



Bourne Toy, Transport & Automobilia Sale  
Wednesday 26th April 2023

**GOLDING YOUNG** EST  
1864

# Probate – Inheritance Tax Assessment

For many Executors and Trustees the responsibility of dealing with a deceased's Estate is a once-in-a-lifetime experience. You have to make a number of important decisions in a very short space of time and all when the loss is most difficult to come to terms with.

The position of Executor is an important one in law and has defined personal liability and responsibility. To exhibit due diligence to beneficiaries and more importantly HM Revenue & Customs, an Executor or advisor will instruct a firm Regulated by RICS.

Even if the estate will be taxed at 0%, a valuation remains an essential tool for an Executor. The inventory will still be used for identification of bequests, trust items, family division and proof of value.

Our valuations are prepared to the International Valuation Standards requirement of the 'Red Book'.

The report will cover sections of:

- Jewellery
- Vehicles
- Antiques, Fine Art & Collections
- General Furniture & Effects



## Removals – Household & Commercial

- Free Quotations
- Full Packing Service
- Suppliers of Packing Materials
- Shipping & Storage Arranged
- Antiques & Fine Art Specialists
- Specialist Piano Movers
- Office Movers

Contact Andrew Lowes on 07970 742577 for a quote  
or email [lowes@goldingyoung.com](mailto:lowes@goldingyoung.com)

[goldingyoung.com](http://goldingyoung.com)

# Review



**A 1999 Rover 200 BRM LE (Limited Edition),** V909 GAP, 1.8 litre petrol, MOT expires 12th June 2023, SORN & garaged since 1st February 2023 with 84,189 recorded miles, current registered keeper since 6th October 2014 during which time it has had a full respray, wheels refurbishment and all mechanical works & servicing undertaken with receipts from MG specialists Hall's Garage, Morton including replacement head gasket in October 2020.  
**SOLD for £3,700**



**A Volkswagen Holdsworth Villa III transporter campervan,** Registration G899 BTW, petrol, white, MOT to 14 June 2023, first registered 25/01/1990, V5 present, 121,822 recorded mileage. To be Sold Upon the instructions of the Executors for Peter Haizelden (Dec'd)  
**SOLD for £5,500**



**A 1926 Clyno Vintage Tourer or Saloon Car,** with Mulliners coachwork, Registration DD 8026, chassis No. 3254, 1303cc petrol, blue, first registered 12 February 1926, MOT expired 29 April 2015 and believed to be stored since that time, engine turns freely but we have not tried to start the car, ideal for recommissioning or restoration, old style V5 present. To be Sold Upon the instructions of the Executors for Peter Haizelden (Dec'd)  
**SOLD for £4,600**



**An Audi A1 TFSi four hatchback,** Registration FY64 FBF, blue, manual, c28,563 recorded miles, V5 present, MOT to 210923., petrol, 1390cc, first registered 22/09/2014. To be Sold Upon the Instructions of the Executors for Diane Birch (Dec'd)  
**SOLD for £6,500**



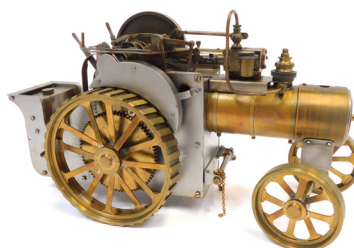
**A 1939 Standard 14 vintage saloon car,** HPJ 229, brown, 1776cc petrol, late registered 1999, last MOT expiry 2012, stored thereafter inside a military tent, no V5. Upon instructions from the Executors of Paul Birchall (Dec'd).  
**SOLD for £3,200**



**An Estrada graphite Cinelli Ram racing bike.**  
**SOLD for £280**



**A BP Motor Spirit enamel double sided sign,** with Union Jack, 61cm x 41cm. (AF)  
**SOLD for £220**



**A steam traction engine model,** the wheels stamped DPM Engineers, Birmingham, England, 14cm high, 29cm wide.  
**SOLD for £500**



**A vintage Esso Extra glass dome sign,** with blue border, red writing, 38cm high, 51cm wide, 17cm deep. (AF)  
**SOLD for £260**



**A late 19th/early 20thC bath seat,** on a metal frame, with shaped seat painted with black, green, and yellow decoration, with a blue leatherette foot section, 112cm high, 173cm long, 87cm wide.  
**SOLD for £240**

# Review



**An invitation to the Dance in Honour of The BRM & GRAHAM HILL 1963, to Mr Edward G Marshall, signed by Graham Hill to Raymond (Benton), Alfred Owen and Raymond Mays together with two Stamford Mercury press photographs of the evening. (3)**  
**SOLD for £220**



**An enamel ESSO advertising sign, the blue enamel border with white ground with red writing, 150cm x 103cm. (AF)**  
**SOLD for £320**



**A Smiths car rev chronometric gauge, with chrome lever, motor cycle registration plate (8254R), Lucas car lamp, etc. To be sold on behalf of the Estate of the Late Jeffrey (Jeff) Ward.**  
**SOLD for £160**



**A Sahara Orceindia Formula 1 Team F1 alloy side table, with circular glass top, on an 88S RE1533 alloy, 37cm high, 35cm diameter.**  
**SOLD for £200**



**Motor racing programmes, various. (1 box) To be sold on behalf of the Estate of the Late Jeffrey (Jeff) Ward.**  
**SOLD for £190**



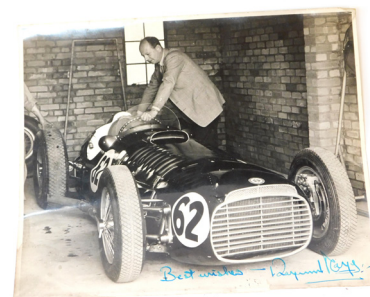
**After Nicholas Watts, Targa Florio 1972, coloured print, signed by the artist, Arturo Merzario and Sandro Munari (drivers), limited edition of 500, 45cm x 73cm. To be sold on behalf of the Estate of the Late Jeffrey (Jeff) Ward.**  
**SOLD for £100**



**A set of four Speed Line Corse AISi7Mg alloy wheels.**  
**SOLD for £220**



**A group of bicycle accessories, to include Shimano brake levers, Suntour XCR chain set, Shimano Ultegra chain set, etc., boxed. (1 box)**  
**SOLD for £150**



**A photograph of the BRM V16, and signed in blue fountain pen 'Best Wishes - Raymond Mays', 19cm x 22cm.**  
**SOLD for £170**



**An enamel ESSO advertising sign, the blue enamel border with white ground with red writing, 150cm x 103cm. (AF)**  
**SOLD for £280**

# Review



A V-Models Vickers Vigor remote control track laying tractor, boxed.  
**SOLD for £300**



A kit built O gauge Class 47 locomotive Gordon Davies, 47587, BR blue with yellow ends.  
**SOLD for £140**



A kit built O gauge Class 17 Bo-Bo locomotive, Councillor Ann Davies nameplate, D8568, BR green.  
**SOLD for £120**



1930s Disney Three Little Pigs clockwork toys, and other clockwork toys, together with three Robertsons figures. (a quantity)  
**SOLD for £420**



Diecast and tinplate vehicles, to include Matchbox Merryweather Fire Engine, Dinky buses, Dinky trains, a Chad Valley Harborne tinplate clockwork car, etc. (2 trays)  
**SOLD for £160**



Tamiya F1 and other race car model kits, including a Castrol Toyota Tom's Supra GT, Lotus type 79 1979 Martini, Williams FW13B Renault, Tyrrell P34 1977 Monaco GP, Lotus 107B Ford, Jordan 191, Lotus Honda 99T, etc. (11)  
**SOLD for £280**



The World of Barbie doll's case, various Barbie and Sindy dolls, etc. (1 box)  
**SOLD for £140**



Dinky Toys diecast, including 101 Thunderbirds 2 and 4, Space 1999 359 Eagle transporter, and Space 1999 360 Eagle freighter, boxed. (3)  
**SOLD for £120**



After Nicholas Watts, British Racing Green, coloured print, signed by Sir Stirling Moss, Tony Brooks and Frank Costin, limited edition of 750, 54cm x 73cm. To be sold on behalf of the Estate of the Late Jeffrey (Jeff) Ward.  
**SOLD for £120**



Britains model diecast, including 9570 Massey Ferguson combine harvester, 9564 elevator, 9542 Forage harvester, 9569 Unimog tractor lorry, etc., boxed. (2 trays)  
**SOLD for £320**

# PRIVATE CLIENT & PROFESSIONAL SERVICE DEPARTMENT

We value personal property for private and corporate clients. Our team have valued family heirlooms, art collections and museum holdings for a variety of purposes.

We are the only auction house in the region to have a bespoke Private Client Department with:

- Three Chartered Arts & Antiques Surveyors
- Four RICS / Antiques Trade Gazette professional assessment award-winning valuers
- Two In-house qualified jewellery valuers
- Experience in abundance and diversity since 1864
- Ten professional staff with RICS, NAVA or SoFAA qualifications.



**For initial advice contact the following Chartered Auctioneers & Valuers:**

Bourne, Stamford & South Colin Young MRICS 01778 422686	Grantham, Lincoln & North William Gregory MRICS 01522 524984
---	--

# Review



**Corgi diecast**, including 1143 America La France Aerial Rescue truck, Corgi gift set 24, Mercedes Benz 240D and touring caravan, 2006 Corgi Super Juniors Mack petrol tanker, 415 Mazda camper, 402 Corgi Whizzwheels Ford Cortina police car, etc. (1 tray)  
**SOLD for £200**



**Airfix and other model kits**, including Phantom FGR.2 Fire Birds, Dassault Mirage F.1C, F84 Thunder Streak, F6F Hell Cat, Vickers Armstrong Wellington B111, etc. (1 box)  
**SOLD for £160**



**A Nintendo NES console**, with controllers, light gun, and games including Super Mario 3, Mega Man 3, Defenders of the Crown, Skate or Die, Donkey Kong, two Gameboy Advances, and a quantity of mini discs. (1 tray)  
**SOLD for £240**



**Dinky and other diecast vehicles**, including Dinky Toys Vanguard, Dinky Toys Austin Devon, Dinky Toys tanker, Corgi Toys Austin 7, Corgi Morris Mini Minor, etc. (1 tray)  
**SOLD for £260**



**Nintendo NES games and accessories**, to include RoboCop, Double Dragon II, Digger Legend of Lost City, Transylvania II Simon's Quest, Super Mario Bros II Jurassic Park, controllers and joysticks. (a quantity)  
**SOLD for £400**



**1:18 scale diecast model vehicles**, including a CMC Exclusive Models Maserati Tipo 61 Birdcage 1960, a Chrono Lotus Elise, and a Shell Classico Collection Ferrari 1972 312 P and Racing fuel pump, boxed. (3)  
**SOLD for £170**



**A Meccano Motor Car Constructor set number 1**, with clockwork motor, key, accessories, and reprinted instruction manual, in associated box.  
**SOLD for £200**



**Britains and other lead soldiers**, including a tank gun, Maasai Warriors, Native Americans, Edwin Warriors, etc. (1 tray)  
**SOLD for £360**



**Paul's Model Art by Minichamps diecast Formula 1 racing cars**, (1 tray)  
**SOLD for £280**



**Paul's Model Art by Minichamps diecast F1 vehicles**, (1 tray)  
**SOLD for £360**

# Review



Paul's Model Art by Minichamps  
F1 diecast vehicles,  
(1 tray)  
SOLD for £220



Paul's Model Art by Minichamps  
diecast F1 vehicles, (1 tray)  
SOLD for £320



Minichamps Michael Schumacher  
Collection and Ralph Schumacher  
Collection F1 cars, including Ferrari  
F300, Ferrari F310, Ferrari 1997  
Launch Edition, Ferrari F310/2,  
Benetton Ford B194, Jordan Peugeot  
197 Ralph Schumacher, etc. (1 box)  
SOLD for £300



Paul's Model Art Minichamps  
diecast F1 cars, (1 tray)  
SOLD for £220



LEGO sets, including 6080 Kings  
Castle, 6061 Siege Tower, etc. (1 box)  
SOLD for £140



A Nintendo Entertainment system  
NS version, with controllers, game  
genie and boxed games (1 box)  
SOLD for £280



Corgi The Aviation Archive diecast  
planes, boxed. (4)SOLD for £100



Corgi and Matchbox diecast cars,  
boxed. (8)  
SOLD for £100



A Commodore Amiga 1200, boxed.  
SOLD for £220



A collection of boxed Dinky and  
Matchbox cars, (1 box).  
SOLD for £300



# Review



A collection of Dinky and Lesney Matchbox Models of Yesteryear, comprising Matchbox Y14, Y6, Y13, Y5, Y1, Y11, Y15, Y10, Y7, Y6, and Models of Yesteryear by Lesney, No 2, No 5, No 3, No 15, Corgi Kits Elephant Page (empty box), Matchbox, Dinky, Viceroy 37 Luxury Coach, etc. (1 tray)  
**SOLD for £180**



Hornby OO gauge rolling stock, locomotives, and tenders, comprising Duchess of Southerland partial locomotive, Pullman coaches, a Hornby Thomas The Tank Engine locomotive, Intercity carriage, Hornby LMS Duke of Sutherland, etc. (1 box, AF)  
**SOLD for £110**



Boxed and unboxed diecast vehicles, including a Corgi Toys Lotus Elan S2, Seledo Lamborghini P400 Miura, Matchbox K24 King Size Lamborghini Miura, Matchbox MB74 Toyate RM2, Seledo Alpine A442, Corgi Whizzwheels TS9B Team Surtees in Italian finish, etc. (a quantity)  
**SOLD for £130**



A Super Nintendo Entertainment System, with Super Mario All Stars, boxed, Super Nes Nintendo Scope 6, boxed, and various games, including Super Mario Kart, Pilot Wings, Desert Strike, etc. (a quantity)  
**SOLD for £180**



Myth and Magic by Tudor Mint Lord of the Rings figures, comprising Frodo Baggins (x2), Sam Gamgee, The Mirror of Galadriel, Treebeard (Fangorn), The Wrong Spell, Frodo Sam and Gollum, Bilbo Baggins, Gollum, Orc, Gandalf, Aragorn (Strider) and Gandalf and Frodo, boxed. (a quantity)  
**SOLD for £120**



A set of Sculptures Dream Lord of the Rings figures, comprising Legolas and Gimli, Orthanc, Aragorn, Witch King, Shelob, Orc, Hobbit, Sauron, Minastirith, Saruman and Galadriel, boxed. (a quantity)  
**SOLD for £140**



A group of Matchbox diecast vehicles, play worn, to include Coca-Cola truck, racing cars, diggers, pallet truck, etc. (3 boxes)  
**SOLD for £130**



An Amati U-Boat 47 Model, Type VIIB-1936, boxed.  
**SOLD for £100**



Hornby and other OO gauge locomotives, including Castle Class locomotive Tregenna Castle, Footbal Class locomotive West Ham United, Class 31 diesel locomotive, etc. (1 tray)  
**SOLD for £110**



Dinky Toys diecast vehicles, including 732 Bell Police helicopter, 410 Bedford van, 451 Johnston road sweeper, 195 Fire Chiefs car, 152 Rolls Royce Phantom 5, etc., boxed. (1 tray)  
**SOLD for £160**

**GOLDING YOUNG** EST  
1864

## Thinking of selling?

Executors, solicitors, accountants, insurers, corporations and government departments, have to exhibit due diligence when instructing. Use this checklist to do the same, with a few reasons why you may wish to choose us.

### We are regulated by RICS

Better Regulation for Us. Better Protection for You.  
Accept Nothing Less.

### Our online catalogues

For over 20 years our catalogues have been online and our experience ensures they are placed in front of the right buyers in the global market.

### Our sales results

July 2020 saw our 141st consecutive month with a sale at either Bourne, Grantham or Lincoln producing a sold rate of over 90%. Good advice, great results for hundreds of vendors every month.

**Join their success with an entry in our next sale!**

# A firm of the highest standing

Being a firm of Chartered Auctioneers & Valuers means that we have not only qualified to the highest standard in the profession, but have to maintain those standards. The first due diligence check any professional makes when needing a formal valuation, or simply selling at auction is for The Hallmark of a Chartered Auctioneer & Valuer - Regulated by RICS.

## RICS

The Royal Institution of Chartered Surveyors is the professional body that has been responsible for The Auctioneers Charter since 1970. All members have to complete at least 20 hours CPD or Continued Professional Development every year. All valuation work is prepared to the RICS Red Book requirements incorporating the International Valuation Standards (IVSC) Client Accounting. All client money has to be held in dedicated, ring-fenced accounts with a full audit trail.

## NAVA Propertymark

The National Association of Valuers and Auctioneers are an important body within the auctioneering and valuation profession, specifically in our case relating to the sale of chattels or personal property. All members have to complete at least 12 hours CPD or Continued Professional Development every year. They work with auctioneers and consumers alike, to offer regulation and guidance. Membership also provides for Primary Authority with Trading Standards to ensure clarity and understanding.

## SoFAA

The Society of Fine Art Auctioneers, formed in 1973, as the name suggests, is a society that exclusively represents the interests of the leading fine art auctioneers in the UK helping them provide the best service to clients. With this level of qualification and accreditation within the firm we pride ourselves on providing a reliable and professional service to get it right.



#### The Bourne Auction Rooms

Spalding Road, Bourne,  
Lincolnshire PE10 9LE

E: [bourne@goldingyoung.com](mailto:bourne@goldingyoung.com)

T: +44 (0) 1778 422686

F: +44 (0) 1778 425726

#### The Grantham Auction Rooms

Old Wharf Road, Grantham,  
Lincolnshire NG31 7AA

E: [grantham@goldingyoung.com](mailto:grantham@goldingyoung.com)

T: +44 (0) 1476 565118

F: +44 (0) 1476 561475

#### The Lincoln Auction Rooms

Thos Mawer House, Station Road  
North Hykeham, Lincoln LN6 3QY

E: [lincoln@goldingyoung.com](mailto:lincoln@goldingyoung.com)

T: +44 (0) 1522 524984

F: +44 (0) 1522 681804

#### The Leicester & Midlands Office

E: [leicester@goldingyoung.com](mailto:leicester@goldingyoung.com)

T: +44 (0) 116 473 5735

#### London & South Valuations

E: [london@goldingyoung.com](mailto:london@goldingyoung.com)

T: +44 (0) 203 301 1007

#### The Louth & Wolds Office

E: [louth@goldingyoung.com](mailto:louth@goldingyoung.com)

T: +44 (0) 1507 661864

#### The Stamford & Rutland Office

E: [stamford@goldingyoung.com](mailto:stamford@goldingyoung.com)

T: +44 (0) 1780 7516