



Grantham Asian Art Sale Review
Wednesday 9th January 2020

GOLDING YOUNG EST
1864

Probate – Inheritance Tax Assessment

For many Executors and Trustees the responsibility of dealing with a deceased's Estate is a once-in-a-lifetime experience. You have to make a number of important decisions in a very short space of time and all when the loss is most difficult to come to terms with.

The position of Executor is an important one in law and has defined personal liability and responsibility. To exhibit due diligence to beneficiaries and more importantly HM Revenue & Customs, an Executor or advisor will instruct a firm Regulated by RICS.

Even if the estate will be taxed at 0%, a valuation remains an essential tool for an Executor. The inventory will still be used for identification of bequests, trust items, family division and proof of value.

Our valuations are prepared to the International Valuation Standards requirement of the 'Red Book'.

The report will cover sections of:

- Jewellery
- Vehicles
- Antiques, Fine Art & Collections
- General Furniture & Effects



Removals – Household & Commercial

- Free Quotations
- Full Packing Service
- Suppliers of Packing Materials
- Shipping & Storage Arranged
- Antiques & Fine Art Specialists
- Specialist Piano Movers
- Office Movers

Contact Andrew Lowes on 07970 742577 for a quote
or email lowes@goldingyoung.com

goldingyoung.com

Review



A fine Japanese two-colour patinated bronze koro, with gilt piquet work embellishments, silvered inlays and appliques of coral and mother-of-pearl, on pierced circular base signed to the underside Made by Ohashi Mitsuemon Yoshihashi.
SOLD for £25,000



A pair of Chinese porcelain tea cups, decorated with European figures and a priest within a classical landscape below a rose swag border, 9cm H.
SOLD for £520



A Chinese Qing period porcelain part tea service, comprising of a bullet shaped teapot and cover, cream jug and cover, teapot stand, spoon tray, six tea bowls, seven saucers and four coffee cans, decorated with bronze vase, incense burners, etc. (23)
SOLD for £1,900



19thC Chinese School. Nine tea plantation drawings, to include figures picking tea, various related buildings, figures with mountains in the distance, tea plantations, figure of a European merchant tea bartering, before many figures, each watercolour on silk lined rice paper, 16cm x 25cm. (9)
SOLD for £3,900



A pair of 19thC Chinese Cantonese famille rose baluster vases, decorated with figures at war and classical figures, on a floral ground, 36cm H. (2)
SOLD for £800



A Chinese export porcelain tankard, the bell shaped body decorated with fish, with an upper floral banding, polychrome decorated predominately in orange, pink and green, with half capped handle, on circular foot, 16cm H.
SOLD for £650



A pair of Chinese Republic porcelain wall plaques, polychrome decorated with an Imperial scene of figure in a chair flanked by further figures in flowing robes, predominately in purple, yellow and pink, with an outer geometric banding. 51cm x 62cm.
SOLD for £1,000



Various oriental bronze and bronzed figures, other metalware etc. comprising three various gods or figures praying, two with legs crossed, 19cm H, etc. a recumbent lady and a figure of a lady standing with arm outstretched. (5)
SOLD for £340



Two jade rings, in green and white colours, each approx 4cm H. (2)
SOLD for £500



Four 19thC blanc de chine porcelain Chinese figures. (various dimensions, 4)
SOLD for £360

PRIVATE CLIENT & PROFESSIONAL SERVICE DEPARTMENT

We value personal property for private and corporate clients. Our team have valued family heirlooms, art collections and museum holdings for a variety of purposes.

We are the only auction house in the region to have a bespoke Private Client Department with:

- Three Chartered Arts & Antiques Surveyors
- Four RICS / Antiques Trade Gazette professional assessment award-winning valuers
- Two In-house qualified jewellery valuers
- Experience in abundance and diversity since 1864
- Ten professional staff with RICS, NAVA or SoFAA qualifications.



For initial advice contact the following Chartered Auctioneers & Valuers:

Bourne, Stamford & South Colin Young MRICS 01778 422686	Grantham, Lincoln & North William Gregory MRICS 01522 524984
---	--

Review



A mid 19thC Minton J Lawlor; Art Union of London Parian sculpture of Solitude, formed as a semi-clad lady aside stork, on a naturalistic setting, titled, signed and dated, London 1852, 53cm H.
SOLD for £1,200



A 19thC Chinese blue and white porcelain moon flask, the circular body with dragon handles on oval foot with an upper Greek key style banding, 24cm H.
SOLD for £340



Various Chinese porcelain, prunus and other vases, to include one of inverted circular form with domed lid, 25cm H, a further ginger jar, two open jars, similarly decorated blue and white Japanese Hirado porcelain vase, water pot with side handle, etc. (a quantity)
SOLD for £300



A 19thC Chinese blue and white porcelain moon flask, of large proportion, with cylindrical stem, the circular body profusely decorated with panels of figures with dragon handles on an oval foot, profusely decorated with flowers, unmarked, 32cm H.
SOLD for £400



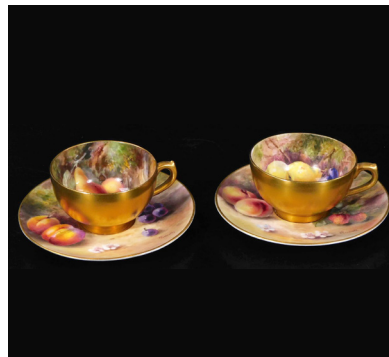
A Chinese porcelain tea bowl, of bell shaped form, profusely decorated with flowers, with seal mark and part script, six character double circle Kangxi type mark beneath, 5cm H.
SOLD for £500



A Chinese porcelain Ta Ching Tung Chin Mein Chih dynasty bowl, of inverted bellied circular form, with inner lined and floral banding, the outer decorated with similar flowers on an circular foot, seal mark beneath, labelled attribution, 21cm Dia.
SOLD for £400



A Chinese Celadon pottery vase, of floral form, on oval foot, labelled beneath Ming Sky Blue Vase, 10cm H.
SOLD for £240



An early 20thC Royal Worcester fruit pattern cup and saucer, by William Ricketts, each piece decorated with autumn fruits, pears, brambles, etc. the saucer 11cm Dia, and another similar (4).
SOLD for £200



A Chinese bronze censer, of bellied circular form, profusely decorated with an upper Greek key style banding and mask handles, bearing six character Xuande reign mark beneath, 21cm W. Auctioneer Announce new dimension.
SOLD for £2,400



A Japanese bronze figure of a crouching tiger, profusely decorated with plain tail, unmarked, 25cm W, and a wooden box.
SOLD for £500

GOLDING YOUNG EST
1864

Thinking of selling?

Executors, solicitors, accountants, insurers, corporations and government departments, have to exhibit due diligence when instructing. Use this checklist to do the same, with a few reasons why you may wish to choose us.

We are regulated by RICS

**Better Regulation for Us. Better Protection for You.
Accept Nothing Less.**

Our online catalogues

For over 20 years our catalogues have been online and our experience ensures they are placed in front of the right buyers in the global market.

Our sales results

July 2020 saw our 141st consecutive month with a sale at either Bourne, Grantham or Lincoln producing a sold rate of over 90%. Good advice, great results for hundreds of vendors every month.

Join their success with an entry in our next sale!

A firm of the highest standing

Being a firm of Chartered Auctioneers & Valuers means that we have not only qualified to the highest standard in the profession, but have to maintain those standards. The first due diligence check any professional makes when needing a formal valuation, or simply selling at auction is for The Hallmark of a Chartered Auctioneer & Valuer - Regulated by RICS.

RICS

The Royal Institution of Chartered Surveyors is the professional body that has been responsible for The Auctioneers Charter since 1970. All members have to complete at least 20 hours CPD or Continued Professional Development every year. All valuation work is prepared to the RICS Red Book requirements incorporating the International Valuation Standards (IVSC) Client Accounting. All client money has to be held in dedicated, ring-fenced accounts with a full audit trail.

NAVA Propertymark

The National Association of Valuers and Auctioneers are an important body within the auctioneering and valuation profession, specifically in our case relating to the sale of chattels or personal property. All members have to complete at least 12 hours CPD or Continued Professional Development every year. They work with auctioneers and consumers alike, to offer regulation and guidance. Membership also provides for Primary Authority with Trading Standards to ensure clarity and understanding.

SoFAA

The Society of Fine Art Auctioneers, formed in 1973, as the name suggests, is a society that exclusively represents the interests of the leading fine art auctioneers in the UK helping them provide the best service to clients. With this level of qualification and accreditation within the firm we pride ourselves on providing a reliable and professional service to get it right.



The Bourne Auction Rooms

Spalding Road, Bourne,

Lincolnshire PE10 9LE

E: bourne@goldingyoung.com

T: +44 (0) 1778 422686

F: +44 (0) 1778 425726

The Grantham Auction Rooms

Old Wharf Road, Grantham,

Lincolnshire NG31 7AA

E: grantham@goldingyoung.com

T: +44 (0) 1476 565118

F: +44 (0) 1476 561475

The Lincoln Auction Rooms

Thos Mawer House, Station Road

North Hykeham, Lincoln LN6 3QY

E: lincoln@goldingyoung.com

T: +44 (0) 1522 524984

F: +44 (0) 1522 681804

The Leicester & Midlands Office

E: leicester@goldingyoung.com

T: +44 (0) 116 473 5735

London & South Valuations

E: london@goldingyoung.com

T: +44 (0) 203 301 1007

The Louth & Wolds Office

E: louth@goldingyoung.com

T: +44 (0) 1507 661864

The Stamford & Rutland Office

E: stamford@goldingyoung.com

T: +44 (0) 1780 7516