



EST  
1864

# GOLDING YOUNG

Fine Art Sale

Wednesday 27th November 2019



CHARTERED AUCTIONEERS & VALUERS • ARTS & ANTIQUES SURVEYORS



## PROBATE – INHERITANCE TAX ASSESSMENT

For many Executors and Trustees the responsibility of dealing with a deceased's Estate is a once-in-a-lifetime experience. You have to make a number of important decisions in a very short space of time and all when the loss is most difficult to come to terms with.

The position of Executor is an important one in law and has defined personal liability and responsibility. To exhibit due diligence to beneficiaries and more importantly HM Revenue & Customs, an Executor or advisor will instruct a firm Regulated by RICS.

Even if the estate will be taxed at 0%, a valuation remains an essential tool for an Executor. The inventory will still be used for identification of bequests, trust items, family division and proof of value.

Our valuations are prepared to the International Valuation Standards requirement of the 'Red Book'.

The report will cover sections of:

- Jewellery
- Vehicles
- Antiques, Fine Art & Collections
- General Furniture & Effects



**For initial advice contact the following Chartered Auctioneers & Valuers:**

Bourne, Stamford & South  
Colin Young MRICS  
01778 422686

Grantham, Lincoln & North  
William Gregory MRICS  
01522 524984



## Removals – Household & Commercial

- Free Quotations
- Full Packing Service
- Suppliers of Packing Materials
- Shipping & Storage Arranged
- Antiques & Fine Art Specialists
- Specialist Piano Movers
- Office Movers

Contact Andrew Lowes on 07970 742577 for a quote  
or email [lowes@goldingyoung.com](mailto:lowes@goldingyoung.com)

[goldingyoung.com](http://goldingyoung.com)

## PRIVATE CLIENT & PROFESSIONAL SERVICE DEPARTMENT

We value personal property for private and corporate clients. Our team have valued family heirlooms, art collections and museum holdings for a variety of purposes.

We are the only auction house in the region to have a bespoke Private Client Department with:

- Four Chartered Arts & Antiques Surveyors
- Two RICS/ Antiques Trade Gazette professional assessment award-winning valuers
- Two In-house qualified jewellery valuers
- Experience in abundance and diversity since 1864
- Ten professional staff with RICS, NAVA or SoFAA qualifications.



SOLD for £2,800



SOLD for £2,800



SOLD for £2,000



SOLD for £1,100



Russian figure by Natalina Danko  
SOLD for £50,000

Grantham, Bourne & Lincoln Collective Sales  
4th/11th/18th December



Bourne Toy, Transport & Automobilia Sale  
Thursday 12th December  
Inc. a 1972 Sirrus Open Sail Plane (Glider) & Trailer



Grantham Fine Ceramics  
& Asian Art Sale  
Thursday 9th January



Further entries invited for all sales.



## INFORMATION FOR BUYERS

- 1. Introduction:** The following informative notes are intended to assist Buyers, particularly those inexperienced or new to our salerooms. All sales are conducted on our printed 'Conditions of sale' which are readily available for inspection and normally accompany catalogues. Our staff will be happy to help you if there is anything you do not fully understand.
- 2. Agency:** As auctioneers we usually contract as agents for the seller whose identity, for reasons of confidentiality, is not normally disclosed. Accordingly, if you buy your primary contract is with the seller.
- 3. Estimates:** Estimates are designed to help buyers gauge what sort of sum might be involved for the purchase of a particular lot. The lower estimate may represent the reserve price and certainly will not be below it. Estimates do not include the buyer's premium or VAT (where chargeable). Estimates are prepared some time before the sale and may be altered by announcement before the sale. They are in no sense definitive and are subject to constant revision.
- 4. Buyers premium:** The 'Conditions of sale' oblige buyers to pay a buyer's premium at 20% on the hammer price of each lot purchased with a minimum of £2 per lot. In the case of lots purchased 'Live Webcast' through Golding Young Live will be charged at 24% and external internet bidding platforms this will be charged at 28% on the hammer price. In addition, VAT is payable on this premium (see below). To clarify, live webcast auctions are NOT sales governed by Distance Selling Regulations – you were given the opportunity to view, even if you did not.
- 5. VAT:** An asterisk (\*) indicates that VAT is payable by the purchaser at the standard rate imposed by current UK law on the hammer price as well as being an element in the buyer's premium, lots are noted in the saleroom by a red dot on the lot number. This imposition of VAT is likely to be because the seller is registered for VAT within the European Union and is not operating the Dealers Margin Scheme or because VAT is due on importation into the UK. The double symbol (\*\*) indicates that the lot has been imported from outside the European Union and the present position is that these lots are liable to a reduced rate of VAT on the gross lot price (i.e. both the hammer price and the buyer's premium). Lots which appear without either of the above symbols indicate that no VAT is payable on the hammer price. This is because such lots are sold using the Auctioneers' Margin Scheme and it should be noted that the VAT included within the premium is not recoverable as input tax. (VAT rates are changing with frequency, please check with HMRC. VAT will be charged as set by Government at the time of sale.)
- 6. Condition and description of lots.** We are primarily, agents for the seller. We are dependent on information provided by the seller and whilst we may inspect lots and act reasonably in taking a general view about them we are normally unable to carry out a detailed or any examination of lots in order to ascertain their condition in the way in which it would be wise for a buyer to do. Intending buyers have ample opportunity for inspection of goods and, therefore, accept responsibility for inspecting and investigating lots in which they may be interested. Please note carefully the exclusion of liability for the condition of lots contained in the 'Conditions of sale'. Neither the seller nor we, as the auctioneers, accept any responsibility for their condition. In particular, mechanical objects of any age are not guaranteed to be in working order. However, in so far as we have examined the goods and make a representation about their condition, we shall be liable for any defect which that examination ought to have revealed to the auctioneer but which would not have been revealed to the buyer had the buyer examined the goods. Additionally, in specified circumstances lots misdescribed because they are 'deliberate forgeries' may be returned and repayment made. There is a 21 day time limit from the date of sale, not date of collection or receipt. (The expression 'deliberate forgery' is defined in our 'Conditions of sale').
- 7. Electrical goods:** Items are tested by a qualified electrician for SAFETY ONLY. An item that passes the PAT safety test may not work. Conversely, an item that fails the test may work with just minor repair. 'Working Order' and 'Safe' are two completely different concepts. The only thing you may take for granted is that the item will be safe at the point of sale. Items that have failed will have their cabling cut to source, labelled and sold 'For Trade Only'. To use the object you will have to change it radically from what was sold to you. Therefore, the Auctioneers cannot be held responsible after the point of sale. Those items sold genuinely as 'antiques or collectables' will not have been tested and if bought for use must be checked over for compliance with safety regulations by a qualified electrician before use. This is an express condition.
- 8. Export of goods:** Buyers intending to export goods should ascertain (a) whether an export licence is required and (b) whether there is any specific prohibition on importing goods of that character because, e.g. they may contain prohibited materials such as ivory. Ask us if you need help.
- 9. Bidding in person:** Some form of identification with proof of address will be required if you are unknown to us. Bidders may be required to register before the sale commences and lots will be invoiced to the name and address on the registration form. Account transfers will not be recognised or facilitated under any circumstances.
- 10. Absentee bidding:** Commission bids may be left with the auctioneers indicating the maximum amount to be bid excluding buyers' premium. They will be executed as cheaply as possible having regard to the reserve (if any) and competing bids. If two buyers submit identical commission bids, the auctioneers may prefer the first bid received. If there are genuine reasons why you are unable to leave a Commission Bid and you wish to bid by telephone we may accommodate on lots where your opening bid will be £500 or above. There are inherent dangers with this practice; therefore all arrangements shall be entirely at the bidder's risk. Absentee bid instructions must be received by telephone, fax or email 12 hours prior to the sale.
- 11. Methods of payment:** Accounts are due for settlement SALEDAY. The following methods of payment are acceptable. There will be NO EXCEPTIONS to this policy. To avoid undue embarrassment for yourself or our staff, please do not ask for preferential treatment.
  - i. Cash.** Single payments up to ONE THOUSAND GBP only per sale.
  - ii. Debit Card.** No limit with chip & pin. (Card Not Present limit £500 & no CNP on gold or silver).
  - iii. Credit Card.** We no longer accept credit cards.
  - iv. Bank Drafts & Building Society Cheques.** No limit. Due to forgeries, we will retain the goods for 3 working days to establish clearance of funds.
  - v. Cheques.** Accepted up to the limit of the guarantee card for immediate clearance. For sums exceeding this, and you are not known to the auctioneers, we will retain the goods for 7 working days to establish clearance of funds.
  - vi. Bank Transfer for Bourne Auctions.** Payments to Golding Young Limited - Auction Clients Account – Bourne. 40-22-19 22034859. HSBC, 88 Westgate, Grantham NG31 6LF. Swift Code MIDLGB22. IBAN is . GB56MIDL40221922034859
  - vii. Bank Transfer for Grantham Auctions.** Payments to Golding Young Limited - Auction Clients Account – Grantham. 40-22-19 13666891. HSBC, 88 Westgate, Grantham NG31 6LF. Swift Code MIDLGB22. IBAN is GB76MIDL40221913666891.
  - viii. Bank Transfer for Lincoln Auctions.** Payments to Golding Young Limited - Auction Clients Account - Lincoln. 40-22-19 33667200. HSBC, 88 Westgate, Grantham NG31 6LF. Swift Code MIDLGB22. IBAN is GB45MIDL40221933667200.

**Bank Transfer payment types, codes and clearance times:**  
BACS – code BP = cleared funds on the 4<sup>th</sup> day.  
EFT or CHAPS – code CR + ADVICE CONFIRMS = cleared funds after 24hrs.  
If early release of goods is requested our staff will ring HSBC to confirm guaranteed cleared funds.
- 12. Collection and storage:** Goods can be collected as soon as they are paid for and within two working days following the sale. If goods remain with us and we have no contrary written advice of your intentions the items will be moved to storage and reasonable labour charges levied and storage at the rate of £2+vat per lot per day thereafter for small items (1 person safe carry) and £10+vat per lot per day for furniture and large items (2 person safe carry). This satisfies the requirements of the Consumer Rights Bill (2014).
- 13. Late payment penalties:** Auction accounts have always been due Saleday. Any account remaining outstanding after 3 days will have a £20+vat administration charge applied. **We require payment to terms. Payment must be made on time, in full, and without any deduction, set off or counterclaim. In the event that an account is outstanding after 7 days, we will refer the matter to our debt collection agents, Daniels Silverman Limited, which will incur a surcharge of 20% of the debt, plus VAT at the prevailing rate. You agree that you will be legally liable to pay us that surcharge, and that payment of the same can be enforced against you in court. You also agree to pay interest at the relevant reference rate provided for under the Late Payment of Commercial Debts (Interest) Act 1998, which interest is payable both after and before any judgment of the court and continues to accrue.**
- 14. Postage & Packaging:** Options for buyers are available at [www.goldingyoung.com/buying-shipping](http://www.goldingyoung.com/buying-shipping) or ask a member of staff.

Lots subject to normal VAT rules are marked in the text-only catalogue with a single asterisk character (\*) or a single dagger symbol (†) to indicate a VAT added rate of 20%.

Lots subject to normal VAT rules are marked in the text-only catalogue with a single 'at' character (@) to indicate a VAT inclusive rate of 20%.

Lots subject to normal VAT rules are marked in the text-only catalogue with double asterisk characters (\*\*) or a double dagger symbol (‡) to indicate a VAT added rate of 5%.

Lots subject to normal VAT rules are marked in the text-only catalogue with double 'at' characters (@@) to indicate a VAT inclusive rate of 5%.

Lots marked in the text-only catalogue with a bullet character (•) are subject to the Artist's Resale Right Scheme.



# The Lincoln Art Sale

**Wednesday 27th November 2019**

**At The Lincoln Auction Rooms  
Viewing & Selling in The Gallery  
At Thos Mawer House  
Sale commences at 6pm**

Viewing: Sunday 24th 2pm-5pm  
Tuesday 26th 10am-4pm  
& saleday from 2pm

Bid online or simply watch the sale live at

**GY  
- Live!**

[goldingyoung.com](http://goldingyoung.com)

All enquiries to William Gregory MRICS on 01522 524984

Front cover images:

Top - Lot 9 Vincent Haddelsey (1934-2010).

The Hunt, oil on canvas, initialled, 45cm x 37cm.

Bottom - Lot 113 Robert Graham (20thC).

St James' Church from Uppgate, Louth, oil on canvas, signed, 90cm x 60cm.



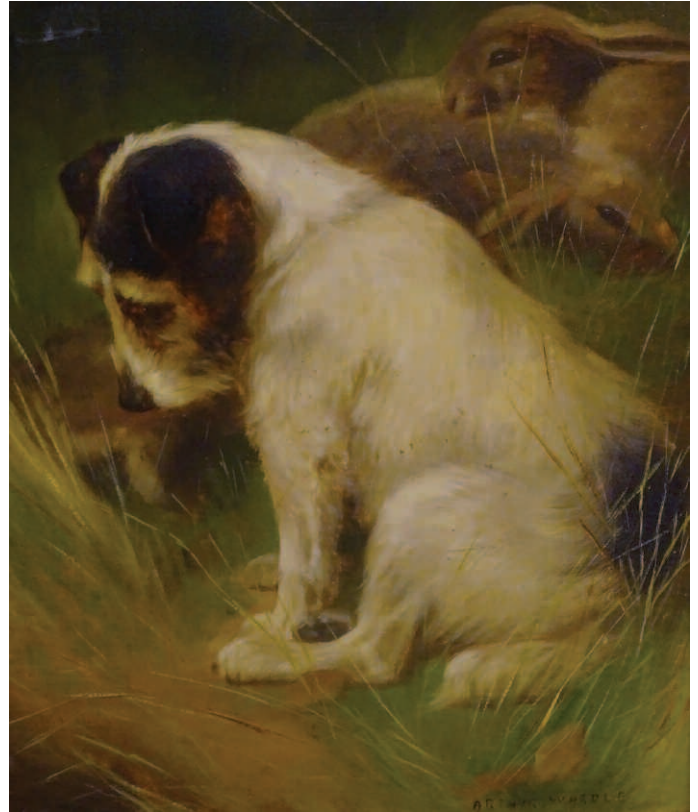
# Lincoln Fine Art Sale



▲ 1.  
**John Piper (1903-1992).**  
 South Lopham, artist signed limited edition screenprint in colours,  
 57/70, 98cm x 56.5cm.  
 Christies Certificate of Authentication label verso Gadsby's Leicester  
 £800-1200



▲ 2.  
**Walter Hunt (1861-1941).**  
 Farmyard scene with a calf and cockerel, oil on canvas, signed and  
 dated (19)04, inscribed verso 'To Mrs Stannidge with Walter Hunt's  
 compliments' October 15th 1904', 14.5cm x 22cm.  
 £1500-2000



▲ 4.  
**Arthur Wardle (1864-1949).**  
 Waiting for the next one, oil on canvas, signed, titled, inscribed and  
 dated 1910 verso, 44cm x 34cm.  
 £800-1200



▲ 5.  
**Mel Langton (20thC).**  
 Sir Walter Style, painted composition moulded statue, initialled and  
 dated (20)15, 160cm high.  
 Provenance: Lincoln Barons' Charter Trail, number 24.  
 £1200-1800





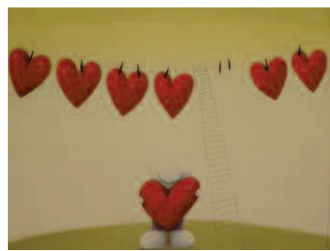
▲ 6.  
**Laurence Stephen Lowry (1887-1976).**  
The Pond, artist signed coloured print, 46cm x 58cm.  
£1500-2500



▲ 3.  
**Francis Abel William Armstrong (1849-1920).**  
Market Day at Lincoln, watercolour, signed and dated 1902, 39cm x 31.5cm.  
Purchased Peter London Fine Art London £1275 1999.  
£100-200



▲ 7.  
**C.W. 19thC.**  
Half length portrait of a young child, oil on canvas, initialled and dated 26/7/(18)53, 64cm x 50.5cm.



▲ 8.  
**Doug Hyde (b.1972).**  
Seven days a week, artist signed and titled limited edition silk screen 215/595, 66cm x 83.5cm.  
DeMontfort Fine Art Certificate of Authenticity verso.  
£150-250



▲ 9.  
**Vincent Haddelsey (1934-2010).**  
The Hunt, oil on canvas, initialled, 45cm x 37cm.  
£400-600



▲ 10A.  
**Antoine Blanchard (1910-1988).**  
The Horse Bus, oil on canvas, signed, 32cm x 44.5cm.  
Provenance: E. Stacey Marks, Eastbourne  
£2000-3000



▲ 10.  
**William Weekes (act. 1856-1904).**  
Musical Critics, oil on panel, signed and titled verso, 27.5cm x 18.5cm.  
£500-800

11.  
**Samuel Williamson (1792-1840).**  
Mountainous landscape with figures tending cattle and goats, oil on canvas, 39.5cm x 50cm.



▲ 12.  
**19thC British School.**  
Masted ship in stormy seas, oil on canvas, 36.5cm x 60cm.  
£100-200

13.  
**J Israels (19thC).**  
A Meagre Meal, oil on canvas, signed, 35cm x 29.5cm.

14.  
**W. St. Henry (19thC).**  
Rural landscape with cottages, trees and one with figure on a country path, oil on canvas - pair, one signed, 24cm x 44cm, in original gilt frames.  
£120-150



▲ 15.  
**Charles Leslie (fl.1835-1863).**  
Ben Lawers for Loch Drunkie, N. Britain, oil on canvas, titled on mount, 29.5cm x 60cm.



# Lincoln Fine Art Sale

16.  
**John Lesley (19thC).**  
Snowdon, oil on canvas, signed and titled verso, 19cm x 39.5cm.

17.  
**18thC Continental School.**  
River landscape, oil on copper laid on panel, 36cm x 43.5cm.  
**£300-400**



▲ 18.  
**19thC British School.**  
Still life of a platter of fruits on a serving table with egg and dart moulding, oil on canvas, 44cm x 59.5cm.  
**£150-250**

19.  
**19thC British School.**  
Coastal scene with figures on the shore, two masted ship in choppy waters and lighthouse on the head, oil on canvas, 22cm x 37cm.  
**£120-150**



▲ 20.  
**Walter H W Foster (fl.1861-1888).**  
In the Betchworth Meadows Surrey, oil on canvas, signed and titled verso, 65cm x 100.5cm.  
**£150-250**

21.  
**19thC British School.**  
Head and shoulders portrait of a Gentleman, oil on board, 21.5cm x 16.5cm.



▲ 22.  
**Copley Fielding (1787-1855).**  
A Roadside Inn, watercolour, signed and dated 1831, 17cm x 26cm.  
*Label verso Henry J Mullen Ltd., Harrogate.*  
**£100-150**

23.  
**19thC School.**  
Regal gentleman with blue cloak, oil, 17cm x 12.5cm.

24.  
**Henry George Todd (1846-1898).**  
Autumn fruits, oil on canvas, titled on mount, 59cm x 48cm.



▲ 25.  
**John Calcott Horsley (1817-1903).**  
The Reading Lesson, oil on canvas, titled on mount, 59cm x 44.5cm.

27A.  
**Walter Hunt (1861-1941).**  
'Out in the Cold', a snow scene depicting a donkey tethered to a post, facing left, the snow falling, oil on canvas, 51cm x 76cm.  
**£2000-3000**



▲ 26.  
**Walter Hunt (1861-1941).**  
Sheep and lambs on a rocky hillside, oil on canvas, signed and dated (18)96, inscribed verso 'Presented to Mrs Stannidge with Walter Hunt's compliments', 17cm x 24.5cm.  
**£1000-1500**



▲ 27.  
**Walter Hunt (1861-1941).**  
Calf by a stream, oil on canvas, signed and dated (19)06, inscribed verso 'To Mrs Stannidge 17 October 1906 with best wishes from Walter Hunt', 16.5cm x 21.5cm.  
**£1000-1500**



▲ 28.  
**Henry Benjamin Roberts (1832-1915).**  
Forget Me Not, watercolour, signed and dated 1870, 49cm x 43cm.  
**£300-500**



▲ 29.  
**John Frederick Tayler (1802-1889).**  
No. 1 study in a trooper's stable, watercolour, signed and initialed, dated 1883, titled verso, 41cm x 57cm.  
**£150-250**





▲ 30.  
**George Augustus Holmes (1822-1911).**  
Sisters by the barn door with piglets, hens and chicks, oil on canvas, initialled, dated (18)75, 52cm x 39cm.  
£500-800



▲ 31.  
**George Augustus Holmes (1822-1911).**  
My Friends - study with a young child, dog and a kitten, oil on canvas, initialled, dated (18)75, 16cm x 21.5cm.  
£100-200

32.  
**James Aumonier (1832-1911).**  
Country landscape with sheep, watercolour, signed, 31cm x 48cm.  
£50-80

33.  
**Hamilton Macallum (1841-1896).**  
Fishing boats on calm sea, oil on canvas, signed and dated 1890, 40cm x 70cm.  
£400-600

34.  
**After Louis Bosworth Hurt (19thC).**  
Highland cattle in a landscape, charcoal, 25cm x 42cm.  
£50-80

35.  
**George Henry Jenkins (1843-1914).**  
Riverside cottage - South Devon, watercolour, signed and titled verso, 24cm x 34cm.  
£50-80

36.  
**After Edwin Ellis (19thC).**  
Fishing boats on a squally sea, oil on canvas, 49cm x 29cm.  
£50-80

37.  
**Leopold Rivers (1852-1905).**  
Shepherd and sheep, in a country landscape, watercolour, signed, 48cm x 27.5cm.  
£50-80



▲ 38.  
**Filippo Indoni (1800-1883/4).**  
A Woodsman, watercolour, signed, 55cm x 37cm.  
£150-250



▲ 39.  
**George Armfield (1808-1893).**  
Terriers, oil on canvas, signed, 29cm x 39cm and another rats, two terriers upturning a bucket in search of contents, 31cm x 41cm, a pair. (2)  
£400-600



▲ 40.  
**Alfred Provis (act.1843-1886).**  
Interior scene of a young maiden reading, oil on canvas, relined, no signature, 34cm x 29cm.  
£200-400

41.  
**A.G.H (19thC).**  
The Question, oil, initialled, 16cm x 12cm.  
£150-250

42.  
**John Sell Cotman (1782-1842).**  
Marine scene with sailing boats, oil, signed, 8.5cm x 12.5cm.  
£80-120

43.  
**F. W. Watts (1800-1870).**  
Rural landscape with figures by a river, titled The Mill Pool, label verso W.H. Patterson, 19 Albermarle Street, London, oil on canvas, relined, 34cm x 44.5cm.  
£400-600



▲ 44.  
**Adrian Viggazo.**  
Winter scene with figures and horses, oil on panel, signed, 39cm x 49cm.

45.  
**Adrian Viggazo.**  
Winter scene with figures, sledges and animals, oil on panel, signed, 38.5cm x 58.5cm.



▲ 46.  
**Auguste Aristide Fernand Constantin (1824-1895).**  
Idyllic Normanby street scene, oil on canvas, signed, 52cm x 34.5cm

47.  
**Watzmann (20thC).**  
Guther Schwonn Wiesbaden, oil on canvas, signed and titled, 57.5cm x 42.5cm.



▲ 48.  
**18thC Italian School.**  
Figures and animals by a bridge, oil on board, 27.5cm x 40.5cm

49.  
**19thC Continental School.**  
Young Couple - The Tryst, oil on board, 28cm x 23.5cm.

50.  
**Dutch School.**  
Still life vase of flowers on mantel, oil on canvas, 49cm x 39cm.

50A.  
**John Linnell (1792-1892).**  
A wooded evening landscape, a drover herding a flock of sheep along a lane towards the viewer, trees to the left, a church partly hidden behind trees to the right, signed lower right, oil on canvas, 67cm x 86.5cm.  
£2000-3000

51.  
**Henry Pilleau (1815-1899).**  
The Guidecca Venice, watercolour, initialled and dated (18)91, 27cm x 48cm label verso Royal Institute of Painters and Watercolours.

# Lincoln Fine Art Sale



▲ 52.  
**George Stansfield Waters (1838-1924).**  
Sonning on Thames, watercolour, signed, dated 1874, titled on the mount, 31cm x 50cm.  
£500-800



▲ 56.  
**George Armfield (1808-1893).**  
Terriers and mouse, oil on canvas - pair, signed, 29.5cm x 39.5cm.  
£1500-2000



53.  
**Ernesto Torrini (19thC).**  
Italian Nobleman holding a glass, watercolour, signed, 36cm x 23cm.  
£100-150

54.  
**Ernesto Fontana (19thC).**  
The Gift, watercolour, signed, 23.5cm x 31cm.  
£150-250

55.  
**Henry John Yeend King (1855-1924).**  
Sunday morning, watercolour, signed, 26cm x 17cm.  
*Label verso Chris Beetles London*  
£150-250



▲ 59.  
**19thC Continental School.**  
Town scene with numerous figures, oil on panel, 23cm x 17.5cm.  
£200-300

60.  
**19thC Italian scene.**  
Venetian canal, watercolour, indistinctly signed, 34cm x 19.5cm.  
£50-100

61.  
**E J Floris (19thC).**  
Young children, watercolour, pair, signed and dated 1892, 28cm x 23cm.  
£150-250

62.  
**George Goodwin Kilburne (1839-1924).**  
The Young Shrimper, watercolour, signed and dated 1870 and titled in mount, 82cm x 47cm.  
£400-600

63.  
**W. Collins (19thC).**  
River scenes with sailing boats, oil on board - pair, signed, 44cm x 143cm.



▲ 57.  
**Henry Garland (1834-1913).**  
Highland Cattle, Near Inveroran, Argyllshire, oil on canvas, signed, date 1899, inscribed verso, 50cm x 75cm.  
£1000-1500



▲ 58.  
**Edwin Earp (1851-1945).**  
Tranquil evening, watercolour, signed, 55cm x 54cm  
*Label verso Hibbert Fine Art, Bakewell.*



▲ 64.  
**19thC School.**  
Shepherd with lamb, oil on panel, 15.5cm x 15.5cm, in Neo-Classical style, in gilt frame.





▲ 65.  
**19thC British School.**  
Head and shoulders portrait of a young woman, oil on canvas, 58cm x 45cm.

66.  
**19thC British School.**  
Head and shoulders portrait of a lady, oil on canvas, 58cm x 49cm.

68.  
**Edward Richardson (1810-1874).**  
On the Rhine at Cologne, watercolour, signed, 22cm x 31cm.  
**£300-500**

70.  
**Sursham ?.**  
Coach and horses at the Inn, watercolour, signed and dated (18)76, 25cm x 35.5cm.

71.  
**John Shapsland (1865-1929).**  
Moorland landscape, watercolour, signed, 28cm x 46cm.  
**£80-120**

72.  
**Dame Laura Knight (1877-1970).**  
Country women, pencil, signed, 24.5cm x 17cm.  
**£80-120**

73.  
**Eugenio Bosa (1807-1875).**  
El Sago de Fragna, watercolour, signed and titled, 17cm x 25cm.  
**£50-80**

74.  
**18thC Dutch School.**  
Stable scene with figures, oil on panel, 35cm x 40cm.

75.  
**W. J. Crompton (19thC).**  
Highland cattle in river mountain landscape, oil on canvas, signed, 49.5cm x 75cm.  
**£80-120**



▲ 67.  
**Nathaniel Sichel (1843-1907).**  
Arthur Lionel Payne (Peczenik) seated, oil on canvas, signed and dated 1873, 148cm x 101cm.  
*See Christies 7th October 1999 Lot 5.*



▲ 69.  
**Hermanus Koekkoek (1836-1909).**  
Dutch barges, horse cart and figures on seashore, oil on canvas, signed, 75cm x 100cm.  
**£1500-2500**

76.  
**E. H. Dixon (19thC).**  
Coastal scenes off Dover, watercolour - pair, signed and dated 1877, 15cm x 31cm.  
**£30-50**

77.  
**J. Banks?.**  
Riverscape, oil on canvas, indistinctly signed, 75cm x 126cm.  
**£200-300**



▲ 78.  
**S. Hodgson (19thC).**  
The Parting, watercolour, signed, 36cm x 55cm.



▲ 79.  
**Winifred Cecile Dongworth (1893-1975).**  
Sisters, watercolour, signed, 20cm x 20cm.  
*N.B Reputed to be grandchildren of Dame Sybil Thorndike.*

80.  
**19thC British School.**  
Husband and wife portraits, oil on canvas, 74cm x 61.5cm.  
**£200-300**

81.  
**19thC British School.**  
Mountain stream, oil on canvas, 25cm x 17.5cm

# Lincoln Fine Art Sale



▲ 82.  
**19thC Continental School.**  
Family in interior scene, oil on canvas, indistinctly initialled, 30cm x 25cm

83.  
**19thC Continental School.**  
Figures dancing in rural scene, watercolour, indistinctly titled, 14cm x 24cm.



▲ 84.  
**Dutch School.**  
Still life, vase of flowers and fruits on mantel, oil on panel, 50cm x 44.5cm.  
*Label verso W. Frank Gadsby, Leicester.*

85.  
**Spare Lot**

86.  
**Salvatore Montullo (19thC/20thC).**  
Figures in coastal scenes, oil on paper - pair, signed, 36cm x 41cm.  
£200-300



▲ 87.  
**Theresa Maria Hegg de Landerset (1829-1911).**  
Woodland flowers, watercolour, signed, 23.5cm x 15.5cm.

88.  
**R. Tessai?.**  
Venice canals with gondola, watercolour - pair, signed, 26cm x 16cm.  
£60-80

89.  
**19thC Continental School.**  
Head and shoulders portrait of a young lady, oil on canvas, 56cm x 47cm.

90.  
**Salvatore Maresca (19th/20thC).**  
Mountain riverscape, oil on canvas, signed, 74.5cm x 61cm

91.  
**19thC British School.**  
Country landscapes with cottages, oil - pair, 19cm x 39cm.

92.  
**Julius Bayer (1840-1883).**  
River landscape with figures, oil on canvas, signed, 35.5cm x 56.5cm



▲ 93.  
**Edwin Frederic-Holts (1864-1897).**  
Landscape with horses, deer and rabbits, oil on canvas, signed and dated 1901, 39.5cm x 59cm.  
£500-800



▲ 94.  
**19thC British School.**  
Dover the Mid-day rest, oil on canvas, 47cm x 57cm.  
£400-600

95.  
**Giocchino la Pira (act.1839-1870).**  
Panoramic view of Vesuvius Naples, watercolour, signed, 81cm x 31cm

96.  
**Continental School.**  
Volcano and coastal views, gouache - four, inscribed and dated circa 1839, 8.5cm x 12cm.

97.  
**19thC Continental School.**  
Classical scene with figures, oil on canvas, 47cm x 38cm.

98.  
**19thC British School.**  
River landscape with figure, oil on board, 16.5cm x 21cm

99.  
**H. A. Jones (19thC).**  
Coastal scene with sailing boats and figure, watercolour, signed and dated (18)87, 17cm x 24.5cm.

100.  
**Early 20thC sketch album,** including Ernest Jackson On the Zyder Zee, letter from the artist dated 1932, other drawings and verse.  
£70-90

100A.  
**F. Stonehouse (20thC).**  
Sketches from the Second World War, titles include 'putting up camouflage in the rain', Troop ship deck, dated 1944, 12cm x 18cm (11), plus Notebook in diarised notes.  
£40-60



▲ 101.  
**G. Arnold.**  
St. Lord Numberholme, watercolour, signed, titled and dated 1911, 35.5cm x 53cm.

102.  
**G. Arnold.**  
St. Persian Empire North Sea, watercolour, signed, titled and dated 1912, 33cm x 49cm.



▲ 103.  
**William Mackenzie Thomson (act.1870-1892).**  
HMS Minerva 1899, watercolour, signed and titled on mount, 29.4cm x 44cm.

104.  
**19thC British School.**  
Sailing ships off the coast, watercolour, 18cm x 28cm.



▲ 105.  
**Charles Kensington (fl.1880-1920).**  
SS Highland Laddie, watercolour, signed and titled, 17cm x 27.5cm.

106.  
**19thC British School.**  
SERAPIS - Troop Transport, Royal Indian Marine, oil on board, titled verso, 21cm x 26.5cm.

107.  
**Bourne (19thC).**  
Steam ship A877, oil, indistinctly signed, 15cm x 25cm.





▲ 108.  
**Edward King Redmore (1860-1941).**  
Steam trawler - Gull H241, oil, signed and dated 1904, 22cm x 28.5cm.

109.  
**Peter Whitlock.**  
Busy waters off Berryhead, oil on canvas, signed and titled verso, 39cm x 75cm.



▲ 110.  
**Peter Whitlock.**  
Tranquility, watercolour, signed, titled and dated (19)96, 30cm x 51cm.  
Label verso The Mall Galleries.

111.  
**Peter Whitlock.**  
Off the coast of Kent, watercolour, signed and titled, 30cm x 51cm.  
Label verso The Mall Galleries.

112.  
**Robert Graham (20thC).**  
St James' Church from Westgate, Louth, oil on canvas, signed, 90cm x 60cm.



▲ 113.  
**Robert Graham (20thC).**  
St James' Church from Upgate, Louth, oil on canvas, signed, 90cm x 60cm.

114.  
**W. L. Rogerson (20thC).**  
George Street, looking towards Gospelgate and St James' Church, Louth, oil on canvas, signed and dated 1978, 75cm x 60cm.



▲ 115.  
**W.L. Rogerson (20thC).**  
Aswell Street, looking towards Kidgate and Newmarket, Louth, oil on canvas, signed and dated 1974, 76cm x 61cm.

116.  
**W. L. Rogerson (20thC).**  
The Masons Arms and Cornmarket, Louth, oil on board, signed, 63cm x 87cm,

117.  
**Robert Graham (20thC).**  
Catherine of the Red Hill, oil on canvas, signed and dated 1977, 71cm x 110cm and another river scene (2).

118.  
**T. E. J. Brooker.**  
Turks Head, pen, signed and dated 1974, 19.5cm x 28.5cm and three other landscapes (4).

119.  
**T.J. Gustard (20thC).**  
Pawn shop passage, Louth, oil on board, signed, dated (19)73, and titled verso, 50cm x 39.6cm, and three other works (4).

120.  
**R Whittern (20thC).**  
River scene and sailing barge, oil on canvas, signed, 61cm x 76cm, and four other works by other artists (5).

121.  
**W. L. Rodgeron (20thC).**  
Country road with cottage, oil on board, signed, 34.5cm x 48cm.

122.  
**W. L. Rodgeron (20thC).**  
Eastgate, looking towards St James' Church, Louth, oil on board, signed and dated, 50cm x 62cm.



▲ 123.  
**Elaine Drewery.**  
Miss M Kent - Louth Lady, died January 1983, oil on board, signed, dated 1983, and titled verso, 75cm x 49.5cm.



▲ 124.  
**John Trickett (b.1952).**  
The Labrador puppy, oil on canvas, signed, 33.5cm x 23.5cm.  
£150-250



▲ 125.  
**John Trickett (b.1952).**  
Jump for Joy, oil on canvas, signed and titled verso, 59.5cm x 39cm.  
£300-500

126.  
**Judith A. A. Oyler (20thC).**  
Continental village, watercolour, signed, 41cm x 31cm and another woodland road (2).



▲ 127.  
**Martin Spencer Coleman (b.1952).**  
A quiet day's fishing, oil on canvas, signed and titled verso, 39cm x 49cm.



▲ 128.  
**Vincent Haddlesey (1934-2010).**  
The Shoot, oil on canvas, initialled, 37cm x 45cm.  
£400-600

129.  
**N. Dudley.**  
Pinkfleet Near Crowland, Shep Whites Holbeach Marsh, oil on canvas - pair, signed and dated (19)63, 39.4cm x 50cm (2).

# Lincoln Fine Art Sale



▲ 130.  
**Leslie Goodwin.**  
Nr. Melton Mowbray, oil on board, signed and titled verso, 34cm x 44.5cm.

131.  
**Leslie Goodwin.**  
No.2 Mill, watercolour, signed and titled verso, 13cm x 21.5cm.

132.  
**Leslie Goodwin.**  
Painting Grey and Ochre, watercolour, signed and titled verso, 13cm x 21cm.

133.  
**Leslie Goodwin.**  
Landscape, watercolour, signed and dated (19)73, 16cm x 26cm.



▲ 134.  
**Leslie Goodwin.**  
Abstract, watercolour and pastel, signed, 37cm x 37cm.

135.  
**Leslie Goodwin.**  
Harbour scene with sailing ships, watercolour, signed and dated (19)73, 35cm x 51cm.

136.  
**Leslie Goodwin.**  
No. 11 Abstract, watercolour and pastel, signed, 37cm x 37cm.



▲ 137.  
**Robert King.**  
View of Ratby, oil on board, signed, 17cm x 22cm.

138.  
**Robert King.**  
The procession, artist signed, numbered 5/35 and dated (19)76 engraving, 35cm x 49.5cm, and another print St Paul's (2).

139.  
**Robert King.**  
Dredger boats reclaiming canal at Havant nr Portsmouth, oil on canvas, signed and titled verso, 50cm x 59.5cm.  
Label verso W. Frank Gadsby Leicester.

140.  
**Charles Clarke.**  
Summer evening, Leazes Moor, oil on canvas, signed, titled and dated 1990 verso, 41cm x 51cm.

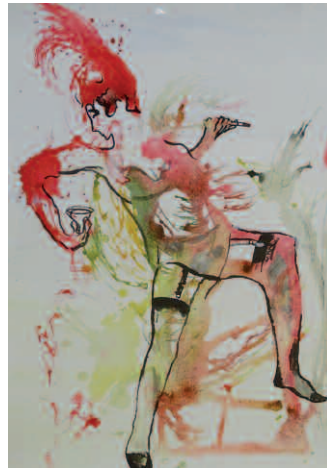
141.  
**Charles Clarke.**  
Barrack Road - Morning IV, oil on board, signed, titled and dated 1999 verso, 12.5cm x 14.5cm and another titled Looking over King Walk II (2).

142.  
**Charles Clarke.**  
Across Victoria road, oil on canvas, signed, titled and dated 1991 verso, 34cm x 39.5cm.

143.  
**20thC School.**  
Figures in landscape, oil, 42cm x 54cm.  
J.D. Wheelodon stamp verso.



▲ 144.  
**Keith Roper (b.1946).**  
Jews House, Lincoln, watercolour, signed and dated 1980, 27cm x 36cm.



▲ 145.  
**Dorothy Lee Roberts.**  
Cabaret, watercolour, titled verso, 58cm x 40cm.  
Artist label verso.

146.  
**Martin Spencer Coleman (b.1952).**  
Viking Way Tealby, oil on canvas, signed and titled verso, 44cm x 59cm.

147.  
**G. W. Ireland.**  
King Norton, watercolour, signed, titled and dated (19)78, 50.5cm x 22.5cm and two others (3).

148.  
**Roy Chambers.**  
Hoover Stand, artist signed limited edition lithographic coloured print 2/VII, 59cm x 47cm and another watercolour (2).



▲ 152.  
**Laurence Stephen Lowry (1887-1976).**  
Britain at Play, Artist signed coloured print, 47cm x 61cm.  
£1000-1500

149.  
**David Waller (b.1945).**  
Cock pheasant, oil on canvas, signed and dated 1981, 24cm x 29cm.

150.  
**Sheila Parkinson (20thC).**  
Mother and child, charcoal, signed and titled verso, 50cm x 39cm, artist label verso.

151.  
**Lincoln Interest.**  
Henry Chaplin MP, coloured print, 18cm x 12.5cm, with newspaper cutting 'Squire Chaplin of Blankney Hall'.  
£40-60

153.  
**Laurence Stephen Lowry (1887-1976).**  
The Crossing, artist signed coloured print, 44cm x 58cm.  
Provenance: Purchased on the 28th May 2018 from Gorrings Auctioneers.

154.  
**Doug Hyde (b.1972).**  
Together We Can Dream, artist signed and titled coloured limited edition print 46/50, 76cm x 56cm.  
£100-150





- ▲ 155.  
**Doug Hyde (b.1972).**  
Loved, artist signed and titled limited edition coloured print 334/595, 58cm x 73cm.  
£200-300



- ▲ 156.  
**Salvador Dali (1904-1989).**  
Rèverence de Groseillier, artist signed limited edition coloured print LXIX/LL, 70cm x 50cm.  
With Certificate of Authenticity.

157.  
**Salvador Dali (1904-1989).**  
Paradise Chant 31: The Archangel Gabriel, artist signed woodcut and block print, edition from La Divine Comedie Suite, 31.5cm x 25cm.  
With certificate of authenticity - F&B Gallery LLC  
£150-250

158.  
**Paul Horton (b.1958).**  
Light of the world, artist signed limited edition coloured print 113/295, 60cm x 49cm and another Summer 324/395.  
With certificate of authenticity - Washington Green.  
£80-120

159.  
**Jacqueline Cohen (20thC).**  
Floral still life, artist signed coloured screenprint, 58cm x 83cm.

160.  
**Jeff Rowland (20thC).**  
Right here waiting for you, artist signed limited edition coloured print 44/150, 55cm x 89cm.  
With certificate of authenticity - Washington Green.  
£100-200

161.  
**Madeline Selfe (1910-2005).**  
The Duke of Beaufort with his hound, artist signed limited edition print 197/350, 61cm x 83cm.



- ▲ 162.  
**William Russell Flint (1880-1969).**  
Artist signed limited edition coloured print, 659.850, 40cm x 56cm.  
Label verso Gadsby's Leicester.

163.  
**Gordon King (b.1939).**  
Two young women by the lily pond, artist signed limited edition coloured print, 788/850, 50cm x 69cm.

- 163A.  
**Gordon King (b.1939).**  
The Portrait, artist signed limited edition coloured print 77/850, 52cm x 69cm.

164.  
**After John Piper.**  
Three Suffok Towers, Tripick coloured prints, 55cm x 27.5cm and another (4).



- ▲ 165.  
**Pierre Goet (20thC).**  
Numbers and letters inset with glass eyes, carved wooden wall plaque, signed and dated 1984, 108cm x 80cm.  
£250-350



- ▲ 166.  
**Beltran (20thC).**  
Circular abstract, multi media, signed and dated (19)80, 80cm x 80cm.

167.  
**20thC School.**  
Female study, glazed earthenware, 24cm x 20cm.

168.  
**Sean O'Connor (1909-1992).**  
Thatched Cottage at Caragh County Kildare, Ireland, oil on canvas, signed, titled and dated June 1969 verso, 38cm x 49cm.  
£100-200

169.  
**Maurice Canning Wilks (1910-1984).**  
Killarney, oil on canvas, signed and titled verso, 49cm x 67cm.  
£1000-1500



- ▲ 170.  
**John Markey Robinson (1918-1999).**  
Figures, oil on board, signed, 29cm x 24.5cm.

171.  
**John Markey Robinson (1918-1999).**  
The Clown, oil, signed, 36cm x 24.5cm.

172.  
**John Markey Robinson (1918-1999).**  
Landscape, oil on board, signed, 27cm x 35cm.  
£150-250

173.  
**John Markey Robinson (1918-1999).**  
Two clowns, oil on board, signed, 45cm x 25cm.  
£150-250

174.  
**J. King.**  
Floral still life, oil on board, signed, 44cm x 34cm.

175.  
**J. Hartham Beeley.**  
Farmstead, pastel, signed, 35cm x 51.5cm.

176.  
**Renato Natali (1883-1979).**  
Harbour scene, oil on board, signed, 33.5cm x 49.5cm

177.  
**20thC Continental School.**  
Market scene, oil on canvas, indistinctly signed, 39.5cm x 29cm.



- ▲ 178.  
**Nancy Bailey (1913-2012).**  
Cottages at Carraroe, Connemara, Ireland, oil on board, signed and titled verso, 39cm x 75cm.  
£150-250

179.  
**Albert Grifon (1910-?).**  
Fishing boats off harbour, oil on canvas, signed, 45cm x 53cm.

180.  
**Ragom? (20thC).**  
Palm river landscape, oil, indistinctly signed and dated (19)94, 49.5cm x 73.5cm.



- ▲ 181.  
**19th/20thC Continental School.**  
Alpine village, oil on canvas, 59cm x 90cm.

# Lincoln Fine Art Sale

**182.**  
**Maud Hall Neale**  
(c1870-1950).  
Mountain lake view, oil on  
canvas, signed, 29.5cm x 40cm.

**183.**  
**Paul Aizpiri (1919-2016).**  
Head and shoulders study of a  
young woman, oil on board,  
stamped verso, 34cm x 22.5cm

**184.**  
**David Aldus (b.1941).**  
Corn fields, oil on canvas, signed,  
55cm x 45cm.

**185.**  
**F. Maud Robertson (20thC).**  
Floral still life, oil on canvas,  
signed, 54.5cm x 44.5cm.

**186.**  
**20thC Continental School.**  
Village with bell tower, oil on  
canvas laid on board, indistinctly  
signed, 33.5cm x 48.5cm.

**187.**  
**20thC Continental School.**  
Cote d'Azur coastal scene, oil on  
board, initialled, 31.5cm x 42cm.

**188.**  
**Roel Dozemann (b.1917).**  
Harbour scene, oil on canvas,  
signed, 49cm x 59.5cm



▲ **189.**  
**William Morris (?) (20thC).**  
Continental street scene, Paris,  
oil on canvas, signed,  
25.5cm x 40cm and another  
26cm x 34cm (2).

**190.**  
**Maurice Barle (1903-1961).**  
Paris, oil on canvas, signed,  
22cm x 27cm.  
£200-300

**191.**  
**Jules Ribeaucourt**  
(1866-1932).  
Sailing barges - river scene, oil on  
board, signed, 20.5cm x 31cm.  
£200-300

**192.**  
**Early 20thC Continental**  
**School.**  
Steam badges on river scene, oil  
on canvas, indistinctly signed,  
59cm x 79cm.  
£200-300

**193.**  
**Angus Bernard Rands**  
(1922-1985).  
Village landscape, watercolour,  
signed, 37cm x 56cm.

**194.**  
**J. Sim.**  
Masted ships attacking coastal  
fort, oil on canvas, signed,  
60cm x 90cm.

**195.**  
**Hans Sell (19thC/20thC).**  
Alpine riverscape, oil on canvas,  
signed, 38.5cm x 30cm.

**196.**  
**Jean Elliot (20thC).**  
Sheep in landscape, watercolour,  
signed, 15cm x 35cm.

**197.**  
**Ernest Arthur Marsh (1918-?).**  
Richmond Castle from the Swale,  
watercolour, signed and titled,  
27.5cm x 41cm.

**198.**  
**J. G. Wright.**  
Rural landscape, watercolour,  
signed, 26cm x 37cm.

**199.**  
**A De Tuyll (19th/20thC).**  
Lake scenes, watercolour - a pair,  
signed, 22.5cm x 34.5cm

**200.**  
**19thC Continental School.**  
Figure resting with maiden  
collecting wood, watercolour,  
22cm x 34cm.

**201.**  
**Anne Isabelle Brooke**  
(1916-2002).  
Simon seat from above Darley, oil  
on canvas, signed and titled  
verso, 34cm x 54.5cm, and two  
others Towards Rylston Fell,  
Wharfedale and farmstead  
landscape (3).



▲ **202.**  
**Staislava Matynsova**  
(b.1954).  
Beach scene with figures, oil  
on canvas, signed Alb. Rigaux,  
50cm x 60cm.

**203.**  
**20thC Continental School.**  
Tall trees in rocky landscape, oil  
on board, 39cm x 39cm.

**204.**  
**James Whitelaw Hamilton**  
(1860-1913).  
Sailing on the Clyde, oil on  
canvas, signed and dated,  
40cm x 50cm.



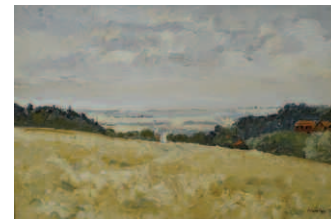
▲ **205.**  
**Roland Oudot (1897-1981).**  
Wedding scene, oil on canvas,  
signed, 29cm x 39cm

**206.**  
**Toulon (20thC).**  
Sailing yacht in harbour, oil on  
board, signed, 28.5cm x 39cm.

**207.**  
**Joan Ridgen.**  
Cornish Engine House, Cornish  
coast, oil on board - Two, signed  
and titled verso, 44.5cm x 30cm.  
Label Verso Reading Guild of  
Artists. (2)

**208.**  
**Ron Schaffer(?).**  
Mother and daughter, oil on  
canvas, indistinctly signed,  
90cm x 59.5cm.

**209.**  
**I. Camolla(?).**  
Study of a woman, crayon  
drawing, indistinctly signed,  
31cm x 23cm and another similar  
hand (2).



▲ **210.**  
**Liam Hanley (b1933).**  
Rural landscape, oil on canvas,  
signed and dated (19)71,  
25cm x 35cm.  
£200-400

**211.**  
**Franz Alekseevic Rouband**  
(1856-1928).  
The Riding Kurd, oil on canvas,  
signed, 40.5cm x 29.5cm

**212.**  
**Aime (19thC/20thC).**  
North African Soldiers, oil on  
canvas, pair, signed and dated  
1886, 60cm x 24cm.

**213.**  
**Erik Langker (1898-1982).**  
Floral still life, oil on board,  
signed, 55cm x 55cm.



▲ **214.**  
**Friedel Colm (20thC).**  
Winter river scene, oil on  
canvas, signed, 47cm x 57.5cm.



▲ **215.**  
**Lee Reynolds Burr**  
(b.1936).  
Crane in garden scene, oil on  
canvas, signed, 121cm x 151cm.  
Label verso Vanguard Studios  
California.



**216.**  
**Leendert De Vogel (1909-1974).**  
Continental street scene, oil on canvas, signed, 59cm x 60cm.

**217.**  
**Jacopo Grimani (20thC).**  
Venice, oil on canvas, signed and titled verso, 60cm x 90cm.

**218.**  
**Paul Wolde (1885-1948).**  
Rocky coastal scene, oil on canvas, signed, 59cm x 79cm.  
£200-300

**219.**  
**Leslie M. Leopold Brangwyn (1896-?).**  
Malayan Girl, oil on board, initialled and titled verso, 43cm x 32cm.  
*Label verso New English Art Club.*



▲ **220.**  
**Austin Garland (1887-?).**  
Portrait of a gentleman wearing a cap, oil on canvas, 60cm x 49cm.  
£40-60

**221.**  
**Continental School.**  
Coastal scene with volcano in the distance, pastel, 20cm x 32cm.

**222.**  
**Ronald Cavalla (b.1940).**  
Country riverscape with figures fishing on the bank, oil on board, signed, 12cm x 17.5cm.  
£50-80

**223.**  
**William Matthew Hale (c.1849-c.1929).**  
Shipping off the coast, oil on canvas, signed, 37cm x 50cm.  
£100-200

**224.**  
**Adrien Jean Le Mayeur De Merpres (1880-1958).**  
North African landscape, oil on canvas laid on board, signed, 31cm x 42cm.  
*Label verso Campo and Campo Antwerpen.*  
£300-400

**225.**  
**Ulrich (19thC/20thC).**  
Sailing boats, oil on board, signed, 15cm x 27cm.  
£50-100



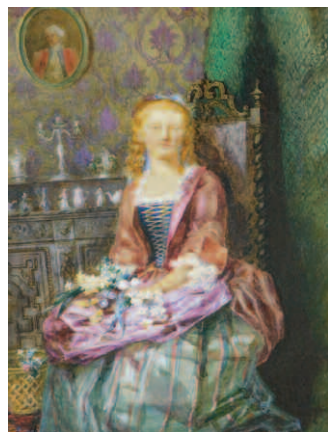
▲ **226.**  
**James Guthrie (1859-1930).**  
Fishing boats in harbour, oil on board, signed, 13.5cm x 21.5cm.  
£300-500

**227.**  
**James Guthrie (1859-1930).**  
Fishing boats entering harbour, oil on board, 13.5cm x 21.5cm.  
£300-500

**228.**  
**Zoe Laigneau (20thC).**  
Young woman in flowing dress, pastel, signed, 78cm x 55cm.

**229.**  
**Continental School.**  
Maidens in flowing costume, oils - pair, 19cm x 13.5cm (2).

**230.**  
**Broeder Max (1903-1973).**  
Standing figure holding child, oil on board, signed, 35cm x 26.5cm



▲ **231.**  
**19thC British School.**  
Maiden seated holding flowers, watercolour, 33cm x 24cm.



▲ **232.**  
**William Heath Robinson (1872-1944).**  
Twelfth Night, Act Two, Scene Three, Clown (Sings), watercolour, signed and annotated verso, 51cm x 39.5cm.  
*Auctioneers Note: This is the original Heath Robinson illustrative work for page 47 of Shakespeare's Comedy of Twelfth Night (or What You Will) published by Hodder and Stoughton as a limited edition of 350.*  
£500-800

**233.**  
**Arthur Edward Davies (1893-1989).**  
Rackheath Grange, oil on canvas, titled on mount, 48cm x 65.5cm.  
£100-200

**234.**  
**Fritz Osswald (1878-1966).**  
Figures bathing by the lake, oil on board, signed 42.5cm x 55cm.  
*Label verso, The Rowley Gallery Ltd.*  
£300-400

**235.**  
**Eduardo de Soto (b.1917).**  
Sitres, oil on canvas, signed and titled verso, 49cm x 59.5cm



▲ **236.**  
**Alois Lecoque (1891-1981).**  
Montmartre, oil on canvas, signed, 49.5cm x 59.5cm.

**237.**  
**20thC Continental School.**  
Alpine scene and figures, oil on board, indistinctly signed, 52cm x 68cm.

**238.**  
**20thC Continental School.**  
Alpine river scene with watermill and figure, oil on canvas, indistinctly signed, 91cm x 66cm.

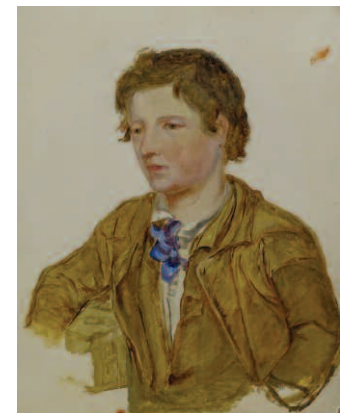
**239.**  
**Bellver (20thC).**  
Spanish landscape, oil on canvas, signed, 79cm x 115cm.

**240.**  
**H S Palmer (19th/20thC).**  
Canadian deer in river landscape, oil on canvas, signed, 60cm x 80.5cm

**241.**  
**George Gault (1916-2001).**  
Floral still life, oil on canvas, signed and dated 1952 verso, 47cm x 60cm.

**242.**  
**20thC Continental School.**  
Alpine landscape, oil on canvas, indistinctly signed, 49cm x 59.5cm.

**243.**  
**Helmut Fleischle (1926-1996).**  
Abstract, oil on canvas, signed, 56cm x 76cm



▲ **244.**  
**Late 19thC School.**  
Sketch portrait of a young man, oil on board, unframed, 30.5cm x 25.5cm.

**245.**  
**A.B.**  
Coastal scene in rocky outcrop, watercolour 25cm x 35cm.  
*Provenance: label verso for Edward Bailey & Sons auction 14th September 1984, stating provenance of R.C.L. Howitt Dec'd of Farndon, Newark.*

**246.**  
**Adolf Kraufmann (1848-1916).**  
Rural scenes with cottages and figures, oil on board - pair, signed S. Galdi, 15cm x 30cm.  
£200-400

# Lincoln Fine Art Sale

247.  
**Roy Hewitt (b.1929).**  
View of Avening, Gloucestershire, oil on board, signed lower right and titled verso, 51cm x 35cm.

248.  
**Christina Croft.**  
Female with elves and frogs, watercolour, unsigned, 15cm x 22.5cm and Pablo Picasso, Juan les Pins, coloured print, 21cm x 25.5cm (2).  
**£40-60**

249.  
**Ian Anthony Gillibrand (b.1960).**  
Landscapes with sheep, watercolour - pair, signed, oval, 27.5cm x 23cm.



▲ 250.  
**Peter Gilman (1928-1984).**  
Farmyard, possibly Norfolk, watercolour, signed, 26cm x 36cm and Walberswick, watercolour, signed, 12cm x 16.5cm.  
*Posthumous exhibition details verso for the Picturecraft Gallery, Holt, Norfolk (2).*

251.  
**Charles O'Connor (b.1943).**  
Magpies, wood engraving, 10cm x 10cm and seven others by the artist (8).

252.  
**M. Lieberman.**  
Family eating at table, 'MAHWZEIT', charcoal and pencil on paper, 10cm x 17cm.  
**£200-300**

253.  
**Maurice Barle (1903-1961).**  
Mediterranean coastal scene, oil on canvas, signed, 20cm x 25cm.  
**£200-300**

254.  
**Charles Richardson (1829-1908).**  
Portrait of a young child, watercolour, 16.5cm x 10.5cm.

255.  
**E. Capron (19th/20thC).**  
Coastal scene with figures and boats, oil on board, signed, 9.5cm x 15cm and Leonard Robert Brightwell (b.1889), Pekinese and puppies, titled Bright Young People, dry point engraving, signed 17cm x 23cm (2).



▲ 256.  
**Francis Russell Flint (1915-1977).**  
Train station interior, artist signed etching, 27cm x 31cm.  
**£50-80**

257.  
**Roland Ward (19th/20thC).**  
Canada geese, artist signed etching, 20cm x 15cm, Benson, and ducks in flight, artist signed etching, 15cm x 9cm (2).  
**£30-50**

258.  
**John G. Mathieson (1918-1940).** S  
cottish Highland scene, artist signed, etching, 22cm x 32cm and an etching of a street scene, indistinctly signed 16cm x 11cm (2).  
**£30-50**

259.  
**Edinburgh Etching Club.**  
Portfolio of twelve etchings by members of the club 1881, artists to include J.B. Abercromby, H. Raeburn Macbeth, R. Paton Reid and Mason Hunter, limited edition number 69 of 200 copies (12).  
**£30-50**

260.  
**HB.**  
Portrait of a lady, charcoal and chalk, inscribed to reverse, 23cm x 18cm and three other pictures (4).  
**£50-80**



▲ 261.  
**Graham Vivian Sutherland (1903-1980).**  
Sluice Gate, artist signed etching, 15.5cm x 14.5cm. With original receipt Ernest Brown and Phillips Ltd London 12 November 1963 - £15.00.  
**£600-800**

262.  
**Sarah Liehak?.**  
Curate of Clyro, boy on a gate, artist signed limited edition print, signed, 11cm x 12cm.

263.  
**Ludwig von Hofmann (1861-1945).**  
Neoclassical nudes, artist signed limited edition etching, number 31/100, 23cm x 27cm.

264.  
**20thC School.**  
Fashion designs, watercolour, 48cm x 36cm, 39cm x 28cm, (4).

265.  
**Peter Isitt (20thC).**  
Fruity Fantasy, watercolour, artist notes verso, 42cm x 60cm.



▲ 272.  
**Francisco Bores (1898-1972).**  
Still life, oil on canvas, signed, 39cm x 49.5cm.  
**£2000-3000**



▲ 266.  
**Giuseppe Cacciapuoti (b.1961).**  
Mediterranean Fruits, oil on canvas - pair, signed, 31.5cm x 39.5cm (2).  
*With certificate of authenticity - P&O Fine Art.*

267.  
**Alicia Quaini (20thC).**  
Bananas and Pears, Giclee on paper, signed and numbered 56/195, 53cm x 40cm.  
*With certificate of authenticity - P&O Fine Art.*

268.  
**Jennifer Winship-Mark (20thC).**  
I shall return, serio-lithograph 142/350, another Jean Baptiste, A Friendly Swim and two others (4).  
*With certificate of authenticity - P&O Fine Art.*



269.  
**20thC British School.**  
Blakeney, watercolour, indistinctly signed and titled, 38cm x 54.5cm.

270.  
**20thC British School.**  
Coastal scene, watercolour, indistinctly signed, 38cm x 52cm.

271.  
**20thC British School.**  
Fotheringhay, watercolour, indistinctly signed and titled, 38cm x 52cm.

273.  
**Carl Wuttke (1849-1927).**  
Ampezzo, oil on board, signed, titled and dated 1882, 31.5cm x 46.5cm.  
£400-600

274.  
**Berthold Paul Forster (1851-1925).**  
Game birds jousting, oil on canvas, signed, 58cm x 88cm.

275.  
**Stechlin.**  
Game bird, oil on canvas, signed and dated (19)75, 68cm x 75cm.

276.  
**Francesco Trombadori (1886-1961).**  
Game - still life, oil on canvas, signed, 34.5cm x 42cm.  
£500-800

277.  
**Albert Cruells (b.1947).**  
Still life, fruit and flowers, oil on canvas, signed, 80.5cm x 64.5cm.



▲ 278.  
**Dauzier (20thC).**  
Three French Bulldogs, oil on canvas, signed, 31.5cm x 44cm.

279.  
**Dauzier (20thC).**  
French Bulldog, oil on canvas, signed, 40cm x 32cm.

280.  
**A. Fletcher (20thC).**  
Cat sleeping, oil on board, signed, 36.5cm x 36.5cm.



▲ 281.  
**Enrico Cerrone (1935-2011).**  
Kittens and chicks, oil on board - pair, signed, 23.5cm x 29cm.  
£150-250

282.  
**Nora Howarth (20thC).**  
Jack Russell Terriers with sticks, pastel, signed, 22.5cm x 29cm.



▲ 283.  
**Nora Howarth (20thC).**  
Jack Russell Terriers begging, pastel, signed, 28cm x 21.5cm.

284.  
**Clive Madgwick (20thC).**  
Piazza St, Croce, Florence, oil on canvas, signed and titled verso, 29cm x 39cm.  
*Label verso, Francis Iles Fine Paintings, Kent.*  
£400-600

285.  
**? Johnson.**  
Full length portrait of a lady in flowing dress holding a rose, 122cm x 97.5cm.

286.  
**Pollyanna Pickering (1942-2018).**  
Kingfisher in reeds, watercolour/gouache, signed, 43cm x 62.5cm.

287.  
**Michael Harrison (b.1945).**  
Abandoned Plinths, artist signed and titled lithographic print, 62cm x 45cm.  
*Gallery booklet verso.*

288.  
**Valerie Thornton (b.1931).**  
Bodian Castle, artist signed, titled limited edition print 155/200, 34cm x 48cm and another signed David Gentleman (2).

289.  
**Howard Carter (20thC).**  
Gothic Lodge Heather Hall, watercolour, signed, dated (19)77, titled verso, 51cm x 42cm.  
*Label verso, Frank Gadsby Ltd, Leicester.*



▲ 290.  
**Rob Bloomfield (B.1948).**  
Chromatic 4, artist signed limited edition colour print, 42/180, 40cm x 63.5cm.

291.  
**Rob Bloomfield (b.1948).**  
Chromatic 6, artist signed coloured print, 62cm x 76cm.

292.  
**Lowell Blair Nesbitt (1933-1993).**  
Abstract landscape, watercolour, signed and dated 1963, 58cm x 76cm.

293.  
**Louis Ferrand (1905-1992).**  
Chardones, oil on board, signed, dated (19)63 and titled verso, 65cm x 54cm.  
£200-300

294.  
**Jackie Bett (20thC).**  
The Interviewer, artist signed, titled, dated (19)89, number etching 1/30, 53cm x 29cm.  
*From the estate of Alistair (ALF) Ludlam, born Grimsby 1941.*

295.  
**David Ballans (20thC).**  
Monkey, ink, titled and dated 1965 verso, 39.5cm x 34cm.  
*From the estate of Alistair (ALF) Ludlam, born Grimsby 1941.*

296.  
**Melvyn Petterson (20thC).**  
Self portrait, pencil, signed and dated 2015, 27cm x 29cm.  
*From the estate of Alistair (ALF) Ludlam, born Grimsby 1941.*

297.  
**Eileen Bunn (20thC).**  
Lady with a hat, charcoal with chalk, titled verso, 53cm x 62cm.  
*From the estate of Alistair (ALF) Ludlam, born Grimsby 1941.*

298.  
**Linda Ingham (20thC).**  
Pauline Scott, oil on canvas, titled and dated 2006 verso, 25cm x 20cm.  
*From the estate of Alistair (ALF) Ludlam, born Grimsby 1941.*

299.  
**Rosi Campbell (20thC).**  
Industrial town 4, acrylic, signed and titled verso, 26cm x 24cm.  
*From the estate of Alistair (ALF) Ludlam, born Grimsby 1941.*

300.  
**Alan J. Cashman.**  
Female study, drawing, signed and dated (19)79, 36cm x 49cm.



▲ 301.  
**Rozanne Bell (b.1962).**  
Out to lunch, watercolour, signed and titled, 75cm x 54cm.  
*With artist signed certificate of authenticity.*  
£100-200

302.  
**Rozanne Bell (b.1962).**  
Bird purple, watercolour, 75cm x 54cm.  
*With artist signed certificate of authenticity.*  
£100-200

303.  
**Rozanne Bell (b.1962).**  
Bird Gold, watercolour, signed, 75cm x 54cm.  
*With artist signed certificate of authenticity.*  
£100-200

304.  
**Rozanne Bell (b.1962).**  
Bird White, watercolour, signed, 75cm x 54cm.  
*With artist signed certificate of authenticity.*  
£100-200

# Lincoln Fine Art Sale

- 305. Rozanne Bell (b.1962).**  
Bird black, watercolour, signed, 75cm x 54cm.  
*With artist signed certificate of authenticity.*  
£100-200
- 306. Rozanne Bell (b.1962).**  
Bird bronze, watercolour, signed, 75cm x 54cm.  
*With artist signed certificate of authenticity.*  
£100-200
- 307. Rozanne Bell (b.1962).**  
Bird bronze, watercolour, signed, 75cm x 54cm.  
*With artist signed certificate of authenticity.*  
£100-200
- 308. Rozanne Bell (b.1962).**  
Eagle, watercolour, signed, 54cm x 73cm.  
*With artist signed certificate of authenticity.*  
£100-200
- 309. Rozanne Bell (b.1962).**  
Head and shoulder study - Gentleman wearing a hat, watercolour, signed, 62cm x 47cm.  
*With artist signed certificate of authenticity.*  
£100-200
- 310. James Tytler (b1948).**  
Edwardian lady with children and geese, pastel, signed lower right, 27cm x 30cm.
- 311. James Tytler (b1948).**  
Promenade by a boating lake, pastel, 21cm x 39cm, and two prints by the artist.
- 312. Robert Webb.**  
Coastal scene, pastels, 29cm x 39cm, a pair.
- 313. James Tytler (b1948).**  
Edwardian children with sailing boat, pastel, 31cm x 39cm, and various other pictures.
- 314. Clive Fryke.**  
Church landscape with poppy field, oil, signed, 35cm x 45cm.
- 315. The Complete Works of Michelangelo.**  
1 Volume and a quantity of other art related books including John Piper, David Hockney, E. M. L. Gill etc. (Qty).
- 316. Tony Matts (b.1934).**  
River scene, artist signed limited edition coloured print 15/30, 24.5cm x 33cm, and three other works including Val Sibley, Joan Russell (6).
- 317. Tibaquirá (20thC).**  
Sur del Huila, watercolour, signed, titled and dated (19)85, 41cm x 56cm and another work signed Sarah Tweedle (2).
- 318. Arthur McArthur (fl.1880-1920).**  
Watermill, watercolour, signed, 24cm x 18cm.
- 319. Peter McPartin (20thC).**  
The Village Well, watercolour, Gouache, monogrammed, 19cm x 24cm and three other works including Diana Eveleigh, Cowling, etc. (4).
- 320. Richard Rockworth (20thC).**  
Nude study, pastel, signed, 35.5cm x 21cm and four other works including Penrose, Peel, Soames, etc. (5).
- 321. John Sell Cotman (1782-1842).**  
The Droppgate, watercolour, titled verso, 22.5cm x 15.5cm and five other works including Wheeldon, Julien, Carter, etc. (6).
- 322. Jenette Coldrick (20thC).**  
Transient lovers, acrylic on canvas, signed and titled verso, 20.5cm x 25cm and seventeen other works (18).
- 323. S.P. Thornton (19thC).**  
Fisherman's luck, watercolour, signed, titled and dated 1925, 16.5cm x 17cm, and eight other works (9).
- 324. AMAINA (20thC).**  
Jar and Bottles, artist signed and titled coloured print, 25cm x 71cm and other mounted prints and pictures, various artists etc.
- 325. Art books,**  
including Henry Moore Drawings, Constable, Matisse, Degas, etc. (Qty).
- 326. John D Howard (20thC).**  
Number 4, The Blackpool Farm, Devon, oil on board, signed J.D. Howard, labelled verso, with price of £8/8s/0, 40cm x 60cm.  
£30-50
- 327. Julie Elizabeth Bell (20thC).**  
Cup and lace, oil on board, signed and dated (19)84, 19cm x 24cm.  
*Label verso Royal Academy Summer Exhibition 1985.*
- 328. Rene Bokoko (b1927).**  
Warrior Bonfire, watercolour, signed, 24cm x 31cm.  
£80-120
- 329. After Thomas Sidney Cooper.**  
Cow, goat, donkey and sheep, oil on canvas, 60cm x 90cm.  
£500-800
- 330. After Robert Taylor.**  
Spitfire, coloured print signed by Group Captain Sir Douglas Bader and Vice Marshal Johnnie Johnson, 50cm x 80cm, and two others comprising Lancaster, and Hurricane. (3)
- 331. Fiona Buck (20thC).**  
Peace VI, artist signed and titled coloured print, 84cm x 65cm, and nine others. (10), label verso SKF Gallery Santa Fe.
- 332. David Shepherd (1931-2017).**  
Stormy skies, artist signed limited edition coloured print 27/255, 43cm x 71.5cm.
- 333. David Shepherd (1931-2017).**  
Zebra, artist signed limited edition print 259/495, 21.5cm x 33cm, plus nine other prints. (10)
- 334. David Shepherd (1931-2017).**  
Sunday Best, artist signed limited edition coloured print 281/650, 26cm x 42cm, and two others. (3)
- 335. Sheila Holland (1932-2012).**  
Art works - composition statues, illustration for guide only.  
*Note: items are in storage within Central Lincoln: viewing by appointment only.*
- 336. Leslie Keys (?-2005).**  
Studio Works, still life, etc., watercolour, (contents one album).
- 337. Leslie Keys (?-2005).**  
Studio Works, USA, etc., watercolour, (contents one album).
- 338. Leslie Keys (?-2005).**  
Studio Works, Asia, etc., watercolour, (contents one album).
- 339. Leslie Keys (?-2005).**  
Studio Works, Grimsby Docks, etc., watercolour, (contents one album).
- 340. Leslie Keys (?-2005).**  
Studio Works, Grimsby Docks, etc., watercolour, (contents one album).
- 341. Leslie Keys (?-2005).**  
Studio Works, Britain, etc., watercolour, (contents one album).
- 342. Leslie Keys (?-2005).**  
Studio Works, South Africa, etc., watercolour, (contents one album).
- 343. Leslie Keys (?-2005).**  
Studio Works, Europe, etc., watercolour, (contents one album).
- 344. Leslie Keys (?-2005).**  
Studio Works, Grimsby Docks, etc., watercolour, (contents one album).
- 345. Leslie Keys (?-2005).**  
Studio Works, Grimsby Docks, etc., watercolour, (contents one album).

Further lots and updates available online.





The wrong time to find out  
what it was worth...



Over 47 million pounds of antiques & fine art valuation  
in UK, Europe, Asia, Africa & The Americas since January 2014.

EST  
1864  
**GOLDING YOUNG**



William Gregory MRICS and Colin Young MRICS  
are RICS Registered Valuers and  
offer free advice for Insurance, Tax Planning and Probate reporting  
and of course the sale of single items and collections.

The Bourne Auction Rooms  
+44 (0) 1778 422686

The Grantham Auction Rooms  
+44 (0) 1476 565118

The Lincoln Auction Rooms  
+44 (0) 1522 524984

CHARTERED AUCTIONEERS & VALUERS ♦ ARTS & ANTIQUES SURVEYORS



[goldingyoung.com](http://goldingyoung.com)

# Artist index

NAME: LOT NUMBER

<b>A</b>		
Aime	212	
Aizpiri, P.	183	
Aldus	184	
Amaina	324	
Armfield, G.	39, 56	
Armstrong, F. A. W.	3	
Arnold, G.	101, 102	
Aumonier, J.	32	
<b>B</b>		
Bailey, N.	178	
Ballans, D.	295	
Banks, J.	77	
Barle, M.	190, 253	
Bayer, J.	92	
Beeley, J. H.	175	
Bell, J.E.	327	
Bell, R.	301-309	
Bellver	239	
Beltran	166	
Bett, J.	294	
Blanchard, A.	10A	
Bloomfield, R.	290, 291	
Bokoko, R.	328	
Bores, F.	272	
Bosa, E.	73	
Brangwyn, L. M. L.	219	
Broeder, M.	230	
Brooke, A. I.	201	
Brooker, T. E. J.	118	
Buck, F.	331	
Bunn, E.	297	
Bourne	107	
Burr, L. R.	215	
A.B.	245	
H.B.	26	
<b>C</b>		
Cashman, A. J.	300	
Cacciapuoti, G.	266	
Camola, I.	209	
Campbell, R.	299	
Capron, E.	255	
Carter, H.	289	
Cavalla, R.	222	
Cerrone, E.	281	
Chambers, R.	148	
Clarke, C.	140-142	
Cohen, J.	159	
Coldrick, J.	322	
Coleman, M. S.	146	
Collins, W.	63	
Colm, F.	214	
Constantin, A. A. F.	46	
Cotman, J. S.	42, 321	
Croft, C.	248	
Crompton, W. J.	75	
Cruells, A.	277	
<b>D</b>		
Dali, S.	156, 157	
Dauzier	278, 279	
Davies, A. E.	233	
Dixon, E. J.	76	
Dongworth, W. C.	79	
Dozeman, R.	188	
Drewery, E.	123	
<b>E</b>		
Earp, E.	58	
Elliot, J.	196	
<b>F</b>		
Ferrand, L.	593	
Fielding, C.	22	
Fletcher, A.	280	
Flint, F. R.	256	
Flint, W. R.	162	
Floris, E. J.	61	
Fontana, E.	54	
Forster, B. P.	274	
Foster, W.	20	
Frederic-Holts, E.	93	
Fryke, C.	314	
<b>G</b>		
Garland, A.	220	
Garland, G.	57	
Gault, G.	241	
Gillibrand, I. A.	249	
<b>Gilman, P.</b>		
Goet, P.	250	
Goodwin, L.	165	
Graham, R.	130-136	
Grifon, A.	112, 113, 117	
Grimani, J.	179	
Gustard, T. J.	217	
Guthrie, J.	119	
	226, 227	
<b>H</b>		
Haddelsey, V.	9, 128, 129	
Hale, W. M.	223	
Hamilton, J. W.	204	
Hanley	210	
Harrison, M.	287	
Hewitt, R.	247	
Hodgson, S.	78	
von Hofmann, L.	263	
Holmes, G. A.	30, 31	
Horsley, J. C.	25	
Horton, P.	158	
Howard, J. D.	326	
Howarth, N.	282, 283	
Hunt, W.	2, 26, 27, 27A	
Hyde, D.	8, 154, 155	
A.G.H.	41	
<b>I</b>		
Indoni, F.	38	
Ingham, L.	298	
Ireland, G. W.	147	
Issitt, P.	265	
Israels, J.	13	
<b>J</b>		
Jenkins, G. H.	35	
<b>K</b>		
Kensington, C.	105	
Kilburne, G. G.	62	
King, G.	163, 163A	
King, H. J. Y.	55	
King, J.	174	
King, R.	137-139	
Knight, Dame L.	72	
Koekkoek, H.	69	
Kraufmann, A.	246	
<b>L</b>		
Laigneau, Z.	228	
de Landerset, T. M. H.	87	
Langton, M.	5	
Langker, E.	213	
Lecocque, A.	236	
Leslie, C.	15	
Lesley, J.	16	
Lieberman, M.	252	
Liehack, S.	262	
Linnell, J.	50A	
Lowry, L. S.	6, 152, 153	
<b>M</b>		
Macallum, H.	33	
McArthur, A.	318	
McPartin, P.	319	
Madgwick, C.	284	
Maresca, S.	90	
Marsh, E. A.	197	
Mathieson, J. G.	258	
Matts, T.	316	
Matynsova, S.	202	
de Merpres, A. J.	224	
Montullo, S.	86	
Morris, W.	189	
<b>N</b>		
Natali, R.	176	
Neale, M. H.	182	
Nesbitt, L. B.	292	
<b>O</b>		
O'Connor, C.	251	
O'Connor, S.	168	
Osswald, F.	234	
Oudot, R.	205	
Oyler, J. A. A.	126	
<b>P</b>		
Palmer, H. S.	240	
Parkinson, S.	150	
Petterson, M.	296	
<b>Pickering, P.</b>		
Pilleau, H.	286	
Piper, J.	51	
la Pira, G.	1	
Provis, A.	95	
	40	
<b>Q</b>		
Quaini, A.	267	
<b>R</b>		
Ragom?	180	
Rands, A. B.	193	
Redmore, E.K.	108	
Ribeaucourt, J.	191	
Richardson, C.	254	
Richardson, E.	68	
Rigden, J.	207	
Rivers, L.	37	
Roberts, D. L.	145	
Roberts, H. B.	28	
Robertson, F. M.	185	
Robinson, J. M.	170-173	
Robinson, W. H.	232	
Rockworth, R.	320	
Rogerson, W. L.	114-116, 121,	
	122	
Roper, K.	144	
Rouband, F. A.	211	
Rowland, J.	160	
<b>S</b>		
St. Henry, W.	14	
Schaffer, R.	208	
Selke, M.	161	
Sell, H.	195	
Shapsland, J.	71	
Shepherd, D.	332-334	
Sichel, N.	67	
Sim, J.	194	
de Soto, E.	235	
Spencer-Coleman, M.	127	
Stechlin	275	
Stonehouse, F.	100A	
Sursham	70	
Sutherland G. V.	261	
<b>T</b>		
Taylor, J. F.	29	
Tessai, R.	88	
Thomson, W. M.	103	
Thornton V.	288	
Tibaquira	317	
Todd, H. G.	24	
Torrini, E.	53	
Toulon	206	
Trickett, J.	124, 125	
Trombadori, F.	276	
de Tuyll, A.	199	
<b>U</b>		
Ulrich	225	
<b>V</b>		
Vickers, A. H.	85	
Viggazo, A.	44, 45	
de Vogel, L.	216	
<b>W</b>		
Waller, D.	149	
Waltzmann	47	
Ward, R.	257	
Wardle, A.	4	
Waters, G. S.	52	
Wattke, C.	273	
Watts, F. W.	43	
Webb, R.	310-313	
Weekes, W.	10	
Whitlock, P.	109-111	
Whitern, R.	120	
Wilks, M. C.	169	
Williamson, S.	11	
Winship-Mark, J.	268	
Wolde, P.	218	
Wright, J. G.	198	
Wuttke	59	
C.W.	7	

As at the time of printing, lots without estimates are to be sold without reserve, auctioneer's discretion.

See online catalogue for updates.



EST  
1864  
**GOLDING YOUNG**



## Thinking of selling?

Executors, solicitors, accountants, insurers, corporations and government departments, have to exhibit due diligence when instructing. Use this checklist to do the same, with a few reasons why you may wish to choose us.

**We are regulated by RICS**

Better Regulation for Us.  
Better Protection for You.  
Accept Nothing Less.

**Our online catalogues**

For over 20 years our catalogues have been online and our experience ensures they are placed in front of the right buyers in the global market.

**Our sales results**

November 2019 saw our 133rd consecutive month with a sale at either Bourne, Grantham or Lincoln producing a sold rate of over 90%. Good advice, great results for hundreds of vendors every month.

*Join their success with an entry in our next sale!*

[goldingyoung.com](http://goldingyoung.com)

## HOUSE CLEARANCE

If there is that hidden 'find', it will be to your direct benefit.

Every week we take instructions for House Clearance for all of the prominent firms of Solicitors in the area, as well as from Private Individuals, Trustees and Executors.

If you are dealing with the content of a property, please contact us at the earliest point.

A visit to the premises by one of our qualified and experienced appraisal staff will offer the best advice for Security, Valuation and Sale.

**DISPOSE OF NOTHING**

Often things thought to be rubbish are saleable.

**IMMEDIATE ACTION IS REQUIRED**

Once a property is uninhabited it is a target for burglars and your insurance may be invalid.

Items removed from premises are listed and handled by our professional carriers. Goods are then allocated to the next appropriate sale to ensure the highest sale return.

We also deal with the unsaleable residue, disposed of in the most cost-effective and environmentally friendly way, giving a total service.



**PROPERTIES CLEARED,  
PROMPTLY AND EFFICIENTLY**

Call: John Ireland MA MRICS - **01778 422686**  
For Bourne, Stamford, Peterborough Region and Southern Counties

Call: Craig Bewick BA (Hons) MRICS FNAVA - **01476 565118**  
For Grantham Region and The Midlands

Call: John Leatt ASFAV - **01522 524984**  
For Lincoln Region and Northern Counties



SOLD for £50,000

#### **The Bourne Auction Rooms**

Spalding Road, Bourne,  
Lincolnshire PE10 9LE

E: [bourne@goldingyoung.com](mailto:bourne@goldingyoung.com)  
T: +44 (0) 1778 422686  
F: +44 (0) 1778 425726

#### **The Grantham Auction Rooms**

Old Wharf Road, Grantham,  
Lincolnshire NG31 7AA

E: [grantham@goldingyoung.com](mailto:grantham@goldingyoung.com)  
T: +44 (0) 1476 565118  
F: +44 (0) 1476 561475

#### **The Lincoln Auction Rooms**

Thos Mawer House, Station Road  
North Hykeham, Lincoln LN6 3QY

E: [lincoln@goldingyoung.com](mailto:lincoln@goldingyoung.com)  
T: +44 (0) 1522 524984  
F: +44 (0) 1522 681804

#### **The Leicester & Midlands Office**

E: [leicester@goldingyoung.com](mailto:leicester@goldingyoung.com)  
T: +44 (0) 116 473 5735

#### **London & South Valuations**

E: [london@goldingyoung.com](mailto:london@goldingyoung.com)  
T: +44 (0) 203 301 1007

#### **The Louth & Wolds Office**

E: [louth@goldingyoung.com](mailto:louth@goldingyoung.com)  
T: +44 (0) 1507 661864

#### **The Stamford & Rutland Office**

E: [stamford@goldingyoung.com](mailto:stamford@goldingyoung.com)  
T: +44 (0) 1780 7516