



EST

1864

GOLDING YOUNG

Fine Art Sale

Wednesday 28th August 2019



CHARTERED AUCTIONEERS & VALUERS • ARTS & ANTIQUES SURVEYORS

PROBATE – INHERITANCE TAX ASSESSMENT

For many Executors and Trustees the responsibility of dealing with a deceased's Estate is a once-in-a-lifetime experience. You have to make a number of important decisions in a very short space of time and all when the loss is most difficult to come to terms with.

The position of Executor is an important one in law and has defined personal liability and responsibility. To exhibit due diligence to beneficiaries and more importantly HM Revenue & Customs, an Executor or advisor will instruct a firm Regulated by RICS.

Even if the estate will be taxed at 0%, a valuation remains an essential tool for an Executor. The inventory will still be used for identification of bequests, trust items, family division and proof of value.

Our valuations are prepared to the International Valuation Standards requirement of the 'Red Book'.

The report will cover sections of:

- Jewellery
- Vehicles
- Antiques, Fine Art & Collections
- General Furniture & Effects



For initial advice contact the following Chartered Auctioneers & Valuers:

Bourne, Stamford & South
Colin Young MRICS
01778 422686

Grantham, Lincoln & North
William Gregory MRICS
01522 524984



Removals – Household & Commercial

- Free Quotations
- Full Packing Service
- Suppliers of Packing Materials
- Shipping & Storage Arranged
- Antiques & Fine Art Specialists
- Specialist Piano Movers
- Office Movers

Contact Andrew Lowes on 07970 742577 for a quote
or email lowes@goldingyoung.com

goldingyoung.com

PRIVATE CLIENT & PROFESSIONAL SERVICE DEPARTMENT

We value personal property for private and corporate clients. Our team have valued family heirlooms, art collections and museum holdings for a variety of purposes.

We are the only auction house in the region to have a bespoke Private Client Department with:

- Four Chartered Arts & Antiques Surveyors
- Two RICS/ Antiques Trade Gazette professional assessment award-winning valuers
- Two In-house qualified jewellery valuers
- Experience in abundance and diversity since 1864
- Ten professional staff with RICS, NAVA or SoFAA qualifications.



SOLD for £1,300



SOLD for £2,100



SOLD for £1,500



SOLD for £1,650



SOLD for £4,200

Welcome to our latest catalogue...

There is no shortage of great lots being offered for auction over the coming weeks.

The Lincoln Fine Art Sale has over 350 artworks by over 200 artists. It is our usual offering of diversity including period portraits, notable Victorian landscapes and intriguing 20thC art including the vibrant works of Northern Art. We continue to offer residual Studio Works of artists with the latest instruction being that of the late Sheila Holland for sale by tender.

The Grantham Auction Rooms September Collective Sale has now become a two-day Special Sale of Period Antiques over Wednesday 4th & Thursday 5th. We are pleased to announce the inclusion of The Shireby Collection; being a life-long collection of over 450 lots of antique furniture, 18th & 19th pictures, fine silver, antique arms, Georgian glass, pottery and much more. This sale is also enhanced with the final 30 lots from The St Georges Collection of Stamford.



Other specialist sales still inviting entries are advertised in the catalogue and the team would be pleased to help with the sale of your items. Please contact any of our salerooms for more information.

The Auction Team @GoldingYoung

Forthcoming Sales

Grantham Collective Sale

Wednesday 4th & Thursday 5th September at 10am



For full catalogue and details please visit goldingyoung.com

All Enquiries Colin Young MRICS FNAVA ASFAV

Bourne Toy, Transport & Automobilia Sale

Thursday 12th September at 10am



Further entries invited...

All enquiries John Ireland MRICS

Grantham Fine Ceramics & Asian Sale

Thursday 3rd October at 10am



Further Entries Invited...

All Enquiries Craig Bewick MRICS

INFORMATION FOR BUYERS

1. **Introduction:** The following informative notes are intended to assist Buyers, particularly those inexperienced or new to our salerooms. All sales are conducted on our printed 'Conditions of sale' which are readily available for inspection and normally accompany catalogues. Our staff will be happy to help you if there is anything you do not fully understand.
2. **Agency:** As auctioneers we usually contract as agents for the seller whose identity, for reasons of confidentiality, is not normally disclosed. Accordingly, if you buy your primary contract is with the seller.
3. **Estimates:** Estimates are designed to help buyers gauge what sort of sum might be involved for the purchase of a particular lot. The lower estimate may represent the reserve price and certainly will not be below it. Estimates do not include the buyer's premium or VAT (where chargeable). Estimates are prepared some time before the sale and may be altered by announcement before the sale. They are in no sense definitive and are subject to constant revision.
4. **Buyers premium:** The 'Conditions of sale' oblige buyers to pay a buyer's premium at 20% on the hammer price of each lot purchased with a minimum of £2 per lot. In the case of lots purchased 'Live Webcast' through Golding Young Live will be charged at 24% and external internet bidding platforms this will be charged at 28% on the hammer price. In addition, VAT is payable on this premium (see below). To clarify, live webcast auctions are NOT sales governed by Distance Selling Regulations – you were given the opportunity to view, even if you did not.
5. **VAT:** An asterisk (*) indicates that VAT is payable by the purchaser at the standard rate imposed by current UK law on the hammer price as well as being an element in the buyer's premium, lots are noted in the saleroom by a red dot on the lot number. This imposition of VAT is likely to be because the seller is registered for VAT within the European Union and is not operating the Dealers Margin Scheme or because VAT is due on importation into the UK. The double symbol (**) indicates that the lot has been imported from outside the European Union and the present position is that these lots are liable to a reduced rate of VAT on the gross lot price (i.e. both the hammer price and the buyer's premium). Lots which appear without either of the above symbols indicate that no VAT is payable on the hammer price. This is because such lots are sold using the Auctioneers' Margin Scheme and it should be noted that the VAT included within the premium is not recoverable as input tax. (VAT rates are changing with frequency, please check with HMRC. VAT will be charged as set by Government at the time of sale.)
6. **Condition and description of lots.** We are primarily, agents for the seller. We are dependent on information provided by the seller and whilst we may inspect lots and act reasonably in taking a general view about them we are normally unable to carry out a detailed or any examination of lots in order to ascertain their condition in the way in which it would be wise for a buyer to do. Intending buyers have ample opportunity for inspection of goods and, therefore, accept responsibility for inspecting and investigating lots in which they may be interested. Please note carefully the exclusion of liability for the condition of lots contained in the 'Conditions of sale'. Neither the seller nor we, as the auctioneers, accept any responsibility for their condition. In particular, mechanical objects of any age are not guaranteed to be in working order. However, in so far as we have examined the goods and make a representation about their condition, we shall be liable for any defect which that examination ought to have revealed to the auctioneer but which would not have been revealed to the buyer had the buyer examined the goods. Additionally, in specified circumstances lots misdescribed because they are 'deliberate forgeries' may be returned and repayment made. There is a 21 day time limit from the date of sale, not date of collection or receipt. (The expression 'deliberate forgery' is defined in our 'Conditions of sale').
7. **Electrical goods:** Items are tested by a qualified electrician for SAFETY ONLY. An item that passes the PAT safety test may not work. Conversely, an item that fails the test may work with just minor repair. 'Working Order' and 'Safe' are two completely different concepts. The only thing you may take for granted is that the item will be safe at the point of sale. Items that have failed will have their cabling cut to source, labelled and sold 'For Trade Only'. To use the object you will have to change it radically from what was sold to you. Therefore, the Auctioneers cannot be held responsible after the point of sale. Those items sold genuinely as 'antiques or collectables' will not have been tested and if bought for use must be checked over for compliance with safety regulations by a qualified electrician before use. This is an express condition.
8. **Export of goods:** Buyers intending to export goods should ascertain (a) whether an export licence is required and (b) whether there is any specific prohibition on importing goods of that character because, e.g. they may contain prohibited materials such as ivory. Ask us if you need help.
9. **Bidding in person:** Some form of identification with proof of address will be required if you are unknown to us. Bidders may be required to register before the sale commences and lots will be invoiced to the name and address on the registration form. Account transfers will not be recognised or facilitated under any circumstances.
10. **Absentee bidding:** Commission bids may be left with the auctioneers indicating the maximum amount to be bid excluding buyers' premium. They will be executed as cheaply as possible having regard to the reserve (if any) and competing bids. If two buyers submit identical commission bids, the auctioneers may prefer the first bid received. If there are genuine reasons why you are unable to leave a Commission Bid and you wish to bid by telephone we may accommodate on lots where your opening bid will be £500 or above. There are inherent dangers with this practice; therefore all arrangements shall be entirely at the bidder's risk. Absentee bid instructions must be received by telephone, fax or email 12 hours prior to the sale.
11. **Methods of payment:** Accounts are due for settlement SALEDAY. The following methods of payment are acceptable. There will be NO EXCEPTIONS to this policy. To avoid undue embarrassment for yourself or our staff, please do not ask for preferential treatment.
 - i. **Cash.** Single payments up to ONE THOUSAND GBP only per sale.
 - ii. **Debit Card.** No limit with chip & pin. (Card Not Present limit £500 & no CNP on gold or silver).
 - iii. **Credit Card.** We no longer accept credit cards.
 - iv. **Bank Drafts & Building Society Cheques.** No limit. Due to forgeries, we will retain the goods for 3 working days to establish clearance of funds.
 - v. **Cheques.** Accepted up to the limit of the guarantee card for immediate clearance. For sums exceeding this, and you are not known to the auctioneers, we will retain the goods for 7 working days to establish clearance of funds.
 - vi. **Bank Transfer for Bourne Auctions.** Payments to Golding Young Limited - Auction Clients Account – Bourne. 40-22-19 22034859. HSBC, 88 Westgate, Grantham NG31 6LF. Swift Code MIDLGB22. IBAN is . GB56MIDL40221922034859
 - vii. **Bank Transfer for Grantham Auctions.** Payments to Golding Young Limited - Auction Clients Account – Grantham. 40-22-19 13666891. HSBC, 88 Westgate, Grantham NG31 6LF. Swift Code MIDLGB22. IBAN is GB76MIDL40221913666891.
 - viii. **Bank Transfer for Lincoln Auctions.** Payments to Golding Young Limited - Auction Clients Account - Lincoln. 40-22-19 33667200. HSBC, 88 Westgate, Grantham NG31 6LF. Swift Code MIDLGB22. IBAN is GB45MIDL40221933667200.
Bank Transfer payment types, codes and clearance times:
BACS – code BP = cleared funds on the 4th day.
EFT or CHAPS – code CR + ADVICE CONFIRMS = cleared funds after 24hrs.
If early release of goods is requested our staff will ring HSBC to confirm guaranteed cleared funds.
12. **Collection and storage:** Goods can be collected as soon as they are paid for and within two working days following the sale. If goods remain with us and we have no contrary written advice of your intentions the items will be moved to storage and reasonable labour charges levied and storage at the rate of £2+vat per lot per day thereafter for small items (1 person safe carry) and £10+vat per lot per day for furniture and large items (2 person safe carry). This satisfies the requirements of the Consumer Rights Bill (2014).
13. **Late payment penalties:** Auction accounts have always been due Saleday. Any account remaining outstanding after 3 days will have a £20+vat administration charge applied. **We require payment to terms. Payment must be made on time, in full, and without any deduction, set off or counterclaim. In the event that an account is outstanding after 7 days, we will refer the matter to our debt collection agents, Daniels Silverman Limited, which will incur a surcharge of 20% of the debt, plus VAT at the prevailing rate. You agree that you will be legally liable to pay us that surcharge, and that payment of the same can be enforced against you in court. You also agree to pay interest at the relevant reference rate provided for under the Late Payment of Commercial Debts (Interest) Act 1998, which interest is payable both after and before any judgment of the court and continues to accrue.**
14. **Postage & Packaging:** Options for buyers are available at www.goldingyoung.com/buying-shipping or ask a member of staff.

Lots subject to normal VAT rules are marked in the text-only catalogue with a single asterisk character (*) or a single dagger symbol (†) to indicate a VAT added rate of 20%.

Lots subject to normal VAT rules are marked in the text-only catalogue with a single 'at' character (@) to indicate a VAT inclusive rate of 20%.

Lots subject to normal VAT rules are marked in the text-only catalogue with double asterisk characters (**) or a double dagger symbol (‡) to indicate a VAT added rate of 5%.

Lots subject to normal VAT rules are marked in the text-only catalogue with double 'at' characters (@@) to indicate a VAT inclusive rate of 5%.

Lots marked in the text-only catalogue with a bullet character (•) are subject to the Artist's Resale Right Scheme.



The wrong time to find out
what it was worth...



Over 47 million pounds of antiques & fine art valuation
in UK, Europe, Asia, Africa & The Americas since January 2014.

EST
1864

GOLDING YOUNG



William Gregory MRICS and Colin Young MRICS
are RICS Registered Valuers and
offer free advice for Insurance, Tax Planning and Probate reporting
and of course the sale of single items and collections.

The Bourne Auction Rooms
+44 (0) 1778 422686

The Grantham Auction Rooms
+44 (0) 1476 565118

The Lincoln Auction Rooms
+44 (0) 1522 524984

CHARTERED AUCTIONEERS & VALUERS ♦ ARTS & ANTIQUES SURVEYORS



goldingyoung.com

The Lincoln Art Sale

Wednesday 28th August 2019

**At The Lincoln Auction Rooms
Viewing & Selling in The Gallery
At Thos Mawer House
Sale commences at 6pm**

Viewing: Sunday 25th 2pm-5pm
Tuesday 27th 10am-4pm
& saleday from 2pm

Bid online or simply watch the sale live at

**GY
- Live!**

goldingyoung.com

All enquiries to William Gregory MRICS on 01522 524984

Front cover images:

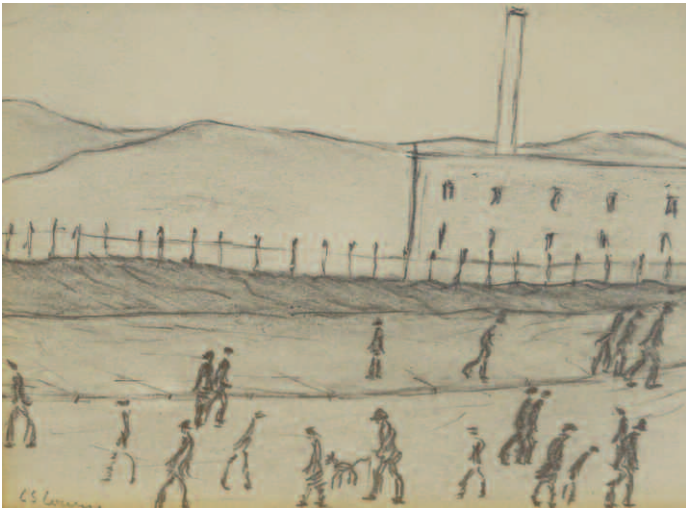
Top - Lot 48 William Shayer (1788-1879).

Milking scene, oil on canvas, signed, 70cm x 89cm.

Bottom - Lot 201 Geoffrey Key (b.1941).

Tibetan Beer Jug, oil on canvas, signed, dated (20)02, titled verso, 39cm x 49.5cm.

Lincoln Fine Art Sale



▲ 1. **Laurence Stephen Lowry (1887-1976).**
Village mill with figures, signed, 10.5cm x 13cm.
Provenance: Purchased from Henry Donn Gallery, Manchester 1982;
lot 129 Capes Dunn, Manchester October 2005.
£6000-8000



▲ 2. **Laurence Stephen Lowry (1887-1976).**
Figures in a park, with buildings in the background, signed and
dated 1943, 14.5cm x 20.5cm.
Provenance: Lot 118 Capes Dunn, Manchester April 2006.
£6000-8000



▲ 4. **Geoffrey Key (b.1948).**
Bottle and Capsicums, oil on canvas, signed, dated (20)02 and titled
verso, 59.5cm x 49.5cm.
£3500-4500



▲ 5. **Edward Hersey (B.1948).**
Farmyard with chickens, oil on canvas, signed, 44.5cm x 60cm.
£800-1200

◀ 3. **Laurence Stephen Lowry (1887-1976).**
The Pond, artist signed coloured print, 46cm x 58cm.
Label verso Bernhardt Gallery, Darlington, with copy of 1973 invoice,
and exhibition catalogue.
£1500-2500



▲ 6. **Rowland Wheelwright (1870-1955).**
Fallen huntsman, oil on canvas, signed, 29cm x 38cm.
£500-800



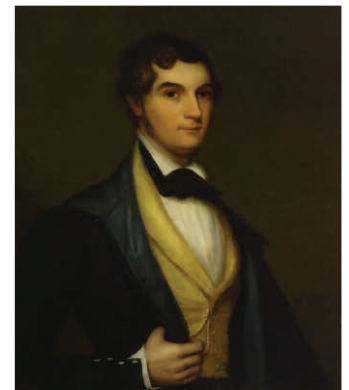
▲ 7. **Follower of John Singleton Copley (1738-1815).**
Portrait of a Gentleman with green silk jacket and gilt embroidered waistcoat, oil on canvas, 92cm x 77cm.
£1500-2500



▲ 8. **Archibald Thorburn (1860-1935).**
Grouse on the Moor, watercolour, signed, dated 1919 and titled verso, 18.5cm x 27.5cm.
Label verso The Moorland Gallery L&D London.
£10000-15000



▲ 9. **Colin Carr (1929-2002).**
White Hart Hotel, Lincoln, watercolour, signed, titled and dated (19)80, 20.5cm x 20cm.
£80-120



▲ 12. **John Moir (1775-1857).**
Young gentleman in jacket and yellow waistcoat, oil on canvas, signed and dated 1830, 74.5cm x 61cm.



▲ 10. **Eric H. Day (1900-1995).**
Mallard train, watercolour, signed, 36.5cm x 52.5cm.

▲ 13. **19thC British School.**
Sheep and cattle in rural scene, oil on board, indistinctly signed, 29cm x 44.5cm.
£120-180



▲ 11. **Edward Henry Holder (1847-1922).**
Figures collecting firewood, woodland coastal scene, oil on canvas, signed, 49cm x 74.5cm.
£300-500

▲ 14. **Guiseppe Batsini (1807-1876).**
The Artist studio, oil on board, signed and dated 1870, 33.5cm x 26cm.
£50-80

▲ 15. **19thC British School.**
Half length portrait of a lady, watercolour, 10cm x 7.5cm.
£80-120

▲ 16. **19thC British School.**
Head and shoulders of a young woman in cape with red bow ribbon, watercolour, 31cm x 25cm.

Lincoln Fine Art Sale



▲ 17. **Philip Thomson Gilchrist (1865-1956).**
The ship graveyard at Falmouth, oil on canvas, signed and titled verso, 36.5cm x 75cm.



▲ 19. **Morel (19thC).**
Still life, cherries and fruits with a basket, oil on canvas, signed, 32.5cm x 42.5cm. £400-600



▲ 20. **Edmund Morison Wimperis (1834-1900).**
Landscape with cattle and church, watercolour, signed, 33cm x 51cm. £100-200



▲ 18. **Edward Williams (1782-1855).**
Evening on the River Dase, oil on canvas, titled on the frame, 71cm x 94cm. £1500-2000



▲ 21. **Thomas Bush Hardy (1842-1897).**
Le Portel, watercolour, signed and titled, 31.5cm x 53cm. £150-250



▲ 22. **Harold Sutton Palmer (1854-1933).**
Rural landscape with sheep; castle in the distance, watercolour, signed, 35cm x 53cm. £250-350



▲ 23. **Harold Sutton Palmer (1854-1933).**
A bridge, near Dunsford, Surrey, watercolour, signed, 35cm x 52.5cm. £250-350

24. **Rowland Henry Hill (1873-1952).**
Moonlit landscape with figures in corn field, watercolour, 25.5cm x 37cm. £150-250



▲ 25. **Rowland Henry Hill (1873-1952).**
Moorland landscape with horse drawn cart and dog, watercolour, signed and dated 1929, 25.5cm x 26.5cm. £150-250

26. **Rowland Henry Hill (1873-1952).**
'Bring the cattle in', before a farmyard, watercolour, signed and dated 1914, 34cm x 44cm. £200-300



▲ 27. **David Cox (1783-1859).**
Crossing the Ford, watercolour, signed and titled verso, 20cm x 27cm. Label verso Henry J Mullen Ltd., Harrogate. £150-250



▲ 28. **Copley Fielding (1787-1855).**
A Roadside Inn, watercolour, signed and dated 1831, 17cm x 26cm. Label verso Henry J Mullen Ltd., Harrogate. £150-250



▲ 29. **Frank Moss Bennett (1874-1953).**
Thatched Cottage - Mother and Daughters, oil, signed and dated 1917, 24cm x 34cm. £300-500

31. **19thC British School.**
Half length portrait of a young girl, oil on canvas, 75cm x 59.5cm.

32. **George Andrew Nasmyth-Langlands (1865-1939).**
Moonlit river scene with figures in a rowing boat, watercolour, signed, 21.5cm x 27cm. £150-250

33. **B. Raynaud (19thC).**
Old gentleman and young maiden, oil on canvas, signed, 33.5cm x 25.5cm. £50-100



▲ 34. **Charles Archer (1855-1931).**
Fruit still life, oil on canvas, signed, 30cm x 35cm. £200-400

35. **D. McLeod (19thC).**
Highland cattle, oil on canvas, signed and dated 1889, 29cm x 44cm. £150-250

37. **Circle of Jean Honore Fragonard (1732-1806).**
Portrait of a young lady, pastel, 61cm x 46cm. Label Lincoln Fine Art - purchased 23/1/92.



▲ 30. **William Shayer (1811-1892).**
Resting on a forest track, oil on canvas, signed, 59.5cm x 48cm.
£800-1200



▲ 36. **Benjamin Leader (1831-1923).**
On the Llugwy, North Wales, oil on canvas, signed and dated 1915,
40cm x 60cm.
£800-1200



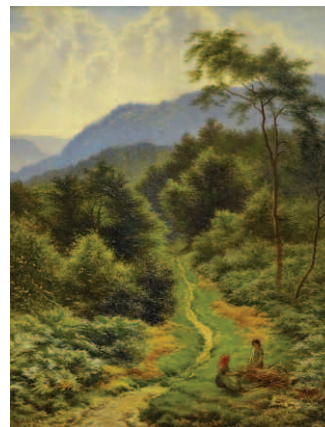
▲ 38. **19thC British School.**
River landscape with shepherd and sheep, oil on canvas,
39cm x 49cm.



▲ 40. **Arthur John Lomax (1857-1929).**
Men round a table, oil on board, signed, 29cm x 44cm.
£400-600



▲ 39. **Ramsay Richard Reinagle (1775-1862).**
Sporting dog, oil on canvas, 49cm x 71cm.
£1000-2000



▲ 41. **Arthur Gilbert Williams (1819-1895).**
Wooded sunny path, Limpfield, oil on board, signed, dated 1883, titled verso, 25.5cm x 19.5cm.
£300-500



▲ 43. **Edward Williams (1782-1855).**
Woodland Pond, oil on canvas, signed, 72cm x 52cm.
£500-800



▲ 42. **Robert Antoine Muller (c.1821-1883).**
Interior scene with a young girl teasing a kitten with a reel of thread, oil on board, signed,
34cm x 29cm.
£300-400



▲ 44. **Edward Williams (1782-1855).**
The Farm Pond, oil on canvas, signed, 61.5cm x 74cm.
£1500-2000

Lincoln Fine Art Sale



▲ 45.
Thomas Taylor Ireland (act. 1880-1927).
River landscape with swans and silver birch, watercolour, signed, 52cm x 34cm.
£100-200



▲ 46.
Carlton Alfred Smith (1853-1946).
Sunny Hours, watercolour, signed and titled, 50cm x 33cm.
£300-500



▲ 47.
George Richmond (1809-1896).
Portrait Mrs Charlie Bagot, watercolour, signed, dated 1842, titled verso, 36cm x 25.5cm.
£300-500



▲ 48.
William Shayer (1788-1879).
Milking scene, oil on canvas, signed, 70cm x 89cm.
£1500-2500



▲ 49.
Constance Pitcairn (1853-1913).
The Queen at the Carisbrooke fete, oil on canvas, signed, c.1900, 89cm x 137cm.
Provenance: Holywell Hall Lot 272 25.9.13
£2200-2800



▲ 50.
19thC British School.
Portrait of Peter King 7th Baron King of Oakham, in Peers robes, oil on canvas, 125cm x 100cm.



▲ 51.
Style of Claude Lorrain.
Harbour scene, masted ship and figures, oil on canvas, 99cm x 134cm
£500-800



▲ 53.
Thomas Sidney Cooper RA (1803-1902).
On The Riverbank, sepia wash over pencil, 11cm x 15cm, signed and dated 1830.
Provenance: Bonhams, Knightsbridge, 19th August 2008, lot 205, (illustrated in catalogue). K.J.Westwood describes as 'A fine and detailed wash drawing of a thatched half-timbered house and thatched ramshackle outbuildings, with washing hanging out on a pole from a dormer window and on a line between poles beside the house, a tall wooden fence with trees beyond, to the right. The buildings on the sloping bank of a river with figures by a boat at the river's edge to the left and buildings, including a church, seen on the far bank in the hazy distance.'



▲ 54.
Thomas Sidney Cooper RA (1803-1902).
A sheep lying down, pencil, 9cm x 13cm, signed and dated 1849.
Provenance: Sotheby's Sussex, 9 August 1994, lot 1426 (3 in 1 mount). K.J.Westwood describes as a finely executed pencil sketch of a sheep, with faint outline of another sheep behind.



▲ 52. **Thomas Sidney Cooper RA (1803-1902).** Canterbury Meadows, depicting cattle in the foreground and sheep at distance, oil on canvas, signed T Sidney Cooper RA, 51cm x 77cm, original gilt plaster frame with titled slip.
Provenance: Goodacre collection No.107
£4000-6000



▲ 55. **Thomas Sidney Cooper RA (1803-1902).** Wooded rural landscape with cottages and tower on the horizon, sepia wash, 12.5cm x 15cm.
A lesson to D W Coit.
Provenance: Goodacre Collection No 210.



▲ 56. **Thomas Sidney Cooper RA (1803-1902).** Pencil sketch with part watermark J WHATMAN TURKEY MILL 18—, by T.S.Cooper, inscribed Biddle Farm Grinstead & dated 1834, 13.5cm x 19cm, thatched and tiled farm buildings, reverse pencil sketch of a farm wagon.
Provenance: Goodacre Collection No 302.



▲ 57. **Thomas Sidney Cooper RA (1803-1902).** Tree lined lane leading to a farm building, inscribed Grinstead and dated 1834, pencil sketch on paper, 19cm x 25cm. Ref. Westwood Vol 1 page 33 fig 14.
Provenance: Goodacre Collection No 303.



▲ 58. **Thomas Sidney Cooper RA (1803-1902).** Study of trees bordering a lane, pencil on paper, 19cm x 25cm. Watermarked "Ruse & Turners 1815" Inscribed "Grinstead" and dated 1834.
Provenance: Goodacre Collection No 304.



▲ 59. **Thomas Sidney Cooper RA (1803-1902).** Sketch of house & outbuildings with well in foreground. Blue grey and brown watercolour washes over pencil. 14cm x 21cm. inscribed "Lingfield surrey" dated 1834. Reverse pencil sketch of houses and outbuildings. Illustrated Westwood Vol 1 page 32 figure 13.
Provenance Goodacre Collection No 305.



▲ 60. **Thomas Sidney Cooper RA (1803-1902).** Cattle in a meadow, pen and ink 8cm x 11.5cm. Signed with initials T.S.C and dated 1875. Typical of studies Cooper hurriedly sketched during Royal Academy banquets etc. which he would give to his neighbours at the table. Being a little deaf he was able to hear the speeches.
Provenance: Goodacre Collection No 306.



▲ 61. **Thomas Sidney Cooper RA (1803-1902).** A track leading through trees, pencil sketch, 14cm x 20cm. A lesson to D W Coit. c1829.
Provenance: Goodacre collection No 307.



▲ 62. **Thomas Sidney Cooper RA (1803-1902).** Figures by a cottage, pencil sketch, 11.5cm x 17cm. A lesson to D W Coit. c 1829.
Provenance: Goodacre Collection No 308.



▲ 63. **Thomas Sidney Cooper RA (1803-1902).** A cottage in a wooden landscape, pencil sketch, 20cm x 23.5cm.
A lesson to D W Coit c1829.
Provenance: Goodacre Collection No 310.



▲ 64. **Thomas Sidney Cooper RA (1803-1902).** Landscape with cottage and barns, pencil sketch, 16cm x 20cm. A lesson to D W Coit. c1829.
Provenance: Goodacre Collection No 312.



▲ 65. **Thomas Sidney Cooper RA (1803-1902).** Landscape with buildings and figures on a track, pencil sketch, 15.5cm x 22.5cm.
Provenance: Goodacre Collection No 313.

Lincoln Fine Art Sale



▲ 66.
Thomas Sidney Cooper RA (1803-1902).
Mountainous Landscape with figures, pencil sketch, 17.5cm x 24cm. After D W Coit. Provenance: Goodacre Collection No 321.



▲ 67.
D W Coit.
Inscribed "Valley of Lauterbrun grey sketch 1830", 20cm x 25cm. Provenance: Goodacre Collection No 322.



▲ 68.
Thomas Sidney Cooper RA (1803-1902).
Lesson for D W Coit, Figure at wayside shrine, 1829. Pencil, 12cm x 18cm. Provenance: Goodacre Collection No 324.



▲ 69.
Thomas Sidney Cooper RA (1803-1902).
Lesson for D W Coit. Cottage in landscape. Pencil sketch, 14.5cm x 19cm. Provenance: Goodacre Collection No 325.



▲ 70.
Thomas Sidney Cooper RA (1803-1902).
After Coit, said to be Gibraltar. Pencil sketch, 15cm x 20cm. Provenance: Goodacre Collection No 326.



▲ 71.
Thomas Sidney Cooper RA (1803-1902).
After D W Coit, inscribed "Bay of Naples from Sorrento". Pencil sketch, 19cm x 13cm. Provenance: Goodacre Collection No 329.



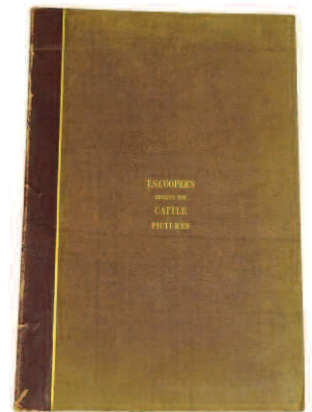
▲ 72.
Thomas Sidney Cooper RA (1803-1902).
T S Cooper after D W Coit. Inscribed "The Cathedral Dresden" (Dresden) 1831. Pencil and sepia wash unfinished, 17cm x 23cm. Provenance: Goodacre Collection No 331.



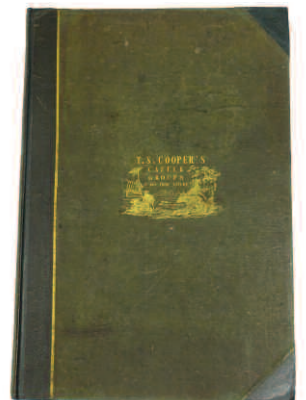
▲ 73.
Thomas Sidney Cooper RA (1803-1902).
A rare print of Grindenwald (Switz'). Engraved by E F Finden (1792-1857) incorrectly attributed to J S Cooper. J should be read T. From a Coit drawing copied by Cooper, 9cm x 13cm, 1833-34 life of Bryon. Provenance: Goodacre Collection No 428.



▲ 74.
Thomas Sidney Cooper RA (1803-1902).
Lithographic after Paul Potter (17c) Peasants and cattle, signed T S Cooper 1829 for Duke d'Arenberg. Provenance: Goodacre Collection No 423.



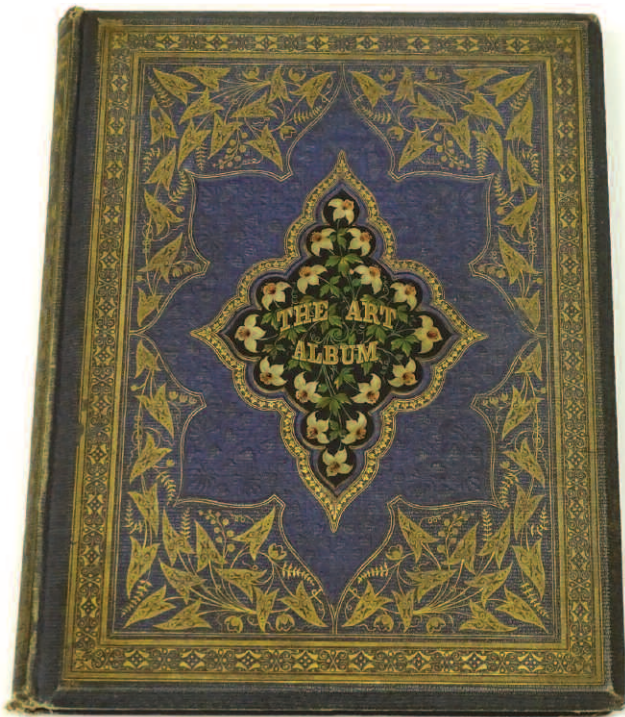
▲ 75.
Thomas Sidney Cooper RA (1803-1902).
Designs for cattle pictures, a leather spined and gilt cloth folio of thirty four lithographs published by Thos. McLean, 26 Haymarket, 1837. Provenance: Goodacre Collection No 427, Ex. Libris Kenneth John Westwood.



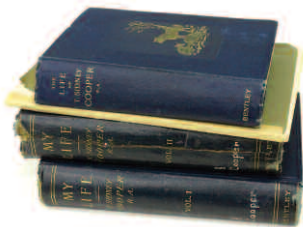
▲ 76.
Thomas Sidney Cooper RA (1803-1902).
Cattle Groups Drawn From Nature, a leather spined gilt cloth folio twenty three (plus frontispiece) lithographs published by Ackenmann & Co, 96, Strand, 1839. Provenance: Goodacre Collection.



▲ 77.
Thomas Sidney Cooper RA (1803-1902).
Studies of Cattle Part 1, a gilt cloth portfolio of thirty two lithographs published by S&J Fuller, 34, Rathbone Place, c.1835/36. Provenance: Goodacre Collection No 427.



- ▲ 82. **The Art Album 1861**, published by W Kent and 60, Paternoster Row, engraved by Edmund Evans and containing sixteen colour facsimiles T.S Cooper, Gco. Cattermole, Wm. Hunt, etc.
Provenance: Goodacre Collection, acquired from Kenneth Westwood 2006.



- ▲ 78. **Cooper (Thomas Sidney RA)**.
My Life, 2 vols, and The Life Of. 1 vol, pub. Bentley; and T.Sidney Cooper, His Life and Art, pub. The Art Record Press 1902 pamphlet. (4)
79. **Eleven Royal Academy Pictures annuals**, marked with reference to works by T.S. Cooper and two similar referenced oil paintings in Public Ownership (Staffordshire & Kent). (13)
80. **Westwood (Kenneth J)**.
Thomas Sidney Cooper, His Life and work, Vol 1, and the Early Drawings, supplement. (2)

81. **Sartin (Stephen)**.
Thomas Sidney Cooper, CVO, RA, 1803-1902, and five other associated titles. (6)

83. **The Strand Magazine**, Vol VII. The Sunday Strand, Vol. V. The Drovers, shire pub. and Bloomfields, illus. T.S. Cooper Hoblely, Tayler & Webster. (4)

84. **T.S. Cooper interest**.
A selection of reproduction prints, photocopies, auction catalogues and miscellaneous together with a photograph album of artist related subject matter.



- ▲ 85. **Hubert Coop (1872-1953)**.
Quayside with fishing boats and figures, watercolour, signed, 49cm x 64cm. £200-300

86. **Edward Duncan (1803-1882)**.
Cattle and sheep in parkland, watercolour, signed, 21.5cm x 30cm. £50-80



- ▲ 87. **Edward Richardson (1812-1869)**.
Dukeld Cathedral, Scotland, watercolour, titled and dated 1852, 40cm x 29cm. Label verso James Usher and Son Newland Lincoln. £50-80

88. **Alfred William Parsons (1847-1920)**.
Saintbury, Gloucestershire, watercolour, signed and titled, 26cm x 35cm. £80-120



- ▲ 89. **Lloyd Branson (1854-1925)**.
The Village Politicians, oil on board, titled and dated March 27 (18)89 verso, 36.5cm x 47cm. £600-800

90. **19thC British School**.
Shepherd and dog with sheep along Woolland Lane, oil on canvas, signed, 66cm x 41cm

91. **19thC Continental School**.
Horses and grooms, oil, 41cm x 32cm. £200-300



- ▲ 92. **Jacob George Smith (19thC)**.
Charles Beattie, oil on canvas, label verso - painted at Brigg, Lincolnshire, 75.5cm x 62cm. £600-800

93. **19thC British School**.
Thomas Ely (1746-1840), Ballaghmore Castle Queen Co., oil on canvas, label verso, 66cm x 54.5cm. £100-150

94. **Circle of J F Herring**.
Faugh-a-Ballagh, race horse in stable aside saddling cloth, oil on canvas, unsigned, titled, 31cm x 40.5cm. Faugh-a-Ballagh ran once as a two year old at Doncaster, finishing second in 1842. The first Irish horse to win the St. Leger Stakes, beat Corrana in a match race and won the Grand Duke Michael Stakes and the Cesarewitch, finishing second in the Cambridgeshire. He was sold to France where he sired the Oaks and French Oaks winner and sired Leamington, whose lines include Longfellow and Iroquois, the first American bred horse to win The Derby. Believed to have been purchased by the vendor's family at The Allington Hall Estate Sale.

95. **F. Lewis ((19thC/20thC))**.
Cynthia, oil on canvas, signed and dated July 1896, 34.5cm x 24.5cm.

96. **John Varley (19thC)**.
River landscape, watercolour, signed verso, 18.5cm x 24.5cm.

97. **19thC British School**.
Tintern Abbey, watercolour, titled verso, 23.5cm x 33cm.

Lincoln Fine Art Sale

98. **Frederick Daniel Hardy.**
Evening prayer, oil on board,
signed, titled and dated 1891,
17.5cm x 23.5cm.
£400-600

99. **Pierre-Jean Abathicci.**
Head and shoulders portrait of a
young maiden, watercolour,
signed, 24.5 cm x 17cm.
£50-80

100. **John Cantiloe Joy**
(1806-1866).
Harbour scene with figures and
boats, watercolour, 28cm x 34cm.
£150-200

101. **Henry Bright (1810/14-1873).**
Farm pond and figures and cattle,
oil on canvas, signed, 40cm x 56cm.
£200-300

102. **Maria (19thC).**
The Violinist, oil on board, signed,
29cm x 24cm.
£100-200

103. **19thC School.**
Madonna with child, and monk,
oil on metal panel, 14cm x 11cm.

104. **19thC School.**
Portrait of a maiden, enamel on
metal, 12cm x 10cm.
£50-80

105. **Theresa Maria Hegg de**
Landerset (1829-1911).
Woodland flowers, watercolour,
signed, 23.5cm x 15.5cm.
£150-250



▲ 106. **19thC Continental School.**
Interior scene 'today's catch',
oil on canvas, 51.5cm x 39.5cm.
£200-300

107. **William Edward Croxford**
(1852-1926).
St Michaels Mount, Village
Harbour, watercolour - pair,
signed, 16cm x 24cm.
£200-300

108. **Walter Dendy Sadler**
(1854-1923).
Tea time, watercolour,
monogrammed, 34.5cm x 27.5cm.
£300-500

109. **Archibald Thorburn**
(1860-1935).
Drake red breasted merganse,
watercolour, dated Feb 1 1890,
22cm x 36cm.
Label verso David McDonald
Booth.

110. **19thC British School.**
Head and shoulders portrait of a
young child, watercolour,
23cm x 18cm.

111. **Achille Vianelli (1803-1894).**
St. Maria la Nova, watercolour,
signed, titled and dated 1838,
21cm x 15.5cm.

112. **19thC British School.**
Portrait of a lady, pastel
22.5cm x 17.5cm.

113. **Dr Angelis (19thC).**
Conto di Nizza, Jarsta di
Camorey, watercolour - Pair,
titled verso, 14.5cm x 11cm.

114. **Fredrick Hines**
(act.1875-1928).
Country scenes, watercolour -
pair, signed, 24cm x 53cm.
£100-200

115. **19thC British School.**
Figure on horseback, walker with
dogs in woodland scene,
watercolour, indistinctly signed,
28.5cm x 47cm.
£100-200

116. **John Varley (1778-1842).**
Village pond with figures and
cattle, watercolour, 27cm x 38.5cm.
£200-300

117. **Henry Cheadle (1852-1910).**
Farm pond with horses watering,
oil on canvas, signed and dated
(18)80, 24cm x 40cm.

118. **19thC Irish School.**
Portrait of a Gentleman: James
Lundy, watercolour, titled verso,
33.5cm x 25cm.

119. **18thC British School.**
Sleeping in the corn field, oil on
canvas, 43cm x 35cm.

120. **19thC British School.**
Portraits, pastel - pair, indistinctly
signed, family tree verso,
59cm x 46.5cm.

121. **Heywood Hardy (1842-1933).**
Shooting at Hartsholme Jan 7
1895, ink drawing, titled and
dated, 18cm x 10.5cm.

122. **19thC School.**
River barges and castle, oil on
canvas, 19.5cm x 24cm.

123. **Geo Bickham (18thC/19thC).**
Great Arch of London Bridge,
coloured plate with original
watercolours and other prints,
contents of folder.

124. **William Edward James Dean**
(?-1956).
Sailing boats at sea, watercolour,
signed, 12cm x 24.5cm.
£50-80

125. **La Pira (19thC).**
Napoli, gouache, signed,
18cm x 26cm.
£200-300

126. **Rose Emily Stanton**
(1838-1908).
Street scene with figures,
watercolour, initialled and dated
1859, 33cm x 22cm.

127. **Frank Saltfleet (c.1860-1937).**
River scene, watercolour, signed,
17cm x 24cm.

128. **Albert E. Marks (1866-1901).**
Masted ship in harbour,
watercolour, signed, 24cm x 16cm.
£50-80

129. **Raimondo Scoppa**
(1820-1890).
Mountain landscape, oil on
canvas - Pair, signed, 46cm x 36cm.
£100-200

130. **Harry Sutton Palmer**
(1854-1933).
Mountain stream in North Wales,
watercolour, signed and inscribed
verso, 51cm x 73cm.
£50-100



▲ 131. **Guilla Cecchi.**
River Arno, watercolour,
signed, 17cm x 35cm.
Label verso, Frost and Reed.
£120-180

132. **E.S.K (19thC)..**
Still life with two handled vase,
watercolour, signed and dated
1857, 48cm x 38cm.

133. **Henry Sykes (1854-1921).**
Rural landscape with cattle,
watercolour, signed,
22.5cm x 31cm.

134. **19thC British School.**
Horse and cart in mountain
landscape, watercolour,
23.5cm x 35cm.
Label verso Fine Art Repository
Liverpool, Goldmark
Uppingham.

135. **19thC British School.**
River scene with anglers in a
rowing boat, watercolour,
26.5cm x 36.5cm.
Label verso Fine Art Repository
Liverpool, Goldmark
Uppingham.

136. **Alfred Elsworth**
(19thC/20thC).
Bolton Abbey, oil on canvas,
signed and dated 1901,
22cm x 31cm.

137. **Charles Fredric Allbon**
(1856-1925).
River scenes, watercolour - pair,
signed, 27cm x 41cm.
£100-200

138. **19thC British School.**
Mountain landscape, watercolour
- pair, 18cm x 32cm.
£80-120

139.
Edwin John Ellis (1842-1895).
Coastal scene with masted ship,
watercolour, signed, 33cm x 56cm.

140.
George Wright (1860-1940).
Passing the hunt, oil on board,
signed, 29cm x 39cm.
£200-300



▲ **141.**
Colin Carr (1929-2002).
Steep Hill, Lincoln rag and
bone man, watercolour,
signed, titled and dated (19)84,
23.5cm x 16.5cm.

142.
Colin Carr (1929-2002).
Steep Hill, Lincoln, watercolour,
signed and dated (19)80,
17.5cm x 12.5cm.

143.
20thC British School.
Lincoln from the South East,
watercolour, 18.5cm x 27cm.



▲ **144.**
Peter Moss (b.1940).
Gilt and diamond motif
decorated bowl, incised
P. Moss, 21cm Dia.

146.
A. Storie (19thC/20thC).
Lincoln, watercolour, signed and
titled, 16.5cm x 23.5cm.

147.
T. Gamble (19thC/20thC).
Boston from The Witham, a
sketch, oil on canvas, initialled,
signed, titled and dated 1889
verso, 30cm x 45cm.



▲ **145.**
William Edward Millner (1849-1895).
Two young girls with dog and horses, oil on canvas, signed and
dated (18)82, 75cm x 101cm.
£1500-2500

148.
**Follower of Samuel Prout
(1783-1852).**
Newark Castle, Nottinghamshire,
watercolour, 33cm x 46cm.
Label verso Alexandra Williams
Pictures London.



▲ **149.**
19thC British School.
Lincoln Cathedral from
Brayford Pool, oil on canvas,
60cm x 90cm.



▲ **150.**
**Mark Huskinson
(1935-2018).**
I think they've found your
bird, Sir, artist signed and
dated (19)96 coloured print,
19cm x 27cm and two others (3).

151.
Mark Huskinson (1935-2018).
What a perfect, height shot
pattern my dear he must be using
a Purdey, artist signed and dated
(19)94 coloured print,
18.5cm x 24.5cm and another (2).



▲ **152.**
John Trickett (b.1952).
Pheasant shooting, winter
woodland, oil on canvas,
signed and dated (19)80,
35cm x 45cm.
£100-200

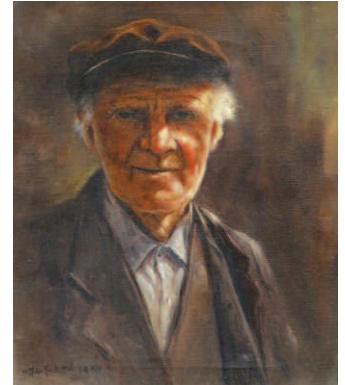
153.
John Trickett (b.1952).
Pheasant shooting, autumn
woodland, oil on canvas, signed
and dated (19)80, 35cm x 45cm.
£100-200

154.
John Trickett (b.1952).
Coastal landscape, oil on board,
signed, 48cm x 59cm.
£100-200

155.
John Trickett (b.1952).
Coastal seascape, oil on board,
43.5cm x 58.5cm.
£100-200

156.
John Trickett (b.1952).
Pheasant shooting with gun dog,
oil on canvas, signed,
49.5cm x 75cm.
£100-200

157.
John Trickett (b.1952).
Fishing - mountain landscape, oil
on canvas, signed, 49.5cm x 75cm.
£100-200



▲ **158.**
John Trickett (b.1952).
Old man, oil on canvas, signed
and dated 1980, 49cm x 39cm.
£100-200



▲ **159.**
John Trickett (b.1952).
The hunt, edge of the woods,
oil on canvas, signed and
dated (19)80, 60cm x 75cm.
£250-350

160.
John Trickett (b.1952).
Masted ships - coastal scene, oil
on canvas, signed, 64.5cm x 84cm.
£100-200

161.
John Grimble (?-1997).
Norfolk farm, oil on board,
signed, dated (19)78 and titled
verso, 24cm x 29cm.

162.
Len Roope (1917-2005).
Lincoln from the South West,
watercolour, signed and titled,
27cm x 25.5cm.

Lincoln Fine Art Sale



▲ 163.
William Bartol Thomas (1877-1947).
Boston Stump, watercolour, signed, 33.5cm x 16cm.

164.
William Bartol Thomas (1877-1947).
Coastal scene, watercolour, signed and dated 1896, 19.5cm x 33.5cm plus another, signed photograph of the artist and an 1896 Artist's Almanac (4).

165.
William Bartol Thomas (1877-1947).
Wrangle Brick Pits, watercolour, signed, 26.5cm x 32.5cm.



▲ 166.
William Bartol Thomas (1877-1947).
Fishing on the banks of the Witham, watercolour, signed, 24cm x 35.5cm.

167.
William Bartol Thomas (1877-1947).
Rocky coastline, watercolour, signed and dated 1897, 22cm x 33.5cm.

168.
William Bartol Thomas (1877-1947).
Landscape with river, village church in the distance, watercolour, signed, 12cm x 17cm.



▲ 169.
Vincent Haddelsey (1934-2010).
Horse and riders winter street scene, watercolour, signed and dated, 55.5cm x 83cm.
£200-300



▲ 170.
Vincent Haddelsey (1934-2010).
Horse and carriage winter farm scene, watercolour, initialled, 55cm x 83cm.
£200-300



▲ 171.
Joseph Smedley (1922/23-2016).
The flight into Egypt, oil on canvas laid on board, signed, dated 1988/94 and titled verso, 84.5cm x 42cm.



▲ 172.
Joseph Smedley (1922/23-2016).
Interior with hanging bacon, oil, signed, dated 1950 and titled verso, 57.5cm x 42.5cm.

173.
Clive Richard Browne (1901-1991).
Sunlit Wold, oil on canvas, signed and titled verso, 60cm x 75cm.

174.
Phil Bowman (b.1954).
Sketches of Spain, oil on canvas, initialled, titled and dated (20)09, 80cm x 100cm.

175.
Gill Nadin (1928-1996).
Palms and swimming pool, pastel, 56cm x 40cm.

176.
Gill Nadin (1928-1996).
Palms and swimming pool, 56cm x 40cm.



▲ 177.
John Danby Wheeldon (1914-2008).
Chapel of Ease Heighington, artist signed and numbered monochrome print 12/75, 25.5cm x 21cm.

178.
M. Tallet (20thC).
High Street Heighington, watercolour, signed, titled, and dated 1980, 13.5cm x 21cm.



▲ 179.
Robin Wheeldon (b.1945).
Flying Scotsman at Lincoln, oil on board, signed, dated 1979 and titled verso, 51.5cm x 77cm.

180.
David Paton (20thC).
Landscape, watercolour, signed and dated (19)75, 21cm x 25.5cm and three other pictures (4).

181.
Mark Huskinson (1935-2018).
The wine tasting, artist signed and dated (19)97 coloured print, 24.5cm x 19cm, and two others (3).

182.
Vaughan Sharp (20thC).
Lincoln landscape, oil on board, signed, 40cm x 50cm.

183.
Mary Dudding (19thC/20thC).
Lilium Limelight, watercolour, signed, dated August 1978, and titled verso, 28cm x 22cm, and another autumn in Minster Yard (2).

184.
Arthur Dudley (1864-1915).
Fruit still life, watercolour, signed Giovanni Barbaro, 33cm x 78cm.

185.
Clive Richard Browne (1901-1991).
Near Brigsley, Lincolnshire, landscape, oil on canvas, signed, label dated verso 'Waltham, Grimsby, February 1973', 51cm x 66cm.
£100-150

186.
George Rowlett (b.1941).
Near Chipping Campden, oil on board, signed, 21cm x 26.5cm.

187.
Gerald Bauer (20thC).
B.E. 2C's over N.W. Frontier, oil on canvas, signed, dated (19)79 and titled verso, 44.5cm x 59.5cm.

188.
Lady Barbara Brassey (1911-2010).
Summer on the pond, oil on canvas, signed dated (19)80 and titled verso, 45cm x 55cm.
£80-120

189.
Thomas Waghorn.
Lincoln from Brayford Pond, artist signed etching, 23cm x 15.5cm and two others.

190.
Pilcher.
Harbour scene, watercolour, 22cm x 28cm, and three other works by the same artist (4).

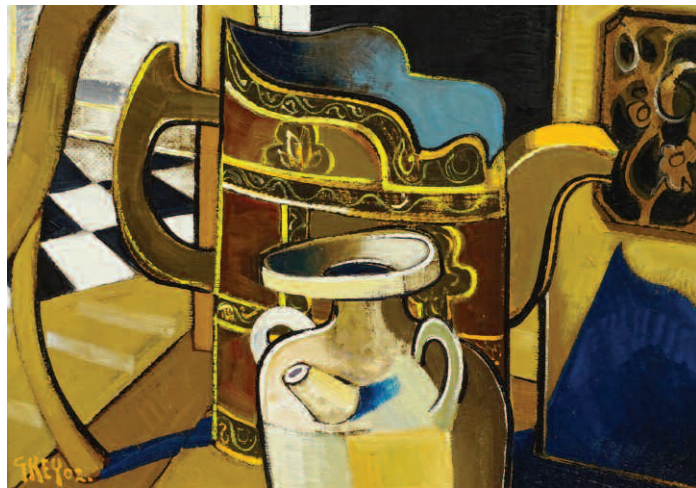
191.
Mary Dudding (19thC/20thC).
Designs for shallow plates for Lincoln Cathedral 900 anniversary, watercolour, signed verso, other works by the artist, Bordclass, artist signed lithographic print 1/11 dated (19)72, and other pictures and prints, Qty.

192.
D.C. Morris (20thC).
Newark, watercolour, signed, dated 1991 and titled, 12cm x 17cm and another watercolour signed Garry Grodin (2).

193.
Alan Oliver.
Sand Castles and Cromer Beach, pastel, signed and titled verso, 25cm x 35cm and another titled painting in the South of France (2).

194.
G. Wilson.
The Estuary, Humberside, oil on canvas, signed and titled verso, 39.5cm x 59.5cm.

195.
James Whitelaw Hamilton (1860-1913).
Sailing on the Clyde, oil on canvas, signed and dated, 40cm x 50cm.
£400-600



▲ **201.**
Geoffrey Key (b.1941).
Tibetan Beer Jug, oil on canvas, signed, dated (20)02, titled verso, 39cm x 49.5cm. Artist label verso.
£2000-3000

196.
20thC Continental School.
Tall trees in rocky landscape, oil on board, 39cm x 39cm.
£100-200

197.
Peter Issitt (20thC).
Vivaloi/Scarlati, watercolour, signed, titled verso, 60cm x 42cm.

198.
Salvador Viniegra Y Lasso (1862-1915).
Spanish players travelling, oil on canvas, signed, 108cm x 161cm.

199.
Herman Dirk Van Dodeweerd (1929-2018).
Female study, oil on canvas, signed, 139cm x 139.5cm.

200.
L W Pooley (British 20thC).
Lancaster Bombers in the night sky, oil on canvas, dated 1992, 59cm x 74cm.
N.B. This lot is to be sold Without Reserve with proceeds of sale going to The Just Jane NX611 Lancaster Restoration Reutn to Flight Project
<https://www.lincsaviation.co.uk/news/lancaster-nx611-return-to-flight/>

206.
Helen Layfield Bradley (1900-1979).
Big Bertha comes to Lees, artist signed coloured print, 48cm x 62cm.

207.
Helen Layfield Bradley (1900-1979).
Blackpool station, artist signed coloured print, 40cm x 56.5cm.



▲ **202.**
William Ralph Turner (1920-2013).
Glow worm in the moonlight, oil on board, signed and titled verso, 19m x 24.5cm.
£1000-1500



▲ **203.**
William Ralph Turner (1920-2013).
Train to London, Stockport, oil on board, signed and titled verso, 24cm x 19cm.
Label verso, Gateway Gallery, Hale.
£1500-2000

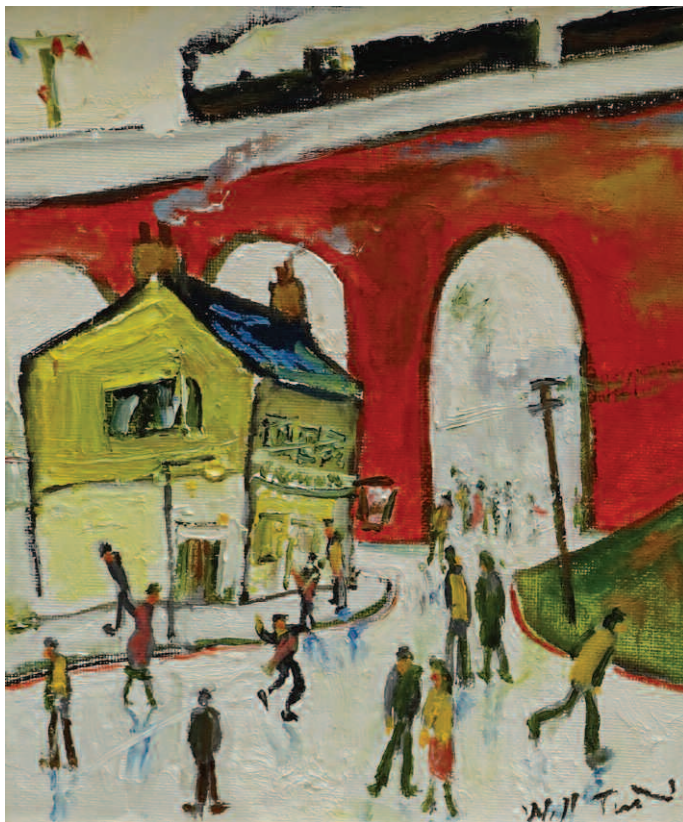
208.
Fred Yates (1922-2008).
On the bridge, oil, signed, 35cm x 43cm.
£1000-1500

209.
Fred Yates (1922-2008).
St. Ives, watercolour, signed, 54cm x 72cm.
£800-1200

Lincoln Fine Art Sale



▲ 204.
William Ralph Turner (1920-2013).
Christ Church, Macclesfield, oil on board, signed and titled verso,
21.5cm x 19.5cm.
£1500-2000



▲ 205.
William Ralph Turner (1920-2013).
The Crown Inn, Stockport, oil on board, signed and titled verso,
24.5cm x 19cm.
£2000-2500

210.
Beryl Cook (1926-2008).
Dog in the Dolphin, artist signed
coloured print, 55.5cm x 27cm.

211.
Beryl Cook (1926-2008).
Dancing on the bar, artist signed
limited edition coloured print
418/850, 41cm x 54cm.

212.
Beryl Cook (1926-2008).
Elvira's Cafe, artist signed limited
edition coloured print 103/850,
47cm x 35.5cm.



▲ 213.
Beryl Cook (1926-2008).
Ivor Dickie, artist signed
limited edition coloured print
165/300, 48cm x 54.5cm

214.
Beryl Cook (1926-2008).
Poetry reading, artist signed
coloured print, 48.4cm x 38cm.

215.
Beryl Cook (1926-2008).
Garden centre, artist signed
limited edition coloured print,
378/850, 54cm x 40cm.

216.
**After Laurence Stephen
Lowry.**
Peel Park, Salford, limited edition
gouttelette coloured print 18/75,
published Felix Rosenstiel's
Widow and Son, 56cm x 105cm.
With framed certificate and
authentication folder.

217.
**After Laurence Stephen
Lowry.**
The Beach, limited edition
gouttelette coloured print 18/75,
published Felix Rosenstiel's
Widow and Son, 56cm x 100cm.
With framed certificate and
authentication folder.

219.
David Stoves (20thC).
Council Meeting, oil on canvas,
signed, dated 1989, titled verso,
60cm x 49cm.



▲ 220.
Duncan Grant (1885-1978).
Portrait possibly Dora Carrington,
oil on canvas, signed, 59cm x 49cm.



▲ 218.
Laurence Stephen Lowry (1887-1976).
The Notice Board, artist signed coloured print, 43cm x 52cm.
£1500-2500



▲ 221.
20thC School.
Wind and Maiden, oil on board, monogrammed and dated (19)32, 56.5cm x 37.5cm
£300-500

222.
Markey Robinson (1918-1999).
Shawlies and Gable ends, gouache on board, signed, 25cm x 35cm.
£400-600

223.
Markey Robinson (1918-1999).
Shawlie in landscape, Gouache, signed, 28cm x 42cm.
£400-600



▲ 224.
Frieda Murdter (1872-1911).
Still life, vase and mandolin, oil on canvas, signed and titled verso, 59.5cm x 49cm.

225.
Vlaminck (20thC).
Cornfield landscape with farm buildings, oil on canvas, titled label verso, 49.5cm x 69.5cm.

226.
Hu Shanyu (1909-1993).
Hong Kong, oil on board, signed, 39.5cm x 29.5cm.
Label verso Fook Hing Studio.
£3000-5000

227.
John Gareth Keates (1915-1992).
Nocturne, oil on board, signed and titled verso, 75cm x 60cm.
Label verso Liverpool Academy of Arts.

228.
Alfred Egerton Cooper (1883-1974).
Sylvia, oil on canvas laid on board, signed, 40.5cm x 30cm.
£100-200

229.
20thC Continental School.
Village with bell tower, oil on canvas laid on board, indistinctly signed, 33.5cm x 48.5cm.
£100-200



▲ 230.
20thC Continental School.
Still life with coffee grinder and fruit, oil on board, signed Kleinschmidt and dated (19)46, 57cm x 49cm.
£100-200

231.
P. Laval (20thC).
Three girls with dovecote, oil on canvas, signed and dated (19)73, 75cm x 60cm.

232.
Albert Cruells (b.1947).
Still life, fruit and flowers, oil on canvas, signed, 80.5cm x 64.5cm.
£300-400

233.
20thC School.
Abstract, floral and figures, oil on canvas, indistinctly signed, 63.5cm x 44cm.
£100-200

234.
Joseph M. Gatt (20thC).
Follow through, oil on canvas, signed and dated (19)85, 111cm x 88.5cm.

235.
James Wright (20thC).
Cornish seascape, oil on canvas, signed and titled verso, 49.5cm x 75cm.

236.
Lee Reynolds Burr (b.1936).
Crane in garden scene, oil on canvas, signed, 121cm x 151cm.
Label verso Vanguard Studios California.

237.
Bellver (20thC).
Spanish landscape, oil on canvas, signed, 79cm x 115cm.
£250-450

238.
Howard Shingler (b.1953).
Rural landscape, oil on canvas, signed, 49.5cm x 59cm.
£100-150

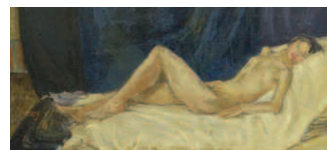
239.
Attributed to J. Rays (20thC).
Church and gardens, oil on board, 34cm x 45cm. Board back stencilled, 10F.C. Guighardaz, Paris, 14, 12 Rue Guaugne.

240.
Reinder Visscher (1904-1973).
Landscape, oil on canvas, signed, 44.5cm x 57.5cm.

241.
Ruskin Spear (1911-1990).
Gentleman smoking pipe, pencil drawing, signed and dated, 26cm x 35.5cm.

242.
Kenneth Carter (20thC).
Masted ship on full sail, oil on canvas, signed, 70cm x 90cm.
£200-300

243.
Mike Rabjohns.
Trees in the park, oil on canvas, signed and titled verso, 69.5cm x 90cm.



▲ 244.
A.C. Cooper (19th/20thC).
Nude study, oil on board, signed verso, 51cm x 111cm.

245.
Regis Bouvier de Carchard (b.1929).
Venice, oil on canvas, signed and dated, 101cm x 76cm.
£300-400

246.
John Murray Thomson (1885-1974).
Sutherland Sunset, oil on canvas, signed and titled verso, 44cm x 59.5cm.
£150-250

247.
Gertrude Franklin White (1920-2011).
Rolling landscape, oil on canvas, 59cm x 89.5cm.

248.
? Harper (20thC).
Cornfield landscape, watercolour, signed, 38cm x 49.5cm.

249.
T. Lind (19thC/20thC).
Coastal scene with sailing boats, oil on canvas, signed, 24cm x 34cm.
£50-100

250.
John Edmund Mace (1889-1952).
Helford Village Cornwall, A Cornish farm Gwendreath, oil on board - pair, signed and titled, 29cm x 40cm.

251.
A.J. Raks (?) (20thC).
Buddhist priest under umbrellas, oil on canvas, indistinctly signed, 94cm x 43.5cm.
£200-300

252.
20thC School.
Running free, oil on board, 39cm x 49cm.

253.
Glynn Williams (b.1955).
The Hunt - outgoing, oil, signed, 29.5cm x 39cm.
£200-300



▲ 254.
Charles Edward Stewart (19thC/20thC).
The hunt and hounds over the moors, watercolour, signed, 33cm x 47.5cm.

255.
20thC Continental School.
Winter landscape with cottages, oil on board, indistinctly signed, 29cm x 21cm.
£50-100

256.
Robert Malcolm Lloyd (1859-1907).
Harbour scene with masted boats, watercolour, signed and dated 1901, 16.5cm x 52cm.

Lincoln Fine Art Sale

257.
19thC School.
Sailing boats - choppy waters,
coastal scene, signed, 35cm x 59cm.

258.
19thC Continental School.
Near Murtiguy le Bourg,
watercolour, titled and dated 1866
verso, 15cm x 24.5cm.
£100-200

259.
Fred Riley (20thC).
Village street scene, watercolour,
signed, 28cm x 35.5cm.

260.
Harry Morley (1881-1943).
Wheelwrights shop, watercolour,
signed and dated 1917,
22cm x 30cm.
Label verso The Fine Art Society
Ltd. London.

261.
David Foggie (1878-1948).
River scene with barges,
watercolour, signed and dated
(19)33, 29cm x 39.5cm.

262.
19thC British School.
Shepherd with sheep,
watercolour, indistinctly signed
and dated 1848, 21cm x 17cm



▲ 263.
Jean Pierne (1881-1974).
Nude study, watercolour,
signed, 28cm x 23cm.

264.
20thC School.
Woodland river, oil on canvas,
24.5cm x 34.5cm.



▲ 265.
E. Foster?(20thC).
Cottage in landscape, oil on
board, signed, 25cm x 30cm.



▲ 266.
**Graham Vivian
Sutherland (1903-1980).**
Sluice Gate, artist signed
etching, 15.5cm x 14.5cm.
With original receipt Ernest
Brown and Phillips Ltd
London 12 November 1963 -
£15.00.
£800-1200

267.
**Isobel Atterburg Heath
(c1909-1989).**
Pom, Pencil drawing, signed and
titled, 24cm x 34.5cm.

268.
After Louis Wain.
Mother cat and kittens,
overpainted print, 21.5cm x 15.5cm.

269.
**Eileen Alice Soper
(1905-1990).**
Dormouse, drawing, 10cm x 11cm.
Label verso Wildlife Art Gallery
Lavenham.

270.
F. Stonehouse (20thC).
Sketches from the Second World
War, titles include 'putting up
camouflage in the rain', Troop
ship deck, dated 1944,
12cm x 18cm (11), plus Notebook
in diarised notes.
£50-80

271.
**William Ramsden Brealey
(1889-1949).**
The Homestead, artist signed
etching, dated 1915, 29cm x 33.5cm.

272.
Alan Moore (19thC/20thC).
Fishing boats on the beach,
watercolour, signed, 24.5cm x 30cm.

273.
**Edward H. Simpson
(1901-1989).**
Coastal scene with fishing boat,
watercolour, signed, 12.5cm x 20cm.
£30-60

274.
**Peter MacGregor Wilson
(1856-1928).**
Fishing and sailing boats in
harbour, watercolour, signed,
29cm x 48cm, and a framed print,
Steam paddle (2).

275.
**Edwina W. Lara
(act.c.1850-1882).**
Coastal scene with sailing boats
and lighthouse, oil on canvas,
signed, 40.5cm x 61cm.
£50-100

276.
Ragom? (20thC).
Palm river landscape, oil,
indistinctly signed and dated
(19)94, 49.5cm x 73.5cm.
£100-200

277.
**19th/20thC Continental
School.**
Alpine village, oil on canvas,
59cm x 90cm.
£300-500



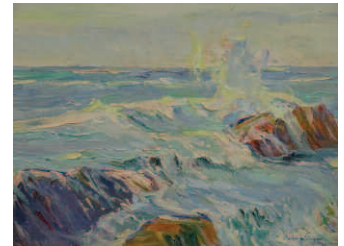
▲ 278.
Tony Binder (1868-1944).
Cairo Evening, oil on board,
signed, 23cm x 30cm.
£200-300

279.
J. Rigg (20thC).
Down the bank, Robin Hoods Bay,
oil on board, signed and titled
verso, 61cm x 45cm.
£200-300

280.
20thC Continental School.
Town street and gate, oil on
board, indistinctly signed,
39cm x 29cm.



▲ 281.
R.G. Hillier (20thC).
Figures on winter path, oil on
board, 37cm x 50cm.
Artist label verso.



▲ 282.
**Charles Walter Simpson
(1885-1971).**
Flowing tide, oil on board,
signed and dated (19)33,
32cm x 39.5cm.
Label verso Royal Canadian
Academy of Arts.

283.
19thC British School.
River landscape with rowing
boats and cattle, oil on canvas,
40cm x 60cm.

284.
20thC School.
Fishes under water, watercolour,
monogrammed E, 54cm x 36cm.
£100-200

285.
19thC Continental School.
Figure resting with maiden
collecting wood, watercolour,
22cm x 34cm.

286.
David Wood (b.1927).
Derwent Friars Craig, oil on
board, signed and titled verso,
25cm x 34cm.

287.
Henry Harris (1852-1926).
River scene and angler, oil on
canvas - pair, 23cm x 19cm.
£150-250

288.
Charles McCall (1907-1989).
Mother and child, oil on board,
signed and titled verso,
29.5cm x 20.5cm.



▲ 289.
**Louis le Breton
(1909-1957).**
Coastal scene with castle, oil
on board, signed and dated 23
Aug 1938, 24cm x 33cm.
£200-300

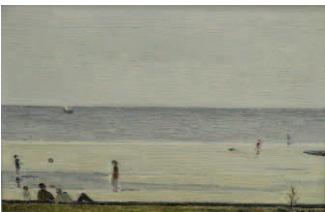
290.
19thC Continental School.
The sleeping shepherdess, watercolour, titled, 12.5cm x 17.5cm.
£100-150



▲ **291.**
Guy Lipscombe (1881-1952).
A Kentish Village, oil on board, signed and titled on mount, 33cm x 49.5cm.

292.
Alvarez.
Figure outside thatched cottage feeding chickens, watercolour, signed, 20cm 29cm

293.
20thC School.
Mountain landscape, coastal scene, oil on canvas - pair, 29cm x 37cm.
Written verso "The artist was a German Prisoner of War in England - painted in 1942".



▲ **294.**
Faro? (20thC).
Cumberland Coast, oil on canvas, signed and titled verso, 23.5cm x 34cm.

295.
Bernard Ninnes (1899-1971).
Floral still life, oil on canvas, signed, 60cm x 50cm, artist label verso.



▲ **296.**
Edwin Lennart Dahlberg (1901-1984).
Coastal scene, watercolour, signed, 38cm x 54cm.
£50-80

297.
Hans Figura (1898-1978).
Sailing ships in Lagoon, oil on canvas, signed, 60cm x 90cm.
£400-500

298.
Heinrich Nagleli (1841-1936).
Mannenbach am Bodensee, oil on board, signed and titled verso, 27.5cm x 36cm.
£100-200

299.
20thC Continental School.
Cote d'Azur coastal scene, oil on board, initialled, 31.5cm x 42cm.
£200-300

300.
Jan Van Neeson (20thC).
Flower piece, oil on canvas, signed and titled (verso), 39.5cm x 49.5cm.
£100-150

301.
Philippe Perennou (b.1944).
Coastal scene, oil on canvas, signed and inscribed verso, 38cm x 55cm.

302.
Michael Norman (b.1943).
Sailing ships, watercolour - four, signed and dated 1980, 11cm x 17.5cm.

303.
Scostion?(20thC).
Early 20thC garden party scene, oil on canvas, indistinctly signed, 60.5cm x 91cm.
£100-200

304.
Fabian Perez (20thC).
Hollywood Nights, hand embellished Giclee canvas, 45/195, 29cm.x 22cm, and mother Marchus with hat and cigarette, 66/195.
£250-350

305.
Dionne Swift (20thC).
Devore - abstract, needlework and textile - two, signed, 17cm x 16.5cm.

306.
Harley Crossley (20thC).
Aston Canal - Lock at Ducie St Junction, Aston Canal, Manchester, oil on canvas, signed and titled verso, 29cm x 60cm.
Artist label verso.

307.
20thC British School.
The waiter, oil on canvas, 107cm x 90.5cm.

308.
Berthold Paul Forster (1851-1925).
Game birds jousting, oil on canvas, signed, 58cm x 88cm.
£300-400



▲ **309.**
Dennis Rothwell-Bailey (b.1933).
Lake District river scene, oil on board, signed and titled verso, 30cm x 42cm.
Label verso Savage Fine Art Northampton.

310.
Altus Maciejaltus Pajor (b.1965).
Tiger, oil on canvas, signed, 59cm x 89cm.
£60-90

311.
P. Wilson (20thC).
Rural landscape with shepherd, oil on canvas, signed, 49cm x 59.5cm.

312.
A.H. Pyne.
Country cottage, oil on board, signed and dated (19)48, 49.5cm x 61cm.

313.
Don Breckon (1935-2013).
Evening at the steelworks, oil on board, signed and dated (19)62, 59cm x 99cm.

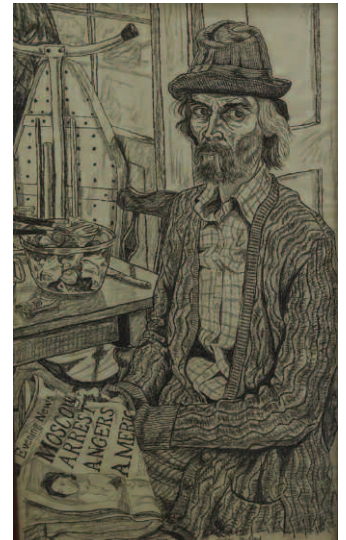
314.
Stechlin.
Game bird, oil on canvas, signed and dated (19)75, 68cm x 75cm.
£200-300

315.
20thC School.
Extensive lankelands scene, oil on canvas, indistinctly signed, 59.5cm x 121cm.

316.
19thC School.
Figures by a bird cage, oilograph laid on canvas, 52cm x 74.5cm.

317.
British School.
Card cheat, Inn interior with Doncaster St Ledger poster, 49.5cm x 62.5cm.
£200-300

318.
C. Harris.
P.O Liner taking pilot off, oil on board, signed and dated 1956, 30cm x 45cm, and another, 27cm x 37cm (2).



▲ **319.**
George Shirlaw (1934-2005).
Self Portrait- Moscow Arrest Angers America, pastel drawing, signed, 129cm x 74cm.

320.
Julian Bray (b.1965).
Rufford Abbey grand entrance, watercolour, signed, 56cm x 56cm, and another.

321.
Julian Bray (b.1965).
Pheasant, watercolour, signed, 37cm x 48cm.

322.
Sarah Carter (20thC).
The blue boat, mixed media, 58cm x 46cm.
£50-80

323.
Frank Gillette (b.1941).
Horn and shell composition, polaroid print, 75cm x 59cm.
£150-250

324.
Sergey Cherep (b.1969).
Panoramique I, artist signed limited edition coloured print 30/250, 35cm x 34cm, and another Panaromique II 30/250.
£50-100

325.
Gill Wilson (20thC).
Untitled, Fibre pulp, 46cm x 46cm.

Lincoln Fine Art Sale

326.
Charlotte Atkinson (b.1973).
Venetian Rhapsody I, II, III, artist signed limited edition giclee on paper with silkscreen varnish 38/195, 60cm x 47cm.
With Bluestone Art Certificate of Authenticity.

327.
Francis A Boxall (20thC).
Studies of Verity, watercolour, signed, 39.5cm x 34.5cm.

328.
Francis A Boxall (20thC).
Kerry, artist signed limited edition coloured print, 118/850, 41cm x 56cm.

329.
Francis A Boxall (20thC).
Solitaire, artist signed coloured print, 50cm x 42cm.

330.
Francis A Boxall (20thC).
Verity, artist signed limited edition coloured print, 524/850, 47cm x 38cm, and another Charlotte 272/850.

331.
20thC British School.
River landscape with farm building, oil on canvas, indistinctly signed, 72cm x 101cm.
£150-250

332.
School of Adelin Charles Morel de Tangay (1857-1930).
Mountain landscape at dusk, oil on canvas, 59cm x 89cm.
£50-100



▲ **333.**
Thomas Lesson Rowbotham (1783-1853).
The Devil's bridge on the St Gothard road, Switzerland, watercolour, signed and titled verso, 26cm x 18cm.
£150-250



▲ **334.**
Copley Fielding (1787-1855).
Ross Castle Killarney, watercolour, signed and titled verso, 14cm x 21cm.
Label verso Henry J Mullen Ltd, Harrogate.
£150-250

335.
John Frederick Tayler (1802-1889).

Returning from the Hunt, watercolour, titled verso, 13cm x 24.5cm.
Label Verso: The Walsingham Gallery, Norfolk.

336.
L.W.Hanson (19th/20thC).
Portraits, ink drawings, and other contents of folder.

337.
20th Continental School.
Egyptian Nile river scene, watercolour, 12cm x 20cm, and two others by the same artist. (3)

338.
After Leon-August l'Hermitte (1844-1925).
Figures in woodland scene, pastel, 21cm x 29cm.

339.
Spare Lot

340.
Thomas Colman Dibdin 1810-1893.
South Lopham Church Norfolk, watercolour, signed and dated, 27cm x 38cm, Toshi Yoshida (1911-1995) Heirmji Temple, Bell Niiza City Tokyo, 40cm x 27cm. (2)

341.
Early 20thC sketch album, including Ernest Jackson On the Zyder Zee, letter from the artist dated 1932, other drawings and verse.
£100-150

342.
C. Stanley Todd.
Partridge in Flight, watercolour, signed and dated 1973, 26cm x 36cm.
Label Verso John Moncrieff MacMillan Antiques Perth

343.
Roland Green.
Pheasants and ducks, two artist signed coloured prints, 39.5cm x 27cm, and another after Galfrey. (3)

344.
R V Verbrugge.
River scene with bridge, oil on panel, signed, 29cm x 39cm.

345.
R V Verbrugge.
Woodland scene with figures and cattle, oil on panel, signed, 29cm x 39cm.

346.
Z Simons.
Dutch winter scene, oil on panel, signed, 23.5cm x 28.5cm.

347.
Z Simons.
Dutch winter river scene, oil on panel, signed, 235cm x 28.5cm.

348.
20thC School.
Faces, a pair of carving, and another mother and child carvings.

349.
Mick Magani (1920-1984).
A diver bird beside tidal creek, aboriginal painting on wood, titled verso, 28cm x 43cm.

350.
Mick Magani (1920-1984).
Flying fish, aboriginal painting on wood, titled verso, 19cm x 59cm.

351.
Maud Hall-Neale (c1870-1950).
Mountain lake view, oil on canvas, signed, 29.5cm x 40cm.
£150-250

352.
Honor Earl (1901-1996).
Head Shoulders portrait of a Young Child, pastel, signed and dated 1954, 34cm x 29cm.



▲ **353.**
Carl August Liner (1871-1946).
Church in mountains, oil on board, signed, 22cm x 28cm.
£1000-2000

354.
Percy C Bovill (act c.1883-1907).
Coastal scene with seagulls, oil on canvas, signed, 72cm x 116cm.
£200-300

Lots 355-364 Upon instructions from the estate of the late Peter Boizot MBE of Peterborough.

355.
Eduardo Paolozzi.
Artist signed coloured prints (4) (AF).

356.
G.D. Armour.
Humour in the hunting field - 1 volume, and another titled sporting pictures (2).

357.
After Eduardo Paolozzi.
Soho jazz festival posters, plus other works, contents of four folders.

358.
Del Southon.
Jazz players, artist signed limited edition works, plus others, Qty.

359.
Peter Griffin.
Sealed with fire, collection of artist signed and numbered works 27/100, and other works, Qty.

360.
Jonathan Routh.
Design for a sky over Belgravia, oil on canvas, signed, titled and dated 1975, 45cm x 35cm. and seven other works by different artists (8).

361.
Max Garr.
Ronnie Scott, artist signed coloured photograph, 34cm x 27cm, and eight other works (9).

362.
Ashley Luff.
Ships that pass in the night, artist signed and numbered print 6/6, 28cm x 37cm, and six other works.

363.
Sally Spector.
Venexia, artist signed and numbered print 30/60, 28cm x 33.5cm, two coloured prints, Deep Politicians, Naples (3).

364.
The Saving of Venice.
Warwick Art Trust exhibition poster 1986, and other sundry pictures and prints, Qty.

Now Accepting Entries...
Lincoln Fine Art Sale
Wednesday 27th November



Beltran. Industrial abstract in wood and metal,
signed, dated '80, 84cm H, 84cm W.

All enquiries William Gregory MRICS

For Sale By Tender

Studio Works

Shelia Holland (1932-2012?)

Over 200 hundred pictures and sculptures.
Late of Lower Bradford Wilderness Sculpture
Garden Blisland, Bodmin, Cornwall.

To be sold in suitable lots, and viewed by
appointment in-situ at a site in Lincoln.

Viewing by Appointment:

Tuesday 27th August & Thursday 29th August
Please contact The Lincoln Auction Rooms
to book a viewing slot.

Tender Closes: Monday 2nd September at 1pm.

All Enquiries William Gregory MRICS

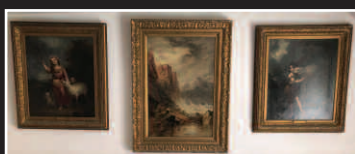
See website for further details.

The Shireby Collection

Over 100 19thC watercolours, oils,
silhouettes & needlework pictures.



Grantham 'Special Sale' of Georgian & Later Furniture,
Paintings & Prints, Fine Silver & Much More



Wednesday 4th September at 10am
All Enquiries Colin Young MRICS FNAVA ASFAV

Introducing

The Leicester & Midlands Office...

Our Leicestershire & Midlands Consultant
Richard Plant MNAVA
will now be available every Tuesday
from 10am to 4pm at our new regional office.



7 The Courtyard, Gaulby Lane,
Stoughton, Leicester, LE2 2FL

Artist index

NAME: LOT NUMBER

A					
Abathicci, P	99	Hardy, F.D.	98	Ragom?	275
Allbon, C.F.	137	Hardy, H	121	Raks, A.J.	251
Alvarez	292	Hardy, T.B.	21	Raynaud, B	33
Dr Angelis	113	Harper, ?	248	Reinagle, R.R.	39
Archer, C	34	Harris, C	318	Richardson, E	87
Armour, G.D.	356	Harris, H	287	Richmond, G	47
Atkinson, C	326	Heath, I.A.	267	Rigg, J	279
		Hersey, E	5	Riley, F	259
B		Hill, R.H.	24-26	Robinson, M	222, 223
Batsini, G	14	Hillier, R.G.	281	Roope, L	162
Bauer, G	187	Hines, F	114	Rothwell-Bailey, D	309
Bellver	237	Holder, E.H.	11	Rowbotham, T.L.	333
Bennett, F.M.	29	Hu, S	226	Rowlett, G	186
Bickham, G	123	Huskinson, M	150, 151, 181	Routh, J	360
Binder, T	278				
Bovill, P.C.	354	I		S	
Bowman, P	174	Ireland, T.T.	45	Sadler, W.D.	108
Boxall, F.A.	327-330	Issitt, P	197	Saltfleet, F.	127
Bradley, H.L.	206, 207			Sartin, S	81
Branson, L	89	J		Scoppa, R	129
Lady Brassey, B	188	Joy, J.C.	100	Smedley, J	
Bray, J	320, 321			Smith, C.A.	46
Brealey, W.R.	271	K		Smith, J.G.	92
Breckon, D	313	Keates, J.G.	227	Sharp, V	182
Bright, H	101	Key, G	4, 201	Shayer, W	30, 48
Browne, C.R.	173, 185			Shingler, H	238
Burr, L.R.	236	L		Shirlaw, G	319
		La Pira	125	Simons, Z	346, 347
C		Lara, E.W.	275	Simpson, C.W.	282
Carr, C	9, 141, 142	Laval, P	231	Simpson, E.H.	273
Carter, K	242	Leader, B	36	Smedley, J	171, 172
Carter, S	322	Le Breton, L	289	Soper, E.A.	269
Cecchi, G	131	Lewis, F	95	Southon, D	358
Cheadle, H	117	Lind, T	249	Spear, R	241
Cherep, S	324	Liner, C.A.	353	Spector, S	363
Coit, D.W.	67	Lipscombe, G	291	Stanton, R.E.	126
Cook, B	210-215	Lloyd, R.M.	256	Stechlin	314
Coop, H	85	Lomax, A.J.	40	Stewart, C.E.	254
Cooper, A.C.	244	Lowry, L. S.	1-3, 218	Stonehouse, F	270
Cooper, A.E.	228	Luff, A	362	Storie, A	146
Cooper, T.S.	52-66, 68-78			Stoves, D	219
Cox, D	27	M		Sutherland, G.V.	266
Crossley, H	306	McCall, C	288	Scostion	303
Croxford, W.E.	107	McLeod, D	35	Swift, D	305
Cruells, A	232	Mace, J.E.	250	Sykes, H	133
		Magani, M	349, 350		
D		Maria	102	T	
De Carchard	245	Marks, A. E.	128	Tallet, M	178
De Landerset, T. M. H.	105	Mathieson, J.G.	339	Taylor, J.F.	335
Dahlberg, E.L.	296	Millner, W.E.	145	Thomas, W.B.	163-168
Day, E.H.	10	Moir, J	12	Thompson, J.M.	246
Dean, W.E.J.	124	Moore, A	272	Thorburn, A	8, 109
Dibdin, T.C.	340	Morel	19	Todd, C.S.	342
Dudding, M	183, 191	Morley, H	160	Trickett, J	152-160
Dudley, A	184	Morris, D.C.	192	Turner, W.R.	202-205
Duncan, E	86	Moss, P	144		
		Muller, R.A.	42	V	
E		Murdter, F	224	Van Dodeweerd, H.D.	199
Earl, H	352			Van Neeson, J	300
Ellis, E.J.	139	N		Varley, J	96, 116
Elsworth, A	136	Nadin, G	175, 176	Verbrugge, R	344, 345
		Nagleli, H	298	Vianelli, A	111
F		Nasmyth-Langlands, G.A.	32	Visscher, R	240
Faro?	294	Neale, M.H.	351	Vlaminck	225
Fielding, C	28, 334	Ninnes, B	295		
Figura, H	297	Norman, M	302	W	
Foggie D	261			Waghorn, T	189
Foster, E	265	O		Westwood, K.J.	80
Forster, B.P.	308	Oliver, A	193	Wheeldon, J.D.	177
				Wheeldon, R	179
G		P		Wheelwright, R	6
Gamble, T	147	Palmer, H.S.	22, 23, 130	White, G.F	247
Garr, M	361	Pajor, A.M.	310	Williams, A.G.	41
Gatt, J.M.	234	Paolozzi, E	355	Williams, E	18, 43, 44
Gilchrist, P.T.	17	Parsons, A.W.	88	Williams, G	253
Gillette, F	323	Paton, D	180	Wilson, G	194, 325
Grant, D	220	Perez, F	304	Wilson, P	311
Green, R	343	Perennou, P	301	Wilson, P.M.	274
Griffin, P	359	Pierne, J	263	Wimperis, E.M	20
Grimble, J	161	Pilcher	190	Wood, D	286
		Pitcairn, C	49	Wright, G	140
H		Pooley, L.W.	200	Wright, J	235
Haddelsey, V	169, 170	Pyne, A.H.	312		
Hamilton, J.W.	195			Y	
		R		Y Lasso, S.V.	198
		Rabjohns, M	243	Yates, F	208, 209

As at the time of printing, lots without estimates are to be sold without reserve, auctioneer's discretion.

See online catalogue for updates.

EST
1864
GOLDING YOUNG



Thinking of selling?

Executors, solicitors, accountants, insurers, corporations and government departments, have to exhibit due diligence when instructing. Use this checklist to do the same, with a few reasons why you may wish to choose us.

We are regulated by RICS

Better Regulation for Us.
Better Protection for You.
Accept Nothing Less.

Our online catalogues

For over 20 years our catalogues have been online and our experience ensures they are placed in front of the right buyers in the global market.

Our sales results

August 2019 saw our 130th consecutive month with a sale at either Bourne, Grantham or Lincoln producing a sold rate of over 90%. Good advice, great results for hundreds of vendors every month.

Join their success with an entry in our next sale!

goldingyoung.com

HOUSE CLEARANCE

If there is that hidden 'find', it will be to your direct benefit.

Every week we take instructions for House Clearance for all of the prominent firms of Solicitors in the area, as well as from Private Individuals, Trustees and Executors.

If you are dealing with the content of a property, please contact us at the earliest point.

A visit to the premises by one of our qualified and experienced appraisal staff will offer the best advice for Security, Valuation and Sale.

DISPOSE OF NOTHING

Often things thought to be rubbish are saleable.

IMMEDIATE ACTION IS REQUIRED

Once a property is uninhabited it is a target for burglars and your insurance may be invalid.

Items removed from premises are listed and handled by our professional carriers. Goods are then allocated to the next appropriate sale to ensure the highest sale return.

We also deal with the unsaleable residue, disposed of in the most cost-effective and environmentally friendly way, giving a total service.



**PROPERTIES CLEARED,
PROMPTLY AND EFFICIENTLY**

Call: John Ireland MA MRICS - **01778 422686**
For Bourne, Stamford, Peterborough Region and Southern Counties

Call: Craig Bewick BA (Hons) MRICS FNAVA - **01476 565118**
For Grantham Region and The Midlands

Call: John Leatt ASFAV - **01522 524984**
For Lincoln Region and Northern Counties

The Bourne Auction Rooms

Spalding Road, Bourne,
Lincolnshire PE10 9LE

E: bourne@goldingyoung.com
T: +44 (0) 1778 422686
F: +44 (0) 1778 425726

The Grantham Auction Rooms

Old Wharf Road, Grantham,
Lincolnshire NG31 7AA

E: grantham@goldingyoung.com
T: +44 (0) 1476 565118
F: +44 (0) 1476 561475

The Lincoln Auction Rooms

Thos Mawer House, Station Road
North Hykeham, Lincoln LN6 3QY

E: lincoln@goldingyoung.com
T: +44 (0) 1522 524984
F: +44 (0) 1522 681804

The Leicester & Midlands Office

E: leicester@goldingyoung.com
T: +44 (0)116 473 5735

London & South Valuations

E: london@goldingyoung.com
T: +44 (0) 2033 011007

The Louth & Wolds Office

E: louth@goldingyoung.com
T: +44 (0) 1507 661864

The Stamford & Rutland Office

E: stamford@goldingyoung.com
T: +44 (0) 1780 7516