



EST  
1864

# GOLDING YOUNG

Fine Art Sale

Wednesday 23rd May 2018



CHARTERED AUCTIONEERS & VALUERS • ARTS & ANTIQUES SURVEYORS

## PROBATE – INHERITANCE TAX ASSESSMENT

For many Executors and Trustees the responsibility of dealing with a deceased's Estate is a once-in-a-lifetime experience. You have to make a number of important decisions in a very short space of time and all when the loss is most difficult to come to terms with.

The position of Executor is an important one in law and has defined personal liability and responsibility. To exhibit due diligence to beneficiaries and more importantly HM Revenue & Customs, an Executor or advisor will instruct a firm Regulated by RICS.

Even if the estate will be taxed at 0%, a valuation remains an essential tool for an Executor. The inventory will still be used for identification of bequests, trust items, family division and proof of value.

Our valuations are prepared to the International Valuation Standards requirement of the 'Red Book'.

The report will cover sections of:

- Jewellery
- Vehicles
- Antiques, Fine Art & Collections
- General Furniture & Effects



**For initial advice contact the following Chartered Auctioneers & Valuers:**

Bourne, Stamford & South  
Colin Young MRICS  
01778 422686

Grantham, Lincoln & North  
William Gregory MRICS  
01522 524984



## Removals – Household & Commercial

- Free Quotations
- Full Packing Service
- Suppliers of Packing Materials
- Shipping & Storage Arranged
- Antiques & Fine Art Specialists
- Specialist Piano Movers
- Office Movers

Contact Andrew Lowes on 07970 742577 for a quote  
or email [lowes@goldingyoung.com](mailto:lowes@goldingyoung.com)

[goldingyoung.com](http://goldingyoung.com)

## PRIVATE CLIENT & PROFESSIONAL SERVICE DEPARTMENT

We value personal property for private and corporate clients. Our team have valued family heirlooms, art collections and museum holdings for a variety of purposes.

We are the only auction house in the region to have a bespoke Private Client Department with:

- Three Chartered Arts & Antiques Surveyors
- Four RICS/ Antiques Trade Gazette professional assessment award-winning valuers
- Two In-house qualified jewellery valuers
- Experience in abundance and diversity since 1864
- Ten professional staff with RICS, NAVA or SoFAA qualifications.





# The Lincoln Art Sale

**Wednesday 23rd May 2018**  
**At The Lincoln Auction Rooms**  
**Viewing & Selling in The Gallery**  
**At Thos Mawer House**  
**Sale commences at 6pm**

Viewing: Sunday 20th 2pm-5pm  
Tuesday 22nd 10am-4pm  
& saleday from 2pm

Bid online or simply watch the sale live at



All enquiries to William Gregory MRICS on 01522 524984

Front cover image: Lot 6 Edward Bawden (1903-1989).  
Chrysanthemums and Emma Nelson,  
watercolour, signed, 47cm x 63cm

## Paintings, Drawings & Sculpture

Any statement as to authorship, attribution, origin, date, age, provenance and condition is a statement or opinion and is not to be taken as a statement or representation of fact. Golding Young & Mawer reserve the right, in forming their opinion, to consult and rely upon any expert or authority considered by them to be reliable.

A picture catalogued with the forename(s) and surname of the painter is in our opinion a work by that artist; e.g. Joseph Mallord William Turner. When an artist's forename(s) is not known, a series of asterisks followed by the surname of the artist, whether preceded by an initial or not, indicates that in our opinion the work is by the artist.

1. **Attributed to....** is in our opinion probably by the artist.
2. **Studio of....** is in our opinion a work from the studio of the artist which may or may not have been executed under his direction.
3. **Circle of....** is in our opinion a work of the period of the artist executed under his immediate influence.
4. **Follower of....** is in our opinion a work by a painter working in the artist's style, contemporary or nearly contemporary, but not necessarily his pupil.

5. **Manner of....** is in our opinion a work in a style related to that of the artist, but of a later date.
6. **School....** is in our opinion the picture was executed at that time and in that location.
7. **After....** is in our opinion a copy of any date after a work by that artist.
8. The term **signed** and/or **dated** and/or **inscribed** means that in our opinion the signature and/or date and/or inscription are from the hand of the artist.
9. The term **Bears signature** and/or **dated** and/or inscription means that in our opinion the artist's name and/or date and/or inscription have been added by another hand.
10. All references to signatures, inscriptions and dates refer to the present state of the work.
11. Dimensions are given height before width.

### Artist's Resale Right Scheme (Droit de Suite)

Following the UK's implementation of the EU Artist's Resale Right directive in February 2006, living artists are entitled to receive a resale royalty each time their art work is sold in the UK by an art market professional, subject to certain conditions. In January 2014 this has been extended to the sale of works of art of artists who have died in the previous 70 years, despite the wishes of the British Art Market Federation and other professional bodies. This payment is calculated on qualifying works of art which are sold for a hammer price or best bid price of more than EUR 1000. The UK sterling equivalent of EU 1000 will fluctuate in line with prevailing exchange rates.

The actual qualifying threshold will be calculated by the Artist's Resale Right Service Hub based on the European Central Bank reference rate published at 2.15pm on the day of the sale.

The royalty charge will apply if the hammer price is more than the UK sterling equivalent of EUR 1000. The royalty charge will be added to buyer invoices and must be paid before items can be cleared. No handling costs or additional fees with respect to these charges are retained by auctioneers despite us having to undertake all of the extra and considerable administration work. This sum is then paid by us to a 'not-for-profit' collecting society, who will actually extract their administration fees. Any residual amount may go to benefit the artist.

| Portion of the hammer price (Euro's EUR) | Royalty rate |
|--|--------------|
| 1000 to 50,000                           | 4%           |
| 50,000.01 to 200,000                     | 3%           |
| 200,000.01 to 350,000                    | 1%           |
| 350,000.01 to 500,000                    | 0.5%         |
| Exceeding 500,000                        | 0.25%        |

VAT is not payable on this royalty charge. A maximum royalty charge is 12,500 EUR. Revised 4th January 2011.



**SOCIETY OF FINE ART AUCTIONEERS AND VALUERS**



## INFORMATION FOR BUYERS

- 1. Introduction:** The following informative notes are intended to assist Buyers, particularly those inexperienced or new to our salerooms. All sales are conducted on our printed 'Conditions of sale' which are readily available for inspection and normally accompany catalogues. Our staff will be happy to help you if there is anything you do not fully understand.
- 2. Agency:** As auctioneers we usually contract as agents for the seller whose identity, for reasons of confidentiality, is not normally disclosed. Accordingly, if you buy your primary contract is with the seller.
- 3. Estimates:** Estimates are designed to help buyers gauge what sort of sum might be involved for the purchase of a particular lot. The lower estimate may represent the reserve price and certainly will not be below it. Estimates do not include the buyer's premium or VAT (where chargeable). Estimates are prepared some time before the sale and may be altered by announcement before the sale. They are in no sense definitive and are subject to constant revision.
- 4. Buyers premium:** The 'Conditions of sale' oblige buyers to pay a buyer's premium at 20% on the hammer price of each lot purchased with a minimum of £2 per lot. In the case of lots purchased 'Live On-line' or via [www.the-saleroom.com](http://www.the-saleroom.com) or [www.i-bidder.com](http://www.i-bidder.com) this will be charged at 25% on the hammer price. In addition, VAT is payable on this premium (see below).
- 5. VAT:** An asterisk (\*) indicates that VAT is payable by the purchaser at the standard rate imposed by current UK law on the hammer price as well as being an element in the buyer's premium, lots are noted in the saleroom by a red dot on the lot number. This imposition of VAT is likely to be because the seller is registered for VAT within the European Union and is not operating the Dealers Margin Scheme or because VAT is due on importation into the UK. The double symbol (\*\*) indicates that the lot has been imported from outside the European Union and the present position is that these lots are liable to a reduced rate of VAT on the gross lot price (i.e. both the hammer price and the buyer's premium). Lots which appear without either of the above symbols indicate that no VAT is payable on the hammer price. This is because such lots are sold using the Auctioneers' Margin Scheme and it should be noted that the VAT included within the premium is not recoverable as input tax. (VAT rates are changing with frequency, please check with HMRC. VAT will be charged as set by Government at the time of sale.)
- 6. Condition and description of lots.** We are primarily, agents for the seller. We are dependent on information provided by the seller and whilst we may inspect lots and act reasonably in taking a general view about them we are normally unable to carry out a detailed or any examination of lots in order to ascertain their condition in the way in which it would be wise for a buyer to do. Intending buyers have ample opportunity for inspection of goods and, therefore, accept responsibility for inspecting and investigating lots in which they may be interested. Please note carefully the exclusion of liability for the condition of lots contained in the 'Conditions of sale'. Neither the seller nor we, as the auctioneers, accept any responsibility for their condition. In particular, mechanical objects of any age are not guaranteed to be in working order. However, in so far as we have examined the goods and make a representation about their condition, we shall be liable for any defect which that examination ought to have revealed to the auctioneer but which would not have been revealed to the buyer had the buyer examined the goods. Additionally, in specified circumstances lots misdescribed because they are 'deliberate forgeries' may be returned and repayment made. There is a 21 day time limit from the date of sale, not date of collection or receipt. (The expression 'deliberate forgery' is defined in our 'Conditions of sale').
- 7. Electrical goods:** Items are tested by a qualified electrician for SAFETY ONLY. An item that passes the PAT safety test may not work. Conversely, an item that fails the test may work with just minor repair. 'Working Order' and 'Safe' are two completely different concepts. The only thing you may take for granted is that the item will be safe at the point of sale. Items that have failed will have their cabling cut to source, labelled and sold 'For Trade Only'. To use the object you will have to change it radically from what was sold to you. Therefore, the Auctioneers cannot be held responsible after the point of sale. Those items sold genuinely as 'antiques or collectables' will not have been tested and if bought for use must be checked over for compliance with safety regulations by a qualified electrician before use. This is an express condition.
- 8. Export of goods:** Buyers intending to export goods should ascertain (a) whether an export licence is required and (b) whether there is any specific prohibition on importing goods of that character

because, e.g. they may contain prohibited materials such as ivory. Ask us if you need help

- 9. Bidding in person:** Some form of identification with proof of address will be required if you are unknown to us. Bidders may be required to register before the sale commences and lots will be invoiced to the name and address on the registration form. Account transfers will not be recognised or facilitated under any circumstances.
- 10. Absentee bidding:** Commission bids may be left with the auctioneers indicating the maximum amount to be bid excluding buyers' premium. They will be executed as cheaply as possible having regard to the reserve (if any) and competing bids. If two buyers submit identical commission bids, the auctioneers may prefer the first bid received. If there are genuine reasons why you are unable to leave a Commission Bid and you wish to bid by telephone we may accommodate on lots where your opening bid will be £500 or above. There are inherent dangers with this practice; therefore all arrangements shall be entirely at the bidder's risk. Absentee bid instructions must be received by telephone, fax or email 12 hours prior to the sale.
- 11. Live Internet Banking:** In completing the bidder registration on [www.the-saleroom.com](http://www.the-saleroom.com) and providing your credit card details and unless alternative arrangements are agreed with Golding Young Limited, you  
(i) authorise Golding Young Limited, if they so wish, to charge the credit card given in part or full payment, including all fees, for items successfully purchased in the sale via [www.the-saleroom.com](http://www.the-saleroom.com) or [www.i-bidder.com](http://www.i-bidder.com), and  
(ii) confirm that you are authorised to provide these credit card details to Golding Young Limited through [www.the-saleroom.com](http://www.the-saleroom.com) or [www.i-bidder.com](http://www.i-bidder.com).
- 12. Methods of payment:** Accounts are due for settlement SALEDAY. The following methods of payment are acceptable. There will be NO EXCEPTIONS to this policy. To avoid undue embarrassment for yourself or our staff, please do not ask for preferential treatment.
  - i. Cash.** Single payments up to £7,000 only.
  - ii. Debit Card.** No limit with chip & pin. (CNP limit £500).
  - iii. Credit Card.** No limit with chip & pin. (CNP limit £500).
  - iv. Bank Drafts & Building Society Cheques.** No limit. Due to forgeries, we will retain the goods for 3 working days to establish clearance of funds.
  - v. Cheques.** Accepted up to the limit of the guarantee card for immediate clearance. For sums exceeding this, and you are not known to the auctioneers, we will retain the goods for 7 working days to establish clearance of funds.
  - vi. Bank Transfer.** Please see details on our website.
- 13. Collection and storage:** Goods can be collected as soon as they are paid for and within two working days following the sale. If goods remain with us and we have no contrary written advice of your intentions the items will be moved to storage and reasonable labour charges levied and storage at the rate of £2+vat per lot per day thereafter for small items and £10+vat per lot per day for furniture and large items.
- 14. Postage and packing:** Options for buyers are available at [www.goldingyoung.com/buying-shipping](http://www.goldingyoung.com/buying-shipping) or ask a member of staff.

Lots subject to normal VAT rules are marked in the text-only catalogue with a single asterisk character (\*) or a single dagger symbol (†) to indicate a VAT added rate of 20%.

Lots subject to normal VAT rules are marked in the text-only catalogue with a single 'at' character (@) to indicate a VAT inclusive rate of 20%.

Lots subject to normal VAT rules are marked in the text-only catalogue with double asterisk characters (\*\*) or a double dagger symbol (‡) to indicate a VAT added rate of 5%.

Lots subject to normal VAT rules are marked in the text-only catalogue with double 'at' characters (@@) to indicate a VAT inclusive rate of 5%.

Lots marked in the text-only catalogue with a bullet character (•) are subject to the Artist's Resale Right Scheme.

# Lincoln Fine Art Sale



▲ 1.  
**19thC British School.**  
Bay in stable, oil on canvas,  
49cm x 59cm  
£200-300



▲ 2.  
**Arthur William Redgate (1860-1906).**  
River scene with sheep, oil on canvas, signed, 34cm x 52cm  
£200-400



▲ 3.  
**Keith Roper (b.1946).**  
Crooked house, Michaels lane, watercolour, signed and dated 1982, 32cm x 40.5cm  
£30-60



▲ 4.  
**Peter De Wint (1784-1849).**  
Newark bridge and castle, watercolour, purchased Sotheby's July 1993, 50cm x 77.5cm  
£2500-3500



▲ 5.  
**Edward Bawden (1903-1989).**  
Little Sampford Church near Great Bardfield, watercolour, signed and dated 1955, label verso The Fine Art Society London, exhibited Edward Bawden Centenary Exhibition 2003, 45cm x 57cm  
£5000-7000



▲ 6.  
**Edward Bawden (1903-1989).**  
Chrysanthemums and Emma Nelson, watercolour, signed, label verso The Fine Art Society London Royal Academy Summer Exhibition 1989, 47cm x 63cm  
£3000-4000



▲ 8.  
**Roger Muhl (1929-2008).**  
La Prairie, oil on canvas, signed, label verso Arthur Tooth and Sons London, 32cm x 40cm  
£400-600



▲ 9.  
**Jorge Aguilar-Agon (b.1936).**  
Fishing boats in coastal scene, oil on canvas, signed, 59.5cm x 90.5cm  
£100-200



▲ 10.  
**Jose Maria y Sert Badia (1874/6-1945).**  
Procession, oil, 63cm x 24cm  
£500-800





▲ 7.  
**Edward Bawden (1903-1989).**  
Christmas Cactus, watercolour, label verso The Fine Art Society  
London Royal Academy Summer Exhibition 1989, 48cm x 63.5cm  
£2000-3000



▲ 11.  
**19thC British School.**  
River landscape with cattle at water's edge, oil on canvas,  
41cm x 67cm  
£100-200



▲ 12.  
**James M Robert Greenlees (1820-1894).**  
Tarbert Loch Fyne, oil on canvas, signed, titled and dated 1887, 49.5cm x 75cm  
£200-400



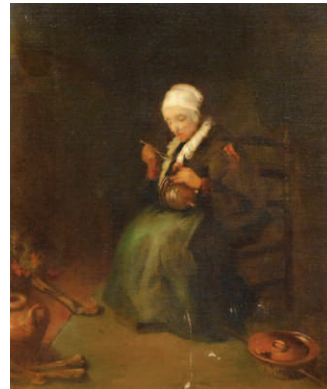
▲ 13.  
**C.O.B. (19thC).**  
Sailing ships off the coast of Dover, oil on canvas, initialled and dated (18)77, 44.5cm x 80cm  
£1000-1500



▲ 14.  
**J.S. (19thC).**  
Landscape with figures, oil on canvas, initialled and dated 1869, 24.5cm x 34cm  
£100-200



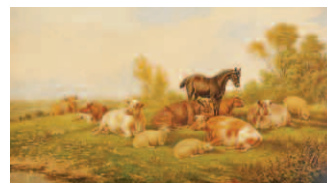
▲ 15.  
**A.H. (19thC).**  
Figures on a horse and carriage, oil on canvas, monogrammed and dated (18)75, 44.5cm x 90.5cm  
£300-500



▲ 16.  
**J Israels (19thC).**  
A Meagre Meal, oil on canvas, signed, 35cm x 29.5cm  
£300-400

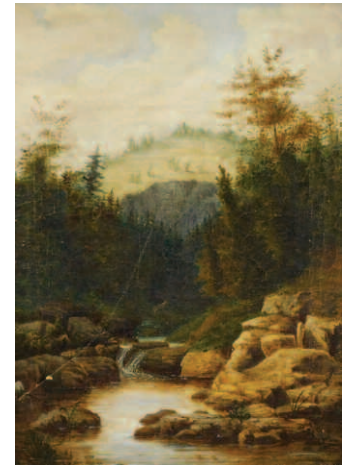


▲ 17.  
**Alfred Augustus Glendening (c.1840-c.1910).**  
The long walk home, oil on board, signed, 41cm x 56cm  
£400-600



▲ 18.  
**William Eddowes Turner (c.1820-1885).**  
Cattle, horse and sheep in field, oil on canvas, 59.5cm x 105cm  
£200-400

19.  
**19thC Continental School.**  
The music lesson, oil on board, 33.5cm x 26cm



▲ 20.  
**19thC British School.**  
Mountain stream, oil on canvas, 25cm x 17.5cm  
£100-150



▲ 21.  
**Narcisse Virgile Diaz de la Pena (1807-1876).**  
Woodland scenes, oil on board - a pair, 16cm x 24.5cm  
£300-500

22.  
**J.V.R. (19th/20thC).**  
Cattle grazing, oil on canvas, 29cm x 39cm



▲ 23.  
**Adolf Eberle (1843-1914).**  
Interior scene - gentleman with dogs, oil on board, signed, 25cm x 17cm  
£300-500



# Lincoln Fine Art Sale

24.  
**H Smyth (19th/20thC).**  
Bridlesmith's Gate Nottingham, oil on canvas, signed and titled verso, 44.5cm x 35cm  
£150-250

25.  
**A Henty (?) (19th/20thC).**  
River scene with cattle and sheep, oil on canvas, indistinctly signed, 39.5cm x 60cm  
£50-100

26.  
**19thC British School.**  
Figure and horse in river scene, oil on board, 34cm x 44cm

27.  
**19thC Continental School.**  
Mother and child, oil on board, 45cm x 36cm

28.  
**19thC British School.**  
Head and shoulder portrait of a gentleman, oil on canvas laid on board, signed, 38cm x 29cm



▲ 29.  
**Luigi Zuccoli (1815-1876).**  
Grandfather and children, oil on board, signed, 38cm x 29cm  
£500-800



▲ 30.  
**Luigi Zuccoli (1815-1876).**  
Mother and children reading, oil on board, signed, 28.5cm x 43cm  
£500-800



▲ 31.  
**Luigi Zuccoli (1815-1876).**  
Family scene, oil on canvas, 40.5cm x 29cm  
£500-800

32.  
**Arthur Suiker (1857-1902).**  
Evening in Somerset, Evening in Cheshire, watercolour - a pair, 19cm x 29cm  
£150-250

33.  
**E Hela (19thC).**  
Loch landscapes with fishermen, oil on board - a pair, signed, 37.5cm x 62.5cm

34.  
**John MacWhirter (1839-1911).**  
Woodland river scene, oil on board, signed, 29cm x 24cm



▲ 35.  
**Causaban.**  
Thomas Smith, Proctor to Queen Anne, oil on canvas, inscribed verso, 73cm x 62cm  
£400-600

36.  
**19thC Continental School.**  
In the Tyrol 1850 and View on the Tyrol 1850, oil on board, titled verso, 19cm x 21.5cm (2)



▲ 37.  
**F W Jackson (19thC).**  
Cottage in rural landscape, oil on canvas, signed and dated 1880 verso, 18.5cm x 29cm  
£30-50

38.  
**19thC School.**  
Cattle in river landscape, oil on board, 24cm x 29.5cm



▲ 39.  
**Henry Marko (1855-1921).**  
River landscapes, oil on canvas - a pair, signed, 28.5cm x 36.5cm  
£250-350



▲ 40.  
**19thC British School.**  
Figure in rural landscape, oil on board, 27cm x 42cm  
£100-150

41.  
**Thomas Henry Hair (1810-1880).**  
The Town Gate Sandwich, watercolour, signed and dated 1867, 28cm x 23cm  
£40-60

42.  
**C W Adams (19thC).**  
Figures unloading fishing boats at quayside, watercolour, signed, 19cm x 27cm  
£40-60



▲ 43.  
**19thC Continental School.**  
Family in interior scene, oil on canvas, indistinctly initialled, 30cm x 25cm  
£300-400



▲ 44.  
**19thC Continental School.**  
Figures dancing in rural scene, watercolour, indistinctly titled, 14cm x 24cm  
£100-200



▲ 45.  
**18thC Continental School.**  
Religious procession, ink and watercolour, 16cm x 28cm  
£200-300



▲ 45A.  
**Michelangelo Meucci (1840-1909).**  
Songbird, oil on board, signed and dated 1875, 20.5cm x 16.5cm  
£150-250





▲ 46.  
**Clelia Bompiani-Bataglia**  
(1847-1927).  
Venetian flower sellers,  
watercolour, signed,  
52.5cm x 36cm  
£200-300



▲ 47.  
**Herbert Menzies Marshall**  
(1841-1913).  
London street scene,  
watercolour, signed,  
25.5cm x 35.5cm  
£250-350

48.  
**Henry Charles Fox**  
(1855/60-1929).  
Rural landscape with cattle,  
watercolour, signed and dated  
1910, 37.5cm x 55.5cm  
£150-250

49.  
**Henry Charles Fox**  
(1855/60-1929).  
Rural landscape with sheep,  
watercolour, signed and dated  
1908, 37cm x 54.5cm  
£150-250

50.  
**Theodor Van Thulden**  
(1606-1669).  
Minerve eveille Ulysse, pencil,  
initialled, label verso Christie's,  
19cm x 24cm



▲ 51.  
**Rubens Santaro**  
(1859-1942).  
Lady with water jugs,  
watercolour, signed,  
26.5cm x 21cm  
£80-120

52.  
**John Frederick Taylor**  
(1802-1889).  
Returning from the hunt,  
watercolour, titled verso, label  
verso The Walsingham Gallery  
Norfolk, 13cm x 24.5cm

53.  
**William M Pratt (1854-1936).**  
Old man with clay pipe,  
watercolour, signed, label verso  
Chapterhouse Fine Art,  
35.5cm x 30.5cm  
£40-60

54.  
**Edmund Monson Wimperis**  
(1835-1900).  
Broadwater Sussex, watercolour,  
signed and titled, 25.5cm x 45.5cm  
£100-150



▲ 55.  
**Henry Enrico Coleman**  
(1846-1911).  
Herding horses, watercolour,  
signed and dated 1858,  
31cm x 47cm  
£300-400



▲ 56.  
**Vicente de Paredes**  
(1845-1903).  
Musicians, watercolour,  
signed, 28cm x 39cm  
£200-300

57.  
**J C Jonas (19thC).**  
Mountain and lake scene,  
watercolour, signed, label verso  
Chapterhouse Fine Art,  
17cm x 45cm  
£40-60

58.  
**H English (19thC).**  
Fishing village with figures,  
watercolour, signed, 24cm x 33cm



▲ 59.  
**George Stainton**  
(act.1860-1890).  
Fishing boats at sea,  
watercolour, signed,  
32cm x 24.5cm  
£100-200



▲ 60.  
**George Stainton**  
(act.1860-1890).  
Fishing boats in calm waters,  
watercolour, signed,  
32cm x 24.5cm  
£100-200



▲ 61.  
**George Stainton**  
(act.1860-1890).  
Fishing boats in harbour scene,  
watercolour, signed,  
29cm x 45cm  
£100-200

62.  
**18thC Italian School.**  
Figures and animals by a bridge,  
oil on board, 27.5cm x 40.5cm

63.  
**19thC Continental School.**  
Mountain landscape, oil,  
21cm x 21cm



▲ 64.  
**19thC Dutch School.**  
City bridge with figures and  
boats, oil on canvas,  
20.5cm x 30.5cm  
£200-300

# Lincoln Fine Art Sale

65.  
**W Deakins.**  
Landscape with figures and castle, watercolour, signed and dated 1878, 22cm x 31cm

66.  
**F Generis.**  
A View of Oberstein, watercolour, signed and titled, 32.5cm x 23cm

67.  
**19thC Continental School.**  
Portraits of maidens, oil on metal, 35cm x 35cm

68.  
**P Brienzi (19th/20thC).**  
Lago d'Orta, watercolour - a pair, signed and titled, 19.5cm x 31cm

69.  
**George Vicat Cole (1833-1893).**  
River landscape with cattle, watercolour, signed and dated 1862, 23.5cm x 36cm

70.  
**H Gibbs (19thC).**  
Rural landscape with young child playing with flowers, oil on canvas, signed and dated 1890, 27cm x 40cm



▲ 71.  
**Alfred W Hunt (1830-1896).**  
The Thames London, watercolour, signed and dated 1875, 18cm x 27cm  
£500-800

72.  
**Challis (19thC).**  
Country cottage with horse in the foreground, oil on canvas, signed dated 1912, 50cm x 35cm

73.  
**Challis (19thC).**  
Crimpleham Church Norfolk, watercolour, signed, titled and dated 1901, 31cm x 47.5cm

74.  
**Challis (19thC).**  
Eynsford, watercolour, signed, titled and dated 1909, 27.5cm x 22cm

75.  
**19thC British School.**  
Manor house, oil on board, 11cm x 19cm

76.  
**Frank Waddington.**  
Figure on woodland path, watercolour, signed and dated (19)29, 29.5cm x 24.5cm

77.  
**19thC Continental School.**  
Portraits of gentlemen, oil on board - a pair, 23cm x 15cm

78.  
**19thC British School.**  
Young child, watercolour, 17cm x 12cm

79.  
**19thC Continental School.**  
Fishing smacks off the coast, oil, 19.5cm x 24cm

80.  
**R Mears (?) (19th/20thC).**  
Street scene, pencil, indistinctly signed and titled, dated 1912, 20cm x 11cm

81.  
**19thC Continental School.**  
Ernzione Del 1822, watercolour, titled, label verso Colnaghi and Co London, 20cm x 28.5cm



▲ 82.  
**Victoriano Codina y Langlin (1844-1911).**  
Maiden in sunlit square, oil on canvas, signed, 23cm x 15cm  
£300-500



▲ 83.  
**Felice Auguste Rezia (act.1857-1907).**  
Venice, oil on board, signed, 22cm x 14.5cm  
£300-500



▲ 84.  
**Thomas Sidney Cooper (1803-1902).**  
Evening on the banks of the Stour, watercolour, signed, 23.5cm x 30cm  
£300-500

85.  
**W B Lasham (19th/20thC).**  
Fishing smacks near harbour, watercolour, signed and dated (19)15, 18.5cm x 26cm  
£30-50

86.  
**19thC British School.**  
Young children, watercolour, 24cm x 17cm

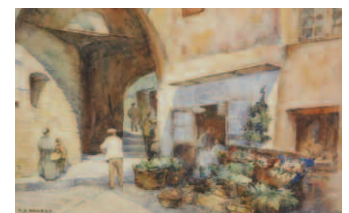


▲ 87.  
**Claude Thomas Stanfield Moore (1853-1901).**  
Pirates on the high seas, oil on canvas, signed, titled and dated 1877, 15cm x 19.5cm  
£400-600

88.  
**A Macalan (19thC).**  
Highland cattle, oil on canvas - a pair, signed, 46cm x 31cm



▲ 89.  
**Raimondo Scoppa (1820-1890).**  
Mountain river landscapes, oil on canvas - a pair, signed, 45cm x 37cm  
£250-350



▲ 90.  
**Mary E Haward (19th/20thC).**  
Fruit stall at San Remo, watercolour, signed and titled verso, 25cm x 35.5cm  
£30-60

91.  
**19thC School.**  
Figure before cottage and tree on a summer's day, watercolour, unsigned, 24cm x 33.5cm, and two stipple engravings, After Orme, etc. (3)



▲ 92.  
**Harry Sutton Palmer (1854-1933).**  
A mountain stream in North Wales, watercolour, signed, 51.5cm x 73cm  
£250-350





▲ 93.  
**Cecil Jack Keats (19th/20thC).**  
River landscape with horse and barge, watercolour, signed, 32cm x 50cm  
£50-100



▲ 94.  
**Cecil Jack Keats (19th/20thC).**  
River landscape with sheep, watercolour, signed, 31.5cm x 50cm  
£50-100

95.  
**J E Wilkinson (19th/20thC).**  
Haymaking, watercolour, signed and dated 1902, 25cm x 33cm



▲ 96.  
**John M Henry (19th/20thC).**  
Fishing boat at sea, watercolour, signed and dated 1885, 37cm x 25.5cm  
£50-80



▲ 97.  
**Robert Fowler (1853-1926).**  
Landscape with figure walking along country lane, oil on canvas, signed, 29cm x 49cm  
£400-600



▲ 98.  
**N. J. (19thC).**  
Moonlit river scene with fishing boats, oil on canvas, monogrammed, 40cm x 60.5cm  
£200-300

99.  
**19thC British School.**  
Lady in forest scene, pastel, 63.5cm x 33cm



▲ 100.  
**Auguste Aristide Fernand Constantin (1824-1895).**  
Idyllic Normanby street scene, oil on canvas, signed, 52cm x 34.5cm  
£600-800

101.  
**19th/20thC British School.**  
Portrait with seated lady and dog, oil on canvas, 76cm x 63.5cm



▲ 102.  
**Edward Chappel (1859-1946).**  
Roses, oil on board, signed, 22cm x 29.5cm  
£100-200

103.  
**H R Wibberley (19th/20thC).**  
Derbyshire landscape, watercolour, signed, 43cm x 48.5cm



▲ 104.  
**H Martin (19th/20thC).**  
Shipping scenes, watercolour - a pair, signed and dated (18)88, 16cm x 24.5cm  
£40-60



▲ 105.  
**Louis Papaluca (1890-1934).**  
S.Y. Cutty Sark R.Y.S., watercolour, signed and titled, 38cm x 68cm  
£300-500

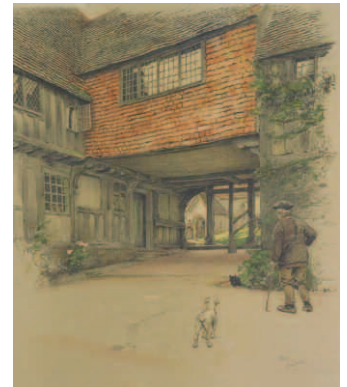
106.  
**19thC School.**  
Mr Grits the Grocer, Mr Bung the Brewer, Mr Green the Florist, Mr Chip the Carpenter, watercolour - four, indistinctly initialled and dated, 37cm x 27cm



▲ 107.  
**Gordon Frederick Browne (1858-1932).**  
Worries and pain, ink drawing with highlight, initialled, 21.5cm x 15cm  
£40-60



▲ 108.  
**George Cruikshank (1842-1910).**  
The Contented Couple, ink, signed and dated 1883, 25cm x 19cm  
£80-120



▲ 109.  
**Cecil Aldin (1870-1935).**  
Courtyard scene with old gentleman and dog, artist signed coloured print, 42.5cm x 34cm  
£50-80

# Lincoln Fine Art Sale



▲ 110.  
**Cecil Aldin (1870-1935).**  
Elegant figures, watercolour,  
signed, 24cm x 36cm  
£150-250



▲ 118.  
**Gioacchino la Pira (act.1839-1870).**  
Panoramic view of Vesuvius  
Naples, watercolour, signed,  
81cm x 31cm  
£600-800



▲ 123.  
**Continental School.**  
Portrait of a princess in alpine  
landscape -shield motif, oil  
with gilt highlight, 8cm x 5cm  
£250-450



▲ 129.  
**William Moore (1790-1851).**  
Joseph Allen of Langley aged  
65, oil on canvas, signed, titled  
and dated 1823 verso,  
91cm x 73cm  
£100-200



▲ 111.  
**19thC Continental School.**  
Alpine scenes, watercolour -  
a pair, indistinctly signed,  
35cm x 24cm  
£50-80



▲ 119.  
**19thC British School.**  
Maiden seated holding  
flowers, watercolour,  
33cm x 24cm  
£300-500



▲ 124.  
**J Denny (19th/20thC).**  
River landscape, watercolour,  
signed, 18cm x 27cm  
£30-50



▲ 130.  
**W Martin (19thC).**  
Fishing boats in harbour scene,  
oil on canvas, signed,  
39cm x 50.5cm  
£250-350

112.  
**E.A.F. (19thC).**  
Country thatched cottage with  
figures in foreground, oil on  
canvas, initialled, 34.5cm x 45cm

120.  
**P Hill (19th/20thC).**  
Coastal scene with fishing boats,  
watercolour, signed and dated  
1923, 25.5cm x 35.5cm

113.  
**Harry Percy Clifford (act.c.1898-c.1938).**  
Rural scene with geese,  
watercolour, signed, 55cm x 77.5cm



▲ 121.  
**M.A.B. (19th/20thC).**  
A walk in the hills,  
watercolour, initialled,  
30cm x 45.5cm  
£100-200

114.  
**19th/20thC British School.**  
Woodland landscape, oil on  
board, 24.5cm x 29.5cm

115.  
**B Nicholls (19th/20thC).**  
Farmyard scene with chickens, oil  
on board, signed, 39.5cm x 29cm

116.  
**A McArthur (19thC).**  
Watermill, watercolour, signed,  
24cm x 18cm

117.  
**F G Heath (18th/20thC).**  
Child playing in the garden, oil on  
board, signed and dated 1914,  
38.5cm x 28.5cm

122.  
**19th/20thC British School.**  
Scarborough harbour,  
watercolour, titled and dated 1911  
verso, 27cm x 56cm  
£40-60

125.  
**19thC British School.**  
Landscape view, oil on glass,  
48.5cm x 6.5cm

126.  
**Walter Dendy Sadler (1854-1923).**  
The Dinner, artist signed print,  
43cm x 55.5cm  
£50-80

127.  
**After G Sheffield.**  
Thoughtful recital, signed print,  
36cm x 50.5cm

128.  
**George Trobridge (1857-1909).**  
Country cottage with chickens,  
watercolour, signed,  
24.5cm x 35cm

131.  
**Fraser Scarfe (20thC).**  
Study for Lincoln from Canwick,  
acrylic on board, signed and titled  
verso, 39cm x 57cm

132.  
**Keith Roper (b. 1946).**  
Exchequergate, East Front,  
watercolour, signed, titled and  
dated 1980, 25cm x 30.5cm

133.  
**Keith Roper (b. 1946).**  
Reepham Road Fiskerton,  
watercolour, signed, titled and  
dated 1983, 22cm x 29.5cm

134.  
**William Bartol Thomas (1877-1947).**  
Boston, watercolour, signed,  
24.5cm x 41.5cm

135.  
**Colin Carr (1929-2002).**  
Caistor - The Market Place,  
watercolour, signed, titled and  
dated (19)89, 16cm x 35.5cm



136.  
**Colin Carr (1929-2002).**  
Louth, watercolour, signed and dated (19)80, 9.5cm x 14.5cm

137.  
**H Hill (19th/20thC).**  
Lincoln, watercolour - a pair, signed, 45cm x 35cm

138.  
**Gordon Cumming (20thC).**  
Brayford Wharf, watercolour, signed and dated (19)75, 41.5cm x 54cm

139.  
**Ron Norris (20thC).**  
View from above Caistor, watercolour, signed and dated verso, 31cm x 47.5cm

140.  
**Cyril J Mayes (20thC).**  
Road to the Village, watercolour, signed and dated (19)78, 33cm x 45.5cm

141.  
**Doreen R Sylvester (20thC).**  
Glory Hole Lincoln, acrylic on board, signed, titled and dated (19)82, label verso Lincolnshire Artist's Society

142.  
**Mary Dudding (20thC).**  
Spires and Bell, oil on board, signed and titled verso, 47.5cm x 53.5cm, with four other works, label verso Lincolnshire Artist's Society



▲ 143.  
**Mark Huskinson (b.1935).**  
The Handicapper's Bonus, watercolour drawing, signed and dated 2000, 24cm x 32.5cm  
£100-150



▲ 144.  
**Cecil Thomas Hodgkinson (1895-1979).**  
A view of a marina with moored boats, watercolour drawing, 30cm x 23cm.  
£50-80

145.  
**Leigh Parry (b. 1919).**  
Towards Lyddington, watercolour, signed and titled verso, 25.5cm x 35.5cm, label verso Britain in Watercolours

146.  
**Cuthbert, Bradley (1861-1943).**  
The Marquis of Exeter, watercolour, initialled and titled, 34cm x 20cm  
£40-60

147.  
**Cuthbert, Bradley (1861-1943).**  
Wot-No Feet! watercolour, initialled and titled, 16cm x 11cm.  
£15-25

147A.  
**Cuthbert, Bradley (1861-1943).**  
Lieut. Col. F. H. Sutton MC, MFH, South Dorset, watercolour, initialled and titled, 31cm x 16cm  
£40-60

148.  
**Edward J Cherry (20thC).**  
High Bridge, Lincoln, artist signed etching, 16.5cm x 10.5cm, and another John Knox House, Edinburgh

149.  
**John Trickett (b. 1952).**  
Down the Middle, oil on board, signed, 35.5cm x 39cm  
£40-60

150.  
**John Trickett (b. 1952).**  
Labrador, artist signed limited edition coloured print 648/850, 50.5cm x 39.5cm, and a framed map of Great Britain

151.  
**Rosa E Woodliffe (20thC).**  
Gathering Storm (Edale Valley Derbyshire), watercolour, signed and titled verso, 25.5cm x 37cm and three other works, label verso Lincolnshire Artist's Society

152.  
**Rob Smith (20thC).**  
Towards Gravel Pit Hill, watercolour, signed and dated (19)92, 36cm x 47cm

153.  
**Janice Glew (20thC).**  
Abstract, oil on canvas, signed and dated 2006 verso, 23cm x 61cm.  
£50-80



▲ 154.  
**Antonin (Tony) Bartl (1912-1998).**  
Nile scene in green, oil on canvas, signed and dated 1984, 65.5cm x 95cm  
£150-250

155.  
**Antonin (Tony) Bartl (1912-1998).**  
Female study, pencil, signed, 36cm x 20cm  
£30-50

156.  
**Antonin (Tony) Bartl (1912-1998).**  
Portrait study of Lyn, pencil, signed, titled and dated 1986, 40cm x 27cm  
£50-80

157.  
**Antonin (Tony) Bartl (1912-1998).**  
Portrait study of Lyn, pencil, signed, titled and dated 1986, 40cm x 27cm  
£50-80

158.  
**Vincent Haddelsey (1934-2010).**  
The Royal Oak, winter scene, artist signed limited edition coloured print XXV/XXXVI, 48cm x 73.5cm

159.  
**Vincent Haddelsey (1934-2010).**  
French hunting scene, artist signed limited edition coloured print XIV/XXXVI, 52cm x 74cm

160.  
**Vincent Haddelsey (1934-2010).**  
At the Races, artist signed limited edition coloured print, EA 14/21, 30.5cm x 46cm, and another Village Winter Scene

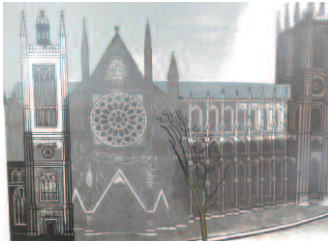
161.  
**Vincent Haddelsey (1934-2010).**  
Mexican on horseback, artist signed coloured etching 1/10, 10.5cm x 13cm, a signed watercolour and a print (3)



▲ 162.  
**Vincent Haddelsey (1934-2010).**  
Sledge ride, ink drawing, signed, 21cm x 26.5cm and two other works

# Lincoln Fine Art Sale

**163.**  
**R Finch (20thC).**  
Lincoln Cathedral from the  
Brayford, watercolour, signed,  
30cm x 42cm, and an oil on board,  
Grimsby, signed G Murray (2)



▲ **164.**  
**Edward Bawden**  
(1903-1989).  
Westminster Abbey, artist  
signed screen print,  
55cm x 71cm  
£500-700



▲ **165.**  
**Richard Bawden (b.1936).**  
Norodevichy Convent  
Moscow, artist signed coloured  
etching, numbered 8/85,  
49cm x 38cm  
£150-250



▲ **166.**  
**Francis A Boxall (20thC).**  
Solitaire, artist signed limited  
edition coloured print,  
572/850, 50cm x 42cm  
£20-40



▲ **167.**  
**David Shepherd**  
(1931-2017).  
The Lunch Break, artist signed  
limited edition coloured print  
597/850, 59.5cm x 80cm  
£30-50

**168.**  
**After Sir William Russell**  
**Flint.**  
Gossip after Market, Perigord,  
limited edition print 850, signed,  
circa 1968, 52cm x 68.5cm.  
£50-80



▲ **169.**  
**Frank Martin (1921-2005).**  
Villeggiatura, artist signed  
etching 40/50, 77cm x 58cm  
£250-350



▲ **170.**  
**Frank Martin (1921-2005).**  
Winter Garden, artist signed  
etching 56/150, 56cm x 40cm  
£250-350

**171.**  
**After James Abbot McNeill**  
**Whistler.**  
Bridge over river, coloured print,  
23.5cm x 17.5cm



▲ **172.**  
**Graham Clarke (b.1941).**  
Old Quarries, artist signed  
etching 56/100, 16cm x 18.5cm  
£80-120



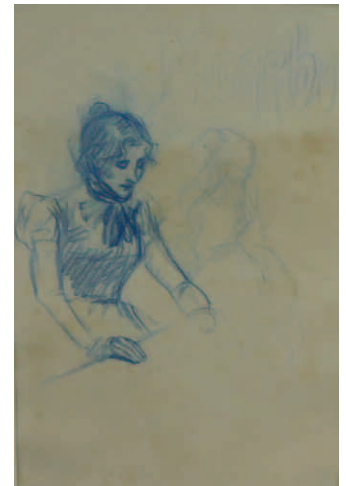
▲ **173.**  
**20thC French School.**  
Seascape, oil on canvas,  
indistinctly signed,  
36.5cm x 59.5cm  
£100-150



▲ **174.**  
**Serge Brigoni (1903-2002).**  
Galapagos, gouache, signed  
and dated (19)77, 41cm x 50cm  
£400-600



▲ **175.**  
**Theodorus Van Dorschot**  
(1910-1989).  
Paris, oil on canvas, signed,  
90cm x 59.5cm, label verso  
Marlow Galleries  
£200-300



▲ **176.**  
**Theophile Alexandre**  
**Steinlen (1859-1928).**  
Figure studies, blue crayon -  
reverse, studio stamp,  
35.5cm x 48.5cm  
£400-600





▲ 177.  
**Louis Justin Laurent Icart (1888-1950).**  
Lady with umbrella, pastel, signed, 43.5cm x 33cm  
£500-800



▲ 178.  
**Louis Justin Laurent Icart (1888-1950).**  
Lady standing, pastel, signed, 44cm x 33cm  
£500-800

179.  
**Angus Bernard Rands (1922-1985).**  
Kettlewell, watercolour, signed, titled and dated May 1978, verso, 43cm x 63cm

180.  
**Angus Bernard Rands (1922-1985).**  
Caistor, Lincolnshire, watercolour, signed and titled verso, 36.5cm x 54cm

181.  
**Angus Bernard Rands (1922-1985).**  
Caistor, Lincolnshire, watercolour, signed and titled verso, 37cm x 54cm

182.  
**Pina (?) (20thC).**  
Sleeping maiden, giclee print number 83/95, 75cm x 100cm, label verso GFA Dania Beach Florida

183.  
**Pina (?) (20thC).**  
Mother and children, giclee print numbered 90/195, 75cm x 100cm, label verso GFA Dania Beach Florida

184.  
**Paul Horton (b.1958).**  
The One and Only, artist signed limited edition coloured print 375/495, 44cm x 74cm, with certificate - Washington Green

185.  
**Don Micklethwaite (b.1936).**  
Fishing boats in harbour, oil on canvas, signed, 29cm x 39cm

186.  
**Joyce Helliard (20thC).**  
Charterhouse London, oil on canvas laid on board, signed and titled verso, 48cm x 59cm



▲ 187.  
**John Coulson (19th/20thC).**  
Egyptian landscape, oil on board, a pair, signed, 24.5cm x 49cm  
£200-300

188.  
**Peter Senior (20thC).**  
Rocky coastal scene, watercolour, signed and dated 1987, 35.5cm x 25cm

189.  
**Visscher(?).**  
Head of a boy sleeping, ink drawing, initialled, 15cm x 12cm



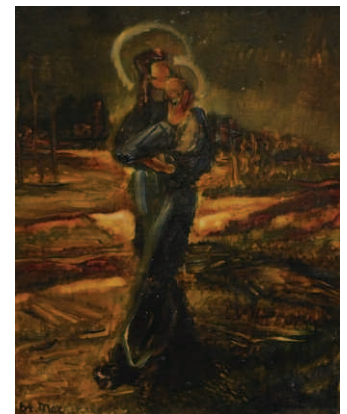
▲ 190.  
**John Frederick Lewis (1805-1876).**  
Camp interior scene, watercolour, inscribed and dated 1872, 20.5cm x 25.5, label verso Hazlitt, Gooden & Fox Interiors 1981, Cat. No. 77  
£2000-3000



▲ 191.  
**Jacob Kramer (1892-1962).**  
Portrait of Dame Flora Robson, charcoal and coloured chalks, signed by the artist and dated 1950, 43cm x 31cm  
£200-300

192.  
**Edward Reginald Kirkness (1900-1979).**  
Coastal scene, oil on board, signed, 59.5cm x 73.5cm

193.  
**19th/20thC British School.**  
Portraits of sisters, pencil, two, 33cm x 27.5cm



▲ 194.  
**Broeder Max (1903-1973).**  
Standing figure holding child, oil on board, signed, 35cm x 26.5cm  
£200-300



▲ 195.  
**20thC Continental School.**  
Bridge and river scene, oil on canvas, 52cm x 61cm  
£50-100

# Lincoln Fine Art Sale

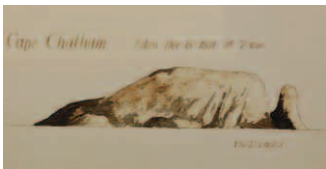


▲ 196.  
**Roland Oudot (1897-1981).**  
Wedding scene, oil on canvas,  
signed, 29cm x 39cm  
£300-500

197.  
**James L Cross (b.1909).**  
Country landscape, watercolour, a  
pair, signed, 30.5cm x 43cm

198.  
**F M (20thC).**  
Landscape with sheep, oil on  
canvas, initialled and dated  
(19)94, 29cm x 38.5cm

199.  
**C W L (20thC).**  
Coal Crusher Amblecote,  
watercolour, monogrammed and  
titled, 27cm x 36cm



▲ 200.  
**19thC School.**  
Cape Chatham taken Dec. 8th  
1801 at 7am, landscape study,  
portrait study, watercolour,  
three, titled, 16.5cm x 28cm  
£80-120



▲ 201.  
**Patrick Hall (1906-1992).**  
The Terrace Windsor,  
watercolour, signed and titled  
verso, 20cm x 30.5cm  
£100-200

202.  
**R Massone (19th/20thC).**  
La Dame en Brun, oil on canvas,  
signed and dated 20 Novembre  
1924, label verso, 130cm x 74cm



▲ 203.  
**John Livesey (1926-1990).**  
Village scene from the balcony,  
oil on board, signed and dated  
(19)61, 67cm x 42.5cm  
£100-200

204.  
**Flora Weatherill (20thC).**  
Bright butterflies, oil on canvas  
laid on board, initialled and titled  
verso, 44.5cm x 54.5cm

205.  
**M A Mathers (20thC).**  
Charlton Saw Mill, oil on canvas,  
signed and titled verso,  
46cm x 57cm

206.  
**Clarissa Gallions (b.1960).**  
Stubble Line, pastel, signed and  
dated (19)88, titled verso,  
31.5cm x 39cm

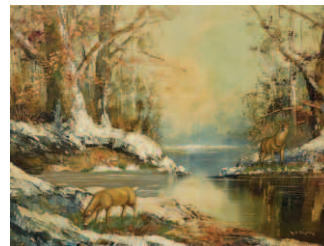


▲ 207.  
**Balthasar Paul  
Ommeganck (1755-1826).**  
Lipizzaner Stallion, head, oil  
on canvas, initialled,  
80cm x 64cm  
£500-800

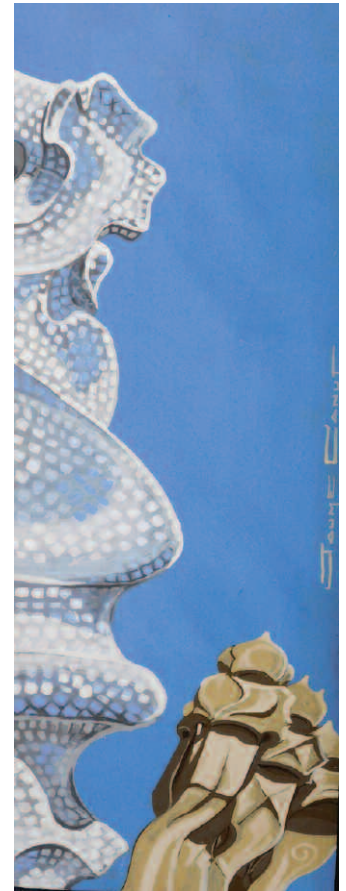


▲ 208.  
**Hendrik Grise (1917-1982).**  
Nude study, watercolour,  
signed, 64cm x 50cm  
£80-120

209.  
**Barnard(?) (20thC).**  
Fishing Nets, oil on board, signed  
and titled verso, 61cm x 75.5cm



▲ 210.  
**H S Palmer (19th/20thC).**  
Canadian deer in river  
landscape, oil on canvas,  
signed, 60cm x 80.5cm  
£150-250



▲ 211.  
**Jaume Canut (b.1950).**  
La Pedrera, oil on board,  
signed and titled verso,  
21.5cm x 62cm, and an artist  
signed print La Rosa (2)  
£100-200



▲ 212.  
**Roel Dozemann (b.1917).**  
Harbour scene, oil on canvas,  
signed, 49cm x 59.5cm  
£100-150





▲ 213.  
**Erik Langker (1898-1982).**  
Floral still life, oil on board,  
signed, 55cm x 55cm  
£600-800

214.  
**H Rainey (20thC).**  
Glengarriff County Court, oil on  
board, titled verso, 47cm x 66cm



▲ 215.  
**A Maculric (20thC).**  
Young ladies on horseback, oil  
on canvas, signed, dated verso  
14/5/14, 68cm x 89.5cm  
£300-500



▲ 216.  
**Rowland Hill (1915-1979).**  
Coastal scene with figures, oil  
on board, signed,  
34.5cm x 45.5cm  
£500-700



▲ 217.  
**Kamel Moustafa (1917-1982).**  
Goatherd, flock and donkey, sea beyond, oil on board, signed,  
identity plaque to frame, 25cm x 47cm  
£1500-2000



▲ 218.  
**John Thomas Young  
Gilroy (1898-1985).**  
Sailing boats in coastal  
landscape, oil on canvas,  
signed, 50.5cm x 76cm  
£300-400



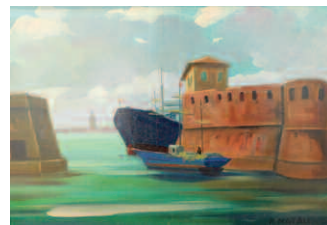
▲ 219.  
**Adrien Jean le Mayeur de  
Merpres (1880-1958).**  
Coastal scene, oil on board,  
signed, 25.5cm x 34.5cm  
£400-600

220.  
**Jose Maria de Servin  
(1917-1995).**  
Male and female figures,  
watercolour - a pair, signed,  
24cm x 20cm

221.  
**Kim Balamara (?) (20thC).**  
Still life, oil on oval metal dish,  
signed and dated (19)48?,  
44.5cm x 30.5cm

222.  
**Kahatcha (20thC).**  
Indian paintbrush, blue fringed  
gentians, watercolour - a pair,  
signed and titled, 19.5cm x 12cm

223.  
**After N Y Jackson.**  
Winter scene, oilography,  
19cm x 24cm, and another coastal  
scene



▲ 224.  
**Renato Natali (1883-1979).**  
Harbour scene, oil on board,  
signed, 33.5cm x 49.5cm  
£600-800



▲ 225.  
**Marcel Delaunay  
(1876-1959).**  
Church, oil on canvas, signed,  
33cm x 46cm  
£300-400

226.  
**Martin Lee (20thC).**  
Abstract, watercolour, signed and  
dated (19)62, 16cm x 35.5cm

227.  
**Visut (?) (20thC).**  
Figures in paddy field, oil on  
canvas, signed, 49cm x 74cm

228.  
**David Newbould (b.1938).**  
You've Lost Your What, pastel,  
signed, titled and dated (19)94,  
48cm x 63cm

229.  
**David Newbould (b.1938).**  
Poker face, pastel, signed, titled  
and dated (19)91, 45.5cm x 33cm

230.  
**David Newbould (b.1938).**  
Luciano Pavarotti - King of the  
High C's, pastel, signed, titled  
and dated (19)94 verso,  
43.5cm x 33cm

231.  
**David Newbould (b.1938).**  
'On the Fiddle' - busker,  
Edinburgh (sic) Festival, pastel,  
signed, titled and dated (19)91,  
35cm x 41cm

232.  
**David Newbould (b.1938).**  
Winnie waits for a waiter, the  
plumber, her giro and a plastic  
hipmaker, pastel, signed, titled  
and dated (19)93, 67cm x 45.5cm

233.  
**V Carlos (?) (20thC).**  
Fishing boat in harbour scene, oil  
on canvas, signed, 60cm x 90cm

234.  
**Murphy? (20thC).**  
Coastal scene with horse cart and  
figures, oil on canvas, signed,  
58cm x 89.5cm

235.  
**Vazquez (20thC).**  
Mediterranean coastal scene, oil  
on canvas, signed, 44.5cm x 36.5cm

236.  
**Marion L Broom (1878-1962).**  
Floral still life, watercolour,  
signed, 52.5cm x 73cm

237.  
**20thC British School.**  
Cottage in country lane,  
watercolour, 38cm x 53cm

# Lincoln Fine Art Sale

**238.**  
**John Lobban (20thC).**  
The Lipizzaner, watercolour,  
signed, label verso BP Art  
Property, 45cm x 50.5cm  
£100-200

**239.**  
**Tom Nederhaff (20thC).**  
Fox, oil on board, signed,  
28.5cm x 38.5cm

**240.**  
**Hoffman (20thC).**  
Alpine landscape, oil on canvas,  
signed and dated (19)49,  
50.5cm x 75cm



▲ **241.**  
**Tinus de Jongh**  
(1885-1942).  
Mountain landscape with  
farmhouse, oil on board,  
signed, 51cm x 51cm  
£500-800

**242.**  
**Xavier Rabous (20thC).**  
Paris street scene, oil on canvas,  
signed, 49.5cm x 59.5cm



▲ **243.**  
**Les Spencer (b.1934).**  
Drakes Island, masted ships in  
coastal landscape, oil on  
canvas, signed Jason,  
60.5cm x 137cm  
£100-200

**244.**  
**Ronald Norman Folland**  
(1932-1999).  
Fishing boats in harbour scene, oil  
on canvas, signed, 39.5cm x 74.5cm

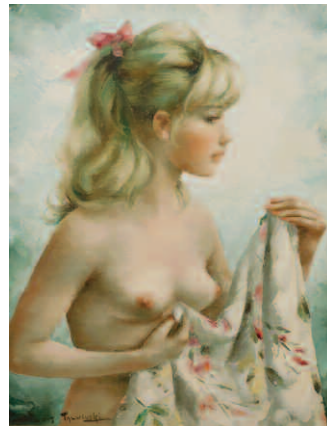


▲ **245.**  
**T Alley (20thC).**  
Dutch river scene with fishing  
boats and figures, oil on board,  
signed, 29.5cm x 39.5cm  
£400-600

**246.**  
**Phillip Draper (20thC).**  
American eagles Goshute Mount  
nr Salt Lake USE, acrylic, signed  
and titled verso, label verso  
Foresters Court Galleries,  
62cm x 82.5cm

**247.**  
**Copper (?) (20thC).**  
Nude study, oil on canvas,  
indistinctly signed, 136cm x 95cm

**248.**  
**Blasnavski (1920-?).**  
Harvest home, oil on canvas,  
signed, titled and dated (19)72  
verso, label verso E Stacy-Marks  
Ltd., 32cm x 40cm



▲ **249.**  
**Igor Talwinski (1907-1983).**  
Nude study, oil on canvas,  
signed and titled verso, label  
verso E Stacy-Marks Ltd.,  
53.5cm x 44.5cm  
£300-500

**250.**  
**Adelene Fletcher (20thC).**  
Taking cover, watercolour, signed  
and titled verso, 37.5cm x 46.5cm

**251.**  
**I Costello (20thC).**  
Venice river scene, oil on canvas,  
signed, 49.5cm x 75cm

**252.**  
**After Talantbek Chekirov**  
(b.1971).  
Mind and Body, limited edition  
coloured print 2666/3999,  
80cm x 60.5cm



▲ **253.**  
**Rivera (20thC).**  
Arc de Triomphe, oil on  
canvas, signed, 25.5cm x 39.5cm  
£100-200



▲ **254.**  
**Farquharson (?) (20thC).**  
Flower market, oil on canvas,  
indistinctly signed, 38cm x 78cm  
£80-120



▲ **255.**  
**19thC Dutch School.**  
Winter river scene, oil on  
canvas, bears signature Louis  
Apol, 35cm x 53cm  
£200-300

**256.**  
**Ethel Louise Rawlins**  
(19/20thC).  
Coastal town, oil on canvas,  
signed, 40cm x 50cm

**257.**  
**F J O'Neill (20thC).**  
Village river scene, oil on canvas,  
signed, 30cm x 40.5cm

**258.**  
**Michael Hampton (b. 1937).**  
Black Tailed Godwit on Silver  
Meadow Payham, watercolour,  
signed and titled verso,  
32.5cm x 53.5cm

**259.**  
**Becky Mair (20thC).**  
'Charle' (black and white dog),  
oil, signed and titled verso, label  
verso DamselFly Ltd.,  
35.5cm x 52cm



▲ **260.**  
**Raymond Poulet (b.1934).**  
Vue sur les sanguinaires, oil on  
canvas, signed and titled  
verso, 79.5cm x 79.5cm  
£300-400

**261.**  
**B Wilder (20thC).**  
Fishing boats, oil on canvas,  
signed, 49.5cm x 39.5cm

**262.**  
**John Bampffield (b.1947).**  
Victorian street scene, oil on  
canvas, signed, 49.5cm x 75cm

**263.**  
**Baillie (20thC).**  
Dutch river scene, oil on canvas,  
signed, 60cm x 90cm

**264.**  
**John Bampffield (b.1947).**  
Fishing boats in harbour scene, oil  
on canvas, signed, 44.5cm x 120cm

**265.**  
**20thC Continental School.**  
Harbour scene, oil on canvas,  
49.5cm x 75cm





▲ 266.  
**H Rietberg (20thC).**  
Indonesian village scene, oil on canvas, signed, 66.5cm x 53cm  
£150-200



▲ 267.  
**Rene Francois Voyer (1888-1975).**  
Crab, oil on canvas, initialled and dated (19)53, 25.5cm x 39cm  
£100-200

268.  
**Harry Holme (20thC).**  
Mimosa in the South of France 1950s, oil on board, inscribed verso, 39.5cm x 29.5cm



▲ 270.  
**Kamel Moustafa (1917-1982).**  
A town in a rural area, oil on board, signed, bears gold identity plaque, 16cm x 24cm  
£1500-2000

269.  
**Maria Hampshire Eaton (c.1860-c.1940).**  
Trafalgar Square, oil, signed, 12cm x 8.5cm, and another Westminster Abbey (2)

271.  
**Charles Comber (20thC).**  
Dutch winter scenes, oil on board - a pair, signed, 18.5cm x 24cm

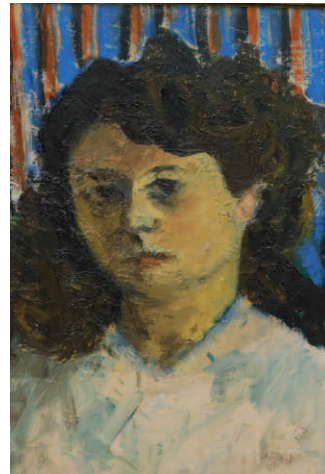


▲ 272.  
**Leendert De Vogel (1909-1974).**  
Continental street scene, oil on canvas, signed, 59cm x 60cm  
£200-300

274.  
**Val Pownall (20thC).**  
On the flats, oil on board, signed, label verso The Mall Galleries, 38.5cm x 59cm

275.  
**George Richard Deakins (1911-1982).**  
Landscape, oil on board, signed, artist's label verso, 14cm x 45cm

276.  
**George Richard Deakins (1911-1982).**  
Seascape, oil on board, signed and dated (19)69, artist's label verso, 14cm x 44.5cm



▲ 273.  
**Paul Aizpiri (1919-2016).**  
Head and shoulders study of a young woman, oil on board, stamped verso, 34cm x 22.5cm  
£600-800

277.  
**Clifford Eric Martin Hall (1904-1973).**  
Study of a woman, oil on canvas, signed and dated 1929, 44.5cm x 36.5cm  
£300-500

278.  
**20thC Irish School.**  
Rural scene with thatched cottage, oil on canvas, 29.5cm x 45cm



▲ 279.  
**George Gault (1916-2001).**  
River landscape with barge, oil on board, signed, 48cm x 62cm  
£300-400



▲ 280.  
**Henry Roulet (1915-1995).**  
L'Harlequin, oil on board, initialled, with document - Henry Roulet booklet, 33cm x 21cm  
£800-1200



# Lincoln Fine Art Sale

281.  
**Cameron (19th/20thC).**  
Country lane with cottages, oil,  
signed, 23cm x 32.5cm

282.  
**Cameron (19th/20thC).**  
River scene with bridge, oil,  
signed and dated 71, 24cm x 35cm



▲ 283.  
**John Samuel Loxton  
(1903-1969/71).**  
Herding - Australia, Summer,  
oil on canvas, signed,  
62cm x 75cm  
£300-400



▲ 284.  
**Leendert De Vogel  
(1909-1974).**  
Continental street market  
scene, oil on canvas, signed,  
60.5cm x 91cm  
£200-300



▲ 285.  
**Siegfried Charoux  
(1896-1967).**  
Mountain lake, watercolour,  
signed and dated 1939,  
28cm x 47.5cm  
£50-100

286.  
**Jeremy Yates (20thC).**  
Trees, Rocks, Water I, watercolour,  
signed, titled and dated 1988  
verso, 42.5cm x 33cm

287.  
**Gillian Beale (20thC).**  
Upper Slaughter, Gloucestershire,  
watercolour, titled, 32.5cm x 24cm

288.  
**Roger Payne (20thC).**  
Prince Charles and Diana,  
watercolour, signed and dated  
1988, 37cm x 17.5cm

289.  
**H Grange (20thC).**  
River scene, watercolour, signed  
and dated (19)77, 30.5cm x 25.5cm



▲ 290.  
**Willem Jacobus Alberts  
(1912-1990).**  
Pastoral landscape, oil on  
canvas, signed and titled  
verso, 48.5cm x 69cm  
£80-120

291.  
**Tony Brummell Smith  
(b.1949).**  
Rydal Water Cumbria, Edge of  
Grasmere, watercolour - a pair,  
signed, titled and dated 1987  
verso, 30cm x 36.5cm

292.  
**Andrzej Kuhn (Polish 1930-?).**  
Seated nude female figure, pen  
and brown ink, dated in pencil  
Oct '92 9'8, 26cm x 40cm, and  
another, seated nude female  
figure, pen and black ink, signed  
in pencil Kuhn '02 Nov,  
40cm x 28cm (2)  
£60-90

293.  
**After Frank Bentley.**  
Harbour scene, coloured print,  
64.5cm x 72cm



▲ 294.  
**Heimrad Prem (1934-1978).**  
Spur Gruppe, oil on canvas, signed and titled verso, 76cm x 101cm  
£3000-4000



▲ 295.  
**Louise Loeber (1894-1983).**  
Composition, oil on canvas,  
initialled, 50cm x 50cm  
£300-400

296.  
**Elsbeth Morden (20thC).**  
Poppies, oil on board, signed,  
72cm x 87.5cm

297.  
**Tony Brodrick (20thC).**  
Planet's Edge, oil on canvas,  
signed and titled, 80cm x 100cm

298.  
**H.L. (19th/20thC).**  
Musician, watercolour - a pair,  
initialled and dated 1908/9,  
49.5cm x 22cm

299.  
**British School.**  
18thC river landscape with  
figures, oil on board,  
19cm x 24.5cm

300.  
**20thC School.**  
Bust of a gentleman, bronze,  
32cm high

301.  
**J.V. (20thC).**  
Bust of a gentleman, composition,  
stamped, 42cm high including  
wooden base

302.  
**20thC School.**  
Bust of a gentleman, composition,  
50cm high including wooden base

303.  
**20thC School.**  
Bust of a young woman,  
composition, 38cm high

304.  
**J.V. (20thC).**  
Bust of a gentleman, composition,  
stamped, 42cm high including  
wooden base

305.  
**20thC School.**  
Bust of a young woman,  
composition, monogrammed and  
dated 1976, 50cm high including  
stone base

306.  
**Brian Willsher (1930-2001).**  
Twenty five piece puzzle,  
wooden, 7cm x 7cm x 7cm





▲ 307.  
**Daisy Boman (b.1948).**  
Two's Company, resin sculpture, 6/95, with certificate Washington Green Fine Art, 21.5cm  
£100-150



▲ 308.  
**Daisy Boman (b.1948).**  
Walk With Us, resin sculpture, 12/95, with certificate Washington Green Fine Art, 20cm high  
£200-400



▲ 309.  
**Daisy Boman (b.1948).**  
The Great Escape, resin wall sculpture, numbered edition 89/100, label verso Washington Green Fine Art, 86.5cm x 86.5cm  
£150-250



▲ 310.  
**Daisy Boman (b.1948).**  
Don't Look Back, resin wall sculpture, numbered edition 43/95, label verso Washington Green Fine Art, 86.5cm x 86.5cm  
£150-250

311.  
**After Emanuel (20thC).**  
Nude studies, Gill Evans artist signed prints, and two others

312.  
**Sundry prints,**  
mounted contents of folio

313.  
**Peter Collins (1923-2001).**  
Nude study, watercolour, studio stamp, 36cm x 48cm, and three others

314.  
**Peter Collins (1923-2001).**  
Studio works - drawings, sketches etc. (a quantity)

315.  
**R Borzacca (20thC).**  
Garden ruins, watercolour, signed, 36cm x 25.5cm, and another initialled E.H.

316.  
**20thC School.**  
Landscape, polished gemstones, 17.5cm x 13cm, and another enamel storks, (2)

317.  
**Patrick Cullen (20thC).**  
French window, artist signed limited edition coloured print, 66cm x 46cm, and four other prints by other artists



▲ 318.  
**E Fuentes (20thC).**  
Spanish street, oil on canvas laid on board, signed, 80cm x 64.5cm  
£200-300



▲ 319.  
**E Fuentes (20thC).**  
Spanish street, oil on canvas laid on board, 70cm x 52.5cm  
£150-250

320.  
**Hempsall (20thC).**  
Street scene, watercolour, signed and dated (19)79, 23cm x 31cm, and two other watercolours

321.  
**Stephen Robert Thornton (20thC).**  
Pint of Bass, artist signed, titled and numbered photograph 1/10, 21cm x 17.5cm, and two framed plaques

322.  
**Emma F Peterson (20thC).**  
River landscape, watercolour, signed, 21cm x 16.5cm, and four other watercolours

323.  
**20thC School.**  
Interior scene, oil on canvas, indistinctly signed, 50cm x 63cm, and five other oil paintings

324.  
**Dolesck (20thC).**  
Inn scene, signed, 31cm x 22cm, and two other pictures

325.  
**Steinlen (19th/20thC).**  
The Family, etching, 14.5cm x 20.5cm, and six other etchings

326.  
**W Monk (19th/20thC).**  
City bridge, artist signed coloured etching, 29.5cm x 39cm, and seven other pictures

327.  
**Seymour(19th/20thC).**  
Woodland park, etching, 15cm x 20.5cm and four other prints

# Artist index

NAME: LOT NUMBER

|                              |          |                                   |          |                                   |             |
|------------------------------|----------|-----------------------------------|----------|-----------------------------------|-------------|
| <b>A</b>                     |          |                                   |          |                                   |             |
| Adams, C W                   | 42       | Gilroy, John Thomas Young         | 218      | Nicholls, B                       | 115         |
| Aguilar-Agon, Jorge          | 9        | Glew, Janice                      | 153      | Norris, Ron                       | 139         |
| Aizpin, Paul                 | 273      | Grange, H                         | 289      | <b>O</b>                          |             |
| Alberts, Willem Jacobus      | 290      | Greenlees, James M Robert         | 12       | Ommegank, Balthasar Paul          | 207         |
| Aldin, Cecil                 | 109, 110 | Grise, Hendrik                    | 208      | O'Neill, F J                      | 257         |
| Alley, T                     | 245      | <b>H</b>                          |          | Oudot, Roland                     | 196         |
| <b>B</b>                     |          | Haddelsey, Vincent                | 158-162  | <b>P</b>                          |             |
| Badia, Jose Maria y Sert     | 10       | Hair, Thomas Henry                | 41       | Palmer, Harry Sutton              | 92          |
| Baillie                      | 263      | Hall, Clifford Eric Martin        | 277      | Palmer, H S                       | 210         |
| Balamara, Kim                | 221      | Hall, Patrick                     | 201      | Papaluca, Louis                   | 105         |
| Bampffield, John             | 262, 264 | Hampton, Michael                  | 258      | Payne, Roger                      | 288         |
| Barnard                      | 209      | Haward, Mary E                    | 90       | Paredes, Vicente de               | 56          |
| Bartl, Antonin (Tony)        | 154-157  | Heath, F G                        | 117      | Parry, Leigh                      | 145         |
| Bawden, Edward               | 5-7, 164 | Hela, E                           | 33       | Pena, Narcisse Virgile Diaz de la | 21          |
| Bawden, Richard              | 165      | Helliar, Joyce                    | 186      | Peterson, Emma F                  | 322         |
| Beale, Gillian               | 287      | Hempsall                          | 320      | Pina                              | 182, 183    |
| Blasnovski                   | 248      | Henry, John M                     | 96       | Pira, Gioacchino la               | 118         |
| Boman, Daisy                 | 307-310  | Henty, A                          | 25       | Poulet, Raymond                   | 260         |
| Bompiani-Bataglia, Clelia    | 46       | Hill, H                           | 137      | Pownell, Val                      | 274         |
| Borzacca, R                  | 315      | Hill, P                           | 120      | Pratt, William M                  | 53          |
| Boxall, Francis A            | 166      | Hill, Rowland                     | 216      | Prem, Heimrad                     | 294         |
| Bradley, Cuthbert            | 146-147A | Hodgkinson, Cecil Thomas          | 144      | <b>R</b>                          |             |
| Brienzi, P                   | 68       | Hoffmann                          | 240      | Rabous, Xavier                    | 242         |
| Brigoni, Serge               | 174      | Holme, Harry                      | 268      | Rainey, H                         | 214         |
| Brodrick, Tony               | 297      | Horton, Paul                      | 184      | Rands, Angus Bernard              | 179-181     |
| Broom, Marion L              | 236      | Huskinson, Mark                   | 143      | Rawlins, Ethel Louise             | 256         |
| Browne, Gordon Frederick     | 107      | <b>I</b>                          |          | Redgate, Arthur William           | 2           |
| <b>C</b>                     |          | Icart, Louis Justin Laurent       | 177, 178 | Rezia, Felice Auguste             | 83          |
| Cameron                      | 281, 282 | Israels, J                        | 16       | Rietberg, H                       | 266         |
| Camut, Jaume                 | 211      | <b>J</b>                          |          | Rivera                            | 253         |
| Carlos, V                    | 233      | Jackson, F W                      | 37       | Roper, Keith                      | 3, 132, 133 |
| Carr, Colin                  | 135, 136 | Jonas, J C                        | 57       | Roulet, Henry                     | 280         |
| Causaban                     | 35       | Jongh, Tinus de                   | 241      | <b>S</b>                          |             |
| Challis                      | 72-74    | <b>K</b>                          |          | Sadler, William Dendy             | 126         |
| Charoux, Siegfried           | 285      | Kahatcha                          | 222      | Santaro, Rubens                   | 51          |
| Cherry, Edward J             | 148      | Keats, Cecil Jack                 | 93, 94   | Scarfe, Fraser                    | 131         |
| Clarke, Graham               | 172      | Kirkness, Edward Reginald         | 192      | Scoppa, Raimondo                  | 89          |
| Clifford, Harry Percy        | 113      | Kramer, Jacob                     | 191      | Senior, Peter                     | 188         |
| Cole, George Vicat           | 69       | Kuhn, Andrzej                     | 292      | Servin, Jose Maria de             | 220         |
| Coleman, Henry Enrico        | 55       | <b>L</b>                          |          | Seymour                           | 327         |
| Collins, Peter               | 313, 314 | Langker, Erik                     | 213      | Shepherd, David                   | 167         |
| Comber, Charles              | 271      | Langlin, Victoriano Codina y      | 82       | Smith, Tony Brummell              | 291         |
| Constantin, Auguste Aristide |          | Lasham, W B                       | 85       | Smith, Rob                        | 152         |
| Fernand                      | 100      | Lee, Martin                       | 226      | Smyth, H S                        | 24          |
| Cooper, Thomas Sidney        | 84       | Lewis, John Frederick             | 190      | Spence, Les                       | 243         |
| Copper                       | 247      | Livesey, John                     | 203      | Stainton, George                  | 59-61       |
| Costello, I                  | 251      | Lobban, John                      | 238      | Steinlen, Theophile Alexandre     | 176         |
| Coulson, John                | 187      | Loeber, Louise                    | 295      | Suker, Arthur                     | 32          |
| Cross, James                 | 197      | Loxton, John Samuel               | 283      | Sylvester, Doreen R               | 141         |
| Cruikshank, George           | 108      | <b>M</b>                          |          | <b>T</b>                          |             |
| Cullen, Patrick              | 317      | Maculric, A                       | 215      | Talwinski, Igor                   | 249         |
| Cumming, Gordon              | 138      | MacWhirter, John                  | 34       | Taylor, John Frederick            | 52          |
| <b>D</b>                     |          | Mair, Becky                       | 259      | Thomas, William Bartol            | 134         |
| Deakins, George Richard      | 275, 276 | Marko, Henry                      | 39       | Thornton, Stephen Robert          | 321         |
| Deakins, W                   | 65       | Marshall, Henry Menzies           | 47       | Thulden, Theodor Van              | 50          |
| Delaunay, Marcel             | 225      | Martin, Frank                     | 169, 170 | Trobridge, George                 | 128         |
| Denny, J                     | 124      | Martin, H                         | 104      | Turner, William Eddowes           | 18          |
| Dolesck                      | 324      | Martin, W                         | 130      | Trickett, John                    | 149, 150    |
| Dorschot, Theodorus Van      | 175      | Massone, R                        | 202      | <b>V</b>                          |             |
| Dozemann, Roel               | 212      | Mathers, M A                      | 205      | Vazquez                           | 235         |
| Draper, Phillip              | 246      | Max, Broeder                      | 194      | Visscher                          | 189         |
| Dudding, Mary                | 142      | Mayer, Cyril J                    | 140      | Visut                             | 227         |
| <b>E</b>                     |          | McArthur, A                       | 116      | Vogel, Leendert De                | 272, 284    |
| Eaton, Maria Hampshire       | 269      | Mears, R                          | 80       | Voyer, Rene Francois              | 267         |
| Eberle, Adolf                | 23       | Merpres, Adrien Jean le Mayeur de | 219      | <b>W</b>                          |             |
| English, H                   | 58       | Meucci, Michelangelo              | 45A      | Waddington, Frank                 | 76          |
| <b>F</b>                     |          | Micklethwaite, Don                | 185      | Weatherill, Flora                 | 204         |
| Farquharson                  | 254      | Monk, W                           | 326      | Wibberley, H R                    | 103         |
| Finch, R                     | 163      | Moore, Claude Thomas              |          | Wilder, B                         | 261         |
| Fletcher, Adelene            | 250      | Stanfield                         | 87       | Willsher, Brian                   | 306         |
| Folland, Ronald Norman       | 244      | Moore, William                    | 129      | Wilkinson, J E                    | 95          |
| Fowler, Robert               | 97       | Morden, Elspeth                   | 296      | Wimperis, Edmund Monson           | 54          |
| Fox, Henry Charles           | 48, 49   | Moustafa, Kamel                   | 217, 270 | Wint, Peter de                    | 4           |
| Fuentas, E                   | 318, 319 | Muhl, Roger                       | 8        | Woodliffe, Rosa E                 | 151         |
| <b>G</b>                     |          | Murphy                            | 234      | <b>Y</b>                          |             |
| Gallions, Clarissa           | 206      | <b>N</b>                          |          | Yates, Jeremy                     | 286         |
| Gault, George                | 279      | Natali, Renato                    | 224      | <b>Z</b>                          |             |
| Generis, F                   | 66       | Nederhaff, Tom                    | 239      | Zuccoli, Luigi                    | 29-31       |
| Glendening, Alfred Augustus  | 17       | Newbould, David                   | 228-232  |                                   |             |
| Gibbs, H                     | 70       |                                   |          |                                   |             |

As at the time of printing, lots without estimates are to be sold without reserve, auctioneer's discretion.  
See online catalogue for updates.



EST  
1864

# GOLDING YOUNG



## Thinking of selling?

Executors, solicitors, accountants, insurers, corporations and government departments, have to exhibit due diligence when instructing. Use this checklist to do the same, with a few reasons why you may wish to choose us.

**We are regulated by RICS**  
Better Regulation for Us.  
Better Protection for You.  
Accept Nothing Less.

**Our online catalogues**  
For over 20 years our catalogues have been online and our experience ensures they are placed in front of the right buyers in the global market.

**Our sales results**  
April 2018 saw our 114th consecutive month with a sale at either Bourne, Grantham or Lincoln producing a sold rate of over 90%. Good advice, great results for hundreds of vendors every month.

*Join their success with an entry in our next sale!*

[goldingyoung.com](http://goldingyoung.com)

## HOUSE CLEARANCE

If there is that hidden 'find', it will be to your direct benefit.

Every week we take instructions for House Clearance for all of the prominent firms of Solicitors in the area, as well as from Private Individuals, Trustees and Executors.

If you are dealing with the content of a property, please contact us at the earliest point.

A visit to the premises by one of our qualified and experienced appraisal staff will offer the best advice for Security, Valuation and Sale.

### DISPOSE OF NOTHING

Often things thought to be rubbish are saleable.

### IMMEDIATE ACTION IS REQUIRED

Once a property is uninhabited it is a target for burglars and your insurance may be invalid.

Items removed from premises are listed and handled by our professional carriers. Goods are then allocated to the next appropriate sale to ensure the highest sale return.

We also deal with the unsaleable residue, disposed of in the most cost-effective and environmentally friendly way, giving a total service.



### PROPERTIES CLEARED, PROMPTLY AND EFFICIENTLY

Call: John Ireland MA MRICS - **01778 422686**  
For Bourne, Stamford, Peterborough Region and Southern Counties

Call: Craig Bewick BA (Hons) MRICS FNAVA - **01476 565118**  
For Grantham Region and The Midlands

Call: John Leatt ASFAV - **01522 524984**  
For Lincoln Region and Northern Counties

**The Bourne Auction Rooms**

Spalding Road, Bourne,  
Lincolnshire PE10 9LE

E: [bourne@goldingyoung.com](mailto:bourne@goldingyoung.com)  
T: +44 (0) 1778 422686  
F: +44 (0) 1778 425726

**The Grantham Auction Rooms**

Old Wharf Road, Grantham,  
Lincolnshire NG31 7AA

E: [grantham@goldingyoung.com](mailto:grantham@goldingyoung.com)  
T: +44 (0) 1476 565118  
F: +44 (0) 1476 561475

**The Louth & Wolds Office**

5 Mercer Row, Louth  
Lincolnshire LN11 9JG

E: [louth@goldingyoung.com](mailto:louth@goldingyoung.com)  
T: +44 (0) 1507 661864

**The Lincoln Auction Rooms**

Thos Mawer House, Station Road  
North Hykeham, Lincoln LN6 3QY

E: [lincoln@goldingyoung.com](mailto:lincoln@goldingyoung.com)  
T: +44 (0) 1522 524984  
F: +44 (0) 1522 681804

**The Stamford & Rutland Office**

1, The George Mews  
Station Road, Stamford  
Lincolnshire PE9 2LB

E: [stamford@goldingyoung.com](mailto:stamford@goldingyoung.com)  
T: +44 (0) 1780 751666