

GOLDING YOUNG


EST
1864

150th Anniversary Sale

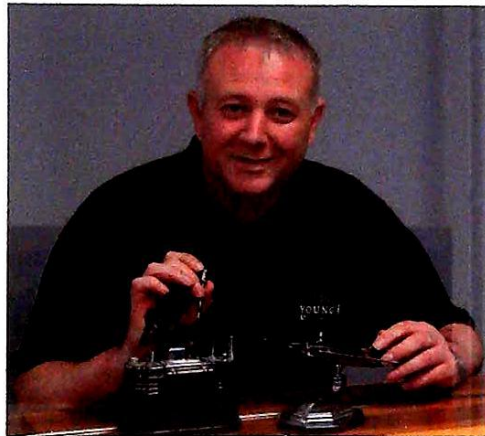
2nd-4th September 2014



CHARTERED AUCTIONEERS & VALUERS • ARTS & ANTIQUES SURVEYORS



As part of our 150th Anniversary celebrations we are holding a one-off 3-day Auction Sale on September 2nd to 4th



Colin Young MRICS FNAVA ASFAV
Chartered Auctioneer & Valuer
RICS Registered Valuer | Managing Director

The sale provides an opportunity to showcase our three salerooms with an illustration of the type of items we regularly sell for between 400 and 500 clients every single month. Over the last four years we have consistently offered over 30,000 lots culminating in over £2million going under the hammer per annum.

This sale brochure highlights what is really a snap-shot of what happens every month in The Lincolnshire Auction Rooms of Golding Young & Mawer. Please come along to a viewing or saleday to share the very best auction experience.

This September coincides with my 25th year at Goldings and 20th year at the helm of the firm. The mergers in recent years have created an outstanding team of professionals that I am extremely proud to be part of.

In 2010 we set up a dedicated department for Professional Services engaging in bespoke valuation work. Our services are used by the region's leading solicitors, accountants, property professionals and private clients.

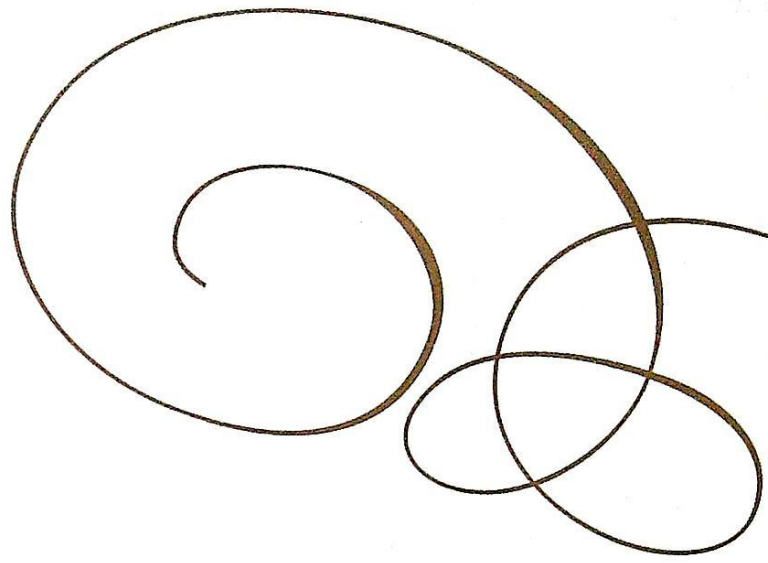
Our reputation is built on the highest standards of being Regulated by RICS. This was, without question, instrumental to our success in being awarded a four year contract to work on behalf of the Foreign & Commonwealth Office to provide valuations across the globe. Even without this instruction, 2014 has already been the department's busiest year to date.

If my colleagues or I can be of assistance with the valuation or sale of items, please give us a call.

We are now taking appointments for the next 150 years...

Lot 2004.
Estimate £8-12,000

Contents



Collective Sales



Bourne	05
Grantham.....	11
Lincoln	16

Asian art

Grantham.....	10
---------------	----

Automobilia

Bourne	04
--------------	----

Fine art

Lincoln.....	21
--------------	----

Sale dates

Tuesday 2nd September 10am
The Bourne Auction Rooms

Wednesday 3rd September 10am
The Grantham Auction Rooms

Thursday 4th September 10am & 7pm
The Lincoln Auction Rooms

Viewing: 10am to 4pm Saturday 30th,
Sunday 31st & Monday 1st and
Saledays 8.30am - 10am

Bid online or simply watch the sale live at:



Bourne Automobilia Sale

Alastair McPhie-Meiklejon BSc.
Colin Young MRICS



▲ 1002
Velogy
Consecutive tax discs, 1921
until 1928 (68).



▲ 1006
**Original 1967 Monaco
Grand Prix poster**
(Jackie Stewart's BRM)



▲ 1003
Raymond Mays ephemera



▲ 1004
**Original 1966 Monaco
Grand Prix poster**
(Graham Hill's BRM)



▲ 1007
**BRM and V16 engine cut-
away book**



▲ 1008
Touring car auto sports
Two winners sashes 1964, etc.
*Provenance. Collection of
Warwick Banks European
Touring Car champion 1964*



▲ 1010
**A brass nymph lady car
mascot**
11cm



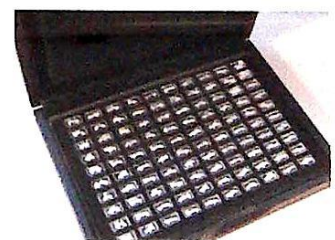
▲ 1012
**Cromwell motor racing safety helmet c/w with rain, sun &
'Turbo' visors**
*Provenance. Collection of Warwick Banks European Touring Car champion
1964*



▲ 1019
**Large selection of The British Racing Drivers Club lanyards
Passes, etc.**
*Provenance. Collection of Warwick Banks European Touring Car champion
1964*



▲ 1020
**A 19thC bone shaker
bicycle.**



▲ 1029
**100 greatest cars silver
miniature collection**
By John Pinches

*Entries invited for future sales of Classic Cars and the
Collectors' items of Planes, Trains & Automobiles.*

Bourne Collective Sale

Alastair McPhie-Meiklejon BSc.
Colin Young MRICS



▲ 1001
Louis Vuitton vintage cabin trunk
76cm x 49cm x 55cm
£300-500



▲ 1030
A scratch built twin mast
pond yacht
110cm wide x 190cm high
£200-300



▲ 1032
Art Nouveau majolica
jardiniere stand
66cm high
£100-150



▲ 1035
Rare Norris No 48
smoothing plane
All enquiries to Colin Young.



▲ 1060
1960's Levin LN 26
acoustic guitar
£500-700



▲ 1061
Third Reich Kriegsmarine
binoculars
£700-900



▲ 1077
Edwardian cased set of
masonic ivory gavels
£1500-2000



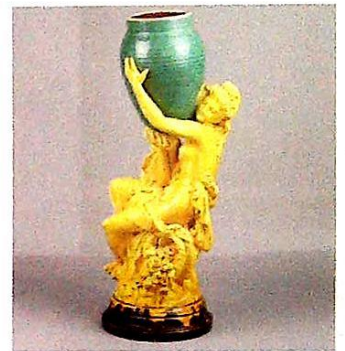
▲ 1091
Lincolnshire Regiment
Queens South Africa and
WWI medal group
£200-300



▲ 1124
Royal Worcester figural
candelabra
c. 1887, 23cm high
£150-250



▲ 1128
After Clovis-Edmond
Masson.
10cm high
£80-120



▲ 1132
A Minton majolica figure
of lady with a water urn
69cm high
£100-150



▲ 1133
After Irene Rochard.
35cm high x 48cm wide
£80-120



▲ 1138
A James McIntyre bowl
By William Moorcroft.
24cm diameter
£400-600

Bourne Collective Sale

Alastair McPhie-Meiklejon BSc.
Colin Young MRICS



▲ 1001
Louis Vuitton vintage cabin trunk
76cm x 49cm x 55cm
£300-500



▲ 1030
A scratch built twin mast
pond yacht
110cm wide x 190cm high
£200-300



▲ 1032
Art Nouveau majolica
jardiniere stand
66cm high
£100-150



▲ 1035
Rare Norris No 48
smoothing plane
All enquiries to Colin Young.



▲ 1060
1960's Levin LN 26
acoustic guitar
£500-700



▲ 1061
Third Reich Kriegsmarine
binoculars
£700-900



▲ 1077
Edwardian cased set of
masonic ivory gavels
£1500-2000



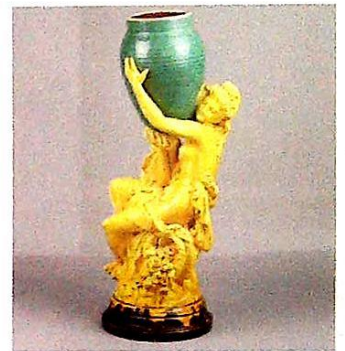
▲ 1091
Lincolnshire Regiment
Queens South Africa and
WWI medal group
£200-300



▲ 1124
Royal Worcester figural
candelabra
c. 1887, 23cm high
£150-250



▲ 1128
After Clovis-Edmond
Masson.
10cm high
£80-120



▲ 1132
A Minton majolica figure
of lady with a water urn
69cm high
£100-150



▲ 1133
After Irene Rochard.
35cm high x 48cm wide
£80-120



▲ 1138
A James McIntyre bowl
By William Moorcroft.
24cm diameter
£400-600

Bourne Collective Sale



▲ 1161
Royal Mint - The Gillick
portrait collection
£300-400



▲ 19thC French alabaster
and gilt metal clock
garniture
28.5cm high.
£100-200



▲ 1227
A Victorian rosewood sewing cabinet
34cm x 34cm x 26cm
£150-250



▲ 1176
Art Deco table lamp
35cm high
£50-80



▲ 1194
Copeland After J. Durham
R.A. - The Hop Queen
c1878, 34cm high
£150-200



▲ 1231
19thC fusee clock
Movement
c/w dial marked Sam Smith,
Stamford, 28cm square
£150-250



▲ 1245
Railway lamp
Twenty near Bourne
£300-400



▲ 1178
Art Deco table lamp
49cm high
£80-120



▲ 1198
Royal Doulton Coronation
loving cup
For George VI and Elizabeth,
26cm high.
£150-250



▲ 1237
Edwardian oak smoking and drinking cabinet
40cm x 40cm
£80-120



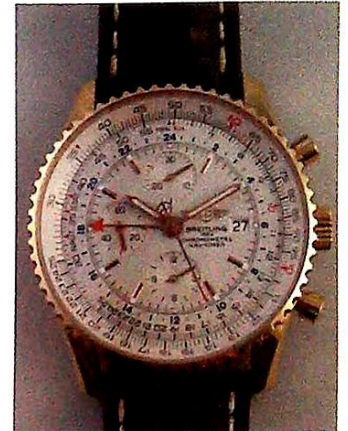
▲ 1185
French bronze animalier
group
21.5cm high, 55cm wide
£100-150



▲ 1499
Military Medal group
 To Corporal A V Tea of 10th
 Essex Regiment
 £200-400



▲ 1509
Victorian silver tea and coffee set
 London 1844 - 1845, by Walker and Hall. 73oz all in
 £700-1000



▲ 1530
**A gentleman's Breitling
 18ct gold automatic
 Chronometre Navitimer
 limited edition wristwatch**
*Provenance: The property of
 Warwick Banks (BRDC member)*
 £7000-10000



▲ 1500
**Early 20thC Naval officer's
 general pattern dress
 sword**
 By J.R. Gaunt & Son Ltd, 79cm
 £200-300



▲ 1510
Diamond solitaire ring
 Approx 5.56 carats
 £10000-15000



▲ 1520
**9ct gold Record by
 Longines ladies cocktail
 watch**
 £100-150



▲ 1801
**19thC ebonised and
 amboyna Bonheur du Jour**
 124cm wide
 £1200-1800



▲ 1502
**A George III pair-cased
 pocket watch**
 By E. Moon of London
 £200-300



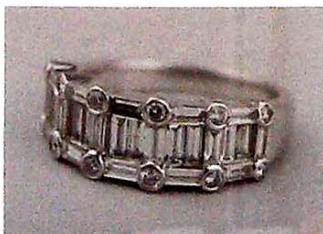
▲ 1515
**18k diamond abstract
 design ring**
 £1800-2500



▲ 1521
**18ct white gold diamond
 set tennis bracelet**
 Approx 10.5 carats
 £8000-10000



▲ 1803
**An Art Nouveau
 Fonderies De Sougland
 Asne No 092 fireplace**
 £500-700



▲ 1518
**18k channel set diamond
 half hoop ring**
 £1800-2500



▲ 1525
Diamond solitaire ring
 Approx 1.83 carats
 £2500-4000

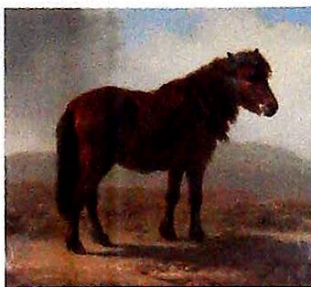
Bourne Collective Sale



▲ 1816
Victorian walnut
Canterbury
57cm wide
£150-250



▲ 1832
Ten 19thC style ash and
elm Windsor chairs
£300-500



▲ 1954
Eugene Verboeckhoven
(1798-1881)
Shetland pony, oil on canvas,
signed sealed and dated 1870,
43cm x 54cm
£1000-1500



▲ 1976
Robert A. Gardner
(1850-1926)
Eastgate, Bourne, oil on
canvas, signed and dated 1900,
41cm x 66cm
£100-200
Plus over 20 other works by
this Lincolnshire (Bourne)
artist.



▲ 1831
Early 19thC flamed
mahogany 8-day longcase
clock
235cm high
£400-600



▲ 1860
18thC oak and elm dresser base
133cm wide, 80cm high, 49cm deep
£250-400



▲ 1988
B Coclery
Interior scene, oil on panel,
signed and dated 1777,
34cm x 43cm
£300-500



▲ 1861
16thC oak boarded chest
70cm x 50cm x 37cm
£200-300

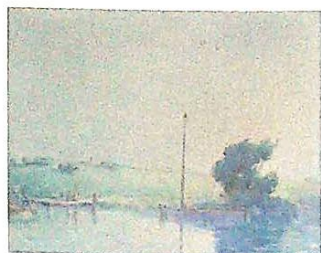


▲ 1972
Cecil Thomas Hodgkinson
(1895-1979)
Pheasants in flight,
watercolour, signed
22.5cm x 30cm
£80-120
Plus other works by this
Lincolnshire (Bourne) artist.

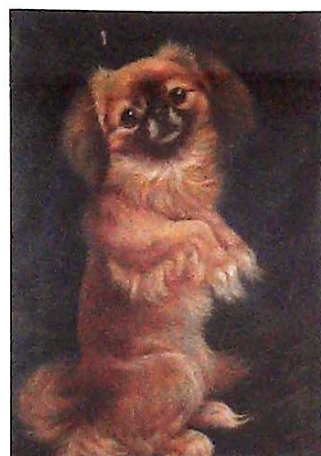


▲ 1989
Charles Brias.
Flemish market, oil on panel,
signed and dated 1860,
21cm x 18cm
£250-400

Full catalogue online at goldingyoung.com



▲ 1992
Harry DeMaine
(1880-1952)
River scene, watercolour,
signed and dated,
21cm x 27cm
£150-250



▲ 1995
Louis Wain (1860-1939)
Study of a long haired pug,
oil on canvas, signed,
49cm x 34cm
£800-1200



▲ 2000
Wilfrid Rene Wood
(1888-1976)
St Mary's Hill Stamford,
watercolour, signed,
25cm x 33cm
£800-1200
Plus other works and
sketchbooks of this
Lincolnshire (Stamford) artist.
See lots; 1996, 1997, 1998, 1999,
3829 & 3830

GOLDING YOUNG
EST
1864

Celebrating
150
YEARS

Lot 30
William Dunn Knox (1880-1945)
Australian landscape, oil, 51cm x 61.5cm
£1200-1500

Bourne Collective Sale

17th September 2014



Thomas Colman Dibdin
(1810-1893) Italian Landscapes,
watercolour, pair, 24cm x 35cm
£300-400



Lot 105
Heuer for Audi Sport
£800-1000



Lot 135
The Beatles. Provenance: The
property of Mrs. Janet Provan who
was one of the three competition
Today winners

Auction:
Wednesday 17th September 10am

Viewing:
Tuesday 16th September 10am to 4pm
and Sale day from 8:30am

The Bourne
Auction Rooms
Spalding Road, Bourne,
Lincolnshire PE10 9LE

E: bourne@goldingyoung.com
T: +44 (0) 1778 422686

**CHARTERED AUCTIONEERS & VALUERS
ARTS & ANTIQUES SURVEYORS**



goldingyoung.com

Grantham Asian Art Sale

Craig Bewick BSc. FNAVA
Colin Young MRICS



▲ 2001
Gyokuzan. Japanese Ivory okimono figure
Meiji period, 34.5cm high
£2000-3000



▲ 2004
19thC Chinese carved ivory tusk
35cm high
£8000-12000



▲ 2002
Ten. Japanese carved ivory okimono figure
Meiji period, 47.5cm high
£2000-3000



▲ 2010
Japanese hardwood shodhana
Meiji period, 108cm wide, 40cm deep, 166cm high
£800-1200



▲ 2011
Japanese carved ivory okimono group
Meiji period, signed, 11.5cm wide
£500-800



▲ 2029
Chinese figure of Hotei
late Qing dynasty
22cm high
£500-800



▲ 2089
Chinese stained and painted pine marriage cabinet
139cm wide, 53cm deep, 196cm high
£200-300



▲ 2067
Ispahan Isfahan rug
213cm x 135cm
£200-300



▲ 2030
Late 18thC Chinese figure of Quan Yin
28cm high
£300-500



▲ 2094
Quartetto of Chinese hardwood tables
36cm x 50.5cm down
£400-600

Grantham Collective Sale

Craig Bewick BSc. FNAVA
Andrew Doubleday MNAVA



▲ 2108
Doulton Lambeth faience charger
By Linnie Watt,
40cm diameter.
Provenance: A gift from James de Rothschild, Waddesdon Manor, to the vendor's grandfather
£1500-2000



▲ 2111
19thC Sevres vase and stand
115cm high.
£1500-2000



▲ 2110
18thC tin glazed maiolica jar
Probably Sicilian, 44cm high.
£100-150



▲ 2125
A Mintons porcelain circular plaque
By James Edwin Dean, 25cm diameter. Part of a collection of works in this sale.



▲ 2168
A Victorian human half skeleton.
59cm wide
£600-800



▲ 2170
An early 19thC mahogany apothecary box
19cm wide, 17cm deep,
21cm high.
£400-600



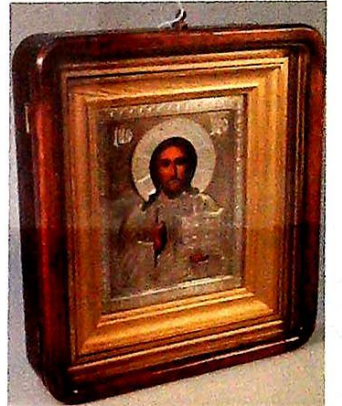
▲ 2176
WWI and WWII medals
Awarded to 34980 A.B.M.B.
H.DE B.K MLLER, 14-F.A.B
A.I.F, later a Sub Commander.
£100-200



▲ 2178
A George III tortoiseshell and ivory tea caddy
15cm high
£800-1200



▲ 2179
A mid 18thC French mounted kingwood boite voyager
33cm wide,
17cm high.
£1200-1500



▲ 2193
19thC St. Petersburg Russian icon
Showing Christ Pantocrator,
30cm high.
£700-900



▲ 2194
19thC fusee bracket clock
22cm wide, 15cm deep,
36cm high.
£600-800

Grantham Collective Sale



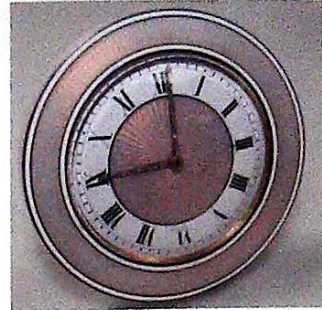
▲ 2195
19thC French Boule
mantel clock
signed CHAS SHAPLAND,
Paris, 40cm high.
£150-250



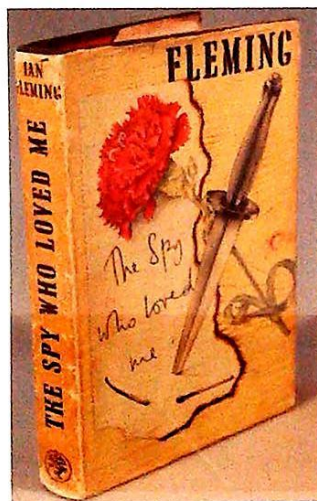
▲ 2235
Early 20thC taxidermy
armadillo
30cm wide
£50-80



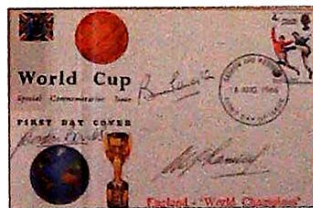
▲ 2301
19thC Denby Bournes
stoneware reform flask
20.5cm high.
£200-400



▲ 2501
Early 20thC basse-taille
enamel desk clock
By Cartier, 8.5cm diameter
£1800-2500



▲ 2240
Fleming, Ian. The Spy
Who Loved Me
1st edition
£100-150



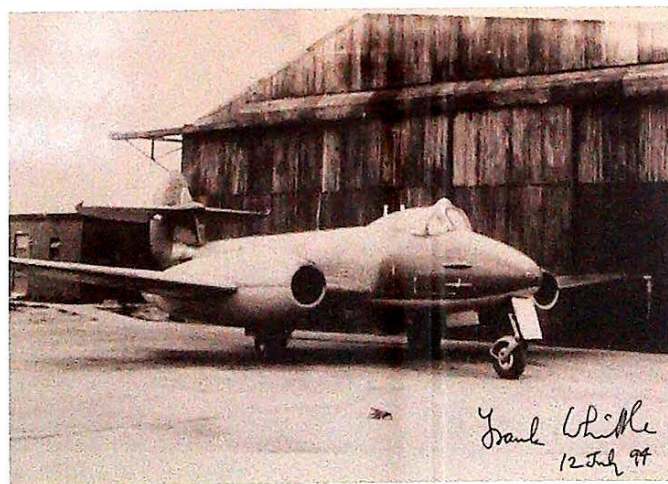
▲ 2316
World Cup 1966 FDC
Signed by Sir Alf Ramsey, etc.
11cm x 17cm
£100-200



▲ 2512
George III silver sugar
casters
By William and John Deane,
London 1763 and 1764, 24oz..
22.5cm high
£400-600



▲ 2200
19thC French carved ivory
figure
37cm high plus socle
£3000-5000



▲ 2258
Air Commodore Sir Frank Whittle OM, KBE, CB
A signed mono photograph of a Gloster Meteor FI jet plane.
From over 50 Whittle lots included in this sale.



▲ 2515
George III silver salt
By Peter and Jonathan
Bateman, London 1790, 10cm
wide
£600-800



▲ 2530
18ct gold solitaire
diamond ring
Approx 1ct.
£1000-1500



▲ 2556
18ct gold and platinum
gentleman's diamond
solitaire ring
£800-1200



▲ 2532
Butterscotch amber
necklace
58cm long, 90g all in.
£200-400



▲ 2563
18ct gold three stone
diamond ring
2.6g all in
£200-300



▲ 2551
18ct white gold half
eternity diamond ring
6.2g all in
£600-800



▲ 2554
18ct gold diamond and
sapphire ring
Approx 1ct of diamonds
£1200-1800



▲ 2753
19thC yew and elm low
back Windsor chair
By John Amos, of Little
Gonerby, Grantham
(1814-1842)
£150-250



▲ 2760
19thC walnut centre table
106cm wide 60cm high
£600-800



▲ 2750
18th/19thC Dutch Walnut
bombe cabinet
236cm high
£2500-4000



▲ 2761
Sheraton Revival cabinet
bookcase
on stand, 49cm wide, 43cm
deep, 177cm high
£150-250



▲ 2763
Early 19thC mahogany
secretaire cupboard
Possibly Gillows, 112cm wide,
60cm deep, 203cm high
£150-300

Grantham Collective Sale



▲ 2764
19thC flamed mahogany
bow front chest
110cm wide, 56cm deep,
121cm high
£200-300



▲ 2792
Victorian Coalbrookdale
cast iron hall stand
106cm wide, 49cm deep,
220cm high
£700-900



▲ 2811
Victorian mahogany buffet
sideboard
122cm wide, 44cm deep,
137cm high
£300-500



▲ 2848
Victorian mahogany
domestic post box
28cm wide, 16cm deep, 34cm
high
£100-150



▲ 2788
Isle of Man inlaid oak
dumbwaiter
50cm wide, 50cm deep,
73cm high
£200-300



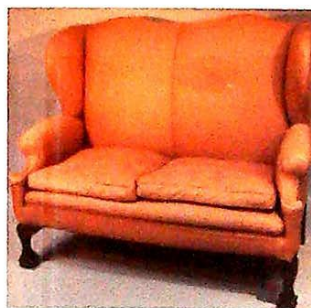
▲ 2812
Victorian mahogany scroll
armchair
97cm high
£200-300



▲ 2851
George II oak kneehole
desk
79cm wide, 54cm deep,
74cm high
£300-500



▲ 2799
19thC mahogany
marquetry and ormolu
vitrine
63cm wide, 41cm deep,
63cm high
£400-600



▲ 2840
Early 20thC wing back
settee
150cm wide, 80cm deep,
127cm high
£150-200



▲ 2861
George III mahogany fire screen
155cm high
£100-150



▲ 2864
Edwardian mahogany games table
By Albert Barker Limited
£200-300



▲ 2953
Walter J. Watson (b.1879)
Near Beddgelert, North Wales,
oil on canvas, signed and
dated 1911, 41cm x 67cm
£400-600



▲ 2958
Beryl Cook (1926-2008)
Print #181/850, 38cm x 51cm
£200-300



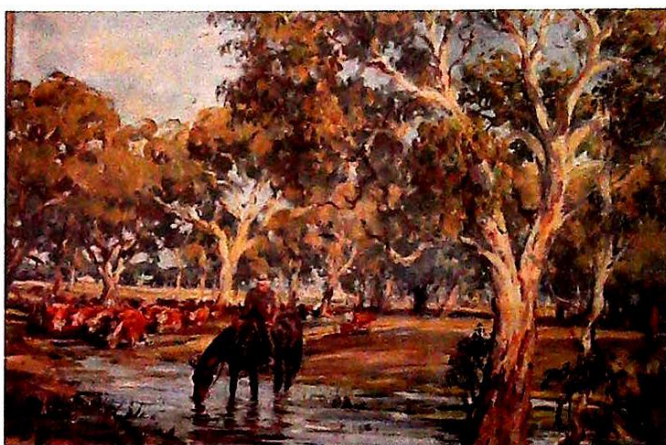
▲ 2964
Elizabeth Sharpe SEA
(20thC)
Barrowby Hunt, oil on canvas,
signed and dated 1982,
51cm x 79cm
£100-150



▲ 2992
Baxter Morgan
(fl.1905-1932)
Shepherd watching his flock
before trees and buildings,
watercolour, signed,
31.5cm x 49.5cm
*A gift from James de Rothschild,
Waddesdon Manor, to the
vendor's grandfather*
£300-500



▲ 2997
Lionel Edwards (1878-
1966)
Stags on a moor, gouache,
signed and dated 1922, 24.5cm
x 34cm
£200-300



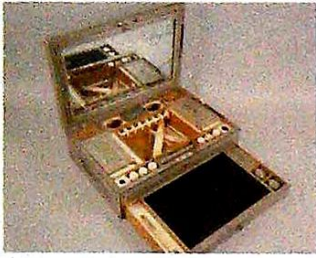
▲ 2998
Cathleen Elizabeth Edkins (1922-2009)
An Australian cattle rancher watching over his horse and cattle, oil
on canvas, signed and dated verso 1969, 43cm x 51cm
The property of a Titled Lady
£1000-1500



▲ 3000
John Frederick Herring Senior (1795-1865)
A study of three horses feeding and with two fancy pigeons, oil on
canvas, inscribed No.47 and entitled JFH verso, and with paper label
and red wax seal to the stretcher frame, 51cm x 77cm
The property of a Titled Lady
£7000-10000

Lincoln Collective Sale

John Leatt ASFAV
William Gregory MRICS
Kirsty Young MNAVA



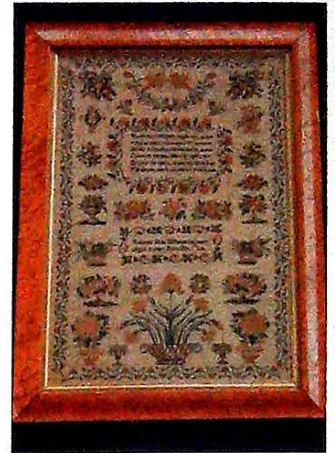
▲ 3001
19thC Indian Vizagapatam
dressing case
44cm wide
£1500-2000



▲ 3006
Laupue (19thC French)
Porcelain cartouche shape
box
10cm wide
£250-350



▲ 3020
Period American bell
metal National Cash
Register
44cm wide
£500-800



▲ 3040
19thC sampler
By Rosanna Jane Warner, aged
13 years, born 1836
44cm x 30cm
£200-300



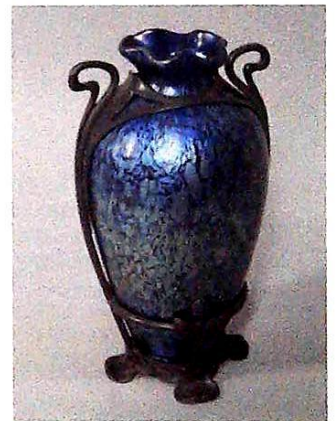
▲ 3002
19thC copper and iron
pans
Provenance: Elveden Hall
£1000-1500



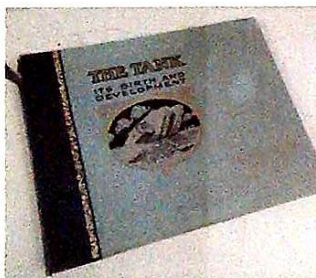
▲ 3014
Victorian cranberry glass
oil lamp
One of a selection in the sale.
£150-250



▲ 3035
The Governor by Jennings
69cm high
£300-400



▲ 3072
Loetz glass and pewter
vase
23.5cm high
£300-500



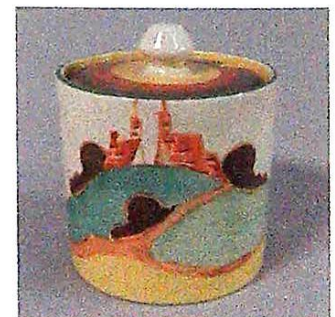
▲ 3003
The Tank, Its Birth &
Development
£200-300



▲ 3005
Marius Hammer of
Norway
Plique-a-jour enamel box,
6cm diameter
£400-600



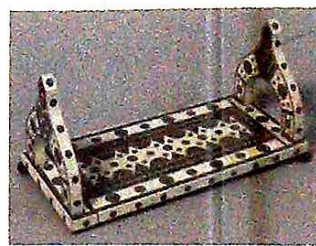
▲ 3036
Last of the Summer Wine
Marina's Phoenix bicycle,
signed by cast and crew
£500-700



▲ 3085
Clarice Cliff
Newport Pottery Secrets
pattern preserve pot,
8cm diameter
£200-300



▲ 3104
19thC Irish Killarney
ware yew and marquetry
writing box
33cm wide
£100-150



▲ 3219
19thC Anglo-Indian
Vizagapatam adjustable
book rack
32cm wide
£300-400



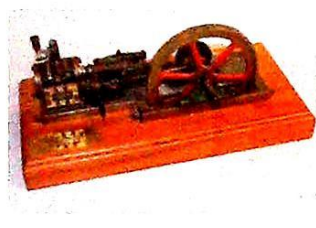
▲ 3275
After Hondius (17thC)
Lincoln & Lincolnshire
40.5cm x 55cm
£150-250



▲ 3332.
John Safley, Edinburgh.
Early 19thC 8-day
longcase clock
211 cm high
£1500-2000



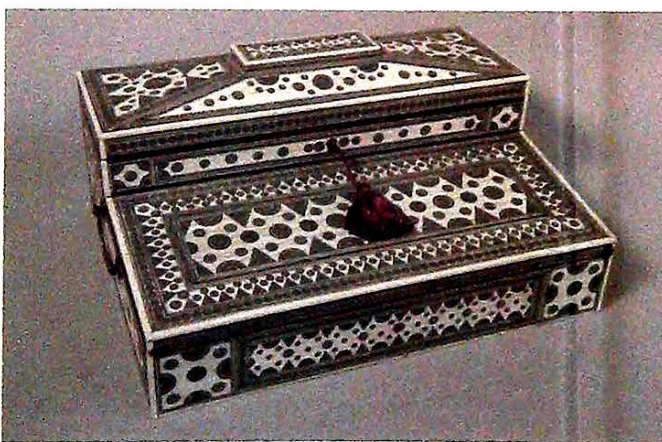
▲ 3188
19thC Indian Vizagapatam
adjustable sandalwood
book rack
30cm min
£200-300



▲ 3230
1" scale Robey horizontal
steam engine
39cm wide
£300-600



▲ 3331
A. Matthews, Ely Early
19thC 8-day longcase
clock
217cm high
£500-800



▲ 3208
19thC Indian Vizagapatam ivory writing box
40cm wide
£1200-1500



▲ 3337
British Pitometer
Company Limited water
flow meter
185cm x 85cm
£600-800

Lincoln Collective Sale



▲ 3340
Gallonier A Nante (19thC French)
Bronze and marble mantel clock, 52cm high
£800-1200



▲ 3347
19thC French brass, copper and mahogany nautical desk stand
52cm wide
£250-350



▲ 3360
19thC French secretaire chest
120cm wide
£300-400



▲ 3378
William IV rosewood breakfast table
122cm diameter
£1000-1500



▲ 3341
George III bracket clock
8-day chiming fusee, c.1760.
49cm high overall
£1200-1800



▲ 3348
Saint Finbarr, shipbuilders scale model
In glazed mahogany case with stand. 138cm high x 161cm wide
£250-350



▲ 3382
Early 20thC French Kingwood bedside cabinets
39cm wide
£150-250



▲ 3392
Suite of 19thC Italian cream painted and parcel gilt furniture
Comprising sofa, two armchairs, a pair of salon chairs, a console table with mirror and a centre table.
£1500-2000



▲ 3358
George III mahogany bow fronted sideboard
153cm wide
£900-1200



▲ 3361
18thC Bombe mahogany commode
125cm wide
Provenance: The estate of Dick Ratcliffe
£1500-2000



▲ 3394
Early 19thC rosewood and satinwood cross banded cylinder bureau cabinet
 175cm high, 92cm wide
Provenance: The estate of Dick Ratcliffe
 £1500-1800



▲ 3459
Victorian ebony and ivory bagpipes
 £350-450



▲ 3468
Butler (ASG).
The Architecture Of Sir Edwin Lutyens
 £225-275



▲ 3480
19thC Royal Artillery military helmet
 28cm high
 £450-550



▲ 3487
Late 16thC / early 17thC white metal and silvered brass pocket watch case
 Possibly German,
 6cm diameter.
 £1500-2000



▲ 3489
Edwardian silver oil lamp
 by Mappin & Webb,
 Sheffield 1903
 63cm high overall
 £800-1200



▲ 3421
William IV rosewood chiffonier by T & G Seddon,
 184cm wide
 £800-1200



▲ 3495
George II silver tankard,
 possibly James Phipps,
 London 1748
 c.42oz, 25cm high.
 £2000-2500

Lincoln Collective Sale



▲ 3496
George III silver basket
by Edward Aldridge,
London 1760
c37oz, 34cm wide
£1000-1500



▲ 3504
18ct white gold, emerald
and diamond half hoop
ring
£250-350



▲ 3515
18ct gold aquamarine and
diamond ring
£400-600



▲ 3524
Rolex Oyster Perpetual
stainless steel wrist watch
£600-800



▲ 3498
Victorian silver tankard
by John Newton Mappin
& George Webb, London
1873
'The Lincoln & District
Allotment Holders
Association',
55oz, 28cm high
£1000-1500



▲ 3506
Victorian turquoise and
diamond star brooch/
pendant
3.4cm wide
£150-250.



▲ 3520
Greta Garbo copyrighted 18K pearl cluster earrings
£400-600



▲ 3513
18ct gold topaz and
diamond ring
£250-350



▲ 3521
Hidalgo ladybird earrings
Marked 750
£400-600



▲ 3501
Diamond solitaire ring
Approx. 3.03 carats
£5000-8000

Lincoln Art Sale

William Gregory MRICS
Colin Young MRICS



▲ 3701
Vincent Haddelsey
(1934-2010)
Polo Match, Belvoir Castle, oil on canvas, monogrammed and signed verso, 64cm x 91cm
£1200-1800



▲ 3704
Vincent Haddelsey
(1934-2010)
The Hunt, oil on canvas, monogrammed, 82.5 x 79cm
£1000-1500



▲ 3706
Vincent Haddelsey
(1934-2010)
Les Grandes Ecuries de Chantilly, artist signed coloured print 10/36, 46.5cm x 63cm
£100-200



▲ 3710
Vincent Haddelsey
(1934-2010)
The Hunt over the Fields, artist signed proof coloured print, 46cm x 65.5cm
£100-200



▲ 3702
Vincent Haddelsey
(1934-2010)
Village of Old Bollingbrooke, oil on canvas, monogrammed, signed, titled and dated 1970 verso, 46 x 59.5cm
£800-1200



▲ 3705
Vincent Haddelsey
(1934-2010)
In the Paddock, artist signed coloured print 8/36, 38cm x 76cm
£100-200



▲ 3707
Vincent Haddelsey
(1934-2010)
Mexican Riders, artist signed coloured print 9/13, 30cm x 46cm
£50-80



▲ 3711
Vincent Haddelsey
(1934-2010)
Polo Match, artist signed proof coloured print, 38cm x 57.5cm
£100-200



▲ 3703
Vincent Haddelsey (1934-2010)
Bougemont House West Virginia, oil on canvas, monogrammed, signed, titled, and dated 1987 verso, 45 x 64cm.
£800-1200



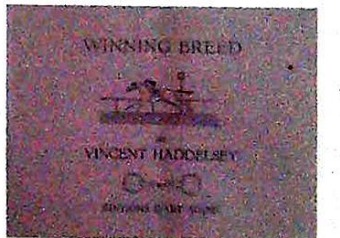
▲ 3708
Vincent Haddelsey
(1934-2010)
Canadian Rodeo, artist signed coloured print, 30cm x 46cm
£50-80



▲ 3712
Vincent Haddelsey
(1934-2010)
Ampleforth 1985, cricket match, artist signed coloured print 14/150, 26cm x 33.5cm
£80-120



▲ 3709
Vincent Haddelsey
(1934-2010)
French Hunt, artist signed coloured print 7/36, 40cm x 76cm
£100-200



▲ 3713
Vincent Haddelsey
(1934-2010)
Winning Breed, boxed edition of 14 artist signed prints, numbered 141
£200-400

Lincoln Art Sale



▲ 3714
Vincent Haddelsey
 (1934-2010)
 Tattershall Castle, steam boat,
 artist signed coloured print
 7.25, 19cm x 29.5cm
 £50-80



▲ 3718
***20thC British School**
 Boats at Dunwich,
 watercolour, set of five, titled
 and dated 1983, 16cm x 23cm
 (5)
 £50-100



▲ 3722
***Frederick Gore**
 (1913-2009)
 The River, a street in Hydra
 Greece, oil on canvas, signed
 and titled verso, 60cm x 50cm
 £2000-3000



▲ 3725
***J Robertson (20thC)**
 Street Performers II, oil, signed
 and dated (19)92, 73cm x 52cm
 £100-200



▲ 3715
Vincent Haddelsey
 (1934-2010)
 The Wedding, artist signed
 print 9/25, 29cm x 33cm
 £50-80



▲ 3719
***Sonia Robinson (b.1927)**
 Two boat Falmouth, oil on
 board, initialled and titled
 verso, 39cm x 54cm
 £50-100



▲ 3723
***Tabitha Salmon (b.1956)**
 Moscow rush hour on the
 metro, artist signed coloured
 proof print, 56cm x 70cm
 £50-80



▲ 3726
***Glen Sujo (b.1952)**
 In Waiting - study for Easter,
 oil on canvas, 109cm x 109cm
 £100-200



▲ 3716
***Jack Hughes (20thC).**
 St Cyr Cadet, oil on canvas,
 49cm x 72.5cm
 £50-100



▲ 3720
***Douglas MacDiamid**
 (b.1922)
 Flower in a vase, oil on canvas,
 signed and dated (19)61,
 45.5cm x 64.5cm
 £300-500



▲ 3724
***Lance Ribiero (1933-2010)**
 Strange Town, oil, signed and
 dated (19)62, 91cm x 78cm
 £200-400



▲ 3727
***Glen Sujo (b.1952)**
 In Donatello's Workshop,
 pastel and charcoal, titled
 verso, 55cm x 75cm
 £50-100



▲ 3717
***Cyril Hamersma**
 (1919-1994)
 Bananas, oil, titled verso,
 58cm x 63cm
 £50-100



▲ 3721
***Christine McKechnie**
 (20thC)
 Suffolk Field, needlework
 collage, 83cm x 62cm
 £50-100



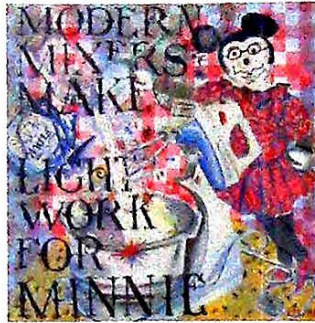
▲ 3728
***Pamela Leung (20thC)**
Tiger, pottery sculpture,
35cm high
£50-100



▲ 3729
***Roy Oliver (20thC)**
Stoneware vase, signed, 38cm
high, Julian Readell (20thC),
Satchel, pottery sculpture,
signed and dated 1982, 22cm
wide and five studio pots (7)
£50-100



▲ 3730
***Ted Roccroft (1918-1991)**
Newborn Piglet, wooden
sculpture, 23cm x 46cm
£50-100



▲ 3731
***Victoria Brill (b.1958)**
Modern Mixers Make Light
Work for Minnie, oil on board,
signed, titled and dated 1988,
verso, label verso,
60cm x 60cm
£50-80



▲ 3732
***Victoria Brill (b.1958)**
Bedistorama, oil on canvas,
signed and dated (19)83,
180cm x 240cm
£150-250



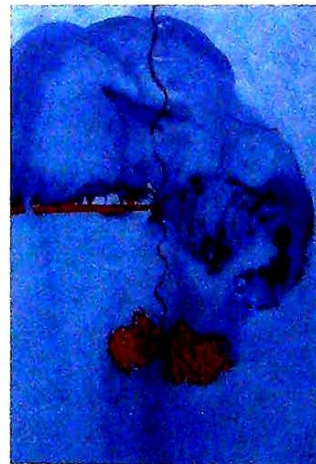
▲ 3733
***Michael Hadlow (20thC)**
Advancing Red Landscape,
oil, signed and dated (19)61?,
90.5cm x 70cm
£50-100



▲ 3734
***Thomas Paul Littlehales (b.1945)**
Robin Hood, The Picture, oil
on canvas, signed and dated
(19)84, 122cm x 137cm
£80-150



▲ 3735
***Gerald Parkinson (b.1926)**
Flowers in a white vase, oil on
board, signed, titled and dated
1960 verso, 60cm x 80cm
£80-120



▲ 3736
***Deanna Jackson (20thC)**
Sky Cat, watercolour, signed,
label verso Space Studios,
Deptford High Street, London,
63cm x 42.5cm
£50-80



▲ 3737
***Mary Hackney (20thC)**
Encore, pastel, signed and
dated (19)85, 68cm x 46cm
£50-80



▲ 3738
***Leonard Hunting (b.1926)**
Village on a hill, Tourrettes
South of France, oil on canvas,
signed and titled verso,
45cm x 54cm
£50-80



▲ 3739
***Gwyn Roberts (b.1953)**
Still life with fruit and wine,
oil on canvas, titled verso,
33cm x 25cm
£50-80

Lincoln Art Sale



▲ 3740
*Christine McKechnie (b.1943)
Suffolk Field, collage, signed and titled verso, 37cm x 36cm
£50-80



▲ 3741
*Nick Arnfield (1961-1999)
Still life with clock, watercolour, initialled and dated (19)91, 58.5cm x 46cm
£50-80



▲ 3742
*Mary Jo Major (20thC)
La Chambrie a Paris, artist signed coloured etching 12/150, 27.5cm x 35cm
£50-80



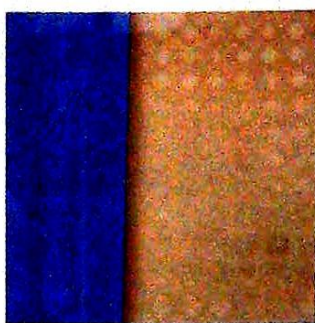
▲ 3743
*Leon Vilaincour (b.1923)
Pearl Wall 2, watercolour, titled verso, 58cm x 39cm, bears label Knoedler Gallery London, 58cm x 39cm
£50-80



▲ 3744
*Brian Robb (1913-1979)
The Gaffers, oil, signed and titled verso, 40cm x 29cm
£80-120



▲ 3745
*Brenda Perkins (20thC)
Windmill, oil on board, titled verso, bears label Redfearn Gallery, London, 61cm x 220cm
£50-80



▲ 3746
*B.C. (20thC)
Repeat Crosses, multi media, initialled and dated August 1978, verso, 220cm x 220cm
£50-100



▲ 3747
*Douglas Abercrombie (b.1934)
Orangerie, oil on canvas, signed and titled verso, 101cm x 110cm
£100-200



▲ 3748
*Moore Charrington (20thC)
Abstract, multi media, signed verso, 181cm x 125.5cm
£80-120



▲ 3749
*John Bransdon (b.1933)
Dunes and Porteymon Bay, artist signed print 23/150, 47.5cm x 62cm
£30-50



▲ 3750
*Helen S Johnson (1888-1931)
High Tide, oil on canvas, signed and titled verso, 63.5cm x 76cm
£150-250



▲ 3751
*David Evans (20thC)
Suffolk Landscape, watercolour, signed, 66cm x 106.5cm
£50-100



▲ 3752
*David Evans (20thC)
Ancient Mariner, watercolour, signed, 72cm x 66.5cm
£50-100



▲ 3753
***Jacquie Turner (20thC)**
Landscape - stormy, oil on board, titled verso, 68cm x 68cm
£50-100



▲ 3757
***John Drawbridge (1930-2005)**
Blue abstract, oil on canvas, titled and dated 1962 verso, 75cm x 60cm
£200-300



▲ 3760
***Tabitha Salmon (b.1956)**
Soldiers on the escalator
Moscow Metro, artist signed
coloured proof print,
81cm x 59cm
£50-80



▲ 3762
***David G Measures (20thC)**
Butterflies, Halam Reservoir,
oil on canvas, signed, titled
and dated 1984, 30cm x 25cm
£50-80



▲ 3754
***Kenneth Draper (b.1944)**
Division, mixed media, signed,
titled and dated (19)79,
84cm x 118cm
£100-200



▲ 3758
***John Yeadon (b.1948)**
Portrait of a dead witch, oil on
canvas, titled, 214cm x 27.5cm
£100-200



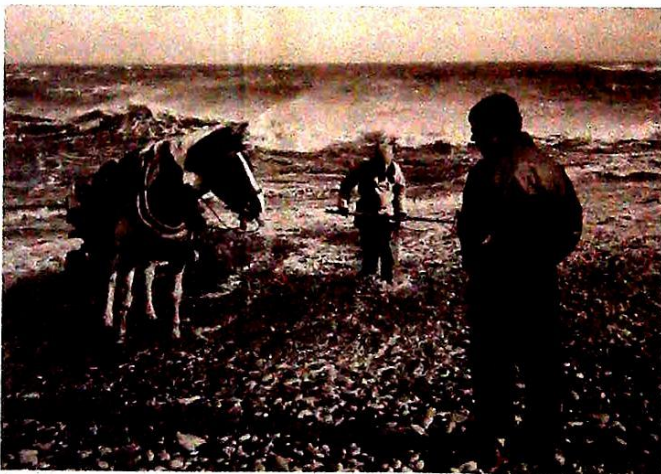
▲ 3761
***George Manchester (1922-1996)**
Palace Pier Broughton, oil on
board, initialled and dated
(19)55, 32cm x 41cm
£80-120



▲ 3763
***Adrian Ryan (1920-1998)**
Old Boulogne, watercolour,
inscribed, 19cm x 27cm, bears
label The Redfern Gallery,
London
£50-80



▲ 3755
***Shirley Hopes (20thC)**
Abstract floral still life,
watercolour, signed,
49cm x 62cm, and another by
the same artist (2)
£50-100



▲ 3759
***Chris Killip (b.1946)**
Seacoal Beach Lynemouth, photograph, titled and dated 1984, verso,
23cm x 30.5cm
£500-800

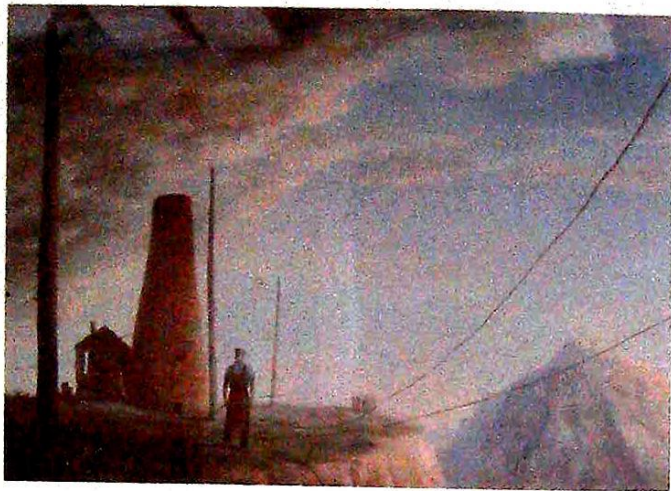


▲ 3764
***20thC European School**
Six figures in street scene,
oil on canvas, 60cm x 45cm
£80-120

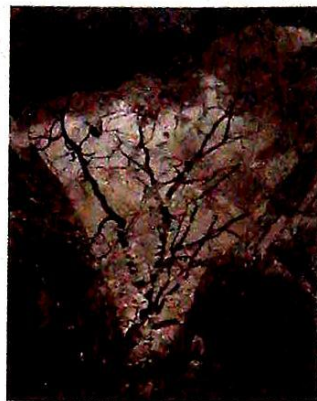


▲ 3756
***Margaret Howitt (20thC)**
Maria, photograph, titled and
dated 1982 verso
£50-80

Lincoln Art Sale



▲ 3765
***Felix Kelly (1914-1994)**
 The Kiln, oil, signed and dated (19)50, 37cm x 50cm
 £1500-2500



▲ 3770
***John Blakemore (b.1936)**
 Afon Gamlan Wales, photograph, signed and dated 1977, 27cm x 21cm
 £200-300



▲ 3772
***Eileen Mayo (1906-1994)**
 Cat in the Sun, artist signed print 4/50, 33cm x 27cm
 £80-120



▲ 3766
***John Paddy Carstairs (1916-1970).**
 Winter on a river, oil, signed, 39.5cm x 49.5cm
 £150-250



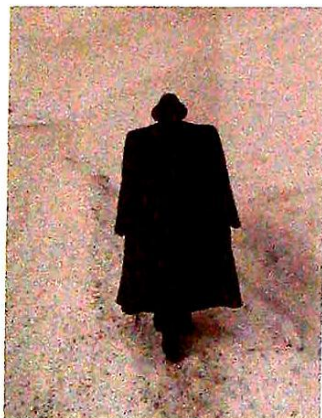
▲ 3768
***Bert Hardy (1913-1995)**
 A day in the life of a Liverpool Carter photograph, signed, 27cm 37cm
 £100-200



▲ 3771
***Frank Creber (b.1959)**
 Stale bread, oil on canvas, Triptych, signed and titled verso, 183cm x 96cm
 £200-400



▲ 3773
***Anna Pugh (b.1938)**
 Fig Tapestry, artist signed print 96.200, 48.5cm x 25cm, Sheila Horton (20thC), The Railway Cat, artist signed proof print, 27.5cm x 15.5cm (2)
 £50-80



▲ 3767
***Paul Hill (b.1941)**
 Man in snow, photograph, signed, titled verso and dated (19)74, 34cm x 25.5cm
 £100-200



▲ 3769
***Lee Millar (20thC)**
 Rounding Up, photograph, bears label The Photographer's Gallery, London, 23cm x 35cm
 £50-80



▲ 3774
***Anna Pugh (b.1938)**
 Camarque I, artist signed etching 27/150, 30cm x 27cm, Mary Ford (b.1944), sailing boats, artist signed print 18/150, 19cm x 48cm (2)
 £50-80



▲ 3776
***Mary Greaney (20thC)**
 Cat People, artist signed print, dated (19)86, 33cm x 19cm, Rosalind Whitman (20thC), Sudanese Village, artist signed proof print, 64cm x 48cm (2)
 £50-80



▲ 3779
***Thelma Chambers (20thC)**
 Breakfast, artist signed print 8/14, dated (19)80, 43cm x 62cm and four other works by different artists (5)
 £50-100



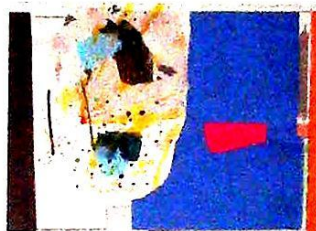
▲ 3782
Michael Christopher Corkrey (b.1962)
 Claudia II, oil on canvas, 160cm x 131.5cm.
Provenance: Royal Academy of Arts, Royal Academy Schools 1989, Exhibition of Work by final year students
 £300-500



▲ 3775
***Toshi Yoshida (1911-1995)**
 Urayasu, woodblock print, signed and titled, 40cm x 27cm
 £50-80



▲ 3777
***Jack Crew (20thC)**
 Murdered man being accepted into heaven, oil on canvas, 91cm x 91cm
 £50-80



▲ 3780
***Alistair Grant (1925-1997)**
 Bateau, artist signed print 14/20, 56.5cm x 66.5cm, and two other works by different artists (3)
 £50-80



▲ 3781
***20thC British School**
 Circus horse, pastel, 33.5cm x 52cm, and two other works by different artists (3)
 £50-80



▲ 3778
***Peter Oliver (b.1927)**
 Three men, oil on board, titled verso, 76.5cm x 51cm
 £200-400

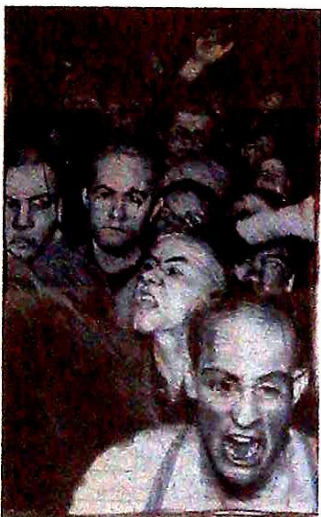


▲ 3783
Steve Johnston (b.1956)
 Man reading, oil and acrylic, signed and dated 2004 verso, 120cm x 60cm
 £1200-1600

Lincoln Art Sale



▲ 3784
Laurence Wallace (20thC)
 Lamp post, artist signed print
 dated July (19)80, 73cm x 52cm
 £50-80



▲ 3785
Anne Magill (b.1962)
 'Brute Force' or 'Energy',
 pastel and charcoal, signed,
 82cm x 50cm.
 £800-1200

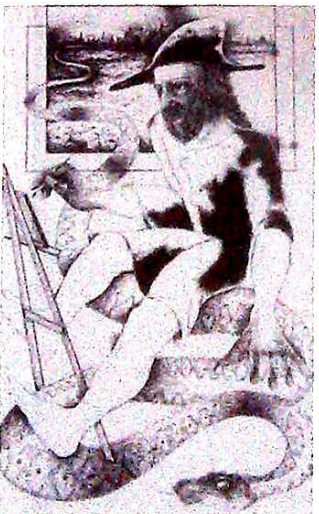
3786 - SPARE LOT



▲ 3787
Elizabeth Finn (b.1933)
 Morlaix, gouache, signed and
 titled verso, 30cm x 20cm
 £400-600



▲ 3788
Elizabeth Finn (b.1933)
 Les Pecheurs, Le Crottoy,
 gouache, signed and titled
 verso, 23cm x 34cm
 £400-600



▲ 3789
S Seurugih (20thC)
 Artist and snake, ink drawing,
 signed, 52cm x 31.5cm
 £80-120



▲ 3790
Wharton Lang (20thC)
 Diving tern, wood sculpture,
 signed, 42cm high
 £300-500



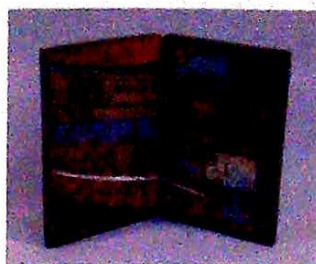
▲ 3791
Kathryn Thomas (20thC)
 Daylight, artist signed print
 6/195, 45cm x 70cm
 £50-80



▲ 3792
Kieran Crowley (20thC)
 Dressed for the night, oil on
 board, 60cm x 79cm
 £200-300



▲ 3793
Evangeline Long (20thC)
 Ginimac III, enamel - Diptych,
 signed, titled and dated 1991,
 30.5cm x 41cm
 £50-80



▲ 3794
Evangeline Long (20thC)
 Ginimac III, enamel - Diptych,
 signed, titled and dated 1991,
 30.5cm x 41cm
 £50-80



▲ 3795
Evangeline Long (20thC)
 Barn, enamel - Diptych,
 signed and titled, 30.5cm x
 48cm and another panel titled
 underneath the arch
 £50-80



▲ 3796
Larry Bigelow (b.1925)
 Abstract female form, gouache
 on paper, 36.5cm x 27.5cm
 £100-200



▲ 3797
Peter Lightfoot (b.1932)
 Fictitious Planets - Blue Moon, oil on board, signed, titled and dated 1970 verso, 44cm x 103cm
 £600-800



▲ 3802
Roger De La Corbiere (1893-1974)
 St Pierre Moreham, oil on canvas, signed and dated 1955, 45cm x 53cm
 £200-300



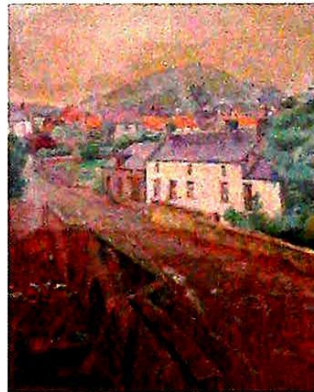
▲ 3805
William Francis Vere Kebbel (1888-1963)
 Portrait of a young woman, oil on canvas, signed, 74.5cm x 61cm
 £400-600



▲ 3798
Peter Godfrey Coker (1926-2004)
 Leadgate Cumberland, watercolour, signed, 37cm x 24cm
 £500-800



▲ 3800
Gerhard Lukas-Larsen (1911-1965)
 Evening flight, oil on canvas, signed and titled verso, 78.5cm x 59.5cm
 £100-200



▲ 3803
Robert Henry Alison Ross (act. 1898-1940)
 Village landscape, oil on canvas, signed, 36.5cm x 30cm
 £80-120



▲ 3806
George Armfield (1808-1893)
 Stable interior with horse and three dogs, oil on canvas, 39.5cm x 55cm
 £300-500



▲ 3799
Adrian Dingle (1911-1975)
 Cod boats and Gypsum, Dingwall, Cape Breton Island, oil on board, signed and titled verso, 22cm x 29cm
 £200-300



▲ 3801
Roger De La Corbiere (1893-1974)
 Perros Guirec, oil on canvas, signed and dated 1953, 51cm x 44cm
 £200-300



▲ 3804
Maurice F Perrot (1892-?)
 Church at Harbour Entrance, oil on canvas, signed, 31.5cm x 39.5cm
 £50-100



▲ 3807
19thC Dutch Scene, winter river scene with figures,
 oil on canvas, 67.5cm x 99cm
 £500-800

Lincoln Art Sale



▲ 3808
Edmund John Niemann
 (1813-1876)
 River landscape, oil on canvas,
 signed, 18.5cm x 28.5cm
 £300-500



▲ 3812
19thC Italian School
 Isola Di Nisida with masted
 ships in harbour, watercolour,
 titled, 39.5cm x 60.5cm
 £400-600



▲ 3816
19thC Dutch School
 Winter riverscape with figures,
 oil on panel, bears signature
 Charles Leickert,
 22.5cm x 29cm
 £150-250



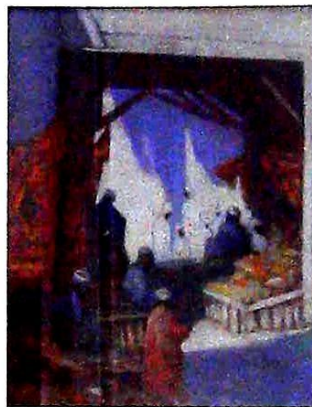
▲ 3819
James M Mackay
 (19th/20thC)
 Fishing in a highland river, oil
 on canvas, signed and dated
 1899, 50cm x 59cm
 £200-400



▲ 3809
Edmund John Niemann
 (1813-1876)
 Fisherman at waters edge, oil
 on canvas, signed,
 19cm x 28.5cm
 £300-500



▲ 3813
Gudrun Sibbons (b.1925)
 Dutch estuary scene with
 masted fishing boats, oil on
 canvas, signed, 39cm x 49cm
 £300-500



▲ 3817
**19th/20thC Continental
 School**
 Middle Eastern market scene,
 pastel, indistinctly signed
 Bouldy, 70cm x 55cm
 £200-400



▲ 3820
Edward King Redmore
 (1860-1941)
 Fishing boats off the coast, oil
 on boards, pair, signed,
 22cm x 30cm
 £150-250



▲ 3810
Edmund John Niemann
 (1813-1876)
 River landscape with figures,
 oil on canvas, signed,
 40cm x 60cm
 £400-600



▲ 3814
Gudrun Sibbons (b.1925)
 Dutch coastal scene with
 figures on the shore, oil on
 canvas, signed, 39cm x 49cm
 £300-500



▲ 3818
**Edith Ellenborough
 Corbet (c.1850-1920)**
 Trumpeter, oil on canvas,
 signed, titled and dated 1883,
 39.5cm x 49.5cm
 £300-500



▲ 3821
19thC British School
 Fishing on the bank, river
 landscape, oil on canvas,
 29cm x 44cm
 £150-250



▲ 3811
Edmund John Niemann
 (1813-1876)
 Landscape with villages in
 background, oil on canvas,
 60cm x 90cm
 £600-900



▲ 3815
19th/20thC British School
 Cattle in river landscape,
 oil on canvas, indistinctly
 monogrammed and dated
 1910, 21.5cm x 33cm
 £80-120



▲ 3822
19thC British School
 Masted ships in choppy seas,
 oil on board, a pair, dated
 1901, 25cm x 50.5cm
 £100-200



▲ 3823
William Raymon Dommersen (1850-1927)
Continental harbour scene with fishing boats and figures, oil on canvas, 39cm x 59cm
£200-300



▲ 3827
Alexander Plunket Greene (1932-1990)
Bar Room brawl, ink drawing, signed and dated July 1949, 32.5cm x 50cm
£100-200



▲ 3830
Wilfrid Rene Wood (1888-1976)
St. Martins Stamford, watercolour, signed and dated (19)60, 23.5cm x 28cm
£80-120



▲ 3833
Judith May (20thC)
Winter landscape, watercolour, signed, 24.5cm x 33.5cm and two others
£50-80



▲ 3824
Joseph Thors (act. 1863-1900)
Figure in country landscape, oil on canvas, signed, 25cm x 35cm
£300-500



▲ 3828
Trevor Tanser (20thC)
Snow at Milton Ferry, oil on board, signed, 29.5cm x 37cm
£80-120



▲ 3831
A W B (18th/19thC)
Stamford, oil on canvas, signed and dated 1828, 45cm x 34.5cm
£80-120



▲ 3834
19thC British School
The Reading, oil on canvas, 30cm x 25cm
£50-80



▲ 3825
Enslin Hercules Duplessis (1894-1978)
Fairground, oil on board, signed, 29cm x 39cm
£400-600



▲ 3829
Wilfred Rene Wood (1888-1976)
St. Martins Stamford, watercolour, signed and dated (19)60, 23cm x 29cm
£80-120



▲ 3832
Tony Malton (20thC)
Tolthorpe Mill, oil on board, signed and titled verso, 14.5cm x 24cm
£50-80



▲ 3835
19thC British School
Fishing boats at low tide, oil on canvas, 25.5cm x 45cm
£50-80



▲ 3826
Geoffrey Chatten (b.1938)
Caister Beach, oil on board, signed, 44cm x 59cm
£100-200

Lincoln Art Sale



▲ 3836
R Randolph (19thC)
The Old Market Place,
Flushing, watercolour, signed
and titled, 34cm x 24cm
£50-80



▲ 3837
19thC Continental School
Old lady collecting hay,
watercolour, indistinctly
monogrammed, 30cm x 22cm
£50-80



▲ 3838
Edwin Saint John
(act. 1880-1890)
On Lake Geneva, watercolour,
signed, 24cm x 44cm
£40-60



▲ 3839
Francis E Jamieson
(1895-1950)
River landscape, oil on canvas,
signed Graham Williams,
39.5cm x 60cm
£30-40



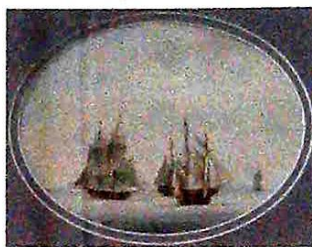
▲ 3840
Thomas Mortimer
(19th/20thC)
Italian coastal scenes,
watercolour, a pair, signed,
35cm x 16.5cm
£80-120



▲ 3841
J Moore (19thC)
Sailing boat off the coast, oil
on canvas, signed,
45cm x 90cm
£350-450



▲ 3842
L Bannister (19thC)
Still life - roses, oil on canvas,
signed and dated, 20cm x 75cm
£50-80



▲ 3843
19thC British School
Masted ships at sea,
watercolour, 15cm x 20cm
£100-200



▲ 3844
19thC British School
Children in woodland scene,
oil on canvas, monogrammed
W R, dated (18)93,
52cm x 42cm
£30-40



▲ 3845
19thC Continental School
The Smugglers, oil on board,
12cm x 17cm
£50-80



▲ 3846
Albert Kuchler (1803-1886)
Head shoulders portrait of a
woman, oil on canvas,
33cm x 25.5cm
£150-250



▲ 3847
Harold Sutton Palmer
(1854-1933)
On The Wharfs, watercolour,
signed and dated (18)80,
33cm x 51.5cm
£300-500



▲ 3848
19thC British School
Sailing vessels in stormy seas,
coastal scene, oil on canvas,
indistinctly signed, 37cm x 51cm
£200-300



▲ 3849
Ella Mary Du Cane (1874-1943)
Cloister of San Gregoria
Venice, watercolour, signed,
29.5cm x 21cm
£160-220



▲ 3852
19thC British School
Coastal scene with castle,
watercolour, a pair,
12.5cm x 18cm
£50-80



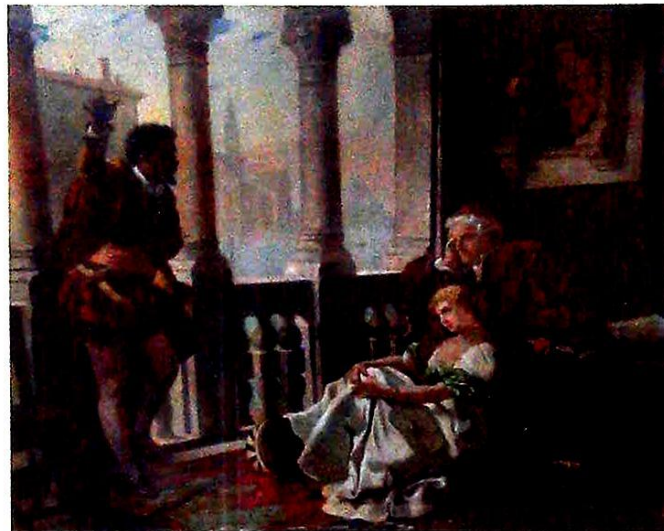
▲ 3855
John Grimble (?-1997)
Boston, oil on canvas, signed
and dated (19)72, 40cm x 50cm
£100-150



▲ 3857
William Bartol Thomas (1877-1947)
Gibraltar Point, Lincolnshire,
watercolour, signed,
25.5cm x 35cm
£100-150



▲ 3850
Joseph Hughes Clayton (act. 1891-1929)
Coastal scene with sailing
boats and masted ship,
watercolour, signed,
23.5cm x 73cm
£300-500



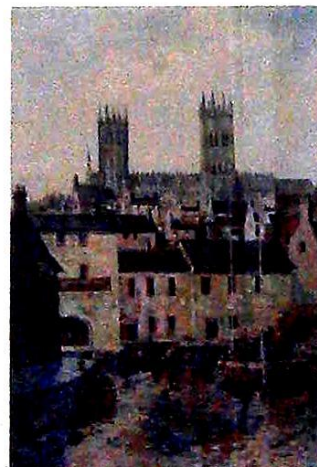
▲ 3853
19thC Italian School
The Thoughtful Father, oil on canvas, signed Viellot, 77cm x 92cm
£500-800



▲ 3858
Antonin (Tony) Bartl (1912-1998)
Standing portrait, Pat, pastel,
83cm x 58cm
£140-180



▲ 3851
19thC British School
Sailing ships off the coast,
watercolour, 14cm x 19.5cm,
David Scrase drawings and
watercolours by Peter De
Wint, 1 volume (2)
£150-250



▲ 3854
Ivan Taylor (b.1946)
Lincoln Cathedral from The
Brayford, oil on board, signed
and dated (19)76,
76.5cm x 53cm
£250-350

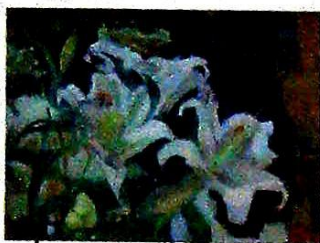


▲ 3856
William Bartol Thomas (1877-1947)
Boston Stump, watercolour,
signed and dated 1899,
37cm x 26.5cm
£300-500



▲ 3859
Simon Britnell (20thC)
Winter landscape, oil, signed,
49cm x 60cm
£200-300

Lincoln Art Sale



▲ 3860
R Long (20thC)
 Lillies, oil on board, signed,
 29cm x 39cm
 £50-80



▲ 3861
R Long (20thC)
 Floral Study, oil on canvas,
 signed, 37cm x 45cm
 £50-80



▲ 3862
Henry Moore (1831-1895)
 Dutch sailing boat off the
 coast, oil on canvas, signed,
 30.5cm x 46cm
 £150-250



▲ 3863
Oliver Clare (1853-1927)
 Apples and plums on a mossy
 bank, oil on canvas, signed,
 13.5cm x 19cm
 £500-800



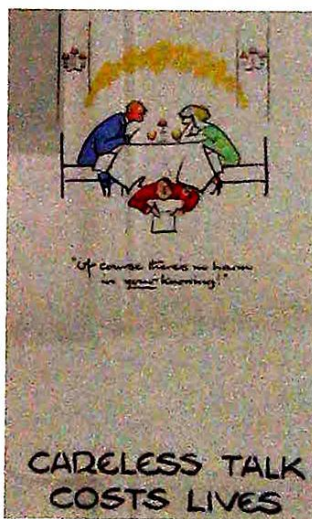
▲ 3864
Ettore Tito (1859-1941)
 Secret Kiss, watercolour,
 signed, 28.5cm x 21cm
 £150-250



▲ 3865
S Maresca (19th/20thC)
 Mandolin player, oil on
 canvas, signed, 38cm x 24cm
 £200-300



▲ 3866
20thC British School
 Study of a painter, pastel,
 35cm x 20cm
 £50-80



▲ 3867
**Cyril Kenneth Bird
 (1887-1965)**
 Careless Talk Cost Lives, a
 set of World War II cartoon
 coloured prints, signed
 Fougasse, 31cm x 19cm (8)
 £300-500



▲ 3868
David Hockney (b.1937)
 Paris Review 25th Anniversary
 1981, printed colour poster,
 86cm x 65cm
 £150-250



▲ 3869
John Piper (1903-1992)
 Llanglofan, artist signed
 coloured print, 39.5cm x 57cm
 £100-200



▲ 3870
John McConnell (20thC)
 Lancia Delta HF Integrale,
 artist signed limited edition
 coloured print, 1472/1500,
 37.5cm x 42cm
 £40-60



▲ 3871
Stuart Brown (20thC)
The Berlin Express, artist signed limited edition coloured print, 095/450, 43cm x 60cm
£40-60



▲ 3874
Charles Hepburn Scott (1886-1964)
Pacific Night, watercolour, signed, titled verso, 42cm x 32cm
£100-200



▲ 3877
Eric Detthow (1888-1952)
Riviera scene, oil on board, signed, 45.5cm x 54.5cm
£200-300



▲ 3881
Gill Nadin (1928-1996)
Summer Afternoon, Alvingham Summer Afternoon, oil on board, signed and dated (19)72, 60.5cm x 50.5cm
£120-160



▲ 3872
Alfred Jenks (19th/20thC)
View at Grasse, Lake Brothers Water, artist signed etchings, a pair, 21cm x 15cm and two others (4)
£50-80



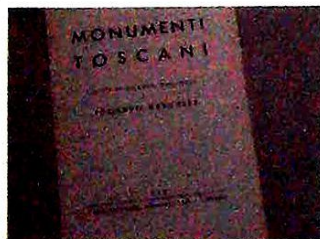
▲ 3875
Samuel Fenton (b.1923)
An Inspector Call, watercolour, signed and titled verso, 42cm x 36.5cm
£100-150



▲ 3878
Eric Detthow (1888-1952)
Village landscape, oil on board, signed, 45.5cm x 54.5cm
£200-300



▲ 3882
Otto Klar (1908-1994)
Figures by farm cottages, watercolour, signed, 39.5cm x 49.5cm
£100-200



▲ 3873
Edward Bargheer (1901-1979)
Monuments Toscani, a set of five artist signed prints, number 486, in original folder, 27cm x 20cm
£50-80



▲ 3876
Roland Shakespeare Wakelin (1887-1971)
Landscape, oil on board, 42cm x 55cm, bears label verso
Macquarie Galleries Sydney
£1500-2000



▲ 3879
Ian Gaskell (b.1948)
Still life with courgettes and baking apples, oil on board, signed and dated 2003, verso, 30cm x 36.5cm, bears label
The Gallery Manchester's Art House
£250-350



▲ 3883
Johan Briede (1885-1980)
Coastal scene, oil on board, signed and dated 1948, 25.5cm x 34cm
£300-400



▲ 3880
Jack Merriott (1901-1968)
Harbour scene with fishing boats, oil on board, signed and dated (19)62, 49.5cm x 70cm
£200-300

Lincoln Art Sale



▲ 3884
20thC Continental School
 First World War Trenches,
 La Bataille Du Groud, oil on
 canvas, titled verso,
 60cm x 81cm
 £100-200



▲ 3887
Piet Van Emmems
 (1908-1978)
 South African landscapes, oil
 on boards, signed and dated
 (19)50, 25cm x 35cm and
 24cm x 30.5cm (2)
 £200-300



▲ 3891
Agathe Sorel (b.1935)
 Apres La Moisson, artist
 signed aquatint print 43/50,
 dated 1960, 41cm x 54cm
 £50-80



▲ 3895
Vincent Selby (1919-2004)
 Country landscape, oil on
 canvas, signed, 50cm x 75cm
 £150-250



▲ 3885
Alex Sutherland (20thC)
 Rural landscape, oil on board,
 initialled and dated (19)51,
 34.5cm x 44.5cm
 £50-100



▲ 3888
William Henry Hall
 (1812-1880)
 Malham Cove Yorkshire, oil on
 board, signed, 49cm x 69cm
 £80-120



▲ 3892
Blaganror (20thC)
 A boy on the Volga,
 watercolour, signed and titled
 verso, 30cm x 37cm
 £60-90



▲ 3896
Vincent Selby (1919-2004)
 River landscape with stone
 bridge, oil on board, signed,
 11cm x 16cm
 £50-80



▲ 3886
Joseph Alfred Terry
 (1872-1939)
 Floral still life, oil on board,
 signed, 39cm x 32cm
 £150-250



▲ 3889
Norman Lloyd (1894-1983)
 Cottage and Garden, oil on
 board, signed, 31.5cm x 39.5cm
 £100-200



▲ 3893
James Docherty
 (19th/20thC)
 Coastal scene, oil on canvas,
 signed, 34.5cm x 52cm
 £100-150



▲ 3897
Vincent Selby (1919-2004)
 River landscape with figure on
 wooden bridge, oil on board,
 signed, 11cm x 16cm
 £50-80



▲ 3890
F Donald Clake (20thC).
 Village scene, watercolour,
 signed, 28cm x 45cm
 £50-80



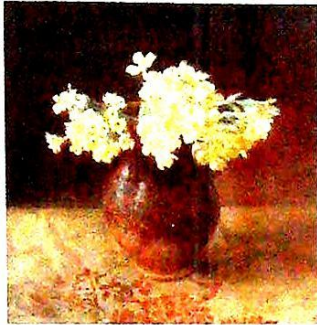
▲ 3894
Johan Briede (1885-1980)
 River landscape, oil on board,
 signed and dated 1947
 30cm x 34cm
 £300-400



▲ 3898
Vincent Selby (1919-2004)
 Country landscape with
 farmhouse, oil on board,
 signed, 14cm x 18cm
 £50-80



▲ 3899
F J Stobart (19th/20thC).
Country landscape,
watercolour, signed,
12cm x 17cm
£50-80



▲ 3902
Frans David Derbery (1867-1944).
Primula, oil on canvas, signed
and titled verso,
27.5cm x 27.5cm
£500-800



▲ 3905
K. Heine (19/20thC)
Village river landscape, oil on
board, signed, 36cm x 44cm
£50-80



▲ 3909
Pamela Scott (b.1937)
Poppies, watercolour, signed,
66cm x 53cm
£50-80



▲ 3900
20thC Continental School
Alpine landscape, oil on
board, indistinctly signed,
18cm x 19cm
£50-80



▲ 3903
Elizabeth Durack (1915-2000)
Aboriginal family,
watercolour, signed,
45cm x 51.5cm
£600-800



▲ 3906
Ferdinand Bernhard Hoppe (1841-1922)
River landscape with
windmill, watercolour, signed,
32.5cm x 36cm
£150-250



▲ 3910
Pamela Scott (b.1937)
Garden flowers, watercolour,
signed and dated 1999,
58cm x 46cm
£50-80



▲ 3901
Petrus Gerardus Vertin (1819-1893)
Continental street scene with
figures, oil on board, signed,
26cm x 29.5cm
£600-900



▲ 3904
John Samuel Loxton (1903-1969)
Droving - New South Wales,
oil on canvas, signed,
62cm x 75cm
£600-800



▲ 3907
Jack Carrington Smith (1908-1972)
Coastal landscape, oil on
canvas, signed and dated,
42cm x 55cm
£250-350



▲ 3911
Pamela Scott (b.1937)
Poppies and flowers,
watercolour, signed and dated
2000, 64.5cm x 49cm
£50-80



▲ 3908
Charles E Hannaford (1863-1955)
At Wroxham, watercolour,
signed, 12cm x 17cm
£50-80

Lincoln Art Sale



▲ 3912
Pamela Scott (b.1937)
 Wild flowers in landscape,
 watercolour, signed and dated
 1996, 75cm x 75cm
 £50-80



▲ 3913
**Percy Frederick Seaton
 Spence (1868-1933)**
 A Bride holding her bouquet of
 flowers, watercolour, signed,
 38cm x 34cm
 Bears label - Lincoln Fine Art
 £150-250



▲ 3914
David Weston (20thC)
 Wildwood fairy Queen, oil
 on board, signed and dated,
 45.5cm x 35.5cm
 £50-80



▲ 3915
R McDonald (20thC)
 Scottish style stream scene,
 watercolour, signed,
 30cm x 46cm
 £30-40



▲ 3916
**David Cuppleditch
 (20thC)**
 The farmhouse, church
 farm museum Skegness,
 watercolour, initial, titled and
 dated (19)88, 37cm x 53cm
 £50-100



▲ 3917
**David Cuppleditch
 (20thC)**
 Georgian terrace, watercolour,
 initialed and dated (19)87,
 51.5cm x 36.5cm
 £50-100



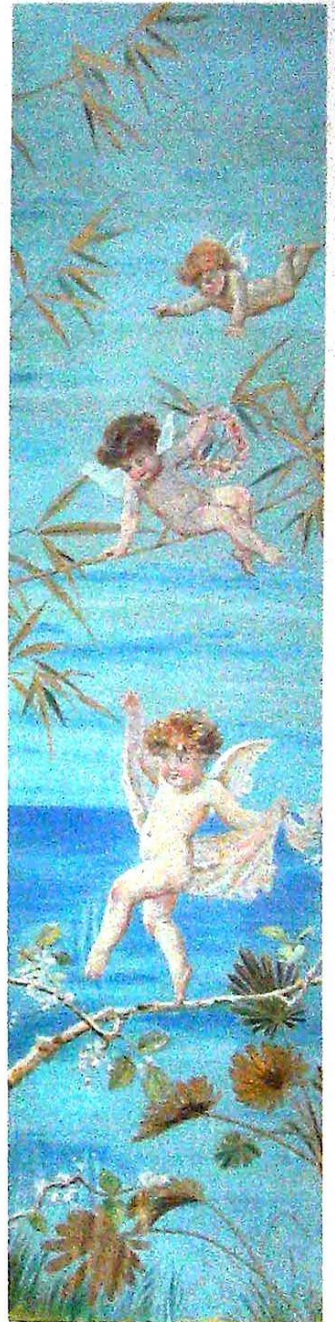
▲ 3918
Van Long (20thC)
 Floral study, oil on canvas,
 signed, 34cm x 44.5cm
 £50-80



▲ 3919
**Beatrix Mary Blyth
 (1903-1986)**
 Woodland scene, watercolour,
 35.5cm x 55cm
 £50-80



▲ 3920
**Jorge Aguilar Agon
 (b.1936)**
 Low Tide, oil on canvas,
 signed, 29.5cm x 60cm
 £100-200



▲ 3921
19/20thC British School
 Cherubs, watercolour - pair,
 100cm x 25cm
 £100-200



▲ 3922
Albert H Findley
(1880-1975)
Lincoln Cathedral,
watercolour - pair, signed,
16cm x 12cm
£80-120



▲ 3923
William Robbie
(1887-1967)
Prized shire horse,
watercolour, signed,
34cm x 54cm
£80-120



▲ 3924
Hans Ollgaard (1911-1969)
Matadors, oil on canvas,
signed verso, 67cm x 93cm
£500-800



▲ 3925
Robert Sargent Austin
(1895-1973)
Female study, charcoal and
pencil, signed and dated
(19)38, 48cm x 40cm
£400-600



▲ 3926
Giovanni Battista
(1858-1925)
Capri - coastal scene, gouache,
signed, 39cm x 18cm
£150-250



▲ 3927
20thC Continental School.
Church landscape, oil on
canvas, 42cm x 36cm
£50-80



▲ 3928
Edwin Aldridge Haddock
(1921-1996)
Abstract, oil on board, signed,
60cm x 91cm.
£80-120



▲ 3929
Edwin Aldridge Haddock
(1921-1996)
Pirahna, oil on board, signed,
91cm x 61cm, bears artist label
verso
£80-120



▲ 3930
Edwin Aldridge Haddock
(1921-1996)
Abstract, oil on board, signed,
122cm x 91.5cm
£120-180



▲ 3931
Thomas Noel Smith
(19th/20thC)
River scenes with windmills,
watercolour, pair, signed,
53.5cm x 38cm.
£150-250



▲ 3932
John Seymour Gadden
(1930-1999)
Waiting for the cup winners,
Tottenham, oil on board,
signed, 42cm x 50cm
Bears Artist label to Verso
£100-200

Lincoln Art Sale



▲ 3933
Ralph Waterhouse (b.1943)
 Sandpiper, watercolour,
 signed, 12.5cm x 17.5cm
 £60-90



▲ 3936
Claude T Stanfield Moore (1853-1901)
 Masted ship in coastal, seascape, oil on canvas, 50cm x 74cm
 £800-1200



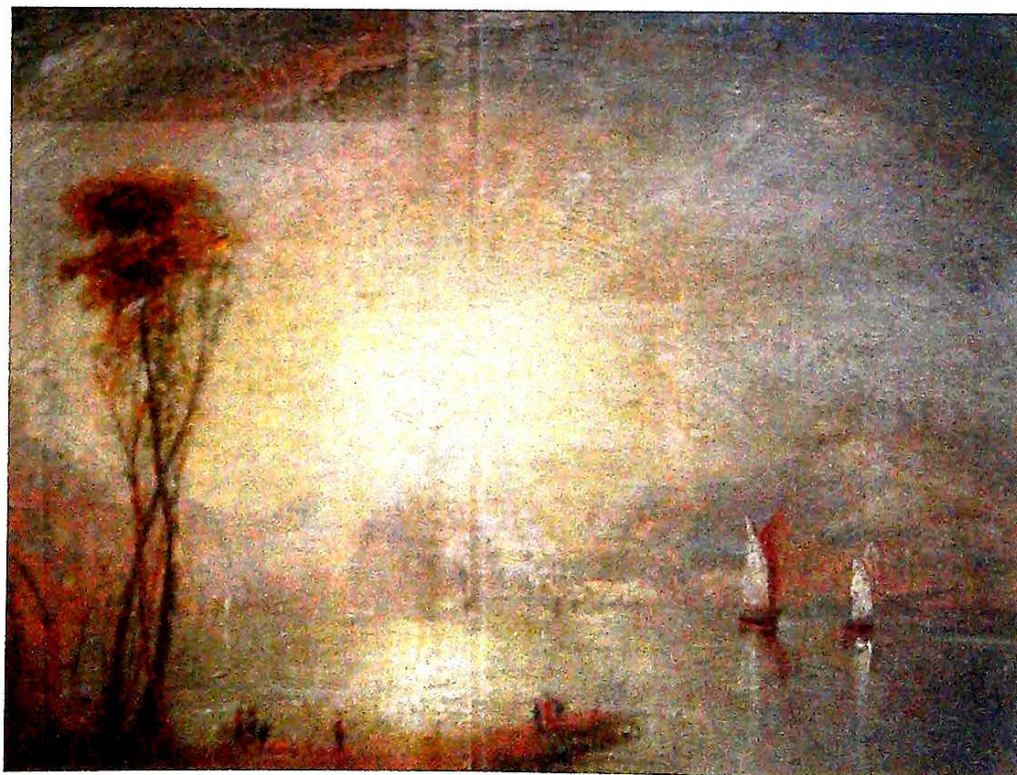
▲ 3937
Thomas Hart Benton (1889-1975)
 Canyon landscape, oil on board, signed, 29.5cm x 21.5cm, bears label Glassers San Antonio Texas.
To be sold WITHOUT RESERVE upon specific instructions of the vendor.
 All enquiries to Colin Young.
 £1200-1600



▲ 3934
After Henriette Ronner (1821-1909)
 Kitten Globetrotters, oil on canvas, 37cm x 45cm
 £500-800



▲ 3935
Henry Thomas Bromley (1853-1924)
 Close Quarter, oil on canvas, signed, dated 1886 and titled verso, 60cm x 90cm
 With original copyright Registry Certificate dated August 9th 1886
 £250-350



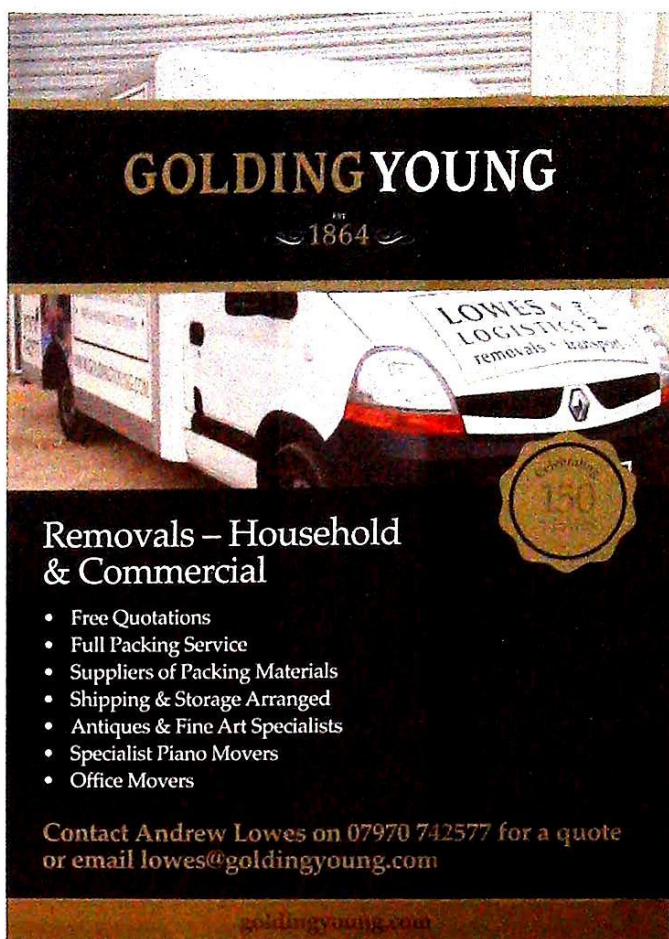
▲ 3938
Turner
 Loch Lomond with two sailing boats, and figures on a headland, oil on canvas, 36cm x 46cm.
 Bears label verso 'From Atherstone House. Property of V F Willson'
Provenance: This picture was last sold at auction by ourselves in the September 1982 Thos. Mawer & Son marquee sale of the contents of Raucby Hall, South Raucby, Nr. Sleaford, Lincolnshire. Ex-lot 830.
 All enquiries to Colin Young

PRIVATE CLIENT & PROFESSIONAL SERVICE DEPARTMENT

We value personal property for private and corporate clients. Our team have valued family heirlooms, art collections and museum holdings for a variety of purposes.

We are the only auction house in the region to have a bespoke Private Client Department with:

- Two Chartered Arts & Antiques Surveyors
- Two RICS/ Antiques Trade Gazette professional assessment award-winning valuers
- In-house qualified jewellery valuers
- Experience in abundance and diversity since 1864
- 11 professional staff with RICS, NAVA or SoFAA qualifications.



GOLDING YOUNG
1864

Removals – Household & Commercial

- Free Quotations
- Full Packing Service
- Suppliers of Packing Materials
- Shipping & Storage Arranged
- Antiques & Fine Art Specialists
- Specialist Piano Movers
- Office Movers

Contact Andrew Lowes on 07970 742577 for a quote or email lowes@goldingyoung.com

goldingyoung.com

AUCTION APPRAISAL



We offer a FREE appraisal service at our offices for items you may wish to consign to auction.

This comprises advice for the most appropriate sale, a pre-sale estimate to encourage buyers and a reserve if necessary.

Items can be accepted at each of the Auction Rooms **Monday to Friday 9am to 1pm & 2pm to 5pm.**

Every Friday the valuers are available without appointment from **9am to 1pm.**

You can also email images to valuers@goldingyoung.com.

FREE home visits can also be arranged, please call your nearest saleroom to speak with the resident valuer.

Alastair McPhie-Meiklejon - Bourne 01778 422686

Craig Bewick - Grantham 01476 565118.

John Leatt - Lincoln 01522 524984

GOLDING YOUNG

ESTD
1864



Thinking of selling?

Executors, solicitors, accountants, insurers, corporations and government departments, have to exhibit due diligence when instructing. Use this checklist to do the same, with a few reasons why you may wish to choose us.

We are regulated by RICS
Better Regulation for Us. Better
Protection for You.
Accept Nothing Less.

Our live webcast auctions
Our 150 years' experience means we
get the best for our clients from holding
our important sales live webcast on
the internet.

Our sales results
August 2014 saw our 72nd consecutive
month with a sale at either Bourne,
Grantham or Lincoln producing a
sold rate of over 90%. Good advice,
great results for hundreds of vendors
every month.

Join their success with an entry in our next sale!

goldingyoung.co.uk

HOUSE CLEARANCE

If there is that hidden 'find', it will be to your direct benefit.

Every week we take instructions for House Clearance for all of the prominent firms of Solicitors in the area, as well as from Private Individuals, Trustees and Executors.

If you are dealing with the content of a property, please contact us at the earliest point.

A visit to the premises by one of our qualified and experienced appraisal staff will offer the best advice for Security, Valuation and Sale.

DISPOSE OF NOTHING

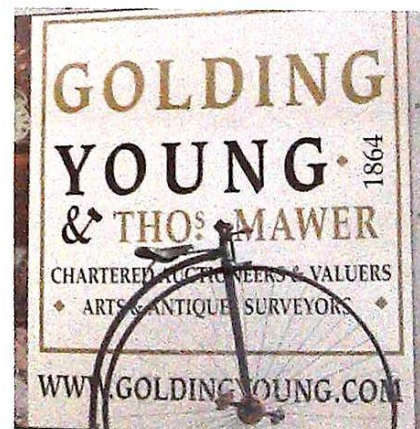
Often things thought to be rubbish are saleable.

IMMEDIATE ACTION IS REQUIRED

Once a property is uninhabited it is a target for burglars and your insurance may be invalid.

Items removed from premises are listed and handled by our professional carriers. Goods are then allocated to the next appropriate sale to ensure the highest sale return.

We will also deal with the rubbish. It is disposed of in the most cost-effective and environmentally friendly way.



PROPERTIES CLEARED, PROMPTLY AND EFFICIENTLY

Call: Alastair McPhie-Meiklejon BSc - 01778 422686
For Bourne, Stamford and Southern Counties

Call: Andrew Doubleday MNAVA - 01476 565118
For Grantham Area and The Midlands

Call: John Leatt ASFAV - 01534 677701
For Lincoln Area and Northern Counties

PROBATE – INHERITANCE TAX ASSESSMENT

For many Executors and Trustees the responsibility of dealing with a deceased's Estate is a once-in-a-lifetime experience. You have to make a number of important decisions in a very short space of time and all when the loss is most difficult to come to terms with.

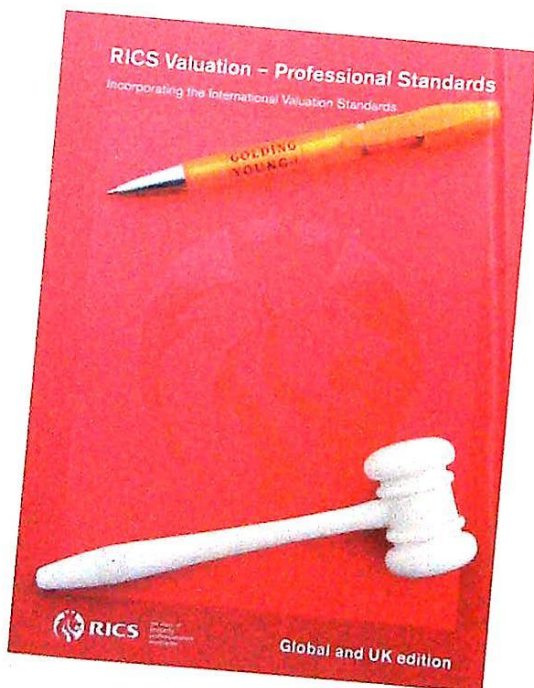
The position of Executor is an important one in law and has defined personal liability and responsibility. To exhibit due diligence to beneficiaries and more importantly HM Revenue & Customs, an Executor or advisor will instruct a firm Regulated by RICS.

Even if the estate will be taxed at 0%, a valuation remains an essential tool for an Executor. The inventory will still be used for identification of bequests, trust items, family division and proof of value.

Our valuations are prepared to the International Valuation Standards requirement of the 'Red Book'.

The report will cover sections of:

- Jewellery
- Vehicles
- Antiques, Fine Art & Collections
- General Furniture & Effects



For initial advice contact the following Chartered Auctioneers & Valuers:

Bourne, Stamford & South
Colin Young MRICS,
01778 422686

Grantham, Lincoln & North
William Gregory MRICS
01522 527984



The wrong time to find out
what it was worth...



Over 25 million pounds of
antiques & fine art valuation in
UK & Europe so far in 2014.

GOLDING YOUNG

EST
1864

Our senior valuers
William Gregory MRICS
and Colin Young MRICS
offer free advice for Insurance,
Tax Planning and Probate reporting
and of course the sale of
single items and collections.

The Bourne Auction Rooms
+44 (0) 1778 422686

The Lincoln Auction Rooms
+44 (0) 1522 524984

The Grantham Auction Rooms
+44 (0) 1476 565118

The Stamford Valuation Office
+44 (0) 1780 751666

CHARTERED AUCTIONEERS & VALUERS
ARTS & ANTIQUES SURVEYORS



goldingyoung.com

goldingyoung.com

**The Bourne
Auction Rooms**
Spalding Road, Bourne,
Lincolnshire PE10 9LE

E: bourne@goldingyoung.com
T: +44 (0) 1778 422686
F: +44 (0) 1778 425726

**The Grantham
Auction Rooms**
Old Wharf Road, Grantham,
Lincolnshire NG31 7AA

E: grantham@goldingyoung.com
T: +44 (0) 1476 565118
F: +44 (0) 1476 561475

**The Lincoln
Auction Rooms**
Dunston House, Portland Street,
Lincoln, Lincolnshire LN5 7NN

E: lincoln@goldingyoung.com
T: +44 (0) 1522 524984
F: +44 (0) 1522 535600

**The Stamford
Valuation Office**
1, The George Mews,
Station Road, Stamford,
Lincolnshire PE9 2LB

E: stamford@goldingyoung.com
T: +44 (0) 1780 751666



RICS - The Hallmark of a professional
auction house offering executor &
private client advice & services for
valuation, auction sale & property
clearance