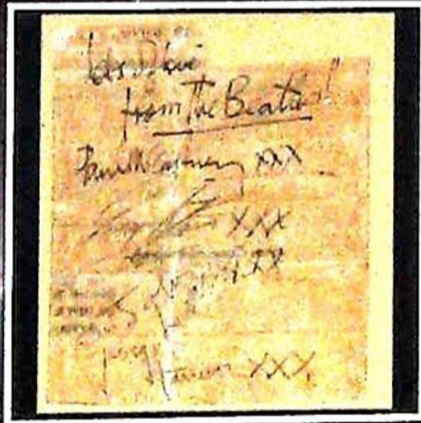


Established 1900

-GOLDINGS-

AUCTIONEERS & VALUERS



CATALOGUE SALE

SEPTEMBER 2003



IMPORTANT NOTES FOR PURCHASERS

1. **PAYMENT:** Must be made in full immediately after the Auction. The following methods of payment are acceptable.
 - a) Cash
 - b) Bankers Draft
 - c) Building Society Cheque
 - d) Cheques (accompanied by a valid card.)
 - e) Debit & Credit Cards (the latter subject to a charge of 2% + VAT).

PAYING BY CHEQUE?

If you are not known to the Auctioneers and wish to pay by cheque above your guarantee card limit WE WILL RETAIN THE GOODS until it has been cleared (7 days). There will be NO EXCEPTIONS to our policy. To avoid UNDUE EMBARRASSMENT for yourself or to our staff, please do not ask for preferential treatment. If you wish to clear goods immediately bring a letter from your Bank or a suitable guarantor reference.

2. **BUYERS PREMIUM** of 15% on the first £100 of each lot and 12 1/2% thereafter is payable on all lots. Minimum £1 per lot. All plus VAT.
3. **REMOVAL OF PURCHASES:** Goods must be collected as soon as they are paid for, and in the 2 Working Days following the sale. If goods are not collected on these days we reserve the right to charge £1 per lot per day thereafter.

4. **COMMISSION BIDS:** If you are unable to attend this or any of our future sales we will be pleased to bid on your behalf. We always purchase at the lowest possible price, subject to other bids and reserves.

All bids must be handed to the office on an official form. It remains the responsibility of prospective purchasers to contact GOLDINGS to confirm whether their bids have been successful.

5. **TELEPHONE BIDS:** There are inherent dangers with this practice, therefore all such arrangements are made entirely at the bidder's risk. Telephone bids will only be accepted if the lower estimate is £500 or above. For lots with a lower estimate below this figure Commission Bids Only will be accepted.

6. **SMOKING** is not permitted in any part of the Saleroom.

7. **REFRESHMENTS** will be available Saleday.

8. **ACCOUNT TRANSFER** will not be recognised after the sale. If any lots are purchased for another person, this must be declared at the fall of the hammer.

9. **ESTIMATES.** Our Auctioneers will be available during viewing to give guidance on your prospective purchases.

GLOSSARY

- a) Generally: 'As Found' (AF). This term indicates the lot has some damage. Its absence does not indicate that the lot is free of defect. All lots are SOLD AS SEEN.
- b) Paintings: 'Signed, initialled, monogrammed' - This refers to the present state of the work and is not an attribution.
- c) Books and printed matter: These items are not sold subject to collation and are not returnable once removed from the premises.
- d) Silver & Jewellery: Weights given are approximations given by basic instruments.



Established 1900

-GOLDINGS-

— AUCTIONEERS & VALUERS —

Upon instructions from over 150 private and professional vendors
from throughout the region.

GOLDING YOUNG & CO will sell by AUCTION

ANTIQUES, WORKS OF ART AND COLLECTORS ITEMS

THURSDAY 18th SEPTEMBER 2003

Session I. 10.30am – Collectables, Ceramics, Clocks, Furniture, Vehicles

FRIDAY 19th SEPTEMBER 2003

Session II. 10.30am – Collectables, Ceramics, Silver, Books

Session III. 3pm – Miniatures, Pictures, Collectables, Jewellery, Textiles, Rugs

Lot enquiries

Suki J Burnett A.N.A.V.A.

Jan L Squires PJ.Gem.Dip, A.N.A.V.A.

Colin R Young M.R.I.C.S., F.N.A.V.A.

Accounts enquiries

Marie Scoffield



VIEWING:

Online at WWW.GOLDINGYOUNG.COM from Saturday 13th
and in the saleroom on Sale week

Monday 2pm to 5pm, Tuesday 2pm to 7pm, Wednesday 2pm to 7pm,
Thursday 9am to 10.30am, Friday 9am to 10.30am & 2pm to 3pm.

Golding Young & Co.

Old Wharf Road, Grantham, Lincolnshire NG31 7AA

Telephone: 01476 565118 Fax: 01476 561475 Email: enquiries@goldingyoung.com



Buyers Hotline: 01476 575202

For lot enquiries and commission bids viewday and saledays only.

NB. BBC BARGAIN HUNT WILL BE FILMING 'LIVE' at this sale with Tim Wonnacott F.R.I.C.S. between 11.30 & 12.30 each day

BUYING OR SELLING?

We have the lot!

- OVER 100 YEARS EXPERIENCE FROM YOUR REGIONAL -
 CHARTERED AUCTIONEERS, VALUERS, ARTS & ANTIQUES SURVEYORS

THE COLLECTIVE SALES

Your Regional Market Place

for Victorian, decorative and
 second-hand furnishings,
 household and personal effects.
**Surplus business assets, stock-in-trade,
 plant, machinery & equipment**

Every two to three weeks we hold sales of over 750 mixed lots
 received from Property Clearances and vendors of single items.

Over 120 vendors sell with us every sale and over 800
 are registered to buy.

NEXT SALES: 1st + 15th + 29th October
VIEWING: Tuesdays 2pm to 6pm & Saleday from 9am

*The sale on the 1st of October includes the contents of
 - a ladies high street fashion shop -
 Upon instructions from the Office of the Sheriff of Lincolnshire*

*The sale on the 29th of October includes a good selection of
 Victoriana and Collectables as we host Bargain Hunt*

THE CATALOGUE SALES

Your Regional Market Place

for fine antiques, works of art, jewellery, silver,
 ceramics, glass, books, clocks, furniture
 and all fields of collectors' items.

*Held quarterly, these sales include select items
 that need specific and direct marketing
 through our select mailing list & databases.*

Up to 200 vendors selling items to a
Worldwide Audience via The Internet.

Past Sale Results now online.

NEXT CATALOGUE SALE:
Wednesday 26th November

CLOSING DATE for entries 31st October

VIEWING:
 Monday 2pm to 5pm,
 Tuesday 11am to 7pm & Saledays 9am to 10am
 And on-line from the Saturday prior.



HOURS of BUSINESS

Monday to Friday 9am to 1pm & 2pm to 5pm
 Entries welcome at all times except Saleday

PROPERTIES CLEARED - TRANSPORT ARRANGED
VALUATIONS FOR ALL PURPOSES

Elizabethan Rooms
Nottingham
March 7th 1963



Show compered by Keith Gordon
Autographed on reverse of fan club application form

Supporting acts on the night:-
Gerry and the Pacemakers
Billy J. Kramer and the Dakotas
The Big Three

Session One

1. A set of Cape Hartbeeste horns, mounted on oak shield, 15" span, early 20thC.
2. An onyx telephone and matching ashtray and Colibri cigarette lighter. (3)
3. A 'Bristol' blue glass spherical bowl, 6" dia, an amethyst bowl, similar, 4 1/4" dia, a 'Bristol' blue glass campagna vase, 5" high, a blue glass wrythen moulded bowl, a modern glass ashtray and 3 glass eye baths, 19thC and later.
4. A 19thC brass miniature saucepan and cover, with steel handles, 3" high 3 1/4" dia.
5. A pink satin sheet, for a single bed, trimmed with mushroom coloured lace, with matching undersheet, another pink satin sheet, early 20thC.
6. A Dresden bone china coffee service, the white moulded ground printed with sprays of summer flowers, modern, (one cup missing).
7. A set of 6 opaque white moulded glass sundae dishes, on knopped stems with spreading foot, early 20thC, 4 1/4" dia.
8. An early 20thC nursery bone china tea service, each piece printed and painted with an inner border of roses, within blue line and turquoise outer border, 16 pieces, some damage.
9. Assorted ceramics including a miniature stoneware teapot, decorative plates, pedestal dish and Denby vase, 19thC and later.
10. An early 20thC peach silk nightgown, with plunging neckline and frill capped sleeves.
11. A white ostrich feather fan and an assortment of various coloured feathers and a parchment light shade.
12. A collection of 19thC and later lace including collars and panels.
13. A 19thC Cantonese enamel bowl decorated with flowers on a bleu-de-mazarin and turquoise ground (AF).
14. A Royal Copenhagen bone china plate, polychrome printed with flowers on a moulded white ground, 8" dia, no 910/1624.
15. A Chinese famille verte plate, centrally painted with an exotic bird on a rock amongst flowers, within flower painted scroll borders, 13 1/2" dia, 19thC, (rim chips).
16. A 19thC brown glaze earthenware bowl, rectangular, with a white slip glaze, 12" wide, another, 10 1/4" wide, (repaired).
17. A Victorian vaseline glass lampshade of frilled and fluted form, 4 1/2".
18. Two Rosenthal bone china trios, together with another, modern.
19. A Wedgwood green glaze leaf moulded plate, 7 1/4" dia, 20thC, together with a German pottery tazza printed with a landscape on polychrome ground, 9" dia, and 2 Wedgwood bone china plates, centrally decorated with flowers, turquoise gilt-lined border, 9" dia, modern. (4)
20. An important Beatles autograph group, being a fan club application form, signed by all 4 members, inscribed 'Lots of love from the Beatles'. The autographs are framed, glazed and mounted, scripted 'Elizabethan Rooms, Nottingham, March 7th 1963. Show compered by Keith Gordon. Autographed on reverse of fan club application form. Supporting acts on the night:- Gerry and the Pacemakers, Billy J Kramer and the Dakotas, The Big Three. The vendor is the personal recipient of these signatures as he compered the show. The following information has been kindly submitted by him, together with a letter of guaranteed authenticity. A separate full information sheet is available by request.
21. A Collingwood porcelain plate, painted in underglaze blue, iron red and gilt with a Japan pattern, no 908, 9 1/4" dia, together with 3 matching tea plates, (one damaged), c.1900.
22. A Masons ironstone miniature jug, of octagonal form, painted in the Japanese manner in underglaze blue, iron red and green, 3" high, another, similar (AF). (2)

23. A pair of Thomas Meyer pottery wall plaques, one painted with primroses and blue bells in woodland, inscribed verso 'The Woodlands Dove', the other with birds-egg in a nest, primroses, violets and dog rose, 13¼" dia.
24. A Moorcroft pottery trinket dish, the well painted with a pansy on deep blue ground, blue facsimile signature and impressed factory marks, 4½" dia.
25. A pair of Goebel blue glaze birds, models no CV72 & CV73, 4½" wide.
26. A Crown Devon Rouge Royale 2-handled dish, boat-shaped, with shaped and gilt rim, enamelled and gilt with leaping fish, the interior with lustre glaze, 8¼" wide.
27. An Ashworth pottery tea pot, of tapering circular form, the black ground printed and painted with roses and other flowers, impressed mark C.1880
28. A Royal Doulton pottery spill vase, the cream ground decorated with ¼-round arches and foliate scrolls, another example decorated with pendant harebells, 3¾" high. (2)
29. An early 20thC Burleighware blue and white 'Willow' pattern pottery cheese cover and stand, with moulded gilt finial, 7¼" wide, together with a 19thC blue and white 'Willow' pattern cheese stand, 10¼" dia. (2)
30. A set of 4 early 20thC Staffordshire pottery meat plates, graduated, printed in blue, with moulded handles, 18" to 11" wide, and a pair of Albion pottery dinner plates. (6)
31. A Burgess & Leigh earthenware 'Florida' pattern dinner service, printed with flowers within a geometric border in blue, approx 49 pieces, early 20thC.
32. A Staffordshire pottery meat plate, printed in blue with an early American Settlement, 'Plymouth 1622', the border with vignettes of American landmarks, printed marks to underside, 'Copyrighted 1908 by A S Burbank and monogram, Plymouth Mass', 16¼" wide.
33. A set of 8 - 19thC pewter plates, with moulded and shaped borders, London touchmarks, 7¼" dia.
34. A set of 5 - 19thC pewter plates, as above, 8¼" dia.
35. A 19thC pewter flagon, of baluster shape, hinged cover with moulded thumbpiece, scroll handle, 7" high, together with a gill measure, a decilitre lidded measure, and a small jug. (4)
36. A German pewter Art Nouveau shallow dish, moulded in low relief with an iris, stamped 'Kayserzinn 198' to base, 6" dia, together with a brass Adam style door knocker, 6". (2)
37. A pair of celadon jade cockerals, on pierced wooden stands, 5" high, (damage to feet on one).
38. A pair of Royal Worcester porcelain Bacchanalian cherubs, blue glaze with gilt highlights, impressed factory marks, late 19thC, 3" high.
39. A treen inkwell, modelled as a horse's hoof, carved with a frieze of horse shoe, stirrups and whip, flanked by leaves and berries, the hinged cover with scroll finial, fitted with a glass well, 4¼" high.
40. A Clarice Cliff 'Harvest' biscuit barrel, with fruit moulded loop handles, on 3 fruit feet, green printed factory mark, 7" high.
41. A collection of Staffordshire cottages, and a pastille burner 19th/20thC.
42. An 18thC porcelain two-handled caudle cup and deep saucer, with moulded gilt rims, Worcester shape, painted with reserves of blue daisies on a yellow ground, overall with flowerheads, red anchor mark, some gilt rubbing to saucer.
43. A pair of Kerr & Binns Worcester vases, of circular form, the slightly everted rims painted with turquoise band between gilt lines, and with gilt lambrequin borders below, the bodies polychrome painted with shells and seaweed, printed mark C.1852-62, 4¼" high, (rim chips).
44. A Royal Worcester porcelain sack vase by James Stinton, with pheasants in a landscape, model no G957, 3¼" high, early 20thC.
45. A 20thC Royal Worcester porcelain sleeve vase by John Stinton, with highland cattle in a Scottish landscape, between shaded gilt borders, model no G923, 4¼" high, early 20thC.
46. A Royal Worcester porcelain plate by F Griffiths, painted to the centre with fruit, berries, flowers and insects, within a cream border heavily gilded with foliate scrolls, medallions and torches, c. 1944-55, 9¼" dia.
47. A pair of Davenport porcelain spherical vases, with narrow everted rims and mounted with 3 rudimentary handles, the pink ground gilt with cherry blossom, printed factory marks, circa 1870-86, 3¼" high.
48. A Royal Doulton pottery bowl, circular, printed internally with 'Dr Johnson at Temple Bar', from the Historic England Series, 9¼" dia, another, oval, decorated with 'Autumn Glory' pattern, 11" wide, another bowl, painted with an inner border of fruit and leaves, 9¼" dia. (3)
49. A Clarice Cliff pottery planter, rectangular, painted with the 'Crocus' pattern below a green and yellow platform rim, 11½" x 7½", black printed factory mark.
50. Four 19thC porcelain plates (formerly with pedestals), each painted with differing landscapes within gilt line borders on pale blue ground, 9¼" dia.

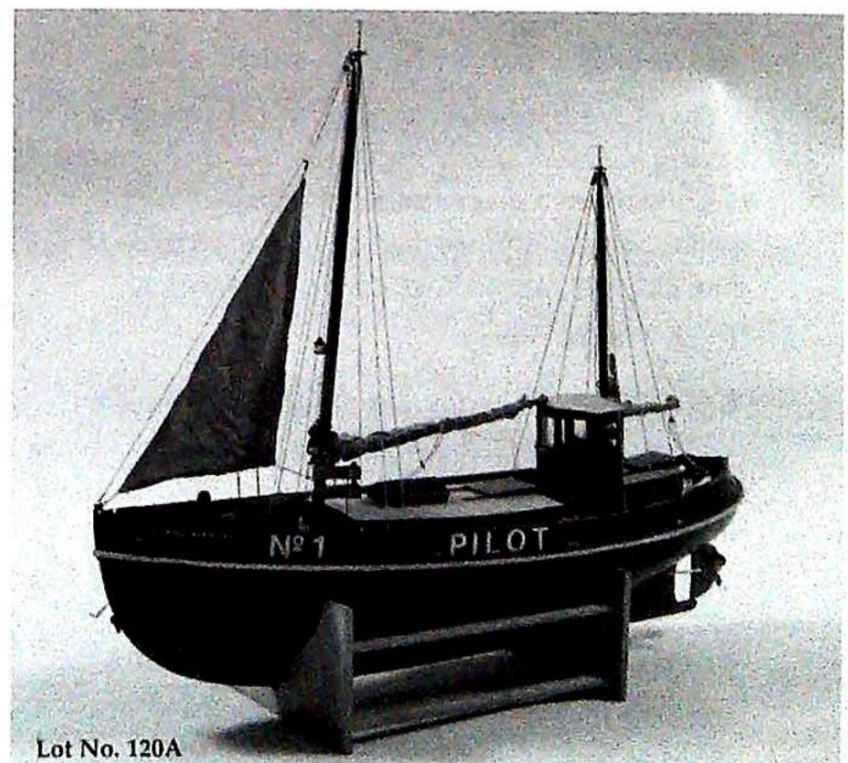
51. A pair of Ludwigsburg porcelain salts, the boat shaped bowls supported by seated figures, painted with flowers, on rococo scroll bases, modern, 5½" wide, (one damaged).
52. A late 19thC German porcelain plate centrally printed with a portrait of a girl with long brown hair, in décolleté dress, within a polychrome and gilt border, 9¼" dia, signed Erlecht to underside.
53. A Doulton Burslem pottery bowl, circular, externally printed with a Willow pattern in blue, 8½" dia.
54. A Mauchline type rectangular box, the hinged cover having a sepia view 'Burns Mausoleum, Dumfries', 4" wide, another box, with micro-mosaic inlays, 4¼" wide. (2)
55. A Wedgwood calendar plate, 1980, boxed, 10" dia, and a modern oriental plate, enamelled and gilt with fruit and leaves, on blue ground, 10" dia. (2)
56. A Royal Crown Derby porcelain trinket dish, decorated with Old Imari pattern in underglaze blue, iron red and green, heavily gilt, pattern no 1128, 6" dia, c.1932, another, similar, 5½" dia, c.1916.
57. A set of 6 Royal Crown Derby teaplates, painted and gilt with Old Imari pattern in underglaze blue, iron-red and green, pattern no 1128, 7¼" dia, modern.
58. A set of 6 Royal Crown Derby dessert plates to match above, 8½" dia.
59. A set of 6 Royal Crown Derby dinner plates, to match above, 10¾" dia.
60. A Royal Crown Derby Old Imari soup tureen, cover and stand, to match above, the tureen 12½" dia, the stand 14" over handles.
61. A pair of Royal Crown Derby oval tureens and covers, to match the above, 12½" over handles, together with a sauce tureen and stand, matching, 9" over handles.
62. A set of 6 Royal Crown Derby dessert dishes, to match above, 8½" dia.
63. An early 20thC barrel shaped tin, printed in brown wood-grain effect, printed '... BA PARAGUAYA LEGITIYH - IMPORTA DORES E MACKINNON Y COELHO, BUENOS AIRES', 8½" high, and a tin modelled as an attache case, 8" wide.
64. A pair of late Victorian green glass 'Jack in the pulpit' vases, the necks with white opaque splashes, 7" high.
65. An EPNS fruit basket with fixed overhead handle, embossed with fruit, 2 pewter tankards and 2 copper tankards. (5)
66. A late 19thC French porcelain tea service, printed with images of charioteers and motifs within terracotta, black and gilt borders.
67. A 19th century brass saucepan with brass handle, 5½ ins diameter, another example with iron handle, 5¼ ins diameter, a copper pan with iron handle 6 ins diameter (3).
68. A part dressing table set decorated with poppies and two small ribbon plates.
69. A set of early 20th century brass postal scales by S. Mordan & Co. on an oak base, fitted with a set of six brass weights, 7¼ ins wide together with a pair of German binoculars in leather case and an Indian inlaid brass dish, 7½ ins diameter.
70. A Westerwald Rheinisch stoneware tapering ewer, with pewter cover.
71. A 19th century mahogany rectangular box with hinged lid, inlaid with burr walnut, tulip wood and other wood in geometric panels 12¼" wide.
72. A 19Cth century brass and leather 2-draw telescope, manufactured by W. Ottway & Co. Ltd. Ealing, London 1940, No. 1122. 18¼" long.
73. An Indian circular cushion shape box and cover, painted with Indian figures against a black ground, within panels, below a floral border, 14½" diameter.
74. A 19th century Satsuma circular box and cover, enamelled and gilt with scholars and other figures in a mountainous landscape, between diaper and geometric borders, the flat cover with circular knob, 4½ ins diameter, 5ins. high, together with a globular base, similarly decorated 4½" high.
75. A Capo di Monte figure group of two young boys playing with a ewe and lamb, on circular base, raised on a gilt metal pierced scroll plinth 9½" high.
76. Three mounted panels, each with a set of military buttons, cap badges and letters from the Royal Horse Artillery, Royal Army Veterinary Corps and Royal Horse Guards.
77. A Kings Troop Royal Horse Artillery busby and hackle, c.1954, contained within a 19th century tin box, the hinged cover with applied plaque inscribed "H. Crofton Esq. Royal Horse Artillery".
78. A Hummel figure, 'The Happy Wanderer', 4½" high, green factory mark.
79. A Hummel figure, 'For Mother', 5¼" high, blue factory mark.
80. A pair of fire bellows, the wooden panels painted with roses within gilt borders.
81. A Royal Copenhagen coffee cup, moulded and painted with flower sprays, an Edinburgh Crystal cut-glass fruitbowl, an egg cruets stand for 4, and an EPNS salver on 3 scroll legs. (4)

82. A Victorian brass and cast-iron goffering iron.
83. A Victorian beadwork tray of semi-elliptical form within a wooden frame and on 4 bun feet, 22½" wide.
84. Five pieces of orange carnival glassware, 3 sugar bowls and 2 cream jugs, together with 3 blue pressed glass dishes.
85. A early 20thC Satsuma teapot, painted with figures, landscapes, and moulded in gilt with a serpent finial handle and spout, together with a matching lidded cream jug.
86. His Master's Voice Learning to Speak French course, 15 - 78rpm records in a leathercloth folder.
87. A Samson Armorialware sauceboat, painted in the Chinese famille rose manner, with flowers and heraldic shields, late 19thC, 8½" wide, together with an amethyst glass sugar basket with clear glass handle, 5¼" wide.
88. An 18thC Worcester porcelain milk jug, baluster body with wrythen moulding, painted in underglaze blue and gilt with a leaf and dot border and floral spriggs, open blue crescent mark, 5" high.
89. Three Victorian and early Edwardian walking canes, together with umbrella.
90. An early 20thC brass penny bank of elongated bell shape with loop handle, inscribed 'Bank Graham Oakes Evans, Bourne, September, 8th 1910', 5" wide.
91. A selection of walking canes and umbrellas inc silver and ivory topped examples.
92. A Kutani style porcelain cup and saucer, decorated in iron red and gilt with birds and flowering plants.
93. A Naples porcelain candlestick, modelled as a satyr, seated on the back of a leopard and holding a palm tree, the top terminating in a rococo scroll scone and flange, 11½" high.
94. A quantity of 19thC porcelain tea cups and saucers, polychrome painted and gilt with blossom and stylised buildings, within blue wash line borders.
95. A white ostrich feather fan with mother of pearl sticks, early 20thC.
96. A selection of linen and lace.
97. A reproduction brass carriage lamp with eagle cresting, fitted for electricity.
98. A 19thC brass arms dish with floral, prickwork design and raised rim, 17" dia.
99. A qty 19thC and later glass drinking vessels, including large goblet with blue glass baluster stem, (chips to base), an ale glass with egg-timer stem and 4 other glasses. (A lot)
100. A 19thC claret jug, etched with fruiting vine, the reverse with a basket of flowers, a spire stopper etched with a band of leaves, 9½" high, together with another.
101. A Sikes hydrometer, contained within the mahogany case, with retailer's plaque W R Loftus Ltd, 521 Oxford Street, London, the box 8" wide.
102. A pair of coloured wickerwork doll's chairs.
103. An Indian hardwood carved rectangular box, 8¼" wide, together with another of similar decoration, 6" wide.
104. A Chinese papier mache box, square with inverted corners, decorated in relief with a basket of flowers, Chinese emblems, 7½" square.
105. A carved jadeite equestrian group, of 2 galloping horses, 10" wide.
106. A pair of hardwood baluster stands, carved with roundels and anthemion, 9" high.
107. A Chinese famille rose ginger jar, painted with alternate panels of figures in interior and flowers with stylised birds, 7½" high, together with 4 modern cloisonné ashtrays.
108. A pair of 3 bird free-standing groups, of coloured ivory birds, on rustic bases, 9" x 6".
109. Two Chinese orange lacquer rectangular trays, painted in gilt with Chinese landscapes, largest 19" wide.
110. Aynsley bone china part tea service, painted with flowers on a cream ground, comprising 6 cups and saucers and a sugar bowl, pattern B3957.
111. An EPNS 3-piece tea service, the oval with fluted lower body, together with a similar hot water jug.
112. An EPNS tea tray, of rectangular form with 2 handles and shaped border, 21½" over handles.
113. A set of late 19thC brass postal scales, on a shaped rectangular base, in low relief with foliate scrolls, the balance having a rectangular plate inscribed with postal rates and the whole fitted with a set of 7 brass weights, 8½" wide.
114. A Maling coffee set, polychrome and gilt with fruit bunches on a background of gilt circles on black, the interiors gilt, the milk jug with pewter cover, pattern no 3615.
115. Four pieces of clear blue glass Art Deco dressing table ware, comprising scent bottle, cologne bottle, trinket dish and cover and pin tray.

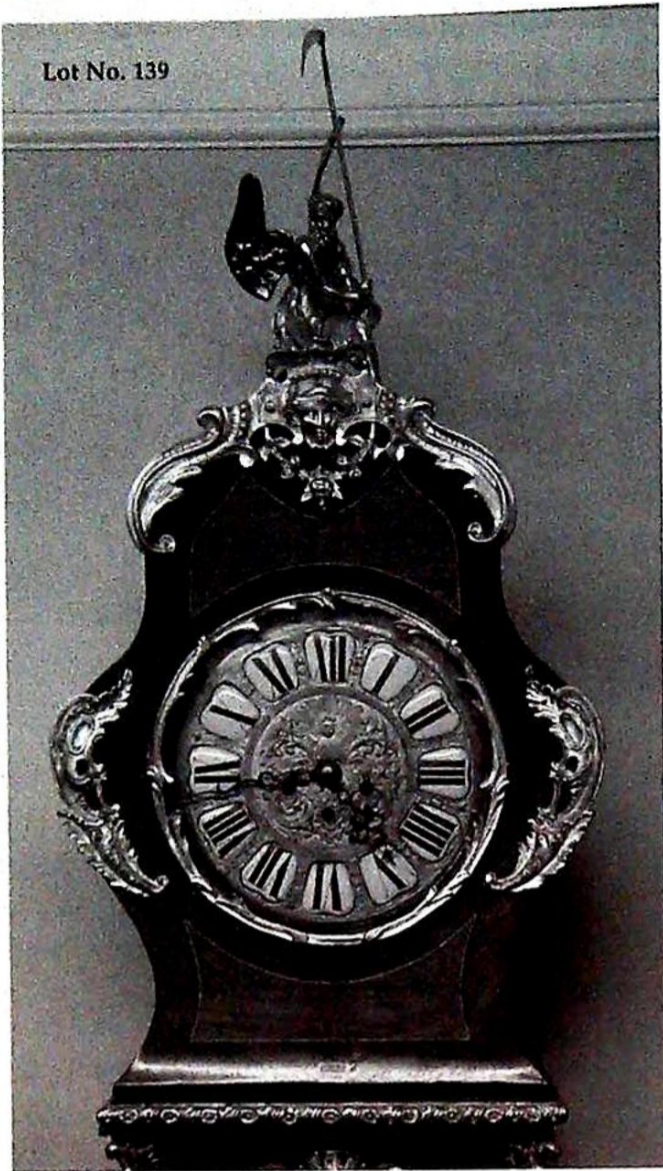
116. A modern Royal Worcester bone china coffee set, printed in colours with floral sprays, gilt line border, in fitted box, together with a Royal Crown Derby 'Derby Posies' miniature cream jug, 2½" high.
117. An EPNS and pine breadboard, of oval form, with gadrooned border and 2 scroll handles, together with 2 EPNS entree dishes and covers.
118. A cast spelter figure of a seated knight, in full armour, holding a flail in his right hand, his left resting on his plumed helmet, on wooden plinth, 11½" high, 13½" wide.
119. A Victorian cylinder teapot, glass posy vase and modern Chinese vase.
120. A Victorian leather cased top hat, by Best of London, together with 2 tailcoats and overcoat.
- 120A. 'LYNDIS KITWOOD' No 1 Pilot Boat, a scratch built scale-model from the original blueprints of the design by McBrides of Glasgow of 1924 when commissioned for the Boston & Spalding Pilotage Authority, 35" wide, 28" high.
121. A 1939 Ford 8 Saloon Car, ESL 218, 885cc, sold with current V5 and RF60 log book, last MOT test 1999, some service history.
122. A 1981 Ford Capri 1.6GL coupe, TBC 130X Tuscan beige, 63,000 miles, MOT to 27/08/04, sold with current V5.
123. A 1977 Daimler 4.2 saloon car, automatic, Westminster blue, 91,000 miles.
124. A grey Ferguson tractor.
125. A 1960 BSA C15 motorcycle, LFF 218, red, 250cc, sold with current V5
126. A 1988 Yamaha RD250LC, Q397 JWX, pearlescent white custom paintwork, 1 year MOT, taxed, full history.
127. A Victorian cast iron serpentine fender, with applied floral scrolled decoration, 6' wide.
128. A George III cast-iron and steel fire basket, in the Adam style, 3'6" wide.



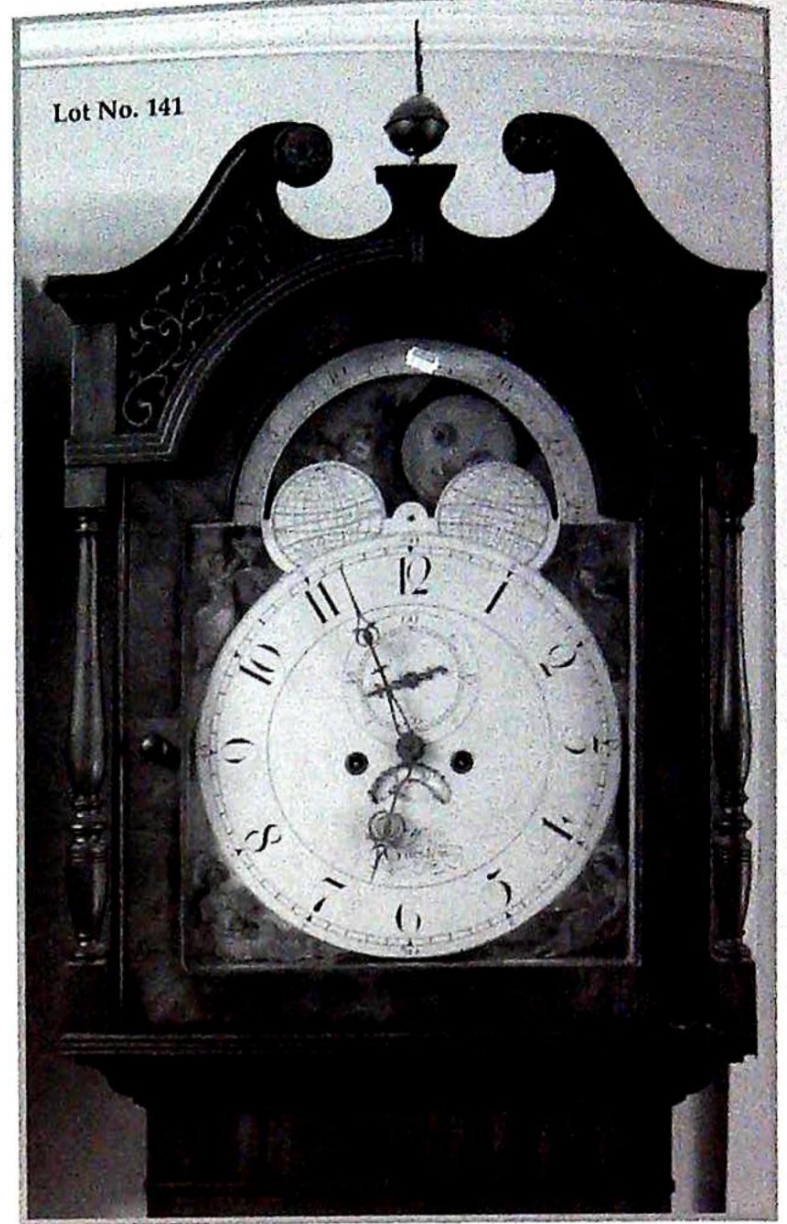
129. A Victorian polished brass galleried fender, 4'6" wide.
130. A Georgian steel platform fender, 4' wide.
- 130A. A Victorian cast iron fire insert, in the Aesthetic style, mounted with 7 Minton medievalism tiles by Moyr Smith, mostly damaged except Excalibur, Geraint, Guinevere and Enid.
131. A Victorian cast-iron fire basket, on shaped legs.
132. RFD LICENCE REQUIRED. A Midland 410 single barrel garden gun, serial no 272
133. SECTION 5 SHOTGUN LICENCE REQUIRED. A 19thC French 7mm Walking Stick Shotgun.
134. SECTION 5 SHOTGUN LICENCE REQUIRED. A mahogany finished horn handled Walking Stick Shotgun, unknown calibre.
135. A 1930's oak longcase clock, with 11" circular dial with Arabic numerals, 3 train-movement, 79" high.
136. A Georgian oak and mahogany cross-banded longcase clock, with swan-neck square pillared hood, short trunk door, plain base and plinth, the 12" painted dial having floral arch and spandrels, Arabic numerals, seconds ring and date crescent, 8-day movement striking on a bell, 89" high.



Lot No. 139



Lot No. 141

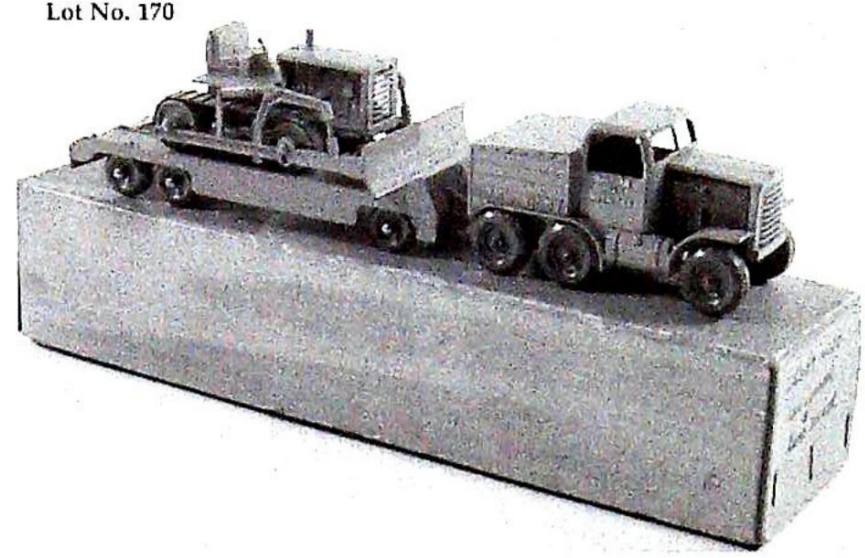


137. A Georgian oak and mahogany cross-banded longcase clock, with swan-neck pillared hood, short trunk door and plane base, the 12" painted dial having a garden scene to the arch entitled 'The Miniature' and seasonal figures to the spandrels, Roman numerals, subsidiary seconds and date rings, 8-day movement striking on a bell, 84" high.
138. A George III flamed mahogany longcase clock case, with dentil moulded swan-neck pediment, reeded pillars and canted body, 90" high.
139. A Louis XV style rosewood and mahogany marquetry longcase clock, with ormolu winged figure surmount, scrolling decoration and amorini masks, circular chased brass dial with enamelled Roman numerals, 8-day chiming movement, 94" high.
140. A Georgian longcase clock, with 12" square dial, having silvered arch with maker Jacob Heardman, London, over a moon roller, the chapter ring having Roman numerals, subsidiary seconds ring, date and fast/slow dials, applied cast brass spandrels, 86" high.
141. A 19thC flamed mahogany longcase clock, by William Wain of Burslem, the pillared hood having swan-neck verre eglomise pediment, full length trunk door with inset cluster columns, similar base and bracket feet, the 13" painted dial having moon roller to the arch, female 4 seasons painted spandrels, Arabic numerals, seconds ring and date crescent, the dial painted Wm Wain, Burslem, 88" high.

- 141A. A composite doll by Bevettato, 65cm, c.1940, slight damage to hands and feet.
- 141B. An American google eye doll, felt limbs, 14".
142. A Bisque headed doll, 27cm, head marked '124 Germany', blonde wig.
143. A bisque headed doll, 27cm, head marked 'Made in Germany 193 187', long wig.
144. A bisque headed doll, 27cm, no marks, blonde bun wig.
145. A bisque headed doll, 32cm, head marked 'DEP R 12/0', blonde wig.
146. A bisque headed doll, 32cm, head marked 'Heuback Kopplesdorf 250.15 Germany', very long wig.
147. A bisque headed doll, 32cm, head marked 'Made in Germany No 2 A', long wig.
148. A bisque headed doll, 32cm, open mouth, open eyes, head marked '193 DEP', short wig.
149. A china headed doll and bisque headed boy doll.
150. A selection of small and miniature bisque and china dolls and parts.
151. Two small cloth bodied dolls, bisque heads, hands and feet.
152. A collection of 'N' gauge locomotives, rolling stock, etc, mostly Graham Farish.

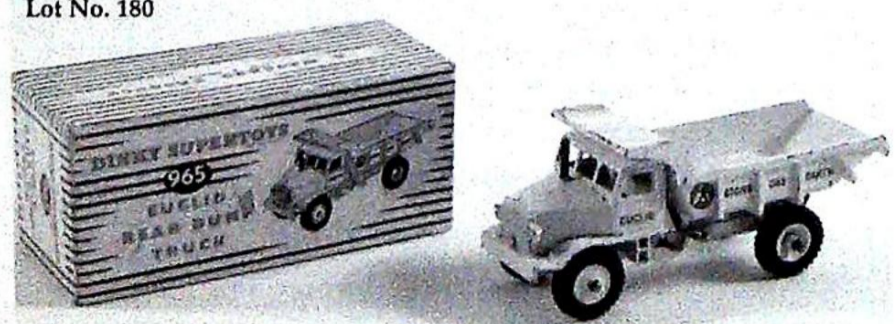
- 153. A large qty of various makes of wagons and coaches, etc.
- 154. Post 1960 Hornby locomotive 'Silver Fox', and other rolling stock.
- 155. Airfix, Wren, Dapol and Palitoy locomotives and rolling stock.
- 156. A collection of Lima locomotives and rolling stock.
- 157. Bachmann Locomotives, Ivatt Class 2 2-6-2T, Class 4 4-6-0, Class 46 diesel-electric 1 Co-Co 1 'Peake', Thompson B1 Class 4-6-0 and 4 coaches, boxed.
- 158. A Tri-ang Lionel Engineering series electronic set.
- 159. A collection of Lledo and other cars, Golly brand models and other items.
- 159A. BAYKO building sets No's 1, 1X, 2X and 3X, in original boxes, c.1950.
- 159B. A Technofix car elevator No 266.
- 160. Five Corgi cars, Ghia L.6.4 2H, MGA Sports 302, Citroen Safari 436, Jaguar Mk X 238, Bentley Continental Sports Saloon 224 and a Matchbox Ford GT 41, all boxed.
- 161. Dinky loading ramp for Pullmore Car Transporter, boxed, Dinky superior Criterion ambulance 263, boxed and Dinky Jaguar Mk X 142, boxed.
- 162. Corgi gift set no 18, tractor and plough and Corgi Major 'Carrimore' low loader 1100, boxed.
- 163. Four Corgi cars, Plymouth station wagon 219, Superior Ambulance 437, VW Karmann Ghia 239, VW Toblerone van 441, boxed.
- 164. A Corgi Toys gift set no 17 with Ferrari.
- 165. A Corgi Major gift set no 16.
- 166. An Armand Marseille baby doll, with bisque head, sleeping blue eyes and painted closed mouth, composition and jointed body, stamped 'AM Germany, 341/6/K', dressed in cotton undergarments, pintucked white cotton dress and cream flannel coat with a lace bonnet, 19" high.
- 170. A Lesney Moko Prime Mover Trailer and bulldozer with ramps, boxed.
- 171. A bisque headed doll, unstrung, head marked 121 R3A Germany.

Lot No. 170

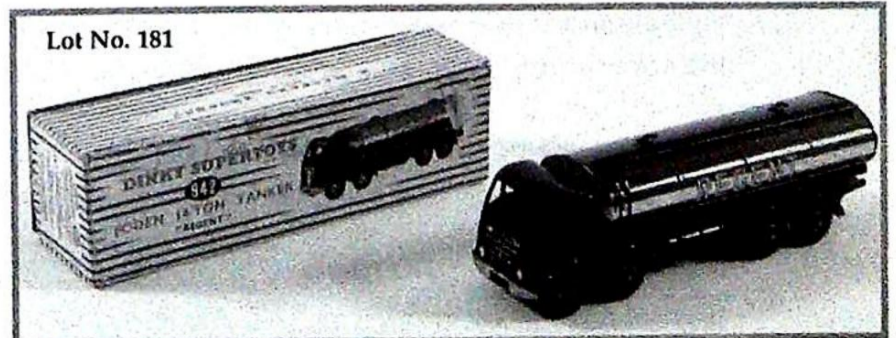


- 172. Dolls' house Christmas tree, metal cooker, clock and radio and cabinet (AF), and 2 small china headed dolls. (AF)
- 173. A custom built dolls' house, mock Tudor style, over 3 floors with conservatory, fully furnished. (Butterfly Hospice)
- 174. A CV Models MG Series TF with Mighty Midget electric motor, boxed, flap missing.
- 175. A Minic Toys APC, American markings, no box.
- 176. A CV Models Triumph TR2 sports car 1/18 scale with Mighty Midget electric motor, boxed.
- 177. A Dinky tank transporter no 660, boxed.
- 178. A Dinky Centurion tank no 651, boxed.
- 179. A Dinky D H Comet airliner, BOAC livery, no 702, boxed.
- 180. A Dinky Euclid rear dump truck no 965, boxed.
- 181. A Dinky Foden 14-ton tanker, in Regent livery no 942, boxed.
- 182. A Dinky 20 ton lorry mounted crane, no 972, no box.
- 183. A Dinky Toys Pullmore car transporter no 982, with ramp, no box.
- 184. A modern leather and mink lady's fur coat.
- 185. A selection of old bottles, including chemist's jars, sweet jars, etc.
- 186. Table linen, lace, needlework and crocodile skin handback.

Lot No. 180



Lot No. 181



Lot No. 201



187. Three bales of 1970's fabric.
188. A selection of linen and lace.
189. A Victorian copper coal helmet.
190. A Victorian brown Toleware coal scuttle, with brass mounts.
191. Four painted skin and simulated wrought iron planed lanterns.
192. A quantity of c.1950's hat, ostrich and marabou feathers and a dress.
193. Eiderdown, woollen blankets, table coverings, etc.
194. Eiderdown, table coverings, whitewear, etc.
195. Lace, linen and Broderais Anglais items, table linen, etc.
196. Cotton and linen napery, etc.
197. An embroidered cloth, crochet, silk and other textiles.
198. A quantity of lace and linen napery, etc and a fur collar.
199. Large crocheted bedspread.
200. Trinket items, china headed doll, costume jewellery, etc.
201. A Tourmaster tandem bicycle, black with white seats and guards.
202. A polished brass car horn for a vintage or veteran car.
203. An Edwardian gold stickpin in the form of a horseshoe set with 8 half seed pearls.
204. An Edwardian silver open faced pocket watch, bezel wind, white dial with black Roman numerals, subsidiary seconds hand, by Reliance, monogrammed verso, Birmingham 1908.
205. A 19thC Staffordshire stirrup cup, in the form of a foxes mask. (AF)
206. A pair of 19thC saucer dishes, printed with in blue and white with a willow pattern, 8" dia.
207. An EPNS stand, cast as a spread eagle on a rocky base and moulded plinth, 8 3/4" high.
208. A Victorian chromolithographic diorama - telescopic view of the Great Exhibition 1851, drawn and lithographed by T J Rawlins, printed by C Moody, 257 High Holborn, the cover enclosing 9 views, all hand-coloured, on card, illustrating the activity at the Great Exhibition, Crystal Palace, 6" high, 7" wide, 21" deep.
209. A Lomonosov pottery figure of an Himalayan bear, 6 3/4" high.
210. A 'Sevres' porcelain pill box, of bombe form, the hinged cover painted with a floral spray within a gilt scrolling frame, gilt metal mounts, faux Sevres marks in iron red, 2 3/4" wide, together with a Limoges porcelain rectangular tray, similarly decorated, 5 1/4" wide (restored rim) and a miniature circular pot, matching, 2" dia. (3)
211. A pair of Georgian dram glasses, each having funnel bowls supported by multi-twist opaque stems, on plain conical foot, 4 1/2" high.
212. A pair of Art Deco miniature bookends, with mottled grey marble bases surmounted by polychrome cold painted bronze stylised birds on a roof, 4" high.
213. An Arts & Craft copper pin wheel, embossed with panels of fruit and flora, 2" dia.
214. A 19thC Chinese rosewood jardinière stand, the shaped top inset with grey/liver marble, open carved frieze having bird mask terminals on stepped legs, 18" dia, 32" high.
215. A Victorian satin walnut snuff box, with penwork grid decoration and tortoiseshell lining, 3".
- 215A. Two Royal Doulton miniature 'Cardinal' character jugs and 2 others.
216. A Clarice Cliff 'Newport Pottery' planter, in the form of a sectioned tree trunk, having 2 moulded love birds, 11" wide, 5" high.
217. A Copeland Spode Toby jug, with man seated with an ale jug, wearing a blue and white frock coat, 8" high.
218. A Copeland Spode Toby jug, depicting a seated man with ale jug, wearing a floral frock coat, 8" high.
219. A Royal Doulton figure, 'Catherine Parr', HN3450, Ltd Edition no 3140/9500.
220. A Royal Doulton figure, 'Ann of Cleves' HN3356, Ltd edition no 2446/9500
221. A Beswick figure, brown horse, gloss, mare, model no 1991.
222. A Beswick figure 'Solomon of Wendover', matt golden yellow Labrador no 1548.

223. A Beswick figure 'Solomon of Wendover', glass black Labrador no 1548.
224. A Beswick figure, Girl on Pony, Skewbald, model no 1499.
225. A Beswick figure, Hereford Bull model no 1363A.
226. A Beswick gamecock, no 2059, c.1966-73, glazed in bright colours with russet, red and green plumage, on a shaped base, impressed factory marks.
227. A Royal Doulton large character jug, 'Gunsmith', D6573.
228. A Royal Doulton character jug, 'John Barleycorn' by C Noke, D5327, 7¼" high.
229. A Beswick figure of a Standard Poodle, white matt, model no 1386, 3½" high.
230. A Royal Doulton Toby Jug, 'Old Charlie', D6030, by H Fenton, 8¾" high.
231. A Royal Doulton Toby Jug, 'Honest Measure', D6108 by H Fenton, 4" high.
232. A Royal Doulton Toby jug, 'Sir John Falstaff', D6063, by C Noke, 5" high.
233. A Royal Doulton character jug 'Old Salt', D6551, large.
234. A Royal Doulton character jug, 'Capt Ahab', D6500, by G Sharpe, large.
235. A Royal Doulton figure, 'The Orange Lady', HN1759, by L Harradine, 8¾" high.
236. A Royal Doulton figure 'Biddy Pennyfarthing', HN1843 by L Harradine, 9" high.
237. A Royal Doulton figure, 'The Balloon Man, HN1j954, by L Harradine, 7¼" high.
238. A Royal Doulton figure 'The Old Balloon Seller', HN1315, by L Harradine, 7½" high.
239. A Royal Doulton Toby Jug, 'Happy John', D6031, 5" high.
240. A Royal Doulton character jug, 'North American Indian', D6614, small.
241. A Royal Doulton figure, 'Flower Seller's Children', HN1342, by L Harradine, 8" high.
242. A Royal Doulton figure 'My Love', HN2339, by P Davies, 6½" high.
243. A Royal Doulton figure, 'Marjorie', HN2788, by P Davies, 5¼" high.
244. A Royal Doulton figure 'Bedtime', HN1978, designed by L Harradine, 5¾" high, together with another 'Darling', HN1985, by C Vyse, 5 ¼" high.
- (2)
245. A Royal Doulton figure, 'Grace', HN2318, designed by M Nicholl, 7¼" high.
246. A Royal Doulton figure, 'Charlotte', HN2421, designed by J Bromley, 6½" high.
247. A Royal Doulton figure, 'Sweet Seventeen', HN2734, designed by D Tootle, 7½" high.
248. A Royal Doulton figure 'Amanda', HN3632, designed by Robert Tabbanor, 5¼" high.
249. A Royal Doulton figure, 'Hilary', HN2335, designed by P Davies, 7¼" high.
250. A Royal Doulton figure, 'Southern Belle', HN2229, designed by P Davies, 7½" high.
251. A Beswick Beatrix Potter figure, 'Jemima Puddleduck', 4¼" high, brown backstamp.
252. A Beswick cruet set, modelled as Dickens characters, glazed in green and terracotta, pepper 2¼" and the salt 3¼" high.
253. A collection of 7 Beswick small figures, fox, 2 rabbits, lamb, 2 ducks, hound.
254. A Beswick Beatrix Potter figure, 'Mrs Tittlemouse', 3½" high, brown backstamp.
255. A Beswick Beatrix Potter figure, 'Mr Algernon Ptolemy', 4" high, brown backstamp.
256. A Beswick figure of a Jersey Cow, 'Champion Newton Tinkle', 6¾" wide.
257. A Beswick Beatrix Potter figure, 'Pigling Bland', 4" high, brown backstamp.
258. A Beatrix Potter figure, 'Jemima Puddleduck', 4¼" high, brown backstamp.
259. A Beswick Beatrix Potter figure, 'Timmy Willy', 2¾" high, brown backstamp.
260. A Beswick Beatrix Potter figure, 'Mrs Tiggywinkle', 3" high, brown backstamp.
261. A Beswick Beatrix Potter figure, Mr Algernon Ptolemy, 3½" high, brown backstamp.
262. A Beswick Beatrix Potter figure, 'Pickles', 4½" high, brown backstamp.
263. A Beswick Beatrix Potter figure, 'Mr Jeremy Fisher', 3" high, brown backstamp.
264. A Beswick Beatrix Potter figure, 'Mrs Rabbit', 4" high, brown backstamp.
265. A Beswick Beatrix Potter figure, 'Mrs Tittlemouse', 3¼" high, brown backstamp.
266. A Beswick Beatrix Potter figure, 'Foxy Whiskered Gentleman', 5" high, brown backstamp.
267. A Beswick Beatrix Potter figure, 'Aunt Petticoes', 4¼" high, brown backstamp.

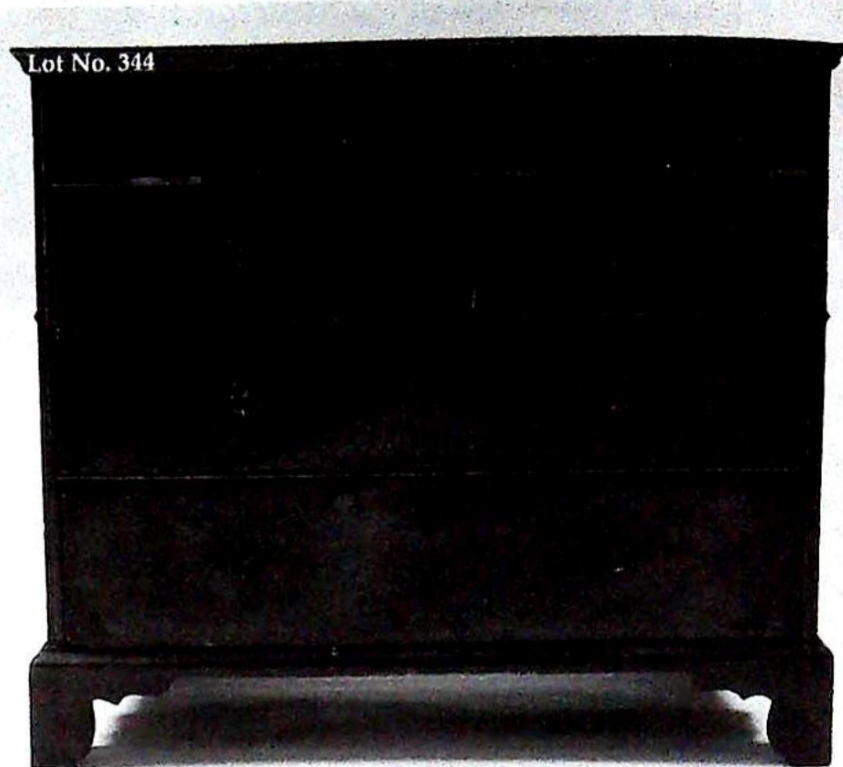
268. A Beswick Beatrix Potter figure, 'Peter Rabbit', 4½" high, brown backstamp.
269. A Beswick Beatrix Potter figure, 'Goody Tiptoes', 4¼" high, brown backstamp.
270. A Beswick Beatrix Potter figure, 'Old Mr Brown', 3¼" high, brown backstamp.
271. A Beswick Beatrix Potter figure, 'Squirrel Nutkin', 3¾" high, brown backstamp.
272. A Beswick Beatrix Potter figure, 'Goody Tiptoes', 3½" high, brown backstamp.
273. A Beswick Beatrix Potter figure, 'Sir Isaac Newton', 4" high, brown backstamp.
274. A Beswick Beatrix Potter figure, 'Tommy Brock', 3¼" high, brown backstamp.
275. A Beswick Beatrix Potter figure, 'Samual Whiskers', 3½" high, brown backstamp.
276. A Beswick Beatrix Potter figure, 'Benjamin Bunny', 5" high, brown backstamp.
277. A Royal Doulton figure 'Balloon Girl', HN2818, designed by W K Harper, 6½" tall.
278. A Royal Doulton figure, 'The Balloon Man', HN1954, designed by L Harradine, 7¼" high.
279. A Royal Doulton figure, 'Balloon Boy', HN2934, designed by P Gee, 7½" tall.
280. A Royal Doulton figure, 'Jane Seymour', HN3349, designed by P Parson, 9" high. Ltd Edition No 3675/9500.
281. A Royal Doulton figure, 'The Old Balloon Seller', HN1315, designed by L Harradine, 7½" high.
282. A Royal Doulton figure, 'Anne of Cleves', HN3356, designed by Pauline Parsons, 6½" high. Ltd Edition No 1992/9500.
283. A Royal Doulton figure, 'Anne Boleyn', HN3232, designed by Pauline Parsons, 8½" high, Ltd Edition No 3846/9500
284. A Royal Doulton figure, 'Will He - Won't He?', HN3275, designed by Robert Tabbenor, 9" high.
285. A Royal Doulton figure, 'Top o' the Hill', HN1834, designed by L Harradine, 7" high
286. A Royal Doulton figure, 'Secret Thoughts', HN2382, designed by P Davies, 6¼" high.
287. A Royal Doulton figure, 'Ninette', HN2379, designed by P Davies, 7½" tall.
288. A Royal Doulton figure, 'Tumbling', HN3283, designed by D V Tootle, 9" tall.
289. A Royal Doulton figure, 'The Last Waltz', HN2315, designed by P Davies, 7¼" tall.
290. A Royal Doulton figure, 'Louise', HN3207, designed by Adrian Hughes, 7½" tall.
291. A Beswick figure of an Arab horse, grey matt glaze, on oval wooden base, 8½" high.
292. A Royal Doulton Seriesware jug, 'New Cavaliers', depicting 2 cavaliers toasting, inscribed 'Ever Drink Ever Dry', 8" high, c.1907.
- 292A. A Royal Doulton Seriesware tankard, depicting the 3 Muskateers, D4749.
293. A Royal Doulton figure, 'Grechen', HN1397, designed by L Harradine, 7¼" high.
294. A Beswick pottery figure of a Panda Cub by James Haywood no 720, black & white gloss body, 3¾" high.
295. A Royal Doulton figure, 'Elegance', designed by P Davies, HN2264, 7¼" high.
296. A Royal Doulton figure, 'Autumn Breezes' designed by Harradine, HN1934.
297. A Royal Doulton large character jug, 'Rip Van Winkle', D6438.
298. A Royal Doulton large character jug, 'Gasler', D6570.
299. A Royal Doulton large character jug, 'Granny', D5521.
300. A Royal Doulton large character jug, 'Falstaff', D6287.
301. A Victorian walnut cabinet bookcase, with moulded cornice, 2 glazed upper doors over 2 drawers and 2 doors to base, with plinth, brass embossed backplate loop handles, 42" wide, 86" high.
302. A George III mahogany chest on chest, with moulded cornice, 2 short and 3 long graduated drawers to the upper part over 3 graduated drawers to the base with oval pressed backplate handles and bracket feet. 44" wide, 74" high.
303. A late Victorian ebonised side cabinet, with inlaid panels of burr elm to the mirror back and base, having an arrangement of glazed and panelled doors and open displays, inset with painted porcelain plaques and portraits, 73" wide, 80" high.
304. A Victorian mahogany framed 4-fold full-length dressing screen, richly decorated in a variety of colourful and varied subject scraps.
305. A Georgian style mahogany display cabinet, with dentil moulded cornice, 2 astragal glazed doors, on a stand with 2 frieze drawers and club legs with pad feet. 40" wide.

306. An early 19thC continental flamed mahogany *Secrétaire a Abbattant*, with fall front resting over 3 stepped drawers.
307. A William IV mahogany *chiffonier*, with scroll and shell carved back, having turned and graduated shelves to the upper part, breakfront top with cushion drawer over 2 arched panel doors with beaded fillets, enclosed by 2 reeded columns on reeded ball feet, 33" wide, 17" deep, 66" high.
308. A 19thC carved oak cabinet, with 2-door upper part and single door base. 20" wide.
309. A George III style mahogany pier glass, with fretwork frame, surmounted with a gilt ho-ho bird.
310. An Edwardian mahogany display cabinet, with blind fret frieze over a single astragal glazed door, on square taper legs with spade feet, 23" wide.
311. An Edwardian string inlaid mahogany china cabinet, with 2 astragal glazed doors, square taper legs and spade feet, 36" wide.
312. A 1920's oak bureau bookcase, with leaded glazed doors over a fall-flap and 2 drawer base, on square taper legs with spade feet, 40" wide, 75" high.
313. A George III mahogany bureau, with fall flap resting on lopers revealing a fitted interior, over 2 short and 3 long graduated drawers with solid backplate brass handles, on bracket feet, 45" wide.
314. A Sheraton period mahogany bureau, with satinwood, box and harewood stringing, crossbanding and shell inlays to a fall flap revealing a fitted interior, resting on 2 lopers, over 4 graduated cockbeaded drawers with cast gilt-brass swan-neck handles and splay feet, 40" wide.
315. A George IV mahogany bowfront sideboard, with planed top, having central cockbeaded drawer with oval pressed backplate handles, flanked by a double depth drawer and double depth door, raised on 6 ring and taper turned legs, 81" wide.
316. A Victorian flamed veneered and mahogany credenza, of traditional form, having 4 door base, raised on plinths, 66" wide.
317. A Victorian flamed mahogany serpentine fronted sideboard, with an arrangement of 3 drawers over 4 arch panelled doors, 72" wide.
318. A pine framed single bed.
319. A mid 19thC Boule pier cabinet, with ormolu mounts and single door with shaped glazed panel and cupid's bow plinth, 32" wide, 42" high. Provenance: Reputedly the Harlaxton Manor sale, 1930's.
320. An Edwardian string inlaid and cross-banded mahogany corner cabinet, on shaped feet.
321. An Edwardian marquetry bowfront writing table, with leather inset top, 3 frieze drawers with oval brass loop handles and square taper legs, 42" wide.
322. A George III mahogany serpentine table mirror, with oval plate, 3 drawers and bracket feet, 17" wide, 24" high.
323. A 19thc pine 2-drawer side table, with painted verso, National Farmers Union, 33" wide.
324. A late Victorian mahogany wall cabinet, with fretwork top, side shelves, including 2 leaded glazed doors, 26" wide, 18" high.
325. An Edwardian oak bureau, with fall-flap over 2 drawer and 2 door cupboard base, on plinth, 38" wide.
326. A late Victorian mahogany display cabinet, with mirrored and fretwork top, over single blind fret drawer and shaped glazed door, on carved cabriole legs, 25" wide, 51" high.
327. An Edwardian oak single pedestal desk, and a 3 shelf mahogany wall shelf.
328. A George III flamed mahogany bowfront chest, with string inlaid and crossbanded top and similar decoration to the 4 graduated cockbeaded drawers with circular brass ring handles, shaped apron and splay feet. 42" wide.
329. A Victorian mahogany table mirror, with arched glass, bobbin-turned uprights and moulded base, 19" wide, 22" high.
330. A Victorian carved mahogany chaise longue, with scrolling and galleried back and bulk, on turned legs with brass and ceramic castors, upholstered in cerise button dralon, 70" long.
331. A 19thC oak side table, with single masked drawer, barleytwist legs and stretchers, 43" x 27".
332. A George III mahogany chest, with 3 cock-beaded drawers having brass swan-neck handles and bracket feet, 31" wide, 30" high.





Lot No. 335



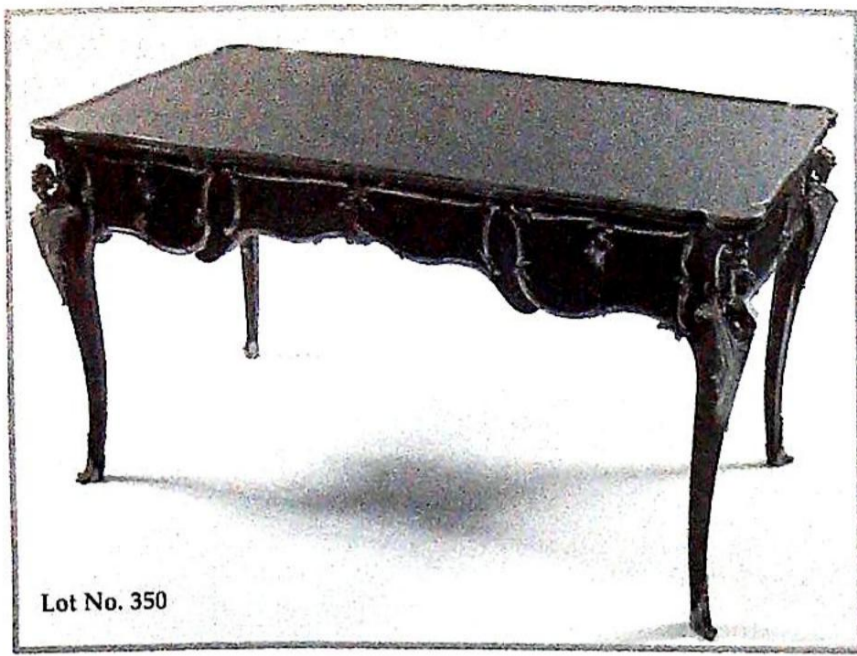
Lot No. 344

333. A Victorian flamed mahogany table mirror, with oval plate, scrolling uprights, shaped base with lift flap, 27" wide, 33" high.
334. A pine slope top school desk.
335. A George III mahogany side table, with ebony strung cross-banded rectangular top over 2 short and 1 long graduated drawer with lozenge inlay and stringing, turned knob handles, square taper legs with swell feet. 33" wide.
336. An Edwardian walnut occasional table, with circular moulded top, spindle uprights, circular undershelf with brass gallery, on outspay legs. 24" dia.
337. A Queen Anne style walnut Lowboy, of traditional form. 40" wide.
338. A George III foldover tea table, with rectangular moulded top and chamfered square legs.
339. A pair of William IV style mahogany rectangular card tables, with octagonal pillars and quatrefoil base.
340. A George III flamed mahogany side table, with cross-banded and reeded rectangular top, plain frieze drawer with swan-neck handles, and square taper legs.

341. A George III mahogany chest of 4 graduated drawers with moulded and crossbanded top, brushing slide, pierced backplate swan-neck handles and bracket feet. 36" wide.
342. A George III mahogany fold over tea table, with rounded rectangular top, turned and part reeded column, quatrefoil base with moulded sabre legs terminating in acanthus scroll feet with castors. 36" wide.
343. An 18thC walnut chest of 2 short and 3 long graduated drawers, with brass loop handles and later bracket feet.
344. A George I walnut chest having moulded and cross-banded top over 2 short and 3 long graduated herringbone strung drawers with replacement drop handles and escutcheons, on bracket feet, 41" wide.
345. A late Georgian mahogany chest of 2 short and 3 long graduated drawers with knob handles, shaped apron and splay feet, 43" wide.
346. A George III mahogany washstand, with lift top and dummy drawers, on square taper legs, 27" x 17".
347. A Victorian pitch pine joint-table, 19" wide, 36" high.
348. An Edwardian oak roll-top desk, with D-shape tambour and pedestal drawers, by Wolfe & Hollendar, London, 53" wide.
349. A George III oak corner cupboard, with single fielded panel door, brass griffin hinges, 37" wide, 46" high.
350. A late 19thC French ormolu mounted kingwood bureau plat, in the Louis XV style, the shaped top with leather writing surface above 3 frieze drawers, the back with simulated drawers, standing on 4 cabriole legs, each mounted by an espagnolette, on scrolling foliate sabots. 53" wide, 30" deep, 29" high.



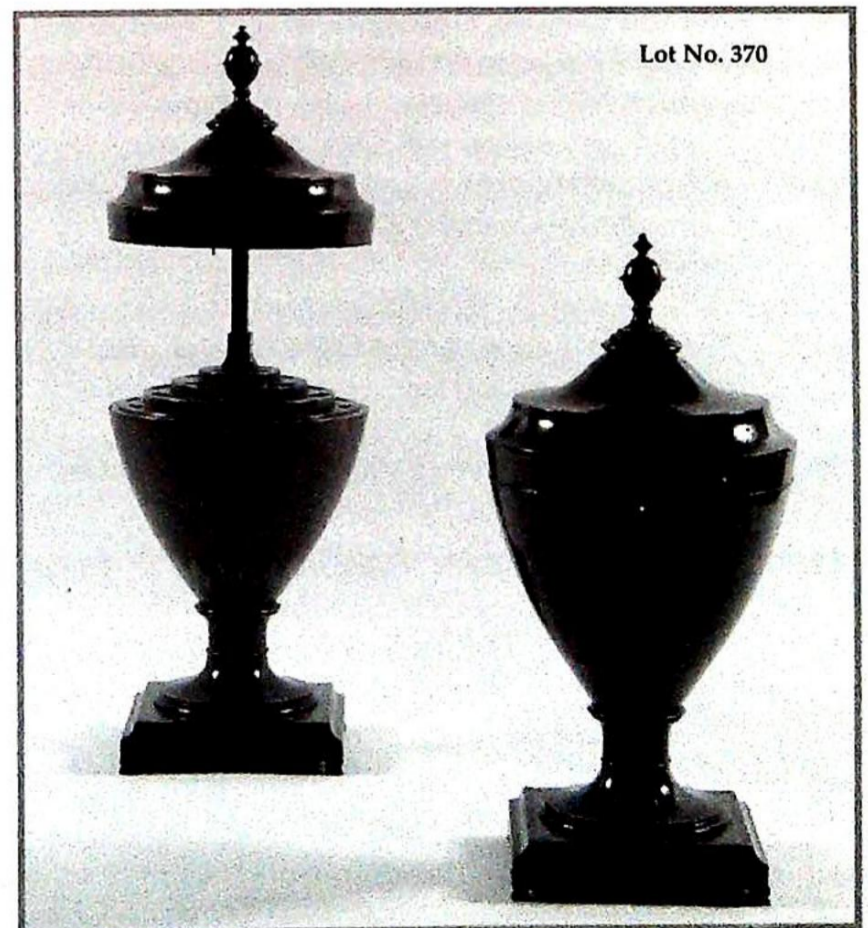
Lot No. 342



- 351. A Victorian oak library table, with brown leather inset moulded top having 2 concealed frieze drawers, raised on 2 baluster pedestals of lobed and carved pendant husk design, resting on platforms with reeded feet, 55" x 30".
- 352. A late Victorian child's metamorphic high chair.
- 353. A Victorian walnut rise and fall piano stool, with 3 carved legs.
- 354. A George III mahogany country carver chair.
- 355. A 19thC elm commode chair, with Chippendale design pierced vase splat.
- 356. An Edwardian rosewood marquetry bedroom chair.
- 357. A Cromwellian style barleytwist oak hall chair, 19thC.
- 358. A set of 4 Victorian oak barback dining chairs, with turned forelegs and drop-in seats.
- 359. A Victorian mahogany breakfast table, with circular tilt-top, octagonal taper pillar, trefoil platform and 3 paw feet, 46" dia.
- 360. A set of 4 William IV rosewood balloonback dining chairs, with carved and shaped backs, overstuffed seats, part reeded and tapering forelegs.
- 361. A 19thC mahogany octagonal centre table, with moulded frieze, square taper legs and pierced X-stretcher, 44" dia.
- 362. A set of 6 Edwardian oak dining chairs, with carved and galleried backs, overstuffed seats and turned forelegs.
- 363. A late Victorian mahogany wind-out dining table, with moulded top and heavy cabriole legs with 2 extension leaves. 41" wide x 6' max.
- 364. A set of 8 George III mahogany dining chairs, with carved and pierced splat backs, moulded square legs, H-frame stretcher and overstuffed gold velvet seats.

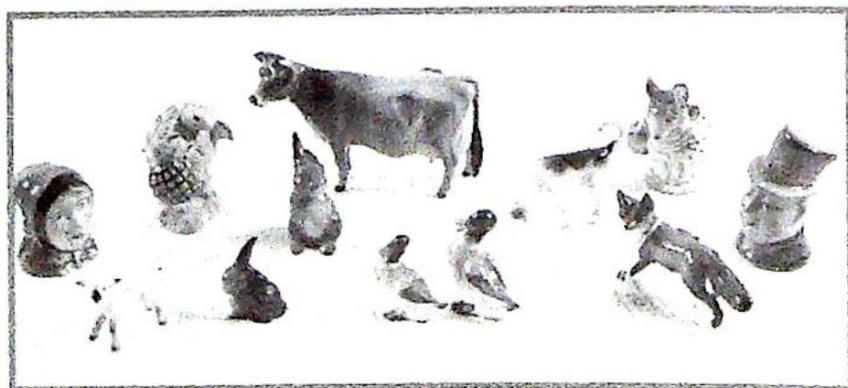


- 365. A Victorian mahogany wind-out dining table, with flamed top, having 3 extra leaves, on turned legs with brass and ceramic castors, 54" wide, 105" max.
- 366. A set of 10 barleytwist oak dining chairs, with gate backs, drop-in seats and H-frame stretcher, 1920's.
- 367. A George III mahogany supper table, with circular tilt-top, on bird-cage with turned pillars, turned pedestal and 3 moulded cabriole legs, with pad feet, 29" dia.
- 368. A brass and leather simulated bamboo 2-tier table.
- 369. A Chinese rosewood jardinière stand, with circular moulded top inset with grey and liver marble, carved openwork foliate frieze and shaped cabriole legs, 10" dia, 36" high.
- 370. A pair of late George III mahogany knife urns, inlaid and cross-banded in satinwood, having fitted interiors, square platform base and ogee feet, 24" high.





371. A Victorian style tripod games table, with chequerboard inset top.
372. A set of 6 Victorian walnut dining chairs, with carved and shaped balloon backs, overstuffed pink dralon seats and cabriole legs.
373. A Victorian mahogany extending dining table, with turned legs.
374. A set of 4 George III mahogany dining chairs, with turned cresting rail, X-frame reeded back, overstuffed seats and square taper legs.
375. A Georgian oak supper table, with floral carved circular tilt-top, baluster pillar and 3 acanthus carved outplay legs, 33" dia.
376. A Victorian flamed mahogany tripod table, with circular white marble inset top, turned pillar and 3 scroll legs, 22" dia.
377. A pair of Victorian mahogany dining chairs, with upholstered cameo backs and overstuffed seats in a gold and rose patterned material with turned forelegs and double crinoline stretcher.
378. A Victorian rosewood spoonback nursing chair, upholstered in green and red rose pattern beadwork upholstery.
379. A Georgian elm blanket box, with moulded lift top and raised on high bracket feet, 37" wide, 27" high.
380. A walnut dressing table stool, in the Queen Anne style, with bergere seat and shell carved cabriole legs.
381. An Edwardian mahogany firescreen, with a silk and needlework panel with birds, flora and butterflies.
- 381A. A Georgian style mahogany table mirror, with oval plate and turned frame, together with another.
382. A Sheraton style cross-banded Sutherland table.



383. A Victorian cast-iron bench, with pierced ends, having anchor motif, 5' wide.
384. A wing-back 2-seater sofa, with cabriole legs and button dralon upholstery.
385. A rococo foliate scrolling gilt framed wall mirror, 52" high, 28" wide.
386. A Victorian mahogany club chair, with turned gallery and leather upholstery.
387. A Victorian grain painted overmantel mirror.
388. A late Victorian walnut sideboard, with 3 drawers over open section, enclosed by 2 carved panel doors, and stamped Maple & Co, 79" wide.
389. A mahogany snooker cue stand, in 2 sections.
390. A turned oak revolving billiard cue stand. (AF)
391. An Edwardian beech metamorphic child's high/low chair.
395. A late 17thC brass lantern clock movement.
396. A lantern clock and associated case, with 6" square dial, having applied rococo spandrels, chapter ring with Roman numerals, single hand and later arch with rondel marked Chas Raymond, Lydeway, fitted in a later mahogany case.
397. A Victorian mahogany bezelled wall clock, with single fusee movement.
398. A 19thC wall clock with ebonised case, 2 part enamel dial with Roman numerals.
399. An electric master clock with painted dial, marked A Drevon, Lyon.
400. A Victorian oak stick barometer, by Negretti & Zamba, with ivory dial and thermometer, 37" high.

Session Two

401. A fine pair of 19thC French bronze and ormolu 3-branch candelabra, with a stylised female winged figure holding baskets of flowers for sconces, standing on a ball and anthemion reeded pillars, 23" high.
402. A pottery wine carrier, early AD.
403. An early 20th century EPNS quatrefoil cruet stand, with loop handle, with five panel cut glass bottles.
404. An old Sheffield plate samovar, of plain rectangular form, on stepped base with 4 feet, 13" high.
405. A pair of late 19th century opaque glass vases, of circular tapering shape, polychrome painted with flowers and foliage below brown collars, 13½ ins high, another vase, ovoid, enamelled with flowers and leaves.
406. A 'Meissen' porcelain figure group, by Samson emblematic of the Harvest, with a classically dressed female and young boy, on rococo scroll base with floral encrustations, 16" high.
407. A Royal Doulton "natural foliage-ware" jardinière, ovoid, with green glaze raised neck, the autumnal ground with the impression of brown leaves, 8½ ins diameter, 7½ ins high, impressed no. 2109, incised CF.
408. A Burleigh Ware yellow ground baluster vase, moulded with butterfly and with parrot moulded handle, 7½ ins high, circa 1930.
409. A 'Meissen' porcelain figure group, by Samson, of a seated gallant with 2 female attendants, a dog by his side, on oval base with flower encrustations and guilloche border, 12" high.
410. A St Clement pottery jug, moulded as a duck, glazed in naturalistic colours, the beak forming the spout, with bush-rush handle, 13" high, circa 1930/40.
411. An early 20thC English Art Pottery vase, the deep circular neck linked to the baluster body by 4 loop handles, with blue/green/brown streaky glaze, incised with panels of 'crazy paving', the neck with boss shields, impressed mark, 10½" high.
412. A Chinese export blue and white circular bowl, with a waved edge, the well painted with a vase of flowers, and overall with a bird and flower landscape, 14½" dia, (repaired).
413. A pair of Kutani vases, late 19thC, of baluster form, each painted with panels of birds and flowering plants, 13½" high.
414. A Victorian embossed brass spirit kettle, with ebonised handle and A-frame stand.
415. A German porcelain jug, of ovoid form, with rising spout and loop handle, the iron-red ground decorated with orchids, factory mark of Hutschenreuther, 10¼" high, modern, another vase, modelled as a Monkshead flower, white ground with gilt, 7½" high. (2)
416. A 19thC 'Sevres' style cache pot, circular, painted with a family garden scene, with 2 rudimentary handles moulded as brackets, on scroll feet, 8¼" high, repaired.
417. A pair of late 19thC continental porcelain vases and covers, of hexagonal baluster form, painted with vertical entwined panels of trailing flowers between gilt lines, on a deep blue ground, painted overall with gilt dot circles, the domed covers with orb finials, 11½" high, blue 'Sevres' factory mark, (some damage and repairs).
418. A pair of late 19thC spelter figures of young girls, one with a watering can, the other with a bundle of fruit and a scythe, on circular marble bases, 10" high.
419. A set of 3 Masons stoneware graduated jugs, hexagonal, each painted in blue, iron red and ochre in the Chinese manner, with green serpent moulded handles, pattern no 311, the largest 7" high, c.1835.
420. A Brown-Westhead, Moore pottery jug and bowl, 'Hebe' pattern, in black on pale blue ground, the jug 9¼" high, the bowl 13½" dia, printed factory marks and French retailers mark, late 19thC, (chip to jug neck rim).
421. A Crown Devon pottery jug, of moulded form, the rough cream ground painted with an abstract pattern, deep red interior, 7" high, c.1950, together with a Wade Heath Streamline pottery jug, of Art Deco outline, the green ground painted with flowers and rectangles in blue and ochre, 7½" high, c.1936.
428. An early 20thC bronze car mascot, modelled as a standing female figure, her knees slightly bent, her right hand holding her dress to her chest, her left arm extended below her long curly hair streaming out behind, 7½" high, on circular wooden base.
431. A pair of Mettlach small ewers, of ovoid form, with loop handles with blue and brown incised scale panels within bead borders, applied buff flowerheads to a matt brown ground, 7½" high, (one - repairs to neck).
432. A pair of late 19thC Satsuma ovoid vases, painted and gilt with figural panels, against a deep blue ground printed in gilt with flowerheads, 7¼" high, (one with foot rim chip).
433. A late 19thC Satsuma ovoid vase and cover, painted and gilt with young musicians in 2 panels against an ornamented ground, the domed cover with spire finial, 5¼" high.

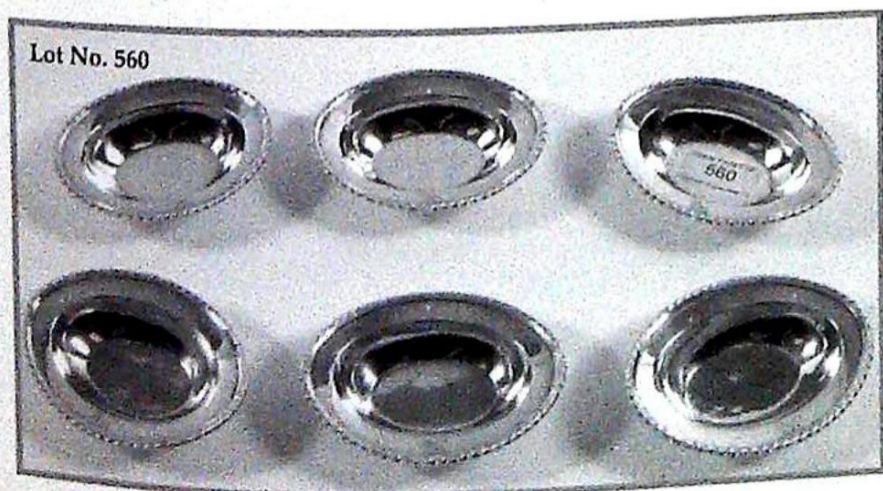
434. A continental porcelain figure group, modelled as a classically dressed female, leaning against a tree trunk supporting a shell shaped dish, painted with flowers in the German manner, 11".
435. A 'Coalbrookdale' baluster vase, with 2 moulded gilt handles, encrusted and painted with a profusion of summer flowers, the neck and foot conforming, gilt and moulded decoration, 13" high..
436. A pair of 19thC green glass table lustres, with candlestick sconce, knops and gilt stem, on moulded foot, hung with clear glass prismatic drop, 8¾" high.
437. A Victorian brass framed firescreen, having 3 bevelled mirror panels painted with flowers, on splay end supports.
438. A Continental porcelain vase, ovoid, with 2 moulded handles and painted with cornucopia on a cream ground, (AF), together with 2 turned wooden bowls, a brass bowl on 3 lion mask and claw feet, and a copper shallow bowl. (5)
439. A pair of 19thC green glass ewers, of lobed form with elongated necks and everted rims, clear glass prunt handles, the bodies enamelled and gilt in Lilly of the Valley and butterfly, 9¾" high.
440. An Arts & Crafts copper umbrella stand, with swirl and plant chased decoration, 23½" high.
441. A Minton earthenware soup tureen and cover, printed in brown and polychrome painted with flowers and urns in the Chinese manner, 14½" over handles.
442. A 19thC German mantel clock by Junghans, of 8-day movement striking on a gong, the beech case of architectural outline with turned finial and metal mounts, 18½" high.
443. A marble cased mantel clock, of architectural outline with modern movement, 8½" high.
444. An early 20thC oak cased mantel clock, with silver dial, of 8-day movement striking on a gong, the square case having moulded frieze and ogee plinth, 12" high.
445. A Mappin & Webb EPNS breakfast chafing dish, of domed form, the 2 knopped handles, the interior fitted with a drainer and dinner dish, raised on 4 legs with bun feet, 13" over handles.
446. An EPNS food cover with loop handle, 14¼" wide, together with another example, 12½" wide.
447. A pair of early 20thC Chinese cloisonné baluster vases, painted with dragons chasing sacred pearl between lotus and scroll borders, 9½" (one AF)
448. A Mdina style baluster glass vase, with a blue clouded ground, black and spangled swirl border, 7" high.
449. A pair of 18thC Chinese export mugs, painted with figures in a garden, between mirror shaped panels and flower sprigs, 5" high, (AF).
450. A pair of Satsuma circular vases, with elongated necks and faux bronze bands, enamelled with battle scenes 9¼" high, together with a baluster vase and cover, similar, 8¾" high.
451. A Denbyware blue glazed trumpet vase, with everted rim, mounted with rudimentary on dished base, together with a circular bowl, similar glaze, 9¼" high and 8" dia respectively.
452. A floral decorated ginger jar.
453. A Chinese famille verte ginger jar and cover, enamelled with reserves of flowers, rocks and foliage, against a pink and green scrollwork ground, within lappet borders, 7¼" high.
454. A Goldscheider pottery figure group, by G Bouret, modelled as a young boy and girl, she tying his scarf, 10" high, Model no 7835 (repair to base).
455. A Staffordshire pottery figure, 'Soldier's Dream', c.1854, soldier in highland dress standing, his left foot on a gun, left elbow resting on a drum behind which are 2 flags, underglaze blue jacket, polychrome painted, 12¾" high. See Pugh, page C276.
456. A pair of Staffordshire pottery white glazed dogs, seated, with ochre and black muzzle, yellow eyes, 13" high.
457. A 19thC Staffordshire pottery figure group, of a lover and his lass seated in an arbour, white ground with polychrome highlights, 14½" high.
458. A pair of 19thC Staffordshire pottery equestrian highlanders, mainly white with gilt highlight, on oval bases, 15" tall.
459. 19thC Staffordshire pottery figure of an unidentified huntsman, climbing a rock, wearing a plumed bonnet, shirt, breeches and stockings, knife in his belt, and at the foot of the rock lie a musket and a dead stag, 10¾" high. See Pugh, Page E394.
460. An early 20thC cast-iron boot scraper, on oval dished base.
461. An early 20thC stuffed panda bear, in glass case, with accessories, 12" high.
462. Two stoneware ale flagons, one stamped 'Port Dandus Pottery Co, Glasgow'.
463. A Victorian copper kettle, the handle with brass uprights, 12" high overall.
464. A mantel timepiece, with circular enamelled 2-part dial, in a gilt metal rococo style scrolling figural case, 11" high.

465. A Chinese enamel and lacquer table lamp base, the red ground applied with black pierced foliate and scrolling panels, 17" overall.
466. A Spode earthenware tureen cover and stand, printed and painted in the Chinese manner with stylised birds, peonies and rocks, the retailers stamp for Waring & Gillows, 12¼" wide.
467. A late 19thC brass single frame firescreen, lead glazed with bevelled glass panels, 26" high.
468. A pair of late 19thC earthenware vases, moulded as a country boy and girl, each with basket, he with stave, on globular bases, the trumpet vases painted with leaves, 19¾" high, (one repaired).
469. A Phillips wireless in a bakelite case.
470. A Bush wireless, in bakelite case with medium and longwave, (type DAC. 90.A).
471. An old wirework birdcage.
472. A set of Imperial weight cast-iron painted scales, together with an office stamp.
473. A Victorian rosewood writing box.
474. A Victorian rosewood tea caddy.
475. A EPNS tea kettle, stand and burner, of rounded rectangular form with gadrooned borders.
476. A metal and glass lantern shade, with foliate flange, 14" wide.
477. A white painted wood and wirework birdcage, probably North African, 19" high.
478. An early 20thC EPNS 5-branch table epergne, supported on scrolling base, 19½" high.
479. A green painted tin, stationmaster's lamp, with swing handle, 18½" high.
480. A Chinese rosewood and metal mounted Mah Jong cabinet.
481. A case containing a collection of Victorian and later dolls' clothes, shawls, etc.
482. A mid 20thC doll's travelling wardrobe trunk containing a collection of doll's clothes and accessories.
483. A collection of glass marbles, of mixed date and size, spirals and opaques.
484. A set of six early 20th century liquer glasses, with facet cut bowls and stems on octagonal circular foot, 4¼ ins high.
485. A pair of Staffordshire pottery figures of the Prince of Wales and The Princess Royal with sheep, glazed in bright colours with underglaze blue jackets, 19thC, 8" high.
486. A Staffordshire pottery arbour figure group of a lover and his lass, predominantly white, with polychrome highlights, 19thC, 14½" high.
487. A Victorian Tonbridge inlaid walnut rectangular workbox, with fitted interior.
488. A Vienna Pottery pedestal bowl, with pierced border, floral garland enamel decoration and classical base, 8" high.
489. A Halcyon Days brown transfer printed tapering planter, with saucer.
490. A Victorian cast iron beam balance, with brass pans.
491. A child's blue Sirrum chair and parasol.
492. A 19thC carved alabaster table centre. (AF)
493. A German porcelain table centrepiece, the pierced basket painted and encrusted with flowers, supported by a scrolling column and base with encrusted flowers and with cherubs, 12" high, (repaired).
494. A wrought-iron framed bulbous glass hanging lantern, 14".
495. A modern green patinated bronze sculpture, 15" high.
496. A 17thC Delft possett pot. (AF)
497. A 17thC faience lobed dish, with a spear holding cherub to the centre field, 14" dia.
498. A 19thC Royal Navy officer's dress sword, with gilt lion mask handle, shagreen grip, pommel and scabbard. 38"
499. A 19thC rapier by Kenning, inscribed 13 Faith, Bradford, to the hilt.
500. A Japanese hanging scroll
501. A Victorian copper warming pan, with turned ebonised handle and plain cover.
502. A 1950's Brexton picnic hamper.
503. A Victorian parian bust of Wellington, imprest Comte D'orsay 1846 verso, 6" high.
504. A Victorian horn handled walking stick with silver bands.
505. An Ericsson Magneto table telephone, type N2155B.
506. A Japanese bronze and cloisonné vase, 8" high.
507. A pair of Victorian brass pierced vases, with amorini masks and paw feet, 9" high.
508. A Mallard type MAS82 bakelite radio receiver.



509. A Victorian copper kettle with acorn finial.
510. An electroplate 3-piece London shape teaset, with part reeded decoration.
511. A Victorian terracotta jardinière, with wavy rim and floral enamelled decoration on a brown ground, probably Minton, 12" dia.
512. An acid etched overlay glass baluster vase, decorated with dragonflys and flora and marked Galle, modern.
513. A Victorian brass and leather bound Lord Bury telescope, by J H Steward, London.
514. A Carters Poole pottery vase, globular shape, splatter and drip lustre glazed in shades of green and turquoise, 7" high.
515. An electroplate Arts & Crafts spirit kettle on stand by James Dixon & Sons.
516. A small Japanese Satsuma bottle vase and 2 others.
517. A cut glass biscuit barrel, oval, with diamond and hobnail cutting and silver plated collar, handle and domed cover, 10" wide over handles.
518. A selection of Torquay ware inc jugs, cruet, bowl, etc.
519. A pair of Baccarat lead crystal champagne flutes.
520. Spare lot.
521. Spare lot.
522. A circular cut crystal hanging centre light, 12" dia.
523. A portable gramophone and selection of records.
524. A brass and black lacquered monocular microscope, by C Baker of London, Model no 9607, cased.
- 524A. A Bussey & Co Patent oak and mahogany golfing tripod golf club stand.
- 524B. A Redgate Fruit Drinks enamel advertising sign.
525. A Herend rabbit with lop ears, painted in blue and gilt with black eyes, 4½" high.
526. 2 Continental porcelain brooch inserts, painted with head & shoulders study of young girls, 1½" high, another pair ¾" high, with portrait miniature frame, having oval concave glass panels enclosed by flower cast gilt metal frame with suspension ring, 3½" high, box of silk mouches, silver nail buffer, 1909, child's silver rattle with mother of pearl teething ring, 1919.
527. A small collection of Wade miniature animals, approx 18.
528. Five set of jet and French jet buttons, with foliate and facet cut decoration.
529. A silver wine keeper mounted with a game bird, 2 EPNS examples and a pair of metal lustre mounts with prismatic drops (incomplete).
530. A glass oil bottle with silver collars and hinged cover, 1911, 4" high, another, with glass stopper, 1906, 4¾" high, (chip to handle).
531. An early 20thC bisque doll's house doll, with applied lustre socks and shoes, in pink lace dress, 6" high.
532. A pair of Meissen porcelain chocolate cups, covers and saucers, each painted with figural panels within gilt and black cartouche frames, the borders gilt with puce landscape vignettes, with bird finials, blue crossed swords mark scratched through, 19thC.
533. A Herend porcelain peacock, hand-painted in blue, black, green and gilt, 4½" high.
534. A 19thC Meissen figure group of a well dressed young lady seated, with her lap dog on her knee, and reflected in a mirror, on circular base with repeat lappet border, blue crossed swords mark, 6" high.
535. A Tonbridgeware small box and cover, of circular panelled form, the screw lid with knop finial, 3" high.
536. A 19thC German porcelain snuff box, circular, the domed cover painted with figures in a landscape, within puce diaper border, the body with similar diaper border over gilt, 2¼" dia (gilt rubbed).
537. A Kutani plate, c.1890, painted with a panel of figures in a landscape, and an adjacent panel of partridge by a lakeside, with flowering plants, against an insect and grass ground, 8½" dia.
538. A 19thC brass and polished steel curved bayonet.
539. A Victorian glass dome and plinth, with a flower arrangement set in wax and worked in multi-coloured wools, 13" high.
540. A part box of White Owl New Yorker cigars.
541. A Martin Bros burnt glazed pitcher, moulded with scrolling stylised acanthus and insect decoration, incised 4-1899 Martin Bros, London & Southhall, 10" (hairline crack to neck).
542. A Victorian embossed copper log bucket with lion mask handles.
543. A set of Victorian stained ivory chess pieces, (one pawn missing).
544. A mahogany shoe shaped snuff box, with pin struck cross keys decoration and the date 1832.

- 545. A Japanese bronze censor, cast with interior seal signature, and serpent handles, with hardwood pierced cover set with agate finial, 3½" dia.
- 546. A Satsuma pot by Kinkozan, of compressed circular form, painted with 2 panels of courtly ladies and their entourage and an opposing panel of flowering plants, against an underglaze blue ground, gilt with fern, signed to underside, 4" dia, (damaged).
- 547. A pair of Daum crystal candlesticks, modern
- 548. A Lalique glass model of a feeding bird, on horseshoe shaped base, stamped Cristal, Lalique, Paris, modern.
- 549. A German porcelain scent bottle, in the form of a crinoline lady.
- 550. A pair of Hummel figures.
- 551. A silver 5-piece cruet set, 1910 and 1913, of ovoid panelled form, comprising 2 footed salts, a mustard with domed cover, each with sapphire liners and 2 pepperettes, together with 3 condiment spoons, in a fitted quatrefoil case.
- 552. A pair of silver Crown 1973 goblets, by Jack Spencer, to commemorate the Bi-centenary of the Foundation of the Sheffield Assay office, the bucket shape bowls on stout stems, worked with bands of overlapping crowns, on circular platform bases, 6" high, no's 81 & 82 of 200, 17ozs gross, boxed.
- 553. Two early 20thC button hooks, with embossed silver handles, 7¾", another, 2", shoe horn and an EPNS preserve spoon with King's pattern handles. (5)
- 554. A silver salt, 1906, oval, with pierced sides, sapphire liner, 2¼" wide, together with a pair of circular salts, with trellis sides (modern), and 2 condiment spoons. (5)
- 555. A silver sauce boat, 1936, the rim and octagonal foot cast with patera border, scroll handle, 7¾" wide, 8.5ozs.
- 556. An Edward VII silver sauce boat, in the George III style, 1902, with gadrooned rim, flying scroll handle with foliate cresting, and on 3 shell feet, 7¾" wide, 10.5ozs.
- 557. A Victorian silver King's Pattern soup ladle, 1891, 13" long, 9.5ozs.
- 558. A George III silver teapot, probably by Charles Wright, 1769, of ovoid form, engraved with C-scrolls and diaper panels around 2 vacant cartouches, scroll handle with ivory heat exchanger, the spout with mask terminal and foliate cap, on domed foot, 16ozs.
- 559. A Victorian silver teapot, by Nathan & Hayes, 1890, of ovoid form, with fluted nut flange, embossed with flowers and leaves over a wrythen band, composition finial and handle, 10.5ozs.
- 560. A set of 6 George III silver salts, by Peter and Ann Bateman, 1799, oval, each with gadrooned rim and the borders engraved with heraldic lion, 4½" wide, 12ozs.
- 561. A George III silver wine coaster, by Charles Aldridge & Henry Green, 1776, with oval engraved shield and pierced scroll and foliate gallery with stylised birds, 5" dia.
- 562. A white metal cream jug, with cut edge, scroll handle and on 4 pad feet, 3¾" high.
- 563. A silver vesta case, of lobed form, 1900, engraved overall with foliate scrolls, another, 1897, together with a matchbox cover, 1899, embossed with scrolls and flowers, around a vacant cartouche and a tea strainer and stand, 1936. (4)
- 564. A Victorian silver castor spoon, 1863, with a foliate pierced bowl, the handle of stylised plant form, 6".
- 565. A pair of silver spice shakers, 1890, with domed pierced covers, circular half-fluted bodies and with loop handles, 2" high, weight nominal.
- 566. A silver trumpet vase, 1946, with shell and reeded rim, knopped stem and on domed foot with conforming ornament, 8" high, weighted.



Lot No. 560

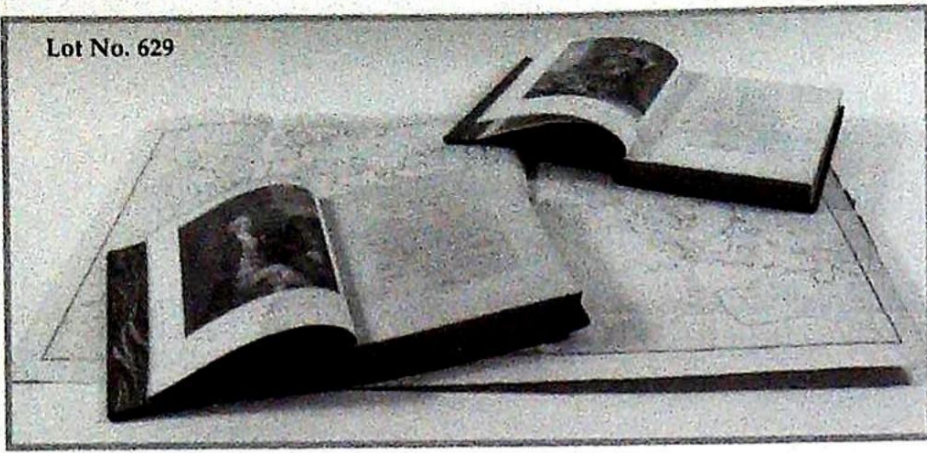
Lot No. 567

567. **A George IV silver 8-bottle cruet stand**, by Crispin Fuller, 1821, of rectangular cavetto shape with gadrooned border with shell ornament, centred by a cast flower and foliate loop handle, fitted with 8 cut glass bottles, 3 with silver covers, the whole raised on shell and foliate feet, 10½" x 8½", weighable silver 24.5ozs.
568. **A silver 3 piece cruet set**, London 1975, the circular bodies chased with a contemporary design of basket weave banding comprising salt pot, pepper pot, and circular mustard 6ozs gross, together with a silver napkin ring (4).
569. **A set of four silver sherry goblets**, to match above lot. 12 ozs. gross.
570. **A set of four silver wine goblets**, London 1972/1973, the bucket shaped bowls on baluster stems and domed feet 5 ins high, 20 ozs. gross.
571. **A pair of silver candlesticks**, London 1910, with removable sconces over knopped baluster stems and domed bases, engraved with diaper panels and flowers, raised on three cast pierced feet, 11½" high, weighted.
572. **A Victorian silver Old English table service**, London 1875, comprising 12 place settings, principally by George W Adams, (Chawner & Co.) 12 table and dessert forks, 12 table and dessert spoons, 6 teaspoons, coffee spoons, egg spoons and various condiment spoons by other Makers, 12 table and dessert knives with Ivorine handles, 5 carving implements, 111 ozs weighable silver, contained within a mahogany brass bound canteen, 18 7" wide.
573. **A Victorian silver caddy spoon** by George Unite, Birmingham 1861, with engraved bowl, and scroll handle, nominal weight (split).
574. **Five pairs of silver sugar tongs**, various dates.
575. **A silver 3-branch candelabra**, 1973, with reeded twin branches, tapering stem and on domed foot with bead border, 9 ins high, weighted base.
576. **A quantity of silver Old English and Fiddle pattern cutlery**, various dates, 19thC, mostly engraved with initials and crests, 52.5ozs gross.
577. **A quantity of 19thC and later silver cutlery**, etc.
578. **An Edwardian silver scoop**, Sheffield 1901, a child's pusher, London 1946 and 3 fruit knives with mother of pearl handles. (5)
579. **A pair of silver machine turned napkin rings**, another pair, plain, modern, and 3 other napkin rings, 2 unmarked. (7)
580. **A set of 6 seal top coffee spoons**, Birmingham 1926, 2ozs.
581. **A Victorian silver miniature cream jug**, Birmingham 1896, with cut rim, baluster body and double scroll handle, on 3 shell and C-scroll feet, 3¼" high, nominal weight.
582. **A Victorian silver ladle**, Sheffield 1897, fiddle pattern, by James Dixon & Sons, 12", 7ozs.
583. **A Victorian silver 2-handled sugar bowl**, Sheffield 1896, the oval body with reeded girdle and fluted lower borders, 5¼" over handles, 3ozs.
584. **An Edwardian pair of silver cauldron salts**, Chester 1906, silver gilt interiors, on 3 bun feet, 1½" dia.
585. **A Goerge V silver sauceboat**, Birmingham 1919, with cut rim, flying scroll handle, and on 3 hoof feet, 5¾" wide, 2½ozs.
586. **An Edwardian silver boat shaped salt**, Birmingham 1901, with pierced sides and sapphire glass liner, another, plain, 1918, both 2¼" wide. (2)
587. **A pair of Victorian silver salts**, Birmingham 1900, heart shaped with gadrooned rims and scroll cartouche cresting, sapphire glass liners, with spoons, (one missing), in fitted case, each 2½".
588. **A Gorge V silver 7-bar toast rack**, Birmingham 1924, with reeded stand and on 4 scroll feet, 5" wide, 6ozs.
589. **A composite silver 3-piece tea service**, Birmingham 1923 (teapot), 1918 (sugar and mil), of rounded rectangular form, with half-fluted body, gadroon rims, the teapot with composition handle, 41ozs
590. **A silver egg cruet**, Birmingham 1938, the circular stand with centre loop handle, fitted with 4 egg cups, (2 missing stems), together with a white metal circular box and cover and a white metal pepperette.
591. **A Victorian silver goblet**, London 1862, the ovoid bowl engraved with a foliate border between wrigglewort lines, with beaded knop stems, the swept foot with conforming engraving a bead border, 7" high, 7.5ozs.
592. **A George III silver goblet**, London 1799, the bell shaped bowl with silver-gilt interior, on applied swept stem and circular foot, with reeded foot rim, 6¼" high, Maker I.R. 8ozs.
593. **A machine turned silver and silver gilt powder compact**, 1948, with mirrored interior, 2½" square, together with an oval planished compact, with mirrored interior, stamped 8308, 3¼" wide.
594. **A silver covered copy of The New Testament**, Birmingham 1996.
595. **A silver salt spoon**, another, silver caddy spoon (AF), and silver handled lace hook inset with Scottish granites. (4)

596. A Victorian silver napkin ring and another.
597. A George IV silver sifter spoon, with pierced bowl, maker RC, London 1826.
598. Harlequin 3 piece silver cruet, Birmingham assay.
599. Five various Georgian silver table spoons.
600. Two Georgian silver table spoons, 2 teaspoons and fish knife.
601. A 19thC French elm butcher's block with a 16" dia circular tapering platform, raised on 3 turned legs.
602. An early 19thC pearlware pickle dish of moulded leaf form, having transfer printed Willow pattern decoration, 6".
603. A five piece German porcelain monkey band, with polychrome and gilt decoration, 20th century, 6" down.
604. A 19th century dwarf candlestick with spun brass sconce and turned olivewood base.
605. A Victorian Prattware polychrome pot lid, depicting a battle scene after Wouvermann.
606. A Victorian Prattware polychrome pot lid, depicting a battle scene after Wouvermann.
607. A Victorian Prattware polychrome pot lid, entitled 'Country Quarters'.
608. An early 19th century tortoiseshell tea caddy with ivory banding, of canted rectangular form, the cover with centre tablet inlaid with mother of pearl flower and leaves, with conforming frieze, the front panel having fluted and bead ornament, the interior having two lidded compartments, on four white metal bun feet, 7ins wide.
609. A Victorian Prattware polychrome pot lid entitled 'Il Penserodo'.
610. A Victorian Prattware polychrome pot lid, entitled 'Uncle Toby'.
611. A Victorian Prattware polychrome pot lid, depicting 'Horses and Figures at the Foot of Ruined Buildings, after Wouvermann.
612. An electroplate cigarette box having hinged lid painted with huntsmen and gathering of hounds by an Inn. 3½" square.
613. A 19th century French porcelain portrait plaque, depicting a young lady with yellow dress with rose garland in a gilt border, later carved oak frame 6" diameter.
614. A white metal Pentagon shaped scent bottle, with guilloche enamel Art Nouveau style decorated front panel depicting pastel coloured narcissi surrounded by a turquoise border, some restoration to border, enamelled top to dropper.
615. A Victorian treen string box, turned in boxwood in the form of a beehive 4".
616. Wilde (Oscar). Poems, together with his Lecture on the English Renaissance, Paris 1903, Ltd Edition 159/250, 1 vol, blue ½ calf, gt, raised spine boards.
617. Godden (Geoffrey A). An Illustrated Encyclopaedia of British Pottery and Porcelain, London 1966, 1 vol, cloth boards, dust wrapper, and Turnbull (G) & Herron (A). The Price Guide to English 18th Century Drinking Glasses, 1970, 1 vol, cloth boards. (2)
618. Jerrold (Walter) - Ed - The Big Book of Fairy Tales, ills Charles Robinson, London & Glasgow, no date, 1 vol, red cloth boards, impressed pictorial top board, gt spine.
619. Kipling (Rudyard). All the Mowgli Stories, ills S Tresellian (signed), London 1933, pic cloth boards, (torn spine), and Animal Stories, ills S Tresellian (signed), London 1932, pic cloth boards. (2)
620. Barrie (J M). Peter Pan and Wendy, ills G M Hudson, pub by Hodder & Stoughton for Books, no date, orig cloth boards, gt decor, and Carroll (Lewis). Alice's Adventures in Wonderland, ills G M Hudson, printed by Hodder & Stoughton for Books, no date, orig cloth boards, gt decor. (2)
621. Sewell (Anna). Black Beauty, ills Cecil Aldin, pub for Boots the Chemist, orig cloth boards, gt decor, and Blackmore (R O), Lorna Doone, ills Brittan & Brock, pub for Boots, no date, orig cloth boards, gt decor. (2)
622. Ball (Charles). The History of the Indian Mutiny, London, no date, 2 vols, ills, re-bound with marble boards, ½ cf gilt with raised spine bands.
623. Murray (T Douglas). Jeanne D'Arc, Maid of Orleans, Deliverer of France, London 1903, 1 vol, cl bds, gt decor, and Walker (William George), A History of the Oundle Schools, London 1956, 1 vol, cl bds, gt decor, dw. (2)



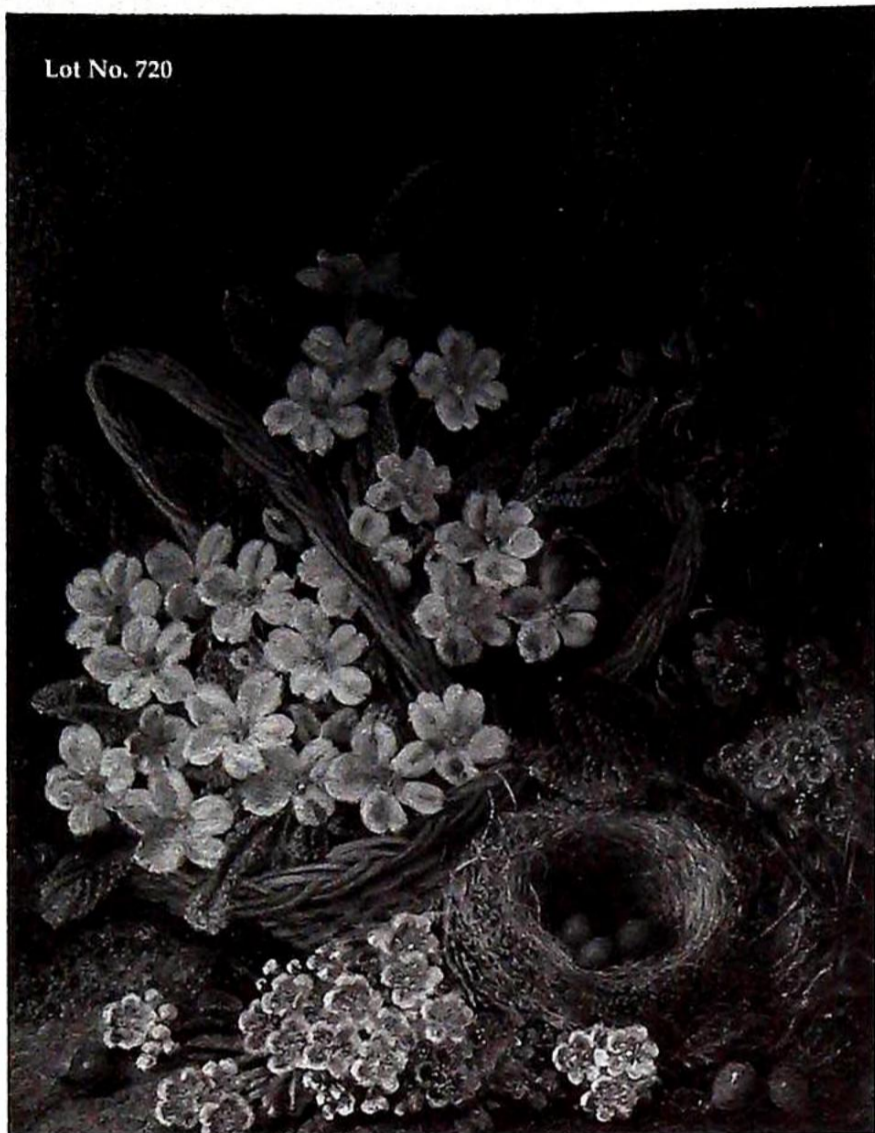
Lot No. 608



624. A collection of early 20thC postcards and 10 early 20thC black and white photographs, diving, Far East and maritime, plus small quantity of ephemera.
625. Copies of the Illustrated London News, 1930's and 1940's.
626. Spectator - 1710-1714, 8 vols, calf, gilt decor, spines AF.
627. The Field - 1866-1867, 2 vols, nos 28 & 29, cl bds, gt decor.
628. Two books of lace pattern samples, 19thC.
629. Staunton (George). An Authentic Account of an Embassy from the King of Gt Britain to the Emperor of China, 2 vols, and a folio volume of plates, published London 1797, an account of the voyage of the Earl of Macartney, his Majesty's Ambassador to Beijing and the return, the 2 vols with engraved frontis and small engraved plates, the folio volume with engraved maps and plates of Chinese rural scenes, palace scenes and natural wonders, etc, (approx 41), full calf, gilt décor, and the 3rd vol marble boards, calf, (spine missing).
630. Milton & Shelley - The Works, plus another, leather bindings.
631. Two late 19thC photograph albums, one with sepia views of Paris, Florence, Turin, Milan, Hamburg, Pisa, etc, each approx 10" x 9", the other GB mainly printed views, fo.
632. Lodge (Edmund). Portraits of Illustrious Personages of Great Britain, London 1835, 6 vols, ills eng plates, full mor, gt decor, raised spine boards.
633. Cockers Arithmetick (AF).
634. Royal Commemorative ephemera and associated items.
635. A Postcard album containing ocean liner, marine and other cards.
636. Postcard album containing mixed subjects, but predominantly Christmas theme.
637. A Postcard, SY Aurora, Australasian Antartic Expedition 1911, with Tasmanian stamp.
638. Old English Country Cottages (AF)
639. Kitchin. Most Accurate Map of the Roads of England & Wales, printed by Sayer, with slip case.
- 639A. A hand-coloured map of Nottinghamshire by Morden, 8" x 6".
640. Woodcuts and portrait engravings.
641. An album of topographical postcards.
642. A postcard album containing articulated cards, topographical and humorous.
643. Six cards inc May and Attwell.
644. American First Day covers, brass bucket balance and selection of cigarette cards.
645. Various topographical and humorous postcards.
646. Football programmes of predominantly Peterborough Unit and other Midlands clubs, 1960's-1980's.
647. FA Cup Final Programmes, 1959, 1966, 1971 (x 2)
648. England International Football Programmes, 1959/60 v Italy, Yugoslavia and Sweden.
649. Football League programmes, Kop Choir record, etc.
650. A large quantity of Football programmes inc c.140 Arsenal, various Chelsea, Leicester, Aston Villa and others.
651. An Album of humorous and nursery postcards.
652. An album seaside saucy postcards.
653. A selection of Tottenham Hotspur football programmes from 1960's to 1980's.
654. Children's annuals, inc Tiger, Eagle, Victor, etc.
655. A selection of postcards, mainly topographical.
656. A circular electroplate bowl on 4-footed stand, hand-finish.
657. A Victorian copper water jug.
658. A Victorian embossed leather bound photograph album.
659. A First Period Worcester blue and white bowl, 4" dia.
660. A set of 5 Limoges porcelain floral dessert plates.
661. A Victorian Coromandel and brass fitted book slide with Egyptian mask uprights.
662. A brass and mahogany 4-pull telescope by Stanley of London.

663. Glass and mahogany miniature 3-pull telescope, cased.
664. An early 20thC continental bone china nursery plate/food warmer, polychrome printed with a dog chasing boy scene, 8" dia.
665. A Victorian copper warming pan, with turned ebonised handle.
666. An electroplate on copper rococo chamberstick with snuffer.
667. A folding chrome plated cakestand, 2 half-dolls, other metalware, etc.
668. An R A Lister & Co class C2 butter churn on stand.
- 668A. An A G Mumford of Colchester steam donkey pump.
669. An Indian gilt metal snuff box with gold piquet and green enamel decoration, 2½" x 3½".
670. A Victorian Kingscrew corkscrew with bone handle.
671. Two corkscrews with brush handles.
672. Various silver tea and coffee spoons.
673. Pair George III silver Old English pattern spoons with later chased decoration, maker TD, London 1810
674. Four Georgian silver fiddle pattern spoons and 3 others.
675. A Britannia Standard silver baluster sugar castor, modern Dublin/Hibernia hallmarks, 8" high.
676. Various silver spoons and fork.
677. A silver 3-piece tea service, Sheffield 1933, of irregular octagonal shape, on paw feet, the teapot with composition handle and finial, 28ozs gross.
678. An Edward VII silver 3-piece tea service, of boat shape, with everted rims and scroll handles, on plinth foot, London 1901/2, 34ozs gross.
679. A 4-piece planished silver tea service, of compressed circular outline, the teapot spout moulded with acanthus leaf, and having composition handles and finials, Birmingham 1931, 67ozs.
680. A Victorian silver easel table mirror, with rectangular plate, Birmingham 1900, 18" x 13".
682. A Carlsberg Special Brew Thimble, Birmingham 1981.
683. A silver engine turned cigarette case, Birmingham 1951.
684. A Stratton gold tone powder compact and a Kigu powder compact with butterfly and floral decoration to front cover.
685. A silver ashtray, a silver backed mirror, and 2 napkin rings, various marks.
686. A silver capstan shaped vase, London 1927, A George III silver baluster tankard with loop handle and indistinct marks.
687. A Victorian Monteith shape silver bowl, London 1891.
688. A pair of 17thC ornate gilt metal buckles.
689. A silver plated ½ pint tankard, small tankard and silver topped trinket jar.
690. A WMF pewter glass holder with classic Art Nouveau decoration, 2 female heads, their hair swirling to form the framework.
691. A pair of circular silver salts on hoof feet, Sheffield 1921.
692. A Georgian silver shoe buckle, classical rectangular shape, with beaded border, Birmingham 1779.
693. A silver Art Nouveau pin cushion, round pillow shape with cherub and acanthus leaf decorated band, Birmingham 1909.
694. Silver plated scissors, sifter spoon and jam spoon.
695. A silver ashtray, Chester 1927, shell dish, Birmingham 1918, small round dish, London 1927, and tea strainer, Sheffield 1934.
696. A silver circular mustard pot on feet, Chester 1913, and spoon, Birmingham 1905.
697. A silver drum mustard pot, Chester 1922, (liner missing), and spoon, Birmingham 1912.
698. Four silver tablespoons, Georgian, mixed marks.
699. Eight silver teaspoons, London 1833.
700. Five silver Georgian teaspoons, various marks.

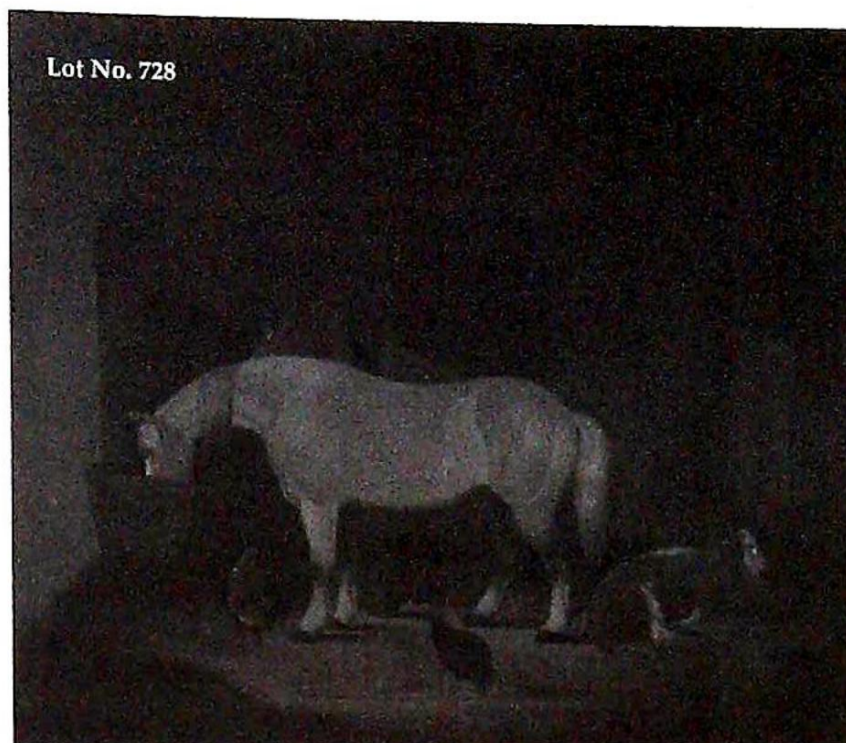




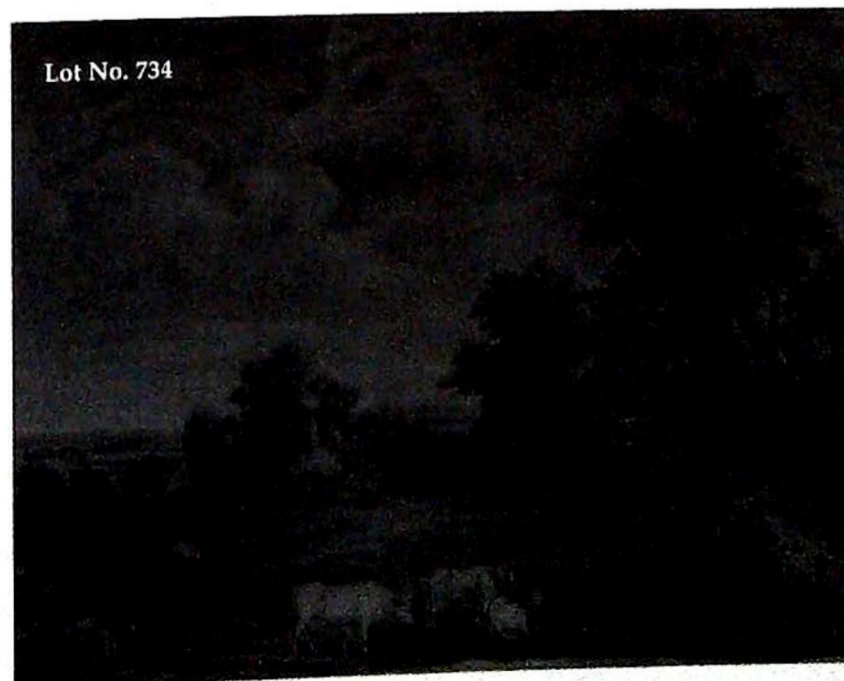
Session Three.

701. **N Cottin.** Portrait Miniature of a lady, in early 19thC costume, with pearl hair ornament, on ivory, signed, oval, 2½" x 2½", in bone frame.
702. **I P F (19th Century).** Portrait miniature of a gentleman, head and shoulders, facing dexter, in blue greatcoat with white cravat, signed with initials, watercolour, oval, 2¾" x 2", in gilt metal frame.
703. **19th Century School.** Portrait miniature of a lady, head and shoulders, facing dexter, in a blue gown with russet shawl, watercolour, oval, 3¼" x 2½", in gilt metal frame.
704. **H D R (19th Century).** Portrait miniature of a lady in Elizabethan court dress, head and shoulders, facing sinister, signed with monogram, watercolour and heightened white on ivory, oval, 2½" x 1¾", in foliate pierced gilt metal frame.
705. **Andre Leon Larne - called Mansion 1785-1834.** 'Louise Vule ...?', portrait miniature of a young lady, head and shoulders, facing dexter, wearing an elaborate turban, decollete gown and fur stole, signed in pencil verso, watercolour and heightened white on ivory, oval, 3¼" x 2¼", in gilt metal frame.
706. **19th Century School.** Portrait miniature of a young lady, head and shoulders facing dexter, in white dress with lace fichu, watercolour on ivory, oval, 2½" x 2", in gilt metal frame.
707. **19th Century School.** Portrait miniature of a young man, head and shoulders, facing sinister, in sky blue coat and white cravat, watercolour on ivory, circle, 2" diameter, in gilt metal frame.
708. **19th Century School.** Portrait miniature of a Naval Officer, facing sinister, watercolour on ivory, oval, 2½" x 2", in gilt metal frame with bevelled glass.
709. **19th Century School.** Portrait miniature of a lady, head and shoulders facing dexter, with long brown hair and wearing a pink dress with white collar, watercolour on ivory, oval, 3¼" x 2½", in gilt metal frame, (ivory cracked vertically on the left hand side).
710. **Pierre Meustiers?** Portrait miniature of a bearded scholar of the 17th Century, head and shoulders facing slightly sinister, with white ruff, oil on copper, signed with initials, and verso, 2¾" x 2¼", in gilt metal frame.
711. **William Bone Junr (1827-1851).** Portrait miniature of 'Montrose', after Vandyck, head and shoulders, in armour, c.1840, oil on copper, inscribed verso, 'Montrose 1840, W Bone Junr after Vandyck', oval, 4¼" x 3¼", in gilt metal frame.
712. **19th Century School.** Portrait miniature of Milton, head and shoulders, facing sinister, in brown jacket with white collar, watercolour, oval, 2½" x 2", in gilt metal frame, engraved verso 'Milton Born 1603, Died 1674'.
713. **19th Century School.** Portrait miniature of King George I, head and shoulders facing dexter, in court dress with red sash, watercolour and heightened white, 3¼" x 2¾", in gilt metal frame.
714. **18th Century School.** Double portrait miniature of a young lady, half length, one in formal dress, the other in day dress, oil possibly on copper, oval, 2" x 1½", in wirework frame.
715. **A portrait miniature** of a gentleman in red tunic, gilt framed and marked verso, 'The Duke of Kent'.
- 715A. **19th Century School.** A portrait miniature of a lady in blue frilled dress and hat, holding a rose, indistinctly signed, watercolour on ivory, 3¼", in a pierced gilt frame.
716. **An early 19thC silkwork picture** of a castle with trees to the side, moat in front, oval, 5¼" x 6¼", in verre eglomise glass, gilt frame.
717. **A 19thC relief moulded picture,** gilt, depicting Cupid sharpening his arrow on a celestial grinder, 2¾" x 3¼", gilt slip and wooden frame.
718. **19th Century.** Study of a classically dressed female with stole bust, sepia stipple engraving, oval, 4¼" x 4", gilt frame.
719. **Mark Huskinson & Christopher Curtis (20th Century).** "The Country Seat", illus. Huskinson & Rose by Curtis, wash/pen/ink/body colour on buff paper, signed and dated 1984, 15" x 11¼".
720. **George Clare (1835-1890).** Basket of primroses, bird with eggs, berries and blossom on a grassy bank, oil on canvas, signed bottom right, 12" x 10", contemporary moulded gilt frame.

721. **After Rembrandt.** The Money Lender, engraving, pub by Boydell, c.1767, proof before letters. 19¼" x 17".
722. **F Parr (19th/20th Century).** A Cornish fishing village, selling the morning catch, watercolour, signed bottom left, 14½" x 10", gallery label verso.
723. **Kate Greenaway (1846 - 1901)** A Georgian bay window from the room, watercolour/pencil on buff paper, 11¼" x 8", another by the same hand of a house exterior (part), 12¾" x 9½" (2). Provenance: From the collection of Miss P Greenaway-Dadd, the artist's great niece purchased from Henry Spencer & Son, Retford on 13/9/78.
724. **After Henry Alken.** 'Weighing in and Rubbing down', (Racing), aquatint, 1st pub 1824, re-issue, image size 7¼" x 21".
725. **R A Gardner.** Landscape, watercolour, signed and dated 1923 bottom left, 9½" x 13¾".
726. **19th Century.** Portrait of a lady with children and dogs, hand-coloured engraving, trimmed to image, 21¼" x 15¼".
727. **E F Sweeting.** Drover in an Australian landscape, oil on canvas, signed, 20" x 24".
728. **19th Century School.** Stabled horses with hens and goat, oil on canvas, unsigned, 20¼" x 24".
729. **19th Century School.** Italianate lakeland view with villa and crustacea foreground, watercolour, 7" x 12½".
730. **Charles E Hannaford (1863-1955).** Fishing boats in the morning mists, watercolour, signed Hannaford bottom right, 8" x 21½", gallery label verso.
731. **Mark Huskinson (20th century).** "Belvoir Kennels 1982" study of hounds, pastel and charcoal on buff paper, signed bottom left and inscribed and dated bottom right, 17½" x 25".
732. **Mark Huskinson (20th Century).** "Duke of Rutlands Hounds, Carpenter", pastel/charcoal on buff paper inscribed bottom centre, 18¼" x 20½".
733. **S F Briggs.** Still life of flowers in a vase.
734. **Cornelius J W Winter (1820-1890)(attrib)** Extensive rural landscape, with figure with horse and cart on a country lane, horses and cattle before a thatcher's cottage with pond, watercolour, 24¼" x 35"
735. **An oil on board of fruit.**
736. **19th/20th Century School.** Scottish landscapes, watercolours and gouache, signed with monogram, 7¼" x 10¼".
737. **After Charles J Payne (Snaffles).** The likonas, 'I don't know who's damn column I'm in nor where we're trekkin nor why', reproduction colour print with facsimile dedication from the artist. Trimmed to image and mounted on card.



738. Spare lot
740. **After George Morland.** 'Deserter pardoned', coloured mezzotint by Keating, trimmed, 17¼" x 15", maple frame.
741. **E Mackintosh, 19th Century.** Woodland landscape, oil on canvas, signed and dated 1898 bottom left, 9¼" x 13".
742. **A collection of 18thC and later engravings, etc,** topographical, maps, Fancy, etc, unframed.
743. **19th Century School.** Landscape with foresters, oil on tin, 8¼" x 10¼"
744. **Edmund Morison Wimperis (1835-1900).** 'The Farm by the River', landscape with sheep, watercolour, signed with monogram, 13¼" x 19", gallery label verso.
745. **Assorted pictures and a studio photograph.**
746. **Daphne Vulliamy (20th Century).** 'A Canal in Burgundy', watercolour, heightened white, signed bottom left, 12½" x 19½".
747. **Stanley Reed.** Still life of chrysanthemums in a vase, oil on canvas, 21" x 12".

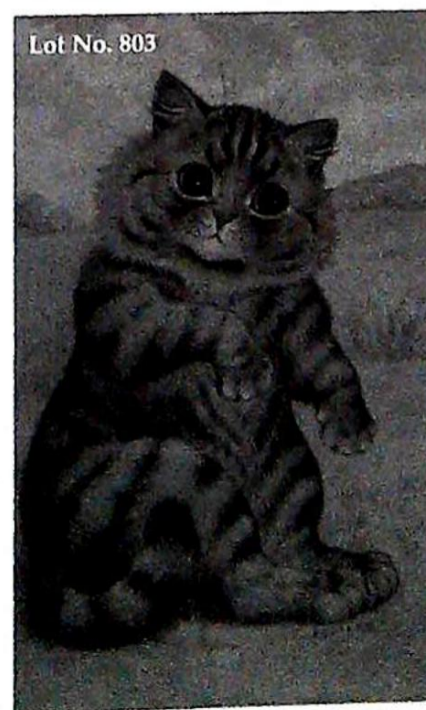


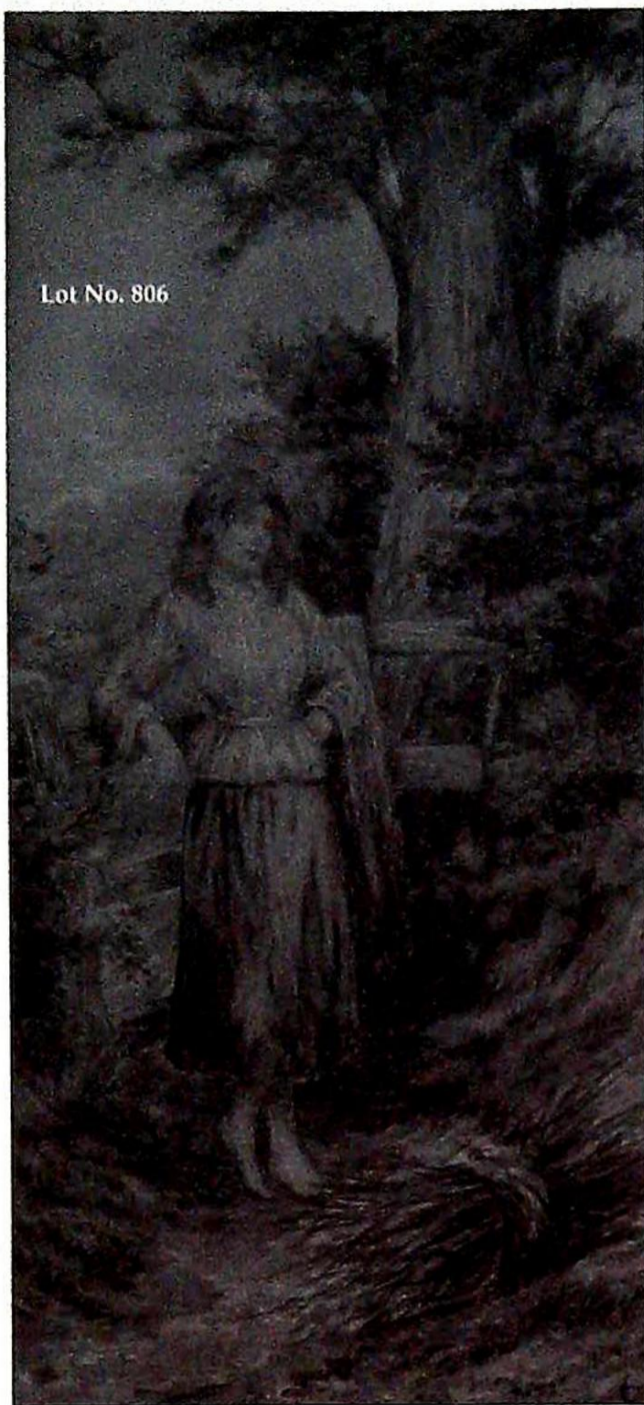
Lot No. 763



748. **After George Sanders (1810-?).** 'Elizabeth, Duchess of Rutland, Second Daughter of Frederick Earl of Carlisle, Born 13th November 1780, Died 29th November 1825', black and white mezzotint by S Cousins, Private Plate, plate size 27½" x 17¼".
749. **A pair of Hogarth framed etchings** after Nicholson.
750. **After Millais.** 'Bubbles', study of a young boy blowing bubbles, oleograph, 29½" x 20½", late 19thC.
751. **Gilpin.** Landscape pencil sketch and another.
752. **Ada France (20th Century).** Still life study of fruit, roses and wine jug, oil on canvas, 20" x 30".
753. **R A Gardner.** A country cottage at Cawthorpe, Nr Bourne', oil on canvas, signed bottom left, 19¾" x 30".
754. **C N Rowe (20th Century).** 'Dartmoor', landscape, watercolour, signed and dated 1913 bottom left, 3½" x 5½".
755. **19th Century.** Kirkstall Abbey, hand coloured lithograph, probably Day & Son lithog. image size 11½" x 18½".
756. **After Natto.** 'Belton House in Lincolnshire', the Seat of Lord Brownlow', hand coloured engraving, and a facsimile lithograph of 'Sketch in the Village of Belton', framed as one, 17" x 11" overall.
757. **Henry Wilkinson (20th Century).** Grouse shooting, hand coloured etching, 40/150, signed in pencil, plate size 7½" x 10¼".
758. **Henry Wilkinson (20th Century).** Fly fishing - coloured etching, 39/150, signed in pencil, plate size 10" x 13½".
759. **Eman Bowen.** Leicester & Rutland, ½ sheet county map with hand coloured boundaries and forest areas, title cartouche and text, 18thC, 9" x 13".
760. **Five small pictures.**
761. **After J Flower.** 'Belvoir Castle, The Seat of His Grace the Duke of Rutland', hand coloured lithograph, 19thC, image size 8¾" x 12¾", together with 5 further engravings of Belvoir Castle. (6)
762. **After Alken.** First Steeplechase on Record, engraved by J Harris, plate 2, modern gilt frame.
763. **After W Inram.** 'Belvoir Castle, H R H The Prince of Wales Accompanied by the Princess of Wales, attended by His Grace the Duke of Rutland, Lord John Manners ... Planting a Tree ... February 1866', chromolithograph by Day & Son, image size 21" x 28", maple frame.
764. **Ada France (20th Century).** Still life of roses, a pair, oil on canvas, signed and dated 1901 and 1903, 12¾" x 37".
765. **19th Century (Day & Son, Lith.),** 'Harlaxton House, Lincolnshire & Belvoir Castle', hand coloured lithographs, a pair, 9¾" x 13".
766. **R A K Marshall.** River landscape with a female figure on a tow path and cattle in the background, watercolour, signed R A K Marshall. 16" x 26", gilt framed. Bears label verso with artist's address and title 'The River ** W. Retford, Notts'.
767. **After J Bowle.** 'Harlaxton Manor House', copper engraving with text, c.1801, 15½" x 9¾" overall, together with another, 'Harlaxton Manor House', image size 5" x 7¼", c.1800. (2)
768. **J Bertrand.** Still life of roses, oil on canvas, 20" x 14".
769. **A map of Grantham** in Lincolnshire, with hand-coloured boundaries, signed in ink by Robt Dawson, Leicut, R E, c.1840, 13" x 10".
770. **Roy Turlington (20th Century).** 'Swans', mixed media, signed and dated '83, on deckle edge paper laid on card, 19½" x 14".
771. **After George Fennel Robson (1788-1833).** 'View from the Vicinity of Crief', coloured aquatint, by H Morton, 9¼" x 16", together with a lithograph of Grantham, 19thC, 13" x 11½", and a black and white facsimile photograph of Grantham in the early 20thC and another. (4)
772. **A photograph of a signed RAF tablecloth.**
773. **19th Century.** 'Page & Tiger' and 'Leaving the Stables', a pair of book illustrations, hand-coloured, 9½" x 7¼".
774. **Ada France (20th Century).** Still life study of fruit, nuts with claret jug and broken wine glass, oil on canvas, signed and dated 1906, 20" x 30".
775. **A pair of 19thC hand coloured fashion plates,** 1932/33, 8" x 6¼".
776. **E Lara (19th Century).** Fishing boats in a Choppy Sea and Boats off the Coast, a pair, oil on canvas, signed bottom left, 16¼" x 24".

777. David Keith (20th Century). 'Old Byland', watercolour, signed bottom right, 8 $\frac{3}{4}$ " x 12 $\frac{3}{4}$ ".
778. Andre Masson. Signed lithograph.
779. After Samuel Buck. 'The East View of Belvoir Castle, in the County of Lincoln', and 'The South View of Belvoir Castle, in the County of Lincoln', hand coloured copper engravings, c.1730, plate size 7 $\frac{1}{2}$ " x 14 $\frac{3}{4}$ ".
780. E. G. Voudrey (?). 20thC study of a young girl, reading in a throne-like chair, watercolour, signed and dated 1905 bottom left, 14 $\frac{1}{4}$ " x 10 $\frac{3}{4}$ ".
781. Three gouache paintings.
782. After David Wilkie, RA. 'Blind Man's Buff', steel engraving by Rainbach, c.1822, image size 16 $\frac{1}{2}$ " x 23 $\frac{3}{4}$ ", maple frame.
783. Philip Martin (20th Century). 'Grain Market, Peterborough', watercolour and ink, signed in pencil and dated 1987. 7 $\frac{3}{4}$ " x 9 $\frac{1}{2}$ ".
784. After Samuel Buck. i) The West Prospect of Newark Castle..., ii) The West Prospect of Thurgaston Priory, Nr Newark..., iii) The West Prospect of Thornton College, nr the Humber ..., iv) The North West Prospect of Barings Abbey, Nr Lincoln, v) Moor Tower, on Town Moor, Nr Horncastle, A set of 5 hand-coloured copper engravings, pub 1726, plate size 7 $\frac{1}{4}$ " x 14 $\frac{3}{4}$ ".
785. George Baxter after Turner. Lake Lucerne, Switzerland. (Baxter No. 173), image showing, 10" x 14 $\frac{3}{4}$ " (See Courtney Lewis Page 474 & plate 64).
786. Charles McKinley (19th/20th Century). Fishing boats off the coast, in a choppy sea, watercolour/heightened white, signed bottom right, 9 $\frac{1}{2}$ " x 21 $\frac{1}{2}$ ".
787. Charles McKinley (19th/20th Century). Fishing boats off the coast, in a choppy sea, watercolour/heightened white, signed bottom right, 9 $\frac{3}{4}$ " x 21 $\frac{3}{4}$ ".
788. Charles McKinley (19th/20th Century). Becalmed fishing boats in the early morning, watercolour, signed bottom left, 9 $\frac{1}{4}$ " x 21 $\frac{1}{2}$ ".
789. Spy. i) 'Judges No 1', (No 58), ii) 'A Future Judge', iii) 'Charlie', iv) 'Men of the Day, No 27', (no 139), v) 'Chesterfield Letters'. Colour prints - 12" x 7". (5)
790. By and after David Gee (20th Century). Head and shoulders study of a West Highland White, etching, signed in pencil, 4 $\frac{3}{4}$ " x 4 $\frac{3}{4}$ ".
791. By and After David Gee (20th Century). Head and shoulders study of a rough Collie, etching, signed in pencil, 4 $\frac{3}{4}$ " x 4 $\frac{3}{4}$ ".
792. By and After David Gee (20th Century). Head and shoulders study of a rough Collie, etching, signed in pencil, 4 $\frac{3}{4}$ " x 4 $\frac{3}{4}$ ".
793. By and After David Gee (20th Century). Study of a spaniel with dead hare, in a landscape, signed in pencil, 4 $\frac{3}{4}$ " x 6 $\frac{3}{4}$ ".
794. 19th Century. Fishing and Shooting, a set of 8 hand-coloured humorous engravings with text, 7 $\frac{1}{2}$ " x 4 $\frac{3}{4}$ ", (in 2 frames).
795. 19th Century. 'Crab', study of a bull mastiff, aquatint, 5 $\frac{1}{4}$ " x 8 $\frac{1}{4}$ ".
796. After Oswald Fletcher. 'Lincoln Cathedral', etching, facsimile signature, early 20thC, 9 $\frac{1}{4}$ " x 6 $\frac{1}{2}$ ".
797. 19th Century. 'Fishing', a pair of hand coloured humorous engravings, with text, 7 $\frac{1}{4}$ " x 11".
798. H Royle. Village landscape nestling amongst green meadows, oil on canvas, bears signature and dated '31, 12" x 16 $\frac{1}{4}$ ".
799. After Kate Greenaway. 'Curly Locks', and 'SingaSong of Sixpence', colour illustrations with text verso, 19thC, a pair, 3 $\frac{3}{4}$ " x 3 $\frac{1}{2}$ ".
800. After Bartolozzi. Young girl with infant in a landscape, conte' print, circle, 5" dia.
801. After Birkett Foster. Mother and 2 children in a rural landscape, chromolithograph, 19thC, 5" x 6 $\frac{1}{2}$ ".
802. Alessandri et Scattaglia. i) Doveur sur Bois, ii) Doveur sur Cuir, iii) Doveur sur Metaux, iv) Doveur sur Cuir. Set of 4, late 18thC copper engravings, 8 $\frac{1}{2}$ " x 6 $\frac{1}{4}$ ".
803. Louis William Wain (1860-1939). Seated cat in a landscape, watercolour heightened white, signed bottom right, 8 $\frac{3}{4}$ " x 5".





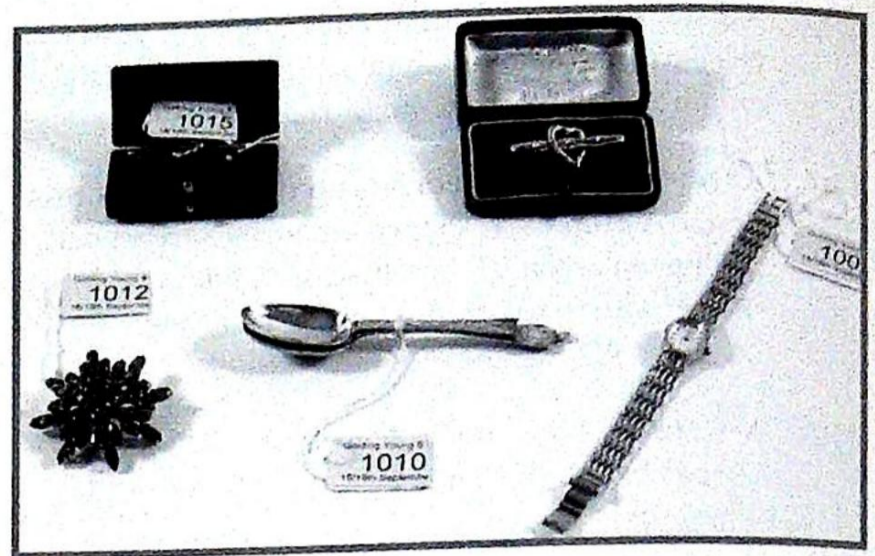
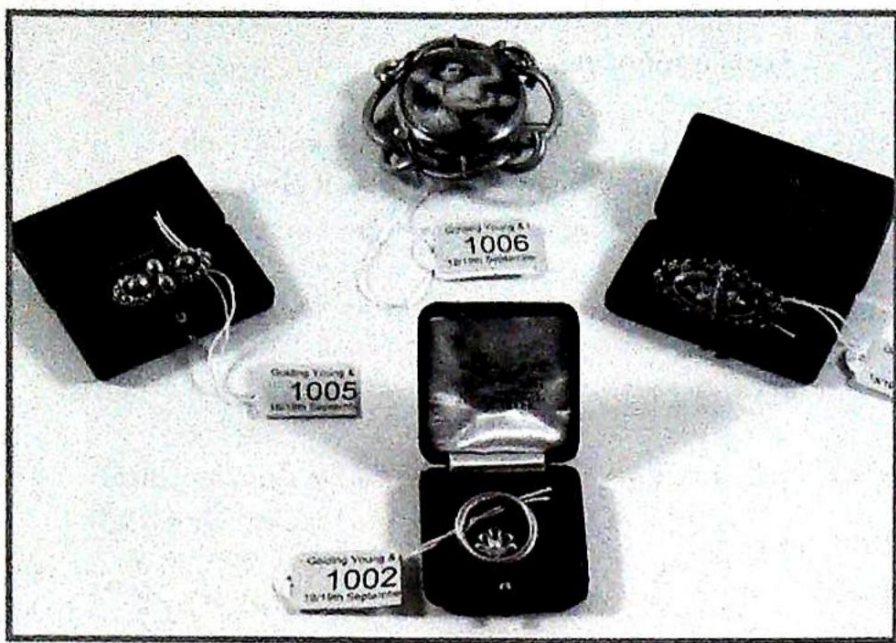
Lot No. 806



Lot No. 824

804. **Louis William Wain (1860-1939)**. 'Our Committee Meeting', ink/paper, signed left, title in pencil, 4½" x 7½".
805. **Louis William Wain (1860-1939)**. 'At Last', ink/bodycolour/paper, signed, title in pencil, 5" x 7".
806. **M Birket Foster (1825-1899)**. 'The Stick Gatherer', watercolour, signed with monogram bottom right, 10¼" x 4¾".
807. **Geo Ayling (1887-1960)**. 'Ulverscroft Priory, Leicestershire', oil on board, signed bottom right, 16¼" x 24".
808. **After Henry B Chalon**. 'Wasp, Child and Billy', study of bulldogs, mezzotint by Ward, pub 1809. 15¼" x 23¼".
809. **After Heywood Hardy**. 'Not to be Caught with Chaff', black and white steel engraving, early 20thC, 16" x 21".
810. **After George Moreland (sic)**. 'The Fruits of Early Industry and Deconomy', 1st pub 1789, re-issue, 20¼" x 15½".
811. **After William Hogarth**. 'Southwark Fair', copper engraving, 1st pub 1733, 19th century re-issue, plate size 14¼" x 18½".
812. **After Henry Alken**. 'How to Go to Cover', pl 1, 'How to Ride Down Hill' pl 3, 'How to Take Your Leap' pl 4, 'How to Take the Lead', pl 6. Colour aquatints by Fuller, from 'How to Qualify for a Meltonian', 1st pub 1819. (4)
813. **After Thos Blinks (1860-1912)**. Taking a Fence, hunting scene, sepia photogravure, pub by Klakner, New York, signed in pencil in margin, 22" x 15¾".
814. **19th Century School**. Parrot on a branch, watercolour and feather, 8¾" x 4¾".
815. **An early 20thC French 3-part advertising brochure**, 'Biere Karcher', printed in colours, 10½" x 14 ¼".
816. **After Myles Birket Foster**. 'Winding the Wool', chromolithograph, 19thC, 7¼" x 10".
817. **After Thos Blinks (1860-1912)**. 'The Kill', hunting scene, black and white engraving, signed in pencil by the artist, 1887, 20" x 31".
818. **A Pears print** 'The Long Bill', chromolithograph, image size 17¼" x 22¼", 19thC, swept gilt frame.
819. **A Pears print**, 'Naughty Polly', chromolithograph, image size 17¼" x 22¼", 19thC, swept gilt frame.
820. **After Hillingford (19th Century)**. 'Wellington at Waterloo, The Dawn of Day, June 18th, 1815', chromolithograph, 21" x 32½".
821. **After Henry Alken (Ben Tally Ho!)**. i) Going at a slapping pace, ii) Topping a flight of rails, iii) Charging an Ox-Fence, iv) Got In and Getting Out, v) Facing a Brook, vi) Swishing at a Rasper, vii) Returning Home in Triumph. A set of 7 aquatints from Alkens 'Qualified Horses and Unqualified Riders', 1st pub 1811, this issue 1815 by Fuller, 8¼" x 10¼".

822. After J A Harrington Bird (1846-1936). 'Over Beeches Brook', racing subject, sepia photogravure, signed in pencil by the artist, on India paper, plate size 11½" x 17½".
823. After F C Turner. Hawking, i) The Departure, ii) The Rendezvous, iii) The Fatal Stoop, iv) Disgorging. Set of 4 hand-coloured aquatints by R G Reeve, 1st pub Laird 1839, image size 15¼" x 12¼".
824. George Smith Armfield (1808-1893). Cottage interior with terriers, with a caged rabbit, oil on canvas, signed bottom right, 9" x 12", (re-lined), swept gilt frame.
825. Manner of Henry Bright (1814-1873). Coastal scene, Norfolk, watercolour, 6½" x 10", inscribed verso Henry Bright, Norfolk.
826. 19th Century School. Harbour scene with figures, moored ships and fishing boats, watercolour, 5¼" x 6¼".
827. Johan Oldert (South African) (1912-1984). 'Near Queenstown, C P South Africa', oil on canvas, signed bottom right, 14" x 18", title verso.
828. Frank Sternberg (engraver). A set of 4 coloured mezzotint portraits of 18thC society beauties, signed in pencil in margin, pub by Virtue, c.1918, 12½" x 10¼".
829. A Victorian oval beadwork panel, worked in turquoise, brown, white and gilt, with roses and swags within 2 re-entrant frames, 21½" x 14¼".
830. By and After ... Lee (20th Century). 'Norwich Cathedral', soft ground etching, signed below lower margin, 27½" x 20¼".
831. After Vanderbank. 'Wm Huck Esq', black and white mezzotint by Faber, c.1737, 14½" x 10½", another of William Walsh, c.1735. (2)
832. After Buckler. St Albans Abbey and 3 views of Hertfordshire Churches, 19thC, together with a map of Scotland, after Mercator. (5)
833. John Cary. A New Map of Derbyshire, double sheet map with hand tinted hundreds, 1801, 21" x 18½", (unframed).
834. Hans Figura. Landscape with windmill, coloured etching on silk, signed in pencil, 15" x 14¼", (unframed).
835. After Custave Dore (1832-1883). 'Christ's Procession to Calverey', steel engraving by John Saddler, signed in pencil by the artist and engraver, on India paper, image size 21¼" x 32¼", c.1880, (unframed), together with an etching by Axel H Haig of a cathedral interior with figures, 23¼" x 15¼", c.1908. (2)
836. Roland Vivian Pitchforth (1895-1962). Houseboat moored by the river bank, watercolour, signed bottom right, 10½" x 13".
837. E Seago (1910-1974) (attrib). 'The Ribble Estuary, March 1947', watercolour, bears signature bottom left, 10" x 14¼".
838. Ashley Jackson (20th Century). 'Blackshaw Edge - Hebden Moor', watercolour, signed and dated 1978 bottom left.
839. William Glover (18th/19th Century). Figure on a hillside path, by castle ruins looking towards the sea, watercolour, signed and dated '82 bottom right, 6¼" x 11".
840. Sylvester Stannard 1870-1951. Herbaceous Borders in a country garden, watercolour, signed bottom left, 7½" x 10¼".
841. Karl Hagedorn (1889-1969). 'A View over wooded Parklands, Pangbourne 1932', watercolour, signed and dated '32 bottom left, 12¼" x 16¼".
842. Tatton-Winter (1855-1928). Figures in a hilly landscape, watercolour, bears signature bottom right, 6¼" x 9¼".
843. Roland Vivian Pitchforth (1895-1982). Study of a female head, monochrome watercolour over pencil, signed bottom right, 10½" x 7".
844. Roland Vivian Pitchforth (1895-1982). Ruined castle on coastal headland (possibly Dunstanbro'), watercolour, signed bottom right, 10¼" x 14½".
845. Roland Vivian Pitchforth (1895-1982). 'Conemara Coast', watercolour, heightened white, signed bottom right, 10" x 15".
846. Horatio Pearson (19th/20th Century). Child on a country lane, watercolour, signed and dated 1909 bottom left, 16" x 10½".
847. J Herman (1911-?). Figures in a landscape, watercolour, ink, 7½" x 11", bears gallery label 'Roland, Browne & Delbanco' verso, together with a catalogue relating to the artist.
848. J Herman (1911-?). Spanish township, watercolour and ink, 7" x 8¼", bears gallery label 'Roland, Browne & Delbanco' verso.
849. Roy Petley (20th Century). Figures on a bridge before a church, watercolour, gouache and heightened white, signed bottom left, 14¼" x 20".
850. Frank McKelvey (1895-1974). River landscape with wooded hills beyond, watercolour, signed bottom left, 8" x 10".
851. Rowland H Hill (1873-1952). 'Goathland', landscape, signed and dated 1900 bottom right, 6" x 9".
852. F Leighton (19th Century). Village street from the top with figure, watercolour, signed bottom right, 16" x 11½".
853. H J Sylvester Stannard (1870-1951). Formal flowerbed with trees beyond, watercolour, signed bottom left, 4¼" x 6¼".

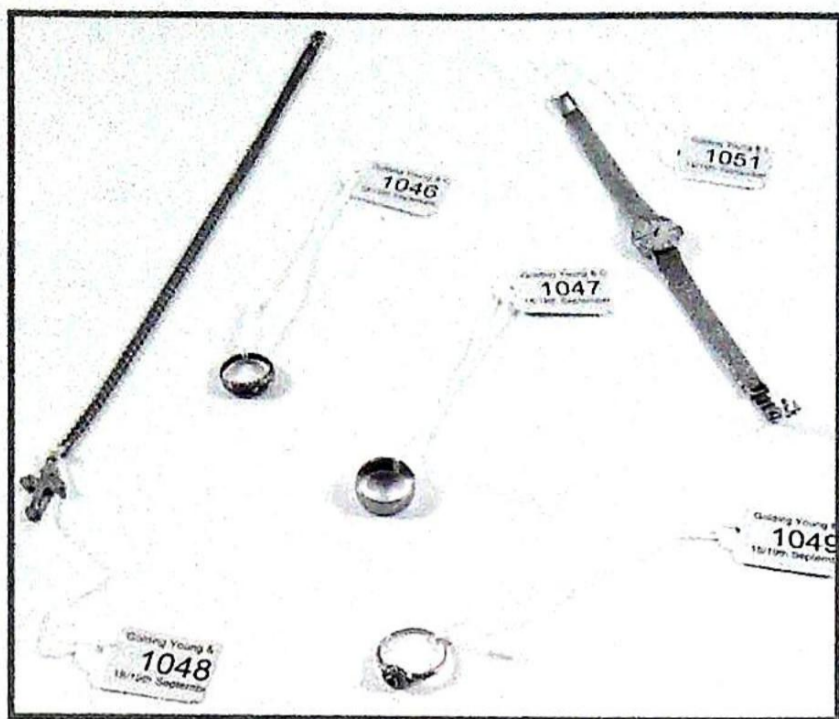


854. **19th and 20th Century.** An album of landscape, sketches, pencil drawings.
855. **Hildah Crewe-Chambres (1880-1905).** A collection of works, landscapes, watercolours, in an album.
856. **M H P (20th Century).** A set of 5 fashion drawings, watercolour and ink, signed with initials and dated 1971, 15" x 9½".
857. **'Level Crossing - Burton-on-Trent'**, colour print, ltd edition, signed in pencil by the artist, bears Fine Art Trade Guild blind stamp, 16" x 22½".
858. **Punch No 3182 Volume CXXII, July 2 1902,** ink sketch of the cover, 11" x 9¾".
859. **F Wilfred Lawson (1842-1935).** Landscape near Buxton, pastel, signed and inscribed F Wilfred Lawson, Buxton, 1913 bottom left, 7" x 8".
860. **G D Paulrai (20th Century).** Native girl washing clothes in a jungle river, watercolour, signed bottom left, 14" x 17¾".
861. **19th Century School.** Landscape with figure and cattle, oil on canvas. 20" x 30", indistinctly signed and marked verso 'Kentmere, West Morland'.
862. **W Duncan.** 'A Kentish Hop Garden', watercolour, heightened white, signed bottom right, 5¼" x 7", title verso.
863. **After William Linton.** 'A City of Ancient Greece' and 'The Ruins of Carthage' steel engravings, 19thC, Image size 9" x 13¼".
864. **Colin Carr (20th Century).** 'The Village Cricket Match', watercolour, heightened white, signed and dated '92 bottom right, 13" x 19½".
865. **After Rembrandt.** A collection of etchings, published by the British Museum, (unframed). (50)
866. **Archibald Ziegler.** A farmstead, oil on canvas, signed Ziegler, 21" x 29".
867. **Follower of Peter Scott.** Ducks in flight, watercolour, bears signature, 12" x 14".

868. **19thC School.** Italian lake scene from gardens, watercolour, 5" x 8".
869. **J Jorgensen.** Winter landscape, oil on canvas, signed, 27" x 38".
- 870 - 1000. Spare lots for late entries.
1001. **A Victorian oval bloomed gold memorial brooch** with scalloped and beaded edge, central motif of applied flowers and leaves, memorial window to reverse, glass missing.
1002. **A small circular brooch,** a twisted outer circle with shell shaped and pearl set motif, in 9ct gold, London import mark.
1003. **A lady's yellow metal 5 stone set dress ring,** shank stamped 9ct.
1004. **A Bucherer lady's bracelet watch,** c.1960, the small white dialled watch set into a heavy wide (25mm) ribbon link textured bracelet, the dial covered by a double wreath of leaves surmounted by a stylised flower head set with 7 diamonds, the whole in yellow metal stamped 750, 95gms approx.
1005. **A Victorian brooch,** yellow metal as a stylised bow.
1006. **A brooch,** a scrolled heavy yellow metal oval mount containing a Vienna porcelain plaque showing a bare breasted woman examining a locket. 7.5cms x 7cms.
1007. **A lady's stone set dress ring,** a central oval flat topped ruby with faceted base in rub over setting in yellow metal to white metal shoulders, set with 6 small diamonds on a yellow metal shank, stamped 18ct & PLAT.
1008. **A Limit lady's bracelet watch.**
1009. **A yellow metal brooch,** a bamboo heart pierced by a bamboo stick.
1011. **a 9ct yellow and white gold diamond set eternity ring.**
1012. **A Victorian white metal sunburst brooch,** the tiered shape set with round and marquise cut garnets, 5cm dia.

1013. A 3 stone diamond ring set in a white metal to a yellow metal shank, stamped 18ct & PLAT, total mounted estimated diamond weight 0.75ct.
1014. A lady's 9ct gold amethyst and diamond set dress ring, a central heart shaped amethyst surrounded by illusion set small diamonds in an elevated heart shaped setting to a wide shouldered shank, London 1999.
1015. A Victorian bar brooch, a hollow scallop shape pierced by a propeller shaped bar, stamped 9ct.
1016. A solitaire diamond ring set with a fancy coloured stone, very light champagne, old cut, claw set to a yellow metal shank stamped 18ct, mounted estimated weight 0.42ct.
1017. A Victorian hinged bangle set with rubies and diamonds, the bangle of classic styling with rope twist detail to split shoulders enclosing a white metal lattice setting of 9 rubies in line, interspersed with pairs of small diamonds (16), stamped 15. Total estimated mounted weight of rubies 1.52ct.
1018. A silver pair-cased open face verge pocket watch, white enamel dial, Roman numerals, beetle hands, pierced and engraved balance cock and backplate, movement scribed Wm Warmingham Hillongley 793, Hallmark Birmingham 1792.
1019. A pair of white metal oval stone set cufflinks, on oval blue topaz centrally surrounded by small mid to pale blue sapphires to a bar back.
1020. An enamel and yellow metal military bar brooch, central crest and crown, wording Royal Army Service Corps and motto Honi soit qui mal i pense - George VI.
1021. A gentleman's diamond set ring, centrally set round brilliant diamond in yellow metal raised coronet to split shoulders and shank stamped 18ct. Estimated mounted weight 0.10ct.
1022. A lady's Art Deco style diamond set ring, 9 diamonds set in a square in yellow metal to graduated looped shoulders to yellow metal shank stamped 18ct. Total estimated mounted weight 0.52ct.
1023. A lady's diamond set twist ring, 2 illusion set small diamonds in white metal, twisted over a yellow metal shank stamped 18ct.
1024. An Edwardian stone set pendant of abstract lozenge shape, set with seed pearls, a central oval aquamarine and teardrop demantoid garnet.
1025. A solitaire diamond ring, a diamond set in white metal, boxed shoulders to yellow metal shank, stamped 18ct & PLAT, estimated weight of diamond 0.50ct.
1026. A hollow link curb bracelet with padlock clasp stamped 9C.
1027. A quizzing glass mounted in yellow metal with floral and foliate decoration.
1028. A Victorian yellow metal stone set brooch, lozenge shape with a centrally set citrine, rococo 'C' scroll styling, 4.5cm.
1029. A shell cameo brooch, a carved male head, possibly Prince Albert, set in rose colour metal, stamped 9C.
1030. A lady's fancy coloured diamond ring, a central old brilliant cut diamond, stated weight 1.06cts, in our opinion, showing as light blue/green, in a white metal millegrain mount, supported by 2 pairs of pink diamonds in rose gold millegrain mounts, total estimated mounted weight 0.20ct, to a D-shaped white metal shank stamped 750. GIA certificate available.
1031. A lady's opal dress ring, a central oval flat opal 14mm x 10mm surrounded by 14 claw set small diamonds to an open basket white metal setting to 5 strand shoulders joining as a 3 strand shank.
1032. A gentleman's Baume & Mercier gold cased dress wristwatch, champagne dial subsidiary second hand, gold hands and alternate Arabic numerals, on a leather strap, c.1960.
1033. A Universal tri-compax chronograph, 18ct gold case, moon phase subsidiary dial and 3 others and 2 apertures, on champagne main dial to a hexagonal close link bracelet. Please note, the back of this watch will not be removed for viewing.
1034. A Victorian brooch in white metal upper setting and yellow metal below, a central flower-head encircled by a $\frac{3}{4}$ crescent, flanked by flower buds and leaves extending to flower-heads, the whole set with diamonds.
1035. A Royal Doulton Ltd Edition locket from the Victorian Collection, 'Eloise', No 0237, an oval garnet set enamelled locket with garnet drop on an 18" fine trace chain, hallmark Birmingham, 14ct.





1036. A solitaire diamond ring, a brilliant cut diamond, mounted estimated weight 1.90cts, clarity P2, colour I-M, 3 small diamonds to each shoulder, the whole set in white metal to white metal shank, stamped PLAT.

1037. A lady's amethyst and diamond dress ring, a central oval faceted amethyst 20mm x 14mm surrounded by 22 diamonds, claw set in 18ct white gold, hallmark London 1975. Total mounted estimated diamond weight 0.66ct.

1038. A wide lady's 9ct gold gate bracelet with padlock clasp, set with 3 Victorian full sovereigns, 1884, 1888, 1899.

1039. A delicate 18ct white gold and diamond brooch in the form of a 4 leaf clover, pierced and ribbon folded border to the leaves all set with graduated diamonds. Total mounted estimated diamond weight 0.55ct, London 1964, maker C&F.

1040. An 18ct gold brooch as a stylised chrysanthemum head, textured gold petals interspersed with royal blue enamelled petals.

1041. A lady's fob watch, case marked 18k with engraved case and T-bar, and a silver example.

1042. A hair watch cord and a 9ct gold and carnelian and agate fob, Birmingham 1911.

1043. A bi-colour chain, fancy link, stamped 9ct with ball and cross attached, 15".

1044. An 18ct gold gypsy style ring set with 3 small diamonds in star-cut settings.

1045. Five small Victorian brooches, various metals.

1046. A Victorian 9ct gold ring, seed pearls and small rubies in a squared setting with beaded borders, hallmark Birmingham, date rubbed.

1047. A 22ct gold wedding band.

1048. A 9ct gold crucifix on chain, 18".

1049. An 18ct gold ring, flower-head design, set with central blue sapphire surrounded by 8 small diamonds, in rub-over settings, hallmark London?

1050. A yellow metal bracelet, stamped 9ct, linked bars interlinked with quatrefoils set with alternating sapphires and diamonds, 7½".

1051. A lady's Omega 9ct gold bracelet watch, round white satin dial, gold baton numerals, close link bark finish bracelet.

1052. A gentleman's gold watch by Garrard, round white satin dial, Arabic numerals, subsidiary second hand, inscription to reverse, on expanding bracelet.

1053. A gent's gold plated quartz wristwatch by Rotary, white satin square dial with gold baton numerals, on mesh link bracelet.

1054. A pair of bi-colour metal and white stone set earrings, stone set stud, with stone set drop.

1055. A lady's sapphire and diamond cluster ring, a central sapphire 3mm x 3mm, in claw setting surrounded by 10 small diamonds, est total mounted weight 0.10ct, to yellow metal shank, tests as 18ct.

1056. A shell cameo brooch, a woman with flower entwined hair with pearl necklace in a 9ct gold mount, Birmingham 1989.

1057. An open face silver pocket watch by E Rippon of Sheffield, hallmark London 1914 and a silver fob watch.

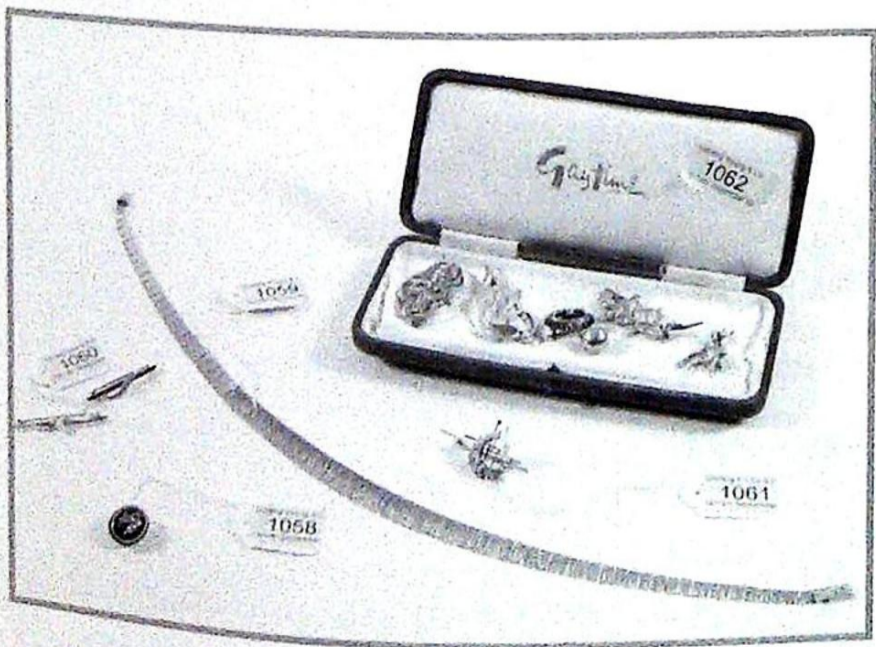
1058. A Victorian brooch, a bull's eye agate cabochon on silver mount with a gem set insect set a top, 20mm x 16mm.

1059. A briquette link collaret in yellow metal stamped 585, 17".

1060. Two pearl set bar brooches.

1061. A yellow metal brooch stamped 585 of 1960 styling, set with a single pearl.

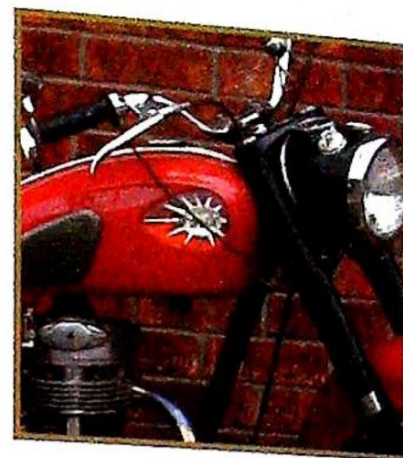
- 1062. A selection of 5 brooches, various metals and ages.
- 1063. An oval yellow metal faced locket with scalloped edge, engine turned decoration and vacant cartouche to front, 4.5 x 4cms.
- 1064. A shell cameo brooch in an oval yellow metal mount with double rope twist edge of a kneeling woman feeding a large eagle like bird, (some damage). 5cms x 4.5cms.
- 1065. A heart shaped brooch, central transfer portrait and black surround in a 9ct gold mount.
- 1066. A lady's 5-stone graduated diamond ring set in white and yellow metal, shank stamped 18ct, total estimated mounted weight 0.54ct.
- 1067. A lady's diamond set ring, 5 small diamonds set in white metal to yellow metal cross-over shoulders and shank, stamped 18ct & PLAT.
- 1068. A gentleman's diamond solitaire signet ring, large claw set, split shoulders, estimated mounted weight of diamond 0.50ct yellow metal shank stamped 18ct.
- 1069. A flower spray brooch pendant, set in white metal stated as white gold, three main flower heads, diamond set with brilliant cut stones, main flower estimated mounted diamond weight 0.75cts, 2 secondary flower heads estimated total mounted weight 0.65cts each, main stem and wrap, diamond set and 3 buds set with rose cut diamonds, the whole fits as a pendant to a multi link white metal chain, 17".
- 1070. A white metal diamond set bracelet, stated metal platinum, textured surface, central lozenge shape enclosing 9 diamonds with one diamond set each side, estimated total mounted diamond weight stated 1.05ct.
- 1071. An Edwardian scarf clip oval shape with central anchor pin, star set with 3 small diamonds, rope edge, in yellow metal.
- 1072. A cased 2002 gold sovereign
- 1073. An elliptical yellow metal memorial brooch with foliate engraving and glass covered hair insert to the reverse, 1 3/4".
- 1074. A 1974 Krugerrand in a spring pendant mount.
- 1075 - 78. A gold sovereign.
- 1079. A cased sewing kit containing thimble, scissors, bodkin and needle case in 9ct gold, each item hallmarked Birmingham 1935, maker JS&S
- 1080. A lady's Omega automatic 9ct gold wristwatch, champagne satin dial, gold baton numerals, on a cross-hatched close link bracelet.
- 1081. A lady's stone set dress ring, an oval sapphire surrounded by 8 small diamonds, claw set to a wide shouldered yellow metal shank.
- 1082. A lady's diamond set cluster ring, a delicate flowerhead set with small diamonds to a 9ct gold shank, hallmarked Birmingham 1983.
- 1083. A lady's stone set cluster ring, a central green stone (possibly tourmaline) surrounded by small diamonds to a yellow metal shank, stamped 18ct Lifetime, maker JH.
- 1084. A 9ct gold diamond solitaire ring.
- 1085. Various items of gold and other metal including 2 Victorian rings, bar brooch, etc
- 1086. A large Victorian banded agate brooch, set in yellow metal mount of scrolling form, 2 1/4" x 1 1/2".
- 1087. Various silver and white metal items including rope twist chain, bangle, etc.
- 1088. Costume jewellery.
- 1089. Various silver and white metal items including large Victorian style locket, filigree brooch, etc.
- 1090. A quantity of costume jewellery, mainly brooches.
- 1091. Four heavy yellow metal bangles, stated metal as 18ct gold, total weight 52gms.
- 1092. A yellow metal rope twist chain, wedding band and locket.



1093. A wide hinged silver bangle with foliate and scrolling bright cut engraving, hallmark Chester 1962.
1094. An Edwardian 18ct gold stone set ring, 4 small sapphires set in a lozenge shape to scroll engraved shoulders, hallmark Birmingham 1904.
1095. An 18ct gold Victorian stone set ring, 5 alternating graduated pink and white stones to a plain shank, hallmark Birmingham 1889.
1096. A black plastic Swan fountain pen, red box instructions included, side lever model, Swan M2, and a small satinwood box with transfer print of Sandown Bay on lid.
1097. An 1887 sovereign in a ring mount, 9ct gold, London.
1098. A full hoop eternity ring with swivel enhancers, white metal half set with pink stones and green stones, enhancers set with white stones (3 green stones missing).
1099. An Edwardian hinged bangle with applied plaque to front of amethysts and seed pearls, in 9ct rose gold, hallmark Birmingham 1912.
1100. A hinged hollow bangle in rose gold with mock belt markings, hallmark Chester 1915. (AF)
1101. A 9ct gold hollow curb link bracelet with padlock clasp.
1102. A Goliath pocket watch by Drew & Son.
1103. A gold lady's bracelet watch, base metal pocket watch, 9ct gold lady's dress ring with purple stone.
1104. A lady's blue sapphire and diamond cluster ring, an oval sapphire 8mm x 6mm, surrounded by 16 small diamonds in a lozenge shape, to an 18ct gold shank (replacement), Sheffield 1999.
1105. An Omega chrome Seamaster gents watch head and another.
1106. A signed Japanese cypress-wood netsuke a study of a small tree frog.
1107. A signed Japanese ivory netsuke a study of a villager in decorated kimono trying to hide a small bale of rice straw.
1108. A signed Japanese ivory netsuke a study of the famed court entertainer Ashi-Odori carrying his equipment in a special box upon his back.
1109. A signed Japanese ivory netsuke a study of a young Geisha mother walking as her new born child upon her back is covered with her large shawl.
1110. A signed Japanese ivory netsuke a study from a story based on legend of a fisherman trying to rope and climb upon a baby whale in order to ride it.
1111. A signed Japanese ivory netsuke a study of a sword dancer performing his dance with blades in each hand.
1112. A 9ct gold graduated link watch chain, 14", T-bar and 2 fobs.
1113. A pair cased open faced verge pocket watch, white enamel dial, Roman numerals, pierced and engraved balance cock, scribed Carrington & Co, Manchester, and 2 mother of pearl handled and other penknives.
- 1114 – 1130. Spare lots for late entries.
1131. A Georgian embroidered wall hanging (Altar piece), close stitched in silks depicting parrot tulips, forget-me-nots, peonies and other flowers, worked through with stylised leaves and scrolls, to a polychrome short twisted fringe, bullion stitched border, 80" x 38".
1132. A Victorian fan, a painted scene to the front of lover and his lass in a rose garden by a pond, gilt highlights, the reverse painted with a landscape, mother of pearl sticks with gilt highlights, yellow metal end sticks pierced and engraved and set with purple stones and enamelled oval tablet, (one stick broken), 8" stick length.
1133. A Victorian fan, black organza on black wooden sticks, columbines, jasmine and prunus blossom with butterfly and dragonflies painted decoration, some sticks carved and painted with silver metallic lilies, stick length 13", and another for restoration.
1134. A late Victorian fan, amber celluloid sticks, overlaid with fine lace, stick length 8".
1135. A Victorian fan, mother of pearl sticks, overlaid with cutwork lace, stick length 9".
1136. Two round footstools and woolwork replacement cover.
1137. Cushion covers, heavy fabric throws, Victorian style scarf, woolwork bell pull and velour cover.
1138. A whitework quilt and bedcover.
1139. A Victorian beaded banner shaped panel depicting white roses and lilies on beige and red ground, with an expanding brass wall hanger.
1140. Lace pieces and a small silk covered parasol with folding handle.
1141. An Asian wall hanging worked in gold thread on green ground.
- 1142 – 1150. An oriental rug.
- End of sale.

CONDITIONS OF SALE

1. These Conditions together with any Notices to Purchasers are the only terms and conditions subject to which Golding Young & Co ("the Auctioneers"), as agents for the Vendor will sell goods to a purchaser ("the Bidder") and all other conditions, whether express, or implied at common law or by statute as are capable of lawful exclusion are hereby excluded.
2. The highest bidder shall be the buyer. The Auctioneers reserve the right of regulating the biddings; of rejecting any bid; and of bidding for, withdrawing, consolidating, dividing or altering the order of lots.
3. The purchase money for each lot with the usual commission of 15% on the first £100 and 12.5% thereafter (min £1 per lot) plus VAT at the current rate shall be paid at the fall of the hammer (if required). Each lot at the fall of the hammer shall be at the sole risk and expense of the buyer, and shall be paid for and removed immediately after the conclusion of the sale, but no lot shall become the property of the buyer, or be removable until paid for, and if taken away in contravention of these conditions without an order for removal signed by the Auctioneers, they shall have power to seize the same by their servants or agents, or otherwise, or the Auctioneers may recover either the lot sold or the price thereof (at their option) by action at law.
4. No contra account of any description whatever will be allowed to the buyer as a set off, and payment for each Lot shall be made to the Auctioneers or their clerk only, and a buyer paying by cheque must give satisfactory references.
5. For all purposes of this sale the Clerk of the Auctioneers shall be deemed to be the agent of both seller and buyer.
6. A bidder shall not be allowed to retract his bidding after the fall of the hammer, and he shall give up his full name and address if required. The Auctioneers will not recognise the transfer of any lot from one buyer to another, nor make any alteration in the sale book in respect thereof.
7. The Auctioneers are acting only as agents, and give no personal warranty as to the condition, quality or authenticity of any chattels offered for Auction. Any catalogue description is given merely as guide to purchasers, any description can be changed from the rostrum before the lot is sold. If a purchaser buys without previous inspection he will do so at his own risk.
8. Notwithstanding any other terms in these Conditions, if within 7 days of the Sale a purchaser gives notice in writing that a lot is a deliberate forgery, with supporting factual evidence, the Auctioneers may rescind the transaction. The burden of factual proof lies with purchaser, mere opinions will not satisfy. This benefit is not assignable.
9. If any buyer neglect or refuse to comply with the above conditions or any of them, his deposit money (if any) shall be forfeited, and the lot uncleared may, at the option of the Auctioneers, be resold without notice by public auction or private treaty, and any loss occasioned by such re-sale together with all expenses attendant thereon, or arising under these conditions shall be paid for by the defaulter and be recoverable as and for liquidated damages. This condition is however without prejudice to the right of the Auctioneers to enforce the contract made at this sale if they think fit.
10. Any Notes for Purchasers and Catalogue Glossaries will be construed as Conditions of Sale.
11. The Auctioneers shall be the sole Arbitrators in all matters of dispute relating to those conditions both as between the seller and the buyer and between the several bidders and buyers and their determination on all matters shall be final and binding on all parties concerned.



How to find us



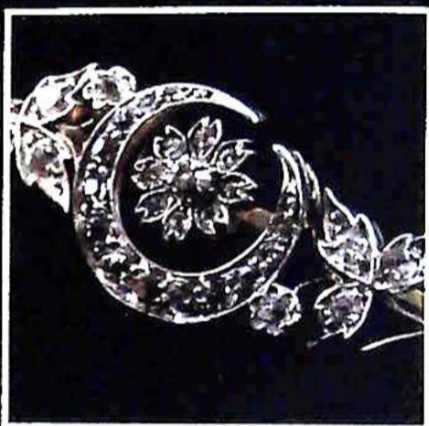
By Road

From whichever direction you approach Grantham, you can find us if you observe the following rules: Follow signs for Town Centre. Follow signs for Railway Station. At the roundabout leading to "Station Road", continue around to a double viaduct/ railway bridge. Take the right hand arch which leads into Old Wharf Road.

The Salerooms are the first building on the right. There are parking and loading bays in front of the premises.

By Train

The auction house is situated very closely to the Railway Station, which is served by the East Coast Main Line. Trains run approximately every 20 minutes from Kings Cross.



WWW.GOLDINGYOUNG.COM

Established 1900
-GOLDINGS-
AUCTIONEERS & VALUERS

Golding Young & Co., Old Wharf Road, Grantham, Lincolnshire NG31 7AA
Telephone: 01476 565118 Fax: 01476 561475 Email: enquiries@goldingyoung.com