

Old Wharf Road, Grantham, Lincolnshire NG31 7AA

Tel: +44 (0) 1476 565118 Fax: +44 (0) 1476 561475 Email: enquiries@goldingyoung.com WWW.GOLDINGYOUNG.COM

Upon instructions from over 180 vendors including the BBC for which we welcome
the filming of BARGAIN HUNT at this sale

GOLDING YOUNG & CO WILL SELL BY AUCTION
Over 750 lots of

ANTIQUE & MODERN COLLECTABLES FURNITURE WORKS OF ART



On WEDNESDAY 25th JUNE, 2003

Viewing: Monday 2pm - 5pm, Tuesday 11am - 7pm

Saleday 9am - 10am and online from Saturday at

WWW.GOLDINGYOUNG.COM

CONDITIONS OF SALE

1. These Conditions together with any Notices to Purchasers are the only terms and conditions subject to which Golding Young & Co ("the Auctioneers"), as agents for the Vendor will sell goods to a purchaser ("the Bidder") and all other conditions, whether express, or implied at common law or by statute as are capable of lawful exclusion are hereby excluded.
2. The highest bidder shall be the buyer. The Auctioneers reserve the right of regulating the biddings; of rejecting any bid; and of bidding for, withdrawing, consolidating, dividing or altering the order of lots.
3. The purchase money for each lot with the usual commission of 15% on the first £100 and 12.5% thereafter (min £1 per lot) plus VAT at the current rate shall be paid at the fall of the hammer (if required). Each lot at the fall of the hammer shall be at the sole risk and expense of the buyer, and shall be paid for and removed immediately after the conclusion of the sale, but no lot shall become the property of the buyer, or be removable until paid for, and if taken away in contravention of these conditions without an order for removal signed by the Auctioneers, they shall have power to seize the same by their servants or agents, or otherwise, or the Auctioneers may recover either the lot sold or the price thereof (at their option) by action at law.
4. No contra account of any description whatever will be allowed to the buyer as a set off, and payment for each Lot shall be made to the Auctioneers or their clerk only, and a buyer paying by cheque must give satisfactory references.
5. For all purposes of this sale the Clerk of the Auctioneers shall be deemed to be the agent of both seller and buyer.
6. A bidder shall not be allowed to retract his bidding after the fall of the hammer, and he shall give up his full name and address if required. The Auctioneers will not recognise the transfer of any lot from one buyer to another, nor make any alteration in the sale book in respect thereof.
7. The Auctioneers are acting only as agents, and give no personal warranty as to the condition, quality or authenticity of any chattels offered for Auction. Any catalogue description is given merely as guide to purchasers, any description can be changed from the rostrum before the lot is sold. If a purchaser buys without previous inspection he will do so at his own risk.
8. Notwithstanding any other terms in these Conditions, if within 7 days of the Sale a purchaser gives notice in writing that a lot is a deliberate forgery, with supporting factual evidence, the Auctioneers may rescind the transaction. The burden of factual proof lies with purchaser, mere opinions will not satisfy. This benefit is not assignable.
9. If any buyer neglect or refuse to comply with the above conditions or any of them, his deposit money (if any) shall be forfeited, and the lot uncleared may, at the option of the Auctioneers, be resold without notice by public auction or private treaty, and any loss occasioned by such re-sale together with all expenses attendant thereon, or arising under these conditions shall be paid for by the defaulter and be recoverable as and for liquidated damages. This condition is however without prejudice to the right of the Auctioneers to enforce the contract made at this sale if they think fit.
10. Any Notes for Purchasers and Catalogue Glossaries will be construed as Conditions of Sale.
11. The Auctioneers shall be the sole Arbitrators in all matters of dispute relating to those conditions both as between the seller and the buyer and between the several bidders and buyers and their determination on all matters shall be final and binding on all parties concerned.
12. The BBC shall not be permitted to plug in their Tea Urn in order that saleroom lighting can be maintained!

IMPORTANT NOTES FOR PURCHASERS

1. **PAYMENT:** Must be made in full immediately after the Auction. The following methods of payment are acceptable.

a) Cash b) Bankers Draft c) Building Society Cheque
d) Cheques, accompanied by a valid card. e) Debit/Credit* Cards *2%+vat charge.

PAYING BY CHEQUE?

If you are not known to the Auctioneers and wish to pay by cheque above your guarantee card limit **WE WILL RETAIN THE GOODS** until it has been cleared (7 days). There will be **NO EXCEPTIONS** to our policy. To avoid **UNDUE EMBARRASSMENT** for yourself or to our staff, please do not ask for preferential treatment. If you wish to clear goods immediately bring a letter from your Bank or a suitable guarantor reference.

2. **BUYERS PREMIUM** of 15% on the first £100 of each lot and 12 ½% thereafter is payable on all lots. Minimum £1 per lot. All plus VAT.
3. **REMOVAL OF PURCHASES:** Goods must be collected as soon as they are paid for, and in the 2 Working Days following the sale. If goods are not collected on these days we reserve the right to charge £1 per lot per day thereafter.
4. **COMMISSION BIDS:** If you are unable to attend this or any of our future sales we will be pleased to bid on your behalf. We always purchase at the lowest possible price, subject to other bids and reserves.
All bids must be handed to the office on an official form. It remains the responsibility of prospective purchasers to contact **GOLDINGS** to confirm whether their bids have been successful.
5. **TELEPHONE BIDS:** There are inherent dangers with this practice, therefore all such arrangements are made entirely at the bidder's risk. Telephone bids will only be accepted if the lower estimate is £500 or above. For lots with a lower estimate below this figure Commission Bids Only will be accepted.

POSTAGE & PACKING: All your requirements from quotes to a forwarding service is available from MBE Leeds, 57 Great George Street, Leeds, LS1 3AJ
Tel: +44 (0) 1132 428715 Fax: +44 (0) 1132 429176 e-mail: info@mbeleedscity.co.uk

6. **REFRESHMENTS** will be available Saleday & Tuesday Viewing.
7. **ACCOUNT TRANSFER** will not be recognised after the sale. If any lots are purchased for another person, this must be declared at the fall of the hammer.
8. **ESTIMATES.** Our Auctioneers will be available during viewing to give guidance on your prospective purchases.

GLOSSARY

- a) Generally: 'As Found' (AF). This term indicates the lot has some damage. Its absence does not indicate that the lot is free of defect. All lots are **SOLD AS SEEN**.
- b) Paintings: 'Signed, initialled, monogrammed' – 'This refers to the present state of the work and is not an attribution.
- c) Books and printed matter: These items are not sold subject to collation and are not returnable once removed from the premises.
- d) Silver & Jewellery: Weights given are approximations given by basic instruments.

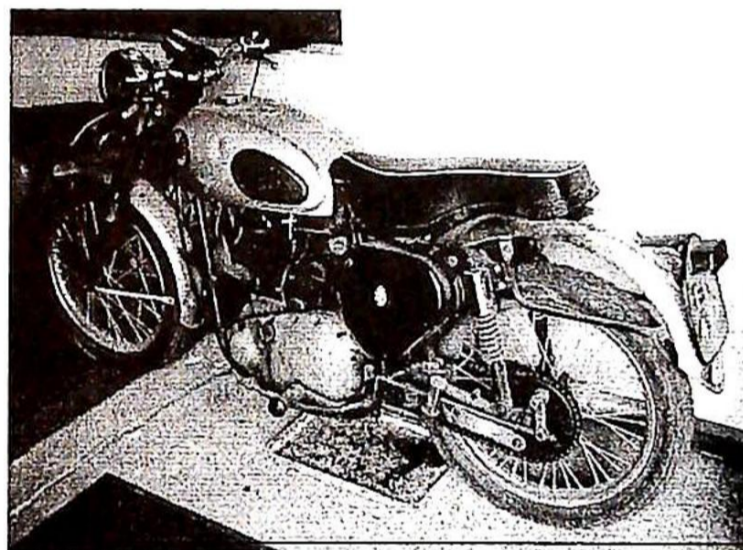
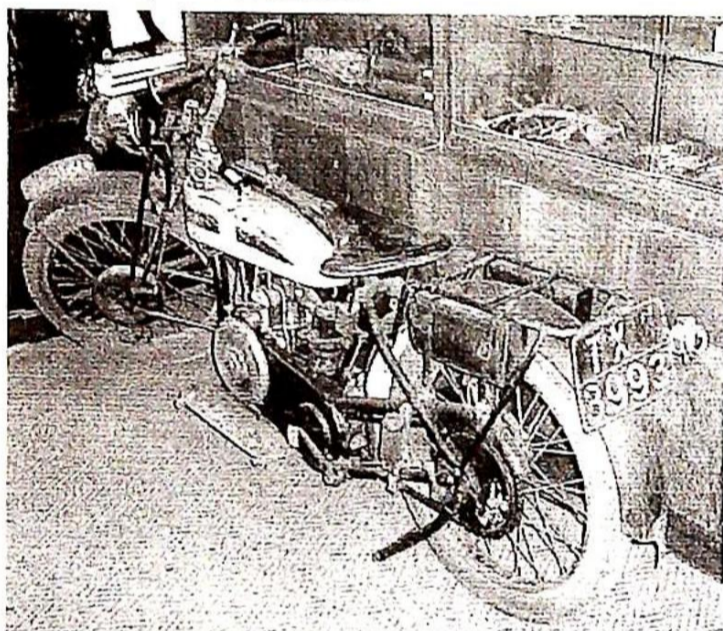
Valuers at this sale for lot enquiries:

Suki Burnett ANAVA - **Jan Squires** PJ Gem Dip ANAVA - **Colin Young** MRICS FNAVA

COLLECTABLES

Commencing at 10am

1. A BSA Bantam motor cycle, MWA 21D, fitted with a 125cc engine and having further 175cc pot amongst spares. Having current V5 and original green logbook.
2. A BSA B31 motor cycle, FEG 427, 350cc with high compression Goldstar cams, sold with current V5.
3. A late 1920's Douglas motor cycle, registration plate marked TX 3993, 350cc. A very original motor cycle in both livery and equipment which has been stored for many decades, the last tax disc dates to 1939, no documents.



4. A BSA A10 motor cycle, comprising, tubular frame, engine, gearbox, wheels, etc.
5. A selection of Classic motor cycle pistons and other various spare parts.
6. An R A Lister & Co type D 1.5hp stationary engine.
7. An R A Lister & Co type D 1.5hp stationary engine.
8. The Barford 15 Atom tractor, serial no A5283
9. An Atco vintage cylinder mower with Villiers engine.
10. Royal Crown Derby "Derby Posies", a tea service for six, including coffee pot, with blue line rim, pattern no. 9875, (one cup missing).
11. Royal Crown Derby "Derby Posies" dinner service comprising two oval meat plates (in 2 sizes), 18 plates in 3 sizes, 6 soup plates, gravy jug and stand.
12. Royal Crown Derby "Derby Posies" teaware inc. strainer, butterdish and knife, preserve pot and cover, hot water jug and a matching dessert service.
13. A James Dixon EPNS breakfast cruet, of elliptical form with raised embossed border, fitted with four egg cups and four teaspoons, hung from a central loop handle, on four fluted feet, 9" wide.
14. A pair of early 20th Century EPNS fish servers with horn handles, a soup ladle and a pair of salad servers.
15. A 19th century pressed brass firemark, of oval form, showing a burning building over four clasped hands inscribed "Union No. 1" within a laurel border, stamped Vaughan Brothers, Birmingham. 8" x 7".

16. A Border Fine Arts model of a bull, signed A. Wall 1980, 465/1500 on wooden stand, 8" high.
17. A Beswick model of a brown and white spaniel, 4" wide.
18. A Beswick model of a tri-colour Cavalier King Charles Spaniel, 5" high, 7" wide.
19. A Royal Doulton porcelain figure "Bedtime" HN 1978, 5 3/4" high.
20. A Royal Doulton porcelain figure "Darling" 1985, 5 1/4" high.
21. A quantity of Commemorative ware crested china and a 1st World War "Recruitment" cup.
22. An Arthur Wood "Garden Wall" moulded jug, polychrome painted with flowers, 10" high, a Bewley Pottery jug, 7" high and a Coronet Jug, 7 3/4" high (3).
23. A Crown Devon pottery rose bowl, of circular lobed form, printed and painted in colours on a blush ivory ground between gilt lines, 6" diameter.
24. An early 20th century pottery part dinner service printed with the Kendal pattern in blue by Myott & Sons, comprising two tureens, one meatdish, six plates, two sauceboats, stands and cover and a ladle.
25. A Grosvenor china Gainsborough pattern morning cabaret set for one.
26. A Victorian flamed mahogany chemist's dispensary box, the upper part with fitted compartments for and including some bottles, the lower drawer with scales and weights, 8" wide, 8" high.
27. A 19thC French porcelain mantel clock depicting a young lady and a dog and a bird riding on a chariot driven by an angel, 2" dial, 12" wide, 9" high.
28. A Kutani plate, c.1860, centrally painted with a bird amongst flowering plants, within multi-pattern geometric border, 8 1/4" dia.
29. A Kutani vase, c.1880, of circular tapering form, painted with a figural panel, opposing panel of birds and flowers, divided by floral sprays, 10" high.
30. Two Pendelphin plaster figures - (1) Rabbit with fruit cart (2) Two rabbits tucked up in bed.
31. A bronze elephant novelty timepiece with motioned fob dial with ribbon decoration and turned pendant bob, 10" wide, 11" high.
32. A Masons Regency pattern oval two handled dish, a blue moulded glass basket, and an Imari baluster vase 9 3/4".
33. A brass Miners lamp.
34. A pair of mid 19th century Staffordshire pottery figures of seated dalmations, each with gold collars and chains on underglazed blue oval bases. 7 1/2" high.
35. A brass and aluminium framed cachet making board, 10" x 7".
36. A Liskard glass paperweight and another paperweight.
37. A pair of Portmerion pottery chamber pots printed with pink rose sprays.
38. A Johnson Bros. Pottery "Old Britain Castles" pattern Hors D'ouvre dish, together with a matching dish and cover, printed in purple.
39. A Carltonware circular posy bowl, moulded and enamelled with garden flowers 8 1/2" diameter.
40. A late 19th century white metal travelling flask and two beakers, in fitted leather case, inscribed with initials.
41. An early 20th century oak double bedstead with bergere panels, and with spring base and side irons.
42. A Queen Anne style walnut framed toilet mirror, with bevelled plate supported by panelled uprights, the shaped base with two frieze drawers, 36 1/2" high.
43. A EPNS circular ink stand, fitted with quill holder and embossed with shells, scrolls and flowers, supporting a circular moulded glass inkwell with hinged cover. 5 1/2" wide.
44. A Beswick pottery figure "Beatrix Pottery Jemima Puddleduck" brown back stamp 6 1/4" high with original box.
45. A Royal Albert Beatrix Pottery Timmy Willie Sleeping. 3 3/4" high with original box.
46. A Beswick pottery figure Beatrix Pottery Pigling Bland 4" high (no box).
47. A Shelley porcelain "Chelsea" pattern tea service for 12 inc teapot and two large plates, pattern no. 11280.

48. A Moorcroft pottery trinket dish, being cream ground, enamelled with campanula 4 1/2" diameter, impressed "Moorcroft made in England".
49. A Moorcroft pottery circular dish, decorated with a single orchid on a blue green ground 4 1/2" diameter, signed with blue signature impressed Potter to H M The Queen Made in England.
50. A Moorcroft pottery baluster vase, cream ground decorated with hibiscus, 5 1/4" high, bearing paper label Potters to the late Queen Mary.
51. A Moorcroft pottery trinket dish, decorated with hibiscus on olive ground, 3 3/4" diameter, impressed "Moorcroft made in England".
52. A Moorcroft pottery vase of ovoid form, decorated with hibiscus on olive ground 5 1/4" high, impressed Moorcroft Made in England.
53. A Moorcroft pottery circular shallow dish, the dark blue ground decorated Oberon pattern 4 1/2" diameter, impressed factory mark Moorcroft Made in England.
54. A Moorcroft pottery baluster vase, the pale blue mottled ground decorated with leaf and berry pattern, to blind with bramble pattern, in shades of purple, blues and greens 7 1/2" high, printed Moorcroft Made in England with Artists initials.
55. A Moorcroft pottery ovoid vase, the deep turquoise ground to blind with foxgloves in shades of pink and ivory 4 1/4" high. Impressed factory mark Moorcroft printed and made in England with artists initials.
56. An early 20th Century copper kettle with turned wooden handle.
57. A Victorian rosewood writing slope, with brass mounts, the interior fitted with two ink wells, 14" wide.
58. A 19th century pottery sleeve vase, the blue ground enamelled and gilt with humming birds and foliage in the oriental manner 9 1/2" high.
59. An early 19th century rosewood tea caddy, of sarcophagus form, the cover having gadrooned tablet, with mother of pearl inlays to front panel, on bun feet, 7 1/2" wide.
60. A pottery musical jug moulded and enamelled in relief with a hunting scene, stamped Sylvan England together with an art pottery baluster jug painted with flowers between black borders.
61. WITHDRAWN.
62. A modern green patinated bronze sculpture, 15" high.
63. A 19th century Staffordshire pottery Arbour group of a lover and his lass seated beneath a fruiting vine arch, mainly white with pink, green, orange highlights 14 1/2" high (cracked).
64. A pair of late 19th Century Bohemian glass pedestal dishes each having a shallow bowl with shaped rim overlaid in opaque white and cut with arched panels painted with flowers, alternating with hatching. The tall pedestal with an oval opaque panel painted with with female half length portrait, decorated overall with gilt leaf scrolling and on domed foot. 11" high.



65. A 19thC Sevres style porcelain mantel clock having gilt and blue rococo borders and central floral painted reserve, 8-day movement striking a bell, later dial, 13" high.
66. Late 19th century brass oil lamp manufactured by Helios having a circular stepped reservoir over stepped domed pedestal, cranberry tinted glass shade etched with stylised plant forms and a glass chimney 23" overall.
67. Pair of late 19th century cranberry glass table lustres with castellated flared rims over baluster bowls, on knopped stem and circular stepped foot, hung with faceted drops, some damage and gilt loss 13 1/4" high.
68. Three 19th century blue and white meat plates, printed with the Willow pattern together with a late 19th century pottery meat plate printed in the aesthetic manner.
69. A late 19th century, early 20th century Burleigh pottery part toilet set, printed with ivy and berries on cream ground, comprising jug, bowl, covered dish and tooth mug.
70. A Carltonware circular footed bowl with inverted rim, printed and painted in colours and gilt, on a blue ground, decorated to the well with Pagoda and figural landscape 10 1/2" diameter.
71. A Royal Doulton stoneware coffee pot of baluster form, the buff ground with applied motif of Topers huntsman and hounds etc. 10" high.
72. A Loetz style jug of fluted baluster form in tinted purple glass with blue to purple to green iridescence, mounted with a metal loop handle, collar and fringed cover. 8 1/4" high.
73. A Doulton Lambeth patent stoneware jug, the background enamelled in turquoise, olive green and white with brown glazed handle and rim, 5 1/2" high.
74. A Royal Worcester pedestal comport, centrally painted with leaf and berry spray within a lambrequin turquoise border, 9 1/4" diameter, c.1876.
75. A child's elm chair, with rounded rail back, the turned legs joined by H stretchers.
76. A period oak bible box, with a lunette front panel, iron lock and clasp. 25 1/2" wide.
77. A Della Robbia pottery bowl, the well inside painted with a fish 7 1/2" diameter, together with a Bretby pottery planter of circular form, the moulded outline glazed in shades of blue ochre and orange 6 1/2" diameter.
78. A good quality German aneroid barometer having an enamelled dial within a polished walnut and ebony case 10" diameter
79. A wooden bowl and cover of irregular oval shape, carved in relief with stylised plant forms 7" wide, together with a wooden fork and spoon, the handles carved in relief with ivy, beads and berries.
80. A 19th century walnut decanter box, rectangular, having a brass inset to lid, fitted with two cut glass decanters of rectangular canted form with faceted stoppers, (some chips), the box 11" high x 9 3/4" wide.
81. A Victorian relief moulded stoneware jug of circular tapering form depicting Cain killing Abel and Adam and Eve weeping over his body, possibly by Edward Walley, unmarked, c.1845 10" high (riveted handle).
82. A Shelley bone china teapot, polychrome printed with floral sprays with a pale blue finial, handle and foot.
83. An opaque green tinted glass bowl with inverted fluted rim, a Paragon bone china cup and saucer, the well decorated with rose spray within gilt line border, apple green ground, gilt with fan motif and a porcelain coffee cup and saucer with riven moulded body and graduated pink matt glaze.
84. An Art Nouveau style miniature longcase clock timepiece with 2" enamel dial, 10" high. Illustrated.
85. A pair of cut glass circular salts, another and a pair of glass knife rests.
86. A collection of circa 1950's glassware, each piece decorated with concentric gold lines comprising decanter, cocktail glasses, liqueur glasses, flask, water jug and tumbler.
87. A 19thC porcelain comport painted with a landscape with a mill, within a turquoise border.
88. An Ironstone "Persiana" pattern toilet bowl, printed and painted in the Chinese manner with flowers, birds and foliage, retail mark for T Goode & Co. London, 15 1/4" diameter.
89. A 19thC brass arms dish with floral prickwork design and raised rim, 17" dia.

90. An old Sheffield Plate samovar of plain rectangular form, on stepped base with 4 feet, 13" high.
91. A Crown Devon pottery preserve dish and spoon, the green ground moulded with berries and honeysuckle, model no. 1802, in original box.
92. A set of six George V silver teaspoons, with engraved handles, Sheffield 1919 in fitted case.
93. A Royal Doulton pottery baby's bowl, printed with image and nursery rhyme "Hey Diddle Diddle" 6" diameter.
94. A 19th century Meissen porcelain fish platter, oval, printed with the onion pattern in underglazed blue, blue cross boards and impressed numbers, 21 3/4" wide.
95. A late 19th century Japanese shallow dish with fluted rim, separated, painted in underglazed blue with leaf forms, 9 3/4" diameter.
96. An American silver cream jug and matching sugar bowl with gadroon moulding and scroll handles, marked Gorham - Sterling 480, together with another, marked Sterling and an EPNS panelled coffee pot.
97. A modern EPNS 3 piece tea service of squat circular outline, together with a modern rose bowl.
98. An Edwardian oak framed tantalus by Daniel & Arter of London, the 3 cut crystal square decanters locked by an electroplate lever cover, 15" wide.
99. A Shelley bone china Chelsea pattern part tea service, pattern no. 11280.
100. A collection of Russian pottery animals, including zebras, seals, birds, polar bears, panda, approx. 20.
101. A Carltonware pottery egg cruet stand, circular, centred by a duck handle (repaired) together with four egg cups (some chips and repair).
102. A Victorian porcelain ink stand of gilt and floral encrusted scalloped form, the removable cover revealing a polychrome scrolling pen tray, double ink stand with covers and further compartment cover, circa 1850, 11" wide.
103. A French faience puzzle jug, 19thC, of baluster form, with overhead and side handles and mask spout, the yellow ground painted with armorial and trefoil within panels, 12" high.
104. A Victorian copper tea kettle of baluster form with fluted and gadroon moulding, ceramic handles and finial, and on a shaped stand with burner (damage to handle) 14 1/2" high.
105. An Epworth pottery vase of ovoid form with a deep green glazed band to the neck and ochre slip decoration.
106. A pair of English porcelain tea cups, painted with reserves of English flowers on blue ground, heavily gilt and with gilt mask moulded handles, together with a 19th century straight sided teacup painted with flowers and gilt.
107. A 19th/20th century Cranberry glass heart shaped dish with clear loop handle and foot 5 3/4" wide.
108. A pair of stoneware chimney pots, of octagonal shape, plinth bases 32" high.
109. A pair of Vintage Compound lawn bowls by Taylor, with ivory markers stamped "B".
110. A hand made and crafted wooden hull pond yacht, painted red and white 52" (mast missing).
111. A Royal Winton lustre glazed 3 section Hors D'ouvres dish.
112. A large glass pedestal dish, the bowl engraved with leaves and berries 10 3/4" high.
113. A late Victorian oak stationery cabinet and writing box with lift top revealing a fitted interior and fall-flap with spring loaded inkwells and writing slope, 17" wide, 11" high.
114. A pair of Kutani vases, late 19thC, of baluster form, each painted with panels of birds and flowering plants, 13 1/2" high. Illustrated.
115. A late 19thC Volkstadt porcelain music group after Kandler, mark to base in underglaze blue, 22" wide, 15" deep.
116. A Japanese bronze censor, cast with interior seal signature, and serpent handles, with hardwood pierced cover set with agate finial, 3 1/2" dia.
117. A Beswick pottery figure 'Queen of Hearts' and companion, 'King of Hearts', from the Alice Series, 4" high, black backstamps.
118. A Beswick pottery figure 'The Amiable Guinea Pig', 4" high, brown backstamp.

119. Beswick: Mrs Flopsy Bunny, 4" high; Mr Jeremy Fisher, 3" high; Squirrel Nutkin, 3 1/2" high; Tommy Brock, 3 3/4" high; Samuel Whiskers, 3 1/2" high; The Racegoer, 3/4" high. (6)
120. A Goldscheider figure of Elizabeth I, in blue, yellow and pink dress, on black base, 8 1/4" high, black Goldscheider with Myott backstamp.
121. A pair of Ludwigsburg porcelain salts, the boat shaped bowls supported by seated figures, painted with flowers, on rococo scroll bases, modern, 5 1/2" wide, (one damaged).
122. A Goldscheider pottery figure group by G Bouret, modelled as a young boy and girl, she tying his scarf, 10" high, Model no 7835 (repair to base).
123. A continental porcelain figure group of 2 young boys playing leapfrog, on moulded circular base, 6 1/2" high, (restored).
124. A Naples porcelain candlestick, modelled as a satyr, seated on the back of a leopard and holding a palm tree, the top terminating in a rococo scroll scone and flange, 11 1/2" high.
125. A late Victorian silver backed brush set, chased with C scrolls, foliage and flowers, comprising two hair brushes and a clothes brush Birmingham 1897.
126. A Victorian mahogany toilet mirror, supported by scroll uprights, on a concave platform base 27" high.
127. A set of four 1930's oak dining chairs, with arched top rail, lath splats, and raffia seats, turned legs with square framing.
128. A Royal Worcester figure 'Joy', modelled by James Hadley, 2/57, 10" high, (repaired).
129. A Locke & Co Worcester porcelain mug, of circular waisted shape, moulded with acanthus borders and painted with 'View in the Lincolnshire Fens', and opposing flower spray, double scroll handle, 5 1/4" high, factory mark and title, no 220 to underside, c.1895.
130. A 19thC 'Sevres' style cache pot, circular, painted with a family garden scene, with 2 rudimentary handles moulded as buckets, on scroll feet, 8 1/4" high, repaired.
131. A Royal Worcester vase modelled as a shell supported on stem of brown coral and gilt seaweed, the rocaille circular base with conforming borders, 8" high, model no 94, c.1890, (cracked).
132. A pair of Sitzendorf porcelain figures, as flower and game sellers, he in burgandy coat and striped breeches, she with orange bodice and striped skirt and blue overskirt, each holding a basket of flowers and game, on rococo scroll bases, 7 1/2" high, 20thC.
133. A Sitzendorf porcelain figure group, modelled as a musician and his female companion, he playing bagpipes, she with a basket of flowers, a lamb at their feet, on oval base, 7" high, 20thC.
134. Eight Meissen porcelain soup plates, each with gilt rims, moulded borders and painted with flower sprays and fruit bunches, 9 1/2" dia, underglaze blue crossed swords struck through, (some gilt and paint loss).
135. A 'Meissen' porcelain figure group by Sampson emblematic of the Harvest, with a classically dressed female and young boy, on rococo scroll base with floral encrustations, 16" high.
136. A 'Meissen' porcelain figure group by Samson, of a seated gallant with 2 female attendants, a dog by his side, on oval base with flower encrustations and guilloche border, 12" high.
137. Four 19thC porcelain plates (formerly with pedestals), each painted with differing landscapes within gilt line borders on pale blue ground, 9 1/4" dia.
138. A moulded glass 'Jack in the Pulpit' vase with opaque and pink splashed rim, 7" high.
139. An Arts & Crafts period copper candelabra, the twin hammered sconces of shaped stem, on oval base, 11" wide, together with an oval bowl of the same period, 11" wide. (2)
140. A set of 12 Dutch pottery knife rests, with flower moulded finials, glazed in differing colours. 5" wide.
141. An early 20thC tin tea caddy and cover, rectangular, decorated with floral and shell panels in gilt on black, stamped 'J Bartlett & Son, Bristol, Welsh Back', 8" high.
142. An early 20th century cranberry glass perfume atomiser, of tapering panelled form, with gilt metal mount 9" high.
143. A Bush DAC 90 Wireless, in cream bakelite casing, 1940/50's 12" wide.

144. A 20th century plastic brooch modelled as a galleon, another, disc shaped in red white and blue.
145. A Beswick Beatrix Potter figure, 'Tommy Brock', 3 1/2" high, brown back stamp.
146. A Beswick Beatrix Potter figure, 'Jemima Puddleduck', 4 1/4" high, brown backstamp.
147. A Beswick Beatrix Potter figure, 'Pigling Bland', 4" high, brown backstamp.
148. A Beswick Beatrix Potter figure, 'Foxy Whiskered Gentleman', 5" high, gold backstamp, (hairline crack to base).
149. A Beswick pottery figure of a Jersey calf, 2 3/4" high.
150. A Copeland porcelain cream jug and sugar bowl, the oval moulded body polychrome and gilt with stylised plant forms in the Chinese manner, contained within an EPNS stand on bun feet.
151. A Royal Crown Derby heart shaped box, decorated in the Imari palette, 2" wide, together with a Royal Worcester porcelain basket, with woven cream ground body and gilt loop handle, 7" high (broken). (2)
152. A Chinese export blue and white circular bowl, with a waved edge, the well painted with a vase of flowers, and overall with a bird and flower landscape, 14 1/2" dia, (repaired).
153. A Regimental banner in blue and yellow sateen with yellow/blue braid, and embroidered to the centre with a Sphinx 'Egypt' Lincolnshire Regiment, 43" x 10 1/4", together with a pair of tray cloths in the same vein.
154. A 19thC slate mantel clock, with an enamel dial, the 8-day movement striking the hour and half-hour on a bell, 9 1/2" high.
155. Two early 20thC cast brass figures of Temple Deities, probably Indian, approx 8" high.
156. A Victorian red grained marble mantel clock of architectural outline, surmounted by a cast brass figure of a prancing horse, circular dial with Roman numerals of 8-day movement striking half hour and hour on a bell, 13" high.
157. A pair of Carltonware black ground vases of ovoid shape, enamelled and gilt with a detailed Chinese pagoda landscape with figures, with a lower red ground border decorated with gilt flowers and vignettes, 8 1/2" high, black printed factory mark impressed 140.
158. A blue glass flagon printed with a portrait cartouche of a Turkish soldier, within floral framing, early 20thC, 11" high.
159. A Smith's mantel clock in bakelite case 8" high circa 1952.
160. A tin wood-effect circular biscuit barrel, with inner liner, chrome lid and swing handle, 6" high.
161. A Doulton Slater's Patent pottery teapot, coffee pot and cream jug, the buff ground enamelled in white and turquoise, over blue/green bands.
162. A qty of British regimental cap badges.
163. An early 20thC terrestrial globe, on circular wooden base, fitted with a small compass, 21" high.
164. A early 20thC comprehensive toilet set, each piece moulded and printed with floral sprays with gilt highlights on cream ground, comprising 3 ewers, 2 basins, 2 chamberpots, 2 toothmugs, 2 covered soap dishes and 1 larger soap dish.
165. An early 20thC silver plate on copper entree dish and cover with scroll and floral carved edges, together with a pair of silver plate on copper wine coasters.
166. A brass cased ship's clock with circular dial, black painted Roman numerals, 8" dia.
167. A silver plated meat dome with cast loop handles, by Mappin & Webb, 14" wide.
168. A brass replica ship's lantern with oil burner and overhead hanging handle, 13 1/2" high.
169. An early 20thC brass duplex oil lamp with a moulded and acid etched glass shade, 22" overall.
170. Four Susie Cooper pottery 'Ferndown' tea plates, and 3 matching dessert bowls, printed factory mark in green, no 2374.
171. A heavy crystal square decanter, cut with circles within squares, with conforming mallet stopper and silver collar, modern, 10" high, (chips to stopper and one corner).
172. A blue ground cloissone bowl on hardwood stand.

173. A Royal Doulton 'Norfolk' pattern trio, printed in underglaze blue, together with a Burlington Ware 'Chintz' trio.
174. A late 19thC French porcelain tea service, printed with images of charioteers and motifs within terracotta, black and gilt borders.
175. A glass punch bowl and cups.
176. A pair of brass candlesticks and a brass bell
177. A cased fan.
178. A quantity of 19thC porcelain tea cups and saucers, polychrome painted and gilt with blossom and stylised buildings, within blue wash line borders.
179. A pair of Satsuma circular vases with elongated necks and faux bronze bands, enamelled with battle scenes 9 1/4" high, together with a baluster vase and cover, similar, 8 3/4" high.
180. Two evening bags.
181. An early 20thC English Art Pottery vase, the deep circular neck linked to the baluster body by 4 loop handles, with blue/green/brown streaky glaze, incised with panels of 'crazy paving', the neck with boss shields, impressed mark, 10 1/2" high.
182. A German porcelain table centrepiece, the pierced basket painted and encrusted with flowers, supported by a scrolling column and base with encrusted flowers and with cherubs, 12" high, (repaired).
183. A late 19thC pottery teapot and cover in the aesthetic style, possibly by Brownhills, the cream ground moulded in relief with bamboo and blossoms, with faux bamboo handles and spout, 8 1/4" high.
184. A pottery wine carrier, early AD.
185. A pair of cauldron shape green glass vases, raised on 3 feet, the bowls enamelled with heraldry and inscribed Anno 1667, 4 1/4" high.
186. A Kutani style porcelain cup and saucer, decorated in iron red and gilt with birds and flowering plants.
187. A floral decorated ginger jar and 3 bird figurines.
188. A Carltonware square dish, with wavy outline, decorated with a floral spray, gilt line rim, 8" square.
189. A Chinese famille verte ginger jar and cover, enamelled with reserves of flowers, rocks and foliage, against a pink and green scrollwork ground within lappet borders, 7 3/4" high.
190. A Kutani plate, c.1890, painted with a panel of figures in a landscape, and an adjacent panel of partridge by a lakeside, with flowering plants, against an insect and grass ground, 8 1/2" dia.
191. FIREARM LICENCE REQUIRED. A Webley & Scott brass barrelled flare pistol. Ser No 96048.
192. SHOTGUN LICENCE REQUIRED. BSA 12 bore side by side shotgun, serial no 19706
193. SHOTGUN LICENCE REQUIRED. A Gardone 12 bore side by side shotgun. Serial No 9170.
194. RFD LICENCE REQUIRED. T Conway. 12 bore side-by-side hammer action underlever shotgun with Damascus barrels.
195. RFD LICENCE REQUIRED. A Midland 410 single barrel garden gun, serial no 272
196. SHOTGUN LICENCE REQUIRED. A Hollis Bentley & Playfair 12 bore side by side shotgun, serial no 93317.
197. RFD LICENCE REQUIRED. A 12 bore side by side hammer action shotgun by J Crockart.
198. RFD LICENCE REQUIRED. A 410 side by side double barrel hammer action garden gun.
199. SHOTGUN LICENCE REQUIRED. A 19thC French 7mm Walking Stick Shotgun.
200. SHOTGUN LICENCE REQUIRED. A mahogany finished horn handled Walking Stick Shotgun, unknown calibre.
201. A Victorian dressing table jar, of faceted oval form, the silver gilt hinged cover engraved with monogram to the centre within a foliate border, the interior with Asprey stamp, 3" high, London 1871, Makers mark JB.
202. A silver candlestick with knopped tapering stem, on domed foot, 5 1/2" high, London, modern, weighted base.

203. An early 20th century sterling silver vase, with everted rim, compressed circular collar over a slender tapering body, engraved with flowers and foliage, on circular domed foot 12 1/4" high.
204. A silver 2 handled trophy cup, engraved "Ripon Y.F.C. 1933, 1st Efficiency" 5 1/4" high, Birmingham 1931, on plastic stand.
205. A pair of silver trumpet vases with everted rims over anulated neck, on domed feet, 8" high, Birmingham 1969, weighted bases.
206. A circular cut glass powder bowl, with silver collar and lid, 1930, 4" diameter.
207. A cut glass bowl with silver collar and lid, with foliate and lobed cutting, the lid with inset mirror, London 1927.
208. A pair of Edward VII silver epergnes, each with a central trumpet vase, with waved rim, and with 3 further conforming vases issuing from a domed foot, 7" high, Birmingham 1908, 7ozs gross.
209. A late Victorian silver salt, of boat shape, with a reeded rim, on oval stepped base, glass liner, 4 1/4" wide, hallmarks rubbed, probably Chester 1898.
210. A set of six George III silver teaspoons, engraved with initials, together with a pair of EPNS sugar tongs, in fitted case, London 1805.
211. A silver thimble, embossed with flower beads, Greek key border, Birmingham 1911.
212. A tortoiseshell backed, silver banded clothes brush, inlaid with oval cartouche, engraved with initial, ribbon tie and harebell pendant and musical instruments London 1916.
213. A Continental silver cake slice, with engraved and pierced blade, with foliate cast handle, stamped 800.
214. A cut glass salts bottle, of square form, with silver lid and inner stopper, 2 3/4" high, London 1923.
215. A set of six Sterling silver salt cellars, with panelled bodies and domed covers, 2" high.
216. A silver mustard, the domed cover with cast thumbpiece, angulated handle on four bun feet, Birmingham 1921, 2ozs. sapphire glass liner, together with EPNS spoon.
217. A silver box, of circular form, the hinged cover with egg and dart border divided by four foliate motifs, on four lobed cabriole legs, 2 1/2" diameter, Birmingham 1928.
218. A Edward VII silver cigarette case, with engraved monogram, Birmingham 1904, another with machine turning, inscribed "Benny" 1935. 8ozs gross.
219. A silver trinket dish, circular, engraved to the centre with the Prince of Wales Feathers, inscribed Charles Diana July 29th 1981, within a foliate and gadroon border, Sheffield 1981, 3 3/4" diameter, a Continental silver photograph frame, machine turned with foliate corners, 4 1/2" x 3 1/4" and an EPNS hip flask (3).
220. A silver backed hair brush, clothes brush and gentleman's brush, various hallmarks.
221. A pair of William IV silver sugar tongs, Exeter 1834, another pair, London 1871, another pair London 1837, 5 ozs gross (3).
222. A pair of silver trumpet vases, with everted rims, over tapering bodies, on domed foot 1908, (AF).
223. A William IV silver preserve spoon with mother of pearl handles, Birmingham 1833.
224. A pair of silver candlesticks with fixed sconces, tapering stems and on domed cavetto foot with gadroon border, 6" high, Birmingham 1970, weighted bases.
225. A set of six Victorian silver fiddle pattern teaspoons, engraved with initials, London 1870, and three teaspoons inscribed "Lincoln Rifle Club 1895".
226. A silver trumpet vase, on spreading foot, 5" high, modern, (weighted base).
227. A pair of engraved silver napkin rings, Birmingham 1924, together with a pair of sugar tongs, modern.
228. A pair of Victorian silver fiddle pattern tablespoons, engraved with initials, London 1838.
229. A set of 6 Victorian silver teaspoons with bright cut engraving, by Josiah Williams & Co, Exeter, 1876, together with a pair of matching sugar tongs.
230. A set of 6 George III silver Old English pattern teaspoons, London 1795, (one damaged).
231. A George V silver hinged wishbone, Birmingham 1933, 4" high.

232. A set of Edward VII silver Old English pattern cutlery, engraved with initials, comprising 6 dessert spoons and forks and 6 table forks, London 1903, in a fitted oak case.
233. A silver bladed butter knife with mother-of-pearl handles, 3 George III silver teaspoons, another, lacquer, an EPNS and mother-of-pearl sardine scoop and bread fork, and assorted 20thC coinage.
234. A pair of George III silver Old English gravy spoons, by George Smith IV, engraved with crest, London 1798, 5ozs.
235. A George IV silver Fiddle Pattern gravy spoon, London 1826, Maker's mark IH, 4ozs.
236. A set of 6 Victorian silver Fiddle pattern table forks, by Joseph & Albert Savory, the reverse engraved with crest, London 1839, 14.5ozs.
237. Four Victorian silver Fiddle Pattern dessert forks, by Joseph & Albert Savory, the reverse engraved with crest, London 1839, 8ozs.
238. Five George III silver Fiddle Pattern table forks, by Thomas Northcote, the reverse engraved with crest, London 1796, and 3 Victorian examples, London 1841, 20ozs.
239. A set of 6 George IV silver Fiddle Pattern dessert spoons, by Thomas & George Hayter, engraved with monogram, London 1826, 8ozs.
240. A set of 6 George III silver Fiddle Pattern dessert spoons, by William Eley & William Fearn, engraved with monogram, London 1805, 8ozs.
241. A pair of silver Rat-tail pattern table spoons, London 1917, a pair of matching dessert spoons, Sheffield 1922, and a pair of Old English soup spoons, London 1897, 13ozs gross.
242. A William IV silver Old English Pattern table spoon, London 1831, a pair of George III examples, London 1816, engraved with initials, (AF), and a Fiddle Pattern table spoon, London 1842, 8ozs gross.
243. A quantity of silver teaspoons, various patterns and hallmarks, 9 1/2ozs gross.
244. A pair of George III silver table candlesticks, with detachable nozzles, pierced composite stems and square domed bases, cast with acanthus and bead borders, engraved crest cartouches, London 1767, Maker's Mark ER, 11 1/4" high, loaded bases.
245. A pair of Victorian silver trinket dishes, of heart shape, with pierced C-scroll and floral borders, raised on 3 conforming feet, (one dish lacking one foot), Sheffield 1896, 4" wide.
246. A Victorian silver trinket dish with pierced quatrefoil walls and scroll and foliate borders, Birmingham 1897, together with 2 smaller examples, 4 1/2" and 3 1/2" respectively.
247. A 3-piece cruet set, of circular flanged bodies, comprising a pair of salts and matching mustard pot, the latter with domed cover, urn finial and shaped handle, all with sapphire glass liners, 1917 or 1942 and 4 condiment spoons.
248. A pair of George V silver machine turned cigarette cases, a footed circular dish and a quantity of teaspoons, various hallmarks, 16ozs gross.
249. A silver machine turned cigarette box, rectangular, with wooden lining, London 1937, 7" wide.
250. A pair of Victorian EPNS fish servers, with Fiddle Pattern handles and pierced and engraved decoration.
251. An Edward VII silver punch bowl by the Goldsmiths and Silversmiths Co, of circular shape, repousee with a band of scrolls, flowers and foliage over a gadrooned body, on domed foot, London 1901, 10" dia, 27ozs.
252. A Victorian white metal pen set comprising quill pen, pencil and letter opener, each with wrythen fluted handle, the opener with hallmark for London 1890, in fitted case marked 'Mappin Bros. Regent St. London'.
253. A pair of Victorian silver salts, the waved everted rims over circular bodies, Sheffield 1890, 2" dia.
254. A Scottish seal, with a lobed granite handle, engraved white metal collar and Cairngorm seal, engraved with a crest, 2 3/4" high.
255. A pocket watch, key wind with 4 small Victorian yellow metal bar brooches



256. A 'Sevres' porcelain pill box of bombe form, the hinged cover painted with a floral spray within a gilt scrolling frame, gilt metal mounts, faux Sevres marks in iron red, 2 3/4" wide, together with a Limoges porcelain rectangular tray, similarly decorated, 5 1/4" wide (restored rim) and a miniature circular pot, matching, 2" dia. (3)
257. A Derby porcelain pill box, of rectangular bombe shape, with blue enamelled ground, painted to the cover with shepherdess and sheep in a landscape within gilt cartouche, the body with gilt floral sprays, internally painted with flowers, gilt metal mounts, painted mark in iron red, c.1800, 2 1/2" wide.
258. A faux Sevres porcelain pill box, with gilt metal mounts, with bleu-celeste ground, painted with a floral monogram to the centre within a gilt frame, and painted to each corner with roses, conforming decoration to the body, internally with roses, pseudo Sevres mark, 19thC, 2 3/4" wide.
259. Three continental cased sets of cutlery.
260. Five Stratton powder compacts.
261. An early 19thC Bilston enamel oval pill box, decorated with chequer panels of flowers and a blue ground.
262. A faux Sevres porcelain trinket box, painted with a seated gallante in landscape, within a gilt border.
263. A gentlemans gold signet ring set with a diamond 0.25 ct approx.
264. A gentlemans 9ct gold signet ring, monogrammed
265. A ladies 9ct gold collerette in scalloped brickette design
266. A sapphire and diamond set ring in 9ct gold, a central tear drop shaped sapphire surrounded by small diamond chips.
267. A lady's diamond set dress ring, an 18ct gold marquise shaped setting, set with 5 small diamonds, hallmarked Chester 1915.

268. A diamond set half hoop eternity ring, white metal stamped 18K, set with 7 diamonds, mounted estimated weight 0.21ct, size I.
269. A lady's stone set dress ring, a central oval flat topped ruby with faceted base in rub over setting in yellow metal to white metal shoulders, set with 6 small diamonds on a yellow metal shank, stamped 18ct & PLAT.
270. A lady's 5-stone graduated diamond ring set in white and yellow metal, shank stamped 18ct, total estimated mounted weight 0.54ct.
271. A lady's diamond set ring, 5 small diamonds set in white metal to yellow metal cross-over shoulders and shank, stamped 18ct & PLAT.
272. A lady's 3-stone diamond ring, the stones in millegrain settings to a yellow metal shank stamped 18ct, total estimated mounted weight 0.16ct.
273. A large diamond cluster ring of 5 layers of graduated stones set in 18ct white gold, total mounted estimated weight 1.8ct, hallmark London 1978.
274. A large diamond cluster ring of 4 layers of similar sized stones, the top central stone mounted estimated weight 0.10ct, total mounted estimated weight 0.50ct, set in 9ct white gold to a yellow gold shank, London 1981.
275. A hinged bangle in yellow metal, 2 sea serpents holding a diamond between their jaws with 3 small diamonds set into the body, mounted estimated weight of central diamond 1ct, stamped 20 CS.
276. A 9ct gold dress ring, a cabachon amethyst with diamond encrusted long point star set a top in a rope rub over setting to trefoil shoulders to shank, hallmark London 1979.
277. An unusual lady's dress ring, an intricate lozenge shape divided into 9 sections, 3 set with an oval opal, 6 set with a garnet, the whole in yellow metal, 3cm x 2cm approx.
278. A pendant, a cabachon opal 2.5cm x 1.7cm surrounded by 20 emeralds, total mounted estimated weight 2cts, set in an open claw mount with fine 9ct box link chain, 20".
279. A double twist fancy link heavy necklace, yellow metal, maker EGA, stamped 750. 19" long.
280. A lady's fob watch with partial floral decorated enamelled back, case stamped 14K, on a yellow metal curb chain, stamped 9C, 24".
281. An oval yellow metal faced locket with scalloped edge, engine turned decoration and vacant cartouche to front, 4.5 x 4cms.
282. A 1960's/70's style very wide wedding band with rough cast surface, 15mm wide, 18ct gold, Maker Kutchinski, 14.8gms.
283. A lady's 9ct gold dress ring, a cabachon opal 17mm x 12mm, pale green and orange flashes, surrounded by 16 rubies, total mounted estimated weight 1.3ct, claw set to a shaped undersetting and shank hallmark London 1978.
284. A heart shaped brooch, central transfer portrait and black surround in a 9ct gold mount.
285. A brooch, a scrolled heavy yellow metal oval mount containing a Vienna porcelain plaque showing a bare breasted woman examining a locket. 7.5cms x 7cms.
286. Cased diamond scales and weights and a Moh's gauge.
287. Ten Silver Fiddle pattern teaspoons, various hallmarks and dates. 50ozs gross.
288. A silver baby's rattle.
289. Four gilt metal teaspoons with twist handles and figural finials.
290. A shell cameo brooch in an oval yellow metal mount with double rope twist edge of a kneeling woman feeding a large eagle like bird, (some damage). 5cms x 4.5cms.
291. An early pair of silver trefid spoons with foliate scrolling handles, maker IH (1 AF).
292. Various fountain pens; Parker Duo Bold with black face and yellow metal mounts, another in blue case, Parker 585 in black gilt metal case, 2 other Parker pens, c.1960's, a white metal propelling pencil, a Summit Oxford pen in green marble case, 2 others.
293. A qty painted lead animals.

294. A 19thC French brass bust of a female, facing dexter, on shaped socle and marble plinth, 7 3/4" overall.
295. A 19thC French bronze bust of a Grecian soldier, on marble plinth, 9" overall.
296. A 19thC French bronze of a cymbals player in classical dress, 9 3/4" high.
297. A silver hair comb of scrolling pierced form, London 1921.
298. A silver brooch with baisse-taille enamel, painted with a circle of roses and leaves.
299. A silver wristchain with graduated links, 12" long; amber necklace and a French jet watchchain (3).
300. A mahogany shoe shaped snuff box with pin struck cross keys decoration and the date 1832.
- 300A. Two modern silver photo frames and plated card tray.
- 300B. An Order of Service sheet for the memorial service held for Linda McCartney at St Martin in the Fields, 8th June 1998.
- 300C. A cased pair of Westminster Abbey Jubilee bowls to commemorate the 1977 Jubilee.
- 300D. An oval silver framed mirror, rococo styling, Birmingham 1998.
- 300E. A rose gold Victorian bangle. (AF)
- 300F. A dwarf plain silver candlestick with loded base, Chester 1921.
- 300G. Two gentleman's wristwatches.
- 300H. Harlequin 3 piece silver cruet, Birmingham assay.
- 300J. A silver tea strainer and saucer, Birmingham 1945.
- 300K. A 1958 Canadian silver dollar.
- 300L. A set of 6 silver teaspoons, London 1805, and a pair of plated sugar bows.

PICTURES

- 300M. R A Gardner. 'A country cottage at Cawthorpe, Nr Bourne', oil on canvas, signed bottom left, 19 3/4" x 30". Illustrated
- 300O. A small en grisaille watercolour scene of fishermen.
- 300P. A pair of Hogarth framed etchings after Nicholson.
- 300Q. W Payne (19th/20th Century). Tree lined path leading to a country cottage, lakeside, watercolour, signed, 14 x 10.50 inches.
- 300R. Gilpin. Landscape pencil sketch and another.
- 300S. After William Linton. 'A City of Ancient Greece' and 'The Ruins of Carthage, steel engravings, 19thC, image size 9" x 13 1/4".
- 300T. 19th Century English School. Still life of arum lilies, oil on canvas, signed KMS/98. 19" x 13".
- 300U. Balinese School. Two court scenes, watercolour, signed M D. Djate. Baturn. Bali. 12" x 8".
- 300V. 19th Century English School. An interior scene with a young lady standing by a kitchen table, oil on canvas, indistinctly signed. 10" x 9".
- 300W. A pencil sketch of seated Roman, signed KV 1954, and 3 further homo-erotic watercolour sketches.
- 300X. R A K Marshall. River landscape with a female figure on a tow path and cattle in the background, watercolour, signed R A K Marshall. 16" x 26", gilt framed. Bears label verso with artist's address and title 'The River ** W. Retford, Notts'.
- 300Y. English School. River landscape with swans, oil on canvas, indistinctly signed. 20" x 15".
- 300Z. 19th Century School. Landscape with figure and cattle, oil on canvas. 20" x 30", indistinctly signed and marked verso 'Kentmere, West Morland'.
301. Mark Huskinson (20th century). "To the last drop or a day in the life of: A Hireling" wash/pen/ink on cream paper, signed bottom right 11 3/4" x 9".

- 301A. After E Ladell. 'Still Life Fruit and Flowers', chromolithograph, pub by Pears, late 29th century, 23" x 15 1/4".
- 301B. 19thC School. Abbey ruins with sheep, watercolour/body colour 14 1/2" x 9 3/4".
- 301C. Rowland Langmaid (1897-1956). Three masted ships in full sail, etching, signed in pencil in margin, 11 3/4" x 7 3/4".
302. Mark Huskinson & Christopher Curtis (20th Century). "The Country Seat", illus.Huskinson & Rose by Curtis, wash/pen/ink/body colour on buff paper, signed and dated 1984, 15" x 11 1/4".
303. Mark Huskinson (20th century). "Belvoir Kennels 1982" study of hounds, pastel and charcoal on buff paper, signed bottom left and inscribed and dated bottom right, 17 1/2" x 25".
304. Mark Huskinson (20th Century). "Duke of Rutlands Hounds, Carpenter", pastel/charcoal on buff paper inscribed bottom centre, 18 1/4" x 20 1/2".
305. Kate Greenaway (1846 - 1901) A Georgian bay window from the room, watercolour/pencil on buff paper, 11 1/4" x 8", another by the same hand of a house exterior (part), 12 3/4" x 9 1/2" (2). Provenance: From the collection of Miss P Greenaway-Dadd, the artist's great niece purchased from Henry Spencer & Son, Retford on 13/9/78.
306. Richard Beer (20th Century). "Brasenose College, Oxford" coloured etching, signed artist's proof, 23" x 17".
307. Henry Wilkinson (20th Century). Grouse shooting, hand coloured etching, 40/150, signed in pencil, plate size 7 1/2" x 10 1/4".
308. Henry Wilkinson (20th Century). Setters in a landscape, coloured etching, 12/150,, signed in pencil, plate size 8 3/4" x 12 3/4" (some damage to image).
309. Henry Wilkinson (20th Century). Fly fishing - coloured etching, 39/150, signed in pencil, plate size 10" x 13 1/2".
310. After T S Seccombe by Kronheim. 'Admiral, Bandsman, Dragoon, Recruit, Naval Officers' Five chromolithographs from Army & Navy Drolleries, pub circa 1873 by Warne & Co. 8 3/4" x 7 1/2".
311. T. H. Fisher. 19th/20th century. Moored sailing barge with sailing boats in the background, cottage by the river bank, watercolour, heightened white, signed bottom right, 8 3/4" x 11".
312. T. H. Fisher - 19th/20th century. "Polperro" watercolour, charcoal, heightened white, signed and titled bottom left 9 1/4" x 12".
313. 19th/20th century School. Cottage garden with trees, watercolour, heightened white, 10 1/4" x 4 1/4".
314. After Hall. "Denmark, Sweden & Norway" - hand coloured single sheet map, 19th century 9 1/2" x 7".
315. After Samuel Dunn, pub. Laurie & Whittle. A map of Abyssinia and Nubia, double sheet map, lightly hand coloured, circa 1794, 11 1/4" x 15 1/2".
316. After Antonio Zetta. "Turchia D'Europa Divisa Nelle Sur Provincie E Governi" Map of Eastern Europe including Bosnia, Albania, Macedonia, Bulgaria, lightly hand coloured, single sheet map, circa 1782 16" x 12 1/2".
317. 19th/20th School. Ratting terriers, oil on canvas, unsigned 8" x 10".
318. After G. Vernon Stokes. "Otter Hound" and "Rough Haired Terrier", a pair reproduction colour prints, title and facsimile signature on mount, image size 9" x 7 3/4".
319. Early 20th Century School - "Mont St. Michael" - watercolour, unsigned 7 1/2" x 10 3/4".
320. T. Walter-Wilson (1851-1912) Figure, horse and cart by a ruined cottage, watercolour, signed and dated August 27th 1866 verso 5 1/2" x 9 1/2".
321. 20th century English School. River landscape, rural landscape, a pair, watercolours unsigned 3 1/4" x 6 1/2".
322. J. B. Cuming (attrib) (fl.1794-1814) Coastal scene with figures, lighthouse and cottage, pen, ink, watercolour, 10" x 14 1/4" (oval).
323. George Baxter after Turner. Lake Lucerne, Switzerland. (Baxter No. 173), image showing, 10" x 14 3/4" (See Courtney Lewis Page 474 & plate 64).

324. 19th Century School. Village scenes with figures, a pair, and another, coastal view by the same hand, watercolours, 3 1/4" x 5 1/4". (3)
325. 19th Century. Kirkstall Abbey, hand coloured lithograph, probably Day & Son lithog. image size 11 1/2" x 18 1/2".
326. J. Bretherton (pub). "Trip to Scarborough AD 1783", hand coloured etching, first pub. 1783, 19thC re-strike, 8 1/2" x 16".
327. E. G. Voudrey (?). 20thC study of a young girl, reading in a throne-like chair, watercolour, signed and dated 1905 bottom left, 14 1/4" x 10 3/4".
328. 19th Century. Views of Scarborough, hand coloured lithographs (2), probably trimmed to image, 7 1/2" x 12".
329. 19th Century School. French street scene with figures around a covered wagon, watercolour, heightened white, 12 1/2" x 8 1/4".
330. William Brassey Mole (1846-1917). Pilgrims entering an Eastern European church, with townsfolk adjacent, and its companion, church interior with pilgrim and clergy, black and white etchings, a pair, signed in pencil, 11" x 7".
331. Carrarelli. 'Monument in Avellino', etching, signed in pencil and dated '81, 5/6, 6" x 4 1/2".
332. Mary Dudding (20th Century). 'Resting under a Tree', etching, signed in pencil, no 3/15. 6 3/4" x 5 3/4".
333. Bernard Eyre Walker (1866-?). 'Boston Town', showing Boston Stump from the River Witham, c.1926, etching, signed and title in pencil. 8 3/4" x 11 3/4".
334. After Rembrandt. The Money Lender, engraving, pub by Boydell, c.1767, proof before letters. 19 3/4" x 17".
335. Oliver Hall (1869-1957). 'Tree Landscape, North Wales', oil on canvas, signed bottom left, 15 1/4" x 21 1/2".
336. R A Gardner. Landscape, watercolour, signed and dated 1923 bottom left, 9 1/2" x 13 3/4".
337. An early 20thC Japanese hand coloured print depicting a leaping tiger, signed in script. 18" x 13 1/4".
338. 19th Century School. 'Watergate Bay', coastal scene with wreck, watercolour/bodycolour, another by the same hand, titles verso. 6 1/4" x 19 3/4". (2)
339. W Sydney Cooper. Cattle on a country path with figures, sailing ships on sea beyond, watercolour, signed bottom left. 11" x 14 1/2".
340. H Mayor. Still life of anemones in a vase, watercolour, signed bottom right. 13 1/4" x 9 1/2".
341. Francis Bott (German) (1904-1998). Composition 1965. Mixed media. 12 1/4" x 9".
342. Roy Turlington (20th Century). 'Swans', mixed media, signed and dated '83, on deckle edge paper laid on card, 19 1/2" x 14".
343. Mary McNicholl Wroe (19th/20th century). Head and shoulders portrait of an elderly woman, facing right, in high necked black dress and gold brooch, watercolour, signed with initials and dated 1892 top right, 19 3/4" x 15 3/4".
344. Keith Vaughan (English) (1912-1977). Wooded landscape, pen, ink, watercolour over pencil, signed and dated '71 bottom left. 15 1/2" x 19 1/2".
345. S J Lamarna Birch (1869-1955). River landscape with stone bridge and cottages to the left, wooded hills beyond, watercolour, signed bottom left. 12" x 16 1/4".
346. Dorothy M Lockwood RBSA (20th Century). 'The Balcony', watercolour, signed bottom right, 21" x 15", bears artist's label and Royal Academy label verso. *This work was exhibited at the R.A. 1965, cat no 946.
347. Philip Martin (20th Century). 'Grain Market, Peterborough', watercolour and ink, signed in pencil and dated 1987. 7 3/4" x 9 1/2".
348. Philip Martin (20th Century). 'Vine Street, Grantham', watercolour and ink, signed in pencil. 9 1/2" x 7 3/4".

349. H Caffiri (1847-1932). A head and shoulders portrait of an Arab, watercolour, signed bottom left. 9 3/4" x 7 3/4".
350. H J Sylvester Stannard (1870-1951). A country house and gardens with delphinium to the fore, watercolour, signed 'Sylvester Stannard' bottom left. 10 1/2" x 7 1/4".
351. Rowland Hilder (20th Century). Oast houses in a Kent landscape, ink and watercolour, signed bottom right. 8 1/2" x 12 3/4".
352. Rowland Hilder (20th Century) open farmland with trees, watercolour, signed bottom left. 10" x 14".
353. H J Sylvester Stannard (1870-1951). Shepherd with sheep before a thatched cottage in wooded landscape, watercolour, signed 'Sylvester Stannard' bottom left. 5" x 7 1/4".
354. H J Sylvester Stannard (1870-1951). Rural landscape with meandering stream, stone bridge and trees, watercolour, signed bottom left 'Sylvester Stannard'. 4 1/2" x 6 3/4".
355. Terresa Stannard (1898-1947). Thatched cottage and garden steps, watercolour, signed bottom left. 4 1/4" x 3 1/2".
356. H J Sylvester Stannard (1870-1951). Country house and garden, and cottage garden with trees, a pair, watercolours, both signed bottom left, 10" x 7", watercolour sketch, tree in high winds, inscribed and signed with monogramme, 5 1/4" x 8 1/22, and another of a bridge across a stream, unsigned, possibly by the same hand, (unframed). (4)
357. F Shelley (1865-?). A rocky garden with trees, watercolour, heightened white, signed and dated 1915 bottom right. 18 3/4" x 13 1/2"
358. Edward Wesson (1910-1983). 'Coastal Waters', watercolour, signed 'Wesson' bottom left, artist and title verso. 13 1/2" x 20".
359. Frank Dobson (1888-1963). Ornamental gardens, a pair, charcoal and watercolour, signed and dated '43 bottom right. 8 1/4" x 11".
360. Frank Dobson (1888-1963). Study of a mother and child, pencil on green paper, signed bottom right. 12" x 10 1/2".
361. Estella Louisa Canziani (1887-1964). Head and shoulders portrait of a lady - facing dexter, oil on canvas, signed and dated 1931 middle bottom, 24" x 20", indistinctly ascribed verso.
362. E Lara (19th Century). Fishing boats in a Choppy Sea and Boats off the Coast, a pair, oil on canvas, signed bottom left, 16 1/4" x 24".
363. 19th Century School. Figures and animals by water's edge, Scottish castle and woodlands beyond, oil on canvas. 18" x 23". Remains of label verso.
364. Louis Haghe (1806-1885). Trancept of the Cathedral of Tournay, in Belgium, with numerous clergy, lay figures and congregation, watercolour/body colour, signed and dated 1868 bottom left. 29" x 21 1/4". *This work is accompanied by 2 letters presenting the painting to a Mr Carrington of Westwood Park, Forest Hill from a Mrs Growther of Streatham, London, dated 1873,
- 365-7. Spare lot.
368. After M I Dicksee. 'The Child Handel', sepia photogravure. Image size 15 1/4" x 21 3/4".
369. After George Romney. 'Lady Townsend', mezzotint. 19 1/4" x 16".
370. 20th Century English School. Still life of tulips, carnations, iris, peonies and daffodils in a vase, oil on canvas, unsigned, 33" x 23 1/2".
371. Wilfred Henderson (by and after). A study of two young girls in diaphanous gowns, coloured mezzotint, early 20thC, signed in pencil in the margin. 20 1/4" x 16 1/4".
372. 20th Century Naive School. Bonnie Prince Charlie with Flora McDonald emerging from his hideout, oil on board, 21 1/2" x 26 1/2".
373. Illustrated London News 'Queen Victoria receiving the Shah of Persia at the Sovereigns Entrance, Windsor Castle, June 20th, hand coloured illustration. Image size 13 1/4" x 19 1/2".
374. After Henry Alken. Fishing, a pair, coloured aquatints. 4 3/4" x 7".

375. By and after Warwick Reynolds (1880-1926). Weasel and pike, etching, signed in pencil right hand bottom margin, 7" x 10", together with a facsimile etching by Queen Victoria held in the Royal Library, Windsor, 'The Princess Royal, August 1842', 7" x 4 3/4".
376. An 18thC copper printing plate used for printing the invitations to the Coronation of King George III, 1760. 3 1/4" x 5 1/2", in wooden frame.
377. 19th Century. A religious study of Madonna and Child, printed in colours against a gilt ground. 7 1/2" x 4", in contemporary ecclesiastical easel frame.
378. After Charles J Payne (Snaffles). The Ikonas 'I don't know who's damn column I'm in nor where we're trekkin nor why', reproduction colour print with facsimile dedication from the artist. Trimmed to image and mounted on card. " x 13".
379. E Lewis (19th/20th Century). Extensive lakeland scene with steam ships and sailing boats, figures on the bank to the left, mountains beyond, watercolour, signed bottom right. 7" x 14".
380. Thomas Mortimer (19th/20th Century). Town Harbour scenes with moored fishing boats, cathedrals in the distance, pair, watercolour, heightened white, signed bottom left. 14" x 9 1/2".
381. 19th/20th Century School. Rouen, Normandy, showing the Market Place and Cathedral, watercolour, heightened white, unsigned. 11" x 14 1/2".
382. 19th Century. Highland cattle, watering, misty mountains beyond, chromolithograph, late 19thC. 12" x 20" (probably trimmed to image).
383. L Walter Gozzard (1888-1950). Rural scene with farm girl at the river's edge and ferryman in his boat, thatched cottage and woodland beyond, oil on canvas, signed bottom left. 20" x 30" (repair to canvas). Cover illustration.
384. 18th/19thC School. Study of children, one of a girl holding a dove, the other, boy with grapes, monochrome ink on panel, 6 3/4" x 5 1/4", within contemporary oval gilt frames.
385. 19th Century School. Church interior with figures, watercolour, indistinctly signed, 8" x 6".
386. Cornelius J W Winter (1820-1890)(attrib) Extensive rural landscape, with figure with horse and cart on a country lane, horses and cattle before a thatchers cottage with pond, watercolour, 24 3/4" x 35"
387. John Vernon-Cryer (20th Century). Willow trees bordering the edges of a meandering river, watercolour/bodycolour, signed, 4 3/4" x 14".
388. E Mackintosh, 19th Century. Woodland landscape, oil on canvas, signed and dated 1898 bottom left, 9 1/4" x 13".
389. 19th Century School. Italianate lakeland view with villa and crustacea foreground, watercolour, 7" x 12 1/2".
390. F. Cook (20thC) Study of a fox and rabbit in a winter landscape, watercolour, signed and dated 1924 bottom right 9 3/4" x 6 1/2"
391. 19th Century. Head and shoulder portraits of young women, heavily decorated with flowers, hand coloured lithographs and collage, 22" x 17".
392. A quantity of Antique and other reference books
393. Kelly's Directory - Derbyshire, Nottinghamshire, Leicestershire and Rutland 1912 and 1922, 2 vols. red cl.gt.
394. Wright (C. M.) Directory of Leicestershire and Rutland 1880, rebound cloth boards 3/4 calf, and another 1892, with folding map, orig. clothboards.
395. White (Francis) - Nottinghamshire History, Gazetteer and Directory 1864, rebound full calf gt.
396. Philips - County Atlas, 47 coloured maps (Lincoln and Nottinghamshire missing) 3/4 red comt. moroc.gilt.
397. Princess of Wales: An Order of Service for the Marriage of Charles Prince of Wales with the Lady Diana Spencer in St. Pauls Cathedral on Wednesday 29th July 1981 at 11.00 a.m. This booklet was produced for guests at the wedding.
398. Walsingham & Payne.Gallway (Ralph) - Shooting, London 1886 and Phillips-Wolley - Big Game Shooting 1894, Badminton Library (2)

399. Walsingham & Payne. Gallway (Ralph) - Shooting, London 1886 and Phillips-Wolley - Shooting 1886, Badminton Library (2)
400. Kirby (Wm) & Spence (Wm) - A Introduction to Entomology, London 1828, 5th edition, 4 vols. illustrated plates, some foxing, comtemp. 1/2 of raised spine bands gt.
401. 19th Century School. Landscape with foresters, oil on tin, 8 1/4" x 10 3/4"
402. W. Hampton (20th Century) Peasant girl with cockeral, in farmhouse kitchen, oil on canvas, 24 x 20 ins.
403. 20th Century "Clare College river-front, Kings Chapel and the Gibbs Building from the steps by Clare Bridge" etching, 19 x 27 ins.
404. Assorted pictures and a studio photograph
405. T. Albin 19thc Continental lakeland scene with moored fishing boats, figures and horses, waterside buildings and mountains, oil on canvas, 27 1/2" x 34 1/2"

COLLECTABLES (cont.)

406. An extensive service of Wedgwood dinner and teaware.
407. A continental porcelain vase, late 19thC, of baluster form, painted with a galante and his lady within a gilt scroll cartouche, with an opposing landscape vignette, 5 3/4" high, together with a cream ground earthenware goblet, the circular bowl on swelling knopped stem and domed foot, with applied green glaze fruiting vine, 3 1/2" high.
408. A Satsuma pot by Kinkozan, of compressed circular form, painted with 2 panels of courtly ladies and their entourage and an opposing panel of flowering plants, against an underglaze blue ground, gilt with fern, signed to underside, 4" dia, (damaged). Illustrated.
409. A Japanese brown patinated bronze figure of an elephant, signed to the underside, 14" high, 17" long. (AF - tail damaged).
410. Various copies of National Coal Board architectural plans.
411. Early 20thC limoge bone china tea and dinner service, printed with apple blossom in green, gilt highlights, approx 56 pieces.
412. A Continental earthenware baluster jug, painted with colourful flowers with a clean black band, scroll handle, 6 1/2" high.
413. A Black Forest cuckoo clock, 18 1/2" high with pine cone weights.
414. A 19thC part tea service, printed in blue with bamboo, berries and birds within gilt line rim, approx 23 pieces, together with 4 items of EPNS cutlery.
415. An Indian dancing puppet, modelled as a temple dancer.
416. A late 19th/early 20thC 4-draw brass and leather covered telescope by C W Dixey, Optician to the Queen, New Bond Street, London, 30" extended.
417. An early 20thC EPNS and leather covered hip flask together with a raffia covered example.
418. A Staffordshire earthenware part dinner service printed in blue with the 'Regal' pattern, approx 30 pieces.
419. A Midwinter pottery part dinner service, printed with leaves, seeds and rushes, in shades of green and brown, factory mark 'Midwinter Stylecraft, Staffordshire, England, Fashion Shape No 17.
420. A Japanese eggshell porcelain part tea service, painted with an image of Mount Fuji, together with a Coalport pottery decanter.
421. A taxidermy model of a kestrel perched on a tree stump, 24" high.
422. A box of assorted Victorian, Edwardian and later linens including tablecloths, napkins, traycloths, pillow cases.
423. A miner's lamp stamped 'The Protector Lamp & Lighting Company Ltd No 131', 8 3/4" high, with hanging hook.

424. A Victorian brass saucepan with cast iron handle, 8 1/4" dia.
425. An oak box, rectangular, having a rising lid with fitted interior, shaped lockplate, drawer below, 12 1/2" wide.
426. A Black Forest mantel top cuckoo clock of 8 day striking movement, on plinth base with shaped apron, 16" high.
427. An early 20thC German tinsplate and brass magic lantern, stamped Evening Star EP, together with a series of coloured nursery rhyme and fairy tale slides, in original box bearing paper label.
428. A child's hand-sewn christening gown, with lace panels, together with various handkerchiefs, etc.
429. A Staffordshire pottery tea service, of 6 sided fluted outline, polychrome printed and gilt with flowers comprising teapot and stand, large milkjug, sugar bowl and cream jug.
430. An early 19thC mahogany tea caddy, the rising lid inlaid to the centre with shell, interior fittings missing, 11 1/4" high.
431. A Lalique glass model of a feeding bird, on horseshoe shaped base, stamped Cristal, Lalique, Paris, modern.
432. A pair of Daum crystal candlesticks, modern
433. A Royal Copenhagen figure of a young bird, a Sitzendorf figure of a bird and a porcelain figure of an owl perched on a branch (3)
434. A late Victorian oak rectangular box, 12" wide.
435. Nine pieces of modern Poole pottery, various patterns.
436. A early 20thC brown bakelite wireless with long wave and medium wave dial, 8 1/2" high, 9 1/2" wide.
437. A Georgian oak candle box with slide lid, 14" high.
438. A stamp album.
439. An Edwardian photograph album with chromolithograph plate and an embossed leather cover with metal clip fastener.
440. A Wade Cookie Jar and an early 20thC mahogany box, the hinged cover carved with ivy leaves within a rectangular shaped panel, 10" x 6 3/4".
441. A "Sisters Collection" porcelain doll "Cecilia" 27" tall on stand
442. A modern porcelain collectors doll 18" tall
443. A white plush clockwork tabby cat, 20".
444. A 1950's Pedigree yellow plush soft stuffed dog 12" long
445. A 1950's teddy bear, well used, jointed head and limbs. 15" tall
446. A 1950's/60's teddy bear, yellow fur soft filled, jointed head and limbs. 14" tall
447. A 1950's "straw" stuffed teddy bear gold fur, jointed head and limbs. 18" tall.
448. A 1950's soft filled Pedigree teddy bear yellow fur, jointed head and limbs 17" tall
449. A 1930's/40's puppet, fabric covered moulded painted head, of a woman in black lace and pink dress, stuffed fabric limbs, probably home made. 28" tall.
450. An early 20 century doll with moulded head, part porcelain limbs, in yellow and black dress, painted face reminiscent of Marlene Deitrich 31" tall.
451. A Peak balsa model of a glider - boxed and The Frog, Monoplane Dive Bomber, made by International Model Aircraft Ltd - boxed
452. A tinsplate clockwork locomotive No.2711 maker unknown. 7 1/2" long. probably pre WW1
453. A collection of small mid 20thC soft toys including Merrythought, Steiff, Gund Dream Pets, etc.
454. A Sunny Jim soft toy, a Knitted Felix the Cat and a copper posher
455. A collection of composite and plastic dolls Mid 20th century various sizes and condition
456. A quantity of 1950-60's tinsplate toys in a used condition

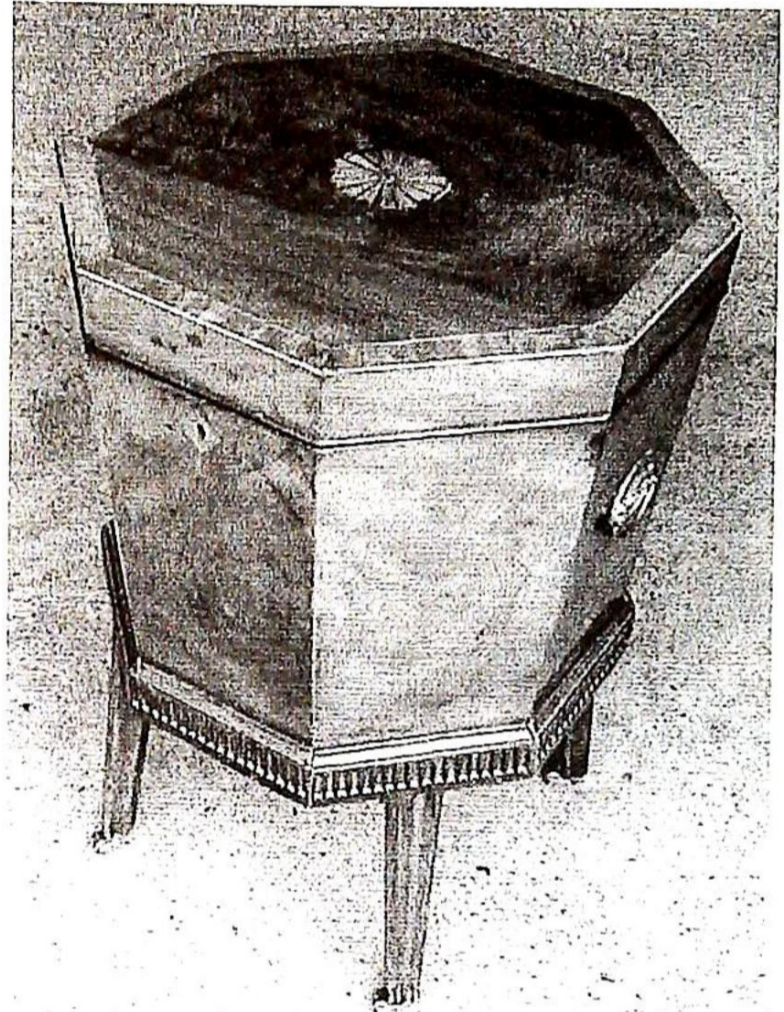
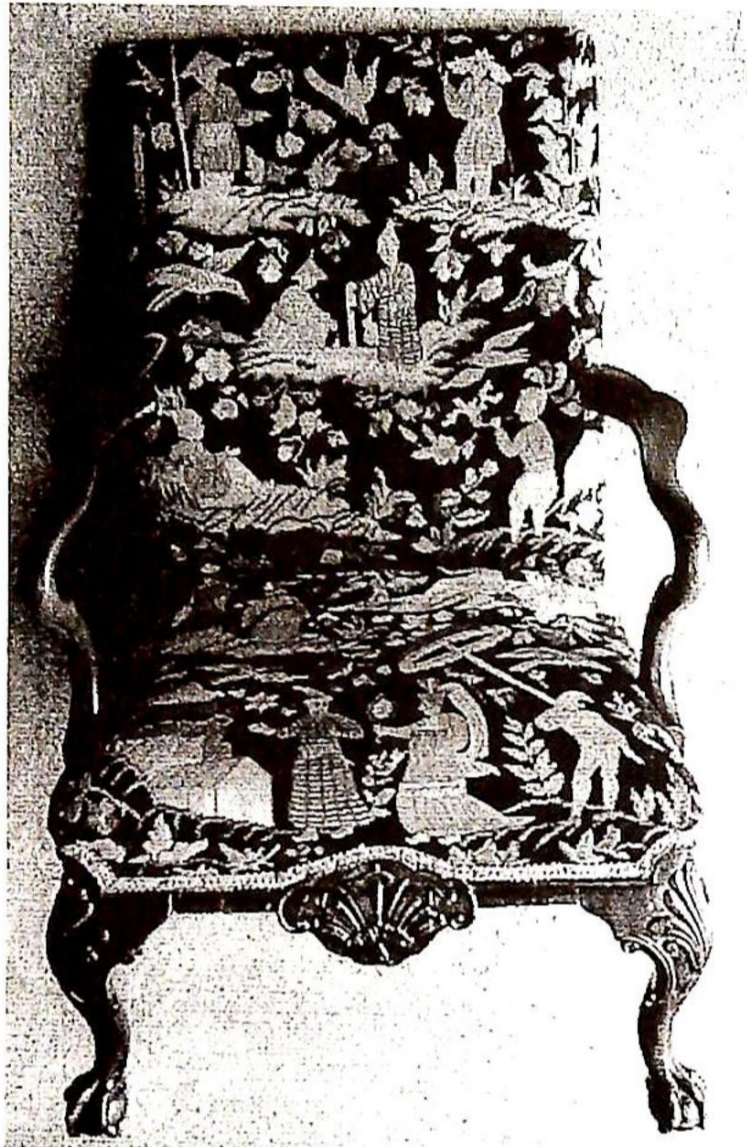
457. A large quantity of railway items including 1940's station, Hornby coaches, Tri-ang post war electric loco's, coaches and waggons and track etc.
458. A composite body baby doll, sleeping eyes, pot head C1950, neck marked Germany 16" tall.
459. A large mohair teddy bear "straw" stuffed jointed head and limbs, replaced pads C 1940/50, 23" tall.
460. A yellow fur teddy bear, well played with condition, soft stuffed, jointed head and limbs. 17" tall.
461. A composite baby doll C 1950, sleeping eyes (damage to head) 20"
462. 1960's apricot fur teddy bear, red pads soft stuffed 13" tall.
463. Dinky Supertoys 964 Elevator Loader, boxed 660 Tank Transporter boxed, 972 20 Ton Coles Crane, boxed and a 697 25lb Field Gun Set, boxed
464. Mickey Mouse "Pied Piper" and other magic lantern slides
465. A tinsplate, clockwork armoured personnel carrier, camouflage paint, early 20thC by Tri-ang
466. An American Google eyed doll, felt limbs, 14"
467. A selection of maribou and ostrich coloured feathers, hats, etc.
468. A Burmantofts faience jardiniere stand.
469. Two vellum suitcases by Landsdown of London.
470. A boxed Belling bed warmer.
471. A Victorian brown Toleware coal scuttle with brass mounts.
472. A selection of linen and lace.
473. A Victorian cast iron fender, fire front, oak fender, tools, etc.
474. A Fortnum & Mason hamper.
475. A mounted display, collection of traditional zulu items.
476. A Victorian terracotta garden figure of a headless monk holding a book, 182 high.
477. Two pairs of antlers.
478. An extending brass fender.
479. An Art Nouveau hammered copper fender.
480. Spare lot.
481. A wirework outline of a mermaid.
482. A Victorian brass and copper warming pan, with turned handle.
483. A Victorian copper warming pan with turned ebonised handle and plain cover.
484. A twisted amber glass post horn, 35".
485. Wooden staging trays and an early wooden cigarette dispenser.
486. After Robert Morden. 'Lincolnshire', double sheet map, hand coloured, c.1695/1713. 15" x 17 1/4".
487. A selection of glassware inc measuring flask and Orrefors decanter.
488. A Victorian copper coal scuttle.
489. A Victorian copper kettle with acorn finial.
490. A Victorian copper kettle with acorn finial.
491. A Victorian copper kettle with turned finial.
492. An animal neck bell, mace, flail and whip.
493. A quantity of Grafton oriental teaware.
494. A Victorian brass preserve pan, onyx pieces, figure, etc.
495. Two boxes.
496. A Japanese hanging scroll
497. Three smoke catchers.
498. A H J Wood relief moulded pottery charger, depicting a garden tavern scene, decorated in polychrome enamel. 16".

499. A 1930's cased Garratt muscle massager.
500. A taxidermy owl.
501. A taxidermy woodpecker.
502. Four sepia etchings of Lincolnshire and a book of prints entitled 'The Hundred Best Pictures'.
503. Two woodworking planes by Norris of London.
504. Two Victorian truncheons from the Kesteven Constabulary.
505. A Victorian walnut sliding bookrack with fretwork uprights.
506. A Royal Doulton 'Seriesware' charger, entitled 'The Meet'. D6326, after Charles Simpson, 13" dia.
507. A Wellington china tea service.
508. An electroplate oval meat cover, with beaded decoration, 15".
509. A Royal Doulton character jug, 'The Poacher', D6429.
510. Two colour prints, modern Masons manderin tea caddy, another, and painted plaque.
511. Modern Masters of Etching - Frank Brangwyn, and 4 others.
512. A 19thC American slate mantel clock, with 8-day movement, by Ansonia.
513. A violin bearing label 'Copy of Richard Duke Beckitt Dresdae, ANO 1888, cased with 2 bows.
514. A selection of walking canes and umbrellas including silver and ivory topped example.
515. A Blick time recorder with mahogany case.
516. A cut crystal 6-branch electrolier and 3 twin branch wall sconces.
517. A 3 1/2" gauge steam locomotive 'Patricia', 1406 4-4-4, with tender, in green GNR livery.
518. A stone fountain carved with an eagle, mounted with tallons on a bird and fish, 19" high.
519. Charlotte Gabrielle Dubray (1855-1931). A carved marble bust of a bearded gentleman, signed and dated 1879, 17".
520. An early 19thC flamed mahogany and rosewood banded bowfront longcase clock, with swan-neck candytwist pillared hood, short trunk door, deep base with bracket feet, the 13" painted dial having a hunting scene to the arch, fruit spandrels, Roman numerals, seconds ring, date crescent, marked Philip Thomas, Doncaster, 8-day movement. 88" high.
521. An oak longcase clock with pillared hood, full length trunk door and bracket feet, painted 11" dial with silent/strike to arch, shells to spandrels, seconds ring, dates ring, Roman numerals and marked 'Gregory, Basingstoke'. 82" high.
522. A HMV oak cased table top gramophone.
523. A late 19thC rosewood and string inlaid musical box playing 12 tunes, 25" wide.
524. An Edison mahogany cased Amberola, bearing plate and serial no 75 SM--16218, together with c.40 records.
525. An Edwardian string inlaid mahogany 'Acadamy' cabinet gramophone, of oval form, raised on square legs.
526. A mahogany cased Cliftohone cabinet gramophone, serial no 02604.
527. A HMV walnut cased Superhet Ten auto-radiogramme, model no 532, serial no 1419.
528. A Victorian walnut cased 'English Automatic Seraphone'.
529. An American saddle.
530. A Geraldo standard piano accordion, cased.
531. Damask tablecloths, lace, etc.
532. A selection of pewter, plates, porringer, etc, together with brass chambersticks, candlesticks, etc. (Container not included.)
533. A collection of brass candlesticks, brass oil lamps, shades, etc. (Container not included.)
534. An oak flamed hanging lantern.
535. Two money boxes and Italian marquetry folding table mirror.

536. A swagger stick.
537. A gilt brass anniversary timepiece, with convex enamel dial, 6 reeded column frame, encased in a glass dome, 17" high.
538. A selection of WWI trench art, shell cases, in the form of coal scuttles, match holders, etc.
539. A Victorian flamed mahogany miniature chest of 4 drawers, with knob handles and bracket feet. 15" high.
540. A late 19thC French holosteric barometer, having an 8" silvered dial with brass bezel, over a 10" spelter figure of a seated female holding a globe and compass.
541. A Victorian EPBM samovar in the form of a 2-handled urn, embossed with floral rococo motifs, maker B&GS, 15" high.
542. A selection of WWI trench art including a table dinner gong, chrome plated coal scuttle, knives, etc.
543. A French gilt brass mantel clock cast with foliate scrolls, trophies and swags, the 4" convex enamel dial having Roman hour numerals and Arabic minute, 8-day movement striking a bell, 20" high.
544. A Tilley lamp.
545. Spare lot.
546. A 19thC American inlaid rosewood 8-day drop-dial wall clock by Gerome.
547. A 19thC American rosewood cased shelf clock by Ansonia.
548. Cassell's Popular Natural History, 4 vols.
549. The Field, Country Gentleman's Newspaper, bound volumes from 1871.
550. The Household Physician, with colour plates, 2 vols.
551. An American mahogany cased full calendar shelf clock by The Ithaca Calendar Clock Co, Ithaca, NY, painted 1865/66, paper dial, 21" high.
552. A moulded oak framed play bill of 1827 for William Tell, the Lancers and Midas at Drury Lane.
553. Two bowler hats and a tail coat.
554. A 19thC Royal Navy officer's dress sword, with gilt lion mask handle, shagreen grip, pommel and scabbard. 38"
- 555-7. A replica Persian musket.
558. Orwell, George. Animal Farm A Fairy Story, 1st ed., D/w, pub. Secker and Warburg.
559. Cockers Arithmetick (AF).
560. Lord, P.B. Algiers and Barbary, 1835, 2 vols; London, Rom. Portrait of Tangier, 1952, Veyre, Gabriel. Au Maroc 1918.
561. Park, Mugo. Travels in the interior districts of Africa G. and W. Nicol, Pall Mall. 4th edition, 1800.
562. Goldsmith (Oliver). The Vicar of Wakefield. 911. Poirson, London 1889, original cloth boards with pict and gilt decor.
563. Robert Freke Gould. The History of Freemasonry, 1887, 3 vols, red morroco gilt.
564. Marcet (Alexander). An Essay on the Chemical History and Medical Trea Edition, hand coloured and plain engraved plates, top board detached.
565. A Lion Menucator, model no 2, printing box.
566. A 'Camden' steel picnic set.
567. A croquet set.
568. An antique book binding with concealed compartments.
569. A mahogany cutlery canteen.
570. A 19thC Indonesian hardwood sheathed sword.
571. An Arthur Wood Art Deco jug.
572. A Minton figure of a crowned seated lion, c.1820.
- END OF MORNING SESSION.

FURNITURE

Commencing at 2.30pm



Lots 771 & 657

- 601. A late Victorian satin walnut wardrobe with Art Nouveau carved panels, mirror door and drawer base.
- 602. An Edwardian mahogany bedstead with crossbanded decoration, 52" wide.
- 603. A brass and leather simulated bamboo 2-tier table.
- 604. An imposing Aesthetic Movement sideboard with galleried and dentil moulded cornice, over an ivy leaf and insect carved panel, an arrangement of inset cushion mirror, rectangular mirrors and shelves to the upper part, the base having a tiled serving slide and 3 frieze drawers over 4 carved panel doors with brass handles and hinges, on turned feet, 79" wide, 24" deep 93" high.
- 605. A Victorian carved walnut wardrobe with oval mirror door, drawer base and dressing chest.
- 606. A George III mahogany bureau bookcase with moulded cornice over 2 glazed doors to the upper part, over a fall-flap resting on lopers revealing a fitted interior of drawers and pigeon holes, over 4 graduated drawers with brass circular ring handles and bracket feet, 41" wide, 89" high.
- 607. A Victorian overmantel mirror, with blue painted and moulded frame.
- 608. A pine framed single bed.
- 609. A Georgian oak bureau cabinet with 2 fielded panel doors to the upper part and kneehole bureau base.

610. An Edwardian oak sideboard with moulded cornice and astragal glazed doors and open compartment to the upper part with metal strapwork and turned supports, the base having an open shelf with turnings and panelled doors, raised on stiles, 68" wide, 75" high.
611. An early 19thC continental flamed mahogany Secretaire a Abbattant with fall front resting over 3 stepped drawers.
612. A walnut veneered Queen Anne style sideboard.
613. A small mahogany side table with drawer.
614. A Georgian flamed mahogany bowfront chest of 3 drawers with oval pressed backplate handles and bracket feet. 36" wide.
615. A Georgian style oak dresser base.
616. A Victorian mahogany toilet mirror with turned uprights and drawer
617. A Jacobean style oak dresser with 3 waterfall shelves over 2 carved doors, raised on legs with plain stretcher.
618. A 19thC and later cross-banded and veneered chest of 3 drawers, on bracket feet.
619. A 19thC Boulle etagere of 3 levels of shaped shelves adorned with ormolu mounts, 14" wide, 12" deep, 31" high.
620. A William IV mahogany Pembroke table with turned legs.
621. A late 19thC American walnut pot cupboard with carved and fielded panel door.
622. A Georgian style oak and mahogany cross-banded hanging corner cupboard.
623. A 19thC mahogany octagonal centre table with moulded frieze, square taper legs and pierced X-stretcher, 44" dia.
624. A Victorian carved mahogany chaise longue with green upholstery.
625. A child's spindleback rocking chair.
626. A George III mahogany bureau with fall flap resting on lopers revealing a fitted interior, over 2 short and 3 long graduated drawers with solid backplate brass handles, on bracket feet, 45" wide.
627. A Victorian walnut armchair with carved cabriole legs and green button dralon upholstery.
628. A Victorian mahogany spoonback armchair with carved scrolling arms and legs with brass castors, serpentine overstuffed seat and button back upholstered in textured dralon.
629. An oak gateleg dining table.
630. A 17thC and later oak gateleg table with oval folding oak top and bobbin turned oak and beech framing, 32" x 45".
631. An Edwardian mahogany X-frame seat.
632. A 1920's mahogany standard lamp with reeded column and 3 outsplay legs.
633. A continental style oak 3 drawer chest on cabriole legs.
634. An oak bedstead.
635. A Victorian mahogany occasional table with serpentine shaped top, frieze drawer, turned legs and shaped undershelf.
636. A Victorian mahogany framed 4-fold full-length dressing screen richly decorated in a variety of colourful and varied subject scraps.
637. A Victorian mahogany bedstead converted from a half-tester.
638. A Victorian elm seated lathback rocking chair.
639. An Edwardian mahogany occasional table with line inlaid circular moulded top, on shaped square legs co-joined by a circular under shelf. 24" dia.
640. A Victorian nursing chair with turned walnut forelegs and pink button dralon upholstery.
641. A Victorian mahogany serpentine chiffonier with barleytwist columns.
642. A late Victorian mahogany wind-out dining table with moulded top and heavy cabriole legs with 2 extension leaves. 41" wide x 6' max.

643. An Edwardian light oak 4-drawer chest with bracket feet.
644. A pine slope top school desk.
645. A George III mahogany bow front chest of 5 drawers with knob handles and turned feet.
646. A period oak and later veneered 2-door wall cupboard with panelled doors.
647. A Regency style mahogany music stool with needlework seat.
648. A Georgian mahogany side table with 2 short and 1 long frieze drawer with brass swan-neck handles and square taper legs. 31" wide.
649. A mid 19thC Boulle pier cabinet with ormolu mounts and single door with shaped glazed panel and cupid's bow plinth, 32" wide, 42" high. Provenance: Reputedly the Harlaxton Manor sale, 1930's.
650. A Victorian walnut marquetry credenza of serpentine form with mirror door.
651. A Victorian mahogany serpentine chiffonier.
652. A Victorian mahogany box with moulded top and 3 section interior.
653. An early 20thC oak engineer's tool chest.
654. A late 19thC carved walnut 3-drawer chest, on turned legs.
655. A 17thC oak 4-panel coffer, raised on styles. 5' wide.
656. A Sheraton spinette (AF).
657. A George III flamed mahogany wine cooler of tapering octagonal form, with inlaid and cross-banded top, oval brass handles, scoop carved moulding and moulded square taper legs, on brass castors. 20" dia, 27" high.
658. A Victorian rosewood spoonback nursing chair, upholstered in green and red rose pattern beadwork upholstery.
659. A pair of Victorian ebonised stools with similar upholstery to the previous lot.
660. A barleytwist oak gateleg dining table.
661. A Victorian mahogany twin pedestal kneehole desk, with brass swan-neck handles and leather inset top.
662. A Carolean style walnut highback hall chair with bergere seat and back, turned and square framing and Spanish foot.
663. A 17thC style carved oak chest with lift top and carved front panel.
664. A William 4 mahogany occasional table with turned uprights and stretcher.
665. A 19thC oak dresser base with 3 frieze drawers, baluster turned uprights and plain stretchers.
666. A Georgian mahogany rectangular folding tea table with square taper legs.
667. A William IV mahogany chiffonier with scroll and shell carved back, having turned and graduated shelves to the upper part, breakfront top with cushion drawer over 2 arched panel doors with beaded fillets, enclosed by 2 reeded columns on reeded ball feet, 33" wide, 17" deep, 66" high.
668. A Victorian cast iron fire insert in the Aesthetic style, mounted with 7 Minton mediaevalism tiles by Moyr Smith, mostly damaged except Excalibur, Geraint and Guinivere.
669. A Victorian walnut nursing chair with floral upholstery, circular seat and reeded forelegs.
670. A Victorian stripped pine dresser.
671. A Victorian mahogany buffet (AF)
672. A continental fruitwood kitchen table, on square legs.
673. A George III oak supper table with circular top, turned pillar and 3 outsplay legs.
674. A pair of mahogany saddle seated stools
675. A rustic hardwood coffee table with drawers.
676. A Victorian pine scrub top kitchen table with 4 drawers with knob handles and turned legs.
677. An Anglo-Indian hardwood slatted armchair.
678. A Victorian walnut rise and fall piano stool with 3 carved legs.

679. A George III cross-banded oak and mahogany hanging corner cupboard.
680. A 19thC elm stool.
681. A late 17thC oak cupboard with 3 fielded panel top, over similar base with 3 drawers, raised on stiles, 54" wide.
682. A George III mahogany bureau bookcase with 2 door cabinet top, over a fall flap revealing a fitted interior, over 4 graduated drawers, with bracket feet. 41" wide, 87" high.
683. A set of 4 bentwood chairs.
684. An oak folding demi-lune table.
685. An Edwardian walnut occasional table with circular moulded top, spindle uprights, circular undershelf with brass gallery, on outspread legs. 24" dia.
686. A Victorian pine coal bin.
687. An oak side table with drawer and slide.
688. A bank of 6 oak veneered file drawers.
689. A Victorian mahogany extending dining table with turned legs.
690. A George III mahogany chest of 4 graduated drawers with moulded and crossbanded top, brushing slide, pierced backplate swan-neck handles and bracket feet. 36" wide.
691. A Queen Anne style walnut Lowboy of traditional form. 40" wide.
692. A George III flamed mahogany side table with cross-banded and reeded rectangular top, plain frieze drawer with swan-neck handles, and square taper legs.
693. An Edwardian string inlaid and cross-banded mahogany corner cabinet on shaped feet.
694. A George III mahogany chest of four graduated drawers with moulded top, canted case with vinefret decoration, the cast brass rococo handles of foliate form, raised on a band of blind fretwork and ogee feet 34" wide.
695. An Edwardian string inlaid mahogany marble top washstand.
696. A George III flamed mahogany rectangular folding card table, on square legs.
697. A pair of William IV style mahogany rectangular card tables, with octagonal pillars and quatrefoil base.
698. An antique and later mule chest converted to a side cabinet.
699. A late Victorian oak wall cupboard with carved door over single mirror, reeded uprights.
700. A woolwork folding firescreen/table.
701. A Victorian grain painted pine 3-drawer chest with knob handles.
702. A reproduction Regency mahogany dining suite, comprising breakfront side cabinet, twin pillar dining table and 8 dining chairs (including 2 carvers) (please note - upholstery does not comply with the Fire Regulations and will be removed by staff before leaving the premises).
703. A 1940's 4-seater sofa with later dralon upholstery.
704. A 1940's oak framed 3 seater sofa.
705. An Amberg's Imperial letter file, comprising a bank of 9 drawers over a 2 drawer base.
706. A late Victorian child's metamorphic high chair.
707. A wing-back 2-seater sofa with cabriole legs and button dralon upholstery.
708. A George III mahogany supper table with circular tilt-top on bird cage with turned pillars, turned pedestal and 3 moulded cabriole legs with pad feet, 29" dia.
709. A George III mahogany side table with ebony strung cross-banded rectangular top over 2 short and 1 long graduated drawer with lozenge inlay and stringing, turned knob handles, square taper legs with swell feet. 33" wide.
710. A George III flamed mahogany bowfront chest with string inlaid and crossbanded top and similar decoration to the 4 graduated cockbeaded drawers with circular brass ring handles, shaped apron and splay feet. 42" wide.

711. A Victorian rosewood pole screen with rectangular cartouche panel, having an oriental scene in needlework on a scrolling trefoil base.
712. A mahogany framed 3-fold glazed screen.
713. A Victorian oak hall stand of architectural form with mirror back, concealed drawer and galleried decoration.
714. A George III oak chest on chest with moulded cornice, 3 short over 3 long graduated drawers to the upper part, the lower having a brushing slide over 3 graduated drawers with brass solid backplate handles and bracket feet. 43" wide, 78" high.
715. A Thonet style bentwood hall stand.
716. A similar lot.
717. A Victorian mahogany circular breakfast table with moulded tilt top, taper pedestal and trefoil base.
718. A Victorian flamed veneered and mahogany Credenza of traditional form having 4 door base raised on plinths, 66" wide.
719. A low mahogany and bergere covered barleytwist footstool.
720. A 19thC carved oak cabinet with 2-door upper part and single door base. 20" wide.
721. A George III mahogany drop-leaf table with circular folding top, raised on turned legs with pad feet. 42" dia.
722. A Regency brass inlaid rosewood foldover card table of rounded rectangular form, raised on a square taper pillar, with knulled moulding to the quatrefoil platform, raised on sabre legs with brass paw castors. 36" wide.
723. A George III oak chest of 2 short and 3 long graduated drawers with mahogany cross-banding, brass swan-neck handles and bracket feet. 34" wide.
724. A fine Victorian burr walnut music cabinet, having brass galleried and crossbanded top, string inlays to sides, canted corners and single glazed door revealing titled leather fronted shelves with shaped plinth, 22" wide, 39" high.
725. A George III mahogany fold over tea table with rounded rectangular top, turned and part reeded column, quatrefoil base with moulded sabre legs terminating in acanthus scroll feet with castors. 36" wide.
726. A mahogany billiards cue stand.
727. A Victorian oak library table with brown leather inset moulded top having 2 concealed frieze drawers, raised on 2 baluster pedestals of lobed and carved pendant husk design, resting on platforms with reeded feet, 55" x 30".
728. An early 18thC pine side table, the moulded edge top with canted front corners, over a long frieze drawer with brass bail handles on shaped backplate, on columnar legs joined by moulded stretchers, 33" wide.
729. A George IV mahogany bowfront sideboard with planed top, having central cockbeaded drawer with oval pressed backplate handles, flanked by a double depth drawer and double depth door, raised on 6 ring and taper turned legs, 81" wide.
730. A Sheraton period mahogany bureau with satinwood, box and harewood stringing, crossbanding and shell inlays to a fall flap revealing a fitted interior, resting on 2 lopers, over 4 graduated cockbeaded drawers with cast gilt-brass swan-neck handles and splay feet, 40" wide.
731. An Edwardian duet music stool
732. A George III foldover tea table with rectangular moulded top and chamfered square legs.
733. A George III upholstered wingback library armchair with moulded square legs, H-frame stretcher and later loose covers.
734. A Victorian flamed mahogany triple wardrobe.
735. A George III mahogany chest on chest with moulded cornice, 2 short and 3 long graduated drawers to the upper part over 3 graduated drawers to the base with oval pressed backplate handles and bracket feet. 44" wide, 74" high.

736. A Georgian style mahogany display cabinet with dentil moulded cornice, 2 astragal glazed doors, on a stand with 2 frieze drawers and club legs with pad feet. 40" wide.
737. A Victorian flamed mahogany triple wardrobe.
738. A Victorian mahogany double wardrobe with large single mirrored door.
739. A late Victorian mahogany 3-fold dressing screen with part glazed and part damask upholstered panels. 6' high.
740. A reproduction Regency style mahogany tapering bucket.
741. An Edwardian oak stick stand.
742. A George III mahogany washstand with folding top for bowl, single drawer and undershelf.
743. A set of 4 George III mahogany dining chairs with turned cresting rail, X-frame reeded back, overstuffed seats and square taper legs.
744. A set of six Victorian walnut dining chairs, with carved and shaped balloon backs, overstuffed pink dralon seats and cabriole legs.
745. A 19thC elm ladderback carver chair.
746. A 19thC elm commode chair with Chippendale design pierced vase splat.
747. A 19thC mahogany side chair with pierced vase splat.
748. An early 19thC ash and elm spindle back Windsor chair. (AF)
749. A George III mahogany country carver chair.
750. A George III oak and elm ladderback country carver chair.
751. A set of 6 late Victorian salon chairs with openwork rococo backs and square cabriole legs.
752. A set of 6 George III mahogany dining chairs including 2 carvers, having camel backs and pierced and moulded vase splats, overstuffed serpentine seats and square moulded legs with side and rear stretchers.
753. A set of 3 George III country chairs with pierced splats, and another.
754. A set of 4 William IV rosewood balloonback dining chairs with carved and shaped backs, overstuffed seats, part reeded and tapering forelegs.
755. A set of 4 Victorian balloonback dining chairs, principally satinwood having shaped backs, cabriole legs and serpentine fronted seats overstuffed in deep rose pink damask.
756. A 19thC oak and elm carver chair, with pierced vase splat.
757. An early 19thC ash and elm comb back Windsor chair.
758. A pair of early Victorian mahogany carver chairs with turned forelegs.
759. A pair of 18thC mahogany chairs with splat backs.
760. An Edwardian mahogany 2-seater boudoir sofa, upholstered in rose pattern fabric.
761. A 19thC elm ladderback chair, with bowed and pegged cresting rail.
762. A ladderback carver chair.
763. A set of 4 Victorian oak barback dining chairs with turned forelegs and drop-in seats.
764. A 19thC French walnut dining chair of neo-classical design.
765. An Edwardian string and marquetry inlaid boudoir chair.
766. A pair of Victorian mahogany dining chairs with upholstered cameo backs and overstuffed seats in a gold and rose patterned material with turned forelegs and double crinoline stretcher.
767. An Edwardian rosewood string and marquetry inlaid bedroom chair.
768. A Victorian mahogany child's balloonback dining chair.
769. An American Shaker barback rush seated chair.
770. A similar ladderback rocking chair.
771. A fine early 19thC mahogany open armchair in George I style, having oriental court scenes to the woolwork upholstery, shaped loop arms, stepped cabriole back legs, the forelegs having shell carved knees, ball and claw feet.

772. A 19thC French side table with single drawer
773. A George III style mahogany pier glass with fretwork frame, surmounted with a gilt ho-ho bird.
774. A George III pine chest of 2 short and 2 long graduated drawers, having later brass swing handles with cutaway backplates, on ogee bracket feet, 32" wide.
775. A Regency giltwood pier glass with breakfront cornice and inset turned pillasters and mahogany reeded moulding to the rectangular plate, 29" high.
776. A circular mahogany folding coaching table.
777. A George I style walnut table mirror with shaped plate and 2 drawer herringbone banded base. 25".

END of SALE.

THE COLLECTIVE SALES

*Your Regional Market Place
for Victorian, decorative and second-hand furnishings,
household and personal effects.*

Every two to three weeks we hold sales of over 750 mixed lots of items received from Property Clearances and vendors of single items.

Over 120 vendors sell with us every sale and over 500 are registered to buy.

NEXT SALES: 9th & 30th July
VIEWING: Tuesdays 2pm to 6pm & Saleday from 9am

Next sale includes first day covers, stamps, proof set coins, modern medallions, etc, garden statuary, terracotta and glazed oriental garden planters, modern Persian rugs, etc.

THE CATALOGUE SALES

*Your Regional Market Place
for fine antiques, works of art, jewellery, silver,
ceramics, glass, books, clocks, furniture
and all fields of collectors' items.*

Held quarterly, these sales include select items that need specific and direct marketing through our select mailing list & databases.

Up to 200 vendors selling items to a
Worldwide Audience via The Internet.

Past Sale Results now online.

NEXT CATALOGUE SALE: 18th & 19th September 2003

**An important 2 day sale with excellent entries in all sections,
call now to enter your items.**