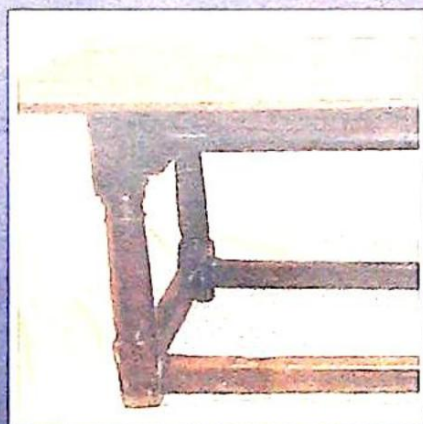
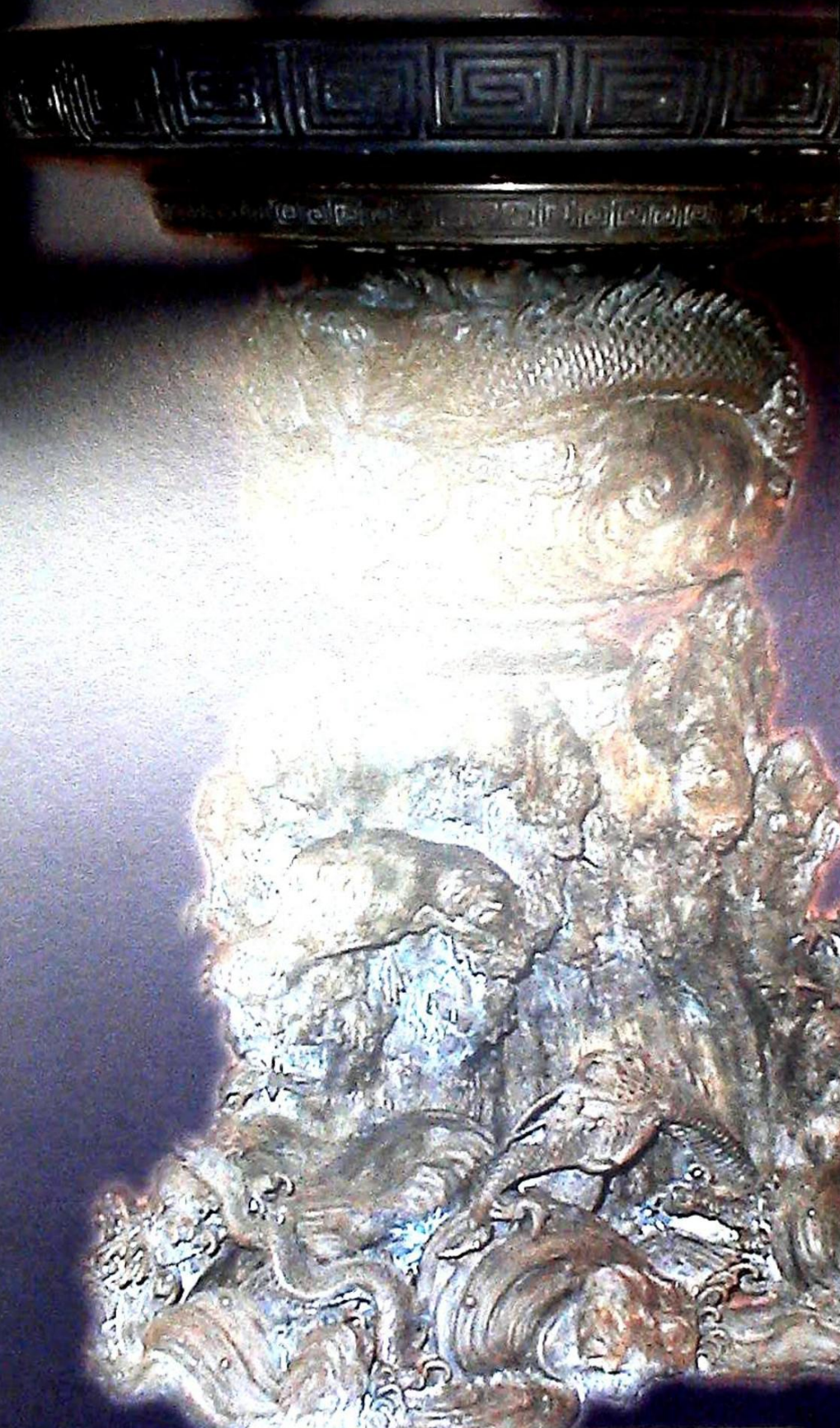
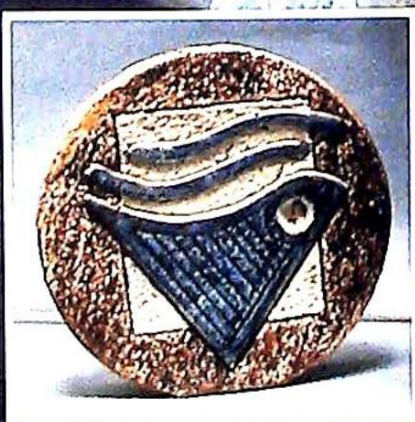
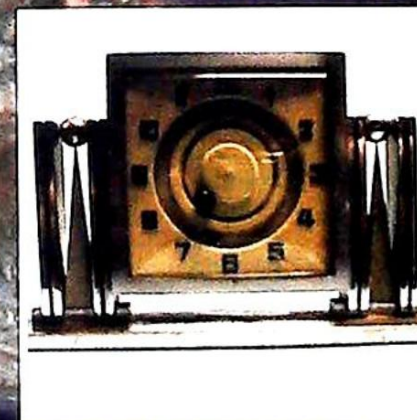
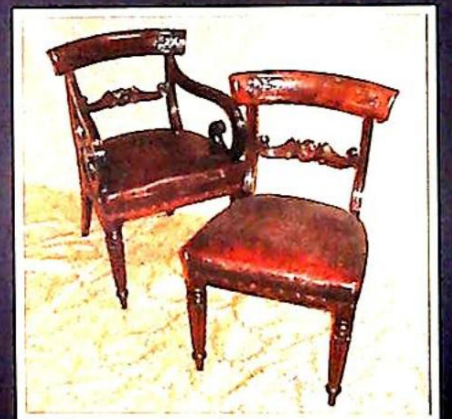
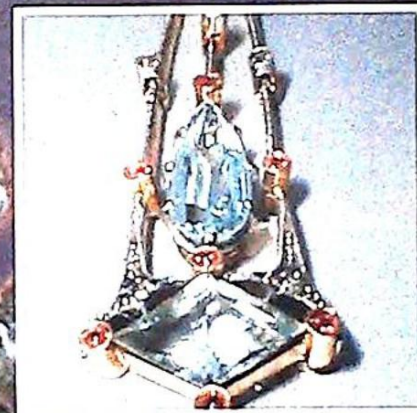
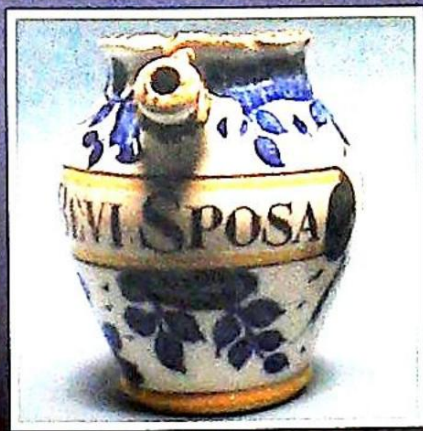


GOLDING YOUNG ♦ 1900

CHARTERED AUCTIONEERS & VALUERS
Commercial Asset Agents ♦ Arts & Antiques Surveyors

CATALOGUE SALE
NOVEMBER 2003





Upon instructions from over 150 private and professional vendors
from throughout the region.

GOLDING YOUNG & CO
will sell by
AUCTION

***ANTIQUES, WORKS OF ART
AND COLLECTORS' ITEMS***

WEDNESDAY, 26th NOVEMBER 2003
at 10am

VIEWING:

Monday, 24th November 2pm to 5pm
Tuesday, 25th November 11am to 7pm
Saleday 9am to 10am

Lot enquiries:

Suki J Burnett ANAVA
Jan L Squires PJ Gem Dip, ANAVA
Colin R Young MRICS FNAVA

Accounts enquiries:

Marie Scoffield

Golding Young & Co

Old Wharf Road, Grantham, Lincolnshire, NG31 7AA
Telephone: 01476 565118
Fax: 01476 561475 • Email: enquiries@goldingyoung.com

Buyers Hotline: 01476 575202

For lot enquiries and commission bids viewday and saleday only.

WWW.GOLDINGYOUNG.COM

CONDITIONS OF SALE

1. *These Conditions together with any Notices to Purchasers are the only terms and conditions subject to which Golding Young & Co ("the Auctioneers"), as agents for the Vendor will sell goods to a purchaser ("the Bidder") and all other conditions, whether express, or implied at common law or by statute as are capable of lawful exclusion are hereby excluded.*
2. *The highest bidder shall be the buyer. The Auctioneers reserve the right of regulating the biddings; of rejecting any bid; and of bidding for, withdrawing, consolidating, dividing or altering the order of lots.*
3. *The purchase money for each lot with the usual commission of 15% on the first £100 and 12.5% thereafter (min £1 per lot) plus VAT at the current rate shall be paid at the fall of the hammer (if required). Each lot at the fall of the hammer shall be at the sole risk and expense of the buyer, and shall be paid for and removed immediately after the conclusion of the sale, but no lot shall become the property of the buyer, or be removable until paid for, and if taken away in contravention of these conditions without an order for removal signed by the Auctioneers, they shall have power to seize the same by their servants or agents, or otherwise, or the Auctioneers may recover either the lot sold or the price thereof (at their option) by action at law.*
4. *No contra account of any description whatever will be allowed to the buyer as a set off, and payment for each Lot shall be made to the Auctioneers or their clerk only, and a buyer paying by cheque must give satisfactory references.*
5. *For all purposes of this sale the Clerk of the Auctioneers shall be deemed to be the agent of both seller and buyer.*
6. *A bidder shall not be allowed to retract his bidding after the fall of the hammer, and he shall give up his full name and address if required. The Auctioneers will not recognise the transfer of any lot from one buyer to another, nor make any alteration in the sale book in respect thereof.*
7. *The Auctioneers are acting only as agents, and give no personal warranty as to the condition, quality or authenticity of any chattels offered for Auction. Any catalogue description is given merely as guide to purchasers, any description can be changed from the rostrum before the lot is sold. If a purchaser buys without previous inspection he will do so at his own risk.*
8. *Notwithstanding any other terms in these Conditions, if within 7 days of the Sale a purchaser gives notice in writing that a lot is a deliberate forgery, with supporting factual evidence, the Auctioneers may rescind the transaction. The burden of factual proof lies with purchaser, mere opinions will not satisfy. This benefit is not assignable.*
9. *If any buyer neglect or refuse to comply with the above conditions or any of them, his deposit money (if any) shall be forfeited, and the lot uncleared may, at the option of the Auctioneers, be resold without notice by public auction or private treaty, and any loss occasioned by such re-sale together with all expenses attendant thereon, or arising under these conditions shall be paid for by the defaulter and be recoverable as and for liquidated damages. This condition is however without prejudice to the right of the Auctioneers to enforce the contract made at this sale if they think fit.*
10. *Any Notes for Purchasers and Catalogue Glossaries will be construed as Conditions of Sale.*
11. *The Auctioneers shall be the sole Arbitrators in all matters of dispute relating to those conditions both as between the seller and the buyer and between the several bidders and buyers and their determination on all matters shall be final and binding on all parties concerned.*

IMPORTANT NOTES FOR PURCHASERS

1. **PAYMENT:** Must be made in full immediately after the Auction. The following methods of payment are acceptable.

a) Cash b) Bankers Draft c) Building Society Cheque
d) Cheques, accompanied by a valid card. e) Debit/Credit* Cards *2%+vat charge.

PAYING BY CHEQUE?

If you are not known to the Auctioneers and wish to pay by cheque above your guarantee card limit WE WILL RETAIN THE GOODS until it has been cleared (7 days). There will be NO EXCEPTIONS to our policy. To avoid UNDUE EMBARRASSMENT for yourself or to our staff, please do not ask for preferential treatment. If you wish to clear goods immediately bring a letter from your Bank or a suitable guarantor reference.

2. **BUYERS PREMIUM** of 15% on the first £100 of each lot and 12 ½% thereafter is payable on all lots. Minimum £1 per lot. All plus VAT.

3. **REMOVAL OF PURCHASES:** Goods must be collected as soon as they are paid for, and in the 2 Working Days following the sale. If goods are not collected on these days we reserve the right to charge £1 per lot per day thereafter.

4. **COMMISSION BIDS:** If you are unable to attend this or any of our future sales we will be pleased to bid on your behalf. We always purchase at the lowest possible price, subject to other bids and reserves.

All bids must be handed to the office on an official form. It remains the responsibility of prospective purchasers to contact GOLDINGS to confirm whether their bids have been successful.

5. **TELEPHONE BIDS:** There are inherent dangers with this practice, therefore all such arrangements are made entirely at the bidder's risk. Telephone bids will only be accepted if the lower estimate is £500 or above. For lots with a lower estimate below this figure Commission Bids Only will be accepted.

POSTAGE & PACKING: All your requirements from quotes to a forwarding service is available from MBE Leeds

57 Great George Street

Leeds

LS1 3AJ

Tel: +44 (01132) 428715

Fax: +44 (01132) 429176

e-mail: info@mbeleedscity.co.uk

6. **REFRESHMENTS** will be available Saleday.

7. **ACCOUNT TRANSFER** will not be recognised after the sale. If any lots are purchased for another person, this must be declared at the fall of the hammer.

8. **ESTIMATES.** Our Auctioneers will be available during viewing to give guidance on your prospective purchases.

GLOSSARY

- a) Generally: 'As Found' (AF). This term indicates the lot has some damage. Its absence does not indicate that the lot is free of defect. All lots are SOLD AS SEEN.
- b) Paintings: 'Signed, initialled, monogrammed' - 'This refers to the present state of the work and is not an attribution.
- c) Books and printed matter: These items are not sold subject to collation and are not returnable once removed from the premises.
- d) Silver & Jewellery: Weights given are approximations given by basic instruments.

THE SALE INVENTORY

1. A Langley ware pottery jardinière painted with iris against a deep blue/green ground, the body with scroll and leaf forms against a pale green matted ground, 7" high.

2. A pair of 19thC pottery Staffordshire dogs, painted with iron red splashes, gilt collars and black chains, 10 1/4" high (minor paint loss to one)

3. A 19thC blue glass part dressing table set, each piece enamelled with scrolling foliage and trailing flowers, comprising tray, 2 bottles with stoppers (1 AF), a boat shaped dish and a ring stand.

4. A Barge ware teapot moulded in relief with flowers and bearing incised plaque 'Eliza Wilford 1884', 8" high.

5. A Barge ware kettle moulded in relief with flowers, a painted plaque inscribed 'Home is Best', 7 1/2" high.

6. A mid-19thC copper lustre footed bowl with inverted rim applied with moulded flower forms to the borders, against a blue ground, c.1830, 5 1/4" dia, another, similar, 4 1/2" dia.

7. A 'Mary Gregory' green glass jug, ovoid, with loop handles and rising neck, the body enamelled and gilt with lily of the valley and foliage, 19thC, 6 1/4" high.

8. A 'Mary Gregory', green glass ewer with clear glass reeded handle, raised rim, the body enamelled and gilt with lily of the valley and foliage, 7 3/4" high.

9. A 'Mary Gregory' green glass jug, ovoid, with angulated handle, rising neck, the body enamelled with lily of the valley, 6" high.

10. A 'Mary Gregory' jug, of panelled ovoid form, with rising neck and loop handle, the body enamelled and gilt with lily of the valley and leafage, 6 1/4" high.

11. A green glass flask and stopper, ovoid, the tall neck with fluted rim, enamelled and gilt with flower and foliage, 9 1/4" high, (chip to rim), together with a 'Mary Gregory' small cream jug, enamelled and gilt with lily of the valley and leafage, 3" high, a similar sugar bowl, 3 1/" dia, and a vase with frilled neck, 7 1/4" high. (4)

12. A late 19thC milk glass vase garniture, the centre ovoid vase with domed and spire cover, each printed and painted with children within cartouche against a mottled ground and between brown lines, centre vase 17" high.

13. A cranberry glass and EPNS sugar basket, the glass bowl enclosed within a pierced footed stand with swing handle, 4 1/2" dia, together with a 19thC glass vase, with ruby floral decoration, 8 1/4" high.

14. A 19thC bachelor's teapot with wooden finial and scroll handle.

15. A Till & Son green glaze moulded strawberry dish, 4 similar plates and a similar tazza, 9 1/2", 9" and 11" dia respectively, (some chips and losses to glaze).

16. An 18thC Delft plate, painted with a landscape within single line border, the rims painted with flower sprays, probably English, 9" dia.

17. A Royal Doulton cabinet plate, centrally painted with a rural landscape of watering cattle by F Parker, signed, within a mottled blue border with gilt lined rim, 10 1/2" dia.

18. A amethyst carnival glass dish with wavy rim and foliate moulded well, together with a similar 2-handled footed dish of waved square outline, moulded with pears and foliage, 8" dia and 8" wide respectively.

19. A pair of 19thC green glass vases, of slender waisted form, gilt and enamelled with exotic flowers and scrolling leafage, 14 1/2" high.

20. A late 19thC glass ewer and stopper, ovoid, enamelled and gilt with floral swags, 10 3/4" high.

21. A pair of 'Mary Gregory' blue glass vases, of waisted panelled form, enamelled and gilt with lily of the valley and with applied clear glass prunts, 11" high.

22. A 19thC pottery Staffordshire figure of a fisherwoman holding a basket of fish, on oval gilt lined plinth base, 13 1/4" high.

23. A 19thC pottery Staffordshire figure of a soldier resting against a drum with flags, cannon at his feet, decorated in under glazed blue, colours and gilt, 10" high.

24. A Copeland Spode pottery toby jug, seated holding a jug of ale, printed in under glaze blue and polychrome painted with sprigs and floral panels and on a shaped plinth, 7" high, (hairline crack).

25. A 19thC Samson figure of a putti standing with one foot on the back of a dolphin holding a fish on his right shoulder, draped in a floral toga, on a rectangular gilt lined base, 8" high.

26. A 19thC green glass decanter, of lobed spherical form, enamelled with flowers below a gilt line, teardrop stopper, 8" high.
27. A 19thC blue ground jug, of compressed ovoid form, moulded in relief with a hunting scene, scroll handle and acanthus moulded spout, 5 1/2" high, 8 3/4" wide over handle.
28. A late 19thC moulded glass celery jar, etched with leaf forms, 7 1/2" high.
29. A late 19thC green opaque glass vase with crenulated rim, the tapering body gilt with lily of the valley, on circular foot, hung with prismatic drops, 10 1/2" high.
30. A Clews earthenware meat dish, of rounded oblong form, printed in blue with a Indian hunting scene, c.1821, 15 1/4" wide, (old riveted repair).
31. A 'Paris' porcelain 2-handled vase, ovoid, painted with allegorical panels and opposing landscape, against a gilt ground with lion mask handles and on knopped socle and square base, 13 1/4" high (rubbing to gilt).
32. An EPNS 6-bottle cruet stand, with centre loop handle, diamond cut bottles.
33. A pair of 19thC blue glass ewers with teardrop stoppers, of compressed circular form, with elongated necks, loop handles and with enamel and gilt decoration, 7 1/2" high.
34. A Doulton Lambeth stoneware jug, ovoid, with loop handle and pewter cover, the body decorated with a continuous border of flowers and leafage within bead borders and against a buff reeded body, 7 1/4" high.
35. A Chinese 19thC export blue and white double gourd vase, painted with fishermen and other figures in a river landscape, 6" high, late 19thC, together with a Chinese blue and white rice wine pot, decorated in underglaze blue with simple plant forms.
36. A Royal Doulton figure 'Innocence' HN2842, 7 3/4" high.
37. A 19thC pottery mug, circular, printed in blue with a Indian landscape, the loop handle with foliate terminals, 5" high.
38. A Royal Doulton figure of a builder, standing with pipe in his mouth, wearing dungarees and holding a spade on rectangular plinth, printed factory marks and impressed no 1.27, 6 1/2" high. Note - this figure specially commissioned by firm of builders and is a limited edition.
39. A Royal Worcester shell vase on a coral plinth and rocaille base, glazed in the white, 7" high, model no 101, 20th Century.
40. An early 20thC pottery outsized teacup and saucer, printed and painted with the Topers & Tykes motto and crest, within brown printed borders, the cup 6" dia.
41. A 19thC saltglaze jug, circular, the white ground moulded with a hunting scene, neck and spout glazed brown, 4 1/2" high.
42. A pair of WMF Art Nouveau pewter spill vases, of circular swept form, with rising pierced handles, the bodies moulded in low relief with stylised plant forms, 5 1/4" high.
43. A pair of ironstone baluster vases, printed in black and painted in chinoiserie scenes, scroll handles, 8" high, together with an overpainted moulded jug with hound handle, 8 1/4" high.
44. A Royal Doulton flambé vase, ovoid, with everted rim, decorated in the round with a river landscape, signed Noke, impressed mark 7754, 8" high.
45. A Royal Doulton flambé vase of inverted baluster form, decorated in black with a cattle and drover within a landscape, impressed no indistinct, 7 1/2" high.
46. A Royal Winton polychrome painted novelty jug modelled as a playful dolphin jug together with 3 others.
47. A 'Mary Gregory' cranberry glass campana shaped vase, enamelled in white with a figure in a landscape within gilt line borders, 5" high.
48. A 'Mary Gregory' green glass water carafe, ovoid, together with a matching tumbler, both enamelled in white with figures in landscapes, 8 1/2" high.
49. A set of 3 Staffordshire pottery graduated jugs of vertical fluted form, gilt with foliage between green tinted borders, with scroll handles, the largest 7 1/2", and the smallest 5 1/2" high.
50. Four Masons ironstone dinner plates, printed and painted in the Chinese manner with flowering shrubs, within scroll-patterned borders, 10" dia, factory mark printed in puce, mid 19thC.
51. A quantity of Copeland's Spode Italian blue and white printed dinnerware, comprising 22 plates in 4 sizes.

52. A set of 4 19thC pottery soup plates, the wells printed in blue with a coastal shipping scene within rose borders, impressed 'Borstrand', 9 3/4" dia.
53. A Belleek porcelain honey-pot and cover, barrel shaped and moulded and painted with shamrocks, black printed mark Second Period, 4" high.
54. A Coalport porcelain figure - Ladies of Fashion - 'Teresa', 7 1/2" high.
55. A Derby coffee cup and saucer, painted and gilt in the Imari palette, pattern no 2614, printed crown in red, c.1830.
56. A pair of Derby coffee cups and saucers painted and gilt in the Imari palette with flowers and foliage, ring handles, c.1887.
57. A Royal Crown Derby loving cup painted and heavily gilt in the Imari palette, pattern no 1128, 3" high, modern.
58. A pair of Royal Crown Derby ewers, painted and heavily gilt in the Imari palette, no 1128, 10" high, modern.
59. A pair of Royal Crown Derby hexagonal trinket box and covers, painted in underglaze blue, iron red and gilt, with trefoils, pattern no A1297, 2 1/4" wide, modern, one with box.
60. A pair of Royal Crown Derby trinket dishes, painted and heavily gilt, in the Imari palette, pattern no 1128, 3 1/2" x 2 3/4", modern.
61. A Royal Crown Derby cigarette box and cover, oblong, painted in the Imari palette, pattern no 1128, 4" x 3 1/2", modern.
62. A Royal Crown Derby bell, painted and gilt in the Imari palette, pattern no 1128, 4 3/4" high, modern.
63. A Royal Crown Derby ginger jar and cover, painted and heavily gilt in the Imari palette, pattern no 1128, 7 1/4" high, modern.
64. A Royal Crown Derby ginger jar and cover, painted and heavily gilt in the Imari palette, 7 1/4" high, modern.
65. A pair of Royal Crown Derby table candlesticks, painted in the Imari palette and heavily gilt, the sconces with metal sleeves, on fixed knopped tapering columns, square concave bases moulded with dolphins to each corner, pattern no 1128, 10 1/4" high, modern.
66. Eight Royal Crown Derby dinner plates, painted in the Imari palette and gilt, pattern no 1128, 10 1/2" dia, together with 2 of 8 1/2" dia, modern.
67. A Royal Crown Derby oval meat platter, painted in the Imari palette and gilt, pattern no 1128, 13 1/2" dia, modern.
68. A Royal Crown Derby 2-handled fruit bowl, of dished oblong shape, with moulded edge, painted in the Imari palette and heavily gilt, pattern no 1128, 1/4" x 8 1/2", modern.
69. Four Royal Crown Derby dessert plates, with waved border, painted in the Imari palette and gilt, pattern no 1128, 8 1/2" dia, modern.
70. A Royal Crown Derby bottle opener, the handle painted in the Imari palette and gilt, pattern no 1128, 5 1/2", modern.
71. A Royal Crown Derby tea service, painted in underglaze blue, iron red, yellow and gilt, with rondels amidst trailing foliage and musical instruments, c.1942, pattern no 4694, for 12 place settings, plus cream jug, sugar bowl and 2 large plates, (some light rubbing to gilt).
72. A Royal Crown Derby tea service, printed in iron red with oriental flowers beneath underglaze blue and gilt borders, the cups of waived outline, with scroll handles, pattern no 2649, c.1943 and comprising 7 plates, 6 cups and saucers and oval platter.
73. A Border Fine Arts model of a dormouse seated on top of a banana skin, 5 1/4" high.
74. A Beswick figure of a Palomino, 'Spirit of Youth', model no 2703, 7" high.
75. Six Carltonware coffee cups and saucers, each of moulded outlines with gilt interiors, 4 decorated with random dot design, the others plain.
76. A hand worked laced collar.
77. A Derby vase and cover, ovoid, painted in underglaze blue, iron red and gilt with peonies, flowerheads and foliage, the pierced domed cover with conforming pattern, c.1888, 8 1/2" high, (cover repaired).
78. A late 19thC Satsuma double gourd pottery vase, painted and gilt with figures, diaper panels and drapery, 15 1/4" high.
79. A 19thC Indian brass ink stand, oblong, the base decorated with 2 raised ornamental borders and fitted with 2 glass inkwells and a stamp box, each with knopped finials and having quill stand to either side, on 4 bun feet, 11 1/2" x 7".

80. A 19thC brass trivet, with square pierced top, stamped Royal Engineers and on a turned pillar with domed foot, 9 1/4" high.
81. A cast brass trivet with a circular pierced top, on turned and block column with shaped square foot, 11 1/2" high.
82. An early 20thC EPNS table epergne, cast as entwined stems mounted with simple leaf forms and supporting a central glass trumpet and 6 radial trumpets, each with cut decoration, 14" high, 23 1/4" wide.
83. An early 20thC Imari urn, of fluted ovoid outline, painted with panels of flowering prunus issuing from an urn, alternating with highland landscapes, 16" high.
84. A 19thC Staffordshire pottery bocage group of seated lovers in an arbour, 10" high.
85. A WMF silver-plated 2-handled preserve dish, of boat form, cast with stylised flowers, on 4 feet, with sapphire glass liner, 6 1/4" over handles.
86. A Beswick model of a Shire Mare, model no 818, glazed in brown gloss, 8 1/2" high.
87. A Charlotte Rhead Bursleyware pottery wall pocket of flanged outline, applied with gold jewel dots against a cream ground, 11" wide, 8" high.
88. A chrome plated car mascot, 'Gloria', from a Triumph Roadster 1935, on square wooden plinth, 7" high overall.
89. An Aynsley porcelain 'Orchard Gold' circular pot and cover printed with mixed fruit against a cream ground, modern, 4 3/4" high.
90. A Merrythought 'Cheeky Muff' bear, with bell ears and a red hanging cord, 13 1/2" high.
91. An EPNS sugar bowl in the shape of an egg surmounted with a bird.
92. An early 20thC German oak cased bracket clock, the brass dial with Arabic numerals and cherub spandrels, the architecturally designed case on plinth base, of 8-day striking movement, 13 1/2" high.
93. A late 19th C gilt metal and alabaster mantel clock, flanked by a country woman and with bird and foliate cresting, the shaped rectangular plinth with mask mount, raised on scrolling and claw feet and with scroll brackets to each side, with lever movement, striking on a bell, 12" high.
94. A Scandinavian Art Glass vase of triple lobed form internally decorated in oranges and greens, 12" high.
95. A Derby coffee can and saucer, c.1800, painted with pink and white roses over a green ground and against black between gilt lines, puce painted factory mark.
96. A Sylvac pottery chamber pot of bellied form, printed with storks and Chinese flowering shrubs, gilt lined borders, early 20thC.
97. A German porcelain 2-section dish by Karl Thieme, c.1875-80, painted with floral sprays and with centre loop handle, painted factory mark in blue, 11" wide.
98. A 19thC English porcelain mug, printed and painted with Chinese figural landscapes and floral spray with a bead line border, scroll handle, 4" high.
99. A 19thC English porcelain tea cup and saucer, the wells painted with floral sprays amidst green and pale cream scrolling gilt reserves, moulded ring handle, pattern no 7762.
100. A 19th C Far Eastern turtle shell caddy, modelled as a full turtle shell, the hinged cover enclosing single compartment inlaid with various woods, some shell losses, 11 1/4" wide, 6" high.
101. A 19th C copper mould of elliptical form, 3 1/2" high.
102. A cast brass planter pierced with panels of foliage issuing from urns, on 4 raised feet, 6 1/4" high.
103. A 19th C porcelain chamber stick, painted with floral medallions against a terracotta ground, pink roses within gilt diamond frames and a leaf border, possibly Chamberlains, 5 1/4" wide.
104. A gilt plaster plaque of rectangular form, moulded in relief with classical Greek figures, lovers and putti, 4 1/4" x 17 3/4".
105. A 19th C papier mâché ring stand by Jennens & Bettridge, inlaid with mother of pearl and painted with gilt scrolls, 3 1/2" dia.
106. A 19th C papier mâché ring stand decorated with a mother of pearl border, 3 1/8" dia.
107. A 19th C redware ovoid milk jug, moulded in relief with goats in a mountain landscape and country figures, scroll handle, 3 1/4" high.
108. A Spode blue and white soup plate, the well printed with a Middle Eastern figural landscape and border printed with wild animals, impressed factory mark, c.1800, 10" dia, extensively repaired.

109. Two 19thC pewter plates, 9 1/2" dia, together with 3 smaller examples, 7 1/4" dia, all with touch marks.
110. A Delft flagon, painted with blue foliate scroll and flowers, with overhead fixed handle and plain spout and on a slightly domed circular foot, 6 1/4" high.
111. A Clarice Cliff Crocus pattern capstan candlestick, 3" high, (hairline crack).
112. A Clarice Cliff Bizarre Crocus pattern octagonal bowl, 9 1/4" wide.
113. A Samson Armorial sauceboat, painted in the Chinese famille rose manner, with flowers and heraldic shields, late 19thC, 8 1/2" wide.
114. A 19thC bird's eye maple tea caddy, of rectangular form, with rosewood banding, interior missing, 10" wide.
115. A Victorian oil lamp, having a circular moulded base with knopped stem, the pink glass reservoir enamelled with fruiting branches and with glass chimney, 23 1/2" high.
116. A turned fruitwood mortar, 13" high.
117. A set of 4 late 19th C tiles, moulded and painted in low relief with stylised plant forms, 6" x 6".
118. A pair of Royal Worcester porcelain Bacchanalian cherubs, blue glaze with gilt highlights, impressed factory marks, late 19thC, 3" high.
119. An amethyst glass sugar basket with clear glass handle, 5 1/4" wide.
120. An Art Deco chromium plated mantel clock with Arabic numerals and concentric ball time indicators, 6" wide, 4" high.
- 120A. A Georgian oak chest of two short and three long graduated crossbanded drawers with brass handles and bracket feet.
121. A George IV mahogany bowfront sideboard with plain top, having central cockbeaded drawer with oval pressed backplate handles, flanked by a double depth drawer and double depth door, raised on 6 ring and taper turned legs, 81" wide.
122. A 17thC oak refectory table with 4 plank top, having moulded frieze, turned legs and low-level stretcher, 34" wide, 87" long, 30" high.
123. A set of 10 barleytwist oak dining chairs with gate backs, drop-in seats and H-frame stretcher, 1920's.
124. A Victorian mahogany wind-out dining table, the moulded top having further leaf and raised on carved and reeded legs, 48" wide, 70" max.
125. A set of 6 Victorian shaped balloon back dining chairs.
126. A Georgian and later mahogany dining table, with drop ends and turned legs with brass castors, 42" wide x 76" min, 180" max.
127. A set of 6 George III mahogany dining chairs including 2 carvers, having camel backs and pierced and moulded vase splats, overstuffed serpentine seats and square moulded legs with side and rear stretchers.
128. A set of 6 Edwardian oak dining chairs with carved and galleried backs, overstuffed seats and turned forelegs.
- 128A. A Queen Anne style quarter veneered extending dining table on cabriole legs.
129. A 19thC carved oak Gothic Revival davenport with cluster column supports.
- 129A. An early Victorian rosewood cottage grand piano by John Broadwood & Sons, 50" wide, 80" long.
130. A George III mahogany fold over tea table with rounded rectangular top, turned and part reeded column, quatrefoil base with moulded sabre legs terminating in acanthus scroll feet with castors. 36" wide.
131. A late 19th/early 20thC oak alter table with moulded top, ring turned inverted baluster legs and moulded H-frame stretcher, 31" x 51", 35" high.
132. A Sheraton period mahogany serpentine press cupboard, with stringing and cross-banded inlays, raised on bracket feet, 48" wide, 25" deep, 47" high.
133. A Queen Anne style walnut lowboy of traditional form. 40" wide.
134. A Victorian carved mahogany chaise longue, with scrolling and galleried back and bulk, on turned legs with brass and ceramic castors, upholstered in cerise button dralon, 70" long. 135. A Victorian ebonised side cabinet with scratch carved decoration heightened in gilt and cross-banded in burr walnut, the 2 doors enclosed by twin column pillars and turned feet, 49" wide, 18" deep, 48" high.
136. A mahogany hat and coat stand.
137. A 1920's two-seater sofa with cabriole legs.

138. A mid-18thC French walnut bureau de dame, of slender proportions incorporating a fall-flap revealing 3 serpentine drawers, over a frieze drawer, square taper cabriole legs, having cast metal toes and rococo escutcheons, of the oak lined drawers, the interior right being stamped I.M. Chevallier, 27" wide, 12" deep, 32 1/2" high.
139. A Victorian walnut rise and fall piano stool with 3 carved legs.
140. A Victorian carved walnut rise and fall piano stool.
141. A Georgian oak supper table with floral carved circular tilt-top, baluster pillar and 3 acanthus carved outspiral legs, 33" dia.
142. A Victorian mahogany tea table with rectangular folding top, flamed frieze and turned legs.
143. An Edwardian oak single pedestal desk.
144. A 19thC mahogany bureau.
145. A George III flamed mahogany side table with cross-banded and reeded rectangular top, plain frieze drawer with swan-neck handles, and square taper legs.
146. A 19thC mahogany octagonal centre table with moulded frieze, square taper legs and pierced X-stretcher, 44" dia.
147. A Victorian display cabinet.
148. An Edwardian oak roll-top desk with D-shape tambour and pedestal drawers, by Wolfe & Hollendar, London, 53" wide.
149. A wingback 2-seater sofa with cabriole legs and button dralon upholstery.
150. A late 19thC French ormolu mounted kingwood bureau plat in the Louis XV style, the shaped top with leather writing surface above 3 frieze drawers, the back with simulated drawers, standing on 4 cabriole legs, each mounted by an espagnolette, on scrolling foliate sabots. 53" wide, 30" deep, 29" high.
- 150A. A walnut framed Bergere 3-piece suite and associated glass top table.
151. A Georgian oak mule chest, with 3 panel lift top, 3 fielded front panels over 2 drawers with pierced brass handles, on bracket feet, 48" wide, 21" deep, 33" high.
152. A George III mahogany side table with ebony strung cross-banded rectangular top over 2 short and 1 long graduated drawer with lozenge inlay and stringing, turned knob handles, square taper legs with swell feet. 33" wide.
153. An Edwardian marquetry inlaid mahogany display cabinet, with 2 astragal glazed doors and cabriole legs, 45" wide, 15" deep, 68" high.
154. An Edwardian string inlaid mahogany china cabinet with 2 astragal glazed doors, shaped apron and square taper legs with spayed feet, 36" wide, 14" deep, 65" high.
155. A George III flamed mahogany bowfront chest with string inlaid and crossbanded top and similar decoration to the 4 graduated cockbeaded drawers with circular brass ring handles, shaped apron and splay feet. 42" wide.
156. A George III mahogany chest of 4 graduated drawers with moulded and crossbanded top, brushing slide, pierced backplate swan-neck handles and bracket feet. 36" wide.
157. A George III oak chest of 2 short and 3 long graduated drawers with later knob handles and bracket feet, 37" wide.
158. A William IV mahogany chest of 2 short and 4 long graduated drawers with knob handles and turned feet, 46" wide.
159. An Edwardian carved oak cabinet bookcase with moulded cornice, 2 glazed doors to the upper part, 2 drawers and 2 carved doors in the Art Nouveau manner to the base, raised on turned feet, 55" wide, 22" deep, 90" high.
160. An Edwardian carved oak side cabinet, with carved mirrorback over a moulded platform with frieze drawer, square taper columns and 2 carved oak lower doors, with brass Arts & Crafts handles, turned feet, 36" wide, 18" deep, 62" high.
161. An Edwardian oak buffet, with carved mirrorback, moulded platform, 2 fielded frieze drawers, Corinthian reeded column pillars and plinth base, 54" wide, 24" deep, 58" high.
- 161A. A Victorian brass telescopic standard oil lamp with porcelain reservoir holder.
162. A 19thC carved oak side cabinet.
- 162A. A Georgian pine glazed 2-door wall cabinet.
163. A 19thC carved oak cabinet with 2-door upper part and single door base. 20" wide.
164. An Edwardian marquetry inlaid mahogany display cabinet, having 2 leaded glazed doors with shaped glass, shaped apron and cabriole legs, 42" wide, 15" deep, 65" high.
165. An late 19thC mahogany serving table, of rectangular form, with plain frieze, square taper legs and stepped feet, 20" x 50", 32" high.

166. A pair of William IV style mahogany rectangular card tables, with octagonal pillars and quatrefoil base.
167. An oak travelling treasure chest by Lefbridge of Plymouth, having wrought iron fittings and bearing makers label outlining the manufacturers for the Captain's cabin of The Mayflower, dated 1957.
168. A 19thC oak cased ship's piano by J B Kramer & Co, London, 42" wide, 15" deep (folded), 28" high.
169. A George III mahogany supper table, with plain circular top, turned pillar and 3 outspread legs.
170. An oak and brass bound coopered jardinière stand.
171. A George III yew wood Windsor chair, with pierced splat and crinoline stretcher.
172. A 19thC elm Windsor highback chair, with later pierced splat, turned legs and H-frame stretcher.
173. A pair of late Victorian walnut side chairs, with galleried and open backs on turned legs, in the Aesthetic style.
174. A Regency style mahogany waterfall bookcase, with dentil moulded cornice, 2 door base, folded plinth and brass knob feet, 20" wide, 45" high.
175. A late Victorian rosewood marquetry purdonium, with mirrored and shelf top, fall-flap, turned legs with brass castors.
176. A William IV mahogany chiffonier with scroll and shell carved back, having turned and graduated shelves to the upper part, breakfront top with cushion drawer over 2 arched panel doors with beaded fillets, enclosed by 2 reeded columns on reeded ball feet, 33" wide, 17" deep, 66" high.
177. An Edwardian string inlaid mahogany 2-door china display cabinet.
178. An Edwardian string inlaid mahogany display cabinet, with moulded cornice, single astragal glazed door with sidelights, shaped apron and cabriole legs, 48" wide, 71" high.
179. An early 19thC walnut tea table, with rectangular moulded tilt top, on a slender turned pillar and 3 outspread reeded legs with brass toes and castors.
180. A pair of 17thC style walnut high-back hall chairs, with bergere seats and backs.
181. A George III mahogany supper table with circular tilt-top, on bird-cage with turned pillars, turned pedestal and 3 moulded cabriole legs, with pad feet, 29" dia.
182. A mid-Victorian walnut-nursing chair with tapestry seat and back.
183. A pair of early 19thC ash and elm Windsor side chairs with pierced splat and H-frame stretcher.
184. A Victorian upholstered button-back low nursing chair with walnut fluted forelegs.
185. A Victorian oak Sutherland table with turned framing, brass and ceramic castors.
186. A 19thC French giltwood 2-seater sofa, upholstered in burgundy velvet.
187. A Victorian walnut framed open armchair, upholstered in sculptured dralon, having turned forelegs with brass cup castors.
- 187A. A reproduction burr walnut twin pedestal kneehole desk, on ball and claw feet.
- 187B-D. An Edwardian style Sutherland table with rosewood cross-banding and string inlay.
188. A Victorian walnut veneered side cabinet with scrolling foliate carved mirror back, moulded white marble top, canted and shaped 3 door mirrored base, on plinth, 48" wide, 16" deep, 65" high.
- 188A. A Victorian mahogany triple wardrobe with moulded cornice, canted sides and mirrored single door on plinth.
189. A Victorian burr walnut side cabinet with broken arch pediment and double mirrored back, over a single wheatsheaf carved door and open base, 23" wide, 15" deep, 63" high.
190. A 19thC French double caned bergere bedstead and shaped base, 60" wide overall.
191. 18thC and later carved oak corner cupboard on barleytwist and spindle supports over a dropleaf gateleg triangular table.
- 191A. A Georgian mahogany bowfront corner washstand.
- 191B. A Victorian mahogany glazed 2-door bookcase with moulded cornice, c. 6'6" high.
- 191C. A 19thC French walnut bibliotheque, having dentil moulded cornice, over 2 half-mirrored doors, c. 6'9" high.
192. A Victorian flamed mahogany chest of 2 short and 3 long graduated cushioned drawers with knob handles and turned feet, 45" wide, 53" high.

193. A Victorian mahogany serpentine sideboard, with carved panel back, single drawer and arrangement of 4 breakfront doors, with shaped plinth, 60" wide, 24" deep.
194. A George I walnut chest having moulded and cross-banded top over 2 short and 3 long graduated herringbone strung drawers with replacement drop handles and escutcheons, on bracket feet, 41" wide.
195. A set of 4 Georgian chairs.
196. A set of 5 George III mahogany dining chairs with shaped backs, drop-in seats and square taper forelegs.
- 196A. A small Victorian mahogany wind-out dining table with extra leaf, on reeded legs with brass ceramic castors.
197. A set of 6 Victorian mahogany balloon back dining chairs, with drop-in seats and turned forelegs.
198. A Regency style mahogany twin pillar dining table with reeded top, having 2 further leaves, on bearers, each turned pillar having 3 reeded sabre legs with brass toes and castors, 45" wide x 72" min, 120" max.
199. A set of 8 William IV mahogany dining chairs, including 2 carvers, having carved overrun cresting rails, reeded and rondel barbacks, overstuffed seats and reeded taper forelegs.
200. A set of 8 George III mahogany dining chairs with carved and pierced splat backs, moulded square legs, H-frame stretcher and overstuffed gold velvet seats.
201. A Sheraton revival satinwood and mahogany bedroom chair with pierced back and square taper legs.
202. An Edwardian string inlaid mahogany corner chair.
203. A George III style mahogany pier glass with fretwork frame, surmounted with a gilt ho-ho bird.
204. A Florentine style gilt framed wall mirror, 32" x 40".
205. A pair of modern Aynsley porcelain fruit plates, printed in colours and signed D Jones, within gilt moulded borders, each 10 1/4" dia, in original cases.
206. A Delft drug jar, the drug label in dark manganese Gothic letters and inscribed below Roob Sambuc, 5" high, and a Savona type wet drugs jar, 4 1/2" high, repaired.
207. A Majolica jardinière, externally moulded as a tree trunk with strawberry plants in relief and with acorn handles on twig foot, the interior lilac, possibly George Jones, 11 1/2" high and 11" dia.
208. A Palissy style majolica plate of circular form, encrusted and moulded with a lobster, oysters and seaweed, 12" dia, minor damage.
209. A 19th/20thC German porcelain double salt, painted with birds, leaves and flowers, with ring handle, bears Augustus Rex painted mark to base, 4" wide.
210. A Troika pottery lamp, of rectangular form, glazed in typical colours of buff, brown and blue, painted mark Troika Cornwall FIB to underside, 11 1/2" high.
211. A Troika vase of circular slab form, moulded and painted in brown, buff and blue, painted factory mark to underside, 4 3/4" dia. (AF)
212. A Troika tapering vase, moulded, glazed in brown and blue, painted Troika Cornwall SK to underside, 6 3/4" high.
213. A Royal Doulton character jug, Baccus, D6505, 4 1/4" high.
214. A Royal Doulton character jug, Rip Van Winkle, D6463, 3 3/4" wide.
215. A Royal Doulton character jug, The Lawyer, D6504, 4" high.
216. A Royal Doulton character jug, Michael Dalton, D6808 (signed), 4 1/2".
217. A Royal Doulton character jug, Rip Van Winkle, D6463, 4" high.
218. A Royal Doulton character jug, John Dalton (Collectors' Club), 4 1/4".
219. A Royal Doulton character jug, Merlin, D6536, 4" high.
220. A Royal Doulton character jug, The Angler, D6866, 4" high.
221. A Royal Doulton character jug, Porthos, D645, 4" high.
222. A Royal Doulton character jug, John Dalton (Collectors' Club), 4 1/4".
223. A Royal Doulton character jug, Sarey Gamp, D6528, 3 1/4" high.
224. A Royal Doulton character jug, Robin Hood, D6534, 4".
225. A Royal Doulton character jug, Captain Henry Morgan, D6469, 3 1/2".
226. A Royal Doulton character jug, Old Charley, D5527, 3 1/4".
227. A Royal Doulton character jug, Long John Silver, D6386, 4" high.
228. A Royal Doulton character jug, The Hampshire Cricketer, D6739, Limited Edition of 5000 no 1043, 5" high.

229. A Royal Doulton character jug, Aramis, D6454, 3 3/4" high.
230. A Royal Doulton character jug, Athos, D6452, 4" high.
231. A set of 3 Royal Doulton Toby jugs, Winston Churchill, graduated sizes, the largest 8 1/2", the smallest 4".
232. A Royal Doulton character jug, Dick Turpin, 6 1/2" high.
233. A Royal Doulton character jug, The Poacher, D6428, 6 3/4" high.
234. A Royal Doulton character jug, Bang Went Sixpence, 3 1/4" high.
235. A Royal Doulton character jug, Pied Piper, D6403, 7" tall
236. A Royal Doulton character jug, Lobster Man, D6617, 7 1/2" high.
237. A Beswick character teapot, Dolly Verden, No 1203, 6 1/4" high.
238. A Sylvac character jug, Pickwick, No 1452, 5 1/2" high.
239. A Beswick character jug, Scrooge, No 372, 7" high.
240. A Beswick character teapot, Peggity, No 1116, 5" high.
241. A Burlington Toby jug, Boozer, 9 1/2" high.
242. A Tony Woods character jug, William, of a bewigged gentleman with his legs by his ears, modelled with legs astride, 5 1/2" high.
243. A Tony Woods Toby jug, Aaron, 7".
244. A Tony Woods lidded Toby jug, 7 1/4" high, together with another Toby jug no 1, and a character jug, Woman of Harlech. (3)
245. Two Goebels miniature character jugs together with a Tony Wood lidded character teapot and a Burlington Old Lady character jug. (4)
246. A Shorter & Son character jug, Cavalier, by R Platt, another by R Platt of a Toby, another, Clown, by Joe Warren. (3)
247. A Wood Toby jug, Sairey Gamp, together with a Mr Pickwick character jug, Lawyer, Long John Silver and Mr Pickwick. (5)
248. A Tony Wood Toby jug of a seated gentleman and another character jug, Fat Boy. (2)
249. A Royal Crown Derby bone china coffee set, printed in the 'Old Derby Posies' pattern within gilt line border, comprising 6 coffee cups and saucers, boxed.
250. A Victorian fan, a painted scene to the front of lover and his lass in a rose garden by a pond, gilt highlights, the reverse painted with a landscape, mother of pearl sticks with gilt highlights, yellow metal end sticks pierced and engraved and set with purple stones and enamelled oval tablet, (one stick broken), 8" stick length.
251. A late Victorian fan, amber celluloid sticks overlaid with fine lace, stick length 8".
252. A Victorian fan, mother of pearl sticks, overlaid with cutwork lace, stick length 9".
253. A green tinted ribbed circular vase, with silver collar, early 20thC, 8 1/8" high.
254. A Royal Worcester jug, of ovoid form, flattened to the side, raised cutaway neck, reeded handle, the body painted and gilt with a chrysanthemum spray, modelled against a matt ivory ground, model no 1094, c.1888, 5 1/4".
255. A Royal Doulton figure, Ruby, HN1725, 5" high.
256. A Royal Doulton miniature character jug, Fat Boy, together with a Goebels character jug of a monk, both approx 2 1/4" high.
257. A Moorcroft posy bowl of rounded rectangular form, painted with 'Hibiscus' pattern, against a blue ground, impressed Moorcroft Made in England and with paper label, 7 3/4" wide.
258. A Chinese famille rose baluster vase, painted with rectangular panels of figures in garden, flanked by shaped landscape panels, within a yellow ground enamelled with flowers and foliage, trellis shoulders with chrysanthemum heads, 14" high, base ground for electricity.
259. A stained wood wall shelf, the 3 shelves supported by pierced side panels and drawer to base, 26" high, 16" wide.
260. A late 19thC cedar wood casket, with brass bands, the hinged cover mounted with a bail handle, cut away lock escutcheon and plate and mounted with handles to sides, 13" wide, 8" high.
261. A 20thC oak smoker's cabinet, with hinged rising top over single door with inset metal panel embossed with stylised plant forms, fitted interior and drawer below, 15 1/2" high, 12 1/2" wide.
262. Three 'Chippendale' glass dressing table jars of panelled outline, each on 3 feet.

263. An Italian velvet covered jewellery box, of rectangular form, decorated with embroidered bands, the interior with lidded compartments, with removable tray and ring slots, 9 1/2" wide.
264. A pair of 19thC Staffordshire pottery figures of the Prince of Wales and The Princess Royal with sheep, glazed in bright colours with underglaze blue jackets, 19thC, 8" high.
265. A Japanese cloisonné wall plaque, circular, centrally enamelled with birds in flowering foliage, the border with birds of prey, flowers and scrolls on a terracotta ground, Meiji period, 12" dia.
266. A Victorian polished brass preserve pan with iron handle.
267. A Victorian brass and walnut pen stand, with uprights formed in profile of a stag and deer
268. A Victorian cast iron framed foot bellows by Fletcher Russell & Co of Manchester.
269. An early electric cast-iron fire enamelled in brown and green glazes.
270. A Meiji period Japanese Katana sword, with cast Tsuba and lacquered sheath.
271. A 19thC Royal Navy officer's dress sword, with gilt lion mask handle, shagreen grip, pommel and scabbard. 38"
272. An old Sheffield plate samovar of plain rectangular form, on stepped base with 4 feet, 13" high.
273. A brass and black lacquered monocular microscope by C Baker of London, Model no 9607, cased.
274. An African tribal shield of interwoven design, having integral quiver.
275. A Scandalli custom built piano accordion.
276. A Victorian rosewood writing box.
277. A Victorian Tonbridge inlaid walnut duet writing box with fitted interior.
278. Staunton (George). An Authentic Account of an Embassy from the King of Gt Britain to the Emporer of China, 2 vols, and a folio volume of plates, published London 1797, an account of the voyage of the Earl of Macartney, his Majesty's Ambassador to Beijing and the return, the 2 vols with engraved frontis and small engraved plates, the folio volume with engraved maps and plates of Chinese rural scenes, palace scenes and natural wonders, etc. full calf, gilt décor, and 3rd vol marble boards, no spine.
279. An embossed leather photograph album from Bourne Portrait Studio.
280. Raymond Mays Ephemera, viz His 1914 Infantry Training Books, 1918 Field Almanac, Cover for Army Book 153, etc.
281. The Ladies Cabinet of Fashion Music and Romance, pub Henderson 1832/3, colour plates, marbled boards to 2 bindings; the Whole Duty of Man. (3)
282. Christopher Barker. The Bible, 1599.
283. A Victorian album of scraps, clippings, photographs, etc.
284. A quantity of magazines, being Eagle and Wonders of Animal Life.
285. 45 vols of Giles cartoons.
286. Fur, Feather and Fin Series, 8 vols.
287. Fridtoft Nansen. Farthest North, the Norwegian Polar Expedition 1893-1896, 2 vols.
288. J Cary and others. An assortment of maps of Rutland, Leicestershire and Europe, 18th and 19th Century, 4to.
289. Brown (Cornelius). The Annals of Newark Upon Trent, London 1879, one vol, illis, half calf gilt decor.
290. Coleridge (Samuel Taylor). The Rime of the Ancient Mariner, 1945, illis Duncan Grant, Ltd Ed 700, deckle edge, orig blue moroc gt decor.
291. Kelly. Directory of Lincolnshire 1909, orig cloth boards, gt decor, (stained).
292. Bentham (George). Handbook of the British Flora, illis, Fitch, 2 vols, London 1865, orig 1/2 calf, raised spine bands.
293. Goldsmith (Oliver). A History of the Earth and Animated Nature, 2 vols, 1857, illis plates, marble end papers, 1/2 calf, gt decor.
294. Lubbock (Basil) - The Last of the Windjammers, Glasgow 1963, numerous black and white photographic illis and plans, orig cloth boards and dust wrappers (vol 1 torn).
295. Brown (Cornelius). A History of Newark-Upon-Trent, Newark 1904, 2 vols illis, cloth bds with gilt crest.
296. Brown (Cornelius). The Annals of Newark-Upon-Trent, London 1879, illis, Sheppard, loose tissue guards, orig green cl bds, gilt decor, (spine split from top front), (inscribed by author).

297. Nimrod. The Chase, The Turf and The Road, illus H Alken, 1837, frontis portrait by Machise, (with light foxing), marble and 1/2 calf bds, raised spine bands.
298. Alken (Henry). Panoramic View of a Fox Hunt, 'Showing a large Scope of the Leicestershire, Rutlandshire and Lincolnshire Counties with all sorts of Riders, Good, Bad & Indifferent', London 1828, hand-coloured soft ground etchings, (5), joined and folded, between paper boards with pict front cover.
299. Menpes (Mortimer). Venice, London 1904, 1st ed no 283/500, signed by artist, 100 col plates, deckle edges, orig cl bds with printed and gilt dec.
- 299A. Four antique reference books and 3 works by T E Lawrence, (reprints).
- 299B. Mills (Freddie), 20 Years, an autobiography, 1950, 1 vol, cloth boards and Downes (Terry), My Bleeding Business, autobiography, 1964. (2)
- 299C. Football: England v Scotland ticket 1947, Grantham Football Club Ltd Share Certificate, magazine photograph of Notts County Football Club 1926-1927 and a magazine photograph of Notts County Cricket Championship Team 1929.
- 299D. Cunard: 7 menus from RMS Queen Mary, Mauretania, etc, c.1954, a box of Cunard matches, napkin, postcards, programmes and a folding penknife stamped RMS Mauretania, together with a copy of The Ocean Times published on board the liners of the Cunard Steamship Co, RMS Queen Mary, 1954.
300. Turrell (Charles). Miniatures, London 1913, 1st ed no 61/100, signed by author, 98 ill plates, pl I lightly foxed, gt vellum, with box case.
301. After Eric H Day. Vulcan Bomber over Township, reproduction colour print, 423/2000, bears the Vulcan Restoration Trust Blind Stamp, image size 11 1/2" x 15 1/2".
302. Charles Whittaker. Docks at Night, pastel/ink/heightened white on paper, signed lower right Charles Whittaker, 13" x 18".
303. After Charles E Holloway. 'Boston, Lincolnshire', etching on sepia paper showing the River Witham and Boston Stump, signed in pencil in the margin, Image size 12 1/2" x 17 1/2".
304. 20thC School. Abstract, acrylic on paper, 9 1/2" x 15 3/4".
305. E Seago (1910-1974) (attrib). 'The Ribble Estuary, March 1947', watercolour, bears signature bottom left, 10" x 14 1/4".
306. Horatio Pearson (19th/20th Century). Child on a country lane, watercolour, signed and dated 1909 bottom left, 16" x 10 1/2".
307. After Malcolm Doughty. St Wulfram's across the Meadows, signed Limited Edition No 31/850, image size 13" x 19 1/2".
308. J A Wheeler. Donkey and goat in stable, oil on canvas, signed at lower left, 15" x 20".
309. After Lionel Edwards. 'Cottesmore Hunt, 1964', reproduction colour print, signed in pencil, image size 14 1/4" x 19 1/2", slightly foxed.
310. After Lionel Edwards. Hunters over a drystone wall in moorland landscape, reproduction colour print, Limited edition 20/500, published by the Tryon Gallery, c.1978, image size 13 1/2" x 21 1/2".
- 310A. Richard Rolyent. Study of a bird's feather with hand, sepia, watercolour, signed lower right Richard Rolyent, 6 1/4" x 4 3/4".
311. After Lionel Edwards. 'Quorn 1934', reproduction colour print, signed in pencil lower left, image size 12 1/4" x 24".
- 311A. English School, early 20thC. Terracotta country scene with inn and picket fence, between trees, watercolour on paper, indistinctly signed lower right, 7 1/4" x 10 3/4".
312. Spare lot.
- 312A. After Mark Huskinson (20th Century). 'The Wine Tasting', reproduction colour print, signed in pencil on mount, 9 1/2" x 7 1/2".
313. Circle of David Cox. Figures on a woodland path and extensive landscape beyond, watercolour on paper, signed lower left David Cox, 6 1/2" x 9".
- 313A. Christine Woodley. 'Snoozing', watercolour, pen and ink drawing, c. 1977, signed lower right Christine Woodley, oval, 6 1/4" x 7 3/4".
314. J Hughes Clayton. Fishing boat at quayside, watercolour on paper, signed J Hughes Clayton lower left, 13 1/4" x 9 1/4".
- 314A. Christine Woodley. 'Brief Stopover', watercolour, pen and ink on paper, signed lower right Christine A Woodley, 5 3/4" x 9 1/4".
315. R Thorne Waite (early 20thC). Country path with church steeple in background, watercolour on paper, signed lower right R Thorne Waite, 7 1/2" x 10 3/4".

- 315A. Christine A Woodley. 'Strawberry Treat', watercolour, pen and ink/hightened white on paper, signed lower right Christine A Woodley, oval, 4 3/4" x 7".
316. Karl Hagedorn (1889-1969). 'A View over wooded Parklands, Pangbourne 1932', watercolour, signed and dated '32 bottom left, 12 1/4" x 16 3/4".
- 316A. Harry Spencer, 20th Century. 'Small tortoiseshell basking', watercolour on paper, signed with monogram, circle, 5 3/4" dia.
317. John Ogilby. Road map of Barnstaple to Truro with compass rosettes, hand coloured, 17thC. 13 3/4" x 17 1/2".
- 317A. Harry Spencer. 20th Century. 'Small tortoiseshell and field scallions summer', watercolour on paper, signed with a monogram, 10 1/4" x 3 3/4".
318. Gustaph Holte. Mother and baby nestling in woodland, oil on board, signed lower right Gustaph Holte, 11" x 8 3/4".
- 318B. An early 19thC silkwork picture of a castle with trees to the side, moat in front, oval, 5 1/4" x 6 1/4", in verre eglomise glass, gilt frame.
319. R Hardinge (-88). Coastal scene from a cottage garden, watercolour on paper, signed lower left R Hardinge -88, 8 3/4" x 122.
- 319A. A double portrait miniature in a bone frame.
320. Spare lot
321. H Sylvester Stannard. Figures in a horse and cart crossing a fiord, watercolour on paper, signed lower left Sylvester Stannard, 9 1/2" x 13 1/2".
322. Kramer. Head and shoulders portrait of an old lady, charcoal, signed Kramer, 14 1/4" x 11 1/4".
323. English School (early 20th Century). Village landscape with cornfield, watercolour on paper, 6" x 9 3/4".
324. After Twelvelreef? 'I don't care, I trust her anyhow', and 'They say there's microbes in kisses, but if you think I don't like microbes just you try me', a pair, humorous colour prints, 11 1/2" x 8 1/2".
325. After Fred Morgan. 'Little Lady Bountiful', black and white photogravure, published by Bovril Ltd, c.1904, image size 19 1/2" x 28".
326. After Landseer. 'Shoeing', chromolithograph, printed for Pears Soap, 21 1/4" x 16 3/4".
327. After Landseer. 'Shoeing', black and white steel engraving by Lewis, c.1860, plate size 27 1/2" x 21 1/2".
328. 19th Century School. Stabled horses with hens and goat, oil on canvas, unsigned, 20 1/4" x 24".
329. By and After David Gee (20th Century). Head and shoulders study of a rough Collie, another similar, etchings, signed in pencil, 4 3/4" x 4 3/4" and a study of a spaniel with dead hare, in a landscape, signed in pencil, 4 3/4" x 4 3/4". (3)
330. DeWint. Two watercolour sketch studies of cottages.
331. After Birkett Foster. Mother and 2 children in a rural landscape, 5" x 6 1/2" and 'Winding the Wool', chromolithographs, 19thC, 7 1/4" x 10". (2)
332. An Ordnance Survey map of the Belvoir Estate, second edition, c.1904, 12" x 18".
333. After Henry Alken. 'Weighing in and Rubbing down', (Racing), aquatint, 1st pub 1824, re-issue, image size 7 1/4" x 21".
334. Kershaw Schofield. Landscape with trees, watercolour, heightened white on paper, signed lower left Kershaw Schofield, 16 1/2" x 23 1/2".
335. R H Bailey. Village Street in Leicestershire, and its companion by the same hand, watercolour/heightened white on paper, signed R H Bailey 1921, 10" x 14".
336. R H Bailey. Thatched cottages on a country lane, watercolour on paper, signed lower left R H Bailey 1921, 10" x 14".
337. R H Bailey. Village Street with figures outside the pub, watercolour on paper, signed lower left R H Bailey 1921, 14 3/4" x 10 1/8".
338. R H Bailey. Lake District landscape with figures by a country cottage, watercolour on paper, signed lower right, R H Bailey 1920, 7" x 10".
339. Chas. Rowbotham. Watering cattle in a river landscape, watercolour on paper, signed lower left Chas. Rowbotham 1885, 11 1/2" x 17 1/2".
340. After P Jolly? Rose in a tumbler, colour print Limited Edition 101/150, signed in pencil and with artist's Blind Stamp, plate size 15 1/2" x 11 1/4".
341. After Clinton? 'Pinnacle, St Botolph's Church, Boston', lithograph, Limited Edition 21/60, signed lower left and title in pencil, 29 1/2" x 19 1/2".

342. R V Pitchforth. 'Boats at Lymington', watercolour/heightened white on paper, signed lower left Pitchforth, 14 1/2" x 21 1/4".
343. 19th Century School. Wells Cathedral from the Cloisters, watercolour/pencil/heightened white on paper, 10" x 7 1/2".
344. A A C Petitt. 'After the Storm, Cayton Bay, Yorks', watercolour on paper, signed lower left A A C Petitt 1902, 11" x 16".
345. Rosemary Sarah Welch. New Forest Ponies, pastel on paper, signed lower right Rosemary Sarah Welch, 14 1/2" x 20 3/4".
346. Fred Lawson. Hayricks, watercolour, signed lower right, Fred Lawson, 8 3/4" x 11 1/2".
347. C Klinghoffer. Study of a girl in a chair and head and shoulders portrait of a young boy, both signed in pencil, C Klinghoffer 1918, 9 1/2" x 7 1/2".
348. W Aggington. Moorland landscape with meandering river, watercolour, signed lower right W Aggington, 5 1/4" x 8 1/2".
349. Edward Wolfe. Head and shoulders portrait of a nude woman facing left, oil on canvas laid onto board, signed lower left Edward Wolfe, 15 1/2" x 11 1/2".
350. E M Wimperis. 'On the Moors', pastel on board, signed lower left EMW, 19" x 29". An exhibition label verso.
351. T S Halliday. Cruise liner and pilot boats, buildings beyond, watercolour on paper, signed lower left T S Halliday, 14 1/2" x 21 3/4".
352. After Tommy Steele. 'My Life, My Song', colour print, signed in pencil and with Blind Trade Stamp, c.1974, 16" x 11 3/4".
353. After Phillip Sutton, 'Jacob', Limited Edition 64/75, signed in pencil Phillip Sutton 1972, image size 7 1/4" x 5 1/2".
354. After Auguste Rodin. 'Cambodian Dancer, Seated', reproduction colour print, 26" x 16".
355. Bobie Chapman. 'Women', colour print, signed in pencil and dated '69, Limited Edition 3/5, 21" x 29 1/2".
356. Dennis Hawkins. 'Rose Nebula', Limited Edition colour print 9/50, signed in pencil and dated 1960, 20 1/2" x 28 1/2".
357. Pietro Annigoni. Head and Shoulders portrait of Queen Elizabeth II, Limited Edition print 472/850, bears signature bottom right, 13 3/4" x 10 3/4".
358. Max Marschner. 'Raising the Gladiator', etching, signed in pencil and dated '79, image size 2 1/4" x 6 3/4", together with 2 other works.
359. After John Piper. 'Palazzo Pesaro', reproduction colour print, bears signature in margin, 9 1/4" x 14 3/4", together with 2 other works.
360. After Auguste Rodin. Study of a nude gymnast, reproduction colour print, 11" x 8 1/4", together with 2 other works.
361. Iona N Cartwright. 'The Sheep Shearer', watercolour, signed lower right I N Cartwright, 6 1/4" x 8", together with 3 other works.
362. 19th Century. 'Fishing', a pair of hand coloured humorous engravings, with text, 7 1/4" x 11".
363. Continental School 19th/20th Century. Mediterranean landscape at sunset, watercolour on paper, signed with initials lower right HBB, 10" x 14 1/2".
364. Manner of Lucianne Pissarro. River landscape with figure, township beyond, watercolour/ink on paper, signed with a monogram lower right, 10 1/2" x 14 3/4".
365. English School - 20th Century. A collection of landscapes, mainly St Ives and Hampstead Heath, watercolours, unframed.
366. A quantity of loose and unframed prints, drawings and watercolours.
367. Spare lot.
368. WWI pencil and wash picture.
369. After Rembrandt. The Money Lender, engraving, pub by Boydell, c.1767. 19 3/4" x 17".
370. J B C. Watercolour of a rainbow over halls in a forest landscape.
371. A pair of Le Blond prints entitled 'So Nice' and 'So Nasty'.
372. A 19thC engraving of Spalding Market Place.
374. An 18thC sampler by Hannah Hicks, 1790, worked in coloured silk threads on a linen backing with birds within diamond shaped lozenges, flowers, trees, lettering, inscribed 'A token of love 1790', 14" x 12 1/4", (small hole middle right and a few other smaller holes).
375. An early 19thC sampler by Rachel Wilson, 1818, worked in brown thread on a linen backing with lozenge panels enclosing birds, flowers, geometrics with other motifs, inscribed ...

- 'R W to S H 1818 Token of love' and other lettering, 12 1/4" x 12 1/2".
376. After Mark Huskinson. 'All's Fair in Love and Polo', reproduction colour print, c.2000, 10 1/4" x 7 1/2".
377. An late 18thC needlework picture worked in coloured silks on a silk backing, with an urn of differing flowers including honeysuckle, convolvulus, poenies and roses, oval, 19" x 15 1/4", label verso 'Worked by Catherine Marak about 1792'.
378. After Alken. First Steeplechase on Record, engraved by J Harris, plate 2, modern gilt frame.
379. After Cuthbert Bradley. 'Belvoir Kennels 9.30pm', 'Good Looks and Good Works Go Together' and 'On the Flags at Peterborough', 3 hand coloured engravings, 4 3/4" x 7 1/4".
380. By and After ... Lee (20th Century). 'Norwich Cathedral', soft ground etching, signed below lower margin, 27 1/2" x 20 1/4".
381. Spare lot.
382. An Australian outback oil Painting.
383. English School - 19th Century. 'Taking a Tumble', hunting scene, watercolour on buff paper, 5 1/4" x 7 1/2".
384. Cornelius J W Winter (1820-1890) Extensive rural landscape, with figure with horse and cart on a country lane, horses and cattle before a thatcher's cottage with pond, watercolour, signed. 24 3/4" x 35"
385. E Lara (19th Century). Fishing boats in a Choppy Sea and Boats off the Coast, a pair, oil on canvas, signed bottom left, 16 1/4" x 24".
386. * Earp. Extensive lakeland view with fisherfolk, moored boats, mountains beyond, watercolour on paper, signed Earp lower right, 9" x 18 1/2".
387. Continental School - 19th Century. Coastal scene with figure in a horse and cart on a rough track, ruins on cliff top beyond, watercolour/heightened white on paper, 8 3/4" x 11 1/2", (unframed).
388. Cyril Aynstey - 19th Century. 'Fisherman's cottage, Westmorland Coast', watercolour on paper, signed Cyril Aynstey bottom left, also title and signature verso, 9 3/4" x 13 1/2".
389. L Cecil Manners. 'Wyndham Park, Grantham', watercolour on paper, signed L C Manners lower left and also in pencil in margin, image size 6 3/4" x 10 1/4".
390. L Cecil Manners. 'From Knipton Road', view of Belvoir Castle, watercolour on paper, signed lower left L C Manners also in pencil in margin, 6 1/4" x 10".
391. English School - Early 19thC similar portraits of 3 children, one with a hoop, one with a doll and the boy with a book, indistinctly signed bottom left, 1/2" x 10 1/2".
392. A late 19thC/early 20thC chrysoleum of a young lady holding carnations in her right hand, 6" x 3 3/4".
393. A pair of 19thC silhouette portraits of Samuel Marsh and his Wife Catherine Marsh, oval, 3 1/4" x 2 1/2", together with another of an unknown Marsh, 2 3/4" x 2 1/8", in black frames. (3)
394. L Knight. Seated ballerina and assistant, believed to be in the dressing room of the Diaghlev Ballet, pencil, bears signature Laura Knight 1920, bottom right. 10" x 7".
395. E M Cross. Lleda Bridge, Bettws-y-Coed, watercolour, signed bottom left E M Cross, 12" x 20", gilt framed.
396. G D Clay. Landscape with castle over a bridge, watercolour, signed G D Clay bottom left, 11" x 18".
397. 18th/19thC School. Study of children, one of a girl holding a dove, the other, boy with grapes, monochrome ink on panel, 6 3/4" x 5 1/4", within contemporary oval gilt frames.
398. After Oswald Fletcher. 'Lincoln Cathedral', etching, facsimile signature, early 20thC, 9 1/4" x 6 1/2".
401. A 19thC brass arms dish with floral prick work design and raised rim, 17" dia.
402. A pair of 19thC RAUD porcelain vases, hand-painted with opposing fete gallante and floral panels, having wavy rims, foliate scroll handles and bulbous body, 20" high, (damage & restoration).
403. A Victorian electroplate table centrepiece by Round & Sons in the form of 2 opposing shells supporting a cut crystal trumpet, on a platform base with scroll feet, 20" x 6".
404. A pair of Kutani vases, late 19thC, of baluster form, each painted with panels of birds and flowering plants, 13 1/2" high.
405. A fine pair of 19thC French bronze and ormolu 3-branch candelabra with a stylised female winged figure holding baskets of flowers for sconces, standing on a ball and anthemion reeded pillars, 23" high.

406. 19thC Cantonese enamel bowl decorated with flowers on a bleu-de-mazarin and turquoise ground (AF)
407. An Edwardian carved oak bracket clock of architectural form, having silvered dial marked Preston, Spalding, gilt mask spandrels, 8-day movement, 15" high.
408. A Victorian cast-iron doorstep in the form of a pineapple, 7".
409. A pair of Chinese baluster vases, decorated in blue and white with birds and flora, on a lappet base, 12" high. (AF)
410. A Victorian polished slate mantel clock of architectural form, having scratch carved gilt decoration and marble inset columns and panels, 8-day movement, 13" high.
411. A Masons Ironstone baluster vase, polychrome decorated with birds and flora, 12" high, transfer printed mark to base.
412. A 17thC polychrome Delft bowl, decorated with stylised tulips, 13" dia. (AF)
413. A Mamod steam traction engine model TE1, SEL model circular saw, Mamod miniature polishing machine, Wileco hock saw, all boxed.
414. A Dinky Aveling Barford Centaur dump truck.
415. A Hornby OO 4620 breakdown crane, boxed.
416. A pair of polished brass binoculars by Paviour, Peterborough.
417. A Victorian black beaded and lace shoulder cape with lace edging.
418. A Victorian silk shawl embroidered overall with flowers, with a hand knotted fringe.
419. A black rose embroidered shawl with knotted fringe.
420. A patchwork quilt in 'Barn Raising' pattern, some fabric disintegration, burgundy border.
421. The Beatles. 3 photographs, 3 albums and 'She Loves You' 45rpm record, etc.
422. A Royal Doulton Seriesware oval bowl, 'Home Waters', D6434.
423. A Royal Doulton Seriesware water jug and electroplate egg cruet. (2)
424. A Victorian loving cup, having loop scroll handles and floral painted panel in the Coalport style, marked in gilt verso 'Thomas Forge Esq, Beverley, 1873'.
425. A glass lemonade set, printed and painted with huntsmen comprising jug and 5 glasses.
426. A Victorian rosewood writing box, having scrolling brass and mother of pearl inlays, satin lined and fitted interior.
427. A Victorian oval brass planter, with applied copper embossed armorial and 2 ring handles.
428. A graduated set of 3 Victorian copper strainers for fish kettles.
429. A 19thC brass hand held 4-burner oil lantern.
430. A Japanese blue and white charger, hand painted with battle scenes enclosed by a foliate border, Meiji period. 20" dia. (AF)
432. A Cauldon blue and white wall plaque from The Revolutionary Series marked 'New York Spirit of 1776 Yankee Doodle', 15" dia.
433. Two mottled stoneware tobacco jars with covers.
434. A Royal Doulton figure, Christine, HN2792.
435. A Royal Doulton figure, Natasha, HN4154.
436. A Royal Doulton figure, Daydreams, HN1731.
437. A Royal Doulton figure, My Love, HN2339. (AF)
438. Brass and copperware comprising 2 half-gill measures, 2 pairs of candlesticks and a lidded box.
439. Cut crystal fruit bowl, 3 Poole ashtrays, etc.
440. An early 19thC Spode felspar porcelain cushion shaped plate, decorated in the Japanese manner and another. (2)
441. A Samson armorial vase and cover, Limoges powder box and cover, 1937 Coronation mug.
442. A Victorian flow blue ewer, in the 'Armitage' pattern, 13".
443. A Victorian Staffordshire cow creamer, transfer printed in the Willow pattern and a modern Meissen coffee pot and cover. #20-40
444. A graduated set of 3 rectangular meatplates and 2 further plates, in the Oriental style.
445. A selection of Victorian ironstone plates.
446. Two vintage microphones. Ken Crystal M-20, boxed; Cadenza ribbon, boxed.

447. A pair of Royal Doulton Siliconware bottle vases, having simulated mosaic pattern decoration, 10" high.
448. A 'Peter Pan' portable gramophone.
449. A Goldscheider figure of Elizabeth I, in blue, yellow and pink dress, on black base, 8 1/4" high, black Goldscheider with Myott backstamp.
450. A pair of brown mottle glazed figures of birds on conical stands in the Wheildon style, 10" high.
451. A mahogany cased Reslosound studio ribbon microphone.
452. A mahogany cased Reslosound studio ribbon microphone.
453. An Edwardian string inlaid mahogany mantel clock, with silvered dial and 8-day movement, 12" high.
454. A British Museum replica model of a male torso and further model of a head.
455. A pair of late 19thC spelter figures of young girls, one with a watering can, the other with a bundle of fruit and a scythe, on circular marble bases, 10" high.
456. A heavy cut crystal flared vase, engraved with a winged warrior, 12" high.
457. An Edward VIII Limited Edition glass tankard, wheel-cut engraved for E Good & Co No 3123.
458. A pair of Franklin Mint bisque porcelain figural candlesticks of Corinthian form, 10".
459. A Copeland late Spode tyg decorated in relief with hunting scenes on a pale blue ground, 5" high.
460. A brass measure and hand-held wind speed indicator.
461. A Beswick model 288 bowl and a further jug. (2)
462. A pair of Linthorpe moulded vases with yellow internal wavy ring, turquoise exterior, in light relief with sunflowers, impressed to base Linthorpe 1755 AS, 9" high. (1 AF).
463. A Linthorpe moulded bottle vase, decorated in light relief with trailing flowers, impressed Linthorpe 1414 SD to the base, 7" high.
464. A Staffordshire fox's mask stirrup cup, black glazed on terracotta heightened with gilt.
- 465-6. A Staffordshire black glazed on terracotta cow creamer.
467. A Sevres style latticework bowl, painted with rosebuds and diaperwork, pseudo mark painted to base over AB, 9" dia.
468. A pair of Whisky and Brandy decanters, in basket moulded pottery, having plated mounts and stoppers, fitted in a plated stand.
469. A Poole Delphis baluster vase, red ground and heightened in mottled orange, blue and green glazes, 10" high.
470. A pair of 19thC Staffordshire greyhounds, moulded on oval blue bases, 5" high.
471. A pair of Regency mallet shaped decanters with faceted and wheel cut decoration, oval prismatic stoppers.
472. A Royal Worcester polychrome bisque figure of a woodpecker, 7".
473. A Myott Art Deco hand painted jug in the flowers pattern. 474. A Grainger's Worcester blue and white teapot with scroll handle and floral and gilt decoration.
475. An extensive Woods Windsor pattern tea and dinner service.
476. An early 20thC nursery bone china tea service, each piece printed and painted with an inner border of roses, within blue line and turquoise outer border, 16 pieces, some damage.
477. A Victorian dessert service by Davenport in the ivy wreath pattern.
478. A Victorian lustre mug and 3 ironstone dishes.
479. A Copeland Aesthetic design oval meat plate.
480. A chromed car mascot depicting horse and jockey.
481. An Arts & Crafts copper circular tray, stamped JS & S.
482. A Victorian majolica leaf dish.
483. A Victorian ruby glass inverted baluster vase.
484. A Royal Doulton Sandemans Port figure decanter.
485. An early 19thC Derby Imari pattern plate.
486. An Armand Marseille doll on stand.
487. An Armand Marseille baby doll, with bisque head, sleeping blue eyes and painted closed mouth, composition and jointed body, stamped 'AM Germany, 341/6/K', dressed in cotton undergarments, pin tucked white cotton dress and cream flannel coat with a lace bonnet, 19" high.
488. A German bisque figure of a young girl with kittens, cat and dog.

489. A Vienna Pottery pedestal bowl with pierced border, floral garland enamel decoration and classical base, 8" high.
490. 19thC Staffordshire pottery figure of an unidentified huntsman, climbing a rock, wearing a plumed bonnet, shirt, breeches and stockings, knife in his belt, and at the foot of the rock lie a musket and a dead stag, 10 3/4" high. See Pugh, Page E394.
491. A 19thC Staffordshire pottery figure group of a lover and his lass seated in an arbour, white ground with polychrome highlights, 14 1/2" high.
492. A pair of Staffordshire pottery white glazed dogs, seated, with ochre and black muzzle, yellow eyes, 13" high.
493. An Austin Reproductions Art Nouveau female figure entitled 'Sever'.
494. A Victorian embossed brass spirit kettle with ebonised handle and A-frame stand
495. A large continental porcelain vase with floral oval panel.
496. A Japanese bronze centrepiece, cast in 3 sections, with scrolling sea serpents, Meiji period, 24" high, 21" dia.
497. A child's 1940's painted steel pedal car.
498. A vintage coach built doll's pram.
499. Two Danish carved teak figures by Simone, 14" high.
500. A Victorian copper warming pan with turned ebonised handle and plain cover.
501. A gold lady's bracelet watch, base metal pocket watch, 9ct gold lady's dress ring with purple stone.
502. An enamel and yellow metal military bar brooch, central crest and crown, wording Royal Army Service Corps and motto Honi soit qui mal i pense - George VI.
503. A hinged hollow bangle in rose gold with mock belt markings. Chester 1915. (AF)
504. A 9ct gold hollow curb link bracelet with padlock clasp.
505. A signed Japanese ivory netsuke a study from a story based on legend of a fisherman trying to rope and climb upon a baby whale in order to ride it.
506. A signed Japanese ivory netsuke a study of the famed court entertainer Ashi-Odori carrying his equipment in a special box upon his back.
507. A signed Japanese cypress-wood netsuke a study of a small tree frog.
508. A signed Japanese ivory netsuke a study of a young Geisha mother walking as her newborn child upon her back is covered with her large shawl.
509. A signed Japanese ivory netsuke a study of a sword dancer performing his dance with blades in each hand.
510. A signed Japanese ivory netsuke a study of a villager in decorated kimono trying to hide a small bale of rice straw.
511. A carved ivory parasol handle.
512. A lady's diamond set twist ring, 2 illusion set small diamonds in white metal, twisted over a yellow metal shank stamped 18ct.
513. A Limit lady's bracelet watch.
514. Two pearl set bar brooches.
515. A lady's diamond set cluster ring, a delicate flowerhead set with small diamonds to a 9ct gold shank, hallmarked Birmingham 1983.
516. A shell cameo brooch, a carved male head, possibly Prince Albert, set in rose colour metal, stamped 9C.
517. A solitaire diamond ring, a diamond set in white metal, boxed shoulders to yellow metal shank, stamped 18ct & PLAT, estimated weight of diamond 0.50ct.
518. A 9ct gold diamond solitaire ring.
519. An oval yellow metal-faced locket with scalloped edge, engine turned decoration and vacant cartouche to front, 4.5 x 4cms.
520. A solitaire diamond ring set with a fancy coloured stone, very light champagne, old cut, claw set to a yellow metal shank stamped 18ct, mounted estimated weight 0.42ct.
521. A lady's stone set dress ring, a central oval flat topped ruby with faceted base in rub over setting in yellow metal to white metal shoulders, set with 6 small diamonds on a yellow metal shank, stamped 18ct & PLAT.
522. A shell cameo brooch in an oval yellow metal mount with double rope twist edge of a kneeling woman feeding a large eagle like bird, (some damage). 5cms x 4.5cms.
523. A lady's 5-stone graduated diamond ring set in white and yellow metal, shank stamped 18ct, total estimated mounted weight 0.54ct.

524. A lady's diamond set ring, 5 small diamonds set in white metal to yellow metal crossover shoulders and shank, stamped 18ct & PLAT.
525. Four heavy yellow metal bangles, stated metal as 18ct gold, total weight 52gms.
526. A delicate 4 stone diamond crossover ring in yellow metal
527. A pair of pink sapphire drop earrings in platinum setting - each one a faceted round bead 8.2mm diameter below 2 baguette cut stones 7mm x 1mm to screw and pad ear fittings
528. A large shell cameo brooch/pendant, a female angel 6cm x 5cm
529. A shell cameo brooch depicting Neptune 5cm x 3.75cm.
530. A shell cameo brooch in scrolled yellow metal frame, woman's head 4 1/2cms x 3cms
531. A shell cameo brooch, a finely carved woman's head adorned with roses in a silver mount 4cm x 3cm
532. An unframed shell cameo of man, woman and monument 5 1/2 cms x 4 1/2 cms
533. A jet necklace and watch chain
534. A diamond set white metal bracelet. The chevron links dividing with 6 brilliant cut diamonds claw set on tablets set between, tongue and clip clasp
535. A brooch set with a portrait of a lady
536. A large shell cameo set in an ornate yellow metal frame, a country squire and lady in woodland, 4 1/2cms x 3 1/2cms
537. An Edwardian marcasite set white metal ladies fob watch, stamped 935, a bow brooch then looped chain supporting the watch with floral motif cover
538. A gold cased 1920's Rolex watch head with expanding bracelet
539. A gold cased 1920's ladies watch with interesting iridescent dial, with later expanding bracelet
540. A silver coin purse, with clip top. Birmingham 1919
541. A 9ct gold sovereign set ring (1911) with pierced shoulders. Birmingham assay.
542. A ladies diamond and sapphire set cluster ring in 18ct white gold, import mark 750
543. A diamond solitaire ring. a fancy coloured pale lemon yellow stone, of approx 1.1 cts, old brilliant cut, claw set in white metal to white metal shank stamped PLAT
544. A silver ingot pendant on silver chain 20" total weight 20gms
545. A delicate "Feather" brooch, yellow metal stamped 9 ct
546. A fancy link open linked chain in yellow metal stamped 375, 30", total weight 28.7 gms
547. A 9ct gold charm bracelet, curb link with 16 charms attached, total weight 41.7 gms London 1975
548. A 9ct gold charm bracelet, curb link with 8 charms attached total weight 27.5 gms
549. A heavy link yellow metal longuard 59" with oval floral engraved locket attached and a swivel. Total weight 59.6 gms
550. A ladies 9ct gold Rotary bracelet watch, oval champagne dial with gold batons and hands, close link bracelet
551. A shell cameo brooch of a ladies head set in 9ct gold. Birmingham 1962 3.5cms x 2.5cms
552. A graduated curb link watch chain with crucifix, swivel and T-bar attached stamped 9 ct, total weight 13.8 gms
553. A full hoop eternity ring in white and yellow metal set with blue and white alternating stones
554. A ladies stone set cluster dress ring. Central oval dark blue stone surrounded by 12 white stones to yellow metal shank
555. A 5 stone in line diamond set ring, set in white metal to yellow metal shank stamped 18ct and PLAT
556. A stickpin, Arts and Crafts styling set with 2 small pink stones, in yellow metal
557. A ladies stone set cluster ring, a central oval ruby 5mm x 4 mm surrounded by 12 small diamonds to 18ct yellow gold shank hallmark rubbed
558. A set of cuff links and shirt studs, the cufflinks being double ovals with central motif and Greek key pattern surround, the studs, white stones, possibly white sapphires in rub over settings, all in yellow metal. Cased.
559. A wide silver bright cut engraved hinged bangle, engraved on the inside "Felicity" Birmingham 1984, 37gms
560. A small selection of jewellery items including brooches, wedding bands etc.

561. An opal ring, the oval opal as a carved scarab 12mm x 9mm in a yellow metal setting to yellow metal shank stamped 18ct
562. A Russian Art Nouveau pendant, formed by a diamond set crescent with supports to the chain, a pearl set below, then supporting a central free moving bar set with tiny rubies and diamond to a tear drop shaped aquamarine, 2 outer bars supporting and enclosing a lozenge shaped aquamarine with colett set rubies at each point, the whole in white and yellow metal, marks include 750, 72, and Cyrillic marks.
563. A pair of ear-rings (converted) each one a square motif of Italian design, stepped, with enamel and beaded decoration, a square emerald in a rub over setting to the front, the reverse enamelled in white, blue and red quartered design.
564. An emerald & diamond set bracelet of 7 oval motifs, each having an oval centre emerald surrounded by 12 small diamonds surrounded by 14 emeralds, joined by pairs of marquise shaped links each set with a round emerald, tongue & snap clasp set with a ruby - all set in yellow metal 6 1/2 ins length 5/8 ins wide. Total weight 39.7 gms
565. A diamond and emerald cluster ring to match the above, an oval central emerald of 6.6mm x 6.2mm surrounded by 14 diamonds surrounded by 14 emeralds in a basket style setting to a 5 band shouldered shank, all in yellow metal
566. A brooch in the form of a scorpion, the body being set with variously coloured garnets (5) set in white metal 2 1/2" long
567. A pair of ornate filigree Indian ear-rings set with small red and green stones in yellow metal
568. A brooch of leaf form, the wire work plain and twisted outline set abstractly with 24 small rubies, estimated total mounted weight 1.2 cts setting stamped 750. Total weight 13 gms
569. An Asian necklace of freshwater pearls and abstract and teardrop shaped yellow metal motifs. Total weight 37.4 gms
570. A double strand pearl necklace of approx 119 dark cream pearls, all 7mm with a garnet and pearl clasp in yellow metal
571. A costume brooch. One of the Duchess of Windsor Collection replica items by Harrods, an oval crystal set surround enclosing intertwined initials together with a costume bracelet
572. A 1970's style cabochon opal set in yellow metal 13.5mm x 10.5mm
573. A pair of Arts and Crafts style pendant earrings, target design with cabachon red stone to centre
574. An emerald and diamond set crucifix and chain by Brooks & Bentley, import mark London 9 ct
575. An Edwardian pendant of trefoil and floral form enclosing an amethyst with an amethyst drop in rose coloured metal stamped 9c together with a pair of Victorian earrings, seed pearls forming bunches of grapes.
576. A pair of pearl ear studs
577. A pair of Victorian drop earrings, each one a link of 4 small diamonds supporting an aquamarine. 5mm dia. surrounded by 10 diamonds, set in white metal with yellow metal backing to drop
- 577A. Three yellow metal rings.
- 577B. A multi-strand bracelet in yellow metal.
- 577C. Four silver serviette rings, various marks.
- 577D. A ceramic cameo of a woman's head with floral decoration, set in yellow metal.
- 577E. A cameo memorial brooch.
- 577F. An elephant brooch, an enamelled parrot brooch, a crown brooch and a marcasite brooch.
- 577G. A 19thC. sovereign scale.
- 577H. A gold cased gent's wristwatch and a pocket watch.
- 577J. A mother of pearl and abalone shell covered cigar case, late 19thC/early 20thC.
- 577K. A shell snuff box, yellow metal mounts.
- 577L. A Cortebert gent's wristwatch, case stamped 14k, satin dial, gold batons, on leather strap.
- 577M. A miniature Meerschaum pipe carved as 2 wolves, cased.
- 577N. A mahogany cased travelling chess set.
- 577P. Two small tortoiseshell covered boxes.
- 577Q. Three small carved stone figures of Buddha.
- 577R. A Christian Dior heavy gold tone link necklace and matching earrings, cased.
- 577S. A fancy link longuard marked for 10ct, 56" long.
- 577T. A cased cheroot holder.

- 577U. A yellow metal open face pocket watch, cased, stamped 18K, retailed by Worthington of Burton on Trent.
- 577V. A Victorian yellow metal memorial brooch and modern miniature scent bottle.
- 577W. A silver gilt mesh coin purse with spring sides and blue stone set clip, together with a Victorian silver sherry label.
578. A gold plated full hunter presentation pocket watch with modern chain
- 578A. A silver-plated oval trinket box, together with a carved ivory horse, wooden novelty egg and celluloid card case.
- 578B. Three small oriental carvings of a fisherman, lion and elephant.
- 578C. A selection of small medallions, mainly Masonic.
- 578D. A half sovereign 1914 and a full sovereign 1928.
579. A double row belcher bracelet in pink metal stamped 9C
580. A Victorian style Knot hinged bangle in pink metal stamped 375
581. A Victorian bloomed gold brooch, 2 bunches of grapes, amethyst set with vine leaves
582. A ladies 18ct gold open faced fob watch, white dial, black Roman numerals the case decorated all over with scrolling and floral motifs, cartouche with initials C.A.
583. A Victorian ring, a small turquoise cabochon in rub over setting set in rose gold hallmark London, date rubbed
584. Two strings of amber beads.
585. A small metal embellished leather vanity bag and plated contents.
597. An Asian wall hanging worked in gold thread on green ground.
600. Two Art Nouveau stone set silver hatpins by Charles Horner.
601. A silver photograph frame, Birmingham 1911, circular with easel stand, 5ins diameter
602. A silver photograph frame, Birmingham 1910, oblong cavetto 6 3/4 x 5 ins (a/f)
603. A set of five Old English Silver teaspoons, London 1801 and three more, London 1802, all engraved with initials 8 ozs gross
604. A pair of Old English silver tablespoons, London 1802/3 by Godbehere, Wigan & Boulton, another, London 1786, engraved with initials, 6.5 ozs gross
605. Three silver dessert spoons, London 1897/8, the handles embossed with a crest and the motto 'Salus Populi Suprema Lex', (the welfare of the people is the supreme law) 5 ozs
606. A pair of silver salts, Birmingham 1883, of circular lobed form, with two angled handles, with sapphire glass liner 3 1/2" over handles with two matched condiment spoons, cased
607. A silver trumpet vase, Birmingham 1960, 6 ins high, another example, 1942, 5 ins high, both with weighted bases
608. A silver salver, Chester 1908, with a gadrooned pie crust rim, on four pad feet, 10 1/4 ins diameter, 19 ozs
609. A silver waiter, Sheffield 1893 with a gadrooned pie crust rim, on four claw and ball feet, 6" diameter, 6.5 ozs
610. A silver 3-piece cruet set, Birmingham 1935, circular with gadroon rims, on lion mask and claw feet comprising salt and mustard, each with sapphire glass liners, (1 broken and repaired) and a pepper, 13 ozs gross
611. A silver waiter, London 1934, on bracketed square outline, on four claw and ball feet, 7 3/4 ins. 14 ozs
612. A silver egg cup - Sheffield 1907, inscribed 'Presented by the Buff Orpington Club' together with a quantity of EPNS and silver teaspoons
613. A silver butter dish and knife with frosted glass liner, Birmingham 1935, of pierced oval form, 6" wide, cased.
614. A set of twelve silver 'Fiddle Pattern' teaspoons and matching sugar tongs, London 1883, engraved with initials, cased
615. A George V Silver Pepper Pot, London 1911
616. A silver dessert fork, Birmingham 1856, with pierced and engraved tines and hollow cast and scroll and foliate handle, by Hilliard and Thomason, together with another example London 1875 and a tea knife, Sheffield 1922 (3)
617. A silver butt selector and vesta case, hallmark rubbed, maker J. C. Vickery, Regent Street London of oblong book form, the eight butts filter within the hinged cover, with jump ring, 2 1/4 x 1 1/2ins (nos 1,2,3 replacement butts)
618. A silver Matchbox cover, Birmingham 1901 from the USS Fletcher (DD-992) engraved with ships motto 'Pace Bello Paratus' (In Peace and War Prepared) 1 3/4 x 1 1/8ins

619. A silver bon-bon dish, London 1894 of boat shape, the plain domed well within a shell case and foliate pierced well, 6 3/4ins diameter, 3 1/2 ozs
620. A white metal and carnelian set pill box, oval, indistinctly stamped with makers initials to well "I P" 1 1/4 ins wide, together with a miniature set of playing cards, approx 3/4" high early 20thC.
621. An early 20thC white metal butt vesta type selector, engraved with initials, with six metal butts, the case stamped Palfrey Stg. Silver with jump ring 2 1/2 x 1 1/4 ins
622. A 19th century white metal seal, rectangular, with foliate cast base, on an ivory shaft, carved with fruiting vine and an acanthus finial, 4 ins high.
623. A silver preserve spoon, London 1831, with a spade shape bowl and fiddle pattern handle
624. A Russian silver preserve spoon, stamped 84 standard, 19thC, with engraved outer bowl and turned handle
625. A silver fiddle pattern caddy spoon, London 1843, engraved with initials
626. A silver fiddle pattern condiment spoon, London 1850, engraved with initial
627. Five silver Old English teaspoons, London 1805, engraved with initials
628. Three silver Old English dessert spoons, London 1807 engraved with initials.
629. A silver sifter spoon, London 1859, fiddle pattern, with a pierced circular bowl, engraved with initials
630. A silver photograph frame, Birmingham 1900, circular with bead inner rim, 2 1/2ins diameter
631. A pair of silver condiment spoons, London 1913, with bead and patera handles
632. A set of six Old English teaspoons, London 18091, engraved with initials
633. Five silver Old English teaspoons, London 1799/1800, engraved with initials.
634. Three silver 'Fiddle pattern' teaspoons London 1842/3 engraved with initials
635. A set of six silver coffee spoons, with bean finials, Birmingham 1924, cased
636. A cut glass and silver topped eau de cologne jar, London 1884, with a flute cut globular body and knopped screw cover, 4 3/4ins high together with a mounted glass and silver scent bottle, London 1922, with spire stopper (chipped)
637. An 18thC Chinese baluster mug, the loop handle with trefoil terminal, painted in blue with a cottage and figural landscape, 6 1/4" high.
638. A Cantonese famille rose oval platter, painted with figural panels against a flowered ground, pierced border, 10 1/4" wide.
639. English porcelain plate, painted with differing flowers to the well, the moulded border with flower sprigs, pattern no 565, 8 1/4" dia, together with a plate of shaped rectangular form, gilt with birds against a blue ground, the well painted with a border of pansies.
640. A pair of German porcelain plate, painted with flowers, within a shaped border, blue crossed sword marks, 19thC, 9 1/2" dia.
641. A set of 7 cranberry glass tumblers of tapering circular form, 3 1/2" high.
642. An early 20thC Cuban fan, printed with a bull-fighting scene and with wooden sticks, stamped Recuereo, and with hand written text and signatures on the back relating to Cuban life.
643. A drafts and back gammon set, the board modelled as 2 bound volumes and containing black and ivory drafts, together with a game of Spellicans, in wooden box with sliding lid and Russian Troika dolls. (3)
644. A Royal Doulton Matsumai pattern oval meatdish, 18".
645. A large electroplate fiddle pattern ladle, 2 smaller examples, salad servers, spoon and 2 plated bonbon baskets.
646. A racehorse, cast in bronze with brown patination, 12" high.
647. An electroplate oval entree dish, tray creamer, ashtray and pair of toastracks.
648. An electroplate entree dish, coffee pot, creamer, cased nutcrackers, scoop, etc.
649. A 19th century miniature compass, with printed dial, in leather case, 1 1/2ins diameter
650. A McGill University Montreal medal awarded for Applied Sciences with a relief moulded bust of James Watt and laurel wreath on reverse, cased.
651. An early 20th century pocket barometer, in a gilt metal case, with blue steel hand on white enamel, dial 2 ins diameter, in leather travelling case.
652. An Accacia nut scent bottle with metal mounts and two turned wooden boxes (3)

653. An early 20th century French carriage timepiece in gilt brass case, with white enamel dial and Roman numerals, 4 1/2 ins high
654. An early 20thC. Carriage timepiece, in gilt brass case, with white enamel face, Roman numerals and secondary dial. 4 1/2ins high
655. A Samson porcelain figure group, of a huntsman on horseback, with a hound by his side, against a bocage, on rococo scroll base, painted with anchor mark in red, 4 ins high (repaired)
656. A Moorcroft vase, ovoid, with slightly everted rim, painted with an anemone pattern in pink and violet against a streaky green ground, impressed factory marks 3 ins high
657. A pair of Royal Doulton flambé Rouge et Noir vases, of globular form with slightly flared extended necks, with abstract glaze, printed factory mark, compressed no 1606, 4 1/4ins high
658. A Royal Doulton figure "Mary had a little Lamb" designed by P. Davies 3 1/2 ins high (repaired) HN2048
659. A Coalport figure 'Sylvia', 3" high
660. A continental porcelain figure of an 18th century traveller, in puce coat, with flowered waistcoat, on rococo scroll base, 5 1/4 ins high
662. A Goebel figure of a young boy holding a lamb.
663. A Beswick Hereford Bull no 1363a
664. A Beswick Hereford calf.
665. A Beswick Hereford cow.
666. A pair of Beswick foxhounds, No's 941 and 942.
667. A Beswick foal, gloss brown.
668. A Beswick figure of a brown mare, gloss.
669. Three Royal Worcester birds, Gold Crest, Hedge Sparrow and Nightingale.
670. A 19thC German walnut and beech wall clock with carved case, 2 part cream dial with Roman numerals, 41" high.
671. An Edwardian mahogany aneroid wheel barometer, with dial marked Harry Hall 'The Gold Medal'.
672. An Edwardian carved oak aneroid barometer by F & G Lawson, Bridlington Quay.
673. A Sheraton style inlaid mahogany aneroid wheel barometer, by Short & Mason of London.
674. A William IV mahogany cased 'Norfolk' style wall clock, with painted circular dial marked Baker, Devizes, two weight 8-day movement striking on a bell, 50" high.
675. A Victorian painted rosewood wheel barometer, with 10" silvered dial, 40" high.
676. A Victorian mother of pearl inlaid rosewood wheel barometer, with 8" dial, 38" high.
677. A Victorian mahogany onion topped wheel barometer, with painted dial by J J Lockwood, Preston, 8" dial, 38" high.
678. A Victorian oak stick barometer with 2-part ivory dial inscribed Jacobs & Lucas, Jewellers to the Queen, Hull, 38" high.
679. A Georgian oak and mahogany cross-banded longcase clock, with swan-neck pillared hood, short trunk door and plane base, the 12" painted dial having a garden scene to the arch entitled 'The Miniature' and seasonal figures to the spandrels, Roman numerals, subsidiary seconds and date rings, 8-day movement striking on a bell, 84" high.
680. A Louis VX style rosewood and mahogany marquetry longcase clock with ormolu winged figure surmount, scrolling decoration and amorini masks, circular chased brass dial with enamelled Roman numerals, 8-day chiming movement, 94" high.
681. A Georgian oak longcase clock with swan-neck pediment, reeded pillars to hood, shaped trunk door, painted 11" dial and floral spandrels, figure with a wheatsheaf to the arch, Roman numerals, subsidiary seconds ring, date crescent and marked Wilson, Spalding, 8-day movement striking on a bell, 81" high.
682. An oak and flamed mahogany banded longcase clock case, the swan-neck and reeded pillared hood, quarter inset column trunk, shaped apron and bracket feet, 11" arch dial aperture, 90" high.
683. A Boulle and ormolu mounted bracket clock, the enamel dial marked Charles Boisin of Paris, surmounted to the top and the glazed door with cherubs, (cast with maker's foundry mark), 34" high, bracket 10".
684. A French gilt brass mantel clock with black enamel chapter ring, Roman numerals and 8-day movement striking a bell, marked M.A. & Co, 1719 14556, 12" high within a 17" high glass dome.
685. An early 19thC miniature wall clock, with turned ebonised mount, enamel dial with Roman hour numerals, Arabic minutes, fusee movement with carousel balance-cock inscribed Jefferys, Chatham, 9361, 5 1/2" dia.
- 686-96. An Oriental Rug.

698. A pair of Victorian silver pepperettes of openwork urn design, Maker JCL, London 1901.
699. An Edwardian silver mustard pot with urn finial, turned body and flying scroll handle, Birmingham 1905.
700. A pair of George III silver fiddle pattern basting spoons, Maker IL, London assay.
701. A George III silver teapot, with Greek key border and ball feet, Maker HS, London 1805.
702. A similar creamer.
703. An Edwardian silver oval bonbon basket with swing handle, Maker TB, London 1903.
704. An early 20thC Dutch silver box in the form of a tapering bucket with 2 loop handles.
705. A George V silver cigarette box, engine turned, Maker Walker & Hall.
706. A George V silver cigarette box, engine turned, Maker W N Ltd, Birmingham assay. (AF)
707. Two silver cigarette cases, one engine turned.
708. A pairing of Victorian silver pickle fork and spoon with ivory twist handles, Maker FH, London 1894 & 1900.
709. A Victorian silver buttonhook with rococo scrolling handle, Maker ESB, Birmingham 1896.
710. An Edwardian silver cigarette box with coaching print to cover, London 1903.
711. A Victorian silver bombe trinket box with rococo scroll cover inscribed 'Hilda', Maker CS*FS, Birmingham 1898.
712. A pair of Victorian silver King's pattern sauce ladles, Maker George Adams, London 1874.
713. A pair of 19thC white metal grape scissors, rubbed marks.
714. A harlequin silver condiment set comprising 4 Georgian style cauldron salts, pair of pepperettes and 3 spoons, in a lined case.
715. A set of 4 Edwardian silver serving spoons with twist handles, cased, Maker C&S Co Ltd, London 1905.
716. Three cased cutlery sets: 6 pairs of bone handled dessert; 6 butter knives; 6 coffee spoons.
717. A George V silver octagonal sugar castor, Maker Mappin & Webb, Sheffield 1911.
718. An Edwardian silver creamer with flying scroll handle, London 1905.
719. Two silver tankards, 20thC (AF)
720. A George V silver coaster with piecrust rim, Maker HA, Sheffield 1912, 7oz.
721. A George II silver spoon, inscribed DD*DD Born 16 Dec 1744, London 1743.
722. Two Dutch style white metal strainer spoons.
723. Two silver spoons.
724. Two circular continental white metal pillboxes, one stamped SB.800.
725. A pair of Edwardian silver openwork cylindrical pepperettes, Maker HE, Birmingham 1902.
726. A George VI silver taper pepperette, Birmingham 1940.
727. A George V silver drum mustard, London 1915.
728. An Edwardian silver oval mustard, Birmingham 1911.
729. A Victorian silver oval mustard, London 1879.
730. A silver salt spoon and 4 plated examples.
731. A pair of 19thC silver oval openwork salt cellars, on ball and claw feet, London assay.
732. A pair of silver napkin rings and 2 others.
733. A Georgian style silver sauceboat with flying scroll handle, Birmingham assay.
734. Two silver cigarette cases.
- 735-7. A Georgian silver caddy spoon.
738. An engine turned silver cigarette box with dome top and ball feet, rubbed marks.
739. A German silver creamer and sugar bowl.
740. A German silver bowl with vine repousse decoration, Maker RM & EH, Sheffield 1865, 6ozs.
741. A silver pistol handled bar knife, boxed, Sheffield 1963.
742. A George VI silver engine-turned compact, Maker A Bros Ltd, Birmingham 1950.
743. An Edwardian silver cased scent bottle having foliage repousse cylinder body, Maker George Ward, Chester 1903.
744. A small Edwardian silver engine turned cigarette case, Birmingham 1902.

745. An early 18thC silver mounted coconut bowl on 3 stepped feet, no marks.
746. Five Edward VIII silver Old English pattern dessert spoons, Sheffield 1936, 9oz.
747. A George III silver cheese scoop, with ivory handle, Maker Joseph Wilmore, Birmingham 1807.
- 748-9. A matched pair of George III silver tablespoons.
750. A Victorian silver fiddle pattern basting spoon, London 1864.
751. A Victorian silver 3-piece cruet, having lobed and gadrooned repousse work, London 1898/9.
752. A Victorian silver fiddle pattern sauce ladle, Maker George Adams, London 1856.
753. A pair of Victorian silver napkin rings and 2 others.
754. A Victorian silver drum mustard, Maker Harrison Bros & Howson? London 1857.
755. A silver coffee spoon with Lincoln Imp knop and 2 pairs of 19thC sugar tongs.
756. A Victorian silver child's whistle and rattle, Maker EM.
757. A Victorian shagreen cased set of 4 blood letting knives.
758. A machine turned silver and silver gilt powder compact, 1948, with mirrored interior, 2 1/2" square, together with an oval planished compact, with mirrored interior, stamped 8308, 3 1/4" wide.
759. A George V silver oval openwork mustard, Make HA, Sheffield 1911.
760. An Edwardian silver creamer and A Georgian style example.
761. An Asprey silver top trinket jar, another, small hip flask and 2 mother of pearl handled items. (5)
762. A set of 6 Victorian silver fiddle pattern tablespoons and associated case, Maker HH, London 1850.
763. A cased set of 6 Victorian silver fiddle pattern teaspoons and plated tongs, Maker HH London 1850.
764. A Victorian silver christening cutlery set, bead pattern, Maker George Adams, London 1869.
765. A cased set of 19thC gilt coffee spoons by Christofle & Cie, Paris.
766. A cased set of German silver handled presentation cutlery by Ohlenschlager & Riemann.
767. Two sets of continental gilt spoons, single case.
768. A set of 6 silver teaspoons, Sheffield 1942, cased, together with a set of EPNS 6 dessert knives and forks with ivorine handles.
769. A silver tea strainer, Sheffield 1937.
770. A quantity of continental and English silver tableware including serving spoons and sugar tongs.
771. A set of silver 'rat-tail' teaspoons, 19th Century, engraved with initials.
772. A Dutch silver caddy spoon, embossed with a windmill landscape, with scroll and pierced bird handles, another, embossed with cherubs and with ship finial.
773. A set of 6 silver 'rat-tail' teaspoons, Birmingham 1897.
774. A set of silver handled dessert knives and forks, with shell terminals, one fork missing, hallmark rubbed.
775. A set of 6 continental white metal table forks with scrolling acanthus terminals.
776. A pair of George V silver vases, Birmingham 1924, of circular tapering shape with waved rims cast with shells and pendant bells, on domed feet, 5 3/4" high, weighted bases.
777. A Limoges pill box, oval, the cover painted with a trellis of flowers against a pink ground, the body with gilt leaf girdle, 20th Century, 2 1/2" wide.
778. A Continental porcelain pill box, oblong, gilt with foliage, gilt metal mounts, 2" wide, together with a gilt metal circular pillbox with Italian mosaic cover. (2)
779. A white metal pedestal dish, the lobed well within pierced border, on stepped circular foot, 6 1/2" dia, modern, stamped 'Sterling'.
780. A pair of Sheffield plated table candlesticks, 6 3/4" high and an EPNS tray, of bracketed oblong shape, 18 1/4" wide.
781. A silver pedestal dish, Birmingham 1943, with a plain folded rim, on knopped stem and stepped circular foot, 8 1/2" dia, (rim inscribed), 17 ozs.
782. A pair of George V silver candlesticks, London 1913, of knopped and baluster shape, engraved with flowers and foliage, 13 1/2" high, 22ozs.
783. A silver 4-piece tea service, Birmingham 1933, of circular bellied shape, with cast harebell rims, the

teapot and hot water jug with composition handles, 54ozs gross.

784. A silver 3-branch candelabra, with a knopped stem and on circular foot, London 1975, 9 1/2" high.

785. A George V silver cocktail shaker, of tapering circular shape, Sheffield 1922, 8 3/4" high, 13ozs.

786-9. Spare lot

790. A silver charger, commemorating the Coronation of Elizabeth II, engraved with coats of arms, around a central boss, chased with a portrait of Elizabeth II and inscribed Coronation of Elizabeth 1953-1978, The College of Arms, 10 1/2" dia, in fitted case, 17ozs.

791. A silver salver, with piecrust edge, and raised on shell feet, Sheffield 1938, 12 1/2" dia, 29ozs, inscribed to centre.

792. A silver mounted glass trumpet vase, with diamond and facet cutting, the foot engraved 'Barr's Prize Vase', 13 1/2" high.

793. A set of 6 Victorian silver and ivory dessert knives and forks, the handles moulded with crown finials, Sheffield 1838.

794. A child's silver porringer, with a patera border and ring handles, Birmingham 1929, together with an associated teaspoon, 5ozs gross, cased.

795. A canteen of silver cutlery, bead borders, with 6 full place settings, in fitted canteen, Sheffield 1992.

796. A set of 12 ivory handled dessert knives and forks.

797. A silver backed hand mirror and matching clothes brush, London 1923.

798. A horn handled carving set and set of 6 fish knives and forks.

799. Trinket items, china headed doll, costume jewellery, etc.

800. Portrait miniature of a lady, head and shoulders, with roses in her hair, circle, 2" dia, black frame.

801. Portrait miniature of a lady, head and shoulders, oval, 2 1/2", black frame.

802. Portrait miniature of a lady, watercolour, head and shoulders, indistinctly signed, oval 2 1/2", gilt metal frame.

803. Portrait miniature of a lady, head and shoulders, with flowers, oval, 1 1/2", black frame.

804. Portrait miniature of a medieval lady, half-length, watercolour, oval, 3 1/4", ivory frame.

805. Portrait miniature of a young girl, head and shoulders, on porcelain, oval, 3 1/4", gilt frame.

806. Portrait miniature of a lady, head and shoulders, oval, 2 1/4", black frame.

807. Portrait miniature of a young girl, head and shoulders, circle, 1 3/4" dia, black frame.

808. Portrait miniature of a young girl, head and shoulders, with roses, circle, 1 1/2" dia, black frame.

809. Portrait miniature of a lady, head and shoulders, in green hat, watercolour, circle, 2" dia, gilt metal frame.

810. Portrait miniature of a lady, in 18thC dress, watercolour, head and shoulders, oval, 2 1/2", gilt metal frame.

811. Portrait miniature of a young girl, head and shoulders, signed Nattier, circle, 2" dia, celluloid frame.

812. Portrait miniature of a gentleman, head and shoulders, in a frock coat, watercolour, oval, 2".

813. Portrait miniature of a young man, head and shoulders, oval, 1 3/4", gilt metal frame.

814. Portrait miniature of an 18thC gentleman, head and shoulders, in a wig and with red coat, watercolour, oval, 2 1/4".

815. Portrait miniature of a gentleman, early 20thC, head and shoulders, in jacket and tie, watercolour, oval, 2 1/4", gilt metal frame.

816. Portrait miniature of a young girl, head and shoulders, watercolour, oval, 1 1/4", moulded frame.

817. Portrait miniature of a young lady, half-length, in early 19thC dress, watercolour, circle, 2 1/4", gilt metal frame.

818. Portrait miniature of a lady, half-length, with a finger to her mouth, circle, 2" dia.

819. Portrait miniature of a bearded man, head and shoulders, watercolour, oval, 1", gilt frame.

820. Portrait miniature of an 18thC naval officer, head and shoulders, oval, 2 1/2", black frame, another of a young girl. (2)

821. Miniature, basket of flowers, oil, oval, 2 1/4", a portrait miniature of a lady, and an empty miniature frame. (3)

822. Portrait miniature of a gentleman, early 20thC, attributed to Edith Wider, head and shoulders in jacket and tie, oval, 1 1/2", lacquered frame.

823. Portrait miniature of Napoleon, half-length - in uniform, oval, 3 1/4", gilt metal frame.

824. A relief cast model of a bird in flight, on an oval black metal mount, signed Arson, 5" wide, together with a model cannon, with brass barrel, mounted on a gun carriage, wooden plinth, the cannon 8" long.

825-9. A quantity of mainly post-war cigarette cards.

830. Assorted ephemera inc Victorian child's book cigarette cards and scraps, together with a carved hardwood folder.

831 Onwards. A collection of 40 lots of Stamps.

END of SALE

BUYING OR SELLING?

We have the lot!

THE CATALOGUE SALE

Your Market Place

for fine antiques, works of art, jewellery, silver,
ceramics, glass, books, clocks, furniture
and all fields of collectors' items.

NEXT SALE 4th FEBRUARY 2004

THE COLLECTIVE SALE

Your Market Place

for Victorian, decorative and second-hand furnishings,
household and personal effects.

LAST SALE of 2003

10th December

VIEWING: Tuesdays 2pm to 6pm & Saleday from 9am

'DE-CLUTTER' before Christmas !

Clear out drawers, cupboards, outbuildings and attics of yesterday's items.
Cutlery, vases, candlesticks, linen, clocks, watches, etc.

VALUATIONS

Free Antiques Auction Advice
Every Tuesday 2pm to 6pm in Grantham