

Established 1900

-GOLDINGS-

AUCTIONEERS & VALUERS



CATALOGUE SALE

APRIL 2003



IMPORTANT NOTES FOR PURCHASERS

1. **PAYMENT:** Must be made in full immediately after the Auction. The following methods of payment are acceptable.
a) Cash b) Bankers Draft c) Building Society Cheque d) Cheques (accompanied by a valid card.)
e) Debit & Credit Cards (the latter subject to a charge of 2% + VAT).

PAYING BY CHEQUE?

If you are not known to the Auctioneers and wish to pay by cheque above your guarantee card limit WE WILL RETAIN THE GOODS until it has been cleared (7 days). There will be NO EXCEPTIONS to our policy. To avoid UNDUE EMBARRASSMENT for yourself or to our staff, please do not ask for preferential treatment. If you wish to clear goods immediately bring a letter from your Bank or a suitable guarantor reference.

2. **BUYERS PREMIUM** of 15% on the first £100 of each lot and 12 1/2% thereafter is payable on all lots. Minimum £1 per lot. All plus VAT.
3. **REMOVAL OF PURCHASES:** Goods must be collected as soon as they are paid for, and in the 2 Working Days following the sale. If goods are not collected on these days we reserve the right to charge £1 per lot per day thereafter.
4. **COMMISSION BIDS:** If you are unable to attend this or any of our future sales we will be pleased to bid on your behalf. We always purchase at the lowest possible price, subject to other bids and reserves.

All bids must be handed to the office on an official form. It remains the responsibility of prospective purchasers to contact GOLDINGS to confirm whether their bids have been successful.
5. **TELEPHONE BIDS:** There are inherent dangers with this practice, therefore all such arrangements are made entirely at the bidder's risk. Telephone bids will only be accepted if the lower estimate is £500 or above. For lots with a lower estimate below this figure Commission Bids Only will be accepted.
6. **SMOKING** is not permitted in any part of the Saleroom.
7. **REFRESHMENTS** will be available Saleday.
8. **ACCOUNT TRANSFER** will not be recognised after the sale. If any lots are purchased for another person, this must be declared at the fall of the hammer.
9. **ESTIMATES.** Our Auctioneers will be available during viewing to give guidance on your prospective purchases.

GLOSSARY

- a) Generally: 'As Found' (AF). This term indicates the lot has some damage. Its absence does not indicate that the lot is free of defect. All lots are SOLD AS SEEN.
- b) Paintings: 'Signed, initialled, monogrammed' - This refers to the present state of the work and is not an attribution.
- c) Books and printed matter: These items are not sold subject to collation and are not returnable once removed from the premises.
- d) Silver & Jewellery: Weights given are approximations given by basic instruments.



Established 1900

-GOLDINGS-

■ AUCTIONEERS & VALUERS ■

Upon instructions from over 200 vendors including various Estates and single entries from throughout the region.

GOLDING YOUNG & CO will sell by AUCTION

**ANTIQUES, WORKS OF ART
AND COLLECTORS ITEMS**

WEDNESDAY 30th APRIL 2003

Commencing at 10am

lots 1 to 62	books, stamps, ephemera
lots 63 to 200	pictures and prints
lots 201 to 380	glass & ceramics
lots 384 to 550	silver, jewellery & bijouterie
lots 551 to 698	furniture
lots 700 to 732	clocks & barometers
lots 741 to 900	collectors items, toys, metalware, boxes, militaria, etc.

Lot enquiries

Suki J Burnett A.N.A.V.A.

Colin R Young F.N.A.V.A.

Accounts enquiries

Marie Scoffield

VIEWING:

Monday 28th - 2pm to 5pm, Tuesday 29th - 11am to 7pm & Saleday 9am to 10am.

And On-line at www.goldingyoung.com

from Saturday 26th April.

Golding Young & Co.

Old Wharf Road, Grantham, Lincolnshire NG31 7AA

Telephone: 01476 565118 Fax: 01476 561475 Email: enquiries@goldingyoung.com

Buyers Hotline: 01476 575202

For lot enquiries and commission bids viewday and saledays only.

BUYING OR SELLING in 2003?

We have the lot!

OVER 100 YEARS EXPERIENCE TO GIVE YOU THE BEST ADVICE

THE COLLECTIVE SALES

Your Regional Market Place

for Victorian, decorative and
second-hand furnishings,
household and personal effects.

Every two or three weeks we hold sales of over 750 mixed lots of items received from Property Clearances and vendors of single items.

Over 120 vendors sell with us every sale and over 500 are registered to buy.

NEXT SALES: 14th & 28th May, 11th June

VIEWING: Tuesday 11am to 6pm & Saleday from 9am

THE COMMERCIAL SALES

Your Regional Market Place
for the sale of business assets, stock-in-trade,
plant, machinery & equipment.

Sales in-house and on-site are held throughout the year
as instructed by

Liquidators, Receivers, Bailiffs, The Sheriff's Office,

County Courts and Business Advisors.

Regular consignments of Tools are included in the
Collective sales on behalf of Machine Mart Ltd.

COMMERCIAL CLEARANCES and SINGLE ITEMS
always INVITED

THE CATALOGUE SALES

Your Regional Market Place

for fine antiques, works of art, jewellery, silver,
ceramics, glass, books, clocks, furniture
and all fields of collectors, items.

*Held quarterly, these sales include select items
that need specific and direct marketing
through our select mailing list & databases.*

Up to 200 vendors selling items to a
Worldwide Audience via The Internet.

**NEXT CATALOGUE SALE:
25th June 2003 at 10am**

CLOSING DATE for entries 6th JUNE

VIEWING:
Monday 2pm to 5pm,
Tuesday 11am to 7pm & Saledays 9am to 10am
And on-line from the Saturday prior.

VALUATIONS

Free Antiques Auction Advice
Tuesdays 2pm to 6pm

Call Jan Squires for appointments
and home visits at other times.

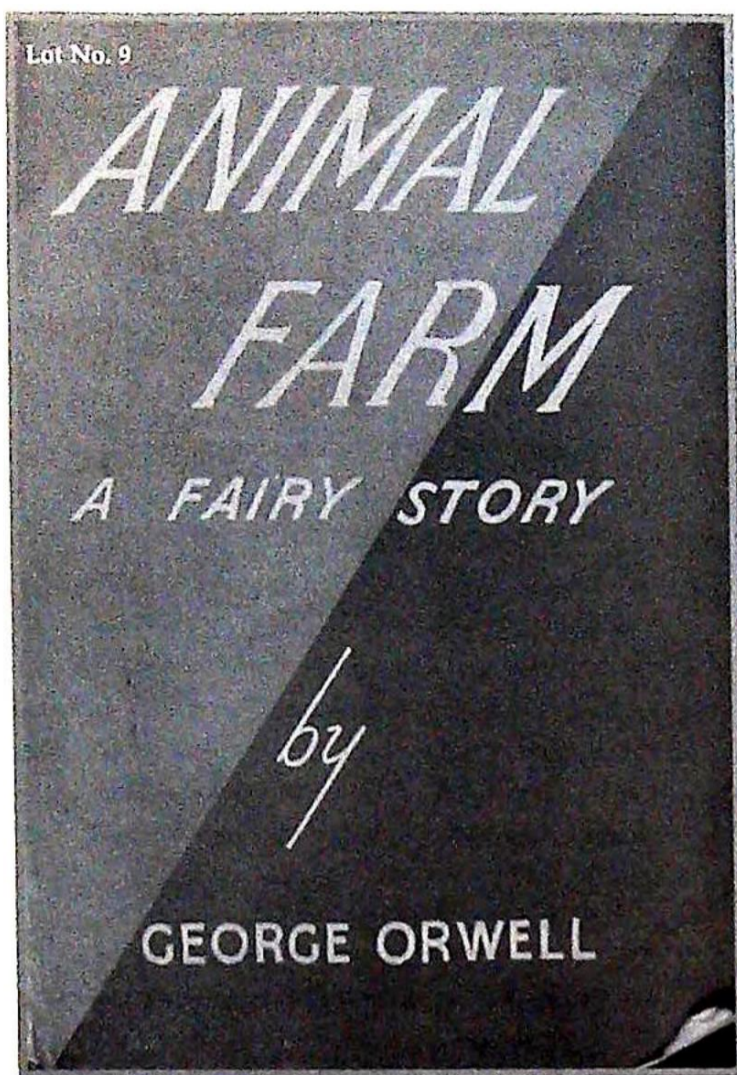
for sales and services information call

01476 • 565118

HOURS of BUSINESS

Monday to Friday 9am to 1pm & 2pm to 5pm
Entries welcome at all times except Saleday

PROPERTIES CLEARED - TRANSPORT ARRANGED
VALUATIONS FOR ALL PURPOSES



BOOKS, STAMPS, EPHEMERA

1. **Sooty Annuals** 1 to 6 and 2 others.
2. **A Popular History of the Great War and The Illustrated War News**; portfolio, 4 vols.
3. **An album of circa 240 Postcards of WWI.**
4. **Carroll (Lewis). Alice in Wonderland**, ill. Mabel Lucie Atwell, London, no date, orig printed boards, green cloth spine.
5. **Postal History.** Used cancelled Trinidad and Tobago, Canada, British New Guinea and Japan. (3)
6. **Channel Islands Covers (1940)**, BEA Helicopter Mail Service Covers 1948 and another, etc.
7. **Selection of World Stamp Swapcards, Operators Log Books** with various stamps.
8. **1950's press photographs** including Campbell's water speed record, Chelsea v Blackpool, Final Test at the Oval and Hoad Wimbledon Champion.
9. **Orwell, George.** Animal Farm A Fairy Story, 1st ed., D/w, pub. Secker and Warburg. Illustrated.
10. **Schneider Trophy Contest Programme**, September 12th, 1931.
11. **Johns (Rev C A).** Flowers in a Field, London 1893, 27th ed, original cloth boards.
12. **Kingsley (Charles).** The Water Babies, ill Mabel Lucie Atwell, London, no date, orig. printed boards, red cloth spine.
13. **A Victorian scrap album**, well filled with coloured and black & white engravings, topographical, religious, decorative, and 2 Chinese pith paper paintings.
14. **Davey (Richard)** - The Pageant of London.
15. **Goldsmith (Oliver).** The Vicar of Wakefield. 911. Poirson, London 1889, original cloth boards with pict and gilt decor.
16. **Neal (W Keith) and Brick (D.H.L.)** The Mantons : Gunmakers, London 1967, orig cloth boards, gt decor, dust wrappers.
17. **An early 20thC photograph album** containing mainly topographical views in the south of England.
18. **An album containing a collection of photographs** relating to HMS Malaya 1935-36, HMS Queen Elizabeth, HMS Cumberland, views of Venice, etc.
19. **An Album of circa 40 Photographs**, Earl Howe's Curzon Travels.
20. **Charlie Chaplin ephemera** inc Christmas greeting card signed verso from CSC 1922, and 1915 copy of the Funny Wonder.
21. **Great Britain, Commonwealth and Foreign Stock Book.** Cat value £9,150+
22. **France and Colonies, 2 Albums.** Cat value £10,400+
23. **Germany and Commonwealth Stock Book.** Cat value £2,500+
24. **Stock Book of German States, Italian States and other.** Cat value £27,000+
25. **GB Album**, mint and used. Cat value £7,600+
26. **Commonwealth Album**, mint and used. Cat Value £3,800+
27. **Australia Stock book.** Cat value £1,000+
28. **Canadian Stock Book.** Cat value £600+
29. **Stock Book**; Uganda, Tanzania, Jamaica, Kut. Cat value £600+
30. **Commonwealth Stock Book.** Cat value £1,600+
31. **Commonwealth Stock book.** Cat value £1,050+
32. **Commonwealth Stock Book.** Cat value £2,350+
33. **Great Britain and Commonwealth Stock Book.** Cat value £600+
34. **Italy Stock Book.** Cat value £1,200+
35. **Norway Album.** Cat value £660+

36. **Denmark, Iceland, Switzerland Album.** Cat value £1,835.
37. **USA Album.** Cat value £680+.
38. **Iceland Stock Book.**
39. **Great Britain, Commonwealth, Asia, USA Stock Book.**
40. **Great Britain Stock Book.** Cat value c.£1,200
41. **Commonwealth Album, all m/mint.** Cat value £500+
42. **Album of Cocos Islands, mint.** Cat value £520+
43. **Collection of Great Britain, Commonwealth and Foreign Stamps on cards.** Cat value £1,100+
44. **China, Canada, South Africa, Stock Books (3).** Cat value £430+
45. **South Africa, Southern Rhodesia and Malawi and Barbados Stock Books.** Cat value £750.
46. **Hong Kong and Malaysia Stock Books, Australia Album.** Cat value £600+.
47. **Printed ephemera relating to Grantham:** 'Grantham - a Poem' by W Weaver, 1816, paper covers, an Ordnance Survey map of Grantham, Ridges List of the Poll ... July 1852, and a quantity of newspapers.
48. **A small collection of early 20thC Valentine cards.** (10)
49. **Cockers Arithmetick (AF).**
50. **Alken (Henry).** The National Sports of Great Britain, London 1903, and Guilford (Everard), Transactions of the Thoroton Society of Nottinghamshire 1932. (2)
51. **A collection of WWI postcards inc verse and humorous, contained in 2 albums.**
52. **Enid Blyton.** 9 vols, 1960's, d/w.
53. **Park, Mugo.** Travels in the interior districts of Africa G. and W. Nicol, Pall Mall. 4th edition, 1800.
54. **Robert Freke Gould.** The History of Freemasonry, 1887, 3 vols, red morroco gilt.
55. **Picturesque views of seats of noble men and gentlemen of Great Britain & Ireland.**
58. **Lord, P.B.** Algiers and Barbary, 1835, 2 vols; London, Rom. Portrait of Tangier, 1952, Veyre, Gabriel. Au Maroc 1918.
59. **Marcet (Alexander).** An Essay on the Chemical History and Medical Trea Edition, hand coloured and plain engraved plates, top board detached,
60. **Four 19thC sepia photographs** laid onto linen to create a panoramic view of North Road Station, Plymouth, c.1860, 9" x 48", together with a photograph c.1856 of North Road Station, Plymouth - Bridge Building, 4" x 5 1/2" and another of North Road Station Workshop, 6" x 8 1/4". (3)
61. **Three 19thC sepia photographs** of the workshops of a Bradford Mill, each 4 1/2" x 6 1/2".
- 61A. **Approximately 31 signed and unsigned photographs** of pop singers, film stars and sportsmen from a Collection taken from 'The Star Steak House', some addressed to the owners Armand & Anita personally, including Gene Pitney, Richard Burton, Cliff Richard, Anna Neagle, Rod Laver, Sammy Davis Junior, Cilla Black. There is an unsigned photograph of the Beatles, which could have been taken from inside the Steak House and may be a one off!
62. **A 19th C Gas Engraving**
- 62A. A quantity of mainly Sothebys catalogues covering a wide range of subjects.

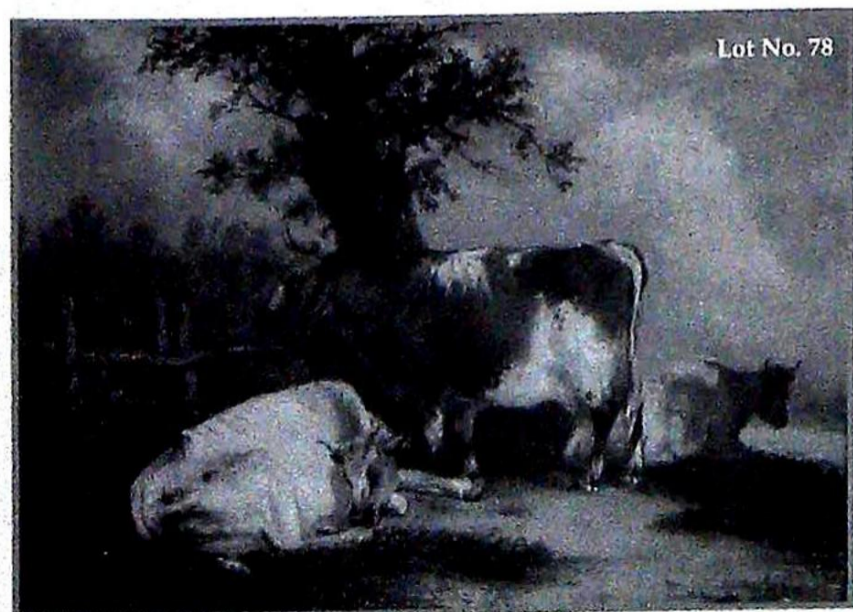
PICTURES AND PRINTS

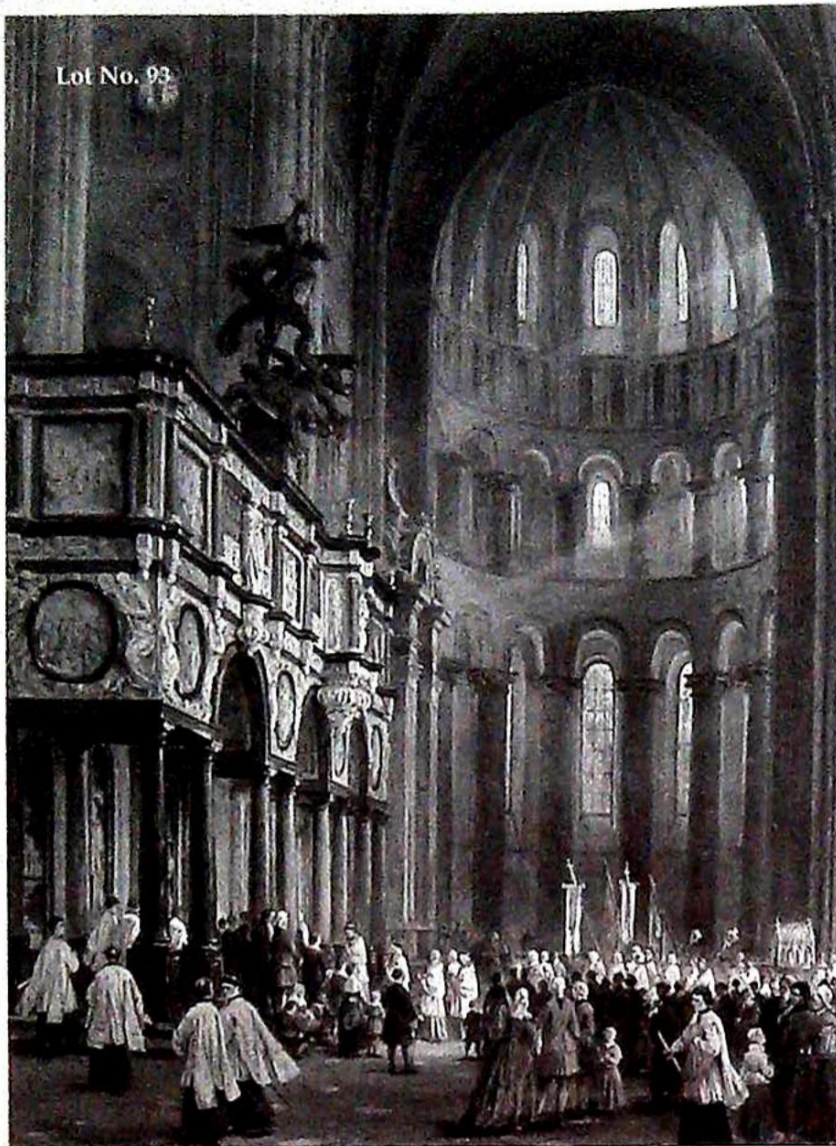
63. **19th Century School.** Views of Old Leicester, a pair, watercolours, 13 1/4" x 10".
- 63A. **Wagner (Richard).** The Ring of the Nibling The Rhinegold - Prelude, The Valkyrie : First Day of the Trilogy, translated by Margaret Armour, London 1939, ill. Arthur Rackham, 24 col plates, orig cloth boards.
64. **Hunt after Lambert.** 'The Age, Brighton Coach at the Bull and Mouth, Regent Circus, Piccadilly', reproduction colour print, first published 1829, image size, 11 1/2" x 16 1/2".
- 64A. **Edward (Amelia B).** A Thousand Miles up the Nile, ills Pearson, London 1877, orig cloth boards, gilt decor, spine split and edges rubbed, and Bates (H E) In the Heart of the Country, ill. Tunnicliffe, London 1942, cloth boards, dust wrappers.



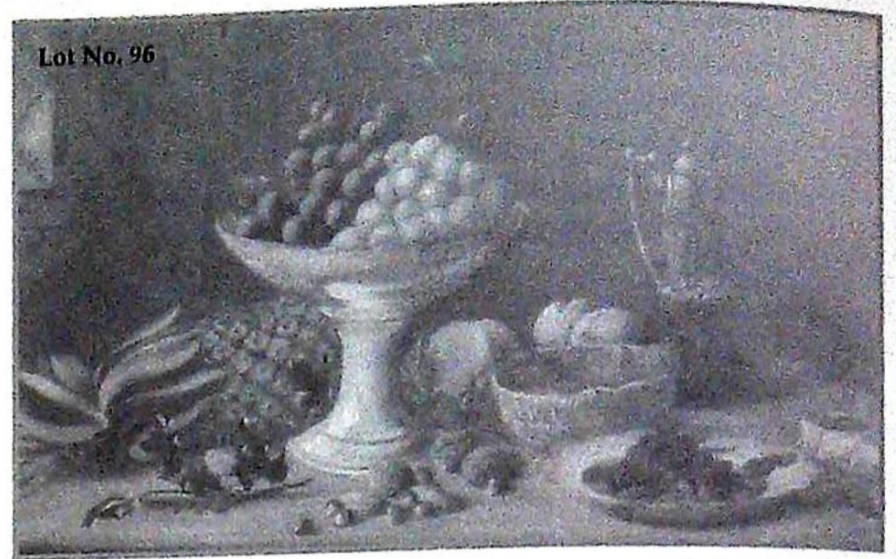
Lot No. 77

65. **Charles Bird after Leonardo de Vinci.** 'Beatrice D'Este', mezzotint printed in colour, inscribed in margin 'Engraved and tinted in colours at one printing without retouching', signed Charles Bird, title label verso, 14 1/4" x 10", early 20thC and Bartolozzi after Benwell, study of a fruit seller, hand-coloured stipple engraving, 7 1/2" x 6", oval. (2)
- 65A. **Miles (W J).** Modern Practical Farriery, ill. B Herring, London, Glasgow & Edinburgh, no date, end papers missing, 3/4 cl gt, stained and scuffed.
66. **Bartolozzi after Cipriani.** Head and shoulders studies of classical figures, a pair, stipple engravings, first published 1796, probably of that date but unexamined out of frame, 7 3/8" x 11 1/8".
- 66A. **Lee Man-Fong.** Paintings and Statues from the Collection of President Sukarno of the Republic of Indonesia, Tokyo 1964, 5 vols, cloth boards, gt. decor, d/w's and slip cases.
67. **John Vernon-Cryer (20th Century).** Willow trees bordering the edges of a meandering river, watercolour/bodycolour, signed, 4 3/4" x 14".
- 67A. **A Victorian album** containing a quantity of cut out chromolithographic scraps and 2 Royalist engravings.
68. **W Douglas Macleod (20th Century).** Fishing scene, Ayrshire, etching, signed in pencil, dated, 1922, image size 6 1/2" x 12 1/4", another by Martyn Lack 'Old Janofs' Donkey', etching, signed and dated in pencil '58, 6 1/2" x 8", another by Winifred Huston, 'Tree Creeper', etching, signed in pencil, 5 1/2" x 7" (3)
- 68A. **Tiger Tim Annual 1923, Playbox Annual 1922, Princess Mary's Gift Book, Kitchener's Army, 6 vols, The Great Exhibition of 1851 commemorative album, The Year Illustrated 1912, and London Illustrated London News 1936.**
69. **19th Century School.** Studies of summer flowers, a pair, watercolour over pencil, 7 3/4" x 6".
70. **19th Century School.** Venetian Canals, a pair, watercolours, 12 1/8" x 6 1/8", and B Figallo (19th/20th century) figure on the river bank, buildings distant, watercolour, signed and inscribed 'Sevilla', bottom left, 9 3/8" x 5 3/8". (3)
71. **J Cary.** A New Map of Sussex, divided into Hundreds, exhibiting its Roads, Rivers, Parks, etc, 1828, a 4-sheet map laid onto linen, 18 3/8" x 21". *Published in conjunction with Smith's Geological map of Great Britain.
72. **J Cary.** A New Map of Gloucestershire, divided into Hundreds exhibiting Its Roads, Rivers, Parks, etc, 1828, a 4-sheet map laid into linen, 21 3/8" x 18 3/8". *Published in conjunction with Smith's Geological map of Great Britain.
73. **J Cary.** A New Map of Hertfordshire, divided into Hundreds exhibiting Its Roads, Rivers, Parks, etc, 1828, a 4-sheet map laid into linen, 18 3/8" x 21". *Published in conjunction with Smith's Geological map of Great Britain.
74. **J Cary.** A New Map of Shropshire, divided into Hundreds exhibiting Its Roads, Rivers, Parks, etc, 1828, a 4-sheet map laid into linen, 21 1/4" x 18 3/8". *Published in conjunction with Smith's Geological map of Great Britain.
75. **J Cary.** A New Map of Oxfordshire, divided into Hundreds exhibiting Its Roads, Rivers, Parks, etc, 1828, a 4-sheet map laid into linen, 21" x 18 3/8". *Published in conjunction with Smith's Geological map of Great Britain.
76. **J Cary.** A New Map of Monmouthshire, divided into Hundreds exhibiting Its Roads, Rivers, Parks, etc, 1828, a 4-sheet map laid into linen, 18 3/8" x 21". *Published in conjunction with Smith's Geological map of Great Britain.
77. **R A Gardner.** A country cottage at Cawthorpe, Nr Bourne', oil on canvas, signed bottom left, 19 3/4" x 30". Illustrated
78. **After William Hogarth.** 'March to Finchley', copper engraving, 19th century, trimmed to image and laid onto card, 16" x 21".
79. **C Mackinley (20th Century).** Highland landscapes, one with cottage, the other, a lake, a pair, oil on canvas, signed, 16" x 24".
80. **After George Morland.** The Cottager's Return, coloured mezzotint by Sydney E Wilson, signed in pencil, c.1917, image size 15 1/2" x 20 1/4".
81. **19th Century School.** Deer in a landscape with majestic oak, castle beyond, pencil, 17" x 13".
82. **Style of Claude Vignon.** Study of an Italian nobleman, Conte drawing, 14 1/8" x 6 1/8".
83. **E Mackintosh, (19th Century).** Woodland landscape, oil on canvas, signed and dated 1898 bottom left, 9 1/4" x 13".





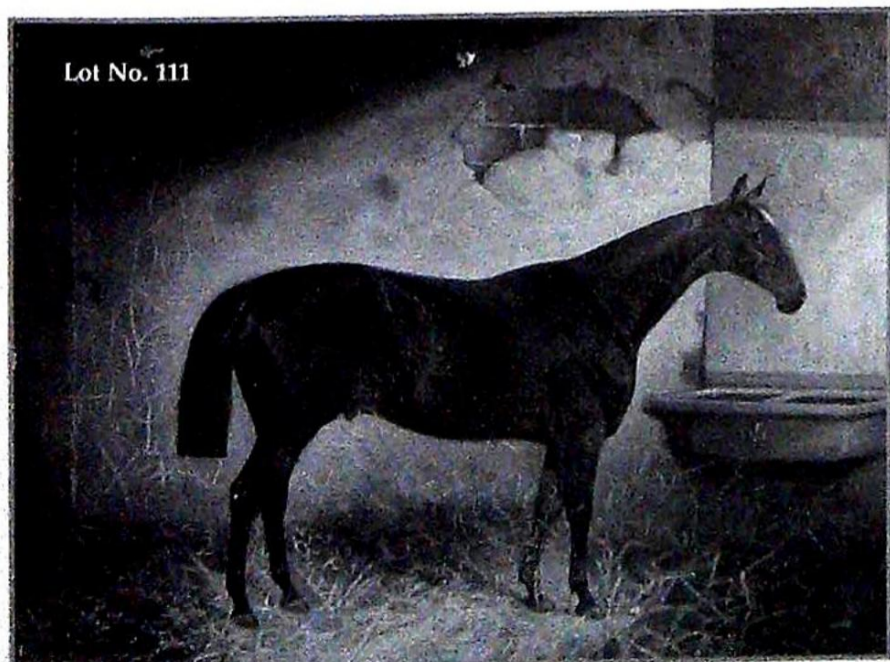
Lot No. 93



Lot No. 96

84. **Arnaldo de Lisio, (19th Century).** Study of Italian peasants, watercolour, signed bottom right, 28 1/2" x 20", (unframed).
- 84A. **19thC School.** Birds gathering around a bowl, oil on milk glass panel, 9" x 12" (much damage).
85. **After George Morland.** Countryman outside an inn, coloured engraving, image size 20" x 15 1/4", early 19thC.
86. **R A Gardner.** Landscape, watercolour, signed and dated 1923 bottom left, 9 1/2" x 13 1/4".
87. **Edward Brown (19th Century).** Cottage scene with figures, watercolour, signed bottom left, 7" x 10".
88. **Charles W Shayer (1826-1914).** Resting cattle, oil on canvas. 12" x 16 1/2", (re-lined). Illustrated.
89. **J Clare.** Still life of a basket of grapes and still life of a basket of flowers, oil on canvas, signed bottom left, 10" x 14".
90. **John Sherrin (1819-1896).** Still life of birds nest and primrose, watercolour, signed, 5 3/4" x 7 1/4".
91. **M W Langlois 19th Century.** Interior with teacher and scholar, watercolour, signed bottom right. 11 3/4" x 8 1/2".
92. **Simione.** 'HMS Miranda'. Steamship on a choppy sea, gouche/body colour, signed bottom right, 15 1/2" x 24 1/4".
93. **Louis Haghe (1806-1885).** Trancept of the Cathedral of Tournay, in Belgium, with numerous clergy, lay figures and congregation, watercolour/body colour, signed and dated 1868 bottom left. 29" x 21 1/4". *This work is accompanied by 2 letters presenting the painting to a Mr Carrington of Westwood Park, Forest Hill from a Mrs Growther of Streatham, London, dated 1873, in appreciation of the former acting as an executor for her late husband's estate
94. **After Robert Morden.** 'Lincolnshire', double sheet map, hand coloured, c.1695/1713. 15" x 17 1/4".
95. **19th Century School.** Medieval turretted castle surrounded by water, moored boats and figures, oil on canvas, 20 1/2" x 30".
96. **Ada France (20th Century).** Still life study of fruit, nuts with claret jug and broken wine glass, oil on canvas, signed and dated 1906, 20" x 30". Illustrated.
97. **Ada France (20th Century).** Still life study of fruit, roses and wine jug, oil on canvas, 20" x 30".
98. **19th Century School.** Figures in a continental landscape, pencil drawing, 10 1/4" x 13 3/4".
99. **19th Century School.** Italianate lakeland view with villa and crustacea foreground, watercolour, 7" x 12 1/4".
100. **19th Century School.** Abbey Ruins with sheep, watercolour/body colour, 14 1/2" x 9 1/4".
101. **After E Ladell.** 'Still Life Fruit and Flowers', chromolithograph, pub by Pears, late 19th century, 23" x 15 1/4".
102. **A** B**.** Still life of grapes, pomegranates and greengages, another of grapes, peaches and plums, a pair, oils on canvas, signed with initials and dated 1899. 24" x 18".
103. **Wilfrid Fairclough (1907-1996) by and after,** 'Juditha Triumphaus - Scuola Grande di S Rocco', etching, signed in pencil and dated 1971, image size 9 1/2" x 11".
104. **Wilfrid Fairclough (1907-1996) by and after,** 'S Giorgio Maggiore - i virtuosi Di Roma', etching, signed in pencil and dated 1970. Image size 9 1/4" x 11".

105. **Philip Martin (20th Century)**. 'Vine Street, Grantham', watercolour and ink, signed in pencil. 9 1/2" x 7 1/4".
106. **Philip Martin (20th Century)**. 'Grain Market, Peterborough', watercolour and ink, signed in pencil and dated 1987. 7 3/4" x 9 1/2".
107. **Roy Turlington (20th Century)**. 'Swans', mixed media, signed and dated '83, on deckle edge paper laid on card, 19 1/2" x 14".
108. **Oliver Hall (1869-1957)**. 'Tree Landscape, North Wales', oil on canvas, signed bottom left, 15 1/4" x 21 1/2".
109. **After Brooks**. 'The Bridesmaid', colour print by George Baxter, mounted on card bearing the Baxter blind trade stamp and title, no 260, 1855, image size 14 3/4" x 10 1/4".
110. **19th Century School**. Still life of oranges, daisies and a jug, oil on canvas. 14" x 18".
111. **J** Hutchinson (19th/20th Century)**. 'White Wings', study of a stabled horse, another, of a black horse, oil on canvas, a pair, signed and dated 1902. 12" x 16". Cover illustration and internal.
112. **Thomas G Appleton, after Wheatley**. 'Milk Below', from Wheatley's 'Cries of London', mezzotint, signed in pencil in margin, blind trade stamp, published by Graves, c.1907, 15 1/2" x 12".
113. **Vawser (19th Century School)**. Panarama of Florence, watercolour, heightened white, signed and dated 1876 bottom left, 5 1/2" x 8 1/4".
114. **Louis William Wain (1860-1939)**. 'Simple Simon' watercolour/body colour, signed, 11 1/4" x 8 1/2". Illustrated.
115. **Margaret Scott Somerville (1918-?)**. Rural landscape with shepherd and his flock, oil on board, signed Peggy Somerville and dated 1939. 10 1/4" x 12 1/4".
116. **After Herring**. Colour hunting print, oak framed.
117. **19th Century School**. Extensive landscape with watering cattle, and a castle on a hilltop to the left, oil on canvas. 18" x 24".
118. **Leon Auguste Salles after John Downman, 19th Century**. Portrait of a young girl, in be-ribboned bonnet, holding a basket of flowers, facing dexter, within a decorative border, stipple engraving, lightly tinted, signed in pencil, 9 1/2" x 8 1/4", in black glass/gilt frame.
119. **Eugenie Ley (19th Century)**. Portrait of a lady, in 18th century costume, within a decorative border, stipple engraving, lightly tinted, signed in pencil, 10 1/2" x 9", in black glass/gilt frame.
120. **E Chester (?) (19th/20th century)**. Still life of grapes and carnations amongst foliage, signed bottom right, 10" x 14".
121. **Dorothy M Lockwood RBSA (20th Century)**. 'The Balcony', watercolour, signed bottom right, 21" x 15", bears artist's label and Royal Academy label verso. Illustrated. *This work was exhibited at the R.A. 1965, cat no 946.
122. **Portrait of George III on horseback, in uniform, mezzotint, trimmed to image. 18thC. 25 1/2" x 21 1/2"**.
123. **18th Century**. 'Theatre Royal, Drury Lane, for the Benefit of Mr Fleeceall's Creditors...', political caricature, hand coloured aquatint, trimmed to image. 10" x 7 3/4".



Lot No. 111

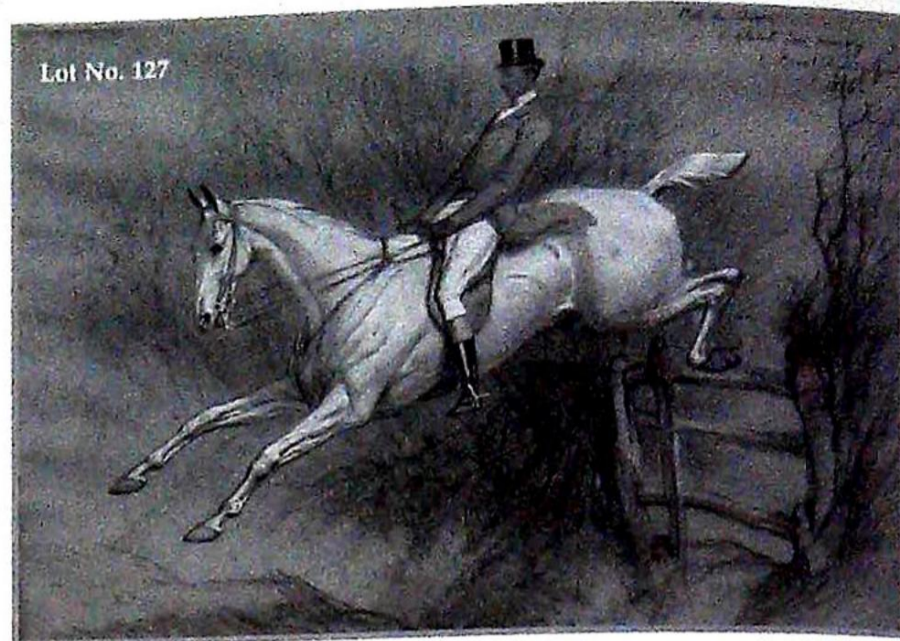


Lot No. 114



Lot No. 121

124. **Charles Spencelayh (1865-1958)**. Study of a young girl, dressed in a blue velvet dress with lace collar, a blue ribbon in her hair, with a kitten in her arms, standing in an orchard, watercolour/body colour, on ivory, signed and dated 1893, 3" x 2 1/4". Cover illustration.
- 124A. **19th Century School**. Portrait of young lady in a green evening gown, watercolour, 3 1/2" x 2 1/2".
125. **After J S Sanderson Wells (1872-1955)**. Hunting Scenes, reproduction colour prints, a set of four, 9 3/4" x 14".
126. **After Basil Nightingale (1864-1940)**. 'Bay Winds on Doneraile ... Memoir of the late Capt W G Middleton, ...', photogravure, image size 11" x 22 1/4".
127. **Basil Nightingale (1864-1940)**. 'With the Quorn', a sketch from memory, pastel/body colour, signed and dated 1896. 17 1/4" x 24 1/2". Cover Illustration and internal.
128. **Gulielmus (William) Wynne Ryland after Anjelica Kauffman**. 'Lady Elizabeth Grey imploring of Edward IV ...', and 'Eleanora sucking the Venom out of the wound which Edward I, her royal consort ...', mixed method engravings, circa 1780. 12 1/2" x 15 1/4". See Bryant's Dictionary of Painters and Engravers.
129. **19th Century School**. 'Watergate Bay', coastal scene with wreck, watercolour/bodycolour, another by the same hand, titles verso. 6 1/4" x 19 3/4". (2)
- 129A. **James Page**. Smugglers in a Cove, watercolour, signed bottom right, 17" x 10".



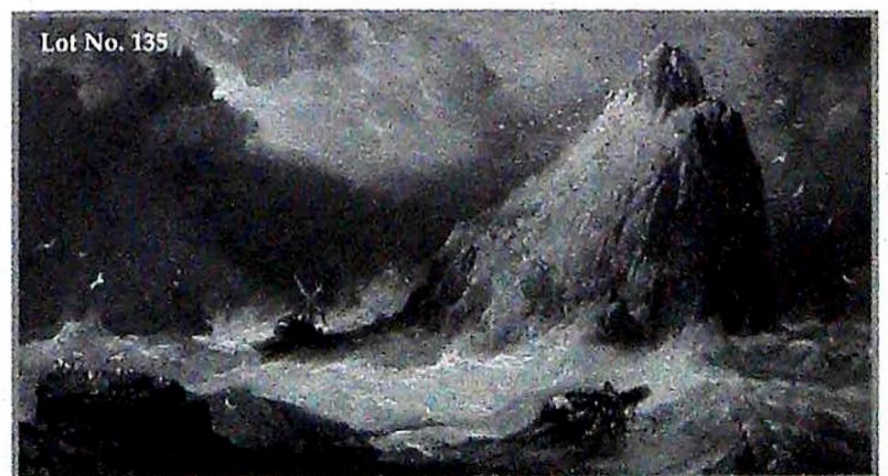
Lot No. 127

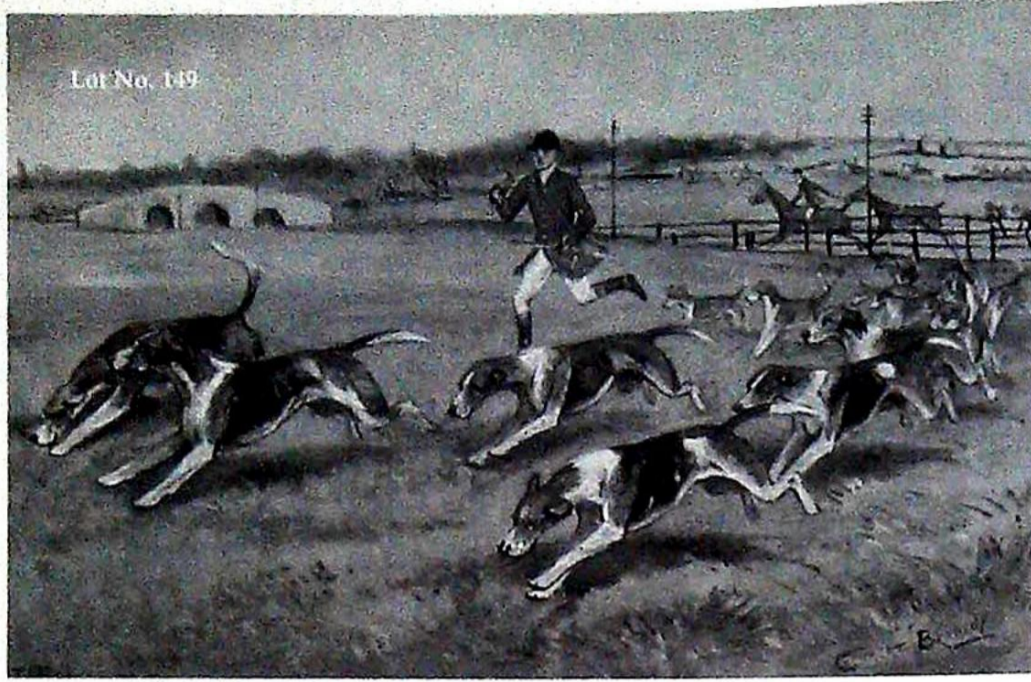
130. **Henriette Ronner-Knip (1821-1909)**. 'Neptune', study of a black and tan Cavalier King Charles spaniel, oil on board, signed with monogram bottom left. 15" x 23 3/4". Cover illustration and internal.
131. **Estella Louisa Canziani (1887-1964)**. Head and shoulders portrait of a lady - facing dexter, oil on canvas, signed and dated 1931 middle bottom, 24" x 20", indistinctly ascribed verso.
132. **C L Fitzroy (19th/20th century)**. Landscape with country church, amidst gravestones, with trees and cottage beyond, watercolour, signed and dated Aug 1895 bottom left, 9 1/4" x 13 1/4".
133. **19th Century School**. Study of a moorland pony, charcoal/body colour, indistinctly signed and dated 28/9/77. 8 1/2" x 11".
134. **Mary McNicholl Wroe (19th/20th century)**. Head and shoulders portrait of an elderly woman, facing right, in high necked black dress and gold brooch, watercolour, signed with initials and dated 1892 top right, 19 3/4" x 15 1/4".
135. **James Webb (1825-1895)**. Shipwreck off a rocky coastline, with sailors clinging to the broken mast, oil on canvas, signed and dated 1869, bottom right, also verso. 8 1/4" x 14". Cover illustration.
136. **19th Century**. Peasant children, chrysolleum, a pair, 4 1/4" x 3 3/4".
137. **I Suyderhoef after W Everfdyck**. Portrait of Johan Van Rouberg, 18thC copper engraving, 8" x 6"; and Thos Cecill. Portrait of Augustus Adolphus, Prince of Finland, 18thC, copper engraving, trimmed to image, 7 1/2" x 4 1/2". (2)
138. **20th Century German School**. 'Wautamburg' etching, signed indistinctly in pencil and dated '23. 8 1/4" x 7 1/4".
139. **H Alken (by and after)**. Sporting Anecdotes 'The Hunting Sweep and the Duke, or Gallantry and Galloping', pl 14, and 'Serious Times - Three Blind 'Uns and a Bolter', pl 3, coloured aquatints, first pub c. 1833/6. 11 1/4" x 15".

140. **Joseph Wright of Derby (1734-1797).** An eruption of Mount Vesuvius across the moonlit Bay of Naples, oil on canvas. 25 1/4" x 33 1/2". Formerly in the collection of Colonel H A Johnson, Allestree Hall, Derby, lot 727 in sale of the house contents Sept 24/27 1928, also included in the catalogue of the sale of the house contents of the Old Rectory, Ufford, Nr Stamford on 18/19 May 2000. Illustrated inside front cover.
141. **Rowland Langmaid (1897-1956).** Three masted ships in full sail, etching, signed in pencil in margin, 11 3/4" x 7 3/4".
142. **Sydney Arrobus (20th Century).** 'Hampstead High Street showing Perrins Court', white gouache on black paper, signed bottom left, 9 1/4" x 14 1/4".
143. **Cuthbert Bradley (1861-1943).** 'Amazon Queen', half length profile portrait of a nurse, watercolour/body colour, signed and dated 1927 bottom right, inscribed below image 'To Sister Hudson, St Clements Nursing Home, Grantham in remembrance Oct. 27. Dec. 6. 1927 from Cuthbert Bradley'.
144. **After Alken.** First Steeplechase on Record, engraved by J Harris, plate 2, modern gilt frame.
145. **E** G** Stott.** 19th/20thC. Still life of dahlias, another of chrysanthemums, oil on canvas, signed and dated 1899 bottom right. 38 1/2" x 15".
146. **19th Century School.** Still life study of fruit, nuts and leaves, oil on canvas, indistinctly signed and dated '96. 8 1/4" x 12 1/4".
147. **19th Century School.** Still life study of strawberries and apples, oil on canvas. 6 1/2" x 9 3/4".
148. **20th Century English School.** Still life of tulips, carnations, iris, peonies and daffodils in a vase, oil on canvas, unsigned, 33" x 23 1/2". Illustrated.
149. **Cuthbert Bradley (1861-1943).** 'Tom Isaac Finishing a Hunt on Foot, Nr Sleaford Town, March-2-1911', watercolour/body colour, signed bottom right. 6 1/2" x 10". Illustrated.



150. **E Lara (19th Century).** Fishing boats in a Choppy Sea and Boats off the Coast, a pair, oil on canvas, signed bottom left, 16 1/4" x 24".
151. **W Payne (19th/20th Century).** Tree lined path leading to a country cottage, lakeside, watercolour, signed, 14 x 10.50 inches.
152. **E Ridal.** Watercolour, pair, river scenes, gilt framed.
153. **Vito.** Pair of gilt framed continental cove scenes, watercolour.
154. Spare lot.
155. **James G Faulds (20th Century).** Study of 2 children by the sea with seagulls, watercolour, signed bottom right. 10" x 14".
156. **James G Faulds (20th century).** Mussel Collectors, watercolour, signed bottom right. 10" x 14".





157. **James G Faulds (20th Century)**. Children playing on a beach with fishing net, watercolour, signed bottom right. 10" x 14". Cover Illustration.

158. **James G Faulds (20th Century)**. Children and nursemaid paddling on a beech with toy yacht, watercolour, signed bottom right. 10" x 14".

159. **James G Faulds (20th Century)**. Children and nursemaid on grassy knoll, sea beyond, signed bottom right. 9 3/4" x 14".

160. **James G Faulds (20th Century)**. Children swinging from the prow of a fishing boat, watercolour, signed bottom right. 10" x 14".

161. **18th/19th Century**. 'John of Gaunt in Love, or Mars on his Knees', political cartoon regarding the Duke of Cumberland, copper engraving. 9" x 12 1/4".

162. **18th/19thC School**. Study of children, one of a girl holding a dove, the other, boy with grapes, monochrome ink on panel, 6 3/4" x 5 1/4", within contemporary oval gilt frames.

163. **19th Century School**. Church interior with figures, watercolour, indistinctly signed, 8" x 6".

164. **Robert Pearson 19th/20th Century (attrib.)** Haymaking, oil on board, signed R Pearson bottom right, 8 1/4" x 12 1/4".

165. **After Robert Morden**. 'Leicestershire', single sheet hand coloured map, 6 3/4" x 8 3/4"; another of Lincolnshire, early 18thC, 8 1/4" x 6 3/4". (2)

166. **Ada France (20th Century)**. Still life of dead game with ale jug, oil on canvas, signed and dated 1900 bottom right, 20 1/4" x 27".

167. **Ada France (20th Century)**. Still life of roses spilling from a basket, oil on canvas, signed and dated 1904, 17 3/4" x 24". Illustrated.

168. **Ada France (20th Century)**. Still life of roses, a pair, oil on canvas, signed and dated 1901 and 1903, 12 3/4" x 37".

169. **19th Century School**. Watering cattle in a highland landscape, oil on canvas, 20" x 30".

170. **After F Cecil Boulton**. 'A Breast-High Scent', colour print, from Fores Hunting Incidents, plate VII, pub circa 1886, image size 14" x 29 1/2".

171. **After H Alken**. 'The Climax of Disaster'. Plate VII, hand coloured aquatint by Bentley, 19thC, image size 10" x 14 1/4".

172. **After Snaffles (Charles J Payne)**. 'Blighty - and only five-and-twenty percent of the danger', colour print, signed in pencil bottom left, 15" x 12".

173. **A moulded oak framed play bill of 1827** for William Tell, the Lancers and Midas at Drury Lane.

174. **After Robert Morden**. 'Derbyshire', a double sheet hand coloured map, c.1695/1713, 14 3/4" x 16 3/4".

175. **Gilpin**. Landscape pencil sketch and another.

176. **After Robert Morden**. 'Nottinghamshire', a double sheet hand coloured map, C.1695/1713, 14 1/2" x 16 3/4".

177. **Pencil sketch** of a barn, small lakeland watercolour and watercolour of Weston Supermare (3)

178. **19th Century School**. Continental landscape, travellers on a mountain pass at a religious shrine, watercolour/body colour, 12" x 9 1/4".

179. **19th/20th Century French School**. Head and shoulders portrait of a young woman, in artist's smock and red tie against a green background, oil on canvas, 18" x 15".

180. **After Thomas Rowlandson**. Comforts of Bath, colour print 5" x 7".

181. **T Bowles (engraver)**. 'Westminster Abbey', 18thC, copper engraving, plate size 8 1/2" x 13 1/2".

182. **English School**. A series of 3 landscape pencil sketches of Kent. c. 7" x 10".

183. **19th Century School**. Scottish landscape with meandering river, hills beyond, gouache on paper laid onto card, 15" x 19 1/2" (partially obscured behind mount).

184. **After Augustus Edwin John**. Musicians under an archway, lithograph, 16" x 11 1/4".

185. **After Ocean*** Coquilles**. Study of a female nude, monochrome print, 20thC, 12" x 9".

186. **A small en grisaille watercolour scene** of fishermen.

187. **20th Century School**. River landscape with tree lined banks, hills beyond, oil on board, 20" x 30".

188. **3 Lawson Wood cartoons**.

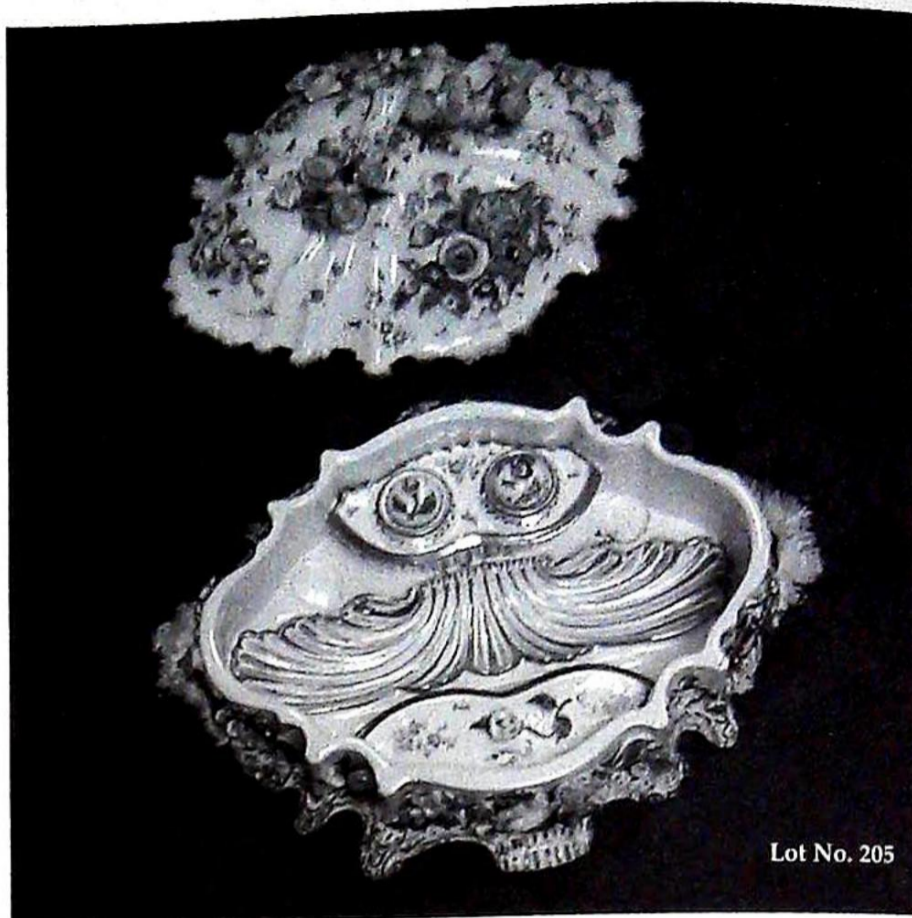


189. **E Walker (20th Century)**. Still life study of blue delphiniums in a vase, oil on board, signed bottom right, 17" x 14 3/4".
190. **After Arthur Pan**. Winston Churchill - seated, with text and facsimile signature, reproduction black and white print, published by Frost & Reed, c.1944, image size 9 1/2" x 12".
191. **Kramer (20th century)**. Abstract - figures in cloisters, mixed media/collage, signed bottom right, 19" x 3 1/2".
192. **After Bartolozzi**. Full length portrait of Miss Amelia Pott, sepia engraving, 13" x 8".
193. **20th Century School**. Extensive seascape with cliff coastline, oil on canvas, indistinctly signed, 20" x 30".
194. **Follower of Rossetti (19th/20th Century)**. Madonna and child, canvas laid onto board, 32" x 19 1/2". Illustrated.
195. **20th Century School**. Woman in a winter landscape at sunset, oil on canvas onto board, indistinctly signed, 13" x 14 1/2".
196. **W McTaggart (style of)**. Three figures in a rural landscape, oil on board, 19thC, 11 3/4" x 15 1/2".
197. **19th Century**. A collection of sepia facsimile prints of Old Master Works, folio, approx 57 in total, (unframed).
198. **After Francesco Zuccarelli**. 'Su della motte erbetta or prende posa Ed' fresco dell' aque in paste ombrosa', copper engravings, 18thC, 15 3/4" x 20 3/4", probably trimmed to image, unexamined out of frame.
199. **After William Linton**. 'A City of Ancient Greece' and 'The Ruins of Carthage', steel engravings, 19thC, image size 9" x 13 1/4".
200. **19th Century**. Head and shoulder portraits of young women, heavily decorated with flowers, hand coloured lithographs and collage, 22" x 17". Illustrated.



GLASS & CERAMICS

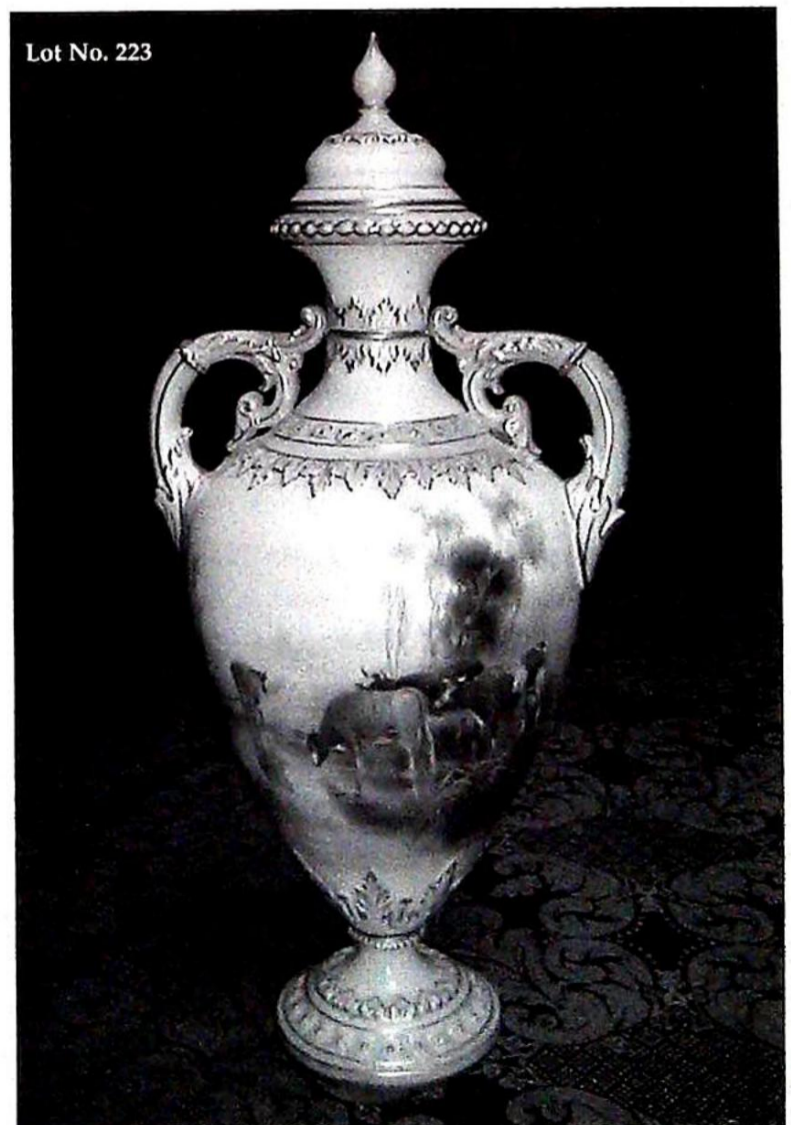
201. A Maling plate, polychrome and gilt with anemones and foliage, on a grey mottled ground within a scroll border, 11 1/4" dia, printed factory mark and numbered 383.
202. A Shelley pottery chamberstick with a streaky blue/grey glaze, the circular, slightly dished base having a loop handle, 4 3/4" dia.
203. A Royal Worcester model 101 conchalogical vase, blush ground. 7" high. (a/f).
204. A Sylvac type blue pottery dog, with brown highlights, marked 1118 to underside, 6 3/4" high; another, of a Highland Terrier, impressed Sylvac 3447, 5" high.
205. A Victorian porcelain ink stand of gilt and floral encrusted scalloped form, the removable cover revealing a polychrome scrolling pen tray, double ink stand with covers and further compartment cover, circa 1850, 11" wide. Illustrated.
206. A Moorcroft pottery circular fruit bowl, painted in the big poppy pattern on a white ground, with an EPNS rim, facsimile signature in blue to underside, 8 1/2" dia.
207. A Royal Worcester model 1672 vase and cover, blush ground hand painted with Chrysanthemums, 1893. 12" (a/f).
208. An early 20thC Satsuma ovoid vase, painted, enamelled and gilt with figures and dragon, with moulded insect handles, 4 3/4" high, on wooden stand.
209. A collection of Staffordshire cottages, and a pastille burner 19th/20thC.
210. A Chameleon Ware pottery ovoid vase by Clews & Co, painted with overlapping autumn leaves below a geometric border, on blue mottle ground, 7" high, c.1935.
211. A collection of Staffordshire Cottages (5)
212. A Royal Crown Derby porcelain rabbit paperweight, blue and gilt sprigged body; another of a doormouse, decorated in autumn colours and gilt with barley corns, stoppers missing.
213. Two Royal Crown Derby porcelain bird paperweights, blue, iron red and gilt bodies, (stoppers missing).
214. Two Royal Crown Derby porcelain bird paperweights, predominantly blue and gilt with iron red highlights.
215. A Crown Devon coffee service, painted with terracotta panels and gilt lines on a cream ground, (one cup missing and one with rim chip), impressed 'Modane', black factory marks.



Lot No. 205

216. Beswick. Ayrshire Cow Ch. 'Ickham Bessie' model no 1350, gloss, 5" high, Jersey Cow Ch. 'Newton Tinkle' model no 1345, gloss, 4 1/4" high, and Fresian Bull Ch 'Coddington Hilt Bar', model no 1439A, gloss, 4 3/4" high. (3)
217. Beswick. Sheepdog, large, model no 1792, black and white gloss, 5 1/2" high, Collie, small, model no 1814, golden brown and white gloss, 3 1/4" high, Thoroughbred Stallion model no 1992, brown gloss, 5 1/2" high, together with 6 assorted pieces with faults.
218. A Royal Worcester porcelain figure group of gamboling lambs, 5" high, modern factory mark.
219. A German porcelain figure of a classically dressed woman holding a basket of flowers at her left hip, a flower in her raised right hand, with a flower filled urn at her feet, on scroll moulded base, early 20thC, blue factory mark probably Eckert, Thuringia, 6" high.
220. A pair of 19thC Staffordshire pottery dogs, white with gilt highlights and grey paws, 9" high, (one cracked).
221. A 19thC Staffordshire pottery dog, painted with iron red splashes, 6 1/2" high (crack to back); another, with white glaze, 8" high. (2)
222. A late Victorian moulded glass table lustre, with a fold-over rim, on panelled baluster column and spread foot, with alternating clear and green faceted drops, 8" high.
223. A George Grainger & Co (Worcester) ovoid 2-handled vase and cover, painted with a scene of watering cattle by John Stinton, a blossom to the reverse, moulded and gilt with formal leafage and scrolls, the domed cover with baluster finial, 13 1/4" high, printed factory marks for 1902, model no 998. Illustrated.

224. A late 19thC Volkstadt porcelain music group after Kandler, mark to base in underglaze blue, 22" wide, 15" deep.
225. A Royal Doulton stoneware ovoid vase, probably by Mark V Marshall, painted in tones of blue and green with flowers and grapes joined by interlinking lines, on white slip ground, c.1902, impressed no 7941, 6" high.
226. A Whitefriars type cranberry glass vase, of circular flared form, lightly ribbed to the interior, 10" high; another vase, of blue glass with frill rim and wrythen flutes, 9" high.
227. An early 20thC English Art Pottery vase, the deep circular neck linked to the baluster body by 4 loop handles, with blue/green/brown streaky glaze, incised with panels of 'crazy paving', the neck with boss shields, impressed mark, 10 1/2" high.
228. A Victorian ruby glass table lustre, the deep bowl with shaped rim, enamelled with flowers, baluster column on domed foot, hung with faceted drops, 13 3/4" high.
229. A Clarice Cliff Bizarre 'Crocus' bachelor tea set, painted in colours, comprising teapot and cover, milk jug, sugar bowl, one cup, saucer and side plate, printed factory marks, teapot 4 1/2" high, (repair to sugar bowl).
230. A Victorian milk glass table lustre, having a flared bowl, with gilt line rim, painted and gilt with flowers and foliage, on a baluster column and domed foot, with similar decoration, hung with 2 rows of faceted glass drops, 14" high.
231. A Royal Dux figure of a young woman in Edwardian dress, leaning against a shell, with dished base, 7 1/4" high, no 814.
232. A cranberry glass sugar castor with EPNS cover, 6" high, a vaseline glass vase with crimped rim, 6" high, and a small glass decanter with applied prunt decoration, (stopper missing) 6 3/4" high. (3)
233. A pair of 19thC 'Samson' porcelain cats, seated on square cushions, painted with grey splashes with iron red collars, the cushions in underglaze blue with gilt tassels, gilt anchor mark to underside, 2 1/2" high.
234. A German porcelain ovoid jar and cover, in the style of Helena Wolfshan, the blue ground painted with a dancing couple in a garden, and opposing flower spray, within gilt reserves, the domed cover with conforming decoration, 20thC, 12" high.
235. A pair of Arthur Wood pottery sectional wall pockets, painted with flowers and foliage in polychrome, 9" high.
236. A pair of Imari ovoid vases, each painted in typical palette with mirror reserves with pagodas and blossom, on a ground painted overall with flowers, foliage and fan shaped panels with insects and birds, 9 3/4" high.
237. A late 19thC pottery plate, by Petrus Regout & Co, Maastricht, Holland, painted in orange and brown with a crown over W, inscribed verso, 'Het Verheugd Amsterdam Aan Zijne Kinderen in Huldiging 1898', 8" dia, together with a Petrus pottery charger, printed in green with an overall geometric pattern, 14 1/4" dia.
238. A pair of high-fired stoneware ovoid vases each with 3 loop handles, possibly by Ruskin Pottery, brown ground beneath mottled and streaky ochre and greyish glazes, 9" high.
239. Royal Crown Derby 'Old Avesbury' pattern: a milk jug with rope handle, 6" high, bread and butter plate, tea late, saucer (hairline crack) and a trinket dish, modern. (5).
240. A Regal Ware pottery ovoid vase, decorated to the shoulder with poppies in green, magenta, blue and gilt, below a black neck rim, on a buff mottled body, 9 1/4" high, c.1930.
241. A 19thC Staffordshire blue and white soup tureen and cover, printed with the Willow pattern, 15" wide, (cracked), a rectangular tureen, printed with an English landscape, 9 1/2", another, Willow pattern, 9 1/4", a Mintons circular bowl, printed with the Willow pattern, 7 3/4" dia. (4)





242. **A Fieldings Crown Devon jardiniere**, of circular lobed form, on raised foot, polychrome printed and gilt with fence, flower sprays and swags, 7 1/4" high, c.1920.
243. **A Royal Crown Derby 'Derby Posies' tea for two porcelain tea service**, comprising teapot and cover and stand, milk jug, sugar bowl, 2 cups and saucers, in original fitted box. Illustrated.
244. **A pair of Newhall Boumier Ware lustre vases**, designed by Lucien Boullemier, of circular form with flared necks, each having an orange speckled ground and border printed in black with exotic birds and flowers, 8" high.
245. **A Royal Crown Derby porcelain bird group** of greenfinch and chicks, on a tree stump with flower encrusted base, 4 1/2" high.
246. **A Charlotte Rhead Trellis design shallow dish**, internally decorated with a border of stylised leaves and berries in orange, blue, green and pewter within trellis, raised on 3 cup shape feet, 8 1/2" dia, signed C Rhead and numbered 5623.
247. **A Crown Staffordshire porcelain bird group designed and modelled by J T Jones**, of a budgerigar perched upon a flower encrusted branch, 7 1/4" high.
248. **A Doulton Burslem Aesthetic Period pottery plate**, printed in brown with a panel of wading birds, between blue and black trellis panels over blossom, highlighted in iron red, 10 1/2" dia; another plate, in the same manner, impressed factory mark for Piuder, Browne & Co, 10 1/2" dia (rim chips). (2)
249. **A pair of Satsuma circular vases** with elongated necks and faux bronze bands, enamelled with battle scenes, 9 1/4" high, together with a baluster vase and cover, similar, 8 3/4" high.
250. **A Carter Stabler Adams terracotta milk jug**, with floral sprays on white slip ground, 3 1/2" high; another, with baluster body, similarly painted, 2 1/4" high, both with impressed factory marks and painter's initials.
251. **A Chinese famille verte ginger jar and cover**, enamelled with reserves of flowers, rocks and foliage, against a pink and green scrollwork ground within lappet borders, 7 1/4" high.
252. **A Beswick pottery figure of a pheasant** on a rectangular base, model no 1774, 4 3/4" high.
253. **A 19thC Chinese pottery fern pot**, decorated in underglaze blue with dragons chasing the sacred pearl, 6" dia, together with a Kutani style porcelain cup and saucer, decorated in iron red and gilt with birds and flowering plants.
254. **A Wedgwood drabware game pie dish**, oval, moulded in relief with dead game and fruiting vines, leaf rim, the cover with rabbit finial, 8 3/4" wide, impressed factory mark, 19thC.
255. **A 19thC majolica circular pedestal vase**, with streaky brown, blue and green glaze on a buff ground, moulded in relief with leaves and bead borders, 5 1/4" high.
256. **A Moorcroft flambe vase of slender inverted baluster form**, with rouleau neck, 9 1/4" high, impressed marks and facsimile signature, 1930's.
257. **A Minton 'April' pattern bone china dinner and tea service**, printed and enamelled with a border pattern of leaves and flowers in green, ochre and brown, within gilt line rim, approximately 48 pieces.
258. **A Noritake coffee cup & saucer** painted with oasis pattern in blue and gilt border; another painted with formal flower sprays in gilt borders; another with overlapping leaf pattern, a sugar bowl & cover green with silvered panels raised on 3 columns with circular base, with scoop, 19thC Chinese blue & white teapot, circular lobed form painted with butterflies below a lappet border, a 19th century Chinese blue and white teapot, of circular lobed form, painted with butterflies below a lappet border (replacement cover).
259. **An English Art Pottery baluster vase**, in the style of Ruskin, high-fired with a streaky glaze of blue, ochre and green, impressed marks and no 74, 11 1/2" high.
260. **A pair of early 20thC German porcelain figures** of a flower seller in puce jacket and yellow breeches, and a female companion in blue and yellow dress with flower sprigged underskirt, both on rococo bases, 5 1/4" high.
261. **A 20thC German porcelain wall mirror**, the shield shape frame moulded and gilt with rococo scrolls and applied amorini and roses in blue, 23 1/2" x 17".
262. **An earthenware moon flask**, decorated with a prunus tree in brown and white on a pale grey glaze, 10 1/2" high.
263. **A late 19thC continental porcelain and gilt metal hat pin stand**, modelled as a half-open umbrella, having a turquoise ground painted with floral garlands, supported upon a gilt metal circular stand on 3 pierced scroll feet, 8 1/2" high.

264. **An 18thC Delft blue and white plate**, centrally painted with a vase of flowers within a simple scroll well, the border with elementary flower forms, 8 1/4" dia, (crack and chip to rim).
265. **An 18thC Delft blue and white plate**, centrally painted with a Chinese landscape, the borders with simple plant forms, 9" dia.
266. **An 18thC Delft blue and white plate**, centrally painted with a basket of flowers within a foliate border reserved with floral panels, 9" dia.
267. **A collection of crested china** including Punch and Judy (Boston Spa), Cenotaph (City of London), Bible (Sandringham), Jester (Cleethorpes), Letter Box (York), approx 28 pieces.
268. **A late 19thC pottery teapot and cover in the aesthetic style**, possibly by Brownhills, the cream ground moulded in relief with bamboo and blossoms, with faux bamboo handles and spout, 8 1/4" high.
269. **A Clarice Cliff Bizarre sugar sifter** of conical form, painted in bands of white, grey and 2 shades of blue, printed factory marks in black, 5 1/2" high.
270. **A pair of Victorian white splashed yellow glass vases**, of baluster form, each with flared tri-form necks and clear glass loop handles, painted and enamelled with flower sprays, 10 1/2" high.
271. **A pair of Victorian yellow glass miniature pedestal urns**, of ovoid form with tall flared necks, clear glass prunt handles, painted with orange flowers and leaves, 6 1/2" high.
272. **A Coalport 'Hong Kong' pattern porcelain plate**, printed and painted in underglaze blue, iron red and gilt with birds amongst flowers and foliage, gilt line rim, 9" dia; another Coalport plate 'Jade' pattern, polychrome with exotic flowers and foliage, with gilt highlights, gilt line rim, 8 3/4" dia; a Mintons 'Delft' pattern plate, printed in blue, 9 1/2" dia, all 20thC. (3)
273. **A Copeland pottery octagonal plate**, monochrome painted with a coastal view inscribed verso 'Sidmouth' signed W Ajale, impressed factory marks; another, mountain view, inscribed verso 'Cader Idris N.Wales', 8 1/4" wide, late 19thC.
274. **A Chinese blue and white export plate**, decorated with a lakeside house amidst foliage, 9 1/4" dia, a Wedgwood pearl 'Camelia' pattern plate printed in blue, 9 1/2" dia.
275. **A Worcester tea bowl with wrythen body**, gilt line rim and painted with harebells in brown and gilt, another tea bowl, internally painted with a sprigged encircling border and gilt lines, c.1790. (2)
276. **A New Hall tea bowl and two matching saucers**, (one cracked), painted with entwined borders in underglaze blue and pink sprigs, and random flower sprays, c.1800, 5 further New Hall tea bowls, two saucers and a plate. (11)
277. **A late 19thC French porcelain tea service**, printed with images of charioteers and motifs within terracotta, black and gilt borders.
278. **A quantity of 19thC porcelain tea cups and saucers**, polychrome painted and gilt with blossom and stylised buildings, within blue wash line borders.
279. **A 19thC glass rummer**, the bowl simply engraved with birds and foliage and inscribed 'Mary Ann Tessear, Came to Clinton, on July 10 * 1841,* For the First Time', with knopped stem and circular foot. 4 3/4" high.
280. **A Grays Pottery charger**, polychrome painted and gilt with flowers and foliage against a cream ground, 15 3/4" dia (repaired).
281. **A Staffordshire pottery 'Oxford' pattern part dinner service**, printed in underglaze blue, approx 24 pieces including 2 tureens and covers.
282. **A pair of 19thC earthenware oval meatplates** printed with a lustre and black border pattern, printed strapwork factory mark 'Exhibition 1790, B E & Co.
283. **A set of Chinese blue and white export rice bowls**, painted with simple plant forms, 2 smaller bowls and a large pottery bowl painted with peonies and foliage.
284. **A German porcelain table centrepiece**, the pierced basket painted and encrusted with flowers, supported by a scrolling column and base with encrusted flowers and with cherubs, 12" high, (repaired).
285. **A German porcelain figure group** of 2 young boys snaring rabbits. Illustrated.
286. **A Bohemian cranberry glass vase**, of panelled trumpet form, with petallated rim, knopped lower body, heavily gilt and silvered with foliage, on clear glass foot, cut to underside, 8" high. Illustrated.
287. **An 18thC blue and white delft 2-handled pot**, painted with figures in an oriental landscape and with serpent handles, 8 1/4" over handles.
288. **A Derby dish** painted in the Imari palette with mirror panels of birds and flowers, peonies and blossom, within moulded border painted with foliage, 8 1/4" dia, year cypher for 1888, a small Imari bowl with wavy edge painted in typical palette, 5" dia, a blue and white Chinese export shallow bowl painted in blue with a Chinese landscape within geometric and ochre border, 6 1/2" dia (crack) and an enamelled glass dish, inscribed Roye verso, 5" dia



Lot Nos. 285 & 286



Lot No. 289

289. A pair of German porcelain table centre pieces, modelled as cornucopia, supported by scrolls, painted and gilt with birds, flowers and trailing swags, against a green ground, and raised on rectangular bases, with gilt flowers and foliage on an orange ground, 9" high, 7" wide. Illustrated.

290. A heavy glass vase paperweight, ovoid, internally decorated in purple, green and white with snake-head fratillaries, early 20thC, 5 1/2" high.

291. A pair of heavy cut glass decanters, of baluster outline, each with a stepped faceted neck and hobnail cut bodies, the baluster stoppers with conforming ornament, star cut to undersides, 10 1/2" high.

292. A pair of Victorian glass rinsers, of plain form, 3 3/4" high, a glass vinegar flask, rectangular with canted corners and teardrop stopper, 7 1/4" high, a firing glass and a custard cup. (5)

293. A Bohemian amber glass goblet, of faceted form, the bowl having 3 clear glass bosses engraved with flowers and motifs and further engraved with flowers and foliage, 6" high, another, engraved with views of Wiesbaden, 4 1/4" high. (2)

294. A pair of cauldron shape green glass vases, raised on 3 feet, the bowls enamelled with heraldry and inscribed Anno 1667, 4 1/4" high.

295. A Kutani type porcelain plate, painted and gilt with a family group in a garden with blossom and birds within a cloud shaped border, gilt with scrolls and foliage, 8 1/4" dia.

296. A Chinese Imari saucer dish, painted in typical palette with flowers and foliage issuing from rocks, a table with vase of flowers to the side, within flower trellis border, 6 1/4" dia.

297. A green glass decanter, of flattened spherical form, with loop handle and with metal collar and stopper, 19thC, 8 1/4" high, together with a blue club shaped spirit decanter with associated lozenge stopper, inscribed in gilt 'Brandy', 19thC, 9" high. (2)

298. A pottery wine carrier, early AD.

299. A pottery oil carrier, early AD.

300. A pair of Georgian green glass flagon decanters, of compressed circular form, with loop handle brass collars and brass and cork stoppers, 8.75 inches high, circa 1830.

301. Five Victorian glass custard cups, each with flared faceted bowls with scroll handles, on circular foot.

302. A pair of dram glasses with conical bowls, the stems with double opaque-twist core, on plain conical foot, 4 1/2" high, 18thC.

303. A pair of dram glasses each having funnel bowls supported by multi-twist opaque stems, on plain conical foot, 4 1/2" high.

304. A commemorative wine glass, the trumpet bowl engraved with ER cypher, Crown and Coronation May 12th, 1937, on a long drawn stem, with internal teardrop, on folded circular foot, 9 3/4" high.

305. A set of 4 rimmers, with bucket shape bowls, on plain stems and stepped feet, 5" high, another pair, similar, 5 1/2" high, together with a large goblet, the rounded bowl on baluster stem and plain circular foot, 6 3/4" high. (7)

306. A tumbler, engraved with stylised plant forms and inscribed P Burnett, on plain rounded foot, 6" high, together with a pair of dram glasses engraved with swags on faceted stems, and plain circular feet, 4 1/2" high.

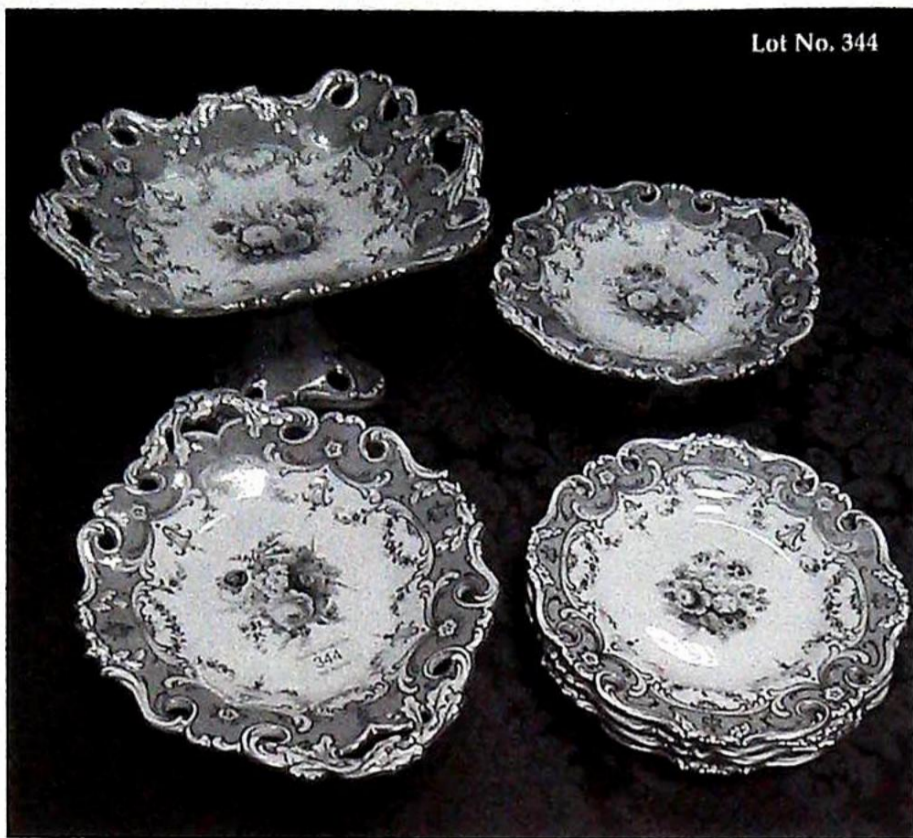
307. A cut glass water jug, the bulbous body with panels of small cut diamonds, panel and flute cutting, notched rim, loop handle, 5 1/2" high, another, of tapering circular form, with similar cutting, 6" high, a smaller example. (3)

308. A pair of custard glasses, with diamond and flute cutting and loop handles, another 2 examples. (4)

309. A semi-opaque glass vase, having a cylindrical body with elongated flared neck, with random etched overall decoration, 8" high.

310. A heavy Loetz style glass vase, of ovoid form, with blue/green oil lustre, 7" high.
311. A cut glass decanter, of mallet shape, with single neck ring, the body cut with hob nail panels and alternating engraved panels of fruiting vine, conforming stopper, star cut to underside, 15" high.
312. A heavy cut glass decanter with swelling faceted body, 4-sided stopper and star cut to underside, 13 1/4" high, together with a pair of sherry decanters with thumb cut bodies and with teardrop stoppers, 11" high.
313. Five sundry decanters, a celery jar and bottle, some with etched decoration. (7)
314. A cut glass decanter, of baluster form, with diamond and flute cut body, triple flared rim and faceted stopper, star cut to underside, 13 1/2" high.
315. An early 20th century glass pedestal dish, the circular bowl externally etched with leaves and berries, having a hollow stem and on circular foot with conforming etching to the underside, 9.25 inches diameter, 10.75 inches high.
316. A cut glass tazza, with diamond and petal cut border pattern, on silesian stem, and star cut circular foot, 8" dia, and a Georgian goblet, engraved with initials within flowers and ferns, on faceted stem and plain circular foot, 5" high.
317. A Kutani vase, c.1880, with a flared rim, elongated neck and ovoid body, painted with figures in a landscape, 6 1/2" high.
318. A Kutani vase, c.1880, of circular tapering form, enamelled and gilt with birds and flowering plants, 10" high.
319. A Kutani vase, c.1880, of circular tapering form, painted with a figural panel, opposing panel of birds and flowers, divided by floral sprays, 10" high.
320. A Kutani lidded tankard c.1880, painted with birds and flowers within shaped panels, the cover with conforming decoration, with rounded finial, 8 1/2" high.
321. A Satsuma well-shaped bucket, c.1920, highly coloured and gilt with Japanese flowers and motifs, 10 1/4" high, together with a Japanese saki bottle, painted and gilt with flowers on a celadon ground, 7 1/4" high and a Satsuma pot and cover, enamelled and gilt with flowers, 4" high. (3)
322. A pair of Kutani plates, c.1890, each painted with mirror shaped panels of figures in a landscape and adjacent panel of birds and trees, against a trellis ground, 8 1/2" dia.
323. A Kutani plate, c.1860, centrally painted with a bird amongst flowering plants, within multi-pattern geometric border, 8 1/4" dia. Illustrated.
324. A Kutani plate, c.1890, painted with a panel of figures in a landscape, and an adjacent panel of partridge by a lakeside, with flowering plants, against an insect and grass ground, 8 1/2" dia. Illustrated.
325. A Japanese double gourd shape wine ewer, with loop handle and upwardly curving spout, applied enamelled and gilt with flowers, grasses and insects, the cover with flower finial, 6 3/4" high. Illustrated.
326. A Satsuma pot by Kinkozan, of compressed circular form, painted with 2 panels of courtly ladies and their entourage and an opposing panel of flowering plants, against an underglaze blue ground, gilt with fern, signed to underside, 4" dia, (damaged). Illustrated.
327. A pair of Kutani vases, late 19thC, of baluster form, each painted with panels of birds and flowering plants, 13 1/2" high. Illustrated.
328. A Kutani cat, asleep with its head between its paws, gold splashes and red collar, 4" wide. Illustrated.
329. A Kutani cat, as above, with gold and black splashes, 2 1/2" wide. Illustrated.
330. A Kutani dog, playing with a ball, gilt and red highlights, 2 1/2" high, together with a crimson opaque glass tea light holder. Illustrated.





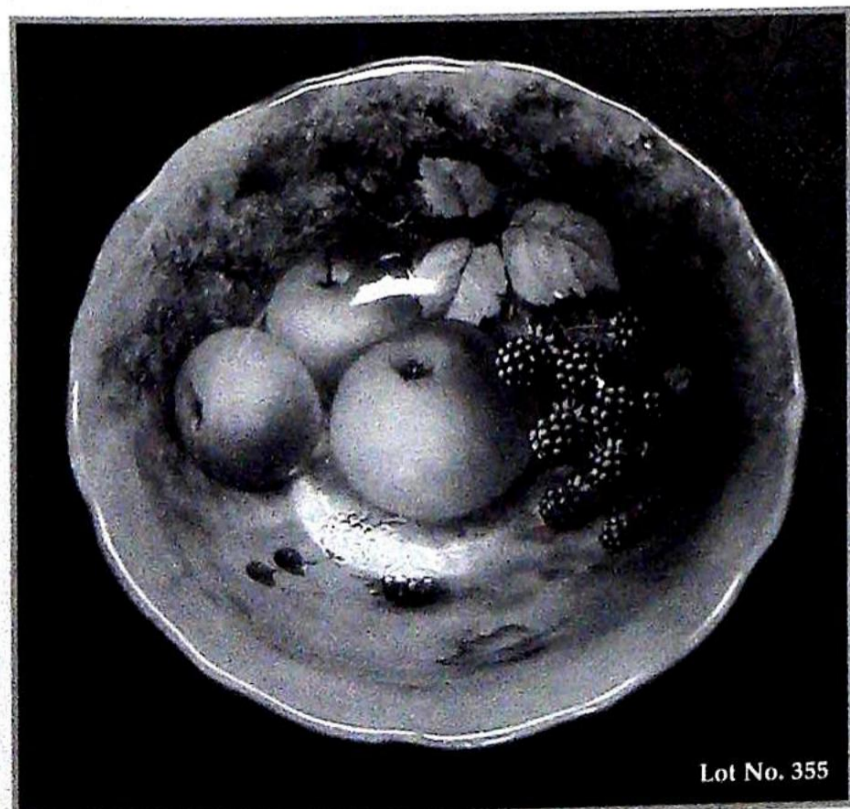
331. A continental porcelain vase, late 19thC, of baluster form, painted with a galante and his lady within a gilt scroll cartouche, with an opposing landscape vignette, 5 3/4" high, together with a cream ground earthenware goblet, the circular bowl on swelling knopped stem and domed foot, with applied green glaze fruiting vine, 3 1/2" high.
332. An opaque glass vase, c.1880, of baluster outline, painted and enamelled with exotic flowers, the neck tinted red, 13 1/2" high.
333. A Cornish ware mixing bowl by T G Green, with pouring lip, 9 3/4" dia, green printed factory mark, another bowl, with later mark, 6" dia.
334. A Falcon Ware pottery vase, 20thC, of spherical outline with elongated neck and everted rim, printed with a continuous wildlife scene of ducks over water and bullrushes, on a blue grund, no 228, signed Kitty Young?to underside, 7 1/4" high, (crack to neck).
335. A Lovatt & Lovatt, Langley stoneware vase, late 19thC, of compressed baluster form, having an elongated brown glaze neck, over a ribbed body, turquoise and incised with cherry blossom in delicate hues and gilt, 6" high, together with a copper lustre footed bowl, c.1835, externally painted with an ochre band and moulded in relief with roses, 4 3/4" dia.
336. A copper lustre footed bowl, c.1835, externally decorated with a blue band and moulded in relief with polychrome flowers, 5 1/4" dia, together with a black glaze pottery spill vase, enamelled with flowers amid a lapet border, on raised circular foot, 5 3/4" high. (2)
337. A Cantonese famille rose vase, 20thC, of rectangular tapering form, flared rim, and with moulded handles, painted with figural panels, 11 1/4" high.
338. A pair of Parian figures of a Shepherd and Shepherdess, in 18thC costume and with sheep and dog recumbant at their feet, on circular bases, 19thc, 9" high. (one AF).
339. A porcelain plaque, late 19thC continental, painted with a scene of the Madonna and Child within a temple, 7" x 5".
340. A Worcester wrythen moulded tea bowl, painted and gilt with floral sprigs within gilt lines, 3 1/4" wide, c.1780.
341. A pair of Flaxman Ware pottery vases, of quatrefoil tapering forms, with fluted and stipple panels, loop handles, having a green/blue streaky glaze, on flange foot, 9" high.
342. A French faience puzzle jug, 19thC, of baluster form, with overhead and side handles and mask spout, the yellow grund painted with armorial and trefoil within panels, 12" high.
343. A Shelley pottery vase, of circular tapering form, externally glazed with orange/green streaks, internally green, on stepped circular foot, 8" high.
344. A fine John Ridgway bone china dessert service, each piece centrally painted with a bouquet of differing flowers, within a pierced and moulded border, glazed in apple gren, yellow and gilt, comprising one large pedestal comport, 2 smaller pedestal comports and 4 plates, pattern no 6/4176, c.1855, the large comport 7" high, 12 1/4" over handles, the plates 9" dia. Illustrated.
345. A pair of Staffordshire type pottery poodles, each with black splashes and brown collars, 7 1/2" high.
346. A Royal Doulton figure 'Thank you Snowman', 5" high.
347. A Royal Doulton figure 'Bo-Beep', Reg No 820495, 5" high.
348. A Victorian pottery chamber pot, printed in brown and painted with colourful flowers.
349. A Royal Doulton series plate 'Roger Solemer, Cobler', 10 1/2" dia, a Wedgwood Ltd Edition plate 'Park House', 1985, no 1023/2500, and a Silver Jubilee plate. (3)
350. Seven decorative plates inc Meissen 'Onion' pattern, 19thC and later.
351. A Beswick pottery figure of a Scottie dog, 6 1/2" wide.
352. A Beswick pottery figure of a Corgi, 6" wide.
353. A Doulton Lambeth stoneware tobacco jar, the diamond moulded body with blue/green glaze, between bead borders, with silver plated cover and loop handle, impressed marks and dated 1882, 3 3/4" high.

354. A 19thC Parian figure modelled as a mortally wounded soldier, naked, with sword at his right hand, on oval base, 8" wide.
355. A Royal Worcester bowl, internally painted with apples and berries against a leafy background, signed T Lockyer, externally with a blush ground, gilt border, 8" dia. Illustrated.
356. A Beswick Beatrix Potter 'Foxy Whiskered Gentleman', brown backstamp.
357. 22 Wade whimsies.
358. A 19thC pottery Toby jug, modelled as a Hearty Good Fellow holding a mug of ale, with black tricorne hat as a cover, blue jacket and yellow breeches, on moulded green base, 8 1/2" high.
359. A Doulton Lambeth stoneware vase, 1887, of compressed baluster form with elongated neck and everted rim, incised overall with stylised leaves in blue, green and brown below a Persian style bead border, 15 3/4" high.
360. A Clarice Cliff love birds planter, 10" wide.
361. A Royal Doulton 'Norfolk' pattern trio, printed in underglaze blue, together with a Burlington Ware 'Chintz' trio.
362. A Carltonware square dish, with wavy outline, decorated with a floral spray, gilt line rim, 8" square.
363. A Royal Doulton pottery jug, printed in colours with 'Desert Scene', and with moulded spout, 7" high.
364. A Carltonware baluster vase, enamelled and gilt with oriental scenes on a mottled blue ground, 9 1/2" high.
365. A Royal Doulton 'A La Mode' porcelain figure HN2544, 12 1/2" high.
366. A pair of Losol Ware 'Armado' pattern baluster vases, printed in colours with fruit and butterfly beneath a leafy border, 8 1/4" high.
367. A Shelley bone china coffee pot of Queen Anne shape, decorated with stylised tree formations, pattern no 11575, 8" high.
368. A Doulton Lambeth stoneware ovoid vase, by Edith Lupton, incised with flowering plants and geometric borders on a mottled buff ground, 12 1/4" high.
369. A Masons Ironstone footbath, painted in blue, green and iron red with Chinese landscapes, mask handle to each side, 20" over handles, c. 1820, (cracked and rivetted).
370. A twisted amber glass post horn, 35".
371. A Satsuma charger (AF), and 3 Japanese plates.
372. A Wedgwood Jasperware jug, Satsuma cup and saucer and further posy vase (3).
373. A graduated set of 3 Copeland Spodes Italian jugs, 3" down.
374. A pair of 18thC delft vases (AF), Asiatic pheasant meat strainer and willow pattern dish. (4)
375. A Royal Doulton character jug - Philpot, 2 1/2".
376. A Royal Doulton character jug - Old Charley, 2 1/2".
377. A blown glass horizontal decanter in the form of a pig, 9".
378. A 19thC Chinese bowl with turquoise ground polychrome border and central scene of figures in a boat under shore attack, 16" dia.
379. A cased set of 3 Guinness Toucans in flight, 9" down.
380. A Carltonware Toucan table lamp entitled 'If he can say as you can Guinness is Good for You', 9 1/2" high. Illustrated.

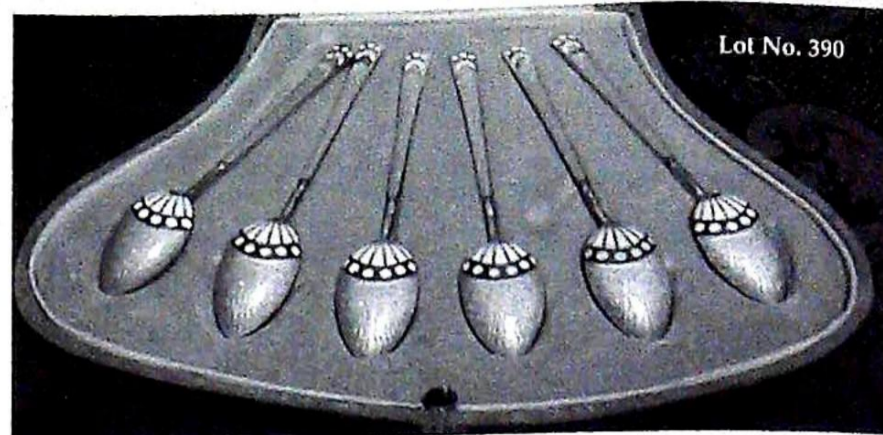
381-3. Spare lots

SILVER JEWELLERY & BIJOUTERIE

384. An 18thC continental silver candlestick with square baluster stem and stepped octagonal base, 7" high.
385. An early pair of silver trefid spoons with foliate scrolling handles, maker IH (1 AF).
386. Three continental cased sets of cutlery.
387. Two silver napkin rings, fork and spoon christening set, thimble and button hook with shoe horn. (7)

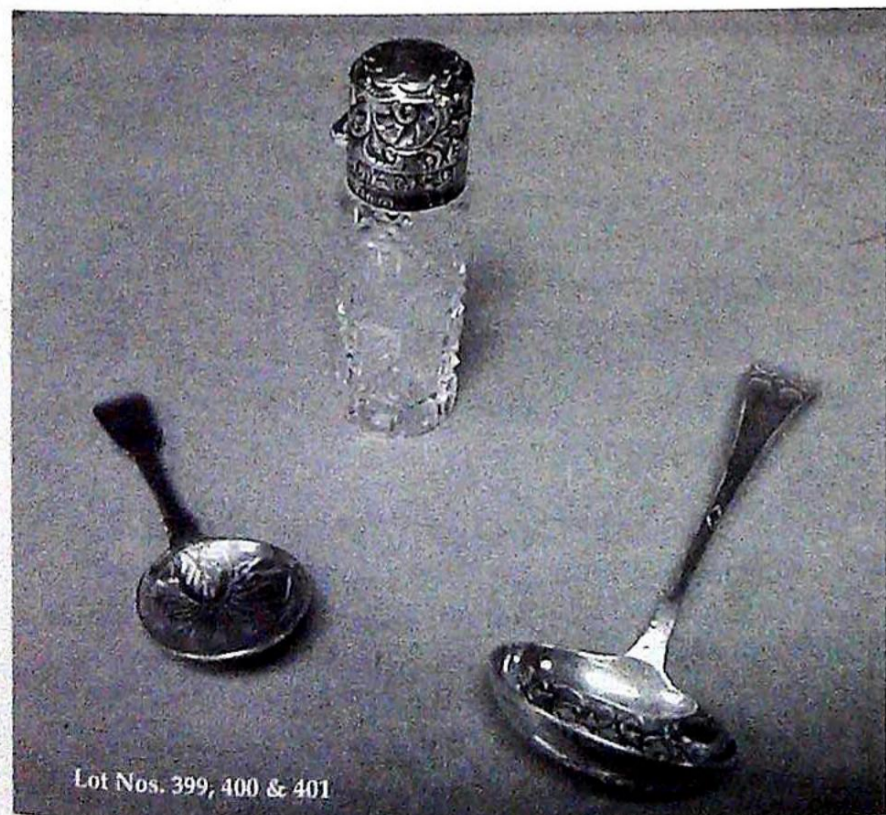


Lot No. 355



388. Harlequin 3 piece silver cruet, Birmingham assay.
389. A Victorian silver topped scent bottle with repousse rococo cover and cut cylindrical body, maker DJE, Birmingham 1893.
390. A cased set of 6 blue and white enamel decorated coffee spoons, silver gilt, maker HH, import marks. Illustrated.
391. A pair of silver napkin rings, Chester assay and 4 silver teaspoons.
392. A Victorian style silver frame double picture frame, London assay, 6" high.
393. Silver mustard spoons, ring, seals, etc.
394. Dressing table brushes, mirror, comb, scent bottle, etc.
395. A pair of Victorian silver fiddle pattern table spoons.
396. A pair of Victorian silver fiddle pattern sauce ladles, maker CB, London 1897.
397. Three decanter labels marked 'Port', 'Sherry' and 'Madeira' (2 silver).
398. A pair of Georgian silver cauldron salts with 3 step feet, rubbed marks, 3" dia.
399. A George III silver nutmeg grater in the form of a barrel, maker ML, Birmingham 1812, 2". Illustrated.
400. A George IV silver fiddle pattern Caddy Spoon with bright cut bowl, London 1820. Illustrated.
401. A Victorian silver mote spoon with engine turned handle and pierced oval bowl, maker George Unite, Birmingham 1870. Illustrated.
402. Spare lot.
403. Two Victorian pierced silver bonbon dishes.
404. A George VI engine turned silver cigarette box, maker T & E Ltd, London 1937, 7" wide.
405. A Victorian silver vesta case and 2 further cigarette cases.
406. A cased set of 6 silver handled butter knives, Sheffield 1938.
407. A George V silver 2-handled trophy, Birmingham 1930, 35ozs, 10" high, inscription, 'Aveling Barford Ltd Challenge Cup for Swimming'.
408. A Georgian style silver 3-footed sauce boat with gadrooned rim, maker CB & S, Sheffield 1960, 5ozs.
409. A George V cased silver dressing table set, engine turned design, Birmingham 1933/34.
410. An Edwardian silver 4-piece teaset, London shape, maker W B Ltd, Birmingham 1910/11, 54ozs all in.
411. A George V silver 3 piece teaset of oval part reeded shape, maker Hutton, Sheffield 1916, 26ozs all in.
412. A George V silver 3-piece teaset of lobed shape, with scroll handles and feet, maker W A, Birmingham 1911, 36ozs all in.
413. A George V silver banded crumb scoop with carved ivory handle and plated bowl, Sheffield 1913.
414. A pair of Victorian cut crystal bottles with prismatic spire stoppers, deep silver necks and taper crystal bodies, London assay, 9" high.
415. A Victorian silver circular taper vase with gadrooned body, maker F S & J H, London, 1890, 14ozs, 10" high.

416. A large collection of mother of pearl games markers in the forms of fishes, ovals, navette and rectangular shapes.
417. An EPNS 3-piece cruet and octagonal castor.
418. A Tiffany & Co silver mounted cigarette dispenser with a circular agate body and marked Tiffany & Co Sterling to base, 4" high, 2 1/2" dia.
419. An antique scrimshaw tooth depicting mediaeval hunter and female, 10". Illustrated.
420. A Victorian papier mache snuff box, the cover painted with a cockeral mounting a hen and entitled 'For Nothing', 3 1/2". Illustrated.
421. A Victorian tartanware thimble holder in the shape of an egg and thimble.
422. A Georgian papier mache rectangular snuff box with pewter inset cover, 3 1/2". Illustrated.
423. A carved jade dish in the form of a leaf, 5", and a tortoiseshell effect snuff bottle. (2)
424. A collective lot comprising jewellery boxes, Victorian silver rattle and various other items.
425. An 18ct gold band, various pairs of gold and plated cufflinks, buttons, studs, etc.
426. Five Stratton powder compacts.
427. A cased miniature Meerchaum pipe carved with a fox (AF)
428. An 18ct gold ladies dress ring set with 3 small emeralds and small diamonds.
429. A bronze figure of a cat with fyfe and bowl, 2 1/4", a bronze figure group of 4 ducks, 3" and a treen bottle holding 3 dice, 3".
430. An Eastern ornate white metal and tigers eye bracelet.
431. A carved oriental box with enamel interior.
432. A small white metal attache case.
433. An Indian white metal cigarette case.
434. A memorial locket with hair insert in yellow metal attached to a 56" longuard, stamped 9ct.
435. A yellow metal brooch stamped 15ct set with 2 half sovereigns.
436. A pair of yellow metal knot earrings and a yellow metal brooch stamped 15.
437. A pair of folding lorgnettes.
444. A small selection of costume jewellery and watches.
445. A selection of white metal and marcasite set jewellery and other white metal jewellery inc a mounted crown pendant.
446. A small amethyst brooch set in yellow metal stamped 9ct with seed pearl surround, 2cm x 1.5cm.
447. A shell cameo brooch of a woman's head with rose adornment to her shoulder, set in yellow metal, stamped 9ct. 4cm x 3cm.
448. A heavy flat curb link necklace in 9ct gold, 30".
449. A heavy curb link bracelet in 14ct gold, import mark.
450. A lady's 9ct gold dress ring set with an oval garnet.
451. A heavy double twist link necklace in 9ct gold, London import mark.
452. A double row cultured pearl necklace 45 + 4 spare, 7mm pearls to white metal and pearl clasp.
453. Four gilt metal teaspoons with twist handles and figural finials.



454. **Ten Silver Fiddle pattern teaspoons**, various hallmarks and dates. *50ozs gross.*
455. **Three Continental silver spoons.**
456. **A George III silver butter knife** with ivory handle, Birmingham 1819, four other knives.
457. **Four Georgian teaspoons**, various dates and makers and a commemorative silver pin tray with a Victorian coin inset.
458. **A Victorian silver caddy spoon** of plain design with Fiddle pattern handle, Birmingham 1842.
459. **An early 20th century child's silver rattle**, the shield shape body embossed with the nursery rhyme image, "The Cow Jumped over the Moon", hung with bells (one missing) abalone teething ring and handle *4.50 inches long*, Glasgow, 1929.
460. **A pair of white metal caddy spoons**, with polychrome enamel decoration, 19th century.
461. **A pair of Victorian silver trinket trays**, of rectangular shape, enclosed with an image from Punch magazine, within shell borders, *4 x 2.75 in*, Birmingham 1887, *2ozs.*
462. **A Victorian silver plated presentation trowel** with ivory handle engraved with fern and inscribed to commemorate the laying of the foundations of a Wesleyan Chapel, 1890, *1 1/2" long.*
463. **A Victorian silver presentation trowel** with ivory handle, inscribed "This Trowel was used by Thos. Ekin Esq" May of the Borough of Grantham. In laying the Foundation Stone of the Reservoir for supplying the town with water 26th September 1850. Presented by Geo Wythes Esq. The Builder "William Foral and Foliate border, London 1850, *14in long.*
464. **A 19th century silver caddy spoon**, with Kings pattern handle, the bowl cast with Shell and C Scrolls, London assay.
465. **A Dutch silver spoon**, the rounder rectangular bowl chased with classical figures within and scroll borders, the handle scroll case with cherubs to finial.
466. **A 19th century child's white metal rattle** hung with bells with whistle handle, *4"*.
467. **A set of 6 George V silver handled tea knives**, Sheffield 1916, in fitted case.
468. **A Victorian silver butter knife** with King's pattern handle, engraved blade, Birmingham 1848.
469. **A set of 4 late Victorian silver napkin rings**, with fold-over knotted rims, and engraved with foliate scrolls, Birmingham 1898, in fitted box.
470. **A pair of George V silver sauce ladles**, Old English, Sheffield 1930, *4 1/2 ozs.*
471. **A Victorian silver serving knife and fork**, with King's pattern handles, the knife with pierced blade, Sheffield 1847, *9ozs.*
472. **A George V silver salt**, of shaped oval form, pierced and on 4 tapering legs, sapphire liner, Birmingham 1931.
473. **An Edward VII silver napkin ring**, engraved with shamrock leaves, Sheffield 1903.
474. **A George VI silver hip flask** with hinged top, Sheffield 1937, *4" high, 4 ozs.*
475. **A Victorian silver lidded pot**, lobed form, and cover struck with a 1745 coin, maker Carrington & Co, Birmingham 1893.
476. **A silver waiter**, with a pie-crust border cast with shells and florets, on 3 scroll feet, Sheffield 1978, *6 1/4" dia, 8ozs.*
477. **A 1908 half sovereign.**
478. **A gentleman's heavy identity bracelet** in 9ct gold, bark effect links, *60.8gms*, London 1973.
479. **A large diamond cluster ring** of 4 layers of similar sized stones, the top central stone mounted estimated weight 0.10ct, total mounted estimated weight 0.50ct, set in 9ct white gold to a yellow gold shank, London 1981.
480. **A large diamond cluster ring** of 5 layers of graduated stones set in 18ct white gold, total mounted estimated weight 1.8ct, hallmark London 1978.
481. **A 5-stone diamond in line gypsy style ring**, central stone estimated mounted weight 0.50ct, total estimated mounted weight 1.50ct, set in 18ct gold mark rubbed.
482. **A stone set dress ring**, 3 oval garnets, 9mm x 7mm, centre slightly larger, with 4 small garnets as infill, set in a 9ct gold exaggerated claw mount to shank hallmark London 1970.
483. **A lady's stone set dress ring**, 3 flower motifs set in line, sapphires as petals and a small diamond as centre flanked by a ruby and emerald motif, shank stamped 9ct import mark.
484. **A 5-stone diamond ring**, inline, set in yellow metal stamped 18ct.
485. **A pendant**, a cabachon opal *2.5cm x 1.7cm* surrounded by 20 emeralds, total mounted estimated weight 2cts, set in an open claw mount with fine 9ct box link chain, *20"*.
486. Spare lot.

487. **A lady's 9ct gold dress ring**, a cabachon opal 17mm x 12mm, pale green and orange flashes, surrounded by 16 rubies, total mounted estimated weight 1.3ct, claw set to a shaped undersetting and shank hallmark London 1978.
488. **A 9ct gold dress ring**, a cabachon amethyst with diamond encrusted long point star set a top in a rope rub over setting to trefoil shoulders to shank, hallmark London 1979.
489. **A pair of stone set ear studs**, a central green stone surrounded by small diamonds set in white metal, post and butterfly fixings.
490. **An unusual lady's dress ring**, an intricate lozenge shape divided into 9 sections, 3 set with an oval opal, 6 set with a garnet, the whole in yellow metal, 3cm x 2cm approx.
491. **A hinged bangle in yellow metal**, 2 sea serpents holding a diamond between their jaws with 3 small diamonds set into the body, mounted estimated weight of central diamond 1ct, stamped 20 CS.
492. **An emerald and diamond ring**, a central trap cut emerald 7mm x 9mm surrounded by 16 diamonds, the emerald in a rub over setting, the diamonds in a scalloped edge white setting on a basket style undersetting to an 18ct gold shank, London 1996.
493. **A gentleman's Oris gold plated wristwatch**, baton numerals, white dial, leather strap.
494. **A lady's dress ring set** with an oval smokey quartz, 9ct gold 'C' scroll setting, London 1962.
495. **A lady's 9ct gold Rotary wristwatch** on a bark link bracelet.
496. **A 9ct gold pendant**, a rectangular tablet scroll engraving to diagonal corners and set with a small diamond on a 23" fine box link chain, total weight 9.3gms.
497. **A pair of Victorian circular ear-studs** with small centrally set diamonds.
498. **A 9ct gold gate bracelet** with twisted links and padlock fastener and safety chain, 32.9gms.
499. **A lady's half hoop eternity ring set** with small diamonds, 9ct gold.
500. **A lady's dress ring set** with a smokey quartz oval stone in a 9ct gold ornate setting, Birmingham 1973.
501. **A 3-stone diamond ring**, claw set on a yellow metal shank stamped 18ct & plat, estimated mounted total diamond weight 0.12carat.
502. **A shell cameo brooch set** in yellow metal, a bust of a woman wearing an ornate floral headdress.
503. **A pair of yellow metal knot ear-studs.**
504. **An intricate 9ct gold bracelet**, 19mm wide, of twisted and knotted bars joined by ball links. Import marked. 26.2gms.
505. **A lady's dress ring set** with blue zircon in white metal, stamped 9ct.
506. **A pair of delicate seed pearl and diamond ear studs** in floral form.
507. **A lady's 9ct rotary bracelet watch.**
508. **A Victorian gypsy style ring** in rose gold set with 3 turquoise.
509. **A lady's dress ring set** with an oval cabachon opal, 14mm x 9mm showing mainly green and blue flashes, flanked by 4 small diamonds, wide shouldered yellow metal settings, shank stamped 585.
510. **A lady's stone set dress ring**, a central oval flat topped ruby with faceted base in rub over setting in yellow metal to white metal shoulders, set with 6 small diamonds on a yellow metal shank, stamped 18ct & PLAT.
511. **A lady's diamond set ring**, 5 small diamonds set in white metal to yellow metal cross-over shoulders and shank, stamped 18ct & PLAT.
512. **A lady's 3-stone diamond ring**, the stones in millegrain settings to a yellow metal shank stamped 18ct, total estimated mounted weight 0.16ct.
513. **A lady's 5-stone graduated diamond ring set** in white and yellow metal, shank stamped 18ct, total estimated mounted weight 0.54ct.
514. **A ladies diamond set ring**, 5 graduated diamonds set in white metal to a yellow metal shank stamped 18ct & PLAT, total estimated mounted weight 0.60ct.
515. **A gentleman's 18ct gold keeper ring**, set with a single old cut diamond, total approx weight 9gms.
516. **A 9ct gold opal and emerald set dress ring**, 3 cabachon opals, interspersed with 4 (one missing) emeralds.
517. **A shell cameo brooch** in an oval yellow metal mount with double rope twist edge of a kneeling woman feeding a large eagle like bird, (some damage). 5cms x 4.5cms.
518. **A tricolour metal bracelet**, complicated plain and textured brick links, total weight 32.2gms, 18.5cm long x 1.3cm wide.
519. **A fancy link yellow metal bracelet** stamped 375. 19.6gms.

520. A bracelet of trap cut graduated garnets set in yellow metal basket settings with extension links.
521. A 1960's/70's style very wide wedding band with rough cast surface, 15mm wide, 18ct gold, Maker Kutchinski, 14.8gms.
- 521A. An 18ct gold fancy link chain, import mark, 31".
- 521B. A yellow metal brooch of a small turbanned man.
- 521C. A 9ct gold biro pen.
- 521D. A 9ct gold tie clip.
- 521E. A 9ct gold money clip.
- 521F. A 9ct gold mesh fob with clip.
- 521G. Arabac worry beads with 18ct gold tassle.
- 521H. Cased diamond scales and weights and a Moh's gauge.
- 521J. A silver baby's rattle.
- 521K. A 9ct gold and agate heart shaped pendant.
- 521L. 4 Dupont lighters.
- 521M. Two pen knives, a fountain pen case and a fob watch movement.
522. An 18ct gold nappy pin, London 1983, Maker Kutchinski, 4gms.
523. A bar brooch set with a spider, pink stone body and seed pearl head, yellow metal stamped 9ct and a Victorian bow brooch set with a red stone set heart, yellow metal stamped 9ct.
524. A bar brooch, yellow metal set with a central rectangular step cut aquamarine $\frac{1}{2}$ " x $\frac{3}{8}$ " approx, setting stamped 9ct.
525. A large shell cameo 2" x 1 $\frac{3}{4}$ ", set in an intricate yellow metal mount, a well executed carving of a woman and Cupid holding an arrow behind his back.
526. An Art Deco lady's dress ring, a central oval mid blue sapphire surrounded by 10 small diamonds in a scallop design, set in white metal, yellow metal undersetting to a yellow metal shank stamped 18ct & PT.
527. A lady's dress ring, Victorian styling, being 4 pearls set as a cross interspersed with small diamonds and a central diamond in 18ct gold, marks rubbed.
528. An Edwardian necklet, an arrangement of seed pearl set leaves and buds with birds to a central flower and heart shaped pearl set drop, yellow metal setting stamped 15ct.
529. A shell cameo brooch in a 9ct gold setting (1"), Birmingham 1982 and a lady's shell cameo set dress ring in 9ct gold, marked rubbed.
530. A Norwegian silver enamelled linked bracelet and a white metal belcher bracelet.
531. A pair of oval garnet ear studs set in yellow metal stamped 9ct and another pair of garnet set ear studs.
532. A pair of pale amethyst ear studs set in yellow metal.
533. A pair of 9ct gold shell cameo set earrings.
534. An 1893 full sovereign in a 9ct gold pendant setting.
535. An Edwardian rose metal brooch with central white stone cluster, with a pearl centre.
536. A Norwegian silver brooch, enamelled abstract leaf form and a Victorian white metal brooch oval shape with raised centre portion decorated with ivy leaves.
537. A lady's rose gold wristwatch, converted from a fob, with gold dial, 9ct with import mark.
538. A brooch, a scrolled heavy yellow metal oval mount containing a Vienna porcelain plaque showing a bare breasted woman examining a locket. 7.5cms x 7cms.
539. A shell cameo brooch, an oval yellow metal mount, showing a veiled woman, 4.5cm x 3.5cm.
540. An oval yellow metal faced locket with scalloped edge, engine turned decoration and vacant cartouche to front, 4.5 x 4cms.
541. A heart shaped brooch, central transfer portrait and black surround in a 9ct gold mount.
542. A yellow metal bar brooch with a spider, body and head set with amethyst, stamped 9CT.
543. A lady's diamond set dress ring, an 18ct gold marquise shaped setting, set with 5 small diamonds, hallmarked Chester 1915.
544. A stone set white metal twist ring, possibly blue zircon, shank stamped 9ct.
545. A lady's 5-stone diamond ring (one stone missing) set in 18ct gold.
546. Two yellow metal lady's watch heads.
547. A diamond set half hoop eternity ring, white metal stamped 18K, set with 7 diamonds, mounted estimated weight 0.21ct, size I.
548. A large link bracelet, 18ct gold, 22.8gms.

549. A sapphire and diamond set ring in 9ct gold, a central tear drop shaped sapphire surrounded by small diamond chips.
550. A yellow metal curb link bracelet T-bar and 2 swivels, 19cms, 11.2gms.

FURNITURE

551. A late Victorian oak salon suite, having scrolling floral carved frame with turned and fluted forelegs and brass and ceramic castors, upholstered throughout in burnt orange velvet.
552. A George III mahogany drop-leaf table with circular folding top, raised on turned legs with pad feet. 42" dia.
553. A 17thC and later oak gateleg table with oval folding oak top and bobbin turned oak and beech framing, 32" x 45".
554. A George III mahogany bowfront chest having cross-banded and moulded top over 2 short and 2 long graduated cockbeaded drawers with oval pressed backplate brass handles, shaped apron and splay feet. 40" wide.
555. A William IV mahogany bowfront chest with plain top, 2 short over 2 long graduated cockbeaded drawers with turned knob handles, shaped apron and splay feet. 36" wide.
556. A Victorian mahogany chest with moulded top over 2 short and 3 long graduated drawers with turned knob handles, moulded plinth and bun feet, 44" wide.
557. A 19thC mahogany Pembroke table with rectangular top, frieze drawer and opposing dummy drawer with brass swan-neck handles and square taper legs. 30" x 43".

558. A Sheraton period mahogany bureau with satinwood, box and harewood stringing, crossbanding and shell inlays to a fall flap revealing a fitted interior, resting on 2 lopers, over 4 graduated cockbeaded drawers with cast gilt-brass swan-neck handles and splay feet, 40" wide. Cover illustration and internal.

559. A George III oak bureau with fall-flap revealing a fitted interior resting on lopers, over 4 graduated cockbeaded drawers with brass loop handles, oval escutcheons and bracket feet. 40" wide.
560. A Victorian mahogany shop display cabinet on stand, the upper part having 4 glazed sides including sliding doors and shelves, seated on a moulded stand with octagonal taper and ring turned legs with brass castors. 32" wide, 17" deep, 48" high.
561. A Georgian elm and pine kitchen table, with single drawer having knob handle, and chamfered square legs, 32" x 44".
562. A 19thC elm ladderback carver chair, turned framing, ball feet and rush seat.
563. A set of 4 Victorian balloonback dining chairs, principally satinwood having shaped backs, cabriole legs and serpentine fronted seats overstuffed in deep rose pink damask.
564. An Edwardian mahogany occasional table with line inlaid circular moulded top, on shaped square legs co-joined by a circular under shelf. 24" dia.
565. A late Victorian walnut window table having a moulded octagonal top with knulled frieze, raised on turned uprights with splay legs, co-joined by square moulded undershelf, 31" dia.
566. A Victorian mahogany chiffonier, having shaped and scroll lobe mirror back, cushion moulded frieze over 2 flamed veneered arch panel doors, enclosed by octagonal pillars on plinth base, 55" wide.





Lot No. 573

567. **A Victorian mahogany wardrobe** having moulded cornice and flame veneered frieze over 2 similar arch panel doors, on plinth base, 52" wide, 65" high.
568. **A George I walnut chest** having moulded and cross-banded top over 2 short and 3 long graduated herringbone strung drawers with replacement drop handles and escutcheons, on bracket feet, 41" wide. Illustrated.
569. **A George III mahogany demi lune side table** with plain frieze and square taper legs, 51" wide.
570. **A George III mahogany tripod table** with plain square top, on slender turned pillar, on 3 outspiral legs with spade feet, 18" square.
571. **A Georgian elm stand** with 3 legs.
572. **A Victorian mahogany writing table**, having inset moulded top over 2 moulded drawers with turned handles, on taper turned legs, with brass and ceramic castors, 36" wide, 24" deep.
573. **A Sheraton period mahogany hanging corner cupboard**, having moulded cornice, satinwood banded sides and stringing repeated to the single full length door with floral marquetry panel revealing shaped shelves, on moulded base, 32" high, 22" wide. Cover illustration and internal.
574. **A set of 4 Regency painted bedroom chairs** with comb backs, rush seats and turned legs.
575. **A Victorian walnut spoonback open armchair**, having carved cresting rail, scrolling arms and legs on brass and ceramic castors, serpentine overstuffed seat, back and arms.
576. **A Victorian mahogany corner washstand** with marble top, single moulded door and bracket feet, 38" wide.
577. **A Victorian mahogany pedestal table** with piecrust moulded circular top, swell reeded pedestal, moulded circular platform and 3 scroll feet, 25" dia.
578. **A Regency mahogany dressing table mirror** with ball knobs to a ring turned frame, on scroll feet, 22" high, 20" wide.
579. **A Regency mahogany dressing table mirror** with ball knobs to a ring turned frame, on scroll feet, 22" high, x 20" wide.
580. **A 19thC Boule etagere** of 3 levels of shaped shelves adorned with ormolu mounts, 14" wide, 12" deep, 31" high.
581. **A set of 8 George III mahogany dining chairs**, including 2 carvers with carved and pierced splat backs, moulded square legs, H-frame stretcher and overstuffed gold velvet seats. Cover illustration.
582. **A George III mahogany metamorphic breakfast and dining table set** comprising 2 pedestal tables with rounded moulded rectangular tops, raised on turned gun-barrel pillars, on 4 sabre legs with brass cup castors, each table having detachable side to accommodate 2 further leaves, forming a dining table, 52" wide, each table 42" long and an overall maximum length of 114". Cover illustration
583. **A George III ash and elm Windsor chair** with pierced vase splat, saddle seat, turned legs and crinoline stretcher.
584. **A pair of Victorian mahogany dining chairs** with upholstered cameo backs and overstuffed seats in a gold and rose pattern with turned forelegs and double crinoline stretcher.
585. **A set of 4 Georgian country chairs** with bar, ball and rail backs, drop-in seats and square taper legs with H-frame stretcher (inc 2 carvers).
586. **An early 19thC mahogany chest** of 3 drawers with cross-banded top, oval pressed backplate handles and bracket feet, 36" wide.
587. **A 17thC and later oak sword chest**, 38" wide.
588. **A George IV mahogany bowfront sideboard** with planed top, having central cockbeaded drawer with oval pressed backplate handles, flanked by a double depth drawer and double depth door, raised on 6 ring and taper turned legs, 81" wide.

589. A George III mahogany wing back library armchair with fluted and chamfered square forelegs and H-frame stretcher, later black leather upholstery.
590. A 19thC upholstered armchair with mahogany square taper legs, having brass and ceramic castors and upholstered in gold velvet.
591. A Victorian oak library table with brown leather inset moulded top having 2 concealed frieze drawers, raised on 2 baluster pedestals of lobed and carved pendant husk design, resting on platforms with reeded feet, 55" x 30".
592. A George III upholstered wingback library armchair with moulded square legs, H-frame stretcher and later loose covers.
593. A Georgian style wingback armchair with cabriole legs and textured tapestry upholstery, modern.
594. A Victorian mahogany chaise longue with scroll carved left hand bulk, scrolling legs with brass castors, serpentine seat and buttoned back, upholstered in brown dralon, 68" wide.
595. An 18thC and later carved oak 3 panel coffer, raised on stiles, 54" wide. (AF)
596. A Victorian mahogany duchess dressing table with shaped mirror and supports, drawer and compartment back, frieze drawer, turned legs and shaped undershelf.
597. A Queen Anne style burr walnut bureau on cabriole legs, early 20thC, 24" wide.
598. A set of 6 Victorian rosewood balloonback dining chairs with carved backs, overstuffed drop-in seats and octagonal taper forelegs.
599. A set of 6 George III mahogany dining chairs including 2 carvers, having camel backs and pierced and moulded vase splats, overstuffed serpentine seats and square moulded legs with side and rear stretchers.
600. A set of 4 Victorian balloonback salon chairs with scratch carved backs and cabriole legs, with serpentine floral overstuffed seats.
601. A set of 4 George III mahogany dining chairs with turned cresting rail, X-frame reeded back, overstuffed seats and square taper legs.
602. A Victorian oak cricket table with moulded octagonal top, 3 turned legs supported by a low level stretcher, 26" dia.
603. A late Victorian mahogany wind-out dining table with moulded top and heavy cabriole legs with 2 extension leaves. 41" wide x 6' max.
604. A set of six Victorian walnut dining chairs, with carved and shaped balloon backs, overstuffed pink dralon seats and cabriole legs.
605. A pair of late 18thC oak country made dining chairs, having reeded frame, rush seats, on square section legs joined by stretchers.
606. Spare lot.
607. A Regency mahogany table mirror with shield shape plate, 2 drawers and ogee feet.
608. A pair of Regency rosewood salon chairs, having a brass inlaid top rail over twin scroll tie rails, cane seats and on sabre legs.
609. A George III foldover tea table with rectangular moulded top and chamfered square legs.
610. A Carolean style walnut highback hall chair with bergere seat and back, turned and square framing and Spanish foot.
611. An early 18thC pine side table, the moulded edge top with canted front corners, over a long frieze drawer with brass bail handles on shaped backplate, on columnar legs joined by moulded stretchers, 33" wide.
612. A Queen Anne style walnut Lowboy of traditional form. 40" wide.
613. A George III mahogany chest of four graduated drawers with moulded top, canted case with vinefret decoration, the cast brass rococo handles of foliate form, raised on a band of blind fretwork and ogee feet 34" wide.
614. A George III flamed mahogany side table with cross-banded and reeded rectangular top, plain frieze drawer with swan-neck handles, and square taper legs.
615. A Victorian rosewood two tier Etagerie with barleytwist uprights and serpentine shelves.
616. A Victorian grain painted pine chest with lift top and simulated front drawers and bracket feet. 25" wide, 18" deep, 27" high.
617. A Regency brass inlaid rosewood foldover card table of rounded rectangular form, raised on a square taper pillar, with nulled moulding to the quatrefoil platform, raised on sabre legs with brass paw castors. 36" wide.
618. A George III mahogany side table with ebony strung cross-banded rectangular top over 2 short and 1 long graduated drawer with lozenge inlay and stringing, turned knob handles, square taper legs with swell feet. 33" wide.
619. A George III mahogany chest of 4 graduated drawers with moulded and crossbanded top, brushing slide, pierced backplate swan-neck handles and bracket feet. 36" wide.

620. **An early 19thC Colonial hardwood Captain's sea chest** with moulded top, brass strapwork and wire loop handles.
621. **A set of 4 early 19thC elm kitchen chairs** with turned gate backs, rush seats and 3 height spindle stretchers.
622. **A rectangular teak lodging box** with tray insert and painted top marked S L Hinsby.
623. **A Continental oak and flamed veneered kneehole desk** with moulded top, three frieze drawers and cupboard pedestals on bracket feet 53" x 30".
624. **A Victorian mahogany framed 4-fold full-length dressing screen** richly decorated in a variety of colourful and varied subject scraps.
625. **An early 20th century three piece suite** with low backs, scroll arms, carved cabriole legs with hoof feet.
626. **A set of William IV rosewood balloonback dining chairs** with carved and shaped backs, overstuffed seats, part reeded and tapering forelegs.
627. **A George III mahogany bowfront sideboard** with crossbanded and satinwood strung top with oval patera inlay, the front aspect having 2 cellerette drawers and frieze drawer, raised on square taper legs with spade feet, pendant husk inlay and stringing throughout. 54" wide.
628. **An early Victorian mahogany chiffonier** with shaped oval back panel, single drawer over 2 arched panel doors, on plinth. 42" wide.
629. **A George III mahogany table mirror** with 3 drawers to the bowfront base, on bracket feet, turned uprights and rectangular plate.
630. **A small rectangular walnut framed mirror** with heavy bevelled plate, 10" x 15".
631. **A Victorian flamed veneered and mahogany Credenza** of traditional form having 4 door base raised on plinths, 66" wide.
632. **An Edwardian oak sideboard** with moulded cornice and astragal glazed doors and open compartment to the upper part with metal strapwork and turned supports, the base having an open shelf with turnings and panelled doors, raised on styles, 68" wide, 75" high.
633. **A George III mahogany bureau bookcase** with moulded cornice over 2 glazed doors to the upper part, over a fall-flap resting on lopers revealing a fitted interior of drawers and pigeon holes, over 4 graduated drawers with brass circular ring handles and bracket feet, 41" wide, 89" high.
634. **An antique oak dresser with platerack top**, 2 drawers with oval pressed backplate handles, high level pot board, on square legs, 41" wide, 72" high.
635. **A Victorian walnut marquetry side cabinet** with single glazed door and ormolu mounts.
636. **A Victorian oak free-standing dinner gong** with a scrolling carved frame embellished with fruit with brass gong and striker
637. **A fine Victorian burr walnut music cabinet**, having brass galleried and crossbanded top, string inlays to sides, canted corners and single glazed door revealing titled leather fronted shelves with shaped plinth, 22" wide, 39" high.
638. **A Victorian walnut pier cabinet** with ebonised and moulded top, string inlaid frieze and uprights embellished with ormolu mounts, enclosing a single glazed door, on plinth, 30" wide, 39" high.
639. **An Edwardian mahogany pot cupboard** with satinwood crossbanding to the back, top and single door, raised on square taper legs.
640. **An Edwardian mahogany purdonium** with satinwood crossbanding throughout, having moulded shelf over bevelled mirror, over a fall front with shaped apron and brass castors.
641. **A Victorian walnut trumpet sewing table** with octagonal top, fitted interior, tapering pedestal and carved tripod base. (AF)
642. **A Victorian papier mache pedestal table** with mother of pearl inlaid and gilt shaped tilt top, baluster pedestal and trefoil base, 22" x 18".
643. **An Edwardian oak folding flat and slope top table.**
644. **An Eastern influence carved teak folding folio stand** with pierced and blind fret decoration.
645. **A mid 19thC Boulle pier cabinet** with ormolu mounts and single door with shaped glazed panel and cupid's bow plinth, 32" wide, 42" high. Provenance: Reputedly the Harlaxton Manor sale, 1930's.
646. **A George III flamed mahogany 2-door cabinet bookcase** with moulded cornice and base, 31" wide, 11" deep.
647. **An Arts & Crafts spindle back child's chair** with turned arms, legs and stretchers, rush seated.
648. **A Victorian walnut games table** with moulded octagonal and chequerboard inlaid tilt top, barleytwist pillar and pierced tripod base, 22" dia.
649. **A Regency mahogany bowfront chest** with moulded top, 2 short and 3 long graduated cock-beaded drawers with circular pierced backplate ring handles, shaped apron and splay feet, 43" wide.
650. **A 19thC carved oak pier cabinet** with moulded top, single drawer over a panelled door and stepped breakfront base, 35" wide.

651. **A George III mahogany chest** with string inlaid and crossbanded top, over 2 short and 3 long graduated cockbeaded drawers with oval loop handles with sphinx pressed backplates and bracket feet, 43" wide.
652. **A George III mahogany corner chair** with bow back, taper turned uprights enclosing 2 pierced vase splats, drop-in seat, moulded square legs and X-stretcher.
653. **An Edwardian mahogany tub chair** with crossbanded and string inlaid arm supports and square taper legs with brass and ceramic castors, later loose covers.
654. **A Victorian ebonised nursing chair** with ring turned forelegs, brass and ceramic castors, upholstered in green velvet with a floral beadwork panel.
655. **A George III mahogany fold over tea table** with rounded rectangular top, turned and part reeded column, quatrefoil base with moulded sabre legs terminating in acanthus scroll feet with castors. 36" wide.
656. **A Georgian style mahogany bowfront bachelor's chest** with brushing slide, over 2 sort and 2 long graduated drawers, with shaped apron and splay feet, 20thC, 28" wide.
657. **A George III mahogany drop leaf table** with ring turned legs, 36" x 53".
658. **A set of 6 (inc 2 carvers) oak dining chairs** with tapering splat backs, drop-in seats, moulded square legs and stretchers.
659. **A Japanese black lacquer cabinet on stand**, having 2 landscape decorated doors revealing a fitted interior of drawers and shelves, on a stand with cupid's bow apron and square section cabriole legs, 38" wide, 22" deep, 47" high.
660. **A William IV rosewood polescreen stand** with wrythen and acanthus carved pillar, on a trefoil scrolling and rondel decorated base with bun feet.
661. **A late Victorian carved beech chaise longue** with scroll end and matching tub chair, in gold dralon upholstery.
662. **An Edwardian mahogany bedstead** with crossbanded decoration, 52" wide.
663. **A late Victorian mahogany washstand** with marble top, 5 drawers and single door, with brass loop handles and plinth, 43" wide.
664. **A 19thC bank of mahogany shop drawers**, with knob handles and gilt/painted content titles, 39" wide, 41" high.
665. **A George III mahogany bowfront chest** with cross-banded top, 2 sort and 3 long graduated cockbeaded drawers with brass knob handles and turned feet, 40" wide.
666. **A George III mahogany supper table** with circular tilt-top on bird cage with turned pillars, turned pedestal and 3 moulded cabriole legs with pad feet, 29" dia.
667. **A Victorian brass framed fire screen** with Art Nouveau handle, sunburst cut and bevelled mirror panel and shaped legs, 25" wide, 24" high.
668. **A Victorian mahogany chaise longue** with scroll carved left hand bulk, reeded and turned legs, green buttoned velvet upholstery.
669. **A pair of William IV rosewood dining chairs** with overrun cresting rails, barbacks, drop-in seats and sabre legs.
670. **A Regency mahogany Pembroke table** with double moulded deep drawer and opposing dummy, on ring turned pillar, with 4 moulded sabre legs with brass castors, 29" x 21".
671. **An antique continental painted pine serpentine chest**, having moulded top, painted K*D 1799, within a cartouche, over 4 floral painted drawers with brass rope ring handles, on painted stand with cabriole legs, 48" wide, 25" deep, 45" high. Illustrated.
672. **A William IV mahogany chiffonier** with scroll and shell carved back, having turned and graduated shelves to the upper part, breakfront top with cushion drawer over 2 arched panel doors with beaded fillets, enclosed by 2 reeded columns on reeded ball feet, 33" wide, 17" deep, 66" high. Cover illustration and internal.
673. **A pair of Victorian mahogany pier cabinets**, having marble tops over a moulded frieze and 2 carved and arch panelled doors with brass grilles and plinth base, 40" wide, 16" deep, 36" high. Cover illustration.
674. **A late Victorian mahogany towel rail**.
675. **A 19thC oak and marquetry corner cupboard on stand**, the upper part having moulded and shaped cornice over fielded and panelled single door, with marquetry floral trophy inlay, on a 3 leg turned stand with shaped stretcher, 30" wide, 67" high.
676. **A late Victorian walnut pot cupboard** with moulded top and single full length door with brass handle and plinth.
677. **A Regency style mahogany twin pillar dining table** with moulded D-ends and further leaf, raised on baluster pedestals with 3 sabre legs and brass paw castors, 40" x 84" max.



678. A late Victorian rosewood marquetry wall mirror with shaped outline and inlays of exotic birds and flora around a central shield bevel plate, 36" high.

679. An oak refectory table raised on 2 bulbous legs with moulded feet and stretcher, 36" x 85".

680. A late 19thC French rosewood/kingwood bureau plat with shaped brass moulded top inset with green leather, the shaped frieze and legs embellished with ormolu rococo scrolling forms and each leg cast with applied amorini busts, 53" wide, 30" deep, 29" high. Cover illustration.

681. An imposing Aesthetic Movement sideboard with galleried and dentil moulded cornice, over an ivy leaf and insect carved panel, an arrangement of inset cushion mirror, rectangular mirrors and shelves to the upper part, the base having a tiled serving slide and 3 frieze drawers over 4 carved panel doors with brass handles and hinges, on turned feet, 79" wide, 24" deep 93" high. Cover illustration and internal.

682. A George III flamed mahogany bowfront chest with string inlaid and crossbanded top and similar decoration to the 4 graduated cockbeaded drawers with circular brass ring handles, shaped apron and splay feet. 42" wide.

683. A George III mahogany bureau with fall flap resting on lopers revealing a fitted interior, over 2 short and 3 long graduated drawers with solid backplate brass handles, on bracket feet, 45" wide.

684. An early 19thC continental flamed mahogany *Secrétaire à Abattant* with fall front resting over 3 stepped drawers.

685. A Pianola.

686. A Victorian mahogany spoonback armchair with carved scrolling arms and legs with brass castors, serpentine overstuffed seat and button back upholstered in textured dralon.

687. A polychrome painted carved rocking horse.

688. A Georgian style mahogany pier glass with fretwork frame, 27" high.

689. A Regency giltwood pier glass with breakfront cornice and inset turned pillasters and mahogany reeded moulding to the rectangular plate, 29" high.

690. A Victorian flamed mahogany table mirror with square plate, scroll uprights and step moulded base, 26" wide, 25" high.

691. A Victorian pitch pine wall mirror with carved simulated bamboo frame and bevelled rectangular plate, 34" wide, 35" high.

692. A circular white painted occasional table in the style of Mackintosh, 24" dia.

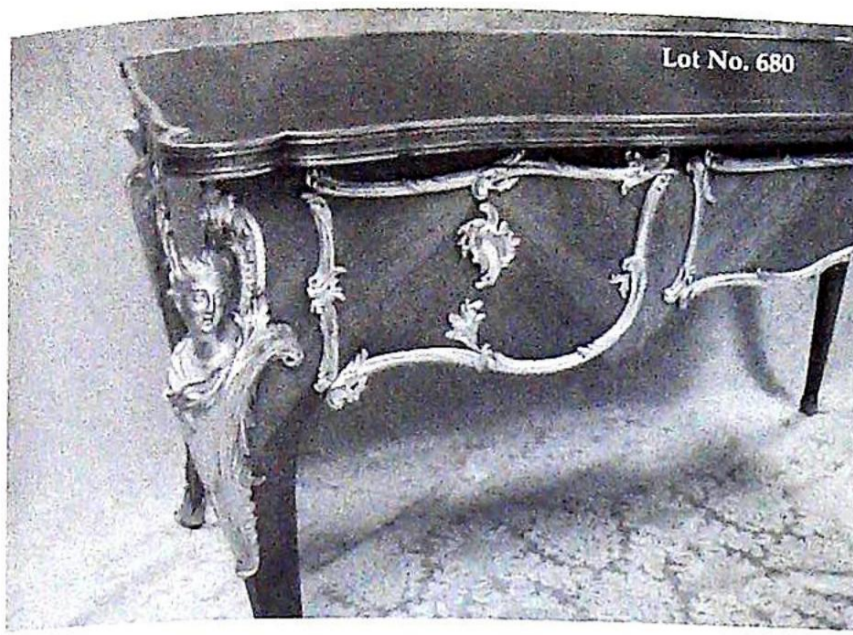
693. A leather top brass 2-tier table with gilt brass simulated bamboo framing, 37" x 15".

694. A Victorian rosewood centre table with serpentine shaped and moulded oval top, with frieze drawers, cabriole legs and shaped scrolling X-frame stretcher, on brass castors, 52" x 32".

695. A cut crystal 6-branch electrolier and 3 twin branch wall sconces.

696. A Victorian pine framed single bed.

697. An Arts & Crafts wall mirror or arched form with bevelled plate and carved softwood frame with floral forms and dragonfly in relief and having stained highlights.



698. 17thC oak bible box with scoop carved frieze, 26" wide.

699. Spare lot

CLOCKS & BAROMETERS

700. A George III oak and mahogany longcase clock with swan-neck and reeded pillared hood, shaped short trunk door, moulded base and plinth, 30" painted dial, having a courting scene to the arch entitled other miniature, and similar decoration to the spandrels, Roman numerals and Arabic to the seconds and date rings, 8-day movement striking on a bell, marked Wishawtown, 83"

701. A mahogany longcase clock inscribed Fab. Robins, London, the marquetry case with shaped and pillared hood and eagle and ball finials, the trunk with neo-classical designs of winged females over an arched trunk door with central vignette of a water carrying maiden and eagle, the moulded base with foliate scrolling shell and urn panel, on bracket feet, the 12" brass dial having cast spandrels, 'tempus fugit' and eagle rondel to arch, silvered chapter ring and subsidiary seconds ring, having Roman hour numerals and Arabic minute and seconds numerals, matted center with date aperture, 8-day movement striking on a bell, 90" high. Illustrated.

702. A Georgian mahogany longcase clock by J Watson of Blackburn, the mahogany string inlaid case having swan-neck hood with Corinthian reeded columns, cluster column trunk with shaped full-length door, crossbanded and canted base with ogee feet, the painted 14" dial having moon roller, conche shell spandrels, Roman hour numerals, Arabic minute and the same to the subsidiary seconds and date rings, 8-day movement striking a bell, 92" high.

703. A George III oak and mahogany crossbanded longcase clock by John Wood Junior of Grantham, having fox painted to the swan-neck pillared hood, full-length trunk door enclosed by inset reeded columns, panel base with bracket feet, circular painted 12" dial 12" having Roman numerals and Arabic minute numerals, 88" high.



704. A 19thC oak, mahogany and rosewood banded longcase clock by Thomas Pearce of Bourne, having swan-neck turned pillared hood, short shaped trunk door with inset reeded columns, inlaid base and later plinth, the painted 12" dial, 12" having a church to the arch and roses to the spandrels, Roman hour numerals and Arabic seconds ring, 85" high.

705. A 1930's oak longcase clock with turned circular dial with Arabic numerals, 12" dia, having 3 train movement, 75" high.

706. A Georgian oak cottage longcase clock with dentil moulded cornice, arch door with applied carving, 10" painted dial with floral spandrels, repainted numerals and reduced base, 30-hour movement striking a bell, 76" high.

707. An early 19thC mahogany shell inlaid wheel barometer with broken arch pediment, thermometer and 8" dial.

708. A George III mahogany shell inlaid wheel barometer, having thermometer and 8" silvered dial marked L Solcha & Co, Hull, 35" high.

709. A Victorian carved mahogany wall clock with carved and pierced circular bezel, fusee movement, 17" dia.

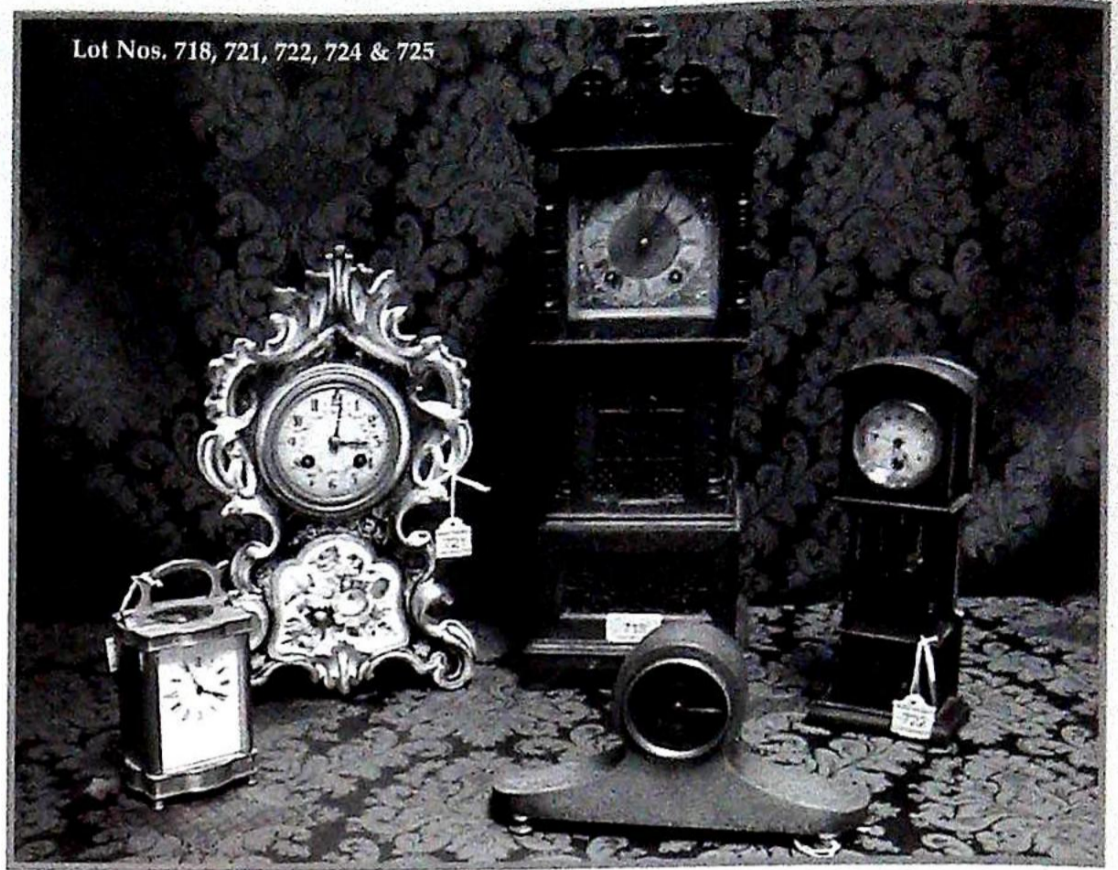
710. A Victorian walnut and mahogany drop dial wall clock by Manoah Rhodes & Son, Bradford, having a painted 11" dia dial, fusee movement, 21" high.

711. A Victorian mahogany drop dial wall clock with 11" painted dial, 8-day movement, 21" high.

Lot No. 701



Lot Nos. 718, 721, 722, 724 & 725



712. A late 19thC walnut cased Vienna wall clock with cream enamel dial having Roman numerals, 8-day movement, 48" high.
713. A 1930's mahogany wall clock having turned dial with Arabic numerals, part glazed bevel door, 8-day movement, 32" high.
714. A 19thC American rosewood shelf clock by Jerome & Co, New Haven Connecticut, with verre eglomise and landscaped glazed door, 30-hour movement, 26" high.
715. A 19thC American rosewood shelf clock by Frome & Co, Newhaven, Connecticut, having blue glazed lower door with scene of classical colonnaded building, 8-day movement striking a gong, 30" high.
716. A Victorian mahogany circular wall clock with painted dial marked Yonge & Son, Strand, London, 30-hour movement striking a gong, 16" dia.
717. An American mahogany cased full calendar shelf clock by The Ithaca Calendar Clock Co, Ithaca, NY, painted 1865/66, paper dial, 21" high.
718. An Edwardian miniature longcase clock with carved oak case, square brass dial with silvered chapter ring, 8-day movement striking a gong, 20" high. Illustrated.
719. A late 19thC German mantel clock with turned dial with Roman numerals striking a gong, 18" high.
720. A French gilt brass mantel clock cast with foliate scrolls, trophies and swags, the 4" convex enamel dial having Roman hour numerals and Arabic minute, 8-day movement striking a bell, 20" high.
721. A 19thC Sevres style porcelain mantel clock having gilt and blue rococo borders and central floral painted reserve, 8-day movement striking a bell, later dial, 13" high. Illustrated.
722. An Art Nouveau style miniature longcase clock timepiece with 2" enamel dial, 10" high. Illustrated.
723. A 19thC French porcelain mantel clock depicting a young lady and a dog and a bird riding on a chariot driven by an angel, 2" dial, 12" wide, 9" high.
724. A gilt brass carriage timepiece, 6" high. Illustrated.
725. A Liberty & Co mantel clock designed by Archibald Knox, the hammered pewter case enclosing a 2" part enamel dial with Roman numerals, raised on turned feet and marked 'Tudric' 01294, 9" wide, 5" high. Illustrated.
726. A bronze elephant novelty timepiece with motioned fob dial with ribbon decoration and turned pendant bob, 10" wide, 11" high.
727. A brass cased American ship's clock by Seth Thomas, 8-day movement, 7" dia.
728. An Edwardian shell inlaid mahogany balloon mantel timepiece with French movement and enamel dial with Roman numerals marked Winsor Bishop, Norwich, 9" high.
729. A 1920's German mahogany bracket clock with turned dial having Arabic numerals and 8-day chiming German movement, 12" high.
730. A Victorian polished slate mantel clock of architectural form, 8-day movement striking a gong, 12" wide, 15" high.

731. A George III black lacquer and painted bracket clock having pagoda top with loop handle, dentil moulding over glazed door revealing a 6 1/2" brass dial having applied spandrels, date ring to the arch, Roman hour and Arabic minute numerals to the chapter ring, 8-day movement, 9" wide, 6 1/2" deep, 18" high. Illustrated.

732. A 19thC French spelter and marble clock garniture having a classical maiden writing with a quill over a porcelain dialled 8-day movement signed Gve Buron, Goulommiers, together with 2 urns, 12" high.

733. Spare lots.

734. Spare lot.

735. Spare lot.

736. Spare lot.

737. Spare lot.

738. Spare lot.

739. Spare lot.

740. Spare lot.

COLLECTORS' ITEMS, TOYS, METALWARE, BOXES, MILITARIA, ETC

741. Charles Valton (1851-1918). A bronze figure group of 2 King Charles spaniels seated on a cushion, brown patination, signed C Valton, 19" wide, 16" deep, 17" high. Illustrated.

742. An electroplate on copper punch bowl with gadrooned rim, lion-mask handles, turned foot and plinth, 14" dia



743. A Victorian copper warming pan with ebonised handle and pricked decoration to the cover, 45".

744. A modern green patinated bronze sculpture, 15" high.

745. A Victorian rosewood cross-banded workbox with pewter and mother of pearl inlay (AF) and fitted interior, 11" wide.

746. An Edwardian string inlaid mahogany oval serving tray with low level brass gallery, 27" wide.

747. An Edwardian shell inlaid mahogany rectangular serving tray having raised banded gallery, brass handle and shaped base, 24" wide.

748. A pair of 19thC French ormolu wall brackets of rococo design, 7" high.

749. A bronze sun dial inscribed 'Lost Time is Never Found Again', 6" square.

750. A graduated set of 25 bronze hand bells with leather straps.

751. A 19thC violin, cased with 2 bows, no labels, 14".

752. A Victorian burr walnut workbox with mother of pearl applique decoration, 12" wide.

753. A Victorian flamed mahogany tea caddy with a part fitted interior, 11" wide.

754. A Victorian rosewood workbox with pewter and mother of pearl inlay and fitted interior, 12" wide.

755. A Victorian Tonbridge inlaid walnut workbox with satin lined and fitted interior, 11" wide.

756. A small collection of 18thc and later pewter including a capstan inkwell, various jugs, etc.





757. Three Georgian pewter measures with bronze rims.

758. A Victorian copper jelly mould of tapering castelated form with open centre, 5" high.

759. An Elkington & Co electroplated table centrepiece of oval form, with pierced decoration, ball and cartouche feet with griffins, together with a set of tri-partite stands, 8 1/2" high. Illustrated.

760. A Victorian brass bound walnut duet writing box with fitted interior, 20" wide.

761. A Victorian flamed mahogany workbox on ball feet, 11" wide.

762. A Victorian brass kettle with turned ebonised handle and a similar bell.

763. A pair of Victorian brass candlesticks with turned and faceted stems, 12" high.

764. A 19thC Cantonese enamel bowl decorated with flowers on a bleu-de-mazarin and turquoise ground (AF).

765. A 19thC Black Forest carved walnut casket with stag surmounted lid and scroll feet, 15" wide.

766. A Sheraton period knife box with later neo-classical painted decoration and a refitted interior for letters, 14" high. Illustrated.

767. A Newlyn copper box by John Pearson of rectangular form with strapwork hinges and legs, the top embossed with 3 sunflowers, marked JP in oval to base, 6" wide, 4" deep, 3 1/2" high. Illustrated.

768. A Japanese bronze censor, cast with interior seal signature, and serpent handles, with hardwood pierced cover set with agate finial, 3 1/2" dia.

769. A Victorian brown Toleware coal scuttle with brass mounts.

770. An oak mounted pair of antlers.

771. After D'Orsi. A bronze bust of a female with cigarette and small amphora over her shoulder, on a marble plinth, 11" high.

772. Charlotte Gabrielle Dubray (1855-1931). A carved marble bust of a bearded gentleman, signed and dated 1879, 17".

773. A hand hewn key stone commemorating George V and Mary 1911, 27" wide, 30" high, 10" deep.

774. A pair of WWI Shells.

775. An early 20thC hand-painted 2-wheel barrel organ cart with electric speakers.

776. A hammered copper rectangular log box of cavetto form, 23" x 20".

777. An early Belling & Co electric convector heater of neo-classical brass design, model 918. Illustrated.

778. A Georgian mahogany box with crossbanded decoration, brass loop handle and divided interior, 10" wide.

779. A Victorian EPNS pickle jar stand, the boat shaped body pierced and fitted with a centre loop handle, on 4 foliate scroll feet, containing 2 cut glass pickle jars and covers, 8 1/2" wide.

780. A 19thC French mahogany parquetry desk stand with case brass fittings and mounts, 15" x 10".

781. A small marble urn.

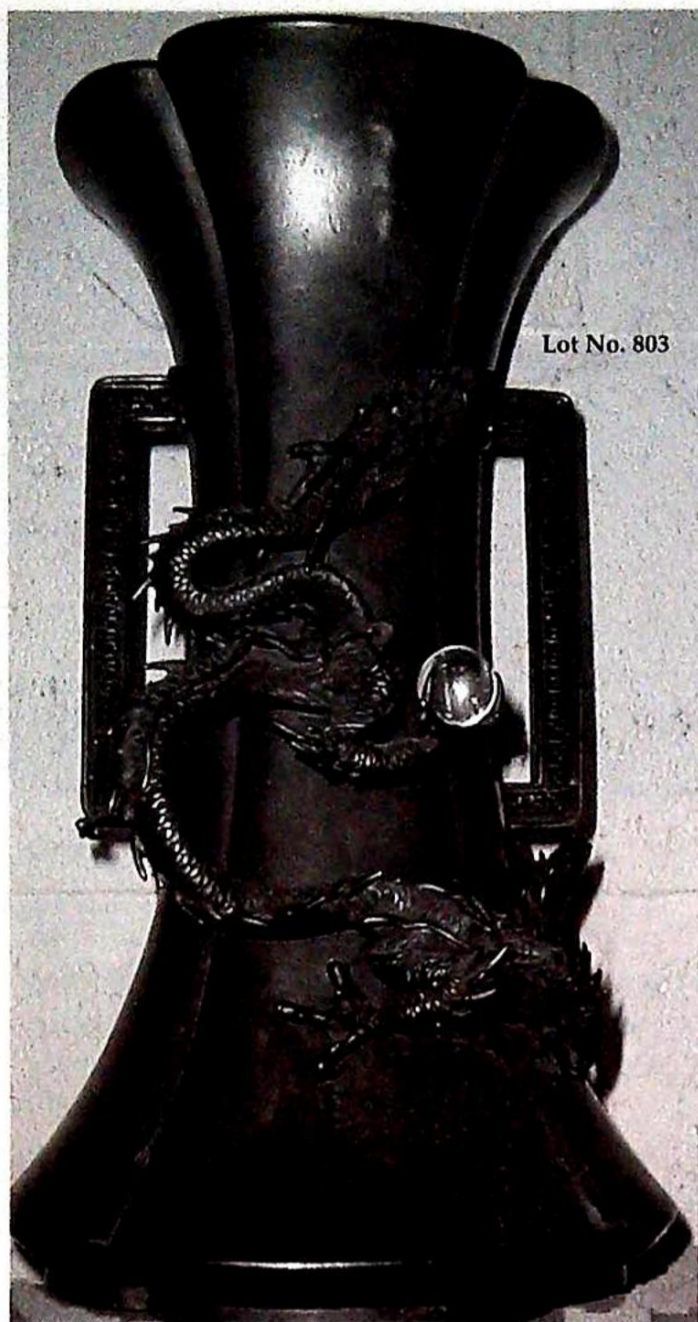
782. An electroplated table centrepiece of shaped and embossed circular form with crystal epergne centre, 15" high.

783. A George III mahogany Stilton coaster with brass castors, 16" wide.
784. A Georgian mahogany 2-section tea caddy with string inlaid decoration, 7" wide, and a further mahogany box.
785. A Georgian mahogany rectangular cutlery box with brass handle, 18" wide.
786. A carved mahogany figure of the Lincoln Imp, 14" high.
787. A late Victorian mahogany cased Thornton Pickard Victory enlarger.
788. An Art Deco figural table lamp with cold painted polychrome figure of a kneeling female on a lozenge stepped onyx base, 11" high.
789. A Sheraton mahogany 2-section tea caddy with shell inlaid decoration and ball finial, no interior, 7 1/2" wide.
790. A George III mahogany 2 section tea caddy with extensive inlays to the rectangular body with brass loop handle and fitted interior, 9" wide.
791. African carved ivory items inc openwork tusks with lions, elephants and giraffes.
792. A Victorian mahogany writing box with brass loop handles and secret drawer, 14" wide.
793. An oak model of a Lincolnshire dresser with shaped back, knob handles and turned feet, 15" wide.
794. A Sheraton mahogany cross-banded knife box with shell inlay (no interior), 15" high.
795. A Victorian copper warming pan with turned ebonised handle and plain cover.



796. A pair of rectangular leather 5-brass martingales.
797. A Victorian copper spirit kettle with turned ebonised handle and rustic stand with spirit burner, 12" high.
798. A Victorian copper jelly mould with scrolling tapered decoration, 4" high.
799. An old Sheffield Plate samovar of plain rectangular form, on stepped base with 4 feet, 13" high. Illustrated.
800. A carved wooden panel depicting a phoenix, carved in high relief, 23" wide, 17" high.





Lot No. 803



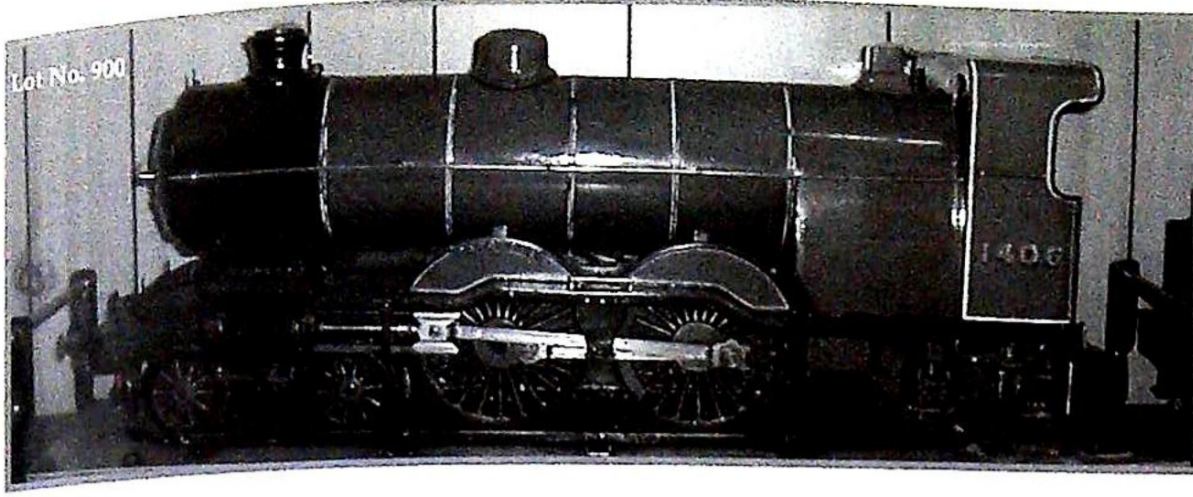
Lot No. 804

801. A Victorian polished brass upright fireside companion with turned finials comprising stand, poker, tools and shovel, 28" high.
802. Two Victorian copper saucepans with iron handles and 3 further covers.
803. A Meiji period Japanese bronze dragon vase, with openwork square form handles to a tapering lobed body, cast in relief with a dragon holding a rock crystal ball, seal mark to base, 15" high. Illustrated.
804. An Edwardian oak framed tantalus by Daniel & Arter of London, the 3 cut crystal square decanters locked by an electroplate lever cover, 15" wide. Illustrated.
805. A 19thC brass arms dish with floral prickwork design and raised rim, 17" dia.
806. An Edwardian oak smoker's cabinet with lift top, 2 bevelled glazed doors with fitted interior, 14" wide, 12" high.
807. An Edwardian oak smoker's cabinet with single door, moulded top and plinth, with fitted interior, 9" wide, 10" high.
808. An Edwardian oak smoker's cabinet with moulded lift top over a door and fitted interior with moulded plinth, 8" wide, 12" high.
809. An Edwardian oak smoker's cabinet with electroplate mounts and 2 doors revealing a fitted interior with mixing jar, 12" wide, 12" high.
810. An early Premier copper electric kettle with ebonised handle, 9" high.
811. A Victorian terracotta garden figure of a headless monk holding a book, 182 high.
812. A fine pair of 19thC French bronze and ormolu 3-branch candelabra with a stylised female winged figure holding baskets of flowers for sconces, standing on a ball and anthemium reeded pillars, 23" high. Cover illustration and internal.
813. An Indian brass hanging lantern of pierced design.
814. A green ground floral painted Detford Pulpware waste paper basket, a graduated set of 3 circular trays and a further magazine rack.
815. A walnut cased radio with bakelite handles.
816. A rosewood string inlaid mandolin bearing label F Nurdea, Napoli, 24" overall.
817. A violin bearing the remnants of a label 'Milan al Segno Della Corona, 1721', cased with bow, 14".
818. A 19thC violin in a string inlaid rosewood case with bow, 14".
819. A Dunn & Co top hat, size 7.
820. A Victorian rosewood and burr walnut tea caddy of canted rectangular form, having inlaid top, 6" wide.
821. A Victorian walnut dome top workbox with lift top, pull front and drawer, 12" wide.

822. A Walker & Hall electroplate serving tray of canted rectangular form, having loop handles and turned gallery, 24" wide.
823. A Victorian mahogany duet writing box with string inlay decoration and fitted interior.
824. A leather collar box and quantity of collars.
825. A Victorian rosewood tea caddy of sarcophagus form having pewter and mother of pearl inlay and bun feet, 9" wide.
826. A Victorian inlaid mahogany workbox, 12" wide.
827. A carved teak glove box and pair of brass dwarf candlesticks.
828. A Victorian mahogany duet writing box with fitted interior, 16" wide.
829. An Edwardian string inlaid oval serving tray with brass handles, 17" wide.
830. A Lipscombe & Co salt glazed stoneware water filter and cover (AF), 20" high.
831. A Victorian cream and floral enamel bidet on a folding wrought iron stand.
832. A late Victorian oak stationary cabinet and writing box with lift top revealing a fitted interior and fall-flap with spring loaded inkwells and writing slope, 17" wide, 11" high.
833. An Edwardian oak smoker's cabinet with single glazed door, fitted interior, moulded top and plinth, 12" wide, 14" high.
834. A Victorian mahogany writing box with fitted interior, 14" wide.
835. A Victorian brass preserve pan with swing handle, 14" dia, and copper warmer.
836. A Victorian rosewood writing box with fitted interior, 16" wide and a mahogany cutlery canteen. (2)
837. A collective lot of optical items including 2 pairs of opera glasses, Vedette binoculars, box cameras, Olympus Trip, etc.
839. A Victorian flamed mahogany chemist's dispensary box, the upper part with fitted compartments for and including some bottles, the lower drawer with scales and weights, 8" wide, 8" high.
840. A Victorian mahogany chemists dispensary pill board (2) with slide and a Harris pill machine with powder measure and box.
841. Various small medical instruments
842. A bronze pestle and mortar and pocket balance.
843. A polychrome and gilt decorated jar marked 'Currie Powr', 11" and 2 further blue bottles with stoppers marked 'Syr. Sennae' and another. (3)
844. A Georgian mahogany cased pocket balance.
845. A Georgian mahogany cased monocular gilt brass microscope with further lenses, no maker's name, 10".
846. A collection of 6 bronze mortars and 4 pestles.
847. A brass and mahogany table scale with mahogany drawer base together with a Flockhart chemist's dispensary box with 16 miniature bottles, and another.
848. A brass and aluminium framed pill making board, 10" x 7".
849. A collection of Victorian and later glass and stoneware chemist's jars, some titled.
850. A Maw & Son treen linament box with bottle and stopper inside and 2 brass boot displays, 5" high.
851. A Victorian brass and mahogany pill making board with slide and accessories.
852. Two Victorian wooden chocolate moulds.



853. Two small lidded treen boxes in the form of a pear and an apple.
854. A bakelite 'Philatector'.
855. A pair of Victorian glass specimen domes, 15" high, 7" dia.
856. A Lincolnshire Regiment silk panel worked in polychrome stitching, WWI, 21" square.
857. A Victorian beadwork panel and an Indian silver thread picture.
858. Lace, needle and crochet work. An assorted lot.
859. A bale of 1970's fabric.
860. A bale of 1970's fabric.
861. A bale of 1970's fabric.
862. A bale of 1970's fabric.
863. A bale of 1970's fabric.
864. A bale of 1970's fabric.
865. A bale of 1970's fabric.
866. A bale of 1970's fabric.
867. A bale of 1970's fabric.
868. A bale of 1970's fabric.
869. A Victorian needlework sampler by Ada Willcock, 20th July, 1891, 16" square.
870. Two bottles of Martinho Port and a Monnet & Co Special Cognac.
871. A Pelham puppet - clown.
872. A Pelham puppet - MacBoozle
873. A Pelham puppet - Mexican Girl.
874. A Pelham puppet - sailor.
875. A Pelham puppet - donkey.
876. A Pelham puppet (yellow box) - old lady.
877. A Pelham puppet (yellow box) - baby dragon.
878. A Pelham puppet (yellow box) - Dutch girl.
879. An Armond Marseille baby doll, restored, 20".
880. An American Google eyed doll, felt limbs, 14".
881. Three modern Hornby locomotives and tenders and further Pallitoy example.
882. A selection of modern railway rolling stock, buildings and accessories.
883. A collection of Hornby O gauge inc M1 locomotive and tender, No 1 goods van, No 1 water tank, No 1 petrol tank, island platform, No 2 junction signal, no 2 signal cabin, platform crane, track, etc.
884. A white plush clockwork tabby cat, 20".
885. A clockwork tinplate toy of a duck on a tricycle, pointed hat, 8".
886. A German tinplate clockwork peacock, 10" and a frog.
887. Hornby O gauge locomotives and rolling stock (all AF).
888. A small collection of Britains and other lead military and other figures, diarama pieces, etc (all AF)
889. A Meredith and Drew biscuit jar, polychrome wooden separator bowl and radio.
890. A pair of red ground Japanese cloissone baluster vases and another blue ground example, 12" high (all AF).
891. A pair of Japanese carved hardwood figures of seated ox on plinth, 10" wide and a further pair of reclining geishas and pagoda.
892. A Japanese hanging scroll
893. Various oriental items of metalware, treen and pottery, 20thC.
894. Various oriental items of metalware, treen and pottery, 20thC.
895. A German Art Deco chrome plated airplane smoker's compendium by J A Henckels, Twin Works, Solingen. 10".
896. Brooklands Speed Trials. An Art Deco chrome plated table clock with inscription, 'One Hour Trial Speed Brooklands 1936, H France-Cohen, car speed 70.23 mph', 1936 Torquay rally badge and the Colmore Trophy Trial Relief Plaque 1936. (3)
897. Spot-on Models; Vauxhall Cresta No 280, MG 1100, Austin Healey Sprite Model No 219, and a further wooden model (4)
898. Four WWII Service Medals for G A Beal, Defence Medal, War Medal, Africa Star, 1939-45 Star, no inscriptions.
899. A WWI & II medal group of Major B H Brown comprising 1914/15 Star, 1914-18 War Medal, 1914-19 Victory Medal, George V/Mary Medal, George V Territorial Force Efficiency Medal, together with a set of miniatures and various badges, letters, postcards, ephemera and stick.



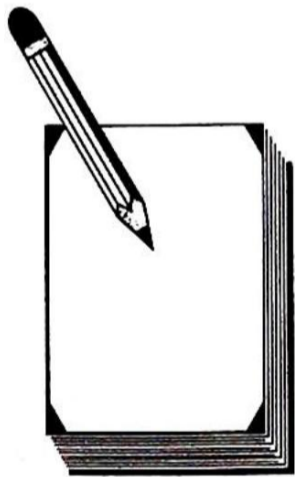
900. A 3 1/2" gauge steam locomotive 'Patricia', 1406 4-4-4, with tender, in green GNR livery. Illustrated.
901. A 19thC Royal Navy officer's dress sword, with gilt lion mask handle, shagreen grip, pommel and scabbard. 38"

1000. **RAF Memorabilia** relating to Flt Lt H France-Cohen briefly comprising medals, 2 log books, some clothing and ephemera.

Full details available upon request.

FOR SALE by INFORMAL TENDER, all bids (exclusive of buyers premium) must be received in writing by 9am, 30th April.

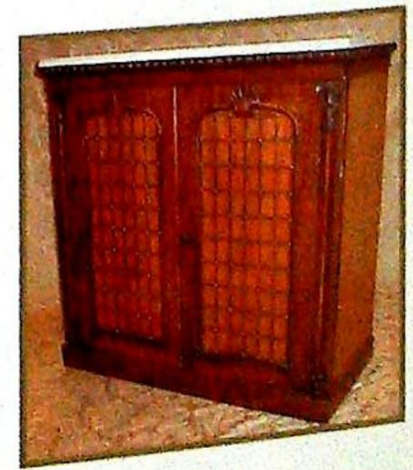
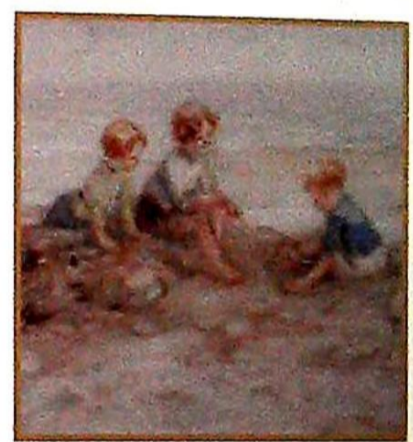
All enquiries to Colin Young.



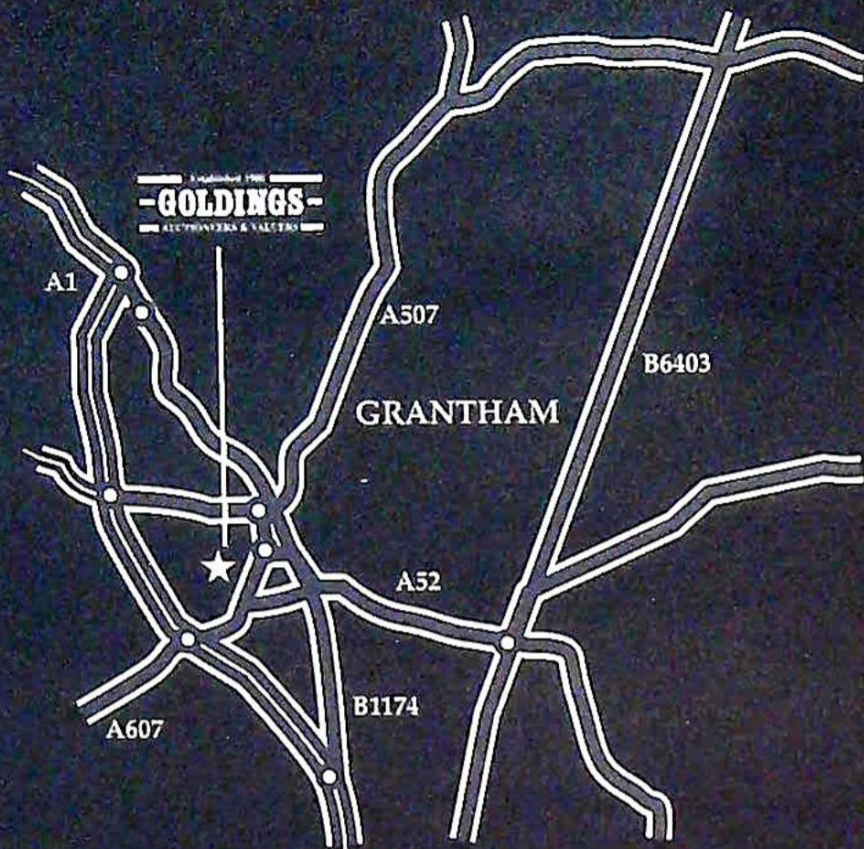
NOTES

CONDITIONS OF SALE

1. These Conditions together with any Notices to Purchasers are the only terms and conditions subject to which Golding Young & Co ("the Auctioneers"), as agents for the Vendor will sell goods to a purchaser ("the Bidder") and all other conditions, whether express, or implied at common law or by statute as are capable of lawful exclusion are hereby excluded.
2. The highest bidder shall be the buyer. The Auctioneers reserve the right of regulating the biddings; of rejecting any bid; and of bidding for, withdrawing, consolidating, dividing or altering the order of lots.
3. The purchase money for each lot with the usual commission of 15% on the first £100 and 12.5% thereafter (min £1 per lot) plus VAT at the current rate shall be paid at the fall of the hammer (if required). Each lot at the fall of the hammer shall be at the sole risk and expense of the buyer, and shall be paid for and removed immediately after the conclusion of the sale, but no lot shall become the property of the buyer, or be removable until paid for, and if taken away in contravention of these conditions without an order for removal signed by the Auctioneers, they shall have power to seize the same by their servants or agents, or otherwise, or the Auctioneers may recover either the lot sold or the price thereof (at their option) by action at law.
4. No contra account of any description whatever will be allowed to the buyer as a set off, and payment for each Lot shall be made to the Auctioneers or their clerk only, and a buyer paying by cheque must give satisfactory references.
5. For all purposes of this sale the Clerk of the Auctioneers shall be deemed to be the agent of both seller and buyer.
6. A bidder shall not be allowed to retract his bidding after the fall of the hammer, and he shall give up his full name and address if required. The Auctioneers will not recognise the transfer of any lot from one buyer to another, nor make any alteration in the sale book in respect thereof.
7. The Auctioneers are acting only as agents, and give no personal warranty as to the condition, quality or authenticity of any chattels offered for Auction. Any catalogue description is given merely as guide to purchasers, any description can be changed from the rostrum before the lot is sold. If a purchaser buys without previous inspection he will do so at his own risk.
8. Notwithstanding any other terms in these Conditions, if within 7 days of the Sale a purchaser gives notice in writing that a lot is a deliberate forgery, with supporting factual evidence, the Auctioneers may rescind the transaction. The burden of factual proof lies with purchaser, mere opinions will not satisfy. This benefit is not assignable.
9. If any buyer neglect or refuse to comply with the above conditions or any of them, his deposit money (if any) shall be forfeited, and the lot uncleared may, at the option of the Auctioneers, be resold without notice by public auction or private treaty, and any loss occasioned by such re-sale together with all expenses attendant thereon, or arising under these conditions shall be paid for by the defaulter and be recoverable as and for liquidated damages. This condition is however without prejudice to the right of the Auctioneers to enforce the contract made at this sale if they think fit.
10. Any Notes for Purchasers and Catalogue Glossaries will be construed as Conditions of Sale.
11. The Auctioneers shall be the sole Arbitrators in all matters of dispute relating to those conditions both as between the seller and the buyer and between the several bidders and buyers and their determination on all matters shall be final and binding on all parties concerned.



How to find us



By Road

From whichever direction you approach Grantham, you can find us if you observe the following rules: Follow signs for Town Centre. Follow signs for Railway Station. At the roundabout leading to "Station Road", continue around to a double viaduct/ railway bridge. Take the right hand arch which leads into Old Wharf Road.

The Salerooms are the first building on the right. There are parking and loading bays in front of the premises.

By Train

The auction house is situated very closely to the Railway Station, which is served by the East Coast Main Line. Trains run approximately every 20 minutes from Kings Cross.



WWW.GOLDINGYOUNG.COM

Established 1900
-GOLDINGS-
AUCTIONEERS & VALUERS

Golding Young & Co., Old Wharf Road, Grantham, Lincolnshire NG31 7AA
Telephone: 01476 565118 Fax: 01476 561475 Email: enquiries@goldingyoung.com