

Established 1900

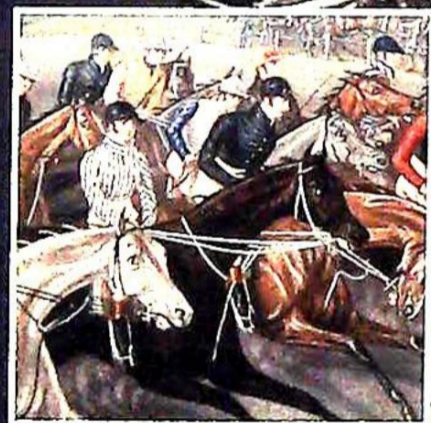
-GOLDINGS-

— AUCTIONEERS & VALUERS —

BOUCHEE
PARIS, 26 Place Vendôme
New York, East 57th Street
180, New Bond Street
LONDON.

CATALOGUE SALE

FEBRUARY 2003





IMPORTANT NOTES FOR PURCHASERS

1. **PAYMENT:** Must be made in full immediately after the Auction. The following methods of payment are acceptable.
 - a) Cash
 - b) Bankers Draft
 - c) Building Society Cheque
 - d) Cheques (accompanied by a valid card.)
 - e) Debit & Credit Cards (the latter subject to a charge of 2% + VAT).

PAYING BY CHEQUE?

If you are not known to the Auctioneers and wish to pay by cheque above your guarantee card limit WE WILL RETAIN THE GOODS until it has been cleared (7 days). There will be NO EXCEPTIONS to our policy. To avoid UNDUE EMBARRASSMENT for yourself or to our staff, please do not ask for preferential treatment. If you wish to clear goods immediately bring a letter from your Bank or a suitable guarantor reference.

2. **BUYERS PREMIUM** of 15% on the first £100 of each lot and 12 1/2% thereafter is payable on all lots. Minimum £1 per lot. All plus VAT.
3. **REMOVAL OF PURCHASES:** Goods must be collected as soon as they are paid for, and in the 2 Working Days following the sale. If goods are not collected on these days we reserve the right to charge £1 per lot per day thereafter.
4. **COMMISSION BIDS:** If you are unable to attend this or any of our future sales we will be pleased to bid on your behalf. We always purchase at the lowest possible price, subject to other bids and reserves.

All bids must be handed to the office on an official form. It remains the responsibility of prospective purchasers to contact GOLDINGS to confirm whether their bids have been successful.
5. **TELEPHONE BIDS:** There are inherent dangers with this practice, therefore all such arrangements are made entirely at the bidder's risk. Telephone bids will only be accepted if the lower estimate is £500 or above. For lots with a lower estimate below this figure Commission Bids Only will be accepted.
6. **SMOKING** is not permitted in any part of the Saleroom.
7. **REFRESHMENTS** will be available Saleday.
8. **ACCOUNT TRANSFER** will not be recognised after the sale. If any lots are purchased for another person, this must be declared at the fall of the hammer.
9. **ESTIMATES.** Our Auctioneers will be available during viewing to give guidance on your prospective purchases.

GLOSSARY

- a) Generally: 'As Found' (AF). This term indicates the lot has some damage. Its absence does not indicate that the lot is free of defect. All lots are SOLD AS SEEN.
- b) Paintings: 'Signed, initialed, monogrammed' - This refers to the present state of the work and is not an attribution.
- c) Books and printed matter: These items are not sold subject to collation and are not returnable once removed from the premises.
- d) Silver & Jewellery: Weights given are approximations given by basic instruments.



Established 1900

-GOLDINGS-

■ AUCTIONEERS & VALUERS ■

Upon instructions from over 200 vendors including various Estates and single entries from throughout the region.

GOLDING YOUNG & CO will sell by AUCTION

**FINE JEWELLERY,
ANTIQUES, WORKS OF ART
AND COLLECTORS ITEMS**

WEDNESDAY 5th FEBRUARY 2003

Commencing at 10am

lots 1 to 100	20th century ceramics & glass
lots 101 to 200	jewellery & bijouterie
lots 201 to 320	pictures, prints & books
lots 321 to 430	silver & platedwares
lots 432 to 499	pre-20th century ceramics & glass
lots 500 to 540	metalware
lots 541 to 658	furniture
lots 659 to 669	clocks & barometers
lots 670 to 800	decorative & collector,s items

Lot enquiries

Suki J Burnett A.N.A.V.A.
Jan L Squires PJ Gem (Dip), A.N.A.V.A.
Colin R Young F.N.A.V.A.

Accounts enquiries

Marie Scoffield

VIEWING: Monday 3rd - 2pm to 5pm, Tuesday 4th - 11am to 7pm and Saleday 9am to 10am.
And On-line at www.goldingyoung.com
from Saturday 1st February.



At this sale we welcome the BBC who will be filming for the Flog It!, programme

Golding Young & Co.

Old Wharf Road, Grantham, Lincolnshire NG31 7AA
Telephone: 01476 565118 Fax: 01476 561475 Email: enquiries@goldingyoung.com

Buyers Hotline: 01476 575202

For lot enquiries and commission bids viewday and saledays only.

BUYING OR SELLING in 2003?

We have the lot!

OVER 100 YEARS EXPERIENCE TO GIVE YOU THE BEST ADVICE

THE COLLECTIVE SALES

Your Regional Market Place

for Victorian, decorative and second-hand furnishings,
household and personal effects.

Every two or three weeks we hold sales of over 750 mixed lots of items
received from Property Clearances and vendors of single items.

Over 120 vendors sell with us every sale and over 500 are
registered to buy.

NEXT SALES: 19th February, 5th & 19th March

VIEWING: Tuesday 11am to 6pm & Saleday from 9am

STAMPS, POSTCARDS, CIGARETTE CARDS AND EPHEMERA

Date to be arranged in March

Catalogues will only be available at viewing,
further unreserved entries are welcome.

THE COMMERCIAL SALES

Your Regional Market Place
for the sale of business assets, stock-in-trade,
plant, machinery & equipment.

Sales in-house and on-site are held throughout the year
as instructed by

Liquidators, Receivers, Bailiffs, The Sheriff,s Office,

County Courts and Business Advisors.

Regular consignments of Tools are included in the
Collective sales on behalf of Machine Mart Ltd.

(Next Selection – 19h February)

COMMERCIAL CLEARANCES and SINGLE ITEMS
always INVITED

THE CATALOGUE SALES

Your Regional Market Place

for fine antiques, works of art, jewellery, silver,
ceramics, glass, books, clocks, furniture
and all fields of collectors, items.

Held quarterly, these sales include select items that need specific and
direct marketing through our select mailing list & databases.

Up to 200 vendors selling items to a
Worldwide Audience viaThe Internet.

NEXT CATALOGUE SALE:
30th April 2003 at 10am

CLOSING DATE for entries 4TH APRIL



Joseph Wright of Derby
Vesuvius from the bay of Naples

VIEWING:
Monday 2pm to 5pm,
Tuesday 11am to 7pm & Saledays 9am to 10am
And on-line from the Saturday prior.

VALUATIONS

Free Antiques Auction Advice
Tuesdays 2pm to 6pm

Call Jan Squires for appointments
and home visits at other times.

for sales and services information call

01476 • 565118

HOURS of BUSINESS

Monday to Friday 9am to 1pm & 2pm to 5pm
Entries welcome at all times except Saleday

PROPERTIES CLEARED – TRANSPORT ARRANGED
VALUATIONS FOR ALL PURPOSES

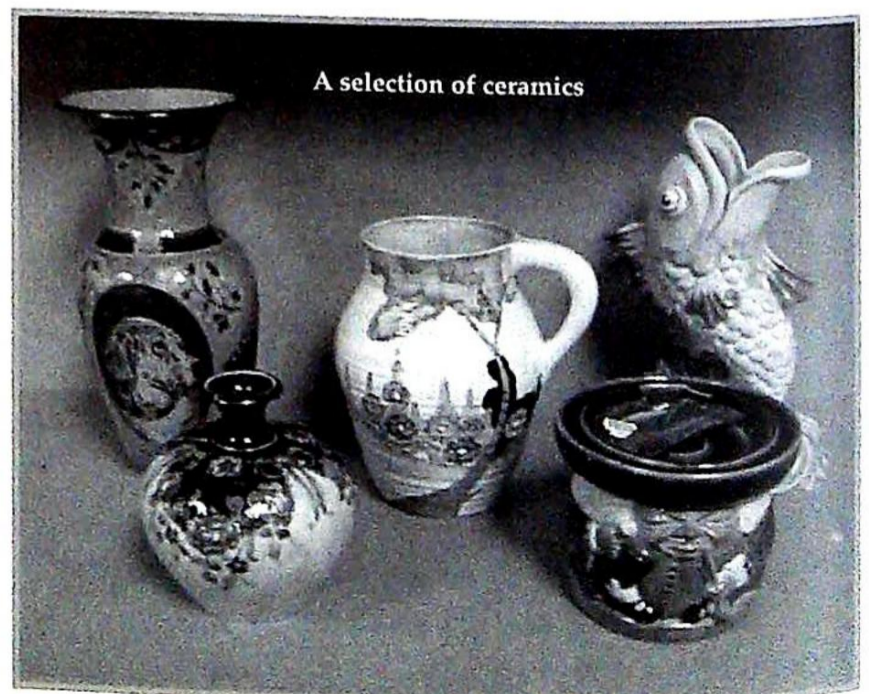


A collection of Royal Crown Derby 'Japan' pattern porcelain.

1. A pair of sweetmeat dishes, circular, with integral pierced handles, heavily gilt, on raised foot, 6 1/4" over handles, pattern no 1128, modern date marks.
2. A ewer, of flattened baluster form, with acanthus and foliate handle forming the back of an extended spout, on scroll moulded domed foot, heavily gilt, 10" high, patt no 1128, modern date mark.
3. A sauce tureen and cover, circular, with acanthus loop handles, on raised cavetto foot, the cover with acorn finial, 7" diameter, patt no 1128, modern date mark.
4. A cigarette box, rectangular with slightly domed cover, 4 1/2" wide, patt no 1128, modern date mark.
5. A set of 4 egg cups, of panelled form, 2 1/4" high, patt no 1128.
6. A table cigarette lighter, circular, patt no 1128.
7. A table cigarette lighter, circular, patt no 1128.
8. A matched pair of circular cannisters and covers, 4" high, 2 3/4" dia, patt no 1128, modern date marks.
9. An ashtray, of wavy rectangular form, heavily gilt, 3 3/4" wide, patt no 1128, modern date mark.
10. A coffee set, comprising coffee pot, cream jug, sugar bowl and 6 demitasse with saucers, patt no 1128, modern date marks.
11. Eight dinner plates, 9" dia, patt no 1128, modern date marks.
12. Seven dessert plates, 8 1/2" dia, patt no 1128, modern date marks.
13. A tea service, comprising 6 tea cups, saucers and tea plates, patt no 1128, modern date marks.
14. Three trios, comprising plate, tea cup and saucer, patt no 2451.
15. A part tea service, comprising 4 cups, saucers and plates and a milk jug, patt no 1128, various marks, mainly early 20thC.
16. A two-handled urn and cover, of ovoid form, with waisted and knopped finial, scroll moulded and pierced handles rising vertically from the body, slender tapering stem on square base with incurving corners, heavily gilt, 17" high, patt no 1128. (Minor damage to finial), modern date mark.
17. A set of 6 tea cups and saucers, patt no 1128, modern date marks.
18. A deeply dished fruit bowl, rectangular, with scroll handles mounted to each side, gadroon border and on oval foot, heavily gilt, 11" wide, patt no 1128, modern date mark.
19. A 2-handled sugar bowl and cover, oval, the domed cover with conforming finial, 7" over handles, patt no 1128, modern date mark.
20. A loving cup, having moulded 2-part handles, 3" high, patt no 1128.
21. A tea pot, of oval form, the domed cover with conforming finial, scroll handle and spout gilt with foliage, patt no 1128, modern date mark.
22. A pedestal comport, of swept square form with relief moulded corners, on square concave foot moulded with dolphins, heavily gilt, 10 1/4" square, patt no 1128, modern date mark.
23. A baluster vase, with elongated flared rim, having 2 acanthus moulded loop handles to the side, on flared foot, 6" high, patt no 1128, 1925.
24. An octagonal bowl, heavily gilt, 7 1/2" wide, patt no 1128, modern date mark.
25. An octagonal bowl, heavily gilt, 7 1/2" wide, patt no 1128, modern date mark.
26. An octagonal bowl, heavily gilt, 9 1/2" wide, patt no 1128, modern date mark.
27. An octagonal bowl, heavily gilt, 10 3/4" wide, patt no 1128, modern date mark, (restored).
28. A pair of candlesticks with fixed sconces over tapering panelled stems, on concave square bases moulded with dolphin, heavily gilt, 10 1/2" high, patt no 1128, modern date marks, (fitted for electricity).
29. Two cake slices, patt no 1128, in fitted boxes.
30. Six teaspoons, patt no 1128, in individual boxes.
31. A set of dessert knives and forks with pistol handles, patt no 1128, modern.

20th century ceramics and glass.

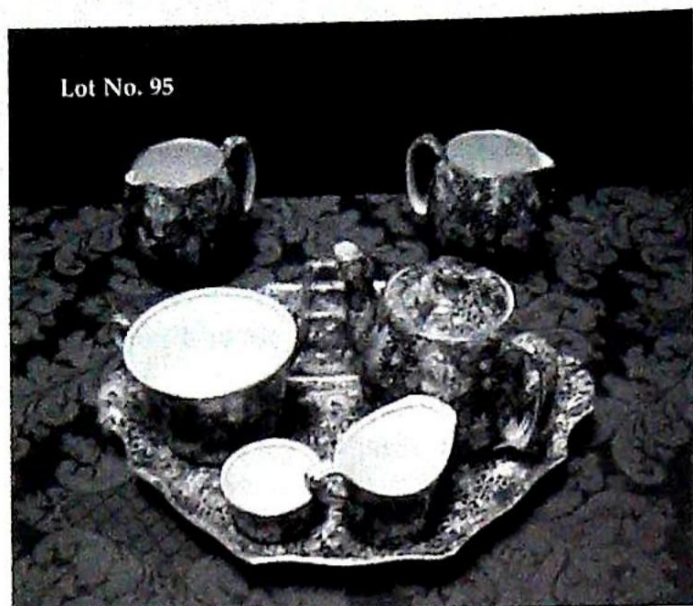
32. A Derby elliptical pen tray, moulded and gilt with scrolls on an underglaze blue ground border, the centre printed with Chinese flowers and motifs in iron red, 9" wide, pattern no 2649, printed factory mark and date code for 1895, together with a saucer, painted and gilt in the Imari palette, pattern no 198, 19thC. (2)
33. A pair of Derby vases, of compressed circular form, each with raised necks and 2 handles moulded as oriental face masks, painted and gilt in the Imari palette with 2 vase shaped panels of birds and foliage, the ground with prunus and chrysanthemums, on raised foot rim, 3 1/2" high, 5 1/4" over handles, underglaze blue factory marks, 19thC.
34. A Royal Crown Derby part trinket set, painted and gilt in the Imari palette, pattern no 381, date code for 1895, comprising pair candlesticks, 3 oval trinket dishes and ring tree. (6)
35. A Moorcroft vase, of compressed circular form, with slightly everted rim decorated in pink, yellow and pale green on a dark green ground, 4 1/4" high, 5 1/2" dia, modern factory marks.
36. A Moorcroft vase, of baluster form, decorated in pink, yellow and pale green on a dark green ground, 3 1/4" high, modern factory marks.
37. A Wilkinson pottery vase, of baluster form, polychrome painted in the Secessionist style with a profile head and shoulders portrait of a female, random and border tulips, 9 1/4" high, c.1907.
38. A Wedgwood for Spink biscuit figure 'Christmas at Windsor 1845', ltd edition 2167/10,000, 7 1/2" high, another, 'The Golden Jubilee 1887', ltd edition 721/10,000, 8 1/4" high. (2)
39. A Bursley ware pottery charger by H J Wood, polychrome and gilt with simple flower forms and strapwork leaves, 14 1/4" dia, printed factory mark and no 1775
40. A Carlton Ware blue ground 'Barge' pattern twin-handled pedestal bowl, with everted shaped rim and moulded gilt handles, pattern 2519, c.1920, 13" over handles.
41. A Royal Doulton pottery decanter, modelled as a buzzard, by John G Tongue for Whyte & Mackay Distillers Ltd, 6 3/4" high, (complete with contents and gold seal)
42. A Royal Doulton pottery decanter, modelled as a Snowy Owl, by John G Tongue, for Whyte & Mackay Distillers Ltd, 6 3/4" high (complete with contents and gold seal).
43. A Royal Doulton pottery decanter of a kestrel, by John G Tongue, for Whyte & Mackay Distillers Ltd, 6 3/4" high.
44. A Royal Doulton pottery decanter of Merlin, by John G Tongue, for Whyte & Mackay Distillers Ltd, 6 3/4" high (complete with contents and gold seal).
45. A Royal Doulton pottery decanter of a Barn Owl by John G Tongue, for Whyte & Mackay Distillers Ltd, 6 3/4" high.
46. A large pottery vase in the style of Ruskin, of circular tapering form, with everted rim, drip glazed in turquoise, green and ochre, 21" high, contained within a wrought iron basket on 3 scrolling legs, overall 31 1/2" high.
47. A Moorcroft pottery pin tray, decorated with Hibiscus on dark blue ground, 4 1/2" dia, modern.
48. A Poole Pottery ovoid vase, with everted rim, pattern V, decorated with stylised flowers and foliage between bands, painted in shades of green, blue, black, purple, yellow and pink on an off white ground, 5" high, impressed factory mark and painted monogram, incised 113, c.1924.
49. A Beswick biscuit porcelain figure of Arkle, Champion Steeplechaser, by Arthur Gredington, on wooden base, from the Connoisseur Series, Model 2065, 12" high.
50. A Beswick biscuit porcelain figure of a Bay thoroughbred gelding, with 3 white socks, 8" high.
51. A Royal Worcester porcelain figure 'But the child that is born on the Sabbath day', Model no 3256, 5" high.
52. A Royal Doulton character jug, 'Athos', D6439, 7 3/4" high.
53. A Fieldings 'Devon Lustrine' octagonal bowl, polychrome and gilt with a pagoda pattern, 8 1/2" wide
54. A Clarice Cliff Bizare lotus jug, possibly decorated in the Tralee pattern and colours, black printed mark, 7 1/2" high
55. A Crown Ducal pottery vase by Charlotte Rhead, of baluster form, decorated in the 'Golden Leaves' pattern, 6 3/4" high, printed and painted marks, no 4921.
56. A Denby stoneware single handled jug by Glyn Colledge, painted in blues and greens with vertical leaf panels, 12" high.
57. A Coalport porcelain figure 'Lady in Lace' from the Ladies of Fashion series, by John Bromley, 6 1/2" high.
58. A Royal Dux porcelain figure of a cockatoo, 7" high, painted in pastel hues, printed and stamped factory marks, modern.



A selection of ceramics

59. A Poole Pottery jug, of spherical form, shape A, painted with stylised flowers and foliage in purple, blue, green, yellow and brown, 4 1/2" high, modern.
60. A Bohemian heavy cut glass bowl, with 'Bristol' blue deeply cut vertical panels, 9 3/4" dia.
61. A Doulton Lambeth stoneware vase, possibly by Florence Barlow, of ovoid form with elongated neck and everted rim, painted pate-sur-pate with dogs in oval panels and alternate diamond panels of birds in landscapes, and random panels of flowers, on a geometric ground, 10 3/4" high, impressed factory marks and indistinct initials, dated 1883.
62. A Doulton Lambeth stoneware tobacco jar, circular, moulded in relief with a pipe smoking bewigged gentleman, holding an ale jug in his right hand, glazed in red and blue on a buff body, 6" dia.
63. A Clarice Cliff jug, moulded as an open-mouthed fish, glazed in yellow, orange and buff, 10 1/2" high, blue printed factory mark.
64. A Moorcroft Macintyre vase, of ovoid form, the neck with everted rim, painted in the 18thC manner with roses, forget-me-nots and ribbons, in underglaze blue, pink and green, on a mottled green ground, 5 1/2" high, printed factory marks and facsimile signature, c.1908.
65. A Royal Doulton figure 'The Old King' by C J Noke, No HN2134, 10 3/4" high.
66. A Moorcroft vase, of baluster form, decorated in the Hibiscus pattern on a green ground, 5 1/2" high, impressed factory mark and printed paper Royal Warrant label.
67. A Shelley 'Queen Anne' shape coffee set, printed and painted with stylised iris comprising coffee pot, cream jug, sugar bowl and 6 cups and saucers, pattern no H561.
68. A Shelley part dinner service, of Queen Anne shape, printed in black and tinted yellow with a country sunrise landscape scene, comprising 2 meatplates, 2 covered tureens, 3 large plates, one tea plate and a gravy boat, pattern no 11678.
69. A Royal Doulton hexagonal sleeve vase, polychrome printed with parrots and foliage on a blue ground, between trellis panels, 11" high, no 14031.
70. A Royal Doulton 'rose Elegans' pattern dinner and tea service, of approximaely 63 pieces.
71. A pair of Royal Copenhagen plates, polychrome printed with differing flowers, within moulded borders, 8" dia, printed and painted factory marks, model no 1624.
72. A cut glass baluster water jug, facet and panel cut, with loop handle, 8" high.
73. A ruby glass decanter of tapering cylindrical form, with facet panels to the neck, and etched with fruiting vines, with teardrop stopper, 16" high.
74. A cut glass decanter of inverted baluster form, with panel and diamond cut bands and mushroom stopper, 9 3/4" high, etched S&W to base, together with another, of square shape.
75. Two Wedgwood embossed Queensware jugs, moulded with classical figures below vine borders, each with rope handles, 6 3/4" high.
76. A Doulton Secessionist pottery ewer, printed in flo-blue with the 'Aubrey' pattern, 13 1/2" high.
77. An Adams pottery bowl, polychrome printed in the Ming Jade pattern, 11" dia.
78. A Minton's terracotta wall plaque hand painted with a blue parrot in flight over a branch signed W.Oujill?, impressed marks to base, 16" dia.
79. A Royal Doulton figure, 'Top 'o the Hill', HN1849.
80. A Watcombe terracotta wall plaque painted with a rural scene of children playing on a bridge, 7" dia.
81. Crestedware. An Arcadian Charabanc (Melton Mowbray), Leicester Clock Tower, etc. (6).
82. A Cobridge stoneware baluster vase painted with buildings and mining towers, 10" high.
83. A Poole pottery vase in the form of a stylised fish, 8" high.
84. A Beswick wall plaque in the form of a seagull, 12" high.
85. A heavy hobnail cut crystal pedestal bowl, 8" high.
86. A Royal Doulton character jug, Winston Churchill.
87. A Carltonware pot pourri cover, having chinoiserie decoration on a powder blue ground, 5 1/2" high, (repair to knop).
88. A modern porcelain cylindrical vase and pierced cover in gilt and blue, having a reserve painted with birds feathers and eggs, signed S Shaw and marked with an interwoven S in gilt, 3 1/2".
89. Three pieces of Denby polychrome earthenware including jug, 2 bowls and further Royal Crown Derby plate.
90. A Clarice Cliff 'Bizarre' sugar bowl, 3" dia.
91. A set of 4 cut and moulded crystal ice plates.
92. A Wedgwood 'Antoinette' pattern blue and white square lobed bowl, 10".





93. A Royal Doulton blue and white taper vase painted with children seated at foot of a tree, 4" high.
94. A Royal Doulton 'Rose Elegans', tea and dinner service.
95. A Royal Winton 'Hazel' pattern chintz breakfast service together with 2 further jugs.
96. A pair of continental porcelain petal vases of spherical form, on 3 legs.
97. A Moorcroft baluster vase, painted with the anemone pattern on a terracotta ground, c.1960, 3 1/4" high.
98. A small selection of Green's blue and white banded Cornish kitchenware.
99. A collection of Staffordshire cottages, 19th/20thC
100. Six Royal Crown Derby blue and white Oriental pattern teaplates.
- Jewellery and Bijouterie**
101. A gentleman's solitaire diamond set 18ct gold heavy signet ring, mounted estimated weight, 1.20ct, colour M-Z, P2.
102. A lady's stone set dress ring, a central oval flat topped ruby with faceted base in rub over setting in yellow metal to white metal shoulders, set with 6 small diamonds on a yellow metal shank, stamped 18ct & PLAT.
103. A gentleman's 18ct gold keeper ring, set with a single old cut diamond, total approx weight 9gms.
104. A gentleman's heavy yellow metal signet ring with a diamond set marquise shaped central insert, a Princess cut central stone, flanked by 2 close set triangle cut stones, mounted estimated total weight of diamonds 1.75ct, total approx weight 11.6gms.
105. A lady's diamond set dress ring, an 18ct stamped marquise shaped setting, set with 5 diamonds.
106. A diamond set half hoop eternity ring, white metal stamped 18K, set with 7 diamonds, mounted estimated weight 0.21ct, size I.
107. An Art Deco three-stone diamond ring, white metal square set stones to a yellow metal shank, mounted estimated weight 0.24ct.
108. A lady's diamond set dress ring, an 18ct gold marquise shaped setting, set with 5 small diamonds, hallmarked Chester 1915.
109. A lady's 5-stone graduated diamond ring set in white and yellow metal, shank stamped 18ct, total estimated mounted weight 0.54ct.
110. A lady's 3-stone diamond ring, the stones in millegrain settings to a yellow metal shank stamped 18ct, total estimated mounted weight 0.16ct.
111. A lady's diamond set ring, 5 small diamonds set in white metal to yellow metal cross-over shoulders and shank, stamped 18ct & PLAT.
112. A ladies diamond set ring, 5 graduated diamonds set in white metal to a yellow metal shank stamped 18ct & PLAT, total estimated mounted weight 0.60ct.
113. A yellow metal, turquoise and diamond Victorian brooch of double overlaid crosses set with turquoise half beads and a central diamond; mounted estimated weight 0.40ct, later pin, screw fixing to reverse.
114. A diamond ring, a white metal basket style setting bagette cut diamond set shoulders to a white metal shank stamped PLAT, set with a pale lemon yellow diamond with green overtones, round brilliant cut, mounted estimated weight, 1.68cts.
115. A selection of citrine and diamond set jewellery, comprising large heart shaped citrine brooch in tricolour metal contemporary setting, a dress ring and ear clips of similar design and a bracelet of oval citrines (7) interlinked with tri-colour gold bow links each set with 2 small diamonds, stamped PLT & 18K.
116. A diamond and ruby set brooch of floral form (c.1940), a mixture of round brilliant, baguette and marquise cut diamonds set in white metal, the rubies in yellow metal, forming a single daisy-like flowerhead with leaves and stem, total estimated weight of diamonds 11.94cts, total weight all in 23.4gms.
117. A shell cameo brooch, oval heavy yellow metal mount, showing a piping cherub and birds and nest, 7cms x 6cms.
118. A shell cameo brooch, an oval yellow metal mount, showing a veiled woman, 4.5cm x 3.5cm.

119. A shell cameo brooch in an oval yellow metal mount with rope twist edge, showing cupid. 5.5cms x 4.5cms.
120. An Art Deco platinum and diamond set necklace comprising of a mixture of bagette and round brilliant cut stones, some 170 in total, in a blue velvet and satin lined fitted leather case by BOUCHERON. From the clasp, set with baguette diamonds, a single row of round stones interspersed with bagette stones falls to a spiral twist of calibre cut stones (each side), the row then dividing into two under the twists, continuing in a graduated double row of larger round brilliant and baguette cut stones. Clasp marked No 96. The total estimated mounted weight of diamonds is 21.38cts. Total weight all in 48.8g. (Front cover illustration)
121. A shell cameo brooch in an oval yellow metal mount with double rope twist edge of a kneeling woman feeding a large eagle like bird, (some damage). 5cms x 4.5cms.
122. A lady's dress ring set with an oval cabochon opal, 14mm x 9mm showing mainly green and blue flashes, flanked by 4 small diamonds, wide shouldered yellow metal settings, shank stamped 585.
123. An oval yellow metal faced locket with scalloped edge, engine turned decoration and vacant cartouche to front, 4.5 x 4cms.
124. A brooch, a scrolled heavy yellow metal oval mount containing a Vienna porcelain plaque showing a bare breasted woman examining a locket. 7.5cms x 7cms.
125. A lady's rose gold wristwatch, converted from a fob, with gold dial, 9ct with import mark.
126. A heart shaped brooch, central transfer portrait and black surround in a 9ct gold mount.
127. Portrait earring and pendant set in black mounts.
128. A large link bracelet, 18ct gold, 22.8gms.
129. A fancy link yellow metal bracelet stamped 375. 19.6gms.
130. A yellow metal belcher chain necklace, 57cms. 18gms, stamped 375.
131. A yellow metal belcher chain bracelet and T-bar, 21cms, 6.4gms.
132. A yellow metal curb link bracelet T-bar and 2 swivels, 19cms, 11.2gms.
133. A yellow metal belcher bracelet and swivel. (AF)
134. A 9ct gold belcher link bracelet, 19cms, 5.6gms.
135. A 9ct gold wedding band.
136. A sapphire and diamond set ring in 9ct gold, a central tear drop shaped sapphire surrounded by small diamond chips.
137. A graduated necklace of dark amber beads, 20".
138. A Victorian bloomed 15ct gold brooch, lozenge shape with applied scroll and bead decoration, central circular raised pad with diamond set star, Birmingham 1895.
139. An oval yellow metal locket with enamelled floral decorated front and floral engraved reverse.
140. A rose coloured bar brooch, abstract form, stamped 9ct.
141. A lady's solitaire diamond ring, a round brilliant cut stone in a simple 4 claw 18ct gold setting, mounted estimated weight 0.25ct.
142. A jet brooch, carved with a rose, leaves and scrolls and another set in yellow metal with silver wirework floral decoration.
143. A Japanese fruitwood netsuke a study of several frogs playing around and within a housemaids rope-bound washing tub.
144. A Japanese ivory netsuke a study of the court entertainer Ashi-Odori performing his fan dance.
145. A superbly detailed signed Japanese ivory netsuke a study of Amario attempting to bring the Rain Dragon under control.
146. A Japanese ivory netsuke a study of a pair of fishermen returning to their village with their catch.
147. A Japanese ivory netsuke a study of 2 immortals seated on a large slippery fish.
148. A Japanese Inro, a pill box favoured by the Samurai, decorated overall depicting deities and sages beneath pine trees.
149. A hinged bangle in yellow metal, 2 sea serpents holding a diamond between their jaws with 3 small diamonds set into the body, mounted estimated weight of central diamond 1ct, stamped 20 CS.
151. A Bohemian garnet necklace of graduated stones in rubover yellow metal setting, with loop and drop sections, 16".
152. A Victorian yellow metal and turquoise parure comprising of a snake link necklet with 3 turquoise set circular drops, the central one having a memorial window to the reverse, joined with snake link loops, and matching circular turquoise set ear studs.





153. An Edwardian amethyst and white stone necklace set in yellow metal, 17 graduated oval amethysts with white stones set above them, suspended from a curb link chain.
154. A brooch, an off set aquamarine heart shaped stone surrounded by a diamond chip set white metal border with further diamond set floral decoration, on a yellow metal undersetting, 3.5cms.
155. A brooch formed as a roundel, a central diamond surrounded by 8 diamonds, surrounded by a blue guilloche enamel band, a white enamel band, then red enamel set with 4 diamonds, then a final surround of diamonds, the whole set in a mixture of white and yellow metal, a memorial window on the reverse, total mounted estimated weight of diamonds 0.49pts, 2.5cms dia.
156. A yellow metal seed pearl set crescent and star shaped brooch. 2.5cms dia.
157. A Victorian bloomed yellow metal bar brooch set alternately with 3 diamonds and 2 sapphires in squared settings with bead and rope border, total mounted estimated weight of diamonds 0.24ct, 3.8cms.
158. A yellow metal garnet set brooch and twisted and folded ribbon set with demantoid and almandine garnets with a garnet set memorial locket suspended, 6cm.
159. An American Indian bead necklace, mainly turquoise and white glass beads.
160. A 4 stone diamond ring set in line in white metal to yellow metal shoulders, stamped 18ct.
161. A modern floral design ring set with a small central sapphire with 6 small stones as petals set in 18ct gold.
162. A 9ct gold 4 bar light weight gate bracelet.
163. A small floral brooch set with iridescent stones and a pearl set pin brooch.
164. A yellow metal bangle set with a small diamond and 2 small blue stones.
165. An Edwardian pendant of scrolling form in yellow metal set with seed pearls, and pale green and purple stones.
166. A 9ct rose gold hinged bangle with chased line and floral decoration, Birmingham 1915.
167. A 5 stone diamond set gypsy style ring in 18ct gold, Birmingham 1911.
168. A diamond solitaire ring set in a white metal setting on a yellow metal shank, mounted estimated weight 0.25ct, shank stamped 18ct & pt.
169. An Edwardian hollow large link bracelet with padlock clasp in 9ct rose gold, Birmingham 1906.
170. A yellow metal bracelet of linked rectangular panels enclosing a filigree centre, 58.6gms.
171. A Victorian yellow metal hinged bangle with twisted overlapping band, joined by a seed pearl set figure of eight.
172. A stone set white metal twist ring, possibly blue zircon, shank stamped 9ct.
173. A 9ct gold opal and emerald set dress ring, 3 cabochon opals, interspersed with 4 (one missing) emeralds.
174. A delicate seed pearl and stone set yellow metal dragonfly brooch, the wings set with tiny seed pearls, the body set with a ruby and the tail in green enamel, 2.7cm wide, 1.5cm long.
175. An early 20thC black opal and diamond set pendant, the circular slice of opal claw set and suspended on a bifurcated bar with a diamond set at the top, stamped 15ct, on a yellow metal chain.
176. A linked brooch of 2 yellow metal, seed pearl and stone set insects joined by a chain in a fitted leather case marked The Goldsmiths & Silversmiths Co, 112 Regent Street.
177. A yellow metal citrine set brooch, a large citrine surrounded by double white stone set rays, approx size 2.5cms x 2cms x 1.3cms.
178. A Victorian diamond set brooch in white and yellow metal, a crescent set with graduated old brilliant cut diamonds (17) with an inner crescent of diamond set stars (9) enclosing a diamond cluster set star (11), estimated mounted weight 1.70ct.
179. A heavy yellow metal ruby set foxtail and double foxtail necklet, c. 1960's, the brushed double link twisted with a single line of small claw set rubies.
180. A bracelet of trap cut graduated garnets set in yellow metal basket settings with extension links.
181. A yellow metal seed pearl set Victorian pendant, a 5 pointed star interspersed at the points with seed pearl set tulip heads, on a long and short link chain, stamped SS18.
182. A 9ct gold lady's dress ring set with an oval pale lilac amethyst, Birmingham 1964.
183. A tricolour metal bracelet, complicated plain and textured brick links, total weight 32.2gms, 18.5cm long x 1.3cm wide.

184. An Eastern gem set collar set with facet cut and cabachon semi-precious stones including amethyst, moonstone, tigers'eye agate, carnelian, garnet, opal and rose quartz.
185. A Belle Epoque diamond and emerald set pendant, a central square emerald surrounded by diamonds, an outer ensemble of floral and scrolling form, all diamond set, with a diamond suspender to the bottom point, estimated mounted weight of emerald 0.92ct, estimated mounted weight of 4 main stones 1ct.
186. A gold sovereign ring in a 9ct gold mount, wide pierced shoulders, date of coin 1905.
187. A porcelain plaque brooch, a picture of a Germanic girl set in a heavy yellow metal mount.
188. A bi-colour yellow metal gate bracelet, weight 24.2gms.
190. A yellow metal bar brooch with a spider, body and head set with amethyst.
191. A seed pearl set yellow metal shamrock spray brooch.
192. A seed pearl set yellow metal floral spray brooch.
193. A cased ivory handled viewer.
194. An intricate watch chain in yellow metal with coloured stone and enamel motifs, possibly Masonic.
195. A Victorian gypsy style ring in rose gold set with 3 turquoise.
196. A small bar brooch with red stone, a bar brooch 'Mother' and another.
197. A costume necklace by Michaela Frey Team.
198. A Victorian bloomed gold memorial brooch, circular form with floral decoration and glass insert to back.
199. A Ladies open faced fob watch in yellow metal marked 18K, keywind, case with engine turned and scrolling decoration with floral and foliate motifs and central cartouche.
200. A Victorian gilt metal Fob Seal.
206. After Arthur Pan. Winston Churchill - seated, with text and facsimile signature, reproduction black and white print, published by Frost & Reed, c.1944, image size 9 1/2" x 12".
207. Thomas G Appleton, after Wheatley. 'Milk Below', from Wheatley's 'Cries of London', mezzotint, signed in pencil in margin, blind trade stamp, published by Graves, c.1907, 15 1/2" x 12".
208. After George Morland. 'Stable Amusement', mezzotint, c.1801 published by I R Smith, trimmed to image on 3 sides, 16 1/2" x 21".
209. After William Hogarth. 'Morning', copper engraving by T Cook, published by Robinson c.1800, plate size 19 1/2" x 15 1/2".
210. Rowland Langmaid (1897-1956). Three masted ships in full sail, etching, signed in pencil in margin, 11 3/4" x 7 3/4".
211. After Bunbury. 'Sir Andrew Aguecheek, Sir Toby Belch and The Clown, sepia stipple engraving by Tomkins, with light hand colouring, c.1792, published by Macklin, 15 1/2" x 18", trimmed margins and stained.
212. W Belch (publisher) (19th Century). 'Chelsea Pensioners' and Greenwich Pensioners', hand coloured copper engravings, 7 1/4" x 11 1/2", trimmed to 3 margins. (2)
213. After Wootton & Burney. 'Up the Warren Hill, East of the Town of Newmarket' and Newmarket (Time of George I), colour prints, late 19thC, 5" x 12". (2)
214. After Bunbury (possibly). 'The Cottagers', a pair, stipple engravings, early 19thC, 10 1/4" x 12 3/4", trimmed to image.
215. After F C Turner. 'Start for the Derby' and 'Coming in for the Derby', hand coloured aquatints by Chas Hunt, published 1838 by J Moore, 1st impressions, 22" x 29 3/4" . Illustrated.
216. After Samuel and Nathaniel Buck. 'The South Prospect of Stamford in the County of Lincon', copper engraving, c.1743, plate size 12 1/4" x 32 1/4", (foxed).

Pictures, Prints and Books

201. After Millais. 'Bubbles', chromolithograph, published by Pears, late 19thC, image size 16 1/2" x 11".
202. After J Walter. SS Great Britain - off Bristol, being warped out of Avon Dock, 24.1.1845, reproduction colour print, published by Ariel Press, 15" x 20 1/4".
203. After Hiddermann. Genre - 19thC schoolroom with scholars and teachers, oleograph, 23" x 28".
204. Baxter Licensee. After J Mansell. 'On the Way to Market', printed in colour, 19thC, 16 1/2" x 13".
205. After Henry Alken. 'Grouse Shooting', 'Partridge Shooting', 'Pheasant Shooting' and 'Duck Shooting', a set of 4 hand coloured etchings, 4 1/4" x 5 1/4", (mounted in one frame).



Lot No. 213



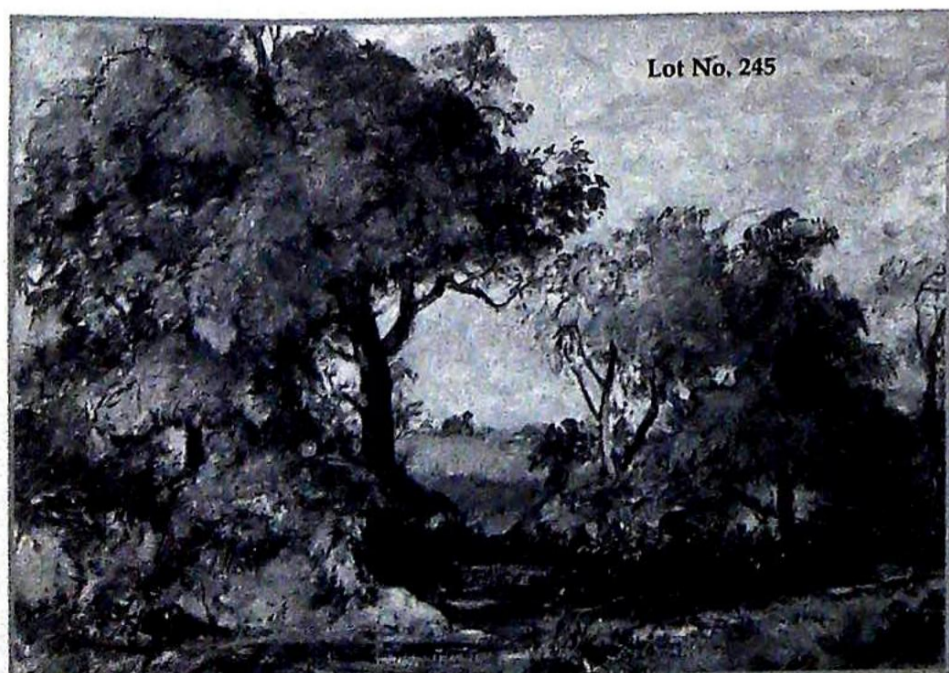
Lot No. 229



Lot No. 236

217. Robert Hills (1769-1844) (attrib). 'A Sheep', 'Studies of Deer', and 'A Buck Asleep', pencil, 5 1/2" x 4 1/4", 8" x 6 1/4" and 6 1/2" x 5 1/2" respectively, all bear Agnew Gallery label verso. (3)
218. F Bartolozzi. 'Cupid Inspiring the Paesy of Sappho' and Camilla Unarming Before Retiring to Rest', a pair, coloured stipple engravings, 10 1/4" dia, title verso, (in black glass).
219. After William Hamilton. 'Morning' and 'Night', a pair, stipple engravings printed in colour, by Bartolozzi, 12" x 9 1/4", ovals, titles verso, (in black glass).
220. Spare lot
221. 19th Century School. A set of 3 continental landscapes with buildings, watercolour, 5 1/2" x 7 1/2", 4" x 5 1/4", 5 1/2" x 7 3/4", (mounted in single frame).
222. C L Fitzroy (19th/20th century). Landscape with country church, amidst gravestones, with trees and cottage beyond, watercolour, signed and dated Aug 1895 bottom left, 9 1/4" x 13 1/4".
223. Frederick E J Goff (1855 - 1931). Limehouse and the River Thames, extensive river scene with numerous barges and shipping, watercolour, heightened white, signed bottom right, 11 x 18 inches.
224. Dorothy M Lockwood RBSA (20th Century). 'The Balcony', watercolour, signed bottom right, 21" x 15", bears artist's label and Royal Academy label verso. *This work was exhibited at the R.A. 1965, cat no 946. PROVENANCE: Bought by the vendor from the artist for £26.5s.
225. Mary McNicholl Wroe (19th/20th century). Head and shoulders portrait of an elderly woman, facing right, in high necked black dress and gold brooch, watercolour, signed with initials and dated 1892 top right, 19 3/4" x 15 3/4".
226. Charles Horwell Woodman (1823-1888). 'The Deer Park', solitary figure holding a gun, with deer amongst trees, watercolour, signed and dated 1869 bottom left, 11" x 21", Maples Gallery label verso.
227. Sydney Arrobus (20th Century). 'Hampstead High Street showing Perrins Court', white gouache on black paper, signed bottom left, 9 1/4" x 14 1/4".
228. L*** St*** (19th Century). Hampstead Heath, landscape with strolling couple, watercolour, heightened white, signed with initials bottom left, 7 1/2" x 13".
229. Lilian Stannard (1884-1944). 'Garden at Great Lizagard, Exeter', watercolour, signed bottom left, 13" x 9".
230. Rowland H Hill (1872-1953). Ruins of Byland Abbey, N.Yorks, watercolour, signed and dated 1924 bottom left, 12 3/4" x 8 3/4".
231. Sylvester Stannard (1870-1951). Country house and gardens in summer, watercolour, signed bottom left, 9 3/4" x 13 3/4".
232. Lilian Stannard (1884-1944). Walled garden with greenhouse, watercolour, signed bottom left, 5 1/4" x 6 1/2".
233. R Suddaby. (20th Century). Landscapes with trees around a pond, watercolours, signed bottom right, 7 3/4" x 15 1/2".
234. Paul James Logan Wyeth (1920-). 'The Young Dancer', pastel, signed with monogram and dated '69 bottom left, 14 3/4" x 11 3/4". PROVENANCE: bought from the artist in 1969 by vendor for £52.10s.
235. Vaniser? (19th Century School). Panorama of Florence, watercolour, heightened white, signed and dated 1876 bottom left, 5 1/2" x 8 1/4".
236. Piper (20th Century). Castle Ruins at Night, ink, pen, gouache, pastel, wash on paper, unsigned, 12 1/4" x 15".
237. 19th Century School. Italian lakeland scene with figures in a boat, further boats moored by a small folly, mountains beyond, unsigned, 13 1/4" x 23".

238. R Suddaby (20th Century). Autumn landscape with trees around a pond, watercolour, signed bottom right, 14" x 21 1/2".
239. Roy Turlington (20th Century). 'Swans', mixed media, signed and dated '83, on deckle edge paper laid on card, 19 1/2" x 14".
240. M*** Paley (19th Century). Italian lakeland view, with boats, buildings and figures, mountains beyond, watercolour, heightened white, signed and dated 1867 bottom right, 8 1/2" x 17".
241. John Higgins (20th Century). Moored boats in St Ives, watercolour, signed bottom right, 9" x 11 3/4".
242. 19th Century School. Figure in a country garden, watercolour, unsigned, 14 3/4" x 19 3/4".
243. John Fulleylove (1847-1908). Mountain landscape with meandering stream, watercolour, signed with monogram and dated 1898 bottom right, 8 1/2" x 12".
244. Jack Merriott (1901-1968). 'Building Site', oil on board, signed bottom right, 19" x 23 1/2".
245. Oliver Hall (1869-1957). 'Tree Landscape, North Wales', oil on canvas, signed bottom left, 15 1/4" x 21 1/2", (illustrated) PROVENANCE: Bought by the vendor from the artist in 1955 for £52.10s.
246. 20th Century English School. Still life of tulips, carnations, iris, peonies and daffodils in a vase, oil on canvas, unsigned, 33" x 23 1/2".
247. Estella Louisa Canziani (1887-1964). Head and shoulders portrait of a lady - facing dexter, oil on canvas, signed and dated 1931 middle bottom, 24" x 20", indistinctly ascribed verso.
248. 19th Century School. Study of a reclining female, classically dressed in a Greek robe and drapes, lying alongside a large urn planted with a shrub, oil on board, unsigned, 16" x 21 1/4".
249. C Vickers (19th Century). Rural landscape with a woman seated on a stile, with child at her feet, by a duck pond, cottage beyond, oil on canvas, signed bottom right, 8" x 12".
250. E Lara (19th Century). Fishing boats in a Choppy Sea and Boats off the Coast, a pair, oil on canvas, signed bottom left, 16 1/4" x 24".
251. Jesus (20th Century). Still life of Damsons, one in a jar, another, of Damsons, one in a bowl, a pair, oil on canvas, signed bottom right, 7 3/4" x 9 3/4".
252. Thomas Kennedy (20th Century). 'Sunset, New Broxbourne', oil on card, signed bottom right, 24" x 30".
253. Thomas Kennedy (20th Century). 'Near Passingford Bridge, Essex', oil on canvas, 20" x 24".
254. S*** Haines (20th Century). 'Battersea at Night during the Blitz', oil on card, signed bottom right, 20" x 30".
255. Colin Russel (1932-) 'Beach Scene', oil on canvas, signed bottom right, 12" x 16".
256. 19th/20th Century Naive School. 'Boston Stump and the River Witham', oil on board, unsigned, 11" x 9".
257. J. Cot? Fishing boats off the coast in a choppy sea, oil on canvas, signed, 20" x 30", gilt frame.
258. A Wivell (1786-1849). Portrait of Herbert Hudson, standing holding a certificate, by a table holding a 2-handled trophy cup, pencil, gouache, watercolour, signed bottom left, 18 1/2" x 15".
259. C Cattermole (1832-1900). Medieval scene of a lady falconer on horse back and her attendants, watercolour, heightened white, signed and dated '87 bottom right, 10 1/4" x 14 1/4".
260. Francis Nicholson (1753-1844). 'Pickering Ruins of the Abbots House, Fountains Abbey' (sic), watercolour, 10" x 13 3/4", signed and inscribed verso, Prov: see Harper Catalogue 1978, page 5, (illustrated).
261. A 19thC gros-point and petit-point needlework picture, depicting Mary & Jesus at the Well, 35" x 26". Illustrated.
262. School of Piper or Hermann. Abstract study of a miner, watercolour 7. 25 x 11 inches.
263. After Annibale Caracci. Nymphs and shepherd, watercolour, 7" x 9 1/2".
264. J. D. Harding (1798-1863) Four pencil sketches of cottages, 2 per frame (2).



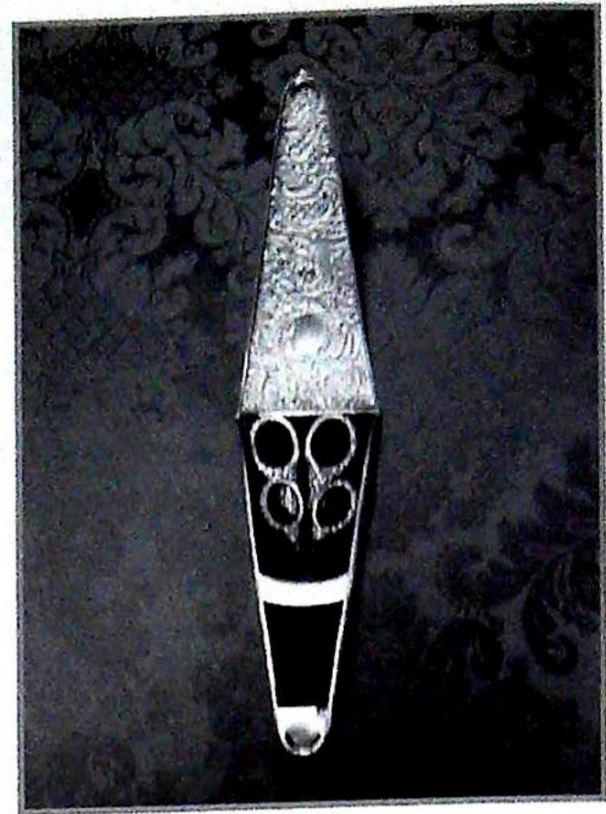


265. English School. A series of 3 landscape pencil sketches of Kent. c. 7" x 10".
266. After Bartolozzi. Full length portrait of Miss Amelia Pott, sepia engraving, 13" x 8".
267. After Thomas Rowlandson. Comforts of Bath, colour print 5" x 7".
268. W Payne 19th/20th century. Tree lined path leading to a country cottage, lakeside, watercolour, signed, 14 x 10.50 inches.
269. 19th Century School. Stable interior with seated hostler, tethered horse and dog, oil on canvas, unsigned, 11 x 14 inches.
270. 20thC School. Deer in a highland landscape, oils on canvas, pair. (AF)
271. After Gainsborough. "The Blue Boy" - coloured mezzotint by Arthur Hogg, circa 1922, signed in pencil by the engraver, and with blind trade guild stamp to margin, pub. Frost and Reed, on india paper, 19 x 13 inches.
272. A gilt framed red damask panel embellished with two 18thC petit point pockets and two embroidered panels.
273. After Herring. Colour hunting print, oak framed.
274. A pair of 19thC. oval portrait paintings on glass of young girls, in gilt frames. 23" x 20".
275. Neil Cawthorne. (20th Century). 'Eastward over the Belvoir Vale ... the South Notts at Cropwell Bishop', reproduction colour print, signed in pencil by the artist, limited edition 12/250, image size 15" x 20".
276. John Cother Webb after J M W Turner. 'The Shipwreck', mezzotint printed in colours, pub Museum Galleries 1925, signed in pencil, and with blind trade stamp, image size 13 1/4" x 18 1/2".
277. John Cother Webb after J M W Turner. 'Childe Harold's Pilgrimage', mezzotint, printed in colours, pub Museum Galleries c.1920, signed in pencil and with blind trade stamp, image size 13" x 23".
278. Frederick E J Goff (1855-1931). Fishing smack off the coast, watercolour, heightened white, signed and dated 18--? bottom right, 25" x 13 1/4".
280. W W W**** (19th century). French street scene, watercolour, indistinctly signed bottom left, 19 1/2" x 15".
281. B*** Hick (19th/20th Century). Continental lakeland landscape, with extensive views of distant mountains, with buildings lakeside and figures, oil on canvas, signed bottom right, 24" x 36 1/4".
282. E Chester (?) (19th/20th century). Still life of grapes and carnations amongst foliage, signed bottom right, 10" x 14".
283. After George Morland. Reproduction colour print after the mezzotint, trimmed to image, 15 3/4" x 19 3/4".
284. C Ginner. Sheep over town bridge, township with figures beyond, watercolour, heightened white, bears signature, 21" x 28 1/2".
285. John Piper (1903-1992). Abstract with green, blue and black watercolour, signed, 8 1/4 x 11 3/4".
286. D F Addy (20th Century). 'River Witham, Boston', oil on canvas, signed bottom right, 20" x 16".
287. T M La*** (19th/20th Century). Still life of fruit and wine, oil on canvas, indistinctly signed bottom left, 9" x 13".
288. 19th Century School. Deer in a landscape with majestic oak, castle beyond, pencil, 17" x 13".
289. 19th Century School. Travellers in a Highland Landscape, oil on canvas, 10" x 14".
290. Charles Simpson 1929. Horses at water's edge, watercolour, signed and dated bottom left, 6 1/4" x 8 1/2".
291. 19th Century School. Study of a young Austrian girl, holding a bunch of summer flowers, with a basket looped over her arm, oil on canvas, 13 3/4" x 7 1/4".
292. 19th Century School. Church interior with figures, watercolour, indistinctly signed, 8" x 6".
293. Myles Birket Foster. (1825-1899). 'Mumbles Head', figures on the cliff top path above Mumbles lighthouse, watercolour, signed with monogram bottom left, 6 1/4" x 15". Cover detail illustration.
294. Ethel Hall (19th/20th Century). The Vegetable Market, Concarneau Brittany, watercolour, signed bottom right, 7 1/2" x 9 1/2".
295. 20th Century School. '.... Island', Coreau Strait', watercolour, 5" x 13 1/2".
296. Juls Van De Liene? 'Zebruge WWI', etching, signed in pencil, 14 1/2" x 19 1/2".

297. Paul Hayworth. Pair of coastal scenes with figures and boats, oils on canvas, gilt framed, 6" x 24".
298. MacFall (Haldane). A History of Painting L & Edin 1911 - 4 vols of 8, The Cambridge Review, 1897-98 & 1899-1900, 2 vols, and 2 further vols. (8)
299. A 1964 Rupert Annual, published by the Beaverbrooks Newspapers Ltd inc Rupert's Magic Painting Pages, (spine damaged).
300. Stevenson, R L. Island Nights' Entertainments, 1st. ed, gt. cloth.
301. Various leather bound books.
302. After Alken. First Steeplechase on Record, engraved by J Harris, plate 2, modern gilt frame.
303. After John Ireland. Five colour prints revealing the gentle art of making Guinness.
304. Cockers Arithmetick (AF).
305. Walter Thornbury. Old & New London, 6 vols in 3 gilt leather bindings.
306. Enid Blyton. 9 vols, 1960's, d/w.
307. An unusual autograph album by Maggie White, 15 Low Road, North Bitch Burn, with drawings, sketches and cricketing prints, 1920's.
308. Robert Freke Gould. The History of Freemasonry, 1887, 3 vols, red morroco gilt.
309. Picturesque views of seats of noble men and gentlemen of Great Britain & Ireland.
310. Art and Antiques Books, various.
311. Antique Furniture and Clock, Books, various including Gloag, Britten.
312. Sewell, Anna. Black Beauty, illus. Cecil Aldin: Kingsley, Charles. The Water Babies, illus Jessie Willcox Smith: Boots pub.
313. Ali Bey. Travels of Ali Bey in Morocco, Tripoli, Cyprus, Egypt, Arabia, Syria and Turkey between the years 1803 and 1807. Two Volumes. Longman, Hurst, Rees, Orme and Brown, 1816.
314. Adams, Robert. The narrative of Robert Adams, a sailor, who was wrecked on the western coast of Africa in the year 1810, was detained three years in slavery by the Arabs of the Great Desert, and resided several months in the City of Tombuctoo. John Murray, 1816, ex.lib.
315. Park, Mugo. Travels in the interior districts of Africa G. and W. Nicol, Pall Mall. 4th edition, 1800.
316. Various 18th Century Book: viz. Milton and Cowper Poems, Annual Register, Fables. (7).
317. Lord, P.B. Algiers and Barbary, 1835, 2 vols; London, Rom. Portrait of Tangier, 1952; Veyre, Gabriel. Au Maroc 1918.
318. Holme. London Past and Present, red leather; Chamber's Journal 1839-43, 2 vols.
319. Lawrence, T.E. The Mint by 352087 A/C Ross, 1st Ed, d/w, pub. Cape.
320. Orwell, George. Animal Farm A Fairy Story, 1st ed., D/w, pub. Secker and Warburg.

Silver

321. A Dutch silver snuff box, bright cut floral engraving marks rubbed, c. 1864.
322. Ten late Victorian silver fiddle pattern teaspoons, Sheffield 1892, (part set in fitted case).
323. An Edward VII silver panelled circular footed bowl, having a pierced shaped rim, Sheffield 1905, 4.25 in diameter, 4.50ozs.
324. Four silver napkin rings, various hallmarks, 3ozs gross.
325. A Victorian silver and glass travelling ink well, the engine turned hinged cover with screw fastening, engraved with initials 1.50 inches diameter, London 1865, an Edward VII silver stamp case with engine turned sliding cover, 2 X 1.50 inches, Birmingham 1908, a pair of condiments spoons, and three teaspoons, and a white metal egg cup.
326. An Edward VII silver 2 handled trophy bowl, a compressed thistle shape, flying scroll handles, on domed foot, 9.50 in wide over handles, London 1908, 16.50ozs.
327. A pair of silver and glass stands circular, Birmingham 1924, 5" diameter.
328. A George III silver set of six Old English pattern teaspoons, London 1806, by Peter and William Bateman.
329. A George V Silver engine turned cigarette case, Chester 1924, a pair of sugar tongs, 1904 and another pair, 1920 (3), 5ozs gross.
330. A George I silver tea caddy of rectangular bombe form, engraved with a crest and opposing cartouche, with Stepped cover and conforming foot, 5" high, Maker Ge (possibly Chris Gerrard) London Britannia Standard, 1717, 6oz.
331. A Victorian silver presentation trowel with ivory handle, inscribed "This Trowel was used by Thos. Ekin Esq" May of the Borough of Grantham. In laying the Foundation Stone of the Reservoir for supplying the town with water 26th September 1850. Presented by Geo Wythes Esq. The Builder" Floral and Foliage border, London 1850, 14in long.
332. A pair of Victorian silver trinket trays, of rectangular shape, enclosed with an image from Punch magazine, within shell borders, 4 x 2.75 in, Birmingham 1887, 2ozs.
333. A George III Silver two handled cup, the goblet shaped bowl annulated with applied moulding, later repousse flower and foliage around uncut and filled cartouches, with capped scroll handles, on a domed a stepped foot with engraved decoration, 6 in high, London 1785, 12ozs.



334. A Dutch silver spoon, the rounder rectangular bowl chased with classical figures within and scroll borders, the handle scroll case with cherubs to finial.
335. A Victorian silver plated presentation trowel with ivory handle engraved with fern and inscribed to commemorate the laying of the foundations of a Wesleyan Chapel, 1890, 1 1/2" long.
336. A George IV silver two handled bow, of circular shape, having a half-reeded body, embossed with vacant shield within C scroll and foliate frame, and with fluted scroll handles, 4 1/2" over handles, London 1827, 2.50ozs.
337. An Edward VII silver two handled circular miniature bowl of slight baluster shape, with lobed and foliate body and cast scroll handles, 3 inches over handles, Birmingham 1904, a cast silver salt 1.75inches in diameter, 1906, and a miniature 2 handled trophy cup, 1.50 inches high, 1911.
338. Five Victorian Fiddle and Shell pattern dessert spoons, engraved with initials, London 1870, 10ozs.
339. Six George IV silver Fiddle and Shell pattern teaspoons, London 1827, 6ozs.
340. Three George III silver Old English pattern teaspoons, eight further dessert spoons 1795, various patterns, George III and later, 15ozs gross.
341. A pair of Victorian silver salts with blue glass liners, oval shape with pierced scrolled sides to ball and claw feet, London 1900, maker H E & Co.
342. A Victorian silver scissor case, having floral and scrolling repousse decoration, for 3 pairs of scissors (one missing), Birmingham 1897, maker Levi & Soloman.
343. A George III silver fish slice, fiddle pattern, with engraved and pierced decoration, London 1814 4ozs.
344. A mid 19th century silver caddy spoon, with Kings pattern handle, the bowl cast with Shell and C Scrolls, London assay.
345. A pair of white metal caddy spoons, with polychrome enamel decoration, 19th century.
348. Four early 19th century silver condiment spoons.
349. A George V child's silver rattle and teething ring, cast as a joker, with abalone handle, 5.75inches Birmingham 1914.
350. Two cast white metal tea strainers.
351. A pair of Edward VII silver pepperettes, with wrythen and gadroon oval bodies on domed foot, 4 inches high, London 1904 2.50ozs.
352. A Continental silver snuff box of rectangular shape, centrally engraved with initials with a lanibrequin and trefoil border, the main cast with flower heads, 2 x 3.25inches.
353. A 19th century child's whit metal rattle hung with bells with whistle handle, 4 inches long.
354. A Victorian child's silver rattle, the embossed body hung with three bells, and a teething ring, with abalone handle, Birmingham, 6.75 inches long 1858.
355. An early 20th century child's silver rattle, the shield shape body embossed with the nursery rhyme image, "The Cow Jumped over the Moon", hung with bells (one missing) abalone teething ring and handle 4.50 inches long, Glasgow, 1929.
356. Three early 20th century child's silver rattles.
357. A pair of William IV Old English pattern tablespoons, London 1831, four fluted tablespoons, one with narrow scoop handle a/f, 13ozs gross.
358. Ten Silver Fiddle pattern teaspoons, various hallmarks and dates, 5. 50ozs gross.
359. An assortment of 19th century silver and Epns tableware including sugar sifter spoons, tongs and fruit knife.
360. A George V silver cased butt selector, London 1927, maker J C Vickery of Regent Street.
361. A pair of silver menu holders, a wolf in Cavalier costume holding farming tools, Birmingham 1909, maker S & Co.
362. Three pairs of silver sugar tongs, with pierced decoration, 19th century and later.
363. A Victorian silver caddy spoon of plain design with Fiddle pattern handle, Birmingham 1842.

364. Five silver Old English pattern teaspoons Birmingham 1930 2.50ozs, together with two pairs of George III bright cut sugar tongs, another pair, with pierced decoration and shell bowls, 5.50oz gross.
365. Nine George III Old English teaspoons, various dates, three pairs of bright cut sugar tongs, 8oz gross.
366. Seven 19th century Fiddle Pattern Condiment spoons, and five bright cut teaspoons, various dates, 5oz gross.
367. A pair of George II silver Old English tablespoons by Hester Bateman, London 1757, 4oz.
368. Two pairs of George III bright art sugar tongs and a collection of assorted silver Fiddle pattern teaspoons, 11ozs gross.
369. An assortment of George III and later teaspoons, a pair of sugar tongs, 10.5ozs gross.
372. A George III pair of silver bright cut sugar tongs, London 1801, another pair of similar age, a set of six George III silver teaspoons, 1803 and a set of six George IV silver teaspoons 6.50ozs gross.
373. Two pairs of Georgian bright cut silver Sugar Tongs.
374. Three Continental silver spoons.
375. A set of 6 silver rat-tail soup spoons, Sheffield 1943. 12ozs.
376. A Victorian silver sugar shovel with mother of pearl handle and similar fish knife.
377. A Victorian silver toddy ladle with repouse bowl, twist handle and mother with child knob. Edinburgh 1858 and further example marked - "DF".
378. Silver Flatware; reeded old English pattern, 6 teaspoons, 6 dessert spoons, 6 tablespoons, 6 dessert knives, 6 table knives. Maker HA, Sheffield 1943. 50ozs.
379. A cased pair of George V silver menu holders in the form of a fox's mask with crossed riding crops. Birmingham 1912. PROVENANCE: Formerly from the Fulbeck Hall Estate.
380. An oval Victorian silver snuff box with engined and scrolling decoration, vacant cartouche to top cover, Birmingham 1847.
381. Cased silver cutlery comprising dessert set, Sheffield assay, marks rubbed, coffee spoons, Birmingham assay and teaspoons, Sheffield assay.
382. Four Georgian teaspoons, various dates and makers and a commemorative silver pin tray with a Victorian coin inset.
383. Five Victorian silver tablespoons, fiddle pattern, monogrammed, London 1839.
384. A silver vesta case, plain design, Chester 1898 and a commemorative bakelite vesta for Edward VII.
385. A silver card and stamp case, all over ivyleaf decoration, vacant cartouche to the front, calf liners and compartments, includes stamp book from George VI, hallmarked Birmingham 1898 and a silver cigarette case, London 1940.
386. A pair of silver serviette rings, beaded rims with bright and foliate central band, hallmark Birmingham 1886, maker H Bros.
387. Two silver propelling pencils and a silver compass, London 1894.
- 388-399. Late entries
400. A Bilston enamel oval pill box, the hinged oval cover inscribed 'The gift of a friend'.
413. A pair of Victorian silver fish servers with ornate pierced blades, maker H+T, Birmingham 1859.
414. A pair of Victorian silver rococo dwarf candlesticks, Sheffield 1891, 5" high.
415. A set of 6 Elkington silver teaspoons, Birmingham 1924.
416. A pair of William Bateman silver Old English tablespoons and 2 others.
417. A Victorian silver 3-piece christening cutlery set, Birmingham 1853.
418. Two Victorian silver top scent bottles, 2 pill boxes, trinket jar and nail file.
420. A Victorian silver top trinket jar, scent bottle, brooch and a cake knife. (4)
421. A cased set of 6 silver Art Nouveau buttons showing female heads, a banner reading EAU and initials AB, Birmingham 1902, maker Levi & Solomon.
422. A George IV silver basting spoon by William Eaton, London 1826, 3.5ozs.
423. A set of 6 silver ice cream spoons with shell and pendant mask handles, Birmingham 1931, 6ozs.
424. An Edward VII pepperette of classical panelled baluster shape with pierced domed cover, Birmingham 1904, 3 3/4" high..
425. A pair of silver salts, circular with bead rims and on 3 hoofed feet, sapphire glass liners, c.1900.
426. An Edward VII silver 2-handled sugar bowl of melon shape, scroll handles and on stepped circular foot, Chester 1901, 3 1/4" high, 5ozs.
427. A George V silver 3 piece dressing table set with chased ribbon decoration. Birmingham assay.
428. A George III silver butter knife with ivory handle, Birmingham 1819, four other knives.
429. Four gilt metal teaspoons with twist handles and figural finials.
430. Eight silver teaspoons, a pair of sugar tongs and a salt spoon, George III and later, 6.50ozs gross.
431. A Victorian silver Fiddle pattern sauce ladle, the bowl set with a florin, Exeter 1859.

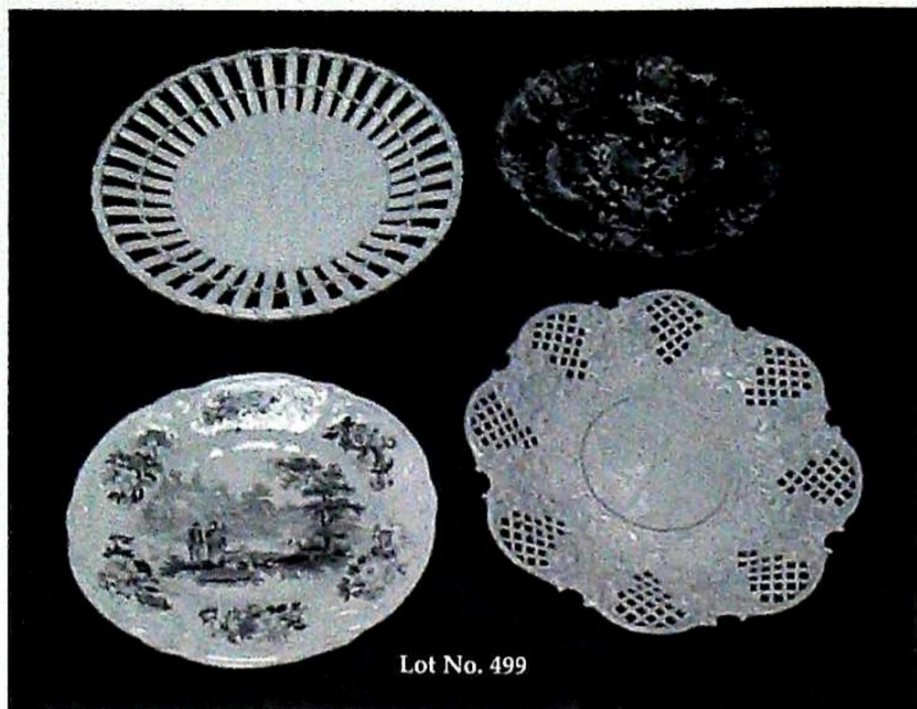
19th century and earlier ceramics and glass

432. Late 19th century Arts and Crafts black basalt teapot, globular form, stepped taper spout, "rivetted" ring handle, 6" high.
433. A Royal Worcester model 1672 vase and cover, blush ground hand painted with Chrysanthemums, 1893. 12" (a/f).
434. A Royal Worcester model 101 conchalogical vase, blush ground. 7" high. (a/f).
435. A Royal Worcester model g923 flared vase, hand painted with highland cattle, 1915. 6" high.
436. A Royal Worcester model G965 ewer hand painted with watering cattle by J Stinton. 7".
437. A Royal Worcester model 1094 ewer, blush ground painted with flora, 1904. 5".
438. Royal Worcester pot pourri model 991, blush ground painted with flora, 1902 (a/f).
439. A Royal Worcester bowl painted with roses by E M Fildes, 1921. 5" diameter.
440. A Royal Worcester circular ash tray painted with fruit by E. Townsend for Betjemann of London, 1931.
441. Three Victorian green transfer printed oval tureens with covers, marked CAIUS/CJ.
442. A Victorian porcelain ink stand of gilt and floral encrusted scalloped form, the removable cover revealing a polychrome scrolling pen tray, double ink stand with covers and further compartment cover, circa 1850, 11" wide.
443. A Victorian porcelain dessert service with shaped gilt cream borders decorated with bluebells, marked 3/820 in gilt to base, comprising two shallow dishes and six plates.
444. Victorian Staffordshire figure of "Little Red Riding Hood" 8" high.
445. Victorian Majolica water jug in the form of a fish with circular base, 10" high.
446. A 19th century French tapering cup with gilt loop handle and oval reserve with basket of flowers 3.50" high.
447. A Naples polychrome moulded tankard with backnaile and classical figures, having lion finial to cover, 7" high.
448. A pair of Georgian green glass flagon decanters, of compressed circular form, with loop handle brass collars and brass and cork stoppers, 8.75 inches high, circa 1830.
449. An early Victorian crystal flagon decanter with loop handle and flown stopper, having Stourbridge wheel-cut engraving of vines and berries throughout.
450. A pair of German polychrome bisque figures of young maidens wearing floral summer dresses depicting the elements, water and fire, on moulded circular bases, marked PB in a raised oval to base, 16" high.



451. A Kutani circular bowl, internally decorated with figural panels, on a foliate ground, externally with diaper, lotus and scroll lower border, 9 1/2" dia, 19th century.
452. A Satsuma small vase, of ovoid form, the blue ground well decorated with gilt diaper panels and flowers, reserved with 2 figural vignettes, 3" high, 19thC.
453. A Doulton Lambeth stoneware ale jug, baluster, the buff ground decorated with applied cameo rosettes, and verse between dark brown bands, scroll handle, impressed factory marks and incised potters marks, 8" high.
454. A cranberry glass circular bowl with applied clear prints, an elliptical salt and cream jug, similar and a rummer with cranberry bowl and milk glass stem. (AF) (5)
455. A Wedgwood pottery toilet bowl and ewer, printed in blue with the 'Willow' pattern, circa 1900, 15 3/4" dia and 11 1/4" high respectively, (ewer handle rivetted).
456. A Johnson Brothers pottery soup tureen, cover and ladle, printed in the 'Persian' pattern in flo-blue and gilt, 14" over handles.
457. A Copeland porcelain coffee or chocolate set, painted in the Imari palette with flowers and fences, comprising a shaped oval tray with entwined ribbon handles 17" wide, 4 demi-tasse and saucers, a covered sugar bowl, cream jug, pot (AF) and a similar single handled flask, printed factory marks, second half of 19thC.
458. A William IV copper lustre jug, with fishtail handle, moulded and painted in relief with a shepherd, sheep and cottage, 6 1/4" high, c. 1834.
459. A parian bust of Princess Alexandra, by Robinson & Leadbeater, in court dress, on square plinth, 12 1/4" high, impressed mark R & L.

460. A Staffordshire earthenware part dessert service, painted with floral panels on a pale blue ground and centrally with floral spray comprising pedestal dish, 2 serving platters, 3 plates, a 19thC earthenware jug printed in purple with a portrait of Lord Althorpe, inscribed REFORM within a floral cartouche, 6" high (AF) together with 2 Davenport ironstone 'Nankin' pattern plates
461. A pair of Royal Worcester porcelain cabinet plates, circular, centrally painted with birds and flowers and foliage, within a brown printed lambrequin well, with pink borders and gilt rim line, 9 1/4" dia, printed factory marks, registration diamond, c.1881.
462. A pair of 19thC Staffordshire figures of a Pasha and female companion, each with underglaze blue coats and pink pantaloons, 6" high.
463. A 19thC decanter, of circular faceted form, with 3-ring neck and faceted mushroom stopper, 8 1/2" high.
464. A Roman period glass vessel with moulded handle and everted rim, 4 1/4" high, another, of squat circular form, with loop handles, 3" high, bears label 'Mount Carmel, Palestine'.
465. An early 20th century glass pedestal dish, the circular bowl externally etched with leaves and berries, having a hollow stem and on circular foot with conforming etching to the underside, 9.25 inches diameter, 10.75 inches high.
466. A pottery wine carrier, early C. AD.
467. A pottery oil carrier, early C. AD.
468. A 19th century Staffordshire spill vase, modelled as two children, one in underglaze blue dress, beside a tree stump, encrusted with foliage, 5.50 inches high.
469. A 19th century black basalt cream jug, the body lightly moulded with panelling below read border, loop handle, 3.75 inches high, possibly by Hollins.
470. A pair of early 19th century purple lustre saucer dishes, centrally decorated with a house and garden, within lime border and rim, 5.75 inches diameter (crack to one).
471. A Stevenson and Hancock Derby candlestick figure of a young flowerseller, glazed white, on scroll base, 7 inches high, painted mark in blue - 19th century.
472. Willow pattern ironstone china including 2 Stilton stands, 3 square tureens and a cover.
473. A Continental figure of a woman in classical dress, with lyre on pedestal, 6.25 inches high together with a 19th century Continental figure of a young flowerseller, in flower sprigged toga, with basket of flowers and bocage on rococo scroll base, 5.25 inches high, and companion figure 3.75 inches.
474. A 19thC Samson tea caddy painted in famille rose palette with armorial crest, 4 3/4" high.
475. Two pairs of early 19thC Coalport 'Japan' pattern porcelain teacup s and coffee cans and saucers.
476. A Victorian ironstone Willow pattern meatdish with drain tree and well, 20".
477. A Victorian pottery water jug by Brownfield of compressed circular form with Greek key border and moulded with cranes heightened in gilt, 7" high.
478. A Victorian salt glazed stoneware Bacchus jug by Moore & Co, having pewter hinged cover and moulded mark to base 'Society of Arts Prize Jug, 1846', 7" high.
479. Two Victorian graduated ironstone jugs by Ashworths, of tapering square form with loop handle, green ground with cartouche and floral polychrome decoration in the oriental taste, 7" & 9".
480. A Victorian Staffordshire toby jug, the figure having black and white striped hat and waistcoat, 7" high, (cover repaired).
481. A Satsuma figure of a sage and another.
482. A Meiji period Satsuma bottle vase with serpent handles and lobed rim, decorated with birds and flora in polychrome enamels, 16".
483. A 19thC French porcelain figural candlestick, being pink ground enriched in gilt, the figure of a young dandy decorated in polychrome bisque, 14" high.
484. A Minton's table centrepiece in the form of a cherub seated upon a large conch shell, turquoise, impressed mark to base with year cypher for 1873, 20" high.
485. A late Victorian porcelain posy basket in the form of a shell and having floral encrusted polychrome decoration.
486. A Victorian porcelain basket with gilt and blue vine moulded border, rustic handle and central floral painted reserve.
487. A Victorian porcelain campana spill vase with floral and gilt decoration, 5" high.
488. A Victorian garniture of 3 flared spill vases with moulded scrolling rims and bases, pink ground with reserves of flower groups, probably Daniels, c.1850.
489. A Victorian Staffordshire pottery loving cup mounted with 2 hound handles and each panel having reserves of roses, pansies and other flora, the interior moulded with single and mating frogs, 6" high.
490. A late 19thC Volkstadt porcelain music group after Kandler, mark to base in underglaze blue, 22" wide, 15" deep.
491. An Ashworths ironstone jug with pewter hinged lid by T Booth of Hanley, the octagonal baluster body having polychrome oriental decoration, 9" high.
492. A continental majolica model of a puppy carrying a basket. 5" high.
493. Two mid-18thC London delft plates, polychrome decoration with a stylised bird and flora over a lake, probably Lambeth, 9" dia.



Lot No. 499

494. A Victorian Staffordshire figure of a statesman, possibly Peel, 8" high. (AF).
495. Eleven Minton fireplace tiles of Arts & Crafts design.
496. A Meiji period satsuma cylinder vase.
497. A Victorian transfer printed part dinner service by T Wynn, 'Rustic' pattern.
498. A porcelain oval tureen.
499. Four English pottery plates including a Whieldon sponged example, an early salt-glazed reticulated and moulded example, a Wedgwood basket lattice example and a Turner example with transfer printed landscape with figures in the foreground.

Metalware

500. A Victorian EPNS pickle jar stand, the boat shaped body pierced and fitted with a centre loop handle, on 4 foliate scroll feet, containing 2 cut glass pickle jars and covers, 8 1/2" wide.
501. A Chinese dinner gong with inlaid hardwood frame and brass bell, together with 2 further Victorian brass candlesticks.
502. Three modern enamelled dishes, one marked in lower case cbb Oslo.
503. A Victorian turned pewter inkwell.
504. An Edwardian electroplate meat cover of lobed form with gadroon and shell decoration by William Hutton & Sons, 15".
505. A Victorian electroplate table centrepiece or epergne stand, of scrolling Bacchanalian rustic form, probably Elkington, 20" high.
506. A Walker & Hall pierced electroplate cakebasket with swing handle.
507. An EPNS 3-piece tea service with ribbon and foliate scroll decoration, modern.
508. A fine 19thC Japanese cloisonne baluster vase with dark blue ground and decorated with trailing leaves and flora, 12" high.
509. A pair of Victorian brass square column candlesticks with removable sconces by Asprey & Co, 6" high.
510. An Art Deco chromium plated smoker's companion in the form of an aeroplane, having detachable cigarette cases modelled as wings, propeller cigar cutter, a cockpit vesta, dividing ashtrays and tapering cigar holder fusilage, 10" long.
511. A Victorian brass jam pan with iron swing handle.
512. An 18thC pewter plate, with slightly dished centre, the rim with touchmarks and inscribed Michel Niman 1725, 14" dia.
513. An 18thC pewter flagon, with a flat cap lid engraved 'Asmias Raht 1780', orb thumbpiece, the tall cylindrical body having 2 single girdles, scroll handle bearing touchmarks and with scroll finial, on a flat circular foot, 13 1/2" high.
514. A 19thC brass jam pan with a fixed iron handle, 12" dia, another, 11" dia.
515. An Arts & Crafts period copper flask, having a planished oval body and circular cap, marked JS & S to underside, 5 3/4" high.
516. A heavy base metal Japanese bowl with embossed decoration of entwined serpents, 11" dia.
517. Two car horns.
518. A Victorian brass ladle and milk skimmer, further vases, candlestick, etc.
519. Two brass fire extinguishers by Romac and Pyrene.
520. A late Victorian brass log box embossed with ribbons and swags, having loop handles and bracket feet, 14" high.
522. A Victorian copper warming pan with turned ebonised handle and having stylised bird prick decorated to the cover.
523. A Japanese bronze censor, cast with interior seal signature, and serpent handles, with hardwood pierced cover set with agate finial, 3 1/2" dia.
524. A Liberty & Co pewter Tudric oval basket with pierced decoration, designed by Archibald Knox, marked Tudric 0359, 9" x 7".
525. A Liberty & Co Tudric hammered pewter tazza, designed by Archibald Knox, No. 01371, 8" dia.
526. A Roundhead hammered pewter 3-piece teaset.
527. A pair of Art Nouveau hammered pewter vases with waisted cylindrical bodies and loop handles, marked Solkets 030, 7" high.
528. A Victorian copper samovar with ebonised knob, brass handles and spout.
529. A modern green patinated bronze sculpture, 15" high.
530. A pair of 19thC gilt brass wall mirrors of scrolling rococo form, 16" high.

531. Two small Victorian polished brass preserve pans with iron swing handles and a saucepan.
532. Two Victorian polished brass preserve pans with swing handles.
533. A pair of Victorian spelter cassoulets, 7" high.
534. A Sun lead firemark, No 19730.
535. A pair of miniature brass and copper starboard and port ships lanterns, 8" high.
536. A brass columnar 2-branch candelabra and a further pair of brass candlesticks.
537. A fine Newlyn copper firescreen by John Pearson, the hammered panel embossed with cranes holding a snake in their beak, standing amongst foliage with further snakes, raised on wrought-iron feet, 22" square, impressed mark verso, JP in oval.
538. A Newlyn copper coal scuttle with brass loop handle, rivetted and hammered cavetto body, the lift lid embossed with a rondel of a small sailing boat.
539. A fine Newlyn copperware overmantel, being oak framed with shelf enclosing 3 panels depicting a peartree to centre enclosed by snakes climbing the fruit trees, 38" wide, 24" high.
540. An early 20thC copper fire insert with Greek key and Art Deco applied moulding.
543. A 1920's burr walnut bedroom suite comprising triple and double wardrobes, dressing table, chest and bedstead.
544. An oak 5 piece bedroom suite
545. A 19thC. baby grand piano by Karl Messrschmidt, ebonised case.
546. A reproduction floral marquetry bombe commode with grey and liver serpentine marble top, 3 drawers with gilt handles and shaped legs.
547. A Victorian flamed veneered and mahogany Credenza of traditional form having 4 door base raised on plinths, 66" wide.
548. A Victorian Chesterfield sofa with buttoned upholstery and short cabriole legs. 5' wide.
549. A George III mahogany Pembroke table, with single drawer and square taper legs.
550. A George III mahogany bowfront corner cupboard with two doors 40".
551. An 18thC walnut veneered mule chest with herringbone inlay to lift top and drawers, on bracket feet.
552. A 19thC flamed and parquetry mahogany inlaid circular occasional table on square taper legs with undershelf. 27" dia.
553. An early 19thC Colonial hardwood Captain's sea chest with moulded top, brass strapwork and wire loop handles.
554. A George III mahogany chest of 4 graduated drawers with moulded and crossbanded top, brushing slide, pierced backplate swan-neck handles and bracket feet. 36" wide.
555. A 19thC mahogany dropleaf dinint table.
556. An early 18thC pine side table, the moulded edge top with canted front corners, over a long frieze drawer with brass bail handles on shaped backplate, on columnar legs joined by moulded stretchers, 33" wide.

Furniture

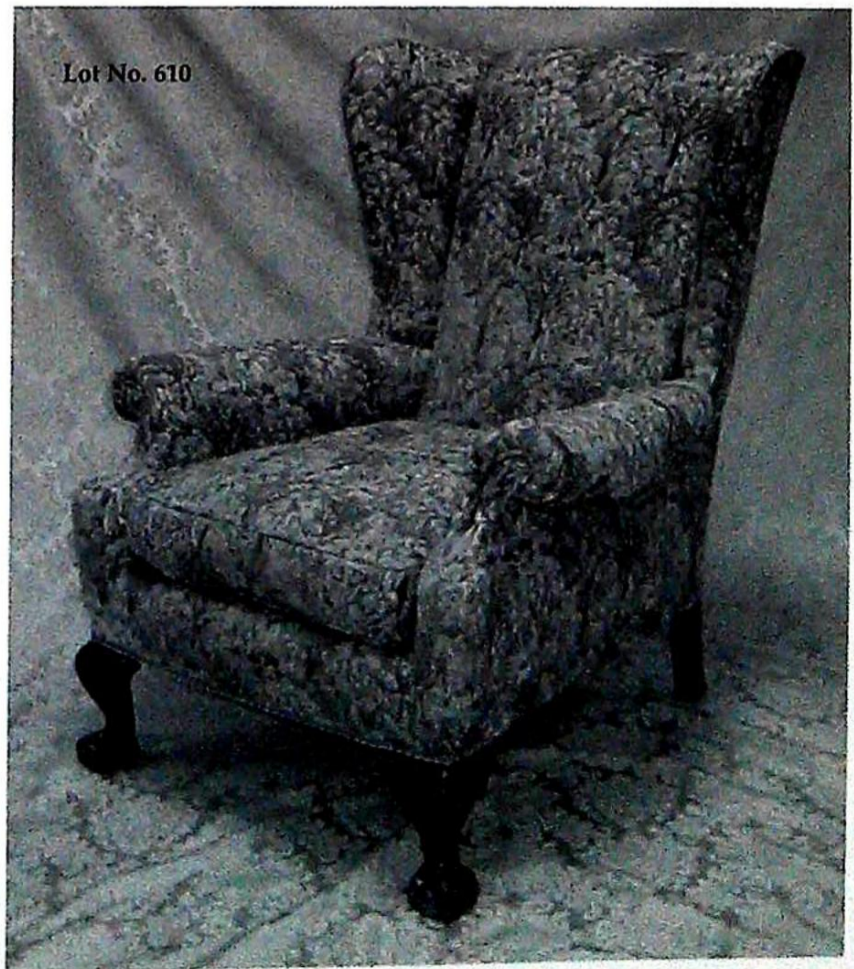
541. A Victorian Tonbridge inlaid walnut overmantel mirror, 35" wide.
542. A Victorian walnut marquetry side cabinet with single glazed door and ormolu mounts.



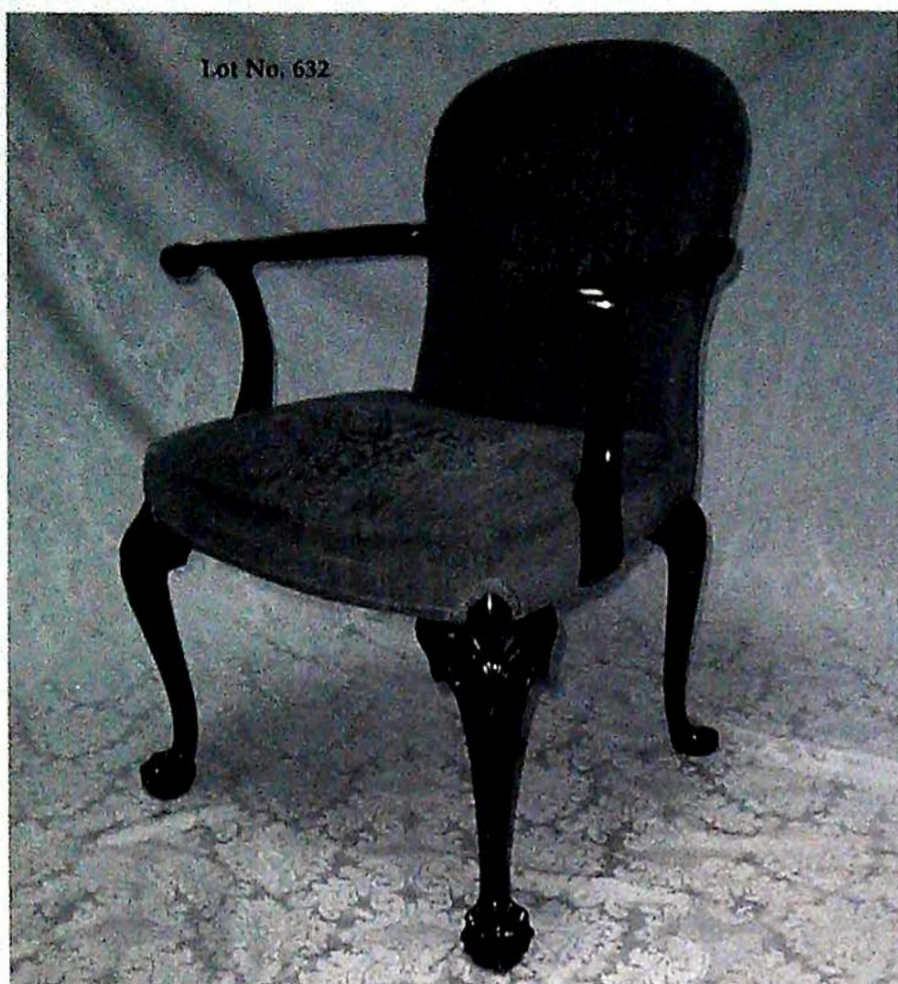


557. A Victorian yew wood open armchair with barback, elm seat, ring turned legs and turned stretchers.
558. A pair of Regency rosewood salon chairs, having a brass inlaid top rail over twin scroll tie rails, cane seats and on sabre legs.
559. A Victorian mahogany framed 4-fold full-length dressing screen richly decorated in a variety of colourful and varied subject scraps.
560. A Victorian mahogany duchess dressing table with shaped mirror and supports, drawer and compartment back, frieze drawer, turned legs and shaped undershelf.
561. A 17thC oak 2-panel coffer with candle box, raised on stiles. 32" wide, 20" deep, 20" high.
562. A George III mahogany chest of four graduated drawers with moulded top, canted case with vinefret decoration, the cast brass rococo handles of foliate form, raised on a band of blind fretwork and ogee feet 34" wide.
563. A modern light oak twin pedestal kneehole desk with chamfered top, 4 drawers to each pedestal and centre drawer with vanity board. 5' x 2'.
564. A Victorian ash and elm lathback nursing chair with turned legs and H-frame stretcher.
565. A George III mahogany fold over tea table with rounded rectangular top, turned and part reeded column, quatrefoil base with moulded sabre legs terminating in acanthus scroll feet with castors. 36" wide.
566. A Carolean oak 4-drawer chest with moulded top, 4 panelled doors, raised on stile feet and having studded muntin marked AS* 1688. 39" wide, 23" deep, 37" high.
567. A 19thC oak cricket table with octagonal moulded top, 3 turned pillars co-joined by a low level plain stretcher. 26" dia.
568. A mahogany desk top with candytwist moulding to backshelf and lift flap. 36" x 25".
569. A Victorian grain painted pine chest with lift top and simulated front drawers and bracket feet. 25" wide, 18" deep, 27" high.
570. A pair of late Victorian 2-seater sofas with scroll arms, carved mahogany cabriole legs. 53" wide.
571. An early Georgian mahogany foldover tea table with shaped top, plain frieze, turned legs with pad feet. 2' wide, 1' deep, 28" high.
572. A set of 6 Queen Anne style high back oak dining chairs with splat backs, turned forelegs and shaped stretchers, early 20thC.
573. An early 18thC carved oak coffer, the plain top with ormolu moulded edge over a carved frieze, triple inset panel front carved with foliate and paterae diamond lozenges, carved muntins and on stile feet, 44" wide, original lock plate and escutcheon, later hinges.
574. A set of 4 Georgian fruitwood wheelback kitchen chairs. (AF)
575. A George III mahogany bowfront sideboard with crossbanded and satinwood strung top with oval patera inlay, the front aspect having 2 cellerette drawers and frieze drawer, raised on square taper legs with spade feet, pendant husk inlay and stringing throughout. 54" wide.
576. A late Victorian mahogany wind-out dining table with moulded top and heavy cabriole legs with 2 extension leaves. 41" wide x 6' max.
577. A set of 6 Victorian rosewood balloonback dining chairs with carved backs, overstuffed drop-in seats and octagonal taper forelegs.
578. An early Victorian mahogany chiffonier with shaped oval back panel, single drawer over 2 arched panel doors, on plinth. 42" wide.
579. A set of 4 early 19thC elm kitchen chairs with turned gate backs, rush seats and 3 height spindle stretchers.
580. A set of 6 Victorian elm kitchen chairs with ball and bar backs, concave seats and turned forelegs.

- 581. A Victorian rosewood two tier Etergere with barleytwist uprights and serpentine shelves.
- 582. A Victorian walnut spoonback nursing chair with floral carved cresting rail and scroll carved forelegs with castors, upholstered in a floral Berlin needlework upholstery. Colour illustration inside front cover.
- 583. A set of six walnut Victorian carved and shaped balloon back dining chairs with overstuffed pink dralon seats and cabriole legs.
- 584. A set of 4 William IV rosewood balloonback dining chairs with carved and shaped backs, overstuffed seats, part reeded and tapering forelegs.
- 585. A Dutch style oak 4 drawer chest
- 586. An early 20th century three piece suite with low backs, scroll arms, carved cabriole legs with hoof feet.
- 587. A pair of late 18thC oak country made dining chairs, having reeded frame, rush seats, on square section legs joined by stretchers.
- 588. A Victorian mahogany breakfront dressing table and matching marbletop washstand.
- 589. A rectangular teak lodging box with tray insert and painted top marked S L Hinsby.
- 590. A Continental oak and flamed veneered kneehole desk with moulded top, three frieze drawers and cupoard pedestals on bracket feet 53" x 30".
- 591. A Victorian walnut breakfast table with circular top, turned pillar and three scroll legs. 41" dia.
- 592. An early Georgian oak bureau with fall flap resting on lopers revealing a fitted interior with well, over three graduated drawers and bracket feet.
- 593. An early 19thC white painted carved and moulded gesso overmantel mirror with anthemium scrolling frieze over 3 plates enclosed by columns. 58" wide, 35" high.
- 594. A Victorian walnut side cabinet with carved overmantel, serpentine marble top, 3 door mirrored base. 59" wide.
- 595. A George III mahogany bureau with ebony strung decoration to the fall flap, which revealed a fitted interior, over 3 graduated drawers, with shaped apron and splay feet, 40" wide.
- 596. A pair of late Victorian walnut wall shelves with bevelled mirror backs.
- 597. A late Victorian mahogany billiards table by William Sykes of Horbury, Yorkshire, together with rules, balls and cues. 8' x 4'.
- 598. A Victorian walnut spoonback open armchair with floral carving throughout the scrolling frame, upholstered in pink button velvet.
- 599. A Queen Anne style rectangular coffee table with burr walnut quarter veneered and cross-banded top, swell frieze and angular cabriole legs.
- 600. A Victorian oak window seat, having turned forelegs and chamfered back legs and stretcher in the manner of A W N Pugin. 53" wide.
- 601. A set of 4 Victorian balloonback salon chairs with scratch carved backs and cabriole legs, with serpentine floral overstuffed seats.
- 602. An Edwardian walnut music cabinet with single glazed door, raised on square taper legs and castors.
- 603. A Victorian flamed mahogany serpentine sideboard with frieze drawer over 2 doors and shaped plinth base. 48" wide.
- 604. A George III mahogany chest of 2 short and 3 long graduated drawers with brass swan neck handles, moulded and canted crossbanded top, canted sides and bracket feet. 39" wide, 34" high. NB. Bought from E M Cheshire in 1973 for £300.
- 605. A late Victorian Art Nouveau brass telescopic standard oil lamp converted for electricity.



Lot No. 632



606. A Queen Anne styled quartetto of tables, the quarter veneered burr walnut and crossbanded top raised on slender cabriole legs with pad feet.
607. An Edwardian mahogany open armchair with ribbon carved cresting rail.
608. A reproduction Regency mahogany twin pillar dining table with reeded top and further leaf, raised on taper turned pillars and 3 reeded outspiral legs with brass cup castors to each pedestal. 44" x 8' max.
609. A set of 6 mahogany Chinese Chippendale dining chairs, including 2 carvers, of traditional form, 19thC. NB. Bought from Hempstead Hall Antiques in 1975 for £850. Cover illustration.
610. A pair of Georgian style wingback armchairs with scroll arms and carved walnut cabriole forelegs with ball and claw feet and modern tapestry upholstery.
611. A Victorian mahogany supper table with moulded circular top, barleytwist column and 3 outspiral legs. 20" dia.
612. A Regency brass inlaid rosewood foldover card table of rounded rectangular form, raised on a square taper pillar, with knulled moulding to the quatrefoil platform, raised on sabre legs with brass paw castors. 36" wide.
613. A Victorian oak occasional table with foliate carved square top, raised on turned legs with similar stretchers.
614. A Carolean style walnut highback hall chair with bergere seat and back, turned and square framing and Spanish foot.
615. A set of 5 (including Carver) Georgian mahogany dining chairs of Hepplewhite design with pierced vase splats, drop-in tapestry serpentine fronted seats, square taper legs and stretchers.
616. An Edwardian mahogany Sutherland table with folding butterfly top, square section uprights and gatelegs.
617. A Victorian walnut oval backed nursing chair with floral carving throughout the scrolling frame and having satin overstuffed upholstery.
618. A George III foldover tea table with rectangular moulded top and chamfered square legs.
619. A Chippendale designed mahogany side chair with pierced vase splat, drop-in seat and square moulded legs.
620. A Victorian mahogany tripod table with oval shaped tilt top, turned pillar and 3 outspiral legs.
621. A gilt circular carved wood 'starburst' wall mirror with convex plate. 28" dia.
622. A similar lot with oval frame and quartz clock to centre. 22" x 16".
623. A set of 6 George III mahogany dining chairs including 2 carvers, having camel backs and pierced and moulded vase splats, overstuffed serpentine seats and square moulded legs with side and rear stretchers.
624. A reproduction Regency flamed mahogany circular centre table with crossbanded top, turned pillar and 4 outspiral legs, with brass paw feet. 24" dia.
625. A George III flamed mahogany side table with cross-banded and reeded rectangular top, plain frieze drawer with swan-neck handles, and square taper legs.
626. A William IV mahogany Pembroke pedestal table with plain dropleaf top, opposing real and dummy cockbeaded drawers with knob handles, raised on a turned baluster pillar on 4 moulded scroll legs.
627. A 19thC elm ladderback chair with rush seat and pegged cresting rail.
628. A Georgian mahogany side table with moulded rectangular top, 2 frieze drawers with swan neck handles and moulded square legs. 30" wide.
629. A mid-19thC French hand painted Bonheur de Jour, with ormolu mounts and fete gallante scene to cabinet door.
630. A Victorian mahogany chest of 2 short and 2 long graduated drawers, knob handles and turned feet. 36" wide.
631. A Queen Anne style walnut Lowboy of traditional form. 40" wide.
632. A pair of George I style upholstered open armchairs with floral needlework backs and seats, the mahogany frame having outspiral arms and cabriole legs with shell carved knees and ball and claw feet.
633. A George III mahogany Pembroke table with moulded top, opposing real and dummy frieze drawers with box and satinwood stringing, raised on 4 ring taper turned legs terminating in brass castors. 39" x 46". Illustrated.

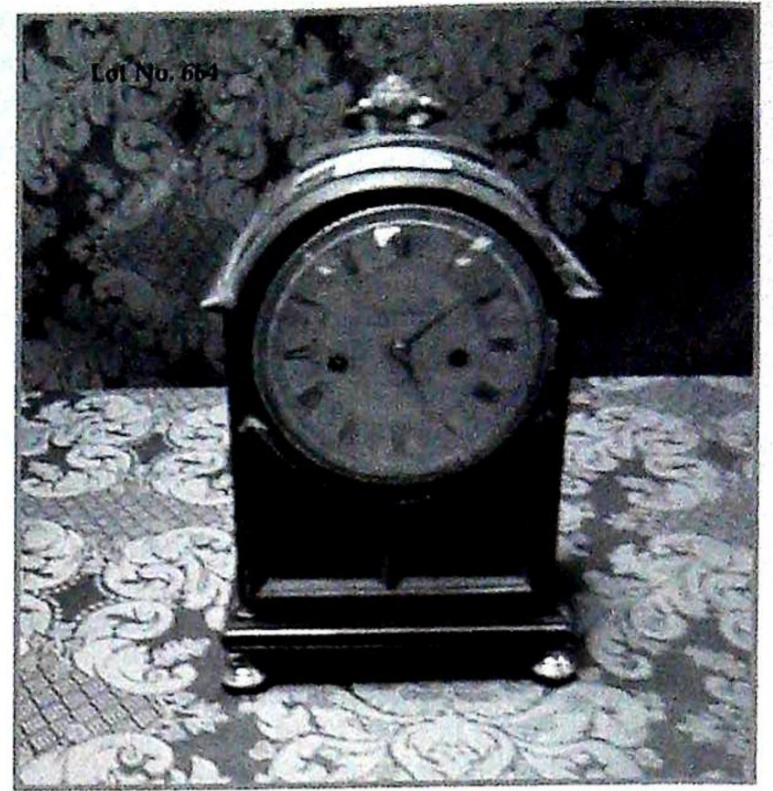
634. A George III mahogany side table with ebony strung cross-banded rectangular top over 2 short and 1 long graduated drawer with lozenge inlay and stringing, turned knob handles, square taper legs with swell feet. 33" wide.
635. A Globe Wernicke style oak 3-tier stacking bookcase with glazed lift door.
636. A Victorian figured walnut side cabinet with moulded marquetry inlaid top, single glazed door enclosed by inlaid panels and ormolu mounts, on shaped plinth base. 33" wide, 43" high.
637. A set of 4 George III mahogany dining chairs with turned cresting rail, X-frame reeded back, overstuffed seats and square taper legs.
638. An Edwardian mahogany crossbanded and inlaid bureau with fall flap over 2 lopers and 3 graduated drawers with brass swan-neck handles.
639. An Edwardian cross-banded mahogany kneehole desk with shaped top, single drawer to the kneehole and 3 bowfront drawers to each pedestal, raised on square taper legs with brass and ceramic castors. 43" wide, 21" deep.
640. A William IV mahogany Pembroke table with moulded drop-leaf top with single frieze drawer on an octagonal taper pillar, quatrefoil platform and moulded sabre legs with brass reeded toes and castors.
641. A pair of Georgian style tapestry upholstered side chairs with carved cabriole legs.
642. A George III mahogany foldover card table, the rectangular moulded top having plain frieze, square taper legs and spade feet. 34" wide.
643. A Victorian mahogany Scotch chest of 2 short and 3 long graduated drawers with knob handles and scroll pilasters, on bun feet. 45" wide.
644. A reproduction flamed mahogany 2 door side cabinet with rondel and moulded doors and splay feet. 41" wide, 43" high.
645. A Regency flamed mahogany chest of drawers with cross banded top, 2 short and 3 long graduated drawers with oval backplate handles, bracket feet and shaped apron. 36" wide.
646. An 18thC oak gateleg dining table with oval moulded top, turned baluster legs and square framing. 52" x 36".
647. A George III flamed mahogany bowfront chest of 2 short and 3 long graduated drawers with oval pressed brass handles and splay feet, 42" wide.
648. A George III ash and elm Windsor chair with pierced vase splat, ring turned legs and H-frame stretcher.
649. An Eastern teak miniature mule chest with brass studded decoration throughout the lid and front perspective.
650. A late Victorian window table with shaped top and undershelf.
651. A rectangular oak and Gesso moulded wall mirror 19" x 24".
652. A small rectangular walnut framed mirror with heavy bevelled plate, 10" x 15".
653. Spare lot.
654. A George III mahogany table mirror with 3 drawers to the bowfront base, on bracket feet, turned uprights and rectangular plate.
655. A Regency mahogany table mirror with shield shape plate, 2 drawers and ogee feet.
656. A fine Victorian rosewood footstool carved with scrolling feet and frieze and having overstuffed upholstery of serpentine outline.
657. A Regency giltwood pier glass with breakfront cornice and inset turned pillasters and mahogany reeded moulding to the rectangular plate, 29" high.
658. Spare lot.

Clocks and Barometers

659. A Georgian and later oak and mahogany cross-banded longcase clock with swan-neck pillared hood, full-length front door and bracket feet, 12" brass dial with 'tempus fugit' rondel to arch, silver chapter ring having Roman hour numerals and arabic minute, seconds ring, 8-day movement striking on a bell, 84" high.
660. An oak bezelled electric school clock with Roman numerals, 12" dia.
661. An early 19thC mahogany shell inlaid wheel barometer with broken arch pediment, thermometer and 8" dial.
662. A 19thC oak and mahogany stick barometer with taper turned pillars enclosing a brass scale and having moulded trunk.



Lot No. 633



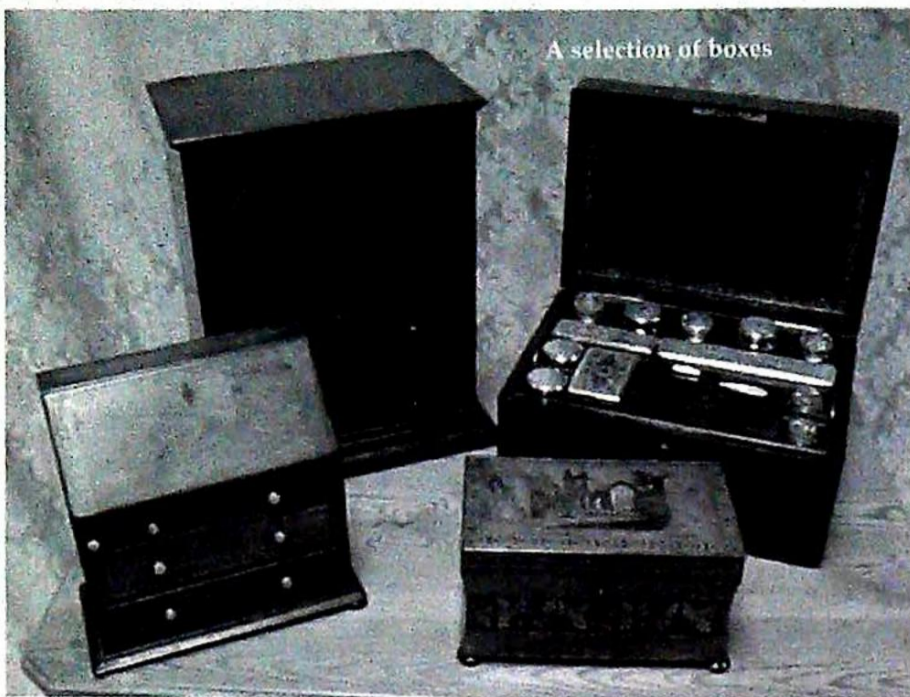
663. A 19thC Boulle mantel clock with ormolu mounts enclosing the brass and tortoiseshell inlays, 3 1/2" porcelain dial with Roman arrow numerals and Arabic minute, French 8-day movement striking a gong, 10" high.
664. An 18thC ebonised bracket clock by Webster of London, the chased 3 1/2" dial having Roman numerals, 8-day cylinder movement striking a bell, 8 1/2" high. (AF)
665. A 19thC French spelter and marble clock garniture having a classical maiden writing with a quill over a porcelain dialled 8-day movement signed Gve Buron, Goulommiers, together with 2 urns, 12" high.
666. A Georgian open mahogany longcase clock with swan-neck pillared hood, full-length shaped trunk door, and bracket feet, the 12" painted dial having moon roller and date aperture and marked J&T Hallam, Nottingham, later electric movement, 89" high.
667. A Georgian inlaid mahogany longcase clock with full length flame veneered door, the canted sides, hood and base having marquetry panels and quadrants raised on bracket feet, the painted square arch dial having floral spandrels and birds to arch, 8 day movement striking on a bell 7' high.
668. A Georgian oak and mahogany longcase clock with swan-neck pillared hood, shell inlaid and shaped door to a reeded and canted trunk, on bracket feet, painted 12" dial having exotic bird and eggs to arch, seconds ring and marked Haines & Son, Stamford, 8-day movement striking on a bell, 83" high.
669. A late Georgian oak and mahogany longcase clock with swan-neck pillared hood, shaped door to the canted and reeded trunk, on bracket feet, 11" painted dial having seconds ring and marked Wm. Green, Grantham, 8-day movement striking on a bell, 80" high.

Decorative and Collector's Items

670. A black and white plush toy figure of Felix the Cat.
671. Britains 9578 loader wagon, red box.
672. Britains: 9563 Bauser vacuum tanker; 9544 disc mower; 9577-130 seed drill, all red box; 9566 tipping trailer, boxed.
673. A Britains bale sledge cart 9557, boxed.
674. A Britains baler 9556, boxed and a Britains Renault tractor and manure spreader, unboxed.
675. Dinky 958 Guy snow plough, black blade, boxed.
676. A small selection of Corgi cars including No 268 'Black Beauty' Green Hornet, boxed, No 264 Oldsmobile Toronado, boxed, and other unboxed vehicles.
678. A Collective Lot of Railway Models; inc. Hornby Dublo & Marklin, comprising various locomotives (some pre-war), various rolling stock and a qty of track.
679. A Mamod steam driven Rolls Royce.
680. An Armand Marseille bisque headed doll marked 370 A310M. Germany on neck, open mouth showing four teeth, sleeping eyes, composite arms, kid legs 16".
681. An American 'Google eyed' doll, felt limbs 14".
682. A Steiff horned sheep, button missing.
683. A Steiff fish, paper label attached 10".
684. A Steiff squirrel, felt paws 6".
685. An Armand Marseille bisque headed doll, sleeping eyes, open mouth with 2 showing teeth, head marked A8M Germany, composite arms and legs, 23".

686. An Armand Marseille bisque headed doll, sleeping eyes, open mouth showing 4 teeth, head marked A.11.M. 390n. DRGM 246/1, composite limbs, some damage to hands, 23".
687. An Armand Marseille bisque headed baby doll, sleeping eyes, open mouth, head marked AM Germany 352/4K, 18".
688. A plastic Mickey Mouse clock by Ilko, 9".
689. A set of Pelham Limited Edition display puppets of Thunderbirds characters, Parker, Brains, Lady Penelope, Scott and Virgil.
690. A German clockwork animated tan plush knitting teddy bear.
691. A German bisque headed doll, sleeping eyes, open mouth, showing 4 teeth, head mark with a star, 2/? Germany, composite body, needs attention.
692. A home-made felt Mickey Mouse figure, eyes missing.
693. An Armand Marseille baby doll, sleeping eyes, open mouth, 2 bottom teeth showing, composite body and limbs, some damage to base of neck, marked A.M. Germany 351/6K.
694. Two boxed sets of Meccano, red, yellow and green box, outfit No's 1 & 3.
695. A Pelham Puppet, buff box, mad professor puppet, green ears, with instructions.
696. Chinese costume dolls and embroidered silk shoes.
697. A Victorian leather cased and bound brass 3 pull telescope and 2 tripods.
698. A bowler hat and walking stick with presentation band.
699. A Victorian burr walnut workbox with brass inlaid cartouche and silk fitted interior.
700. A small Victorian brass inlaid rosewood jewellery box and another.
701. An early 19thC rosewood tea caddy, of sarcophagus form, well figured with boxwood stringing, fitted with ring handles to each side, on 4 compressed bun feet, the interior having 2 removable lidded boxes, flanking a well for a mixing bowl (now missing), velvet lining to interior of lid, 12" wide.
702. An Arts & Crafts oak box, of rectangular form, the hinged cover centrally mounted with a pewter tablet stamped 'Bridge' and 2 stylised 'faux' hinges, the front panel drops to reveal fitted interior, on bracket feet, 9" wide.
703. A 19thC figured leather bound casket, the hinged lid centrally fitted with a brass inset handle, engraved S.M. on the plate, the interior to the lid fitted with a pen flap, 9 3/4" wide.
704. A mahogany miniature fall-front bureau, with crossbanded fall, over 3 graduated drawers, with bone knobs, with spreading apron and on compressed bun feet, 9" wide.
705. A George III crossbanded mahogany Box, of ogee form the sloping lid inlaid with satinwood shelf, patesa inlay to inner lid, fitted with three cut glass decanters, previously a knife box, the lock inscribed "J T Needs 100 New Bond Street, J. Bramah Piccadilly", 8.75 inches wide.
706. A Victorian walnut combined workbox and lap desk, having tonbridge inlaid banding and fitted interior.
707. A Meiji period Japanese table cabinet having a well patinated case with mixtures of parquetry inlay panelling and lacquerwork, the 2 front doors having takimaki lacquer panels of Mount Fuji and bird in the foreground, 13" high.
708. A Victorian marquetry workbox with satinbox and harewood inlays incorporating an anchor motif (AF).





709. A fine Victorian Tonbridgware caddy, the domed rectangular top having a scene of church ruins within a stylised border, the cavetto body having a single band of leaves, on bun feet, 2 section tin lined interior.
710. A Victorian rosewood workbox fitted with a variety of cut crystal bottles and jars with pierced and chased electroplate mounts, bearing maker's label of Doulton, London, and having double Bramah lock.
711. A Victorian rosewood and mahogany table cabinet, having 2 lozenge panelled doors over 6 short drawers with knob handles and moulded base, 15" high, 13" wide.
712. A Victorian figured walnut workbox with tonbridgware banded exterior and satin lined and fitted interior, 12" wide.
713. A Victorian brass bound rosewood campaign duet writing box with fitted interior and inkwells by Perry & Co, London.
714. A Swiss bells-in-sight musical box, the 6 1/4" cylinder with 3 bells, with butterfly strikers, playing ten airs, as listed on the tune sheet, the walnut crossbanded case decorated with transfer print Royal Crest, 18 1/2" wide.
715. A Victorian rosewood marquetry cased Swiss Musical Box, 11" cylinder, single comb
716. An early 20thC mahogany tray, rectangular with integral handles, the centre glass panel hand painted and backed with butterfly wings, inscribed 'Rio-Brasil', 24 1/2" wide, another example, 24" wide. (2)
717. A pair of oriental hardwood carvings of pedlars, with ivory teeth, on pierced integral bases, 15" tall.
718. A Japanese black lacquer table jewellery cabinet with coloured mother of pearl inlay.
719. A Japanese black lacquer table cabinet having chinoiserie decorated panels of 2 fighting figures.
720. A Victorian shaving stand with 2 detachable bowls, stand and glass on drawer base.
721. A mahogany shove ha'penny board.
722. Mike Grevatte. Albatross Dream, a polychrome carved wood wall plaque, 11".
723. A Victorian burr walnut cased chemist's dispensary box, with fitted interior, small quantity of bottles and marked 'Thomas & Cappa, Liverpool, Birkenhead and Manchester, Homeopathic Chemists.
724. An electric shock treatment set bearing label 'Newly invented, manufactured by William Skidmore, Sheffield'.
725. A Victorian mahogany cased electric shock treatment set bearing label 'Improved Curative Magnito Electric Machine E Howett, Launder Terrace, Grantham.
726. A Victorian brass and mahogany 3 pull telescope by Thompson of Nottingham.
727. A rare 19thC American daguerreotype, the chased gilt mount marked 207 Bowerg NY, the case moulded from paper machie with figures, horses and steer to the front and oval to the back. 6" x 5".
728. Six various Victorian deguerreotypes.
729. A Norris of London adjustable smoothing plane.
730. A Norris of London No 8 dovetailed rebate plane.
731. A William Marples Ultimatum brass and ebony woodworking brace.
732. A pair of Air Ministry binoculars by Wray of London, leather cased.
733. Various 1970's film posters including Emmanuelle, The Man with the Golden Gun, Confessions and early Regal (Stranraer) posters including Mary Poppins and Enter the Dragon.
734. 1950's press photographs including Campbell's water speed record, Chelsea v Blackpool, Final Test at the Oval and Hoad Wimbledon Champion.
735. 1966 World Cup. Two souvenir programmes, 5 Wembley tickets and an autograph album including the Mexican team, Terry Venables, Pat Jennings, Bill Nicholson, John Collins, Dave McKay, anon.

736. An Edwardian artist's travelling easel by Cheney.
737. A collection of walking sticks and umbrellas, viz knops including a silver fish with glass inset eyes, Maker CD, London 1903, carved bone wild fowl bill, both by Brigg of London, a carved Black Forest monkey with opening mouth and 2 others.
738. An autograph album - Jack Warner, Peter Byrne, Richard Lynn, Ray Ellington, Frankie Vaughn, Stanley Black, Diana Coupland, Benny Green, Anne Shelton, Jonnie Ray, Spike Milligan, Kay Kendall etc, another album.
739. Various Victorian and later scraps.
740. A 19thC natural history taxidermy specimen of a turtle.
741. An electroplate on copper 3-branch candelabrum and pair of candlesticks.
742. A Victorian leather cased pocket barometer by Callaghan & Co of London.
743. A collection of commemorative newspapers.
744. A miniature cricket bat with facsimile signatures from the England First Test, 1953.
745. Two small lidded treen boxes in the form of a pear and an apple.
746. Two Victorian treen medicine glass boxes.
747. Two Victorian papier mache and tortoiseshell inlaid snuff boxes and a horn handled penknife.
748. Charlie Chaplin ephemera inc Christmas greeting card signed verso from CSC 1922, and 1915 copy of the Funny Wonder.
749. A moulded oak framed play bill of 1827 for William Tell, the Lancers and Midas at Drury Lane.
750. A Hawkes & Son of London brass cornet, boxed, with design pamphlet.
751. A cased violin with bow, maker unknown.
752. A Murdoch, Murdoch & Co of London 'The Maidstone' violin, cased with bow.

- 753-6. A cased violin with bow, maker unknown.
757. A Primavera modern violin, cased, with bow.
758. A fur coat, hat and accessories
759. An ivory dressing table set comprising rectangular trinket box, brush, comb and mirror, banded with ebony and inscribed Gold Coast Colony Co-operation in silver-gilt.
760. Charlotte Dubray. A carved marble bust of a bearded gentleman, signed and dated 1879, 17".
761. A cut crystal 6-branch electrolier and 3 twin branch wall sconces.
762. A Victorian cut and moulded crystal electrolier with prismatic drops.
763. A cut crystal 11-light electrolier
764. A cut crystal 11-light electrolier
765. A pair of 2 light brass and crystal wall sconces, (similar to previous lot).
766. An early 20thC alabaster plafonier, 18" dia.
767. A turned ebony egg shaped sewing etui with silver commemorative thimble, thread and needles.
768. A 19thC French porcelain serpentine pill box with hinged metal cover.
769. A cased miniature Meerchaum pipe carved with a fox.
770. A cased miniature Meerchaum pipe carved with a fox (AF)
- The following 10 lots of guns may only be sold to relevant license holders, if in doubt enquiries to Colin Young
771. A Hollis Bentley & Playfair 12 bore side by side shotgun, serial no 93317.
772. A Gardone 12 bore side by side Shotgun. Serial No 9170.

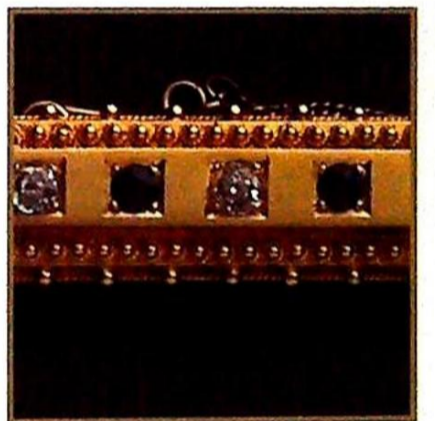


773. T Conway. 12 bore side-by-side hammer action underlever shotgun with Damascus barrels.
774. BSA 12 bore side by side shotgun, serial no 19706
775. A 12 bore side by side hammer action shotgun by J Crockart, serial no
776. A Midland 410 single barrel garden gun, serial no 272
777. A 410 side by side double barrel hammer action garden gun.
778. A Victorian shooting stick with horn handle.
779. A Victorian mahogany finished and horn handled shooting stick.
780. Two replica hand guns, .44 Magnum and .357 Python.
781. An early 20thC EPNS cigarette box, of rectangular form, the hinged cover inset with lithographic hunting scene.
782. Two bodkin holders, one treen, one chased metal
783. A carved cameo shell with script from the Lords Prayer
784. A Montblanc 144 Masterpiece fountain pen in green striped celluloid.
785. A Royal Albert Beatrix Potter figure of a 'Hunca Munca sweeping', brown back stamp.
786. A Beswick Beatrix Potter 'Foxy Whiskered Gentleman', brown backstamp.
787. A Beswick Beatrix Potter 'Squirrel Nutkin', brown backstamp.
788. Beswick Tom Kitten GBS.
789. Beswick Mrs Flopsy Bunny BBS.
790. A Belleek shell moulded cup and saucer.
791. An eastern hardwood scent bottle with metal mounts.
792. An Art Nouveau brass car mascot of a naked female on a broomstick with an owl, 6" high.
793. A WWII leather flying helmet with mask.
794. 22 Wade whimsies.
795. A qty. of Wade whimsies.
796. A Victorian leatherbound brass 3-pull telescope by Dolland of London.
797. A hand hewn stone tablet carved in relief with George V inscribed Georgius.et.Maria.Rex.Et.Reg 20" x 30" x 10"

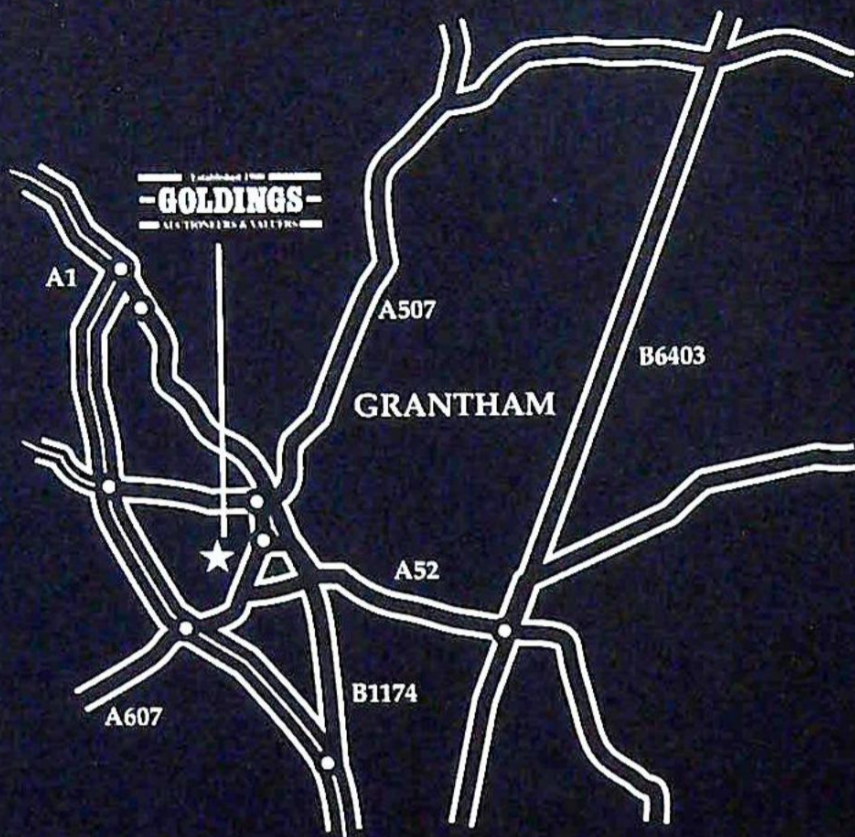
End of Sale.

CONDITIONS OF SALE

1. These Conditions together with any Notices to Purchasers are the only terms and conditions subject to which Golding Young & Co ("the Auctioneers"), as agents for the Vendor will sell goods to a purchaser ("the Bidder") and all other conditions, whether express, or implied at common law or by statute as are capable of lawful exclusion are hereby excluded.
2. The highest bidder shall be the buyer. The Auctioneers reserve the right of regulating the biddings; of rejecting any bid; and of bidding for, withdrawing, consolidating, dividing or altering the order of lots.
3. The purchase money for each lot with the usual commission of 15% on the first £100 and 12.5% thereafter (min £1 per lot) plus VAT at the current rate shall be paid at the fall of the hammer (if required). Each lot at the fall of the hammer shall be at the sole risk and expense of the buyer, and shall be paid for and removed immediately after the conclusion of the sale, but no lot shall become the property of the buyer, or be removable until paid for, and if taken away in contravention of these conditions without an order for removal signed by the Auctioneers, they shall have power to seize the same by their servants or agents, or otherwise, or the Auctioneers may recover either the lot sold or the price thereof (at their option) by action at law.
4. No contra account of any description whatever will be allowed to the buyer as a set off, and payment for each Lot shall be made to the Auctioneers or their clerk only, and a buyer paying by cheque must give satisfactory references.
5. For all purposes of this sale the Clerk of the Auctioneers shall be deemed to be the agent of both seller and buyer.
6. A bidder shall not be allowed to retract his bidding after the fall of the hammer, and he shall give up his full name and address if required. The Auctioneers will not recognise the transfer of any lot from one buyer to another, nor make any alteration in the sale book in respect thereof.
7. The Auctioneers are acting only as agents, and give no personal warranty as to the condition, quality or authenticity of any chattels offered for Auction. Any catalogue description is given merely as guide to purchasers, any description can be changed from the rostrum before the lot is sold. If a purchaser buys without previous inspection he will do so at his own risk.
8. Notwithstanding any other terms in these Conditions, if within 7 days of the Sale a purchaser gives notice in writing that a lot is a deliberate forgery, with supporting factual evidence, the Auctioneers may rescind the transaction. The burden of factual proof lies with purchaser, mere opinions will not satisfy. This benefit is not assignable.
9. If any buyer neglect or refuse to comply with the above conditions or any of them, his deposit money (if any) shall be forfeited, and the lot uncleared may, at the option of the Auctioneers, be resold without notice by public auction or private treaty, and any loss occasioned by such re-sale together with all expenses attendant thereon, or arising under these conditions shall be paid for by the defaulter and be recoverable as and for liquidated damages. This condition is however without prejudice to the right of the Auctioneers to enforce the contract made at this sale if they think fit.
10. Any Notes for Purchasers and Catalogue Glossaries will be construed as Conditions of Sale.
11. The Auctioneers shall be the sole Arbitrators in all matters of dispute relating to those conditions both as between the seller and the buyer and between the several bidders and buyers and their determination on all matters shall be final and binding on all parties concerned.



How to find us



By Road

From whichever direction you approach Grantham, you can find us if you observe the following rules: Follow signs for Town Centre. Follow signs for Railway Station. At the roundabout leading to "Station Road", continue around to a double viaduct/ railway bridge. Take the right hand arch which leads into Old Wharf Road.

The Salerooms are the first building on the right. There are parking and loading bays in front of the premises.

By Train

The auction house is situated very closely to the Railway Station, which is served by the East Coast Main Line. Trains run approx. every 20 minutes from Kings Cross.



WWW.GOLDINGYOUNG.COM



Golding Young & Co., Old Wharf Road, Grantham, Lincolnshire NG31 7AA
Telephone: 01476 565118 Fax: 01476 561475 Email: enquiries@goldingyoung.com