

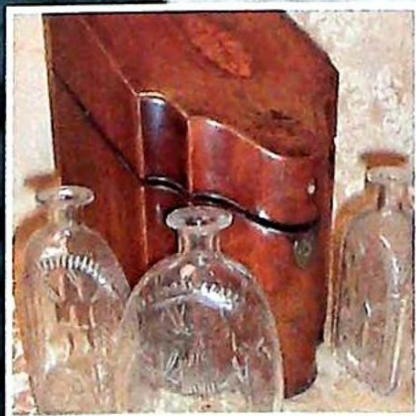
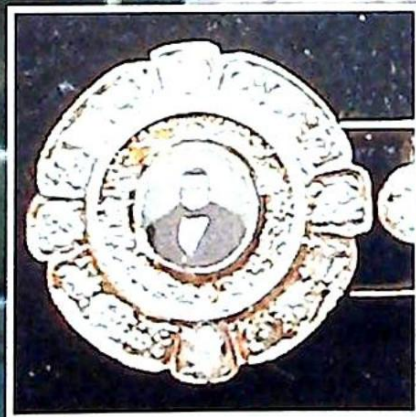
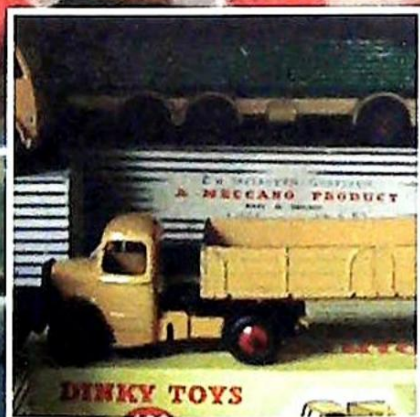
Established 1900

-GOLDINGS-

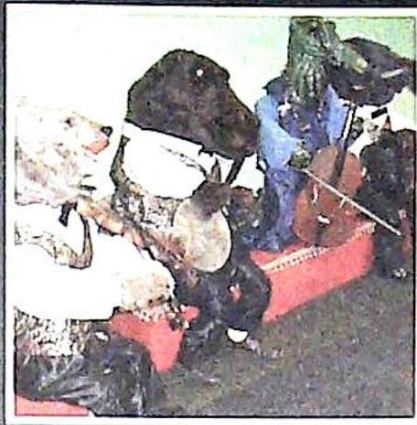
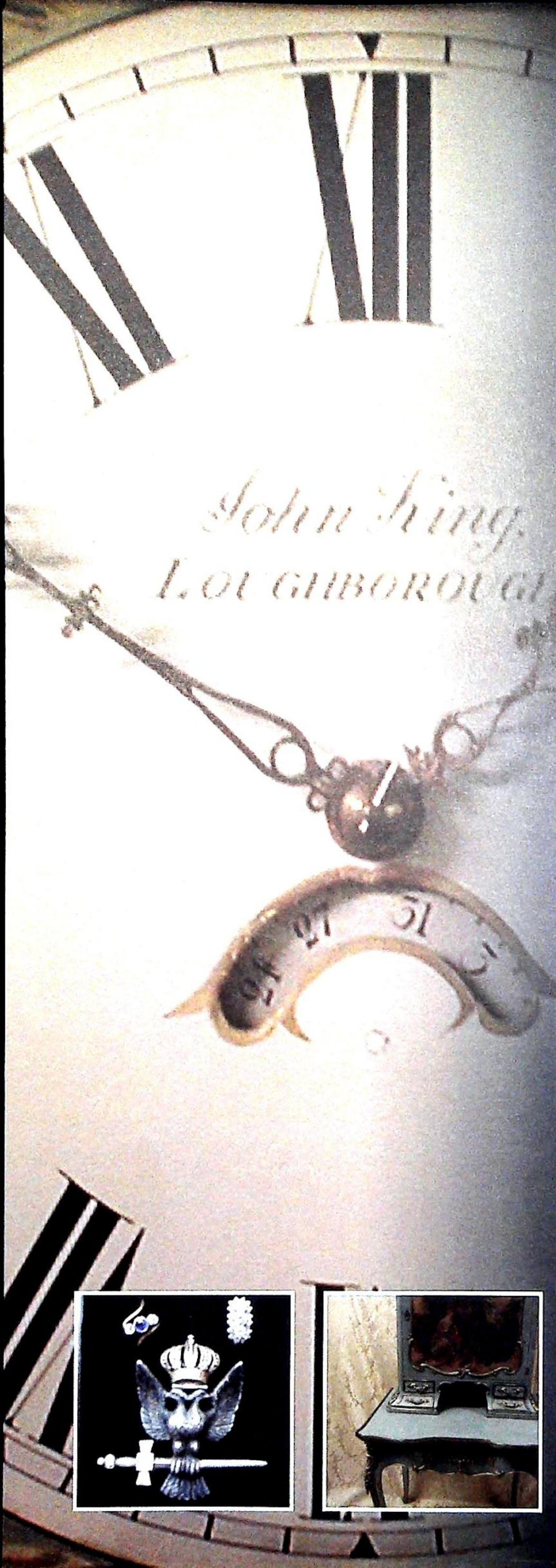
— AUCTIONEERS & VALUERS —

CATALOGUE SALE

NOVEMBER 2002



WWW.GOLDINGYOUNG.COM



Upon instructions from various estates, selected collections and single entry vendors from throughout the region.

GOLDING YOUNG & CO will sell by AUCTION Over 1,300 lots in a collective

ANTIQUES, FINE ART & COLLECTOR'S SALE

**On Tuesday 12th November at 12 noon
& Wednesday 13th November at 10am**

Viewing: Monday 11th 2pm to 7pm,
Tuesday 12th 9am to 12 noon and Wednesday 9 to 10am

click to view - The majority of lots are illustrated online from 9th November

12 noon Tuesday - lots 1 to 650 - **Silver, Platedware, Pictures,
Jewellery, Glass, Books, Ceramics, Clocks & Furniture**

10am Wednesday -lots 1001 to 1500 - **Toys, 19th & 20thC collectables**

lot enquiries - Suki J Burnett ANAVA
& Jan L Squires PJ Gem Dip, ANAVA

vendor enquiries - Colin Young FNAVA

Telephone: 01476 • 565118

Fax: 01476 • 561475

Email: enquiries@goldingyoung.com

Buyers Hotline: 01476 • 575202

For Lot Enquiries & Commission Bids Viewday & Saledays Only

IMPORTANT NOTES FOR PURCHASERS

1. **PAYMENT:** Must be made in full immediately after the Auction. The following methods of payment are acceptable.
a) Cash b) Bankers Draft c) Building Society Cheque
d) Cheques, accompanied by a valid card. e) Debit/Credit* Cards *2%+vat charge.

PAYING BY CHEQUE?

If you are not known to the Auctioneers and wish to pay by cheque above your guarantee card limit **WE WILL RETAIN THE GOODS** until it has been cleared (7 days). There will be **NO EXCEPTIONS** to our policy. To avoid **UNDUE EMBARRASSMENT** for yourself or to our staff, please do not ask for preferential treatment. If you wish to clear goods immediately bring a letter from your Bank or a suitable guarantor reference.

2. **BUYERS PREMIUM** of 15% on the first £100 of each lot and 12 ½% thereafter is payable on all lots. Minimum £1 per lot. All plus VAT.
3. **REMOVAL OF PURCHASES:** Goods must be collected as soon as they are paid for, and in the 2 Working Days following the sale. If goods are not collected on these days we reserve the right to charge £1 per lot per day thereafter.
4. **COMMISSION BIDS:** If you are unable to attend this or any of our future sales we will be pleased to bid on your behalf. We always purchase at the lowest possible price, subject to other bids and reserves.

All bids must be handed to the office on an official form. It remains the responsibility of prospective purchasers to contact **GOLDINGS** to confirm whether their bids have been successful.

5. **TELEPHONE BIDS:** There are inherent dangers with this practice, therefore all such arrangements are made entirely at the bidder's risk. Telephone bids will only be accepted if the lower estimate is £500 or above. For lots with a lower estimate below this figure Commission Bids Only will be accepted.

POSTAGE & PACKING: All your requirements from quotes to a forwarding service is available from

MBE Leeds, 57 Great George Street, Leeds LS1 3AJ

Tel: +44 (01132) 428715

Fax: +44 (01132) 429176

e-mail: info@mbeleedscity.co.uk

6. **REFRESHMENTS** will be available Saleday.
7. **ACCOUNT TRANSFER** will not be recognised after the sale. If any lots are purchased for another person, this must be declared at the fall of the hammer.
8. **ESTIMATES.** Our Auctioneers will be available during viewing to give guidance on your prospective purchases.

DAY ONE - Commencing 12noon

1. Four stoneware jars, one stamped, "Pickard Mansfield".
2. A Diamond Moulded glass and epns claret jug, with domed cover and flying scroll handle, 12.50 " high.
3. A Myott and Sons "Festoon" part toilet set, printed in blue with gilt highlights, comprising ewer chamber pot, tooth mug, and part soap dish.
4. A Mason Ironstone toilet set, a octagonal form, printed and polychrome painted with Chinese landscapes, comprising ewer with serpent hand, 11.50 " high, basin 16.25 " diameter, chamber pot, tooth mug (a/f) and soap dish, liner and cover, printed factory marks, 19th century pattern no. 1365.
5. A stoneware jardiniere, circular, inlaid with scrollwork panels and foliage in turquoise and gilt on a matted buff ground, 10 " diameter
6. A pair of patinated spelter figures of a gallant and female companion, dressed in early 19th century costume, on circular base, 14 " high.
7. A pair of 20th century patinated metal figures of crusader knights, one depicting Richard the Lion Heart, on circular bases (one a/f) 13.25 " high.
8. A Royal Doulton stoneware ale jug, the buff ground printed with an etched scene of the Lion Brewery, signed Edgar Wilson "88, between brown bands, scroll handle, impressed no. 3584, early 20th century, 7.75 " high.
9. A Victorian copper kettle, 11.50 " high.
10. A Victorian copper and brass kettle, 10.50 " high.
11. A Langley Ware earthenware baluster vase, the elongated neck with flared rim, with deep blue glaze and moulded in low relief with flowerheads and bead motif, over a finely ribbed buff ground body enamel and gilt with formal scrolls and arabesque, impressed factory marks and no 2031, 12.25 " high.
12. A Charles Meigh earthenware buff ground gothic jug, moulded with eight saints within panels, the angled handle with mask and acanthus ornament, C. 1842, 9.50 " high (restored).
13. An early 20th century glass pedestal dish, the circular bowl externally etched with leaves and berries, having a hollow stem and on circular foot with conforming etching to the underside, 9.25 " diameter, 10.75 " high.
14. A pair of Middle Eastern Coconut vase table lamps, overlaid with brass and white metal ornament, on circular stepped foot, 10 " high.
15. A Victorian ruby glass table lustre, having a shaped rim and painted with flowers, gilt highlights, baluster stem and on domed circular foot, with clear prismatic drops, 11.75 " high.
16. A pair of Victorian milk glass table lustres, with black and gilt ornament (rubbed), knopped baluster stem, domed circular foot, with cut and prismatic drops, 9.25 " high.
17. A Villeroy & Boch Mettlach plaque, of circular shape incised outline and polychrome painted with a Bavarian Woodsman/Warrior in a landscape, inscribed "Irutz ohn Macht wird verracht" 14 1/2" dia.
18. A Derby porcelain bowl of circular lobed form, painted in green pink blue with flower sprigs within gilt dentil borders and lines, puce scroll D to underside, 19th century, 9 " diameter.
19. A Victorian Walnut writing box, inlaid with brass bands, shield and escutcheon, the interior with leather slope and compartments (a/f) 12 " wide.
20. A pewter tobacco box, of irregular octagonal form, the domed cover having mask finial, with inner lid, the body with foliate scroll bands, probably made during the Peninsula war period, 5 " wide.
21. A 19th century rosewood tea caddy, the hinged cover with gadroon border, centrally inlaid with a walnut

panel enclosed within detail barding, conforming inlay to the front, over a single frieze drawer with brass drop handle, to interior with two compartments, on four metal feet, 9.25 " wide.

22. A late Victorian porcelain coffee service, printed and painted with rose barding, pattern no. 11660, comprising six cups and saucers.

23. A pottery whiskey barrel, decorated with rural landscapes, allegorical of the seasons, birds, flowers and wildlife, signed Monika Heller-Cole, 12" high.

24. A Wedgwood pottery soup tureen and cover, printed in blue with landscapes within rose and leaf border, the domed cover having a foliate finial, 13 1/2" wide, impressed Wedgwood and date letter for 1883.

25. A pair of Wedgwood pottery side dishes, of oval shape with integral handles to the sides, printed in blue with village landscapes within rose and leaf borders, 9" wide, impressed Wedgwood and date letters for 1883. #40-60

26. A German porcelain figure of an 18thC youth, dressed in flower sprigged frock coat and breeches holding a flute, on a flower encrusted scroll moulded base, late 19thC. 8 1/2" high.

27. A Delft plate, painted in blue with peonies and foliage, yellow rim, 9" dia, signed on reverse, together with an Ashworth type ironstone plate, polychrome painted with a Chinese landscape and flowers, 8 1/2" dia. (2)

28. A 19th century Staffordshire pottery pastille burner, modelled as a cottage, with green umbrella roof over pink ground walls with lancet windows and red door, 4.50 " high.

29A. A 19th century Staffordshire pottery castle, buff-grounds, with asymmetrical roofs and windows, red door and chimney, with dog and kennel by the door, 6.75 " high.

30. A Staffordshire porcelainous thatched cottage, encrusted with flowers foliage lattice windows and red door, 3.50 " high, another cottage, 3.75 " high. (2)

31. A Staffordshire porcelainous model of a church, with encrustations and gilt highlights 3 " high, a thatched cottage, 3.50 " high. (2)

32. A 19th century Staffordshire pottery estate cottage, with pink roof, red chimneys and door, black highlights, 3.75 ", another later, (2).

33. A 19th century Staffordshire pottery money box, modelled as a cottage with blue roof, the walls moulded with birds and climbing roses, the red door with gilt arch and steps, on green base, 4.75 " high.

34. A 19th century Staffordshire figure group of a young couple and dog standing by a tree, the branches and base encrusted with foliage, 7 " high.

35. A 19th century pottery house, with thatched roof, encrusted with foliage, with an archway and recumbent dog, 5.75 " high.

36. A 19th century pottery money box, modelled as a twin gabled estate Cottage with moss encrusted roof, two chimneys, painted brown with black and gilt highlights, 5 " high.

37. A 19th century Staffordshire spill vase, modelled as two children, one in underglaze blue dress, beside a tree stump, encrusted with foliage, 5.50 " high.

38. A 19th century pink glass match holder, with finely ribbed body and silver rim, 3 " high together with a small green glass scent bottle and stopper with silver lustre overlay, 3.50 " high and a pair of earthenware spill vases, the deep turquoise ground printed with gilt flower sprigs heightened with enamelling, 3.75 " high. (4)

39. A Continental figure of a woman in classical dress, with lyre on pedestal, 6.25 " high together with a 19th century Continental figure of a young flowerseller, in flower sprigged toga, with basket of flowers and bocage on

rococo scroll base, 5.25 " high, and companion figure 3".

40. A Stevenson and Hancock Derby candlestick figure of a young flowerseller, glazed white, on scroll base, 7 " high, painted mark in blue - 19th century.

41. A pair of late 19th century glazed bisque figures depicting children dressed as "Grandpa " and "Grandma", glazed white with gilt highlights, 6.75 " high.

42. A blue glass flagon, of compressed circular form, with loop handle, brass collar and brass and cork stopper, 8 " high, circa 1830.

43. A green glass club shaped small decanter, with triple neck ring and flute cut mushroom stopper, 8 " high, 19th century (stopper repaired).

44. A pair of Georgian green glass flagon decanters, of compressed circular form, with loop handle brass collars and brass and cork stoppers, 8.75 " high, circa 1830.

45. A pair of Copeland Spode oval small plates border printed in blue and white with scrolls and flaves, the centres printed with the legend "Who burnt the tablecloth?", 5.75 " wide, 19th/20th century.

46. A 19th century black basalt cream jug, the body lightly moulded with panelling below read border, loop handle, 3.75 " high, possibly by Hollins.

47. A pair of early 19th century purple lustre saucers dishes, centrally decorated with a house and garden, within lime border and rim, 5.75 " diameter (crack to one).

48. A Sunderland lustre cup and saucer, polychrome painted with a borad band of flowers and foliage, c 1830, Staffordshire porcelain cup and saucer painted in green and puce with flower sprigs, gilt rims, c 1845.

49. A Victorian glass frigiger rolling pin etched with fern, 16 " long.

50. A Tuscan earthenware coffee pot, the grey matt glazed ground decorated with white geometric bands within black running dog borders, acanthus

moulded handle, a pewter hinged cover, 8.75 " high, together with a baluster buff ground jug, simular 6.50 " high.

51. An early 20th century leather covered playing card box, the hinged lid stamped "Piquet" in gilt, containing Bezique score markers stamped Jaques London, sealed packs of Swifts playing cards by De La Rue, Bezique and Patience rule books, and two further packs of cards , 8.50 " wide.

52. A 19th century ironstone footed bowl, circular, printed in brown and painted in pink and iron red with flowers in the Chinese manner, 7.75 " in diameter.

53. A porcelain eau de cologne bottle, of rectangular form with incurving corners and domed stopper, painted with flowers and gilt, early 20thC, 6 1/2" high.

54. A Victorian copper box kettle, with baluster overhead handle, brass mounts, on four feet, stamped VR. 8.50 " high.

55. A horn hunting flask, the brass collar cast with animals and with their Latin names, screw cap and fitted with two belt rings, 11.50 " long.

56. A Hilditch porcelain saucer dish, centrally painted with Chinese figures in a landscape, c. 1830, 8" diameter together with three blue and white miniature plates and jug, a/f. (5)

57. An Enoch Wood type pottery figure, of Andromache, her arms encircling an urn, on pedestal, square moulded base, 9 1/2" high.

58. A Victorian Staffordshire pottery figure of a musician, holding a flute, with seated dog at his side, underglaze blue and polychrome glaze, on a circular base with gilt line, 8 3/4" high.

59. A Victorian Staffordshire pottery figure of a grandly dressed lady holding a lamb, underglaze blue and polychrome glazes, on a circular base with gilt line, 8 1/2" high.

60. A Victorian Staffordshire pottery figure of a spaniel, seated, with iron red splashes, gilt collar and black chain, 8 1/2" high.

61. A Derby porcelain pen tray, of elongated leaf form, painted with a spray of roses, other flowers and butterfly, the white and green spout with gilt highlights, 12" wide, faint factory mark to underside, c.1840.
62. An early 19thC Staffordshire pearlware model 'The Game Bag', as a tree trunk hung with dead game and cartridge bag, 7 1/2" high.
63. A 19th century porcelain figure of a recumbent greyhound, glazed white, on a moulded green base with gilt rim, 5" wide (hairline crack to body, firing crack to base).
64. A Meissen porcelain tea pot, painted with insects and encrusted with Deutsche Blumen, the double scroll handle and spout moulded and gilt with acanthus, underglaze blue factory mark, late 19thC, 4" high, (chip to rose finial).
65. A late 18thC creamware teapot, circular, the domed cover with baluster finial, loop handle and leaf moulded spout, painted with roses, berries and foliage.
66. Two early 20th century horse brasses, each with applied Royal Crest and engraved "Merit Badge R.S.P.C.A. London Cart Horse Parade 1928" and Presented by the R.S.P.C.A. 1929, another "Butlers Pride of the Midland" and "Bickleigh Mill Farm" together with a brass plaque from a Samson safe. (5)
67. A Victorian Epns teapot, of oval form, engraved with flowers, leaves and berries, with scroll handle.
68. A Prattware pot lid, "Tria Juncta Lu Uno" Queen Victoria and others, within decorative borders, printed on underside "Robert Feast 15 & 16 Pavement Finsbury Square London" 5 " diameter.
69. A Royal Artillery heart shaped memento cushion decorated with card crest, woven poem and regimental flags, decorative pins and silver thread work, suspended in a wood and glass case by a satin ribbon, overall 13 x 12.25 ".
70. A late 19th Century plaster figure group of Jesus and Mary Magdalene, under glass dome, 17 " high overall.
71. An early 20th Century glass cordial set, comprising jug and six pedestal glasses, engraved with simple flower forms.
72. A Victorian vaseline glass display with wavy rim, lobed body and applied trunks, 5 " in diameter.
73. Glass : 2 small decanters with mushroom stoppers, a cut glass eau de cologne bottle and 2 cut glass scent bottles (5).
74. An early 19th Century wine glass, the conical bowl on knopped stem and folded foot, 4.25 " high, 5 further glasses. (6)
75. A late 19th century oil lamp, with ruby glass reservoir on fluted brass column and circular base, with glass chimney, 24.25 " overall.
76. A Victorian pewter tankard, 1 pint capacity, engraved with initial, a brass "Trench Art" circular casket, and a WMF style inkstand, 7.50 wide.
77. A 19th Century Imari Bowl, circular with wavy edge painted with floral panel and centrally with a flowerhead, 9.75 " diameter, (chip to rim).
78. A pierced Epns circular two handled basket 5.75 " in diameter, a pair of brass piano candlesticks and a pierced bracket with spider hook and a gilt brass crucifix.
- 78A. A quantity of 19th Century and later spectacles, mainly in cases, and his Masters Voice gramophone, needles in original his and quantity bank notes.
79. A set of six German porcelain circular medallions painted with farming, industrial and toping scenes 2.75 " in diameter, together with a glass paperweight of Blackpool Tower and one of a York Minister.
81. An olivewood rectangular panel, the moulded oval panel inlaid in marquetry with a dancing couple, inscribed "Sorrento" 9.25 x 6.50 ".
82. An early 20th century novelty ink stand cast in metal as a seaside donkey, with a moulded glass well with hipped lid, label to underside "stair and

Adnams, 23 Westborough, Scarborough, 3.50 " wide.

83. A draught and backgammon board, modelled as a pair of books "History of Rome" together with wooden draught pieces (a/f).
84. A 19th century slated marble timepiece, of architectural outline, the enamel dial with Roman numerals and inscribed J W Benson, Ludgate Hill, London, 10.50 " high.
85. A copper funnel, a brass ladle with iron handle, two brass saucepans, late 19th/early 20th Century.
86. Three brass cider measures with iron handles, and a copper measure.
87. A gilt brass table lamp, cast as a youth in 19th Century dress holding a plant pot planted with flowers, holding two scones, fitted for electricity, on circular sode cast with flowers, on square base with acanthus corners, 16 " high.
88. Two stoneware ale jars, one marked "Markhams Botanical Brewers Queen Street, Gainsborough" 1942.
89. A quantity of blue and white pottery:- Copeland Spode Italian bowl, 9.50 diameter, Abbey patton beaker, Yorkshire Relish plate, 4.25 diameter, various plates, and oval Minton "Delft" pattern meat plate, two tea pot stands and a preserve pot.
90. A Graingers Worcester wall pocket, moulded as a lily flower issuing from a lily pad, 4.25 " high, 19th Century.
91. A pair of Art Nouveau gas brackets, an ornate pierced brass door plate a/f, and other gas brackets.
92. A bottle of Port bearing label "Fine Old Port Hodgson and Hepworth Ltd, Doncaster", another bottle, unidentified (2). 19th Century.
93. A 19th century Copeland butter dish, cover and stand, glazed white an inscribed "Nursery" in blue, the cover with flower frial, together with three Delft houses, (modern).
94. A set of four cranberry glass small beakers, 3.75 " high together with a cream jug, straight sided, with clear handle, 4 " high. (5)
95. A quantity of Dageurrotypes and Photographic slides.
96. A late 19th Century mahogany stained hanging corner cabinet, the single door decorated with an ink work panel in the Art Noveau manner with a girl with geese, 16 x 13 ".
97. A George III crossbanded mahogany Box, of ogee form the sloping lid inlaid with satinwood shelf, patera inlay to inner lid, fitted with three cut glass decanters, previously a knife box, the lock inscribed "J T Needs 100 New Bond Street, J. Bramar Piccadilly", 8.75 " wide.
98. A Dudson lilac jasperware tobacco jar and cover, moulded with classical figures, musical instruments and trees, the domed cover and foot with acanthus leaf and foliage, 6 1/2" high, c.1880.
99. An EPNS flambe stand and burner by Walker & Hall, oval, having a pierced band to the body, the separate burner with 2 carrying handles, 6 1/2" high.
100. A Victorian Staffordshire pottery figure of a hunter astride a horse with leopard in the undergrowth, underglaze blue and polychrome glazes, on an oval base with gilt line, 11" high.
101. By and after Alken - "Spree at Melton Mowbray", "Lurking at the Grantham Tollgate" and "Quick Work Without a Contract" hand coloured aquatints, from Sporting Anecdotes, 19th century, 12 x 15.50 ", 2 plates of 33.
102. Lionel Edwards - "The Brothers Johnson", reproduction colour print, signed in pencil in the margin, plate size, 12 x 9.50 ".
103. Lionel Edwards (after) - "In Full Cry". "At the Covert", "The Finish", reproduction colour prints, image size, 15 x 10.50 ".
104. After Alken. "Breaking Cover", "Going to Cover", "Full Cry", "The Death". coloured equatints, by Sutherland, first published 1821, re-issues 9.75 x 17 ".

105. 19thC Italian School. Madonna and child, oil on panel, gilt framed.
106. 20th Century School. Study of the rear view of a seated nude, oil on board, 17 x 14 ".
107. Hxx Todd (20th century). Coastal seascape, with cliffs, oil on board, signed bottom left, 11 x 14".
108. After Terry Mckivragau. Golfer in full swing, coloured print, signed in pencil, 10.5 x 7.5".
109. Cashes. Nasturtiums in a vase, woven "silks" 7 x 5.50 ".
110. After Allom. "Grantham Market Place, Lincolnshire", steel engraving by T Clark, 19th century, 4.50 " x 6.50 " (af) and After J Shury. "Hampton Court Palace", steel engraving, 19th century, 4.50 x 6.75 " (2).
111. After George D Armour. Three angling scenes, reproduction colour prints with remarques, together with a carriage driving scene, by the same hand, 11 x 8.25 " (4).
112. 19th Century. "A Hunting We Will Go" - interior, chromolithograph, trimmed to image, title verso, 16.75 x 11.50 ".
113. Allan Dorrian Clark (20th Century). "The Brook - through Caldecote, Autumn 1979" - pastel, signed and dated, 13.50 x 9 ".
114. R.W.H. "Piet" - horse and rider during the Boer War, pencil, signed with initials, 12.25 x 17.75 " (unframed).
115. 19th Century - "Firecrest" and "Girl Bunting" - bird studies, hand coloured engravings, 6.25 x 4.25 " (2).
116. A Derbyshire County Map published Fullarton, framed 9" x 7"
117. Frederick EJ Goff (1855 - 1931). Limehouse and the River Thames, extensive river scene with numerous barges and shipping, watercolour, heightened white, signed bottom right, 11 x 18 ".
118. 19th Century Japanese School. Battlesave, coloured woodcut, 12.25 x 8.75 ".
119. John Smith. "Azay Le Rideam, Loire", watercolour signed and dated 1985, 12.50 x 8 " and J E Bayes - Village Street, watercolour, signed, 8.50 x 11.50 " (2).
120. Davy. Extensive river scene with moored barges before bridge, city beyond, watercolour, signed bottom left, 6.75 x 13.50 ".
121. By & After William Geldart. "North Wales" - windblown landscape, blur Limited Edition reproduction print, signed in pencil, 19/75, 8 x 13.50 ".
122. After Malcolm. "Ford House, Derbyshire" hand coloured copper engraving, 19th century, 4.24 x 6.75 " and After Cooper - "Yachts of Gravesend" hand coloured steel engraving, 19th century, 6 x 7.50 " (2).
123. After George H Downing. "Old Time London" - facsimile coloured etching, 9.25 x 6.25 " and After Walter G Price - "King Edwards School, Birmingham", b/w facsimile etching 5.50 x 8 " (2).
124. After Lionel Edwards - "R A Drag Bourdon 1938", reproduction colour print, pub. Sporting Gallery, Jermyn Street, London, 10.50 x 15 ".
125. After H LaPorte. "Coursing - In the Slips" and "The First Turn" hand coloured aquatints by H Papprell, circa 1860, 14 x 23 ".
126. 19th Century School. "Boston Stump" - view from the opposite bank, oil on board, 18 x 12 ".
127. 19th Century School. Stable interior with seated hostler, tethered horse and dog, oil on canvas, unsigned, 11 x 14 ".
128. By and After Tom Carr (1909-1999). "The Bog" - hunting scene, coloured etching, Limited Edition no. 12/75 signed in pencil. 10.50 x 12.25 ".
129. By and After Richard Winter (19th/20th Century). Gathering Bullrushes, man in a punt on a lake with country home beyond, and, "On the Towpath" - horse drawn barge with sail up boat nearby - church on the bank, hand coloured etchings, with pencil signature and remarques in margin, a pair, 12 x 28 ".

130. After Gainsborough. "The Blue Boy" - coloured mezzotint by Arthur Hogg, circa 1922, signed in pencil by the engraver, and with blind trade guild stamp to margin, pub. Frost and Reed, on india paper, 19 x 13 ".

131. A Far Eastern Fabric panel, embroidered in gold and silver threads with fabled beast, palm tree and other foliage amongst clouds, with abstract below representing a stormy sea, 11.25 x 11.50 ".

133. Thos Palser (pub). "View in Hyde Park with the Fleet at Anchor on the Serpentine River" and "View of the Bridge and Pagoda from the Canal, St. James's Park", hand coloured aquatints, pub. by Thos. Palser, 1814, 9.25 x 13.25 ", (trimmed to image on three sides, some worn holes on the 2nd print one tear to each).

134. After Edward King (19th/20th Century). "Victoria Embankment", coloured etching by D. Donald, signed in pencil by the artist, etcher, pub. 1926 by Museum galleries, blind trade guild, stamp bottom left, plate size 11 x 15 ".

135. After Edward King (19th/20th Century). "Marble Arch", coloured etching by Eugene Tilly, signed in pencil by the artist, etcher, pub. 1925 by Museum Galleries, blind trade guild, stamp bottom left, plate size, 11 x 14.75 ".

136. After Edward King (19th/20th century). "The National Gallery", coloured etching by Cecil Tatton Winter, signed in pencil by the artist and etcher, pub. 1925 by Museum Galleries, blind trade guild stamp bottom left, plate size 10.75 x 14.75 ".

137. After Edward King (19th/20th century). "Richmond Bridge", coloured etching by Eugene Tilly, signed in pencil by the artist and etcher, pub. 1925 by Museum Galleries, blind trade guild stamp bottom left, plate size 11 x 14.25 ".

138. After Edward King (19th both Century). "The Horseguards Whitehall". coloured etching by Eugen Tilly, signed in pencil by the artist and etcher, pub.

1925 by Museum Gallerikes, Blind trade guild stamp bottom left, plate size 10.75 x 15 ".

139. Jack Cox (20th Century). Quayside scene, North Norfolk, with figures and moored boats, oil on board, signed "Cox" bottom left, 18 x 28 ".

141. Thomas Herbert Victor (1894 - 1980). "Newlyn Harbour", watercolour, signed bottom right, 12 x 17.75 ".

142. Thomas Herbet Victor (1894 - 1980). "Penzance- Abbet Steps", watercolour, signed bottom righ, 7.75 x 11.75 ".

143. After Tom Purvis. An advertising poster "Leud to Defend this Right to Be Free Buy Defence Bonds", from the National Westminster Bank, depicting a young boy with Meccano coloured print, 17 x 12.25 ".

144. After Barrund. View of Norwich Cathedral, chromolithograph, late 19th century, 7 x 5 ", another of Salisbury Cathedral, 6.75 x 4.75 " (2).

145. Rosemary Luddington (20th Century). Study of anemones, oil on board, signed, 13 x 9.50 ".

146. B. Mack (19th Century). Fishing boat sailing into port with moored steamship - industrial township beyond, oil on card, signed bottom right, indistinctly Gates '87, 8.50 x 23 ".

147. 19th Century School. A study of 2 gentlemen in 18thC costume studying a globe, watercolours, heightened gilt, 12 x 10 ".

148. J D Walker. "Boston Stump" View from Wormgate, watercolour over pencil, signed bottom right. 13.75 x 10.25 ".

149. A pair of 19thC. oval portrait paintings on glass of young girls, in gilt frames. 23" x 20".

150. After Bat. Political cartoons, monochrome etchings. 14" x 9". (2)

151. H Boler. Cattle on a country lane, watercolour, heightened white, signed bottom left, 11.25 x 19.25 ".

152. 20th Century School. Moorland landscape with copse, oil on board, indistinctly signed, title verso

"Cotswolds 1981" and artist's signature. 6.75 x 10.50 ".

153. Exx See. Coastal steamer in a choppy sea, oil on card, signed bottom left, 10.50 x 14 ".

154. After Frank Reynolds. "Jingle" "Mr Pickwick" "Jolly Varden" "Mr Micawber" a set of four reproduction colour print, from the Dickens Series for James Buchanan and Co Proprietors of "Black and White" and "Red Seal" Scotch Whiskies, early 20th Century, 10 x 7.25 ".

155. A collection of assorted illustrations from The Illustrated London News.

156. L L Razen (19th century). "Canterbury from South Eastern Railway" hand coloured engraving, 9 x 14.50 " and a coloured illustration "Captain Jenningham's Experiment For Saving Lives from Shipwreck" 6 x 9 ".

157. J Stewart. "Queen of the South", Study of a screw steamship off the coast, watercolour, signed and title bottom right, history and Ackemaun label verso, 14.75 x 21.50 ".

158. 20th Century School. A becalmed galleon by moonlight, oil on canvas, 25 x 30 ".

159. 19th/20th C. School. Bridge over a Stream, watercolour beams signature of W Russell Hint, 8.25 x 6.25 ".

160. John Piper (1903-1992). Abstract with green, blue and black watercolour, signed, 8.25 x 11.75 ".

161. Colin W Burns (1944-) "Shooting Wild Duck", watercolour signed bottom left, 10.25 x 14 ".

162. John Duncan (20th century). "Goldfinch", "Blackbird" "Purple Martin", set of 2 shidies of birds in landscapes, watercolour, heightened body colour, signed and dated 1905, 11 x 9.25 oval.

163. Cxx Jxx Hobson. (20th Century) Study of a gentleman in a suit with bowler hat and umbrella, standing in a landscape, watercolour, heightened bodycolour, probably on ivory (unexamined out of frame) signed and

dated 1921 9.75 x 5.75 " in folding frame.

164. A 19th century sampler by Sarah Baker, 1852, worked in coloured threads with alphabet, numerals and verse, within three sample stitch borders, 11.25 x 15.50 ".

165. After William Nicholson (1872-1949). "The Prince of Wales" coloured woodcut, 9.75 x 9 " , another by the same hand "Pifor Publicain" 9.25 x 7.25 ".

166. J Hesman (1911). Seated figure on a beach, watercolour, signed bottom right, 7 x 10.50 ".

167. Michael Ayrton (1921-1975). Riot at the Huntings - pencil, watercolour, bookcolour, 12.25 x 19.25 ".

168. W Payne 19th/20th century. Tree lined path leading to a country cottage, lakeside, watercolour, signed, 14 x 10.50 ".

169. Michael Ayrton (1921-1975). Fighting Colossus, with crouching figures over heavenly forms, pencil, watercolour, signed. 13.25 x 19.25 ".

170. Rowland Suddaby (1912-1973). "The Fallen Elm A shidy". watercolour, signed bottom right, 11 x 16 ".

171. J Bratby. (1928-1992). "Billy & Ivy" charcoal and crayon, signed and title bottom right, 14 x 21 ".

172. Txx Matherson (19th/20th century). "North Cornwall" and "The Cornish Coast", watercolour, signed, a pair, 6.75 x 10.50 ".

173. 19th Century School. Hall Length portrait of a young girl in early 19th century dress, facing half left, pencil, work and heightened white, 3.75 x 3 " , oval.

174. Baxter Licences. Semi naked lady in a shell boat, printed in colours. 4 x 2.75 ".

175. Two Victorian style silhouettes, man and woman, head and shoulders facing up. 3.75 x 2.75 ".

176. School of Piper (20th Century). Abstract study of a miner, watercolour 7.25 x 11 ".

177. Swift (Jonathon) Gulliver's Travels into several remote nations of the world, 911.S.B.De la Bere, 1904, orig-decor. cloth boards, and Hibberd (Shirley) - Rustic Adornments 1856, orig.gt-decor, cloth boards. (2)
178. The Artist. 10 vols, bound magazines circa 1950s.
179. Churchill (Winston S) - The Second World War, Chartwell Edition, 6 vols red cloth boards, with gt-decor. and relief profile portrait to top cover.
180. A collection of late 19th century and later childrens books.
181. Potter (Beatrix) - 6 volumes. various conditions, also - Milne (A.A.) "Those were the Days", 1st Edition" Methuen 1929, original cloth boards, gt - decor., worn.
182. Greenaway (Kate) - Marigold Garden Ware & Co. C 1926, "Under the Window, Ware & Co c 1926, both with original decorative cloth boards, worn, together with Caldecott (Randolph)- Second Collection of Pictures and Songs. Warne & Co 1895, original decorative cloth boards and Picture Book, Routledge, no date, original cloth boards, worn.
184. Mrs Beeton x 2 and other books, including R.M.S. Queen Mary, Triumph Mayflower Instruction book, Beatrix Potter, De Luxe Ford Handbook etc.
185. Churchill Winston S. "The World in Crisis", 1911-1941, 1923, 1915, 2nd impressia 1923, and 1916-18 parts I & II, 1st Edition 1927 original blue d. days and The Second World War, 60 volumes 1948-1954, original d books - d.w (toru) and Montgomery - Normandy to the Baltic - plus 1st World War trench maps etc.
186. A quantity of early 20th Century childrens books.
187. An autograph album - Jack Warner, Peter Byrne, Richard Lynn, Ray Ellington, Frankie Vaughn, Stanley Black, Diana Coupland, Benny Green, Anne Shelton, Jonnie Ray, Spike Milligan, Kay Kendall etc, another album.
188. Assorted postcards and cigarette cards.
189. A quantity of assorted postcards, Victorian and later and sundry printed ephemera.
190. An early 20th Century album dec/omania printed scraps.
191. Postcards container in 2 albums, early 20th Century and later miscellaneous Mabel Lucie Atwell.
192. Early 20th Century postcard album, containing a good collection, mainly numerous 1st World War, topographical.
193. A quantity of early 20th Century postcards, mainly topographical and greetings in 2 albums (distressed).
194. An interesting 20th Century postcard album containing approximately 192 cards mainly Singapore and Far East 2nd World War onwards.
195. A Souvenir publication from the Illinois Central Railroad Company Fiftieth Anniversary 1851-1901 on the occassion of a Dinner to the Directors and Officers at the Auditorium Hotel, Chicago, February 9th 1901, with illustrations and menu details, guests present and detailing the inception and history of that railway, original gt-decor mor. bds.
196. A Souvenir Album from Hill Armed Merchant Cruiser Tentomic White Star Royal Mail Live at the Jubilee Naval Ruiuew Spithead June 26th 1897. Photographed and Engraved by Stras. Waley and Co, London printed for private circulation in 1898, including photograph of the commaments, fittings and interiors, Officers and crew and photographic portraits of the principal guests, the appendix details the construction of the Oceanic, scraps and other memorabilia.
197. Cunard White Star: The Launch of the Queen Elizabeth in 1938 and The Launch of the Mauretania, 1938, Official souvenir programes.
198. A quantity of Railway publications, including Allen Edgar C - The Model Locomotive - 1912.
199. A quantity of Meccano Magazines from 1925 onwards.

200. A Collection of early 20th Century Official Guides to English Seaside Resorts.
201. A Doulton miniature stoneware Hunting Jug with silver rim. Birmingham 1889.
202. A Stevenson and Hancock Derby miniature Toby Jug, with black hat, yellow jacket and blue sprigged waistcoat, 19th century, 1.5/8 high.
203. A Royal Worcester porcelain thimble, painted with a robin perched on a blossom branch between gilt lines, printed factory mark, late 19th century
204. A Royal Worcester porcelain group of three young foxes, naturalistically glazed, model no. 3131, 2.50 " high, 20th century.
205. A 19th century bone snuff box, with hinged cover, constructed with brass pins, 2.75 " wide.
206. A Russian silver gilt champleve snuff box, of rectangular form, enamelled in rich colours with scrolls, foliage and flowerheads, 3.25 " wide.
207. A late Victorian silver gilt pill box, of rectangular form, the jet cover inlaid with micro mosaic bird with flower, Birmingham 1900, 1.50 " wide.
208. An early 19th Century tortoiseshell oval snuff box, with white metal frame, the cover having picque decoration, 2.75 " wide (af).
209. A late 19th Century silver seal, blank, of circular form, cast with a roe deer finial, 2 " high, London 1896 and import mark.
210. A 19th century brass seal, engraved initial "A", having a cast bird finial, 2 " high, together with another having windmill seal mark, with running fox finial, and a silver knife rest, (3).
211. Spare lot.
212. A Japanese darkwood netsuke, a traditional study of a three-clawed dragon coiled and hiding within its own smoke clouds.
213. A Japanese three case blackwood Inro, its face side depicting a lunar hare corded in silk with an amber ojime bead.
214. A Chinese snuff bottle with internal painted decoration.
215. A Japanese ivory netsuke a study of a Daimo (Lord) seated, his katana sword by his side and holding his closed fan to indicate silence.
216. A Japanese ivory netsuke, a study of a house-master returning carrying a trussed turtle, his short kimono finely decorated.
217. A Japanese ivory netsuke a study of a Go Master seated teaching a student the most complicated of board games and holding his hand up to prevent his pupil making an incorrect move.
218. A Japanese ivory netsuke, a study of the mythological character Mu Jima magically appearing from a whisp of smoke, her kimono well decorated.
219. A cased Meerscham pipe, a carved detailed curved clawed birds foot enclosing the egg shaped bowl.
220. A brass cased pocket barometer, the dial signed Pillisher, London, the back scribed HHPB 1892 - some staining to the dial.
221. A tatting thread shuttle and a silver vesta case - monogrammed, London 1895.
222. A coral necklace, a silver salt pot and a whistle.
223. A silver christening mug with rococo style scrolling embossed decoration, Birmingham 1899, a similar styled napkin ring, Birmingham 1899 and a cased napkin ring Birmingham 1929.
224. A pair of silver desert serving spoons with fruit embossed bowls, engraved handles Edinburgh 1827.
225. Two pairs of silver sugar bows.
226. Three silver cruet items, various hallmarks and a silver vesta case.
227. A Victorian silver backed five piece dressing table set, embossed with putti, birds, scrolls and trellis, comprising 2 hair brushes, clothes brush, hand mirror and comb.
228. A George V silver quatrefoil dish, London 1934, set with a 1676 florin,

- together with 2 matching dishes, marked 'Sterling', both set with coins, 10 1/2ozs gross.
229. A silver saucer, London 1961, 3 3/4" dia, 2ozs.
230. A Middle Eastern white metal scent bottle, cast with flowerheads, mounted with cabachon agates, suspended on a chain.
231. A middle Eastern white metal scent bottle, of triform cushion shape, suspended on a chain.
232. A pair of late Victorian silver composite column candlesticks, with removable sconces, with acanthus capitals, fluted stems, on square stepped bases with gadroon borders, Sheffield 1891, 9" high, loaded bases, (slight damage to one base).
233. A Russian silver box with Niello body, of rectangular shape with hinged cover, 3 1/4" wide, 2 1/2ozs.
234. A George V silver trumpet vase with shaped pan top, tapering stem and on swept circular foot, Chester 1926, 9 1/4" high. (AF)
235. A Victorian silver gilt rectangular box, the hinged cover engraved with crest and latin motto, London 1865, 3 1/4" wide, 2 1/2ozs.
236. An ivory carving of a Buddah, seated on lotus, 3 1/2" high.
237. A late 19thC German porcelain candlestick, modelled as a tree trunk, with a young boy, standing, a bird in his hand, a caged bird at his feet, on moulded base 8" high.
238. A Leeds creamware model of a man and wife, he in yellow top hat and turquoise frock coat, she in lustre spotted coat and flowered bonnet, on green moulded base, 4" high.
239. A Japanese Satsuma Moon Flask, signed. 4".
240. A Japanese bronze censor, cast with interior seal signature, and serpent handles, with hardwood pierced cover set with agate finial, 3 1/2" dia.
241. A late 18thC tea bowl, printed in blue and painted in pink and green with flowers, 3" dia, (rim chip); together with a Chinese blue and white tea bowl, with wavy edge printed in blue with simple plant forms, 4" dia.
242. A white metal small platter, cast in low relief with frog archers, with blossom, 4 3/4" wide.
243. Hukin & Heath silver plated mustard pot and spoon after a design by Dr. Christopher Dresser.
244. A baluster shaped silver Christening Mug Birmingham 1945.
245. A pair of shell shaped silver salts on bead feet Birmingham 1876.
246. A pair of cream pail shaped silver salts with gilt bands, maker CS & FS London 1887.
247. A set of fiddle and shell pattern fruit knives - cased and a set of cased silver coffee spoons with Art Deco styling - a royal blue enamel insert to the handle. Birmingham 1934.
248. A silver cigarette box with engine turned decoration. London 1925.
249. A travelling vanity case covered in dark green leather with interior fittings in silver gilt inc brush, comb, perfume sprays etc. London 1927, maker J G Vickery Regent St.
250. 6 silver teaspoons, one fork and one knife - various hallmarks.
251. A feeder spoon, white metal stamped 1811 and 6 silver coffee spoons, marks rubbed.
252. A pair of silver napkin rings with millegrain edges Chester 1895.
253. 3 pairs of silver sugar bows - various marks.
254. A silver dressing table set with one extra brush Birmingham 1899.
255. A silver flip top cigarette case, monogram to front, Chester 1898.
256. A silver scissors case, Art Nouveau decoration with chain and clip, Birmingham 1911.
257. Silver purse with chain and ring Birmingham, marks rubbed and a silver bridge marker and miniature silver cased comb. Chester 1902 & Birmingham 1902.
258. A silver plated nurses buckle.

259. A silver hinged bangle Birmingham 1966 and a GWR cap badge.
260. A George V silver 3 piece dressing table set with chased ribbon decoration. Birmingham assay.
261. A Victorian silver top cut crystal Scent Bottle. Birmingham assay.
262. A continental majolica model of a puppy carrying a basket. 5" high.
263. A Victorian silver chatelaine hanging pin cushion, the revolving circular panel chased with c-scrolls and birds. Maker SM. other marks indistinctive.
264. A Victorian gilt metal Fob Seal.
265. A Victorian lace and mother of pearl fan, 13".
266. An oak easel set of mother of pearl handled dessert knives and forks.
267. A Parkinson & Frodsham 2 day Marine Chrometer.
268. John Lilley & Son Maling card
269. A 19thC. brass monocular microscope by E Hartrack & A Prazmouler Rue Bonapartes Paris and slide case.
270. A four fold Victorian brass monocular telescope.
271. A silver and silver-gilt memorial bar brooch, with horse shoe decoration.
298. A 1910 Instruction manual for a Renault Freres 8hp two-cylinder Voiturette.
299. A WWI Military Cross Medal Group awarded to L.Sgt. E L Booth 15976 of the Lincolnshire Regiment (4), cased.
300. A cased set of gold collar studs, stamped 9ct; and a 'Beagle' watch fob.

Watches from the Ray Duller Collection

301. A pair cased open face verge Pocket Watch, white enamel dial, signed AMYOT, Norwich, Roman numerals, beetle hands, pierced and engraved backplate, scribed Peter Amyot, Norwich, square pillars, outer case yellow metal and tortoiseshell (some

damage), inner case yellow metal, c.1730.

302. A silver open face Pocket Watch, white enamel dial, Roman numerals, signed J W Sewell, Grantham, subsidiary second hand, hallmark London 1878.

303. A silver pair cased open face verge Pocket Watch, white enamel dial (slight damage), Arabic numerals, pierced and engraved balance cock and backplate, scribed Wm Brown, London 40819, hallmarked London 1811.

304. A gilt metal pair cased open face verge Pocket Watch, white enamel dial, Arabic numerals, pierced and engraved balance cock, scribed Thos Sherwood, Doncaster, 5226, c.1780.

305. A silver open face Pocket Watch, silvered dial with floral central panel, roman numerals, subsidiary second hand, engraved balance cock, scribed R W Sexty, Grantham, hallmarked Chester 1854.

306. A silver open face Pocket Watch, silvered dial with central floral motif, subsidiary second hand, Roman numerals, engraved balance cock, scribed Hewitt & Barnes, Gainsboro, hallmarked London 1876.

307. A double sided open face Pocket Watch with enamelled dials, one Roman, one Turkish numerals, (some damage), signed Brevet No 171, c.1890.

308. A silver pair cased, open face verge Pocket Watch, white enamel dial, Roman numerals, pierced and engraved balance cock, scribed Hendale, London 9918, hallmarked London 1809.

309. A silver pair cased open face verge Pocket Watch, white enamel dial, Roman numerals, pierced and engraved balance cock, hallmarked Birmingham 1833.

310. A silver open faced Pocket Watch, white enamel dial, signed Rolex, subsidiary second hand.

311. Two silver cased open face Pocket Watches by J W Benson.

312. A silver open face Pocket Watch, white enamel dial signed Sexty bros, Grantham, subsidiary second hand, c.1880.

313. A white metal open face Pocket Watch, white enamel dial, Roman numerals, subsidiary second hand, signed Frank W Lee, Grantham, Brevet movement.
314. Two silver cased open face Pocket Watches, hallmarked Birmingham 1891 and 1906.
315. Two silver cased open face Pocket Watches.
316. Two silver cased open face Pocket Watches.
317. Two silver cased open face Pocket Watches.
318. A silver pair cased open face Pocket Watch, white enamel dial, Roman numerals, signed Andrew Dempster, New Maud, Hallmark Chester 1901.
319. Two silver cased open face Pocket Watches.
320. Two silver cased open face pocket watches, one signed Chas Basker & Son, Grantham.
321. Three silver Pocket Watches, being a lady's fob, a half-hunter and an open face signed Fattorini & Sons, Bradford.
322. A lady's Rolex 9ct gold watch head, c.1920.
323. Two yellow metal and stone watch fobs and a watch key.
324. An Edwardian yellow metal pendant/brooch of floral and scrolling form set with seed pearls and peridot, with bead drop suspended on a thick link yellow metal chain, length 15" approx, total weight 21.2gms.
325. An 18ct gold diamond set cluster ring of 5 small diamonds illusion set in white gold, lozenge shaped, Birmingham 1946.
326. A 9ct gold ring set with 3 white stones in line, surrounded by small white stones, Birmingham 1989.
327. A Victorian brooch of dumbell form being 2 portrait miniatures (5mm diameter) set side by side, surrounded by goldstone to one and granulated gold to the other, due to restoration, each surrounded by 16 small diamonds of between 1pt and 2pts with a central diamond between the portraits, the whole set in yellow metal gallery settings joined by bars and with yellow metal pin and catch. 3.8cm long, 1.5cm deep.
328. A 3 stone diamond and sapphire set vertical twist ring in yellow metal stamped 18ct, a central millegrain set mid blue sapphire 4mm diameter approx with old brilliant cut diamonds set either side, 3 mm diameter approx.
329. A silver pendant of Aquila, the double headed eagle, alighted on a sword with screw fittings on an articulated crown above, marked Spence of London hallmarked Birmingham 1929, 6cm x 6cms.
330. An Edwardian bar brooch in rose coloured metal stamped 9ct set with a central aquamarine flanked by 2 small green stones.
331. A medium weight yellow metal belcher watch chain with swivel and agate pendant drop. 19".
332. A diamond solitaire ring set in white metal marked 18ct and PLAT., 25 pts, mounted estimated weight.
333. A 3 stone diamond set twist ring, set in white metal to yellow shank stamped W G & S. PLAT.
334. An 18ct gold half hunter pocket watch dial signed Jays Oxford Street, swiss made.
335. A ladies fob watch in white metal, open face with a floral central ring, case with engine turned scrolling decoration.
336. A Ladies open faced fob watch in yellow metal marked 18K, keywind, case with engine turned and scrolling decoration with floral and foliate motifs and central cartouche.
337. An open faced 14K yellow metal cased pocket watch, key wind, white metal dial, subsidiary seconds hand, together with a pink metal fancy belcher link chain, T bar and fob.
338. A 9ct rose gold graduated curb link watch chain and swivel 18 gms aprox 14", attached to a silver cigar case and holder, Birmingham 1901.

339. An American half hunter pocket watch in yellow metal marked 14K, white enamel dial signed Lever Brothers Ltd, New York. C 1900.
340. A ladies silver cased fob watch with damascened dial and scrolling and floral decoration to case.
341. Style of J F Herring, Snr. Horses and sheep in a landscape by lakeside, with figures on the bank, wayside inn in background, oil on panel, 22 1/4" x 35".
342. * Hicklin. A pair of Cornish coastal scenes, watercolour, signed and dated 1888 10" x 17".
343. A pair of Continental lake scenes, gouache, 20thC.
344. After Thomas Rowlandson. Comforts of Bath, colour print 5" x 7".
345. Arthur Spooner (19th/20thC). Figures on a village street with thatched cottages and trees, watercolour, signed bottom right 6 3/4" x 11".
346. 18/19thC. School. Full length portrait of a gallante, sepia charcoal, 14" x 7".
347. 19thC School. Spanish castle ruins with conversing soldiers in the courtyard, watercolour over pencil, unsigned 9 1/4" x 13 1/2".
348. After JMW Turner. Landscape with castle on a mount, pencil sketch heightened in white, 8 1/2" x 6 1/2".
349. JOHN SPEEDE (after). 'The Kingdom of Great Britain and Ireland', facsimile map, 14 1/2" x 19".
350. After Bartolozzi. Full length portrait of Miss Amelia Pott, sepia engraving, 13" x 8".
351. English School. A series of 3 landscape pencil sketches of Kent. c. 7" x 10".
352. J. D. Harding (1798-1863) Four pencil sketches of cottages, 2 per frame (2).
353. P. Turk. Two small highland landscapes, oil on board, bears signature P. Turk and dated 1892 and 1895.
354. After Annibale Caracci. Nymphs and shepherd, watercolour, 7" x 9 1/2".
355. A G Brown. An Arab, encamped at the edge of a village and lake, signed A G Brown RSW, watercolour, 10" x 17".
356. A gilt framed red damask panel embellished with two 18thC petit point pockets and two embroidered panels.
357. Bert Cutts. "On the Llugwy, North Wales" - river landscape, oil on canvas, signed and title bottom right 30" x 20".
358. J. Cot? Fishing boats off the coast in a choppy sea, oil on canvas, signed, 20" x 30", gilt frame.
359. Douglas Smart (1879-1970). Landscape sketches, watercolour town scene and sketches. Including works from Stamford, Crowland, Boston & Kings Lynn.
360. After Harry Payne - Heroes of the Victoria Cross, set of 12 reproduction colour prints, 6" x 9" together with framed cover, orig. pub. 1887 by The Kensington Fine Art Society, reprinted 1975.
361. After Ludovici. Four coaching scene colour prints, oak framed.
362. Lucien Picasso. Country Landscape with figure on a towpath, watercolour, bears monogram 10 1/2" x 14 1/2".
363. A Victorian needlework sampler worked coloured wools depicting a cock and two pairs of love birds within a border, marked Mary Fords Work June 24 1847. 17" sq.
364. G. Bowles. Rural landscape with river and barns, watercolour, signed 15" x 21".
365. G. Bowles. Coastal cliffs, watercolour, signed, 21" x 13".
366. Edward Taylor (Attrib). Half length portrait of a young lady, pastel, 17" x 13".
367. D. Dalby. HMS Neptune, oil on canvas, 16" x 22".
368. Two unsigned oil paintings of Stamford Scenes depicting St. Mary's Hill and Scotgate, 7 1/2" x 11".
369. Two unsigned watercolour rural landscapes 10" x 13".
370. Two panoramic watercolour landscapes.

371. 3 Folders of vehicle engravings c.1920 from Coopers Journal.
372. Culpeppers Herbal 1 vol. and medical book by Rocer.
373. Family cook book.
374. Painted glass panel in oak frame.
375. A rare 19thC American daguerrotype, the chased gilt mount marked 207 Bowerg NY, the case moulded from paper machie with figures, horses and steer to the front and oval to the back. 6" x 5".
376. Potter (Beatrix). The Tale of Peter Rabbit, London & New York, 27 cold ill, orig bds, with pict cover label, (pages loose).
377. Milne (Alan Alexander). When We Were Very Young - Now We Are Six, ill E H Shepard, London 1927, 2nd editions, orig cl gt, (end paper missing to Now We Are Six, spines scuffed).
378. Coward (Noel) Middle East Diary London-Toronto 1944, 2nd ed, cl bds, dust jacket (torn), Milligan (Spike) Adolf Hitler My Part in His Downfall, London 1971, cl bds, and Huxley (Aldous). Leda, London 1920, orig cl bds, stained and paper title lable rubbed. (3)
379. Boys Annual, 1880-1881, half calf, gt spine.
380. Goldsmith (Oliver). A History of the Earth and Animated Nature, vol II, Edin & London, hand-cold plates, hf cf gt, some staining, spine scuffed.
381. Two copies of The Pears Edition of Charles Dickens Christmas Books, ill. by Charles Green, and four other children's books.
382. Collier (Jeremy). The Great Historical Dictionary, London 1688, vol 1, 2nd Edition, cf raised spine bands, and other sundry vols.
383. Paton (R) and Alexander (S G B) - Antique Pistols, London 1963, 12 col ill, paper boards, gilt and col decor (some loose pages).
384. Murray (James), Bradley (Henry) and others, A New English Dictionary on Historical Principles, Oxford, c.1928, 12vols, 1/2 calf, gilt.
385. English - Greek Lexicon and art books.
386. Peder Mork Monsted (1859-1941). 'Friderikaberg Harg 1926', river landscape with tree lined bank and winding path to the side, oil on canvas, signed, title and date bottom left, 16" x 24 1/2".
387. A pottery model of a Toucan.
388. A pair of Art Deco bookends mounted with chrome plated birds.
389. A 19thC Chinese blue and white painted bowl.
390. A painted steel pub sign from "The Woolpack", North Summercotes.
391. A lead wall cistern with armorial and date 1768, 20" wide, 9" high to lip.
392. A 19thC rosewood 5 dial wheel barometer, with hygrometer, thermometer, convex mirror, silvered dial and spirit level, c.1850 37" high.
393. A famille rose plate, 19thC, enamelled with peonies and bamboo, issuing from rocks and a basket, within floral border with tri-lobed pendants, 9" dia, with hairline cracks, together with a Chinese export plate, painted in blue, centrally with floral spray within pendant border and honeycomb rim, 9 1/4" dia, an Imari plate, centrally painted in iron red and blue.
394. 2 shooting sticks and oriental parasol.
395. An Edwardian cream silk dress and parasol.
396. Decorative pottery, fans, etc.
397. A pair of Regency style electroplate on copper 2 branch Candelabra of nulled circular design 21" high.
398. A leather belt with EPNS buckle inscribed "Wellington Wrestling Club Won by John Forrester July 29th 1876".
399. A Victorian copper Coal Helmet.
400. A 19thC rapier with scabbard.
401. A pair of Wilkinson Sword Mk II daggers in sheaths, having silver and opaque handles 14" & 15".
402. An oval bronze plaque with St. Peter cast in relief 8".

403. A pair of brass and steel andirons with lion mask rococo fronts 13" high, 18" deep.
404. A large EPNS 2-handled tea tray, en-suite with preceding lot, engraved with shell, floral and foliate ground, cast rim and handles, 29 1/2" wide.
405. A Victorian oil lamp with clear glass reservoir and open cast base.
406. A George V brass ship's clock. 8" dial.
407. A pair of German porcelain plaques having Photographic Images of Louisa Elizabeth Mercer 1880's.
408. A Georgian pewter "Top Hat" Commode.
409. A Chinese brassbound casket.
411. A Victorian Postman's Alarm Wall Clock with mahogany bezel. 9" dia. dial.
412. A 19thC. Bonn Pottery Cheese Dish and cover having floral decoration.
413. Mason's ironstone square plate, Royal Doulton plate and others
414. A German porcelain floral cherub basket decorated with roses, Imari pattern teaware etc.
415. Cut crystal: 2 flared vases and 3 fruit bowls.
416. A cut crystal dressing table set.
417. A cut crystal dressing table set.
418. A Bohemian gilt ruby overlay glass goblet.
419. Cut crystal: Drinking glasses, beakers, decanter etc. and an ebony brush set.
420. A silver reeded cut crystal vase (AF).
421. A pair of Arts & Crafts iron chandeliers, c.1930.
422. A pair of Arts & Crafts iron chandeliers, c.1930.
423. A pair of Arts & Crafts iron chandeliers, c.1930.
424. A 19thC tin bait box and old fishing rod.
425. A late 19thC brass fender, having open scroll ends, turned gallery and moulded plinth, 64" x 16 1/2".
426. A Georgian steel platform fender 36" wide.
427. A 19thC German wall clock with 8 day movement and part painted case, 28" high.
428. A 19thC Cantonese enamel bowl decorated with flowers on a bleu-de-mazarin and turquoise ground (AF).
429. After the Antique. A bronze group depicting 'Romulus and Remus', on square base, 19thC. 9" wide.
430. A set of Victorian brass fire irons and stands.
431. A set of Victorian iron beam balances.
432. A mahogany Class B balance by W A Webb Ltd.
433. A Continental moulded figure St. George and The Dragon, painted in muted colours, on oval base, 18 3/4" high 17" wide.
434. A large oak and steel lockplate and key.
435. A Victorian cylindrical log bucket.
436. Avery brass and iron baby scales.
437. A Victorian rosewood marquetry cased swiss musical box, 6" cylinder, single comb, handle stamped 37160.
438. A Victorian rosewood marquetry cased Swiss Musical Box, 11" cylinder, single comb
439. An optician's oak trial case of test lenses.
440. A Burmantofts tile by Charles Wain, c.1891, modelled in relief with cavorting children and goat, 4" x 6".
441. A late 19thC Longivy tile painted in blue with a deer in a lakeland landscape, French, circa 1880, 8" square.
442. A Victorian cast brass chimney ornament, with a spire shaped screw cap, circular column and domed circular foot, cast in the ecclesiastical manner, enclosing a folding fabric face screen (AF), label to the underside 'Day's Patent Chimney Ornament Are Constructed so they may be used for Fire Screens, Flower or Scent Jars ...', 9" high.

443. A Meissen porcelain clock, 19thC, the enamel dial with Arabic numerals, swagged flowers to the centre, enclosed within a gilt metal egg and dart bezel, of 8-day movement, chiming on a gong, the backplate stamped 'Vincente', surmounted by 2 doves, cartouche and floral encrustacheons, rosette and laurel swag faux handles flanking the dial, the whole resting on a Corinthian column.
444. Cased stuffed and mounted fish (af)
445. Cased stuffed and mounted fish (af)
446. A Victorian cast iron doorstep.
447. A 19thC. enamelled footbath.
448. A Cantonese famille rose bowl, centrally decorated with a symbolic battle scene, with elders on the seashore repelling marauders on a boat, the well painted with exotic butterflies, all within an everted rim enamelled with flowers, 15 1/2" dia.
449. An 18thC. Continental brass candlestick with removable scone, on turned baluster knoped stem and high conical base, 11" high. (AF)
450. An Italian bronze head and shoulders bust of a Roman lady, with silvered eyes, on oblong plinth, 8" high.
451. A Continental porcelain cherub basket group (AF).
452. A pair of late Victorian pottery spaniels, having copper lustre splashes, yellow eyes, black nose, moulded with separate front leg, c. 1900, 8 1/2" high.
453. A pair of green glazed terracotta bulbous vases with twist handles 6".
454. A Samuel Alcock parian ware bust of Sir Robert Peel after Jackson (chips to base of bust) 12".
455. A Doulton Lambeth stoneware moulded "Egyptian" Jug, 9".
456. A Georgian treacle glazed stoneware Child's Potty, 5" high.
457. Spode, Rockingham cups and jug (3).
458. A pair of Parian figures of a Shepherd and Shepherdess, in 18thC costume and with sheep and dog recumbant at their feet, on circular bases, 19thC, 9" high. (one AF)
459. Six Royal Crown Derby blue and white Oriental pattern teaplates.
460. A Prattware comport, printed in colours with a vulture and snake in a lakeland landscape, within blue border, 9 1/4" dia. (AF)
461. A 19thC bronze figure of a ruffled bird on a branch, marked PAUTROT to base 7".
462. A selection of walking canes inc carved negro head.
463. A rosewood cased Banjo by John Grey & Sons, London, cased and another.
464. A Violin by A. L. Palmer Jnr., cased with two bows 14" back.
465. An early patent Vacuum cleaner (AF).
466. A Victorian toleware Coal Scuttle.
467. A pair of brass circular salvers.
468. A Victorian rosewood rectangular workbox.
469. A small Victorian mahogany Box Stool.
470. A German silver rectangular framed mirror, 11" x 18 3/4".
471. A glass dish, early 20thC internally painted with 18thC dancing figures, within scroll border and floral swags, 9" dia.
472. A green-grey jade carving of a Chinese immortal, 5 1/2" high. (AF)
473. A Victorian 'Activus' transfer printed washdown closet with mahogany seat.
474. A large Chinese blue and white ginger jar with Kangxi marks.
475. A Decomania papier mache vase
476. A Victorian needlework sampler by Susanna Bolton, 1858, aged 10. 18" x 11".
477. An opium pipe with unusual grotesque mask bowl.
478. To 520. Spare lots.

FURNITURE

521. A reproduction Regency mahogany three door bookcase with glazed upper part and three drawer over three door base on bracket feet. 5' wide.
522. An early 19th C continental flamed mahogany Sectaire a Abbattant with fall front resting over 3 stepped drawers.
523. An Edwardian string inlaid mahogany wardrobe compactum with single door over four graduated drawers.
524. A Victorian mahogany wind-out dining table frame/snooker table base
525. An early 20thC. mahogany bowfront sideboard, on cabriole legs. 72" wide.
526. An Edwardian string inlaid dressing chest.
527. A ring turned mahogany torchere stand.
528. A Georgian tripod table with circular top and turned pillar
529. A clover leaf carved oak spinning stool and rush seated bedroom chair
530. Jacobean style carved oak boxseat
531. A 19thC. dropleaf table, with square taper legs.
532. A Victorian mahogany mirror with serpentine base.
533. A red studded upholstered club chair with mahogany square taper legs, circa 1890
534. A pair of Cromwellian style barleytwist oak chairs with tapestry seats
535. A late Victorian carved walnut dresser base
536. A Georgian mahogany side table with moulded square legs
537. A walnut wall shelf
538. An Edwardian mahogany marquetry bedstead.
539. A fine Victorian satinwood and crossbanded full length mirror.
540. A grain painted two tone Victorian kitchen dresser
541. A Victorian mahogany spoonback armchair with scrolling arms, serpentine seat and buttoned velour upholstery.
542. A 19thC French upholstered armchair with giltwood carved forelegs and castors.
543. An Edwardian walnut two seater sofa and matching armchair with moulded square tapering frame and sculptured dralon upholstery.
544. A late Victorian Art Nouveau brass telescopic standard oil lamp converted for electricity.
545. A William IV mahogany Pembroke Table with rectangular dropleaf top having frieze and dummy drawers on a turned pillar with circular base and sabre legs.
546. A Regency string inlaid mahogany breakfast table with reeded rectangular top, gun barrel pillar and three outplay legs 30" x 46".
547. A Georgian mahogany dropleaf dining table on square taper gateleg base 58" x 44" max.
548. An early Georgian walnut veneer chest of 2 short and 2 long graduated drawers with brass loop handles and escutcheons, moulded top having a quarter veneer centre enclosed by 2 cross bands, raised on bracket feet. 38" wide.
549. An Edwardian string inlaid mahogany lady's writing table with two drawers and shaped top with leather inset and two frieze drawers, raised on square taper legs with splay feet 36" wide.
550. A mahogany open armchair with bergere back and burgundy overstuffed seat.
551. An 18thC mahogany chair with carved splatback in the Chippendale manner with arms.
552. A Sheraton period inlaid mahogany bowfront sideboard, the front elevation having single drawer over dummy, enclosed by left hand cupboard and right hand cellarette with oval pressed brass handles decorated with satinwood and harewood pendant

husks and spandrels, raised on square taper legs with spade feet 5' wide.

553. A late 19thC neo-classical revival display cabinet having blind fret and applied mouldings to the serpentine top supported by turned and reeded pillars with oval patera and pendant husks, single astragal glazed door, the base having serpentine urn carved frieze with conforming pillars, shaped undershelf and turned feet 3' wide 5'6" high.

554. A Victorian flamed veneered and mahogany Credenza of traditional form having four door base raised on plinths, 66" wide.

555. A George III mahogany chest of two short and three long graduated drawers with brass knob handles and bracket feet 40" wide.

556. A George III flamed mahogany bowfront chest of two short and three long graduated drawers with oval pressed brass handles and splay feet 42" wide.

557. A George III mahogany chest of two short and three long graduated drawers with small oval acorn embossed backplate handles and bracket feet 44" wide.

558. A 19thC oak, mahogany and burr elm longcase clock, the square painted dial with Roman numerals and foliate spandrels, inscribed John King, Loughborough, with calendar aperture, 30 hour movement, the hood with swan neck pediment, centre cast brass finial, turned pilasters, shaped trunk door flanked by canted corners, and on a deep plinth with fielded panel and bracket foot 85" high.

559. A George III inlaid mahogany longcase clock with full length flame veneered door, the canted sides, hood and base having marquetry panels and quadrants raised on bracket feet, the painted square arch dial having floral spandrels and birds to arch, 8 day movement striking on a bell 7' high.

560. An early 18thC longcase clock, the green lacquer case having chinoiserie decoration throughout, the 12" brass square arch dial having cast

applied spandrels, silvered silent/strike bezel to arch with a floral engraved centre, the silvered chapter ring having matted centre and subsidiary seconds dial and date aperture, maker NICHOLAS PREVOST, London, 8-daystriking on a bell, 7'3" high

561. A set of 6 William IV mahogany dining chairs with over-run cresting rails, barbacks, drop-in seats and turned legs (AF)

562. A pair of late 19thC Art Nouveau dining chairs with foliate pierced and shaped back, studded leather seats on square swell forelegs.

563. A George III mahogany chest of four graduated drawers with moulded top, canted case with blind fret decoration, the cast brass rococo handles of foliate form, raised on a band of blind fretwork and ogee feet 34" wide.

564. A Dutch style oak 4 drawer chest.

565. An Edwardian brass framed dressing table stool

566. A Victorian rosewood breakfast table, the circular top banded with pollard oak with brass stringing, on a turned pillar with trefoil base and scroll feet. 4' dia.

567. A Victorian mahogany single door pot cupboard

568. A Regency mahogany table mirror with rectangular plate, reeded uprights and scroll feet 20" high, 19" wide.

569. A Victorian glazed oak table top display cabinet

570. A Victorian mahogany 3 tier whatnot with turned uprights and brass cup castors. 18" x 15" x 35" high.

571. An Edwardian flame mahogany bureau raised on cabriole legs.

572. An oval coffee table with brass framed base and heavy moulded glass top.

573. An Antique 'Armada' style steel chest.

574. An Edwardian crossbanded mahogany revolving bookcase.

- 606. A cut crystal 11-light electrolier
- 607. A cut crystal 11-light electrolier
- 608. A brass and crystal 5-light electrolier.
- 609. A pair of 2 light brass and crystal wall sconces, (matching previous lot).
- 610. A Victorian walnut side cabinet with carved overmantel, serpentine marble top, 3 door mirrored base. 59" wide.
- 611. An early 18thC pine side table, the moulded edge top with canted front corners, over a long frieze drawer with brass bail handles on shaped backplate, on columnar legs joined by moulded stretchers, 33" wide.
- 612. A Victorian walnut marquetry side cabinet with single glazed door and ormolu mounts.
- 613. A Georgian mahogany Pembroke table of slender proportions with drawer and taper legs.
- 614. A pair of late 18thC oak country made dining chairs, having reeded frame, rush seats, on square section legs joined by stretchers.
- 615. A late Victorian rosewood marquetry Music Cabinet with single mirror and panel door.
- 616. A pair of William IV mahogany barback dining chairs with drop-in seats and turned forelegs.
- 617. A George III mahogany bowfront corner cupboard with two doors 40".
- 618. A Victorian walnut card table with rectangular moulded folding top having baize insert, plain frieze over a jewel carved pedestal supported by 4 scroll legs. 36" wide.
- 619. A 19thC dining table with folding flaps.
- 620. An early 18thC carved oak coffer, the plain top with ovolu moulded edge over a carved frieze, triple inset panel front carved with foliate and paterae diamond lozenges, carved muntins and on stile feet, 44" wide, original lock plate and escutcheon, later hinges.
- 621. A George III pine chest of 2 short and 2 long graduated drawers, having later brass swing handles with cutaway backplates, on ogee bracket feet, 32" wide.
- 622. A Victorian mahogany cheval dressing mirror. 65" high.
- 623. A late 19thC Chippendale Revival mahogany Silver Table with gallery.
- 624. A Georgian style oak bureau.
- 625. A Victorian mahogany circular table with trefoil base 20" dia.
- 626. A set of 6 19thC mahogany dining chairs with carved camel backs, pierced vase splat, drop-in seats and moulded square legs with plain H-frame stretchers.
- 627. A set of 4 19thC mahogany provincial dining chairs with reeded barbacks and tie rail, conforming uprights, loose seats on ring turned and turned legs joined by H-stretchers.
- 628. A set of 7 George III dining chairs comprising carver and 6 side chairs with ball and pierced bar backs with single satinwood panel, drop-in seats and turned forelegs, together with a second matched carver chair with reeded arms. (8)
- 629. A Victorian marbled slate fire surround with cast metal insert.
- 630. A Regency mahogany table mirror with shield shape plate, 2 drawers and ogee feet.
- 631. A pair of Victorian walnut balloonback dining chairs and a Georgian ladderback.
- 632. A Victorian burr walnut Music Cabinet with pierced gallery and single glazed door.
- 633. A Victorian satinwood inlaid Bedroom chair.
- 634. An Edwardian open armchair with pierced splat and cabriole legs.
- 635. A mid-19thC French hand painted Bonheur de Jour. Illustrated inside front cover.
- 636. A Victorian walnut open armchair with spoonback, scroll arms and legs, button dralon upholstery.
- 637. A George III oak Bureau with fallflap on 4 graduated drawers, with knob handles and turned feet. 37" wide.

638. A George III flamed mahogany Bureau with fall flap revealing an inlaid and fitted interior over 2 short and 3 long graduated drawers, oval brass handles and bracket feet. 48" wide.
639. A Victorian oval gilt wall mirror, with moulded frame. 38" high.
640. A late Victorian mahogany Corner Chair with turned uprights and trellis backs in the Arts & Crafts manner.
641. A standard lamp painted with birds and pruness blossom sprays.
642. A Queen Anne style walnut Lowboy of traditional form. 40" wide.
643. A Victorian ebonised Bidet.
644. An early 19thC mahogany canopy bed with arched footboard and 2 pillars having wrythen leaf carving over pineapple knobs.
645. A Benares brass tray top table with folding hardwood stand.

DAY TWO - Commencing 10am

Toys from Collection of the late Clifford Tresadern

1001. Dinky 903 Foden Flat Truck with tailboard, blue cab, orange trailer, boxed.
1002. Dinky 902 Foden flat truck, yellow cab, green trailer, boxed.
1003. Dinky 934 Leyland Octopus Wagon, yellow-green cab, green trailer, red hubs, boxed.
1004. Dinky 409 Bedford Articulated Lorry, all gold-yellow, boxed.
1005. Dinky 409 Bedford Articulated Lorry, all gold-yellow, boxed.
1006. Dinky 409 Bedford Articulated Lorry, all mustard-yellow, boxed.
1007. Dinky 417 Leyland Comet Lorry, blue cab, yellow back, boxed.
1008. Dinky 408 Big Bedford Lorry, maroon cab, beige back, grey wheels, boxed.
1009. Dinky 408 Big Bedford Lorry, maroon cab, beige back, black wheels, boxed.
1010. Dinky 408 Big Bedford Lorry, maroon cab, beige back, grey wheels, boxed.
1011. Dinky 408 Big Bedford Lorry, blue cab, yellow back, yellow wheels, boxed.
1012. Dinky 960 lorry mounted Concrete Mixer, orange body, blue and yellow mixer, boxed.
1013. Dinky 902 Foden Flat Truck, orange cab, green trailer, boxed.
1014. Dinky 905 Foden Flat Truck with chains, green throughout, boxed.
1015. Dinky 911 Guy 4 ton Lorry, royal blue cab, mid blue trailer and wheel hubs, boxed.
1016. Dinky 504 Foden 14 ton Tanker, dark blue cab, airforce blue tank and wheels, black ladders, boxed.
1017. Dinky 532 Leyland Comet Wagon, tan cab and wheels, red trailer, boxed but very poor condition of box.
1018. Dinky 435 Bedford TK Tipper, yellow cab, black roof, red wheels, silver trailer, yellow sides, boxed.
1019. Dinky 428 Trailer (large), grey trailer, red hubs, black tyres, boxed.
1020. Dinky 431 Guy Warrior 4 ton Lorry, mustard-yellow cab, dark green trailer, red wheels, boxed.
1021. Dinky 512 Guy flat Truck, maroon cab, dark green trailer and wheels, boxed, blue box with orange black and white paper label.
1022. Dinky 428 Trailer (large), grey trailer, red hubs, grey tyres, boxed.
1023. Dinky 429 Trailer, all green, black tyres, boxed.
1024. Dinky 428 Trailer (large), grey trailer, red hubs, black tyres, boxed.
1025. Dinky DY8 1948 Commer 8cwt Van, Sharps Toffee on red body, boxed.
1026. Dinky 428 Trailer (large), grey trailer, red hubs, black wheels, boxed.
1027. Matchbox K17 Low Loader with Bulldozer, boxed.
1028. Matchbox Super Kings K34 Pallet Truck, boxed.
1029. Matchbox Super Kings K11 Daf Car Transporter, boxed.

1030. Matchbox Super Kings K10 Pipe Truck, boxed.

1031. Matchbox Super Kings K17 Scammel Crusader Container Truck, boxed, Gentransco livery.

1032. Matchbox Super Kings K17 Scammel Crusader Container Truck, boxed, Gentransco livery.

1033. Matchbox Super Kings K17 Scammel Crusader Container Truck, boxed, Gentransco livery.

1034. Matchbox Super Kings K17 Scammel Crusader Container Truck, boxed, 7UP livery.

1035. Matchbox Super Kings K33 Cargo Hauler, boxed.

1036. Matchbox Super Kings K18 Ford LTS Articulated Tipper, silver cab and container, red chassis, Tarmac livery, boxed.

1037. Matchbox Super Kings K18 Ford LTS Articulated Tipper, red metallic cab, yellow container with black chassis, silver chassis to cab, boxed.

1038. Matchbox Super Kings K13 Daf Building Transporter, green metallic, boxed.

1039. Matchbox Super Kings K13 Daf Building Transporter, bright green, boxed.

1040. Matchbox Super Kings K24 Scammel Container Truck, Crowe livery, boxed.

1041. Matchbox King Size K4, Leyland Tipper Truck LE Transport livery, boxed.

1042. Matchbox Super Kings K19 Scammell Tipper Truck, boxed.

1043. Matchbox Super Kings K2 Scammell Heavy Wreck Truck, Esso livery, boxed.

1044. Dinky No 692 5.5 Medium Gun, boxed.

1045. Dinky 623 Army Covered Wagon, boxed.

1046. Dinky 815 EBR Panhard Tank, boxed.

1047. Dinky 692 5.5 Medium Gun, boxed.

1048. Dinky 623 Army Covered Wagon, boxed.

1049. Dinky 688 Field Artillery Tractor, boxed.

1050. Dinky 692 5.5 Medium Gun, boxed.

1051. Dinky 643 Army Water Tank, boxed.

1052. Dinky 623 Army Covered Wagon, boxed.

1053. Dinky 686 25-pounder Field Gun, boxed.

1054. Dinky 670 Armoured Car, boxed.

1055. Dinky 686 25-pounder Field Gun, boxed.

1056. Dinky 674 Austin Champ (with roof), boxed.

1057. Dinky 677 Armoured Command Vehicle, boxed.

1058. Dinky 641 Army 1-ton Cargo Truck, boxed.

1059. Dinky 621 3-ton Army Wagon, boxed.

1060. Dinky 661 Recovery Tractor (total re-paint), boxed.

1061. Dinky 689 medium Artillery Tractor, boxed.

1062. Dinky 622 10-ton Army Truck, boxed.

1063. Dinky 642 Pressure Refueller, boxed.

1064. Dinky 622 10-ton Army Truck, boxed.

1065. Dinky 660 Tank Transporter, boxed, box in poor condition.

1066. Matchbox Battle Kings K115 Articulated Petrol Tanker, boxed.

1067. Dinky 681 DUKW Amphibian, boxed.

1068. Corgi 909 Quad Tractor, Ammunition Trailer and Field Gun, boxed.

1069. Corgi 906 Saladin Armoured Car, boxed (shells present).

1070. Corgi 901 Centurion Mk III Tank, boxed, (shells present).

1071. Solido 242 Dodge 6 x 6 boxed, with a Corgi Saladin Armoured Car, unboxed and 2 field guns, unboxed.

1072. A quantity of Dinky and other military vehicles including trucks, tanks and guns, unboxed.

1073. A quantity of Matchbox Super Kings - 5 K21 variants, K31, K3, K33 and K17, boxed.

1074. Corgi 452 Commer Dropside Lorry, red cab, cream body, boxed.

1075. Corgi 494 Bedford Tipper Truck, red/yellow body, boxed.

1076. Corgi Toys 260 Renault 16, boxed.

1077. Corgi 100 Dropside Trailer, boxed.

1078. Dinky 668 Foden Army Truck, boxed.

1079. Dinky 269 Ford Transit Police Accident Unit, boxed.

1080. Dinky 276 Ford Transit Ambulance, boxed.

1081. Dinky 978 Refuse Wagon, lime green cab, grey wagon, boxed.

1082. Dinky 276 Ford Transit Ambulance, boxed.

1083. Dinky 266 ERF Fire Tender, boxed.

1084. Dinky 277 Police Land Rover, boxed.

1085. Dinky 978 Refuse Wagon, lime green cab, grey wagon.

1086. Dinky 978 Refuse Wagon, lime green cab, grey wagon, boxed.

1087. Dinky 279 Aveling-Barford Diesel Roller, boxed.

1088. Dinky 279 Aveling-Barford Diesel Roller, bubble box.

1089. Dinky 974 AEC Hoynor Car Transporter, boxed.

1090. Dinky 917 Mercedes-Benz Truck and Trailer, boxed.

1091. Dinky 254 Police Range Rover, boxed.

1092. Dinky 263 Airport Fire Rescue Tender, boxed.

1093. Dinky 285 Merryweather Marquis Fire Tender, boxed.

1094. Dinky 449 Johnston Road Sweeper, boxed.

1095. Dinky 950 Foden Fuel Tanker, Burmah livery, boxed.

1096. Dinky 940 Mercedes Benz Truck, white cab, red chassis, boxed.

1097. Dinky 432 Foden Tipping Lorry, boxed.

1098. Dinky 945 AEC Fuel Tanker, Esso livery, no tiger logo, boxed, bubble.

1099. Dinky 399 Convoy gift set, boxed.

1100. Dinky 440 Ford D800 Tipper Truck, boxed.

1101. Dinky 380, 381 and 383, Convoy vehicles, boxed. (3)

1102. Dinky 163 Volkswagen 1600TL Fastback, metallic blue, boxed, bubble, slight damage to box.

1103. Dinky 438 Ford D800 Tipper Truck, metallic red cab, yellow tipper, bubble box.

1104. Corgi Classics C897/3, D822/5, C953/3, being an AEC 508 Cabover, Bedford O Series Van, Bedford O Series Pantechnican, all boxed. (3)

1105. Corgi Classics C827, C953/2, C897/1, being 1929 Thornycroft Van, Bedford O Series Pantechnican, AEC 508 Cabover, all boxed. (3)

1106. Corgi Classics C827 Thornycroft Vans GWR, all boxed. (3)

1107. Corgi Classics. Thornycroft Vans, HP Sauce, Keiller Marmalade, Peek Freans Biscuits, all boxed. (3)

1108. Corgi Classics. Thornycroft Vans, Puritan Soap, Oxo and Huntley & Palmers Biscuits, all boxed. (3)

1109. Corgi Classics. Thornycroft Vans, Duckhams, Safeway and Eddershaws Ltd, all boxed. (3)

1110. Corgi Classics. Thornycroft Vans, Galeries Lafayette, Thorleys and Macfarlane Lang, all boxed. (3)

1111. Corgi Classics. Thornycroft Vans, Macfarlane Lang, Castrol and East Anglian Fruit Co, all boxed. (3)

1112. Corgi Classics. Thornycroft Vans, Scotts Empire Bread, Liptons Tea, Don Brake Pads, all boxed. (3)

1113. Corgi Classics. Thornycroft Vans, GWR, all boxed. (3)

1114. Corgi Classics. Thornycroft Vans, Courvoisier, Dewars and Marcel Gardet, all boxed. (3)
1115. Corgi Classics. Thornycroft Vans, Ind, Coope & Allsopp, Allenbury's Foods, GWR Limited Edition, all boxed. (3)
1116. Corgi Classics. Thornycroft Vans, Taunton Gold, Home Lane Brewery, Tookeys Pilsner, all boxed. (3)
1117. Corgi Classics. Thornycroft Vans, Gamleys, Schweppes, Field Ambulance, all boxed. (3)
1118. Corgi Classics. Thornycroft Vans, LNER, all boxed. (3)
1119. Corgi Classics. Thornycroft Vans, Southern Railway, all boxed. (3)
1120. Corgi Classics. Thornycroft Vans, GWR, all boxed. (3)
1121. Corgi Classics. Thornycroft Vans, LNER (2), Southern Railways (1), all boxed.
1122. Corgi Classics. Thornycroft Vans, LMS, all boxed. (3)
1123. Corgi Classics. Thornycroft Vans, SR, all boxed. (3)
1124. Corgi Classic Renault Truck 823, Thornycroft LMS and Chivers & Sons, all boxed. (3)
1125. Corgi Ford Escort 497, 503, 498, all boxed. (3)
1126. Corgi Ford Escort 499, 503, 496, all boxed. (3)
1127. Corgi Ford Escort C549, C537, 621, all boxed. (3)
1128. Corgi Ford Escort C534, C532, C562, all boxed. (3)
1129. Corgi Ford Escort C534, 626, both boxed. (2)
1130. Corgi C1105 Berliet Horse Transporter, boxed but no bubble.
1131. Corgi C1107 Container Truck, 1106 Mack Container Truck, boxed. (2)
1132. Corgi 1160, Gulf Petrol Tanker, 1109 Articulated Truck, boxed. (2)
1133. Corgi 1102 Dumper, 1157 Esso Petrol Tanker, boxed. (2)
1134. Corgi 1144 Berliet Wrecker Truck, 1116 Shelvoke & Drewry Revopak, 1117 Faun Road Sweeper, boxed. (3)
1135. Corgi E2007 Low Loader and Shovel, 2014 Mercedes Benz Transporter, boxed. (2)
1136. Corgi 2018 Scania Container Truck, boxed. (2)
1137. Corgi 2017 Scania Giant Tipper, 2020 Birds Eye Container, boxed (2), plus 418 Austin London Taxi, boxed. (3 total)
1138. Matchbox Models of Yesteryear, Y22, Y18, Y25, Y5, Y7, red boxes. (5)
1139. Matchbox Models of Yesteryear Y25, Y28, Y22, Y22, Y13, red boxes. (5)
1140. Matchbox Models of Yesteryear Y5, Y12, Y2, Y3, Y26, red boxes. (5)
1141. Matchbox Models of Yesteryear Y5, Y26, Y19, Y8, Y25, red boxes. (5)
1142. Matchbox Models of Yesteryear Y2, Y27, Y22, Y21, Y26, red boxes (5)
1143. Matchbox Models of Yesteryear Y29, Y27, Y12, Y26, Y8, red boxes.(5)
1144. Matchbox Models of Yesteryear, Y3, Y18, Y12, Y25, Y18, red boxes.(5)
1145. Matchbox Models of Yesteryear, Y3, Y30, Y15, Y25, Y30, red boxes. (5)
1146. Matchbox Models of Yesteryear. Y27, Y28, Y18, Y19. red boxes. (4)
1147. Matchbox Models of Yesteryear, boxed set of 3, red box.
1148. Matchbox Models of Yesteryear, Y5, Y5, Y13, Y3, Y22, cream boxes. (5)
1149. Matchbox Models of Yesteryear, Y16, Y5, Y22, Y3, Y11, cream boxes. (5)
1150. Matchbox Models of Yesteryear, Y3, Y2, Y25, Y3, Y5, cream boxes. (5)
1151. Matchbox Models of Yesteryear, Y14, Y8, Y3, Y12, Y13, cream boxes. (5)
1152. Matchbox Models of Yesteryear, Y5, Y25, Y12, Y5, Y17, cream boxes. (5)
1153. Matchbox Models of Yesteryear, Y13, Y25, Y21, Y13, Y22, cream boxes. (5)
1154. Matchbox Models of Yesteryear, Y12, Y5, Y12, Y12, Y12, cream boxes. (5)

1155. Matchbox Models of Yesteryear, Y12 x 5, cream boxes. (5)

1156. Matchbox Models of Yesteryear, Y12, Y9, Y8, Y10, Y4, cream boxes. (5)

1157. Matchbox Models of Yesteryear, Y13, Y5, Y5, Y1, Y24, cream boxes. (5)

1158. Matchbox Models of Yesteryear, Y5, Y5, Y12, Y13, Y5, cream boxes. (5)

1159. Matchbox Models of Yesteryear, Y12, Y12/45, Y13, Y5, Y5, cream boxes. (5)

1160. Matchbox Models of Yesteryear, Y7, Y1, Y2, Y12, Y12, cream boxes. (5)

1161. Matchbox Models of Yesteryear, Y2, Y12, Y5, Y8, Y29, Y12/45, Y12/45, mixed boxes. (7)

1162. Matchbox Super Kings K34, boxed. (3)

1163. Matchbox Super Kings K23, K20, K20, boxed. (3)

1164. Matchbox Super King K8, K40, boxed. (2)

1165. Matchbox Super King, K31, K17, K33, boxed. (3)

1166. Matchbox Super Kings K33, K17, K31, boxed. (3)

1167. Matchbox Super Kings K20, K16, boxed. (2)

1168. Matchbox Super Kings, K24, K24, K37, K6, K14, boxed. (5)

1169. Matchbox G5 boxed set.

1170. Corgi Motoring Memories, AA Van x 2, Cadbury Van x 2, boxed. (4)

1171. Corgi Motoring Memories, Vintage Railways, GWR, SR, LMS and LNER, boxed. (4)

1172. Corgi Classic Commercials. Bedford OB's from Corkills to Kasteel, plus Beford OB Scilly Isles Vics Tours, boxed. (2)

1173. Various boxed collectable vehicles. (11)

1174. Commercial Vehicles by Gescha, boxed. (5)

1175. Commercial Vehicles by Siku, boxed. (7)

1176. Commercial Vehicles by Siku, boxed. (7)

1177. Commercial Vehicles DAF and various makes, boxed. (11)

1178. Commercial Vehicles by Gama and others, boxed. (7)

1179. Commercial Vehicles by Nacoral, boxed. (11)

1180. Commercial Vehicles by DAF and others, boxed. (10)

1181. Commercial Vehicles, various makes, boxed. (6)

1182. Large Commercial Vehicles, various makes. (7)

1183. Large Commercial Vehicles, various makes. (5)

1184. Majorette Commercial Vehicles, boxed. (11)

1185. Various Commercial Vehicles, unboxed.

1186. A small selection of unboxed Matchbox and other makes.

1187. Various Commercial Vehicles, mainly Matchbox, unboxed.

1188. Various Commercial Vehicles, mainly Matchbox, unboxed.

1189. Various Commercial Vehicles, Dinky and others, unboxed.

1190. Various Commercial Vehicles, mainly Dinky Foden, unboxed.

1191. Various Vehicles, various makes.

1192. Various Commercial Vehicles, mainly Dinky Guy.

1193. Commercial Vehicles, mainly Dinky Bedford.

1194. Various Commercial Vehicles, various makes.

1195. Quantity Dinky Refuse Wagons.

1196. Commercial Vehicles, mainly Corgi Majors.

1197. Tenko Commercial Vehicles, boxed.

1198. Commercial Vehicles, mainly Dinky Commer.

1199. Commercial Vehicles, mainly Corgi Major.

1200. Various Trailers.

1201. Commercial Vehicles, various makes.

1202. Commercial Vehicles, mainly Dinky.
1203. Commercial Vehicles.
1204. Commercial Vehicles, Majorette.
1205. Empty car and other boxes (2)
1206. Large quantity early McDonalds and other small clockwork toys.
1207. Wind-up Coffin Bank, made in Japan by Yoke, boxed, c.1950's/60's.
1208. Tinsplate, clockwork Rabbit Drummer, China, c.1950's/60's, boxed.
1209. Mechanical Thirsty Monkey, Alps Japan, boxed, c.1950's/60's.
1210. Mechanical Monkey with Cymbals, Western Germany, boxed, c.1950's/60's.
1211. Tinsplate wind-up Musical Clown, set of 3 with cymbals, drums and maraccas, TN Japan, boxed, c.1950's/60's.
1212. Tin plate yo-yo playing wind-up Bunny, Japan, boxed, c.1950's/60's.
1213. Tinsplate mechanical Cubby the Reading Bear, Alps Japan, boxed, c.1950's/60's,
1214. Tinsplate mechanical Telephone Bear, Alps Japan, boxed, c.1950's/60's.
1215. Tinsplate mechanical Marching Drummer Bear, Alps, Japan, boxed, c.1950's/60's.
1216. Tinsplate mechanical Dutch violin playing boy and girl Doll, c.1950's/60's.
1217. Tinsplate mechanical Monkey Bartender, TN Japan, boxed, c.1950's/60's.
1218. Tinsplate mechanical Little Shoemaker, Alps Japan, boxed, c.1950's/60's.
1219. Tinsplate mechanical Rabbit, West Germany, boxed, c.1950's/60's.
1220. Two plastic mechanical Drummer Bears, lady and gentleman, China, boxed, c.1950's/60's.
1221. Tinsplate mechanical Drumming Panda, China, boxed, c.1950's/60's.
1222. Russian tinsplate doll and plastic Crawling Baby, China, boxed, c.1950's/60's.
1223. Five various wind up toys, mainly plastic, boxed, c.1950's/60's.
1224. Five various wind up toys, mainly plastic, boxed, c.1950's/60's.
1225. Five various wind up toys, mainly tinsplate, boxed, c.1950's/60's.
1226. Five various wind up toys, mainly plastic, boxed, c.1950's/60's.
1227. Twelve various wind-up toys, some boxed, c.1950's/60's.
1228. Two porcelain musical clowns, China, boxed, c.1950's/60's.
1229. Various small tinsplate and plastic toys, c.1950's/60's. (7)
1230. A fur covered drum playing Bear, Germany, and a yellow plush covered dancing Bear, c.1950's/60's. (2)
1231. Modern Steiff Bear "Baby Alfonzon"
1232. Modern Bartons Creak Teddy "Blake".
1233. Modern Steiff Teddy Replica 1907.
1234. Modern Steiff Teddy Boy 1905.
1235. Modern Steiff Teddy Replica 1905.
1236. Modern Steiff Teddy British Collectors Teddy 2001.
1237. Modern Steiff Teddy Bear "Xenia".
1238. Modern Steiff Teddy "Dominic".
1239. Modern Steiff Teddy "Scottish Bear 2001".
1240. Modern Steiff Teddy "Ours Teddy".
1241. Modern steiff Teddy Replica 1922.
1242. Modern Steiff Teddy Golden Jubilee Bear.
1243. Modern Steiff Teddy Windmill Bear.
1244. Witney Bear - Theodore Roosevelt Family - Ethel.
1245. Witney Bear - Theodore Roosevelt family - Edith.
1246. Modern Steiff Teddy "Centenary Teddy Bear"/
1247. Modern Steiff Teddy Bear 1909 Blond 65.

1248. Modern Gund Teddy "Raffles".
1249. Modern Gund Teddy "Mr Tibbs".
1250. Modern Gund Teddy "Emerald".
1252. Russ Berne Bear "Centennial".
1253. A Pelham Puppet Poodle A4., yellow box.
1254. A Chad Valley Golly 24" approx.
1255. Corgi State Landau Silver Jubilee.
1256. A live steam engine.
1257. A Lawrence Designs - Models Tiger Month Construction Kit No 13A, Boxed. 1/48th scale metal parts.
1258. A German double faced bisque baby doll, no makers mark, on a miniature bentwood chair.
1259. A wooden and rubber block toy printing set and various board, card games all in played with condition.
1260. A Green Monk, Sooty and Sweep Super Tone xylophone, boxed, including song book.
1261. A Meccano Army Multikit, box distressed.
1262. An Automaton mechanical animal band consisting of drumming zebra, accordion playing elephant, cello playing alligator, banjo playing hippopotamus and violin playing bear, all in evening dress and playing to accompanying music, the whole display 11ft x 4ft 6ins, nb. 240v, not tested for safety.
1263. A W Brittain 40mm Anti Aircraft Gun No. 1715 boxed and 25lb Gun Howitzer No. 2026, boxed.
1264. A tinplate Mettoy General Hospital Toy on 3 levels.
1265. A tin plate truck and a small selection of die-cast vehicles inc. 007 Moonbuggy, Thunderbirds, Dalek and Joe 90 animals, all in used condition.
1266. Two pond yachts, the smaller unnamed, the larger bearing a label "Clyde Model Dockyard" 22" long and a table croquet set (3).
1267. A NZG Modelle of a BROYT X50 earthmover, boxed.
1268. A Hornby tin plate loco and carriages no. 2595 used condition.
1269. 6 Folio Edition Jigsaw Puzzles by Waddington - The Great Hall, Warwick Castle (2), The Drawing Room, Arundel Castle, The Dining Room, Luton Hoo, State Bedroom, Woburn Abbey, The Drawing Room, Rudding Park, boxed but used condition.
1270. 5 LUMAR Jigsaw Puzzles, No's 20, 80, 45, 44 & 97 boxed but used condition.
1271. Various bygone toys and bottle stoppers, including a tin plate station - Victoria Station.
1272. A Britains Ltd. Model Farmyard No. 4711 and a selection of farm machinery and vehicles, fences etc.
1273. A woode ark (AF) with animals.
1274. A small bisque doll with real hair and painted features 5" tall.
1275. A bisque headed doll marked AB 1362 made in Germany 4, composite body, sleeping eyes, brown hair, open mouth showing four teeth 27".
1276. A bisque headed doll, marked 6'by 170K 3 Germany, sleeping eyes, brown hair, open mouth showing 4 teeth, kid body, bisque arms and legs 22".
1277. A Simon Halbig bisque headed baby doll with "flirty" eyes, marked Simon Halbig Company 126, composite body, real hair wig 21".
1278. A small bisque headed baby doll, sleeping painted eyes, no hair, composite body 11 ". AF
1279. A composite doll C.1950, walks and turns head, sleeping eyes. 27 ".
1280. A boxed magic lantern marked Standard E.P. with slides.
1281. A Magic lantern, boxed, full size.
1282. A set of lantern slides, small size.
1283. A set of square lantern slides.
1284. A selection of wooden framed novelty slides ie disappearing man etc.
1285. A qty of geographical lantern slides
1286. A qty of lantern slides.
1287. "The Barton" slideshow operator's Viewer with bell.

1288. A Pelham Puppets Poodle.
1289. A 3.5" gauge 0-6-0 locomotion in green and black livery, plated "42".
1290. A 1" gauge 4-6-2 locomotion and tender in maroon "LMS" livery.
1291. A 1" gauge 0-4-0 locomotion "Tick" in green and black livery.
1292. A Bassett-Lowke 'O' gauge clockwork locomotive and tender, Prince Charles 4-4-0 in LNER livery.
1293. A Beswick 9-piece 'pig' orchestra, comprising conductor, trombonist, violinist, guitarist, trumpeter, flute player, drums, triangle and cymbals, 4" to 6" high, black backstamp.
1294. Advertising Items: Robin's Dairy Cake enamel sign, 2 Player's card signs and Coalite brass toasting fork.
1295. 2 large and varied Postcard Albums of topographical, portraiture, silks, etc.
1296. Various part and sets of Cigarette Cards.
1297. 2 modern autograph albums.
1298. A block of 12 Victorian red 1/2d Stamps and 2 others.
1299. A 1939 Philatelic page with various stamps.
1300. The "Improved" Album of World Stamps.
1301. An Adams ironstone teapot printed with Cries of London panel, the cover with bud finial, together with a matching jug, 20th century.
1302. A late 19th century bisque figure of a bathing belle, standing ready to dive, on moulded base, 8 " high, together with a continental porcelain shoe encrusted with flowers and moss, 4.75 " wide and a Royal Worcester model of a Wood Washer no. 3200 (af) (3).
1303. A Bisque figure of a Dandy in green and pink costume, standing against a fence, on moulded base, 6.25 " high, a pair of bisque children in Edwardian costume, 5 " high, a bisque posy basket and another figural group of a girl with kitten, together with a Dutch pottery mantel clock, in bird and foliage lustre case, 9.25 " wide. (6).
1304. Five pieces of Cornishware by T G Green, comprising four jars and covers marked "Flour", "Currants", "Sugar", "Raisin", 5.50 " high, and a large jug, 8 " high.
1305. A Crown Devon pottery bowl, of circular ribbed form, with two moulded handles, the mottled ground painted with a pink band within gilt lines, on three loop feet, 10.25 " diameter.
1306. A Carlton pottery bowl, circular, externally decorated with geometric bands on yellow ground, with conforming decoration to the well, 9 " in diameter.
1307. A Crown Ducal pottery vase, with green, blue and brown mottled glaze, 8.5 " high and a Roskyl pottery vase painted with flowers over green and brown lines, 5.75 " high.
1308. An Art Deco moulded green opaque glass bowl, with diamond body, three handles, 8.50 diameter.
1309. A Chinese Famile rose pottery sleeve vase, enamelled with figures in landscapes, the body pierced with quatrefoils, 11 " high.
1310. A Royal Doulton loving cup moulded in relief with "The Three Musketeers", designed by Charles J Noke, Limited Edition no. 354/1600. 10" high, together with original printed certificate.
1311. A Medina slab sided green/blue glass vase, with elongated funnel neck, with internal sleeve, 10 " high, 9 " wide.
1312. A Medina spherical blue glass vase, with green and brown abstract decoration, 4.5 " high, together with another blue glass vase, of compressed circular form with everted rim, similarly decorated, 6 " diameter, and an iridescent amethyst glass vase, 5 " high. (3)
1313. A pair of Mtarfa mottled blue glass vases with everted petal rims, another, pink, 5.5 " high, another, orange with green splashes, 3 " high, (4).
1314. A Venetian glass clown, multi-coloured with opaque white collar, moustache and hands, 11.5 " high.

1315. A pair of white opaque glass pedestal bowls and covers, painted with flowers and leaves, the cover with clear glass spire finials, on clear glass stems and foot, 11 " high.
1316. A Staffordshire pottery tea pot, stand, milk jug and sugar bowl, the blush ivory ground decorated in the Crown Devon manner with flowers, over moulded and gilt fluting.
1317. A Royal Doulton character jug, "Long John Silver", no. D6335, 7.75 " high (AF). #15-25
1318. A Carlton Ware leaf moulded bowl 9.5 " wide on lobster feet, together with a pair of salad servers.
1319. An Edwardian pottery toilet set printed with floral swags, posies and ribbon, gilt highlights, comprising ewer, basin, chamber pot and tooth mug a/f together with another chamber pot.
1320. An early 20th Century frosted blue glass bowl, circular, with everted rim, moulded in the style of Lalique, with swimming fish, on three feet, reg. no. 796188, 10.75 " diameter.
1321. A Royal Doulton bone china "tea for two" service, gilt with ferns over rich crimson bands, comprising teapot, milk, sugar and 2 cups and saucers, modern.
1323. An Orrefers glass vase of spherical shape, the green tinted glass internally decorated with fish and weeds, signed Orrefers no. 989N and with artist's signature, 4 " in diameter.
1324. A green pottery vase of compressed circular form, with three twist handles issuing from the elapser neck, 7.75 " high, early 20th Century.
1325. A Royal Doulton "Persian Spray" underglaze blue plate, 10.25 " in diameter.
1326. An early 20th Century pottery jardiniere, circular with wavy rim, with green/ochre streaky glazes, the interior turquoise, 9.5 in diameter.
1327. A Wade pottery "Sandermans Port" decanter, modelled as a Portuguese Don, 8.75 " high.
1328. A Moorcroft pottery vase, of compressed baluster shape, in streaky blue and buff glazes, 9.50 " high.
1329. A Gouda pottery vase painted with flowers between brown and yellow bands, 11.25 " high, another Gouda vase, similar, 10.25 " high.
1330. A novelty wall hanging dinner gong, carved as a toucan with red bakelite beak supporting brass gong with small strike.
1331. A Smiths plastic clock advertising "Guinness Time", with illumination and push switch, 12 " wide.
1332. A D'Orsay scent bottle of panelled cushion form, sealed with gold thread and with spherical stopper, containing "Belle de Fow" scent, in original box, Circular 1943.
- 1332A. A set of five German porcelain dessert plates, moulded and gilt with foliate scrolls and printed in colours with flowers, 20th Century 8.25 " diameter.
1333. An Art Deco period polished slate desk stand, the slightly shaped rectangular base with paw, well, fitted with two glass inkwells, flanking a calendar stand, 9.50 " wide.
1334. A Shelley vase, a square form, decorated with streaky orange, buff and grey glazes, the interior green, 10.25 " high, together with a Shelley ginger jar, with similar glaze, 7 " high.
1335. An early 20th century frosted glass light bowl, with hobnail and star cutting, together with an Alfred Meakin "Bleu du Roi" teapot, cover and stand.
1336. A pair of continental bisque figures of children, pastel glazes, on circular flowers encrusted bases, raised on feet, (a/f) 12 " high, together with an early 20th century coloured etching of Saint Malo, 7.75 x 5.50 " (all unframed). (5)
1337. A Continental bisque "baby", playing with a ball, pastel glazes, on moulded base, 8.75 " high.
1338. An early 20th century Japanese porcelain coffee service, painted green and enamelled with dragons, (1 cup missing).

1339. Two Chinese blue and white ginger jars (no lids), two earthenware bowls, painted with flower (a/f) and a pottery 2 handled sugar bowl, with pate sur pate decoration. (5)
1340. A 19th Century blue and white Willow pattern stilton stand, circular 10.25 " diameter, a blue and white Willow pattern pottery stand and tureen and cover and a Chinese square pierced vase. (5)
1341. A pair of Japanese pottery vases, of ovoid form, the terracotta ground enamelled and gilt with flowers and diaper panels, each with bamboo moulded handles, 10 " high.
1342. A Lovatts pottery vase, of ovoid form, the ribbed body glazed green, 8.50 " high.
1343. A Victorian Vaseline glass flute vase with wavy rim, on clear circular foot, 9 " high.
- 1343A. A Susie Cooper "tea for two" service, the rose ground incised with leaves, comprising teapot, milk, sugar, 2 cups and saucers, impressed 42 no. 1482, a plated of the same pattern, with deer backstamp.
1344. A Frosted glass handkerchief bowl with green rim, trailing lime green decoration, 10.50 " diameter.
1345. A clear quilted glass double guard vase, with applied green and gilt speckled print ornament. 6.75 " high.
1346. A late 19th century green glass vase of fluted ovoid form, slightly everted rim, applied leaf decoration and on iridescent petal foot, 6.75 " high.
1348. A set of Shorter fish moulded plates together with a sauce jug, with pink and green glazes.
1349. A Carlton Ware pottery preserve pot and cover, moulded with apple blossom, together with a preserve dish and spoon, moulded with blackberry and apple blossom, in original gift box.
1350. Two Staffordshire blue and white Willow pattern oval meat plates, 13.50 x 12 " wide, together with a Copelands Spode Italian cream jug, 3" high.
1351. A Clarice Cliff Bizarre Delecia Vase of circular pocket form, painted with flowers on streaky glaze ground, 6.50 diameter (cracked).
1352. A Carlton Ware pottery leaf shallow dish, moulded with apple blossom 7.25 " wide, another smaller, and a buttercup moulded dish with matching knife.
1353. A Clarice Cliff Bizarre Delecia 2 branch candlestick, painted with flowers on streaky glaze ground, on circular base, 9 " wide, 5 " high.
1354. A Wedgwood green Jasperware trinket box and cover, a small campagna shape vase and a trinket dish, together with two blue jasper ash trays and a small vase. (6)
1355. A Foley China coffee set, printed and painted with flower springs within green and black borders.
1356. A pair of Carlton Ware bud vases, the pink ground, printed and painted with rose and fern spray, 8.25 " high, a sauce jug modelled as an orange and a 5 bar toast rack. (4)
1357. A Carlton Ware leaf jug moulded with apple blossom, with twig handle, 6 " high, and a leaf dish moulded with foxgloves, 9.50 " wide. (2)
1358. A Wilkinson pottery "tea for two" service, the cream ground decorated with concentric green and buff circles, comprising teapot, cream, sugar and 2 cups and saucers.
1359. A Carlton Ware lettuce, tomato moulded dish and similar platter, sauce boat, stand and small dish. (5).
1360. A Beswick peach moulded dish 5 " wide and a Crown Devon trinket dish painted with violets, 4.75 " wide. (2).
1361. A Carlton ware leaf moulded dish painted with seafood and celery, 11 " wide, and a leaf shaped dish moulded with tomatoes, together with a pair of salad servers.
1362. A Westerwald grey and cobalt blue tall lidded jug.
1363. A Royal Doulton Figurine "Michele" JM2234.

1364. A Bourne Denby footwarmer modelled as a gladstone bag in blue and brown.
1365. A Royal Doulton Bunnykins money ball "Christening".
1366. A Royal Doulton Bunnykins Saving Set.
1367. A Royal Doulton Bunnykins baby set of plate and 2 handled mug.
1368. A Royal Doulton Bunnykins figure "Trick or Treat".
1369. A Royal Doulton jug, cream ground, blue handle and bands, floral decoration.
1370. A Royal Doulton Figure "Happy Anniversary" HN 3097.
1371. A Royal Doulton Figure "Grace Darling" Hn 3089 No.330.
1372. A Royal Doulton Figure "HRH The Prince of Wales" HN2883 no 1260.
1373. A Royal Doulton figure "Loretta" HN 2337.
1374. A Royal Doulton Figure "Gloria" HN 3200.
1375. A Fairing "Returning at 1 o'clock in the morning".
1376. A Carltonware Guinness Toucan Figure 4" approx.
1378. A Royal Doulton "Sea Shanty Jug" slight crazing to the base, upper body, hairline crack to lip.
1379. A Royal Doulton character jug "Don Quixote" D6455.
1380. A Royal Doulton character jug "The London Bobby" D6744.
1381. A Royal Doulton character jug "William Shakespeare" D6689.
1382. A Royal Doulton character jug "The Cook and The Cheshire Cat" D6842.
1383. A Royal Doulton character jug "Louis Armstrong" D6707.
1384. A Royal Doulton character jug "Old Salt" D6551.
1385. A Royal Doulton character jug "Athos" D6139/
1386. A Royal Doulton character jug "Robinson Crusoe" D6532.
1387. A Royal Doulton character jug "The Fortune Teller" D6874.
1388. A Royal Doulton character jug "Tony Weller".
1389. A Royal Doulton character jug "Drake".
1390. A Royal Doulton character jug "Golfer" D6623.
1391. A Royal Doulton character jug "Othello" D6673.
1392. A Royal Doulton character jug "Davy Crockett" D6729.
1393. A Royal Doulton character jug "Falstaff".
1394. A Royal Doulton character jug "Jimmy Durant" D6708
1395. A Royal Doulton character jug "George III/George Washington" "D6749.
1396. A Royal Doulton figure "Priscilla" HN 1495.
1397. A square studio pottery dish with inscribed Maori style decoration - dark metallic glaze 8" square.
- 1397A. A studio pottery wall plaque depicting a minstrel 14 1/2".
1398. A Royal Doulton Toby Jug "Happy John".
1399. A Royal Doulton Toby Jug unnamed 8328A impressed mark.
1400. Two Art Deco style dancers in cast metal on marble bases.
1401. A Royal Doulton jug "Pickwick Papers".
1402. A cast metal figure of a WWII pilot with propeller concealing a table lighter.
1403. A selection of Pendelphin models.
1404. A Beswick figure of a horse and another.
1405. A Beswick figure of a horse no. 1374.
1406. A Beswick figure - Quarter Horse.
1407. A Beswick figure - Terrier, Champion Talavera Romulus.
1408. Beswick figures - A young horse laying down and two standing foals (3).
1409. Beswick figures - A donkey and foal.

1410. Beswick figures - Shetland pony and foal.
1411. A Beswick figure of a grey horse.
1412. A cased set of laquered trinket boxes inlaid with mother of pearl.
1413. A part tea set of oriental china, gilt and pink and green floral border.
1414. A part tea set 1920's design, blue, orange and yellow floral decoration.
1415. A Capodimonte figure group of sleeping peasant on a cart with boy.
1416. A Capodimonte figure of a tramp feeding pigeons.
1417. A Capodimonte figure of a man feeding a dog.
1418. A Capodimonte figure of an umbrella mender.
1419. A Capodimonte figure of a baker at his oven.
1420. A Capodimonte figure of a man treading grapes
1421. A part child's tea set by Beswick, Mickey Mouse and Donald Duck and other Disney Characters.
1422. A Carltonware Welsh crested match holder and other crested items.
(7)
1423. Royal Doulton small busts of Sairey Gamp and Sam Weller.
1424. Royal Doulton mini character jug "Sam Weller".
1425. Royal Doulton mini character jug "Old Charley".
1426. Royal Doulton mini character jug "Micawber".
1427. A Volkstedt figure of a Kingfisher.
1428. A Royal Doulton serving dish No D5285, and drainer and plate, a Beswick pickle dish, and other early 20thC ceramics.
1429. Two cast metal figures "Gaile and Modestie".
1430. A cottage ware sugar shaker, lustre bowl, toast rack and decorative items by Limoges.
1431. An oak ink stand and commemorative crown.
1432. A large studio pottery polychrome platter and matching jug.
1433. A Sylvac stylised donkey No 369 and shell vase.
1434. A Hornsea pottery tree jug and an Eastgate fauna jug.
1435. A Myott & Sons fan shaped bud vase in orange and greens and a Sylvac oval bowl.
1436. A wall pocket of a girl showing her petticoats in pink and blue standing beneath a balcony, marked Clarice Cliff Wilkinson Ltd, England.
1437. 3 stylised triangular wall pockets with pastel foliate decoration by Fenton.
1438. A Seagull wall pocket by Clarice Cliff, Newport Pottery.
1439. A Crown Ducal covered temple jar in Rufad design and a matching vase.
1440. A Poole pottery fruit bowl, orange, yellow and brown modern abstract design and matching ashtray.
1441. Three flying wall ducks (af).
1442. Three items of Bewley pottery: a flared vase, a footed bowl and a round jug, yellow ground with orange and deep yellow design.
1443. Two fish vases by Clarice Cliff, Newport Pottery, one with orange fins, one with blue fins.
1444. A part tea set of teapot, sugar bowl, milk jug, 6 cups, 6 saucers, 2 butter dishes and sandwich plate, 6 side plates by Clarice Cliff, cream ground, green border, blue, pink and yellow crocus pattern.
1445. Three items of Burleighware Zenith teaware, being an oval plate, a covered cheese dish and a lidded jam pot, together with a Beswick leaf salad drainer and plate.
1446. Clarice Cliff dinner ware, cream ground with concentric burnt orange and gilt bands - 3 graduated oval meat plates, 2 covered vegetable dishes, 4 soup cups and a sauce jug.
1447. Beswick Squirrel Nutkin. BBS.
1448. Beswick Mrs Floppsy Bunny BBS.
1449. Beswick Peter Rabbit GBS.

1450. Beswick Mr Drake Puddle Duck BBS.
1451. Beswick Mr Jeremy Fisher BBS.
1452. Beswick Tom Kitten GBS.
1453. Beswick Flopsy, Mopsey and Cottontail BBS.
1454. Beswick Jemima Puddle Duck GBS.
1455. Beswick figure of a fox.
1456. Beswick figure "Kick Start" by Norman Thelwell.
1457. A quantity of Wedgwood Penshurst pattern dinnerware, a Royal Doulton Kew pattern dessert service and other decorative china.
1458. A Bewley pottery globular shaped jug with brown banding, orange and yellow floral decoration.
1459. A Rye Cinque Port Pottery studio jug with brown and beige slip glazing.
1460. An amber studio glass vase, an alabaster vase and decanter (3).
1461. 2 tins of Players Navy Cut Cigarettes, unopened stating "Specially Imported for Iraq".
1462. A blue and white Masons Ironstone toilet bowl and jug (restored).
1463. A Westerwald cobalt blue glazed doughnut shaped jug.
1464. A German porcelain figure of two lovers in pastel colours.
1465. Various items of Green & Co, Gresley, narrow green banded Kitchenware including flour shaker.
1466. A quantity of Collingwoods teaware, gilt lace and green border.
1467. A quantity of Indian Tree teaware, no makers mark.
1468. A Beswick figure group - The Mad Hatters Tea Party. no. 508. Limited Edition.
1469. A collection of Royal Doulton mini character mugs with display stand - Dick Turpin, Simon the Cellarer, Jester, John Barleycorn, Granny, and Parson Brown.
1470. A quantity of Canterbury china dinner and teaware, autumn fruit decoration with gilt borders.
1471. Bretby tobacco jar, pipe scraper and weaving shuttle.
1472. Various Royal Commemorative items.
1473. A quantity of early 20thC blue and white banded dinnerware, including meat plates and tureens.
1474. A selection of new series Wade Whimsies (19).
1475. Various items of decorative china including a breadplate.
1476. A Wade Heath jug, jade green ground with floral spays, bird perched on handle.
1477. A 1940/50's Mock Tudor dolls house, opening front, 2 floors with a quantity of mostly later plastic furniture.
1478. A large Bells Wade Whisky decanter and a small one (both empty) 2 shaving mugs and 2 small Wade items.
1479. A Salisbury "Spring" pattern part tea set, white ground with blue birds - stylised foliage Art Deco Styling.
1480. A Beswick figure of a wren.
1481. A Beswick figure "Pigling Bland" GBS.
1482. A Meakin Sunshine pattern salad plate and drainer and a pair of Royal Doulton series ware tea plates with country scene.
1483. A quantity of Royal Grafton "Majestic" pattern dinnerware, white ground with burgundy and gilt banding to outer edges.
1484. A part double teaset of Noritake china, white with pale cream border overlaid with gilt floral banding - gilding worn in places.
1485. 20thC. Commemorative Newspapers.
1486. A selection of table linen, covers, lace etc.
1487. Blake's 7. A selection of photographs and sketches.
1488. An E. Radford posy bowl and Sylvac squirrel on log trinket.
1489. A brass and mahogany 2 bottle locking Tantalus.