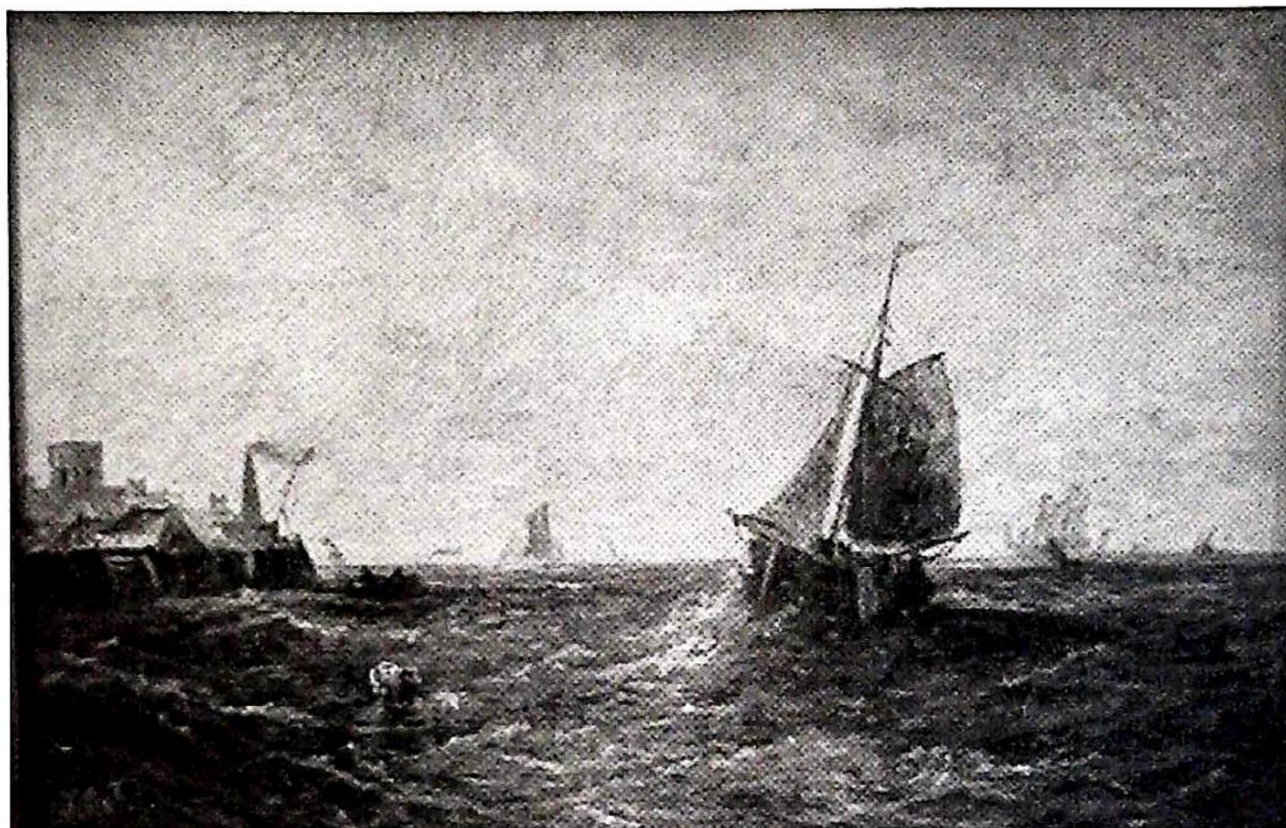


Established 1900

-GOLDINGS-

AUCTIONEERS & VALUERS

AUCTION SALE CATALOGUE



Period & Decorative Furniture,
Works of Art, Glass, Ceramics, Metalware,
19th & 20th Century Collectables, etc.

Wednesday 17th July, 2002 at 10am

IMPORTANT NOTES FOR PURCHASERS

1. **PAYMENT:** Must be made in full immediately after the Auction. The following methods of payment are acceptable.

a) Cash b) Bankers Draft c) Building Society Cheque
d) Cheques, accompanied by a valid card. e) Cards. Debit, no charge. Credit, 2%+vat.

PAYING BY CHEQUE?

If you are not known to the Auctioneers and wish to pay by cheque above your guarantee card limit **WE WILL RETAIN THE GOODS** until it has been cleared (7 days). There will be **NO EXCEPTIONS** to our policy. To avoid **UNDUE EMBARRASSMENT** for yourself or to our staff, please do not ask for preferential treatment. If you wish to clear goods immediately bring a letter from your Bank or a suitable guarantor reference.

2. **BUYERS PREMIUM** of 15% on the first £100 of each lot and 12 ½% thereafter is payable on all lots. Minimum £1 per lot. All plus VAT.
3. **REMOVAL OF PURCHASES:** Goods must be collected as soon as they are paid for, and in the 2 Working Days following the sale. If goods are not collected on these days we reserve the right to charge £1 per lot per day thereafter.
4. **COMMISSION BIDS:** If you are unable to attend this or any of our future sales we will be pleased to bid on your behalf. We always purchase at the lowest possible price, subject to other bids and reserves.

All bids must be handed to the office on an official form. It remains the responsibility of prospective purchasers to contact **GOLDINGS** to confirm whether their bids have been successful.

5. **TELEPHONE BIDS:** There are inherent dangers with this practice, therefore all such arrangements are made entirely at the bidder's risk. Telephone bids will only be accepted if the lower estimate is £500 or above. For lots with a lower estimate below this figure Commission Bids Only will be accepted.
6. **SMOKING** is not permitted in any part of the Saleroom.
7. **REFRESHMENTS** will be available Saleday.
8. **ACCOUNT TRANSFER** will not be recognised after the sale. If any lots are purchased for another person, this must be declared at the fall of the hammer.
9. **ESTIMATES.** Our Auctioneers will be available during viewing to give guidance on your prospective purchases.

GLOSSARY

- a) Generally: 'As Found' (AF). This term indicates the lot has some damage. Its absence does not indicate that the lot is free of defect. All lots are **SOLD AS SEEN**.
- b) Silver & Jewellery: Weights given are approximations given by basic instruments.

Upon instructions from the Executors of Mr A E 'Cam' Chambers (Dec'd)),
Executrixes of Mr Graham H Clay (Dec'd) and others, selected collections
and single entry vendors from throughout the region.

GOLDING YOUNG & CO will sell by AUCTION

Over 650 lots in a collective

ANTIQUE & COLLECTORS' SALE

On Wednesday 17th July, 2002 from 10am

Viewing: Tuesday 16th 2pm to 7pm and
Saleday from 9 to 10am

click to view - Most of the lots are illustrated from 12th july at -

www.goldingyoung.com

lot enquiries - Suki Burnett - Jan Squires - Colin Young

vendor enquiries - Marie Scoffield

cover illustrations - lots 329 and lot 546

Telephone: 01476 • 565118

Fax: 01476 • 561475

Email: enquiries@goldingyoung.com

Buyers Hotline: 01476 • 575202

For Lot Enquiries & Commission Bids View-day & Sale-day Only

THE GRANTHAM AUCTION ROOMS

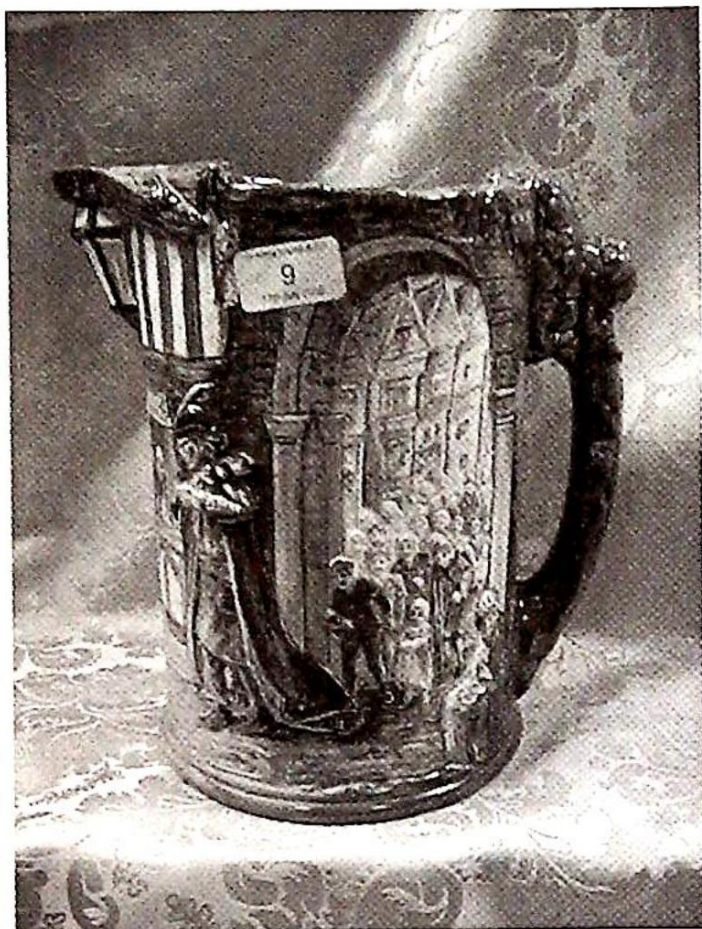
Old Wharf Road, Grantham, Lincolnshire, NG31 7AA

CONDITIONS OF SALE

1. These Conditions together with any Notices to Purchasers are the only terms and conditions subject to which Golding Young & Co ("the Auctioneers"), as agents for the Vendor will sell goods to a purchaser ("the Bidder") and all other conditions, whether express, or implied at common law or by statute as are capable of lawful exclusion are hereby excluded.
2. The highest bidder shall be the buyer. The Auctioneers reserve the right of regulating the biddings; of rejecting any bid; and of bidding for, withdrawing, consolidating, dividing or altering the order of lots.
3. The purchase money for each lot with the usual commission of 15% on the first £100 and 12.5% thereafter (min £1 per lot) plus VAT at the current rate shall be paid at the fall of the hammer (if required). Each lot at the fall of the hammer shall be at the sole risk and expense of the buyer, and shall be paid for and removed immediately after the conclusion of the sale, but no lot shall become the property of the buyer, or be removable until paid for, and if taken away in contravention of these conditions without an order for removal signed by the Auctioneers, they shall have power to seize the same by their servants or agents, or otherwise, or the Auctioneers may recover either the lot sold or the price thereof (at their option) by action at law.
4. No contra account of any description whatever will be allowed to the buyer as a set off, and payment for each Lot shall be made to the Auctioneers or their clerk only, and a buyer paying by cheque must give satisfactory references.
5. For all purposes of this sale the Clerk of the Auctioneers shall be deemed to be the agent of both seller and buyer.
6. A bidder shall not be allowed to retract his bidding after the fall of the hammer, and he shall give up his full name and address if required. The Auctioneers will not recognise the transfer of any lot from one buyer to another, nor make any alteration in the sale book in respect thereof.
7. The Auctioneers are acting only as agents, and give no personal warranty as to the condition, quality or authenticity of any chattels offered for Auction. Any catalogue description is given merely as guide to purchasers, any description can be changed from the rostrum before the lot is sold. If a purchaser buys without previous inspection he will do so at his own risk.
8. Notwithstanding any other terms in these Conditions, if within 7 days of the Sale a purchaser gives notice in writing that a lot is a deliberate forgery, with supporting factual evidence, the Auctioneers may rescind the transaction. The burden of factual proof lies with purchaser, mere opinions will not satisfy. This benefit is not assignable.
9. If any buyer neglect or refuse to comply with the above conditions or any of them, his deposit money (if any) shall be forfeited, and the lot uncleared may, at the option of the Auctioneers, be resold without notice by public auction or private treaty, and any loss occasioned by such re-sale together with all expenses attendant thereon, or arising under these conditions shall be paid for by the defaulter and be recoverable as and for liquidated damages. This condition is however without prejudice to the right of the Auctioneers to enforce the contract made at this sale if they think fit.
10. Any Notes for Purchasers and Catalogue Glossaries will be construed as Conditions of Sale.
11. The Auctioneers shall be the sole Arbitrators in all matters of dispute relating to those conditions both as between the seller and the buyer and between the several bidders and buyers and their determination on all matters shall be final and binding on all parties concerned.

The Sale Inventory

Collectables



LOT 9

1. Games: Early Monopoly set, jigsaws of Giggleswick (early 20thC), and another jigsaw.
2. A 19thC rosewood workbox with interior fitted tray, bound in brass, 7 1/2" wide, two further boxes.
3. A Heubach & Kopplesdorf bisque head doll, no. 320/G, with fixed eyes, open mouth, papier mache body, 12" high (AF), together with a Chad Valley rag doll and others.
4. A Chad Valley blond plush teddy bear, with long nose, jointed legs, with button to right ear, 16" high, (in worn and repaired state).
5. A German tin plate clockwork peacock, with highly coloured printed body and "feathers", 6 1/2" high, in original box (early 20thC).

6. A Collection of polished agate stones, cut into ovals.
7. A Copeland Spode coffee service, printed in black and polychrome painted in the Chinese manner, pattern no. 52455.
8. A solitaire set, a leather box and contents, two treen circular screw top boxes etc.
9. A Royal Doulton "Pied Piper of Hamelin" jug, no. 55 of 600, moulded in relief with characters from the fairy tale designed by Charles Noke, 10 1/4" high, (together with the R.D. certificate) c.1934.
10. Collectables including a travelling spirit level, binoculars, smokers accessories, spirit flask etc.
11. A Shelley coffee service of irregular octagonal form, "Queen Anne shape" painted in black and enamelled with orange flowers, pattern no. 11497.
12. A Poole pattern bowl, polychrome painted in simple flower forms and cockerels, 5 3/4" high, signed L E to underside, a Masons "Fruit Basket" ginger jar and cover and a pair of blue pottery jugs of panelled baluster shape with scroll handles, 8" high.
13. A cut glass fruit basket, a conical cut glass decanter, another panel cut decanter.
14. Two cut glass flower vases and an early 20thC celery jar, with dentil rim and rib cutting to the ovoid body.
15. An Arcadian crested china tea service, including teapot, sugar and milk jug, bearing the town crest of "Settle".
16. H. Wedgwood & Sons pottery jug commemorating the 1636 Agreement with Native Americans and the Creation of "Providence, Rhode Island, 4 1/2" high, together with seven items of assorted china and pottery.
17. A "Duchess" pattern flo-blue toilet jug, bowl and tooth mug, (crack to bowl), 19thC.
18. An EPNS arts and crafts period 3 piece tea service, the compressed

circular planished body with reeded girdle, the teapot with composition handle and knop.

19. A German china nursery tea set, each piece polychrome printed with a band of children, early 20thC.

20. A Victorian lustre fruit bowl, the interior painted in blue, green, iron red, lustre and gilt with flowers and fern, on raised foot, 9" diameter.

21. A set of early 20thC brass letter scales on an oak base 8" wide, with brass weights from 1/2 oz. to 4 oz.

22. A creamware circular pierced plant holder, moulded with fruiting vine and with ring handles, 5" high (AF).

23. An EPNS oval teapot, engraved with foliate panels in the Secessionist manner, a pair of brass shell vases, embossed with roses, a pair of brass candlesticks and a small brass shell spill vase.

24. A blue glass bowl in the manner of Jobling, moulded in relief with fish, crabs and seaweed, having two coral moulded handles, and raised on four feet, 12" over handles Reg. No. 798843.

25. A Majolica leaf moulded comport, 9" diameter, a Minton "Delft" blue and white large plate, a pair of Masons blue and white plates and others.

26. A Moorcroft "Hibiscus" pattern small vase (chip to rim), circa 1950's, 3 1/2" high, a Carltonware blue lustre small dish, polychrome and gilt with a Chinese landscape, 4 1/2" diameter, two Belleek cream jugs, black factory marks, and four pieces of crested china.

27. Three pottery "Alexandria" pattern meat plates, of graduated size, printed in blue in the Secessionist manner, 15" to 12" wide.

28. A 19thC Chinese export blue and white dish, painted with a padoda landscape, 6 1/2" diameter, a Chinese rectangular dish with canted corners, similar, (AF) 10" wide.



LOT 29

29. A Steiff lion, with blond plush body, white mane, glass eyes, jointed limbs, button to left ear, 16" tip to tail.

30. Four early 20thC sepia photographs by Barrand, of Miss Ellen Terry, Lady Randolph, Churchill, J. Chamberlain and Henry Irving, each 9 1/2" x 7".

31. A pair of Staffordshire pottery spaniels, predominantly white with gilt splashes and orange noses, 12 1/2" high.

32. A pair of pottery dogs, with ruby moulded bodies, gilt collar chain, glass eyes and black nose, 13" high. (some minor chips to one).

33. A qty of Meccano in boxes no. 0, 1 & 2A, together with a qty in a wooden box inc instruction manual.

34. A Copelands pottery soup tureen, cover and stand, printed and painted in blue, pink and green with a border pattern of trellis, convolvulus and ivy, scroll gilt handles, the stand 13" diameter, 19thC.

35. An early 19thC 3 section mahogany inlaid tea caddy, 8 1/2" wide (AF), a daguerreotype, a Continental Majolica plate (AF) etc.

36. A straw boater, a brown felt "Cranwell" hat, in original box, and two plaited whips.

37. A collection of Dinky die-cast motor cars, all in a played-with condition.

38. A Crown Devon "Ilkley Moor Baht 'At" music jug, moulded in relief with characters from the song, 5 1/2" high.

39. An early 20thC tin plate army gun housing, painted in camouflage colours, die cast cars etc.

40. An Arthur Price mahogany canteen containing a part suite of cutlery, bead pattern in stainless steel, together with assorted cutlery in an oak canteen.

41. A mahogany framed rectangular mirror with bevel plate 15 3/4" x 12 1/2".

42. A Chad Valley game of Mah-Jong, together with an instruction manual.

43. A game of Mah-Jong with instruction manual.

44. Wade Whimsies: Set no. 8 "Zoo" in original box.

45. Wade Whimsies: Set no. 4, Wild Animals, in original box.

46. Wade Whimsies: Set no. 5 Horses and dog, in original box

47. Wade Whimsies: Set no. 3, various in original box.

48. Wade Whimsies: Set no. 9, "North American Animals", in original box.

49. Wade Whimsies: Set no. 2, various in original box (AF).

50. Wade Whimsies: Set no. 7 "Pedigree Dogs" in original box.

51. Wade Whimsies: Set no. 6 "Polar Animals" in original box.

52. An Edwardian EPNS 7 bar toast rack, the rectangular base with rococo scroll border and four feet 7 1/4".

53. An Edwardian EPNS Biscuit Barrel of bombe oblong shape, the twin flap lid engraved with formal scrolls and strapwork, hinged to the centre and opened by a scroll cast handle, on rocaille cast feet, 9 1/2" high over handle (hinge damaged).

54. A Gouda circular dish and cover, painted with flowers and the cover with a view of "Witte Huis Rotterdam", 5" diameter, together with a circular dish and boat shape dish, similar (3).

55. An earthenware salad bowl and matching servers, polychrome printed with flowers, plated mounts, 9" diameter.

56. An Aynsley bone china tea service, printed in black and painted with a border pattern of alternating diaper and rose panels, 12 place settings, (one saucer repaired and crack to jug).

57. A pair of pottery Staffordshire type seated cats, black and white on green cushions, another pair on blue cushions, 4" high (modern).

58. An EPNS presentation sleeve tankard, with horn handle, inscribed, 9 1/4" high together with a presentation pedestal cup 7" high.

59. An EPNS pedestal bowl by Garrard & Co. with Celtic and paterae border, two swept handles issuing from the conforming pedestal, on raised circular foot, bears inscription, 12 3/4" over handles.

60. An EPNS circular tray, the raised border cast with fruiting vine, 14" diameter, another, with gadroon and bead border, on three claw feet, 11 3/4" diameter, both inscribed.

61. An Edwardian EPNS 3 piece tea service of oval fluted shape, engraved with scrolls and harebell pendant, the teapot with ivory finial.

62. An EPNS trophy vase, with everted rim and raised girdle, on domed circular foot, 13 3/4" high, inscribed.

63. An Edwardian glass claret jug, ovoid, cut with diamond shoulders and paterae, star cut to base, the silver collar hallmarked Sheffield 1908, spire stopper, 12" high.

64. A heavily potted terracotta green glaze flagon, baluster, with loop handles, 15" high and a green glaze pottery sleeve jug with entwined handle, 12 1/2" high (damaged).

65. A brass desk stand, the rectangular base fitted with two square inkwells with domed covers, quill tray and two scroll handles, marked W. T. & S. to the base, 10 3/4" wide.

66. A set of brass letter scales by De Grave Short & Co. Ltd. and weights to weigh up to 8oz. on wooden base.

67. A Cantonese famille rose oblong dish, enamelled with alternating panels of figural interiors and flowers with birds and insects, 8 3/4" wide.

68. A Victorian Majolica two handled platter, modelled with leaves and fern 11 1/2" wide.

69. An Edwardian oak smoker's cabinet, with brass strapwork handles and carrying handles to each side, with two doors enclosing a fitted interior of two short and one long drawer above an inlaid swivel panel, fitted with an Adams blue jasperware tobacco jar, relief moulded with a hunting scene 12" wide.

70. A frosted glass table lustre, having a compressed circular dish top, enamelled and gilt with scrolls, hung with prismatic drops 11" high.

71. A Royal Vinton pottery toilet service, printed with swans in a lakeland landscape, 9 pieces.

72. A Stonemason's mallet, turned beech table lamp, and a panelled baluster vase (3).

73. A pair of Victorian brass candlesticks, with knopped columns and on stepped circular bases, engraved with numbers, crown and VR. 8 1/4" high.

74. A Kaiser bisque porcelain figure of a dolphin, rising from a wave, 9" high, impressed no 654.

75. An early 20th C oak cased mantel timepiece, the silvered dial with Arabic numerals, gilt spandrels and flowers to the arch, 8 3/4" high.

76. A late 19th C brass table clock surmounted with an eagle over a baroque style case with sunburst sides, lyre motifs to front, the brass dial having enamel number tablets, 8-day movement striking a gong, 17" high.

77. A pair of mid-19thC German figure groups, each having seated girl to the centre of 2 floral encrusted cornucopia, on rococo base, 7" high. (1 AF)

78. A pair of Derby style 'Japan' pattern vases of compressed moon flask design, with gilt scroll handles, 7" high. (1 AF)

79. An Aynsley Commemorative plate, 90th Birthday of the Queen Mother.

80. A 19thC earthenware 'Greenleaf' part nursery dessert service, glazed green and moulded with leaves, comprising pedestal comport, an oblong platter and 5 plates, together with an 8" plate, similar.

81. A Victorian opaque glass table lustre, with frill edge, the bowl with gilt foliage, hung with prismatic drops 10" high.

82. A Chinese famille noir porcelain charger

83. Crown Staffordshire limited edition plaque, 80th birthday of the Queen Mother, together with Princess Anne Marriage plate.

84. A limited edition Cash Fine Art silk picture of The State Coach, boxed.

85. A Victorian needlework sampler by Susanna Bolton, 1858, aged 10. 18" x 11".

86. A Wedgwood blue jasperware planter with cherub musicians and tree decoration.

87. A mahogany Class B balance by W A Webb Ltd.

88. Queen Elizabeth the Queen Mother at Clarence House - John Cornforth.

89. A large Chinese blue and white ginger jar with Kangxi marks.

90. A Rockingham part tea service, pattern no 1212, painted in grey and gilt with scrolls, comprising 8 cups in 2 sizes and 4 saucers, printed factory mark in puce. c.1830

92. A large heavy cut glass fruit bowl, with stylised flower and leaf motifs, starcut to base, 10" dia.

93. A pair of brass mantelpiece ornaments cast as a horse and jockey at gallop, 5 1/2" wide, an African rosewood carved head, 7 1/2" high, a boxed set of wooden coasters incised with Japanese landscape and a cast metal stirrup, probably North African.

94. An Arts and Crafts copper ashtray, the border embossed with stylised plant forms in the Art Nouveau manner, an oblong copper dish, the well embossed with a squirrel and nut (2).
95. A heavy cut-glass fruit bowl, with cut and engraved flower motifs, star cut to base, 8" dia.
96. An early 19thC. porcelain dish of inverted square shape, centrally painted with birds in a landscape, butterflies and insects within a gilt dentil border, 7 1/2" square, (some wear).
97. A modern Poole pottery plate centrally decorated with flower spray within purple and green lines, 10" dia.
98. Six Minton Indian Tree pattern soup plates.
99. A Moscow porcelain wall plaque, the celadon ground reserved with panels of urns, flowers and other motifs in the Chinese manner, the ground painted overall with flowers and foliage within a Greek key and foliate border, 13" dia, together with a similar dish, 10" dia.
100. A Moscow porcelain wall plaque, the pink ground decorated with radiating panels of flowers alternating with panels of yellow, blue and green, in the Persian manner, 16" dia, another, 13 1/4" dia, and a similar dish, 11 1/2" dia, printed factory mark in red.
101. A Russian saucer dish, transfer printed and polychrome painted with a formal border of interlinking panels of flowers, the centre with flower spray, 10 1/2" dia, a matching bowl, 8" dia, blue factory marks, possibly Kuzentsov.
102. A Royal Copenhagen vase, baluster, decorated with sea gulls in flight, over the sea, 5" high, no 1138/88A.
103. A Medina turquoise glass bottle vase, with everted rim, 16 1/4" high, together with a sleeve vase with white cobweb overlaid enamel, 10 1/2", a German blue glass with wavy rim, on a slender stem and plain circular foot, together with a German glass vase, etched with flower and foliage.
104. Six Moscow porcelain bowls, variously decorated, 6 1/2" dia.
105. A pair of Moscow porcelain bowls, green ground painted with leaves, 4 3/4" dia, another pair, similar, with Persian crest and inscription, 4 1/2" dia, another bowl, 5" dia.
106. A quantity of Moscow hard paste porcelain tea and dessert ware, the magenta ground painted with circular panels of flowers, comprising demitasse and saucers, teapots, large platters, bowls and tea plates, printed factory mark in red.
107. A Moscow hard paste porcelain part tea service, the blue ground with flowered reserves, comprising demitasse, saucers, teapot and 2 plates, printed factory marks in red.
108. Spare lot
109. Five brass flow cups for paint/adhesive viscosity.
111. Kodak No. 4 Panoramic Camera.
112. Super Ozeck II 300ml lens.
113. Thornton Pickard Ruby Horizontal SLR Camera, cased.
114. Spare lot.
115. A glass dome.
116. A sterling silver footed dish, of circular outline, having a gadroon rim and pierced border, 9" dia, another similar, 6 1/2" dia, both marked 'Rogers Sterling' to underside.
117. A pair of EPNS tazza, of plain design, with raised borders, on knopped stems with raised circular foot, 10" dia.
118. An Indian silver plated coffee set, of 3 pieces, engraved with flowers and foliage, a similar small jug. (4)
119. An EPNS stand fitted with a sugar bowl and cream jug, of plain design, with hoop handle, on 4 bun feet, 8" high, together with a pair of tongs.
120. Five Art Nouveau tiles, decorated in low relief with stylised plant forms in turquoise.
121. An early 20thC ebony part dressing table set, and similar inc 2 silver mounted brushes (9).

122. A FIFA Italia '90 green glass bottle.

123. A gilt brass carriage timepiece.

124. An early 20thC oak cased timepiece, of canted oblong form with egg and dart moulded borders, with brass numerals to the open face, French movement 10" wide.

125. A mid 19thC Hancock 'Paris' pattern 'rumtopft' pail.

126. A pair of white metal tazza, the circular bowls supported on 3 cast uprights, on domed foot, 5" high, 4 1/2" dia, (tests as silver).

127. An Indian white metal rose bowl, mid 20th C of compressed circular shape, embossed with trailing foliage within shaped panels, having 2 scroll handles, on knopped stem and domed stepped foot, fitted with a radiating grill with lobed finial, 12" high, 16" over handles, (tests as silver).

128. An EPNS spirit kettle and stand, of the Art Nouveau period, with raffia handle, the stand with lamp and pierced kettle brackets, circular base raised on 3 feet, 15" high.

129. A wooden pond yond with white painted hull, "teak" deck and cloth sides, stamped "Star Yacht, Birkenhead", 18" long, 25" high.

130. A 19thC slate mantel clock of eight day chiming movement, with Brocot movement, 2 part dial with Roman numerals, 14 1/4" high.

131. An early 20thC brass table lamp, with panelled tapering column and circular foot, 11 1/2" high.

132. A 19thC. Bavarian Violin with 2 piece back, straight grained, the scroll carved as a grotesque mask, dark brown varnish, 23 1/2" long, together with a bow, in wooden case. (No Label)

133. Three early 20thC children's puzzle boxes, printed with chromolithographic scenes, and a qty of children's books etc.

134. A Davenport ironstone jug, of octagonal baluster form, polychrome and gilt with chinoiserie pattern, serpent handle, 3 1/2" high.

135. A Mason's ironstone plate, polychrome and gilt with chinoiserie pattern, 9 1/4" diameter, another 10 1/4" diameter, together with an Ashworth type soup plate, 10" diameter.

136. A "Masons" ironstone jug, of panelled baluster form, polychrome and gilt with chinoiserie panels on a green ground, underglaze blue neck, and serpent handle 7 1/4" high.

137. A set of six Avery brass circular weights from 1oz. to 4lb.

138. A flambe bottle vase, with compressed body and crested rim, 8 1/4" high.

139. A Victorian pottery mug, printed in monochrome with Yorkshire legend and figural interior, 4" high, another, monochrome printed with Greek Artefacts, in the "Panthes" pattern, 4" high.

140. A Viners silver plated 4-piece London shape tea and coffee service together with chased serving tray.

141. Silver plated and bone handled fiddle pattern cutlery.

142. An EPNS 4-piece tea service of rounded rectangular form, the teapot and hot water jug with composition handles and finials, (hot water jug AF), inscribed with initial 'M'.

143. A qty of EPNS fiddle and thread pattern tableware.

144. A 21 button Anglo System Concertina, the fretted rosewood end panels with bone buttons, 6 1/2" across in leather covered case.

145. A 21 button Concertina by Broad Reeds, the rosewood and brass end plates with bone buttons, 7" across.

146. A Symphonium Simplex Musical Box, German, circa 1905, 5 3/4" discs, in a Faux rosewood box with flower printed lid, 7 1/2" wide and 16 discs.

147. A Minton "Grasmere" pattern part dinner service, comprising 24 plates in 3 sizes and a covered tureen.

148. A Shelley tea set, the cups with flared bowls and ring handles, printed in brown and painted with flowers, together with a part dessert service of

the same design, comprising: 12 plates, 12 saucers, 11 cups, 2 large plates, cream, sugar bowl, dessert bowl and four dishes, pattern no. 12025.

149. Copperware: Hurricane lamp, gallery tray, 2 Middle Eastern cooking pots, ornamental fish and a relief moulded wall plaque.

150. An Art Nouveau copper coal bucket, circular, embossed with a horse and rider flanked by foliate scrolls and a lower border of simple leaf forms, with lion mask and ring handles (the rings now missing) 13 1/2" diameter.

151. A brass table lamp of neo classical influence, with a silk shade, 37" high overall.

152. A Staffordshire baluster jug, painted and gilt in underglaze blue, pink and green with flowers in the Chinese manner, 19thC, 9" high, an Imari bowl, painted in typical palette, a pottery milk jug and a flour shaker.

153. A modern Poole pottery baluster jug painted overall with flowers, 7" high.

154. A modern Poole Pottery shallow dish, painted with a band of birds and flowers, 9 3/4" diameter.

155. A Poole Pottery small candlestick, painted with geometric flowers and foliage in typical palette, 4 3/4" dia.

156. A Carltonware shouldered ovoid vase, with everted rim, painted with flowers on a blue ground, above a lower border of wavy lines and flower forms, 10 1/2" high (hairline cracks to base).

157. A Belleek shell moulded teapot, with coral handle and spout, black transfer mark, early 20thC, (spout damaged), together with a 19thC porcelain teapot in the Rockingham style, melon shape, decorated with gilt flowers and scrolls. (2)

158. A set of 6 Art Deco glass sundae dishes, with dot enamelling and black painted foot.

159. An Edwardian EPNS boat shaped fruit bowl by Cattaneo & Co, Leeds, embossed with scrolls, foliage and pierced with quatrefoil trellis, on rocaille feet, 12 1/4" wide.

160. A 19thC copper urn of Egyptian influence, with ovoid body, bead borders and handles, with brass tap, on square raised base, 20" high.

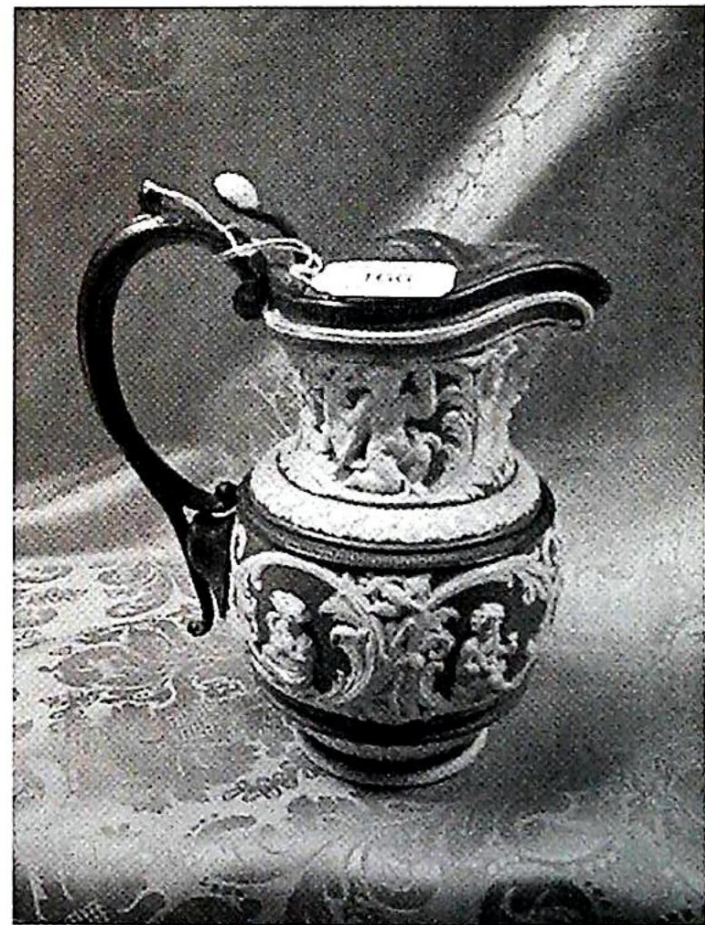
161. A Fenton china tea service for 6 persons, printed in black with a border pattern of acanthus leaves within gilt lines.

162. An EPNS stand, cast as a spread eagle on a rocky base and moulded plinth, 8 3/4" high.

163. An Indian brass toasting fork cast with temple diety, and with horn handle, 20" long.

164. An early 20thC mahogany and brass fishing reel, together with 3 brass reels. (4)

165. Two GPO Bakelite and metal candlestick telephones, together with 3 bell boxes.



LOT166

166. A stoneware jug by Charles Meigh & Sons, moulded in relief in white on a blue ground with classical scenes emblematic of the Four Seasons, pewter hinged cover embossed with acanthus, scroll handle, bears registration diamond for 25th August 1852, 8" high.

167. A 19thC Staffordshire pottery figure group painted in underglaze blue, orange and green, on moulded bocage base, 9 1/2" high, (repaired).



LOT 168

168. A Staffordshire 'Pratt' type pearlware figure of a youth, in yellow frock coat and breeches, seated in a shell moulded chair, on shaped base, 8 3/4" high.

169. A pair of Parian figures of a Shepherd and Shepherdess, in 18thC costume and with sheep and dog recumbant at their feet, on circular bases, 19thC, 9" high. (one AF)

170. A 19thC. French bronze figure of a classically dressed youth, leaning against an Ionic pillar, 14" high.

171. A 19thC. bronze Animalier figure of a wild boar, 7 1/2" long.

172. After the Antique. A bronze group depicting 'Romulus and Remus', on square base, 19thC. 9" wide.

173. An Italian bronze head and shoulders bust of a Roman lady, with silvered eyes, on oblong plinth, 8" high.

174. A 19thC Staffordshire pottery harbour group, of a courting couple,

highly coloured and with gilt highlights, 14 1/4" high.

175. A Crown Devon musical mug 'On Ilkla Moor Baht 'At', moulded in low relief with characters from the song, loop handle, 5 1/2" high.

176. An 18thC. Continental brass candlestick with removable sconce, on turned baluster knoped stem and high conical base, 11" high. (AF)

177. A Japanese bronze censor, cast with interior seal signature, and serpent handles, with hardwood pierced cover set with agate finial, 3 1/2" dia.

178. A 16thC. French bronze mortar cast in relief, 4 1/4" dia.

179. A cased Mandolin.

180. Spare lot.

181. Spare lot.

182. A Victorian EPNS baluster tankard, with scroll handle and acanthus thumbpiece, 5" high, inscribed 'Evans, Covent Garden Limited', on a ribbon crest, together with another 1/2 pint, by Mappin & Webb, with loop handle.

183. A gilt-brass clock garniture, heavily cast with strapwork, masks, shells, the circular dial with Roman numeral reserves, of 8-day chiming movement, together with a pair of 4-branch candelabra. 24 1/2" x 27" respectively.

184. A 19thC tin bait box and old fishing rod.

185. An early 20thC leather covered jewellery casket, the interior having a fitted lift out tray, lined in red satin.

186. A late 19thC mahogany collar stud box, rectangular, 8" wide.

187. A Victorian rosewood box inlaid with mother of pearl, 8" wide.



LOTS 171 and 172

188. Three glass apothecary's jars, 2 inscribed, together with a Horlicks malted milk jar.
189. A large collection of First Day covers.
190. A large collection of postcards, mainly topographical, some humorous including Donald McGill.
191. A large collection of 20thC topographical postcards.
192. A box containing an assortment of tins, boxes, some containing buttons and buckles, etc.
193. A 19thC Spode cushion shape dish with transfer printed border.
194. Two Hornby clockwork locomotives(AF) and 2 vols Works of Flavius Josephus.
195. A pair of Victorian canary opalescent pressed glass baskets and blue glass enamelled circular scent bottle.
196. A vintage car luggage top box.
197. A reproduction rococo cast brass companion set with stand.
198. A Victorian stepped brass fender with gallery.
199. A brass and wirework spark guard.
200. A wickerwork picnic hamper.
201. A Carlton Ware Dish, modelled and glazed with the "Buttercup" pattern circa 1940, 10 1/4 in wide.
202. A Burleighware pottery jug moulded in the form of a corn stook with rabbit to base, 7 1/2" high.
203. A pair of late 19thC ewers with porcelaneous ovoid bodies, hand painted with floral decoration and mounted with gilt metal top and brace, 27" high.
204. A pair of 19thC Staffordshire spaniels, 9" high. (AF)
205. A Wedgwood ribbed and flared vase designed by Keith Murray, 8 1/2" high. (Small chip to base.)
206. A pair of Myott water jugs decorated in bands of orange and brown with pinched necks.
207. A 19thC Staffordshire model of a castle portal, 9" high.
208. A 19thC Staffordshire flat back figure of a young girl, stylised bird and kilted gentleman on an orange sofa, 10" high.
209. Two Sylvac buff pottery models of West Highland Terriers.
210. A Sylvac ewer moulded with lotus leafs and crane handle, 8" high.
211. A Sylvac flared vase moulded with a bacchanalian scene, 10" high.
212. A 19thC Staffordshire blanc de chine toby jug, 9" high.
213. A 19thC Staffordshire toby jug decorated with blue sponged tunic and trousers, on a rustic base, 7 1/2" high.
214. A 19thC Chinese baluster vase decorated with birds and flora, 11" high.
215. Three Victorian pottery cheese dishes.
216. Royal Doulton Indian Tree tableware comprising 2 square cushion dishes, 3 side plates and an oval bowl.
217. A turned walnut and yew gavel.
218. An Arthur Wood water jug moulded with floral decoration over a brickwork ground.
219. Two leather straps with buckles and 4 square brasses.
220. A Victorian brassbound mahogany writing box.
221. A 19thC Staffordshire stirrup cup in the form of a foxes mask. (Heavily restored.)
222. A moulded wax polychrome panel depicting a Cavalier on horseback, 10" x 9".
223. Royal Commemorative ephemera including London Illustrated News, Apollo Magazine, Newspaper articles, etc.
224. An early 20thC silver plate and glass dessert cruet, the stand incorporating a flute edged cream jug and sugar bowl and fitted with 2 frosted glass dishes.
225. A Nottingham lace table cover.

226. Kodak No 1A pocket folding camera.

227. A Royal Wedding 1973 boxed plate, trinket box, bowl and mug by Crown Staffordshire, a Silver Jubilee mug and a Wedgwood ash tray.

228. Godden. Encyclopaedia of British Pottery and Porcelain Marks.

229. A graduated set of 3 oak tea trays and another example.

230. A Bell's Whiskey decanter - Charles and Diana

231. A Bells Whiskey decanter - Queen Elizabeth the Second 60th Birthday.

232. A Bells Whiskey decanter - Andrew and Sarah

233. A Bells Whiskey decanter - Princess Eugene.

234. A Bells Whiskey decanter - Prince Henry.

235. A Bells Whiskey decanter - Prince William.

236. A Victorian brass bound oak bucket with ring handles.

237. A hammered copper circular planter.

238. Four silk bookmarks inc. a Stevens

239. Plated cutlery sets. (5)

240. A Victorian brass oil lamp and stoneware warming plate.

241. Olympus Trip 35, Canon QL 35mm cameras and further lens(3)

242. An EPNS oval 2-handled tray engraved with a panel of flowers, scrolls, within a palmette border, the rim fluted, 29 1/2" wide.

243. A G.E.C. bakelite radio, model 5645.

253. A fine pair of cast silver-gilt ROYAL MARRIAGE SPOONS, having foliate stems, figural crown knops, the bowl having crest in relief, set in a satin and velvet lined case. 8 1/2". NB. These spoons were issued to guests on the occasion of the wedding of Miss Betty York (Lincolnshire Girl) and Prince Wladyslaw Czartoryski in 1949. Sold together with ephemera.



LOT 253

254. An Opticians Specimen Case for 100 glass eyes, containing a varied selection of 96 examples.

255. A Victorian rise and fall style brass and iron hanging lantern converted for electricity.

256. A large quantity of stamps.

257. A small stamp album.

258. A selection of stamps including first day covers.

259. A 1930's oak chiming wall clock.

260. An early 18thC longcase clock, the green lacquer case having chinoiserie decoration throughout, the 12" brass square arch dial having cast applied spandrels, silvered silent/strike bezel to arch with a floral engraved centre, the silvered chapter ring having matted centre and subsidiary seconds dial and date aperture, maker NICHOLAS PREVOST, London, 8-day movement striking on a bell, 7'3" high

261. A circular brass footstool with dralon upholstered cushion, on 3 wooden bun feet.

262. A pair of cast-iron strapwork door hinges.

263. A Benares brass tray together with folding wooden stand.

264. A cast iron and brass coal scuttle having a sloping front embossed with an anamalia landscape within scrolls and fixed handle to the top, on reeded feet.



LOT 260

265. A 19thC mahogany box, the cover fitted with brass corners and lined in felt, 16" wide, (crack to the lid).

266. A Masonic apron, Steward's medal for 1958 and a pair of white gloves in leather.

267. A circular brass jam pan with iron loop swing handle, 13" dia.

268. A quantity of textiles including lace, linen, crochet work, etc.

269. An Edwardian oak wall clock, with silvered dial, Arabic numerals, of 8-day striking movement. 31" high.

270. A 19thC. German wall clock in stained wood case, with enamel 2-piece dial with Roman numerals, of 30-day striking movement. 24" high.

271. A wooden model of a Vulcan bomber, on wooden stand. 24" x 31".

272. A wooden model of the BBMF Lancaster bomber PA474 'City of Lincoln'. 30" x 37".

273. A set of Henry Cotton golf clubs in an old canvas golf bag.

274. A quantity of early 20thC lace trimmed and crochet linen including table cloths, doilies, a small reptile skin bag, 2 pairs of leather gloves, etc.

275. A quantity of construction toys.

276. A quantity of Meccano.

277. Triang Minic and other vehicles (a lot)

278. Triang Minic: London double decker bus with 'Bovril' and 'Ovaltine' advertisements, Green Line single decker, 'Dorking' fire engine, removal lorry, 2 steam engines, etc.

279. A 19thC copper milk pail and 2 other pieces of copperware.

280. A wooden trunk containing a quantity of 18th/19thC porcelain, pottery and glass, (all very AF).

281. A optician's oak trial case of test lenses.

282. A pair of Arts & Crafts iron chandeliers, c.1930.

283. A pair of Arts & Crafts iron chandeliers, c.1930.

283A. A pair of Arts & Crafts iron chandeliers, c.1930.

284. A copper ladle with iron handle, 19", bellows, brass jug and trivet. (4)

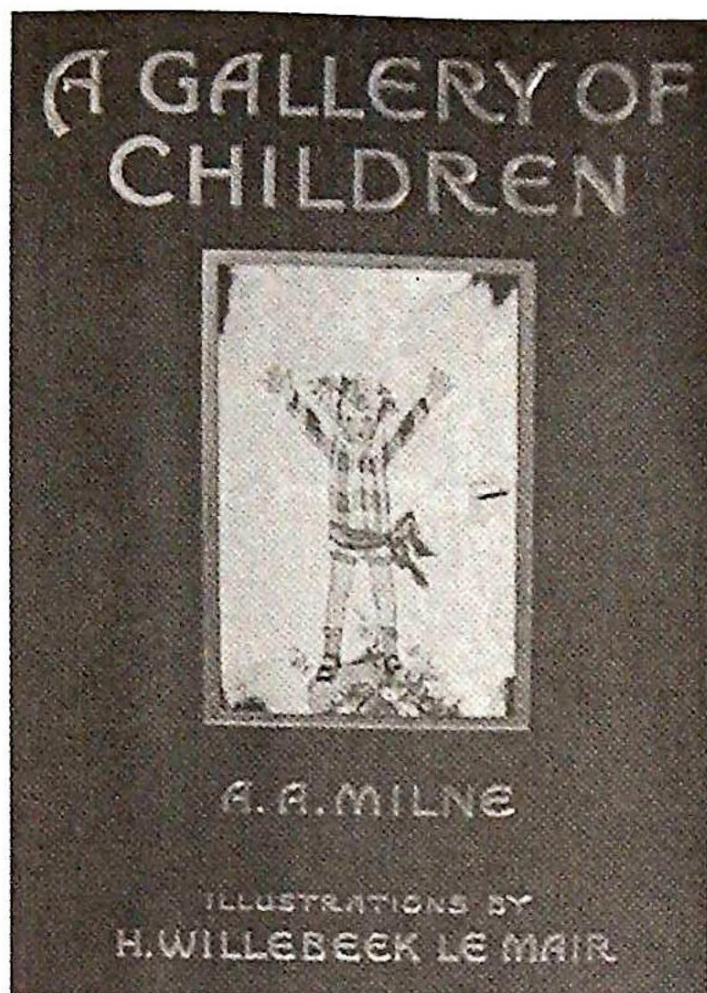
285. A toleware purdonium with cast scroll handles and ornament, the top inset with a hand coloured engraving depicting animals and figure in a landscape, the fall front having a painted panel of a waterfall, with small shovel fitted to the rear. 18" x 15" (re-painted).

286. A pair of buffalo horns mounted on wooden shield, 45 1/2" across, together with a pair of antlers.

287. A cast iron shield shape boot scraper on oval dished base.

288. A silver topped ebony walking cane, together with an 18ct gold mounted umbrella, etc.

289. A silver capped walking stick and 2 others.



LOT 303

- 290. A part made patchwork quilt, crochet mats, linen cloths, etc.
- 291. A small quantity of Victorian and Edwardian tablecloths, embroidered, drawn thread and crochet.
- 292. A quantity of Victorian lace including collars, panels, trimmings, etc.
- 293. A Victorian white linen nightdress with lace trimmings, 2 drawn thread tablecloths, etc.
- 294. A box of Victorian and Edwardian children's nightwear, bodices, lace trimmed cloths etc.
- 295. A box of early 20thC linen, lace, madeira napkins etc.
- 296. A wicker basket containing assorted linen, lace etc.
- 297. Two boxes of assorted linen and lace and sundry fabrics.
- 298. A fine quality linen banqueting cloth centrally decorated with embroidered and drawn thread flowers and foliage and conforming continuous border, approx 97" x 144", another worked with butterflies and blossom

around a central drawn thread medallion, with conforming borders, approx. 116" x 80" and two others (4).

299. A pair of ecru lace panels appliqued with ribbons, flowers and foliage, approx. 96" x 74" 19/20thC.

300. A qty of monogrammed linen sheets, lace trimmed sheets etc (early 20thC).

301. Brayshaw T. & Robinson R. - A History of the Ancient Parish of Giggleswick, London 1932, Frontis map and 18 ills. (not checked), cloth boards and Riley W. - A Village in Craven, London 1925, 12 col. ills. by E. Brockbank, cloth boards and Sanderson G. - Architectural Features of the Settle District, London 1911, paper boards, woodcut decor. (3).

302. Whitaker T. D. - The History and Antiquities of the Deanery of Craven in the County of York, London 1805, frontis portrait of the author, illus. aquatint, engravings, plans and charts throughout the text, marble end papers, full calf boards gilt decor, some foxing and staining, front board loose.

303. Milne A. A. - A Gallery of Children, London 1925, ills. Le Mair, "Saida" cloth boards, paper decor (torn), gilt.

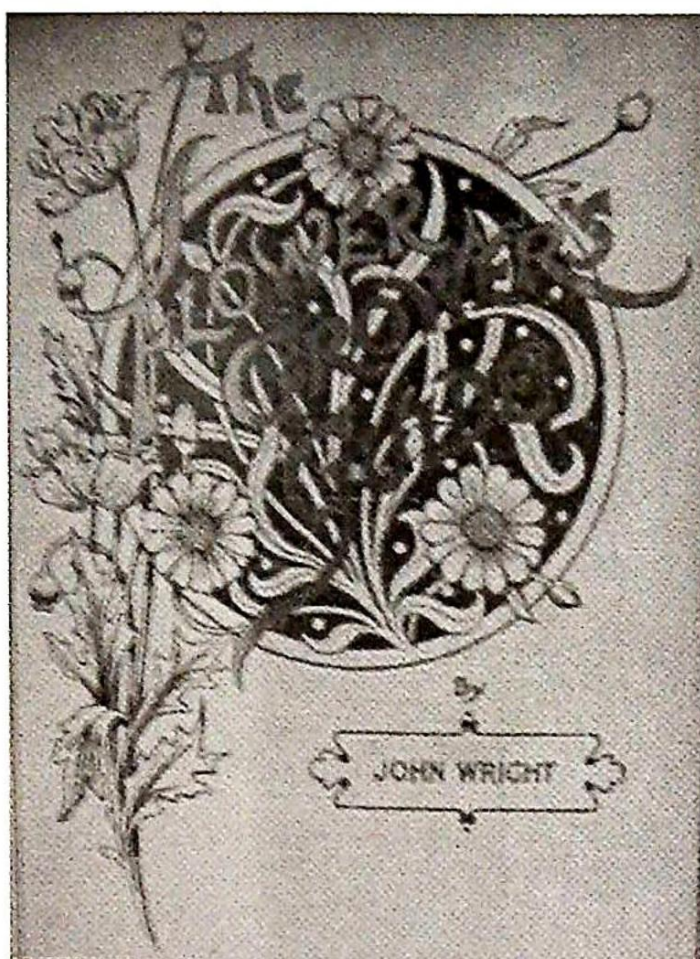
304. Milne A. A. - The Christopher Robin Story Book, London 1929, ill. Shephard, cloth boards, gilt decor, spine torn, slight staining, together with six other children's books.

305. Two stamp albums, GB and World, early 20thC and onwards, together with a small qty of postcards and two booklets.

306. Hunt J. - The Ascent of Everest, London 1953, orig. cloth boards, dust wrapper, slightly frayed on spine.

307. Dickens (Charles) - Memoirs of Joseph Grimaldi, Ed. Boz London 1846, 1 vol. ills. Cruikshank, cloth boards, and three other misc vols (4).

308. Gould (Robert Freke) - The History of Freemasonry Ed. D. Wright, London, c.1920, 5 vols. Orig. cl. gt, dust wrappers slightly frayed.



LOT 317

309. Johnson (Ben) - Dramatic Works, London 1811, 4 vols. marble boards and calf spines (AF).

310. Girard (S. Louis) - The Daily Express Children's Annuals No. 2, London, no date, 6 pop-up models, cloth boards, spine detached, together with two other children's books (3)

311. Greenleaf (Horace) - Britain's Big Four - The Story of the London Midland and Scottish, London & N.Eastern, G. Western & Southern Railways, London 1948, cloth boards, and Greenleaf (Horace) & Tyers (G) - The Permanent Way - Britain's Railroads in the Making, London 1948, cloth boards (2).

312. Hissey (James John). Over Fen and Wold, London and New York, 1898, ill. orig. cl. gt. (1)

313. Shakespeare (William). The Heroines of Shakespeare, London & New York, no date, 48 steel engraved portraits, text in English and French, orig. cl. gt. decor and Clarke (Dr. A) - Foxe's Book of Martyrs - London, no date, orig. cloth boards (2)

314. After Kiepert (Henrico) - Atlas Antiquus, by J. Sulzer, pub. D. reimer Berlin, 12 maps, marble boards, 19thC and 5 paper bound vols or divisions of "Old England".

315. Kipling, Rudyard - Works, London 1920-27, 23 vols, red calf, gt spines.

316. An early 20thC leather bound autograph book, and a small photo album (2).

317. Wright (John) - The Flower Grower's Guide, 6 divisions, London, no date, circa 1897, chronolith. plates by Hamilton & Low, tissue guards, original decor. cloth boards, spines and corners slightly frayed.

318. A collection of loose and mounted stamps, GB and the World, mint and used, early 20thC and later.

319. Two albums containing a collection of 1st Day Covers dated from 1968, together with a quantity of stamp booklets.

320. A small collection of mint GB stamps, 1966 and later, unmounted (in folder).



LOT330

321. A Simplex album with GB and Europe stamps, mint and used, mounted and unmounted.

322. A loose leaf album containing a general collection of used GB stamps and sheets of 1972 Post Office stamps.

323. Delavigne (Casimir). Le Havre, 24 sepia photographs of the town including shipping, original cloth boards, gilt decoration, also 5 Racing Form books, Golfer's handbook and one other. (8 vols)

324. White (William). History Gazetteer and Directory of Lincolnshire, London 1892/3, 5th edition, rebound, cloth boards, calf spine; and Kelly (L) Directory of Cambridge, Norfolk and Suffolk, London 1925, orig cloth boards. (2)

325. Brett (Walter). The New Book of Gardening, London, no date, 3 vols, orig cloth boards, gt.decor.

326. After Gainsborough - "Portrait of Lady Petrie", coloured mezzotint, signed in pencil by the etcher c. 1913, plate size 20 1/2" x 13 1/2" its companion "Lady Milna" by Herbert Sedcole, signed in pencil by the etcher, blind trade stamp, plate size 17 1/4" x 10 1/4" in contemporary gilt frames.

327. After Bartolozzi - Ladies and amorini, sepia soft ground etching, 9 3/4" x 7 1/4" oval, black/gilt glass, contemporary gilt frame.

328. After Paul Soyer - Child with rabbits, chromolithographs, circa 1900, 9" x 7", and companion print After Deraux, child with saucepan, 9 1/4" x 7".

329. J. Cot? Fishing boats off the coast in a choppy sea, oil on canvas, signed, 20" x 30", gilt frame. Illustrated on front cover.

330. D. Hilson? (19thC), "The Blind Piper" - oil on board 9 1/4" x 12 1/4" gilt frame, inscribed with artist and title on frame verso.

331. 19th Century School. Grazing sheep in a meadow, figures in a horse and cart in the distance, oil on board, 9" x 12 1/4" gilt frame.

332. A late 19thC beadwork panel with swallows in flight over water, with a basket of forget-me-nots to the left, 8 1/2" x 17 1/2".

333. A pair of Victorian sepia photographic cartoons, "The Final Heat for the Boro' plate, Peterboro' General Election 1868" and "The Fight for the Membership and 400 . . . 1868" in maple frames 15" x 21"

334. W. H. Earp. (19thC British). Fishing boats in coastal waters, with figures and moored dinghy on the beach, headland beyond, watercolour, signed 10" x 21"

335. W. H. Earp (19thC British). Scottish loch and mountain landscape, with fisherman on the bank and sailing boats, watercolour, signed 10" x 21 1/4".

336. Harrop (Publisher) "The Gardener's Wife", chromogramme, subscription issue, image size 14 1/4" x 19".

337. T. Hodson (19th/20thC British). Woodland pond with ducks, watercolour, body colour, 9 3/4" x 11 1/2".

338. After Cruikshank? "A General Panic at Epsom" caricature coloured etching orig. pub. Fores 1826, later issue, plate size 9 1/2" x 14".

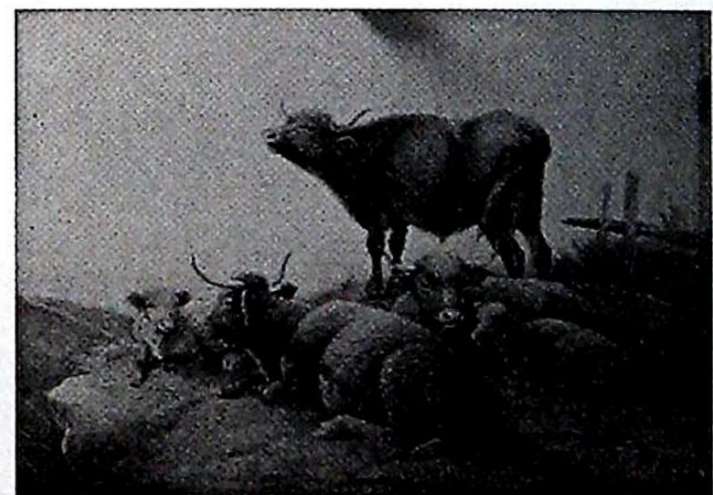
339. After G. Sheridan Trowles. Mother and child frolicking in a meadow, workers beyond, chromolithograph, c1902, 23 1/2" x 14 1/2".

340. A folder containing a qty of 18thC black and white Religious engravings, mainly large folio.

341. A 19thC woolwork picture "Flight into Egypt" on stretchers 27" x 20 1/2".

342. Eighteen 19thC costume plates: military, civil, aristocratic, and "modes de femmes" unframed.

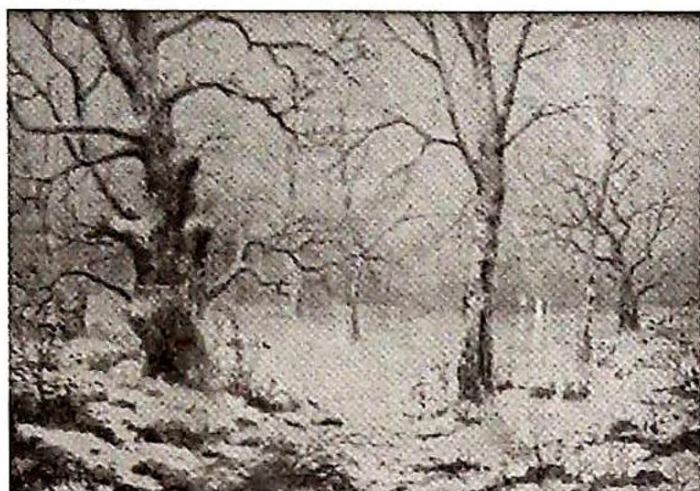
343. * Cowderoy (19th century), Study of a Nubian warrior at the temple door, watercolour, signed and dated '97, 9 1/4" x 6 1/2".



LOT 344

344. Frederick E Valter (1850-1930 British). Cattle at rest in a landscape, watercolour, signed and dated 1910. 9 1/4" x 13 1/2".

345. Douglas Smart (1879-1970). Landscape sketches, watercolour town scene and sketches. Including works from Stamford, Crowland, Boston & Kings Lynn.



LOT 346

346. J Halford Ross. Winter landscapes with wildlife, a pair, watercolours, signed, 7" x 10 1/4".

347. A G Brown. An Arab, encamped at the edge of a village and lake, signed A G Brown RSW, watercolour, 10" x 17".

348. John Bangay (after), Lincoln Cathedral from the Castle, colour print, 19" x 22 1/2".

349. Harold Thornton (after). "Rydal Water" coloured etching, 8 1/2" x 12 1/4".

350. Jodocus Hondius (after). "The Countie and Citie of Lyncolne", double page map, uncoloured, with coats of arms and city plan c.1610 16" x 21 1/2"

351. Ingall. Landscape watercolour.

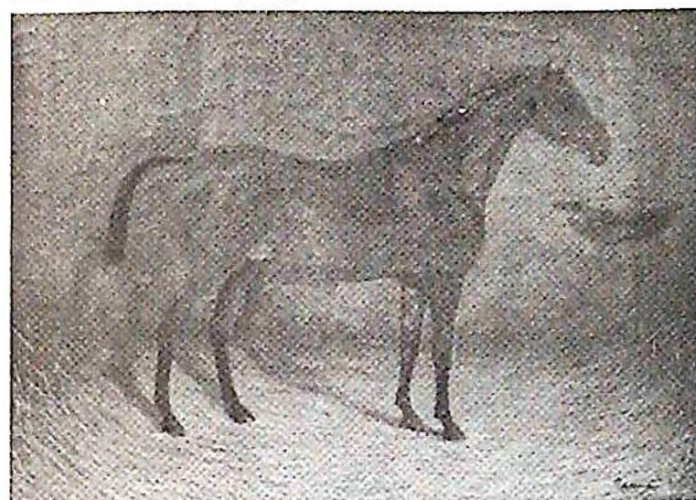
353. 19thC/20thC English School. 'Settle Church and Bridge', oil on canvas. 24" x 18".

354. Cyril Whitehead. (20th C). 'Welltown Manor, Nr Boscastle', oil on panel, signed, 20" x 24", moulded frame.

355. A gilt framed red damask panel embellished with two 18thC petit point pockets and two embroidered panels.

356. Sydney Walton (20thC). Self portrait, 1/2 length portrait of the artist in a beret, holding brushes, oil on board, signed. 25" x 20", artist's label verso.

357. Nancy Bailey. The Dobey, St Ives, oil on canvas, signed. 30" x 20".



LOT 358

358. T B Whitby. Pair of Chestnut Hunters, oil on canvas, signed, 20" x 24"

359. 19thC School. Children playing on a beach, oil on canvas, unsigned. 17" x 21".

360. After Henry Alken. Fox Hunting, set of 4, soft ground etchings. 5 1/2" x 8 1/2".

361. After George Northouse. 'Boston May Sheep Fair', reproduction colour print. 16" x 20 1/2".

362. Thomas Moule. Printed map of Suffolk, showing the railways, vignettes of Euston Hall and Heveringham Hall, hand coloured, 19thC. 9" x 11 1/2".

363. Robert Morden. Printed map of Suffolk, hand coloured, late 17thC. 16 1/2" x 18".

364. A coloured etching of Jack Russell terriers in a landscape, no 45/150, indistinctly signed in pencil by the artist, 9" x 11 1/2"; together with an illustration of prize winning bulls, 19thC. (2)

365. Thomas Moule. Printed map of Suffolk showing the railways, with vignettes of Euston Hall and Heveringham Hall, hand coloured, 19thC. 7 3/4" x 11".

366. A quantity of children's books including Enid Blyton, Beatrix Potter, School Friend Annuals, etc.
367. G.C. Outward Bound and fresh breeze, pair of oils on board marine scenes in moulded gilt arch frames. 17" x 10".
368. Elizabeth Sharp. The Belvoir at Knipton, Ltd edition print.
369. Three framed prints of sea birds.
370. George Stubbs (after). 'Mambrino', study of a grey in a landscape, image size 8 1/2" x 13".
371. E Francis (20thC British). Church Interior with figures, watercolour over pencil, body colour, signed and dated May '13. 13" x 10 1/4".
372. An original Pears print entitled 'Fruit and Flowers'.
373. After E A Douglas. Three plate engraving entitled 'Sadling', 'A Close Finish' and 'Going to Weigh'.
374. Alfred Praga. Interior scene en griselle water colour of 2 ladies in conversation, signed Alfred Praga '95. 13" x 9 1/2".
375. James Page. 'Sailors Disembarking in a Cove'. 7" x 10 1/2".
376. 19thC School. Tavern scene with 3 figures around a cricket table, oil, 6 1/2" x 9".
377. A.McK. Caudebec-en-caux, street scene titled and initialed 1944, watercolour, 10 1/2" x 9".
378. L K. Parisienne street scene, oil on board, initialled, 10 1/2" x 29".
379. A Victorian brass patent corkscrew.
380. A signed Japanese fruitwood Inro, in the form of a wide bodied koi fish.
381. A signed Japanese ivory netsuke study of a Geisha in finely decorated kimono carrying a jare of incense sticks.
382. A signed Japanese ivory netsuke study of a group of six noh play masks.
383. A signed Japanese ivory netsuke a study of Mu Jima the mermaid of mythology taunting a seamonster.
384. A signed Japanese ivory netsuke a study of Okame the famed temptress Geisha of mythology.
385. A signed Japanese ivory netsuke a study of a villager collecting frogs in an open basket by his side.
386. An Edwardian stick pin and a hinged engraved bangle stamped 9ct.
387. Various small gold and silver bar brooches and a carved mother of pearl brooch.
388. A yellow metal Albert, fob and set of watch keys.
389. A silver bracelet with various charms. (12)
390. A large quantity of costume jewellery.
391. Jewel box and contents of costume jewellery.
392. Period costume jewellery including some jet and diamante.
393. A diamond solitaire ring, diamond of 0.50ct approx mounted weight, set in white metal claw setting to yellow metal shank, stamped 18ct.
394. A quantity of pen knives and old travel cutlery, etc.
395. A selection of mother of pearl handled silver pen knives.
396. A large quantity of mother of pearl and silver handled pen knives.
397. A silver card case, silver handled penknives and other small silver items.
398. A silver fob watch on travel stand.
399. A collection of mother of pearl and other handled pen knives.
400. A quantity of assorted coins.
401. A silver 5-bar toastrack, of ogee form, Sheffield 1922.
402. An Edward VII silver bon-bon dish, with chased and pierced borders, on four bun feet, 4 1/2" wide, Birmingham 1901.
403. A 19thC glass trinket box of hexagonal form, the cover reverse etched with a Dutch figural landscape, within an encircling metal frame, set with coloured stones, 2 1/2" wide.

404. A pair of George V silver miniature photograph frames, of rectangular form with moulded borders, 2 3/4" x 2" Birmingham 1916.
405. A cut glass dressing table jar with embossed silver cover, 2 1/2" diameter, Chester 1904, together with a cut glass hair tidy with white metal cover.
406. A George V period cut glass eau de cologne bottle with silver cover, 4" high, Birmingham 1919 (AF).
407. An Edward VII silver vesta case, engraved with leaves, Birmingham 1908, a silver cigarette case, 1939, and a silver whisky decanter label, modern.
408. A 19thC green and clear glass scent bottle of waisted form, white metal hinged cover with inner glass stopper 3" high.
409. A George V silver photograph frame, of shaped rectangular form, with moulded border, on easel stand, 6 3/4" x 4 1/2", Birmingham 1921.
410. A George V silver photograph frame, rectangular, with beaded border, on easel stand, 6 1/4" x 4 1/4", Birmingham 1924.
411. A pair of George V silver photograph frames, rectangular with arched tops, 7 1/2" x 5 1/4" Birmingham 1917.
412. A sterling silver shell dish, 5" wide (modern).
413. A machine turned silver cigarette case, 5 1/2", London 1958, another, with silver gilt border, 3 1/4", Birmingham 1936, 10ozs. gross.
414. A George V silver 5 bar toast rack 2 3/4", Birmingham 1935, weight nominal.
415. A set of six silver teaspoons of Art Deco design with reeded edges, by Elkington & Co. Birmingham 1938, cased.
416. A set of six silver teaspoons of Dubarry pattern, Sheffield 1961, cased.
417. A part set of Victorian silver rat-tail pattern teaspoons, Birmingham 1896 (5 of 6) - case damaged.
418. A set of twelve Edward VII silver teaspoons and matching sugar tongs, with foliate engravings and initials, Sheffield 1904, in fitted case.
419. A George V silver two handled rose bowl, with slightly everted rim, on circular stepped pedestal foot, inscribed, 9" over handles, Birmingham 1927, 12 ozs.
420. An Edward VII silver golf trophy, with knopped pedestal, on circular foot, 3 3/4" high, 1907 London, another, two handled trophy, London 1921, 3 1/2" high. Inscribed 1: Old Granthamians Golf Challenge Cup. 2: Grantham Golf Club Victory Bowl 1922.
421. A George V silver two handled trophy, with scroll handles and knopped pedestal, Birmingham 1932, 4" high. Inscribed BPGC Clements Bowl 1933.
422. A silver golf trophy, the rim cast with the legend "Souvenir Dunlop Golf Ball Hole-in-one" mounted with cross golf clubs to the front, Birmingham 1931, 1 3/4" high. Inscribed AEC Chambers Belton park Golf Club 18-6-31; c/w Dunlop No.4 ball.
423. A pair of silver St. Leger Bi-Centenary Commemorative goblets, 1976, with everted rims, on baluster stems and circular foot, 4 1/2" high, 6ozs. gross, in presentation case with certificate.
424. A pair of gentleman's silver backed brushes with engine turning, centrally engraved with initials, Birmingham 1919.
425. A silver 3-piece tea service, Sheffield 1933, of irregular octagonal shape, on paw feet, the teapot with composition handle and finial, 28ozs gross.
426. Four Victorian silver fiddle pattern dessert spoons, London 1953, 5ozs.
427. An early 20thC button hook and shoe horn, the silver wrythen handles with tiger finials, hallmark rubbed.
428. An early 20thC button hook and shoe horn, the silver handles cast with acanthus terminals, 1914.

429. A George V silver mustard, oval, with reeded borders and scroll handle, the domed cover with acorn finial, Birmingham 1919, together with a condiment spoon, weight nominal.
430. An Edward VII silver travelling ashtray, fitted with a spring clip and cigar stand, London 1907.
431. A silver machine turned cigarette box, engraved with initials, a silver backed hand mirror, 2 brushes and shoe horn, various dates, early 20thC.
432. An early George III silver teapot, by Charles Wright, ovoid, the flush hinged cover with flower and foliate finial, double scroll handle, scroll thumbpiece and ivory heat exchangers, with later applied mask ornament and engraving, London 1769, 15ozs.
433. Three pairs of Georgian silver sugar bows with bright cut decoration.
434. Three pairs of Victorian silver sugar bows.
435. Three pairs of Victorian silver sugar bows.
436. A silver pistol handled carving set comprising knife, fork and steel, Sheffield modern.
437. A George V silver 3-piece tea service, by Walker & Hall, of boat shape, with gadroon moulding to the rims, the teapot with composition handle and finial, on bun feet, Sheffield 1924/25, 42ozs.
438. A 4-piece planished silver tea service, of compressed circular outline, the teapot spout moulded with acanthus leaf, and having composition handles and finials, Birmingham 1931, 67ozs.
439. A silver framed calendar, rectangular with pie crust rim, on wooden base, 7 1/4" wide, Birmingham 1931.
440. A George V silver biscuit barrel, oval with rope borders, the hinged cover with ivory finial, by Walker & Hall, Sheffield 1935, 6 3/4" wide, 25.5 ozs. (bears inscription).
441. A set of six early 20thC white metal and mother of pearl tea knives and forks, cased.
442. A set of twelve early 20thC white metal and ivory tea knives and forks, cased (AF); and another.
443. An Edward VII silver 3-piece tea service, of boat shape, with everted rims and scroll handles on plinth foot, London 1901/2., 34ozs gross.
444. A pair of George III silver fiddle pattern tablespoons, engraved with initial, London 1794.
445. Four Daguerrotype portraits in gilt metal frames and folding cases, another, a vacant Daguerrotype frame etc.
446. A George V silver cigarette case, engraved with initials, Birmingham 1923, a leather card case with silver mounted corners, a leather cigar clip and a Meerscham amber and silver cheroot holder (AF) (4).
447. A silver cheroot holder by Alfred Dunhill with machine turned stem and a series of five differently coloured composition mouthpieces, in original fitted case, Birmingham 1955.
448. A pair of 19thC white metal shoe buckles, of curved form, with foliate and swag ornament.
449. Three Parker Fountain Pens, 2 silver "Yard O'Lead" propelling pencils etc.
450. A Lady's Rotary 9ct gold wristwatch with flexible bark bracelet.
451. A lady's Perona 9ct gold wristwatch with leather strap together with an early 20thC lady's 9ct gold wristwatch with modern leather strap (AF).
452. An Edward VII silver pedestal dish, the rectangular lobed bowl pierced with scrolling panels, on conforming feet, Sheffield 1905, 14 ozs. 9 1/2" wide.
453. A Japanese cribbage marker, rosewood, with Shibayama type decoration, boen markers inlaid with mother of pearl and agate inserts 3 1/2" (AF).
454. A gilt bronze figure of a kneeling cavalier, 3" high.

455. A set of six 17thC. Dutch bronze tiles, cast in low relief with scenes depicting the Labours of Hercules, 3 1/2" x 3 1/4".

456. A pair of 19thC. Bohemian glass salts, of ogee form, the ruby wells decorated with an image of Napoleon and Josephine within gilt scrolls, 3 1/4" wide.

457. Walt Disney: 78rpm record Farmyard Symphony parts 1 and 2, by His Master's Voice.

458. An Edward VII silver miniature cream jug, baluster with cut rim, scroll handle and on 4 pad feet, Chester 1902, 2 3/4" high, and 2 other items.

459. A late Victorian cigarette case, engraved overall with foliate scrolls, monogram to centre, Birmingham 1900.

460. An Edward VII heart shaped documentary pin cushion, 1902.

461. A silver napkin ring engraved with initials, Sheffield 1945, another napkin ring. (2)

462. A 9ct gold hunter pocket watch.

463. A silver gilt open face fusee pocket watch, bloomed gold coloured dial, Roman numerals, bezel heavily embossed with fruit, flowers and leaves, movement inscribed La Roi, Paris 610, case marked for Paris.

464. Ten silver watch fobs.

465. A 3-stone diamond twist ring set in white metal on a D shape yellow metal shank, stamped 18ct.

466. A French bronze village medallion.

467. A Birmingham Education Committee medallion.

468. An amber and meerschaum pipe with engraved silver ferrule, early 20thC, in fitted case.

469. A yellow metal ring with blue enamel head surround by seed pearls, set with a central small diamond, c.1890.

470. A yellow metal and black enamel memorial locket with star set diamond to centre and floral engraved back.

471. A long curb link chain in yellow metal stamped for 9ct

472. A fancy link chain in yellow metal, stamped for 9ct. 19 ins long

473. A yellow metal bar brooch with applied flower head with pearl centre.

474. An Art Deco metamorphic brooch and clip set of Odeonesque styling, having central trap cut diamond of c.20pts & two brilliant cut diamonds of c.33pts each, with bands of millegrain set smaller stones, 50mm x 20mm.

475. An Edwardian 9ct rose gold brooch with yellow gold foliate decoration and a rose gold bar brooch.

476. A 9ct gold longuard with swivel clip - 60" approx.

477. 2 snuff bottles.

478. A lady's musical powder compact, rectangular, the cover decorated with mother of pearl panels.

479. A 9ct rose gold Albert with T bar and swivel, slightly graduated links, larger towards the centre. 38 gms. Birmingham assay.

480. A modern 9ct gold and garnet cluster ring.

480A. A marcasite set suite of jewellery, comprising necklace, earrings and brooch.

481. A 9ct gold bar brooch with central garnet and seed pearl motif.

482. Silver topped trinket jar, spoons, pencil, sugar nips and gold wristwatch.

483. A hinged bangle with screw fastener and screw head applied decoration, hallmarked 9ct white gold.

484. Parker and Kingswood fountain pens (2).

485. A Chinese snuff bottle with internal painted decoration.

486. Two silver engine turned cigarette cases.

487. A gold plated half hunter pocket watch (AF).

488. A lady's powder compact, circular, the cover decorated with mother of pearl.

489. A gentleman's Clogan 9ct gold celtic design ring with central cabachon ruby.
490. A Continental white metal filigree crucifix and rosary beads, cased.
491. A George V silver mug, by Elkington & Co., of circular form with two applied gadroon bands, scroll handle and on raised circular plinth, Birmingham 1923, 3 1/2 in. high, 5 ozs.
492. An Edward VII silver straight sided mug, with loop handle, engraved with monogram and date 1909, Birmingham 1908, 3" high, 3ozs.
- 493-5. A quantity of costume jewellery.
496. Five silver watch fobs.
497. Ten silver watch fobs.
498. Ten silver watch fobs.
499. 4 silver watch fobs.
500. Trinket items including mother of pearl handled button hook.

Furniture

501. A 19thC mahogany bow fronted chest of drawers having 2 short and 3 long cockbeaded drawers, later brass handles, on bracket feet. 42" wide. (AF)
502. An Edwardian mahogany corner washstand, with white marble galleried top, over a single bow front panelled door, on square tapering legs with spade feet, joined by undershelf. 34" wide.
503. A Victorian figured mahogany toilet mirror, with oval plate on scroll uprights, the base with feather banding, 3 frieze drawers, on reeded bun feet, 18" wide.
504. A George III oak side table with a rectangular crossbanded top, over single frieze drawer with brass loop handles on relief stamped oval backplates, on square tapering legs, 28 1/2" wide.
505. An Edwardian Sutherland table, the rectangular flaps with canted corners and crossbanded border, on slatted end supports joined by a flat stretcher, 26 1/2" x 32 1/2".
506. An Edwardian mahogany plant stand, with circular top (previously with fan inlay), on square flared legs joined by a circular undershelf with fan inlay. 39 1/2" wide.
507. A 19thC beech and elm slat back Windsor armchair.
508. A pair of 19thC traytop torchere, the rectangular tops on circular columns and concave platform bases, 15" x 11".
509. A Victorian mahogany toilet mirror, having a arched cushion frame enclosing bevelled plate (AF), on circular uprights with melon finials, fluted end supports on a concave platform plate, 41" x 30 1/2".
510. A 19thC mahogany bowfront chest of 2 short and 3 long graduated drawers, each with cockbeaded moulding and turned knobs, on baluster feet. 41" wide.
511. A 19thC oak country made dining table with twin rectangular flaps, on square section legs, 42" wide.
512. An Edwardian walnut child's schooner chair with turned uprights and horizontal spindle back, bergere seat.
513. A mahogany occasional table having an octagonal moulded edge top on 4 shaped legs with conforming undershelf, 18" wide.
514. A pair of Regency rosewood salon chairs, having a brass inlaid top rail over twin scroll tie rails, cane seats and on sabre legs.
515. A Victorian/Edwardian beech framed lady's chair with a carved frame, circular panel back, serpentine seat and on turned legs.
516. A pair of late 18thC oak country made dining chairs, having reeded frame, rush seats, on square section legs joined by stretchers.



LOT 521

517. A late 19thC stained oak hanging coat rack with broken swan-neck pediment, foliate carved frame, hung with metal hooks (3 missing), 39 1/2" wide.

518. A Victorian walnut chiffonier of inverted break front form, having a grey veined white marble top, over 2 cupboard doors with inset mirror panels flanking an open galleried shelf and mirror door below, inlaid overall in satinwood and ebony with scrolling foliage and shields, on plinth base. 50" wide.

519. A late 19thC mahogany veneered cabinet with caveto moulded cornice over 2 glazed doors enclosing 2 adjustable shelves and over a single frieze drawer with brass ring handles and stamped backplates, 27" wide.

520. A pair of 19thC beech framed occasional chairs having scroll pierced top rail, previously upholstered panel, pierced splat and on circular tapering legs joined by H stretcher, (upholstered pad seats missing).

521. A Victorian walnut davenport desk, with pierced brass 3/4 gallery, leather inset writing surface and the

satinwood interior with 2 fitted drawers, the right side fitted with a panelled cupboard, which opens to reveal 4 drawers and having an opposing panelled dummy drawer to the other side, the whole supported on fretwork and scroll uprights and on compressed bun feet, 22" wide.

522. A George III oak fall-front bureau, the fall enclosing a simply fitted interior, over 4 graduated drawers, cockbead moulding and ring handles with oval stamped backplates and on bracket feet, 38" wide.

523. An Edwardian mahogany display cabinet having a mirrored half back, the single door with oval glass plate enclosing 2 shelves, on slender tapering legs, painted in the Sheraton Revival style with flowers, swags, 24" wide.

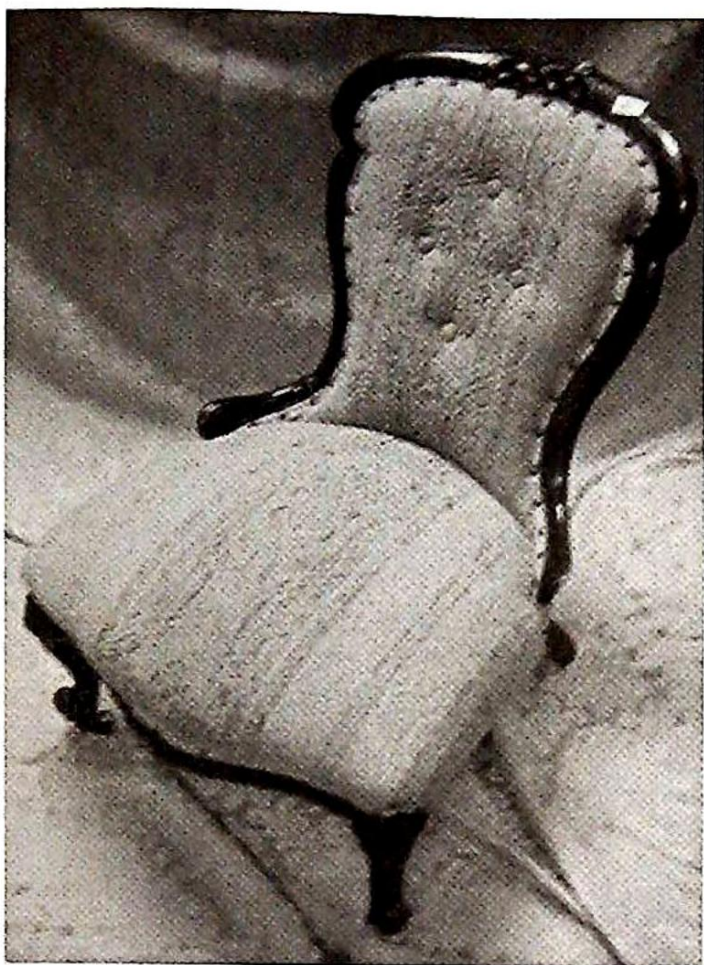
524. A Victorian overmantel mirror having a cavetto cornice over a frieze with patera in relief and centrally moulded with torch quiver and leafage, the bevelled plate flanked by Corinthian side columns, (painted), 42" wide.

525. A basketwork garden chair.



LOT 526

526. A late 19thC mahogany serpentine fronted chest in the Chippendale style by J W Hetherington, Lancaster, with a moulded edge top over 4 graduated drawers with cockbead moulding and cast brass swing handles, flanked by blind fret canted corners and on ogee bracket feet. 38" wide.



LOT 527

527. A Victorian walnut lady's chair having a button upholstered back and circling frame carved with foliage, serpentine seat and on carved and nulled front legs with ceramic castors.

528. A set of 4 Cromwellian style oak dining chairs having pierced top rail, barleytwist and anthemian uprights, flanking an oval caned panel back, needlework seats and on turned lobed and bobbin legs with conforming H-stretchers.

529. A mahogany toilet mirror, the oval plate on ring turned and turned uprights, scroll end supports and conforming stretcher, 24" wide.

530. A pair of 19thC circular footstools with upholstered tops on moulded frames and compressed bun feet.

531. A 19thC satin beech chest of 2 short and 3 long graduated drawers with moulded edge top, turned knobs with lower plinth and on bun feet, 44" wide.

532. A Victorian walnut framed chair with upholstered button back, scroll uprights and arms, serpentine seats and

on turned legs with brass caps and ceramic castors.

533. A mid 20thC walnut radio, modelled as a grandmother clock, c.1940.

534. A Victorian burr walnut 3-tier whatnot of serpentine form, the upper shelf with fretted gallery and lobed and turned finials, twist fluted and lobed uprights, the lower shelf having frieze drawer and on lobe feet and brass cups and castors. 23" wide.

535. A 19thC mahogany Pembroke table with rectangular twin flaps, single end drawer with brass swing handle, on square section legs joined by cross stretcher (later addition), 32" x 39".

536. A set of 10 Victorian mahogany club chairs with hoop backs having open splat, brown leather overstuffed seats and heavy inverted baluster turned forelegs.

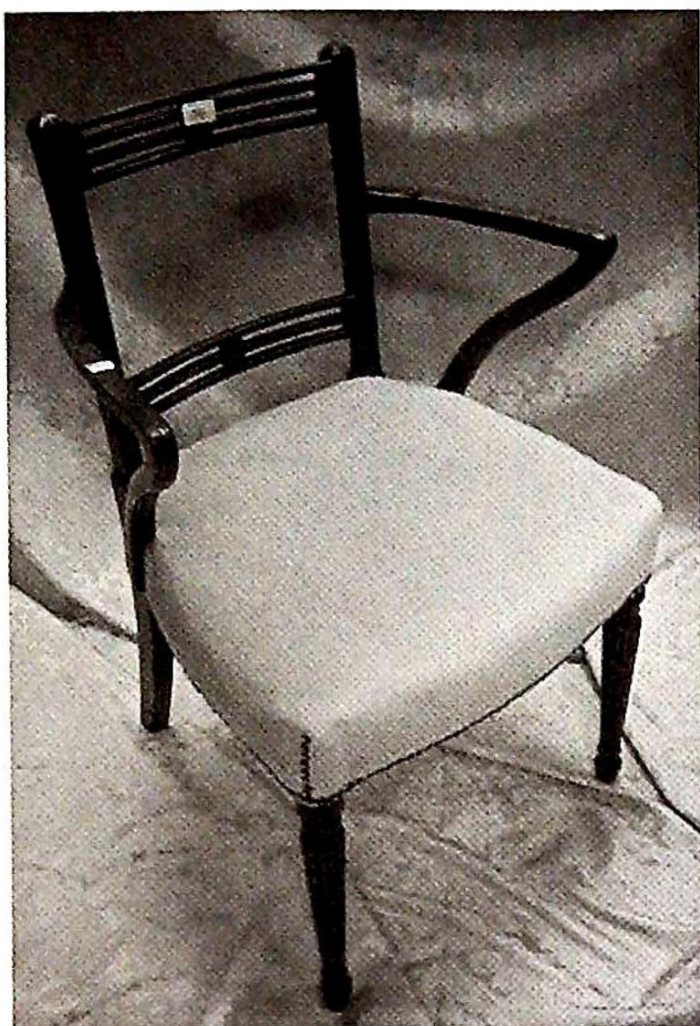
537. A George III oak tilt-top pedestal table, circular 4-part top, on vase turned pedestal and 3 down-swept legs, 25 1/2" dia.

538. An early 20thC walnut cased grandmother clock, having a brass dial with silvered chapter ring and Roman numerals, brass spandrels and engraved centre, of 8-day chiming movement, the hood with dentil and cavetto cornice above blind fret frieze, turned pilasters, the rectangular door with 2 inset panels and blind fret panel, on bracket feet.

539. An Edwardian stained beech window table with piecrust edge and on 6 cabriole legs with carved knees joined by a conforming undershelf, 28 1/2" dia.

540. A reproduction walnut foldover card table, the demi lune top with folded edge, on cabriole legs with shell carved knees and pad feet, 31 1/2" wide.

541. An early 20thC oak occasional table of folding circular form supported by a single gateleg, 28" dia.



LOT 562

542. An early 20thC oak occasional table, the rectangular top carved with a lunette border, moulded edge over plain frieze and on turned legs joined by square stretchers, 24" wide.

543. A stained beech rocking chair having bar back, turned spindles, solid seat and turned front rail.

544. A 17thC German steel chest.

545. An oak 2-tier cakestand.

546. An early Victorian rosewood breakfast table with moulded circular rosewood top with extensive maple marquetry depicting birds, flora and stylised motifs, on an octagonal baluster pillar, on 3 scroll carved outswept legs, 52" dia. Illustrated on front cover.

547. A mahogany occasional table, the oblong top with canted corners and on square splay legs joined by a rectangular undershelf, 24" wide.

548. An Edwardian stained beech Sutherland table, having rectangular flaps with canted corners and slatted end supports joined by a stretcher, 24" wide.

549. A mahogany 2-section towel rail on splay end supports.

550. An oak writing table having a bowed centre drawer and flanked by 2 drawers to each side, on square tapering legs with brass castors, 40" wide.

551. A stained pine hanging double wall shelf having fretted panels in the Gothic manner, 22" wide.

552. An early 19thC mahogany commode having a lift-up hinged top over a double cupboard moulded as drawers with later turned knobs, 2 full width faux drawers below, on bracket feet, 23 1/2" wide.

553. A 20thC oak fall front bureau having a frieze drawer with carved panel over 2 further drawers and on cup and cover legs and block feet joined by cross stretchers, 27" wide, (matching dining suite lot no 604).

554. An Art Nouveau period mahogany piano stool, the lift-up lid with needlework cover and inlaid to all sides with stylised flower and leaf forms, with shaped apron, on slender cabriole legs and pad feet.

555. A late 19thC oak writing table, the rectangular top with moulded edge, over 2 frieze drawers with cast brass loop handles and on tapering square legs with spade feet, 42" wide.

556. A 19thC oak hall chair having a shield and strapwork back with conforming fielded panel, solid seat and on tapering panelled legs and bun feet.

557. A set of 4 Queen Anne style dining chairs with vase splat over drop-in seats with needlework upholstery, on slender cabriole legs with pad feet.

558. A set of 4 Victorian walnut balloon back salon chairs having a scroll carved tie rail, serpentine seats and on French cabriole legs.

559. A 19th C French 3-tier etagere with floral marquetry serpentine top on a kingwood and walnut ground, single drawer over 2 open shelves with turned supports with outsplay legs, 16" wide, 30" high to gallery.

560. A 19thC brass umbrella stand of triangular form with knob finials.

561. A set of 4 19thC mahogany provincial dining chairs with reeded barbacks and tie rail, conforming uprights, loose seats on on ring turned and turned legs joined by H-stretchers.

562. An unusual George III mahogany carver chair with openwork back, overstuffed seat and reeded taper legs.

563. A leather dome topped cabin trunk together with a coffin shaped trunk.

564. A mahogany chair having a 3 panelled upholstered back, on hoop front legs joined by turned stretchers.

565. A mahogany chest of 4 graduated drawers each with cockbead moulding and ebonised turned wooden knobs, on lobed feet, 41 1/2" wide.

566. A large late Victorian mahogany mirror back sideboard, the upper section with cavetto moulding, carved corbels and a bevelled mirror plate flanked by twin turned pilasters, supported on carved brackets, the lower section having 2 frieze drawers over 2 end cupboards each with inset carved panels flanking open shelf with conforming uprights. 72 1/2" wide.

567. A Victorian 2 door walnut wardrobe with inset arched panels and on raised plinth base, together with another matching single door wardrobe.

568. A late 19thC tub armchair with rail back, turned uprights and on turned legs with stretcher.

569. A pair of Edwardian mahogany bedroom chairs with reeded top rail over turned gallery, overstuffed seats on turned legs joined by stretchers.

570. A beech framed occasional chair having a shaped top rail over pierced splat, upholstered serpentine seat and on plain slender turned legs.

571. A Victorian mahogany shop cabinet, having 4 glazed doors with shelves, 75" wide, 11" deep, 31" high.

572. A mid 19thC stool with brown studded and buttoned leather upholstery and ebonised turned forelegs and sabre back legs, 54" x 16".

573. A mahogany sideboard having a rectangular cross-banded top over 3 frieze drawers with ring handles with circular stamped backplates, over a double cupboard and single cupboard, the doors with inset panels, with shaped apron on splay bracket feet. 54 1/4" wide.

574. A mahogany toilet mirror, the oval plate on scroll uprights with splayed pend supports.

575. A nest of 3 walnut occasional tables with quarter veneers and on cabriole legs with pad feet.

576. A Victorian walnut balloonback salon chair having scroll carved top rail and tie rails, overstuffed needlework seat and on ring turned splay legs joined by stretchers.

577. A pair of Edwardian beech cane seated bedroom chairs together with another pair similar.

578. A Corinthian column brass lamp standard and fringed shade.

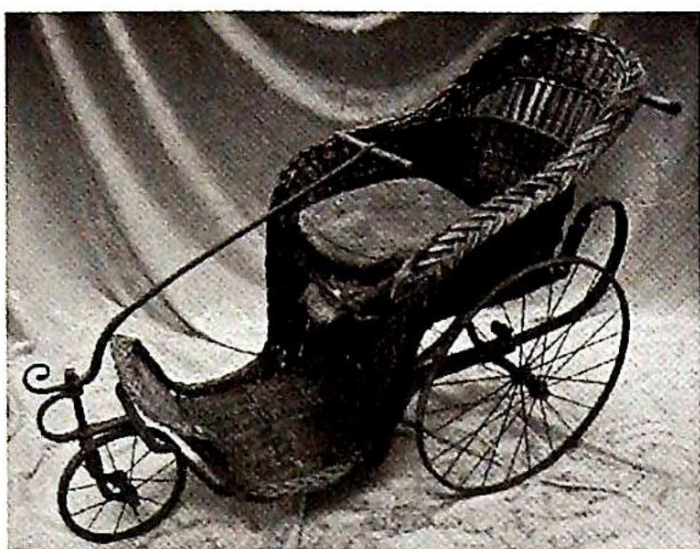
579. A beech oval topped stool with cane seat (AF), on 4 fluted legs joined by incurving stretchers.

580. A 19thC mahogany stool with overstuffed seat and on 4 splay legs, inlaid overall with simplified flower and leaf forms and stringing.

581. A 19thC faux bamboo chair with barback, rail splat and 2 horizontal tie rails, cane seat (AF).

582. A 19thC grained pine chest of 2 short and 2 long drawers having a shaped half back, the drawers with white ceramic knobs and on peg feet, 42" wide.

583. A Globe Wernicke type mahogany bookcase with acanthus capitols and dentil frieze, reeded side pillars, single glazed uplifting door over full width drawer, 35" wide.



LOT 594

584. A reproduction Chinese black lacquer chest, having a rectangular top with moulded edge over full width frieze drawer and 3 smaller drawers below, shaped apron and on cabriole legs, decorated overall with hibiscus and colourful birds within quatrefoil borders, 30" wide.

585. A 19thC grained pine chest of 2 short and 2 long drawers with turned knobs on bracket feet, 41" wide.

586. An Edwardian walnut dining table with oval moulded drop leaf top, raised on 4 cabriole legs with pad feet.

587. A Victorian tub chair with upholstered bow rail and seat with 5 turned uprights, turned front legs bearing the trade label to the back 'J Ward manufacturer to The Queen and the Royal Family patentee invalid chairs and carriages of every description'.

588. A Victorian tripod table with chamfered and canted rectangular tilt top and turned pillar.

589. An Edwardian string inlaid mahogany 3 tier folding cakestand with moulded circular platforms.

590. A late Victorian walnut octagonal occasional table with gallery cross stretchers.

591. An Edwardian string inlaid mahogany octagonal occasional table with square taper legs and undershelf.

592. A Victorian mahogany centre table with rectangular top raised on 4 turned pillars, joined by turned stretcher.

593. An Edwardian beech wind-out dining table with canted top, square taper legs with swell feet, and 2 further leaves.

594. A Victorian invalid bath chair with sprung steel frame, single steering front wheel and 2 spoked rear wheels, and having wicker seat and footrest.

595. An early 19thC oak side table with drawer and square taper legs.

596. A Victorian mahogany chaise longue with turned legs, left hand bulk and upholstered in mushroom button dralon.

597. A Regency mahogany firescreen with extending panels, moulded uprights, reeded outspread feet with brass cup castors.

598. A Jacobean style oak buffet, with moulded top, 2 lozenge carved doors enclosing 2 drawers, raised on bulbous acanthus legs, joined by pot board.

599. A small Edwardian screen with folding top.

600. A Victorian kitchen table with pine scrub tilt top on a beech tripod base.

601. A 19thC carved oak hall chair in the Jacobean style.

602. A Victorian oak corner bow chair with pierced vase splates.

603. A 19thC dining table with folding flaps.

604. A 1930's oak drawleaf dining table together with 4 dining chairs and breakfront sideboard, (matching bureau lot no 553).

605. A set of 6 1930's oak dining chairs with splat backs, mushroom turned forelegs and shaped stretchers.

606. A mahogany table lamp with gilt metal decoration and satinwood inlay treen shade, the 'Napoleon' N in laurel leaf.

607. A late Victorian flamed mahogany chest of 2 short and 3 long graduated drawers with brass octagonal backplate handles and bracket feet, 46" wide.

608. A marble top Torchere with ball turned pillar.



LOT 629

609. A pair of Adam Revival oak serving tables with scoop carved frieze, oval patera and applied decoration, raised on 6 fluted square taper legs co-joined by a shaped moulded stretcher. 59" wide.

610. A George III mahogany D-end table with reeded top, plain frieze and turned legs.

611. An Edwardian ebonised 2-seater salon sofa with 3 panel back, open arms, serpentine overstuffed seat and cabriole legs.

612. A 19thC. dropleaf table, with square taper legs.

613. A Victorian walnut nursing chair with shell and scratch carved cresting rail, pink button dralon upholstery to back and seat and turned front legs.

614. A mahogany writing table with tooled leather inset top, raised on square taper legs, 3' x 2'.

615. An Edwardian walnut occasional table with undershelf and turned legs, 23" square.

616. A Victorian ash and elm smoker's bow chair.

617. A late Victorian walnut open bookcase with 2 panelled doors to the top, 19" wide.

618-9. A modern Knole 2 seater sofa with sage green upholstery with latin script, Heals of London.

620. An American late 19thC beech harmonium.

621. A Victorian painted pine kitchen dresser.

622. A 1930's oak 3-piece suite, raised on ball feet, upholstery project.

623. A 1930's oak chest on chest.

624. A Victorian gilt plaster overmantel mirror, 32" wide, 44" high.

625. An upright overstrung grand piano.

626. An Edwardian walnut piano stool with lift box seat.

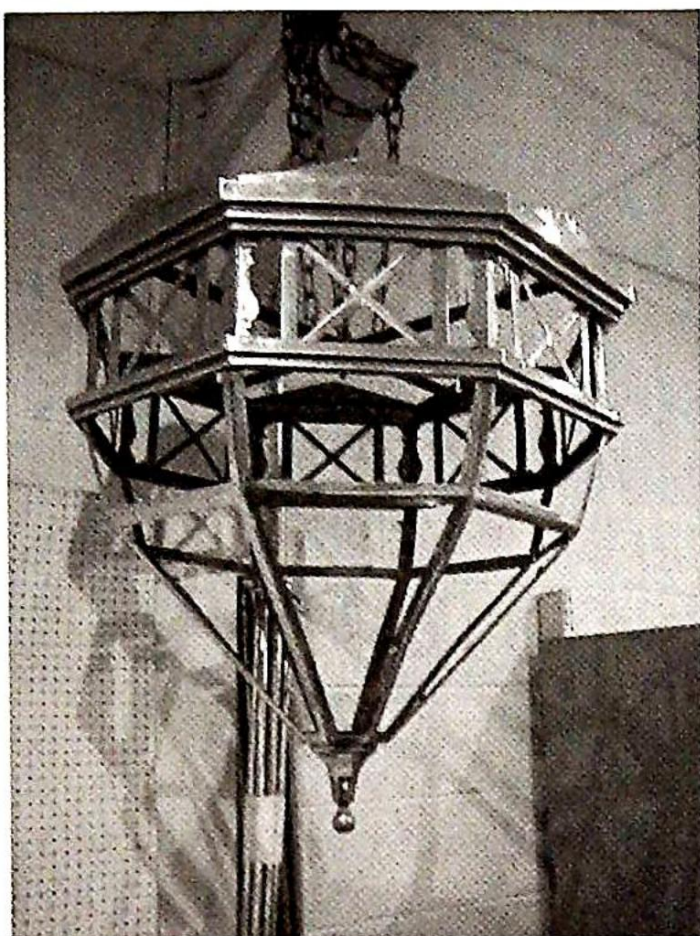
627. A late Victorian mahogany part bedroom suite comprising dressing chest, washstand and bedstead and having Art Nouveau anodised copper handles.

628. An early 20thC. Chinese cinnabar lacquer display cabinet, with an arrangement of asymmetrical shelves, hinged and sliding doors.

629. An Edwardian carved oak secretaire cabinet with the upper part having a baluster gallery over carved frieze and 2 astragal glazed doors, the lower part having demilune frieze over a panelled fall flap revealing secretaire over 3 x 2 graduated drawers enclosed by turned uprights, 51" wide, 7' high.

630. An Edwardian mahogany marquetry double wardrobe with moulded cornice, 2 oval mirror doors and drawer base.

631. An early 19th C continental flamed mahogany Sectaire a Abbattant with fall front resting over 3 stepped drawers.



LOT 635

632. An Edwardian oak mirror back dresser with turned uprights, 2 drawers over 2 panelled doors, raised on cabriole legs, 5' wide.

633. A 17thC oak 3 panelled coffer with scoop carved frieze and raised on styles, 58" wide, 27" high.

634. A late Victorian 3 piece suite with scroll arms and upholstered with Italian gros-point upholstery.

635-8. A polished steel hanging lantern with glazed panels and hanging rods.

639. A Victorian cross banded walnut overmantel mirror.

640. A Victorian pine 2-door storage cupboard.

641. A set of 6 (including 2 carvers) late Victorian walnut dining chairs with upholstered seats and galleried backs.

642. A Waring & Gillows designed reproduction oak platerack dresser.

643. A Kodak cast iron rise and fall camera table plateau, Studio Stand No. 1 and an early 20thC mahogany studio camera by Watson & Sons of London.

644. A set of 4 late Victorian walnut panelback dining chairs.

645. A pair of Victorian mahogany balloonback dining chairs.

646. A set of 4 (including carver) 1930's reproduction oak dining chairs with floral tapestry upholstery.

647. A 1930's reproduction oak refectory table with bulbous legs, 2'3 x 4'6.

648. A 1930's barleytwist oak gateleg dining table.

649. A Victorian pine scrubtop kitchen table with drawer.

650. A Gergian oak supper table with circular tilt-top and tripod base.

651. A late 19thC Turkish rug with stylised tree patterns to the blue ground centre field.

652. A late 19thC Turkish rug with geometric centre field.

653. A Zekhiani rug. 1.96 x 1.05

654. A pair of rectangular chenille table covers.

655. An Herathi Rug 3.6 X 6.7

656. A Persian Hamadan rug 2.03 X 1.20

657. A fine 20thC. Persian Prayer Rug. 86" x 55"

658. A fine 20thC. Persian Carpet. 158" x 117".

659. A Shiraz Rug 5.4 X 8.3

660. A Chinese handcut rug 1.83 X 0.91

661. AN Abusson needlepoint rug 1.52 X 0.91

662. A Chinese blue and cream carpet. (AF)

END of SALE.

FORTHCOMING SALES

GENERAL SALE - Wednesday 31st July at 10am.

Including the residual general contents of the cellars and attics of Fulbeck Hall

20thC FURNITURE & EFFECTS - 800 lots

VIEWING: Tuesday 30th 2pm to 6pm and Saleday 9am to 10am.

HOUSE CLEARANCES and SINGLE ITEMS always INVITED

IMPORTANT SALE of ANTIQUES FINE ART & SELECT ESTATE ITEMS

Tuesday 17th & Wednesday 18th September

Including the residual collectable contents of the cellars and attics of Fulbeck Hall

Entries now invited

VIEWING: Monday 16th - 2pm to 7pm, Tuesday 9am to 12noon
and Wednesday 9am to 10am.

Click-to-View Past Sale Results at www.goldingyoung.com

Antiques Roadshow/Discovery Days

FREE AUCTION VALUATIONS

Entries now invited for our forthcoming Specialist Sales

Every Tuesday 2pm to 6pm in the Saleroom.

For less portable items or large collections either bring a photograph or invite us to visit your home without charge or obligation.

Late Night Opening For Sale Entries

We will be open for ENTRIES ONLY every Friday until 7pm
in July and August.