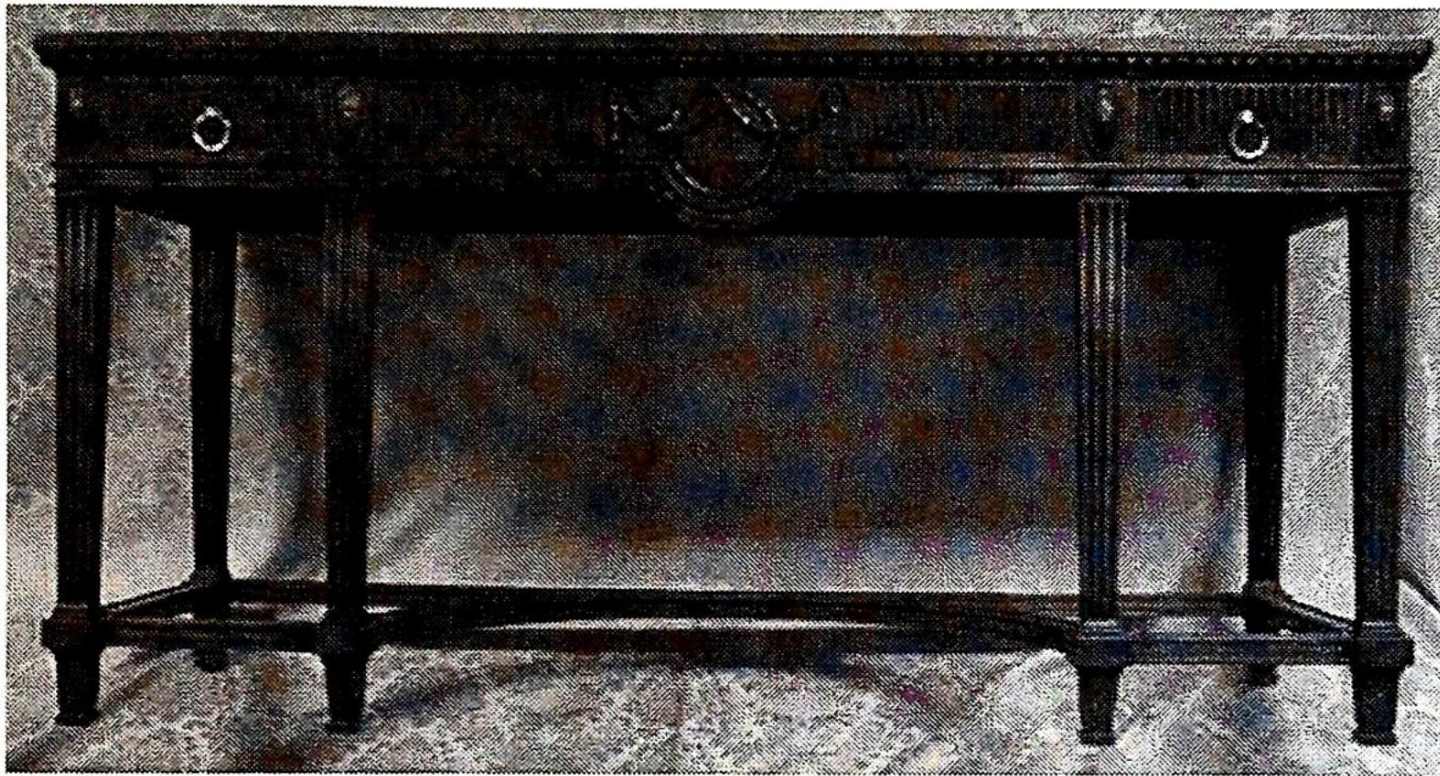


AUCTION CATALOGUE



Victorian & Georgian Furniture
Rugs, Pictures, Silver
Jewellery, Ceramics
Collectables

Wednesday 20th March, 2002
at 10am

Principal
Colin R. Young FNAVA

Consultants
C. Robin Hall FRICS FAAV
Ian J. Shaw FRICS FNAEA



National Association of
Valuers & Auctioneers

Golding Young & Co.
Old Wharf Road, Grantham
Lincolnshire, NG31 7AA

01476 - 565118

Fax
(01476) 561475

E-Mail
enquiries@goldingyoung.com

Internet
<http://www.goldingyoung.com>

Associate Office
Goldings, Chartered Surveyors & Estate Agents
45 High Street Grantham NG31 6NE (01476) 590211

IMPORTANT NOTES FOR PURCHASERS

1. **PAYMENT:** Must be made in full immediately after the Auction. The following methods of payment are acceptable.
a) Cash b) Bankers Draft c) Building Society Cheque
d) Cheques, accompanied by a valid card.
PAYING BY CHEQUE?
If you are not known to the Auctioneers and wish to pay by cheque above your guarantee card limit **WE WILL RETAIN THE GOODS** until it has been cleared (7 days). There will be **NO EXCEPTIONS** to our policy. To avoid **UNDUE EMBARRASSMENT** for yourself or to our staff, please do not ask for preferential treatment. If you wish to clear goods immediately bring a letter from your Bank or a suitable guarantor reference.
2. **BUYERS PREMIUM** of 15% on the first £100 of each lot and 12 ½% thereafter + VAT is payable on all lots.
3. **REMOVAL OF PURCHASES:** Goods must be collected as soon as they are paid for, and in the 2 Working Days following the sale. If goods are not collected on these days we reserve the right to charge £1 per lot per day thereafter.
4. **COMMISSION BIDS:** If you are unable to attend this or any of our future sales we will be pleased to bid on your behalf. We always purchase at the lowest possible price, subject to other bids and reserves.
All bids must be handed to the office on an official form. It remains the responsibility of prospective purchasers to contact **GOLDINGS** to confirm whether their bids have been successful.
5. **TELEPHONE BIDS:** There are inherent dangers with this practice, therefore all such arrangements are made entirely at the bidder's risk. Telephone bids will only be accepted if the lower estimate is £500 or above. For lots with a lower estimate below this figure Commission Bids Only will be accepted.
6. **SMOKING** is not permitted in any part of the Saleroom.
7. **REFRESHMENTS** will be available Saleday.
8. **ACCOUNT TRANSFER** will not be recognised after the sale. If any lots are purchased for another person, this must be declared at the fall of the hammer.
9. **ESTIMATES.** Our Auctioneers will be available during viewing to give guidance on your prospective purchases.

GLOSSARY

- a) Generally: 'As Found' (AF). This term indicates the lot has some damage. Its absence does not indicate that the lot is free of defect. All lots are **SOLD AS SEEN**.
- b) Paintings: 'Signed, initialled, monogrammed' – 'This refers to the present state of the work and is not an attribution.
- c) Books and printed matter: These items are not sold subject to collation and are not returnable once removed from the premises.

The Sale Inventory

1. An Edwardian quarter veneered mahogany wardrobe with floral marquetry panels flanking single mirrored door over drawer base on bracket feet, and dressing chest with rectangular mirror.
2. A late Victorian walnut dressing chest with triple mirror and Art Nouveau metal handles.
3. A Victorian mahogany chest of 2 short and 3 long flamed veneered drawers with knob handles and moulded base. 38" wide.
4. An Edwardian mahogany bowfront china cabinet with gadrooned moulded top, single leaded glazed door and outspread feet. 24" wide.
5. An Edwardian mahogany bowfront china cabinet with moulded top, floral painted frieze over leaded glazed single door, raised on square string inlaid legs. 24" wide.
6. An Edwardian mahogany writing table with leather inset top, 4 frieze drawers, square taper legs with brass and ceramic castors. 47" x 22".
7. A late Victorian walnut sideboard with moulded top, 3 veneered drawers over 2 glazed and 2 panelled doors and open base, raised on turned legs and having pressed brass handles. 6' wide.
8. An Edwardian satinwood cross-banded flamed mahogany dressing chest with shaped mirror.
9. An Edwardian string inlaid mahogany triple wardrobe with central mirrored door and 3 drawer base.
10. A Victorian stripped pine Lincolnshire dresser of traditional form. 64" wide.
11. An Edwardian music stool with turned gallery and legs.
12. A Victorian walnut harmonium by Barnett Samuel of London.
13. An Edwardian 2 seater sofa with moquette upholstery and cabriole legs. 51" wide.
14. A Victorian walnut breakfront side cabinet with marble top, 2 arch mirror doors enclosing open gallery and single door on plinth base. 61" wide.
16. An Edwardian mahogany side table with moulded top, plain frieze and turned legs. 28" wide.
17. A set of 4 Victorian elm and beech kitchen chairs with pierced baluster splat and spindles.
18. A George II and later mahogany gateleg dining table with oval rule jointed top, frieze drawer, turned uprights, plain stretchers.
19. A pair of late Victorian dining chairs with open gallery backs.
20. A 19thC mahogany dining table with oval flaps.
21. A Victorian tilt-top occasional table, the oval top painted with a wildlife landscape, on oak pedestal with 4 carved downswept legs and block feet, 28 1/2" wide.
22. A George III oak provincial dining chair, with yoke shaped top rail, pierced splat, loose seat, on square legs joined by stretchers.
23. Small hand-carved and painted rocking horse.
24. A Georgian mahogany part dining table.
25. A pair of Victorian walnut dining chairs with scratched carved uprights and splat, overstuffed seats and turned legs.
26. A Victorian mahogany breakfast table with circular moulded tilt top on turned pillar with trefoil base and scroll feet. 42" wide.
27. A set of 4 early 20thC Queen Anne style high back dining chairs with cabriole legs and turned H-frame stretcher.
28. A Victorian mahogany 2-door wardrobe compactum with fretwork frieze. 39" wide, 63" high.
29. A Victorian mahogany triple wardrobe.
30. A glazed walnut wall cabinet.
31. A Victorian fireplace with brass columnar enclosure around landscape painted tiles.
32. A Victorian mahogany half tester bed with tulip carved and candytwist uprights and moulded panel base.
33. An Edwardian string inlaid rosewood circular occasional table with shell inlaid top, shaped frieze drawers, raised on square taper legs co-joined by a shaped and inlaid undershelf, on outspread legs with brass and ceramic castors. 27" dia.
34. An Art Nouveau mahogany side table with pierced and shaped legs and frieze. 21" x 15".
35. A Victorian iron cot with nursery panel decoration.
36. A cast iron fireback depicting the Royal Oak and marked CR. 35" wide, 29" high.
37. A Victorian tub chair with upholstered bow rail and seat with 5 turned uprights, turned front legs bearing the trade label to the back 'J Ward manufacturer to The Queen and the Royal Family patentee invalid chairs and carriages of every description'.
38. An Edwardian flamed mahogany circular occasional table with inlaid banding over 8 taper turned legs with octagonal undershelf and partial gallery. 30" dia.
39. A set of oak arched ladderback chairs with rush seats, turned legs and stretchers.
40. A Chippendale design dining chair with pierced vase splat and ball and claw feet.

41. A Victorian walnut chaise longue with blue fan pattern upholstery, galleried back, turned legs and scratch carved bulk.

42. A Victorian gold painted plaster framed overmantel mirror. 48" wide, 42" high.

43. A Victorian mahogany triple wardrobe with central mirror door.

44. A late Victorian walnut pot cupboard with overhang top, open compartment and single door.

45. A Dutch oak bedroom suite comprising 4-door wardrobe, dressing table with mirror, double bedstead, pair of bedside cabinets.

46. A Victorian sideboard in carved oak in the Jacobean style, mirrorback.

47. A Victorian mahogany buffet with reeded uprights, single shelf over another with cabinet 2 door base. 46" wide.

48. A 17thC oak gateleg table with turned uprights.

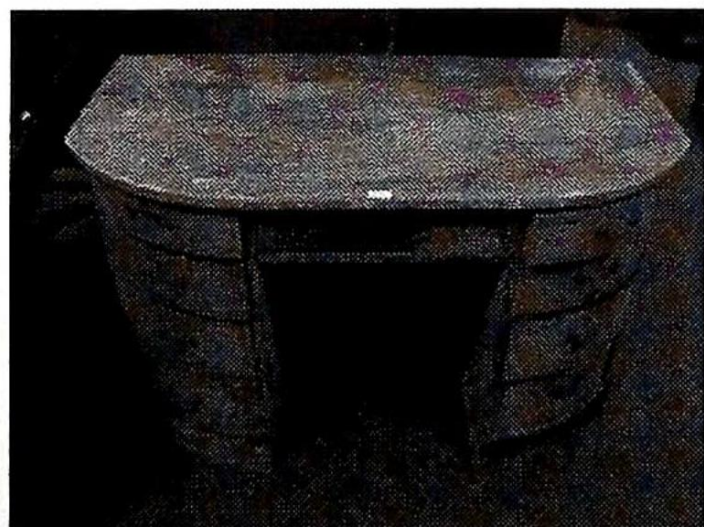
49. A mid Victorian carved oak overmantel mirror with arch top having egg and dart carving over a rosette frieze, the uprights having game trophies and mask capitals. 86" wide, 58" high.

50. A Queen Anne walnut cross banded chest of 2 short and 3 long graduated drawers. (AF) 36" wide.

51. A 19thC rosewood side cabinet with heavy gadrooned top, break front, with drawer over 2 shelves supported by reeded and candytwist columns, on plinth. 46" wide.

52. A Georgian oak 2 door cabinet with mahogany flamed cornice, shell inlaid doors and plinth. 45" wide, 43" high.

53. An early 19thC bow front kneehole desk decorated in a green painted covering.



54. A late Georgian oak chest of 2 short and 3 long graduated drawers with knob handles. 36" wide.

55. A late Georgian mahogany chest of 4 graduated drawers with swan-neck handles and bracket feet. 50" wide.

56. An early 19thC flamed mahogany chest of 2 short and 3 long graduated drawers with knob handles, shaped apron and splay feet. 41" wide.

57. A mahogany gateleg table with oval moulded top and turned legs. 48" x 36".

58. An early 19thC flamed mahogany press cupboard with moulded cornice, 2 door upper part concealing press drawers, the lower part having 2 short and 2 long graduated drawers with knob handles.

59. A pair of Adam Revival oak serving tables with scoop carved frieze, oval patera and applied decoration, raised on 6 fluted square taper legs co-joined by a shaped moulded stretcher. 59" wide. Cover Illustration.

60. A 19thC Continental carved oak chest of 4 drawers, side table with pineapple finials and pot cupboard.

61. A Georgian style wooden back armchair with short cabriole legs.

62. A Victorian grain painted pine kneehole dressing table with knob handles and turned feet.

63. A Victorian grain painted pine chest of 2 short and 3 long graduated drawers.

64. A Victorian grain painted pine chest of 2 short and 3 long graduated drawers.

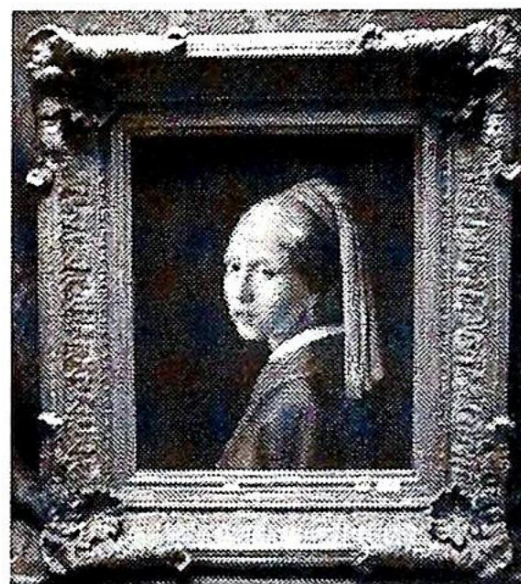
65. A Victorian bamboo side cabinet with mirror back, lacquered top and two glazed doors 21" wide.

66. A mid 19thC. Italian walnut marquetry cabinet with three drawer base, having brass handles and fretwork doors and galleries to the upper part. 38" wide 67" high.



67. An Edwardian walnut chiffonier with triple mirror top having fretwork open arch pediment, the lower part having a credenza shape form with blind fretwork to the frieze, drawer and cupboard doors. 49" wide 67" high.
68. A late 19thC carved oak pier glass with broken arch pediment, scoop moulded frieze, fluted pillars enclosing a rectangular bevelled plate. 29" wide 48" high.
69. An Edwardian dark stained ash triple wardrobe with centre mirror door.
70. An Edwardian walnut dining table with oval moulded drop leaf top, raised on 4 cabriole legs with pad feet.
71. A late Victorian elm smoker's bow chair with H-frame stretcher.
72. A mahogany cased upright overstrung piano by John Brinsmead & Sons, London, No 27365, together with stool.
73. An Art Nouveau walnut veneered overstrung upright iron grand piano by Henry Ward of London, having stylised marquetry inlay in satinwood and mother of pearl.
74. An Edwardian walnut wardrobe with mirror door.
75. An early 20thC mahogany serpentine sideboard with gadroon top and cabriole legs.
76. An Edwardian occasional table with shaped top.
85. A brown and beige ground Turkish rug with multi gul centre field. (AF)
86. A Bokara rug. (AF)
87. A beige ground Turkish rug with olive ground centre field. (AF)
90. A Bokhara style rug.
91. A large cream ground carpet.
92. A red ground Shiraz carpet with floral central field and cream border.
93. A Zekhiani rug. 1.96 x 1.05
94. A modern bird garden rug.
95. A Persian Quashgai Kelim Rug 3.1 x 2.01
96. A PERSIAN HAMADON RUG 2.03 X 1.20
97. A CHINESE SUPER HANDCUT RUG 1.83 X 0.91
98. AN ABUSSON NEEDLEPOINT RUG 1.52 X 0.91
99. AN ABUSSON NEEDLEPOINT RUG 1.52 X 0.91
100. A Chinese wall carpet of Persian design, beige ground. 3.7m x 3m.
101. NANCY BAILEY. (20th Century.) 'The Dobey, St Ives, oil on canvas, signed. 30" x 20".
102. NANCY BAILEY. (20th Century.) 'Storm over the Minnows', oil on canvas, signed. 24" x 36".

103. NANCY BAILEY. (20th Century.) 'Guards Head to Deudeen', oil on canvas, signed. 20" x 40".
104. G BARBARO. (19th/20th Century.) 'Street Market in the Middle East', watercolour, signed. 9 3/4" x 23".
105. PEARLS. 'Tempted but Shy', chromolithograph. Image size 16" x 24".
106. C BOLONACHI. (20th Century.) 'Busy street market in Italy, oil on canvas, signed. 24" x 40".
107. HUGH STEVENSON. (20th Century.) 'South African landscape, oil on board. 25" x 39 1/2".
108. VERMEER (style). (20th Century.) 'Portrait of a Girl', oil on canvas. 24" x 20". Gilt frame with shell and foliate corners.



109. EARLY 20th CENTURY SCHOOL. Head and shoulders portrait of a Roman woman, wearing a red headscarf, facing left, oil on canvas laid to board. 24" x 21".
110. H HAMMOND. (19th Century/20th Century.) i) Children on a fence by a duck pond, thatched cottage beyond, ii) horses and drover by a duck pond, figures on a lane and thatched cottages, watercolour, a pair. 12" x 18".
111. W DRAKE. Rural scene, woman, geese and cattle in a village street, oil on canvas, signed. 24" x 36".
112. V G***RYLY. Still life of roses in a glass vase, oil on canvas, signed indistinctly. 16" x 20".
113. MACWHIRTER. 'The Cumbræes', watercolour, signed with monogram. 9 1/4" x 14 3/4". Artist's name and title verso.
114. S Rama Rao. Reflections, oil on board, signed verso and dated 1970. 22" x 30".
115. Joyce Dearden. Mountain gully, mixed media and collage on paper, signed with initials and dated 1984.
116. S Rama Rao. Abstract pattern blue unsigned lithograph dated 1964 verso, 19" x 24".

117. Snaffles (after) "Wipers" - 1st World War image 17 x 13 1/2".
118. Geo. Hyde. "Fleet St by the Cheshire Cheese", oil on card signed 9 1/4" x 6".
119. A Folio containing a large quantity of 18th and 19thC engravings, lithos, and watercolours (AF).
121. A glass picture of HMS Dreadnought.
122. Colour print - 'The Charge That Saved the Guns at Mons'. - framed.
123. A G Brown. An Arab, encamped at the edge of a village and lake, signed A G Brown RSW, watercolour, 10" x 17".
124. A 19thC oil on oak Panel depicting the birth of Christ.
125. A small framed oriental picture.
126. Robert Morley (1857-1941). 'Fellow Prisoners', mixed medium depicting two seated monkeys. Verso label having artist's name, title and account L Folks No 33159. 11" x 8 1/4"
127. Albert T Pile. The George Inn, Habberholme, etching, signed in pencil.
128. John Absolon. Cottage interior view of an Inglenook, watercolour, signed in pencil. 9" x 14".
129. A framed advertising picture. Jacob & Co's Cream Crackers.
130. 16thC. Italian School. St Jerome, oil on canvas, 16" x 12".
131. A signed photograph of Jack Warner, together with a publicity photograph 'The Mummy', Universal Studios.
132. A Boer War Commemorative handkerchief, printed in blue with a map of South Africa and the musical score to 'The Absent-Minded Beggars' by Sullivan, vignettes of Queen Victoria and Lord Roberts (Kiplings General) and a poem by Kipling, also the signature in ink of Lord Roberts, framed, c.1899/1902.
133. A qty of 19thC engravings of topographical views in Lincolnshire.
134. A qty of 19thC engravings of views in Nottinghamshire and others.
135. A WWI photograph frame, modelled in relief with a cenotaph, inscribed 'The Path of Duty was the Way to Glory', with oak outer frame and the front page of the Nottingham Evening Post, Monday November 1918, reporting the Armistice, framed, a silk painting of Ypres and 2 other framed items relating to WWI. (5)
136. The Mafeking Mail - special sieze ship dated Friday December 22nd 1899, framed, together with a framed explanation of Scott's fatal visit to the North Pole 1911, and a carved wood photo frame inscribed Shanghai, China. (3)
137. A good qty of 19thC blue and white steel engravings, mainly portraits, some views.
138. A similar lot.
139. A framed collection of Victorian greetings cards.
140. H C Walters. Birds on a fence with floral sprays, oil on board, signed. 19" x 15"; and an abstract oil painting. (2)
141. A pair of rural scene colour prints in ebonised frames.
142. A pair of Chinese gilt landscape pictures in ebonised frames.
151. A pair of Victorian brass candlesticks, with knopped columns and on stepped circular bases, engraved with numbers, crown and VR. 8 1/4" high.
152. A pair of frosted glass vases of circular tapering form, with double ring necks, painted with flowers and foliage. 11 1/4" high.
153. A 'Nailsea' glass large pipe, decorated with white concentric lines, having a triple knopped stem. 30" high.
154. A Sylvac character jug, modelled as an elderly man with a full beard, the handle moulded as a gull. 6" high.
155. A late 19thC copper lidded jug, chased in relief with stylised flowers in the Art Nouveau manner, the domed cover with scroll and scalloped thumbpiece, marked JS & SR, Rd.no.09942. 7 1/2" high.
156. A Fellahharg vase of slender baluster form, painted with a nomad and camel in a desert landscape, signed Prioscholett. 10" high.
157. A pair of Fellahharg vases, ovoid, each painted with arab warriors in a desert landscape, signed Gammer. 6 3/4" high, (each with chip to rim).
158. A late 19thC moulded glass celery vase, with bead edge, two scroll handles, etched with ferns and inscribed 'Celery', on lobed knopped stem and star moulded foot. 10 1/4" high. (AF)
159. A German porcelain table centrepiece, painted with Deutsche Blumen and encrusted with flowers, the rococo base with amorini against a moulded column, on 4 scroll feet. 11 1/4" high.
160. A Delft vase, hexagonal, painted in blue with a fisherman and buildings, within a shaped panel moulded with flowers. 7 1/4" high. (Chips to foot.)
161. A mahogany stationery box, having a half-back incised with bamboo, over a cylinder rising cover, inlaid with bamboo, the interior fitted with compartments. 12" x 13".
162. An early 19thC. faience pot with 3 spouts, and 3 loop handles, painted with serpents, armorial crest, and concentric circles, 6" dia.

163. A Japanese oak and parquetry jewel cabinet with applied gilt metal decoration, 6" high.

164. A 19thC golden onyx turned font, 12" high.

165. A BEM electric clock with brass dial ring and base.

166. A pair of antique Chinese models of parrots, 8" high, restored.

167. An 18thC Leeds creamware Coffee Pot with loop handle. (Spout and cover missing).

168. A small framed embroidery sampler.

169. A Persian design blue and white tin glazed terracotta charger, 13" dia.

170. A Continental blue and white wall plaque of symmetrical floral design, 10" dia.

171. A Victorian faceted glass sweetmeat dish with inverted baluster teardrop stem.

172. A Decomania papier mache vase.

173. Two pewter plates including early example marked PSN.

174. A large Chinese blue and white Ginger Jar with Kangxi marks.

175. An orange lacquer silhouette bowl.

176. A Kaiser bisque porcelain figure 'Odette', (from Swan Lake), limited edition 3052/7500, hand tinted, 9 1/4" high, (with certificate).

177. A Wade model of a Parrot

178. A pottery character figure of Lord Kitchener, yellow/white glaze with gilt highlights, 6 1/2" high, (AF); together with a treacle glaze character figure inscribed 'French, 4 3/4" high.

179. A Gimson Sessionist plate 'Shakespeare' pattern, octagonal, printed in brown and polychrome painted, 9 1/2" wide; a 19thC sugar bowl and cover, with gilt highlights and foliage on white ground.

180. A pottery toilet bowl, with wrythen moulded body, decorated in green and gilt with ivy.

181. A pair of Chinese pottery monkeys, polychrome painted and holding seeds, on moulded bases, 10 1/2" high, modern.

182. A 'Virol' stoneware storage jar, oviform, with printed inscription, 9 1/2" high; another, 6" high; another, 3 1/4" high.

183. A 'Pearson's Chesterfield' stoneware jar impressed 'John McNaught Davis, Ram Hotel, Newark', 10 1/2" high; another with stencil 'S.R.D.'; and 2 early 20thC milk bottles.

184. Nine WWII period pieces of sheet music, with illustrated covers including 'The Dam Busters', 'Run Rabbit Run', 'Lilli Marlene', and 'Will Santa Claus wear a Tin Helmet' - all framed.

185. A copper relief moulded plaque depicting a soldier from WWI, inscribed 'A gentleman in

khaki', in wooden frame. 15 1/2" x 11 1/2" overall.

186. Bruce Bairnsfather (after). 'His Secret Sorrow', WWI colour print together with 'Oxo in the Trenches' poster and 3 framed WWI ephemera.

187. Six WWII period pieces of sheet music with illustrated covers, including 'Chocolate Soldier from the USA', 'White Cliffs of Dover'. 'We're Gonna Hang out the Washing on the Siegfried Line', all framed.

188. A table lamp made from a WWII aeroplane propeller, bearing trademark 'Ruston, Lincoln, England'.

189. A pair of WWI leather lace-up boots.

190. Six WWII period pieces of sheet music with illustrated covers, including 'The Khyber Pass March', 'The Boys in Khaki', 'Belgian Quadrille' and 'The Great Eastern Polka'.

191. A Boer War silk picture of Kitchener 'Khartoum to Pretoria', a gilt metal photo frame containing a silk postcard 'Royal Engineers' and a black and white photograph, 4 sepia photographs 'The King and His Fighting Men', and a South African commemorative greeting from Queen Victoria dated 1900 in Oxford frame.

192. A Royal Marines swagger stick with white metal cap bearing crest, another stick and an ebonised cane with silver cap and mounted with a skull and crossbones with ribbon inscribed 'Or Glory'; another cane. (4)

193. A WWI brass memorial plaque relating to the death of 'John Dennis', together with a sepia photograph and inscription of the same, and a quantity of framed wartime ephemera.

194. A Lipton's brass souvenir tea caddy made for the British Empire Exhibition 1925, and an inkwell and box made from the Teak of HMS Iron Duke, Admiral Jellicoe's Flag Ship, Jutland 1915.

195. A collection of early 20thC German ceramic pipes, colour printed with portraits of the military including Hindenburg, Kaiser Wilhelm II, etc.

196. A Ridgway plate, circular, monochrome printed with an image of HMS Dreadnought, under steam, 10" dia; together with a brass shell case ashtray and vesta stand, a display Chadwicks cotton reel, and a school slate.

197. A quantity of WWI period advertising posters, including Wrights Coal Tar Soap, Lifebuoy Soap, Ogden's Guinea Gold.

198. 1st World War: A Wymering Manor plate, commemorating the fallen of WWI, a Grimwades plate, sepia printed with a WWI image after Bruce Bairnsfather and a teapot, similar, (AF).

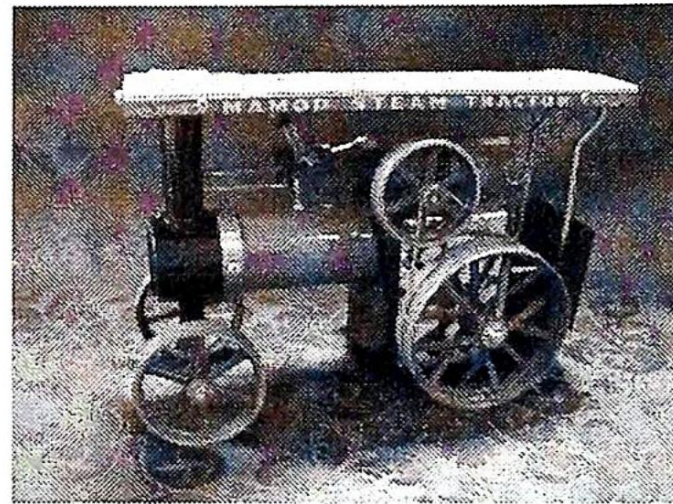
199. ODHAMS PRESS. The War in Pictures - 6 vols, c.1945, cloth boards; together with The War Illustrated - 2 vols, c.1917, and The wonder Book of Soldiers.

200. A set of 6 Victorian 'Scraps' depicting battle scenes from the Crimea, Afghan and Indian Wars, framed.
201. A German regimental stein, moulded and coloured with military scenes, the metal cover with figural knop, 12 1/4" high (repaired), a Lipton's brass tea caddy, 1924, and an alloy inkwell modelled as a guard's helmet, etc.
202. A pair of WWII binoculars in a canvas case, a WWI tin helmet and other army items.
203. A copper kettle.
204. A Foretay (after). An earthenware bust of a young woman, looking to her right, in a decollete dress and flowers in her hair. 19" high.
205. A cast iron trivet with octagonal pierced top, knopped stem and raised foot; another, wall hung, cast with game.
206. A pottery novelty teapot, modelled as the Old Woman in the Shoe, green glaze with silver highlights.
207. An American mantel clock, the painted wooden case surmounted by a spelter figure of a South American cowboy, the circular brass dial with Arabic numerals, of 8-movement striking the half-hour on a bell, 21" high, (bears presentation plaque).
208. A stoneware jar, stamped W.P.H., a wooden masher and a fleam hammer.
209. A cast iron doorstep modelled as a Sailor, another as a Scottish Soldier, another, Soldier on horseback.
210. A cast iron doorstep "Punch", another Old Woman and children, together with an alloy model of Britannia.
211. A set of brass stair rods and clips.
212. A Ship's brass gimble, a small brass bell, a Lincolnshire Vintage Steam Rally plaque, and a miner's lamp (4).
213. Five pieces of brass and copper Trench Art.
214. A Staffordshire "Rutland" pattern jardiniere, decorated with roses, strapwork and scrolls, 9" diameter.
215. An Arthur Wood pottery basket, the mottled cream ground painted with wild roses and gilt quatrefoil, 6" wide, together with a marble sleeve vase, 3 porcelain sugar bowls and an enamel and metalised shallow dish.(5)
216. Three pieces of Carltonware leaf moulded dishes and a Crown Devon leaf moulded dish with fusia stem (4).
217. A Staffordshire pottery "Natal" pattern dinner service, decorated in underglaze blue scrolls and pink flower sprays, approx 43 pieces, early 20thC.
218. A modern Poole pottery cream jug, painted with a broad band of flowers, model no 305, 4" high.
219. A Copeland Spode pottery jug, baluster, the green ground moulded in bas-relief with huntsman, dog and game 7" high 20thC.
220. An Arthur Wood pottery jug, of elongated baluster shape, the ribbed cream body painted with flowers and rushes, 11" high.
221. A Poole pottery sugar bowl, circular, painted overall with stylised flowers and geometrical, no. 354, 4 1/2" dia. marked "Poole, England".
222. A Cinque Port pottery loop handled vase, painted in brown with concentric square, 10" over handle.
223. A Royal Doulton "Mr. Pickwick" plate 10 1/2" dia.
224. A contemporary amber glass sleeve vase, internally decorated with blue and teardrop shaped bubbles, 14 1/4" high.
225. A Royal Doulton "Peggotty" moulded jug depicting figures from David Copperfield, Reg No 859004 and others, 8" over handle.
226. A Royal Doulton "Gaffers" jug, decorated with a figure in a doorway and inscribed "Gaffers I be all the way from Zummeset" 5" high.
227. A Royal Doulton Dickensware spill vase, painted with "Poor Jo" pattern, 3 3/4" high.
228. A Royal Doulton character jug, "Mr. Pickwick" 3 1/4" high.
229. A Radford Jug, painted with foliage, no. 1081, 6" high.
230. A large copper kettle with brass handle 13 1/2" high.
231. A copper warming pan with turned fruitwood handle.
232. A Maling "Coleus" pattern baluster vase, the foliage painted on a pearl lustre ground, 8 1/2" high.
233. A Sylvac vase, the orange ground painted with a blue/green streaky glaze, 6 1/4" high, another similar, 4" high, and a Carltonware "Rouge Royale" ashtray.
234. A Mason's Ironstone vase, decorated in the Chinese manner in underglaze blue and polychrome, 4" high, 19thC.
235. A Royal Copenhagen figure of a young boy with umbrellas, on raised square plinth, 7" high, no. 1129.
236. A Royal Copenhagen model of a salmon 6" wide.
237. Blanc de chine: The Eight Chinese Immortals, approx 6" high.
238. A Satin beech box with applied colour engraving to lid, a middle Eastern box with pewter mount and wooden photograph box modelled as a book (3).

239. A 19thC pearlware mask jug, modelled with a Bacchus face mask, and foliate sprigs in silver lustre, 5 1/4" high.
240. A Majolica baluster loop handled flagon, moulded in bas relief with lapette collar and ferus, 8" high.
241. A Royal Winton "Wycombe" pattern jug with streaky green glaze 9" high.
242. A 19th C Cantonese enamel Bowl decorated with flowers on a bleu-de-mazarin and turquoise ground. (AF)
243. A Sessionist green pottery 2 handled vase.
244. A Victorian rosewood box, bound in brass and with engraved tablet to the centre (fittings missing) 12 1/4" wide.
245. A mahogany box, having marked veneered panels, and on four bun feet 15 3/4" wide.
246. A quantity of Victorian and Edwardian clothing including a cotton handsewn night gown, 3 christening gowns, 2 lace bonnets and nurse's apron.
247. A German bayonet with eagle hilt, horn grip, the blade marked Alexander Coppel, Solingen, with leather and plated sheath, 13" blade.
248. Another bayonet, similar, the blade marked Carl Eickhorn, Solingen.
249. An Edwardian mahogany kidney shaped gallery tray, inlaid to the centre with a shell, with brass handles, 23 1/2" wide (AF).
250. A carved serpentine stone urn. (AF)
251. A Kaiser bisque porcelain figure of a dolphin, rising from a wave, 9" high, impressed no 654.
252. A 19thC. tin tea cannister, circular, painted with the Royal Crest, 17 1/4" high (AF).
253. An EPNS and glass serving dish, rectangular, raised on four cast feet, 18" over handles.
254. A 19thC. travelling Medicine Cabinet, with fitted interior and bottles 12" wide.
255. An Edwardian mahogany stationery box, with 3/4 gallery, over a hinged fall, filter interior, and on spreading plinth 18 1/2" wide.
256. EPNS Old Englishware tableware, in oak canteen, by Croisdale, Leeds (6 place settings).
257. An oak miniature chest of 2 short and 3 long drawers, with cast drop handles, on stile feet with shaped apron 11 1/2" x 16".
258. A Strobel & Wilken bisque headed doll, with brown mohair wig, brown sleeping eyes, open mouth with fully painted composition, limbs marked 120-9 mark for Strobel & Wilken Germany 25" high.
259. An Armand Marseille bisque doll's head, no. 390, with blue sleeping eyes and open mouth.
260. A Victorian brass firescreen with mesh panel.
261. A Staffordshire pottery figure of Dick Turpin, Companion figure of Tom King, both in underglaze blue jackets, 9 1/4" high. 19thC.
262. A Staffordshire Toby Jug "The Snufftaker" in patterned tricorne hat, green jacket and patterned waistcoat and breeches, on moulded green base 9 1/2" high 19thC.
263. A Staffordshire pottery group of two girls in matching outfits, carrying tartan shawls, on moulded base, 19thC. 6 1/4" high.
264. A Staffordshire pottery group of two children bird nesting, with applied bocage, 5 ins high, 19thC.
265. A Staffordshire pottery group of fruit sellers, he with a basket, she carrying the fruit in her apron, on oval base, 6 1/4" high.
266. A cold painted bronze figure of a parrot, seated on a branch, Austrian, 11 1/2" high.
267. An EPNS oval 2-handled tray engraved with a panel of flowers, scrolls, within a palmette border, the rim fluted, 29 1/2" wide.
268. Spare Lot.
269. A Mahogany cased alarm clock with string inlay, French movement, retailed by Harrods, on metal bun feet 6in high.
270. Spare Lot.
271. A 19thC. mahogany butler's tray, the shaped gallery with four pierced handles, 25 1/2" wide.
272. A 19thC. pewter chafing dish, with gravy channels, two turned wood handles and on bun feet (one missing) 26 1/2" over handles.
273. A 19thC. copper coal helmet, with two brass and turned wood baluster handles, on circular raised foot, 18 1/2" high.
274. A copper bucket with brass carrying handles, 16" dia.
275. Approx 25 early 20thC trade calendars, mainly pictorial views of London.
276. A qty of bound 'Illustrated London News', music sheets, etc. (AF)
277. Various early 20thC watercolours and prints. (AF)
278. Bartolozzi (after). Stipple engraving and sundry prints and etchings. (AF)
279. A qty of early 20thC tins, some with original contents including medicinal, food and tobacco.
280. A mahogany and brass plough plane, marked W Lewis, York, H Crowther & F S Doe.
281. Charlie Chaplin: 'Easy Street', and Pathescope 9.5mm film reel, another 'The New World', another 'The Waiter', and 'Fury Below' anonymous.

282. A collection of early 20thC photographs including nursing, WWI and others.
283. An album of early and mid 20thC newspaper clippings concerning auctions and a qty of receipts, billheads, etc, relating to Lincolnshire.
284. An early 20thC hide suitcase marked with initials K.B.H. and a leather clask cylinder.
285. An early 20thC leather hatbox with a fitted interior, marked with initials EBH
286. A leather and brass suitcase with straps, marked with initials EBH.
287. Two large tea tins, painted overall in the Chinese manner, 20th Century.
288. A Victorian rosewood duet writing box with brass campaign handles and metalwork and tablet inscribed ATW.
289. A qty of early 20thC moulding planes.
290. An antique beech spinning wheel, carved with date 1789. (AF)
291. Le Follett: Journal Du Grand Monde, 19thC magazines containing coloured fashion plates, approx 30.
292. An Armand Marseille bisque head doll, no wig, sleeping blue eyes, open mouth, with fully jointed composition body, 21" high, marked 390. A&M, in organza 'fairy' dress.
293. An Armand Marseille bisque head doll, brown wig, sleeping blue eyes, open mouth, with fully jointed composition body, 24" high, marked 390 A&M, (one lege unattached).
294. A pot head doll with moulded and painted features and composition body, 21" high.
295. A pot head doll with moulded wig, sleeping eyes and open mouth, composition body, (very AF)
296. A collection of early 20thC children's and parlour games.
297. Hornby Dublo: electric, various locomotives, tenders and rolling stock.
298. A collection of early 20thC children's party and parlour games.
299. Hornby Dublo: electric, post war, 'G25 LNR 2-8-0 Freight Train Set', in original box.
300. Hornby Dublo: electric, post war, 'Set 2049 Breakdown Train Set', in original box.
301. Hornby Dublo: EDL18 Standard 2-6-4 tank locomotive; L30 1,000 B.H.P. Bo-Bo diesel locomotive EDL12 locomotive B.R. 'Duchess of Montrose', (all boxed).
302. Hornby Dublo: a qty of accessories and track, mainly boxed.
303. A Hornby HM2000 power controller, in box.
304. Meccano Magazine: 1946-1950's, approx 43 copies + 4 Boys Own.

305. A piece of studio glass and green glass jug with star cut base.
306. A tall lobed oyster colour vase with pink glazed interior, marked on underside 'Real Staffordshire Ceramic by Clarice Cliff'. 12" tall.
307. A pair of 19thC Chinese plates of prunus design and 2 similar bowls.
308. A Whieldon type glazed figure.
309. A Copeland Spode bud vase, pale blue ground and white plum blossom decoration.
310. A small Crown Devon model of a woeful dog.
311. A pair of German porcelain figures of a young dandy and girl, 5".
312. Spare Lot.
313. A Mamod traction engine, boxed.



314. A 1970's 'Rhythm' alarm clock.
315. A brass telescope and tripod.
316. An American wall clock, painted dial, in square cushion frame, of 8-day striking movement. (AF)
317. Eight Eagle Annuals, various years to 1963.
318. A 1929 catalogue of the sale of 'The Blyth Hall Estate', together with a Plan of The Serlby Hall Estate, Nottinghamshire when offered for sale in 1930 by Knight Frank & Rutley.
319. Qty of 19thC bottles including one for Arnold & Co, Lincoln, together with leather and metal dray horse decorative mounts, 2 bell ropes, etc.
320. A cavalry officer's sword with wooden and metal grip, pierced basket and with steel scabbard.
321. A GEC bakelite radio, model BC4650
322. An Allcock and Co stainless steel sea fishing reel.
323. A cut-away model of an automatic engine transmission.
324. A Victorian stationery box.

325. A mahogany cased Zimmerman Autoharp and sheet music.
326. Old Games; including Halma, Jiggle-Jogger, etc.
327. A French leather gun case for a Browning Superpose 12 bore.
328. A Coronet Midget camera, having a green marbled bakelite case, in original box.
329. Titanic: 'The Deathless Story of the Titanic', 1st Edition, c.1912, issued by Lloyds Weekly News.
330. A Victorian silver sweetmeat dish, of shield shape, the everted rim with hatched panels and chased with flowers, foliage and scrolls, and on pierced plinth. Birmingham 1887. 5 1/4" wide, 2ozs.
331. A silver tea strainer and stand. Birmingham 1944.
332. A Victorian silver pin tray, of diamond shape, having a chased and pierced border. Birmingham 1893, 4 1/2" wide.
333. A ladies Kigu cigarette case, elliptical, the black enamelled cover set with marcasite ornament, 3 1/2" wide.
334. A George V silver machine turned cigarette box, rectangular, the lid engraved with initials 'J.R.' Birmingham 1923. 7 1/4" wide.
335. A Victorian silver claret jug collar and hinged lid, probably by John Figg, repousse with Bacchanalian masks, berries and foliage, the lid with shield and lion rampant thumbpiece, London 1857, 7ozs.
336. A Victorian silver claret jug hinged lid and collar, chased and engraved with flowers and foliage, the domed cover with lobed and foliate finial, Birmingham 1869; together with a plated jug collar and a white metal pepperette cover. (3)
337. A silver machine turned hip flask, Birmingham 1939, 6 1/4", 6ozs.
338. A silver machined turned cigarette case, with initials GJB. Chester 1924, 3", 2ozs.
339. An early 20thC silver plated car mascot modelled as a naked female with her arms extended behind and windswept hair. 8" high, with screw and bolt fixing.
340. A set of military uniform buttons, pips and leather greatcoat buttons, in a Rattray's Red Rapparee tobacco tin.
341. A qty of Victorian and later glass marbles.
342. A Mauchlin ware watch stand, painted with a view of The Parade, Skegness. 4".
343. A 19thC French brass travelling monoscope, in fitted case, 5 1/2" high.
344. Two pairs 19th/20thC pinc-nez, in cases.
345. Two Victorian EPNS pierced belt buckles and panels.
346. A Royal Doulton Sairey Gamp character jug, 4 1/2" high.
347. Medals: A German Iron Cross 1939, with ribbon, cased; WWI Service Medals; Imperial Service Medal, QEII and others, various cap badges and qty of coins, together with an early 20thC scrapbook, silk postcards and stamp album.
348. A qty of cigarette cards and a small photograph album.
349. An AA car badge No 8B41145.
350. Ostrich feathers, satin items, etc.
351. A Victorian ivory and brass 2 pull telescope, 3 1/4" max and part sleeve case.
352. Five cigarette cases; inc a gun metal example with plaque of the Eiffel Tower with an Airship and silver example.
353. 2 snuff bottles.
354. A signed Japanese Netsuke, 2 young wrestlers.
355. A Japanese ivory nesuke, study of 2 brothers playing, the elder on his knees, the other rising.
356. A Japanese ivory netsuke study of a cask-maker seated working upon his latest creation.
357. A Japanese ivory netsuke study of Shoki the Demon Queller seated at a stove upon which rests a kettle.
358. A Japanese ivory netsuke study of a street trader walking offering peaches from a basket.
359. A Japanese ivory netsuke study of a noh play mask-maker seated by his working clogg.
360. A Japanese ivory Inro, a pill box favoured by the Samurai.
361. A Ladies open faced fob watch in yellow metal stamped 14K, the reverse engraved with a floral spray.
362. A Ladies open faced fob watch in yellow metal stamped 18K, made by J. W. Benson, floral decoration to the reverse with a central shield.
363. A cased manicure set, mostly with mother of perl handles, the case having a selection of wrapped needles in the lid.
364. A Victorian gypsy style ring set with 3 1/2 pearls and 2 red stones. Hallmarked Birmingham 22ct gold 1868.
365. A tin containing an enamelled ring, 4 silver coins and 2 brooches.
366. A silver ring tree, the base having a pie-crust edge and rococo style decoration. Hallmarked Chester 1901.
367. A crystal salt with a continental silver swan neck and wing attachment with London import mark, together with a salt spoon and Asprey box.
368. A silver teddy bear key ring by Asprey.

369. A collection of football programmes, various dates from 1960's - 1980's, various teams and a pre 1971 semi-final ticket for Sheffield Wednesday.

370. A Kolster Brandes cream bakelite radio, model FB10.

371. A Dresden flared vase and Japanese cup and saucer.

372. A Victorian flamed mahogany sarcophagus tea caddy with brass inlay and missing jar. 12" wide.

373. A Mappin & Webb silver plated syphon sleeve, a cocktail shaker and claret jug.

375. Two Edwardian oak whip racks.

376. An oil lamp with cast base and cranberry glass reservoir converted to electricity.

377. An Art Deco chromium plated hanging centre light with frosted glass shades.

378. A Victorian rise and fall style brass and iron hanging lantern converted for electricity.

379. A 19thC mahogany banjo barometer by Terzza of Nottingham. (AF)

380. A Victorian pine specimen chest of 6 drawers with lepidoptery specimens.

381. A rosewood crossbanded specimen chest of 8 drawers with lepidoptery specimens.

383. A 19thC French figural mantel clock surmounted with a spelter female harpist entitled 'Melodie Champetre', after Moreau, on a stepped liver and cream marble base with gilt rococo mounts, enamel dial, 8-day movement. 24" high.

384. A wooden inlaid cigarette box.

385. Late entries.

NEXT SALES

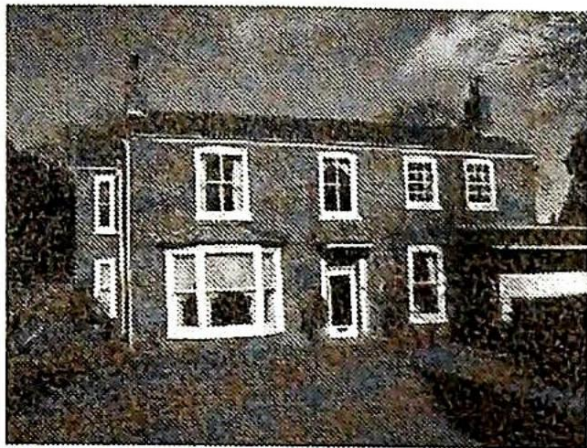
GENERAL – 10th April

FINE ART – 15th May

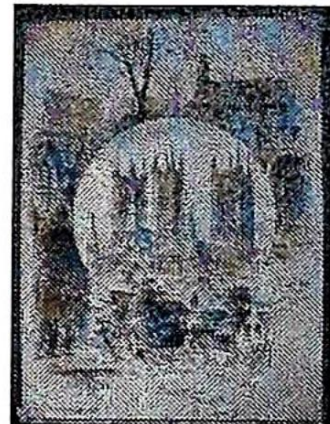
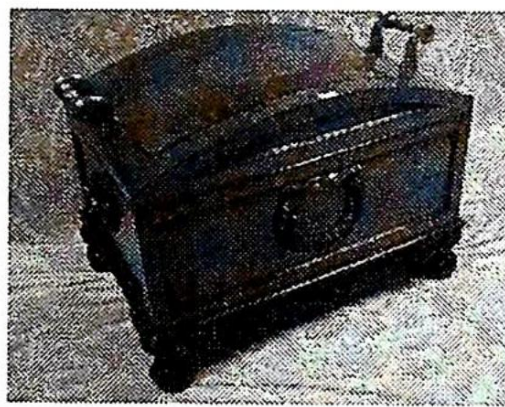
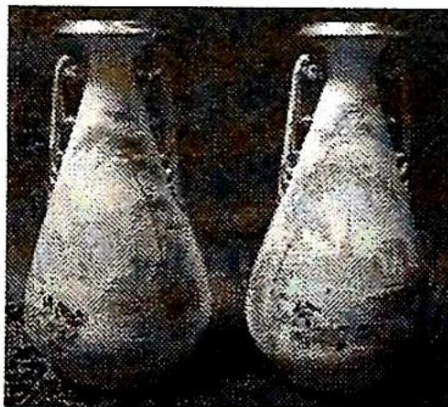
ENTRIES NOW INVITED

IMPORTANT 1,000 lot FINE ART ESTATE SALE

Upon instructions from the Executors of Mrs M H Dick (Dec'd)) being the contents of The Ferns, Westgate, Sleaford., Mrs E Hamilton (Dec'd), etc.



Closing date for all categories 19th April.
Entries welcome from full estates to single items.



Viewing: Sunday 12th 2pm to 5pm, Monday 13th 2pm to 7pm,
Tuesday 14th 9am to 2pm and Saleday from 9 to 10am

Saledays: Tuesday 14th May at 2pm & Wednesday 15th May at 10am

Catalogues: £5 each, pre-paid by post.

Visit our website: www.goldingyoung.com :

CATALOGUES with COLOUR IMAGES of all lots of interest and valued at over £100 are on our website from Saturday 11th May. There is a search engine to find the lots you are interested in. Also review past sales.

Part of LINCOLNSHIRE ANTIQUES WEEK

Over 3,000 Lots from 6 major estates to be sold in one week

By Lincolnshire's 3 leading Auctioneers.

Messrs Goldings (Grantham) Thos. Mawer & Son (Lincoln) & DDM (Brigg).

May Fine Art Order of Sale

2pm Tuesday - lots 1 to 250 - **Watches**
lots 251 to 400 **Clocks, Barometers,**
Scientific & Marine Items

6pm Tuesday - lots 501 to 700 - **Silver & Platedware**
lots 701 to 1000 - **Jewellery, Netsuke & Bijouterie**

10am Wednesday - lots 1001 to 1250 - **Furniture & Rugs**

12 noon Wednesday - lots 1251 to 1400 - **Pictures & Prints**

followed by

lots 1401 to 1500 - **Royal Commemorative Items**

lots 1501 to 1600 - **Antiquarian & Collectable Books**

lots 1601 to 2000 - **Glass, Ceramics, Collectables, Bygones,**
Metalware, etc.

COLLECTIVE GENERAL ESTATE SALE

On Wednesday 10th April at 10am.

Circa 800 lots of Antique & Modern Furniture, Decorative & Collectable Items, Household Goods, Personal Effects, Pictures & Prints, Tools, Gold, Silver, Jewellery and Objects of general use and interest.

HOUSE CLEARANCES and SINGLE ITEMS always INVITED

ENTRIES CLOSE 5pm the preceding FRIDAY

VIEWING: Tuesday 9th 2pm to 6pm and Saleday 9am to 10am.

NEXT SALE 24th APRIL

Antiques Discovery Days

FREE AUCTION VALUATIONS

Entries now invited for our forthcoming Fine Art and Specialist Sales

Every Tuesday 2pm to 6pm in the Saleroom.