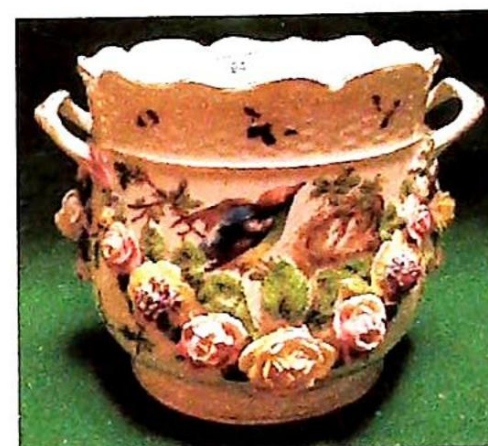


Established 1900

- GOLDINGS -

AUCTIONEERS & VALUERS

AUCTION SALE CATALOGUE



Principal
Colin R. Young FNAVA

Consultants
C. Robin Hall FRICS FAAV
Ian J. Shaw FRICS FNAEA



National Association of
Valuers & Auctioneers

Wednesday 30th January, 2002

Golding Young & Co.
Old Wharf Road, Grantham
Lincolnshire, NG31 7AA

01476 - 565118

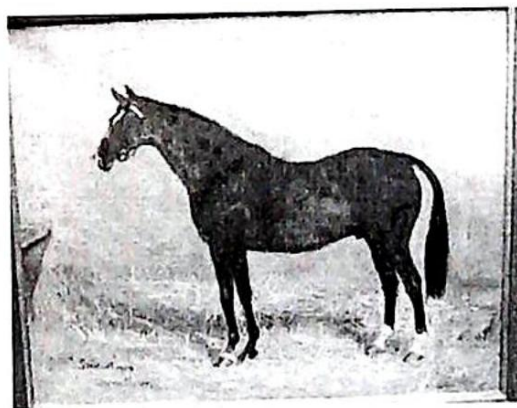
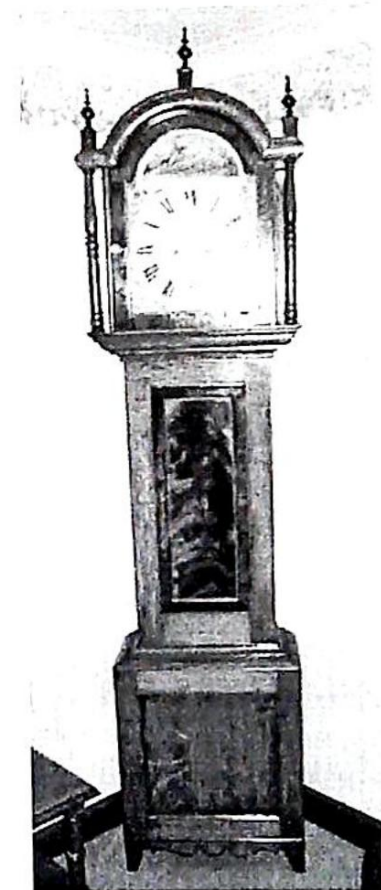
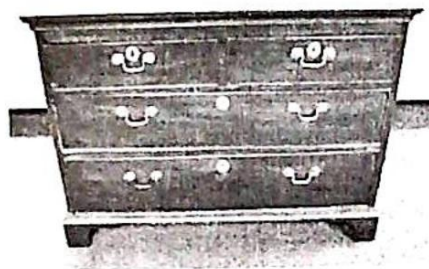
Fax
(01476) 561475

E-Mail
enquiries@goldingyoung.com

Internet
<http://www.goldingyoung.com>

Associate Office
Goldings, Chartered Surveyors & Estate Agents
45 High Street Grantham NG31 6NE (01476) 590211

selected images from
www.goldingyoung.com



Upon instructions from the Executors of Mrs V M Jenkinson (Dec'd), Mr R Scoffield (Dec'd), collections and clearances from throughout the region.

Golding Young & Co will sell by Auction a

COLLECTIVE FINE ART SALE

On Wednesday 30th January 2002

10am. – *Lots 1 to 550* - works of art , glass, ceramics, metalware, silver, 19th & 20th c. Collectables, etc.

2pm. – *Lots 851 to 1000* - oriental rugs, period & decorative furniture

6pm. - *Lots 1001 to 1150* - jewellery & bijouterie

Viewing: Tuesday prior 2pm to 7pm
and Saleday from 9 to 10am
(*Extra jewellery viewing 4pm to 5.45pm*)

Click to View:

Over 500 lots illustrated from 26th January at –

www.goldingyoung.com

Lot Enquiries: *Suki Burnett, Jan Squires and Colin Young*

Vendor Enquiries: *Marie Scoffield*

Telephone: 01476 • 565118

Fax: 01476 • 561475

Email: enquiries@goldingyoung.com

Buyers Hotline: 01476 • 575202

For Lot Enquiries & Commission Bids Viewday & Saledays Only

IMPORTANT NOTES FOR PURCHASERS

1. **PAYMENT:** Must be made in full immediately after the Auction. The following methods of payment are acceptable.

a) Cash b) Bankers Draft c) Building Society Cheque
d) Cheques, accompanied by a valid card.

PAYING BY CHEQUE?

If you are not known to the Auctioneers and wish to pay by cheque above your guarantee card limit **WE WILL RETAIN THE GOODS** until it has been cleared (7 days). There will be **NO EXCEPTIONS** to our policy. To avoid **UNDUE EMBARRASSMENT** for yourself or to our staff, please do not ask for preferential treatment. If you wish to clear goods immediately bring a letter from your Bank or a suitable guarantor reference.

2. **BUYERS PREMIUM** of 15% on the first £100 of each lot and 12 ½% thereafter + VAT is payable on all lots.
3. **REMOVAL OF PURCHASES:** Goods must be collected as soon as they are paid for, and in the 2 Working Days following the sale. If goods are not collected on these days we reserve the right to charge £1 per lot per day thereafter.
4. **COMMISSION BIDS:** If you are unable to attend this or any of our future sales we will be pleased to bid on your behalf. We always purchase at the lowest possible price, subject to other bids and reserves.

All bids must be handed to the office on an official form. It remains the responsibility of prospective purchasers to contact **GOLDINGS** to confirm whether their bids have been successful.

5. **TELEPHONE BIDS:** There are inherent dangers with this practice, therefore all such arrangements are made entirely at the bidder's risk. Telephone bids will only be accepted if the lower estimate is £500 or above. For lots with a lower estimate below this figure Commission Bids Only will be accepted.
6. **SMOKING** is not permitted in any part of the Saleroom.
7. **REFRESHMENTS** will be available Saleday.
8. **ACCOUNT TRANSFER** will not be recognised after the sale. If any lots are purchased for another person, this must be declared at the fall of the hammer.
9. **ESTIMATES.** Our Auctioneers will be available during viewing to give guidance on your prospective purchases.

GLOSSARY

- a) Generally: 'As Found' (AF). This term indicates the lot has some damage. Its absence does not indicate that the lot is free of defect. All lots are **SOLD AS SEEN**.
- b) Paintings: 'Signed, initialled, monogrammed' – 'This refers to the present state of the work and is not an attribution.
- c) Books and printed matter: These items are not sold subject to collation and are not returnable once removed from the premises.
- d) Silver & Jewellery: Weights given are approximations given by basic instruments.

The Sale Inventory

10am.

1. A Staffordshire figure 'De Connaught' on horseback, glazed white, on naturalistic base, 12 1/2" high (crack to base).
2. A Staffordshire figure 'General Sir George deLacy Evens', lightly coloured in underglaze blue coat, the horse sponged brown, on moulded base, 13" high (repair to head). Pugh C245 fig 122.
3. A Staffordshire figure 'Hector Macdonald', on horseback, glazed white, on naturalistic base, 12 1/4" high.
4. A Staffordshire figure 'Havelock', on horseback, lightly glazed in orange, green and pink, 9 1/4" high.
5. A pair of Staffordshire spill vases, each modelled as a cow and nursing calf, against a tree trunk, on naturalistic bases with stream, 11 1/4" high, (damaged).
6. A fine Staffordshire figure decorated in underglaze blue, orange and green, and pink plumes to hat, having a dog at his feet, 12 1/2" high.
7. A pair of early 19thC Staffordshire pearlware figures, 'Widow' & Widower, she with a flower sprigged gown and green cape, seated with a meal barrel and oil flask, he, in brown gown with green cape, seated, with a raven, on square bases, one with inscription, 10 3/4" high, some restoration.
8. A Staffordshire figure of a man with a girl on a pony, well coloured in predominately pastel colours, 10" high, see Pugh page 1540, plate 44, fig 83.
9. A Staffordshire figure of a fruit vendor, astride a horse, well coloured in underglaze blue, pink, yellow, orange and green, 11 1/2" high (damaged).
10. A Staffordshire Toby jug, wearing a red jacket, with yellow waistcoat and pink breeches, seated with a napkin on his knees, 9 3/4" high (repaired).
11. A Staffordshire Toby jug, with elongated spout, decorated in orange lustres, green and yellow, 9" high, (restored).
12. A pair of German figures of a young musician with a set of pipes, and his female companion with tambourine, decorated in pastel shades, 9" high.
13. A pair of Continental porcelain figures of pheasants, with red breasts, yellow plumage, on rocky bases with foliage, 8" high.
14. A 19thC burr walnut stationery box, with domed lid, embellished with brass strapwork and ornament, 8 3/4" wide, (interior fittings missing).
15. A Victorian walnut vanity box, inlaid with tonbridge type panels and with centre mother of pearl medallion, the interior fitted with an assortment of glass bottles with EPNS cover and velvet lined compartments and a mirror to the lid, 12" wide.
16. An olive wood folder, the front inlaid with a marquetry panel of flowers within a geometric border, 13" x 9 1/2", together with a small mahogany display case with baize lined interior, 8 1/2" square.
17. A Victorian candlestick oil lamp, having a wrythen milk glass reservoir, the brass pedestal with fixed decorative sconce, vase turned stem, and on a domed circular foot, cast with formal scrolls and foliage, 13 1/2" high.
18. A pair of Victorian candlestick oil lamps, with cranberry glass reservoir, the brass columns cast with scrolls and strapwork, 12 1/2" high (AF)
19. A gilt metal photograph frame, the rectangular aperture encircled by foliate scrollwork, on easel stand, 11 1/4" x 7 1/2".
20. An EPNS 3-bottle decanter stand by Mappin Brothers, having a loop handle with cast foliate ornament, the 3 panel cut decanters with star cut bases and faceted stoppers, each with a spirit label, 10" high.
21. A 5-bottle cruet stand, on bun feet, (one replacement bottle).
22. An 18thC wrought iron rushnip, on 3 scroll feet, 11 1/4" high.
23. A Doulton & Watts Lambeth salt glaze No 2 barrel, with turned wood tap, 12 1/4" high.
24. A wooden coopered sherry barrel with metal tap, 14 1/4" high.
25. A wooden coopered sherry barrel, with wooden tap, inscribed 'Timpano Amontillado'.
26. A brown saltglaze jar, with sgraffito decoration, 11" high.

27. A pair of Delft bottle vases, having reserved panels of Dutch barges and windmills, framed by flowers and foliage, 12" high, (one AF)
28. A 19thC mahogany box, rectangular, with fitted interior, handles to each side, on bracket feet, 12 1/4" wide. (AF)
29. A mahogany miniature chest of drawers with 2 short and 3 long drawers, each with knob handles, on shaped bracket, 10 1/4" x 10".
30. A ruby moulded glass light shade, a cranberry glass hand held oil lamp, 4 etched and moulded light shades, a cranberry reservoir and 4 glass chimneys.
31. A pair of Royal Doulton ovoid vases, printed overall in flo-blue with children in a landscape, the flared rims gilt, 6 1/4" high.
32. A pair of Royal Doulton vases, of circular tapering shape, printed overall in flo-blue with children in landscapes, having gilt lines to interior and foot rim, 4 1/4" high (one repaired and chipped).
33. A Leeds creamware barrel-shape teapot, probably Leeds, painted with panels of trailing foliage, printed with religious verse, the cover with ball finial, straight spout (AF) and loop handle, 6" high, late 18thC.
34. A cold painted bronze tazza of the Art Nouveau period, circular, modelled in low relief with a female figure in profile holding a flower in her right hand, seated beneath a tree, the sun rising from the left, on ring knopped stem, 10 3/4" dia.
35. A pair of Carlton Ware sundae dishes, modelled as buttercups with integral foliage stands, together with 2 spoons with buttercup finials.
36. Continental pottery models of a cock and a hen, brown glazes with red mottling, 12" high (one repaired).
37. A Staffordshire toby jug 'Hearty Good Fellow', standing holding a foaming ale jug and pipe, highly coloured, 11 1/4" high, (damage to hat).
38. A Staffordshire toby jug, a seated Squire Toby James Kent with foaming ale tankard, 11 1/4" high.
39. A 19thC saltglaze stoneware jar, having an impressed flowerhead border and reeded loop handle, 14" high (crack to handle).
40. A pair of gilt metal figures of putti, one playing a violin, the other a tambourine, on circular wooden bases. 7 1/2" high.
41. 2 cast metal sailor money boxes.
42. A Meiji period Japanese Satsuma baluster Jar with lining lid and cover, decorated in traditional enamels depicting birds and flora, signed to base, 10 1/2" high (restored cover).
43. A Chinese famille rose plate decorated with figural panels alternating with flowers and birds, 8"
44. An early 19thC blonde tortoiseshell needlework box with ivory and silver stringing, 3" wide, 2" deep, 4" high. (Some damage to shell above rear hinges and chips to top.)
45. An Alcock porcelain teapot, circular with compressed moulded body, with double scroll handle, on four feet, painted in underglaze blue, red and green gilding. C.1830, pattern no 2617 (repair to handle).
46. After David Cornell. "Champion Finish", a bronze model of a racehorse and jockey, signed and dated 1985, on a black slate rectangular base 8 1/2" high.
47. An early 20thC turned oak pedestal fruit stand, the dished bowl with lobed exterior, 10 1/2" dia.
48. A continental pottery basket, with turquoise interior, the exterior with roses and foliage in relief, 11" wide.
49. A Copeland Spode 'Eden' pattern morning tea cup and saucer, a pair of matching circular trinket dishes, together with a Maling cup and saucer/plate.
50. A Kaiser bisque porcelain figure of a dolphin, rising from a wave, 9" high, impressed no 654.
51. A Kaiser bisque porcelain figure 'Odette', (from Swan Lake), limited edition 3052/7500, hand tinted, 9 1/4" high, (with certificate).
52. A Wade model of a Parrot
53. An embossed copper powder flask.
54. A Celadon baluster vase and cover, enamelled in deep blue, white and brown with birds and blossom, 20" high, together with an Imari baluster vase with everted rim, 17 1/2" high, (both damaged).
55. A pair of porcelain ovoid 2-handled vases and covers, printed and painted with cattle landscapes, signed H Bradshaw, 16" high.
56. A 19thC. Cantonese tray decorated in enamels, on a hardwood stand.

57. A Delft vase of irregular octagonal outline, moulded in low relief with scrolls and painted with a panel of a Chinese figure and flowers, 12" high (AF); and a cover.
58. A Chinese blue and white ovoid vase, having a cracked ice and prunus ground reserved with panels of flowers, 10" high, (restored); together with a cloissone vase, 5" high (badly damaged).
59. An Imari koro and cover, of lobed outline, with shi-shi finial, 13" high, (restored).
60. An oriental ginger jar and cover, the crazed ground enamelled in blue with Dogs of Fo and clouds, the collar and cover with faux bronze bands, 11 1/2" high, (cracks).
61. A pair of bellows, c.18 horse-brasses and handle backplates.
62. An ivory stay bust, 15 3/4" long.
63. A fur cape and collar.
64. A 1930's skin clutch bag.
65. 2 brocade evening bags.
66. A Victorian double burner oil lamp, having a brass composite columnar stem, moulded opaque green glass reservoir, and moulded green tinged shade, 34" high including chimney.
67. A taxidermy specimen of a barn owl, perched on a rocky outcrop encrusted with moss, brass plaque inscribed 'Barn Owl (Tyto Alba) 16th February 1990', 13" high, under glass dome.
68. A Benares brass planter chased with a continuous hunting scene with wild animals and hunters below a palmette border, 14 1/2" dia.
69. A Beswick sexagonal lobed bowl on feet, model no 425, decorated in drip glazes, 12" dia.
70. A pair of Chinese baluster vases with a powder blue ground revealing panels of mothers' watching their children at play, 18" high, together with carved hardwood bases.
71. A burr-walnut model of a Victorian davenport, 12" high.
72. A 5-brass martingale.
73. A horse's hoof mounted with an EPNS cover with horse finial, with a shield inscribed 1883.
74. An 18thC Leeds creamware Coffee Pot with loop handle. (Spout and cover missing).
75. Two wooden decoy ducks
76. A Victorian style mahogany brass bound dome top casket with fitted interior for stationery.
77. A cold painted polychrome desk lighter in the form of a tree-trunk on a rustic base with a pheasant, 12" x 4" x 8".
78. A Decomania papier mache vase.
79. A Salter No 20T trade spring balance.
80. An orange lacquer silhouette bowl.
81. An early stitched brown leather football.
82. A 19th C Cantonese enamel Bowl decorated with flowers on a bleu-de-mazarin and turquoise ground. (AF)
83. A 20thC German ewer with burned orange and gilt floral decoration, 10".
84. A heavy slice-cut crystal ovoid vase, 10".
85. A small 17th C crested bronze Mortar.
86. Three modern german porcelain figures.
87. A large Chinese blue and white Ginger Jar with Kangxi marks.
88. A Sheraton style satinwood stationery box in the form of a knife box.
89. A Doulton Burselm biscuit jar with plated swing handle and cover, buff and gilt border over floral sprays.
90. A pair of antique Chinese models of parrots, 8" high, restored.
91. An unusual triangular lithographed tin-plate biscuit tin. (AF)
92. A pair of early 20thC part-glazed Chinese figures of village elders.
93. A Bohemian blue overlay glass fruit bowl.
94. An early 20thC Dresden porcelain jardinaire with 2 gilt handles, basket frieze decorated with butterflies and insects, the body encrusted with floral decoration and painted with birds attending to their nest, 7" high.
95. A Sessionist green pottery 2 handled vase.
96. A Victorian cut crystal Gasolier (AF). Predominantly a lot with a large quantity of crystal lustre drops, faceted jewels, etc.
97. A reproduction collection of WWII combat knives.
98. A Franklin Mint presentation case set commemorating 2000 years of the sword.
99. A cut crystal Electrolier.
100. A brass telescope and tripod.

- 100A. An Edwardian pushchair with leather canopy and steel spoked wheels with brass caps.
101. An Armand Marseille bisque headed doll, no 1894/4 with mohair wig, sleeping brown eyes, open mouth, composition body and wooden jointed limbs, in white crochet trimmed dress and pantaloons, (one leg detached).
102. A Schoenan & Hoffmeister bisque headed baby doll, no 169/1 with mohair wig, sleeping brown eyes, open mouth, composition body, 16" high.
103. An Armand Marseille bisque headed black baby doll, with glass eyes, composition body and limbs, no 34/O.K, 10" high.
104. An American 'Google' eyed doll, with papier mache head and cloth body, c.1920, 15 1/2" high.
105. A German bisque headed doll, marked 49/70, having a hair wig, brown sleeping eyes, open mouth, the papier mache body with jointed limbs, in white crochet trimmed gown, 27 1/2" high.
106. An Armand Marseille bisque headed doll, with blonde mohair wig, blue sleeping eyes, open mouth, having cloth body and composition lower limbs, no 3200/8, 24" high.
107. A Simon & Halbig bisque headed doll, with sleeping brown eyes, open mouth and composition body, marked KR 126/46, 21" high, in white nightgown.
108. A 'Queen Louise' bisque headed doll by Wolf & Co, No 10, with sleeping brown eyes and open mouth, with composition and wooden body, in flannelette coat and straw hat, 24 1/2" high.
109. A Simon & Halbig bisque headed doll, No 90, having sleeping brown eyes, open mouth, with mohair wig, with composition body and wooden jointed limbs, in silk lace trimmed dress, pantaloons and leather sandals, 33" high.
110. A 'Princess Elizabeth' bisque headed doll by Schoenan & Hoffmeister No 5, with blonde mohair wig, blue sleeping eyes and open mouth, composition body, in net and embroidered dress with black flower trimmed hat, 20 1/2" high.
111. A German bisque headed doll with blue glass eyes, blond hair, open mouth, on a jointed composition body, wearing a pale green and lace top and skirt and mob cap, 14 1/2" high, marked with horseshoe and 1900 - 7/0.
112. A Deans Patent 'Tru-To-Life' British Rag Doll, with blonde mohair wig, printed features and clothes, 23 high.
113. A German poupard, having celluloid head and bead trimmed dress, 13" high, the musical action in working order.
114. A bisque headed fashion doll, having mohair wig, blue glass eyes and open mouth, the cloth body with bisque arms and hands, dressed in a large straw bonnet, green flower sprigged dress with lace trim, with underskirt, 14" high.
115. A doll with wax head and limbs and cloth body, blue glass eyes, 17" high.
116. An Armand Marseille oriental bisque headed doll, with painted hair and fixed eyes, composition body, model 2K, 11 3/4" high.
117. A celluloid doll with sleeping blue eyes, blonde wig, cloth body and composition limbs, in cream lace dress, 14" high.
118. A wax over composition shoulder-headed doll, with mohair wig, blue eyes, in original costume, 14 1/2" high.
119. A poured wax shoulder-headed doll, with blonde wig, sleeping blue eyes and open mouth, cloth body and bisque lower limbs, 18" high (cracks)
120. A wax over composition shoulder-headed doll, with blonde wig, sleeping blue eyes, closed mouth, cloth body with composition lower limbs, 16 1/2" high, in original clothes with straw boater.
121. A German shoulder-headed bisque doll, with moulded blonde coiffure, painted face, cloth body and bisque lower limbs (arms missing), 14" high.
122. A wax over composition doll, with blonde wig, fixed brown glass eyes, closed mouth, stuffed body with composition lower arms and hands, 10 1/2" high.
123. A bisque shoulder-headed oriental doll, having black wig (partially missing) fixed black glass eyes, closed mouth, cloth body with bisque lower limbs, in oriental costume, 10 1/2" high.
124. A German bisque headed black doll, with black wig (loose) and fixed black glass eyes, composition body, 11 3/4" high.
125. Two dolls-house dolls with bisque heads, blonde wigs, sleeping eyes and composition bodies, in complementary knitted outfits, painted hose and shoes, probably German, 4 3/4" high.

126. Two bisque headed dolls-house dolls, one with brown wig, sleeping blue eyes, the other with blonde wig, sleeping brown eyes, both with open mouth and composition bodies, with painted hose and shoes, original clothes, 5 1/2" high.
127. A pair of German ceramic headed dolls-house dolls, with moulded black coiffure and painted faces, cloth bodies and bisque lower limbs, in original dress, 6 1/2" high.
128. A bisque headed dolls-house doll with blonde wig, sleeping blue eyes, and open mouth, papier mache body with painted hose and shoes, 5" high, 2 dolls-house babies, and a German bisque shoulder-headed dolls house doll, with cloth body, 5 3/4" high.
129. A bisque shoulder-headed dolls-house doll with brown wig, painted face and cloth body with bisque lower limbs, 7" high, 2 oriental miniature dolls, and 2 other items.
130. A papier mache dolls-house doll with brown wig, painted face and cloth body, 7 1/2"; 2 other dolls. (AF)
131. A qty dolls' clothes including bonnets, coats and dresses, etc.
132. A beech dolls-house dining table, with refectory supports, 5 1/4" x 3 1/2", an oak sewing table, 3 1/4" x 3", an oak sewing table, 3 1/4" x 3", a dining chair with upholstered seat and back, and a bamboo hoop back chair.
133. A set of 4 dolls-house Windsor armchairs, 7 1/4" high, modern.
134. A dolls-house 4-poster bed with drapes 5" x 4", a wardrobe 6 1/4" high, a corner washstand 4 1/2" high, another 4-poster bed 5" x 3".
135. A dolls-house dressing table, constructed from marble effect card, with shell decoration, padded columns and centre drawer below mirror, 6 3/4" x 5", and board 3 drawer chest, 3 1/4" high, a stool, 3 3/4" wide and a dining table, 3 1/2" x 5".
136. A dolls-house cast iron fireplace with scroll relief decoration and brass grate, 7 1/2" x 7 1/2", (slight damage).
137. A dolls-house cast iron 'Crescent' range cooker, with chimney, 4 plates and side shelves, together with saucepan, griddle and cooking pot, approx 10" high x 10" wide overall.
138. A dolls-house brass fender, 6 3/4" wide, a brass bedroom fire grate front, 3 1/4" wide, a brass linen basket with hinged cover, cast with coal bucket and shovel, and copper saucepan.
139. A qty dolls-house furniture and accessories including a high chair, mirror, candlesticks, chamber pots, stone jars, plates, etc, also miniature animals and dolls.
140. Two German porcelain half dolls.
141. A German clockwork wicker crib with 2 baby dolls with automaton movement, 12" wide.
142. Two golden plush teddy bears with articulated limbs.
143. An Armand Marseille bisque headed doll no 390, 21" high.
144. A small coloured doll and another in a crepe paper dress.
145. 'Maisie' a 3 1/2" scale scratch built steam locomotive, together with blueprints and the LBSC 1952 book detailing construction. The locomotive and tender are painted in the livery of the LNER and numbered 5762.
146. A Hornby Dublo DI island platform, boxed.
147. A table lighter modelled as an aeroplane, metallic blue painted monoplane with propeller.
148. A Hornby water tower.
149. A Bassett-Lowke loco and tender - Princess Elizabeth.
150. A Hornby O gauge trolley wagon, boxed no RS712.
151. A qty O gauge track including boxed buffers.
152. Various O gauge locos and wagons (AF)
153. A boxed set of 25 picture puzzle blocks together with 5 loose colour lithograph plates and a sixth to the box cover.
154. Various modern reference books on dolls and toys.
155. Marvel full colour Comic Album No 1. last page loose o/w good.
156. A qty of Eagle Comics including Edition No 1.
157. Four Rupert Annuals and The Story Wonderbook.
158. The Beatles - Rubber Soul - Parlophone, stereo. PCS 3075, 33 1/3rpm, in slip case, together with The Official Beatles Fan Club sixth Christmas Record, 33 1/3rpm - in slip case.

159. Daily Mail Nipper Annual 1940, 1904 Halloween Carnival Programme and Cartoon Sketch Book Europe since Versaille by Low. (3)
160. Christie (Agatha). Hickory Dickory Dock, 1st edition 1955, and Cat Am dust wrappers, 8v0. (2)
161. Marcet (Alexander). An Essay on the Chemical History and Medical Trea Edition, hand coloured and plain engraved plates, top board detached,
162. An autograph album of boxers, mainly pre-1950.
163. A postcard album containing photographs and postcards of cats, dogs and various other animals.
164. An old leather spined ledger containing photographs and descriptions of antique furniture.
165. G Lister Sutcliffe. The Principles and Practice of Modern House Constructions, 2 vols, red leather spine.
166. Sydney's History of England containing engravings after Wale.
167. A selection of cigarette cards including albums of filmstars, costume, etc.
168. A Russian Imperial dagger.
169. A selection of decorative and reproduction knives together with Franklin Mint collectors' pen knives. (C.20 pieces)
170. A Mauchlineware string box, circular, the cover with a view of Saltburn, 3 1/4" dia, together with 3 other circular boxes.
171. A Mauchlineware oblong money box, the cover inscribed 'Save in Time', 4 3/4" wide, together with a circular stud box and a carved wood circular box.
172. An Indian circular box and covers, 3 3/4" dia, a darning mushroom, a horn baker (AF), and a small circular box.
173. A moulded wood jewellery casket, gilt, the domed lid with sepai panel, 6" wide, a 2-drawer trinket box and a small lidded box.
174. A Harper Columbia Second Bubble Book, by Mayhew & Johnson, 1917/18, including 12 bakelite records of nursery rhymes.
175. A clockwork tin-plate drum playing bear, on wheels, printed in bright colours, 5" x 5 1/2".
176. A clockwork tin-plate cat and ball, printed in colours, 4", together with a clockwork celluloid monkey playing cymbals, in red trousers, 5 3/4" high.
177. A model of a penny farthing bicycle, on wooden plinth, 5" high, together with a cloth doll, in Victorian garb, on a model of a penny farthing bicycle, 8" overall.
178. A set of ten coloured magic lantern slides depicting a comedy sequence involving a man, a donkey and a picnic, 3 1/4" sq.
179. A George III silver toasting fork with knopped shaft and rococo handle. Maker R Peaston. London 1767. 7oz 10dwt. 17" long.
180. A silver candlestick of rococo design with a loaded base. Birmingham 1905. (AF)
181. A silver baluster Pepperette having domed cover with flame finial, 4" high, Birmingham 1962, 1.5 ozs.
182. An Edwardian VII silver 3 piece teaset of irregular hexagonal form, the teapot with composition handle and finial London 191/2 35oz. gross.
183. An Edward VIII silver 3 piece tea service, circular, on paw feet, the teapot with composition finial and scroll handle, Sheffield 1936. 28.5oz all in.
184. A pair of German porcelain figures of a young dandy and girl, 5".
185. A German white metal Art Deco cigarette case with black and red enamelled covers.
186. A group of white metal miniature models including cart, waggon, swing, crib and animal figures.
187. A large Japanese signed Ltd Edition print.
188. Eight 19thC Chinese paintings on silk.
189. 19thC School. Watercolour entitled 'Lake of Lucerne', 10 1/2" x 17".
190. English School. Landscape with fisherman and a boat in the foreground, watercolour, 7 1/2" x 11".
191. After J Lewis**. Artist's proof colour etching entitled 'Leabury'.
192. After Thomas Bush Hardy. A colour lithograph entitled 'On the Medway'.
193. A portrait of a cardinal (AF) and 2 landscape oils (AF) signed Montgomery Ansell.
194. Nunhead Football & Sports Club fixture and membership cards from 1919 to 22, and a silk bookmark.
195. T Conway. 12 bore side-by-side hammer action underlever shotgun with Damascus barrels. A SHOTGUN PERMIT IS REQUIRED FOR THIS WEAPON

196. A 12 bore side by side Shotgun, unknown maker, Serial No 24606, and leather case. A SHOTGUN PERMIT IS REQUIRED FOR THIS WEAPON.
197. .410 Garden Gun, unknown maker. A SHOTGUN PERMIT IS REQUIRED FOR THIS WEAPON
198. A Gardone 12 bore side by side Shotgun. Serial No 9170 A SHOTGUN PERMIT IS REQUIRED FOR THIS WEAPON.
199. BSA single barrel 20 bore shotgun. Serial No 111621 A SHOTGUN PERMIT IS REQUIRED FOR THIS WEAPON
200. A Webley & Scott brass barrelled flare pistol. A FIREARM PERMIT IS REQUIRED FOR THIS WEAPON.
201. After Fritz Newman. Battle at the Shaho, another similar, Japanese battle scenes, chromolithographs, a pair, 15" x 20".
202. 17thC. Italian School. Study of a woman, head and shoulders, wearing a white head-dress, oil on canvas 26" x 20".
203. John Wilson. 'Gypsies in the New Forest', watercolour, signed, 11 3/4" x 14 1/2".
204. A.. M... River landscape with watering cattle, castle ruins beyond, oil on board, indistinctly signed. 9" x 12".
205. 19th/20thC. School. Head and shoulders study of a girl, oil on board, 9 1/2" x 8".
206. Kimmerle. Alpine township, oil on canvas, signed and dated '61. 22 1/4" x 28 1/2".
207. A Victorian memorial sampler, embroidered with verse and motifs, dated 1866, 19" x 16".
208. BNZ. Study of a stag in a landscape, watercolour, signed with initials and dated '45. 7 3/4" x 11 1/4".
211. 20thC. School. Farmhouse in a high Alpine meadow, oil on board, 17" x 23".
212. A Georgian pollard oak framed picture on glass with foil back depicting a bird and fruit in a basket.
213. A East. The Holy Temple at Jaipur, watercolour, signed, 9" x 14", bears label verso.
214. L Gianni. A pair of continental lake scenes with figure of a lady amongst flora and stone walling to the foreground, watercolour, signed. 15 1/2" x 9 1/2".
215. A framed oriental scene.
216. A folder containing a quantity of Ordnance Survey maps of Lincolnshire, Nottinghamshire, c.1959.
217. V V (after). Shoeing the Bay Mare [Not by Sir E Landseer], colour engraving, 7" x 9 1/2".
218. 20thC School. Hens, cockeral and ducks in a landscape, oil on canvas, signed indistinctly, 12" x 16".
219. 20thC School. Aberdeen Angus Bull 'Cash'; Hereford Bull 'Maidstone'; Shorthorn Bull 'Iron Clad', colour prints, 6 1/2" x 9". (3)
220. I Beatrice Thomson (20thC) 'Orthos', study of a bay horse in a stable, oil on canvas, signed and dated 1932. 16 1/4" x 20".
221. I Beatrice Thomson (20thC). 'Spearwort'. Study of a bay horse in a stable, oil on canvas, signed and dated 1932. 16 1/4" x 20".
222. J Milner (20thC). Study of a chestnut horse in a meadow, oil on canvas, signed and dated 1904, 13" x 17".
223. Lionel Edwards (after). 'Leaving Cover', hunting scene, chromolithograph, image size 12 1/2" x 18 3/4".
224. Japanese School. Study of a geisha, painted on silk, 16 1/2" x 13 1/2".
- 224A. 19thC English School. 'Cromwell's Bridge', oil on canvas, 21 3/4" x 27" (tear to canvas)
225. 20thC School. Extensive landscape with figures on a beach, believed to be Dawlish from the railway, oil on canvas, 16" x 22".
226. Robert Morley (1857-1941). 'Fellow Prisoners', mixed medium depicting two seated monkeys. Verso label having artist's name, title and account L Folks No 33159. 11" x 8 1/4"
227. A 19thC oil on oak Panel depicting the birth of Christ.
228. Frank Arden. Highland landscape, watercolour, signed and dated 1912, 10" x 14", gilt framed.
229. A watercolour street scene, indistinctly signed, 12" x 6 1/2".
230. Joyce Dearden. Mountain gully, mixed media and collage on paper, signed with initials and dated 1984.
231. A colour print depicting a sheet from the Book of Kells.
232. S Rama Rao. Reflections, oil on board, signed verso and dated 1970. 22" x 30".

233. S Rama Rao. Abstract pattern blue unsigned lithograph dated 1964 verso, 19" x 24".
234. Colin Wilson. Blackheath early morning, oil on board, signed with initials and dated 1961. 30" x 20".
235. A black and white print after George Morland, Cottages.
236. Binnie Matthews. Greek village acrylic on paper, signed and dated 1955.
237. Arthur Parsons. Wooded landscape black and white etching, signed and numbered 4/60.
238. William Strang. Old woman, pencil, 11" x 15".
239. Reuben Moring. A view of Colchester, etching, signed.
240. Belinda King. Full Moon, etching.
241. Maya Kulshreth. Blues, colour lithograph.
242. George Speake. Jazz box etching signed and dated 1965.
243. Valarie Thornton. Carved Tomb, Cain and Abel, colour etching, signed.
244. M E White. Coustouges Pyrenees, watercolour.
245. Oliver Hall. Workers bridge, Isle of Wight, etching, signed.
246. P G Hornby. Delft townscape, etching, signed.
247. A limited edition (94/100) print of Moses in a basket.
248. Woodcut Indian figures.
249. Four studies of British Birds, colour prints, 6 1/4" x 4 3/4", single frame.
250. Four studies of British Birds, colour prints, 6 1/4" x 4 3/4", single frame.
251. Three studies of British Birds, colour prints, 6 1/4" x 4 3/4", single frame.
252. An engraving of 'Various Articles at the Sandwich Islands'.
253. After Buck. A panoramic colour engraving of London from Sugar House to York House.
254. After Buck. A panoramic colour engraving of London from Summer House to Somerset House.
255. After Buck. A panoramic colour engraving of London from Summer House to St Brides Church.
256. After Buck. A panoramic colour engraving of London from St Mary's Overy Church.
257. After Buck. A panoramic colour engraving of London, untitled.
258. Tallis. Hand coloured map of West India Islands.
259. Chapman & Hall. Map of Calcutta pub 1842.
260. An Islamic illuminated watercolour of a man.
261. After H Alken. A set of 4 hand coloured horse racing etchings; 'Preparing to Start', 'At Speed', 'Weighing In and Rubbing Down', 'Winning'.
262. Lily Wilson. Pair of watercolour landscapes, Lakes of Kilarney and Upper Lake, signed. 16" x 7", gilt framed.
263. 19thC English School. Landscape with figures, horse and cart and sailing dinghy in foreground, oil on panel. 9" x 12".
265. After Wale. A set of 4 copper engravings from 'Russel's History of England', hand tinted, 18thC, 11 3/4" x 6 1/4".
266. 19th/20th Century English School. Peel Castle, St. Patrick's Isle, Isle of Man, Landscape, oil on canvas. 10" x 14".
267. Haig. A framed engraving of a church interior
268. Japanese colour prints of a geisha and flowers.
269. A brass warming pan.
270. A qty of lace and linen.
271. A Bretby rose and rustic moulded jardiniere, 12" dia, 10" high.
272. A Victorian red canvas fire bucket with Royal crest.
273. A 19thC mandolin (AF), cased.
274. A sealed tin canister of China tea with label of Li Ling Soo & Co Ltd.
275. A glass blow butter maker.
276. A gilt metal and porcelain 3-branch candelabrum. (AF)
277. A large qty crystal lustre droplets.
278. A qty early feather flighted wooden darts.
279. A Crown Ducal Dorric pattern moulded jardiniere, 9 1/2" dia, 8" high.
280. A pair of 19thC Chinese plates of prunus design and 2 similar bowls.
281. Four silver plated salvers.

282. A silver plated water ewer by James Dixon & Sons, of part reeded form.
283. A Victorian willow pattern meatdish, 12".
284. A Persian style flintlock rifle, 4'5".
285. A reproduction halberd and shield.
286. A Royal Artillery dress sword by Sanderson Bros & Newbold Ltd, Sheffield.
287. An early Victorian marine barometer by H Frodsham, Sth. Castle St., Liverpool, fitted with sympisometer and thermometer, with vertical steel scales, in mahogany case with petal-carved friezes and baluster finial, the cistern, gimbals and bracket of brass, 39". Provenance: S A Hume, owned by the Cookson family c.1830-50.
288. A Victorian rosewood and mahogany wheel barometer with scrolled outline, thermometer and porcelain dial. 3'1" high.
289. A Victorian rosewood wheel barometer with onion top, hygrometer, thermometer, mirror, porcelain dial and level. 3' high.
290. A 19thC Vienna wall clock with embossed brass dial, enamel chapter ring 33" high.
291. A Vienna regulator wall clock with weight-driven movement, the 2-part enamel dial with Arabic numerals, numbered 51420 + 7/27" to the backplate, brass weights, the walnut case with nulled frieze to ogee pediment, fluted columns with volute capitals, 38" high.
292. A 19thC oak and flamed mahogany longcase clock with square arch dial, painted with huntsmen and hounds to the arch, floral spandrels, Roman numerals, seconds ring, date ring, maker J N FAIRBARN, CHESTER LE STREET, 8 day movement striking on a bell, pillared hood, trunk door, panelled base with bracket feet and cupid's bow apron. 7' high excluding finials.
293. Gilt metal cartouche wall clock.
294. A continental gilt metal and blue enamel clock garniture, the circular dial with Roman numerals in a lyre shaped case, flanked by 2 amorini holding a floral swag, together with a pair of 7-branch candelabrum, 26 1/2" high, modern.
295. A French gilt metal and white marble mantel clock by Japy Freres, the circular dial with Roman numerals, of eight day movement striking the 1/4 hours on a bell, the rectangular case surmounted by a covered urn with figural handles, rosettes to the side, swags under clock face, on claw feet.
296. An early 19thC French ormolu mantel clock by HENRY MARE, the 8-day movement having silk suspension, striking on a bell, the enamelled circular dial with Roman numerals, the case surmounted by a figure of a 16thC gentleman and hound, raised on a slate plinth, the base cast with urn, foliage and strapwork, 15 1/4" high (some damage to dial).
297. An early 20th century mahogany and burr walnut mantel timepiece, with an elongated arched case, the circular dial with Roman numerals, on bun feet. 10 1/4" high.
298. A late 19th century ormolu and marble mantel clock, the drum shape movement with enamelled dial, Roman & Arabic numerals, of eight day striking movement with urn surmounted and encircled by laurel, supported on a shaped platform and four turned columns, mounted with swags, the shaped platform base with bead border. 18" high.
299. A 19thC. 'Bishop's' mantel clock, of eight day striking movement, the gilt metal circular dial with Roman numerals, the ebonised case gilt with foliate scrolls and strapwork and inlaid with mother of pearl 17 1/4" high.
300. A 19thC. rosewood bracket clock, the caddy top with brass carrying handle and 4 pineapple finials, the circular enamelled dial with Roman numerals within a hinged bezel with brass spandrels, raised on brass bracket feet, 8-day movement, striking on a bell, 13 1/2" high.
301. An Edward VII glass inkwell, square, with chamfered corners and hobnail cut base, the silver cover inscribed 'An Appreciation from the C.J. & C.C.C. 1912', Birmingham 1909, 3 3/4" square. (AF)
302. An Edward VII cut glass scent bottle, globular, the hinged silver cover repousse with flowers and scrolls, Birmingham 1908, 4 1/2" high. (AF)
303. A silver shell dish 5" in length, London 1908.
304. Three silver topped lady's vanity jars, various hallmarks.
305. A three piece silver teaset by Walker & Hall, a round, footed design with reeded edge with foliate decoration, Sheffield 1918.
306. A silver castor 8", Birmingham 1934.
307. A silver matchbox case (Swan Vesta), London 1932.
308. An Indian silver and walnut bowl, 4" dia.

309. A silver wooden lined cigarette box, Birmingham, date later rubbed.
310. Three Indian silver bowls with coins set in the base, 2 x 4" dia, 1 x 3 1/2" dia.
311. A small silver pedestal bowl with beaded rim, 4 1/2" dia, London 1905.
312. A cased Mappin & Webb engine turned silver double ended scent and powder bottle, Birmingham 1884.
313. A silver card tray 4 1/4", London 1915.
314. An engine turned silver cigar cutter, 2" long, Birmingham 1955.
315. A cased plated feeder spoon and pusher with nursery rhyme decoration.
316. Six silver handled butter knives, Sheffield 1908.
317. Two silver plated hot water jugs.
318. A pair of silver salts and a selection of salt spoons.
319. A silver pepperette and a plated mustard pot.
320. Silver and plated coffee bean spoons.
321. A selection of plated ware including sauce boat, knife rests, napkin ring, etc.
322. A late 19thC Japanese satsuma baluster vase, 24". (AF)
323. A Victorian rosewood duet writing box with brass campaign handles and metalwork and tablet inscribed ATW.
324. A Victorian rosewood writing slope with fitted interior and mother of pearl inset tablet.
325. After the Antique. A rare early 19thC bronze model of a pig by Chiurazzi & Fils with Herculanium (green) patination, raised on a platform with claw feet, the platform 12" x 6" x 4 1/2" high, the pig 15" x 7". The base has one broken foot and further fractures to another; the pig has fractures to rear legs; no retaining screws to base.
326. A satinwood and mahogany workbox with ivyleaf inlay to cover and crossed British Naval flags to the front, inscribed Minnie.
327. A 19thC black lacquer and chinoiserie octagonal workbox with carved bone accoutrements.
328. A Royal Doulton stoneware baluster vase of moulded leaf design, 12".
329. A 19thC blue and white meatdish with wriggle-work design and a Rheinisch style pitted glaze, 15 1/2".
330. A 19thC Coalport creamer with a heavy cobalt gilt blue ground with panels of floral sprays.
331. A pair of Persian design ewers, Staffordshire, with bulbous bodies, long taper necks and handles, 12" high.
332. A 19thC Chinese famille rose cabinet plate. (AF)
333. Three Imari plates, onion pattern plate and another. (5)
334. An early 19thC Prattware moulded jug with figures depicting a miser, 5".
335. A Victorian blue and white transfer printed willow pattern dish, 7" dia.
336. A Copeland & Garrett porcelain oval dish with pierced gilt border, green ground with gilt decoration supporting swags of hand painted roses, 12". Some restoration replacing riveted repairs)
337. A Victorian flow blue oval meatplate with scroll moulded border, 18".
338. A Victorian relief moulded hunting mug with a lilac ground.
339. An early 19thC Derby cabinet plate with turquoise and gilt border and topographical scene to the centre, entitled verso, 'On the River Trent', 9" dia. Old rivet repair to crack.
340. A 19thC Pratt style jug with devil's mask, fruit and vines moulded to the body, 5" high.
341. A 19thC Staffordshire polychrome character jug entitled 'Hearty Good Fellow', 11".
342. Two 19thC drinking glasses with conical bowls.
343. A Wedgwood majolica butter dish and cover decorated in the Japanese style with chrysanthemums.
344. A late 19thC Japanese satsuma figure of a seated lady in full dress and holding a scroll.
345. A Victorian 2-handled rectangular blue and white hand painted with flowers and butterflies, 12" x 9".
346. A blue and white transfer printed willow pattern circular platter, 14" dia.
347. A 19thC Continental porcelain part dinner service, hand painted with flowers in blue and having gilt borders and tracery comprising, soup tureen with cover (rivet repair to base), tureen stand, further tureen, a cover, 5 - 11" plates, 5 - 9" plates.

348. An early 19thC ironstone tazza of shell moulded and shaped rectangular platform on similarly moulded pedestal, polychrome decorated with exotic birds, 5" high, 13" wide. (AF)
349. A Persian design blue and white tin glazed terracotta charger, 13" dia.
350. A Continental blue and white wall plaque of symmetrical floral design, 10" dia.
351. A Pendelfin model of Little Mo.
352. A Pendelfin model of Boswell.
353. A Pendelfin model of The Large House.
354. A Pendelfin model of Mother and Baby.
355. A Pendelfin model of Father Rabbit.
356. A Pendelfin model of Jim Lad.
357. A Pendelfin model of Pie Face.
358. A Pendelfin model of Nipper.
359. A Pendelfin model of Crocker.
360. A Pendelfin model of Muncher.
361. A Pendelfin model of Whopper.
362. A Pendelfin model of Oliver.
363. A Pendelfin model of Picnic Midge.
364. A Pendelfin model of Scrumpy.
365. A Pendelfin model of Dandy.
366. A Pendelfin model of The Shrimp Stand.
367. A Pendelfin model of The Old Curiosity Shop and deeds.
368. A Pendelfin model of The Thumper.
369. A Pendelfin model of Bongo.
370. A Pendelfin model of Piano and plant.
371. A Pendelfin model of Rolly.
372. A Pendelfin model of Jingle (no label, bell rim chipped).
373. A Pendelfin model of Clanger (green).
374. A Pendelfin model of Rosa.
375. A Pendelfin model of Solo.
376. A Pendelfin model of Rocky.
377. A Pendelfin model of Phumpf.
378. A Pendelfin model of The PicNic stand.
379. A Pendelfin model of The Bandstand.
380. A Pendelfin model of Tammy.
381. A Pendelfin model of Blossom.
382. A Pendelfin model of Tennyson.
383. A Pendelfin model of Birdie.
384. A Pendelfin model of The Raft.
385. A Pendelfin model of Picnic stand.
386. A Pendelfin model of Cobble Cottage.
387. A Pendelfin model of Barney.
388. A Pendelfin model of Bathtub.
389. A Pendelfin model of The Jetty.
390. A Pendelfin model of Mother Rabbit.
391. A Pendelfin model of Victoria.
392. A Pendelfin model of Uncle Soames.
393. A Pendelfin model of Casanova and The Balcony Scene.
394. A Pendelfin model of Barrow Boy.
395. A Pendelfin model of Apple Barrel.
396. A Pendelfin model of Fruit Shop.
397. A Pendelfin model of Castle Tavern.
398. A Pendelfin model of Peeps.
399. A Pendelfin model of Wakey.
400. A Pendelfin model of Twins.
401. A Pendelfin model of Parsley.
402. A Pendelfin model of Poppet.
403. A Pendelfin model of Dodger.
404. A Pendelfin model of Totty.
405. A Pendelfin model of Lucy Pocket.
406. A Pendelfin model of Snuggles.
407. A Pendelfin model of Boswell.
408. A Hummel figure of a girl with watering can.
409. A Hummel figure of a boy playing a cello.
410. A Royal Doulton character jug, small - Old Charley.
411. A Royal Doulton character jug, medium - The Cavalier.
412. A cased carved meerschaum pipe - an Edwardian hatted ladies head, and another plain pipe.
413. A Beswick figure No 1347 'Susie Jamaica'.
414. A collection of 12 various unsigned paperweights.
415. A large Bohemian glass vase with graded green and blue leaf shaped top, 15" tall.
416. A clear glass tazza with painted nasturtium decoration, 9" dia.
417. A tall lobed oyster colour vase with pink glazed interior, marked on underside

- 'Real Staffordshire Ceramic by Clarice Cliff'. 12" tall.
418. A Carltonware butter dish and 2 pat servers in yellow waterlily design.
 419. A clear glass celery vase with wheel cut and acid etched decoration of ferns and partridge. 9".
 420. A Copeland Spode bud vase, pale blue ground and white plum blossom decoration.
 421. A pair of Victorian white lined pink opaque glass vases with painted and transfer printed panels of ladies tending birds, one base damaged and repaired. 16" tall.
 422. Two car mascots - a gazelle and a greyhound.
 423. A chromium plated car mascot depicting Mercury.
 424. A car mascot of a pheasant in flight.
 425. Two car mascots - a naked woman on a wheel and a Jaguar drivers club.
 426. A selection of turned wooden lace maker's bobbins without spangles.
 427. Three Bretby plates moulded as anemone in acid green grading to yellow.
 428. A Spode Velamour oblong planter, white with daffodil moulded decoration.
 429. A Locke of Worcester blush shell dish.
 430. A Whieldon type glazed figure.
 431. A small Crown Devon model of a woeful dog.
 432. A cast Mickey Mouse figure on a marble base.
 433. A table lighter in the form of pilot with propellor.
 434. A BEM electric clock with brass dial ring and base.
 435. A pair of Dutch brass vases by Daalderop in the Art Nouveau style, 12".
 436. A pair of copper bowls on openwork stands marked Union to base, 8 1/2" dia.
 437. Three pieces of hammered pewter including jardiniere, pedestal bowl and dish stand.
 438. A Doulton Burslem 2 handled biscuit barrel with tree and bird in relief and a plated cover.
 439. A Carltonware biscuit barrel of floral design with electroplated cover and swing handle.
 440. A Victorian Staffordshire clock group. (AF)
 441. A reproduction majolica fish platter.
 442. Three silver plated card trays and salvers.
 443. A brass columnar oil lamp with cranberry glass reservoir and frosted shade.
 444. A 19thC golden onyx turned font, 12" high.
 445. A pair of mottled glazed vases, each having 4 loop handles, 8".
 446. A Victorian blue and white teapot in the oriental style. (AF)
 447. A white marble part reeded urn, 9".
 448. A large silver plated 7-bar toast rack.
 449. Fiddle pattern silver plated cutlery together with bone handled knives.
 450. Seven horse brasses.
 451. A silver plated 4 bottle cruet by Rogers of Sheffield.
 452. A 19thC majolica teapot of compressed hexagonal form, moulded as bamboo with a bird in relief to each side.
 453. Five Royal Doulton afternoon tea cups and saucers with floral decoration.
 454. A Belleek shell dish on stand, 6".
 455. A Sheraton mahogany tea caddy with shell inlaid top. (AF)
 456. A Doulton Lambeth baluster vase decorated with briar roses, 12", painted by Emily J Gillman, monogram to base.
 457. Eight turned Victorian wooden knob handles for a chest.
 458. An Edwardian inlaid mahogany octagonal aneroid barometer.
 459. An Edwardian marquetry inlaid mahogany oval tray with 2 brass handles, 24".
 460. An Edwardian glass carafe and glass with wheel-cut fern decoration.
 461. A Victorian oval display standing or wall mounted mirror, 8".
 462. An Edwardian balloon timepiece with carved mahogany case and convex enamel dial, marked Harrods Ltd, 9".
 463. A chromium plated Corinthian columnar table lamp, 17".
 464. A Royal Crown Derby 2 handled urn with blue gilt grounding and floral panels by C Gresley (missing base and damage).
 465. A bronze sundial inscribe 'Ye Svnny Tyme', 12" square.
 466. A small pair of alabaster bird book ends.
 467. A carved serpentine stone urn. (AF)

468. A 19thC Parianware model of a hand holding a shell, 8".
469. A Stevenson & Hancock Derby tapering cup and saucer, hand painted with pansies and roses, signed I Weiucier*.
470. A mahogany and brass telescope inscribed 'Day or Night' and another (AF).
471. A Victorian porcelain door finger plate depicting children at play in a landscape, date lozenge mark verso.
472. Two pewter plates including early example marked PSN.
473. A Staffordshire pottery figure of a collie, 7". Repair to hind leg.
474. A Victorian glass rummer with moulded bowl.
475. A Wedgwood blue Jasperware bowl and ewer.
476. A pair of Victorian brass and porcelain handles.
477. A Victorian faceted glass sweetmeat dish with inverted baluster teardrop stem.
478. A Williams & Bach Messengers patent oil lamp insert.
479. A string inlaid mahogany alarm clock with enamel dial marked Harrods, 6".
480. An Art Nouveau pottery figure of a lady leaning against a tree stump, 12".
481. A pair of silver plated wirework baskets, 10".
482. A Royal Doulton Slaters Patent bottle vase.
483. Ale bottles including 1966 Word Cup pale ale, 1984 Olympic ale, together with football memorabilia, viz. George Best Pennant.
484. An Art Pottery stoneware vase of globular form with reeded neck, 8".
485. A Victorian faceted crystal decanter with stopper.
486. A Victorian oak and mahogany drop dial alarm wall clock with 8" brass dial inscribed D Lloyd, Leominster.
487. A Georgian style mahogany model of a linen press on ogee feet, 20" high.
488. A Georgian style mahogany model of a chest of drawers with bracket feet, 9" high.
489. A Japanese oak and parquetry jewel cabinet with applied gilt metal decoration, 6" high.
490. A Triang doll's house.
491. A painted doll's house with double front opening onto 4 rooms, 31 1/2" wide.
492. A 19thC majolica garden seat of rustic design and moulded with small cranes (much damage).
493. A silver plated 4 bottle cruet by Walker & Hall.
494. A WWI trench art shell together with a selection of fire irons.
495. A leather gladstone bag.
496. A leather gentleman's travel case, part fitted.
497. A Victorian brass bound rosewood box and qty draughts.
498. Six 18thC Dutch delft blue and white topographical tiles.
499. A carved hardwood dandy cane, parasol handle with gilt metal knop and a plaited leather cosh.
500. A Victorian oak canteen of 12 pairs of knives and forks with engraved floral blades and carved ivory handles.
501. Three old millinery trade boxes inc Tress, Bourne & Hollingsworth and Christys and a selection of old hats.
502. 9 Chinese carved bone snuff bottles, 20thC.
503. Viceroy stamp album, etc.
504. Victorian brass postal scales on a walnut base.
505. A Victorian mahogany and brass travelling apothecary scales and weights.
506. A Japanese oak and brass abacus with verso inscription reading 'Presented to Matatoshi Yoshida on the Anniversary of his 60th Birthday.
507. A George V silver 5 piece dressing table set of Art Nouveau design. Birmingham 1919.
508. A pair of Victorian pierced silver heart shaped bonbon dishes. Birmingham 1898
509. A set of 6 Edwardian silver handled butter knives. Birmingham 1905.
510. Four pairs Victorian King's pattern dessert knives and forks with wrapped silver handles. Sheffield assay.
511. An Indian ivory stay bust with embossed white metal handle.
512. A pair of Victorian silver earn shaped pepperettes. Maker GU, Birmingham 1876.

513. An Edwardian silver urn shape pepperette. Birmingham 1905, and case.
 514. A cased set of white metal coffee spoons each having a different simulated stone knop.
 515. A George III silver Old English pattern basting spoon, London 1805.
 516. A Georgian silver pot bellied mug with scroll handle, 4". Indistinct marks to base.
 517. A Georgian silver oval mustard pot with domed cover with thumb piece and ball feet. Indistinct marks.
 518. The Christmas 1914 ration box together with 4 Lincolnshire Regiment WWI service medals and a 1935 County of Middlesex Jubilee Medal. (WWI medals presented to 15191 Private W J Moorcroft S.Staff.R)
 519. A pair of silver oval salts with blue glass liners. Birmingham assay; 2 silver topped salt pots and 2 glass knife rests.
 520. Silver and plated golf coffee spoons, 3 old balls and small book of golf rules.
 521. An oval cartouche silver bonbon dish, Sheffield assay, an octagonal silver bonbon dish, Sheffield assay and Indian silver pin tray with swing handle. (3)
 522. A Georgian style silver wine coaster. Maker HW & Co. Sheffield assay.
 523. A pair of WMF sugar tongs, an armorial kidney shaped caddy spoon and bone spoon. (3)
 524. A pair of Victorian silver sugar scissors with shell nips.
 525. A silver mounted bone pickle spoon with thistle knop. Birmingham assay.
 526. A Victorian ivory and brass 2 pull telescope, 3 1/4" max and part sleeve case.
 527. A set of 6 George V silver forks. Maker FS, London 1916. 13oz.
 528. A set of 6 silver dessert forks. Maker FS, London 1915. 8oz.
 529. A set of 6 George V silver table spoons. Maker FS, London 1917. 13ozs.
 530. A set of 6 silver dessert spoons. Maker FS, London assay. 8oz.
 531. A pair of George V silver sauce ladles. Maker FS, London 1916.
 532. A set of 4 Victorian silver fiddle pattern dessert forks. Maker BS, London 1840. 6oz.
 533. A pair of white metal fiddle pattern table forks.
 534. A pair of Georgian silver Old English pattern table spoons. Maker WB, London 1817.
 535. An early 19thC. Dutch silver snuff box in the form of a book.
 536. To 550. Late entries.
- 2pm.**
851. To 868. Late entries.
 869. An Abusson Needlepoint Rug 1.52m x 0.19m
 870. A large blue ground Shiraz carpet.
 871. A Persian Quashgai Kelim Rug 3.1m x 2.01m
 872. A Zekhiani rug. 1.96m x 1.05m
 873. An antique Turkish design runner.
 874. A modern bird garden rug.
 875. An Abusson needlepoint rug 1.83m x 1.22m
 876. A small Turkish knotted rug.
 877. A small Turkish knotted rug.
 878. A small Turkish knotted rug.
 879. A red ground Shiraz carpet with floral central field and cream border.
 880. A large cream ground carpet.
 - 880A. A pair of brown leather upholstered armchairs.
 881. A Victorian mahogany chest of drawers
 882. A Georgian mahogany chest of drawers
 - 882A. A 19thC circular gilt porthole mirror with convex plate, 19" dia.
 883. A Victorian flamed mahogany bowfront chest of 2 short and 3 long graduated drawers with grain painted knob handles. 41" wide.
 884. A pair of 16thC style oak joint stools painted white.
 885. A late Victorian walnut pot cupboard with single door.
 886. A Victorian mahogany stained dwarf open bookcase.
 887. An Edwardian quarter veneered mahogany bureau, the fall flap over 3 graduated drawers, raised on cabriole legs.

888. A Victorian flamed mahogany bowfront chest of 2 short and 3 long graduated drawers with knob handles.
- 888A. A Gordon Russell style rosewood circular coffee table.
889. A 19thC continental walnut extending dining table and 4 chairs.
890. A pair of low wingback armchairs with bulbous legs and carved stretchers, one reupholstered in pink herringbone fabric, the other in original brown rexine, together with a further qty of fabric
891. A late Victorian high wing back armchair with square taper legs.
892. A Victorian drop arm sofa with loose floral covers, serpentine back.
893. A large mahogany wall cabinet.
894. A reproduction Regency mahogany extending dining table with twin pillars and 2 further leaves, 5' x 3'6 minimum.
895. A 17thC and later oak settle with left box seat.
896. An 18thC oak bureau with profusely carved fall front.
897. A late Victorian chaise longue painted in lime green and having similar damask upholstery.
898. A pair of Victorian walnut dining chairs with scratched carved uprights and splat, overstuffed seats and turned legs.
899. A George III mahogany Pembroke Table with turned legs
900. A 19thC oak library chair with turned front legs and bergere caned seat and back.
901. A Georgian oak chest of 2 short and 2 long graduated drawers with moulded top, brass swan neck handles and bracket feet.
902. A Victorian mahogany side cabinet with tray top, single drawer over 2 panel doors. 31" wide, 36" high.
903. A George III mahogany carver chair with pierced vase splat in the Chippendale manner.
904. A George III mahogany carver chair with pierced vase splat in the Chippendale manner.
905. A George III mahogany dining chair with pierced vase splat in the Chippendale manner.
906. A pair of Victorian mahogany balloonback dining chairs with drop in seats and turned legs.
907. A pair of Victorian mahogany balloonback dining chairs with drop in seats and turned legs.
908. A George III oak tripod table with later carved circular top, turned pedestal and tripod base, 28" dia.
909. A pair of Edwardian mahogany tub chairs with pink dralon upholstery and cabriole legs.
910. An Edwardian oak and silver plated tantalus on stand with 3 cut crystal decanters, having whiskey, brandy and gin silver labels, integral cigar box, spring loaded drawer, on cabriole legs.
911. A Victorian mahogany pole screen with tripod base and rectangular panel having gros-point rose decoration.
912. An Edwardian oak optician's cabinet, the part glazed lift top displaying a selection of lenses, over a sliding work table, fall flap sterilisation cabinet and drawer.
913. A pair of Victorian walnut tub chairs with buttoned upholstery, one being an open armchair with reeded uprights, both having circular seats and fluted legs.
914. A Georgian mahogany tripod table (reduced in size).
915. A Victorian mahogany armchair with button green dralon upholstery and turned legs.
916. A fine and large proportioned pollard oak veneered circular dining table on trefoil base, raised on 3 paw feet, in William IV style.
917. A fine Maples Sheraton revival flamed mahogany sideboard of D-shape with 6 taper reeded column legs. 6'1" wide.
918. A set of 8 (inc 2 carvers) Queen Anne style walnut dining chairs with vase splat backs, overstuffed damask seats and cabriole legs.
919. A George III mahogany dining chair with shell carved cresting rail, pierced vase splat in the Chippendale style, drop-in seat and square legs.
920. A Victorian brass and iron double bedstead.
921. An early 19th C continental flamed mahogany Secretaire a Abattant with fall front resting over three stepped drawers.
922. A George I style walnut bachelor's chest with cross banded burr top over brushing slide and 3 similarly cross banded graduated drawers with open brass backplate handles and bracket feet. 31" wide, 35" high.

923. A George III flamed mahogany linen press with moulded cornice, 2 panel doors revealing press drawers to the upper part and 2 short and 2 long graduated drawers with knob handles to the base, with shaped apron and bracket feet. 4' wide, 7' high.
924. A reproduction burr elm dresser base with shaped and strung top, 4 frieze drawers with brass handles, shaped frieze, shell carved cabriole legs with ball and claw feet, 57" wide.
925. A Victorian fireplace with brass columnar enclosure around landscape painted tiles.
926. A late Victorian cast iron fire insert with floral pattern tiles.
927. A Victorian fireplace with monochrome tiles.
928. A hessian 4 fold dressing screen with arched tapestry panel top. 5'6" high.
929. A 19thC brass inlaid rosewood and mahogany work table with serpentine lift top with oval patera inlay and 2 drawers under.
930. A Victorian mahogany stool with tapestry overstuffed seat and turned legs. 12" square.
931. An early 18thC walnut veneered side table with cross-banded top, frieze drawer with pear-drop handles, turned uprights, shaped stretcher and turned feet. 36" wide.
932. A Regency mahogany breakfast table with double moulded rectangular tilt-top, turned pillar and sabre legs with brass cap castors.
933. A set of 5 Queen Anne style mahogany dining chairs with drop-in tapestry seats (inc carver): together with another side chair.
934. A George III oak bureau with fall flap over 4 graduated drawers with solid brass backplate swan-neck loop handles and bracket feet. 36" wide.
935. A large hand-carved and painted rocking horse with fairground twist pole.
936. A mahogany sideboard in the Chippendale manner.
937. A Victorian mahogany occasional table with shaped and moulded top and 3 leg basket base.
938. An 18thC. oak gateleg table.
939. A George II and later mahogany gateleg dining table with oval rule jointed top, frieze drawer, turned uprights, plain stretchers.
940. A Victorian chaise longue with turned feet and blue/gold damask upholstery.
941. A green and gilt painted set of 3 tier library steps.
942. A Victorian stripped pine pot cupboard.
943. A Victorian stripped pine chest of 2 short and 3 long graduated drawers with white porcelain handles.
944. An Edwardian mahogany table top dome display cabinet with astragal glazed fall door and gallery top, 28" wide.
945. A George III hanging corner cupboard with 2 bowfront doors having a painted scene of courtiers. 3'7" high.
946. A Victorian mahogany tripod table with oval tilt top, turned pillar, on 3 outsplay legs.
947. A 19thC mahogany dining table with oval flaps.
948. An oval display cabinet with solid tray top painted in the French taste.
949. An Edwardian walnut picture easel, c.5'6 high.
950. A Victorian mahogany 2 door cabinet bookcase with moulded cornice, 2 glazed panel doors to the upper part, cushion drawer and 2 panel doors to the lower part, on plinth.
951. A Victorian stripped pine 2 door cupboard. 5'9" high.
952. A red painted 2 door cabinet on stand with circular brass plaque and Chinese handles to doors. 5'9" high.
953. A Georgian style brown button leather wing armchair with acanthus cabriole legs and ball and claw feet.
954. A George III cross-banded mahogany dressing table with 3-section top incorporating mirrored centre and lift-flap compartments to the side, configuration of brushing slide, 3 real and 2 dummy drawers, with oval gilt handles, on square taper legs. 36" wide, 22" deep.
955. A 17thC oak gateleg serving table, of rectangular cusped form, with single dropleaf, on turned legs, block feet joined by moulded stretchers, single drawer to one end with turned knobs. 33 1/4" x 33".
956. A 19thC mahogany dining chair with pierced waisted splat, loose seat, and on square legs joined by stretcher.

957. A Victorian mahogany windout dining table with turned legs and 2 further leaves.
958. A 19thC walnut stool, rectangular, the button velvet top on cabriole legs with knurled feet.
959. A child's upholstered armchair, with lift-up seat enclosing a storage compartment.
960. A Victorian footstool with button upholstery on bun feet.
961. An upholstered long stool, rectangular, on turned mahogany legs.
962. A late 19thC cast iron paraffin stove, with tile panels, and red glass canopy, fitted with a copper paraffin lamp.
963. A 19thC oak country dining chair, having a bar back, pierced tie rail, with rush seat, on square tapering legs joined by stretchers.
964. An 18thC mahogany campaign washstand, the folding top over a dummy drawer and double cupboard, having a narrow drawer below, on 4 square legs, 15 3/4" wide. (AF)
965. A 19thC mahogany pole screen, the rectangular frame with fleur-de-lys corners and enclosing a needlework panel depicting a religious scene, on turned and lobed columns with trifirm concave base and compressed bun feet.
966. An oak smoker's companion, with barleytwist columns and dished circular base.
967. A Victorian 3-tier what-not rectangular, the burr walnut and cross-banded stages supported on ebonised uprights, with brass finials, pierced gallery to the upper shelf, 15" wide.
968. A George III mahogany tilt-top table, circular, on vase turned pedestal, and 3 downswept legs terminating in pad feet, 29 1/2" dia.
969. A Victorian stained wood corner 4-tier whatnot, of serpentine shape, having a pierced gallery to the upper shelf, with spiral turned uprights, on turned feet, 46 1/2" high.
970. An early 19thC child's mahogany and oak commode rocking chair, with solid X-shaped back and side panels and shaped apron (hinged cover missing).
971. A 19thC child's ash and elm high seat Windsor chair with stick back, baluster uprights, on turned legs with foot rest.
972. A George III oak provincial dining chair, with yoke shaped top rail, pierced splat, loose seat, on square legs joined by stretchers.
973. A Victorian ladies walnut chair, with button back, encircling frame with flower cresting, outswept arms with scroll terminals, having a serpentine seat, and on cabriole legs with carved knees, on castors.
974. An oak Sutherland table, the rectangular flaps with canted corners, on turned legs, 22" wide.
975. A Victorian walnut ladies chair, having a button upholstered back, the encircling spoonback with flower cresting, the outswept arms with scroll uprights, serpentine seat, cabriole legs with carved knees and ceramic castors.
976. A late 19thC/early 20thC mahogany duet stool, with grospoint needlework seat, on turned legs.
977. A Victorian tilt-top occasional table, the oval top painted with a wildlife landscape, on oak pedestal with 4 carved downswept legs and block feet, 28 1/2" wide.
978. A Victorian burr walnut 2-tier what-not, rectangular, with ring turned uprights, 27 1/2" wide (gallery missing).
979. A Jacobean style carved oak dresser with panelled splashback, two drawers each over two doors enclosed by blind fretwork and raised on two double barleytwist columns to the front, co-joined by stretchers on bun feet 6ft wide.
980. A pair of Victorian mahogany balloonback dining chairs with cabriole legs.
981. A George III cross banded mahogany Pembroke Table with oval top, having fall flap (some veneer damage) with single drawer with swan neck handles raised on slender square taper legs with small and low brass castors 3' wide (max) x 2'
982. A Victorian ebonised tub chair with galleried back and turned legs and striped upholstery.
983. A late Victorian walnut chest of two short and two long graduated drawers with pressed brass backplate handles with bracket feet 3'7" wide 2'7" high
984. An early 19th century flamed mahogany D front chest of two short and three long graduated drawers with brass pierced backplate handles, shaped apron and feet 3'8" wide 4'2" high.

985. A George II oak lowboy with moulded top (with replacement inserts) with three frieze drawers, shaped apron and slender cabriole legs with pad feet 32" wide 27" high.
986. A Victorian Chesterfield droparm two seater sofa with turned legs.
987. A Victorian deep upholstered armchair of low long form in the style of Howard & Sons.
988. A 17th Century oak coffer with three panel top, two panel front having two large areas on let-in repair 3'5" wide x 2' high.
989. A George II oak hanging corner cupboard with fielded panel door, brass H-hinges and shaped shelves 2'11" high, 2'1" wide.
990. An Elizabethan style oak drawleaf dining table on bulbous legs with bun feet, co-joined by plain double H stretcher 3'6" wide x 4' wide min.
991. A Victorian walnut nursing chair with carved resting rail, spoonback and scroll feet in a modern striped upholstery.
992. A Victorian mahogany wind-out dining table with double moulded edge top, raised on part reeded and fluted legs with brown ceramic and brass castors. 4' wide, 4'9" min (no leaves).
993. Late Victorian walnut nursing chair with galleried back and turned front legs.
994. A Victorian flamed mahogany twin pedestal sideboard with moulded breakfront top having three frieze drawers, enclosed back panel and each pedestal having carved mahogany doors. 7'2" wide
995. A George III oak Bureau with fall flap concealing fitted interior on lophers with two short and three long graduated drawers with cast brass handles on bracket feet. 40" wide.
996. An Edwardian quarter veneered mahogany wardrobe with floral marquetry panels flanking single mirrored door over drawer base on bracket feet, and dressing chest with rectangular mirror.
997. An Edwardian string inlaid mahogany double wardrobe with moulded cornice, single door with arched plate and two drawer base, and Dressing Chest with arched mirror.
998. An Edwardian string inlaid mahogany wardrobe with moulded cornice, single door and drawer together with dressing chest with oval mirror.
999. An Edwardian mahogany Bureau Bookcase in the Chippendale manner with two door astragal glazed top over fall flap with oval beaded veneer panel, over 3 graduated drawers with pierced brass swan neck handles, raised on square legs with fretwork insert. 7' high x 3' wide.
1000. A Late Victorian Walnut Hallstand with galleried and mirrored back with brass hooks, lift flap compartment on turned columns quartered by stick stand insert. 6'4" high.
- 6pm.**
1001. A pierced and engraved white metal hinged bangle inscribed 26.1.47 probably French.
1002. A yellow metal brooch of flower spray design set with Burmese rubies and diamonds as flower centres.
1003. An open face pocket watch by Retouret of Geneva, with a Swiss lever movement set with 15 rubies, the yellow metal case stamped 18K.
1004. A ladies 9ct gold wristwatch.
1005. A portrait miniature of a young lady wearing a pearl necklace. JA monogram.
1006. 5 restruck silver Austrian coins.
1007. A ladies Ricoh watch with quartz movement.
1008. A six point star brooch with enamel points and a micro-mosaic floral rondel centre. Marked CG to the yellow metal back.
1009. A silver bangle and agate brooch.
1010. A silver charm bracelet with 4 charms and padlock clasp, together with 3 - 9ct gold charms and an Indian silver circular pendant.
1011. A double strand simulated pearl necklace with Deco style clasp
1012. A restruck gold Hungarian coin, cased.
1013. A signed Japanese ivory netsuke a study of a Dutchan, his ballooned trousers exaggerated and assisting him concealing a sword behind his back.
1014. A signed Japanese Netsuke, a smiling man holding a stick with a gourd and his hat.
1015. A signed Japanese ivory netsuke a study of a deity standing holding an unfurled scroll, a goose beside him.
1016. A signed Japanese ivory netsuke a study of a naked man wrestling with a huge sea serpent.

1017. A signed Japanese Netsuke, round bellied man carrying a fan and bag on his back.
1018. A signed Japanese ivory netsuke a study of a youth collecting edible snails in a growth of bamboo.
1019. A signed Japanese ivory netsuke a study of Ashi-Odori a court entertainer of mythology standing holding his stringed musical instrument.
1020. A signed Japanese Netsuke, 2 young wrestlers.
1021. A signed Japanese ivory netsuke a study of a Shoki the mythological Demon Queller wrestling with a pair of evil horned Oni (Demons).
1022. A pair of Georgian steel wig spectacles and others.
1023. Small cased pipe
1024. Coins; 1d. & 1/2d., etc.
1025. A long curb link chain in yellow metal stamped for 9ct
1026. A tri-colour graduated width bracelet in 9ct gold
1027. A tri-colour metal fancy link bracelet, stamped 750
1028. A double curb twist link chain in yellow metal stamped for 9ct. 26ins long
1029. A rope twist necklace in 9ct gold, 15 ins long
1030. A fancy link chain in yellow metal, stamped for 9ct. 19 ins long
1031. A belcher link bracelet in 9ct gold
1032. A white metal Wedding Band with floriate decoration, no hallmark, stamped platinum. Weight 3.8gms
1033. A gentleman's signet ring, sunburst top, in 9ct gold
1034. A gentleman's signet ring, in 9ct gold
1035. A ladies 9ct gold keeper ring
1036. A white metal Wedding Band with foliate decoration, no hallmark, stamped platinum. Weight 2.8gms.
1037. A signet ring set with a coin in 9ct gold
1038. A gentleman's signet ring, top square set with a central small diamond with wide bark shoulders in 9 ct gold
1039. A gentleman's signet ring - top diagonal set with three small diamonds in 9ct gold
1040. An Art Deco metamorphic brooch and clip set of Odeonesque styling, having central trap cut diamond of c.20pts & two brilliant cut diamonds of c.33pts each, with bands of millegrain set smaller stones. 50mm x 20mm.
1041. An Art Deco style ring of two concentric rings of brilliant cut diamonds surrounding a cabachon emerald set in white metal on a white metal shank, 19 diamonds of c.10pts & 10 diamonds of c.15pts, emerald 8.2 x 6.8 mm.
1042. A 9ct gold band, heart decoration.
1043. A 9ct gold ring set with a single white stone.
1044. A bi-colour 9ct gold diamond set ring, the double row of small diamonds set in white gold.
1045. Four yellow metal charms, a bracelet and a pair of earrings.
1046. A yellow metal belcher link bracelet with 5 charms attached, stamped .375.
1047. An Art Deco ring of white metal lozenge shaped head set with 9 diamonds with millegrain divisions on a yellow metal shank, stamped 18ct & PLAT. Total diamond weight 0.25ct approx.
1048. An 18ct white metal claw set single stone diamond ring of 1.19cts approx with diamond set shoulders and heart shaped cheniers.
1049. A white metal claw set single stone diamond ring of 0.65ct approx, the shank stamped platinum.
1050. A white metal diamond set full hoop eternity ring, approx 0.25ct. in all.
1051. A selection of yellow and white metal diamond set rings of modern designs, shanks stamped 750
1052. A yellow metal diamond set ring, the diamond in a rubover setting, shank marked 750.
1053. A yellow metal diamond set ring, 3 diamonds set in line, open set, the shank marked 750.0. 18ct total.
1054. A yellow metal diamond set ring of crossover design.
1055. A white metal diamond set ring, the part reeded band set with 6 small diamonds in line, the shank stamped 750.
1056. A yellow metal diamond and ruby set ring, a modern setting of an oval ruby in rubover setting surrounded by close set diamonds forming a comet tail on a wide shank, stamped 18k, total weight 9gms, ruby 0.40ct approx.

1057. An Art Deco style white metal diamond and sapphire set ring, a central square sapphire surrounded by pave set and bagette diamonds to the shoulders, stamped 750. Total weight 4.6gms, sapphire 0.70ct approx.
1058. An Art Deco style white metal ruby and diamond set ring, the central oval ruby banded and flanked by pave set diamonds, stamped 18k. Total weight 7.4gms, ruby 0.30ct approx.
1059. A white metal diamond set ring of a central diamond set lozenge of 9 small diamonds flanked by diamond set rolls and then 8 square cut diamonds to each shoulder, stamped 750. Total weight 6.7gms, diamond total 0.50ct approx.
1060. A yellow metal diamond set cluster ring, a central cluster of 7 stones flanked by band set stones to the shoulder, stamped 750. Total weight 3.7gms, diamond total 0.40ct approx.
1061. A white metal diamond set ring of 21 close set diamonds in 3 bands with pierced shoulders stamped 18k. Diamond total 0.60ct approx. Total weight 5.3gms.
1062. A white metal diamond set ring of 4 open woven plaited bands, 2 of which are set with small diamonds, the whole forming a wide band of some 18mm, stamped 750. Total weight 14.9gms, diamond total 0.80ct approx.
1063. A yellow metal diamond set ring, the heavy band divided and half pave set, stamped 750. Total weight 7.8gms, diamond total 0.34ct approx.
1064. A white metal diamond set ring of modern design, a scroll twist rolling over the stone set band, stamped 750, total weight 10.1gms, diamond total 0.40ct approx.
1065. A white metal diamond set ring, a diamond set band of square calibre cut stones in crossover turban style, stamped 14k, diamond total 0.30ct approx.
1066. A yellow metal sapphire and diamond set ring, a central oval sapphire in rubover setting flanked by band set diamonds, stamped 750. Total weight 4.2gms.
1067. A white metal single stone diamond set ring, shank stamped 750. Diamond 0.25ct approx.
1068. A white metal single stone diamond set ring in a simple crossover setting, shank stamped 750. Diamond 0.25ct approx.
1069. A white metal diamond set ring of modern design, the elongated oval head pave set with diamonds, shank stamped 750. Total weight 9.9gms, total diamond 0.25ct approx.
1070. A white and yellow metal diamond set ring of modern design, an open back, double separated bands of wave form with pave set diamonds to the front, stamped 750. Total weight 14gms, total diamond 0.30ct approx.
1071. A selection of 6 yellow and white metal diamond set rings of modern design.
1072. A mixed yellow and white metal diamond set bracelet of double bar diamond set briquettes, cross linked with yellow metal, stamped 750. Length 7 1/2", total weight 18.3gms, total diamond 1.50ct approx.
1073. A yellow metal and diamond set cluster ring of floral form, shank stamped 750.
1074. A white metal diamond set ring, pierced with double twist, stamped 750.
1075. A white metal diamond set cluster ring of floral form, stamped 750.
1076. A yellow metal diamond set ring, a leaf shaped central pave set head flanked by reeded shoulder, stamped 750.
1077. A yellow metal diamond set cluster ring, a stepped crossover cluster, stamped 750.
1078. A white metal diamond set ring, crossed central bands, flanked by stone set heart shapes, stamped 750. Total weight 7.2gms.
1079. A white metal modern diamond set wedding band, wave form, stamped 750. Total weight 7.6gms.
1080. A white metal diamond set ring of 2 stone set crossed bands over a basketweave shank, stamped 750. Total weight 8.1gms.
1081. A modern bi-colour metal ring with central diamond in rubover setting, shank stamped 18k. Total weight 9.6gms, diamond 0.10ct approx.
1082. A yellow metal diamond set ring, triple twist and pierced, stamped 750.
1083. A white metal and diamond ring, a dainty diamond set bow shaped head, shank stamped 750.
1084. A white metal and diamond set ring, a diamond set band forming a heart shape around the shank, stamped 750.

1085. A white metal diamond set ring of slim crested wave form with pierced shank stamped 750.
1086. A yellow metal single stone diamond ring of delicate foliate form, stamped 750.
1087. A white metal diamond set ring, a concave diamond set head with heart shaped piercing to the shoulders, stamped 750.
1088. A yellow metal diamond set ring, an oval basketweave cushion surmounted by a diamond set quatrefoil, shank stamped 750. Total weight 6.5gms.
1089. A white metal diamond set ring, an oval basketweave cushion surmounted by a diamond set quatrefoil, shank stamped 750. Total weight 6.6gms.
1090. A yellow metal diamond set 1/2 hoop eternity ring with curved top, stamped 750.
1091. A yellow metal diamond cluster ring on reeded shoulders, stamped 750.
1092. A white metal diamond set ring, a round pave set plaque on plain shoulders, stamped 750.
1093. A white metal diamond set ring, an oval pave set plaque on plain shoulder, stamped 750.
1094. A yellow metal diamond set ring, stamped 750
1095. A delicate single stone ring set in yellow metal, stamped 750.
1096. A pair of white metal and diamond cufflinks, on swivel backs, a round button with crossbands and a diamond set centre, stamped 18KT.
1097. A pair of white metal and diamond cufflinks, on swivel backs, a knot with 3 stone set centre, stamped 18KT.
1098. A yellow metal and diamond set cluster ring with bi-colour metal shank, stamped 750. Total weight 6.1gms, total diamond 0.54ct. approx.
1099. A yellow metal diamond set ring of graduated line of small diamonds, band set and bevelled shank, stamped 750. Total weight 6.1gms, total diamond 0.48ct. approx.
1100. A heavy wide white metal diamond set ring, the stones being set within elongated S bands on wide shoulders, stamped 750. Total weight 8.6gms, total diamonds 0.50ct.
1101. A modern design white metal diamond set ring stamped 750. Total weight 7.6gms, total diamond weight 0.25pts.
1102. A bi-colour metal diamond set ring of unusual design, the whole resembling a pave set frog's head with 2 larger diamonds set as eyes, the shank stamped 750. Total diamond 2ct approx.
1103. A white metal modern design wedding band set with small diamonds in wave form, stamped 750.
1104. A white metal diamond set ring of 3 panels of small diamonds, heart shaped piercing to setting, stamped 750.
1105. A white metal 5 stone diamond set ring with heart shapes to setting and stamped 750.
1106. A heavy bi-colour metal ring with a central set diamond, stamped 18k. Total weight 11gms.
1107. A white metal diamond set scalloped shape eternity ring with pierced heart shapes to setting, shank stamped 750. Total weight 7.4gms.
1108. A white metal diamond set ring with in line flat top, heart shape piercing to setting, stamped 750.
1109. A white metal diamond set flat topped ring, shank stamped 750.
1110. A yellow metal diamond set ring of crossover design, stamped 750.
1111. A white metal full hoop diamond set eternity ring.
1112. A modern white metal wedding band of 3 moulded bands, the outer 2 being half round set with small diamonds, stamped 750.
1113. A bi-colour metal diamond set tennis bracelet, the diamonds set in white metal cubes, interlinked with yellow metal bars. Length 7 1/2", total weight 14.2gms, total diamond 0.60ct.
1114. A white metal diamond and sapphire set ring of central oval dark sapphire (0.70ct approx), surrounded in knot form by baguette cut diamonds stamped 18k, total weight 8.5gms, total diamond 1ct approx.
1115. A white metal ring with 2 acutely angled rows of calibre cut diamonds graduating to wide shoulders, stamped 750, total diamond 1ct approx.

1116. A yellow metal ring set with 3 rows of diamonds in a lattice setting (22 stones) stamped 750. Total diamond weight 0.22ct approx.
1117. A bi-colour metal ring set with square cut diamonds in a zigzag form, stamped 18k. Total weight 12.2gms, total diamond 0.48ct.
1118. A white metal diamond and ruby set ring of an oval ruby surrounded by pave set diamonds and banding, shank stamped 18K. Total weight 8.2gms.
1119. A bi-colour metal diamond set crucifix.
1120. A yellow metal diamond set heart shaped pendant stamped 750.
1121. A white metal diamond set pendant.
1122. A yellow metal diamond set pendant, a curved row of 9 diamonds in rubover settings.
1123. A white metal ribbon style crucifix set with baguette diamonds, stamped 18k.
1124. A white metal 4 petal flower shaped pendant with a centrally set diamond, stamped 750.
1125. A white metal modern design diamond set crucifix stamped 750.
1126. A white metal diamond set clasp or pendant.
1127. A white metal diamond set butterfly 'floating' pendant, stamped 750.
1128. A white metal diamond set star shaped pendant with heart shaped piercing, stamped 750.
1129. A bi-colour metal crucifix with centrally set diamond.
1130. A bi-colour metal diamond set pendant of modern design.
1131. A bi-colour metal diamond set crucifix.
1132. Two items of diamond set body jewellery.
1133. A pair of bi-colour metal and diamond set wide hoop earrings, stamped 750.
1134. A pair of bi-colour metal diamond set wedding band style earrings stamped 750.
1135. A pair of white metal heart shaped diamond set earrings.
1136. A pair of bi-colour metal earrings with diamond set drops, modern design, stamped 18k.
1137. A pair of bi-colour metal diamond set small hoop earrings stamped 750.
1138. A pair of white metal diamond set earrings stamped 750.
1139. A pair of white metal diamond set earrings.
1140. A white metal diamond set ring, 3 panels of 4 square cut diamonds on a wide shank, stamped 750. Total weight 8.6gms, total diamond weight .24ct approx.
1141. A bi-colour ring of jointed bands diamond set, one of each colour, stamped 750. Total weight 8.4g.
1142. A white metal diamond set ring, 4 rows of diamonds wrapped with a plain central band twist on a wide shank, stamped 750. Total weight 8.5g.
1143. A heavy white metal diamond set bracelet of twisted ribbon plaques, the centre 5 of which are set with either round or calibre cut diamonds. Total weight 34gms, total diamond 2ct approx.
1144. A gold plated double watch chain with faceted links, 29" long.
1145. To 1150. Spare lots.