

AUCTION SALE CATALOGUE



Period & Decorative Furniture,
Works of Art, Glass, Ceramics, Metalware,
19th & 20th Century Toys & Collectables, etc.

Wednesday 5th December, 2001 at 10am

Principal
Colin R. Young FNAVA

Consultants
C. Robin Hall FRICS FRAV
Ian J. Shaw FRICS FNAEA



National Association of
Valuers & Auctioneers

Golding Young & Co.
Old Wharf Road, Grantham
Lincolnshire, NG31 7AA

01476 - 565118

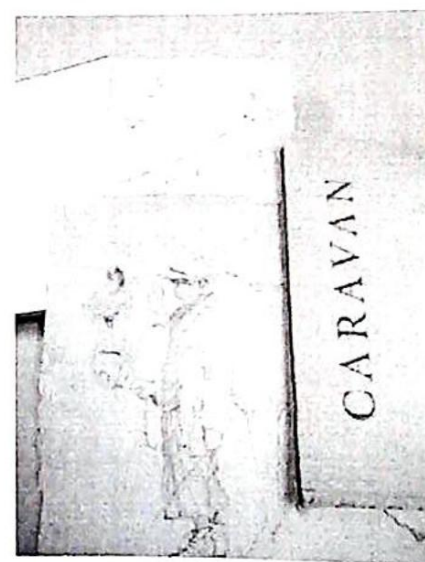
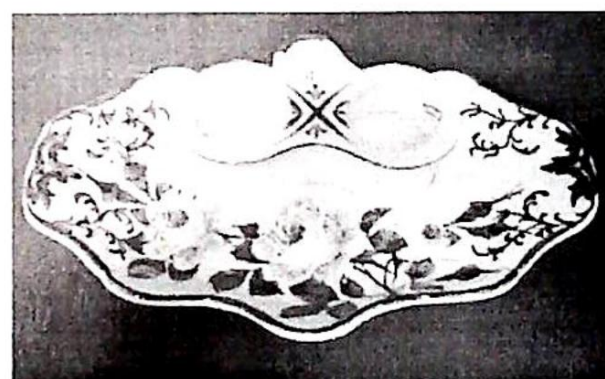
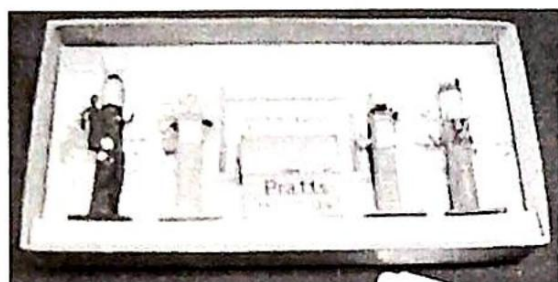
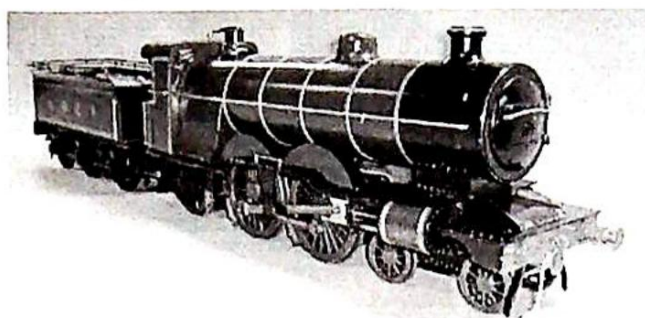
Fax
(01476) 561475

E-Mail
enquiries@goldingyoung.com

Internet
<http://www.goldingyoung.com>

Associate Office
Goldings, Chartered Surveyors & Estate Agents
45 High Street Grantham NG31 6NE (01476) 590211

selected images from
www.goldingyoung.com



*Principally upon instructions from the Executors
of various estates, residual property clearances
and private entries.*

Golding Young & Co will sell by Auction

**ANTIQUE AND DECORATIVE FURNITURE
GLASS , CERAMICS, METALWARE
PICTURES, PRINTS , BOOKS
COLLECTABLES, TOYS, ETC**

On Wednesday 5th December 2001 at 10am

Viewing:

**Tuesday 4th December 2pm to 7pm
And saleday 9am to 10am**

Lot enquiries:

Suki Burnett

**Jan Squires ANAVA, PJ Gem Dip.
Colin Young FNAVA**

Vendor enquiries:

Marie Scoffield

Click-to-View:

www.goldingyoung.com

over 80% of lots are illustrated Online

IMPOTANT NOTES FOR PURCHASERS

1. **PAYMENT:** Must be made in full immediately after the Auction. The following methods of payment are acceptable.

a) Cash b) Bankers Draft c) Building Society Cheque
d) Cheques, accompanied by a valid card.

PAYING BY CHEQUE?

If you are not known to the Auctioneers and wish to pay by cheque above your guarantee card limit **WE WILL RETAIN THE GOODS** until it has been cleared (7 days). There will be **NO EXCEPTIONS** to our policy. To avoid **UNDUE EMBARRASSMENT** for yourself or to our staff, please do not ask for preferential treatment. If you wish to clear goods immediately bring a letter from your Bank or a suitable guarantor reference.

2. **BUYERS PREMIUM** of 15% on the first £100 of each lot and 12 ½% thereafter + VAT is payable on all lots.
3. **REMOVAL OF PURCHASES:** Goods must be collected as soon as they are paid for, and in the 2 Working Days following the sale. If goods are not collected on these days we reserve the right to charge £1 per lot per day thereafter.
4. **COMMISSION BIDS:** If you are unable to attend this or any of our future sales we will be pleased to bid on your behalf. We always purchase at the lowest possible price, subject to other bids and reserves.

All bids must be handed to the office on an official form. It remains the responsibility of prospective purchasers to contact **GOLDINGS** to confirm whether their bids have been successful.

5. **TELEPHONE BIDS:** There are inherent dangers with this practice, therefore all such arrangements are made entirely at the bidder's risk. Telephone bids will only be accepted if the lower estimate is £500 or above. For lots with a lower estimate below this figure Commission Bids Only will be accepted.
6. **SMOKING** is not permitted in any part of the Saleroom.
7. **REFRESHMENTS** will be available Saleday.
8. **ACCOUNT TRANSFER** will not be recognised after the sale. If any lots are purchased for another person, this must be declared at the fall of the hammer.
9. **ESTIMATES.** Our Auctioneers will be available during viewing to give guidance on your prospective purchases.

GLOSSARY

- a) Generally: 'As Found' (AF). This term indicates the lot has some damage. Its absence does not indicate that the lot is free of defect. All lots are **SOLD AS SEEN**.
- b) Paintings: 'Signed, initialled, monogrammed' – 'This refers to the present state of the work and is not an attribution.
- c) Books and printed matter: These items are not sold subject to collation and are not returnable once removed from the premises.
- d) Silver & Jewellery: Weights given are approximations given by basic instruments.

The Sale

Inventory

Collectables

1. A miniature leaf moulded green glaze dessert set, 19thC, comprising tazza, 6 platters, and 11 plates, some damage and repair.
2. A Doulton Lambeth stoneware jug, moulded in low relief with toppers, animals and windmill, 6 1/2" high.
3. A Cantonese tray on stand.
4. A Wemyss double ink stand, having an oval shaped base painted with pink roses, leafage, blue scrolls, 10" wide, impressed factory mark.
5. A Copeland porcelain plate, the centre painted with an eagle landscape, the pink border gilt with formal scrolls and dentil rim, 9 1/4" dia.
6. An English porcelain plate, 19thC painted and moulded with flower sprays, the centre painted with the Heylegair crest, 9 3/4" dia.
7. A qty green leaf and berry moulded dessert ware, 19thC, including a tazza, some damage, together with a majolica leaf moulded plate.
8. A pottery dinner service, late 19thC, printed and painted with flowers and foliage, the rims gilt.
9. Two Copeland earthenware tureens and covers, oval meat plate and stand, printed in brown.
10. A Moorcroft vase of circular tapering form, having a red and yellow falmbe style glaze, 10 1/2" high.
11. Nine Brown Westhead & Moore 'Meissen' pattern plates, together with a platter and 2 soup plates similar.
12. A Brown Westhead & Moore 'Meissen' pattern oval meat plate, underglaze blue on white ground, 20" wide.
13. An Arts & Crafts hammered pewter small jardiniere, with 2 handles and on 4 feet, 11 1/2" over handles.
14. A mahogany table top specimen cabinet, the top having a microscope stand, the single glazed door enclosing 18 numbered drawers, together with a collection of mounted slides, 10 1/2" x 12".
15. A pair of Kashmiri embroidered panels, worked as the Tree of Life in silks and cottons, on silk ground, 14" x 10".
16. An Art Deco anodised copper desk lamp.
17. A Coalbrookdale panel and stand depicting a blacksmith scene. 9" x 18".
18. A 19thC wooden box and cover, circular, with swing handle, 9" dia.
19. A 19thC copper kettle.
20. A stoneware water filter by Cheavins, Boston, England, with lion mask handle, 16" high, (no cover).
21. A Royal Doulton figure 'The Potter', HN1493, 7 1/2" high.
22. A 19thC Staffordshire figure of William Tell, in plumed hat, short skirted dress and calf-high boots, the right hand with bow, sparsely coloured, 19" high. See Pugh, page 151.
23. A 19thC Staffordshire group of gypsy musicians, she with hoop and he with concertina, well coloured, 17 1/4" high, (damaged). See Pugh, page E446.
24. A Staffordshire toby jug 'Hearty Good Fellow', standing holding a foaming ale jug and pipe, highly coloured, 11 1/4" high, (damage to hat).
25. A Staffordshire toby jug, a seated Squire Toby James Kent with foaming ale tankard, 11 1/4" high.
26. A Georgian circular mahogany butler's tray.
27. A Houghton Ensign Carbine No 3 folding camera with Trichro shutter, circa 1920-30, in leatherette case.

28. A Braun Gloriette 35mm camera with Proutor SUS shutter, circa 1954, leather case.

29. A 19thC copper one quart measure, stamped J Stewart & Co with everted rim and loop handle, 6 1/2" high.

30. Spare Lot.

31. A Davenport bulb pot, painted and gilt with a broad band of flowers and leafage, 2 faux ring handles to each side, 5 3/4" high, c.1795.

32. A mahogany rectangular tray, having raised gallery, 2 brass handles and with shell inlay to centre, 21 1/2" wide over handles.

33. A Beswick character jug 'Captain Cuttle', impressed Beswick England 1, 120, 5" high.

34. Spare Lot.

35. An early 20thC oak book trough, modelled as a church pew with moulded stands, 16 1/2" long.

36. Spare Lot.

37. A pair of brass candlesticks, cast as angels, each holding a sconce in their right hands, hung with a faceted glass drop, on urn base, knopped socle and domed foot, 8 1/2" high.

38. A Prattware pot lid 'The Ning Po River' and circular box, yellow ground, 4" diameter, (chip to lid)

39. Two glass light shades, of trumpet shape, the body of graduated strung glass beads between faceted glass borders, blue and ruby respectively, 7 1/4" high, with chain suspension.

40. A Japanese bronze vase, of panelled baluster shape, with everted petal rim, cart in relief with flowering prunus and birds, 14 1/2" high.

41. A Victorian double burner oil lamp, having a cranberry glass reservoir with applied prints, on baluster knopped column, stepped circular ceramic base, stamped 'Veritas Lampworks', 15" high, and glass chimney.

42. A Victorian double burner oil lamp, with a clear cut glass reservoir, on a brass and composition..

'composite' column with square stepped base, having a cranberry tinted and etched shade and glass chimney, 31" high overall.

43. A pair of French vases, of slender tapering form, each having everted petal rims, 2 acanthus scroll handles, and painted with summer flowers and leaves, on domed circular foot, 18" high, (one repaired).

44. A Carlton Ware vase, of circular tapering form, decorated with the late kingfisher design on rouge ground, having a ribbed foot, 6 1/2" high.

45. A late 19thC earthenware baluster urn, having an everted rim, ring collar, 2 entwined serpent handles, enamelled and gilt with 'lace' panels and flowers on a black ground, on circular domed foot, 20" high, bears monogram ECN.

46. A cream-ground pottery vase designed by Constance Spry, of flaring circular shape, 12" high, chips to foot; another, 8 1/2" high.

47. A Beswick boat-shape vase, on oval fluted foot, cream ground with abstract design in green ochre and yellow, 16 1/2" wide. No 1498-1.

48. A Studio glass vase of ovoid shape by Charlie Meaker, predominantly black with swirling lines of green, mauve and blue, 5 3/4" high.

49. A Studio glass vase of barrel shape, by Peter Layton, having a multi-coloured iridescent ground, 5" dia.

50. A Studio glass vase of irregular spherical shape by Peter Layton, having a mottled green ground with coloured and iridescent abstract motifs, 6 1/4" dia.

51. A Medina glass vase, circular, with pinched neck and everted rim, the yellow ground with irregular blue vertical stripes, 6" high; together with a Murano green glass ashtray. (2)

52. A Victorian EPBM tea caddy, hexagonal, the swept and domed cover with coolie knop, engraved with scrolling cartouche and flowers, 6 1/4" high.

53. An Edwardian EPNS cake basket, oval, moulded and cast with shells and acanthus with swing handle and on plain foot, another similar, a small teapot. (3)
54. An Empire style EPNS plate holder, the circular collar supported by 3 winged beasts, on tripartite concave platform with claw feet, 8 1/4" dia, together with 2 EPNS plant pots. (3)
55. A commemorative horse brass, Edward VII, on leather strap.
- 55A. A cast brass letter clip.
56. A mahogany and brass spirit level, early 20thC, 8" long.
57. A late 19thC copper faced photograph frame embossed with shield, flowers and swags, easel support, 8" x 5 3/4".
58. An oak and walnut freestanding perpetual calendar, early 20thC, together with 2 top hat brushes.
59. An early 20thC mahogany card stand, the shaped back with shell inlay, bearing label 'Asprey, London'. 9" x 8 3/4".
60. A large copper kettle, oval, a pierced brass trivet and a brass front door bell. (3)
61. A pair of late 19thC gilt metal candelabra, each with 5 branches, engraved and cast with acanthus, scrolls and stylised foliage, with slate and marble socle and rectangular base, on 4 cast metal feet. 20" high.
62. A qty early and mid 20thC sepia and black and white celebrity postcards.
63. A pair of Staffordshire pottery 2-handled vases, of compressed baluster shape, with acanthus moulded rim, printed with roses, 14 1/2" high.
64. A pair of 19thC Staffordshire lions, opposing, each having a raised front foot on a ball, in light brown glaze with glass eyes, on rectangular stepped bases with concave corners.
65. A 19thC copper warming pan, with turned fruitwood handle, 38".
66. An EPBM teapot of inverted baluster form, chased with flowers and foliage, with mother of pearl finial.
67. A Maling shallow dish, circular, moulded with eidleweiss on a green and puce scale ground, on shaped foot, 11" dia.
68. A heart shaped pin cushion, embroidered with beads, with applied paper verso, 7" wide.
69. A mahogany and bird's eye maple wall mirror, rectangular with shallow arch to the top, with bevel plate, 14 1/2" x 12 1/2".
70. A circular dressing table mirror with bevel plate and flower cresting, with easel stand, 8" dia.
71. A pair of frosted glass candlesticks, modelled as kneeling angels, on star bases, 4 1/2" high.
72. A brass tea kettle with flower chased decoration and bakelite handle and finial, together with a French novelty cigarette dispenser and a ladies gold plated cigarette case. (3)
73. A Royal Doulton plate, circular, polychrome printed with a colourful bird amongst foliage, 9 3/4" dia.
74. A Kaiser bisque porcelain figure of a dolphin, rising from a wave, 9" high, impressed no 654.
75. A Kaiser bisque porcelain figure group of a penguin and chick, 6 1/4" high, impressed no 773.
76. A Kaiser bisque porcelain figure of a killer whale, limited edition 3271/4000, 12" wide, (with certificate).
77. A Kaiser bisque porcelain figure 'Odette', (from Swan Lake), limited edition 3052/7500, hand tinted, 9 1/4" high, (with certificate).
78. A pair of bone china easel photograph frames, of shaped rectangular shape with oval apertures, printed with hollyhocks and foliage 11" x 9".
79. An early 20thC marbled glass light bowl, 10 1/2" dia.
80. A Kaiser bisque porcelain figure of a leaping dolphin and baby, 7 1/2" high, impressed no 6979.

81. A pair of gilt metal figures of putti, one playing a violin, the other a tambourine, on circular wooden bases. 7 1/2" high.
82. A pair of gilt spelter figures, emblematic of industry, on wooden bases 13" high.
83. After David Cornell. "Champion Finish", a bronze model of a racehorse and jockey, signed and dated 1985, on black slate rectangular base 8 1/2" high.
84. A 4" wooden and brass fishing reel, another 3 1/2" and an Allcock Aerialite reel. (3)
85. Eleven 2 1/2" lead soldiers, contained within a pierced wooden box.
86. A white metal cast model of a mythical beast with elephant head and four arms 11" high.
87. An Alcock porcelain teapot, circular with compressed moulded body, with double scroll handle, on four feet, painted in underglaze blue, red, green and gilding. c.1830, pattern no. 2617 (repair of handle).
88. A 19th century porcelain and gilt metal two handled urn, of double baluster shape, painted with panels of summer flowers and one of putto on a cloud, with metal liner, the collet cast with scrolls, the base pierced with shells and scrolls 11 1/4" high (cover missing).
89. A pair of early 19th century brass candlesticks, having oval half fluted stems, on oval bases 6" high.
90. A pair of brass composite column candlesticks, having fixed sconces, on square bases with reeded collets and bead edges 6" high.
91. A Bing & Grondahl figure of a seated hound, 7 1/4" high, no 1716, signed A W>
92. A 19th century fruitwood circular bowl and cover, carved in high relief with vine and grapes, the cover similarly carved and with pressed brass knop finial 8 1/2" dia.
93. A bronze mortar with raised band to centre body, 5 1/4" diameter.
94. A pewter pepper, salt and mustard by James Yates, each of baluster form, on circular foot.
95. A pair of Venetian glass figures modelled as an Italian nobleman and lady, in pale blue and amber glass, 10" high, signed G. Joffolo.
96. An amber glass scent bottle, having indented oval panels gilt with foliage 7" high.
97. A 19th century white metal tankard with hinged cover, with knob finial and loop handle, and chased overall with mythical beasts, birds and foliate scrolls, with shield crest. 5 3/4" high.
98. An early 19thC blonde tortoiseshell needlework box with ivory and silver stringing, 3" wide, 2" deep, 4" high. (Some damage to tortoiseshell above rear hinges and chips to top.)
99. A Staffordshire figure of a girl and sheep, she in plumed hat, blue jacket and flower skirt, the sheep with encrusted body, on naturalistic base, 8 1/4" high.
100. A pair of early 20thC brown leather ice skating boots, together with 3 pre-war bathing suits and 3 wooden tennis racquets.
101. A mandolin and case.
102. A stuffed and mounted red squirrel displayed amongst ferns, bracken and moss, in a rectangular case, 11 1/2" x 12 3/4".
103. A Shelley bone china tea service, decorated in an arch trellis and plant design.
104. Four 17thC wooden wallpaper blocks.
105. A green glass ale bottle, seal mark J M 1726, 9" high.
106. Five tall ale glasses, engraved with hops and panel cut to bowl, a glass flask modelled as a dog, two water flasks and an oval moulded glass flask with faceted stopper.
107. Six wine goblets and other glass.

108. Stereoscopic views Das Heilige Land durch das stereoskop. Holy Land, by Underwood; Bermese Alps; both boxed and a viewer.

109. Stereoscopic view - snaps; South African War and Towns, all boxed, and a viewer.

110. A Chinese ginger jar and cover, the deep blue ground enamelled with butterflies, and flowers, turned wood cover 10" high, hairline crack

111. A nickel plated horse's bit by James Dixon & Sons.

112-4. Four assorted horses bits.

115. 3 unusual nickel plated bits.

116. 3 horse brasses on leathers

117. A large Chinese blue and white Ginger Jar with Kangxi marks.

118. A small 17th C crested bronze Mortar.

119. A Chinese baluster vase, painted overall with flowers and foliage on a yellow ground, reserved with panels of dragons and landscapes 8 3/4" high.

120. An orange lacquer silhouette bowl.

121. A Decomania papier mache vase.

122. A pair of Japanese circular bowls and covers, painted overall with flowers in iron red, 9" dia. (cracks).

123. A Cloissone ovoid bowl, the bronze ground decorated overall with flowers and scrolls, mask panels within turquoise border 8" dia.

124. A Chinese black-flecked green jade carving of 2 birds perched on a bough, 20thC, 6 3/4" wide, on a wooden stand.

125. A Stergene stoneware bottle.

126. A Japanese satsuma baluster vase decorated with birds and flora, 9".

127. A Sessionist green pottery 2 handled vase.

128. A Wade 'Gothic' pattern vase.

129. An 18thC Leeds creamware Coffee Pot with loop handle. (Spout and cover missing).

130. A cast based oil lamp with blue glass reservoir.

131. A composition and wood Japanese boy doll, dressed in traditional dress of tunic and trousers embroidered in gold thread, the moulded head with painted face pigtail and ceremonial head dress, wooden body with jointed limbs, 11 1/2" high. Probably 18/19th century.

132. An S F B J bisque headed doll, with brown glass eyes, brown hair, open mouth, on a jointed composition body, wearing a white lawn lace trimmed dress, green satin bonnet, 15 1/2" high, model no. 60.

133. A German bisque headed doll with blue glass eyes, blond hair, open mouth, on a jointed composition body, wearing a pale green and lace top and skirt and mob cap, 14 1/2" high, marked with horseshoe and 1900 - 7/0.

134. A celluloid gypsy doll with closing eyes, brown hair and jointed body, in scarlet and black dress, 13 1/2" high.

135. A German bisque-head doll, having mohair wig, brown sleeping eyes and open mouth, fully jointed composition body, marked Made in Germany 136/11, 24" high.

136. An early Palitoy blonde Action Man with plastic hands, together with Army Landrover and rifle rack with various rifles; together with a late Hornby clockwork train set.

137. A 3-storey dolls' house, 27" wide, 47" high, 14" deep.

138. A painted wooden doll's house, 25" wide, 29" high, 16" deep, together with garden and fencing.

139. A Victorian doll's house. (AF)

140. A painted metal rocking horse.

141. An old cast-metal pull-along child's horse.

142. A large hand-carved and painted rocking horse with fairground twist pole.

143-9. Small hand-carved and painted rocking horse.

150. 'Maisie' a 3 1/2" scale scratch built steam locomotive, together with blueprints and the LBSC 1952 book detailing construction. The locomotive and tender are painted in the livery of the LNER and numbered 5762.

151. A 'Star' pond yacht, painted green and yellow with red keel and mast, cloth sails, 17 1/2" long.

152. A Tri-ang pull-along steam engine, painted red and yellow, no 73000, with horn bellows, 17" long.

153. A Hornby tin plate clockwork speed boat No 3, cream and red, in original box. (AF)

154. A Hornby No 101 tank passenger set, clockwork, O gauge, comprising 0-4-0 tank engine LNER 460, 2 carriages, guard's van, track, in original box.

155. A Hornby No 2 4-4-0 O gauge locomotive and tender, with clockwork mechanism, painted black with red coachlines and inscribed LNER 2711.

156. A Hornby No 3 station, O gauge, with ramps, in original box.

157. A Hornby No 1 footbridge, together with a Hornby No 1 level crossing, O gauge, both boxed.

158. A Hornby O gauge clockwork No 501 0-4-0 locomotive, (reversing), painted in dark red and black LNS livery, together with No 501 tender, both in original boxes.

159. A Hornby O gauge No 2 level crossing, a No 2 turntable and a platform crane, in original boxes.

160. A Hornby O gauge No 2 turntable, boxed, together with a goods platform and signal cabin.

161. Hornby O gauge: No 1 buffer stop (spring type), 12 straight rails, boxed, a qty of rails, etc. (A lot)

162. A Bassett-Lowke O gauge LNS brake van no 62306 (lid missing to box).

163. A Hornby O gauge No 2 tank 4-4-2 locomotive, painted in the green..

GWR livery, together with a GWR breakdown van and crane.

164. A qty Hornby O gauge rolling stock: a British Railways flat truck with furniture container, a cattle truck, a gas cylinder wagon, a ventilated refrigerator van, a brake van, a timber wagon, a 'Portland Cement' cement wagon. (7)

165. A qty Hornby O gauge LNS rolling stock: 2 brake vans, no 2 cattle truck, No 1 cattle truck x 2, 4 x M1 wagons. (9)

166. A qty Hornby O gauge rolling stock: a NE wagon, an LNER brake van, an SR flat truck with ventilated container, a NE flat truck with cable drum, and a flat truck, together with a water tank, No 1 buffer stops (spring), boxed, another, and a telegraph pole. (9)

167. A qty Hornby OO gauge rolling stock, boxed, some loose carriages, and 5 boxed Palitoy rolling stock (modern) and accessories.

168. Five Hornby OO gauge locomotives: a 4-6-2 Duchess of Sutherland locomotive and tender, an LNER 0-4-2 tank engine, an LNER 4-2-2 mlocomotive and 2 deisal engines.

169. A Hornby O gauge signal cabin No 2E, a banana van, boxed, a GW no 1 wagon, a SR No 2 cattle truck.

170. A qty of Hornby O gauge rolling stock: a 'Shell' petrol tank wagon, a No 2 timber wagon, a No 2 lumber wagon, box for fibre wagon, flat truck with cable drum (boxed).

171. A Hornby O gauge Special Pullman Coach, with grey roof, a No 1 buffet shop (spring) and 2 point switches.

172. A qty Hornby railway accessories including hedge sections, fences with trees, tracks, points, No 1 station staff.

173. A Dinky Petrol Pump Set No 49 'Pratts' - blue box.

174. A Dinky RAC hut motor cycle patrol and guides, No 43, - blue box.

175. A Dinky filling/service station No 48 with green base and yellow roof, boxed.

176. Two dinky tractors, i) blue/green body, red wheels, ii) yellow body, red wheels, together with a qty of Britains and other farmyard animals and accessories.
177. A Dinky giant high-speed monoplane, unboxed.
178. Dinky Supertoy Foden flat-bed 4-axle lorry in blue and orange, unboxed.
179. A Dinky Supertoy Leyland Octopus 4-axle tanker in Shell BP livery, unboxed.
180. A Dinky Supertoy Leyland tipper with cream body, blue roof and orange balast body.
181. A straw filled cloth doll with transfer printed face.
182. A Crawford's transfer printed biscuit tin, the Lucy Atwell 'Kiddibics'. (AF)
183. A black perambulator, c.1930.
184. A grey soft bodied doll's pram.
185. A brown soft bodied doll's pram.
186. A duck egg blue Silver Cross doll's pram.
187. A doll's pram.
188. Two Pelham puppets. (AF)
189. A remote controlled tinplate car by Arnold, made in Germany.
190. A tinplate Renault fire rescue tender and a tinplate aeroplane fusilage. (AF)
191. A selection of loose Meccano pieces.
192. Bygone board games and tins.
193. A Bell's 'Duncan Hamilton' racing game.
194. A Hornby Dublo electric train set 'Duchess of Atholl'.
195. A qty military Dinky toys, used condition, and others.
196. A cardboard jigsaw puzzle, 2 sets of football medalions and a trinket box.
197. Two Coalport Indian Tree Meatplates (AF).

Books, Prints, Ephemera, Stamps, Etc.

198. An old Bible and drawings.
199. Edward Seago. Circus Company, green cloth, pub. Putnam 1933, having a drawing by the Seago of a horses head and a clown, signed and dated 1933.
200. Edward Seago. Caravan, biege cloth, pub. Collins 1937; together with the original drawing for the book of a Romany boy with his horse.
201. 19th century School. Head and shoulders study of a black and tan Cavalier King Charles Spaniel, oil on canvas, 10" x 8" dated '82.
202. 19th Century School. Head and shoulders study of a Staffordshire bull terrier, oil on canvas, signed with initials and dated '82. 10" x 8".
203. 19th Century Japan School. Portrait of a Japanese Grandee in ceremonial dress, another, seated in a chair, a pair, watercolour, on rice paper.
204. 19th Century Japan School. Interior scenes of a young man seated with attendants, a similar one of a young lady, a pair, watercolours on rice paper. 12 1/2" x 7".
205. 19th/20th Century English School. Peel Castle, St. Patrick's Isle, Isle of Man, Landscape, oil on canvas. 10" x 14".
206. 19th Century School - Study of a woman, head and shoulders, wearing a white head-dress, oil on canvas 26" x 20".
207. 20th Century School. "The Battle of Vimy Ridge", 1st World War military scene - coloured print, 13 1/4" x 21 1/4".
208. 19th Century School. Half length portrait of a gentleman, in black frock coat, seated, holding spectacles in right hand, oil on canvas, 32 3/4" x 27 1/2".
209. G. John Blockley. (20th Century). "Snowdonia" - pen, ink and watercolour, signed. 9" x 13 1/2".

210. Reginald G. Haggard R.I. (20th Century). "Demolition, Old Bottle Oven, Lockett's Lane, Loughton". Watercolour, signed and dated 1968, 21 1/2" x 15". Artist's label verso.
211. John Piper. "Abbeville" screen print, signed limited edition 43/70. 31 1/2" x 23 1/4".
212. William Russell Flint (after). Thatched cottage amongst trees, signed artist's proof, pub Frost & Reed, c.1942, 14 1/2" x 21 3/4".
213. Spare lot
214. After Wale. A set of 4 copper engravings from 'Russell's History of England', hand tinted, 18thC, 11 3/4" x 6 1/4".
215. A gros-point needlework picture of a mother and child in a colonial garden, 12" x 12 1/2", good maple frame.
216. An early 19thC Turkeywork and long stitch embroidered oval, on silk panel, depicting a young girl in rural landscape, 8 3/4" x 6 1/4".
217. A WWI memorial photograph frame, the inner frame modelled on the Cenotaph, with vacant aperture with bronze medallion to the pediment, oak frame, 29" x 17 1/2".
218. A WWI certificate 'Medaille Militaire', presented to Sergeant Horace Flynn, 6th Batt Royal North Lancashire Regiment, July 1918, a photograph 1925 Lincolnshire Regiment - Winners of the Brownlow Cup 1925; photograph of an Indian Regiment and other WWI ephemera. (A lot)
219. Page Roberts. Relief of Kut 1916, Exhib. Dantas Gallery 1969, watercolour, title and text verso, 12" x 9".
220. F W Kirtley (British 20thC). Cattle and sheep in a highland landscape, a pair, oil on canvas, signed bottom left, dated verso 1920, 14" x 22".
221. 19thC English School. 'Cromwell's Bridge', oil on canvas, 21 3/4" x 27" (tear to canvas)
222. J E Duckett. 'A Day to Ourselves', watercolour, 8 1/2" x 15".
223. J E Duckett. Pheasants in a landscape, watercolour, 8 1/2" x 15".
224. J E Duckett. 'The Chase', watercolour, 8 1/2" x 14 1/2".
225. Charles White (20th Century). 'Carriage Riding', oil on canvas laid on to board, signed and dated '77, 12 1/4" x 14".
226. R Shirley (20th Century). 'Tree near Castleton', ink and watercolour, signed. 6 1/4" x 10".
227. 20thC School. River landscape, Austrian township, oil on canvas, 17" x 20 1/2".
228. J E Duckett. 'Two foxhounds', oil on board, 14 1/2" x 19".
229. J E Duckett. 'Boucher - winner of the St leger Stakes 1972 - L Piggott up', watercolour, 10 1/2" x 14 1/2".
230. J E Duckett. Hunt in a landscape, oil on panel, 11 1/2" x 17 1/4".
231. J E Duckett. Game birds in landscape, oil on panel, 14" x 21".
232. J E Duckett. The hunt in a field, oil on board, 11" x 17".
233. 20thC School. Extensive landscape with figures on a beach, believed to be Dawlish from the railway, oil on canvas, 16" x 22".
234. J E Duckett. Deer in a landscape, oil on board, 9 3/4" x 13 3/4".
235. J E Duckett. Landscape with figure and dog by a river, ducks in flight, oil on board, 8 1/2" x 16".
236. J E Duckett. Huntsman and horse, with hounds in a landscape, oil on board, 16" x 12".
237. J E Duckett. The Chase, oil on board, 8 1/2" x 14 3/4".
238. J E Duckett. Horse in a landscape, watercolour, 8" x 12".
239. J E Duckett. Ducks on water, pastels, 8" x 14".
240. J E Duckett. Hunting, landscape, oil on board, 13 3/4" x 17 3/4".

241. After H Alken. A set of 4 hand coloured horse racing etchings; 'Preparing to Start', 'At Speed', 'Weighing In and Rubbing Down', 'Winning'.
242. L Gianni. A pair of continental lake scenes with figure of a lady amongst flora and stone walling to the foreground, watercolour, signed. 15 1/2" x 9 1/2".
243. A G Brown. An Arab, encamped at the edge of a village and lake, signed A G Brown RSW, watercolour, 10" x 17".
244. A Victorian memorail sampler, embroidered with verse and motifs, dated 1866, 19" x 16".
245. After Fritz Newman. Battle at the Shaho, another similar, Japanese battle scenes, chromolithographs, a pair, 15" x 20".
246. 19th/20th Century School. Continental landscapes, buildings by the lake, a pair, pencil, one signed K.P. 12 1/4" x 19".
247. A facsimile newspaper cutting dated Friday August 9, 1963, reporting the Great Train Robbery, flanked by 2 photographs of Ronnie Biggs, 19 1/2" x 29 1/2".
248. After Landseer. Polar bears with shipwreck, steel engraving, proof before letters, signed in pencil and with blind trade stamp, 15 1/2" x 42".
249. Spare lot.
250. A 19thC illustration 'Heroism', engraving from the Crimean War, together with a moder Japanese print.
251. J E Duckett. Horse and jockey, 'Roberto and L Piggott', oil on board, 8" x 9 3/4".
252. A Georgian pollard oak framed picture on glass with foil back depicting a bird and fruit in a basket.
253. A.. M... River landscape with watering cattle, castle ruins beyond, oil on board, indistinctly signed. 9" x 12".
254. A Wyllie. 'Whitby, Yorkshire', showing the harbour with town and ruins beyond, watercolour, signed. 9 3/4" x 14".
255. Cuthert Bradley. 'Lady Marjorie Manners', in the hunting field, watercolour, signed and dated 1911. 8 3/4" x 12".
256. Cuthbert Bradley. 'Lord Roberts by the Bobby', horse and rider, watercolour, signed and dated 1907. 8" x 9 3/4".
257. H English. Figures on a village lane by thatched cottage, church and village beyond, watercolour, signed. 7 1/2" x 11 1/2".
258. G Crisp (19thC British). Still life of grapes, peaches, tomato and berries, on a grassy bank, oil on canvas, 13" x 19", signed and dated 1890 bottom left.
259. 19th/20thC British School. Landscape with cottages at the end of a waterlogged lane, watercolour, 14 1/2" x 21 1/4".
260. Elsa Fussell. 'Broadstairs 1927'. Watercolour, 6 3/4" x 3 1/2", signed with monogram bottom left.
261. A John King limited edition hunting print.
262. Spare Lot.
263. A Japanese framed picture.
264. 11 studies of British birds, colour prints, each 6 1/4" x 4 3/4" (in 3 frames). 19thC.
265. A colour print after Archibald Thorburn.
266. A colour print of the Procession of the 3 Kings after Gozzoli.
267. P Hasland Fisher. Cottage Scene watercolour, signed, 10" x 15".
268. A East. The Holy Temple at Jaipur, watercolour, signed, 9" x 14", bears label verso.
269. J J Hissey. A mill in landscape, watercolour and gouche, signed, 9" x 12 1/2".
270. A large Japanese signed Ltd Edition print.
271. Four Japanese woodcut prints.
272. A 1930's film photograph album and Jubilee playing cards.

273. Qty stamps on envelopes and loose stamps, some from field post offices.
274. Small qty postcards.
275. First day covers, some service related.
276. Various early stamps from the Commonwealth on envelopes.
277. American stamps on envelopes.
278. First day covers, c.1960's.
279. Postal history - health stamps and other from New Zealand.
280. Postal history - a small quantity of service related first day covers and some 1/2 and 1/4 sheets of unused GB stamps.
281. Bartholomew J G. The Survey Atlas of England & Wales, The Royal Geographical Society 1903.
282. A Dail Mail Nipper annual 1940 and other booklets (3).
283. A Walker & Hall silver and plate catalogue and a Bramwell & Co example.
284. A selection of Royal memorabilia booklets.
285. A Deutches Opernhaus Berlin programme with Olympic emblem and 3rd Reich emblem.
286. Marvel full colour Comic Album No 1. 1st page loose o/w good.
287. White (Charles). Three Years in Constantinople 1846, 3 vols, marble bds, cf corners and spine, and a qty of other books including Grantham pamphlets and Lincolnshire reference books.
288. Walford - County Families of the United Kingdom, 1918; Who's Who 1938; Who was Who 1916-1928; Kelly's Handbook 1929; Debrett's Peerage 1892 & 1897. (6 vols)
289. A qty of early 20thC children's annuals.
290. An early 20thC postcard album containing a large collection of military postcards.
291. The Holy Bible containing the Old and New Testament, London, c.1904 (1000) De Luxe Ed. Grol.cl.

With Apocrypha, hf.pig, raised spine bands, King James service in 4 panels, title and book number in 2, slight darkening.

292. Qty of military autobiographies, reference books, etc.
293. Eight leather bound volumes - poetry and novels.
294. Norie (J W). The Complete Epitome of Practical Navigation - 1900. leath.bds, (torn), International Code of Signals, 20th Ed 1926 and one other book on sailing. (3)
295. Aesop. The Fables, 1818 1st. T Bewick ed. re-bound leath bds, gt decor.
296. Ogilvie (Will H). Galloping Shoes, 1922. Ill Lionel Edwards, cl.bds, gt. decor, stained; Galvayne (Sydney) The XXth Century Book on the Horse, 3rd Ed. 1912, cl.bds. stained; various books and pamphlets on field sports.
297. Jemmett (C F) and Preston (R A B). The Treatise on the Law Relating to Pleasure Yachts, 1903, cl.bds.gt.decor; Bedford (Captain G.D.) the Sailor's Pocket Book, 1890, leath bds; Hunts Universal Yacht List 1903, cl.bds stained and detached. (3 vols.)
298. Anderson (Hans Christian). Fairy Tales, illus Heath Robinson c.1913, Hodder & Stoughton, cl. bds. faded, D.W.
299. Kipling (Rudyard). Just So Stories for Little Children, 1902, 4to, original pict. cl.spine faded.
300. Encyclopaedia Britannica - 1951, 17 vols.

Collectables (Cont..)

301. A Royal Doulton 'Billie & Buntie' Bunnykins 'Sleigh Ride', brown backstamp.
302. A burnwood snuff box, oblong, the hinged cover with mother of pearl and ebony lozenge, 4" wide.
303. Spare Lot.
304. A Royal Doulton miniature figure 'Buzfuz', another 'Sairey Gamp', each 4 1/4" high.

305. An Aynsley bone china leaf shape sweetmeat dish, printed and painted with fruit and berries by D Jones, within a moulded gilt border, 5" wide.
306. A continental porcelain figure of a boy soldier, in tricorn hat, green jacket, red breeches and black boots, on moulded base, 4 1/2" high, impressed no 3865, painted crown and N in blue.
307. A Royal Doulton miniature figure of a cat 'Lucky', 2 3/4" high.
308. An early 19thC horn beaker with white metal collar, 4" high.
309. A satinwood and ebony chess set.
310. A Clarice Cliff Bizarre circular pot, painted in the pomegranate pattern 3" dia.
311. Royal Army Medical Corps: 3 jacket buttons, lapel badge, 2 epaulette badges, cap badge, sergeant and corporal brass stripes on leather straps, service medals and other times.
312. Military cap badges, RAF, Royal Canadian Corps of Signals.
313. A Moorcroft circular ashtray, painted with stylised wallflowers on shaded blue ground, 4 1/2" dia, modern.
314. A Moorcroft circular trinket dish, painted with hibiscus pattern on brown ground, 3" dia.
315. A Moorcroft ashtray, painted with hibiscus pattern on green ground.
316. A Stevenson & Hancock Derby figure of a seated scribe in black jacket and tricorn hat, with geese, on naturalistic moulded base, 5 1/4" high, painted factory mark in place.
317. A horse's hoof mounted with an EPNS cover with horse finial, with a shield inscribed 1883.
318. A hand grenade ashtray, mounted on a ceramic base, inscribed 'Memento of the Great War Actual Hand Grenade casting as used by the Allies'.
319. A WWI money box, alloy and brass, modelled as a bullet, 6 3/4" high.
320. A WWI money box, modelled as a Tommy's tin hat, 4" dia.
321. A Strand china model of the Cenotaph bearing the City of London crest, 5 1/4" high.
322. An Arcadian china model of a clip of bullets, bearing Grantham crest, 2 1/2" wide. Reg No 657648.
323. An Arcadian china model of a tank, bearing Grantham crest, 4 1/2" wide. Reg No 658588.
324. A Carlton china model of 'Tommies Bungalow', bearing Grantham crest, 2 3/4" high.
325. A willow china model of a submarine bearing Grantham crest, 4 3/4" long.
326. A silver napkin ring engraved with a crest of the Lincolnshire Regiment and Egypt.
327. A silver watch albert with elongated and twist links, 2 fobs and a coin.
328. A watch chain modelled as a horse's bit.
329. A qty of WWI postcards including Grantham & District, Military and Silks.
330. A qty of books and pamphlets relating to Grantham including Almanacs, Directories and Rally programmes - WW1 and later.
331. A 'Royal North Lincoln Militia' metal belt buckle.
332. A Victorian NCO's brass glengarry badge of the Royal Middlesex Rifles.
333. A qty of badges, medals, etc including South African Heavy Artillery, a brass Huntingdon Rifle Volunteers (part), Cyprus Customs, Queen Alexandra's Nursing Reserve, etc.
334. Various badges and buttons including an other ranks bi-metal cap badge of a Dorsetshire regiment with Egypt 'Marabout' scroll.

335. Four early 19thC drinking glasses with tapered engraved bowls, faceted stems and domed foot.
336. Two early 19thC drinking flutes with wheel engraved conical bowls, plain stem. One having a folded foot.
337. Auction Catalogue: The dispersal of The Harlaxton Estate, Nr Grantham by Messrs Jackson Stopps & Staff; c/w location plans.
338. A brass telescope and tripod.
341. An interesting lobed charger decorated in copper lustre and blue with a domed centre with eagle and shield, 19" diameter.
342. A mixed lot comprising a polished brass Mr Punch figure, sucrere, lidded jar, ewer and Dr Who Tardis. (5)
343. A green glass rosewater flask.
344. A Flemish style embossed brass alms dish.
345. A Turkish copper and brass coffee pot and beneres tray. (2)
346. A 19thC Chinese bronze censor with coiled serpent handles, 6" high.
347. A 19thC polychrome decorated Hoechst vase embellished with an eagle attacking a stylised bird.
348. A Georgian brass ferruled malaca dandy cane.
349. An 18thC Leeds creamware coffee pot (no cover).
350. An early Victorian flamed mahogany sarcophagus shaped workbox with brass tablet inlaid MAS, on ball feet.
351. An interesting 18thC blue and white flask with raised moulded tracery, 5" high.
352. A quality leather and brass suitcase.
353. A Victorian cast iron based cigar cutter.
354. 2 cast metal sailor money boxes.
355. A 4-pull brass telescope by J T Coppock Ltd, London, with a pigskin case.
356. The Woodstock original soundtrack, 3 record album.
357. An embossed copper powder flask.
358. A rose patterned pink and white chamberpot.
359. A brass and leather horse collar.
360. A riding crop and bullwhip.
361. A pair of mounted buffalo horns.
362. A miner's lantern and a Stanley compensated
363. Two railway hand lanterns.
364. Two mahogany cased instruments; ameter and voltmeter
365. A Victorian walnut workbox. (AF)
366. A gilt framed naval signalling flag.
367. Gilt metal cherub scone figures.
368. A Lladro figure of a bust of a matador.
369. A qty of old railway tickets and punch.
370. A pair of Mappin & Webb silver plated coasters bearing the crest of the Union Castle Line.
371. A qty Minton 'Amhurst - Japan' teaware, painted in typical palette, comprising teapot, covered sugar bowl, cups and saucers, together with a covered sugar bowl, (some AF)
372. A 19th C Cantonese enamel Bowl decorated with flowers on a bleu-de-mazarin and turquoise ground. (AF)
373. An Edwardian green floral bordered tea service.
374. A Staffordshire Cottage money box, with pale orange glaze and bocage 5" high (chip to opening).
375. A Volkstedt Art Nouveau centrepiece modelled with sea nymphs riding fish. (AF)
376. An EPNS entree dish and cover, oblong, with reeded borders and centre removable handle, 10 3/4" wide, another, 10 1/2" wide.

- 377. Military swagger stick, marked 1900.
- 378. A qty of Victorian and other brass balance weights.
- 379. A metronome.
- 380. A pair of 20thC green patinated bronze figures of cranes, 17" high.
- 381. A 20thC green patinated bronze figure of a seated nude female, 15" high.
- 382. An interesting golden onyx carved sculpture in the modernistic style, 24" high.
- 383. A Victorian brass and oak magazine rack.
- 384. A reproduction collection of WWII combat knives.
- 385. A Franklin Mint presentation case set commemorating 2000 years of the sword.
- 386. A cased onyx chess board and pieces.
- 387. Cast aluminium plaque depicting The Last Supper.
- 388. Three old golf bags and qty clubs.
- 389. A Victorian brass preserve pan, primus stoves and other metalware.
- 390. A railway block indicator unit.
- 391. Three railway carriage builder's plaques - 2 by S J Clay of Long Eaton, another by The Birmingham Railway Carriage and Wagon Co Ltd.
- 392. A black bakelite telephone.
- 393. A field morse code lamp set.
- 394. Two hand-held railway lanterns.
- 395. A pair of steel and oak hames.
- 396. An extensive Hanley pottery Dinner Service printed with flowers.
- 397. A qty green leaf pottery and 3 Victorian sauce tureens. (AF)
- 398. A 19thC mottled glazed stoneware jardiniere and similar saucer dish.
- 399. A Georgian steel framed trivet with pierced brass platform and ebonised handle.

400. A Grimwade's Byzantaware lustre shallow bowl, 11" dia.

400A. Two decorative plates, a pressed glass sugar bowl and blue and white sauce tureen.

Furnishing & Decorative Items

- 401. An early 19th C continental flamed mahogany Secretaire a Abattant with fall front resting over three stepped drawers.
- 402. An Edwardian mahogany 3-piece bedroom suite with floral and chevron bordered marquetry inlay, comprising wardrobe, dressing chest and marble top washstand.
- 403. A 19thC French oak double bed with panelled headboard, footboard and carved sides. 4'6" wide.
- 404. A Victorian stripped and waxed pine breakfront dresser base with 3 drawer centre flanked by single drawers on turned feet. 55" wide.
- 405. A Victorian mahogany breakfast table with moulded rectangular tilt top over a turned pillar, on 3 sabre legs. 3' x 4'.
- 406. A fine early 19thC ash and elm spindleback Windsor chair by F Hubbard of Grantham.
- 407. A late Victorian open armchair with twist spindles, cane seat and turned legs.
- 408. A Victorian mahogany spoonback nursing chair with buttoned mustard dralon upholstery and turned legs with castors.
- 409. A Jacobean style carved oak chest on stand with demilune carved lift top over 2 lozenge and rosette panels and foliate carved base, on turned feet, 39" wide, 30" high. Carved 1901 to reverse.
- 410. A George III mahogany tripod table with rectangular top, turned pillar and trefoil base, with scroll feet.
- 411. A Victorian mahogany table mirror with arched glass and barleywist uprights.
- 412. Late Victorian walnut lady's and gent's armchairs. (AF)

413. An 18thC and later oak open armchair with floral carved cresting rail, the vase splat inscribed ERBE, over stylised foliage and demi-lune panel, similar carving to the shaped arms, 3 plank seat, square legs and stretchers.

414. An Edwardian walnut picture easel, c.5'6" high.

415. A pair of Victorian walnut dining chairs with scratched carved uprights and splat, overstuffed seats and turned legs.

416. A late Victorian chaise longue painted in lime green and having similar damask upholstery.

417. A Victorian mahogany loo table with oval moulded top, turned pillar and 4 carved cabriole legs. 4'6 x 3'6.

418. An early 19thC mahogany chest of 2 short and 3 long graduated drawers with later handles, 41" wide, 42" high. (AF)

419. A Victorian mahogany occasional table with shaped and moulded top and 3 leg basket base.

420. A Middle Eastern hardwood occasional table with mother of pearl inlay.

421. A Georgian style brown button leather wing armchair with acanthus cabriole legs and ball and claw feet.

422. An early 20thC carved oak spinning chair.

423. A late Victorian cast iron fire insert with floral pattern tiles.

424. A similar lot with brass columnar enclosure around landscape painted tiles.

425. A similar lot with monochrome tiles.

426. A mahogany sideboard in the Chippendale manner.

427. A reproduction burr elm dresser base with shaped and strung top, 4 frieze drawers with brass handles, shaped frieze, shell carved cabriole legs with ball and claw feet, 57" wide.

428. A Regency bergere library chair with part reeded and brass castored front legs. (AF)

429. A late Victorian walnut nursing chair with ball gallery and carved cresting rail, turned feet.

430. An Edwardian string inlaid mahogany music cabinet with malacite inset door.

431. A late Victorian walnut rise and fall piano stool with turned and reeded legs.

432. A rectangular walnut stool with turned Victorian legs and blue fleur de lyse upholstery.

433. Set of 6 Victorian rosewood balloonback dining chairs, carved with scroll moulded top rail and tie rail, serpentine overstuffed seat and on cabriole legs.

434. A late Georgian mahogany tripod table with moulded top, drawer and dummy with knob handles, turned legs with brass castors.

435. A 17thC oak gateleg serving table, of rectangular cusped form, with single dropleaf, on turned legs, block feet joined by moulded stretchers, single drawer to one end with turned knobs. 33 1/4" x 33".

436. A 19thC mahogany dining table with oval flaps.

437. A George II and later mahogany gateleg dining table with oval rule jointed top, frieze drawer, turned uprights, plain stretchers.

438. Spare lot.

439. A Chinese hardwood alter table of traditional form with openwork frieze. 50" wide, 19" deep, 34" high.

440. An Edwardian mahogany mirrorback sideboard with shaped back, 3 drawers and 2 door base, on cabriole legs, 5' wide, 70" high.

441. A late Victorian walnut pot cupboard with moulded top arch and column door.

442. A late Victorian oak hall stand with stick stand sides, central door and mask handle.

443. A pair of Victorian elm Windsor side chairs with spindle backs and double H stretchers.

444. A Victorian mahogany duchess style washstand with splashback, shaped top, single drawer, carved cabriole legs with scroll feet and platform base, 4' wide.
445. A late Victorian carved walnut chaise longue with turned legs. (AF)
446. A 1920's mahogany bureau bookcase with astragal glazed upper part, 3 drawers, cabriole legs and ball and claw feet.
447. A 1920's oak bureau bookcase with leaded glazed upper part, over fall flap and 3 drawers with bracket feet.
448. A Regency mahogany chair with sabre legs and rocking base.
449. A late Victorian mahogany music cabinet with mirror panel and glazed door.
450. A mahogany and beech cabinet gramophone.
451. An oak corner cupboard with single door encasing 2 shelves profusely carved with anthemium, acanthus and scrolls, 27" wide.
452. A Victorian mahogany step commode.
453. An oak overmantel mirror.
454. A Georgian oak side table with drawer and plain stretchers.
455. A Georgian oak side table with 2 drawers, brass backplate handles and square legs.
456. A Georgian oak tripod table with circular dish top, birdcage gun barrel pillar and 3 outsplay legs, 24" dia.
457. An 18thC oak side table with 2 cockbeaded drawers, barleytwist legs co-joined by shaped stretcher, 34" wide.
458. A George III mahogany tripod table with circular tilt top, taper pillar and 3 outsplay legs, 31" dia.
459. An unusual rustic carved and pegged oak cabinet with lift top, having internal mirror, 2 side sweeping compartments concealing a cupboard base, 18" wide, 25" high.
460. A pair of 18thC Continental walnut chairs with yoke stretcher, vase splat, drop-in seat, cabriole legs and turned stretcher, probably Dutch.
461. A 19thC ash and elm Windsor chair with pierced vase splat, turned legs and H-frame stretcher.
462. A Regency style waterfall open bookcase with 2 drawers to base and square taper legs, ebonised with painted tracery, 37" wide, 47" high.
463. A mahogany cased short grand piano by Schonberg.
464. A reproduction Regency mahogany extending dining table with twin pillars and 2 further leaves, 5' x 3'6" minimum.
465. A Victorian flamed mahogany washstand with traytop, 2 cushion drawers over 2 drawers with glass handles and turned feet.
466. A Victorian pine chest of 2 short and 3 long graduated drawers with knob handles.
467. A George III mahogany cross-banded oak bureau with fall flap concealing a fitted interior over 4 graduated drawers with bracket feet, 42" wide.
468. An Edwardian mahogany fire surround in the Chippendale manner.
469. A late Victorian light ash chest of 2 short and 3 long graduated drawers with pierced brass handles, 48" wide.
470. A late Victorian mahogany writing or dressing table with a flamed top, 5 frieze drawers with turned knob handles, raised on turned legs joined by an under tray, 51" wide, 24" deep.
471. An Edwardian oak roll-top desk with S-shaped tambour, 4' wide.
472. A 19thC French oak and walnut veneered armoire with carved arch cornice and 2 shaped bevel mirrored doors and drawer base 43" wide, 94" high.
473. An Edwardian mahogany office chair. (AF)

474. An Edwardian mahogany single wardrobe with marquetry panels and single mirrored door.
475. A Victorian mahogany double bed with moulded headboard and barleytwist footboard.
476. A 19thC gilt plaster overmantel mirror, 45" wide, 48" high. (AF)
477. A late Victorian walnut dining table with canted moulded top and part reeded wind-out base. (AF)
478. A small late Victorian walnut overmantel mirror.
479. A late Victorian burr walnut and marquetry cased upright piano by Paul Scharff, Berlin, overstrung, No 6902.
480. A fine Maple & Co walnut and burr veneered dining room suite in the Queen Anne style comprising serpentine sideboard, extending table with 2 leaves and 6 chairs incorporating 2 carvers.
481. A late Georgian mahogany crossbanded oak chest of 2 short and 3 long graduated drawers with knob handles and bracket feet, 37" wide. (AF)
482. A Victorian mahogany chest of 2 short and 3 long graduated drawers with knob handles, on turned feet, 42" wide.
483. An Edwardian box commode.
484. A Victorian mahogany table or cheval base.
485. A Riley metamorphic snooker and dining table with rise and fall mechanism and fluted legs. 4' x 7'6"
486. An Adam Revival mahogany breakfront sideboard with ribbon and pendant husk carved doors, reeded and urn finial centre drawer, raised on square taper legs. 6' wide.
487. A mahogany breakfront sideboard with Greek key frieze, 2 drawers to the centre flanked by a single panel door. 72" wide.
488. A Chippendale style mahogany serving table with 2 frieze drawers on carved cabriole legs with ball and claw feet. 54" wide.
489. An Adam style Sideboard with 2 lift compartments over drawers and doors with carved patera and swags, raised on cabriole legs, early 20thC. 5' wide.
490. A 17thC oak refectory table base with bulbous legs.
491. A 19thC mahogany corner cupboard with dentil cornice and 2 doors, each

having 2 fielded panels, on bracket feet, 53" wide, 83" high.

492. A Jacobean style carved oak sideboard with shelf over splashback, with turned columns and 2 carved panel doors to base with plinth 5' wide,.

493. A 19thC 2-fold screen in the French taste with painted landscape panels.

494. A Victorian stripped and waxed pine blanket box.

495. An upright overstrung piano by Edgar Horne, Derby.

496. A Victorian upright piano.

497. An Edwardian mahogany 2 drawer writing table with leatherette top.

498. A Victorian chesterfield sofa with modern upholstery.

499. A Victorian stripped and waxed pine domed top trunk.

500. A fine late 19thC Sheraton Revival satinwood Carlton House desk of restrained form and having detailed marquetry panels in a variety of inlays, 48" wide.

501. A rectangular wall mirror with anodised frame.

502. A pair of gilded wood pricket candlesticks, the circular platforms with gouged borders, bead knopped and fluted tapering columns, on circular bases. 28" high, modern.

503. A Moroccan influence hanging lantern with leaded glass panels.

504. A 17thC and later oak Settle.

505. A George III mahogany Pembroke table with turned legs.

506. A cut crystal Electrolier.

507. A cut crystal Gasolier (AF).

Followed by

508 to 530.

Carpets and late entry furniture including a selection of old farmhouse pine pieces.

530 to 550.

Woodworking Tools and Garage Sundries including a private collection of interesting items.

551 to 560.

Militaria including a Russian Imperial dagger, dress sword, replica knives and pistols, etc.

561 Onwards.

Late entries of all description.