

Established 1900  
**-GOLDINGS-**  
AUCTIONEERS & VALUERS

*Auction Catalogue*

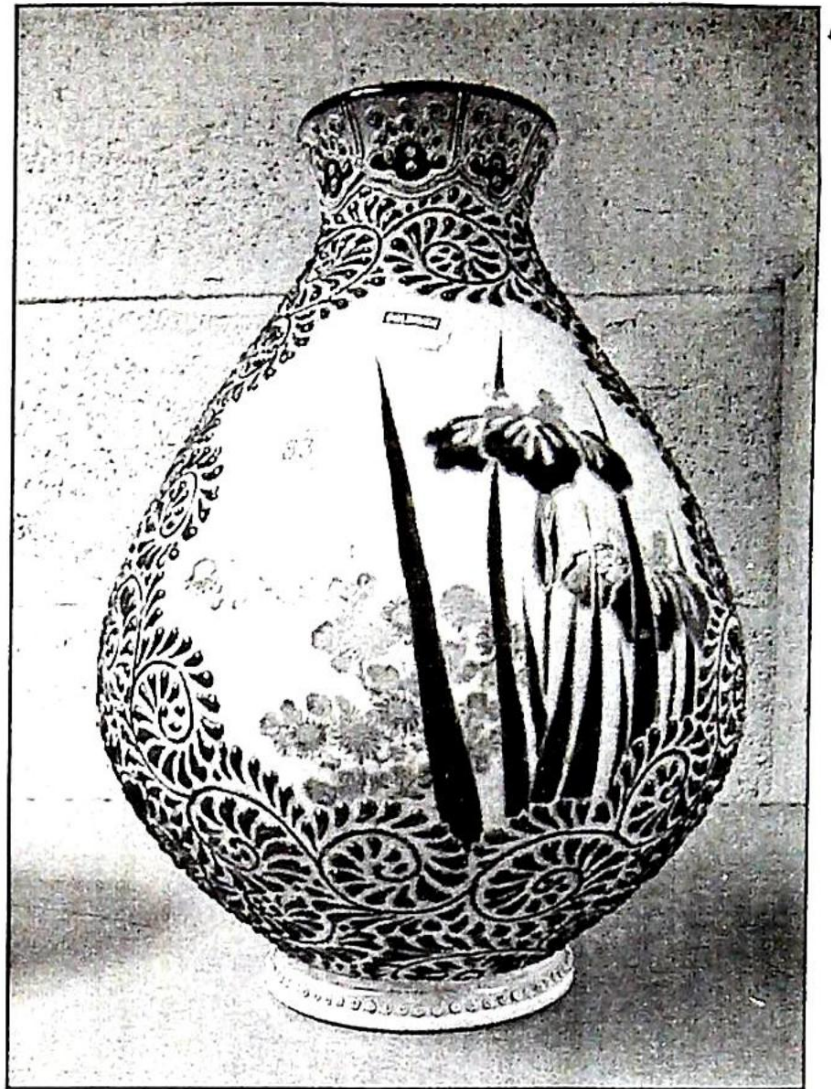


**ANTIQUES, FINE ART & COLLECTABLES**

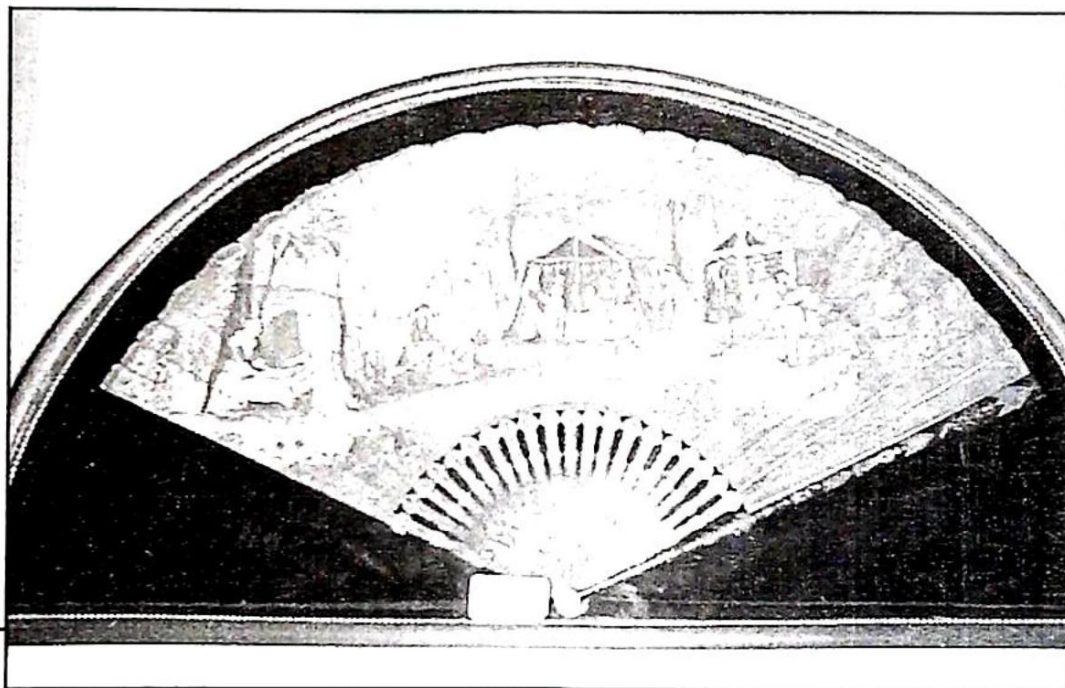
**7th & 8th February, 2001**



Lot 79



Lot 83



Lot 1501

Lot 4



Lot 109

Cover  
Illustration  
Lot 89



*Upon instructions from Executors, Solicitors, Accountants,  
Private Vendors and Others*

## **Golding Young & Co will sell by Auction**

*The residual contents of Property Clearances from throughout the  
region being...*

**Oriental Carpets and Rugs  
Antique Collectables, Silver , Jewellery, etc.**

On

***Wednesday 7<sup>th</sup> February, 2001***

At 10am

**Modern Collectables**

At 2pm

**Antique and Decorative Furniture**

On

***Thursday 8<sup>th</sup> February, 2001***

10am

**Pictures**

At 11am

**Viewing:**

*Tuesday prior 2pm to 7pm  
and Saledays from 9 to 10am*

**Lot Enquiries:**

*Suki Burnett, Jan Squires & Colin Young.*

**Vendor Enquiries:**

*Marie Scoffield*

**Telephone: 01476 • 565118**

**Fax: 01476 • 561475**

**Email: [enquiries@goldingyoung.com](mailto:enquiries@goldingyoung.com)**



## **20thC. FURNITURE, GENERAL EFFECTS & BRIC-A-BRAC**

Wednesdays 14<sup>th</sup> & 28<sup>th</sup> February, 2001 at 10am

**HOUSE CLEARANCES and SINGLE ITEMS always INVITED**

ENTRIES CLOSE 5pm the preceding FRIDAY

Viewing: Tuesday prior 2pm to 6pm and Saleday from 9am to 10am.

---

## **COMMERCIAL SALE**

Wednesday 28<sup>th</sup> February, 2001 at 10am

**COMMERCIAL PROPERTY CLEARANCES and SINGLE ITEMS always INVITED**

ENTRIES CLOSE 5pm the preceding FRIDAY

Viewing: Tuesday prior 2pm to 6pm and Saleday from 9am

---

## **ANTIQUES AND FINE ART**

11<sup>th</sup> 7 12<sup>th</sup> April, 2001

**HOUSE CLEARANCES and SINGLE ITEMS always INVITED**

---

## **Introducing the BRONZE MONKEYS of GIAMBOLOGNA**

[www.goldingyoung.com](http://www.goldingyoung.com) - Click on 'News'

## IMPORTANT NOTES FOR PURCHASERS

1. **PAYMENT:** Must be made in full immediately after the Auction. The following methods of payment are acceptable.
  - a) Cash
  - b) Bankers Draft
  - c) Building Society Cheque
  - d) Cheques, accompanied by a valid card.

### PAYING BY CHEQUE?

If you are not known to the Auctioneers and wish to pay by cheque above your guarantee card limit **WE WILL RETAIN THE GOODS** until it has been cleared (7 days). There will be **NO EXCEPTIONS** to our policy. To avoid **UNDUE EMBARRASSMENT** for yourself or to our staff please do not ask for preferential treatment. If you wish to clear goods immediately bring a letter from your Bank or a suitable guarantor reference.

2. **BUYERS PREMIUM:** of 12<sup>1</sup>/<sub>2</sub>% + VAT is payable on all lots.
3. **REMOVAL OF PURCHASES:** Goods must be collected as soon as they are paid for, and in the Two Working Days following the sale. If goods are not collected on these days we reserve the right to charge £1 per lot per day thereafter.
4. **COMMISSION BIDS:** If you are unable to attend this or any of our future sales we will be pleased to bid on your behalf. We always purchase at the lowest possible price, subject to other bids and reserves.

All bids must be handed to the office on an official form. It remains the responsibility of prospective purchasers to contact **GOLDINGS** to confirm whether their bids have been successful.

5. **TELEPHONE BIDS:** There are inherent dangers with this practice, therefore all such arrangements are made entirely at the bidder's risk. Telephone bids will only be accepted if the lower estimate is £500 or above. For lots with a lower estimate below this figure Commission Bids Only will be accepted.
5. **SMOKING:** is not permitted in any part of the Saleroom.
6. **REFRESHMENTS:** will be available Saleday.
7. **ACCOUNT TRANSFERS:** will not be recognised after the sale. If any lots are purchased for another person, this must be declared at the fall of the hammer.
8. **ESTIMATES:** Our Auctioneers will be available during viewing to give guidance on your prospective purchases

## GLOSSARY

- a) **Generally: 'As Found.'** (AF). This term indicates the lot has some damage. Its absence does not indicate that the lot is free of defect. All lots are **SOLD AS SEEN**.
- b) **Paintings: 'Signed, initialled, monogrammed'** This refers to the present state of the work and is not an attribution.
- c) **Books and printed matter:** These items are not sold subject to collation and are not returnable once removed from the premises.
- d) **Silver & Jewellery:** Weights given are approximations given by basic instruments.

## CARPETS & RUGS

Commencing 10am – Wednesday 7<sup>th</sup>.

*Sold concurrently with Lot One.*

901. A large blue ground Shiraz Carpet.
902. A beige ground Persian rug. (AF)
903. Beige ground handmade woollen Abusson Needlepoint Rug, 72" x 48".
904. Red ground handmade Woollen Persian Shiraz Carpet, 111" x 80".
- 905-908. A 20thC Persian Rug.
909. A Persian carpet.
910. A Persian carpet.
911. Indian carpet.
912. A red ground Indian Rug.
913. A Persian Rug.
914. A Shiraz Rug.
915. A Bokhara Runner. 13' x 3'.
916. A Joshigan Rug. 10' x 7'.
917. A Turkish rug.
918. A small Turkish Rug.
919. A Zekhani Rug.
920. A small Turkish Rug.
921. A Shirazi Rug. C. 5'7 x
922. A modern 'Bird Garden' rug.
923. A Bokhara rug.
924. A large Chinese hand-cut blue ground rug.
925. A Bokhara runner.
926. A leopardskin rug with stuffed mask.

## ANTIQUe COLLECTABLES, METALWARE, CERAMICS, SILVER & JEWELLERY

Commencing 10am.

*Please note that Lots 1 to 9 require a Shotgun Certificate.*

1. Mortimer 10 bore side by side hammer action underlever shotgun.
2. Kestrel side-by-side .410, Serial No 285161
3. Unknown side-by-side 12 bore, Serial No 2565P.
4. T Conway. 12 bore side-by-side hammer action underlever shotgun with Damascus barrels. Illustrated.
5. Gorasabel side-by-side 12 bore, Serial No 106880. Illustrated.
6. Unknown side-by-side .410 shotgun, Serial No 431.
7. BSA single barrel 20 bore shotgun. Serial No 111621
8. Manuarm .410 single barrel shotgun, Serial No 260114
9. An antique sidelock percussion wildfowl gun by Nock of London.
10. A Webley & Scott brass barrelled flare pistol. Illustrated on Website.
11. A pair of Victorian Staffordshire pottery Spaniels. 10"
12. A Staffordshire pottery spaniel with separate front leg, lustre splashes, chain and collar. 9 1/2" high.
13. A Staffordshire spaniel, sprayed brown with gilt splashes. 13 1/2" high.
14. A Staffordshire Figure of a Girl.
15. A Victorian milk glass vase with a scene of young lovers. 12".
16. A Volkstedt Art Nouveau centrepiece modelled with sea nymphs riding fish. (AF)
17. An 18thC Leeds creamware Coffee Pot with loop handle. (Spout and cover missing).
18. A pair of Fieldings Crown Devon 'Pendant' pattern vases. 8".
19. A Victorian rosewood sarcophagus tea caddy.
20. A Russian electroplated samovar.
21. A Mappin & Webb string inlaid mahogany Mantel Clock. 7".
22. An Edwardian Tonbridge inlaid walnut Mantel Clock on brass feet. 6".
23. A Paris porcelain cylindrical Teapot, Coffee Can and Tea Cup.
24. An electroplate 4 piece London shape Teaset. (Spout AF)
25. A Garrard & Co electroplate 3 piece London shape Teaset.
26. An electroplate gadrooned Candelabrum.
27. An oval plated Tray and other pieces.
28. An electroplate part fluted oval 3 piece Teaset.
29. A Walker & Hall circular 3 piece Teaset.
30. A Victorian plated Teapot.
31. A Victorian plated Teapot.
32. Sundry platedware.
33. A reproduction Art Deco inkstand.
34. A pair of turned pewter Candlesticks.
35. A plated Teapot and Basket.
36. An electroplate on copper Chamberstick with snuffer of rococo style.
37. A pair of plated Candlesticks with octagonal bases.
38. A brass and steel Miner's Lamp.
39. Pewter and metalware.
40. A Fieldings cylindrical Pot on 3 legs. 4" dia, 4" high.
41. A Victorian beadwork Pin Cushion.
42. A Victorian bronze Letter Rack cast with opposing rural scenes.
43. A Walker & Hall electroplate 3-piece Teaset.
44. A 19thC Doorbell and a lamp.
45. Glass and cutlery.
46. A Chinese design bronzed metal incense burner.
47. A Copeland dessert service.

48. A pair of brass eagle finials.
49. A gentleman's travelling shaving set.
50. A cased Violin labelled 'Copy of Nickolass Amati. Made in Germany. With bow.
51. Cauldron, hook and teapot stand.
52. A Japanese horsehair fly whisk with a rootwood handle. 19thC.
53. A Victorian ebonised and gilt-brass inlaid Liqueur Box enclosing a fitted interior with flasks and glasses (some losses).
54. A leather box containing 3 travelling flasks.
55. A stamped leather box enclosing manicure set and toilet accessories.
56. A papier mache magazine rack.
57. A Victorian polished slate Mantel Clock of architectural form.
58. A Norwich Union fire mark.
59. An Art Deco bronze figure of Icarus.
60. A ship's copper cased Lantern.
61. A stoneware Spirit Jar.
62. An African Tribal Figure on plinth. 24" high.
63. A plaster figure of a young girl (AF).
64. An Ensign oak and tin plate projector.
65. A box of carpenter's tools.
66. A set of chemists jars.
67. Oak purdonium.
68. Fox furs, stoles and figure (AF).
69. A set of 3 graduated copper water jugs.
70. A pair of cased glass decorative ewers, blue with gilt ornament.
71. A pair of Oriental style porcelain figures.
72. A Japanese lacquered figure of an ox with glass eyes in a recumbent position, incised signature to base. Meiji period. Length 11".
73. A Chinese carved hardwood figure of a boat with figures. 19thC. Length 12".
74. A pair of early 20thC brass temple dogs.
75. A pair of Thai carved wood figures of female dancers. Length 14".
77. A 19thC Chinese flared baluster vase decorated in underglaze blue and red with opposing panels of a horse and a deer in a landscape amidst a ground of butterflies and foliage. Pierced side handles. Qing dynasty seal mark. Height 8 1/4".
78. A 19thC Chinese Celadon baluster vase with incised roundel and rugi head decoration. Qing dynasty mark. Height 10 3/4".
79. A Japanese carved hardwood figure of a Chinese warrior with long beard and flowing robes standing holding a sword and pike and inlaid with gold roundels, ivory and coral. Meiji period. Bears signature inlaid in square gold seal. Height 15". (Illustrated)
80. A Japanese pottery sake flask. Height 8 1/2".
81. An early 20thC Oriental black lacquer table cabinet with an arrangement of six drawers, a miniature chest of 4 drawers (2).
82. A Japanese Shonsui blue and white panelled bowl of decagonal spiral form decorated with alternating figures and landscapes. Late 19thC. Dia 7 1/2".
83. A good Japanese Satsuma baluster vase by Kozan decorated with opposing panels depicting irises and chrysanthemums and flowers, books and tea ceremony ware, within a gadrooned scrolling ground. Signed. Meiji period. Height 13".
84. A Japanese silver inlaid bronze vase of globular form. Height 5 1/2".
85. A Chinese cast bronze incense burner bearing an Arabic inscription. 18thC. Diameter 6 1/4".
86. Three pottery busts of black females.
87. A pottery figure of a reclining black lady.
88. An unusual cigarette holder in the form of an oversized leather covered pipe by Longchamp.
89. A 19thC Japanese Sumida double gourd vase by Inoue Ryusai, the red fluted body decorated in relief with irises, the shoulders with blue applied glaze, bears artist's seal. Cover Illustration.
90. A 19th C Cantonese enamel Bowl decorated with flowers on a bleu-de-mazarin and turquoise ground. (AF)
91. A leather doctor's bag.
92. A Victorian Staffordshire spaniel, 13", and cups.
93. Brass shell case.
94. An extensive Copeland green floral transfer printed tea service.
95. A Davenport teapot stand, decorated in colours and lustre with roses; another by Villeroy and Boch.
96. A green pottery pig, possibly Moores.
97. Four old Russian glass Perfume Bottles with silver plated filigree cagework decoration.
98. A 19thC painted and lustre saucer dish.
99. A Victorian copper kettle of compressed circular shape and a copper funnel. (2)
100. An antique copper Grain Scoop.
101. An early 20thC Imari dish.
102. A Decomania papier mache vase.
103. A Japanese gilt metal and copper dragon plaque. Incised signature and date. 9".
104. A modern brass dome clock by Junghans.
105. A 'Pratt' style spill vase and 3 continental plates, etc.
106. A moulded glass celery jar and 2 moulded glass pedestal dishes.
107. A Japanese cloisonne bowl decorated with flying cranes on a powder blue ground. Diameter 7".
108. A set of 8 porcelain dessert plates, the wells painted with differing flowers within turquoise border.
109. An 18thC French handpainted fan in case, depicting a fete champetre with figures in 18thC dress, mounted in a wooden case.
110. A pair of 20thC Japanese chargers enamelled with table furniture within faux bronze borders.

## CARPETS & RUGS

Commencing 10am – Wednesday 7<sup>th</sup>.

*Sold concurrently with Lot One.*

901. A large blue ground Shiraz Carpet.
902. A beige ground Persian rug. (AF)
903. Beige ground handmade woollen Abusson Needlepoint Rug, 72" x 48".
904. Red ground handmade Woollen Persian Shiraz Carpet, 111" x 80".
- 905-908. A 20thC Persian Rug.
909. A Persian carpet.
910. A Persian carpet.
911. Indian carpet.
912. A red ground Indian Rug.
913. A Persian Rug.
914. A Shiraz Rug.
915. A Bokhara Runner. 13' x 3'.
916. A Joshigan Rug. 10' x 7'.
917. A Turkish rug.
918. A small Turkish Rug.
919. A Zekhani Rug.
920. A small Turkish Rug.
921. A Shirazi Rug. C. 5'7 x
922. A modern 'Bird Garden' rug.
923. A Bokhara rug.
924. A large Chinese hand-cut blue ground rug.
925. A Bokhara runner.
926. A leopardskin rug with stuffed mask.

## ANTIQUe COLLECTABLES, METALWARE, CERAMICS, SILVER & JEWELLERY

Commencing 10am.

*Please note that Lots 1 to 9 require a Shotgun Certificate.*

1. Mortimer 10 bore side by side hammer action underlever shotgun.
2. Kestrel side-by-side .410, Serial No 285161
3. Unknown side-by-side 12 bore, Serial No 2565P.
4. T Conway. 12 bore side-by-side hammer action underlever shotgun with Damascus barrels. Illustrated.
5. Gorasabel side-by-side 12 bore, Serial No 106880. Illustrated.
6. Unknown side-by-side .410 shotgun, Serial No 431.
7. BSA single barrel 20 bore shotgun. Serial No 111621
8. Manuarm .410 single barrel shotgun, Serial No 260114
9. An antique sidelock percussion wildfowl gun by Nock of London.
10. A Webley & Scott brass barrelled flare pistol. Illustrated on Website.

11. A pair of Victorian Staffordshire pottery Spaniels. 10"
12. A Staffordshire pottery spaniel with separate front leg, lustre splashes, chain and collar. 9 1/2" high.
13. A Staffordshire spaniel, sprayed brown with gilt splashes. 13 1/2" high.
14. A Staffordshire Figure of a Girl.
15. A Victorian milk glass vase with a scene of young lovers. 12".
16. A Volkstedt Art Nouveau centrepiece modelled with sea nymphs riding fish. (AF)
17. An 18thC Leeds creamware Coffee Pot with loop handle. (Spout and cover missing).
18. A pair of Fieldings Crown Devon 'Pendant' pattern vases. 8".
19. A Victorian rosewood sarcophagus tea caddy.
20. A Russian electroplated samovar.
21. A Mappin & Webb string inlaid mahogany Mantel Clock. 7".
22. An Edwardian Tonbridge inlaid walnut Mantel Clock on brass feet. 6".
23. A Paris porcelain cylindrical Teapot, Coffee Can and Tea Cup.
24. An electroplate 4 piece London shape Teaset. (Spout AF)
25. A Garrard & Co electroplate 3 piece London shape Teaset.
26. An electroplate gadrooned Candelabrum.
27. An oval plated Tray and other pieces.
28. An electroplate part fluted oval 3 piece Teaset.
29. A Walker & Hall circular 3 piece Teaset.
30. A Victorian plated Teapot.
31. A Victorian plated Teapot.
32. Sundry platedware.
33. A reproduction Art Deco inkstand.
34. A pair of turned pewter Candlesticks.
35. A plated Teapot and Basket.
36. An electroplate on copper Chamberstick with snuffer of rococo style.
37. A pair of plated Candlesticks with octagonal bases.
38. A brass and steel Miner's Lamp.
39. Pewter and metalware.
40. A Fieldings cylindrical Pot on 3 legs. 4" dia, 4" high.
41. A Victorian beadwork Pin Cushion.
42. A Victorian bronze Letter Rack cast with opposing rural scenes.
43. A Walker & Hall electroplate 3-piece Teaset.
44. A 19thC Doorbell and a lamp.
45. Glass and cutlery.
46. A Chinese design bronzed metal incense burner.
47. A Copeland dessert service.



111. A tin box containing cigarette cards and silks.
112. A Davenport part tea service decorated with birds and flowers in the oriental manner. (AF)
113. Three early 20thC glass paperweights with souvenir images and a small pepper grinder.
114. Six pottery figures.
115. A pair of opaque glass table lustres with faceted drops, another of green glass.
116. An oriental coffee service decorated with bamboo on a mottled ochre ground, early 20thC.
117. An Atlas china green floral bordered Tea Service.
118. A set of wooden block picture puzzles.
119. An Indian brass small tray with raised edge and engraved decoration.
120. A selection of old records.
121. A butterfly wing tray.
122. A pair of silver plated wine coasters.
123. A silver plated 3-piece tea service and a plated hot water jug.
124. A cranberry glass pickle jar and cover etched with floral swags.
125. A ruby glass vase etched with trees and hound, a covered sugar bowl. (2)
126. A pewter plate with London touchmarks, a pewter hotplate. (2)
127. A silver plated hot water jug and a plated coffee pot. (2)
128. A pair of brass small candlesticks.
129. A silver plated cigarette box.
130. A silver plated sugar dish with cranberry glass liner.
131. A boxed set of C.W.S. soaps (early 20th C)
132. A pair of 19thC blue and white plates printed with 'Kirkham Priory, Yorkshire' pattern, impressed crown mark.
133. A good quality 19thC Satsuma vase of square baluster form, enamelled with figures, birds and chrysanthemums, together with a shaped jasperware dish and cover.
134. A wooden adjustable table bookstand, mounted with brass and Pratt type plaques.
135. A 'Ringtons Tea' blue and white Willow pattern caddy and cover.
136. An Alfred Dunhill pewter tobacco jar.
137. An orange lacquer silhouette bowl.
138. A Royal Worcester Cabinet Plate with gilt cartouche borders having opposing scenes of fish and fishing accessories, the centre field painted with a bridge over a river in landscape, signed verso E Salter (restored). 10" dia.
139. A silver plated oval gadroon moulded fruit basket with swing handle.
140. A pair of Minton basket pattern blue and white plates, impressed and printed marks.
141. A bevelled Easel Mirror.
142. A set of 4 porcelain dessert plates painted with differing flowers within gilt and pierced borders.
143. A Victorian enamel dial alarm wall clock, 8 day.
144. Assorted pottery items.
145. A Royal Doulton Series ware bowl, painted with fishermen by Noke.
146. A Royal Worcester blush ivory oval basket, Shape No 2365, c.1904.
147. A French pendant counterbalanced electric light with crimped glass shade.
148. Spare lot.
149. Assorted ceramics.
150. An etched glass decanter and matching glasses.
151. A silver plated and ceramic preserve dish, a pair of plated stands.
152. A 19thC 3 ring decanter with mushroom stopper, another, later and small vinegar flask and stopper. (3)
153. An early 20thC mahogany cased mantel clock with chiming 8-day movement.
154. 19thC spongeware comprising 2 serving platters and 5 plates, brown/buff glazes, with gadroon rims (1 AF).
155. A 19thC oak salt box.
156. An Instantgraph plate camera with mahogany case and brass lens.
157. Two wood planes.
158. A linen smock.
159. A linen sheet.
160. A snakeskin handbag
161. Another example.
162. A similar lot
163. A Gladstone bag.
164. Coffee mill.
165. A small mahogany tabletop cabinet.
166. A Hohner piano accordion.
167. Books, bibles and maps, etc.
168. Gas masks: Mickey Mouse, baby and 2 GP.
169. Boxers scales from Solomon's gym.
170. Giles, Beano and other annuals and books.
171. A Victorian brass and walnut duet writing box.
172. Two French tapestries depicting interior scenes.
173. 'Universal History of the World' 8 vols and 'the Story of Exploration and Adventure' 3 vols.
174. Ephemera relating to John Pond, Illustrator and Calligrapher of Stamford, Lincolnshire.
175. A boxed top hat.
176. A Bush bakelite radio.
177. An English hammered pewter 4 piece teaset and other pieces.
178. A brass Corinthian columnar converted oil lamp with clear glass reservoir.
179. A majolica fish-eating-fish teapot, in the style of Adams & Bromley, glazed in green, olive and brown. Repair to tail.
180. A small 17th C crested bronze Mortar.

181. A brass anniversary clock with glass dome.
182. Two small pairs of binoculars.
183. An oak canteen of plated cutlery.
184. An Italian Maiolica saucer dish with polychrome decoration depicting the slaying of Samson. 12" dia.
185. A Hancock & Son wall plaque, hand painted with a fisherman and boat in the foreground.
186. A Victorian mahogany bezel WALL CLOCK by A Satelle, Lincoln with an earlier movement.
187. An oak shield with khukri knives mounted.
188. Cast iron scales, oval meatplate and pair of fighting cocks.
189. A Copeland earthenware dinner service, printed with a thistle and leaf pattern in brown, comprising 5 graduated meat plates, 2 tureens, 2 sauce boats, cover and stands, 11 medium and 14 large plates and gravy boat. 19thC.
190. 19thC transfer printed wares. (AF)
191. A Minton chamber pot and another.
192. A carved mahogany figure of Earl Haig carved by G W Burbidge, Barkston, Nr Grantham, 1933. 28" high.
193. An Edwardian walnut smoker's cabinet.
194. Gnome enlarger.
196. A Corona portable typewriter
197. A large Eastern brass bowl.
198. A model galleon.
199. Pressed glass platedware and other sundries.
200. A quantity of moulding planes.
201. An oak cased gramophone.
202. A beneres brass circular tray.
203. A National brass cash register.
204. A Victorian toleware tray with floral painted and gilt trailing decoration. 32".
205. A quantity of Abbey blue and white pottery.
206. A quantity of blue and white ware.
207. A Copeland Spode's Italian coffee pot, cups, saucers and side plates.
208. A selection of Adams blue and white transfer printed wares.
209. A Sarreguemes type jug.
210. A Sarreguemes type jug.
211. A Victorian EPBM 3-piece coffee set.
212. A pair of brass candlesticks, cutlery, etc.
213. Three plated cakestands.
214. Sundry platedware.
215. A glass and plated cakestand.
216. Christening gown, needlework panels, etc.
217. A Victorian EPBM nautilus shell spoon warmer.
218. A frosted glass biscuit barrel with plated mounts.
219. Chamber pot.
220. A brass blow lamp.
221. A brass blow lamp.
222. A Victorian walnut writing slope.
223. A horn gramophone and records.
224. Hutton, Len. 'Just My Story', autobiography, 1956, signature of author on frontispiece, dust wrappers.
225. Scott, Peter. Portrait drawings 1949, with author's signature (facsimile?), cloth boards.
226. A canvas trunk.
227. The Three Musketeers, 2 vols, illustrated, by Leloir.
228. Books
229. 'The Hums of Pooh' by A A Milne.
230. A Royal Doulton 'The Cavendish' part dinner service.
231. Bunyan. The Pilgrim's Progress Family edition with colour plates.
232. A 19thC. Cantonese cylindrical Teapot and saucer.
233. To 240. Spare Lots.
241. An oak and elm aneroid barometer.
242. A green treacle glazed Jardiniere on stand overpainted in white with storks. Height 35" overall.
243. A large Chinese baluster vase with wavy rim.
244. Two Victorian bamboo curtain poles.
245. To 374. Spare Lots.
375. A pair of dwarf candlesticks. (AF)
376. An Edwardian silver candlestick. Birmingham assay.
377. A 19thC French bronze comucopia quill holder with talon pedestal 7 1/2".
378. A Prisoner of War straw work elliptical case.
379. A 19th century Coalport style floral painted Powder Pot.
380. A Genroku Kenjo style Imari plate decorated with a central panel of pavilions within a border of lattice work panels. Late 17th/early 18th century. Black enamel inscription, diameter 7 1/2".
381. A pair of French porcelain figures of boy and girl (AF).
382. An 18thC Wedgwood moulded creamware Teapot.
383. A 19thC Strawberry Hill brass Fan Case decorated in the Gothic taste.
384. A 19th C French bronze Figure of a monkey in Napoleonic dress mounted on a poodle, (after the engraving by Rowlandson depicting the Ango-French relationship), signed A Baron and bearing foundry mark. 8" wide, 4" deep, 8" high.
385. An Edwardian silver backed hairbrush and hand mirror.
386. A Japanese rattan Tonkotsu with hand painted decoration.
387. Another example marked Guy.
388. A similar lot.
389. An Art Nouveau paper knife.
390. A quantity of Chinese enamelled nail guards. (14)
391. A treen lidded pot.
392. Two glass paperweights.

393. A Chinese Kangxi mallet shaped Vase with applied handles and blue and white decoration, depicting a young family riding an ox. 5 1/2". Four character mark to base.
394. A green glazed pottery water dropper in the form of a turtle.
395. A water dropper in the form of a blue and white fish in a basket.
396. A Chinese Yi Xing pottery water dropper in the form of a boy climbing onto a recumbent ox.
397. A small Chinese brass seal mounted with shelled creature.
398. A small pair of cold painted spelter hounds.
399. A Japanese incense stick holder in the form of a gold and black Priest's hat. Taisho period. Long inscription. Height 3".
400. A 19th C Dresden Jar with cover decorated with opposing panels of flowers and garden scenes on a powder blue ground. 6". (AF)
401. A George V silver cigarette box of oblong form with sectional wood lining, cover engraved with initials, London 1933. 9" wide.
402. A white metal easel mirror, cast with birds, scrolls and diaper panels, with shield cresting, enclosing a heart shaped bevelled mirror. 11" high.
403. A Continental silver mounted engraved glass flask, with figural knob. 8" high. Late 19thC.
404. An Edward VII silver shell shaped bon-bon dish, pierced and cast with flowerheads and scrolls, on 3 reeded bun feet, Sheffield 1906. 6" wide, 3ozs.
405. A George V silver vesta case of plain form, Chester 1926.
406. A George III silver tankard, of slightly tapering form, with raised centre band and scroll handle, Newcastle 1760/8, by John Langlands. 5 3/4" high, 16oz.
407. A George III silver cream jug of oval form, with bright cut leaf banding, London 1812. 3ozs (adapted).
408. A silver Candlestick of rococo design with a loaded base (some damage). Birmingham 1905.
409. An Edwardian silver plated fish server, the blade pierced and engraved with foliage and fish.
410. An Edward VII silver 3 piece tea service of irregular hexagonal form, the teapot with composition handle and finial. London 1901/2. 35 oz gross.
411. A George V silver 3-piece tea service of circular form with cut rims, on scroll and pad feet, the teapot with composition handle and finial. Birmingham 1918. 15oz.
412. An Edward VII plain silver napkin ring. Birmingham 1906; another unmarked.
413. A sterling silver vesta case, cast as 'Punch', marked '925 sterling'. 2 1/4" high.
414. A late Victorian silver card case, engraved overall with scrolls. Birmingham 1897, 3 1/4" wide.
415. A late Victorian planished silver card case. Birmingham 1897, 3 1/4" wide.
416. An Edward VIII silver 2-handled golfing trophy, on knopped stem and dished circular foot. Birmingham 1932, 6 1/2" high.
417. A George V silver hot water jug, of slender baluster form with 1/4 reeding and conforming cover, composition scroll handle and finial. London 1912, 12ozs gross, 8 1/2" high.
418. A Victorian silver teapot of circular tapering form, engraved with foliage, composition finial and scroll handle. London 1842, 16oz.
419. Three Dutch white metal caddy spoons, the bowls chased with figural scenes.
420. A silver photograph frame of plain design. London. 5" x 3 1/2".
421. A pair of silver miniature trophy urns, each with 2 handles, domed covers (one missing). Sheffield 1929; another small trophy. Birmingham 1928. 7oz gross.
422. An Edward VII silver faced mantel balloon timepiece, the plain dial above an oval panel chased with ribbon tie and flowers. Birmingham 1907, 5 1/2" high.
423. A silver 2-handled trophy of ovoid form, knopped stem, stepped circular foot. London 1933, 7 3/4" high, 10oz.
424. A set of gents dress shirt buttons, boxed.
425. An Edward VII silver baluster cream jug with cut rim, scroll handle and on 3 cabriole feet. Sheffield 1906, 5" high, 5oz.
426. A pair of George V cut glass salts with silver collars. Birmingham 1924; 2 condiment spoons and a wineglass with 1/2-flute bowl.
427. A quantity of teaspoons, etc including 3 Georgian silver.
428. A pair of George V silver specimen vases with flared rims, octagonal panelled stems, on domed foot. London 1912, 6" high. (Weighted bases.)
429. An Indian silver circular box and cover together with a quantity of silver plated napkin rings.
430. A 19thC silver wine coaster with gadrooned rim, Hallmark London, rubbed.
431. A Victorian silver cigar case, engraved with initials, Birmingham 1897.
432. A silver hip flask with hinged cover, Sheffield 1946.
433. A Victorian circular trinket box with tortoiseshell cover, on 3 splay feet. Birmingham 1897.
434. A late Victorian silver 2-handled small trophy on stepped foot. Chester 1897.
435. A George III silver fiddle pattern fish slice. London 1803, 4.5oz, Maker Eley & Fearn.
436. A quantity of Victorian silver tableware, mainly fiddle and thread pattern, comprising 7 table forks, 20 dessert forks, 2 sauce ladles, sugar tongs, 13 teaspoons, 2 tablespoons, 6 dessert spoons, 2 condiment spoons. Various hallmarks, 83oz. gross.
437. A 19thC French silver oval 2 handled bowl raised on 4 feet.
438. A Walker and Hall silver Christening Set.
439. Cased fish cutlery.
440. To 500. Spare Lots.
501. Six pieces of Goss crested china.

A COLLECTION of MAUCLINEWARE.

502. A Mauchlin box printed with a view 'Maidstone New Bridge', 4" wide; another, 'The Town Hall, Yarmouth'.
503. A Mauchlin napkin ring 'West View of the Giant's Causeway, Antrim'; another 'All Souls College and Ratcliffe Library, Oxford'.
504. A Mauchlin box modelled as an egg, 'The South Sands, Scarborough', containing a cotton reel; and a stamp box 'Westgate, Winchester'.
505. A Mauchlin string ball 'Pier, Hastings'.
506. A Mauchlin bound copy of the New Testament 'Markinch' (AF), a pocket book 'The Hermitage, Dunkeld', and a circular box 'Ventnor'.
507. A Mauchlin pin box 'Alloway Kirk' and 'Burns Cottage' and a glass scent bottle contained within a Mauchlin box painted with ferns.
508. A Mauchlin tumbler box 'The Harbour, Lowestoft'; and another smaller 'Church of the Holy Trinity, Stratford-upon-Avon', both with tumblers.
509. An ebony circular hair pin box mounted with silver.
510. A glass jar containing smelling salts, another with faceted stopper, 2 small glass bottles with metal stoppers, a leather cigar case, a wooden scent bottle, etc.
528. Two medals from 1914 Merchant Navy.
529. An Elgin plated pocket watch, Albert, coin and 2 ladies watches.
530. Seven plated watches.
531. An amethyst and diamond ring set in white metal being a large oval stone with 3 small diamonds to each shoulder.
532. A jewellery box with costume pieces, inc simulated pearls.
533. Six silver satyr mask Buttons, cased.
534. A 16" box link 9ct gold chain.
535. A fan, necklace and earrings.
536. A small selection of earrings.
537. A cased set of 6 silver coffee spoons. London 1927.
538. Four various Chains including fancy link.
539. A small quantity costume jewellery.
540. A 1950-60's designed bracelet comprising of 5 strands of brushed liquid link 18ct yellow gold with an 18ct white gold floral motif set with 6 small diamonds and a ruby centre acting as the clasp. 541. A signed Japanese ivory netsuke, study of a village elder guarding a jar of wine.
542. A signed Japanese ivory netsuke study of a small boy playing his flute.
543. A signed Japanese ivory netsuke study of a student seated to a desk studying an open book.
544. A signed Japanese ivory netsuke study of a village elder holding his pipe his right hand holding a fan.
545. Signed Japanese ivory netsuke study of a family of rats.
546. A signed Japanese semi-erotic ivory netsuke study of a low educated north island fisherman.
547. An English silver lever pocket watch and a lady's continental example.
548. Five Art Deco diamante clips and 2 shoe decorations and a hair grip.
549. A silver pencil, Birmingham hallmark.
550. A Victorian marquise 18ct gold ring set with 3 cornflower blue sapphires and 2 diamonds.
551. A silver pencil by S Mordan & Co.
552. An Edwardian 22ct wedding band.
553. 5 small white metal spoons.
554. A 9ct gold cased Omega lady's wristwatch on a leather strap with a square white satin dial.
555. Costume jewellery.
556. A 9ct gold lady's Rotary wristwatch on a bracelet and a sovereign pendant mount.
557. A Gentleman's 9ct gold pocket watch.
558. An opal and diamond ring.
559. A silver card case hallmarked Birmingham 1905.
560. Trinket pieces, costume jewellery, etc.
561. A multi strand rocaille and tube iridescent bronze glass bead necklace.
562. A netsuke of a man carrying a bread basket.
563. A netsuke of a man with a basket of fruit.
564. A netsuke of a woman in a hapi coat.
565. A netsuke of an elephant with a bird on its back.
566. A netsuke of a man with a large fish on his shoulder.
567. A fruitwood netsuke of a frog on a lotus pod.
568. A fruitwood netsuke of a bullock and a monkey.
569. A fruitwood nestuke of a cockerel.
570. A white metal vesta case.
571. A white metal needle case.
572. An impressive marquise shaped diamond and ruby ring set in yellow metal marked 18ct being a central line of 7 cushion cut pink stones, surrounded by 20 old brilliant cut diamonds approx 1.10cts total.
573. Military buttons and coins.
574. A bloomed yellow metal scrolling leaf pendant set with a red stone on a yellow metal chain.
575. An Edwardian bloomed yellow metal memorial bar brooch.
576. An Edwardian 9ct bloomed gold bar brooch set with a rose cut diamond. Chester 1906.
577. An Edwardian 9ct bloomed gold bar brooch set with 5 seed pearls.
578. An Edwardian 9ct bloomed gold bangle with ball and rope twist floret motif set with 5 rose cut diamonds. Chester 1907.
579. A Russian silver gilt vodka cup decorated with polychrome enamel champeve stylised owls and fir trees. Approx 2" tall.
580. A modern 3 stone diamond ring set in 18ct gold, 1/4ct approx total.
581. A diamond solitaire ring set in 22ct gold, approx 1/10ct.
582. A silver bangle.
583. A gold seed pearl and chalcedony cruciform locket.

584. A silver charm bracelet, 23 charms.

585. Two gold and stone fobs.

### MODERN COLLECTABLES

Commencing at 2pm – Wednesday 7<sup>th</sup>.

*The following lots are Models of Yesteryear.*

- 1001. Y8 1945 MG TC
- 1002. Y23 1922 AEC 'S' type omnibus.
- 1003. Y12 1912 Ford Model T Captain Morgan.
- 1004. Y5 1927 Talbot. Ever Ready.
- 1005. Y12 1912 Ford Model T Hovis.
- 1006. Y12 1912 Ford Model T Suze.
- 1007. Y12 1912 Ford Model T Pepsi Cola.
- 1008. Y5 1927 Talbot Chocolat Menier.
- 1009. Y9 1912 Simplex 50
- 1010. Y10 1906 Rolls Royce Silver Ghost.
- 1011. Y16 1928 Mercedes SS.
- 1012. Y14 1931 Stutz Bearcat.
- 1013. Y1 1936 Jaguar SS100.
- 1014. Y3 1934 Riley MPH.
- 1015. Y3 1912 Ford Model T 'BP'.
- 1016. Y12 1912 Ford Model T 25 Years of Yesteryear - white box.
- 1017. Y21 1930 Ford 'A' Walkers Palm Toffee.
- 1018. Y7 1912 Rolls Royce.
- 1019. Y3 1912 Ford Model T Mobiloil.
- 1020. Y5 1927 Talbot Nestles Milk.
- 1021. Y6 1920 Rolls Royce Fire Truck - Borough Green and District.
- 1022. Y4 1930 Model J Duesenberg - 2 tone green.
- 1023. Y22 1930 Ford 'A' Maggi's.
- 1024. Y5 1927 Talbot Dunlop.
- 1025. Y21 1927 Ford 'A' A & J Box.
- 1026. Y13 1918 Crossley Warings.
- 1027. Y11 1938 Lagonda.
- 1028. Y23 1922 AEC S Type Omnibus Yellow sign Sweppes.
- 1029. Y5 1927 Talbot Liptons Tea.
- 1030. Y13 1918 Crossley Pickfords.
- 1031. Y5 1927 Talbot Roses Lime Juice.
- 1032. Y5 1927 Talbot Taystea Bread.
- 1033. Y22 1930 Ford 'A' Canada Post.
- 1034. Y25 1910 Renault Type AG Duckhams Oils.
- 1035. Y12 1922 Ford Model T Harrods. Green and cream box.
- 1036. Y2 1914 Prince Henry Vauxhall.
- 1037. Y15 1930 Packard Victoria.
- 1038. Y8 1945 MG-TC.
- 1039. Y18 1937 Cord 812 plum - white roof.

1040. Y4 1930 Model J Duesenberg - brown and beige.

1041. Y19 1935 Auburn 851.

1042. Y17 1938 Hispano Suza.

1043. Y18 1937 Cord 812 red - white roof.

1044. Y12 1912 Ford Model T Hoover.

1045. Y20 1937 Mercedes Benz. 540k

1046. Y12 1912 Ford Model T Smiths Crisps.

1047. Y12 1912 Ford Model T Birds Custard Powder.

1048. Y13 1918 Crossley. Evans Coal and Coke.

1049. Y1 1936 Jaguar SS 100

1050. Y11 1938 Lagonda beige and black.

1051. Y17 1938 Hispano Suza 2 tone turquoise.

1052. Y14 1931 Stutz Bearcat red and cream.

1053. Y12 1912 Model T Ford Colman's Mustard.

1054. Y16 1928 Mercedes SS White.

1055. 24 1928 Bugatti T44 black and yellow.

1056. Y4 1930 Model J Duesenberg 2 tone green.

1057. Y12 1912 Ford Model T Royal Mail.

1058. Five various Yesteryear vehicles - red box.

1059. Five various Yesteryear vehicles - red box.

1060. Five various Yesteryear vehicles - red box.

1061. Five various Yesteryear vehicles - red box.

1062. Five various Yesteryear vehicles - red box.

1063. Matchbox Super Kings K15 The Londoner, boxed.

1064. Corgi London Transport Routemaster in Old Holborn orange livery. No box.

1065. Corgi Routemaster 469 in TDK blue and white - boxed.

1066. Corgi Routemaster 469 in Aero cream livery - boxed.

1067. Corgi Routemaster 469 in BTA red livery - boxed.

1068. Boxed set of 3 Models of Yesteryear.

1069. Blue boxed model of Yesteryear Y2 1914 Prince Henry Vauxhall metallic royal blue.

1070. Corgi 1956 Mercedes 300Sc.806, boxed.

1071. 2 Lledo Models of Days Gone, boxed.

1072. 6 Lledo Models of Days Gone, boxed.

1073. 6 Lledo Models of Days Gone, boxed.

1074. Three Tetley die cast.

1075. Various model cars - no boxes.

*Cigarette and Trade Cards.*

1076. John Players. Sea Fishes, 1935, 49/50

1077. Gallaher. Famous Jockeys, 1936, set 48, some mauve print.

1078. Gallaher. Garden Flowers, 1938, set 48.

1079. Gallaher. Wild Animals, 1939, set 48.

1080. Gallaher. Famous Film Scenes, 1935, set 48.

1081. Gallaher. British Birds, 1937, set 48.

1082. Park Drive. The Navy, 1937, set 48.

1083. Gallaher. Butterflies and moths, set 48.
1084. Gallaher. Wild Flowers, set 48.
1085. Carreras. 'Fortune Telling', set 36, head insert.
1086. Gallaher. Sporting Personalities, set 48.
1087. Wills. Dogs, 1937, set 50.
1088. John Players. Aircraft of the Royal Air Force, 1938, set 50.
1089. John Players. Hints on Association Football, 1934, set 50.
1090. Wills. Safety First, 1934, set 50.
1091. John Players. Struggle for Existence, 1923, set 25.
1092. John Players. Dogs, scenic background, 1925, set 50.
1093. John Players. Army Life, 1910, set 25.
1094. Wills. Garden Flowers by Sudell, 1939.
1095. John Players. Flags of the League of Nations, 1928, set 50.
1096. John Players. Dogs by Wardle (Heads), 1929, set 50.
1097. John Player. Cries of London, 2nd Series Blue back.
1098. John Players. Aviary and Cage Birds, 1933, set 50.
1099. John Players. Natural History, 1924, set 50.
1100. Wills. Old English Garden Flowers, 1910, set 50.
1101. John Player. Footballers Caricatures by Rip, 1926, set 50.
1102. John Player. Products of the World, 1908, set 50.
1103. John Player. Motor cars, 1936, set 50.
1104. Wills. Famous Inventions, 1914, set 50.
1105. Players. Footballers 1928, 1928, set 50.
1106. Players. Gems of British Scenery, 1917, set 25.
1107. Wills. Do you Know, 1922, set 50.
1108. Players. Cricketers 1934, 1934, set 50.
1109. Players. Ceremonial and Court Dress, 1911, set 25.
1110. Players. RAF Badges, 1937 with motto, set 50.
1111. Wills. Life in the Royal Navy, 1939, set 50.
1112. Players, Coronation Series, 1937, set 50.
1113. Players. Motor Cars, 2nd Series, 1937, set 50.
1114. Wills. Air Raid Precautions, 1938, set 50.
1115. Players. Birds and Their Young, 1937, set 50.
1116. Players. Military Uniforms of the British Empire, 1938, set 50.
1117. Wills. The Sea Shore, 1938, set 50.
1118. Players. Kings & Queens of England, 1935, set 50.
1119. Players. Cricketers 1938, 1938, set 50.
1120. Players. Straight Line Caricatures, 1922, set 50.
1121. Wills. Arms of Foreign Cities, 1912, set 50.
1122. Wills. Roses 2nd Series, 1913, set 51-100
1123. Players. Those Pearls of Heaven, 1916, set 25.
1124. Wills. Borough Arms, 4th Series, 1905, set 151-200.
1125. Players. Game Birds and Wild Fowl, 1927, set 50.
1126. Wills. Borough Arms 3rd Series grey, 1905, set 101-150
1127. Wills. Household Hints, 1927, set 50.
1128. Wills. Garden Life, 1914, set 50.
1129. Wills. Speed, 1929, set 50.
1130. Wills. Overseas Dominions (Australia), 1915, set 50.
1131. Wills. Household Hints, 1927, set 50.
1132. Wills. Railway Equipment, 1930, set 50.
1133. Wills. Overseas Dominions (Canada), 1914, set 50.
1134. Wills. British Birds, 1915, set 50.
1135. Wills. Military Motors, 1916, set 50.
1136. Players. Wonders of the World, 1916, set 25.
1137. Players. Victoria Cross, 1914, set 25.
1138. Players. Polar Exploration, 2nd series, 1916, set 25.
1139. Wills. Garden Hints, 1938, set 50.
1140. An album of cigarette cards, approx 380 various makes and sets.
1141. An album of cigarette cards, approx 400 various makes and sets.
1142. An album of coins, all in used condition including 2 Commemorative Coronation medals - Edward VIII and Elizabeth II.
1143. An album of coins including some Roman all in used condition.
1144. To 1172. An album of mixed stamps.
1173. Assorted framed stamps.
1174. Assorted stamps.
1175. Wills 'Aviation'.
1176. Gallaher 'Sporting Personalities'.
1177. John Players 'Motor Cars'.
1178. A Postcard Album containing mostly pictorial views from the 1920's.
1179. A small quantity of embroidered cards.
1180. A quantity of postcards, various topics.
1181. An A.S.R.S. Medallion.
1182. A Lancashire County Cricket Club Diamond Jubilee Programme 1864-1924.
1183. A collection of 12 Models of Yesteryear and a suitcase.
1184. A small case containing ship model makers items.
1185. Four volumes of The War in Pictures.
1186. A .303 ammunition belt.
1187. A cased reproduction fishing trophy.
1188. A purple velvet dress and bolero and green print duster coat.
1189. A turquoise and emerald green silver embossed Frank Usher evening dress from thre 1960's.
1195. Two Sylvac Planters, a Brentleighware Jug and a Wade basket planter.
1196. A black Wade terrier, a Wade fish dish, a Sylvac planter, and a Susie Cooper banded meat plate.
1197. A Myott hand painted pitcher and small vase, a cream ground with orange and blue floral decoration.

1198. Five various late Victorian/Edwardian glasses.
1199. A Paragon Royal commemorative coronation loving cup (Edward VIII).
1200. A selection of Commemorative items.
1201. A pair of oriental style pale blue and gilt vases.
1202. Four Wade liquor bottles (empty).
1203. A black teapot with floral and gilt decoration, two Royal Doulton pin trays with Welsh scenes and a Coalport example.
1204. A quantity of Royal Winton dinnerware, floral spray pattern.
1205. Sylvac shell moulded planter, vase, Poole vase, etc.
1207. A large Chinese blue and white Ginger Jar with Kangxi marks.
1213. A Poole Delphis vase.
1214. A Poole Delphis vase.
1215. An Imani pattern English hand painted ginger jar.
1216. An earthenware Coronation bottle for George V and Mary by Copeland Spode.
1217. A Sylvac style beige terrier.
1218. A milk pressed glass cream jug.
1219. A Sylvac vase no 1307, a Wade Haig ashtray and a cream and red Carltonware vase.
1220. A Wedgwood cream drabware ink pot.
1221. Small Royal Doulton character jug - Sairey Gamp.
1222. A Royal Doulton figurine - Symphony HN2287.
1223. A Hummel figure of a young window cleaner.
1224. A Royal Doulton figurine - Southern Belle HN2229.
1225. A Royal Doulton figurine - Blithe Morning HN2021.
1226. A Poole figure of a bird on a flowerpot.
1227. A Pendelphin rabbit - mother and baby, damage to paintwork.
1228. A collection of character jugs.
1229. A Poole Delphis saucer dish.
1230. A small Royal Doulton Character jug "Merlin" D6536.
1231. A small Royal Doulton Character jug "The Lawyer" D6504.
1232. A small Royal Doulton Character jug "The Trapper" D6612.
1233. A Beswick small Character jug "Mr Varden" No 1204.
1234. A Royal Doulton half figure of Mr Pickwick.
1235. A Sadler teapot, a coffee pot and a Hornsea Sugar pot and a Hornsea Teapot.
1236. A Noritake tea set, lemon and gilt decoration.
1237. A Royal Albert "Old Country Rose" tea set and other items.
1238. A crocodile skin effect copper jug and other metalware.
1239. Pewter tankards and other metalware.
1240. A Verdigris copper bowl with stylised white metal applied decoration.
1241. Ophthalmological testing equipment.
1242. A carved tribal figure of an African woman.
1243. An ebonised carved tribal figure of an African woman.
1244. A carved kneeling tribal figure supporting a tray.
1245. A large selection of linen.
1246. A selection of pink glassware.
1247. A selection of green glassware.
1248. A frosted blue glass trinket set.
1249. A pink glass dessert set and other items.
1250. Pink glass teaware.
1251. A selection of pink glassware.
1252. A 1950's German teddy bear (with history).
1253. Stoneware bottles and chamber pots etc.
1254. A box set of Victorian wooden building blocks.
1255. Books, annuals including Giles.
1256. A coffee grinder.
1257. Subutteo items.
1258. A selection of advertising tins.
1259. 7 Oxo Tins.
1260. A china headed doll (AF).
1261. A composite doll with a bisque head (AF).
1262. A bisque headed baby doll.
1263. A gold plush teddy bear.
1264. Old records.
1265. Marilyn Monroe Jigsaw Puzzle.
1266. A quantity of old buttons.
1270. Various dinnerware items of Clarice Cliff Wilkinson's china, a cream ground with green and brown line border with zinnia flower sprays in pink, purple and green.
1271. 4 Bradford Exchange Collectors plate.
1272. A Lladro figure of a woman in a picture hat with a spaniel on her lap. 13" tall.
1273. To 1280. A Rockwell/Bradford Exchange Limoges Plate
1281. To 1283. A Coalport Christmas Plate
1284. 50th Anniversary of the Battle of Britain plate. Royal Worcester and a limited edition Wedgwood plate.
1285. A Beswick Siamese cat 13 1/2" tall.
1286. Large Dresden figure of a lady.
1287. Large Dresden Music Group.
1288. Capo Dimonte flowers and basket.
1289. A Coalport 'Elizabethan Cottage' pastille burner.
1290. A Dresden Ballerina figure.
1291. A Royal Doulton miniature Halloween vase.
1292. A slice and wheel cut water jug.
1293. A Royal Crown Derby sugar bowl.
1294. A Hammersley shell shaped floral decorated dish.
1295. A pair of Grimade, Meissen onion pattern sugar bowls.

1296. A Moorcroft 'Anemone' pattern spherical vase with tall neck, purples and pink on a streaky green/blue ground. 10 1/2" high, incised marks and paper label 1920/30 (factory hole to base).
1297. A Royal Doulton tea set - Glamis Thistle H4601.
1298. A Royal Doulton "Sovereign" pattern 6 place tea set.
1299. An Armand Marseille bisque doll's head No 996, with quivering tongue and 2 teeth showing, real hair, eye lashes and sleeping eyes.
1300. Ebonised brush and mirrors and a Pye wooden cased radio.
1301. An N.P.L. designed measuring instrument.
1302. A Staffordshire frog creamer. 20thC.
1303. A glass cocktail shaker with brass top and gilt decoration and glasses.
1304. A Japanese eggshell porcelain miniature Teaset, decorated with flowers and birds within blue lustre borders, comprising teapot, milk jug, sugar bowl, 6 cups, saucers and plates, in original box.
1305. Matchbox 'Models of Yesteryear'. 1912 Simplex, boxed.
1306. Three Sports Caps.
- 1306A. Seven dwarf figures.
1307. 4 small Jasperware items - modern.
1308. A Jasperware vase.
1309. A Jasperware vase.
1310. A flared Wedgwood Jasperware vase.
1311. A Jasperware planter.
1312. A cylindrical Jasperware vase.
1313. A Jasperware Jug.
1314. A Jasperware Plaque.
1315. A Poole two tone beige coffee set.
1316. Two old plastic bodied racing cars and a Dinky model Viking aeroplane, all in used condition.
1317. A quantity of American commemorative Wedgwood Jasperware plates.
1318. A quantity of American commemorative Wedgwood Jasperware pin trays.
1319. A Jasperware 1979 mother plate.
1320. A Wedgwood Christmas plate and one other.
1321. Three Wedgwood Jasperware London scenes plates.
1322. Three Wedgwood Jasperware Christmas plates.
1323. Five Spode Christmas plates.
1324. A Modern Moorcroft globular base with tiger lily decoration 7" approx.
1325. A modern Moorcroft tapered baluster vase with honeysuckle and dog rose decoration 8" approx.
1326. A modern Moorcroft plate with a Turkish balcony scene 10" dia. approx.
1327. A Modern Moorcroft table lamp and shade with lily decoration 10" plus shade.
1328. A modern Moorcroft bowl with cream and pink peony decoration 10 1/2" diameter.
1329. A modern Moorcroft year plate for 1999 with Turks head lily decoration 8 1/2" approx.
1330. A modern Moorcroft plate for 2000 with a Polynesian sunset scene 8 1/2 approx.
1331. A modern Moorcroft bud vase with Noah's Ark and dove pattern 8" approx.
1332. A modern Moorcroft table lamp and shade with lily decoration 12" plus shade.
1333. A floral decorated cake plate and server.
1334. Wade Mrs. Fluffy Cat from the Noddy set.
1335. Wade Dalmation from the TV Pets Series.
1336. Wade "Thumper" damaged foot.
1337. Wade "Tramp".
1338. Wade "Dumbo" damaged lot.
1339. Wade "Boris".
1340. Wade "Baby Pegasus".
1341. Six Wade Whimsies.
1342. Ten Wade Whimsies.
1343. Wade "Tramp" hatbox.
1344. Wade "Lady" hatbox.
1345. Ten Wade Whimsies.
1346. Various small china animals etc.
1347. Early plush Mickey Mouse figure with felt hands and feet 10" tall. Reg No 73068 visible on neck.
1348. A white metal figure.
1349. A white metal figure.
1350. Bildajig Wooden 3D Jigsaw 100 pces ship model.
1351. A "Chad Valley" Easter Egg Puzzle of Chickens.
1352. A qty of loose cigarette cards.
1353. Two Daily Mail card jigsaw puzzles - Britain's Beauty "The Village Street" and "The Manor House" (no boxes).
1354. Two Daily Mail Weekend card puzzles - Britains Beauty "The Castle" and "The Modern Army" and one other.
1355. 3 GWR published wooden jigsaw puzzles 400 pieces.
1356. 5 GWR published wooden jigsaw puzzles 200 pieces.
1357. A Cannonade game, a solitaire board, two cribbage boards and ivory pegs.
1358. Two card jigsaw puzzles.
1359. A boxed Halma game, PIT, a boxed "Game of Schinamell", bridge book, draughts and board.
1360. A collection of loose used GB and world Stamps.
1361. Four stamp and cuttings albums.
1362. Four stamp and cuttings albums.
1363. 2 children's slates.
1364. A chess set and board.
1365. A qty of ivory counters - plain and dyed.
1366. A spinning game die.
1367. An autograph album of boxers, mainly pre-1950.
1368. An album of 1900-1917 postcards and photos.



1369. A cigarette card album.  
1370. A large quantity of postcards.

## FURNITURE

Commencing at 10am – Thursday 8<sup>th</sup>.

1500. A cast iron Fireback.
1501. A George III mahogany Pembroke table with oval moulded top, opposing bow front dummy and real drawers with Prince of Wales Feathers brass rondel handles, square taper legs with brass spayed feet and castors. 31" x 41". Illustrated.
1502. A Victorian mahogany double wardrobe with mirror door.
1503. A 19thC French armoire with 2 mirror doors.
1504. A Victorian mahogany 4-door compactum wardrobe.
1505. A Victorian mahogany mirrorback chiffonier.
1506. An Edwardian walnut mirrorback Dresser.
1507. A mahogany panelled fire surround and overmantel.
1508. An Edwardian oak mirrorback sideboard with Greek key cornice and chequered inlay.
1509. A 19thC mahogany longcase clock with painted arch dial with 30 hour movement and modern replacement movement.
1510. An antique oak housekeeper's cupboard with galleried upper part over 4 (2 sliding) doors on a 3 drawer dresser base, raised on legs, profusely carved throughout.
1511. A George III mahogany gentleman's Dressing Chest converted to a drinks cabinet. 38" wide, 36" high.
1512. A Victorian mahogany triple wardrobe with mirror door and fitted interior.
1513. A George III mahogany Sectaire Bookcase with astragal glazed 2 door upper section, the lower having fitted drawer over 2 door base, on splay feet. 44" wide, 95" high.
1514. A set of 10 Cromwellian style oak highback dining chairs with green dralon upholstery, 19thC.
1515. A pair of 19thC turned oak hall chairs.
1516. A Victorian stripped pine tile washstand.
1517. A late Victorian carved walnut dresser base.
1518. A reproduction mahogany serpentine chest.
1519. A Victorian mahogany games table with reversible baize and chequerboard inset to a scoop moulded top, on square taper legs.
1520. A 17thC oak wainscot chair with single lozenge carved panel back.
1521. A period carved oak bible box on legs, with bible.
1522. A Victorian flamed mahogany chest of 2 short and 3 long graduated drawers with turned handles with cushion drawer over, raised on turned feet.
1523. A George III mahogany chest of 2 short and 4 long cross-banded and graduated drawers with brass swan-neck handles and bracket feet. 43" wide.
1524. A Victorian mahogany chest of 2 short and 3 long graduated drawers with knob handles. 42" wide.
1525. A Victorian spinning wheel.
1526. A Georgian string inlaid mahogany table mirror with 2 bowfront drawers, turned uprights and feet.
1527. An oak refectory table on 2 bulbous supports and plain stretchers. 8' x 2'5".
1528. An Edwardian mahogany occasional table with shaped top, turned stretchers to undershelf and square taper legs.
1529. A Victorian walnut table mirror with barleytwist supports.
1530. An Edwardian mahogany pot cupboard with turned legs and straight stretcher.
1531. A mahogany dentil moulded shop display cabinet with vere eglomise panel entitled 'Crawford's Delightful Biscuits', over 3 sloping bays. 42" wide, 52" high.
1532. An oak bowfront cabinet with arched doors.
1533. Mahogany open shelves.
1534. A Victorian upholstered armchair with turned legs.
1535. A Victorian mahogany spoonback chair with scroll legs.
1536. A carved oak 3 panel cofferr raised on stiles.
1537. A Victorian treen cat stand.
1538. A Victorian mahogany dressing table with single drawer, reeded baluster uprights and stretcher.
1539. A late Victorian mahogany music cabinet.
1540. A Victorian flamed mahogany mirrorback sideboard with 2 cushion drawers over 2 doors.
1541. A late Victorian 2-door cabinet with fitted interior on cabriole legs.
1542. A late Victorian mahogany sideboard with gadrooned carving, panel doors and cabriole legs.
1543. A Victorian barleytwist torchere.
1544. An antique oak and elm court cupboard of traditional form. 55" wide, 5' high.
1545. A Victorian ebonised side cabinet with ormolu mounts and 4 oval French porcelain plaques.
1546. An early 19th C continental flamed mahogany Sectaire a Abattant with fall front resting over three stepped drawers.
1547. An early 19thC mahogany Pembroke table with oval drop leaves, square taper legs with brass cup castors.
1548. A Victorian walnut twin pedestal kneehole desk.
1549. A Victorian rosewood and mahogany Pier Cabinet.
1550. An antique oak gateleg table with 40" oval top.
1551. A Victorian mahogany Sutherland table with turned uprights, stretcher and gate legs. 35" x 37".
1552. A schooner chair.
1553. An Edwardian mahogany occasional table with shaped top, undershelf and cabriole legs.
1554. A Victorian walnut spoonback open armchair with scroll legs.
1555. A set of 4 Victorian mahogany dining chairs with open backs, serpentine seats and fluted legs.
1556. A pair of Edwardian tub chairs with tapestry upholstery.
1557. A 19thC wirework 2 tier planter.
1558. An Edwardian oak metamorphic snooker and dining table with slate bed and shaped square taper legs. 4' x 8'

1559. A Regency mahogany sofa table with opposing real and dummy frieze drawers, reeded top and sabre legs with paw feet.
1560. A burr walnut cased TV/radiogramme.
1561. An Edwardian rosewood marquetry music cabinet.
1562. A reproduction mahogany corner whatnot.
1563. A gilt stool with cabriole legs.
1564. A Victorian mahogany spoonback open armchair with scroll legs.
1565. A Georgian oak hanging corner cupboard with single glazed door.
1566. An Edwardian floral upholstered library chair with square taper legs.
1567. A Cromwellian style carver chair.
1568. A Victorian mahogany balloonback dining chair.
1569. A Victorian music stand with mahogany lecturn, brass pole and cast-iron base.
1570. A barleytwist oak gateleg table.
1571. A candy twist standard lamp.
1572. A walnut standard lamp.
1573. Wall shelves/Delft rack.
1574. A Victorian painted simulated bamboo traytop washstand, towel rail, stool and magazine rack.
1575. A Chinese Chippendale design breakfront display cabinet with astragal glazed centre doors, early 20th C. 6' wide, 53" high.
1576. A Victorian flamed mahogany chest. (AF)
1577. A George III walnut veneer bureau with fall flap over 3 graduated drawers and splay feet.
1578. An late Victorian walnut dressing chest.
1579. An American turned rocking chair.
1580. A Georgian oak country Hepplewhite chair.
1581. A cream and gilt painted stool.
1582. A pine refectory table.
1583. A Victorian oak Partner's Desk with 3 drawers to each frieze and each pedestal. 4'6" x 3'6".
1584. A Georgian ash and elm Windsor chair with crinoline stretcher.
1585. An Edwardian mahogany corner chair.
1586. A Victorian mahogany 2 drawer chest with knob handles and turned legs. 182 high.
1587. An Edwardian oak dining table and 4 chairs with square taper legs.
1588. A reproduction torchere with rams head masks.
1589. A Georgian mahogany Pembroke table with reeded top, opposing dummy and real frieze drawers, taper turned legs. 3' square.
1590. A Victorian pine single bed with simulated bamboo uprights.
1591. A harlequin set of 6 Victorian painted simulated bamboo chairs with rush seats.
1592. An Art Deco walnut smoker's stand.
1593. A pair of Edwardian bedroom chairs.
1594. An Edwardian oak pedestal kneehole desk with leather top. 4' x 2'3".
1595. A clerk's desk top.
1596. An early 19thC oak Pembroke table with frieze drawer and square taper legs.
1597. A Victorian card table.
1598. A mahogany demi-lune hall table on square taper legs. 27" wide.
1599. A profusely carved Chinese X-frame chair.
1600. An Edwardian satinwood chest of 2 short and 2 long graduated drawers.
1601. A Victorian grain painted pine tray top washstand.
1602. A pair of Cromwellian style barleytwist oak dining chairs with bergere seats and backs and barleytwist uprights.
1603. A Victorian flamed mahogany chest of 2 short and 3 long graduated drawers with knob handles. 42" wide.
1604. An ebonised upright piano by Murdoch, Murdoch and Co.
1605. A reproduction carved mahogany settle.
1606. To 1609. A pine pew.
1610. A Regency gilt pier glass with ball pediment and turned pillars.
1611. A late Victorian beech chaise longue with gallery back and dralon upholstery.
1612. A gilt framed porthole mirror with eagle pediment.
1613. A brass bedstead.
1614. A William IV mahogany barback carver chair.
1615. A modern Venetian Wall Mirror.

## PICTURES

Commencing at 11am – Thursday 8<sup>th</sup>.

1701. Naval Officer by Muller dated 1820 in black ebony frame.
1702. Young Naval midshipman circa 1800 (in gold frame).
1703. Mature lady wearing bonnet (in gold frame) Richard Cosway circa 1790.
1704. American silvered framed officer on copper. Signed Josef and dated 1787.
1705. Young lady signed M L Wing.
1706. Lady Constance in gilt wood frame.
1707. WWI Officer with peaked cap and medal ribbon bar.
1708. 2nd W.W. Marine Commando Officer with beret.
1709. Large oval watercolour of officer in red tunic by Du Suck dated 1860.
1710. Robert Alexander died 1790. (In gold frame) circa 1750.
1711. Police Officer in tunic circa 1840.
1712. Ivory framed portrait of Napoleon in green and white cavalry uniform by Gerard circa 1800.
1713. Silhouette of a gentleman, ebony frame.
1714. Two sketches by James Harrison of sailing boats.
1715. Copper landscape picture.

1716. Studio photograph, business card and further photo of Oliver Pond, Illuminator (Biog. verso).
1717. Illustrator London News 1858 "Sir Isaac Newton, Grantham".
1718. A small collection of 18thC black and white engravings.
1719. A qty of sundry prints and engravings.
1720. A sketch book by Philip Poyser 1931.
1730. Robert Morley (1857-1941). 'Fellow Prisoners', mixed medium depicting 2 seated monkeys, signed. 8" x 11". Verso label having artist's name, title and account L Folks No 33159. Illustrated.
1731. 19thC School "Loch Lomond" another view of a loch, a pair, signed indistinctly, oil on canvas 12" x 24".
1732. A. Cushing - Coastal landscape, oil on board signed 9 3/4" x 13 1/2" and three other paintings.
1733. Laurie & Whittle (Pub) "Hope" Black and white Mezzotint, trimmed and a Baxter Licencees "Street Urchin and Puppy" (2).
1734. L Mountain. Fishermen on a river bank, oil on canvas, signed and dated 1903 20" x 14".
1735. W Jackson. Sheephaven Bay, Co Donegal, a crofter's cottage by the waters edge at the end of a lane, mountains beyond, on panel, signed 15 1/2" X 19 1/2", paper label and title verso.
1736. 19thC English School. Landscape - figures around a pond, with substantial house on the right, unfinished, watercolour. 8" x 12".
1737. Owen Bowen (1873-1967). Turretted castle on the side of a lake, another on the far bank, rocks and trees to the foreground, hills beyond, oil on board, signed 11" x 15".
1738. Kate B Griffith - "Autumn" oil on canvas signed 14" x 16 1/2".
1739. \*Bernard. Country landscape with grazing sheep, watercolour, indistinctly signed and dated. 8" x 18 1/2". M H Close. Ireland's Eye from Howth' seascape, watercolour dated March 1862, artist's name verso 6 1/4" x 9 1/2".(2)
1740. After Kneller - "The Duchess of St Albans" Black and white mezzotint by Smith, early 19thC.
1741. After Moule "Town Plan of Boston", hand coloured, 19thC.
1742. C. W. Oswald - Highland Cattle in a landscape, a pair, oil on canvas 18" x 10".
1743. After Blair - "Kittens", a pair chromolithographs 14 1/2" x 19 1/4".
1744. G Colville. 'Boston Stump, Lincolnshire'. from the river, watercolour, signed, label verso. 14" x 10".
1745. W B Thomas. Landscape. ducks on a pond, trees beyond, watercolour, signed. 12" x 10 1/4".
1746. An illuminated address from the mid-Victorian era.
1747. A pair of Japanese lacquer and relief pictures with sailing boats in coves.
1748. A Chinese red lacquer panel with relief figure in mother of pearl.
1749. Bryan M Conway. Hunting Scene, oil on canvas.
1750. W Richards. Pair of coastal scenes with sailing boats and figures on the shore, oil on canvas, signed. 8" x 12 1/2".
1751. 19th Century School. i) Mending the Nets, iii) Landing the Catach, a pair, chromolithographs. 12" x 18 1/4".
1752. A pair of Victorian Highland landscape oils.
1753. A Rural landscape watercolour with sheep dated '39.
1754. A small pair of landscape oils, signed A Gill.
1755. A pair of oak framed highland cattle prints.
1756. After Jennings. Landscape, figures round an open fire, on heather covered moors, oil on card, bears signature. 12 1/2" x 18".
1757. A pen sketch of a bullfight inscribed Sevilla 9.4.50. 6 1/2" x 9 1/4".
1758. A pastel drawing of a Terrier.
1759. An oak framed colour coaching print.
1760. An oil on canvas of an Arab gentleman, initialled EB 1844.
1761. F Nicholson. Landscape, highland loch in a mountain valley, watercolour, signed. 6 1/4" x 9 1/2".
1762. A 19th C oil on oak Panel depicting the birth of Christ.
1763. Chandos. 'Riviera Scene' - figures by the water's edge, before a building with flower laden balcony, a sailing boat nearby, oil on board. 11 1/2" x 15 1/2", signed, label verso.
1764. 19thC English School. Family Crest - 'Fortifer et Suaviter', oil on canvas. 13 3/4" x 10 3/4".
1765. An oval oil on panel of flowers.
1766. A gilt framed watercolour landscape signed Wm. C. Coles? 9 1/2" x 14".
1767. A decorative watercolour of children playing on the shore with fishing baskets and trawler. 9 1/2" x 15".
1768. Japanese landscape pictures.
1769. W L Wyllie. Isle of Wight, pen and wash sketch. 3" x 6 1/2".
1770. A set of 12 'Cries of London' colour engravings, Hogarth framed.
1771. An oak framed needlework picture of a 3 mast sailing boat with flags to the spandrels. 9 1/2" x 15 1/2".
1772. A Korean circular squat vase decorated with prunus in underglaze blue. Signed. Diameter 8 1/2".
1773. C Stephenson-Mole. A pair of railway watercolours.
1774. Reynolds. Highland scene watercolour, signed. 13" x 22".

END of SALE.

Established 1900

# **-GOLDINGS-**

**AUCTIONEERS & VALUERS**

## **20thC. FURNITURE, GENERAL EFFECTS & BRIC-A-BRAC**

Wednesdays 14<sup>th</sup> & 28<sup>th</sup> February, 2001 at 10am

**HOUSE CLEARANCES and SINGLE ITEMS always INVITED**

**ENTRIES CLOSE 5pm the preceding FRIDAY**

Viewing: Tuesday prior 2pm to 6pm and Saleday from 9am to 10am.

---

## **COMMERCIAL SALE**

Wednesday 28<sup>th</sup> February, 2001 at 10am

**COMMERCIAL PROPERTY CLEARANCES and SINGLE ITEMS always INVITED**

**ENTRIES CLOSE 5pm the preceding FRIDAY**

Viewing: Tuesday prior 2pm to 6pm and Saleday from 9am

---

## **ANTIQUES AND FINE ART**

11<sup>th</sup> - 12<sup>th</sup> April, 2001

**HOUSE CLEARANCES and SINGLE ITEMS always INVITED**

---

## **Introducing the BRONZE MONKEYS of GIAMBOLOGNA**

[www.goldingyoung.com](http://www.goldingyoung.com) - Click on 'News'