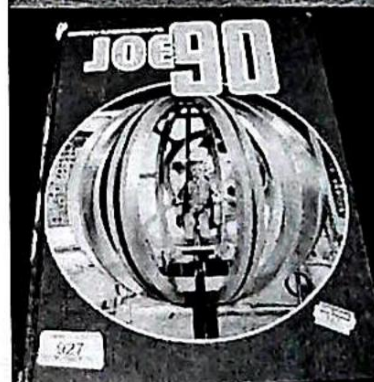
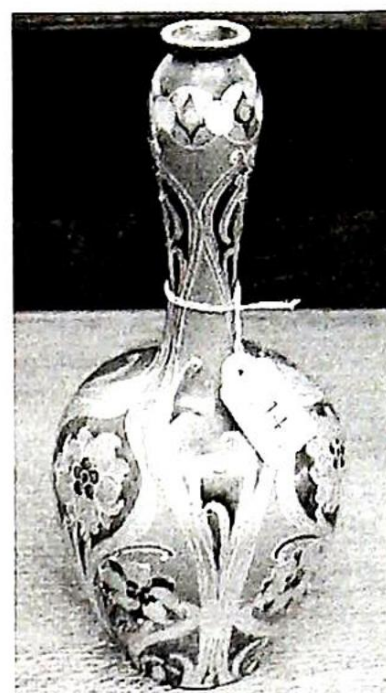


Established 1900

-GOLDINGS-

— AUCTIONEERS & VALUERS —



Catalogued two day
FINE ART & COLLECTORS SALE
Wednesday 8th & Thursday 9th
August, 2001.

*Upon instructions from Executors, Solicitors, Accountants,
Private Vendors and others*

Golding Young & Co will sell by Auction

*The residual contents of Property Clearances
from throughout the region being...*

Antique Collectables, Silver, Jewellery, Ceramics, etc.

On Wednesday 8th August 2001 at 10am
Followed by...

Modern Collectables at 2pm

Antique and Decorative Furniture, Oriental Carpets and Rugs

On Thursday 9th August 2001 at 10pm
Followed by...

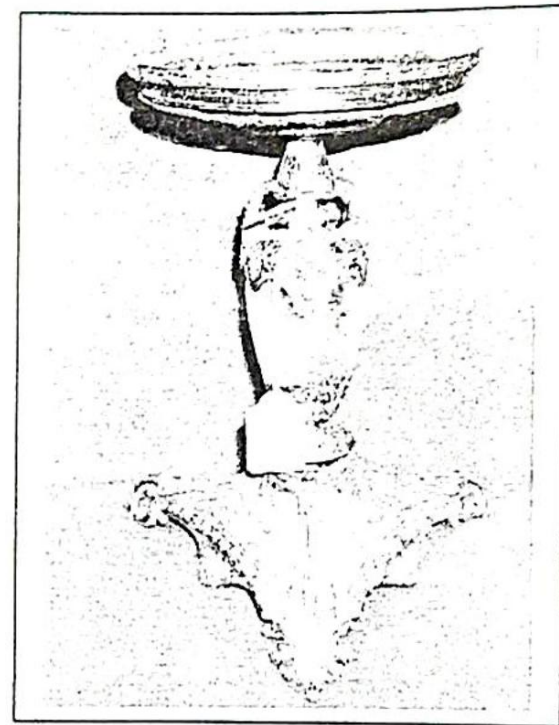
Pictures

Viewing : *Tuesday prior 2pm to 7pm
and Saledays from 9am to 10am*

Lot Enquiries: *Suki Burnett, Jan Squires and Colin Young*

Vendor Enquiries: *Marie Scoffield*

Illustrations: Online at **www.goldingyoung.com**



Golding Young & Co.
Old Wharf Road • Grantham • Lincolnshire • NG31 7AA

Telephone: 01476 • 565118

Fax: 01476 • 561475

Email: enquiries@goldingyoung.com

Buyers Hotline: 01476 • 575202

For Lot Enquiries & Commission Bids Viewday & Saledays Only

THE SALE

INVENTORY

DAY ONE

Commencing 10am

1. BSA single barrel 20 bore shotgun. Serial No 111621
2. T Conway. 12 bore side-by-side hammer action underlever shotgun with Damascus barrels.
3. A Gardone 12 bore side by side Shotgun. Serial No 9170
4. A 12 bore side by side Shotgun, unknown maker, Serial No 24606, and leather case.
5. .410 Garden Gun unknown maker.
6. A Webley & Scott brass barrelled flare pistol.
7. An antique Colt's patent No 7339 revolver.
8. A Victor No 1 revolver, c.1876.
9. A Colt bore measure and lapel badge.
10. A stock and action by M Lowrance & Son.
11. An interesting shaped 18thC. polychrome Delft standish of squat circular form, having 3 holes to the rim and a central raised receptacle. 6" dia.
12. A Victorian Fairing figure with a couple in a bedstead.
13. A Georgian enamel pill box, 'A trifle from Brighton'. (AF)
14. A Macintyre bottle vase, mottled green and blue ground with gilt floral and foliate decoration. Transfer printed mark to base, painted M2048 in red, green, signature of Moorcroft. 10".
15. An 18thC Leeds creamware Coffee Pot with loop handle. (Spout and cover missing).
16. Cine projector and film.
17. A bone china Tea Service printed with scale and medallion borders.
18. A Victorian mahogany rectangular tea caddy. (AF)
19. A 1920's green lacquer and chinoiserie 2-handled tray.
- 20-22. A cream Staffordshire pastille burning cottage.
23. A Victorian Staffordshire pearlware Toby jug. 10".
24. A Meissen blue and white plate with floral decoration and reticulated border.
25. A Victorian London shape creamer with polychrome chinoiserie decoration.
26. A German porcelain posy basket in the form of 2 winged cherubs supporting a floral encrusted egg basket. 8".
27. A Victorian burr walnut jewellery box with mother of pearl inlay and fitted interior.
28. A Victorian majolica planter in the form of a coopered milk bucket with ram's head masks, berries and vines in relief. Marked to base with a moulded fish. 12" high.
29. A 19thC pottery spirit barrel of moulded form, having print and wash decoration of a stag, marked B.L.Gin.
30. A similar lot marked O.J.Rum.
31. A similar lot with cock fighting scenes, marked P.Brandy.
32. A similar lot with cock fighting scenes marked B.Brandy.
33. A similar lot with scene of a lady horse jumping marked I.Whiskey.
34. A Victorian sampler with examples and inserts of appliqué work, crochet, cross stitch, weaving, needle-lace, pulled threadwork, embroidery, tatting and other forms of decorative stitchery.
35. Petticoat, christening gown and 2 souvenir handkerchiefs.
36. A boxed top hat.
37. 7 reproduction Bellarmine ewers.
38. Old bottles of beer and spirit caps.
39. Stoneware spirit bottle of Adcock of Peterborough and storage jar.
40. A late 19thC solid cast bronze anamaler figure of a bull, green patination. 8" long, 4" high.
41. A 19thC brass and copper powder flask.
42. A 19thC French faience oval platter of Chinese design. 13".
43. Plated and brassware including creamer, champagne coaster, rose bowl, etc.
44. A silver plated presentation cigarette box, hem marker and addressograph.
45. Two stoneware Spirit Barrels - gin and sherry.
46. A Victorian part toilet set comprising jug, washbowl, pail, chamberpot and shaving mug (AF).
47. A gent's wristwatch by Limit on an expanding bracelet.
48. An early 20th C Japanese model of a miniature helmet in a lacquer box and original packaging.
49. A Victorian cast iron fender. 45" wide.

50. A Kriss with carved ivory hilt, wood and brass sheath, 19". (AF)

51. A brass and mahogany 5-draw telescope by Adams, London, 43" long, together with a brass stand, fitted mahogany case.

52. A pair of English bakelite opera glasses, another leather and chrome pair. (2)

53. A leather and brass shot flask. 7".

54. A bronze and brass open barrel and screw corkscrew, with ebony handle, (brush missing). 6 3/4" high, together with 2 further corkscrews with turned wood handles. (3)

55. A Victorian police truncheon, painted with Royal Crest and initials LC, turned handle. 16" long.

56. A Royal Worcester shell vase, with coral handle and stem, rocaille base, 4 1/2" high, impressed factory mark.

57. A cranberry glass jug of lobed form, moulded with leaves, clear glass reeded handle. 5 1/4" high.

58. An ebonised walking stick, the handle carved and painted as a drake's head, another carved stick. (2)

59. Two Derby porcelain toilet pail inner covers, the rich blue ground reserved with pink roses within gilt foliate scrolls, the inner cover pierced. 10" dia.

60. A Maple & Co silver plated breakfast chafing dish, with domed cylinder cover, enclosing 2 removable dishes, cast handles to each side, on stylised foliate legs. 14" over handles.

61. Collar box, medicine glass, etc.

62. A 19thC Vienna wall clock with embossed brass dial, enamel chapter ring, 33" high.

63. A Victorian mahogany bezel WALL CLOCK by A Satellite, Lincoln with an earlier movement.

64. A modern Louis XV style Mantel Clock of German 8-day movement, striking on a bell, the burr-walnut waisted case embellished with gilt metal mounts, the moulded gilt metal and enamel dial with Roman numerals. 23" high.

65. A pair of walnut framed circular footstools with upholstered pads. 10 1/2" dia. (AF)

66. A ukelele by John Grey & Sons, London, with rosewood and mahogany frame, in case.

67. A Capo di Monte style table lamp, moulded with figures, on cast metal column, with moulded glass shade. 23" high.

68. A silver on copper oval gallery tray, pierced wavy gallery with integral handles, 23 1/2" wide, together with a plated two-handled tray, the border cast with scrolls, flowers and leafage, the centre engraved, 28" over handles. (2)

69. A pottery and Britannia metal warming plate, printed and painted with flowers and leafage, 10 1/4" dia, together with a Japanese satsuma circular dish decorated with rushes on a brown ground, 9 3/4" dia. (2)

70. Three 19thC horn beakers. 4 1/2" high.

71. A Copeland porcelain circular dish, cover and stand, pink and gilt with trailing foliage, acanthus loop handle, a matching saucer, together with an earthenware cheese wedge, printed with flowers. (AF)

72. An Arthur Wood green glaze large jug, moulded in relief with hunting scenes, leaves and berries to the neck, hound handle, 9 1/2" high, modern, together with a white toilet jug with shaped rim and acanthus handle.

73. A Koma 400 day timepiece, in satin brass rectangular case, loop and scroll cresting and turned corner finials, on adjustable feet. 11" high.

74. A pair of brass andirons, with pierced wrythen finials, on horseshoe front supports, 12 1/4" high, together with a brass poker, etc.

75. A copper coal helmet, repousse with pineapple, scrolls, foliage and flowerheads, the swing handle with brass lion mask terminals, turned wood and wrythen brass handle to the rear, on raised circular foot.

76. An Art Deco period plaster study of a nude female, seated, with peacock alongside, oblong base. 21" wide.

77. A pair of Mintons salt glazed ovoid jugs, moulded with hunting scenes, 6" high, modern, together with Spode pottery sauce tureen and cover, printed in blue with 'Chatsworth' pattern, and a miniature part tea set, painted with flower sprigs, comprising teapot, sugar bowl, 2 cups and 3 saucers. (AF)

78. A mahogany miniature tilt top table, the circular 2-piece top on a vase turned pedestal, 3 downswept legs, pad feet. 9 1/4" high, 8 3/4" dia. (Damaged.)

79. A Japanese bronze 2-handled bowl and stand, of circular bellied form, the stand on 3 shaped feet, 9 1/2" over handles, together with a brass roasting jack (part).

80. A Victorian walnut workbox, oblong, mother of pearl shield and escutcheon, the interior with green silk fittings. 11 3/4" wide.

81. A Victorian mahogany tea caddy of sarcophagus form, with gadroon moulding to the cover, the interior with 2 lidded compartments flanking a moulded glass mixing bowl, on compressed bun feet. 10 3/4" wide.

82. A 19thC walnut box with marquetry panels, oblong, 7 3/4" wide, (re-finished interior).

83. A 19thC stained wood 2-section cutlery tray with centre handle. 14" wide.

84. A Victorian walnut writing box, the hinged cover centred by a brass initialled plaque, the interior with leather writing surface, pen tray, ink well aperture and stamp slope. 14" wide.

85. A Victorian rosewood box, oblong, the domed cover with mother of pearl and abalone inlaid diamond, conforming escutcheon, 10" wide (re-finished interior).

86. A gilt metal wall timepiece, the silver plated chapter ring with Roman numerals, the centre cast with amorini and scrolls, the case cast with cherubs, scrolls and urn. 13 1/2".

87. A glass 3-tier chandelier, hung with faceted drops.

88. A pair of Bohemian ruby glass table lustres, the flamed bowls etched with animals, buildings and foliage, knopped and waisted stem, circular foot, hung with prismatic drops. 10" high.

89. An Old Sheffield plate flask, of circular tapering form, the hinged dome cover with horn finial, scroll handle, 9" high, together with a plated rose bowl with pierced border, circular bead foot, sapphire glass liner, 8 1/2" dia, (plate worn).

90. A Victorian EPNS teapot of compressed circular form, engraved with foliate scrolls, acorn finial, together with a pedestal cake basket, 4-section toast rack, a quantity of plated tableware, 3 napkin rings and silver lid.

91. An EPNS entree dish and cover, oblong, with reeded borders and centre removable handle, 10 3/4" wide, another, 10 1/2" wide.

92. A pair of EPNS entree dishes and covers, oblong, with gadroon borders and handles. 10 1/4" wide.

93. An EPNS salver, engraved to the centre, with shaped and cast raised rim, on 3 bun feet, 12 1/2" dia, together with an EPNS oval tray, engraved, on 4 bun feet, 8" wide. (2)

94. An EPNS salver, engraved with strapwork and foliage, pierced gallery, acanthus rim, on 4 claw and ball feet. 15" dia.

95. An Edwardian EPNS biscuit barrel, circular, engraved with 2 bands of anthemion, domed stepped cover with corn stook finial, integral stand on 3 cast anthemion feet, 8" high.

96. An EPNS pedestal fruit bowl, with shaped pierced gallery, circular domed foot, together with an EPNS pierced circular dish, on 3 bun feet. (2)

97. An EPNS table centrepiece, the scrolled and entwined arms supporting 3 pink moulded glass bowls, centred by a larger bowl, on stepped domed base, mask and scroll cast feet. 19 1/2" high.

98. A faux whale's tooth thermometer and a Yorkshire Penny Bank Savings Book.

99. An Asiatic short sword with carved bone hilt, wooden scabbard 25".

100. A Ridgeway salt glaze jug, moulded in relief with Biblical scenes, double scroll handle, 7" high (pewter cover missing) together with a Pratts Italian blue and white candlestand, a Rosenthal bowl and cover and other various items.

101. A Chinese plate, blue and white, painted with flowers and foliage, 9" dia. a Spode earthenware plate, lovat green ground painted with trellis and berries, pierced and shaped rim, 9 1/2" dia., a Continental wall plate, painted in underglaze blue with landscape and floral panels on an abstract ground, brown border 10 1/2" dia (3)

102. A Japanese cabinet plate, underglaze blue and iron red, the well painted with landscape within a cusped border, the borders with floral panels, 9" dia.

103. A set of brass balances, on wooden plinth, with a set of four brass weights 1oz. to 8 oz. 9" wide.

104. A set of Continental metal and brass postal scales, with enamelled scale in grams 8 3/4" high.

105. Four Chinese underglaze blue small vases, and a pair of spills. (6)

106. A Chinese tea bowl, of fluted outline, underglaze blue with alternating panels of flowers and figures, the interior with an animal in a landscape, 3 1/4" dia.

107. A Fukugawa Vase, of cylindrical outline with narrow neck and everted rim, painted in underglaze blue with flowers in arches 5" high.

108. A Shelley china coffee set, of irregular octagonal form, printed in black and painted with ivy leaves, fruit and berries, comprising coffee pot, 6 demitasse, 6 saucers, cream and sugar basin, Reg No 723404 Pattern No 11498

109. A late 19thC circular glass bowl and cover, the cover gilt with lion and ring masks, ribbon swags and garlands, circular finial 7" dia.

110. An opaque glass bottle vase, enamelled in the Persian manner with foliate, flower and bead panels on a turquoise ground 7 1/2" high.

111. A pair of cloisonne baluster vases, decorated with jolly dragons, the necks with floral acanthus borders 6 1/4" high.

112. Five 19thC green leaf and berry moulded circular plates, together with a matching dish, 9" dia. and 11" wide respectively (one repaired).

113. A Chinese ginger jar and cover, the deep blue ground enamelled with butterflies, and flowers, turned wood cover 10" high, hairline crack

114. A Cloissone ovoid bowl, the bronze ground decorated overall with flowers and scrolls, mask panels within turquoise border 8" dia.

115. A pair of Coalport Salopian double gourd vases, decorated with underglaze blue flowers, leafage and geometric bands 6 3/4" high.

116. A Loetz style green glass bowl and brass hinged cover, the bowl decorated with abstract iridescent lines, the cover engraved with mistletoe, 4 1/4" dia. (reg nos to the inner lid).

117. A Vienna circular trinket box and cover, painted with a floral spray within yellow and green borders, 5" dia., another of heart shape 3" wide.

118. An earthenware bottle and stopper of globular form, painted in the Derby Imari manner, 6" high.

119. A Quimper style wine pot, painted with leafage and berries, raised on a circular pedestal, a faience baluster vase (2).

120. A Faience water flask in the style of Quimper, the heart shaped body painted with animals, 5" high.

121. A Staffordshire Cottage money box, with pale orange glaze and bocage 5" high (chip to opening).

122. Spare lot.

123. A Chinese baluster vase, painted overall with flowers and foliage on a yellow ground, reserved with panels of dragons and landscapes 8 3/4" high.

124. A Goss model of "The Bargate, Southampton" white glaze with legend on underside 3 3/4" high.

125. An Adams Calyxware bowl of circular form, painted with flowers in blue and pink, the interior with blue band, 11" dia.

126. A pair of Japanese circular bowls and covers, painted overall with flowers in iron red, 9" dia. (cracks).

127. A Villeroy and Boch pottery chicken mould, 11" (minor chips and hairline crack).

128. A Limoges porcelain small teapot and cream jug each with blue bands and gilt strapwork borders, on raised circular foot 6".

129. Three Japanese eggshell china cups and saucers, a similar plate.

130. A collection of Commemorative ware inc a Minton's Victoria 60 yrs beaker, George V Silver Jubilee cup and saucer with union flag handle, Aynsley Edward VII Coronation cup and saucer with empire symbols.

131. Spare lot.

132. A brass car lamp, stamped "Dietz Dainty Side Lamp, N.Y., U.S.A." together with another by Lucas "King of the Road".

133. A 19thC copper kettle with brass handle.

134. Two embossed Britannia metal chambersticks together with two pewter plates.

135. A "Rushmore" brass cased circular lamp with 2 mounting blocks.

136. A "Desmo" brass car horn.

137. A small brass jampan with iron swing handle together with two ladles, with brass bowls and iron handles.

138. A "Polkey" acetylene projector car lamp with two mounting blocks and hood.

139. A copper skillet, and 3 brass saucepans.

140. Two antique pewter plates with folded rims and a large pewter platter.

141. A 19thC ale jug and cover, encased within a coopered oak body with silver plated mounts, decorated thumbpiece and scroll handle.

142. A brass trivet, rectangular, with pierced decoration on twisted stem and domed circular foot; another, circular with horse motif on vase shape stem, tripod feet, and a brass horse doorstep (3).

143. A copper food warmer, rectangular with removable plate stand over burner tray.

144. A copper kettle with turned wood handle, and composition finial.

145. A pair of late 19thC Japanese bronze bottle vases, each with two elephant mask handles, the bodies cast with intaglio panels of birds in landscapes.

146. An Indian brass baluster coffee pot, with hinged cover, scroll handle, on four stile feet.

147. A pair of bronze figures as Baliucie Dancers.

148. A gilt and painted brass figure of a Baliucie Musician, seated, playing a pipe.

149. A gilt metal figure of a seated buddah, in ceremonial robes with "lapis" blue head dress, seated on an oval dias.

150. An oriental plate painted with stylised flowers and foliage within wavy moulded border.

151. A pair of pottery incense burners modelled as temple dogs, green and olive glazes on shaped bases.

152. A pair of ivory head and shoulders carvings of Japanese girls, on circular wooden bases.

153. An early 20thC carved ivory lion 7" long.

154. A bronze pipe tamper modelled as a ceremonial monkey, together with a similar cast seal.

155. A 19thC. timepiece, the silvered circular dial with Roman numerals, inscribed Vulliamy, London No. 1724, in an architectural oak case.

156. A Victorian porcelain Breakfast Service with a turquoise border, trailed with gilt foliage.

157. A Copeland earthenware dinner service printed with a thistle pattern in brown.

158. A burr walnut and rosewood Casket, of rectangular form, bound and inlaid with brass, domed cover enclosing velvet lined interior. 9 1/4".

159. A .303 ammunition belt.
160. A bronze Mortar of circular form with crest casting. 4 1/2".
161. A 19thC Dresden Jar with cover decorated with opposing panels of flowers and garden scenes on a powder blue ground. 6" (AF).
162. An orange lacquer silhouette bowl.
163. A Derby Cup and 2 Saucers painted with broad bands of blue leafage and gilt sprigs within gilt lines, puce factory mark, early 19th C.
164. Spare lot
165. A Royal Worcester commemorative Plate, sepia printed with mayoral portraits within lilac borders, foliage and swags, date code for 1896. 10 1/2" dia.
166. A Royal Worcester white glaze nautilus shell posy Vase, raised on a coral pedestal, rocaille base. 20th C. 6 1/2" high.
167. A French porcelain Tea Service, printed and painted with flowers on a shaded peach ground, gilt sponged rim.
168. A Foley Art China part tea service, printed in green and pink in the Art Nouveau manner.
169. A 19thC. blue and gilt porcelain inkstand.
170. An Italian porcelain Candlestick, with rococo style scone, the stem modelled as Pan, seated astride a leopard, on rococo base. 11 3/4" high. (AF)
171. A Coalport anniversary cup, saucer and plate, painted with flower sprigs.
172. A pair of brass eagle finials.
173. Spare lot
174. A pair of Ludwigsburg porcelain Salts, modelled as a youth and his female companion, seated on rococo style bases, dressed in typical 18th C dress, the bowls painted with flowers, 5 1/2" wide, blue factory mark. (AF)
175. A copper lustre circular Bowl, decorated with a broad buff band with leafage. 7 3/4" dia.
176. A Stevenson & Hancock Derby bottle vase, glazed white, encrusted with flowers, (some losses). 6".
177. A Decomania papier mache vase.
178. Part Dinner Service
179. A pair of early 20th C double gourd earthenware Vases, painted with floral sprays within gilt scroll bands. 10 1/4". (AF)
180. A 19th C Staffordshire pottery Pot Pourri and cover 'Chinese Tree' pattern, probably Minton. 10 1/4" high. (AF)
181. A Volkstedt Art Nouveau centrepiece modelled with sea nymphs riding fish. (AF)
182. A Victorian polished slate Mantel Clock of architectural form.
183. A Samson figure group after a Meissen model by Kandler, of a young man seated, attended by his maid, his companion seated along side, a poodle to his right with its front paws on the bench, on a circular based encrusted with flowers, guilloche borders. 11 1/2" high.
184. Three silver plated entree dishes and covers and an oval gallery tray.
185. A cut glass ship's Decanter with silver collar, modern, 10 1/4" high; together with a cut glass boat shaped Bowl, 9 3/4" wide.
186. Platedware; jug, bowl, mustard (4).
187. A profile carving of a game bird in flight, on shaped mount.
188. A 19thC silver plated cruet stand, having foliate pierced cushion sides, centre handle and on 4 acanthus feet, with 4 cut glass bottles.
189. A Capo di monte porcelain figure of a seated tramp, signed Piero.
190. A German porcelain figure group of a coach and horses with lady, bowing gentleman and coachman (AF).
191. An extensive Hanley pottery Dinner Service printed with flowers in the George Jones manner.
192. A Swiss musical box, playing 6 airs, in a rosewood and ebonised case inlaid with bow, quiver, flute and ribbons (AF).
193. A German porcelain coffee can and saucer painted with fruit and flowers in gilt ovals (AF), another with a swan, together with two cake plates printed with a border of water lilies and dragonflies.
194. A qty of 78 and 33rpm records (cased).
195. An Eastern white metal mounted stick, tooth handled stick, harewood handled parasol, sword, sabre case and knife.
196. A 19th C Cantonese enamel Bowl decorated with flowers on a bleu-de-mazarin and turquoise ground. (AF)
197. A large Chinese blue and white Ginger Jar with Kangxi marks.
198. SPARE LOT
199. A pair of brass balance Scales with fluted stem, wrythen cast trays, together with a miniature fender.
200. A small 17th C crested bronze Mortar.
201. A set of brass laboratory Balances by Philip Harris Ltd, Birmingham, England, in oak case.
202. A bird handled Umbrella and another.
203. A pair of Sessionist 2-handled Vases, green gravel bodies incised with leaves, (one damaged).
204. A cased bridge set inc 2 packs of cards, score cards, rules for auction and contract bridge, leather case.

205. A porcelain egg cruets, shaped base with centre loop handle, holding six egg cups, white ground with gilt lines.

206. A miniature character jug "Arry" by Royal Doulton, another "Sam Weller" plus "Fat Boy", another by Sandland "Uncle Tom Cobley" and 3 mugs.

207. A pair of brass and metal carriage lamps with cut and faceted glass panels (AF).

208. A pair of black metal carriage lamps with blue glass cut panels (AF).

209. A GNR railway gatehouse lamp, with handle to top and back, stamped 'GNR Louth and Willoughby Gatehouse No 69', 12" high (glass cracked), another lamp, stamped BR(E), 11 1/2" high. (2)

210. An early 20thC sword with curved blade, brass hilt and sharkskin grip, leather and brass scabbard, blade length 23".

211. A 'Parasene' blow lamp together with a 'Marsh Wells' niblick with hickory shaft. (2)

212. A bronze figure of a fishergirl, seated on a rock, holding a basket of fish, on square base, 19" high, modern.

213. A Russian brass Samovar, of fluted tapering form, stepped dome cover, wooden fastenings and handles, on circular stepped base with 4 canted feet. 18 1/2".

214. An ornamental hunting horn, with bone mouthpiece and brass mounts, 13" long.

215. A copper kettle, moulded with 3 relief bands, fixed handle, 11" high.

216. A pair of green glass table lamps, overlaid with white enamels printed with flowers, baluster columns, domed shade with faceted drops, on pierced gilt metal base, 20" high.

217. An early 20thC oil lamp, quilted clear glass reservoir on 4-sided pierced metal base, etched globe, glass chimney, 22 1/2" overall.

218. A pair of Victorian porcelain dessert plates, each painted with differing flowers within peach and turquoise borders, gilt with lambrequin and line borders, 9" dia, pattern no 520.

219. A Graingers Worcester plate, decorated in the Chinese manner with flowers and foliage and gilt highlights, moulded border, 10" dia (hairline crack), another plate, painted with spring flowers within blue and gilt borders, 9" dia.

220. A Chinese baluster vase, the yellow ground painted in blue with chrysanthemums, 12 1/2" dia, (chip to rim).

221. A Limoges porcelain dessert service, decorated with rambling rose sprays within gilt moulded borders, comprising 6 plates, raised stand and a comport.

222. A set of 6 Japanese porcelain plates, painted with a scene of Mount Fuji, 8 1/2" dia, (one repaired).

223. An early 19thC Sunderland lustre industry jug, ovoid, printed and painted with Masonic emblems and verse, 8 3/4" high, (some chips).

224. An early 19thC Sunderland lustre jug, ovoid, printed in black with Masonic emblems and verse, 8 1/4" high.

225. A set of Apothecary's brass and polished metal balances, in beech case, on adjustable feet.

226. A carriage timepiece, inscribed Matthew Norman, London, in gilt brass case, 5 1/2" high excluding handle.

227. A pair of late 19thC brass candlesticks, turned baluster columns, on square canted bases, 9", (one repaired), together with a copper and brass hunting horn. (3)

228. Three jasper jugs, two with pewter covers, together with a Doulton Lambeth stoneware jug, moulded with figures and dogs.

229. An EPNS teapot, engraved with holly sprays, an EPNS hot water jug and a circular panelled dish on four feet. (3)

230. A pair of Wedgwood black jasper dwarf candlesticks, with anthemion and scrolls in relief, a vase, with putti and oak leaf and acorn border.

231. A qty of silver and plated ware including toast rack and castor, etc, (6)

232. A cased carving set, with ivory handles and silver ferrules. (AF)

233. Commemorative beakers, mugs and loving cups, mainly QEII. (9)

234. A 19thC pottery spaniel, painted with iron red coat, black collar and chain, 15" high,

235. An earthenware 2-handled vase, painted and gilt in the Derby manner, 14" high.

236. A pair of earthenware 2-handled vases, of ovoid outline, printed with lakeland landscapes within gilt scroll borders, the necks and feet blue with gilt dusting, 14 1/4" high.

237. A brass warming pan, the cover embossed with a sailing ship, turned wood handle.

238. A brass muffin call bell with domed pierced cover, rope loop handle.

239. A pair of early 20thC brass goblets and covers, engraved with foliate scrolls and flowers, on knopped stems, the covers with minaret finials.

240. A brass alms dish, the well chased with anthemion and wreath foliage, the wide border with foliate border and folded rim, 17 1/2" dia.

241. A Japanese wooden oblong tablet, decorated with a water pot and red pepper, signed, 4 3/4" x 7 3/4", mounted and in case.

242. A cast brass hexagonal lantern, with knob finials and hanging loop, 17".
243. A Polyphon table model disc musical box, playing 15 1/2" discs, having sepia picture panel to the underside of the lid, the case with floral marquetry inset panel, 21" wide, with 28 discs.
244. A Staffordshire pottery spill 'Dog Tray', of a hunter and dog seated by a tree, 13 1/2" high,
245. A Staffordshire pottery theatrical figure group of a musician and girl seated on a couch, a bird on the arm of the couch, (head missing), 10 1/2" high.
246. A continental figural liquer flask, modelled as a middle eastern nobleman, 'Creme de Hoyaux', together with another as a female 'Creme de Vanille', 11 1/2" high, (restored).
247. An early 20thC bisque figure group 'The Good Templars', 9 1/2" high (repaired), another, of a young boy with mandolin, 6 1/2" high. (2)
248. A pair of opaque glass table lustres, the tulip rims pink with gilt lines, tapering columns and domed circular foot, hung with prismatic drops, 11" high, (2 drops AF)
249. A pair of earthenware baluster 2-handled vases and covers, the blue fern shadowed ground enamelled with tulips, the domed covers with knob finials, gilt highlighting, 17" overall, (covers repaired).
250. A Staffordshire pottery figure of Dick Turpin and Black Bess, he in underglaze blue jacket, 9 1/2" high, (horse repaired).
251. A pair of flo-blue ovoid 2-handled vases, decorated with spring flowers, gilt highlights, 14" high. (AF)
252. A Coalport style 2-handled baluster vase, moulded and gilt with foliage, reserved with panels of summer flowers and encrusted with hollyhocks, daises and roses, 12 1/2" high, (AF)
253. An EPNS teapot, of lobed circular form, cast with flowers and leafage, the handle with acanthus sheath, together with an EPNS coffee pot of lobed baluster form.
254. An EPNS entree dish and cover with bead borders and removable handle, a 4-bottle cruet and a 3-bottle cruet. (3)
255. A mahogany cased bracket timepiece, the 8" circular dial with Roman numerals, inscribed T Wood London, on swept scrolling apron, and stepped cavetto base, 14" high.
256. An American steeple clock, by the Ansonia Brass & Copper Co, with a mahogany case enclosing the enamelled dial, painted glass panel to the door, 15 1/2" high.
257. Two raffia 3-section cutlery trays with handles and a qty of tableware.
258. A brass ceremonial urn or censer, cast in relief with birds and trees, foliate handles to each side, the cover with elephant finial, 19 3/4" high.
259. An EPNS table centrepiece by James Dixon & Sons, the centre trumpet vase rising from a concave tripartite rising base, with gadroon border and 6 scrolling branches supporting an arrangement of 3 trumpet vases and 3 stands. 18 1/2" high.
260. A weight driven post office clock, in a stained wood frame, the dial with Roman numerals and exterior hands, brass weights and pendulum, 13" dia.
261. A German bracket clock, with metal dial, gilt metal spandrels, in polished wood case with arched hood, of 8-day chiming movement, modern, 14" high.
262. A stoneware ginger beer flagon, printed Brewery Mark 'Drake & Co, Lowestoft', with handle and wooden tap, 13 1/2" high.
263. A Wedgwood earthenware oval meat plate printed with the 'Chain' pattern, with gravy channels to the well, raised on shaped feet. 21 1/2" wide.
264. Five Victorian custard glasses, faceted ale glasses, etc.
265. A large collection of 19th and 20thC brass and iron door furniture principally letter boxes and knockers, in all about 250.
266. A 19thC. malaca Cane with Nepalese/Burmese white metal knop having figures in relief. #250-350
267. A mahogany cased Receiver Set with 2 doors over fall flap.
268. A cased Piano Accordion.
269. A tin coal box with sloping front, mounted with a brass handle together with a brass shovel with turned handle.
270. A cast metal footman, pierced oblong top on four splay feet. 12" wide.
271. A 19th C brass and pierced steel fender, with return ends, on 3 paw feet. 29".
272. A brass trivet and 3 fire irons.
273. A late Victorian brass rise and fall gas centre light.
274. An Art Nouveau brass 3-light electric electrolier.
275. A cut-crystal 6-light electrolier with prismatic drops. 20" dia, 21" high.
276. A pair of 19thC spelter candelabra, each having 4 rococo foliate scroll sconces, amorina figural pedestal and stepped and canted base. 27" high.
277. A cut-throat razor box and strop.
278. A blue and white porcelain table cruet.
279. A small table top cabinet with a selection of lepidoptery specimens.

280. A pair of pub advertising mirror signs, Brandy and Whisky.
281. An advertising board marked 'Ernest Godsall, Draper, High Street, Grantham.
282. To 297 Spare Lots.
298. Coins, lead planes, etc.
299. A Rockwell silver overlay green glass honey pot with bee finial to the hive shaped pot cover, saucer base, acid etched 'Rockwell'.
300. A Jade tea bowl, carved with foliage, on quatrefoil foot 2 1/2" dia.
301. A Delft scent bottle, painted with flowers, reserved with a landscape panel, white metal collar and stopper, inner stopper, 3 1/4" high #40-60
302. An amethyst rectangular salt, the base intaglio etched with an amorini, butterfly, and flower, egg and dart border, with gilt metal stand on scroll feet 2 1/2" square (minor chips).
303. A Sevres pot pourri circular bowl and cover, gros blue ground, the bowl mounted with a pierced gilt metal collar and two scroll handles, gilt with foliage and scrolls, the domed cover painted with panels of lovers in a garden, signed Denis and an opposing river landscape panel, pierced gilt metal mount and pineapple finial, the whole raised on a gilt metal stand with 3 strapwork and scroll feet. 7 1/2" over handles, factory marks to inner lid.
304. A bronzed metal figure of a baying hound, on rectangular hardstone plinth, 4 1/2" high, together with a treen pipe rest modelled as a pig's head.
305. A silver framed magnifying glass, pierced and cast with masks, flowers and scrolls, the handle wrought with shell finial. 9".
306. A George III silver caddy spoon, with shell bowl and bright cut handle, London 1804, by Joseph Preedy. 3".
307. A pair of Victorian silver salts, circular, with pierced borders, on 3 bun feet, sapphire liners, London 1894, 2 1/4" diameter, together with 2 salt spoons.
308. A pair of Victorian pepperettes, of ovoid outline, on 3 shell and pad feet, London 1898. 3" high.
309. A continental silver 'milk churn' pepper mill. 2 1/2" high.
310. A continental white metal tea strainer, the bowl cast with windmill, with foliate border and windmill handle. 6 1/4".
311. An enamel metal pill box, rectangular, the hinged cover decorated with a cock fighting scene. 2" wide.
312. A gilt metal pill box of circular cushion form, the hinged cover enamelled with a stylised flower head. 1 3/4" dia.
313. A continental scent flask, of compressed circular form, decorated with landscapes, gilt mounds. 2 3/4".
314. A late Victorian scent flask, modelled as 2 blue and white Willow pattern plates, silver screw top, London 1875, by S Mordan & Co. 2 1/4".
315. An Edward VII silver salt and pepper, each with diamond and rail piercing, the salt on 3 bun feet, sapphire liners, Sheffield 1904 and 1905.
316. A set of 6 teaspoons, early 20thC with faux coin bowls, knopped handles and silver 3d finials.
317. A Victorian mustard, circular, the hinged cover with shell thumbpiece, scroll handle, sapphire liner and spoon, Birmingham 1897, another similar.
318. A Victorian smelling salts bottle of panelled outline, with an unmarked white metal hinged cover with applied monogram, 3" high (maker's name to the inside of the cover).
319. A Victorian glass snuff bottle, of circular tapering form with panelled everted rim, the silver spoon with satyr finial, Birmingham 1894. 3 1/2" high.
320. A Victorian silver cigarette case, oblong, engraved overall with foliate scrolls, centred by a shield crest, Chester 1898, 3 1/2", 3.5ozs, in presentation case.
321. An Isnik glass perfume vial, tubular, painted gilt, the gilt metal mounts enamelled in colours, 6 1/2" long.
322. A cased set of George V GB coinage, Crown to 3d., 1927, together with a 1935 crown.
323. Another as above.
324. A pair of novelty sugar tongs, cast as a juggler with snakes, 4 1/2", marked .925.
325. A pair of EPNS toddy ladles, each with twist handles, brass finials cast as a Dandy and Mr Pickwick. 7 1/2".
326. A silver handled shoe horn and matching button hook, another pair, similar. (4)
327. An Edward VII silver letter opener, engraved with inch markers, incorporating a folding blade, 7 1/4" long, Sheffield 1904, together with a mother of pearl fruit knife with silver blade.
328. A continental filigree taperstick on 3 scroll feet, with attached snuffer, together with a carved ivory needle case, a white metal cross cast with flowers and foliage. (3)
329. A late Victorian amber cheroot holder with 15ct gold mount, in silver case, together with a bridge pencil in 9ct gold case and a pair of EPNS nail scissors. (3)
330. A leather trinket box and miscellaneous pieces including 2 pairs silver 3d cuff links, miniature gilt metal photograph frame and spirit labels.

331. A Clarice Cliff 'Bizarre' circular dish, painted with a geometric pattern, 3 1/2" dia.
332. An ivory netsuke carved as a recumbant fisherman and basket, signed. 2 1/2" long.
333. A gilt metal and black plush compact, oblong, the interior fitted with a mirror and manicure set, 4".
334. A gilt metal jewellery casket, of serpentine form, cast with flowers, foliage and ribbons, on 4 French cabriole legs, 4 1/2" wide, 4" high, stamped DEPOSE N.46
335. A Victorian silver double lip baluster Cream Boat, with 2 scroll handles. 4 3/4" over handles, London 1885. 3ozs.
336. A pair of Edward VII silver sardine tongs, with fish shaped nippers, the handle cast with saints, Sheffield 1901, weight nominal.
337. A George III silver fiddle pattern fish slice by Eley & Son, with pierced blade, London 1818. 6ozs.
338. A pair of 18thC silver sugar scissors, with shell bowls, marked with lion passant, date letter rubbed.
339. A pair of Victorian silver plated fish servers with King's pattern handles.
340. A Georgian silver creamer.
341. A spinning die game.
342. A Victorian yellow metal oval pendant locket with bevelled front and back glass.
343. A yellow metal brooch of glower spray design set with Burmese rubies and diamonds as flower centres.
344. A circular yellow metal pendant with pink and blue stones and a tie clip.
345. Pieces of turquoise and yellow metal jewellery comprising a foliate brooch and possible praelet parts or ear-ring drops without links or findings of similar design.
346. A six point star brooch with enamel points and a micro-mosaic floral rondel centre. Marked CG to the yellow metal back.
347. A wishbone ring with coloured and white stones.
348. A pair of Wade White Horse whiskey spirit measurer pourers.
349. A sterling silver stamp case fob, with chased decoration, impressed 'stamps' together with another, of envelope form, both marked .925.
350. A pair of silver sauce boats, each with reeded borders, acanthus scroll handle, on 3 web feet, 9" wide, London 1972. 24 ozs.
351. A George III silver mustard, of ovoid pedestal form, engraved with vacant cartouche and floral swags, below a pierced and bead border, the domed cover with urn finial, scroll handle, circular foot with bead border, sapphire

liner, London 1827, by Thomas Daniel, 3ozs. 5 1/4" high.

352. A George V silver sweatmeat dish, circular, with egg and dart rim, London 1934, 4.5oz, 5 3/4" dia.

353. A George III silver salt, oval, pierced and cast with oval bosses and swags, gadroon rim, on 4 scroll claw and ball feet, sapphire liner, London 1773, 2.5oz, 3 1/4" wide. (Minor damage.)

354. An Edward VII silver chaging or muffin dish, circular, gadroon rim to the dish, inner plate, domed cover with composition finial, Sheffield 1907, 7 1/4" dia, 18oz.

355. A George V silver 2 bottle cruet stand, with gadrooned rim, pierced body, cast handles, on 4 bun feet, fitted with 2 cut-glass bottles for vinegar and oil, Birmingham 1912, 6" wide, 3.5oz.

356. A pair of George III silver salts and matching mustard, of boat form, bright cut, on 4 reeded legs, the mustard with domed cover, torch finial and reeded handle, Dublin 1799, 4 3/4" wide, sapphire liners (one missing). 5ozs.

SILVER TABLEWARE

357. Six Old English pattern table forks, Exeter 1825 and London 1798, 12oz, (monogram)

358. Six Old English pattern dessert forks, London 1892, 9oz, (Crest).

359. Four Hanovarian pattern table forks, George III, various hallmarks and dates, 8oz. (crest to 2).

360. Five Old English pattern tablespoons, George III, various hallmarks and dates, 8.5oz (monogram).

361. Three Fiddle pattern dessert spoons, William IV, London 1830, another, Exeter 1829, 5oz, (monogram).

362. Five Old English pattern tablespoons, George III, London 1813, 10oz (monogram).

363. Five Old English pattern tablespoons, George III, London, various dates, 10oz, (one with crest)

364. Five Fiddle pattern teaspoons, Victorian, London 1864, 4oz, (monogram), together with a variety of silver teaspoons and condiment spoons.

365. A part suite of Fiddle and Thread pattern tableware, Victorian, London 1849 and 1855, comprising: 2 tablespoons, 6 dessert spoons, 12 table forks, 11 dessert forks, 4 teaspoons and 2 sauce ladles, 79oz. (crest)

366. A pair of Danish silver servers, probably by George Jensen, slightly planished, the handles pierced with leaf and berries, marked 'Steshing, Denmark'. 6".

367. A variety of silver tableware including Georgian, Victorian and later spoons, forks, sugar scoop, caddy spoon and sugar tongs, 13oz.

368. A George V silver cigarette case, engine turned with monogram to corner, Chester 1926, 3 1/2" wide, 4oz.

369. Five silver napkin rings, Victorian and later..

370. A pair of George V silver salts, circular, with everted rims, on 3 shell and pad feet, Sheffield 1922, 2 1/4" dia, together with a George V pepper pot, pierced with scrolls, sapphire liner, 2" high, Birmingham 1910.

371. A Victorian silver shell shaped sweetmeat dish, on 3 bun feet, 3 3/4" wide, Sheffield 1894, together with a George V silver egg cup, Birmingham 1930.

372. A pair of George III silver bright cut sugar tongs, London 1799, together with a variety of silver tableware and a napkin ring, 18oz gross, and a pair of Mappin and Webb plated servers with wooden handles.

373. A quantity of Victorian silver tableware, mainly fiddle and thread pattern, comprising 7 table forks, 20 dessert forks, 2 sauce ladles, sugar tongs, 13 teaspoons, 2 tablespoons, 6 dessert spoons, 2 condiment spoons. Various hallmarks. 83oz gross.

374. A late Victorian silver dish, circular, the everted rim and well chased with scrolls, 4 1/4" dia, Sheffield 1894.

375. A 2-handled sugar bowl, repousse with vacant cartouche, flowers and foliage, on circular stepped foot, bears hallmark for Birmingham 1891, 5 1/2" wide over handles.

376. An Indian silver bowl, circular, chased with temple figures, foliage and acanthus border, 5"

377. A Victorian cream jug and sugar bowl, of hexagonal panelled form, engraved with scrolls and stylised foliage, shell spout, on raised circular foot, scroll handles, Sheffield 1861, 2oz.

378. A pair of early George V silver dwarf candlesticks, each on short knopped stems, circular dished foot with gadroon border, London 1911, 4" high (loaded bases).

379. A Victorian silver baptismal mug, of campagna form, raised on 4 shell and foliage feet, double scroll handle with acanthus sheaf, London 1839, 4" high, 3oz.

380. A late Victorian silver baptismal mug, of circular form, engraved overall with flowers and foliage, diaper and design, plain loop handle, Birmingham 1893, 2 3/4" high, 2oz.

381. A silver and glass teapot stand, Birmingham 1927, 5" dia, together with a silver egg cup, London 1906. (2)

382. A rococo handled toasting fork.

383. A gold cased wristwatch.

384. A George III silver oval tea caddy with bright-cut neo-classical motifs. Bearing the marks of Fogelberg & Godbhere, London 1782.

385. An 18ct gold open faced Pocket Watch by Thomas Russell & Son, centre sweep second hand and roman numerals, the case having a central band decorated with a floriate design. Chester 1899.

386. A pair of earrings being a pear drop cut mid colour amethyst in yellow millegrain metal and twisted rope setting suspended on screw fittings stamped 9CT.

387. A white metal filigree oval Brooch with an oval centre set cabachon, possibly moonstone.

388. A white metal Wedding Band with floriate decoration, no hallmark, stamped platinum. Weight 3.8gms

389. A white metal Wedding Band with foliate decoration, no hallmark, stamped platinum. Weight 2.8gms.

390. A cultured pearl Necklace of graduated size from 5.4mm - 2.5mm, white metal clasp marked silver, set with marcasite. Length including clasp 16".

391. A 5 stone boat shaped Ring of 3 small rubies and 2 small diamonds. Hallmarked .375 London 1973.

392. A ring, being a central diamond of 25pts and 2 small diamonds on each shoulder set in white metal on a yellow gold shank marked 18ct and plat.

393. A diamond solitaire Ring set in white metal coronet setting with diamond set shoulders, 3 small stones each side with millegrain edging and cheniers. Shank stamped plat. Calculated mounted weight of main diamond 0.70cts. approx.

394. A silver Sovereign Holder in fob watch style with rococo style engraving containing a 1907 sovereign, hallmarked Birmingham but dated rubbed, on a medium weight white metal chain stamped 925.

395. A small yellow metal dragonfly.

396. A child's Charm Bracelet in yellow metal stamped 9CT.

397. A pendant, shaped as a crown set with large oval topaz (5) and 10 smaller round topaz and amethyst, the whole set in yellow metal stamped 750. Total weight 41.9grms. 4.3cms long x 3.6cm wide x 4cm deep. Average weight of topaz 18cts.

398. A 4 strand choker style cultured pearl necklace with amethyst set yellow metal clasp stamped 375 and a complimentary style bracelet with a similar clasp on 4 strands of cultured pearls with yellow metal spacers.

399. Oval Australian sapphire and diamond cluster ring set in 18ct white gold with an 18ct yellow gold broad shouldered shank.

400. A ring, being 5 sapphires alternated with 3 cubic zirconium stones in line setting over a 9ct gold shank.

401. A signed Japanese Netsuke, a man holding a large fish on a rope.

402. A signed Japanese Netsuke, a reclining man being climbed upon by a child holding a peach.

403. A signed Japanese Netsuke, a man sitting waiting for his tea kettle to boil.

404. A signed Japanese Netsuke, a smiling man holding a stick with a gourd and his hat.

405. A 5 stone diamond Ring in a boat shaped 18ct gold setting. Hallmarks rubbed. Total estimated mounted weight of diamonds 0.49cts. approx.

406. A signed Japanese Netsuke, a long bearded man sitting on a sack holding a pipe.

407. A signed Japanese Netsuke, 2 young wrestlers.

408. A signed Japanese Netsuke, a bird of prey standing picking flesh from a skull.

409. A signed Japanese Netsuke, a peasant sitting in a basket grinding corn.

410. A signed Japanese Netsuke, round bellied man carrying a fan and bag on his back.

411. A signed Japanese Netsuke, a bird's talons enclosing a monkey.

412. A pierced and engraved white metal hinged bangle inscribed 26.1.47 probably French.

413. A silver Card Case with fitted interior. Birmingham 1908.

414. A Japanese ivory netsuke, a study of a master artist instructing his young pupil how to decorate a scroll.

415. A Japanese erotic ivory netsuke, a study of a Samurai and his Geisha, both wear well decorated 'happy coats'.

416. A Japanese ivory netsuke, a study of a naked Geisha seated upon a short plank over her rope-bound washing tub and squeezing water from her long hair.

417. A Japanese ivory netsuke, a study of a cask-maker standing by his latest creation and holding his tools.

418. A Japanese ivory seal pattern netsuke, a study of a market trader seated beside a huge basket offering ears of corn.

419. A Japanese ivory netsuke, a study of 3 youths learning to ride ponies.

420. A pear shaped silver Hot Water Jug, lidded with crested shell over paw feet. Sheffield 1902. 12ozs all in.

421. A silver and gold Damascened Tazza base in the manner of Moret Ladeuil, the steel frame decorated in gold with foliage and strapwork, with the engraved crystal glass urn-shaped column applied with 3 silver grotesque mask supports, the triform scroll foot with 3 silver plaques

chased with butterflies, a dragonfly and flowers. 24cm.

422. A pair of silver Candlesticks.

423. A silver candlestick of rococo design with a loaded base (some damage) Birmingham 1905.

424. A George III silver Pap Boat with hammered rim, 5" wide, London hallmark, rubbed.

425. A white metal Cigarette Case with Russian inscription stamped 800.

426. An Edwardian VII silver 3 piece teaset of irregular hexagonal form, the teapot with composition handle and finial London 191/2 35oz. gross.

427. A silver Sauce Boat with an open scrolled handle and fluted rim. Birmingham 1927. 3ozs.

428. A silver Sauce Boat with an open scrolled handle and fluted rim. Birmingham 1931. 4ozs.

429. A Victorian Trophy of chalice form with a raised detail of cattle by Elkington & Co, London 1871. 11 1/2ozs.

430. A silver Clutch Purse with fitted interior and jade cabachon fastener stamped 875 for Latvia.

431. A silver mounted horses hoof by Aspreys of London.

432. A silver pen tray with engine turned central decoration with a reeded and foliate stepped border by Mappin & Webb, London. 1912. 5ozs.

433. A qty of costume jewellery including some silver items.

434. A qty of gent's watches.

435. An early Accurist gent's month, day ring and date ring wristwatch with stop watch function.

436. Watch.

437. Watch.

438. A miniature mandolin covered with tortoiseshell and with mother of pearl inlay.

439. A miniature guitar covered with tortoiseshell and with mother of pearl inlay.

440. A white metal cylindrical vesta case with applied decoration.

441. A decorative modern lady's fob watch in yellow metal.

442. A lady's gold plated Omega wristwatch on expanding bracelet.

443. A 3-stone diamond ring, 3 small stones in rubover settings, Art Deco styling, shank marked 18ct & plat.

444. A gent's 9ct gold wedding band and a lady's 22ct wedding band.

445. 3 yellow metal dress rings.

446. A ladies 9ct gold wristwatch.

447. 2 yellow metal locket, 1 9ct; one chain.

448. A collection of mounted natural stone cabochon brooches and other costume pieces.

449. Costume jewellery inc. hatpins, diamante and cut steel items.

450. A silver button hook. Chester assay.

451. 3 ladies watches.

DAY ONE

Commencing 2pm

801. A Sinclair C5 electrified tricycle with power pack. Provenance: from new this was a display model in the Ropsley Fox Public House, near Grantham until put into storage.

802. The Woodstock original soundtrack, 3 record album.

803. Led Zeppelin. Physical Graffiti album.

804. 'Maisie' a 3 1/2" scale scratch built steam locomotive, together with blueprints and the LBSC 1952 book detailing construction. The locomotive and tender are painted in the livery of the LNER and numbered 5762.

805. A Marklin model railway, 00 gauge 2 rail centre stud pickup consisting 4 locomotives with lights, 6 red and yellow coaches, 4 green coaches, 18 goods and freight wagons and 2 American type guards vans and track.

806. A Hornby Series tin-plate model of a station, together with track.

807. A smaller Hornby Series tin-plate station.

808. A Hornby Series tin-plate engine shed, together with track.

809. Three wood and tin-plate passenger carriages.

810. A Hornby 00 trainset and collection comprising 4 locomotives, tenders, 2 passenger carriages, 11 commercial wagons and qty track.

811. 20th C School. 'Great Central Railway six wheel coupled express goods engine No 279 Earl Kitchener of Khartum' and 'Great Central Railway eight wheels coupled mineral engine No 1190', mixed medium on card, dated Nov 1920, a pair, 12 3/4" x 31 1/2".

812-818. Spare Lots.

819. A pair of woodworking and other tool display panels, marked J & H Lacy, Long Eaton, 1922-1982.

820. A hand-built model of the USS Kearsarge (the first ship commissioned into the US Navy), in a glass case with shells, etc to base.

821. A T G Green blue banded large mug and storage jar.

822. A Grindley 4-person buffet set, a Denby cruet and a Sylvac character jug, Yeoman of the Guard.

823. A Poole pottery 'Agean' Vase, of ovoid form, painted with stylised leafage in tones of orange, ochre and brown, by Carol Kellett and Diana Davies, impressed Poole England, initialled CK & AA 84. 9 1/4" high.

824. A Burleighware squirrel Jug.

825. A pair of cut glass decanters

826. A Crown Ducal planter in 'Louis' pattern.

827. A pair of H & K Tunstall vases with desert scenes. 12".

828. An early 20thC Royal Doulton chamber pot and 2 soap dishes with drainers, pattern no D4958, Reg no 397783.

829. A toilet bowl with bamboo and bird decoration

830. A copper coal helmet

831. A leather travel case.

832. Pre-decimal price printing blocks.

833. A quantity of 1950's cocktail glasses.

834. A Lovatts Langley ware lidded jug, 2 Furnwalls jugs and a Japanese jam pot.

835. A Sadler pearl effect and gilt wall pocket and 2 other wall pockets.

836. A large Burslemware 'Pomme D'or' bowl.

837. A Beswick Dulux Old English sheepdog.

838. An Old English garden teapot, jug and pot stand.

839. A 'Tams' ware vanity set, stylised blue, yellow and orange flower decoration.

840. A ceramic biscuit barrel, floral decoration and bound cane handle.

841. A Wade heath jug, yellow ground with parakeet decoration.

842. A Moorcroft pen tray with hydrangea decoration.

843. Two Rubensware items in 'Pomegranate' pattern, being a bowl and a rectangular dish.

844. A Moorcroft vase of circular bellied form with abstract blue, purple and green decoration.

845. An extensive cased picnic set.

846. A continental coffee pot, jug and sucrere with gilt and floral decoration.

847. A Losolware Keeling & Co drainer and plate and a part fruit set.

848. A Noritake bowl with peacock decoration and a Noritake oriental style vase of triangular form.
849. A Beswick woodgrain effect vase and 4 Carltonware petunia pin trays.
850. An Arthur Wood silver shield biscuit barrel.
851. Four items of Glyn College Studio ceramics.
852. A Kaiser porcelain pheasant decorated in naturalistic colours, on moulded base with stylised flower spikes, signed U Netzsch. 18" wide (repaired).
853. Four decorative plates.
854. A 1940's marbled glass lamp.
855. A Bishop & Stonier jug with floral decoration.
856. A ceramic rose bowl and 2 Carltonware soap dish stands.
857. Copper andirons and 3 copper coal skuttles.
858. A Price Brothers squirrel and acorn teapot and jug.
859. A Clementson Bros Chusan pattern part teaset.
860. A Wade Bells whisky decanter, various teaware and glassware.
- 861-863. Four collector's teapots.
864. Five Victorian Mowbray & Co Grantham ale and lemonade bottles and 2 Bourne Water cod bottles.
865. A suitcase and contents of linen and doileys, etc.
866. Four collectors teapots.
867. Four collectors teapots
868. A Ronald Regan caricature teapot.
869. A Margaret Thatcher caricature teapot.
870. A Toybox teapot and 3 others.
871. Four caricature teapots.
872. Three fireman teapots.
873. Three Alice in Wonderland collectors teapots.
874. A small doll's house, c.1960.
875. Doll's teaware.
876. A composite baby doll and 2 others.
877. Four collectors teapots.
878. Four collectors teapots.
879. A Price cottageware teapot and another.
880. Four collectors teapots.
881. An Elvis Presley teapot and 3 others.
882. Four collectors teapots.
883. A make-up box with fitted interior, c.1950's.
884. An Arthur Wood 'Time' part teaset.
885. A Royal Albert part teaset 'Cross stitich' pattern.
886. A Sylvac buff ground Jug with squirrel handle. 7" high.
887. A Wade pottery miniature pub 'Port' Barrel with stopper and tap, painted with puce bands, gilt lines and cartouche. 5 1/2".
888. An opaque turquoise pressed glass lidded bowl on dolphin feet with sea shell decoration.
889. Three ceramic penguins, 3 ceramic birds and 2 rabbit figures.
890. Two Wade schoolgirl pig money boxes and one Wade baby pig money box.
891. A Carltonware part coffee set, 1960's.
892. A Royal Doulton 'Sea Shanty Jug' and a small Malling 'Peony Rose' dish.
893. A Walt Disney Productions Bambi figure and one of Mickey Mouse.
894. Two Spanish porcelain figures of ladies, an Irish Wade cruets and jam pot.
895. Two evening bags and 2 glass bead mats.
896. A Beatles pencil tin.
897. Susie Cooper China
898. A silver plated punch bowl and cups.
899. A Wade 'Woodmist' teapot, creamer and sugar bowl and a 'Homemaker' plate.
900. A pair of 'Bunnykins' sauce dishes, Susie Cooper dessert dishes and other small items of china.
901. An oak cased mantel clock and a novelty clock with dancing figures.
902. Two brass candlesticks, pink pressed glass items.
903. Six Sylvac mugs commemorating The Peoples March 1983, a Goss sun dial and other ceramics.
904. A Royal Doulton stoneware bowl, blue flowers and mottled blue glaze, and a hand painted example.
905. A miniature Royal Doulton Lambethware jug, a Goss cup and saucer and other decorative china.
906. A Burleighware jug with Lupin decoration.
907. A hammered copper jug.
908. A pair of green velvet and brass bracket shelves.
909. Captain Scarlet's Thunderbird Annual, printed paper boards; and Alice other children's books (box)

911. Whieldonware biscuit server, Sadler teapot, creamer and sugar bowl, and a Hancock & Sons vase.
912. Two mirror mounted swans.
913. A hand painted Losolware dish and 2 mottled glaze vases.
914. A Carltonware coffee set - footed cups with striking black on white floral decoration.
915. Three items of Radford china, A Beswick flower bowl and a Coalport candlestick.
916. Two floral decorated meatplates, one blue and white meatplate and another.
917. A George Jones fine china rose decorated lobed bowl.
918. Edwardian glassware and 3 1970's Denby pieces.
919. Portmerion Botanic Garden cruet, salad bowl, storage jar and medium jug.
920. Portmerion Botanic Garden 5 dinner plates, 4 side plates and 2 oval plates.
921. Portmerion Botanic Garden 12 saucers, 3 cups, 8 large saucers, 1 dessert dish, 1 soup plate.
922. A Beatles jigsaw, no box, c.1966, one of a series.
923. A stoneware ale bottle with an impressed plaque stating 'London Stout from R J Royall, Grantham'.
924. Early Plush Mickey Mouse figure with felt hands and feet 10" tall. Reg No 73068 visible on neck.
925. A Bendy style toy model of Noddy and his car.
926. A Dinky Supertoys Foden flat bed Lorry. (AF)
927. A Joe 90 annual.
928. A doll's Silver Cross coach built twin pram in cream and navy.
929. A baby's pram by Royale.
930. A rocking horse, dapple gray with leather tack. 30" tall approx.
931. A wooden silhouette rocking horse. 23" high approx.
932. A 'Thunderbolt' metal pedal car.
933. A set of seven plaster figures of the 7 dwarfs.
934. A large gilt and black wall clock and accompanying 4 pictures.
951. Beano 1980-1985, various.
952. Beano 1991-1995, various.
953. Beezer 1981-1986, various.

954. Beano 1987-1988, various.
955. Wizard, Jackpot, Whizzer and Buster comics, various dates.
956. Beano 1989-90-94, various.
957. Beano, various dates, 1971-1979.
958. Cor, Tornado, Tiger, 2000 AD, Cheeky, Spiderman and misc, various dates.
959. Nutty, Beezer, Topper and Beano comic library, various dates.
960. Eagle and Tiger various dates, all 1980's
961. Eagle comics, 1980's, various dates.
962. Beezer, Topper and puzzle books, various dates.
963. Victor, odd pre-decimal, otherwise various later.
964. Whoopee, 1970's and 80's, various
965. Dandy comic library from No 1-134.
966. Dandy 1970's and 1980's, various.
967. Beano cartoon books, Warlord, Topper and Roy of the Rovers.
968. Dandy comic library, various dates.
969. Beano, 1980's, various.
970. Battle comics, 1980's, various.
971. Eagle comics No 1 (dated 14th April 1950), No 21 and one from 1951.

Followed by a 50 Lots of
Antiquarian & Collectors Books.

DAY TWO

Commencing 10am

1200. A slender tall Shop Display Cabinet with glass shelves, mirrored back and sides.
1201. A Victorian oak windout dining table with moulded top, inlaid with a Greek key border, burr walnut frieze, raised on 5 part ebonised fluted legs. 4'9 wide x 5'6" min and 14' max.
1202. An early 20thC child's cot, the head and foot boards transfer printed with nursery scenes
1203. A 19thC rococo style fire screen, moulded and carved with C scroll and acanthus foliage, on twin end supports, needlepoint panel. 43" high.
1204. A teak occasional table, the oval top supported on an elephant pedestal, the stepped square platform base on twin end supports. 28" wide.

1205. An early 18thC provincial walnut side table, the rectangular top with moulded edge and box line inlay, the full width frieze drawer with conforming inlay and brass bail handles with cutaway backplates, on cabriole legs with pad feet. 30 1/2" wide. (Crack to top and some worm.)

1206. A set of six mahogany balloon back dining chairs, with strapwork and acorn tie-rail, overstuffed serpentine seats, turned and lobed front legs, peg feet.

1207. A mahogany 3-tier cake stand with scroll uprights, turned handle, 37" high.

1208. An Edwardian mahogany window table with square moulded top, drawer, square taper legs and spade feet.

1209. A Victorian mahogany firescreen, the embroidered panel with a dentil and scroll frame, turned pillar, on 3 downswept feet.

1210. A Victorian mahogany toilet mirror, square plate within cushion frame on scroll uprights, shaped base with 2 drawers. 20 1/2" wide.

1211. A 17thC oak gateleg serving table, of rectangular cusped form, with single dropleaf, on turned legs, block feet joined by moulded stretchers, single drawer to one end with turned knobs. 33 1/4" x 33".

1212. An Edwardian mahogany serpentine sideboard with brass handles.

1213. A gramophone cabinet.

1214. A pair of late Victorian walnut salon chairs with Art Nouveau carved back.

1215. A late Victorian carved oak chaise longue, the back panel carved with alternating rondels, acanthus carving to the bulk, raised on fluted legs.

1216. A pair of 19thC barleytwist walnut open armchairs with studded leather upholstery.

1217. A late Victorian walnut pot cupboard.

1218. A George III flamed mahogany chest of 2 short and 3 long graduated drawers with string inlaid caddy top, oval pressed brass lion mask loop handles and bracket feet. 36" wide.

1219. An Edwardian side cabinet, the upper part being a rotating rectangular box with sliding doors and lift flap and marquetry panels, over a shelved base with square taper legs. 2'8" wide.

1220. A mid 17thC oak coffer with 3 panel hinged lid, over 2 panelled base, raised on styles. 3'9" wide, 2'1" high.

1221. A mid Victorian mahogany display cabinet on stand. 5' high, 2'4" square.

1222. A harlequin chest on cabinet, being the former part of a campaign chest on a 2-door cupboard base.

1223. A 17thC panelled oak mule chest with plain hinged top over 2 hexagonal panels and single drawer, raised on styles. 4'1" wide, 2'10" high.

1224. An Edwardian ebony strung dressing table and marble top washstand.

1225. A Victorian flamed mahogany scotch chest of 2 short and 3 long graduated drawers with knob handles and barleytwist columns. 3'8" wide.

1226. An Adam style Sideboard with 2 lift compartments over drawers and doors with carved patera and swags, raised on cabriole legs, early 20thC. 5' wide.

1227. An Edwardian mahogany bedstead.

1228. A Victorian flamed mahogany cabinet, having moulded cornice over 2 glazed doors and single drawer base on plinth. 3'2" wide, 5'2" high. #150

1229. A Wurlitzer upright piano, serial no 2809122, model no 2981WAL.

1230. A burr walnut upright overstrung piano.

1231. A Victorian upright piano.

1232. A late Victorian rosewood marquetry upright steel framed piano by John Broadwood & Sons, serial no 98576.

1233. An Edwardian beech piano stool.

1234. A late Victorian walnut double wardrobe and dressing chest with swan-neck pediment and dentil cornice.

1235. A fine Edwardian rosewood marquetry chiffonier, the upper part having bevelled plate galleries, shelves and broken arch pediment, the lower part having single drawer, 2 glazed doors enclosed by bow front cabinets and shelf compartments. 5' wide, 8'4" high.

1236. A Victorian mahogany bowfront chest of 2 short and 3 long graduated drawers with turned knob handles and feet. 3'4" wide.

1237. A 1920's oak lowboy with cabriole legs.

1238. A late Victorian mahogany cabinet bookcase with moulded cornice, 2 glazed doors over single drawer, 2 doors and plinth. 6'11" high, 3'6" wide.

1239. A William IV flamed mahogany twin pedestal sideboard with gadrooned carving to the columnar bow front doors. 7' wide.

1240. A Victorian flamed mahogany 4-door breakfront sideboard with splashback, 3 cushion rolled drawers over 4 panel doors, on plinth. 6'1" wide.

1241. A Victorian oak banker's desk with drawer and gallery platform with slope to the top, drawers with knob handles to pedestals and frieze.

1242. A Riley metamorphic snooker and dining table with rise and fall mechanism and fluted legs. 4' x 7'6"

1243. An oak refectory table in Elizabethan style, 3 plank top, scoop carved frieze, bulbous legs and end stretchers. 6'3" x 3'2".

1244. A set of 6 19thC oak ladderback dining chairs with rush seats, turned stretchers and pad feet.

1245. A 19thC carved oak centre table with canted rectangular top, foliate frieze with drawer and mask corners, reeded pendant drops, each support having 2 cup and cover uprights, carved stretcher and acanthus carved scroll feet. 4'4" x 2'10".

1246. A Victorian walnut oval loo table with quarter veneered and knulled tilt top over a reeded pillar, on 4 scroll legs with paw feet. 5' x 3'7"

1247. A 19thC mahogany dining table with oval flaps.

1248. A 19thC mahogany Pembroke Table with reeded legs.

1249. A late Victorian scratch carved walnut open armchair with brown rexine upholstery.

1250. A Victorian mahogany step commode.

1251. A Victorian marble top pot cupboard.

1252. Three Art Nouveau mahogany high-back dining chairs with green velour upholstery.

1253. A late Victorian walnut part salon suite comprising open armchair, 3 high chairs and 3 nursing chairs.

1254. A set of 4 1920's Queen Anne style mahogany dining chairs with cabriole legs.

1255. A pair of Victorian oak balloonback dining chairs with outspread legs.

1256. A set of 4 Victorian birch balloon-back dining chairs with turned legs.

1257. A Flemish oak court cupboard with lunette and floral demilune carved frieze. 4'8 wide, 5'10 high.

1258. A pair of 19thC Charles II style Hall Chairs.

1259. A late Victorian mahogany double wardrobe with moulded cornice, mirrored door and drawer base.

1260. A late Victorian walnut dressing chest with brass loop handles.

1261. An Art Nouveau oak washstand with marble top and tile back.

1262. A child's oak rush seated chair.

1263. An early 19thC oak school desk on stand.

1264. A mahogany and beech kneehole desk.

1265. A buttoned leather office chair.

1266. A Victorian beech and elm swivel office chair.

1267. Two door glazed bookcase.

1268. A watchmaker's pine chest of 3 x 12 drawers.

1269. An Edwardian string inlaid satinwood envelope folding card table with drawer, square taper legs, spade feet and castors.

1270. A fine Victorian walnut centre table with circular moulded top with 14 sectional veneers, tilting on a 3 pillar basket base with cylindrical boss, supporting 3 cabouchon carved scroll feet with acanthus toes. 4'4" dia.

1271. A leather upholstered wing armchair on square frame. (AF)

1272. A leather covered wing armchair on square frame. (AF)

1273. A 19thC beech and elm ladderback kitchen chair.

1274. A rush seated barback chair.

1275. A late Victorian walnut framed 3-piece suite with blue and white stripe upholstery, together with a pouffe.

1276. A late Victorian carved walnut Chaise Longue with turned legs.

1277. A Victorian mahogany Wardrobe.

1278. An oak bureau with fall flap over 3 drawers.

1279. A late Georgian oak chest on chest, the upper part having moulded cornice over 3 short and 3 long graduated drawers, the lower part having 3 graduated drawers and bracket feet, with brass swan-neck handles. 5'9" high, 3'8" wide.

1280. A beech and elm wheelback Windsor Carver Chair.

1281. A George III mahogany side chair with reeded and patera back.

1282. A mahogany writing desk with surmount.

1283. An early 18thC walnut veneered side table with cross-banded top, frieze drawer with pear-drop handles, turned uprights, shaped stretcher and turned feet. 36" wide.

1284. *A George III mahogany gentleman's Dressing Chest converted to a drinks cabinet. 38" wide, 36" high.

1285. A George III cross-banded mahogany dressing table with 3-section top incorporating mirrored centre and lift-flap compartments to the side, configuration of brushing slide, 3 real and 2 dummy drawers, with oval gilt handles, on square taper legs. 36" wide, 22" deep.

1286. An Edwardian window table, the octagonal top (split) on turned circular legs with raised undershelf on ceramic castors.

1287. Three mahogany yoke back open armchairs with bobbin turned uprights, acorn finials and shaped apron, bobbin turned legs joined by shaped stretchers.

1288. Set of 4 with faux rosewood frames shaped up-rail and tie rails, raffia seats to 2, new cane to 2, on splay legs.

1289. An oak cabinet on stand with triple panel top, the fall front carved with quatrefoil motif lunette frieze on baluster turned legs joined by plain stretchers. 36 1/2" wide.

1290. An oak dinner wagon carved with flowers and leafage, 2 tiers on barleytwist legs joined by stretchers.

1291. A circular topped chess table on vase turned column and 3 downswept feet. 21 1/2" wide.

1292. A Victorian mahogany occasional table with shaped and moulded top and 3 leg basket base.

1293. Fox, George: The History of Pontefract in Yorkshire, folding map, plat

1294. An oak dresser base with 3 drawers, panelled doors and dog-kennel centre. 5' wide.

1295. A Victorian mahogany half-tester bed.

1296. Two 'Dixie' cherrywood shop cabinets

1297. An oak side table, rectangular top with moulded edge over single frieze drawer carved with anthemium, iron swing handle on barleytwist and ring turn legs joined by plain stretchers. 24" wide.

1298. An 18thC oak gateleg dining table with twin oval flaps supported on turned legs and square stretchers. 42" x 51".

1299. An early 20th C oak drop leaf table with twin oval flaps on barleytwist supports, joined by plain stretchers.

1300. A barleytwist oak dropleaf table.

1301. A circular leather top coffee table with cabriole legs.

1302. Oak extending dining table (2 extra leaves) anthemium and lunette moulded border on 4 baluster legs carved with anthemium joined by 2 incurving galleried stretchers centred by a finial. 89 1/2" extended, together with a set of 6 dining chairs, the cresting rails carved with lions, shell and scrolls.

1303. An early 19thC oak table with single drop flap on slender turned legs joined by plain stretchers. 44 1/2" wide.

1304. A Victorian mahogany serpentine Side Table with 2 frieze drawers, barleytwist columns and undershelf. 4' wide.

1305. An Adam Revival mahogany breakfront sideboard with ribbon and pendant husk carved doors, reeded and urn finial centre drawer, raised on square taper legs. 6' wide.

1306. A Victorian walnut open Armchair with floral upholstery and turned legs.

1307. An early 19th C continental flamed mahogany Secrétaire à Abattant with fall front resting over three stepped drawers.

1308. An 18thC. oak bureau, with profusely carved fall front, fully fitted interior, 2 over 3 graduated drawers, all carved with acanthus, anthemion and scrolls, on bracket feet. 37" wide.

1309. A late Victorian mahogany mirrorback chiffonier of rococo design, with shaped and bevelled glass and shelves to the upper part, blind fret carved frieze and serpentine glazed doors to the base, on cabriole legs.

1310. A Victorian 3-fold dressing screen with embossed paper panels.

1311. A Victorian mahogany Cabinet with moulded cornice, grille compartment over 2 folding doors to the upper part, the lower having 3 drawers with brass handles over 2 panelled doors, raised on plinth. 3'9" wide, 8'6" high.

1312. An antique oak housekeeper's cupboard with galleried upper part over 4 (2 sliding) doors on a 3 drawer dresser base, raised on legs, profusely carved throughout.

1313. An oak press cupboard on stand, moulded cornice over 2 panelled doors profusely carved with flowers and figures within guilloche borders, the interior fitted with sliding shelves (one only) with full width drawer below, carved with vine and grapes, centred by a head and shoulders carving of a gentleman, the stand with shaped apron and square legs. 47 1/2" wide.

1314. A Victorian flamed mahogany mirrorback sideboard with 2 cushion drawers over 2 doors.

1315. An oak corner cupboard with single door enclosing 2 shelves profusely carved with anthemium, acanthus and scrolls. 27" wide.

1316. A reproduction mahogany corner whatnot.

1317. A late Georgian mahogany carver chair with reeded arms and turned legs.

1318. A Victorian mahogany commode chair.

1319. An Edwardian mahogany occasional table.

1320. A 19thC Hepplewhite carver chair.

1321. A pair of Victorian mahogany ballon-back dining chair.

1322. A late Victorian walnut gentleman's armchair with shell and leaf carved cresting rail and reeded legs.

1323. A matching set of 6 dining chairs.

1324. A matched set of 5 dining chairs.

1325. A Victorian mahogany breakfast table with moulded rectangular tilt top over a turned pillar, on 3 sabre legs. 3' x 4'.

1326. A pair Ibex kitchen chairs.

1327. A William IV mahogany barback carver chair.

1328. A leaded glazed oak 2-door cabinet bookcase top.

1329. A George III oak bureau with fall-flap concealing fitted interior, over 4 graduated drawers, with bracket feet. 38" wide.

1330. A pair of carved Blackamore figures holding a jardiniere overhead, on green and gilt plinths. 6'8" high.

1331. A Victorian gilt framed overmantel mirror. 4'8" high, 4' wide.

1332. A full size 'London Bridge' style mahogany snooker table.

1333. Set of 6 Victorian rosewood balloonback salon chairs, carved with scroll moulded top rail and tie rail, serpentine overstuffed seat and on cabriole legs.

1334. A modern italian panel gilt open display shelves, breakfront bar and 2 stools.

1335. A modern bird garden rug.

1336. A Shiraz Rug.

1337. A large blue ground Shiraz carpet.

1338. Beige ground handmade woollen Abusson Needlepoint rug 72" x 48"

1339. @Red ground hand made woollen Persian Shiraz carpet 111" x 80"

1340. An Indian multi coloured rug.

1341. An early 20thC Turkish rug, blue ground with cream medallion and multi borders.

1342. An Herati rug with multi-lozenge central field and multi border in cream, blue and red.

1343. A red ground Shiraz carpet with floral central field and cream border.

1344. A Victorian oval gilt wall mirror.

1345. An Art Deco bi-colour circular wall mirror.

1346. An Edwardian oval mahogany wall mirror.

1347. An oval bevelled wall mirror.

1348. An oval centre table with Victorian marquetry 1/4 veneered Loo top.

Immediately followed by...

1500. 19thC. English School. Portrait miniature of a young lady with a bonnet, gold necklace and lace frill.

1501. A church interior scene, signed E Francis. 15" x 18".

1502. After Alken (H). 4 sporting hand coloured engravings, grouse, partridge modern mounts. (4)

1503. After Joseph Farquharson. "Evening The Wild Woods Among", colour prin bears trade guild blind stamp.

1504. After Joseph Farquharson. "When the West with Evening Glows", colour bears trade guild blind stamp.

1505. J Finlayson after C Read, mezzotint, Elizabeth Duchess of Hamilton & B 19s", Old gilt frame

1506. After Morland. 'The Dram', black and white mezzotint by Ward, 18thC. Image size 19 3/4" x 15 1/2".

1507. Copley Fielding. Rocky river landscape with wooded banks, watercolour, bears signature and dated 1851. 12 1/2" x 19 1/2".

1508. After Cecil Aldin. A set of 4 gilt framed colour prints depicting various hunts.

1509. 19th C English School. Corn Stooks in a field, village beyond, watercolour. 9 3/4" x 18".

1510. L Gianni. A pair of continental lake scenes with figure of a lady amongst flora and stone walling to the foreground, watercolour, signed. 15 1/2" x 9 1/2".

1511. Bishopp. A gilt framed watercolour of a house interior.

1512. Dancker Danckerts after Berchem, engraving, Dutch Rustic Scene,

1513. J R Smith after J Ward: coloured mezzotint, The Wounded Soldier,

1514. T Cook. A colour engraving after Hogarth, Evening.

1515. John Gilpin caricatures of a horse racing past a pub skittle match, 15"

1516. Gainsborough Dupont after T Gainsborough: mezzotint, Queen Charlotte,

1517. Valentine Green after A Van Dyke: mezzotint, Henry Danvers

1518. G S & J G Facius after Benjamin West, stipple engraving, Mr West and published by Boydell, 25" x 21", Old Hogarth frame

1519. Valentine Green after Joshua Reynolds: mezzotint, Lady Betty Delme, 15

1520. A large oil on canvas depicting a bridge.

1521. C W Freezor. Lighthouse on a jetty, stormy sea, sepia gouache. 18 1/2" x 11".

1523. Stipple engraving of a grandiose gentleman, 7" x 9", old plaster frame.

1524. A 19thC oil on oak Panel depicting the birth of Christ.

1525. 19thC English School. Landscape - figures around a pond, with substantial house on the right, unfinished, watercolour. 8" x 12".

1526. Morley (Robert) (1857-1941). 'Fellow Prisoners', mixed medium depicti Verso label having artist's name, title and account L Folks No 33159.

1527. Six pencil sketches of varying subjects (5 framed, 1 unframed).

1528. Gordon Cummins. "Steep Hill, Lincoln" ink and wash, signed bottom left 8 1/2" x 10 3/4".

1529. A. E. White. "City Gate, Lincoln", oil on board, signed and dated 1904, bottom left 15" x 12 3/4".

1530. J R Smith after Romney: mezzotint, Serena, 12" x 14", Old Hogarth

1531. George Townley Stubbs after G Stubbs, stipple engraving, Mambrino, dam frame

1532. A G Brown. An Arab, encamped at the edge of a village and lake, signed A G Brown RSW, watercolour, 10" x 17".

1533. Bartolozzi, after Romney, stipple engraving, Charlotte Jane Windsor, 7

1534. After Rowlandson & Pugin. "Herald's College The Hall" by Bluck, pub 1808 by Ackermann, col. aquatint, pl. size 9" x 11".

1535. After Kneller "Sarah, Duchess of Marlborough and "Countess of Ranelagh" copper engravings c.1786. 7 1/2" x 7 3/4".

1536. S M Paterson. Pair of en grisaille pictures of boats and a seated gentleman.

1537. Spare lot.

1538. Greenwood "Map of the County of Essex" 1831, hand coloured vignette of Audley End House 23 3/4" x 27 1/2".

1539. A series of Japanese woodcuts, coloured, depicting ladies in landscapes and ladies in a dressing room (5).

1540. 18thC English School. Half length portrait of a lady, facing half right, in blue dress with lace trim, black shawl and lace bonnet, oil on canvas, 30" x 25".

1541. 20thC School. Woodland landscape, oil on canvas, 16" x 20".

1542. 19thC English School. 'Cromwell's Bridge', oil on canvas, 21 3/4" x 27" (tear to canvas)

1543. MacWhirter. Winter landscape with driver and sheep, oil on canvas, bears signature.

1544. Frith. 'Jane Roe - Mrs Burne', shadow portrait, full length, 11 1/2" x 8 1/2", signed and dated 1839.

1545. 19thC Japanese. River landscape with bathers, another, Pavillian in a park, coloured woodcuts, signed, 12 1/2" x 8 1/2".

1546. A trade display 'Fitchett & Woollacott Ltd. Hardwood specialists, Nottingham', showing examples of 48 different woods, framed,

1547. Louis Wain (attrib). 'Ma! I want to get up! Its 9 oclock', sepia crayon, signed bottom left. 8 3/4" x 6 1/4"

1548. Louis Wain (attrib). 'Astonished', sepia crayon, signed bottom left. 8 3/4" x 6 3/4".

1549. Louis Wain (attrib). 'Mind You Me!', sepia crayon, signed bottom left. 6" x 5".

1550. Louis Wain (attrib). Untitled, head and shoulders study of a cat, sepia crayon, signed bottom left, 7" x 6".

1551. A gilt framed picture of Christ.

1552. Gudrun Sibbons. A pair of flamenco dancers, oil on canvas.

1553. J Parker. The Captive, a pencil sketch of a chained tiger, signed and dated 1915.

1554. A woolwork picture of birds, in a mahogany frame.

1555. Richard Earlom after A Van Dyke: mezzotint, Sir Thomas Chaloner, 11,"

1556. G White after G Kneller: mezzotint, Madame Smith 9" x 13", old frame

1557. J R Smith after G Morland: coloured mezzotint, The Fern Gatherers, 23"

1558. An oak framed colour print of a short-horned bull.

1559. Three colour prints of pixies, after Margaret Tarrant.

1560.

1561. Framed print 'Return of the Few'

1562. T E Francis. Village scene with thatched houses, figures and horse and cart, watercolour. 11" x 15".

1563. Albert Goodwin. Lu**rne Dawn, watercolour, htd in white, signed. 7" x 11".

1564. Albert Goodwin. Nymizon Rhine, watercolour, htd in white, signed. 7" x 10". NB. Sold as a pair with the previous lot in 1968 for 85 guineas with invoice from Beryl Kendall, Kensington High Street.

1565. Herbert R Cole. A steam ship and other boats in harbour, watercolour, signed and dated 1917. 14" x 10".

1566. Cecil Hodgkinson. Mallards flying over the fens, watercolour, signed. 13" x 20".

1567. 19th/20thC School. Landscape with figures on a beach,

1568. Joanne Pemberton Longman. Jays, a still life of dead birds, oil on canvas, initialled and dated 1961. 24" x 20".

1569. A Dudley. Pair of watercolours, still life of fruit on a table with stein and vase, signed. 31" x 11".

1570. A Georgian pollard oak framed picture on glass with foil back depicting a bird and fruit in a basket.

1571. A Victorian velvet and gilt framed portrait of 2 young girls.

1572. Landscape print and 2 silk prints.

1573. G.E. A rural landscape with figures and horse on a country path passing a thatched cottage, oil on canvas. 18" x 24".

1574. G.E. A rural landscape with ducks and cattle at the water's edge and thatched cottage nearby, oil on canvas. 18" x 24".

1575.

1576. 19thC School. Landscape river scene, probably the Nile with figures, cattle and boats in the foreground, oil on canvas laid to board. 30" x 44".

1577. David Shepherd. Winter Plough. Colour print by Solomon & Whitehead, signed in ink by the artist. 19 3/4" x 30".