

Established 1900
-GOLDINGS-
AUCTIONEERS & VALUERS

AUCTION SALE CATALOGUE



Period & Decorative Furniture,
Works of Art, Clocks, Silver,
Jewellery, Glass, Ceramics, Metalware,
19th & 20th Century Collectables, etc.

Wednesday 10th & Thursday 11th October, 2001

Principal
Colin R. Young FNAVA

Consultants
C. Robin Hall FRICS FAIV
Ian J. Shaw FRICS FNAEA



National Association of
Valuers & Auctioneers

Golding Young & Co.

Old Wharf Road, Grantham
Lincolnshire, NG31 7AA

01476 - 565118

Fax
(01476) 561475

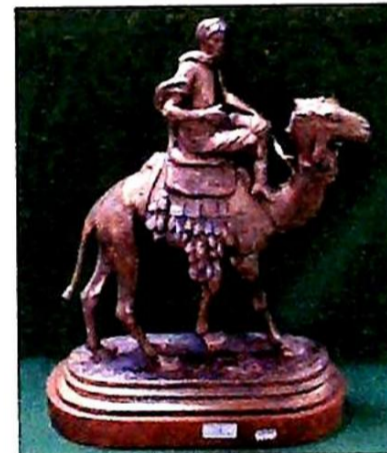
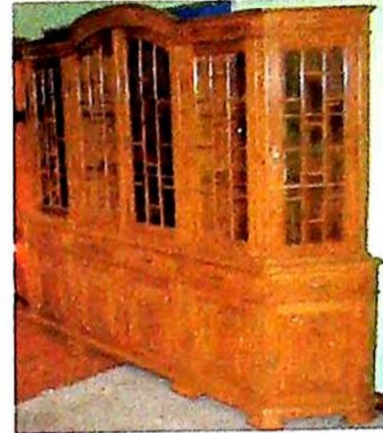
E-Mail
enquiries@goldingyoung.com

Internet
<http://www.goldingyoung.com>

Associate Office
Goldings, Chartered Surveyors & Estate Agents
45 High Street Grantham NG31 6NE (01476) 590211

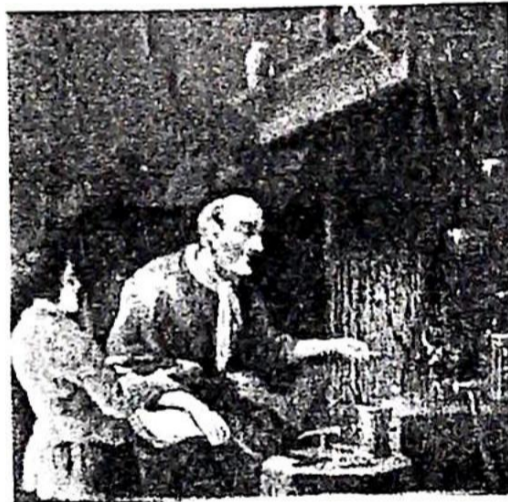
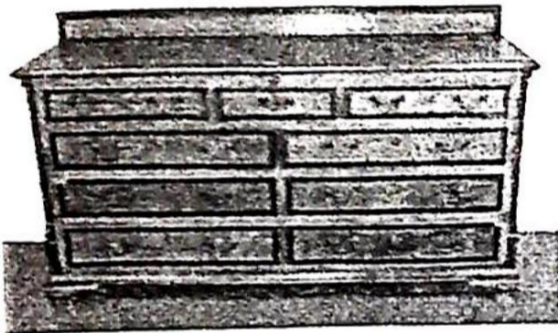
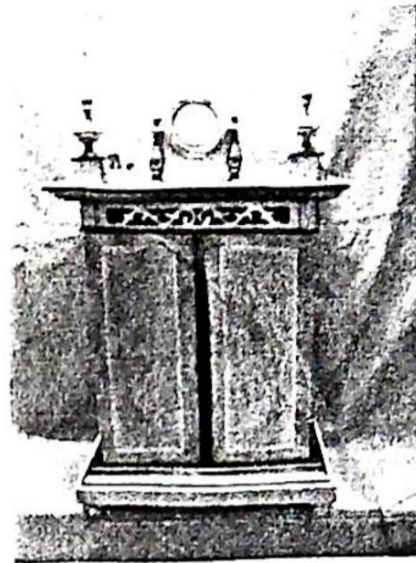
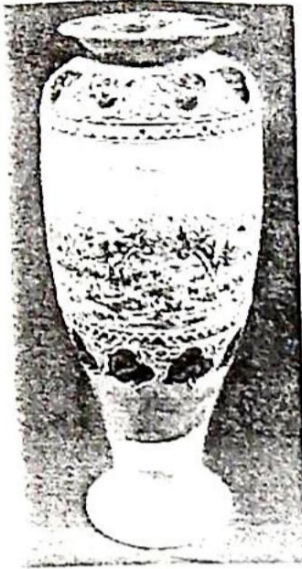
SELECTED SALE IMAGES

From
www.goldingyoung.com



SELECTED SALE IMAGES

From
www.goldingyoung.com



*Upon instructions from Executors, Solicitors, Accountants,
Private Vendors and others*

Golding Young & Co will sell by Auction

The residual contents of Property Clearances from throughout the region being...

**Antique Collectables, Metalware, Silver,
Jewellery, Ceramics, etc.**

On Wednesday 10th October, 2001 at 10am
Followed by...

Pictures at 1pm

19th & 20th C. Collectables at 2pm.

On Thursday 11th October, 2001 at 10am

**Antique and Decorative Furniture,
Oriental Carpets and Rugs**

Viewing : Tuesday prior 2pm to 7pm and Saledays from 9am to 10am

Lot Enquiries: Suki Burnett, Jan Squires and Colin Young

Vendor Enquiries: Marie Scoffield

Telephone: 01476 • 565118

Fax: 01476 • 561475

Email: enquiries@goldingyoung.com

Buyers Hotline: 01476 • 575202

For Lot Enquiries & Commission Bids Viewday & Saledays Only



THE SALE INVENTORY

WEDNESDAY 10th October, 2001

Commencing 10am

1. An 18thC oak and mahogany longcase clock of 30 hour movement, the brass dial with Roman and Arabic numbers, matted centre with stars and moon and calendar apertures, bird boss to arch inscribed JOHN WYLD, NOTTINGHAM, the hood with broken swan-neck pediment, brass finial to centre, 84" high.
2. A mahogany longcase clock of 8-day movement, late 18thC, the painted arch dial with Roman numerals, moon phase to arch, the centre inscribed ROBERT KELLETT, BREDBURY, with figural spandrels, the hood with swan-neck and block pediment, reeded square pilasters, the trunk with a gothic moulded door flanked by half square reeded columns, the whole inlaid with satinwood lines. 88 1/2" high.
3. An early 20thC mahogany longcase clock, the arched brass dial with silvered chapter ring and chime ring to arch, Roman numerals, the serpentine hood with foliate cresting, composite columns flanking the dial, the trunk with glazed door, flanking composite columns, on bracket feet, 86" high.
4. An oak longcase clock by C R DYSON of BOURNE, of 8-day movement, the brass dial with Roman and Arabic silvered chapter ring, rolling ship to the arch, seconds dial to the matted centre, the hood with broken arch and fluted pilasters, the plain trunk with canted corners, on bracket feet. 84 1/2" high.
5. An oak longcase clock of 30 hour movement, the square brass dial with silvered chapter ring with Roman numerals, matted centre, foliate spandrels, the hood having guilloche moulding to the frieze, turned pilasters, narrow trunk and plinth base. 75" high.
6. A Vienna regulator wall clock with weight-driven movement, the 2-part enamel dial with Arabic numerals, numbered 51420 + 7/27" to the backplate, brass weights, the walnut case with nulled frieze to ogee pediment, fluted columns with volute capitols, 38" high.
7. A 19thC mahogany wall clock, the circular white painted dial with Roman numerals and signed PRESTON, SPALDING, 15" diameter.
8. A German wall clock by GUSTAV BECKER, the 2-part dial with enamel chapter ring, Roman numerals, gilt metal centre and bezel, of 8-day striking movement, the oak case with an architectural arched pediment with fluted urn finials, moulded and fluted columns flanking glass door, and with finial pendant, 40 3/4" high.
9. A 19thC Vienna wall clock with embossed brass dial, enamel chapter ring 33" high.
10. A 19thC mahogany wall clock, the circular white painted dial with Roman numerals and signed CLARK & SON, GREENOCK, 15 1/2" dia.
11. A clock picture depicting Big Ben.
12. A 19thC mahogany drop-dial wall clock, the circular enamel dial with Roman numerals and signed WHEATLEY, CARLYSLE, with foliate scroll brackets, 36 1/2" high.
13. A Jaeger-Le-Coultrre 'Atmos' perpetual motion clock, the square dial with Roman numerals, contained within a gilt metal case, 9" high, 8" wide.
14. A 19thC slate mantel clock of architectural outline, having an 8-day Brocot movement, 2 part enamel dial with Arabic numerals, flanked by classical columns, the plinth centred with gilt metal mask and foliage, 20" high. (AF)
- 14A. A 19thC slate mantel clock of architectural outline, 10".
15. A 19thC French slate clock garniture, the clock with gable pediment, the tympanum cast in low relief with classical figures and animals, black and gilt metal circular dial signed T R RUSSELL, flanked by 4 composite columns, stepped plinth, 8-day striking movement, the 2 'Warwick' urns with egg & dart borders, cast with masks in high relief, interlaced handles on reeded socle.
16. A 19thC slate and marble mantel clock of architectural outline, the 8-day French movement striking on a gong, circular enamel dial with Roman numerals, the square case having gable pediment, inlaid with marble panels, on oblong plinth, 18 1/2" high.
17. A French brass cased 'Napoleon' mantel timepiece, the white dial with Arabic numerals, the case with a gadroon front border and applied cast leafage.

18. A 19thC gilt metal mantel clock by JAPY FRERES, having a porcelain dial painted with flowers to the centre, Roman numerals within cartouches, and with a painted figure landscape below, the case cast with pineapple finial and ribbons, cornucopia and flowers and strapwork, of 8-day movement, striking on a bell, 13 1/2" high.
19. A 'REEVE' musical clock movement, of 8-day movement, with chiming, striking and musical train, having a brass dial with Roman chapter ring, chime/silent to the arch, (unfinished); together with 'The Musical Clock' by Claude B Reeve.
20. An early 19thC French ormolu mantel clock by HENRY MARE, the 8-day movement having silk suspension, striking on a bell, the enamelled circular dial with Roman numerals, the case surmounted by a figure of a 16thC gentleman and hound, raised on a slate plinth, the base cast with urn, foliage and strapwork, 15 1/4" high.
21. A late 19thC German small mantel timepiece, the gilt metal case having globe finial, foliate cast columns and inset with tortoiseshell panels, the 2-part dial with Arabic numerals and gilt metal centre, 6 1/2" high.
22. A 19thC Boulle mantel clock, the cast gilt metal dial with blue cartouche numerals, the case applied with a foliate finial, mask and scroll cresting, raised on 4 scroll feet, of 8-day movement striking on a bell, 12 1/4" high.
23. A repeating alarm carriage clock, with white enamelled dial and subsidiary alarm dial, 8-day movement with hour and half-hour strike, the champleve case decorated with flowers and foliage, 6 1/2" high.
24. A Victorian polished slate mantel clock of architectural form with 6 brass pillars, gilt dial with enamel chapter ring, 8-day movement.
25. A German alarm clock modelled as a pocket watch. 8" high.
26. A Victorian black lacquer mother of pearl wall clock with octagonal case inlaid with mother of pearl.
27. A set of brass and mahogany postal scales and weights by Perry & Co, London.
28. A flo-blue part dinner service comprising 4 graduated oval meat plates, 3 graduated tureens with covers, 1 ladle, 6 x 3 graduated plates, marked Belmont Durability JHW & Sons, Hanley, England, semi porcelain.
29. A Victorian ale glass with faceted bowl.
30. A Victorian crystal mallet decanter.
31. A pair of Regency hob-nail cut crystal spirit decanters. (AF)
32. A Copeland late Spode 'Lyon' pattern pottery: octagonal meatplate (AF), soup tureen, vegetable dish, small octagonal plate and 3 saucers.
33. An alabaster Roman columnar style table lamp and 2 urnular examples.
34. An archer's bow.
35. A large Victorian copper kettle, with fixed overhead handle and upwardly curving spout. 14 1/2" high.
36. A qty Minton 'Amhurst - Japan' teaware, painted in typical palette, comprising teapot, covered sugar bowl, cups and saucers, together with a covered sugar bowl, (some AF)
37. An Imari plate, the moulded body painted in blue, iron-red and green with radiating panels, 8 3/4" dia; another similar 8 1/2" dia. (2).
38. BOUCHOU. A pair of gilt spelter figures of girls, one with a lute, the other with a sheaf of corn, on naturalistic bases, ebonised circular bases, signed. 20 1/2" high.
39. A gilt spelter figure by E GUILLEMIUR, cast as a mounted Arab, seated astride a camel, with padded fringed saddle, on oval base, wooden plinth, signed. 19" high.
40. A 19thC copper warming pan with pricked decoration, having an ebonised fruitwood handle. 41" high.
41. A pair of brass carriage lamps with pierced chimneys, the glass side panels with cross guards, with original brackets, 18 1/2" high.
42. A Victorian copper Samovar, ovoid, with 2 cast flying scroll handles, brass tap, the cover with foliate knob, on square base raised on 4 acanthus feet, 22" high.
43. A 19thC brass warming pan with pierced and pricked decoration, fruitwood handle. (AF)
44. Four Ashworth ironstone soup plates and a matching dinner plate, printed and polychrome painted in the Chinese manner, 10 1/4" dia.
45. A Staffordshire 'Scenic Ware' circular pottery jardiniere, early 20thC, painted with a continuous landscape of castle, cottages and lakes, 8 1/2" dia.
46. Two Bretby pottery busts of Edward VIII, overall cream glaze, on square bases, 5" high.
47. A Copeland Spode 'Italian' blue and white circular bowl, 9 1/2" dia, early 20thC.

48. A Wedgwood blue and white basin, circular, printed with 'Fallow Deer' pattern to the well, continuous flowering and running dog borders, 15 3/4" dia.
49. A Royal Doulton baluster vase by Hannah Barlow, incised with a band of wild ponies, between mottled green/blue ground, 11 1/4" high, factory and artists marks and no 703.
50. A Royal Albion china tea service, painted with stylised foliage and meadow, the cone shaped cups with angulated handles.
51. A Davenport ironstone stand, circular, painted in the Chinese manner with flowers and rocks, in colours and gilt, 13 1/4" dia.
52. An Alcock ironstone stand, circular with foliate scroll handles, polychrome with flowers, foliage and scrolls, 15" over handles.
53. A Chinese baluster vase, painted overall with flowers and foliage on a yellow ground, reserved with panels of dragons and landscapes 8 3/4" high.
54. An 18thC Leeds creamware Coffee Pot with loop handle. (Spout and cover missing).
55. A pair of Japanese circular bowls and covers, painted overall with flowers in iron red, 9" dia. (cracks).
56. A Volkstedt Art Nouveau centrepiece modelled with sea nymphs riding fish. (AF)
57. An oriental plate painted with stylised flowers and foliage within wavy moulded border.
58. A Samson figure group after a Meissen model by Kandler, of a young man seated, attended by his maid, his companion seated along side, a poodle to his right with its front paws on the bench, on a circular based encrusted with flowers, guilloche borders. 11 1/2".
59. A continental pottery trefoil sweetmeat dish, early 20thC, printed and painted with birds and blossom, gilt highlights, 12" wide.
60. A George Jones felspar 2-handled urn, baluster, the pink ground moulded in relief with a continuous band of grapes and leaves, between lunette and Greek key borders, mask and scroll handles, patch mark with monogram, 10 1/2".
61. A Royal Doulton baluster vase, by Hannah Barlow, incised with cattle grazing, between dot borders and outer borders of ivy leaves on a mottled green border, factory marks and monogram to the base, 11 1/2" high.
62. A Royal Doulton baluster vase by Florence Barlow, the mottled green and brown ground with stylised leaves, reserved with 4 stippled brown panels decorated with pate-sur-pate parrots, birds and foliage, factory marks and monogram to the base. 18 1/2" high.
63. An earthenware cream jug, baluster with lustre decoration, 4" high, (chip to rim), together with a silver lustre milk jug, 6" high, (cracks and repairs) and a pottery jelly mould. (3)
64. A large glass vase of circular tapering form, internally decorated with raindrops and etched with flying ducks and rushes, 6" high.
65. An Art Deco period plaster study of a nude female, seated, with peacock alongside, oblong base. 21" wide.
66. A pottery jardiniere, early 20thC, of moulded circular form, the flo-blue ground gilt with flowers, 2 shaped and gilt bead handles to the sides, 14" over handles.
67. A Chinese ginger jar and cover, the deep blue ground enamelled with butterflies, and flowers, turned wood cover 10" high.
68. A Cloissone ovoid bowl, the bronze ground decorated overall with flowers and scrolls, mask panels within turquoise border 8" dia.
69. A pair of cloissone baluster vases, decorated with jolly dragons, the necks with floral acanthus borders 6 1/4" high.
- 70-72. A cream Staffordshire pastille burning cottage.
73. An Italian porcelain Candlestick, with rococo style scone, the stem modelled as Pan, seated astride a leopard, on rococo base. 11 3/4" high. (AF)
74. An Imari platter, late 19thC, circular with wavy edge, painted with radiating panels from a floral well, 12" dia, (chip to rim).
75. A porcelain comport, painted with apples within turquoise and brown borders, together with a Sowerby type 'malachite' glass candlestick, 5" high. (2)
76. A 19thC copper kettle, with stepped domed cover with acorn finial, 11" high.
77. A pair of EPNS entree dishes and covers, oblong, with gadroon borders and handles. 10 1/4" wide.
78. An EPNS entree dish and cover, oblong, with reeded borders and centre removable handle, 10 3/4" wide, another, 10 1/2" wide.
79. A late 19thC circular glass bowl and cover, the cover gilt with lion and ring masks, ribbon swags and garlands, circular finial 7" dia.

80. A Cauldon china tea service, polychrome, printed in the Chinese manner.
81. An Edwardian EPNS biscuit barrel, circular, engraved with 2 bands of anthemion, domed stepped cover with corn stook finial, integral stand on 3 cast anthemion feet, 8" high.
82. An opaque glass bottle vase, enamelled in the Persian manner with foliate, flower and bead panels on a turquoise ground 7 1/2" high.
83. A pair of Staffordshire Punch & Judy character figures and covers, painted in iron red, blue and white, reg no 139844, 13 1/2" and 11 1/2" respectively.
84. A pair of Ludwigsburg porcelain Salts, modelled as a youth and his female companion, seated on rococo style bases, dressed in typical 18th C dress, the bowls painted with flowers, 5 1/2" wide, blue factory mark. (AF)
85. A Rockwell silver overlay green glass honey pot with bee finial to the hive shaped pot cover, saucer base, acid etched 'Rockwell'.
86. A 19thC green glaze, leaf moulded, miniature dessert service, comprising pedestal comport, 2 platters and 9 plates.
87. A pair of German porcelain figures of parakeets, in the style of Kandler, perched on tree stumps, painted in bright colours, modern Dresden marks to the underside, 12 3/4" high.
88. A pair of Sessionist 2-handled Vases, green gravel bodies incised with leaves, (one damaged).
89. A late 19thC/early 20thC Chinese ginger jar and cover, the blue ground gilt with flowers and foliage, 16" high.
90. A Delft inkwell, of square cushion form, with removable inkwell and cover, the stand with 4 quill holes, on a cusped plinth, painted overall with floral panels and ornament in typical palette, 4 1/2" square (chip to cover).
91. A pair of Continental figures emblematic of love, turquoise glazes with gilt highlights, on circular bases, bears Sevres type marks to underside, 9" high.
92. A silver plated figure of a Great Dane, standing, on square base, 6" high, 7" wide.
93. A cast bronze figure of a seated hare, overpainted, 4" high.
94. A cast bronze figure group of mating pigs, 20thC, 4 1/2" wide.
95. Spare lot.
96. A set of 6 fish knives and forks, ivory handles, silver ferrules, in oak case.
97. A late Victorian earthenware cheese dish and cover, tinted green ground, decorated with flowers, gilt highlights, 9" wide.
98. A copper lustre mug, moulded in relief with flowers and fruit on a blue ground, c.1830, 3" high, together with a copper lustre pedestal goblet with a grape and leaf painted border, 4 1/4" high. (2)
99. A German porcelain 3-sided cup and saucer, painted with floral swags and gilt ornament.
100. A Carltonware urn and cover, of hexagonal baluster form, painted and highly gilt in the 'Imitation Swansea' manner, 11 1/2" high, c.1900.
101. A Della Robbia terracotta baluster vase, by Liz Wilkins, with slip decoration of medallions and scales, 8 1/2" high, incised factory mark and initials
- 101A. A Della Robbia terracotta baluster vase, by E M Wood, with slip decoration of acanthus and scroll leaves. 8 3/4" high, incised factory mark and initials.
102. A Samson porcelain figure of a young pedlar, dressed in a flowered coat and purple breeches, with black hat, a flower filled pannier on his back, against a tree stump, on rocky flower encrusted base, 10" high.
103. A Shelley china coffee pot, of irregular octagonal form, printed and painted with flowers and foliage, factory mark, no 723404, pattern no 11619, 7" high.
104. A Berlin porcelain vase, of compressed lobed form, with 2 open scroll handles, printed and painted with flowering branches and a parakeet, 5 1/2" high, early 20thC.
105. A Royal Doulton cabinet plate, decorated by C Dean, with floral spray to the centre, similarly decorated border panels, overprinted with gilt leafage, 10 dia.
106. An ironstone china octagonal jug with serpent handle, the blue ground painted with flower sprays in pink and white, 8 1/2" high.
107. A Minton posy vase, modelled as 3 mollusc shells, on a tripartite base, moulded and coloured as seaweed, gilt highlights, 7 1/2" wide, impressed factory marks.
108. A Belleek honey pot, modelled as a basketweave hive and decorated in relief with bees and shamrocks, loop handle to domed cover, 5 1/4" high, modern printed mark.
109. A Royal Doulton figure 'Silks & Ribbons', HN2017, 6" high.

110. A Shorter vase, baluster with pinched spout and scroll handle, in blue and buff streaky glazes, 7 3/4" high.
111. A Venetian green and orange glass vase, baluster, internally decorated with gold, 7 1/4" high.
112. Four Masons ironstone plates, printed and painted with flowers and scrolls in blue, iron red and orange, pattern no 2648. 10" dia.
113. An Ashowrth 'Yedo' pattern plate, printed in midglaze flo-blue, 10" dia.
114. Spare lot.
115. A 'Vienna' cabinet plate, the well painted with a classical landscape within a scalloped border, the yellow ground painted with flower sprays and gilt, 8 3/4" dia.
116. An English porcelain plate, with pierced and moulded rim, yellow and gilt, the well painted with an eagle on a cliff top within yellow and gilt border, turquoise borders, 8 3/4" dia, title 'The Eagle' verso, pattern no 369, (gilt rubbed).
117. A Prattware plate, printed and painted with a classical landscape within a terracotta border and printed rim. 8 1/4" dia.
118. A Limoges 3-piece tea service, printed with flowers and foliage, gilt lines.
119. A Coalport small 2-handled vase, ovoid, painted with a landscape within a gilt cartouche, on a rich blue ground, 3 1/4" high.
120. A 'Vienna' miniature cabinet cup and saucer, the well printed with a figural scene after Kauffman, the violet ground gilt with scrolls; together with 2 miniature mugs and cup and saucer. (AF)
121. An Imari platter, 20thC, the moulded body painted with underglaze blue, iron-red, pink and green with radiating panels. 12" dia.
122. An EPNS 3-piece tea service, of plain outline, the teapot with composition finial and handle, the cream jug and sugar bowl with everted rims, modern.
123. A pair of late 19thC brass candlesticks with fluted and turned tapering columns, together with a cast bronze Siamese figure of Deities on horse, and an Edwardian EPNS crumb scoop. (4)
124. An early 20thC dissecting lens by Flatters & Garnett Ltd, Manchester, with a brass platform, with 2 removable wings, monocular lens, on gunmetal base, in a mahogany case.
125. A cast bronze figure of a footballer kicking a ball, on wooden plinth, 9 1/2" high, early 20thC.
126. A gilt metal hanging candelabra, having 4 scrolling and winged branches, emerging from a centre fluted tapering column, below a circular platform.
127. An ormolu candlestick, with a removable sconce, with acanthus cast column, and on circular lobed foot. 7" high.
128. A collection of Goss heraldic china including 'The Melrose Cup', 'Model of a Norwegian Horse - shaped beer bowl', 'Flemish Bottle', 'Salisbury Leather Gill'. (16 pieces)
129. A .303 ammunition belt.
130. A 19thC mahogany jewellery box, of rectangular outline, the hinged cover having a centre bail handle with pierced backplate, the interior fitted with a removable tray and mirror, the lock with cutaway escutcheon. 12" wide.
131. A 19thC rosewood 3 section tea caddy, oblong, having a silver plated ring handle to the cover, the interior fitted with 2 removable lidded canisters, flanking a cut glass mixing bowl.
132. A Georgian mahogany wig stand, having double baluster turned column, on a raised circular foot. 10" high.
133. An early 20thC ivory tusk, vertically carved with 2 figures, flowers, birds and a prunus tree, 16" high, on pierced wooden stand.
134. A Chinese black-flecked green jade carving of 2 birds perched on a bough, 20thC, 6 3/4" wide, on a wooden stand.
135. A pair of gilded wood pricket candlesticks, the circular platforms with gouged borders, bead knopped and fluted tapering columns, on circular bases. 28" high, modern.
136. A 1930's pottery chamberstick, printed in black with a view of Ropsley Church, (greetings verso from A F Rowell, Grocer & Draper, Ropsley) together with a pottery and tin warming plate.
137. A Staffordshire part dinner service, printed in blue with a border pattern of flowers and foliage.
138. An oak canteen containing an extensive set of silver plated 'Kings' pattern tableware, (12 place settings).
139. A French porcelain Tea Service, printed and painted with flowers on a shaded peach ground, gilt sponged rim.
140. A Japanese Satsuma saucer dish and another.
141. A yellow art glass shallow bowl, flared glass vase and crimped bowl. (3)

142. A Victorian Staffordshire pastille burning cottage.
143. A pair of German porcelain figures of a lady and gentleman.
144. A 19th C Cantonese enamel Bowl decorated with flowers on a bleu-de-mazarin and turquoise ground. (AF)
145. A Victorian copper pan and tray. (2)
146. An oak canteen of 6 pairs of fish cutlery.
147. A small rectangular bevelled wall mirror with concave corners.
148. A brass syphon, a very large corkscrew and brass ladle.
149. A vegetable tureen and meatplate.
150. A Meissen moulded platter with figures of swans, much damage.
151. A Cantonese tray on stand.
152. A cut-crystal 6-light electrolier with prismatic drops. 20" dia, 21" high.
153. A Victorian copper warming pan.
154. A 19thC French salt-glazed stoneware ewer with sparrow beak spout, loop handle and bulbous body, 16".
155. An electroplated 4-piece London shape 4 piece teaset.
156. A Victorian copper milk can and another.
157. A set of brass laboratory Balances by Philip Harris Ltd, Birmingham, England, in oak case.
158. An oval Victorian copper skillet and water jug.
159. A Victorian pottery cream skimming pale with floral transfer printed decoration. (AF)
160. A Victorian moon flask shaped jug embossed with cranes by Brownfield and a Spode pink ground jug moulded with hounds.
161. A Royal Worcester urn with floral decoration, cypher mark for 1925.
162. A famille jeune Chinese bowl on stand.
163. A top hat by Moss Bros.
164. An Emerson radio receiver set with tambour front revealing 2 bakelite switches on a fretwork panel, serial no 409774.
165. A pair of Chinese bowls on stands.
166. A floral patterned cloissone baluster vase decorated with pink and white peonies and carved figure. (2)
167. A large Chinese blue and white Ginger Jar with Kangxi marks.
168. A small 17th C crested bronze Mortar.
169. An orange lacquer silhouette bowl.
170. A Decomania papier mache vase.
171. A Royal Worcester white glaze nautilus shell posy Vase, raised on a coral pedestal, rocaille base. 20th C. 6 1/2" high.
172. A 19thC. malaca Cane with Nepalese/Burmese white metal knop having figures in relief.
173. A Victorian brass framed hanging lantern with leaded coloured glass panels to the 4 sides, 12" square, 17" high.
174. An EPBM table lamp of urnular form with grotesque mask and pendant decoration.
175. A 4 brass martingale
- 176-8. 3 horse brasses on leathers
179. Selection of brasses, studs and fly terret.
- 180-2. Four assorted horses bits.
183. A nickel plated horse's bit by James Dixon & Sons.
184. A 19thC horses steel bit with plated Royal crested mounts.
185. Three unusual nickel plated bits.
186. A steel trunk and a pair of blinkers.
187. A set of leather blinkers with brass studs, 2 pierce domed brasses and a fly terret.
188. A set of patent lion polished steel hames.
189. A pair of elm and steel hames.
- 189A. Tandem driving harness set.
190. A Georgian circular mahogany butler's tray.
191. An Edwardian oak writing box.
192. A Victorian black pottery tapering jug with enamelled decoration and a moulded and pewter lidded jug. (2)
- 193-4. A Victorian copper kettle.
195. A Victorian porcelain Breakfast Service with a turquoise border, trailed with gilt foliage.
196. A christening gown.
197. A cased violin with 2 bows (no labels).
198. A chromed candlestick telephone.
199. A pair of brass balance Scales with fluted stem, wrythen cast trays, together with a miniature fender.
200. Two Victorian meatplates.
201. An extensive Hanley pottery Dinner Service printed with flowers in the George Jones manner.
202. A selection of hand carved oak panels of animals and fruit. (9)

203. A pair of carved oak figures of a piper and another.
204. A pair of unusual Chinese brass and copper ornamental horns.
205. A kriss with a carved hardwood handle.
206. An old wooden step ladder.
207. A hand-built model of the USS Kearsarge (the first ship commissioned into the US Navy), in a glass case with shells, etc to base.
208. A qty umbrellas and walking sticks, including silver banded example.
209. 'Maisie' a 3 1/2" scale scratch built steam locomotive, together with blueprints and the LBSC 1952 book detailing construction. The locomotive and tender are painted in the livery of the LNER and numbered 5762.
210. A deep carved oak panel of a bacchanalian scene.
211. A carved oak panel of apples.
212. A set of steel stilliards.
- 212A. A pair of hayforks and pair of potato forks.
213. A thatcher's needle and an eel spear.
214. A pair of steel and oak hames.
215. Three graduated Victorian brass saucepans.
216. A large Chinese copper gong in the form of a bowl.
217. An old saw, Stanley No 50 plane and shoe jack.
218. A New Guinea drum, figurine and wooden house charm.
219. A Moroccan influence hanging lantern with leaded glass panels.
220. An inglenook meat hanger and a 3 section boxwood and brass rule.
221. A selection of brassware including wall sconces, candelabrum, candlesticks, etc.
222. A terracotta white glazed half figure of a North African figure, 3'6" high.
223. A late 19thC walnut and rosewood crossbanded upright musical cabinet with 2 combs and 10 x 9" discs.
224. Victorian glassware, coffee cans and saucers, vase, etc.
225. An Edwardian green floral bordered tea service.
226. A Victorian comport painted with a butterfly.
227. A Victorian papier mache ink stand.
228. A Royal Doulton 'Sea Shanty Jug'.
229. A large Donald Cook's compressed cornbeef tin and a Mrs Peek's date pudding.
230. Plate, 2 bisque figures, Coronation handkerchief and Rolls razor tin.
231. A Zsolnay Pecs Persian design ewer with lustrous foliate decoration and handle. 12" high.
232. A Capo di monte porcelain figure of a seated tramp, signed Piero.
233. A Staffordshire Cottage money box, with pale orange glaze and bocage 5" high (chip to opening).
234. To 283. Spare Lots.
284. A fine English brass carriage timepiece with retail mark of POONA and escapement heat compensator.
285. A carved ivory Chinese openwork pendant.
286. A pair of Victorian crystal obelisk, carved and painted to view a vase of flowers, 4 1/4".
287. A Chinese tea bowl, of fluted outline, underglaze blue with alternating panels of flowers and figures, the interior with an animal in a landscape, 3 1/4" dia.
288. A Victorian Staffordshire polychrome toby jug and cover.
289. An Art Deco red bakelite aneroid barometer.
290. A Ronson Art Deco chrome plated desktop cigarette dispenser and integral lighter, together with a similar free-standing lighter.
291. A brass surveyor's pocket level by Troughton & Simms Ltd, London.
292. An Eastern brass opium burning stand.
293. A Galle polychrome faience plate depicting a falconer and boy with hounds marked Emille Galle Nancy, 10" dia.
294. A 19thC Paris 2-handled vase with wavy rim, scrolling shell moulded handles, floral spray to body of primrose, rose, chrysanthemum and 4 scroll feet, 8".
295. An Eastern carved stone figure of a deity reclining.
296. A Japanese Satsuma baluster vase decorated with birds and flora, 9".
297. A Victorian cast iron based cigar cutter.
298. A Royal Worcester 2-handled urn, 6".
299. A Victorian majolica strawberry dish, 9" x 5".
300. A First Period Worcester bullet shaped teapot with blue painted decoration and open crescent mark to base. (AF)
301. A 9ct gold band set with white stones. (AF)

302. A Thai princess ring in yellow metal set with white and multi-coloured stones.
303. A lady's 9ct gold cased wristwatch by J W Benson on an expanding bracelet stamped 9ct; and another.
304. An 18ct gold signet ring and a 9ct gold signet ring.
305. A 9ct gold bracelet, 4.7gms.
306. A yellow metal lady's dress ring set with an opal doublet and white stones.
307. A 9ct gold gypsy style ring set with turquoise. (AF)
308. A lady's Perona 9ct gold cased wristwatch on a bracelet.
309. A lady's dress ring, being an aquamarine set in a yellow metal fleur de lys claw setting with feathered shoulders. 8.17cts est. weight.
310. A small selection of marcasite jewellery.
311. Regimental badges, Celtic brooches, etc.
312. A lady's Perona bracelet watch.
313. An early Imado gent's stainless steel bracelet watch with LED display.
314. Three yellow metal cased lady's watches.
315. A 1960's Old English large lady's wristwatch on original orange fluorescent strap.
316. A yellow metal brooch of 2 hearts over a bow of seed pearls (2 missing), one heart set with a small ruby, the other with a small diamond.
317. Small jewellery items including some silver.
318. A miniature carved peridot hippopotamus. c.9g.
319. A pendant, shaped as a crown set with large oval topaz (5) and 10 smaller round topaz and amethyst, the whole set in yellow metal stamped 750. Total weight 41.9grms. 4.3cms long x 3.6cm wide x 4cm deep. Average weight of topaz 18cts.
320. A Jade tea bowl, carved with foliage, on quatrefoil foot 2 1/2" dia.
321. A lady's gold plated Omega wristwatch on expanding bracelet.
322. A pair of Victorian pepperettes, of ovoid outline, on 3 shell and pad feet, London 1898. 3" high.
323. A ring, being 5 sapphires alternated with 3 cubic zirconium stones in line setting over a 9ct gold shank.
324. A pierced and engraved white metal hinged bangle inscribed 26.1.47, probably French.
325. A six point star brooch with enamel points and a micro-mosaic floral rondel centre. Marked CG to the yellow metal back.
326. A pair of earrings being a pear drop cut mid colour amethyst in yellow millegrain metal and twisted rope setting on screw fittings stamped 9CT.
327. Oval Australian sapphire and diamond cluster ring set in 18ct white gold with an 18ct yellow gold broad shouldered shank.
328. A white metal Wedding Band with floriate decoration, no hallmark, stamped platinum. Weight 3.8gms
329. A yellow metal brooch of flower spray design set with Burmese rubies and diamonds as flower centres.
330. A ladies 9ct gold wristwatch.
331. A 4 strand choker style cultured pearl necklace with amethyst set yellow metal clasp stamped 375 and a complimentary style bracelet with a similar clasp on 4 strands of cultured pearls with yellow metal spacers.
332. A signed Japanese Netsuke, 2 young wrestlers.
333. A signed Japanese Netsuke, a bird's talons enclosing a monkey.
334. A signed Japanese Netsuke, round bellied man carrying a fan and bag on his back.
335. A signed Japanese Netsuke, a peasant sitting in a basket grinding corn.
336. A signed Japanese Netsuke, a bird of prey standing picking flesh from a skull.
337. A signed Japanese Netsuke, a smiling man holding a stick with a gourd and his hat.
338. A signed Japanese Netsuke, a man sitting waiting for his tea kettle to boil.
339. A wishbone ring with coloured and white stones.
340. A continental white metal tea strainer, the bowl cast with windmill, with foliate border and windmill handle. 6 1/4".
341. A silver framed magnifying glass, pierced and cast with masks, flowers and scrolls, the handle wrought with shell finial. 9".
342. An amethyst rectangular salt, the base intaglio etched with an amorini, butterfly, and flower, egg and dart border, with gilt metal stand on scroll feet 2 1/2" square (minor chips).
343. A white metal Wedding Band with foliate decoration, no hallmark, stamped platinum. Weight 2.8gms.
344. A modern brass carriage timepiece.
345. Three white metal figures.

346. A gent's pocket watch.
347. A George III silver salt, oval, pierced and cast with oval bosses and swags, gadroon rim, on 4 scroll claw and ball feet, sapphire liner, London 1773, 2.5oz, 3 1/4" wide. (Minor damage.)
348. A heavy Victorian silver locket with applied ball and plaque decoration and an engraved central cartouche with a matching heavy collarette, Birmingham 1884, 61gms.
349. A miniature mandolin covered with tortoiseshell and with mother of pearl inlay.
350. A miniature guitar covered with tortoiseshell and with mother of pearl inlay.
351. A ring, being a central diamond of 25pts and 2 small diamonds on each shoulder set in white metal on a yellow gold shank marked 18ct and plat.
352. A multi strand white metal tasselled watch chain on a swivel catch.
353. A wristwatch for a left handed lady in a yellow metal case on a yellow metal bracelet marked 9c.
354. A ladies fob watch in a yellow metal case marked 18K on a yellow metal ball and link chain with ball and cross set with red stones.
355. An Elgin open faced pocket watch, case marked 14K with ornate brocaded dial and engraved and engine turned decoration.
356. A late 19C enamelled box with fighting cock decoration.
357. A small Belleek bowl with shamrock decoration Reg No. 0857.
358. A silver hunter pocket watch.
359. A pair of silver serviette rings with hammered surface finish.
360. Three stick pins, one being a horseshoe set with red and white stones.
361. An unusual silver spoon with flat twist handled, bears the hallmark for London 1790.
362. A silver vesta case with foliate scroll decoration Birmingham 1907.
363. A silver cigarette case with foliate scroll decoration. Birmingham 1900 and a small white metal and red suede purse.
364. An American open faced pocket watch (Charles Benedict) yellow metal case and a Ladies white metal fob watch.
365. Six ivory napkin rings with pierced decoration.
366. A small silver model of an Eastern oil lamp with swans neck handle. Birmingham 1914.
367. A cased set of 6 coffee spoons with pierced decoration. Birmingham 1913.
368. A cased set of a pair of silver sugar dishes and bows. Birmingham 1926.
369. A cased set of 4 silver salts and spoons with floral embossed pattern. Birmingham 1899.
370. A diamante bracelet, a watch ring, needlecase and ladies fob watch.
371. A silver vesta case.
372. A Gents Trebex watch with yellow metal case.
373. An open faced Waltham pocket watch, case marked 14K.
374. A small model chair with a Rene Mackintosh style back.
375. A cased set of six silver coffee spoons, sifter spoon and sugar bows.
376. A silver sugar castor Birmingham 1926.
- 377-8. Costume jewellery.
379. A selection of rings.
380. A Pinchbeck longuard.
381. A selection of bracelets, various metals.
382. A white metal Mizpah ring and a small gold ring.
383. A 9ct gold and opal and white stone cluster ring.
384. A 9ct gold opal and sapphire cluster ring.
385. A moss agate set ring on a 9ct gold shank Chester assay.
386. A ring set with a blue stone with a yellow metal shank marked 9c.
387. A bar brooch set with an agate, the yellow metal setting marked 9ct.
388. A selection of brooches.
389. A silver photograph frame. Birmingham 1926.
390. An amber and 9ct gold cigar holder
391. A pair of plated fish servers with silver bands.
392. A Goliath pocket watch.
393. A full hunter pocket watch.
394. An open face Waltham pocket watch.
395. An open faced pocket watch by Graves of Sheffield.
396. A pocket watch.

397. An open faced pocket watch by H. Samuel of Manchester.
 398. An open faced white metal pocket watch.
 399. A watch chain in yellow metal stamped 9ct.
 400. Various watch keys, worn half sovereign and a ring.
 401. A Thomason type double action corkscrew with bone handle, brush and brass barrel, with applied Royal Coat of Arms, c.1830.
 402. A rolled gold propelling pencil, a pewter and leather hip flask, etc.
 403. A quantity of old fountain pens and others.
 404. Three small Hornsea ornaments, being 2 fawns and a lamb.
 405. Wade Whimsies (c.27)
 406. Four Swarovski crystal figures, owl, swan, smaller swan and turtle.
 407. A signed Japanese ivory netsuke a study of a Dutchman, his ballooned trousers exaggerated and assisting him concealing a sword behind his back.
 408. A signed Japanese ivory netsuke a study of a youth collecting edible snails in a growth of bamboo.
 409. A signed Japanese ivory netsuke a study of a deity standing holding an unfurled scroll, a goose beside him.
 410. A signed Japanese ivory netsuke a study of Ashi-Odori a court entertainer of mythology standing holding his stringed musical instrument.
 411. A signed Japanese ivory netsuke a study of a naked man wrestling with a huge sea serpent.
 412. A signed Japanese ivory netsuke a study of a Shoki the mythological Demon Queller wrestling with a pair of evil horned Oni.
 413. A cultured pearl Necklace of graduated size from 5.4mm - 2.5mm, white metal clasp marked silver, set with marcasite. Length including clasp 16".
 414. A 19thC gilt brass miniature model of a telescope with abalone and mother of pearl set barrel. Marked Lekid, France.
 415. To 459. Spare Lots
 450. An early 20thC French brass carriage timepiece.
 451. An Edward VII silver caddy and cover by Walker & Hall, oval, with finely reeded borders, engraved with initials, 4 1/4" high, Birmingham 1901, 6.5ozs.
 452. A Victorian silver mustard, oval, chased with flowers, scrolls and shell, the centrally domed cover with orb finial, scroll handle, Sheffield 1892; together with an Edward VII mustard, of square form, having a pierced body, square domed cover and scroll handle, Chester 1901. (2)
 453. A Victorian silver mustard, circular, with pierced body, raised flat-top cover, scroll handle, Sheffield 1894, together with an Edward VII silver matchbox cover, chased with deer and scrolls, Birmingham 1903. (2)
 454. A Victorian silver cruet, the trefoil stand with centre loop handle, holding glass bottles, (one missing), London 1898, together with a Victorian cut glass saltpot with silver cap, London 1865, and a silver plated napkin ring. (3)
 455. A set of 4 Victorian silver plated salts, circular, each chased with flowers and scrolls, on 3 stepped pad feet, glass liners (one missing and 2 chipped).
 456. A pair of silver plated composite column table candlesticks, with removable inverted square sconces, wrythen stem, on square stepped foot with bead borders, 6" high.
 457. A set of 9ct gold cuff links and matching collar studs, early 20thC, in fitted case.
 458. A Victorian silver bladed butter knife, engraved with foliage, with abalone handle, Birmingham 1897.
 459. A pair of silver serving spoons with passion flower engraving to the handle and embossed passion flower decoration to the bowl, gilt finish to the bowl, London 1806.
 460. A silver bowl 3 3/4" dia by Mappin & Webb with a millegrain rim, reeded bowl and flared foot, Sheffield 1890.
 461. A silver candlestick of rococo design with a loaded base (some damage) Birmingham 1905.
 462. An Edwardian VII silver 3 piece teaset of irregular hexagonal form, the teapot with composition handle and finial London 191/2 35oz. gross.
- WEDNESDAY 10th October, 2001**
Commencing 1pm
800. 19thC School. Head and shoulders portrait of a young man, facing dexter, miniature on ivory, 3" x 2 1/2", ebony frame.
 801. Charles Blacklock (fl.1850-1890 British). 'Near Bewtts-y-Coed'. Landscape with fisherman, oil on panel, 10" x 7", signed and dated 1878 bottom right, label verso.

802. A Bouvard (20thC French). Venetian canal with gondolas, watercolour, 7 3/4" x 10 1/2", signed bottom right.
803. 19thC Continental School. 'Anxious Moments'. A gypsy musician seated on a grassy bank. Oil on canvas, 18" x 14", indistinctly signed bottom right.
804. G Crisp (19thC British). Still life of grapes, peaches, tomato and berries, on a grassy bank, oil on canvas, 13" x 19", signed and dated 1890 bottom left.
805. Elsa Fussell. 'Broadstairs 1927'. Watercolour, 6 3/4" x 3 1/2", signed with monogram bottom left.
806. 19th/20thC British School. Landscape with cottages at the end of a waterlogged lane, watercolour, 14 1/2" x 21 1/4".
807. F... C... Landscape with watering cattle, seated drover, castle in the distance. Watercolour, pair, signed, dated '97, 9 3/4" x 14".
808. W Deakin. 20thC British. Extensive mountain landscape, watercolour, 11 3/4" x 17 3/4", signed bottom right.
809. J Emms (1843-1912). Cottage interiors, with figures by an open hearth fire, watercolour, a pair, one with signature and date '75 bottom right. 9" x 13 1/4".
810. 19thC English School. Study of a gentleman facing left, in black top hat, frock coat and checked trousers, colour print. 10 1/4" x 7".
811. 19thC English School. 'Admiral Rous and Mr Payne', profile study of 2 gentlemen in street attire, colour etching. 8" x 5 3/4".
812. R Dighton (after). Profile study of a Victorian gentleman in street attire, colour lithograph. 10" x 6 3/4".
813. A Marston. 19th/20thC. Coastal scene with figures and moored fishing boats, oil on panel, signed and indistinctly dated bottom right, 9" x 12".
814. Vandyke Fielding. River landscape with castle ruins on the bank, figures in front of the arch, oil on panel. 3" x 3 3/4".
815. J Perry (19thC) Rural landscape with harvesters in a meadow, watercolour, 8 1/4" x 11 1/4". Artists attribution verso.
816. J Perry (19thC). Continental studies, figures and buildings, watercolours, artists attribution verso. (3)
817. 19thC English School. Continental landscape, seated figure by a stream, ruins to the left bank, watercolour, 7 1/2" x 10".
818. J Perry (attrib). (19thC). Gondolier below a Venetian building, watercolour, 9 3/4" x 6 1/4"; another, view of a lake over roof tops, 4" x 6 1/2". (2)
819. 19thC English School. Coastal landscape, with 2 figures looking at the distant cliff tops, watercolour, 6 1/2" x 9 1/2".
820. M.A.G. (19thC English). 'Lynmouth Harbour', watercolour, signed with initials and dated 1866, 6 1/4" x 9 1/2".
821. Bob Lally (after). '86. Sleeping tramp in a field, sepia engraving, 10" x 11".
822. Cuthbert Bradley (20thC British). 'Belvoir Weaver'. Study of a hound, oil on canvas, signed and dated 1906, 10" x 14".
823. F W Kirtley (British 20thC). Cattle and sheep in a highland landscape, a pair, oil on canvas, signed bottom left, dated verso 1920, 14" x 22".
824. Cuthbert Bradley (20thC British). 'A Flying Visit to Cranwell Fox Covers', (Duke of Rutland Hunt), watercolour with heightened body colour, signed bottom left, 12" x 20".
825. Joseph Kirkpatrick (by and after) (1872-1930). Ploughing on the South Downs, coloured aquatint and etching, signed by artist in margin, gallery proof, 8" x 11 3/4".
826. John King (after). The Hunt crossing a stream, colour print, signed in pencil in the margin, 20thC, 13" x 20".
827. C M Kinley (20th C). Scottish landscapes. Cottages in the shadow of the mountain and highland lock, a pair, oil on canvas, signed, 16" x 24".
828. 11 studies of British birds, colour prints, each 6 1/4" x 4 3/4" (in 3 frames). 19thC.
829. A framed engraving of a lady feeding dogs.
830. Madelaine Selfe (after). 'The Duke of Beaufont with his hounds in Badminton Park, 1973', signed limited edition 103/350, image size 22" x 32".
831. 19thC English School. Continental landscapes, river townships, a pair, watercolours, 4 1/4" x 6 1/2".
832. A set of 6 Japanese drawings of birds in landscape, on silk, 19thC, 3 1/2" x 2 1/2".
833. J Conrad (19thC). Nomads in the Egyptian desert, a pair, watercolours, signed, 4 1/2" x 9 1/2"; together with 2 others, similar. (4)

834. C.V.H. (19thC). Hunt crossing a stream, watercolour/drawing with heightened body colour, signed with initials, 3 3/4" x 6 3/4".
835. Cuthbert Bradley. (20thC British). 'Huntsman on a grey', oil on panel, the frame inscribed 'The White Horse Inn' 'Soames Ales and Stout', signed and dated 1836, 9 1/2" x 9 1/4".
836. Cuthbert Bradley (20thC British). 'Hold Hard Please! Give the Hounds a Chance!', ink drawing, signed, image size 5 3/4" x 11".
837. Cuthbert Bradley (20thC British). 'Knives v Goulburn at Hurlingham', a set of 12 polo ink and wash sketches, signed and some with notations, each c. 3" x 2 3/4", (2).
838. Cuthbert Bradley (20thC British). 'Blaisdon Draughts and Kings Warrior', study of 2 shire horses, oil on metal, cut-outs, c.1915, 7 1/2" x 23 1/2".
839. Cuthbert Bradley (20thC British). A series of 13 sporting and allied subjects, oil paintings on sheet metal, cut-outs, including 2 polo players, hunting and racing.
840. Study of a young Spanish peasant girl, coloured litho, 13 1/2" x 10".
841. 20thC School. River landscape, Austrian township, oil on canvas, 17" x 20 1/2".
842. A Pears print, 2 young girls seated on trunks at a railway station with 2 rabbits in a basket, chromolithograph, margin trimmed, 25" x 17 1/2".
844. Snaffles (after). 'Sandown - Asking 'Em the Question', colour print, 16 1/2" x 21", facsimile.
845. G.E. A rural landscape with figures and horse on a country path passing a thatched cottage, oil on canvas. 18" x 24".
846. G.E. A rural landscape with ducks and cattle at the water's edge and thatched cottage nearby, oil on canvas. 18" x 24".
847. Albert Goodwin. Lu**rne Dawn, watercolour, htd in white, signed. 7" x 11". NB. Sold as a pair with the next lot in 1968 for 85 guineas with invoice from Beryl Kendall, Kensington High Street.
848. Albert Goodwin. Nymizon Rhine, watercolour, htd in white, signed. 7" x 10". NB. See previous lot.
849. 19th/20thC School. Landscape with figures on a beach, believed to be
850. 19thC English School. 'Cromwell's Bridge', oil on canvas, 21 3/4" x 27" (tear to canvas)
851. A 19thC chromolithograph of a farmer seated outside a country inn with a mug of ale, 14" x 8 3/4".
852. Copley Fielding. Rocky river landscape with wooded banks, watercolour, bears signature and dated 1851. 12 1/2" x 19 1/2".
853. E Charpentier (19thC). Study of a North African soldier in a landscape, oil on panel, signed bottom right, 9" x 6 1/4".
854. P.M.F. (19thC). Alchemist and his assistant at an open fire, oil on panel, signed with initials, 10" x 9".
855. J Parker. The Captive, a pencil sketch of a chained tiger, signed and dated 1915.
856. A Georgian pollard oak framed picture on glass with foil back depicting a bird and fruit in a basket.
857. 19thC School. Portrait of a woman, head and shoulders, wearing a flowered bonnet, oil on canvas, 25" x 21 1/2". (AF)
858. A 19thC silhouette of the Arand family showing James Richard Arand, seated, reading a paper, Sarah Jane Arand, standing, with child Edward James, Upton Grange 1829, 10" x 13 1/2".
859. A 19thC woolwork picture of doves in a landscape within a floral border, 19" x 19 1/2". (AF)
860. J Paulson (19thC). Head and shoulders portrait of a woman, charcoal and wash, signed and dated 1850, 20 1/2" x 16 1/2".
861. C R Moore (after). Hare coursing, set of 3, oils over. 4 3/4" x 7 3/4".
862. E.G. (19thC School). Nomadic desert scenes, gouache, a pair, 10 3/4" x 3 3/4", 3 3/4" x 10 3/4"; another by the same hand, 6 1/2" x 9 1/2", signed with initials. (3)
863. A set of 4 Japanese woodcuts, studies of a geisha, 16" x 10"; together with 3 further woodcuts, river scenes, 8 3/4" x 13 1/2"; another of a military interior, 14 1/2" x 10".
864. 19thC English School. Cottage interior, with a family gathered around the open hearth fire, with a man seated at a table, the wife holding a freshly shot rabbit, children and animals close by, an old woman tends the fire, oil on canvas. 20" x 24".
865. David Shepherd (after). 'Tembo Mzee', colour print of an African elephant in a landscape, limited edition 153/850, signed in pencil. 18" x 32".
866. A 19thC oil on oak Panel depicting the birth of Christ.

867. After H Alken. A set of 4 hand coloured horse racing etchings; 'Preparing to Start', 'At Speed', 'Weighing In and Rubbing Down', 'Winning'.
868. A church interior scene, signed E Francis. 15" x 18".
869. L Gianni. A pair of continental lake scenes with figure of a lady amongst flora and stone walling to the foreground, watercolour, signed. 15 1/2" x 9 1/2".
870. A G Brown. An Arab, encamped at the edge of a village and lake, signed A G Brown RSW, watercolour, 10" x 17".
871. 18thC English School. Half length portrait of a lady, facing half right, in blue dress with lace trim, black shawl and lace bonnet, oil on canvas, 30" x 25".
872. After Kneller "Sarah, Duchess of Marlborough and "Countess of Ranelagh" copper engravings c.1786. 7 1/2" x 7 3/4".
873. Morley (Robert) (1857-1941). 'Fellow Prisoners', mixed medium depicting .. Verso label having artist's name, title and account L Folks No 33159
874. Louis Wain (attrib). 'Ma! I want to get up! Its 9 oclock', sepia crayon, signed bottom left. 8 3/4" x 6 1/4"
875. Louis Wain (attrib). Untitled, head and shoulders study of a cat, sepia crayon, signed bottom left, 7" x 6".
876. Louis Wain (attrib). 'Astonished', sepia crayon, signed bottom left. 8" x 6".
877. E Longbottom. Sketch of a couple by a thatched cottage in church, maple framed.
878. A chalk and crayon sketch of a horse and jockey.
- 879-82. Four colour hunting prints.
883. Malcolm Doughty. Landscape with cattle, oil on canvas.
884. John Grove. Huntsmen and hounds on a country path, oil on canvas.
901. To 930. Duckett. The following 30 lots are works by the artist including hunting and rural scenes.
1003. Costume jewellery, babies shoes and small trinket items.
1004. A pair of Staffordshire Spaniels. 12".
1005. A Beswick handled vase with palm tree decoration Pat No 1070.
1006. A Coalbrookdale panel and stand depicting a blacksmith scene. 9" x 18".
1007. A pair of brass and glass candle sconces marked GWR.
1008. 2 cast metal sailor money boxes.
1010. A pair of carved coromandel elephant book ends.
1011. A picture of a young boy and girl painted on silk.
1012. A part coffee set by Susie Cooper - Nasturtium pattern.
1013. A quantity of linen and lace and a black mourning dress.
1014. A quantity of old 78 RPM records.
1015. A quantity of linen and lace.
1016. Four Bradford Exchange limited edition plates in creamware with pierced borders and floral decoration.
1017. A quantity of blue and white oriental china, egg shell china etc.
1018. A tall white Sylvac vase and another decorated with yellows and beige drip glaze.
1019. A large and varied selection of Poole dinner and teaware in two tone beige.
1020. A very large, heavy lobed clear glass vase, a fruit bowl and pressed glass fruit stand.
1021. A cranberry glass flat dish and a pair of graduated cranberry glass bud vases with twisted necks and silver collars.
1022. A Beswick cockerel "Leghorn" No. 1892.
1023. A Beswick Bald Eagle No. 1018.
1024. A Royal Doulton Character Jug of Winston Churchill.
1025. A Beswick Kitten No. 1886, a Beswick Puppy in blue and a Beswick Greenfinch.
1026. A Royal Crown Derby 'Derby Posies' part tea set and a soup cup and saucer.
1027. A quantity of Bradford Exchange plates.
1028. A Wade 'Gothic' pattern vase.
1029. A Victorian chrysanthemum pattern serving dish and stand.
1030. A Wade ashtray, Hornsea bud vase and a Wade Viking ship.
1031. Two cut glass decanters.

WEDNESDAY 10th October, 2001

Commencing 2pm

1001. A brass advertising plaque and 2 ceramic decorative plaques.
1002. A variety of shaving equipment and a boxed Horlick's mixer.

1032. A Beswick owl No 1046.
1033. An Aynsley owl 'Scops Owl'.
1034. A Russian ceramic figure of a magpie.
1035. Four bird figurines by Carl Ens.
1036. A Shelley nursery mug 'Bo Peep', a pair of vases and a kingfisher figurine.
1037. A Carltonware leaf and tomato dish and leaf dish.
1038. A flat dish and vase in Indian Tree pattern by H J Wood.
1039. A Royal Doulton figurine 'Elenor'.
1040. A Royal Doulton figurine 'The Fairytale Begins'.
1041. A Coalport figurine 'The fire bird'.
1042. A Royal Doulton figurine 'Grace' HN2318.
1043. A Royal Doulton figurine 'Lady Charmain'.
1044. A Royal Doulton figurine 'Winsome'.
1045. A Royal Doulton character mug, medium size, 'Sir Francis Drake'.
1046. Various crested china items.
1047. Three graduated Sylvac dogs and 3 other Sylvac items.
1048. A selection of Sylvac items.
1049. A qty ceramic sanitary wares.
1050. A selection of small Sylvac ornaments.
1051. A bridge set, lacquered box and small table book rack.
1052. A German carved table book rack.
1053. A part tea set by Aynsley, floral motif and pink and gilt border.
1054. Three green Sylvac jugs, 1 heron, 1 squirrel, 1 pixie.
1055. Two glass and brass inkwells, an LNER sugar bowl and 3 old biscuit tins.
1056. Boxed games, royal memorabilia and bygones.
1057. A Chad Valley wooden jigsaw No JP8 (Chelsea Pensioners) and other card jigsaws.
1058. A small qty mostly 1960's doll's house furniture.
1059. A very large qty matchbooks, mainly American and African, majority different.
1060. A coin collection display box and album.
1061. Old cigarette packets, postcards and bygones.
1062. A qty first day covers.
1063. A qty stamps, novelty clock, shoe stretchers and ephemera.
1064. A pair of Norah Wellings sailor boys, 9" tall.
1065. A qty of stamps, cigarette cards and a copy of the Wide World magazine.
1066. Three Beam Kentucky whiskey flasks and another.
1067. A part teaset of Noritake teaware in cream and white with floral motif and gilt lace border and rim.
1068. A pair of glass candlesticks and a ceramic toast rack.
1069. A part china dressing table set.
1070. Four collector's plates - Bradford Exchange, Coalport aircraft 'Reach for the Sky'.
1071. A qty linen and lace.
1072. A novelty ceramic cat mantel clock and a Sadler teapot, sugar bowl and creamer.
1073. Louis Wain. Such Fun, an illustrated childrens book.
1074. A pop-up book. Bookano Stories No 3.
1075. Shirley Temple - Stars of Films 1937, Arther Askey's Annual, 3 Tiny Tots Annuals and Teddy Tail's Annual 1935.
1076. A pair of late 19thC satsuma baluster vases.
1077. Two coloured dolls.
1078. A china doll.
1079. A wooden push along horse.
1080. A Cottageware teapot and biscuit barrel, a Bunnykins dish and cottage style jug.
1081. A pair of brass dragon candlesticks and a pair of buccaneer bookends.
1082. A Dinkie Gee-Wiz race game.
1083. A carved walking stick
1084. The Woodstock original soundtrack, 3 record album.
1085. A drip glazed lobed bowl and an Arthur Wood jug.
1086. A pair of German black moulded wall plaques of London street scenes.
1087. A coach lamp and brass and copper items.
1088. A circular woolwork picture in a mahogany frame.
1089. Two albums of Card Collectors Society cigarette cards.
1090. A Reversing Electric Train Set, boxed, made in England c.1940.
1091. A Hornby train goods set No 50, boxed, with extra track.
1092. Royal ephemera.
1093. Operatic & theatre ephemera.

- 1094. Football programmes, 1966 World Cup and others.
- 1095. Cigarette card album.
- 1096. FA Cup Final programme April 29th 1939 and FA Cup Final programme May 1 1st 1937.
- 1097. Football programme England v Scotland April 9 1938 and April 4 1936.
- 1098. Various Tottenham Hotspur programmes, 1970's.
- 1099. FA Cup Final programmes 1954, 1953, 1955, 1957.
- 1100. A signed framed photograph of the 1933/34 Tottenham Hotspur team and staff.
- 1101. Dickens: 6 divisional folders with full page illustration, pub. Cassell.
- 1102. Christie (Agatha). Hickory Dickory Dock, 1st edition 1955, and Cat Am dust wrappers, 8v0. (2)
- 1103. Marcet (Alexander). An Essay on the Chemical History and Medical Trea Edition, hand coloured and plain engraved plates, top board detached,
- 1104. A Book - "Things Old and New" Max Beerbohm.
- 1105. An autograph album of boxers, mainly pre-1950.
- 1106. Association Football, Caxton. 4 vols.
- 1107. Dandy 1970's and 1980's, various.
- 1108. Eagle comics; Numbers 1 (dated 14th April 1950) to 21 and one from 1951.
- 1109. National Hunt form books. 1964-1989, 25 vols, blue leather and gold block.
- 1110. To 1120. Books, stamps and postcards.

THURSDAY 11th October, 2001

Commencing 10am

- 1182. A Shiraz Rug.
- 1183. A red ground Shiraz carpet with floral central field and cream border.
- 1184. A modern bird garden rug.
- 1185. A red patterned carpet.
- 1186. Red ground hand made woollen Persian Shiraz carpet 111" x 80"
- 1187. A beige ground Oriental carpet.
- 1188. A beige ground Oriental carpet.
- 1189. A Turkish rug.
- 1190. A Persian Hamadan rug. 2.20 x 1.34

- 1191. A Zekhiani rug. 1.96 x 1.05
- 1192. An Abusson needlepoint rug. 1.52 x .91
- 1193. An Afghan runner. 2.73 x .80
- 1194-97. A Chippendale style pier glass with ho-ho bird pediment.
- 1198. An Edwardian oval wall mirror.
- 1199. A 19thC rococo gilt plaster pier glass with rectangular plate.
- 1200. A gilt framed rococo style arched plate pier glass.
- 1201. An Adam style Sideboard with 2 lift compartments over drawers and doors with carved patera and swags, raised on cabriole legs, early 20thC. 5' wide.
- 1202. A late Victorian walnut framed 3-piece suite with blue and white stripe upholstery, together with a pouffe.
- 1203. An Edwardian mahogany occasional table.
- 1204. An Adam Revival mahogany breakfront sideboard with ribbon and pendant husk carved doors, reeded and urn finial centre drawer, raised on square taper legs. 6' wide.
- 1205. A leaded glazed oak 2-door cabinet bookcase top.
- 1206. An 18thC. oak bureau, with profusely carved fall front, fully fitted interior, 2 over 3 graduated drawers, all carved with acanthus, anthemion and scrolls, on bracket feet. 37" wide.
- 1207. A late Victorian mahogany cabinet bookcase with moulded cornice, 2 glazed doors over single drawer, 2 doors and plinth. 6'11" high, 3'6" wide.
- 1208. A Victorian mahogany breakfast table with moulded rectangular tilt top over a turned pillar, on 3 sabre legs. 3' x 4'.
- 1209. A 19thC mahogany dining table with oval flaps.
- 1210. A Victorian oak extending dining table (2 extra leaves) anthemium and lunette moulded border on 4 baluster legs carved with anthemion joined by 2 incurving galleried stretchers centred by a finial. 89 1/2" extended, together with a set of 6 dining chairs, the cresting rails carved with lions, shell and scrolls.
- 1211. An early 19thC oak table with single drop flap on slender turned legs joined by plain stretchers. 44 1/2" wide.
- 1212. An 18thC oak gateleg dining table with twin oval flaps supported on turned legs and square stretchers. 42" x 51".

1213. Set of 6 Victorian rosewood balloonback dining chairs, carved with scroll moulded top rail and tie rail, serpentine overstuffed seat and on cabriole legs.
1214. A William IV flamed mahogany twin pedestal sideboard with gadrooned carving to the columnar bow front doors. 7' wide.
1215. A set of 6 (inc 2 carvers) Queen Anne style dining chairs with drop-in seats, cabriole leg and H-frame stretcher.
1216. A early Victorian mahogany chiffonier with back shelf supported by 2 turned columns, with drawer base over 2 panelled doors. 36" wide.
1217. A Chinese hardwood chair with circular marble plaque inset back and profusely inlaid with mother of pearl throughout.
1218. A Chinese hardwood chair with fruit carved splat, marble inset seat and mother of pearl and brass inlay.
1219. A Victorian flamed mahogany breakfront 4 door sideboard with serpentine top, having 3 drawers over 4 drawer base and plinth. 6' wide.
1220. A Victorian rosewood veneered ottoman
1221. A pair of composition oak torchere stands. 28" high.
1222. A 19thC walnut Savonarola style X-frame chair.
1223. A similar chair bearing the label on the underside of the seat Giovanni Bacci, with illustration of a similar chair.
1224. A pair of Victorian mahogany kidney back dining chairs with carved bars, drop-in seats and tulip carved legs.
1225. A Sheraton Revival gentleman's dressing chest with later conversions and inlaid case. 20" wide.
1226. A Victorian mahogany bow front chest of 2 short and 3 long graduated drawers with knob handles. 37" wide.
1227. A Victorian walnut rectangular stool with heavy carved cabriole legs and castors. 30" x 15" seat.
1228. A Victorian flamed mahogany chest of 3 drawers with knob handles.
1229. A carved camphorwood blanket chest.
1230. A George III oak chest of 2 short and 3 long graduated drawers with knob handles and bracket feet. 40" wide.
1231. A Victorian flamed mahogany chest of 2 short and 3 long graduated drawers with knob handles and turned feet. 36" wide.
1232. An Adam style mahogany and satinwood crossbanded demi-lune table with square taper legs. 45" wide.
1233. A late Georgian mahogany D-shape folding card table on turned legs. 36" wide.
1234. A pair of George I style armchairs upholstered in a red brocade with floral tracery, raised on shell carved cabriole legs.
1235. A Victorian mahogany half-tester bed with barleytwist supports.
1236. Spare lot.
1237. A Georgian giltwood jardiniere stand with liver marble inset shaped top, openwork frieze, fruit and trailing scroll legs with ball and claw feet. 18" dia, 32" high.
1238. A 19thC Chinese hardwood jardiniere stand with circular marble inset top, openwork frieze and leaf carved cabriole legs with ball and claw feet. 12" dia, 25" high.
1239. A Victorian rectangular 2 tier whatnot with turned uprights. 32" x 14" x 24" high.
1240. An Anglo-Indian Padouk centre table with circular tilt-top top with leaf and acorn carved frieze, the pedestal with berries, raised on a tripod openwork base with leaf scroll feet. 27" dia, 27" high.
1241. A late Victorian walnut open armchair with red dralon upholstery and turned legs.
1242. A set of 4 late Victorian oak dining chairs with brown rexine panelled backs and overstuffed seats with turned legs.
1243. A late Victorian beech spindle back rocking chair.
1244. A Victorian walnut spoonback nursing chair in the Empire style.
1245. A George III oak 2-door book cabinet with 2 double fielded panel doors. 38" wide, 38" high.
1246. A Victorian mahogany bidet with sleeve cover, ceramic pan and turned legs.
1247. A Victorian flamed mahogany bow front chest of 2 short and 3 long graduated drawers with knob handles and turned feet. 44" wide.
1248. A George III flamed mahogany chest of 2 short and 3 long graduated drawers with knob handles, cross banded top, ebony strung inlay, cupid's bow apron and bracket feet. 40" wide.
1249. A George III mahogany tea table with D-shape string inlaid folding top and square taper legs. 33" wide.
1250. A 17thC oak gateleg serving table, of rectangular cusped form, with single dropleaf, on turned legs, block feet joined by moulded stretchers, single

drawer to one end with turned knobs.
33 1/4" x 33".

Provenance: Private entry from the family of Charles Toller Antiques.

1251. A 19thC mahogany tip-top tripod table with dished circular top, reeded pillar and 3 outspread legs. 22" dia.
1252. A Victorian mahogany cylindrical pot cupboard with marble inset top and concave moulded body, octagonal base.
1253. A late Victorian mahogany occasional table with moulded oval top, C-scroll frieze, slender carved cabriole legs joined by C-scroll and urn centred stretcher.
1254. A George III mahogany gentleman's dressing chest converted to a drinks cabinet. 38" wide, 36" high.
1255. An Edwardian walnut occasional table with moulded octagonal turned uprights and galleried undershelf, 20thC.
1256. An early 18thC walnut veneered side table with cross-banded top, frieze drawer with pear-drop handles, turned uprights, shaped stretcher and turned feet. 36" wide.
Provenance: Private entry from the family of Charles Toller Antiques.
1257. A Victorian mahogany occasional table with shaped and moulded top and 3 leg basket base.
Provenance: Private entry from the family of Charles Toller Antiques.
1258. A George III mahogany tea table with moulded rectangular folding top, plain frieze with moulding and square legs. 36" wide.
1259. A George III mahogany bow front chest of 3 drawers with brass loop handles with mask pressed backplates, cupid's bow apron and splay feet. 42" wide.
1260. A George III cross-banded mahogany dressing table with 3-section top incorporating mirrored centre and lift-flap compartments to the side, configuration of brushing slide, 3 real and 2 dummy drawers, with oval gilt handles, on square taper legs. 36" wide, 22" deep.
Provenance: Private entry from the family of Charles Toller Antiques.
1261. A Chinese hardwood alter table of traditional form with openwork frieze. 50" wide, 19" deep, 34" high.
1262. A mid Victorian mahogany writing table with D-shape top, frieze drawers (centre dummy), on reeded legs with brass cup castors. 38" wide.
1263. A William & Mary laburnum oyster veneered chest of 2 short and 3 long graduated drawers with engraved brass backplate loop handles and escutcheons, on later bracket feet.
39" wide, 22" deep, 34" high.
1264. A 1920's mahogany bureau.
1265. A mahogany and beech kneehole desk.
1266. A folding butler's tray stand and suitcase stand.
1267. An Edwardian mahogany and marquetry double bedstead.
1268. An Edwardian mahogany china cabinet with reeded uprights, single astragal glazed door, square taper legs with bow feet.
1269. A pair of Victorian walnut dining chairs with scratched carved uprights and splat, overstuffed seats and turned legs.
1270. A 1920's mahogany bureau with ball and claw feet.
1271. Three mahogany yoke back open armchairs with bobbin turned uprights, acorn finials and shaped apron, bobbin turned legs joined by shaped stretchers.
1272. A Victorian mahogany step commode.
1273. A rush seated gateback chair.
1274. An Arts & Crafts oak tub chair bearing a brass nameplate 'SS Mauretania'.
1275. A set of 3 Victorian walnut salon chairs with pierced and carved splat.
1276. A set of 4 19thC oak spindle back chairs with rush seats.
1277. A George III mahogany bureau with fall flap concealing fitted interior on lopers, with 4 graduated drawers with oval pressed backplate handles and bracket feet. 36" wide.
1278. A Jacobean style carved oak monk's bench, late 19thC.
1279. A late Victorian scratch carved walnut chaise longue with mustard dralon upholstery, galleried back and turned legs.
1280. A Victorian mahogany spoonback armchair with buttoned mustard dralon upholstery, scrolling back, arms and legs, serpentine seat and castors.
1281. A Victorian mahogany spoonback nursing chair with buttoned mustard dralon upholstery and turned legs with castors.
1282. A 1920's beech and walnut bergere deep upholstered armchair with floral tapestry cushions.

1283. A 17thC and later oak open armchair with floral carved cresting rail, the vase splat inscribed ERBE, over stylised foliage and demi-lune panel, similar carving to the shaped arms, 3 plank seat, square legs and stretchers.
1284. A late Victorian mahogany Art Nouveau style pot cupboard with fielded door and carved back.
1285. An Edwardian mahogany occasional table with moulded top and each upright having 2 folding cake stands.
1286. An Edwardian mahogany folding 3 tier cakestand.
1287. A George III mahogany pot cupboard with pierced galleried frieze on 3 sides, moulded square legs, with rise and fall door to the front elevation. (AF)
1288. A Jacobean style carved oak hall chair with reeded legs.
1289. A Jacobean style carved oak hall chair with barleytwist uprights and legs.
1290. A Victorian gilt table mirror with arched glass, reeded supports, shaped base with drawer and knulled feet. 2'9" high.
1291. A Victorian mahogany loo table with oval moulded top, turned pillar and 4 carved cabriole legs. 4'6 x 3'6.
1292. A Victorian mahogany nursing chair with later sculptured upholstery.
1293. An oak side table, rectangular top with moulded edge over single frieze drawer carved with anthemium, iron swing handle on barleytwist and ring turn legs joined by plain stretchers. 24" wide.
1294. A set of eight 19thC bentwood chairs including 2 carvers.
1295. A George III mahogany bidet with slip cover and square taper legs. (AF)
1296. A 1920's mahogany sideboard in the Chippendale manner.
1297. A late Victorian armchair upholstered in polychrome continental brocade upholstery, on square taper legs.
1298. A similar lot with turned legs.
1299. A fine Victorian carved walnut scroll arm sofa with red buttoned upholstery, detailed carving of carved trails, knulled and reeded taper turned legs with brass and ceramic castors. 7' wide.
1300. A Queen Anne style reproduction walnut corner cabinet with glazed upper part and panelled door to base, with bracket feet.
1301. An early 19thC mahogany chest of 2 short and 3 long graduated drawers with oval pressed brass backplate handles, with shaped apron and bracket feet. 36" wide.
1302. A George III yew Windsor chair with pierced vase splat, elm seat, crinoline stretcher and turned legs.
1303. A Victorian burr walnut veneered centre table in the French taste with shaped quarter veneered top, similar frieze and slender cabriole legs.
1304. A Chippendale style fretwork 3 tier etagere with drawer, 20thC.
1305. A George III oak corner cupboard with dentil moulded cornice, 2 double fielded panel doors to the upper part, concealing shaped shelves, over 2 similar single panel doors to the base.
1306. A 1930's oak 2-door bookcase with caddy top, 2 leaded glazed doors over 2 panelled doors, on ball feet. 2'4" wide, 6'2" high.
1307. A Victorian oak 2-door stationery cabinet with fitted interior. 36" wide, 6'2" high.
1308. A Georgian style oak chest of 2 short and 3 long graduated drawers with moulded top, drawer fronts, brass swan-neck handles and bracket feet. 3'6" wide.
1309. A late Victorian walnut nursing chair with ball gallery and carved cresting rail, turned feet.
1310. A pair of late Victorian walnut tub chairs with carved urn and fan backs, acanthus to the arms and turned front legs.
1311. A George II and later mahogany gateleg dining table with oval rule jointed top, frieze drawer, turned uprights, plain stretchers.
1312. A late Victorian walnut dressing chest with rectangular bevelled plate, 2 drawer supports over 2 moulded short over 2 long drawers with knob handles and mother of pearl inlay, on plinth.
1313. An oak press cupboard on stand, moulded cornice over 2 panelled doors profusely carved with flowers and figures within guilloche borders, the interior fitted with sliding shelves (one only) with full width drawer below, carved with vine and grapes, centred by a head and shoulders carving of a gentleman, the stand with shaped apron and square legs. 47 1/2" wide.
1314. An antique oak housekeeper's cupboard with galleried upper part over 4 (2 sliding) doors on a 3 drawer dresser base, raised on legs, profusely carved throughout.

1315. A floral cottage style 3-piece suite.
1316. An early 19th C continental flamed mahogany Secretaire a Abattant with fall front resting over three stepped drawers.
1317. A George III oak drop-leaf dining table with 6 moulded legs.
1318. A George III mahogany drop-leaf dining table.
1319. An oak corner cupboard with single door enclosing 2 shelves profusely carved with anthemion, acanthus and scrolls. 27" wide.
1320. A reproduction mahogany corner whatnot.
1321. A George III mahogany commode chair with moulded cresting rail, gate back, reeded and shaped arms and similar tapering uprights.
1322. A George III mahogany dining chair with shell carved cresting rail, pierced vase splat in the Chippendale style, drop-in seat and square legs.
1323. A late Victorian walnut open armchair.
- 1324-6. A Victorian carved walnut nursing chair with fluted legs.
1327. A pair of Sheraton design wheatsheaf dining chairs.
1328. An Edwardian mahogany corner chair.
1329. An Edwardian mahogany piano stool with kidney shape handles and cabriole legs.
1330. A Victorian walnut spoonback armchair with button tapestry upholstery and scroll arms.
1331. A Victorian ash and elm child's Windsor chair.
1332. A Victorian mahogany dressing table mirror with rectangular plate, cushion drawer and ball feet.
1333. A George III mahogany chest of 2 short and 3 long graduated drawers with moulded top, pressed brass circular handles, splay feet and shaped apron. 48" wide
1334. A Victorian mahogany card table with D-shape folding top, fruit and leaf carved frieze, on a turned and jewel carved pillar with 3 scroll legs terminating in scroll feet. 36" wide.
1335. A Victorian mahogany tub chair with deep buttoned upholstery.
1336. An oak pot cupboard with gothic carved door.
1337. A Victorian mahogany box commode.
1338. A Victorian mahogany towel rail.
1339. A gothic oak stick stand.
1340. A turned adjustable wool spinning stand.
1341. A Victorian mahogany music stand with carved tripod base.
1342. A late Georgian mahogany corner cupboard with single door.
1343. A George III flamed mahogany and oak bowfront hanging corner cupboard with simulated dentil cornice.
1344. A set of 6 Victorian mahogany balloonback dining chairs with drop-in seats and turned front legs.
1345. An Anglo-Indian hardwood occasional table with mother of pearl and tonbridge inlay.
1346. A Chippendale style mahogany serving table with 2 frieze drawers on carved cabriole legs with ball and claw feet. 54" wide.
1347. A similar mahogany breakfront sideboard with Greek key frieze, 2 drawers to the centre flanked by a single panel door. 72" wide.
1348. A George III oak dresser base with 4 deep frieze drawers with oval pressed backplate handles, raised on 3 square taper front legs with swell feet and 2 square legs to the back. 96" wide, 21" deep, 31" high.
1349. A George III oak Lancashire dresser with lift top, over 3 dummy drawers, over 2 x 3 cross-banded drawers with brass swan-neck handles and ogee feet. 69" wide.
1350. A Victorian elm smoker's bow chair.
1351. A pair of Georgian elm spindleback Windsor kitchen chairs.
1352. A Victorian mahogany dining chair with serpentine seat and reeded legs.
1353. A late Victorian rosewood marquetry upright steel framed piano by John Broadwood & Sons, serial no 98576.
1354. A Victorian upright piano.
1355. A Riley metamorphic snooker and dining table with rise and fall mechanism and fluted legs. 4' x 7'6"
1356. A full size 'London Bridge' style mahogany snooker table.
1357. An Art Deco boardroom table.
1358. A late Victorian walnut 3 tier serving buffet with 3 moulded shelves, supported by taper turned uprights, on castors.
1359. A modern oak wall unit with 6 door bevelled glazed upper part, over 4 drawer and cupboard base, with canted sides.
1360. A Georgian elm 2 door wall cupboard.
1361. A 19thC Beidermier table with flamed veneer rectangular top, frieze drawer, solid uprights co-joined by an intermediate stretcher, on ball feet.

THURSDAY 11th October, 2001

Commencing 2pm

50 New Garden Buildings

5 different styles,

estimates from £475 to £900.

Established 1900

-GOLDINGS-

— AUCTIONEERS & VALUERS —

Forthcoming Sales and Events

COLLECTIVE AUCTION SALES

Of Furniture, Household Goods, Personal Effects and Objects of general use and interest.

On Wednesday 17th & 31st October, 2001 at 10am

HOUSE CLEARANCES and SINGLE ITEMS always INVITED

ENTRIES CLOSE 5pm the preceding FRIDAY

Viewing: Tuesday prior 2pm to 6pm and Saleday from 9am to 10am.

60 Rolls of NEW CARPETS on the 17th.

COMMERCIAL SALE

On Wednesday 31st October, 2001 at 10am

Now accepting entries of Office, Shop, Catering & Trade Equipment & Stock, Machinery, Tools, Vehicles, etc.

COMMERCIAL PROPERTY CLEARANCES and SINGLE ITEMS always INVITED

ENTRIES CLOSE 5pm the preceding FRIDAY

Viewing: Tuesday prior 2pm to 6pm and Saleday from 9am

Upon instructions from Mr E Armitage due to retirement the complete dispersal of the entire

AGRICULTURAL IMPLEMENTS

For 550 acres. On site at Thetford House Farm, Baston, Peterborough

Including 6 tractors (John Deere and Case International), irrigation equipment, 8 trailers, ploughs, Knight sprayer, hydraulic Cambridge, flat rolls, power harrow, root and corn drills, Mercedes lorry, etc.

On Saturday 13th October, 2001 at 10.30am

All enquiries to Robin Hall FRICS FAAV on 01476 590211

**Clocks, Glass, Ceramics, Metalware,
Period & Decorative Furniture, Works Of Art
19th & 20th C. Collectables, Etc.**

On Wednesday 5th December, 2001 at 10am

Viewing: *Tuesday prior 2pm to 7pm and Saledays from 9 to 10am*

Visit our website: CATALOGUES with COLOUR IMAGES of all lots of interest and valued at over £100 are on our website from Saturday 1st. There is a search engine to find the lots you are interested in.

Antique and Modern

JEWELLERY, SILVER, WATCHES, BIJOUTERIE & OBJECTS of VERTU

On Friday 14th December, 2001 at 6pm

ENTRIES CLOSE Thursday 29th NOVEMBER

Viewing: Thursday 13th 4pm to 7pm, Saleday 10am to 1pm & 2pm to 6pm
& at www.goldingyoung.com from 8th December.

All enquiries for buying, selling or appraisal. Contact Jan Squires P J Gem Dip.