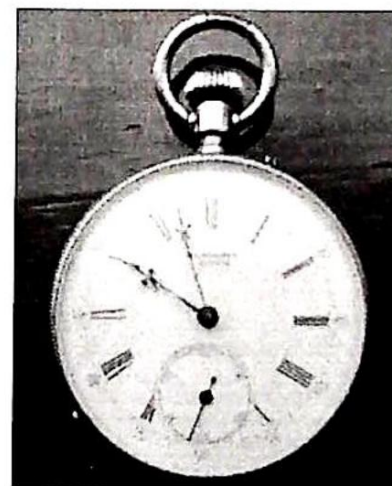
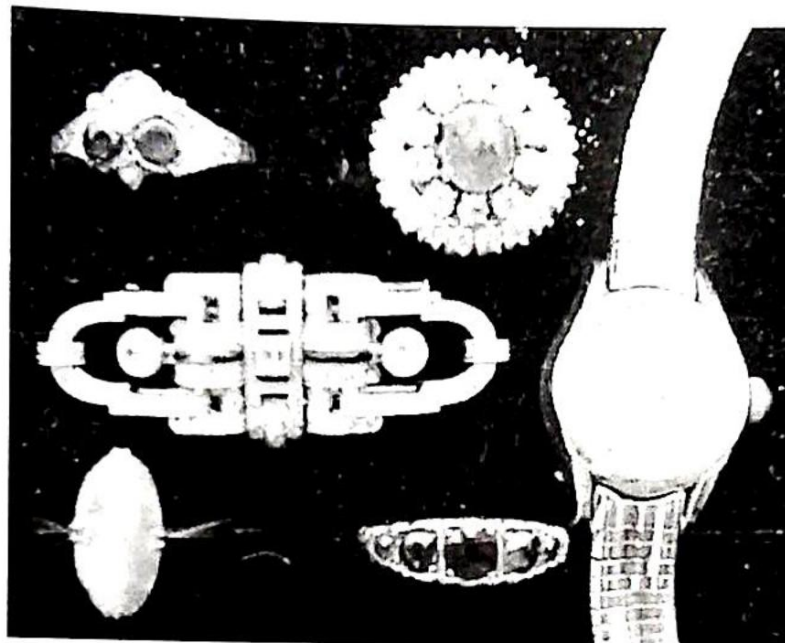


AUCTION SALE CATALOGUE



Antique and Modern
**JEWELLERY, SILVER, CLOCKS
WATCHES & BIJOUTERIE**

On Friday 14th December, 2001 at 6pm

Viewing:

Thursday 13th 4pm to 7pm,
Saleday 10am to 1pm & 2pm to 6pm
& at goldingyoung.com from 11th December.

Principal
Colin R. Young FNAVA

Consultants
C. Robin Hall FRICS FAHV
Ian J. Shaw FRICS FNAEA



National Association of
Valuers & Auctioneers

Fax
(01476) 561475

E-Mail
enquiries@goldingyoung.com

Internet
<http://www.goldingyoung.com>

Golding Young & Co.
Old Wharf Road, Grantham
Lincolnshire, NG31 7AA

01476 - 565118

Associate Office
Goldings, Chartered Surveyors & Estate Agents
45 High Street Grantham NG31 6NE (01476) 590211

IMPORTANT NOTES FOR PURCHASERS

1. **PAYMENT:** Must be made in full immediately after the Auction. The following methods of payment are acceptable.

a) Cash b) Bankers Draft c) Building Society Cheque
d) Cheques, accompanied by a valid card.

PAYING BY CHEQUE?

If you are not known to the Auctioneers and wish to pay by cheque above your guarantee card limit **WE WILL RETAIN THE GOODS** until it has been cleared (7 days). There will be **NO EXCEPTIONS** to our policy. To avoid **UNDUE EMBARRASSMENT** for yourself or to our staff, please do not ask for preferential treatment. If you wish to clear goods immediately bring a letter from your Bank or a suitable guarantor reference.

2. **BUYERS PREMIUM** of 15% on the first £100 of each lot and 12 ½% thereafter + VAT is payable on all lots.
3. **REMOVAL OF PURCHASES:** Goods must be collected as soon as they are paid for, and in the 2 Working Days following the sale. If goods are not collected on these days we reserve the right to charge £1 per lot per day thereafter.
4. **COMMISSION BIDS:** If you are unable to attend this or any of our future sales we will be pleased to bid on your behalf. We always purchase at the lowest possible price, subject to other bids and reserves.

All bids must be handed to the office on an official form. It remains the responsibility of prospective purchasers to contact **GOLDINGS** to confirm whether their bids have been successful.

5. **TELEPHONE BIDS:** There are inherent dangers with this practice, therefore all such arrangements are made entirely at the bidder's risk. Telephone bids will only be accepted if the lower estimate is £500 or above. For lots with a lower estimate below this figure Commission Bids Only will be accepted.
6. **SMOKING** is not permitted in any part of the Saleroom.
7. **REFRESHMENTS** will be available Saleday.
8. **ACCOUNT TRANSFER** will not be recognised after the sale. If any lots are purchased for another person, this must be declared at the fall of the hammer.
9. **ESTIMATES.** Our Auctioneers will be available during viewing to give guidance on your prospective purchases.

GLOSSARY

- a) Generally: 'As Found' (AF). This term indicates the lot has some damage. Its absence does not indicate that the lot is free of defect. All lots are **SOLD AS SEEN**.
- b) Silver & Jewellery: Weights given are approximations given by basic instruments.

SALE ENQUIRIES

Jewellery Lots - Jan Squires PJ Gem Dip. ANAVA

All other lots - Colin Young FNAVA

The Sale Inventory

1. A 19thC oak and mahogany longcase clock of 8-day movement, the painted dial with roses to the arch, Arabic numerals, subsidiary dials inscribed Jn. Wall & Co Coventry, the case with swan-neck pediment, reeded pilasters, shaped trunk door with foliate inlay, 1/4 round reeded pillars to the sides. (AF)
2. An oak and mahogany crossbanded longcase clock, painted square dial with Roman numerals, the case with swan-neck pediment, reeded pilasters, pagoda top door to trunk, 30 hour movement. (AF)
3. A 19th century mahogany wheel barometer with 8" brass dial, thermometer, level and clock replacement to hygrometer aperture, by Cox, 5 Barbican, London (AF) 36 1/2" high.
4. A Vienna double weight wall clock, in a walnut case, the two part enamel dial with Roman numerals and seconds dial, of eight day striking movement, early 20th century. 39" high.
5. A Vienna regulator wall clock with weight-driven movement, the 2-part enamel dial with Arabic numerals, numbered 51420 + 7/27" to the backplate, brass weights, the walnut case with nulled frieze to ogee pediment, fluted columns with volute capitals, 38" high.
6. A 19thC Vienna wall clock with embossed brass dial, enamel chapter ring 33" high.
7. A 19thC. mahogany drop dial wall clock with fusee movement. (AF)
8. A 19thC. French slate clock garniture, the clock with gable pediment, the tympanum cast in low relief with classical figures and animals, black and gilt dial marked Thos. Russell, 8 day striking movement, the 2 Warwick urns cast in high relief.
9. An early 19thC French ormolu mantel clock by HENRY MARE, the 8-day movement having silk suspension, striking on a bell, the enamelled circular dial with Roman numerals, the case surmounted by a figure of a 16thC gentleman and hound, raised on a slate plinth, the base cast with urn, foliage and strapwork, 15 1/4" high (some damage to dial).
10. A 19thC French gilt metal and porcelain clock garniture, the clock of 8-day movement, bell striking on the hour and half-hour, of architectural form with porcelain dial, pilasters and urn cresting painted in the Sevres manner, together with 2 complimentary ewers, the clock 16" high, the ewers 15" high, (damage to one ewer), flanked by putti.
11. A German bracket clock by Gustav Becker, the mahogany case with caddy top, and inlaid with walnut spandrels around the 8" circular polished steel dial with Roman numerals, of 8-day chiming and striking movement, 15 3/4" high.
12. A German mantel clock, the enamel 2-part dial with Arabic numerals, of 8-day striking movement, the slate case of architectural influence, with marble 1/2 round columns and panel, 11 3/4" high.
13. A German walnut cased mantel timepiece by Gustav Becker, having a brass and enamel dial with Roman numerals, the case with segmented pediment, mounted with gilt metal ornament, 16 1/2" high.
14. An early 20thC oak cased mantel timepiece, with plain circular white dial, the case with lower moulded frieze, 11 1/2" wide.
15. An early 19th century timepiece by Allan & Caithness, Watch & Clockmakers, London, No. 2992, having a circular dial with Roman numerals, mounts to the front panel of a rectangular gilt metal case modelled as a carriage clock, engraved overall with scrolls and foliage 5 1/4" high.
16. A brass cased carriage clock, with white enamel dial, striking the hours on a gong together with alarm, 4 3/4" high.
17. A French gilt metal and white marble mantel clock by Japy Freres, the circular dial with Roman numerals, of eight day movement striking the 1/4 hours on a bell, the rectangular case surmounted by a covered urn with figural handles, rosettes to the side, swags under clock face, on claw feet.
18. A 19thC. green onyx mantel clock of architectural form, with French 8-day movement. 10" high.
19. A German oak cased bracket clock, of eight day striking movement, the enamelled two part dial with Arabic numerals, the case with arched top and carved panels, 11 1/2" high.
20. An early 20th century mahogany and burr walnut mantel timepiece, with an elongated arched case, the circular dial with Roman numerals, on bun feet. 10 1/4" high.
21. A late 19th century ormolu and marble mantel clock, the drum shape movement with enamelled dial, Roman & Arabic numerals, of eight day striking movement with urn surmounted and encircled by laurel, supported on a shaped platform and four turned columns, mounted with swags, the shaped platform base with bead border. 18" high.
22. A 19thC. 'Bishop's' mantel clock, of eight day striking movement, the gilt metal circular dial with Roman numerals, the ebonised case gilt with foliate scrolls and strapwork and inlaid with mother of pearl 17 1/4" high.
23. An early 20thC. French brass carriage timepiece.
24. A Lantern style electric table clock. 6.5" high.
25. A 19thC. brass inlaid mahogany drop dial wall clock with repainted dial having Roman numerals and marked Joseph Watts, Peterboro', fusee movement.
26. Clock movement and parts.
- 27. To 66 Spare Lots for late entries.**
67. A fur cape and collar.
68. A 1930's skin clutch bag.
69. 2 brocade evening bags.

70. 2 Chinese hardwood figures of noblemen, 20thC.
71. 4 crestedware hatpin holders, inc. Grantham.
72. A pair of Victorian silver fish servers with pierced blades and tines and Kings pattern handles. Maker JG. Birmingham 1858.
73. A modern silver napkin ring.
74. An EPNS entree dish and cover, oval, with bead borders and removable handle.
75. A set of George III knives and forks, with silver wrapped handles, Sheffield 1826, (AF).
76. A silver dressing table set comprising hand mirror, 2 hair brushes, 2 clothes brushes, early 20th century.
77. A small silver salt, rectangular, with gadroon body, Birmingham 1909, together with two silver thimbles.
78. A 3 piece silver Cruet Set comprising salt (with sapphire liner and spoon), mustard and spoon and pepperette, Birmingham 1966.
79. A Victorian silver mustard, oval, chased with flowers, scrolls and shell, the centrally domed cover with orb finial, scroll handle, Sheffield 1892, (liner missing), together with an Edward VII mustard, of square form, having a pierced body, square domed cover and scroll handle, Chester 1901. (2)
80. A silver candlestick of rococo design with a loaded base. Birmingham 1905. (AF)
81. An Edwardian VII silver 3 piece teaset of irregular hexagonal form, the teapot with composition handle and finial London 191/2 35oz. gross.
82. A white metal novelty cruet set, the stand modelled as 3 golf clubs supporting a golf ball, having a salt, mustard and pepper.
83. An Indian silver footed bowl, chased with a border of wild animals, with fluted rim, 7 in. diameter.
84. A silver pepperette of baluster form, with torch finial, modern, together with a pair of EPNS pepperettes and a cast metal teaspoon.
85. A silver plated entree dish and cover, together with a pair of EPNS candlesticks, a toast rack and two sauce boats.
86. Four silver plated salvers.
87. A pair of 19thC. mother of pearl set gilt brass opera glasses by Le Maire Paris, cased.
88. A Venetian glass flared and fluted small bowl.
89. A signed Japanese ivory netsuke a study of a deity standing holding an unfurled scroll, a goose beside him.
90. A signed Japanese ivory netsuke a study of a naked man wrestling with a huge sea serpent.
91. A signed Japanese Netsuke, a peasant sitting in a basket grinding corn.
92. A signed Japanese Netsuke, a smiling man holding a stick with a gourd and his hat.
93. A signed Japanese Netsuke, a man sitting waiting for his tea kettle to boil.
94. A signed Japanese ivory netsuke a study of a Dutchman, his ballooned trousers exaggerated and assisting him concealing a sword behind his back.
95. A signed Japanese ivory netsuke a study of a Shoki the mythological Demon Queller wrestling with a pair of evil horned Oni (Demons).
96. A signed Japanese Netsuke, a bird of prey standing picking flesh from a skull.
97. A signed Japanese ivory netsuke a study of a youth collecting edible snails in a growth of bamboo.
98. A signed Japanese ivory netsuke a study of Ashi-Odori a court entertainer of mythology standing holding his stringed musical instrument.
99. A signed Japanese Netsuke, 2 young wrestlers.
100. A signed Japanese Netsuke, round bellied man carrying a fan and bag on his back.
101. A George V silver teapot, of half fluted oval shape, with composition finial and handle, Chester 1915, 16 1/2" ozs.
102. A silver matched cream jug and sugar bowl, of half fluted oval shape with reeded handles, Birmingham 1923 and Sheffield 1904 respectively, 7 ozs. gross.
103. An Edward VII silver shell moulded dish, on three shell feet, 4 3/4" wide, Sheffield 1904.
104. A Victorian silver 5-bar toast rack, Sheffield 1896, 2.5 ozs.
105. A George V silver 7-bar toast rack, Sheffield 1933, 5ozs.
106. A silver engine turned cigarette box, with wooden lining, 5" wide. Birmingham 1963.
107. A George V silver hot water jug, of tapering oval shape, engraved with lion rampant, with composition finial and scroll handle with acanthus terminal, London 1918, 7" high, 14.5ozs gross.
108. A George III silver sauce boat, having a gadroon rim, double scroll handle, on acanthus, scroll and leaf feet, London 1773, 8", 16 ozs. Maker A F.
109. A spherical glass toilet water bottle with silver collar and hinged domed cover, 6" high. Birmingham 1917.
110. A pair of George VI silver sauce boats, having wavy edges flying scroll handles on three shell and hoof feet, 6 1/4" over handles, Birmingham 1937, 6 ozs. (AF).
111. A pair of George V silver sugar tongs, having bird claw nips, Chester 1920, together with 2 pairs of EPNS sugar tongs (3).
112. A pair of George III silver sugar tongs, having scissor ring handles, hallmarks indistinct.

113. A George V silver sugar castor, baluster, with pierced domed cover, on circular stepped foot, 7 1/2" high, Birmingham 1918.
114. Three George V silver liqueur goblets, each with tulip bowls, engraved with stylised thistles, on knopped stem and stepped foot, 4" high. Birmingham 1918.
115. A Victorian silver trophy, ovoid, on bead knopped stem and circular foot, engraved with inscription within shield cartouche, 10 1/2" high, Sheffield 1882.
116. An Edward VIII silver 3 piece tea service, circular, on paw feet, the teapot with composition finial and scroll handle, Sheffield 1936. 28.5oz all in.
117. A silver baluster Pepperette having domed cover with flame finial, 4" high, Birmingham 1962, 1.5 ozs.
118. A George III silver pair-cased pocket watch with verge movement, backplate inscribed J Shurman, Melton, with enamelled face and Roman numerals, London 1814.
119. A plated tri-colour necklet (17") and matching bracelet stamped 9ct.
120. A Victorian mourning necklace and a 4 strand faceted garnet bead necklace.
121. A 9ct gold double watch chain with faceted links, 29" long.
122. A silver charm bracelet with 14 charms and padlock clasp.
123. Two 9ct gold flat link bracelets.
124. A flat link bracelet and a yellow metal link bracelet, stamped 9k.
125. A 9ct gold slave bangle.
126. An Edward VII silver vesta case with engraved decoration.
127. A silver hinged bangle with engraved decoration together with another, similar.
128. A 9ct gold and jet mourning ring mounted with the letter C.
129. Three 9ct gold dress rings and a yellow metal coin set ring.
130. A pair of engine turned 9ct gold cuff links together with a pair of yellow metal cuff studs and a cased set of mother of pearl stone set studs and tie pin.
131. A 9ct gold pendant, pierced and set with peridots and pearls, on 9ct gold chain.
132. A ladies 9ct gold Omega dress watch with flexible bracelet.
133. A ladies 9ct gold Rotary watch with flexible bracelet.
134. Two small meerschaum and amber pipes, in fitted case.
135. A ladies Ricoh watch with quartz movement.
136. A man's 9ct gold stone set ring together with 2 - 9ct gold signet rings and a 9ct gold fob.
137. A USA gold 2 1/2 dollar coin - 1913.
138. A 9ct gold clown charm on fine 9ct gold chain (broken), a flat link bracelet and a ladies Timor watch.
139. Two ladies silver open faced pocket watches with enamel faces together with a hunter type watch case marked 14k.
140. An 18ct gold diamond set eternity ring.
141. An 18ct and platinum 5 stone diamond ring.
142. A man's 9ct gold shield ring.
143. A man's 9ct gold St George medal ring.
144. A man's 9ct gold St George medal ring.
145. A 9ct gold dress ring set with sapphire and diamonds.
146. A man's 9ct gold dress ring.
147. A 9ct gold dress ring and 3 other rings.
148. An 18ct gold solitaire diamond ring.
149. A 9ct gold cluster ring and one other.
150. A silver charm bracelet with 4 charms and padlock clasp, together with 3 - 9ct gold charms and an Indian silver circular pendant.
151. Three 9ct gold dress rings.
152. A qty. natural stone, glass and other beads including amber.
153. Two rococo style brooches, in yellow metal with central coloured stone.
154. A ring; yellow metal setting stamped 18ct, set with turquoise matrix and a turquoise necklace.
155. A ring; hallmarked 9ct gold shank on an earlier gypsy style setting with 5 red stones.
156. An Odeonesque style diamante and mother of pearl set necklace.
157. A ring; yellow metal setting of floral form set with 3 purple/pink stones and 1/2 seed pearls.
158. GB Coins and an old jewellery box.
159. A linen bag and silver coins.
160. Qty costume jewellery and trinket items including fountain pens.
161. Silver and white metal brooches.
162. A yellow metal locket and photograph brooch.
163. Two yellow metal Edwardian style brooches.
164. An Art Deco style ring of two concentric rings of brilliant cut diamonds surrounding a cabachon emerald set in white metal on a white metal shank, 19 diamonds of c.10pts & 10 diamonds of c.15pts, emerald 8.2 x 6.8 mm.
165. An Art Deco metamorphic brooch and clip set of Odeonesque styling, having central trap cut diamond of c.20pts & two brilliant cut diamonds of c.33pts each, with bands of millegrain set smaller stones. 50mm x 20mm.

166. A ladies Omega Seamaster wristwatch, the case marked 14k on a yellow metal bracelet stamped 585.
167. A diamond solitaire ring in an illusion setting on a yellow metal shank
168. A sapphire and diamond cluster ring, central Australian sapphire of 8x6 mm approx. surrounded by small diamonds, claw setting on a 9ct gold shank
169. A small sapphire cluster ring set in 9ct gold with bark effect shoulders
170. A ruby set gypsy style ring - three rubies set in 9ct gold
171. A ladies 9ct gold and amethyst dress ring with pierced shoulders
172. A sapphire and diamond cluster ring set in 9ct gold
173. A triple stone (cubic zirconium) ring set in 9ct gold
174. A delicate sapphire and diamond cluster ring of foliate form set in 9ct gold
175. A sapphire and diamond cluster ring of tiered form set in 9ct gold
176. A single stone (cubic zirconium) ring set in yellow metal stamped 9ct.
177. An oval Australian sapphire & diamond cluster ring set in white metal on a yellow metal shank stamped 18ct & plat.
178. A sapphire and diamond cluster ring set in 9ct gold
179. A ring - a pearl surrounded by small star set diamonds on a yellow metal shank marked for 18ct.
180. An amethyst ring of oval shape set in a rococo style setting on a yellow metal shank stamped for 9ct.
181. A triple stone ring of central green stone flanked by two white stones, in a plain setting tests as 9ct.
182. An Aquamarine and diamond cluster ring set in 9ct gold
183. A sapphire and diamond cluster ring, with an unusual twist setting in yellow metal, tests as 9ct.
184. A ladies 9ct gold keeper ring
185. A ladies signet ring with coin design, stamped 9ct.
186. A ring - an opal and diamond cluster of oval form set in 9ct gold
187. A gentleman's signet ring - top diagonal set with three small diamonds in 9ct gold
188. A ladies dress ring of open barkwork design in yellow metal, stamped 18ct.
189. A gentleman's signet ring set with an oval black onyx in 9 ct gold
190. A gentleman's signet ring, top square set with a central small diamond with wide bark shoulders in 9 ct gold
191. A gentleman's signet ring, reeded shoulders in 9ct gold
192. A gentleman's signet ring, sunburst top, in 9ct gold
193. A gentleman's signet ring, in 9ct gold
194. A signet ring set with white stones in a snowflake design in 9ct gold
195. A signet ring set with a coin in 9ct gold
196. A gentleman's oval top signet ring in 9ct gold
197. A fine belcher chain in 9ct gold, 16 ins. long
198. A long curb link chain in yellow metal stamped for 9ct, 16 ins long
199. A twisted curb link chain in yellow metal stamped for 9ct, 18 ins long
200. A double curb twist link chain in yellow metal stamped for 9ct. 26ins long
201. A fancy link chain in yellow metal, stamped for 9ct. 19 ins long
202. A long curb link chain in yellow metal stamped for 9ct
203. A belcher chain in yellow metal stamped for 9ct. 15 ins long
204. A stranded foxtail link chain with band securing the strands at intervals, in yellow metal tests for 18ct. 16 ins long
205. A curb link chain in yellow metal stamped for 9ct, 20 ins long
206. A rope twist necklace in 9ct gold, 15 ins long
207. A fancy link bracelet in yellow metal, stamped 9kt.
208. A fine long curb link chain in yellow metal stamped for 9ct. 18 ins long
209. A double curb link bracelet in yellow metal, marked 9kt.
210. A fine curb link bracelet in 9ct gold
211. A belcher link bracelet in 9ct gold
212. A fancy link bracelet in yellow metal stamped for 9ct.
213. A tri-colour metal fancy link bracelet, stamped 750
214. A fancy link bracelet in yellow metal, stamped for 9ct
215. A light open link bracelet & padlock in 9ct gold
216. A plaited snake link bracelet in yellow metal stamped for 9ct.
217. A tri-colour graduated width bracelet in 9ct gold
218. A tri-colour brickette link bracelet, stamped 750
219. A double strand simulated pearl necklace with Deco style clasp

220. A Gents Omega presentation watch and a Freeson gents watch both in yellow metal cases.
221. A silver charm bracelet with 22 charms and padlock clasp.
222. A ladies 9ct gold wristwatch.
223. A ring, being a central diamond of 25pts and 2 small diamonds on each shoulder set in white metal on a yellow gold shank marked 18ct and plat.
224. A miniature carved peridot hippopotomus. c.9g.
225. A white metal Wedding Band with foliate decoration, no hallmark, stamped platinum. Weight 2.8gms.
226. A white metal Wedding Band with floriate decoration, no hallmark, stamped platinum. Weight 3.8gms
227. A yellow metal brooch of flower spray design set with Burmese rubies and diamonds as flower centres.
228. A lady's dress ring, being an aquamarine set in a yellow metal fleur-de-lys claw setting with feathered shoulders. c. 8.17cts.
229. A pierced and engraved white metal hinged bangle inscribed 26.1.47 probably French.
230. A watch chain modelled as a horse's bit.
231. A rolled gold charm bracelet with charms, some stamped 9ct.
232. Spare lot.
233. A George V ladies chased 9ct gold open faced fob watch. Birmingham 1911.
234. A silver bangle and agate brooch.
235. A silver charm bracelet with 20 charms.
236. A small selection of costume brooches.
237. Costume jewellery.
238. Trinket items.
239. A small leather purse with costume jewellery and a beaded purse and box with costume jewellery.
240. A Cased Malacite necklace.
241. A quantity of costume jewellery.
242. A quantity of costume jewellery.
243. Various old spectacles.
244. A 1940/50's beaded evening bag.
245. A marble sample stick.
246. A necklet consisting of a double curb link chain joining 9 shield shape motifs in yellow metal marked 9ct.
247. A ring; silver set with Blue John and another.
248. Two pocket watches - Ingersol & H. Samuel.
249. A printed handkerchief from the 1966 World Cup era.
250. An oriental laquered box with gilt crane decoration.
251. A Victorian mother of pearl inlaid papier mache spectacle case.
252. A pair of Georgian silver wig spectacles. Maker FC. Birmingham assay.
253. A ring; an oval opal doublet set in yellow metal marked 9ct.
254. A watch chain and a small number of small trinket items.
255. A 9ct gold eternity ring with white stones.
256. A green stone set ring.
257. A gent's signet ring set with tigers eye agate in 9ct gold.
258. A ring set with red and white stones in 9ct gold.
259. A single white stone set ring in yellow metal stamped 18ct.
260. A single white stone ring.
261. A "pearl" and orange stone ring.
262. A single white stone set in white 9ct gold.
263. An open face pocket watch by Retouret of Geneva, with a Swiss lever movement set with 15 rubies, the yellow metal case stamped 18K.
264. An open face pocket chronograph pocketwatch.
265. A silver open face pocket watch - The Faringdon.
266. Marcasite brooch, fob watch and eternity ring.
267. Costume jewellery and watches.
268. A silver plated Swiss stopwatch.
269. A 5 stone diamond ring set in yellow metal stamped 18ct.
270. 3 gents rings.
271. A wedding band and another.
272. A Victorian 9ct rose gold double Albert curb watch chain with T-bar and 2 clips. 52g.
273. A Victorian 18ct gold bezel wind Hunter pocket watch by Thos. Russell & Son (No 88690), 12 Church Street, Liverpool. Chester 1894.
274. Hatpins.
275. 9 Chinese carved bone snuff bottles, 20thC.
276. A portrait miniature of a young lady wearing a pearl necklace. JA monogram.
277. A pair of Georgian steel wig spectacles and others.
278. A George III silver toasting fork with knopped shaft and rococo handle. Maker R Peaston. London 1767. 7oz 10dwt. 17" long.
279. A qty. of Austrian schillings, various denominations.

- 280. A restruck gold Hungarian coin, cased.
- 281. Coins; 1d. & 1/2d., etc.
- 282. A Skinner & Rook wine merchants promotional corkscrew.
- 283. A King screw open barrel corkscrew.
- 284. 5 restruck silver Austrian coins.
- 285. A small George V silver cigarette case. Chester 1912.
- 286. A Victorian silver vesta case with chased decoration. Birmingham 1897.
- 287. A Victorian silver flat curb watch chain with T-bar.
- 288. Coins; inc GB and IOM: 1937 napkins.
- 289. A white metal bead chain with bluestone drop tail
- 290. A white metal and pale blue stone square set pendant
- 291. A white metal chain and ribbon scroll and white stone set pendant necklace
- 292. A baroque pearl and white metal necklace
- 293. A white stone set bullet shaped white metal pendant necklace
- 294. A white stone set circular pendant and white metal chain
- 295. A six point star brooch with enamel points and a micro-mosaic floral rondel centre. Marked CG to the yellow metal back.
- 296. Costume jewellery.
- 297. Costume jewellery.
- 298. Costume jewellery.
- 299. Costume jewellery.
- 300. Costume jewellery.
- 301. Costume jewellery.