

Established 1900

**-GOLDINGS-**

— AUCTIONEERS & VALUERS —

# *Auction Catalogue*



*Spring Fine Art Sale 2001*





Lot 92



Lot 13

Lot 94

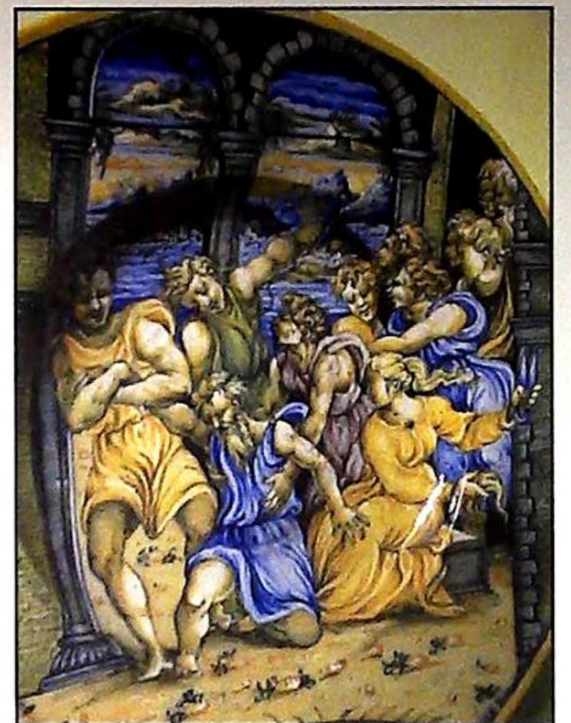


Collection of  
Modern Dolls

Collection of Silver



Details of Lot 350



A Selections of Lots



Collection of Staffordshire



Images of all interesting lots available at [www.goldingyoung.com](http://www.goldingyoung.com)



Established 1900

**-GOLDINGS-**

— AUCTIONEERS & VALUERS —

Are pleased to announce the completion of the

---

# SALEROOM MODERNISATION

Specially re-designed to offer the  
**MOST *up-to-date* FACILITIES**  
FOR THE SALE BY AUCTION OF

---

*Antiques*  
*Works of art*  
*Collectables*

---

General Furniture & Effects

---

*Commercial Assets*

---

**At: THE NEW GRANTHAM AUCTION ROOMS**  
Old Wharf Road, Grantham, Lincolnshire

*You are cordially invited to join the Auctioneers and Staff  
To view our First 2-day Fine Art Sale in the New Saleroom.  
If you are unable to attend - View the sale On-line.*

**[www.goldingyoung.com](http://www.goldingyoung.com)**

**Messrs Golding Young & Co.**

Colin R Young FNAVA

Consultants: C Robin Hall FRICS FAAV Ian J Shaw FRICS FNAEA



# NOTES

---

## CONDITIONS OF SALE

1. These Conditions together with any Notices to Purchasers are the only terms and conditions subject to which Golding Young & Co. ("the Auctioneers") as agents for the Vendor will sell goods to a purchaser ("the Bidder") and all other conditions, whether express, or implied at common law or by statute as are capable of lawful exclusion are hereby excluded.
2. The highest bidder shall be the buyer. The Auctioneers reserve the right of regulating the biddings; of rejecting any bid; and of bidding for, withdrawing, consolidating, dividing or altering the order of lots.
3. The purchase money for each lot with the usual commission of 15% on the first £100 (minimum £1 per lot) and 12½% thereafter plus VAT at the current rate shall be paid at the fall of the hammer (if required). Each lot at the fall of the hammer shall be at the sole risk and expense of the buyer, and shall be paid for and removed immediately after the conclusion of the sale, but no lot shall become the property of the buyer, or be removable until paid for, and if taken away in contravention of these conditions without an order for removal signed by the Auctioneers, they shall have power to seize the same by their servants or agents, or otherwise, or the Auctioneers may recover either the lot sold or the price thereof (at their option) by action at law.
4. No contra account of any description whatever will be allowed to the buyer as a set off, and payment for each Lot shall be made to the Auctioneers or their clerk only, and a buyer paying by cheque must give satisfactory references.
5. For all purposes of this sale the Clerk of the Auctioneers shall be deemed to be the agent of both seller and buyer.
6. A bidder shall not be allowed to retract his bidding after the fall of the hammer, and he shall give up his full name and address if required. The Auctioneers will not recognise the transfer of any lot from one buyer to another, nor make any alteration in the sale book in respect thereof.
7. The Auctioneers are acting only as agents, and give no personal warranty as to the condition, quality or authenticity of any chattels offered for Auction. Any catalogue description is given merely as guide to purchasers, any description can be changed from the rostrum before the lot is sold. If a purchaser buys without previous inspection he will do so at his own risk.
8. Notwithstanding any other terms in these Conditions, if within 7 days of the Sale a purchaser gives notice in writing that a lot is a deliberate forgery, with supporting factual evidence, the Auctioneers may rescind the transaction. The burden of factual proof lies with purchaser, mere opinions will not satisfy. This benefit is not assignable.
9. If any buyer neglect or refuse to comply with the above conditions or any of them, his deposit money (if any) shall be forfeited, and the lot uncleared may, at the option of the Auctioneers, be resold without notice by public auction or private treaty, and any loss occasioned by such re-sale together with all expenses attendant thereon, or arising under these conditions shall be paid for by the defaulter and be recoverable as and for liquidated damages. This condition is however without prejudice to the right of the Auctioneers to enforce the contract made at this sale if they think fit.
10. Any Notes for Purchasers and Catalogue Glossaries will be construed as Conditions of Sale.
11. The Auctioneers shall be the sole Arbitrators in all matters of dispute relating to those conditions both as between the seller and the buyer and between the several bidders and buyers and their determination on all matters shall be final and binding on all parties concerned.

Auctioneers: C. Robin Hall FRICS FAAV & Colin R. Young FNAVA



*Upon instructions from Executors, Solicitors, Accountants,  
Private Vendors and Others*

## **Golding Young & Co will sell by Auction**

*The residual contents of Property Clearances from throughout the  
region being...*

**Antique Collectables, Silver, Jewellery,  
Ceramics, etc.**

On ***Wednesday 11<sup>th</sup> April, 2001***

At 10am followed by

**Modern Collectables**

At 2pm

**Antique and Decorative Furniture  
Oriental Carpets and Rugs**

On ***Thursday 12<sup>th</sup> April, 2001***

10am followed by

**Pictures**

At 12noon

**Viewing:**

*Tuesday prior 2pm to 7pm  
and Saledays from 9 to 10am*

Lot Enquiries: *Suki Burnett, Jan Squires & Colin Young.*

Vendor Enquiries: *Marie Scoffield*

**Golding Young & Co.**

**Old Wharf Road • Grantham • Lincolnshire • NG31 7AA**

**Telephone: 01476 • 565118**

**Fax: 01476 • 561475**

**Email: [enquiries@goldingyoung.com](mailto:enquiries@goldingyoung.com)**

**Buyers Hotline: 01476 • 575202**

**For Lot Enquiries & Commission Bids Viewday & Saledays Only**



## IMPORTANT NOTES FOR PURCHASERS

1. PAYMENT: Must be made in full immediately after the Auction. The following methods of payment are acceptable.
  - a) Cash    b) Bankers Draft    c) Building Society Cheque
  - d) Cheques, accompanied by a valid card.

### PAYING BY CHEQUE?

If you are not known to the Auctioneers and wish to pay by cheque above your guarantee card limit WE WILL RETAIN THE GOODS until it has been cleared (7 days). There will be **NO EXCEPTIONS** to our policy. To avoid **UNDUE EMBARRASSMENT** for yourself or to our staff please do not ask for preferential treatment. If you wish to clear goods immediately bring a letter from your Bank or a suitable guarantor reference.

2. BUYERS PREMIUM: of 15% on the first £100 (minimum £1 per lot) and 12½% thereafter plus VAT is payable on all lots.
3. REMOVAL OF PURCHASES: Goods must be collected as soon as they are paid for, and in the Two Working Days following the sale. If goods are not collected on these days we reserve the right to charge £1 per lot per day thereafter.
4. COMMISSION BIDS: If you are unable to attend this or any of our future sales we will be pleased to bid on your behalf. We always purchase at the lowest possible price, subject to other bids and reserves.

All bids must be handed to the office on an official form. It remains the responsibility of prospective purchasers to contact GOLDINGS to confirm whether their bids have been successful.

5. TELEPHONE BIDS: There are inherent dangers with this practice, therefore all such arrangements are made entirely at the bidder's risk. Telephone bids will only be accepted if the lower estimate is £500 or above. For lots with a lower estimate below this figure Commission Bids Only will be accepted.
5. SMOKING: is not permitted in any part of the Saleroom.
6. REFRESHMENTS: will be available Saleday.
7. ACCOUNT TRANSFERS: will not be recognised after the sale. If any lots are purchased for another person, this must be declared at the fall of the hammer.
8. ESTIMATES: Our Auctioneers will be available during viewing to give guidance on your prospective purchases

### GLOSSARY

- a) Generally: 'As Found.' (AF). This term indicates the lot has some damage. Its absence does not indicate that the lot is free of defect. All lots are **SOLD AS SEEN**.
- b) Paintings: 'Signed, initialled, monogrammed' This refers to the present state of the work and is not an attribution.
- c) Books and printed matter: These items are not sold subject to collation and are not returnable once removed from the premises.
- d) Silver & Jewellery: Weights given are approximations given by basic instruments.



## DAY ONE – 10am

1. A carved mahogany figure of Earl Haig carved by G W Burbidge, Barkston, Nr Grantham, 1933. 28" high.
2. A set of 3 Victorian copper graduated Jug Measures of flared form, with loop handles, marked with VR cypher. 9 1/4" to 7" high.
3. An earthenware 2-handled ovoid Vase, green ground reserved with a painted panel of pheasants in a landscape, on gilt socle. 16 1/2" high.
4. A 19th C opaque glass Ewer, painted with flowers, gilt metal mounted neck, spout and handle cast with bird and scrolls, the metal pedestal and foot cast with marks, foliage and strapwork. 23 3/4" high.
5. A Victorian Staffordshire spaniel, 13", and cups.
6. An African Tribal Figure on plinth. 24" high.
7. A Lovatts Langleyware stoneware Jardiniere, underglaze blue neck, pale blue body painted with formal scrolls and medallions. 9" dia.
8. A Doulton & Slater 'Chine' baluster Vase, dark green acanthus moulded neck with everted rim, brown lace body with turquoise and white enamels. 18" high.
9. A pair of 19th C compressed ovoid Vases, highly gilt and painted with figural landscapes, with lion mask handles, on square bases. Very badly damaged. 11" high.
10. A mid 19th C copper lustre moulded Jug, highlighted in blue, 7 1/4" high; together with a creamware baluster Jug painted with butterfly within ivy leaves, painted cover. 6 1/2" high.
11. A Booths part Service, printed in blue and polychrome painted with birds and flowers.
12. A silver plated rectangular Warming Dish and cover; another, entree dish, both with bead and reeded moulding, loop handles.
13. A New Hall porcelain silver shape Teapot and Stand, painted with flowers and diaper panels between blue lines, pattern no 105, (chips and repair to finial). 6 1/2" high.
14. A New Hall porcelain Teapot of globular shape, painted with scale borders, flower sprays, the domed cover with baluster finial, moulded scroll handle and spout. 6" high.
15. Six New Hall porcelain Tea Bowls and 5 Saucers painted with scale border and flowers, pattern 173, together with another tea bowl (some cracks and losses).
16. A Victorian copper bombe ice cream Mould. 6" high.
17. A 19th C copper Mould with hollow centre stamped 'Jones Bros., 4 Down Street'. 5 1/2" high.
18. A 19th C leather bound Box with brass fittings, enclosing 3 cut glass heart shaped scent bottles with faceted stoppers. 11 1/2" wide.
19. A pair of 20th C Vienna porcelain Figures of a gentleman with hound and his female companion in pink coat and muff. 6" high.
20. A Continental porcelain table Vase modelled as a chariot and horses with female charioteer, glazed in buff and blue with gilt highlights, early 20th C. 12" wide.
21. A Wemyss trinket Dish of rectangular form with canted corners, painted with 3 black Cockerels in a field. 9 1/2" wide, impressed and printed factory marks.
22. A silver plated Entree Dish and cover of rectangular form, cast and moulded with gadrooning and lobing, removable scroll handle. 11 1/2" wide.
23. A Derby porcelain ice pail cover, painted and gilt with foliage, pineapple finial; and a Wades paisley printed panelled teapot, (spout and cover repaired).
24. A Meakin Meatplate, others, and glass jelly mould.
25. A qty of Victorian Dinnerware printed in turquoise with scrolls and foliage, gilt lines.
26. A Derby porcelain Tray of rectangular form with canted corners, the handles gilt with faux moulding, the well printed in underglaze blue with stylised flowers and insects, 18 3/4" wide; together with a 'Berber' pattern oval meatplate, 16" wide.
27. A porcelain Cabaret comprising tray of indented oblong form, teapot, cream jug, sugar bowl and cover and cup and saucer, with faux bamboo handles, painted with flowers within blue and gilt panels, (some gilt rubbed).
28. A 19th C melon shaped Sugar Bowl and Cover, gilt with seed heads and scrolls, the domed cover with bifurcated finial, on rococo base.
29. A pair of Doulton Lambeth faience Vases, of compressed baluster form, decorated with pink cyclamen and foliage on graduated blue ground, printed factory marks and artist's initials. c.1900. 8" high.
30. A pair of plated 19th C 2-handled jewelwork Vases of bulbous form with everted wavy rims, painted and enamelled in relief with flowers, scrolls and beadwork. 6" high.
31. A Royal Doulton flo-blue baluster 2-handled Vase with everted rim, decorated with iris and with gilt dusting. 6" high. (Hairline to base).
32. Five Victorian Mowbray & Co. Grantham ale and lemonade bottles and 2 Bourne Water cod bottles.
33. A qty of 19th C Delft wall tiles, under-glaze blue with landscapes, figures, etc (some damage).
34. A ship's copper cased Lantern.
35. A 19th C cast-iron bedroom Fender, pierced and cast with bosses. 29" wide.
36. A Gecophone Wireless, Model no 3045, late 1920's, in red leather cloth case.
37. A WWII field Telephone, stamped 'Telephone Set F Mk.II. T.M.C.'.
38. An oak cased Signal Detector.
39. An RAF Astro Compass, in wooden case.
40. An RAF WWII Signal Lamp.
41. Coastal Command: The Air Ministry Account of the Part Played by Coastal Command in the Battle of the Seas, 1939-1942 (front cover loose).
42. A Portadyne Challenger Wireless in walnut case, circa 1931.



43. A Volkstedt Art Nouveau centrepiece modelled with sea nymphs riding fish. (AF)
44. An 18thC Leeds creamware Coffee Pot with loop handle. (Spout and cover missing).
45. A green pottery pig, possibly Moores.
46. A Decomania papier mache vase.
47. A Paris porcelain cylindrical Teapot, Coffee Can and Tea Cup.
48. A Victorian polished slate Mantel Clock of architectural form.
49. A modern Louis XV style Mantel Clock of German 8-day movement, striking on a bell, the burr-walnut waisted case embellished with gilt metal mounts, the moulded gilt metal and enamel dial with Roman numerals. 23" high.
50. A Royal Doulton Vase of tapering cylindrical form, by Francis Pope, with incised green leaves and yellow flowers on a mottled blue ground. 13 3/4" high.
51. A pair of late 19th C spelter Figures after Bruchow, of a young girl holding a basket of berries, with spaniel at her side; and a youth with corn sheaf and game bird, on circular wooden bases. 16 1/2" high.
52. A late 19th C baluster Ewer, with pierced fluted spout, serpent handle, the body painted with bird, flowers and foliage on a matt ivory ground. 13" high.
53. An earthenware baluster Vase, painted with an overall landscape of ruins and mountains, blue collar and foot. 15" high.
54. Chamber pot.
55. A Victorian flo-blue Toilet Set, printed with flowers, foliage and ribbons, comprising ewer, bowl and tooth mug.
56. A 19th C spelter Figure after Bruchon, 'L'Amair Vagabons', putti on celestial globe, marble base. 18 1/2" high.
57. A set of brass and metal Balances, with chrome trays, enclosed within a mahogany case.
58. A large Chinese blue and white Ginger Jar with Kangxi marks.
59. A pair of Cranford circular tapering Vases with flared rim and foot, printed and painted with landscape vignettes, scrolls and garlands, on a shaded ivory ground. 9 1/4".
60. A Devon Ware waisted Jug, printed and painted with flowers, ferns and swags. 9" high.
61. A 19th C mahogany sarcophagus Tea Caddy, with gadroon tablet to the hinged cover, the interior with 2 lidded compartments, on compressed bun feet. 9" high.
62. A Dresden figure of a young man seated on the ground, resting his head in his right hand and leaning against a flower encrusted tree trunk, in white flower sprigged shirt and patterned trousers. 13" wide, 8" high.
63. A pair of late 19th C Satsuma ovoid Vases and covers enamelled with buff and white flowers and foliage against a green shaded ground, dark brown cloud shoulders and moulded with tassels, the domed covers with shi-shi finials. 12 1/2" high.
64. A pair of 18thC brass petal base candlesticks.
65. An Italian porcelain Candlestick, with rococo style sconce, the stem modelled as Pan, seated astride a leopard, on rococo base. 11 3/4" high. (AF)
66. An extensive Copeland green floral transfer printed tea service.
67. A smoked grey glass circular tapering Vase with ribbing to the body. 12" high.
68. Seven items of crested china.
69. A pair of brass eagle finials.
70. An orange lacquer silhouette bowl.
71. A Royal Worcester Cabinet Plate with gilt cartouche borders having opposing scenes of fish and fishing accessories, the centre field painted with a bridge over a river in landscape, signed verso E. Salter (restored). 10" dia.
72. A pair of Royal Doulton double gourd Vases by Francis Pope, incised in blue with stylised flowers, leaves and tendrils. 10 3/4" high.
73. A Victorian mahogany bezel WALL CLOCK by A. Sattelle, Lincoln with an earlier movement.
74. An 18thC French hand painted fan in case, depicting a fete champetre with figures in 18thC dress, mounted in a wooden case.
75. A pair of 20thC Japanese chargers enamelled with table furniture within faux bronze borders.
76. A Verdigris copper bowl with stylised white metal applied decoration.
77. A Davenport part tea service decorated with birds and flowers in the oriental manner. (AF)
78. A Doulton Slaters 'Chine' straight sided tapering Jug, the buff ground enamelled in turquoise and white, scroll handle, with dark brown pendant diamond rim. 6 1/2" high.
79. Six pottery figures.
80. A Parian Figure of a young boy with slate and pencil, seated on a fabric strewn plinth, his left foot resting on a folio, square base. 13".
81. A terracotta Bust of an Blackamoor wearing a red turban and gold tasselled cloak, on black socle, circular stepped base. 13 1/2" high.
82. A pair of turned oak Candlesticks with plated sconces.
83. A Royal Doulton Sung tapering Vase, the shoulders with marble glazes, 5 1/2" high; another flambe Vase of ovoid form. 6" high (chip to rim).
84. A Royal Doulton stoneware Vase of slender tapering form, painted with sprays of cherry blossom against a green background, stylised leaves rising from the foot. 11 1/4" high.
85. A Dresden yellow ground Inkwell with integral stand and cover, gilt with diamond border, foliage and scrolls, painted with flowers. 5 1/2" dia. 19th C.
86. A Derby Cup and 2 Saucers painted with broad bands of blue leafage and gilt sprigs within gilt lines, puce factory mark, early 19th C.
87. A Loch Gilthead Pottery bottle Vase, painted with tree and bird landscape. 6 1/4" high, 20th C.
88. A Royal Doulton stoneware spherical Jug, with raised rim, scroll handle, the mottled green ground decorated with blue roundels with applied flowerheads. 4 3/4" high.



89. A pair of Royal Doulton stoneware small bottle Vases, the mottled brown ground with applied blue stylised foliage medallions. 3 1/2" high.
90. A 19th C Cantonese enamel Bowl decorated with flowers on a bleu-de-mazarin and turquoise ground. (AF)
91. A Doulton Burslem 'Willow' blue and white painted Jug of tapering form, with cusped loop handle and pewter hinged lid. 8 1/2" high.
92. A Copeland parian Figure of a neo-classical maiden, after Marshall, facing left, wearing a draped skirt, holding a tambourine in her left hand and her right hand resting on a flower strewn trunk, bears Art Union of London Stamp. 18 1/2" high (repair to left arm).
93. A pair of Ludwigsburg porcelain Salts, modelled as a youth and his female companion, seated on rococo style bases, dressed in typical 18th C dress, the bowls painted with flowers, 5 1/2" wide, blue factory mark. (AF)
94. A Samson figure group after a Meissen model by Kandler, of a young man seated, attended by his maid, his companion seated along side, a poodle to his right with its front paws on the bench, on a circular based encrusted with flowers, guilloche borders. 11 1/2" high.
95. A Royal Worcester white glaze nautilus shell posy Vase, raised on a coral pedestal, rocaille base. 20th C. 6 1/2" high.
96. An oak canteen of plated cutlery.
97. A mahogany cased Bracket Clock, the rectangular case with segmented top, inlaid with brass flowerheads and stylised leafage, lion mask and ring handles to each side, the enamel dial with Roman numerals, brass bezel, together with a bracket with conforming inlay, the clock. 12" high.
98. A silver plated Chamberstick, the scone on a circular base, with scroll handle and encircled by a plain ring supported by 3 uprights with acanthus and trefoil casting, fitted with a conical snuffer, 4 1/4" dia; together with a silver plated Salver with stepped piecrust border, on 3 scroll feet. 10 1/4" dia.
99. A Royal Worcester commemorative Plate, sepia printed with mayoral portraits within lilac borders, foliage and swags, date code for 1896. 10 1/2" dia.
100. A 'Lille' pattern bone china Tea Service, printed with medallions and swags within peach borders.
101. A French porcelain Tea Service, printed and painted with flowers on a shaded peach ground, gilt sponged rim.
102. A commemorative glass fluted Goblet engraved with Edward VIII cypher and dated 1937, 9 3/4" high; together with a bucket shaped Goblet commemorating the wedding of HRH Prince Charles.
103. A bird handled Umbrella and another.
104. A Staffordshire earthenware Cheese Wedge and stand, painted and gilt with flowers and foliage against a cream moulded ground.
105. A frosted green glass Dish with central flower holder modelled as a naked maiden, 7 1/2" dia; together with a continental 2-handled pedestal Vase printed with putti, encrusted with flowers and mounted with putti, on pierced pedestal, 6" high (lacking cover).
106. A bone china Tea Service printed with scale and medallion borders.
107. A small 17th C crested bronze Mortar.
108. An early 20th C mahogany and brass magic lantern, together with a qty of slides, mainly of cartoons and caricatures.
109. A set of brass laboratory Balances by Philip Harris Ltd, Birmingham, England, in oak case.
110. A set of 4 19th C porcelain Dessert Plates, painted with landscape vignettes within a turquoise ground, the borders ivory and gilt with foliage, pattern No 596. 9" dia (some rubbing). 111. A 19th C Sevres style ovoid Vase, with underglaze blue ground reserved with a portrait of a court lady within green/gilt and floral panels, 2 gilt handles. 13 3/4" high. 112. A Doulton Slaters 'Chine' circular tapering Vase, the brown glaze knopped neck with everted rim, the body in blue and white enamelling. 11 3/4" high.
113. A Doulton Slaters 'Chine' baluster Jug, slender neck with everted rim and acanthus moulding, decorated in blue and brown glazes, enamelled in blue, white and gilt. 10" high. 114. A Satsuma baluster 2-handled Vase with neck, the green ground decorated with jewel enamelling, reserved with a panel of oriental chrysanthemums. 12 1/4" high.
115. A Doulton Burslem small Ewer of panelled tapering form, shaped rim and serpent handle, painted with delicate flower sprays and decorated overall with gilt foliage and tracery, on 4 acanthus hoof feet. 10" high. Rd. No 160952 G.W.1146.
116. A modern ribbed glass Dish, a baluster crackle glass 2-handled Vase and a lobed turquoise mottled glass Vase.
121. A late 19th C Staffordshire Jardiniere of ovoid form, underglaze blue border gilt with flowers, the yellow body printed with roses within an underglaze blue and gilt cartouche, and overall, gilt handles to the side, on 3 scroll feet. 9" dia. 122. A Staffordshire flat back Figure of a female equestrian with tambourine, probably 'Esmerelda', predominantly white glaze with pastel highlights. 11 1/4" high.
123. A Staffordshire Figure of 'Tom King' in underglaze blue coat with orange trim, on a bay horse, 10" high. (Chip to hat and hairline to underside). 124. A Staffordshire Figure of 'Dick Turpin on Black Bess', underglaze blue coat, black hat. 9" high. (Chip to hat and horse's ear)
125. A pair of Staffordshire Figures, 'Female Musician on Couch' and 'Male Musician on Couch', she bareheaded with long dress holding an open book and violin, he in floral jacket, breeches and boots, with book and violin, orange and brown glazes to the couch. 9" high.
126. A Staffordshire Spill Vase as Little Red Riding Hood, seated to the right, the wolf crouching at her side, tree trunk behind, orange and naturalistic glazes. 10 1/4" high. (Slight paint flaking)
127. A Staffordshire Spill Vase, the shaped base modelled with 2 swans and a cygnet before a tree trunk, bocage embellishments. 5 1/4" high.
128. A Staffordshire Pen Holder, modelled as a swan, with brown and pink tipped wings. 3 3/4" high.
129. A pair of Staffordshire Spaniels, with black eyes and ochre muzzles, gilt splashes. 12 1/2" high. (Hairline to each)



130. A Staffordshire Figure of Prince Albert, seated, in underglaze blue coat, holding a scroll in his right hand. 5 1/2" high.
131. A Staffordshire Figure of a female seated on a recumbent sheep before a vine bower, in underglaze blue and flower sprigged dress, orange sash. 8" high. (Hairline)
132. A Staffordshire Figure Group of 2 washerwomen, wearing white shawls and aprons with blue and pink highlights, yellow striped skirts, on bocage base. 8 1/4" high.
133. A Staffordshire Clock Group with a female standing to the left, a boy seated on top of the clock face, in underglaze blue, green and orange. 6 3/4" high.
134. A pair of Burslem Ware spaniels, with black eyes, ruby muzzles, gilt collar and chain, with black splashes. 7 3/4" high.
135. A pair of Staffordshire spaniels with partly separated front leg, black muzzles, gilt collar and chain and gilt splashes. 10 1/2" high. (1 foot repaired)
136. A Staffordshire Royal Coat-of-Arms Clock Group, surmounted by a crown, lion to the left and unicorn to the right, white glaze with gilt highlights. 9 1/2" high. (Repaired)
137. A Staffordshire Animal Group of a seated poodle and 2 puppies, on underglaze blue oval base. 5 1/2" high. (Repairs and damage)
138. A Staffordshire Clock Group of the Prince of Wales and Princess Royal with pet dog and lamb, on rococo scroll base over clock face, white glaze and brown and gilt highlights. 8 1/4" high. (Hairlines)
139. A pair of Staffordshire recumbent greyhounds, with ruby coats and black collars on moulded bases with green, brown and ochre glazes. 3 1/4" wide.
140. A Staffordshire Figure of The Prince of Wales, seated on a goat, with underglaze blue jacket, red beret, green trousers, the goat with black and tan coat. 6 1/4" high.
141. A Staffordshire Figure Group of a man holding a tambourine, the woman seated by a hutch and holding a rabbit, both in underglaze blue jackets, she with sprigged skirt. 6 1/2" high. (Damaged)
142. A Staffordshire Spill Vase, of a male traveller standing to the left of a milestone, the female to the right, both in underglaze blue jackets, she with flower sprigged skirt, the milestone inscribed 'London 30 Miles'. 11" high. (Chip and hairline)
143. A pair of German porcelain figures of seated lion cut poodles, on rococo scroll bases. 5" high.
144. A pair of Victorian green glass dumps. 4" high.
145. A Victorian green glass dump. 5" high.
146. A 19th C cased pair of Papal commemorative medals, 1887.
147. A Masons 'Golden Azalea' pattern, footed bowl, with wavy edge, 10 1/4" dia, together with a matching ginger jar and cover. 5 1/2" high.
148. A 19th C tortoiseshell, mother of pearl and abalone Tea Caddy, of rectangular serpentine outline, the hinged lid enclosing 2 compartments with tortoiseshell covers, brass escutcheon, and on 4 bun feet. 8" wide.
149. A cast metal Safety Lamp by Wells & Co. 5 1/4" high.
150. A cast metal and brass Coffee Grinder, the grinding handle with turned wooden finial, by Clark & Co. 5 1/4" wide.
151. A horn handled Carving Set comprising steel, knife and fork, cased.
152. A Samuel Alcock Jersey Pattern Part Tea Service with teapot (AF), creamer, sucriere and cover and 2 teaplates.
153. Two Victorian copper lustre Bowls and silver lustre Sucrere.
154. A Victorian cranberry crimped glass Candle Holder and cranberry tapered Glass.
155. A pair of 19thC Mintons low Comports with gilt Greek key border enclosing a yellow ground painted with bamboo shoots, fan and birds in the Japanese taste.
156. Four Victorian and later Jugs.
157. An onyx and brass Doorstop and exposure meter. (2)
158. A pair of 19thC brass 3-branch Candelabra with cast triangular bases.
159. A majolica glazed Teapot, blue ground with pineapple finial.
160. A Bohemian ruby overlay glass pedestal Bon-bon Dish, wheelcut decoration of Wiesbaden Cathedral.
161. A Victorian copper coal scuttle.
162. A Victorian copper coal scuttle.
163. A Victorian copper coal helmet.
164. A Victorian copper kettle
165. A Victorian copper log bucket with brass mask handles and paw feet.
166. "Universal History of the World" 8 vols. and "The Story of Exploration and Adventure" 3 vols.
167. A brass and crystal centre light with faceted drops and a pair of brass lustre hanging lamps.
168. A Fowler's patent.
169. A Jack plane and Pyrene brass fire extinguisher.
170. A brass and copper post horn and 2 others.
171. 4 brass Primus blow lamps.
172. A 19thC salt glazed stoneware spirit flask modelled with lions, knights, armorials and vines.
173. An oak cash till.
174. Art Nouveau brass dish, weights, dinner gong etc.
175. A National brass cash register.
176. A Persian brass opium pipe.
177. A wicker fishing basket.
178. A Victorian grain painted tin travel trunk.
179. Walking sticks and whip.
180. A mahogany cased receiver set.
181. A hymn board.
182. Two leather travel cases.
183. A bamboo bird cage.
184. An embossed brass fire screen.



185. An Art Nouveau brass fender.
186. A sexagonal brass coal bucket with ring handles.
187. An Art Nouveau brass fender.
188. A Victorian cased Diorama with 2 squirrels and bird.
189. A Georgian pierced steel fender
190. A Victorian polished brass fender.
191. A Victorian brass and steel coal scuttle.
192. A Persian flintlock rifle (AF).
193. An Edwardian mahogany serving tray with brass handles.
194. Four Hickory shafted golf clubs including The Percy Beale Special 3 iron, Maxwell Mashie Campbell Gem Putter and a Star Maxwell Special.
195. A small mahogany wall shelf with lift flap.
196. A Victorian brass samovar.
197. A majolica glazed jug with hound handle and game to the body.
198. A Doulton Lambeth stoneware tapered jug with lappet decoration and white metal mount. 8 1/2".
199. An early Derby plate with landscape by Z Boreman (restored).
200. A Victorian burr walnut dome top stationery box with a fitted interior.
201. A Geo. III cross banded mahogany 3 section tea caddy with brass handle.
202. An early 19thC flamed mahogany sewing box.
203. A Victorian Tonbridgeware transfer printed workbox.
204. A Victorian embossed leather photograph album.
205. A silver plated presentation cigarette box, hydrometer, hem marker and addressograph.
206. An Arthur Wood horse handled jug.
207. A 1920's mahogany mantel clock.
208. A pair of Bali carved hardwood female figure bookends.
209. A pair of Victorian brass candlesticks and a small oak cask.
210. Two carved fertility masks.
211. A Burmantofts Faience pedestal jardiniere decorated in relief with flowers. (Jardiniere damaged and restored).
212. A Victorian glass dome with plaster figure of a monk and child.
213. A 19thC Bonn Pottery Pail with painted and transfer printed floral ribbon decoration (hairline crack).
214. A Lucas Silver King Lamp and another.
215. A pair of Victorian plates with blue crossover border and floral sprig decoration, date lozenge verso; Nankin Plate (AF).
216. A Pair of German Bisque Fairing figures (repair to neck). 6 1/2".
217. A Victorian Cranberry glass creamer and sugar bowl.
218. A 19thC opaque china polychrome transfer printed jug with satire mask spout 5". Maker Mayer and Newbold.
219. A Victorian walnut 8 day mantel clock with 8 day movement.
220. A Victorian mahogany cased brass microscope and slides (no maker's name).
221. A Victorian brassbound walnut writing box.
222. A Victorian salt glazed stoneware hound handle mug. (AF).
223. An 18thC Chinese bowl painted with scenes of an indiscreet lady 5" diameter.
224. An 18thC Famille Rose bowl on ormolu stand 4 1/2" high.
225. A Hirado tea bowl and saucer.
226. Two Famille Rose tea bowls.
227. Two Japanese eggshell cups and saucers heavily decorated with flora.
228. An 18thC Chinese Famille Rose Cup.
229. An 18thC Chinese Famille Rose cup.
230. An Imari plate, two brush pots, ewer, bowl and stoneware jar. (6)
231. A Japanese Satsuma creamer and saucer.
232. A Japanese baluster mon vase 6".
233. A 19thC Japanese Celadon glazed bowl 7 1/2" dia.
234. A 18thC Japanese Imari bullet shape teapot (chips to rim of lid).
235. A Libation cup with bird of prey to base.
236. A Celadon bowl moulded with flowers 4" high.
237. A pair of oriental blue and white landscape baluster vases 8".
238. A 19thC Nankin blue and white diaperwork bordered plate 8" dia.
239. A Japanese bowl with two figures to the rim 6" dia.
240. A Japanese cylindrical vase moulded with dragon in relief 7" high.
241. Two Japanese Cloissone vases (AF).
242. A 19thC Imari basket pattern bottle vase 9" high.
243. A 19thC Japanese red foil Cloissone sexagonal baluster vase 7 1/2" high.
244. A 19thC Fukagawa long neck squat vase painted with opposing panels of rushes and fish. 6 1/2".
245. Two Fukagawa cups and saucers.
246. A Fukagawa dragon jar with cover. 5 1/2" high.
247. A Fukagawa plate decorated with fish.
248. A Fukagawa baluster vase painted with opposing panels of flora 4 1/2" high.
249. A Fukagawa plate painted with a scene of Mount Fuji. 7 1/2"
250. A Fukagawa petal plate with opposing decorative panels 9"
251. A 19thC Japanese Imari Bowl 4 1/2" dia.
252. A 19thC Japanese bowl 6" dia.
253. A Japanese plate with mythical animal to centre field.
254. A Chinese hardwood Charger stand.



255. A 19thC Paris Inkwell with green floral band raised on 4 gilt feet.
256. A small silver mounted Leipzig Cup dated 1899.
257. A Westerwald Globular vase 3 1/2" high.
258. A Georgian wine glass, 6 custard glasses and another. (8)
259. A pair of Victorian pink overlay glass lustre vases with prismatic droplets and painted bodies. 13 1/2" high.
260. A Victorian black pottery samovar with enamelled floral decoration.
261. An electroplate circular three piece tea set.
262. A bronze figure of an Indian Elephant 6 1/2" high.
263. A .303 ammunition belt.
264. A small Chinese brass seal mounted with shelled creature.
265. A 19thC Strawberry Hill brass fan case decorated in the Gothic taste
266. A 19thC Dresden Jar with cover decorated with opposing panels of flowers and garden scenes on a powder blue ground. 6" (AF).
267. A 19thC French bronze figure of a monkey in Napoleonic dress mounted on a poodle, (after the engraving by Rowlandson depicting the Anglo-French relationship), signed A Baron and bearing foundry mark. 8" wide, 4" deep, 8" high.
268. An 18thC Wedgwood moulded creamware teapot.
269. An Edwardian mahogany mantel clock with enamel dial and brass columns.
270. Furs, badges, lighters etc.
271. A mahogany box of coloured bone counters and farm animals.
272. A Japanese teapot moulded on each side and to lid with grotesque masks.
273. A Chinese pottery figure of a Water Buffalo with seated figure. 6" high.
274. A 19thC Faience creamer moulded with shells.
275. Meerscham pipe, two jade figures, leather tool and jewellery pieces.
276. A Japanese knife in the form of a fan.
277. A Japanese carved hardwood figure of a demon.
278. Leather Gladstone style bag and another.
279. A Mallaca Dandy Cane with white metal mount with Japanese carved ivory ball knob.
280. An oil lamp with a blue and white porcelain reservoir. (restored).
281. A plated Epergne stand with three glass trumpets.
282. Various figures, glass bowls and dish.
283. An oak ink stand with crystal well.
284. A Noritake Tyg, Cranberry Caster and Bowl.
285. Two Soapstone Spills, decorative china etc.
286. An electroplate four piece teaset with Arabesque design.
287. A cased set of 6 pairs of silver plated fish cutlery.
288. An electroplate columnar oil lamp with stepped base, reeded column, cut crystal reservoir and decorative shade.
289. A large Chinese Baluster vase with wavy rim.
290. An antique copper grain scoop.
291. A large linen Table Cover with hand crochet inset panels with scenes of stag, squirrels, swans, lions, etc enclosed by pulled threadwork borders and a butterfly piquet edge.
329. A Memorial script of John Taylor of Barrowden, Rutland incorporating an image of him and of a Church.
330. A Circular wall mirror with floral frame.
331. Three various game masks (AF).
332. A tool chest containing plough plane, moulding and various other items.
333. A pair of solid brass no. 2 Hames.
334. Various fishing rods.
335. A large oval two handled tray with Rococo and shell borders and handles stamped verso "Mount stamped from the original Bolton & Watt Dies c.1774" 31" wide.
341. A Pair of Staffordshire sponged spaniels 5 1/2" high.
342. A Staffordshire flat back figure with capped jockey on horse.
343. A Staffordshire figure of a Scottish lad leaning on his drum with a canon to base. 8" high.
344. A small Staffordshire cottage pastille burner.
345. A Shelley crested model of The Black Watch with City Mark of Nottingham and another.
346. A Victorian Fairing figure with a couple in a bedstead.
347. After Barbedienne. A Bronze bust of a gentleman impressed F. Barbedienne Fondateur - Reduction Mecanique A Collas. 5 1/2" high and marble plinth.
348. A Japanese carved hardwood Kimono of a male figure stretching.
349. A French brass carriage clock.
350. An Urbino Maiolica istoriato Dish depicting the blinded Samson being restrained as his hair is cut. Attributed to Francesco Xanto Avelli di Rovigo. 12 1/2" dia. Marked 'Sanson' Verso. (A hairline crack runs from top centre to centre of dish, a little scratching to the domed surface of the centre picture, chip to rim. Various other fill-ins to rim under the glaze.)
351. A George V silver travelling Coffee Pot and matching Hot Water Jug, of octagonal outline, the hinged covers with raffia loop finials and with raffia covered scroll handles. 5 1/4" high, London 1912, Makers Mark: GH. 17ozs.
352. A Victorian silver Caddy by Vale Bros & Serman, of rectangular bombe outline, chased with flowers and ribbon, above lobed band, the plain oblong cover with wooden urn finial. 5" high, Birmingham 1890, 7ozs.
353. A Victorian silver double lip baluster Cream Boat, with 2 scroll handles. 4 3/4" over handles, London 1885. 3ozs.
354. A Victorian silver eau-de-Cologne Case of circular outline, the front panel repousse with figures in a landscape, purse clasp, containing a scent bottle with Faina retail label. 4 3/4" high, London 1899. 3.5ozs.



355. A George III helmet Cream Jug with bright-cut decoration, loop handle, engraved with initials. 4 1/2" high, London 1806. 4ozs.
356. A Victorian silver Sugar Castor by Charles Boyton, of hexagonal baluster outline, the pierced cover with conforming finial. 7 3/4" high, London, 1898. 9ozs.
357. A Victorian silver Sweetmeat Dish, the everted rim pierced and chased with flowers, fruit and C scrolls. 5" dia, Sheffield 1895. 3ozs.
358. A pair of Victorian silver Sweetmeat Dishes, chased with scrolls and acanthus, the plain wells inscribed with initial B. 3 1/2" dia, London 1895. 2ozs.
359. A pair of Victorian silver fiddle and thread Tablespoons, London 1839, Makers mark G.R.C. 6ozs.
360. A pair of George III Berry Spoons, the handles engraved with flowers and cartouche, London 1808. 5ozs.
361. A pair of Edward VII silver Sardine Tongs, with fish shaped nippers, the handle cast with saints, Sheffield 1901, weight nominal.
362. A George III silver Old English pattern Fish Slice, with pierced blade, London 1803. 5ozs.
363. A George III silver fiddle pattern Fish Slice by Eley & Son, with pierced blade, London 1818. 6ozs.
364. A pair of Victorian silver bead pattern Tablespoons by Chawner & Co. 6ozs.
365. Three George III silver fiddle pattern Tablespoons, engraved with initials, Glasgow 1822. 7ozs.
366. A silver helmet Cream Jug with bright cut decoration, 3" high, Chester 1934. 2ozs.
367. A set of 6 Victorian silver fiddle pattern Teaspoons, London 1856; together with a pair of George III bright-cut Sugar Tongs, London 1796 (cased).
368. A George III silver Marrow Spoon by Smith & Fearn, the bowl reserve engraved with crest, London 1786. 1.5ozs.
369. A mid 18th C silver Mote Spoon with foliate piercing, hallmark indistinct.
370. A pair of Victorian silver baluster Knife Rests by Joseph Willmore, with pierced stands, Birmingham 1841. 2ozs.
371. A George III silver Nutmeg Grater of ovoid outline with screw closure, London 1790. 1 1/2" high.
372. A Victorian silver Caddy Spoon, the bowl cast as a shell, the handle with flowers and shamrock, Birmingham 1897.
373. A Victorian silver Caddy Spoon by Charles Boynton, with flower engraved bowl, fiddle pattern, handle with initials, London 1865.
374. A George IV silver Caddy Spoon by William Eaton, plain bowl and fiddle pattern handle, London 1821.
375. A George III silver Caddy Spoon by Joseph Taylor, with a pierced heart shaped bowl, Birmingham 1813.
376. A George III silver Caddy Spoon by Thomas Baker, with shell moulded bowl and fiddle pattern handle, London 1817.
377. A George III silver Caddy Spoon with pierced bowl and loop handle, Birmingham 1808.
378. A George III silver Caddy Spoon modelled as a leaf, London 1803.
379. A George III silver Caddy Spoon by Joseph Willmore with square bowl and thread moulding, Birmingham 1817.
380. A George III Caddy Spoon by Joseph Taylor the shovel scoop with scale engraving, curled handle, Birmingham 1805.
381. A Victorian silver fiddle pattern Caddy Spoon, with engraved bowl and handle, inscribed with initial, by George Adams (Chawner & Co), London 1873.
382. A Victorian silver Caddy Spoon by Yapp & Woodward, with shell bowl and terminal, Birmingham 1846.
383. A George IV silver Caddy Spoon with engraved kidney shape bowl and bright cut handle, hallmark rubbed, probably London 1828.
384. A Victorian silver Caddy Spoon with bright cut foliate engraving and initial L, London 1872. Makers mark: HH.
385. A George III silver fiddle and shell Caddy Spoon, with shell bowl, Newcastle 1795, Makers Mark FS.
386. A William IV Game Skewer with loop finial, 6 3/4" long, Exeter 1830.
387. A pair of 18th C silver Sugar Scissors, with shell bowls, marked with lion passant, date letter rubbed.
388. A pair of Victorian silver fiddle pattern Sauce Ladles by W R Smith, engraved with initials, London 1847. 4ozs.
389. A pair of George III silver fiddle and shell pattern Toddy Ladles, Edinburgh 1817, Makers Mark: CD. 2ozs.
390. A set of 6 Victorian silver fiddle pattern Teaspoons by James & Josiah Williams, engraved with initials, Exeter 1864. 4 1/2ozs.
391. A Victorian silver double ended Medicine Spoon by Henry Holland, London 1879. 5 1/4" long.
392. A George II silver rat-tail Tablespoon, London 1757; another, Edinburgh, possibly by William Aytoun??, dated letter rubbed, c.1750; another, hallmarks rubbed. 6ozs.
393. A William IV silver fiddle pattern Mustard Spoon by John Beebe, London 1832; another, probably by Samuel Winkle, London 1857.
394. A George III silver Old English Tablespoon by Peter & Ann Bateman, engraved with initials, London 1813.
395. A pair of 18thC silver Sugar Tongs with fluted bowls and bead edge.
396. An Edward VII Napkin Ring with engraved scroll decoration, initials G.M., Birmingham 1905; another, Birmingham 1912; another, Birmingham 1906.
397. A George III silver Marrow Scoop of plain outline, the bowl reverse engraved with initial, London 1791.
398. A George I silver Pap Boat, with late repousse work of flowers, scrolls and leafage, bears Britannia mark and date letter for 1718, 4 3/4" wide, (rubbed).
399. A George III silver Pap Boat with hammered rim, 5" wide, London hallmark, rubbed.



400. A pair of Victorian silver fiddle pattern Tablespoons by Charles Boynton, London 1850, 4ozs; together with a George III silver fiddle pattern Tablespoon by Eley & Fearn, London 1817.
401. Three George IV silver fiddle pattern Tablespoons, Glasgow 1821, Makers Mark: DMcD. 7ozs.
402. Three George III silver Teaspoons, hallmark rubbed; a pair of George III fiddle and thread Teaspoons, London 1801; a single teaspoon, London 1826.
403. A George III silver Meat Skewer with ring terminal, 13" long, London 1810. 3ozs.
404. An Edward VII silver Preserve Spoon, with engraved decoration, Sheffield 1901; together with a Victorian silver fiddle pattern Pickle Fork, London 1846.
405. A pair of Victorian silver Teaspoons with bright-cut decoration, London 1896; together with a George III bright-cut Teaspoon by Peter, Ann & William Bateman, 1804.
406. A pair of George II silver pierced Ladles, possibly by Philip Roker, circular foliate pierced bowls, the handles cast with foliage, shell and shield engraved with Royal shield. 10 1/4" long, London 1748. 8ozs.
407. A Victorian Muffineer by Deakin & Francis, of ribbed baluster outline, the foliate pierced cover with turned finial, 4 1/2" high, Birmingham 1899.
408. A George III silver Caster by John Wakelin, of baluster outline, with pierced domed cover with knopped finial, on domed circular foot. 4 1/2" high, London 1764. 2ozs.
409. A Georgian silver Teaspoon, 3 Condiment Spoons, a plated Butter Knife, a silver Preserve Pot Cover and a silver plated port Funnel and strainer.
410. A silver Waiter, with moulded and shell and scroll cast border, on 3 claw and ball feet. 8" dia, Birmingham 1966. 11ozs.
411. A quantity of Victorian silver tableware, mainly fiddle and thread pattern, comprising 7 table forks, 20 dessert forks, 2 sauce ladles, sugar tongs, 13 teaspoons, 2 tablespoons, 6 dessert spoons, 2 condiment spoons. Various hallmarks. 83oz gross.
412. A white metal and amethyst necklace.
413. A silver bangle.
414. An Edwardian bloomed yellow metal memorial bar brooch.
415. A gold locket with Baden-Powell photograph.
416. A pair of diamond stud earrings set in white metal basket style settings, total carat weight 1.20 cts. approx.
417. A 15ct gold rope twist Guard Chain.
418. An English silver lever pocket watch and a lady's Continental example.
419. A Netsuke of an elephant with a bird on its back.
420. A Netsuke of a man with a basket of fruit.
421. A Japanese ivory netsuke a study of a fat armed Samurai with his kimono open as he walks to the bath house carrying a towel over his shoulder.
422. A Japanese ivory netsuke a study of the famed Nagea, an imbecile of mythology, depicted crouched over a worthless bail of rice straw in his decorated kimono.
423. A Japanese ivory netsuke a study of a Master Artist and his pupil mixing paint and about to decorate a book each having a brush in his hand.
424. A Japanese ivory sashi netsuke a study of the famed immortal Gama Sennin standing upon the shoulders of his legendary huge pet toad.
425. A Japanese ivory netsuke a superbly detailed study of a pair of Sumo Wrestlers locked in combat.
426. A Japanese ivory netsuke a study of a wood cutter taken by surprise as the Buddhist Goddess Kuan Yin rises from a bamboo stump that he has just cut.
427. A modern Chinese Snuff Bottle.
428. A silver photograph frame of plain design London 5" x 3 1/2".
429. A silver faced table clock.
430. A Georgian bright cut silver tablespoon.
431. A cased pair of electroplated fish servers with chased blades and ivory handles.
432. An Indian silver circular box and cover together with a qty of silver plated napkin rings.
433. A silver candlestick of rococo design with a loaded base (some damage) Birmingham 1905.
434. An Edwardian VII silver 3 piece teaset of irregular hexagonal form, the teapot with composition handle and finial London 191/2 35oz. gross.
435. A Georgian silver Ink Standish with two crystal wells. Maker R Hennell.
436. A French mahogany 8 day Mantel Clock with a tortoiseshell and silver mounted front. Chester assay.
437. A ladies diamond solitaire Ring, D-shaped shank in yellow 18ct gold, hallmarked Birmingham 1998 to a white gold collet, a brilliant cut diamond in a rubover setting of approx 0.63ct.
438. A hinged Bangle with bright cut decoration marked 9ct.
439. A ladies fancy link yellow metal Bracelet marked .375.
440. A pair of yellow metal framed Spectacles in a metal case and a yellow metal lorgnette.
441. A Ring, being a boat shaped setting with 3 sapphires infilled with 4 small diamonds set in 18ct gold, hallmarked London, date letter rubbed.
442. A Faberge lapis lazuli carving of a pig with diamond set eyes in gold rubover settings, a gold signature mark to the underside, presented in its fitted case by Wartski.
443. A gentleman's heavy style Watch, 2 tone metal with a black dial marked Gucci, Swiss made.
444. A 1950's-60's designed Bracelet comprising of 5 strands of brushed liquid link 18ct yellow gold with an 18ct white gold floral motif set with 6 small diamonds and a ruby centre acting as the clasp.
445. A Ring being a half-hoop diamond set eternity style of 9 small diamonds squared channel set in white metal stamped plat.



446. An intricately styled white metal buckle and a white metal and marcasite necklace.
447. A 9ct. rose gold cased ladies watch on an expanding yellow metal bracelet marked 9ct.
448. Two Edwardian ladies wristwatches.
449. A yellow metal chain and various white metal bangles.
450. A bi-colour yellow metal gate bracelet.
451. A pierced and engraved white metal hinged bangle inscribed 26.1.47 probably French.
452. A butterfly brooch and a dragon fly brooch.
453. A ring, being 3 in line opals infilled with 4 small diamonds set in a yellow gold shank hall mark Birmingham 1908.
454. A ring, being a central diamond of 25pts and 2 small diamonds on each shoulder set in white metal on a yellow gold shank marked 18ct and plat.
455. A collarette of 9ct gold in a wide fancy serpentine link design.
456. A 3 strand simulated pearl choker with central blue stone clasp, Lotus, cased.
457. Oval Australian sapphire and diamond cluster ring set in 18ct white gold with an 18ct yellow gold broad shouldered shank.
458. A ring, being 5 sapphires alternated with 3 cubic zirconium stones in line setting over a 9ct gold shank.
459. An interesting and unusual suite of medieval styled gilt jewellery comprising pendant necklace, bracelet, brooch, screw back earrings and ring. Each piece set with pearls and facet cut and cabachon "emerald" green stones. Marked Sterling, Made in England. Maker Z.W & Co.
460. An Art Nouveau style dragonfly brooch with butterfly wings set under glass.
461. A modern style amethyst cluster ring set in 9ct gold.
462. A modern design dress ring in 9ct gold.
463. A watch ring, being a Swiss Pallas watch set in a white metal case marked .800.
464. A selection of yellow and white metal rings.
465. A 19thC papier mache snuff box.
466. Two silver charm bracelets.
467. 1915 Austrian gold coin set as a brooch, and a white metal ring that was a half crown.
468. An Art Nouveau silver backed hairbrush. Birmingham 1903.
469. A white metal bear baby's rattle, a white metal lorgnette and miniature brass propelling pencil.
470. Two medals from 1914 Merchant Navy.
471. 2 sets of simulated pearls.
472. A polish wood and white metal jewellery box and costume jewellery.
473. A quantity of badges, medallions, brooches etc.
474. To 480. Small quantity of coins.

#### DAY ONE – 2pm

- 996 - 1000. Knightship Title Deed. The Title Deed gives the owner under UK law a title of Sir or Dame should they wish to use it. Full UK solicitor documentation included in the Deed.
1001. An Alberon collector's Doll 'Peggy'.
1002. A porcelain collector's Doll on a stand.
1003. An Alberon collector's Doll 'Claire'.
1004. An Alberon collector's Doll 'Kelly'.
1005. An Alberon collector's Doll 'Naomi'.
1006. An Alberon collector's Doll 'Mandy'.
1007. A porcelain collector's Doll on stand.
1008. An Alberon collector's Doll 'Aimy'.
1009. An Alberon collector's Doll 'Karen'.
1010. A Hanah collectable Doll 'Natasha'.
1011. A porcelain collector's Doll of a young boy.
1012. A porcelain collector's Doll on a stand.
1013. An Alberon collector's Doll 'Carmen'.
1014. An Alberon collector's Doll 'Donna'.
1015. A Georgetown Collection Doll 'EEntsy Weentsy Willie'.
1016. An Ashton-Drake Galleries collectable Doll 'Whitney'.
1017. A small all porcelain collector's Doll, 6" approx.
1018. A 1986 England Football Shirt, signed by the squad.
1019. Three old advertising tins, one as an anvil.
1020. A collection of old keys.
1021. A Wade turtle and a small pink marble glass hanging lamshade.
1022. Ab Eastgate Fauna Vase and a smaller example.
1023. A Crown Ducal Bowl with bird and pine cone decoration.
1024. An Art Deco style batchelor's Coffee Set.
1025. Four cocktail Glasses with cockerel decoration.
1026. A Royal Winton Teaset, Queen Anne pattern.
1027. A Thorburn Bowl, 3" dia; and a collector's Torquay Teapot.
1028. Two oriental decorated Tea Cannisters and 2 pewter Norse ships.
1029. A Royal Winton Sandwich Plate and a Midwinter small plate by Peter Scott.
1030. A child's part Teaset by Corona.
1031. A set of seven plaster figures of the 7 dwarfs.
1032. A qty advertising Tins inc. Quality Street, etc.
1033. A china headed doll (AF).
1034. Books, annuals including Giles.
1035. A Wellington china 1930's style Teaset with blue floral decoration.



1036. A Vase by H J Wood, Indian Tree design.
1037. Two Royal Winton Serving Plates.
1038. A Hatpin Jar and another.
1039. A Royal Doulton flambe ware penguin, 6 1/2" tall, signed Noke. (AF)
1040. A Shelley blue concentric banded Plate.
1041. A Crown Devon green and cream flower basket
1042. Various items of Susie Cooper banded Teaware in cream, beige and green.
1043. A Jug and 2 covered vegetable Dishes by Bristol, Mountary & Co.
1044. A Trio by Susie Cooper, blue banded.
1045. A Susie Cooper Trio in beige and orange bands and spots.
1046. A part bone china Teaset in buttercup yellow with gilt decoration.
1050. A Chameleon Vase in autumn colours.
1051. A Chameleon Vase in sponged green and blue. (AF)
1052. A Chameleon Bowl in shades of blue.
1053. A Chameleon flared Vase in shades of blue.
1054. A Coffee Set by Grindley in pale blue.
1055. A Shelley Vase, dripped glaze in green, orange and grey.
1056. A Shelley Vase, dripped glaze in green, orange and grey.
1057. A Shelley Vase, dripped glaze in green, orange and grey.
1058. A Shelley Bowl, banded in green/grey and orange.
1059. A Shelley Bowl, dripped glaze in green, grey and orange.
1060. A Susie Cooper harlequin Coffee Set.
1061. A Royal Stafford Coffee Set and other china.
1062. Three Susie Cooper Plates and Grays Pottery - various items.
1066. A Figurine.
1067. A medium Royal Doulton China Jug, 'Robin Hood' D6534.
1068. A medium Royal Doulton China Jug, 'The Lumberjack' D6613.
1069. A Moorland Jug with blue and white spotted pig decoration.
1070. A large Royal Doulton Character Jug, 'Old Charley' 'A'.
1071. A speckled blue and banded Studio Glass Dome.
1072. A Sylvac squirrel Jug.
1073. Four items of Studio Pottery - various forms.
1074. A Carnival Glass Tazza, Bowl and pewter Bowl.
1075. An Art Deco style figurine of a woman within a hoop.
1076. Four Bradford Exchange Wedgwood Plates, series 'Country Days'.
1077. A selection of small copper and brass ornaments and a brass tankard.
1078. A Wade Nat West schoolgirl pig moneybox.
1079. A Wade Nat West schoolgirl pig moneybox.
1080. A Wade Nat West baby pig moneybox.
1084. A selection of pressed glass items.
1085. A part Art Deco style Pallissy Tea Set, blue banded with gilt edge, and other similar plates.
1086. A chrome plated Art Deco style Fruit Stand.
1087. A Sarreguemines type jug.
1088. A Sarreguemines type jug.
1089. Various green glass items inc an eye bath, a Venetian vase, 2 Edwardian glasses and a vinegar Carafe.
1090. An Aynsley Plate with kingfisher and floral decoration; and a Royal Crown Derby Plate.
1091. A Peter Rabbit 3 part Cruet, an onion shaped Pepper Pot and a dog and cat Cruet.
1092. A German porcelain elephant with Kaikemon decoration.
1093. A Sylvac Planter and other china.
1094. An Aynsley Royal Wedding commemorative Plate of Princess Anne to Captain Mark Phillips 1973.
1095. 'The Robert Burns Plate' by Wedgwood.
1096. Three lengths of Furnishing Fabrics.
1097. A small Stathern millefoire Paperweight, a glass with millefoire base and a mushroom shaped Paperweight.
1098. A Burleighware squirrel Jug.
1099. A Goss style model of the Bell Hotel, Tewksbury and a Dutch example.
1100. An Atlas china green floral bordered Tea Service.
1101. A triangular shaped Tureen with grey and gilt decoration and an Alcock. & Co Olympia Tureen.
1102. A Carnival glass 2-handled Bowl and another.
1103. A hand-made silk Hapi Coat, heavily embroidered with insects and flowers and trimmed with braid panels on the sleeves depicting pagodas, bridges, trees and mountains.
1104. A Tuscan china Teapot and other china.
1105. A Royal Doulton 'Bunnykins' Golden Jubilee Feeding Bowl and Mug and a Dessert Bowl; and a Denby child's dessert Dish.
1106. Four decorative Plates.
1107. Three Chamberpots.
1108. A Kaiser porcelain pheasant decorated in naturalistic colours, on moulded base with stylised flower spikes, signed U Netzsch. 18" wide (repaired).
1109. A silver backed Mirror, plated swing handled Fruit Basket and othr plated items.
1110. A crystal and silver plated Claret Jug.
1111. A Wedgwood Christmas plate and one other.
1112. A large gilt and black wall clock and accompanying 4 pictures.
1130. Two Daily Mail card jigsaw puzzles Britains Beauty "The Village Street" and "The Manor House" (No boxes).
1131. A Palitoy 'Sheena' Doll with growing hair.



- 1132. A small live steam Engine.
- 1133. A Moore & Wright paraffin model maker's Blow Lamp and an articulated Walking Toy (AF).
- 1134. A qty of Meccano Magazines - 1930's.
- 1135. A qty of Playing Cards and Card Games, 1930's/1940's.
- 1136. A qty Meccano - not a boxed set.
- 1137. Three sets ivory Dominoes.
- 1138. Five Tete-a-Tete Jigsaw Puzzles.
- 1139. A Mettype Junior Typewriter.
- 1140. A mounted piece of shrapnel purported to be from a bomb dropped on Aveling Barford.
- 1141. A Pelham Puppet of Muffin the Mule (AF) and 2 other puppet heads.
- 1142. 3 Sports Caps.
- 1143. A Mandolin
- 1144. A Lorenzo 12-string Guitar, black body with blue jay decoration.
- 1145. A modern dapple-grey bow Rocking Horse with leather tack.
- 1146. A 500 piece Second World War Series, The Daily Mirror July 4th 1945, and a painted saw.

NB. The following lots are a collection of Hornby and other OO post 1950 electric unboxed and used with some livery changes.

- 1150. Hornby Loco 2753 Cheshire L5494 LNER, a Mainline Loco LNER 581 and a Hornby Dublo Loco 6239 City of Chester 20738 and 2 tender. (5)
- 1151. A Tri-ang Loco R251 and a tender - LNER 4281, make unknown Loco 9523 and another Loco and a Tri-ang tender R39. (5)
- 1152. A French Loco and tender and 2 Tri-ang examples. (4)
- 1153. A Trian Loco and tender R350 - 3P 31757, a Tri-ang Loco R251 and a Hornby R52 NDR No 12. (4)
- 1154. A Lima Loco 9420 and a Hornby Dublo Loco EDL18, a Hornby Dublo Loco Type E11 - Golden Fleece 4495 and tender and another. (6)
- 1155. A Hornby diesel Power Unit - Cyclops 47624, a Tri-ang diesel Power Unit 37149 and a Mainline diesel Power Unit 45039. (3)
- 1156. Five various diesel Power Units.
- 1157. One Hornby and 4 Lima diesel Power Units.
- 1158. One Lima electric Power Unit and Carriage in BR livery.
- 1159. Various Carriages and Units.
- 1160. Various Coaches, Trucks and Tenders.
- 1161. A small qty Cars and Lorries for loading on trains.
- 1162. A qty of model making parts and equipment.
- 1163. A Dinky Supertoys Foden flat bed Lorry. (AF)
- 1164. A quantity of dolls including a Sindy and a Basil Brush Doll.

- 1165. A quantity of 1960's and 70's toys and games including a tin plate telephone exchange.
- 1166. Various EP's and LP's.
- 1167. 2 Large modern plastic dolls and a rag doll.
- 1168. A Kodak box camera, 3 tins of trinket items.
- 1169. A Minnie Mouse alarm clock, cream with red bells and Minnie Mouse on the dial, Walt Disney Productions made in Germany.
- 1170. 2 Tin plate money boxes (AF) and 2 others.
- 1171. A Carnival glass bowl with centre horses head motif.
- 1172. A Small selection of lead figures and animals (AF).
- 1173. A collection of 12 Summer Collectors Plates depicting Waterbirds.
- 1174. Ephemera from the Coronation etc.
- 1175. A Sylvac beige Vase with flared top. 10 1/2".
- 1176. A Sylvac green glazed Harold Hare.
- 1177. A Sylvac beige Squirrel Jug.
- 1178. A pair of floral decorated Plate with pierced borders.
- 1179. Seven green stemmed Cocktail Glasses and a Crown Derby Vase, 4" tall.
- 1180. A Sylvac mother and baby elephant in black.
- 1181. A bronze model of a couple dancing set on a marble plinth, after Chiparus.
- 1182. An oak cased Mantel Clock.
- 1183. A Mattelli German made Accordion. (AF)
- 1184. A cased Piano Accordion.
- 1185. Wartime and later photographs and ephemera (single folder)
- 1186. A framed and glazed collection of military badges and insignia including The Lincs Regiment.
- 1187. Two framed and glazed sets of cigarette silks depicting regimental crests etc.
- 1188. A framed and glazed set of cigarette cards depicting military uniforms.
- 1196. Early Plush Mickey Mouse figure with felt hands and feet 10" tall. Reg No 73068 visible on neck.
- 1197. Wade Mrs. Fluffy Cat from the Noddy Set.
- 1198. Wade "Thumper" damaged foot.
- 1199. Wade "Dumbo" damaged hat.
- 1200. A Wade Figure of Bambi - hatbox size.
- 1202. A Beswick model of a blue tit no. 992.
- 1203. A Beswick model of a goldfinch no. 2273 (AF).
- 1204. A Hummel figure of a young girl, hands behind back, headscarf and pig tail.
- 1205. A Hummel figure of a young boy holding a trumpet.
- 1206. A Moorcroft pin tray, 4 1/2" dia. green ground with blue and purple pansy - impressed mark.



1207. A Moorcroft baluster shaped vase 6" tall, dark blue ground with dark pink and blue flag iris decoration, impressed mark and underglaze blue signature.
1208. A Royal Doulton figurine "Babie" HN 1679.
1209. A Royal Doulton figurine "The Paisley Shawl" HN 753120.
1210. A Goss model of Shakespeare's House No. 225833.
1211. A Matchbox model of a Police Launch No. 52 and a Matchbox Model of a Swamp Rat No. 30.
1212. Players 'Famous Irish Greyhounds' in an album.
1221. A quantity of trade cards in albums.
1222. A small selection of postcards - some local.
1223. A small collection of railway related postcards.
1224. A Players cigarette card album with various cards - 3 sets of Grandee Cards, British Butterflies, Famous M.G. Marques and British Birds.
1225. Gallahers Racing Scenes, Portraits of Famous Stars and Westminster 1924-28 approx 70 cards.
1226. To 1233. A Box of loose cigarette and tea cards.
1234. 14 albums of tea cards.
1235. Players "Aircraft of the RAF, Animals of the Countryside, Aviary and Cage Birds, Birds and their young".
1236. Players "Boy Scout and Girl Guide Emblems", "Characters from Dickens", "Colonial and Indian Army Badges", "Coronation Series, Ceremonial Dress".
1237. Players "Cricketers 1934" 2 sets. "Cries of London" 2 sets. "Curious Beaks".
1238. Players "Derby & Grand National Winners" transfers and cards.
1239. Players "Dogs", "International Air Liners" and two sets of "Military Head dress".
1240. Players "Miniatures" 3 sets, "Natural History", "Polar Exploration" and "Products of the world".
1241. Players, playing card size "Regimental Uniforms" and "Sea Fishes".
1242. Players "Shakespearian Series", "Struggle for Existence", "Wild Birds" and "Wrestling and Ju Jitsu".
1243. 6 sets of trade cards.
1244. Wills 2 Sets of "Cricketers" 1928.
1245. Wills "Celebrated Ships", "Flowering Trees and Shrubs" and "Garden Flowers".
1246. Wills "Historic Events", "Household Hints" and "Lucky Charms".
1247. Wills "Mining" and "Merchant Ships of the World".
1248. Wills "Old English Garden Flowers", "Railway Equipment", "Ships Badges" and "Speed".
1249. Wills "The Reign of King George V", "The Sea Shore", "Wild Flowers" and "Wild Flowers in an album".
1250. A set of Bat cards.
1251. Gallahers "Animals and Birds of Commercial Value", and 2 sets of "Army badges".
1252. Gallahers "Dogs", "Famous Jockeys", and "Portraits of Famous Stars".
1253. Gallahers "Racing Scenes", and "Sporting Personalities".
1254. Millhoff "Real Photos".
1255. Ogdens 'British Birds' cutouts and 'Foreign Birds'.
1256. Loose Cigarette Cards and 1 album.
1257. Qty of Cigarette Packets and related packaging.
1258. A photograph and postcard album and ephemera.
1259. Newspaper cuttings.
1260. Postcard silks, etc.
1261. Will's 'Speed' in an album.
1262. A small collection of Postcards.
1263. A quantity of 'Bayko' building items inc instructions. (Not original box.)
1264. A Mamod SE2 stationery Steam Engine in original box.
1265. A Roto Gyre flying toy by Brevete France.
1266. A weaving shuttle.
1267. Old cotton and lace trimmed small items of clothing.
1268. Old cotton and lace trimmings.
1269. Old cotton and lace trimmed napery and a small plated dish.
1270. A pair of cloisonne Vases on blue enamel ground.
1271. An oriental style metal globe shaped Vase with coloured metal crane decoration.
1272. A pair of overlay glass Roamers, 20thC.
1273. A cased Fish.
1274. Two barrel tap-ends painted with Fred Astaire & Ginger Rogers.
1275. Brass fire irons.
1290. 4 framed and glazed photographs of railway engines.
- 1291-2. A quantity of railway related books.
1293. Books including "King Edward's Realm" June 1902.
1294. A book - Kellys Handbook of the Upper Ten Thousand 1878.
1295. A Book - "Things Old and New" Max Beerbohm.
1296. Two tea card albums.
1297. An autograph album of boxers, mainly pre-1950.
1298. Books
1299. 'Mrs Beeton's Cookery Book', Teddy's Tails Annual 1934 and 2 other books.
1300. Books Vols I & II of Byron's Works.
1301. Pages of Islamic Script and a Banknote.
1302. Geo. Cruickshank. Cartoon sketchbook, 1828. (AF)
1303. Book entitled 'Barnaby Rudge'.
1304. Two pencil sketches of aircraft, F100 and Tankbuster and a print of a 41 Sqd Spitfire and a Hurricane.



1305. A Limited Edition Print of RAF Waltham 1990 and 'Breakout' and other aviation prints.

1306. A selection of aviation prints.

#### DAY TWO – 10am

1570. A Bokhara runner.

1571. A small Turkish rug

1572. A Joshigan rug 10' x 7'.

1573. A Bokhara runner 13' x 3'

1574. Indian carpet.

1575. A 20thC Persian Rug.

1576. A 20thC Persian Rug.

1577. Beige ground handmade woollen Abusson Needlepoint rug 72" x 48"

1578. A large blue ground Shiraz carpet.

1579. A Shiraz rug c.5'7" x 4'

1580. A Persian rug.

1581. A red ground Indian rug.

1582. A small Turkish rug.

1583. A Zekhiani rug

1584. A Modern "Bird Garden" Rug.

1585. A Persian carpet.

1586. Red ground hand made woollen Persian Shiraz carpet 111" x 80"

1587. A beige ground Persian rug (AF)

1588. A Shiraz rug.

1589. A blue and red ground Runner.

1590. A Persian carpet.

1591. A pitch pine pew.

1592. A carved elm spinning stool.

1593. A full size mahogany Billiards Table.

1594. An early 19thC flamed mahogany wheel barometer with swan neck pediment, hygrometer over thermometer with central convex glass, 10" dial, bone bezel over thermometer with silvered plate. Makers mark of B Pedrone Glasgow Warranted. 43" high.

1595. A 19thC Vienna wall clock with embossed brass dial, enamel chapter ring 33" high.

1596. A Victorian fusee wall clock with moulded mahogany bezel, painted dial inscribed R Winsor Bishop, Grantham. 7" dial.

1597. A Victorian fusee wall clock with moulded bezel, roman numerals and painted T Armstrong and Bros. Manchester. 14" dial.

1598. A Georgian oak and mahogany Longcase clock with dentil moulded swan neck pillared hood, full length trunk door and plinth base, the 12" square arch dial with floral motifs to arch and spandrels, roman numerals..

..seconds ring and date crescent signed P Clapham Brigg, 8 day movement striking on a bell, 72" high.

1599. An early 19thC mahogany cross banded Longcase clock with swan neck pillared hood, reed canted trunk and raised on bracket feet. The 13" square arch dial painted with a young lady holding a basket of flowers to the arch, floral spandrels and scene to dial with roman numerals by William Pratt, 30 hour movement, 7'5" high.

1600. A George III Oak Longcase Clock with caddy top, exposed pillars, full length door and bracket feet, square inch brass dial with silver chapter ring and 8 day movement striking on a bell. Maker James Parsons 48" high.

1601. A Victorian mahogany centre table with moulded top and turned legs.

1602. A drag painted pine two door armoire.

1603. A Victorian mahogany Duchess dressing table with leather insert converted as a writing table.

1604. A Victorian mahogany Box Commode.

1605. A Georgian mahogany fall-flap Dining Table on square legs.

1606. A Georgian oak Corner Cupboard with dentil cornice, with 2 panelled doors over a further 2. (Cut bottom)

1607. A Georgian mahogany Press Cupboard with dentil moulded cornice over 2 panelled doors to the upper section, over 2 short and 2 long cock-beaded drawers with knob handles and bracket feet. 3'10" wide, 6' high.

1608. A late Victorian mahogany triple Wardrobe Compactum with shaped mirror doors, enclosing carved panel doors over drawers with ornate metal handles and matching Dressing Chest.

1609. A Flemish oak Court Cupboard with lunette and floral demi-lune carved frieze, 4 floral back panels, lion-mask and paw supports to the upper section, the lower part having naive male and female columns enclosing lozenge and lunette carved 4-panel double doors, on plinth. 4'8" wide, 5'10" high.

1610. A Victorian oak Sectaire Bookcase with 2 glazed doors over fitted secretaire drawer and 2 door panelled base on plinth. 3'10" wide, 7'5" high, (no cornice).

1611. A Victorian mahogany Cabinet with moulded cornice, grille compartment over 2 folding doors to the upper part, the lower having 3 drawers with brass handles over 2 panelled doors, raised on plinth. 3'9" wide, 8'6" high.

1612. A Victorian walnut Tub Chair with buttoned upholstery and turned legs.

1613. A Victorian walnut open Armchair with floral upholstery and turned legs.

1614. An Adam style Sideboard with 2 lift compartments over drawers and doors with carved patera and swags, raised on cabriole legs, early 20thC. 5' wide.

1615. A Victorian mahogany washstand with D-shape marble top, fluted legs and platform base.

1616. A William IV mahogany barback Carver Chair with scroll arms and carved legs.

1617. An Edwardian rosewood marquetry octagonal Centre Table on turned legs with undershelf. 2'7" dia.

1618. A Georgian oak Pembroke Table on square legs.



1619. A Georgian oak Pembroke Table on square taper legs.
1620. An Edwardian satinwood banded mahogany Writing Table with slope top, square taper legs and castors.
1621. A mahogany topped rectangular Pub Table with cast-iron base.
1622. A Victorian carved mahogany Torchere.
1623. An 18thC carved oak 2 seater Settle.
1624. An antique oak dropleaf Table.
1625. Five Jacobean style oak barleytwist Dining Chairs, 19thC.
1626. A 19thC mahogany Pembroke Table with reeded legs.
1627. A Georgian Carver Chair with pierced ladderback, overstuffed leather seat, moulded legs and H-frame stretcher.
1628. A late Georgian mahogany Centre Table with rectangular top, opposing frieze drawers, turned pillar and 3 outplay legs.
1629. A Victorian mahogany Elbow Chair with floral sculptured overstuffed seat, arms and panel back, turned uprights and legs.
1630. A 19thC elm seated Windsor Armchair with tree vase splat and H-frame stretcher.
1631. A reproduction mahogany Drum Table. (AF)
1632. A pine refectory Table.
1633. An elm seated smoker's Bow Chair.
1634. A Georgian elm Carver Chair and matching Side Chair.
1635. A barleytwist oak Sewing Table and a Carver Chair.
1636. Victorian stained pine hanging Shelves.
1637. A reproduction elm Sofa Table.
1638. A chest of Drawers.
1639. A Victorian walnut spoonback open armchair with scroll legs.
1640. An oval gilt framed Wall Mirror with rococo scroll pediment. 3'10" high (AF).
1641. A Victorian mahogany Breakfast Table.
1642. A Victorian rectangular Overmantel Mirror with arabesque painted frame.
1643. A pine hanging Drying Rack.
1644. An Anglo-Indian design teak Campaign Chest with 2 mirrored doors to the upper part and 2 section split chest on turned legs.
1645. A Victorian walnut Credenza with veneered top, gilt-metal mounts and marquetry panel to door. 5' wide.
1646. Five folding Chairs.
1647. A walnut Dressing Table with triple mirror.
1648. A Spice Rack with blue and white panels.
1649. A reproduction carved mahogany Settle.
1650. An Edwardian mahogany Bureau.
1651. An oak Bureau with fall flap over 3 drawers.
1652. An Art Nouveau pokerwork Table with vine carved decoration.
1653. A walnut breakfront Display Cabinet.
1654. A Victorian walnut veneered Loo Table with shaped top, carved pillar and 4 scroll feet.
1655. A late Victorian walnut Wardrobe (no cornice).
1656. A 'Chippendale' Dining Suite comprising 10 ribbon carved chairs (including 2 carvers) with fleur-de-lys drop-in green seats and a Victorian style mahogany Dining Table with moulded top and reeded legs. 4' x 12' max, together with baize and padding.
1657. A candytwist Standard Lamp with shade.
1658. A reproduction mahogany corner Whatnot.
1659. A beech reeded Standard Lamp.
1660. \*A high fluted cast Urn.
1661. \*A high fluted cast Urn.
1662. An Art Deco style light ash extending Boardroom/Dining Table with folding central leaf. 4'0 x 5'9 (max).
1663. A set of 6 Victorian lathback Kitchen Chairs.
1664. A Georgian mahogany Table with single fall-flap.
1665. A late Georgian flamed mahogany Pembroke Table with opposing real and dummy cockbeaded drawers with brass knob handles, turned legs and brass castors. 3'6" x 3'2".
1666. A Georgian mahogany drop-leaf Kitchen Table. 2'10 x 5'2.
1667. An early 19thC mahogany Pembroke table with oval drop leaves, square taper legs with brass cup castors. 3'9" X 5'3"
1668. A Victorian mahogany Stool with overstuffed seat and turned legs.
1669. A deep blue damask upholstered Knole Sofa. 7'3" wide x 3' deep.
1670. A George III mahogany Bureau Bookcase with fall flap over 2 short and 3 long graduated drawers with pierced backplate swan-neck handles, ogee feet and later astragal glazed 2 door cabinet top. 3'3" wide, 7'2" high.
1671. A barleytwist oak Dresser with open platerack over 2 cupboard doors, raised on barleytwist legs with plain stretchers. 3' wide, 6'2" high.
1672. A Victorian mahogany serpentine Side Table with 2 frieze drawers, barleytwist columns and undershelf. 4' wide.
1673. A oak Hall Stand with circular mirror, lift flap and wrought hooks, 1930's.
1674. A William IV mahogany barback carver chair.
1675. A late Georgian mahogany Chest with 2 secret frieze drawers over 3 short and 3 long graduated drawers with knob handles and bracket feet. 4'1" wide. (AF)
1676. A Jacobean style barleytwist oak Sideboard, 1930's.
1677. A Victorian carved beech rise and fall Piano Stool with circular seat, leaf carved pillar and scroll legs.
1678. A reproduction mahogany bedside Chest.
1679. A Victorian carved walnut rise and fall Piano Stool with circular seat, cabochon carved pillar and similar scroll legs.



1680. A 19thC mahogany bowfront Dressing Table with knob handles and splay feet. 4' wide.
1681. A Victorian grain painted pine tray top Washstand.
1682. A barleytwist oak gateleg Dining Table, 1920/30's.
1683. A mahogany Table Mirror with rectangular plate.
1684. A small oak hanging Corner Cupboard with mask to door.
1685. An oak student's Bureau with fall-flap over 2 cupboard doors and open base.
1686. An oak Bureau with fall flap over 2 drawers, on turned legs, 1930's.
1687. A reproduction Torchere with ramshead masks.
1688. A 1920's walnut side-by-side Cabinet Bureau.
1689. A slender tall Shop Display Cabinet with glass shelves, mirrored back and sides.
1690. An oak student's Bureau with fall-flap over open shelves.
1691. An Edwardian style mahogany octagonal Centre Table on turned legs with galleried stretcher.
1692. An Edwardian beech Dining Table on square taper legs (AF).
1693. A set of 8 French painted cameo back Dining Chairs in cream with light blue upholstery and fluted legs.
1694. A reproduction oak refectory Table. 4' x 2'.
1695. A Victorian mahogany Smoker's Armchair with tapestry upholstery (AF).
1696. A pair of reproduction Windsor Armchairs.
1697. A Victorian stripped pine Kitchen Table on turned legs.
1698. An Edwardian Chaise Longue with left-hand baulk, open back and square taper legs.
1699. A Victorian mahogany spoonback Nursing Chair adapted as a rocking chair.
1700. A set of 6 (inc 2 carvers) Hepplewhite wheatsheaf design mahogany Dining Chairs with green drop-in seats.
1701. A reproduction Regency 3 pillar Dining Table with ebony strung crossbanded top, having 2 extra leaves, raised on turned pillars with each having 3 outsplay legs with brass paw castors. 3'1 x 11'2 (max).
1702. An early 19thC mahogany Pembroke Table with reeded top, ebony strung opposing real and dummy drawers and square taper legs with splayed feet. 3' x 4'.
1703. A 19thC ash and elm Windsor Chair with pierced vase splat and H-frame stretcher.
1704. A beech and elm wheelback Windsor Carver Chair.
1705. An oak twin pedestal Office Desk, 1930's.
1706. A set of 6 carved barleytwist oak Dining Chairs with panel backs and seats.
1707. A reproduction mahogany twin pillar Dining Table with single leaf.
1708. An oak Bench Seat.
1709. A Victorian mahogany box Commode on turned legs.
1710. A reproduction Regency bowfront Sideboard on square taper legs. 3'6" wide.
1711. A Pub Table with Britannia metal cast tripod base.
1712. A 19thC mahogany Chest (AF).
1713. An Edwardian oak Wall Cabinet with gallery and 2 door cupboard.
1714. A pair of mahogany single door Cupboards.
1715. A fine William IV flamed mahogany Work Table with moulded top, frieze drawer with turned knob handles, similar rondels to the back slide, raised on turned legs with bobbin turned H-frame stretcher, on jewelled brass and wooden castors. 1'10" x 1'3" x 2'6" high.
1716. An early 19thC mahogany table D-end with turned legs.
1717. A mahogany cased baby grand Piano by Challen. Retailed by Selfridges of London.
1718. A Victorian mahogany scroll arm Sofa with moulded cresting rail, acanthus scroll arms and turned legs. 6'6" wide.
1719. A pair of Regency mahogany Dining Chairs with carved cresting and barbacks, sabre legs and drop-in seats.
1720. An Edwardian walnut Chaise Longue with left-hand bulk, gallery back and turned legs, pink upholstery.
1721. An Edwardian rosewood marquetry music cabinet.
1722. A Victorian stripped pine Blanket Box.
1723. An oval barleytwist oak Occasional Table, 1920's.
1724. An Edwardian beech bedroom Chair with tapestry seat and back.
1725. A Victorian mahogany Centre Table with oval moulded top and cabriole legs (AF).
1726. A Victorian mahogany wind-out Dining Table with oval moulded top with 2 leaves, raised on cabriole legs. 5'10 x 3'6 max.
1727. A Victorian grain painted pine Blanket Box.
1728. A pair of oak turned Dining Chairs with strung seats.
1729. A Refectory Table.
1730. A set of 4 French style mahogany Dining Chairs with cameo backs and cabriole legs, mustard button dralon upholstery.
1731. An Edwardian mahogany Sutherland Table with moulded canted top, square taper gatelegs and square uprights. 2'3 x 2'8.
1732. An Edwardian Dressing Chest.
1733. A Victorian walnut and mahogany metamorphic Library Chair/Steps.
1734. A Regency mahogany Sideboard with knob handles and turned legs. (AF)
1735. Two Dixie cherrywood Shop Cabinets with deep oak lined drawers in Georgian styling with bracket feet.
1736. A George III flamed mahogany Table Mirror with moulded rectangular plate, oval shell inlaid base with 2 bowfront ebony strung drawers, on bracket feet.
1737. A reproduction Regency Stool.
1738. A small oak gateleg Table.
1739. A fine Victorian carved mahogany Sofa with left-hand bulk, floral carved cresting rail, serpentine overstuffed seat,



- leaf carved scroll legs and green button dralon upholstery.
1740. A George III yew Windsor Chair with tree vase splat and crinoline stretcher.
1741. A Victorian carved walnut spoonback Nursing Chair with lozenge tapestry upholstery, floral cresting rail and leaf carved cabriole legs.
1742. An Edwardian mahogany double Wardrobe with mirror and panel doors.
1743. A 19thC oak Chest of 2 short and 3 long graduated drawers with knob handles. 4'1" wide (cut sides).
1744. A glazed tabletop Lectern.
1745. A Victorian mahogany Sutherland Table with moulded top, fluted uprights and gateleg, similar stretcher and scroll feet. 2'8 x 3'3.
1746. An Edwardian carved walnut bowfront Writing Table, raised on staged square taper legs (later top). 4'3" wide.
1747. An Edwardian string inlaid and satinwood crossbanded mahogany Cabinet with 2 fielded panel doors, raised on bracket feet. 4'2" wide, 4' high.
1748. A Victorian oak and pollard veneered breakfront Sideboard with rolled edge top, 3 frieze drawers with brass drop handles, over 4 fielded panel doors, enclosed by Corinthian columns, surmounted by oval patera. 6'7" wide.
1749. A Victorian mahogany Chaise Longue with right-hand bulk, acanthus carved scroll back, short reeded legs and circular nulled feet.
1750. An X-frame oak open Armchair, 1930's.
1751. A carved oak 3 panel coffer raised on stiles.
1752. A Victorian mahogany Chaise Longue with left-hand bulk, open carved scroll back and turned feet.
1753. An Edwardian oak Wall Cabinet with fall flap and shelves.
1754. A George III mahogany Chest of 2 short and 3 long graduated drawers with knob handles, cupid's bow apron and splay feet. 4'1" wide, 3'9" high (cut sides).
1755. A Victorian flamed mahogany Chest of 2 short and 3 long graduated drawers with knob handles and turned feet. 3'2" wide, 3'5" high.
1756. An Edwardian style crossbanded mahogany revolving Bookcase. 22" square, 3'8" high.
1757. A Chinese Chippendale design breakfront display cabinet with astragal glazed centre doors, early 20th C. 6' wide, 5'3" high.
1758. A George III oak Bureau with mahogany crossbanded fall flap over 4 similar graduated drawers, having later fitted interior, knob handles and bracket feet. 3'3" wide.
1759. A Chinese hardwood Jardiniere Stand with marble inset circular top, carved prunus to frieze and cabriole legs. 2'3" high.
1760. A set of 4 oak Filing Drawers.
1761. A late Victorian mahogany sideboard with gadrooned carving, panel doors and cabriole legs.
1762. An Edwardian string inlaid mahogany folding Cakestand with dished stands.
1763. A Pugin style oak rectangular Side Table on chamfered legs. 2' x 3'.
1764. A George III mahogany Chest of 2 short and 3 long graduated drawers with ebony strung and crossbanded top, oval backplate handles and bracket feet. 3'4" wide, 3'3" high.
1765. A 17thC oak 3 panel Coffin with scoop carved frieze, lozenge carved front panels, raised on stiles. 3'4" wide, 1'10" high.
1766. An early Georgian mahogany Tripod Table with circular tilt top, turned baluster and 3 outspread legs. 2'6" dia.
1767. An oak cased cabinet Gramophone.
1768. Spare lot.
1769. An Edwardian crossbanded mahogany bedroom Chair.
1770. A George III mahogany D-end Table with turned legs.
1771. A Georgian oak dropleaf Table.
1772. A George III crossbanded oak bowfront hanging Corner Cupboard with 2 doors, H hinges and oval escutcheons.
1773. A late Victorian mahogany music cabinet.
1774. A late Victorian 2-door cabinet with fitted interior on cabriole legs.
1775. A fine quality George III style mahogany 3 pillar Dining Table together with a set of 12 Sheraton style Dining Chairs (2 carvers and 10 side chairs) in tapestry upholstery.
1776. An armorial cast-iron Dog Grate.
1777. A George III crossbanded mahogany Sideboard with oval brass handles and reeded square taper legs. 4'4" wide.
1778. An early 19th C continental flamed mahogany Secrétaire a Abattant with fall front resting over three stepped drawers.
1779. A Collector's Chest of 15 drawers. 11" wide, 20" deep, 3'6" high.
1780. An oak cut Court Cupboard with demi-lune friezes, 3 panel upper part with Chinese blind carving, similar to the drawers, over 2 panelled doors to the base, raised on stiles. 4'6" wide.
1781. An antique oak housekeeper's cupboard with galleried upper part over 4 (2 sliding) doors on a 3 drawer dresser base, raised on legs, profusely carved throughout.
1782. \*A George III mahogany gentleman's Dressing Chest converted to a drinks cabinet. 38" wide, 36" high.
1783. A Victorian mahogany triple Wardrobe with mirror doors and fitted interior.
1784. A grey and liver marble Column. 3'8" high.
1785. A Victorian flamed mahogany mirrorback sideboard with 2 cushion drawers over 2 doors.
1786. A Victorian barleytwist Torchere.
1787. A Victorian rosewood and mahogany Pier Cabinet.
1788. A Brass telescopic Standard Lamp on paw feet.



- 1789. A George III Elm Carver Chair with gateback.
- 1790. A Country Chippendale Dining Chair, 18thC.
- 1791. A Country Chippendale Dining Chair, 18thC.
- 1792. A Carolean style oak Hall Chair.
- 1793. A 19thC. Mahogany Open Bookcase 5' wide , 4'2" high.
- 1794. An oak Sideboard with bergere back, barleytwist uprights, legs and stretchers, 2 drawers to the centre flanked by 2 cupboard doors. 5' wide.
- 1795. A Harlequin set of 6 Victorian painted simulated bamboo chairs with rush seats.
- 1796. An oak drawleaf Dining Table raised on 4 barleytwist legs, joined by H frame stretcher.
- 1797. A pair of Cromwellian style barleytwist oak Hall Chairs, 19thC (AF).
- 1798. A late Victorian carved walnut Chaise Longue with turned legs.
- 1799. A Victorian barleytwist pedestal Table with dish top 17" dia. 28" high (AF).
- 1800. A Late Victorian pitch pine Chest of 2 short and 4 long drawers with brass Arts and Crafts loop handles. 39" wide 54" high.

#### DAY TWO – 12noon

- 1801. T S Cooper & F R Lee. A fine landscape with cattle, oil on canvas. 27" x 35", signed and dated 1854, carved gilt frame and arch mount.
- 1802. A colour engraving by C Hunt.
- 1803. A pair of colour engravings of Sir Frances Burdett and the Hon George Lamb.
- 1804. J G Sykes. Sheep on a Country Lane, watercolour, signed J G Sykes. 12" x 18".
- 1805. The Prodigal Son. A set of 6 colour engravings by Paul Bamaschina, 1799. 6" x 10", numbers 1 to 6.
- 1806. After Arthur Cherry. 'The High Rocks, Tunbridge Wells', etching, pencil signed, 4 3/4" x 2 1/2"; together with a pair of early 20thC Japanese colourwash prints of Mount Fuji, 2 1/2" x 11 1/2".
- 1807. G H Pettitt. 'A View in Langdale, Westmorland', watercolour, signed, 6 3/4" x 9 3/4".
- 1808. 19thC English School. Landscape - figures around a pond, with substantial house on the right, unfinished, watercolour. 8" x 12".
- 1809. Samuel Austin (1796-1834) Attrib. 'East Cliff, Hastings'. Fishermen and dogs on the shoreline, fishing boats at anchor, watercolour, inscribed & signed verso. 9" x 12".
- 1810. A 19thC oil on oak Panel depicting the birth of Christ.
- 1811. F A Robson (20th C). Continental landscape, roadside villa with cypress trees, hills in the background, signed and dated 1946, watercolour. 4 1/2" x 8 1/2".
- 1812. A pair of spy Cartoons 'Piety and Banking' and 'Formerly of the Carlton'. Image size 12" x 7".
- 1813. A 19thC aquatint and wash view of castle ruins at water's edge, rowing boat and figures alongside. 9 1/2" x 13 1/2".
- 1814. Style of James Clark (19thC). Bay horse in a stable, oil on canvas. 16" x 20".
- 1815. 20thC School. 'Shipping off Dover', oil on board, indistinctly signed. 11 1/2" x 17 1/2".
- 1816. 19thC School. Moored fishing boats at low tide, with figures on a boat, another alongside, watercolour. 14 1/2" x 20 1/2".
- 1817. Copley Fielding. Rocky river landscape with wooded banks, watercolour, bears signature and dated 1851. 12 1/2" x 19 1/2".
- 1818. An early 20thC Crystoleum, depicting a 17thC family group. 5 1/2" x 3 3/4".
- 1819. Faulkner (19thC). Haywain with a chestnut and grey horse in harness, the driver resting beneath a tree, having refreshment from a farm girl, oil on canvas, signed. 16" x 24".
- 1820. After Joseph Farquharson. 'When the West with Evening Glows', colour print by Frost and Reed. 19 1/4" x 28", bears trade guild blind stamp.
- 1821. After Bernard Partridge. 'A Gentleman & All Temperance' and 'One who Knows', woodcuts, 10" x 8".
- 1822. L Parrish (20thC). Ragamuffin with broom and puppy, watercolour, 14" x 10", signed; together with 2 charcoal drawings by the same hand.
- 1823. After Mark Huskinson (20thC). 'There was an old pheasant call Stan ...', colour print, pencil signed in top left hand corner. 9 3/4" x 6 3/4".
- 1824. A set of 3 - 19thC Chinese embroidered circular panels worked in gold thread and silk with animal, fish and bird centres, encircled by flowers, lotus and leafage. 8 3/4" dia, maple frames.
- 1825. R Norie (19thC). Fishing boats in a stormy sea, watercolour, signed, 4 1/4" x 7 1/4".
- 1826. L Smithson (19thC). Moored fishing boats, townships beyond, watercolour, a pair, signed and dated '91. 4 1/2" x 6 1/2".
- 1827. After F C Turner. 'Bachelor's Hall' pl 1 & 5 aquatints, 19thC, plate size 11 3/4" x 14 3/4", (foxed).
- 1828. A pair of chromolithographic plates of Chaffinches & Linnets. 7" x 4 1/2".
- 1829. Thackeray/Edwards. 'Has Been Hunted by a Lady', colour print, 9 1/4" x 14 3/4". In original oak frame with applied title.
- 1830. Thackeray/Edwards. 'Have Been Drivn Much Together', 9 1/4" x 14 3/4". In original oak frame with applied title, companion to above lot.
- 1831. A M Readman (19thC) Study of 2 dogs' heads, oil on canvas, signed and dated 1801. 9 1/2" x 11 1/2".
- 1832. After Joseph Farquharson. Evening The Wild Woods Among', colour print by Frost and Read. 20 1/2" x 28", bears trade guild blind stamp.
- 1833. A colour print depicting Neslon and HMS Victory at Trafalgar 1805, a supplement from the Sunday Times, framed.



1834. After Cecil Aldin. A set of 4 gilt framed colour prints depicting various hunts.
1835. Four colour engravings after Baxter, unframed.
1836. L Gianni. A pair of continental lake scenes with figure of a lady amongst flora and stone walling to the foreground, watercolour, signed. 15 1/2" x 9 1/2".
1837. J Lake. An early boxing scene, watercolour, signed J Lake. 15" x 21".
1838. After Millais. 'Bubbles', an original Pears print.
1839. An original Pears print depicting 2 young girls with rabbits in a basket.
1840. W L Wyllie. Isle of Wight, pen and wash sketch. 3" x 6 1/2".
1841. A G Brown. An Arab, encamped at the edge of a village and lake, signed A G Brown RSW, watercolour, 10" x 17".
1842. Twelve framed and glazed 17th C woodcut portrait engravings.
1843. A 19th C oil on canvas North African market street scene. 3'5" x 16".
1844. 19thC English School. Family Crest - 'Fortifer et Suaviter', oil on canvas. 13 3/4" x 10 3/4".
1845. A pair of modern watercolours, one depicting fruit on a ledge, the other a cottage scene.
1846. A pair of late 19thC oil landscapes, indistinctly signed, on canvas. 20" x 9".
1847. J Cantrill. Glory Hole of Lincoln, watercolour, signed and dated 1898. 7" x 9 1/2".
1848. J Cantrill. Pair of rural scenes, one of a farmyard and one of a style, watercolour.
1849. J Cantrill. Rural street scene, watercolour, signed and dated 1985.
1850. A similar landscape watercolour.
1851. Four framed Vanity Fair prints.
1852. A selection of unframed Vanity Fair colour prints.
1853. Laurie & Whittle (Pub) "Hope" Black and white Mezzotint, trimmed and a Baxter Licencees "Street Urchin and Puppy" (2).
1854. A pair of late 19thC watercolours of flamingoes and cranes. 30" x 12".
1855. T Stuart. A sketch with fishermen in the foreground and castle in the background, gilt mount board and ebonised frame. 15" x 24", signed.
1856. Frank Turner. A shepherd and his flock on a country path, signed Frank Turner - 75, oil on canvas. 12" x 18".
1857. Robert Morley (1857-1941). 'Fellow Prisoners', mixed medium depicting 2 seated monkeys, signed. 8" x 11". Verso label having artist's name, title and account L Folks No 33159. Illustrated.
1858. Six pencil sketches of varying subjects (5 framed, 1 unframed).
1859. A small watercolour of a fireplace.
1860. Three gilt framed colour illustrations by Kate Greenaway.

1861. J Cantrill. Pair of watercolours of farmyard and some silver birches, oak framed.
1862. 2 framed landscapes.
1863. Chandos. 'Riviera Scene' - figures by the water's edge, before a building with flower laden balcony, a sailing boat nearby, oil on board. 11 1/2" x 15 1/2", signed, label verso.
1864. A M Redgate. A pair of landscape views of Derbyshire, oil on canvas, signed A M Redgate. 20" x 30", in gilt carved frames, bears verso labels 'William Redmile Antiques, Grantham'. Ex lot 100 Warner Auctions, Leicester 15th November 1993.
1865. A pair of Dutch tavern scenes, oil on canvas laid to board. 18" x 16 1/2".
1866. Copper landscape picture.
1867. Portrait miniature of a naval officer by Muller dated 1820 in black ebony frame.
1868. American war of independence silvered frame portrait miniature of an army officer painted on copper. Signed Josef and dated 1787.
1869. Oval miniature on ivory of two birds in oak frame.
1870. Small portrait miniature of a British naval officer in gold frame. Circa 1760 contained in small leather case.
1871. Oval portrait miniature on copper of a 19thC officer of Yeomanry in a black ebony frame.

End of Sale.



Established 1900

# **-GOLDINGS-**

**■ AUCTIONEERS & VALUERS ■**

[www.goldingyoung.com](http://www.goldingyoung.com)

## *Forthcoming Auction Sales*

We are pleased to announce our next 2-day Auction Sale of

### **ANTIQUES, FINE ART & COLLECTABLES**

Principally from estates, collections and clearances from March

Wednesday 7<sup>th</sup> & Thursday 8<sup>th</sup> June, 2001

**Viewing:** Tuesday prior 2pm to 7pm and Saledays from 9 to 10am

**Catalogues:** are FREE when collected from our offices or £5 (pre-paid) by post.

**Visit our website:** CATALOGUES with COLOUR IMAGES of all lots of interest and valued at over £100 are on our website from Saturday 2<sup>nd</sup> June.

There is a search engine to enable you to find the lots you are interested in.

---

### **20thC. FURNITURE & GENERAL HOUSEHOLD EFFECTS**

On Wednesdays 18<sup>th</sup> April & 2<sup>nd</sup> May, 2001 at 10am

*These sales attract buyers looking for FURNITURE from Edwardian to Ercol, Stag & Old Charm, Parker Knoll PICTURES from original oils & water-colours to prints, SILVER & PLATE from flatware to trinket pieces, JEWELLERY including modern gold & gemstones to costume pieces, CERAMICS & GLASS from Aynsley, Derby, Caithness, Stuart Crystal Wedgwood, & other named factories, TEXTILES viz. Quality carpets, rugs, curtains & linen, BOOKS of general interest, AND appliances, tools, outdoor items, bric-a-brac, etc*

Including a clean C-Reg Nissan Bluebird saloon

**HOUSE CLEARANCES and SINGLE ITEMS always INVITED**

**ENTRIES CLOSE 5pm the preceding THURSDAY**

**Viewing:** Tuesday prior 2pm to 6pm and Saleday from 9am to 10am.

---



Our next monthly

## COMMERCIAL SALES

*To include any instructions forthcoming from The Sheriff's Office, The County Court, Certificated Bailiffs, Liquidators, Machine Mart, Other Companies, etc....*

On Wednesdays 2<sup>nd</sup> & 30<sup>th</sup> May, 2001 at 10am

*Now accepting entries of Office, Shop, Catering & Trade Equipment & Stock, Machinery, Tools, Vehicles, etc Sales already includes 40 New Carpets (unless repleved), 120 lots of refurbished catalogue return tools and equipment, etc.*

**COMMERCIAL PROPERTY CLEARANCES and SINGLE ITEMS always INVITED**

ENTRIES CLOSE 5pm the preceding FRIDAY

Viewing: Tuesday prior 2pm to 6pm and Saleday from 9am

---

Our next catalogued sale of  
***Antiquarian, modern and rare***  
**BOOKS & PRINTS**

Is on Friday 25<sup>th</sup> May, 2001 at 11am

Viewing: Thursday 24<sup>th</sup> 2pm to 6pm and Saleday from 9am

ENTRIES CLOSE Tuesday 8<sup>th</sup> MAY

*Please note our Consultant Book Valuer is available for appointments to see large collections and libraries of interesting books. He will also be joining our Valuation Roadshow Team on Tuesday 8<sup>th</sup> May at the Saleroom for individual edition and smaller collections.*

---

Preliminary Notice of

## THE LINCOLNSHIRE SALE

We have started cataloguing for a summer sale of items with specific regional interest. Books, Ephemera, Paintings, Prints, Maps, Clocks, Marine Items, Rural and Domestic Bygones, Furniture, etc. Also to include a featured sale of RAF related memorabilia. We are now accepting entries of limited edition aviation prints, squadron related pictures and prints, items of pre and post WWII uniform (pre 1960), mess dress items, ie buttons, insignia, etc, silver, ie inscribed tankards, mess crests, etc. Any RAF related items are welcome but items from 'mothballed' Lincolnshire RAF stations especially so, also books, photographs, ephemera, squadron crests, etc, both from current and laid-up squadrons, line books, cartoons, etc. *Virtually anything with a Lincolnshire connection, covering all County Towns and Rural Communities.*