

1900

Established 1900
-GOLDINGS-
AUCTIONEERS & VALUERS

2000

Centenary Sale Week



100 YEARS OF PROFESSIONAL SERVICE

Established 1900
-GOLDINGS-
AUCTIONEERS & VALUERS

Antiques Valuation Services



Two George Jones Majolica Centers - Sold for £17,000

FREE AUCTION VALUATIONS

Entries now invited for our forthcoming Fine Art and Specialist Sales of

Antique and later Furniture
European and Oriental Pottery, Porcelain and Glass
Oil paintings, Watercolours and Prints
Books and Printed Items
Dolls, Teddy Bears, Die-cast, Tinplate and other Toys
Silver, Sheffield and Electro Platedwares
Clocks, Watches & Jewellery
Modern Sporting Guns, Antique Arms & Militaria
Collectors' Items

Our valuer Colin Young FNAVA is available for consultation
Every Tuesday 2pm to 6pm in the Saleroom

For appointments at other times contact Marie Scofield on 01476 565118

*For less portable items or large collections we would be pleased to visit your home
without charge or obligation*

Specialists in the preparation of Insurance and Probate Valuations

THE CENTENARY SALE WEEK PROGRAMME

MONDAY 19TH JUNE 2000

10am - FURNITURE {Lots 1001- 1300}

1pm - PICTURES {Lots 1301 - 1500}

6pm - JEWELLERY, SILVER & BIJOUTERIE {Lots 1601 - 1800}

TUESDAY 20TH JUNE 2000

10am - GLASS & CERAMICS {Lots 2001 - 2250}

2pm to 6pm - ANTIQUES & COLLECTABLES VALUATION ROADSHOW

Colin Young, Jan Squires & Suki Burnett

WEDNESDAY 21ST JUNE 2000

10am - ANTIQUE COLLECTORS ITEMS {Lots 3001- 3350}

VIEWING FOR THE ABOVE SALES

Saturday 17th & Sunday 18th 11am to 4pm

Monday 19th & Tuesday 20th 9am to 6pm

Wednesday 21st 9am to 10am

(Please note that Lots 3001 to 3350 cannot be viewed Tuesday 10am to 2pm)

VIEWING FOR THE FOLLOWING SALES

(No Condition Reports or further information available until Viewing)

Thursday 22nd 2pm to 6pm

Friday 23rd from 9am to start of sales

FRIDAY 23RD JUNE 2000

10am - 20TH CENTURY COLLECTABLES, TOYS, etc {Lots 5001 - 5450}

1pm - BOOKS & PRINTS {Lots 5501 - 5800}

All Enquiries

TELEPHONE: 01476 565118

FAX: 01476 561475

Email: goldingyoung@compuserve.com

Golding Young & Co., Old Wharf Road, Grantham, Lincolnshire NG31 7AA

IMPORTANT NOTES FOR PURCHASERS

1. **PAYMENT:** Must be made in full immediately after the Auction. The following methods of payment are acceptable.
- a) Cash b) Bankers Draft c) Building Society Cheque
 - d) Cheques, accompanied by a valid card.

PAYING BY CHEQUE?

If you are not known to the Auctioneers and wish to pay by cheque above your guarantee card limit **WE WILL RETAIN THE GOODS** until it has been cleared (7 days). There will be **NO EXCEPTIONS** to our policy. To avoid **UNDUE EMBARRASSMENT** for yourself or to our staff please do not ask for preferential treatment. If you wish to clear goods immediately bring a letter from your Bank or a suitable guarantor reference.

2. **BUYERS PREMIUM:** of 12½% + VAT is payable on all lots.
3. **REMOVAL OF PURCHASES:** Goods must be collected as soon as they are paid for, and in the Two Working Days following the sale. If goods are not collected on these days we reserve the right to charge £1 per lot per day thereafter.
4. **COMMISSION BIDS:** If you are unable to attend this or any of our future sales we will be pleased to bid on your behalf. We always purchase at the lowest possible price, subject to other bids and reserves.
- All bids must be handed to the office on an official form. It remains the responsibility of prospective purchasers to contact **GOLDINGS** to confirm whether their bids have been successful.
5. **TELEPHONE BIDS:** There are inherent dangers with this practice, therefore all such arrangements are made entirely at the bidder's risk. Telephone bids will only be accepted if the lower estimate is £500 or above. For lots with a lower estimate below this figure Commission Bids Only will be accepted.
5. **SMOKING:** is not permitted in any part of the Saleroom.
6. **REFRESHMENTS:** will be available Saleday.
7. **ACCOUNT TRANSFERS:** will not be recognised after the sale. If any lots are purchased for another person, this must be declared at the fall of the hammer.
8. **ESTIMATES:** Our Auctioneers will be available during viewing to give guidance on your prospective purchases

GLOSSARY

- a) Generally: 'As Found.' (AF). This term indicates the lot has some damage. Its absence does not indicate that the lot is free of defect. All lots are **SOLD AS SEEN**.
- b) Paintings: 'Signed, initialled, monogrammed' This refers to the present state of the work and is not an attribution.
- c) Books and printed matter: These items are not sold subject to collation and are not returnable once removed from the premises.
- d) Silver & Jewellery: Weights given are approximations given by basic instruments.

FURNITURE

1001. A fine Edwardian crossbanded mahogany triple wardrobe and washstand. 5'10" wide, 7'0" high.

1002. A Waring & Gillows fitted mahogany triple wardrobe on ogee feet. 5' wide, 6'3" high.

1003. An Edwardian mahogany display cabinet with single drawer, over bowfront cupboard, on taper legs. 2' wide.

1004. A 19thC mahogany bureau bookcase with blind fret decoration, astragal glazed top and 4 drawer base

1005. An 18thC black lacquer cabinet on stand with oriental brasswork.

1006. A George III pitch pine corner cupboard with 2 arch panel doors 6'9".

1007. A Victorian cast iron double bedstead

1008. A cast iron fireback with tavern scene. 2' square.

1009. Oak panelling, etc.

1010. An Edwardian carved oak leaded glazed cabinet with cupboard base.

1011. An Edwardian oak wardrobe with mirror door and drawer base.

1012. A 19thC rosewood armoire with single mirror door and drawer base.

1013. A late Victorian mahogany triple wardrobe.

1014. An Edwardian walnut breakfront triple wardrobe and dressing table.

1015. An early 20thC Adam style gilt wall mirror with rectangular plate.

1016. A 19thC Chippendale wall mirror with gilt and carved fretwork frame and rectangular plate. 3' wide, 4'8" high.

1017. A reproduction mahogany breakfront display cabinet.

1018. A reproduction mahogany bureau bookcase.

1019. A Victorian gilt plaster framed rectangular wall mirror.

1020. A late Victorian walnut mirrorback sideboard.

1021. An antique moulded and cross grained walnut pier glass in the Queen Anne style.

1022. An Edwardian string inlaid mahogany dressing table with shield shape plate.

1023. An Edwardian oak hallstand with tile inset.

1024. An Edwardian inlaid mahogany wardrobe.

1025. An oak glazed cabinet bookcase.

1026. A grain painted pine kitchen cabinet.

1027. A reproduction oak dresser.

1028. An Art Nouveau carved oak wardrobe with mirror door.

1029. An Edwardian walnut dresser with later platerack.

1030. An early Victorian flamed mahogany cabinet bookcase the upper part having carved Prince of Wales feathers and swept cornice over 3 glazed doors, the base having 3 panel doors concealing 3 door fitted centre and raised on carved ball and claw feet. 75" wide x 92" high. Illustrated.

1031. A Victorian mahogany chaise longue.

1032. A set of 5 + 1 (including carver) William IV mahogany dining chairs with over-run cresting rails and carved barbacks.

1033. A Victorian tapestry armchair.

1034. A green silk 4-fold screen.

1035. A turned column, c.5'6".

1036. A pair of early 20thC satin birch night cabinets on square taper feet.

1037. A large wrought iron spark-guard

1038. A fine quality 1950's rosewood dining suite comprising extending table, 5 + 1 chairs and a matching coffee table.

1039. A set of 6 1950's formed plywood dining chairs.

1040. A 1950's elm nest of 5 tables.



1041. A George III mahogany chest of 2 short and 4 long drawers with spindlebacks and bracket feet. 3'6" wide 4'7" high.
1042. A late Victorian carved walnut dresser base.
1043. A George II oak 2-door cupboard
1044. A Regency mahogany chest of 2 short and 3 long graduated drawers with oval brass handles and splay feet. 3'7" wide.
1045. A Georgian oak plate rack. 5'4" wide.
1046. An early 19thC flamed mahogany chest of 2 short and 3 long graduated drawers, oval pressed brass handles and turned feet. 3' wide.
1047. A George III mahogany astragal glazed bookcase top.
1048. A Georgian tripod table with mahogany dished top. 22" dia.
1049. A Georgian tripod table with oak top. 2'10" dia.
1050. A Victorian flamed mahogany D-front chest of 2 short and 3 long graduated drawers, knob handles and turned feet. 3'6" wide.
1051. An early 20thC bergere tub chair (af)
1052. A Victorian mahogany spoonback open armchair.
1053. A late Victorian 7-piece walnut salon suite with carved fretwork splats, comprising sofa, armchair and 5 side chairs.
1054. A Victorian mahogany breakfront 3-door sideboard with carved splashback. 4' wide.
1055. A Victorian oak and mahogany crossbanded chest of 2 short and 3 long graduated drawers with ebony knob handles and turned feet. 3'4" wide.
1056. A 19thC mahogany corner open bookcase. 2'6" high.
1057. An Adam revival mahogany serpentine dressing table and marbletop washstand with carved pendant husks and oval pierced metalwork.
1058. A set of 4 William IV mahogany barback dining chairs with over-run cresting rails.
1059. A 19thC mahogany open armchair.
1060. An antique matched wingback 3-piece suite with cabriole legs and new upholstery.
1061. A Victorian mahogany loo table with oval tilt-top, reeded column and 4 carved cabriole legs.
1062. A late Victorian carved dresser base with secretaire drawer.
1063. A 19thC mahogany butler's tray and stand.
1064. A cream damask 3-seater sofa.
1065. A Heal's style oak framed armchair.
1066. A 19thC mahogany bureau with fall flap, over 4 graduated drawers, swan-neck handles and bracket feet.
1067. A Victorian Pembroke table with turned legs.
1068. A Victorian rosewood barleytwist whatnot base.
1069. A Victorian mahogany tripod table with turned column.
1070. A Victorian mahogany commode chair.
1071. A pair of Victorian mahogany reeded bedposts.
1072. A George III mahogany chest of 2 short and 3 long graduated drawers with swan-neck handles. 4'3" wide.
1073. A pair of Victorian painted bedroom chairs with rush seats.
1074. A 19thC upholstered armchair with cabriole legs.
1075. A George III mahogany chest of 2 short and 2 long drawers with knob handles and 2 splay feet.
1076. A Georgian oak Pembroke table on square taper legs.
1077. An Egyptian brass standard lamp.
1078. A Victorian pine clerk's desktop.
1079. A Georgian oak hanging corner cupboard. 3'5 high.
1080. A 19thC mahogany hanging corner cupboard. 3'3 high.
1081. A Regency mahogany nightstand
1082. A Victorian mahogany tripod table with turned column.
1083. A small Victorian walnut x-frame chair.
1084. A 17thC oak 3-panel coffer.
1085. A fine Victorian mahogany 7 piece salon suite with pierced vase splats and cresting rails, on cabriole legs.
1086. A Victorian mahogany traytop table with 2 drawers, knob handles and shaped base.
1087. A William IV mahogany open armchair with scroll arms and turned legs.
1088. A Victorian mahogany 2-door cabinet.
1089. A pair of Victorian mahogany Pembroke tables with turned legs and brass cup castors. 3'9" square.
1090. An Edwardian ebonised carver chair with bentwood twist uprights.
1091. A Victorian cast-iron stickstand in the form of a sailor with rope standing on marine trophies.
1092. A Victorian Chesterfield sofa (af)
1093. A mahogany cheval table mirror.
1094. A mahogany cheval table mirror.
1095. An oak tea trolley with turned supports.
1096. A bobbin turned low armchair in green velour.
1097. An early 20thC walnut veneer tripod table with shaped oval top.
1098. An early 20thC walnut veneer nest of 3 tables with oval tops.
1099. A Victorian cast-iron pub table base.
1100. A late 19thC mahogany centre table with an elaborate parquetry top, similar frieze and carved cabriole legs. 4'6" x 3'6".
1101. A reproduction mahogany butler's tray on table base.
1102. An early 20thC walnut veneer sideboard with cabriole legs.
1103. A reproduction mahogany display cabinet with astragal glazed top and cupboard base. 3'6" wide, 6' high.
1104. A reproduction flamed mahogany breakfront sideboard. 4'2" wide.
1105. A Victorian mahogany cabinet with moulded lift top 3 (1 dummy) drawers and 2 door base. 3'7" wide, 2'10" high.

1106. A reproduction mahogany hanging corner cupboard with dentil cornice, 22" high.
1107. An early 20thC mahogany table with gadrooned top and cabriole legs with ball and claw feet.
1108. A 19thC walnut centre table in the French taste, with serpentine top, moulded frieze and cabriole legs. 3'5" x 4'8".
1109. A George III mahogany astragal glazed bookcase top.
1110. An early 20thC walnut stool with drop-in seat and shell carved cabriole legs.
1111. A Victorian mahogany hanging wall cupboard with 2 moulded doors.
1112. A reproduction mahogany sofa table.
1113. A Victorian walnut veneer folio table with adjustable top, shaped frieze, fluted legs and turned stretchers.
1114. A reproduction yew 5 drawer chest.
1115. A Georgian mahogany side chair with woolwork seat.
1116. A reproduction mahogany serpentine bachelor's chest.
1117. A reproduction mahogany tripod table with leather top.
1118. An Edwardian inlaid mahogany 3 piece boudoir suite with square taper legs.
1119. A Victorian mahogany circular breakfast table with moulded tilt top, turned pillar, trefoil base and scroll feet.
1120. A 19thC barleytwist folding chair in the Jacobean style.
1121. An early 20thC cabinet gramophone.
1122. A Victorian window seat with damask upholstery.
1123. A Georgian elm ladderback chair.
1124. A Victorian painted pine chest.
1125. A Victorian painted pine chest.
1126. A late Victorian mahogany overmantel mirror.
1127. A Victorian mahogany cabinet with 2 glazed upper doors and panelled base.
1128. A later Victorian mahogany bergere daybed.
1129. A Jacobean style oak dresser base.
1130. A Georgian mahogany fall-flap dining table on square legs.
1131. A Victorian walnut marbletop pot cupboard.
1132. An early 19thC mahogany campaign chest in 2 sections with brass handles and turned feet.
1133. An Edwardian ebonised boudoir sofa in the French style.
1134. An Edwardian floral marquetry mahogany cheval mirror.
1135. An early 19thC mahogany chest with brass handles and splay feet. (af)
1136. A Victorian mahogany suite comprising cameo sofa and 4 open armchairs in green button dralon upholstery.
1137. A reproduction mahogany breakfront sideboard.
1138. A reproduction oak sideboard.
1139. An Edwardian ball turned crib.
1140. An Edwardian ball turned crib.
1141. A 19thC. Ash and elm Windsor chair with pierced splat.
1142. A reproduction mahogany magazine rack.
1143. A reproduction mahogany magazine rack.
1147. A Victorian figured mahogany inverted breakfront twin pedestal sideboard with scrolled panel back. 66".
1148. A Georgian mahogany full front bureau with fitted interior and four graduated drawers with brass swan necked handles, bracket feet. 26 1/2" wide.
1149. A victoria mahogany framed gentleman's armchair upholstered in brown rexine.
1150. An antique style caved oak box stool with silhouette ends.
1151. Spare lot.
1152. An Edwardian wing back armchair on tapering legs.
1153. An 18thC style wing back armchair on claw and ball cabriole front supports and with tapestry upholstery.
1154. A stripped pine box - Miss Thorp, Bourn.
1155. An Edwardian mahogany box strung double door glazed china cabinet on tapering legs with spade feet. 36" wide.
1156. An antique style oval oak drop leaf table on turned supports.
1157. An early 18thC panelled end oak chest of 3 graduated drawers with brass plates, bracket feet. 35".
1158. An 18thC Hepplewhite design mahogany shield-shaped toilet mirror on a 3 drawer serpentine base.
1159. An early Victorian rosewood foldover card table on a turned column with a platform base. Width 35".
1160. An Art Nouveau octagonal oak side table.
1161. A Georgian oak foldover tea table with fitted single drawer and on tapering supports. 40 1/2" wide.
1162. A Georgian 2 door cabinet.
1163. An American walnut cased harmonium by Tryber & Sweetland, Chicago.
1164. A Victorian stripped pine single wardrobe.
1165. Spice drawers.
1166. A bergere carver chair.
1167. A Butchers block.
1168. A period oak hall chair.
1169. An Edwardian child's push chair.
1170. A green painted pine wash stand.
1171. A Victorian strip pine bamboo carved side table.
1172. A 1920's mahogany sideboard.
1173. A leaded glazed oak 2 door bookcase.
1174. A pine and mahogany clerk's desk.
1175. An octagonal oak bookcase/ coffee table.
1176. 2 drawer kitchen table with towel rail.
1177. An oak gateleg dining table.
1178. A rustic yew table.

1179. A Queen Anne style walnut extending dining table and 5 chairs.

1180. A Victorian pine 2 drawer chest with knob handles.

1181. A walnut cased upright piano.

1182. A modern oak grandmother clock.

1183. A Georgian Windsor chair. (af)

1184. An antique mahogany Gainsborough chair of large proportions with deep buttoned leather upholstery.

1185. A panelled oak chest.

1186. A walnut veneer dropleaf table with cabriole legs.

1187. A walnut veneer sideboard with cabriole legs.

1188. A fine 19thC brass strung mahogany Secretaire a Abbatant with drawer over fall flap with 2 door base, on square taper legs. 36" wide, 57" high.

1189. An oak student's bureau.

1190. An antique oak gateleg table with 40" oval top.

1191. An Edwardian satinwood banded mahogany hanging corner cabinet with astragal glazed door. 36" high.

1192. A Victorian mahogany box commode. Reputedly from Grimsthorpe Castle.

1193. An Edwardian rise and fall stool with ball and claw feet.

1194. A 19thC mahogany table mirror with rectangular plate.

1195. A set of 6 late Victorian walnut dining chairs. Illustrated.

1196. A Victorian mahogany tripod table with circular top and s scroll legs.

1197. A Victorian walnut table mirror with oval plate, moulded plinth with flap.

1198. An ash and elm child's Windsor chair.

1199. An oval bevel wall mirror.

1200. An Edwardian shell inlaid mahogany bureau.

1201. A George III oak hanging 2 door corner cupboard. 42" wide, 49" high.

1202. An Edwardian carved walnut purdonium with brass handles.

1203. A barleytwist oak standard lamp.

1204. A Georgian mahogany chest for restoration.

1205. A Georgian oak and elm chest on later bracket feet.

1206. A Victorian cast-iron rise and fall stool with circular woolwork top.

1207. A Victorian ball turned ebonised corner chair.

1208. A 19thC oak Pembroke table.

1209. A set of 4 Art Nouveau splatback dining chairs.

1210. A Victorian mahogany butler's tray on later folding stand.

1211. A set of 4 Victorian dining chairs with pierced vase splats and cabriole legs.

1212. A period oak joint stool with later top.

1213. A late Victorian music stool.

1214. A pair of 19thC elm spindleback Windsor side chairs.

1215. A pair of Edwardian carved beech folding chairs.

1216. A Victorian grain painted pine box.

1217. A Victorian mahogany rise and fall bed table with adjustable reading slopes.

1218. A reproduction mahogany 'drum' coffee table.

1219. A Georgian oak tripod table with circular top.

1220. A Victorian mahogany tabletop jewellery display cabinet.

1221. A Victorian mahogany 3-drawer chest with knob handles. 41" wide.

1222. A Globe Wernicke stacking bookcase with 3 glazed levels.

1223. A Victorian mahogany traytop 3 drawer chest with knob handles and turned feet. 41" wide.

1224. A Victorian mahogany nursing chair with scroll feet.

1225. A Victorian ash and elm grandfather chair.

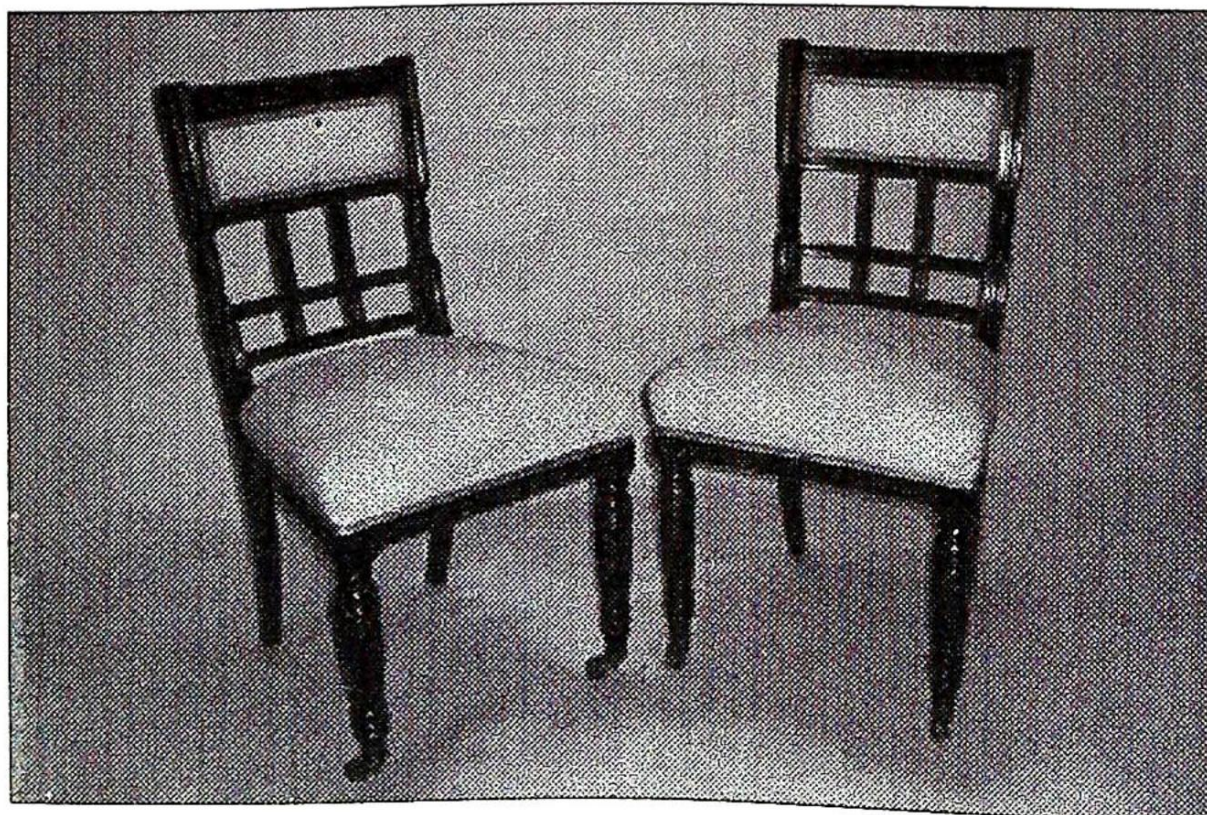
1226. A Victorian mahogany ladies dressing chest with full length central mirror, flanked by 2 six-drawer pedestals. 5' wide.

1227. A George III mahogany gentleman's dressing chest converted to a drinks cabinet. 38" wide, 36" high.

1228. A Victorian drop-arm Chesterfield sofa upholstered in green sculptured dralon.

1229. A late Victorian mahogany windout dining table with gadrooned top and acanthus carved cabriole legs with ball and claw feet and 4 leaves. 39" wide, 6' min and 11'9 max.

1230. A set of 4 satinwood dining chairs with square taper legs and pierced splat.



1231. A Georgian elm carver chair.

1232. A Georgian elm carver chair.

1233. A Georgian elm carver chair.

1234. A set of 3 George III mahogany dining chairs in the Chippendale style with pierced vase splats.

1235. A late Victorian bergere rocking chair.

1236. An unusual late Victorian porter's chair with studded tapestry upholstery.

1237. A 19thC elm Windsor side chair.

1238. An early Victorian gilt and ebonised tripod table with circular slate top, hand painted with flora and set with mother of pearl butterflies. 20" dia.

1239. A 19thC mahogany serpentine armchair with H-frame stretcher.

1240. A fine Regency mahogany twin pillar dining table, the moulded top and frieze having one extension leaf, each pedestal of tapering concave rectangular form on a nulled quatrefoil base and 4 reed scroll feet with similar brass toes and castors. 53" x 84" max. Illustrated.

1241. An Edwardian panelled mahogany kneehole desk with reeded columns and swan-neck handles. 5'6 x 3'4.

1242. A Regency mahogany chest of 2 short and 3 long graduated drawers with pierced ring handles, caddy top and bracket feet.

1243. An early 18thC walnut veneered chest of 2 short and 3 long graduated drawers with brass loop handles and bracket feet.

1244. A Victorian oak partner's desk with 3 drawers to each frieze and each pedestal. 4'6 x 3'6.

1245. A cushion moulded octagonal bevel wall mirror.

1246. A 19thC French dining chair.

1247. A Regency giltwood girandole with carved eagle pediment. 30" dia.

1248. A late 19thC Arts & Crafts mahogany china display cabinet with stylised fruit marquetry inlay and leaded glazed doors. 44" wide, 68" high

1249. A George III mahogany secretaire bookcase with astragal glazed 2 door upper section, the lower having fitted drawer over 2 door base, on splay feet. 44" wide, 95" high. Illustrated.



1250. A harlequin set of 12 Sheraton mahogany dining chairs comprising 2 carvers and 6 side chairs (a good antique set) and 4 craftsman made 20thC matching examples. Illustrated.



1251. A fine Edwardian rosewood chiffonier with extensive neo-classical marquetry inlay. 55" wide, 96" high. Illustrated.

1252. A 19thC gilt moulded overmantel mirror. 43" wide, 31" high.

1253. A good 19thC gilt gesso overmantel mirror in the Egyptian taste, 36" wide, 27" high.

1254. An early 20thC wall mirror with a green chinoiserie frame.

1255. A Jacobean style oak dresser with platerack.

1256. A G.P.O. circular wall clock in mahogany case with 12" enamelled dial and fusee movement.

1257. A similar clock by Simson of Hertford.

1258. A similar clock by W. Louth of Spalding.

1259. A 19th century tavern clock in a figured mahogany case. The 18" enamelled dial signed Geo. Bradshaw, Whitchurch, striking movement, Height 50".

1260. A Victorian pine scrub-top refectory table. 32" x 81".



Lot 1250

1261. A 19thC carved oak demi-lune D-end table on square legs.

1262. A mahogany rectangular folding card table.

1263. A Georgian mahogany side table with reeded top, drawer with brass knob handles and square taper legs. 30" wide.

1264. A Georgian oak tripod table with circular top.

1265. A mahogany standard lamp.

1266. A Victorian light oak pot cupboard

1267. A 19thC white painted marbletop corner washstand.

1268. A 19thC circular mahogany breakfast table.

1269. An 18thC black lacquer and chinoiserie hanging corner cupboard.

1270. A Victorian mahogany polescreen with circular base.

1271. A Victorian mahogany polescreen with trefoil base.

1272. A large late Victorian walnut open armchair.

1273. A Georgian mahogany coaching table with dished circular top and turned folding base. 36" dia.

1274. A Regency mahogany ropetwist pier glass. 42" high.

1275. A Regency mahogany overmantel mirror.

1276. A Chippendale mahogany fretwork pier glass with gilt ho-ho bird.

1277. A large wall mirror with broken arch pediment.

1278. A Victorian grain painted pine cradle.

1279. A nearly 19thC crossbanded mahogany longcase clock with mechanical dial, full length door with reeded column and bracket feet.

1280. A Georgian flamed mahogany longcase clock with painted dial by J Las** Southampton, 8 day movement 83"

1281. A 19thC oak and mahogany longcase clock with 12" pressed square arch painted dial by Vorley, Harboro, 8-day movement. 86" high.

1282. A 19thC oak and mahogany longcase clock with painted 12" square arch dial. Maker from Rotherham. 84" high.

1283. A Regency giltwood porthole mirror. 14" dia.

1284. A Victorian walnut windout dining table with canted corners and reeded legs, and leaf. 40" wide x 4' min, 5'9" max.

1285. A Victorian deep upholstered armchair (af).

1286. A 19thC French rococo gilt and cream painted wall mirror. 38" high.

1287. An Art Deco cast iron table base in the form of a dancer on a stepped plinth.

1288. A gilt framed wall mirror.

1289. A George III string inlaid mahogany pier glass with cluster columns

1290. A George III flamed mahogany serpentine card table, with folding top.

1291. - 1295. Spare lots.

1296. A 19thC white marble fire surround.

1297. A lead well pump.

1298. A Regency cast iron fire insert.

1299. Two sections of wrought iron railings.

1300. An oak bell tower with lead pagoda top and obelisk.

PICTURES

1301. Mary E Oddie (20thC). Still life - anenomes in a cream glazed baluster jug, oil on board, signed. 18 1/4" x 14".

1302. 19thC Dutch School. Oriental landscape with an imperial family in their garden with peasants and dog, building beyond, oil on tin. 6 3/4" x 8 1/2".

1303. James A O'Connor (1792-1841) attrib. Landscape - figures on a country lane, with a cottage beyond, heavily wooded, oil on panel, signed verso. 8 1/4" x 10 1/2".

1304. Peter MacGregor Wilson (1856-1928). Sailing boat on a choppy sea, oil on canvas, signed. 9 3/4" x 13 1/2".

1305. T M Hall (19thC). Landscapes - figure by a bridge, with cottage adjacent, meadows beyond, another with a figure, on a country lane,

bridge and buildings beyond, a pair, oil on canvas, signed. 9 1/4" x 17".

1306. George Vicat Cole (1833-1893). Wooded landscape with figures beneath the trees, a small pond in the foreground, oil on canvas, (re-lined), monogrammed and dated 1880. 9 1/2" x 17".

1307. 19thC English School. Coastal scene - a man o'war beached, with many figures spectating, a horse drawn cannon to the side, distant horizons, oil on canvas (re-lined). 6 1/2" x 15".

1308. Style of George Armfield. Study of a spaniel carrying dead game, in undergrowth, oil on canvas, 12" x 18".

1309. James P Power (fl.1924-1938). Cornish street scene, with harbour beyond, oil on canvas, signed. 17 1/4" x 21 1/2". Illustrated on centrefold

1310. 20thC Continental School. Landscape - chalet nestling amongst pine trees, snow covered mountains beyond, oil on canvas, indistinctly signed. 20" x 24".

1311. W Jackson. Sheephaven bay, Co Donegal, a crofter's cottage by the water's edge at the end of a lane, mountains beyond, on panel, signed. 15 1/2" x 19 1/2", paper label and title verso. Illustrated on centrefold.

1312. John Joseph Hughes (19thC). "Kenilworth Castle". Watering cattle with milkmaid carrying a bucket, the castle to the rear, at sunset, oil on panel, signed and dated 1838. 7 1/2" x 9 1/2".

1313. 19thC Italian School. Landscape with fisherman, and another on horseback, with sheep and cattle by a castle moat, hills beyond, oil on panel. 8 3/4" x 11 1/2".

1314. Elizabeth Mary Watt (1886-1954). Still life - vase of spring flowers including tulips, daffodils and iris, in a green vase, oil on canvas, signed. 31" x 25". Illustrated on centrefold.

1315. Carpioni. Neptune and followers setting off in a new direction, in a chariot, oil on canvas. 39" x 31 1/2". Illustrated on centrefold.

1316. Herring. Stable interior with 2 donkeys, hens and a piglet feeding from a trough, oil on canvas. 9 1/2" x 13".

1317. Garstin Cox (1892-1933). View of a cottage beyond woodland path, pond in the foreground. 27 1/2" x 35 1/2", artist's name verso.

1318. F Robertson (19thC). Highland landscape - cattle watering and grazing by the loch side, mist covered mountain in the distance, oil on canvas, signed. 19½" x 29½". Illustrated on centrefold.
1319. Jean-Etienne Liotard (1702-1789) attrib. Portrait - "Captain Joachini Bank", half length, standing wearing his uniform of the Dutch East India company, the ship "Popkensburg" to the rear, oil on canvas, 24" x 17½". *captain Bank was the last captain on the Popkensburg. Illustrated on centrefold.
1320. John Hoppner (1758-1810) attrib. Portrait of Fanny Burney, half length, seated facing right, wearing a white gown trimmed with blue ribbon and holding a book. 29½" x 24¼". Illustrated on centrefold.
1321. William Dickson (fl.1881-1904). Landscape - a half ruined castle built on the side of a wooded hillside, at sunset, oil on canvas, signed W Dickson. 23½" x 17½". Illustrated on centrefold.
1322. Redmore. Fishing boats and sailing boats becalmed at sea, oil on board, bears signature and dated 1871. 7½" x 9 ¼".
1323. Joanne Pemberton-Longman (20thC British). 'Jays', study of dead birds, hanging from a fence and on an old sack, oil on canvas, signed with initials and dated 1961. 23½" x 19¼".
1324. 19thC English School. Landscape - two fishermen beside a pond, one walking away, trees and cottages to the rear, oil on canvas. 10¼" x 14½".
1325. J McColvin (19thC). Study of a woman in a garden setting, a pair, oil on canvas, signed. 12" x 4".
1326. 20thC English School. River landscape with figures in a boat and on the bank, trees and buildings at the river edge, viaduct beyond, oil on board. 18" x 24".
1327. 18thC English School. Portraits - 'Queen Elizabeth', half length, facing left, wearing a jewel covered red gown with lace ruff; and 'Mary, Queen of Scots', half length, facing right, in a black dress with white lace bonnet and ruff, a pair, on panel. 4½" x 3½", bears title verso.
1328. Follower of Nicholas Lancret (1690-1743). Landscapes - a young lady in formal dress serenaded by a youth, seated on the ground playing a flute; another of two girls, one seated with roses strewn around, the other posing, a pair, oil on panel. 7" x 9¼". Illustrated on rear cover.
1329. 18thC English School. Portrait - head and shoulders of a gentleman in black jacket and white cravat, on panel. 5½" x 4¾".
1330. Chandos. 'Riviera scene' - figures by the water's edge, before a building with flower laden balcony, a sailing boat nearby, oil on board. 11½" x 15½", signed, label verso.
1331. Greenup Moorson Storm (1901-1973). 'Bridlington harbour' - fishing boats at anchor, oil on board, signed. 12" x 14".
1332. Ernest Higgins Rigg (1868-1947). 'Summer landscape' - grazing sheep below a cloudy summer sky, oil on panel, signed. 8½" x 11¾".
1333. Alfred H Vickers. River landscape - fisherman by the water's edge, cottages and hills beyond, oil on canvas, signed. 11½" x 9½".
1334. Herring Snr. Portrait of a bay racehorse and jockey, dressed in blue jacket, red cap and white breeches, oil on panel. 11¼" x 15". Illustrated on centrefold.
1335. Heather Debenham. 'Sarah' - portrait of a girl standing looking from a window, her reflection in the mirror behind, oil on canvas, signed and dated 1986. 36" x 30".
1336. Early 20thC School. Cattle in a farmyard, oil on board, 14¼" x 19½". (frame inscribed 'presented to r t v c by Charles Hammond Esq')
1337. 19thC English School. Two cows in a byrne, oil on canvas. 10" x 14".
1338. 19thC English School. Landscape with a saddled donkey grazing beside a wattle fence, cottage and sheep beyond, oil on canvas. 11¼" x 15¼".
1339. Spare lot.
1340. Sidney Steele. Nocturnal river landscape in winter, snow covered buildings on the far side, oil on panel. 9½" x 11¼".
1341. 19thC English School. Landscape with figures at the water's edge, impression of buildings beyond, oil on canvas. 10¼" x 14".
1342. Ellert Mehl (early 20thC) study of 2 spaniels, oil on canvas, signed. 11¾" x 23".
1343. P C Steenhouwer (20thC Dutch). Town scene with a man driving a horse and cart down a cobbled street, oil on canvas, signed. 19¼" x 15".
1344. G Stevens. (20thC English School). Coastal landscape with ducks flying across sand dunes, oil on canvas, signed. 23" x 29".
1345. Early 20thC School. Portrait of a lady seated in a chair, looking to her right, wearing a pale pink long dress, oil on canvas. 36" x 24".
1346. E Mortimer. Landscape and misty hillsides with cottage nestling in the valley, oil on board, signed, inscribed 'Cumbria' and dated '38 verso. 9½" x 13".
1347. 19thC School. Seated lovers before a window, oil on parchment, circle, 5¾" dia.
1348. H English. Girl on a coastal path, carrying a heavy basket, shipping in the distance, watercolour, signed and dated '09. 11¼" x 17".
1349. Adeline Maud Dobinson (20th c). Still life - an arrangement of russian bowls and boxes and oriental figures, oil on canvas, signed. 23½" x 19¼".
1350. 19th/20thC Naive School. Study of a sheep in a landscape, oil on canvas. 11¼" x 17¼".
1351. 19thC School. A young man attempting to woo a young woman, oil on canvas, circle 15" dia.
1352. 20thC School. Landscape - cattle grazing in a meadow, oil on board, 7" x 8¾".
1353. Oliver Omina. 'View of Chesterfield', oil on board, title, artist and date 1980 verso. 11¼" x 23".
1354. John Henry Inskip RBA (1860-1947). 'Robin Hoods Bay' - stormy coastal scene, oil on board, signed and artist's name verso. 8½" x 13".
1355. Lesley Herriett (20thC). River landscape with a sailing boat moored by a thatched cottage, with mainly wooded banks, oil on canvas, signed. 15" x 192.
1356. Lesley Herriett (20thC). Landscape - a cornfield at harvest time, with well wooded fields beyond, oil on canvas, signed. 15" x 19".
1357. 19thC Naive School. Study of a spotted dog, outside its kennel, landscape with bridge and figures beyond, oil on panel. 15" x 11".
1358. G Stainton (fl.1860-1890). Fishing boats off the coast, with sailors in rowing boats in the foreground, oil on canvas, inscribed and dated verso, 1884. 19¼" x 23¼"

1359. A Castellain. View of a French town overlooking the rooftops and cathedral, winding river with many bridges beyond, believed to be Montpellier, oil on panel, signed. 7½" x 11½".

1360. Richard Wilson (attrib) (1714-1782). Coastal scene with children playing on the tree lined shore, numerous boats and an island beyond, oil on panel, bears label verso 'Richard Wilson RA. Purchased at Christies 1887.' 4" x 4½".

1361. H M Raine. River landscape, a pair, ovals, signed and dated 1923. 13¾" x 17¾".

1362. Blanche Odin (1865 - French). 'Villeneuve' - shed in a flower filled garden, watercolour, signed and label verso. 7½" x 10¾".

1363. Spare lot

1364. John Sell Cotman (1782-1842). Mill house and stream, watercolour drawing, label verso. 6¾" x 10".

1365. George Goodwin Kilburne (1839-1924). Regency interior - a card game, watercolour. 8¼" x 11¾".

1366. John MacWhirter (1839-1911 British). Landscape with figures on a country path, with loch and mountain beyond, watercolour, signed with initials. 20" x 16½". Illustrated on centrefold.

1367. Thomas Pyne (1843-1935). Extensive river landscape with grazing cattle, wooded slopes, hills beyond, watercolour, bears label verso. 9" x 13".

1368. F E Payne (20thC). Street scene - an old man carrying a sack on his back, on a cobbled street, timbered houses stretching down the hill, watercolour, signed and dated 1911. 13" x 9½".

1369. E M B (20th c English). Windsor castle from the Thames, pencil hightened body colour, signed with initials and dated 25.7.01.

1370. J H Seth (19thC). 'After her turf career' - a mare and her foal, pencil, signed and dated sept 16th 1886. 13½" x 20½".

1371. Ada Watson Raab. Street scene with figures by a church arch and medeival timbered buildings, signed and dated '25, watercolour. 7¼" x 10".

1372. Edmund Drooge? North African street scene, with street vendor and other figures, mosques beyond a shady building, watercolour, signed. 9¾" x 14".

1373. John Lees (19thC British). 'The Kittock Burn near Busby' - fisherman by a stream, with stone bridge beyond, watercolour, signed and dated 1885. 7½" x 11½".

1374. Henry Collins (20thC English). 'Cornfields gleaned at lower marsh farm, Brightlingsea 1953', pencil gouche, signed, bears label verso. 18¼" x 25¼".

1375. School. Landscape - heather clad moorland at sunset, gouche, 11½" x 19".

1376. F Nicholson. Landscape - highland loch in a mountain valley, watercolour, signed. 6¼" x 9".

1377. J H Seth (19thC). Landscapes - figures on a country path by a loch and figures fishing by a waterfall, watercolours, a pair, signed and dated indistinctly. 7" x 10".

1378. H Brinault (19thC). 'Rheims' - street scene on market day, with numerous figures, the cathedral in the background, watercolour, signed. 19½" x 11½".

1379. E Tucker (1830-1909). 'View of Lake Garda', ink, watercolour, hightened body colour, signed with monogram, title and artist's name verso. 8½" x 13½".

1380. 19thC English School. Coastal scene - figures on a beach with moored boat, buildings nestling under mountains, watercolour. 10" x 16¼".

1381. Alfred H Vickers (fl:1853-1907). Coastal scenes - figures walking by the shore, fishing boat beyond, and boats moored by a jetty, figures alongside a building to the rear, a pair, watercolours, hightened body colour, signed. 6" x 20¼".

1382. William Bartol Thomas (1887-1947). 'Boston' - seven matchbox views, watercolour, framed as one. 9¼" x 11".

1383. William Bartol Thomas (1887-1947). 'Welsh sands - landscape with grassy sand dunes, sea and hills in the distance, watercolour, signed. 9¾" x 13¾".

1384. Paul Sandby Munn (19thC British). 'View of Llanthony Abbey, Monmouthshire', watercolour and pencil, title verso. 11¼" x 18".

1385. Conrad H R Carelli (19thC Italian). A desert oasis with numerous figures, palm trees and buildings beyond, watercolour, signed. 13½" x 19¾".

1386. Moon-Goodman (20thC British). 'Bruce Logan' - portrait of an oarsman, pencil and watercolour, signed and dated 1911. 7" x 8¼".

1387. Cecil Hodgkinson (1895-1979). Woodcock in woodland - watercolour, signed. 8¼" x 11½".

1388. Cecil Hodgkinson (1895-1979). Ducks over marshland, watercolour, signed. 9" x 11¼".

1389. John Paley. Head study of a golden labrador and a black flat coat retriever, watercolour, hightened body colour, signed. 15 ½" x 12½".

1390. Lennard Lewis (1826-1913 British). Sailing boats by a rocky shoreline, with numerous figures on the beach, watercolour, signed and dated '50. 9¼" x 21".

1391. Percy Lancaster (1878-1951). 'The apple sellers' - street market with figures, watercolour, pencil, signed, 9½" x 9".

1392. John Hassall (1868-1948 British). 'Undaunted' - a jaunty sailor with monkey, parrot, dog and other pets, cartoon, pen, ink and watercolour, signed with monogram. 8½" x 7¼".

1393. Frederick Henry Henshaw (1807-1891). Study of a tree in a landscape, monochrome watercolour, signed. 10½" x 8¾".

1394. 19thC English School. Landscape - figures around a pond, with substantial house on the right, unfinished, watercolour. 8" x 12".

1395. Grainger Smith (19thC British). 'A Brittany fruit stall', street scene with figures, watercolour, signed. 9" x 11½".

1396. Lennard Lewis (1826-1913 British). Extensive lakeland landscape with a steamer and fishing boats, two figures on a grassy bank by a cottage, hills beyond, watercolour, hightened body colour, signed and dated '09. 9" x 21".

1397. Wallace c***? (19th/20thC School). Canal side buildings, with figures and a moored display, watercolour, signed indistinctly. 9½" x 13½".

1398. Joshua Smith RBA (fl.1913-1928). Portrait of a young girl, half length, dressed in white dress with organza stole and plaited headband, in an abstract landscape, watercolour, signed and dated '19. 26" x 19½".

1399. L R Armstrong. 'Two cornish crabbers and cutter trawlers' - coastal scene off a Cornish village, pencil and crayon, signed. 18" x 26".
1400. L R Armstrong. 'The wanderer' - a four masted schooner at sea, pencil and crayon, signed. 17" x 26".
1401. Ruisdael (17thC), 'The church at Nordesten'. A lakeside church with figures in a boat adjacent, oil on panel, bears label verso. 4½" x 6".
1402. 19thC English School. River view with solitary fisherman, church beyond, oil on board. 5¾" x 6 ½".
1403. School of Titian (1488-1570). 'St John the Baptist', oil on canvas, bears 19thC attrib and collection label verso. 16¼" x 6¾".
1404. David Cox (attrib) (1809-1885). Landscape after turner - two women bathing in a river, mainly wooded banks, bridge and buildings beyond, watercolour. 20" x 16¾".
1405. Turner (1775-1851). 'The river Mosel showing Traben, Trarbach and the Grevenburg', watercolour sketch, heightened body colour. 5½" x 7½".
1406. F Buzzi (19thC Italian). Cottage interior with a fisherman mending his nets, his wife and children close by, pencil and watercolour, signed, bears label verso. 6¼" x 4½".
1407. John Hollins ARA (1798-1855). 'Florence from the river Arno', watercolour, signed and dated 1825. 4 1/2" x 7¾".
1408. J Hollins ARA (1798-1855). 'Lake Neme' - figures on a country path overlooking the lake with solitary sailing boat, watercolour, mount inscribed john hollins 1825. 5½" x 8".
1409. 19thC English School. Landscape - turreted castle and town buildings beyond a river bridge, with figures playing in the water and moored fishing boats, watercolour, mount inscribed Anthony van Dyke Copley Fiedling but possibly Thos Allen. 4½" x 6¾".
1410. Follower of John Constable (19thC). Landscape with figure on a country path outside a cottage, trees and pond adjacent, oil on canvas, bears signature. 11½" x 15½".
1411. J R Buhlmann (1802-1890). '**Ano' - figures on a hillside overlooking an Italian town, pencil drawing, signed and dated 1841. 8" x 10½".
1412. J R Buhlmann (1802-1890). Figures by a well in garden setting, pencil with heightened body colour, signed and dated 1846. 8½" x 10½".
1413. Style of Vanloo (18thC French). Jailers and guards in dungeon, sepia pen and ink drawing, 19thC. 12¼" x 8½".
1414. John Varley (attrib) (1778-1842). Landscape - figures seated in a country lane, with cottage nearby and hills beyond, watercolour, mount bears attribution and dates. 6¾" x 9½".
1415. Stanley A Bradshaw (20thC British). An air flying corps bi-plane of the first world war, watercolour, signed. 14" x 10".
1416. 19thC English School. Travellers around a camp fire at night, pencil drawing, mount bears attrib to Gainsborough. 2¾" x 4¼".
1417. J D Harding (1798-1863). Coastal scene with moored boat and figures at the water's edge, sails on the horizon and cliffs to the right, signed with initials. 3¾" x 5 ½".
1418. After Turner. 'Blois on the Loire' - riverscape with figures on the river bank, buildings either side of the bridge, watercolour and heightened body colour. 5¼" x 7½".
1419. Style of Gainsborough (18thC). Landscape - sheep drover on horseback, other figures in a woodland setting, thatched cottage beyond, oil on canvas, bears signature. 15½ x 13"
1420. Thomas Miles Richardson Jnr (attrib) (1813-1890). Coastal sketch - figures on a sandy beach, rocky outcrops and seagulls, bears title and attribution verso. 4½" x 7"
1421. Carel Weight (1908 - British). 'The rescue' - mixed medium, on paper, signed. 7¼" x 10½".
1422. 19thC School (after Claude Lorraine). 'Tivoli - sybelle temple' - figures crossing a bridge leading to the temple, a shepherd with sheep at the water's edge, sepia pen, ink and wash. (copied from an 18thC aquatint by Zarlom). 7½" x 10".
1423. Owen Bowen (1873-1967). Turreted castle on the side of a lake, another on the far bank, rocks and trees to the foreground, hills beyond, oil on board, signed. 11" x 15".
1424. Style of Lowry. Sailing boats, pencil drawing, bears initials. 4" x 8".
1425. 19thC English School. Landscape - couple conversing by a river, with stone bridge leading to woodland, cottages adjacent, hills beyond, watercolour heightened body colour, mount inscribed "Pelter Bridge, Rydal" Peter de Wint'. 8¼" x 11¾".
1426. H Hughes Richardson (20thC British). Still life - dahlias, anenomes and daisies in a vase, a glass tazza alongside, watercolour signed. 15 ½" x 10½".
1427. Edward Lear (attrib) (1812-1888). 'Simplon Pass, swiss side', unfinished pencil and watercolour sketch, inscribed on image. 9½ x 13 ½".
1428. Style of Constable. 'Stratford St Mary, nr East Burgholt', thatched roof cottage with figure on the bridge over a stream, pencil drawing. 9¼" x 13½".
1429. 19thC English School. 'View of Lancaster?' figures seated by the river's edge, multi-span bridge, castle and town beyond, watercolour. 8¼" x 11".
1430. H Cooper (19th/20thC School). Highland loch scene at sunset, with a solitary fisherman in a dinghy, the rocky shores, sparsely wooded and misty hills beyond, oil on canvas (re-lined), signed and indistinctly dated. 18" x 29".
1431. Henry Morley (1869-1937). 'The Manor Hotel, Blakeney, Norfolk', watercolour, signed, title and date 1938 verso. 7½" x 13".
1432. Hiroshi (19th/20thC Japanese). Landscapes - sailing boat on a lake, grassy tree lined banks, mount fuji in the distance, and cottages beside a meandering stream, a pair, watercolours signed. 10" x 13½".
1433. Hovishiu (19th/20thC Japanese). Landscape - country lane with tree-lined bank, meadows and meandering stream with stony banks, mount fuji in the distance, watercolours, signed. 9¾" x 13½".
1434. Guignier (20thC French). 'Paris' - street scene with figures showing the moulin rouge, watercolour, signed. 8¾" x 13½".
1435. A Clark (19thC British). Equestrian study of a dressage pony in a landscape, oil on canvas, signed. 11" x 15".
1436. 19thC English School. Family crest - 'fortifer et suaviter', oil on canvas. 13¾" x 10¾".

1437. Janos Viski (1891-? Hungarian). 'The horse race', oil on canvas, signed. 23" x 31".

1438. A C Turnbull (19thC British). 'Grandmama Vera', 3/4 length portrait of a seated lady, holding a book, pencil and heightened body colour, signed and title verso. 9 3/4" x 8".

1439. Dora Webb RMS (20thC). Study of a seated black poodle, watercolour, signed and dated 1935. 8 3/4" x 7".

1440. 19thC School. Landscape, figure of a peasant woman standing on a hillside before castle walls, watercolour, 13 3/4" x 9 1/2".

1441. Lord Methren (20thC British). 'The western pavillion, western terrace, Brighton' - pen, ink and watercolour, signed, title and dated 6 dec 1942 - label verso. 9 1/2" x 12"

1442. Spare lot.

1444. John Oliver Pond (1866-1914). Sailing boat in rough seas, oil on canvas, signed and dated '92. 13" x 10".

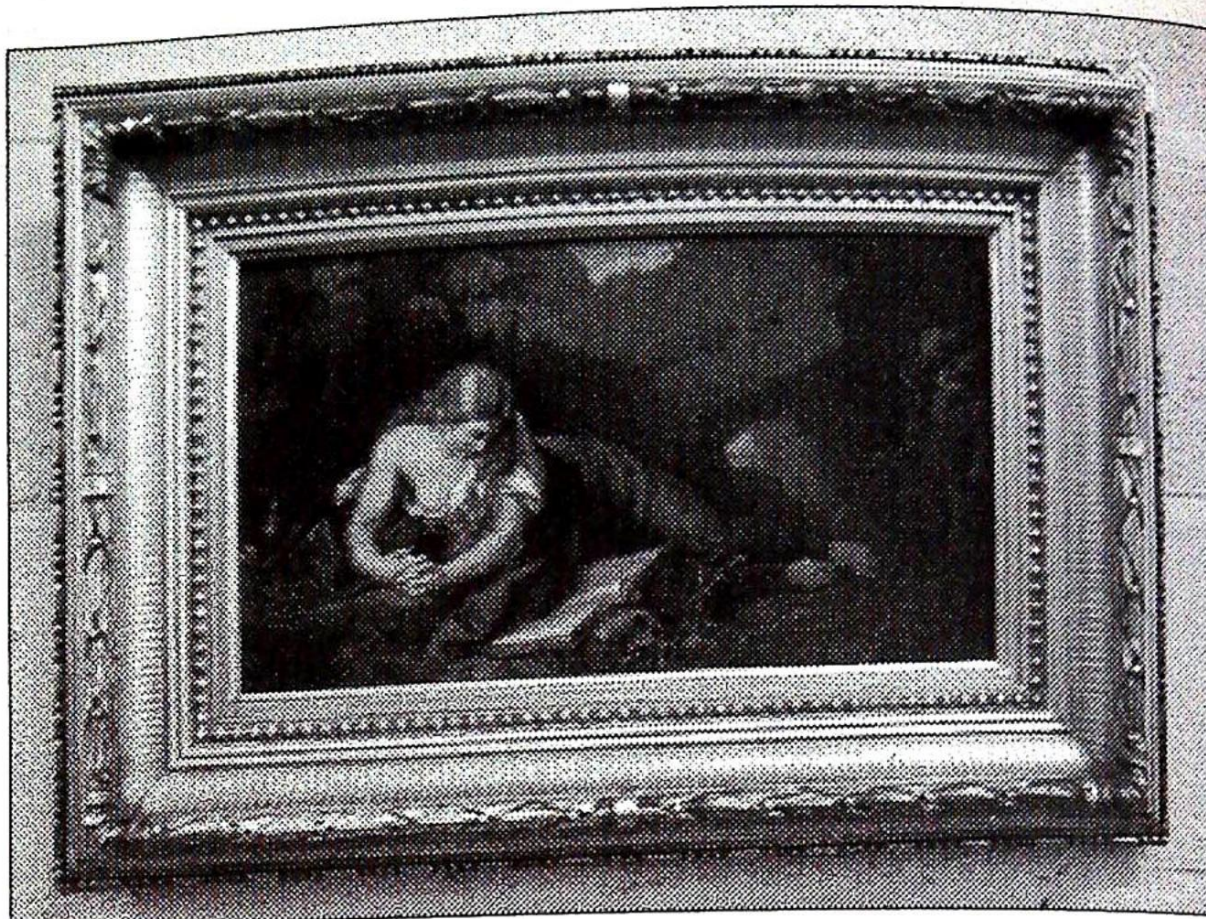
1445. An oak and gilt framed illumination of madonna and child.

1446. A pair of 19thC portrait oleographs.

1447. Still life of fruit, acrylic.

1448. Louis Vigon. Antibes l'apres midi, oil on panel with palette knife. 7 1/2" x 12 1/4", framed.

1449. H*** Wynn. An oil on board depicting Newark Castle. Signed and dated 1895. 14.5" x 9.5", unframed; and another.



1450. A framed oil on canvas of horses

1451. Bryan M Conway. Hunting scene, oil on canvas.

1452. 19thC English School. Portrait of a spaniel in landscape, oil on panel. 8" x 10".

1453. A 19thC oil on board landscape with figures in the foreground.

1454. Robert Morley (1857-1941). 'Fellow prisoners', mixed medium depicting 2 seated monkeys, signed. 8" x 11". Verso label having artist's name, title and account L Folks no 33159. Illustrated.

1455. A Japanese watercolour with figures on a boat.

1456. A Victorian gilt framed milk glass panel painted with azaleas.

1457. J E Peach. An Edwardian lady with bonnet and full-length dress, watercolour, signed and dated 1901. 9 1/2" x 6 1/2".

1458. W F G Boen. Watercolour of a millhouse, signed and dated '05. 6" x 5 1/2".

1459. A pair of early 19thC oval landscape wash sketches, signed Eliza Hill. 6" x 8".

1460. A 19thC maple framed profile watercolour of a gentleman.

1461. A 19thC Hogarth framed family silhouette portrait.

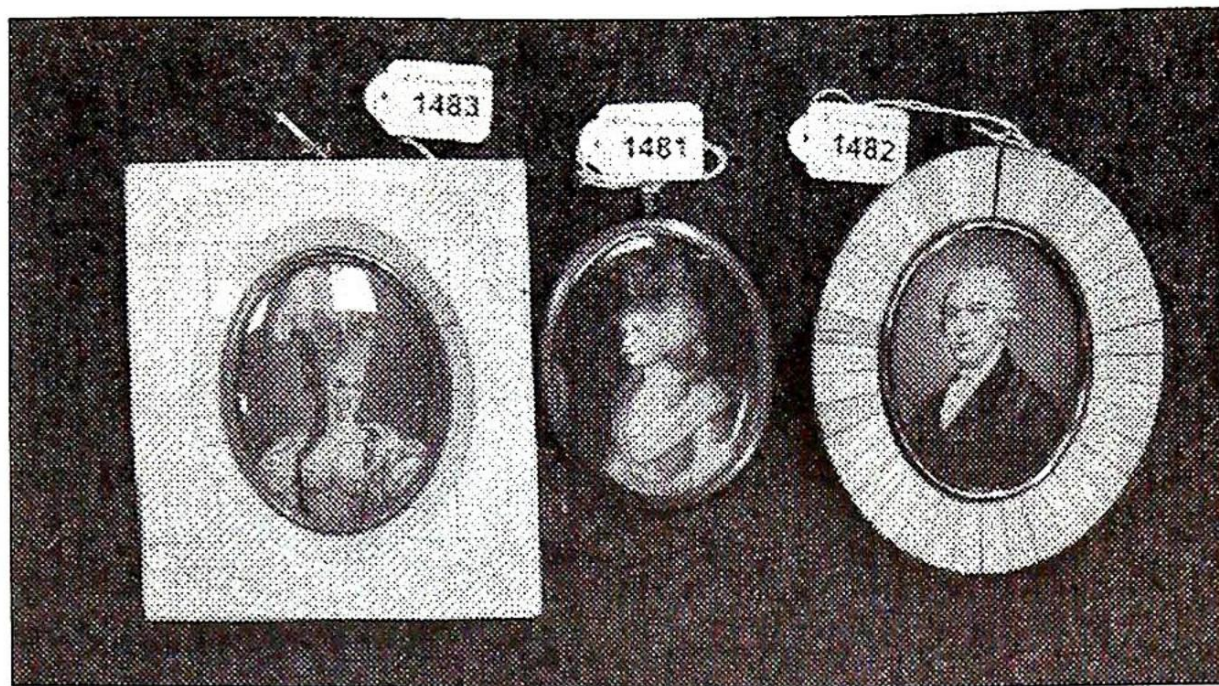
1462. W F Ready. A pair of stormy shore scenes, oil on panel. 9" x 15".

1463. Watercolour head and shoulders portrait of a young lady wearing a bonnet.

1464. 19thC School. Portrait of a lady in decollete dress and hat, edged with pins - watercolour on silk.

1465. Otto Wustlich (1818-1886). A reclining young lady in landscape reading, believed to be the penitent magdalene, oil on marble panel, signed o:wustlich, gilt framed. 10" x 17". Illustrated.





1466. An unusual pair of scandinavian winter lanscapes painted on kid 9 1/2" x 13 1/2", oak framed.

1467. A sketch of a gentleman, signed Kramer and a signed print of mother and child.

1468. Spare lot.

1469. Style of Francis Grant. Naval 3/4 length portrait believed to be T Hutley. 13" x 9".

1470. A pen sketch of a bullfight inscribed Sevilla 9.4.50. 6 1/2" x 9 1/4"

1471. John Holland (19thC). Peel harbour, Isle of Man, oil on board, 10" x 16", heavy gilt frame. Illustrated on centrefold.

1472. Fragonard. Young lady with child, pastel sketch, 9" x 14".

1473. - 1474. Spare lots.

1481. P Masson. 'Mrs Siddons', watercolour on ivory. Illustrated.

1482. Smyth. Portrait of a gentleman in blue jacket, watercolour on ivory. Illustrated.

1483. Portrait miniature of an 18thC French demoiselle, on ivory, signed M Callet. Illustrated.

1484. 19thC Italian. Madonna san Listo, on porcelain.

1485. 19thC School. Portrait of a lady, watercolour on ivory, cased.

1486. 18thC School. Portrait of a young lady, watercolour on ivory, cased; another of a young man.

1487. Two ebonised framed silhouettes of gentlemen.

1488. A 19thC rosewood framed silhouette of a gentleman.

1489. A silhouette portrait and full-length profile portrait.

1490. A signed silhouette painted on an ivory panel, signed.

SILVER, PLATED WARES, JEWELLERY & BIJOUTERIE

1601. A 20thC Mappin & Webb 5-piece tea and coffee service, of panelled ovoid shape, the teapot, coffee pot and hot water jug with hinged domed covers with urn finials, composition loop handles with acanthus terminals, the sugar basin with swing handle, all on oval stepped bases.

1602. A Walker & Hall electroplated teapot.

1603. A similar hot water jug.

1604. Two plate on copper chambersticks.

1605. A pair of Georgian style plate on copper salts and a matching mustard.

1606. An electroplated oval pierced butter dish with glass liner.

1607. A Dixon & Smith plated teapot in the Georgian style.

1608. A modern electroplated coffee pot and an engraved tray.

1609. A silver plated oval bread basket, a Victorian bread fork, and a circular coaster with cast border.

1610. An oriental white metal 6 piece egg set.

1611. A silver manicure set in leather case.

1612. A quantity of plated and stainless steel cutlery.

1613. An epns Georgian style condiment set.

1614. A quantity of British coinage (some pre 1947 silver).

1615. Three ivory backed silver-mounted hairbrushes.

1616. A quantity of British and foreign coinage.

1617. A pair of silver bladed butter spades and a matching bread fork. Birmingham assay.

1618. An old English pattern silver tablespoon and a silver teaspoon.

1619. A hallmarked silver octagonal pill box, a flean, a quill holder and a ring handle.

1620. A swiss silver pocket watch with exposed escapement and an Ingersoll pocket watch.

1621. An English silver-cased half-hunter pocket watch.

1622. An English silver-cased pocket watch with champeve dial.

1623. An English silver cased pocket watch. Ramsdale - New Southgate.

1624. A continental silver-cased chronograph pocket watch and chain.

1625. Two matching rectangular silver photograph frames. Birmingham and London assays. 9" and 7".

1626. A Victorian cased silver christening set, Birmingham 1853.

1627. An oak cased canteen of 6 pairs of plated fish knives and forks.

1628. A quantity of plated cutlery.

1629. A quantity of silver-handled dessert and bread and butter knives and forks.

1630. A cased set of 6 plated dessert knives and forks and 4 picks.

1631. An epbm 4-piece teaset.

1632. A Walker & Hall electroplate oval taper 3-piece teaset.

1633. A 5-bottle cruet with plated stand.

1634. A pair of electroplate entree dishes.
1635. A pair of electroplate wine coasters.
1636. A pair of electroplate candlesticks and castor.
1637. Gallery tray and other platedware
1638. Three electroplate chambersticks.
1639. A pair of navette shaped plated salts.
1640. Plated oval basket and pastry knives and forks.
1641. An oblong plated salver.
1642. A pair of white metal sugar tongs.
1643. Four silver salt spoons, Sheffield 1919.
1644. A pair of silver asparagus servers, Sheffield 1929. 4¹/₂oz.
1645. A pair of silver napkin rings, Sheffield 1912.
1646. A silver napkin ring, Birmingham 1911.
1647. A Georgian silver castor spoon (rubbed marks).
1648. Four silver salts of a rose bowl design, Birmingham 1919.
1649. A pair of silver toast racks with ball feet, Sheffield 1913.
1650. A George III navette shaped silver salt with bright cut decoration and ball and claw feet, London 1787.
1651. A George III pierced silver oval salt on 4 fluted legs, London 1795.
1652. A George V London shape silver 3 piece teaset, maker M & Co, Sheffield 1913. 39oz all in.
1653. Two George III silver old English pattern table spoons, London assay.
1654. Two Edwardian cut glass bud vases with silver rims.
1655. A 19thC electroplate meat cover.
1656. A cased set of 6 silver butter knives, Sheffield 1903.
1657. A small silver trophy. Birmingham 1927.
1658. A pair of wishbone shaped sugar tongs, London 1904.
1659. A silver handled rococo patterned button hook, Chester assay.
1660. A tortoiseshell bladed silver handled letter opener, sponser WHW, Birmingham 1904.
1661. An engine turned rectangular silver cigarette case monogrammed 'EM'. Birmingham 1937.
1662. A continental white metal Georgian style sauce boat with scroll handle and on 3 hoof supports.
1663. A Goldsmith's and Silversmith's circular butter dish with stylised handles and cut glass liner, Birmingham 1949.
1664. A silver commemorative Grantham eggcup and spoon, Birmingham 1937.
1665. An oval electroplate cake basket.
1666. A silver London shape teapot, Edinburgh 1932. 22oz all in.
1667. A cased silver christening quaich with a horn spoon. Sheffield 1935.
1668. A silver christening bowl with a reeded border, Sheffield 1936.
1669. Two silver spoons, London assay.
1670. Five Victorian fiddle pattern silver teaspoons, Edinburgh 1871 and a bone handled silver pickle fork.
1671. 3 spirit flasks (1 silver topped)
1672. A cased christening set in silver.
1673. A silver matchbox cover with Art Nouveau decoration, Birmingham assay, mark rubbed.
1674. An 8-day Swiss made travel clock in a crocodile case.
1675. An engine turned silver cigarette case by Asprey of London. London 1935; and a plated example.
1676. Four plated wine coasters of various designs and a dish.
1677. A plated engine turned cigarette box.
1678. An Elkington plated entree dish.
1679. A plated urnular teapot on a stepped base, sugar bowl and creamer.
1680. A plated decorated serving fork and a plated lidded tankard.
1681. Two plated teapots. (af)
1682. Two plated spirit flasks.
1683. A pair of silver topped perfume bottles with scalloped, engraved hinged tops, London assay, rubbed marks.
1684. Two plated sauce boats.
1685. A 19thC electroplate serving dish, raised on 4 shaped legs.
1686. A Victorian rococo embossed 2-handled cup with scalloped base. Maker WS, London 1856. 31oz.
1687. An 18thC 2-handled cup stamped with maker RB to the handles and loaded base.
1688. A George III silver goblet with gilt interior and later rococo decoration, presentation inscription. London 1788. 14oz.
1689. A 19thC French brass carriage timepiece. 4¹/₂" high.
1690. A cased pair of silver engine-turned brushes, Birmingham assay.
1691. A 19thC French brass carriage timepiece.
1692. A quantity of Victorian buttons, some marked E M Paris.
1693. 3 gold topped hatpins.
- 1693a. 3 silver topped hatpins.
- 1693b. 5 hatpins.
1694. A selection of hatpins.
1695. A brass sovereign scale.
1696. A mother of pearl pique work Victorian card case with abalone shell borders.
1698. Assorted WWII cloth badges.
1699. Assorted stone earrings.
1700. An early 9ct gold cased Accurist wristwatch.
1701. Art Deco diamante clip marked L.W. Paris.
1702. A cut crystal necklace and a string of pearls.
1703. A silver vesta case.
1704. A ladies 9ct gold cased Tissot watch.
1705. A ladies 9ct gold wristwatch on a cord strap.
1706. An amber necklace.

1707. An 18ct gold $\frac{1}{2}$ hoop diamond ring.
1708. A heavy yellow metal chain.
1709. A white metal and diamond cluster ring.
1710. One single strand simulated pearl necklace and 1 double strand simulated pearl necklace.
1711. Costume jewellery inc some 9ct gold and silver items.
1712. Costume jewellery inc Coalbrook china brooches.
1713. Ivory handled miniature ladies vanity items.
1714. A mother of pearl crucifix, 2 brass seals and brooches.
1715. Three glass necklaces.
1716. Costume jewellery.
1717. Ivory eidelwiess jewellery items.
1718. A bracelet made from silver coins and assorted earrings and diamante items.
1719. A miniature silver mirror and button hook and pencil.
1720. Two silver watch chains.
1721. Two gents and 2 ladies watches.
1722. An enamelled Victorian coin brooch, a 22ct gold wedding band and 1 other ring.
1723. A 9ct gold amethyst set ring and 2 others.
1724. A yellow metal ring set with a pink stone and one other with green stones.
1725. A ring marked 9ct set with an amethyst.
1726. A gold plated pocket watch and other jewellery items.
1727. A yellow metal ring set with a pale amethyst.
1728. A ring in 18ct gold marked for Birmingham 1865 set with seed pearls, jade and turquoise.
1729. A ring in 15ct gold marked for Birmingham 1892 set with a ruby and seed pearls.
1730. Two 9ct gold gents signet rings and a memorial ring.
1731. A 9ct rose gold engraved hinged bangle marked Birmingham 1864.
1732. A cut steel and crystal pendant/brooch with drops.
1733. A fleur de lys stickpin set with a diamond and one other as a horseshoe.
1734. Three stickpins, one set with blue john.
1735. A ring set with cairngorm quartz and marcasite.
1736. An 18ct gold diamond solitaire ring, 15pts.
1737. An 18ct gold and platinum 5 stone diamond set ring.
1738. A 5-stone diamond ring set in yellow metal, 35 pts approx.
1739. A 9ct gold diamond and sapphire cluster ring.
1740. An impressive diamond cluster ring, a mix of baguette and brilliant cut diamonds forming a raised diamond shape, set in 18ct white gold 2.5cts. approx total.
1741. An 18ct diamond cluster ring and a 9ct gold wedding band.
1742. A small engraved bar brooch 'Betty', marked 15ct.
1743. A heavy double chain 9ct rose, gold bracelet, 32gms.
1744. Two 9ct gold locket and one other.
1745. Two silver engine turned cigarette cases.
1746. A pair of ornately decorated 9ct marked dumb-bell and marquise shaped cufflinks.
1747. A quantity of beaded necklaces.
1748. Three glass bead necklaces.
1749. A heavy 9ct rose gold watch chain with t-bar and double sided agate fob. 36gms.
1750. Two stickpins, one set with a garnet.
1751. Gents 22ct gold wedding band. 10.3gms.
1752. Ladies 22ct gold wedding band. 6.5gms.
1753. Ladies 22ct gold wedding band. 2.3gms.
1754. A 9ct gold keeper ring.
1755. A 56" long guard chain, marked 9ct 15.4g
1756. A hollow link bracelet marked 9ct and another of white metal.
1757. A Ronson Goldtone lighter, a Masda streamline 500 lighter and a miniature lighter on a keyring.
1758. A heavy gents 18ct gold signet ring set with a diamond. 13g.
1759. A ladies 22ct gold wedding band. 5.6g.
1760. A gents 18ct gold signet ring.
1761. A gents engraved 9ct gold wedding band.
1762. A ladies ornate fob watch, case marked 14k.
1763. A late 19thC French key wind fob watch, chased white metal case marked 935.
1764. Art Deco style boat shaped ring, white metal set with diamonds, central diamond of 10pts approx.
1765. An 18ct gold diamond shaped pendant set with a single diamond of 27pts. approx on a 20" chain.
1766. A diamond set 18ct white gold pendant, main diamond of 15pts approx, on an 18" 18ct white gold chain.
1767. The military cross and campaign medals of, and memorial plaque commemorating Lieut Herbert J Mason.
1768. An Indian white metal and simulated turquoise perfume bottle pendant.
1769. A 9ct gold and citrine set ring.
1770. An engraved and pierced 22ct gold ring set with a single sapphire of 75pts. approx.
1771. A ring set with an almandine garnet, yellow metal shank marked 9c.
1772. A gents wide 9ct gold band shaped wedding band.
1773. A 9ct gold ring set with a central emerald cut aquamarine and small diamond set shoulders.
1774. A Wyler Vetta Incaflex Dynawind 18ct gold ladies bracelet watch.

1775. A set of 6 Norwegian silver gilt and enamel coffee spoons.

1776. A silver engine turned cigarette case, the sliding front having a print of an erotic Turkish dancer. Birmingham 1917.

1777. A pair of silver serviette rings of modern design marked Birmingham 1976.

1778. A silver handled magnifying glass hallmarked for London.

1779. A machine engraved silver serviette ring, London 1914.

1780. A pair of silver serviette rings, Birmingham 1972.

1781. A silver cinnamon castor, London 1886.

1782. A boxed set of 6 pistol grip silver butter knives, Sheffield 1915.

1783. A pair of white metal grape scissors, cased, having heavy ornate handles decorated with vine leaves and grapes.

1784. Spare lot.

1785. An extensive set of ladies dressing table items with white metal lids and backs decorated in the Art Nouveau style.

1786. A gun metal cased ladies fob watch and a foxes head stickpin.

1787. A glass perfume bottle, elongated shape with gilt decoration.

1788. A yellow metal armband, a diamante arm band and a pair of large floral drop diamante earrings, 2 gents and 1 ladies watch.

1789. A 9ct gold propelling pencil, made by Biro by the Miles Martin Pen Co Ltd.

1790. A rose gold propelling pencil marked 9ct by Everpoint, cased, with bright cut decoration.

1791. Two costume necklaces and a pair of pendant earrings.

1792. A cheroot holder, cased, with yellow metal mounts.

1793. A treen barrel shaped money box.

1794. A cellulose tortoiseshell box with white metal decorative plaque.

1795. A cased daguerrotype.

1796. A shagreen and silver mounted 3-piece dressing table set. London assay.

1797. An electroplate oval tray with pierced gallery.

GLASS & CERAMICS

2001. A 19thC brown jasperware cheese bell and stand.

2002. A pair of 19thC Pratt lustre chamber pots.

2003. A yellow and black chamber pot.

2004. A graduated set of 3 German floral meat dishes and tureen.

2005. A pair of Portmerion cylinder planters.

2006. Two Portuguese gilt planters.

2007. A pair of Royal Doulton Slaters patent ovoid vases. 12".

2008. Three Victorian jugs.

2009. Spode, Coalport and Doulton pieces (3).

2010. A 19thC gilt and rose painted moulded jug, marked E.G. London 1834.

2011. A 19thC green ground mug with floral painted gilt cartouche.

2012. Two Victorian copper lustre bowls, blue banded and floral moulded.

2013. A Victorian copper lustre jug, turquoise banded and floral moulded.

2014. A Victorian copper lustre jug, cream banded.

2015. A Victorian copper lustre mug and jug.

2016. A Victorian copper lustre pot.

2017. A Victorian 'Devon' pattern blue and white meat dish with moulded drain well.

2018. Two Victorian meat dishes.

2019. A Turner moulded game dish base.

2020. A Wedgwood 'avocado' dinner service

2021. An extensive Royal Worcester 'Evesham' dinner service.

2022. Six Royal Worcester coffee cans and saucers.

2023. Two graduated glass compots.

2024. An early 19thC blue and white dish and a Minton ribbon plate. (af)

2025. A gilt black teapot and gothic jug.

2026. A Victorian glass celery vase and jug.

2027. 2 Staffordshire spill figures. 5".

2028. A Chinese saucer dish and blue and white box.

2029. An Adams 'Calyx' dish, jug and a stoneware tobacco jar.

2030. Five Copenhagen plates from the marine series: i) sta 'Sir Winston Churchill'. ii) clipper, 'the Cutty Sark', III) sta brig 'Royalist', IV) sta schooner 'Malcolm Miller', v) full rigged ship 'HMS bounty'. Details of each ship printed verso. 7" dia.

2031. A Victorian copper lustre mug. 5"

2032. A majolica jardiniere pedestal with pierced and acanthus decoration.

2033. A Holdcrofts green glazed lobed jardiniere. Height 11".

2034. A pair of continental table lamps "night and day".

2035. A Bohemian green glass white overlay oil lamp hand painted with flowers and on a brass base.

2036. A Staffordshire figure group 'the Vicar and Moses' by Ralph Wood. 9 3/4".

2037. A Minton pottery mosaic pattern tile planter. (af)

2038. A set of 3 German porcelain floral decorated soup plates, 5 dinner plates, a pair of ladles and a flan dish.

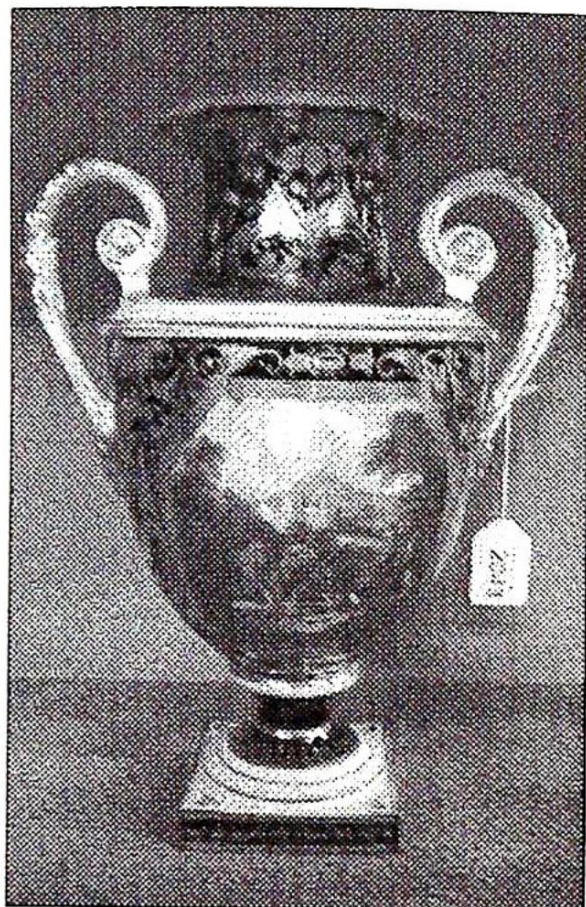
2039. A Gray's pottery copper lustre bachelor's teaset.

2040. A pair French pottery pierced plates.

2041. A pair of French 19thC shallow dishes with hand pierced decoration of flowers within borders of gilt rococo decoration. 14". (af)

2042. A set of 6 ruby glasses.

2043. A good Bloor Derby porcelain vase of neo-classical form decorated with a hand painted panel depicting Downton Castle, Herefordshire within a gilded octagonal border on a Royal blue ground with gilded scrolling acanthus and having scrolling gilded side handles. Printed mark for the period 1820-40. Height 11³/₄". (af) Illustrated



2044. A garniture of three 19thC continental porcelain vases with transfer decorated panels on a pink ground of young woman and men. 16¹/₂" and 13¹/₄". (af).

2045. A pair of Derby coffee cans and saucers with floral decoration.

2046. An 18thC blue and white Delft plate with floral decoration and yellow painted rim. 9".

2047. A 19thC blue and white transfer decorated bordalou. (af)

2048. A English bullet shaped creamware teapot with lustre decoration.

2049. A pair of porcelain coffee cans decorated en grisaille with rustic scenes.

2050. A Doulton Lambeth saltglazed harvest teapot. 7". (af)

2051. A similar jug. 8¹/₄".

2052. A smaller similar jug. 4". (af).

2053. Three moulded glass cakestands.

2054. A Staffordshire dressing table set.

2055. A Victorian majolica plate decorated flowers in relief. 9". (af)

2056. A pair of Japan pattern dished plates. 9".

2057. A Susie Cooper sunflower pattern tea service and 2 other plates.

2058. A late 19thC Bretby green glazed jardiniere, height 10¹/₂", and on a pedestal stand.

2059. A pair of 19thC continental bisque figures of children with animals, 13".

2060. A set of three china bowls decorated with exotic birds.

2061. A Copeland charger monochromatically decorated with a landscape scene. 13".

2062. A set of 4 plates transfer decorated with urchins.

2063. Three tobacco jars in the form of an Arab, an Indian and a bonneted girl.

2064. A mossware china wall pocket encrusted with flowers and a bird.

2065. Two bisque pottery tobacco jars - fisherman and African.

2066. A pair of Limoges plates decorated birds and flowers.

2067. An early 19thC Minton bisque figure of Hannah Moore. 6³/₄".

2068. An early 19thC blue and white transfer decorated pearlware eggstand and 2 cups.

2069. A Staffordshire pottery figure 'the harvester', c.1860. 7³/₄".

2070. A pair of Ashworth blue and white floral decorated tureens and covers, c.1880.

2071. A Staffordshire figure group of men with a flag, 8¹/₄", c.1870.

2072. A Staffordshire figure of a highland soldier. 9¹/₂", c.1850.

2073. A Charles Meigh salt-glazed apostle jug with pewter lid. 9¹/₄", c. 1845.

2074. A similar smaller lot without lid. 6³/₄".

2075. A Worcester coffee cup and saucer decorated bluebell husks and gilt, c.1810.

2076. A Clarice Cliff 'Fantasque' flower brick, 2¹/₂".

2077. A Royal Worcester blush Ivory candlestick decorated roses, c.1910. 6¹/₄".

2078. A blue and white pearlware meatplate with Queen of Sheba pattern. 14¹/₂", c.1830.

2079. A Mason's ironstone blue and white octagonal meatplate, 15³/₄", c. 1840.

2080. A pair of English baluster Carltonware jugs with chinoiserie decoration on a black ground. 9¹/₂" and 8¹/₂".

2081. A French faience triform gargoil vase. 7¹/₂".

2082. A Royal Worcester figure 'good luck to your fishing', in the form a sea nymph. 5¹/₂".

2083. A 19thC majolica Wedgwood eggcup stand.

2084. A Victorian moulded and glazed urn.

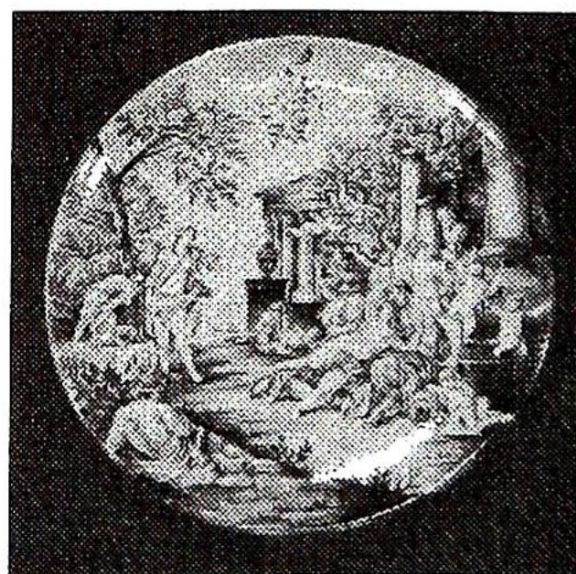
2085. A Kang Hsi Chinese Sang de Boef baluster vase. 33" high.

2086. A pressed glass dressing table set.

2087. A pair of opalescent glass vases.

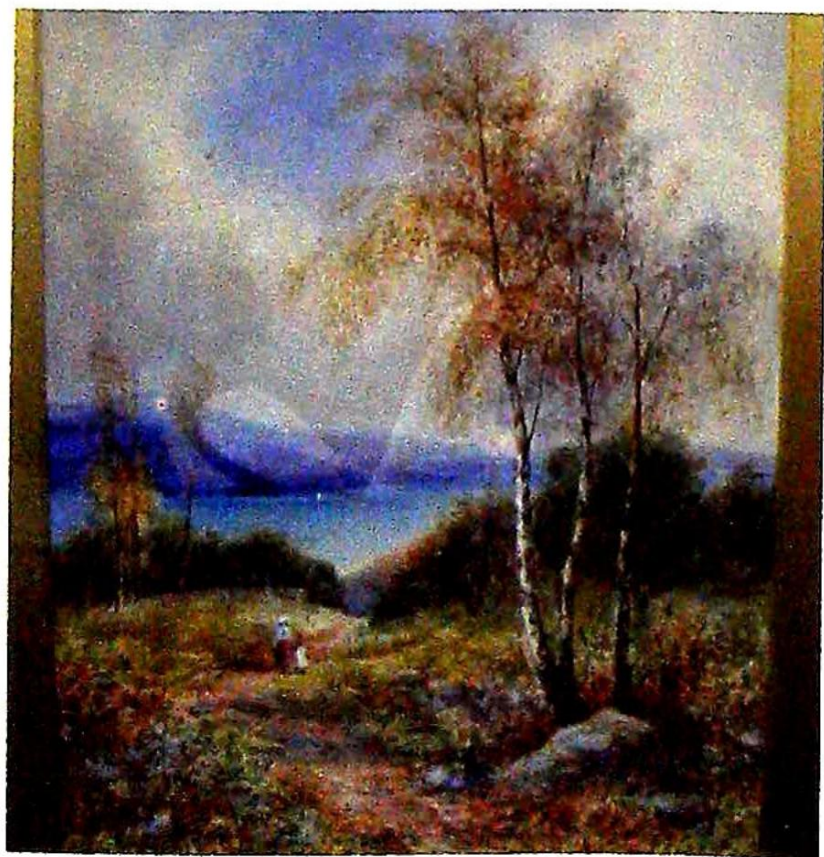
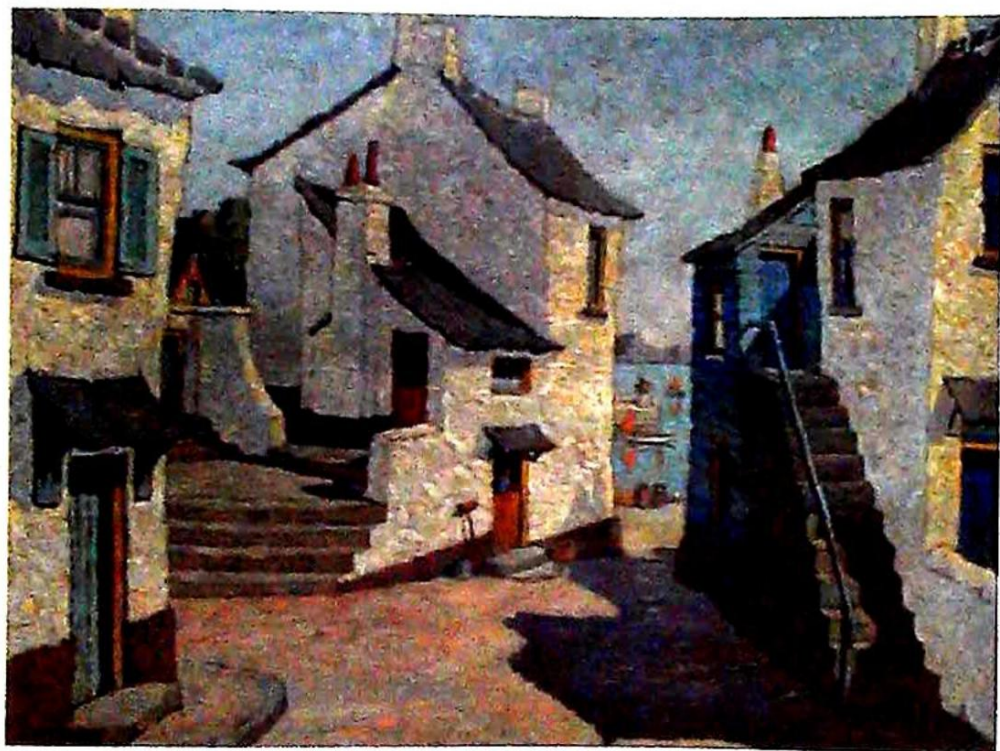
2088. Three New Hall tea bowls and 2 saucers.

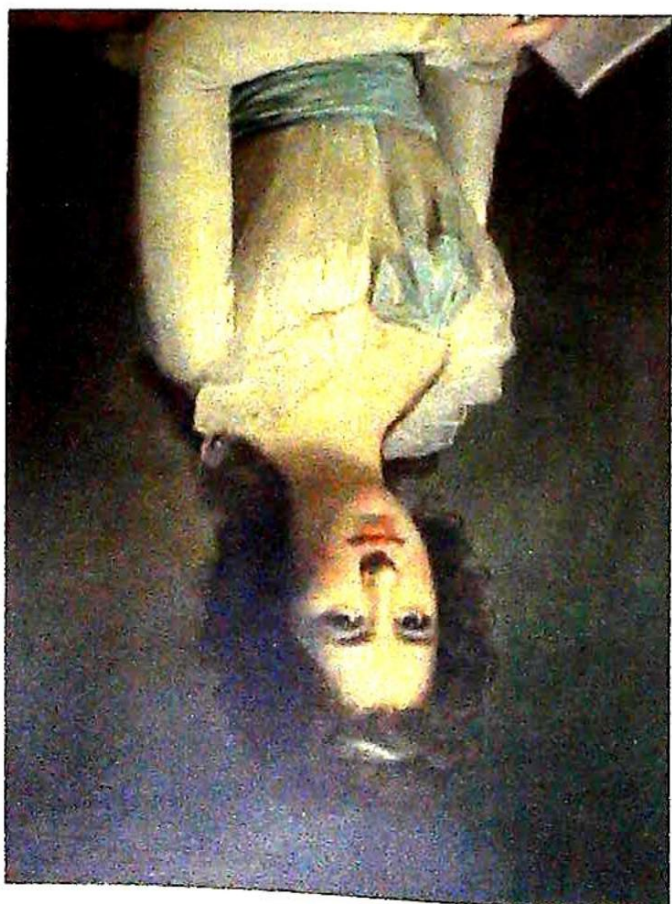
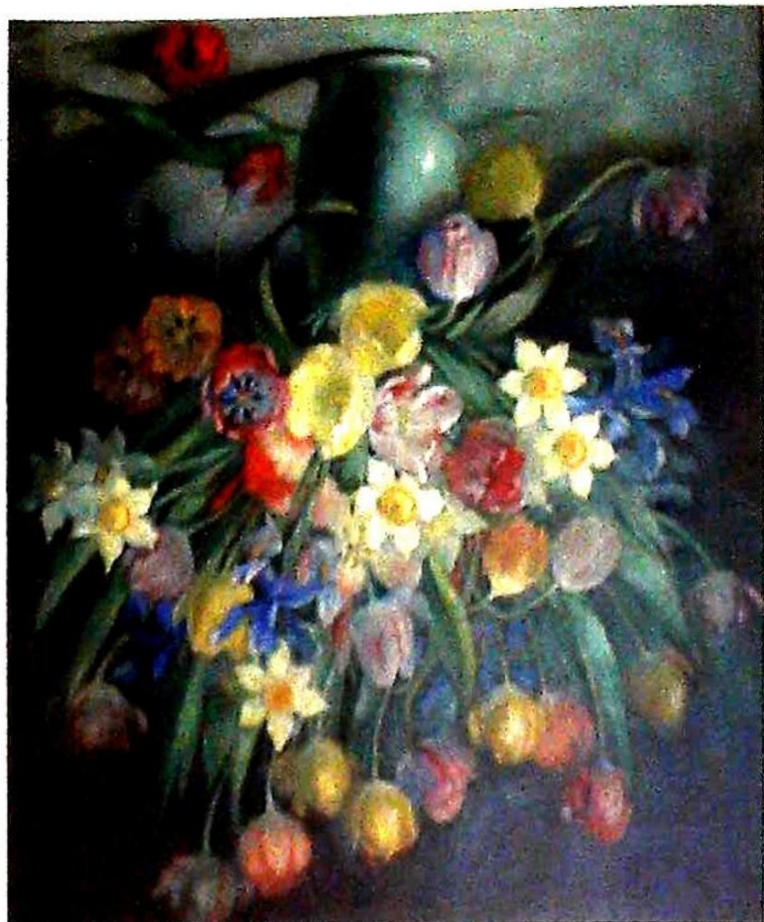
2089. A Victorian Staffordshire figure of a seated fallow deer.



2090. An impressive 19thC blue and white Italian charger. 19" dia. (af) Illustrated.

2091. A Bohemian glass vase (af) and shelly teapot.





2092. A Hadley's Worcester elephant vase, impressed mark, 8". (af)

2093. A 19thC Wedgwood lobed teapot and stand moulded with bamboo shoots.

2094. A Kang Hsi period baluster vase decorated in 'famille verte' enamels. Early 18thC. (af)

2095. A 19thC pearlware campana vase; Grimwade tureen, Art Deco jug; pair Samson spill vases; Johnson plates.

2096. A Meiji period Japanese Satsuma baluster vase, 18". (af)

2097. A Victorian crystal mallet decanter.

2098. A Chinese blanc de chine tablelamp in the form of seated kylin.

2099. A pair of Victorian Staffordshire spaniels with liver sponged decoration. 7 1/2".

2100. A pair of Victorian Staffordshire spaniels with liver sponged decoration. 4 1/2".

2101. A Staffordshire figure of Scottish boy and girl.

2102. A Staffordshire sheep spill vase.

2103. A Staffordshire model of Stanfield Hall.

2104. Two Staffordshire cow creamers and money box.

2105. Two Staffordshire pastille burners.

2106. A Staffordshire pastille burner and money box.

2107. A Staffordshire hound with rabbit.

2108. A Staffordshire spaniel.

2109. A Staffordshire figure group with kennel.

2110. A 19thC Imari lobed dish, 12" dia

2111. A 19thC majolica cheese dish with bell cover in the form of a basket and corn on the cob, probably Wedgwood.

2112. An antique Italian baluster vase (af).

2113. An 18thC Delft baluster shaped dry drug jar.

2114. A Minton majolica jardiniere moulded with alternating ring handles and cameo portraits. 16" dia. (af)

2115. An extensive Copeland green floral transfer printed tea service.

2116. An 18thC Dutch Delft bowl. 10" dia. (af)

2117. A Minton's blue and white transfer printed breakfast cup and saucer.

2118. A pair of early Victorian Staffordshire spaniels with sponged liver decoration. 10".

2119. A 19thC Chinese blanc de chine figure a deity.

2120. Two Chinese blue and white baluster vases.

2121. A Chinese blue and white ginger jar with hardwood cover.

2122. A Crown Derby style teapot.

2123. A mandarin tankard. (af)

2124. Royal standard bone china tea service.

2125. German plates.

2132. Six 19thC glass rummers.

2133. A caudon coffee set and others.

2134. A Victorian pink ground doll's teaset.

2135. A Victorian glass fly catcher.

2136. Four 19thC glass rummers.

2137. A 19thC airtwist wineglass.

2138. Assorted 19thC glasses.

2139. A neo-classical blue and white tureen and stand.

2140. A Victorian willow pattern stilton stand and bowl.

2141. Two Copeland willow pattern cups and saucers and 6 further examples.

2142. A set of 3 19thC English blue transfer printed lozenge dishes.

2143. A Chinese blue and white square dish. 9".



2126. A cranberry tinted shade.

2127. A Staffordshire plate.

2128. A French porcelain trinket box.

2129. Two small Georgian crystal decanters.

2130. Two 19thC mallet shaped decanters.

2131. A hob-nail cut crystal decanter.

2144. A Sitzendorf figural clock garniture. 16" high. Illustrated.

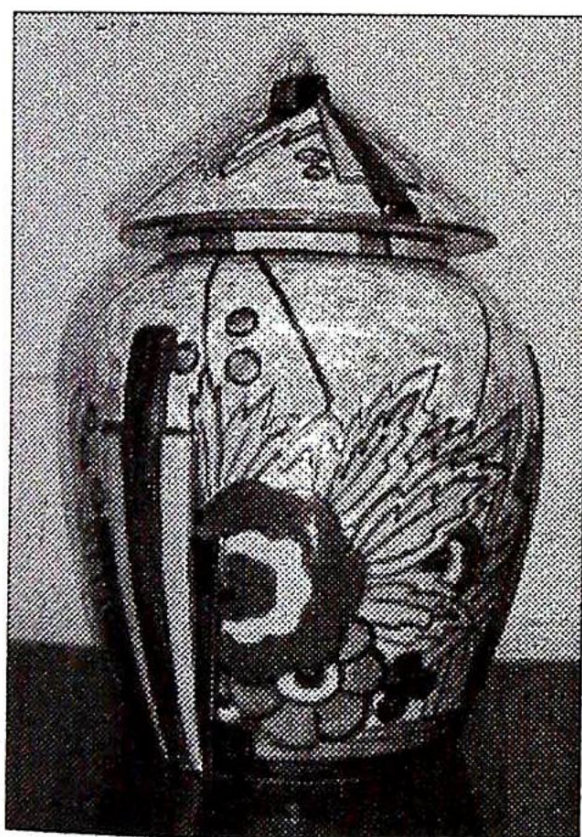
2145. Victorian tiles: 3 depicting sailing boats and 2 double tiles depicting shooting and fishing.

2146. A pair of polychrome bisque figures of young lady and gentleman.



2147. An early 19thC Cantonese baluster vase, the body moulded with sea serpents and having shi shi handles. 24". Illustrated.

2148. A Pheonix Syrian pattern moulded polychrome Art Deco baluster vase and cover. 12". Illustrated.



2149. A pair of German porcelain figures of young man and lady.

2150. A pair of German porcelain figures of young man and lady.

2151. Two carnival glass bowls.

2152. Victorian children's plates and two 1851 exhibition transfer printed plates.

2153. 'Present from Nottingham' cup, stoneware jug and oval soap dish with cover.

2154. An oval fish platter.

2155. A Staffordshire style figure group

2156. Two Chinese bottle vases.

2157. Two marble spheres, 3" dia.

2158. Three teabowls and 2 cups inc. first period Worcester example.

2159. A 19thC chinoiserie decorated toleware tray.

2160. A large gilt frame.

2161. Polychrome pot lid depicting Anne Hathaway's cottage.

2162. A polychrome pot lid depicting the master of the hounds, and another (2).

2163. A green treacle glazed jardiniere on stand overpainted in white with ho-ho birds.

2164. A Grindley transfer printed part teaset.

2165. A 19thC Coalport rouge pot and cover painted with floral sprays.

2166. A 19thC French porcelain tray.

2167. A 19thC French porcelain tablelamp base.

2168. A Victorian glass bottle.

2169. 19thC pottery and porcelain, etc.

2170. A Pallisy style lobster dish.

2171. A 19thC Doulton salt-glazed stoneware harvest jug. 6 1/2".

2172. A 19thC Staffordshire transfer printed and overpainted mug with moulded frog to interior.

2173. A Victorian Staffordshire figure depicting Romeo & Juliet under a bow. 8".

2174. A pair of mid-19thC Derby bottle vases with covers encrusted with flowers and gilt decoration. 10" high.

2175. A 19thC Meissen figure of a chaffinch. 5 1/2" high.

2176. A Royal Doulton Dickens series ware moulded jug with silver rim. 7" high.

2177. A Celadon jardiniere moulded with leaf decoration. 6" high.

2178. A Meiji period Japanese Satsuma charger.

2179. Two 19thC Bavarian plates and sucrere.

2180. A pair of 19thC aperitif glasses with flared bowls.

2181. A 19thC Cantonese cylindrical teapot. 6 1/2" high.

2182. Sundry Victorian and later wine glasses.

2183. A Copeland & Garrett plate transfer printed with the Spode 'net' pattern in the Chinese taste, printed and impressed mark. 10" dia.

2184. Grimwades 'quick cooker', leaf dishes, inkwells, etc.

2185. A 19thC Minton tazza with moulded gilt and rose painted dish supported by 3 stylised dolphins. 8" high.

2186. Custard glass and 3 drinking glasses.

2187. A fine pair of 19thC Sitzendorf comports with pierced and moulded bowls and figural columns. 12" high.

2188. Champagne flutes and glasses.

2189. A pair 19thC Dutch circular plaques with painted landscapes.

2190. Two Edwardian crystal decanters.

2191. A Victorian black glass urnular vase.

2192. Two Victorian cobalt blue and floral pin dishes.

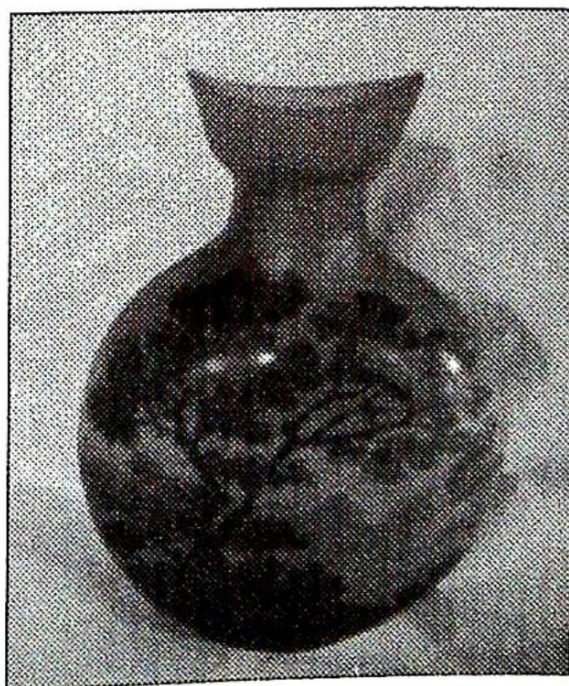
2193. A Berlin gilt cup and another.

2194. A willow pattern meatplate.

2195. A willow pattern meatplate.

2196. A 19thC French painted glass scent bottle.

2197. An early 20thC Galle cameo glass vase, acid etched landscape in shades of brown, signed. 6" high. Illustrated



2198. A cut crystal celery vase and water jug.

2199. 2 transfer printed jugs, hat pin holder and scent bottle.

2200. Blue and white bowl and dish.

2201. A comport. (af)

2202. A 19thC Wedgwood majolica jardiniere and stand.

2203. Two graduated Brownfield green and white relief moulded ewers.

2204. Three willow pattern meatplates

2205. A pair of 19thC English floral plates.

2206. A Victorian Arabian pattern soup tureen with cover, stand and ladle (af).

2207. A Doulton Lambeth stoneware taper ewer.

2208. A Doulton Lambeth conical match striker with silver Mappin & Webb top.

2209. A pearlware blue and white cat.

2210. Two continental blanc de chine figures.

2211. A pair of German floral encrusted planters.

2212. A pair of Chinese blanc de chine figures.

2213. A Victorian moulded creamer with hound handle.

2214. A Victorian purple lustre mug.

2215. A Victorian Staffordshire jug.

2216. A miniature pair of Staffordshire spaniels.

2217. A 19thC French pottery dessert service.

2218. A 19thC mocha mug.

2219. A 19thC mocha mug.

2220. A 19thC mocha mug.

2221. A Victorian Staffordshire cottage.

2222. A large Victorian bacchus jug and 2 others.

2223. A Victorian Staffordshire toby jug.

2224. A Porto vase.

2225. A Meissen hatpin stand.

2226. A 19thC Mason's ironstone jug.

2227. A Copeland Spode's Italian 2-handled bowl.

2228. An Imari plate.

2229. A Victorian gilt green floral water jug.

2230. A Mason's grey Sicilian jug.

2231. A Chinese blue and white baluster vase and cover with figures in hexagonal lappet reserves. 6 character mark. 13"

2232. A Victorian willow pattern meatdish with strainer.

2233. A Royal Doulton ashtray with figure to centre.

2234. A silver topped cut-crystal scent bottle.

2235.-38. A Victorian willow pattern meatdish.

2239. A pair of Victorian cranberry glass bowls with wavy rim.

2240. A Victorian cranberry glass scent bottle with silver top.

2241. A Victorian glass with square base.

2242. A set of 3 Georgian liquor glasses with wheel-cut basket decoration to the bowl, plain stem and folded foot.

2243. A Naples circular moulded dish.

2244. A 19thC Sitzendorf figure of a young man dressed in blue and yellow. 10".

2245. A Royal Doulton figure - Fleur HN2368.

2246. A pair of Sitzendorf figures carrying baskets of flowers. 9" (af)

2247. A silver banded wheel-cut crystal bowl and jug.

2248. A cut-crystal decanter and 2 pickle jars.

2249. Two pieces of blue glass and 2 modern paperweights.

2250. A multi-cane polychrome paperweight.

2251. A multi-cane polychrome paperweight.

2252. A crystal bottle with stopper and millefiore weighted base.

ANTIQUE COLLECTORS ITEMS

3001. An acanthus carved giltwood tablelamp.

3002. A 19thC Italian marble tablelamp of pineapple form.

3003. A 19thC Italian marble tablelamp of pineapple form.

3004. A late 19thC. walnut cased mantel clock with bevel glass, applied spandrels and silvered chapter ring, 8-day movement.

3005. An oriental hardwood vase with an elongated circular neck over compressed body, cover with a band of laurel leaves. 7½" high. (af)

3006. A Victorian copper wall lantern.

3007. A 1930's model of the Golden Hind 27½".

3008. A Georgian wax head and shoulders cameo portrait in a glazed and gilded frame. 11" x 10¼".

3009. An Art Nouveau oxidised firescreen.

3010. A ladies 19th century brass framed fan in case.

3011. Victorian clothing including a child's dress, bonnet, black dress etc.

3012. 10 assorted linen sheets.

3013. 8 damask tablecloths, 18 napkins and assorted embroidery and mats.

3014. 10 assorted linen sheets.

3015. 6 linen sheets, 5 pillowcases and 3 embroidered cloths.

3016. A ladies ebony and mother of pearl inlaid toilet box fitted numerous glass bottles with plated mounts.

3017. An Edwardian inlaid mahogany mantel clock.

3018. An embossed copper and brass powder flask with hunting scene.

3019. A similar smaller lot and a copper lidded box.

3020. An early 19thC figured mahogany cheese coaster of dished form, on ball feet. 18".

3021. A quantity of embroidered table linen.

3022. A set of three 19thC steel fire irons.

3023. An Edwardian mahogany cased balloon shaped timepiece mantel clock with platform escapement.

3024. An Egyptian leather handbag, a deco example and a manicure set.

3025. A black silk parasol and a black velvet muff.

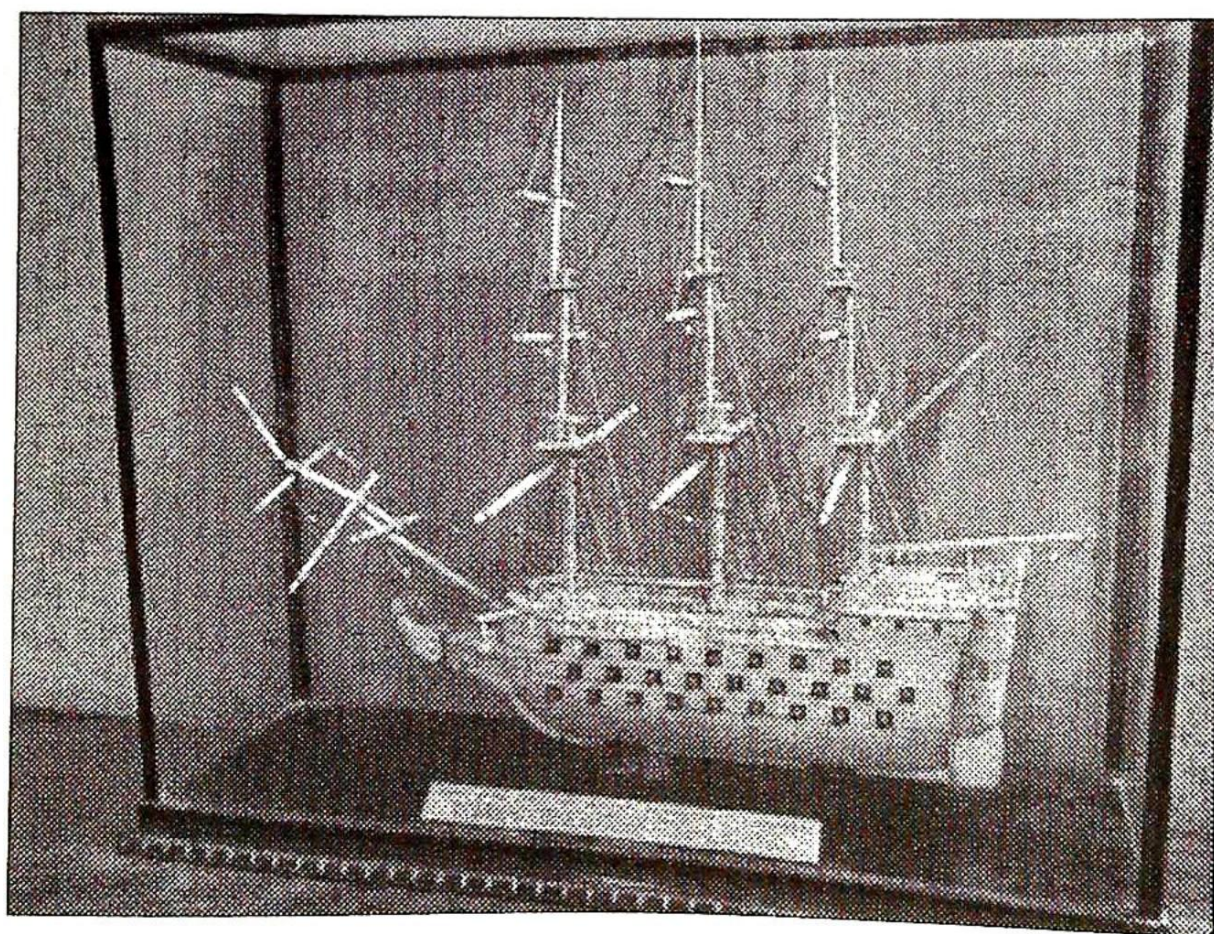
3026. A quantity of railway lead figures and machines.
3027. A quantity of silk shawls and kimonos.
3028. A burr walnut cased mantel clock in the antique style, the dial engraved J W Benson, London.
3029. A Remington standard typewriter and a manual calculator by Mullo.
3030. A boxed set of laboratory brass weights.
3031. A set of laboratory scales and brass weights.
3032. An interesting 19thC woolwork panel woven with the American and British flags and sailing boats and with recesses for photographs. 21" x 21", oak framed.
3033. Two thai tribal art puppets.
3034. Approximately 90 old keys.
3035. A brass cased compass, c. 8".
3036. An embossed leather brass-mounted photograph album.
3037. Three hickory shafted golf clubs and 2 steel examples.
3038. A Victorian rosewood box and 2 others.
3039. Various plated and pewter condiments, mugs, etc.
3040. A Swallow chrome plated car mascot.
3041. Three graduated brass and iron saucepans.
3042. A calfskin rug.
3043. A brass and boxwood cartridge filler.
3044. An electric copper kettle, a chrome example and a brass lamp.
3045. An oak biscuit barrel.
3046. An antique copper coal helmet.
3047. An antique copper grain scoop.
3048. A circular copper log basket.
3049. A plaster relief portrait plaque of rupert brooke.
3050. A painted pine case containing stuffed siamese lambs from Lord Kesteven's estate c.1910
3051. A late 19th century mahogany cased box strung dome topped bracket clock with circular silvered dial. Triple chain fusee movement with Whittington and Westminster chimes. Retailed by Christie of Edinburgh height 16".
3052. A walnut cased chiming mantel clock.
3053. A Victorian mahogany bagatelle board (af)
3054. A Regentone walnut cased television with circular screen and 3 band radio.
3055. A singer sewing machine.
3056. A pair of Victorian polychrome and gilt floral wall brackets.
3057. An ebonised mantel clock.
3058. A small oak footstool. (af)
3059. A Meiji period Japanese lacquer and chinoiserie table cabinet.
3060. A pine carpenter's tool chest and planes.
3061. A Victorian brass Art Nouveau fender.
3062. A steel banded 19thC bucket.
3063. A leaded and colour glazed panel.
3064. A Victorian pine 6 drawer specimen chest.
3065. A Victorian flamed mahogany stick barometer by west of London. 36".
3066. A Corinthian Aryballos, c.300BC. 3 1/4".
3067. A 1stC bronze plaque of putti and goat. 4" square.
3068. A 1stC bronze plaque of figures and charioteers. 3" x 5".
3069. A Westmacott SC marble bust of a young female pub march 1860. 12".
3070. A 19thC alabaster figure of a neo-classical maiden. 24".
3071. A pair of WMF brass baluster vases. 7".
3072. Three needlework samplers.
3073. A Victorian brass 3 pull pocket telescope and binoculars.
3074. A 19thC brass and mahogany campaign medicine box.
3075. A 19thC French brass and rosewood serpentine workbox.
3076. A 19thC crossbanded mahogany workbox.
3077. 'The Janitor'. An Edwardian light oak spring loaded cigar box.
3078. A Victorian oil lamp with pink glass reservoir.
3079. A Victorian brass columnar oil lamp with crystal reservoir.
3080. A Victorian cranberry glass night light, chimney and shade (af).
3081. A small oak mantel clock.
3082. A Ferguson vintage radio.
3083. A glass and plated cakestand.
3084. An early 19thC brass candlestick in classical form with makers label 'Palmer & co'.
3085. An Archimedes type corkscrew.
3086. A pierced steel fender. 53".
3087. A Victorian painted doll's bed.
- 3088.-90. A 19thC American mantel clock.
3091. A Georgian brass and pierced steel fender.
3092. A 19thC rosewood marquetry Swiss music box with drum and bells in sight, 10 tunes.
3093. A Victorian mahogany cased wall clock.
3094. A Victorian mahogany bezel wall clock by a Satelle, Lincoln with an earlier movement.
3095. A small pair of cloissone baluster vases, boxed.
3096. A Victorian brass bound rosewood writing box.
3097. A Victorian brass bound rosewood vanity box fitted with jars and compartments.
3098. A Regency rosewood 2 section tea caddy with recess for mixing jar.
3099. A 19thC Morocco bound dome top casket.
3100. A cased student's violin bearing label 'the Maidstone'.
3101. A Victorian cast oil lamp and another.
3102. A pair of carriage lamps.

- 3103. A pair of carriage lamps.
- 3104. Two hickory shafted golf clubs.
- 3105. Old woodworking planes.
- 3106. A Victorian brass curtain pole.
- 3107. An interesting pair of antique African carved figures. Illustrated.



- 3112. A pair of oak panels painted in oils of plums and berries.
- 3113. A Victorian copper urn.
- 3114. A Victorian brass stickstand.
- 3115. A 19thC Bavarian stickstand, carved in the form of a bear baiting figure. 4' high.
- 3116. A Victorian cast iron stickstand.
- 3117. A Victorian brass warming pan with peacock design to cover.
- 3118. A pair of French spelter female figures 'la musique' and 'la danse', on turned wood bases. 18 1/2" high.
- 3119. A Chinese inlaid bronze circular jardiniere with lion mask handles. 10" dia.
- 3120. A 19thC prisoner of war straw work box. (af).
- 3121. A George III cross stitch wool sampler of 'the tree of knowledge', worked by Mary Rhodes aged 11 in 1802. 18" x 15 1/2".

- 3126. A brass footman pierced with horses.
- 3127. A brass snuffer stand with scissors.
- 3128. A pair of Victorian turned brass candlesticks.
- 3129. An Art Deco golden onyx mantel clock.
- 3130. A Victorian copper water can.
- 3131. A Victorian pierced copper jardiniere with paw feet.
- 3132. A Victorian copper taper jug and another.
- 3133. Two copper trays and floral embossed vase.
- 3134. A Victorian copper saucepan and pair of brass candlesticks.
- 3135. An Edwardian copper hot water jug.
- 3136. A Bretby dish (af) and small metal figure of a frog.
- 3137. A hand knotted oriental rug in shades of blue, central medallion and spandrels. 80" x 51".



- 3108. A scale model of an early 19thC French line-of-battleship, build by Napoleonic prisoners of war, in bone. 14" high, 15" high. Illustrated.
- 3109. Oak wall shelves.
- 3110. An embossed brass firescreen.
- 3111. A Georgian brass and wirework fender. 30".

- 3122. An Art Nouveau hammered copper jug. 12".
- 3123. A beech framed circular wall clock.
- 3124. A Victorian mahogany bezelled wall clock, 9" dial.
- 3125. 78 rpm records inc George Formby.

- 3138. A hand knotted oriental wool rug in shades of brown with turkoman decorative motifs all over. 73" x 50".
- 3139. A Chinese hand knotted wool rug in shades of beige and fawn.
- 3140. An oval tray and butterfly dish.
- 3141. A marine clock.
- 3142. A mahogany bezelled wall clock.
- 3143. A brass clock under dome.
- 3144. An onyx mantel clock.
- 3145. An oak mantel clock.
- 3146. A 1930's wall clock.
- 3147. 2 brass figures.
- 3148. A black bakelite telephone.
- 3149. A reproduction telephone.
- 3150. A sextant.
- 3152. A rock crystal ball watch.
- 3153. A brass compass.
- 3154. A brass sundial compass, boxed.
- 3155. A mahogany cased level.
- 3156. Cased miniature brass telescope.
- 3157. A carved oriental figure.
- 3158. Brass oil lamp.

3159. A cast base oil lamp with amber glass reservoir.
3160. A Victorian brass urnular oil lamp.
3161. A moulded resin easel mirror.
3162. Two Victorian jelly moulds.
3163. A stoneware bottle and pewter wine funnel.
3164. A Phillips 9" terrestrial globe, retailed by Harrods.
3165. A brass and mahogany plough plane.
3166. Two leather straps each with 2 horse brasses.
3167. Two silhouettes and 2 frames.
3168. A telescope on tripod.
3169. A small gilt framed Victorian pressed flower arrangement.
3170. An 18thC painted sign from the Beehive Inn, Castlegate, Grantham, as recorded in the 1980 'The Book of Grantham' by Michael Honeybone. 21" high, 17" wide. Illustrated on front cover.
3171. Two woolwork cushions and 2 embroidered seat covers.
3172. An early lucas brass headlight.
3173. A 19thC French gilt, spelter and alabaster figural mantel clock with dome. (af)
3174. A heavy 19thC cast brass casket.
3175. A Victorian rosewood sarcophagus tea caddy with fitted interior having 2 caddies and mixing jar.
3176. A Victorian coromandel lap desk with gilt brass frames to porcelain cameos of cherubs.
3177. A 19thC tortoiseshell and mother of pearl inlaid rosewood lute.
3178. A pair of Victorian mother of pearl and ormolu opera glasses.
3179. A 19thC violin with bow (label illegible) in a shaped rosewood case.
3180. A 19thC crossbanded flamed mahogany table casket with roll top.
3181. A 19thC brass and walnut chariot plane, stamped W Wormal.
3182. Two carved hardwood Chinese figures.
3183. A woolwork panel.
3184. A Chinese carved hardwood boat.
3185. A hardwood mother of pearl and rosewood inlaid jardiniere stand.
3186. A Victorian tonbridge inlaid chequerboard tabletop.
3187. Three brass blow lamps.
3188. A Kent patent knife cleaner.
3189. A Kismet MKII garage foot pump.
3190. A steel bound animal skin dome top trunk.
3191. A Victorian gilt framed woolwork picture entitled 'Hagars Flight', on a verre eglomise mount.
3192. A tapestry panel depicting a mediaeval hunting scene on a mahogany rail. 56" high, 45" wide.
3193. A Victorian mahogany framed woolwork picture. (af)
3194. A Victorian mahogany framed needlework sampler by Martha Coward, aged 12.
3195. A Victorian needlework sampler by Martha Davies, aged 10.
3196. A maple framed sampler. (af)
3197. A George III needlework picture of a peacock on a branch, gilt framed. 13" x 11", oval.
3198. A pair of Chinese silk and needlework pictures of fish and birds.
3199. A Victorian needlework sampler.
3200. A 19thC woolwork carpet picture depicting a young family group.
3201. A stained leaded glazed panel with oval scenes of birds.
3202. A Victorian pierced brass stickstand.
3203. A set of Victorian brass fire irons.
3204. Four 1 brass and one plated 19thC candlesticks.
3205. A Victorian walnut dome top workbox.
3206. A Victorian Tonbridge inlaid walnut writing box.
3207. Five Victorian candlesticks.
3208. A Chinese carved hardwood figure and cylindrical vase.
3209. Waders and sundry fishing tackle.
3210. A pair of antlers.
3211. Three split cane fishing rods.
3212. Longcase clock movement.
3213. Two grain measures for a gallon and a peck.
3214. A pair of oak chambersticks and a pair of horns.
3215. A carved teak tray.
3216. An Edwardian officer's dress sword by Samuel Bros.
3217. Two bayonets.
3218. Four carved giltwood swags of fruit, 26" each.
3219. A carved swag of flowers in the style of Grinling Gibbons. 20".
3220. A baroque style carved and gilt frame enclosing a carved mirror plate depicting an 18thC gentleman.
3221. A 19thC ormolu 3 light candelabrum.
3222. A 19thC ormolu 3 light candelabrum.
3223. A Georgian pierced steel fender with brass paw feet. 43".
3224. A Victorian octagonal papier mache gilt tray impressed Clays patent. 20".
3225. A 19thC chinoiserie gilt decorated wall cabinet.
3226. An embossed and painted metal table lamp.
3227. Three hand screens.
3228. A brass oil lamp.
3229. An oval copper planter.
3230. A large brass blow lamp.
3231. Two small brass blowlamps.
3232. Brass fire irons and sprayer.
3233. A brass stirrup pump and another.
3234. Two flat irons and stand.
3235. Three stoneware flagons and 2 storage jars.
3236. A Fallowfield mahogany and tin enlarger.
3237. An antique pewter quart tankard.
3238. A small pair alabaster urns.
3239. A 19thC satinwood 2-section tea caddy.
3240. An oak canteen of Dixon silver plated cutlery.
3241. A 19thC rosewood cased 10 air Swiss musical box inlaid with a scene of the Eiffel tower.

3242. A 19thC walnut polyphon and discs.

3243. A Victorian brass bound rosewood writing box.

3244. A Victorian walnut cased polyphon and discs.

3245. Treen items.

3246. An Italian marble table lamp base.

3247. A 19thC bronze candelabrum and other metalware.

3248. A Victorian cast iron doorstep.

3249. A Victorian sewing machine with cast base.

3250. A Victorian sewing machine with cast base.

3251. A wrought iron grate front and pair of andirons.

3252. A Victorian copper kettle with acorn finial.

3253. A 19thC German pickelhauber.

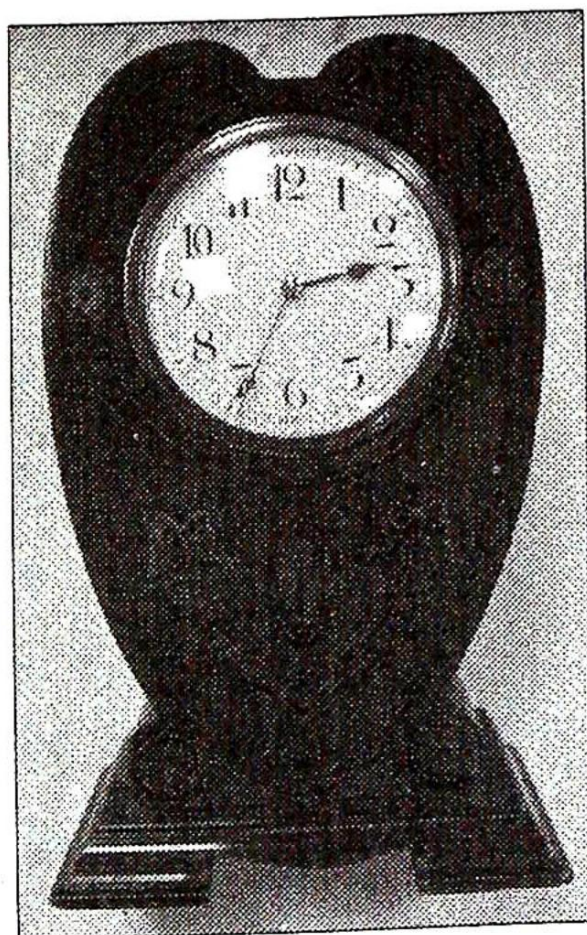
3254. A violin by R W Berry 19/4, maker Thornlea, Hepthorn Lane no 8 Chesterfield. 15", overall length 24".

3255. A mahogany rosewood and mother of pearl bow.

3256. Brass servant's bell, balance and hooks.

3257. An early Victorian copper warming pan with pin-struck cover.

3258. An early 20thC Italian Art Deco terracotta figure group of a naked young girl and a turtle, signed Guero. 15 1/2" x 3 1/2" and 9" high.



3259. A Victorian mahogany clock bracket.

3260. An Edwardian mahogany mantel timepiece of heart form with marquetry inlaid patera and pendant husks, French 8-day movement. 9 1/2". Illustrated.

3261. A Victorian mahogany School clock.

3263. A pair of leather riding boots with trees and jack.

3264. A Jones sewing machine.

3265. A Victorian satinwood bombe tea caddy.

3266. A Victorian walnut 2 section tea caddy.

3267. A 20thC kelim.

3268. 78 rpm records.

3269. Umbrella, riding crop and bamboo shooting stick.

3270. A jack plane.

3271. A late Victorian glass and hide trinket box.

3272. A Victorian mother of pearl inlaid rosewood sewing box.

3273. Small sampler, carved mask, plated and other cutlery.

3274. An early speedograph.

3275. A small circular table mirror with carved floral decoration.

3276. Two small trays and folding marquetry stand.

3277. Three Indian brass wall sconces, bank and evening bags.

3278. Cast iron kitchen scales with brass weights.

3279. Table linen and lace.

3280. A Victorian rosewood and fretwork sliding book rack.

3281. A cartridge filler.

3282. A pair of early Georgian style cast brass candlesticks. 8".

3283. A Victorian glass smoke collector.

3284. A Victorian rosewood polyphon with discs.

3285. A Victorian tin megaphone.

3286. A brass and walnut brace.

3287. A Lancaster full plate brass and mahogany tropical camera.

3288. Old fairground sign and Norfolk foods sign.

3289. A Victorian cast iron mechanical money box in the form of a man with shotgun aiming at a tree.

3290. A small lead pump.

3291. A barrel stick stand.

3292. An Edwardian child's pull along skin horse with rocker stand.

3293. A Victorian walnut workbox.

3294. A Victorian stained satinwood games box.

3295. A Victorian Tonbridge painted workbox.

3296. A Victorian mother of pearl inlaid rosewood workbox.

3297. A Victorian rosewood box.

3298. A transfer printed box.

3299. A Japanese black lacquer dressing table cabinet.

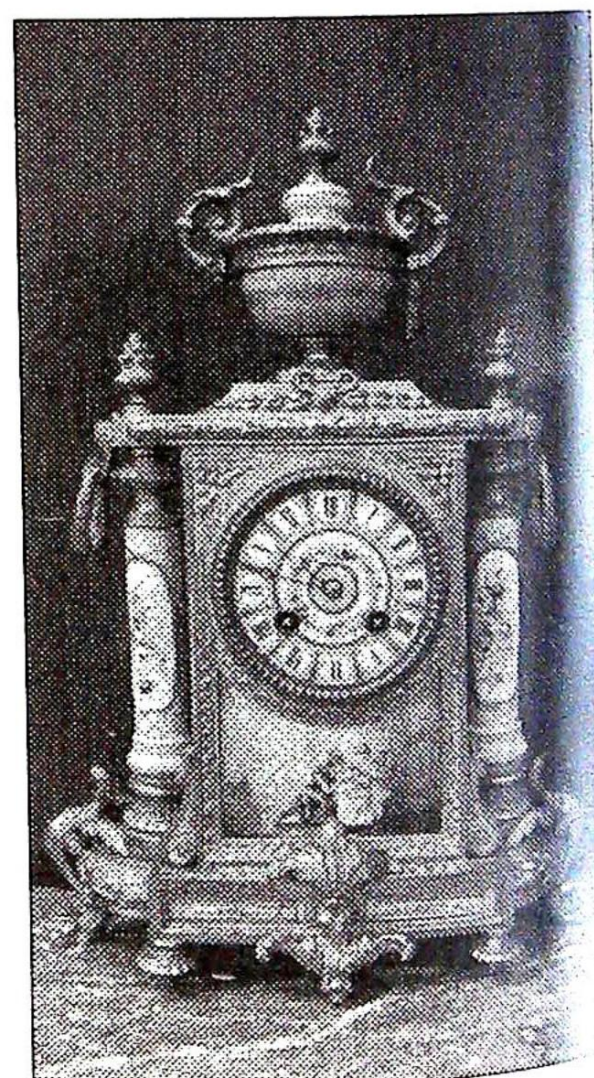
3300. An easel stand with Madonna and child.

3301. A cast iron railway lamp.

3302. An early 19thC French ormolu mantel timepiece with enamel dial and 8-day movement. 10".

3303. A Meiji period Japanese carved ivory parasol handle in the form of a lion: a carved ivory spill vase and ivory chess pieces (9)

3304. A 19thC French gilt metal mantel clock with porcelain dial and mounts. Illustrated.



3305. A Georgian shell inlaid mahogany banjo barometer. 38".

3306. Two Victorian papier mache dishes and cresting piece.

3307. A George III black lacquer and chinoiserie dome top tea caddy with 3 tin liners.

3308. A Victorian black lacquer floral painted and gilded stationery box.

3309. A Persian rug.

5012. A box of button badges.

5013. A lorgnette, cased spectacles and 2 treen items.

5014. Mantilla hair comb, glove stretchers and other wooden items.

5015. Miniature advertising tins and other advertising items.

5016. Coins, salts, brass picture frame and curios.

5017. Two tin post box money boxes.

5018. Needle packets and other small items.

5029. Four porcelain 1/2 dolls and 1 pair legs.

5030. Five porcelain 1/2 dolls and 1 as a brush.

5031. Three porcelain half dolls.

5032. Five small porcelain 1/2 dolls.

5033-7. Franklin Mint collectors knife.

5038. Knightstone collectors knife.

5039. 3 Wade whimsies - spaniel, squirrel and goat.

5040. 2 Wade whimsies - shire horse and calf.

5041. Two Wade whimsies, camel and cockerel.

5042. Six Wade whimsies - various.

5043. Wade Yogi Bear.

5044. Four Wade whimsies - panda, lion cub, goat and cockatoo.

5045. Three Wade Irish 'little people'.

5046. Wade Si and Am from 'Lady and the Tramp'.

5047. Wade Madam Mim (hen) from sword in the stone.

5048. Wade Mrs Fluffy Cat from Noddy set.

5049. Wade 'Lucky' from 101 Dalmatians.

5050. Wade Bambi.

5051. Two Wade minikins kittens.

5052. Wade figures of Noddy, Big Ears, Mr Plod and Mrs Fluffy Cat.

5053. A collection of glass animals.

5054. Four Wade whimsies, camel, squirrel and 2 lambs.

5055. Four Wade whimsies, poodle, spaniel, lion cub and goat.

5056. Four Wade whimsies, little elf, elephant, panda and cockatoo.

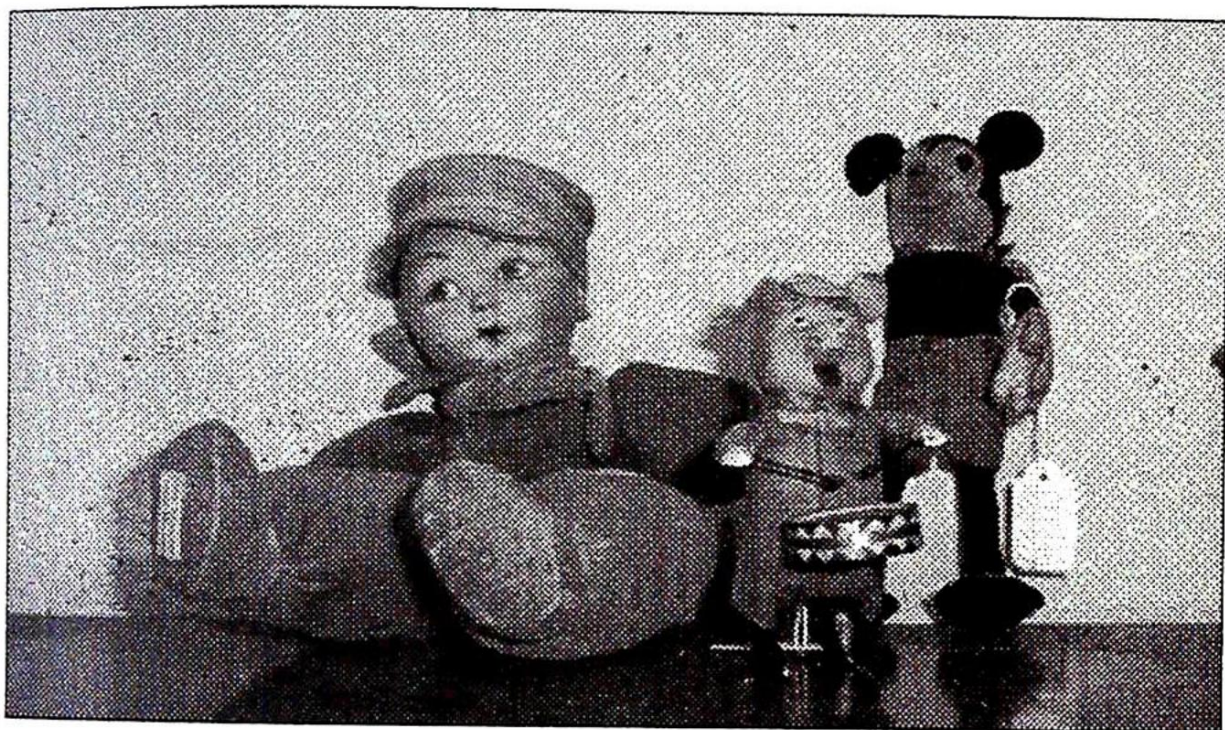
5057. Six Wade whimsies, bird, duck, chimp, fawn, butterfly and squirrel.

5058. Five Wade minikins - kittens and rabbits.

5059. A boxed miniature coronation coach.

5060. Six Wade whimsies.

20th CENTURY COLLECTABLES, TOYS, ETC.



5001. A miniature ladies razor and 2 miniature penknives.

5002. Miniature animals.

5003. Miniature shoes.

5004. Miniature glass animals.

5005. Miniature lead swans and an amethyst Buddha, etc.

5006. Miniature lead and ivory animals.

5007. Miniature birds and animals.

5008. A miniature Norev Renault Dauphine and green racing car.

5009. Miniature ceramic animals.

5010. An inlaid ivory dance card and marker.

5011. Two tartanware items with a silver thimble.

5019. Trinket items.

5020. Powder compacts, small travel watch, card holder and picture frame.

5021. A child's leather clog.

5022. A selection of retailed perfume bottles, some with Art Nouveau labels.

5023. A l'aimant loose powder box and perfume and bottle in original box, c. 1900.

5024. Small glass items including a ruby vase and green glass eye bath.

5025. A Babycham bambi, coronation coach and 2 small toys.

5026. Small oriental china items.

5027. Berlin musical souvenir bell.

5028. Plastic racker favours and other small toys.

5061. Two souvenir propelling pencils, (1 af) from the Cunard White Star liner 'Aquitania'.

5062. A Crown Devon marked wall mask.

5064. A Wade weasel.

5065. A pair of floral vases and 2 coffee pots.

5066. A Victorian bamboo doll's bentwood chair.

5095. A printers tray with brass handle and junction clips.

5096-9. A woolwork picture.

5100. A bisque headed doll.

5101. A collection of ceramic shoes.

5102. A collection of cat and owl ornaments.

5103. A selection of glass animals.

5104. Crested china shoes and others.

5105. Collectable animals and ornaments.

5106. A quantity of cat and other ornaments.

5107. Small glass and china items.

5108. A collection of china shoes.

5109. A collection of small jugs and pots.

5110. Miniature plates and other small china items.

5111. A collection of china cats.

5112. Small china items.

5113. A collection of china cats.

5114. A collection of pigs including a family with father pig reading the Wall Street journal - china and plastic.

5115. A collection of brass boots and shoes.

5116. Crown Devon cruet as tomatoes on a leaf and a Carltonware leaf dish.

5117. Three Beswick leaf dishes.

5118. Two Cornishware storage jars.

5119. Hornsea flora Royal jug and wall pocket.

5120. One Sylvac rabbit and one Sylvac style rabbit.

5121. A George VI glass basket and a pressed glass vase.

5122. A Sylvac rabbit dish.

5123. A Beswick character jug - tony Weller no 281.

5124. A Royal Doulton character jug - Sairy Gamp.

5125. A Tuscan bone china teaset - september song.

5126. A Royal Worcester tankard - Nelson's Victory at Trafalgar; a Royal Albert tankard - 'Cook's voyage to the south pacific'; and a French maritime tankard.

5127. A limited edition tankard - dawn patrol - spitfire; and a flying for victory tankard - 50th anniversary Battle of Britain.

5128. Five pot tankards and one other

5129. Six pewter tankards.

5130. A George VI and Queen Elizabeth commemorative cakestand.

5131. A George V and Mary jubilee teapot.

5132. A George VI and Elizabeth coronation teapot.

5133. A Poole fish dish and Wadeheath jug.

5134. A Burleighware George VI and Elizabeth plate and urn.

5135. Six various Royal commemorate mugs.

5136. Commemorative egg, plate and tin.

5137. Commemorative ware and crested ware.

5138-40. Quantity crested ware.

5141. A collection of cruet sets.

5142. A collection of cruet sets.

5143-5. Quantity of crested ware.

5146. Advertising decal milk bottles.

5147. Six Babycham glasses - gilt rimmed.

5148. A Beswick leaf dish.

5149. Sarah Garden meat plate.

5150. Sarah Garden comport.

5151. Sarah Garden bowl.

5152. Mason's vase.

5153. A Royal Doulton figure - Simone

5154. A Royal Doulton figure - Lorna.

5155. A Royal Doulton figure - The balloon man

5156. A Royal Doulton figure - Old balloon seller.

5157. A Royal Doulton figure - Silks and balloons.

5158. Spare lot.

5159. Four hornsea wall pockets.

5160. Cottageware cruet.

5161. Cottageware butterdish (af) and toast rack.

5162. Egg cup set and cheese dish.

5163. Cottageware tea set including milk, sugar and teapot.

5164. Cottageware coffee pot.

5165. Two storage jars (cottageware first).

5166. Cottageware biscuit barrel.

5167. Cottageware large jug and bell.

5168. Coalport 'Lady of fashion' Josephine.

5169. Irish Wade lidded pot and Wade bell's whiskey decanter.

5170. Quimper fiance figure of 2 matelots.

5171. Portmerion "Botanic Garden" storage jar.

5172. Royal Doulton 'snowman' mug and 5 fruit handled butter knives.

5173. A Westerwald stoneware jug.

5174. A Royal Doulton fruit bowl and blue and white old willow bowl.

5175. Three Wade pub china items and a water jug.

5176. Clarice Cliff crocus teaplate.

5177. Johnson bros teaware, tea and coffee for one.

5178. Beswick Beatrix Potter 'Ginger'.

5179. Beswick Beatrix Potter 'Duchess' with pie.

5180. Beswick Beatrix Potter 'Pig'.

5181. Beswick Beatrix Potter 'Sir Isaac Newton'.

5182. Beswick Beatrix Potter 'Pickles'.

5183. Beswick Beatrix Potter 'Old Mr Brown'.

5184. Beswick Beatrix Potter figure 'Mrs Tiggy Winkle'.

5185. Beswick Beatrix Potter figure 'Diggory Diggory Delvet'.

5186. Beswick Beatrix Potter figure 'Little black rabbit'.

5187. Beswick Beatrix Potter figure 'the old woman who lived in a shoe'.

5188. Sweet Anne.

5189. Royal Albert Tommy Brook bp3b.

5190. Royal Albert Diggory Diggory Delvet.

5191. Hummel figure.

5192. Moorcroft vase.

5193. Mr McGregor.

5194. Royal Albert 'Cottontail'.

5195. Royal Albert 'Pig Robinson'.

5196. Royal Albert 'Mrs Flopsy Bunny'.

5197. Royal Albert 'Pigling Bland'.

5198. Royal Albert 'and this pig had none'.

5199. Royal Albert 'Peter ate a raddish'.

5200. Royal Albert 'Foxey reading'.

5201. A Dinky Supertoys Guy flat bed truck, orange and blue.

5202. Five Dinky toys.

5203. A Dinky Duple roadmaster Leyland Royal tiger, blue; and 3 others.

5204. A Lesney Massey Ferguson combine and 5 other vehicles.

5205. A clockwork tinplate train set, 1950's.

5206. Subuteo of Tunbridge Wells teams, etc.

5207. Six normal size beanie babies.

5208. A Rupert bear bendy toy in original packing, 10" tall.

5209. A small teddy bear.

5210. A selection of Mr Men toys.

5211. Five McDonald's beanie babe toys.

5212. Noddy and car squeaky toy and Dennis the Menace toy.

5213. Nine wooden skittles as soldiers

5214. A large qty Snoopy memorabilia

5215. A magic roundabout clock.

5216. A Merrythought black French poodle in boucle fabric, 14" tall.

5217. A black French poodle, German make, 16" tall; and a yellow plush teddy bear, jointed limbs, 10" tall.

5218. A Jayne Mansfield hot water bottle.

5219. A Sunny Jim force flakes doll.

5220. A Jelex augments jet motor in original box.

5221. A tinplate rifle.

5222. A Pelham puppet of a cowboy in original box with instructions.

5223. A felt doll with painted face, synthetic wig and fully clothed, 20" tall.

5224. An Armand Marseille bisque headed baby doll with closing eyes and composite hands, marked a.m., 11" long.

5225. A plush clockwork bird, 5" long, a wire doll and a plush and felt monkey with jointed limbs and spectacles, 5" tall.

5226. Two composite dolls with real hair.

5227. Two composite dolls with real hair.

5228. A bottle of glass marbles, approx 550.

5229. Lotts brick set and anchor blocks set.

5230. Two childrens jigsaw puzzles.

5231. Two model bus handbooks.

5232. Two child's sewing machines - one by Grain, the other not marked, both hand operated.

5233. Assorted items of children's printing set, microscope, etc.

5234. Five modern porcelain headed dolls.

5235. A Steiff rabbit, 13" tall with original swing labels, button in ear missing, dralon fur fabric.

5236. Force flakes Sunny Jim doll.

5237. Early plush Mickey Mouse figure with felt hands and feet, 10" tall. Reg no 73068 visible on neck.

5238. A Norah Wellings Dutch boy doll, 13" tall.

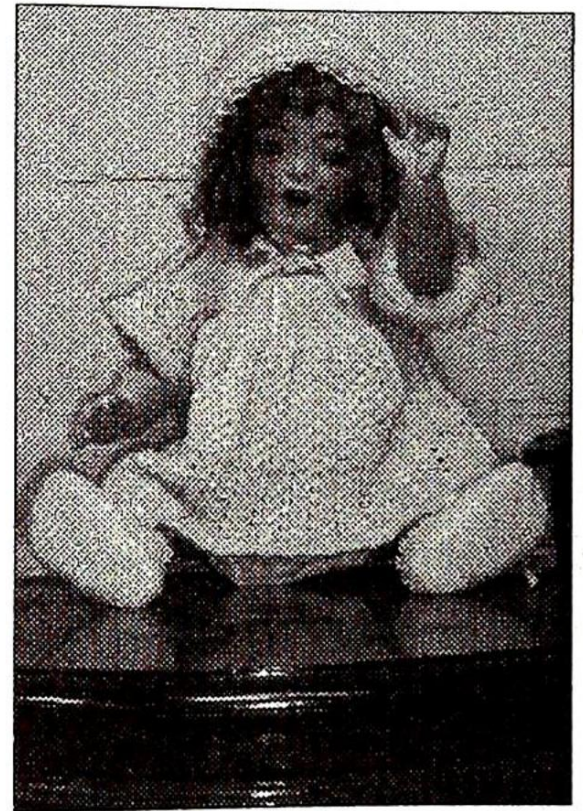
5239. A Shuco felt covered tin plate clockwork drummer boy pig.

5240. A model ice cream vendors cart and rider.

5241. A Dinky boxed Coles mobile crane 971, yellow crane on black base, excellent condition.

5242. Four Franco British exhibition postcards.

5243. 'Rosemary'. A 28" porcelain headed Heubach Kopplesdorf doll with jointed composite body and blue glass eyes, closing lids and hair eye-lashes. Full ringlet wig. Illustrated.



5244. Six old jigsaw puzzles.

5245. Six boxed games including dominoes and lotto.

5246. Boxed games including monopoly, roulette, dominoes, etc.

5247. Two Mettoy tinplate typewriters and a supreme paintbox.

5248. Triang 10" racing yacht, merit student's microscope and a wooden yacht.

5249. Escalado, majong and a chess set.

5250. Assorted board and boxed games.

5251. Tbouring England game and 3 jigsaw puzzles.

5252. Lead and metal farm animals and equipment.

5253. Tinplate steam ship, 16" long.

5254. An Armand Marseille porcelain headed doll with jointed body, brown closing eyes, marked A11M 996, 21" long.

5255. A Hessmobil tinplate tractor.

5256. Assorted games, geometry set and harmonica.

5257. Assorted games and a chess set.

5258. Doll's house furniture.

5259. Three tin plate aircraft.

5260. A tinplate clockwork drake and tinplate London bus.

5261. A Jetex boxed jet car.

5262. Double sided jigsaw puzzle.

5263. Tinplate clockwork Gamma tank.

5264. Clockwork rabbit.

5265. Doll's house furniture.

5266. A mock tudor detached residence, part furnished for dolls.

5267. A boxed 'Elvis Presley' toy guitar

5268. Cast resin mediaeval style chess set and chess board.

5269. C.1950's 'i love you' Snoopy toy dog.

5270. Toy cinematograph/magic lantern with some film and instructions

5271. A hide rocking horse.

5272. A large grey rocking horse by Pegasus toys with leather tack on a static frame.

5273. A composite doll, doll faces and crib.

5274. A boxed 'muffin the mule' puppet.

5275. A tinplate spinning top toy.

5276. A boxed Shuco tin plate clockwork clown playing a violin.

5277. A child's armchair.

5278. A wooden toy piano.

5279. A set of wooden block picture puzzles.

5280. Triang OO railway rs.2 and assorted accessories including extra track and locomotives.

5281. The EP magic lantern, boxed.

5301. Little loveable good luck.

5302. Little lovable 'I love you'.

5303. Mickey Mouse 70th anninersary

5304. Donald Duck 70th anniversary

5305. Miss Demure

5306. A T.G. Green's small milk jug.

5307. A Wade large white waterlily planter.

5308. A small Carltonware leaf dish.

5309. A Carltonware oval dish with marigold decoration.

5310. A Clarice Cliff plate, pale green ground with wheatear decoration.

5311. A Susie Cooper plate with vegetable design.

5312. A Maling shell planter, powder blue ground, white floral decoration.

5313. A 1920's style jug by Trix.

5314. A floral embossed teapot.

5315. A Royal Dux eiderduck.

5316. A Royal Dux elephant.

5317. A Shelley pin tray and vase.

5318. A Moorcroft ashtray.

5319. An Art Nouveau style vase.

5320. A British heroes biscuit tin.

5321. A quantity of commemorative and advertising tins.

5322. Three large advertising tins, Bisto, Sambros and Blue Bird.

5323. Charlie Chaplin figure.

5324. A quantity of large glass bowls and a soda syphon.

5325. A pair of Swedish art glass jugs.

5326. A Royal Doulton character jug 'The jester'.

5327. An Art Deco style jug.

5328. A Carltonware orange squeezer (top only).

5329. Five etched commemorative glasses.

5330. A ceramic dalmation, possibly Sylvac.

5331. A Beswick urn.

5332. A small Moorcroft pansy bowl, 5" dia.

5333. A Beswick trout leaping.

5334. A Beswick blue and yellow cockatoo.

5335. A Beswick blue tit. 992

5336. A Hummel robin.

5337. A Hummel bird.

5338. A Beswick stone chat.

5339. A Beswick foal, grazing.

5340. A Kensingtonware jug and a myott jug.

5341. A Venetian glass sculpture by Louis Stefino.

5342. Royal Doulton character jug - 'Rip van Winkle', large size. D6438

ROYAL DOULTON CHARACTER JUGS

5343. 'Merlin', large size. D6529

5344. 'the poacher', large size. D6429

5345. 'Santa Claus', large size. D6690

5346. 'John Doulton', medium size. D6656

5347. 'Don Quixote', medium size. D6460

5348. 'King philip of Spain, medium size. D6822

5349. 'Queen Elizabeth 1st' medium size. D6821

5350. 'King Edward VII', medium size. D6923

5351. 'Albert Sagger the potter', medium size. D6745

5352. 'The falconer', medium size. D6540

5353. "Robinson Crusoe" large size (af). D6532

5354. "Beefeater" large size. D6206

5355. "The guardsman" large size. D6755

5356. "Pearly king" large size D6760

5357. "Neptune" large size. D6548
5358. "Charles Dickens" medium size. D6901
5359. "Simon the cellarer" large size.
5360. "Othello" large size. D6673
5361. "Vice Admiral Lord Nelson" large size. D6932
5362. "Old salt" medium size. D6554
5363. "Mark Twain" medium size. D6694
5364. "Old Charley" medium size. D5527
5365. "Sairy Gamp" large size D5528
5366. "Tony Weller" large size.
5367. "London bobby" large size D6744
5368. "Queen Victoria" large size. D6816
5369. "Chelsea pensioner" large size. D6817
5370. "Pearly queen" large size. D6759
5371. "Old Charley" large size.
5372. "Long John Silver" large size. D6335
5373. "George Washington" large size. D6669
5374. "D'artagnan" large size. D6691
5375. "Lobster man" large size. D6617
5376. "The guardsman" medium size. D6771
5377. "The falconer" medium size. D6540
5378. "Priscilla". HN1340
5379. "John Peel" medium size.
5380. 3 modern Wedgwood pieces and 2 blue and white plates.
5381. A pair of modern vases.
5382. Three graduated floral decorated jugs.
5383. A McFarlane lang biscuit tin, a basildon bond stationary box, a Cadbury's chocolate box and Huntley and Palmers assorted chocolate biscuit box.
5384. A ship in a bottle.
5385. A wooden fyffe with a brass joint ring.

5386. A Frontalini piano accordion, c.1950.
5387. Five Wedgwood jasperware 'mother' plates 6 1/2" dia.
5388. Five Wedgwood jasperware christmas plates, London scenes.
5389. Four Wedgwood china plates, various subjects.
5390. Ten Wedgwood jasperware American independence day plates.
5391. Three Wedgwood jasperware sports scene plates.
5392. Five Wedgwood jasperware christmas mugs.
5393. Two Wedgwood china Queen's jubilee mugs.
5394. A Beswick jersey cow 'Newton Tinkle'.
5395. A Beswick jersey bull 'Dunsley coy boy'.
5396. Two soft toys.
5397. Railway track, rolling stock, etc
5398. A patterned Poole pottery planter
5399. A Mettlach polychrome stein.
- CIGARETTE CARDS**
5405. Gallaher 'sporting personalities'
5406. Wills 'aviation'.
5407. John players 'motor cars'.
5408. Gallaher 'sporting personalities'
5409. International soccer stars brooke bond. The wonderful world of kevin tipps brooke bond. 40 years of the chimps brooke bond. Pyramid power brook bond. Wings of gold. Collect a card fish angling times. Secret diary of kevin tipps brooke bond.
5410. Assorted cards.
5411. Assorted cards - personalities
5412. A selection of postcards - birthdays, etc.
5413. A selection of postcards - places, etc.
5414. A selection of postcards - personalities and other subjects.
5415. A selection of postcards including an early snow white Disney birthday card, dirk bogard's autograph, etc and other autographs.

5416. A collection of loose cigarette cards in full and part sets including Wills celebrated ships, railway engines, fish and bait, physical culture, aviation, railway loco's, etc.
5417. An album of pre-decimal first day covers.
5418. A collection of stamps.
5419. Pre-decimal first day covers in an album.
5420. A small album of postcards.
5421. A collection of postcards.
5422. A quantity of postcards.
5423. George VI Falkland Island dependencies stamps.
5424. 1937 coronation stamps.
5425. 1946 victory/peace stamps of the colonies and south west Africa stamps.
5426. Silver wedding 1948 commemorative stamps.
5427. A selection of matchboxes and match books.
5428. An album of first day covers.
5429. An album of first day covers.
5430. Two albums and 4 loose first day covers.

BOOKS & PRINTS

5501. CULPEPPER (NICHOLAS) - THE COMPLETE HERBAL, New Edition, Kelly, London MDCCCL (1850). Illus, 19 hand coloured plates, half calf and marble boards, spine repaired.
5502. Descourtilz (J Th). Pageantry of Tropical Birds. A ZWemmer, London 1960, with 60 mainly black and white litho plates, together with text and additional booklet.
5503. The Connoisseur -Christmas Annual 1914, Daily Mail 'Golden Peace Number', pub Monday June 30th 1919; and The Times 'Edward VII Memorial' Monday, May 23rd 1910, The Family Herald, vol xxxix, 1/2 calf, marble boards.
5504. Coffin (A I) - A Botanic Guide to Health and The Natural Pathology of Disease (thirteenth edition) Manchester 1848, half calf, marble boards. (AF)

5505. The Englishwoman's Domestic Magazine, New Series Vol VIII 1863, 6 illus fashion plates; another with 8 fashion plates, 1864; another with 7 plates, 1861; another with 13 plates, 1864; 4 vols Beeton (S O) and Shaer (John). Dictionary of Universal Information, London 1859, with 14 maps of countries after Francis Young
5506. Planta (Edward) - A New Picture of Paris or the Stranger's Guide to the French Metropolis, London 1831, with 4 folding maps and numerous copper engravings, leather bound. (AF)
5507. Thomson (James) - The Seasons, London 1793, with 4 copper plate engravings after Dodd, leather bound.
5508. Kelly's Directory of Sheffield and Rotherham - 1939; and Leyland (John) - The Peaks of Derbyshire, its Scenery and Antiquities, 1909.
5509. Sitwell (Osbert) - Great Morning and Laughter in the Next Room - 2 vols from the autobiography Left Hand, Right Hand, MacMillan, London 1949. 2 vols.
5510. Carroll (Lewis) - Alice's Adventures in Wonderland, illus Margaret W Tarrant, n.d; and Stevenson (Robert Louis) - Treasure Island and Kidnapped, col illus, n.d., 2 vols.
5511. A M - Ayame-San, A Japanese Romance of the 23rd Year of Meiji (1890). Illustred from photographs by W K Burton, painted boards.
5512. A pair of early 20thC gilt metal Photograph Frames with bow crestring, on easel stand. 6³/₄" x 5¹/₄".
5513. An early 20thC Postcard Album containing approximately 208 cards, predominantly topographical; another with approximately 74.
5514. A late Victorian leather bound Album containiⁿg autographs, hand-written poems, postcards and ephemera.
5516. An early 20thC POSTCARD ALBUM containing approximately 276 cards, including topographical, Cries of London, Mabel Lucie Atwell, Christmas and New Year Greetings, Comic History of England after Hebblethwaite, comical, portraits, theatre, shipping and naval.
5517. An early 20thC Photograph Album, alternative pages with chromolithographic frames, with an embossed leather cover, (previously with metal clasp).
5518. Three books - Selected Poems, Democracy and the Arts and 1914 and Other Poems, all by Rupert Brooke.
5519. A quantity of collectors, art and design related books including Dresden China by W B Honey and Bronze Sculpture of 'Les Animaliers', by Jane Horswell.
5520. Old Home Economics Books (5).
5521. Military related books (3).
5522. A selection of house and style related books.
5523. A selection of books by and about Nancy Mitford.
5524. The Rommel Papers edited by B H Leddel-Hart and other books on the Second World War.
5525. Books by and about Cecil Beaton including a First Edition of 'The Face of the World'.
5526. A selection of theatrical books.
5527. A small selection of scripts including 'Talking Heads' by Alan Bennett.
5528. A collection of Autobiographies and Biographies, some first editions, some signed by the author.
5529. A collection of Biographies including Getrude Lawrence, etc.
5530. A collection of books with a theatrical bias including 'The Noel Coward Diaries'.
5531. An Austin Seven handbook.
5532. A selection of books by John Galsworthy including 'The Forsyte Sage' and poems by Alfred Noyes.
5533. A collection of books by E F Benson and his biography.
5534. Three Rupert annuals, 1 small book and 2 magazines.
5535. Girl annuals and other childrens' books.
5536. Football related books.
5537. A selection of childrens' books.
5538. An extensive collection of Dennis Wheatley books principally 1st editions with dust jackets.
5539. A selection of old books including 'The History of Tom Jones - a Foundling'.
5540. The Compleat Angler by Walton and Cotton.
5541. A boxed set of 3 Churchillian books, Painting as a Pastime, an Anthology and His Life and Times.
5542. Three card albums c.1910 (empty).
5543. Edwin Foley. The Book of Decorative Furniture, 2 vols, London 1910.
5544. Charles Packer. Paris Furniture by the Master Ebonists, Newport 1956.
5545. Cescinsky & Gribble. Early English Furniture and woodwork, London 1922.
5546. William Pain. The Practical Builder, leather spine, London 1763.
5547. The Plurality of Worlds, vellum cover and slip case. Bernard de Fontenelle.
5548. Familiar Garden Flowers by F Edward Hulme and Shirley Hibberd.
5549. Thompson's Gardener's Assistant, 6 vols, published 1910.
5550. A large family Bible.
5551. Adam Bede by George Elliot, calf bound, illustrated by P E Hickling.
5552. Two copies of Mrs Beeton's Cookery Book 1901 and 1906.
5553. Assorted books and subjects including gardening.
5554. Ephemera relating to John Oliver Pond, Illuminator and Calligrapher of Stamford, Lincs.
5555. Children's books including Little Girls Sewing Book.
5556. Assorted books including 'The Story of Gladstones Life' by Justin McCarthy.
5557. A large quantity of Theatre programmes from London, Cambridge Arts and Brighton Royal Theatres of the last 4 decades.
5558. Cambridge Arts Threatre Programmes from the 50's and 60's.
5559. London Theatre Programmes mostly of the 1920's and 30's.
5560. Contempory theatre programmes mostly from London and Chichester.
5561. Country house brochures.
5562. A selection of Art Gallery brochures.

5563. A quantity of pre 1940's radio ham message received cards, documentation, etc.

5564. An autograph album from the late 19thC with watercolours and sketches.

5565. A copy of 'A Midsummer Night's Dream', illustrated by Arthur Rackham.

5566. Books by Edith Oliver including 'Night Thoughts of a Country Landlady' with illustrations by Rex Whistler.

5567. Books and plays by J M Barrie including 'Peter and Wendy', illustrated by F D Bedford.

5568. Books by and about Red and Laurence Whistler.

5569. Volumes of Play Pictorial from the 1920's, marked 'Property of the Footlights Dramatic Club, Cambridge' and other theatrical magazines.

5570. The Poetical Works of John Keats illustrated by Claude A Shepperson.

5571. The Bells and other Poems by Edgar Allan Poe, illustrated by Edmund Dulac.

5572. Various books.

5573. A Programme from 'A Talent to Amuse', a 70th birthday tribute to Noel Coward and a signed photograph.

5574. Old Garden Roses by Wilfrid Blunt and James Russell.

5575 - 5650. Spare lots that will be filled by a large selection of modern books.

5651. A mid 19thC. print of Lady's Bridge, Sheffield, in a swept mahogany frame.

5652. After C J Keats. Abbeville, colour print in a moulded gilt frame.

5653. After C J Keats. Brussels, colour print in a moulded gilt frame.

5654. After C J Keats. Antwerp, colour print in a moulded gilt frame.

5655. A set of 6 19thC colour Prints of Milanese Cathedral scenes.

5656. A Lowry colour Print signed in pencil.

5657. Framed print of Boston stump

5658. Arthur Wardle print of a terrior.

5659. A colour print of the Dover landing by Prince Albert

5660. A framed print of 'Salisbury Cathedral'.

5661. A Victorian oleograph of cows in a shed.

5662. A pair of 19thC coloured coaching prints.

5663. A set of 4 19thC colour engravings after George Morland, in gilt frames with verre eglomise mounts, entitled 'The Country Butcher', 'Gypsies', 'The Cottager's Wealth', 'The Cottager's Favourite'.

5664. A pair of Edwardian colour prints of a young girl with dogs.

5665. A H Haig. A first edition etching of Nuremburg, signed in pencil.

5666. Joseph Kirkpatrick. An artist's proof colour engraving depicting horses on a cliff towpath, signed in pencil.

5667. Thomas Blinks. 'Full Cry', colour hunting print.

5668. A C Havell. A pair of colour hunting prints.

5669. Three early 19thC prints depicting scenes from The Jungle Book.

5670. A Victorian colour print depicting children awaiting a carriage.

5671. E Shailand. Two colour etchings of 'Rheimes' and 'The Bridge of Sighs', signed in pencil.

5672. A Continental alpine scene colour print.

5673. Charles W R Lee. Briggs and Boats colour engraving.

5674. N J Whitehand. HMS Victory, limited edition colour print 752/850.

5675. N J Whitehand. Captain Cook's ship, limited edition colour print 200/200.

5676. A Victorian oleograph of young lovers.

5677. Elizabeth Sharp. 'The Belvoir out of the Vale', limited edition colour print 253/850.

5678. Elizabeth Sharp. 'The Belvoir below the Castle', limited edition colour print 446/850.

5679. A pair of rural colour prints.

5680. Le Blonde, Baxter and other colour prints (5).

5681. Robert Morden. Hand-coloured map of Devonshire.

5683. The Audubon folio of prints and print of a swan.

5684. Pair Victorian Religious colour prints.

5685. Blaeu. A double sided coloured map of Denbighshire and Flintshire, c. 1645.

5686. Onwards - Late Entries.

END of SALE.

NOTES

Established 1900
-GOLDINGS-
AUCTIONEERS & VALUERS

AUCTION SALE DATES 2000

**VICTORIAN, MODERN & GENERAL
FURNITURE & EFFECTS**

28th June
12th July
26th July
20th September
4th October
25th October
1st November
15th November
29th November
13th December

Viewing Times:

Day prior to sale 2pm to 6pm and
Saleday 9am to commencement of sale at 10am

All the above sales close for entries 5pm the preceding Friday.

ANTIQUE AND FINE ART SALES

16/7th August
Closing date for entries is 28th July

18/9th October
Closing date for entries is 29th September

6/7th December
Closing date for entries is 24th November

Viewing Times:

Monday & Tuesday prior to sale 2pm to 7pm
and Saleday 9am to commencement of sale at 10am

Golding Young & Co., Old Wharf Road, Grantham, Lincolnshire NG31 7AA

Telephone: 01476 565118 Fax: 01476 561475

Email: goldingyoung@compuserve.co

Established 1900

— GOLDINGS —

Chartered Surveyors, Auctioneers, Valuers & Estate Agents
Residential, Commercial, Agricultural, Property Management, Financial Services

45 High Street, Grantham, NG31 6NE

Telephone: 01476 · 590211

PROFESSIONAL SERVICES FOR



RESIDENTIAL

Our established Residential department headed by Chartered Surveyors undertakes sale and valuation of all types of property from Castles to Town Houses; Surveys, Homebuyers Reports, Mortgage, Probate and Insurance Valuations carried out with care attending to individual requirements.



COMMERCIAL

Dealing with the sale and survey of Shops, Offices and Factories. Valuation for Rent Reviews, Lease renewals and negotiations. Rent Arbitration, on behalf of landlord and tenant.

Plant, Machinery & Assets; Sales for Receivers, Liquidators, High Court & County Court. Auction Sales on Site or at The Grantham Auction Rooms for private and public clients alike.



AGRICULTURAL

Our Senior Partner has wide experience in the sale and valuation of Agricultural Properties, conducting Farm Sales and Valuation of Live and Dead Farming Stock for dissolution, Probate and other matters. Together with Rent Reviews, Development Land reports and Annual Stocktaking Valuations.



FINANCIAL SERVICES

Our Experienced Consultant is available to advise on all matters concerning Finance, Mortgages, Insurance, Investment, Planning and Pensions.



PROPERTY MANAGEMENT

Personal service and attention to detail ensures that our management team exploits your investment portfolio whether an Individual Family Home let for a small fee or Office, Factory, Shop or Farm with rent collected and regular inspections made.

Chattels Auctioneer

Colin R. Young FNAVA

Property Management

Mrs. Margaret Pashley

Partners

C. Robin Hall FRICS FAAV

Ian J. Shaw FRICS FNAEA

Financial Service Consultant

John G. Stukins

Residential Sales Manager

Mrs. Jenny Diment FNAEA CPEA

Associated Office: Golding Young & Co. The Grantham Auction Rooms, Old Wharf Road, Grantham, Lincolnshire, NG31 7AA
Telephone: (01476) 565118 Fax: (01476) 561475

NOTES

CONDITIONS OF SALE

1. These Conditions together with any Notices to Purchasers are the only terms and conditions subject to which Golding Young & Co. ("the Auctioneers") as agents for the Vendor will sell goods to a purchaser ("the Bidder") and all other conditions, whether express, or implied at common law or by statute as are capable of lawful exclusion are hereby excluded.
2. The highest bidder shall be the buyer. The Auctioneers reserve the right of regulating the biddings; of rejecting any bid; and of bidding for, withdrawing, consolidating, dividing or altering the order of lots.
3. The purchase money for each lot with the usual commission of 12½% plus VAT at the current rate shall be paid at the fall of the hammer (if required). Each lot at the fall of the hammer shall be at the sole risk and expense of the buyer, and shall be paid for and removed immediately after the conclusion of the sale, but no lot shall become the property of the buyer, or be removable until paid for, and if taken away in contravention of these conditions without an order for removal signed by the Auctioneers, they shall have power to seize the same by their servants or agents, or otherwise, or the Auctioneers may recover either the lot sold or the price thereof (at their option) by action at law.
4. No contra account of any description whatever will be allowed to the buyer as a set off, and payment for each Lot shall be made to the Auctioneers or their clerk only, and a buyer paying by cheque must give satisfactory references.
5. For all purposes of this sale the Clerk of the Auctioneers shall be deemed to be the agent of both seller and buyer.
6. A bidder shall not be allowed to retract his bidding after the fall of the hammer, and he shall give up his full name and address if required. The Auctioneers will not recognise the transfer of any lot from one buyer to another, nor make any alteration in the sale book in respect thereof.
7. The Auctioneers are acting only as agents, and give no personal warranty as to the condition, quality or authenticity of any chattels offered for Auction. Any catalogue description is given merely as guide to purchasers, any description can be changed from the rostrum before the lot is sold. If a purchaser buys without previous inspection he will do so at his own risk.
8. Notwithstanding any other terms in these Conditions, if within 7 days of the Sale a purchaser gives notice in writing that a lot is a deliberate forgery, with supporting factual evidence, the Auctioneers may rescind the transaction. The burden of factual proof lies with purchaser, mere opinions will not satisfy. This benefit is not assignable.
9. If any buyer neglect or refuse to comply with the above conditions or any of them, his deposit money (if any) shall be forfeited, and the lot uncleared may, at the option of the Auctioneers, be resold without notice by public auction or private treaty, and any loss occasioned by such re-sale together with all expenses attendant thereon, or arising under these conditions shall be paid for by the defaulter and be recoverable as and for liquidated damages. This condition is however without prejudice to the right of the Auctioneers to enforce the contract made at this sale if they think fit.
10. Any Notes for Purchasers and Catalogue Glossaries will be construed as Conditions of Sale.
11. The Auctioneers shall be the sole Arbitrators in all matters of dispute relating to those conditions both as between the seller and the buyer and between the several bidders and buyers and their determination on all matters shall be final and binding on all parties concerned.

Auctioneers: C. Robin Hall FRICS FAAV & Colin R. Young FNAVA



Established 1900
— **GOLDINGS** —
AUCTIONEERS & VALUERS