

Established 1900

-GOLDINGS-

THE GRANTHAM AUCTION ROOMS

Upon instructions from Executors of Estates in Grantham and Stamford,
the residual contents of Sutton-on-Sea holiday home and others.

GOLDING YOUNG & Co. will sell by AUCTION

Antiques & Fine Art



on Wednesday, 6th December, 1995 at 10 a.m.

Golding Young & Co.

Old Wharf Road, Grantham, Lincolnshire, NG31 7AA

Telephone: (01476) 65118

Fax: (01476) 61475

CONDITIONS OF SALE

1. These Conditions together with any Notices to Purchasers are the only terms and conditions subject to which Golding Young & Co. ("the Auctioneers") as agents for the Vendor will sell goods to a purchaser ("the Bidder") and all other conditions, whether express, or implied at common law or by statute as are capable of lawful exclusion are hereby excluded.
2. The highest bidder shall be the buyer. The Auctioneers reserve the right of regulating the biddings; of rejecting any bid; and of bidding for, withdrawing, consolidating, dividing or altering the order of lots.
3. The purchase money for each lot with the usual commission of 10% plus VAT at the current rate shall be paid at the fall of the hammer (if required). Each lot at the fall of the hammer shall be at the sole risk and expense of the buyer, and shall be paid for and removed immediately after the conclusion of the sale, *but no lot shall become the property of the buyer, or be removable until paid for*, and if taken away in contravention of these conditions without an order for removal signed by the Auctioneers, they shall have power to seize the same by their servants or agents, or otherwise, or the Auctioneers may recover either the lot sold or the price thereof (at their option) by action at law.
4. No contra account of any description whatever will be allowed to the buyer as a set off, and payment for each Lot shall be made to the Auctioneers or their clerk only, and a buyer paying by cheque must give satisfactory references.
5. For all purposes of this sale the Clerk of the Auctioneers shall be deemed to be the agent of both seller and buyer.
6. A bidder shall not be allowed to retract his bidding after the fall of the hammer, and he shall give up his full name and address if required. The Auctioneers will not recognise the transfer of any lot from one buyer to another, nor make any alteration in the sale book in respect thereof.
7. The Auctioneers are acting only as agents, and give no personal warranty as to the condition, quality or authenticity of any chattels offered for Auction. Any catalogue description is given merely as guide to purchasers, any description can be changed from the rostrum before the lot is sold. If a purchaser buys without previous inspection he will do so at his own risk.
8. Notwithstanding any other terms in these Conditions, if within 7 days of the Sale a purchaser gives notice in writing that a lot is a deliberate forgery, with supporting factual evidence, the Auctioneers may rescind the transaction. The burden of factual proof lies with purchaser, mere opinions will not satisfy. This benefit is not assignable.
9. If any buyer neglect or refuse to comply with the above conditions or any of them, his deposit money (if any) shall be forfeited, and the lot uncleared may, at the option of the Auctioneers, be resold without notice by public auction or private treaty, and any loss occasioned by such re-sale together with all expenses attendant thereon, or arising under these conditions shall be paid for by the defaulter and be recoverable as and for liquidated damages. This condition is however without prejudice to the right of the Auctioneers to enforce the contract made at this sale if they think fit.
10. Any Notes for Purchasers and Catalogue Glossaries will be construed as Conditions of Sale.
11. The Auctioneers shall be the sole Arbitrators in all matters of dispute relating to those conditions both as between the seller and the buyer and between the several bidders and buyers and their determination on all matters shall be final and binding on all parties concerned.

Auctioneers: C. Robin Hall FRICS FAAV & Colin R. Young FNAVA



Established 1900

-GOLDINGS-

• Fine Art Auctioneers & Valuers •

THE GRANTHAM AUCTION ROOMS

Golding Young & Co
Telephone: (01476) 65118

Old Wharf Road, Grantham, Lincs NG31 7AA
Fax: (01476) 61475

GOLDING YOUNG & Co. will sell by AUCTION

Antiques & Fine Art

On Wednesday, 6th December, 1995 at 10 a.m.

This collective catalogued sale includes
BOOKS, COLLECTORS' ITEMS, GLASS, CERAMICS
SILVER, PLATEDWARE, PAINTINGS, PRINTS
CLOCKS, BAROMETER, JEWELLERY,
NETSUKE & FURNITURE

Viewing Times:

Sunday 3rd: 2 p.m. to 4 p.m.
Tuesday 5th: 2 p.m. to 7 p.m.
Saleday 6th: 9 a.m. to 10 a.m.

Front & Rear Cover
Illustrations: Lot 360

IMPORTANT NOTES FOR PURCHASERS

1. **PAYMENT:** Must be made in full immediately after the Auction. The following methods of payment are acceptable.
 - a) Cash b) Bankers Draft c) Building Society Cheque
 - d) Cheques, accompanied by a valid card. For accounts above the stated card limit, we reserve the right to retain the goods until clearance is established.
2. **BUYERS PREMIUM:** of 10% + VAT is payable on all lots.
3. **REMOVAL OF PURCHASES:** Goods must be collected as soon as they are paid for, and in the Two Working Days following the sale. If goods are not collected on these days we reserve the right to charge £1 per lot per day thereafter.
4. **COMMISSION BIDS:** If you are unable to attend this or any of our future sales we will be pleased to bid on your behalf. We always purchase at the lowest possible price, subject to other bids and reserves.

All bids must be handed to the office on an official form. It remains the responsibility of prospective purchasers to contact GOLDINGS to confirm whether their bids have been successful.
5. **TELEPHONE BIDS:** There are inherent dangers with this practice, therefore all such arrangements are made entirely at the bidder's risk. Telephone bids will only be accepted if the lower catalogue estimate is £500 or above. For lots with a lower estimate below this figure Commission Bids Only will be accepted.
5. **SMOKING:** is not permitted in any part of the Saleroom.
6. **REFRESHMENTS:** will be available Saleday.
7. **ACCOUNT TRANSFERS:** will not be recognised after the sale. If any lots are purchased for another person, this must be declared at the fall of the hammer.

GLOSSARY

- a) Generally: 'As Found.' (AF). This term indicates the lot has some damage. Its absence does not indicate that the lot is free of defect. All lots are SOLD AS SEEN.
- b) Paintings: 'Signed, initialled, monogrammed.' This refers to the present state of the work and is not an attribution.
- c) Books and printed matter: These items are not sold subject to collation and are not returnable once removed from the premises.
- d) Silver & Jewellery: Weights given are approximations given by basic instruments.

BOOKS

1. The Works of Shakespeare, illustrated by Kenny Meadows, 6 volume set.
2. Thomas Allen. History of London, 1827, 3 volumes.
3. Robert Riddell. Carpenter and Joiner, 58 plates.
4. Stephen Glover. History of Derbyshire, 2 volumes.
5. Britannica Great Books of the Western World, 54 volumes mint.
6. Raemaekers War Cartoons (WW1), 2 volumes with slip case.
7. Flowers, 2 volumes, c.1945, Hyperien press.
8. Harry Parkes. 'That sister-in-law of mine', portfolio.
9. Richard Doyle. The Foreign Tour of Brown, Jones and Robinson.
10. 6 small leatherbound BOOKS.
11. Pepys Diaries. 10 volumes, leather and cloth bound.
12. Dickens Works. 19 volumes. Edition de luxe.
13. Richard Le Galliere. The Complete Angler, illustrated by Edmund H. New.
14. Stories from The Arabian Knights illustrated by Edmund Dulac.
15. The Ceramic Art of China, etc (1).
16. Royal Natural History with 72 col plates and 1600 engravings, 1893-96, half calf and marbled, 6 vols

17. L. Lloyd. The Game Birds of Sweden and Norway 1867, gilt cloth
18. Woods Natural History 2 vols.
19. Kelly's Directory of Lincolnshire 1933
20. Kelly's Directory of Lincolnshire 1937
21. Kelly's Directory of Lincolnshire 1937
22. Brenshaw Village John Moore; Other Novels, British Towns etc
23. A large collection of BALLET related books together with Ballet Annuals.
24. Charles Reade, The Works of, 13 vols, Library Edition 1895
25. Alexandre Dumas. The Romans of Orleans Edition, 1895, 15 volumes.
26. Reference set, Postal guide, Whittaker, Bradshaw, ABC, with rack, 1903.
27. Collection of books relating to folk and fairy stories.
28. With the flag to Pretoria, gilt cloth, 1902, 3 volumes.
29. Fenland Rivers, Virgil's Works etc.,
30. C.375 Eagle Comics from 1956 onwards. £600-800

BYGONES AND MISCELLANEA

31. A cut glass CHANDELIER £30-40
32. A Victorian brass SMOKERS STAND. £60-90
33. 2 Victorian WORKBOXES (AF).

34. An oak cased Westminster chime
MANTEL CLOCK.
35. A copper FIRE
EXTINGUISHER.
36. A Victorian copper KETTLE with
acorn finial.
37. 3 old GOLF CLUBS, 2 hickory
shafted. £20-30
38. A Victorian brass and iron
FOOTMAN. £20-30
39. A large Victorian brass
PRESERVE PAN. £25-40
40. A cased Osbourne Garrett
electric HAIR/SCALP
MASSAGER and a bakelite
example £40-60
41. A Grantham stoneware SPIRIT
BOTTLE.
42. A Grantham stoneware SPIRIT
BOTTLE.
43. A Grantham stoneware SPIRIT
BOTTLE.
44. A Grantham stoneware SPIRIT
BOTTLE.
45. Spare Lot.
46. A Grantham stoneware SPIRIT
BOTTLE.
47. A Grantham stoneware SPIRIT
BOTTLE.
48. 3 Grantham stoneware SPIRIT
BOTTLES.
49. Dolls Hoover washing machine.
50. 3 Tin money boxes.
51. A Benares circular brass TRAY.
52. A ladies FUR COAT.
53. A 19thC ebonised
GRAPHOSCOPIC VIEWER by
E. Ziegler, Paris. £60-90
54. A Bush Bakelite RADIO.
£30-40
55. 2 stoneware SPIRIT BOTTLES
of Wrights of Lincoln.
56. A wooden PUB SIGN - Fox
Tavern. £20-30
57. A pair of Spelter FIGURES,
Pecheur et Pechouse £30-50
58. A Victorian Tonbridgeware
WORKBOX. £30-40
59. A Georgian fitted mahogany
WRITING BOX. £150-200
60. A brass SNUFFER TRAY and
door knocker.
61. Books, Tablecloths etc.
62. 3 Royal PHOTOGRAPHS
63. A pair of oak CANDLESTICKS
and pair of FRAMES
64. Novelty EGG CUPS
65. A Victorian copper WARMING
PAN. £30-50
66. 1883 Oak FOLDER and Pine
Box
67. A fine Victorian tooled and gilt
leather WRITING BOX with
Bramah Lock (AF), key and
certificate £100-150
68. A Wicker FISHING BASKET
69. A large DOLLS HOUSE and
FURNITURE. £120-180
70. A Pewter BEDPAN by Richard
Yates. £50-70
71. 19thC Brass DOOR HANDLE
with turned decoration.
72. A brass MILK SKIMMER.
73. A Victorian brass FENDER.
£20-30
74. A Westminster Bakelite RADIO,
model ZA818. £25-40
75. A copper MILK SKIMMER
£20-30
76. Scales and weights.

77. 3 skin HANDBAGS.
78. 2 child's DRESSES, satin shirt and another.
79. A pair of carved PANELS with coathooks. £20-30
80. Feather BOA, 3 parasols including bone finials.
81. A Chinese embroidered silk DRAPE. £40-60
82. A Victorian mahogany WOOLWINDER. £20-30
83. A glass SMOKE COLLECTOR.
84. A Victorian carved oak arched FOOTSTOOL. £70-90
85. A Victorian mahogany circular FOOTSTOOL in red velvet £60-80
86. A Victorian yew sarcophagus TEA CADDY. £60-80
87. A George III mahogany TEA CADDY. £40-60
88. An Art Nouveau hammered copper hanging LANTERN. £200-300
89. A Continental ivory ink and PEN STAND on turned supports. £30-40
90. A pair of 19thC onyx and gilt metal URNS. £60-90
91. An EASEL.
92. A pair of 19thC Italian painted terracotta FIGURES.
93. A Huntley and Palmer cannon shape TIN and lead racehorses.
94. A Tartanware CRIBBAGE BOARD.
95. 6 graduated ivory ELEPHANTS. £50-80
96. Ivory DRAUGHT SET and DOMINOES

97. Two ALBUMS of World Stamps.
98. A Chinese porcelain SNUFF BOTTLE
99. A signed Chinese Imperial blue and white porcelain SNUFF BOTTLE
100. 6 Toy SEWING MACHINES including a Bing example.
101. An old DRAUGHT SET.
102. Penknife, propelling pencil etc
103. Ebony and Ivory DOMINOES and pair of elephants
104. A Dog's head NUTCRACKER and other TREEN. £30-50
105. Plated CRUET, castor and knife.
106. Album of World STAMPS x 3.

GLASS & CERAMICS

107. A 19thC German Posy FIGURE £25-35
108. A Sitzendorf posy lady FIGURE £35-45
109. A Sitzendorf Boy with lamb FIGURE £35-45
110. A pair of Dresden SHEEP £60-80
111. A Victorian Dolls PLATE
112. A small Prattware PLATE £40-60
113. A pair of Dresden POODLES on shaped bases £150-200
114. Beswick and other ANIMALS (4)
115. A pair of miniature Satsuma VASES, signed, with stands. £180-250
116. A pair of Loetz style iridescent glass VASE with wavy rim. £100-150
117. Aller Vale JUG, Carlton DISH and Wedgwood DISHES.

118. A floral pottery
CHAMBERSTICK.
119. A pair of 19thC German
FIGURES £30-40
120. A 19thC German FIGURE Girl
with puppy £30-40
121. A 19thC German FIGURE with
sword. £25-40
122. A Dresden Candlestick FIGURE
£50-70
123. A Dresden FIGURE GROUP of
children and chair £60-80
124. An Alsation FIGURE £35-45
125. A pair Victorian children -
CHRISTMAS GROUP
£40-50
126. A 19thC Mandarin TEAPOT
with strainer £25-35
127. A Meidi period IMARI VASE
£25-35
128. A Victorian "Poor Richard"
PLATE. £25-40
129. A Meidi period Imari
Baluster VASE and cover
£250-350
130. An 18thC Blue and white Delft
PLATE (AF) £20-30
131. A 19thC Imari PLATE
£20-30
132. A Victorian blue and white
SERVING DISH
133. 2 Vienna Creamware RIBBON
PLATES £40-60
134. A Victorian brass and crystal
INKWELL
135. A Locke & Co Worcester SHELL
DISH £35-45
136. A large 19thC Satsuma baluster
VASE £150-200
137. 2 Spode blue and white PLATES,
and 2 others.
138. An opalescent glass BOWL,
moulded with 3 feet and fish
decoration, engraved Joblings
Opalique. £100-150
139. A Victorian Davenport TEA
SERVICE with gilt peach
border and central roses,
including breadplate,
6+6 cups and 6 saucers.
£100-150
140. 6 Vienna creamware basket
RIBBON PLATES £25-35
141. Oriental Pottery (AF)
142. Doulton blue and white CUPS
AND SAUCERS and other
chinaware (AF)
143. A Belleek conchological VASE.
£50-80
144. A Victorian EGG CRUET £20-30
145. A Willow pattern MEAT PLATE.
£20-30
146. A Willow pattern MEAT PLATE.
£20-30
147. A Willow pattern MEAT PLATE.
£20-30
148. A Willow pattern MEAT PLATE.
£20-30
149. A Parrot Coronetware JUG.
£20-30
150. A 19thC Vienna CUP and
SAUCER. £30-40
151. A 19thC Vienna floral painted
PLATE. £60-80
152. A 19thC KPM floral painted
PLATE. £60-80
153. A Redcliff ironstone WINE
TUREEN with spoon and jug.
£60-80

154. A large Victorian oval veined MEATPLATE with floral border. £80-120
 155. A Victorian TEA SERVICE by Samuel Radford Ltd. £120-150
 156. 4 Victorian cut glass RUMMERS. £25-35
 157. A painted German PLATE
 158. A Victorian green ground 5 piece TOILET SET with gilt decoration. £50-70
 159. 6 Victorian Aperatif GLASSES with conical bowls
 160. A Ridgeway moulded stoneware HUNTING JUG and another £25-35
 161. A Shelley Lustrous BOWL decorated with bird and berries £25-35
 162. Jasperware ASHTRAY and 2 VASES
 163. Beswick FIGURES of horse and huntsman, fox and 2 hounds (4) £35-50
 164. 3 Beswick Brown and white HORSES £20-30
 165. Beswick FIGURES of a Shire Horse and Connemara
 166. A Victorian TEA SERVICE comprising 12 cups, 12 saucers, 12 plates, 2 bread plates and sugar bowl £100-150
 167. A 19thC German garniture of VASES, pink ground, panels painted with country scenes. £100-150
 168. A Victorian Staffordshire CHARACTER JUG - Hearty Goodfellow. £20-30
 169. A Victorian wash blue and white DINNER SERVICE including 6 meatplates, 5 tureens (AF), 12 plates. £70-100
 170. A cut crystal WATER JUG.
 171. 8 clear WINE GLASSES with teardrop stems. £30-40
 172. 5 cut glass HOCK GLASSES.
 173. 6 cut CHAMPAGNE GLASSES.
 174. Large pair CHINESE FIGURES £250-350
 175. Two Ironstone JUGS. £30-40
 176. A pair of 18thC Delft TILES. £20-30
 177. A pair of KPM oval PLAQUES of Cavaliers. 9½" high. £150-200
 178. A KPM circular PLAQUE of flowers. 16" diameter. £150-200
 179. A pair of 19thC Staffordshire gold wine JUGS with floral transfer printing. £100-150
 180. A black pottery COW CREAMER. £25-40
 181. An Imari quadrant DISH (AF). £20-30
-
- ## SILVER AND PLATEDWARE
182. An electroplated globular TEA KETTLE on rustic stand. £40-60
 183. A plated TEAPOT £20-30
 184. Platedware including ewer, cruet(AF), teapot etc.
 185. An electroplated rectangular CAKE BASKET with swing handle. £40-60
 186. A pair of old Sheffield Plate telescopic CANDLESTICKS with nulled trim.

187. A plated TANTALUS with 3 glass decanters. £280-350
188. An electroplated 7 bottle CRUET. £180-250
189. A pair of silver DWARF CANDLESTICKS (AF).
190. 12 Silver NAME CARD HOLDERS £100-150
191. A silver NOTE CLIP
192. 6 pairs of Victorian silver KNIVES AND FORKS with mother of pearl handles Sheffield 1862 £120-150
193. A set of 6 silver PASTRY FORKS £25-40
194. Plated BASTING SPOON, 2 Toastracks and oak jar £20-30
195. A silver rimmed glass MATCH STRIKER £20-30
196. 5 Small TROPHIES, (3 Silver) £20-30
197. An engine turned silver CIGARETTE CASE London assay £20-30
198. A4 bottle CRUET on a plated stand. £30-50
199. Plated Ladle, Basting Spoon and others
200. An electroplated circular CAKESTAND
201. An engine turned silver SPIRIT FLASK, Birmingham assay. £80-120
202. A pair of circular electroplated ENTREE DISHES. £60-90
203. A pair of Old Sheffield Plate WINE COASTERS with gadrooned rims. £60-90

204. A set of 8 silver COFFEE SPOONS Birmingham assay, cased £40-60
205. 2 Victorian Silver BOWLS London Assay £25-35
206. A Silver Chainmail PURSE

NETSUKE

207. A signed Japanese hardwood NETSUKE a study of a fat frog standing upon a lotus leaf and posed as a Sumo Wrestler £30-40
208. A signed Japanese hardwood NETSUKE a splendid study of a giant snail, excellent netsuke subject £30-40
209. A signed Japanese ivory NETSUKE a well detailed study of a mother hen with her chick £40-60
210. A signed Japanese ivory NETSUKE a traditional study of a family of turtles £40-60
211. A signed Japanese ivory NETSUKE a study of a decorated wine jar with frogs upon it and within it £40-60
212. A signed Japanese ivory NETSUKE a rare study of a giant panda seated eating bamboo shoots £40-60

JEWELLERY & BIJOUTERIE

213. A Victorian Mother of Pearl CARD CASE £25-40
214. Two simulated pearl NECKLACES (2 + 1 strand), cased

215. A Victorian expanding BRACELET with orb and spider finials, set with an opal and ruby £100-150
216. An Edwardian 18ct gold RING set with 3 pearls Chester 1904 £100-150
217. Costume Jewellery, mustard pot etc in a box.
218. A crescent and lyre BROOCH garniture. £20-30
219. A small Victorian gold MEMORIAL BROOCH. £20-30
220. 2 agate BROOCHES and a ring.
221. A Victorian 14K Lady's FOB WATCH £30-50
222. Amber and other coloured BEADS
223. Jet and coral NECKLACES
224. Coloured glass NECKLACES
225. A Neo Classical CAMEO BROOCH in a gold mount
226. 3 White metal BROOCHES (2 Art Nouveau)
227. A 9ct. gold set RING and another
228. A 9ct. gold set RING and another
229. A 9ct. gold garnet and pearl BROOCH £25-35
- 230-350 Allocation for Late Entries.

PICTURES

351. 19thC Italian School. Cupid on a sheet with quiver in the background, Oil on canvas, 19" X 15" in a carved giltwood and gesso frame. £400-600

352. 19thC Italian School. Madonna with child in arms, Oil on canvas, 19" X 15", in a carved giltwood and gesso frame. Bears label on reverse Charles Eaton, Toilethorpe Hall, (Nr Stamford), Store Feb 2nd, 1914 No 262 £400-600
353. 19thC Italian School. Young boy in traditional 17thC dress, Oil on canvas, 19" X 15", in a carved giltwood and gesso frame. *Illustrated on centre pages.* £300-400
354. A pair of WATERCOLOURS. Still life with butterfly signed and dated 1830 £60-90
355. A pair of PRINTS Lady and Gentleman in gilt frames £30-40
356. J. R. Miles. A Boatyard scene, oil on card, signed 10" x 7", gilt plaster frame £120-180
357. Niemann E. J. (Jnr) Landscape with meandering river and castle in the background, Oil on canvas, signed, 12" x 20", one of a pair, gilt plaster frame £700-900
358. Niemann E. J. (Jnr) Landscape with village church by water, Oil on canvas, signed 12" x 20", second of a pair, gilt plaster frame. *Illustrated on centre pages.* £700-900
359. Niemann E. J. (Jnr) Attrib. Landscape with cottages and windmill, Oil on canvas, unsigned 8" x 16", the mount inscribed *PELL GREEN, SUSSEX, NIEMANN* ebonised oak frame £400-600

360. W. A. Thornley. A pair of tranquil Harbour Scenes depicting Sunset and Sunrise, oils on panel, signed 10" x 8" *Illustrated front and back covers* £600-900
361. 1918 Kings Tribute to Munition Workers and small watercolour of a house.
362. W. Johnston. Four Highland cattle, watercolour, signed. 6" x 9". £30-40
363. A. Herbert. Landscape with cottage by a stone bridge crossed by cattle, oil on canvas, signed. 16" x 24". £80-120
364. An oleograph on canvas of Bubbles. £30-40
365. J. Plumb. Landscape with a castle by a lake, oil on canvas, signed. 22" x 32". £80-120
366. G. Walling. Pair landscapes with streams, oil on card, signed. 12" x 19". £25-40
367. W. Collins. Landscape of a bridge over a stream, oil on card, 18" x 13" £25-40
368. W. Collins. Landscape of a lake, oil on card, 13" x 18". £25-40
369. A. G. Asprey. Looking over Broadway in the Cotswolds, watercolours, signed 19" x 24" £80-120
370. J. Henry. Highland cattle in landscape, signed, oil on canvas, 28" x 36", moulded brown frame. £300-400
371. 19thC English School. Portrait Study of a white bearded elderly gentleman, Oil on canvas, lined on board 14" x 10" £150-200
372. W. H. Sweet. Clovelly, Devon street scene with donkey and figures, watercolour, 14" x 10", signed. £350-450
373. A pair of Chinese SILK PICTURES of flowers. £40-60
374. MacGregor Grierson. Tavern scenes, pair watercolours, signed. 15" x 11". £250-350
375. A mountainous landscape print. £20-30
376. J. Ducker. River landscape, oil on canvas, signed and dated 1922. 16" x 20". £60-80
377. A 19thC colour lithograph - The Royal Children £25-40
378. A pair of PRINTS in ebonised frames, 'Waiting for an answer' and 'The First Quarrel'.
379. An oak framed print of Lincoln Cathedral. £20-30
380. A pair of Prints
381. 6 early 19thC ENGRAVINGS depicting calendar months, in verre eglomise mounts £150-250
382. G. Colville. Boston Stump from the river, WATERCOLOUR 14" x 10" £250-350
383. A Le Blond PRINT - The Village Spring £40-60
384. A gilt framed Landscape WATERCOLOUR signed Maude £30-50
385. A pair of Georgian scene PICTURES on glass. £200-300
386. A pair of Pears colour prints of Lady and Children. £50-80
387. After Wheatley. 2 Cries of London colour engravings. £80-120

- 388. After Morland. The Cottagers, colour engraving. £80-120
- 389. A 19thC Cotswold landscape, figures in the foreground and a castle on a hill, 6¹/₂" x 8¹/₂", oil on card. £180-250
- 390. 19thC English school. Cottage with donkey, chickens and figures, watercolour, 5¹/₂" x 8". £80-120
- 391. E. Penstone RA. Peasant girl with a wheatsheaf watercolour, signed and dated 1877, 8¹/₂" x 5". £100-150
- 392. After Shayer. Donkey in landscape, oil on canvas, 12" x 17". £180-250
- 393. An engraving after Bartolozzi, Hogarth framed. £30-40
- 394. P. MacGregor Wilson RSW. The sound of the Mull, watercolour, signed. 7" x 10". £60-80
- 395. A Victorian Woolwork PICTURE of a Parrot £40-60
- 396. A Victorian TAPESTRY of Christ £50-80

CARPETS & RUGS

- 397. A Persian Tabriz CARPET. £280-350
- 398. A Persian Serab RUG. £120-150
- 399. A Belough RUG. £80-100
- 400. A Northwest Persian RUNNER. £120-150
- 401. A Persian Kilim. £90-120
- 402. A Kilim WALL HANGING. £150-200
- 403. A Kilim. £75-100
- 404. A Chinese hand cut RUG 8' X 9' £60-80

FURNITURE

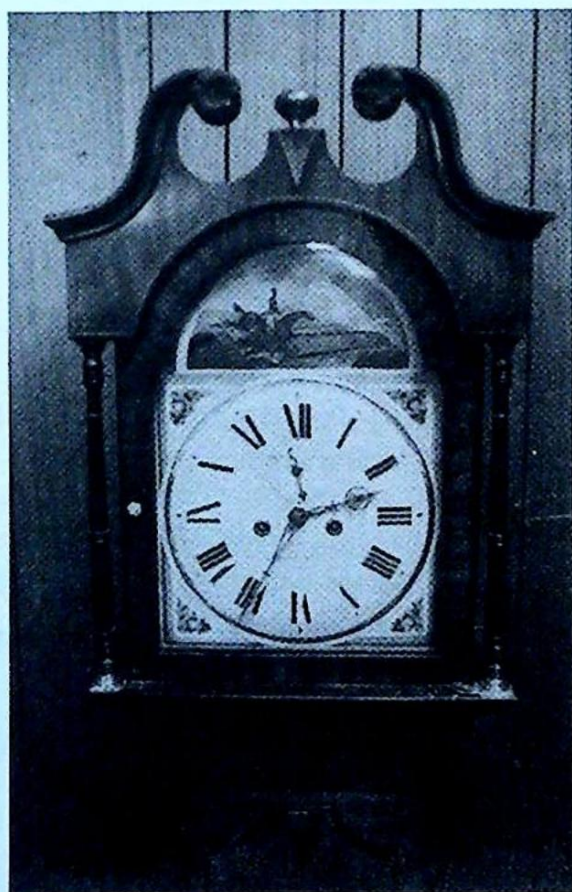
- 405. A set of 6 Georgian style barback DINING CHAIRS by Gordon Russell Ltd., with leather drop-in seats (1 missing). £300-400
- 406. A fine William IV rosewood CANTERBURY. *Illustrated on centre pages* £500-700
- 407. A small Victorian walnut pedestal TABLE with circular top. £80-120
- 408. A William IV mahogany barback CARVER CHAIR. £100-150
- 409. An Edwardian wind-out DINING TABLE, moulded top with canted corners, turned and fluted legs. 41" x 68" max. £300-400
- 410. A Geo III Oak oval Dropleaf TABLE on moulded chamfered legs £250-350
- 411. A set of 4 Edwardian mahogany DINING CHAIRS with cabriole legs. £100-150
- 412. A Victorian NURSING CHAIR, pink button dralon upholstery. £50-80
- 413. Edwardian mahogany rectangular QUARTETTO TABLES with bow stretchers. £300-400
- 414. A Victorian TOWEL RAIL. £20-30
- 415. Georgian mahogany freestanding OPEN BOOKSHELVES. £200-300
- 416. A George III oak TEA TABLE with moulded folding top, drawer, square taper legs. £120-180



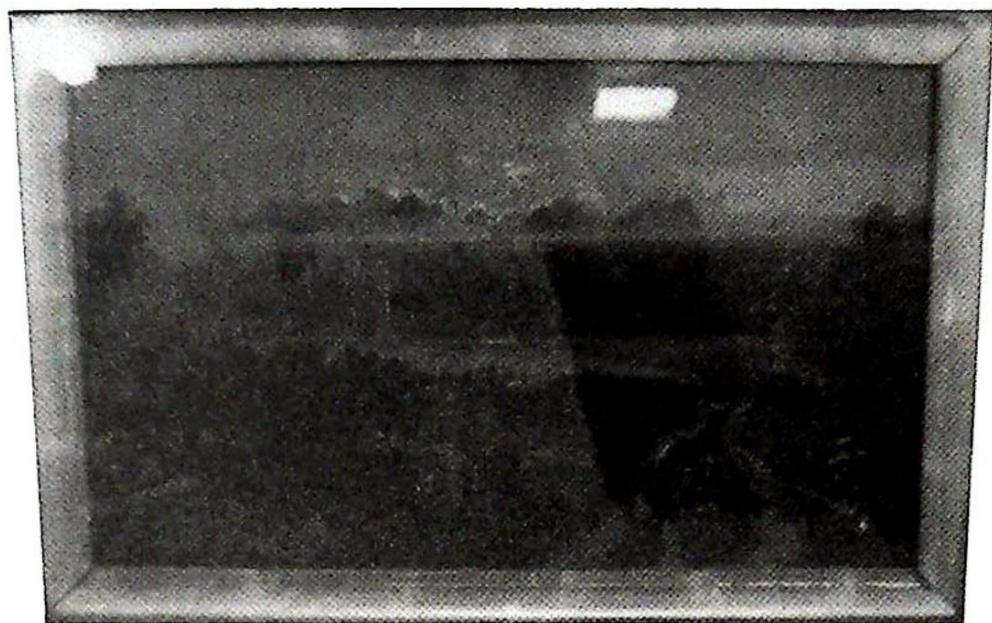
Lot 353



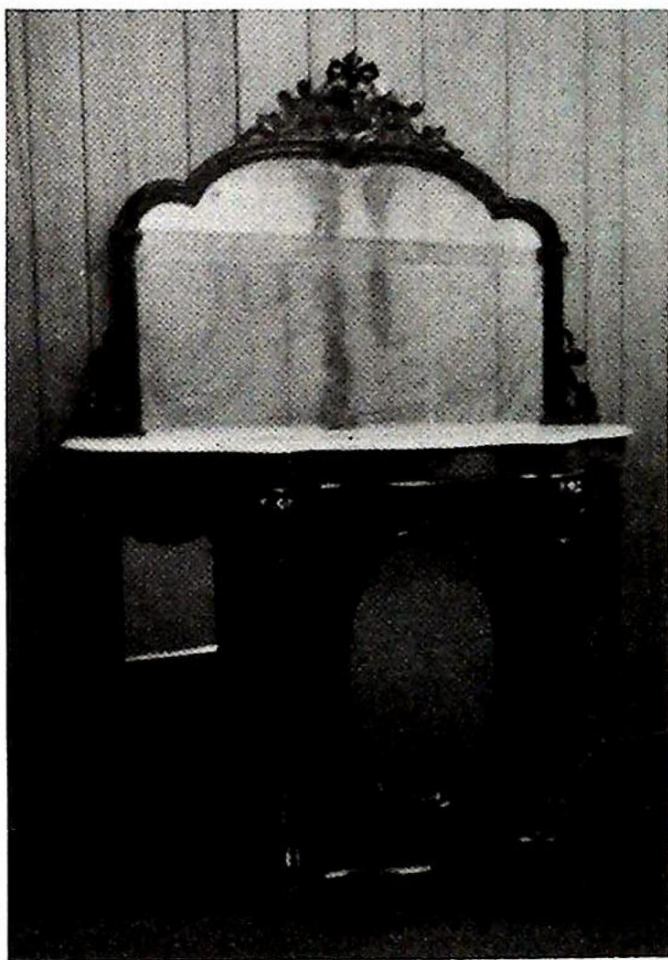
Lot 512



Lot 519



Lot 358



Lot 495



Lots 406 and 502



Lot 507

417. A small George III mahogany square TABLE of two tiers and single drawer on brass casters. £150-200
418. A late Victorian mahogany 3 fold DRESSING SCREEN, part glazed. £120-180
419. A Victorian mahogany CHEST of 2 short and 3 long graduated drawers, knob handles, shaped apron and splay feet, 39" wide. £200-300
420. A George III mahogany traytop WASHSTAND with bowl recess and drawer £100-150
421. A George II oak hanging CORNER CUPBOARD, 37" high. £120-180
422. A George III mahogany WASHSTAND with bowl recesses, drawer and undershelf. £120-180
423. A small Edwardian oak SUTHERLAND TABLE. £100-150
424. An oak REFECTORY TABLE £100-150
425. A 19thC mahogany ROLL-TOP DESK, fitted interior with slide, two doors and square taper legs. £400-600
426. An oak WASHSTAND, no top.
427. An oak extending DINING TABLE with bulbous legs. £80-120
428. A Dalex CARD TABLE. £15-25
429. A barleytwist oval oak gateleg DINING TABLE. £70-100
430. An Edwardian OCCASIONAL TABLE with shaped top and undershelf. £25-40
431. A small oak BOOKCASE with cupboard base. £30-50
432. A Mid 19thC French Walnut Lady's BUREAU with brass mounts and marquetry fall flap £300-400
433. A pair of Art Deco walnut CARVER CHAIRS. £180-250
434. A oak STUDENTS BUREAU £75-100
435. A Bobbin turned oak OCCASIONAL TABLE
436. A Georgian oak tripod PEDESTAL TABLE £150-200
437. A reproduction Sheraton inlaid mahogany serpentine SIDEBORD. £180-250
438. A modern extending walnut effect DINING TABLE. £150-200
439. A matching COFFEE TABLE. £50-70
440. A modern ROCKING CHAIR. £30-50
441. An oak bound TRAVEL CHEST. £25-40
442. An early Georgian oak gateleg DINING TABLE with turned legs. £250-350
443. A Victorian mahogany scroll carved CHAISE LONGUE. £150-250
444. An Edwardian TUB CHAIR with cabriole legs. £80-120
445. An oak DRESSING MIRROR. £40-60
446. A pair inlaid mahogany SINGLE BEDS. £120-180
447. A 1940's Italian sculptured dralon 3 piece SUITE. £120-180

448. A George III mahogany TRIPOD TABLE with 32" circular tilt top, on a turned pedestal. £250-350
449. A George III mahogany TABLE, D shape top square taper legs (end of a dining table). £200-300
450. A George III mahogany PEMBROKE TABLE with drawer and turned legs. £150-200
451. A 19thC corner BOW CHAIR with rush seat. £75-100
452. An Edwardian walnut TUB CHAIR with turned legs. £100-150
453. A pair Georgian elm barback SIDE CHAIRS with pierced and carved rails, concave seats. £120-150
454. A 19thC French STOOL with shaped double X-stretcher, cabriole legs, overstuffed seat. £500-700
455. A Victorian barback CHAIR.
456. A late Victorian rise and fall MUSIC CHAIR with lyre and scroll carved back. £150-200
457. A compact 20thC burr walnut BUREAU. £200-300
458. A mahogany circular tripod TABLE with drawer.
459. A Queen Anne style walnut scroll ARMCHAIR in blue floral cover. £200-250
460. A 19thC American ROCKING CHAIR. £120-150
461. A Victorian walnut candy twist ARMCHAIR in red dralon. £280-350
462. A William IV mahogany scroll ARMCHAIR in red dralon. £280-350
463. A Victorian mahogany scroll ARMCHAIR in buttoned red velvet. £250-300
464. A pair of 19thC mahogany OPEN ARMCHAIRS with cabriole legs. £60-90
465. A Victorian mahogany scroll arm SOFA with turned legs. £80-120
466. A Victorian mahogany scroll arm SOFA with cabriole legs. £80-120
467. A 19thC french giltwood ARMCHAIR with carved classical urns to the arms. £100-150
468. A Jacobean style oak HALL CHAIR, 19thC. £40-60
469. A reproduction oak SIDEBORD. £60-90
470. A set of four Queen Anne style DINING CHAIRS, 1920's. £120-180
471. An oak drop-leaf DINING TABLE. £50-80
472. A fine Victorian walnut spoonback NURSING CHAIR, carved rail and cabriole legs, button upholstery. £400-500
473. A Georgian mahogany BEDSIDE CUPBOARD. £120-180
474. A Georgian yew bowback WINDSOR CHAIR with pierced splat and crinoline stretcher. £500-700
475. A fine mahogany Georgian style CHEST ON CHEST, 24" wide 50" high. £500-700
476. An oak FOOTSTOOL with cabriole legs. £60-80

477. A mid 19thC French floral marquetry 3 tier ETAGERE. £280-350
478. A Victorian mahogany 2 door WALL CUPBOARD. £60-90
479. Victorian mahogany hanging WALL SHELVES. £40-60
480. A George III mahogany corner WASHSTAND. £180-250
481. A George III mahogany WIGSTAND. £250-350
482. A 19thC satinwood inlaid and cameo panelled LADY'S WORKBOX on STAND. £500-700
483. A George III mahogany PEMBROKE TABLE. £200-300
484. A George III mahogany CORNER WASHSTAND. £350-450
485. An Edwardian brass Corinthian column STANDARD LAMP. £400-600
486. A fine William IV rosewood CANTERBURY £500-700
487. A pair of Georgian elm Windsor SIDE CHAIRS with pierced splats. £120-150
488. Victorian Ash and Elm Smokers BOW CHAIR. £70-90
489. A Regency scroll end SOFA with sabre legs (AF). £25-50
490. A Victorian rosewood circular rise and fall PIANO stool with trefoil base. £100-150
491. A Victorian oak Overmantel MIRROR £60-80
492. A George III mahogany BUREAU BOOKCASE, two astragal glazed doors over a fall flap concealing a fitted interior, 4 graduated drawers pierced brass handles and escutcheon. 42" wide, 94" high. £900-1200
493. A part coloured and cut crystal CHANDELIER. £100-150
494. A Victorian mahogany 4 drawer CHEST, turned handles. £100-150
495. A Fine Victorian Walnut CREDENZA with scroll carving, framed mirrorback, shaped marble top and 3 mirror doors, 49" wide. *Illustrated on centre pages* £900-1200
496. A Jacobean style oak HALL ROBE with 2 panelled and guilloche carved doors. £150-200
497. A Regency mahogany BUFFET with lion mask heads, reeded pillars and four paw feet. £400-600
498. An Edwardian mahogany TRIPLE WARDROBE COMPACTUM. £300-400
499. A 19thC carved oak BOOKCASE with cupboard base. £350-500
500. A mahogany swing TABLE MIRROR. £30-50
501. A Victorian mahogany bow front CHEST of 2 short and 3 long drawers, knob handles and splay feet. £200-300
502. A Queen Anne Walnut CHEST of 2 short and 3 long graduated doors, moulded top, drop handles and bracket feet 41" wide. *Illustrated on centre pages* £900-1400

503. A Victorian satinwood Triple
WARDROBE COMPACTUM
with domed cornice.
£350-500
504. A Victorian stripped pine
LINCOLNSHIRE DRESSER.
£180-250
505. A 19thC Flemish heavily carved
oak SIDEBBOARD. £600-800
506. An early 19thC burr walnut
STICK BAROMETER by
L Casella, London. £900-1200
507. A Fine Victorian Walnut
CHIFFONIER with scroll carved
frame to mirror back, shaped
marble top, 2 mirror panel doors,
58" wide *Illustrated on centre
pages* £1000-1500
508. An Edwardian oak mirrorback
HALLSTAND. £180-250
509. An Edwardian inlaid mahogany
DRESSING CHEST with triple
mirror.
510. A Serpentine reeded COLUMN
£50-80
511. A 19thC French giltwood and
plaster WALL MIRROR 55" high
57" wide
512. An early 19thC Mahogany
CHEST on CHEST *Illustrated on
centre pages.* £600-900
513. A Georgian oak CUPBOARD
with 2 door fielded panel top and
5 drawer base, pierced brass
handles and bracket feet.
4'6" wide, 4'11" high. £1000-1500
514. An Edwardian mahogany
mirrorback SIDEBBOARD with
cabriole legs. £100-150
515. A 19thC walnut Black Forest
WALL CLOCK. £200-300
516. An Edwardian banded mahogany
DRESSING CHEST. £50-80
517. A Victorian walnut
OVERMANTLE with mirror.
£60-90
518. A gilt and carved rococo WALL
MIRROR. £180-250
519. A Geo III crossbanded and
flamed mahogany LONGCASE
CLOCK with swan neck pillar
hood, shaped trunk door and
bracket feet, square arch dial
painted with a hunting scene,
floral spandrels, roman
numerals, seconds ring, 8 day
movement by Green of Grantham
6'6" high *Illustrated on centre
pages* £900-1200
520. An Edwardian inlaid mahogany
CHINA CABINET on square
taper legs. £500-700
521. A 1930's burr walnut
ESCRITOIRE/BOOKCASE with
central quartered veneered, fall
front with fitted interior over
three drawers and flanked by
glazed leaded light book
compartments. Raised on short
cabriole supports. 48" wide
£250-350

END OF SALE

LATE ENTRIES ALREADY INCLUDE

- a) A single carat solitaire ring
- b) A Rolex Jubilee wrist watch
- c) A Victorian walnut Davenport
- d) Porcelain headed doll
- e) etc.



Established 1900

-GOLDINGS-

• Fine Art Auctioneers & Valuers •

THE GRANTHAM AUCTION ROOMS

Golding Young & Co
Telephone: (01476) 65118

Old Wharf Road, Grantham, Lincs NG31 7AA
Fax: (01476) 61475

HAVE YOU BEEN TO ONE OF OUR RECENT

GENERAL SALES

For the last year we have been selling
350-450 LOTS PER WEEK

Selling Every WEDNESDAY at 10.30 a.m.

Viewing Tuesdays 4 p.m. to 6 p.m. and Saleday from 9 a.m.

TAKING ENTRIES EVERYDAY

Entries for the Wednesday close 5 p.m. Monday

SALEDAY CASH PAYOUTS AVAILABLE TO VENDORS

We provide the quickest turnaround of lots
for clients in the area.

COMPETITIVE COMMISSION RATES FOR REGULAR TRADE

COMMISSION BID FORM

LOT NO	BRIEF DESCRIPTION	PRICE

Bids are left at the senders risk and are accepted subject to our Conditions of Sale.

NAME:

ADDRESS:

.....

.....

.....

TEL:

SIGNATURE:

SALE DATE:

Lots will be purchased at the lowest price as permitted by other bids or reserves.

Prospective purchasers should contact the Auction Rooms after the sale and if successful, the item(s) purchased must be collected and paid for within two days of the sale.

A Buyers Premium of 10% + VAT will be levied on the hammer price, to all purchasers.

MAILING REGISTER SUBSCRIPTION FORM

If you wish to receive our Auction catalogues and detail sheets for one year, please complete and return this form.

1. Antiques & Fine Art Auctions

There are currently planned 5 Sales per annum to include:-

Furniture, Paintings, Prints, Glass, Ceramics, Toys, Silver, Clocks, Watches, Jewellery, Metalware, Stamps, Coins, Books, Arms & Militaria, Bygones, Barometers, Collectors Items, etc.

2. Commercial & Agricultural Auctions

Frequency of Sales determined by instructions from The High and County Courts, Liquidators and Receivers, and private individuals/companies.

Office Equipment, Catering Equipment, Engineering Equipment, Industrial Plant & Machinery, Live & Dead Farming Stock, Retail/Wholesale Shop Stock and Fittings, Vehicles; – Assets of a variety of Businesses.

3. Specific Requirements

If you specialise in one area of the above categories (eg. *Books*) please state this to avoid receiving unwanted catalogues.

.....

1. Antiques & Fine Art. (£10)	£.....
2. Commercial & Agricultural Auctions. (£5)	£.....
Fee enclosed	£..... Total

Name: Mr/Mrs/Miss/Title

Address:

Tel: (.....) Date: Our Ref: *ML



Established 1900

-GOLDINGS-

• Fine Art Auctioneers & Valuers •

THE GRANTHAM AUCTION ROOMS

Golding Young & Co
Telephone: (01476) 65118

Old Wharf Road, Grantham, Lincs NG31 7AA
Fax: (01476) 61475

GOLDINGS STAMFORD ANTIQUES ROADSHOW

Our Principal Valuer and Auctioneer Colin Young F.N.A.V.A. will be available at our weekly Antiques Valuation Day to appraise your items.

This will provide you access to not only an International Market of buyers for higher value Works of Art, but also the quick turnaround that our Weekly Antique & Modern Auctions in Grantham provide.

Items suitable for the Weekly Sale deposited on a Friday would be sold the following Wednesday with payment the next Friday.

Selling by Auction in 7 days provides the quickest and most efficient way of selling in the area.

For more unusual or higher value lots allocation to one of our Regular Specialist Sales may be more appropriate.

Our Valuation Team, headed by Mr Young, comprises experts and consultants with an up-to-date working knowledge of:

- | | | |
|-------------|-------------|-----------|
| ★ Furniture | ★ Paintings | ★ Silver |
| ★ Ceramics | ★ Clocks | ★ Glass |
| ★ Books | ★ Jewellery | ★ Bygones |

and an increasingly diverse field of Collectors' Items.

For less portable items, such as furniture or large collections, either bring along a photograph or ask for our Valuer to visit your home, without charge or obligation to sell.

STAMFORD VALUATION OFFICE:

4, Ironmonger Street, Stamford, Lincs PE9 1PL
(Paul Johnson Property Consultants)

Telephone: (0378) 215134 - Every Friday 9.30 am to 1 pm

NOTES

NOTES

We are pleased to recommend

Lowes Removals



Removals - Fine Art Carriers
Local & Long Distance

Andrew Lowes

15 Webster Way, Gonerby Hill Foot,
Grantham, Lincs., NG31 8GH
Telephone: 01476 65194

PRINTED BY W. G. HARRISON LTD., DYSART ROAD, GRANTHAM
TELEPHONE: (01476) 62700

Established 1900

— GOLDINGS —

Chartered Surveyors, Auctioneers, Valuers & Estate Agents
Residential, Commercial, Agricultural, Property Management, Financial Services

45 High Street, Grantham, NG31 6NE

Telephone: 01476 · 590211

PROFESSIONAL SERVICES FOR



RESIDENTIAL

Our established Residential department headed by Chartered Surveyors undertakes sale and valuation of all types of property from Castles to Town Houses; Surveys, Homebuyers Reports, Mortgage, Probate and Insurance Valuations carried out with care attending to individual requirements.



COMMERCIAL

Dealing with the sale and survey of Shops, Offices and Factories. Valuation for Rent Reviews, Lease renewals and negotiations. Rent Arbitration, on behalf of landlord and tenant.

Plant, Machinery & Assets; Sales for Receivers, Liquidators, High Court & County Court. Auction Sales on Site or at The Grantham Auction Rooms for private and public clients alike.



AGRICULTURAL

Our Senior Partner has wide experience in the sale and valuation of Agricultural Properties, conducting Farm Sales and Valuation of Live and Dead Farming Stock for dissolution, Probate and other matters. Together with Rent Reviews, Development Land reports and Annual Stocktaking Valuations.



FINANCIAL SERVICES

Our Experienced Consultant is available to advise on all matters concerning Finance, Mortgages, Insurance, Investment, Planning and Pensions.



PROPERTY MANAGEMENT

Personal service and attention to detail ensures that our management team exploits your investment portfolio whether an Individual Family Home let for a small fee or Office, Factory, Shop or Farm with rent collected and regular inspections made.

Chattels Auctioneer

Colin R. Young FNAVA

Property Management

Mrs. Margaret Pashley

Partners

C. Robin Hall FRICS FRAV

Ian J. Shaw FRICS FNAEA

Financial Service Consultant

John G. Stukins

Residential Sales Manager

Mrs. Jenny Diment FNAEA CPEA

Established 1900

-GOLDINGS-

THE GRANTHAM AUCTION ROOMS

NEXT SALE
of
ANTIQUES & FINE ART

is on Wednesday, 7th February, 1996

Further entries invited until January 22nd



THE COMPLETE AUCTION SERVICE

Auction Sales of Antiques, Fine Art, Collectables, Modern Furniture & Effects - Office, Shop & Catering Equipment
Vehicles - Plant & Agricultural Machinery - Stock-in-Trade - Business Assets - Liquidations & Receiverships
VALUATIONS undertaken for Insurance, Probate, Family Division and Sale purposes. Full HOUSE CLEARANCE facilities.