

Established 1900

**-GOLDING-**

**THE GRANTHAM AUCTION ROOMS**



In aid of the Lincolnshire Red Cross 125th Anniversary Celebration

**GOLDING YOUNG & CO will sell by AUCTION**

# Antiques & Fine Art

**In a Marquee at Grimsthorpe Castle, Nr Bourne**



**On Sunday 24th June, 1995 at 10.30am**

**Cash only £5 each - Admits two to View**

**Golding Young & Co.**  
Old Warehouse, Grantham, Lincolnshire, NG31 7AA  
Telephone: (01476) 65118  
Fax: (01476) 61475



## CONDITIONS OF SALE

1. These Conditions together with any Notices to Purchasers are the only terms and conditions subject to which Golding Young & Co. ("the Auctioneers") as agents for the Vendor will sell goods to a purchaser ("the Bidder") and all other conditions, whether express, or implied at common law or by statute as are capable of lawful exclusion are hereby excluded.
2. The highest bidder shall be the buyer. The Auctioneers reserve the right of regulating the biddings; of rejecting any bid; and of bidding for, withdrawing, consolidating, dividing or altering the order of lots.
3. The purchase money for each lot with the usual commission of 10% plus VAT at the current rate shall be paid at the fall of the hammer (if required). Each lot at the fall of the hammer shall be at the sole risk and expense of the buyer, and shall be paid for and removed immediately after the conclusion of the sale, *but no lot shall become the property of the buyer, or be removable until paid for*, and if taken away in contravention of these conditions without an order for removal signed by the Auctioneers, they shall have power to seize the same by their servants or agents, or otherwise, or the Auctioneers may recover either the lot sold or the price thereof (at their option) by action at law.
4. No contra account of any description whatever will be allowed to the buyer as a set off, and payment for each Lot shall be made to the Auctioneers or their clerk only, and a buyer paying by cheque must give satisfactory references.
5. For all purposes of this sale the Clerk of the Auctioneers shall be deemed to be the agent of both seller and buyer.
6. A bidder shall not be allowed to retract his bidding after the fall of the hammer, and he shall give up his full name and address if required. The Auctioneers will not recognise the transfer of any lot from one buyer to another, nor make any alteration in the sale book in respect thereof.
7. The Auctioneers are acting only as agents, and give no personal warranty as to the condition, quality or authenticity of any chattels offered for Auction. Any catalogue description is given merely as guide to purchasers, any description can be changed from the rostrum before the lot is sold. If a purchaser buys without previous inspection he will do so at his own risk.
8. Notwithstanding any other terms in these Conditions, if within 7 days of the Sale a purchaser gives notice in writing that a lot is a deliberate forgery, with supporting factual evidence, the Auctioneers may rescind the transaction. The burden of factual proof lies with purchaser, mere opinions will not satisfy. This benefit is not assignable.
9. If any buyer neglect or refuse to comply with the above conditions or any of them, his deposit money (if any) shall be forfeited, and the lot uncleared may, at the option of the Auctioneers, be resold without notice by public auction or private treaty, and any loss occasioned by such re-sale together with all expenses attendant thereon, or arising under these conditions shall be paid for by the defaulter and be recoverable as and for liquidated damages. This condition is however without prejudice to the right of the Auctioneers to enforce the contract made at this sale if they think fit.
10. Any Notes for Purchasers and Catalogue Glossaries will be construed as Conditions of Sale.
11. The Auctioneers shall be the sole Arbitrators in all matters of dispute relating to those conditions both as between the seller and the buyer and between the several bidders and buyers and their determination on all matters shall be final and binding on all parties concerned.

Auctioneers: C. Robin Hall FRICS FAAV & Colin R. Young FNAVA



Established 1900

**-GOLDINGS-**

• Fine Art Auctioneers & Valuers •

**THE GRANTHAM AUCTION ROOMS**

Golding Young & Co  
Telephone: (01476) 65118

Old Wharf Road, Grantham, Lincs NG31 7AA  
Fax: (01476) 61475



In aid of the Lincolnshire Red Cross 125th Anniversary Celebration  
**GOLDING YOUNG & CO will sell by AUCTION**

# Antiques & Fine Art

On Saturday, 24th June, 1995 at 10.30 am

In a Marquee at Grimsthorpe Castle, Nr Bourne

## General Viewing:

Friday 23rd 10 am to 6 pm  
& Saleday 9 am to 10.15 am

## Special Preview:

The Evening of Friday 23rd 7 pm to 9 pm  
(Entry Cost £7.50 per head  
to include wine, canapes and Raffle)

## Grimsthorpe Telephone Numbers

Line 1 - 0374 959559 (Viewing & Saleday)

Line 2 - 0836 632058 (Saleday only)

Line 3 - 0378 762162 (Saleday only)

Rear Cover Illustration : Lot 568



## IMPORTANT NOTES FOR PURCHASERS

- 1. PAYMENT:** Must be made in full immediately after the Auction. The following methods of payment are acceptable.  
a) Cash   b) Bankers Draft   c) Building Society Cheque  
d) Cheques, accompanied by a valid card. For accounts above the stated limit, we reserve the right to retain the goods until clearance is established.
- 2. BUYERS PREMIUM:** of 10% + VAT is payable on all lots.
- 3. REMOVAL OF PURCHASES:** Goods must be collected as soon as they are paid for (Subject to our payment terms). Staff will be at Grimsthorpe until 5 pm to assist with loading.  
If items are not collected by this time a charge for taking them back to The Grantham Auction Rooms will be levied. Furniture £5 + VAT per lot, all other lots £2 + VAT.  
Representatives of Lowes Removals will be at hand at the sale to discuss deliveries with you.
- 4. COMMISSION BIDS:** If you are unable to attend this or any of our future sales we will be pleased to bid on your behalf. We always purchase at the lowest possible price, subject to other bids and reserves.  
All bids must be handed to the office on an official form. It remains the responsibility of prospective purchasers to contact GOLDINGS to confirm whether their bids have been successful.
- 5. TELEPHONE BIDS:** There are inherent dangers with this practice, therefore all such arrangements are made entirely at the bidder's risk. Telephone bids will only be accepted if the lower catalogue estimate is £500 or above. For lots with a lower estimate below this figure Commission Bids Only will be accepted.
- 6. SMOKING:** is not permitted in any part of the Saleroom.
- 7. REFRESHMENTS:** will be available Saleday.
- 8. ACCOUNT TRANSFERS:** will not be recognised after the sale. If any lots are purchased for another person, this must be declared at the fall of the hammer.

## GLOSSARY

- Generally:** 'As Found.' (AF). This term indicates the lot has some damage. Its absence does not indicate that the lot is free of defect. All lots are SOLD AS SEEN.
- Paintings:** 'Signed, initialled, monogrammed.' This refers to the present state of the work and is not an attribution.
- Books and printed matter:** These items are not sold subject to collation and are not returnable once removed from the premises.
- Silver & Jewellery:** Weights given are approximations given by basic instruments.



## GLASS & CERAMICS

1. A large Victorian white moulded JARDINIÈRE. £25-40
2. A cut glass BOWL £25-40
3. A Wilkinson's octagonal JARDINIÈRE £25-40
4. A Bowl and 2 plates by LM & Gie £20-30
5. A pair of Doulton Siliconware VASES.
6. A transfer printed CHEESE DISH and pair of plated dachshund KNIFE RESTS. £20-30
7. A Royal Crown Derby oval URN. £35-45
8. A Royal Worcester TAZZA, floral painted, Greek key border, c.1913. £50-80
9. A cut crystal SALAD BOWL and servers.
10. A mottled green glass VASE
11. A Wedgwood BOWL and GINGER JAR £20-30
12. A Victorian blue and white shallow PLATE
13. A 19thC salt glazed Hunting MUG. £25-40
14. A Coalport floral PLATE, 3 Spode DISHES and small flask (5). £25-40
15. A Victorian cut crystal DECANTER. £20-30
16. A Victorian cut crystal DECANTER. £20-30
17. A Nailsea style glass ROLLING PIN. £20-30
18. A Shelley running glaze square BULB HOLDER. £20-30
19. A Loetz style iridescent glass VASE with pewter handles. 8". £100-150
20. 3 Georgian glass Wine Funnels.
21. An Eggshell TEA SERVICE. £40-60
22. An Eggshell TEA SERVICE. £40-60
23. A Victorian ruby overlay glass TABLELAMP. £40-60
24. An 18thC blue and white SUGAR BOX with saucer. £40-60
25. A small Chinese blue and white TEAPOT and 2 cups (1 AF).
26. A Victorian pink glass LUSTRE VASE. £40-60
27. A Royal Worcester floral VASE, *shape 1039*. £50-70
28. A pair of Rockingham crested SOUP BOWLS. c.1840. £80-120
29. A pair of cut crystal DECANTERS. £40-60
30. A 19thC ruby overlay glass VASE and DECANTER (2). £40-60
31. A 19thC turquoise glass VASE with gilt and white enamel decoration. (AF) £60-80
32. A Copeland Spode 1911 Coronation DECANTER. £40-60
33. A 19thC Chinese Export BOWL. £40-60
34. Two graduated Chamberlain's Worcester armorial MEATPLATES. £50-80
35. A 19thC Jasperware: Adams silver rimmed TANKARD; Copeland & Garrett flared VASE (2). £30-50
36. A Royal Crown Derby oval DISH, Japan pattern. £40-60

37. A pair of Cantonese style baluster VASES, blue ground, 18". £100-150
38. A 19thC German porcelain PLAQUE of a young lady collecting water, 5" x 7". £80-100
39. A pair of 19thC Italian painted terracotta FIGURES. £150-200
40. 2 Royal Crown Derby SOUP PLATES. £40-60
41. A Victorian floral painted JUG (AF). £50-70
42. A 19thC Faience DISH. £40-60
43. 2 Derby PLATES and DISH. £30-40
44. A Doulton stoneware JUG with oriental figures and 3 stoneware jars. £40-60
45. A 19thC Chinese blue and white CHARGER embellished with 2 serpents. 16". £60-90
46. A Royal Dux CENTREPIECE with 2 bathing maidens around a large shell (AF). 17" high. £150-250
47. A pair of Royal Dux FIGURE GROUPS of Roman potters by Ionian columns (AF). 16" high. £150-250
48. A pair of ruby glass LUSTRE VASES. £100-150
49. An amethyst glass BOWL. £20-30
50. A Victorian stoneware JUG & BOWL SET, painted floral motifs. £60-90
51. A large marbled glass hanging LIGHT SHADE. £60-80
52. A Victorian Brownfield vine moulded JUG. £40-60
53. An unusual Art Nouveau floral lustre VASE. £100-150
54. A 19thC Derby POT POURRI VASE with cover, red painted mark. £80-100
55. A First Period Worcester blue and white leaf moulded Jug, satyr mask spout, scroll handle, open crescent mark. 8½". £150-200
56. A Chamberlain's Worcester CAKE BASKET, painted topographical scene enclosed by a gilt and blue ground border, c.1850. £100-150
57. Two Wemyss fruit PLATES. 6". c.1900. £100-150
58. A New Hall London shape TEAPOT, oriental gilt blue decoration. £120-180
59. A 19thC Chinese FIGURE, 13". £120-150
60. 3 Watcombe Torquay circular terracotta PLAQUES floral decorated by E Anita Herring. £100-150
61. A Victorian Staffordshire flatback FIGURE of DUNDAS. £120-150
62. A Victorian Staffordshire CHARACTER JUG - Hearty Goodfellow. £80-120
63. A Victorian Staffordshire flatback FIGURE of a Highland Lad and Lass 14". £50-70
64. A Victorian Staffordshire flatback FIGURE of a girl with basket of fish (AF) 13". £50-70
65. A Victorian Staffordshire Flatback FIGURE of a Highland Gamekeeper (AF) 15". £30-40
66. An early 19thC Ralph Wood Staffordshire FIGURE GROUP - The Vicar and Moses. 9½". £150-200



67. A pair of 19th century Cloissone VASES (AF) £25-40
68. A fine pair of Cloissone BALUSTER VASES, cream ground, on wooden plinths, 8". See illustration on centre pages. £400-600
69. A small Rosenthal Bear Figure. £20-30
70. A Victorian ceramic POT with polychrome lid. £30-40
71. A Samson polychrome FIGURE of Count Lafette, gold anchor mark. £60-80
72. A fine pair of Chelsea polychrome PLATES, painted with exotic birds and insects, 9", gold anchor mark, c1756-69. See illustration on centre pages. £500-700
73. A pair of miniature Satsuma VASES. £25-30
74. A pair of German Match Strike FIGURE of boy and girl. £25-35
75. A fine 19thC KPM DESSERT SERVICE comprising pedestal Centrepiece, shaped Tray, 2 pairs of Comports, 2 Stands and 12 pierced Plates. Hand painted with birds and flora, heavily gilded, printed and painted marks. The centrepiece *signed J Siobor '93*. See illustration centre pages. £1800-2500
76. A Japanese baluster VASE with many figures, 12". £100-150
77. A 15thC style Chinese VASE with relief figures, 10". £100-150
78. A Victorian Staffordshire 4-piece TEASET, Japan pattern. £75-100
79. A Copeland Parianware BUST of Alexandra c.1868. 15". £150-200
80. A 1911 Coronation Commemorative TEAPOT and 1953 JUG £60-80
81. A 1911 Coronation Commemorative PART TEA SERVICE with creamer, sugar bowl, 5 cups and saucers, 2 bread plates £120-150
82. An early 19thC brown and cream pearlware COW CREAMER. £300-400
83. A pair of Dartington crystal CANDLE LAMPS, and a mottled glass BASKET £30-40
84. 5 pairs 19thC Imari design coffee CANS AND SAUCERS £50-80
85. 8 pairs German eggshell CUPS AND SAUCERS £50-70
86. Set of 6 German CUPS and a MUG, transfer printed with English text £25-35
87. Pair white china TABLE LAMPS £50-70
88. A Victorian pressed glass DECANTER, mallet shaped and a Victorian cut crystal CLARET JUG £40-60
89. A 19th century Pottery Creamware PAIL (AF)
90. A Royal Doulton transfer decorated BOWL of Sir Roger De Coverley £20-30
91. A Victorian Asiatic pheasant MEAT PLATE £25-40
92. An Adams "Juliette" pattern octagonal MEAT PLATE £20-30
93. A green glass CLARET JUG
94. A Royal Crown Derby TRIO of cup, saucer, and plate, Japan pattern
95. A Meiji period Imari sexagonal baluster VASE, 14" high £100-150

96. A 19th century Cantonese baluster VASE, 10" £80-120
97. A pair of blue ground Doulton stoneware SPIRIT BOTTLES, *marked Scotch Whisky and Brandy* £50-80
98. A heavy cut crystal BOWL and BON BON DISH £40-60
99. A Bristol blue glass BOWL, pear shaped PAPERWEIGHT and small vase
100. A Wymss type oval PLATE, Shropshire transfer printed MUG and Staffordshire FIGURE
101. A Doulton Siliconware "Copper" JUG £70-100
102. A pair of Doulton Slaters Patent BOTTLE VASES, 16". See illustration on centre pages. £350-450
103. A Doulton stoneware BISCUIT BARREL, incised scene of pigs and donkeys by Hannah Barlow, plated cover. See illustration on centre pages. £200-300
104. A Doulton stoneware Baluster VASE, incised with Art Nouveau stylised foliage, by Frank Butler, 18". See illustration on centre pages. £300-400
- 105-110 Spare Lots.
115. A 1913 Half SOVEREIGN, 9ct pendant mount and chain. £35-45
116. An 18k rolled gold 5 Sovereign CASE. £20-30
117. A 9ct rose gold BRACELET mounted with 5 HALF SOVEREIGNS. £150-200
118. An 18k gold cased Lady's FOB WATCH. £30-40
119. A 14ct rose gold and onyx Signet RING. £20-30
120. A BANGLE, 4 strand HEART NECKLACE and sapphire set BROOCH, all silver. (3)
121. A 9ct gold BAR BROOCH, amethyst set.
122. Two gold Scarab STICK PINS. £20-30
123. Assorted GOLD CHARMS (2). £40-60
124. An 1897 Afrikaan POND PENDANT. £20-30
125. A 9ct gold Flowerhead RING, ruby and diamond set. £25-40
126. A 9ct gold Cluster RING, sapphire and cz set. £20-30
127. A gold plated ALBERT with fobs and Memorial BROOCH. £20-30
128. A 9ct rose gold cartouche FOB.
129. A 9ct gold Gents Signet RING.
130. An 18ct gold sapphire RING. Birmingham 1917. £30-50
131. A 9ct rose gold garnet half hoop RING and pair of sugar bowls. £20-30
132. An old cut diamond SOLITAIRE RING of c. 1/2 carat. £180-250
133. An 18k gold flat curb NECKLACE, 30 grammes. £100-150

## JEWELLERY & BIJOUTERIE

111. An 1886 Maundy Set.
112. A 9ct rose gold ALBERT, 16 grammes. £50-80
113. A 1915 One Hundred CORONA 9ct gold pendant mount, on a 9ct gold CHAIN. £150-200
114. A 1915 Four Doucat, mis-strike. £60-90



134. A Longines Lady's WRIST WATCH. £30-40
135. A marquise shaped 15ct gold BROOCH, floral spray enclosed by seed pearls. £20-30
136. An 18k cased Gent's POCKET WATCH, dial with seconds ring and marked Anghinoni Lugano. £30-50
137. A Dupont gold plated LIGHTER. £20-30
138. An 18ct gold BANGLE and Costume Jewellery. £40-60
139. A single strand of graduated cultured PEARLS with a 9ct white gold clasp. £100-150
140. A 9ct gold kerb link BRACELET with heart shaped padlock (30gms). £120-150
141. A Lady's silver 'snake' NECKLACE.
142. A gold PENDANT, opal set surrounded by 6 sapphires on a fine gold chain. £30-40
143. A gold Locket and Chain and 3 9ct gold dress Rings. £50-80
144. A pair of 9ct gold BANGLES. £40-60
145. A Victorian BROOCH, the central floral micro mosaic within a 6 point enamel star. *In the manner of Carlo Giuliano.* £150-250
146. A brass VESTA CASE, fine 9ct gold CHAIN and paste locket with chain. (3) £20-30
147. An 18ct gold oval platinum Art Deco RING, central diamond flanked by smaller 3 diamonds on stepped shoulders. £100-150
148. 4 turquoise set HATPINS. £20-30
149. HATPINS including golfing, teddy bear and other interesting knops. £80-100
150. An Edwardian silver top SCENT BOTTLE, the porcelain body painted with an oriental lady with a fan. £80-120
151. A lady's 18ct gold RING set with central oval cut opal surrounded by 24 small diamonds. £600-800
152. A heavy 18ct gold fancy link BRACELET, 122 grammes. £1000-1200
153. William Bishop Ford. A gold STICKPIN mounted with a circular enamel depicting the head of a fox, *signed verso W B Ford 1874*, cased. £200-300
154. An 18ct gold heart shape RING set with central opal enclosed by 1ct of diamonds. £600-800
155. An 18ct gold triple wavy link NECKLACE and BRACELET SET, 92 grammes. £800-1000
156. An 18ct gold RING, set oval opal surrounded by illusion set diamonds. £60-90
157. A garnet and white sapphire eternity RING on a 9ct shank. £25-40
158. A Graduated BEAD NECKLACE £20-30
159. A circular RING, grain set with circular faceted diamonds of c.1 carat £250-400
160. A Victorian BROOCH set with a substantial diamond content of rose-cut and Victorian cut stones £250-400
- 161-170 Spare Lots.

## NETSUKE

171. A Japanese Sumada School mother-of-pearl netsuke, study of a flat fish finely fabricated from decorated pieces of pearl. £25-35
172. A signed Japanese hardwood netsuke, traditional study of a fisherman with his catch and basket. £30-40
173. A signed Japanese hardwood netsuke, an unusual study of an octopus wrestling with a monkey. £30-40
174. A signed Japanese hardwood netsuke, a scarce Cicada study of a locust. £30-40
175. A signed Japanese ivory netsuke, study of a Sennin with huge eye-brows and bushy beard. £40-60
176. A signed Japanese ivory netsuke, study of the horse-like winged monster of mythology with its wings folded. £40-60
177. A signed Japanese ivory netsuke, study of a deity standing upon a rope-bound wooden barrel. £40-60
178. A signed Japanese ivory netsuke a study of a youth in fine kimono holding a large peach. £40-60
179. A signed Japanese ivory netsuke, study of a seated fat Buddhist monk with his fine robes open exposing his ample stomach. £40-60
180. A signed Japanese Okimono, study of a family seated and playing 'go'. £60-80

## COLLECTABLE & MISCELLANEA

181. NAZI COLLECTORS' ITEMS: Including a watercolour of Vienna signed A Hitler 1911, 10" x 15", (illustrated on centre pages); A Hitler coffin drape, swastika armband, 1938 copy Hitler Baut and photographs. *Sold with letter of authenticity.* £800-1200
182. An AUTOGRAPHED BEATLES Photograph, single John Lennon autograph and a pair of Beatles Nylon Stockings. £300-400
183. A ROD STEWART AUTOGRAPHED red Sweater. £70-100
184. A black lacquer FOLDER and a bamboo FAN.
185. A pair of Chevalier mother of pearl OPERA GLASSES. £30-50
186. A Dinky Supertoy - No 986 Mighty Antar, boxed (no propellor). £25-40
187. A late 19thC German carved walnut INKWELL in the form of a bear head. £30-40
188. A bone handled CARVERY SET, cased. £30-50
189. A copper lidded MUG stamped HH (Harry Hunting Butcher Peterborough), 2 pan lids, measure, etc.
190. Carvery Set, plated ladle and jug, Malay Hut picture etc
191. A Bone SNUFF BOX £25-30
192. A MAH JONG SET, leather cased. £50-80
193. Two ebony Dressing Table TRINKET SETS. £150-200



194. A Brass Door KNOCKER £25-40
195. A fine Doll's bowfront CHEST. £40-60
196. A fine Doll's DRUM TABLE with parquetry top. £40-60
197. A 19thC walnut cased MUSICAL BOX, 6 airs. £200-300
198. A pair of mother of pearl and nickel plated OPERA GLASSES. £40-60
199. A Travelling CUTLERY SET, leather cased. £50-70
200. Carved Bear's Head STAMP BOX, Mauchlinware ball cup GAME and oriental carving (3).
201. A STEVENGRAPH, Called To The Rescue. £40-60
202. Lace cushion and beadwork.
203. A small Bear Bating brass FIGURE.
204. A set of brass POSTAL SCALES. £30-40
205. An RNAS cast aluminium PLAQUE, Cranwell.
206. Two Limited Edition Horse Racing PRINTS; Rhme & Reason and Desert Orchid.
207. Pair of cast metal PLAQUES of Gun Dogs £20-30
208. A set of wooden INDOOR SKITTLES. £40-60
209. 7 graduated lacquer BOWLS.
210. A small brass BOX, 5 Dutch brass BELL FIGURES, and a brass model FENDER £35-45
211. A 19thC PIPE £20-30
212. A fine chinoiserie black lacquer FAN, painted and applique decoration.
213. Two pair of ivory handled CARVERY TOOLS with sharpener, cased £40-60
214. A 19th Century French Copper PLAQUE and pair of brass Candlesticks
215. Silhouettes, unframed
216. A pair of 19th century French porcelain, mother of pearl and brass OPERA GLASSES in a beadwork case £100-150
217. A Scrimshaw SOLITAIRE BOARD by John Adams, and balls
218. A Doulton Siliconware "Cricket Ball" MATCH STRIKER and a "Jockey's Cap" gilt metal TRINKET BOX £25-40
219. A Fine Victorian green lacquer CARD CASE painted with scene of Craigmiller Castle £100-150
220. Canary under a Victorian glass dome.
221. A Victorian case of 3 STUFFED BIRDS. £25-40
222. A cased STUFFED COCK. £30-40
223. A cased ANGLING TROPHY, 5lb Tench. £80-120
224. An ANGLING TROPHY, pair Roach, bowfront case. £100-150
225. An ANGLING TROPHY of a Pike caught by Mr A Rowlett of Bourne Angling Society at Grimsthorpe November 26th 1955, Weight 33lbs. Preserved and mounted in a bowfront glazed case by J Cooper & Sons. £900-1200
226. A case of STUFFED BIRDS (Kokabara, Parakeets, etc) £40-60
227. A case of STUFFED BIRDS (Foreign Species). £40-60

228. A case of 2 STUFFED ALBINO MOLES. £20-30
229. A cased STUFFED SEAGULL. £25-40
230. A large case of STUFFED BIRDS (Coot, Kestral Hawk, Dartar Bird, etc.) £50-80
231. A cased ANGLING TROPHY.
232. A cased ANGLING TROPHY.
233. A cased ANGLING TROPHY.
234. A Victorian STUFFED PARROT in a glass dome case. £100-150
235. Fox's Head and Tail £20-30
236. A Fox and 2 Hare Heads. £20-30
237. A Hardy Bros FISHING HOOK.
238. Four old TENNIS RACKETS, including a swallow tail example. £50-80
239. 5 DITTO £50-80
240. 5 DITTO £50-80
241. 5 DITTO £50-80
242. A pair of leather RIDING BOOTS. £60-80
243. A Victorian brass and copper WARMING PAN. £50-70
244. A Victorian metal COAL SCUTTLE painted with daffodils. £40-60
245. A Victorian brass and floral painted MIRROR FIRE SCREEN. £50-70
246. An Indian hardwood folding TABLE inlaid with ivory and a Benares TRAY. £50-70
247. Boxed sets containing c.150 78 rpm RECORDS £30-50
248. An embossed brass PLAQUE, 3' diameter. £60-90
249. A black lacquer chinoiserie BOX (AF).
250. A Victorian inlaid rosewood MUSIC BOX (AF). £100-150
251. A Heubach Koppledorf 300-5 DOLL. 18". £100-150
252. A 19thC mahogany rectangular TRAY.
253. A 19thC elm MIXING BOWL. £25-40
254. A Victorian rosewood grained SMOKERS CABINET £80-120
255. A Victorian brass JAMPAN. £30-50
256. A Victorian brass JAMPAN. £25-40
257. Four graduated Victorian brass Saucepans. £50-80
258. Four graduated Victorian brass SAUCEPANS. £50-80
259. Two Victorian brass milk SAUCEPANS. £25-40
260. A brass Grain SCOOP, copper belly warmer and 3 brass plates.
261. A Victorian scripted SAMPLER. £40-60
262. A Chinese embroidered silk PICTURE of a house, in a carved lacquer panel. £80-100
263. A 19thC Anglo Indian ebony and ivory fitted Dressing Table TRINKET BOX. £120-180
264. A pair of 19thC Eastern CAMEL BAGS, stuffed as cushions. £120-150
265. A pair of Victorian pierced brass CANDLESTICKS. £40-60
266. 2 Brass Alms PLAQUES £100-150
267. Three 19thC Milking Stools. £40-60
268. A Victorian papier mache WALL RACK. £40-60



269. A small Victorian mahogany rectangular STOOL. £75-100
270. A pair Victorian papier mache WALL BRACKETS. £25-40
271. A Victorian mother of pearl DESKSTAND. £75-100
272. An Oriental Scene PICTURE painted and embroidered on silk.
273. A Victorian rosewood cutlery CANTEEN. £40-60
274. A large oval copper BOWL. £100-150
275. A circular copper KETTLE and BED WARMER.
276. After A Foretaylor. A cast plaster female bust. £25-40
277. A Fifeshire Constabulary TRUNCHEON and Edinburgh Police BELL. £30-40
278. A Victorian DOLL in a blue velvet gown. £25-40
279. A black bakelite TELEPHONE.
280. A Victorian PAPER ROLLER. £30-50
281. A Victorian gilt metal STAND with Minton bell pedestal. £30-40
282. A small plated TEA URN. £20-30
283. Pair of spelter FIGURES of Gun Dogs. £20-30
284. A Victorian copper FOOTMAN. £30-50
285. Gee-Wiz Horse Racing GAME, boxed. £25-40
286. A Jacques Ping Pong set, boxed.
287. Bezique, Squails, etc.
288. Lacquer Tray, Jug and 2 planters.
289. A set of 3 Victorian brass FIRE IRONS. £25-40
290. A Victorian Boxwood strung sarcophagus TEA CADDY £80-120
291. 3 brass wall PLAQUES
292. A Victorian walnut DESKSTAND, 2 bottle. £30-50
293. A Widecombe Fair Print and Stool.
294. 3 Pewter TANKARDS and pair of pewter CANDLESTICKS
295. A Victorian brass JAMPAN, iron swing handled. £25-40
296. 34 old moulding PLANES. £25-40
297. A hammered pewter 5-piece TEASET inset with turquoise colour stones. £40-60
298. Oriental Printing BLOCKS.
299. A small Georgian mahogany BOX. £25-40
300. An ornate Victorian cast iron BOOT SCRAPER. £40-60
301. A Georgian brass and iron WARMING PAN. £100-150
302. A Victorian gilt brass TABLELAMP. £20-30
303. A pair of alabaster TABLELAMPS. £30-40
304. A Snug Room leaded light panel inscribed 'Mowbray's Grantham Ales'. £50-80
305. A Georgian copper COFFEE POT of ovoid form with mesh face mount and on a circular gadrooned base. £80-120
306. A 19thC brass DOOR HANDLE with turned decoration.
307. A Regency Decoupage WORKBOX with a tiger, butterflies and floral decoration (AF). £60-80

308. A 19thC copper and brass WARMING PAN with turned wood handle. £50-70
309. A 19thC OIL LAMP with brass font. £25-35
310. 2 cream leather SUITCASES. £60-80
311. A leather SUITCASE. £20-30
312. A Victorian leather HATBOX with Top Hat and Wig. £60-90
313. A Barrister's WIG. £40-60
314. A Victorian dome top TEA CADDY (AF). £20-30
315. An Art Deco amber bakelite INKSTAND and NOTEPAD STAND. £25-40
316. A Prisoner of War straw-work JEWEL BOX in the form of a book. £25-40
317. A leather SUITCASE, pink satin lined. £40-60
318. A Victorian brass WOOL DISPENSER. £40-60
319. A Victorian pewter 'Top Hat' COMMODE. £40-60
320. A leather Boot Polishing CASE and further case (2). £30-50
321. Spare Lot.
322. A Huntley & Palmer's BISCUIT TIN in the form of a Handbag. £80-100
323. A Huntley & Palmer's BISCUIT TIN in the form of a Toby Jug. £80-100
324. A Huntly & Plamers BISCUIT TIN in the form of 8 Books. £100-150
325. A Victorian brass ROASTING JACK and spit. £20-30
326. An oak and plated TANTALUS STAND. £20-30
327. A Victorian WALL MIRROR with gilt ivy frame. £50-70
328. Two Victorian beadwork SCREENS on gilt metal bracket clamps. £40-60
329. An Amplex Model A RECEIVER. £20-30
330. A George III mahogany TABLE MIRROR (AF). £100-150
331. A Victorian walnut WORK BOX. £80-100
332. A Victorian stereoscopic VIEWER and slides.
333. A TRUNCHEON painted V.R. No 58K. £20-30
334. A jet bead BOLERO.
335. A Knobi Stick. £30-40
336. An Edwardian DOLLS PRAM. £80-100
337. An oak TRAY. £20-30
338. A pair of George III brass CANDLESTICKS, square bases. 8½". £120-180
339. A pair of 19thC brass CANDLESTICKS, square bases. 8½". £50-80
340. An Eastern Pannier BAG. £30-50
341. An Art Deco FIGURE of a lady kneeling, cast after a model by Guislain, 14". £200-300
342. A fitted 'Crocodileskin' SUITCASE. £100-150
343. An Armand Marseille bisque headed girl DOLL. *Mould No 390*. £100-150
344. A 19thC French telescopic TABLE LAMP. 23". £350-450
345. A 19thC ormolu CANDLABRUM. £300-400



346. A 19th century Japanese BRONZE JARDINIÈRE with 6 relief panels on a diaperwork ground, seal mark to base 15" dia £300-400
347. A pair of 19th century Bronze FIGURES depicting Mercury and Minerva on green marble plinths 22" £300-400
348. A 19thC French BRONZE BUST entitled 'MIGNON', cast from a model by Emmanuelle Villanis, shown with her shoulder length hair covered by a scarf, signed *E Villanis*, on a square taper naturalistic base entitled *MIGNON and inscribed SALON 1896*. 14". On a grey and liver marble plinth. See illustration on centre pages. £900-1200
- MIGNON, an opera by Ambroise Thomas, was first produced in PARIS IN 1866. The main character is a beautiful young maiden kidnapped in childhood from her father's castle by wandering gypsies. Born in Lille of Italian Parents, Emmanuelle Villanis (or Villani) was perhaps the most prolific sculptor of the late Victorian/early Art Nouveau period. In the late 1880s after his initial success. Villanis shunned the exhibit and salon circuits. It was said that he became an industry unto himself and that his prolific output of bronzes is what helped keep France solvent during the 1880s and 1890s. Villanis's works are almost exclusively of female subjects. Predominantly busts, these are easily recognizable by the artistic scrolling of the subject's name below her face. Also characteristic of his sculpture are the perfect, ideally proportioned features of his women's faces.*
349. A Zulu SHIELD, 3 SWORDS AND 2 DAGGERS. £100-150
350. A pair of brown leather Army Boots with stretchers. £40-60
351. A pair of brown leather Army Boots with stretchers. £40-60
352. South Yorkshire Regiment Major's TUNIC and others. £100-150
353. A brass handled SHORTSWORD and Fish Sword. £25-40
354. A 'Stradivarius' VIOLIN by A Schmidt & Co, Saxony, single piece back, cased with bow. £40-60
355. A Victorian TAPESTRY depicting a King's Court, gilt framed. £40-60
- 355 A. A Victorian shaped papier mache tray £40-60
356. 2 Victorian copper KETTLES £40-60
357. A Victorian mahogany TEA CADDY of sarcophagus form £30-50
358. An African carved TRIBAL MASK £20-30
359. 4 19th century Stoneware JELLY MOULDS £20-30
360. A Prisoner of War straw-work JEWELLERY BOX in the form of a book and Japanese Lacquer box £20-30
361. A 19th century mahogany BUTLER'S TRAY £60-80
362. A 19th century Anglo-Indian carved hardwood DESK STAND £50-80
363. 3 leather SUITCASES £40-60
364. An Edwardian oak DESK STAND with 2 cut glass inkwells and plated mount £40-60

- 365. A Geo III copper barrel shape COFFEE POT with bark handle £25-30
- 366. A 19th century gilt brass FENDER with neo classical urn stop ends £180-250
- 367. A 19th century Chinese carved red lacquer BOX 16" x 12" £100-150
- 368. A small 4 wheel CART £100-150
- 369. A Leatherbound canvas dome top TRUNK £25-40

## BOOKS & MAPS

- 370. 3 Hunting Journals of Sir Henry Tate, Late Master of Cottesmore (1949 to 1961), one with sketches possibly by Lady Tate. £80-120
- 371. Robertson William. The History of America, 1778, 2 vols leatherbound, with maps £100-150
- 372. Old England. Engravings of popular antiquities, 2 Vols. £40-60
- 373. A 19thC Family BIBLE, in 2 volumes. £30-50
- 374. Old England, folio of chromolithographs, c.1844.
- 375. 21 assorted POSTCARDS.
- 376. 7 Phil May Sketches from Punch and Fable Book.
- 377. Smellie's Natural History 1818, 4 colour plates.
- 378. Lloyds Natural History, 3 colour plates, and 3 of Castles.
- 379. Leigh Parry. Print of Burghley Horse Trials 20th Anniversary.
- 380. Modern First Editions.
- 381. History of the Lincolnshire Regiment 1914-18 £80-100
- 382. Tallis's Topographical Dictionary of England and Wales 2 vols £40-60
- 383. Goldsmith's Animated Nature, 2 vols £40-60
- 384. The Purchased Estates of General T Birch Reynardson in North Lincolnshire, 1841. £50-80
- 385. Robert Morden. Colour county Map of Norfolk. £50-80
- 386. Robert Morden. Colour county Map of Surrey. £50-80
- 387. Greenwood & Co. County Map of Rutland surveyed 1825. £150-200
- 388. Greenwood & Co County Map of Norfolk surveyed 1831/2 £100-150
- 389. Greenwood & Co County Map of Yorkshire surveyed 1817/8. £100-150
- 390. Greenwood & Co. County Map of Lincolnshire Surveyed 1827/8 £150-200
- 391. Jansson. A county map of Lincolnshire, surveyed c.1646. £300-400
- 392. County Map of Northumberland £30-40
- 393. A Strip MAP of Lincs and Notts, hand coloured, framed £25-40
- 394. A MAP of Lincolnshire, hand coloured, oak framed £30-40
- 395-410 Spare Lots.

## CLOCKS

- 411. A Belgian flambe glazed Art Deco CLOCK GARNITURE. £40-60





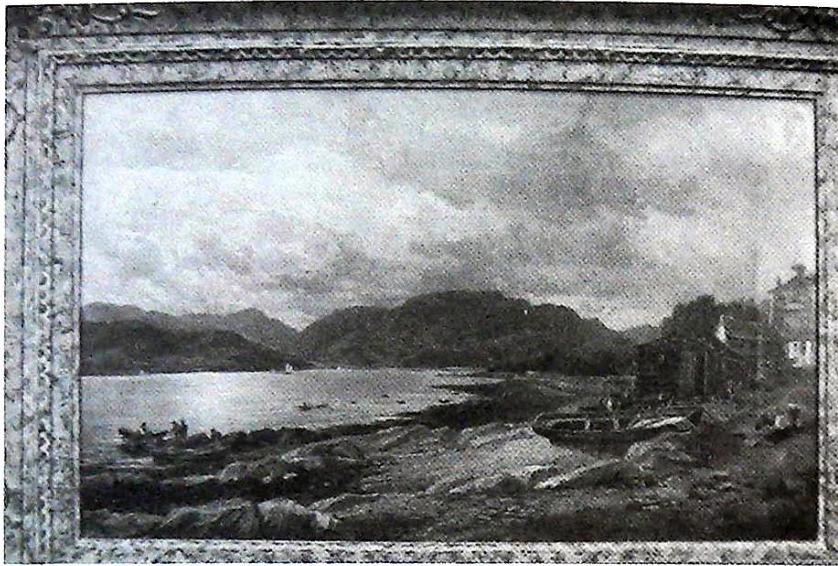
Lot 744

Lot 348

Lots 75 & 747





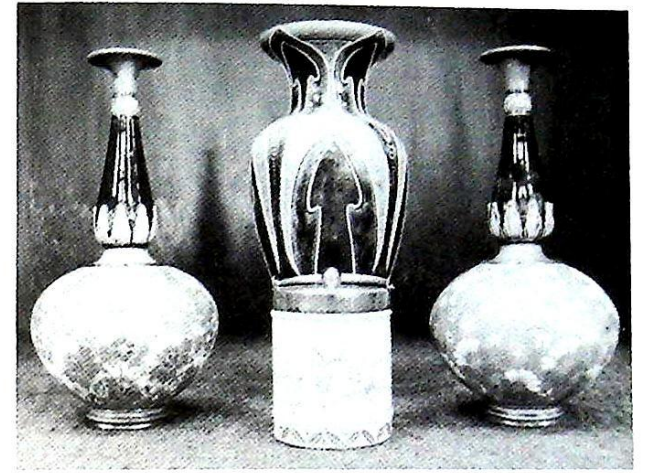


Lot 566

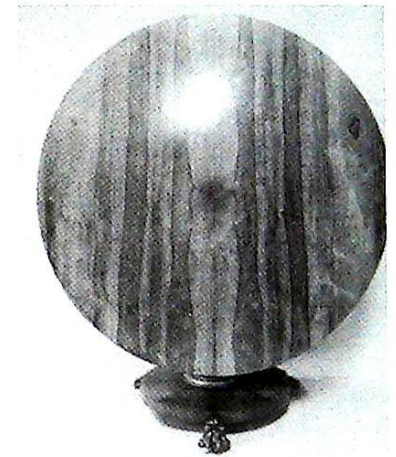


Lot 570

Lots 102, 103 & 104



Lot 569

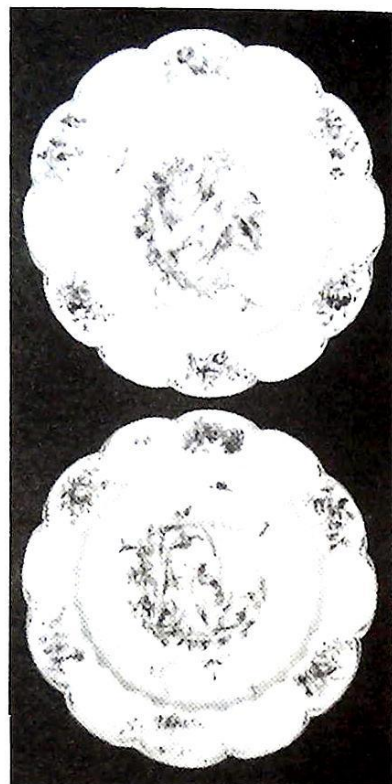


Lot 723





Lot 414



Lot 72



Lot 462

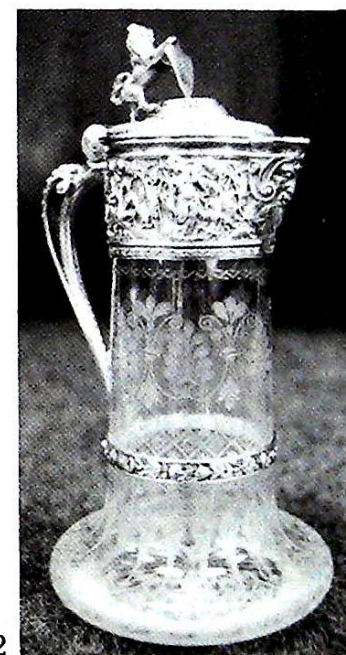


Lots 737 & 738

Lot 706



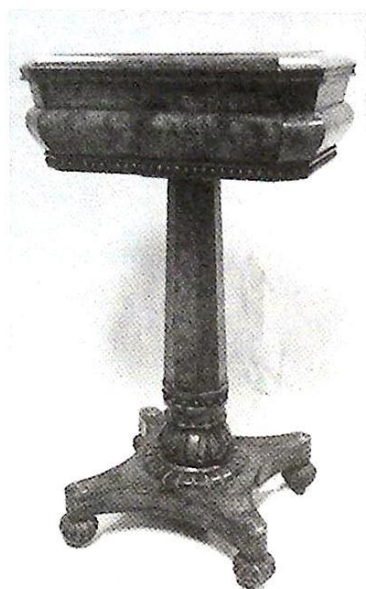
Lot 482







Lot 68



Lot 716

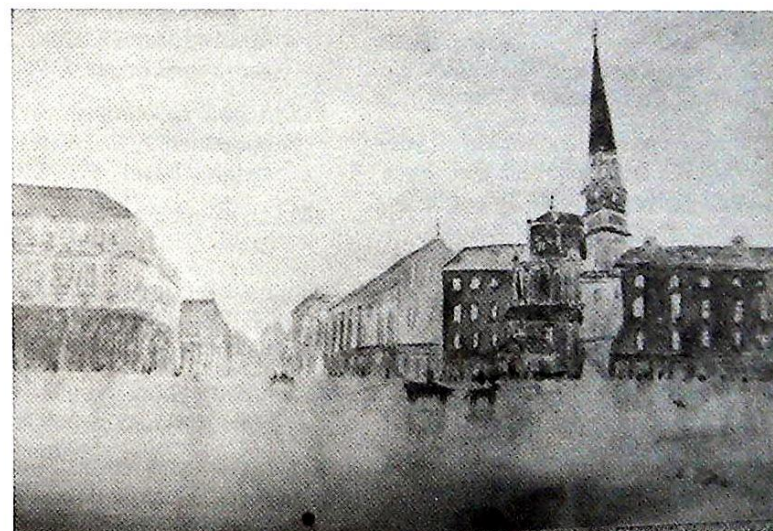


Lot 724



Lot 745

Lot 181





412. An Edwardian inlaid mahogany BRACKET CLOCK, 8 day with silent/strike to arch £120-180
413. A 19thC French gilt metal MANTEL CLOCK mounted with a figure of a flower gathering maiden over a circular porcelain dial. £50-80
414. A 19thC French gilt metal MANTEL CLOCK mounted with a porcelain urn and columns, the dial having roman numerals and central painted cherub, above a painted fishing scene, 8-day Japy Freres movement striking on a bell, 15" high, on a wooden plinth. See illustration on centre pages. £600-800
415. A 19thC Cuckoo MANTEL CLOCK. £80-100
416. A Victorian black slate MANTEL CLOCK, 8 day. £30-50
417. A Victorian mahogany MANTEL CLOCK, fusee movement. £100-150
418. A French gilt brass CARRIAGE CLOCK. £100-150
419. A Victorian marbled black MANTEL CLOCK, 8 day. £40-60
420. A 19th century mahogany fusee WALL CLOCK, painted dial, Sam Dalman, Newark £180-250
421. An Edwardian inlaid flamed mahogany LONGCASE CLOCK, circular dial with roman numerals, seconds ring, date ring, 8-day movement, glazed trunk door, bracket feet. £600-900
422. A Victorian mahogany circular WALL CLOCK with fusee movement. £180-250
- 423-437 Spare Lots.

## SILVER & PLATED WARE

438. A small white metal Picture Frame, Pendant and Anointing Spoon
439. A pair of Hester Bateman Silver Old English TABLE SPOONS £80-120
440. Victorian faceted crystal MUSTARD and PEPPER POTS, silver spire tops London 1865 £60-90
441. A large hammered electroplate SERVING TRAY. £50-80
442. An electroplate circular 4-piece TEASET. £40-60
443. An electroplate shaped and galleried TRAY. £50-80
444. An electroplate Corinthian columnar TABLE LAMP, 15". £100-150
445. A 19thC electroplate CHAFING DISH (AF). £150-200
446. A 19thC electroplate CHAFING DISH, bulls mask legs. £180-250
447. A pair of 19thC electroplate rectangular ENTREE DISHES, gadrooned edges. £120-150
448. A pair of electroplate Corinthian columnar CANDLESTICKS on square stepped bases. 9 1/2". £100-150
449. An electroplate oval entree dish and cover. £20-30
450. An electroplate 3-piece circular TEASET, plated tray, castor, sugar helmet, etc. £100-150
451. A pair of bone handled electroplate FISH SERVERS cased. £40-60
452. A George V silver 7-piece CRUET, cased. Maker JD & WD. Chester 1919. £100-150

453. 2 silver top JARS, Napkin Rings, etc. £60-80
454. An Indian white metal 3-piece TEASET. £100-150
455. A Georgian silver CREAMER of urnular form, beaded rim, loop handle. Maker \*\* Ann Bateman, rubbed marks. 5oz 6dwts. £100-150
456. A George V silver London shape 4-piece TEASET, part reeded. Makers RFM Sheffield 1913. 58oz all in. £500-700
457. A set of 6 pairs bone handled electroplate FISH CUTLERY, oak cased and 6 pairs FRUIT CUTLERY, cased. (2). £50-80
458. Six pairs of shell pattern FISH CUTLERY, the blades bearing the makers mark of Roberts & Belk Sheffield 1896. £250-350
459. An Edwardian silver DWARF CANDLESTICKS of Corinthian columnar form. £80-120
460. 6 Pairs of electroplate FISH CUTLERY, mop handles, cased £50-70
461. A 4 footed silver SALVER, pie crust edge. Maker FH. Sheffield Assay. 26oz. £180-250
462. A Victorian silver 3-piece TEASET of compressed panelled circular form, bright cut engraving, scroll handled, Maker WB (Wm Barber or Wm Barrett II). London 1838. 45oz. See illustration on centre pages. £700-1000
463. A pair of American sterling Federal design TABLESPOONS. £25-40
464. A set of 11 Victorian fiddle pattern TEASPOONS. Exeter 1869. £50-80
465. A Georgian silver MOTE SPOON. £40-60
466. A pair of Walker & Hall electroplated SCISSORS with chased decoration, cased. £50-80
467. A plated Fish Slice, Napkin Ring, Sugar Bows, Hip Flask and 2 Skewers. £20-30
468. A George V pierced oval CAKE BASKET with gadrooned rim and swingover handle supported on 4 hoof feet. Makers JD & WD Sheffield 1930. 12oz. £150-200
469. A silver handled LETTER KNIFE. £25-40
470. A George III silver half pint pot-bellied MUG, with leaf capped scroll handle. Maker John Denziloe. London 1774. 8oz. £200-300
471. An engine turned silver ASHTRAY. Birmingham 1935. £20-30
472. A Victorian silver circular BOWL, foliate chasing, 3.1/2" dia. Maker HA. Sheffield 1894. £40-60
473. A pair of Victorian silver Apostle SUGAR NIPS and a Victorian silver THIMBLE. £20-30
474. A Victorian chased silver VESTA CASE. Birmingham Assay. £20-30
475. A Victorian plain silver VESTA CASE. Chester 1896. £20-30
476. A MAGNIFYING GLASS, silver handle and rim, London assay.
477. A George V silver 3-piece TEASET of compressed circular form. Birmingham 1923. 21oz all in. £100-150
478. An Edwardian silver FRUIT KNIFE, mother of pearl handled. Sheffield 1905. £25-40



479. A Mappin & Webb silver Claret JUG TOP.
480. A 4½" diameter silver BOWL. Maker Goldsmiths & Silversmiths Co Ltd. London 1916. 4oz. £60-80
481. A glass INKWELL, silver banded. Birmingham assay. £25-40
482. A Victorian CLARET JUG the cast silver mount having lion and shield thumbpiece, satyr mask spout, band of vine entwined cherubs, scroll handle and floral band, the body being traditional Stourbridge wheel-cut decoration. Maker FE. Birmingham 1874. 11". See illustration on centre pages. £1000-1500
483. A George III silver CREAMER. Maker GH London, 1773. (Handle 1797) 2oz. £50-80
484. An Art Nouveau silver BOWL. Sheffield 1882. £40-60
485. A George V silver easel photograph FRAME. Birmingham 1918. £20-30
486. An Elkington electroplate circular BOWL. £40-60
487. An electroplate octafoil DISH with swing handle. £30-40
488. An electroplate oval ENTREE DISH, beaded rim. £50-80
489. An electroplate circular ENTREE DISH, beaded rim. £30-40
490. A large 19thC electroplate 2 handled TRAY, gadrooned pie crust edge. £100-150
491. A 19th century plated LOVING CUP with heraldic crest £30-50
492. A Walker & Hall oval electro plate CAKE BASKET, pierced and fluted, with twist swing handle £50-80
493. A Victorian electro plate 4 piece TEASET, repoussé designs on matted panels £120-180
494. A pair of electro plate rectangular ENTREE DISHES, gadrooned borders, square handles £100-150
495. 3 Engine turned silver CIGARETTE CASES £30-50
496. An Elkington plated FISH SLICE, Crumb Scoop and 2 Spoons £40-60
497. Silver MUSTARD, 2 Silver PEPPERETTES and 2 plated SALTS £50-80
498. A Mexican cased engine turned CIGARETTE CASE, stamped 900 £25-40
499. A George V silver TROPHY, 2 Scroll handles, Presentation inscription, Birmingham 1923 £40-70
500. A pair of George III silver FRUIT SPOONS, bright cut handles, gilded and embossed bowls. London 1791 £50-80

## PICTURES

501. After Francis Grant. Sir Richard Sutton and the Quorn Hounds, colour engraving by F Bromley, Published 1855. £250-350
502. Pair gilt framed colour prints of young ladies. £60-80
503. Elizabeth Sharp. Autumn Mornings, hunting scene, oil on canvas, signed. 20" x 30", gilt frame. £450-550
504. English School 19thC. Huntsmen and hounds, oil on canvas, 8" x 16", gilt plaster frame. £80-120

505. After Blinks, 3 colour Hunting Prints, rosewood framed. £50-80
506. Dutch School. 3 figures playing chess, oil on tin. 7" x 6". £150-250
507. S J Nash. Canterbury Cathedral, watercolour, signed. 13" x 10", gilt framed. £80-120
508. ERAubin. Anne Hathaway's Cottage, watercolour, signed and dated July 1930. 10" x 14", titled mount. £100-150
509. After G Morland. Print of fighting dogs. £30-40
510. Fermar (Attrib). Langley Mill, Notts, watercolour. 10" x 17". £60-90
511. A gilt framed oleograph of a young lady. £20-30
512. A small oil on board Coastal Cottage Scene. £20-30
513. A Row of Thatched Cottages, watercolour, initialled OPRQ 1934. 7" x 9". £25-40
514. Haymaking Scene, watercolour, initialled AB '08. 9" x 7". £30-40
515. W J Boddy. Salisbury Cathedral, brown wash, signed and dated 1896. 10" x 7". £50-80
516. A pen and ink sketch of Westminster Abbey and colour print Madance Adelaide. £25-40
517. J Moody. Bird of Prey with fish, watercolour, signed. 13" x 18". £30-40
518. A lithograph of London Bridge and an etching of The Guildhall, Totnes. £30-50
519. Parisian School. 19thC watercolour of a street market. 3" x 3". £150-200
520. A watercolour of 2 DUCKS. £30-50
521. A pair of SILHOUETTES in simulated rosewood frames. £80-100
522. A coloured print - Pin Money. £30-40
523. A Harbour Scene, oil, monogrammed WCR. £20-30
524. A pair of colour engravings of Fountain's Abbey. £80-100
525. W Wray. A wooded landscape, watercolour, signed, 10" x 14". £30-50
526. A pair of 18thC colour engravings of Scarborough. £60-80
527. A Victorian pastel of a young lady, oval gilt framed. £40-60
528. A coloured engraving of a Dustman, eglomise mount. £30-40
529. G Hall. Huntsmen and hounds, oil on canvas, signed. 20" x 24". £50-80
530. A coloured mezzotint of George III. £70-90
531. F C Koenig. A rowing boat on a lake, watercolour, signed and dated '27. £25-40
532. Print of a Dog, pollard effect frame. £20-30
533. A pair of oak framed monochrome Cattle Prints. £20-40
534. A Victorian gilt framed TAPESTRY, a drinking scene by a wellhead, and 2 other tapestries, framed £80-120
535. A pair of oak framed oils of swans. £30-50
536. A gilt framed oil of Highland Cattle. 20" x 28", signed. £50-70
537. A coloured steel Engraving of Bruxelles, c. 1870. £35-50



538. A coloured steel Engraving of Carlsbad, c.1870. £35-50
539. A Laughing Cavalier Print.
540. A PEARS PRINT, children playing on a gate, oak framed. £40-60
541. J W Hepple. Lady walking along a continental foothill path. £100-150
542. A pair of Victorian MIRROR PICTURES printed with bowls of flowers, gilt and velvet frames. £80-120
543. E Moss. Landscape with sheep, watercolour, signed and dated 1909. 20" x 10", gilt frame. £25-40
544. English School. Sailing ship running aground, oil on canvas, 8" x 12", 19thC. £40-60
545. A small watercolour of a Bridge, gilt framed. £30-40
546. Oil on board. Cottage in a landscape, signed. 10½" x 14½".
547. Fred Merriman. On the Trent, oil on canvas, signed 18" x 32", gilt framed £80-120
548. After Boucher. Two engravings. £80-120
549. A set of 4 'brown wash' landscape Prints, framed. £80-120
550. Three 19thC colour engravings of Deer.
551. Four 19thC colour engravings of Architecture.
552. A Bartolozzi engraving after Gainsborough. Duport dated 1791 of William Pitt as Chancellor £100-150
553. A G Asprey. Looking over Broadway in the Cotswolds, watercolour, signed. 19" x 24". £150-200
554. P Signac (Attrib). Hillside Village, watercolour and pencil, signed and dated '31. 3.1/2" x 5.1/2". £150-200
555. A 19thC watercolour of a Ship Wreck. 11" x 15". £80-120
556. J Kip. Colour engraving of Grimsthorpe Castle, c.1709. £120-180
557. W Burgess. Colour engraving of Tydd St Mary Church, c.1885. £100-150
558. W Burgess. Colour engraving of Leverington Church, 1885. £100-150
559. Adrienne Lester. Black and White Cats, oil on canvas, signed. 14" x 20". £100-150
560. Still Life of flowers in a vase, oil on canvas. 4' x 3'. £700-900
561. Garstin Cox. Evening Glow, oil on board, signed, 10" x 12", moulded frame. £400-600
562. Garstin Cox. P\*\*\* Beach, oil on board, signed, 10" x 12", moulded frame. £400-600
563. W Edwin Tindall. Landscape with cottages, Stream and Bridge, oil on canvas, signed and dated '84. 12" x 18", moulded and glazed gilt frame. £250-400
564. Sir William Russell Flint. Waves, a colour print signed in pencil. 18" x 24", framed. £400-600
565. C Harrington. River landscape with figures, watercolour signed, 10" x 13", modern gilt frame. £400-600
566. Arthur Perigal RSA (1816-1889). Boatyard on a loch, oil on canvas, 15" x 24", signed, label verso marked Arthur Perigal, RSA, 7 Oxford Terrace, Edinburgh. See illustration on centre pages. £2000-3000

567. E Ellis. Heavy horse and figures travelling by a stream through heather rich countryside to a nearby settlement, watercolour, signed, 22" x 32". £400-600
568. Francis Augustus Silva (1835-1886). An American Shore Scene, oil on canvas, 17" x 26", signed and dated '83. See illustration on rear cover. £8000-12000
569. E. J. Frere. The Art Critics, oil on canvas, signed, 15" x 12" reeded gilt plaster frame. See illustration on centre pages £1800-2500
570. Edward John Cobbett RA (Attrib) Haymaking Landscape oil on canvas, 17" x 27". See illustration on centre pages £800-1200
571. English School 19thC. Three Dogs, oil on canvas, 12" square. £200-300
572. W Prater. The Gannel, near Newquay, watercolour, signed. 12" x 20". £25-40
573. David Cox. A rural Church in landscape, watercolour, signed and dated 1895. 6½" x 9½". £300-500
575. G Ellesby. Village Street Scene, oil on board, signed and dated '30. 12" x 18". £30-50
576. P MacGregor Wilson RSW. The Sound of the Mull, watercolour, signed. 7" x 10". £100-150
577. Mary Dudding. A collection of 9 landscape oils on board.
578. A View of Lowestoft, watercolour, initialled T H and dated 1868. 13" x 20". £50-80
579. John Coster Webb. Colour proof engraving, signed in pencil £50-70
580. John Coster Webb. Colour proof engraving, signed in pencil £50-70
581. John Coster Webb. Colour proof engraving, signed in pencil £50-70
582. A watercolour of a Rickshaw and other scenes, in single frame £30-40
583. Sketch of a House and Last Supper print
584. Engraving of Wyndham Church
585. A multiscene frame of 19thC paintings on Mica £35-45
586. E. Penstone RA. Peasant girl with a wheatsheaf Watercolour, signed and dated 1877 8½" x 5" £150-200
587. Al\*\* Green. A Terrier with bird and artists brushes, oil on canvas, signed 20" x 24"
588. After Millais. 3 children on a bench, oil on canvas 18" x 24" gilt framed £100-150
- 689-644 Spare Lots.

## CARPETS

645. A Persian Tabriz CARPET (3.04m x 1.94m) £300-400
646. A small Persian Sharaz RUG. £80-120
647. A Persian Karajeh RUNNER (3.05m x 1.05m) £150-200
648. A Hamadan RUG (1.55m x 1.05m). £100-150
649. A Northwest Persian RUNNER (2.80m x 1.05m) £150-200
650. A Turkman RUG. £150-200

## FURNITURE

651. An oak TOWEL RAIL.
652. A Victorian ash and elm GRANDMOTHER CHAIR. £50-80



653. An 18thC oak 2 panel HALL CHEST. £280-350
654. A Regency mahogany WRITING DESK, galleried shape top, taper turned supports, brass castors. £250-400
655. A William IV Mahogany bowback LIBRARY CHAIR with reeded front legs £500-800
656. A George III ash and elm STOOL with oval top £25-40
657. A pair of 19thC giltwood BEDROOM CHAIRS. £50-80
658. A George III oak and mahogany bowfront CORNER CUPBOARD, dentil inlaid cornice, shell inlaid doors. £400-600
659. An early 18thC oak WALL CUPBOARD, 2 fielded panel doors. £250-350
660. A Victorian balloonback KITCHEN CHAIR. £25-40
661. A CONVERSATION SEAT upholstered in green velvet. £100-150
662. A 19thC scroll arm RECLINING ARMCHAIR, green sculptured dralon upholstery. £100-150
663. An early 19thC stripped pine D-front cupboard. £180-250
664. A Georgian elm BLANKET BOX. £40-60
665. An oak TEA TROLLEY. £150-200
666. An Edwardian galleried CHAISE LONGUE. £150-200
667. An 18th/18thC Spanish walnut HALL CHAIR, leather upholstery. £150-200
668. An oak drawleaf DINING TABLE with carved bulbous legs. £100-150
669. A barleytwist oak DINNER GONG. £60-80
670. A Georgian elm MULE CHEST, swan neck handles, bracket feet. £180-250
671. An Art Deco walnut BUREAU with cabriole legs. £120-150
672. An Edwardian CORNER CHAIR. £50-70
673. A circular STOOL with padfeet. £30-50
674. Two 19thC rush seated spindleback CHAIRS. £75-100
675. A fine Victorian bamboo octagonal OCCASIONAL TABLE. £120-150
676. A pair of George III elm COUNTRY CHAIRS. £120-150
677. An oak CUPBOARD BASE. £25-40
678. A 19thC mahogany D-shape SIDE TABLE, leather top, square taper legs. £100-150
679. A mahogany STANDARD LAMP with twist column. £30-50
680. A Victorian mahogany bowfront COMMODORE CHEST, knob handle, splay feet. £150-200
681. A pair of wrought iron GARDEN CHAIRS. £70-100
682. A Georgian style upholstered WING ARMCHAIR. £120-180
683. An Edwardian PIANO STOOL £20-30
684. A mahogany cased overstrung UPRIGHT PIANO. £150-200
685. A Victorian rosewood rise and fall circular PIANO STOOL, tripod base, scroll feet. £100-150

686. A Victorian rosewood rise and fall circular PIANO STOOL, circular base, scroll feet. £100-150
687. A 19thC. rosewood cased GRAND PIANO by ERARD. £800-1200
688. A bird's eye maple framed WALL MIRROR. £25-40
689. An oval mahogany WALL MIRROR. £20-40
690. An Edwardian walnut WALL MIRROR, swan neck pediment. 26". £60-80
691. An unusual Continental painted gesso CARVED PANEL of a robed lady with angelic masks, probably 17thC. £400-600
692. A fine Victorian inlaid light ash BEDROOM SUITE comprising triple wardrobe, dressing table, marble top washstand, pot cupboard, towel rail, double bed and chair £600-900
693. A George III BUREAU, the fall flap concealing pigeon holes and drawers, over 2 short and 3 long graduated drawers, brass swing handles, bracket feet. 38". £500-700
694. A Victorian flamed mahogany TRIPLE WARDROBE COMPACTUM with arch doors. £250-350
695. An Edwardian telescopic brass STANDARD LAMP with wrythen column, circular base with ball feet £80-120
696. A Victorian ash and elm SMOKER'S BOW CHAIR £100-150
697. A set of 4 Jacobean style barleytwist oak DINING CHAIRS with cane seats, 19th century £350-450
698. A Jacobean style barleytwist oak CARVER CHAIR with lion and shield cresting rail, vine carved splat, lion mask arms, 19th century, matching previous lot £200-300
699. A Barleytwist oak gateleg DINING TABLE £100-150
700. A Jacobean style oak BUFFET, carved grotesque back, moulded top, 2 drawers on heavy barleytwist legs 60" wide £400-600
701. A Victorian walnut framed double scroll end SOFA, stripped for re-upholstery £400-600
702. An iron CHANDELIER £80-100
703. A 19th century French rococo giltwood and mirrored HANGING CORNER ETAGERE
704. A George III Mahogany fretwork rectangular STOOL with drop in seat £500-700
705. A Heal's Chippendale design mahogany single 4 POSTER BED, with drapes £750-1000
706. A Walnut CHEST on CHEST, 18th century and later. See illustration on centre pages £2500-3000
707. A George III mahogany TABLE MIRROR, 3 drawers, ogee feet £120-180
708. A 19th century Venetian WALL MIRROR 40" high £500-700
709. A 19thC mahogany CHEVAL MIRROR, oval glass, urn top supports, splay feet, with brass paws and castors. £400-600
710. A mahogany DISPLAY CASE with gothic astragal door. 64" high x 15" wide. £80-120



711. A Georgian style flamed mahogany PARTNER'S DESK. 63" x 39". £300-500
712. A pair of Victorian oak bowback CARVER CHAIRS with leather upholstery. £120-180
713. A 19thC Chinese carved hardwood 4-fold SCREEN, c.6'. £180-250
714. A Victorian mahogany wind-out DINING TABLE, moulded top, with 2 extra leaves, part reeded legs. 84" x 42" max. £1000-1500
715. A set of 6 Victorian mahogany balloon back DINING CHAIRS, pierced backs, octagonal front legs, blue floral upholstery (AF). £400-600
716. A Victorian pollard oak TEAPOY, fitted moulded top on octagonal taper pillar, quatrefoil base, carved ball feet. See illustration on centre pages. £350-500
717. A Jacobean style oak DRESSER BASE, 2 moulded panel frieze drawers, 3 turned baluster front legs, plain stretchers. 72" wide. £350-500
718. An oak D-front SIDE CABINET, 2 drawers flanked by 2 convex doors. £250-350
719. A 3-PIECE SUITE with carved mahogany frame, green dralon upholstery. £400-600
720. A 17thC carved oak 3-panel COFFER. £300-400
721. A Restoration period oak carved and barleytwist CARVER CHAIR. £400-500
722. A set of Victorian mahogany balloonback DINING CHAIRS, turned front legs. £400-500
723. An early Victorian rosewood BREAKFAST TABLE, circular tilt-top, octagonal taper pillar, circular base and paw feet. 4' diameter. See illustration on centre pages. £800-1000
724. A Victorian walnut CARD TABLE, the 1/4 veneered shaped folding top over a scroll carved basket base. See illustration on centre pages. £500-800
725. A Queen Anne style walnut DINING SUITE comprising 6 chairs (inc 2 carvers), extending dining table and serpentine sideboard. £500-800
726. A Georgian oak gateleg DINING TABLE, 59" x 42". £200-300
727. A set of 6 Carolean style oak DINING CHAIRS (inc 2 carvers) bergere and rondel backs and carved crown cresting rail. £350-450
728. A 17thC oak CRICKET TABLE. £350-450
729. A Victorian mahogany scroll ARMCHAIR, green dralon upholstery. £100-150
730. A 19thC mahogany CARVER CHAIR in the Chippendale manner with pierced ladderback. £150-250
731. A Victorian 2 seater SOFA with double drop-arm, green button dralon. £100-150
732. An early 19thC mahogany PEMBROKE TABLE, moulded top, frieze drawer and turned legs. £200-300
733. A Victorian satinwood PRIE DIEU CHAIR with barleytwist columns and legs, stamped C Hindley & Sons. £150-200

734. A 19thC mahogany SOFA TABLE, ebony strung moulded top, 2 frieze drawers, Prince of Wales' feathers handles, lyre supports, turned stretcher, splay legs, brass paws and castors. £300-400
736. A Victorian walnut DAVENPORT, barleytwist legs, 4 drawers opening, 4 dummy drawers, pen drawer. £900-1200
737. A Charles II oak GATELEG TABLE, shaped gate stretchers, bobbin turned legs, frieze drawer. 42" x 37". See illustration on centre pages. £800-1200
738. A pair of late 17thC oak splatback HALL CHAIRS, turned front legs. See illustration on centre pages. £300-400
739. A fine Queen Anne style walnut veneer DINING ROOM SUITE comprising extending dining table, 6 chairs (inc 2 carvers), serpentine sideboard, cocktail cabinet on stand, 2 door glazed display cabinet on stand. £1200-1800
740. A Sheraton style mahogany kidney shape DRESSING TABLE with shield mirror, 3 shaped frieze drawers, X supports. £300-400
741. A Regency mahogany SOFA, green/red stripe upholstery, scroll arms, 3 turned front legs. £600-800
742. A George III mahogany folding rectangular CARD TABLE, the crossbanded top inlaid with an oval panel, on tapering panel column and quatrefoil base, on scroll feet with brass toes and castors, 36". £500-700
743. An early 19thC French giltwood SOFA, green floral stripe upholstery, guilloche frieze, fluted front legs. £400-600
744. A fine Georgian oak DRESSER BASE, moulded 2 plank top, 3 frieze drawers, solid brass backplate loop handles, shaped apron, cabriole legs with pad feet. 81". See illustration on centre pages. £2500-3500
745. A fine George III flamed mahogany BUFFET, the 2 satinwood banded doors enclosing drawers and slides, square taper legs, 40" wide. See illustration on centre pages. £1200-1800
746. A George III flamed mahogany hanging CORNER CUPBOARD, the 2 bowfront doors inlaid with Britannia, 43" high. £600-800
747. A Flemish style carved oak and glazed DISPLAY CABINET, c.6'3" high, 32" wide. See illustration on centre pages. £1200-1800
748. A fine pair of mid 19thC French giltwood CONSOLE TABLES, demi-lune green marble tops (1AF), reeded frieze and legs with swag decoration. 30" wide. £800-1000
749. A Victorian walnut spoonback OPEN ARMCHAIR. £300-400
750. A 19thC. Vincenza stone GARDEN STATUE, depicting Mars, on an integral plinth. 70" high. £5000-8000
751. A 19thC mahogany swing TABLE MIRROR turned supports. £100-150
752. A turquoise ground chinoiserie RECORD CABINET, 1920's. £280-350
753. A Victorian mahogany WARDROBE.
755. A 17thC oak single STUMP BED, the headboard carved with the initials A W E dated 1653. £1500-2000

END OF SALE





Established 1900

**-GOLDINGS-**

• Fine Art Auctioneers & Valuers •

THE GRANTHAM AUCTION ROOMS

Golding Young & Co  
Telephone: (01476) 65118

Old Wharf Road, Grantham, Lincs NG31 7AA  
Fax: (01476) 61475

## **GOLDINGS STAMFORD ANTIQUES ROADSHOW**

Our Principal Valuer and Auctioneer Colin Young F.N.A.V.A. will be available at our weekly Antiques Valuation Day to appraise your items.

This will provide you access to not only an International Market of buyers for higher value Works of Art, but also the quick turnaround that our Weekly Antique & Modern Auctions in Grantham provide.

Items suitable for the Weekly Sale deposited on a Friday would be sold the following Wednesday with payment the next Friday.

Selling by Auction in 7 days provides the quickest and most efficient way of selling in the area.

For more unusual or higher value lots allocation to one of our Regular Specialist Sales may be more appropriate.

Our Valuation Team, headed by Mr Young, comprises experts and consultants with an up-to-date working knowledge of:

- |             |             |           |
|-------------|-------------|-----------|
| ★ Furniture | ★ Paintings | ★ Silver  |
| ★ Ceramics  | ★ Clocks    | ★ Glass   |
| ★ Book      | ★ Jewellery | ★ Bygones |

and an increasingly diverse field of Collectors' Items.

*For less portable items, such as furniture or large collections, either bring along a photograph or ask for our Valuer to visit your home, without charge or obligation to sell.*

### **STAMFORD VALUATION OFFICE:**

4, Ironmonger Street, Stamford, Lincs PE9 1PL  
(Paul Johnson Property Consultants)

Telephone: (0378) 215134 - Every Friday 9.30 am to 1 pm

# COMMISSION BID FORM

LOT NO	BRIEF DESCRIPTION	PRICE

Bids are left at the senders risk and are accepted subject to our Conditions of Sale.

NAME: .....

ADDRESS: .....

.....

.....

.....

TEL: .....

SIGNATURE: .....

SALE DATE: .....

Lots will be purchased at the lowest price as permitted by other bids or reserves.

Prospective purchasers should contact the Auction Rooms after the sale and if successful, the item(s) purchased must be collected and paid for within two days of the sale.

A Buyers Premium of 10% + VAT will be levied on the hammer price, to all purchasers.



## MAILING REGISTER SUBSCRIPTION FORM

If you wish to receive our Auction catalogues and detail sheets for one year, please complete and return this form.

### 1. Antiques & Fine Art Auctions

There are currently planned 5 Sales per annum to include:-

Furniture, Paintings, Prints, Glass, Ceramics, Toys, Silver, Clocks, Watches, Jewellery, Metalware, Stamps, Coins, Books, Arms & Militaria, Bygones, Barometers, Collectors Items, etc.

### 2. Commercial & Agricultural Auctions

Frequency of Sales determined by instructions from The High and County Courts, Liquidators and Receivers, and private individuals/companies.

Office Equipment, Catering Equipment, Engineering Equipment, Industrial Plant & Machinery, Live & Dead Farming Stock, Retail/Wholesale Shop Stock and Fittings, Vehicles; – Assets of a variety of Businesses.

### 3. Specific Requirements

If you specialise in one area of the above categories (eg. *Books*) please state this to avoid receiving unwanted catalogues.

.....

-----

1. Antiques & Fine Art. (£10) £.....

2. Commercial & Agricultural Auctions. (£5) £.....

Fee enclosed £..... Total

Name: Mr/Mrs/Miss/Title .....

Address: .....

.....

.....

.....

Tel: (.....) ..... Date: ..... Our Ref: \*ML .....

### JAMES CAMPBELL (c.1825-1893)

Campbell exhibited a painting at the Society of British Artists in 1855. Priced £10.10s the work illustrated below was entitled: "THE LOLLIPOP".



Some 140 years later it was discovered by our Auctioneer in a mid-terrace property in Grantham. In 1995 it was sold in The Grantham Auction Rooms for

**£15,000**



Established 1900

**-GOLDINGS-**

**THE GRANTHAM AUCTION ROOMS**

Golding Young & Co  
Telephone: (01476) 65118

• Fine Art Auctioneers & Valuers •

Old Wharf Road, Grantham, Lincs NG31 7AA  
Fax: (01476) 61475



We are pleased to recommend

**Lowes Removals**



— Removals - Fine Art Carriers —  
Local & Long Distance

Andrew Lowes

15 Webster Way, Gonerby Hill Foot,  
Grantham, Lincs., NG31 8GH  
Telephone: 01476 65194

PRINTED BY W. G. HARRISON LTD., DYSART ROAD, GRANTHAM  
TELEPHONE: (01476) 62700

Established 1900

# — GOLDINGS —

Chartered Surveyors, Auctioneers, Valuers & Estate Agents  
Residential, Commercial, Agricultural, Property Management, Financial Services

45 High Street, Grantham, NG31 6NE

Telephone: 01476 · 590211

## PROFESSIONAL SERVICES FOR



### RESIDENTIAL

---

Our established Residential department headed by Chartered Surveyors undertakes sale and valuation of all types of property from Castles to Town Houses; Surveys, Homebuyers Reports, Mortgage, Probate and Insurance Valuations carried out with care attending to individual requirements.



### COMMERCIAL

---

Dealing with the sale and survey of Shops, Offices and Factories. Valuation for Rent Reviews, Lease renewals and negotiations. Rent Arbitration, on behalf of landlord and tenant.

*Plant, Machinery & Assets*; Sales for Receivers, Liquidators, High Court & County Court. Auction Sales on Site or at The Grantham Auction Rooms for private and public clients alike.



### AGRICULTURAL

---

Our Senior Partner has wide experience in the sale and valuation of Agricultural Properties, conducting Farm Sales and Valuation of Live and Dead Farming Stock for dissolution, Probate and other matters. Together with Rent Reviews, Development Land reports and Annual Stocktaking Valuations.



### FINANCIAL SERVICES

---

Our Experienced Consultant is available to advise on all matters concerning Finance, Mortgages, Insurance, Investment, Planning and Pensions.



### PROPERTY MANAGEMENT

---

Personal service and attention to detail ensures that our management team exploits your investment portfolio whether an Individual Family Home let for a small fee or Office, Factory, Shop or Farm with rent collected and regular inspections made.

#### Chattels Auctioneer

Colin R. Young FNAVA

#### Property Management

Mrs. Margaret Pashley

#### Partners

C. Robin Hall FRICS FAAV

Ian J. Shaw FRICS FNAEA

#### Financial Service Consultant

John G. Stukins

#### Residential Sales Manager

Mrs. Jenny Diment FNAEA CPEA



Established 1900

**-GOLDINGS-**

**THE GRANTHAM AUCTION ROOMS**



Francis Augustus Silva (1835-1886)  
American Shore Scene, oil on canvas, 17" x 26"  
signed & dated '83

**Estimate £8,000 - £12,000**

**THE COMPLETE AUCTION SERVICE**

Auction Sales of Antiques, Fine Art, Collectables, Modern Furniture & Effects – Office, Shop & Catering Equipment  
Vehicles – Plant & Agricultural Machinery – Stock-in-Trade – Business Assets – Liquidations & Receiverships  
VALUATIONS undertaken for Insurance, Probate, Family Division and Sale purposes. Full HOUSE CLEARANCE facilities.