

Established 1900

-GOLDINGS-



AUCTION SALE

OF

Antiques



THE GRANTHAM AUCTION ROOMS



## CONDITIONS OF SALE

1. The highest bidder shall be the buyer. The Auctioneers reserve the right of regulating the biddings; of rejecting any bid; and of bidding for, withdrawing, consolidating, dividing or altering the order of lots.
2. The purchase money for each lot with the usual commission of 10% plus VAT at the current rate shall be paid at the fall of the hammer (if required). Each lot at the fall of the hammer shall be at the sole risk and expense of the buyer, and shall be paid for and removed immediately after the conclusion of the sale, *but no lot shall become the property of the buyer, or be removable until paid for*, and if taken away in contravention of these conditions without an order for removal signed by the Auctioneers, they shall have power to seize the same by their servants or agents, or otherwise, or the Auctioneers may recover either the lot sold or the price thereof (at their option) by action at law.
3. No contra account of any description whatever will be allowed to the buyer as a set off, and payment for each Lot shall be made to the Auctioneers or their clerk only, and a buyer paying by cheque must give satisfactory references (if required).
4. For all purposes of this sale the Clerk of the Auctioneers shall be deemed to be the agent of both seller and buyer.
5. A bidder shall not be allowed to retract his bidding after the fall of the hammer, and he shall give up his full name and address if required. The Auctioneers will not recognise the transfer of any lot from one buyer to another, nor make any alteration in the sale book in respect thereof.
6. The Auctioneers are acting only as agents, and give no personal warranty as to the condition, quality or authenticity of any chattels offered for Auction. Any catalogue description is given merely as guide to purchasers, any description can be changed from the rostrum before the lot is sold. If a purchaser buys without previous inspection he will do so at his own risk.
7. Notwithstanding any other terms in these Conditions, if within 7 days of the sale a purchaser gives notice in writing that a lot is a deliberate forgery, with supporting factual evidence, the Auctioneers may rescind the transaction. The burden of factual proof lies with purchaser, mere opinions will not satisfy. This benefit is not assignable.
8. If any buyer neglect or refuse to comply with the above conditions or any of them, his deposit money (if any) shall be forfeited, and the lot uncleared may, at the option of the Auctioneers, be resold without notice by public auction or private contract, and any loss occasioned by such re-sale together with all expenses attendant thereon, or arising under these conditions shall be paid for by the defaulter at this sale and be recoverable as and for liquidated damages. This condition is however without prejudice to the right of the Auctioneers to enforce the contract made at this sale if they think fit.
9. Any Notes for Purchasers and catalogue Glossaries, where used, will be construed as Conditions of Sale.
10. The Auctioneers shall be the sole Arbitrators in all matters of dispute relating to these conditions both as between the seller and the buyer and between the several bidders and buyers and their determination on all matters shall be final and binding on all parties concerned.

Auctioneers: C. Robin Hall FRICS FAAV & Colin R. Young FNAVA



**Combined Catalogue  
for a two day sale in which**

Messrs.

**-GOLDINGS-**

will sell by Auction

**ANTIQUE & MODERN  
JEWELLERY, SILVER  
WATCHES & BIJOUTERIE**

on St Valentine's Evening  
Monday 14th February, 1994 at 6.30pm

**ANTIQUE & LATER  
FURNITURE, PICTURES, GLASS, CERAMICS,  
ARCHITECTURAL & COLLECTORS ITEMS**

on Wednesday 16th February, 1994 at 10.00am

Both sales will be held at

**THE GRANTHAM AUCTION ROOMS**

Old Wharf Road, Grantham, Lincolnshire NG31 7AA

Telephone: (0476) 65118 Fax: (0476) 590998

Viewing Times:

Sunday 13th: 2pm to 4pm  
Monday 14th: 2pm to 6pm  
Tuesday 15th: 1pm to 7pm  
Wednesday 16th: 9am to 10am

Cover Illustration: Lot 175

## IMPORTANT NOTES FOR PURCHASERS

1. **PAYMENT:** Must be made in full immediately after the Auction. The following methods of payment are acceptable.  
a) Cash   b) Bankers Draft   c) Building Society Cheque  
d) Cheques, accompanied by a valid card. For accounts above the stated card limit, we reserve the right to retain the goods until clearance is established.
2. **BUYERS PREMIUM:** of 10% + VAT is payable on all lots.
3. **REMOVAL OF PURCHASES:** Goods must be collected as soon as they are paid for, and in the Two Working Days following the sale. If goods are not collected on these days we reserve the right to charge £1 per lot per day thereafter.
4. **COMMISSION BIDS:** If you are unable to attend this or any of our future sales we will be pleased to bid on your behalf. We always purchase at the lowest possible price, subject to other bids and reserves.  
  
All bids must be handed to the office on an official form. It remains the responsibility of prospective purchasers to contact GOLDINGS to confirm whether their bids have been successful.
5. **TELEPHONE BIDS:** There are inherent dangers with this practice, therefore all such arrangements are made entirely at the bidder's risk. Telephone bids will only be accepted if the lower catalogue estimate is £500 or above. For lots with a lower estimate below this figure Commission Bids Only will be accepted.
5. **SMOKING:** is not permitted in any part of the Saleroom.
6. **REFRESHMENTS:** will be available Saleday.
7. **ACCOUNT TRANSFERS:** will not be recognised after the sale. If any lots are purchased for another person, this must be declared at the fall of the hammer.

## GLOSSARY

- a) Generally: '*As Found.*' (AF). This term indicates the lot has some damage. Its absence does not indicate that the lot is free of defect. All lots are SOLD AS SEEN.
- b) Paintings: '*Signed, initialled, monogrammed.*' This refers to the present state of the work and is not an attribution.
- c) Books and printed matter: These items are not sold subject to collation and are not returnable once removed from the premises.
- d) Silver & Jewellery: Weights given are approximations given by basic instruments.
- e) Estimates: For intending purchasers we include in this catalogue the Auctioneers opinion of value. If no figures are given the value is less than £20.



## DAY ONE

St. Valentines Evening

Monday 14th February at 6.30pm

## JEWELLERY, WATCHES & BIJOUTERIE

1. A Victorian Rosecut Diamond Set and Enamel Foliate Scroll PENDANT NECKLET. Weight 6.7gms £150-200
2. An Edwardian 18ct Gold Diamond Set RING. £20-30
3. A fine pair of Edwardian 15ct Gold SCARF CLIPS in original presentation case, by Brook & Son, Edinburgh. Weight 3.0gms. £20-40
4. A Modern 18ct Gold Wishbone half ETERNITY RING, set brilliant cut Diamonds weighing approx. 0.40cts in total. £250-300
5. A Modern Blue Topaz and Diamond 9ct Gold drop PENDANT NECKLET. £150-180
6. A 18ct Gold TWO STONE RING, the brilliant cut Diamonds weighing approx. 0.06cts in total. £70-90
7. A 9ct White Gold 'Valentine Heart' PENDANT NECKLET, set single Diamond. £20-30
8. A Victorian Amethyst and Seed Pearl 9ct Gold brooch. (faults) £50-70
9. A Gold twist and curb fancy link NECKLET, weighing 5.5gms. £70-90
10. An Victorian Rosecut Diamond and Ruby set star Rose Gold BAR BROOCH. £70-90
11. An Edwardian 18ct Gold Ruby and Diamond set RING. Chester 1906. £70-90



Left to right, Top, Lots 35, 131 and 91.  
Bottom, Lots 17, 34 and 82.



12. A Seed Pearl and Coral 9ct Gold Dress RING £40-60
13. A late Victorian Turquoise set 9ct Gold RING. £40-60
14. A Victorian 15ct Gold RING, set Rubies and Pearls. £70-90
15. An Edwardian 18ct Gold RING, set Sapphires and Rosecut Diamonds. £70-90.
16. **A Modern 18ct White Gold half Eternity Ring**, set graduated brilliant cut Diamonds weighing approx 0.90 cts in total. **£300-350**
17. **An 18ct Gold two row Diamond and Emerald RING.** See *Illustration on page 3.* **£375-450**
18. A Platinum three stone Diamond RING, the brilliant cut Diamonds weighing approx 0.30cts in total. £80-100
19. A modern 18ct Gold CLUSTER RING, the brilliant cut Diamond bordered by six Sri Lankan Sapphires. £170-200
20. Four 9ct Gold CHARMS. £15-20
21. A Gold DRESS RING, set Amethysts and Seed Pearls. £45-60
22. An 18ct Gold Jockey BROOCH. £25-40
23. An Antique Silver RING. £10-15
24. A Victorian 9ct Gold ring, set five Rubies, Chester 1897. £70-90
25. A 9ct Gold and Coral CHILD'S BRACELET. £15-30
26. An Edwardian 9ct Gold Heart shaped locket, set Photographs of Edward VII and Alexandra of Denmark. £20-30
27. A Victorian 9ct Rose Gold ARTICULATED FOB by W.H. Wilmot, weighing 21.7gms. £80-120
28. A VICTORIAN BROOCH of Cornucopia Form, set Rose Cut Diamonds. £100-150
29. A Gold 'Arts and Crafts' RING, the horizontal Rosecut Diamond set cross amongst vines. £55-70
30. An 18ct Gold Ruby and Diamond set VICTORIAN GYPSY RING. £60-80
31. A Victorian 18ct Gold scroll RING, set Rosecut Diamonds. £70-90
32. A modern 9ct Gold scroll carved DRESS RING, set five Amethysts. £35-50
33. **A VICTORIAN 18ct GOLD RUBY AND DIAMOND CLUSTER RING**, the Burmese Ruby bordered by ten old brilliant cut Diamonds weighing approx 0.40cts in total. **£375-450**
34. **A PLATINUM ART DECO PIERCED RING**, set Diamonds and Sapphire baguettes, the central brilliant cut Diamond of circa 0.30cts. (Faults). See *Illustration on page 3.* **£350-450**
35. **A fine Victorian Diamond set CRUCIFORM PENDANT**, the central old brilliant cut Diamond circa 0.40cts. See *Illustration on page 3.* **£650-800**
36. An 18ct Gold Plated Serpentine NECKLET with Gold Initial M. £30-40
37. A 9ct Gold pierced scrollwork DRESS RING, set Opals and Emeralds. £60-80
38. A Victorian Gold and Platinum CLUSTER RING pavé set with old brilliant cut Diamonds. £60-80
39. A modern 18ct GOLD BAR BROOCH with orchid motif to centre, set Emerald and Rosecut Diamonds. £250-300



40. A Gold open curb LINK BRACELET, weighing 11 gms. £40-50
41. A modern 9ct Gold ARTICULATED BRACELET, set alternating pairs of Opals and Rubies. £120-150
42. A modern 9ct Gold Ruby and Diamond CLUSTER RING. £45-60
43. A modern 9ct Gold Cobra-Link BRACELET, set three small brilliants. £20-30
44. A 9ct Gold open PENDANT, set Seed Pearls and Marquise Garnet on fine trace necklet. £10-20
45. A two colour Gold curb link NECKLET WITH MATCHING BRACELET (2) total weight 21gms. £140-160
46. A modern 9ct Gold loop TIE SLIDE, weighing 4.8gms. £120-130
47. A Victorian 18ct Gold and Platinum LOZENGE RING, set table cut Diamond, inscribed 'Nil Desperandum'. £25-40
48. An 18ct Gold and Platinum SOLITAIRE DIAMOND RING, the brilliant cut Diamond of approx 0.10gms. £30-50
49. Spare Lot.
50. A 9ct Gold GATE BROOCH, weighing 7.7gms. £25-40
51. A modern 9ct Gold "21" Key, 5gms. £15-20
52. A set of 9ct Gold Dress Studs. £10-20
53. An Art Deco 14ct White Gold double drop PENDANT, the oval Onyx panels set with a single brilliant cut DIAMOND, on fine fetter link necklet. £100-150
54. A Victorian Gold double BAR BROOCH set Ruby, Sapphire and Diamond to centre. £60-80
55. A Victorian Gold knife edge BROOCH with central panel set Rosecut Diamonds. £80-100
56. A Victorian 18ct Gold three stone RING, the fine colour Ruby flanked by Sapphires. £70-90
57. An Edwardian 18ct Gold and Platinum 'DAISY' CLUSTER RING, set 8/8 Diamonds. £55-70
58. An Edwardian 18ct Gold Diamond set GYPSY RING. £45-60
59. A Victorian 18ct Gold DRESS RING, set Emerald and Seed Pearls. £65-80
60. A Victorian Gold HORSESHOE RING, the central Rhodolite Garnet bordered by Seed Pearls and Turquoise. £60-80
61. A Victorian 15ct Gold DRESS RING, set Seed Pearl and Turquoise. £40-60
62. An 18ct Gold DRESS RING, set cushion cut green garnet with a trefoil of brilliant cut Diamonds to each shoulder. £55-70
63. A Gold FIVE STONE RING, set Cabochon Opals interspaced by two old-brilliant-cut Diamonds weighing approx 0.22 cts each. £250-350
64. An Edwardian 18ct Gold Sapphire and Diamond set GYPSY RING. £40-60
65. An Edwardian 9ct Gold Garnet and Diamond RING. £50-60
66. A Victorian 9ct Gold pierced BANGLE weighing 15.2gms. £80-100
67. A 9ct Gold PENDANT NECKLET, set Opal bordered by cubic Zirconia and Sapphires. £10-20
68. An 18ct Gold 'Silver and Gold' Pearl RING. £40-60
69. A Black RIBBON FOB with 9ct Rosegold fittings. £30-50



70. A 15ct Gold STICKPIN, finial of Seed Pearl bordered by four Aquamarines. £20-40
71. A pair of 9ct Gold Chainlink CUFFLINKS. £20-30
72. A pair of engine turned 9ct Gold chainlink CUFFLINKS. £20-30
73. Two 9ct Gold STOCK PINS. (2) £15-30
74. A bold Gold Edwardian BROOCH, set Sapphire flanked by two cushion cut Diamonds. £120-150
75. A graduated cultured Pearl NECKLACE. £40-50
- 76. AN EDWARDIAN BEE BROOCH,** set Opal, Rubies, Sapphires and Rosecut Diamonds on knife edge Rosegold bar with a Ruby termination. **£300-350**
77. A three row faceted Garnet NECKLACE, 14ct Gold Gem-set clasp. £120-150
78. A 15ct Gold and base metal Diamond set STICK PIN. £15-25
79. A Gold Victorian FLORAL BROOCH, set Seed Pearls and Turquoise. £55-70
80. A yellow metal portrait BOW BROOCH. £15-25
81. A modern 9ct White Gold RING, the step cut Emerald flanked by two brilliant cut Diamonds of approx 0.06cts each. £50-70
- 82. A GOLD SCROLL CARVED RING,** set Sapphires and brilliant cut Diamonds. *See Illustration on page 3.* **£300-400**
83. A Victorian Gold Navette RING, set Emeralds and Seed Pearls. £150-200
84. A pair of 9ct Gold chainlink CUFFLINKS. £10-20
85. A late Victorian scroll pierced Gold DRESS RING, set Opal flanked by Tourmalines. £55-70
86. An 18ct Gold and Platinum three stone DIAMOND RING. £25-40
- 86A. A Similar lot. £25-40
87. A modern 18ct White Gold PENDANT necklet, the Navette Sapphire within Diamond set scroll mount. £120-150
88. An 18ct Gold BOAT SHAPED RING, set Diamonds and Sapphires. £180-250
- 89. AN EDWARDIAN 9ct GOLD HINGED BANGLE,** the entwined heart motif set brilliant cut Diamonds and Calibre Sapphires. **£250-350**
90. A pair of 18ct Gold Diamond and Sapphire CLUSTER EARSTUDS. £80-100
- 91. A WHITE GOLD DIAMOND SET OPEN HEART PENDANT,** the twelve brilliant cut Diamonds of circa 1.2cts in total. *See Illustration on page 3.* **£650-800**
92. A 9ct Gold VALENTINE CHARM, cupid amongst hearts. 6.5gms. £40-60
93. A 9ct Gold engined turned CARD CASE. 33 gms. £90-120
94. A yellow metal CIGAR CUTTER. £45-60
95. A Victorian 9ct Gold VESTA CASE. £80-120
96. A Victorian Silver pierced scrollwork NURSE'S BUCKLE. £50-70
97. A pair of Sterling Silver NAPKIN RINGS. £10-20
98. A 9ct Gold Diamond and Emerald DRESS RING. £30-50
99. A 9ct Gold Garnet, Seed Pearl and Diamond DRESS RING. £25-40



100. A 9ct Gold SOLITAIRE RING, Diamond set shoulders. £15-25
101. A 9ct Gold scroll-carved DRESS RING, set Turquoise, Pearls, and Diamonds. £35-50
102. A 9ct Gold scroll chased BUCKLE RING. £20-30
103. An Edwardian 18ct Gold GYPSY RING, set Sapphires and Diamonds. £70-90
104. A 9ct Gold SOLITAIRE RING, the brilliant cut Diamond of approx. 0.06cts. £30-50
105. A 9ct Gold CIRCULAR BROOCH. £20-40
106. A 9ct Gold FLORAL PENDANT, cluster set Diamond and Sapphires. £15-20
107. A quantity of Silver Jewellery, including Marcasite set Lizard Brooch, Dolphin Brooch and Art Nouveau Button. (7) £10-20
108. A Silver DOLPHIN BROOCH by Georg Jenson. £35-50
109. A 9ct Gold Garnet cluster DRESS RING and two others. (3) £30-40
110. A 9ct Gold Amethyst Cabochon DRESS RING and two others. (3) £20-30
111. A 9ct Gold Ruby and Opal DRESS RING and one other. (2) £40-50
112. A quantity of lockets, including a Gold hair locket. (6) £40-50
113. A 9ct Gold Diamond and Sapphire Half ETERNITY RING and two others. (3) £20-40
114. A quantity of charms etc., including an Intaglio Chrysoprase in mount. (7) £35-50
115. A 9ct Gold Foxtail link NECKLET. £25-40
116. An Eastern Gold Filigree panel BRACELET. £60-80
117. A Victorian Gold RING, light blue enamel, set Rosecut Diamonds. £30-40
118. A 9ct Gold Gentleman's Diamond set RING and one other. £35-50
119. A quantity of rings including a yellow metal photograph ring and a 14ct Gold 'Love' ring. (4) £15-25
120. An 18ct Gold and Platinum SOLITAIRE RING and two others. (3) £35-50
121. A 9ct Gold Ruby and Diamond CLUSTER RING. £10-20
122. A Gold mounted PENDANT and another (2). £60-80
123. A yellow metal stone set RING. £25-40
124. A Lady's 9ct Gold 'Girard Perregaux' BRACELET WATCH. £60-80
125. A Lady's 9ct Gold 'Elco' WATCH on 'Foxtail' BRACELET. £40-50
- 126. AN 18ct GOLD AND PLATINUM LADY'S ART DECO DRESS WATCH**, The scroll work case set with calibre Emeralds and 8/8 Diamonds. Later 9ct Gold Foxtail Bracelet attached. **£400-500**
127. A Silver hinged BANGLE. £20
128. A 9ct Gold Amethyst and Pearl WISHBONE RING, and three others. (4) £40-50
129. An Edwardian 18ct Gold MARQUISE RING, set five brilliant cut Diamonds. £50-80
130. A 9ct Gold Garnet PENDANT NECKLET. £20-40



131. **A GOLD FOUR STONE DIAMOND RING**, the brilliant cut Diamonds of circa 3cts in total. *See Illustration on page 3.* £2,000–2,500
132. An 18ct Gold and Platinum three stone DIAMOND RING. £120–150
133. A pair of 18ct Gold HOOP EARRINGS. £40–70
134. A pair of yellow metal BROOCHES, one set with Seed Pearls. (2) £10–20
135. A Victorian 9ct Gold BAR BROOCH, set Seed Pearls and a Ruby. £40–60
136. A Victorian 'Arts & Crafts' floral 9ct Gold BROOCH, set Rubies and Pearl. £40–60
137. A Victorian 9ct Gold MEMORIAL BROOCH, set Rubies and Pearl. £40–60
138. A Victorian 15ct Gold STICK PIN, Diamond set. £20–30
139. A Gold 'Fox Head' STOCK PIN, with Rosecut Diamond eyes. £20–30
140. A lady's 9ct Gold WATCH on an expanding bracelet. £80–100
141. A 12ct Gold WEDDING BAND. £20–30
142. A Silver CHATELAINE. £35–50
143. A Gentleman's manual wind Gold cased 'Garrards' STRAP WATCH. £80–100
144. A 9ct Gold, POCKET WATCH, Arabic numerals and subsidiary seconds. £120–150
145. A single row of graduated cultured pearls. £30–50
146. A Victorian Gold textured MUFF CHAIN (as bracelet), with Gold ball charm attached, set with Turquoise. £60–80
147. An 18ct Gold Ring, set with cushion cut Rubies. £35–50
148. A Victorian 12ct Gold DRESS RING, set with five Amethysts. £30–50
149. A Gold target DRESS RING, set Seed Pearls. £30–40
150. An 18ct Gold Garnet and Diamond GYPSY RING, the brilliant cut diamonds of circa 0.10cts each. £150–200
151. A modern 18ct Gold three stone RING, the Oval faceted Ruby flanked by brilliant cut Diamonds of circa 0.06cts each. £150–200
152. An unusual New Zealand 'Green Tiger Eye' BAR BROOCH, Gold mounts. £30–50
153. A Scottish Gold DAGGER BROOCH, carnelian scabbard and citrine pommel. £30–50
154. An 18ct Gold COILED SNAKE RING, set with brilliant cut Diamonds. £180–250
155. An 18ct yellow and white Gold heavy SIGNET RING with applied Armourials to tablet. 20.7gms £120–150
156. A modern 18ct Gold Serpentine link BOLA NECKLET, set with brilliant cut Diamonds. £200–300
157. An 18ct Gold Diamond and Sapphire CLUSTER RING. £200–300
158. An Edwardian 18ct Gold RING, set with brilliant cut Diamonds and fine quality Kashmir Sapphires. £200–300
159. A quantity of simulated pearl necklaces. (6) £20–40
160. A fine carved IVORY BROOCH, having Oriental figures within Chinese Riverside garden, Gold mounted. £60–80
161. A quantity of Fashion Jewellery in Jewel Case. £25–40



162. A Similar lot. £20-30
163. A quantity of Jewellery, including Coral cross and glass bead necklace. (7) £20-30
164. An 1897 South African one shilling piece in Silver Brooch mount. £15-25
165. A quantity of assorted items, including badges and Silver trowel bookmark. £20-30
166. A quantity of Fashion Jewellery, including multi-agate bracelet and cufflinks. £20-30
167. A graduated Ivory Bead NECKLACE. £20-30
168. An Amber Bead NECKLACE. £20-30
169. A quantity of Jewellery, including Jet Brooch and Moonstone Rosary. £20-30
170. A pair of CANDLE SNUFFERS, and a white metal NECKLACE. (2) £20-30
171. A fine quality Gold GUARD CHAIN with Ring Fitting. £300-400
172. A quantity of white metal BROOCHES. (4) £20-30
173. A lady's Gold plated ribbon bow UNO FOB WATCH.
174. A lady's Silver cased manual wind WRISTWATCH. £20-30
175. **A FINE VICTORIAN GOLD BROOCH BY CARLO GIULIANO.** The central floral micro-mosaic within an eight-point enamelled star. *See Cover Illustration.* **£1,200-1,800**
176. **A VICTORIAN GOLD MICRO-MOSAIC BROOCH** of Mandolin form in the manner of Giuliano (AF). **£400-600**
- 177 to 186. Spare Lots
187. A 9ct Gold Cameo Ring. £20-30
188. A Victorian oval agate PILL BOX set in gilt brass, 3" £50-70
189. Two Pairs of Gold Earrings, gold chain, gold chain & heart pendant. £20-30
190. A blue-john Egg. £30-40
191. Assorted 9ct Gold charms. £50-80
192. A 9ct rose Gold mounted amber Cigar Holder.
193. Three 9ct Gold Eternity rings. £20-30
194. Bead and crystal necklaces, silver pieces, etc.
195. A carved ivory SWORD HANDLE. £20-30
196. A 15ct Gold Diamond set BAR BROOCH. £30-40
197. Three 9ct Gold Signet Rings, including an onyx example. £25-35
198. A 9ct Gold buckle design SCARF CLIP. £20-30
199. Three 9ct Gold Rings; cameo, onyx heart and solitaire. £20-30
200. Four Oriental Gold Charms. £60-80
201. A 9ct Gold Opal and Cubic Zirconia Ring. £20-30
202. A 9ct Gold Sapphire & Diamond half Eternity RING. £20-30
203. Four 9ct Gold Rings; 2 dress, solitaire and band. £25-40
204. A 9ct Gold & Enamel Naval Sword BROOCH. £30-40
205. A silver Watch Chain and a Gold plated Bracelet.
206. A portrait miniature of an 18thC gentleman, oil on metal. £35-50
207. A 9ct gold amethyst and seed pearl PENDANT in the Art Nouveau style. £80-100



208. A CAMEO PENDANT in an ornate gilt metal mount with chain. £60-80
209. A Chinese painted porcelain Snuff Bottle depicting a dragon.
210. A Chinese blue and white porcelain Snuff Bottle.
211. A signed Japanese hardwood NETSUKE, a study of a sitting elephant. £20-30
212. A signed Japanese hardwood NETSUKE, a study of a prone horse. £20-30
213. A signed Japanese ivory Noh Play Mask NETSUKE depicting the features of a deity, well decorated upon its reverse side. £30-40
214. A signed Japanese ivory NETSUKE, a study of a coiled snake. £30-40
215. A signed Japanese ivory NETSUKE, a study of an octopus attaching itself to a basket. £30-40
216. A signed Japanese ivory NETSUKE, a study of a leaping dolphin. £30-40
- 216A. An American yellow metal Gents Wristwatch. £20-30
- 217. A FINE BURMESE 18ct GOLD SPRAY BROOCH** set with diamonds and rubies. **£250-350**
- 217A. A gold plated Swiss Hunter Pocket-watch. £30-40
218. A Sekonda Fob Watch.
219. Assorted Great Britain mint Coins. £20-30
220. Three pairs WWI Service Medals and 2 RAF Rifle Association medals.
221. A 15ct rolled Gold BANGLE set with bright cut thistle decoration. £25-40
222. Expanding bracelets, floral brooches, etc.
223. A Silver Spoon.
- 223A. A gold gate BRACELET set with four half sovereigns
224. A French silver ladies FOB WATCH with an enamel dial.
225. A Bilston enamel PILL BOX the lid depicting a mandolin player.
- 226 to 240. Spare Lots.

## SILVER & PLATEDWARE

241. An Edwardian Silver Vesta Case. Birmingham 1906.
242. A Victorian silver Vesta Case. Birmingham 1899.
243. Three pairs of silver Pistol handled Butter Knives and Forks. £20-30
244. A silver backed Hand Mirror.
245. Four Georgian Silver Teaspoons, vesta case, two trophies, etc.
246. Plated cutlery, some Silver handled.
247. A Silver topped crystal Inkwell (AF). £20-30
248. An Edwardian Silver topped cut crystal oval Trinket Jar. £20-30
249. Two Silver topped crystal Trinket Jars.
250. A Victorian silver topped cut crystal SCENT BOTTLE. Birmingham 1900. £40-60
251. A 19thC Russian convex rectangular silver SNUFF BOX engraved on the lid with a horse and trap and a rural scene to the base.  $3\frac{1}{2}'' \times 2''$ . Hall-marked MK,84, & HA 1836. £200-300
252. A George V Silver easel PHOTOGRAPH FRAME, Birmingham 1923. 7" high. £40-60
253. A George V Silver easel PHOTOGRAPH FRAME, Birmingham 1923. 8" high. £40-60



254. An Edwardian rectangular Silver PHOTOGRAPH FRAME. Birmingham 1907. £25-40
255. An Edwardian Silver Lace Hook. Birmingham 1902.
256. A George V Silver backed Hair Brush. Chester 1918.
257. A cased pair of Victorian Silver-Gilt shell shaped SALTS with spoons. Birmingham 1899. £40-60
258. A cased set of six George V Silver TEASPOONS, Birmingham 1931, and a pair of tongs. £20-30
259. A George V octagonal Silver Castor. Chester 1913. £25-40
260. A pair of William IV Silver Sugar Tongs. London 1833. £20-30
261. A Silver napkin ring, sauce spoon and sifter spoon. £20-30
262. A pair of electroplate GRAPE SCISSORS with twist and turned handles. £50-80
263. A pair of electroplate GRAPE SCISSORS with raised vine and grape handles. £50-80
264. An engine turned Silver Cigarette Case. Birmingham 1932. £20-30
265. A pierced electroplate Comport, three footed dish, rosebowl and tea strainer.
266. A reeded and gadrooned electroplate oval CAKE BASKET. £30-50
267. A Victorian electroplate oval three piece TEASET. £60-90
268. An elliptical electroplate on copper PIERCED DISH.
269. An electroplate SYPHON HOLDER with ornate open scrollwork frieze. £80-100
270. An Edwardian crystal BISCUIT BARRELL with an electroplate cover and stand. £50-80
271. An electroplate four piece London shape part reeded TEASET. £120-180
272. An electroplate two section ENTREE DISH. £30-50
273. An electroplate Comport and Toastrack.
- 274. A Silver four piece circular TEASET.** Sponser Munsey & Co. London 1958. 39 oz (*all in*) **£300-400**
- 275. A Silver three piece London shape TEASET.** Sheffield 1967. 39oz (*all in*). **£300-400**
276. An Edwardian Silver two handled BOWL. Birmingham 1904. 7 oz. £60-80
277. A George V Silver engine turned TRINKET BOX with a satin lining. Birmingham 1913. £50-80
278. A Silver engine turned CIGARETTE BOX. Birmingham 1965. £30-40
279. Spare Lot
280. A George V silver 4 footed SALVER, inscribed. Chester 1919. 17ozs. £150-250
281. A pair of Victorian wheel cut Stourbridge crystal SCENT BOTTLES with silver tops. Birmingham 1852. £50-80
282. A George V parcel silver-gilt mounted wheel cut crystal FLASK with engine turned decoration. Sponsor JCV. London 1913/14. £50-90
283. A Victorian silver PAPER CLASP the openwork front cast with figures at a well. Sponsor JSB. London 1888. £30-50
284. A pair of Victorian silver FRUIT SPOONS. Sponsor Hilliard & Thomason. Birmingham 1898.



285. An ornate 19thC French silver octagonal TRAY with a pierced gallery and handles.
286. An electroplate TOASTRACK.
287. A Vic 4 piece reeded TEASET.
288. An electroplate 3 piece part reeded TEASET.

289. A Georgian style baluster shape COFFEE POT AND WATER JUG. London 1961/62. 64ozs (*all in*) £400-500.

290 to 299. Spare Lots.

**END OF DAY ONE**



## DAY TWO

Wednesday 16th February at 10.00am

### COLLECTORS ITEMS, BYGONES & MISCELLANEA

300. The Abbeydale Photographic ENLARGER. £50-80
- 300A. A composite headed Doll with dress and bonnet. £30-40
301. An 18th/19thC French SABRE. £20-30
302. A black TRUNCHEON, painted Wm IV R Bucks. £40-60
303. A 19thC brass handled TULWAR. £20-30
304. A 1780 CAVALRY SABRE with a steel scabbard. £100-150
305. A Kriss. £30-50
306. A Royal Scots Fusilier Plaque. £20-30
307. A Victorian brass and copper WARMING PAN. £70-90
308. A Dresner satin lined Travel Case. £25-40
309. A Khukri Knife.
310. Two silver banded Walking Sticks.
- 310A. A 19thC VIOLIN bearing the label Antonius Stradivarius 1727, cased with two un-named bows. £60-80
311. A Victorian copper SAMOVAR. £150-200
312. Two leather Suitcases. £20-30
313. An Adam style brass Door Knocker, brass door handle and an iron letterbox. £25-40
314. Thomas Kitchin. A hand coloured map of Huntingdonshire. 8" x 7", framed. £30-40
315. An old enamel Stallholder's Lamp.
316. A mahogany cased MICROSCOPE by Carl Zeiss Jena No 70599. £80-120
317. A Victorian mahogany Shaving Mirror. £20-30
318. A white embroidered Tablecover. £30-40
319. Three sets of brass STAIR RODS. £20-30
320. A Victorian copper CAULDRON with an iron swing handle. £100-150
321. A tabletop DISPLAY CABINET. £25-40
322. A tabletop DISPLAY CABINET. £25-40
323. A tabletop DISPLAY CABINET. £80-120
324. A 1937 Coronation stainless steel Tray.
325. A bowler Hat.
326. Union Flags, 1953 Coronation Banners, etc.
327. Two black Evening Gowns and a blue floral dress.
328. Two old Lamps and Tin.
329. Two lace TABLECOVERS in retailers box.
330. A TRIANGTOIS pull-along TOY HORSE AND CART together with a further pull-along horse. £120-180
331. An ARP enamel Sign.
332. Boxes of old Christmas Decorations.
333. A brass Jug and three flat irons.
334. Two old Biscuit Tins and contents.
335. A set of Victorian polished steel FIRE IRONS. £80-120



336. A Victorian copper SKILLET with two brass handles. 17" diameter. £120-180
337. A BAROGRAPH by T B Winter & Son, Newcastle upon Tyne. £50-70
338. Four horse brasses, purses, evening bag, etc.
339. A mahogany HOURGLASS. £40-50
340. Two Star model Pond Yachts. 18" and 14". £25-40
341. Two Star model Pond Yachts. 14" and 10". £20-30
342. Two Star model Pond Yachts. 8" and 11".
343. A Chinese embroidered SILK SHAWL. £80-100
344. A Chinese hardwood COLLECTOR'S CHEST. £40-60
345. A cast iron Butcher's Display Pig. £20-30
346. A pair of brass Candlesticks.
347. A pair of Victorian wrought ANDIRONS.
348. Three old Golf Clubs.
349. A brass Stirrup Pump.
350. A Britannia metal Literature Statue on plinth. £30-40
351. A whicker Fishing Basket.
352. A cast metal figural Companion Stand.
353. A Garretts Patent variable horse drawn PLOUGH. £70-90
- 354. A set of 6 graduated brass and copper WEIGHTS AND MEASURES 'CHECKPUMP' ranging from 5 gallons to ½ gallon, each bearing the maker's plate of Gaskell & Chambers Ltd, Birmingham and marked COUNTY OF KENT. See illustration. £600-800**



Lot 354.



355. A pair of rectangular LEAD PLANTERS. 23" long. £150-200
356. The leather cased MASONIC REGALIA of Brother Harold Pigott, c.1900. £40-60
357. A collection of modern Spoons and a Jewellery Box.
358. Lead shire horse figures, etc.
359. A Victorian soapstone two section CADDY. £30-40
360. A Victorian black papier mache Spectacle Case with chinoiserie decoration.
361. Daguerreotype, fan, etc.
362. Four packs of Playing Cards.
- 362A. A turned African blackwood GAVEL. £30-50
363. Two whicker Log Baskets. £20-30
364. A mounted STAG'S HEAD. £100-150
365. A pair of barleytwist Candlesticks.
366. A scale MODEL CANNON. £50-80
- 367 to 375. A small collection of Dinky and Corgi toys, principally cars, all unboxed.
376. A model John Deere Tractor and implements.
380. A Victorian cranberry glass CREAMER AND TWO BOWLS with white spiral decoration. £120-150
381. A pair of Victorian cranberry glass Salts. £30-40
382. A Victorian cranberry glass Jug of tapering cylindrical form. £20-30
383. Two Victorian Staffordshire flatback Figures. £25-40
384. A pair of Victorian yellow glass Spill Vases. £30-40
385. A Victorian green vaseline glass Trumpet Vase. £40-50
386. A Victorian cranberry glass Basket. £20-30
387. Two Victorian milk glass Jugs and an amber crackle glass posy Vase. £30-50
388. A three footed Carnival glass Bowl. £20-30
389. A vine pattern Carnival glass Bowl. £20-30
390. Six amber stemmed Wine Glasses and a jelly glass.
391. Four Italian Cat Band Figures. £20-30
392. Four Continental Fairing type Figures. £20-30
393. A Victorian green glass Decanter.
394. A Sadler blue and white stripe three piece Teaset.
395. Twelve pieces of Victorian copper Lustreware. £60-80
396. Cut glass decanter, Mason's ginger jar, glasses, etc.
397. Victorian blue and white Meatplates, etc. £25-40
398. A Coalport floral and gilt Plate. £20-30

## CERAMICS & GLASS

377. A Pre-Columbian Indian earthenware 3 handled VESSEL. 11" high £400-500
378. A 19thC Staffordshire BUST of John Wesley by Enoch Wood. 12½" high. £180-250
379. A Victorian cranberry and vaseline glass CREAMER AND BOWL. £150-200



399. An Arcadian Blue Lagoon pattern BOTTLE VASE. 12" high. £80-100
400. A Victorian part TEA SERVICE with gilt and beige decoration. £50-80
401. A pair of ROYAL DOULTON Fairfax circular Tureens.
402. A SHORTER pottery JUG depicting an owl. £20-30
403. A stoneware Spirit Barrel. £25-40
404. A pair of Victorian Staffordshire GREYHOUNDS. 11" high. £80-120
405. A graduated set of 3 Victorian stoneware JUGS. £40-60
406. Six Victorian glass Rummors. £20-30
407. Decorative chinaware including Limoges, Spode, etc.
408. Ten Victorian Wine Glasses. £30-50
409. A tin glazed figure of a bird.
410. A Silver plated sauce stand with jug and bowl.
411. A pair of Arcadian blue Vases.
412. An Imari style Punch Bowl. £20-30
413. A Victorian Dinner Service comprising 4 oval meatplates, 3 plates, stilton stand and tureen. £25-35
414. A 19thC Continental Figure of a cherub. £20-30
415. A small Victorian Staffordshire Greyhound.
416. A Chamberlain's WORCESTER Tea Bowl.
417. A 19thC miniature Toby Jug with a mock Chelsea gold anchor mark.
418. A 19thC STAFFORDSHIRE FIGURE of a gardener carrying a basket of vegetables. 5". £40-60
419. A CAUGHLEY Tea Bowl.
420. A Chamberlain's WORCESTER JUG with gilt spout and kick back handle, decorated with polychrome exotic birds. 5½". £80-120
421. A SWANSEA SLOP BOWL decorated with roses (AF). 6" Dia. £60-80
422. A 19thC Sucrier with a gilt and turquoise border. £30-40
423. A Grainger's WORCESTER CHRISTENING MUG with floral and gilt decoration. £40-60
424. A NEW HALL Slop Bowl.
425. Christening mug, cups, etc. (5)
426. A Cantonese Sugar Box (AF).
427. A DERBY Saucer Dish, puce mark (AF).
428. A COALPORT TRIO of coffee cup, teacup and saucer, flower and lantern pattern. £80-120
429. A COALPORT Comport in the Brosley pattern (AF). £20-30
430. A pair of 19thC SPODE Plates with floral decoration. £30-40
431. A HERCULANEAN Saucer Dish. 8½" dia. £30-40
432. Three DAVENPORT TRIOS of cup, saucer and plate decorated with gilt turquoise bands with oval panels painted with birds. £70-100
433. A 19thC COALPORT Dessert Dish with floral motif in the centre and in a gilt conche border (AF). £30-40
434. A NANTGARW MEATPLATE with floral motifs. 12" £120-180
435. A pair of white columnar Candlesticks.
436. A floral pattern part TEA SERVICE. £25-40



## BOOKS, STAMPS, POSTCARDS & PRINTED MATTER.

437. A selection of Military Books.
438. Crowned Masterpieces of Eloquence, 10 volumes, and Short History of the English People, 4 volumes.
439. Milton's L'Allegro - Shakespeare's Sonnets. 1873.
440. Longfellow, The Landsdowne Poets, gilt embossed cover. 1878.
441. F H Burnett. Little Lord Fauntleroy, gilt cover. 1890.
442. C H Lane. All about Dogs, 1900 and British Dogs.
443. Rubens paintings, cloth bound. 1939.
444. Two Postcard catalogues and Sotheby's 1986.
445. Nature of Art 1866-67. £60-80
446. Boys Own Paper, 1887.
447. Milner. Gallery of Nature, 1849. £20-30
- 447A. Joseph Nash. The Mansions of England in Olden Times. £20-30
448. Old England, a Pictorial Museum. Vols I and II. £100-150
449. The Comprehensive Atlas & Geography of the World; Blackie & Son, 1883. £30-40
450. The Peter Pan Picture Book, 1917.
451. A case of assorted books, etc.
452. A portfolio of European photography.
453. Assorted Boys Own Annuals.
454. L T Meade. Atalanta 1893; Architectural photography; Land and Seascape prints. (3)
455. A collection of Ladies Dance Cards with pencils.
456. Vernon Watson. An autograph postcard with letter on reverse.
457. 48 Postcards and Photographs principally of Grantham and some Lincoln.
458. Hand coloured relatives postcards, etc.
459. An album of Postcards including numerous, Grantham area and WWI examples. £40-60
460. c.150 assorted Postcards. £20-30
461. c.60 Cartoon and humorous Postcards. £60-90
462. c.20 Grantham Postcards. £25-40
463. c.20 Grantham Postcards. £25-40
464. 9 Postcards of the 1906 Grantham Railway Disaster. £20-30
465. Players Cigarette Cards; Sea Fishes, Uniforms of the T.A., etc.
466. An album of Postcards including Isle of Wight examples.
467. An album of World Stamps together with a selection of loose examples.
468. An album of WORLD STAMPS Including 4 mint 1d reds. £40-60

## CLOCKS

469. An oak cased GRANDMOTHER CLOCK with Westminster chimes. £60-80
470. A Victorian mahogany circular WALL CLOCK by Swinden & Sons, Birmingham, with a fusee movement. £180-250



471. A Victorian walnut cased Vienna regulator WALL CLOCK. £250-350
472. A Victorian ebonised cased Vienna regulator WALL CLOCK. £150-200
473. An octagonal rosewood WALL CLOCK. £30-50
474. An American drop dial WALL CLOCK. £40-60
475. A 19thC American mahogany OG SHELF CLOCK by Jerome & Co., Connecticut. £100-150
476. A 19thC American mahogany OG SHELF CLOCK by Chalicey Jerome, Connecticut. £100-150
477. A 19thC American oak PARLOUR CLOCK. £50-80
478. A 19thC mahogany arch top BRACKET CLOCK with an 8-day movement by Winterhalder and Hofmeier. £150-200
479. A 19thC French FIGURAL MANTEL CLOCK. £80-120
480. A late 19thC American simulated marble MANTEL CLOCK. £60-90

## LATE ENTRIES

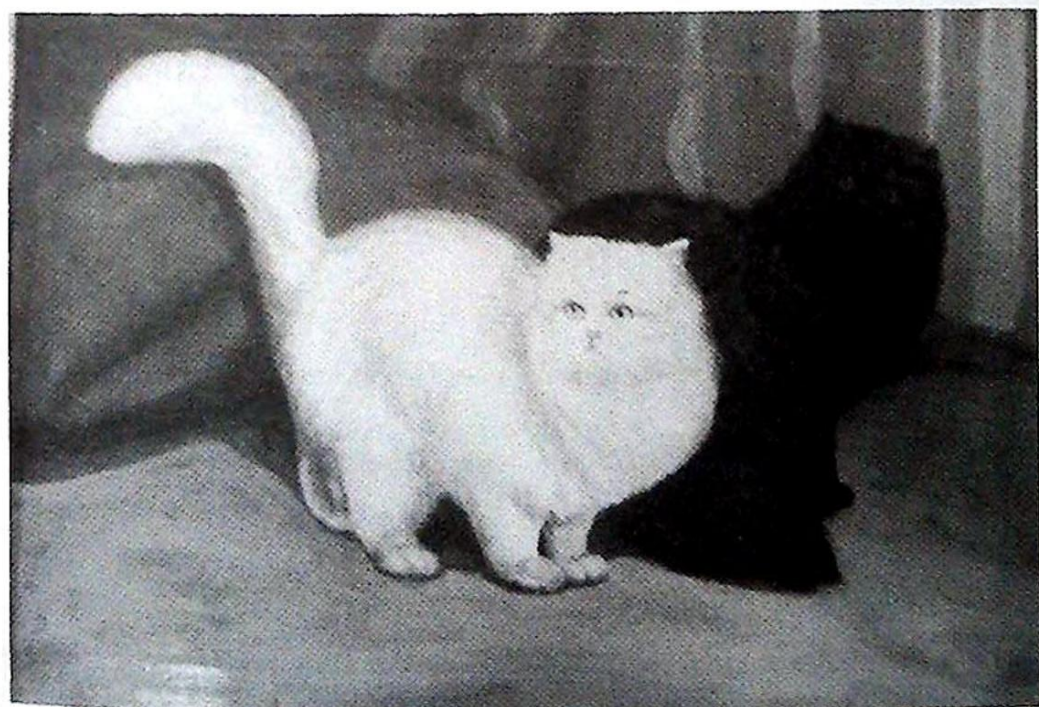
481. A brass Carriage Clock (AF). £50-80
482. A Regency ivory BOX. £300-400
483. Two small DUELLING PISTOLS. £200-300
484. H.G. Wells. The Outline of History vols I & II, leather bound.
485. W.F. Kirby. The Butterflies and Moths of Europe, cloth board.
486. Royal Crown Derby limited edition LOVING CUP commemorating Margaret Thatcher's 3rd term of office 1987. No 9 of 650.
487. Watson Charlton. Lakeside w/c, signed.
488. K. Rose. Forest path, w/c signed.
489. Still Life of daffodils in a vase, oil on panel.
490. Gilt framed oil on canvas of a swan.
491. A 19thC engraving of a German hunting scene.
492. Still life oil on panel of fruit.
- 493 to 520. Spare Lots.

## PAINTINGS & PRINTS

521. A 19thC oil on board ¼ length portrait of a lady. £25-40
522. 19thC English School. Landscape oil on board. 8" x 11" £50-80
523. Teesdale. All Saints Church, Stamford, Lincs. watercolour. 19" x 14". £60-80
524. Walking Dress engraving and Tyrolean Waltz print.
525. A set of four Hunting Scene colour engravings. £20-30
526. W Highfield. Hatfield Howse Farm, Shire Green, oil on canvas, signed and dated 1907. 16" x 22". £70-100
527. 19thC English School. A pair of half length portrait oils on canvas of Mr and Mrs Storey, in gilt frames. 30" x 25". £500-800
528. A pair of sizeable Farquharson winter scene prints. £100-150
529. Jan Van Dyk. A calm seascape, oil on canvas. £40-60
530. George Garrard. Woburn Sheep-shearing engraving. £30-40
531. A maple framed print 'The Visit of Affection'. £30-40



532. Fred Slocombe. An engraving of horse and cart in a clearing, signed in pencil.
533. Two colour prints, photograph and embroidered cross stitch text.
534. A gilt framed print of an angel.
535. A Victorian landscape oleograph.
536. Spare Lot.
537. A 19thC still life of flowers and an oleograph of horse and rider.
538. A pair of 19thC portrait Engravings.
539. B Howlett. A colour engraving of Lincoln, published 1797. £30-40
540. J Redaway. A colour engraving of a View of the City of Lincoln, published 1829. £30-40
541. J L Chapman. A colour print of a country scene with shire horses, signed in pencil. £50-70
542. An engraving of an 18thC Officer, in a Hogarth frame.
543. A small watercolour Seascape in an ebonised frame.
544. A watercolour landscape signed E Digby Talbot.
545. H Dickbroom. Flamenco Dancers, oil on canvas. 30" x 25". Signed and dated '66. £70-100
546. A Victorian gilt framed picture, part painted and part woolwork.
547. An early 19thC colour engraving of a group by a fountain.
548. A pair of late Victorian colour prints of a Jockey's Tack Room and a Racecourse Crowd by Isaac Cullin and another. 22" x 34". £150-200
549. A humerous colour print of a bird pie.
550. 19thC English School. Still life of flowers in a bowl, oil on canvas. 12" x 10". £80-120
- 551. Adrienne Lester. Black and White Cats, oil on canvas, signed. 14" x 18". See Illustration. £300-400**



Lot 551.



552. A colour print of mother and child in a circular frame. £25-40
553. A 19thC colour engraving of the Duchess of St Albans, in a Hogarth frame. £25-40
554. A 19thC oil on canvas of a Barber Shop. 10" x 8". £30-50
555. A 19thC porcelain PLAQUE painted with a scene of Lynmouth. £80-120

**556. Clarkson Stanfield RA.** A British Ensign flagged sailing vessel in distress off a coastline with a castle, signed Stanfield and dated 1840, in a gilt plaster frame. 20" x 30". See *Illustration*. £1800-2500

**556A. Niemann.** View of Lincoln Cathedral, oil on canvas, signed. 9" x 18". £600-800



Lot 556.

## FURNITURE

557. A Chinese hardwood OCCASIONAL TABLE. £40-60
558. A Victorian mahogany barleytwist PEDESTAL TABLE. £80-100
559. An early Victorian flamed mahogany POT CUPBOARD. £50-80

560. A bentwood Carver Chair. £30-40
561. An oval mahogany Occasional Table with lyre splat. £30-50
562. Two small Victorian Stools. £20-30
563. A Jacobean style oak CARVER CHAIR. £40-60
564. A Regency style mahogany COFFEE TABLE. £50-80



565. A late Victorian bamboo and silk FIRESCREEN. £60-80
566. A 19thC carved elm side Table with drawer. £50-80
567. A set of four Edwardian DINING CHAIRS with gallery backs. £60-90
568. An Edwardian mahogany Bedroom Chair.
569. A George III oak bowfront CORNER CUPBOARD on bracket feet. 41" high. £250-350
570. A Victorian mahogany STOOL COMMODE. £100-150
571. A Regency mahogany SOFA TABLE, the plain moulded top having two fall flaps, frieze drawer with Prince of Wales feathers ring handle, rectangular pillars and fluted sabre legs, brass toes and castors. 20" x 36". £250-350
572. A Victorian upholstered mahogany SMOKERS CHAIR. £100-150
573. A late Georgian mahogany PEDESTAL TABLE with a circular moulded tilt top, taper pedestal and tripod base. 22" diameter. £400-600
574. An 18thC carved oak three panel COFFER, 51" wide. See Illustration. £350-500
575. A set of eight Regency country barback DINING CHAIRS including two carvers. (AF) £600-900
576. A Georgian mahogany DINING TABLE with dropleaf centre section. £800-1200
577. A George III oak hanging CORNER CUPBOARD, 44" high. £200-300

Lot 574.







Lot 578.

- 578. An early Victorian mahogany LIBRARY TABLE** with a leatherette and moulded top, six frieze drawers, on part reeded legs, brass cups and castors. 42" x 59". See *Illustration*. £1,200-1,800
579. A 1930's oak KNEEHOLE DESK with leatherette top. £100-150
580. An inlaid Edwardian OCCASIONAL TABLE on splay legs. £80-100
581. Four 1930's oak CARVER CHAIRS. £50-70
582. A white painted Lloyd Loom Chair.
583. An American ROCKING CHAIR. £150-200
584. An Antiquitable softwood MARINE CHEST. £100-150
585. A shaped oval mahogany WALL MIRROR. £30-40
586. A Victorian painted pine CHEST of four drawers. £60-80
587. An Edwardian mahogany CHINA DISPLAY CABINET on cabriole legs. £180-250
588. A 1920's shaped walnut Wall Mirror. £25-40
589. An Edwardian oak ROLLTOP DESK. £350-450
590. A late Georgian oak CHEST of two short and three long drawers, on bracket feet, 38" wide. £80-120
591. A Victorian mahogany Toilet Mirror. £30-40
592. A late Georgian oak CHEST of two short and three long drawers, on bracket feet, 41" wide. £80-120
593. A Victorian walnut WARDROBE AND DRESSING CHEST. £150-200



594. A William IV mahogany bowfront CHEST of four graduated drawers with pressed brass handles and reeded columns. 47" wide. £500-700
595. An oval gilt Wall Mirror. £20
596. A Victorian walnut breakfront TRIPLE COMPACTUM with domed cornice and mirror door. £300-400
597. A mahogany four drawer Filing Cabinet. £30-40
598. A 1920's flamed mahogany SIDEBOARD. £180-250
599. A 19thC bank of PHARMACY DRAWERS with mahogany fronts and knob handles. (AF) £180-250
601. A 1930's flamed mahogany SIDEBOARD with splay legs. £100-150
602. A late Victorian Cabinet Base. £60-80
603. A Victorian painted pine LINCOLNSHIRE DRESSER. £180-250
604. A Victorian banded mahogany bowfront CHEST of two short and two long graduated drawers, with oval brass handles and splay feet. 40" wide. £400-500
605. A Victorian stripped pine Blanket Chest. £40-60
606. A substantial Victorian pine REFECTORY TABLE. 13' x 4' £400-600
607. A set of twelve (inc. two carvers) modern light oak DINING CHAIRS. £500-700
608. A fine 19thC Boulle première partie CARD TABLE in Louis XV style with ormolu mounts. See Illustration. £1000-1500
609. A stripped pine Washstand.

Lot 608.





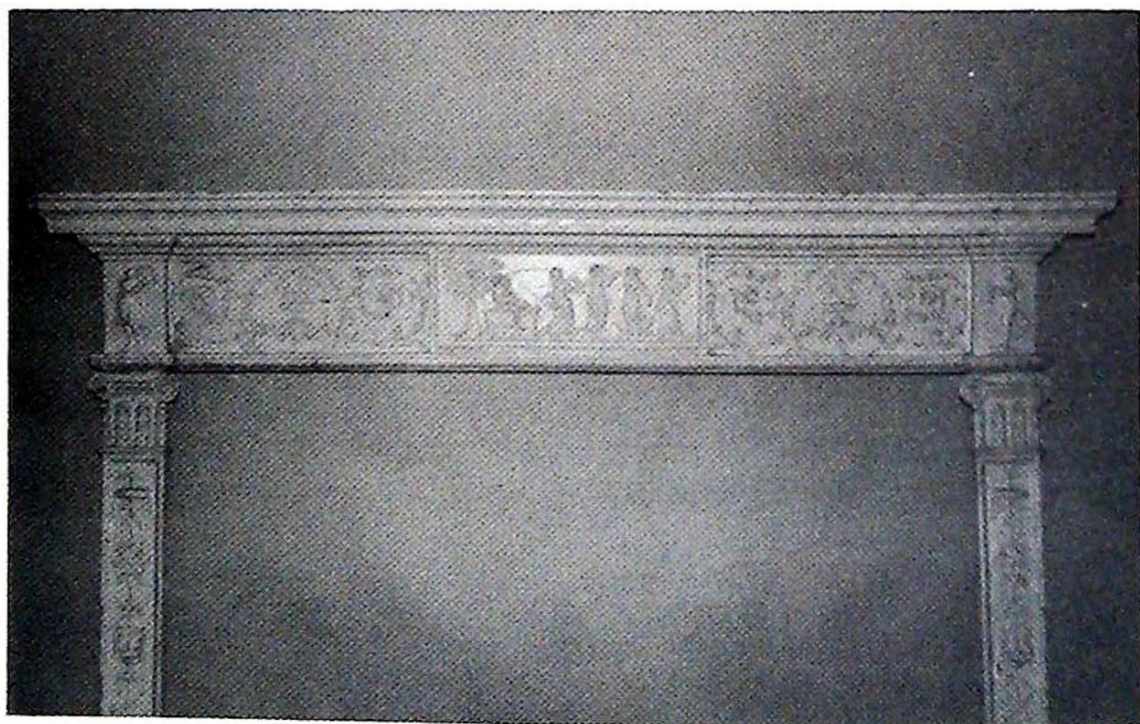
610. A modern woollen CARPET SQUARE.  
£40-60
611. A modern woollen CARPET SQUARE.  
£40-60
612. A modern woollen CARPET SQUARE.  
£40-60

## ARCHITECTURAL ITEMS

613. A George III painted pine and gesso FIRE SURROUND 75" wide, 64" high. See Illustration.  
£800-1200  
Provenance: Formerly of Bottesford Manor, Notts. from the extention documented in 1789.
614. A George III painted pine and gesso neo-classical DOOR FRAME with carved acanthus corbels.  
£400-600  
Provenance: As lot 613

615. A pair of George III painted pine and gesso neo-classical DOOR HEADS, 52" wide.  
Provenance: As lot 613
616. A pair of 18th/19thC STONE PEACOCKS of The Duke of Rutland's coat of arms. 16" high. £200-300  
Provenance: Formerly of Bottesford Manor.
617. A Victorian cast iron FENDER with a brass gallery rail. 52" wide. £100-150
618. Three 18th/19thC neo-classical iron FIRE FRONTS and another. £100-150
619. A Victorian cast iron BAKER'S OVEN by Alfred Hunt. £100-150
620. A pair of Victorian wrought iron GATES each 57" wide, 54" high together with a pair of cast iron POSTS. £300-400

Lot 613.





## FURNITURE (cont'd)

- 621. A George III mahogany Gentleman's WASHSTAND. £250-400
- 622. A Georgian oak HANGING CORNER CUPBOARD. £180-250
- 623. An inlaid late Victorian CORNER DISPLAY CABINET. £500-800**
- 624. An oak LONGCASE CLOCK, 30 hour movement and painted dial. £200-350
- 625. An ornate French marquetry VITRINE. £600-800**
- 626. A Victorian mahogany PEDESTAL SIDBOARD. £200-300
- 627. An oak HALLSTAND with seat. £100-150
- 628. An oak HALLSTAND. £50-80
- 629. A Georgian mahogany bow front CORNER CUPBOARD. £200-300
- 630. A Victorian mahogany rectangular DINING TABLE. £200-300
- 631. A set of four Victorian mahogany balloon back DINING CHAIRS. £300-500
- 632. A Victorian mahogany pedestal TEA TABLE. £200-300
- 633. A pair of Victorian mahogany DINING CHAIRS. £80-120
- 634. An antique oak SIDE TABLE with frieze drawer. £200-300
- 635. An oak CARVER CHAIR. £40-50
- 636. An old reproduction ladies WRITING BUREAU. £150-200
- 637. A Victorian walnut X framed STOOL. £50-60
- 638. A mahogany SEWING TABLE with rising lids. £100-150
- 639. An Edwardian inlaid mahogany BIJOUTERIE TABLE. £200-300
- 640. An adjustable MUSIC CHAIR. £40-60
- 641. A Victorian bowfront COMMODORE CHEST. £80-100
- 642. An interesting rope twist framed STOOL. £150-200
- 643. A pine TOWEL RAIL. £30-50
- 644. A set of four KITCHEN CHAIRS. £100-150
- 645. An Edwardian mahogany DUET STOOL. £100-150
- 646. An ornate BRASS STAND with inset marble top. £100-150
- 647. An 18thC oak COFFER with panelled front. £300-400**
- 648. A Victorian mahogany SUTHERLAND TABLE. £180-250
- 649. A late Regency mahogany BERGERE CHAIR. £300-400**
- 650. A fine George III mahogany WINE COOLER. £2000-2500**
- 651. A fine mid 19thC marquetry two tier ÉTAGÈRE. £1200-1800**

END OF SALE



## **FORTHCOMING SALES AT**

### **THE GRANTHAM AUCTION ROOMS**

GOLDINGS will sell by AUCTION

**ANTIQUE & MODERN**

**FURNITURE, BRIC-A-BRAC AND EFFECTS**

on Wednesday 23rd February, 1993 at 10.30am  
(and weekly thereafter)

PLEASE NOTE NEW VIEWING TIMES

Saleday Only — from 9am to 10.30am

**Entries for these sales close 5pm Monday**

**\* SALEDAY CASH PAYOUT FOR VENDORS \***



An interesting and unusual sale of a Melton Mowbray man's life collection of  
**COLLECTABLES**

**CHINA, GLASS, METALWARE,**

**MILITARIA, BRIC-A-BRAC, ETC.**

on Friday 4th March, 1994 at 10am

To include moustache cups, ribbon plates, relief plates, brown glazed stoneware, commemorative ware, crested ware, Victoriana, Bretby vases, kitchenalia, lustreware, Staffordshire figures, willow pattern, ornamental cruets, toby jugs, whisky decanters, miniature longcase clocks, egg cups, ashtrays, shaving mugs, cups & saucers, trinket jars, teapots, vases, punchbowl, ginger jars, brassware, copperware, treen watchstand, old bottles, butter churn, wickerware, early fireman's helmet, taxidermy, mantel and alarm clocks, silver plated ware, model boats, early electric hairdryer, smoker's stand, carved African figures, replica firearms, swords, armour, firemarks, mounted horns, pictures, prints, maps, carved wooden models, etc. — The list is exhaustive!

What makes this sale unusual is that the property cleared was a mid-terrace 2-up-2-down and the whole sale is comprised of the downstairs rooms which yielded 50 teachests of items

Viewing: Thursday 3rd March 2.00pm to 5.00pm & Saleday 9.00am to 10.00am



Preliminary Notice for an Auction Sale of

**AUTOMOTIVE GARAGE**

**(With planning permission for flats)**

**MOT & OTHER EQUIPMENT**

**STOCK & VEHICLES**

To be held on the premises in Swadlincote, Derbyshire.  
Full details available in due course from the Auctioneers.



## NOTES

---



## NOTES

---



# COMMISSION BID FORM

LOT NO	BRIEF DESCRIPTION	PRICE

Bids are left at the senders risk and are accepted subject to our Conditions of Sale.

NAME: .....

ADDRESS: .....

.....

.....

.....

TEL: .....

SIGNATURE: .....

SALE DATE: .....

Lots will be purchased at the lowest price as permitted by other bids or reserves.

Prospective purchasers should contact the Auction Rooms after the sale and if successful, the item(s) purchased must be collected and paid for within two days of the sale.

A Buyers Premium of 10% + VAT will be levied on the hammer price, to all purchasers.



## NOTES

---



## MAILING REGISTER SUBSCRIPTION FORM

If you wish to receive our Auction catalogues and detail sheets for one year, please complete and return this form.

### 1. Antiques & Fine Art Auctions

There are currently planned 5 Sales per annum to include:-

Furniture, Paintings, Prints, Glass, Ceramics, Toys, Silver, Clocks, Watches, Jewellery, Metalware, Stamps, Coins, Books, Arms & Militaria, Bygones, Barometers, Collectors Items, etc.

### 2. Commercial Auctions

Frequency of Sales determined by instructions from The High and County Courts, Liquidators and Receivers.

Office Equipment, Catering Equipment, Engineering Equipment, Industrial Plant & Machinery, Retail/Wholesale Shop Stock and Fittings, Vehicles; – Assets of a variety of Businesses.

### 3. Specific Requirements

If you specialise in one area of the above categories (eg. *Books*) please state this to avoid receiving unwanted catalogues.

.....

1. Antiques & Fine Art. (£10) £.....

2. Commercial Auctions. (£5) £.....

Fee enclosed £..... Total

Name: Mr/Mrs/Miss/Title .....

Address: .....

.....

.....

.....

Tel: (.....) ..... Date: ..... Our Ref: \*ML .....



***Lowes Removals***



— *Removals - Fine Art Carriers* —  
*Local & Long Distance*

**Andrew Lowes**

40 Vernon Avenue, Gonerby Hill Foot,  
Grantham, Lincs., NG31 8JJ  
*Telephone: 0476 65194*

PRINTED BY W.G. HARRISON, DYSART ROAD, GRANTHAM  
TEL: 0476 62700



Established 1900

# -GOLDINGS-

Chartered Surveyors, Auctioneers, Valuers & Estate Agents  
Residential, Commercial, Agricultural, Antiques & Fine Art

45 High Street, Grantham, NG31 6NE

Telephone: 0476 · 590211

## PROFESSIONAL SERVICES FOR



### RESIDENTIAL

---

We have a department headed by Chartered Surveyors to undertake valuation and sale of all types of property from Castles to Town Houses. Surveys, Housebuyers Reports, Mortgage, Insurance and Probate Valuations to individual requirements.



### COMMERCIAL

---

*Property*; Dealing with the survey of Shops, Offices and Factories. Sale, Valuation and Rent Reviews, Lease negotiations and Rent Arbitration for the landlord and tenant.

*Plant, Machinery & Assets*; Sales for Receivers, Liquidators, High Court & County Court. Auction Sales on Site prepared for private and public clients alike.



### AGRICULTURAL

---

Our Senior Partner has wide experience in the sale and valuation of Agricultural Properties, conducting Farm Sales and Valuation of Live and Dead Farming Stock for dissolution, Probate and other matters. Other areas covered include Rent Reviews, Development Land reports and Annual Stocktaking Valuations.



### FINANCIAL SERVICES

---

Our Experienced Consultant is available to advise on all matters concerning Finance, Mortgages, Insurance, Investment, Planning and Pensions.



### PROPERTY MANAGEMENT

---

Personal service and attention to detail ensures that our management team exploits your investment portfolio whether an Individual Family Home let for a small fee or Office, Factory, Shop or Farm with rent collected and regular inspections made.

#### Saleroom Manager

Colin R. Young FNAVA

#### Partners

C. Robin Hall FRICS FRAA

Ian J. Shaw FRICS FNAEA

#### Financial Service Consultant

John G. Stukins



# **-GOLDINGS-**

## **ANTIQUES DEPARTMENT**



### **GENERAL ENQUIRIES**

Our Auction Rooms are open 9am to 1pm & 2pm to 5pm Monday to Friday. Please call in or telephone (0476) 65118 for entering items, valuation appointments, sales information, house clearances and transport arrangements.



### **VALUATIONS**

For items too large or numerous to bring to us our valuer can visit your home to give personal advice on the best method of sale.

With an increasing number of thefts, particularly of Antiques & Works of Art it is essential to have a detailed inventory and report with photographic records. This can be essential when negotiating settlements with Insurance Companies.



### **SELLING WITH GOLDINGS**

For over 90 years we have held sales in Grantham. Our spectrum ranges from important paintings, such as two examples by Fred Stead selling for £10,800 to items of a few pounds.

Our versatility enables us to deal with single items to Country House Sales with the same level of professional competence. Flexible commission rates, extensive register of specialist buyers and regular sales ensure that your valuables get the widest International exposure and that selling with us is a pleasurable and profitable experience.

**HOW TO FIND ...  
"THE LARGEST  
PURPOSE BUILT  
AUCTION ROOMS  
IN THE AREA"**

