

Established 1900

- GOLDINGS -

AUCTION SALE OF Antiques

**Furniture, Pictures, Silver, Ceramics
and Collectors Items**

**On Wednesday, 15th June, 1994
at 10.00am**



THE GRANTHAM AUCTION ROOMS

CONDITIONS OF SALE

1. The highest bidder shall be the buyer. The Auctioneers reserve the right of regulating the biddings; of rejecting any bid; and of bidding for, withdrawing, consolidating, dividing or altering the order of lots.
2. The purchase money for each lot with the usual commission of 10% plus VAT at the current rate shall be paid at the fall of the hammer (if required). Each lot at the fall of the hammer shall be at the sole risk and expense of the buyer, and shall be paid for and removed immediately after the conclusion of the sale, *but no lot shall become the property of the buyer, or be removable until paid for*, and if taken away in contravention of these conditions without an order for removal signed by the Auctioneers, they shall have power to seize the same by their servants or agents, or otherwise, or the Auctioneers may recover either the lot sold or the price thereof (at their option) by action at law.
3. No contra account of any description whatever will be allowed to the buyer as a set off, and payment for each Lot shall be made to the Auctioneers or their clerk only, and a buyer paying by cheque must give satisfactory references (if required).
4. For all purposes of this sale the Clerk of the Auctioneers shall be deemed to be the agent of both seller and buyer.
5. A bidder shall not be allowed to retract his bidding after the fall of the hammer, and he shall give up his full name and address if required. The Auctioneers will not recognise the transfer of any lot from one buyer to another, nor make any alteration in the sale book in respect thereof.
6. The Auctioneers are acting only as agents, and give no personal warranty as to the condition, quality or authenticity of any chattels offered for Auction. Any catalogue description is given merely as guide to purchasers, any description can be changed from the rostrum before the lot is sold. If a purchaser buys without previous inspection he will do so at his own risk.
7. Notwithstanding any other terms in these Conditions, if within 7 days of the sale a purchaser gives notice in writing that a lot is a deliberate forgery, with supporting factual evidence, the Auctioneers may rescind the transaction. The burden of factual proof lies with purchaser, mere opinions will not satisfy. This benefit is not assignable.
8. If any buyer neglect or refuse to comply with the above conditions or any of them, his deposit money (if any) shall be forfeited, and the lot uncleared may, at the option of the Auctioneers, be resold without notice by public auction or private contract, and any loss occasioned by such re-sale together with all expenses attendant thereon, or arising under these conditions shall be paid for by the defaulter at this sale and be recoverable as and for liquidated damages. This condition is however without prejudice to the right of the Auctioneers to enforce the contract made at this sale if they think fit.
9. Any Notes for Purchasers and catalogue Glossaries, where used, will be construed as Conditions of Sale.
10. The Auctioneers shall be the sole Arbitrators in all matters of dispute relating to these conditions both as between the seller and the buyer and between the several bidders and buyers and their determination on all matters shall be final and binding on all parties concerned.

Auctioneers: C. Robin Hall FRICS FAAV & Colin R. Young FNAVA

Established 1900

-GOLDINGS-

THE GRANTHAM AUCTION ROOMS

Old Wharf Road, Grantham, Lincolnshire NG31 7AA

Telephone: (0476) 65118 Fax: (0476) 590998



Lot 379

Viewing Times:

Sunday 12th: 2pm to 4pm
Tuesday 14th: 1pm to 7pm
& Saleday 9am to 10am

IMPORTANT NOTES FOR PURCHASERS

- PAYMENT:** Must be made in full immediately after the Auction. The following methods of payment are acceptable.
 - Cash
 - Bankers Draft
 - Building Society Cheque
 - Cheques, accompanied by a valid card. For accounts above the stated card limit, we reserve the right to retain the goods until clearance is established.
- BUYERS PREMIUM:** of 10% + VAT is payable on all lots.
- REMOVAL OF PURCHASES:** Goods must be collected as soon as they are paid for, and in the Two Working Days following the sale. If goods are not collected on these days we reserve the right to charge £1 per lot per day thereafter.
- COMMISSION BIDS:** If you are unable to attend this or any of our future sales we will be pleased to bid on your behalf. We always purchase at the lowest possible price, subject to other bids and reserves.

All bids must be handed to the office on an official form. It remains the responsibility of prospective purchasers to contact GOLDINGS to confirm whether their bids have been successful.
- TELEPHONE BIDS:** There are inherent dangers with this practice, therefore all such arrangements are made entirely at the bidder's risk. Telephone bids will only be accepted if the lower catalogue estimate is £500 or above. For lots with a lower estimate below this figure Commission Bids Only will be accepted.
- SMOKING:** is not permitted in any part of the Saleroom.
- REFRESHMENTS:** will be available Saleday.
- ACCOUNT TRANSFERS:** will not be recognised after the sale. If any lots are purchased for another person, this must be declared at the fall of the hammer.

GLOSSARY

- Generally:** 'As Found.' (AF). This term indicates the lot has some damage. Its absence does not indicate that the lot is free of defect. All lots are SOLD AS SEEN.
- Paintings:** 'Signed, initialled, monogrammed.' This refers to the present state of the work and is not an attribution.
- Books and printed matter:** These items are not sold subject to collation and are not returnable once removed from the premises.
- Silver & Jewellery:** Weights given are approximations given by basic instruments.
- Estimates:** For intending purchasers we include in this catalogue the Auctioneers opinion of value. If no figures are given the value is less than £20.

COLLECTORS' ITEMS & MISCELLANEA

1. A Phillips & Son steel SAFE with key.
2. Six Oxo cube TINS.
3. A stoneware WATER FILTER by Hatkins & Co, London. £40-60
4. A HMV portable GRAMOPHONE and records. £40-60
5. An old Mecanno Crane and box of pieces. £25-40
6. A chromium plated columnar TABLELAMP. £20-30
7. An Asian brass JARDINIÈRE.
8. Two old railway HAND LAMPS. £130-40
9. A Victorian brass SPARKGUARD. £25-40
10. A FIELD TELEPHONE, set D Mk V. £20-30
11. A pilot's leather FLYING HELMET complete with mask and communications. £100-150
12. A pair of military FIELD GLASSES. £20-30
13. An 'Exhibition' GRAMOPHONE. £100-150
14. A brass TABLE GONG, pair of glass salts and pair of trinket jars. £25-40
- 14A. An old OIL LAMP. £40-60
15. A Victorian brass TELESCOPE. £20-30
16. The leather cased MASONIC REGALIA of Brother Harold Pigott, c.1900.
17. An iron Armorial COMPANION SET. £30-50
18. WOODWORKING PLANES; smoothing, three jack and two others. £20-30
19. A modern MODEL BOAT, 34" long. £40-60
20. A Victorian pierced copper WARMING PAN with fruitwood handle (AF). £25-40
21. A Victorian copper SAUCEPAN and COOKPOT.
22. A Victorian copper KETTLE with acorn finial. £30-50
23. A Victorian copper KETTLE with acorn finial. £30-50
24. A Victorian brass CHESTNUT ROASTER. £50-80
25. A Victorian brass SAUCEPAN.
26. A heavy Victorian copper SKILLET. £40-60
27. A circular Victorian copper LOG BOX. £50-80
28. A circular Victorian copper LOG BOX. £60-90
29. Two Star model Pond Yachts. 14" and 10". £20-30
30. An Indian brass HUBBLE PIPE. £20-30
31. Six metal barleytwist DISPLAY STANDS. £40-60
32. A Victorian copper KETTLE and POWDER FLASK. £20-30
33. A small gilt framed WALL MIRROR. £25-40
34. A brass and copper BUGLE.
35. A shield shape lead FIREMARK. 8". £40-60
36. 78rpm Records and needles.
37. A Victorian iron handled brass PRESERVE PAN. £25-40

38. A Victorian iron handled brass PRESERVE PAN. £25-40
39. A Victorian iron handled brass PRESERVE PAN. £25-40
40. Two linen Tablecloths.
41. Jigsaw and Borzoi club medal.
42. A leather SUITCASE.
43. A Victorian shield shape panel with a floral bead and woolwork PANEL. £40-60
44. Three graduated brass and copper JUGS.
45. Brass and copperware (4).
46. A small GAME TROPHY of a deer. £40-60
47. A Ukelale. £28-35
48. A Victorian oak and brass POSTAL DELIVERY BOX with drawer. £80-120
49. Three pieces of Victorian papier mache. £30-40
50. A Lees TAPESTRY of children and a piper in a garland, framed. £30-50
51. Two HORSE BRASSES on a face piece; crown and lion passant; and another. £25-35
52. Two FLY TERRETS with bells (1 plume missing). £20-30
53. Four HORSE BRASSES, etc.
54. A sidelock percussion PISTOL (AF).
55. An Art Deco FIGURE GROUP of 2 spelter alsations on a marble plinth. 20" long. £120-180
56. A Prisoner-of-War bone CASKET, satin lined. £200-300
57. Two embossed copper POWDER FLASKS.
58. A Georgian copper TANKARD and pewter plate.
59. A Victorian WOOLWORK PICTURE in a maple frame. £100-150
60. A leather GAMES CASE in the form of a book.
61. A 19thC French brass neo-classical FIGURE. £50-80
62. An inlaid Victorian mahogany two section TEA CADDY. £40-60
63. A Victorian mahogany WRITING BOX. £50-80
64. A Victorian mahogany two section TEA CADDY. £30-50
65. A pair of George III brass CANDLESTICKS with square bases. 7". £80-100
66. A George III mahogany TEA CADDY. £80-100
67. A Victorian burr walnut two section TEA CADDY. £40-60
68. A Victorian Tonbridgeware walnut TEA CADDY, with domed top. £50-80
69. A brassbound Victorian walnut WRITING BOX. £30-50
70. A pair of Georgian brass CANDLESTICKS with square bases. 10". £25-40
71. A clockwork flying saucer TOY Merry-Go-Round, boxed. £25-40
72. A Victorian MOURNING APRON AND PARASOL. £30-40
73. A three-piece bone handled CARVERY SET. £20-30
74. Assorted Games. £20-30
75. A chromed CAR MASCOT.
76. A golden plush TEDDY BEAR, straw filled and articulated, 15" (AF). £100-150
77. A Georgian LACE MAKING PILLOW and stand. £40-60

78. Two Hardy Bros 'Uniqua' FISHING REELS.
79. Hardy FLYBOX and two fly wallets.
80. PIETRE DURA PANELS, one of a bird, one of a flower, both framed. £40-60
81. A selection of old cycle BAR BADGES.
82. A Victorian tortoiseshell WORK CASKET on ball feet. £100-150
83. WWI Service Medals and coins.
84. A Victorian mother of pearl CARD CASE. £25-40
85. Burnham Fountain Pen and Propelling Pencil, cased.
86. A Victorian mahogany GAMES BOX containing CHESSMEN, (4½" king), DRAUGHTS and 2 shakers, in bone. (white/red stain) (AF). £80-100
87. A set of brass POSTAL SCALES and weights. £30-50
88. A Victorian Lincolnshire needlework SAMPLER by Jane Pratt age 10 with text 'This I have done that you may see what care my parents took in learning me Manby'. £150-200
89. A George III needlework SAMPLER by Ann Babington Stewton 1813. £150-200
90. Quimper style DISH and horn flask.
91. A Victorian parquetry travelling SEWING CASE. £20-30
92. A Victorian soapstone two section CADDY. £20-30
93. Two Nottingham copper TANKARDS and silver handled knives.
94. A French metal JEWEL CASKET. £25-40
95. Two WWII Service Medals, etc.

96. Trinket box, two pieces enamel and silver pin cushion.
97. Three shot/powder FLASKS (AF).
98. Three embossed POWDER FLASKS. £40-60
99. Three leather SHOT FLASKS. £35-45
100. A Ronson plated TABLE LIGHTER. £20-30
101. A pewter PORRINGER and oblong box.

EUROPEAN CERAMICS & GLASS

102. A pair of Victorian bisque BUSTS of Burns and Beatrice. £30-50
103. A Bohemian gilt amber glass SCENT BOTTLE. £40-60
104. A pair of 19thC continental FIGURINES of lady and gentleman. £40-60
105. A pair of porcelain CANDLESTICKS and CLOCK. £40-60
106. An Art Nouveau six piece part TOILET SET by H Alcock. £40-60
107. A BRETBY log shaped PLANTER. £20-30
108. A pair of Victorian milk glass POSY VASES (AF). £20-30
109. A green SYLVAC RABBIT.
110. A Victorian blue and white JUG AND WASHBOWL. £40-60
111. A large transfer printed CHEESE DISH. £40-60
112. A WEDGWOOD wash blue and gilt pearlware COMPOT. £50-80
113. A CROWN DEVON FRUIT BOWL. £25-40

114. A BESWICK cottage BISCUIT JAR and further lid. £25-40
115. An early 19thC CREAMER with neo-classical figures in relief on a sky blue ground. £40-50
116. A stoneware Spirit Barrel. £20-30
117. A ROYAL WORCESTER FIGURE of Charles I, No 2651, *year cypher 1918*. £50-70
118. A DAVENPORT botanical PEDESTAL DISH and four plates. £60-90
119. A ROYAL WORCESTER floral EWER, No 1378, 7". £80-120
120. A pair of Victorian glass LUSTRE VASES, 9". £60-90
121. A Victorian Decanter (AF).
122. A pair 19thC Bohemian overlay VASES. 4". £30-50
123. A graduated set of three Victorian JUGS, blue bisque ground with leaves glazed in relief, moulded mark W B Colridge Hampton and date lozenge. £100-150
124. A pair of Victorian mallet shape DECANTERS with spire stoppers. £30-50
125. Six CUSTARD GLASSES, etc.
126. A Victorian green glass DOORSTOP (AF). £20-30
127. A Victorian green glass DOORSTOP. £25-40
128. A DOULTON "Marigold" PAIL with cover £60-90.
129. A 19thC 'Babes in the Wood' relief moulded STAFFORDSHIRE JUG. £30-40
130. A MASON'S ironstone PEDESTAL FRUITBOWL, 10" diameter. £150-200
131. A Burleighware paisley design WASH JUG. £40-60
- 131A. A Locke & Co WORCESTER floral LOVING CUP. £40-60
132. A Victorian blue and white transfer printed WASH JUG. £30-50
133. A pair of pottery VASES with polar bears in relief. £20-30
134. A Victorian white stoneware FOOTBATH. £100-150
135. A Victorian Staffordshire PEN HOLDER depicting a gentleman with beer barrel and jug. 4 1/2". £20-30
136. A Victorian Staffordshire COTTAGE MONEYBOX. £40-60
137. A Victorian Staffordshire COTTAGE MONEYBOX. £40-60
138. A 17thC DELFT DRUG JAR, inscribed C; CYNOSBAT (AF) 7". £350-450
139. A Victorian Staffordshire SPILL VASE with maid at a tree base. 5". £20-30
140. A Victorian Staffordshire FIGURE of a spaniel and hare. 3 1/2". £50-80
141. An 18thC English bullet shape TEAPOT (AF). £50-80
142. A Royal Stafford Clarice Cliff POSY VASE.
143. A 1937 Coronation Model of the Cenotaph. £40-50
144. Five pieces of First Period WORCESTER; two teabowls and three saucers. £50-80
145. A RATHBONE ironstone TRIO of cup, saucer and plate, sunray mark. £30-50
146. Five purple lustre CUPS AND SAUCERS.
147. Two Victorian ironstone PLATES. £20-30
148. Four Victorian purple lustre SAUCER DISHES and another.

149. Six CUPS and SAUCERS, gilt vine decoration; and a Tuscan part tea service.
150. A pair of German SPILL VASES, other china and glass.
151. Three polychrome POT LIDS in ebonised frames. £70-100
152. Shaving mug, meatplate and other china. £20-30
153. A LALIQUE PERFUME BOTTLE moulded intaglio with female figures in Greek costume, moulded R Lalique, c.1925. 6". £250-300
154. A pair of English DELFT blue and white botanical PLATES. 9". £100-150
155. Two Willow pattern plates (AF).
156. Four DANIELS CUPS AND SAUCERS and SLOP BOWL. £35-50
157. A DANIELS 'Spode Bell' TRIO of cup, saucer and plate. £30-40
158. A GRAINGERS WORCESTER CUP AND SAUCER.
159. A FOLEY green and white part TEA SERVICE. £25-40
160. A pair of SHELLEY black ground VASES, patt. 8322. 8". £20-30
161. A WEDGWOOD Etruria forty-piece TEA SERVICE. £60-90
162. An AYNSLEY 39-piece TEA SERVICE, blue transfer printed (some AF). £80-120
163. Three bowls (AF).
164. Pair Vases, Minton jewel box and six plates (AF).
165. An Ashworth's Tureen (AF)
166. Miscellaneous Chinaware (AF)
167. Four Victorian blue/red DINNER PLATES.
168. A Victorian 44 piece blue and white DINNER SERVICE. £80-120
169. A CROWN DEVON 33 piece part TEA SERVICE (including Teapot), Spring pattern. £120-180
170. A ROYAL WORCESTER FRUIT BASKET, cream ground, painted with flora, Model G441. 9". £120-150
171. A 19thC SAMSON Oriental BOWL with two cocks in the centre field. £50-70
172. A polychrome POT LID entitled 'Peace', in an ebonised frame. £20-30
173. Six Stuart crystal RUMMERS. £20-30
174. Three cut crystal DISHES.
175. A Victorian COMPORT and four dessert plates, turquoise border. £25-40
176. Slice cut sherry and port GLASSES, etc.
177. A PAPERWEIGHT. £20-30
178. A Royal Grafton COFFEE SERVICE; blue/gilt teaware; 6 side dishes.
179. A Japan pattern gilt cylinder VASE. 4½". £30-40

ORIENTAL CERAMICS & WORKS OF ART

180. Two Japanese Cloissone VASES. £40-60
181. A Meiji Imari SAUCER DISH. 13" (AF). £20-30
182. A Chinese blue and white TEAPOT, three redware vases, and a crackleware vase. £25-40
183. A Chinese Armorial SAUCEBOAT. £180-250

184. A Chinese mandarin CREAM JUG. £50-80
185. A similar style JUG and an oil bottle. £30-40
186. A Chinese octagonal CHARGER, blue ground with panels decorated in enamels. £80-120
187. A Cantonese CABINET PLATE. £20-30
188. Five Chinese blue and white PLATES, four depicting two birds and a tree (1 AF). £50-80
189. A Chinese basket pattern SAUCER DISH. £30-40
190. A Chinese SAUCER DISH decorated in enamels of flora and butterflies. £30-40
191. A Chinese SAUCER DISH, pagoda scene and another. (2) £25-40
192. A Chinese famille rose PLATE. £30-50
193. A Chinese famille rose octagonal PLATE. £30-50
194. A Chinese famille rose PLATE with central floral spray and trailing ivy borders. £30-50
195. Two large Chinese RICE BOWLS. £25-40
196. An Oriental bronze VASE on four sabre legs. £30-50
197. A three-footed Japanese circular BOWL. £20-30
198. Three pieces of Imari (AF).
199. A Canton Sugar Box and two saucers (AF).
200. A 19thC SATSUMA baluster VASE decorated with trailing wisteria. 13". £60-80
201. A gold lacquer CASKET with applique metal chinoiserie decoration. £50-80
202. A Victorian rosewood and chinoiserie WORKBOX. £120-180
203. A Chinese blue and white GINGER JAR. £80-120
204. A Korean green BOTTLE VASE and a Chinese example. £50-80
205. A signed Japanese VASE, part glazed with applied figures. 9". £40-60
206. A Chinese blue and white DISH. £30-40
207. An Imari FIGURE of a cat, 14"
208. Four Oriental TEA BOWLS and SAUCER. £20-30
209. An oriental black lacquer MIRROR STAND AND CASE with polished copper mirror. £40-60
210. A Celadon BOWL decorated with dragons in enamels. 8". £30-40
211. A SATSUMA baluster VASE decorated in enamels. 12". £80-120
212. A pair of SATSUMA hexagonal VASES with gilded polychrome landscapes, signed. 10". See illustration. £180-250



Lot 212



Lot 215

213. An 18thC Imari bullet-shape TEAPOT (AF). £40-60
214. A 19thC Chinese CHARGER enamel decorated panels of birds and flora on a gilt mandarin diaper field. 27" dia. (AF). £300-400
215. A fine pair of cloisonné baluster VASES, cream ground, on wooden plinths. 8". See illustration. £600-800
216. Four small FIGURES; pair of blanc-de-chine geishas and pair of T'ang style elders. £25-40
217. Two Chinese porcelain SNUFF BOTTLES.
218. An unusual early 18thC Chinese BOWL, with two panels of seated maidens. £80-120
219. Kunichika (1835-1900). Kabuki actor, Kawarazaki Gonjuro, watercolour. £30-50
220. Kunichika (1835-1900). Kabuki actor, Nakamura Fukusuke as Ninamoto Yoshitsune, watercolour. £50-80
221. A signed Japanese hardwood netsuke study of a seated tiger. £20-30
- 221A. A pair of Japanese watercolours on Taisho woodcuts. £30-50

NETSUKE

222. A signed Japanese hardwood netsuke study of a seated farm labourer holding a large fruit. £20-30

- 223. A signed Japanese hardwood netsuke study of a camel. £20-30
- 224. A signed Japanese ivory netsuke a well animated study of a coiled snake. £30-40
- 225. A signed Japanese ivory netsuke study of a seated puppy dog. £30-40
- 226. A signed Japanese ivory netsuke study of an immortal with a large fly swat fan. £30-40
- 227. A 19thC Japanese ivory netsuke study of a traveller with crooked staff. £40-60
- 228. A 19thC Japanese ivory netsuke study of a robed animal. £40-60
- 229. A 19thC Japanese ivory okimono figure holding a broom. 3 1/2". £50-80

BOOKS, MAPS & STAMPS

- 230. T Kitchen. A map of Yorkshire, Hogarth framed. £25-40
- 231. A map of Durham, Hogarth framed. £20-30
- 232. Krohne & Sesemann. 1894 catalogue of Veterinary Instruments; Everyday Farriery, 86th Edition. £30-40
- 233. A leather suitcase containing world POSTAGE STAMPS. £20-30
- 234. Waverly Novels, 40 vols; Dickens Novels, 19 volumes.
- 235. Ten gilt leather Books. £20-30
- 236. Newspapers relating to the death of George V.
- 237. 1887 Jubilee supplement.
- 238. Davis Postcards of the world and cigarette cards.
- 239. Rev B Street, BA. Historical NOTES ON GRANTHAM and Grantham

Church, pub. Ridge & Son 1857; 1967 Borough Directory; 1832 engraving. £50-80

- 240. Small box of European Stamps.
- 241. Large box of world Stamps.
- 242. A Prestige Album of World Stamps. £30-40
- 243. - ditto -
- 244. - ditto -
- 245. Medallion, stamps etc.

JEWELLERY, COINS & BIJOUTORIE

- 246. Two strand pearl Necklace.
- 247. Eight silver pendants with chains.
- 248. Two 22ct WEDDING BANDS. £20-30
- 249. Two 22ct WEDDING BANDS. £20-30
- 250. Two 9ct gold SIGNET RINGS.
- 251. Dress Rings, silver pieces, chinoiserie clock, etc.
- 252. An 18ct gold RING set with five graduated old-cut diamonds. £30-50
- 253. A 9ct rose gold GUARD CHAIN with small locket. 28grammes. £150-250
- 254. WATCH CHAINS, two silver, one plated (3).
- 255. A 9ct gold articulated BRACELET. 42grammes. £80-120
- 256. A 9ct gold RING with a 1915 Sovereign. 22grammes (all in). £40-60
- 257. A pair of 18ct gold striped sardonyx chain CUFFLINKS, cased. £60-80
- 258. A pair 9ct gold oval chain CUFFLINKS and BAR BROOCH.
- 259. Two sets of studs, boxed; a silver ring.

260. A pair of Edwardian 9ct rose gold chain CUFFLINKS. £25-40
261. A gold DRESS RING set with two semi-precious stones. £30-50
262. A Victorian 9ct rose gold fancy link ALBERT with crucifix. £300-350
263. An Eastern gold filigree panel BRACELET. £50-70
264. A gold mounted jade PENDANT and another. £40-60
265. A lady's 9ct gold "Elco" WATCH and "Foxtail" Bracelet. £30-40
266. An 18ct gold WEDDING BAND and two further rings.
267. A small gold BELCHER CHAIN and CRUCIFIX. £20-30
268. A 1906 gold HALF SOVEREIGN. £30-40
269. An 1882 gold SOVEREIGN. £40-60
270. Victorian and later English coinage. £20-30
271. Two WWI Service Medals.
272. Pair gold CUFFLINKS, brooch and coins.
278. Three gentlemen's POCKET WATCHES.
279. Two gold plated gentlemen's POCKET WATCHES.
280. A French silver POCKET WATCH with a floral enamel dial, cased. £20-30
281. A Victorian silver gentleman's POCKETWATCH with fusee movement, engraved Wm Best, Consett No 21321, with chain and fob. £40-60
282. A George III silver pair-cased verge POCKET WATCH enamel dial, roman numerals, gilt fusee movement, pierced and engraved Wm Knowles, Liverpool 536. £150-200
283. A Victorian walnut BANJO BAROMETER, by Preston, Spalding, 8" dial. £120-180
284. A Victorian rosewood BANJO BAROMETER with mother of pearl inlay (AF). £80-120
285. A Victorian rosewood onion top BANJO BAROMETER (AF). £60-90
286. An oak aneroid BAROMETER. £20-30
287. A George V GPO electric WALL CLOCK. £30-50
288. A 19thC American ogee SHELF CLOCK. £50-80
289. Three painted Clock Faces.
290. A black slate MANTEL CLOCK. £20-30
291. A Victorian black slate columner MANTEL CLOCK. £40-60
292. An ANNIVERSARY CLOCK with glass dome. £50-80
293. A Victorian slate MANTEL CLOCK. £25-40
294. A mahogany MANTEL CLOCK with Westminster chimes. £40-60

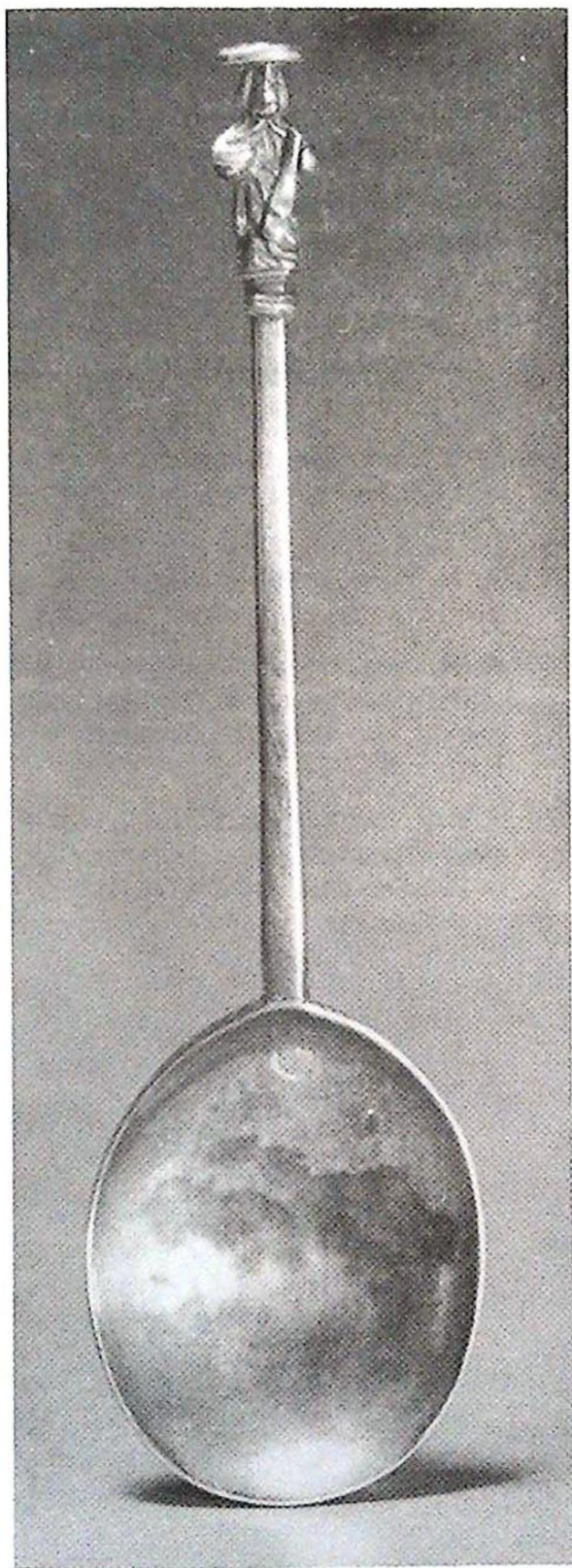
CLOCKS, WATCHES & BAROMETERS

273. An Avia lady's WRISTWATCH with a marcasite strap. £20-30
274. A George V silver gentleman's POCKET WATCH and chain by Mears & Co. and another. £20-30
275. Two gold lady's WRISTWATCHES and further strap. £20-30
276. A silver and tortoiseshell (AF) EASEL CLOCK. £70-90
277. A ladies 9ct gold WRISTWATCH.

295. A Bulle electric DOME CLOCK. £30-50
296. An oak MANTEL CLOCK with Westminster Chimes. £20-30

SILVER & PLATEDWARE

297. An electroplate London shape TEAPOT with embossed and part reeded decoration. £30-50
298. A swing handled CAKE BASKET and a three-piece teaset (AF). £20-30
299. Quantity of oval silver plated PLATTERS.
300. A circular electroplate SALVER with claw feet. £25-40
301. An Elkington electroplate three-piece TEASET. £40-60
302. A Mappin & Webb electroplate reeded VASE. 12". £25-40
303. Silver plated CUTLERY, continental white metal bowl, salts, etc.
304. Two silver plated TEAPOTS. £20-30
305. A Mappin Bros electroplate oval ENTREE DISH. £25-40
306. A 1920's walnut CANTEEN on cabriole legs containing a selection of electroplate cutlery. £80-100
307. An oak canteen of bone handled FISH CUTLERY. £30-40
308. A blind filigree white metal TRINKET SET (4). £30-50
309. An Edwardian oval silver BON BON DISH with pierced and embossed decoration. *Sponsor* JR. Sheffield 1905. 2½oz. £30-50
310. A pair of George V silver CANDLESTICKS. Birmingham 1915. 6". £25-40
311. Four Edwardian silver SPILL VASES. *Sponsor* Walker & Hall. Sheffield 1909/10. £50-80
312. An Edwardian rococo silver TRAY. Chester 1901. 8oz. £40-60
313. Two engine turned silver Cigarette Cases.
314. A pair of Edwardian silver PEPPER-ETTES. Birmingham 1905. £25-40
315. An Edwardian silver pedestal BOWL. *Sponsor* A&JZ. Birmingham 1905. 5oz 14dwts. £50-80
316. Two Georgian silver FRUIT SPOONS with gilt bowls. £20-30
317. A Victorian silver CADDY SPOON in the form of a rococo shell and scroll. *Sponsor* Martin Hall & Co. Sheffield 1854. £30-50
318. Apostle COFFEE SPOONS; five silver, two plated and five Georgian fiddle pattern SALT SPOONS. (12)
319. Three Georgian Old English pattern TABLE SPOONS.
320. Assorted silver FLATWARE. £30-40
321. Georgian and later silver Kings pattern FLATWARE. £40-60
322. A matched silver three-piece CRUET.
323. A Victorian oval silver MUSTARD POT, Sheffield 1866; and a Georgian spoon. £40-60
324. An engine turned silver CIGARETTE CASE.
325. A pair of silver gilt GOBLETS. Birmingham assay. 5oz. £40-60
326. An engine turned silver CIGARETTE BOX. £40-50
327. A silver topped crystal three-piece CRUET, Chester 1931; and a pepperette. £25-40



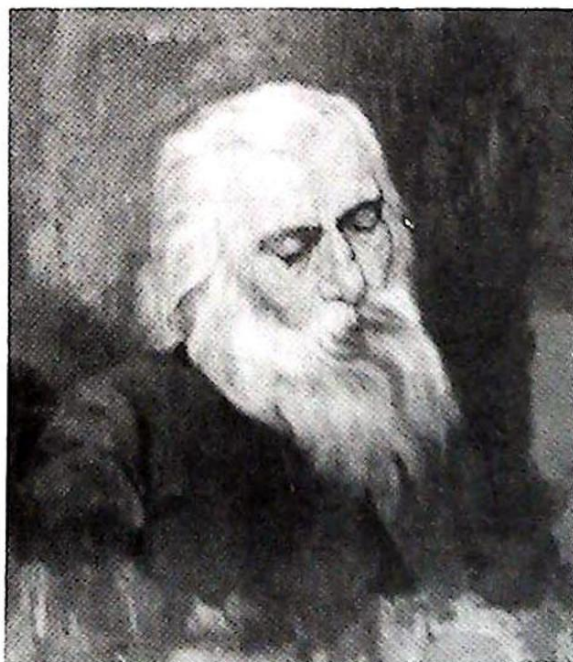
Lot 333

328. A George V five-piece pierced silver CONDIMENT SET with blue glass liners and two spoons, cased. £80-120
329. A George V silver five-piece DRESSING TABLE SET monogrammed EA. Birmingham 1911. £80-120
330. A Victorian silver melon shape TEAPOT. Sponsor Jos. & Albert Savory. London 1855. 23oz. £250-350
331. A Victorian silver part fluted SPIRIT KETTLE on warming stand. Sponsors Elkington & Co. Birmingham 1898. 28oz (all in). £150-200
332. An Edwardian silver circular SALVER with a moulded foliate shell and gadrooned border and four scroll feet. Sponser GH. London 1909. 17" dia. £600-800
333. A Charles I silver APOSTLE SPOON, the apostle surmounted by a spread winged bird seal, both with minute traces of gilding, the shaft bearing the year letter of 1637, the lion passant and sponsor mark RC with rosette below (Richard Crosse), the bowl bearing the London Assay mark, to the reverse inscribed KBEN 1662. 7½". 58grammes (2oz). £1200-1500

PICTURES

334. A NEEDLEWORK PICTURE of a peacock, in a maple frame. £25-40
335. A Baxter print of a jetty.
336. A Wooded Landscape watercolour. 9½" × 14". £30-50.
337. English School. Gulls off a rocky coastline. 10" × 14". £30-50

338. A pair of Oriental relief painted PANELS with pagoda scenes. 18" × 6". £30-40
339. Three landscape oils in ebonised frames.
340. Street scene watercolour and two landscape oils.
341. A 19thC watercolour of a European town arch, in a Hogarth frame. £40-60
342. A pair of oval gilt framed Prints of young ladies; two crystoleums. £20-30
343. A watercolour of flowers in a serpent entwined vase.
344. An oak framed PEARS PRINT. £30-40
345. Cecil Markham. Two garden scene watercolours 1920's. £20-30
346. A village scene oil painting signed P Slack.
347. A horse racing Print, after Munnings. £30-40
348. A print of dogs at the kill.
349. Three mezzotints, classical scenes in oval gilt frames. £40-60
350. Three small oak framed prints and an oleograph of a country house. £20-30
351. K. Rose. Forest path, watercolour, signed. £30-50
352. An East Anglian Coastal scene watercolour, initialled T.H. dated 1868. 13" × 20". £50-80
353. A plaster PICTURE FRAME to hold mount 45" × 55". £40-60
354. A painted Victorian overmantel FRAME. £20-30
355. M A Ogle. Still life of flowers in a vase, watercolour, signed and dated 1920. 10½" × 9". £30-50
356. Oliver V Chew. Cottage scenes, pair, one signed and dated 1921. £30-40
357. E Davies. Landscape watercolour, signed. £25-40
358. A pair of Regency PORTRAITS of seated lady and gentleman. £40-60
359. A colour engraving of a dancing maiden. £30-40
360. Two 18thC engravings of young girls. £30-50
361. Gilbert. A pair of Harbour Scenes, oils on panel, signed. 8½" × 6½". £80-120
362. A pair of sizeable Farquaharson prints of sheep in winter. £70-90
363. A Landscape with two figures at a stile, watercolour, indistinctly signed and dated, believed to be J Harper. £50-80
364. A half length portrait of a white bearded gentleman, oil on canvas. 26" × 22". See illustration £100-150



Lot 364

365. Helen McCarvill. Still life of bottles, oil on board. £50-80
366. After Alken. Four hand coloured engravings of Game Shooting scenes. £30-50
367. E Vulliamy. A French street scene, watercolour, signed and dated 1923. 9" x 11". £60-80
368. Two en grisaille watercolours; one of sailing ships and dinghy, dated 01; one of a beached boat, dated 92; both monogrammed C(or G)Y, in gilt frames. 9" x 13½". £150-200
369. 19thC English School. Half length portrait of a gentleman. 36" x 28" (holed). £100-150
370. A full set of thirteen Cries of London. Prints, with proof stamp and signed in pencil. £150-200
371. A pair of Interior Scenes depicting; two boys eating fruit; three men around a chessboard; oils on metal. 7½" x 6½". £120-180
372. Henry Moore. Off Scarboro' in a Gale, pencil sketch, signed H Moore. 5" x 7", attached to a sheet marked Yours truly Henry Moore in ink. £100-150
373. G F Watts (Attrib). Christ in Glory, red/black pastel drawing. 20" x 18". £180-250
374. 19thC English School. Landscape view of Windsor Castle, oil on canvas, indistinctly signed. 20" x 30", gilt framed. £350-500
375. 19thC English School. Three quarter length portrait of seated learned gentleman, oil on canvas. 36" x 28", gilt framed. £350-500

Lot 378





Lot 380



376. English School. Landscape with figures of man and ox in the foreground, oil on panel. 9" x 12". £350-450
377. **anley. A pair of Coastal Scenes, believed to be off Whitby, one indistinctly signed. 8" x 6", in modern gilt frames. £400-600
378. W.D.P. (Penny?). A pair of Seascapes, oils on canvas, 8" x 12", initialled with one dated 84. *See Illustration overleaf.* £600-800
379. James Clark. Sheep by a gate, oil on canvas, signed. 20" x 24". *See illustration on Page 1.* £600-900
380. Harrington Bird. A pair of Equestrian Scenes; two horses and carriage; oils on canvas, signed and dated 95/8. 10" x 20", in gilt frames. *See illustration.* £1000-1500
381. A 19thC oil on panel of a seated boy with flute, in Bavarian style dress, 12" x 10". £300-400
382. Spare Lot

FURTHER ENTRIES

383. Silver plated and bone handled CUTLERY.
384. Silver plated and bone handled CUTLERY.
385. An oak CANTEEN of CUTLERY, silver plated and bone handled. £40-60
386. An oak CANTEEN of electroplated FISH CUTLERY. £80-100
387. A Walker & Hall electroplate three piece TEASET. £30-50
388. A four bottle CRUET on an electroplate stand. £40-60

389. A horse hoof mounted with silver as an INKWELL. £40-60
390. A Jones SEWING MACHINE with cast metal base. £20-30
- 391-420. Spare Lots.

FURNITURE

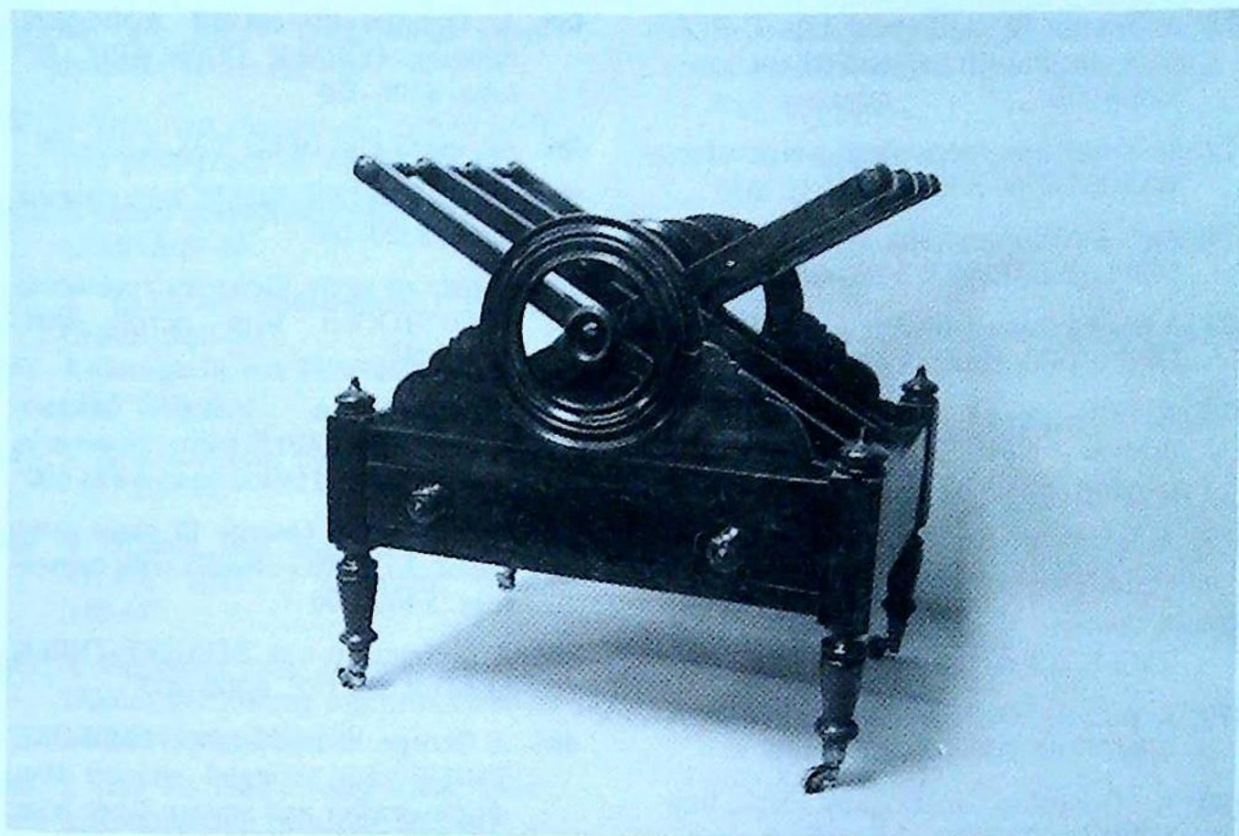
421. An Edwardian walnut WASHSTAND with grey/liver marble top. £40-60
422. A carved oak SPINNING STOOL. £25-40
423. A low elm BENCH. £25-40
424. An Edwardian walnut HALL CHAIR. £40-60
425. A pair of 19thC oak ladderback DINING CHAIRS. £25-40
426. An Edwardian wing ARMCHAIR, red dralon upholstery. £30-50
427. Five Victorian barback CHAIRS and a Windsor chair (AF). £40-60
428. A Victorian SMOKER'S BOW CHAIR (AF). £25-40
429. A wrought iron BOOT SCRAPER. 5". £30-50
430. An adjustable ebonised MUSIC CHAIR. £30-50
431. An Edwardian walnut SIDE CUPBOARD with glazed door. £25-40
432. Two brass STANDARD LAMPS. £20-30
433. A PIANO STOOL and three leg table (AF).
434. A circular oak COFFEE TABLE. £20-30
435. A blue Lloyd Loom CHAIR with brass feet. £25-40
436. A modern DRINKS GLOBE. £50-80
437. Two Victorian lathback CHAIRS (AF).

438. An oak JOINT TABLE and small dropleaf Table. £25-40
439. A Victorian rosewood TRIPOD BASE (for polescreen or stool). £25-40
440. A heavy barleytwist oak STANDARD LAMP. £40-60
441. A Victorian upholstered CHILD'S CHAIR. £50-80
442. A George III oak PEMBROKE TABLE (AF). £50-80
443. A Georgian elm folding TEA TABLE (AF) £50-80
444. A William and Mary style walnut STOOL with X stretcher, 19thC. £40-60
445. A Georgian oak rectangular TEA TABLE, the folding top crossbanded in mahogany. £80-120
446. A pair of 1930's wing ARMCHAIRS upholstered in brocade. £50-80
447. A 19thC French gilt metal JARDINIÈRE STAND with an onyx top. £80-120
448. A Victorian stripped pine BLANKET BOX. £50-70
449. A Victorian painted pine WASHSTAND with marble top and tile back. £60-90
450. A pair of Victorian mahogany DINING CHAIRS with fluted legs. £40-60
451. A 1920's walnut cylindrical JARDINIÈRE STAND on cabriole legs. £60-90
452. A 19thC pine pitch single seat PEW. £60-90
453. A pair of oak open DWARF BOOK-CASES. ££60-90
454. A pair of cast iron PUB TABLES. £60-90
455. A Louis XIV style kingwood BEDSIDE CABINET with a grey/liver marble top. £80-120
456. A Victorian oak two-drawer SIDE TABLE. £50-80
457. A Victorian SMOKER'S BOW CHAIR. £40-60
458. A 19thC Italian oak HALL CHAIR with X frame base. £80-120
459. A 19thC American ROCKING CHAIR. £80-100
460. A Victorian black papier mache CHAIR of chinoiserie decoration inlaid with mother of pearl. £80-120
461. A black lacquer chinoiserie STANDARD LAMP. £30-50
462. A William IV mahogany circular tilt-top BREAKFAST TABLE with a reeded pedestal and trefoil base. £300-500
463. Six Victorian mahogany balloonback DINING CHAIRS with turned legs. £500-700
464. A George III mahogany PEMBROKE TABLE. £250-350
465. A Georgian oak and elm tripod TEA TABLE with birdcage. £120-180
466. A George III oak TEA TABLE with circular tilt top and tripod base. £100-150
467. A Georgian mahogany padfoot SERVING TABLE. £100-150
468. An Edwardian crossbanded mahogany SUTHERLAND TABLE. £180-250
469. A Georgian panelled pine MULE CHEST. £150-200
470. A set of three Victorian wirework GARDEN CHAIRS. £100-150
471. A Victorian satin/mahogany SIDE TABLE with drawer and barleytwist legs. £180-250

472. A George III mahogany TEA TABLE with circular tilt top and tripod base. £250-350
473. A Victorian mahogany serpentine WASHSTAND. £200-300
474. An Edwardian inlaid mahogany DISPLAY CABINET. £200-300
475. A low Victorian upholstered mahogany OPEN ARMCHAIR. £100-150
476. A George IV mahogany two-drawer WRITING TABLE with traytop. £250-350
477. A Jacobean carved oak three-panel COFFER, 38" wide. £250-350
478. A George III mahogany PEMBROKE TABLE. £300-400
479. A pair of George III elm bowback WINDSOR CHAIRS. £200-300
480. A Georgian mahogany fall flap DINING TABLE on square legs. £100-150
481. A pair of Edwardian walnut TUB CHAIRS with galleried backs, upholstered in green button dralon. £200-300
482. A Victorian walnut and chequer-board top CENTRE TABLE with turned pillars. £150-200
483. A Jacobean style oak HALL CHAIR. £70-100
484. A Victorian rosewood PIANO STOOL with a reeded and carved rise-and-fall base. £120-180
485. A reproduction swivel OFFICE CHAIR in red button leather. £80-120
486. An oak REVOLVING BOOKCASE on stand. £150-200
487. A heavy oak drawleaf DINING TABLE and 4 CHAIRS, with pineapple carvings. £400-500
488. A George III carved mahogany hanging CORNER CUPBOARD. 12" high. £100-150
489. An 18thC elm DEED BOX. £100-150
490. A cast iron DOG GRATE with shaped back. £120-180
491. A pair of early Victorian rosewood FOOTSTOOLS with scroll feet. £350-450
492. A Victorian black lacquer tilt top TEA TABLE with chinoiserie decoration and trefoil base. £400-600
493. A set of five George III mahogany barback DINING CHAIRS with turned legs. £400-600
494. A barleytwist oak BERGERE THREE SEATER SETTEE. £300-400
495. A George III mahogany PEMBROKE TABLE with stringed shaped top, single drawer and square taper legs. *See illustration.* £400-600



Lot 495



Lot 501

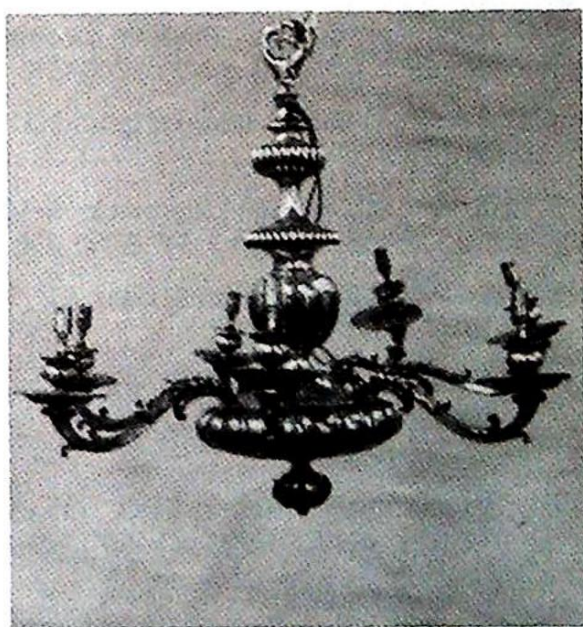
496. A George III mahogany folding TEA TABLE. £300-400
497. A George III mahogany WINDOW SEAT. £300-400
498. A Georgian oak three-panel COFFER, 44" wide. £350-500
499. A mid 19thC French flamed mahogany LIT A BATEAU. £120-180
- 500. A fine George III mahogany serpentine CHEST OF DRAWERS. £4000-6000**
501. A fine Regency rosewood CANTERBURY with drawer. *See illustration.* £900-1200
502. A Victorian mahogany WARDROBE COMPACTUM. £300-400
503. A George II oak SPOONRACK with box base. £120-180
504. A modern six branch ELECTROLIER. £30-50
505. A fine Edwardian mahogany CHIFFONIER with floral and marquetry decoration. *See illustration overleaf.* £600-900
506. A Jacobean oak COURT CUPBOARD the four panel upper section having turned balusters and two door base, carved throughout with lozenge motifs. 67" wide, 72 high. £600-800
507. A pair of oak BOOKCASES with two bevelled glazed doors. £400-500
508. A 20th century oak CENTRE TABLE with 6 drawers 69" x 42". £300-500
509. An Arts & Crafts oak BUREAU BOOKCASE, leaded glazed doors, fall flap, shelved base. £120-180



Lot 505

- 517. A Victorian mahogany five-drawer CHEST with knob handles, 48" wide. £120-180
- 518. An Edwardian oak OVERMANTEL with two landscape prints and mirror. £40-60
- 519. An Edwardian oak DRESSER BASE, two drawers, two doors. £100-150
- 520. A Georgian style mahogany corner HALL CUPBOARD. £350-500
- 521. A Victorian mahogany double door WARDROBE. £300-400
- 522. A 19thC American walnut TRIPLE WARDROBE with carved panels and fitted linen press interior. £250-350
- 523. A George III flamed mahogany BUREAU, fall flap concealing a fitted interior, four graduated drawers and later bracket feet, 38" wide. See illustration overleaf. £400-600

- 510. An Edwardian mahogany five-drawer CHEST. £80-120
- 511. An Adam style oval WALL MIRROR. £25-40
- 512. A Victorian stained pine breakfront LINCOLNSHIRE DRESSER. £400-500
- 513. A fine electroplated seven-branch ELECTROLIER with four matching WALL LIGHTS. 32" high. See illustration. £400-600
- 514. A Victorian painted pine SPLIT CHEST. £80-120
- 515. A Victorian painted pine traytop CHEST. £120-180
- 516. A Victorian shield shape WALL MIRROR painted in cream and gold. £40-60

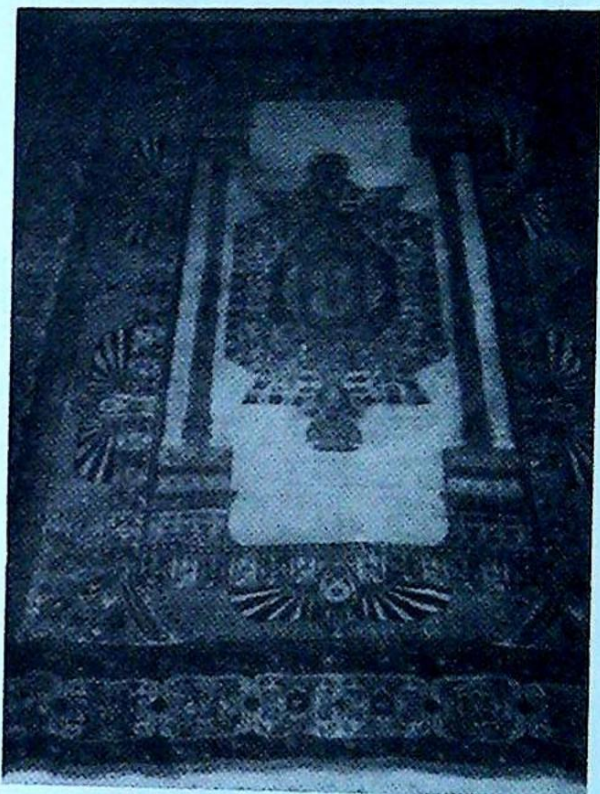


Lot 513



Lot 523

Lot 530



ORIENTAL RUGS

524. A Malayer RUG, madder ground, rectilinear design. 75" x 43". £200-250
525. A Caucasian RUG, madder lozenge in a blue field. 72" x 40". £200-250.
526. A Azarbijan RUG, madder gound. 57" x 39". £150-200
527. A Kurdish RUG, blue/black field, madder lozenge. 88" x 54". £300-350
528. A Gashgi RUG, cream border. 65" x 37". £120-180
529. An antique Persian RUG, rectilinear design with a multi gul field. 67" x 43". £80-120
530. An antique Persian RUG, cream centre field, 85" x 55". See illustration. £150-250
531. An antique Persian GARDEN RUG. 79" x 55". £50-80

END OF SALE

NOTES

NOTES

MAILING REGISTER SUBSCRIPTION FORM

If you wish to receive our Auction catalogues and detail sheets for one year, please complete and return this form.

1. Antiques & Fine Art Auctions

There are currently planned 5 Sales per annum to include:-

Furniture, Paintings, Prints, Glass, Ceramics, Toys, Silver, Clocks, Watches, Jewellery, Metalware, Stamps, Coins, Books, Arms & Militaria, Bygones, Barometers, Collectors Items, etc.

2. Commercial & Agricultural Auctions

Frequency of Sales determined by instructions from The High and County Courts, Liquidators and Receivers, and private individuals/companies.

Office Equipment, Catering Equipment, Engineering Equipment, Industrial Plant & Machinery, Live & Dead Farming Stock, Retail/Wholesale Shop Stock and Fittings, Vehicles; – Assets of a variety of Businesses.

3. Specific Requirements

If you specialise in one area of the above categories (eg. *Books*) please state this to avoid receiving unwanted catalogues.

.....

1. Antiques & Fine Art. (£10)	£.....	
2. Commercial & Agricultural Auctions. (£5)	£.....	
Fee enclosed	£.....	Total

Name: Mr/Mrs/Miss/Title

Address:

.....

.....

.....

Tel: (.....) Date: Our Ref: *ML

NOTES

NOTES

GOLDINGS sell by AUCTION
ANTIQUÉ & MODERN
FURNITURE, BRIC-A-BRAC
HOUSEHOLD EFFECTS

Every Wednesday at 10.30am

In all circa 350 lots of furniture, pictures,
china, glass, tools, carpets, rugs, books,
bric-a-brac, outdoor effects, etc.

Viewing: Tuesday 4pm to 6pm
& Saleday from 9am.

*** SALEDAY CASH PAYOUT FOR VENDORS ***

ENTRIES FOR THE WEEKLY GENERAL SALE
USUALLY CLOSE 5pm EACH MONDAY

*** FULL HOUSE CLEARANCE SERVICE ***



Upon kind instructions from DRAMA 93
Goldings will sell by Auction

THEATRICAL COSTUMES

(at a date to be set in late summer)

To include a selection 20th century and
period pieces viz. 17thC mens velvet jacket,
18thC tapestry long waistcoat, 1920's bathing costumes,
selection of mens Morning Suits, ass. suits, blazers, overcoats,
ladies dresses in chiffon/satin/velvet/lace, Astrakan coats,
stoles, ladies Greek & Egyptian gowns, military tunics,
wonderchick outfit, Service/Panto/Music Hall hats,
prs curtains, tablecovers, cushions,
Panto animal heads, K/D clothes rails, material offcuts, etc.

*Further entries of period costumes and textiles
are invited for this sale.*

Catalogues for this sale will be forwarded upon request
and will be available in due course.

NOTES

We are pleased to recommend

Lowes Removals



Removals - Fine Art Carriers
Local & Long Distance

Andrew Lowes

40 Vernon Avenue, Gonerby Hill Foot,
Grantham, Lincs., NG31 8JJ
Telephone: 0476 65194

PRINTED BY W.G. HARRISON, DYSART ROAD, GRANTHAM
TEL: 0476 62700

Established 1900

- GOLDINGS -

Chartered Surveyors, Auctioneers, Valuers & Estate Agents
Residential, Commercial, Agricultural, Antiques & Fine Art

45 High Street, Grantham, NG31 6NE
Telephone: 0476 · 590211

PROFESSIONAL SERVICES FOR



RESIDENTIAL

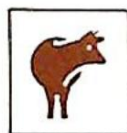
Our established Residential department headed by Chartered Surveyors undertakes sale and valuation of all types of property from Castles to Town Houses; Surveys, Homebuyers Reports, Mortgage, Probate and Insurance Valuations carried out with care attending to individual requirements.



COMMERCIAL

Dealing with the sale and survey of Shops, Offices and Factories. Valuation for Rent Reviews, Lease renewals and negotiations. Rent Arbitration, on behalf of landlord and tenant.

Plant, Machinery & Assets; Sales for Receivers, Liquidators, High Court & County Court. Auction Sales on Site or at our Auction Rooms for private and public clients alike.



AGRICULTURAL

Our Senior Partner has wide experience in the sale and valuation of Agricultural Properties, conducting Farm Sales and Valuation of Live and Dead Farming Stock for dissolution, Probate and other matters. Together with Rent Reviews, Development Land reports and Annual Stocktaking Valuations.



FINANCIAL SERVICES

Our Experienced Consultant is available to advise on all matters concerning Finance, Mortgages, Insurance, Investment, Planning and Pensions.



PROPERTY MANAGEMENT

Personal service and attention to detail ensures that our management team exploits your investment portfolio whether an Individual Family Home let for a small fee or Office, Factory, Shop or Farm with rent collected and regular inspections made.

Saleroom Manager

Colin R. Young FNAVA

Property Management

Mrs. Margaret Pashley

Partners

C. Robin Hall FRICS FAAM

Ian J. Shaw FRICS FNAEA

Financial Service Consultant

John G. Stukins

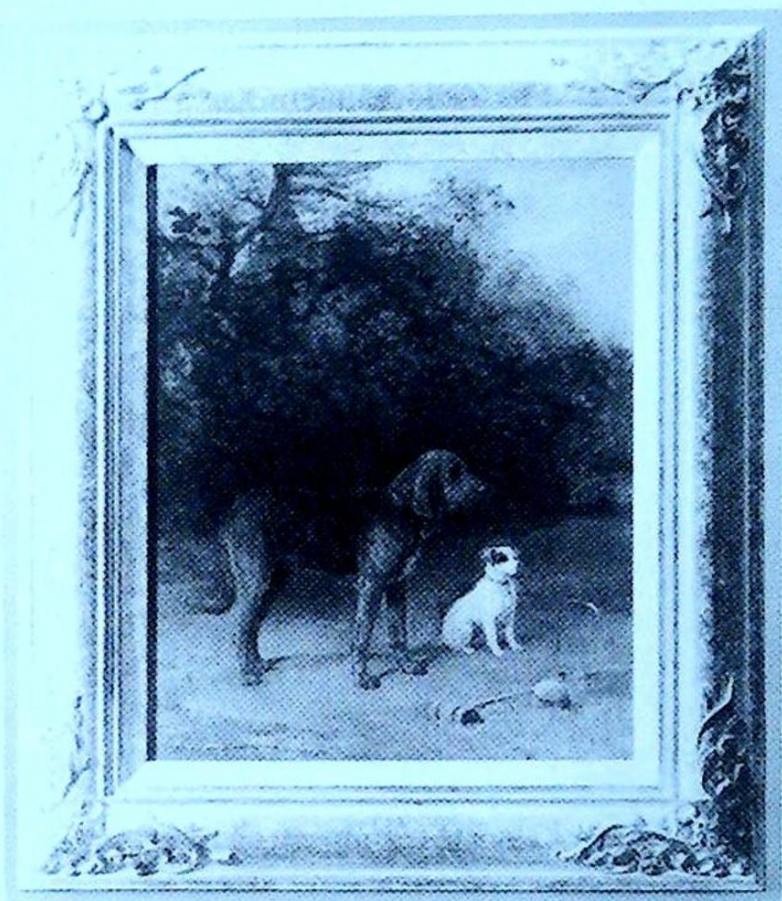
Residential Sales Manager

Mrs. Jenny Diment FNAEA CPEA

Established 1900

-GOLDINGS-

THE GRANTHAM AUCTION ROOMS



Heywood Hardy, oil on canvas 11" x 9",
signed & dated, 1895, in our last sale

SOLD for £1,400

NEXT SALE

of

ANTIQUES & FINE ART

Wednesday 17th August, 1994 at 10.00am

Entries are welcome until August 4th.

Call Colin Young for a Free Valuation

Old Wharf Road, Grantham, Lincolnshire NG31 7AA
Telephone: (0476) 65118 Fax: (0476) 590998