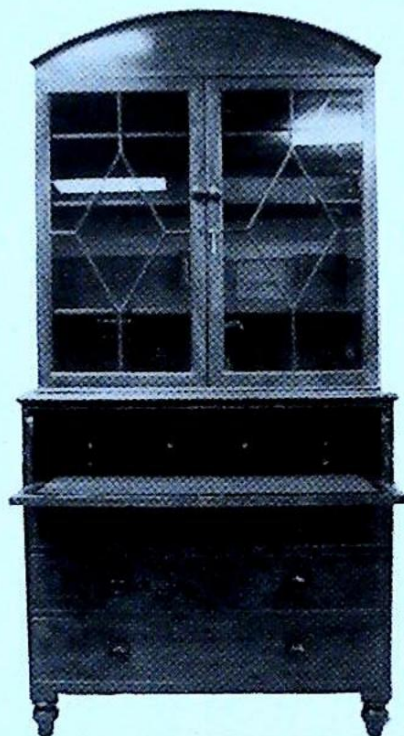


Established 1900

**-GOLDINGS-**

**THE GRANTHAM AUCTION ROOMS**

Upon instructions from the Executors of J.R. Cragg (Dec'd) and others



AUCTION SALE OF  
**Antiques**

On Wednesday, 17th August, 1994 at 10.00am

**Golding Young & Co.**

Old Wharf Road, Grantham, Lincolnshire, NG31 7AA

Telephone: (01476) 65118



## CONDITIONS OF SALE

1. These Conditions together with any Notices to Purchasers are the only terms and conditions subject to which Golding Young & Co. ("the Auctioneers") as agents for the Vendor will sell goods to a purchaser ("the Bidder") and all other conditions, whether express, or implied at common law or by statute as are capable of lawful exclusion are hereby excluded.
2. The highest bidder shall be the buyer. The Auctioneers reserve the right of regulating the biddings; of rejecting any bid; and of bidding for, withdrawing, consolidating, dividing or altering the order of lots.
3. The purchase money for each lot with the usual commission of 10% plus VAT at the current rate shall be paid at the fall of the hammer (if required). Each lot at the fall of the hammer shall be at the sole risk and expense of the buyer, and shall be paid for and removed immediately after the conclusion of the sale, *but no lot shall become the property of the buyer, or be removable until paid for*, and if taken away in contravention of these conditions without an order for removal signed by the Auctioneers, they shall have power to seize the same by their servants or agents, or otherwise, or the Auctioneers may recover either the lot sold or the price thereof (at their option) by action at law.
4. No contra account of any description whatever will be allowed to the buyer as a set off, and payment for each Lot shall be made to the Auctioneers or their clerk only, and a buyer paying by cheque must give satisfactory references.
5. For all purposes of this sale the Clerk of the Auctioneers shall be deemed to be the agent of both seller and buyer.
6. A bidder shall not be allowed to retract his bidding after the fall of the hammer, and he shall give up his full name and address if required. The Auctioneers will not recognise the transfer of any lot from one buyer to another, nor make any alteration in the sale book in respect thereof.
7. The Auctioneers are acting only as agents, and give no personal warranty as to the condition, quality or authenticity of any chattels offered for Auction. Any catalogue description is given merely as guide to purchasers, any description can be changed from the rostrum before the lot is sold. If a purchaser buys without previous inspection he will do so at his own risk.
8. Notwithstanding any other terms in these Conditions, if within 7 days of the Sale a purchaser gives notice in writing that a lot is a deliberate forgery, with supporting factual evidence, the Auctioneers may rescind the transaction. The burden of factual proof lies with purchaser, mere opinions will not satisfy. This benefit is not assignable.
9. If any buyer neglect or refuse to comply with the above conditions or any of them, his deposit money (if any) shall be forfeited, and the lot uncleared may, at the option of the Auctioneers, be resold without notice by public auction or private treaty, and any loss occasioned by such re-sale together with all expenses attendant thereon, or arising under these conditions shall be paid for by the defaulter and be recoverable as and for liquidated damages. This condition is however without prejudice to the right of the Auctioneers to enforce the contract made at this sale if they think fit.
10. Any Notes for Purchasers and Catalogue Glossaries will be construed as Conditions of Sale.
11. The Auctioneers shall be the sole Arbitrators in all matters of dispute relating to those conditions both as between the seller and the buyer and between the several bidders and buyers and their determination on all matters shall be final and binding on all parties concerned.

Auctioneers: C. Robin Hall FRICS FAAV & Colin R. Young FNAVA



Established 1900

# **-GOLDINGS-**

**THE GRANTHAM AUCTION ROOMS**

Golding Young & Co  
Old Wharf Road, Grantham, Lincolnshire, NG31 7AA

Telephone: 01476 65118

Fax: 01476 590998

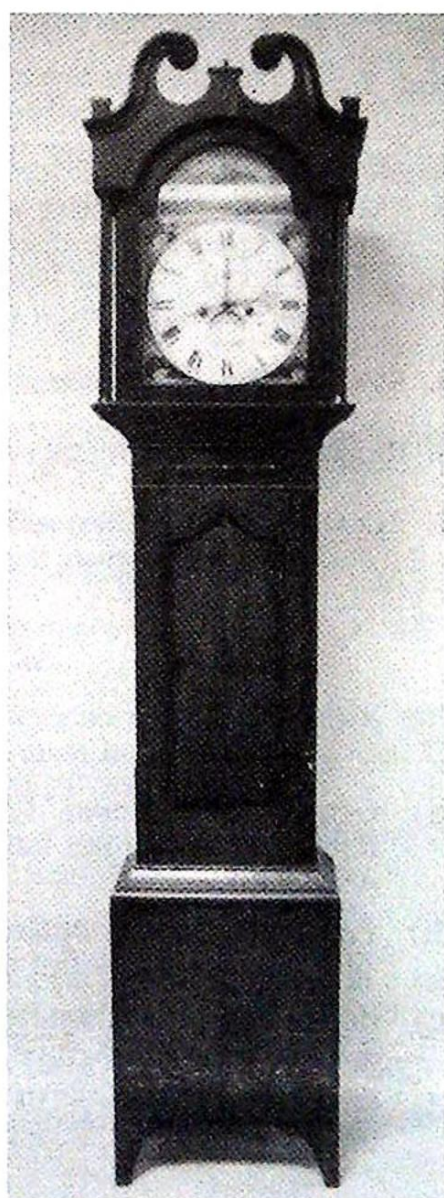


Lot 679

Cover Illustration: Lot 686.

Viewing Times:

Sunday 14th:	2pm to 4pm
Tuesday 16th:	1pm to 7pm
& Saleday	9am to 10am



Lot 428

## IMPORTANT NOTES FOR PURCHASERS

1. **PAYMENT:** Must be made in full immediately after the Auction. The following methods of payment are acceptable.  
a) Cash   b) Bankers Draft   c) Building Society Cheque  
d) Cheques, accompanied by a valid card. For accounts above the stated card limit, we reserve the right to retain the goods until clearance is established.
2. **BUYERS PREMIUM:** of 10% + VAT is payable on all lots.
3. **REMOVAL OF PURCHASES:** Goods must be collected as soon as they are paid for, and in the Two Working Days following the sale. If goods are not collected on these days we reserve the right to charge £1 per lot per day thereafter.
4. **COMMISSION BIDS:** If you are unable to attend this or any of our future sales we will be pleased to bid on your behalf. We always purchase at the lowest possible price, subject to other bids and reserves.  
  
All bids must be handed to the office on an official form. It remains the responsibility of prospective purchasers to contact GOLDINGS to confirm whether their bids have been successful.
5. **TELEPHONE BIDS:** There are inherent dangers with this practice, therefore all such arrangements are made entirely at the bidder's risk. Telephone bids will only be accepted if the lower catalogue estimate is £500 or above. For lots with a lower estimate below this figure Commission Bids Only will be accepted.
5. **SMOKING:** is not permitted in any part of the Saleroom.
6. **REFRESHMENTS:** will be available Saleday.
7. **ACCOUNT TRANSFERS:** will not be recognised after the sale. If any lots are purchased for another person, this must be declared at the fall of the hammer.

## GLOSSARY

- a) **Generally:** 'As Found.' (AF). This term indicates the lot has some damage. Its absence does not indicate that the lot is free of defect. All lots are SOLD AS SEEN.
- b) **Paintings:** 'Signed, initialled, monogrammed.' This refers to the present state of the work and is not an attribution.
- c) **Books and printed matter:** These items are not sold subject to collation and are not returnable once removed from the premises.
- d) **Silver & Jewellery:** Weights given are approximations given by basic instruments.



## BYGONES, MISCELLANEA & COLLECTORS' ITEMS

1. A large pair of Indian brass TEMPLE JARS. £40-60
2. A Victorian OIL LAMP base, painted green glass reservoir. £40-60
3. A 19thC. brass ARMORIAL JARDINIÈRE with lion mask handles. £120-150
4. A walnut cased RADIO (AF).
5. A copper SINK and 2 hay KNIVES.
6. An old Heyden manual GRINDER.
7. A DUMB WAITER display stand.
8. A cream leather SUITCASE and bags.
9. Pair pink floral silk CURTAINS and swags. £20-30
10. A Victorian leather TRAVEL CASE.
11. A Victorian copper WARMING PAN (AF) and 2 pieces of stoneware.
12. A large stoneware SALTING POT and another (AF).
13. An oak BUTTER CHURN. £25-40
14. An ACCORDIAN.
15. An old fishing BAIT TIN, basket and two reels.
16. Stoneware FLAGON, earthenware PANCHEON and salting pot.
17. Basket, clogs, enamel, etc.
18. A small Victorian brass SPARKGUARD.
19. An antique pewter Top Hat COMMODE. (ex Chatsworth House Sale) £70-90
20. Pair green silk CURTAINS and swags. £20-30
21. An elm lace makers COTTON WINDER. £30-50
22. A Victorian wrought iron FOOTMAN. £25-40
23. A Victorian Barrow Wheel. £20-30
24. Two wicker LOG BASKETS. £20-30
25. FENDERS; one oak, one embossed copper. (2)
26. A manual SEWING MACHINE.
27. A Ukelale.
28. A Victorian brass OIL LAMP.
29. A French brass and marble TABLE LAMP. £50-80
30. A brass and onyx COLUMNAR TABLE LAMP. £20-30
31. A Victorian brass and cast iron MODEL CANNON, 18". £60-90
32. A 19thC Bavarian carved limewood FIGURE of an Ibis. £400-500
33. A 19thC Japanese chinoiserie black lacquer COLLECTORS CABINET. £150-200
34. A Marconi walnut RADIO.
35. The Standard steel SAFE, with key. £25-40
36. Two leather PORTMANTEAUX.
37. A box of KITCHENALIA.
38. A Reliance ICE CREAM MAKER. £40-60
39. A Victorian brass JARDINIÈRE with lion mask handles and paw feet. 15" dia. £180-250
40. A cast iron armorial COMPANION SET. £20-30
41. A leather CASE.
42. A Lincoln Bennet TOP HAT in a red satin lined leather box. £80-100.
43. Two Veret bakelite BED WARMERS.
44. A small countertop DISPLAY CASE.



45. A Victorian countertop DISPLAY CABINET. £50-80
46. Copper EWERS and brass COMPANION SET.
47. Old Bottles, etc.
48. A HYGROMETER for moisture in grain.
49. 3 Cast Iron COOKING POTS.
50. A Victorian cast iron OIL LAMP with blue glass reservoir.
51. A brass OIL LAMP.
52. A Victorian brass OIL LAMP with clear glass reservoir. £100-150
53. A Victorian brass OIL LAMP with clear glass reservoir. £100-150
54. A Victorian brass urnular OIL LAMP. £70-90
55. A George III mahogany TABLE MIRROR (AF). £35-40
56. Two Victorian OIL LAMPS. £30-40
57. A Victorian brass FIRESCREEN with coloured leaded glass. £180-250
58. A pair Victorian cast iron LAMP SCONCES. £60-80
59. A Jobell walnut cased RADIO. £20-30
60. A Victorian brass columnar OIL LAMP with engraved shade, and spare. £100-150
61. A model ride-on TRAIN. £25-40
62. Fifteen turned pine BALUSTERS, 20". £50-70
63. A Victorian mahogany swing TOILET MIRROR. £20-30
64. Scythe, pruner and malt shovel. £20-30
65. A pair iron FIRE DOGS, brass and iron RAIL, etc. £40-60
66. A small Victorian mahogany WALL SHELF.
67. 78rpm Records.
68. 78rpm Records.
69. A 19thC YOKE. £30-40
70. A 19thC YOKE. £30-40
71. Split can FISHING RODS, etc.
72. A large MAPLE FRAME. £20-30
73. A pair floral prints in MAPLE FRAMES. £30-40
74. Five small graduated MAPLE FRAMES. £40-60
75. A carved oak ARMORIAL PANEL. £25-40
76. Victorian glass HANDLES and STOPPERS. £20-30
77. A Victorian toleware oval gallery TRAY.
78. 19thC embroidered CUSHIONS, etc. £30-50
79. Old petrol can, horse groomer and paint box.
80. Walking Sticks and Parasols.
81. Small wooden Picture Frames.
82. Lace pieces.
83. Green leaf pattern PLANTER and two others. £25-35
84. Mahogany curtain Rings, etc.
85. 'My Lady' Corset advertising card and three prints.
86. Chain and wood carvings.
87. A fine Victorian lined leather HAT BOX. £30-50
88. Enamel pieces, glass lustres, etc.
89. Two pairs Victorian BELLOWS.
90. A walnut handled HAND BELL. £20-30



91. Brass PUMP, etc.
92. Rolling Pins, pie raiser, etc.
93. A pewter BEDPAN by Richard Yates c.1785 (Ex Chatsworth House Sale). £80-120
94. A Victorian chopping BLOCK AND CHOPPER.
95. Pestle, goffering irons, etc.
96. A rosewood TRUNCHEON. £20-30
97. A set of Victorian FIRE IRONS.
98. A set of Victorian FIRE IRONS.
99. A set of Victorian FIRE IRONS.
100. A CROOK and Knobkerry stick..
101. Three HMV RECORD SETS.
102. Two Architectural sketches and two oak frames.
103. Small carved PICTURE FRAMES.
104. A pair Victorian elm BELLOWS. £20-30
105. Old household goods TINS inc. Kitchener example. £40-60
106. A George III mahogany TEA CADDY. £30-50
107. A George III mahogany TEA CADDY. £30-50
108. Trug, glass washboard, enamel, etc.
109. Furniture brass gallery, fire irons, etc.
110. A Victorian copper SAUCEPAN.
111. A Victorian brass SAUCEPAN.
112. Two hanging lamps and lanterns.
113. A Victorian cast iron KETTLE STAND. £20-30
114. Pair oval mezzotints of ladies and two further pictures. £50-70
115. Brass horse bridge, apprentices fender, and ormolu sconce.
116. Enamel bucket, tiles, rings, etc.
117. Letter Rack, panel, quiver, candlestick and box.
118. Jewish Antiquities and biblical atlas, Woolwork picture of bird and Ices sign.
119. A Victorian copper KETTLE. £25-40
120. A set of eight 19thC brass LION MASK HANDLES. £25-40
121. Two Spirit Levels and other brassware.
122. A George III mahogany CUTLERY TRAY with brass hoop handle. £280-350
123. A pair of George III brass CANDLESTICKS, square bases. £100-150
124. A Victorian brass MILK SKIMMER. £30-40
125. Teddy Bear and Doll.
126. A pair of brass shell case TABLELAMPS.
127. A pair of lady's crocodile SHOES.
128. An old Breadboard and Knife.
129. Four soda SYPHONS.
130. A cased singer SEWING MACHINE.
131. A candlestick TELEPHONE (AF). £20-30
132. An old leather SPECIMEN CASE. £20-30
133. Two iron Flag Holders.
134. A Victorian cast iron DOORSTOP in the form of a horse.
135. A Victorian cast iron DOORSTOP in the form of a St Bernard dog.
136. An ENAMEL SIGN - Marzawattee Ceylon Tea, 11" x 15".



137. A Victorian rosewood Box and pair of spectacles.
138. 78rpm 7" LP RECORDS.
139. Plumblin, Crimea War whip, etc.
140. Damask Tablecovers, etc.
141. A WWI leather COAT, scarves, etc.
142. A cast iron PLAQUE James Coulthas, Grantham, a Grantham cistern and petrol can.
143. A silver top DANDY CANE engraved C Andrew, Watch Maker, Grantham. £25-40
144. A Greener's Humane CATTLE KILLER. £70-100
145. A Railway LAMP, Corby Glen. £30-50
146. An LNER Railway LAMP, Great Ponton. £30-50
147. An LNER Railway LAMP, Grantham. £30-50
148. God Bless our Home and another picture.
149. Camp Bed and Bag.
150. An early Despatch Riders HELMET and goggles.
151. WWII GAS MASKS.
152. A canvas FLYING HELMET.
153. French and English HELMETS.
154. Two Military WATER BOTTLES and others.
155. A pair spelter CANDLESTICKS.
156. An early Royal TYPEWRITER.
157. An ebony DRESSING TABLE SET.
158. An Art Nouveau pewter INKWELL, Cake Basket and pin dish. £20-30
159. Two Bowler HATS and Trilby, boxed.
160. A Pacific Choo Choo Express TOY TRAIN. £25-40
161. A small Victorian style tapestry STOOL. £50-80
162. An ebony DRESSING TABLE SET.
163. A mother of pearl inlaid Stand, Bowls, etc.
164. Victorian brass JUG, LADLE and CHAMBERSTICK.
165. A Salter brass face FAMILY SCALE. £20-30
166. A Victorian brass TRIVET.
167. An old cast iron SANDBOX from Grantham Golf Club.
168. A chromium plated columnar TABLELAMP.
169. An armorial lead PROPERTY MARK. 8". £20-30
170. Three embroidered THROWOVERS. £25-40
171. A Victorian brass ROASTING JACK. £50-80
172. A modern Chinese VIOLIN. £25-40
173. Two TOP HATS. £20-30
174. A 19thC VIOLIN (AF), cased with bow. £25-40
175. A leather SUITCASE. £20-30
176. A silver banded UMBRELLA and WHIPS.
177. An oval copper PLANTER.
178. Equestrian leatherware, saddle rack, etc.
179. Two wooden BISCUIT BARRELS and TEA JAR.
180. A Victorian stoneware FOOT WARMER.
181. A Georgian mahogany BOX and a Japanese lacquer BOX. £20-30
182. A heart shape HORSE BRASS on strap, and band. £20-30



183. Two brass CAR HORNS. £20-30
184. An African hardwood oval FRUIT BOWL.
185. A Victorian walnut WRITING SLOPE. £25-40
186. An oak CIGARETTE DISPENSER and barleytwist Candlesticks.
187. An enamel DRESSING TABLE SET.
188. A SEWING BASKET.
189. A Panama HAT and Trilby, boxed.
190. A straw filled TEDDY BEAR (AF).
191. With the BEATLES Talc. £40-50
192. A Victorian brass octagonal CHESTNUT ROASTER. £40-60
193. A set of three Victorian brass FIRE IRONS. £100-150
194. A brass Primus STOVE.
195. A Victorian brassbound rosewood WRITING BOX (AF). £25-40
196. A Cricketing mahogany and brass LETTER RACK. £100-150
197. A Victorian equestrian cast iron DOORSTOP. £20-30
198. Victorian brass FIRE IRONS AND DOGS. £30-50
199. Fourteen Tankards, pewter and plated.
200. An oak BOWLING TROPHY.
201. Two small steel TRUNKS.
202. A leather TRUNK.
203. Two oak and electroplate BISCUIT BARRELS.
204. A Victorian brass CHESTNUT ROASTER. £25-40
205. A large ENAMEL SIGN - Brooke Bond Tea is good tea. £20-30
206. An 1840 needlework SAMPLER (AF). £50-80
207. A George III needlework SAMPLER worked with apagoda over three verses, floral and animal motifs and inscribed 'Alethea Hewerdine aged 15 years December 11th 1816 Woolsthorpe'. Maple framed. 14" x 12". £100-150
208. A Victorian needlework SAMPLER by Sarah Bryan ROPSLEY, age 9 1880, maple framed. *See illustration on centre pages.* £100-150
209. A Victorian NEEDLEWORK PICTURE of girl and birds, black silk ground. £60-80
210. A Victorian WOOLWORK PICTURE of negro and child. £80-120
211. A Georgian oval NEEDLEWORK PICTURE of fruit on a tree. £50-80
212. A Victorian WOOLWORK PICTURE of a sailing steam ship. £350-450
213. A 1925 needlework SAMPLER.
214. A woolwork SAMPLER dated 1802. £35-45
215. An ATS Corporal's TUNIC.
216. A Red Cross COAT, HAT and APRON.
217. After F Preiss. A figure of a half robed maiden. 8½" £40-60
218. An Art Deco cast metal figure of a Jester. £60-90
219. A 19thC French sidelock percussion PISTOL. £180-250
220. A Victorian cast iron 'Bull Dog Bank' MONEY BOX. £25-40
221. A cased carved PIPE. £20-30
222. A pair Victorian papier mache SPILL VASES.
223. An ebony CLOCK and four elephants.



224. Mahogany and brass POSTAL SCALES. £30-50
225. A GAMES BOX in the form of a book; set of draughts; set of dominoes. £30-40
226. Mug, coins, broochs and locket.
227. An Edwardian TAROT CARD SET.
228. A DINKY SUPERTOYS Leyland Octopus Wagon No 934, boxed. *Illustrated on centre pages.* £120-150
229. An early lead TEA CADDY painted green with monogram and cross golf club in yellow. *Illustrated on centre pages.* £150-200
230. A Napoleonic Prisoner of War straw work BOX. £45-60
231. A boxed brass MICROSCOPE. £25-40
232. An oak cased set of seven CUT THROAT RAZORS. £20-30
233. Feather fan, 2 pin cushions, 2 lace bobbins, etc.
234. A clay PIPE with figures in relief and inscribed A Present from Skegness, and a Shellagh. £20-30
235. Three porcelain Heads and rolled gold hunter watch.
236. A miniature alabaster BABY in COT. £20-30
237. Old Spectacles, Grantham makers.
238. Old Marbles, Card Games, etc.
239. Gramophone needles, 1909 pipe, cards, etc.
240. A fine pair of Georgian cast brass CANDLESTICKS with shaped bases. 8" £250-350
241. A fine Japanese chinoiserie on black lacquer COLLECTOR'S CABINET on stand. 16" high. *See illustration on centre pages.* £450-550

242. An oak LETTER RACK. £20-30
243. A George III fruitwood TEA CADDY. *Illustrated on centre pages.* £400-500
244. A Victorian cast iron squirrel NUT CRACKER. £20-30
- 245-249 Spare Lots.

## GLASS & CERAMICS

250. A Royal Doulton FIGURE - Darling HN1985, 5".
251. Three china Trinkets.
252. Four small FIGURES; pair of blanc-de-chine geishas and pair of T'ang style elders.
253. Aynsley 'Orchard Gold' CHINA, including two vases, lidded jar, bell, cup and saucer, and similar hand painted jug. £60-90
254. A Fougere Gilot SCENT BOTTLE and another. £30-50
255. A pair of early 19thC Derby POT POURRI VASES; red painted mark, 4". *Illustrated on centre pages.* £250-350
256. Three small Coalport DISHES, Aynsley pheasant, etc.
257. A Glass hanging LAMPSHADE.
258. A slipware TEAPOT and BAKING DISH (AF)
259. Three Planters and frill Vase. £25-40
260. A Wedgwood MEATPLATE.
261. Two Chamberlains Worcester armorial MEATPLATES (ex Chatsworth House Sale). £45-60
262. Ironstone dish, bust, glasses, etc. £30-40
263. A Foleyware gilt blue three-footed circular PLANTER. £30-50
264. Two Carnival glass VASES.



265. A Victorian green glass floral PAPERWEIGHT.
266. Grantham pottery, etc.
267. A gilt part TEA SERVICE, etc.
268. A cut crystal FRUIT BOWL.
269. A cream ground EWER.
270. A Cantonese CABINET PLATE.
271. A Victorian Staffordshire FIGURE entitled 'Up Guards at Them' (AF).
272. A Delft brown/yellow BOWL and a Staffordshire shaving mug.
273. Four Champagne GLASSES.
274. Venus figure, measuring jug, etc.
275. A grey Staffordshire relief JUG (AF) and a bisque spill vase FIGURE.
276. A Newhall COFFEE SET.
277. Twelve Susie Cooper PLATES.
278. A cased pair modern MINTON PIN DISHES and 5 German examples.
279. Victorian eperne trumpets (AF).
280. Six Victorian Glasses.
281. Ewers and other china.
282. A pair Staffordshire urnular VASES printed with roses.
283. A Mary Gregory crystal DECANTER.
284. Two graduated greenleaf PLANTERS and another.
285. Glass FRUITBOWL and other china.
286. A Royal Crown Derby CABINET PLATE gilt with flora.
287. Prince of Wales Mug, Imari Rabbit, china bells, etc.
288. A pair Victorian green opaque bottle VASES. £25-40
289. A floral Sutherland TEA SERVICE. £20-30
290. Six Royal Doulton CUPS AND SAUCERS. £20-30
291. Three JUGS. £20-30
292. Two glass PAPERWEIGHTS. £25-40
293. Blue and white Pottery including willow pattern coffee cans. £20-30
294. Oriental Teapot and Coffee Cans.
295. A Crown Devon FRUITBOWL. £20-30
296. A pair Victorian staffordshire FIGURES of boy and girl with sheep. (AF) £20-30
297. A Chinese octagonal PLATTER. £25-40
298. A Rockingham PLATE and two others. £20-30
299. A Chinese mandarin CABINET PLATE. £25-40
300. A Chinese famille rose CABINET PLATE. £25-40
301. A Chinese redware BOWL and small baluster vase. £20-30
302. A Victorian JUG AND BOWL SET and ginger jar (AF). £20-30
303. A Rutland COUNTY PLATE. £35-45
304. Blue and White plates, teapot and Staffordshire hen. £20-30
305. A pair of 19thC continental FIGURINES of lady and gentleman. £20-30
306. A pair Victorian Staffordshire GREYHOUNDS, 8" long. £25-40
307. A Royal Worcester FIGURE of a pug dog 4" high, c.1899. £40-60
308. A large painted Staffordshire CHEESE DISH. £20-30
309. An early 19thC CREAMER with neo-classical figures in relief on a sky blue ground. £30-40

310. A grey and white part DINNER SERVICE, including 3 octagonal meatplates. £30-50
311. A Copeland part TEA SERVICE. £25-40
312. A Shelley twenty-one piece TEA SERVICE. £40-60
313. A 19thC SAMSON Oriental BOWL with two cocks in the centre field. £40-60
314. A DAVENPORT botanical PEDESTAL DISH and four plates. £40-60
315. Twenty-two Edwardian engraved GLASSES. £25-40
316. A pair Victorian faceted crystal DECANTERS. £30-50
317. Two Victorian bisque FIGURES. £20-30
318. A green ground Moorcroft TRINKET JAR. £25-40
319. A Victorian COMPORT and four dessert plates, turquoise border. £20-30
320. Four crystal DECANTERS. £20-30
321. A pair Bavarian style green glass EWERS. £20-30
322. A Royal Crown Derby CABINET PLATE gilt with exotic birds. £20-30
323. A Carltonware chinoiserie CYLINDRICAL VASE. £20-30
324. A Wedgwood jasperware BISCUIT BARREL presented to A Kerr, Grantham 1922. £30-40
325. A pair of Frieberg quatrefoil DISHES. £25-40
326. Two Graingers Worcester cup, saucer and plate TRIOS, blue and gilt. £30-50
327. A Victorian ironstone seventeen-piece part DINNER SERVICE. £50-80
328. A Victorian Staffordshire FIGURE of spaniel with hare, scroll base, 5" long. £60-80
329. A Du Barry floral part TEA SERVICE. £30-50
330. An 18thC Chinese blue and white PLATE. £20-30
331. An 18thC Chinese blue and white PLATE. £20-30
332. A white Minton LAZY SUSAN. £50-80
333. A large Chinese TEAPOT, later lid. £40-60
334. A large Chinese CABINET PLATE decorated with enamel birds and flora. £40-60
335. A Chinese PALETTE MUG. £100-150
336. A Chinese baluster MUG. £80-120
337. A Foley floral TEA SERVICE comprising six cups, six saucers, six tea plates, bread plate and sugar bowl. £80-120
338. A Victorian majolica 3 footed PLANTER, probably Wedgwood, 8" dia. *Illustrated on centre pages.* £150-200
339. A Minton majolica FIGURE GROUP of putti carrying large oval basket. 11" high. (AF) *Illustrated on centre pages.* £150-200
340. A ROYAL WORCESTER FRUIT BASKET, cream ground, painted with flora, Model 6441. 9". £100-150
341. Four Ridgway ironstone PLATES and five BOWLS, floral design, moulded gadroon edge, printed *Columbia Stone China J.W.R.* £200-300
342. A Victorian forty-eight piece floral gilt part TEA SERVICE. £80-120
- 343-350. Spare Lots.



## PRINTED ITEMS

- 351. Two Hogarth framed COUNTY MAPS. £25-40
- 352. A George III COUNTY MAP OF RUTLAND, 1801. £50-80
- 353. A pair of oak frames each with 3 POSTCARD SILKS. £40-60
- 354. Sutton Nicholls. A New Mapp of Lincoln Shire. £30-50
- 355. A 1782 Plan of the River Trent.
- 356. The Imperial Family Bible and two others.
- 357. A set of Dickens Novels and others.
- 358. The Works of J M Barrie, 20 volumes.
- 359. The History of the Indian Mutiny, two volumes and British Government in India, 2 volumes. (4) £30-40
- 360. A print of Tanks on Parade and two Household Brigade Magazines.
- 361. 1950's glamour magazines.
- 362. Pictorial England & Wales and a large Victorian BIBLE.
- 363. A selection of sexually orientated Books.
- 364. Gardening books, ledger, etc.
- 365. Gardening Books.
- 366. Sports Books.
- 367. Veterinary Appliances Catalogues, etc.
- 368. Jerome K Jerome. Told After Supper, 1st edition. 1891.
- 369. Anecdotes, 1799, etc.
- 370. Early engravings of St Wulfram's Grantham and Belvoir Castle and further photograph.
- 371. A Scrap ALBUM, Maggie Parish, Grantham 1886.

372. Eight Postcard Silks and others. £25-40

373. Postcards. £20-30

374. Postcards. £20-30

375. Clifford Henry Meham. Sketches and Incidents of the Siege of Lucknow, folio of twenty-seven lithographs. £100-150

376. A selection of old Bill Heads relating to Grantham businesses.

377-394. Postcards, Grantham Districts.

395. A 1903 erotic POSTCARD.

396-400. Spare Lots.

## NETSUKE & BIJOUTERIE

401. Two Chinese porcelain Snuff Bottles.

402. A signed Japanese hardwood NETSUKE study of a mythological turtle-drag.

403. A signed Japanese hardwood NETSUKE study of a monkey.

404. A Japanese mother-of-pearl Sumada School NETSUKE of a flat fish.

405. A signed Japanese ivory NETSUKE study of an Octopus attaching itself to a basket of crabs.

406. A signed Japanese NETSUKE study of a street pedlar carrying various wares.

407. A signed Japanese NETSUKE study of a bearded immortal in fine kimono holding a staff and before him a Crane.

408. A paste Jewellery Suite and evening bag.

409. Two NECKLACES; one red coral, one mother of pearl.

410. A silver filigree galleon, three brooches, necklace and 9ct gold sapphire ring.
411. A Victorian gold MEMORIAL BROOCH. £20-30
412. Two pearl NECKLETS.
413. Cufflink set.
414. Pair gold filigree EARRINGS.
415. A gold mounted jade PENDANT and another.
416. A 15ct gold and enamel WRISTWATCH (AF). £20-30
- 416A. A 9ct rose gold and garnet RING.

## CLOCKS, WATCHES & BAROMETERS

417. A Victorian silver gentleman's POCKET WATCH by F Pinney, cased. £25-40
418. Two gentlemen's POCKETWATCHES, one gold plated, one alarm. £40-60
- 419-420. Spare Lots.
421. A Victorian oak aneroid BAROMETER engraved 'W Emerton (Belton's Head Gardner) from the Earl & Countess Brownlow'.
422. A Victorian drop dial inlaid WALL CLOCK painted face by Andrew & Taylor, Grantham. £100-150
423. A Victorian drop dial inlaid WALL CLOCK painted face by Andrew & Taylor, Grantham. £100-150
424. A Victorian inlaid rosewood drop dial WALL CLOCK. £100-150
425. An Aspro electric HANGING CLOCK, formerly of Miss Cheshires Chemists, Grantham.
426. A Victorian brass inlaid rosewood BANJO BAROMETER. £200-300
427. A modern oak cased LONGCASE CLOCK with brass dial and pillared hood. 5' 11". £150-200
428. A Georgian oak LONGCASE CLOCK with swan neck pediment, pillar hood, painted square arch dial, seconds ring, date crescent, 8 day movement by J K Western, Wragby. 7'. *Illustrated on frontispiece.* £500-700
429. An early 19thC flamed mahogany Yorkshire LONGCASE CLOCK, swan neck pediment, painted square arch dial with seconds and date rings, 8 day movement. 7' 10" *Illustrated on centre pages.* £500-700
430. An oak Grandmother CLOCK. £25-40
431. A 19thC French spelter FIGURAL MANTEL CLOCK. £30-50
432. An oak MANTEL CLOCK with Westminster Chimes.
433. A Victorian marbled black slate MANTEL CLOCK inscribed A J Godfrey, Grantham and presented to the Secretary of Grantham & District Cart Horse Society 1886. £60-90
- 433A. An ANNIVERSARY CLOCK with glass dome. £20-30
- 434-440. Spare Lots.

## SILVER & PLATEDWARE

441. Ten silver plated oval PLATTERS. £20-30
442. A bright cut electroplate BISCUIT BARREL. £40-60
443. A four bottle CRUET on an electroplate stand. £40-60
444. Three boxes of CUTLERY.
445. Electroplate: water jug, 3 sauceboats, etc. £20-30



446. Electroplate: 2 vases, cake basket, etc. £20-30
447. An electroplate pierced SYPHON HOLDER. £30-50
448. Four sets of plated Cutlery, 3 cased.
449. A pair electroplate oval ENTREE DISHES. £30-50
450. An electroplate oblong ENTREE DISH. £20-30
451. Three cased CUTLERY sets.
452. A Walker & hall electroplate ICE BUCKET on stand. £50-80
453. An electroplate three-branch CANDELABRUM. £20-30
454. An electroplate part reeded COFFEE POT. £20-30
455. A 19thC French electroplate CANDESTICK.
456. A bright cut electroplate gallery TRAY. £25-40
457. A pair Georgian Sheffield plate ENTREE DISHES. £80-120
458. An electroplate shaped circular CAKE BASKET. £20-30
459. An electroplate oval CAKE BASKET. £20-30
460. An electroplate circular CAKE BASKET.
461. An Elkington electroplate oval ENTREE DISH. £30-40
462. An electroplate oval pedestal BAIN DISH. £180-250
463. An electroplate London shape four-piece TEASET. £120-180
464. Spare Lot.
465. An engraved electroplate three-footed silver SALVER. £30-50
466. An electroplate BISCUIT BARREL with glass liner. £30-40
467. An oak CANTEEN OF CUTLERY, twenty-four piece, mother of pearl handles. £150-200
469. A pair Victorian pierced electroplated FISH SERVERS, cased.
470. A cased set of FISH CUTLERY, six pairs knife and fork and pair of servers, bone handles. £50-70
471. A cased set of FISH CUTLERY, six pairs knife and fork and pair of servers, bone handles. £50-70
472. Silver and plated Spoons, etc.
473. Silver and plated CUTLERY including mother of pearl pieces. £20-30
474. Platedware: Cakebasket and smaller pieces.
475. Silver Napkin Ring, Platedware including Ewers. £20-30
476. A Walker & Hall silver CIGARETTE BOX presented by Aveling Barford. £30-40
477. An electroplate seven-bar TOASTRACK. £25-35
478. A pair of Sheffield plate reeded WINE COASTERS. £60-80
479. Two Georgian silver FRUIT SPOONS with gilt bowls. £40-60
480. A George III silver CHEESE SCOOP with bone handle and mahogany box.
481. A pair Georgian bright cut silver SUGAR BOWS. London 1799.
483. A Victorian ivy leaf CADDY SPOON. London 1895. £20-30
484. A silver fork and spoon CHRISTENING SET. Sheffield 1931.
485. A small silver TROPHY and pair of sugar bows.

- ✓ 486. A two handled silver TROPHY. Chester assay. 8½oz. £60-80
- ✓ 487. A George III silver FISH SLICE. London assay. £25-35
- ✓ 488. An Edwardian silver VESTA CASE. Birmingham 1903. £20-30
- ✓ 489. A pewter SNUFF BOX embossed with a gun dog. £20-30
- ✓ 490. A silver CHRISTENING MUG. Birmingham 1912. 1oz 16dwts. £25-40
- ✓ 491. A silver fork and spoon CHRISTENING SET, cased. Sheffield 1914. £20-30
- ✓ 492. An engine turned silver four piece DRESSING TABLE SET. £60-90
- ✓ 493. An Arabesque engraved white metal CIGARETTE BOX. 10oz, and another. £70-100
- ✓ 494. A set of six silver TEASPOONS, boxed. Sheffield assay. £20-30
- ✓ 495. A set of six silver TEASPOONS, cased (1AF). Birmingham assay.
- ✓ 496. A set of six silver TEASPOONS and BOWS, cased. London assay. £30-50
- ✓ 497. An engine turned silver six piece BRUSH SET. Birmingham 1931. £50-80
- ✓ 498. An Edwardian silver handled SHOE HORN and LACE HOOK. £20-30
- ✓ 499. A pair silver DWARF CANDLESTICKS. Birmingham assay.
- ✓ 500. An Edwardian silver THISTLE VASE. Birmingham 1901. £25-40
- ✓ 501. A silver CASTOR. Birmingham 1932. 3oz 8dwts. £25-40
- ✓ 502. Two silver NAPKIN RINGS.
- ✓ 503. Two silver top SMELLING SALT BOTTLES.

- ✓ 504. Two silver top PEPPER POTS.
- ✓ 505. A Georgian style silver SAUCEBOAT with flying scroll handle. (AF). Birmingham assay. £30-50
- ✓ 506. A Walker & Hall silver TAZZA. Sheffield 1926. 15oz. £120-180
- ✓ 507. A silver five bar TOAST RACK. Birmingham assay. £25-40
- ✓ 508. A set of six Edwardian silver TEASPOONS and BOWS, cased. Birmingham 1902. £25-40
- 509. Silver SPOONS; 2 table, 3 tea.
- 510-520. Spare Lots.

## PICTURES

- 521. A pair of hunting prints, map and another, all oak framed.
- 522. A Baxter print of Brighton Chair Pier.
- 523. A map of Durham, Hogarth framed.
- 524. A pair of Oriental relief painted PANELS with pagoda scenes. 18" x 6".
- 525. A Victorian oleograph of a church.
- 526. A gilt framed Scottish interior scene print.
- 527. Helen McCarvill. Still life of bottles, oil on board.
- 528. An oval portrait of a young girl.
- 529. A colour print of a 15thC Knight on horseback.
- 530. A print of The Last of the Garrison, carved oak frame.
- 531. Ecce Homo print, carved oak frame.
- 532. Landscape watercolour of maid on a pathway, 10" x 14", indistinctly signed.





Lot 208

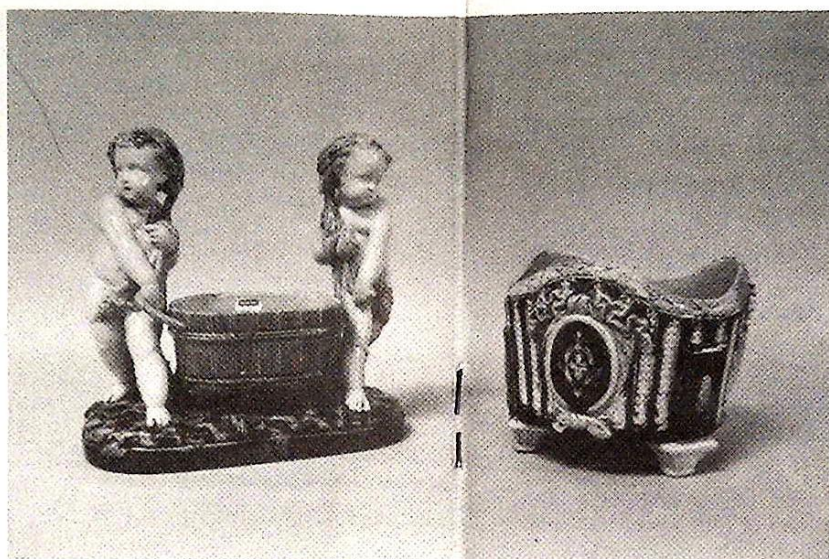
Lot 571







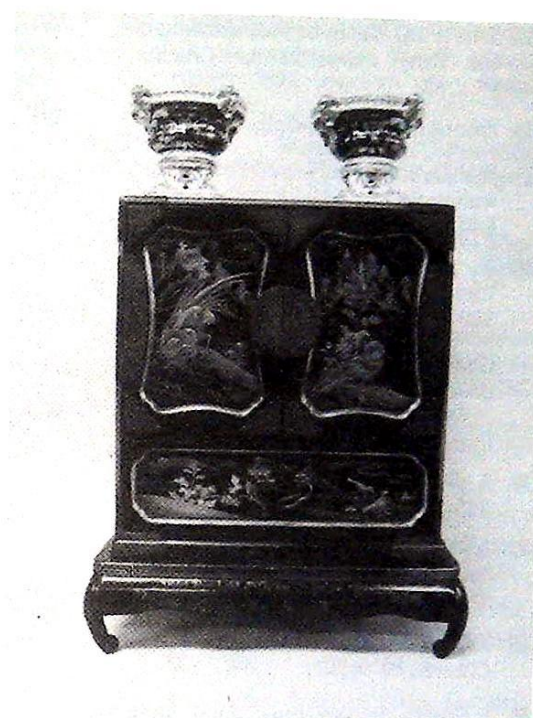
Lot 429



Lot 339



Lot 338

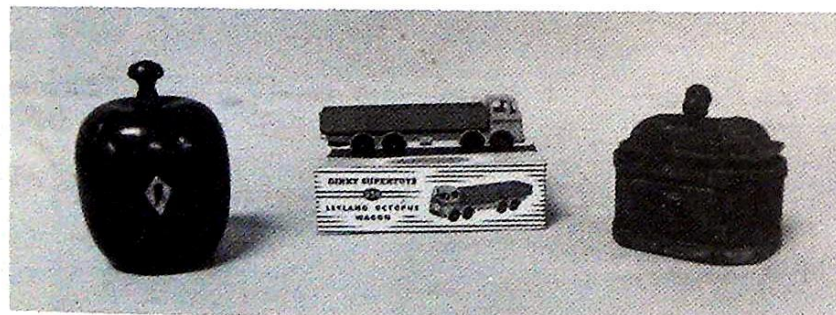


Lots 255 and 241

Lot 243

Lot 228

Lot 229



Lot 682



533. 17th/18thC Italian School drawing of the Three Marys at the Crucifix, 9" x 6".
534. Pair of landscape prints.
535. W B Thomas. Harboured Battleships, watercolour, 4½" x 7", signed. £40-60
536. A pair Venetian Canal Scene Watercolours, indistinctly signed. £50-70
537. Geo Bartlett. Maiden and two beast on a mountain pass, watercolour, 9" x 14", signed, dated 1861, gilt plaster frame. £50-80
538. A pair of 18thC Italian Engravings. £25-40
539. A Victorian watercolour of The Angel & Royal in Grantham. 11½" x 14½", Hogarth frame. £80-100
540. J J Hardwick. Watercolour of a Church, 10" x 17".
541. E Arnold. Summertime, watercolour of cattle by river, signed, 9" x 14".
542. A pair Victorian PORTRAIT oils on canvas. £50-80
543. A Pears PRINT - of child and kittens. £35-50
544. A Pears PRINT - Titbits (AF).
545. A set of four engravings, Hogarth framed. £25-40
546. A large Cantonese GINGER JAR. £20-30
547. A watercolour of a floral garden, 9" x 9". £20-30
548. A Victorian colour engraving of 'Fire' or the horrors of crinoline, rosewood frame. £30-50
549. A print of Little Lady Bountiful, oak framed. £20-30
550. An alpine scene, oil on board, 17" x 24", signed Graham Brinsley, modern gilt frame. £30-50
551. A watercolour of 4 offshore sailing boats. 14" x 21". £40-60
552. An English Homestead, maple framed print. £20-30
553. Equestrian prints and girl with sheaf. £20-30
554. After Alken. Colour engraving 'Pheasant Shooting', oak framed. £20-30
555. After Alken. Colour engraving 'Spearing the Otter', published 1820, maple framed. £30-40
556. After Ansell. Colour engraving 'The Danger Over or Billy's return to John Bull'. £25-40
557. After Alken. Three hunting engravings titled and dated 1798, in pencil. £25-40
558. After Alken. An 1820 colour engraving of 'Owling', Hogarth framed. £20-30
559. After G Stubbs. An 1817 engraving of 'Baronet', a racehorse, rosewood frame. £20-30
560. Two Spy Cartoons; The Huntsman and Horses. £25-40
561. H Earp Sen. Mountain stream under a stone bridge, 18" x 14, bears signature. £60-80
562. A watercolour of a footbridge over a stream. £30-40
563. After Alken. Four hand coloured engravings of Game Shooting scenes. £25-35
564. A Pears PRINT - 'Suspense', oak framed. £30-50
565. E Vulliamy. A French street scene, watercolour, signed and dated 1923. 9" x 11". £40-60

533. 17th/18thC Italian School drawing of the Three Marys at the Crucifix, 9" x 6".
534. Pair of landscape prints.
535. W B Thomas. Harboured Battleships, watercolour, 4½" x 7", signed. £40-60
536. A pair Venetian Canal Scene Watercolours, indistinctly signed. £50-70
537. Geo Bartlett. Maiden and two beast on a mountain pass, watercolour, 9" x 14", signed, dated 1861, gilt plaster frame. £50-80
538. A pair of 18thC Italian Engravings. £25-40
539. A Victorian watercolour of The Angel & Royal in Grantham. 11½" x 14½", Hogarth frame. £80-100
540. J J Hardwick. Watercolour of a Church, 10" x 17".
541. E Arnold. Summertime, watercolour of cattle by river, signed, 9" x 14".
542. A pair Victorian PORTRAIT oils on canvas. £50-80
543. A Pears PRINT - of child and kittens. £35-50
544. A Pears PRINT - Titbits (AF).
545. A set of four engravings, Hogarth framed. £25-40
546. A large Cantonese GINGER JAR. £20-30
547. A watercolour of a floral garden, 9" x 9". £20-30
548. A Victorian colour engraving of 'Fire' or the horrors of crinoline, rosewood frame. £30-50
549. A print of Little Lady Bountiful, oak framed. £20-30
550. An alpine scene, oil on board, 17" x 24", signed Graham Brinsley, modern gilt frame. £30-50
551. A watercolour of 4 offshore sailing boats. 14" x 21". £40-60
552. An English Homestead, maple framed print. £20-30
553. Equestrian prints and girl with sheaf. £20-30
554. After Alken. Colour engraving 'Pheasant Shooting', oak framed. £20-30
555. After Alken. Colour engraving 'Spearing the Otter', published 1820, maple framed. £30-40
556. After Ansell. Colour engraving 'The Danger Over or Billy's return to John Bull'. £25-40
557. After Alken. Three hunting engravings titled and dated 1798, in pencil. £25-40
558. After Alken. An 1820 colour engraving of 'Owling', Hogarth framed. £20-30
559. After G Stubbs. An 1817 engraving of 'Baronet', a racehorse, rosewood frame. £20-30
560. Two Spy Cartoons; The Huntsman and Horses. £25-40
561. H Earp Sen. Mountain stream under a stone bridge, 18" x 14, bears signature. £60-80
562. A watercolour of a footbridge over a stream. £30-40
563. After Alken. Four hand coloured engravings of Game Shooting scenes. £25-35
564. A Pears PRINT - 'Suspense', oak framed. £30-50
565. E Vulliamy. A French street scene, watercolour, signed and dated 1923. 9" x 11". £40-60



592. A compact reproduction bowfront BACHELOR'S CHEST. £100-150
593. A Smoker's BOW CHAIR. £50-80
594. A George III elm barback CARVER CHAIR.
595. An Arts & Crafts oak DRESSING TABLE. £25-40
596. An Edwardian walnut HALL CHAIR. £25-40
597. A 19thC Chinese Chippendale style upholstered OPEN ARMCHAIR. £50-80
598. A small Victorian pine SIDE TABLE. £30-50
599. A Victorian bamboo SIDE TABLE. £20-30
600. A Victorian satinwood circular TABLE with turned pillar and tripod base. 19" dia. £60-90
601. An inlaid walnut CENTRE TABLE with 4 column base. £60-90
602. An oak STUDENT'S BUREAU. £30-50
603. An 18thC elm DEED BOX. £80-120
604. A small 1930's oak barleytwist dropleaf TABLE. £40-60
605. Three bentwood CHAIRS and latheback chair. £20-30
606. A Victorian smokers BOW CHAIR (AF). £25-40
607. A William IV rosewood balloonback DINING CHAIR. £25-40
608. An oak OCCASIONAL TABLE with undershelf. £20-30
609. A Victorian rosewood balloonback DINING CHAIR. £20-30
610. A Victorian painted pine BLANKET BOX. £50-70
611. Two Victorian BEDROOM CHAIRS.
612. A 1920's glazed walnut BOOKCASE. £50-80
613. An oak CARVER CHAIR. £25-40
614. A Victorian painted pine traytop WASHSTAND. £50-80
615. A Georgian oak fall flap DINING TABLE (AF). £20-30
616. An oak CORNER STICKSTAND and contents. £20-30
617. A Victorian burr walnut BASE for Whatnot or Canterbury. £50-80
618. A mahogany NURSING CHAIR with later upholstery.
619. An Edwardian circular OCCASIONAL TABLE with undershelf. £20-30
620. A Chippendale style mahogany COFFEE TABLE. £30-50
621. A 1940's shell back NURSING CHAIR in gold brocade. £40-60
622. A Benares brass three-tier CAKESTAND. £20-30
623. A set of six barleytwist oak DINING CHAIRS, including carver (2 AF). £50-80
624. An Edwardian mahogany three tier CAKESTAND (AF). £20-30
625. A Victorian Child's HIGH CHAIR. £25-40
626. A 1930's oak barleytwist OCCASIONAL TABLE. £20-30
627. A pair Victorian rosewood balloonback DINING CHAIRS with cabriole legs. £50-80
628. A large wicker TRUNK. £30-50
629. An Edwardian four fold SCREEN. £20-30
630. A Georgian elm country CHAIR and bobbin turned stool. £30-50

631. A Regency giltwood and brass POLE STAND.
632. A Victorian bamboo JARDINIÈRE STAND. £40-60
633. A Georgian elm CARVER CHAIR.
634. A pair Georgian elm COUNTRY CHAIRS. £50-80
635. A Victorian three-fold mahogany SCREEN with Arts & Crafts panels. £40-60
636. Two 19thC elm STOOLS. £20-30
637. Two Edwardian folding TABLES. £20-30
638. A Victorian OCCASIONAL TABLE with catstand base. £25-40
639. A Regency simulated bamboo CHAIR.
640. A period carved oak BIBLE BOX. £80-120
641. A Victorian rosewood FOOTSTOOL, 4'. £150-200
642. A Victorian mahogany DINING CHAIR in the Chippendale manner.
643. A 17thC oak gateleg DINING TABLE (AF).
644. A Victorian upholstered pine LINEN BOX. £20-30
645. An antique stripped pine TRESTLE BOX. £40-60
646. 19thC French cameo back CHAIR (AF).
647. A 1920's heavy oak drawleaf DINING TABLE. £100-150
648. A set of four George III mahogany DINING CHAIRS in the Hepplewhite manner, red leather upholstery. £400-600
649. A Georgian oak and elm tripod TEA TABLE with birdcage. £80-120
650. A Victorian mahogany serpentine WASHSTAND. £150-200
651. A barleytwist oak gateleg DINING TABLE. £120-150
652. A Georgian elm CHEST of three drawers, knob handles and bracket feet. 31" wide. £120-180
653. A Victorian brass and iron DOUBLE BED. £120-180
654. A George III mahogany PEMBROKE TABLE. £200-300
655. A Georgian mahogany padfoot SERVING TABLE. £80-100
656. A Regency mahogany SINGLE BED with lyre headboard and swan neck pillars. £150-200
657. A Victorian ebonised TORCHÈRE. 43". £80-120
658. A Georgian style scroll arm THREE PIECE SUITE in gold brocade. £150-250
659. A Victorian Child's CHAIR, brown dralon upholstery.
660. A George III oak circular tilt top TEA TABLE with birdcage. £120-180
661. A William IV mahogany upholstered CHAIR with turned front legs. £120-180
662. A Georgian mahogany dropleaf DINING TABLE. £80-120
663. A Victorian painted pine traytop CHEST. £120-180
664. A Victorian satin/mahogany SIDE TABLE with drawer and barleytwist legs. £120-180
665. An early Victorian mahogany traytop WRITING TABLE with two drawers. £150-250
666. An early Victorian mahogany caddy top CHEST of two short and three



- long graduated drawers, glass handles, bun feet. 36". £150-200
667. A Victorian walnut and chequerboard top CENTRE TABLE with turned pillars. £120-180
668. A Victorian mahogany PEMBROKE TABLE. £120-180
669. A 1930's oval oak barleytwist DINING TABLE. £100-150
670. A George III carved mahogany hanging CORNER CUPBOARD. C 12" high. £100-150
671. An Edwardian mahogany envelope folding CARD TABLE. £200-300
672. A Georgian mahogany COMMODORE CHEST with ring handles. £150-200
673. An Edwardian breakfront BOOKCASE. 6" wide, 42" high. £200-300
674. A George II oak hanging CORNER CUPBOARD with H-hinges. £400-600
675. A George II oak bowfront hanging CORNER CUPBOARD mahogany crossbanded, with H-hinges. £600-800
676. A George III mahogany bowfront hanging CORNER CUPBOARD with H-hinges. £600-800
677. A set of six Victorian mahogany balloonback DINING CHAIRS (1 AF) £300-500
678. Spare Lot.
679. A George III SIDE CABINET with two drawers over dummy drawer and square taper legs, satinwood veneered with ebony stringing. 35". Bears label of Lady Daniels. *Illustrated on frontispiece.* £400-600
680. A Victorian mahogany bowfront CHEST of three long and two short drawers. £250-350
681. A 17thC oak three panel COFFER with scratch carving. £350-450
682. A Victorian walnut kidney shape WRITING TABLE with leather inset, two drawers and carved pedestal base. *Illustrated on centre pages.* £400-600
683. A William IV mahogany circular tilt-top BREAKFAST TABLE with a reeded pedestal and trefoil base. £250-400
684. A 19thC Flemish style Childs HIGH CHAIR. £400-500
685. A fine Victorian walnut SUTHERLAND TABLE with shaped top. £800-1000
686. An early 19thC mahogany SECRETAIRE BOOKCASE with ebony stringing, arch pediment, astragal glazed doors, fitted secretaire drawer over three graduated drawers, turned handles and feet. 46" wide, 7' 9" high. *See illustration on front cover.* £1200-1500
687. A George II oak hanging CORNER CUPBOARD, mahogany crossbanded, with H-hinges. £200-300
688. A reproduction linenfold oak three piece BEDROOM SUITE. £80-120
689. A Victorian mahogany four drawer Compactum Unit.
690. A mahogany cased UPRIGHT PIANO by Verde.
691. A barleytwist oak DUET STOOL. £40-60
692. A porcelain mounted WALL MIRROR. £30-50
693. Spare Lot.

694. An Edwardian mahogany DOUBLE WARDROBE with mirror door and drawer base. £60-80
695. An Edwardian inlaid mahogany WARDROBE with single door and drawer base. £80-120
696. An Edwardian inlaid mahogany WARDROBE with single door and drawer base. £80-120
697. A Victorian pine PRINTERS/ COLLECTORS CHEST with 2 x 12 graduated drawers. £90-120
698. A Victorian painted pine LINCOLNSHIRE DRESSER. £150-200
- 698A. A Regency giltwood PIER GLASS with figures of shepherd and flock. £150-200
699. A walnut marquetry cased UPRIGHT PIANO by A Ramsden, London. £25-40
- 699A. An Arts & Crafts oak BUREAU BOOKCASE, leaded glazed doors, fall flap, shelved base. £200-250
700. A Victorian mahogany PIANO BOX STOOL.
701. A 1920's walnut three-piece BEDROOM SUITE. £50-80
702. A Victorian mahogany DOUBLE WARDROBE with mirror door. £100-150
703. Victorian satinwood BEDROOM FURNITURE comprising Chest, Dressing Table and marbletop washstand. £120-180
704. A Victorian Tonbridge OVERMANTEL MIRROR. £20-30
705. A Victorian satinwood DRESSING CHEST. £80-120
706. A Victorian mahogany WARDROBE with double door and drawer base. £100-150
- 706A. A 1930's oak glazed two door BOOKCASE. £60-90
707. A 1920's glazed oak two door BUREAU BOOKCASE.
- 707A. A Victorian oval gilt WALL MIRROR (AF).
708. A Victorian mahogany OVERMANTEL MIRROR. £40-60
- 708A. A Victorian painted pine three tier WALL SHELF with ivy leaf carving.
709. A Victorian walnut double WARDROBE, DRESSING CHEST and double Bed. £80-120
- 709A. Old oak panelling, two table bases and court cupboard top.
710. A Victorian double BED (AF)
- 710A. An ornate Edwardian OVERMANTEL with copper Art Nouveau panels. £60-80
711. A Victorian walnut CHIFFONIER, couple door base. £180-250
- 711A. A Victorian overmantel MIRROR. £20-30
712. A Victorian pollard oak breakfront PEDESTAL SIDEBORD. £600-900
- 712A. A Victorian overmantel MIRROR. £20-30
713. A Victorian mahogany DOUBLE WARDROBE with mirror door and drawer base. £200-300
- 713A. A Victorian oblong WALL MIRROR, gilt plaster frame. £100-150
714. An oval oak WALL MIRROR.
- 714A. A Regency convex circular WALL MIRROR with eagle pediment. 39" high. £150-200
715. A 19thC giltwood and gesso marbletop CONSOLE TABLE. £80-120



- 715A. An embossed copper WALL MIRROR. £25-40
718. A lathed mahogany SINGLE BED.
- 719A. Washstand, Towel Rail and two Georgian Chairs.
720. A Victorian painted pine traytop WASHSTAND. £50-80
721. A Victorian painted pine traytop WASHSTAND. £25-40
722. A Victorian painted pine three drawer CHEST. £40-60
723. A Victorian cream painted pine CHEST of four drawers, turned handles and feet. £80-120
724. A Victorian cream painted pine BLANKET BOX. £25-40
725. A Victorian pine BLANKET BOX with original paintwork. £60-90
726. A Victorian pine MEATSAFE and large DESK SLOPE.
727. A Georgian oak PEMBROKE TABLE. £50-80
728. A Victorian white painted TABLE MIRROR.
729. A Victorian painted pine CHEST of two short and three long drawers. £100-150
730. A Victorian painted pine BLANKET BOX. £30-50
731. A Victorian painted pine CHEST of three drawers. £100-150
732. A Victorian pine two drawer SIDE TABLE. £100-150
733. A Victorian pine three section, BACON CUPBOARD. £80-120
734. A Victorian pine scrubtop KITCHEN TABLE.
735. A 1930's oak barleytwist SIDEBBOARD. £80-120
736. A Victorian painted pine BLANKET BOX with iron handles. £30-50
737. An Edwardian mahogany DRESSING CHEST with reeded pillars. £30-50
738. An Edwardian satin birch CHEST of two short and three long drawers, metal loop handles. £100-150
739. Two circular mahogany TABLE TOPS.
740. Spare Lot.
741. A Georgian pine two panel COFFER. £120-180
742. A Georgian oak DELFT RACK.
743. A stripped pine DELFT RACK.
744. A period pine WALL SHELF.
745. A 19thC Bokhara RUG of blue/red geometrical design. 88" x 44". £50-80
746. A 19thC Bokhara RUG of blue/red geometrical design. 65" x 44". £50-80

## ARCHITECTURAL PIECES

747. Terracotta ridge and hip pieces.
748. A pair terracotta URNS (AF). £25-35
749. A pedestal SUNDIAL. £40-60
750. A large stoneware SINK. £20-30
751. Two large stone CORBELS. £30-50
752. Old stone pieces.
753. A cast iron DOG GRATE with shaped back. £80-120
754. A 6" wooden GARDEN BENCH. £40-60
755. A rustic GARDEN TABLE with metal base.
756. A cast iron MANGER and BOOT SCRAPER.

757. A classical campana marble URN. 15". £80-120
758. A classical campana marble URN. 14". £50-80
759. A 19thC reconstituted stone neo classical GARDEN FIGURE. 52". £300-400
760. A Petrolux cast enamel STOVE. £70-100
761. A Victorian cast iron framed GARDEN BENCH. 8'.
762. A two section CHIMNEY POT.
763. A marble classical campana URN, 12". £50-80
764. A pair Doulton CHIMNEY POTS. £50-70
765. A Victorian cast iron FIRE FRONT.
766. A Victorian iron GATE. £20-30
767. Pair 19thC French cast iron BALCONY FRONTS. £50-70
768. A Victorian wrought iron FINIAL CROSS. £30-40
769. A stone Bedroom FIREPLACE. £40-60
770. A Victorian stone FIREPLACE. £40-50
771. A Victorian copper and iron curved FENDER. £30-50
772. A pair of Victorian wrought iron GATES each 57" wide, 54" high together with a pair of cast iron POSTS. £200-300
773. A George III painted pine and gesso FIRE SURROUND 75" wide, 64" high. Provenance: Formerly of Bottesford Rectory, Notts from the extention documented in 1789. £400-600
774. A George III painted pine and gesso neo-classical DOOR FRAME with carved acanthus corbels.

Provenance: As lot 773. £200-300

775. A pair of George III painted pine and gesso neo-classical DOOR HEADS. 52" wide. Provenance: As lot 773. £50-80

## ADDITIONAL LOTS

- 160A. A engine turned silver 3 piece DRESSING TABLE SET. £20-30.
- 160B. Plated CUTLERY.
- 160C. A pair of white reeded VASES. £20-30.
- 160D. A pair of Royal Doulton stoneware BOTTLE VASES, 10". £100-150.
- 160E. A gilt metal WALL MIRROR, £20-30.
- 160F. A willow pattern DINNER SERVICE, £40-60.
- 218A. A gilt brass CARRIAGE CLOCK, £100-150.
245. An oak and bakelite office Telephone
246. A toy Merry-go-round, boxed. £30-40.
247. An Art Deco plaster FIGURE OF DIANA THE HUNTRESS. £250-350.
248. An Asprey Picnic Basket. £80-120.
249. Old Meccano pieces. £20-30.
- 249A. Two crest and monogram Books.
- 550A. Watercolour 28" x 20½" World War I battle scene with soldier comforting his dying comrade. Signed P.S. Laws.
- 550B. Oil on canvas 11½" x 8½" primitive landscape with traveller at a crossroads. Signed T. Wainwright 1909.
- 550C. A mezzotint GOLFING SCENE, £30-40.



- 550D. A mezzotint GOLFING SCENE, £30-40.
- 587A. Victorian print of a snowscene by Joseph Farquharson in oak veneered frame.
- 587B. Victorian print of gentlefolk in drawing room.
- 587C. Victorian hand coloured print by David Wilkie 'The Village Politicians'.
- 587D. Pair of art nouveau paintings on glass.
- 587E. Pair of Swiss caricature watercolours.
- 587F. Irish landscape watercolour by Emily Corey.
- 587G. Victorian print of young lady entitled 'Blanche'.
- 587H. Watercolour of country cottage and garden with chickens in foreground, L. Goodwin.
- 587I. Pair of oriental prints.
- 587J. Pair of Garman Morris seascapes entitled 'Morning' and 'Moonrise'.
- 587K. Large Victorian print of lion.
- 587L. Victorian Scottish print of stag entitled 'The Challenge'.
- 587M. Scottish scene of bulls oleograph in oak frame.
- 587N. Victorian oleograph snow scene in black glass mount.
590. A Victorian duet STOOL, £80-120.

#### END OF SALE

Other items sold at short notice:  
Regency brass inlaid card table, stone pillar, stone figure,  
Georgian yew Windsor Chairs (i.e. child's'), etc.

## COMMISSION BID FORM

LOT NO	BRIEF DESCRIPTION	PRICE

Bids are left at the senders risk and are accepted subject to our Conditions of Sale.

NAME: .....

ADDRESS: .....

.....

.....

.....

TEL: .....

SIGNATURE: .....

SALE DATE: .....

Lots will be purchased at the lowest price as permitted by other bids or reserves.

Prospective purchasers should contact the Auction Rooms after the sale and if successful, the item(s) purchased must be collected and paid for within two days of the sale.

A Buyers Premium of 10% + VAT will be levied on the hammer price, to all purchasers.



## NOTES

---

## MAILING REGISTER SUBSCRIPTION FORM

If you wish to receive our Auction catalogues and detail sheets for one year, please complete and return this form.

### 1. Antiques & Fine Art Auctions

There are currently planned 5 Sales per annum to include:-

Furniture, Paintings, Prints, Glass, Ceramics, Toys, Silver, Clocks, Watches, Jewellery, Metalware, Stamps, Coins, Books, Arms & Militaria, Bygones, Barometers, Collectors Items, etc.

### 2. Commercial & Agricultural Auctions

Frequency of Sales determined by instructions from The High and County Courts, Liquidators and Receivers, and private individuals/companies.

Office Equipment, Catering Equipment, Engineering Equipment, Industrial Plant & Machinery, Live & Dead Farming Stock, Retail/Wholesale Shop Stock and Fittings, Vehicles; - Assets of a variety of Businesses.

### 3. Specific Requirements

If you specialise in one area of the above categories (eg. *Books*) please state this to avoid receiving unwanted catalogues.

.....

1. Antiques & Fine Art. (£10)

£.....

2. Commercial & Agricultural Auctions. (£5)

£.....

Fee enclosed

£..... Total

Name: Mr/Mrs/Miss/Title .....

Address: .....

.....

.....

.....

.....

Tel: (.....) ..... Date: ..... Our Ref: \*ML .....



## **FORTHCOMING SALES**

**GOLDING YOUNG & CO.**

**will sell by AUCTION**

**ANTIQUARIAN & COLLECTORS**

**BOOKS, PRINTS, MAPS & EPHEMERA**

**on Monday, 24th October, 1994 at 11 a.m.**

**An Evening Sale of**

**JEWELLERY, SILVER**

**& BIJOUTERIE**

**on Monday, 24th October, 1994 at 7 p.m.**

**Further entries invited for both sales.**

**Call Colin Young for a Free Valuation.**

## **FORTHCOMING SALES**

**GOLDING YOUNG & CO.**

will sell by AUCTION

**ANTIQUE & MODERN  
FURNITURE, BRIC-A-BRAC  
HOUSEHOLD EFFECTS**

Every Wednesday at 10.30am

In all circa 350 lots of furniture, pictures,  
china, glass, tools, carpets, rugs, books,  
bric-a-brac, outdoor effects, etc.

Viewing: Tuesday 4pm to 6pm  
& Saleday from 9am.

**\* SALEDAY CASH PAYOUT FOR VENDORS \***

*ENTRIES FOR THE WEEKLY GENERAL SALE  
USUALLY CLOSE 5pm EACH MONDAY*

**\* FULL HOUSE CLEARANCE SERVICE \***



## NOTES

---

We are pleased to recommend

***Lowes Removals***



— Removals - Fine Art Carriers —

*Local & Long Distance*

**Andrew Lowes**

40 Vernon Avenue, Gonerby Hill Foot,  
Grantham, Lincs., NG31 8JJ  
*Telephone: 0476 65194*

PRINTED BY W.G. HARRISON, DYSART ROAD, GRANTHAM  
TEL: 0476 62700

Established 1900

# — GOLDINGS —

Chartered Surveyors, Auctioneers, Valuers & Estate Agents  
Residential, Commercial, Agricultural, Property Management, Financial Services

45 High Street, Grantham, NG31 6NE

Telephone: 01476 · 590211

## PROFESSIONAL SERVICES FOR



### RESIDENTIAL

---

Our established Residential department headed by Chartered Surveyors undertakes sale and valuation of all types of property from Castles to Town Houses; Surveys, Homebuyers Reports, Mortgage, Probate and Insurance Valuations carried out with care attending to individual requirements.

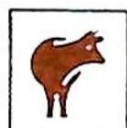


### COMMERCIAL

---

Dealing with the sale and survey of Shops, Offices and Factories. Valuation for Rent Reviews, Lease renewals and negotiations. Rent Arbitration, on behalf of landlord and tenant.

*Plant, Machinery & Assets*; Sales for Receivers, Liquidators, High Court & County Court. Auction Sales on Site or at The Grantham Auction Rooms for private and public clients alike.



### AGRICULTURAL

---

Our Senior Partner has wide experience in the sale and valuation of Agricultural Properties, conducting Farm Sales and Valuation of Live and Dead Farming Stock for dissolution, Probate and other matters. Together with Rent Reviews, Development Land reports and Annual Stocktaking Valuations.



### FINANCIAL SERVICES

---

Our Experienced Consultant is available to advise on all matters concerning Finance, Mortgages, Insurance, Investment, Planning and Pensions.



### PROPERTY MANAGEMENT

---

Personal service and attention to detail ensures that our management team exploits your investment portfolio whether an Individual Family Home let for a small fee or Office, Factory, Shop or Farm with rent collected and regular inspections made.

#### Chattels Auctioneer

Colin R. Young FNAVA

#### Property Management

Mrs. Margaret Pashley

#### Partners

C. Robin Hall FRICS FAIV

Ian J. Shaw FRICS FNAEA

#### Financial Service Consultant

John G. Stukins

#### Residential Sales Manager

Mrs. Jenny Diment FNAEA CPEA



Established 1900

# **-GOLDINGS-**

## **THE GRANTHAM AUCTION ROOMS**



A George III mahogany PEMBROKE TABLE, in our last sale

**SOLD for £850**

---

**NEXT SALE**  
of  
**ANTIQUES & FINE ART**

Wednesday 26th October, 1994 at 10.00am

Entries welcome until October 13th.

Call Colin Young for a Free Valuation

### **THE COMPLETE AUCTION SERVICE**

Auction Sales of Antiques, Fine Art, Collectables, Modern Furniture & Effects – Office, Shop & Catering Equipment  
Vehicles – Plant & Agricultural Machinery – Stock-in-Trade – Business Assets – Liquidations & Receiverships  
VALUATIONS undertaken for Insurance, Probate, Family Division and Sale purposes. Full HOUSE CLEARANCE facilities.