

Established 1900

- GOLDINGS -

**AUCTION SALE
OF**

Antiques

**Furniture, Pictures, Silver, Ceramics
and Collectors Items**

**On Wednesday, 20th April, 1994
at 10.00am**



THE GRANTHAM AUCTION ROOMS

CONDITIONS OF SALE

1. The highest bidder shall be the buyer. The Auctioneers reserve the right of regulating the biddings; of rejecting any bid; and of bidding for, withdrawing, consolidating, dividing or altering the order of lots.
2. The purchase money for each lot with the usual commission of 10% plus VAT at the current rate shall be paid at the fall of the hammer (if required). Each lot at the fall of the hammer shall be at the sole risk and expense of the buyer, and shall be paid for and removed immediately after the conclusion of the sale, *but no lot shall become the property of the buyer, or be removable until paid for*, and if taken away in contravention of these conditions without an order for removal signed by the Auctioneers, they shall have power to seize the same by their servants or agents, or otherwise, or the Auctioneers may recover either the lot sold or the price thereof (at their option) by action at law.
3. No contra account of any description whatever will be allowed to the buyer as a set off, and payment for each Lot shall be made to the Auctioneers or their clerk only, and a buyer paying by cheque must give satisfactory references (if required).
4. For all purposes of this sale the Clerk of the Auctioneers shall be deemed to be the agent of both seller and buyer.
5. A bidder shall not be allowed to retract his bidding after the fall of the hammer, and he shall give up his full name and address if required. The Auctioneers will not recognise the transfer of any lot from one buyer to another, nor make any alteration in the sale book in respect thereof.
6. The Auctioneers are acting only as agents, and give no personal warranty as to the condition, quality or authenticity of any chattels offered for Auction. Any catalogue description is given merely as guide to purchasers, any description can be changed from the rostrum before the lot is sold. If a purchaser buys without previous inspection he will do so at his own risk.
7. Notwithstanding any other terms in these Conditions, if within 7 days of the sale a purchaser gives notice in writing that a lot is a deliberate forgery, with supporting factual evidence, the Auctioneers may rescind the transaction. The burden of factual proof lies with purchaser, mere opinions will not satisfy. This benefit is not assignable.
8. If any buyer neglect or refuse to comply with the above conditions or any of them, his deposit money (if any) shall be forfeited, and the lot uncleared may, at the option of the Auctioneers, be resold without notice by public auction or private contract, and any loss occasioned by such re-sale together with all expenses attendant thereon, or arising under these conditions shall be paid for by the defaulter at this sale and be recoverable as and for liquidated damages. This condition is however without prejudice to the right of the Auctioneers to enforce the contract made at this sale if they think fit.
9. Any Notes for Purchasers and catalogue Glossaries, where used, will be construed as Conditions of Sale.
10. The Auctioneers shall be the sole Arbitrators in all matters of dispute relating to these conditions both as between the seller and the buyer and between the several bidders and buyers and their determination on all matters shall be final and binding on all parties concerned.

Auctioneers: C. Robin Hall FRICS FAAV & Colin R. Young FNAVA

Messrs.

- GOLDINGS -

Old Wharf Road, Grantham, Lincolnshire NG31 7AA

Telephone: (0476) 65118 Fax: (0476) 590998



Lots 13, 68 & 374

Lots 70, 126 & 353

Viewing Times:

Sunday 17th: 2pm to 4pm
Tuesday 19th: 1pm to 7pm
& Saleday 9am to 10am



IMPORTANT NOTES FOR PURCHASERS

1. **PAYMENT:** Must be made in full immediately after the Auction. The following methods of payment are acceptable.
 - a) Cash
 - b) Bankers Draft
 - c) Building Society Cheque
 - d) Cheques, accompanied by a valid card. For accounts above the stated card limit, we reserve the right to retain the goods until clearance is established.
2. **BUYERS PREMIUM:** of 10% + VAT is payable on all lots.
3. **REMOVAL OF PURCHASES:** Goods must be collected as soon as they are paid for, and in the Two Working Days following the sale. If goods are not collected on these days we reserve the right to charge £1 per lot per day thereafter.
4. **COMMISSION BIDS:** If you are unable to attend this or any of our future sales we will be pleased to bid on your behalf. We always purchase at the lowest possible price, subject to other bids and reserves.

All bids must be handed to the office on an official form. It remains the responsibility of prospective purchasers to contact GOLDINGS to confirm whether their bids have been successful.
5. **TELEPHONE BIDS:** There are inherent dangers with this practice, therefore all such arrangements are made entirely at the bidder's risk. Telephone bids will only be accepted if the lower catalogue estimate is £500 or above. For lots with a lower estimate below this figure Commission Bids Only will be accepted.
5. **SMOKING:** is not permitted in any part of the Saleroom.
6. **REFRESHMENTS:** will be available Saleday.
7. **ACCOUNT TRANSFERS:** will not be recognised after the sale. If any lots are purchased for another person, this must be declared at the fall of the hammer.

GLOSSARY

- a) **Generally:** *'As Found.'* (AF). This term indicates the lot has some damage. Its absence does not indicate that the lot is free of defect. All lots are SOLD AS SEEN.
- b) **Paintings:** *'Signed, initialled, monogrammed.'* This refers to the present state of the work and is not an attribution.
- c) **Books and printed matter:** These items are not sold subject to collation and are not returnable once removed from the premises.
- d) **Silver & Jewellery:** Weights given are approximations given by basic instruments.
- e) **Estimates:** For intending purchasers we include in this catalogue the Auctioneers opinion of value. If no figures are given the value is less than £20.

BYGONES & MISCELLANEA

1. A Garretts Patent variable horse drawn SKERRY. £70-90
2. A painted brass Sign - Smoke Room and LCC cast iron Sign.
3. A pair of lady's snakeskin Shoes, size 4.
4. A pair of barleytwist oak Candlesticks. £20-30
5. A Comport Stand and circular Mirror.
6. A Victorian walnut Writing Box. (AF) £20-30
7. A Victorian brassbound rosewood Work Box. (AF) £20-30
8. A large brass Tray.
9. A set of Victorian polished steel FIRE IRONS with cast brass handles. £100-150
10. A Victorian brass and steel Ashpan and tools. £20-30
11. The Abbeydale mahogany Photographic ENLARGER. £25-40
12. A small Victorian cast iron Fender.
13. A Victorian copper and brass SAMOVAR. £100-150
14. A Persian design inlaid square TRINKET BOX. £20-30
15. An oval chopping board, creamer, bowl and blotter.
16. A silver Cigarette Box and glass Fruitbowl.
17. A Victorian mahogany INKSTAND. £30-50
18. A tin of old Collars and Cuffs.
19. A bakelite Darning Light.
20. The 'Serpent' label Printing Machine.
21. A Servants BELL BOX. £40-60
22. A Japanese black laquer COLLECTORS CABINET on stand with chinoiserie decoration. £80-100
23. A pair of Japanese cast brass VASES, seal mark to base. £50-80
24. A framed Lincolnshire map.
25. A George III mahogany TEA CADDY. £100-150
26. A Victorian walnut Caddy. £20-30
27. A gilt metal easel PHOTOGRAPH FRAME and box. £20-30
28. A SMOOTHING PLANE by Buck, 245, Tottenham Court Road. £30-50
29. Three Jack Planes and two others. £20-30
30. Chisels, mallets, saws, etc.
31. Four sets of four turned legs and a square table top, all 19thC. £25-40
32. A split cane Midland FISHING ROD. £20-30
33. A 19thC frying pan and two copper covers. £20-30
34. A bone handled Carvery Set.
35. A Victorian brass square Chamber Stick with snuffer.
36. Two pairs of Victorian brass circular Chamber Sticks with two snuffers. £20-30
37. An old acetylene Cycle Lamp.
38. An old acetylene Cycle Lamp.
39. An old oil cycle Lamp.
40. Linen; double bedspread, table runner, tray cloth, two tablecloths, napkins, etc.
41. An enamel Water Can.
42. Baby's satin bonnet, handkerchief, etc.

43. Meccano pieces, pond yacht (AF), lead soldiers, etc.
44. A Victorian Jewel Case.
45. A 19thC black ground Collector's Chest with painted decoration of birds and flora. £50-80
46. A 19thC walnut VIOLIN branded KOPE or HOPE on backboard, cased with 3 unnamed bows.
47. Old wax Cylinder Records and Player. (AF)
48. A pair of 19thC French ormolu CHENETS. 14". See illustration on page 14. £200-300
49. **DAVID CORNELL, F.R.S.A., F.R.S.B.S. CHAMPION FINISH**, a limited edition bronze of Lester Pigott on Nijinsky, on a black marble base. 7"high. Commemorating the jockey's retirement from racing. Sold with certificate of authenticity. **£180-250**
50. A black bakelite Telephone. £25-40
51. A cased Sewing Machine.
52. A Victorian mahogany fitted WORK BOX. £40-60
53. Reproduction ARMOUR consisting of breastplate, pr arms and pr elbows. £50-80
54. Pr. 19thC South American STIRRUPS £20-30
55. A Victorian brass 3 piece TEASET £40-50
56. Assorted Linen
57. - 62. Spare lots
63. Old tins and coins
64. A Jaguar CAR MASCOT. £30-40
65. A cast bronze figure of 'OLD BILL' after Bruce Bainsfather, on a metal and stoneware plinth. 6½". £60-90

66. A pair of 19thC bronze CRAYFISH. 9" long. £80-120
67. A pair of 19thC bronze INCENSE BURNERS of circular form with butterfly handles. 5". £80-120
68. A pair of ORMOLU CANDLESTICKS of reeded columnar form with square bases, by Cailar Bayard. 6". *Illustration on page 1.* £200-300

CERAMICS & GLASS

69. An Art Nouveau vaseline glass hanging CENTRE LIGHT and a marble glass example. £80-120
70. A pair of Meiji period Satsuma BOTTLE VASES, marked dai nippon to base. 13" See illustration on page 1. £80-120

A COLLECTION OF TEN MODERN LLADRO FIGURES

71. Girl with Goose and bucket No 682. £40-60
72. Orange girl. £40-60
73. Eskimo and bear cub No 1195. £25-35
74. Polar Bear No 1209. £20-30
75. Boy, girl and dog No 1230. £150-200
76. Boy, girl and candle. £25-35
77. Two angels. £40-60
78. Girl with lamp No. 584. £35-45
79. Goose, girl and dog. £40-60
80. Ballerina and Pierot No 4935. £200-300
81. A Carnival glass Dish.
82. Two Victorian Jelly Glasses.
83. An 18-piece part Tea Service with floral gilt borders.

84. A Daniel trio with a gilt red border.
85. A Daniel gadrooned Cup and Saucer.
86. Four Daniel gadrooned Cups and Saucers. £20-30
87. A Daniel gilt blue Cup and Saucer; another; a Victorian Sucrier (AF).
88. Four Daniel Cups and Saucers and Slop Bowl with floral pink borders. £50-70
89. A Minton Trio in a gilt rose pattern.
90. Two Daniel Cups and Saucers with gilt peach borders.
91. A BOW powder blue octagonal PLATE. £70-90
92. A BOW octagonal PLATE with oriental decoration. (AF) £40-60
93. A COALPORT TRIO of coffee cup, teacup and saucer, flower and lantern pattern. £70-90
94. A NANTGARW MEATPLATE with floral motifs. 12". £80-100
95. A 19thC Cantonese Plate. £20-30
96. A 19thC Staffordshire FACE MUG. £40-60
97. A 19thC SAMSON Oriental BOWL with two cocks in the centre field. £60-80
98. Seven coloured Victorian Glasses.
99. A 19thC Cantonese octagonal CABINET PLATE with a central scene of a deer and gig. £60-90
100. A pair of 19thC Chinese famille rose CABINET PLATES decorated in floral enamels. 9". £50-70
101. A Victorian flatback Staffordshire figure of a watercarrying girl. 7". £40-50
102. A **LALIQUE amber glass ASHTRAY**, the domed centre encircled by four swirling maidens. *Moulded mark.* 6½" dia. £400-600
103. A **LALIQUE frosted glass PLAFONIER**, moulded with 3 rows of leaves, 18" dia., engraved mark. £500-700
104. A Victorian ROYAL WORCESTER creamware TEA SERVICE hand painted with thistles and flora, comprising; sucriere, creamer, 2 bread plates, 6 side plates, 6 saucers and 6 cups. *Year cypher 1898.* £150-200
105. A First Period WORCESTER blue and white SAUCEBOAT, open crescent mark. £120-180
106. A Dr Wall WORCESTER polychrome TEAPOT. £150-200
107. A **fine ROYAL WORCESTER JARDINIERE** with a gilt and pierced rim, the body painted with roses amongst gilt and moulded rococo scrolls, signed Sedgley. 12" dia. £1200-1500
108. A ROYAL WORCESTER FRUIT BASKET, cream ground, painted with flora, Model G441. 9". £150-200
109. A First Period WORCESTER MUG decorated in underglaze blue with a butterfly, fruit and parrot. 5¼". £80-120
110. A **pair of ROYAL WORCESTER CABINET PLATES**, cobalt blue ground with gilt bordered butterfly cartouches, painted with exotic birds, butterflies and insects, signed C Johnson, 1909. 9". *See illustration overleaf.* £450-600



Lot 110

111. A ROYAL WORCESTER FRUIT BOWL, cream ground with a pierced rim and embossed with leaves, model 1004, c.1925. £300-400

112. A fine MASON'S ironstone GARNITURE OF THREE VASES, of sexagonal baluster form, the pink ground embellished with chinoiserie decoration in relief; the pierced covers having dog of fo finials, gilt and cream serpent handles to the body. Printed mark Fenton Stone Works CJM & Co Granite China, Staffordshire Potteries. One 15", two 11". See illustration. £500-700



Lot 112

113. An 18thC TEAPOT with blue and white scene of fishermen, with a Lowestoft lid. £120-150
114. A matched pair of Victorian Staffordshire FIGURES of a young man and lady with dogs. £150-250
115. An 18thC TEAPOT decorated with ladybirds and flora. £150-200
116. A pair of 19thC SATSUMA OVOID VASES, signed on base. 5". £80-120
117. A Georgian style cut crystal mallet shape Decanter. £30-50
118. A 19thC Chinese famille rose CABINET PLATE decorated in floral enamels. 9". £40-60
119. A Victorian Staffordshire TOBY JUG with cover. £40-60
120. A Victorian Staffordshire Greyhound. £25-35
121. A Victorian blue ground flared VASE with a country house painted in a gilt cartouche, possibly Rockingham. £40-60
122. An 18thC brown salt glazed stoneware JUG with a side mounted spout. £40-60
123. A mid-Victorian blue and white COPELAND FOOTBATH with a Greek key pattern. £180-250
124. A pair of METTLACH OVOID VASES with armorial type decoration in relief, impressed mark. 9". £250-350
125. A pair of 19thC Bohemian blue and grey stoneware EWERS. 22". £180-250
126. A 19thC Chinese BALUSTER VASE decorated in underglaze blue. 24". *See illustration on page 1.* £180-250
127. An amber irredescent glass Vase. £40-60
128. A First Period WORCESTER blue and white BOWL, 6" dia. £30-40
129. A MINTON turquoise and gilt Posy Vase. £30-50
130. A Locke & Co WORCESTER floral LOVING CUP. £60-80
131. Two 19thC Cantonese baluster Vases. £30-40
132. Two plates
133. Ashtray and feeding cup
134. China
135. A WEDGEWOOD black basaltes ovoid VASE and CREAMER
136. An 18thC bullet shape English creamware TEAPOT (AF) £120-180
137. An 18thC DERBY LOVING CUP and two other cups. £30-40
138. A 19thC blue and white relief CREAMER £20-30
139. A 19thC blue and white relief CREAMER £20-30
140. A 19thC blue and white relief CREAMER £20-30
141. A WORCESTER reeded CREAMER in blue and gilt open crescent mark. £30-50
142. A 19thC mandarin pattern London shop CREAMER
143. A 19thC oval CREAMER with a gilt and transfer printed pattern.
144. A RILEY moulded MILK JUG, marked 1823 £30-40
145. A similar MILK JUG £50-70
146. A similar MILK JUG £80-100
147. A similar MILK JUG with blue relief figures and gilded G. Jackson 1829. £50-70

JEWELLERY & BIJOUTERIE

148. A 9ct rose gold mounted amber Cigar Holder.
149. A blue john Egg.
150. A turquoise set Poison Ring and a 9ct gold mounted Cameo brooch. £20-30
151. A North West Frontier 1937-39 Medal. £20-30
152. A silver and mother of pearl Cufflink and Studs, cased. £20-30
153. Costume Jewellery; cameo brooches, propelling pencils, etc. £20-30
154. A Victorian half-GUARD CHAIN £250-350
155. A ruby and diamond DRESS RING on an 18ct white gold shank £300-400
156. An 18ct gold ETERNITY RING £300-400
157. A 1914 Half Sovereign. £30-40
158. A 1791 gold Spode Ace GUINEA £70-90
159. A 1950's 12k LEAF BROOCH £70-90
160. A modern 9ct gold Bangle £30-40
161. An Arabic 18ct gold Pendant on a 9ct chain. £20-30
162. A 9ct gold Ring set with 5 garnets and a pr of earrings. £40-60
163. Two gold Bar Brooches £35-45
164. Two gold Bar Brooches £35-45
165. A gold Locket, chain and half eternity ring.
166. A 9ct gold belcher link ALBERT with bloodstone fob. £100-150
167. A Vic 9ct rose gold fancy link ALBERT with crucifix £400-500
168. A **platinum RING** with a magnificent spray of round and baguette diamonds in the form of a palm tree. **£3,500-4,000**

169. A **platinum RING** with 15 diamonds, similar quality. **£3,000-3,500**
170. A 22ct gold DRESS RING in the Arts & Crafts style. £200-300
171. A similar lot
172. A similar lot
173. Spare lot
174. A silver Buckle Ring and 2 others.
175. An American yellow metal Gents Wristwatch.

CLOCKS

176. A chiming gilt-brass CARRIAGE CLOCK. £200-300
177. An Edwardian mahogany dome MANTEL CLOCK with an empire eight day movement. £30-50
178. A **mid Victorian brass SKELETON CLOCK**, the scroll openwork plates mounted with a silvered chapter ring with Roman numerals, fusee movement striking the bell hourly, and a silvered makers plate T Evans (Birmingham). On an ebonised oval base with a glass dome. 17". See *illustration*. £400-600



Lot 178

179. A 19thC American Ogee Shelf Clock. £30-50
180. A 19thC American ogee SHELF CLOCK. £50-70
181. A **George III oak LONGCASE CLOCK** with a pillared hood, shell inlaid trunk, painted square dial with rosebud spandrels, roman numerals, second ring and date crescent, eight day movement striking on a bell, signed R Tyler, Melton. 6' 9". **£500-800**
182. An oak LONGCASE CLOCK, the single handed dial with a silvered chapter ring signed E. Gatland, Cockfield, c 6'tall. £400-500

SILVER & PLATE

183. An electroplate bulbous COFFEE POT. £50-80
184. An electroplate five trumpet EPERGNE. 9". £40-60
185. Two Ice Buckets and a Cocktail Shaker. £20-30
186. A silver plated part reeded TEAPOT. £20-30
187. A Victorian silver plated SPIRIT KETTLE of part reeded design. £80-120
188. An Edwardian silver part reeded TEAPOT. Sponsor CSH. London 1903. 17oz (all in). £80-120
189. **An Arts & Crafts silver 3 handled BOWL** on plinth. Glasgow 1905. 37oz. *See illustration.* **£400-600**



Lot 189

190. An octagonal ENTREE DISH. £20-30
191. A galleried oval oak TRAY. 14". £30-50
192. A silver plated Breadboard and Muffin Dish.
193. A pair of 19thC electroplate ENTREE DISHES of scalloped oval form with gadrooned decoration. £120-180
194. A Victorian plated Tea Caddy, engraved golfing trophy Rossafenna 1899. £25-35
195. An electroplate Kings pattern Ladle.
196. A pair of FISH SERVERS with ivory twist handles. £40-60
197. Twelve pairs of bright-cut TABLE KNIVES AND FORKS with ornate mother of pearl handles; and a further cased set of forks. £100-150
198. A Victorian engine turned silver SNUFF BOX, with a gilt interior. Sponser Neustadt & Barnett. Birmingham 1841. £150-200
199. A cased pair of bone handled FISH SERVERS. £20-30
200. A cased pair of bright-cut FRUIT SERVERS. £25-35
201. A cased pair of bone handled FISH SERVERS.
202. A cased Victorian CARVERY SET with silver mounted bone handles. Sheffield 1894. £40-60
203. Three cased sets of Coffee Spoons (2 sets silver) £20-30
204. An Edwardian silver Pin Cushion. London 1905 £30-50
205. An Edwardian silver topped Scent Bottle. Birmingham 1901. £30-40
206. Two silver Cigarette Cases. £20-30
207. A square Edwardian silver Pin Cushion. London 1905 £30-50
208. A circular George V silver engine turned three footed Trinket Box. £25-40
209. Two engine tuned silver Cigarette Cases.
210. A Victorian silver handled Crumb Brush. Birmingham 1889.
211. A rococo design silver NURSES BUCKLE. £40-60
212. **American silver rococo CUTLERY, 47 pieces, stamped Sterling. 79oz. £500-700**
213. A small pair of silver Spill Vases. Birmingham Assay. £30-50
- 214.-230. Spare Lots.

LATE ENTRIES

231. A 9ct gold amethyst and pearl WISHBONE RING, and three others. (4) £25-35
232. A 9ct gold diamond and sapphire HALF ETERNITY RING and two others. (3) £20-30
233. An Eastern gold filigree panel BRACELET. £50-70
234. A 9ct gold gentleman's diamond set RING and one other. £30-40
235. A gold mounted jade PENDANT and another. £50-70
236. A lady's 9ct gold "Elco" WATCH and "Foxtail" Bracelet. £30-40
237. An amber bead NECKLACE. £20-30
238. A lady's silver cased manual wind WRISTWATCH
- 239.-300 Spare Lots

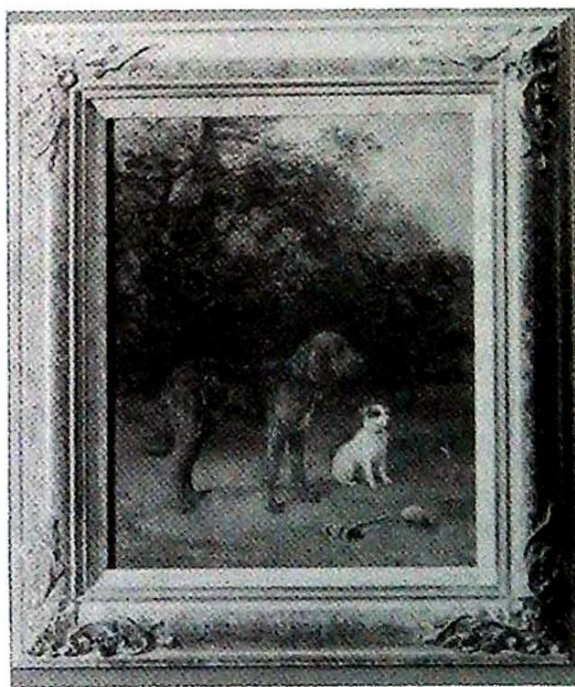
PICTURES

301. A PORTRAIT MINIATURE of an elderly gentleman, in a satin lined leather case.. £40-60
302. Four hand coloured engravings after H Alken entitled 'Weighing & Rubbing Down', 'Preparing to Start', 'At Speed' and 'Winning'. £40-60
303. Six assorted Prints.
304. A horse racing Print, after Munnings. £30-40
305. A print of dogs at the kill.
306. A small Edwardian watercolour of three girls.
307. An 18thC colour print of the Earl of Salisbury in a Hogarth frame. £40-60
308. A portrait of a bearded Arabian gentleman, oil on panel, 16" x 13". £80-120

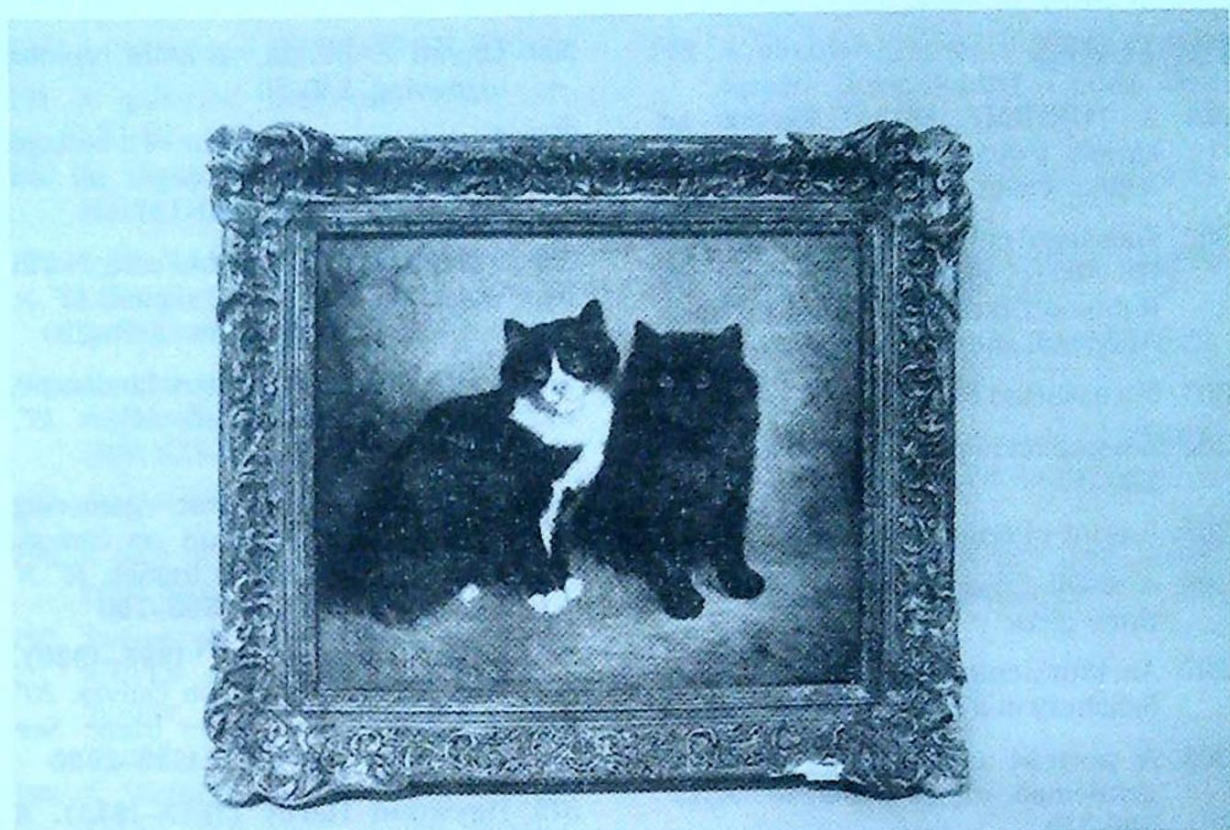
309. Orgard & Elfrida, an 18thC colour engraving. £40-50
310. A winters evening scene of a cottage with children and dogs, oil on canvas, 18" x 15". £80-120
311. F Hider. In the Vale of Fest?, North Wales, oil on canvas, signed. 12" x 20", in a Hogarth frame. £150-200
312. F Hider. A mountainous landscape, oil on canvas, signed. 14" x 18". £50-80
313. **J McColvin.** Flower gathering maidens, a pair of oil on canvas, signed, in gilt plaster frames. 16" x 8". See illustration. £500-700
314. **Lilian Cheviot (fl. 1894-1930).** Two seated cats, oil on canvas, 20" x 24", in a gilt plaster frame. See illustration overleaf. £1500-2000
315. **Heywood Hardy (1843-1933).** A mastiff and Jack Russell terrier on a croquet lawn, oil on panel, signed and dated 1895, framed. 11½" x 9½". See illustration. £1500-2000



Lot 313



Lot 315



Lot 314

FURNITURE

316. Music Chair
317. A Pair of Victorian mahogany DINING CHAIRS. £80-120
322. An ornate BRASS STAND with insert marble top. £100-150
319. Pair of Victorian rosewood Chairs.
320. A 19thC elm BUREAU with lift top and frieze drawer. £100-150
321. An Art Nouveau BOUDOIR SOFA, painted in cream and gold. £180-230
322. A Victorian mahogany PEMBROKE TABLE. £100-150
323. An Edwardian mahogany WRITING TABLE. £120-180
324. An Edwardian serpentine OCCASIONAL TABLE with leatherette top. £80-100
325. A pair of Victorian mahogany shaped balloonback DINING CHAIRS. £60-90
326. A Victorian oak tilt-top TEA TABLE with a turned pillar and tripod base. £80-120
327. An Edwardian inlaid and upholstered ARMCHAIR. £80-120
328. A Victorian embroidered 4 fold SCREEN. £80-120
329. A Victorian circular woolwork FOOTSTOOL. £50-80
330. A Victorian painted Bedroom Chair.

331. A Victorian ebonised Cabinet Base. £30-40
332. A 19thC American ROCKING CHAIR. £80-120
333. An Edwardian octagonal OCCASIONAL TABLE. £30-50
334. An oak panelled semi-circular COURTROOM DOCK. £60-80
335. A reproduction open BOOKCASE. £60-80
336. A late Victorian BARBER'S CHAIR.
337. A small American walnut SUTHERLAND TABLE. £180-250
338. **A George III mahogany TEA TABLE** with a circular moulded tilt top, taper pedestal and tripod base. 22" diameter. *See illustration.* **£500-700**



Lot 338

339. A Regency two seater SOFA painted in lime green and upholstered with birds and flora. £280-350
340. A small Victorian pine Box. £30-40
341. A Victorian pine KNEEHOLE DESK (AF). £150-200
342. A George II oak LOWBOY (AF). £150-200
343. A Victorian pine KITCHEN TABLE. £150-200
344. A reproduction Jacobean oak DINING SUITE comprising drawleaf table, four panelback chairs and low sideboard. £250-350
345. A 19thC French giltwood STOOL. £300-400
346. A Victorian oak WINDOW SEAT with twist brass handles and rondels. £300-400
347. A pair of Regency simulated bamboo painted SIDE CHAIRS. £200-300
348. A George III mahogany CARVER CHAIR with ropeback and reeded arms. £250-350
349. An unusual George III mahogany OPEN BOOKRACK. £350-500
350. **A George I oak gateleg oval DINING TABLE** with taper turned legs, 39" x 47". **£350-500**
351. **A fine Georgian yew bowback CHILD'S WINDSOR CHAIR** with an elm seat. *See illustration overleaf.* **£500-700**



Lots 48, 351 & 352

352. A fine George III mahogany **PEMBROKE TABLE** of slender proportions with two frieze drawers and turned legs. 26" x 19" max. See illustration. £500-700
353. A compact George II walnut and oak **CHEST** of four graduated drawers with bracket feet and later handles. 31" wide, 31" high. See illustration on page 1 £800-1200
354. A mahogany **CARD TABLE** with a crossbanded folding top, octagonal pedestal and quatrefoil base. £500-700
355. A Victorian mahogany **TUB DESK CHAIR** with turned gallery and legs, upholstered in red velvet. £200-300
356. A George III mahogany **BUTLER'S TRAY** on a folding stand £400-600
357. A Jacobean oak **COURT CUPBOARD** the four panel upper section having turned balusters and a two door base, carved throughout with lozenge motifs. 67" wide, 72" high. £1000-1500
358. A Victorian satinwood **BEDROOM SUITE** comprising wardrobe, dressing chest and marbletop washstand. £250-350
359. George III mahogany four tier **WALL SHELVES**. £300-400
360. An oak **Fireplace**. £30-40
361. A 1920's flamed mahogany **SIDEBOARD**. £80-100
362. A gilt framed **Pier Glass**. £20-30

363. Two mahogany Press Cupboards. £20-40
364. A flamed mahogany Fire Surround. £30-50
365. A cartouche shaped gilt framed Wall Mirror. £20-30
366. A 1920's mahogany mirrorback SIDEBOARD. £80-120
367. A Victorian flamed mahogany CHIFFONIER with barleytwist pillars. 43" wide. £250-350
368. A Victorian mahogany swing Table Mirror. £30-40
369. An Edwardian walnut double WARDROBE. £50-80
370. An Edwardian walnut Dresser Base. £30-50
371. A substantial Victorian Pine REFECTORY TABLE 13' x 4'. £400-600
372. A set of twelve (including two carvers) light oak DINING CHAIRS £500-800
373. **A William IV mahogany bowfront CHEST** of four graduated drawers with pressed brass handles and reeded columns 47" wide. **£500-700**
374. **A 20th century oak CENTRE TABLE** with 6 drawers 69" x 42" See illustration on page 1. **£500-800**

END OF SALE

NOTES

NOTES

NOTES

NOTES

NOTES

NOTES

MAILING REGISTER SUBSCRIPTION FORM

If you wish to receive our Auction catalogues and detail sheets for one year, please complete and return this form.

1. Antiques & Fine Art Auctions

There are currently planned 5 Sales per annum to include:-

Furniture, Paintings, Prints, Glass, Ceramics, Toys, Silver, Clocks, Watches, Jewellery, Metalware, Stamps, Coins, Books, Arms & Militaria, Bygones, Barometers, Collectors Items, etc.

2. Commercial Auctions

Frequency of Sales determined by instructions from The High and County Courts, Liquidators and Receivers.

Office Equipment, Catering Equipment, Engineering Equipment, Industrial Plant & Machinery, Retail/Wholesale Shop Stock and Fittings, Vehicles; - Assets of a variety of Businesses.

3. Specific Requirements

If you specialise in one area of the above categories (eg. *Books*) please state this to avoid receiving unwanted catalogues.

.....

1. Antiques & Fine Art. (£10) £.....

2. Commercial Auctions. (£5) £.....

Fee enclosed £..... Total

Name: Mr/Mrs/Miss/Title

Address:

.....

.....

.....

Tel: (.....) Date: Our Ref: *ML

Lowes Removals



— Removals - Fine Art Carriers —
Local & Long Distance

Andrew Lowes

40 Vernon Avenue, Gonerby Hill Foot,
Grantham, Lincs., NG31 8JJ
Telephone: 0476 65194

PRINTED BY W.G. HARRISON, DYSART ROAD, GRANTHAM
TEL: 0476 62700

Established 1900

-GOLDINGS-

Chartered Surveyors, Auctioneers, Valuers & Estate Agents
Residential, Commercial, Agricultural, Antiques & Fine Art

45 High Street, Grantham, NG31 6NE
Telephone: 0476 · 590211

PROFESSIONAL SERVICES FOR



RESIDENTIAL

We have a department headed by Chartered Surveyors to undertake valuation and sale of all types of property from Castles to Town Houses. Surveys, Homebuyers Reports, Mortgage, Insurance and Probate Valuations to individual requirements.



COMMERCIAL

Property; Dealing with the survey of Shops, Offices and Factories. Sale, Valuation and Rent Reviews, Lease negotiations and Rent Arbitration for the landlord and tenant.

Plant, Machinery & Assets; Sales for Receivers, Liquidators, High Court & County Court. Auction Sales on Site prepared for private and public clients alike.



AGRICULTURAL

Our Senior Partner has wide experience in the sale and valuation of Agricultural Properties, conducting Farm Sales and Valuation of Live and Dead Farming Stock for dissolution, Probate and other matters. Other areas covered include Rent Reviews, Development Land reports and Annual Stocktaking Valuations.



FINANCIAL SERVICES

Our Experienced Consultant is available to advise on all matters concerning Finance, Mortgages, Insurance, Investment, Planning and Pensions.



PROPERTY MANAGEMENT

Personal service and attention to detail ensures that our management team exploits your investment portfolio whether an Individual Family Home let for a small fee or Office, Factory, Shop or Farm with rent collected and regular inspections made.

Saleroom Manager
Colin R. Young FNAVA

Partners
C. Robin Hall FRICS FAAV
Ian J. Shaw FRICS, FNAEA

Financial Service Consultant
John G. Stukins

Established 1900

-GOLDINGS-

THE GRANTHAM AUCTION ROOMS



An early Victorian mahogany Library Table
in our last sale.

SOLD for £2,000

NEXT SALE

of

ANTIQUE & FINE ART

Wednesday 15th June, 1994 at 10.00am

Entries are welcome until June 2nd.

Call Colin Young for a Free Valuation

Old Wharf Road, Grantham, Lincolnshire NG31 7AA
Telephone: (0476) 65118 Fax: (0476) 590998