

Established 1900

# **-GOLDINGS-**

**THE GRANTHAM AUCTION ROOMS**

Upon instructions from the Executors of Mr A. E. Neale (Dec'd),  
the residual contents of 2 local farmhouses and other vendors.



**Golding Young & Co will sell by Auction**

**BOOKS & PRINTED ITEMS**  
**on Monday 24th October, 1994 at 11.00am**

**JEWELLERY, SILVER & BIJOUTERIE**  
**on Monday 24th October, 1994 at 6.30pm**

**ANTIQUES & COLLECTORS' ITEMS**  
**on Wednesday 26th October, 1994 at 10.00am**

**Golding Young & Co.**  
**Old Wharf Road, Grantham, Lincolnshire, NG31 7AA**  
**Telephone: (01476) 65118**



## CONDITIONS OF SALE

1. These Conditions together with any Notices to Purchasers are the only terms and conditions subject to which Golding Young & Co. ("the Auctioneers") as agents for the Vendor will sell goods to a purchaser ("the Bidder") and all other conditions, whether express, or implied at common law or by statute as are capable of lawful exclusion are hereby excluded.
2. The highest bidder shall be the buyer. The Auctioneers reserve the right of regulating the biddings; of rejecting any bid; and of bidding for, withdrawing, consolidating, dividing or altering the order of lots.
3. The purchase money for each lot with the usual commission of 10% plus VAT at the current rate shall be paid at the fall of the hammer (if required). Each lot at the fall of the hammer shall be at the sole risk and expense of the buyer, and shall be paid for and removed immediately after the conclusion of the sale, *but no lot shall become the property of the buyer, or be removable until paid for*, and if taken away in contravention of these conditions without an order for removal signed by the Auctioneers, they shall have power to seize the same by their servants or agents, or otherwise, or the Auctioneers may recover either the lot sold or the price thereof (at their option) by action at law.
4. No contra account of any description whatever will be allowed to the buyer as a set off, and payment for each Lot shall be made to the Auctioneers or their clerk only, and a buyer paying by cheque must give satisfactory references.
5. For all purposes of this sale the Clerk of the Auctioneers shall be deemed to be the agent of both seller and buyer.
6. A bidder shall not be allowed to retract his bidding after the fall of the hammer, and he shall give up his full name and address if required. The Auctioneers will not recognise the transfer of any lot from one buyer to another, nor make any alteration in the sale book in respect thereof.
7. The Auctioneers are acting only as agents, and give no personal warranty as to the condition, quality or authenticity of any chattels offered for Auction. Any catalogue description is given merely as guide to purchasers, any description can be changed from the rostrum before the lot is sold. If a purchaser buys without previous inspection he will do so at his own risk.
8. Notwithstanding any other terms in these Conditions, if within 7 days of the Sale a purchaser gives notice in writing that a lot is a deliberate forgery, with supporting factual evidence, the Auctioneers may rescind the transaction. The burden of factual proof lies with purchaser, mere opinions will not satisfy. This benefit is not assignable.
9. If any buyer neglect or refuse to comply with the above conditions or any of them, his deposit money (if any) shall be forfeited, and the lot uncleared may, at the option of the Auctioneers, be resold without notice by public auction or private treaty, and any loss occasioned by such re-sale together with all expenses attendant thereon, or arising under these conditions shall be paid for by the defaulter and be recoverable as and for liquidated damages. This condition is however without prejudice to the right of the Auctioneers to enforce the contract made at this sale if they think fit.
10. Any Notes for Purchasers and Catalogue Glossaries will be construed as Conditions of Sale.
11. The Auctioneers shall be the sole Arbitrators in all matters of dispute relating to those conditions both as between the seller and the buyer and between the several bidders and buyers and their determination on all matters shall be final and binding on all parties concerned.

Auctioneers: C. Robin Hall FRICS FAAV & Colin R. Young FNAVA

Established 1900

# **-GOLDINGS-**

**THE GRANTHAM AUCTION ROOMS**

Golding Young & Co  
Old Wharf Road, Grantham, Lincolnshire, NG31 7AA  
Telephone: 01476 65118  
Fax: 01476 590998

Combined Catalogue for three auction sales



Lot 507

Viewing Times:

Sunday 23rd:	2pm to 4pm
Monday 24th:	9am to 6pm
Tuesday 25th:	1pm to 7pm
Wednesday 26th:	9am to 10am

Cover Illustration: Lot 889



## IMPORTANT NOTES FOR PURCHASERS

1. **PAYMENT:** Must be made in full immediately after the Auction. The following methods of payment are acceptable.  
a) Cash   b) Bankers Draft   c) Building Society Cheque  
d) Cheques, accompanied by a valid card. For accounts above the stated card limit, we reserve the right to retain the goods until clearance is established.
2. **BUYERS PREMIUM:** of 10% + VAT is payable on all lots.
3. **REMOVAL OF PURCHASES:** Goods must be collected as soon as they are paid for, and in the Two Working Days following the sale. If goods are not collected on these days we reserve the right to charge £1 per lot per day thereafter.
4. **COMMISSION BIDS:** If you are unable to attend this or any of our future sales we will be pleased to bid on your behalf. We always purchase at the lowest possible price, subject to other bids and reserves.  
  
All bids must be handed to the office on an official form. It remains the responsibility of prospective purchasers to contact GOLDINGS to confirm whether their bids have been successful.
5. **TELEPHONE BIDS:** There are inherent dangers with this practice, therefore all such arrangements are made entirely at the bidder's risk. Telephone bids will only be accepted if the lower catalogue estimate is £500 or above. For lots with a lower estimate below this figure Commission Bids Only will be accepted.
5. **SMOKING:** is not permitted in any part of the Saleroom.
6. **REFRESHMENTS:** will be available Saleday.
7. **ACCOUNT TRANSFERS:** will not be recognised after the sale. If any lots are purchased for another person, this must be declared at the fall of the hammer.

## GLOSSARY

- a) **Generally: 'As Found.'** (AF). This term indicates the lot has some damage. Its absence does not indicate that the lot is free of defect. All lots are SOLD AS SEEN.
- b) **Paintings: 'Signed, initialled, monogrammed.'** This refers to the present state of the work and is not an attribution.
- c) **Books and printed matter:** These items are not sold subject to collation and are not returnable once removed from the premises.
- d) **Silver & Jewellery:** Weights given are approximations given by basic instruments.



**DAY ONE**  
**Monday 24th October**  
**at 11am**

**BOOKS & PRINTED MATTER**

1. Print Quarterly, 1980/90's (28)
2. Auction Catalogues mainly Christies/Sothebys 1988 on - Topographical pictures (12)
3. Fine paintings and drawings etc., Christies (18)
4. Old Master and Contemporary Prints etc., (15)
5. Paintings, Drawings and Sculpture etc., (19)
6. Paintings, Drawings and Sculpture etc., (18)
7. Books, prints etc., (18)
8. Various Collectors Fields (18)
9. Hitlers Mein Kampf (18)
10. Disraeli: The Earl of Beaconsfield and his times, 1883, gilt blue bindings 5 vols.
11. Sir Thomas Lawrence, The Life and Correspondence of, By D.E. Williams, leather spined, marbled cover 2 vols. 1831.
12. Lines of British Statesmen by John MacDiarmid 2nd ed., 1820, Leather spine marbled cover 2 vols.
13. Edmund Turnor. Collections for the History of the Town and Soke of GRANTHAM 1806, bound in 1 vol with engravings and text of other Lincolnshire Places.
14. Modern Hunting Books (5)
15. A.H. Brown. My Game Book; The Complete Shoot; and other shooting titles (7)
16. Gardening Books (6)
17. Norwegian paintings, col. plates.
18. Debrett's People of Today 1994.
19. Modern Practical Farriery by W.J. Miles. Illustrations and Anatomical plates, bound in 1 vol with The Diseases and Management of Cattle, Sheep and Pigs.
20. W. Earl Hodgson. Trout Fishing 1904.
21. James Wilson. The Rod and The Gun 1844.
22. Postcard Album, various.
23. Books that have changed man's thinking. 12 vols, gilt binding, plus Edito-Service.
24. Miscellaneous titles by Plato, Aristotle, etc. 6 gilt volumes, pub Heron; 3 others.
25. 1898 Parish Magazine of Welby, Nr Grantham.
26. Grantham related Ephemera.
27. Grantham related Ephemera.
28. Countries of the World by Robert Brown. 6 volumes, bound in three gilt leather and cloth bindings.
29. Punch 13-14 (1847), 1 volume and 3 Geographical Magazines.
30. The Imperial Dickens Collection and Waverley Novels.
31. 1950's Blighty magazines (50)
32. Old Annuals.
33. Gardening Books.
34. Grantham related Ephemera.
35. Beatrice Clay. King Arthur and his Round Table, ill Dora Curtis.
36. Print of a Spanish Galleon.
37. Encyclopaedia Britannica, 11th edition, 28 leatherbound volumes.



38. Interesting selection of newspapers relating to George VI coronation, JFK assassination and other events.
- 39.to 45. Grantham related Ephemera.
46. 3 Kitchener prints.
47. Cheshire's pharmacy labels, 2 frames.
48. Grantham Ephemera.
49. 1910 Furniture Auction Poster, Woolsthorpe by Belvoir.
50. 1836 engraving of Grantham Market Place.
51. Children of the World, 4 volumes.
52. Wild West and other annuals.
53. Modern Cookery Books.
54. Ann Pratt, The Flowering Plants, Grasses, Sedges and Ferns of Great Britain, (revised by Edward Step), 4 vols, London 1905.
55. Mortimer and Dorothy Menpes. World's Children, 1 vol, London 1904.
56. Beatrix Potter. The Roly-Poly Pudding, clothbound, pub. F Warne & Co.
57. T E Lawrence. Seven Pillars of Wisdom, clothbound, pub Jonathan Cape, 1935.
58. John Bunyan. Pilgrim's Progress and other allegorical works, pub Fullarton & Co.
59. Lewis Carroll. Alice in Wonderland, illus. W H Walker, suede binding.
60. Herring print, Home Companion, etc.
61. The Life and Explorations of Dr Livingstone, leatherbound, many colour plates.
62. 1913 Grantham Journal and Spirit Stockbooks
63. Gainsborough and Lincolnshire at the turn of the 20thC.
- 64.to 67. Old Grantham Directories.
68. Items relating to old Grantham businesses.
69. Annie S Swan, 9 novels.
70. 1929 Parish magazines of Loveden.
71. Assorted novels.
72. Old photographs, etc.,
73. Assorted books.
74. Set of four colour seasonal prints.
75. Box of modern First Editions.
76. Box of Children's Books.
77. Box of Children's Books.
78. Box of Children's Classics.
79. Box of Annuals.
80. Various books.
81. 6 Magnet's; 2 Bunter novels.
82. Bill the Minder, illus W Heath Robinson.
83. Britten's Old Clocks and Watches.
84. Print of Grantham Church.
85. A Prize Fight, colour engraving after Alken, 1820.
86. A set of four humorous Hunging Scenes, colour engraving, c.1800.
87. Oak framed print of Churchill.
88. Hunting Qualifications, after Alken, six colour engravings.
89. Female portrait print.
90. W Dendy Sadler, colour print - 'Old and trusted'.
91. W Dendy Sadler, colour print 'The Skein of Wool'.
92. WWI Photograph of soldiers of Doncaster.
93. Portrait photograph of gentleman, framed.



94. Two framed photographs of children and two military examples.
95. Gustav Klint, colour print of two naked maidens.
96. Gustav Klint, colour print of lovers.
97. Hand coloured Map of Leicestershire.
98. Colour print of Mansion House.
99. S Prout, pair of colour engravings of Venice.
100. Two Venetian prints.
101. Round the Globe card game.
102. Six Tuck's Oilette postcards of Calcutta.
103. Photograph box containing mainly Italian postcards; 1823 map of Rome; map of Europe.
104. Eight Postcard Silks and others.
105. Three Postcard catalogues.
106. Postcards and card game.
- 107.to 114. Various Postcards.
115. Colour advertising prints.
116. The Angler's Souvenir by P Fisher 1835, with many illustrations.
117. Naturalists Library Mammalia; Monkeys 1833; Introduction 1842; many colour plates (2)
118. Album of World Stamps and two catalogues.
119. Observations on the Bedford Charity, 1861.
120. Resolutions of the Associated Architects on Fires.
121. Five 18thC pamphlets on the drainage of the fens, with maps.
122. Nansen. Farthest North, 2 vols, First edition, 1897.
123. Chichester and Burgess Short. The Records and Badges of every Regiment in the British Army, 24 colour plates. 1895.
124. Potter. history of Charnwood Forest 1842, with colour map and engraved plates.
125. Wiltshire Manuscript Marriage Settlement, early 18thC.
126. Thomas Hardy. Human Shows Far Phantasies, First edition.
127. Lowe. Natural History of British Grasses, 1871.
128. Thomas Brown. Amusements Serious and Comical, 1702.
- 129.to 130. Spare Lots.
131. Limited edition print of sailing boats, 37/300 signed E R HAMMOND.
132. 'Black Monday or the Departure to School'. Engraving by Tom Jones.
133. A pair of Victorian oleograph Landscapes with cattle and sheep 'Going North' and 'Going South'.
134. Oleograph of Highland Cows driven over a bridge.
135. Large colour print 'Lord Ullin's daughter'.
136. 'Gone to Earth' dog print.
137. Steeple Chase engraving after Bell Hering 'Here They Come'.
138. Two limited edition signed prints - 'Habu' and 'Rocket Firing Typhoon'.
139. John Pettitt, Limited edition print 'Death of a Dinosaur' with many signatures of veterans.
140. John Pettitt, Limited edition print 'Dawn Return' with many signatures of veterans.
141. John Pettit, Limited edition print 'Tribute to 617 Squadron Past and Present' with many signatures of veterans.



142. Colour engraving of Lincolns Inn Field.
143. Colour engraving of a Wood Nymph.
144. Colour engraving of Delicious Dreams.
145. Giles annuals, etc.
146. Grantham ephemera and games.
147. Scrap Album.
148. Musical Books, picture books, etc.
149. Gardening Books.
150. 1937 Coronation Souvenir Book; George V and Edward VIII. (2)
151. Art Annual, childrens books, etc.
152. Equestrian books; Farmer and Stockbroker.
153. History of the Great European War (6); Girls and other books.
154. All the year Round Journal (2).
155. The Holy Vessels and Furniture of the Tabernacle of Israel, many colour plates.
156. Drawing Room Scrapbook 1836, with many plates.
157. Bibliography/Reference Books.
158. Bibliography/Reference Books.
159. Various Books.
160. Two Bird Books.
161. Read on Tattershall Castle.
162. Architectural Books. (3)
163. Knights Pictorial Museum of Animated Nature.
164. Two Georgian Deeds.
165. Architecture Books.
166. Penrose Annuals. 1950's to 1980's. (31)
167. Reynolds. Birkett Foster, in slip case.
168. Abercromby's. The Martial Achievements of the Scots Nation, Edinburgh 1711. (2 vols).
169. Rossi. Italian Jewelled Arts.
170. Three Victorian Marine Atlases, folio and navigation.
171. Three Victorian Childrens Books (1890's), with colour plates.
172. Spenser. Poems 1811; Read Dramatic Poems 1888. (2)
173. Lincoln Directory 1913 and another.
174. The Practice of Elocution, 1826.
175. Gilpin. Observations on Western Parts of England, tinted plates, 1808; and five other 19thC calf-bound books.
176. Box of various books.
177. Gurney J.H. A list of Diurnal Birds of Prey, 1884; Lindley. British Flora, 1884 and three other 19thC books.
178. Old Lincolnshire sale particulars, 1832-8.
179. Alphabetical poems, c.1850.
180. German celestial Atlas.
181. Homer's Hymn's to Aphrodite, Fanfrolico Press number 198 of 500 copies.
182. The Sedgefield County, 1904 (Hunting book).
183. Four unframed maps of Nottinghamshire including Robert Morden.
184. William Hutton Bookseller, engraving.
185. A framed colour manuscript relating to Newark, Notts.
186. Colour Map of Leicestershire by Bowen, 1756. 21" x 28".
187. C.D.B. Ellis. Leicestershire and the Quorn Hunt, 1951; books, ledgers, etc.



188. Colour engraving of Stephen Croker, gamekeeper, 1844.
189. The Book of Cakes with many colour plates.
190. Harmsworth Encyclopedia (9); Thackeray, Waverly Novels, assorted.
191. Photograph portfolio; Daily Wants 3 vols, Half Hours with Best Authors.
192. The Life of Napoleon Bonaparte, W.M. Sloane 4 vols; Anecdotes of Napoleon; Napoleon's mother.
193. Chambers Miscellany Traits, 8 vols, 1/2 calf.
194. Thiers Historie de la Revolution, 2 vols, 1/2 calf.
195. History of the Restoration of the Monarchy in France, 4 vols; Evgen Weber, Peasants into Frenchmen.
196. Historie de Thon, 12 vols, calf.
197. General Paperbacks, etc.
198. English & French Literature, poems, etc.
199. The Musical Educator; books of music.
200. German photographic magazines.
201. Schillers Sammtliche Werke, 1 vol 1834, 7 vols. 1860.
202. Goethes Works 1881, 5 vols.
- 203.to 205. Assorted German Books.
206. De Quincey's Works, 16 vol set.
207. Mark to Hounds, illustrated F.A. Stewart; The Devon and Somerset Staghounds, illustrated Lionel Edwards.
208. 6 Hunting books.
209. Manchester City Batallions.
210. Vic Family Bible.
211. Mister Bosphorus and the Muses by Ford Madox Ford, Duckworth & Co. 1923.
212. The Book of Football 1906.
213. Round London 1896, photographic portfolio.
214. The 'Revolt of the Field' in Lines by Rex Russell (2); 1828 Byelaw pamphlet of the Sleaford Navigation.
215. P. F. Warner. The Book of Cricket, pub Dent 1911.
216. Art & Architecture in Italy; Stained Glass; etc (5)
217. Matabele Journals of Robert Moffat 1945 2 vols; In the Heart of Africa.
218. Racing Calendar 1812; Academic Speakers 1789.
219. 1807 Ledger.
220. Modern First Edition by Joseph Connolly.
221. Blackwoods and Scribner's magazines; The Isis. (3)
222. History of the Great Warr; Childs guide; other 18/19thC. calf books.
223. Scott: Life of Scott, 1839, 10 vols; Poetical Works, 12 vols; Prose Works 28 vols; Waverly Novels 48 vols; all calf, marbled edges.
224. R.S. Thomas. The Stones of the Field, d/w, Druid Press authors first book.
225. G. Orwell. Animal Farm, d/w, Secker & Warburg 1945, 1st ed.
226. Angela Carter. Love, d/w, signed 1st ed, Rupert Hart-Davis 1971.
227. Angela Carter. Shadow Dame, d/w 1st ed., Heinemann.
228. A Garland for the Laureate, Celadine Press, Poems presented to Sir John Betjeman at his 75th birthday, signed by 22 contributors, marbled paper, black slip case.

229. Rubaiyat of Omar Khayyam, illustrated by Edmund Dulac, Hodder & Stoughton, gilt white cloth.
230. Robert Graves. Whipperginny, d/w, 1st ed., Heinemann 1923.
231. Philip Larkin. The Whitsun Weddings, d/w, 1st ed, Faber 1964.
232. Philip Larkin. High Windows, d/w, 1st ed., Faber 1974.
233. T.S. Eliot. Ash Wednesdays (Six Poems), d/w, 1st ed., Faber & Faber 1930; Four Quartets, d/w., 1st ordinary ed., Faber 1944. (2)
234. John Betjeman. Continual Dew, d/w, 1st ed., Murray 1937; A few late crysanthemums, d/w, 1st ed., Murray 1954 (2)
235. Ted Hughes. Crow Wakes, author's copy No 5 Sept 20th 1971, signed, Ltd ed of 200.
236. John Betjeman. New Bats in Old Belfries, d/w, Murray 1945. 'Inscribed for Terence De Vere White, etc., signed and dated by Betjeman.
237. John Betjeman. Old Light for New Chancels, d/w, Murray 1940.
238. Craig Raine. A Free Translation, d/w, Salamander Press of 200 limited copies.
239. Kazuo Ishiguro. The Remains of the Day; An Artist of the Floating World; d/w's, Faber 1st ed.,
240. Cautionary Tales for Children by H. Bellow, illustrated BTB, 1st ed., Duckworth.
241. Andrew Young. A Prospect of Flowers, d/w, Jonathan Cape 1945, signed.
242. Andrew Young. Collected Poems; d/w., Jonathan Cape 1936, signed, c/w letter from Young.
243. Poetry London/Apple Magazine, edited by Tambimottu; Vol 1 No 1, Limited ed. of 150 in cloth board.
244. Seamus Heaney. Seeing Things, d/w., 1st ed., Faber.
245. Brendan Behan. Borstal Boy, d/w., 1st ed., Hutchinson 1958.
246. Brendan Behan. Island; Hold Your Hour and Have Another; New York; 1st ed., d/w's, Hutchinson.
247. J.G. Ballard. Empire of the Sun, d/w., Gollancz 1984.
248. J.G. Ballard. The Kindness of Women, d/w., Harper Collins, 1991, signed.
249. J.G. Ballard. The Day of Creation, d/w., Gollancz 1987. signed.
250. Brian Moore. No Other Life, d/w Bloomsbury 1993, signed.
251. Mary Renault. The Bull from the Sea, d/w., Longmans 1962; McEwan. The Chills on Time; McEwan: Or Shall we die. (3)
252. Wendy Cope. Men and their boring arguments, limited edition no 325 of 390
253. Christopher Isherwood. A meeting by the river, d/w., Methuen 1967, 1st ed., My Guru and his Discipline.
254. Aldous Huxley: The Doors of Perception, d/w, Chatto 1957. The first book on the drugs revolution.
255. Aldous Huxley. Five various titles, some d/w's.
256. Dylan Thomas. Adventures in the Skin Trade; The Beach of Falescá; Quite Early One Morning; all listed, d/w's.
257. 7 books (5 small); How to Behave, etc.,
258. H.E. Bates, The Cruise of the Breadwinner; Barbara Lym. An Academic Question; Donleavy. What They Did in Dublin, all 1st ed.,



259. Larry Eigner. 4 various titles.
260. Jack B. Yeats. Life in the West of Ireland, blue cloth board, Mannsel & Co. 1912, (2 plates missing).
261. Thom Gunn. The Menace, limited ed., no 35 of 250, signed.
262. Thom Gunn. Jacks Straw's Castle; Undesirables; The Fair in the Woods.
263. Peter Reading & David Butler. 5x5x5x5x5, limited ed., 750, signed by Reading.
264. Poets Corner, The Pigeon & Demos the Emperor. (3)
265. Frederick Rolfe. Baron Corvo, The Desire and Pursuit of the Whole: A.J.A. Symons. The Quest for Corvo.
266. Swinburne. Mary Stuart; David Garnet, No Love; etc.,
267. Miscellaeous Books; inc. Floss on the Mill 3 vols etc.,

## Monday 24th October at 6.30pm

### JEWELLERY

268. A pietra dura BROOCH.
- 268a. A lady's silver and marcasite WATCH.
269. A mother of pearl CARD CASE. £30-40
- 269a. A pair silver and agate CUFFLINKS and another pair.
270. A 9ct gold plate cameo portrait BROOCH.
- 270a. An ivory STAY BUST and handle. £20-30
271. A red agate 9ct gold BROOCH.
- 271a. A continental silver and ivory LETTER KNIFE.
272. A Victorian memorial BROOCH.
- 272a. A Vesta STRIKER.
273. A pair 9ct gold CUFFLINKS.
- 273a. 18ct mounted STUDS, cased.
274. 5 Lighters (1 silver). £30-40
- 274a. Onoto the PEN.
275. 4 Gents POCKETWATCHES (3 silver). £40-50
- 275a. 9ct PENDANT, charms and cufflinks.
276. A platinum diamond SOLITAIRE RING c 70pts. £400-600
- 276a. A 9ct gold and aquamarine RING, boxed. £25-40
277. An 18ct and platinum ruby and diamond CLUSTER RING. £200-300
- 277a. A Mickey Mouse WATCH.
278. An 18ct and platinum amethyst and diamond FLOWERHEAD RING. £200-300
- 278a. A silver DESK CALENDAR. Birmingham assay. £30-50
279. An 18ct and platinum amethyst and diamond QUATREFOIL RING. £200-300
280. An 18ct and platinum sapphire and diamond FLOWERHEAD RING. £300-400

- 280a. An ivory LETTER KNIFE.
281. Costume Jewellery and metal ewer.
- 281a. A Child's BANGLE stamped George Jensen. £30-50
282. Two 3 strand PEARL NECKLACE's
- 282a. An 18k gold RING set with a heart shape pink sapphire c15pts encircled by diamonds. £300-400
283. Two 2 strand PEARL NECKLACE's.
- 283a. A marcasite FOB WATCH and BROOCH.
284. A single strand PEARL NECKLACE.
- 284a. A pair of Herdomas Patent silver cased POCKETWATCHES. £50-80
285. A pair of turquoise EARRINGS and silver mounted pieces.
- 285a. A 9ct rose gold double ALBERT with citrine fob. £100-150
286. A carved cameo BROOCH.
287. An Omega lady's WRISTWATCH. £100-150
295. An engine turned silver CIGAR CUTTER. London assay.
296. Silver and plated CUTLERY inc. basting spoon, grape scissors, etc., £25-40
297. A small silver and glass EPERGNE, London assay.
298. An electroplate rococo TRAY. £50-80
299. A pair of silver rimmed SCENT BOTTLES. £50-80
300. A George II silver lidded TANKARD. Sponsor JN. London 1749. 22oz. £1,000-1,500
301. An electroplate on copper gallery TRAY. £25-40
- 301a. A pewter SARDINE DISH.
302. An electroplate oval GALLERY TRAY. £100-150
303. A silver rimmed bone handled CARVERY SET, cased.
304. A demi-lune oak CANTEEN of Cutlery. £40-60
305. An electroplate FIGURAL INKSTAND. £200-250
306. Two plated PHOTOGRAPH FRAMES.
307. 12 pairs bone handled FISH CUTLERY, boxed. £25-40
308. A pair bone handled FISH SERVERS, cased.
309. A bone handled CARVERY SET, cased.
310. A silver plated 3 branch CANDELABRUM. £25-40
311. An electroplate four piece TEASET. £80-120
312. An electroplate fluted oval BISCUIT BARREL. £30-50

## SILVER & PLATEDWARE

288. A silver half GUARD CHAIN.
289. A pair of Victorian silver SUGAR TONGS. £20-30
290. A pair of silver CANDLESTICKS. Birmingham assay. £25-40
- 290a. A carved Pipe
291. A set of 6 silver handled TEA KNIVES, cased. £20-30
292. A Victorian silver CREAMER: London essay. £50-80
293. A cased set of 6 seal top COFFEE SPOONS, by Mappin & Webb. £40-60
294. Silver VESTA CASE and other pieces.



313. An electroplate TOASTRACK and continental COFFEE POT. £25-40
314. Two electroplate ENTREE DISHES. £30-50
315. A circular silver plated MUFFIN DISH.
316. A pair of FISH SERVERS, cased.
317. Two silver plated BON BON DISHES with swing handles.
318. An electroplate part reeded COFFEE POT.
319. An electroplate PUNCH BOWL. £40-60
320. Two electroplate MEAT COVERS. £40-60
321. A silver GOBLET and a HIP FLASK. £20-30
322. A small silver TROPHY and 2 pair of SUGAR BOWS. £20-30
323. Spare Lot.
324. 2 silver plated BUCKLE BELTS. £20-30
325. An oak CANTEEN of electroplate CUTLERY. £60-90
326. A pair of George III silver TABLESPOONS. £30-40
327. A pair of Georgian silver BASTING SPOONS. £180-250
328. to 380. Spare Lots.
385. A 15ct gold ARROW BROOCH. £40-60
386. A Pinchbeck? Large CAMEO. (3 graces). £80-120
387. An Initial T BROOCH, 9ct.
388. A Horseshoe gold STICK PIN. £20-30
389. A Scarab STICK PIN.
390. A Scarab STICK PIN.
391. A ½ sovereign in BROOCH mount. £50-80
392. An 18ct gold sapphire diamond 3 stone RING. £120-150
393. A Gents 9ct gold SIGNET RING. £20-30
394. A 9ct rosegold MEDALLION. (B'ham 1908) £20-30
395. A 9ct 'Dogtag' INGOT. £30-40
396. 1847 USA \$10 coin PENDANT. £100-150
397. 1897 South African 1 pound piece coin PENDANT. £40-60
398. 1892 Sovereign PENDANT. £50-70
399. ½ sovereign MOUNT.
400. 9ct front & back OVAL LOCKET. £20-30
401. An ETERNITY RING set with 20 diamonds (1.6ct). £400-500
402. A 9ct gold emerald, diamond and opal RING. £50-70
403. A 9ct gold BUCKLE RING.
404. An Edwardian 9ct gold amethyst PENDANT and chain.
405. A 9ct gold diamond SOLITAIRE RING. £20-30
406. A Stick Pin, boxed.
407. A Victorian 18ct gold ruby and diamond RING, Birmingham 1897. £60-80

## JEWELLERY & BIJOUTERIE

381. A Gold plate limit POCKETWATCH. £40-60
382. A Cameo portrait BROOCH. £70-90
383. A 15ct gold & plat Pearl BROOCH. £40-60
384. A Gold cameo landscape BROOCH £50-80

408. A Victorian 18ct gold RING set with small diamonds, Birmingham 1897. £60-80
409. An 18ct gold diamond WISHBONE RING. £200-300
410. A 9ct gold '21' key CHARM (5g).
411. A pair of 9ct gold CUFFLINKS (9g). £30-40
412. An amethyst and pearl RING.
413. A 9ct white gold heart shaped DIAMOND PENDANT. £650-800
414. Three 9ct gold PADLOCKS and one other. £20-30
415. A yellow metal SPRAY BROOCH. £20-30
416. A 9ct gold blue topaz and diamond PENDANT. £120-150
417. An old agate CLASP and silver box lid.
418. A 9ct gold Avia ladies WRISTWATCH. £30-40
419. A 9ct gold CLOWN CHARM. £60-80
420. An 18ct white gold HALF ETERNITY RING. £200-300
421. An 18ct gold ruby and diamond seven stone RING. £150-250
422. A pair of AMBER EARRINGS.
423. A pair of 9ct gold JADE EARRINGS. £20-30
424. A 9ct gold citrine PENDANT and chain. £20-30
425. A 9ct gold CHILD'S BRACELET.
426. An 18ct gold aquamarine and diamond PENDANT and chain.
427. An Art Deco 18ct gold and platinum diamond RING. £20-30
428. An 18ct gold turquoise and diamond RING. £30-40
429. An 18ct gold and platinum diamond CLUSTER RING. £50-70
430. A 15ct gold ruby and pearl RING. £50-70
431. A Victorian 18ct gold RING, Birmingham 1894. £40-60
432. An 18ct gold JOCKEY BROOCH. £30-40
433. A 9ct gold five stone diamond RING. £60-80
434. A Stick Pin, boxed. £20-30
435. An 18ct gold and platinum diamond CLUSTER RING. £100-150
436. An Edwardian 18ct gold emerald and seed pearl MARQUISE SHAPED RING. £120-180
437. An Edwardian 9ct gold amethyst PENDANT and chain.
438. An Art Deco platinum diamond RING with baguette diamond shoulders. £450-600
439. A 9ct white gold diamond PENDANT.
440. An 18ct gold and platinum diamond CLUSTER RING. £100-150
441. A 9ct gold juggling CLOWN PENDANT. £40-60
442. A 9ct gold sapphire and opal PENDANT and chain.
443. A Victorian miniature PHOTO ALBUM.
444. An antique diamond BROOCH. £120-150
445. An 18ct gold FANCY CHAIN with 9ct 'M' charm. £40-60
446. An 18ct gold sapphire and diamond CLUSTER RING. £120-150
447. A 9ct gold five stone sapphire RING. £30-40
448. A 9ct gold BRACELET set with heart shaped stones. £60-80



449. A pair of Earrings.
450. An Edwardian 18ct ruby and diamond MARQUISE SHAPED RING, Birmingham 1903. £300-400
451. An old amber PENDANT.
452. A heavy 9ct CHILD'S BRACELET. £50-70
453. A Victorian 9ct gold VESTA CASE, Birmingham 1897. £80-100
454. A 9ct gold ruby and seed pearl BAR BROOCH. £20-30
455. A 14ct gold fancy link CHAIN, 25" long. £50-70
456. An Art Deco 14ct white gold black onyx and diamond PENDANT. £120-150
457. A 9ct gold and fabric FOB and various 9ct fittings. £30-40
458. A heavy curb Bracelet. £80-100
459. An Art Deco sapphire and diamond RING with filigree shoulders. £350-450
460. A Victorian diamond solitaire RING. £300-400
461. A 9ct gold cultured pearl PENDANT and chain.
462. A 9ct gold fancy WEDDING BAND.
463. A platinum three stone diamond RING. £100-150
464. A pair of 9ct gold sapphire EARRINGS.
465. An Art Deco sapphire and diamond BROOCH (tests 18ct). £100-150
466. A pair of 18ct gold and diamond EARRINGS. £20-30
467. An 18ct gold sapphire and diamond GYPSY RING. £60-80
468. An antique diamond and pearl RING. £120-150
469. An 18ct gold garnet and diamond GYPSY RING. £50-80
470. An Art Deco 18ct gold and platinum diamond RING.
471. An 18ct gold and platinum diamond CLUSTER RING. £40-60
472. A 10ct gold GUARD CHAIN (17g) £120-150
473. A pair of EARRINGS.
474. A pair of silver EARRINGS.
475. An antique silver RING.
476. A 9ct gold TEDDY BEAR CHARM. £100-150
477. An Art Deco ruby and diamond RING. £350-450
478. A Victorian gold and silver diamond PENDANT. £700-800
479. A large bow fronted DISPLAY CABINET, 34" wide. £80-120
480. A similar lot (no glass), 30" wide. £30-40
481. A mahogany DISPLAY CABINET, 45" wide. £60-80
482. A small DISPLAY CABINET, approx 22" wide. £60-80
483. 6 assorted gold CHARMS. £50-70
484. 6 assorted gold CHARMS. £60-80
485. White metal watch chain.
486. 2 BANGLES.
487. A Ladies gold plated OMEGA mechanical WATCH. £80-100
488. 2 ladies gold watches (14ct gold ruby set 9ct gold). £30-40
489. A brass CARRIAGE CLOCK and an oak MANTEL CLOCK.
490. A Bloodstone pencil FOB.
491. 5 assorted gold CHARMS. £40-60.

- 492. A 9ct gold and moonstone RING.
  - 493. 2 silver napkin RINGS and egg coddler.
  - 494. A 9ct gold BAR BROOCH.
  - 495. Costume Jewellery inc. marcasite pieces, cameo, etc.,
  - 496. A 9ct gold opal and sapphire ETERNITY RING.
  - 497. An 18ct gold Victorian MALTESE CROSS, boxed. £250-350
  - 498. An Omega gent's WRIST WATCH. £120-150
  - 499. An 18ct gold moss agate BROOCH. £60-80
  - 500. A micro mosaic BROOCH.
- 

## DAY TWO

### Wednesday 26th October at 10am

#### COLLECTOR'S ITEMS

- 501. A WORKBOX containing wood-cutting tools.
- 502. Oil and watercolour PAINTS.
- 503. Army Uniforms of a Captain in the Northamptonshire Regiment.
- 504. A small Thorens MUSICAL BOX. £40-60
- 505. A fine Edwardian mahogany TRAY with floral marquetry. £300-500
- 506. A leather TRUNK and case.
- 507. An Austin A40 child's PEDAL CAR, model J3, red. Illustrated on frontispiece. £250-400
- 508. A mother of pearl tortoiseshell TEA CADDY (AF).
- 509. Damask TABLE CLOTHS and other linen.
- 510. Linen BED HANGINGS.
- 511. A Spiller's dog biscuit ENAMEL SIGN. £25-40
- 512. A pair of cast iron TABLE PEDESTALS. £30-40
- 513. A Victorian copper FISH KETTLE. £50-80
- 514. A set of Victorian brass FIRE IRONS. £40-60
- 515. A Victorian brassbound WRITING BOX. £75-90
- 516. A wall BRACKET and mahogany BOX. £30-40
- 517. Two Jigsaws.
- 518. A plush child's RIDE-ON TOY DOG. £20-30
- 519. 4 Flat Irons.
- 520. A Victorian brassbound COAL SCUTTLE. £25-40
- 521. A Mobiloils ENAMEL SIGN. £40-60
- 522. An Oak cased WALL TELEPHONE. £30-40
- 523. A Mahogany BELL BOX. £30-40
- 524. A Bakelite TELEPHONE. £40-60
- 525. A Bakelite TELEPHONE. £60-80
- 526. A Bakelite TELEPHONE. £60-80



Lot 947a



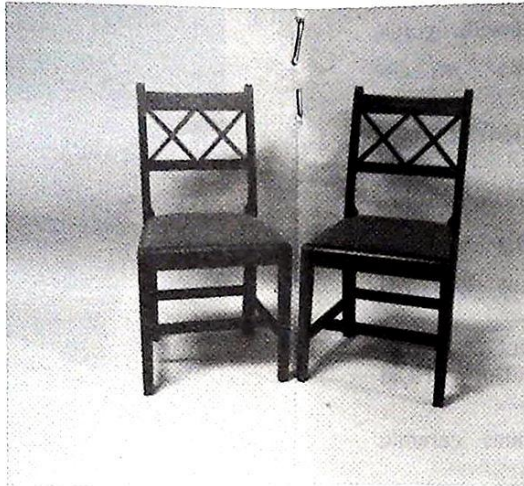
Lot 888







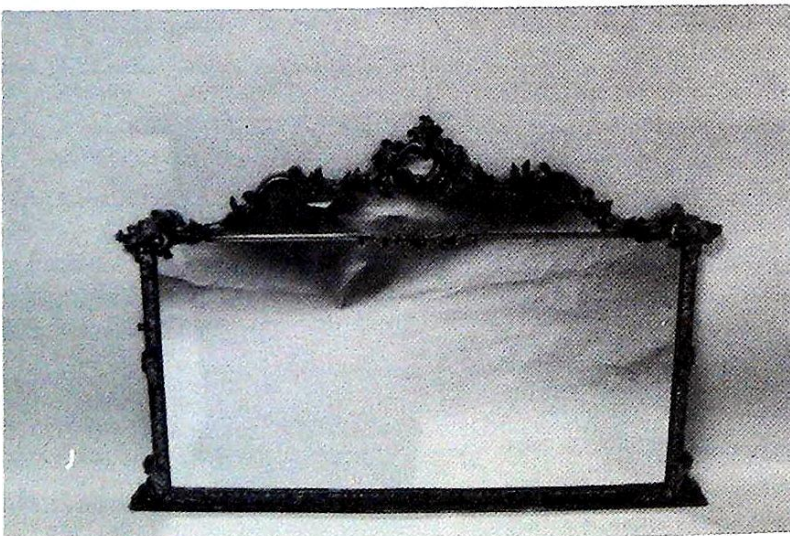
Lot 886



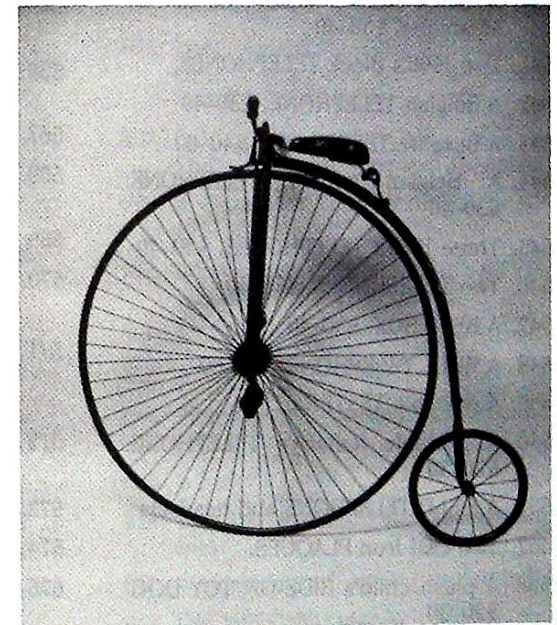
Lot 848



Lot 571



Lot 948



Lot 594



527. A Candlestick TELEPHONE. £60-90
528. A Bakelite TELEPHONE. £30-40
529. An Ericsson Auto TELEPHONE Type 1087. £25-40
530. An old Telephonist's MICROPHONE. £25-35
531. A Bakelite WALL TELEPHONE. £40-60
532. A Railways TELEPHONE. £25-30
533. An Oak SWITCHBOARD TELEPHONE. £70-100
534. An Early TELEPHONE, probably Ericsson. £180-250
535. A Chrome MICROPHONE.
536. A Candlestick MICROPHONE. £40-50
537. A Red Bakelite TELEPHONE. £60-80
538. A Bakelite TELEPHONE. £40-60
539. A Bakelite TELEPHONE. £30-40
540. A Black plastic TELEPHONE with scrambler. £30-40
541. Two 1960's Black TELEPHONES.
542. A Belgian TELEPHONE. £30-40
543. A Bakelite TELEPHONE. £40-60
544. A Belgian copper TELEPHONE. £30-40
545. Three 1970's TELEPHONES. £30-40
546. Two TELEPHONES. £30-40
547. A BELL BOX. £30-40
548. A WALL TELEPHONE. £40-60
549. A portable TESTER.
550. A portable Railways TELEPHONE. £20-30
551. A FIELD TELEPHONE and headsets
552. Two cast iron PLAQUES.
553. A plush child's RIDE-ON TOY DOG. £20-30
554. A Forestry Commission ENAMEL SIGN. £20-30
555. A painted Chinese TEA BOX. £60-80
556. Two Kitchen STORAGE JARS.
557. A metal ADVERTISING SIGN - Dennis's Lincolnshire Pig Powders. £80-100
558. An oriental onyx DISH with figures in relief.
559. A doll's Body.
560. A Victorian brass TRIVET, tray, snuffer and two bowls.
561. An oriental WALL MIRROR. £25-40
562. Two oriental lacquer BOXES.
563. A Victorian mahogany WRITING BOX.
564. A Chinoiserie COLLAR BOX, TRINKET BOX and Dog's Head INKWELL. £20-30
565. A Victorian brass and ceramic double LIGHTSWITCH.
566. A Victorian mahogany WRITING BOX. £25-40
567. Union Flags.
568. A chromium plated Art Deco CENTRE LIGHT.
569. A musical CIGARETTE BOX. £20-30
570. A Garniture of Egyptian gilt metal BUSTS. £200-300
571. A Victorian ebonised and gilt brass inlaid DECANTER BOX *Illustrated on centre pages*. £400-600
572. A Victorian pierced brass FENDER. £80-100
573. A Victorian brass gallery FENDER.
574. A Victorian brass FENDER. £60-80
575. A Victorian copper BUCKET with tap. £30-50

576. A Mobo ROCKING HORSE.
577. A Bavarian carved limewood FIGURE of a mountain goat. £350-450
578. A 19thC Japanese chinoiserie black lacquer COLLECTOR'S CABINET. £100-150
579. A Victorian brass PRESERVE PAN.
580. Two pairs Victorian BELLOWS. £20-30
581. An Antique Pewter Top Hat COMMODE. £70-90
582. Fifteen turned pine BALUSTERS, 20". £40-60
583. An elm lace makers COTTON WINDER. £30-50
584. A STICK BUNDLER.
585. A marble PLAQUE, Miss Brittain Dressmaker.
586. Old BOTTLES including Grantham pharmacy items.
587. A Victorian copper WARMING PAN. £25-40
588. A bullet TABLELAMP.
589. A porcelain headed DOLL. £100-150
590. A cast iron bedroom FENDER.
591. A Victorian brass PRESERVE PAN.
592. An old TRADESMAN's BICYCLE.
593. An old LADY'S BICYCLE.
594. A PENNY FARTHING BICYCLE, probably Coventry Machinist, 48" wheel. *Illustrated on centre pages.* £1,500-1,800
595. A pair of cylindrical bamboo VASES carved and inlaid with mother of pearl and ivory. £40-60
596. A Vic wrought iron KETTLE STAND. £30-50
597. A Vic aneroid BAROMETER/CLOCK. £30-50
598. A pair of 19thC French brass URNS on marble bases. £40-60
599. A fine LADY'S SHAWL.
600. A log BISCUIT TIN.
601. 18/19thC engravings Lincoln Cathedral, etc.,
602. Spare Lots.
603. A pair of Vic brass circular CANDLESTICKS. £20-30
604. Copper pin dishes, brass candlestick, etc.
605. 5 18/19thC engravings Stamford Scenes.
606. A 19thC rosewood and marquetry MUSICAL BOX with an 8 air movement by Nicole Freres No 36815 Gamme No 1720.
607. 9 Crown shape gloss NIGHT LIGHTS. £25-40
608. Peggy Alexander. 1,000 Up, a limited edition sculpture 4/100, of jockey Stan Mellor. £50-80
609. 2 Victorian brass CANDLESTICKS, Chinese Wall Hanging and 2 plaques.
610. A Grantham LNER RAILWAY LAMP. £25-40
611. A set of Victorian brass FIRE IRONS. £30-50
612. A Chinese silk SHAWL and another.
613. A lined leather TRAVEL CASE.
614. Plated ware, pottery and carved items.
615. A Sailor's Outfit.
616. Old PIE RAISERS, ice skates and lock.
617. 2 copper sieves, saucepan and bell.
618. Old MECCANO pieces.



619. A late Regency rosewood tabletop JEWELLERY & WRITING CABINET, the caddy top having fitted jewel tray, over 2 doors concealing dummy drawer, 2 drawers and a lap desk, inlaid throughout with mother of pearl. £300-400
620. An Arts & Crafts copper FENDER. £25-40
621. An old oak GRAIN MEASURE. £40-60
622. A needlework SAMPLER of Hull General Infirmary. 1782. £300-400
623. A bronze FIGURE of a robed classical lady.
624. A pair of Victorian circular brass CANDLESTICKS. £40-60
625. A framed Russian ICON. £30-50
626. to 629. Spare Lots.
631. LEAD FIGURES of farm and other animals. £25-35
632. LEAD FIGURES of cowboys and indians. £25-35
633. LEAD FIGURES of infantrymen, etc.
634. A WWI hand grenade MONEY BOX.
635. A 1918 Venners patent MILITARY COMPASS. £30-40
636. A Victorian mahogany MINIATURE CHEST of drawers, 8" high. £50-80
636. A Victorian mahogany MINIATURE CHEST of drawers. 8" high. £50-80
637. A Napoleonic Prisoner of War straw work BOX. £40-60
638. Old Spectacles, etc, many Grantham cases.
639. A WWI sweetheart's PIN CUSHION £25-35
640. A Victorian mahogany CORKSCREW.
641. 2 eyebaths.
642. A set of brass cantilever POSTAL SCALES. £25-35

643. A set of brass POSTAL SCALES. £20-30
644. 2 Bilston enamel PILL BOXES. £60-80
- 644a. A Guinness CLOTHES BRUSH.
645. to 650. Spare Lots.

## CERAMICS & GLASS

651. A 'Minster pattern hand painted pottery VASE. £120-30
652. A Rockingham PLATE and two others.
653. A large Chinese TEAPOT, later lid. £30-40
654. A Chinese famille rose CABINET PLATE. £20-30
655. A white Minton LAZY SUSAN. £40-60
656. A Victorian glass VASE painted with berries.
657. A Victorian floral JUG, WASHBOWL and CHAMBER POT. £50-80
658. A Victorian ribbon and rose design part TOILET SET. £20-30
659. A pair of Victorian pink overlay VASES painted with birds, crimped neck. £50-80
660. A pair of Crown Devon VASES (1 AF). £20-30
661. A large Victorian dimpled cranberry glass JUG. £60-90
662. A pair of VASES transfer printed with pond scenes.
663. A pair of Victorian floral VASES with blue necks.
664. A blue transfer printed JUG and CHAMBERPOT.
665. A glass ROLLING PIN.

666. A Beswick LEAF DISH and stoneware TEAPOT.
667. An early 19thC CREAMER with neo-classical figures in relief on a sky blue ground. £30-40
668. A Limoges Chinoiserie TRAY. £30-50
669. A Limoges CAKE PLATE and SLICE. £30-50
670. A 19thC SAMSON Oriental BOWL with two cooks in the centre field. £40-60
671. A Victorian Staffordshire pedestal VASE with gilt handles, painted with bird and flora.
672. A Ruskin pottery VASE with flared rim. 9½". £30-50
673. Beswick and Sylvac PLANTERS (2)
674. A pair of Imari VASES moulded with dragons (AF). £50-80
675. An unusual shaped 19thC celadon DISH, birds and flora in enamels. £50-80
676. Two Victorian floral COMPORTS. £20-30
677. Three Victorian floral COMPORTS. £25-40
678. A German FIGURINE of flower gathering maiden (AF).
679. Four small FIGURES; pair of blanc-de-chine geishas and pair of T'ang style elders.
680. A pair of silver rimmed glass SPILL VASES.
681. Two small Victorian glass VASES. £30-40
682. A Victorian pink bordered MINTON DESSERT SERVICE with painted mountainous landscapes. Comprises 2 comports and 12 plates. £80-120
683. A Victorian polychrome bisque FIGURE GROUP of girl and dog. £100-150
684. A modern Wedgwood SOUP SERVICE.
685. A 19thC cut crystal and gilt metal EPERGNE SET of thistle form. £180-250
686. A Worcester CLAW VASE, floral and gilt decoration, impressed mark c.1867. £60-80
687. A Worcester DESSERT SERVICE with gilt pink borders, comprising four comports and eleven plates, the latter painted with floral sprays, printed mark, c.1881. £400-600
688. An Old Foley TEA SERVICE in the oriental taste, comprising tray, teapot, creamer, sugar bowl and four cups and saucers. £200-300
689. A floral Mason's green ground VASE with cover (AF). £20-30
690. Four small Capodimonte style FIGURES.
691. A Sandro Maggioni FIGURE of a fisherman entitled L'ainto. £40-60
692. An Italian porcelain FIGURE GROUP of two lovers and cupid. £30-50
693. A porcelain FIGURE GROUP of Napoleon, on a brass plinth. £60-90
694. A Victorian Worcester oval MEATPLATE, willow pattern. £20-30
695. A Royal Doulton Character JUG, The Poacher. £25-40
696. A Victorian part DINNER SERVICE, turquoise border.
697. 2 Tin glazed SAUCER DISHES.
698. A Royal Worcester FIGURE "Monday's Child". £25-40
699. A Royal Doulton FIGURE of Lorraine HN3118. £40-60



700. A Royal Crown Derby "Red Avres" Flared VASE. £20-30
701. 3 Wade PIGGY BANKS.
702. A Victorian MUG transfer printed with Belvoir Castle (AF).
703. An Imari plate, pierced plate and Spode's Italian teapot stand. £20-30
704. Two Chamberlains Worcester armourial MEATPLATES (ex Chatsworth House Sale). £40-60
705. Crown Devon pottery pieces, Stockholm pattern after Susie Cooper. £50-80
706. A part TEA SERVICE decorated with rosebuds and ribbons. £40-60
707. A pair of Chinese blue and white MOON FLASKS painted with 'Boys in the Band' scenes. 12". £900-1200
708. A Chinese redware BOWL and small baluster vase.
- 708a. A Victorian blue and white Staffordshire HUNTING JUG. £40-60
- 708b. 2 blue and white BOWLS, slipware dish, etc.
709. A large willow pattern BOWL. £20-30
710. Spare Lot.
711. A Paragon TEA SERVICE. £40-60
712. A pair of Georgian brown glass DECANTERS. £180-250
713. A Victorian TOILET SET with a gilt seaweed pattern. £30-50
714. A set of 8 cut crystal RINSER BOWLS. £180-250
715. A set of 4 cut crystal GOBLETS. £40-60
716. A pair of yellow GINGER JARS and a Staffs SPILL VASE. £20-30
717. An English Saltglazed MONEYBOX. £20-30
718. A Victorian Staffs. CLOCK GROUP. £30-40
719. 5 PLATES. Pine, Worcester painted example.
720. Victorian tree JUG, bookends., etc.
721. A Cantonese TEAPOT (AC), Celadon WALL POCKET and Chinese GINGER JAR.
722. A green vaseline glass VASE.
723. A Victorian stoneware bottle VASE and glass VASE.
724. A Beswick SHIRE HORSE.
725. 3 graduated Victorian ribbon JUGS.
726. A 19thC blue transfer printed and veined MEATDISH. £200-300
727. A comprehensive 19thC Copeland TOILET SET of Greek design. £400-600
728. A pair of 17thC DELFT TILES.
729. A pair of Victorian white and gold lustre Staffordshire SPANIELS. £150-250
- 729a. A cased set of four shell SALTS with spoons.
730. A Chinese grey pottery GARDEN SEAT. £40-60
731. A large Chinese floral RICE BOWL. £30-40
732. A Chinese mandarin VASE.
733. A pair of Bretby shell WALL POCKETS.
734. to 750. Spare Lots

## CLOCKS

751. A mahogany MANTEL CLOCK.

752. An oak MANTEL CLOCK. £20-30
753. An Edwardian inlaid mahogany MANTEL CLOCK with lion mask. £80-120
754. A Victorian burr walnut MANTEL CLOCK. £50-80
755. A 19thC American mahogany ogee SHELF CLOCK. £80-120
756. A 19th century French Boulle MANTEL CLOCK. £100-150
757. A fusee WALL CLOCK. £40-50
758. A small German WALLCLOCK. £80-100
759. An oak three-train LONGCASE CLOCK. £100-150
- 760.to 770. Spare Lots.

## PICTURES

771. A watercolour of a Kingfisher on a branch, initialled RAV. £30-50
772. A continental oil landscape.
773. E. Vulliamy. A French street scene, watercolour, signed and dated 1923. 9" x 11". £30-40
774. Henry Moore. Off Scarborough' in a Gale. pencil sketch, signed H. Moore. 5" x 7" attached to a sheet marked Yours Truly Henry Moore in ink. £40-60
775. A pair of watercolour continental landscapes. 9" x 7". £50-80
776. P. Ellis. Fishing in a bay, oil on canvas, signed. 25" x 29". £50-80
777. Helen McCarvill. Still life of bottles, oil on board. £50-80
778. G. Barker. Gulls off a rocky coastline, watercolour, signed. 10" x 7". £50-80
779. F. Ramus. Rural landscapes, watercolour, signed and dated 1903. 7 1/2" x 11". £50-80
780. Three Mr Rods, humorous sketch
781. English School. Landscape, two figures with tags in forest clearing. oil on board. 9" x 12", modern gilt frame. £50-80
782. Allam. English Landscapes, pair of oil on canvas, signed. 16" x 24", gilt framed. £80-120
783. An alpine scene, oil on board 17" x 24" signed Graham Brinsley modern gilt frame. £20-30
784. A pair of Landscapes and floral print.
785. A maple framed WOOLWORK PICTURE of two figures. £25-40
786. English School. Nottingham Castle from the Park Bowling Green, WB 1849 scribed verso, oil on canvas. 12" x 18". £150-200
787. Laura Knight (Attrib) Reclining Baby, watercolour sketch. 7" x 10". £200-300
788. James Ward RA. Pencil portrait drawing. 6" x 4". £120-180
789. 17th/18thC Italian School drawing of The Three Marys at the the Crucifix. 9" x 6". £120-180
790. Harry E James. Cottage at Hurstbourne Tarrant, Hampshire, watercolour signed. 7" x 10". £300-400  
Provenance: Nicolgate House Sale, Brigg 1964.
791. A Varoni. Desert scene with arab upon camel, watercolour, signed. 17" x 12". £50-80  
Provenance: Nicolgate House Sale, Brigg 1964.



792. George Nicholson. Woody landscape with river, watercolour, unsigned, 7" x 12". £50-80  
Provenance: Nicolgate House Sale, Brigg 1964.
- 792a. Hans Dall. Skagen Island, Jutland, oil on board 14" / 18". £100-150
793. A landscape oil and limited edition print of The Mask.
794. Kramer. Sketch of seated gentlemen, signed. £50-80
795. The Fisher Arms, watercolour.
796. An Artist's proof print signed E. Wardle.
797. A Victorian needlework PICTURE on silk of girl and birds. £50-70
798. A Victorian watercolour of shepherd and flock. £60-80
799. A watercolour of a wooded river signed indistinctly.
800. Three informal etchings, indistinctly signed.
801. to 810. Spare Lots.

## FURNITURE

811. A marble FIRE SURROUND (AF)
812. A Victorian copper and iron curved FENDER. £25-40
813. A late Georgian mahogany DRESSING TABLE. £200-300
814. A Benares brass circular TABLE. £25-35
815. A pair of ebonised DINING CHAIRS with sabre legs. £25-40
816. An Arts & Crafts oak wind-out DINING TABLE and four CHAIRS. £120-180
817. A green button leather CHESTERFIELD SUITE comprising 4 seater sofa and a pair of wing armchairs. £300-400
818. A mahogany PUB TABLE with cast iron base. £30-50
819. A Victorian ebonised octagonal OCCASIONAL TABLE with red velvet top. £40-60
820. An Edwardian inlaid mahogany TOWEL RAIL (AF)
821. A 19thC barleytwist HALL CHAIR. (AF) £30-50
822. A small Georgian leatherbound TRUNK with brass fittings. £150-200
823. A 19thC mahogany TRIPOD TABLE with pie-crust edge. £100-150
824. A 19thC Chinese Chippendale style upholstered OPEN ARMCHAIR. £30-50
825. An 18thC oak fall-flap DINING TABLE. £40-60
826. An Edwardian PIANO BOX STOOL. £40-60
827. An Edwardian rosewood octagonal OCCASIONAL TABLE. £25-40
828. A bentwood CARVER CHAIR. £20-30
829. A Benares brass tray top OCCASIONAL TABLE. £25-40
830. A set of five Bentwood spindleback CHAIRS. £50-80
831. A pair of Victorian elm lathback KITCHEN CHAIRS. £25-40
832. An oak Captain's CHAIR. £20-30
833. An Edwardian SALON CHAIR with pierced splat (AF). £40-60
834. A Queen Anne style oak HALL CHAIR. £20-30
835. A Victorian upholstered ARMCHAIR with loose floral cover. £20-40

836. A set of four William IV mahogany barback DINING CHAIRS (inc carver) with turned legs, drop-in seats. £200-300
837. A set of 6 Queen Anne style walnut DINING CHAIRS labelled as Shoolbred & Co. £400-600
838. A mahogany octagonal OCCASIONAL TABLE. £30-40
839. A Geo Mahogany PEMBROKE TABLE. £200-300
840. A small ebonised TABLE.
841. A set of five Victorian walnut balloonback DINING CHAIRS with cabriole legs. £500-700
842. A reproduction Elizabethan drawleaf DINING TABLE and a set of four bobbin turned DINING CHAIRS. £150-200
843. An antique oak Continental SEA CHEST. £300-500
844. An Edwardian inlaid mahogany LADY'S CHAIR in mustard upholstery. £150-200
845. A pair of mahogany DINING CHAIRS. £80-100
846. A Victorian inlaid walnut three-tier CORNER WHATNOT. £200-300
847. A Victorian bowback OFFICE CHAIR, green leather upholstery. £120-180
848. A set of 6 Georgian COUNTRY DINING CHAIRS with drop in seats illustrated on centre pages. £700-1,000
849. A pair of brown leather WING BACK ARMCHAIRS. £50-80
850. An 18thC carved oak WAINSCOT CHAIR. £200-300
851. A 17thC oak COFFER. £200-300
852. A 17thC elm COFFER. £100-150
853. A Victorian oak HALL CHAIR with pierced cartouche back. £60-80
854. A Victorian wingback ARMCHAIR, floral upholstery. £80-120
855. A Queen Anne style walnut Demi Lune CHEST of two drawers on cabriole legs. £200-300
856. A pair of William IV mahogany barback DINING CHAIRS. £50-80
857. A George III oak hanging CORNER CUPBOARD with dentil cornice.
858. A George III mahogany rectangular tilt-top TABLE with baluster pedestal and tripod base. £300-450
859. An Edwardian carved CORNER CHAIR. £60-80
860. A barleytwist oak drawleaf DINING TABLE. £40-60
861. A 17thC oak three panel COFFER with scratch carving. £250-350
862. A Georgian yew bowback WINDSOR CHAIR with H stretcher. (AF) £200-300
863. A Reproduction oak CORNER CUPBOARD 50" high. £60-90
864. A Regency mahogany barback CARVER CHAIR. £40-60
865. An oak barback CARVER CHAIR. £30-50
866. A William IV mahogany barback DINING CHAIR. £20-30
867. A Victorian inlaid rosewood octagonal OCCASIONAL TABLE. £150-200
868. A Georgian elm circular tilt-top TABLE, turned pedestal, tripod base. 32" dia. £100-150
869. A set of 4 Queen Anne style DINING CHAIRS. £60-90
870. A Victorian mahogany DINING CHAIR. £20-30
871. An oak 3 plank REFLECTORY TABLE 8' 6" x 3". £800-1200



872. A set of 8 Jacobean style oak DINING CHAIRS (inc. 2 carvers) with rush seats. £600-900
873. A pair of mahogany DINING CHAIRS. £80-100
874. A 19thC Flemish style Childs HIGH CHAIR £380-450
875. A pair Georgian elm COUNTRY CHAIRS. £30-50
876. A Victorian painted oak HALL CHAIR. £40-60
877. A William IV Mahogany upholstered CHAIR with turned front legs. £120-150
878. A Victorian mahogany DINING CHAIR in the Chippendale manner. £60-80
879. A Victorian bamboo JARDINIERE STAND.
880. An oak REFECTORY TABLE. £80-120
881. A Victorian mahogany PEMBROKE TABLE. £100-150
882. A Victorian upholstered mahogany NURSING CHAIR. £40-60
883. A Japanese black and gold lacquer SEWING TABLE. £500-600
884. A Vic walnut NURSING CHAIR. £50-70
885. A walnut DAVENPORT. £400-600
886. A fine Regency rosewood DAVENPORT. *Illustrated on centre pages.* £1,200-1,500
887. A Viz lathback GRANDFATHER CHAIR. £80-120
888. A 19thC Flemish walnut WRITING DESK 55" wide. *Illustrated on centre pages.* £300-500
889. An early 19thC mahogany twin pillar DINING TABLE, each with moulded top, quadruped splay legs, brass toes and castors. 60" x 48". *Illustrated on front cover.* £2,000-3,000
890. A Victorian mahogany BOX COMMUNE. £30-50
891. An oak MAGISTRATES CHAIR. £150-250
892. A fine 17thC carved 3 panel oak COFFER. £600-900
893. A large Victorian pine DRESSER BASE. £150-250
894. A Cos mahogany oval DINING TABLE, drop leaf, padfeet and later inlay.
895. A pair of Vic mahogany DINING CHAIRS with green dralon. £40-60
896. A Georgian piece BLANKET BOX on bracket feet. £80-120
897. A barleytwist oak circular HALLSTAND. £150-200
898. A mahogany REVOLVING BOOKCASE. £450-600
899. A Edwardian inlaid mahogany oval CENTRE TABLE.
900. A mahogany OCCASIONAL TABLE with drawer. £120-150
901. A Victorian bathback GRANDFATHER CHAIR. £120-150
902. A reproduction mahogany twin pedestal DESK £120-180
903. A Victorian ROCKING CHAIR. £180-250
904. A 1920's walnut BUREAU. £200-250
905. A George III mahogany ropeback CARVER CHAIR. £200-250
906. An Edwardian walnut BOOKCASE with mirror back. £250-350

907. A Victorian bathback GRANDFATHER CHAIR. £80-120
908. A Vic bar-room BENCH. £100-150
909. A Victorian walnut rise and fall PIANO STOOL. £250-350
910. A William IV mahogany predestal SOFA TABLE with quatrefoil base. £900-1,200
911. George III flamed mahogany BUREAU with oval brass handles shaped apron and splay feet. 36" wide. £1,500-1,800
912. A pair of Regency simulated bamboo DINING CHAIRS. £100-150
913. A fine Victorian burr walnut 3 tier WHATNOT. £1,500-2,000
914. An early 19thC bowfront mahogany SIDEBOARD 40" wide. £500-700
915. A Victorian rosewood NURSING CHAIR upholstered in green dralon. £350-450
916. A pair of Georgian yew bowback WINDSOR CHAIRS with crinoline stretchers. £800-1,200
917. A lead FOUNTAIN HEAD in the form of winged boy holding fish.
918. A fine Regency rosewood CENTRE TABLE with frieze drawer, reeded and mulled supports and paw feet. £2,500-3,000
919. to 930. Spare Lots.
919. A Georgian mahogany BUTLER'S TRAY and stand. £500-600
931. An Edwardian inlaid satinwood TRIPLE WARDROBE. £150-200
932. A George III oak CHEST of four graduated drawers, knob handles and bracket feet. 44". £150-200
933. A cast iron FIREBACK, dated 1679. £300-400
934. A Victorian mahogany Duchess DRESSING TABLE. £150-200
935. A glazed oak WALL DISPLAY CABINET. £60-80
936. A mahogany DISPLAY CABINET on stand with cabriole legs. £100-150
937. A Victorian mahogany bowfront CHEST of two short and three long graduated drawers, knob handles, turned feet 36". £120-180
938. An Edwardian mahogany PEDESTAL SIDEBOARD with mirror back. £100-150
939. A Georgian oak CHEST of two short and three long graduated drawers, brass handles, bun feet 42". £120-180
940. A Georgian mahogany PRESS CUPBOARD with two panel doors over three graduated drawers 6' high 3' 6" wide. £250-400
941. A fine Edwardian inlaid mahogany BEDROOM SUITE comprising triple wardrobe compactum, marble top washstand and dressing table. £1000-1500
942. An ebonised BOOKCASE TOP DRESSER. £80-120
943. An Oak BUREAU 36" wide. £350-450
944. A pair of 19thC French cast iron BALCONY FRONTS. £50-70
945. A Victorian mirrored OVERMANTEL. £50-80
946. A Georgian style mahogany BUREAU. £250-400
947. A Persian design Axminster CARPET c.12" x 9". £50-80
- 947a. A George III mahogany BUREAU, 40" wide. *Illustrated on centre pages.* £1,200-1,500



948. A fine 19thC cast iron OVERMANTEL MIRROR, probably Coalbrookdale. *Illustrated on centre pages.* £1,500-2,000
949. A reconstituted stone neo-classical GARDEN STATUE. £100-150
950. A modern pine DRESSER. £180-250
951. Two large marble SLABS. £50-80
952. A cast iron FIREPLACE with stone surround. £25-40
953. A fluted stone PILLAR. £80-120
954. A lead lined wooden TROUGH.
955. A substantial hand hewn STONE TROUGH. £400-600
956. A glazed walnut 2 door CHINA DISPLAY CABINET.
957. A Vic tripod PEDESTAL TABLE, the circular slate top painted with a scene of dogs. £250-350
958. A Victorian mahogany fitted Wardrobe. £80-120

END OF SALE

We are pleased to recommend

**Lowes Removals**



Removals - Fine Art Carriers  
Local & Long Distance

Andrew Lowes

40 Vernon Avenue, Gonerby Hill Foot,  
Grantham, Lincs., NG31 8JJ  
Telephone: 0476 65194

## MAILING REGISTER SUBSCRIPTION FORM

If you wish to receive our Auction catalogues and detail sheets for one year, please complete and return this form.

### 1. Antiques & Fine Art Auctions

There are currently planned 5 Sales per annum to include:-

Furniture, Paintings, Prints, Glass, Ceramics, Toys, Silver, Clocks, Watches, Jewellery, Metalware, Stamps, Coins, Books, Arms & Militaria, Bygones, Barometers, Collectors Items, etc.

### 2. Commercial & Agricultural Auctions

Frequency of Sales determined by instructions from The High and County Courts, Liquidators and Receivers, and private individuals/companies.

Office Equipment, Catering Equipment, Engineering Equipment, Industrial Plant & Machinery, Live & Dead Farming Stock, Retail/Wholesale Shop Stock and Fittings, Vehicles; – Assets of a variety of Businesses.

### 3. Specific Requirements

If you specialise in one area of the above categories (eg. *Books*) please state this to avoid receiving unwanted catalogues.

.....

-----

1. Antiques & Fine Art. (£10) £.....

2. Commercial & Agricultural Auctions. (£5) £.....

Fee enclosed £..... Total

Name: Mr/Mrs/Miss/Title .....

Address: .....

.....

.....

.....

Tel: (.....) ..... Date: ..... Our Ref: \*ML .....



## **FORTHCOMING SALES**

**GOLDING YOUNG & CO.**

will sell by AUCTION

**ANTIQUE & MODERN  
FURNITURE, BRIC-A-BRAC  
HOUSEHOLD EFFECTS**

Every Wednesday at 10.30am

In all circa 350 lots of furniture, pictures,  
china, glass, tools, carpets, rugs, books,  
bric-a-brac, outdoor effects, etc.

Viewing: Tuesday 4pm to 6pm  
& Saleday from 9am.

**\* SALEDAY CASH PAYOUT FOR VENDORS \***

*ENTRIES FOR THE WEEKLY GENERAL SALE  
USUALLY CLOSE 5pm EACH MONDAY*

**\* FULL HOUSE CLEARANCE SERVICE \***

# COMMISSION BID FORM

LOT NO	BRIEF DESCRIPTION	PRICE

Bids are left at the senders risk and are accepted subject to our Conditions of Sale.

NAME: .....

ADDRESS: .....

.....

.....

.....

TEL: .....

SIGNATURE: .....

SALE DATE: .....

Lots will be purchased at the lowest price as permitted by other bids or reserves.

Prospective purchasers should contact the Auction Rooms after the sale and if successful, the item(s) purchased must be collected and paid for within two days of the sale.

A Buyers Premium of 10% + VAT will be levied on the hammer price, to all purchasers.



Established 1900

# — GOLDINGS —

Chartered Surveyors, Auctioneers, Valuers & Estate Agents  
Residential, Commercial, Agricultural, Property Management, Financial Services

45 High Street, Grantham, NG31 6NE

Telephone: 01476 590211

## PROFESSIONAL SERVICES FOR



### RESIDENTIAL

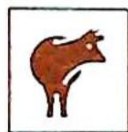
Our established Residential department headed by Chartered Surveyors undertakes sale and valuation of all types of property from Castles to Town Houses; Surveys, Homebuyers Reports, Mortgage, Probate and Insurance Valuations carried out with care attending to individual requirements.



### COMMERCIAL

Dealing with the sale and survey of Shops, Offices and Factories. Valuation for Rent Reviews, Lease renewals and negotiations. Rent Arbitration, on behalf of landlord and tenant.

*Plant, Machinery & Assets*; Sales for Receivers, Liquidators, High Court & County Court. Auction Sales on Site or at The Grantham Auction Rooms for private and public clients alike.



### AGRICULTURAL

Our Senior Partner has wide experience in the sale and valuation of Agricultural Properties, conducting Farm Sales and Valuation of Live and Dead Farming Stock for dissolution, Probate and other matters. Together with Rent Reviews, Development Land reports and Annual Stocktaking Valuations.



### FINANCIAL SERVICES

Our Experienced Consultant is available to advise on all matters concerning Finance, Mortgages, Insurance, Investment, Planning and Pensions.



### PROPERTY MANAGEMENT

Personal service and attention to detail ensures that our management team exploits your investment portfolio whether an Individual Family Home let for a small fee or Office, Factory, Shop or Farm with rent collected and regular inspections made.

#### Chattels Auctioneer

Colin R. Young FNAVA

#### Property Management

Mrs. Margaret Pashley

#### Partners

C. Robin Hall FRICS FAIV

Ian J. Shaw FRICS FNAEA

#### Financial Service Consultant

John G. Stukins

#### Residential Sales Manager

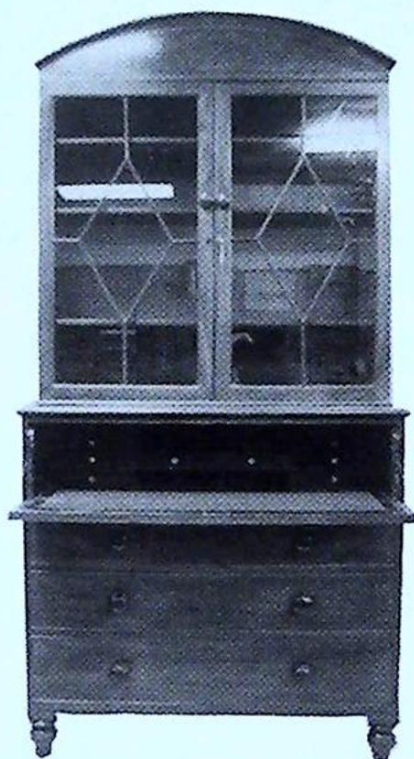
Mrs. Jenny Diment FNAEA CPEA



Established 1900

**-GOLDINGS-**

**THE GRANTHAM AUCTION ROOMS**



A 19thC mahogany SECRETAIRE BOOKCASE, in our last sale

**SOLD for £1,200**

---

**NEXT SALE**

of

**ANTIQUES & FINE ART**

Wednesday 14th December, 1994 at 10.00am

Entries welcome until 1st December.

Call Colin Young for a Free Valuation

**THE COMPLETE AUCTION SERVICE**

Auction Sales of Antiques, Fine Art, Collectables, Modern Furniture & Effects - Office, Shop & Catering Equipment  
Vehicles - Plant & Agricultural Machinery - Stock-in-Trade - Business Assets - Liquidations & Receiverships  
VALUATIONS undertaken for Insurance, Probate, Family Division and Sale purposes. Full HOUSE CLEARANCE facilities.