

Established 1900

- GOLDINGS -



AUCTION SALE

OF

Antiques



THE GRANTHAM AUCTION ROOMS

CONDITIONS OF SALE

1. The highest bidder shall be the buyer. The Auctioneers reserve the right of regulating the biddings; of rejecting any bid; and of bidding for, withdrawing, consolidating, dividing or altering the order of lots.
2. The purchase money for each lot with the usual commission of 10% plus VAT at the current rate shall be paid at the fall of the hammer (if required). Each lot at the fall of the hammer shall be at the sole risk and expense of the buyer, and shall be paid for and removed immediately after the conclusion of the sale, *but no lot shall become the property of the buyer, or be removable until paid for*, and if taken away in contravention of these conditions without an order for removal signed by the Auctioneers, they shall have power to seize the same by their servants or agents, or otherwise, or the Auctioneers may recover either the lot sold or the price thereof (at their option) by action at law.
3. No contra account of any description whatever will be allowed to the buyer as a set off, and payment for each Lot shall be made to the Auctioneers or their clerk only, and a buyer paying by cheque must give satisfactory references (if required).
4. For all purposes of this sale the Clerk of the Auctioneers shall be deemed to be the agent of both seller and buyer.
5. A bidder shall not be allowed to retract his bidding after the fall of the hammer, and he shall give up his full name and address if required. The Auctioneers will not recognise the transfer of any lot from one buyer to another, nor make any alteration in the sale book in respect thereof.
6. The Auctioneers are acting only as agents, and give no personal warranty as to the condition, quality or authenticity of any chattels offered for Auction. Any catalogue description is given merely as guide to purchasers, any description can be changed from the rostrum before the lot is sold. If a purchaser buys without previous inspection he will do so at his own risk.
7. Notwithstanding any other terms in these Conditions, if within 7 days of the sale a purchaser gives notice in writing that a lot is a deliberate forgery, with supporting factual evidence, the Auctioneers may rescind the transaction. The burden of factual proof lies with purchaser, mere opinions will not satisfy. This benefit is not assignable.
8. If any buyer neglect or refuse to comply with the above conditions or any of them, his deposit money (if any) shall be forfeited, and the lot uncleared may, at the option of the Auctioneers, be resold without notice by public auction or private contract, and any loss occasioned by such re-sale together with all expenses attendant thereon, or arising under these conditions shall be paid for by the defaulter at this sale and be recoverable as and for liquidated damages. This condition is however without prejudice to the right of the Auctioneers to enforce the contract made at this sale if they think fit.
9. Any Notes for Purchasers and catalogue Glossaries, where used, will be construed as Conditions of Sale.
10. The Auctioneers shall be the sole Arbitrators in all matters of dispute relating to these conditions both as between the seller and the buyer and between the several bidders and buyers and their determination on all matters shall be final and binding on all parties concerned.

Auctioneers: C. Robin Hall FRICS FAAV & Colin R. Young FNAVA

Upon instructions from Solicitors, Executors and Private Individuals including the residual contents of a farmhouse.

Messrs
-GOLDINGS-

will sell by Auction selected pieces of

ANTIQUE & LATER
FURNITURE, PAINTINGS, CERAMICS,
JEWELLERY, ORIENTAL RUGS,
AND COLLECTORS ITEMS

on Wednesday 16th June, 1993

Commencing 10am at

THE GRANTHAM AUCTION ROOMS

Old Wharf Road, Grantham, Lincolnshire NG31 7AA
Telephone: (0476) 65118 Fax: (0476) 590998

Viewing Times:

Sunday 18th: 2pm to 4pm
Tuesday 20th: 1pm to 7pm
Saleday 21st: 9am to 10am

Cover Illustration: Lot 230

IMPORTANT NOTES FOR PURCHASERS

1. **PAYMENT:** Must be made in full immediately after the Auction. The following methods of payment are acceptable.
a) Cash b) Bankers Draft c) Building Society Cheque
d) Cheques, accompanied by a valid card. For accounts above the stated card limit, we reserve the right to retain the goods until clearance is established.
2. **BUYERS PREMIUM:** of 10% + VAT is payable on all lots.
3. **REMOVAL OF PURCHASES:** Goods must be collected as soon as they are paid for, and in the Two Working Days following the sale. If goods are not collected on these days we reserve the right to charge £1 per lot per day thereafter.
4. **COMMISSION BIDS:** If you are unable to attend this or any of our future sales we will be pleased to bid on your behalf. We always purchase at the lowest possible price, subject to other bids and reserves.

All bids must be handed to the office on an official form. It remains the responsibility of prospective purchasers to contact GOLDINGS to confirm whether their bids have been successful.
5. **SMOKING:** is not permitted in any part of the Saleroom.
6. **REFRESHMENTS:** will be available Saleday.
7. **ACCOUNT TRANSFERS:** will not be recognised after the sale. If any lots are purchased for another person, this must be declared at the fall of the hammer.

GLOSSARY

- a) **Generally:** '*As Found.*' (AF). This term indicates the lot has some damage. Its absence does not indicate that the lot is free of defect. All lots are SOLD AS SEEN.
- b) **Paintings:** '*Signed, initialled, monogrammed.*' This refers to the present state of the work and is not an attribution.
- c) **Books and printed matter:** These items are not sold subject to collation and are not returnable once removed from the premises.
- d) **Silver & Jewellery:** Weights given are approximations given by basic instruments.
- e) **Estimates:** For intending purchasers we include in this catalogue the Auctioneers opinion of value. If no figures are given the value is less than £20.

COLLECTORS ITEMS, BYGONES ETC.

1. A Victorian cast iron Lawn Roll. £40-60
2. Two wrought iron Boot Scrapers.
3. Three Milk Churns.
4. A Rudge Ladies Cycle.
5. BSA Ladies Cycle.
6. A small hand hewn Stone Trough. £30-50
7. Three single bed Quilts.
8. Sanderson floral print *154cm (61")* drop Curtains, two *160cm (63")* wide, one *114cm (45")* wide. (3) £30-50.
9. Two pairs of burgundy ground cotton EMBROIDERED CURTAINS: *215cm (85")* drop with a *172cm (68")* pelmet; *215cm (85")* drop with a *300cm (118")* pelmet. £60-80
10. A chenille Table Cover. *172cm × 158cm (68") × 62")*. £25-40
11. A dark green Kashmir PRAYER RUG, embroidered with gilt thread, pink and light green silks. *250cm × 118cm (98" × 46")*. £100-150
12. An EMBROIDERY PICTURE, worked in en camieu wools, depicting a rural scene with a mother, child and a variety of animals. *72cm × 93cm (28" × 37")*. £80-100
13. A Needlework Picture in an oval Victorian mahogany frame. £25-40
14. Three Victorian wooden printing blocks.
15. Six woodworking tools.
16. A Kodak No 1A Pocket Camera.
17. An Oil Tin, stamped N.T.G.B. PSC.
18. Two ox bells, magnifying glass, engraving of Venice and a glass top tray.
19. A boxed S.E.L. Microscope.
20. A carved lignum vitae Tortoise.
21. A Brown & Polson blancmange mould, storage jar and tin.
22. A pine tabletop Ironing Board.

23. A copper Fender.
24. A 19thC carved Soapstone Spill Vase Group with two monkeys. £20–30
25. A kodak camera and 78rpm records.
26. Old Billiard Balls.
27. Five woodworking Planes.
28. A Victorian oak Desk Stand with drawer. £25–40
29. A Military Khukri Knife.
- 30. An Antique CLOSE HELMET**, in 12thC. style *See illustration on centre pages.* **£600–900**
31. A plaster Art Nouveau FIGURAL LAMP BASE in the form of a nude female leaning on a column. 56cm (22") high. £50–80.
32. A large Victorian copper Kettle. £35–50
33. A Bush bakelite Radio, *Serial No 62/85277.* £40–60
34. An English golden plush Teddy Bear, with jointed body. 16cm (6") high. £20–30
35. An early STEIFF golden plush TEDDY BEAR, with boot-black eyes, pointed snout, jointed head and body and button in ear. 40cm (16") high. £80–100
36. A 19thC MICRO MOSAIC oval PICTURE FRAME with flowerhead designs in relief, and Venizia to the base. 40cm (16") high. £150–200
37. A Regency SECRET BOX in the form of a book, with veneers of various woods. 19cm (7½") high. £80–120
38. A Victorian mahogany Box.
39. The Alleydale ENLARGER, mahogany cased with leather bellows. £60–90
40. A 'Cornish Pewter' three piece Coffee Set.
41. A cased model of a Pike. 75cm (29") long. £40–60
42. A brass and copper Warming Pan. £20–30
43. A Victorian copper WARMING PAN with an ebonised handle.) £40–60
44. An old Pub Advertising Mirror. £20–30
45. An old Pub Advertising Mirror. £20–30

46. A bulls head cast iron Tin Opener.
47. A pair of unworked IVORY TUSKS, 19cm (7.1/2"). £20-30.
48. A pair of unworked IVORY TUSKS, 33cm (13"). £20-30
49. A small Box containing 72 Seed Specimens.
50. An Edwardian leather Wallet.
51. A telescopic brass toasting fork and papier mache snuff box, a daguerrotype (AF) and an oval photograph locket.
52. Two 19thC Truncheons. £20-30
53. Two 17thC Cannon Balls. £20-30
54. A Victorian rosewood La Chenal & Co PATENT CONCERTINA in hexagonal mahogany box. £50-80
55. An EPNS Candelabra. £20-30
56. A Victorian Pipe Ashtray and a leather Cigar Case.
57. A Doulton & Co Lambeth improved Bed Pan, (AF).
58. Two glass Shades, brass bell, pair plated knife rests, etc.
59. A pair of wooden cloggs.
60. A pair of brass carriage Hub Caps, stamped Frampton.
61. A Victorian brass Trivet.
62. A 19thC oval galleried Tray.
63. A brass greasegun and a brass sprayer.
64. A Grenadier Guard's Uniform. £20-30
65. A Victorian childs Nightdress.
66. A Victorian childs Nightdress.
67. Three childrens embroidered dresses, c.1930.
68. 2 Childrens embroidered dresses, c.1930.
69. A 1920's blue silk Wedding Dress with stockings, gloves, etc. £20-30
70. A brass and copper Coal Bucket with liner. £30-40.

GLASS & CERAMICS

71. An early 19thC salt glazed stoneware SPIRIT BARREL. 33cm (13") high. £120-180
72. A Victorian etched crystal Decanter with prismatic stopper. £25-40
73. A Victorian slice cut crystal Decanter with mushroom stopper. £20-30
74. Two Victorian Jardinieres. £20-30
75. A Victorian blue and white Meatplate and a relief moulded Water Jug. £25-40
76. A Victorian two handled PAIL, the cream ground decorated with lillies. £40-60
77. Two Myott wash blue shaped Meat Plates.
78. A 19thC Austrian pottery FIGURE OF A GIRL picking flowers. 41cm (16") high. (AF). £30-40
79. A blue/green glass Carafe. £30-40
80. Fine Staffordshire Cows and two Copeland dishes.
81. Four pieces of Commemorative China.
82. An Aynsley 31 piece part TEA SERVICE painted with floral sprays. £50-80
83. A Victorian moulded two handle DISH (AF), two bottles and a rice bowl.
84. An early ROCKINGHAM Cabinet Plate with gilt border and landscape centre (AF), red griffin mark. £25-40
85. A Brownfield & Sons Jug and Bowl Set with blue and white transfer printed oriental design. *Date lozenge 1879*. £20-30
86. A Royal Doulton salt glazed stoneware Jar with hunting and other scenes in relief.
87. A 19thC Continental Creamer, a jam pot and three small ribbon plates. (5) £20-30
88. A small circular Copenhagen Plaque with neo-classical figures in relief.
89. A pair of small 19thC circular Copenhagen terracotta Plaques with neo-classical figures in relief. £30-40
90. An Oriental nine piece HORS D'OEUVRE DISH in a mahogany case. £80-100
91. A DERBY lozenge shape BOWL with green floral decoration, black painted mark, c.1800. £25-40

92. A Chamberlains WORCESTER 'Japan' design polychrome CABINET PLATE. 24cm (9½") dia, c.1800, (AF) £50-70
93. A Staffordshire moulded and hand painted Side Plate. £25-35
94. A pair of DERBY PLATES with rosebuds and gilt decorated borders. 25cm (10") dia., c.1825, red painted mark. £100-150
95. A 19thC Continental porcelain VASE gilded and hand painted with a floral spray. 28cm (11") high. £50-70
96. A mid Victorian Staffordshire TOBACCO JAR blue ground with white relief Cricketing scenes, 12cm (5") high. See illustration on centre pages. **£200-300**
97. A late 19thC French lattice work porcelain BASKET, painted flora and birds. 18cm (7") dia. £40-60
98. A shaped and moulded oval CABINET PLATE of THE HAGUE factory, the centre field painted with two blue and yellow birds on a branch, the border having four blue and gilt panels connected by garlands, c.1775. Stork mark in underglaze blue. (AF). See illustration on centre pages. **£150-200**
99. A pair of SPODE CYLINDRICAL VASES moulded with fruit and flowerheads, gilt and polychrome decoration, c.1810. 11cm (4¼") high. See illustration on centre pages. **£200-300**
100. A ROYAL WORCESTER EWER, the cream ground painted with floral sprays and gilt decoration. Model 1094. Year cypher 1898. 14cm (5½") high. See illustration on centre pages. **£180-250**
101. A Victorian Oriental design SAUCER DISH. £40-60
102. A Victorian part Dinner Service of 27 blue and white transfer printed decoration. £40-60
103. A transfer printed FISH PLATTER and JUG. £50-70
104. Portugese tin glazed blue and white TILES, each with a different scene. (29). £80-100
105. A modern Figural Table Lamp of a lady and dog.
106. A Val St Lambert glass PLATTER. 16". £40-60
107. Six demi tasse Cups and Saucers.
108. A German 19thC porcelain Figure Group.

- 109. A Victorian copper lustre Jug. (AF)
- 110. Two Victorian ribbon plates and a cress drainer.
- 111. A Skegness crested miniature Tea Service and Vase.
- 112. Two Oriental Plates painted with birds and flora. £25-40
- 113-120. SPARE LOTS

BOOKS & PRINTED MATTER

- 121. A set of six Asti colour portrait Postcards, in a single oak frame. £30-40
- 122. Cassells Holy Bible with over 900 engravings.
- 123. A Victorian Bible and Prayer Book, velvet bound in a leather case.
- 124. Wonderful London by St John Adcock, 3 illustrated volumes.
- 125. Old and New Edinburgh by James Grant, 1882, 3 illustrated volumes.
- 126. The Chronicles of Crime by Camden Pelham, 1887, 2 illustrated volumes.
- 127. Wormwood, A drama of Paris by Marie Corelli, 1890, 3 volumes.
- 128. A Victorian Family Bible.
- 129. Colour Figures of the Eggs of British Birds by Henry Seebohn, 1896 and British Birds by Kirkman.
- 130. The Oriental Annual 1840 by Thomas Bacon.
- 131. Blackies Children's Annual (3), Jolly Book.
- 132. Jack London novels. (9).
- 133. Cookery Books.
- 134. Qty novels, etc.
- 135. Chatterbox 1912 and 1915, Robin Hood, Boys Own Annual, etc.
- 136. Arrowsmiths Modern Geography, 1846, etc.
- 137. An autographed print of Winston Churchill.
- 138. Novels, A40 book, etc.
- 139. The History of Pompey the Little: or, the Life and Adventures of a Lap-Dog, 1751. £50-80

140. The French Family Cook, 1793. £50–80
141. A quantity of old photographs; singer sewing machine advertising.
142. An old photograph on glass.
143. Crest and monogram album (large – red cover) £30–40
144. Crest and monogram album (Green cover) £20–30
145. A Family bible.
146. Document relating to Stickney Enclosure: Lands allotted to Mr. William Palethorpe.
147. Documents relating to court of sewers, and many other items of Lincolnshire interest.
148. Stamp album containing early GB and other early stamps. £70–80
149. Stamp album containing early Germany. £25–40
150. Reference books relating to stamp collecting.
151. A quantity of tea and cigarette card albums.
152. Book. (AF) Index to Rolls of Parliament. £20–30
- 153. An album containing German Stamps, including early German States. £150–200**
154. Book Calendar of Charter Rolls and Inquisitions 'ad quod damnum' 1803. £30–40
155. Personal, family and legal papers, largely correspondence of the Bland family, including an account book 1849–1850 and other MS accounts. £25–40
156. Inventory of the stock and tenants property on a farm at Market Rasen, late in occupation by Sarah Bland.
157. London Gazette 1901, Mentions Sir Arthur Seymour Sullivan, Knight (Gilbert & Sullivan) p. 491.
158. Album 1880s. MS
159. 2 Lincs/Cambridge newspapers.
160. A small quantity of town guides, including Newgate Calendar and Grantham Guide (1961).

- 160A. 'On the Study of Words' by R.C. Trench DD 1892.
- 160B. OLDRID. Personal and family papers of Oldrid/Oldrid family and other allied families. 1800s. John Oldred draper, started business which is now continued by Oldred's Dept. store in Boston. £25-35
- 160C. A photograph album. £30-40

SILVER, JEWELLERY & BIJOUTERIE

- 161. A fine Burmese 18ct gold SPRAY BROOCH** set with diamonds and rubies. 5.1/2cm (2"). *See illustration on centre pages.* **£280-350**
- 162. A sapphire and diamond FLOWERHEAD RING on an unusual 18ct white gold shank.** **£100-150**
- 163. A fine George II silver CONDIMENT STAND** of rococo design. Sponsor SW. London 1759. 200 grammes (18oz). with five hob-nail cut bottles having spire stoppers. **£700-900**
164. A silver Pepper Pot.
165. An 18ct gold and platinum Art Deco diamond RING. £40-60
166. A 9ct gold PENDANT set with opal and sapphires.
167. A pair of amber Earrings.
168. An 18ct gold onyx and diamond Ring (large size). £80-120
- 169. A VICTORIAN BROOCH**, set with 6 diamonds. **£200-300**
170. An Art Deco 18ct gold and platinum sapphire and diamond RING. £40-60
171. A 9ct gold PENDANT set with sapphires and diamond.
172. A carved jade Tortoise Necklace.
173. A pair of 9ct gold Cufflinks. Chester Assay.
174. An 18ct gold and platinum sapphire and diamond 9 stone RING. £60-80
175. A 9ct gold mounted JADE BROOCH set with spare 3 pearls. £40-60
176. An 18ct gold and platinum diamond RING. £40-60
177. A baroque pearl, amethyst and diamond BROOCH. £70-100
178. A 9ct gold Pendant set with red stone, on a 9ct gold chain.

179. A Georgian Salt.

180–190 SPARE LOTS.

CLOCKS, WATCHES & BAROMETERS

191. An Art Deco 18ct gold cased GLYCINE GENTS WRISTWATCH. £100–150

192. A 9ct gold cased LONGINES GENTS WRISTWATCH. £100–150

193. A large Edwardian Swiss Pocket Watch, in a fluted case. £20–30

194. A George III VERGE POCKET WATCH signed Thos. Haynes, Stamford, in a silver pair case. London 1812. (AF). £50–80

195. An inlaid mahogany 8-day Mantel clock. £80–100

196. A 19thC black slate MANTEL CLOCK with an 8-day movement by the Ansonia Clock Co, New York. £80–120

197. A Victorian rosewood BANJO BAROMETER, the case richly inlaid with coloured mother of pearl. 10" dial (AF). £150–200

198. An early 19thC oak LONGCASE CLOCK, the arch top hood having brass ball and spike finials, plain columns with brass capitals, the trunk with moulded arch door and plain base, silvered chapter, seconds and date rings, the arch boss signed Alex Rae, Dumfries. *198cm (78") high.*
£400–600

199. A 19thC American drop dial WALL CLOCK. £80–120

200. A Victorian mahogany BANJO BAROMETER. £80–120

PAINTINGS & PRINTS

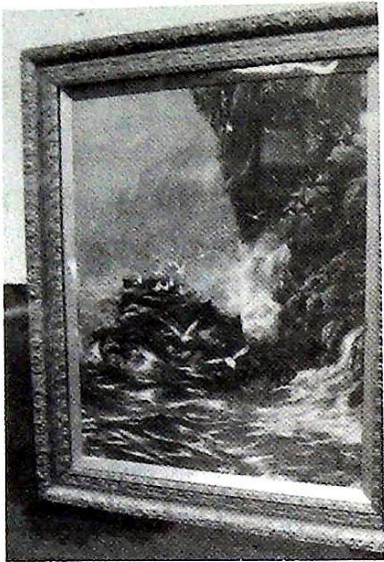
211. A framed flag of King George V.

212. An early 19thC colour engraving of The Duke of Monmouth. £20–30

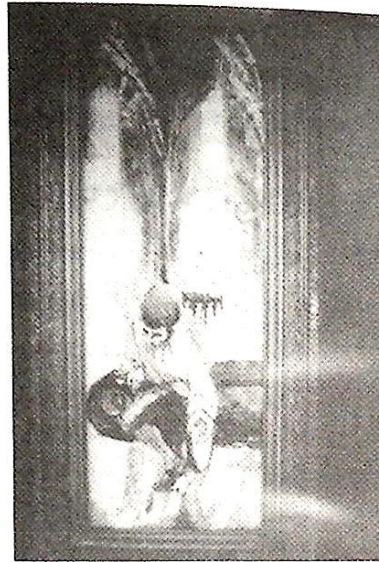
213. E Sharland. A coloured engraving of Canterbury Cathedral signed in pencil.

214. Farquharson. A gilt framed colour engraving of The Shortening Winter.
£50–80

215. E Locke. Oil-on-canvas, landscape in a gilt frame. £25–40



Lot 224



Lot 225



Lot 96

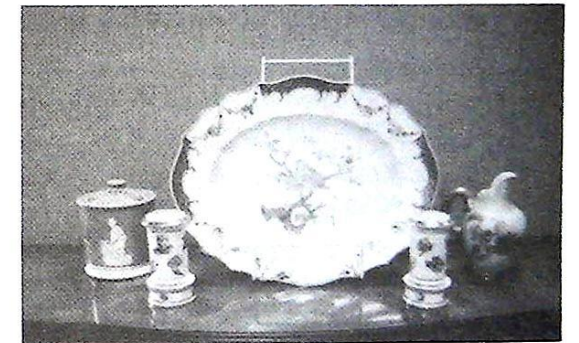
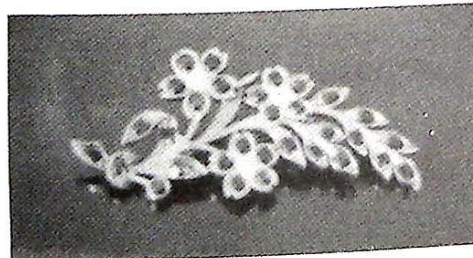


Lot 30



Lot 341

Lot 161



Lots 96, 98, 99, 100



Lot 230

216. A Solomon. A sketch of two young boys.
217. G Hester. A pair of colour engravings 'The Right Sort' and 'The Wrong Sort', after Alken. £25–40
218. E Cope. A portrait of a seated young lady in a short sleeved dress and bonnet, in an alpine landscape, signed and dated 1890, oil on canvas. 36cm × 30cm (14" × 12"). £40–60
219. An early 20thC watercolour Mountainous Landscape. £20–30
220. A pair of Victorian oil-on-glass Landscapes. £30–50
221. 19thC French School. An oval ¼ length portrait of a lady, oil, unsigned. 50cm (20") high. £100–150
222. Bernard Partridge. Unconquerable, a colour print, signed in pencil. £20–30
223. An 1886 colour lithograph of The Late Fred Archer in the colours of HRH the Prince of Wales. £80–100
224. **Peter Graham. Gulls off a rocky cliff**, signed and dated 1896. 55cm × 43cm (22" × 17"). *See illustration on centre pages.* **£500–800**
225. **Milton Avery. A man on a bench in a gothic building**, watercolour, signed and dated '27. 48cm × 18cm (19" × 7"). *See illustration on centre pages.* **£500–800**
226. **L Ury. Köln-Börn**, watercolour, signed and dated '98. 30cm × 21cm (12" × 8"). **£250–400**
227. **18th/19thC English School.** ¼ length portrait of Gentleman, oil-on-canvas in a maple frame, 46cm × 36cm (18" × 14") **£800–1200**
228. **W R Stone. A wooded landscape with two shire horses pulling a cart**, with a man riding side saddle, oil on canvas, signed. 30cm × 40cm (12" × 16") **£250–400**
229. **Claude Muncaster. Regent Street from Langham Place**, watercolour over pen and ink, signed and dated May 1923. 28cm × 38cm (11" × 15") **£300–400**
230. **19thC Marine Watercolour.** A shipwreck scene, watercolour on paper, unsigned, in a Hogarth frame. 28cm × 46cm (11" × 18"). *See illustration on centre pages.* **£300–500**
231. **19thC Marine Watercolour.** A large beached sailing ship, watercolour on paper, unsigned. 30cm × 52cm (12" × 20½"). *See cover illustration.* **£300–500**

- 232. 20thC French School.** A still life of a vase of flowers, oil-on-board, indistinctly signed. *33cm × 41cm (13" × 16")*. **£300–400**
233. George Denholm Armour. A path through a wooded landscape, oil-on-panel unsigned. *35cm × 46cm (14" × 18")*. £180–250
234. Cecil Beaton. A view of an interior colonnade, watercolour on paper, signed, with stamp 'Cecil Beaton from Miss E Rose'. *17cm × 28cm (6½" × 11")*. £200–300
235. Julian Trevelyan. Titled Schooner, limited edition aquatint, 2/150, signed in pencil. *48cm × 35cm (19" × 14")*. £100–150
236. Jolan P Williams. A view of Hampstead Road, London? Oil-on-canvas, signed. *40cm × 51cm (16" × 20")*. £200–300
237. Jolan Williams. Saint Teresa's Dream, oil-on-card, signed, exhibition labels on reverse of frame. *31cm × 36cm (12" × 14")*. £200–300
238. Anton Mauve. Sky and Water, charcoal drawing, verso label states 'Initials stamped by his wife after his death'. £100–150
- 239. Legrande. A harbour scene,** oil-on-card, signed. *44cm × 62cm (17" × 24½")*. **£300–400**
240. W H Earp. A pair of landscapes of Lock Lommond and Loch Tay, watercolour on paper, signed. *45cm × 20cm (18" × 8")*. £40–60
241. A pair of Victorian polychrome WOOLWORK PICTURES, rural scenes, in dark oak frames. *69cm × 52cm (27" × 22½")*. £200–300
242. Rudolph Ihlee. A red conte and wash ¾ length portrait study of a seated lady. *30cm × 25cm (12" × 10")*.
Sold with a note from the artist's wife, Isabel Ihlee, confirming the authenticity of this drawing. £200–300
243. Follower of Munnings. A pencil drawing of a Huntsman with riding crop and horn. *46cm × 35cm (18" × 14")*. £100–150
244. Harry Fricker. Still life of flowers in a vase, watercolour, signed. *68cm × 50cm (27" × 20")*. £60–90
245. J Dean. A Rural Feast, an 18thC colour engraving, after George Morland. £40–60
246. Mary D Elwell. Near Zermatt – The Matterhorn, oil-on-panel, signed and dated 1939, verso title label. *36cm × 26cm (14" × 10")*. £80–120

- 247. A Victorian Landscape, oil-on-canvas. £40–60
- 248. Oak framed Prints; The Cavaliers Stable, Dorothy's Courtship and Ballet Dancer. (3) £20–30
- 249. A print of an Asian girl.
- 250. A still life print of flowers.
- 251. A Parisian print in a limed oak frame.
- 252. A Pears print, *Her Birthday*, unframed. £20–30
- 253. Two silhouette pictures and a print of a garden scene.
- 254. A Pears Print, untitled, in an oak frame. £30–50
- 255. A Pears Print, *Where are you going to my Pretty Maid*, in a modern frame. £40–60
- 256. A Pears Print, *Tempted But Shy*, in a dentil moulded frame. £40–60
- 257. A Pears Print, *Family Worship*, in a modern frame. £30–50
- 258. E T Humphries. The cliffs at Polmear, Cornwall, oil-on-canvas, signed. (AF). £25–40
- 259–270. SPARE LOTS

CARPETS & RUGS

- 271. An oriental design Rug. 304cm × 93cm (120" × 37") £30–50
- 272. An oriental design Rug. 304cm × 93cm (120" × 37") . – matching previous lot. £30–50
- 273. Two small Rugs.
- 274. Two small Rugs.
- 275. Two small Rugs and a Shariz style rug.
- 277. A Caucasian rug, the tri-medallion centre field woven in black/red wools, 186cm × 96cm (73" × 38"). £180–250
- 278. A Beluch RUG, red ground, 197cm × 117cm (78" × 46"). £180–250
- 279. A fine JOSHAGHAN CARPET**, red ground, 320cm × 210cm (126" × 83"). **£600–800**

280. A Turkish Rug, rectilinear design in primary colours. *164cm × 94cm (65" × 37")*. £60–90
281. A Malayer RUG, red ground with a rectilianeal design. *189cm × 96cm (74" × 38")*. £180–250
- 282–288. SPARE LOTS

FURNITURE

289. A set of four brass CENTRE LIGHTS, with painted milk glass shades. £60–90
- 290. A fine Victorian walnut DAVENPORT. £1000–1200**
291. A Victorian satinwood BOUDOIR SOFA, with turned front legs. *115cm (45") wide*. £150–200
292. A Victorian satinwood BOUDOIR SOFA, with turned front legs. *115cm (45") wide*. Matching previous lot. £150–200
293. A Victorian mahogany SIDE TABLE. £100–150
294. A Victorian TUB CHAIR, with turned front legs and loose tapestry cover. £80–120
295. An Edwardian Armchair, with cabriole front legs. £40–50
296. An Art Deco walnut OCCASIONAL TABLE, with drawleaf undershelf. £25–40
297. A gold Lloyd Loom Chair. £20–30
298. A 19thC Rocking Chair, with rush seat. £25–40
299. An oak three-tier Cakestand. £30–40
300. Three late Victorian carved walnut side chairs. £25–40
301. A Victorian rosewood STOOL, the upholstered rectangular top on barleytwist legs with similar stretcher. £120–180
302. An oak File Cabinet with tambour top. £40–60
303. An Arts & Crafts oak MAGAZINE RACK. £60–90
304. A 1930's oak Monk's Bench. £60–80
305. A Victorian black lacquer balloonback Bedroom Chair, inlaid with mother of pearl. £20–30

306. A small Victorian mahogany bowfront Linen Box, on cabriole legs. £30-50
307. A George III mahogany ribbon back SIDE CHAIR, with rush seat. £40-60
308. A George II ladder back Carver Chair (AF).
309. An Edwardian mahogany SUTHERLAND TABLE with square legs. £150-200
310. A Victorian mahogany balloonback Side Chair. £20-30
311. A Victorian mahogany SIDE TABLE. £100-150
312. A set of six Edwardian DINGING CHAIRS. £120-180
313. An oak drawleaf DINING TABLE. £40-60
- 314. A set of seven Edwardian mahogany DINING CHAIRS**, with splatbacks, turned H-stretcher and pad feet. **£350-450**
315. An oak drawleaf DINING TABLE. £100-150
316. A reproduction walnut SIDE CABINET with, serpentine front. *130cm (51") wide, 107cm (42") high, 30cm (12") deep.* £80-120
317. An Edwardian mahogany marquetry SIDE CHAIR. £60-80
318. An Edwardian rosewood marquetry MUSIC CABINET. £80-120
319. A Victorian mahogany TOWEL RAIL with barleytwist pillars. £60-90
320. Two George III mahogany camel back SIDE CHAIRS. £50-80
321. A Jacobean oak GATELEG TABLE. *117cm × 96cm (46" × 38").* (AF) £120-180
322. Three Victorian mahogany balloon back SIDE CHAIRS. £60-90
323. A pair of William IV mahogany barback SIDE CHAIRS, with turned legs. £50-80
324. An oval oak GATELEG TABLE with ball turned legs. *138cm × 102cm (54" × 40").* £150-200
- 325. A Victorian inlaid walnut veneer MUSIC/DISPLAY CABINET.** *66cm (26") wide.* **£300-400**
326. A George III oak PEDESTAL TABLE, with a circular tilt top, turned pillar and tripod base. *60cm (24") dia.* £100-150
327. A reproduction oak REFECTORY TABLE and four panel back CHAIRS. £120-180

328. A Regency mahogany SIDE CHAIR, with barback and reeded legs. £60–80.
329. An Edwardian mahogany SUTHERLAND TABLE, with turned legs. £200–300
- 330. A fine George III oak HANGING CORNER CUPBOARD**, crossbanded with mahogany and rosewood. **£350–450**
- 331. A George III oak hanging CORNER CUPBOARD**, with dentil cornice and reeded frieze. *110cm (43") high.* **£200–300**
332. A Victorian stripped pine WRITING SLOPE with gallery. £70–90
333. A pair of Victorian reeded mahogany PILLARS. *115cm (45") high.* £80–100
334. A pair of Victorian reeded mahogany PILLARS. *115cm (45") high.* £80–100
- 335. An Edwardian inlaid mahogany ladies WRITING DESK** with fall flap concealing a fitted oak interior, over two drawers, on square taper legs. *66cm (30") wide.* **£250–400**
336. A George III elm PEDESTAL TABLE, with square top and tripod base. £200–300
337. An Edwardian inlaid mahogany SINGLE BED. £50–80
338. A Scottish Victorian mahogany cylindrical POT CUPBOARD. £150–200
- 339. An Edwardian rosewood OCCASIONAL TABLE**, the crossbanded octagonal top with a marquetry medallion, on four shaped legs with pendant husks. **£250–350**
- 340. A Victorian rosewood OPEN ARMCHAIR**, with scroll arms, turned front legs and a loose floral cover. **£400–500**
- 341. A late Victorian walnut PRESS CABINET**, with six graduated drawers flanking two panelled doors, *256cm (101") wide, 143cm (56") high, 60cm (24") deep.* See illustration on centre pages. **£50–700**
342. A stripped pine WELSH DRESSER, with platerack top. *188cm (62") wide, 266cm (89") high.* £100–150
343. An Art Deco 4-piece BEDROOM SUITE, comprising gents wardrobe, ladies wardrobe, dressing table and stool. £120–180
344. A George III painted pine CORNER CUPBOARD, with dentil cornice and cluster column sides. £150–250
345. An Edwardian inlaid mahogany WARDROBE, with dome cornice, mirror door and drawer base. £80–120

346. A 1950's glazed mahogany TRIPLE BOOKCASE. £200-300
347. A Victorian mahogany DOUBLE WARDROBE with drawer base. £150-200
348. A 1930's oak BOOKCASE with two glazed doors over drawers and cupboards. £280-350
349. An early Victorian mahogany DOUBLE WARDROBE, the cornice having dentil moulding and Greek key blind fretwork. £250-300
350. An oak arch-top glazed two-door BOOKCASE. £80-120
351. A 1930's oak DOUBLE WARDROBE. £60-90
352. An Edwardian mahogany Dressing Table Mirror and Washstand Back (2). £25-40
353. A Victorian mahogany WARDROBE with mirror door and drawer base. *115cm (45") wide*. £80-120
354. A Victorian painted pine Washstand. £30-40
355. A Victorian mahogany swing Table Mirror with lift flap base. £30-40
356. An Edwardian mahogany and marquetry WARDROBE with mirror door and drawer base. *107cm (42") wide*. £120-180
357. A Victorian oak WELSH DRESSER, with platerack top, cupboard and two drawer base, raised on cabriole legs. *137cm (54") wide × 195cm (77") high*. £180-250
358. A fine Edwardian inlaid mahogany WARDROBE with dentil cornice, mirror door and drawer base. £120-180
359. An Art Deco 3-piece bleached walnut BEDROOM SUITE comprising gents wardrobe, ladies wardrobe and dressing table. £120-180
360. An Edwardian mahogany oval Wall Mirror. £20-30
361. An arch top oak Wall Mirror.
362. A Victorian walnut Wall Mirror with shaped arch top. £25-40
- 363. A fine Regency inlaid and ebonised DISPLAY CABINET. £1000-1200**
364. A Victorian brass rise and fall PIANO STOOL base. £80-100
365. A Victorian painted pine Blanket Box. £40-60
366. A Victorian painted pine Lincolnshire style DRESSER BASE. £120-180

367. A Victorian mahogany bank of five DRAWERS. *44cm (17") wide, 86cm (34") high, 56cm (22") deep.* £80–120
368. A George III mahogany TRIPOD TABLE. *56cm (22") dia.* (AF). £100–150
369. A 1920's walnut BERGERE CHAIR. £60–90
370. A reproduction Regency two pillar DINING TABLE. £100–150
- 371. A George III oak CORNER CUPBOARD, with shell inlay door. £300–400**
372. A 19thC Country Chair. £30–45
373. A 19thC Country Chair. £30–45
- 374. A late 17thC panelled OAK COFFER. £300–400**

– END OF SALE –

FORTHCOMING SALES AT

THE GRANTHAM AUCTION ROOMS

ANTIQUE & MODERN FURNITURE & EFFECTS

on Wednesdays 30th June, 14th & 28th July, 11th & 25th August
Commencing 10am

Entries for these sales are invited until
Friday 12 noon prior to sale.

Viewing: Days prior to Sale 1pm to 5pm & Saleday 9am to 10am

THE COMPLETE AUCTION SERVICE

Our next catalogued sale of

ANTIQUES & FINE ART

is on Wednesday 8th September, 1993 at 10am

Viewing: Sunday 5th 2pm – 4pm, Tuesday 7th 1pm – 7pm
and Saleday 9am – 10am

Catalogues £2.50 or £10 by annual subscription.

GRANTHAM'S NO 1 AUCTIONEERS & VALUERS FOR

ANTIQUES * FINE ART * HOUSEHOLD * COMMERCIAL



A Victorian Silver Coffee Pot. London 1845. 23 oz.
Sold for £500 in our last catalogued sale.

MAILING REGISTER SUBSCRIPTION FORM

If you wish to receive our Auction catalogues and detail sheets for one year, please complete and return this form.

1. Antiques & Fine Art Auctions

There are currently planned 5 Sales per annum to include:-

Furniture, Paintings, Prints, Glass, Ceramics, Toys, Silver, Clocks, Watches, Jewellery, Metalware, Stamps, Coins, Books, Arms & Militaria, Bygones, Barometers, Collectors Items, etc.

2. Commercial Auctions

Frequency of Sales determined by instructions from The High and County Courts, Liquidators and Receivers.

Office Equipment, Catering Equipment, Engineering Equipment, Industrial Plant & Machinery, Retail/Wholesale Shop Stock and Fittings, Vehicles; – Assets of a variety of Businesses.

3. Specific Requirements

If you specialise in one area of the above categories (eg. *Books*) please state this to avoid receiving unwanted catalogues.

.....

1. Antiques & Fine Art. (£10) £.....

2. Commercial Auctions. (£5) £.....

Fee enclosed £..... Total

Name: Mr/Mrs/Miss/Title

Address:

.....

.....

.....

Tel: (.....) Date: Our Ref: *ML

NOTES

Lowes Removals



— *Removals - Fine Art Carriers* —
Local & Long Distance

Andrew Lowes

40 Vernon Avenue, Gonerby Hill Foot,
Grantham, Lincs., NG31 8JJ
Telephone: 0476 65194

PRINTED BY W.G. HARRISON, DYSART ROAD, GRANTHAM
TEL: 0476 62700

Established 1900

-GOLDINGS-

Chartered Surveyors, Auctioneers, Valuers & Estate Agents
Residential, Commercial, Agricultural, Antiques & Fine Art

45 High Street, Grantham, NG31 6NE

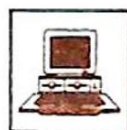
Telephone: 0476 · 590211

PROFESSIONAL SERVICES FOR



RESIDENTIAL

We have a department headed by Chartered Surveyors to undertake valuation and sale of all types of property from Castles to Town Houses. Surveys, Housebuyers Reports, Mortgage, Insurance and Probate Valuations to individual requirements.



COMMERCIAL

Property; Dealing with the survey of Shops, Offices and Factories. Sale, Valuation and Rent Reviews, Lease negotiations and Rent Arbitration for the landlord and tenant.

Plant, Machinery & Assets; Sales for Receivers, Liquidators, High Court & County Court. Auction Sales on Site prepared for private and public clients alike.



AGRICULTURAL

Our Senior Partner has wide experience in the sale and valuation of Agricultural Properties, conducting Farm Sales and Valuation of Live and Dead Farming Stock for dissolution, Probate and other matters. Other areas covered include Rent Reviews, Development Land reports and Annual Stocktaking Valuations.



FINANCIAL SERVICES

Our Experienced Consultant is available to advise on all matters concerning Finance, Mortgages, Insurance, Investment, Planning and Pensions.



PROPERTY MANAGEMENT

Personal service and attention to detail ensures that our management team exploits your investment portfolio whether an Individual Family Home let for a small fee or Office, Factory, Shop or Farm with rent collected and regular inspections made.

Saleroom Manager

Colin R. Young FNAVA

Partners

C. Robin Hall FRICS FRAV

Ian J. Shaw FRICS FNAEA

Financial Service Consultant

John G. Stukins

-GOLDINGS-

ANTIQUES DEPARTMENT



GENERAL ENQUIRIES

Our Auction Rooms are open 9am to 1pm & 2pm to 5pm Monday to Friday. Please call in or telephone (0476) 65118 for entering items, valuation appointments, sales information, house clearances and transport arrangements.



VALUATIONS

For items too large or numerous to bring to us our valuer can visit your home to give personal advice on the best method of sale.

With an increasing number of thefts, particularly of Antiques & Works of Art it is essential to have a detailed inventory and report with photographic records. This can be essential when negotiating settlements with Insurance Companies.



SELLING WITH GOLDINGS

For over 90 years we have held sales in Grantham. Our spectrum ranges from important paintings, such as two examples by Fred Stead selling for £10,800 to items of a few pounds.

Our versatility enables us to deal with single items to Country House Sales with the same level of professional competence. Flexible commission rates, extensive register of specialist buyers and regular sales ensure that your valuables get the widest International exposure and that selling with us is a pleasurable and profitable experience.

**HOW TO FIND ...
"THE LARGEST
PURPOSE BUILT
AUCTION ROOMS
IN THE AREA"**

