

Established 1900

— GOLDINGS —

(Chartered Surveyors, Auctioneers & Valuers)



AUCTION SALE

OF

Antiques



CONDITIONS OF SALE

1. The highest bidder shall be the buyer. The Auctioneers reserve the right of regulating the biddings; of rejecting any bid; and of bidding for, withdrawing, consolidating, dividing or altering the order of lots.
2. The purchase money for each lot with the usual commission of 10% plus VAT at the current rate shall be paid at the fall of the hammer (if required). Each lot at the fall of the hammer shall be at the sole risk and expense of the buyer, and shall be paid for and removed immediately after the conclusion of the sale, *but no lot shall become the property of the buyer, or be removable until paid for*, and if taken away in contravention of these conditions without an order for removal signed by the Auctioneers, they shall have power to seize the same by their servants or agents, or otherwise, or the Auctioneers may recover either the lot sold or the price thereof (at their option) by action at law.
3. No contra account of any description whatever will be allowed to the buyer as a set off, and payment for each Lot shall be made to the Auctioneers or their clerk only, and a buyer paying by cheque must give satisfactory references (if required).
4. For all purposes of this sale the Clerk of the Auctioneers shall be deemed to be the agent of both seller and buyer.
5. A bidder shall not be allowed to retract his bidding after the fall of the hammer, and he shall give up his full name and address if required. The Auctioneers will not recognise the transfer of any lot from one buyer to another, nor make any alteration in the sale book in respect thereof.
6. The Auctioneers are acting only as agents, and give no personal warranty as to the condition, quality or authenticity of any chattels offered for Auction. Any catalogue description is given merely as guide to purchasers, any description can be changed from the rostrum before the lot is sold. If a purchaser buys without previous inspection he will do so at his own risk.
7. Notwithstanding any other terms in these Conditions, if within 7 days of the sale a purchaser gives notice in writing that a lot is a deliberate forgery, with supporting factual evidence, the Auctioneers may rescind the transaction. The burden of factual proof lies with purchaser, mere opinions will not satisfy. This benefit is not assignable.
8. If any buyer neglect or refuse to comply with the above conditions or any of them, his deposit money (if any) shall be forfeited, and the lot uncleared may, at the option of the Auctioneers, be resold without notice by public auction or private contract, and any loss occasioned by such re-sale together with all expenses attendant thereon, or arising under these conditions shall be paid for by the defaulter at this sale and be recoverable as and for liquidated damages. This condition is however without prejudice to the right of the Auctioneers to enforce the contract made at this sale if they think fit.
9. Any Notes for Purchasers and catalogue Glossaries, where used, will be construed as Conditions of Sale.
10. The Auctioneers shall be the sole Arbitrators in all matters of dispute relating to these conditions both as between the seller and the buyer and between the several bidders and buyers and their determination on all matters shall be final and binding on all parties concerned.

Auctioneers: C. Robin Hall FRICS FAAV & Colin R. Young ANAVA

Upon instructions from the Executrix of Miss S Ledger (Dec'd), other
Local Estates and Private Individuals.

Messrs

— GOLDINGS —

will sell by Auction selected pieces of

ANTIQUE & LATER

**FURNITURE, ORIENTAL RUGS & CARPETS,
SILVER, GLASS, CERAMICS,
JEWELLERY AND COLLECTORS ITEMS**

on Wednesday 24th February, 1993

Commencing 10am at

THE GRANTHAM AUCTION ROOMS

Old Wharf Road, Grantham, Lincolnshire NG31 7AA
Telephone: (0476) 65118 Fax: (0476) 590998

Viewing Times:

Sunday 21st: 2pm to 4pm

Tuesday 23rd: 2pm to 7pm

Saleday: 9am to 10am

IMPORTANT NOTES FOR PURCHASERS

- 1. PAYMENT:** Must be made in full immediately after the Auction. The following methods of payment are acceptable.
a) Cash b) Bankers Draft c) Building Society Cheque
d) Cheques, accompanied by a valid card. For accounts above the stated card limit, we reserve the right to retain the goods until clearance is established.
- 2. BUYERS PREMIUM:** of 10% + VAT is payable on all lots.
- 3. REMOVAL OF PURCHASES:** Goods must be collected as soon as they are paid for, and in the Two Working Days following the sale. If goods are not collected on these days we reserve the right to charge £1 per lot per day thereafter.
- 4. COMMISSION BIDS:** If you are unable to attend this or any of our future sales we will be pleased to bid on your behalf. We always purchase at the lowest possible price, subject to other bids and reserves.

All bids must be handed to the office on an official form. It remains the responsibility of prospective purchasers to contact GOLDINGS to confirm whether their bids have been successful.
- 5. SMOKING:** is not permitted in any part of the Saleroom.
- 6. REFRESHMENTS:** will be available Saleday.
- 7. ACCOUNT TRANSFERS:** will not be recognised after the sale. If any lots are purchased for another person, this must be declared at the fall of the hammer.

GLOSSARY

- a) Generally: 'As Found.' (AF). This term indicates the lot has some damage. Its absence does not indicate that the lot is free of defect. All lots are SOLD AS SEEN.
- b) Paintings: 'Signed, initialled, monogrammed.' This refers to the present state of the work and is not an attribution.
- c) Books and printed matter: These items are not sold subject to collation and are not returnable once removed from the premises.
- d) Silver & Jewellery: Weights given are approximations given by basic instruments.
- e) Estimates: For intending purchasers we include in this catalogue the Auctioneers opinion of value. If no value is given the value is less than £20.



Lot 374

Due to instructions being received to clear a Grantham Town House after the closing date for the catalogue, a brief list is made at the end of each category of those items.

COLLECTORS ITEMS, BYGONES & MISCELLANEA

1. Blue enamel Storage Jars.
2. Two old Baker's Peels.
3. An old Milk Churn with brass plaque J A Miller, L.N.E.R., Long Clawson.
4. An old Butter Churn, trouser press and net.
5. A steel SAFE by S. Withers and Co, Patentees and Manufacturers, *53cm (21")* deep, *53cm (21")*, wide, *76cm (30")* high. Key in office. £50-80
6. A selection of 1950's Radios.
7. An early 19thC elm and parquetry WORK BOX. £40-60
8. A Victorian Oil Lamp (AF).
9. A Victorian oval copper Kettle. £30-50
10. An Armadillo skin Basket.
11. A red leather Desk Folder and a blotting set.
12. A Victorian oval copper Kettle. £30-40
13. An old British Rail Lamp and two further pieces. (AF)
14. Two stoneware Footwarmers.
15. A pine Workbox and a lacquer tray.
16. The Mettype Junior Working Toy Typewriter in original box.
17. Two bone handled Whips and two riding crops.
18. An African Tribal Spear and hide Shield. £20-30
19. An 1886 Ordnance Survey Map of Londonthorpe and a plan of Fiskerton Morton and Bleasby.
20. Three wrought iron Trivets.
21. A selection of old property and chattels Auction Catalogues, mainly Nottinghamshire.
22. A selection of old property and chattels Auction Catalogues, mainly Nottinghamshire.

23. Trunk and leather case.
24. An old cylinder Dictaphone. £20-30
25. A Victorian cast brass Trivet with a pierced circular tilt top, *28cm (11")* diameter.
26. A Gazelle Head. £30-40.
27. A small gilt Porthole Mirror.
28. A small gilt Porthole Mirror.
29. A Victorian copper Warming Pan. £30-50
30. A Victorian brass and copper Warming Pan. £30-50
31. A London Assurance Plaque. £20-30
32. A Victorian mahogany Truncheon stamped with crown, VR and 416, *38cm (15")* and an Irish Club. £25-40
33. A Victorian Oil Lamp. £25-40
34. A pair of Victorian brass Candlesticks.
35. A pair of silver plated Spill Vases and three Candlesticks.
36. A Victorian brass Inkstand (AF).
37. A Victorian mahogany Money Box.
38. A pair of 19thC Bohemian cast metal Ewers, *17" high*. £30-40
39. A pair of Victorian brass Candlesticks. £20-30
40. A Victorian rosewood Tea Caddy of Sarcophagus form (AF). £20-30
41. Antiquarian brooches, metal and stone.
42. A pair of late 19thC French spelter 3 branch CANDELABRA on square polished slate and marbled bases, *46cm (18") high*. £80-120
43. A small Victorian Tonbridgeware dome-top Caddy and a mahogany box. £25-40
44. Two 1930's Travel Cases.
45. A Victorian brass and cast iron Poker Stand. £25-40
46. A 19thC burlwood Tea Caddy. £30-50
47. A cream lace Tablecloth.

48. A pair of 19thC carved Soapstone Spill Vase Groups with monkeys. £25–40
49. A 19thC carved Soapstone Spill Vase Group with two monkeys. £20–30
50. A brass Ceremonial Purse.
51. A Dutch white metal clasped Ladies Evening Bag.
52. A pair of Victorian brass Candlesticks.
53. A 19thC pewter Lidded Tankard.
54. A pair of 18thC pewter Plates.
55. A small brass Beam Balance, boxed.
56. A Masonic Apron and leather pouch.
57. A late 19thC/early 20thC VIOLIN, 15", bearing the label of Giovan Paolo Maggini, Germany, with a modern case and bow. £100–150
58. A 19thC Violin, 13", cased with bow. £30–40
59. Spare Lot
60. A 19thC hand hewn STONE TROUGH, 130cm × 46cm (52" × 18"). £100–150
61. An old RAILWAY LAMP with the plate of Barkstone North Station. £60–80
62. A leather cased Hunting Flask. £20–30
63. – 71. Spare Lots.
72. A collection of LEAD FIGURES being people, animals, hounds and huntsmen, by Britains, Reka, Hill, Charberis and others. £80–120
73. A carved ivory rhinoceros and letter knife.
74. A small Tonbridge Stamp Box and contents.
75. An agate and brass Pill Box.
76. Three Delf clay Character Pipes.
77. Three 19thC mahogany Fishing Reels. £25–40
78. A blue john Bowl, 14cm (5½") diameter. £50–70
79. A pair of 19thC ivory cased OPERA GLASSES, Junelle Elliptique, Brevette S.G.D.G. £80–150
- 80. 'THE LITTLE SAD ONE', a gilt bronze and ivory figure, cast and carved from a model by Chiparus, of a young lady wiping her eye**

with her gown. On a canted brown veined black onyx base, inscribed D.H. Chiparus, Etling Paris. 30cm (12") high. See cover illustration. £1500-2000

81. – 90. Spare Lots.

Extra lots include Victorian brass Fender, copper Ale Warmer, Egyptian style Inkstand, early bronze nest of Weights, etc.

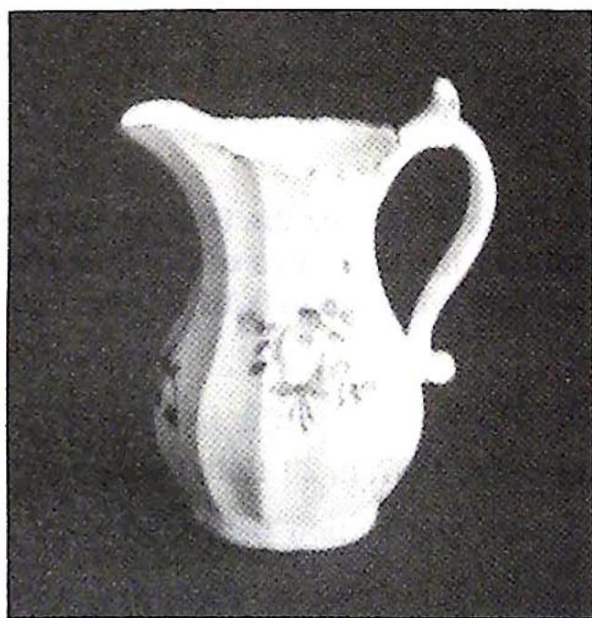
GLASS & CERAMICS

91. A pair of Victorian blue glass LUSTRES (AF). £60-90
92. A Victorian orange-peel ground Relief Jug. £25-40
93. A pair of Victorian blue and white Relief Jugs.
94. A Victorian Water Jug. £20-30
95. An early 19thC crystal mallet shape Decanter with blown stopper. £20-30
96. A Victorian cut crystal Decanter with a spout neck.
97. A Victorian mallet shape cut crystal Decanter (AF).
98. A Clarice Cliff FIGURE of a RAVEN, 5" high. £80-120
99. A TABLE LAMP being a 19thC Chinese famille vert Baluster vase on a hardwood base, electric conversion by Hinks & Son, patent. £60-90
100. A Sabino clear glass SAUCER DISH embossed with six opalescent bluebirds, moulded mark. 10" diameter. £80-120
101. A Meiji period Imari plate, Victorian blue and white dish, Carlton Leaf Dish, etc. £120-30
102. A Victorian Fruitbowl and blue & white Meatplate.
103. Six willow pattern Coasters.
104. A pink ground flared Vase painted with a panel of church and floral motif verso, probably Minton, 13cm (5") high. (AF). £25-35
105. A 19thC French urnular Vase with painted rosebud and gilt decoration, 14cm (5½") high. £25-35
106. A 19thC Copenhagen bisque figure of classical harpist, blue wave mark to base, 17cm (7") high (AF). 120-30

107. A Royal Doulton Beaker commemorating the 1902 Coronation.
108. A 20thC copy of the Meissen Monkey Band Cellist. £25–40
109. A Victorian cranberry glass Goblet. £20–30
110. A modern Cantonese Saucer Dish. £20–30
111. A Staffordshire Eggcup Stand and a black basaltes relief Jug.
112. A 20thC Limoges Plate with gilt and floral decoration. £20–30
113. A pair of Coalport 'Ming Rose' Candlesticks (AF).
114. A Meiji period IMARI BOWL painted with vases amidst foliage, *21.5cm (8½")* diameter, *10cm (4")* high. £50–80
115. A Minton Majolica Dish (AF). £25–40
116. Two Carnival glass Bowls.
117. Six pieces royal Commemorative ware.
118. American white Slag Glass. (8) £20–30
119. A Colclough ivy leaf TEA SERVICE. £20–30
120. A Carltonware dish, Disney character jug and an Amherst Japan tureen.
121. A Grindley Art Deco 14 piece TEA SERVICE, including teapot and creamer. £25–40
122. A relief jug, meatplate, cup and saucer, plate and plated stands.
123. A Royal Doulton salt glazed stoneware Jar with hunting and other scenes in relief.
124. Pressed glassware, etc.
125. A Spode's 'Camilla' Copeland TEA SERVICE comprising; 11 cups, 7 saucers, 12 teaplates, cream jug, sugar bowl, 2 meatplates, 2 sandwich plates, tureen and five eggcups. Retailers mark Stoner & Co Liverpool, *c.1900*. £60–90
- 126. A fine French circular PLAQUE painted with three neo-classical figures in a landscape, within a gilt band and floral garland border having a gilt and light blue rim, *c.1870*, *36cm (14")* diameter. See illustration. £400–600**
Note: this lot was sold by ourselves on 12 September 1990 (The Miss Pimm Estate Sale), hammer price £620.



127. A DERBY CREAM JUG with scroll handle, painted with a pink rose spray and pansy, probably by Withers, c.1760, 9cm (3½") high. See illustration. £100–150



128. A Lowestoft Vase with cover painted with a pagoda and foliage in underglaze blue (AF). 14cm (5½") high. £20–30
129. A late 19thC Chinese Plate and a pair of miniature Baluster Vases, all decorated in underglaze blue.

130. – 140. Spare Lots

Extra lots include Staffordshire figure of girl, 19thC Japanese Vase with applied figure, etc.

BOOKS & POSTCARDS

- 141. Mrs Beeton's Every Day Cookery, 1912.
- 142. Longfellow by the Landsdown Poets, 1879.
- 143. Little Lord Fauntleroy by F H Burnett, 1890.
- 144. Three Men in a Boat by Jerome K Jerome, 1889.
- 145. The Ingoldsby Legend, Mrs Browning and two Dickens novels.
- 146. George Eliot, Middlemarch, 1871 in two volumes and the Northwest Passage.
- 147. The Compact Encyclopaedia, six volumes.
- 148. The Old and New Testaments, eight volumes in a gilt and tooled leather binding, first quarter 19thC. £50–70
- 149. The Pictorial History of England during the Reign of George III, illustrated with several hundred woodcuts in three cloth bound volumes, 1842 and Scott's bible. £20–30
- 150. Edmund Turner. Collections for the History of the Town and Soke of Grantham containing the memoirs of Sir Isaac Newton, 1806, cloth-bound in one volume with extracts of Belton House, Stamford, etc. £60–80**
- 151. The Illustrated War News, six volumes.
- 152. The Penny Cyclopaedia, 1887, in 20 cloth bound volumes.
- 153. Assorted Science Fact and Fiction paperbacks and British ecclesiastical Critic.
- 154. Pictorial News 1887 and an album of old Matchboxes.
- 155. John Bull and other magazines.
- 156. Twelve portfolios of photographs 'Beautiful Britain' 1894. £20–30
- 157. Winston Churchill. The Second World War, in six volumes, first edition. £20–30

158. Arther Mee's Kent & Lincolnshire, Tales and Rhymes in the Lindsey Folk-Speech by Mabel Peacock 1886, *1st Editions* and Shelley Selected Poems.
159. The Family Friend, three volumes.
160. The Confessions of a Poacher by John Watson, 1890.
161. Miscellaneous Books, principally Agricultural. £20-30
162. 24 British Franco Exhibition Postcards.
163. Thirteen Grantham and area Postcards.
164. Eight Coronation and a 1908 International Horse Show Postcards.
165. A set of the Encyclopaedia Britannica comprising half ninth edition, half tenth edition, 36 volumes (AF) £40-60
166. - 170. Spare lots.

JEWELLERY & BIJOUTERIE

171. An 1887 Crown, 1887 Florin, other Victorian and later English coins. £20-30
172. Silver 3d's.
173. A 1912 Sovereign. £50-70
174. Three Pendant Necklaces
175. A heavy yellow metal Curb Bracelet and further bracelet with blue stones.
176. Bead Necklaces, etc.
177. A 15ct gold hinge link Bracelet. £25-40
178. A silver Bangle. £20-30
179. A silver Bangle. £20-30
180. An ivory bead Necklace. £25-40
181. A solitaire Ring on a 9ct shank. £30-40
182. A 9ct gold Bangle, Chester Assay. £25-40
183. A 9ct gold Bangle, Chester Assay. £25-40
184. An 18ct gold and platinum 5 stone diamond Ring. £40-60

185. An 18ct gold CUBIST RING set with three diamonds and central blue stone. Birmingham Assay. £80–100
186. An 18ct gold FLOWERHEAD RING with central diamond enclosed by sapphires. London 1967. £60–80
187. A George V 15ct gold DEAREST RING. Birmingham 1917 £80–120
188. A 9ct gold RIBBON PENDANT set with two opals. £50–80
189. An 18ct white gold 3 stone diamond RING each stone 3mm dia. £50–80
190. An 18ct white gold CLUSTER RING with central faceted blue zircon (*22mm dia*), enclosed by twenty two diamonds. £300–400
- 191. An 18ct gold emerald and diamond CLUSTER RING. £400–500**
192. A Victorian 12 ct gold garnet Ring, Birmingham 1869. £40–60
193. A pair of amber Earrings.
194. A 9ct gold Bracelet with three gold charms. £20–30
195. A Victorian 18ct gold ruby and diamond RING. Birmingham 1865. £70–90
196. An 18ct gold sapphire and diamond 3-stone TWIST RING. £60–80
197. An 18ct gold BRACELET. £80–100
198. An 18ct gold two-stone DIAMOND RING. £80–120
199. A garnet Necklace.
200. An Edwardian 18ct gold five-stone ruby and diamond RING. Chester 1906. £80–100
201. An 18ct gold diamond CLUSTER RING. £50–70
202. A 9ct. gold Signet Ring.
203. An 18ct gold sapphire and diamond PENDANT. £150–200
204. A 9ct gold ruby and diamond two-stone RING. £40–60
205. An 18ct gold and platinum diamond CLUSTER RING. £100–150
206. An 18ct gold Chain with charm. £40–60
207. An Edwardian 18ct gold five-stone sapphire GYPSY RING. Birmingham 1903. £70–90
208. A George V 18ct gold three-stone diamond GYPSY RING. Birmingham 1918. £70–90

209. An emerald and diamond five-stone RING. £200–250
210. A Victorian silver Necklace. £30–40
- 211. An 18ct gold three-stone DIAMOND RING. £300–400**
212. An 18ct gold sapphire and diamond half-hoop RING. £50–70
213. A Georgian silver and diamond BROOCH. £180–250
214. Two old Stickpins.
215. Three 9ct gold Rings. £20–30
216. A heavy 9ct gold Buckle Ring.
217. An 18ct gold three-stone DIAMOND RING. £150–200
218. An Edwardian 18ct gold sapphire and diamond seven-stone RING. Birmingham 1903. £80–100
219. A 9ct gold Scarf Clip
220. A Georgian silver Ring. £20–30
221. An 18ct gold Jockey Brooch. £40–60
222. A 15ct gold peridot and diamond CLUSTER RING. £120–180
223. A Victorian diamond Swallow Brooch. £40–50
224. A 9ct rose gold Locket. £30–40
225. A Victorian 18ct gold ruby and pearl RING. Birmingham 1882. £80–100
226. An 18ct gold diamond Cluster Ring. £40–60
227. An 18ct gold diamond SOLITAIRE RING. £80–100
228. A 9ct gold WATCH FOB. £120–150
229. An Edwardian 15ct gold sapphire and diamond Ring. Birmingham 1905. £80–100
- 230. An Art Deco 18ct gold DIAMOND RING. £350–450**
231. An 18ct white gold CLUSTER RING with an oval sapphire and illusion set diamonds. £80–120
- 232. A diamond SOLITAIRE RING, 0.9 carat, mounted in platinum, on an 18ct gold shank. £700–900**
233. A 9ct rose gold Bar Brooch with a pink colour stone. £20–30

234. A 9ct gold Bar Brooch with a green colour stone. £20–30
235. A 9ct gold TWIST RING set with two diamonds, each 0.15 carat. £60–80
236. A 9ct gold Wedding Band. £25–35
237. – 240. Spare lots.

CLOCKS & BAROMETERS

241. An Edwardian carved oak ANEROID BAROMETER. £60–80
242. A 19thC German WALL CLOCK. £80–120
243. A Smiths 8-day Starburst Wall Clock.
244. A Smiths Starburst Wall Clock.
245. A Smiths 8-day Starburst Wall Clock.
246. A Mappin & Webb silver plated 8-day MANTEL CLOCK.
247. A Victorian polished slate MANTEL CLOCK with an 8-day movement, Henry Bright, Leamington. £40–60
248. A hammered silver plate on copper Mantel Clock.
249. – 260. Spare lots.

Extra lots include an oak longcase Clock with bullseye and thirty hour movement.

ARMS & MILITERIA

261. A Roundhead style steel HELMET. £100–150
262. A 19thC Guardsman's HELMET. £50–80
263. A Military Khukri Knife.
264. A 19thC Ottoman SWORD. £80–100
265. A small Arabian Dagger in a green baize case.
266. A 19thC French Sabre. £30–50

267. A mid 17thC Japanese NAGINATA, signed Bisen No Kuni Ju Suke Mune, the curved *36cm (14")* blade inserted in a *185cm (73")* pole having traces of lacquer and mother of pearl inlay. £100–150
268. A CAPE RIFLE with a 14 bore shotgun side-by-side a rifled barrel, inscribed 'Made in England' for W Rawbone, Cape Town. Serial No 27683. (The purchaser of this lot must have a current Firearms Certificate.) £150–200
269. Three leather Shot Flasks. £20–30
270. Two Powder Flasks. £20–30
271. – 280. Spare Lots.

Extra lots include an antique flintlock holster Pistol (AF), Queen Anne brass Cannon , barrelled Pistol, etc.

SILVER & SILVER PLATE

281. A pair of fiddle pattern silver Sugar Tongs.
282. A George IV silver Basting Spoon. London 1823. £20–30
283. A small George III silver SAUCE BOAT with rococo repousse decoration and three hoof feet. London 1799. £60–90
284. A George V oval silver Mustard Pot with blue glass liner. Birmingham 1925, with spoon. £30–50
285. A silver Cream Jug, two silver Napkin Rings, two silver spoons, plated fork and spoon and an oval Serving Tray. £20–30
286. A pair of openwork silver plated Salts with blue glass liners and silver spoons. £20–30
287. An Edwardian silver THREE PIECE TEASET of plain flowerhead design. Sponser J & C. Birmingham 1905. *750 grammes (24½ oz)* all in. Together with a similar Coffee Pot without hallmarks. *400 grammes (13 oz)* all in. £400–600
288. A silver PUNCH LADLE with a twisted whalebone handle, the bowl impressed with a 1777 Spanish coin. £80–120
289. A silver PUNCH LADLE with a twisted whalebone handle, the bowl impressed with a 1702 shilling. £80–120

290. Four George V Old English pattern Soup Spoons. Sponsor EV. Sheffield 1927. 250 grammes (10oz). £25-35
291. Six George III rat-tail Dessert Spoons. Sponsor JR. Sheffield 1936. 240 grms (9oz). £30-40
292. A silver faced Desk Calendar.
293. A silver Cigarette Box and silver cased Pocket Watch.
294. Six pair of silver handled Knives and Forks, in two cases. £25-40
295. Two silver topped Dressing Table Jars.
296. An Edwardian silver backed five piece Dressing Table Set. Birmingham 1908. £40-60
297. Silver plated pieces including Tray, Teapot, Water Jug, Cutlery, etc. £20-30
298. A set of six George V silver Coffee Spoons, in a satin lined case. Birmingham 1929.
299. A silver backed Hand Mirror, Clothes Brush and glass Trinket Jar. £20-30
300. Two silver Old English pattern Tablespoons. Sponsor William Shaw. London 1779.
301. Four fiddle pattern silver Teaspoons.
302. Plated jug, cup and glass castor.
303. A silver plated London shape 3 PIECE TEASET. £40-60
304. An oval silver plate Centrepiece with a clear glass liner.
305. A silver plated Cake Basket with Swing Handle.
306. A silver plate Egg Cruet and an Elkington circular Tray.
307. An electroplate Teapot on a warming stand. £25-40
308. - 330. Spare lots.

Extra lots include pair of plated telescopic Candelabra, plated entree dish, silver and tortoiseshell Purse, four-piece plated Teaset, silver trumpet Vase, silver bon-bon Dish, silver and ivory caddy Spoon, Russian silver Snuff Box, silver Bowl (c.16 oz), etc.

PAINTINGS & PRINTS

- 331. A large Victorian maple framed colour landscape print.
- 332. A large gilt framed portrait Photograph.
- 333. A Parisian print in a limed oak frame.
- 334. A hunting print.
- 335. A still life print of flowers.
- 336. A 19thC engraving of the Prince Regent.
- 337. A colour engraving 'The last fox of the season'.
- 338. A Vernon Ward print 'Stream from the Hills'.
- 339. An oak framed print of a girl.
- 340. A harbour scene.
- 341. A print of a lady on a balustrade.
- 342. A print of an Asian girl.
- 343. A copper Engraving Plate of a scene with a Sheraton sideboard and ornamentation.
- 344. A 19thC print of the East window, Kings College, Cambridge, in a gilt frame.
- 345. F Varley. Two sailing dinghies and a palm beach 20thC watercolour, signed, *18cm × 28cm (7" × 11")*. £30-40
- 346. A small watercolour of a coastal town. £20-30
- 347. G G Winckler. An early 19thC colour engraving of St Peters, Rome, by Georg Balthasar, in an ebonised frame. *26cm × 40cm (10" × 16")*. £35-50
- 348. William Sharp. An 18thC engraving of Charles II landing on the Beach at Dover, by B West, in an ebonised frame. *42cm × 59cm (16" × 23")*. £35-50
- 349. T Cook. An 18thC engraving of the March to Finchley by W Hogarth, in an ebonised frame. *42cm × 59cm (16" × 23")*. £35-50
- 350. James Parker. An early 19thC coloured stipple engraving of two ladies by James Northcote, in a circular gilt frame. *30cm (12")* dia. £25-35
- 351. A Victorian gilt framed oval oil on canvas rocky Coastline. £25-40

352. W P Cooper. A stream in a woodland, watercolour, signed and dated 1913. *20cm × 30cm (8" × 12")*. £25–40
353. A still life oil-on-board signed Henri Marlin, 1923.
354. A 19thC shoulder length portrait of a young lady with bonnet, oil on canvas, (holed). *56cm × 40cm (22" × 15½")*. £20–30
355. An oil-on-board landscape in a modern oval gilt frame. £20–30
356. Two 20thC watercolours signed Brown '49; a cottage scene, framed; and a scene of Wallingford Bridge. Together with a pair of unframed prints £25–40
357. A 20thC watercolour of two sailing dinghies. *28cm × 45cm (11" × 18")*. £25–40
358. Arthur Scott. A 20thC watercolour with three figures in a cave. *22cm × 33cm (9" × 13")*. £20–30
359. A late 19thC watercolour of a European riverside town in a mountainous landscape, with a moored boat and figures on horseback in the foreground. *24cm × 39cm (9½" × 15½")*. £50–80
360. A late 19thC watercolour of a European lake with a chateau in a mountainous landscape and covered rowing boat. *24cm × 35cm (9½" × 14")*. £60–90
361. An oil on panel of an 18thC Interior Scene with six figures and birds, in a gilt frame. *30cm × 40cm (12" × 16")*. £150–200
362. An early 19thC oval Needlework Picture of a seated lady with lambs, in a beaded frame. *30cm × 23cm (12" × 9")* £50–80
363. Three colour lithographs of the Crimean War, mounted. £50–80
364. A Ltd Edition print of Ginger Lacey, DFM, signed in pencil Richard Hook, 43/550.
365. A 20thC landscape with lady and two children in the foreground. *25cm × 35cm (10" × 13")* in a gold mount and gilt frame. £50–80
366. J H Sharples. A 20thC still life of roses, bluebells and other flora in a blue vase, oil on canvas, signed. *35cm × 25cm (14" × 10")*, in a modern gilt frame.
367. A 20thC landscape with lady and two children in the foreground. *25cm × 35cm (10" × 13")* in a gold mount and gilt frame. £50–80

368. English School. A late 19thC landscape with two cowhands and small herd of cattle, oil on canvas mounted on board. *39cm × 50cm (16" × 20")* in a maple frame. £60–90
369. F C Gall. A watercolour landscape titled 'St Mary's Battersea', signed and dated 1889. *26cm × 18cm (10" × 72)*. £50–70
370. E Cope. A portrait of a seated young lady in a short sleeved dress and bonnet, in an alpine landscape, signed and dated 1890, oil on canvas. *36cm × 30cm (14" × 12")*. £40–60
371. E Hockney. Full length portrait of a young girl, after the pre-Raphaelites, oil on canvas, signed. *66cm × 50cm (26" × 20")*. See illustration. £60–90



372. ?H Cubley. 19thC, signed, oil on canvas, inscribed verso 'On Loch Levan Bullyhullish. Painted from nature, by ?H Cubley Newark on Trent. *23cm × 27cm (9½" × 14½")*. £80–120
373. J G Sykes. A watercolour of a game fish leaping from still waters afore a rocky cliff, signed. *23cm × 30cm (9" × 12")*. £100–150
374. T Sidney Cooper. Landscape with cattle and sheep at the water's edge, oil on canvas, signed, in a giltwood frame. *40cm × 61cm (16" × 24")*. See illustration, page 4. £600–900

375. A Portrait Miniature of an 18thC gentleman, mounted in Hogarth frame. £30–50

The following 10 lots are from a private collection of Original Vanity Fair lithographs.

376. Seven Legal Profession. £50–80
377. Three Horse Racing. £20–30
378. Four Cricket. £30–40
379. Seven Military. £50–80
380. Ten Assorted Subjects. £20–30
381. Seven Assorted Gentry. £20–30
382. Ten Assorted Gentry. £25–40
383. Ten Assorted Gentry. £25–40
384. Ten Assorted Gentry. £25–40
385. Ten Assorted Gentry. £25–40
386. – 390. Spare lots.

FURNITURE

391. A carved oak drawleaf DINING TABLE AND SIDEBOARD. £100–150
392. A set of five 20thC mahogany DINING CHAIRS in the Hepplewhite manner. £60–80
393. A Lloyd Loom Patio Chair. £30–50
394. A green Lloyd Loom Chair. £25–40
395. A drop arm Sofa.
396. A 1930's walnut DINING SUITE of drawleaf table, sideboard and four chairs. £150–200
397. A 1930's walnut Tea Trolley. £25–40
398. A Victorian CHAISE LONGUE upholstered in green dralon. £100–150
399. An Edwardian mahogany ROCKING CHAIR with marquetry splat back, barleytwist supports and legs, and recessed seat. £250–300

400. An Arts & Crafts OCCASIONAL TABLE tracery carved and stained with birds and flora. £100–150
401. An Edwardian Armchair upholstered in floral tapestry. £25–40
402. A large Victorian upholstered ARMCHAIR with turned front legs. £80–120.
403. A circular Occasional Table with carved top and undershelf. £30–50
404. A 1930's limed oak DINING SUITE of drawleaf table, sideboard and four chairs. £120–150
405. An Edwardian comb-back Bedroom Chair. £20–30
406. An elm Tea Trolley. £25–40
407. A Victorian drop-arm SOFA and three Armchairs. £80–120
408. A pair of 19thC lacquer JARDINIÈRE STANDS, the circular top inset with grey and liver marble, 66cm (26") high. £80–120
409. A late Victorian ebonised Double Sutherland Table with turned pillars, stretcher and gate legs. £60–90
410. A reproduction Regency mahogany extending circular DINING TABLE on four splay legs.
411. A 1930's moquette upholstered THREE PIECE SUITE, including drop-arm sofa. £50–80
412. A 1930's oval oak Occasional Table with barleytwist legs. £20–30
413. A 1930's oval oak Occasional Table with barleytwist legs. £20–30
414. A Victorian mahogany circular STEP COMMODORE. £50–80
415. A George III oak tip-top TRIPOD TABLE. £80–120
416. A George III ash and elm WINDSOR ELBOW CHAIR with pierced back splat and H stretcher. £80–120
417. A William IV mahogany barback Dining Chair with drop-in seat and sabre legs. £20–30
418. A pine dome-top Trunk and another.
419. An Edwardian Schooner Chair.
420. A 1920's oak DINING TABLE with fall flap top, barleytwist legs and X stretcher. £100–150

421. A 1930's barleytwist oak gateleg DINING TABLE. £40–60
422. An oak Bedside Table with drawer. £30–50
423. A green dralon Box Stool with bun feet.
424. A Victorian lathback Grandfather Chair (AF). £30–50
425. An Edwardian mahogany Boudoir Chair. £40–60
426. A Victorian cast iron OCCASIONAL TABLE with a circular marble top. £80–120
427. A painted Regency mahogany FOLDING CHAIR/LIBRARY STEPS with fluted barback and uplights. £200–300
428. An Art Deco Chromium plated Standard Lamp. £20–30
429. An early 18thC oak oval GATELEG TABLE. *120cm × 99cm (47" × 39")*. £120–180
430. A pair of George III mahogany DINING CHAIRS (AF). £25–40
431. A George III mahogany Side Chair. £20–30
432. A George III mahogany Carver Chair with rush seat. £25–40
433. A George III elm Carver Chair with rush seat. £25–40
434. A Victorian mahogany KNEEHOLE DESK, three drawers to each pedestal with brass swan-neck handles and leather insert top. *153cm × 84cm (60" × 33")*. £350–450
435. A 20thC panelled oak DRESSER BASE *134cm (53")* wide. £180–250
436. A George IV mahogany COMMUNE. £100–150
437. A Victorian mahogany Corner Cupboard with blind-fret decoration, two doors and undershelf. *97cm (38")* high. £40–60
438. A small 1930's oak gateleg TABLE with barleytwist legs. £30–50
439. A small glazed Victorian oak 2-door Wall Cabinet. £30–50
440. A Victorian Wall Mirror in a carved gilt frame together with a further similar frame. £30–50
441. A Jacobean style carved oak SETTLE with panel back, lift seat, cabriole legs with ball and claw feet. *100cm (39")* wide. £150–200
442. A pair of 1920's CORNER CHAIRS with turned X stretcher. £80–100

443. A William IV mahogany HALL CHAIR with shield back and turned front legs. £50-80
444. A Victorian oak OFFICE CUPBOARD. £60-80
- 445. A Charles I oak COFFER of three panel construction on raised stiles, the front carved with demi-lune, lozenge and guilloche work. 133cm (52") wide, 66cm (26") high. £600-800**
(Please phone before travelling as this lot may be relieved prior to viewing.)
446. A set of four Victorian mahogany barback DINING CHAIRS with drop-in seat and turned front legs. £180-250
447. A William IV mahogany Pembroke Table with plain drop leaf top, drawer and dummy to the frieze, turned knob handles, the turned legs terminating in brass castors. £120-180
- 448. A set of six Continental style oak DINING CHAIRS, carved with shells and flora, reeded panels to reverse, upholstered in light green sculptured dralon, c.1930. See illustration. £500-700**



449. A Victorian mahogany windout DINING TABLE with plain top with two extra leaves, on four cabriole legs having acanthus carved knees, ball and claw feet, on brass and ceramic castors. £300-400

450. A fine Victorian walnut CANTERBURY with galleried upper section over single drawer with turned handles, turned legs on brass and ceramic castors. £600–800
451. A Victorian mahogany LADIES ARMCHAIR upholstered in green dralon with scroll arms and legs on brass and ceramic castors. £400–500
452. A Victorian mahogany HALL CHAIR with an oval back, shaped seat and turned front legs. £100–150
453. An Edwardian carved mahogany CORNER CHAIR. £120–180
454. An Edwardian mahogany OCCASIONAL TABLE, the oval satinwood crossbanded top on square taper legs with shaped stretchers and oval undershelf, on brass castors. £350–400
455. A Victorian mahogany BUFFET, the three moulded tiers divided by four swell reeded columns. 48cm (19") deep, 138cm (54") wide, 122cm (48") high. See illustration. £400–600



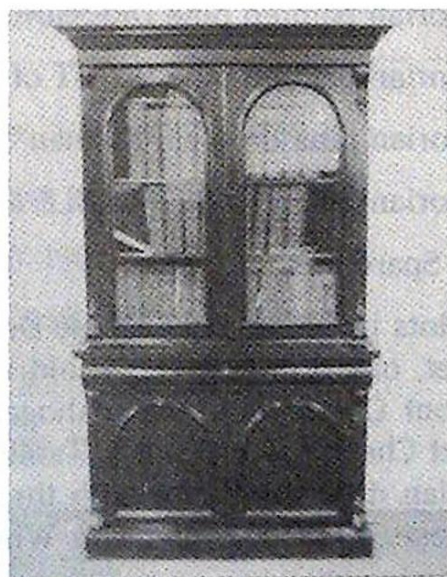
456. A Victorian walnut CENTRE TABLE, the quarter veneered oval top with stringed floral inlay, turned supports and stretcher, acanthus carved cabriole legs. 92cm (36") × 53cm (21"). £150–200
457. A Victorian mahogany OCCASIONAL TABLE with a plain circular top, turned pillar, trefoil base and bun feet. 58cm (23") diameter. £120–180
458. An Edwardian mahogany TORCHERE, 94cm (37") high. £40–60
459. A bronzed metal five branch electric Chandelier. £20–30
460. A late Georgian mahogany TEA TABLE, the moulded tip-top on a turned pedestal supported by three scroll legs. 54cm (21") square. £120–180

461. A Victorian reeded mahogany TORCHERE, *145cm (57")* high. £80–120
462. An early 19thC oak OCCASIONAL TABLE. £60–90
463. A Victorian Grandfather Chair (AF). £30–50
464. An Edwardian inlaid mahogany Double Bed (AF).
465. A George III elm country Carver Chair. £30–50
466. – 500. Spare lots.
501. A large pine Cupboard. £40–60
502. A Victorian walnut DRESSING TABLE with triple mirrors. £80–120
503. A 1930's oak Chinese style CABINET ON STAND. £50–80
504. A pine Double Wardrobe. £40–60
505. An oak Dressing Table and Chest. £60–80
506. An Edwardian mahogany WARDROBE with mirror door and drawer to base. *117cm (46")* wide. £60–90
507. A 19thC mahogany and pine BOOKCASE with two glazed doors. *89cm (35" wide, 142cm (56")* high. £50–80
508. A large pine Stationary Cupboard £30–50
509. A walnut marquetry cased UPRIGHT PIANO. £60–80
510. An Edwardian PIANO STOOL with lift lid upholstered in sculptured dralon, turned handles and cabriole legs. £50–80
511. A Victorian mahogany DRESSING TABLE with swing mirror on scroll supports and marble slab enclosed by two drawers, two frieze drawers and turned legs. *120cm (47")* wide. £120–180
512. A Victorian mahogany DOUBLE WARDROBE with fitted interior, arch panel doors and drawer base £120–180
513. A Victorian mahogany WASHSTAND, the D-shape marble top on a shaped base with central carved cabriole leg. *106cm (42")* wide. £80–120
514. A George III oak CHEST of four drawers with iron escutcheons and mahogany knob handles. *66cm (26")* wide. £150–200
515. A Queen Anne style mahogany bowfront SIDEBBOARD with oval mirrorback two drawers enclosed by two panel doors, on cabriole legs. *184cm (72")* wide. £120–180

516. A Victorian mahogany CHEST of 2 short and 3 long graduated drawers with knob handles. *122cm (48")* wide. £120-180
517. A Georgian oak CHEST of two short and three long graduated drawers with pierced brass loop handles and escutcheons, on bracket feet. *92cm (36")* wide. £120-180
518. A Victorian mahogany swing TOILET MIRROR. £30-50
519. A Victorian Tonbridge inlaid walnut Overmantel Mirror. £25-40
520. A 1920's walnut TRIPLE WARDROBE the doors having applique moulding separating the burr and figured veneers, on ogee feet. Maker's cellulose disc on reverse by Jas. Shoolbred & Co Ltd. £120-180
- 521. A late Victorian walnut DRESSING TABLE with dentil moulded rectangular mirror, glazed cabinets and three drawers to the upper section, kneehole drawer and three drawers and cupboard to each pedestal. £500-700**
522. A late 19thC mahogany CHEST, the cavetto hood being applied carving, surmounting three short drawers and three graduated long drawers with pierced brass circular loop handles, over a fluted and patera band, two door cupboard base, on carved bracket feet, in the Hepplewhite manner.
105cm (41") wide,
161cm (63") tall,
50cm (20") deep.
 £300-500
 See illustration.



523. A walnut framed Wall Mirror
524. A 1930's bleached burr walnut COCKTAIL CABINET with carved wheatsheaf top, fitted two door top, two door cupboard base, carved cabriole legs and carved wheatsheaf apron. *97cm (38") wide. £350-450*
525. A Jacobean style oak SIDEBBOARD the panel back having bulbous supports, the base having three drawers enclosed by two cupboards, barleytwist legs and stretchers, 1930's. *£180-250*
526. A George III oak CHEST of two short and four long graduated drawers with pierced brass swan-neck handles and bracket feet. *110cm (43") wide. £120-180*
527. A Victorian mahogany DRESSER BASE, the serpentine front having four panelled doors and single drawer. *214cm (84") wide. £300-450*
528. A late 19thC WALL MIRROR with circular glass enclosed by a gilt square baroque frame. *72cm (28") square. £40-60*
- 529. A Jacobean oak OVERMANTEL PANEL with three arched fields with demi lune and scoop carving. £400-600**
530. An Edwardian mahogany DOUBLE WARDROBE, with blind fret cornice, ebony stringing to the doors, on carved ball and claw feet. *£120-180*
- 531. A Victorian mahogany BOOKCASE, the upper section having a moulded cornice and two arch glazed doors, the lower section having two drawers over two arch panel doors on a plain plinth, bearing the manufacturers label of PARKINSON & CO, Cabinet Makers, Upholsterers & Paper Hangers, Market Place, RICHMOND. 44cm (17") deep, 125cm (49") wide and 220cm (86") high. See illustration. £800-1200**



532. An Edwardian inlaid mahogany WARDROBE with mirror door and drawer base. £150–200
533. A Victorian mahogany SCOTCH CHEST of four drawers with knob handles, barleytwist pillars and bun feet. *112cm (44")* wide. £120–180
534. An Edwardian mahogany Bedroom Fire Surround. £40–60
535. A wrought iron DOG GRATE. £25–40
536. A Victorian cast iron FENDER with brass rail and a dog grate. £30–50
537. A brass and crystal 5 branch Centre Light. £25–40
538. A wrought iron and copper Centre Light.
539. Six bentwood type spindleback Chairs. £30–40
540. Eight bentwood type spindleback Chairs. £40–60
541. A Victorian pine Blanket Box. £40–60
542. A Victorian painted pine CHEST of 2 short and 3 long graduated drawers with ceramic knob handles. *105cm (41")* wide. £80–120
543. A Victorian pine Side Table (AF). £30–50
544. An elm and pine Blanket Box on bracket feet. £40–60
545. A Victorian painted pine BLANKET CHEST. £60–80
546. A Victorian painted pine MULE CHEST. £80–120
547. A Victorian pine BLANKET BOX. £25–40
548. A Victorian painted pine DRESSING TABLE £60–80
549. A Victorian painted pine CHEST of drawers. £80–100
550. A Victorian pine dropleaf Kitchen Table. £25–40
551. A Victorian pine CRICKET TABLE £60–90
552. – 560. Spare lots.

Extra lots include oak kneehole Desk, superb Victorian mahogany display Cabinet, oak drawleaf Table, old wooden shop Till, Victorian mahogany bowfront Chest, Victorian mahogany Wardrobe with double doors, pine blanket Chest, oak extending Table with spare leaf, walnut nest of Tables, Victorian dressing Mirror with three drawers, Victorian walnut Chiffonier Bookcase, 19thC ash and elm Windsor Chair, 19thC yew Windsor Chair

with crinoline stretcher, glazed shop counter Cabinet, Victorian mahogany Armchair, Victorian grandfather Chair, Globe Wernicke Bookcase, oak framed Mirror, walnut Art Deco Armchair, William IV mahogany Armchair, child's bentwood Chair, pair of Victorian Footstools, fine Edwardian inlaid Worktable, oak blanket Chest, large oak Barometer (King's Lynn maker), Georgian oak mule Chest, round mahogany Tray, 19thC revolving piano Stool, brass top Benares Table, Victorian mahogany Commode, early 18thC oak Chair, mahogany extending dining Table with 2 spare leaves, oak library Table with six drawers, Georgian oak corner Cupboard, etc.

ORIENTAL AND OTHER CARPETS & RUGS

- 561. A small red ground Indian floral Rug.
- 562. A Shiraz style Rug.
- 563. Two Persian style Rugs.
- 564. Two Persian style Rugs.
- 565. Two Persian style Rugs.
- 566. Two Persian style Rugs.
- 567. Two Persian style Rugs.
- 568. Two Persian style Rugs.
- 569. Two Persian style Rugs.
- 570. A Persian Runner. £30-50
- 571. A Senna Kelim Rug, c.1930. *173cm × 108cm*. £200-300
- 572. A Ghashghi Kelim Rug, c.1950. *242cm × 148cm*. £250-350
- 573. A Shiraz Rug. *165cm × 117cm*. £120-180
- 574. A Caucasian Rug. *200cm × 124cm*. £180-250
- 575. A Caucasian Rug. *200cm × 115cm*. £180-250
- 576. A Malayer Rug. *210cm × 131cm*. £120-180
- 577. A Shiraz Rug. *164cm × 116cm*. £120-180
- 578. An Afshar Rug. *177cm × 122cm*. £200-300

579. A Hamadan Runner. *290cm × 79cm*. £180–250
580. A Bluch Rug. *173cm × 89cm*. £180–250
581. A Bluch Rug. *184cm × 95cm*. £150–200
- 582. A Bijar Rug. *198cm × 130cm*. £450–550**
583. A Ferdos Rug. *287cm × 105cm*. £150–200
584. A Malayer Runner, *c.1920*. *144cm " 86cm*. £250–350
585. A Ghashghi Rug. *191cm × 133cm*. £200–300
586. A Malayer Rug. *144cm × 86cm*. £100–150
587. A Savah Rug. *150cm × 94cm*. £100–150
- 588. A Tabriz Carpet, *c.1940*. *330cm × 245cm*. £750–1000**
- 589. A fine Bakhtiar Carpet, *c.1930*. *407cm × 320cm*. £1500–2000**
- 590. A fine Kashan Carpet. *396cm × 300cm*. £1400–1800**
591. A Pushty Rug. £40–50
592. A Pushty Rug. £40–60
593. A white ground Indian Carpet (AF). £20–30
594. An Indian Carpet (AF). £20–30

– END OF SALE –

FORTHCOMING SALES AT

THE GRANTHAM AUCTION ROOMS

ANTIQUE & MODERN FURNITURE & EFFECTS

on Wednesday 10th March 1993, at 10am

Viewing: Tuesday 9th 1pm to 5pm & Saleday 9am to 10am

We now require entries for our

SPRING WEEKEND AUCTION

SATURDAY 13th MARCH: Outside lots to include garden tools, mowers, bicycles, statues, c.100 shrubs & trees, DIY & building equipment, c.100 lots of new timber, farm machinery, etc.

SUNDAY 14th MARCH: Inside lots to include c.500 lots of new planters, pots, vases, garden furniture, tools, etc.

Both sales commence 11am with viewing from 9am morning of each sale only.

Please note that the saleroom will be open to receive entries on Saturday 6th March 9am to 10am.

ANTIQUE & MODERN FURNITURE & EFFECTS COMMERCIAL CATERING EQUIPMENT OFFICE EQUIPMENT, ETC.

on Wednesday 24th March 1993, at 10am

Viewing: Tuesday 9th 1pm to 5pm & Saleday 9am to 10am

Our next catalogued sale of

ANTIQUES & FINE ART

is on Wednesday 21st April, 1993 at 10am

Selected Furniture, Paintings, Prints, Glass, Ceramics, Silver, Clocks, Jewellery, Metalware, Books, Arms & Armour, Bygones, etc.

– FURTHER ENTRIES NOW REQUIRED –

Viewing: Sunday 18th 2pm – 4pm, Tuesday 20th 1pm – 7pm
and Saleday 9am – 10am

Final closing date for entries is 2nd April.

THE COMPLETE AUCTION SERVICE

— GOLDINGS —

ANTIQUES DEPARTMENT



GENERAL ENQUIRIES

Our Auction Rooms are open concerning valuation appointments, sales information, house clearance and transport arrangements from 9 am to 5 pm Monday to Friday. Please telephone Grantham (0476) 65118



VALUATIONS

For items too large or numerous to bring to us our valuer can visit your home to give personal advice on the best method of sale.

With an increasing number of thefts, particularly of Antiques & Works of Art it is essential to have a detailed inventory and report with photographic records. This can be invaluable when negotiating with Insurance Companies.



SELLING WITH GOLDINGS

For over 90 years we have held sales in Grantham. Our spectrum ranges from important paintings, such as two examples by Fred Stead selling for £10,800 to items of a few pounds.

Our versatility enables us to deal with single items to Country House Sales with the same level of professional competence. Flexible commission rates, extensive register of specialist buyers and regular sales ensure that your valuables get the widest International exposure and that selling with us is a pleasurable and profitable experience.

**HOW TO FIND ...
"THE LARGEST
PURPOSE BUILT
AUCTION ROOMS
IN THE AREA"**

