



reviews
news &

SPRING & SUMMER 2006

GOLDING YOUNG 1900
CHARTERED AUCTIONEERS & VALUERS Commercial Asset Agents • Arts & Antiques Surveyors

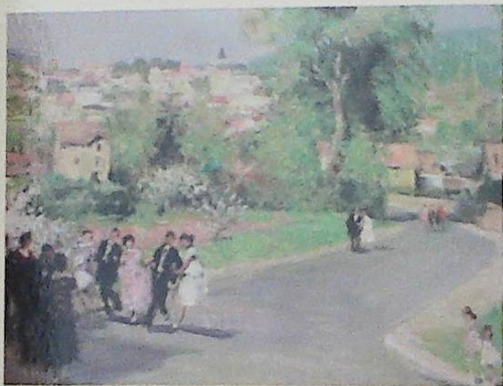
reVIEW



£5,300



£750



£1,300



£1,800



£900



£380



£135,000

SPRING & SUMMER 2006 EVENTS

THE SPRING CATALOGUE SALE

On Wednesday 10th May 2006
Further details on the following preVIEW pages

THE COLLECTIVE SALES

Your Market Place

for Victorian, decorative and modern furnishings
jewellery, silver, ceramics, glass, books, clocks, modern collectables, toys, etc.
Surplus business assets, stock-in-trade, vehicles, plant, machinery & equipment.

24th May, 7th & 28th June, 12th July 2006 at 10am

Lotted List Online Tuesday prior 7pm at WWW.GOLDINGYOUNG.COM
VIEWING: Tuesday prior 2pm to 6pm & Sale day from 9am to 10am

ENTRIES ALWAYS INVITED

LINCOLNSHIRE SHOW

Come and visit our stand in the Mews at the 2006 Show
on June 21st & 22nd and meet our Valuers.

THE SUMMER CATALOGUE SALE

7th July - Closing Date for Entries of

Jewellery, Watches & Bijouterie ❖ Glass & Ceramics ❖ Toys & Juvenalia
Books, Stamps, Maps, Ephemera ❖ Textiles & Metalware ❖ Arms, Decorations, Coins
Silver and Plated Wares ❖ Clocks & Barometers ❖ Pictures, Prints & Miniatures
Antique & Decorative Furniture ❖ Sporting: Hunting/Shooting/Fishing/Racing
(Sale On Wednesday 2nd August, 2006)

ANTIQUES & FINE ART CONSULTANCY

@ The Grantham Auction Rooms
Every Friday 9am to 1pm

For free advice on marketing there is only one place to come.



We are the **ONLY** auction house in the region to have **ALL**
of our experienced valuation staff Qualified as Fellows of
The National Association of Valuers & Auctioneers



@ The George Hotel, Stamford

2pm to 4.30pm on Fridays

12th May ❖ 23rd June ❖ 4th August
22nd September ❖ 24th November

@ The New England Hotel, Boston

2.30pm to 4.30pm on Fridays

30th June ❖ 29th September



PROFESSIONAL VALUATIONS

Property Clearance & IHT Valuations

With the new guidelines of HM Customs & Revenue, if you are the 'accountable person' dealing with the furniture and effects (chattels) from an Estate without it is imperative to obtain professional advice from Valuers that are qualified to do so.

Insurance Valuations

There is only one way to insure your Antiques, Works of Art and other contents.
Get a Valuation Report - give it to your Insurer and tell them what to insure!
Only by knowing your risk, can they offer you the best and most competitive policy.
It is always too late when your claim is reduced or void by policy wording.

For all professional Valuations contact our senior auctioneer,
Colin Young MRICS FNAVA

Colin is a Chartered Arts & Antiques Surveyor and currently holds the RICS/Antiques Trade Gazette Prize for Professional Assessment.

THE SPRING CATALOGUE SALE

Upon instructions from the Executors of
R C Scoggins (Dec'd), Enid Wildbore (Dec'd), John G Steele Wildbore (Dec'd), Joan Brandon (Dec'd)
and further lots in the estate of Major General Sir Bryan Wyldbore-Smith removed from Grantham House
together with the substantial furniture contents of a six-bedroom farmhouse.

Over 150 vendors choosing GOLDING YOUNG as their Auction Professionals.

Jewellery, Watches & Bijouterie

Glass & Ceramics

Toys & Juvenalia

Books & Ephemera

Textiles & Metalware

Silver and Plated Wares

Clocks & Barometers

Pictures, Prints & Miniatures

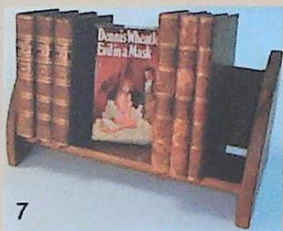
Antique & Decorative Furniture

1000+ Lots on Wednesday 10th May 2006

Catalogues are fully Illustrated Online from 6th May at
WWW.GOLDINGYOUNG.COM

VIEWING: Monday 8th 2pm to 5pm, Tuesday 2pm to 7pm
& Saleday 9am to 10am.

*pre*VIEW



Cover illustration:

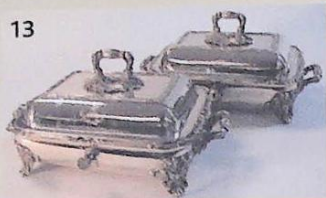
A Victorian parian figure of Ariadne and the Panther, 7" high.

1. A selection from over 150 lots of antique and decorative furniture.
2. Chinese cloisonné pieces from a selection of decorative oriental wares.
3. From Victorian sarcophagus tea caddies, to an Edwardian humidor and a Georgian salt box to a French bust of a Blackamoor; a sale of diversity and interest.
4. Tudric Arts & Crafts pewter wares by Liberty.
5. A fine George III silver Standish by T&J Guest, John Craddock. London 1809.
6. A 1930 Liberty silver wine jug and a later rosewood handled example.
7. A Robert Thompson 'Mouseman' bookrack containing Hallam's Literature of Europe; Dennis Wheatley, 1st. editon Evil in a Mask and The Duke of Rutland's Travels in Great Britain, 1805.
Provenance: The Manners family by descent.
8. A Bing tinplate clockwork car and an ORTO lamp.
9. A 'barn-find' Wolseley car reg. MJL 555
10. A selection from over 30 lots of glass including a Georgian tazza with Silesian stem.
11. From a selection of 18th & 19th C metal ware.

preVIEW



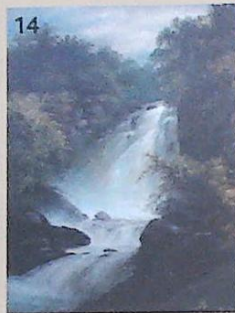
12



13



16



14



19



15



20



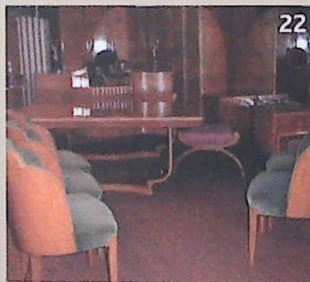
17



18



21



22

- 12. A 19th C mahogany wheel barometer by W Adamson, Manchester.
- 13. A pair of crested electroplate entrée dishes with warming stands.
- 14. A landscape oil on canvas by GB Yarnold 36" by 28", gilt framed.
- 15. By and after John Piper. Harlaxton Manor, print signed in pencil, 20" by 27".
- 16. Military letter of instruction from The Duke of Wellington together with a Bohemian paperweight.
- 17. A fine French gilt brass repeater carriage clock, 8" high.
- 18. A 1966 World Cup programme, tickets and an extensive chronological collection of England football programmes and ephemera.
- 19. A 19th C brass skeleton clock by Thos. Hambleton, Birkenhead, 18" high.
- 20. From a selection of medals and associated ephemera.
- 21. An Italian micro-mosaic brooch depicting St Peter's Square, Rome and an 18ct white gold seven-stone diamond half-hoop.
- 22. From a selection of Epstein Art Deco furniture removed from its one and only residence in North London.

preVIEW



23



28



24



25



34



26



27



29



30



32



31



33

- 23. A George III mahogany sideboard from Grantham House, 72" wide.
- 24. A Victorian ebonised credenza, 59" wide.
- 25. An early 18thC laburnum oyster veneer cabinet on later stand.
Provenance: By descent, The Fitzgeralds of The Island, County Waterford, this item has been on loan at Malahide Castle, near Dublin
- 26. Victorian and George IV Davenports.
- 27. From a selection of oak in the sale including an Irish joint stool.
- 28. A Japanese bottle vase signed Dai Nikon Seto, 12" high
- 29. A pair of 'Nabeshima' dishes, 8¼" dia.
- 30. A George IV Celtic silver shawl pin. Edinburgh 1830.
- 31. An Art Deco brooch, circa 1.75cts.
- 32. A 19thC French gilt mantel clock, 22" high.
- 33. A selection of longcase clocks in the sale.
- 34. A longcase clock by Nat. Sanders of Manchester.

preVIEW

Golding Young & Co.

Old Wharf Road, Grantham, Lincolnshire NG31 7AA

Telephone: 01476 565118 Fax: 01476 561475

Email: enquiries@goldingyoung.com www.goldingyoung.com