

ANTIQUES, WORKS OF ART,
SILVER & COLLECTORS' ITEMS



Wednesday 20th April 2011 at 10am

GOLDING YOUNG & THOS MAWER ♦ 1864



Lot 322

By instructions from
Executors of the late Peter Hunt, Bransby Rest Home for Horses,
Lincolnshire & other local vendors

Auction Sale of

ANTIQUES, WORKS OF ART,
SILVER & COLLECTORS ITEMS

Wednesday 20th April 2011 at 10am at
The Lincoln Auction Rooms

On View: Tuesday 19th 10am-4pm,
& morning of sale from 8.30am

Catalogues £10

GOLDING YOUNG & THOSMAWER 1864

The Grantham Auction Rooms
Old Wharf Road, GRANTHAM
Lincolnshire NG31 7AA
Tel: +44 (0) 1476 565118
Fax: +44 (0) 1476 561475
Email: grantham@goldingyoung.com



WWW.GOLDINGYOUNG.COM

The Lincoln Auction Rooms
Dunston House, Portland Street
LINCOLN, Lincolnshire LN5 7NN
Tel: +44 (0) 1522 524984
Fax: +44 (0) 1522 535600
Email: lincoln@goldingyoung.com

IMPORTANT INFORMATION FOR BUYERS

1. **Introduction:** The following informative notes are intended to assist Buyers, particularly those inexperienced or new to our salerooms. All sales are conducted on our printed 'Conditions of sale' which are readily available for inspection and normally accompany catalogues. Our staff will be happy to help you if there is anything you do not fully understand.
2. **Agency:** As auctioneers we usually contract as agents for the seller whose identity, for reasons of confidentiality, is not normally disclosed. Accordingly, if you buy your primary contract is with the seller.
3. **Estimates:** Estimates are designed to help buyers gauge what sort of sum might be involved for the purchase of a particular lot. The lower estimate may represent the reserve price and certainly will not be below it. Estimates do not include the buyer's premium or VAT (where chargeable). Estimates are prepared some time before the sale and may be altered by announcement before the sale. They are in no sense definitive.
4. **Buyers premium:** The 'Conditions of sale' oblige buyers to pay a buyer's premium at 17.5% on the hammer price of each lot purchased with a minimum of £1 per lot. In the case of lots purchased 'Live On-line' or via www.thesaleroom.com or www.i-bidder.com this will be charged at 22.5% on the hammer price. In addition, VAT is payable on this premium (see below).
5. **VAT:** No lots in this sale are subject to VAT.
6. **Condition and description of lots.** We are primarily, agents for the seller. We are dependent on information provided by the seller and whilst we may inspect lots and act reasonably in taking a general view about them we are normally unable to carry out a detailed or any examination of lots in order to ascertain their condition in the way in which it would be wise for a buyer to do. Intending buyers have ample opportunity for inspection of goods and, therefore, accept responsibility for inspecting and investigating lots in which they may be interested. Please note carefully the exclusion of liability for the condition of lots contained in the 'Conditions of sale'. Neither the seller nor we, as the auctioneers, accept any responsibility for their condition. In particular, mechanical objects of any age are not guaranteed to be in working order.

However, in so far as we have examined the goods and make a representation about their condition, we shall be liable for any defect which that examination ought to have revealed to the auctioneer but which would not have been revealed to the buyer had the buyer examined the goods. Additionally, in specified circumstances lots misdescribed because they are 'deliberate forgeries' may be returned and repayment made. There is a 21 day time limit from the date of sale, not date of collection or receipt. (The expression 'deliberate forgery' is defined in our 'Conditions of sale').
7. **Electrical goods:** Items are tested by a qualified electrician for SAFETY ONLY. An item that passes the PAT safety test may not work. Conversely, an item that fails the test may work with just minor repair. 'Working Order' and 'Safe' are two completely different concepts. The only thing you may take for granted is that the item will be safe at the point of sale. Items that have failed will have their cabling cut to source, labelled and sold 'For Trade Only'. To use the object you will have to change it radically from what was sold to you. Therefore, the Auctioneers cannot be held responsible after the point of sale. Those items sold genuinely as 'antiques or collectables' will not have been tested and if bought for use must be checked over for compliance with safety regulations by a qualified electrician before use. This is an express condition.
8. **Export of goods:** Buyers intending to export goods should ascertain (a) whether an export licence is required and (b) whether there is any specific prohibition on importing goods of that character because, e.g. they may contain prohibited materials such as ivory. Ask us if you need help.
9. **Bidding in person:** Some form of identification with proof of address will be required if you are unknown to us. Bidders may be required to register before the sale commences and lots will be invoiced to the name and address on the registration form. Account transfers will not be recognised or facilitated under any circumstances.
10. **Absentee bidding:** Commission bids may be left with the auctioneers indicating the maximum amount to be bid excluding buyers' premium. They will be executed as cheaply as possible having regard to the reserve (if any) and competing bids. If two buyers submit identical commission bids, the auctioneers may prefer the first bid received. If there are genuine reasons why you are unable to leave a Commission Bid and you wish to bid by telephone we may accommodate on lots where your opening bid will be £500 or above. There are inherent dangers with this practice; therefore all arrangements shall be entirely at the bidder's risk. Absentee bid instructions must be received by telephone, fax or email 12 hours prior to the sale.
11. **Live Internet Bidding:** In completing the bidder registration on www.the-saleroom.com and providing your credit card details and unless alternative arrangements are agreed with Golding Young & Co and/or Thos. Mawer & Son, you (i) authorise Golding Young & Co and/or Thos. Mawer & Son, if they so wish, to charge the credit card given in part or full payment, including all fees, for items successfully purchased in the sale via www.thesaleroom.com or www.i-bidder.com, and (ii) confirm that you are authorised to provide these credit card details to Golding Young & Co and/or Thos. Mawer & Son through www.the-saleroom.com or www.i-bidder.com
12. **Methods of payment:** Accounts are due for settlement SALEDAY.

The following methods of payment are acceptable.

There will be NO EXCEPTIONS to this policy.

To avoid undue embarrassment for yourself or our staff, please do not ask for preferential treatment.

 - i. **Cash.** Single payments up to £10,000 only.
 - ii. **Debit Card.** No limit with chip & pin. (CNP limit £500).
 - iii. **Credit Card.** (Fee of 2%+vat) No limit with chip & pin. (CNP limit £500).
 - iv. **Bank Drafts & Building Society Cheques.** No limit. Due to forgeries, we will retain the goods for 3 working days to establish clearance of funds.
 - v. **Cheques.** Accepted up to the limit of the guarantee card for immediate clearance. For sums exceeding this, and you are not known to the auctioneers, we will retain the goods for 7 working days to establish clearance of funds.
 - vi. **Bank Transfer for Grantham Auctions.** Payments to Golding Young & Co Auction Clients Account, 40-22-19 31269348. HSBC, 88 Westgate, Grantham NG31 6LF. Swift Code MIDLGB22. IBAN is GB78MIDL40221931269348.
 - vii. **Bank Transfer for Lincoln Auctions.** Payments to Thos. Mawer & Son Auction Clients Account, 40-28-20 22768127. HSBC, Stonebow, 221 High Street, Lincoln, LN1 1TS. Swift Code MIDLGB65. IBAN is GB65MIDL40282022768127.
13. **Collection and storage:** Goods can be collected as soon as they are paid for and within two working days following the sale. If goods remain with us and we have no contrary written advice of your intentions the items will be moved to storage and reasonable labour charges levied and storage at the rate of £2+vat per lot per day thereafter for small items and £10+vat per lot per day for furniture and large items.
14. **Postage & Packing:** Four options for buyers are available ask a member of staff or visit www.goldingyoung.com/buying.

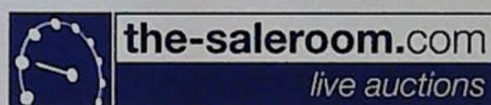
GOLDING YOUNG & THOS MAWER will sell by Auction

ANTIQUES, WORKS OF ART, SILVER & COLLECTORS ITEMS

WEDNESDAY 20th APRIL at 10am
Lots 1-413

Lots 414 onwards also to be sold (not in catalogue)

Bid on-line or simply watch the sale live



Buyers Enquiries: **01522 524984**

Note: Lots 1001 onwards (approx. 400 lots) will be sold concurrently
in Saleroom 2 on the 20th April

The catalogue will be available in text only format
WWW.GOLDINGYOUNG.COM

GOLDING YOUNG & THOS MAWER 1864

The Grantham Auction Rooms
Old Wharf Road, GRANTHAM
Lincolnshire NG31 7AA
Tel: +44 (0) 1476 565118
Fax: +44 (0) 1476 561475
Email: grantham@goldingyoung.com



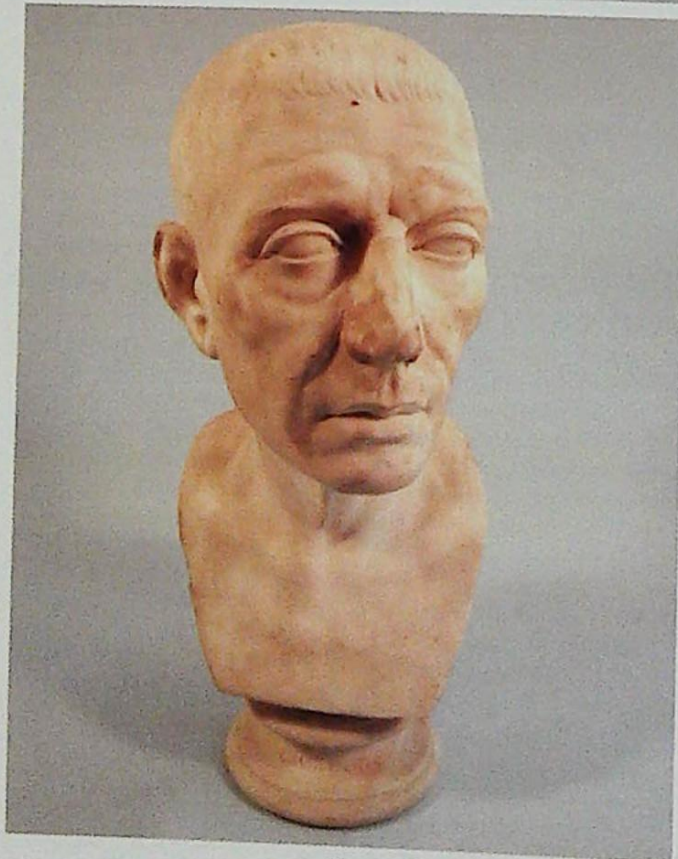
WWW.GOLDINGYOUNG.COM



The Lincoln Auction Rooms
Dunston House, Portland Street
LINCOLN, Lincolnshire LN5 7NN
Tel: +44 (0) 1522 524984
Fax: +44 (0) 1522 535600
Email: lincoln@goldingyoung.com

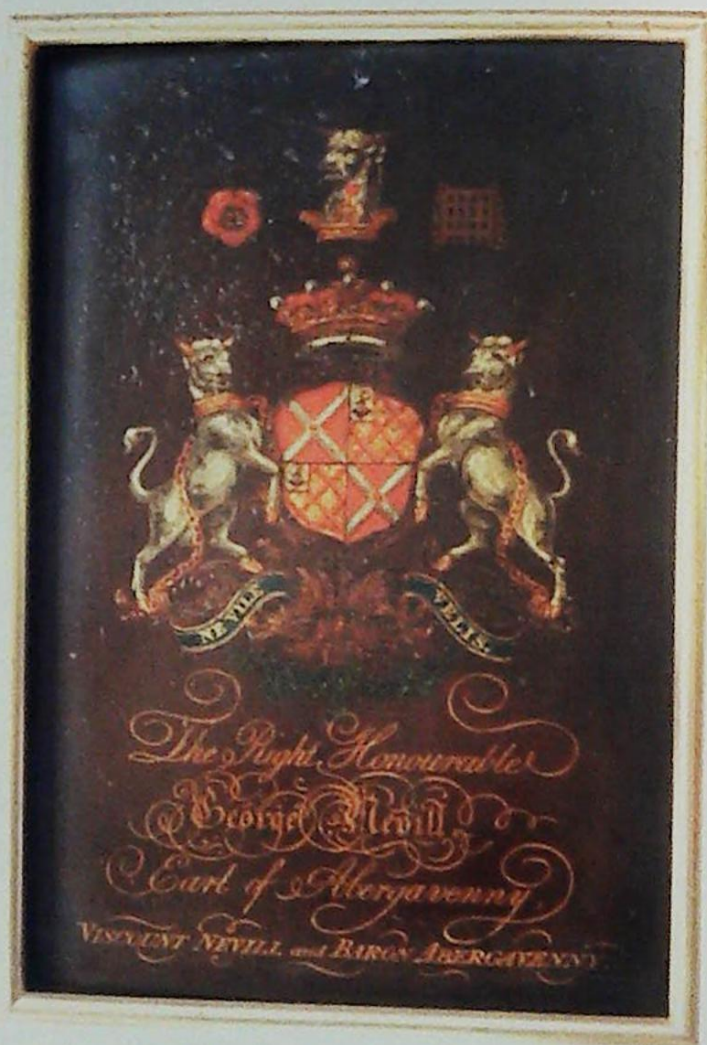


1



2

1. **A 19thC German ivory tankard**, carved in high relief with a classical battle scene, the hinged cover with a figure on horseback and the handle with a bound captive and acanthus, on a silver oval stand, possibly Augsburg, embossed with lion masks, raised on four pad feet, *the tankard 40cm high, overall 46cm high*
2. **G D Rossi (19thC)**. Bust of the Emperor Cicero, white marble, inscribed 'G De Rossi, Roma, Cicerone' *59cm high*
3. **A 19thC coaching panel**, printed and painted with the Royal crest, *47cm x 57cm*



4

4. **An early 19thC coaching panel** painted with the Nevill crest, inscribed "The Right Honourable George Nevill, Earl of Abergavenny, Viscount Nevill and Baron Abergavenny" on a black ground, *45cm x 30cm*



5

5. An early 19thC tortoiseshell & mother-of-pearl inlaid tea caddy, the sarcophagus top and front fascia with floral sprays, the interior with ivory banding and two lids to previously divided compartments, on bun feet, 17cm wide, 15cm high



8

8. A 19thC calamander stationery box, with decorative brass mounts, with internal division, stamped Everingham, Pelham, Nottingham, 20cm high, 26.5cm wide



6

6. An early 19thC tortoiseshell tea caddy of serpentine form, the hinged cover with metal plaque, enclosing two lidded divisions, on bun feet, 14cm high, 21cm wide



7

7. An early 19thC tortoiseshell tea caddy of rectangular form, with a double bow front & cover, the hinged cover enclosing two lidded divisions, on bun feet, 15cm high, 20.5cm wide



9

9. An early 19thC needlework sampler worked by Betty Lawton aged 10 in 1809, showing a list of her family members including the date of their deaths and a poem, flanked by flowers in a contemporary rosewood frame - now converted to a firescreen, 80cm x 56cm



10

10. 20thC School. Horse and jockey, bronze, on a brown marble base, 26cm wide overall



11

11. An Edward VII silver two handled cup & cover by Goldsmiths & Silversmiths Co Ltd, the body with an imbricated girole above a repousse acanthus border, with leaf capped scroll handles, the cover with a bud finial and foliate border against a matted ground, the interior gilt, the body engraved with initials and dates, London 1907 (the cover 1905), 30cm high, approx weight 103oz



12

12. An Edward VII Irish silver dish ring, by James Wakely & Frank Clarke Wheeler, the sides pierced with hounds and game amidst scrolling leaves and flowers, fitted with a blue glass liner, Dublin 1904, 19cm diameter, 10cm high, approximate weight 12.5oz



13

13. A Victorian silver sugar castor, by George Jackson and David Fullerton, urn shape, embossed with wrythen flutes, scrolls and foliage, on a square foot, the pierced cover with flame finial, London 1898, 22.5cm, approximate weight 8oz



14

14. **A Victorian silver teapot** by *William Morrisse* (probably), of compressed circular form, repoussé with flowers, scrolls and 'C' scrolls around two cartouches engraved with heraldic crests, the leaf capped handle with ivory heat exchangers, the domed cover with rose and leaf finial, London 1852, 14cm high, approximate weight 22oz



15

15. **A William IV silver teapot**, by *Richard Pearce & George Burrows*, the swept baluster body repoussé with flowers, scrolls and 'C' scrolls around two cartouches engraved with heraldic crests, the leaf capped scroll handle with ivory heat exchangers, the cover with a strawberry and leaf finial, raised on scroll and acanthus bracket feet, London 1836, 24cm high, approximate weight 24oz



16

16. **An Elizabeth II silver five light candelabra** of 18thC design by *Richard Comyns*, with four scrolling branches, fixed sconces and drip trays, on a knopped stem and moulded circular foot, London 1964, 36cm high, weighted



17

17. **A pair of late Victorian silver candlesticks**, by *Charles Boynton*, the composite columns entwined with ivy, on stepped head bases, London, 1892, 20cm high, weighted
18. **A Victorian silver dish**, by *Rosenthal Jacob & Co* the circular body with swelling wrythen collar over a matted ground embossed with scrolls and flowers around a cartouche, engraved with a heraldic crest and emblem, the base inset with a florin, London 1892, 10cm diameter, 7cm high, approximate weight 3oz



19

19. A George III silver wine funnel, maker's mark rubbed, with a reeded collar and ribbed spout, the interior fitted with a strainer, London 1798, 16cm
20. A William IV silver mustard by Barnard Bros, the drum shape body with a gadroon rim, the hinged cover with shell thumb piece and engraved with a heraldic emblem and monogram, blue glass liner, London 1830, 5cm high, approximate weight 4oz



21

21. A Victorian silver breakfast service by Charles Stuart Harris, comprising teapot, milk, sugar and sugar basin, bullet shape, each lightly engraved with foliate borders over engraved cartouches, on circular foot rim, London 1875. Approximate total weight 18oz

22. A Victorian silver sugar castor by Fenton Bros, the plain cylindrical body with annulated girole and on a gadroon foot, the pierced cover with urn finial and conforming border, Sheffield 1888, 18cm high, approximate weight 7oz



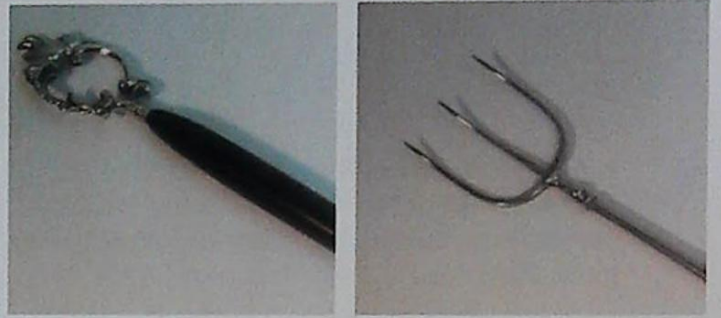
23

23. A George V silver inkwell, by Adie Bros, of circular moulded form, with a hinged cover, engraved with "June 9th 1928," Birmingham 1927, 10cm diameter, 6.5cm high, weighted
24. A George III silver chamberstick, by Thomas Blagden & Co., the oblong base and drip tray with gadroon borders, fitted with a ring handle, Sheffield 1814, 6cm high, approximate weight 3oz
25. An Edward VII pepperette with an octagonal baluster body, pierced and engraved cover, on a spreading foot, Chester 1909, 11cm high
26. A George V silver ashtray, of circular dished form, Birmingham 1925, 13.75cm diameter
27. A Victorian silver shell shape dish, by Hammond & Innes, with pierced and embossed ornament, on three reeded bun feet, Edinburgh 1897, 9.5cm wide
28. A Victorian silver commemorative pin tray, maker's mark rubbed, of circular form, moulded with two 'crown' handles, engraved 1837-1897, London 1896, 14.5cm wide overhandles, approximate weight 2.5oz



29

29. **An early George V silver Baptismal mug or small tankard**, by *Goldsmiths & Silversmiths Co Ltd*, the cup shape body with an annulated girdle over 18thC ornament, leaf capped scroll handle, on a domed foot rim, *London 1911*, 10cm high, approximate weight 5 oz
30. **An early George V silver shallow dish** by *Adie Bros*, with an egg and dart rim and ribbed well, on a spreading circular foot, bears retailer's name of *Coombes & Co, Rangoon, Birmingham 1930*, 11.5cm diameter, approximate weight 2.5oz
31. **A Victorian silver dish**, by *Wallace & Hall*, of ovoid form, embossed with flowers and foliage over a wrythen basal border, *Birmingham 1877*, 10cm diameter, 7cm high, approximate weight 3oz
32. **An Edward VII silver sifter spoon**, with a circular pierced bowl and Old English pattern on handle, *Sheffield 1905*
33. **An early George V silver Baptismal knife and fork**, by *Goldsmiths & Silversmiths Co Ltd*, the handles with raised decoration, engraved with initials, *London 1910*
34. **An Edward VII silver Baptismal spoon & fork**, the shaped handles with gadroon borders and foliate terminals, *Birmingham 1903*



35

35. **A George III silver toast fork**, maker's mark of 'WH', with a three prong fork on an ebony sectional handle with silver mounts, terminating with a rococo scroll finial, *London 1799*, 90cm
36. **Two pairs of Victorian silver sugar tongs**, each with shell bowls from volute and twist shafts, *London 1892*
37. **A pair of late Victorian silver sugar tongs**, with shell detail, *London 1900*



38

38. **A George IV silver pap boat** by *Henry & Charles Lias*, of traditional form with a gadroon rim, *London 1827*, 12cm wide
39. **An Edward VII silver sifter spoon**, with a circular pierced bowl and shell finial, *London 1901*, together with an Epns butter knife (2)



40

40. A pair of Victorian silver pepperettes, each with wrythen baluster bodies, flame finials, on circular foot, London 1899, 9cm high, approximate total weight 3oz



41

41. A pair of George III silver entree dishes & covers, maker's mark rubbed, each of plain rectangular outline, with reeded borders and conforming removable handles, London 1809, 28.5cm wide, approximate total weight 96oz



42

42. An Edward VII silver desk stand by William Hutton & Sons Ltd, of bracketed outline with two handles, fitted with two inkwells (one associated and one now missing), flanking a circular box, lacking taperstick, raised on pad feet, London 1901

44. Charles Emile Jonchery (French 1873-1937), an Art Deco period gilt bronze and ivory figure of a female wearing a full length coat, on a green onyx base, 'signed Jonchery', 22cm high



44

45. A 19thC Prattware pot lid entitled "Philadelphia Exhibition 1876", 11cm diameter, another printed with sea shells, 11cm diameter, another entitled "The Ning Po River", 10cm diameter, a pair of inkwells, each decorated with a coastal scene, a rectangular lid printed with a continental scene with a castle in the background and a small pot lid printed with a marriage scene (7)



46

46. A pair of Royal Worcester blush ivory lobed vases, with a slender neck and two gilded handles, the body polychrome and gilt with a floral spray, shape 694, date code for 1890, 24.5cm high (lacking stopper)



47

47. A Royal Worcester claret jug, the blush ivory ground gilded and polychrome painted with flowers, shape 1047, date code for 1898, 22.5cm high

48. A Royal Worcester plate, with a gilt border and fluted well, painted in gilt with flowers against a matt ivory ground, shape 1416, date code for 1890, 21.5cm diameter

49. A Royal Worcester miniature cup & saucer, decorated with floral sprays against a blush ivory ground, date code for 1909, the cup 4.25cm high

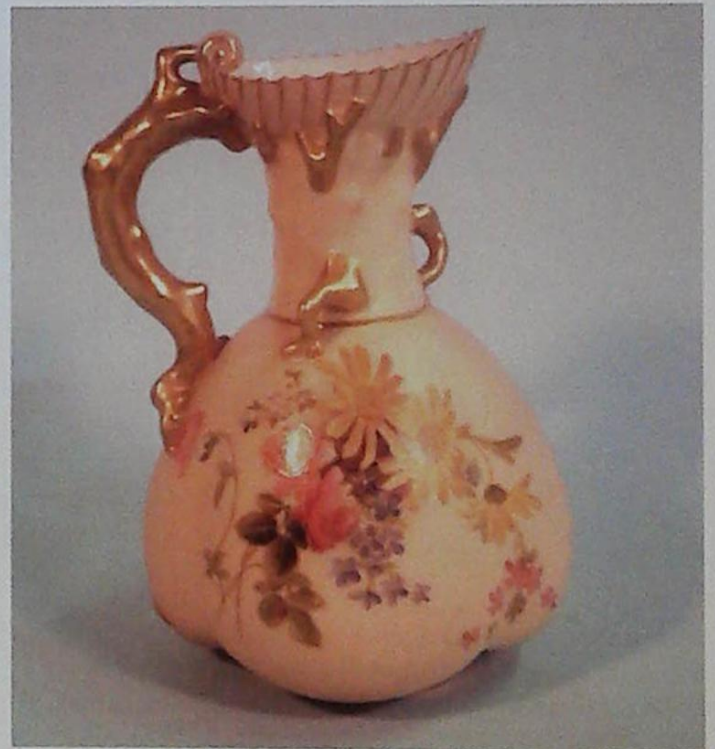
50. An Italian blue globular vase, circa 1950 with yellow and gold inclusions, 12cm high

51. A continental porcelain and novelty ashtray in the form of a 'Glamour Lady' holding a fan and with articulated legs, painted with flowers, 14cm wide



52

52. An early 20thC yew apprentice chest of two short and two long drawers on bracket feet, 20cm high x 20cm wide



53

53. A Royal Worcester jug, of lobed outline, with a shell moulded neck and gilded coral handle, painted and gilt with summer flowers, shape no. 1507, date code for 1903

54. An Edwardian porcelain scent flask, of flattened circular form, decorated in colours with a study of a lady, with an internal glass stopper and silver cap, hallmark for Birmingham 1904, 5.5cm

55. A late 19thC French gilt metal urn with porcelain mounts decorated with putti on a blue ground, 33cm high



56

56. A pair of 19thC Staffordshire pottery flatback figures of zebras, on ovoid bases, 20cm wide
57. A Spode Royal Jade figure of a toucan, 9cm high
58. A set of four Majolica side plates, each decorated with flowers and scrolls, double 'X' mark to base, possibly Minton and a pair of Continental Majolica fish shaped plates (6)
59. A 19thC German porcelain salt in the form of a putto, 10cm high and other porcelain figures
60. A pair of late 19thC Continental porcelain plates, each later inset with a miniature print of a lady with a green and gilt border, 25cm diameter
61. A pair of mid 19thC Staffordshire porcelain jugs, each with a scroll handle and painted with a British domestic bird on a green ground, 20cm high overall
62. A pair of Victorian Staffordshire pottery figures each in the form of Queen Victoria and Prince Albert seated on a throne, 14cm high overall
63. A pair of cylindrical blue printed vases entitled to the base "Pratts Lke Scenery", 23cm high
64. A Victorian green glass lustre decorated in coloured enamels with flowers and acanthus leaves, the top with a shaped edge on an inverted baluster column and domed base, 37cm high
65. A 19thC Chinese famille verte vase with four handles decorated with figures and a dragon, 39cm high
66. A Victorian turquoise glass lustre decorated in coloured enamels with butterflies and flowers (lacking drops)

67. A Royal Doulton stoneware bowl decorated with a blue band and moulded with flower heads, 16cm diameter
68. A pair of late 19thC German bisque incense burners, each in the form of Chinese mandarins



69

69. A pair of Sunderland lustre wall plaques, each titled "Crimea" with a lion and eagle crest and the flags of France and England and various mottos, 20cm x 22cm
70. Spare Lot.
71. A 1960s West German Kat Lava Type vase, decorated with bright red mottled grey and blue bands, 25cm high
72. A 20thC Oriental pottery table lamp in the form of a Chinese mandarin, decorated in gold and with a white crackle glaze, 74cm high
73. An Edwardian square silver picture frame embossed with scrolls, with a circular aperture, Birmingham 1905, 7.5cm high
74. A Prattware pot lid - "Rifle Content Wimbldeon 1868", 10.5cm diameter and "The Shepherdess", 10.5cm diameter
75. A Prattware pot lid - "The Village Wedding", 10.5cm diameter and "A Race or Derby Day", 10.5cm diameter
76. A Prattware pot lid - "Trafalgar Square", 10.5cm diameter and "Garibaldi", 10.5cm diameter
77. A Huntley & Palmer's biscuit tin, printed with a design of a Scot's soldier, made for John O'Groates shortbread, 11cm high

78. A 19thC Prattware type pot lid with base entitled "Walmer Castle", 10cm diameter, another "The Trouper", 11cm diameter, another "Dr Johnson", 10.5cm diameter another after Wouvermanns of a village scene and another with soldiers before a country house terrace (5)
79. A Prattware pot lid - "Holborn Viaduct", 10.5cm diameter and "Harbour of Hong Kong", 10.5cm diameter
80. A set of six George V silver Old English pattern teaspoons, by William Hutton & Sons, London 1912, approximate gross weight 4oz



81

81. A set of matched George III berry spoons by William Bateman & Others, London 1804(2), 1815 & 1816, with later embossed and engraved decoration, in a red lined black morocco case, retailed by Fattorini & Sons, Bradford
82. A George III silver Old English tablespoon by Ann Robertson, Newcastle 1805, another, London 1802, and a Hanovarian pattern tablespoon, approximate gross weight 6oz (3)
83. Twelve early 19thC silver Old English pattern teaspoons, various makers and dates, approximate gross weight 5oz
84. A Heath & Middleton silver preserve spoon, Birmingham 1900, together with various silver condiment spoons, a silver thimble and a pair of sugar tongs, approximate gross weight 3oz
85. An early 20thC Epns novelty vesta case, as a pig, with hinged head, the strike to underside, 4.5cm high
86. A 19thC silver plate on copper caddy of canted oblong form, with a domed hinged cover, fitted with a ball finial and having a gadroon border, 11.5cm high

87. A Victorian silver vesta/sovereign case, of rounded slab form, engraved with initials 'J.A.C.' and fitted with a suspension ring, Birmingham 1897, 7cm
88. An Edward VII silver pill box, of plain circular cushion form, Birmingham 1902, 3.25cm diameter
89. A set of six George V silver Old English pattern dessert spoons by James Deakin & Son, Sheffield 1918, approximate total weight 11oz
90. Eight silver napkin rings, various dates, together with a pair of Epns grape scissors, approximate gross silver weight 4oz (9)
91. A Victorian silver vinaigrette by Joseph Willmore, engraved with foliate scrolls around an engine turned oval cartouche, the interior with a pierced gilt metal grill, Birmingham 1840, 4.25cm wide (top cover detached)



92

92. A pair of late 19thC Arts & Craft style copper and brass candlesticks, in the manner of W.A.S. Benson, each with a shaped scone and dome base, 19cm high
93. An early/mid 19thC salt glazed jug with applied decoration of pipers, urns, birds and flowers, 20cm high
94. An early 20thC mahogany concave sided and bow fronted pedestal side cabinet, with one drawer and a door, on a plinth base, 92cm high x 48cm wide
95. A late 19thC/early 20thC stiff hinged white metal bangle, engraved and overlaid in two colour gold with roses and leaves, unmarked
96. An early 20thC lady's 9ct gold wrist watch with a flexible mesh strap, together with a yellow metal ring inscribed 'Mosul 1919' and a 9ct gold bar brooch (lacking pin), approximate gross weight 26 grams (3)



97

97. A silver punch bowl of lobed form with a mesh cover and moulded base, London 1967, maker RC, 24cm diameter, 38oz approx.

98. A 20thC Indian Sitar, applied and inlaid with bone, with ebonised and brass fittings, 122cm long



99

99. A George III silver waiter with beaded border and acanthus and paw feet, London 1819, 19cm diameter, 11ozs approx.

100. A pair of plated cauldron shaped salts and other plate

101. A gilt metal and bloodstone seal initialled DHW inset in bloodstone and orange agate, another silver, bloodstone and orange agate seal, another gilt metal engraved with initials DH, another with a crest, another gilt metal with moonstone, a plain ditto of tapering form, a gilt and white metal lockets inset with plaited hair and a small papier mache and pewter pique work snuff box

102. A 9 carat gold Swiss lady's fob watch with a 9 carat gold bow shaped pin (adapted) and another similar

103. Spare Lot.

104. Spare Lot.

105. A gold memorial brooch, the reverse inset with a female photograph

106. A pocket watch movement and dial signed R Wathman of Weymouth, the enamel dial with letters of the alphabet rather than numerals, and various gent's wrist and pocket watches



107

107. A Victorian hinged bangle set with graduated round old brilliant cut diamonds, total approx 1ct, (central motif missing) all in yellow metal, unmarked, weight all in 22g.



108

108. An enamelled and seed pearl decorated pocket watch, yellow metal with royal blue guilloche' enamelled back and bezel, key wind, monogram AB to back.



109

109. An 18ct gold cased small size half hunter fob watch, bezel wind, back engraved V.W. March 3rd 1930.



110

110. A 19thC 18ct gold mid size half hunter pocket watch, bezel wind, monogram to back.



111

111. An 18ct gold full hunter pocket watch, hallmark London 1873, dial scribed G.E. Frodsham, 31 Gracechurch Street, London.



112

112. An 18ct gold Swiss open face pocket watch, bezel wind, by Femey & Cie Genevc.

113. Seven late 18thC/early 20thC Delft tiles, to include three Manganese glazed tiles decorated with buildings, 13cm wide, two blue glazed tiles decorated with boats, 12.5cm wide, a blue glazed tile decorated with a gentleman sewing, 12cm wide and a polychrome tile decorated with an urn of flowers, 13cm wide

114. A Murano jug, with millefiori type decoration in red, blue, green and yellow, 26cm high



115

115. A late 18thC/early 19thC silver plated candlestick in Neo-classical style, cast with a cluster column with an acanthus leaf, the square base with urns and leaves, pseudo silver marks, 18cm high

- 116. A yellow metal tie pin in the form of a horse and jockey, a silvered tie pin inset with an enamelled greyhound, another with a horse shoe and two others (5)
- 117. A 19thC cameo brooch with yellow metal mount, another cameo brooch with similar foliate yellow metal mount, other cameos etc.
- 118. A pair of 19thC miniatures of young children, each painted onto porcelain and set on green glass, an oval and agate, painted with a landscape and a Victorian ceramic scent bottle painted with flowers and leaves with a silver mount (3)
- 119. A 19thC oak small cider costrel type barrel, stamped to one end 'H.L.', with iron bands and painted brass handle, 18cm wide
- 120. An agate brooch set in yellow metal mount, another similar, an agate and silver trowel bookmark etc.



121

- 121. A 19thC miniature on ivory of an old lady wearing a lace bonnet, in a gilt metal oval frame inset to the reverse with platted hair, an indian ivory miniature of a palace, a Continental porcelain plaque painted with a version of the Madonna and child and an unfinished miniature of a lady on ivory (4)
- 122. A 19thC gilt metal buckle, each part inset with a porcelain plaque of The Pont St Martin and The Theatre Des Varietes, a tortoise-shell and white metal medallion inset with a lady carved in silhouette on ivory, a yellow metal and enamel brooch decorated with scrolls etc.
- 123. A white metal pendant stamped "Sterling" in the form of an owl, a bangle, cuff links, marcasite clips, brooches etc. - mostly white metal

- 124. A Victorian yellow metal ring inset with two small diamond chips and decorated with a buckle, stamped 18K
- 125. An amethyst and yellow metal pendant set with seed pearls, a locket and other mainly yellow metal jewellery
- 126. A pair of 9 carat gold cuff links, a wedding band, signet ring etc.
- 127. Spare Lot.
- 128. Two pairs of silver sugar tongs, fiddle pattern, plain form, London 1834 and 1866
- 129. A pair of early 19thC silver sugar tongs of pierced form with shell ends, engraved S F, London
- 130. Two pairs of similar 19thC silver sugar tongs, each with bright cut decoration
- 131. Three pairs of silver plated sugar tongs, one with pierced decoration, the other plain and one cast with shells and foliate scrolls
- 132. A silver trophy cup and cover with an urn shaped finial and two handles on a tapering base, engraved "Inter Hospital Cup 1932", London 1931, 14cm high; and another two handled cup on a tapering base, Birmingham 1937, 9cm high (2)



133

- 133. A George III silver gravy boat with a scroll handle and beaded borders engraved with a crest surrounded by flowers, the underside 16-13.5, London 1818, 22cm wide, 17oz approx.
- 134. A walnut Art Deco mantel clock, with chrome numerals and a German movement, 35 wide
- 135. A 1970s West German brown and cream glazed lava lamp base with pierced sides, 72cm high

136. **An amethyst and rhinestone dress ring**, set in silver gilt
137. **A pair of early 19thC silver sugar nips** with shell ends of scrolling form and a pair of EPNS sugar nips with claw ends
138. **A silver baluster shaped sugar castor**, the flame finial and reeded bands on a square base, *Chester 1906, 16.5cm high overall, approx. 4oz*
139. **Three Victorian silver vesta cases**, one engraved with leaves and a central shield shaped vacant cartouche, another initialled *JPD* within a cartouche surrounded by scrolling engraving and another *CWA* within plain stripes (3)



140

140. **A Spanish enamelled plaque** decorated with a lady wearing a black and green hat and dress, in a fruit wood frame with silver plated slip and plaque with name *'I. Nonell'*
141. **A silver napkin ring** with engine turned decoration initialled *R* and another engraved with leaves (2)
142. **A silver plated napkin ring** engraved *College Stanislas*, another engraved with leaves, and one other, a sovereign case of square form and a leaf engraved vesta case with vacant lobed cartouche, etc
143. **An Edwardian silver butter knife** with a shaped blade and handle, a rattle (*poor condition*), a Continental filigree butterfly brooch, a silver powder compact with engine turned lid of circular form, a silver brooch cast with the head of a stag, a plated thimble in a fitted case, plated mustard spoon, three flat spoons decorated in the aesthetic taste
144. **An Edwardian part silver button hook**, a set of novelty sugar tongs in the form of a wishbone, a small silver and glass hip flask, the base engraved *J Kemp of Lincoln*, a silver cigarette case initialled *AH* with a striped engraving and another similarly decorated initialled *H.B.C.T April 7th 1912*, a silver plated hip flask, the screw lid with security chain
145. **A silver 'Port' label** engraved with shells and foliage, a matching 'Sherry' label and two silver plated 'Brandy' labels
146. **A set of six Continental silver coffee spoons**, each engraved with Caribbean motifs to include coffee bean, palm tree, anteater, pineapple etc.
147. **A set of seven silver plated apostle spoons**, a plated sifter spoon, a small silver trophy cup of tapering form
148. **A pair of silver fiddle and thread pattern sauce ladles**, engraved *M*, marks indistinct
149. **A Victorian silver christening mug**, the scroll handle cast with beads decorated overall with flowers within compartments and geometric and bead borders, engraved to the centre *RCG from HFK, Birmingham 1876*, and another small christening mug of plain form with scroll handle, *Birmingham 1931(2)*
150. **A set of six fiddle pattern table forks**, various hallmarks, five by George Angel, *London 1844 & 1821, 16oz approx.*
151. **Two similar silver fiddle pattern serving spoons**, *London hallmarks 1817 and 1824*
152. **A set of six EPNS cake forks**, each with chevron design to the handle etc.
153. **A silver quill pen**, the handle of tapering form, marks indistinct
154. **A silver mounted part dressing table set** comprising and engine turned hand mirror with flower cast handle, a hand brush and a clothes brush, *Birmingham 1932*; another embossed silver hand brush and an ebony clothes brush with silver mount and an ebony walking cane with silver mount made by *Brigg of London - incomplete(6)*
155. **A pair of early to mid 20thC gold plated cuff links**, each with a glass panel of an Airedale Terrier

156. A walnut veneered bow fronted Art Deco style display cabinet, with a part mirrored and fabric upholstered back on cabriole legs, 102cm wide
157. An Edwardian rectangular oak, rosewood and marquetry wall mirror, the shield shaped plate with a bevelled edge, 39cm x 36.5cm
158. A 19thC silver plated five branch candelabra, on a flower and leaf cast column and square base, 54cm high
159. A silver mounted dressing table jar, embossed with birds, scrolls and flowers around a vacant cartouche and mask
160. An engraved silver egg cup with a gilt interior, Birmingham 1893, various Continental white metal commemorative spoons etc.



161

161. An Edwardian silver mounted rectangular travelling watch case, Birmingham 1905, complete with a silver pocket watch with enamelled dial, London 1877
162. A 19thC Coalbrookdale small porcelain basket, painted with flowers and with encrusted, pierced sides, 10.5cm wide and a Royal Crown Derby type salt painted with flowers and leaves in iron red, blue and pink with gilt borders, 7.5cm diameter
163. A Continental porcelain box and cover in the form of a horse shoe, Crown Staffordshire basket, a fish shaped dish etc.
164. A pair of late 18th/early 19thC English porcelain saucers, each decorated in Imari colours with birds, plants and insects, 12.5cm diameter and a A 19thC Japanese Imari teapot and cover decorated with scrolls and flowers, 13cm wide



165

165. An early 19thC embroidered picture of Noseley Hall, the seat of Sir Arthur Heazelriggs in Leicestershire, worked by Jane Simpson at Stickney School 1833, in contemporary figured mahogany frame, 61cm x 69cm
166. A late 19th/early 20thC German bisque porcelain and hand coloured spill vase in the form of comical pianist with large hands, 9.5cm wide
167. A late 19th/early 20thC painted German bisque figure of "Der Marathonlauffer" (the marathon runner) 17.5cm wide
168. A German bisque porcelain tooth pick holder in the form of a gentleman with an articulated mouth entitled "Keep Your Hair On", 10.5cm high and another in the form of a nodding dog entitled "Dry? Not Half", 14.5cm high (2)
169. A George III glass comport with a raised border on a tapering column, the base 30cm diameter
170. A Chinese soapstone carving of an immortal beside a smaller figure on a pierced base, 46cm high
171. A late 19thC Continental parcel gilt composition statue in the form of a maiden carrying water beside a fountain, the stepped base titled "Quelle", 16cm high
172. Two Burmese carved hardwood stands, each decorated with serpents, birds and foliate scrolls on stylised dragon feet, 40cm high
173. A gilt brass Mr Punch door stop, a Mrs Punch door stop and a cast iron Mr Punch door stop (3)



174

174. Three 19thC German papier mache and leather card cases, each hand painted



176

176. A Benham & Froud brass coal scuttle and shovel, the scuttle itself with a turned mahogany handle, the shovel with an ebonised handle, stamped to base with maker's mark, 43cm long

177. An early 20thC bamboo walking cane, with sterling silver mount and bone handle, the cane is hollow possibly to contain letters or documents, 92 cm wide

178. An Edwardian poker work hanging corner cabinet, decorated with flowers and heraldic dragons, 68cm high x 56cm wide

179. Spare Lot.

180. A modern plaster and fibreglass sculpture in the form of a cow, with a verdigris type finish on a rectangular base, 62cm wide

181. A mid 19thC papier mache snuff box painted with a Swiss landscape and another printed with donkeys, 9cm diameter

182. A 1950s Hollycraft paste set pendant, with a plated chain

183. A late 19thC Japanese black lacquer box decorated in gilt with a shi-shi, 9.5cm wide

184. An early 20thC gilt fan, a cast iron dog and a gilt metal box inset in a pot

185. A 19thC carved Chinese ivory card case, a Victorian mother of pearl inlaid spectacle case, a 19thC carved ivory box, a 19thC carved wooden box (Bavarian), and a 19thC Tunbridgeware type box and cover



175

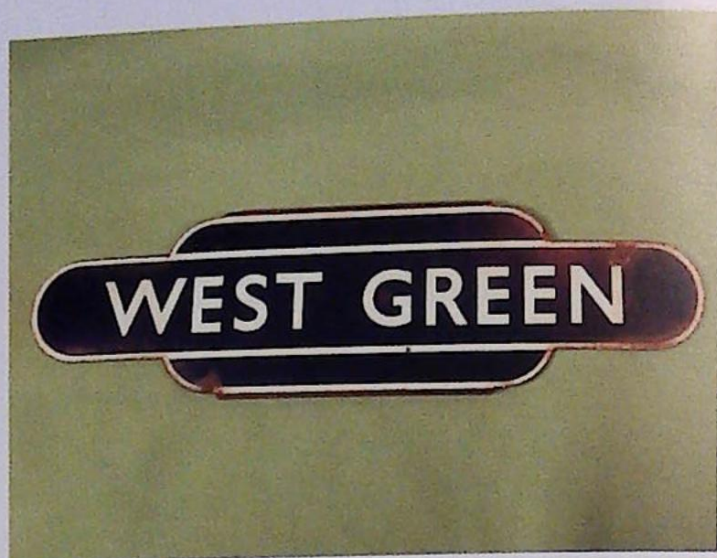
175. A George III mahogany and chequer banded knife box, with a slope top and shaped front and brass side handles, later converted to a letter box, the top with an inlaid oval "Post", 32cm high, 19cm deep, 23cm wide

186. An early 19thC mahogany and boxwood strung tea chest of rectangular form, the hinged lid enclosing two lidded compartments and a recess form a mixing bowl on bun feet, 14cm high, 17cm deep, 27cm wide
187. A Victorian oil lamp, the vaseline glass shade decorated with flowers in art nouveau style, the ceramic base painted with a flower with gilt metal mounts, 58cm high overall
188. A mid Victorian gilt metal face screen, with a beadwork banner decorated with roses, a fringed border, on a shaped base cast with flowers and four scrolling feet, 56cm high
189. A 19thC pull-a-long toy horse covered in pony skin, the red painted pine base, lacking wheels, 47cm high
190. An Edwardian brass two handled ink stand a 19thC copper imperial pint standard jug and a pair of early 19thC brass candlesticks of tapering form, the bases with beaded borders
191. A Victorian papier mache stud box of rectangular form, the hinged lid painted with hunstmen leaping a stream beside the hounds, 13cm wide
192. A Stevenograph woven in the form of a stage coach with four horses 5cm x 15cm and another entitled "The Present Time, 60 miles an hour" woven in the form of an early steam train with two carriages, 5cm x 15cm



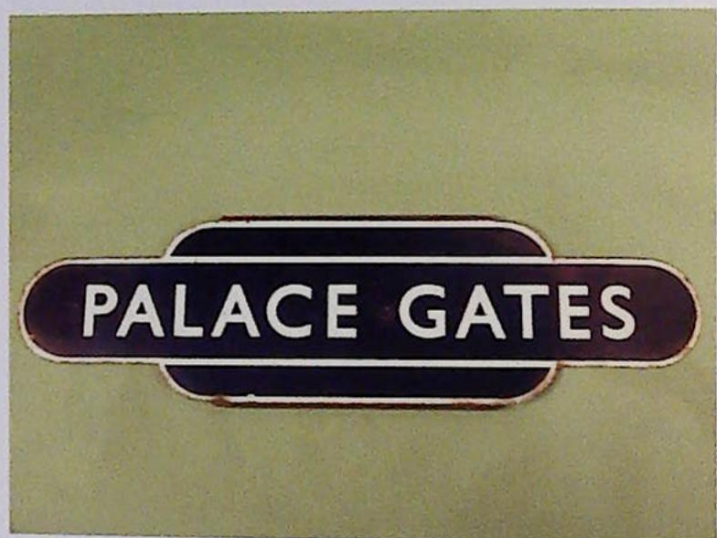
193

193. An enamel railway station sign, 'Shorncliffe' with white lettering on a green background, 77cm wide



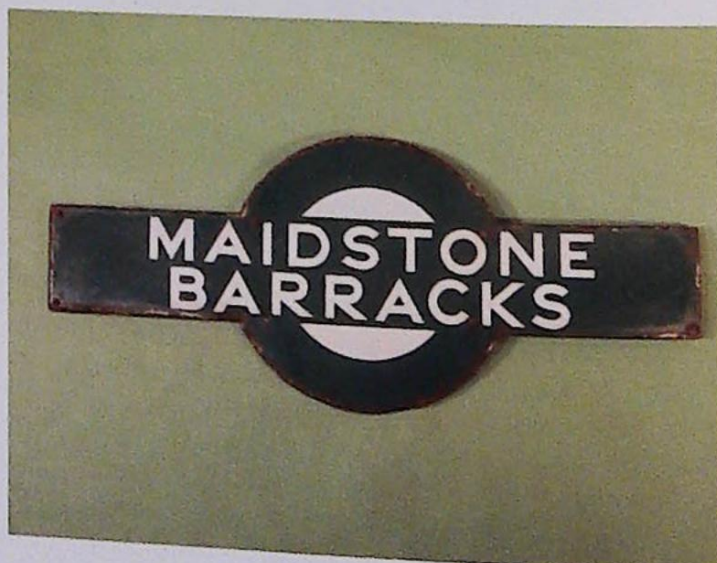
194

194. An enamel railway sign, "West Green" with white lettering on a blue background, 92cm wide



195

195. An enamel railway sign, 'Palace Gates' with white lettering on a navy blue background, 91cm wide



196

196. An enamelled railway station sign, 'Maidstone Barracks' with white lettering on a green background, 92cm wide

197. An Orrefors glass vase, decorated with a nude lady with two birds, engraved marks to base, 10cm high



198

198. A Victorian stained pine and brass studded dome top trunk, with paper lining, bearing retailer's label to interior for 'B. Cave, Brush, Basket and a Toy Warehouse of 1 Edwards Street etc', 84cm wide



199

199. A 1950s silver plated novelty pepper and salt, each in the form of two penguins, stamped to base, 10cm high
200. A mid Victorian tole ware tray, with a shaped border, painted to the centre with a flower spray and foliate borders, 84cm x 65cm
201. A Victorian oval papier mache tray, decorated to the centre with a flower spray within gilt bands, 59cm x 77cm
202. A mid Victorian tole ware tray, decorated to the centre with a flower spray and foliate scrolls with a simulated bead border, 65cm x 51cm



203

203. A 1920s/30s Tiffany & Co cut glass circular ashtray, with blue enamelled silver mount, 6cm wide
204. A 19thC tole ware tea cannister decorated with oriental figures in gilt, a papier mache adjustable book stand, a pewter half pint measure and a milk jug, an unusual British Queen three burner copper paraffin lamp, a stoneware beer flagon and stopper
205. A 19thC beadwork picture decorated with a flower and leaves, on a pale purple ground, in a rectangular stained oak frame 60cm x 31cm, a 19thC beadwork face screen banner decorated with a flower on a coral red ground with fringed borders and a beadwork bag(3)
206. A 19thC fruitwood truncheon
207. A pair of pharmacists bottles and cut glass stoppers, each enamelled 'Jockey Club', 21cm high
208. A Queen Elizabeth II medal with bar for Brunei presented to Pte J Vickers of the Queens own Highlanders
209. A Victorian papier mache and mother of pearl inlaid writing slope, the top decorated with flowers and leaves with gilt border, 29cm wide
210. An oval Dutch style brass jardiniere of lobed form, embossed with flowers on paw feet, a brass charger decorated with a galleon, a brass oil lamp with a white opaque and gilt shade, a modern two branch silver candelabra, a brass oil lamp (converted to electricity)
211. Spare Lot.
212. An early 19thC papier mache canted rectangular tray, with a raised gallery, painted with a flower spray within gilt leaf borders, 55cm x 81cm

- 213. A Victorian rosewood writing slope, the top set with a mother of pearl oval bearing monogram AMS, 40cm wide
- 214. An ivory fan and a painted wooden fan, an ivory napkin ring and a needle case etc.
- 215. A set of six fiddle pattern silver teaspoons, London 1812, and another set of six silver teaspoons
- 216. A set of five silver teaspoons, each with a beaded border, Birmingham 1931 and another set of six silver teaspoons
- 217. A William IV silver cream jug with bright cut decoration, London 1830, 11cm wide, 2ozs approx.
- 218. A silver candlestick in the form of a corinthian column with beaded borders on a stepped base, Sheffield 1909, 17cm high (loaded) and a pair of column type candlesticks, Sheffield 1906, 11cm high (loaded) (3)



219

- 219. A silver two handled cup on a tapering base, Sheffield 1930, 21cm high, approx. 18ozs
- 220. An Edwardian silver pin cushion in the form of a pig, Birmingham 1905, 5cm wide and a silver plated pig (2)



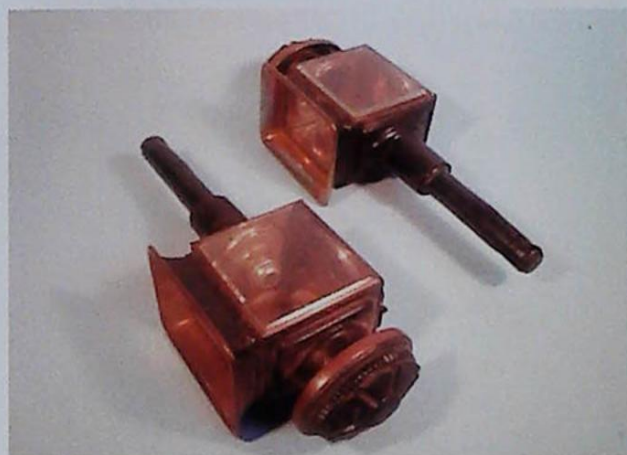
221

- 221. A pair of early 19thC portrait miniatures, each in the form of a gentleman and a lady, in black papier mache frames, with gilt metal mounts entitled "Mrs Roberts 1763-1809", the other "Beech Roberts born June 15th 1766, died February 7th 1836", the frame 13cm x 11cm
- 222. A Victorian dome top workbox, with a mother of pearl cartouche, 27.5cm wide and an Edwardian oak desk calendar 13.5cm high (2)
- 223. A carved wooden horse and cart, the cart bearing words "A Farmer Sometime Ago" complete with farmer leading the horse; other horse's carts etc.
- 224. A series of journals relating to Mr James Alex Brown of Surrey, a Sargent in the Royal Artillery Band dating from the 1860s through to approximately 1900 (19)



225

225. A pair of 19thC brass and iron coaching lamp stamped *May and Jacobs*, 45cm high and three others (5)



226

226. A pair of brass and iron coaching lamps by Rogers & Sons of Oswestry
227. Various RSPCA brass merit badges from the 1920s onwards, various buckles, pair of horse fittings stamped R Philp, Sadlers of Loch Gelly and a brass plaque stamped *W. Russon of Bransby*
228. A Victorian rosewood dressing case, the hinged lid with a mother of pearl cartouche, enclosing compartments and glass fittings with silver plated mounts, 31cm wide
229. A Smith's brass Improved Gold Balance, in original fitted case, a treen box and cover and a stamp box inset with a coaching scene
230. An early 19thC miniature silver vinaigrette engraved with flowers and a thistle, the gilt interior with makers mark *TH*, in original fitted leather case, with paper label for *B Savory Jeweller of London*, 2cm wide
231. A set of 19thC wooden building bricks, the lid bearing original label for "Gothischer Baukasten"

232. An album of Victorian scraps and another album comprising mainly 1920s and 30s greeting cards, some postcards etc. (2)
233. Spare Lot.
234. A leather horses collar, two horses hoofs, a rasp, two horse measuring devices etc.
235. A Victorian copper kettle, a brass spit jack by John Linwood, a pair of flat irons, brass pan etc.
236. A Victorian album of mainly portrait photographs, with musical movement playing one air, three autograph and sketch albums, cigarette cards etc.



237

237. A mid/early 19thC wheel barometer, in a boxwood strung mahogany case with hydrometer, thermometer, concave mirror and an engraved, silvered dial, made by *Bellatti of Grantham*, 105cm high



238

238. A 19thC leather punch bowl with white metal mount, the 'wavy' border decorated with three various bands, stamped to base *T Clark E.D.R.*, possibly for *Edinburgh*, 25cm diameter
239. A pair of Austrian cold painted spelter figures of cock pheasants, each on a rectangular base with a stylised tree stump, fitted with a table lighter, 32cm wide overall



240

240. A Victorian rosewood fire screen, with a pierced crest, on spirally turned supports, the raised woolwork banner decorated with a horse and dogs, on scroll carved end supports, 100cm wide



241

241. A 19thC woolwork picture of a two mast sailing ship, with the English ensign and a single funnel steamer in the background, 23cm x 35cm

242. A George IV mahogany dressing mirror, the rectangular plate on turned and lappet carved supports, the base with a moulded edge and scroll feet, 68cm wide

243. A small Regency style convex gilt wall mirror

244. An early 19thC sampler by Frances Jane Isaac, titled "The Future" and dated 1832, in a maple frame



245

245. Ronald 'Ronnie' Kray (1933-1995) Orange landscape with cottage watercolour gouache signed and dated (19)73, 25cm x 30cm



246

246. Reginald 'Reggie' Kray (1933-2000) River landscape watercolour signed and dated (19)73, bears Parkhurst Newport stamp verso, 21cm x 29.5cm



247

247. Ronald 'Ronnie' Kray (1933-1995) Orange landscape with pond watercolour gouache signed and dated (19)73, bears HM Parkhurst, Newport stamped verso, 26cm x 35.5cm



248

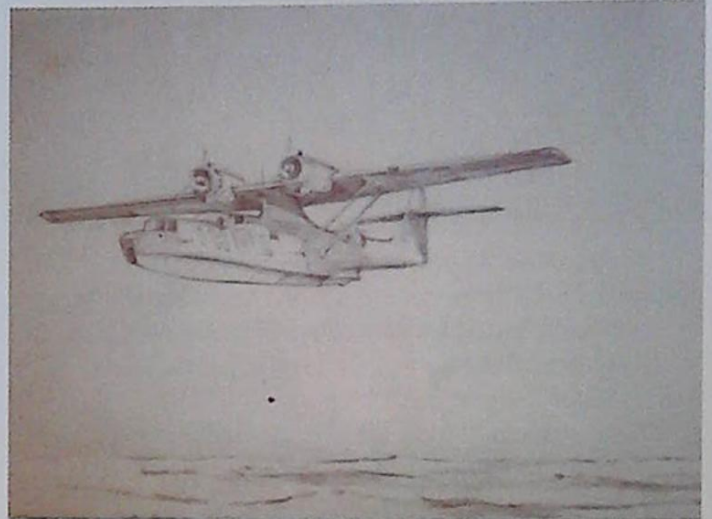
248. **Reginald 'Reggie' Kray (1933-2000)**
 Night scene
 watercolour gouache
 signed and dated (19)73, bears HM Parkhurst,
 Newport stamp verso,
 27.5cm x 36cm



249

249. **Graham Frederick Young (1947-1990)**
 Portrait, The Kray Twins
 oil gouache, bears HM Prison Parkhurst stamp
 verso
 24cm x 30.5cm
 and a coloured pencil drawing
 The Krays boxing (2)

250. **An archive of RAF ephemera**, to include aerial photographs of Krups, Essen, Cologne and other German cities, ports etc., an aircraft map, photograph taken from a Lancaster bomber, photographs taken during RAF training in Bulawayo, Zimbabwe etc. - all associated with Flight Lieutenant G.H. Eakins, latterly of the 106 Squadron Metherringham, Lincolnshire



251

251. **G.H. Eakins**
 A Cat flying boat, watercolour
 30cm x 40cm
 and a pencil study of a Cat flying boat
 19cm x 24cm (2)



252

252. G.H. Eakins
Stuker being pursued by a Spitfire,
watercolour
30cm x 40cm
oval and an unfinished watercolour sketch of a
church on the reverse



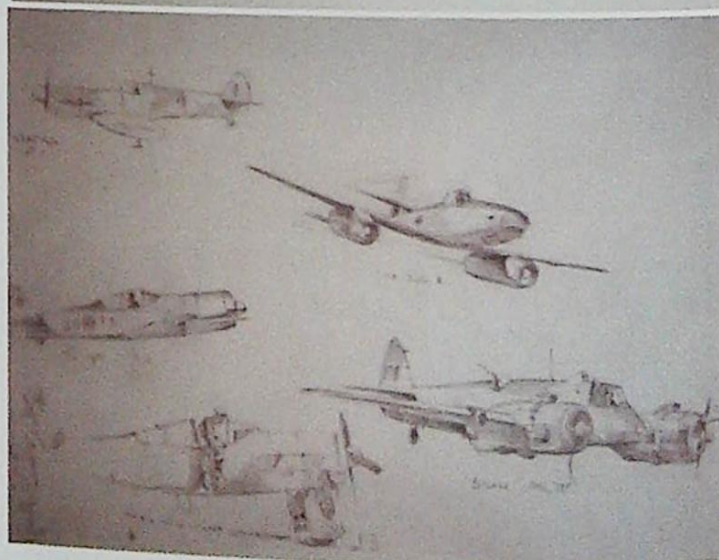
253

253. G.H. Eakins
In the cockpit of a Lancaster bomber,
watercolour
30cm x 40cm
oval



254

254. G.H. Eakins
Lancasters going out on a mission
watercolour
35cm x 45cm



255

255. G.H. Eakins
An American Navy Phantom and various
planes to include a Spitfire, pencil sketches
35cm x 35cm (2)

256. **Spare Lot.**
257. **Six books on clocks**, to include Old Clock & Watches and their Makers by F J Britain, English Domestic Clocks by Cechinsky & Webster, British Skeleton Clocks by Derek Roberts etc.
258. **Six folio type volumes of Charles Dickens** by Frederick Barnard, each with eighteen full page character sketches, A Mixture Of Drawings by H. M. Bateman, a copy of Theatre & Design edited by Geoffrey Holme and A Supplement To Johnsons English Dictionary by George Mason
259. **A quantity of books on Art and Antiques** to include Chamberlain Worcester Porcelain by Geoffrey Godden, Wedgwood by Wolf Mankowitz, two copies of Victorian Painters by Jeremy Maas, Dictionary of Victorian Painters and other books
260. **Twelve volumes of "The Horse, It's Treatment, Health & Disease"** by Professor J. Wortley Axe
261. **Twelve books on horses**, to include Mountain Man by McTaggart, Yorkshire Cattle Doctor & Farrier by Knowlson, An Introduction To Polo by Marco etc.
262. **Various books on horses**, mainly on farriery and horse vetinary, to include Armitage's Horse Doctor, 3 volumes of Whites Treaties on Vetinary Medicine
263. **Five volumes of The Lonsdale Library**, on golf, flat racing, fox hunting, trout fishing from all angles, shooting by Moor, Field & Shore, with brown canvas bindings and a book on The Science Of Fly Fishing For Trout By Fred G. Shaw (6)
264. **A copy of The Complete Farrier and Sportsman** by Richard Lawrence, printed by Thomas Kelly & Co of Paternoster Row, leather bound
265. **A quantity of books on mainly hunting subjects**, to include Lionel Edwards, A Sportsmans' Bag, Memories of Racing & Hunting by the Duke of Portland, Hunters Moon by Edric G Roberts, Squire Osbaldaston, his autobiography and Points of the Horse by Captain Hayes (12)
266. **A folio collection of Old English Coaching Inns** by J C Maggs and a copy of Coach Days of England printed by Paul Elek
267. **A copy of Whites Lincolnshire Directory** for 1892, rebound, green cloth; another copy of Whites Lincolnshire dated 1882, with folding map (2)
268. **A Kelly's Directory of Lincolnshire** for 1896 including map and another 1909 (lacks map) (2)
269. **Four volumes of Lincolnshire Notes & Queries**, a quarterly journal, edited by The Rev. J Clare Hudson, and E Mansel Sympson, printed in Horncastle by W K Morton, vols. 1, 3, 5 & 6
270. **Nine books** published by The Lincoln Record Society to include Stow Church restored, Bishop Repeingdon's Register No.3, Registers of Henry Burghersh 1320-1342 Vol. 2, Lincoln Wills 1853-1834 etc.
271. **Brown (Cornelius):- A History of Newark on Trent**, 2 volumes, S Whiles, Newark 1904, numerous black and white plates and engravings, original green cloth, gilt armorials and lettering
272. **A Turkey carpet**, with a design of medallions, on a red ground with one wide and three narrow borders, 390cm x 213cm



273

273. **A large Persian carpet**, with a central medallion, on a red ground with cream spandrels, with one wide and four narrow borders, 236cm x 338cm

274. A Persian type runner, with a design of medallions on a blue ground, 91cm x 310cm
275. A Persian type rug, with a design of botei on a red ground, with one wide and six narrow borders, 142cm x 190cm
276. A modern Indian Jaipur runner, with a design of medallions on an orange ground, with one wide and two narrow borders, 85cm x 305cm
277. Spare Lot.
278. Spare Lot.
279. Spare Lot.
280. A Victorian walnut and marquetry pier cabinet, with gilt metal mounts and two glazed doors, on a plinth base, 114cm wide



281

281. A Victorian satinwood and marquetry triple breakfront wardrobe, inlaid in boxwood, sycamore and ivory with angels, fruit, foliate scrolls and bows, with two mirrored doors flanking a central section with a shelf, above two panelled doors and three drawers on a plinth base, 213cm high, 206cm wide
282. A Victorian ebonised circular foot stool, with gilt metal mounts and a floral woolwork padded seat, on bun feet, 38cm diameter
283. A mid 19thC mahogany and brass bound campaign writing box with brass side handles (lacking part of interior) 51cm wide

284. A set of six Regency mahogany bar back dining chairs, each with a caned seat and drop in cushion on sabre legs, stamped below seat rail M.M.M.
285. A set of five mid 19thC mahogany and satinwood banded dining chairs, each with a bar back, drop in seat, on square tapering legs with "H" stretcher



287



289

286. A Victorian walnut luggage stand, with turned stretcher and legs, 69cm wide
287. A mid Victorian walnut oval breakfast table, with a moulded edge, the turned base carved with beads and flutes, on four scroll carved downswept legs, 71cm high, the top 98cm x 137cm

288. A late Victorian mahogany foot stool, the embroidered woolwork cover decorated with flowers, on bun feet, 26cm diameter
289. A William IV mahogany armchair, the scrolling arm rests with turned fluted supports, on tapering legs with brass castors, 68cm wide



290



292

290. A Victorian walnut low cupboard, the top with a moulded edge, above a frieze carved with flutes and four panelled doors, flanked by reeded columns, on a plinth base (cut to centre), 105cm high, 51cm deep, 217cm wide
291. An early 19thC mahogany pembroke table, the rectangular top with a reeded edge, on turned tapering legs, 73cm wide
292. An early 19thC Chinese export lacquer work table, decorated overall with figures and buildings in gilt on a black ground, the hinged lid enclosing a fitted interior with compartments and ivory and mother of pearl bobbin cases, needles, clamps etc, on pierced lyre end supports and a platform base, the feet carved with shells and paws, 69cm high, 45cm deep, 65cm wide
293. A George III oak bureau, the hinged fall enclosing drawers and pigeon holes, above four graduated drawers on bracket feet, 97cm wide
294. An early 19thC mahogany open armchair, the bar back with moulded borders, the reeded arms on turned supports, with square tapering legs and "H" stretcher



295

295. An early Victorian mahogany secretaire chest, the cross banded top with a moulded edge, above a panelled hinged fitted drawer and three further graduated drawers, on bracket feet, 105cm wide



296

296. A mid 18thC walnut and chevron banded chest of drawers, with three short and three long drawers, flanked by reeded, canted pilasters on bracket feet, formerly the top of a chest on chest, 99cm high, 54cm deep, 96cm wide

297. An early 19thC mahogany stool, the upholstered, square top on turned tapering legs, 50cm high, 30cm wide

298. Spare Lot.



299

299. An early 19thC mahogany and ebony strung bow fronted chest of drawers, with turned handles, on bracket feet, 90cm high, 51cm deep, 91cm wide

300. A Victorian mahogany piano stool, of turned form, with a red padded seat and an "X" stretcher, 50cm high



301

301. An 19thC mahogany wardrobe, the two doors flanked by cylindrical pilasters with corinthian capitals, on a plinth base, 192cm high, 63cm deep, 121cm wide

302. An early Victorian mahogany hall chair, with a shield shaped back and solid seat, on turned legs

303. A French oak side cabinet, with a raised gallery, above two drawers, on cabriole legs 45cm wide

304. A mid 19thC ash and elm windsor armchair, with a pierced splat, solid seat and turned legs and stretchers



305

305. A matched set of four early/mid 19thC yew, ash and elm windsor armchairs, each with a pierced splat, solid seat and turned legs
306. A mid 19thC ash and elm windsor open armchair, with a pierced splat and solid seat, on turned tapering legs with crinoline stretcher



307

307. A Victorian walnut and figured walnut duchess dressing table, the cartouche shaped mirror on shaped supports, with three trinket drawers, the base with a central frieze drawer, on cabriole legs with shaped platform, 123cm wide

308. A Victorian ebonised occasional table, the octagonal top with gilt metal mounts and inset with a verre eglomise panel in gilt and green with a central painting of fruit, on a spirally turned column and tripod base, 66cm wide



309

309. A pair of Edwardian mahogany and marquetry bow fronted display cabinets, each with a broken pediment, above a central glazed door flanked by mirrors and turned pillars, the base with two panelled doors on square tapering legs, 206cm high, 92cm wide



310

310. An Edwardian oak metamorphic drinks cabinet, the rectangular top with a moulded edge, enclosing a built in tantalus and recesses for glasses, on square tapering legs with circular undertier storing wine glasses, terminating with brass castors, some original glasses, 62cm wide



311

311. A 17thC oak planked coffer, the front carved with arches and leaves, with fish tail end supports, 99cm wide

312. An early 19thC mahogany bow fronted serving table, with a frieze drawer, on turned tapering legs, 92cm wide



313

313. A late 19th/early 20thC oak centre table, the circular top with a carved border, the octagonal base with two frieze drawers (one hinged) carved with scrolls on cabriole legs, with pad feet, stamped *S & H Jewell of London* to the inside of a drawer, adapted, 414cm wide



314

314. An early 19thC French elm Lit en Batteau, the tapering ends headed by female busts on wooden castors, 107cm deep, 204cm long

315. A birds eye maple veneered bookcase in Victorian style, the two doors with arched glazed panels, on a plinth base, 132cm high, 109cm wide



316

316. A Regency mahogany extending dining table, the rectangular top with rounded corners and a reeded edge, on two turned pillars and sabre legs carved with acanthus, with two loose leaves, 129cm x 184cm

317. A set of four 19thC French walnut dining chairs, each with a carved show frame decorated with wreaths and masks, the padded backs and seats on turned tapering reeded legs



318

318. A 17thC carved walnut day bed, with a caned seat, the frame decorated with foliate scrolls, crowns and flower heads, adapted and some later additions, 168cm long



319

319. A suite of Victorian parlour furniture, comprising a burr walnut oval breakfast table on four turned supports and splay legs, the top 84cm x 116cm, a gentleman's show frame armchair with a padded back, armrest and seat on turned legs, a similar lady's chair and four side chairs (7)



320

320. A late 19thC arts and crafts style giltwood casket, the arched lid decorated with stylised roof tiles, the base with angels and ecclesiastical motifs, indistinctly inscribed to base (some paint loss), 47cm high, 33cm deep, 32cm wide



321

321. A Victorian burr walnut credenza with gilt metal mounts, of inverted breakfront form, the shaped top with a moulded edge above two paneled doors, inlaid with scrolls and roundels, flanked by two bowed glazed doors enclosing shelves, on a plinth base, 106cm high, 42cm deep, 182cm wide



322

322. A 19thC mahogany bookcase in Sheraton revival style, the inverted breakfront top with four glazed doors and adjustable shelves, the base with an arrangement of six drawers and two panelled doors inlaid with neo-classical urns, on a plinth base, 253cm high, 57cm deep, 158cm wide



323

323. A George III mahogany bow fronted sideboard, stamped Edwards and Roberts, With an arrangement of two drawers and a door, on square tapering legs

324. A Victorian mahogany oval breakfast table, on four turned supports and splayed feet with ceramic casters, the top 128cm x 95cm.
325. Spare Lot.
326. An early 19thC mahogany dressing table mirror, the rectangular plate on turned supports, the bow fronted base with three drawers on bracket feet
327. A Victorian mahogany breakfast table, the circular top on a leaf carved baluster turned column and four splayed feet, 118cm diameter
328. An early 20thC mahogany sideboard with a raised back, the inverted base with a gadroon border above an arrangement of three drawers, two cupboard doors with circular panels on leaf carved cabriole legs with ball and claw feet, 152cm wide, 53cm deep, 122cm high
329. A mid 19thC rosewood cased wheel barometer, with convex mirror and silvered dial and barometer, together with spirit level etc. 94cm high
330. Spare Lot.
331. A mahogany open armchair with a shield shape back, leaf carved arms and drop in seat
332. An early 19thC Continental mahogany card table, the rectangular top with a moulded edge on turned tapering legs
333. A mid 18thC oak oval drop leaf table on turned tapering legs with pad feet, 122cm wide
334. An early 19thC mahogany tea table, the rectangular top above a frieze drawer on square tapering legs with block feet, 83cm wide
335. An early 20thC mahogany demi lune card table on square tapering legs and ceramic castors



336



338

336. A pair of Victorian ebonised and parcel gilt nursing chairs, each upholstered in red textured fabric on 'X' shaped supports
337. A George III mahogany breakfast table, the circular top on a turned column and tripod base with leaf carved knees and brass castors, 134cm diameter

338. A Gobelin type tapestry, woven with a neo-classical goddess seated on a cloud, surrounded with a design of putti, animals and flowers, 146cm x 209cm
339. A 19thC pierced brass fender, with rounded corners and a moulded base, 133cm wide
340. A George III mahogany and satinwood cross banded serpentine fronted sideboard, with a raised back above a frieze drawer flanked by two doors above a tambor door on square tapering legs with splayed feet, 154cm wide
341. An extensive Royal Doulton "Tonkin" pattern part dinner, tea and coffee service



342

342. A Foley "Urbato" pottery tube lined vase, decorated with flowers and with six small handles, printed marks to underside and registration number 330305, 12cm high
343. A Monart type blue striped glass vase, 22cm high



344

344. A William Moorcroft Florian ware bottle vase, with typical tube lined decoration of flowers, initialed in green to base and printed pottery mark in red, pattern number M743, 28cm high
345. An Italian gilt brass and marble clock garniture, with a pair of two six branch candelabra and a central lyre shaped clock, the enamel dial stamped "Imperial", flanked by two fawns, the clock 52cm high
346. A modern Poole pottery "retro" Venetian vase, painted with flowers and leaves, stamped to underside F H Lawson 2004, 25cm high
347. A modern Poole pottery limited edition plate entitled "The Tree of Life", complete with certificate and box, 25cm diameter
348. A Victorian brass hanging lantern in the gothic style, with an orange tinted shade, complete with reservoir stamped Veritas Lamp Works, 108cm high (including chains)
349. An early 19thC Chinese blue and white two-handled cup, 10cm high.
350. Spare Lot.
351. A Stevens & Williams vase, with cut decoration in green and blue, 25cm high

352. A 19thC mahogany writing box and a mahogany jewellery box (2)
353. A German porcelain figure of a gentleman, wearing a pink coat on a black base, 15cm high, possibly a spill holder.
354. A 19thC Edwards "Arrabesque" pattern part dinner service, to include sauce tureens, dinner plates, meat dishes etc.
355. Victorian brass and mahogany letter scales, a tape measure, a set of weights and another set of scales.



356

356. A graduated set of three 19thC Wedgwood Caneware game pie dishes, each moulded with game amid grapes and vines with a rabbit handle, 29cm, 25cm, 22cm wide respectively
357. A late Victorian/Edwardian parasol with a carved hardstone handle, terminating in a parrot with a yellow metal collar, 92cm long
358. An early 20thC parasol, the handle carved with an exotic bird and another parasol
359. A photograph of the astronaut Neil Armstrong, on a official NASA paper, bearing signature
360. A set of four early 19thC mahogany dining chairs, each with rail back padded seats and square tapering legs
361. A George IV mahogany sideboard of inverted breakfront form, with an arrangement of a frieze drawer flanked by two doors on ring turned and reeded tapering legs

362. An oak Arts & Crafts style dresser, possibly by Liberty, the raised back with mirror and a door, inset with leaded green stained glass panel, decorated with "bulls eyes", the base with an arrangement of one long and two short drawers, each with locks stamped *Hobbs & Co*, two panel doors and a dog kennel on a plinth base with bun feet, 198cm x 182cm
363. A Soumak carpet with a striped design, 177cm x 431cm
364. A William IV mahogany pole screen, the canted rectangular banner inset with a woolwork picture of a parrot within flowers and leaves, the gothic carved supports on a triform base with bun feet
365. A Chinese bamboo and rattan marriage casket, carved with leaves, and with a brass handle, 52cm high



366

366. A George III mahogany bureau bookcase, the top with two doors with arched astragals, the base with a fitted interior above three graduated drawers on bracket feet, the top possibly of a later date, 109cm wide
367. A 19thC mahogany rectangular tea table, on turned tapering legs, 91cm wide
368. A 19thC beech and elm captains armchair, with a solid seat and turned supports and legs
369. An oak side chair, with a shaped splat and seat, in part 18th and 17thC
370. A silver sugar basket engraved with a floral cartouche and a swing handle, on domed foot, 17cm high overall, Birmingham 1937, approximately 4oz.
371. A silver two-handled sugar bowl on four shaped feet, 12cm wide, Birmingham 1911 and a silver sauce boat in the George III style with a shaped border, scroll handle and shaped legs, 15.5cm wide, Birmingham 1933, combined weight approximately 5 1/2oz.
372. A ladies Omega de Ville gold plated wrist watch, on black leather strap, cased.
373. A three stone dress ring, a central oval sapphire flanked by 2 tiny diamonds set in yellow metal stamped 750.
374. A 9ct gold solitaire diamond ring, 0.10pts approx, London import mark.
375. A 19thC Belleek type porcelain pot pourri basket, with flower encrusted decoration, unmarked (lacking handle), 28cm diameter
376. An early 19thC turned fruit wood and steel toasting fork, 62cm long.
377. A silver mounted walking cane, shooting stick, brightly coloured parasol with silver handle, walking stick with silver collar and a parasol with a copper and white metal inlaid handle, etc.
378. A set of four brass 19thC pans, each of tapering form, with iron handles
379. A Whitefriars type large green glass bowl and a pink glass bowl with wrought iron mount, the green bowl 38cm diameter
380. A pair of Victorian orange lustre type glass oval dishes on four feet, a 1930s painted glass jar and cover, a blue and opaque glass basket, four green tinted small wine glasses, a glass ornament and a coloured glass dish/plate etc.

381. A set of Victorian brass letter scales by Sampson Mordan & Co London, on a rectangular oak base
382. A 19thC Chinese blue and white shell shaped dish, decorated with a river landscape, two export blue and white plates, two spoons, two famille rose bowls, a saucer, an Imari Cafe Au Lait bowl, cloisonne bowl and small tray and a Japanese Imari dish with shaped border
383. A Hornby 00 Duchess of Montrose train set, a D-1 Through Station, a power control unit A3 and various accessories.
384. A 19thC Indian Talwar, with decorated handle, 87cm long



385

385. A Westley Richards carbide rifle, with a monkey tail and a walnut stock, 104cm long



386

386. An English Infantry Officers short sabre sword, stamped to scabbard 2nd West Indian Regiment, 87cm long
387. Four Hogarth prints to include industry and idleness plate 3, plate 9, the Industrious Printers plate 4 and plate 8
388. An Art Deco bar brooch, of central round sapphire flanked by two small diamonds in target style setting in white and yellow metal.



389

389. A Chinese jadeite figure, carved in the form of a winged maiden on a stylised base, 7cm high

390. An Edwardian mahogany pedestal desk, with an arrangement of nine drawers on a plinth base, 139cm wide
391. An early 19thC oak and mahogany banded corner cabinet, with one panelled door, 80cm wide
392. An early Victorian gilt gesso girandole, the oval mirror mounted with a putto, 89cm x 53cm
393. A Victorian mahogany drop leaf table, the rectangular top with a moulded edge on massive turned tapering legs with ceramic castors, 120cm wide
394. A Spanish hand painted coffee table, the top decorated to simulate marquetry with flowers and on a scumbled background with a brass border above a canted undertier, 101cm wide
395. Barber, Nottingham. An early 19thC longcase clock, the painted dial with floral spandrels, with an eight day striking movement in an inlaid mahogany case on bracket feet, 198cm high
396. Spare Lot.
397. Spare Lot.
398. Spare Lot.
399. Spare Lot.
400. Spare Lot.
401. An Edwardian crystoleum in the form of a young girl standing beside a lion, cattle, leopards etc. after William Strutt, 17cm x 24cm
402. An Edwardian crystoleum in the manner of Haywood Hardy, depicting a man on horseback beside two ladies, 19cm x 24cm another similar entitled 'I could say goodbye til it be tomorrow', 22cm x 26cm
403. An Edwardian crystoleum in the form of a Continental village scene with ladies beside a well head, with figures in the background, 19cm x 25cm
404. An Edwardian crystoleum in the form of a young lady with a basket of flowers, 27cm x 18cm and another in the form of a gentleman carrying a lyre whilst carrying a maiden 24cm x 13cm
405. A 19thC brass and iron hanging oil lamp and shade, possibly French



395

406. A Victorian silver evening purse, engraved with scrolls and a cartouche bearing the initial C, Birmingham 1900, 6oz overall.
407. A glass scent bottle, with a pierced and embossed silver mount and a leather card case. (2).



408

408. A Chinese porcelain circular domed box and cover painted with flowers and butterflies, approx. 27cm diameter
409. A set of 56lb brass and iron beam scales for the City of Lincoln, dated 1886 with various proofing dates, a brass and turned lignum handle on a mahogany base, 146cm high, 95cm wide

410. A set of 7lb beam scales by De Grave & Co., makers of London, with brass supports dated 1887 in a mahogany cabinet, 82cm high, 74cm wide
411. A set of brass beam scales for the City of Lincoln with patent number 1467, by De Grave & Co., makers of London, in a mahogany cabinet, 44cm high, 38.5cm wide
412. A German Third Reich SA dagger, with a black painted scabbard and a wooden handle, 38cm long
413. A 19thC ebonised wooden truncheon or tipstaff, carved with a crown and decorated with crests, 57cm long
414. A set of six brass and copper petrol measures, each for Holland County Council Lincolnshire, ranging from 5 gallons to 1/2 half gallon
415. A part set of Victorian brass weights for the City of Lincoln dated 1897, in a rosewood case (lacking three small weights)

There will be further later entered lots included in this Live Webcast sale.

Saleroom Two will also host another 500-700 lots to be sold concurrently on the same day.

Go to WWW.GOLDINGYOUNG.COM for the full and amended catalogue.

Golding Young & Thos. Mawer produce two Collective Sales just like this EVERY MONTH. These sales usually include 2,000-3,000 lots ranging from tens of thousands of pounds to just nominal sums. Each sale has an extensively illustrated catalogue online that is FREE to download.

Transport & Removals

Golding Young & Thos. Mawer provide Removal Services, Property Clearance and Transport for items submitted for Auction.

For a full range of services please contact Andrew Lowes directly on (07970) 742577.

- **Removal Services** •

Household & Commercial
Local & Long Distance

- **Packaging Services** •

Antiques & Fine Art Specialists
Materials Supplier
Shipping & Storage Arranged

- **Collections & Deliveries** •

Single Items or Regular Contracts

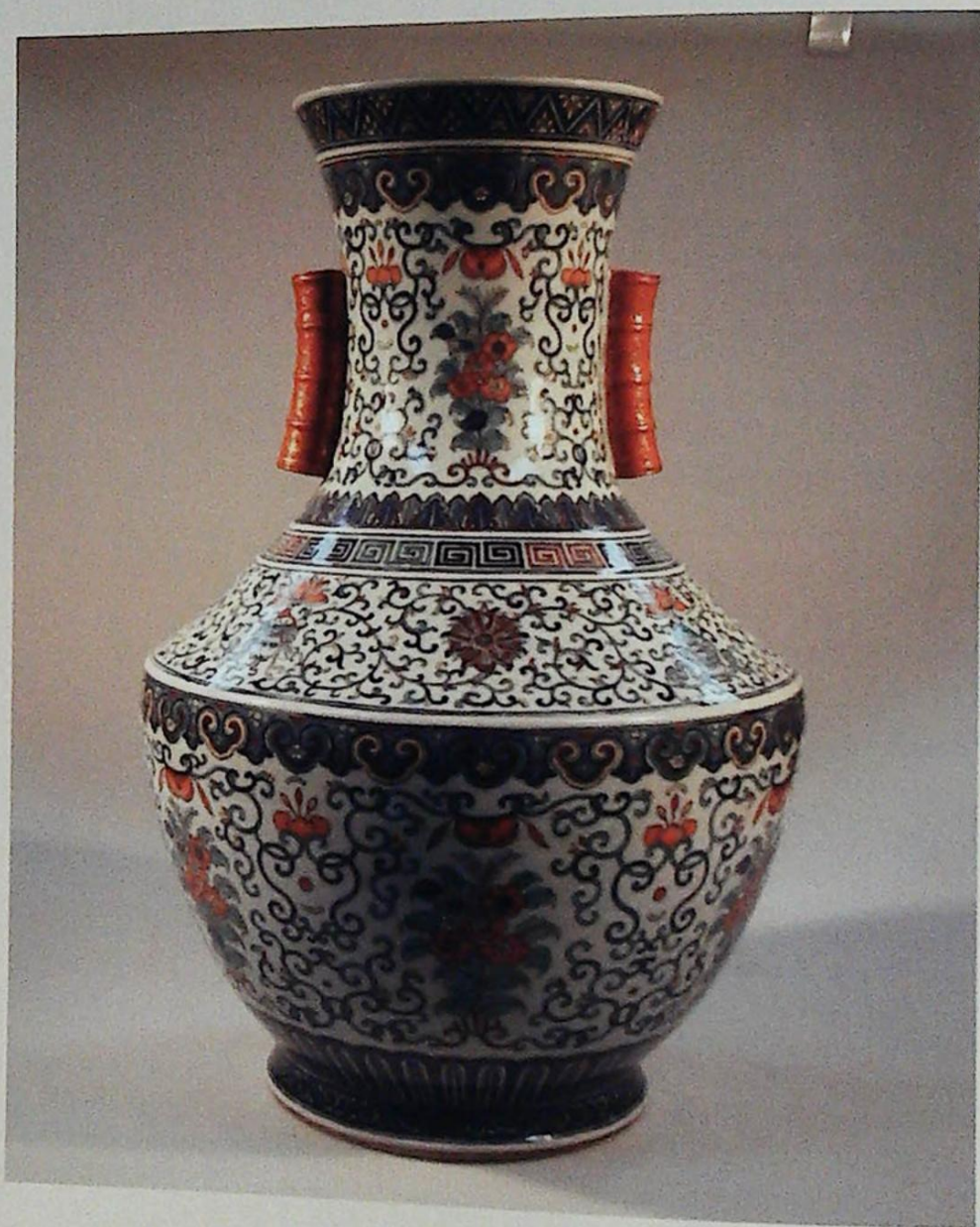
- **Bespoke Professional Service** •

Over 30 years experience working with Golding Young & Thos. Mawer

Specialist Sale of Asian Art

Chinese, Japanese, Indian & Eastern Ceramics, Objects & Works of Art

Wednesday 4th May 2011 at 10am



Further entries invited for this and future sales
Fine examples now being accepted for the 2nd November Sale
which precedes London Asian Art Week

Private Collection
of Antique & Modern Arms & Militaria

Wednesday 4th May 2011 at 10am



At The Grantham Auction Rooms

Final Call for Entries

Fine Furniture & Clocks

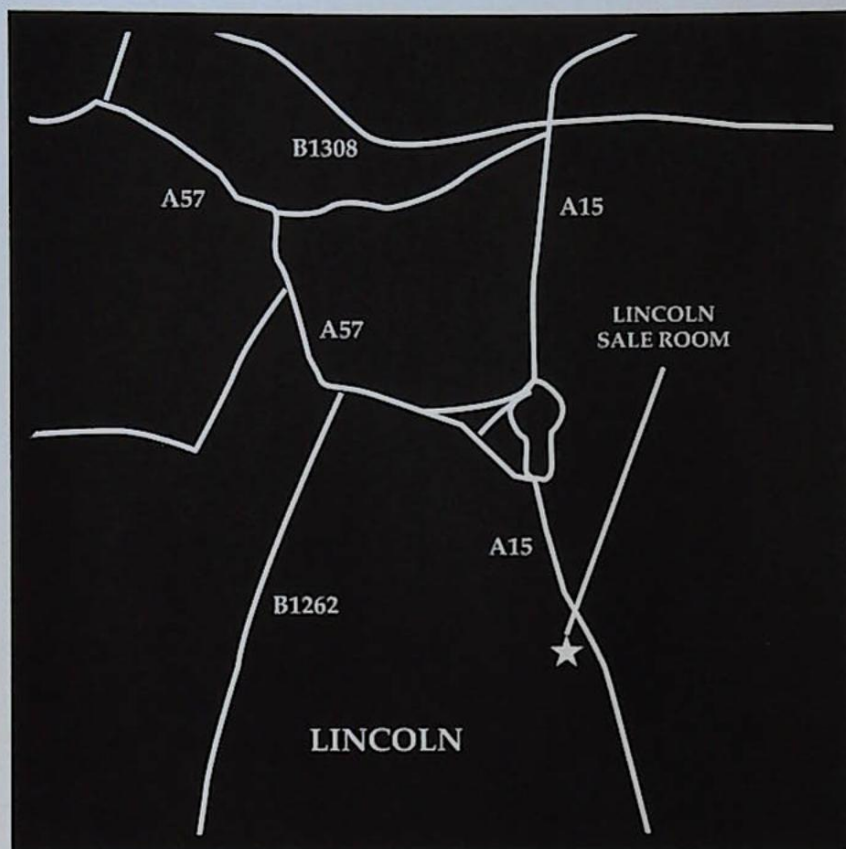
Wednesday 4th May 2011 at 10am



At The Grantham Auction Rooms

Final Call for Entries

How to find the Lincoln Auction Rooms



The Thos. Mawer & Son salerooms at Dunston House are situated in central Lincoln on the East end of Portland Street at the foot of Pelham Bridge (Canwick Road.) By car, approaching from the South, take the last turning on the left just before the road rises to the bridge.

Approaching from the North (via Broadgate,) go over the bridge and turn towards Jacksons Building Centre/Tesco on to Kesteven Street.

Follow the road around to the left and drive under Pelham Bridge to Portland Street. Turn left and you will see Dunston House on the right. Portland Street is also accessible from Lincoln's High Street, opposite the Ritz public house.

The salerooms are within walking distance of the main railway station and bus depot.

