

FINE ART



Wednesday 27th April 2011 at 7pm

GOLDING YOUNG & THO^S MAWER ♦ 1864



Lot 2041

Artist's Resale Right Scheme (Droit de Suite)

Following the UK's implementation of the EU Artist's Resale Right directive in February 2006, living artists are entitled to receive a resale royalty each time their art work is sold in the UK by an art market professional, subject to certain conditions. This payment is calculated on qualifying works of art which are sold for a hammer price or best bid price of more than EUR 1000. The UK sterling equivalent of EUR 1000 will fluctuate in line with prevailing exchange rates.

The actual qualifying threshold will be calculated by the Artist's Resale Right Service Hub based

on the European Central Bank reference rate published at 2.15pm on the day of the sale, and can be found on www.dacs.org.uk.

The royalty charge will apply if the hammer price is more than the UK sterling equivalent of EUR 1000. The royalty charge will be added to buyer invoices and must be paid before items can be cleared. No handling costs or additional fees with respect to these charges are retained by auctioneers despite us having to undertake all of the extra administration work. This sum is then paid by us to a 'not-for-profit' collecting society, who will actually extract their administration fees. Any residual amount may go to benefit the artist.

Portion of the hammer price (Euro's EUR)	Royalty rate
1000 to 50,000	4%
50,000.01 to 200,000	3%
200,000.01 to 350,000	1%
350,000.01 to 500,000	0.5%
Exceeding 500,000	0.25%

VAT is not payable on this royalty charge. The maximum royalty charge is 12,500 EUR. Revised 4th January 2011.

By instructions from
Executors of the late Peter Hunt, Bransby Rest Home for Horses,
Lincolnshire & other local vendors

Auction Sale of

FINE ART

**Wednesday 27th April 2011 at 7pm at
The Lincoln Auction Rooms**

**On View: Sunday 24th 2pm-5pm,
Tuesday 26th 10am-4pm,
& saleday 2pm-7pm**

Catalogues £10

GOLDING YOUNG & THOSMAWER 1864

The Grantham Auction Rooms
Old Wharf Road, GRANTHAM
Lincolnshire NG31 7AA
Tel: +44 (0) 1476 565118
Fax: +44 (0) 1476 561475
Email: grantham@goldingyoung.com



WWW.GOLDINGYOUNG.COM



The Lincoln Auction Rooms
Dunston House, Portland Street
LINCOLN, Lincolnshire LN5 7NN
Tel: +44 (0) 1522 524984
Fax: +44 (0) 1522 535600
Email: lincoln@goldingyoung.com

IMPORTANT INFORMATION FOR BUYERS

- 1. Introduction:** The following informative notes are intended to assist Buyers, particularly those inexperienced or new to our salerooms. All sales are conducted on our printed 'Conditions of sale' which are readily available for inspection and normally accompany catalogues. Our staff will be happy to help you if there is anything you do not fully understand.
- 2. Agency:** As auctioneers we usually contract as agents for the seller whose identity, for reasons of confidentiality, is not normally disclosed. Accordingly, if you buy your primary contract is with the seller.
- 3. Estimates:** Estimates are designed to help buyers gauge what sort of sum might be involved for the purchase of a particular lot. The lower estimate may represent the reserve price and certainly will not be below it. Estimates do not include the buyer's premium or VAT (where chargeable). Estimates are prepared some time before the sale and may be altered by announcement before the sale. They are in no sense definitive.
- 4. Buyers premium:** The 'Conditions of sale' oblige buyers to pay a buyer's premium at 17.5% on the hammer price of each lot purchased with a minimum of £1 per lot. In the case of lots purchased 'Live On-line' or via www.thesaleroom.com or www.i-bidder.com this will be charged at 22.5% on the hammer price. In addition, VAT is payable on this premium (see below).
- 5. VAT:** No lots in this sale are subject to VAT.
- 6. Condition and description of lots.** We are primarily, agents for the seller. We are dependent on information provided by the seller and whilst we may inspect lots and act reasonably in taking a general view about them we are normally unable to carry out a detailed or any examination of lots in order to ascertain their condition in the way in which it would be wise for a buyer to do. Intending buyers have ample opportunity for inspection of goods and, therefore, accept responsibility for inspecting and investigating lots in which they may be interested. Please note carefully the exclusion of liability for the condition of lots contained in the 'Conditions of sale'. Neither the seller nor we, as the auctioneers, accept any responsibility for their condition. In particular, mechanical objects of any age are not guaranteed to be in working order.

However, in so far as we have examined the goods and make a representation about their condition, we shall be liable for any defect which that examination ought to have revealed to the auctioneer but which would not have been revealed to the buyer had the buyer examined the goods. Additionally, in specified circumstances lots misdescribed because they are 'deliberate forgeries' may be returned and repayment made. There is a 21 day time limit from the date of sale, not date of collection or receipt. (The expression 'deliberate forgery' is defined in our 'Conditions of sale').
- 7. Electrical goods:** Items are tested by a qualified electrician for SAFETY ONLY. An item that passes the PAT safety test may not work. Conversely, an item that fails the test may work with just minor repair. 'Working Order' and 'Safe' are two completely different concepts. The only thing you may take for granted is that the item will be safe at the point of sale. Items that have failed will have their cabling cut to source, labelled and sold 'For Trade Only'. To use the object you will have to change it radically from what was sold to you. Therefore, the Auctioneers cannot be held responsible after the point of sale. Those items sold genuinely as 'antiques or collectables' will not have been tested and if bought for use must be checked over for compliance with safety regulations by a qualified electrician before use. This is an express condition.
- 8. Export of goods:** Buyers intending to export goods should ascertain (a) whether an export licence is required and (b) whether there is any specific prohibition on importing goods of that character because, e.g. they may contain prohibited materials such as ivory. Ask us if you need help.

- 9. Bidding in person:** Some form of identification with proof of address will be required if you are unknown to us. Bidders may be required to register before the sale commences and lots will be invoiced to the name and address on the registration form. Account transfers will not be recognised or facilitated under any circumstances.
- 10. Absentee bidding:** Commission bids may be left with the auctioneers indicating the maximum amount to be bid excluding buyers' premium. They will be executed as cheaply as possible having regard to the reserve (if any) and competing bids. If two buyers submit identical commission bids, the auctioneers may prefer the first bid received. If there are genuine reasons why you are unable to leave a Commission Bid and you wish to bid by telephone we may accommodate on lots where you opening bid will be £500 or above. There are inherent dangers with this practice; therefore all arrangements shall be entirely at the bidder's risk. Absentee bid instructions must be received by telephone, fax or email 12 hours prior to the sale.
- 11. Live Internet Bidding:** In completing the bidder registration on www.the-saleroom.com and providing your credit card details and unless alternative arrangements are agreed with Golding Young & Co and/or Thos. Mawer & Son, you (i) authorise Golding Young & Co and/or Thos. Mawer & Son, if they so wish, to charge the credit card given in part or full payment, including all fees, for items successfully purchased in the sale via www.thesaleroom.com or www.i-bidder.com, and (ii) confirm that you are authorised to provide these credit card details to Golding Young & Co and/or Thos. Mawer & Son through www.the-saleroom.com or www.i-bidder.com

- 12. Methods of payment:** Accounts are due for settlement SALEDAY.

The following methods of payment are acceptable.

There will be NO EXCEPTIONS to this policy.

To avoid undue embarrassment for yourself or our staff, please do not ask for preferential treatment.

- i. Cash.** Single payments up to £10,000 only.
 - ii. Debit Card.** No limit with chip & pin. (CNP limit £500).
 - iii. Credit Card.** (Fee of 2%+vat) No limit with chip & pin. (CNP limit £500).
 - iv. Bank Drafts & Building Society Cheques.** No limit. Due to forgeries, we will retain the goods for 3 working days to establish clearance of funds.
 - v. Cheques.** Accepted up to the limit of the guarantee card for immediate clearance. For sums exceeding this, and you are not known to the auctioneers, we will retain the goods for 7 working days to establish clearance of funds.
 - vi. Bank Transfer for Grantham Auctions.** Payments to Golding Young & Co Auction Clients Account, 40-22-19 31269348. HSBC, 88 Westgate, Grantham NG31 6LF. Swift Code MIDLGB22. IBAN is GB78MIDL40221931269348.
 - vii. Bank Transfer for Lincoln Auctions.** Payments to Thos. Mawer & Son Auction Clients Account, 40-28-20 22768127. HSBC, Stonebow, 221 High Street, Lincoln, LN1 1TS. Swift Code MIDLGB65. IBAN is GB65MIDL40282022768127.
- 13. Collection and storage:** Goods can be collected as soon as they are paid for and within two working days following the sale. If goods remain with us and we have no contrary written advice of your intentions the items will be moved to storage and reasonable labour charges levied and storage at the rate of £2+vat per lot per day thereafter for small items and £10+vat per lot per day for furniture and large items.
 - 14. Postage & Packing:** Four options for buyers are available ask a member of staff or visit www.goldingyoung.com/buying.

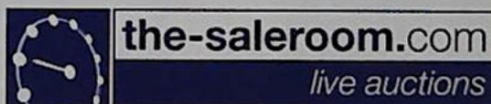
GOLDING YOUNG & THOS MAWER will sell by Auction

FINE ART

WEDNESDAY 27th APRIL at 7pm

Lots 2001-2032	19thC Watercolours, Pastels & Prints
Lots 2033-2092	19thC Oils
Lots 2093-2159	Lincolnshire Artists
Lots 2160-2203	20thC Art

Bid on-line or simply watch the sale live



The catalogue will be available in text only format
WWW.GOLDINGYOUNG.COM



2001

2001. **Henry Charles Fox (1860-1929)**
On the Thames above Henley
watercolour, signed and dated 1912, titled on
the mount,
36cm x 54cm
£250-350



2004

2004. **Henry John Kinnaird (19th/20thC)**
A Sussex cornfield
watercolour, signed and titled,
19.5cm x 40cm
£150-250



2002

2002. **Joseph Hughes Clayton (19th/20thC)**
Newlyn Harbour
watercolour, signed,
31.5cm x 53cm
£200-300



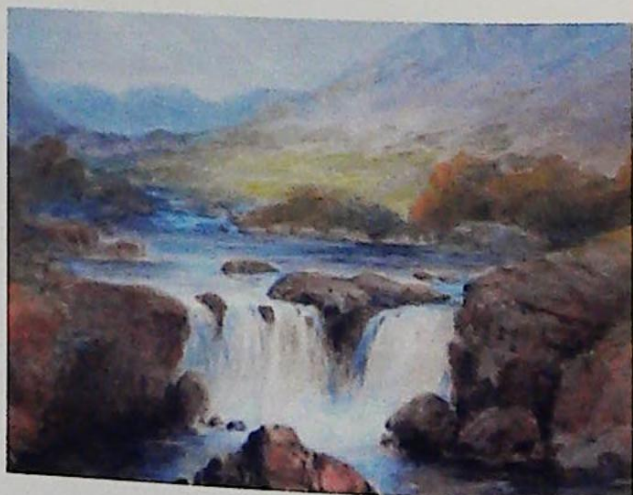
2005

2005. **Henry John Kinnaird (19th/20thC)**
The Thames near Goring
watercolour, signed and titled,
19.5cm x 40cm
£150-250



2003

2003. **Herbert Moxon Cook (1844-1928/29)**
In Creeping Tide Whitby shore
watercolour with highlight, signed and titled
verso,
18cm x 26cm
£100-200



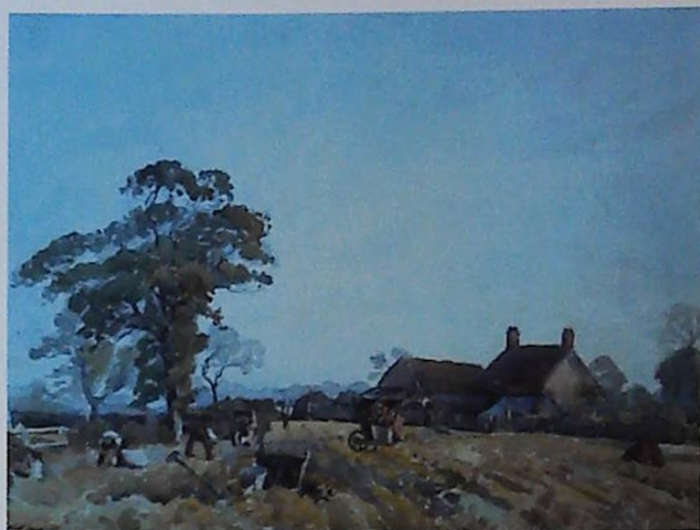
2006

2006. **J. MacDiarmid (19th/20thC)**
Glen Lyon Perthshire
watercolour, signed and dated 1913,
23cm x 24cm
£100-150



2007

2007. **E. Herbert Smith (19thC)**
Country cottages with figures
watercolour, signed and dated (18)92, a pair,
27cm x 38cm
£100-150



2010

2010. **William Mansfield (19th/20thC)**
The Potato Patch, Mobberley
watercolour, signed and dated 1920, titled on
mount,
34.5cm x 49cm
£100-200



2008

2008. **H. Murray (19th/20thC)**
Country cottage with family
watercolour, signed,
17.5cm x 25cm
£150-250



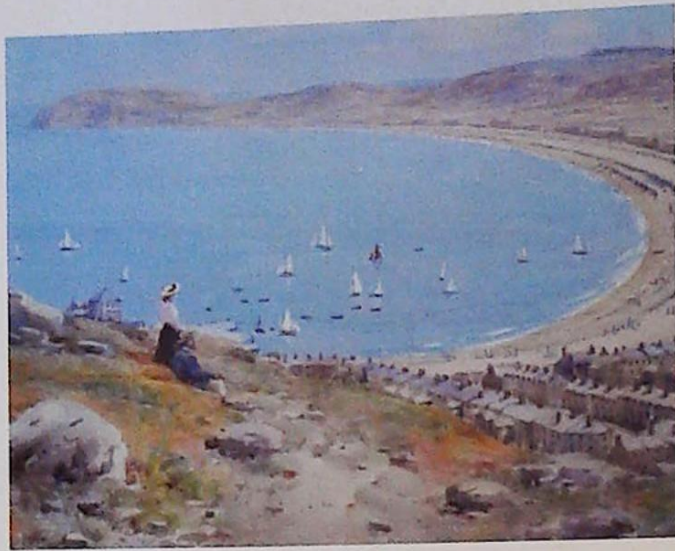
2009

2009. **Edwin Saint John (19th/20thC)**
View on Lake Como
watercolour, signed and titled verso,
27.5cm x 53cm
£150-250



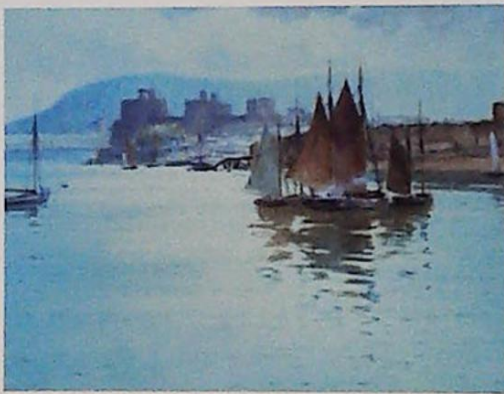
2011

2011. **Frederick James Knowles (1874-?)**
Strayed, Llanrhaiadr N Wales
watercolour, signed and titled on the mount,
56cm x 42.5cm
£200-300



2012

2012. **Warren Williams (1863-1918)**
Llandudno, Great Orme
watercolour, signed,
23cm x 38cm
£500-800



2013

2013. **Warren Williams (1863-1918)**
View of Conway Castle
watercolour, signed,
21.5cm x 40cm
£250-350



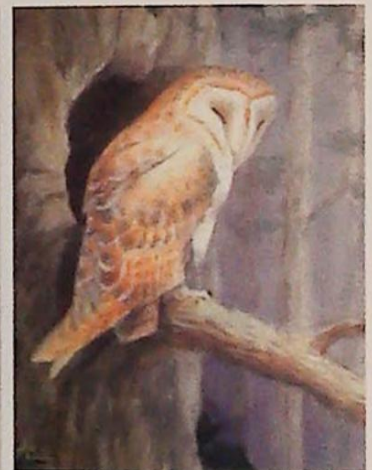
2014

2014. **Joshua Anderson Hague (1850-1916)**
Harbour scene with masted boat
watercolour, signed,
34cm x 50cm
Bears label verso 'Memorial Exhibition of
Works Manchester 1919'
£150-250



2015

2015. **Arthur Dudley (c.1890-1907)**
Still life with grapes and peaches
watercolour, signed 'Giovanni Barbaro',
30cm x 73.5cm
£150-250



2016

2016. **Roland Green (1896-1972)**
Owl
watercolour, signed,
24.5cm x 16cm, and another signed and dated
1919 (2)
£50-80



2017

2017. **18thC print**
Horses under tree published by H. Brookes,
Coventry Street, Dec 26th 1792,
10cm x 14cm
£30-50



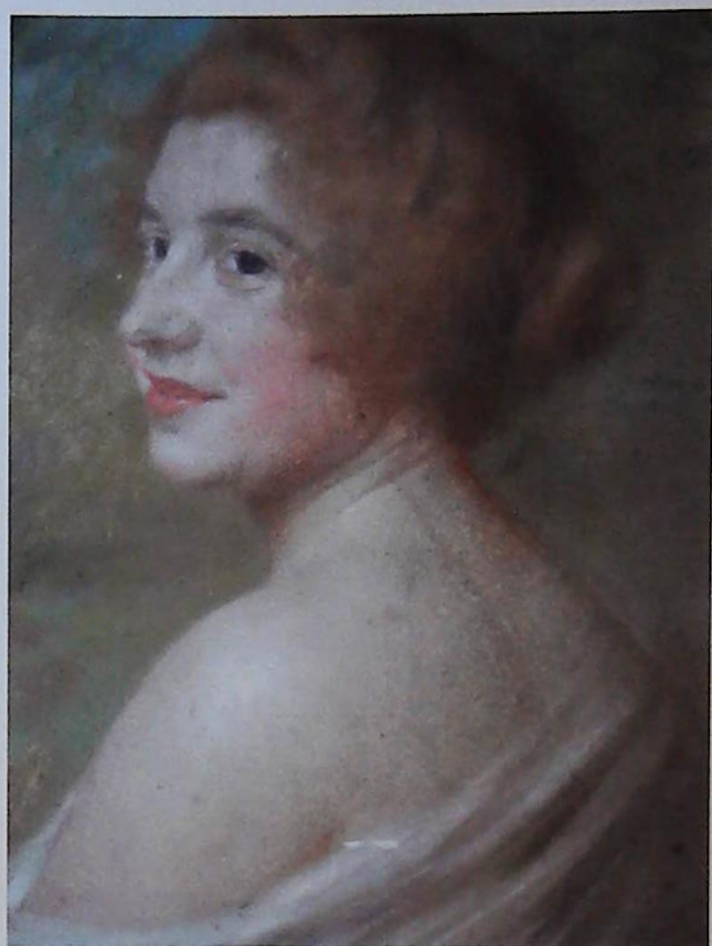
2018

2018. **Charles Cooper Henderson (1800-1877)**
Stage coach and horses at inn
watercolour,
24.5cm x 36.5cm
£200-300



2019

2019. **After Thomas Bretland**
Moore's celebrated winners, St Lawrence
winner of the Chester Cup 1847, engraved by
C. N. Smith, published by J. Moore, Derby
19thC coloured engraving,
45.5cm x 54cm
£150-250



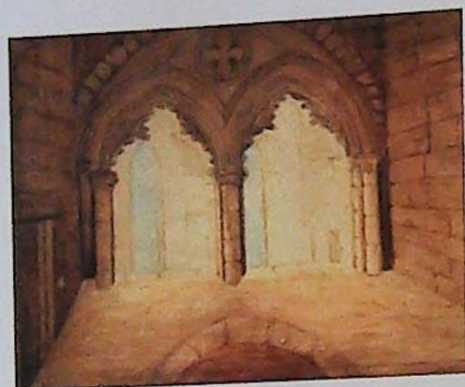
2020

2020. **Alvis Schornbock (1863-1926)**
Head and shoulders portrait of a lady
pastel, signed,
59cm x 46cm
£400-600



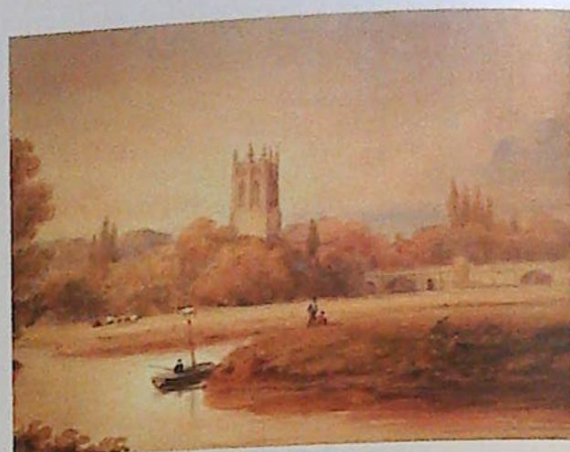
2021

2021. **19thC**
Horse drawn carriage
pencil,
17cm x 23.5cm
£50-80



2022

2022. 19thC
Abbey interior
watercolour,
18cm x 24cm
£50-80



2025

2025. 19thC
River landscape with fishing boat, bridge and
church in background
watercolour,
18cm x 28cm
£60-90



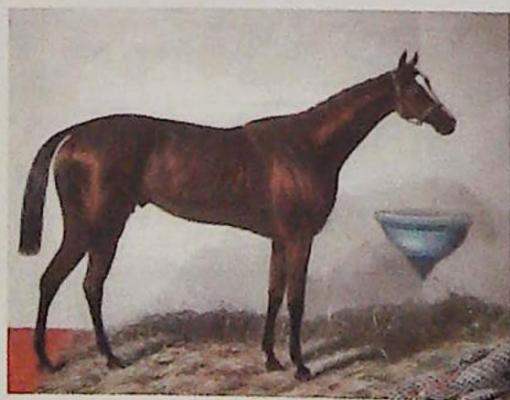
2023

2023. M.E. Wright (19th/20thC)
Driving horses, Rosa Bonheirs
charcoal, pencil with highlights, signed and
dated 1937,
52cm x 104cm
£400-600



2026

2026. Cornelius Pearson (1805-1891)
River landscape with bridge and building,
figures in background
watercolour, signed and dated 1853,
44cm x 69.5cm
£250-350



2024

2024. After C.N. Smith
Moore's celebrated winners, Glen Sattel, winner
of the Great Metropolitan Stakes Epsom 1848
19thC coloured engraving, engraved by C.N.
Smith, published by J. Moore, Derby,
38cm x 50cm
£200-300



2027

2027. 19thC
School building with figure in foreground
watercolour, gilt frame,
39cm x 69cm
£200-300



2028

2028. **George Sidney Shepherd (1784-1862)**
Country house with figures in foreground
watercolour, initialed, gilt frame,
21cm x 29.5cm
£200-300



GO TO GAME



GAME IS OVER

2029

2029. **A pair of monochrome sporting prints**
depicting figures on horseback and figures
returning from a shoot entitled "Go To Game"
and "Game Is Over",
49cm x 66cm
£35-50



2030

2030. **G. Cruickshank (19thC)**
Portrait of a young maiden
watercolour, signed,
45cm x 33.5cm
£300-500



2031

2031. **George Oyston (1861-1937)**
Cornfields
watercolour, signed,
23cm x 53cm and a similar print (2)
£100-200



2032

2032. R.C. Lowish(?) (19thC)
Study of a pony
pencil with highlight, signed and dated 1875,
28cm x 22cm (oval)
£80-120



2033

2033. 20thC Continental School
Fishing vessels
oil on canvas, indistinctly signed,
59cm x 89.5cm
£80-120



2034

2034. T. Galt (19th/20thC)
Coastal scene with lifeboat
oil on board, signed and dated 1902,
19.5cm x 27cm
£50-100



2035

2035. 19thC British School
Half length portrait of a gentleman with dog
oil on canvas,
90cm x 69cm
£200-300



2036

2036. 19thC British School
Half length portrait of a lady
oil on canvas,
90.5cm x 70cm
£250-350



2038

2038. Frank Markham Skipworth (1854-1929)
Portrait of a young beauty in flowing dress
oil on canvas, initialed, signed verso,
54.4cm x 75.5cm
£800-1200



2039

2039. After George Armfield
Three terrier dogs
oil on panel,
12cm x 14.5cm
£150-250



2037

2037. Claude McChesney (19thC)
River landscape with cottages and a windmill
oil on canvas, signed,
70cm x 90.5cm
£500-800



2040

2040. 19thC British School
Fishermen at pool and waterfall
oil on canvas,
44cm x 59cm
£350-450



2041



2042

2041. **James Wilson Carmichael (1800-1868)**
Shipping on the Thames London
oil on canvas,
70cm x 135cm
£8000-12000
2042. **19thC British School**
Country lane with buildings and figures
oil on canvas,
29cm x 39cm
£200-300
2043. **Henry Dawson (1811-1878)**
Country landscape with figures and sheep
oil on canvas,
74cm x 124.5cm
£1500-2000



2043



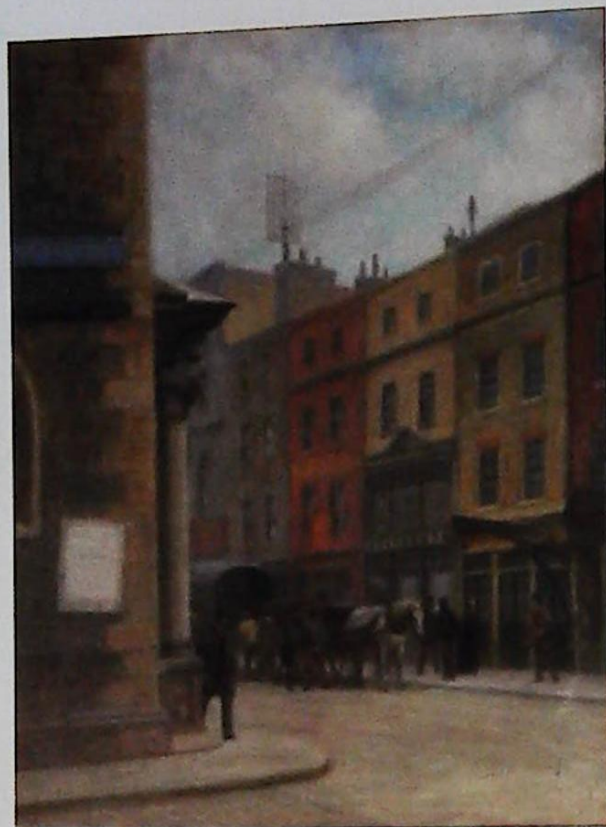
2044

2044. 19thC British School
Half length portrait of a gentleman
oil on canvas,
74.5cm x 61.5cm
£250-350



2045

2045. M. Adams (19thC)
Spaniels, interior scene
oil on canvas, signed and dated 1881(?),
61.5cm x 81.5cm
£400-600



2046

2046. W.E. Norman (19thC)
Free Church Lane, street scene circa 1900
oil on canvas, signed,
50.5cm x 40cm
£400-600



2047

2047. After George Morland (19thC)
Gentleman smoking pipe, interior scene,
seascape in the background,
33.5cm x 28cm
£150-250



2048

2048. J R (19thC)
Courting couple playing chess
oil on canvas, initialed,
30.5cm x 35.5cm
£250-350



2049

2049. Karl L. Hatfield (b.1886)
Sailing boats on lake, oil on canvas, signed,
14cm x 17.5cm
£200-300



2050

2050. **Early 19thC**
Portrait of a young boy
oil on panel,
34cm x 28cm
£100-200



2051

2051. **19thC British School**
Horse and cart on country track
oil on board,
15cm x 19.5cm
£60-90



2052

2052. **19thC British School**
Thatched stable with figures and a cart
oil on board,
13.5cm x 18.5cm
£180-250



2053

2053. **19thC British School**
Fishermen in country landscape
oil on canvas,
19cm x 29cm
£250-350



2054

2054. **After Henry Redmore**
Coastal scene with fishing smalks
oil on board,
30.5cm x 46cm
£120-160



2055

2055. **G.K. Harcourt (19thC)**
"Dangerous", winner of the Derby 1833
oil on canvas, signed and titled verso,
30.5cm x 41cm
£400-600



2056

2056. 19thC
Dog within Victorian room interior
oil on canvas,
32cm x 35cm
£100-150



2057

2057. 19thC
Horse in portrait landscape
oil on canvas,
59.5cm x 74cm
£400-600



2058

2058. Wright Barker (1864-1941)
Portrait of a gentleman
with horse in landscape
oil on canvas, signed and
dated 1917,
136cm x 126cm
£1800-2400



2059

2059. **19thC British School**
 River landscape with cattle grazing
 oil on canvas,
 49.5cm x 75cm
 £500-800



2060

2060. **Early 19thC British School**
 River landscape with sailing boats
 oil on board,
 15cm x 22cm
 £250-350



2061

2061. **19thC British School**
 Lake scene with cottages and animals grazing,
 bears label verso Loch Lomond
 oil on canvas,
 23.5cm x 42.5cm
 £350-450



2062

2062. **Herman Ludwig Van Hoom (1812-1881)**
 Dutch canal scene
 oil on board, a pair, signed,
 24cm x 45.5cm (2)
 £600-900



2063



2064



2065

2063. **After John Frederick Herring Jn - (19thC)**
Three horses outside stable
oil on canvas,
29cm x 44cm
£400-600

2064. **19thC**
River landscape with ruins and figures
oil on canvas,
21cm x 26cm
£200-300

2065. **E G (19thC)**
Horse and spaniel outside stable
oil on canvas, initialled and dated 1850(?),
39cm x 49.5cm
£800-1200



2066

2066. **Early 19thC**
Half length portrait of a young woman
oil on canvas,
49cm x 41.5cm
£600-800



2067

2067. **19thC British School**
Woodland river scene with figures
oil on canvas,
61cm x 74cm
£600-800



2068

2068. **Samuel Calvert (1828-1913)**
Landscape with windmill
oil on canvas,
54cm x 94.5cm
£800-1200



2069

2069. **Rosie J. Morison (19thC)**
Shepherd and herd in landscape
oil on canvas laid on board, signed and titled
verso,
24.5cm x 34.5cm
£250-350



2070

2070. **19thC British School**
Figures in coastal landscape
oil on board,
22cm x 33cm
£300-400



2071

2071. **Early 19thC British School**
Figures in river landscape
oil on board,
14cm x 19cm
£250-350



2072

2072. 18thC
Prize bull in landscape
oil on canvas,
58cm x 74cm
£1200-1600



2074

2074. 18thC
Dapple grey horse with carriage harness
oil on canvas,
60cm x 72cm
£800-1200



2073

2073. After Cecil Aldin
Steeple Chase
oil on card, 14.5cm 19.5cm
£80-120



2075

2075. Robert W. Wright (19thC)
Child seated with toys
oil on board, signed and dated 1877,
24cm x 19cm
£300-400



2076

2076. Early 19thC
Half length portrait of a young gentleman
oil on board,
24cm x 19cm
£150-250



2077

2077. Early 19thC
Country landscape with cottage and figures
oil on canvas,
37cm x 51.5cm
£200-300



2078

2078. 19thC British School
Half length portrait of a lady
oil on canvas,
75cm x 62cm
£300-500



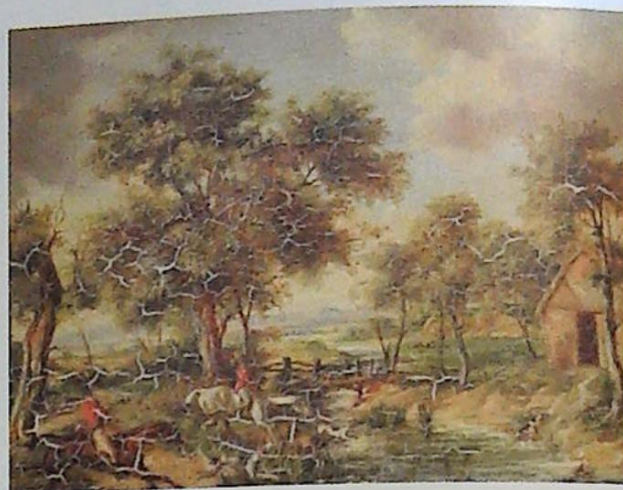
2079

2079. 19thC British School
Half length portrait Highland gamekeeper
with dog, landscape background
oil on canvas,
75cm x 62cm
£400-600



2080

2080. Louis Van Staaten (1836-1909)
A Dutch harbour
oil on canvas, signed,
49.5cm x 75cm
£400-600



2081

2081. After Alken
The Hunt over river landscape
oil on panel,
28cm x 38cm
£100-200



2082

2082. Attributed to J. Williamson (19thC)
River landscape
oil on board, gilt frame,
9cm x 15cm
£80-120



2083

2083. Early 19thC
Dark chestnut horse in landscape
oil on canvas, gilt frame,
49.5cm x 59cm
£400-600



2084

2084. **Gourlay Steell (1819-1894)**
A Day of Rest
 oil on canvas, signed and dated 1864,
 titled verso,
 70cm x 90cm
 Provenance: Sotheby London 26.3.03
 £1800-2400



2086

2086. **J. Williamson (19thC)**
Coastal scene
 oil on board, signed,
 10cm x 18.5cm
 £80-120



2085

2085. **19thC**
Country house with figures, horses and dogs in foreground
 oil on canvas,
 69cm x 88cm
 £800-1200



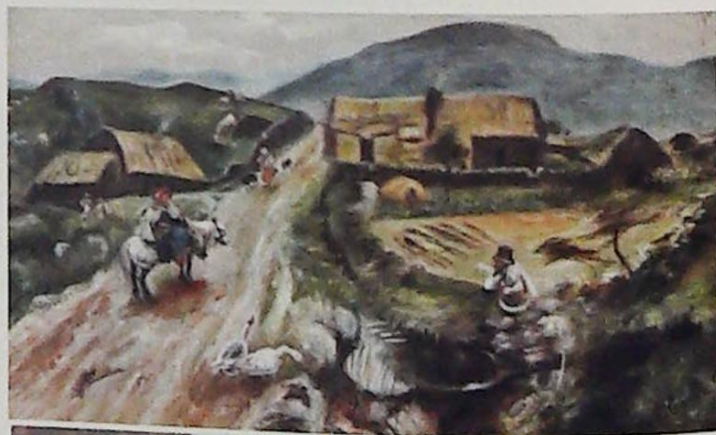
2087



2088

2087. **19thC English School**
Gentleman with two greyhounds in open
landscape
oil on canvas,
38cm x 82.5cm
£1000-1500

2088. **19thC Italian School**
The Lovers with cherubs in landscape
oil on canvas,
84cm x 141cm
£1000-1500



2089

2089. **L. Copson**
A child nursing a calf within a stable and
19thC style landscape with figures on a road,
oil on canvas, pair
29cm x 49cm
£50-100



2090

2090. **Harold Bennett (19th/20thC)**
Harvest time near Scarborough
oil on board, signed, label vreso,
40cm x 50cm
£500-800



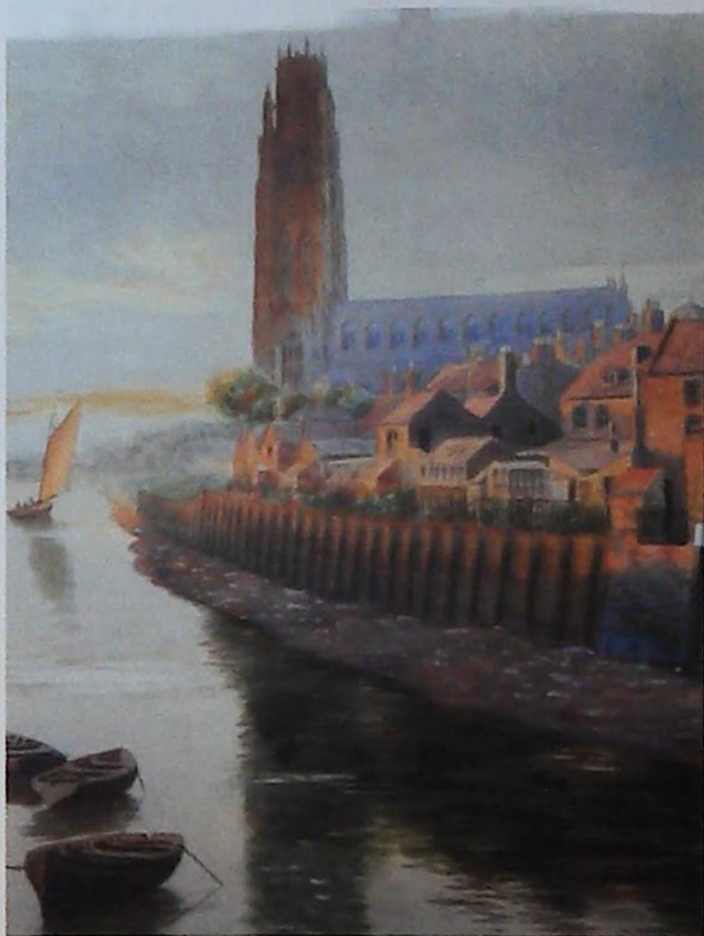
2091

2091. **19thC Italian School**
Nativity scene
oil on canvas, gilt frame,
65cm x 77cm
£700-900



2092

2092. **Marrs(?) (19thC)**
Winter landscape with stage coach, signed,
modern gilt frame,
41.5cm x 74cm
£400-600



2093

2093. **William Bartol Thomas (1877-1947)**
Boston Stump from the River Witham
watercolour, signed and dated 1898,
52cm x 36cm
£500-800



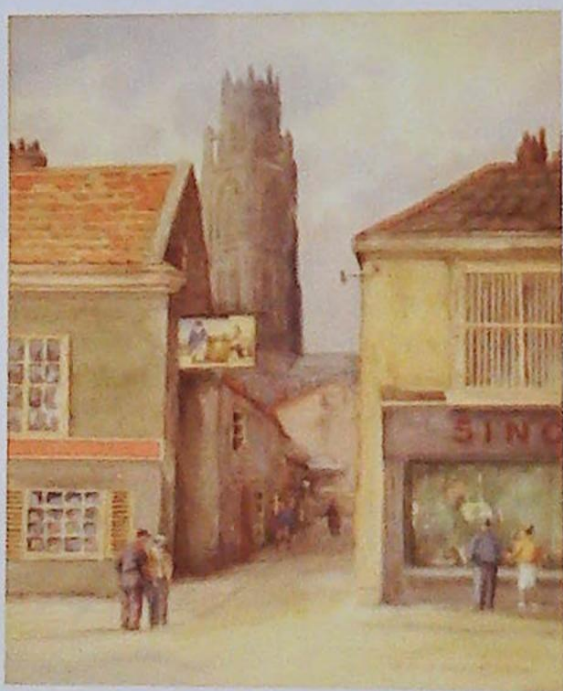
2094

2094. **Alfred Ernest White (1873-1953)**
Newport Arch from Bailgate, Lincoln
oil on board, signed,
29.5cm x 50cm
£200-300



2095

2095. Cecil Hodgkinson (1895-1979)
Boston Streets and Stump
watercolour, signed,
37cm x 26.5cm
£70-100



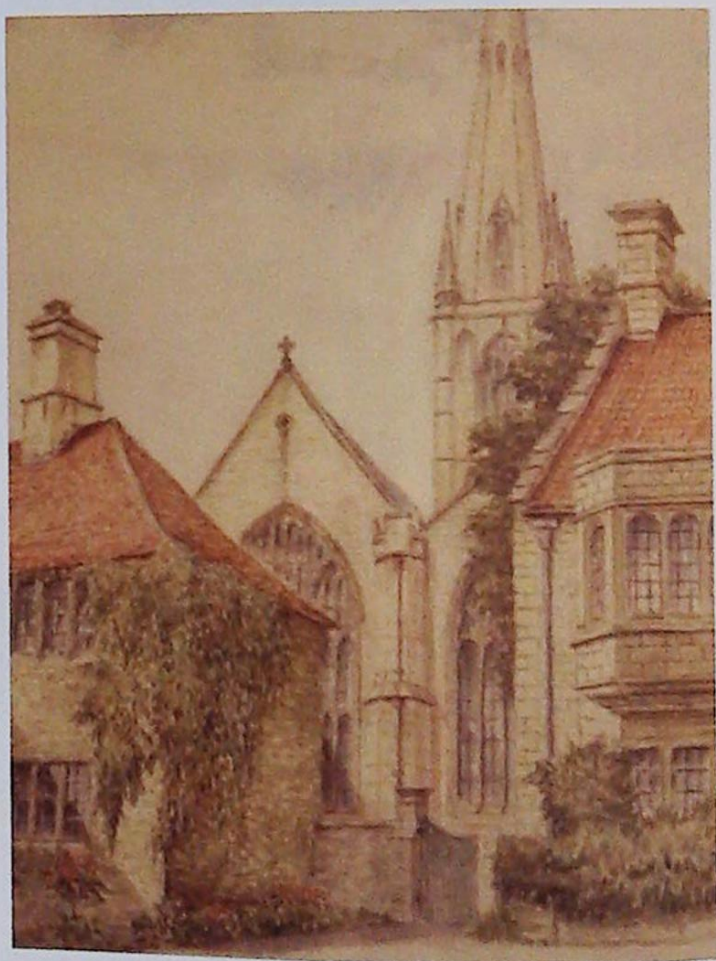
2096

2096. Cecil Hodgkinson (1895-1979)
Britannia Public House, Boston
watercolour, signed,
37cm x 26.5cm
£70-100



2097

2097. Cecil Hodgkinson (1895-1979)
Mallard in flight
watercolour, signed,
22cm x 33cm
£50-80



2098

2098. Sam Burden (20thC)
St Wulfram's Church from Grantham House
watercolour, signed,
45cm x 30cm
£50-80



2099

2099. **19thC British School**
Lincoln Cathedral, interior view
watercolour,
31.5cm x 23cm
£50-100



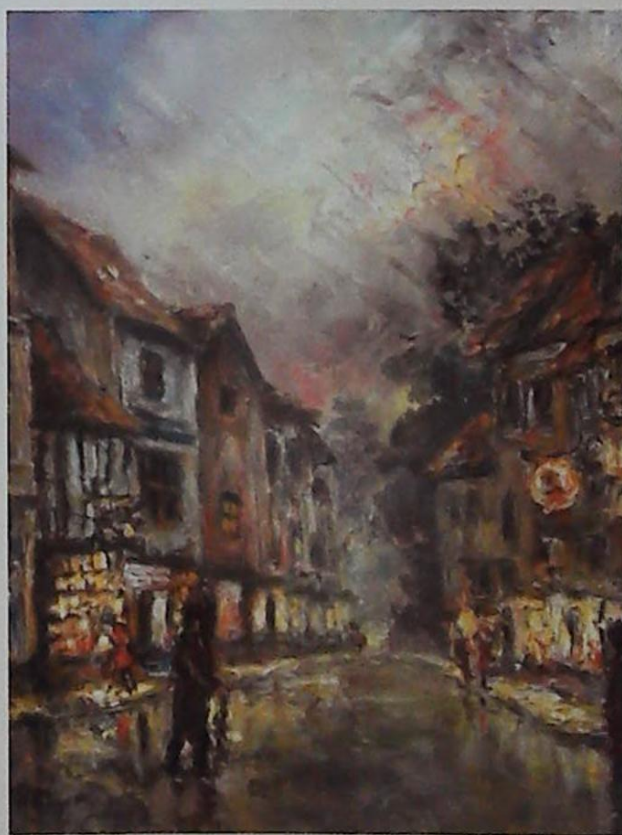
2101



2100

2100. **William G. Footit (1865-1936)**
Greetham Church, near Lincoln
ink drawing, signed and dated 1902,
21cm x 29.5cm
(Artist bibliograph details verso)
£80-120

2101. **Sidney Valentine Gardner (1869-1957)**
Thatch cottages, village lane
oil on board, a pair, signed,
21cm x 29.5cm (2)
Sidney Gardner was a Nottingham artist and
member of the Staithes Art Club
£200-300

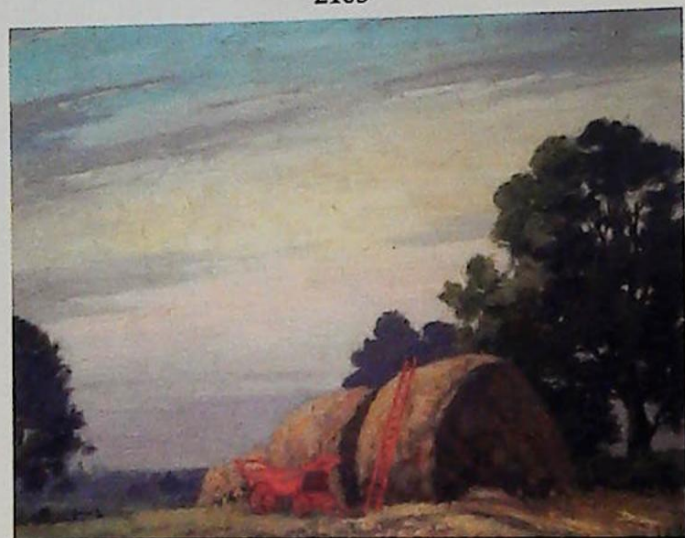


2102

2102. **Barry Mason (20thC)**
Steep Hill, Lincoln
oil on canvas, signed,
24cm x 19.5cm
£50-80



2103



2104



2105

2103. **John Grimble (20thC)**
Boston Stump
oil on canvas laid on board, initialled and
dated (19)71,
25cm x 30cm
£50-100

2104. **Clive R Browne (1901-?)**
The Red Wagon
oil on board, signed,
28cm x 38cm
£100-200

2105. **William Edward Millner (1849-1895)**
Young country maiden sleeping
oil on canvas, monogrammed,
44cm x 59cm
£700-900



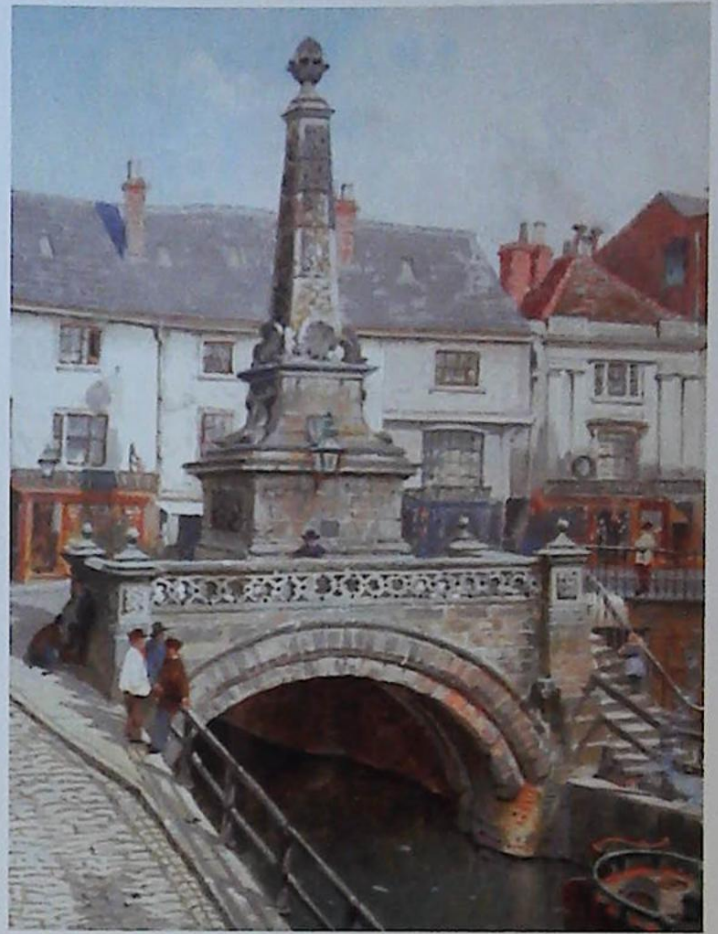
2106

2106. **William Edward Millner (1849-1895)**
Victorian maiden, gentleman fishing in
background
oil on board, monogrammed,
24cm x 17cm
£400-600



2107

2107. **William Edward Millner (1849-1895)**
Country landscape with young boy on
horseback
oil on card, initialled,
28cm x 43cm
£400-600



2108

2108. **G T C (?) (19thC)**
High Bridge Lincoln
watercolour drawing, initialled and dated
(18)78,
34.5cm x 24cm
£200-400

2109. **Herbert Rollett (1872-1932)**
Lincolnshire village in landscape
oil on canvas, signed,
62cm x 75cm
£1000-1500



2109



2110

2110. **After Joseph Baker**
The North West prospect of the Cathedral
Church of Lincoln
18thC engraving,
49cm x 71cm
£200-300



2111

2111. **I.N. Cartwright (20thC)**
The Ace
pencil, signed,
13cm x 19.5cm
£50-80



2112

2112. **I.N. Cartwright (20thC)**
Dartmoor pony
pencil and wash, signed,
12cm x 14cm
£50-80



2113

2113. **I.N. Cartwright (20thC)**
Dartmoor pony "Nettle"
pen and ink, signed,
16cm x 17cm
£50-80



2114

2114. **I.N. Cartwright (20thC)**
Ancient Arab
pencil, signed,
20cm x 16cm
£50-80

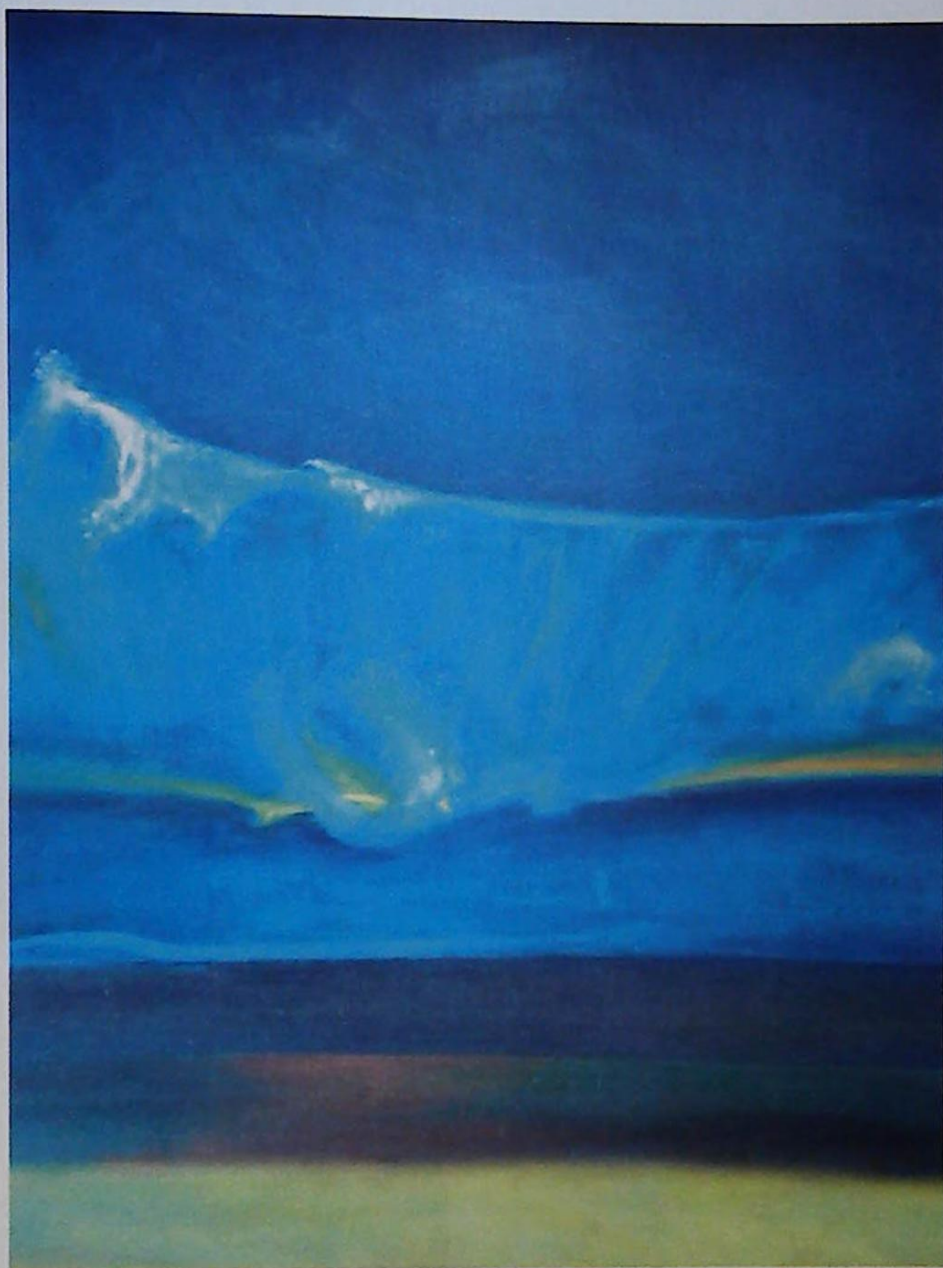


2115

2115. **I.N. Cartwright**
Arab foal
ink wash, signed,
22cm x 15cm
£50-80

2116. **Spare Lot.**

2117. **Spare Lot.**



2118

2118. Antonin (Tony) Bartl (1912-1998)

Wave

oil on canvas, signed and dated 1976,

90cm x 90cm

£300-500

Antonin Bartl (1912-1998) had been invited by Marchbank Salmon to lecture in Fine Art in Lincoln. A Czechoslovakian, Bartl had trained in Prague, where he had briefly been taught by Oskar Kokosckha. A Communist, he became Head of Publicity for Twentieth Century Fox in Prague, during the 1930's, but during the Second World War he had been put in a Labour Camp, from which he had escaped to Vienna. In his Prague years he had painted his compatriot Hedy Lamarr, Clark Gable and all the big stars, but after the hardships of war he needed a period of recuperation and he came to England as a Visiting Artist with the Arts Council in 1947, re-training at Heatherley's School of Art under Iain MacNab, since his qualifications were not recognised here, and he could not speak English. Marchbank Salmon was a friend of fellow Scott MacNab, and he first met Bartl at Heatherley's.

Bartl, a charming and charismatic man, made an immediate and lasting impact, and while the Echo reported Dugdale's praise for Tarttelin's negroid 'Baptism of Our Lord', ignoring Bartl, an unidentified news cutting carried a lengthy review which praised Bartl's 'Cornish Harbour' oil before all others. His eventual impact on the Society and on countless art students has become a Lincoln legend, with many current members acknowledging his influence.

Lincoln Artists 100 Yews 1906-2006 Edward Mayor



2119

2119. Antonin (Tony) Bartl (1912-1998)
Sailing ships Fellucas, The Nile Egypt
oil on canvas, signed and dated 1985,
66cm x 95cm
£300-500



2120

2120. Antonin (Tony) Bartl (1912-1998)
City Set, cafe at night
oil on board, initialled and dated (19)66,
100cm x 137.5cm
£300-500



2121

2121. Antonin (Tony) Bartl (1912-1998)
Study portrait of Jennifer Wilson
pencil, signed and dated 1979,
43cm x 28.5cm
£100-150



2122

2122. J. Croking(?) (19th/20thC)
Lincoln from Washingborough
pastel, signed,
43cm x 57cm
£50-100



2123

2123. **David Ashman (20thC)**
Lincolnshire, stubble burning
oil on canvas, signed and dated (19)81,
49cm x 75cm
£100-200



2124

2124. **David Ashman (20thC)**
Lincolnshire landscape
oil on board, signed,
49cm x 75cm
£100-200



2125

2125. **T.G. Storey (20thC)**
Lincolnshire village
oil on canvas, signed,
24.5cm x 34.5cm
£50-80



2126

2126. **T.G. Storey (20thC)**
Floral still life
oil on board, initialled,
100cm x 57cm
£80-120



2127

2127. **Hai Stinet Yeung (b.1936)**
River landscape with figure fishing
oil on canvas, signed and dated 2.5 1981,
55cm x 76.5cm
Born in China to become a British resident and
Lincolnshire based artist since 1969
£200-300



2128

2128. **Hai Stinet Yeung (b.1936)** Woodland and river landscape
oil on canvas, signed,
50cm x 90.5cm
£200-300



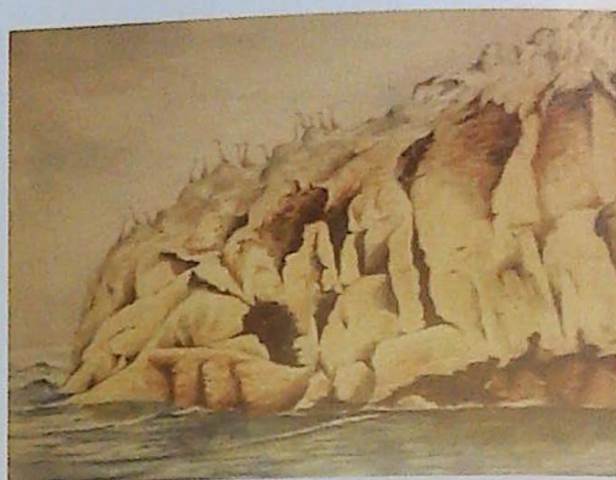
2129

2129. **Janet Hutton (1941-2010)**
Landscape with poppies
watercolour, signed,
26cm x 34cm and three other oils (4)
£50-80



2130

2130. **Janet Hutton (1941-2010)**
Windmill
watercolour, signed,
38cm x 48cm and two others (3)
£50-80



2131

2131. **Janet Hutton (1941-2010)**
Coastal
watercolour, signed,
34cm x 42cm and two others
£50-80



2132

2132. **Janet Hutton (1941-2010)**
Maud Foster Windmill, Boston
watercolour, signed,
41cm x 31cm and two others
£50-80



2133

2133. **Janet Hauton (1941-2010)**
Coastal scene
watercolour, initialed and dated 1986,
19cm x 34cm and a quantity of other pictures
and prints
£50-80



2136

2136. **Sheila Parkinson (20thC)**
Lincolnshire landscape
watercolour and pastel, signed and dated,
35cm x 49.5cm
£50-80



2134

2134. **Terry Shelbourne (20thC)**
Locomotive Class A4 "Sir Nigel Gresley at
York Shed"
oil on board, signed, titled and dated (19)83
50cm x 80cm
£100-150



2137

2137. **Keith Roper**
Ely Cathedral
watercolour and pastel, signed, titled and
dated 1988,
27cm x 38cm
£100-150



2135

2135. **David Waller (b.1945)**
Spaniel
oil on canvas, signed,
39.5cm x 49.5cm
£50-100



2138

2138. **Keith Roper (b.1946)**
Lincoln from Riseholme
watercolour and pastel, signed and dated (19)93,
16cm x 20cm
£100-150



2139

2139. **Keith Roper (b.1946)**
Lincoln
watercolour and pastel, signed and dated
(19)83,
16.5cm x 22cm
£100-150



2140

2140. **Keith Roper (b.1946)**
Lincoln
watercolour and pastel, signed and dated
(19)85,
22cm x 26.5cm
£100-150



2141

2141. **Keith Roper (b.1946)**
The Strait Lincoln
watercolour, signed and dated (19)81,
38.5cm x 22.5cm
£100-150



2142

2142. **Keith Roper (b.1946)**
Michaelgate Lincoln
watercolour, signed and dated 1982,
30cm x 38cm



2143

2143. **Keith Roper (b.1946)**
Newark, River Trent
watercolour and pastel, signed and
dated (19)87,
27cm x 40cm
£100-150



2145

2145. **Gill Nadin (1928-1996)**
Poppies at night
artists signed proof dated (19)75,
35cm x 25.5cm
Gill Nadin was a tutor at Lincoln City Art
School and member of the Lincolnshire Artists
Society
£40-80



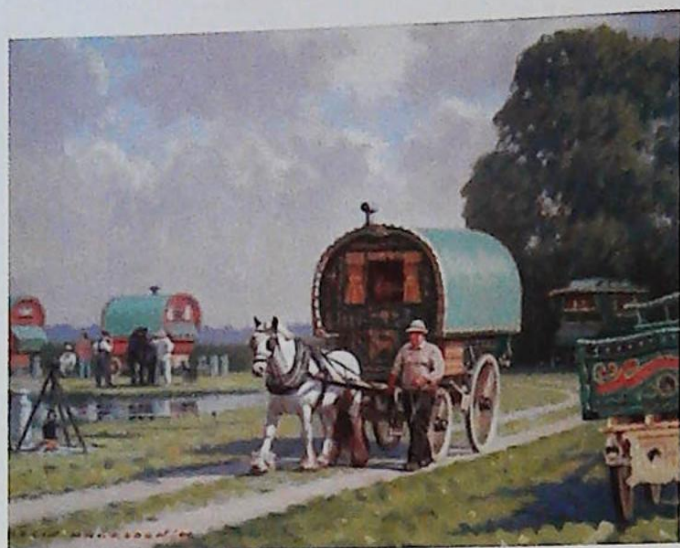
2144

2144. **George Todd (20thC)**
Head and shoulders portrait of a woman
mixed media, signed and dated (19)51?,
51cm x 41cm
George Todd was part of the Pacifist farming
community based at Holton-Cum-Beckering,
Lincolnshire
£200-300



2146

2146. **Gill Nadin (?-1996)**
Late sunshine with coffee
oil on canvas, signed, titled and dated 1968,
59.5cm x 59.5cm
£200-300



2147

2147. Robin Wheeldon (b.1945)
Gypsy Caravan
oil on board, signed and dated (20)00,
29cm x 39cm
£150-250



2148

2148. Robin Wheeldon (b.1945)
Mowing hay in the 1940's at Waddington
oil on board, signed, titled and dated (20)01,
43.5cm x 59.5cm
£200-300



2149

2149. Robin Wheeldon (b.1945)
Humber Keel on the Foss Dyke Lincoln
between Brayford and the Pyewipe
oil on board, signed, titled and dated (20)04,
39.5cm x 55cm
£200-300



2150

2150. Robin Wheeldon (b.1945)
Picking daffodils on Lincoln Heath near
Metheringham
oil on board, signed, titled and dated (20)10,
29.5cm x 39cm
£150-250



2151

2151. Robin Wheeldon (b.1945)
Ploughmans Lunch
oil on board, signed, titled and dated (20)10,
29.5cm x 39cm
£150-250



2152

2152. **Robin Wheeldon (b.1945)**
 Kuhne Kuhne pigs (from New Zealand)
 oil on board, signed, titled and dated (20)10,
 29.5cm x 39cm
 £150-250



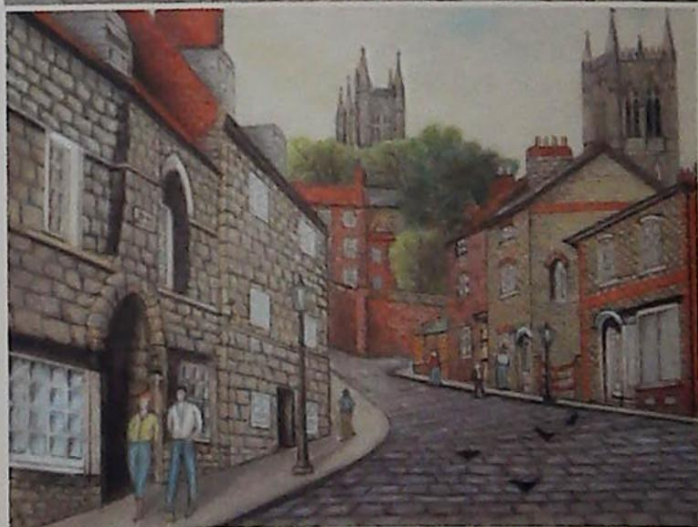
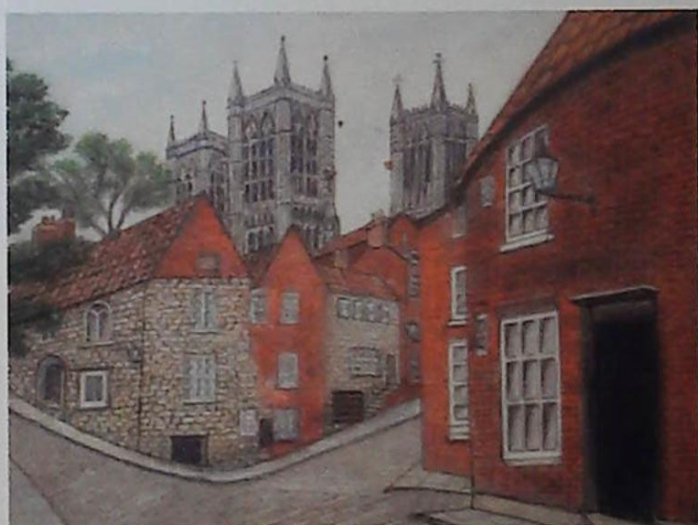
2154

2154. **Robin Wheeldon (b.1945)**
 Hedge trimming at South Carlton, near
 Lincoln
 oil on board, signed, titled and dated (20)09,
 29.5cm x 39.5cm
 £150-250



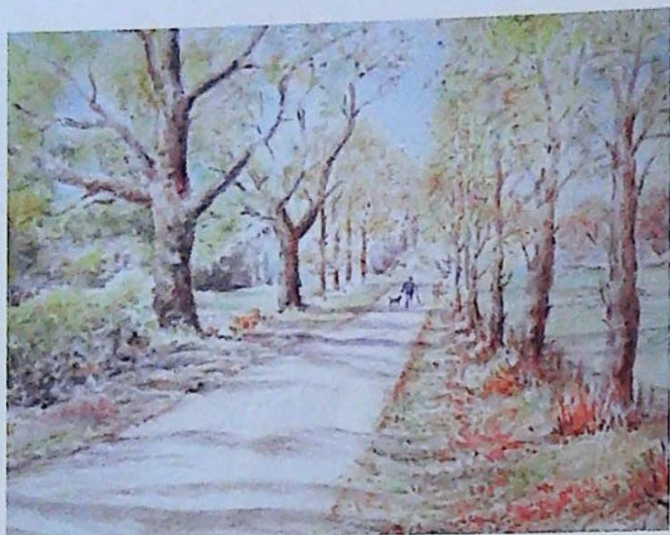
2153

2153. **Robin Wheeldon (b.1945)**
 Ploughing at Fishtoft near Boston, Lincolnshire
 oil on board, signed, titled and dated (20)10,
 29.5cm x 39cm
 £150-250



2155

2155. **Richard Riley (20thC)**
 Steep Hill and Michaelgate Lincoln
 watercolour and pastel, a pair, signed and
 dated 1987,
 34.5cm x 39cm (2)
 £50-100



2156

2156. James Booth (20thC)
Autumn, Woodhall Spa Lincolnshire
watercolour, signed and titled,
17cm x 22.5cm
£50-100



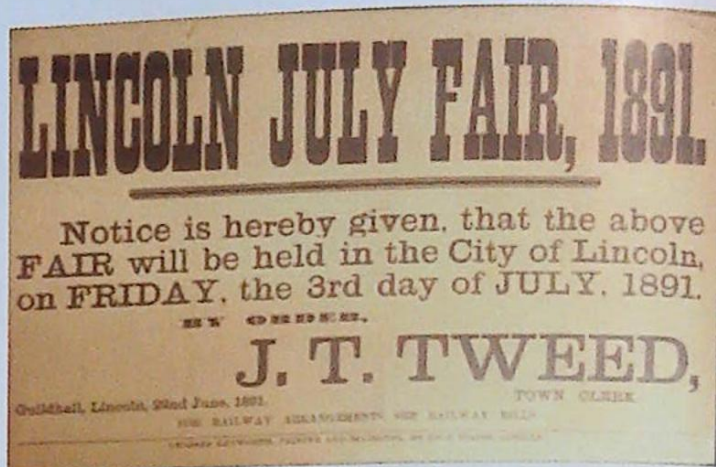
SPILSBY AGRICULTURAL SOCIETY,
FOR THE ENCOURAGEMENT OF DESERVING LABOURERS AND SERVANTS.

CERTIFICATE OF MERIT.

This is to Certify, that on the 11th day of November 1875,
a Premium of *Two Pounds* was given by
The Spilsby Agricultural Society,
to *W. J. J. J.* being the Society's 1st Prize
for Underdraining in Class H.
Witness my Hand, *W. J. J. J.* President

2157

2157. Spilsby Agricultural Society Certificate of Merit
monochrome print dated 1875,
29cm x 22.5cm, and two others
Alford (3)
£50-80



2158

2158. Lincoln July Fair 1891
monochrome poster,
32cm x 49cm and two others Statue 1890 and
Caution (3)
£50-80



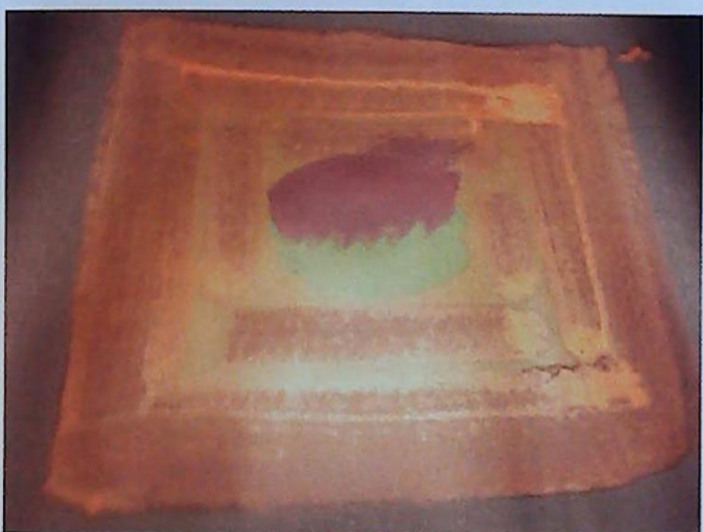
2159

2159. Lincoln April Fair
monochrome poster dated 21st February 1889,
88cm x 57cm
£100-200



2160

2160. **Brad Farr**
Artist signed lithograph print
Golden Agate 67/150, dated (19)84
£50-70



2161

2161. **Howard Hodgkin**
Tropical Fruit
screen print in colours 1981 edition, published
by Bernard Jacobson,
78cm x 93cm
£500-800



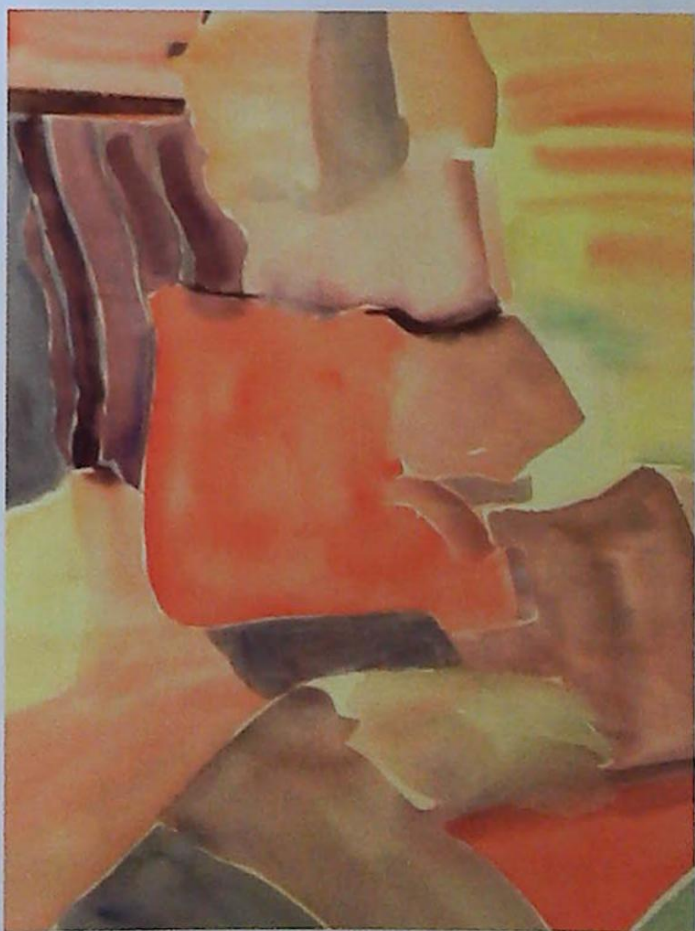
2162

2162. **George Alfred Boden (1888-1956)**
North African figures
oil on board, signed,
37cm x 57cm
£200-300



2163

2163. **Fred Yates (1922-2008)**
French street scene
watercolour, signed,
28cm x 37cm
£300-400



2164

2164. **William Tillyer (b.1938)**
Abstract study
watercolour, signed,
71cm x 47cm
£500-700



2165

2165. **Henning Hougaard (1922-1995)**
Swedish birds in winter landscape
oil on canvas, signed,
43.5cm x 63.5cm
£100-150



2166

2166. **Amanda Paye (20thC)**
Coat of many colours
oil on board, monogrammed,
28cm x 28cm
£100-200



2167

2167. **C.M. Christie.(20thC)**
Still life roses
oil on canvas, signed,
39.5cm x 31cm
£200-300



2168

2168. **Elizabeth Sharp (20thC)**
The Hunt
oil on canvas, signed and dated 1978,
49.5cm x 74.5cm
£200-300



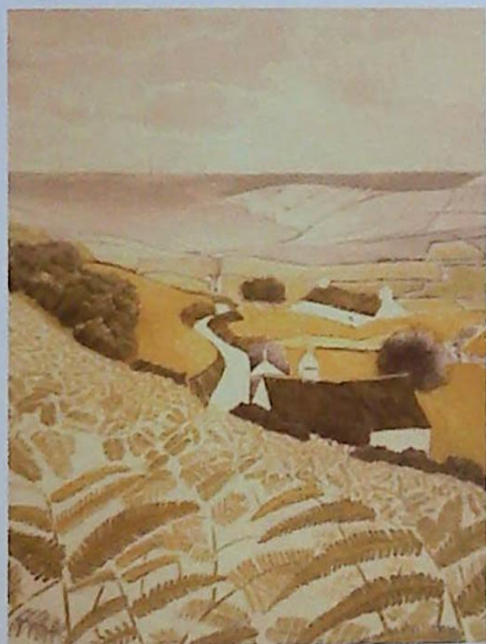
2169

2169. **W.H. Figgures (20thC)**
Autumn, New Forest
oil on board, signed,
49cm x 75cm
£30-50



2171

2171. **Norman Wade (20thC)**
Link Road Durham
artist signed lithograph print dated (19)72,
43.5cm x 60cm; and two others The Bailey
Durham and Bow Lane Durham (3)
£50-80



2170

2170. **Berwyn Jones (b.1942)**
Annelog
artist signed coloured etching,
32cm x 47cm and another titled Tan-Y-Frow (2)
£50-80



2172

2172. Rowland Langmaid (1897-1956)
 Sunken Ships
 Benghazi, watercolour drawing, signed
 and titled,
 19cm x 28cm
 £120-180



2174

2174. Norman Brewster (20thC)
 Sir Nigel Gresley locomotive
 oil on board, signed and dated 1983,
 42cm x 56.5cm
 £50-80



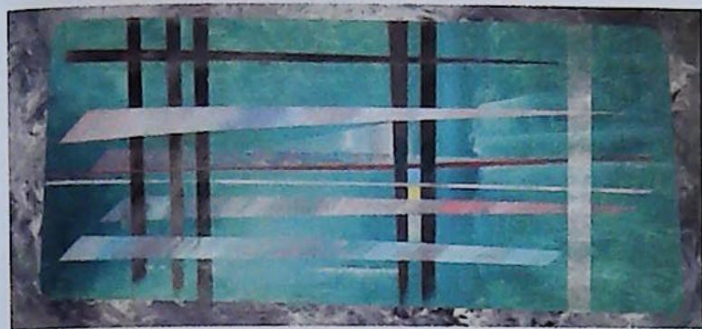
2173

2173. Rowland Langmaid (1897-1956)
 M.T.B.
 Passing the wreck of the Italian cruiser
 "San Georgio"
 watercolour drawing, signed and titled,
 19cm x 28cm; also, an artist signed etching
 "British Warship" (A/F) (2)
 £120-180



2175

2175. Sheila Walker (20thC)
 Floral still life
 oil on board, initialed,
 36cm x 29cm
 £50-80



2176

2176. 20thC
Geometric abstract
oil on board,
90cm x 44.5cm
£50-80



2179

2179. Reg Gardner (b.1948)
Street scene, Manchester
oil on board,
16.5cm x 24cm
£100-150



2177

2177. Reg Gardner (b.1948)
Derelict northern street scene
oil on canvas, signed and dated (19)72,
23.5cm x 29cm
£100-150



2180

2180. Norman Laycock (20thC)
Northern street scene
oil on canvas, signed,
17cm x 24.5cm
£100-150



2178

2178. Reg Gardner (b.1948)
Canal scene, Manchester
oil on board, signed and dated (19)72,
16.5cm x 24cm
£100-150



2181

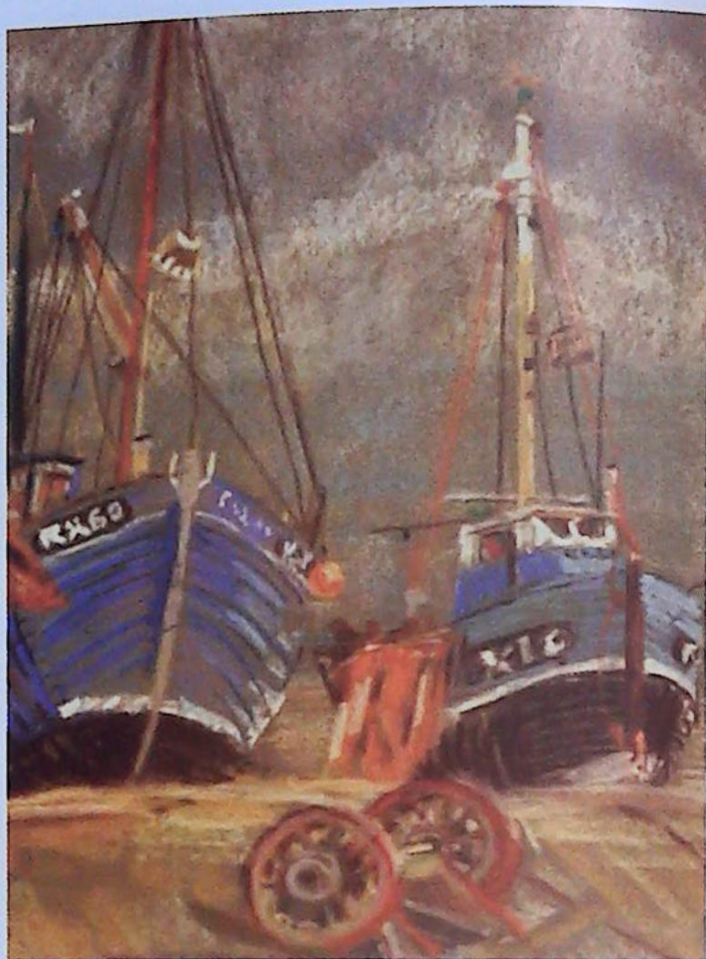
2181. Martin McKeown (20thC)
Interior still life
oil on board, signed
19cm x 24cm
£50-80

2182. Spare Lot.



2183

2183. Onslow Sykes (20thC)
Reflections
oil on canvas, signed, titled and dated 2007
verso,
73cm x 60cm
£50-80



2185

2185. Gladys Williams (?) (20thC)
Fishing boats Hastings
pastel, signed and titled
36cm x 25cm
£50-80



2184

2184. Richard Quinlan (20thC)
Odessey
oil on canvas, signed, titled and dated verso,
76cm x 60.5cm
£50-80



2186

2186. Tom Green (20thC)
City riverscape
watercolour, signed,
35.5cm x 48cm
£50-80



2187

2187. **Harry Riley (20thC)**
Bootham Bar York
watercolour, signed,
37cm x 53cm
£50-80



2190

2190. **Mary Hodgson (20thC)**
Farnborough Kent
watercolour, signed and dated 1966,
23.5cm x 31cm
£50-80



2188

2188. **R.C. Allock Bowden (20thC)**
Winter landscape
watercolour, signed,
33cm x 46cm
£50-80

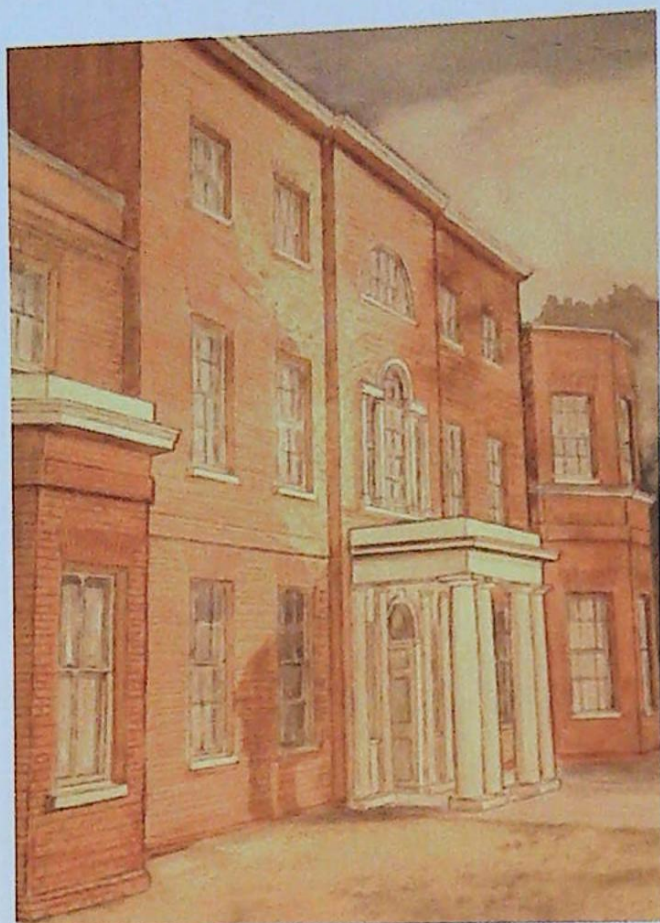


2191

2191. **Hugh McKenzie (1909-2005)**
Edge of park
watercolour, signed,
22cm x 33.5cm
£50-80



2189



2192

2192. **A.C. Hart (20thC)**
The Rookery St Mary Cray
watercolour, signed and dated (19)64,
36cm x 27cm
£50-80



2193

2193. **Dorothy Green (20thC)**
The river at Rochester
watercolour, signed and titled verso,
34cm x 48.5cm
£50-80

2194. **Spare Lot.**



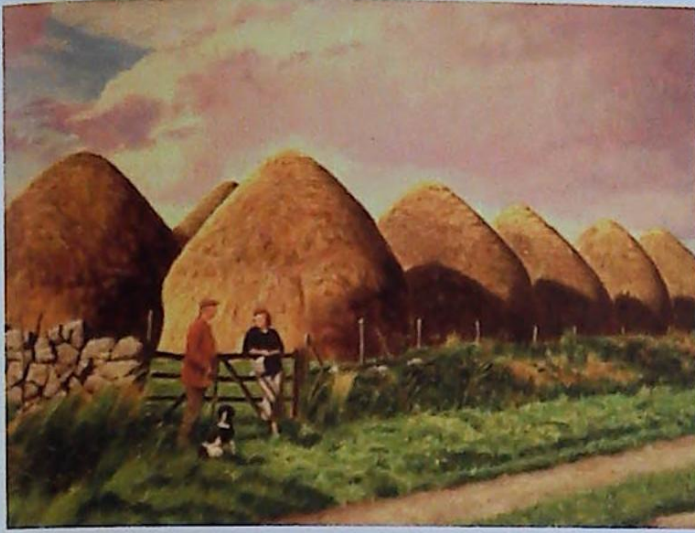
2195

2195. **E. Shepherd (20thC)**
Two jays
watercolour, signed and dated (19)78,
49cm x 38cm
£50-80



2196

2196. **Lesley Teare (20thC)**
East beach
oil on board, signed,
60cm x 90cm
£50-80



2197

2197. **Malcolm Doughty (20thC)**
Rural landscape with figures
oil on canvas, signed and dated 2003,
59cm x 90cm
£50-80



2198

2198. **Max Walker (20thC)**
Street scene with figures
oil on canvas, signed and dated (19)46,
59.5cm x 90cm
Verso 17 Pembridge Cres W11
£200-300



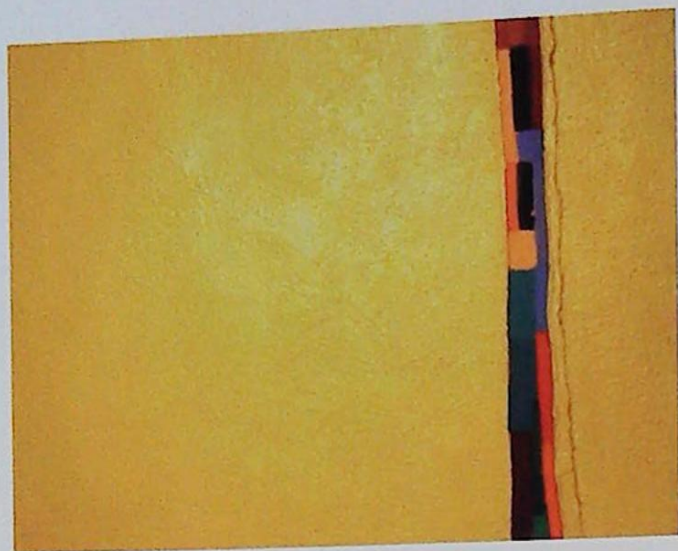
2199

2199. **Irene Tchistovski (20thC)**
Still life, roses with dew drops
oil on board, signed,
23cm x 18cm
Bears label 'The Unicorn Gallery Ltd Wimslow'
verso
£100-200



2200

2200. **Jonathon X. Coudrille (b.1945)**
Beach scene
oil on canvas, monogrammed, signed and
dated (19)89 verso,
90.5cm x 136cm
£500-800



2201

2201. **Katia Cadman (20thC)**
O2
oil on canvas laid on board, signed, titled and dated 1997 verso,
60.5cm x 61cm
£50-80



2203

2203. **Peter Andrew Jones**
Dawn of the Dragons, oil on board
Provenance: Book cover illustration of the same title by Joe Dever, copy of the book with this lot
£80-120



2202

2202. **Paul James Logan Wyeth (1920-1983)**
'The Young Dancer'
pastel, signed with monogram and dated '69
bottom left
14 3/4" x 11 3/4"
£250-350