

# THOS. MAWER & SON LTD

*Auctioneers & Valuers Established in 1864*



Tuesday 27th April 2010

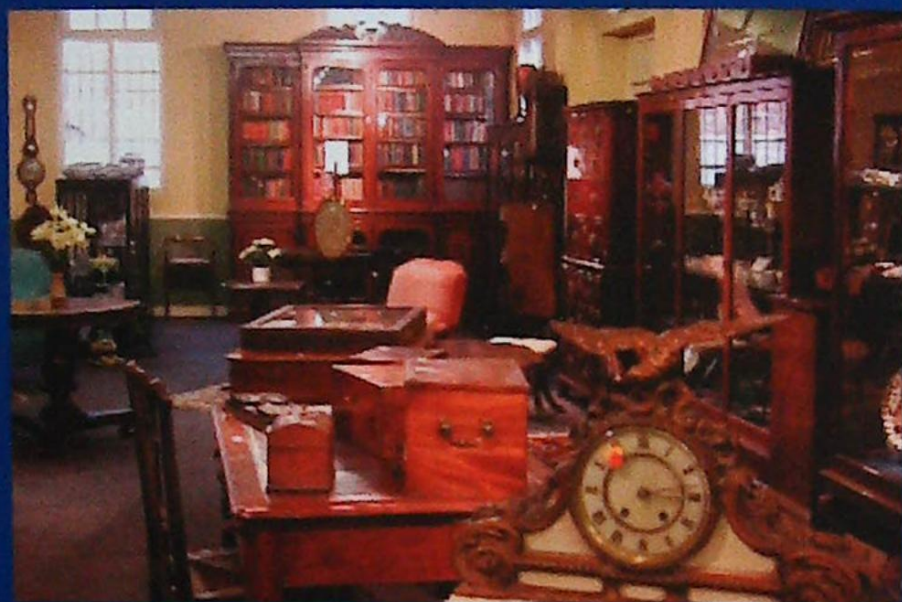


# THOS. MAWER & SON LTD



## THOS. MAWER & SON LTD.

*Auctioneers & Valuers Established in 1864*



- Estate sales the first Saturday of each month -Victoriana, collectables & ephemera
- Free valuation clinic every Friday a.m.
- Sale catalogues on [www.thosmawer.com](http://www.thosmawer.com)
- International advertising for top prices
- We have specialist buyers worldwide
- Special Antique and Book sales throughout the year
- Full house clearance service

DUNSTON HOUSE · PORTLAND STREET · LINCOLN · LN5 7NN  
TELEPHONE 01522 524984 · FACSIMILE 01522 535600

EMAIL [auctions@thosmawer.com](mailto:auctions@thosmawer.com)

WEBSITE [www.thosmawer.com](http://www.thosmawer.com)



### Forthcoming sales

First Saturday of each month (except Bank Holidays)

8th May

5th June

3rd July

7th August

4th September

2nd October

6th November

4th December

Special sale of vintage fashion, textiles and accessories: 3rd July  
Further entries accepted



# THOS. MAWER & SON LTD

*Auctioneers & Valuers Established in 1864*

By instructions from Executors & Local Vendors

## Sale of Antiques, Collectables, Pictures & Objets

**Tuesday 27th April 2010**

at 11am

### Viewing

Sunday 25th April 11am - 2pm

Monday 26th April 10am - 4pm

Tuesday (prior to sale) 9am - 10.30am

### Order of Sale

- |         |  |
|---------|--|
| 1-28    | A Private Collection of Wedgwood models<br>by John Skeaping                              |
| 29-81   | Ceramics & Glass   |
| 100-117 | Oriental Ceramics  |
| 125-164 | Miscellany & Metalware etc.  |
| 175-200 | A collection of samplers formed by a local lady –<br>a member of the Embroiderers' Guild |
| 201-299 | Oil Paintings, Watercolours, Prints &<br>other pictures                                  |
| 300-351 | Silver, Plate, Jewellery & Watches   |
| 359-372 | A Swiss cylinder musical box, Clocks & a Barometer                                       |
| 374-386 | Mirrors  |
| 394-494 | Furniture & Effects  |

N.B. Please note any gaps in sale lotting when estimating the time lots will be offered for sale



the-saleroom.com  
live auctions

Bid live online at  
www.the-saleroom.com

Café facilities available  
Catalogue: £7



A Private Collection of Wedgwood models by John Skeaping



1. John Skeaping. A Wedgwood cream glazed sea lion on a shaped base, impressed mark  
20cm wide  
£200-300



2. John Skeaping, a Wedgwood moonstone glazed sea lion on a shaped base, impressed mark  
20cm wide  
£200-300



3. John Skeaping, a Wedgwood green glazed sea lion on a shaped base, impressed mark  
20cm wide  
£200-300



4. John Skeaping, a Wedgwood cream glazed sea lion on a shaped base, impressed mark  
20cm wide  
£200-300



5. John Skeaping, a Wedgwood black basalt sea lion on a shaped base, impressed mark and inscribed signature  
19cm wide  
£500-600



6. John Skeaping, a Wedgwood cream glazed figure of a kangaroo on a rectangular base, impressed mark  
23cm wide  
£200-300



7. John Skeaping, a Wedgwood black basalt kangaroo on a rectangular base, impressed Wedgwood mark and inscribed signature  
20cm wide  
£300-500



8. John Skeaping, a Wedgwood green glazed kangaroo on a rectangular base, impressed mark  
22cm wide  
£200-300



9. John Skeaping, a Wedgwood white glazed figure of a 'duiker lying' on a rectangular base with bowed sides, impressed mark  
17cm wide  
£200-300





10. John Skeaping, a Wedgwood dark cream glazed figure of a 'duiker lying' on a rectangular base with bowed sides, impressed mark  
17cm wide  
£200-300



14. John Skeaping, a Wedgwood cream glazed figure of a duiker, on a rectangular base and ebonised plinth, impressed mark  
17cm wide  
£200-300



17. John Skeaping, a Wedgwood blue and brown figure of a deer; the glaze by Norman Wilson, on rectangular base with bowed sides, impressed marks and numbers NW 21 09 and 5A 59  
18cm wide  
provenance: Richard Dennis, Wedgwood Exhibition 1982 'J.S. 11'  
£500-800



11. John Skeaping, a Wedgwood green glazed figure of a 'duiker lying' on a rectangular base with bowed sides, impressed mark  
17cm wide  
£200-300



15. John Skeaping, a Wedgwood green glazed figure of a duiker, on a rectangular base, impressed marks  
14cm wide  
£200-300



18. John Skeaping, a Wedgwood white glazed figure of a deer on a rectangular base with bowed sides, impressed and printed marks  
18cm wide  
£200-300

12. John Skeaping, a Wedgwood white glazed figure of a duiker on a rectangular base, impressed mark  
14cm wide  
£150-200



13. John Skeaping, a Wedgwood dark cream glazed figure of a duiker, on a rectangular base, printed and impressed marks  
14cm wide  
£200-300



16. John Skeaping, a Wedgwood green glazed figure of a deer on a rectangular base with bowed sides, impressed marks  
17cm wide  
£300-500



19. John Skeaping, a Wedgwood black basalt figure of a deer, on a rectangular base with bowed sides, impressed mark and inscribed  
16cm wide  
£400-600





20.  
John Skeaping, a Wedgwood cream glazed figure of a deer, on a rectangular base with bowed sides and ebonised plinth, impressed marks  
21cm wide overall  
£200-300



23.  
John Skeaping, a Wedgwood white glazed bison on a rectangular base, printed and impressed marks  
24cm wide  
£400-600



26.  
John Skeaping, a Wedgwood blue/brown polar bear, glazed by Norman Wilson, on a rectangular base with bowed sides, impressed marks and numbers NW 2174  
19cm wide  
£400-600



21.  
John Skeaping, a Wedgwood green glazed bison calf, on a rectangular base and ebonised plinth, impressed marks  
23cm wide  
£400-600



24.  
John Skeaping, a Wedgwood white glazed 'tiger with buck' on a rectangular base, impressed marks  
34cm wide  
£300-500



27.  
John Skeaping, a Wedgwood white glazed polar bear on a rectangular base with bowed sides, impressed and printed marks  
20cm wide  
£200-300



22.  
John Skeaping, a Wedgwood cream glazed figure of a bison calf, on a rectangular base and ebonised plinth, impressed and inscribed marks (cracked)  
23cm wide overall  
£200-300



25.  
John Skeaping, a Wedgwood green glazed 'tiger with buck' on a rectangular base and ebonised plinth, impressed marks (cracked)  
36cm wide overall  
£200-300



28.  
John Skeaping, a Wedgwood white glazed crouching monkey, on a rectangular base, impressed and printed marks  
18.5cm wide  
£200-300



## Ceramics &amp; Glass

- 29.**  
Roy Smith, a Wedgwood & Co white glazed figure of a seated monkey, printed and impressed marks  
14.5cm wide  
£80-120
- 30.**  
A Wedgwood Ferdinand bull with a stone coloured glaze, printed marks  
31cm wide  
£100-200
- 31.**  
A Wedgwood Ferdinand bull decorated with yellow and blue flowers on a cream ground, printed marks  
31cm wide  
£100-200
- 32.**  
A Wedgwood 'Taurus the Bull' designed by Arnold Machin, with a printed design of astrological emblems, on a cream ground, printed marks  
40cm wide  
£150-250
- 33.**  
A Wedgwood limited edition 'Taurus the Bull', produced for the millenium, designed by Arnold Machin, decorated in gilt with a design of astrological emblems, on a black ground, printed marks, number 113/2000  
£100-200
- 34.**  
A Wedgwood bull designed by Arnold Machin, decorated with a printed design of flowers on a cream ground, printed marks  
41cm wide  
£100-150
- 35.**  
An Amphora porcelain figure of a brown bear, on a shaped base, printed mark  
30cm wide  
£100-150

**36.**  
An Amphora porcelain figure of a lion, on a stylised rocky base, impressed mark  
19cm wide  
£150-200

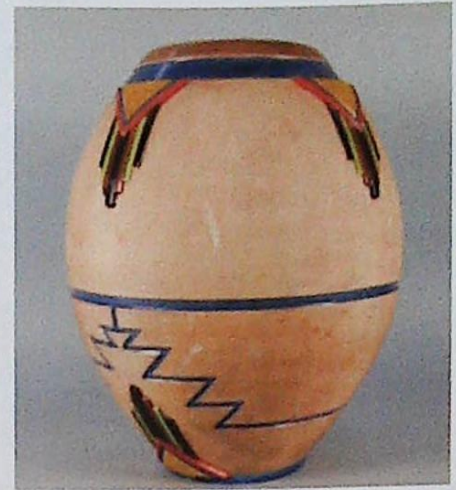
**37.**  
Keith Murray, a Wedgwood green glazed urn with two handles and a white stepped base, printed marks  
20cm high  
£40-60

**38.**  
A Keramis pottery bottle shaped vase decorated with flowers and leaves in turquoise and blue  
22cm high  
£80-120

**39.**  
A Keramis pottery vase decorated with flowers and leaves in turquoise and blue  
19cm high  
£60-80

**40.**  
A Keramis pottery bottle shaped vase decorated with triangular panels in blue, green and yellow  
16cm high  
£80-120

**41.**  
A Boche pottery bottle shaped vase designed by Charles Catteau decorated with a geometric design in blue, yellow and green  
15cm high  
£100-150



**42.**  
Longwy France. A large barrel shaped vase decorated in Art Deco style, 'El Paso' pattern F2120, printed mark in blue  
42cm high  
£200-300

**43.**  
A Linthorpe pottery bottle shaped vase, in the manner of Christmas Dresser, with a brown mottled glazed  
23cm high  
£150-200

**44.**  
A Rookwood Pottery vase decorated in coloured slip with flowers, impressed mark  
36cm high  
£60-80

**45.**  
A Fulper stoneware bowl decorated with a Chinese style, high fired glaze, printed marks and indistinct paper label  
36cm diameter  
£50-100

**46.**  
A Bretby pottery spill vase in the form of a stork beside bamboo, impressed marks  
29cm high  
£40-60

**47.**  
A late XIX/early XX century Continental pottery Majolica charger, the centre moulded with a putto playing pipes with leaf floral borders, impressed mark to back  
43cm diameter  
£100-150



48.

R Lalique. A frosted glass shallow dish with a radiating design to the centre, marked to base 33cm diameter and four Lalique type frosted glass flowers [some chips to rim]  
£50-80



49.

A Spode 967 pattern part tea service decorated in oriental style in Imari colours comprising a teapot, cover and stand, two saucer dishes, slop bowl, six tea cups, four coffee cups and five saucers  
£250-300

50.

A pair of XIX century Mintons stork and fan pattern plates, each with a simulated basket weave pierced border, printed and painted to centre with a stork, fans and flowers, printed registration mark and makers mark to the back, also impressed  
23cm diameter  
£80-120

51.

An early XIX century cream ware jelly mould of tapering form with pierced borders and moulded with a fish  
17cm wide  
£50-80

52.

A set of three Wedgwood green leaf moulded plates,  
21cm and eight similar (11)  
£80-120

53.

An early XIX century blue printed part dinner service, decorated with vases of flowers within a leaf engraved border, comprising a large meat dish with well, five soup plates, eleven dinner plates, two sauce tureens, covers and stands, square tureen and cover, canted square dish, a small meat dish, a small ladle, ten small plates and six side plates  
£200-300

54.

A XIX century Wedgwood cabbage leaf moulded teapot and cover, red printed mark  
26cm long  
£40-60

55.

An early XIX century Mocha ware mug, decorated with stars within bands of leaves  
14cm high  
£100-150

56.

An early XIX century Mocha ware mug, decorated with flowers, on a brown ground  
12cm high  
£50-100

57.

An XVIII century Caughley mug printed in blue with roses with a gilt border, blue printed mark to the base  
14.5cm high  
£80-120

58.

An early XIX century stoneware cat, possibly Lambeth, on a canted rectangular cushion base  
7cm high  
£80-120

59.

Two Spode porcelain models of a cock and a hen pheasant, printed marks to base  
25.5cm and 26.5cm high  
£200-300



60.

A Victorian Copeland parian bust 'Oenone,' sculpted by W C Marshall for the Crystal Palace Art Union, the head dress and band of the dress picked out in coloured enamels, with gilt borders, on a reeded plinth  
43cm high  
£300-500



61.

A XIX century Derby ice pail, decorated with flowers in iron red, red cross batten and crown mark to base  
15cm high, 19.5cm diameter,  
lid 7cm high  
£300-400

62.

A late XVIII/early XIX century Spanish tin glazed two handled vase, decorated in blue with bands of leaves and flowers  
12cm high  
£80-120

63.

An XVIII century Worcester porcelain blue and white mask jug, moulded with cabbage leaves and decorated in blue with flowers, crescent mark to base, circa 1780  
14.5cm high  
£80-120





70

64. An early XIX century Staffordshire porcelain jug, moulded and painted in coloured enamels with a hunting scene, 12cm high and a similarly decorated jug with a purple ground 12cm high (2)  
£60-80

65. An early XIX century stoneware tyg, each handle moulded with greyhounds, the sides with King George and dragon, a rearing horse and a windmill 16cm high  
£50-80

66. An early XIX century Derby porcelain centre piece in the form of a lady holding a flower encrusted bowl, hand painted blue mark 33cm wide  
£100-200

67. A Victorian style glass walking stick containing a collection of beads and twelve coloured batons (13)  
£100-200



71

68. An XVIII century Dutch delft vase decorated in Chinese style with flowers within shaped borders, monogram mark to base, possibly for Anthony Pennis 24cm high  
£100-200

69. A pair of late XIX century Bohemian cranberry tinted glass vases, each decorated in gilt with stars 14cm high  
£150-200

70. Charles Baldwin, Royal Worcester: A two handled baluster shaped vase and cover, painted with four fantail doves, with gilt borders, signed, printed mark to base 20cm high  
£1000-1500

71. Charles Baldwin, Royal Worcester: A two handled vase of tapering form, painted with swans and a swallow to the reverse with gilt borders, signed, printed factory mark 25cm high  
£2000-3000



73

72. An early XX century Sevres style vase and cover with gilt metal mounts, painted with a Wattenesque lady, signed Daret, blue sevres style mark to cover 24cm high  
£100-200

73. A late XIX/early XX century Sevres style two handled urn with gilt metal mounts, decorated with a Wattenesque scene to one side and a building to the other, each with elaborate gilt borders, signed Danby on a shaped base with beaded borders 59cm high  
£800-1200



74. Masons Patent Ironstone. A two handled comport decorated in typical palette 167cm high, 27cm diameter  
£200-400





**75.**  
A Victorian glass epergne with pink and opaque glass borders with four trumpet shaped vases and three baskets suspended on scrolling arms on a bowl shaped base  
50cm high  
£400-600

**76.**  
A XIX century Continental cut glass and silver plated oval centre piece, cast to each end with two winged caryatids and with beaded and leaf engraved bands  
37cm wide  
£80-120

**77.**  
After Christopher Dresser. A glass claret jug with a star cut base, plated mounts and ebony handle  
23cm high  
£100-200

**78.**  
Minton Hollins & Co. A pair of "Astra ware" baluster shaped vases with a red Chinese style glaze, printed marks to base  
30cm high  
£80-120



**79.**  
Moorcroft. A bottle shaped vase decorated with pomegranates and grapes, impressed and scripted mark  
approx. 27cm high  
£400-600

**80.**  
A Victorian Minton moon flask, decorated in raised enamels with flower sprays on a turquoise ground, impressed marks to base  
approx. 20cm high  
£150-200

**81.**  
A pair Victorian porcelain fan shaped menu holders, in the aesthetic style, each printed and painted with birds and branches, printed registration mark to back  
approx. 6cm high  
£80-120

**82.**  
No lot



**83.**  
A pair of mid XIX century porcelain two handled vases, each painted with flowers, on a cobalt blue ground  
10cm high  
£180-220

**84.**  
A mid XIX century Minton porcelain cup and saucer, painted with shells and flowers, on a cobalt blue ground, pseudo Sevres mark to base  
9.5cm diameter  
£150-200

**85.**  
A mid XIX century Spode coffee can, decorated with flowers, pattern number 2413  
£30-40

**86.**  
An early XIX century porcelain coffee can, painted with a landscape  
6.5cm high  
£40-60



**87.**  
A mid XIX century Minton type mug, painted in monochrome with putti within an ovoid panel, with a turquoise ground  
9cm high  
£300-400

**88.**  
An early XIX century Worcester porter mug, decorated with a gilt armorial and flowers in black and gilt, monogram 'rpj' in gilt  
16.5cm high  
£150-200

**89.**  
An early XIX century Worcester porcelain figure of a large gentleman and a snuff bottle in the form of a seated man taking snuff  
10 and 8cm high  
£150-200





**90.**  
 Degue, France. A three colour cameo glass vase, decorated with trees and leaves, signed, retailers label to base  
 10cm high  
 £250-300

**91.**  
 A mid XIX century armorial porcelain cup and saucer, decorated with flower sprays with a cobalt blue ground, bearing motto 'GRIP FAST', possibly for the Leslie clan of Scotland  
 16.5cm diameter  
 £150-200

**92.**  
 A glass dish decorated with a figure in profile and three similar decorated with flowers (3)  
 £50-80

**93-96.**  
 No lots



**97.**  
 A late XIX century Japanese ivory okimono, carved in the form of a man carrying a child on his back and another figure of a man with a hoe (2)  
 each 15cm high  
 £250-350



**98.**  
 Two late XIX century Japanese ivory fishermen, one with rods and fish, the other with cormorants  
 22cm high  
 £600-800



**99.**  
 A late XIX century Japanese bronze two handled vase, decorated in relief with birds and flowers  
 17cm high  
 £250-300

### Oriental Ceramics

**100.**  
 A pair of late XIX century Japanese porcelain and cloisonne vases decorated with panels of animals, butterflies and birds within flowering branches, signed to base  
 39cm high  
 £80-120

**101.**  
 A pair of Japanese bronze two handled vases, each cast with birds and flowering branches, converted to table lamps  
 37cm high  
 £80-120



**102.**  
 A pair of late XIX century Japanese cloisonne vases, each decorated with iris's and swallows on a dark navy ground  
 9cm high  
 £200-300

**103.**  
 A Chinese carved Jadeite roundel, 5.5cm diameter  
 £50-80

**104.**  
 A Chinese blue and white ribbed porcelain teapot, with a bronze loop handle, decorated with dragon  
 17cm wide  
 £60-80

**105.**  
 A Chinese blue & white porcelain jar and cover, decorated with vases, with two iron loop handles  
 12cm high  
 £50-80

**106.**  
 A XIX century Chinese blue and white porcelain teapot and cover decorated with figures, with a serpent spout, four character mark to base  
 23cm wide  
 £80-120

**107.**  
 A Chinese blue and white porcelain teapot and cover, decorated with an exotic bird and dragon to each side, six character marks to base  
 18cm wide  
 £80-120

**108.**  
 A XIX century Nankin lozenge shape plate  
 29cm x 21cm  
 £60-90



**109.**  
A pair of XIX century Nankin lozenge  
shape plates  
25.5cm x 17cm  
£100-150

**110.**  
A XIX century Chinese canton  
decorated teapot and cover with gilt  
borders  
24cm high  
£40-60

**111.**  
A Chinese blue and white porcelain jar  
and cover, decorated all over with a  
foliate design  
20cm  
£50-80

**112.**  
A large Chinese blue and white  
porcelain teapot and cover, decorated  
with meandering flowers  
25cm high  
£50-80

**113.**  
A pair of XIX century Chinese canton  
tall cylindrical vases/stick stands, each  
decorated with figures, birds, insects  
and flowers within elaborately  
decorated borders, each on a later  
ebonised stand (some damage)  
64cm high  
£80-120



**114.**  
A pair of late XIX century Chinese  
dogs of fo, each constructed from  
roots on a shaped base  
64cm high  
£400-600



**115.**  
An Indian hardwood and bone group  
in the form of two tigers fighting,  
possibly XIX century  
46cm wide  
£200-300

**116.**  
A late XIX century ivory group of  
female flute player and two cows  
beside a tree, on a later hardwood  
base  
33cm high  
£100-150

**117.**  
An early XX century Japanese bronze  
cigarette case, decorated with a  
dragon to one side and the Kinkakuji  
Temple to the other, signed to the  
front and interior  
9cm x 5cm  
£80-120



**118.**  
An early XIX century surgeons bone  
saw with a steel blade and engraved  
silver plated handle  
33cm long  
£200-300

**119.**  
A Swiss Black Forest carved bear  
ashtray and two other Black Forest  
bears (3)  
£50-80

**120.**  
A mid XIX century papier mache tray,  
decorated with a ruin, on a black  
ground  
40cm x 30cm  
£50-80



**121.**  
A late XIX century Swiss Black Forest  
carved wild boar, signed N. Deneffe  
28cm high  
£600-800



**122.**  
An early XIX century mahogany and  
brass bucket, with a swing handle  
22cm high  
£250-300

**123.**  
A Continental ebony and silver desk  
set, each piece decorated with fox  
masks and grapes, cased  
£100-150



**124.**  
A late XVII century elm box, the front  
carved with flutes  
55cm wide  
£250-300



## Miscellany & Metalware etc.



- 125.**  
A XIX century Continental bronze and gilt metal centrepiece, the cut glass bowl supported by two putti on a classical gilted plinth  
36cm high, 30cm diameter  
£400-600

- 126.**  
A pair of George III mahogany and brass candlesticks, each with a turned scone, a reeded column and moulded base  
37cm high  
£100-150

- 127.**  
An African hardstone figure carved in the seated position  
25cm high  
£80-120



- 128.**  
A pair of Continental ormolu light fittings, each cast with masks, leaves and fruit with frosted glass shades moulded as shells  
22cm wide  
£300-400

- 129.**  
A gilt metal lamp base in the form of an angel on a polished black marble base, adapted  
48cm high  
£100-200



136

- 130.**  
A Victorian papier mache and mother of pearl inlaid chess/backgammon board in the form of two book volumes  
44cm x 26cm  
£80-120

- 131.**  
A mid XIX century French thermometer in an inscribed fruitwood case *Patte, Ingenieur, Opticien Boulogne*  
31cm long  
£100-150

- 132.**  
An early XIX century turned fruitwood barrel shaped box and cover  
10cm high  
£30-60



133

- 133.**  
A Swiss Black Forest carved lime seated bear, inscribed to base "Berne Aout 1911"  
19cm high  
£300-400

- 134.**  
A pair of Continental gilt metal tie backs, each with lion masks  
18cm high  
£50-80

- 135.**  
A set of three Continental gilt gesso and cream painted tie backs, each decorated with a flowerhead  
£100-150

- 136.**  
Louis Vuitton. A leather and canvas trunk, with wooden supports, brass name plaque to top 'J.S FRY & SONS', paper label to interior and number 210482  
44cm wide  
£1000-1500

- 137.**  
Barbara Tribe FRBS (1913-2000). A bronzed plaster bust of LL. Zamenhof, dated 1957  
16cm high  
*Ludwig Lazarz Zamenhof (1859-1917) was the Polish inventor of Esperanto*  
£80-120





149



150



151



152

**138.**  
A bowl of alabaster and other artificial fruit - grapes, orange, bananas, apple, pear etc.  
£60-80

**139.**  
A Japanned book carrier decorated in gilt with figures, boats and buildings on a black ground, the interior with a scroll on a red ground  
32cm x 26cm  
£100-200

**140.**  
Three leather bound volumes of Carlo Botta's work on the American War of Independence titled 'Storia Della Guerra, Della Indepenza, Degli Stati Uniti Di American' - dated 1820, published in Milan (3)  
*provenance: inscribed in pen 'Lord Newbury'*  
£100-200

**141.**  
A late XIX/early XX century leather leg o' mutton shaped shot gun case  
78cm long  
£60-80

**142-148.**  
No lots

**149.**  
Benedetto Boschetti, Rome. A mid to late XIX century Grand Tour bronze cornucopia cast with classical maidens and a winged mythical beast to one end, on a rouge marble canted base and black plinth, signed to base and with Greek inscription  
33cm high overall, 40cm long  
*provenance: for a similar example see Hampel Auctioneers in Munich Lot 129 04.07.2008, sold for 13,500 euros*  
£5000-8000

**150.**  
A Japanese Bronze Model of a Cockerel standing upon a shaped, rustic wood base, the creature well cast with additionally chased feathers and other details, the whole bears a rich patina,  
73cms high, unsigned, Meiji era (1869-1912)  
£5000-8000

**151.**  
A Japanese Bronze Figure of a Cockerel, the bird stands upright with head raised alertly as it strides across a farmyard mound upon which omodaka plants are growing, the head and wattle highlighted in red, it bears a cast signature panel which appears to read Masatsune tsukuru  
58cm high including base, Meiji period (late 19th - early 20th century)  
£5000-8000

**152.**  
Constantin Cristesco, Romanian. A bronze sculpture of two horses taking a hurdle, foundry mark for Susse Frere of Paris  
27cm high, 15cm deep  
£2500-3500

**153.**  
A XIX century bronzed metal neo classical two handled vase on a slate base  
42cm high  
£100-150



154.

A cast iron umbrella stand, in Victorian style stamped *Falkirk*  
89cm high  
£100-200

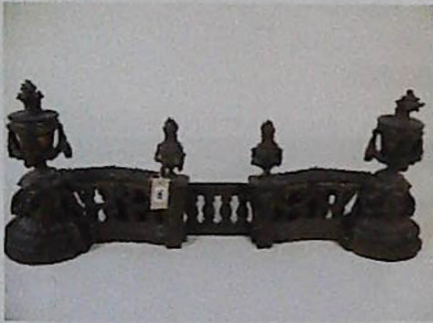
155.

A pair of XIX century brass and steel fire implements, another similar and a polished steel cast iron set of implements  
£120-150

156.

Two late XIX century fruitwood wig stands, each on turned bases, two turned fruitwood and brass coat hangers, a single fruitwood hanger and a similar hat stand

*provenance: purchased from Sothebys, the residual contents of Thorseby Hall, 31st May, 1st and 2nd June 1989.*  
£100-200



157.

An early XIX century continental gilded bronze adjustable fender, in neoclassical style  
approx. 138cm overall, urns 37cm high  
£200-400



158.

A Victorian brass nursery fender, part with mesh, the inside with hooks for fire irons on a moulded base  
106cm wide  
£250-350

159.

A XIX century cast iron blacked serpentine fender, with scroll and shell pattern borders, paw feet and fire iron supports  
115cm wide  
£100-200

160.

An XVIII century adjustable metal roasting jack  
£80-120

161.

A mid Victorian cast iron boot scrape with floral finials, patera and arched decoration to the base  
43cm x 32cm  
£50-80



162.

James Clewes, Birmingham. A pair of baluster turned candlesticks, each with a domed base  
55cm high  
£300-400



163.

Liberty & Co Limited London. A mahogany smokers cabinet with a door, a recess and two copper ashtrays inset into a fitted pipe rack, with etched decoration of a lion and the motto "The man who smokes thinks like a sage and acts like a samaritan", ivorine label to top  
62cm high, 72cm wide  
£250-350



164.

An early XX century gilt metal spark guard, decorated overall with foliate scrolls with a carrying handle and a pierced base  
approx. 76cm high, 66cm width  
£300-500

165-174.

No lots

### A collection of samplers formed by a local lady – a member of the Embroiderers' Guild



175.

A XIX century pictorial sampler by Emma Lewis aged 12, worked with birds, Adam and Eve beneath a tree, flowers and "The Lord is my Shepherd"  
64.5cm x 50.5cm  
contemporary birds eye maple frame  
£400-600

176.

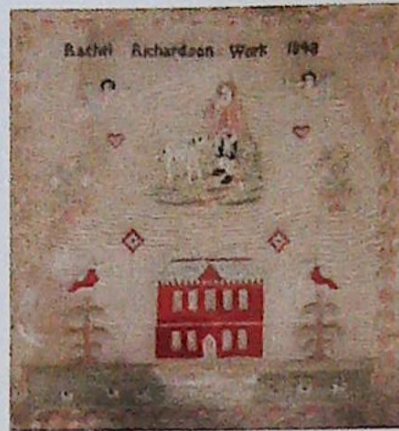
An XVIII century alphabetical and numerical sampler worked with The Lords Prayer and dated 1728  
approx. 40cm x 19.5cm  
£70-150



**A collection of samplers formed by a local lady**



**177.**  
A well coloured alphabetical and numerical sampler worked with a poem - Friendship by Ann Maddison, High Toynton (Lincolnshire) March 8th 1811 approx. 36cm square  
£300-500



**180.**  
A XIX century pictorial sampler by "Rachel Richardson Work 1848" with a figure and lamb, angels, a house, birds and flowers  
52cm x 49cm  
contemporary rosewood frame  
£200-350



**185.**  
A XIX century woolwork sampler "A representation of Lincoln Cathedral Rebecca Unsworth work 1845", centred with the Cathedral, bouquets of flowers and a bird to the corners and with figures  
51cm x 52cm  
£300-600



**178.**  
A XIX century Continental sampler worked with the alphabet and pictures by Andrea Lecocq aged 9 Essars  
56cm square  
£200-300



**181.**  
An early XIX century alphabetical, numerical and pictorial sampler worked with a legend by Jemima Cannon (?) aged 8 Feb 12th 1833  
55cm x 44.5cm  
£200-400



**186.**  
A rare XVIII century Lincolnshire needlework sampler worked with three verses by Frances Wood "Frances Wood ended this sampler in the 12th year of her age December 10th 1760"; also "this sampler was wrought at Mrs Salt?? School in Alford the year of our Lord 1760 Lincolnshire"  
39cm x 29.5cm  
£200-400



**182.**  
A XIX century alphabetical Continental sampler by Hildegard? Lugler(?), Engel Cottes(?)  
52cm x 48cm  
£100-200

**179.**  
An alphabetical and pictorial sampler worked with a prayer by Sophia Dowse "her work in the 10th year of her age 1813"  
51cm x 41cm  
£200-400

**183.**  
An early alphabetical and numerical sampler centred with a legend worked with vases of flowers, a crown etc., probably XVIII century, worked by Matilda Rose Bonchurch aged 13  
49cm x 42cm  
£150-200

**187.**  
A XIX century alphabetical and numerical sampler "Alice Proctors(?) sampler 1813 in the seventh year of her age"  
20cm x 29.5cm  
£75-150



**188.**

A XIX century alphabetical and numerical sampler by Marie Alder 1825  
26cm x 20cm  
£60-120

**189.**

A XIX century alphabetical and numerical sampler by Jane Procter aged 8  
approx. 24.5cm x 30cm  
£75-150

**190.**

An alphabetical and pictorial "jewelled" sampler centred with a bird beside a vase of flowers - undated  
25cm square  
£150-250

**191.**

A XIX century pictorial sampler with a building, windmill, flowers and trees  
28cm x 26cm  
£50-100

**192.**

An alphabetical and numerical Lincolnshire sampler by Kate Watson aged 12 years, Hagg School 1880  
17cm x 29cm  
£75-150

**193.**

An alphabetical and pictorial sampler - undated XIX century  
19cm x 32cm  
£75-150

**194.**

An alphabetical, numerical and pictorial sampler worked by Mary R?n?on 1835, aged 11  
26cm x 30cm  
£75-150

**195.**

A XIX century alphabetical sampler worked with a legend "beset with snares on every hand ...." by Sarah Harper June 1824  
30cm x 33.5cm  
£100-200

**196.**

A woolwork sampler worked with birds, angels, a vase of flowers and buildings  
46cm x 36cm  
£75-150

**197.**

A Lincolnshire alphabetical and numerical sampler worked by Betsy North, Skellingthorpe, aged 12 184?  
29cm x 24.5cm  
£75-150

**198.**

A XIX century alphabetical and pictorial sampler by Sarah Lucy Reynolds aged 10 years 1874, Cammeringham School, unframed  
53cm x 46cm  
£100-200

**199.**

An early XVIII century sampler worked with a motto, Adam and Eve beneath a tree, all in a floral border  
approx. 44cm x 26cm  
£150-300

**200.**

A pictorial woolwork of a mother and child with a stag  
24cm x 32cm  
£50-100

## **Oil Paintings, Watercolours, Prints & other pictures**



**201.**

Edith Gunther  
lady with hat beside the shore  
oil on canvas, signed and dated 1906  
114cm x 88cm  
£700-900

**202.**

Berw??er  
lake scene  
oil on canvas  
60cm x 90cm  
£200-300

**203.**

XX century school  
English pointers flushing game from bracken  
oil on canvas  
60cm x 90cm  
£200-300



**204.**

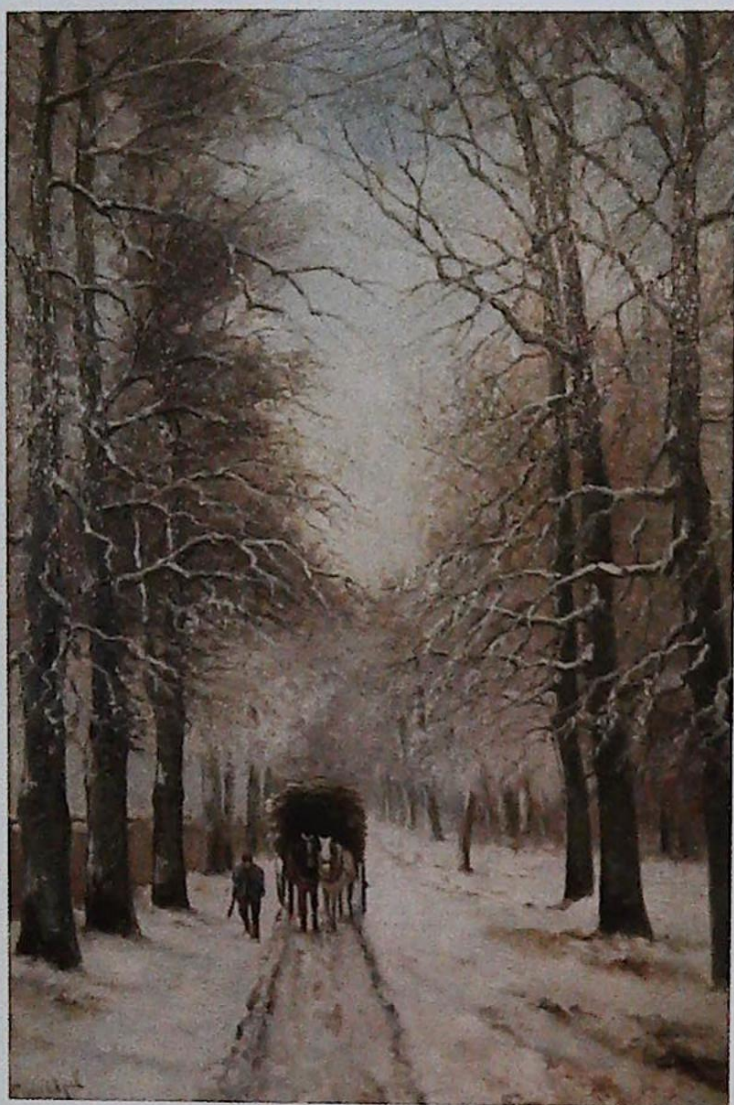
James Price (1842-1876)  
shepherd driving sheep in landscape  
watercolour, signed  
52cm x 74cm  
£500-800



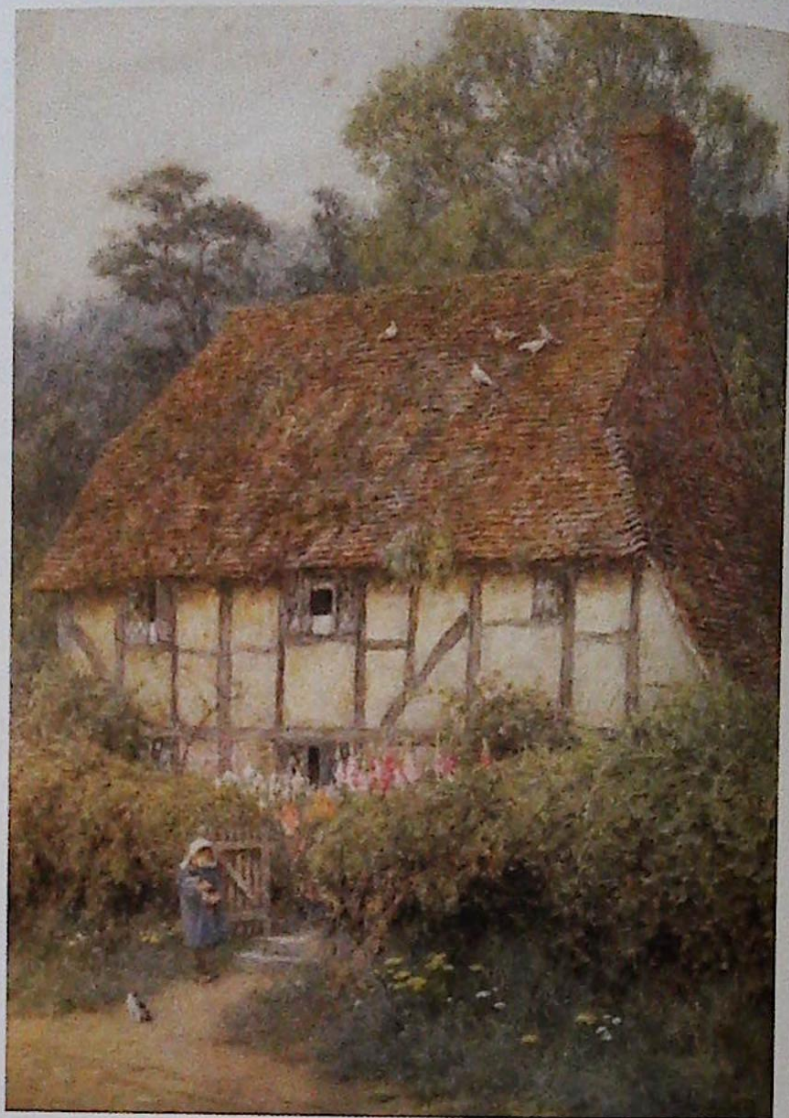
**205.**

D Bruyker  
Dutch coastal scene with boats and a tower  
oil on canvas, signed  
59cm x 79cm  
£400-600





207



212



**206.**  
Millson Hunt  
shipping in choppy seas  
oil on canvas, signed and dated 1890  
39cm x 60cm  
£800-1000

**207.**  
Louis Apol (1850-1936)  
a winter landscape with figure and  
horse drawing a cart loaded with  
wood in a tree lined lane  
oil on panel, signed  
38.5cm x 26cm  
£2000-3000

**208.**  
W. Martens  
Berne street scene with fountain  
watercolour  
16cm x 21cm  
£200-300

**209.**  
Elizabeth Sharp  
morning exercise, horses within  
woodland  
pastel drawing, dated 1977  
41cm x 25cm  
£60-80

**210.**  
XIX Century School  
gentleman with mirror beside a lady  
holding her hair - old label verso "Ida  
May Rendel"  
watercolour drawing  
26cm x 21cm  
£50-80

**211.**  
JW Richardson  
fortified coastal town  
watercolour drawing, signed and dated  
1895  
12cm x 18cm  
£80-120

**212.**  
Helen Allingham R.W.S (1848-1926)  
child in blue dress with cats before  
timber framed cottage  
watercolour, signed  
26cm x 18cm  
£1500-2000

**213.**  
William Manners (1860-1930)  
moonlit street scene with horses and  
carts  
gouache  
24cm x 34cm  
£200-300



214.

M Martino  
Venetian scenes  
watercolour drawings, signed, a pair  
30cm x 17cm  
£100-150

215.

JW Wyllie  
Al Campo and forest scene  
watercolour drawings, signed, a pair  
31cm x 43cm  
£80-120



218.

Raymond C. Watson (b1935)  
red-necked phalarope  
watercolour drawing  
13.5cm x 25.5cm  
provenance: Raymond Watson Exhibition  
of "Birds of Coast & Sea - Britain &  
Northern Europe", Mandell's Gallery  
Norwich and Polak Gallery St James's  
London June 1977  
£300-400

219.

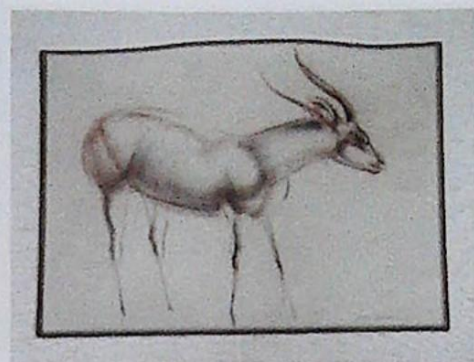
Emil Axel Krause, Danish (1871-1945)  
Loch Katriene  
watercolour drawing  
34cm x 25cm  
provenance: presented to the Rev. E J  
Chappell as token of esteem and respect  
by his class members, Westgate Hall,  
August 1910  
£150-250

220.

Roland Hill  
lady and child beside a cottage and a  
blossoming tree  
watercolour, signed  
33cm x 25cm  
£100-200

221.

David Cox  
hay cart within landscape  
watercolour  
29cm x 37cm  
provenance: inscribed from David Cox to  
K Ruskin, Xmas 1851  
£200-300



222.

John Rattenbury Skeaping (1901-1980)  
Antelope  
pencil and charcoal sketch  
28cm x 38cm  
provenance: purchased 1957 for £10  
£300-500



223.

Charles Rowbotham (1856-1921)  
Above Bellagio Lake Como, and At  
Azzano Lake Como  
watercolour and gouache, signed, a pair  
12cm x 18cm  
£600-800



224.

Ralph Hedley (1851-1913)  
"The Wishing Well" Mount Grace  
Priory (titled on the mount)  
oil on canvas, signed and dated 1908  
44cm x 35cm  
£800-1200

216.

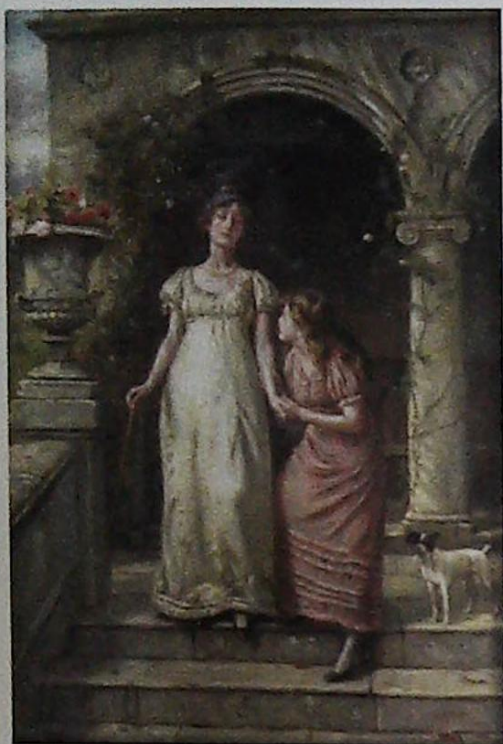
Andrew F. Affleck (exh. 1904 - 1929)  
Chateau Gaillard  
watercolour, signed  
approx. 25cm x 21cm  
£300-500



217.

Clive Madgwick (b1934)  
a view of Santa Maria del Salute Venice  
and Pitti Palace from the Boboli  
Gardens Florence - gallery label verso  
watercolour drawings, a pair signed  
26cm x 37cm  
£250-300





225

225.  
George Goodwin Kilburne (1839-1924)  
lady and young lady before an arcaded portico standing on steps, beside them a flowering urn and a Jack Russell  
oil on canvas  
65cm x 44cm  
£1000-1500

226.  
Continental School  
ballerina standing beside a pedestal  
oil on canvas, indistinctly signed to back  
*Makroba?*  
49cm x 36cm  
£60-80

227.  
XVIII century Continental School  
interior scene with lady cooking fish  
oil on canvas  
47cm x 37cm  
£150-200

228.  
Late XIX/early XX century School  
coastal scenes with timbered building  
oil on canvas  
25cm x 34cm  
£100-150



233



229.  
Early XVIII century School  
portrait of William Mieris  
oil on oak panel, contemporary label  
verso, rococo style papier mache frame  
26cm x 19cm  
£200-300



230.  
XIX century School  
"Fire at Austria Embassy Hall  
(Napoleon & Marie Louise)"  
oil on canvas, titled verso  
24cm x 38cm  
£250-400



231.  
JW Booth RCA  
moorland scene with sheep  
oil on board  
25cm x 35cm  
£400-600



232.  
W Richards (F E Jameson, 1895-1950)  
river landscapes with cattle and cottages  
oil on canvas, a pair  
40cm x 59cm  
£400-600

233.  
John Scott (1802-1885)  
"The Tiviot" off Liverpool, with other sailing ships, steam ships in the foreground  
oil on canvas, signed and dated 1849  
64cm x 91cm  
£1200-1800





**234.**  
Andrzej Kuhn (b1940)  
scene with gentleman smoking a pipe  
standing beside a lady with a  
Continental town in the background  
oil on canvas, signed and dated 1975  
77cm x 91cm  
£500-800

**235.**  
XIX century Continental School  
figures before a ruined farmhouse  
watercolour drawing  
26cm x 21cm  
£70-150



**236.**  
Donald Chaffin  
Mr & Mrs Fox and family  
watercolour drawing  
15cm x 13cm  
provenance: purchased 14.5.73 for £40,  
possibly an illustration for Roald Dahl's  
"Fabulous Mr Fox"  
£200-300

**237.**  
Edward Bradley  
The Castle of St Angelo  
pencil  
23cm x 18cm  
£150-250



**238.**  
W Stone  
winter landscape with cottages  
oil on canvas, signed and dated 1885  
29cm x 60cm  
£600-800



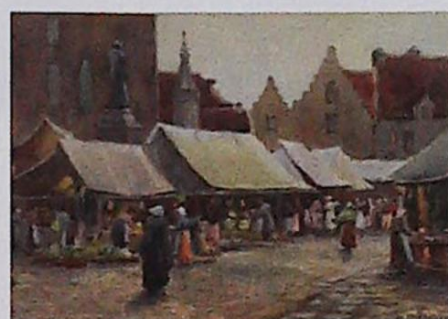
**239.**  
Thomas Lawrence  
interior scene with lady and child  
beside a spinning wheel  
oil on canvas, signed lower left  
30cm x 40cm  
£600-800



**240.**  
Geery  
XIX century French soldier in the snow  
Oil on mahogany board  
16.5cm x 10cm  
£250-350



**241.**  
James W. Milliken (fl 1887-1930)  
continental market scene  
watercolour drawing  
24cm x 34.5cm  
£200-300



**242.**  
James W. Milliken (fl 1887-1930)  
continental market scene  
watercolour drawing  
24cm x 33.5cm  
£200-300

**243.**  
R A Combes  
"Saturday Night" and "Sunday Morning"  
signed limited edition prints, a pair  
in one frame  
each 37cm x 53cm  
£50-100





244

244.

Jeremy Le Grice (b 1936)  
 "Atlantic Experience, Voyager I"  
 oil on canvas, signed and inscribed to  
 the reverse  
 79cm x 112cm  
 provenance: exhibited at Visage in  
 Glastonbury, sold with an accompanying  
 letter by the artist dated January 1990,  
 purchased 1989 for £3000  
 £600-800

245.

After Violet  
 children at play, The Earl of Grosvenor  
 coloured engraving  
 26cm x 19cm  
 £150-200



246.

XIX century school  
 scenes within a XVII century  
 Continental court  
 chromo lithograph prints, a pair  
 63cm x 86cm  
 £300-400

247.

After Chagall  
 scene with cockeral and horse  
 coloured print  
 47cm x 33cm  
 £80-120



248.

Robert Alexander Hillingford  
 (1828-1904)  
 "Cromwells Troops desecrating Wells  
 Cathedral  
 oil on canvas, signed  
 50cm x 39cm  
 £1200-1800

249.

Attributed to Jorgen Roed  
 cow girl with cat and cows in stable  
 oil on canvas, (labelled verso)  
 62cm x 48cm  
 £700-1200



249



250



250.

David Cox  
Lugg Meadows, Hereford  
watercolour drawing  
approx. 42cm x 69cm  
£1000-1500

251.

E S England  
Geese and Jack Russell before a  
farmhouse  
oil on canvas, signed  
60cm x 90cm  
£100-200



252.

Circle of Sir Peter Lely  
Portrait of a young boy holding a dove  
seated on a cushion and another of a  
young boy feeding a parrot  
oil on canvas, a pair  
75cm x 62cm  
bearing the inscription 'the sons of  
Josiah Acklam'  
£1500-2000

253.

C Wilkin after William Beechey  
children relieving a beggar boy  
engraving  
51cm x 42cm  
£60-80

254.

After Arthur House  
portrait of an Elizabethan lady  
a coloured etching  
plate size 40cm x 31cm  
£40-60

255.

M Petterson  
Cat Studies  
two signed artists proofs within one  
frame  
20cm x 27cm  
and another work "Jake" (2)  
£40-60

256.

Charman Harris  
"Granhams Moat"  
signed artists proof  
52cm x 78cm  
£80-120

257.

Marc Chagall  
Ahasuerus sends Vashti away  
(from the Bible)  
coloured lithograph  
36cm x 26cm  
£80-120

258.

Marc Chagall  
Esther (from the Bible)  
coloured lithograph  
36cm x 26cm  
£80-120

259.

Marc Chagall  
female figure with an angel in the  
background (possibly from the bible)  
coloured lithograph  
36cm x 26cm  
£80-120

260.

After Bunbury  
Caricature on horseback  
coloured engraving  
26cm x 20cm (4)  
£150-200

261.

William Lamb (1893-1951)  
"Backyards Arbroath" and "The Old  
Bridge Villeneuve Sur Lot"  
signed etchings  
18cm x 12cm and 19.5cm x 26cm (2)  
£60-80

262.

William Lamb (1893-1951)  
man with hoe  
signed etched  
19.5cm x 26cm  
£40-60



263.

After Samuel Buck  
A set of eight prospects of views of  
Lincoln and Lincolnshire to include:-  
north view of the Lincoln Palace taken  
from the top of the minster; the north  
west prospect of Barlings Abbey near  
Lincoln; south prospect of Tuppholme  
Priory near Lincoln; east prospect of  
John O'Gaunts below the hill of  
Lincoln; south west prospect of Lincoln  
Castle; the north east view of Louth  
Park Abbey near Louth; the east  
prospect of Tatershal Castle near  
Boston and the north view of Temple  
Bruer in the middle of the great heath  
on the south side of the city of Lincoln  
(8)  
20cm x 37.5cm  
£250-300

264.

After Barbara Palecki  
"Colin" - a tabby cat standing on a  
fence  
a signed limited edition print and five  
other works by the artist (6)  
47cm x 63cm  
£100-200





278

265.  
After R Cosway  
Lord Dunganan and the Honourable  
Courtenay and Charles Boyle  
engraving  
28cm x 20cm  
£50-100

266.  
Schiavanetti after Joshua Reynolds  
The Mask  
engraving  
21cm x 24cm and an XVIII century  
engraving of a putto (2)  
£80-120

267.  
After Rembrandt  
Adam & Eve beside the apple tree  
etching, reprint  
plate size 16cm x 11cm  
£40-60

268.  
A XIX century Chinese scroll painting  
of Shou Lau  
approx. 63cm x 128cm  
£100-150

269.  
After Jean Baptiste  
'L'Attaque Feroce Oudry', two  
cheetah's fighting  
engraving  
30cm x 38cm  
£100-200

270.  
J Closterman after J Smith  
Mr & Mrs Gibbons  
an engraving  
29cm x 34cm  
£60-80



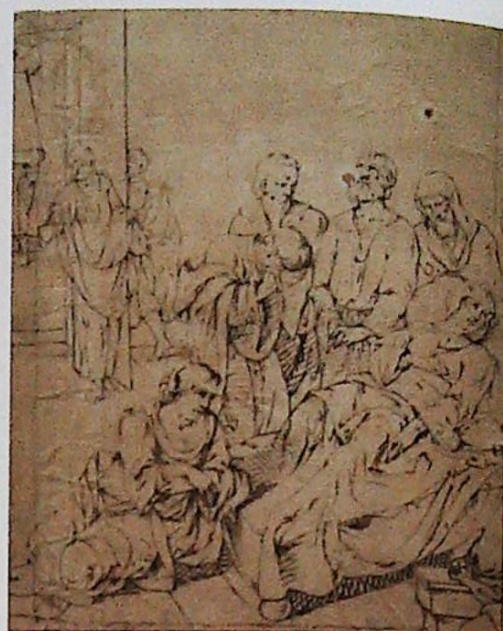
279

271.  
XIX century English School  
figures within a landscape with coast in  
distance, watercolour drawing  
33cm x 47cm and After Hughia  
O'Donaghue "Descent" - a snake  
wrapped around a male nude state  
proof image size 27cm x 20cm  
£50-100

272.  
Peter Coker  
seascale  
signed limited edition print No. 11/25  
image size 40cm x 50cm  
£80-120

273.  
Bonles after Marieschi  
a view of the great arsenal at Venice,  
which has two gates, one for the  
workmen to enter and the other for  
the ships  
published May 1794, possibly later  
coloured  
26cm x 41cm  
£80-120

274.  
After I Cobens & C Mortir  
"America Meridionalis in Suas  
Traecibus Partes Divisa, ad usum  
serenissimi burgundiae diucis"  
map of South America  
50cm x 61cm  
£100-150



280

275.  
After John Speed  
a map of Bedfordshire with later  
watercolour  
plate size 39cm x 51cm  
£80-120

276.  
Henry Birche after Thomas  
Gainsborough  
cottage children  
print dated 1791  
56cm x 38cm  
£60-80

277.  
John Varley (1778-1842)  
lake scene  
watercolour, signed  
6cm x 11cm  
£100-200

278.  
XVII century Dutch School  
bay and white horse  
oil on canvas  
34cm x 27cm  
£1200-1800

279.  
XVII century Spanish School  
Madonna and child  
oil on canvas  
34cm x 28cm  
£1000-1500

280.  
Attributed of Carlo Caliari  
Roman scene with figure conch  
pen and ink  
29cm x 24cm  
£1000-1500



**281.**  
After Piranesi  
Ve duta del Sepolcro di cajo ceftio  
etching  
41cm x 55cm  
£150-250

**282.**  
XX century Indian School  
two figures  
oil on card  
50cm x 30cm  
£150-250

**283.**  
Salvatore  
abstract with circle  
limited edition print  
51cm x 35cm  
£50-80

**284.**  
After Rossini  
Roma  
etching, dated 1819  
48cm x 38cm  
£100-150



**285.**  
Canning Town School  
interior scene with nude  
oil on canvas  
69cm x 56cm  
£600-800



**286.**  
Italian School  
portrait of a girl with red waistcoat  
oil on canvas  
60cm x 50cm  
£200-300

**287.**  
After Sir William Nicholson  
(1872-1949)  
Oxford series  
etching, signed  
32cm x 35cm  
£100-150



**288.**  
Philip Wilson Steer (1860-1942)  
river landscape with farmhouse beyond  
watercolour drawing  
36cm x 46cm  
£300-400



289

**289.**  
After Sir Edward Paolozzi  
(1924-2005)  
print - untitled, signed to reverse  
30cm x 30cm  
£200-300

**290.**  
Polish School  
cottage with straw roof  
oil on canvas  
35cm x 43cm  
£150-250

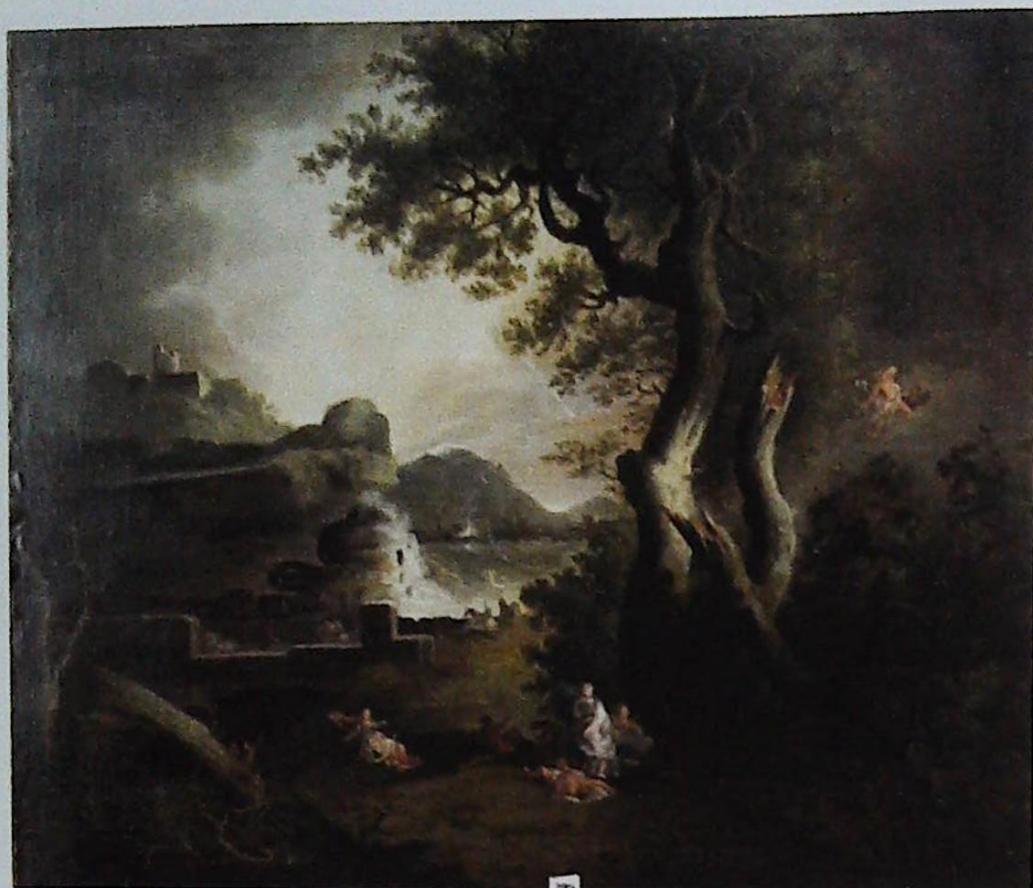


**291.**  
Late XIX century School  
hunting scene  
oil on canvas, unfinished work  
50cm x 39cm  
£250-350



**292.**  
Sir Edward Paolozzi (1924-2005)  
abstract  
painted collage  
30cm x 36cm  
£250-350

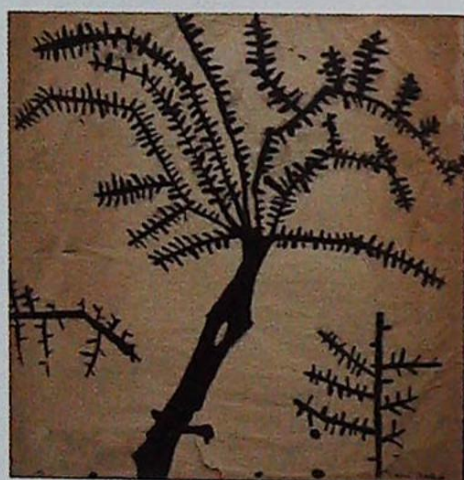




295



299.  
H Schmiechen  
portrait of a lady  
oil on canvas, signed and dated '89, in  
fine original carved gilt wood frame  
62cm x 46.5cm  
£400-800



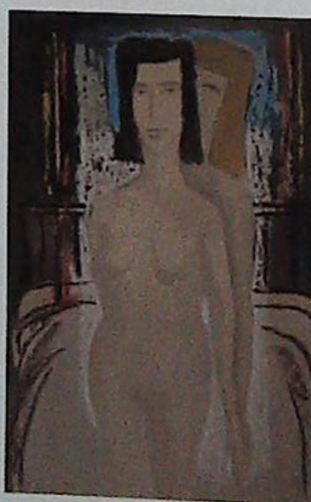
296.  
Harry Epworth Allen (1894-1958)  
Derbyshire scene  
pencil  
54cm x 36cm  
£50-80

297.  
Attributed to Edward Wadsworth  
abstract  
watercolour drawing  
39cm x 29cm  
£120-180

293.  
Sir Edwardo Paolozzi (1924-2005)  
abstract tree  
watercolour drawing  
50cm x 47cm  
£250-350

294.  
Earnest Borough Johnson (1866-1949)  
Nicky Mcann with parasol  
pencil sketch  
40cm x 23cm  
£50-80

295.  
XVIII century School  
alagorical scene  
oil on canvas  
107cm x 107cm  
£1200-1800



298.  
Dominic Fels (fl. 1920-1984)  
nude  
watercolour drawing, dated 1959  
37cm x 24cm  
£200-300

## Silver, Plate, Jewellery & Watches

300.  
A silver three piece cruet decorated  
with a Celtic band *Birmingham 1937*,  
cased; a set of six silver coffee spoons  
*Sheffield 1931* and a silver mirror and  
two brushes (5)  
£80-120

301.  
A set of six silver and mother of pearl  
tea knives *Sheffield 1919* and another  
set with plated blades *Sheffield 1923*  
£40-60

302.  
An Edwardian tortoise-shell and silver  
box and cover with gadrooned  
borders on a domed base  
*London 1905, maker WC*  
11cm high  
£80-120





**303.**  
A late XIX/early XX century Continental silver box and cover, the shaped lid engraved and cast with flowers around a central ovoid agate, on pierced feet  
20cm x 17cm  
£300-400



**308**

**304.**  
A set of four Asprey's silver and enamel propelling pencils each decorated with card suits and a set of playing cards  
£50-100

**305.**  
A continental silver and mother of pearl rattle decorated with flowers and a mother of pearl teether  
£80-120

**306.**  
Royal Doulton. A Christening set printed with nursery rhyme scenes with silver mounts, Birmingham 1934 and a similar egg cup and stand with a plated mount  
£100-200

**307.**  
A Victorian silver Fiddle pattern ladle, London 1850  
approx. 7oz  
£150-250

**308.**  
A late XIX century Russian silver and niello cigar case decorated with a troika carrying figures within an oval panel, surrounded by an all over design of meandering flowers, the hinged lid enclosing a gilt interior, possibly by Vasily Alexandrovich Petrov, of Moscow, dated 1885  
approx. 12.5cm x 8cm  
£1500-2000

**309.**  
A XIX century Russian silver spoon, the bowl engraved with scrolls and flowers with a turned handle, possibly by Mikail Iakovlevich Isakov, approx. 17cm, also another marked H.W. C cyrillic  
£60-80

**310.**  
A silver "Old English" pattern ladle, London, 1810 and a silver basting spoon, London, 1807  
£100-200

**311.**  
A pair of silver spoons, Sheffield, 1905, two other spoons and four dessert forks, various dates (8)  
£100-150

**312.**  
A pair of silver candlesticks of turned form each with a domed base, Birmingham, 1917  
approx. 25cm high  
£150-200

**313.**  
A set of silver flatware comprising six table spoons, six table forks, six dessert forks, six dessert spoons, six tea spoons and sugar tongs, London, 1876  
approx. 58 grams  
£400-600



**313**





**314.**  
Two sets of silver pistol handled knives, Sheffield, 1898  
£200-300



**318.**  
An oval silver two handled tray with a gadrooned and shell cast border; approx 56 grams, Sheffield 1930  
£400-600



**315.**  
A set of six silver goblets with hammered bowls, tapering stem and circular bases, Birmingham 1969 each approx. 15cm high  
£300-500



**316.**  
A silver goblet designed by Reginald Hill, of tapering form, London, 1953, engraved to base, awarded 1959 approx. 10.5cm high  
£200-300

**317.**  
A Victorian silver cigar case of cylindrical form with pierced ends, Edinburgh hallmark, date letter indistinct approx. 16.5cm long  
£80-120



**319.**  
A late XIX century continental yellow metal and opaline glass scent bottle, the lid inset with turquoise 9cm high  
£200-300

**320.**  
A set of six Russian silver teaspoons, each bowl decorated with leaves and with a twist handle  
£100-150

**321-329.**  
No lots

**330.**  
A pair of silver plated two handled entree dishes and covers in Art Deco style 27cm wide, an entree dish with warming rack and a toast rack  
£60-80

**331.**  
A chrome plated desk calendar in the form of horse, on a bakelite base 14cm high  
£60-80

**332.**  
An early XX century gilt metal travelling clock with a marble face and enamel surround, an Edwardian silver handled magnifying glass, Birmingham 1909 and a silver horse shoe shaped brooch  
£60-80

**333.**  
A pair of Victorian silver plated spoons, each with a shell shaped bowl and another with pearl handle (cased) and another pair (cased) (4)  
£30-40

**334-339.**  
No lots

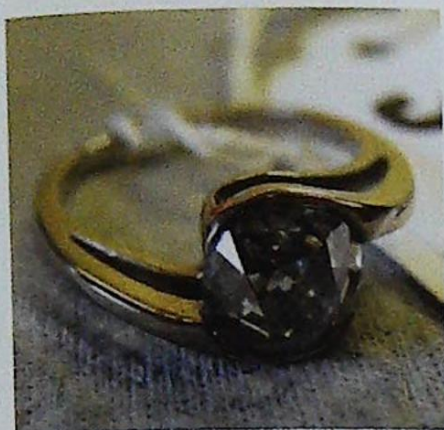


**340.**  
A Continental 14 carat gold brooch set with three facet cut amber coloured stones in a heart and suspended below a further stone in matching mount  
£200-300



**341.**  
A 9 carat gold gate bracelet set with alternate amethyst and pearls  
£400-500





342

342.  
An 18ct white gold diamond ring  
2.4ct total  
£2000-3000



343

343.  
A three stone diamond ring claw set in  
platinum and yellow gold, the central  
stone approx. .75 carat, flanked by two  
stones, each approximately .33 carat  
£1500-2000



344

344.  
A three stone diamond ring set in 18ct  
gold with stones of approximately  
0.85, .63 and 0.60 metric carats  
£2000-3000



347.  
A lady's Bueche Girod wrist watch  
with articulated 9 carat gold bracelet  
42grams gross  
£250-350



349.  
An 18 carat gold pocket watch, the  
fusee movement signed J R Arnold  
London, 84 Strand London, engine  
turned silvered dial, through case  
winder with key  
£250-350



345.  
A large facet cut amethyst coloured  
ring surrounded by small diamonds,  
claw set in platinum  
£200-300



348.  
A Rolex Airking gent's watch with a  
blue dial  
£300-500



350.  
An 18 carat gold cased pocket watch,  
with unnamed fusee movement, engine  
turned case with white enamel dial  
£300-400



346.  
A 9 carat gold albert with elongated  
links  
approx. 28 grams, 46cm  
£200-300

351.  
An early XIX century silver cased  
pocket watch Jn. Sinkinson Doncaster,  
fusee movement  
£40-60

352-358.  
No lots



A Swiss cylinder musical box, Clocks & a Barometer



**359.**  
A XIX century Swiss musical box with a 46cm cylinder, six bells and a drum playing ten airs, in a burr walnut and tulipwood banded case with ebonised borders, original tune sheet fixed to lid 74cm wide  
£450-750



**360.**  
An early XIX century "North Country" longcase clock, the painted dial with a moon roller movement, doves and castles with an eight day movement, the cross banded mahogany case with an arched door on ogee bracket feet  
240cm high, 64cm wide, the dial 14"  
£650-900

**361.**  
A XIX century onyx neo classical design mantel clock with applied gilt mount on an oval plinth  
41cm  
£140-240



**362.**  
An XVIII century bracket clock, the arched white dial signed Baker Tamworth, strike and silent indicator to the arch, the fusee movement with engraved frame, domed mahogany glazed case with brass mounts and feet  
40.5cm high, 27.5cm wide, 16cm deep, the dial 27cm x 20cm  
£800-1200



**363.**  
A Regency mahogany bracket clock, the convex silvered dial signed James Bath, eight day movement striking on a bell, the rectangular case with moulded barrel cornice and brass lifting handle, brass spandrels and ball feet  
42cm high  
£1000-1500



**364.**  
A late XIX century French gilt metal clock garniture, the porcelain mounts painted with birds within a river landscape with a chateau in the background  
the clock 36cm, the urn 28cm  
£600-800



**365.**  
A XIX century French ormolu and porcelain mounted mantel clock with crimson ground painted sevres panels, the architectural case surmounted by an urn on which two winged angels are seated  
44cm high  
£800-1500





**366.**  
An early XIX century rosewood and brass cased mantel clock with circular white enamel dial, striking French movement stamped *WBK and Fils, Paris*, the plinth depicting galloping horses  
54cm high  
provenance: paper label to inside from *Flackfields private banker, Paris collection*  
£400-600



**368.**  
A XIX century mahogany cased fusee wall clock, the painted white dial signed *Lister & Sons Newcastle on Tyne*  
29cm diameter  
£600-800

**369.**  
MS Honouables Paris. A French brass skeleton type mantel clock with alarm, the enamelled dial with roman numerals on an ebonised base, later perspex dome  
22cm high  
£150-200



**367.**  
A XIX century rosewood and mother of pearl inlaid drop dial wall clock signed *Stevens Boston*, single fusee movement  
29cm diameter dial  
£250-350



**370.**  
A XIX century French bronze cartel clock, with an enamelled dial, the case cast with an urn and ribbons  
69cm high  
£650-750

**371.**  
No lot

**372.**  
L. Belatti? Lincoln. An early XIX century mahogany ebony strung wheel barometer with an engraved silvered dial thermometer, level and hydrometer, and ivory fittings  
27cm long  
£120-180

**373.**  
No lot

**Mirrors**



**374.**  
An early XX century Swiss Black Forest wall mirror, carved in the form of an eagle, with a crescent shaped plate  
44cm wide  
£500-600



**375.**  
A XIX century neo classical gilded over mantel mirror, centred with an oval bevel plate flanked by two rectangular plates, the applied decorated of ribbons and swags with foliate scrolls beneath a moulded cornice  
82cm x 143cm  
£300-450





**376.**  
A Venetian style etched and cut wall mirror with bevel plates, foliate and leaf design  
121cm x 66cm  
£200-300

**377.**  
An Edwardian mahogany and boxwood strung shield shaped dressing table mirror, the shaped stand inlaid with patera  
57cm wide  
£75-150

**378.**  
A George II walnut dressing table mirror with a rectangular plate on tapering supports, the base with a moulded edge and a drawer on ogee bracket feet  
39cm wide  
£130-180

**379.**  
An early XIX century mahogany chequer banded dressing table mirror, the rectangular plate with an arched top on tapering legs, the base with frieze drawer on ogee bracket feet  
36cm wide  
£100-200

**380.**  
An early XIX century mahogany and boxwood strung dressing table mirror, the oval plate on shaped supports, the bow fronted base inlaid with a patera and with three drawers on bun feet  
51cm wide  
£80-160

**381.**  
A XIX century Continental mahogany dressing table mirror, the rectangular mirror flanked by part turned supports with shaped crest, the concave base with two frieze drawers and bun feet  
74cm high, 42cm wide  
£70-130



**382.**  
A late XIX century gilt gesso Adam revival oval wall mirror decorated with an urn, flowers and foliage scrolls  
124cm x 152cm  
£250-500

**383.**  
A XIX century gilt frame convex mirror  
57cm diameter  
£50-80

**384.**  
A mahogany and parcel gilt frame wall mirror in George I style, the crest carved with a pierced shell, the sides with flowers and leaves, with a beaded slip  
107cm x 60cm  
£150-300



**385.**  
A pair of Regency giltwood and gesso convex wall mirrors, each with a reeded slip and applied with spheres  
60cm diameter  
£400-600

**386.**  
A mahogany and parcel gilt fret frame wall mirror in George I style, with a pierced crest  
102cm x 51cm  
£100-200

**387-393.**  
No lots

## Furniture & Effects



**394.**  
An early XX century green painted French double bed head and foot, the moulded frame carved with flowers  
163cm wide  
£200-300



**395.**  
Five bespoke curtains lined and interlined, each approximate drop 12' 6" x 8' with two pairs of tiebacks, two festoon pelmets, all trimmed with matching braid etc.  
£600-1200

**396.**  
A mahogany table top bureau in campaign style with panelled fall above six small drawers flanked by brass handles on bracket feet  
66cm wide  
£75-150





**397.**  
A XIX century French carved giltwood frame three fold screen with bevelled glazed shaped panes to the upper section and figured damask upholstery to the remainder raised on scroll feet  
*approx. 152cm high, 121cm wide*  
£400-650

**398.**  
An early XIX century Chinese three fold screen set with twelve alabaster painted panels of figures in traditional costume and landscapes  
*105cm high, 80cm wide*  
£150-250



**400.**  
A late Victorian walnut secretaire bookcase, relief carved with leaves and scrolls  
*120cm wide*  
£400-600



**402.**  
An early Victorian mahogany bookcase, the top with two glazed doors, the base with two panelled doors, *approx. 212cm high, 117cm wide*  
£400-600



**401.**  
A set of eight Victorian mahogany balloon back dining chairs, each with padded canvas seats, on turned legs  
£600-900



**403.**  
An early Victorian walnut bookcase, the top with two glazed doors, the base with two panelled doors, *approx. 195cm high, 115cm wide*  
£400-600



**399.**  
An early XIX century mahogany and ebony strung cellerette, the canted rectangular top with three hinged lids above brass side handles on turned brass bun feet  
*35cm high, 31cm wide*  
£200-300





**404.**  
An early XIX century Continental walnut serpentine chest of four graduated drawers, the top quarter veneered and cross banded, the oak lined drawers with original handles and each cross banded, on turned feet  
107cm wide, 58cm deep  
£800-1300

**405.**  
A William IV rosewood screen, the square banner with acanthus carved corners, glazed to enclose a woolwork panel of roses on a lotus carved and turned column and triform base with bun feet  
140cm high  
£120-180



**406.**  
An early XIX century mahogany and boxwood strung sideboard, the raised back with two sliding doors above two frieze drawers, flanked by two deep drawers on ring turned taper legs - possibly Scottish  
112cm high, 73cm deep, 229cm wide  
£300-600

**407.**  
Robert "Mouseman" Thompson. An oak fire kerb, carved typically with two mice to fit the recess 143cm x 41cm  
£150-300

**408.**  
An early XVIII century oyster veneered walnut and cross banded chest of drawers, the top with boxwood stringing above two short and two long drawers on bracket feet - possibly adapted  
78cm high, 55cm deep, 86cm wide  
£1500-2500



**409.**  
An early Victorian mahogany wash stand in the manner of Gillows of Lancaster, the raised back with a moulded edge above two frieze drawers and part turned fluted tapering legs with brass castors  
87cm high, 66cm deep, 121cm wide  
provenance: Inventory number for Clumber Park (6034) bought by the family of the owner at the country house sale on the 13th October 1937  
£600-800

**410.**  
A pair of marquetry and satinwood demi lune console tables, in the Sheraton style  
90.5cm wide  
£1400-1800



408



410





**411.**  
An early XIX century mahogany and boxwood strung wash stand, the double hinged top enclosing recesses for a bowl and beakers and a mirror above a single door and a pull out commode drawer on ring turned tapering legs  
86cm high, 58cm deep, 58cm wide  
£300-400



**413.**  
An early XIX century mahogany enclosed wash stand, the rectangular top with satinwood and rosewood cross banded border, enclosing a large bowl recess and four recesses for beakers and a rectangular mirror on a ratchet, with an arrangement of two short, one false and one long drawer and two doors on square tapering legs and spade feet  
89cm high, 49cm deep  
£400-600



**414.**  
An early XIX century mahogany tea table, the rectangular top with rounded corners and a reeded edge with a boxwood strung frieze and square tapering legs  
90cm wide  
£250-300

**412.**  
An early XIX century mahogany serving table, the serpentine fronted top above a fluted frieze and square tapering legs  
92cm high, 72cm deep, 168cm wide  
£600-800



412



**415.**  
A Dutch walnut bureau bookcase, the top with two glazed doors, the blockfront base with four drawers on bracket feet  
225 x 112cm  
£600-800





416

**416.**  
Gillow of Lancaster. A George III mahogany architects table with a rectangular hinged top and a fall front drawer enclosing two folio slides on square tapering legs with brass castors  
80cm high, 90cm deep, 126cm wide  
£1500-2000

**417.**  
A XIX century pitch pine pot cupboard, the rouge marble top above a drawer and a door  
43cm wide  
£60-100

**418.**  
A XIX century French oak pot cupboard, the rouge marble top above a drawer and a door  
42cm wide  
£80-140

**419.**  
A George III mahogany and rosewood cross banded demi lune card table, the part baize lined interior with a central satinwood ebony inlaid chess board and cribbage scorers, the frieze with a fan on square tapering legs headed by inlaid shells and with spade feet  
90cm wide  
£1500-2000



**420.**  
A George IV mahogany and tulipwood banded card table, the rectangular top with rounded corners on four ring turned supports, with a square platform and reeded sabre legs and brass castors  
92cm wide  
£600-800



419



419 (open)





**421.**  
A George III mahogany boxwood strung demi lune card table, the top inlaid with a marquetry shell, the frieze with swags and bell flowers on square tapering legs, *the inlay possibly later*  
88cm wide  
£300-400



**422.**  
An early XIX century mahogany tea table, the rectangular top with rounded corners above a geometrically inlaid frieze on turned tapering legs  
91cm wide  
£250-300

**423.**  
A George III figured mahogany bureau with maple veneered internal drawers enclosed by a cross banded fall above four graduated cock beeded drawers  
102cm wide - *in need of restoration*  
£150-250



**424.**  
A George III mahogany kneehole desk, the rectangular top with a moulded edge above an arrangement of one long and three short drawers around the kneehole with an inset panel door on bun feet  
71cm high, 53cm deep, 84cm wide  
£400-600



**425.**  
A George III oak corner cabinet with a moulded cornice above an inlaid frieze and two panel doors flanked by reeded canted corners, the interior with shaped shelves  
115cm wide  
£200-300

**426.**  
A XVII/XVIII century slope top bible box, relief carved with trellis and roundel design on a later stand, three internal drawers  
69,5cm  
£130-230

**427.**  
A mid Victorian turned fruitwood child's rocking chair, with a Turkey work type seat on shaped supports  
40cm wide  
£100-200



**428.**  
A William IV extending mahogany dining table, the rectangular top with rounded corners and a moulded edge, on lotus and carved turned octagonal legs with brass castors  
132cm x 214cm  
£800-1200



**429.**  
A set of six William IV mahogany dining chairs, each with a plain bar back, drop in seat and on turned tapering legs  
£500-800





**430.**  
A William IV rosewood open armchair with a padded back, arm rests and seat on lotus carved tapering legs with brass castors  
£200-300

**431.**  
A set of six George IV mahogany dining chairs, two with arms, each with a bar back with pierced support, a padded seat upholstered in gold and black damask on turned legs  
£700-900



431



**432.**  
A mid Victorian walnut oval breakfast table, the quarter veneered figured top with a marquetry band, on four turned supports and outswept legs, each with ceramic castors  
71cm high, 101cm deep, 131cm wide  
£300-400

**433.**  
A Victorian walnut open armchair with a padded back and seat, scrolling arms and cabriole legs with ceramic castors  
£150-200

**434.**  
A George III mahogany and cross banded corner cabinet with a rectangular panel inlaid with an arch enclosing shaped shelves  
71cm wide  
£100-200



**435.**  
A George III oak and mahogany bow fronted corner cabinet with a later parquetry inlaid frieze and shell marquetry to the doors  
68cm wide  
£250-300



**436.**  
Gordon Russell Limited, Broadway, Worcester. An octagonal oak book table with a bog oak moulded base 63cm high, 61cm wide bearing a label for The Gordon Russell Limited Workshops at Broadway, design No. 857, made by Cabinet Maker H Mann under the supervision of the foreman Fred Shilton, March 21st 1930  
£300-400



437.

An early XVIII century oak oval gate leg table, the planked top on baluster turned legs, approx. 78cm high, the top 185cm x 184cm  
£3500-4500



437

438.

An oak Arts & Crafts style dresser, possibly by Liberty, the raised back with mirror and a door, inset with leaded green stained glass panel, decorated with "bulls eyes", the base with an arrangement of one long and two short drawers, each with locks stamped *Hobbs & Co*, two panel doors and a dog kennel on a plinth base with bun feet  
198cm x 182cm  
£800-1200



439.

A cast iron oak leaf and acorn pattern garden seat  
145cm wide  
£200-400

440.

A mid Victorian mahogany tub shaped armchair upholstered in brown on scroll carved cabriole legs  
£100-200



438





**441.**  
A XIX century continental walnut and parquetry table, the rectangular top inlaid with specimen timbers on tapering octagonal columns, the platform base with a stretcher and obelisk shaped finials on bun feet  
80cm high, 48cm deep, 64cm wide  
£200-400



**442.**  
A Victorian burr walnut work table, the rectangular boxwood strung top with a specimen timber banded edge, hinged to enclose a fitted interior and a recess on an octagonal column, triform base with bun feet  
75cm high, 38cm deep, 51cm wide  
£250-350

**443.**  
A set of six Regency mahogany dining chairs, each with a reeded panelled back, drop in seats and sabre legs, one with arms  
£500-800

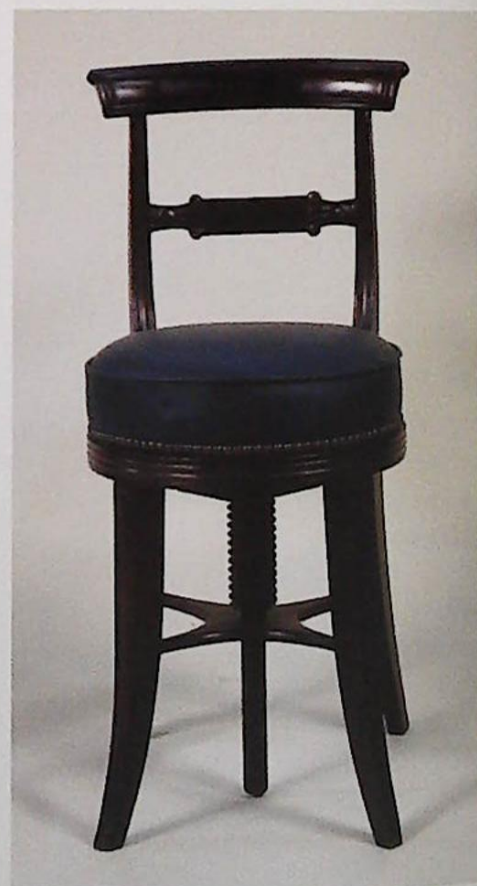


**443 (a set of six)**

**444.**  
A pair of George IV mahogany dining chairs, each with a panelled bar back with reeded shaped supports, headed by ionic capitals, each with drop in seats on turned tapering fluted legs with brass castors  
£100-200



**445.**  
A Victorian tub shaped armchair upholstered in buttoned velvet on turned tapering legs with ceramic castors  
£150-200



**446.**  
A George IV mahogany adjustable piano stool, with a bar back, a green leather padded seat on channelled outswept legs  
£150-250



447.

A set of eight Regency ebonised parcel gilt dining chairs, each with triple rope twist backs, cane seats and sabre legs  
£800-1200



447 (a set of eight)

448.

A George III 'D' end dining table with drop leaf centre  
10' 6" x 135cm  
£450-550



449.

A Victorian mahogany nursing chair with brocaded damask upholstery on turned tapering legs and ceramic castors  
54cm wide  
£100-200

450.

No lot

451.

A Victorian walnut button back armchair on turned legs with brass castors  
72cm wide  
£80-120

452.

A George III mahogany tilt top table, the canted rectangular top on a ring turned column and tripod base  
70cm high, 50cm deep, 60cm wide  
£100-150

453.

A Continental tulipwood veneered low table, the circular top with radiating veneers, a pierced gallery on square tapering legs  
46cm high, 45cm diameter  
£150-200



454

454.

An oak oval gate leg table with a frieze drawer on baluster turned supports with channelled outswept feet, the base early XVIII century, the top  
98cm x 126cm  
£150-250



455.

Robert "Mouseman" Thompson. A nest of two oak rectangular tables, each on canted supports and block feet with stretchers  
the largest 61cm wide  
£150-250





**456.**  
A Continental walnut chest of drawers, the four drawers each with raised panels on bun feet -  
XVIII century, but adapted  
87cm high, 43cm deep, 69cm wide  
£400-600



**457.**  
An early XIX century mahogany boxwood and ebony strung card table, the cross banded rectangular top with rounded corners above a plain frieze with a central tablet on square tapering legs  
92cm wide  
£300-500



**458.**  
An early XIX century mahogany card table, the rectangular top with rounded corners above a panelled frieze on turned tapering fluted legs  
92cm wide  
£250-350

**459.**  
A Victorian rosewood prier-dieu chair, relief carved with foliage and scrolls on cabriole front legs  
£100-200



**460.**  
A William IV rosewood tea table, the rectangular top with rounded corners on a hexagonal beaded column with a concave platform base and scroll feet  
92cm wide  
£300-400



**461.**  
A George I oak pier table, the rectangular top on tapered shaped legs with pad feet  
76cm x 50cm  
£700-800

**462.**  
A Regency Japanned tilt top table, the top decorated with oriental figures within a floral border on a turned reeded column and down swept legs  
77cm high, 38cm deep, 45cm wide  
£100-200



**463.**  
A rare Georgian oak tripod table, the 43cm diameter top with eight incised roundels, probably for oysters  
£300-400





**464.**  
An early Victorian rosewood games/worktable with a chess board top, hinged to enclose a fitted interior with a wool bag on a tapering column, triform base and scroll feet  
71cm high, 43cm wide  
£250-350

**465.**  
An Edwardian mahogany and marquetry tub shaped armchair with a padded back and seat on shaped legs  
£100-200



**466.**  
A French stained beech table with gilt metal mounts, the circular marble galleried top on channelled supports, the pierced undertier with a central basket with shaped feet and sabot  
80cm high, 49cm diameter  
£250-350



**467.**  
A William IV simulated rosewood sofa on turned tapering fluted legs with brass castors  
196cm wide  
£200-300



**468.**  
An early XIX century mahogany pembroke table, the shaped top with later marquetry fan and two oval and amboyna panels, surrounded by satinwood cross banding, above a frieze drawer and a false drawer on square tapering legs  
73cm high, 76cm deep, 82cm wide  
£300-400



**469.**  
A suite of French style white painted parcel gilt furniture to include a sofa, two open armchairs, two side chairs - each with padded backs and seats upholstered in pink and white checked fabric on turned tapering legs  
£800-1200

**470.**  
A Victorian mahogany butlers tray and stand, the rectangular tray with a shaped moulded border and two handles, the 'X' framed stand with ring turned supports and stretchers  
72cm high, 51cm deep, 81cm wide  
£100-200





**471.**  
An early XIX century Dutch walnut and floral marquetry standing corner cabinet, the broken pediment with a central urn, above four doors, on bracket feet  
24cm high, 116cm wide  
£1000-1500



**472.**  
An oak refectory type table in late XVII century style, the cleated planked top on a foliate and floral frieze with cup and cover supports and block feet and stretchers  
75cm high, 91cm deep, 183cm wide  
£600-800

**473.**  
A late George III mahogany elbow chair with a bar back above a rope twist carved support with reeded arms, a padded seat on square tapering legs  
51cm wide  
£100-150

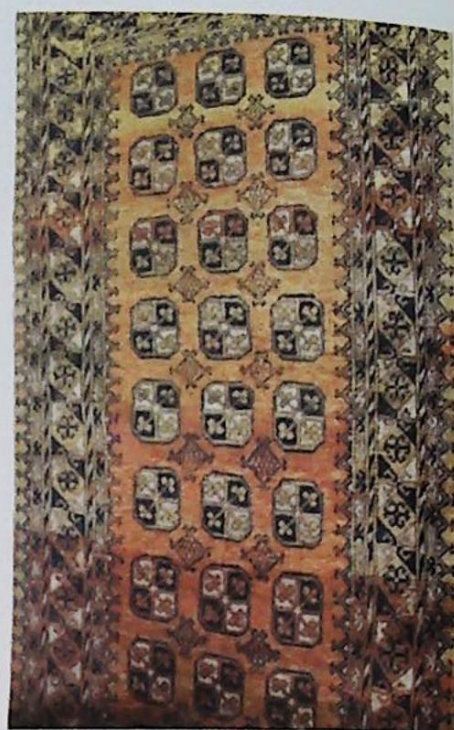
**474.**  
A pair of George III mahogany armchairs, each with a hooped back, pierced splat and a serpentine drop in seat upholstered in blue and cream fabric on channelled square tapering legs  
£100-150

**475.**  
An Anatolian picture rug and a Persian rug (2)  
£80-120

**476.**  
A Khamseh 'chicken' rug, with a central pole medallion on a dark navy ground  
approx 136cm x 226cm  
£100-200



**477.**  
A Turkish type rug, with a central medallion on an orange ground, signed  
170cm x 234cm  
£200-300



**478.**  
An Afghan runner, with a design of medallions on an orange ground  
106 x 268cm  
£150-250



**479.**  
A French giltwood gesso fauteuil, the moulded frame carved to the crest with flowers, with padded back, arm rests and seat, upholstered in gold damask on square tapering reeded legs  
59cm wide  
£200-300





**480.**  
A George III mahogany tilt top table,  
the circular top on a "bird cage"  
support with turned column and  
cabriole tripod base and pad feet  
71cm high, 79cm diameter  
£300-500



482



483

**482.**  
A XX century walnut dining suite in  
Queen Anne style comprising of  
extending table  
259cm x 92cm and eight chairs  
£800-1400

**483.**  
An early Victorian mahogany kneehole  
desk, the raised back above an  
arrangement of nine drawers, each  
with brass locks and turned handles  
with brass carrying handles on a  
plinth base  
84cm high, 58cm deep, 124cm wide  
£500-800



**481.**  
A Regency mahogany breakfast table  
on a turned column with quadruple  
splay feet  
91cm x 110cm  
£200-300





484

**484.**  
A George III oak and mahogany banded 'Lancashire' mule chest with five dummy and four drawers, on ogee bracket feet, approx. 106cm high, 54cm deep, 178cm wide  
£500-800



**485.**  
An XVIII century oak mule chest, the planked top above three panels and two drawers  
50cm high, 128cm wide  
£250-450



**486.**  
An early XX century continental painted salon suite, comprising a sofa, two chairs and a stool  
£200-300



489

**487.**  
No lot



**488.**  
An oak chest of two short and three long geometrical moulded drawers, on a stand with 'wavy' stretchers  
98cm wide, 132cm high  
£300-500

**489.**  
A William IV mahogany writing table with an arrangement of five drawers to each side around an arched kneehole with pierced gothic style brackets, on turned and lotus carved tapering legs with brass castors  
76cm high, 99cm deep, 137cm wide  
£400-600



490.

A set of George III mahogany metamorphic library steps in the style of Robert Campbell, in the form of a pembroke table, on turned tapering supports

127cm high, 41cm wide extended

These metamorphic models were often based on a 1774 patent of Robert Campbell. He designed library steps in writing tables, dining, card, breakfast and other tables.

£800-1200



490

491.

An early XIX century breakfront mahogany sideboard inlaid with ebony and boxwood stringing, on square tapering legs

156cm wide, 71cm deep

£1000-1500



491



492.

A Victorian rosewood canterbury what-not, with turned finials, spirally turned supports and a frieze drawer on bun feet

133cm high, 41cm deep, 45cm wide

£250-350



493.

An oak cupboard carved with vines, grapes, flowerheads and leaves with three panelled doors and two drawers above an arched apron, on bun feet - part late XVII/early XVIII, century, but adapted

£800-1200



493

494.

A George III mahogany chest of drawers, the top with a broad banding, above a slide and four graduated drawers on bracket feet (distressed)

75cm high, 46cm deep, 76cm wide

£250-350



1. In these conditions Thos. Mawer & Son act only as auctioneers and agents and the representative of Thos. Mawer & Son conducting the auction is called 'The Auctioneer'

2. Whilst Thos. Mawer & Son make every effort to ensure the accuracy of their catalogue and the description of any lot:

(i) Each lot set out in the catalogue or as divided or combined with any other lot or lots is sold by the vendor with all faults and imperfections and errors or descriptions

(ii) Thos. Mawer & Son do not accept responsibility for the authenticity, attribution, genuineness, origin, authorship, date, age, period condition or quality of any lot unless they have been instructed in writing by the buyer to so certify.

(iii) All statements whether printed in the catalogue or made orally as to any of the matters set out in (ii) above are statements or opinion only and are not to be taken as being or implying any warranties or representations of fact by Thos. Mawer & Son unless they have been instructed in writing by the buyers to so certify.

3. The Auctioneer has absolute discretion to divide any lot, to combine any two or more lots or to withdraw any lot or lots from sale, to refuse bids, regulate bidding or cancel the sale without in any case giving any reason or without previous notice. He may bid on behalf of the vendor for all goods which are being offered subject to reserve or at the Auctioneer's discretion.

The highest bidder shall be the buyer. The Auctioneer may at his sole discretion determine the advance of bidding or refuse a bid. If during the auction the Auctioneer considers that a dispute has arisen, has absolute discretion to settle it, or to re-offer the lot.

All conditions, notices, descriptions, statements and other matters in the catalogue and elsewhere concerning any lot are subject to any statements modifying or affecting the same made by the Auctioneer from the rostrum prior to any bid being accepted for the lot

4. The buyer shall pay the hammer price together with a premium of the hammer price - 17.25% inclusive of VAT

5. Notwithstanding any other terms of these Conditions, if within seven days after the sale Thos. Mawer & Son have received from the buyer of any lot notice in writing that in his view the lot is a deliberate forgery and within twenty-one days after such notification the buyers return the same to Thos. Mawer & Son in the same condition as at the time of the sale and by producing evidence, the burden of proof to be on the buyer, satisfies Thos. Mawer & Son that considered in the light of the entry in the catalogue the lot is a deliberate forgery then the sale of the lot will be rescinded and the purchase price of the same refunded.

The vendor agrees to be bound by Thos. Mawer & Son's decision.

6. Thos. Mawer & Son disclaim any responsibility for default by either the buyer or the vendor because they act as Auctioneers only and therefore do not pay out to the vendor until payment is received from the buyer. Instructions given by telephone are accepted at the sender's risk and must be confirmed in writing forthwith.

7. Every person on Thos. Mawer & Son's premises at any time shall be deemed to be there at his own risk. He shall have no claim against Thos. Mawer & Son in respect of any accident which may occur or injury, damage, loss howsoever caused, save in so far as the injury, damage loss shall be caused by the negligence of Thos. Mawer & Son's employees.

8. Each lot shall be at the purchasers risk from the fall of the hammer and must be paid for in full before the delivery and must be taken away by the purchaser at his own expense within 7 working days following the conclusion of the sale. The Auctioneer shall be entitled to charge storage charges in respect of lots not taken away as aforesaid (minimum charge of £10 plus VAT) and interest on unpaid accounts @ 4% above clearing bank base rate (per day)

9. Cheques which are not honoured by the payee's bank will incur a handling charge of £20 plus VAT for each presentation.

## COMMISSIONS

The Auctioneers are pleased to execute commissions for intending buyers in confidence as cheaply as is allowed by any other bids. **All telephone bids must be confirmed in writing or by fax by 4pm the day prior to sale, telephone bids will not be accepted for lots on which the top estimate is under £500.00.** We cannot guarantee to execute bids received on the morning of sale.

**TELEPHONE BIDS** are only accepted on lots estimated at £500 + and must be confirmed by fax or email with debit card details. **Bid must be confirmed at the latest by 3pm day before 1st sale day** and cannot be accepted after this time. We have limited lines and bids are taken 'first come first served'

Arrangement to collect goods are the responsibility of the buyer; we do not provide post and packing services. Mail Boxes Etc collect from us regularly (t: 0114 272 0777 e: info@mbesheffield.co.uk)

## BUYER'S PREMIUM

There is a 17.6% premium payable on the final hammer price of each lot

## REGISTRATION

All prospective purchasers are requested to register and obtain a bidding number prior to the start of the sale.

## CATALOGUE DESCRIPTIONS

Care is taken to ensure that any statement as to authorship, attribution, origin, date and provenance is reliable and accurate, but all such statements are statements of opinion and are not to be taken as statement or representations of fact. Thos. Mawer & Son Ltd. reserve the right, in forming their opinion, to

consult and rely upon any expert or authority reasonably considered by them to be reliable. While an identification of damage is given in some instances, an absence of such advice does not imply that a lot is free from defect. Prospective purchasers are strongly advised to inspect any lot on which they intend to bid. All measurements and weights are approximate and should be verified by intending purchasers

## CONDITION REPORTS

We regret that we are unable to provide condition reports on the morning of the sale.

## ESTIMATES

On lots that are reserved, the reserve will not be greater than the published estimate at the time the catalogue goes to press.

## PAYMENT OF ACCOUNTS

*All Lots should be paid for and collected immediately following the sale. Any lots not collected by 4.00pm on the Wednesday following sale day will incur storage charges (minimum £25.00 plus VAT per lot).*

*Payment for all lots must be made on the day of sale and methods are (1) CASH, (2) CHEQUES supported by either a letter of Reference from your bank or a cheque guarantee card to cover the sum of your purchase, (3) BANKERS DRAFT, (4) DIRECT DEBIT CARDS such as "Switch", "Delta", "Classic", "Connect", (5) CREDIT CARDS subject to a 2% premium charge.*

*No lots in this sale are the property of Thos. Mawer & Son.*

*Please note we will no longer accept payment by cheque from January 2010*

## ONLINE BIDDING

Thos. Mawer & Son at times offer an online bidding service via the-saleroom.com for bidders who cannot attend the sale.

In completing the bidder registration on www.the-saleroom.com and providing your credit card details and unless alternative arrangements are agreed with Thos. Mawer & Son you -

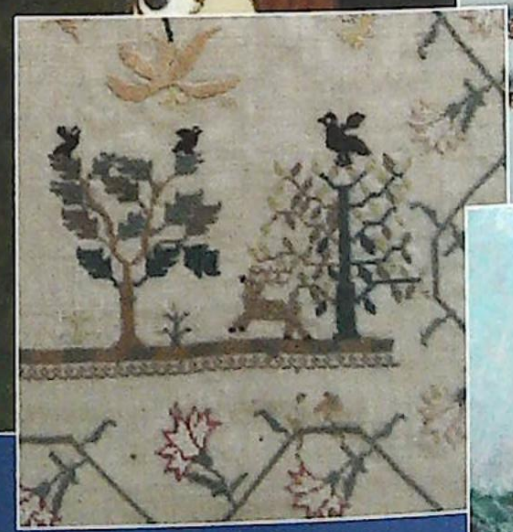
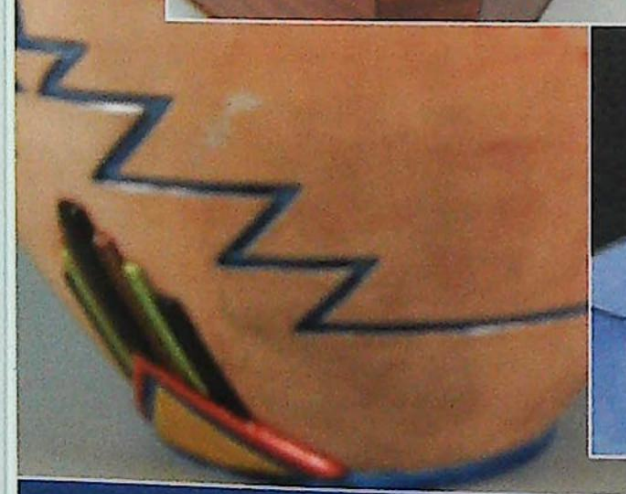
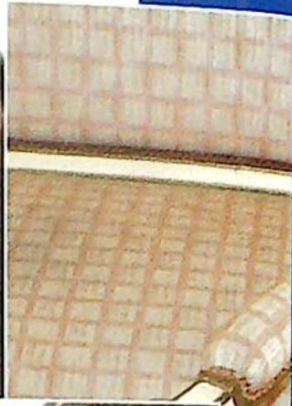
1. authorise Thos. Mawer & Son, if they so wish, to charge the credit card given in part or full payment, including all fees, for items successfully purchased in the auction via the-saleroom.com, and

2. confirm that you are authorised to provide these credit card details to Thos. Mawer & Son through www.the-saleroom.com and agree that Thos. Mawer & Son are entitled to ship the goods to the card holder name and card holder address provided in fulfilment of the sale.

Please note that any lots purchased via the-saleroom.com live auction service will be subject to an additional 3% commission charge + VAT at the rate imposed on the hammer price

**This contract is governed by English Law.**





Dunston House · Portland Street · Lincoln LN5 7NN  
Telephone: 01522 524 984 · Fax: 01522 535 600  
Email: [auctions@thosmawer.com](mailto:auctions@thosmawer.com) · Website: [www.thosmawer.com](http://www.thosmawer.com)