

THOS. MAWER & SON LTD

Auctioneers & Valuers Established in 1864



The Contents of Orston Hall & other country houses

Tuesday 13th & Wednesday 14th October 2009

THOS. MAWER & SON LTD



THOS. MAWER & SON LTD.

Auctioneers & Valuers Established in 1864



- Estate sales the first Saturday of each month -Victoriana, collectables & ephemera
- Free valuation clinic every Friday a.m.
- Sale catalogues on www.thosmawer.com
- International advertising for top prices
- We have specialist buyers worldwide
- Special Antique and Book sales throughout the year
- Full house clearance service

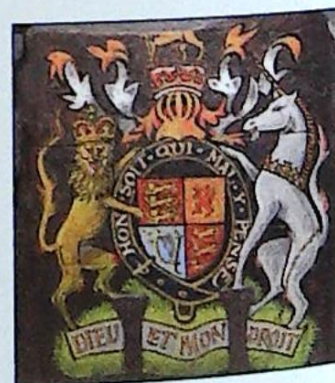
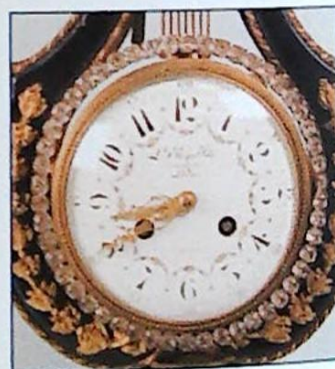
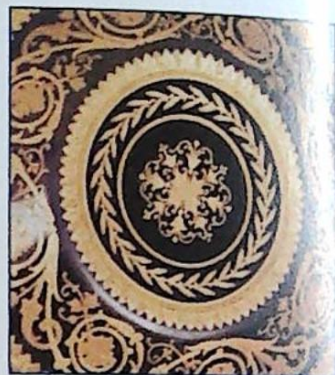
DUNSTON HOUSE · PORTLAND STREET · LINCOLN · LN5 7NN
TELEPHONE 01522 524984 · FACSIMILE 01522 535600

EMAIL auctions@thosmawer.com
WEBSITE www.thosmawer.com

Forthcoming Estate Sales

Saturday 7th November • Saturday 5th December

Further entries invited



THOS. MAWER & SON LTD

Auctioneers & Valuers Established in 1864

By instruction from the Executors of the late E. B. Gibson esq.
the remaining content of Orston Hall,
from the Executors of the late Miss E A S Neale of Kneeton,
from Mr John Gibson Esq. who has moved to a smaller property
and from other executors to close estates in Lincolnshire,
Nottinghamshire and Derbyshire

2 Day Sale of Antique Furniture • Paintings • Silver • Objets d'Art Rugs • Carpets • Garden Furniture and Effects

Tuesday 13th & Wednesday 14th October 2009
commencing at 10.30am each day

Viewing

Friday 9th October 12m - 4pm
Sunday 11th October 12pm - 3pm
Monday 12th October 9.30am - 4pm
and morning of sale from 9.15am - 10.15am

Order of Sale

Tuesday 13th October	1-128	English, continental, oriental ceramics and glass
	130-156	Brass and other metalware
	170-313	Silver, plated items, jewellery and watches
	350-387	Carpets and rugs
Wednesday 14th October	401-518	Pictures, prints, mirrors and books
	525-591	Lighting, bronzes, boxes and objects
	600-630	Clocks
	636-772	Garden ornaments and antique furniture



the-saleroom.com
live auctions

Bid live online at
www.the-saleroom.com

Café facilities available on sale days
Catalogue: £10

ORSTON HALL



Situated in the Vale of Belvoir in Nottinghamshire, Orston Hall was built in the late-17th century as a rectory for the Dean and Chapter of Lincoln which also owned the church even though it was not in its diocese.

In 1956 businessman Barry Gibson bought the Hall, a separate cottage and 158.5 acres of land at auction. He lived at the hall and filled his home with furniture, ceramics and works of art worthy of an English country house. Following Mr Gibson's recent death, the hall was sold and now Thomas Mawer and Son are offering the residual contents of the Hall for sale.

DAY ONE

English, Continental and Oriental ceramics and glass



1.
A Royal Copenhagen porcelain vase and cover, the cover applied with a putto holding a cartouche, the base decorated with a flower sprig surrounded by small flowers on a square base, painted mark to base and numbered 1221, 1757
28cm high overall
£150-200



2.
A Royal Copenhagen porcelain coffee service decorated with flower sprays within gilt borders comprising a coffee pot and lid, a sucrier, a milk jug, six cups and saucers, printed mark to bases and pattern numbers (17)
£250-300



3.
A set of ten Royal Copenhagen porcelain side plates, each decorated with floral sprays within a gilt border, printed marks and pattern numbers 493 and 1623 and a set of ten tea plates, printed marks and pattern number 1221, 1626 (20)
£100-150



4.
A Royal Copenhagen porcelain bowl decorated with flower sprays within gilt borders, a similar smaller bowl, a rectangular dish, a platter, a tazza and a soup plate, printed mark to bases and pattern number (6)
£100-150

5.
A Royal Copenhagen figure of a fox number 437, 27cm high; a figure of a goose number 1088, 13cm high; a perch number 1138, 19cm high; a bull terrier number 3280, 14cm high; a Bing and Grondahl budgerigar number 2210, a Copenhagen crab shaped ashtray, number 3131 and a fawn 16cm wide (some damage) (6)
£60-80

6.
A pair of Dresden porcelain cache pots, each with flower encrusted decoration and painted with birds
£80-120



7 & 8

7.
A XX century Meissen flared porcelain vase, painted with a dragon, with a white metal rim
25cm high
£80-120

8.
A XX century Meissen porcelain charger, painted with a dragon, with a white metal rim
34cm diameter
£80-120



9.
A Haviland Limoges porcelain flared vase painted with a hummingbird and an orchid, supported by three elephant head feet
38cm high
£40-60

10.
A late XIX century Volkstedt porcelain boat shaped flower encrusted bowl applied in putti
30cm wide
£80-120



- 11.**
A pair of Paris porcelain two handled pot pourri vases and covers, each decorated with exotic birds, pseudo Chelsea marks to base
27cm high
£100-150

- 12.**
A Capo Di Monte porcelain 'swan service' square dish
18cm wide
£50-100



- 13.**
A Limoges porcelain two handled vase, painted with a scene of a shipwrecked man being saved by a mermaid, signed Lucas, on a cobalt blue ground - lacking cover
18cm high
£300-400

- 14.**
A XIX century Paris porcelain bowl, painted with figures and landscapes in silhouette on a pink ground and bands of swags within gilt borders
18.5cm diameter
£80-120



15

- 15.**
A Sevres style cabinet cup and saucer, decorated in gilt with flowers and leaves, on a cobalt blue ground
£80-120

- 16.**
A Continental porcelain circular tray, the centre decorated in gilt with a 'C' monogram, Brussels retailer to back
50cm diameter
£80-120



- 17.**
A late XIX century Paris porcelain baluster vase in Chinese famille rose style, decorated with vertical bands of flowers and leaves (lacking cover)
26cm high
£80-120

- 18.**
No lot(s)

- 19.**
A pair of late XIX century German bisque figures of a gentleman and lady in XVIII century dress, approx. 34cm high
£80-120



20

- 20.**
A late XIX century Paris porcelain group titled "Le Bourgeois Gentilhomme"
21cm wide
£150-200



- 21.**
A pair of Berlin porcelain salts, each in the form of putti and two baskets, painted with birds and flowers on scroll feet
13cm high
£150-200

- 22.**
A set of four Capo Di Monte porcelain figures of the four seasons
10cm high
£80-120

- 23.**
A pair of Dresden porcelain figures of huntsmen and a lady, each holding a gun wearing a tricorne hat
15cm high
£80-120

- 24.**
A Sitzendorf porcelain group of a gentleman and his lover beneath a tree with a sheep beside them
16cm high
£80-120

- 25.**
A Sitzendorf porcelain group of a gentleman and lady, she seated holding a spaniel with a lamb beside her
19cm high
£80-120

- 26.**
A pair of Capo Di Monte figures of putti, each on tapering bases
18cm high
£60-80



27.
A Meissen figure of a putto gardening beside a rake and plant pots
13cm high
£150-200



28.
A pair of Meissen porcelain salts, each in the form of two baskets painted in birds and flowers
5cm high
£150-200



29.
A pair of late Meissen figures of ladies seated at tables, one with a bird cage, the other a nosegay
14cm high
£300-500



30.
A collection of thirty, mainly late Meissen miniature animals and birds
£600-800



31.
A late XIX century Meissen porcelain group of children playing around a tree
30cm high
£400-600



32.
A pair of Sitzendorf porcelain figures of a shepherd and shepherdess, each with lambs at their feet
25cm high
£150-200

33.
A pair of Sitzendorf porcelain figures of a boy and girl, seated holding floral sprigs
13cm high
£80-120

34.
A Plau porcelain wall plaque in the form of a putto playing a mandolin
15cm high
£60-80



35.
An XIII century Chelsea fluted bowl painted both internally and externally with flower and insects - *unmarked*
6cm high, 12.2 cms diameter
£180 - 300

36 - 37.
No lot(s)



38.
A pair of XIX century Staffordshire zebra ornaments on bocage strewn naturalistically painted oval bases
17cm high
£150-250

39.
A mid XIX century Staffordshire pottery flatback figure of 'The Lion Slayer'
42cm high
£80-120

40.
A mid XIX century Staffordshire pottery flatback figure of 'Dick Turpin'
29cm high and another 'Will Watch'
38cm high (2)
£60-80

41.
A mid XIX century Staffordshire pottery flatback watch stand in the form of a musician and companion
32cm high, a mid XIX century flatback watch group
20cm high and a cottage
(3)
£60-80



42. Two mid XIX century Staffordshire pottery flatback watch groups, each in the form of a piper and a lady 38cm and 33cm high £80-120

43. Two mid XIX century Staffordshire pottery flatback figures of a gentleman and a lady carrying faggots each 33cm high £80-120

44. A pair of mid XIX century Staffordshire pottery figures of a Scotsman beside a sheep and another of a lady 20cm high and a pair of mid XIX century Staffordshire pottery spill vases in the form of cows 19cm high (4) £60-80



45. A mid XIX century Staffordshire pottery flatback figure 'Prince of Wales' 32cm high
Provenance: label to base for the Rich Collection
£80-120

46. Two mid XIX century Staffordshire pottery flatback spill vases each in the form of a lady and gentleman beside a tree 20cm high (2) £60-80

47. A mid XIX century Staffordshire pottery flatback spill vase in the form of a gentleman spying on a gentleman and his lady 31cm high; another of a Scotsman and a sheep beside a tree 33cm high and another of a Scots lady giving water to a man 27cm high (3) £100-150



48. A mid XIX century Staffordshire flatback spill vase the form of a lady seated on a bridge with a swan and fox below 22cm high; a figure of a Scots lady and gentleman with three spaniels 13cm high; a poodle inkwell/spill vase 14cm high and a small watch group 12cm high (4) £120-150



49. A Staffordshire model of a greyhound holding a hare 29cm high and a pair of similar 19cm and another (4) £100-150

50. A pair of Staffordshire pottery mantel figures of seated spaniels with enamelled muzzles and eyes 33cm high £40-60

51 - 52. No lot(s)

53. Hereford Fine China. A figure of a partridge on a presentation base; a pair of bookends mounted with lead huntsmen; a ceramic teapot in the form of a huntsman; a two owl golfer and a resin paperweight in the form of a shotgun (6) £10-30



54. A Royal Crown Derby "Battersea" pattern dinner service decorated in Imari colours, approx. sixty five pieces £400-600



55. A modern Coalport dessert service, printed with a design of strawberries (13) £150-200

56. A pair of Victorian porcelain dessert plates, decorated with butterflies in the manner of Charles Ford (restored) £50-80

57. A pair of early XX century Royal Doulton porcelain plates decorated with exotic birds, signed E Percy 23cm diameter £60-80



- 62.**
A XIX century Coalport ewer, the moulded body painted with summer flowers, gilt highlights and a leaf design
25cm high
£100-150



- 66.**
A graduated set of three Minton Majolica jugs, each with a styles branch handle, impressed marks to base
£100-150

- 58.**
A Stevenson & Hancock Derby porcelain tyg, painted in roses within a gilt trellis design
8cm high
£80-120



- 63.**
A pair of late XIX century Minton porcelain vases, each painted with a band of flowers on a turquoise ground
13cm high
£150-200

- 67.**
Two late XIX century Staffordshire spirit barrels "port" and "sherry", each with a puce band 28cm high and a similar port barrel 31cm high (3)
£100-150

- 59.**
A set of six Royal Crown Derby coffee cans and saucers, pattern 1128 and two similar plates (14)
£100-150

- 60.**
A late Victorian blue and white, leaf pattern gold banded tea service (40)
£50-80



- 61.**
A mid XIX century Minton porcelain comport painted with a spray of flowers with a green border 22cm diameter and a mid XIX century porcelain soup plate and side plate, each printed and painted with flowers with a powder blue border 20cm diameter(3)
£150-200



- 68.**
A mid/late XIX century Staffordshire porcelain two handled slop bucket and cover, decorated with printed and painted flower sprays and wavy puce bands
36cm high overall
£100-150



- 65.**
A pair of English white and gilt porcelain figural dessert stand bases, circa 1860, previously fitted as electric lamps and modelled as a pair of draped putti, representing Night and Morning; seated on tree stumps, the shaped gilt and turquoise bases jewelled in Minton style
23.5cm high
£80-120



- 69.**
A mid XIX century Staffordshire porcelain dessert service, each piece painted with country houses and ruins within landscapes, on a blue ground, comprising three stands and eight plates
£200-300



62



70.
An extensive Spode Copeland china dinner and tea service printed and painted with flower sprays - approx. 153 pieces
£150-200



76.
A Royal Worcester sugar bowl decorated with fruit by H H Price
8cm diameter
£100-150



79.
A pair of Royal Worcester plates decorated with fruit by S Weston, within a gadrooned gilt rim
15cm diameter
£200-300



71.
A Bow porcelain pierced trumpet shaped 'frill' vase encrusted with flowers and moulded with masks, wheat and leaves (restored)
18cm long
£150-200

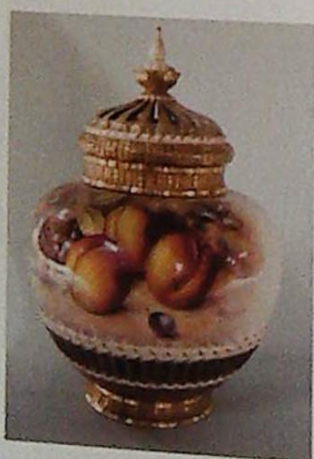


77.
A Royal Worcester plate decorated with fruit by R Price, within a gadrooned gilt border
20cm diameter
£100-150

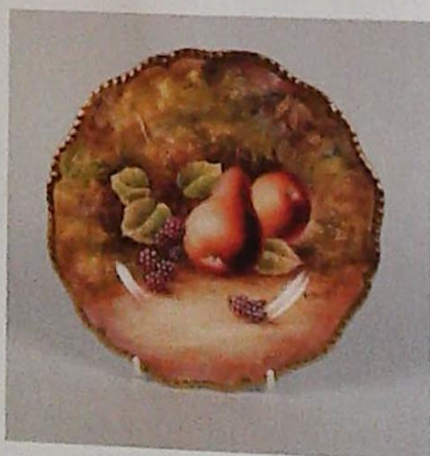


80.
A Royal Worcester cup and saucer decorated with fruit by J Skerrett, with gilt borders, the cup 6.5cm high, the saucer 11cm diameter
£100-150

72 - 74.
No lot(s)



75.
A Royal Worcester pot pourri jar and cover, decorated in fruit by Freeman within gilt borders, number 1286
25cm high
£800-1200



78.
A Royal Worcester plate decorated with fruit by J Skerrett within a gadrooned gilt border
20cm diameter
£100-150



81.
A Royal Worcester rectangular dish decorated with fruit by Roberts within a gadrooned gilt rim
18cm wide
£80-120



- 82.**
A Royal Worcester porcelain blush ivory pot pourri vase and cover, decorated with flowers
13cm high
£100-150

- 83.**
A Royal Worcester blush ivory miniature tyg decorated with flowers, dated cypher for 1906 and a Spodes Copeland Imari pattern tyg (2)
£30-50

- 84.**
A Royal Doulton figure of Dinky Do, HNI 678 and another of Tinker Bell HNI 677 (2)
£60-80

- 85.**
A Royal Crown Derby 'Linen' pattern pin tray "presented by Stuart Lyons CBE, Chief Executive, Royal Doulton plc", a Royal Crown Derby 'Linen' pattern cake knife (cased) and a set of six Royal Crown Derby desert knives, the handles printed with flowers
£60-80

- 86 - 89.**
No lot(s)



90

- 90.**
A modern Royal pewter flambé group 'Images of Fire' modelled with two birds emblematic of courtship, stamped AM to base
40cm high
£150-200



- 91.**
A Bretby green glazed pottery vase in archaic Chinese style, of bold two handled squared baluster form, impressed mark
42cm high
£40-80



- 92.**
William De Morgan. A tile painted with a yellow flower; stamped to the back "Sands End Pottery Fulham"
15.5cm
£100-150



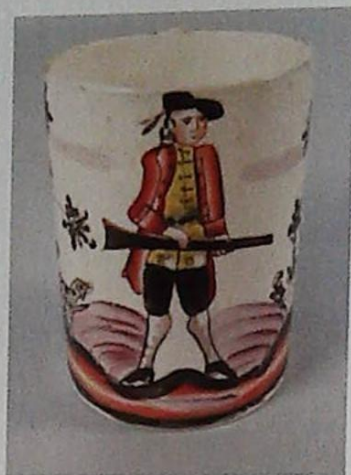
- 93.**
William De Morgan. A set of twelve pottery tiles painted with purple flowers and leaves on a blue ground
15cm wide, now inset into a mahogany coffee table
provenance: bears the inscription "This coffee table was made by Oliver Needham, the Duke of Portland's cabinet maker at Welbeck"
£800-1200



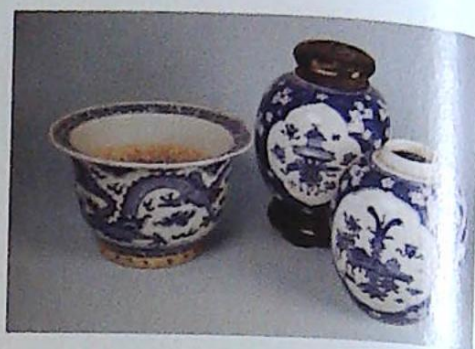
- 94.**
Martin Brothers. A pair of late XIX century stoneware two handled vases, each incised and painted with flowers, stamped RW Martin & Brothers, London and Southall, 4-8-3 to the base
21cm high
£1000-1500



95.
An Orivit Art Nouveau pottery and pewter bottle vase, decorated with snowdrops and stamped to the base
28cm high
£150-200



102.
A rare XVIII century Leeds creamware tankard decorated with a sportsman in a landscape with gun and dog
9cm high
£400-650



106.
Two similar XIX century Chinese blue and white ginger jars, each decorated with lions and vases within a shaped cartouche surrounded by a prunus design 20cm and 19cm high; and a blue and white jardiniere (3)
£150-200

96 - 99.
No lot(s)



100.
A rare early XIX century Prattware sauce boat in the form of a duck, the moulded body painted in blue, green and brown
9.6cm high (top of head) and 20cm overall
£300-500



103.
A Sarreguemines Majolica monkey candlestick, modelled wearing a top hat, seated on a book entitled "Darwin"
19cm high
£200-300

106A.
A Chinese blue and white porcelain teapot and cover, decorated with a procession with a figure riding a dragon, 19cm high
£80-120



107.
An XVIII century Chinese export porcelain canted rectangular tureen, cover and stand, painted with figures on a terrace within a river landscape, with a blue floral border
20cm high, 27cm deep, 36cm wide
£150-200

Oriental ceramics



101.
An XVIII century Leeds creamware mug with reeded cross over loop handle, the slightly bulbous body painted with a rose and foliage
£200-300

104.
A Chinese blue and white porcelain teapot and cover, decorated with a figure riding a dragon, 26cm high
£80-120

105.
A Chinese blue & white porcelain jar and cover, decorated with vases, with two iron loop handles, 12cm high
£80-120

107A.
A Chinese porcelain blue and white vase, approx. 35cm high
£60-80



108.

An XVIII century Chinese celadon porcelain baluster vase with XIX century ormolu mounts, now fitted as an electric lamp
47cm high
£500-800



109.

A Chinese jar and cover painted in blue with a bird and flowers on a celadon ground, 22cm high and another with a design of meandering leaves, the cover later 33cm high (2)
£120-150



110.

A Chinese porcelain famille verte bottle vase decorated with birds and flowers
33cm high
£80-120



110A.

A Chinese blue and white ribbed porcelain teapot, with a bronze loop handle, decorated with deer,
17cm wide
£120-150



111.

A XIX century Chinese Canton plate decorated with birds, insects and flowers on a celadon ground with a gilt metal mount, cast with birds and scrolls
31cm diameter and a set of five Canton plates and another each decorated with insects on a celadon ground
19cm diameter
£150-200



112.

A XIX century Chinese famille rose baluster vase decorated with birds, insects and flowering branches
24cm high
£100-150

113.

An early XIX century Chinese famille verte bowl painted with buildings and landscapes 23cm diameter and a Chinese canton bowl 26cm diameter (2)
£40-60



114.

A pair of Japanese Imari jars, covers and stands, each with a berry knob, painted overall in figures, birds and flowers, six character marks to base
£100-150



114A.

A XIX century Chinese blue and white porcelain teapot and cover decorated with figures
£150-200

115.

A set of four XVIII century Chinese Imari tea bowls and saucers and five small Chinese blue and white dishes
£40-60

116.

Three early XIX century Chinese export porcelain saucer dishes, a bowl and a rice spoon, each decorated to the centre with Arabic script, two Chinese blue and white porcelain rings and a bronze tablet 11cm wide
£80-120



116A.
A Chinese Jadeite and cloisonne enamel hand mirror; decorated with a design of scrolls and roundels, 15cm long
£40-60

117.
A Chinese blue and white porcelain jar and cover; decorated all over with a foliate design, 20cm
£80-120



118A.
A Chinese carved Jadeite roundel, 5.5cm diameter
£50-80

119.
A large Chinese blue and white porcelain teapot and cover, decorated with meandering flowers, 25cm high
£80-120



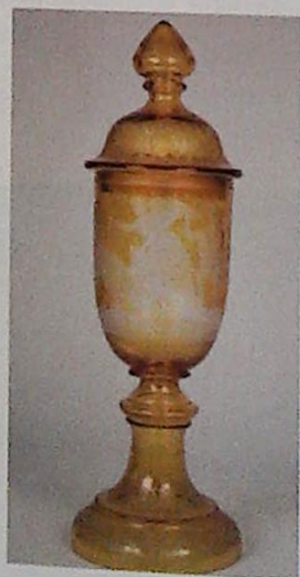
119A

119A.
A Chinese blue and white porcelain teapot and cover, decorated with an exotic bird and dragon to each side, six character marks to base, 18cm wide
£150-200

120.
A large XIX century amethyst tinted toilet jug, possibly Bristol, cracked
28cm high
£100-150



121.
A late XIX century Bohemian amber flash cut glass goblet and cover, engraved with a hunting scene
39cm high
£400-600



122.
A Bohemian amber flash goblet with domed cover, engraved with angels and Alexander the Great in a chariot and inscribed "Aus Dem Alexanderzag"
45cm high
£1000-1500



123.
Algues Lalique. An opaque black glass plate with a design of a tree, signed to the back *Lalique France*
28cm diameter
£200-300



124.
A cut glass jar and cover in George III style on a stepped base 33cm high
£100-150

125.
A Stuart crystal goblet engraved to commemorate the investiture of the Prince of Wales at Carnarvon Castle 1st July 1969, number 3 22cm high; another to commemorate the wedding of Princess Ann and Mark Philips 14th November 1973, 18cm high another to commemorate the Coronation of Queen Elizabeth II, and another commemorative glass (4)
£100-150



- 126.**
A pair of XVIII century cordial glasses with opaque twist stems, 12cm high and a pair of engraved wine glasses with air twist stems
£150-200



- 127.**
Fourteen XIX century double lipped wine glass coolers, each with a star cut base
14cm-15cm wide
£150-200



- 128.**
Rene Lalique. A large Art Deco style cologne or scent bottle and stopper of tapering form, the base with moulded mark "R. Lalique, France", appearing on the BBC Restoration Roadshow
23cm high
£300-500

- 129.**
A glass trumpet shaped vase on a circular base
37cm high
£20-30

Brass and other Metalware

- 130.**
An XVIII century bronze croquet bell initialled E.S., possibly for Edward Seller II of York with four other bells (5)
£80-120



- 131.**
Various XIX century copper and brass; a bowl, 39cm diameter, a small Victorian copper kettle, a copper and brass flask and two funnel shaped cups etc. (7)
£100-150

- 132.**
A XIX century oval copper pan and lid with an iron handle 49cm wide and a copper coal helmet 36cm wide
£80-120



- 133.**
A Victorian copper jelly mould of oval lobed form, 11cm high, 18cm wide and another Victorian round jelly mould of tapering form 15cm high, 11.5cm diameter (2)
£150-200



- 134.**
A Victorian circular copper jelly mould in the form of a stylised castle, stamped to base 'M' below a crown 10cm high, 12cm diameter and another circular Victorian copper jelly mould in the form of stylised flames, stamped to the base 486 below an orb and cross marks 11cm high, 10.5cm diameter (2)
£150-200

- 135.**
A Victorian circular copper jelly mould, moulded in a stylised chain, stamped to the base 443 above an orb and cross mark
12cm high, 13.5cm diameter
£80-120

- 136.**
A Victorian copper circular ring jelly mould 17cm diameter, another smaller 11.5cm diameter and a set of four copper moulds, each with a pineapple 10cm x 6.5cm (6)
£60-80

- 137.**
A Victorian copper salt box and cover with a plated interior 19.5cm high, 14cm wide, a Victorian pan of tapering form with a pewter handle and a funnel (3)
£80-120

- 138.**
A late XVII/early XVIII century brass skillet with three tapering legs and a handle
34cm long overall
£80-120



139.
A Victorian copper two gallon flagon stamped "Hall" within an oval plaque
39cm high
£100-150

140.
Two brass bowls, each engraved with foliate scrolls and geometric devices, possibly Indian
28cm and 26cm diameter
£60-80

141.
A brass pill box in the form of a pocket watch, with a hinged lid
6cm wide
£60-80



142.
An XVIII century pewter charger by Samuel Righton of London 45cm diameter; a XIX century pewter bowl stamped D Scouler 24cm wide; two mid XVIII century pewter plates by Watts of London 23cm diameter and another plate (5)
£200-300

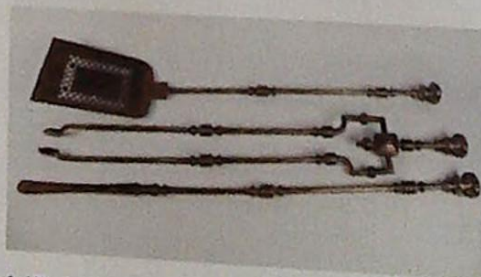
143.
An early XIX century large heated pewter meat dish with drainer 61cm wide and another smaller example with two handles by Samuel Cocks of London 39cm wide(2)
£80-120

144.
A stitched leather 'jack' by Ross of Winchester, with a silver mount
Sheffield 1909
19cm high
£60-80



145.
Robert Wells of Aldbourne, Wiltshire. A collection of XVIII century bells to include a size 18 stamped R Wells, a size 16 stamped R.W., a size 14 stamped R.W and a large Crotal bell (no handle) stamped R.W. (4)
£200-300

146.
Two XIX century pewter pint jugs and a half pint jug, each with touchmarks for Munster Iron Company Cork; a set of four XIX century James Dixon & Sons pewter salts with blue glass liners; a XIX century pewter pint mug and a jug, both by James Yates; a XIX century imperial gill measure with lid, another pint mug; a tea caddy and a half pint beaker (13)
£80-120



147.
Three George III steel fire irons, each with turned handles,
£100-150

148.
A set of three early Victorian steel fire implements, circa 1840, the cast handles with flower heads and leaves
£150-250

149.
A Victorian copper and brass log container; a coal helmet, a pair of steel fire dogs and other fire related items
£100-150

150.
A XIX century bronze bell with a turned wood handle
30cm high
£80-120

151.
A late Georgian copper two gallon baluster beer jug, early XIX century with bold loop handle and dovetail seam
35cm high
£40-60

152.
An early XIX century copper and brass warming pan with a turned and ebonised handle
106cm length
£60-80

153.
A Victorian copper and brass hot water warming pan stamped H.H to Mrs J Keal F.D with a turned mahogany handle
65cm length
£30-50

154.
An early Victorian copper and brass warming pan, engraved with a bird, with ebonised handle
£40-60



155.
A large George III copper warming pan, the lid engraved with a perching bird, with a turned ebonised handle
111cm length
£80-120



156.
A pair of Art Nouveau style pewter plaques cast with women in neo classical dress, signed Silas to back and numbered 281 and 281A, possibly American
30cm diameter
£200-300

157 - 169.
No lot(s)

Silver, plated items, jewellery and watches

170.
A set of five Victorian silver Victoria pattern teaspoons - George Adams London 1845 14.7cm long; a George V silver engine turned card case - Birmingham 1926, 6cm x 4.2cm (6)
£50-80

171.
A George III Scottish silver Old English pattern soup ladle, engraved with crest and motto - maker RG Edinburgh 1793
37.5cm long
£120-180



172.
A pair of George III silver asparagus tongs, early XIX century, spring loaded and with beaded borders, sterling mark and indistinct maker's mark only
23cm overall
£120-180



173.
A Victorian silver teapot of lobed form, engraved with baskets of flowers and scrolls, Exeter 1848, by Robert James and Josiah Williams, approx 24oz,
22cm high
£400-600

174.
A silver helmet shaped cream jug engraved JSN August 1891
Birmingham 1896
12cm high
£60-80

175.
A silver two handled sugar bowl Birmingham 1919; a George III silver berry sifter spoon, London 1809; a small sifter spoon, a mustard spoon, a caddy spoon, three wine labels and an ebony and white metal pipe
£60-80

176.
An XVIII century silver baluster shaped sugar castor with a turned finial, indistinct
14cm high
£80-120

177.
A George III silver old English pattern basting spoon
Newcastle 1801, 30cm long
£80-120

178.
A set of six William IV silver kings pattern teaspoons, cased
London 1834
£100-150

179.
A circular silver compact with engine turned decoration London 1909, a William IV silver vinaigrette and an engraved pencil holder
£80-120

180.
A set of 18 Victorian silver fiddle pattern teaspoons
London 1840
approx. 15ozs
£100-200

181.
A pair of George III silver sugar tongs and five other pairs
£100-150

182.
A modern silver wine coaster with a turned wood base
London 1993, 9.5cm wide
£60-80

183.
A pair of George III silver Old English pattern berry spoons London 1786 cased and another pair London 1797 - both later embossed
£100-150

184.
A Victorian oval silver mustard pot and cover with bright cut swag decoration with a blue glass liner and an associated spoon
London 1877, 10cm wide
£60-80

185.
A George III baluster shaped pepper pot on a round base London 1798, another similar London 1811, a smaller pepper pot (marks indistinct) and a silver pepper pot on a square base
London 1826 (4)
£150-200

186.
A set of four Victorian silver fiddle pattern table spoons
London 1875, approx. 10ozs
£60-80

187.

A pair of silver salt sellers in George III style with a shaped border and pad feet

London 1912
£80-120

188.

A silver christening set to include a two handled bowl and spoon and a napkin ring - cased

Sheffield 1923
£80-120

189.

A pair of silver baluster shaped pepper pots

Sheffield 1923, 9.5cm high
£50-80

190.

A George III silver two handled loving cup, initialled JHJ
Newcastle 1794 by John Landland I and John Robertson I
approx. 8oz, 14.5cm high
£120-180



191.

A George III silver two handled loving cup, initialled M to the top of handle
London 1762, possibly by Benjamin Cartwright
approx. 9oz, 14cm high
£180-220

192.

A George III two handled loving cup, monogrammed JH
London 1789 by Hester Bateman
6oz, approx. 15.5cm high
£200-300



193.

A George III silver two handled loving cup, initialled JJ, possibly by Thomas Wynne of Bath
London 1770, approx. 6oz, 11cm high
£150-200

194.

A George III silver two handled loving cup, initialled T to handle, by John Langlands I
Newcastle 1774, approx. 11ozs, 16cm high
£150-200

195.

A George III silver baluster shaped pepper pot and salt pot, each on a circular base, Edinburgh, possibly by Milne & Campbell - date letter indistinct, 7.5cm high
£150-250

196.

A Victorian silver christening mug, engraved C.N. within a cartouche, on a beaded shaped base
Sheffield 1886, 9.5cm high
£80-120

197.

A silver baluster shaped breakfast teapot of faceted form with a turned knob and a matching hot water pot, each with a composition handle, by Mappin & Webb
Birmingham 1973 & 1977 respectively, 12cm high
£80-120

198.

A George III oval silver basket with a swing handle and pierced and engraved border
Sheffield 1793 by John Younge & Son, approx. 20ozs, 34cm wide

199.

A set of four silver salts, each of pierced form with blue glass liners, ball and claw feet and four associated spoons
London 1915
8.5cm wide
£200-300

200.

An oval silver two handled tray with a pierced gallery and engraved with scrolls and patera, on bun feet
Sheffield 1895 by Mappin & Webb
approx. 45ozs, 50cm wide
£350-450

201.

A set of three silver salts in George III style, each embossed with flowers on hoof feet
Sheffield 1884 by Martin Hall & Co
approx. 5ozs overall, 8.5cm wide
£150-200



202.

A William IV silver melon shaped three piece tea service, the teapot with a flower finial, the handles cast with acanthus, the feet with lilies
Sheffield 1834 by William Allanson & Co
approx 55ozs and a plated coffee pot of the same design (4)
£400-600

203.

A pair of silver long handled old English pattern spoons
Sheffield 1940
£80-120

204.

A silver mustard pot of pierced form with a blue glass liner
London 1915
7cm high
£60-80



205.
An associated pair of George III silver boat shaped salts
London 1900 & 1902, makers mark AK
9cm wide
£80-120



206.
A silver tea caddy of lobed form, the hinged lid engraved H.C.D.
Birmingham 1894
9.5cm wide
£80-120

207.
A pair of silver horn shaped posy holders
London 1914
11cm high
£80-120



208.
A Victorian silver milk jug with a gadrooned border, the spout cast with an acanthus leaf, initialled J
Sheffield 1896
approx. 6ozs
£100-150

209.
A George III silver six division toast rack, of boat shape on four feet
Sheffield 1801 by John Green & Co
24cm long
£150-200



210.
A pair of XIX century German silver fluted oval two handled sweet meat dishes, embossed in high relief with panels of flowers, fruits and beading, with cast scrolling rococo handles - English import marks for William Moering, London 1897
12cm x 19.7cm over handles
approx. 7oz
£80-120



211.
A silver salver, with a pie crust edge and hoof feet
Elkington & Co Birmingham 1930,
31cm diameter, approx 28oz
£200-300

212.
A pair of silver gilt berry spoons and a sugar sifter, London 1808, 1802 and 1797, later embossed, in a fitted case
£60-80

213.
A silver helmet shaped cream jug with a loop handle
Birmingham 1896, 15cm high
£60-80



214.
A silver four piece tea service of canted rectangular form with ebonised handles
Birmingham 1967, approx 54oz gross
£300-400



215.
A silver coffee pot in George I style with an acanthus cast knob and composition handle
Birmingham 1969, approx 32oz
£250-300

216.
A rectangular silver dressing tray with engine turned decoration
Birmingham 1920, approx 17oz, 31cm x 23cm
£120-150



217.
A silver and blue enamelled dressing table set comprising a cut glass jar and cover; five brushes, mirror, comb, atomiser, pair of candlesticks and a scent bottle
Birmingham 1925
£300-400

218.
A rectangular silver cigarette box with engine turned decoration
Birmingham 1930, 20cm wide
£40-60



219.
A George III silver chamberstick and snuffer with a beaded dished base
London 1779 by John Schofield, approx 8oz
£200-300

220.
A silver sugar caster of baluster form, in early XVIII style in turned finial
London 1934, approx. 20.5cm high
£80-120



221.
A pair of silver entree dishes and covers of lobed form, the moulded borders cast with shells
Sheffield 1918, each approx. 36cm wide, 56oz.
£1000-1500



222.
A XIX century silver salver with a shaped shell cast border, engraved overall with foliate scrolls, crested
London 1828, approx. 40oz, 37cm diameter
£600-800

223.
A George II silver waiter, with a shaped moulded edge on pad feet, crested,
London 1735, 23cm diameter
£250-300

224.
A set of six silver goblets, each with a baluster stem and domed base, initialled 'G',
Birmingham 1928, approx. 32oz, 12 cm high
£80-120

225.
A pair of silver goblets, each applied with the Prince of Wales feathers, made to commemorate the marriage of the Prince of Wales and Lady Diana Spencer in 1981
Birmingham 1981, each approx. 13cm high
£60-80



226.
A set of six Hanoverian pattern silver table spoons, crested, Sheffield 1899 approx. 14oz.
£150-200

227.
Two silver sauce boats, each with a wavy edge and pad feet,
Birmingham 1913 and Chester 1926, approx. 16oz. total
£80-120

228.
Two silver sauce boats, each with a wavy edge and pad feet
Sheffield 1932, the other with indistinct marks approx. 11oz.
£80-120

229.
A George III silver sauce ladle, the base inset with a George III coin, dated 1787 and with a turned ivory handle (incomplete), marks rubbed, another silver sauce ladle with a twisted horn handle
London 1804 and another London 1849 (3)
£70-140

230.
A modern silver Armada dish, engraved to the border
approx. 8oz, 17cm diameter
£60-80

231.
A pair of oval salts, each pierced with flowers and leaves on ball and claw feet, probably continental silver, approx. 9cm wide, also, a silver salt spoon
£50-80



232.

A George III silver cream jug, with a reeded handle, *London 1808*, another silver cream jug, *Birmingham 1932* and a silver two handled sugar bowl, *Sheffield 1916* (3)
£80-120

233.

A XIX century silver mounted snuff mull, a continental white metal pill box, the mother of pearl lid carved in figures and two onyx small dishes (4)
£60-80

234.

A Mexican silver water jug, with a scroll handle, stamped to base with a monogram 'JR' approx. 19oz, 17cm high
£60-80

235.

A silver mustard pot and lid, with a gadrooned border, lion mask and paw feet, *Birmingham 1955*, approx. 5oz.
£50-80

236.

Mexican silver sombrero hats, a vase, a Mexican silver cruet and other small silver & plated items
£40-60

237.

A silver shell shaped butter dish, *Sheffield 1887*, two silver bonbon dishes and salt and pepper pots (6)
£50-80

238.

A silver six division toast rack, *Birmingham 1936*, a silver specimen vase, *Sheffield 1926*, a silver sugar caster, *Birmingham 1955*, a pair of silver scissors (4)
£40-80

239.

A George III silver brandy ladle, the base inset with a coin, twisted whalebone handle, another George III oval brandy ladle and two others (4)
£100-150

240.

A Victorian cut glass scent bottle with a hinged silver gilt lid to each end, monogrammed 'CA' and 'RO' *London 1876*; a cylindrical glass scent bottle and cover *Birmingham 1909*, another bottle with a silver lid (marks rubbed) and another *Birmingham 1903* (4)
£60-80



241.

A silver cigarette box with engine turned decoration in Art Deco style, bearing a plaque "presented to A B Gibson esq. on his 75th birthday from the staff, York 15.7.33", a silver miniature whistle, a Continental white metal box, a bone spinning top, two bone handles, a Victorian papier mache snuff box, an Indian card case and a gilt metal and hardstone box (8)
£60-80



242.

A square silver waiter with re-entrant corners on shaped feet, engraved to centre "to Mr & Mrs Cullen J Gibson etc. from the staff at Empire House 1944" *Sheffield 1943*, 25cm wide, 25ozs
£100-150



243.

A Dutch silver spoon, the barrel cast with a tavern scene, the handle with a water carrier, a Dutch silver lobed box and cover cast with putti and scrolls, a Continental silver miniature evening bag and a Continental white metal frog (4)
£100-150



244.

A George III silver marrow scoop with a turned ivory case, marks indistinct 7cm and two bone marrow scoops (3)
£60-80

245.

A silver caddy spoon with a shell cast bowl and handle *London 1978*
£40-60

246.

A Victorian tape measure in a lignum vitae case with silver handle, other tape measures, a set of bone utensils and other items
£30-60

247.

A small silver cream jug, *Birmingham 1907*, two silver trinket boxes, a silver and ivory paper knife, a silver cross, a match case, scent bottle and a pen case (8)
£80-120

Silver, plated items, jewellery and watches

248.

A 9ct gold pocket lighter initialled SC, a Victorian gilt metal posy holder cast with leaves and a gilt metal and enamelled handle, now mounted as a seal
£100-150



249.

A Continental white metal trophy in the form of the 'Font De Canaletes' Barcelona, in a fitted case
£40-60



250.

A pair of Indian white metal beakers each decorated with a design of flowers and leaves, engraved to bases "presented by Lieutenant H C Curry 1867"
£30-50

251.

A set of six silver Hanovarian pattern tablespoons London 1896
16ozs
£150-200



252.

A set of six silver fiddle pattern dessert spoons Dublin 1818 and a matched set of six teaspoons Dublin 1858 and 1864
14ozs in total
£150-200

253.

A silver sugar bowl with a lobed edge and pierced bands with scroll feet London 1724
15cm wide
£200-300



254.

An Art Deco blue leather lady's dressing case containing a selection of silver and blue enamelled brushes, bottles, jars and covers, the mounts etc. Birmingham 1933 contained in a canvas travelling case
£150-200



255.

An Edwardian Gladstone type fitted black leather case containing two silver mounted brushes and other fittings (incomplete) and another Gladstone type brown leather case, lacking fittings
£80-120



256.

An Edwardian brown crocodile leather dressing case, initialled DS fitted with silver gilt brushes, a mirror, engraved glass jars and covers within two hinged trays, silver hallmarked London 1904, with an outer canvas travelling case
£800-1200

257.

A Victorian silver dessert stand with a triform base, surmounted by three seated camels and swaged rugs with a reeded column, the three foliate branches terminating in eagle heads with chain linked between, and lion masks to the platforms
Birmingham 1866, by Horace Woodward & Co - Edgar Finley & Hugh Taylor
approx. 133ozs, 59cm high
£2000-3000

258.

A silver four piece tea service in art deco style, with composition handles
Sheffield 1946
£150-200



259.

A pair of early XIX century Continental cast silver candlesticks, each with leaf and reeded bands on square bases, possibly Portuguese, makers mark F.I.A.
14cm high
£500-700



260.

A French Art Deco Continental engine turned silver compact
£100-150



261.

An XVIII century oval silver teapot with bright cut decoration
London 1781 (makers mark indistinct) and an oval stand of the same date by Richard Rugg
approx. 19ozs gross
£350-450

262.

A rectangular silver cigarette box with floral engraved lid, on bun feet, cedar lined, Birmingham 1909
£40-80

263.

An XVIII century silver ladle possibly by John Lambe, marks compressed and unclear; and a table spoon of similar age
£40-90

264.

A XIX century shell pattern silver table spoon, two dessert spoons, a teaspoon, another with loop handle and a plated fork
£30-45



265.

A George III silver waiter, with a gadrooned and scroll cast border, engraved to centre with a crest and inscribed "To Thomas Baynham esq. Barrister at Law, this waiter was presented by Arthur Beardmore as a small token of gratitude for pleading his cause and that of his clerk David Meredith against the Earl of Halifax, then Secretary of State, for false imprisonment under his warrant, commonly called a Secretary of State Warrant, that Canker of English Liberty 1766"
London 1766 by Ebenezer Coker, approx. 30ozs, 32cm diameter
£800-1400



266.

A Victorian silver six division toast rack, the shaped border engraved with roundels on scroll feet
London 1853, stamped Hunt & Roskell, late Storr & Mortimer, 16ozs, 17cm wide
£300-400



267.

A set of four Victorian silver chamber candlesticks and snuffers, each engraved to the thumb piece 'N' below a coronet, with beaded borders
London 1879, each 11ozs, 17cm wide
£800-1200

268.

A George III silver wine coaster, the pierced border with a beaded edge on a turned base
London 1818, makers marks EL, 13cm diameter
£200-300

269.

A silver wine coaster, pierced and decorated with swags and scrolls with a beaded edge, on a turned base
Sheffield marks indistinct, 14cm diameter
£150-200

270.

A Chinese silver bowl, cast overall with dragons and flames
18.5cm wide
£150-200

Silver, plated items, jewellery and watches

271.

A pair of Victorian silver coasters, each with a pierced band, locking bases
8oz, 8cm diameter
£60-80

272.

An Arts & Crafts silver mustard pot, embossed with flower heads and engraved with a castle crest "I Hope In God"
Sheffield 1899 3ozs
£50-80



273.

A George IV rectangular silver snuffer tray, the border cast in flowers, scrolls and eagles
London 1822, possibly by William Eley,
29cm wide
£300-400

274.

A continental white metal cigarette case, engraved J M Mitchell
9cm wide
£30-40

275.

An oval silver teapot of half fluted form, engraved Beatrice, Sheffield 1896
20cm wide and an onyx dish with a silver mount and a pair of silver napkin rings
£50-80



276

276.

Austin of Dublin. A Victorian calamander and brass inlaid dressing case, the hinged lid enclosing seven silver mounted cut glass jars and covers and three scent bottles, the fall front with a Bramah lock and enclosing a drawer and a leather writing slope, the lid with MO monogram engraved as a serpent
silver mounts London 1860, 34cm x 26cm
£400-600

277.

A George V silver mounted patent battery operated night light of moulded square form with mahogany base and ball feet, white opaque glass shade, London 1929, patent no. 288846
11cm high overall, 9cm square
£40-60

278.

A Smith's Empire main electric mantle clock in a Birmingham hallmarked silver engine turned case
11.5cms high
£70-120



279.

An engine turned white metal compact, mounted with the arms of the Royal Artillery, with a blue and red enamelled band, 8cm diameter
£80-120

280 - 284.

No lot(s)



285.

A pair of silver plated oil lamps, each with a pink rippled glass reservoir and shade, later converted to electricity
40cm high
£80-120

286.

A Victorian silver plated and cut glass claret jug with a mask spout and angular handle
29cm high
£80-120

287.

An Edwardian silver plated and cut glass claret jug, the mounts engraved with birds
24cm high
£80-120

288.

Victorian silver plated and mother of pearl fish knives and forks (11 forks and 12 knives) and a matching set of fish servers (cased)
£100-150



289.

A pair of late Victorian silver plated four-branch, five light table candelabra in Regency style, with moulded foliate borders (some rubbing)
54cm high
£200-300

290.

A pair of XIX century Sheffield plated candlesticks cast with foliate scrolls, 28cm high, also, a pair of electroplated candlesticks cast in neo-classical style, 28cm high (4)
£60-80

291.

An Edwardian silver plated breakfast dish engraved 'G', a plated salver and a rectangular plated waiter (3)
£60-80

292.

A plated cake knife and fork with mother of pearl handles (cased), a set of three plated berry spoons (cased) and a set of four plated coffee spoons with coloured bakelite handles emblematic of card suits (3)
£40-60

293.

A silver plated salver in Art Deco style, a plated breakfast dish, three plated coasters and a shaped dish (6)
£60-80



294.

A Victorian silver plated three piece tea service with a later gilding, the base stamped 21; and a XIX century plated rectangular tray, crested
£80-120

295.

A late XIX century silver plated meat dish cover of gadrooned form, initialled "W" and another (2)
£80-120



296.

An early XIX century rectangular plated two handled tray with a grape and vine cast border on scroll feet 48cm wide and an early XIX century old Sheffield plate sugar basket with a swing handle and plated liner 17cm wide (2)
£80-120

297.

A set of Victorian silver plated fish servers, the blades engraved in aesthetic style with birds, insects and fans - cased and another set engraved with fish (2)
£60-80



298.

A late XIX century brown leather dressing case, the hinged lid initialled INFM enclosing silver plated jars and covers, a jewellery box, three ivory brushes 29cm x 14cm with purple canvas travelling case
£120-150

299.

A pair of silver plated spoons, each with a large bowl with a spiral Lincoln Imp handle, retailed by Usher of Lincoln
£60-80

300.

An Edwardian cut glass claret jug with a plated mounts
29cm high
£30-60



301.

A pair of late XIX century electroplated two branch candlesticks, in Adam style
approx. 35cm high
£200-400



302.

Cartier. A gentleman's open face pocket watch with engine turned dial, subsidiary seconds ring, top wind in a gold case dated 1910 on reverse
47mm diameter
£200-300

303.

A Swiss 14k gold open faced chronometer pocket watch by Zenith, of slim late Art Deco design, jewelled keyless nickel lever movement, signed throughout, marked 14k (0.585) overall diameter 42mm
£80-120



- 304.**
An 18ct. gold cased open face Gentleman's pocket watch with sweep second hand and 9ct chain with elongated links and fob chain approx 68 grams
£600-800

- 305.**
E Howard Watch Co Boston USA; A white metal cased open face Gent's pocket watch, thin model size 10, 17 jewel movement no. 44160
£50-100

- 306.**
A 9ct gold cased English open face white dial pocket watch and case 17 jewel movement
£70-100

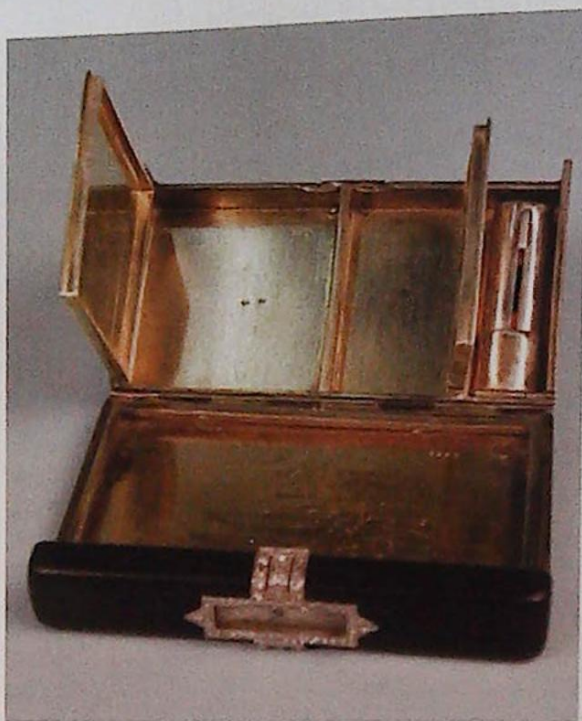
- 307.**
A silver cased lady's wrist watch with Longuines movement retailed by Lidgett Lincoln
£30-50

- 308.**
A W W Co. Waltham Mass. A silver cased open face pocket watch
£15-30

- 309.**
A hallmarked silver bangle
£15-30

- 310.**
An amethyst & green stone engraved 15ct gold dress ring
£70-120

- 311.**
A sapphire and diamond 3 stone dress ring claw set in 18ct yellow gold; diamond approx .28ct
£120-180



- 312.**
A gold bar brooch, miniature book of Italian painters, horn clip, coin & charm bracelets etc.
£20-40

- 313.**
A French art deco silver gilt and black enamelled compact in the manner of Cartier; the clasp set with rose cut diamonds, the hinged lid with a clock, enclosing a lipstick holder and two compartments with hinged lids, lacking mirror, 8cm wide
£3000-5500

- 314 - 349.**
No lot(s)

Carpets and rugs

- 350.**
A Khamseh chicken rug, circa 1890, with a central pole medallion on a navy field
approx. 133cm x 172cm
£100-150

- 351.**
An Ersari engsi door rug, circa 1900, with a cross design on a red ground with two wide and two narrow borders
approx. 177cm x 149cm
£80-120



313



- 352.**
A Khamseh chicken rug, circa 1890, with an all over design, with six narrow borders
approx. 173cm x 141cm
£200-300

- 353.**
A Khamseh rug, with a central pole medallion on a navy ground, with one wide and six narrow borders
approx. 192cm x 144cm
£200-300

- 354.**
A Kizil Ayak carpet, circa 1880, with a design of medallions on a red ground
approx. 226cm x 261cm
£400-600

- 355.**
No lot(s)

- 356.**
A Tekke Turkman rug, circa 1920, with a design of medallions on a red ground
approx. 128cm x 152cm
£100-150

357.
An Ersari runner, circa 1900, with a design of medallions within rectangles on red ground with one narrow border
approx. 381cm x 91cm
£100-150

358.
An Afghan rug, with a design of medallions on a brown ground
approx. 121cm x 236cm
£80-120

359.
A Kizil Ayak runner, circa 1920, with a design of medallions on a red ground,
approx. 76cm x 520cm
£60-80

360.
An Afshur rug, circa 1920, with a central pole medallion on a navy ground, worn
approx. 161cm x 106cm
£30-40



361.
A Caucasian rug in a design of medallions on pink ground
approx. 169cm x 280cm
£200-300

362.
No lot(s)



363.
A Yomud Turkoman juval, circa 1920, with a design of medallions on a red ground
approx. 47cm x 121cm
£80-120



364.
An Afghan runner, with a design of medallions on a red ground
approx. 77cm x 556cm
£100-150

365.
A flat weave rug/seat cover with design of flowers, incomplete, also another cover
approx. 63cm x 67cm
£40-50

366.
A Sarab runner, with a design of medallions on a red ground
approx. 111m x 325cm

367.
A Persian runner with a central pole medallion on a dark navy ground, with five narrow borders
approx. 624cm x 104cm
£500-800



368.
A Bakhtiari Char Mahal, rug with a central medallion on a red ground
£150-200

369.
A Tekke Turkman carpet, with a design of medallions on a red ground
approx. 249cm x 201cm
£200-300



370.
An Armenian kilim rug with a geometric design, woven with 'hap.m 1948'
approx. 148cm x 331cm
£80-120

371.
A Tekke Turkman rug with a design of medallions on a red ground, framed
approx. 67cm x 78cm
£80-120

372.
A Khamseh rug, with a central medallion on a navy ground with one wide and four narrow borders, approx. 214cm x 161cm, and another worn example, approx. 201cm x 173cm (2)
£80-120

373.
An Afghan rug with all over design on a red ground
approx. 115cm x 182cm and a modern Bokhara rug approx. 126cm x 187cm
£80-120



374.
A Turkoman carpet with a design of medallions on a red ground
approx. 278cm x 193cm
£150-200

Carpets and rugs



375.
A Ispahan rug, circa 1920, with a central medallion on a red ground
approx. 204cm x 137cm
£400-600

376.
A Persian rug with a central pole medallion on a dark navy ground in four borders
approx. 196cm x 153cm
£80-120

377.
A Turkoman rug with a design of ten medallions on a blue ground in one wide and two narrow borders *approx. 245cm x 164cm*, and another Turkoman rug, *approx. 104cm x 199cm*
£80-120

378.
A Turkoman juval with a design of medallions in a red ground
approx. 115cm x 116cm
£60-80

379.
A Persian rug with an all over design on a navy ground, *approx. 122cm x 171cm* and another similar, *approx. 122cm x 13cm* (2)
£80-120



380.
A Persian rug with an all over design on navy ground with one wide and six narrow borders, retailers label for "Mitchell & Co, Kashmir"
approx. 272cm x 175cm
£200-300



381.
A Khamseh rug, with an all over design of birds and trees on a dark navy ground in three narrow borders
approx. 139cm x 204cm
£150-200



382.
A Meshed carpet, with a floral design
approx. 350cm x 570cm
£200-300



383.
An Armritsar carpet, circa 1900, with a central medallion on a red ground with one wide and five narrow borders
approx. 402cm x 474cm
£400-600



384.
A Belouch carpet, with a design of medallions on a dark navy ground in one wide and two narrow borders
approx. 277cm x 340cm
£150-200

385.
An Oushak, with a design of medallions on a red ground
313cm x 562cm
£150-250

386.
A Turkey carpet of traditional design with medallions on red ground
£60-80

387.
Four modern Egyptian Gabbeh rugs
£40-60

388 - 400.
No lot(s)

DAY TWO

**Pictures, prints,
mirrors and books**

- 401.**
J William Ogden XIX/XX century
stormy seas
oil on canvas signed lower left
88cm x 104cm
£100-150



- 402.**
English Provincial School (circa 1850)
Gordon Setter in a landscape
oil on canvas
42cm x 51.5cm
£200-300



- 403.**
Late XVIII/early XIX century English
School
cock fighting scenes
watercolours - a set of five
14cm x 24cm
£200-300



- 404.**
Edna W Guy RSMA (1897-1969)
The Thames, Kings Reach
watercolour, signed
29cm x 43cm
£150-200

- 405.**
Raymond Leech (b.1949)
Winter - partridges in a snow covered
landscape
oil on board, signed lower right
45cm x 60cm, framed
£150-200

- 406.**
Johan Nicolaas Van Lokhorst
(1837 - circa 1874)
The edge of the village - cattle
in a land
oil on canvas, signed lower right
76cm x 152cm
£2000-3000



- 407.**
Owen Bowen (1873-1967)
still life with flowers
oil on canvas - signed lower right
42cm x 53cm
£350-450





408.
George Shalders (1826-1873)
Sunrise with a distant view of Harwich
oil on canvas, signed lower right
43cm x 60cm
£600-800

409.
C S Herrieux
fishing boats in choppy seas
oil on canvas - signed lower right
74cm x 106cm
£1500-2000

410.
Claude T Stanfield Moore
(1853-1901)
Tilbury from the Thames
oil on canvas, signed lower right,
inscribed verso *Tilbury Fort with Police
Station formed out of [?] a Russian Prize
and dated '79*
39cm x 53cm
£2000-3000



411.
XVIII Century School
figures within an Italianate landscape
with ruins
oil on canvas
43cm x 67cm
£400-600

412.
Late XVII century English School
portrait of boy wearing pink holding
a bow and arrow
oil on canvas
74 x 61cms
provenance: *The Nevile
family, Lincolnshire originally
hung in Wellingore Hall*
£1000-1500



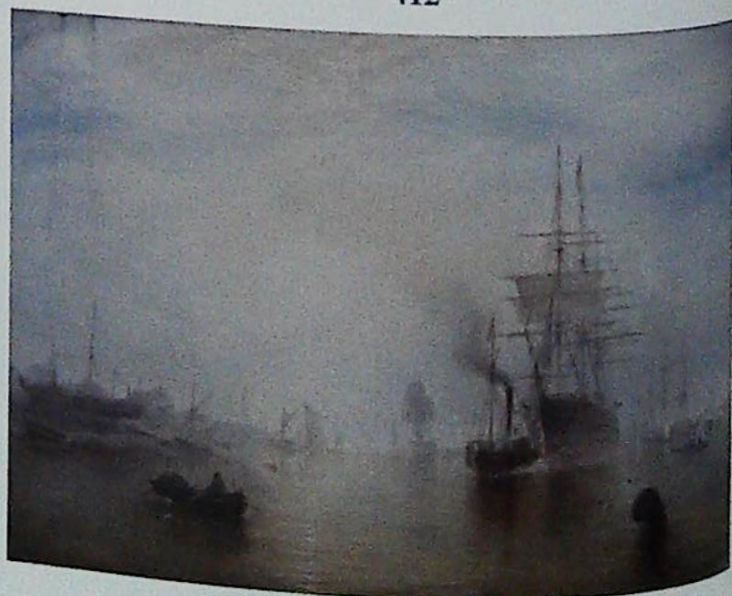
413.
Follower of George Morland
Three sheep resting beneath a tree
oil on canvas
33cm x 38cm
£1000-1500



412



409



410



414

414.
Circle of Sir Peter Lely
Portrait of a young boy holding a dove
seated on a cushion and another of a
young boy feeding a parrot
oil on canvas, a pair
75cm x 62cm
bearing 'the sons of Josiah Acklam'
provenance: *The Nevile family, Lincolnshire*
originally hung in *Wellingore Hall*
£4000-6000



416.
XIX century English School
country landscape with figures by a
pond, harvest field thatched cottage in
the distance
oil on canvas - unsigned
29cm x 49cm
£300-500

417.
XIX century Dutch School
winter scene with skaters
oil on oak panel
37cm x 47cm
£800-1200



418.
Early XVIII century English school
portrait of a gentleman wearing a red
coat
oil on canvas
72cm x 61cm
provenance: *The Nevile family, Lincolnshire*
originally hung in *Wellingore Hall*
£800-1200



415.
XIX century school, possibly French
A river landscape with figures and
goats by a footbridge
Signed *Ferriere(?)*
oil on canvas
32cm x 44cm
£300-500



417

419.
XX century English School
Venice
pastel
35cm x 44cm
£50-80

420.
R T Buttery
Nottingham Market Place
aquatint with contemporary colour
35cm x 61cm
£150-250

421.
Early XIX century English School
Shipping in choppy Seas
Oil on canvas
39cm x 45cm
£300-500

422.
Dutch School XIX century
figures in a fishing smack with a
windmill beyond
oil on canvas
50cm x 75cm
£250-300

423.
Leonard Lewis (1826-1913)
moorland landscape with lake
watercolour drawing, signed and dated
'03 lower left
24cm x 54cm
£100-150

424.
F R Shaw
boats moored off shore
watercolour drawing, signed lower
right
16cm x 29cm
£100-150



425.
John Nost Sartorius (1759-1828)
sportsmen with setters and hare in a
wooded landscape
oil on panel, signed and dated 1820
34cm x 42cm
£1100-1600



426.
George Armfield (circa 1808-1893)
"Caught" - terriers covering a fox with
pheasant
oil on canvas, signed
40cm x 52cm
£1200-1800

427.
Joseph Ross Halford (b.1866)
country cottage and river landscape
watercolour drawing, signed lower left,
a pair
19cm x 27cm
£100-150

428.
John Macwhirter RA (1839-1911)
silver birches with river beyond
pair of watercolours signed 'MACW'
lower left
19cm x 14cm
£100-150

429.
In the manner of Jan Jacob Conraed
Spohler
Dutch canal scene with a windmill
oil on oak board
26cm x 20cm
£100-150



430.
A Duval XIX century
female musicians before ruins
oil on board, one signed lower right, a
pair
31.5cm x 16cm
£250-300

431.
Sydney Yates Johnson
river landscape with cattle watering at
sunset
oil on canvas, signed lower right
29cm x 60cm
£100-150



432.
William Eddowes Turner (1820-1885)
portrait of the race horse "Prince
Frederick"
oil on board, signed lower left and
inscribed to the back
29cm x 44cm
£300-500



433.
William Eddowes Turner (1820-1885)
portrait of a chestnut hunter
oil on canvas, initialled lower right
34cm x 49cm
£250-300



436.
John Henry Mole (1814-1886)
lady and child seated beneath a tree
watercolour, signed lower left
24cm x 34cm
£600-800



439.
Frederick Stewart Richardson
(1855-1934)
Whitby and a scene of a barn (on
reverse)
watercolour, signed lower right
20cm x 29cm
£300-400

434.
XVIII century Continental School
farmer driving cows across bridge
oil on board
26cm x 33cm
£80-120

437.
John Baragwanath King (1864-1939)
Richmond Castle
watercolour drawing, signed lower left
29cm x 46cm
£100-150



435.
A Colkin
interior scenes with people playing
with a child and reading, a pair
oil on board, signed lower right
20cm x 25cm
£300-400



438.
A XIX century English School
the birthday gift
silhouette
approx. 27cm x 32cm
£150-200



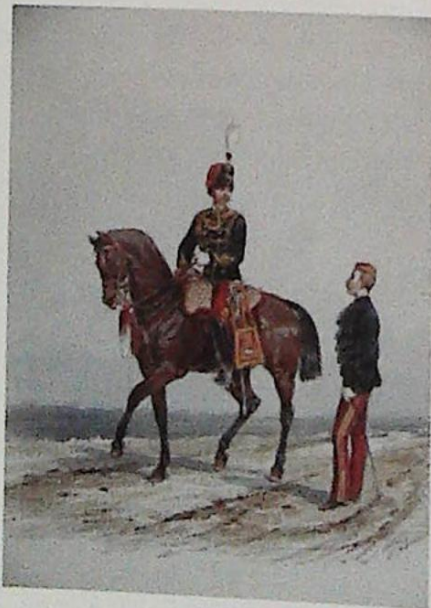
440.
Sir Gerald Leslie Brockhurst RA (1890-
1978)
Melisande
pen and ink
18cm x 14cm
provenance: Robert O Price Collection, by
repute purchased from the sitter, the
artists daughter 17th January 1983,
inscribed by her on the reverse
£300-500



441.
Adrian Stokes (1854-1935)
Woodland scenes
oil on canvas initialled lower left
22cm x 17cm
£300-500



442.
Lady Butler
Balaclava, The Start
pen and ink
25cm x 22cm
provenance: produced for her
autobiography 1922, purchased from The
Parker Gallery London
£100-150



443

443.
Orlando Norrie (1832-1901)
The 11th (Prince Albert's own)
Hussars circa 1880
watercolour, signed lower left
26cm x 20cm
provenance: The Parker Gallery London
£150-200



444.
Richard Simkin (1840-1920)
11th (Prince Albert's own) Hussar
circa 1914
watercolour, signed lower left
21cm x 21cm
provenance: The Parker Gallery London
£150-200

445.
Rodney Player
The 11th (Prince Albert's own)
Hussars 1884
gouache, signed and dated '99
25cm x 20cm
provenance: The Parker Gallery London
£80-120

446.
Rodney Player
The 11th (Prince Albert's own)
Hussars circa 1880
gouache, signed and dated '87
26.5cm x 19cm
provenance: The Parker Gallery London
£80-120

447.
Rodney Player
The 11th (Prince Albert's own)
Hussars circa 1912
gouache, signed and dated '95
25cm x 20cm
provenance: The Parker Gallery London
£80-120

448.
F Szabo
still life with grapes, plumbs and
peaches
oil on board, a pair, signed lower left
12cm x 17cm
£40-60

449.
Late XIX/early XX century School
birds nesting in primrose and blossom
oil on board, signed lower right
22cm x 18cm
£60-80



450.
Edna W Guy R.S.M.A (1897-1969)
The Little Midshipman at Rotherhithe
watercolour
29cm x 37cm
£80-120



451.
After E Eyre
Newark Market Place circa 1776
hand coloured print
23cm x 38cm
provenance: purchased from a sale at
Elston Hall 28/10/54 former home of
Sydney Shepherd MP for Newark
£80-120



452

452.
W Evans-Linton (b.1878 fl. 1909-1932)
Farmer and three heavy horses pulling
a seed drill
oil on canvas, signed lower right
83cm x 111cm
£2000-4000

454.
P.H.S
11th Light Dragoons, circa 1800
watercolour
38cm x 24cm
provenance: *The Parker Gallery London*
£50-80



453.
Stella Steyn (1909-1987)
still life with fruit and pan
oil on canvas
33cm x 23cm
Thomson Roddick and Metcalf Studio
stamp to back
£250-300



455.
David Cox
Lugg Meadows near Oxford
watercolour drawing
42cm x 69cm
provenance: *The estate of commander*
C P N Wells-Cole
£1200-1600

456.
After John Ogilby
The extended road from Oakham to
Richmond in Yorkshire
coloured map
36cm x 46cm; and a coloured map of
Leicestershire 27cm x 20cm (2)
£60-80

457.
Samuel Cousins after John Lucas
His Royal Highness Prince Albert KG
engraving
84cm x 53cm
£100-150

458.
XIX century school
hunting scenes
coloured prints, a set of four
25cm x 38cm
£80-120



459.
Early XVIII century Dutch School
Dead game with hound
oil on oak panel
26cm x 21cm
£350-400

460.
Mogul School
Indian nobleman
miniature on ivory
3cm x 5cm
£120-150

461.
XX century School
West Highland Terrier
miniature watercolour
7cm
£30-40



462.
Late XIX century School
Young girl beside sea
miniature on ivory
6cm x 5cm
£250-400



463.
P Sarison Fabrice
The Duke of Reichstadt, son of
Napoleon I and Charlotte Cordoy
miniature on ivory, a pair
approx. 6cm wide
£100-150



464.
B A Howe after Worsley C Robinson
figures with dog and hedgehog
tinted lithograph, signed in the plate
and dated 1852, published by Tegg &
Co
34.5cm x 45cm
£120-180



465.
R Robinson
pheasants in the snow
gouache, signed lower right and dated
'83
38cm x 65cm
£100-150

466.
After Tom May
Doncaster 1888 "The Scum of the
Course"
coloured horse racing print
34cm x 50cm
£30-50

467.
After Joan Wanklyn
The Royal Hussars, Guiden Parade,
Tidworth June 1990
signed and limited edition print
45cm x 59cm
£40-60

468.
XIX century school
British domestic birds
a set of four coloured prints
12cm x 20cm
£40-60

469.
Jennifer A Bell
Kingfishers on a branch
watercolour, signed lower right
27cm x 38cm
£40-60

470.
After Derick Brown
Shooting grouse
signed limited edition coloured print
51cm x 67cm
£30-40

471.
After Lady Butler
Balaclava, The Return - 28th October
1854
coloured print
40cm x 64cm
£60-80

472.
After Robert Nicholson
"The Captain of the 1st eleven went in
first" and "With a fine disregard for the
rules"
a pair of signed limited edition prints
related to Rugby School
50cm x 58cm
£30-40

473.
After John Leech
Mr Jorrocks enters into Handley Cross
and four others
coloured prints, a set of five
12cm x 18cm
£20-50

474.
J Harris after Henry Martens
The 11th (Prince Albert's own)
Hussars
a coloured print
35cm x 23cm and four other prints of
the 11th Hussars (5)
£150-200



475.
R G Reeve after Henry Alken
cock fighting prints
a set of four coloured prints in two
frames
each frame 58cm x 28cm
£80-120

476.
Charles L Stadden
Officer 11th (Prince Albert's own)
Hussars 1890
watercolour
21cm x 14cm; another watercolour
signed P J Mercer and two prints (4)
£100-150

- 477.**
After Deighton
A view taken from Christchurch
Meadows, Oxford
coloured print
28cm x 20cm - and five prints relating
to Nottinghamshire & Yorkshire (6)
£30-40

- 478.**
Arundel
Country house
oil on canvas, signed lower right and
dated '48
45cm x 54cm
£40-60



- 479.**
Lucas Vorftermans after Diepenbeeck
and Diepenbeeck after Van
Caukercken
Mackomilia un Turk and Le Superbe
Cheval De Spanie, outside Welbeck
Abbey
prints, a pair
39cm x 52cm
£150-200



- 480.**
Charles Pigott (1863-1940)
recumbent sheep
watercolour, signed lower left
18cm x 25.5cm, unframed
£80-120

- 481.**
G Silvestri
sunset over the Laguna
oil on board, signed lower right
48cm x 122cm
£80-120



- 482.**
S Arundel
Lincolnshire farm
oil on board, signed and dated 1934
59cm x 74cm
£80-120

- 483.**
After Lionel Edwards
"Spying" and four others
photoprint
29cm x 23cm
£60-80



- 484.**
XVIII century French School
'La Maison du Perruquier Croquart, St
Emillion"
oil on board
indistinctly signed
23cm x 14cm
£100-150

- 485.**
J Turner
ploughing scene
oil on canvas signed and dated 1876
36cm x 56cm
£150-200



- 486.**
G N Johnson
pheasant shooting
gouache, a pair signed and dated '82
lower left
22cm x 30cm
£100-150

- 487.**
After Samuel and Nathaniel Buck
The South Prospect of Nottingham
print
34cm x 82cm
£100-150



- 488.**
John Speed, the county of Nottingham
described
double page engraved map published
by Sudbury and Humble, later
watercolour tinted
38cm x 52cm
£100-150

- 489.**
C Hulmandel after H Alken
A set of four fox hunting scenes
tinted engravings, published 1822
23cm x 30.5cm
£80-120

490.

G Keating after Francis Wheatley RA
"The Cottage Door" and "The School Door"

A pair of Pears coloured prints
34cm x 28cm with rosewood frames
£80-120

491.

Giordani
forest scene
oil on mahogany panel

27cm x 62cm
£150-200

492.

XX century English School
sailing boat
pastel

37cm x 30cm
£50-80

493.

A pair of Victorian woolwork pictures
of flowers

18cm wide
£50-80



494.

A XIX century gilt gesso oval wall
mirror, the pierced frame decorated
with foliate scrolls

62cm high, 48cm wide
£200-300



495

495.

A William IV ebonised and gilt
overmantel mirror, circa 1830, with a
leaf crest and turned pilasters

122cm x 138cm
£250-350

496.

A George III mahogany oval toilet table
mirror, the serpentine base with three
drawers, on ogee feet

43cm wide
£80-120



497.

A XIX century Italian giltwood wall
mirror with an arched frame and crest

97cm high x 52cm wide
£200-300



498.

A XIX century Italian rectangular
giltwood wall mirror, the pierced frame
carved with 'C' scrolls and leaves

78cm high x 126cm wide
£300-400

499.

A late XIX/early XX century gilt gesso
girandole with an urn crest and
rectangular plate

87cm x 42.5cm
£100-150



500.

An XVIII century giltwood rectangular
wall mirror, moulded with leaves and
scrolls, the plate and frame associated

57cm x 53cm
£150-300



501.

A George II walnut wall mirror, circa
1745, of fretted outline, the cresting
pierced with carved giltwood leafy
roundel

101.5cm high, 61cm wide overall
£300-600

502.

An early XIX century oval
embroidered silk picture, in the form
of a lady beside a small tree with a
folly in the background

41cm high x 31cm wide
£100-150

503.

A Victorian hand coloured print of
Prince Albert in his 11th Hussars
uniform in an elaborate gilt metal
frame with a monogram and dragon
crest, retailed by Ortner & Houle, St
James's Street

48cm high, 38cm wide
£100-200



504.
A pair of Regency giltwood and gesso convex wall mirrors, each with a reeded slip and applied with spheres
60cm diameter
£600-900

505.
A George III mahogany shield shaped dressing mirror; the bow front base with three drawers, on bracket feet
43cm wide
£200-300

506.
A Victorian painted picture on opaque glass, late XIX century, of dog roses and a pair of nesting birds
38cm x 32cm
£40-60

507.
A George III mahogany and parcel gilt fret frame wall mirror
79cm x 44cm
£100-150



508.
Joannes Blau. A hand coloured map of Xensi Province, China, 40cm x 49cm
£100-150



509

509.
Joannes Blau. A hand coloured map of Kiang Si Province, China, 40cm x 49cm
£100-150

510.
An XVII century bible, printed by Robert Barker in 1615, containing the old and new testament
£200-300

511.
Clare, John, The Shepherd's Calendar with village stories, published 1827 and Lawrence Richard, The Complete Farrier, published 1816
£80-120

512.
The Badminton Library of Sports and Pastimes, illustrated, maps with pictorial plates on riding, polo, fishing (2 vols), shooting (2 vols), driving, tennis, lawn tennis, rackets and fives, boating, golf, athletics and football, cycling, cricket, hunting, racing (14 Vols.) £150-200

513.
Miniature leather bound. A London Almanac for the year of Christ 1791, printed for the company of stationers, in a coloured tooled leather case £60-80

513.
Two copies of Thoratons Antiquities of Nottinghamshire, printed by Robert White, for Henry Matlock and dated 1677, both leather bound and Thoratons History of Nottinghamshire, re-published by John Throsby, published 1790, 3 vols (5) £200-300

515.
The War Illustrated, album 900 De Luxe, 10 volumes, with red canvas bindings
£80-120

516.
Max Arthur, 'Forgotten Voices of the Second World War' and other military hardback books
£80-120

517.
Sir Humphrey F De Trafford Maine 'The Fox Hounds of Great Britain and Ireland 1905-6'

£80-120

518.
Captain Godfrey Williams Trevelyan The historical records of the XIth Hussars from 1715 to 1908; L.R. Lumbley The Eleventh Hussars 1908-1934 and "A short history of the 7th armoured division June 1934-July 1945"
£80-120

519.
Shilton. Richard Phillips, The History of the Town of Newark On Trent, published 1820, (2 vols) and another copy of the same books in one binding £60-80

520.
Punch, volumes 141, 149, 150, 151, 152, 155 each in half calf bindings and the year books for 1897 and 1913, canvas (8) £80-120

521.
Beckford, Peter, The Thoughts on Hunting, illustrated by George Denholm Armour; red canvas, Captain Pennell-Elmhurst, The cream of Leicestershire, Colonel Anstruther Thomson, Eighty Years Reminiscences, red canvas, Handley Cross, illustrated by John Leach, The Druid, Post and the Paddock and Scott & Sebright and Galsworthy, John, Memories, illustrated by Maud Earl (7) £60-80

522.
Mr Laird, A Topographical and Historical Description of the County of Nottinghamshire, Francis & John White's Gazetter of Nottingham, 1844, The Place Names of Nottinghamshire, The Penroses of Fledborough Parsonage, edited by the Reverend A B Baldwin and three other books (7) £30-40

523 - 524.
No lot(s)

Lighting, bronzes,
boxes and objects

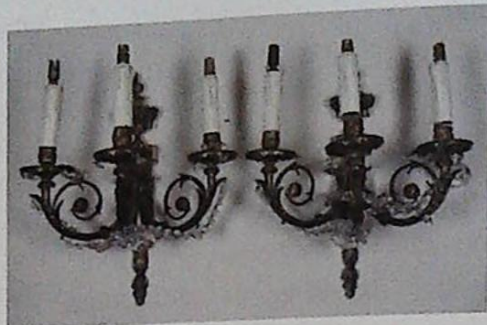


525.
A pair of XIX Century French gilt metal and bronze candlesticks, each with a frosted glass shade and triform base cast with sphinx
34cm high
£300-400

526.
A XIX century French gilt metal table lamp, the eagle crest on a column with four scrolling branches and a square base
50cm x 10cm wide
£200-300



527.
A set of three early XX century French gilt metal two branch wall lights, each cast with urns, leaves and swags, with later sconces
£200-300



528.
A pair of late XIX century French gilt metal three branch wall lights, each cast with flaming urns, leaves and scrolls
44cm high, 37cm wide
£600-800



529.
A pair of early XX century gilt metal wall lights, each with four reeded scrolling branches suspended with beads, cast with garya, patera and acanthus
44cm high, 39cm wide
£250-300



530.
A pair of early XIX century bronze and gilt metal table lustres, each with a turned sconce, a stylised tree stump support and a stepped base
25cm high
£200-300



531.
A late Victorian brass hexagonal hall lantern, 65 cm high
£250-350

532.
A brass and onyx electric standard lamp with shade, in Victorian style
£70-90



533.
A set of five plated two branch wall lights, each with an oval beaded back plate and rams head
24cm wide
£250-300



534.
A pair of plated two branch wall lights in Dutch style
19cm wide
£40-60

535.

A set of three wall lights, each with a mirror back and suspended on prismatic drops
21cm wide
£60-80



541.

A George III brass oil lamp, late XVIII century, the three light reservoir of classical creuse form, on a slender pillar and dished shaped circular base - now fitted for electric light
57cm high
£80-120



547.

J M Michel (Austrian)

a cold painted bronze figure of a ballet dancer on a pale onyx plinth, signed to the base of figure
21.5cm high overall
£200-300

536.

A set of five gilt metal light fittings, each with cut glass shades
£150-200

537.

A pair of late XIX century Continental bronze three branch wall lights, each in the form of a putto holding a wreath, with eagle sconces
17cm wide
£100-150



542.

A gilt brass electric wall light in decorative mid XIX century style, 20th century, designed as a winged mer maiden holding a torch
31cm high overall, 19cm deep
£60-80



543.

An early XIX century brass serpentine fender with a pierced border
£120-180

548.

A late XIX century Chinese canton ivory and red stained chess set
8.5cm - 4cm high
£80-120

544.

A brushed steel and leather club fender; modern
166cm wide
£100-150

549.

A late XIX century bone and bamboo mah-jongg set, with a mahogany chest with bronze mounts
9cm high, 10cm deep, 15cm wide and a late bamboo mag-jongg set and instruction book
£50-120

538.

A XIX century French gilt metal eight branch chandelier; cast with scrolls and masks
70cm high
£100-150

539.

An Edwardian brass electric table lamp, early XX century, with swan neck branch adjusting in height on a slender pillar and weighted moulded circular base
56" high
£40-60

545.

A modern brass and red leather upholstered club fender;
194cm wide
£250-350

546.

A cold painted figure of an 11th Hussar officer on horseback, signed Caton 75 to the marble base 13.5cm high and two sentry box figures of 11th Hussar Officers 15cm high (3)
£60-80



540.

An Edwardian brass electric table lamp, early XX century, with swan neck branch adjusting in height on a slender pillar and weighted moulded circular base
56" high
£40-60

550.

A late XIX century tortoise-shell and pique note dance marker with gilt metal mounts, the cover inset with a pietra dura panel of a dove and a lily
10cm x 6cm
£200-300



551.
A late XIX century carved and stained ivory figure of a bird, possibly Japanese
£80-120

552.
Two late XIX century Continental painted terracotta wall mounted whip racks, each in the form of a hounds head (possibly Austrian)
29cm high
£1500-2500



552



553.
A Japanese bronze and enamelled temple gong, decorated with a band of dragons and scales
54cm diameter
£300-400



554.
A late XIX century Indian painted miniature of a lady, in a gilt frame 7cm x 10cm; a white metal and enamelled parasol handle; and Indian brass and white metal petal shaped vase 34cm wide; a square brass tray and a pierced and carved copper tray (5)
£100-150

555.
An early XIX century turned wood ceremonial truncheon, painted with a royal crest and initialled M.P.
£60-80



556.
A late XIX century ivory and lace fan by Duvellemey of London and Paris, the box engraved "Grand Masters Lodge No. 1" Brother Alderman J.C. Dimsdale W.M. with kind regards Crystal Palace, July 28th 1892; a painted oriental fan with ivory sticks, another with tortoise-shell and four other fans (7)
£100-200

557.
After Georges Marie Bareau (1866-1931) a bronze figure of a young falconer, signed to the base and with Paris exhibition plaque
105cm high
£2000-3500



557



558

558.
A pair of late XIX century French bronze gilt metal and rouge marble candelabra, after models by Clodion
75cm high
£2000-4000



559

561.
Franz Bergman (1898-1963) a cold painted bronze figure of a native American hunter carrying two bear cubs, signed 'namg reb' to base
27cm high
£1500-2500



560

559.
After Jean Didier Debut (1824-1893) a bronze figure of a North African water carrier
62cm high
£2000-4000

560.
A pair of early XIX century bronze and gilt metal two branch candelabra, each in the form of a classical maiden holding a cornucopia, inserted with later flower branches
69cm overall
£1500-2500



561



562.
A good early Victorian gros point country house bell pull, circa 1840, the broad buff ground colourfully worked with flowers and scrollwork within multi-coloured corded borders, headed by a plushwork roundel, the base with multi-coloured silk tassel
260cm long overall, 17cm wide
£150-250

563.
A Derbyshire Blue John egg
5.5cm high
£40-60



564.
A late XIX century Japanese Tokyo School ivory okimono carved with immortals and a rat in a bag, signed to the base
28.5cm long
£1000-1500



565.
A Meiji period Japanese bronze and gold koro and cover, decorated with insects, leaves and flowers with a cast dragon to the lid, on three feet
32cm high overall
£600-800



566

566.
After Henri Gaudier - Brzeska
(1891-1914)
crouching fawn
bronze
approx. 24cm high, 30cm wide
provenance: *Bought in Massachusetts
USA. Roger Cole author of 'Burning to
Speak' (biography of Gaudier) has
examined this bronze and is of the
opinion it is from an early cast
£5000-8000*



567.
A William IV giltwood and gesso wall
bracket in rococo revival style, circa
1835 and serpentine shelf on a pierced
asymmetrical scrolling acanthus
support set with fruit and flowers
41cm high, shelf 33cm wide, 23.5cm
deep
£120-200



568.
A Sino-Shan bronze three frog drum
from Laos, cast with four groups of
three mating frogs and plain bands
around a central star, the sides with
graduating elephants
46cm high, 63.5cm diameter
£600-1000

569.
An oriental bronze temple chain cast
with a figure, elephant and a peacock
£100-150



570.
A scale model of a Swiss chalet in a
glass dome with ebonised base, by
repute constructed by a prisoner
of war
39cm wide
£100-150

571.
An early XIX century mahogany
rectangular glove box with a hinged lid
with ball and claw feet, 56cm wide and
a walnut humidor (2)
£60-80



572.
A late XIX century fruitwood circular
spice box with a turned knob,
containing eight small jars, seven with
named covers
17cm diameter
£40-60

573.
An early Victorian rosewood and
marquetry workbox, circa 1840, with a
domed hinged lid and satin lined
interior
14cm high, 21cm deep, 22cm wide
£80-120

574.
A XIX century elm and beech spinning
wheel, of turned form
£70-90

575.
A late XIX century artists mahogany
paint box, the interior fitted with trays
and paint blocks, above a drawer
24cm wide
£80-120



576.
A Victorian amboyna veneered rectangular glove box, circa 1850, 26.5cm; a Victorian black papier mache circular tray circa 1850, gilt with gothic arches 26cm diameter
£100-150



579.
A Dutch mahogany and rosewood square jardiniere, early XIX century, with banded borders and dentil inlay, the outset canted angles above square tapering legs, with two handled brass liner
48cm high, 27cm square
£150-250



582.
A George III navette shaped mahogany tea caddy, the hinged lid inlaid with a flower and leaves, within an oval, with parquetry borders
16cm wide
£100-150



577.
An E Ziegler magnifying viewer, circa 1870-80, the folding amboyna veneered and ebonised case with ivory label inscribed *E Ziegler, R'des Capucines 35, Paris*, beneath the circular magnifier, two stage adjustment on stay and easel
21cm x 14cm x 6cm
£50-70



580.
A mid XIX century French tulipwood and mother of pearl caddy with bronze mounts, the hinged top enclosing lidded compartments, with paper label for Treacher & Co, retailer, Bombay, India
26cm high
£250-300



583.
A mid XIX century mahogany and brass bound campaign writing box, the hinged lid enclosing two false compartments
50cm wide
£200-400



584.
A XIX century Anglo Indian rosewood and bone inlaid workbox, the hinged lid enclosing a mirror and compartments
31cm diameter, 46cm wide
£150-200

578.
An oak slope top candle box, early XIX century with shaped back 38cm wide, 34cm high (hinge replaced); a coopered oak four band costrel, late XVIII/early XIX century 26cm wide, 20cm diameter (one band lacking); a small patinated beech stand (3)
£80-120



581.
A George III turner fruitwood tea caddy in the form of an apple
12cm high
£400-700



585.
A late XIX century Jaques mahogany, rosewood and boxwood, patent in Status Quo chess board, with turned and carved ivory pieces
23cm x 12cm when closed
£100-150

586.
An early XIX century Chinese export lacquered box and cover, painted overall in gilt with figures within vine borders, the interior containing lidded compartments with shells, paper and stained ivory counters
27cm x 31cm
£100-150



587.
A Regency painted boxwood casket circa 1810, of basket form with swing handle and pair of slope top hinged covers
17.8cm wide
£80-120



588

588.
A George III burr yew canted rectangular tea caddy
19cm wide
£80-120

589.
A George III mahogany two compartment tea caddy, circa 1790, with crossbanded borders, inlaid with stringing and oval patera
20.3cm wide (interior inlay of later date)
£80-120



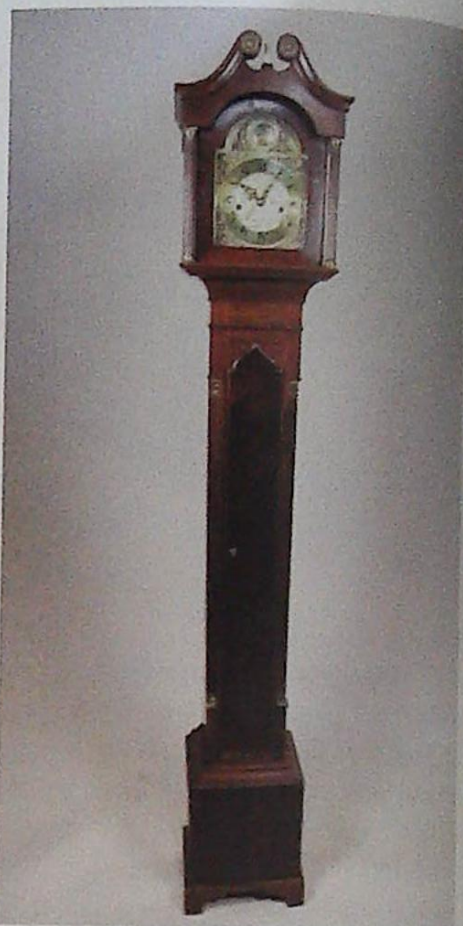
590.
An XVIII century Continental ebony (probably Flemish) table cabinet, the top, sides and fall line inlaid with a bone diamond pattern, the fall front concealing a central cupboard and eight drawers, each with engraved applied gilt brass plates
26.5cm wide, 19.5cm high, 16cm deep
£800-1200

591.
An antique replica suit of armour for many years on display in the Central Cafe Stamford appearing on the BBC Restoration Roadshow
£150-300

592 - 599.
No lot(s)

Clocks

600.
An early XIX century mahogany and oak longcase clock, the arched painted dial signed *John Poxson, Alvingham 1831* with an eight day striking movement, the hood later inlaid with a marquetry fan
212cm high
£300-400



601.
A mahogany longcase grandmother type clock in George III style with an eight day striking movement, the brass arched dial engraved with a windmill and huntsmen, the case with a swan neck pediment and reeded pilasters on bracket feet
181cm high
£1000-1500



602.
An Edwardian mahogany and brass inlaid mantel clock with a silvered dial, the German movement stamped PCCO
40cm high
£200-300

603.
A French brass carriage timepiece with an enamelled dial
15cm high
£60-80



604.
A mid XIX century French gilt metal mantel clock, the white enamelled dial signed *Savoie A Paris*, the case cast with foliate scrolls and a putto
30cm high
£200-300

605.
An early XIX century mahogany longcase clock, with an eight day striking movement, the arched dial painted with a gentleman and lady, the case with a swan neck pediment, 222cm high overall
£250-300

606.
A late XIX century French gilt metal mantel clock, circa 1870, the enamelled dial inscribed *W. C. Shaw, Paris*
37cm wide
£100-150

607.
A late XIX century French brass carriage timepiece with an enamelled dial
16cm high
£100-150



608.
A XIX century four dial mahogany banjo barometer signed *A Terzza Nottingham*
96cm high
£100-150



609.
A Liberty & Co pewter timepiece, possibly designed by Archibald Knox, with a blue/green enamelled dial, the case cast with stylised trees, stamped 0371 to the base
23cm high
£1200-1800



610.
A late XIX century French champleve enamel and brass carriage clock with repeat, the enamelled dial with Roman numerals and seconds sweep, signed *J Ullmann & Co, Hong Kong and Shanghai*, with a subsidiary alarm dial, numbered 2108 to back
20cm high
£2000-3500



611.
An early XIX century mahogany and brass inlaid fusee wall timepiece with a painted dial and octagonal case
47cm wide
£500-800



612.
A late XIX century French gilt brass oval carriage clock with repeat, the engraved case inset with porcelain panels decorated with figures, the porcelain dial with Roman numerals and signed W Schonberger, Wien and with subsidiary alarm dial
18cm high
£2500-3500



615.
A miniature alarm clock by the Hamburg American Clock Company, in a silver plated and simulated tortoise-shell case
8cm high
£200-300



618.
A French gilt brass carriage clock, the enamelled dial with Roman numerals, with a leather travelling case
17cm high
£150-200



616.
An early XIX century mahogany fusee wall clock, with a painted dial
46cm diameter
£500-800



619.
A late XIX century French marble and ormolu lyre shaped mantel clock, with a sunburst crest, the round dial engraved with swags, surrounded by a circular paste inset pendulum, on a stepped base
72cm high
£3000-5000

613.
A late XIX/early XX century mahogany clock bracket, of tapering form
48cm wide
£100-150



614.
A late XIX century Continental ivory and turned ebony timepiece
18cm high
£200-300



617.
A XIX century continental porcelain mantel clock in the form of a pink glazed column, the enamelled dial decorated with floral swags
34cm high
£200-300



620.
A Regency mahogany bracket clock, the convex silvered dial signed *James Bath*, eight day movement striking on a bell, the rectangular case with moulded barrel cornice and brass lifting handle, brass spandrels and ball feet
42cm high
£1500-2500



622.
Le Roy & Fils. A brass carriage clock with repeat, the enamelled dial with roman numerals and subsidiary alarm dial, in a shaped case
17cm high
£1200-1800



624.
Le Roy & Fils. A porcelain lyre shaped mantel clock in Louis XVI style, late XIX/early XX century, the enamelled dial signed *Le Roy & Fils, 57 New Bond Street, London*, and painted with floral swags suspended from gilt florets, eight day striking movement, the bleu-de-roi case with ormolu mounts and set with paste stones
57.2cm high
£1000-2000



621.
A George III mahogany stick barometer, the rectangular silvered register signed *F Saltery & Co London*, the vernier and alcohol thermometer, herringbone banding and turned cistern cover
96.5cm
Frans Saltery & Co working from 94 Holborn, London
£1000-1500



623.
Regally a Paris. A gilt brass carriage clock with repeat, the enamelled dial with roman numerals and subsidiary alarm and seconds dial
17cm high overall
£1200-1800

625.
A late XIX century French gilt metal and alabaster figural mantel clock, the dial initialled *PBB*
42cm high
£300-400



626.
A late XIX century French green boule and gilt metal mantel clock, the white porcelain dial indistinctly signed by the retailer *Manoah Rhodes & Co Bradford*, the movement initialled *JBD* on a gilt base
36cm high
£500-800

627.
J Lister Halifax. A mid XIX century longcase clock, the arched dial painted with a biblical character and an angel and flowers to the spandrels with a 30 hour movement, in an oak and mahogany case
235cm high
£400-600

628.
Mason Chesterfield. A late George III longcase clock, the circular dial painted with roses to the centre and with subsidiary seconds and date aperture, with an eight day striking movement, in an oak and mahogany banded case
220cm high
£700-900



629.
Mark Draper, Witham. A George III longcase clock, the arched brass and silvered dial with a subsidiary seconds dial and date aperture with an eight day movement in an oak case
233cm high
£700-900



630.
James Alling, Bungay. A George III longcase clock, the arched dial painted with figures in a landscape with subsidiary seconds dial and date aperture, with an eight day movement in an oak and mahogany banded case
227cm high
£800-1200

631 - 635.
No lot(s)

Garden ornaments and antique furniture



636.
A XIX century lead fountain, in the form of a putto standing on a bowl, the tri-form base with dolphin supports
approx. 100cm high
£1500-2000

637.
A pair of Victorian cast iron two handled urns
32cm high, 47cm wide
£150-200

638.
A Victorian cast iron umbrella stand, in the manner of Dr Christopher Dresser
71cm high
£80-120



639.
G. Gattoni, Milan; a XIX century Italian marble bust carved in the form of a lady wearing a rose
£2000-3000

640.
A Victorian Coalbrookdale type nasturtium pattern cast iron bench
184cm wide
N.B. The design for this seat was registered at the public records office by Coalbrookdale on 1st March 1866
£1500-2000



641.
An Edwardian wirework garden armchair with scrolled decoration, and a circular table
£200-300



642.
A suite of Victorian wire work garden furniture to include; four side chairs, three armchairs and a double chair garden seat
£600-900

643.
A pair of Victorian wire work garden chairs
£100-150

644.
An early XX century painted goat cart and harness
£150-200

645.
A small hand operated four wheel estate fire pump, late XIX/early XX century
£150-200

646 - 648.
No lot(s)



649.
Robert 'Mouseman' Thompson of Kilburn. A paneled oak wardrobe with two doors, wrought iron fittings with carved mouse signature
186cm high, 61cm deep, 132cm wide
£1500-2200

650.
An early XIX century oak chest of drawers, with two short and three long drawers on bracket feet
76cm high, 90cm wide
£200-300

651.
An oak chest of four long graduated cock beaded drawers with cross banded borders on bracket feet
94cm
£100-150



652.
A George III Scottish mahogany bow end sideboard, the raised back with tambour compartments above four frieze drawers and two cupboards flanking a recess, on turned legs
117cm high, 193cm wide, 75cm deep
£800-1200



653.
A George III mahogany lazy Susan, the circular dished top revolving on castors
62cm diameter
£250-300



654.
A late George III mahogany bow front chest of drawers, with a slide above three long drawers on splayed bracket feet
94cm wide
£250-300

655.
An Edwardian boxwood strung mahogany statuary pedestal
114cm high
£80-120



656.
A mid XIX century French mahogany and ebony inlaid side table, with a frieze drawer on shaped legs on paw feet
90cm wide
£250-300

657.
A George III mahogany night cupboard, circa 1790, on square tapering legs
£80-120



658.
Robert 'Mouseman' Thompson of Kilburn. A pair of oak single bed ends carved "Search others for their virtues thyself for their faults" and "He who lies long in bed, his estate feels it"
91cm wide
£800-1200

659.
A George III rectangular mahogany fold over tea table with line inlay on square chamfered legs
78cm wide
£70-140



660.
A late XIX century French ebonised and boule marquetry three tier etagere, with gilt metal mounts
81cm high, 42cm wide
£200-300

661.
A George III mahogany stool on out turned legs, over stuffed blue fabric upholstered seat
£70-120



662.
A late XVII century panelled oak coffer, the frieze carved with flutes
68cm high, 51cm deep, 123cm wide
£300-400

663.
An early XIX century mahogany tea table, the rectangular folding top above a drawer on reeded legs
76cm high, 48cm deep, 75cm wide
£100-150

664.
An oak gate leg dining table, part late XVII century, with bobbin turned underframe, now with a later George III rectangular top
104cm x 117cm
£180-220



665.
A Victorian mahogany open armchair with a padded back, arms and seat, upholstered in foliate and floral fabric
£200-300

666.

A Victorian buttoned back armchair, circa 1870, upholstered in pink dralon, the turned walnut legs with brass socket castors
£150-200



667.

A Regency mahogany and ebony strung bow front corner wash stand
106cm high, 57cm wide
£60-80



673.

An Edwardian caned sofa, painted in Sheraton revival style with flowers and putti
122cm wide
£300-500



670.

A Regency ebonised and gilt elbow chair, with a padded back and seat, on sabre legs
57cm wide
£200-300

674.

An XVIII century hanging oak corner cupboard enclosed by a shaped panel door with "H" brass hinges and key
£200-300



671.

A George III mahogany rectangular folding tea table, circa 1760, the lip carved with florets above a shallow frieze drawer
94cm wide
£500-800



675.

A Victorian satin birch wash stand, the white marble top with a splashback inset with Minton Shakespearian tiles designed by John Moyr Smith, above two drawers on turned legs
123cm wide
£150-200

668.

A mid XIX century yew and elm Windsor armchair, on turned legs with a crinoline stretcher
£300-500

669.

An early XIX century fruitwood and elm Windsor elbow chair with a wheelback and "H" stretcher, and three side chairs(4)
£200-300

672.

A pair of Victorian walnut library side chairs, the bold spirally turned backs supporting upholstered crestings, the stuffed over circular seats on ringed tapering legs
78cm high
£100-150

676.

A Victorian walnut prie dieu chair, circa 1850, upholstered in floral tapestry
£100-150



677.
A late XVII century joined oak mule chest, with a rectangular hinged top above two false and four panelled drawers, on stiles
71cm high, 50cm deep, 145cm wide
£800-1200



678.
A XIX century mahogany breakfront low clothes press, the panelled doors enclosing sliding trays
201cm wide
£1000-1500



679.
A George III mahogany bureau, the fall front with a fitted interior above two short and three long graduated drawers
91cm wide
£200-400



680.
A George III mahogany bookcase, the top with a pendant carved frieze, above two glazed doors and two short drawers, the base with four flame veneered graduated drawers on bracket feet
237cm high, 68cm deep, 107cm wide
£1500-2000



681.
An exceptionally small George III mahogany bureau with a fitted interior, cock beaded oak lined drawers on shaped bracket feet
76cm wide, 45cm deep, 95cm high
£800-1200



682.
A George III mahogany chest of drawers, the rectangular top with re-entrant corners, with a slide and four long drawers on bracket feet
78cm high, 45cm deep, 84cm wide
£600-800

683.
A mid XVIII century walnut and oak chest, with sycamore strung drawers, on bracket feet
90cm high, 52cm deep, 95cm wide
£400-600



684.
An early XIX century mahogany and satinwood banded bow front chest, with a brushing slide and three long drawers on bracket feet
83cm high, 76cm wide
£300-400



685.
An oak and elm panelled box settle, part early XVIII century, the sides with hinged candle boxes above the hinged seat
176cm wide
£250-300



686.
An early XIX century Japanned kneehole dressing table, painted overall with oriental figures and buildings on a black ground
77cm high, 53cm deep, 114cm wide
£500-800



687.
A brass mounted kingwood and floral marquetry commode in Louis XVI traditional style, of three drawer serpentine bombe form beneath a breche violette marble top
85cm high, 58cm wide, 37cm deep
£300-400

688.
An Edwardian chequer banded and ebony strung mahogany bow breakfront sideboard, on square tapering legs
92cm high, 150cm wide, 60cm deep
£180-220

689.
A George III figured mahogany bureau with maple veneered internal drawers enclosed by a cross banded fall above four graduated cock beeded drawers
102cm wide - in need of restoration
£200-400



690.
A boxwood strung mahogany serpentine serving table, part late XVIII century, the frieze inlaid with flutes flanking a shell inlaid tablet, on reeded square tapering legs
86cm high, 150cm wide, 76cm deep (an old reconstruction)
£500-800

691.
An oak boarded coffer, late XVII century, the front carved with arches
103cm wide
£250-300

692.
A George III mahogany two tier bow front corner wash stand
116cm high, 59cm wide
£50-80

693.
A George III inlaid mahogany semi circular folding card table, circa 1800, the square tapering legs with spade feet
73cm high, 91cm wide, 45cm deep
£150-250



694.
A George III mahogany 'D' end dining table with one leaf (with table cover)
160cm x 122cm
£350-450

695.
A set of four George III Hepplewhite style mahogany rail back dining chairs
£200-300

696.
An Edwardian rosewood and marquetry hanging corner cupboard with a glazed door
69cm x 35cm
£100-150

697.
A George III style mahogany hanging corner cupboard with moulded dentil cornice, above an astragal glazed single door, flanked by fluted pilasters, three internal shaped shelves
104cm high
£150-200



698.
A mahogany wingback armchair in George II style, circa 1900, the cabriole legs with pad feet
£350-450

699.
A William IV rosewood and simulated rosewood table, the octagonal top on a turned column and triform base
72cm high, 47cm wide
£100-150

700.
An early XIX century mahogany drop leaf three tier dumb waiter, on reeded sabre legs and brass castors
138cm high
£800-1200

701.
A pair of gilt side chairs in Louis XVI traditional style, late XIX century with padded cartouche backs and overstuffed serpentine seats, on cabriole legs
92cm high
£80-120



702.
A XIX century burr walnut Davenport desk, boxwood and ebony strung with a maple veneered interior; with four drawers
53cm wide
£500-1000

703.
A pair of George II upholstered side chairs, circa 1750, with rectangular backs, the mahogany legs with stretchers
£120-150



704.
A pair of Victorian mahogany side chairs in Chinese Chippendale style, the broad rectangular backs filled with Chinese railing beneath pierced moulded cresting rails, drop-in seats, square underframes with stretchers
£300-500



705.
A late XVII century oak and iron chest with side handles, the back painted with a crest, the front later painted with the royal crest
69cm high, 71cm x 97cm
£200-400

706.
A George III mahogany elbow chair with a gothic pierced splat and tapestry type seat
£200-300



707.
A Victorian bronzed iron pub type table, cast with angels and shields, stamped "Victory" with registration number 375 686 and number 423
£100-150

708.
An early XVII century oak oval gate leg table on turned supports
73cm high, 112cm x 134cm
£200-300



709.
A pair of George IV mahogany library chairs, each with buttoned green leather, with moulded arm supports and rail, on turned legs and brass castors
£800-1200

710.
A late XVII century joined oak coffer, the three panel front carved with roundels, beneath a frieze of lunettes, channelled frame and panelled lid
52cm high, 106cm wide, 50cm deep
£250-300



711.
A George III rectangular mahogany cellerette, the hinged lid with canted sides with later brass side handles, the base with pierced brackets and square tapering legs
69cm high, 32cm deep, 56cm wide
£600-800

712.
A George III mahogany bedside cabinet, with a pierced gallery, above two doors on turned tapering legs and pad feet
79cm high, 38cm deep, 56cm wide
£150-200



713.
A child's Victorian ash and elm rocking chair, mid XIX century, with oversailing cresting rail, pierced splat, turned arms and supports
68cm high
£100-120

714.
A Charles II oak joined stool circa 1680 with a carved frieze on turned legs joined by stretchers (some replacements)
46cm wide
£150-200



715.
A George III mahogany card table, the rectangular top with rounded corners above a frieze drawer, on cabriole legs with ball and claw feet, possibly Irish
76cm high, 86cm wide, 43cm deep
£500-800



716.
A George IV mahogany drop leaf work table, the rectangular top above two frieze drawers with opposing false drawers on a 'U' shaped support with concave platform and paw feet (lacking wool bag)
71cm high, 49cm deep, 76cm wide
£300-500



717.
A set of eight Victorian mahogany balloon back dining chairs, each with padded canvas seats, on turned legs
£1000-1500



718.
An early XIX century mahogany and caned cradle on part turned supports with brass paw feet
120cm high, 55cm deep, 103cm wide
£150-200

719.
A Charles II oak joined stool, circa 1670, the channelled frieze above turned tapering legs joined by stretchers
43cm wide
£250-300

720.
An oak oval gate leg dining table, part XVII century on turned legs
£120-180



721.
An early XIX century mahogany writing table in the manner of Gillows, the rectangular top with a hinged recess for an inkwell, above a frieze drawer on turned legs
74cm high, 50cm deep, 71cm wide
£400-600

722.

An Edwardian Howard type armchair upholstered in red, on square tapering legs, the brass castors stamped "Harrods"
£200-300



723.

A Regency satinwood banded rosewood sofa table, circa 1810, on plain end supports and reeded sabre legs
72cm high, 154cm wide, 71cm deep
£1000-2000

724.

A three seater sofa in mid XVIII century style with a shaped back and arms, upholstered in brown with scroll feet
£150-200



725.

Howard & Sons. A Victorian mahogany button back armchair on turned legs and brass castors, stamped
£300-400



726.

A set of six George II mahogany dining chairs, each with a pierced splat, a drop in seat and scroll carved cabriole legs with pad feet and a later pair of matching XX century mahogany elbow chairs (8)
£2000-3000



727

727.

A mahogany table, the sides with hinged candle stands on square tapering legs, constructed from XVIII century timber
53cm high, 36cm deep, 60cm wide
£60-80



728.

A French giltwood armchair in Louis XVI style, circa 1880, with a padded back and seat
£400-600

729.

A George III mahogany 'D' end dining table, circa 1800, the twin canon barrel tripod supports with brass socket castors
127cm wide, 189.2cm long
£2000-3000



729

730.

A George III mahogany 'D' end dining table on channelled legs with splay feet, comprising two ends, a drop leaf section and a leaf

132cm wide, 287cm length
£2000-3000



730

731.

A set of ten George III mahogany rail back dining chairs, with turned tapering legs including two elbow chairs

£2500-3500



732.

A nest of three Regency rosewood banded satinwood quartetto tables, each on turned supports with shaped legs, 73cm high, 52cm wide

£600-800



731



733.

A George III mahogany, rosewood banded, ebony and boxwood strung drop leaf work table, the rectangular top with rounded corners, with an arrangement of drawers including a writing slope on a turned column and sabre legs with brass castors

72cm high, 51cm deep, 86cm wide
£600-800



735.

A set of XIX century Chinese quartetto export tables, each decorated with flowers on a brown ground, on pierced end supports and paw feet, stenciled ngo Sing Ang to underside

54cm wide
£200-300

734.

A gilt brass mounted Kingwood and floral marquetry occasional table in Louis XVI style, circa 1890, the square top and four serpentine leaves inlaid with flower sprays

top 49.5cm (when closed)
£300-500

736.

A French walnut bedside cabinet, circa 1910, the marble top above a drawer and panelled door; on cabriole legs

38cm wide
£80-120



737.
A George III figured mahogany clothes press, the top with two panelled doors enclosing trays, the base with two long and two short drawers on bracket feet
194cm high, 58cm deep, 132cm wide
£800-1200



740.
A set of eight mahogany dining chairs in George III style, each with a carved pierced splat, drop in red leather seat and cabriole legs with ball and claw feet, two with arms
£1000-1500



742.
A George IV rosewood card table, the rectangular top with rounded corners with a leaf and scroll carved frieze, a lyre shaped support, on a concave platform and sabre legs with brass paw castors
71cm high, 44cm deep, 90cm wide
£600-800



738.
A George III mahogany tilt top table, the circular top on a bird cage, with a turned column and tripod base
70cm high, 83cm diameter
£600-800



741.
A George III mahogany night commode, with a raised gallery above a door and a drawer containing a recess for a chamber pot
74cm high, 49cm wide
£200-300

743.
An oak Wainscott chair in Jacobean style, the inlaid back carved with an arch, with a solid seat and scrolling arms
60cm wide
£300-400

744.
A Victorian pale rosewood open armchair, circa 1860, upholstered in natural ground floral tapestry with leaf carved scroll back and padded crook arms on cabriole legs
£200-300



745.
A pair of mahogany Gainsborough chairs with moulded legs and arms, period timber but new frames
69cm wide
£1000-1500

739.
A mid XVII century oak caryatid carved with a female figure, a mask and a flower head 50cm high and a XIX century oak panel carved with fruit 67cm high x 25cm wide
£200-400



746.
An Edwardian walnut pedestal desk with a tooled red leather top
height 70cm, depth 74cm, width 122cm
£400-500

747.
A George III mahogany Pembroke table with rosewood cross banding and brass handles
the top 91cm x 68cm
£250-350

748.
A Victorian walnut spoonback nursing chair, circa 1850, carved with flower heads and leaves, the back upholstered in floral Berlin woolwork
£180-220



749.
A Victorian mahogany silver table in George III gothic revival style, with fretwork gallery, blind fretwork frieze and pierced cluster column legs
29cm high, 30cm wide, 21cm deep
£300-500



750.
A regency mahogany tea table, the 'D' shaped top with a reeded edge on reeded sabre legs
72cm high, 44cm deep, 84cm wide
£400-600

751.
A mid/late Victorian walnut table, the shaped quarter veneered top inlaid in specimen timbers with a star, on a turned column and tripod base
58cm wide
£60-80

752.
An Edwardian mahogany and satinwood and banded table on square tapering legs
35cm wide
£60-80

753.
A satinwood banded mahogany square revolving bookcase in Edwardian style,
84cm high, 46cm wide
£120-180

754.
An Edwardian style mahogany and inlaid revolving bookcase
87cm high
£100-150



755.
A compact Edwardian mahogany Sheraton revival square revolving bookstand, circa 1905
81.5cm high, top 43cm
£200-300



756.
An early XIX century oak and mahogany cross banded 'Lancashire' chest, with five dummy drawers and four drawers, on ogee bracket feet
108cm high, 156cm wide
£600-800



757.
An early XIX century mahogany whatnot, the top with double hinged writing surface, above a drawer and candle holder to one side and a hinged inkwell compartment to the other, above a shaped shelf on turned supports
111cm high, 46cm deep, 62cm wide
£1000-1500



759.
Two French mahogany and tulipwood banded bedside cabinets, each with a raised gallery, the door applied with book spines above a recess and a drawer on square tapering legs - one XIX century with a marble top, one later with a painted top
80cm high, 26cm deep, 25cm wide
£400-600

760.
An early XIX century mahogany chest with four long drawers on ogee bracket feet, previously a commode
72cm high, 55cm wide
£150-200



762.
An early XIX century mahogany and satinwood banded reading table, the rectangular top with two hinged leather sections, above four drawers on square tapering legs with spade feet
82cm high, 51cm deep, 80cm wide
£300-500



763.
A George III mahogany tilt top table, the circular top on a turned column and tripod base
122cm diameter
£600-800



758.
An early XIX century mahogany four tier what-not with a drawer on turned supports
122cm high, 41cm deep, 55cm wide
£800-1200



761.
A satinwood concave fronted side cabinet in Sheraton revival style, with a frieze drawer above two doors, each painted with laurel wreaths on bracket feet
82cm high, 36cm deep, 61cm wide
£400-700



764.
A William IV rosewood games/work table on a tripod column and circular platform with scroll feet
51cm wide
£250-300



765.
A XIX century mahogany four leaf draught screen, the earlier panels of Spanish embossed polychrome leather decorated with figures and playful amorini
160cm high
£400-700



767.
A mahogany and Kingwood banded bow front wardrobe in George III style, with two false drawers and one drawer on bracket feet
203cm high, 103cm wide
£200-300



768.
A George III mahogany chest on chest, the top with three short and three long drawers, the base with a slide and three long drawers, on bracket feet
175cm high, 59cm deep, 110cm wide
£800-1200



766.
An oak settle with a panelled back and solid seat, constructed from old timber
183cm wide
£250-300



769.
A late XVII/early XVIII century three panel oak coffer, raised on high stiles, the top rail lunette carved with original iron hasp and lock plate
113cm wide
£250-350



770.
A XIX century demi lune mahogany tea table, with kingwood crossband, boxwood and ebony line inlay, on turned tapering fluted supports terminating in original brass castors
106cm wide
£300-500



771.
A set of five George III mahogany dining chairs, each with a pierced splat and a woven horse hair upholstered seat on square tapering legs, one with arms
£400-700



772

772.

Gillow of Lancaster. A George III mahogany architects table with a rectangular hinged top and a fall front drawer enclosing two folio slides on square tapering legs with brass castors 80cm high, 90cm deep, 126cm wide £6000-8000

773.

A French fauteil, painted in green and gilt on cabriole legs £300-400

774.

A George III mahogany tilt top table, with a dished top and tripod base approx. 88cm diameter £400-600

775.

A XIX century country oak foot stool, approx. 40cm high £40-60

776.

An early XVIII century oak oval gate leg table, the planked top on baluster turned legs, approx. 78cm high, the top 185cm x 184cm £5000-8000

777.

A late XVII century panelled oak coffer; the frieze carved with arches above lozenges, the top possibly later, approx. 125cm wide £250-300

778.

A George III oak and mahogany banded 'Lancashire' mule chest with five dummy and four drawers, on ogee bracket feet, approx. 106cm high, 54cm deep, 178cm wide £1000-1500

779.

An early Victorian walnut bookcase, the top with two glazed doors, the base with two panelled doors, approx. 195cm high, 115cm wide £800-1200

780.

An early Victorian mahogany bookcase, the top with two glazed doors, the base with two panelled doors, approx. 212cm high, 117cm wide £800-1200



776

1. In these conditions Thos. Mawer & Son act only as auctioneers and agents and the representative of Thos. Mawer & Son conducting the auction is called 'The Auctioneer'

2. Whilst Thos. Mawer & Son make every effort to ensure the accuracy of their catalogue and the description of any lot:

(i) Each lot set out in the catalogue or as divided or combined with any other lot or lots is sold by the vendor with all faults and imperfections and errors or descriptions

(ii) Thos. Mawer & Son do not accept responsibility for the authenticity, attribution, genuineness, origin, authorship, date, age, period condition or quality of any lot unless they have been instructed in writing by the buyer to so certify

(iii) All statements whether printed in the catalogue or made orally as to any of the matters set out in (ii) above are statements or opinion only and are not to be taken as being or implying any warranties or representations of fact by Thos. Mawer & Son unless they have been instructed in writing by the buyers to so certify.

3. The Auctioneer has absolute discretion to divide any lot, to combine any two or more lots or to withdraw any lot or lots from sale, to refuse bids, regulate bidding or cancel the sale without in any case giving any reason or without previous notice. He may bid on behalf of the vendor for all goods which are being offered subject to reserve or at the Auctioneer's discretion.

The highest bidder shall be the buyer. The Auctioneer may at his sole discretion determine the advance of bidding or refuse a bid. If during the auction the Auctioneer considers that a dispute has arisen, has absolute discretion to settle it, or to re-offer the lot.

All conditions, notices, descriptions, statements and other matters in the catalogue and elsewhere concerning any lot are subject to any statements modifying or affecting the same made by the Auctioneer from the rostrum prior to any bid being accepted for the lot

4. The buyer shall pay the hammer price together with a premium of the hammer price - 17.25% inclusive of VAT

5. Notwithstanding any other terms of these Conditions, if within seven days after the sale Thos. Mawer & Son have received from the buyer of any lot notice in writing that in his view the lot is a deliberate forgery and within twenty-one days after such notification the buyers return the same to Thos. Mawer & Son in the same condition as at the time of the sale and by producing evidence, the burden of proof to be on the buyer, satisfies Thos. Mawer & Son that considered in the light of the entry in the catalogue the lot is a deliberate forgery then the sale of the lot will be rescinded and the purchase price of the same refunded.

The vendor agrees to be bound by Thos. Mawer & Son's decision.

6. Thos. Mawer & Son disclaim any responsibility for default by either the buyer or the vendor because they act as Auctioneers only and therefore do not pay out to the vendor until payment is received from the buyer. Instructions given by telephone are accepted at the sender's risk and must be confirmed in writing forthwith.

7. Every person on Thos. Mawer & Son's premises at any time shall be deemed to be there at his own risk. He shall have no claim against Thos. Mawer & Son in respect of any accident which may occur or injury, damage, loss howsoever caused, save in so far as the injury, damage loss shall be caused by the negligence of Thos. Mawer & Son's employees.

8. Each lot shall be at the purchasers risk from the fall of the hammer and must be paid for in full before the delivery and must be taken away by the purchaser at his own expense within 7 working days following the conclusion of the sale. The Auctioneer shall be entitled to charge storage charges in respect of lots not taken away as aforesaid (minimum charge of £10 plus VAT) and interest on unpaid accounts @ 4% above clearing bank base rate (per day)

9. Cheques which are not honoured by the payee's bank will incur a handling charge of £20 plus VAT for each presentation.

COMMISSIONS

The Auctioneers are pleased to execute commissions for intending buyers in confidence as cheaply as is allowed by any other bids. **All telephone bids must be confirmed in writing or by fax by 4pm the day prior to sale, telephone bids will not be accepted for lots on which the top estimate is under £500.00.** We cannot guarantee to execute bids received on the morning of sale.

TELEPHONE BIDS are only accepted on lots estimated at £500 + and must be confirmed by fax or email with debit card details. **Bid must be confirmed at the latest by 3pm day before 1st saleday** and cannot be accepted after this time. We have limited lines and bids are taken 'first come first served'

Arrangement to collect goods are the responsibility of the buyer, we do not provide post and packing services. Mail Boxes Etc collect from us regularly (t: 0114 272 0777 e: info@mbesheffield.co.uk)

BUYER'S PREMIUM

There is a 17.6% premium payable on the final hammer price of each lot.

REGISTRATION

All prospective purchasers are requested to register and obtain a bidding number prior to the start of the sale.

CATALOGUE DESCRIPTIONS

Care is taken to ensure that any statement as to authorship, attribution, origin, date and provenance is reliable and accurate, but all such statements are statements of opinion and are not to be taken as statement or representations of fact. Thos. Mawer & Son Ltd. reserve the right, in forming their opinion, to

consult and rely upon any expert or authority reasonably considered by them to be reliable. While an identification of damage is given in some instances, an absence of such advice does not imply that a lot is free from defect. Prospective purchasers are strongly advised to inspect any lot on which they intend to bid. All measurements and weights are approximate and should be verified by intending purchasers

CONDITION REPORTS

We regret that we are unable to provide condition reports on the morning of the sale.

ESTIMATES

On lots that are reserved, the reserve will not be greater than the published estimate at the time the catalogue goes to press

PAYMENT OF ACCOUNTS

All Lots should be paid for and collected immediately following the sale. Any lots not collected by 4.00pm on the Wednesday following sale day will incur storage charges (minimum £25.00 plus VAT per lot).

Payment for all lots must be made on the day of sale and methods are (1) CASH, (2) CHEQUES supported by either a letter of Reference from your bank or a cheque guarantee card to cover the sum of your purchase, (3) BANKERS DRAFT, (4) DIRECT DEBIT CARDS such as "Switch", "Delta", "Classic", "Connect", (5) CREDIT CARDS subject to a 2% premium charge.

No lots in this sale are the property of Thos. Mawer & Son.

Please note we will no longer accept payment by cheque from January 2010

ONLINE BIDDING

Thos. Mawer & Son at times offer an online bidding service via the-saleroom.com for bidders who cannot attend the sale.

In completing the bidder registration on www.the-saleroom.com and providing your credit card details and unless alternative arrangements are agreed with Thos. Mawer & Son you -

1. authorise Thos. Mawer & Son, if they so wish, to charge the credit card given in part or full payment, including all fees, for items successfully purchased in the auction via the-saleroom.com, and

2. confirm that you are authorised to provide these credit card details to Thos. Mawer & Son through www.the-saleroom.com and agree that Thos. Mawer & Son are entitled to ship the goods to the card holder name and card holder address provided in fulfilment of the sale.

Please note that any lots purchased via the-saleroom.com live auction service will be subject to an additional 3% commission charge + VAT at the rate imposed on the hammer price

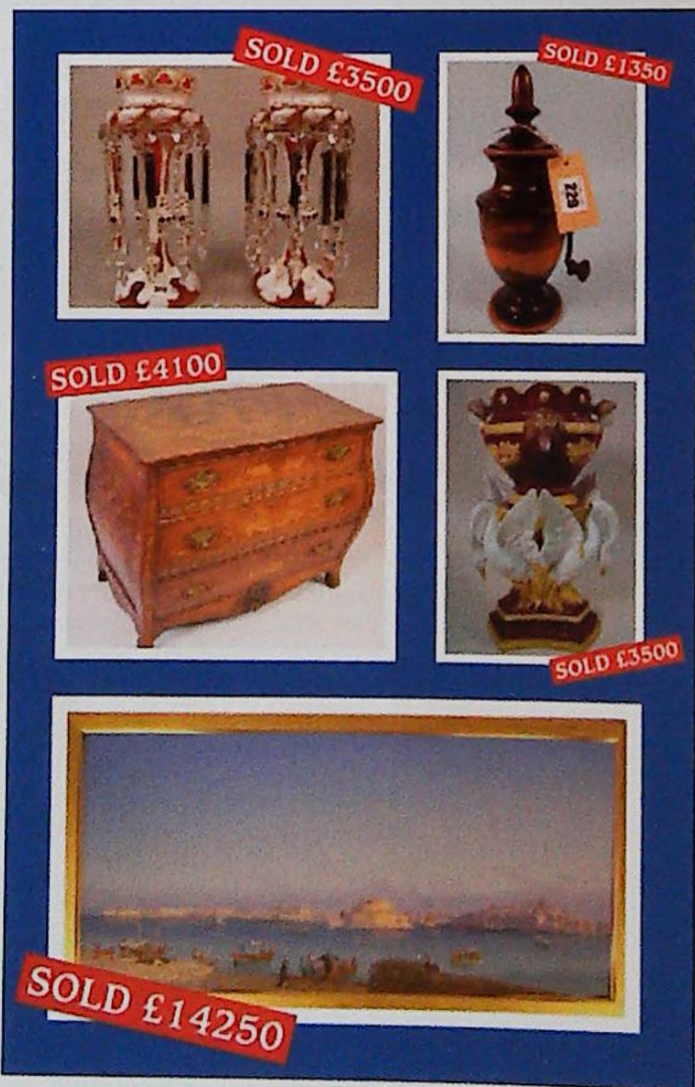
This contract is governed by English Law.

Thinking of selling?

We are experiencing a healthy demand for decorative antiques with discerning buyers using this market as an alternative form of investment.

For a free appraisal and valuation visit our saleroom **every Friday** between 9.30 and 12 noon.

For the best possible price contact us for **FREE** valuation and advice.



Dunston House · Portland Street
Lincoln LN5 7NN

Telephone: 01522 524 984 · Fax: 01522 535 600

Email: auctions@thosmawer.com

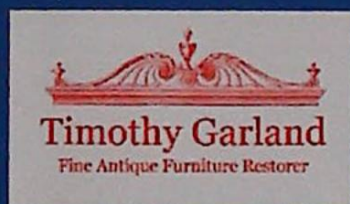
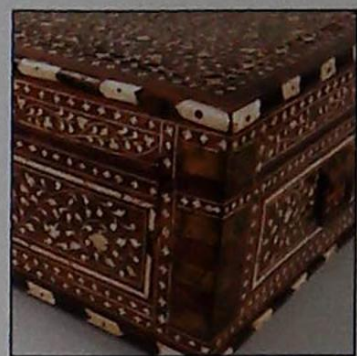
Website: www.thosmawer.com

Location

The Thos. Mawer & Son salerooms at Dunston House are situated in central Lincoln on the east end of Portland Street at the foot of Pelham Bridge (Canwick Road). By car, approaching from the south take the last turning on the left just before the road rises to the bridge.

Approaching from the north (via Broadgate), go over Pelham Bridge and turn left towards Jacksons Building Centre/Tesco on to Kesteven Street. Follow the road around to the left and drive under Pelham Bridge to Portland Street. Turn left and you will see Dunston House on the right. Portland Street is also accessible from Lincoln's High Street, opposite the Ritz public house.

The salerooms are within walking distance of the main railway station and bus depot.



Telephone 01522 805929



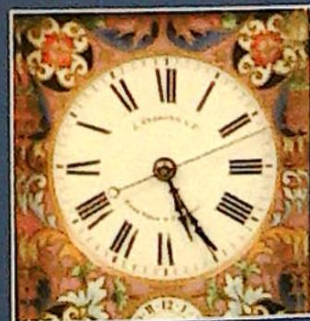
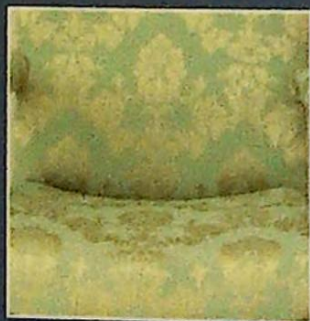
=



- * Estate Sales first Saturday of each month
- * Free valuation clinic every Friday
- * International buyers, live online bidding for top prices
- * Country House Sales

DUNSTON HOUSE · PORTLAND STREET · LINCOLN · LN5 7NN





Dunston House · Portland Street · Lincoln LN5 7NN
Telephone: 01522 524 984 · Fax: 01522 535 600
Email: auctions@thosmawer.com · Website: www.thosmawer.com