



THOS. MAWER & SON LTD.

Auctioneers & Valuers Established in 1864

Auction 16th & 17th June 2009

THOS. MAWER & SON LTD.

COMMISSIONS

The Auctioneers are pleased to execute commissions for intending buyers in confidence as cheaply as is allowed by any other bids. **All bids must be confirmed in writing or by fax by 12noon the day prior to sale, telephone bids will not be accepted for lots on which the top estimate is under £500.00.** We cannot guarantee to execute bids received on the morning of sale.

BUYER'S PREMIUM

There is a 15% (+vat) premium payable on the final hammer price of each lot.

REGISTRATION

All prospective purchasers are requested to register and obtain a bidding number prior to the start of the sale.

CATALOGUE DESCRIPTIONS

Care is taken to ensure that any statement as to authorship, attribution, origin, date and provenance is reliable and accurate, but all such statements are statements of opinion and are not to be taken as statement or representations of fact. Thos. Mawer & Son Ltd. reserve the right, in forming their opinion, to consult and rely upon any expert or authority reasonably considered by them to be reliable. While an identification of damage is given in some instances, an absence of such advice does not imply that a

lot is free from defect. Prospective purchasers are strongly advised to inspect any lot on which they intend to bid. All measurements and weights are approximate and should be verified by intending purchasers

CONDITION REPORTS

We regret that we are unable to provide condition reports on the morning of the sale.

ESTIMATES

On lots that are reserved, the reserve will not be greater than the published estimate at the time the catalogue goes to press.

PAYMENT OF ACCOUNTS

All Lots should be paid for and collected immediately following the sale. Any lots not collected by 4.00pm on the Wednesday following sale day will incur storage charges (minimum £25.00 plus VAT per lot).

Payment for all lots must be made on the day of sale and methods are (1) CASH, (2) CHEQUES supported by either a letter of Reference from your bank or a cheque guarantee card to cover the sum of your purchase, (3) BANKERS DRAFT, (4) DIRECT DEBIT CARDS such as "Switch", "Delta", "Classic", "Connect", (5) CREDIT CARDS subject to a 2% premium charge.

No lots in this sale are the property of Thos. Mawer & Son.

*By instructions from the Representatives of Edna Northam (retired antiques dealer)
the entire contents of her home 15 High Street, Long Sutton, Lincolnshire – also
from the estates of the late Robert (Bob) Holland the contents of his home at
Ratcliffe on the Wreake, from other local vendors & Executors*

ANTIQUES & VICTORIANA

to be sold commencing at 10.30am each day on

Tuesday 16th June 2009

***The Edna Northam Collection of Glass, Taxidermy & Collectables
Lots 1 - 466***

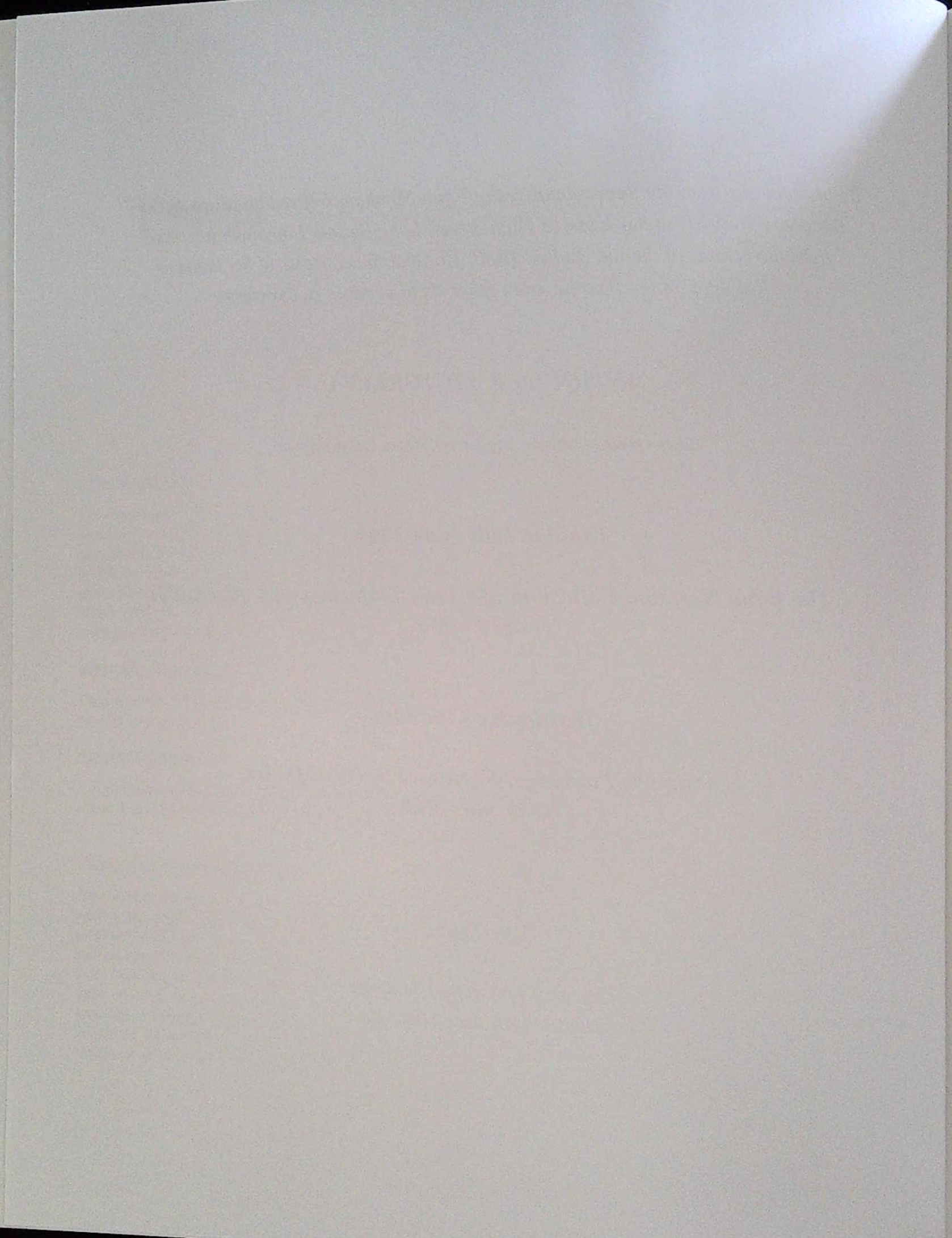
Wednesday 17th June

***Antiques, Paintings, Furniture & Objet D'Art
Lots 500 - 960***

View Days:-

Thursday 11th June 10am-4pm

Monday 15th June 10am-4pm



Sale commencing 10.30am Tuesday 16th June

1. Fairing "Little John in Trouble", a quantity of Victorian china plates etc., small swan tureen, a cherub wall pocket, chamber stick, small dishes and ornamental china - three shelves £10-30

2. Victorian and later beadwork - snake dated 1918, curtain, cushion, wall pocket £30-50



3. A XIX century walnut cased clock/thermometer/barometer £30-50

4. Assorted bread and wall plates etc. (13)

5. A wicker sewing box containing assorted cotton reels, a basket of buttons, curtain tapes, four lamp wick holders, a quantity of soft toys including a plush Teddy - three shelves £10-20

6. A small oak shop table top display cabinet with glazed doors and sides, string top stool, a box, tea caddy and inlaid plaque. £40-70

7. Miniature china cups and saucers, jugs, tureens etc. - one shelf £10-25

8. Limoges France; a green, floral and gilt decorated cabaret set (6) £30-50

9. A fluted papier mache dish containing eight hardstone decorative eggs and a Blue John tablet £10-30

10. A Staffordshire spill holder - a horned cow by a tree stump and stream and two gilt decorated Staffordshire King Charles spaniels 26.5cm high £40-80



11. A wicker covered and pewter mounted soda syphon; a metal ash tray/cigarette box - Diana the Huntress £15-30

12. Alexandra China, Austria; a porcelain vase with pierced body decorated in blush peach, gilt and green detailing with floral decoration; a cherub decorated wall bracket; cherub posy holder; Dorian oval vase; Continental figure etc. (7) £40-80

13. Ansonia Clock Co. A simulated ebonised gilt and marbled cast metal cased mantel clock with circular white roman dial and chiming movement 28cm high; and a brass mounted chiming mantel clock 22cm high £40-90

14. Earthenware; a green glazed jug with strap handles and a gilt decorated green glazed jug with animal style spout; a shell shaped toilet jug and bowl and a hanging pottery flower holder (5). £40-90

15. A large qty. of sundry china and ornaments. £20-40

16. A large qty. of assorted sea shells and a box of sundry china. £10-20

17. Assorted clear glass bowls, a butter dish etc. - quantity. £10-20

18. Carnival and other moulded pressed glass. £40-80

19. Shaving mugs, three moustache cups, two trinket sets etc. £20-40

20. Assorted resin figures etc. inc Border fine arts - a large qty. £10-30

21. Various dog ornaments. £10-30

25. A miniature stained wood folding chair with carpet upholstery, photo of Queen Victoria, "Antique" and "Open" signs, two gilt wood folding brackets etc. £10-30

26. A wicker doll's crib with floral pillow and lining, an articulated resin bodied doll with white cotton night dress, two hardwood tribal figures and pottery dog. £10-30

27. An oriental figure of a seated child dressed in a blue and patterned garment and a feather fan. £20-40



28. Assorted costume jewellery and handbags - one box. £20-40

29. Books; "The Connoisseur Complete Encyclopedia of Antiques" etc., assorted sale catalogues - one box.

31. A cabin trunk containing assorted linen - assorted table, tray and doyleys etc. £50-100

35. A large glass hanging ball with blue finish and a wicker basket containing four others £20-40

36. A black painted cast iron foot scraper in the form of lions £20-40

TAXIDERMY

37. Taxidermy - a group of exotic birds including a toucan etc under a glass dome approx 47cm high £70-130



38. Taxidermy - A wading bird in a naturalistic setting - dome fronted case 28cm £15-30



39. Taxidermy; a green parakeet on a moss covered branch amid ferns; cased. £20-40

40. Taxidermy - a barn owl on a branch - cased. £20-40

41. Taxidermy - an otter on an oak plinth £20-40

42. Taxidermy - a Yorkshire Terrier on a cushion, cased £70-130

43. Taxidermy - a mounted dog's head on an oak shield, paper taxidermists label (part) - W Bazeley Northampton (torn) £100-200



43A. Taxidermy - a rams head £40-80

44. A stags head £80-140

45. Bull horns £10-20

46. Two turtle shells 48cm x 44cm and 43cm x 42cm approx., a tortoise approx. 36cm x 32cm overall, a Cayman, a small tortoise shell, a horn and a Yorkshire Terrier £100-200

CERAMICS

47. A Needham green glazed Art Nouveau style jardiniere and a pink floral gilt decorated Continental porcelain vase approx. 50cm high £50-100

48. A large green glazed leaf embossed jardiniere marked "Soudin 12in" and matching pedestal approx. 97.5cm high overall £100-200

49. Rorstrand; an earthenware vase and pedestal, the vase with cover, satyr headed handles, lion mask and foliage decorated body glazed in green, brown and gilt approx. 60cm high the matching pedestal 160cm high £300-600

50. A hard paste porcelain baluster vase decorated with flowers, butterflies and foliage approx. 42.5cm high £50-100

51. George Jones & Sons "Crescent" a waisted handled vase decorated with flowers on a dark blue ground approx. 53cm high £100-200

52. Doulton Burslem. A "Pomegranate" pattern blue and white vase approx. 59cm high £100-200

53. A jardiniere and stand with pink, pale yellow and gilded body, painted cartouche depicting "Alnwick Castle" and "Chichester Cathedral" signed R South approx. 45cm & 47cm high £100-200

54. A black glazed globular two handled lidded vase decorated with multi-coloured birds and flowers; marked 338 to base, two Masons floral decorated toilet jug and bowls; black ground £150-250

55. Burleigh. An ivy decorated pottery jug, a Continental ribbon plate, a Willow pattern sauce tureen and cover, a sauceboat, Poutney Bristol, three meat plates and eleven matching plates, Wade Heath; "Pied Piper" jug, trinket set etc. - two shelves £50-100

56. Prattware. A pair of transfer print plates No. 123 £40-80

57. A blue & white floral decorated soup tureen & cover with gilt floral knob handle, a Willow pattern soup tureen, a blue & white meat plate and two blue & white covered vegetable dishes £70-150

58. A pair of Adams Staffordshire chargers approx. 47cm diam. £40-80

59. A blue & white comb back meat plate - fanciful bird amid foliage £20-40



Lot 48



Lot 49



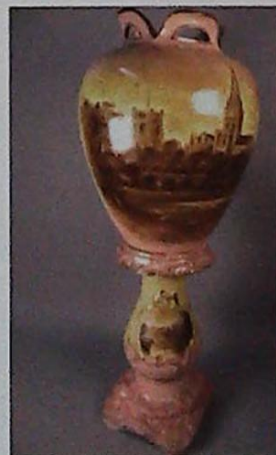
Lot 50



Lot 51



Lot 52



Lot 53



Lot 58

60.
A large pottery jardiniere and stand decorated with roses - blush & black body *approx. 94cm high overall.* £50-100



61.
A lobed form floral & gilt decorated toilet jug & bowl, two chamber pots, soap dish etc. £60-120

62.
A rose decorated and blue edged toilet jug & bowl and two chamber pots. £40-80

63.
A ribbed neck toilet jug and bowl, chamber pot and vase decorated with a bird, gilded foliage and blush body; Doulton "Willow Pattern" D653; a chamber pot, another floral decorated chamber pot, a "Melrose" pattern toilet set etc. (13) £50-100

64.
A transfer print floral decorated serving plate, an open vegetable dish, a Willow pattern sauce tureen, a sauce boat and two earthenware jugs £40-80

65.
Ashworth 'Yedo' pattern. A transfer printed cheese plate and three matching meat plates £20-40

66.
A rust & blue transfer print cheese dome & stand, a matching trefoil dish, two transfer print cheese dishes and another (9) £40-80

67.
A porcelain blanc de chine framed mirror 37cm x 26cm and a floral pottery dish (2) £50-100

68.
A pair of Bavarian porcelain chargers - lady and roses *approx. 35cm diameter* £50-100

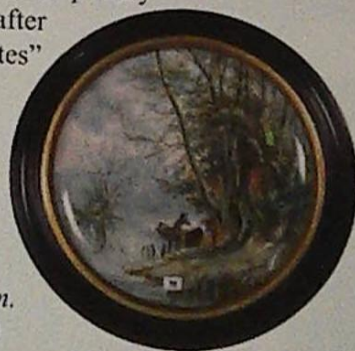
69.
Royal Dux. A large pair of figures - lady with sheep; man with goat *approx 76cm & 80cm high* £400-800

70.
A pair of pottery chargers, decorated with gilt birds and foliage *approx 42cm diameter* £100-200

71.
Royal Worcester:- a pattern 1094 jug, *approx 10cm high*, and 1327 vase, *approx 28cm high.* £60-100

72.
Foley:- an Imari style plate; Ridgeway "Old Derby" tray; Davenport dish and two egg cups. £40-80

73.
A hand painted pottery charger "after David Bates" in an ebonized and gilded frame, *approx 63cm diam.* £150-300



74.
A rare glass vase, black painted with classical figures and rose banding, *approx 40cm high* £100-200

VICTORIAN POTTERY PEDESTALS

75.
A pair of spirally fluted Majolica pedestals glazed in green and brown, incised 5047 beneath *approx 90cm high* £150-300



76.
A blue and gilt moulded column pottery pedestal *approx 75cm high* £150-250



- 76A.
A turquoise ground pedestal with panels of sun flowers *68cm high* £70-140



77.
A blue, green and black corinthian style column pottery pedestal *approx 75cm high* £100-200

77A.
An ebonised timber and green pottery pedestal *110cm high* £70-140

78.
A blue and white floral transfer print decorated pottery pedestal *approx 98cm high* £100-200

78A.
A rare pottery pink gilt and blush decorated table, the top painted with birds *70cm high, 48cm diameter* £200-400

79.
A pink and gilt decorated pottery pedestal, neo classical design *approx 61cm high* £70-150

79A.
A Bretby lotus flower style jardiniere and pedestal *30cm and 70cm* £200-300

80.
A moulded baluster column pedestal in green, brown and black *72cm high* £70-140

80A.
A green glazed trellis pattern pedestal *59cm high* £75-150

80B.
A brightly coloured pottery column of neo classical design *115cm high* £200-400

Lot 77



Lot 77a



Lot 78



Lot 78a



Lot 79



Lot 79a



Lot 80



ORIENTAL CERAMICS

ORIENTAL CERAMICS

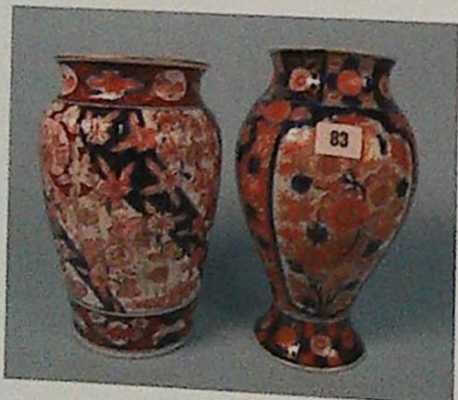
81.
A pair of Imari vases with ribbed bulbous bodies approx. 25cm high £80-140



82.
A pair of square tapering Imari vases approx. 21cm high £50-100



83.
An Imari vase with baluster body and flared foot and another with ribbed body (2) £70-150



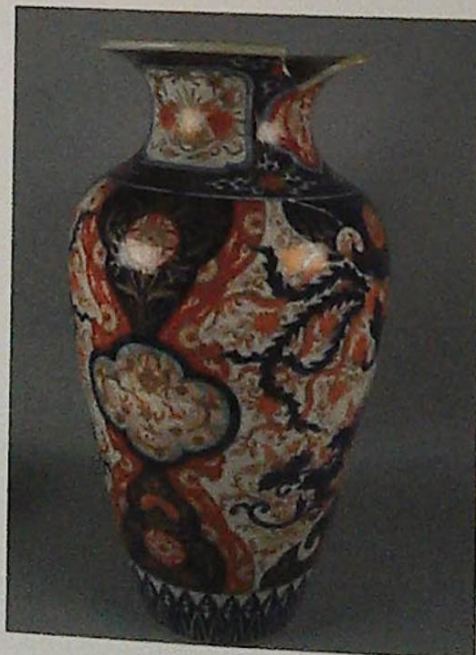
83A.
An Imari baluster vase, 22cm and another taller 34cm £50-100

84.
Three Imari bowls with panelled decoration £100-200

85.
Two almost matching Imari hexagonal shaped narrow neck vases approx. 47cm high and a smaller vase, 33cm high (3) £200-350



85A.
A large Imari tapering vase (defective) approx. 56cm £50-100



86.
Imari. Two vases with covers, a covered pot, a shaped pot, an open dish, a small vase and spare lid etc. (11) £80-150



87.
Two ginger jars & covers, a covered pot, another with no cover, a pair of blue & white baluster vases & covers, a bulbous blue & white vase (7) £100-200

88.
Satsuma ware; two vases & covers, three open vases, three miniature vases, a cup, a saucer etc. (16) £70-150

89.
A large Satsuma style ovoid vase with figured panels, flowers etc. approx. 50cm high £50-100

90.
A large oriental blue and white vase decorated with buds and prunus approx. 60cm high. £100-200



91.
Three scallop edged Imari plates, a fan shaped Imari plate and two Chinese plates £70-150

91A.
Five wavy edge Imari plates
£30-60

92.
A blue & white decorated oriental vase with two figured panels and floral ground
approx. 52cm high £30-60



93.
An oriental blue & white vase with foliage decoration and animal handles
approx. 35cm, and another blue & white vase *approx. 32cm high*
£100-150



94.
A pair of oriental lacquered circular plaques decorated with stained applied bone and mother of pearl cockerels
approx. 37cm diameter £200-300



95.
A Chinese Celadon glazed jardiniere with moulded stylised birds
approx. 37cm diameter £70-140

96.
A Chinese crackle glazed jardiniere decorated with figures and landscape
41cm diameter £100-200



97.
A Chinese blue & white bulbous vase & cover decorated with flowers and foliage
approx. 65cm high
£200-400



98.
A pair of Satsuma vases with narrow necks
approx. 90cm high £200-400



99.
A pair of Chinese Cloisonne enamel plates decorated with stylized diapons
approx. 36cm diameter £200-400



100.
A pair of Chinese Cloisonne enamel chargers decorated with flowers and birds
approx. 60cm diam. £500-1000



BLUE GLASS (cabinet 3)

BLUE GLASS (cabinet 3)

101. Davidson Blue Pearline glass; four baskets £20-50

103. Davidson Blue Pearline glass; sugar bowl and jug; square dish; small vase and basket 242 (5) £30-60



104. Davidson Blue Pearline glass. A dish 96945, a smaller Davidson Pearline glass dish, dish and cover and oval plate (5) £30-50



105. A pale blue glass water jug with white foliate decorated neck approx. 18cm high £10-30



106. A pair of pale blue glass vases decorated with birds and flowers approx. 34cm high; a small oil lamp and two bird decorated glass vases (5) £120-250

107. Pale blue Satin Glass:- A pair of ewers, two other ewers and a pair of vases (6) £50-100

108. A pale blue satin glass vase; a pair of clear over blue glass ewers; a small satin posy bowl and another posy bowl (5) £30-60

109. A Webb style small crimped rim posy vase and a satin overlay small vase (2) £30-50

110. An opalescent glass vase approx 31cm high £40-70

111. A gilt decorated green glass vase, white satin glass vase and cover and a white satin glass decanter (3) £20-60

112. Mary Gregory. A clear glass decanter, a claret jug, a biscuit barrel and bowl, and a green glass vase and cover (a/f) £40-100



113. A pair of wine bottles with EP labels "Brandy" and "Whiskey"; a green glass decanter; and a fly trap £50-100



114. Assorted glass. A blue vase, pair of green posy baskets etc. £50-100

115. A cut glass claret jug with EP "Vine" handle approx. 26cm high £30-60



116. An amber glass oval bodied claret jug with ornate pewter overlay and scroll handle approx. 33cm high £40-70



117. A floral decorated claret jug with pewter foliate mounts and "C" scroll handle approx. 31cm high £50-100

118.
An olive green glass claret jug with pewter mounts and scroll handle
approx. 29cm high £50-100

119.
W.M.F.; an Art Nouveau syphon holder Number 47
approx. 20cm high £10-30



120.
A blue and opalescent edged four trumpet epergne
approx. 49cm high £150-250

121.
A gilt decorated pale blue glass trinket set and tray
£70-140



122.
A pale blue over white frilly edge trumpet vase and four other pieces (5)
approx. 16cm £20-40

123.
An acid etched clear pale blue glass shade; and a pale blue satin glass shade
£20-40

124.
A pair of pale blue frilly edged opalescent white glass dishes
approx. 20cm diam. £20-40

125.
A pale blue and white glass single trumpet epergne decorated with flowers
approx. 37cm high £30-60

126.
A pale blue over white satin glass narrow neck vase decorated with a bird and foliage
approx. 33cm high £10-30

127.
A pale blue opalescent "Jack in the pulpit" style vase
approx. 30cm high £10-30

GREEN & YELLOW GLASS (cabinet 2)

128.
A pair of opalescent, pale yellow "Jack in the pulpit" style vases with green feet
approx. 18cm and 15cm high and a larger similar vase £20-40

129.
A pair of pale green and clear glass "Jack in the pulpit" style vases
approx. 21cm high £30-60



130.
A pair of pale yellow opalescent glass vases "Iris" pattern
approx. 37cm high £50-100

131.
A pink edged yellow glass vase with decorated neck
approx. 18cm high £20-40



132.
A pale yellow satin glass ewer decorated with foliage and butterflies
approx. 30cm high, a similar two-handled vase
approx. 30cm high and another ewer (3) £50-100

133.
A pale yellow opalescent short baluster stem vase
approx. 20cm high £20-40

134.
Three assorted pale yellow and opalescent small bowls
approx. 13cm diam. £20-40



136.
A pair of pale yellow and opalescent vases with clear star shape feet
approx. 12cm high; and two pale yellow glass "stirrup" vases
approx. 11cm and 13cm high (4) £30-60

137.
Davidson primrose Pearline glass:- four pattern 242 baskets £30-60



GREEN & YELLOW GLASS (cabinet 2)

138.
Davidson primrose Pearline glass:- a pair of dishes Reg No. 413701 approx. 29cm diam. £40-80



139.
Davidson primrose Pearline glass:- a pair of bowls approx. 19cm diam. £30-60

140.
Davidson primrose Pearline glass:- an oval bowl approx 18cm long; salt cellar approx 6cm diam; and a pattern 225 sugar bowl (3) £30-60



141.
Davidson primrose Pearline glass; cream jug and sugar basin Ref. 413701, and butter dish and cover (4) £30-70

142.
Davidson primrose Pearline glass - a stemmed bowl, Reg No 254027 approx. 13cm high, and a similar bowl approx. 11cm high £30-50

143.
Davidson primrose Pearline glass cake stand approx 22cm diameter, 10cm high £20-40



144.
Uranium yellow glass; seven assorted salt cellars, a scent bottle; a pair of jelly moulds (10) £50-100

145.
Three closed glass baskets - assorted colours £10-30

146.
An amber glass water set (5), a decorated vase; and a yellow opalescent lamp (7) £10-30

147.
Assorted green glass:- two vases with clear glass feet; a cream jug and basin; a candlestick, a specimen vase and two slender vases (8) £20-50

148.
Two twin stem floral decorated vases approx. 17.5cm high £10-30

149.
Decorated green glass - miniature jug; cream jug; tumbler; specimen vase and metal mounted bowl with hinged lid (5) £20-40



150.
A pair of gilt and white decorated green glass claret jugs approx. 20cm high and a heavy Stourbridge type inkwell £20-50

151.
A jade green glass lustre approx 19cm high, a satin green glass bowl and smaller leaf dish (3) £10-30

152.
A green glass cheese dish and cover with gilt and floral decoration £40-80



153.

A green glass biscuit barrel and cover decorated with gilt and white flowers approx. 25cm high; and a dish approx. 20cm diam. £30-60

154.

A green glass claret jug decorated with lily of the valley; clear glass handle and stopper approx. 25cm high

155.

Green glass with lily of the valley decoration; a basin, three assorted jugs and salt cellar (5) £40-80

156.

A pair of green glass vases decorated with lily of the valley approx. 21cm high, and a larger vase approx. 27cm high £40-80

157.

A pale green glass Mary Gregory vase approx. 26.5cm high, and a smaller vase with clear glass mounts approx. 15cm high £30-60

158.

A green glass Mary Gregory vase approx. 30cm high £40-80

159.

A green glass Mary Gregory claret jug - girl in pink dress approx. 28cm high £30-70

160.

A pale green glass Mary Gregory claret jug - boy with walking stick approx. 30cm high £30-60

161.

Three assorted jade green glass vases with gilt decoration approx. 18cm; 28cm and 37cm high £20-40

162.

A green glass Mary Gregory powder bowl and cover £20-40

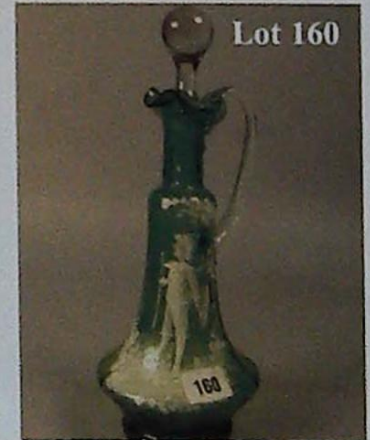
163.

A pair of green glass Mary Gregory vases - children with hoops approx. 22.5cm high £30-60



164.

A clear, opalescent and green edged seven trumpet glass epergne £120-200



MISCELLANEOUS POTTERY ETC.

MISCELLANEOUS POTTERY ETC.

170.
XIX century blue and white transfer print pottery - five pieces
£20-40

171.
A Continental tin glazed blue and white plate, an oriental shallow dish and a blue and white pottery model of a three masted sailing ship (3)

172.
A massive Royal Doulton blue and white bowl decorated with roses
21cm high, 36cm diameter
£40-70

173.
Sundry blue and white china - two ewers, a large oval plate, delft vase, parrot design wall pocket, pair of seated figures etc.
£40-80

174.
A pair of Staffordshire King Charles Spaniel chimney ornaments
approx. 32cm high £40-70

175.
A pair of Staffordshire King Charles Spaniel chimney ornaments
approx. 32cm high £40-70

176.
Sundry decorative china - ornaments, three chamber pots, a black glazed King Charles Spaniel etc. - a large qty.
£20-40

177.
Miscellaneous glassware, decorative china and effects £10-20

178.
A pair of Staffordshire flatback spill holders of seated King Charles spaniels against boughs 34cm £70-130

179.
A pair of swan plant holders
approx. 43cm x 50cm £100-150

180.
A blanc de chine swan posy holder
38cm x 40cm £150-250

Lot 172



Lot 175



Lot 179



Lot 178



Lot 180

BISQUE FIGURES

198.
A bisque group of two lovers dressed in finery 33cm £10-25



199.
Two Continental bisque figures - boys dressed in finery 38cm high £30-50



200.
A pair of Continental well coloured figures of a boy and girl dressed in finery, she with a basket of posies (2) 46cm high £20-40

201.
Continental porcelain-bisque etc. - figures and other ornaments (approx. 35) £30-60

202.
A set of three Continental bisque figurines of children on swings. £20-40

203.
A pair of Continental porcelain vases in the form of children in a tree £20-40

204.
A Continental bisque piano baby £10-20



205.
A Continental bisque vase group in the form of a pair of outward facing swans with central lady figure wearing a pink dress £15-30

206.
Two large Continental bisque figures of seated children £40-80



207.
Two Continental bisque figures of dancing children wearing a yellow/orange dress, on a naturalistic base; another with blue and floral dress 42cm £40-80

208.
A pair of Continental bisque figures of babies - one on a high chair; the other in a baby walker 24cm £20-40



209.
Two Continental bisque figures of young girls in blue dresses 26cm £20-40

210.
A Continental bisque figure of a lady holding a sheaf of corn; and a gentleman with tricorn hat £20-30

211.
A Continental bisque figure of a cavalier in XVIII century clothing with a seated dog on his left side 52cm £20-40

212.
Two Continental bisque figures of children on circular naturalistic bases 35cm £30-50

213.
Two Continental bisque figures of young children each holding a puppy 32cm £20-40

214.
A Continental bisque group of lovers on naturalistic base, 33cm; and two of lady and gentleman with flounce hats holding sunflowers, 37cm (3) £20-40

BISQUE FIGURES

215.
A Continental bisque figure of a lady standing by a ship's wheel
32cm £20-40



216.
Continental bisque - boy with horn; boy and girl skipping; girl with muffler (4)
27cm-32cm £20-40



217.
Continental Bisque - a shepherdess, a man sowing corn, a lady with a retriever 40cm, and a lady with bird to her shoulder 31cm (4) £30-60



218.
Three Bisque figures of seated children
18cm £10-30



219.
Continental Bisque - two children on a white horse, father and small child beside, under glass dome and stand
approx. 40cm overall
£30-50



220.
Continental Bisque - a pair of lovers in a garden with dried foliage and flowers, under glass dome and stand
approx. 55cm overall £70-130



221.
Continental bisque - a pair of figures - boy and girl in floral setting with glass dome and stand
approx. 53cm overall
£70-130



222.
Continental bisque - a pair of figures with floral settings, under domes and stands
approx. 53cm overall
£70-130



223.
Seven glass domes - and various bases.
£40-100

224.
A pair of Continental porcelain figures of children - "Papa" and "Mama" - No. 1484 approx. 25cm high £30-60

225.
A large bisque child in a blue garment pulling off a sock
32cm £40-70



226.
Continental bisque - assorted figures; a pair of shoes etc. (12) £40-80



Edna Northam's Antique Shop 15 High Street, Long Sutton
A print circa 1991 included
in Lot 721

METALWARE

230.
A massive XIX century copper kettle and a brass and iron footman £20-40
231.
A pair of Victorian turned brass candlesticks and a pair of Corinthian column ditto 36cm and 20cm high £15-30
232.
A conical copper saucepan, a small brass saucepan with iron handle and assorted long handle utensils £20-40
233.
A large assortment of XIX century and later metalware - copper warming pan etc. £10-30
234.
A bronzed model of a saddled horse, another of a panther, two ormolu sconces, A boar's tusk ornament, soapstone figure etc. £20-40
235.
An Ardent oil burning heater with brass oil lamp fitting in a cylindrical black tinned case - late XIX/early XX century Belgium £40-80
236.
A brass tray, two jardinières and a candle holder (4) £10-20
237.
A tribal spear £20-40

VICTORIAN LUSTRES

251.
Two pale pink lustres with gilt decoration approx. 33cm x 27cm high £20-50
252.
A pair of pink white and gilt glass lustres, painted with foliage approx. 36cm high £100-200



253.
A trio of part white/pink lustres with gilt highlights approx. 25cm high £50-100



254.
A pair of pink open white cased glass lustres with gilt highlights approx. 38cm high £70-120



255.
A pair of pale blue glass lustres with white and gilt decoration approx. 22cm high £20-40



256.
A pair of pale blue glass lustres with white and gilt decoration approx. 22cm high £70-140



257.
A Royal blue glass lustre with gilt and floral enamel decoration approx. 33cm high £50-100



258.
A green glass lustre with gilt decoration
approx.
32cm high
£50-100



262.
A pair of ruby glass lustres with gilt and floral enamel decorations
approx. 36cm high £150-200



266.
A pair of pale green multi glass lustres with darker green shading, and flowers, decorated with portraits of children
approx. 35cm high £70-140



259.
A pair of green and finely gilt decorated lustres *approx.* 30cm high
£150-300



263.
A cranberry glass lustre with fine gilt decoration
approx.
34cm high
£150-250



267.
A pair of white glass lustres with shaded brown decoration to stem; floral, gilt and portrait painted
approx. 37cm high £50-100



260.
A pair of Bohemian style red flashed glass lustres decorated with stags
approx. 27cm high £200-400



263A.
A pair of ruby glass lustres with spiral moulded stems 33cm £50-100

264.
A pair of white and ruby overlay crystal lustres with gilt decoration *approx.*
34cm high £400-600



268.
A pair of white and gilt lustres with gilt decoration *approx.* 34cm high
£70-150

269.
A pair of white and green knop gilt decorated lustres with dome turned scalloped tops *approx.* 30cm high
£100-200

261.
Three ruby glass lustres with gilt and floral coloured decoration *approx.*
35cm high £150-250



265.
A cased white over ruby hexagonal stemmed lustre
approx. 30cm high
£50-80



270.
A pair of opal glass lustres with gilt decoration (A/F) and a smaller opal lustre *approx.* 34cm (2) and 30cm
£20-40

271.
A cut glass clear lustre with scalloped bowl, faceted stem *approx. 37cm high*, and a smaller opal lustre
£50-100

272.
A pair of clear glass lustres with frosted finish and petal feet *approx. 28cm high*
£100-200



273.
A green glass lustre with gilt decoration *approx. 25cm high* and another paler green lustre *approx. 26cm high* (2)
£70-130

274.
A pair of pale blue glass lustres with coloured enamel floral decoration *approx. 34cm high* - drops incomplete
£70-120



275.
A pale blue glass lustre with frosted finish, white floral decoration *approx. 36cm high*
£40-70

LIGHTING - OIL LAMPS, BRASS LIGHT FITTINGS, HANGING SHADES, PARTS & RELATED ITEMS

276.
Quantity of spare prism drops, cascade chandelier etc. £10-30

277.
A pair of brass gas lamp wall brackets and another similar oil lamp wall bracket (3) £70-150

278.
A pink moulded and etched glass pendant lampshade with pierced gilt metal mount *30cm* £50-100

279.
A Victorian brass Corinthian column table oil lamp with moulded and etched plain glass shade *approx. 56cm high*
£100-200



280.
A Victorian oil lamp with facet cut clear reservoir, cast brass column and blue floral decorated pottery body *approx. 68cm high (excluding shade)*
£200-400

281.
A small oil lamp with yellow body, clear moulded glass prints, painted white glass "tulip" shade *approx. 20cm high*
£70-140



282.
A small oil lamp with clear over pink/white moulded square base, pink frilled edge shade *approx. 20cm high*
£70-120



283.
A cranberry glass hand oil lamp with ribbed body *approx. 13cm high*, and a pink glass hand lamp with clear glass feet *approx. 15cm high*
£50-100

284.
Two green glass bodied hand oil lamps *approx. 28cm high overall*
£20-40

285.
Moore and Co. Staffs. A pair of cactus shape porcelain oil lamps with pink etched shades (a/f) *approx. 27cm high overall*
£100-200



286.
A fluted column brass oil lamp with painted opal reservoir and shade *approx. 40cm high*
£50-100



287.
A pair of EP circular base candlesticks with pair of oil lamp inserts; one pink reservoir, the other blue - no shades approx. 34cm overall £40-80



288.
A Corinthian column table oil lamp with blue satin glass reservoir approx. 34cm high £40-80



289.
A frosted moulded ruby glass oil lamp base, the body moulded with grapes, cast brass top and feet approx 32cm high £50-100

290.
A brass "Veritas" lamp with ribbed cranberry glass shade. £70-130

291.
A brass "Veritas" lamp with opal shade over painted with a lakeland scene approx 45cm high £100-150



292.
A brass "Veritas" lamp with ribbed cranberry glass shade approx 53cm high £70-130

293.
A brass "Veritas" lamp with pink satin glass shade approx 45cm high £100-150

294.
A brass "Veritas" lamp with blue satin moulded glass shade, approx 45cm high and another base £100-180

295.
A pair of brass and copper column oil lamps approx 51cm high £120-250

296.
A porcelain bodied oil lamp with brass mounts; etched globular glass shade approx 39cm high £150-250



297.
A "Captain Loftus" brass hand oil lamp; another brass hand lamp and pair of brass baluster candlesticks with peg oil lamp inserts. £50-100

298.
A wrought iron and copper mounted oil lamp with white globular shade approx 64cm high £50-100

299.
A hand painted porcelain bodied oil lamp, cast metal mounts, etched frosted shade, approx 61cm overall £100-200



300.
A cast metal mounted alabaster column oil lamp with clear cut glass reservoir; etched globular shade approx 93cm high overall £200-300



301.
A white milk glass floral and bird decorated oil lamp with crimped top white glass shade, approx 70cm high overall £120-220



302.
A pair of Continental porcelain bodied blanc de chine oil lamps decorated with floral swags and putti; white globular shades approx 50cm high overall £150-300



303.
Moore & Co, Staffs. A "coral" porcelain bodied oil lamp; gilt highlights (c.1880-1890) approx 48cm overall £200-400



304.
A bird and floral decorated vase shaped mushroom milk glass oil lamp with black base; moulded and etched shade approx 67cm overall £70-150



305.
A canary yellow moulded glass bodied oil lamp with gilt highlights, brass base and mounts, etched glass shade, with beaded fringe approx 65cm overall £150-250

306.
A canary yellow satin glass reservoir oil lamp with brass column, black base, etched globular shade, bead fringe approx 52cm high overall £200-300



307.
A canary yellow milk glass oil lamp with brass circular base and mounts, etched shaded green glass globe shade and bead fringe approx 70cm high overall £200-300

308.
A brass mounted and porcelain Corinthian column oil lamp with moulded canary yellow milk glass fount, etched green glass shade approx 66cm high overall £200-400



309.
A porcelain and brass column oil lamp with canary yellow milk glass fount; pale green etched glass shade approx 58cm high overall £100-200

310.
A shaded green milk glass column oil lamp; floral decoration, brass mounts, circular black base, etched green shade approx 67cm overall £150-300



311.
A brass fluted column oil lamp with moulded canary yellow milk glass fount, black base, fluted green etched shade approx 67cm high £200-400

312.
A brass Corinthian column oil lamp with clear ribbed green glass fount, etched green glass shade approx 74cm high £150-300



313.
An orange milk glass oil lamp with brass foot and mounts; etched shaded orange globular shade, approx 74cm high. £200-300

314.
A fluted brass column and cast metal based oil lamp with painted milk glass fount, etched amber glass globular shade approx 65cm high £100-200



315.
A brass finished column oil lamp with globular floral decorated porcelain fount - engraved with presentation 1893 approx 73cm high £200-400

316.

A milk glass stemmed oil lamp painted with herons, cast metal base decorated with hunting artefacts, leaf decorated fount holder *approx 77cm high* £150-250



320.

A porcelain vase shaped body oil lamp, decorated in classical style, cast brass foot, etched amber glass globular shade *approx 65cm high* £200-400



324.

A pale green milk glass baluster shape oil lamp decorated with children and foliage, etched moulded glass shade *approx 62cm high* - converted to electricity. £100-200



317.

A floral decorated vase shaped oil lamp with cast brass base, matching globular shade, *approx 62cm high* £150-300

321.

A blue and gilt decorated porcelain bodied oil lamp with square foliate decorated cast brass base, etched glass shade *approx 74cm high* £300-600

325.

A brass column oil lamp with shaded amber satin glass fount, gilt decorated black circular base, etched shaded amber glass shade *approx 53cm high* £150-250

318.

A foliate decorated porcelain bodied oil lamp with cast brass mounts and base, small ribbed clear glass fount *approx 65cm high* £200-400

322.

A Furnival pottery bodied oil lamp decorated with flowers, vines and cherubs' heads, etched Art Nouveau glass shade *approx 50cm high* £300-600

326.

A pair of milk glass oil lamps, octagonal moulded fount, white shade *approx 50cm high* £100-200



319.

A gilt foliage and bird decorated porcelain bodied oil lamp base with cast metal base *approx 48cm high* £200-400

323.

A rust and red foliage decorated porcelain bodied oil lamp with cast brass holder, foliate etched decorated fluted glass shade, bead fringe *approx 52cm high* £300-600

327.

A campagna shade foliage decorated porcelain bodied oil lamp with cast metal mounts, Art Nouveau vaseline glass shade *approx 51cm high* £300-500



328.
A vase shaped porcelain bodied oil lamp decorated with gilt highlighted foliage, green over white shade *approx 58cm high* £200-400



329.
A black glass vase shape oil lamp decorated in Mary Gregory style, white globular shade *approx 54cm high* £150-250

330.
A black glass floral decorated vase shape oil lamp with metal handles and mounts, Art Nouveau vaseline glass shade, *approx 60cm high* and another glass oil lamp base £200-300



331.
A brass Corinthian column oil lamp, cut glass fount moulded and etched glass shade *approx 85cm high*, £200-350

332.
A brass column oil lamp with clear glass fount etched globular shade *approx 80cm high* £100-200



333.
A silver plated Corinthian column oil lamp with cut glass fount etched moulded pink shade *approx 88cm high* £300-600

334.
A brass Corinthian column oil lamp, white shade, bead fringe £200-400



335.
A brass and glass column oil lamp with cut glass fount ribbed, etched and moulded shade, *approx 80cm high* £200-400

336.
A cut glass column oil lamp with brass mounts, cut globular shade *approx 77cm high* £200-400



337.
A cut glass baluster stemmed oil lamp, brass mounts *approx 49cm high* £150-250

338.
A drawn glass column oil lamp with air bubbled base, star cut foot, ribbed moulded fount cut globular shade *approx 68cm high* £100-200



339.
A pair of clear blue moulded oil lamp bases *approx 28cm high* £70-150

340.
A blue milk glass fount and brass column oil lamp, black base; etched blue tinted shade *approx 56cm high* £200-400



341.

A shaded blue moulded milk glass oil lamp, with Art Nouveau decoration brass base, clear blue etched glass shade *approx 61cm high* £300-600

342.

A shaded blue milk glass floral decorated oil lamp, brass Corinthian mount and base, fluted shaded blue etched shade *approx 70cm high* £250-500



343.

A brass mounted and shaded blue floral decorated milk glass oil lamp, circular black base, fluted etched shade *approx 67cm high* £150-300

344.

A blue striped white glass column oil lamp with moulded blue milk glass fount, etched clear glass shade, cast brass foliate base *approx 87cm high* £400-600



345.

A pale blue milk glass case shape oil lamp transfer printed with a bird and foliage, white globular shade, bead fringe *approx 54cm high* £150-250

346.

A bird decorated blue milk glass vase shape oil lamp and fount, clear etched shade, *approx 63cm high* £200-300



347.

A blue floral and lizard decorated glass vase shape oil lamp with cast metal base, etched clear glass shade *approx 62cm high* £300-500

348.

A Sevres style porcelain bodied oil lamp decorated with summer flowers, gilt banding, cast metal handles and base, pale blue etched shade *approx 64cm high* £400-800



349.

A Doulton Lambeth stoneware oil lamp base with brass handles and mounts by Edith D Lupton rosette mark 1883 *approx 43cm high* £400-700

350.

A Doulton style stoneware and brass mounted lamp base *approx 42cm high* £300-600



351.

A brass mounted floral pottery column oil lamp with moulded clear over pink glass fount fluted floral decorated pink shade *approx 60cm high* £150-250

352.

A brass based and moulded pink milk glass fount oil lamp with pink etched globular shade *approx 55cm high* £150-250



353.
A pink glass floral decorated oil lamp
with pink globular glass shade
approx 50cm high £150-250



357.
A gilt decorated porcelain column oil
lamp with brass mounts, circular black
base, pink cased glass fount, etched
shade approx 100cm high £200-400



361.
A cast brass oil lamp with pink
moulded glass fount pink satin glass
shade approx 48cm high
£150-250



354.
A floral decorated pink glass oil lamp
base with cast brass foot with pink
fluted edge etched shade
approx 57cm high £200-300

358.
A gilt decorated pink glass column oil
lamp with gilt decoration, brass mounts,
pink crimped glass shade
approx 80cm high £200-400

362.
A pink glass vase shape lamp base
decorated with white flowers
approx 38cm high
£100-200

355.
A pink over white floral decorated
lustre with castellated top housing a
pink glass oil lamp insert - drops
incomplete approx 49cm high
£200-300

359.
A pink vase shaped oil lamp and fount
painted with a robin and cherries,
etched globular pink shade
approx 60cm high £150-300

363.
A pink glass vase
shape oil lamp base
with etched pink
shade, the fount
painted with birds
amid foliage
approx 60cm high
£200-300



364.
A cast brass and white column oil
lamp, clear cut glass fount, etched pink
edged shade approx 51cm high
£200-300

356.
A pink over white gilt decorated glass
oil lamp base; leaf decorated lamp
insert, pink etched shade
approx 46cm high £200-300

360.
A pink glass frosted column oil lamp
with matching fount brass mounts,
circular black base, etched globular
pink shade approx 68cm high
£200-400

365.
A pink cranberry
glass stem oil lamp
with globular etched
pink shade
approx 61cm high
£150-300



366.

A brass four Corinthian column oil lamp with moulded cranberry fount, pink ribbed etched shade
approx 73cm high £200-400



370.

An ornate pierced cast brass oil lamp base with fluted etched pink shade
approx 70cm high £200-400



374.

A brass Corinthian column oil lamp and base with ruby glass fount, etched pink glass shade
approx 82cm high £200-400



367.

A brass Corinthian column oil lamp, moulded cranberry fount, ruby chimney, and etched globular shade
approx 75cm high £200-300

371.

A cast brass based oil lamp with stamped brass fount, pink etched shade
approx 64cm high £200-400

375.

A pair of cast brass lamps and wall brackets decorated with stylised griffins. £100-200

376.

A cranberry glass globular oil lamp with a clear glass stylized salamander decoration and three fish feet, *approx 25cm high*; and a cranberry glass hand lamp with crimped pink edged shade *approx 24cm high (2) £100-200*

368.

A brass Corinthian column oil lamp with ribbed cranberry glass fount, fluted and etched pink shade
approx 74cm high £200-300

372.

An oriental design brass vase oil lamp base with dragon decoration, cut cranberry glass fount, etched pink shade *approx 75cm high £200-400*

377.

A white speckled pink glass hand lamp, *approx 13cm high*, and a pale pink and clear glass mounted hand lamp *approx 20cm high £100-200*



378.

A cranberry glass lamp with ribbed fount and shade, *approx 26cm high*; and a moulded pink glass hand lamp with ribbed fluted pale pink shade *approx 21cm high (2) £100-200*



369.

A brass Corinthian column oil lamp with ribbed mauve glass fount, globular etched pink shade *approx 84cm high £200-300*

373.

An oriental pattern brass based oil lamp with ruby glass fount and etched pink shade *approx 77cm high £200-400*

379.

A satin pink glass hand lamp, *approx 14cm high*, and a copper and brass lamp with pink over white moulded glass shade *approx 27cm high (2) £50-120*

380.
An opalescent tinted yellow glass lamp raised on four feet; etched green globular shade *approx 37cm high* £150-250



381.
Four assorted oil lamp founts, a brass fount with etched moulded cranberry shade and a part lamp base and an etched globular shade (8) £50-100

382.
A pair of small blue biscuit glazed lamps with gilt highlights, spirally fluted cylindrical bowls *approx 15cm high* £70-120



383.
Oil lamp parts:- a blue glass fount, four clear glass founts and two cranberry glass founts (7) £30-70

384.
A cranberry glass hand lamp, *approx 15cm high*, a cranberry glass fount and fluted shade (3) £50-100

385.
An assortment of small oil lamps etc (10). £50-100

386.
A brass wall bracket with a pale blue ribbed oil lamp, fount and shade. £150-250

387.
An assortment of four satin glass lamp shades and a white drawn thread and blue edged shade (5) £70-140

388.
Nine cranberry glass lamp shades £100-150

389.
Three assorted oil lamp shades. £100-200

390.
A set of four pink flushed ribbed glass shades, *approx 14cm diameter*, and a set of nine pink flushed and etched shades, *approx 11cm diameter* (13) £100-150

391.
An assortment of etched moulded lamp shades - various colours (11). £100-200

392.
Three opalescent and coloured glass smoke deflectors and two ribbed glass smoke deflectors (5). £100-200

393.
Assortment of lamp shades. A pair of green etched, cranberry, white opal, clear etc.(14) £100-150

394.
As assortment of lamp shades and smoke deflector (12) £80-160

395.
Various opaline lamp shades - plain and painted (7) £50-100

396.
A cast metal bracket oil lamp with brass fount and etched green edge shade £70-140

397.
A pair of cast polished brass bracket oil lamp holders with winged cherubs, pressed brass smoke deflectors £200-300



398.
A pair of polished brass bracket gas lamps with stylized foliage decoration. £100-200

399.
Two cast brass bracket oil lamp fittings and two brass gas bracket lamp fittings £100-200

400.
A pair of cylindrical brass bracket oil lamp fittings converted to electricity, a brass and iron harp oil lamp and painted cast metal brackets £50-100

401.
Miscellaneous lamp parts and fittings, candle holders, shades etc £100-150

402.
A gilt brass framed shade with smoked glass insert and part of a rise and fall fitting and a blue and floral decorated glass cylindrical shade £50-100

403.
A multi coloured leaded glass and brassed metal hall lantern with rise and fall fitting £50-100

404.
A cast metal oil lamp with brass fount
fluted cranberry glass shade £70-150

405.
A wrought metal rise and fall lamp
fitting, opaline painted glass shade,
another metal candle fitting, two
lanterns etc. £50-100

406.
A pair of cast brass and barley twist
clear glass stemmed wall bracket gas
lamps with white ribbed and pink
edged shades £150-300

407.
A cast metal patent rise and fall lamp
fitting and an ornate cast brass gas
lamp fitting. £50-100

408.
A pair of glass beaded lamp shade frills
and five odd frills, various parts etc.
£40-80

409.
A brass based oil lamp with ruby
flashed fount, etched and pink edged
shade *approx 33cm high* £100-200

Lot 404



410.
A pair of pink glass etched shades,
three others and three framed shades
hung with glass drops £100-200

411.
Lamp parts - three shades, two facet cut
clear glass lamps £40-80

412.
A crimson pottery and brass standard
oil lamp of neo classical design
143cm + lamp £150-300

413.
A magnificent brass telescopic standard
lamp on classical base
155cm (+extra) £300-600

414.
A brass reeded column standard lamp
with undertier *approx. 142cm high*
£100-200

Lot 414



415.
A Victorian brass standard oil lamp
145cm high
£150-300

415A.
A Victorian standard lamp
with brass porcelain
mounted
telescopic
column
140cm high
£300-600

415B.
A black iron standard lamp with copper
burner *137cm high*
£20-40

Lot 415a



RUBY GLASS (cabinet 5)

RUBY GLASS (cabinet 5)

416.
A Bohemian glass tankard with pewter bound lid. £70-150



417.
A cranberry glass oval bodied sugar bowl with floral cast metal holder and a cranberry glass biscuit barrel with metal lid and swing handle (2) £40-80

418.
Three Mary Gregory cranberry jugs, approx 8cm high, a tumbler, approx 9cm high and a vase with metal base approx 16cm high (5) £50-100



419.
A cranberry glass advertising beaker "Compliments of the Season from Green's Noted Stores East Rudham" approx 10cm high £30-60

420.
A cranberry glass advertising jug "Strathallen Special Scotch" approx 15cm high £30-60



421.
A cranberry glass commemorative water jug "To Commemorate the Marriage of the Duke of York with Princess May of Teck July 6th 1893" approx 20cm high £50-100

422.
A cranberry glass ribbed and fluted bodied flower basket with clear "bramble" handle, approx 19cm high, and a pair of specimen vases, approx 15cm high. £25-50

423.
Three cranberry glass powder bowls and lids £40-80



424.
Cranberry glass - pair of specimen vases decorated with fruit; boot; salt cellar; cream jug; decorated posy bowl and a white footed roemer. (a.f) £70-130

425.
Cranberry glass - two sugar casters, three piece condiment set, two vinegar bottles. £40-80

426.
Cranberry glass - four assorted jugs £40-80

427.
A H.M. silver rimmed cranberry glass loving cup with star cut base approx 9cm high £40-80



428.
Two cranberry glass candlesticks with clear glass feet approx 20cm high £40-80

429.
A cranberry glass vase with wavy top and clear feet, approx 17cm high, two decorated ruby glass vases and a ruby flashed "present" jug (4). £40-80



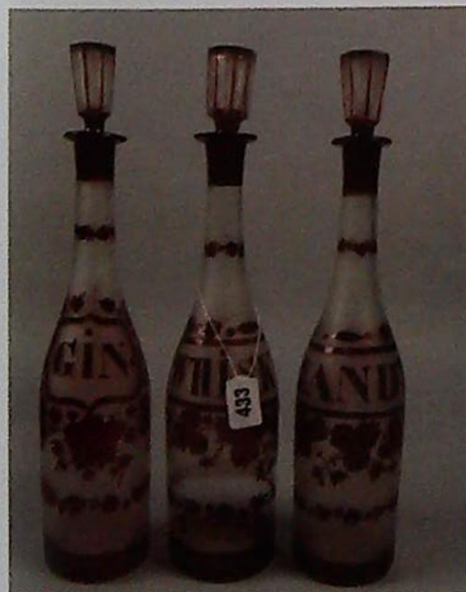
430.
A pair of white decorated cranberry glass claret jugs, approx 28cm high. £70-140

431.
A cranberry glass cylindrical bodied jug decorated with flowers and another bulbous shape jug decorated with gilt and white sways and foliage approx 17cm x 19cm high £50-100



432.
Two cranberry glass vases with clear glass decoration; a carafe; a cut decorated posy bowl; and a ribbed bodied vase (5) - carafe (a/f) £70-150

433.
A set of three Bohemian style decanters with vine decoration, frosted bodies "Gin"; "Whisky"; "Brandy" - Gin rim chipped approx 37cm high £100-200



434.
An EP mounted and ruby glass bodied bee preserve holder by Mappin & Webb £40-80

435.
Cranberry glass:- two carafes and three tumblers (5) £30-60

436.
A red flashed and etched decanter; a ruby and gilded glass bottle; four drips, match striker etc (12) £40-80

437.
Three cranberry bowl and stem glasses, stemmed sugar bowl and two other bowls £30-50

438.
Two cranberry glass jugs approx 14cm & 18cm high £40-60

439.
Two cranberry glass jugs approx 16cm high £40-60

440.
Three cranberry glass cream jugs £60-100

441.
Two cranberry glass posy bowls; a salt cellar; small vase; and a menu holder (5) £60-100

442.
A clear glass decorated trumpet shaped vase, approx 27cm high and another cylindrical vase, approx 18cm high £50-100

(cabinet 4)

443.
A gilt decorated cranberry glass pedestal vase, approx 27cm high, and a floral decorated posy bowl £70-150

444.
A white and gilt decorated cranberry glass biscuit jar and cover approx 24cm high £80-140



445.
A clear glass decorated cranberry glass cheese dish and cover approx 23cm high £100-180



RUBY GLASS (cabinet 5)

446.

A blue, white and gilt decorated cranberry glass cheese dome and stand approx 22cm high £80-150



447.

Three white rimmed cranberry glass bells with ring topped handles approx 33cm high £100-200



448.

Two white rimmed cranberry glass bells with clear glass handles, approx 22cm & 19cm high and a larger cranberry bell with similar handle, approx 27cm high £80-160

449.

A cranberry glass bell with twist design bell with clear handle, approx 34cm high and a smaller similar bell, approx 29cm high £70-150

450.

A cranberry glass claret jug with drum shape body, approx 29cm high and another similar jug, approx 24cm high £30-80

451.

Three cranberry glass claret jugs £40-100



452.

Three cranberry glass claret jugs with ribbed bodies £50-100

453.

A cranberry and clear glass table centre with white metal scrolling tripod base £100-200

454.

A cranberry and clear glass epergne with single trumpet approx 31cm high £100-150



455.

A cranberry and clear glass epergne with central trumpet and three smaller non matching vases approx 44cm high £100-200



456.

A cranberry glass epergne with trumpet centre vase; three barley twist cane holders and three baskets; and two EP based specimen vases etc - a lot. £150-300

457.

A cranberry glass pipe approx 46cm long £40-80



458.

A cranberry glass epergne with frill edge containers approx 57cm high £150-250

Lot 458



459.
A cranberry glass epergne with clear edged trumpets and base - not complete
approx 55cm high £50-100

460.
A pair of pale pink clear glass vases with opalescent frilled tops, clear feet, approx 18cm high and a taller vase with deeper pink and opalescence, approx 30cm high £70-140

461.
A pair of satin pink over white glass vases decorated with flowers and butterflies approx 34cm high £50-100

462.
A pair of satin pink glass ewers with floral decoration, approx 26cm high, and a blue and gilt decorated satin pink glass vase £40-80

463.
Four satin pink glass ewers with floral decoration. and a satin pink glass vase £40-80

464.
A pair of floral decorated pink glass vases, pink over white glass vase etc (6) £40-80

465.
A pink over white frill edged dish, approx 28cm diameter; a smaller pink over white frill edged dish, approx 16cm diameter and a pink over white glass yellow edged epergne base; and a cranberry glass shade (4) £40-80

466.
A tall ruby glass tapering vase on a circular ebonised brass base 160cm £200-400

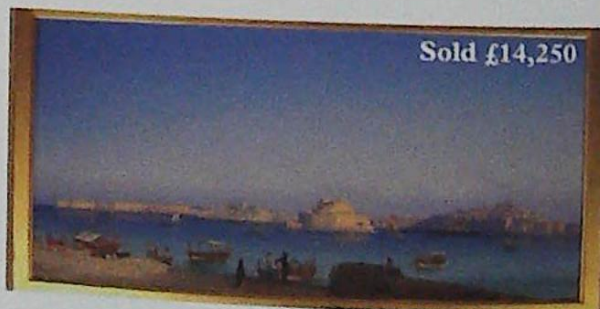
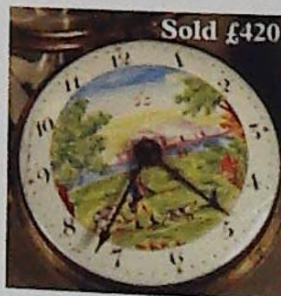
End of Tuesdays Sale

Thinking of Selling?

We are experiencing a healthy demand for decorative antiques with discerning buyers using this market as an alternative form of investment

*For a free Appraisal & Valuation
visit our held every Friday between
9.30am-12noon*

For the best possible price contact us for **FREE**
valuation & advice



Sale commencing 10.30am Wednesday 17th June

500.

A pair of Royal Doulton chine oil lamps with opaque white frilly glass shades with green edging, plain glass chimneys and brass mounts
42cm overall £150-250



501.

A pair of embossed brass column lamps with ruby glass founts and conical opaque shades 44cm (to top of shade) £150-250

502.

A small Eichwield pottery oil lamp with tapering body and brass mounts painted with summer flowers
approx. 22cm
£50-100



503.

A small Eichwield pottery baluster shape oil lamp with brass mounts, the body painted with trailing flowers
19cm £50-100

505.

A 10" Poole pottery plate and a 4" vase (2) £5-15

506.

Royal Crown Derby. A 10.5" cabinet plate and another 9" ditto (2) £20-40

507.

Assorted plate, three piece tea set, pair of brass candlesticks etc. £10-30

508.

Four peices of commemorative china - George V and Queen Mary etc., and ivory and silver plate patent lady's evening purse and a pair of Victorian cranberry glass salts £10-30

509.

J Gregory Nottingham.
An accordion in mahogany case £20-40



510.

Queen Victoria Jubilee commemorative tile teapot stand and two square plates (3) £5-20

511.

Sundry decorative china - two Susie Cooper tureens and covers, six Royal Crown Derby coffee cans, cups and saucers, toby jug, opera glasses, Sadler teapot, copper lustre jug etc.
£10-20

512.

An American world globe, a mouseman cheeseboard and three clay pipes framed as a display £20-40

513.

A plain white Wedgwood foot bath, XIX century copper kettle and trivet and a printed wash bowl - two shelves £20-40

514.

A Victorian relief carved oak coal box £20-40

515.

A Royal Vienna oil lamp with brass mounts and base, hand painted ceramic body, cut glass and acid etched shade
36cm to top of shade £150-250

516.

A small Royal Vienna brass mounted oil lamp with porcelain hand painted body, leaf pattern feet, patterned shade
28cm £100-200

517.

An Art Nouveau chalice shaped brass oil lamp with black pottery plinth, green tinged acid etched shade
48cm (to top of shade) £100-200



518.

A Victorian brass column oil lamp with facet cut clear fount, green touched acid etched shade £20-50

519.

Sundry decorative china to include cottage teapot and butter dish, two wade leaf dishes, lustre jug and goblet etc. £5-20

520.
Lace makers equipment - a quantity of bobbins, pins etc. £10-30

521.
Two XIX century writing boxes, two caddies, a cask etc. (7) £10-40

522.
A XIX century Dresden macaw incised '20X' and a sulphur crested cockatoo, underglaze blue cross sword mark beneath, incised '57A'
28.5cm and 22cm £80-130



523.
XIX century Derby. A baluster jug painted with summer flowers, underglaze crown baton and "D"
25cm high £50-100



524.
A XIX century oriental finely decorated tea caddy with panels of many figures and carved dragon head feet, the interior fitted with two pewter caddies
approx. 14cm high, 20cm wide
£100-200



525.
A pair of XIX century opaque glass lustres with painted decoration, four drops missing 30cm high £50-100

526.
T G Green & Co. Ltd. Cornish kitchenware - a salt container and two kitchen jars, green back stamp, XIX century cheese dish and domed cover; a basin and three plates £30-70

527.
Sundry ornamental items - a turned wooden thimble case and tape measure and pin cushion, finely painted satsuma dish, a French pipe (cased) etc. £30-60

528.
Royal Worcester. A gold Chantilly pattern part tea and dinner service - approx. 65 pieces
£80-150

529.
A collection of various table glasses - sherry, port, whisky tumblers, cake stand, fruit bowls etc. - a large quantity (two shelves) £20-40

530.
Miscellaneous silver plate - tankards, cruet, toast rack, toaster etc. - one shelf
£15-40

531.
Masons "Chartreuse" pattern - three plates, an oblong sandwich plate and a preserve jar and cover; a Masons ginger jar and other decorative china
£30-60

532.
Miscellaneous decorative china - a Masons "Manchu" pattern fruit bowl, cabinet plates, part coffee service etc. - one shelf

533.
Mappin & Webb. A Mappin plate "A" eight place setting canteen of cutlery
£70-140

534.
Miscellaneous bygones - a XIX century tea caddy, binoculars, inkwell, ivory fan etc. £15-30

535.
A XIX century copper kettle, rectangular brass trivet and a brass crumb tray and brush £15-30

536.
John Maddoch & Sons. An "Indian Tree" pattern part dinner service - approx. 64 pieces £50-100

537.
Wedgwood "Woodland Rose" R4596 - a part dinner service (23 pieces)
£40-80

538.
Susie Cooper Collectors Club. A No. 1 plaque titled "Panorama" £10-20

539.
A collection of brass ornaments - two XIX century copper cans and lids, brass vases, platters, chestnut roaster, hand bell etc. (22) £30-60

540.
Three XIX century copper bed warmers with turned handles £20-40

541.
A XIX century polished copper tea urn
and a Benares brass jardiniere £20-40

542.
Two XIX century copper kettles and a
brass ditto with an amber glass handle
£30-60

543.
Royal Worcester. A "Regency" pattern
part tea service, four crimson ground
coffee cans with cream jug and sugar
basin and various other teaware £30-60

544.
Royal Worcester "Dunrobin" pattern - a
part service (51 pieces)
£40-80

545.
Royal Crown Derby. A "Derby
Border" pattern part service (21 pieces)
£40-80

546.
Two pairs of XIX century brass
candlesticks, a pair of taper sticks, a
chamber candlestick and two others
£10-20

547.
Royal Doulton "Bunnykins" collection
including; mug, beaker, tea set, three
bowls, clock, egg cup, money boxes
etc. - 23 pieces
£70-120

548.
Keele Street Pottery Co Ltd "thatched
cottage" three piece tea service, four
commemorative mugs; WWI, George
VI and George V Jubilee mug and three
Goebel figures
£20-40

549.
Royal Doulton. A Fairfax pattern part
tea service and other decorative china
£20-50

550.
A Caithness paperweight, another,
copper fish mould, ships type clock,
books etc.
£10-30

551.
Eight pottery Victorian jelly moulds
£40-90

552.
Two plum bobs, three glass blow
lamps, two porcelain pipes etc.
£10-20

553.
A qty. of various household china, a
silver mounted steeple scent bottle, a
Mason's jug etc. - one shelf
£20-40

554.
Sundry decorative china; a Wade
tortoise, a Mason's bowl etc.
£10-30

555.
Poole. A brown and cream fifteen piece
coffee service, Carltonware sunflower
dish and another, Wedgwood jar and
cover, plated napkin rings etc.
£15-40

556.
Martinware. A conical bowl on three
lobed feet, incised RW Martin London
6-1876 13cm high, 13.5cm diameter
£30-60



557.
An oriental parquetry table cabinet
fitted with small drawers and a
cupboard £20-40

558.
Sundry ornamental china, glass, gilt
mirror, plated cutlery etc. £10-20

559.
Decorative china, teaware, Torquay
pottery, framed pictures and prints,
book trough, cutlery, a clock under a
glass dome, glassware to include
Caithness paperweight etc, also a boxed
set of Britains Bandsmen
£15-40

560.
Mobo scamper along dog and tortoise
and a Boy's Brigade brass buckle
£15-30

UNUSUAL AND NOVELTY WALKING STICKS

UNUSUAL AND NOVELTY WALKING STICKS

561.
A XIX century leather covered sword stick and a hickory ditto
£40-80

562.
Two twist sticks, a knobby ditto and another with a knurled head and notches (4) £20-40

563.
A XIX century stick gun with a horn handle £70-140

564.
A XIX century stick the top which unscrews to provide quill pen and ink container £25-50



565.
A hickory stick relief carved by a prisoner of war "Andenken 98 POWC", also carved with an oak leaf and acorns
£20-40

566.
A XIX century walking stick extending to provide a horse measure - stag horn handle £80-130



567.
A XIX century walking stick, the top unscrewing to provide a tobacco pipe
£50-100

568.
A walking cane with metal mount, screw off top for flask etc., embossed British Legion and another silver mounted with a flask type compartment and a dagger (2) £50-100



569.
An Indian sword stick, another similar and a carved ebony native stick (3)
£20-40

570.
A twisted stick with silver mount and ivory hand and ball knob and two walking canes (3)
£30-50

571.
A three section horn walking stick and another with a metal spade end thistle spud (2) £20-40

572.
Parasol and four various sticks (5)
£10-20

573.
A large copper and brass log container with cast brass handles and feet £30-50

574.
Seven old trunks/suitcases - wooden, canvas and leather £20-40

575.
A leather suitcase with Revelation brass locks £10-30

576.
A three fold scrap screen £20-40

577.
A collection of walking sticks, thumb stick, umbrellas etc. £10-20

578.
A white painted cast iron Victorian style stick stand £30-60

CLOCKS & BAROMETERS

584.
A XIX century mahogany five dial banjo barometer £80-150
585.
A single fusee clock movement, the white dial "James Milne & Son Edinburgh" £30-60
586.
A XIX century rosewood mother of pearl inlaid drop dial wall clock 56cm £70-130
587.
An Edwardian aneroid barometer and thermometer in carved oak case £30-60
588.
Admiral Fitzroy's barometer - a Victorian oak cased mercury column barometer with paper dial, also "the atmosphere" and a thermometer 115cm high £200-400

589.
An aneroid barometer and thermometer in a relief carved oak case 92cm £50-100
590.
An Edwardian steel dial wall clock in a stained hardwood case with revealed pendulum 72cm £25-50
591.
An XVIII century and later longcase clock, the arched brass dial signed *Evan Jenkins Ynispe Nlwch*, silvered chapter ring, subsidiary seconds ring and date aperture, applied cast brass spandrels with tempus fugit motif to the arch, engraved dial centre with landscape and cottage, the mahogany case with a swan neck pedimented hood, the trunk enclosed by a long arched door 210cm high £500-1000

592.
A XIX century Vienna double weight regulator wall clock with enamel dial, the burr walnut case with architectural fluted corinthian columns flanking the door and with a stepped ornamental top £300-600
593.
An XVIII century and later oak and mahogany banded longcase clock, the square 9" brass and silvered dial contained in a plain hood, eight day striking movement £200-400
594.
An Edwardian grandmother clock with brass and silvered dial and chiming movement £100-200



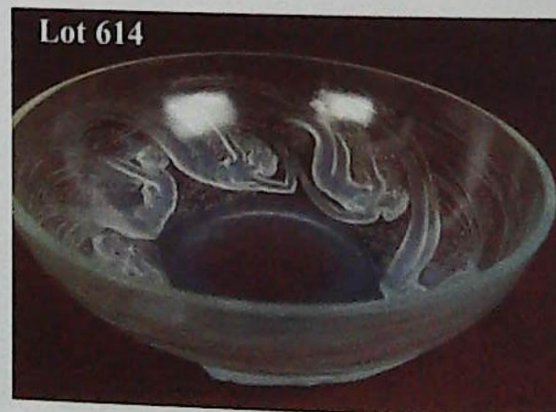
DOULTON, BESWICK, MOORCROFT ETC.

DOULTON, BESWICK,
MOORCROFT ETC.

600.
Five small Doulton character jugs including two tinies £20-40
601.
Moorcroft; three 11.5cm dishes £20-40
602.
Moorcroft "Symphony" vase and cover No.28 approx 19cm £200-300
603.
Moorcroft "Snakeshead" vase 1996 approx 14cm £80-120
604.
Moorcroft vase "Rough Hawkes beard" 1995 approx 16cms £40-60
605.
Moorcroft. An Anemone pattern powder bowl and cover, impressed mark (twice) and original paper label beneath and to lid 11cm diameter £100-200

606.
Beswick. Five models of garden birds and two others £15-30
607.
Royal Doulton HN2254. "Shore Leave" £30-60
608.
Royal Doulton; HN2309 "Buttercup" and HN2318 "Grace" £50-100
609.
A pair of XIX century Staffordshire zebra ornaments on bocage strewn naturalistically painted oval bases 17cm high £200-400
610.
Royal Copenhagen No.4027; a nude girl resting on a rock approx. 14cm £50-100

611.
A XIX century Continental figure of a lady with spinning wheel holding a prayer book underglaze blue sword mark, impressed No. 844 approx. 15.5cm high £50-100
612.
A Parian Lincoln Imp and an overlay glass vase £10-25
613.
Twenty pieces of crested china £40-80
614.
Rene Lalique. A 1930's "Ondines" pattern fruit bowl moulded in relief with six sinuous white spirits, signed Lalique and impressed 'Lalique France' 20.5cm diameter £500-700
615.
A Lowestoft baluster side handled chocolate pot and cover decorated with blue floral sprigs approx. 10cm high £30-60



SILVER, PLATE & JEWELLERY

628.
Two mirror topped silver plated wedding cake stands, a circular plated leaf decorated galleried tray and an oval scallop edged plated serving tray (4) £20-40
629.
A cast white metal table centre with stag and palm tree dated 1864, *approx 40cm high*, and a plated tea service £80-120
630.
A collection of hat pins on stands and miscellaneous costume jewellery £30-60
631.
A pair of pierced hallmarked sugar bows, small silver faced prayer book, bookmark in the form of trowel and other small silver items £30-50
632.
A silver charm bracelet, four bangles etc. £20-40
633.
A 60" 9 carat gold guard chain £100-150
634.
A 9 carat gold ribbed scroll and circular bracelet and a chain bracelet with seven charms (2) £80-140
635.
A fine twisted 9 carat neck chain with an engraved locket, 22 carat wedding ring and a 9 carat plain gold signet ring (3) £50-90
636.
A three stone 18 carat gold crossover dress ring, a signet ring set with a facet cut blue stone and an 18 carat gold ring set with a single diamond (3) £60-90
637.
A five stone diamond ring in 18 carat gold £120-180
638.
A large facet cut amethyst dress ring claw set in 9 carat yellow gold £50-100
639.
A pair of pearl and garnet earrings £80-150
640.
A 9 carat gold charm bracelet with 19 charms £200-300
641.
A scalloped flat link 9ct gold necklace £200-300
642.
A five stone diamond dress ring set in 18 carat yellow gold £80-160
643.
A Rotary lady's cocktail watch in the form of a bracelet, the watch face enclosed with a spring cover set with diamantes and blue stones, in rolled gold £150-250
644.
A half hoop diamond and ruby ring set in 18 carat yellow gold £80-120
650.
Sheffield hallmark four footed two handled sugar bowl and cream jug (2) £30-50
651.
A fitted Art Deco oak jewellery box with applied decorative silver mounts *15cm square* £30-60
652.
Tiffany & Co. A rectangular sterling silver cigarette box engraved with dedication dated 1947 £60-100
653.
A square engine turned ashtray, an engraved pocket cigarette case, a plated photo frame, two plated spoons, cased set of fish eaters and a silver shell shape butter dish £30-60
654.
A pair of silver napkin rings decorated with birds amid foliage and a silver backed hand mirror (3) £10-30
655.
Two mother of pearl and silver pocket knives, a hallmarked page marker and a plated timple (4) £20-40
656.
A Georgian silver meat skewer, London 1764 £70-110
657.
A cut glass powder bowl with an engraved hallmark silver top and a fluted globular scent bottle with silver top (2) £30-60
658.
A Birmingham hallmark helmet shaped cream jug with scroll handle, gadrooned border on a shaped foot, 1909 £50-100



659.
A pair of XIX century London hallmark tablespoons by TB £40-60

660.
A 14carat Swiss lady's open face fob watch in engraved case with blue enamel numerals £100-150

661.
A rare and unusual pocket watch signed by Ferdinand Berthoud A Paris - "restored by Robin", in an engine turned silver case, the cylinder escapement with 30 teeth, 12 second sweep hand and equation of time dial; quarter repeater

5.7cm diameter externally overall
(has been working in saleroom)
£600-800

We are indebted to Mr Roy Ellis of Timepiece Repairs for examining and describing this watch - further information may be obtained from him on Lincoln 01522 525831/881790



Lot 661



Lot 661 detail

662.
A set of four oval Birmingham hallmark oval ashtrays and two larger square ditto £20-40

663.
A silver mounted presentation trophy on an oak plaque "HMS Exeter 1935 America & West Indies Squadron" supporting a silver oar.
Birmingham hallmark £30-50



667.
The Goldsmith & Silversmith Co Ltd.
A set of four wine tasters, London hallmark 5cm diameter bowl; a Chester hallmark owl menu holder and a small silver daschund (3) £30-60

668.
A Birmingham hallmark cream jug and matching two handled sugar basin £30-50

669.
A Birmingham hallmark Georgian design three footed sauce boat with scroll handle £30-60

670.
An enamel, silver and diamond set jewel (brooch), in the form of a globe surmounted by a coronet and lion banded with small diamonds and set in a laurel wreath, crossed gold canon beneath; original box
Carrington & Co London £70-130

671.
Two tiny ivory carvings - one of a lion(?) mounted in seeds £10-20

672.
A Sheffield hallmark pie crust edge three footed salver 21cm diameter, approx. 13ozs £80-150

664.
A Birmingham hallmark bright cut engraved silver gilt pocket cigarette case and a Birmingham vesta case £20-40

665.
A Birmingham hallmark baluster sugar dredger with domed pierced cover and a small plated tankard and plated spoon £20-40

666.
A Birmingham hallmark and blue enamel case travelling watch with Swiss movement, the front with a silver coronet 4.5cm square £30-60



Lot 670

673.
Walker & Hall Sheffield 1913
A very good quality heavy silver gilt four piece tea service with cast borders, the handles on serpent brackets
approx. 86ozs
£1400-2200



674.
A high quality late XIX/early XX century oval EPNS two handled tea tray with pierced scroll border and engraved centre *61cm x 43cm* £100-200
675.
A pair of early XIX century sugar tongs by PB&B £15-30
676.
Two pairs of Birmingham hallmark candlesticks and an inkwell £80-150
677.
Fiddle pattern flatware - four tablespoons, three dessert spoons and four various forks, mainly London hallmark £40-60
678.
A set of six bean end coffee spoons with shell bowls Birmingham hallmark, a silver mounted salt cellar, four salt spoons and a teaspoon £20-35
679.
Four hallmarked decanter labels, a pair of plated ditto and three matching ditto £20-40
680.
A mother of pearl silver bladed pen knife, two hallmarked napkin rings, a mustard pot, two glass salts with coloured enamel tops, silver butter knife etc. £20-35
681.
A cased set of six reproduction Georgian spoons and another set of six antique silver spoons £20-40
682.
A Lincoln Ltd. Ed. silver gilt goblet 298/700 produced for the Seventh Centenary of Lincoln Cathedral, (with certificate) £50-100

683.
An early XIX century Continental enamel and gilt clock, the fusee movement signed *Franz Jurdan a Vienne*, the case painted with classical figures of lovers in gardens, the interior of the case with Continental buildings above a lake in the foreground, the oval clock movement supported on an enamel and gilded figure playing a mandolin and surmounted by a seated enamel figure in traditional costume *18cm high* £2000-3000



POST & CIGARETTE CARDS, COLLECTABLES ETC.

POST & CIGARETTE CARDS,
COLLECTABLES ETC.

684.
A collection of early XIX century postcards £30-60
685.
617 Squadron autographs and other RAF memorabilia, two pages from an autograph book signed Johnny Fanguard DSO DFC, Willy Tait DSO 4 bars, Mitch Martin, Ernest Weaver DFC, Bob Barry DFC, Bernard Kent DFC; also photograph Malta 1947, print Lancaster etc. £40-80
686.
Two postcard albums containing approx. 360 black & white and coloured XX century cards £50-100
687.
250 GB postcards £50-100
688.
Cigarette cards; silk, Gallagher, Churchman etc. and a qty. of loose - one album, also an album of greetings and postcards £30-70
689.
Two Will's cigarette card albums and contents; early XX century coloured cards - Butterflies, Dogs, Military, Birds, Motorcycling etc. £20-40
690.
Four cigarette card albums and contents £20-40
691.
Cigarette cards; six Park Drive Albums with Gallaher Ltd. champions of stage and screen, ditto "stairs", aircraft, shots from films, dogs £20-50
692.
Cigarette cards; seven albums - Players; Fresh Water Fish, Film Stars, Modern Navy Craft, Hint on Association Football, Coronation George VI & Queen Elizabeth, Wills; Life in the Royal Navy, Motor cars £20-40

693.
The Gem Cigarette Card Album; Players; Cricketers 1934, Ogden's Children of the Nations, Foreign Birds, Poultry, Leaders of Men, Trainers and Owners, Colours, Alphabet, Cavander's Homeland Series hard coloured, also another small album - Gallagher Ltd; Dogs, Trains of the World, The Navy £30-60
694.
Fourteen sets of loose cards; Gallagher Ltd, Garden Flowers, Famous Jockeys, Film Partners, British Birds etc. £5-20
697.
Three Rupert Annuals 1953/54; generally poor, taped spines, some tears etc £10-30
698.
Approx. 50 football programmes from the 1970s £20-40
699.
Houdini's Big little Book of Magic circa 1927
700.
Tokens & coins; Clarke Norwich, Coffee Tavern Kensington Labery Entwistle, Winchester, XIX century and later; two ten shilling notes, coins and stamps £20-40
701.
A cancelled Craven five pound bank note 1835 and another 1836 £40-70
702.
A coin album containing pre decimal silver and bronze coins £5-25
703.
Military memorabilia of Mjr. L J Northam S.LAN. R; King George V Medal with Palestine bar, shoulder pips, buttons, uniform patches/parachute and a black and white photograph of Mjr. Northam £30-60

704.
A French 1872 bayonet £30-60
705.
A sword fish bill 59cm £20-40
706.
A travelling salesman's sample of XIX century buttons by CHC & Co. London £20-40
707.
A brass and black enamel metal microscope £10-20
708.
The Angle Lamp Co. An unusual American patented brass hanging oil lamp with horizontal double burners £150-250
709.
A Tiffany style light shade set with mother of pearl shells, coloured glass and rock form panels in a lead frame - purchased at auction by the owner's father around 1950 42cm diameter, 24cm deep £250-350



PICTURES, PRINTS, MIRRORS & MAPS

710.
After Saxton
A copy of Saxton's map of Yorkshire, British Museum Maps, framed and glazed *61cm x 87cm*; a framed map of Cumberland and Westmoreland published by Hogg from an atlas *20cm x 16.5cm* and a framed book plate of Derbyshire with pictorial vignettes *25.5cm x 20cm* (3) £20-50
711.
After Robert Morden
An XVIII century hand coloured map of Leicestershire *36cm x 42cm* and a new map of Nottinghamshire from a XIX century atlas *20cm x 15cm* (2) £15-40
712.
Two XIX century coloured prints in matching contemporary plaster gilt frames - seascape and "Cochen on the Moselle" (2) £50-100
713.
A XIX century coloured engraving "The Thames" indexed with famous buildings etc. labelled verso The Parker Gallery; an embroidered panel in Chinese taste and a framed aerial photograph of London (3) £50-100
714.
A Priest 1844
A blood hound and terrier oil on canvas and a XIX century oil on canvas - two border collies (2)
715.
P Rex Downing
Oil on canvas - two griffons and oil on artists board - a Yorkshire Terrier (2) £30-70
716.
A pair of oval silhouettes in ebonised frames and two prints - a pointer and redstarts £20-40
717.
A reproduction fret mirror £20-40
718.
Early XIX century English Shoreham Sussex, dated verso 1906 Oil on canvas *19cm x 29cm* and F Willows - a watercolour drawing - village scene *27cm x 36cm* (2) £20-40
719.
A XIX century sampler worked by Mary Ann Hunter 1848 *approx. 51cm x 52cm* £70-100
720.
After Cecil Aldin
A pair of chromo-lithographs "The Game of Chess" and "The Game of Cards" c.1901 *39cm x 63cm* £200-400
721.
A XIX century auction poster advertising "Wheelwrights Stuff" at Long Sutton October 1858 and a print of Mrs Northam's antique shop and house, 15 High Street, Long Sutton £10-30
722.
A Victorian cased portrait of a lady with two children, ornate domed gilt mount and rosewood outer case *59cm x 48cm overall*; also various coloured prints £10-50
723.
Terrance Cuneo. A coloured print pub. 1976 Blaze Fine Art Ltd - "The Flying Scotsman" limited edition 700/850, signed by Cuneo *image size 57cm x 75.5cm* £60-120
724.
A Victorian coloured lithograph of a young girl with basket of flowers in a plaster gilt oval frame *overall 108cm x 95cm* £20-50
725.
A Victorian coloured lithograph from the Pears annual 1892 - "Christmas Lunch" in a contemporary birds eye maple moulded frame £30-60

Lot 720



PICTURES, PRINTS, MIRRORS & MAPS

726.
Seven various Victorian coloured framed lithographs - Pears and similar £50-100

727.
A Victorian plaster gilt over mantel mirror
138cm x 81cm £75-150

728.
Three 19th century chrysoleums and a carved wall bracket £10-40

729.
A pair of oval gilt floral decorated frames, a Victorian lithograph in a maple frame etc. (4) £20-60

730.
A large quantity of frames, pictures and prints £20-40

731.
A Chippendale style mahogany fret mirror 87cm x 50.5cm and a mahogany frame bevel edge robing mirror (2) £50-100

732.
A light mahogany antique style fret mirror 64cm x 43cm and another similar in dark mahogany 68cm x 38cm (2) £50-100

733.
XIX century English School
Oil on canvas
two children fishing in a pond with harvest field in the distance, indistinctly signed 76cm x 126cm £50-100

734.
A George III carved giltwood Chippendale design wall mirror, the foliate scroll flowerhead and openwork frame surmounted by a pagoda style canopy in which a Chinese bearded man stands holding a staff and vase; original Vauxhall bevel edge mirror plate 126cm high, 58cm wide £2000-4000

735.
E Verboeckhoven
Sheep and lambs in a winter landscape oil on canvas signed lower left 46cm x 63cm £600-900

736.
XIX century English School
a river landscape with arched stone bridge and figure oil on canvas 75cm x 126cm £75-150

737.
A half model of a clinker built boat, framed as a picture
XIX century 68cm x 33cm - the boat approx. 53cm x 7cm £150-250

738.
After J W Carmichael
The Hull Newcastle paddle steamer in heavy seas with other shipping in the distance oil on canvas - unsigned, partial old label verso 52cm x 85cm £600-1200

Lot 734 detail



Lot 734



Lot 735



Lot 737



739.
A XIX century pictorial woolwork sampler by Hannah Thomas aged 12, centred with a verse 44cm x 39cm £70-120

740.
XIX century English School
The Bay of Naples, lake scene and figure fishing oils on card (3)
30cm x 43cm; 23cm x 33cm and 14cm x 11cm £40-80

741.
A pair of oval Victorian portraits in ornate plaster gilt frames
46cm x 38cm overall £30-60

742.
David Bates 1908 signed, one dated "A Boggy Reach - Dolwydalen" and "By the School House, Breadons Norton" watercolour drawings, a pair, contemporary moulded plaster gilt frames 26cm x 36cm £1000-2000

743.
A Victorian painted tin frame with oval picture of Continental winter village scene 40cm x 30cm overall and XIX century Continental school - two figures with a child, oil on canvas 19cm x 24cm (2) £40-80

744.
A pair of mahogany frame domed painted bevel edge wall mirrors, one with a wading bird amid bullrushes, the other with finches amid blackberries 140cm wide, 122cm high £300-500

745.
After Miles Birkett Foster
A Victorian watercolour drawing of children with yachts at a pond set in extensive country landscape, and a similar print unframed (2) the watercolour 26cm x 36.5cm £70-150

746.
Three watercolour drawings:- M Simmons 1980 - a house and gardens 38cm x 48cm; F Willows lakeland scene with stone bridge 26.5cm x 36.5cm and F Willows - English landscape with village 26.5cm x 36.5cm (3) £10-20

747.
Various prints:- after Wallace, Hester - Wellingborough School black and white engraving; after Macenzie - gate of Christchurch; Market Rasen; still life study of flowers; another modern print of flowers (5) £20-40

748.
Two French fashion prints, pair of Continental lake scenes, Lincoln Cathedral and fourteen others £10-30

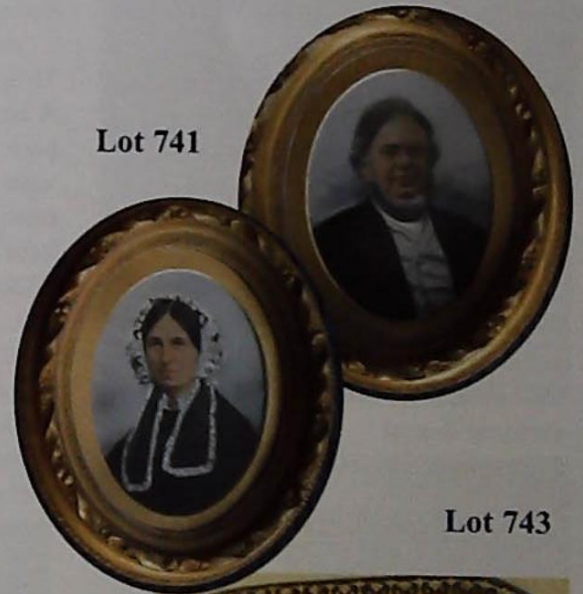
Lot 738



Lot 745



Lot 741



Lot 743



FURNITURE

FURNITURE

750.

An Art Deco mahogany china display cabinet with a raised shaped back, two bevel glazed doors, boxwood and ebony tulip pattern inlay on cabriole supports

137cm wide £300-500

751.

A XIX century mahogany drop leaf pembroke style occasional table fitted with a single frieze drawer on ring turned taper supports

86cm x 109cm £70-140

754.

An early XIX century oak chest of four long drawers with turned knobs and diamond ivory escutcheons

107cm wide £50-100

755.

A Victorian burr walnut cased upright piano by Wm G. Pain & Compy. London, the case with fretted panels backed with red silk - *dilapidated*

£50-100

756.

Maple & Co Ltd. An Edwardian mahogany and chevron inlaid marble top and marble back wash stand of neo-classical design

122cm wide £80-160

757.

A pair of rosewood open wall shelves with pierced fret carved backs on spirally fluted columns and with inset mirror panels

118cm wide £70-140

758.

A Victorian mahogany Duchess dressing table, the oval mirror on carved supports with two banks of three trinket drawers and a central glove compartment, raised on carved cabriole legs

117cm wide £120-180

759.

A Victorian ebonised oak breakfront open bookcase

183cm wide £100-150

760.

A Victorian mahogany wall display shelf and cabinet enclosed by panelled sliding doors

82cm wide £100-200

761.

A large late Victorian walnut mirror back sideboard of architectural design with a stepped cornice, protruding canopy on taper column supports, the base fitted with cupboards and drawers

182cm wide £150-300

762.

A magnificent Victorian figured mahogany mirror back sideboard, the mirror surmounted by a carved cartouche with fruiting vine and foliage, the base with two domed

fronted cupboards with fitted interiors, joined by a cellerette cupboard beneath

239cm wide £1200-1700

763.

An XVIII century and later Chippendale design walnut sideboard, the top quarter veneered into four panels, each with herringbone banding, fitted with three drawers and a cupboard enclosed by dummy drawers, raised on carved cabriole legs

terminating in ball and claw feet

163cm wide, 63.5cm deep £300-600

764.

A XIX century figured mahogany chiffonier, the raised back with a carved fleur-de-lys style design, the display shelf on turned columns, the base enclosed by panelled arched doors

110cm wide £200-400

765.

A XIX century figured mahogany chiffonier, the shaped back with a narrow display shelf on tapering pillar supports, the base enclosed by a pair of glazed arched doors beneath one long drawer

107cm wide £200-300

766.

A Victorian figured mahogany mirror back two door sideboard, the base fitted with two concave drawers above arched fielded panel doors

150cm wide £200-400

Lot 762



Lot 764



Lot 766



767.
A XIX century mahogany bow front chest of two short and three long drawers on splay bracket feet
103cm wide £200-400

768.
An early XIX century rosewood chiffonier with raised display shelf, mirror back, the base enclosed by two doors lined with pleated fabric
120cm wide £200-400

769.
An Edwardian mahogany satinwood banded pedestal display cabinet glazed on four sides and standing on taper supports *approx. 38cm square*
£150-250

770.
A Victorian oak three tier buffet with a raised back centred with a carved shield, the tiers with wide cross bands on carved column supports, original castors *119cm wide, 57cm deep*
£400-600

771.
A XIX century mahogany extending dining table on taper fluted supports with two leaves
183cm x 118cm £200-400

772.
A matched set of seven XIX century mahogany bar back dining chairs - six singles and one carver with drop in dralon upholstered seats
£150-300

773.
A Victorian walnut four tier corner what- not with turned and spirally fluted supports, graduated shaped tiers on turned legs £100-150

774.
A Victorian burr walnut three tier what-not, the serpentine tiers separated by barley twist columns and scroll supports with fretted frieze
92cm wide £300-450

775.
A Victorian burr walnut marquetry inlaid four tier what- not with fretted carved frieze, the top tier set with an oval mirror, the shelves separated by fluted turned supports
78cm wide £250-400

776.
A XIX century oak dresser with a moulded and carved cornice above three open shelves, the base fitted with drawers and cupboards
164cm wide, 220cm high £150-300

777.
An early XIX century mahogany breakfast table on a turned pedestal with quadruple splay legs and brass claw castors *122cm x 135.5cm*
£300-500

778.
A Victorian burr walnut serpentine shaped chiffonier with raised display shelf, mirror over, the base with two doors and open shelves to each side
121cm wide £300-500



FURNITURE

779.
A Victorian rosewood what-not with fret carved back, central drawer separated by serpentine and turned columns 51cm wide £300-500

780.
A Victorian mahogany console table raised on bold cabriole front supports joined by a shaped undertier 121cm wide £200-400



781.
A Victorian mahogany bow front chest of two short and two long drawers on turned feet 93cm wide £100-200

782.
A George III small mahogany chest of four drawers with a brushing slide, raised on shaped bracket feet 73cm wide £600-1000



783.
A Victorian wash stand, the shaped marble top on bold cabriole supports joined by an undertier £100-180

784.
A carved three tier burr walnut Victorian buffet with an elaborate fret back, the tiers separated by shaped fret supports on carved scroll feet 140cm wide £300-600



785.
A Victorian figured mahogany Duchess dressing table, the upper section with an oval mirror on carved scroll supports with two banks of three small drawers and a central cushion front long drawer, raised on carved cabriole supports joined by a shaped undertier 120cm wide £200-350

786.
A late Victorian walnut davenport desk 56cm wide £100-200

787.
An oval burr walnut loo table raised on a bulbous flat sided pedestal with quadruple cabriole supports 136cm x 105cm £200-400

788.
A XIX century Gothic style hall table fitted with two panel frieze drawers, the panelling repeated on the reverse, raised on turned supports with corinthian capitals joined by a wavy stretcher 105cm wide, 69cm deep £300-600



Lot 788

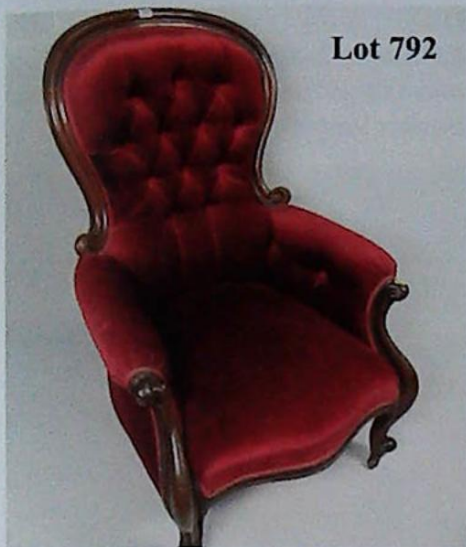
789.
A serpentine sided mahogany specimen table on shaped legs joined by an undertier £70-150

790.
A Victorian burr walnut side cabinet, the upper section with two display shelves separated by double spirally fluted columns and with fret carved backs, the base enclosed by a pair of plain glazed doors and flanked by further columns 92cm wide, 36cm deep £400-650



791.
A Victorian mahogany frame open armchair raised on turned fluted supports upholstered in red dralon £150-250

792.
A Victorian mahogany frame button back Gentleman's armchair raised on cabriole front supports £200-300



Lot 792

793.
A late Victorian open armchair with a pierced carved splat beneath a serpentine top rail, upholstered in green velour £30-60

794.
A Victorian mahogany frame open arm settee with a serpentine shaped back, raised on cabriole legs upholstered in pink dralon £200-400



795.
A Victorian carved walnut frame cabriole leg open armchair upholstered in pink dralon £250-400

796.
A Victorian burr walnut games-cum-work table, the quarter veneered fold over top providing back gammon and chess boards, the drawer with fitted compartments above a sliding silk box, raised on column turned supports with cabriole legs 55cm x 41cm £300-500



Lot 795



Lot 796

797.
A XIX century ash and elm high back Windsor chair £80-130

798.
A XIX century ash and elm windsor chair £70-120

799.
A Victorian oval burr walnut occasional table with marquetry inlay, raised on reeded carved columns with cabriole supports 109cm x 65cm £150-250

800.
A Victorian open armchair upholstered in crimson dralon raised on turned front supports £100-200

801.
A XIX century tilt top pedestal wine table £70-120

802.
A child's American rocking chair £100-200



Lot 803

803.
A Victorian dog cart, two old paper labels "G & J L Ltd London" £200-300

804.
A Victorian carved walnut frame cabriole leg open armchair upholstered in pink dralon £150-300

805.
A XIX century beech and elm stickback child's armchair £80-140

806.
A Victorian mahogany wine table on bobbin turned column with oval top 52cm x 38.5cm £70-120

807.
An exceptionally small George III mahogany fall front bureau with a fitted interior, cock beaded oak lined drawers raised on shaped bracket feet 76cm wide, 45cm deep, 95cm high £800-1200



FURNITURE

808.
A XIX century mahogany three tier dumb waiter on turned column with triple cabriole supports
53cm diameter, 98cm high
£300-600



809.
A Victorian burr walnut serpentine sided marquetry inlaid side table, the quarter veneered top 106cm x 58cm, raised on carved columns with scroll feet £250-400



810.
A Victorian mahogany circular music stool with rising top on carved cabriole base £50-100

811.
A Victorian mahogany shop haberdashery display cabinet by *O C Hawkes Limited Birmingham*, fitted with three sliding display shelves enclosed by a glazed door
75.5cm high, 44cm wide £120-180



812.
A Victorian mahogany clothes rail, the cupboard base fitted with a panel drawer £30-60

813.
Two plant stands - one with a fluted column, the second with a spirally carved column
117cm and 112cm high £10-40

814.
Two Victorian cabriole leg spoonback dining chairs £40-80

815.
An early Victorian rosewood wine table, the circular 40cm diameter top with a plain gallery, raised on a baluster fluted column with platform base and scroll feet £150-300

816.
A XIX century burr walnut Davenport desk boxwood and ebony strung with maple veneer interior fitted with four drawers 53cm wide £500-1000

817.
A Victorian burr walnut conical workbox with a fitted interior on carved cabriole supports £200-300



818.
A Victorian burr walnut and marquetry inlaid loo table, the quarter veneered top 115cm x 87cm on a quadruple column base with four carved feet £200-400



819.
A Victorian burr walnut profusely carved pedestal wine table
the top 51cm diameter £300-500

825.
A dome top cabin trunk, an old leather suitcase, oriental brass top table, fire screen and Singer sewing machine £10-20

826.
A Victorian pine mule chest containing a quantity of hand tools £30-50

827.
A matching set of mahogany occasional table, one large and four small; also three reproduction pedestal wine tables £40-80

828.
A shaped gilt frame mirror, two solid oak cabinet made bar stools, cane armchair, mahogany finish blanket box and rectangular foot stool £10-40

829.
An early XIX century pine two drawer side table £40-80

830.
A Victorian three piece kneehole mahogany desk - *distressed* £50-100

831.
A quantity of tools, three jerry cans £10-20

832.
A late Victorian oak pedestal drop front coal compodium £20-40

833.
Four wingback armchairs - two Parkemoll in matching fabric, two require re-upholstering £100-150

834.
A Corby 4400 trouser press £15-35

835.
A walnut double wardrobe, gilt frame robing mirror, open bookcase and leather top desk £10-20

836.
A Victorian drop end settee £30-60

837.
An oak dining suite, nest of coffee tables, pedestal chest of drawers £20-40

838.
An Edwardian oak revolving bookcase, Edwardian oak window table and hanging open bookshelves £20-40

839.
A XIX century mahogany chest of two short and three long drawers with lion mask handles £50-100

840.
A Victorian cast iron base pub table £20-40

841.
A Victorian painted pine bookcase enclosed by glazed doors and an oak cupboard base £40-80

842.
Three open pine wall shelves and a chest of two short and two long drawers £10-20

843.
A tradesman's cycle with basket £100-150

844.
Three Edwardian carved oak picture frames, quantity of canes, umbrellas and walking sticks £10-20

845.
A painted three tier trolley, pedestal cupboard and a plant stand £20-40

846.
A walnut finish china display cabinet, shaped window table, cane work basket, two tier stand, ebonised plant stand and an oak plant stand £10-20

847.
Sundry chairs and other furnishings £20-40

848.
A Victorian painted pine chest of two short and three long drawers £10-20

849.
Two leather pouffes and another £20-40



850.
A Zanussi small size front loading washing machine

851.
A Canon Cambridge gas cooker

852.
A Fridgidaire refrigerator

864.
A draw leaf oak table and a bergere side chair £10-20

865.
Two Edwardian oak adjustable armchairs, a lozenge shape wall mirror, gilt ditto, frameless ditto etc. £10-20

866.
An Edwardian barley twist leg oak occasional table, XIX century stickback kitchen chair, milking stool, hand sewing machine and a quantity of china and bric-a-brac £10-20

867.
A large quantity of framed modern prints - aircraft and related subjects £20-40

FURNITURE

868.
A XIX century Governess cart
£300-450



876.
A Victorian walnut pedestal bedside
cupboard £50-80

877.
A XIX century stripped pine wash
stand £20-40

878.
An Edwardian mahogany three tier
folding cake stand £30-50

879.
A Victorian piano stool with rising top
£70-120

880.
A reproduction mahogany open
bookcase by Spokeshave of Stickney,
Boston with cupboard base, eight
adjustable shelves on bracket feet
(Purchased 2008 for approx £980)
135cm wide, 215cm high
£100-300

881.
A reproduction oak finish open
bookcase and another smaller ditto
83cm wide, 190cm high and 82cm
wide, 110cm £40-80

882.
A XIX century "butterfly" pembroke
table, cross banded top and bow front,
boxwood strung frieze drawers
89cm x 79cm £200-400

883.
A reproduction mahogany finish side
table fitted with a writing slide two
drawers and an "X" stretcher 83cm
wide and a mahogany finish
reproduction sofa table £75-150

884.
A XIX century walnut Adams style
pedestal with square section tapering
shaped column on a stepped base
30cm square £100-200

885.
A XIX century mahogany bow front
hanging corner cupboard enclosed by
double panel doors beneath a moulded
cornice 122cm high £150-250



886.
A Victorian walnut frame circular piano
stool with rising top, tapering fluted
supports joined by a turned "X"
stretcher £80-150

887.
A XIX century oak chest of two short
and two long mahogany cross banded
drawers 89cm wide £100-200

888.
A Georgian mahogany corner wash
stand with shaped back, central drawer
and two dummies to the undertier, the
swept supports joined by a shaped
stretcher £150-250



889.
A Victorian burr walnut canterbury
with a hinged domed cover and
fretwork panelled front £100-200



890.
A late Victorian oak hall table, the
raised back carved with medallions, the
frieze with two drawers on baluster
turned front supports joined by an
undertier 117cm wide, 46.5cm deep
£100-200

891.
A panelled oak coal box and a bamboo fire screen originally from Thoresby Hall £20-40

892.
A Victorian burr walnut canterbury, the upper tier with a chased brass rail, the base fitted with a single drawer, boxwood strung and on original pot castors 61cm wide £200-400

893.
A Victorian walnut pole screen with oval woolwork panel of birds amid flowers, elaborate carved cabriole leg base £70-140



894.
A George III mahogany wash stand the top enclosed by double leaves above a cupboard and narrow drawer 50cm x 46cm £120-180

895.
A George III figured mahogany fall front bureau with maple veneered internal drawers enclosed by a cross banded fall above four graduated cock beaded drawers 102cm wide - in need of restoration £200-400

896.
A figured Victorian mahogany serpentine front four drawer sideboard, the mirror back surmounted by a carved cartouche, the base with a central drawer above two cupboards and flanked by two further cupboards with arched mouldings 180cm wide £300-500

897.
A Victorian brass and white painted double bedstead £50-100

898.
A Victorian ornate brass and iron half tester double bedstead £150-250



899.
A tubular brass single bedstead £50-100

900.
A Victorian mahogany frame upholstered ottoman 105cm x 51cm £100-200

901.
A XIX century solid rosewood tripod wine table raised on a tapering vase turned column with triple cabriole supports the top 52cm diameter £200-400

902.
A Victorian mahogany circular supper table on flat sided pedestal with platform base 110cm diameter £50-100

903.
A Victorian tripod table with a shaped top and fluted column £50-100

904.
A Victorian walnut and marquetry circular wine table on a turned relief carved column with triple carved cabriole supports the top 50cm diameter £150-250



905.
A XIX century carved oriental vase stand, the octagonal top with a marble inset 61cm high £80-150



906.
A XIX century oriental relief carved hardwood vase stand, the octagonal top inset with marble 92cm high £70-130



907.
A XIX century carved hardwood oriental vase stand with marble inset top 62cm high, 41cm diameter £70-130

908.
An oriental relief carved hardwood vase stand with inset marble and undertier 84.5cm high £80-160

909.
Two Eastern hardwood octagonal side tables profusely inlaid with ivory - almost a pair the tops approx. 52cm diameter £300-600

910.
Sundry furniture - an Eastern mother of pearl inlaid side table, two others carved in relief and a barley twist and cane panel stick stand £10-40

911.
An early XIX century oak tripod wine table on vase turned column with triple cabriole supports 59cm diameter top £70-140



912.
A pair of Victorian mahogany spirally fluted columns on cabriole supports 125cm high £200-300

913.
A XIX century mahogany pedestal on spirally fluted and carved column 116cm high £50-100

914.
Two white painted pedestal plant stands £30-60

915.
A late Victorian mahogany triangular specimen table on shaped legs joined by an undertier

916.
A XIX century mahogany drop leaf side table fitted with two drawers raised on ring turned taper supports the top 77cm x 51c £100-200

917.
A rectangular mahogany side table raised on turned taper supports 69cm x 45.5cm £30-60

918.
A Victorian mahogany tripod wine table with 44cm diameter circular top, relief carved border on an elaborate turned and fluted column £100-200



919.
A late Victorian mahogany oriental design three tier pedestal plant stand 112cm high £50-100

920.
A Victorian cushion shape ottoman stool £40-80

921.
A George III design mahogany hanging corner cupboard with moulded dentil cornice, above an astragal glazed single door, flanked by fluted pilasters, three internal shaped shelves (key is taped behind cornice) 104cm high £150-250

922.
A XIX century butterfly shaped mahogany pembroke table fitted with a single frieze drawer, raised on chamfered supports 85.5cm x 76cm £100-200

923.
A Georgian mahogany fold over "D" shaped side table on taper supports 91cm wide £150-250

924.
A reproduction walnut chest of two short and three long drawers with a brushing slide 77cm wide and a similar bedside cupboard £100-200

925.
An XVIII century style oak drop leaf occasional table *47cm x 49cm* and a Hepplewhite style side chair £40-70
926.
Two pairs of bamboo side chairs £40-80
927.
A bamboo framed small wall mirror, an oval mirror in carved oak frame and a frameless small ditto £20-40
928.
A XIX century bamboo and cane small wardrobe and matching chest of three drawers £150-250
929.
A XIX century bamboo and lacquer dressing chest fitted with two drawers and a matching wash stand £120-180
930.
A bamboo and lacquer six tier corner display stand £100-200
931.
A bamboo corner display stand and a wall rack £70-120
932.
Two bamboo and painted lacquer side tables, a bamboo magazine rack and a small table £50-100
933.
A XIX century bamboo and lacquer china cabinet £70-120
934.
A bamboo and lacquer panelled magazine rack fitted with a drawer £70-120
937.
A Regency figured rosewood circular breakfast table, the top with brass line inlay on a baluster flat sided pedestal, the circular base with three gilded carved paw feet *122cm wide* £2500-3500
938.
A Victorian walnut gothic style side chair upholstered in original woolwork on cabriole legs £70-130
939.
A XIX century mahogany boxwood strung sabre leg child's side chair upholstered in mustard coloured dralon £20-40
940.
A reproduction figured walnut chest of four drawers *77cm wide* £100-200
941.
A Victorian bow front chest of two short and three long drawers *105cm wide* £100-200
942.
A carver chair with carved splats, flat sided turned legs, the drop in seat worked with a white rose £50-100
943.
An Edwardian piano stool, the frame line inlaid with a hinged top £40-80
945.
A Victorian button back armchair upholstered in pink dralon £70-130

Lot 933



Lot 934



FURNITURE

946.

A Victorian carved mahogany frame gentleman's armchair raised on cabriole and scroll supports £250-350

947.

A XIX century rosewood six drawer Wellington chest, oak lined drawers 54.5cm x 30cm x 113cm £400-700

948.

An Edwardian open armchair in carved oak frame upholstered in pink dralon

949.

A set of four bentwood ash and elm kitchen chairs £20-40

950.

A Victorian rosewood serpentine mirror back two door sideboard with a shaped marble top, applied foliate and scroll brackets 154cm wide £200-400

951.

A set of four Edwardian mahogany shield back salon chairs £40-70

952.

A mahogany Sutherland table

953.

A set of four Edwardian salon chairs with carved pierced splats, green upholstered overstuffed seats £70-120

954.

Two crimson ground bokhara type oriental rugs 10cm x 82cm and 138cm x 86cm £30-50

955.

A crimson ground bokhara type oriental rug 193cm x 122cm £20-50

956.

An oriental cream ground rug 153cm x 105cm £20-40

960.

A XIX century oak partners desk fitted with three frieze drawers to each side and three drawers to each pedestal with opposing cupboards 167cm wide x 106cm deep £600-1000

Lot 946



Lot 960



Our regular monthly Estate Sale

will take place on

Saturday 11th July at 10am

and will include

*China & Ceramics, Glass, Silver, Plate & Jewellery,
Bygones & Ephemera, Pictures, Clocks & Furniture*



Victorian
Ventriloquist
dummy



An early XIX Century
pair cased pocket
watch by Geo.
Atkinson Louth

A 15ct gold Victorian memorial ring
dedicated to Mary E Usher sister-in-
law to James & dated 1877



Cranberry vase with enamel
decoration

Viewing:- Friday 10th 12noon-4pm & morning of sale from 8.30am
Catalogue on www.thosmawer.com approx. 10 days prior

LOCATION



The Thos. Mawer & Sons salerooms at Dunston House are situated in central Lincoln on the east end of Portland Street at the foot of Pelham Bridge (Canwick Road). By car, approaching from the south take the last turning on the left just before the road rises to the bridge.

Approaching from the north (via Broadgate), go over Pelham Bridge and turn left towards Jacksons Building Centre/Tesco on to Kesteven Street. Follow the road around to the left and drive under Pelham Bridge to Portland Street. Turn left and you will see Dunston House on the right. Portland Street is also accessible from Lincoln's High Street, opposite the Ritz public house.

The salerooms are within walking distance of the main railway station and bus depot.

CONDITIONS OF SALE

1. In these conditions Thos. Mawer & Son act only as auctioneers and agents and the representative of Thos. Mawer & Son conducting the auction is called 'The Auctioneer'
2. Whilst Thos. Mawer & Son make every effort to ensure the accuracy of their catalogue and the description of any lot:
 - (i) Each lot set out in the catalogue or as divided or combined with any other lot or lots is sold by the vendor with all faults and imperfections and errors or descriptions
 - (ii) Thos. Mawer & Son do not accept responsibility for the authenticity, attribution, genuineness, origin, authorship, date, age, period condition or quality of any lot unless they have been instructed in writing by the buyer to so certify.
 - (iii) All statements whether printed in the catalogue or made orally as to any of the matters set out in (ii) above are statements or opinion only and are not to be taken as being or implying any warranties or representations of fact by Thos. Mawer & Son unless they have been instructed in writing by the buyers to so certify.
3. The Auctioneer has absolute discretion to divide any lot, to combine any two or more lots or to withdraw any lot or lots from sale, to refuse bids, regulate bidding or cancel the sale without in any case giving any reason or without previous notice. He may bid on behalf of the vendor for all goods which are being offered subject to reserve or at the Auctioneer's discretion.

The highest bidder shall be the buyer. The Auctioneer may at his sole discretion determine the advance of bidding or refuse a bid. If during the auction the Auctioneer considers that a dispute has arisen he has absolute discretion to settle it, or to re-offer the lot.

All conditions, notices, descriptions, statements and other matters in the catalogue and elsewhere concerning any lot are subject to any statements modifying or affecting the same made by the Auctioneer from the rostrum prior to any bid being accepted for the lot.

4. The buyer shall pay the hammer price together with a premium of the hammer price - 17.25% inclusive of VAT
5. Notwithstanding any other terms of these Conditions, if within seven days after the sale Thos. Mawer & Son have received from the buyer of any lot notice in writing that in his view the lot is a deliberate forgery and within twenty-one days after such notification the buyers return the same to Thos. Mawer & Son in the same condition as at the time of the sale and by producing evidence, the burden of proof to be on the buyer, satisfies Thos. Mawer & Son that considered in the light of the entry in the catalogue the lot is a deliberate forgery then the sale of the lot will be rescinded and the purchase price of the same refunded.

The vendor agrees to be bound by Thos. Mawer & Son's decision.

6. Thos. Mawer & Son disclaim any responsibility for default by either the buyer or the vendor because they act as Auctioneers only and therefore do not pay out to the vendor until payment is received from the buyer. Instructions given by telephone are accepted at the sender's risk and must be confirmed in writing forthwith.
7. Every person on Thos. Mawer & Son's premises at any time shall be deemed to be there at his own risk. He shall have no claim against Thos. Mawer & Son in respect of any accident which may occur or injury, damage, loss howsoever caused, save in so far as the injury, damage loss shall be caused by the negligence of Thos. Mawer & Son's employees.
8. Each lot shall be at the purchasers risk from the fall of the hammer and must be paid for in full before the delivery and must be taken away by the purchaser at his own expense within 7 working days following the conclusion of the sale. The Auctioneer shall be entitled to charge storage charges in respect of lots not taken away as aforesaid (minimum charge of £25 plus VAT) and interest on unpaid accounts @ 4% above clearing bank base rate (per calendar month)
9. Cheques which are not honoured by the payee's bank will incur a handling charge of £20 plus VAT for each presentation

Online Bidding

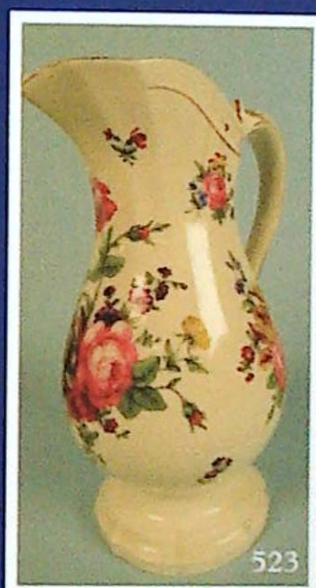
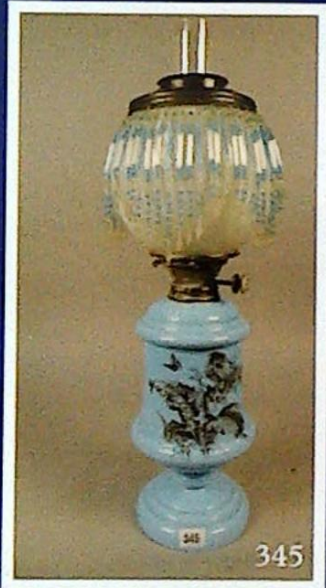
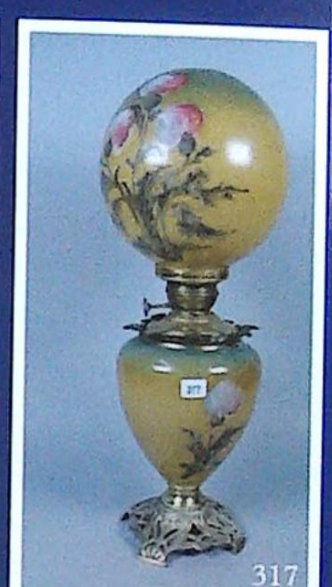
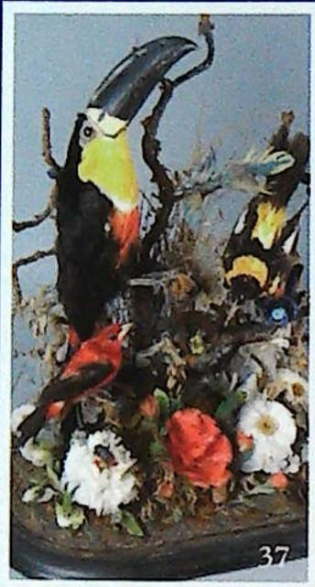
Thos. Mawer & Son Ltd offer an online bidding service via the-saleroom.com for bidders who cannot attend the sale.

In completing the bidder registration on [HYPERLINK "http://www.the-saleroom.com/"](http://www.the-saleroom.com/) \o "blocked::http://www.the-saleroom.com/" www.the-saleroom.com and providing your credit card details and unless alternative arrangements are agreed with Thos. Mawer & Son Ltd you:

1. authorise Thos. Mawer & Son Ltd, if they so wish, to charge the credit card given in part or full payment, including all fees, for items successfully purchased in the auction via the-saleroom.com, and
2. confirm that you are authorised to provide these credit card details to Thos. Mawer & Son Ltd through [HYPERLINK "http://www.the-saleroom.com/"](http://www.the-saleroom.com/) \o "blocked::http://www.the-saleroom.com/" www.the-saleroom.com and agree that Thos. Mawer & Son Ltd are entitled to ship the goods to the card holder name and card holder address provided in fulfilment of the sale at the cardholder's expense.

Please note that any lots purchased via the-saleroom.com live auction service will be subject to an additional 3% commission charge + VAT at the rate imposed on the hammer price.

This contract is governed by English Law.



DUNSTON HOUSE · PORTLAND STREET · LINCOLN · LN5 7NN

TELEPHONE 01522 524984 · FACSIMILE 01522 535600

EMAIL auctions@thosmawer.com · WEBSITE www.thosmawer.com