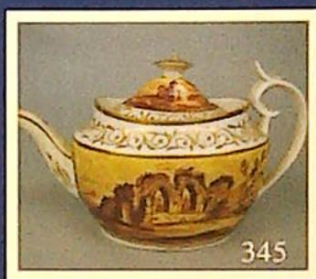




THOS. MAWER & SON LTD.

Auctioneers & Valuers Established in 1864



**Spring Sale of
ANTIQUES, SILVER, COLLECTABLES
PAINTINGS & FURNITURE**

featuring a private collection of English Pottery & Porcelain

Saturday 1st March 2008 commencing at 10.00am

On View

Friday 29th February 10.00am – 4.00pm & morning of sale from 8.30am

Catalogue £5.00

THOS. MAWER & SON LTD.

COMMISSIONS

The Auctioneers are pleased to execute commissions for intending buyers in confidence as cheaply as is allowed by any other bids. All telephone bids must be confirmed in writing or by fax by 4pm the day prior to sale. **Telephone bids will not be accepted for lots on which the top estimate is under £500.00.** We cannot guarantee to execute bids received on the morning of sale.

BUYER'S PREMIUM

There is a 17.6% premium (inclusive of VAT) payable on the final hammer price of each lot.

REGISTRATION

All prospective purchasers are requested to register and obtain a bidding number prior to the start of the sale.

CATALOGUE DESCRIPTIONS

Care is taken to ensure that any statement as to authorship, attribution, origin, date and provenance is reliable and accurate, but all such statements are statements of opinion and are not to be taken as statement or representations of fact. Thos. Mawer & Son Ltd. reserve the right, in forming their opinion, to consult and rely upon any expert or authority reasonably considered by them to be reliable. While an identification of damage is given in some instances, an absence of such advice does not imply that a lot is free

from defect. Prospective purchasers are strongly advised to inspect any lot on which they intend to bid. All measurements and weights are approximate and should be verified by intending purchasers.

ESTIMATES

Estimates for lots under £100.00 are not printed in the catalogue. On lots that are reserved, the reserve will not be greater than the published estimate at the time the catalogue goes to press.

PAYMENT OF ACCOUNTS

All Lots should be paid for and collected immediately following the sale. Any lots not collected by 4.00pm on the Wednesday following sale day will incur storage charges (minimum £25.00 plus VAT per lot).

Payment for all lots must be made on the day of sale and methods are:

(1) CASH, (2) CHEQUES supported by either a letter of Reference from your bank or a cheque guarantee card to cover the sum of your purchase, (3) BANKERS DRAFT, (4) DIRECT DEBIT CARDS such as "Switch", "Delta", "Classic", "Connect", (5) CREDIT CARDS subject to a 2% premium charge.

No lots in this sale are the property of Thos. Mawer & Son.

ORDER OF SALE COMMENCING AT 10am

Italics denotes catalogue on internet only - www.thosmawer.com

1-144

*General Furniture, China, Glass,
Bric-a-Brac etc.*

145 - 179

**English & Continental China
including new Volkstedt,
Sitzendorf, Dresden, Meissen,
Wedgwood, Coalport etc. - many
items with boxes**

180 - 199

Antiquarian Books & Ephemera

200 - 297

**XVIII & XIX Century British
Pottery to inc. single owner
private collection of Creamware,
Pearlware & Staffordshire**

300 - 333

**XIX Century Sunderland & other
Pink Lustre - mainly from one
private collection**

336 - 368

**A private collection of XVIII &
XIX Century Porcelain & Pots to
include Worcester, Caughley,
Spode, Minton etc.**

375 - 422

Oriental Ceramics

424 - 449

**Decorative, Continental &
Oriental China**

460 - 489

Glassware

490 (extra lots may be posted on
internet after Lot 499 in this
catalogue)

Silver & Plate, Objets D'art etc.

575 - 614

**Metalware, portrait miniatures,
bygones inc. vintage fishing
tackle & flies**

615 - 623

Postcards & Bygones

Details of additional lots from Lot
623 will be posted on the internet and
will include Victorian to modern
furniture)

820 - 849

Pictures, Prints & Mirrors

855 - 868

Clocks

874 - end of sale

Furniture & appointments

The complete catalogue for this sale will be updated approx. 7 days prior to sale
and can be downloaded from our website www.thosmawer.com

Extra lots will be added as they are delivered and will only be described on the
website. On the homepage, go to the box headed "General or Special Sales" and
click here for text only printable version.

*If you are traveling to the saleroom to bid for a specific lots, please telephone us during
the morning to ascertain the sale progress.*

ENGLISH & CONTINENTAL CHINA

145. Royal Crown Derby.

A boxed lidded vase
RRP £1250.00
£300-600



146. Royal Crown Derby.

A boxed Imari lidded
sucrier
RRP £600.00
£200-300



147. Royal Crown Derby.

A boxed Mansion House Dwarf
in Imari colours
RRP £995.00
£350-450



148. **Sitzendorf.** A pair of figures
he playing bugle she holding
rifle gilt highlighted and
decorated in colours and a
Sitzendorf plaque (3)
RRP £525.00 £120-180



149. Volkstedt a pair of Dresden figures of
vagerbond children each painted in colours
RRP £195.00 £60-80

150. A pair of Sitzendorf figures
of a lady and gentleman he
with scissors and she
holding flowers gilt
highlighted and painted in
colours
RRP £375.00 £120-150



151. A pair of Sitzendorf figures
of lady and gentleman he
holding flowers she with
bonnet gilt highlighted and
painted in colours
RRP £375.00 £120-150



152. A Waldenburg cup & saucer, a Dresden hand painted ditto, a Limoges miniature gilt highlighted cup & saucer and another coffee can and saucer highlighted with flowers (8)
RRP £313.00 £120-150
153. Three Rudolph Kammer standing soldiers each on gilt highlighted circular bases
RRP £225.00 £90-130
154. Four Rudolph Kammer military busts and a plaque (5)
RRP £440.00 £120-150
155. Rudolph Kammer military busts £120-150
156. Kammer. A pair of military figures Napoleon and la Fayette and a Scheibe plaque
RRP £600.00 £200-300
157. Dresden and hand painted and gilt highlighted lamp base decorated with flowers
RRP £245.00 £100-150
158. Dresden. A lamp base gilt highlighted and hand painted with flowers on orange ground
RRP £245.00 £80-130
159. A Dresden lamp base with gilt highlighted goats head handles painted with flowers on shaped base, impressed marks beneath
RRP £245.00 £80-130
160. Meissen. A ribbon edged dish gilt highlighted and hand painted with flowers blue cross sword marks beneath
RRP £580.00 £200-250
161. Meissen. A hand painted pierced ribbon edged plate the centre decorated with flowers, gilt highlights cross sword marks beneath
RRP £480.00 £200-250
162. Meissen. A hand painted wavy edged plate the centre decorated with flowers cross sword mark beneath
RRP £280.00 £100-150
163. Wedgwood collector's plate "Ruby Tonquin" highlighted with flowers
RRP £250.00 £80-120
164. Wedgwood boxed limited edition Susie Cooper plate, cup and saucer "Genius Collection"
RRP £75.00
165. Wedgwood. Four boxed season plates, Summer, Autumn, Winter, Spring
RRP £100.00
166. Wedgwood Blue Jasper Ware comprising five boxed cups & saucers and a clock (11)
RRP £185.00

167. Wedgwood Blue Jasper Ware - three boxed Christmas plates 1990 (2) & 1991 and two boxed wedding plates (5)

RRP £165.00

168. A Meissen plaque

RRP £50.00

169. Wedgwood Blue Jasper a boxed vase and cover with Cherub knop, fern and ribbon banding the body raised with flowers on square foot

RRP £650.00 £150-250



170. A Meissen tea set comprising teapot, lidded sugar bowl, cream jug, six cups and saucers - each piece hand painted with flowers blue cross swords beneath

RRP £1000.00 £250-350

171. A quantity of Staffordshire bone china decorated with fruits on yellow ground comprising miniature tea sets (3), clock and three mugs

RRP £333.00 £80-120

172. Coalport. A boxed limited edition Cornucopia "Coalbrookdale" pattern CP167

RRP £400.00 £100-150

173. Peter Gosling. A hand painted plate with plums, blackberries, pears and grapes signed in original box and another smaller

RRP £178.00

174. Royal Worcester Anniversary box, vegetable garden box, candle snuffer box, all boxed

RRP £171.00

175. Royal Worcester candle snuffer, Nelson's elephant with box

RRP £115.00

176. Royal Worcester candle snuffers, green and red pears and red and green apple with boxes(3)

RRP £135.00

177. Limoges. Mini box, watering can, bird, boar, boat and elephant boxes (six)

RRP £560.00 £150-250

178. Limoges. Large round box, large and small eggs and a round box

RRP £429.00 £120-150

179. Limoges. "Puss in Boots", large elephant, snail, fish (all boxes) (4)

RRP £410.00 £120-150

ANTIQUARIAN BOOKS & EPHEMERA

180. **Books; Innes, AD** *Harmsworth History of the World* 8 vols. with black & white illustrations

181. **Ephemera. Ewart & Chainbelt Co. Ltd. Derby** An album of various black & white photos referring to the *Tate and Lyle Thames factory London, Morris Motors Ltd., Raleigh cycling, Lincolnshire Cannery Boston* and others and **books** - *The Life & Times of King George and Hawks, Cpt. Ellison Britain's Wonderful Fighting Forces*

182. **Books: Shaw, Vero (B.A.)** *The illustrated book of the Dog* CASSEL, PETER, GALLON & CO. LONDON. Blue/gilt cloth with illustrations and *Hunts with Jorrocks and The Birds of America* (3)

183. **Books: Stonham, C** *The Birds of the British Islands* GRANT RICHARDS, LONDON. 1908. 5 vols, gilt/red binding with b/w illustrations £150-200

184. **Books: Stonham, C.** *The Birds of the British Isles* GRANT RICHARDS LTD, LONDON. 1910. Five vols. leather and marbled boards (re-bound), with colour illustrations £200-400

185. **Books: Morris, F O. (Rev)** *A Natural History of British Moths* GEORGE BELL & SONS, LONDON 1872. Four vols. green/gilt cloth with colour illustrations £200-300

186. **Books: Morris, F O. (Rev)** *A History of British Butterflies* JOHN C NIMMO, LONDON. 1910. 1 Vol, gilt/cloth, hand coloured illustrations £100-200

187. **Books: Morris, F O. (Rev)** *A History of British Butterflies* GEORGE BELL & SONS LONDON, 1906. One vol. Leather and marbled boards (re-bound,) with colour illustrations £100-200

188. **The Walhachin Estates British Colombia** An early XX century album of black and white photographs and information regarding C E Barnes' attempt to irrigate British Colombia, to include in excess of fifty 19 x 24cm photographs of the planting of the orchards, the building and interiors of houses, the Bull Lake reservoir, various other lakes and scenery etc. each lined on card *Similar plates can be found in the British Colombia archive* £2000-3000

189. **Books.** A XIX century cookery book - A Complete System of Cookery on a plan and an entirely new early edition, quantity of sketches by Boz, other books etc. - one box

190. **Book.** Confederate Hand Guns - concerning guns, the men who made them and the times of their use, Simmons, Albaugh Benet
191. **Books.** A large quantity to include Antiques Review, Handbook of Popular Antiques, The Conniessuer Year Book 1958, books on clocks, paintings etc.
192. **Books.** Large quantity of ceramic related including Worcester, teapots and coffee pots, a large quantity of other to include Turner, silver, Minton Pottery etc. - one box
193. **Books.** Ceramics and pottery related to include XIX century Lusterware, Collecting Lusterware, a catalogue of Early English Country Pottery, Post Medieval Pottery 1650-1800 etc.
194. **Books.** Ceramic related to include collecting English Antiques, Mankowitz, Wedgwood, British Pottery and Porcelain by Henry Sandon etc.
195. **Books:**Antiques to include Tate Gallery, Creamware, Donald Towner, English & Scottish Earthenware, Illustrated Guide to Staffordshire Salt glazed Stoneware etc.
196. **Books.** Ceramic related to include English Ceramics, The Castleford Pottery, Newlife Porcelain, Porcelain etc.
197. **Books** relating to antiques to include the Ceramic Art of Great Britain, *Norfolk Museums Lowestoft's Porcelain, Minton Pottery & Porcelain of the First*, Porcelain etc.
198. **Books:**Catalogue of the Glaisher collection of pottery and porcelain vols. 1 & 2
199. **Books.** **The Life of Josiah Wedgwood Vols. I & II** facsimile, limited edition, presentation case; **An Anthology of British Teapots** by Miller & Berthoud and Tilly, **Teapots & Tea** etc.
- 199A. **Peters, Ellis** A Morbid Taste for Bones, pub.McMillan London 1977 with dust cover £400-600

XVIII & XIX CENTURY BRITISH POTTERY

200. **A named blue and white Leeds Creamware baluster coffee pot and cover** circa 1788 given to Elizabeth Beet decorated with Chinese figure before trees and pagoda, 'C' scroll handle, floral relief spout, domed cover, circular foot *approx. 28.5 cms high* £200-300



201. **A Staffordshire Creamware baluster coffee pot** circa 1790 Decorated with Oriental figures and birds predominately in iron red on circular foot *approx. 18cms high*



202. **A Staffordshire Pearlware blue & white baluster shaped coffee pot and cover** Early XIX Century of ribbed form, heavily decorated with buildings and foliage, domed cover, highlighted scroll handle and plain spout, circular foot *approx. 24cms high*



203. **An XVIII century Leeds Creamware baluster shaped coffee pot and cover** undecorated with moulded spout, plain handle and circular foot *approx. 24cms high*



204. **An XVIII century Leeds Creamware baluster coffee pot and cover** the body decorated with pink flowers, double strap handle, floral knop, domed cover, moulded spout and circular foot *approx. 28cms high* £70-100



205. **An unrecorded Creamware baluster coffee pot and cover**

late XVIII/early XIX century polychrome decorated to both sides showing courting couple in greens, reds and yellows, naive blue banding, domed lid, scroll handle, plain spout, circular foot approx. 26cms high £300-500



206. **A late XVIII/early XIX blue & white century Pearlware baluster shaped coffee pot and cover**

heavily transfer printed with buildings and fishermen, ear shaped handle, plain spout, ribbed domed cover and circular foot approx. 30.5cms high £70-100

207. **An early XIX century Staffordshire Pearlware baluster shaped coffee pot and cover**

polychrome decorated with flowers with an upper cross banding, moulded spout, plain handle and domed cover on circular foot approx. 25cms high £70-100

208. **A XIX century Staffordshire blue & white transfer printed coffee pot and cover**

of baluster form, decorated with oriental style buildings, blue highlighted spout, scroll handle, circular foot approx. 26.5cms high

209. **A late XVIII century Pearlware blue & white baluster coffee pot and cover**

Perhaps Leeds the body heavily decorated with geometric flowers with moulded handle and spout, floral knob and circular foot approx. 28cms high £100-150



210. **An undecorated XVIII century Leeds Creamware baluster coffee pot and cover**

with ribbed double strapped handle, moulded spout, domed cover and circular foot approx 21.5cms high

211. **A XIX century Pearlware baluster shaped coffee pot and cover**

naively decorated with blue dots and banding to the body with moulded scroll handle and spout, circular foot approx. 25cms high

212. **An XVIII century Leeds Creamware baluster coffee pot and cover**

painted with flowers and leaves in greens and reds with moulded scroll handle, highlighted spout and domed cover raised on circular foot approx. 25cms high £100-150



213. **A XIX century Leeds Pearlware baluster coffee pot and cover**

transfer printed with oriental buildings and bridges, geometric banding, highlighted scroll handle and spout on circular foot approx. 24cms high

214. **A XIX century Pearlware teapot of ribbed diamond form**

Perhaps Harley but unmarked sparsely decorated with blue line and dot banding, swan knob, moulded handle and spout approx. 19cms high

216. **A good XIX century pearlware chestnut basket and stand**

the basket of diamond form with pierced sides on an oval stand with pierced border each piece decorated with pineapples, pears and grapes the stand approx. 25cm diameter



217. **An XVIII century Leeds Creamware pierced chestnut basket**

Impressed LEEDS POTTERY of oval form with rope work border and textured centre approx. 28cms wide

218. **An XVIII century Leeds Creamware pierced basket**

of oval form with rope work border approx. 22cms wide

219. **An XVIII century Leeds Creamware teapot stand**

of oval form with pierced border and moulded centre highlighted in brown approx. 24cms diameter

220. **An XVIII century Leeds Creamware teapot stand**

of oval form with shaped pierced border, moulded centre and brown rope work banding approx. 24cms diameter

221. **A Harlequin set of eight undecorated XVIII century Creamware plate**

Some stamped Neale & Co each with shaped pierced borders and moulded lattice banding each approx. 28cms diameter £100-150

222. An XVIII century solid agate teapot and cover of small proportion

Probably Staffordshire with moulded loop handle and plain spout the whole on triple paw supports approx. 7cms high £200-300



223. Two XIX century Blue & White Pearlware leaf shape Willow Pattern pickle dishes

each of typical form with raised veins verso approx. 12.5cms wide and a XVIII brown stoneware teacup and saucer with raised scroll decoration the saucer approx. 7cms dia.

224. A rare XIX century Gaudy Welsh style named death jug commemorating: "Martha Collier (who) died June 27th 1829 aged 11 years" typically decorated and of bulbous form with beak spout and plain scroll handle on circular foot approx. 15cms high

225. A XIX century Creamware cabbage leaf dish Impressed Wedgwood of shaped oval form highlighted in green with a molded centre approx. 27cms high

226. A XIX century Castleford style teapot and cover with sparse Pratt decoration, the whole modelled as a house in greens, blues, browns and yellows approx. 14cms high £150-200



227. A XIX century Yorkshire white stoneware teapot and cover

Possibly Castleford Of oval castellated form, the domed cover with floral knob, scroll handle and moulded spout, the body raised with classical figures approx. 16.5cms high N.B. A similar example can be found at the Yorkshire museum £100-150



228. An XVIII century white stoneware teapot and fixed cover

Possibly Richard Barker, Lane End Staffordshire. The moulded body of commode form decorated with classical figures and sprigs and highlighted in blue with swan knob, moulded scroll handle and spout approx. 16cms high £100-150



229. A XIX century Felix Pratt chocolate pot of tapering cylindrical form

printed mark beneath 'PRATT 123 FENTON' transfer printed showing figure driving cattle and horses pulling boat on orange ground, gilt highlighted handle and spout approx. 15cms high

230. A XIX century transfer printed Prattware tankard of cylindrical form, the main body decorated with figures washing and figures on horseback on orange ground with gilt highlighted ear handle approx. 10.5cms high

231. An early XIX century Castleford style teapot of blue highlighted cape form the body decorated with raised leaves and berries, gadrooned banding, moulded ear handle and part gadrooned spout on oblong foot approx. 14cms high £80-120

232. A XIX century Staffordshire blue glazed Pearlware jug with moulded handle, the body decorated with raised classical figures with beak spout and circular foot approx. 15cm high

233. A Pair of XIX century Staffordshire spaniels each with yellow and black highlighted eyes, gilt coloured chains and muzzles, sparse gilt bodies approx. 25cm high; a silver lustre jug and an unsigned Mdina style turquoise and green glass jug with plain "C" scroll handle (4)

234. A large pair of Staffordshire spaniels probably XIX century with gilt highlighted bodies and collars, oval black and yellow eyes each approx. 35cm high £100-150

235. A XIX century Bargeware teapot of large proportion with domed cover decorated with raised floral rosettes and peacocks, the central cartouche reading "Mr & Mrs Shaw 1891" with teapot knob, moulded handle and spout, the whole on circular foot approx. 37.5cm high £100-150



236. **A pair of Victorian Toby jugs "Punch"**

and "Judy" possibly William Kent c.1880 each typically decorated, seated in colours with moulded handles each approx. 24cm high



237. **Wedgwood. A late XIX/XX century creamware basket** of circular form with a pierced rope work border and textured centre impressed marks beneath Approx 24cms dia.

238. **A pair of Staffordshire and spaniel puppy groups** each probably XIX century highlighted in black with gilt collars on orange and green bases with gilt highlights each approx. 16.5cm high



239. **A Staffordshire recumbent greyhound inkwell and a dalmatian**

both probably XIX century the inkstand of typical form in orange and blue, gilt lined base, the dalmatian standing on oval gilt lined base the greyhound approx. 16cm high



240. **An XVIII century Bristol delft plate** of circular form, polychrome decorated, painted with fisherman before tree approx. 22.5cm diameter £100-150

241. **Spode. A XIX century oval blue and white transfer print shallow dish**

decorated with Italian river & town scene, scroll handles to each side 45cm x 32cm excluding handles £150-250



245. **An XIX century black basalt coffee pot and cover** Possibly Moseley, impressed C mark beneath Of shaped cape form, the body raised with classical figures, moulded handle and spout Approx. 27cms high
A similar example can be found in "The Makers of Black Basalts" by H M Grant "Plate LXXXIV" figure.2 £70-100

246. **A XIX century black basalt coffee pot and cover** in the manner of Moseley of comode form, the main body raised with ferns and decorated with cherubs with a Virgin knop, moulded handle and spout approx. 28cms high £70-100



247. **A rare XIX century brown Jasper coffee pot and stand**

The stand impressed C Greasley The coffee pot of globular form with moulded handle and beak spout, the lid topped with acorn finial, the whole on circular foot the stand of circular form approx 17cms diameter £150-200



248. **A XIX century basalt globular coffee pot and cover**, the body part fluted with moulded leaf capped handle and spout, virgin knop, the whole on circular foot approx. 22cm high

249. **A XIX century Wedgwood black basalt coffee pot and cover** impressed WEDGWOOD of shaped globular form highlighted with flowers and another undecorated (2) the latter approx. 17cm high

250. **A XIX century Cyples teapot and cover** with bird knop, griffin topped handle and florally banded border and an unmarked basalt teapot geometrically decorated (2) the latter approx. 17.5cms high

251. **An early XIX century Cyples black earthenware teapot and cover** impressed mark beneath another unmarked and a XIX century teapot of shaped form (3) the latter approx. 19cm high

252. **A XIX century Cyples style black basalt teapot and domed cover** The body decorated with floral banding, Griffin topped handle and moulded bird spout on circular foot and a black basalt teapot of circular form (2) the latter approx. 9cms high

253. **An early XIX century Wedgwood blue & white Jasper teapot and cover** of circular form with raised blue ivy leaf banding, shaped handle and moulded spout, impressed mark beneath approx. 11cms high

254. **An early XIX century Wedgwood Blue Jasper teapot and cover** *impressed marks beneath* of circular form with moulded handle and plain spout, white applied decoration to the body on circular foot *approx. 12cms high*
255. **Dudson Bros. Hanley. A XIX century blue glazed Jasper coffee pot and cover** *impressed marks beneath* of cylindrical form with rope work handle and a plain spout decorated with raised figures in white relief, *approx. 18cms high*
256. **Dudson Bros. Hanley. A XIX century glazed brown Jasper milk jug** *impressed marks beneath* with rope twist handle and beak spout, upper floral banding, the main body decorated with classical figures, *approx. 13cms high*
257. **Dudson Bros. Hanley. A XIX century green glaze Jasper coffee pot and cover** *Impressed marks beneath* with rope handle and moulded spout, upper floral banding, the main body decorated with raised classical figures *approx. 20cms high*
258. **Dudson Bros. Hanley. A XIX century green glaze Jasper coffee pot and cover** *impressed marks beneath* the body decorated with raised classical figures with moulded handle and beak spout, *approx. 18cms high*
259. **A XIX century treacle glaze barkware coffee pot and cover** of shaped cylindrical form with moulded body and shaped spout *approx. 21.5cm high*

260. **A XIX century brown stoneware chocolate pot and cover** the body decorated with tavern scenes and part floral banding, moulded ear handle, shaped spout, shaped circular foot *approx. 27cms high £70-100*



261. **A XIX century Wedgwood terracotta style teapot and cover** with spaniel knob, the body decorated with raised flowers *approx. 9cms high*
262. **An early XIX century Wedgwood lead glazed teapot**, a terracotta style ditto and another with wheat sheaf knob (3) *the latter approx. 8cms high*
264. **A XIX century earthenware baluster shaped coffee pot and cover** heavily decorated with raised flowers, floral knob, ear handle and moulded spout on oval foot *approx. 24cms high*

265. **A XIX century white earthenware teapot and cover** relief cast to the body with Cupid and Muse and Diana with Virgin & Child knob, a gadrooned circular teapot and a Teal Jasper teapot with white floral banding (3) *the latter approx. 11cms high*
266. **A XIX century shaped teapot decorated with stalk**, a Copeland Spode Copela ditto and a white earthenware teapot with pewter lid (3) *the latter approx. 14cms high*
267. **A XIX century blue transfer printed marriage jug** *Given to Joseph and Ann Mellor (Lincolnshire)* of waisted form decorated with shepherdess, S scroll handle, circular foot *approx. 24 cm high*
270. **A XIX century Redware char bowl and cover** with cylindrical handle to the side and cylindrical spout, plain decoration *approx 4cms high*
271. **A XIX century Wedgwood Redware teapot and cover** *impressed marks beneath* with floral highlights, moulded handle and spout, metal lid, *approx. 15cms high*
272. **A XIX century terracotta teapot and cover** of tapering cylindrical form with gilt highlighted scroll handle and spout, turquoise classical Greek key banding *approx. 19cms high* and another smaller (2)

273. **An early XVIII century Elers style chocolate pot and cover** the body decorated with raised sprigs and figures, moulded handle and spout, circular foot *approx. 23cms high £300-500*



274. **An early XIX century Wedgwood Rosso Antico coffee pot and cover** of shaped circular form, the body raised with black basalt figures on C scrolls with plain handle, S scroll spout and virgin knob *approx. 11cms high £70-100*



275. **A XIX century plum Redware teapot and cover** *mock Chinese mark beneath* of globular form with "C" scroll handle and plain spout, the body part painted with flowers in white, green and yellow, *approx. 13cm high £80-120*



276. **An XVIII century Redware teapot and cover** *mock oriental mark beneath* with gilt highlighted body, moulded "C" scroll handle and spout, approx. 11cm high £100-150



277. **A XIX century English Redware teapot and cover** of circular form with moulded handle and spout, raised white floral decoration to the body approx. 8cms high

278. **A XIX century Redware teapot, liner and cover** of cylindrical form with C scroll handle and plain spout, the body highlighted in white approx. 9cms high £80-120

279. **A XIX century Redware teapot and cover** of shaped square form with raised relief flowers to the body, shaped floral entwined handle and spout approx. 9cms high

280. **A XVIII century Redware baluster coffee pot and cover** *mock square Chinese seal mark beneath* with textured body, moulded handle and spout, circular knob, the whole on circular foot approx. 25cms high £100-150



281. **A XIX century black lead glazed teapot and cover** of shaped cylindrical form, the body decorated with raised floral and shell banding with moulded handle and spout and a similar cream jug (2) the cream jug approx. 9cm high

282. **A rare XIX century double Redware teapot** *probably Chinese* of cylindrical form with plain handle and sparse ribbon banding approx. 13cms high



285. **An unmarked coffee pot and cover** of tapering cylindrical form, moulded handle and spout decorated with sprigs and scrolls in greens and yellows approx. 22.5 cms high

286. **A XIX century Brameld teapot and cover of cylindrical form** decorated with raised leaves, an XVIII century teapot, a pink lustre sauce boat, a wade PDM loving cup and a Denby Elizabeth II tankard (5) tankard approx. 13cms high

287. **A hand painted ceramic wall plaque painted by Fred Laughton** XX century of circular form, decorated with huntsmen and hounds in colours, paper label verso "Delftsch Plateelschilderwerk" approx. 51 cm diameter £100-150



288. **A quantity of various black and white transfer printed teaware** XVIII & XIX century comprising Newhall teapot of caped form decorated with fisherman before castle; an unmarked Spode "Winstone Cottage" design teapot; similar stand; Creamware slop bowl; similar transfer printed lustre sugar bowl etc. the teapot approx. 18cm high £100-150



289. **An early XIX century English creamware plate** polychrome decorated with oriental figures and flowers, raised floral banding, a Tyneside pottery Pearlware lustre dish, a Sunderland pink lustre plate and a modern Myott & Sons shaped silver lustre serving plate (4) the latter approx. 30cm wide

290. **An XVIII century teapot and cover** of globular form, "C" scroll handle and highlighted spout, the body decorated with blue and white flowers, domed cover, circular foot approx. 13.5cm high £80-120



291. **"God Speed The Plough."** A XIX century silver lustre motto mug reading: "The Husbandmans Diligence Provides Bread" approx. 8.5cms high
292. **Maling. A Ringtons Tea transfer printed jug** decorated with flowers with shaped "C" scroll handle, printed marks beneath approx. 18cm high
293. **GR. A glazed stoneware tankard of cylindrical bulbous form** with scroll handle decorated with lion and unicorn commemorating the coronation of George V approx. 16.5cm high
294. **Ashworth. An unusual set of twelve XIX century transfer printed ironstone plates** each decorated with vases and flowers with green and gilt floral banding each approx. 26.5cm diameter £70-100

295. Wemyss. An open jar hand painted with roses impressed, printed and painted marks beneath approx. 9.5cm high

296. Wemyss. A preserve pot and cover painted mark beneath hand painted with brambles and leaves approx. 8cm high



297. A XIX century blue and white Pearlware willow pattern christening cup of circular form with highlighted moulded handle on circular foot approx. 6cm high

FORTHCOMING SALES

*Our Estate Sales
take place on the first
Saturday of each month*

*Starting at at 10.am
see www.thosmawer.com*

*Free Valuation Clinic
every Friday
9.30am-12noon*



XIX CENTURY SUNDERLAND & OTHER PINK LUSTRE

300. A modern pink lustre jug highlighted with a ship of bulbous form with beak spout and moulded handle, the whole on circular foot approx. 13cm high
301. A XIX century silver resist mug highlighted with ferns of circular form with plain handle; a similarly decorated beaker and a saucer (3) the saucer approx. 17cm diameter
302. A XIX century copper lustre to include - three egg cups, large tankard and three cylindrical mugs (7) the tankard approx. 11cm high

303. A XIX century copper lustre jug

possibly Staffordshire of globular form, transfer printed to both sides with charity, moulded florally highlighted handle and beak spout, circular foot approx. 13cm high; and a copper lustre jug with pink banding, highlighted with houses (2)



304. A XIX century barkware vase of cylindrical form with moulded handle, lustre finish approx. 23.5cm high
305. A XIX century copper lustre jug with orange banding raised with relief cast blue birds; naive style tankard with raised figures, another painted with flowers, goblet etc. (5) the jug approx. 18.5cm high
306. A XIX century two handled copper lustre loving cup of campana form with moulded ear handles, part ribbed body with upper floral banding, the whole on circular foot approx. 12.5cm high
307. A quantity of XIX century copper lustre to include a moulded jug, two others, an unusual pie funnel in the form of a bird, footed bowl of small proportion, mug etc. (8) the pie funnel approx. 10cm high
308. A quantity of XIX century copper lustre ware mainly Staffordshire to include lidded teapot with griffin handle, jug with ear handle, goblet, tea cup etc. (7) the goblet approx. 10.5cm high

309. **A rare XIX century copper lustre jug of tapering form** XIX century, possibly Enoch Wood the body decorated with Masonic scenes, beehive, easel, jug, globe etc and a crown with orbs, with further decoration of figures studying a globe before ship, with moulded handle and spout, beaded upper banding and circular foot approx. 16cm high



N.B. This example is illustrated in "Lustreware" Michael Gibson pg. 28 £70-100

310. **A good copper lustre jug of bulbous form** XIX century possibly Staffordshire the cream banding printed with Hope and Faith on circular foot with beak spout and moulded ear handle approx. 13cm high
311. **A XIX century silver resist lustre jug** possibly Staffordshire the globular form decorated with leaves and flowers with moulded handle, beak spout and circular foot approx. 15cm high
312. **Four silver lustre goblets of circular form,** large gadrooned silver lustre coffee pot and two bowls etc (10) coffee pot approx. 18.5cm high
313. **A copper lustre coffee pot** of campana form with domed cover, moulded handle and spout on circular foot, a teapot and three various XIX century jugs, one highlighted with houses (5) the coffee pot approx. 25cm high
314. **Three XIX century copper lustre highlighted mugs** of varying forms; a small circular salt; a cream jug and an unusual copper lustre pie funnel (6)
315. **A XIX century pink lustre sugar bowl** decorated with a house, a slop bowl, a saucer, a copper lustre jug and a pink lustre ditto, the oval roundel transfer printed with stags before house and a bridge (5) the latter approx. 11.5cm high
316. **A XIX century pink Pearlware motto mug** "Flowers that never fade generosity" transfer printed with a boat before houses and windmill and courting couples picking fruit approx. 7.5cm high

317. **Three XIX century pink lustre earthenware jugs** each with raised bead decoration (3) all approx. 11cm high



318. **A XIX century pink lustre coffee pot and flush cover of baluster form** possibly Staffordshire the body decorated with a banding of flowers with floral highlighted moulded scroll handle and spout on circular foot approx. 28cm high £70-100

319. **A XIX century pink lustre coffee pot and domed cover** possibly Staffordshire of baluster form with green and pink leaf banding to the lid and body, moulded pink highlighted handle and spout, the whole on circular foot; two XIX century pink transfer printed tea cups; a teapot decorated with figures taking water; various XIX century Staffordshire lustre saucers; pink transfer ditto Prince of Prussia saucers (2), another XIX century teapot etc. the coffee pot approx. 27cm high £70-100



320. **A XIX century naive style pink lustre teapot of cape form** probably Staffordshire the domed lid with hoop knob decorated with a house, the body of similar decoration with moulded scroll handle and spout on quadruple supports and a quantity of XIX century pink lustre cups and saucers the teapot approx. 18.5cm high
321. **A set of four XIX century Staffordshire pink lustre cups and saucers** each of geometric pattern (8)
322. **A XIX century naive style Sunderland lustre plate** decorated with a house and trees; another of baron landscape and two pink lustre cups and saucers, each black transfer printed, the first with Britannia and the second of figures before a house (6) large plates each approx. 19.5cm diameter £20-30
323. **A pair of XIX century pink lustre cups and saucers** each decorated with berries and ivy leaves and a quantity of other lustre cups and saucers (11) the larger saucers approx. 14.5cm diameter
324. **A XIX century Staffordshire pink lustre motto jug** "Let him that would live for to thrive by his trade" of globular form with upper raised floral banding, the main body transfer printed with hunting scene, the whole on circular foot, with moulded handle and beak spout approx. 13.5cm high

325. **A XIX century pink and copper lustre jug** decorated with raised classical figures; a blue and pink lustre Staffordshire jug with raised upper floral banding, the main body decorated with church and windmill; and a XIX century pink lustre sauce boat banded with berries and flowers (3) *the latter approx. 9.5cm high* £20-30

326. **A XIX century Sunderland pink lustre motto jug** "Friendship Love & Truth" transfer printed with the Mariners arms, "Success to Commerce" and a large ship "Northumberland 74", of globular form with pink highlighted handle and beak spout on circular foot *approx. 19cm high* £70-100



327. **A XIX century Sunderland pink lustre frog tankard** of cylindrical form, the exterior transfer printed with the "Sailors Farewell", with moulded scroll handle and green glazed interior *frog approx. 12cm high* £120-150



328. **A XIX century Sunderland pink lustre jug** the exterior transfer printed with the "Gardeners Arms" and The Cast Iron Bridge the whole of globular form with pink highlighted scroll handle and beak spout, on circular foot *approx. 14cm high* £70-100

329. **An unusual XIX century Sunderland pink lustre two handled jar and cover** the lid of domed form with circular knob, the main body transfer printed with an unnamed ship and the motto "When first I was a foremast man I often did pretend..." the whole of circular form *approx. 12.5cm high* £50-80



330. **A XIX century Staffordshire hunting jug** *hash mark beneath* of oviform, the body raised with lurchers and hound in naturalistic setting, *approx. 17.5cm high*

331. **A Sunderland lustre bowl of small proportion** XIX century style Plain interior the exterior transfer printed with ship and motto "The Man Doom'd to Sail" on circular foot *Approx 17cms dia.*

332. **A Sunderland Pink lustre jug** XIX century style The exterior decorated with The West View of the Cast Iron Bridge painted in colours with a black transfer of flowers, an upper floral banding, decorated spout and handle the whole on circular foot *The whole approx. 16cms high*

333. **A XIX century Staffordshire twenty four piece pink lustre and transfer printed tea service** comprising tea pot, slop bowl, sugar bowl, milk jug, serving plates, cups & saucers £100-150

XVIII & XIX CENTURY PORCELAIN & POTS

336. **A XIX century blue and white Masons teapot, cover and stand** each piece gilt highlighted and decorated with underglaze blue willow pattern, mock Chinese marks beneath *the stand approx. 21cm wide* £90-140

337. **A Flight period Worcester teapot and cover** *late XVIII century, blue filled crescent mark beneath* of globular form, with sparse gilt highlighted upper banding and floral body, gilt highlighted ear handle and moulded spout *approx. 19cm high* £100-150



338. **A Royal Worcester "Queen Charlotte" pattern teapot and cover** *late XVIII century* blue square fret mark beneath; of globular form, typically decorated with spiralling bands of stylized flowers and foliage in underglaze blue, iron red, purple and gilding with floral knob, scroll highlighted handle and spout on circular foot *approx. 17cm high* £70-100



339. **An XVIII century Caughley blue and white teapot and cover** *printed blue Salopian S mark beneath* of unusual faceted globular form, heavily decorated with oriental houses and foliage with a gilt highlighted scroll handle and a moulded spout, the whole on circular foot *approx. 15cm high* £70-100



340. **A XIX baluster shape coffee pot and cover** the body sparsely decorated with flowers, with gilt highlighted handle and circular spout, the whole on circular foot *approx. 22cm high*

341. **A XIX century Continental porcelain baluster shaped coffee pot and cover** decorated with sparse black and red geometric upper banding raised with gilt highlights, moulded gilt handle and serpent spout, the whole on circular foot *approx. 23cm high*

342. **An early XIX century blue and white teapot, cover and stand in the manner of Newhall** of commode form, the body decorated with a house amongst trees with bridge in the foreground, with florally highlighted scroll handle and spout on a gilt lined stand *the stand approx. 20cm diameter £100-150*

343. **An unusual early XIX century Spode teapot cover and stand** *printed mark Spode 2572 beneath* of compressed oval form, the body with oval floral banding in green, yellow, red and pink with moulded gilt highlighted handle and spout on oval stand *the stand approx. 10cm diameter £100-150*

344. **Six various XIX century teapots** to include Spode pattern 2638, oriental transfer print ditto, another of globular form numbered D199 etc. (6)

345. **An early XIX century Minton teapot and cover** *remnants of blue painted mark beneath* of oval form, the body vibrantly decorated in yellow showing ruined building before mountains with an upper gilt scroll banding, the lid similarly decorated with gilt highlighted ear handle and spout on gilt lined oval foot *approx. 18cm high £600-800*



346. **An early XIX century Newhall teapot and cover** *number N308* of commode form decorated with sprigs and basket of flowers in black, with highlighted scroll handle and spout, printed marks beneath *approx. 16cm high £70-100*

347. **An early XIX century Derby style teapot and cover** of small proportion the body smothered with gilded Billingsley style roses, with an upper blue border, gilt highlighted ear handle, spout and knob, the whole on oval foot *approx. 13cm high*

348. **An attractive XIX century teapot and cover** *Possibly Coalport numbered 1944* of compressed oval form with moulded handle and spout, the main body of textured form, painted with flowers and gilt highlights with an upper blue banding, the whole on oval foot *approx. 17cm high*

349. **A Flight Barr & Barr period teapot and cover** of compressed oval form with gilt banding to the body and lid; and an XVIII century Dr Wall period teapot (*minus cover*) painted with flowers on circular foot (2) *the latter approx. 12cm high*

350. **An early XIX century Derby teapot and cover** *crown mark beneath for 1800-25* of oval compressed form, the body painted with geometric pattern in blue, green, pink and orange with gilt highlights, highlighted moulded handle and spout, the whole on for orb feet *approx. 16cm high £70-100*

351. **An XVIII century Caughley blue and white baluster shaped coffee pot and cover** *printed mock Chinese mark beneath* with a moulded handle and butterfly highlighted spout, domed cover and floral knob, the whole on circular foot *approx. 22cm high £200-300*



352. **An early XIX century Chamberberlains Worcester teapot and cover** *July 1816 printed mark of shop 1155 New Bond Street London under cover* decorated with gilt highlighted scrolls and fern leaves in iron red and blue, with gilt highlighted moulded handle and spout, gilt garland knob, the whole on oval foot *approx. 16cm high £80-120*

353. **An unmarked XIX century Derby style sucrier and cover** of boat form decorated with gilt highlighted flowers in green, iron red and blue, on gilt lined oval foot *approx. 14cm high*

354. **A XIX century Spode teapot, cover and stand** No. 2213 painted marks beneath the teapot of new oval form, decorated with flowers and diamonds in guards red and blue, highlighted in gilt, with moulded handle and oval foot *the oval stand approx. 19cm wide £80-120*

355. An early XIX century Newhall teapot and cover pattern No. 594 of low oval form, painted with flowers in pink, green, orange and yellow to the body and lid, with highlighted scroll handle and moulded spout on oval foot approx. 16cm high £100-150



356. A XIX century teapot and cover in the Derby manner indistinctive painted red marks beneath of compressed London form, the body heavily decorated with gilt highlighted flowers in greens, reds and blues with scroll handle and silver tipped spout, the whole on orb feet approx. 16.5cm high £70-100



357. A XIX century pink lustre teapot possibly Staffordshire of low oval form with a banding of ivy leaves and berries to the lid and body with moulded handle and spout; and another XIX century teapot (2) the former approx. 19cm high

358. An XVIII century Salopian Caughley blue and white teapot and cover printed letter "S" beneath of globular form decorated with The Fisherman Pattern with moulded floral knob, moulded scroll handle, decorated spout on circular foot approx. 17cm high £200-300



359. An XVIII century Caughley blue & white teapot and cover blue crescent mark beneath of globular form with moulded ear handle, acorn finial and painted spout, the main body painted with flowers approx. 13cm high

360. An early XIX century Spode teapot and cover the lid numbered 741, the base 500 and impressed 280 of cylindrical form, puce decorated with flowers, gilt banding and knob, lobed ear handle and spout approx. 15.5cm high; and an early XIX century Newhall "Brecknock" teapot and cover, puce decorated to both sides with moulded ear handle and spout on oval foot (2) £80-120



361. An early XIX century blue and white transfer printed teapot and cover of compressed oval form with gilt highlights, moulded ear handle and plain spout on oval foot approx. 16cm high; and another similar transfer printed with oriental style pagodas with gilt highlights £70-100

362. A XIX century silver lustre teapot and cover of cape form decorated with flowers, with moulded ear handle and highlighted spout on oval foot; and a XIX century bone china teapot in the manner of Newhall painted with flowers (2) the latter approx. 14.5cm high

363. An unmarked XIX century teapot and cover the body gilt highlighted and decorated with leaves with garlands, knob, moulded handle and spout on oval foot; a XIX century teapot of oval form and a ribbed Newhall example of oval form (3) £80-120

364. A XIX century Wedgwood teapot and cover impressed marks beneath Wedgwood painted red X and blue star the body decorated with flowers and birds in blue, green, yellow and red with a moulded handle and spout, the whole on oval foot approx. 15cm high

365. A XIX century Newhall teapot, cover and stand printed number beneath NO142 of commode form with upper gilt feather banding, acorn finial, moulded gilt highlighted scroll handle and spout on stand the stand approx. 26cm diameter £100-150



366. A XIX century teapot and cover possibly Coalport printed number beneath No. 1865 with a rose banding in pink and green with gilt highlights and further blue gilt highlighted banding, with a moulded handle and spout on an oval foot approx. 15cm high £50-80

367. A XIX century vase probably English blue printed feather mark beneath gilt highlighted and painted in colours of predominantly orange, green and blue on a gilt ground with two 'C' shaped handles the whole on circular foot Approx. 29cms dia.

368. A XIX century Derby teapot and cover Painted Crown and D mark below Of cape form. The lid smothered in gilt highlighted flowers mainly in blues and greens the body with a similar upper banding Approx 13 cm high

ORIENTAL CERAMICS

375. An XVIII century Famille rose Chinese export teapot and cover

of globular form, the textured body painted with flowers with scroll handle, the whole on triple ball and claw supports *approx. 18cm high* £100-150



376. An unusual set of twelve XIX century oriental plates

Probably Chinese each of shaped circular form decorated with blue and green flowers and further blue flowers verso *each approx. 21cm diameter* £200-300



377. A XIX century oriental ginger jar another of globular form and a marmalade jar and cover (3) *the larger jar approx. 18cm high*

378. A pair of table top Dogs of Fo *probably Chinese* each of typical form with front paws resting on orbs, on stepped rectangular feet, each predominately painted in greens and oranges *approx. 45cm high*

379. An XVIII century Famille rose oriental teapot and cover the main body painted with flowers with "C" scroll handle and later metal spout, the whole on circular glazed foot *approx. 15cm high* £70-100

380. A blue and white Chinese teapot with later English spongeware lid *the teapot probably XVIII century* the body decorated with pagoda amongst trees with highlighted scroll handle and spout, unglazed base *the whole approx. 10cm high*

381. An oriental teapot of small proportion *probably early XIX century* in Famille vert pallet with "C" scroll handle and shaped spout on circular foot, the body decorated with flowers and butterfly *approx. 11cm high*

382. A Chinese teapot and similar shaped cover *late XVIII century*

painted with flowers in Famille rose pallet, the body painted with seated figures, plain handle and spout *approx. 16cm high* £120-150



383. A XIX century oriental Famille Vert teapot and cover of small proportion the body of bowl form with plain handle and gilt highlighted spout, the main body decorated with figures surrounded by flowers *approx. 12cm high*; a XIX century oriental teapot similarly decorated with figures with a gilt highlighted handle and spout; a miniature oriental style teapot; an unglazed liner; a further teapot and another painted with flowers (6) *the former approx. 10cm high* £80-120

384. An oriental polished soapstone teapot and cover *Probably XIX century* heavily carved with flowers to the shaped handle and spout, fluted body, bird knob, circular foot *approx. 10cm high*

385. An unglazed Tang style terracotta figure of a standing horse on rectangular base *approx. 10cm high* £70-100

386. A XIX century glazed figure of an oriental gentleman beside a barrel and monkey, he with jovial expression on square base *approx. 19cm high*

387. An unglazed Tang style terracotta figure of an oriental soldier, standing with arms crossed on square base *approx. 17cm high*

388. An unglazed terracotta style figure of an oriental kneeling gentleman on square base *approx. 24cm high*

389. An oriental vase of large proportion *probably Japanese* of trumpet form, gilt highlighted with fixed lion mask handles, decorated with birds and flowers on green ground, the whole on circular foot *approx. 63cm high* £100-150

390. A good oriental vase on wooden stand *probably Japanese, late XVII-early XIX century* of inverted baluster form, gilt highlighted and decorated with figures before pagoda below a floral rim on circular foot with wooden stand *approx. 49cm high* £200-400



391. A large oriental charger of circular form painted with birds and flowers, predominately in green, red and blue, on white ground with geometric banding, blue highlights verso *approx. 47.5cm diameter* £100-150



392. **A late XIX century Famille vert vase of large proportion** of tapering trumpet form, heavily decorated with figures, birds and flowers with upper gilt handles and applied dragons on circular foot *approx. 61cm high* £100-150



393. **An oriental charger of large proportion** gilt highlighted and hand painted with figures, trees, birds and flowers with floral border on guards red ground with floral highlights verso *approx. 47cm diameter* £100-150



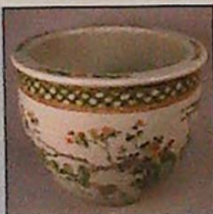
394. **A large oriental octagonal charger** extensively painted with flowers and trees in blues, greens and oranges with gilt highlights and decorated base *approx. 43cm diameter* £100-150



395. **A blue and white oriental vase** XIX century style of tapering shouldered form, decorated with sprigs and flowers on bluish ground, painted marks beneath *approx. 48cm high* £100-150



396. **A large Chinese Fish Bowl** painted with flowers in greens and oranges with an upper geometric banding and sparse floral rim on white ground *approx. 34cm high* £200-300



397. **An Imari design bowl of flared form** gilt highlighted and decorated with flowers and buildings, on blue lined circular foot *approx. 20cm diameter*

398. **A large Famille vert vase of tapering trumpet form** with gilt mask handles, the body heavily decorated with figures and flowers in shades of green, pink and white on circular foot *approx. 62cm high* £70-100

399. **A seated figure of a smiling Buddha** Chinese XIX century typically posed holding beads in a floral dress, his wide smile picked out in red, impressed mark beneath *approx. 30cm high* £100-150



400. **An Imari vase and cover** probably early XX century of ribbed tapering form, the domed cover with dog of foe knob, the body heavily decorated in blue, orange and green flowers and scrolls on a white ground *approx. 39cm high*

401. **Two matched Imari vases of ribbed form** each probably late XIX century of tapering cylindrical form, the domed covers with dog of foe knobs, the bodies heavily decorated with flowers in reds, blues and pinks on white ground *each approx. 34cm high* £80-120

402. **An oriental Kutani figure of a Geisha girl** with marks beneath she standing in gilt highlighted flowing gown predominately in green, blue and orange on circular, unglazed base *approx. 49cm high* £200-300



403. **A pair of fluted Imari vases** each of shouldered form, heavily decorated with flowers in blues and oranges on white ground with sparse floral rims on circular feet *each approx. 32cm high*

404. **A XIX century style Imari dish** with flared rim; a similarly decorated bowl; a vase and a fan shaped dish with sparse florally painted back (4) *the fan shaped dish approx. 29cm wide*

405. **A XIX century style Imari charger** with flared rim; and four various Imari plates - all XX century *the larger approx. 30cm diameter*

406. **Eight various Imari plates** all XX century *the largest approx. 24cm diameter*

407. **A pair of Japanese plates** probably XIX century each decorated with many figures playing games before trees on white ground, each with sparse decoration and marks verso *approx. 25.5cm diameter*

408. **A XIX century style Imari vase** probably early XX century of flared form, the bulbous body decorated with blue and orange flowers on white ground, the whole on circular foot *approx. 38cm high*



409. **A pair of Imari vases** possibly XIX century of ribbed shouldered form, each heavily decorated with flowers in blues and oranges on white ground with sparse floral rims each approx. 24cm high



410. **A late XIX century Oriental plate** naively painted with figure on horseback before further figure and mountains and another similar, printed floral bouquets verso (2) each approx. 21cm diameter



411. **An Imari design plate** of shell shaped form, heavily decorated with flowers and leaves in oranges and blues on white ground with floral bouquets verso approx. 31cm wide



412. **An Imari bowl** of small proportion, another, a vase painted with figures before houses and trees on circular foot and a figure of a seated Geisha girl mainly in purple, green and brown the latter approx. 15cm high (4)

413. **An Imari vase**, a bulbous oriental ditto, a similarly decorated bulbous double gourd vase in blues, guards red approx. 19cm high, and a bowl (4)

414. **A Japanese incense bowl and cover** XIX century predominately in oranges and reds on white ground with gilt highlights, dragon knob, pierced handles and lid, the whole on triple cylindrical supports and wooden circular stand approx. 36cm high



415. **A good pair of Satsuma vases** XIX century Japanese, gilt marks beneath each with floral banding the main body decorated with birds, flowers and buildings before mountains on circular gilt lined feet each approx. 33cms high £150-250

416. **A good and large Chinese charger** XIX century of circular form, hand painted with remnants of gilt, bird on water before reeds, predominantly in orange, green and blue with decoration and marks verso Approx. 50cms dia.

417. **A large oriental yellow ground charger** Late XIX/ early XX century marks beneath of circular form painted with birds and flowers with a black floral banding Approx. 45cms dia.

418. **An Oriental Imari charger** XIX century painted and decorated with a vase of flowers with floral banding predominantly in orange, blue and white, painted flowers verso Approx. 46cms dia.

419. **An oriental soapstone figure of a standing gentleman** XIX or XX century holding scrolling in flowing robes beside vase, on ebonised scroll foot the whole approx. 20cm high



420. **A pair of polychrome oriental ginger jars** early XX century each decorated in colours showing figures, shrubs and butterflies on circular feet, one with Chinese marks each approx. 14.5cm high

421. **A Famille Vert Canton charger** XIX century

Heavily decorated with exotic birds, butterflies and flower heads with an inner Greek Key border with painted flowers verso the whole predominantly in greens, pinks and gilt etc approx 34 cm diameter Provenance: believed to be from the Lady Haitland collection



422. **An XVIII century blue and white Chinese export charger**, painted with a figure before boat, mountains and trees, yellow border 46.5cm diameter

DECORATIVE CHINA

424. **A pair of Sitzendorf figures of parrots**
XX century each with blue crown and S marks beneath the first yellow, blue and green the other red and blue on naturalistic floral bases each approx. 32cms high



425. **Crown Staffordshire. A pair of vases and covers**
each of inverted baluster form, painted with flowers and leaves on white ground on circular feet with domed gilt highlighted covers each approx. 32cm high



426. **Royal Dux. A table centre**
XX century, D59 raised rectangular pink mark beneath of naturalistic form, the shaped bowl with leafy stem and swept base, aside maiden with a further maiden climbing the bowl, approx. 42cm high £150-300

427. **A parian style figure of a lady** early XX century standing in classical dress holding dove and shell on circular foot approx. 33cm high

428. **Wedgwood. An octagonal lustre bowl of Daisy Makeig Jones Design** numbered Z4832 the exterior with an upper gilt lined geometric banding above flying storks, the interior gilt and lustre highlighted with butterflies on orange ground with central flower the whole approx. 20cm diameter £100-150

429. **EGM, 1912. An unusual German faience tankard** painted in colours showing hunters and dogs attacking boar, reading "An Faga Und An Hund Macht" with blue dash handle on circular foot approx. 14cm high

430. **A XIX century Perugian lustre cream jug** the body smothered in flowers and reading "Bevipinche Poi-Veve-Per" with plain scroll handle on circular foot, painted marks beneath approx. 9.5cm high

431. **Capo Di Monte. A set of four figures of soldiers** each XX century in typical poses holding guns and swords in XIX century dress, each on gilt highlighted naturalistic squared bases, blue crown and N marks beneath and a Capo Di Monte hand bell with metal handle (4) the bell approx. 25cm high

432. **Capo Di Monte. A highly elaborate dome top jewellery casket** Crown & N mark beneath gilt highlighted and heavily decorated with raised figures on paw feet, gilt marks beneath approx. 20.5cm high

433. **A pair of Capo di Monte lidded vases** of urn form, each gilt highlighted with scrolls and decorated with raised figures of cherubs and trees with gilt highlighted handles and oval feet each approx. 39cm high



434. **Capo Di Monte. A modern lidded two handled vase** of compressed oval form, with gilt highlighted scroll handles, the body decorated with raised nudes on gilt highlighted oval foot, printed marks beneath approx. 27cm high

435. **Royal Copenhagen. A shaped circular bowl** XX century with lizard handles, the centre painted with flowers on circular foot, printed marks beneath approx. 21cm diameter

436. **A pair of Continental Bisque porcelain figures of boy and girl** each dressed in finery on naturalistic settings, predominately in peach, green and blue each approx. 24cm high

437. **A Capo di Monte figure of a lady**
XX Century She seated in finery holding a hand mirror in pinks and greens on gilt highlighted base approx. 17.5 cm high



438. **A Continental Majolica pottery ewer** late XIX/early XX century of globular form with scroll handle on shaped foot; and a XIX century painted pink glass vase of tapering cylindrical form on circular foot the base approx. 35cm high



439. **Wedgwood. A dark blue Jasperware vase** late XIX/early XX century of urn form decorated with classical figures on circular foot and a XIX century transfer printed jug decorated with Dick Whittington, hinged pewter lid (2)

440. **Charlotte Rhead. A Crown Ducal charger** No. 4298 printed and painted marks beneath painted in green, orange and silver on a cream ground, Approx. 34cms dia.

GLASSWARE

441. **Fred Walklate 1888-1927. A pair of hand painted Royal Doulton plates** *early XX century, Tiffany & Co New York marks beneath. Pattern: E1373* of circular form, the centres painted with grazing sheep (signed) with an outer Hyperion style raised gilt scroll border on white ground *Each approx. 22.5cms dia. The Royal Doulton Museum, Nile Street, Burslem have no such example of Walklate's work and his name only appears in their pattern books. £500-700*

442. **Dresden. A figure of a girl gardener** *early XX century F crown mark beneath* She trimming roses in finery beside basket, on gilt lined oval base *approx. 14cm high*



443. **Meissen. A figure of a boy holding wreath** *XIX century blue cross swords mark beneath numbered 5* standing in a pink waistcoat, striped green breeches, on gilt highlighted scroll base *approx. 14cm high*



444. **Meissen. A figure of a boy holding a garland** *late XVIII/early XIX century blue cross sword mark beneath, impressed No. 15 & 62* he seated in pink waistcoat and finery holding garland of flowers, on gilt lined scroll base *approx. 13cm high*



445. A continental bisque figure of a lady, glazed ditto and another boy, Continental cup and saucer and a Capo Di Monte elaborate preserve jar and spoon
446. **A quantity of china and glass etc.** to include a Cloisonne incense burner of bulbous form, pair of miniature Staffordshire style spaniels, two etched brass shell cases dated 1917, an oriental bowl, a Quimper saucer and miniature porringer, a metal pin cushion in the form of a shoe, silver plated table basket with pierced rim, brass ink stand of squared form on quadruple supports, five Italian tin glazed style plates decorated with various fruits a brass kettle with amber style handle and a trivet
447. **Moorcroft. An Anemone pattern baluster vase** blue mark *13cm high*
448. **Moorcroft. A leaf and berry pattern baluster vase** green mark *13cm*
£100-200
449. **A Royal Worcester figure "Grandmothers Dress"** Rd No. 799938

460. **A pair of XIX century red glass lustres** with clear tear glass droppers of castellated dumb bell form on raised circular feet *each approx. 32cm high £50-80*

461. **A pair of Victorian green glass lustres** each gilt highlighted of dumbbell form with clear glass droppers on circular feet *Each approx. 17cms high*



462. **A good pair of Victorian glass lustres** each with castellated tops and plain glass droppers, the bodies gilt highlighted and painted with cherubs and flowers in greens and oranges, on baluster columns and circular feet *each approx. 36cm high £100-150*



463. **A Pair of Victorian ruby and clear glass lustres** The flared rims highlighted with flowers, raised on baluster columns and circular feet *each approx 36cm high*



465. **A pair of heavily decorated candlesticks** *early XX century* gilt highlighted and decorated with birds and flowers on shaped tapering stems, shaped domed supports each with vase shaped dish holders *approx. 30cm high*
466. **An early XX century oil lamp** with plain glass funnel and reservoir, white milk glass shade, shaped metal base *approx. 56cm high*
467. **A good early XX century oil lamp** with etched clear and cranberry glass flared shade, clear funnel and brass stand, the whole on circular ebonised foot *approx. 57cm high £70-100*
468. **A painted milk glass vase** *late XIX/early XX century* of tapering form with gilt lined trumpet stem, the body painted with flowers on circular foot and a copper kettle on stand *the latter approx. 33cm*

469. **A pair of blue glass and metal ewers** *late XIX/early XX century* each with pierced handles and moulded rims, above tapering glass bodies highlighted with flowers on pierced metal bases *each approx. 39cm high*



470. **A Georgian ale glass**
Possibly XVIII century
of typical form with plain stem
and domed foot, rough pontil
approx. 20cm high



471. **An Austrian milk glass vase of large proportion**

XIX century of dumbbell globular form, the body gilt highlighted and painted with classical lady reading, the whole on circular foot
Approx. 54cms high



472. **Four clear glass oil lamp towers**
each approx. 15.5cm high
473. **A XIX century moulded green glass oil lamp** with frosted glass chimney and baluster reservoir the circular foot moulded with raised serpents and shell scrolls approx. 45.5cm high
474. **A XX century textured green glass alchemists bottle with baluster stopper**
approx. 39cm high
475. A moulded milk glass lamp of dumb bell form with clear glass funnel and two others (3) the former approx. 42cm high
476. A late XIX/early XX century metal and glass oil lamp with clear baluster funnel and reservoir on pierced metal stand and a late XIX century blue and milk glass oil lamp (2) the latter approx. 35cm high
477. **A XIX century etched red glass Mary Gregory style vase** of waisted trumpet form, the main body typically decorated with child by tree on circular foot approx. 20cm high
478. **A XIX century cranberry glass bon bon dish and cover** with textured clear glass banding on shaped clear glass foot the whole approx. 14cm high
479. **Two XIX century clear and cranberry glass salts** of shell shaped circular form, a XIX century dwarf ale glass on circular foot, a red and clear glass sherry glass and a green glass brandy balloon (5) the latter approx. 13cm high
480. **Four cranberry and clear glass wine glasses and a red and clear glass serving jug** the jug approx. 18.5cm high
481. **An unsigned clear glass Mdina style dump** approx. 11cm high, a blue glass vase of globular form, glass hen ornament and a jug with flared rim etc. (5) the jug approx. 17.5cm high

482. **A XIX century painted Bristol blue glass style vase** the globular bowl raised on baluster stem and circular foot, a blue glass vase decorated with ferns and a turquoise glass oil lamp of trumpet form the latter approx. 26cm high
483. **A cranberry glass and silver plated two bottle condiment cruet by MW & Co** each bottle of bulbous form with plated mounts and stand approx. 17cm high
484. **A XIX century green glass Bohemian lustre** of dumbbell castellated form, gilt highlighted with flowers, the circular base inset with roses approx. 32cm high
485. **A 1930's press moulded green glass lamp** modelled as a naked maiden on shaped circular base approx. 20cm high (minus shade)
486. **Three Bristol blue glasses** with circular bowls, tapering stems and domed feet, rough pontils each approx. 12.5cm high

SILVER & PLATE, OBJETS D'ART ETC.

490. **An elaborate Baroque style four branch candelabra modelled as a tree** XIX century the stem with raised oak leaf and acorn banding supporting four candle holders held by a calyx of flowers, the naturalistic stump base decorated with sheep with detachable bough stoppers Approx 79cms high £100-150



491. **A good quality silver galleried edged tea tray** Approx 79oz Sheffield maker Walker & Hall of oval form with a pierced gallery, bright cut decoration, presented to John Seddon 1913-1919 with an inner scroll banding and central initials, beaded 'C' scroll handles, quadruple ball feet Approx 60cms wide £300-600



492. **An Irish silver potato ring** Dublin 1915 Weir & Sons stamped TW of inverted circular form, pierced body, decorated with hounds, scrolls and flowers with a vacant cartouche approx. 21.5cm wide £200-400



493. **A hallmarked silver chocolate pot**

London 1890 maker CSH of tapering bulbous form, gadrooned hinged lid and lower body, upper garland banding, ebonised side handle, beak spout, the whole on triple shell cap supports *approx. 23cm high*



494. **Royal Society for the Protection of Birds**

A cased member's edition of solid sterling silver spoons with accompanying ephemera

495. **Coins.** Boxed Franklin Mint proof set Belize 1975 and Virgin Islands with paper work and a box set of miniature sterling medallions of classic motorcars

496. **Great British Locomotives** A case of proof sterling silver ingots of famous trains to commemorate the inauguration of the National Railway Museum 1975 with accompanying ephemera

497. **The complete works of Vermeer** A limited edition boxed proof set Gold on Silver medal collection showing the complete works with documentation in yew wood case (31)

498. **A silver plated gallery edged tea tray** of plain oval form with pierced gallery *approx. 62cm diameter*

499. **An Edwardian oak three bottle glass tantalus** with metal mounts and carrying handle, and three wine labels *approx. 30cm high*

500. **A silver stamp case** London in the form of an envelope

501. **A hallmarked silver heart shaped dish,** preserve spoons, plated three footed salt etc. (one bag)

525. **2 coloured horn snuff boxes** with hinged lid and a carved ditto *the latter approx. 8.5cm long*

526. **A carved ivory bust of an ethnic figure** *approx. 7cm high*

527. **An oval cameo brooch** of a lady on gold mount, stamped 9ct and a pair of cameo ear studs

528. **A pair of floral ear studs,** each inset with six diamonds and central red stones on gold mount

529. **A lady's necklace inset with polished oval amber coloured stones,** gilt metal claw setting; and a pair of matching ear studs

530. **A hallmarked silver gilt bar brooch** "Good Wishes", a Lincoln Imp gold ditto and a quantity of cuff links etc. (one box)

531. **A quantity of 9ct and other cuff links**

532. **A Queen Victoria gold sovereign 1890**

533. **An Edward VII gold sovereign 1904**

534. **A Queen Elizabeth II gold sovereign 1963**

535. **Old Sheffield plate.** A pair of wine coasters each of baite lined circular form with raised floral rims *approx. 17.5cm diameter*

536. **Old Sheffield plate.** A pair of wine coasters each of circular form with swept floral rims *approx. 17.5cm diameter*

537. **Old Sheffield plate.** A near matching set of three wine coasters each of circular form with scroll borders *each approx. 15cm diameter*

538. **Four various old Sheffield plate coasters** and a silver plated circular tray on triple supports

539. **A pair of Edwardian silver plated salts** each with cranberry glass liners *approx. 7.5cm diameter*

540. **Silver plate** A galleried tray, muffin dish, continental oval plate, circular stand, candlesticks etc. - one shelf

541. **A pair of hallmarked silver (scrap) candlesticks** another, a four piece silver plate tea service, pierced basket, boxed cutlery etc. - one shelf

METALWARE, PORTRAIT MINIATURES, BYGONES

575. **A pair of Regency style copper and brass buckets** of oval form with lion mask handles, on studded hairy paw supports *each approx. 45cm diameter*



576. **A brass planter** with shaped handles and pierced central rim of barrel form *approx. 15cm high*

577. **A good painted model of a three masted ship** with rigging, deck and upper cabins etc. on stand *approx. 107cm wide*



578. **A mid XX century teddy bear** probably English plush jointed with orange and black eyes, black nose and mouth and pad lined hands and feet *approx. 38cm high*



579. **A Georgian style mahogany miniature bureau** the fall front revealing drawers and pigeon holes above four long drawers on bracket feet *approx. 24cm high*

580. **A pair of XIX century style cast metal figures of Le Travail & Le Science** each of classical form, he semi clad holding garlands, his foot resting on books under broken column; she beside a wheel with arm raised, on circular bases *each approx. 50cms high*



581. **A bronzed oriental design vase** with dragon handles, of waisted form with trumpet stem, decorated with raised figures on circular foot; and two similar garniture vases *the latter approx. 31cm high £120-150*



582. **A German pot headed doll** the head stamped TBSH 1909 with brown eyes, open mouth showing teeth and plaster body and a black baby doll (a/f) (2)

583. **Auguste Moreau**. A metal on plaster figure of a classical lady standing on a naturalistic base and holding parchment (as a table lamp) *Approx. 72cms high £150-250*



584. A metal plated "Mollasine" advertising match holder *approx 7 cm long*

585. **An XVIII century portrait miniature of George Jackson MD, Derby** he quarter profile wearing wig in oval gilt frame *Approx. 5.5cms high £100-200*



585A. **A XIX century portrait miniature print** of Lady J Russell in pierced easel style frame

585B. **A pair of XIX century silhouettes** of Mr & Mrs F Masterson (1840), each in oval frames

586. **An early XIX century portrait miniature of a soldier** standing side on half length in ebonised frame *The whole approx. 14cms £100-200*



587. **A XIX century portrait miniature of a gentleman** dressed in black and white, half profile in oval frame initial verso *Approx. 11cms £100-200*



588. **A XIX century gauche portrait miniature of a gentleman** Half profile he dressed in black jacket with white neckerchief in oval frame, written verso 18/1/64 *Approx. 7cms £100-200*



589. **A XIX century portrait miniature of a gentleman** with flowing blonde hair in black jacket in gilt oval frame *Approx. 7.5cms high £100-200*



590. **A XIX century portrait miniature of a lady** dressed in black and white wearing bonnet in oval velvet lined gilt frame *Approx. 8cms high £100-200*



591. **A XIX century continental miniature of a lady in religious dress** holding flower in heavily carved frame *The whole approx. 13cms*

592. **An elaborate pair of plaster table lamps** the main bodies cast with figures of ladies aside wells on circular bases with shades *Each approx. 87cms high (excluding shades)*



593. **Three XIX century French hand touched prints** Figures sewing, figures on a street and portrait of a lady each in carved giltwood frames. *Each frame approx. 20 x 23 cm*

594. A metal framed mesh fireguard

595. **Football programme** - Nottingham Forest v Luton Town Littlewoods Cup Final 1989, quantity of others to include Leeds United v Sunderland FA Cup Final 1973, Lincoln City Centenary programme with signature of Bobby Charlton and a quantity of England programmes from the 1970s

596. **A quantity of 1970s boxing programmes** to include programmes signed by Frankie Vaughn and Joe Louis (5)

597. **Nottingham Forest** - a signed football to include signatures: Paul Daniels and Brian Cloughs' 1st Team etc.

598. **Hardy Bros. Ltd Alnwick. A patent "steel centre" three piece salmon rod** 12ft 6inches, spare top, number E31960 and another similar rod, 3 piece, 12ft 8inches, number 41208 (2)

599. **Fishing Rod:-** A E Rudge & Son Redditch. A three piece 14ft dapping rod with split cane top section and another 15ft ditto by the same maker (2)
600. **Hardy Bros. Ltd Alnwick. A 9ft 4inch cane spinning rod** number E6869, two piece and another unnamed 14ft salmon rod, three piece
601. **Hardy Bros. Ltd. The "Altex" fixed spool spinning reel** and another fixed spool reel "The Helical Casting Reel Co. Redditch"
602. **Hardy Bros. Ltd. The Perfect salmon fly reel - 3.75inch**

603. **Hardy Bros. Ltd.**
The Perfect salmon fly reel
- 3.5inch



604. **Hardy Bros. Ltd. The Perfect salmon fly reel - 4inch**

605. **A late XIX/early XX century mahogany table top cabinet** containing ten slides, each with salmon fly clips, the drawers numbered and with ivorine plaques, including approximately 186 traditionally tied single hook salmon flies £200-300



606. **A XIX century black leather covered travelling box** containing salmon flies "Salmon Flies, J.B. Baillie Leys Castle", the hinged top enclosing cork lined tray and a book wallet of nine double sided vellum stitched pages divided into compartments and containing approximately 130 mainly gut eyed salmon flies - external measurements 28cm x 25cm x 17cm £300-500



613. **Two bowling woods and a jack** contained in a travelling case and another pair in a canvas and leather case
614. **A Paillard Bolex (Swiss made) vintage cine projector** in black leatherette case

POSTCARDS & BYGONES

615. **An early XX century album** containing over 950 postcards including topographical, rural, piers, World War I, humorous, film & stage, 2 "hold to light" etc - mainly UK - some French £700-1200

616. **Postcards. Cats**
- Louis Wain 2 & 7 others (9)



617. Postcards. Tram Terminus Wanstead Flats & Town Hall Matlock (2)
618. Postcards. Shipping some rail related RMS Campania & Luciana, SS Mersey Preussen Bremen Southampton Docks (3) etc (12)
619. Postcards. India Tea - Dismounted Sowars; Dispatching by River & Shipping Calcutta (3)
620. Postcards - Rail travelling Post Office, Midland Hotel Manchester (3), Signal Cabin Rugby etc. (13)
621. Postcards. Theatre "The bad girl of the family", four black & white Her Majesty's Theatre, Drake "England is waiting" & Concert Hall Torquay Pavilion (6)
622. Postcards 6 "The Royal Mint" black & white (not posted and unwritten) all titled
623. **An album of mainly Lincolnshire postcards** to include Lincoln Typhoid 1905, Stonebow, Steep Hill, various other Lincoln and other scenes - mainly all early XX century

PICTURES, PRINTS & MIRRORS

820. **After Willem & Johan Blaeu** National Library of Scotland reprint map in Hogarth frame; another modern map of Lincolnshire and a Nottingham ditto (3) *the latter approx. 45cm x 57.5cm*
821. **After John Speed** Facsimile map of Northumberland in colours, Hogarth frame *approx. 42cm x 55cm*
822. **After John Morden & George Humble** A framed map of Sussex bearing the date 1610 printed text verso regarding the county, pencil No. 309/14 *approx. 40cm x 52.5cm £70-100*

823. **William Kipp & William Hole** *The 1607* (First Edition) framed map of Lincolnshire printed Latin text verso, mounted and framed approx. 30cm x 35cm £100-150
824. **An unnamed XVII century coloured engraved map of Lincoln** with latin text verso mounted and framed approx. 41cm x 51cm £100-150
825. **"Mare Della Caramania Di Cibro"** a framed map after Cornaro approx. 39cm x 52cm
826. **Five facsimile maps - Nottingham, West Yorkshire etc. (5)** each approx. 26cm x 35cm
827. **A black and white map of Lincoln** in modern mounted frame decorated with sea monsters and ships approx. 29cm x 39cm

828. **A XIX century framed black and white bookplate after W Dickinson & Ward "The Choice", XIX century English School** oil on canvas - figure before stream and mountains and **P Clarkson** print - Castle Square Lincoln the oil approx. 24cm x 33cm



829. **Albert Hartland** XIX century watercolour calm stream and bridge before trees, signed lower left approx. 17cm x 25cm £20-30
830. **Moore, J C S** Oil on canvas Lincoln Pottergate, signed and dated 1882 approx. 19.5x14.5cm
831. **Bearing the signature Mianchino Carcello** Oil on canvas Still Life vase of summer flowers, signed lower left approx 49x40 cm £100-150
832. **A Continental School landscape print** Early XX century Children sailing toy boats in stream before bridge, cottage and trees approx. 43.5x34 cm

833. **Ralph Wilson** oil on canvas "Climbing Roses" signed lower right Approx. 8cm x 76cm £200-300



834. **XIX century school** A pair of oil on canvas "A village near Great Marlow on Thames and a village near Stratford Upon Avon" (2) Each approx. 59 x 105 cms (Formally in Potterhanworth Hall) £400-800

835. **Penley, Edwin Aaron (1830 - 1900)** watercolour 1864 Wast "Water on a summers day", monogrammed and dated lower right Approx. 19x46 cm £200-300



836. **Earpesen, Harold (Senior) 1831 - 1914** Watercolour Cattle grazing before farmer ploughing in the distance, signed lower right Approx 22x52cm £80-140
837. **Needham, Joseph (1810-1880)** Watercolour Sheep on path before figure and mountains, signed lower right Approx. 27.5x43.5 cm £70-100
838. **A Schafter** A pair of oils on canvas Continental town scenes each signed and dated 187* Each approx 38 x 29 cm £150-300
839. **XIX century Continental School** Oil on canvas Figures on a summers day before ruins and mountains approx 48 x 58.5cms £100-150
840. **Thomas Bushby (1861-1918)** Watercolour "The Ribble Head Viaduct" with steam train passing over the river Gretna, signed lower left. Approx 25.5 x 35 cm with article verso regarding the rail line and viaduct The bridge has fallen into disrepair and was the old Nottingham to Glasgow route
841. **A XIX century pictorial, alphabetical and numerical sampler** by Ann Pollart, aged 12 29cm x 29cm

842. **Reinhart, Lea** Still life study centred with a porcelain group of two lovers, beside a green vase on a ledge with emerald set bracelet and lace cloth in the foreground, written verso "Lea Reinhart Akad Materim original unikat" Oil on canvas 33cm x 27cm £300-500



843. **XIX century English school** oil on canvas bearing a plaque "The Old Jetty Yarmouth John Moore c. 1882" Approx. 24cms x 39cms £180-280



848. A modern gilt framed hanging mirror
849. A Large XIX century giltwood mirror the frame centred by a single scroll with textured bead and floral banding approx 141 cm high

CLOCKS

855. Denis Papin Vapeur

An elaborate XIX century style mantel clock, the circular roman numeric dial beside seated figure on marble base and painted enamel plaques, above shell scroll apron and scroll feet on a velvet lined base with beaded border *the whole approx. 35cm high* £100-150



856. A XIX century walnut and ormalu mounted cast metal mantel clock

of shaped form with gilt brass highlights, circular arabic dial and black baton pointers, the whole on scroll supports *Approx. 25cms high*



857. An oak stained mantel clock with arabic dial

858. A XIX century single weight Vienna regulator wall clock contained in a walnut architectural case with applied ebonised barley twist decoration and moulded cornice *110cm* £300-500

859. A XIX century spring driven Vienna wall clock contained in an elaborate walnut case decorated with split turnings, a mask etc. *approx. 82cm* £60-120

860. A good quality XIX century cold metal and marble table clock the circular Arabic dial below resting maiden on shaped textured red and black marble inverted base with ormalu mounts, the whole on shaped circular supports *Approx. 36cms high* £100-150



864. A XIX century longcase clock the oak and mahogany case enclosing the arched painted dial decorated with castle scene and signed "Hargrave Bawtry", 30 hour striking movement, the trunk enclosed by a long shaped crossbanded door *220cm high* £300-600



865. A late XVIII/early XIX century mahogany longcase clock the arched brass dial with subsidiary second and date rings, contained in a broken swan neck pedimented hood, the trunk enclosed by a figured shaped long door flanked by quarter fluted columns *237cm high* £800-1200

866. A mid XIX century mahogany broad cased grandfather clock with arched painted dial, contained in a swan neck pedimented hood, flanked by turned columns, the trunk with a short shaped door flanked by columns (*distressed*) £250-350

867. An early XIX century mahogany longcase clock the arched painted dial with an automaton of Adam & Eve in the arch, subsidiary seconds ring and date aperture, signed "Wm. Latch Newport", contained in a swan neck pedimented hood flanked by Corinthian columns, the base enclosed by a short door, chevron banded and boxwood strung *overall 226cm high* £700-1100



868. An XVIII century oak longcase clock with later chiming and striking free train movement on eight bells, the brass dial with applied spandrels, silvered chapter rings with seconds ring and striking silent dials *220cm high* £400-800



FURNITURE & APPOINTMENTS

873. A Victorian mahogany bar back dining chair with drop in seat on fluted front supports

874. A brass extending standard lamp the tapering column terminating in circular foot and triple hairy paw supports with floral shade *Approx. 164cms high*

875. A large XIX century mahogany chest of four short and three long drawers with a central bonnet drawer, raised on splay bracket feet *121cm wide* £200-350

876. A XIX century mahogany four door bookcase top now on later feet and used as a display cabinet *152cm wide*

877. An early XIX century mahogany double wardrobe enclosed by a pair of panel doors, above two drawers *131cm wide* £100-150

878. A XIX century mahogany secretaire the fall front enclosing a fitted interior of pigeon holes and small drawers above a cupboard base fitted with three slides, enclosed by two cross banded doors *110cm wide* £200-300



879. **A Victorian oak chest of two short and three long drawers** with a similar glazed bookcase top *120cm wide* £100-200

880. **A George III style mahogany six leg sideboard** with concave centre fitted with a drawer and deep napery drawer, flanked by bow fronted cupboards *152cm wide, 63.5cm deep* £200-300



881. **A small early XIX century mahogany chest** of three cock beaded drawers with oval brass handles on bracket feet *86cm wide, 84cm high* £200-300

882. **A XIX century mahogany bow fronted chest of two short and three long drawers** flanked by turned boxwood strung columns *114cm wide* £200-300



883. **An early XIX century mahogany bow front six leg sideboard** with a central napery drawer flanked by two short drawers, a cellerette and a cupboard, inlaid with ebony stringing and with lion mask handles, raised on turned taper supports *17cm wide, 68cm deep* £450-750



884. **A George III mahogany bureau bookcase** the upper section enclosed by astragal glazed doors beneath a moulded stepped cornice, the fall front enclosing a fitted interior of pigeon holes and small drawers above four long graduated cockbeaded oak lined drawers, on bracket feet *96cm wide, 225cm high* £1000-1500



885. **A XIX century Boulle pedestal display cabinet** richly decorated and with bold ormalu mounts enclosed by an arched glazed door *81cm wide, 121cm high* £400-600



886. **A tall Chinese carved hardwood vase stand** the top inset with a Cantonese enamel plaque, raised on four carved supports *90cm high* £80-130

887. **A Chinese bamboo style tall vase stand** on four shaped supports with inset rouge marble to the top *91cm high* £80-130

888. **An octagonal carved hardwood Chinese vase stand** with rouge marble inset top raised on four carved supports *62cm high* £70-120

889. **A good quality Continental walnut and marquetry inlaid serpentine sided table** with quarter veneer floral marquetry top, frieze drawer on shaped legs; ormalu mounted *101cm x 61cm* £200-350



890. **A XIX century figured walnut and floral marquetry pedestal display cabinet** enclosed by an arched glazed door with applied bold cast ormalu mounts *80cm wide, 112cm high* £450-650



891. **A reproduction mahogany miniature sofa table**

892. **An early XIX century figured mahogany pot cupboard** enclosed by a single plain door and raised on slim tapering turned supports *44.5cm x 38.5cm* £150-220



893. **A mahogany torchere on a fluted column** *127cm high*

894. **A good quality Victorian burr walnut conical workbox** on cabriole legs, relief carved at the knee, fitted interior *72cm high* £250-350



895. **An XVIII century mahogany cross-banded and strung hanging corner cupboard** enclosed by a single door beneath a moulded cornice with false pilasters to each side (with a later stand) *106cm high* £150-220

896. **A XIX century pine and mahogany chest of drawers** the cross banded top above two short and three long cockbeaded drawers on bracket feet *approx 91cm wide*

897. **A XIX century heavily carved oak floor standing bookcase** with adjustable shelves *approx 106 cm wide*

898. **An XVIII century oak mule chest** with hinged plain lid, four panel front above two drawers *139cm wide* £200-300



899. **A XIX century figured walnut pedestal display cabinet**

enclosed by a single plain glazed door, chevron inlaid and with applied ormalu mounts 113cm high, 50cm wide £100-200



900. **A Continental walnut games table** profusely marquetry inlaid, the serpentine fold over top green baize lined above two drawers, on cabriole supports 70cm wide £150-250
901. **A pair of richly carved and silvered Renaissance style altar candlesticks** 152cm high Provenance: from the roof space of Lincoln Cathedral £400-700
902. **A Georgian mahogany wash stand** enclosed by two hinged leaves, undertier with drawer and "X" stretcher 37cm square £70-120
903. **A late XVIII century mahogany tripod table** with 60cm one piece tilt top on "gun barrel" pedestal £80-150
904. **A George III rectangular drop leaf gate leg breakfast table** raised on turned taper supports terminating in pad feet 120cm x 97cm extended £100-200
905. **An English XVIII century oak lowboy** the rectangular top with moulded border, above one long and two short drawers, on cabriole supports with pad feet - *untouched, neglected condition* 76cm x 47cm £600-800 (illus front cover)
906. **A XIX century rosewood four tier what-not** the graduated serpentine fronted shelves separated by barley twist turned columns 74cm wide £100-200
907. **A set of eight Chippendale style polished hardwood dining chairs** with pierced fan splats and drop in seats £150-250
908. **An early XIX century extending mahogany dining table** raised on turned fluted tapering supports with cast brass castors 168cm x 122cm (sold with additional leaf to be fitted - 56cm x 122cm) £600-900
909. **A set of eight mid XIX century mahogany bar back dining chairs** with shaped solid seats on baluster turned front supports - two carvers and six singles £400-600
910. **A high quality French Kingwood marquetry inlaid and crossbanded double door cabinet** the marble top above one long drawer and a double cupboard, standing on short shaped legs with applied ormalu mounts 79cm wide, 41cm deep, 120cm high £200-400
911. **An early XIX century bow front dressing chest** of four drawers, each boxwood strung, with oval brass handles, raised on splay bracket feet (the top drawer fitted, but parts now missing) 108.5cm wide, 64cm deep, 86cm high £300-500

912. **A set of five (4+1) Georgian mahogany and brass inlaid dining chairs** each with turned bar backs and fluted styles, above over stuffed green leather upholstered seats and turned front supports
913. **A XIX century carved beech frame open arm settee** in French Hepplewhite style, the frame surmounted by a ribbon with swept underarms and turned fluted tapering front supports £80-120
914. **A Sheraton style mahogany bow front side table** with raised back, fitted with two frieze drawers, raised on square taper supports, the top drawers and legs banded and boxwood strung 91cm wide £200-300
915. **A broad arm high back ash and elm Windsor chair** £100-200
916. **A Victorian mahogany extending dining table** on baluster turned legs with brass castors, three spare leaves 269cm x 121cm max
917. **An XVIII century oak estate cupboard** the moulded cornice above a pair of fielded panel doors enclosing an interior fitted with document compartments and pigeon holes, original paper label relating to English architecture, pre XVI century 130cm high, 120cm wide £100-200
918. **An XVIII century panelled oak double door bookcase** internally fitted with shelves (now floor standing) 125cm wide, 38cm deep £75-150

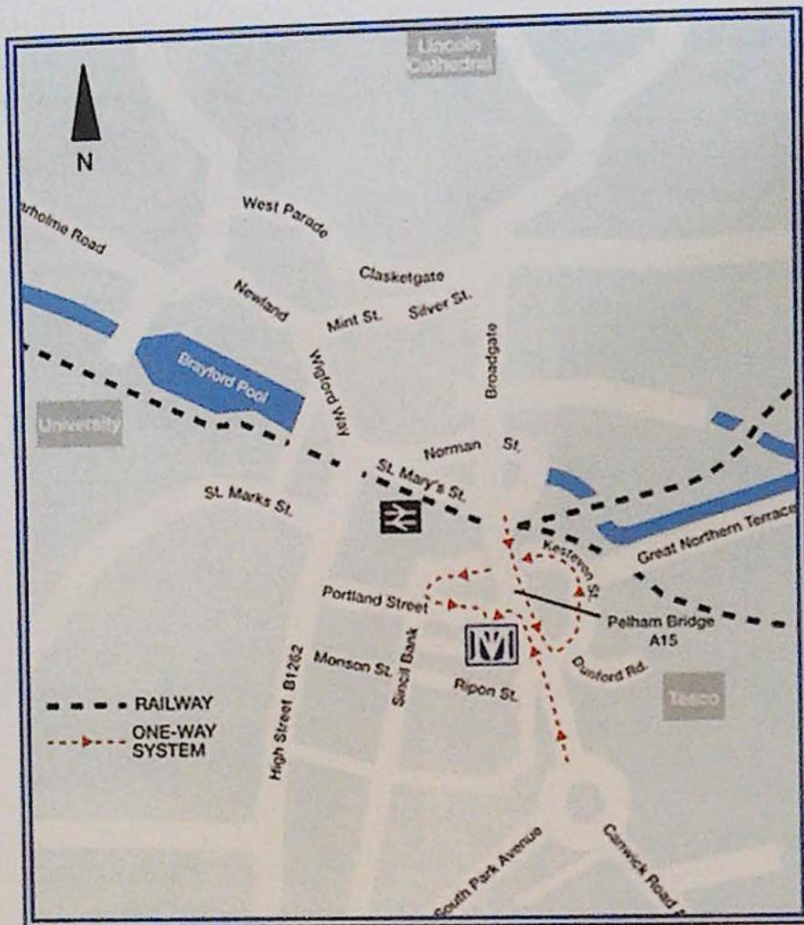
919. **A Louis XV style burr walnut ormolu mounted bonheur du jour**

the raised superstructure with a pierced ormolu gallery and fitted with two banks of four drawers, flanking a central cupboard above a serpentine fronted writing surface with three shaped frieze drawers beneath, standing on cabriole front supports with ormalu mounts and inset with Sevres porcelain plaques 117cm wide, 112cm high £3500-6500



920. **A Victorian burr walnut 'piano' top Davenport desk** with a rising compartment, writing slide, two internal drawers and four side drawers with opposing dummy drawers Approx. 57 cms wide £280-380
921. **A XIX century rosewood fold over games table** the carved floral stem raised on an inverted H shaped platform base terminating in ball feet approx 90cm wide £300-500

LOCATION



The Thos. Mawer & Sons salerooms at Dunston House are situated in central Lincoln on the east end of Portland Street at the foot of Pelham Bridge (Canwick Road). By car, approaching from the south take the last turning on the left just before the road rises to the bridge.

Approaching from the north (via Broadgate), go over Pelham Bridge and turn left towards Jacksons Building Centre/Tesco on to Kesteven Street. Follow the road around to the left and drive under Pelham Bridge to Portland Street. Turn left and you will see Dunston House on the right. Portland Street is also accessible from Lincoln's High Street, opposite the Ritz public house.

The salerooms are within walking distance of the main railway station and bus depot.

CONDITIONS OF SALE

1. In these conditions Thos. Mawer & Son act only as auctioneers and agents and the representative of Thos. Mawer & Son conducting the auction is called 'The Auctioneer'

2. Whilst Thos. Mawer & Son make every effort to ensure the accuracy of their catalogue and the description of any lot:

(i) Each lot set out in the catalogue or as divided or combined with any other lot or lots is sold by the vendor with all faults and imperfections and errors or descriptions

(ii) Thos. Mawer & Son do not accept responsibility for the authenticity, attribution, genuineness, origin, authorship, date, age, period condition or quality of any lot unless they have been instructed in writing by the buyer to so certify.

(iii) All statements whether printed in the catalogue or made orally as to any of the matters set out in (ii) above are statements or opinion only and are not to be taken as being or implying any warranties or representations of fact by Thos. Mawer & Son unless they have been instructed in writing by the buyers to so certify.

3. The Auctioneer has absolute discretion to divide any lot, to combine any two or more lots or to withdraw any lot or lots from sale, to refuse bids, regulate bidding or cancel the sale without in any case giving any reason or without previous notice. He may bid on behalf of the vendor for all goods which are being offered subject to reserve or at the Auctioneer's discretion.

The highest bidder shall be the buyer. The Auctioneer may at his sole discretion determine the advance of bidding or refuse a bid. If during the auction the Auctioneer considers that a dispute has arisen he has absolute discretion to settle it, or to re-offer the lot.

All conditions, notices, descriptions, statements and other matters in the catalogue and elsewhere concerning any lot are subject to any statements modifying or affecting the same made by the Auctioneer from the rostrum prior to any bid being accepted for the lot.

4. The buyer shall pay the hammer price together with a premium of the hammer price - 17.6% inclusive of VAT

5. Notwithstanding any other terms of these Conditions, if within seven days after the sale Thos. Mawer & Son have received from the buyer of any lot notice in writing that in his view the lot is a deliberate forgery and within twenty-one days after such notification the buyers return the same to Thos. Mawer & Son in the same condition as at the time of the sale and by producing evidence, the burden of proof to be on the buyer, satisfies Thos. Mawer & Son that considered in the light of the entry in the catalogue the lot is a deliberate forgery then the sale of the lot will be rescinded and the purchase price of the same refunded.

The vendor agrees to be bound by Thos. Mawer & Son's decision.

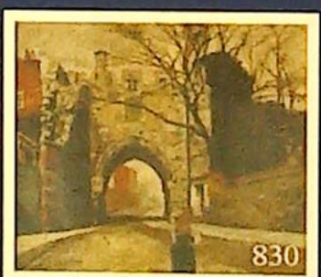
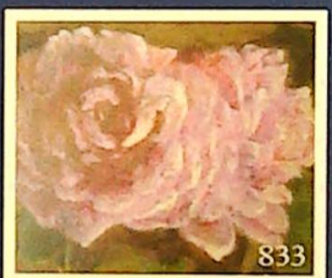
6. Thos. Mawer & Son disclaim any responsibility for default by either the buyer or the vendor because they act as Auctioneers only and therefore do not pay out to the vendor until payment is received from the buyer. Instructions given by telephone are accepted at the sender's risk and must be confirmed in writing forthwith.

7. Every person on Thos. Mawer & Son's premises at any time shall be deemed to be there at his own risk. He shall have no claim against Thos. Mawer & Son in respect of any accident which may occur or injury, damage, loss howsoever caused, save in so far as the injury, damage loss shall be caused by the negligence of Thos. Mawer & Son's employees.

8. Each lot shall be at the purchasers risk from the fall of the hammer and must be paid for in full before the delivery and must be taken away by the purchaser at his own expense within 7 working days following the conclusion of the sale. The Auctioneer shall be entitled to charge storage charges in respect of lots not taken away as aforesaid (minimum charge of £25 plus VAT) and interest on unpaid accounts @ 4% above clearing bank base rate (per calendar month)

9. Cheques which are not honoured by the payee's bank will incur a handling charge of £20 plus VAT for each presentation.

This contract is governed by English Law.



DUNSTON HOUSE · PORTLAND STREET · LINCOLN · LN5 7NN
 TELEPHONE 01522 524984 · FACSIMILE 01522 535600
 EMAIL auctions@thosmawer.com · WEBSITE www.thosmawer.com