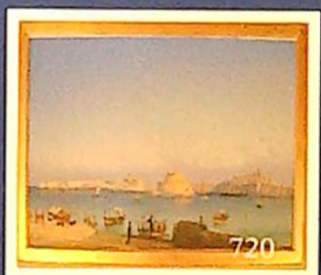




THOS. MAWER & SON LTD.

Auctioneers & Valuers Established in 1864



**Special Sale of
ANTIQUES & COLLECTABLES**

Friday 5th & Saturday 6th September 2008

On View

Thursday 4th September 10 - 4pm
Friday 5th & Saturday 6th September from 9.00am

Catalogue £6.00

THOS. MAWER & SON LTD.

COMMISSIONS

The Auctioneers are pleased to execute commissions for intending buyers in confidence as cheaply as is allowed by any other bids. All telephone bids must be confirmed in writing or by fax by 4pm the day prior to sale. **Telephone bids will not be accepted for lots on which the top estimate is under £500.00.** We cannot guarantee to execute bids received on the morning of sale.

BUYER'S PREMIUM

There is a 17.6% premium (inclusive of VAT) payable on the final hammer price of each lot.

REGISTRATION

All prospective purchasers are requested to register and obtain a bidding number prior to the start of the sale.

CATALOGUE DESCRIPTIONS

Care is taken to ensure that any statement as to authorship, attribution, origin, date and provenance is reliable and accurate, but all such statements are statements of opinion and are not to be taken as statement or representations of fact. Thos. Mawer & Son Ltd. reserve the right, in forming their opinion, to consult and rely upon any expert or authority reasonably considered by them to be reliable. While an identification of damage is given in some instances, an absence of such advice does not imply that a lot is free

from defect. Prospective purchasers are strongly advised to inspect any lot on which they intend to bid. All measurements and weights are approximate and should be verified by intending purchasers.

ESTIMATES

Estimates for lots under £100.00 are not printed in the catalogue. On lots that are reserved, the reserve will not be greater than the published estimate at the time the catalogue goes to press.

PAYMENT OF ACCOUNTS

All Lots should be paid for and collected immediately following the sale. Any lots not collected by 4.00pm on the Wednesday following sale day will incur storage charges (minimum £25.00 plus VAT per lot).

Payment for all lots must be made on the day of sale and methods are:

(1) CASH, (2) CHEQUES supported by either a letter of Reference from your bank or a cheque guarantee card to cover the sum of your purchase, (3) BANKERS DRAFT, (4) DIRECT DEBIT CARDS such as "Switch", "Delta", "Classic", "Connect", (5) CREDIT CARDS subject to a 2% premium charge.

No lots in this sale are the property of Thos. Mawer & Son.

By order of the Executors of the late Mrs S.G.E. Blomfield,
the contents of 1 Curle Avenue Lincoln,
from the Estate of Mrs E.M. Nevile
and other local vendors

The Renfrew collection of Gilbert clockwork gramophones
(www.gilbert-gramophones.co.uk)

to be sold on

September 5th & 6th 2008 ~ View day 10am – 4pm Sept. 4th

ORDER OF SALE

*Please note the catalogue will be updated with any late entries received and posted on the internet 7 days prior:
www.thosmawer.com*

Sale on 5th & 6th September 2008

Friday 5th September 2008 at 12 noon

Lots 1 - 79

Victorian & later furniture, stone troughs & Victorian iron garden urns

Lots 80 - 156

Ceramics, glass & bric-a-brac

Lots 160 - 173

Silver plate

Lots 180 - 192

Books & cigarette cards

Lots 200 - 229

Beswick, Doulton, Lladro etc.

Lots 230 - 307

Bygones inc. coins, postcards, stamps, toys & memorabilia

Lots 309 - 322

Pictures & prints

Lots 340 - 348

Weapons

Lots 400 - 432

The Renfrew collection of Gilbert cabinet Gramophones

End Of Friday's Sale

Saturday 6th September 2008 at 10am

Lots 500 - 559

Antique china & glass etc.

Lots 570 - 593

Metalware, objets etc.

Lots 600 - 681

Silver, jewellery, watches etc.

Lots 690 - 708

Clocks

Lots 710 - 743

Pictures & mirrors

Lots 760 - 900

Furniture

The complete catalogue for this sale will be updated approx. 7 days prior to sale and can be downloaded from our website www.thosmawer.com

Extra lots will be added as they are delivered and will only be described on the website. On the homepage, go to the box headed "General or Special Sales" and click here for text only printable version.

If you are travelling to the saleroom to bid for a specific lot, please telephone us during the morning to ascertain the sale progress.

VICTORIAN & LATER FURNITURE, STONE TROUGHES & VICTORIAN IRON GARDEN URNS

1. A large Victorian over mantel mirror in a moulded gilded frame *approx. 143cms x 165cms*

2. A massive XIX century 'D' shape hewn stone trough (no bottom) *approx. 106cms x 120cms*



3. A XIX century square stone trough *approx. 55cms*

- 3A. A XIX century square hewn stone trough *approx. 61cm*



4. An Edwardian oak bureau with chequered line inlay
5. A double folding 'Z' bed
6. A reproduction yew wood finished corner cupboard, assorted picture frames and china
7. An ebonised mirror back shop display cabinet by W. M. Potter & Sons Ltd. *London approx. 160cms wide*
8. A cast iron frame mangle
9. An Edwardian mahogany china cabinet enclosed by astragal doors on short ball and claw feet
10. Sundry small furniture and effects; two trolleys, a stool, a stoneware spirit bottle A & J Colquhoun Manchester, baker's trays, a fire screen etc.
11. A reproduction stripped pine Welsh dresser
12. An Edwardian barley twist occasional table and a similar umbrella stand
13. A Victorian mahogany dressing table and four balloon back Victorian dining chairs
14. An oriental lacquer clover leaf shape two tier table and a woolwork fire screen
15. An Edwardian mahogany cross banded two tier table, an oak tea trolley, two Edwardian dining chairs and a tripod wine table

19. A Victorian painted pine dresser
20. A stripped pine dresser
21. An Edwardian oak double door bookcase
22. A set of four spindle back chairs
23. A high quality 'Tudor' oak design standing corner cupboard
24. An early XX century cool cabinet in a stripped pine case
25. A Victorian chest of drawers with shaped back and original paint work and a stained side table
26. An Edwardian panelled oak mirror back sideboard
27. A yellow metal strawberry pattern patio set, table and four chairs
28. An Edwardian oak gate leg dining table, two carver chairs and four singles
29. A white painted chest of drawers, a similar open bookcase, a trolley, a standard lamp etc.
30. An antique commode chair, two oak dining chairs and a tubular frame armchair
31. A Victorian kneehole dressing table and a square oak table
32. Various hand tools
33. A Victorian pine joiner's chest
34. A Georgian and later panelled mahogany double wardrobe
35. An oak hanging corner cupboard with leaded glazed door
36. An Edwardian oak bookcase relief carved and enclosed by astragal glazed doors
37. A bamboo open bookshelf and chest of three drawers
38. Sundry household furniture - barley twist side table, oak bureau, reproduction bookcase, two coffee tables, pedestal pot cupboard, reproduction serpentine chest of drawers
39. An Edwardian oak dining room suite - draw leaf table, four chairs and a sideboard; and two nests of three coffee tables, four other occasional tables including brass framed and a cane stool
40. A Victorian mahogany chest of two short and three long drawers *approx. 107cm wide, 50cm deep £120-220*
41. A reproduction mahogany serpentine sideboard
42. After Cecil Aldin "Nonie RAF" - a print of a West Highland Terrier who served in the battle of Jutland
43. An Edwardian steel dial longcase clock with three train movement
44. Books and magazines including trout and salmon back copies etc.
45. A pair of oak open bookcases with panelled backs, *118cm wide*; and a XIX century oak tripod table

46. An oak and walnut cabinet with three central drawers flanked by cupboards each with geometrical mouldings over a scroll carved stretcher *approx. 127cm length, 53cm wide, 93cm high* £300-500
47. A late Victorian carved walnut bedroom pair - walnut wardrobe and dressing table
48. A late Victorian mirror back sideboard carved in relief
49. An iron fire basket etc.
50. A Victorian white painted pine chest of drawers
51. An oak draw leaf table
52. A walnut side table with quarter veneered top on cabriole legs

57. A large pair of XIX century cast iron campana shape garden urns *approx. 77cm high, 60cm diameter* £300-500



58. A set of four Victorian cast iron garden urns with ribbed bodies on fluted pedestals *approx. 52cm high* £400-600



59. A Victorian mahogany loo table on quadruple column base *approx. 150cms x 86cms*
60. A Victorian mahogany serpentine front cabinet the centre section enclosed by glazed marquetry inlaid door flanked by two bow cupboards above an under tier standing on shaped legs with gilt brass mounts *approx. 90cms wide*
61. A Queen Anne and later walnut side table fitted one narrow and two deep drawers raised on barley twist supports joined by an 'X' stretcher *approx. 76cms wide, 48cms deep*
62. A late XIX century mahogany three part kneehole desk fitted with one long frieze drawer and three short drawers to each pedestal *the top approx. 101cm x 58cm*
63. A Victorian walnut boxwood strung lady's desk with a stationery compartment, sloping writing surface raised on turned columns *approx. 53.5cms wide*
64. A Victorian mahogany 'D' shape dressing table with a pair of double drawers single frieze drawer raised on carved shaped front supports *approx. 89cms wide*

65. An early XIX century oak bureau the fitted interior enclosed by a cleated mahogany cross banded fall above four long graduated drawers with original turned wooden handles and raised on turned feet *approx. 90cms wide* £120-180
66. A Victorian mahogany chest of two short and three long drawers *approx. 96cms wide*
67. A late XVIII century Lancashire oak mule chest fitted with two short dummy drawers above three long drawers
68. An XVIII century oak hanging corner cupboard enclosed by a panel door *approx. 67cm wide, 92cm high* £80-130
69. An XVIII century stripped pine mule chest *113cm wide*
70. A late Victorian walnut cabinet fitted with two drawers above two cupboards enclosed by panel doors *122cm wide*
71. An XVIII century oak and mahogany cross banded fall front bureau with four long drawers *97cm wide*
72. A Victorian mahogany demi lune marble top duchess dressing table and an oak chest of three drawers and plant stand (3)
73. A good quality reproduction oak Tudor style full length corner cupboard

74. An XVIII century stripped pine tallboy of two short and five long drawers *approx. 119cm wide*



75. A reproduction mahogany bow front dressing table with triple mirror

76. A Victorian walnut dressing chest with triple mirror, two trinket drawers and two short and two long drawers to the base *approx. 107cm wide* £80-150



77. An early XIX century stripped pine press cupboard, the upper section enclosed by panelled doors and with three linen slides, the base with two short and two long drawers



78. A late Victorian satin walnut bedroom pair, single wardrobe and dressing chest
79. A Victorian mahogany scroll end day bed upholstered in pink dralon

CERAMICS, GLASS & BRIC-A-BRAC

80. Crown Ducal - an Orange Tree pattern service comprising; six tea plates, three smaller ditto, six coffee cans and saucers, a cruet, a side handle coffee pot, a conical coffee pot, a cream jug and six miscellaneous
81. Sundry china, prints, Wedgwood part dinner service etc. - two shelves
82. A large quantity of decorative china, glass, coffee services, etc. - two shelves
83. Five pieces of Mason's Ironstone
84. A crumb coated poodle, a XIX century medicine bottle in a wooden case, Mason's type jug, decorative china and effects - one shelf
85. Sundry china, glass and effects, a miner's lamp, plated tea set etc. - one shelf
86. A collection of novelty teapots, a large qty. of bygones etc. - two shelves
87. Sundry china and glass, Denby stoneware etc. - two shelves
88. Two coloured art glass vases, a scent bottle and a candle holder
89. A commemorative mug and beaker Coronation 1937, a doll, a clock, a cigarette box etc.
90. Coloured glass, a stein and a collection of cottage herb containers
91. Shelley Fine Bone China; a six piece tea service with tea plates, milk jug and slop bowl
92. Mason's Patent Ironstone China; a XIX century dish, six Booths soup plates, two Cantonese teapots and three other pieces
93. A large quantity of table glassware including eight glasses with ruby bowls, five green ditto, hock glasses, two sherry decanters etc.
94. Leonardo Collection and similar; five animal groups
95. A Royal Doulton Norfolk pattern salad dish and stand, two cast iron retriever door stops, a Mary Gregory type ruby glass beaker and a Noritake hat pin stand
96. Four Wade ornaments, Limoges trinkets, two Carltonware leaf dishes etc.
97. A collection of Ltd. Ed. cabinet plates; Bradford Exchange, Doulton, Wedgwood etc.

- (approx. 55) - two shelves
98. An extensive Royal Albert 'Old Country Roses' tea and dinner service, over 70 pieces
99. A collection of mainly XIX century tea ware to include; six Copeland coffee cans, saucers and a cream jug, tea cups, a teapot, a pair of green ground jugs with applied flowers, Susie Cooper coffee cans etc. - one shelf
100. Decorative china - three boxes including a Grafton Art Deco design tea set
101. Blue & White mainly XIX century transfer print china including; Copeland Italian Spode, two hunting jugs etc. - one shelf
102. A quantity of XIX century and later decorative china including stoneware, Continental pot pourri, old printed tins etc. - two shelves
103. Treacle glaze earthenware; two toby jugs, a barge teapot, a stoneware jug, also a Chinese puzzle teapot, a pair of bottle vases etc. - one shelf
104. A copper spirit kettle and stand and a pair of decorative continental porcelain two handled vases
105. Two shelves of sundry decorative china including white enamel ware, a Minton type jardiniere, Carltonware, barometer, glass, paperweights etc. - two shelves
106. Various Oriental blue & white vases, a jardiniere and an Irish china tea set
107. Three part tea services including Denby and other decorative pottery
108. Silver plate and brass ware - one shelf

109. A pair of spelter figures of foundry workers



110. XIX century and later glass; including three hobnail cut goblets, a glass rolling pin, a XIX century glass sweet meat container with cover, four finely painted hock glasses, a Lalique style vase (a.f.) etc.
111. Sundry decorative china including a part tea and dinner service - two shelves
112. Sundry china; a tantalus, a wall plaque, water jugs etc. - one shelf
113. Decorative china and glass - one shelf
114. Oriental and other metal ware, lacquer, a railway lamp, candlesticks etc. - one shelf
115. A XIX century Continental porcelain dessert service painted with summer flowers - six comports and twelve plates

116. Royal Winton Summertime; part tea service 27, two Sylvac rabbits and a Norville Ware Edward VIII Coronation cup & saucer
117. A collection of small ornaments mainly cruets - one shelf
118. Ridgway Potteries Homemaker; an oval meat plate, four 9" plates, five 8" plates, four 7" plates, a tureen and cover, a coffee pot, a cadensa milk jug, eight fruit and cereal bowls, four coffee cups and saucers
119. A suite of cut glass - twelve champagne saucers, thirteen large stemmed wines and twelve small ditto
120. Royal Brierley crystal; six claret glasses and six ditto white wine
121. Decorative china to include blue Jasperware, two Beswick tomato dishes - one shelf
122. A reproduction bracket clock and two pottery elephant seats
123. Two small character jugs, a trinket set and two pieces of commemorative china
124. A moulded pottery blue & white transfer print jug and bowl
125. Cut glass, fruit bowls, dishes, vases, a jug etc.
126. Ironstone china; transfer printed wash jug and bowl etc.
127. Commemorative china; eight pieces plus three others
128. A collection of decorative china some XIX century, Copeland Italian Spode fruit bowl, teapots, vases, a pair of glass frill neck vases, chamber pot etc.
129. A Festival of Britain 1951 four piece Cottage tea service, a Smiths mantel clock and a two handled vase
130. Blue & white tea ware including Copeland Italian Spode, a pair of Naples pottery soldiers, assorted silver plate, mounted coloured prints etc.
131. A collection of various botanical and other prints
132. Table linen; an embroidered tablecloth in coloured floral design, a crocheted ditto, other table linen including napkins, a handbag etc.
133. Linen; vintage baby and dolls clothes including some bonnets
134. A box of assorted linen mostly crochet and two others, tableware etc. (3)
- 134A, A box of mixed linen.
135. A Cantonese tea service, Japanese fruit bowl on hardwood stand, alabaster mantel clock and plated rose bowl and teapot
136. A Continental porcelain wall pocket moulded with winged cherubs and decorated in pink and gilt and another Dresden style wall pocket (2)
137. A set of oak hanging wall shelves with shaped ends and a wall bracket
138. Two Edwardian oak biscuit barrels with plated mounts
139. Crown Staffordshire. A "Black Victoria" pattern dinner service:- two oval meat plates, three tureens and lids, two gravy boats and stands, ten dinner plates, ten dessert plates, ten side plates and ten soup plates £150-250
140. A Cantonese enamel cabinet plate, a hard paste porcelain plate decorated with a goldfinch and a Spanish plate decorated with roses (3)
141. Copeland Spode Italian pattern; assorted china to include 14" meat plate, two smaller ditto, two bread & butter plates, bowls, cups etc. (18)
142. Coalport. A comport decorated with floral garlands on cobalt blue and with gilt highlights; another Limoges comport retailed by Alfred Dunn Birmingham and a richly decorated Wedgwood pot pourri (3)
143. Two trays of miniature china and ornaments including Royal Worcester, Crown Derby, Crown Staffordshire etc.
144. Royal Doulton. A series ware two handled tobacco jar with plated cover, filigree gilt mounted dressing table set, copper lustre jug and decorative china
145. Seven Goebel figures
146. Decorative glassware, ornaments, brass etc.
147. Royal Albert "Old Country Rose". A tea service with two large platters, two tier cake stand, teapot, six cups and saucers etc. (38 pieces)
148. An XVIII century Newhall style jug, four oriental porcelain faces, coloured glass, pair of canisters etc.
149. A large two handled vase painted with a river scene; Bretby parrot; clock etc.
150. A XIX century papier mache mother of pearl and gilt decorated box
151. A brass and blue enamel mantel clock
152. Two Victorian table oil lamps on brass Corinthian columns
153. A reproduction Victorian style hanging oil lamp and a brass table ditto (2)
154. A brass table oil lamp
155. An aneroid barometer and thermometer in an oak case
156. A XIX century mercury stick barometer (*dilapidated*)

SILVER PLATE

160. Silver plate:- a pair of table candlesticks, pair of elliptical salts with blue glass liners, salver, sugar basin etc.
161. A large lozenge shape two handled silver plate tea tray, a similar platter, a cocktail shaker, a warm plate, entree dish etc.
162. A pair of Georgian design silver plate candlesticks by Walker & Hall, a pair of gravy boats, a syphon holder, an oval teapot and a hot water jug
163. A canteen of plated cutlery by Hart & Co. and sundry other cutlery
164. Silver plate. A four piece half fluted tea service and an engraved two handled tray
165. Silver plate:- a dressing table set, powder bowl, cased set of coffee spoons etc. - one tray
166. An Art Deco three piece dressing table set (cased), powder compacts in the form of handbags (3), two others etc.
167. A cased set of plated Apostle spoons, a cake knife, a pair of fish servers, a set of cake forks, a fruit set, tea knives and fish eaters (7)
168. Two cased sets of fish eaters, fish servers, tea knives, coffee spoons, miscellaneous etc.
169. A five drawer Edwardian oak table top cutlery canteen by Walker & Hall Sheffield containing King's pattern plated cutlery; ten dinner knives, ten steak knives, eighteen table forks, eighteen dessert forks, twelve soup spoons, ten serving spoons, ten dessert spoons, eleven tea spoons, six salt spoons, two pickle, two butter knives, two pickle forks, four ladles, a large soup ladle and two basting spoons, also non-matching fish eaters and fruit knives and forks £200-400
170. A set of twelve Victorian plated fruit knives and forks with engraved blades, embossed bolsters and turned bone handles
171. A Dunhill lighter, two silver mounted cut glass scent bottles, a coaster, carver rests, pair of salts etc. - one tray

172. An EPNS four piece part fluted tea set



173. An Eastern silver circular container and cover, a plated and elaborately engraved salver and a mizpah circular plated jewel box (3)

BOOKS & CIGARETTE CARDS

180. Five boxes of books including history, novels etc.
181. A box of books - family bible, History of the Ancient Parish of Guisley etc.
182. Blue Peter Annuals - one box
183. A box of books - four vols. Highways & Byways in Lincolnshire, Notts, Devon & Cornwall, London, Lincoln etc.
184. Leather bound volumes The Sporting Magazine, mixed dates from 1830 onwards, two vols. British Cattle & Sheep, The Art Journal and other XIX century books
185. A large quantity of mixed hard bound books - literature, reference etc. - three shelves and three boxes
186. The British Colonies 12 vols. and Farmers Magazine 20 vols. circa 1840 onwards (illustrations removed)

187. Browne, W.G. Travels in Africa, Egypt & Syria from 1792 to 1798, printed for T Cadell & W Davies etc. 1799, rebound between marbled boards with leather spine and corners



188. Mixed books including World War II, The War in Pictures, Movies, tea cards, magazines etc. - two shelves
189. One box of books and pamphlets & programmes
190. Books - Thoughts on Hunting, Farmers Magazine etc. - 3 vols.
191. Seventeen full sets of cigarette cards - Players, Dogs, Ships, Badges, Cries of London, Gallagher's Animals & Birds etc.
192. Cigarette cards - box sets some in sleeves including Gallagher, racing scenes, plants of commercial value, army badges etc. and Castella Grandee etc. seventeen sets of cards in sleeves - Top Dogs, Natural Wildlife, M G Martes etc.

BESWICK, DOULTON, LLADRO ETC.

200. A Beswick model of a leghorn cockerel No. 1892



201. Beswick; a tawny owl No.1046
202. Mack Bone China; a little owl and a green woodpecker both signed beneath
203. Beswick; a jay No.2417 and a lesser spotted woodpecker No.2420
204. Beswick; a cuckoo No.2315 and a pigeon No.1383
205. Beswick; a kingfisher, a robin No.980 and Coopercraft; a corgi (3)
206. Beswick. A chestnut cob
207. A chestnut mare with cropped tail and foal (2)
208. Lladro. Four figures of children with animals
209. Lladro. Four figures - girl in pink dress, girl in white dress, seated girl with posies and girl with posy basket (4)
210. Lladro. Three figures and a rabbit trinket box - girl with posy basket, cat and kittens, girl bathing hound
211. Wade. Two Tom and Jerry figures (4)
212. Royal Doulton figure "Angela" HN3419
213. Royal Doulton figure "Lynne" HN2329
214. Royal Doulton figure "Flower of Love" HN3970
215. Royal Doulton figure "Autumn Attraction" HN3612
216. Royal Doulton figure "Jennifer" HN3447
217. Royal Doulton figure "Linda" HN3374
218. Royal Doulton figure "Sweet Sixteen" HN3648
219. Royal Doulton figure "Fair Lady" (red) HN2832
220. Royal Doulton figure "Buttercup" HN2309
221. Royal Doulton figure "Janine" HN2461
222. Royal Doulton figure "Kirsty" HN2381
223. Royal Doulton figure "Elaine" HN2791
224. Royal Doulton figure "Valerie" HN3904
225. Royal Doulton figure "Jessica" HN3850
226. Royal Doulton figure "First Bloom" HN3913
227. Royal Doulton figure "Fair Lady" HN2193
228. Royal Doulton figure "Southern Belle" HN2229
229. Royal Doulton figure "Lady with Rose" HN48A

BYGONES INC. COINS, POSTCARDS, STAMPS, TOYS & MEMORABILIA

230. Boxed of mixed coins including Churchill crown specimen set, Victorian pennies etc - large quantity
231. Twenty Elizabeth II crowns 1977
232. Mixed coins and notes
233. Large quantity of silver threepenny pieces - Victorian and later and other mixed coins
234. A 1977 specimen crown, cartwheel penny, 1927 crown, two plated snuff boxes etc.
235. A Queen Elizabeth II commemorative Golden Jubilee set of cased coins (24)
236. A silver proof £1 coin, another 1981, FA Cup Centenary medals, World Cup 1970 ditto, mixed coins, coins of Great Britain 1978-80 & 81 etc.

237. 1914-18 war medals of Pte. M. Garvey A.S.C., brass items made from shell cases, ribbons, Metropolitan whistle, Daily Mail coronation souvenirs etc.



238. 1902 Coronation medallions (2) and other similar memorabilia bygones coins etc.
239. Enamel Masonic rotary and similar medals - large quantity; also collar studs and cuff links

240. Police Long Service medal, enamel badges, bronze coins, badges and brooches, presentation key, cricketer's frame etc.



241. Cunard memorabilia - printed list of passengers, New York-Southampton 1954 and Beatles stamps 1960's
242. A World War II cookery and instruction book in the hand of Spr. J A Harrison No. 33697 2nd New Zealand Expeditionary Force Middle East Command with the 19th Army Transport Corps, dated 1941 containing recipes and notes on equipment etc required to operate a field kitchen; together with a picture of Spr. Harrison, postcards, miniature medals and two World War II magazines. Note 'Sea Pie' also appears in lot 243 the similar book of 1890 £100-300

243. The recipe/instruction book of Sargent Chas. Smith 4th Battn. Lincolnshire Regiment dated 1st January 1890, written in ink in immaculate hand and carefully illustrated together with his army account book when he enlisted for the 3rd Brigade Infantry in Lincoln on the 22nd January 1876 aged 19. It contains a comprehensive record of his movements, monthly settlements, clothing account, savings bank account, his marriage etc. etc. - the last entry around 1897, also a picture of seven cooks, (he the one holding a spatula 3rd from right) a portrait photograph of him in uniform another of his wife and a 3rd; her with (probably) her mother also a memorial card on her death in 1925; a Victorian mantel clock presented to him on discharge 23rd Jan 1897 included in this lot. £100-400

244. Commemorative medallions - George VI, Nottingham 1856, Jubilee 1897 (2) and Baptist Mission Centenary with some ribbons

245. A postcard signed by the MCC touring team South Africa 1956/7 including Dennis Compton, Peter Richardson, Jim Laker, Colin Cowdrey etc.

246. A signed Lilywhite Frowde cricket bat- New Zealand cricket team 1973, Kent, Essex, Middlesex and Sussex

247. The World War I diaries & memorabilia of Lance Corporal G M Chidley giving an account of his service commencing in England November 24th 1914 when he was enlisted in the 10th battalion Middlesex regiment and continuing with his memoirs during the war - fascinating first hand account of the first World War; also a Wheatstone concertina catalogue (where he later worked) photographs and other material

248. The memorabilia of Captain A.F. Scott M.B.E. Queen's medal and five clasps -

Ellandslaggte, Defence of Lady Smith, Orange Free State, Transvaal and Cape Colony; King's medal and two clasps 1901 & 1902, M.B.E (the M.B.E. was stolen in a burglary).

Enlisted Fifth Royal Irish Lancers 19/5/1890 discharged 18/12/1915.

Commission to the Lincolnshire Yeomanry 19/12/1915 to 24/3/1920.

Indian 1891 - 1898, South Africa 1898, South Africa war 1899-1902, wounded August 1900, Egypt October 1915, appointed Officer Assistant Imperial School of Instruction, Zeitoun Egypt 1916, Cavalry cadet school 1917-1919. Mentioned in dispatches August 1918 awarded M.B.E. June 1990.

The lot contains correspondence, telegrams, photographs, press cuttings and medals (except M.B.E.), menu of the Seventh Annual Dinner Defenders of Ladysmith Feb. 24th 1934 signed by General Sir Ian Hamilton and others. Officiated at the visit of HM King Edward VII to the Royal Show at Lincoln 1908.

He lived at West Parade and Westgate, Lincoln and died in May 1955, his distinguished military career is described in two press articles, the Lincolnshire Chronicle Dec 4th 1953 and another undated which are part of this lot.



250. Twenty "Disaster" postcards - The Louth Flood, The Terrible Rail Accident at Grantham, Sheffield Train Accident 1916, Manor Cross Motor Accident 1906, Halifax Tram Accident etc - early 20th century

251. A collection of general postcards - mostly UK
252. An early XX century picture postcard album containing Victorian portraits, country houses etc.

253. A collection of printed silks, regiment flags, people etc. and postcards

254. A collection of early XX century postcards - many of Bognor Regis and district including 1912 water plane - over 90 in total

255. An album of over 400 early XX century postcards collected by the owners mother having been sent by her father between 1904 and 1909 when he travelled widely in the UK, many early coloured cards included, Raphael Tuck, "Oilette" cards. Well preserved in modern album £200-300
256. A comprehensive collection of early XX century postcards of all descriptions - approx. 600 £300-500
257. Postcards - snap shot books, Esso road maps etc. - mainly pre World War II
258. An early XX century postcard album that belonged to Nellie W Platt containing silk cards, early coloured postcards with some local scenes - Horncastle, Woodhall etc.; also magazines and pamphlets pre World War II, sheet music etc.
259. An early XIX century postcard album containing monochrome and coloured cards some of Lincoln and district including 'Typhoid Epidemic' card 1904/05 taken at the corner of Hampton Street on West Parade posted 10th March 1905 £50-100
260. French coloured 'naughty' postcards of nudes including; seven cards by A. Penot, No.114-120 and three other cards

263. Schuco; a tin plate car 'Ingenico 5335' in original box



264. A Smith's Timecal Noddy & Big Ears alarm clock



265. Dinky Super Toys; a Coles mobile crane No. 971 in original box



266. Dinky Super Toys; a lawn mower No. 751, in original box



267. Dinky Toys, a Coventry Climax forklift truck, a Dinky four wheel farm trailer and a tin plate clockwork waddling penguin (3)

268. Dinky Toys; a 25 pounder Field Gun No.686 with original box
269. A live steam stationary engine, a set of taps and dies and alphabetical punches
270. An 'automatic chocolate machine' Peter Pan Reg, original box appears unused

271. Britain Home Farm Series; a tumbrel complete with hay ladders and carter, original box



272. A Corgi Magic Round-a-bout
273. Hornby Meccano Ltd. three trains; 'Sir Nigel Gresley', a G.W.R. shunter No.5700 and another G.W.R. No.6699, also war department whistles, soldiers' Bible etc.
274. A Graham Farish 'Scale Model Railroad', boxed, wooden box containing meccano and magazines, a XIX century tea caddy etc.
275. Triang Railways; a large collection of engines, rolling stock, rail, connected models, some boxed, also a VIP 'high speed electric raceway set' - three shelves
276. A soft toy; a recumbent lion
280. Masonic Regalia; a suitcase containing Masonic aprons, medals, sashes and books
281. Miscellaneous bygones and bric-a-brac - one shelf
282. A child's sewing machine, a two drawer stationery chest, 78 records, an early XX century children's building block set etc. - one shelf
283. Decorative boxes and cash tins - one shelf
284. A collection of printed tins - one shelf
285. A XIX century circular two handle copper preserve pan, a copper foot warmer and a jug
286. Miscellaneous bygones, jelly moulds, stoneware hot water bottle, mahogany tea caddy, kitchen utensils - one shelf
287. Miscellaneous metalware and bygones, enamel bread bin, copper container, flat irons, plated ware - one shelf
288. A collection of photographic equipment, albums, a microscope, a fur coat etc.
289. Three brass table oil lamps
290. Miscellaneous glass, crockery, metalware, bygones including; a trivet, tiles, a trinket set, cased cutlery, stoneware bottles etc. - four shelves
291. Miscellaneous bygones, brass ware etc.
292. Sundry tools, three old enamel signs, a cased wading bird, scales etc.

293. An oak table top four drawer stationery cabinet, a Grandfather clock dial and a framed and glazed notice board cabinet
294. Two swordfish bills
295. A XIX century brass and copper warming pan
296. A XIX century brass and copper warming pan
297. An Edwardian painting of four white doves amid blossom painted on glass in a contemporary frame
298. A XIX century fitted joiner's chest and tools and another smaller ditto
299. A XIX century fretted brass fender *approx. 98cms wide*
300. A reproduction polish brass fire curb
301. An Edwardian mahogany cased steel dial mantel clock and framed photographs the SS Great Britain

302. A Japanese silk kimono the emerald green ground embroidered with exotic butterflies and trimmed with a black band worked with trailing flowers £150-250



303. A large oval brass lidded cauldron on lion mask legs

304. A C Hathaway butter churn the oak barrel on a pine stand



305. A large collection of GB and other stamps including a stop book, First Day Covers, kilo ware etc.
306. A Bounty stamp album and contents - world stamps, a Pioneer album and a Stirling ditto (3)
307. A Swift Sure stamp album containing world stamps

PICTURES & PRINTS

309. A watercolour drawing, a still life study of a geranium and an oil on canvas wrens by a tap
310. A World War I photograph of a soldier, three "naughty" Edwardian prints and four other prints
311. An old print "Prize Heifer" (*with damage*)
312. After Ansdell. A coloured print - prize bull titled "Scene at Wiseton"
313. A circular probably XVIII century embroidered panel of stylized flowers, framed and glazed *approx. 23cms dia.*
314. After Morland. Two coloured framed mezzotints titled 'Nurse and children in the fields' and 'Dancing dogs'
315. A wool and bead work embroidered panel of flowers and another framed embroidery *approx. 110cms x 27cms and 39cms x 20cms*
316. A Chinese silk embroidered framed panel, many figures
317. After the antique - prints; Winged cherubs, three cherubs with lurcher and olegraph of a child with bird's nest - three prints
318. A Victorian painting on glass; a moon-lit night with windmill
319. After Morland. Six XIX century mezzotints in gold lined silhouette frames; Smugglers, The Thatcher, Gypsies, The Horse Feeder, The Corn Bin etc. (6)
320. Three various mirrors
321. An artist proof print - Memorial of Charter House, signed and after Farquharson - a winter scene sheep on a lane, signed on the mount, a mahogany framed over mantel mirror and a watercolour drawing of ships signed Fred Dade (4)
322. Various XIX century pictures and prints (*approx. 38*)

WEAPONS

340. A German dress sword stamped 'E Sachs Hofliefera Berlin' initialled W K & C with etched blade, brass hilt with folding guard *approx. 80cms overall*
341. A match lock muzzle loading musket with engraved metal mounts *approx 157cms overall*
342. A XIX century percussion muzzle loading rifle *approx. 140cms overall*
343. A XIX century bolt action rifle

- 344. A flint lock oriental musket with brass banded long barrel and leather covered brass embellished stock approx. 174cms long
- 345. Two long barrel oriental flint lock guns with brass decoration approx. 164cms overall
- 346. An oriental match lock muzzle loading musket approx. 177cms overall
- 347. A flint lock muzzle loading musket with full wooden stock approx. 142cms overall
- 348. An oriental long barrel flint lock musket with etched brass bands and a brass and bone inlaid stock approx. 177cms overall

THE RENFREW COLLECTION OF GILBERT CABINET GRAMOPHONES

- 400. Columbia. A Viva-tonal 'Grafonola' model No.113a, a clockwork portable gramophone



- 401. A Gilbert gramophone Model 89, 1930 - pull out winding handle
- 402. A Gilbert gramophone Model 54, 1926
- 403. A Gilbert gramophone Model 53, 1926
- 404. A Gilbert gramophone model 60, 1927 in a mahogany cabinet
- 405. A Gilbert gramophone Model 53, 1927 - retailed by Jacques, The Lawns, Hinkley
- 406. A Gilbert gramophone Model 45, 1926 in a walnut veneered cabinet retailed Tomlinsons of Derby
- 407. A Gilbert gramophone in an oak cabinet model 77, 1929 - with needle light
- 408. A Gilbert gramophone Model 64, 1927
- 409. A Gilbert gramophone Model 64, 1927 converted in the 1950s to an electric deck
- 410. A Gilbert gramophone Model 53, 1927
- 411. A Gilbert gramophone Model 45, 1925 - up and over door
- 412. A Gilbert gramophone Model 91, 1928 - central winder
- 413. A Gilbert gramophone Model 60, 1927, retailed by Phillip Cann *Sheffield*
- 414. A Gilbert gramophone Model 60, 1927 in an oak case, retailed by Tankards of Bradford

- 415. A Gilbert gramophone model 53, 1927
- 416. A Gilbert gramophone Model 16, 1929 - tambour front door
- 417. A Gilbert gramophone Model 51, 1926 in a light oak cabinet
- 418. A Gilbert gramophone Model 62, 1927 in a mahogany cabinet
- 419. An electric Play-a-gram record player in a walnut effect cabinet
- 420. An Academy mahogany finish record storage cabinet with fitted interior and a gramophone cabinet (no works)
- 421. A mahogany finish record cabinet with drop down front and numbered baize lined record slots
- 422. A Gilbert record player (dilapidated) - model 77, 1928
- 423. A Gilbert gramophone Model 73, 1926 in an oak case
- 424. A Gilbert gramophone Model 85, 1929
- 425. A Gilbert gramophone Model 12, 1929
- 426. A Gilbert gramophone Model 45, 1926 with up and over sound door
- 427. A Gilbert gramophone Model 60, 1927 in an oak cabinet
- 428. A Gilbert gramophone - a 1926 Geisha with J H Masters retailer's label, oak cabinet
- 429. A Gilbert gramophone Model 77, 1929 - with electric needle lamp
- 430. A Gilbert gramophone Model 51, 1926 in an oak cabinet
- 431. A Gilbert gramophone Model 51, 1926 in an oak cabinet
- 432. A Gilbert gramophone Model 73, 1928

ANTIQUA CHINA & GLASS ETC

500. A pair of Staffordshire flat back spill holder seated King Charles spaniels approx. 33cm high £100-150



501. A matched pair of Staffordshire leaping deer spill holder flat back chimney ornaments approx. 28cm high £70-120



502. A Vienna porcelain cup & saucer painted with a winged cherub before lady signed Hauser and mark beneath Kamm Zu Mir and a Sevres porcelain coffee can and saucer decorated with reserve panels of summer flowers in gilt frames, cerise ground

503. Royal Worcester shape 2729; a lidded vase painted with highland cattle by H Davis



504. A Spode stone china jug, blue underglazed seal mark beneath 16cm high £120-180



505. A large XIX century Sunderland pink and copper lustre jug approx. 21.5cm high
506. A Victorian blue, white and gilt decorated pottery biscuit barrel with Walker & Hall plated lid and mount
507. A Staffordshire Creamware baluster coffee pot circa 1790 decorated with Oriental figures and birds predominately in iron red on circular foot approx. 18cms high and an XVIII century Leeds Creamware baluster shaped coffee pot and cover undecorated with moulded spout, plain handle and circular foot approx. 24cm high (2)

508. An unrecorded Creamware baluster coffee pot and cover late XVIII/early XIX century polychrome decorated to both sides showing courting couple in greens, reds and yellows, naive blue banding, domed lid, scroll handle, plain spout, circular foot approx. 26cm high

509. A XIX century Cycles style black basalt teapot and domed cover The body decorated with floral banding, Griffin topped handle and moulded bird spout on circular foot and a black basalt teapot of circular form (2) the latter approx. 9cm high

510. A XIX century plum Redware teapot and cover mock Chinese mark beneath of globular form with "C" scroll handle and plain spout, the body part painted with flowers in white, green and yellow, approx. 13cm high and a XIX century Redware teapot and cover of shaped square form with raised relief flowers to the body, shaped floral entwined handle and spout approx. 9cm high (2)

511. A XIX century Redware teapot, liner and cover of cylindrical form with C scroll handle and plain spout, the body highlighted in white approx. 9cm high

512. A XIX century Castleford style teapot and cover with sparse Pratt decoration, the whole modelled as a house in greens, blues, browns and yellows approx. 14cm high

513. A blue and white Chinese teapot with later English spongeware lid the teapot probably XVIII century the body decorated with pagoda amongst trees with highlighted scroll handle and spout, unglazed base the whole approx. 10cm high and an oriental teapot of small proportion probably early XIX century in Famille vert pallet with "C" scroll handle and shaped spout on circular foot, the body decorated with flowers and butterfly approx. 11cm high (2)

514. A Chinese teapot and similar shaped cover late XVIII century painted with flowers in Famille rose pallet, the body painted with seated figures, plain handle and spout approx. 16cm high and an XVIII century Famille rose Chinese export teapot and cover of globular form, the textured body painted with flowers with scroll handle, the whole on triple ball and claw supports approx. 18cm high (2)

515. **A XIX century teapot and cover in the Derby manner** indistinctive painted red marks beneath of compressed London form, the body heavily decorated with gilt highlighted flowers in greens, reds and blues with scroll handle and silver tipped spout, the whole on orb feet approx. 16.5cm high

516. **An early XIX century Minton teapot and cover** remnants of blue painted mark beneath of oval form, the body vibrantly decorated in yellow showing ruined building before mountains with an upper gilt scroll banding, the lid similarly decorated with gilt highlighted ear handle and spout on gilt lined oval foot approx. 18cm high

517. **A XIX century oriental Famille Vert teapot and cover of small proportion** the body of bowl form with plain handle and gilt highlighted spout, the main body decorated with figures surrounded by flowers approx. 12cm high; a XIX century oriental teapot similarly decorated with figures with a gilt highlighted handle and spout; a miniature oriental style teapot; an unglazed liner; a further teapot and another painted with flowers (6) the former approx. 10cm high

518. **An early XIX century Spode teapot and cover** the lid numbered 741, the base 500 and impressed 280 of cylindrical form, puce decorated with flowers, gilt banding and knob, lobed ear handle and spout approx. 15.5cm high; and an early XIX century Newhall "Brecknock" teapot and cover, puce decorated to both sides with moulded ear handle and spout on oval foot (2)

519. **A late XVIII century Dr Wall period Worcester teapot**, the cover with a floral finial, "Three Flower" pattern approx. 15cm high £200-400



520. **A Worcester Flight trio** comprising spirally fluted cup, saucer and tea bowl, underglaze Flight and crescent mark beneath and another similar Worcester tea bowl and saucer

521. **A Worcester Davis Flight tea bowl and saucer** decorated with a thistle, another similar and a Derby tea bowl

522. **A Chamberlain Worcester tea bowl and saucer**, Flight cup and saucer, two others, an XVIII century cream jug with vignettes of nesting birds "L'amitie", a Bloor Derby coffee can, Naples cup and a crescent china cup and saucer (13 pieces)

523. **A Derby figure of a musician** circa 1780 playing a pipe and beating a tambourine, restored approx. 21cm £80-150



524. **An early XIX century Chelsea Derby porcelain figure of a beau**, richly decorated, carrying barrel beneath his arm with a dog at his feet, against boge 25cm high £200-300

525. **A tin glazed wet drug jar "Althaea" underglaze mark beneath LPKAM** 24cm high £400-600



526. **A Chelsea red anchor mark dish** in the form of a sunflower with loop handle, restored approx. 23cm x 23cm £150-250



527. **An XVIII century Chelsea red anchor mark posy basket** with applied trailing flowers to the rim and handle, internally decorated with moths, restored approx. 17.5cm x 13cm £180-280



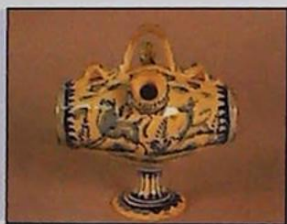
528. **Coalport. A two handled vase** painted with rural scenes in oval vignettes, black and gilt decoration, painted number beneath A56747 19.5cm high

530. An unglazed Tang style terracotta figure of a standing horse on rectangular base approx. 10cm high; a XIX century barkware vase of cylindrical form with moulded handle, lustre finish approx. 23.5cm high; and an oriental polished soapstone teapot and cover probably XIX century heavily carved with flowers to the shaped handle and spout, fluted body, bird knob, circular foot approx. 10cm high (3)

531. A glazed Chinese earthenware spill holder figure group of five Chinese robed men in a garden 22cm high; and a Chinese green glazed jug in the form of a figure holding a duck (2)



532. An unusual Continental blue and white tin glazed wine casket 19cm high, 17cm wide



533. A Continental faience moon flask, a mallet shaped vase and bottle vase with salamander handle, all brightly decorated with flowers, buildings and animals (3)
534. Two Continental faience candlesticks and two cylindrical vases decorated with animals, figures and birds
535. A finely painted Japanese porcelain tureen and cover and a similarly decorated tea service
536. XVIII and XIX century blue and white china - two Chinese plates, a tin glazed bowl, Spode bowl etc. (8) (all with damage)
537. A XIX century blue and white Nankin lozenge shaped plate 35cm x 26cm
538. An unusual set of twelve XIX century oriental plates probably Chinese each of shaped circular form decorated with blue and green flowers and further blue flowers verso each approx. 21cm diameter
539. Sundry decorative XIX century ornamental china - Royal Worcester mask jug, ink stand, spill vases etc. (with damage) (21 pieces)
540. A pair of green ground oriental cylindrical vases decorated with birds and peonies, a wash bowl and a Booths meat plate decorated with a parrot (4)
541. An old plated table candlestick converted for use as a table lamp 45cm high and a Cantonese enamel vase as a table lamp (2)

542. A pair of Satsuma gold and enamel baluster vases decorated with portrait heads 33cm high



543. An oval Continental porcelain two handled tray painted with vignettes of lovers in a landscape 43cm x 33cm
544. A pair of finely decorated XIX Century Satsuma vases painted with many figures before pagoda roofed buildings in a garden setting 31cm high £100-200

545. Royal Worcester; a cobalt blue and gilt decorated coffee set of six cups and saucers, cased painted mark beneath C343BT retailed by Mappin & Webb £80-150



550. A finely decorated steamed tazza painted with ripening fruit and with gilt highlights approx. 13.5cm high x 12cm diameter

551. A green glass and white enamel tapering vase painted with floral garlands and gilt highlights and a trumpet shape wine glass etched with fruiting vine (2)



552. A collection of twelve green glasses, four conical tumblers and eight stem glasses
553. Four stem glasses with ruby glass bowls on plain bases and thirteen tiny coloured glasses with powder gilt decoration (17)
554. A cut glass water jug, 12 stemmed port glasses and 5 small plain glasses
555. A set of six plain wine glasses with pinched facet stems on circular feet
556. A good pair of hobnail cut spirit decanters with star cut mushroom stoppers approx. 24.5cm high
557. A pair of glass and silver mounted salad oil bottles, two bottle cruet on a plated stand, hob nail cut scent bottle with silver top and a pickle jar
558. A three bottle tantalus on a clover leaf shaped plated stand

559. A pair of XIX century Mary Gregory green glass vases painted in white with a boy and girl 27.5cm high

METALWARE, OBJETS ETC

570. A collection of sixteen carved oriental soapstone figure groups
571. **Decorative metalware;** a French litre pewter tankard, a brass ladle, a pair of lamp bases (candlesticks) etc.
572. **Three relief carved stone tablets:-** a kneeling oriental figure approx. 35cms x 17cms, three stylised figures (Greek/Egyptian?) approx. 23cms x 13cms and a single figure with a snake approx. 19cms x 13cms
573. A XIX century copper side handle conical teapot
574. A XIX century circular copper two handled preserve pan 42cm diameter
575. A set of polished brass long handled fire irons and dogs
576. A set of long handled fire irons and dogs and a fender, 122cm wide
577. A triangular beaten copper Art Deco design umbrella stand

578. **Taxidermy. A Victorian display of twenty birds of paradise** under a glass dome overall approx. 72cm high £200-400



579. A heavy brass bucket decorated in oriental taste 36cm high, 32cm diameter £100-200



580. An oriental mirror in a profusely carved frame 62cm x 39cm
581. A XIX century pepper box percussion pistol by W Rowntree, 'Barnard Castle & Penrith' with chequered stock foliate scroll engraving to the action £250-350

582. A rare mid XIX century wooden doll with ball joints, painted and features a gold tiara in the hair, waist joint and red painted slippers, stamped on left leg 'C(?)utting 268 Oxford Street' wearing an original pink dress Approx. 47cms long £1000-2000



583. **Stanley Benchett 1904-1920 'Painter of the world's tinniest pictures'** - two minute watercolours; a shipping scene and coastal scene mounted and signed; together with a press article about the artist

584. **P J Mene. A bronze group of two hares** impressed 'P J Mene' the oval base 14cm x 8.8 cm £300-500



585. A XIX century Continental jewel casket of neo-classical design and another lozenge shaped brass casket (2)
586. A gilded cast metal easel mirror foliate and scroll design frame (support missing) approx. 27cms x 20cms
587. **Oriental carved ivory** - a card case carved in deep relief with figures and buildings, another plain ditto, nine various figures, a circular box, bearded man's head inro and an elephant £100-200
588. An earthenware Egyptian style oil lamp, an enamel bracelet, two enamel pill boxes, a scent bottle and a pair of opera glasses etc.
589. **Thirteen oriental carved half stone medallions**
590. A XIX century rosewood tea caddy, an oriental lacquered and decorated box and a similar table cabinet with five internal drawers (3)
591. A pair of circular Victorian mahogany foot stools with wool and bead work embroidered covers approx. 30cm diameter

592. A Victorian serpentine sided cabriole leg foot stool and an oriental long tray and stand



593. A mahogany tea tray with raised gallery and four scroll handles 64cm x 44cm



SILVER, JEWELLERY, WATCHES ETC

600. A three piece Sheffield hallmark tea service with gadrooned border by Walker & Hall approx. 40ozs gross £200-300
 601. A Sheffield hallmark lidded hot water pot approx. 13ozs gross
 602. An XVIII Century baluster pepperette, London hallmark, a Birmingham oval lidded mustard and a small pepperette (3)

603. A Chester hallmark sugar dredger with a pierced domed cover and turned finial, flat sided baluster body approx. 9ozs gross, approx. 22cm high



604. A Birmingham hallmark cased three piece cruet set with spoons
 605. A pair of London hallmark wine coasters with pierced sides and turned hardwood bases £80-140
 606. A Birmingham hallmark helmet shaped cream jug, a shell shaped London butter dish and a Birmingham two handled sugar basin (3) £70-120
 607. A continental silver beaker and a circular ashtray (2)
 608. A silver mounted manicure set, cased
 609. A Victorian London hallmark sovereign case, a Georgian Birmingham hallmark plain oval silver patch box, a Birmingham cheroot holder and a Victorian engine turned étui (4) £100-200
 610. A pair of Birmingham hallmark embossed oval salt cellars and spoons, a baluster pepperette, a silver match sleeve and a miniature pair of baskets (6)
 611. A Birmingham hallmark three piece cruet by William Greenwood & Sons, cased

612. A pair of London hallmark fiddle pattern sugar bows, a preserve spoon, a baby's spoon etc.
 613. A pair of London hallmark circular pierced dishes maker R C approx. 12.5cm diameter
 614. A London hallmark pressed pierced rococo design compot; maker J D W D approx. 19cm diameter

615. A Georgian wine coaster with a shaped engraved and pierced gallery and turned hardwood base (marks rubbed) and an antique whale bone handle tody ladle inset with a 1787 shilling (2) £100-150



616. A London hallmark baluster cream jug by R C and a plain silver London hallmark bowl by C & R
 617. A Birmingham hallmark Christening mug by E & Co. Ltd. approx. 8cm

618. A pair of London hallmark turned table candlesticks, weighted bases approx. 17cm high £120-180



619. An oval fluted lidded mustard pot and liner by Walker & Hall, Sheffield hallmark

620. A pair of early XIX century Newcastle berry spoons by IW 1807 £70-130



621. A Birmingham hallmark half fluted sugar bowl and five bright cut decorated teaspoons with shell pattern bowls

622. A set of four London hallmark repousse decorated two handled salts with spoons, £70-130



623. A set of six shell pattern silver gilt coffee spoons, London hallmark (cased)
 624. A set of six antique bright cut decorated silver gilt teaspoons (marks rubbed)

625. A plain Birmingham hallmark coaster with a turned hardwood base *approx. 14cm diameter*
626. A pair of continental silver grape scissors with steel blades stamped 830
627. An embossed Dutch silver spoon the bowl with a figure by trees leading a dog
628. A pair of Birmingham hallmark pressed silver heart shaped bon-bon dishes

629. An unusual Sheffield hallmark table bell by James Dixon 1899



630. A good quality George V pie crust edge salver with engraved centre raised on ball and claw feet, Perry & Co London 1910 *approx. 16ozs gross £100-200*
631. A Birmingham hallmark square table top cigarette case and a pocket ditto (2)
632. A rectangular silver card box "whist" with cards and markers
633. A Birmingham hallmark half fluted teapot with composition handle *approx. 19.5ozs gross*

634. The Goldsmiths & Silversmiths Co. A four piece part fluted tea service; H A Sheffield 1863/4 and 1896 *approx. 54oz gross £300-450*



635. A canteen of French cutlery comprising; seven table spoons, twelve dessert spoons, eight table forks, twelve dessert forks and six various tea spoons *approx. 84ozs £150-300*

636. A planished silver three handled cup by James Henry & Herbert Barraclough Leeds, London hallmark 1901 *approx. 29oz, 18cm high £200-400*



637. Mappin & Webb. A London hallmark four piece tea service with bright cut banded decoration *approx. 52ozs gross £300-500*

638. An XVIII century two handled cup maker JB London 1752 *approx. 10.5cm high, 9.5cm diameter, 7++ozs £150-250*



639. A pair of silver gilt berry spoons TL Sheffield 1897, cased
640. A cased set of Sheffield coffee spoons, a set of six silver handle tea knives (cased), three Sheffield table spoons and a plated sifter spoon
641. Mappin & Webb London & Sheffield. A gentleman's black leather travelling case with canvas outer, the green silk lined interior fitted with engine turned silver mounted bottles, brushes etc., over 20 pieces, hallmarks for 1912, in overall well preserved condition *£200-400*

642. A Continental silver engine turned lipstick holder with spring loaded hinged flap for a mirror - early XX century *approx. 6cm x 1.8cm*



650. A 15ct. gold bangle set with two diamonds and three sapphire coloured stones *£180-280*



651. A 15ct. gold wrist bangle set with three diamonds *£120-180*
652. A 15ct filigree mounted pendant centred with a green stone surrounded by small ruby coloured stones and hung with a tier drop green stone on a fine gilt chain

653. Two bar brooches and an engraved bridge pencil, all 9ct. gold



654. A gold crucifix set with twelve rose cut diamonds, thought to be Russian - brought by the owner from Malta - unmarked *approx. 44mm x 30mm £800-1500*



655. A 1914 sovereign
 656. A 1914 gold sovereign mounted as a bar brooch
 657. A 1913 half sovereign
 658. A 1906 half sovereign, framed as a pendant
 659. A string of graduated pearls with 9 carat clasp approx. 48cm long; a triple string of pearls, costume brooch, hat pins, earrings, two medallions etc.
 660. A 1887 gold two pound piece mounted as a pendant
 661. A red morocco jewel box and contents - costume jewellery, brooches, beads, hat pins, an Everite lady's watch, Tissot ditto etc.
 662. A 9 carat gold double twist necklet and a part guard chain as a necklet (2)
 663. A Victorian commemorative coin as a brooch, a pearl pendant, cameo brooch, millifaire brooch, silver crucifix, earrings etc.
 664. Two 9 carat plain gold wedding bands and five dress rings
 665. A triple string of lotus pearls
 666. Eight jet brooches and a pendant
 667. A Smiths 15 jewel gent's wrist watch in 9 carat gold case

675. An early XX century travelling clock the dial centre painted with a forest scene gilt chapter ring in a blue engine turned enamel frame, eight day Swiss movement £150-250



676. An open face gent's pocket watch in a gold plated case



677. A half hunter pocket watch in plated gold case with graduated silver chain



678. A silver cased open face pocket watch engraved "presented to John Stubby, 4th Batt. Line Reg by the inhabitants of Swineshead for services in the Boar War, 1900, 1901 and signed 1902" with a graduated silver chain

679. A 9ct. gold cased open face gent's pocket watch by JW Benson with a 9ct. graduated double Albert watch chain £150-250



680. A 9ct. gold hunter gent's pocket watch with Waltham movement and 9ct. double Albert watch chain £250-350



681. An 18 carat gold cased half Hunter pocket watch by Watson, 25 North Audley Street, London with 9 carat chain and a silver cased pocket watch by Chas B. Beeber Nottingham (2) £200-300

CLOCKS

690. A XIX century French ormolu cased mantel clock, the French movement signed on the back plate and Numbered 951, pendulum on silk suspension the clock on a serpentine gilt wood plinth approx. 36cms (inc. plinth) £350-500
 691. An Edwardian mantel clock in a domed inlaid mahogany case with white enamel dial approx 31.5cm

692. A brass skeleton clock with fusee movement on a veined white marble base with glass dome approx. 34cm £150-250



693. A late Victorian bracket clock in an elaborately carved gothic style case, the German three train movement chiming on eight gongs, with an arched brass dial, silvered chapter ring, subsidiary chime silent, fast slow and four/eight gong dials; applied floral spandrels 58cm high, 33cm wide, 24cm deep £400-650



700. **An XVIII century pine cased grandfather clock**, the square brass dial signed Wm. Prestidg Eydon, 30 hour movement *189cm high* £150-250

701. **A XIX century longcase clock**, the arched painted dial signed Jas Welch Broughton Le Spring with subsidiary second dial and date aperture, the mahogany case with boxwood stringing, cross banded and panels of decorative veneers *218cm high* £800-1400



702. **A XIX century Lincolnshire longcase clock** the arch painted dial signed Jon. Hyde Sleaford contained in a broken swan neck pedimented hood the trunk enclosed by mahogany banded shaped door; eight day movement *approx. 102cms high* £400-800



703. **An early XIX century Lincolnshire long case clock** the arched painted dial decorated with flowers and anchors, subsidiary second hand and date aperture contained in a pagoda type hood flanked by reeded columns the trunk enclosed by a long oak and mahogany cross banded door *approx. 204cm high* £400-800



704. **An oak longcase clock** with square painted dial, the hood surmounted by a carved eagle £50-100

705. **A XIX century Lincolnshire oak and mahogany longcase clock**, the arched dial painted with a sportsman shooting ducks over a spaniel, and signed Border Sleaford, eight day striking movement, contained in a broken swan neck pedimented hood with orb finials, the pendulum also stamped Border *210cm high* £500-900



706. **An XVIII century oak and mahogany banded longcase clock** with square brass dial signed Fernal Wrexham, 30 hour movement, the case enclosed by a long door *202cm high* £250-500

707. **An early XIX century longcase clock** the arched painted dial centred with a bird and signed Hardy Nottingham contained in a broken swan neck pedimented hood flanked by fluted columns, the trunk enclosed by a long mahogany banded shaped door, 30 hour movement *approx. 214cm high*



708. **A XIX century oak and mahogany longcase clock**, the arched dial painted with landscape scenes and sea shells, signed Border Sleaford *204cm high* £400-600



PICTURES AND MIRRORS

710. **A XIX century oak frame mirror** with painted glass panel beneath a moulded cornice *78cm high, 57cm wide* and a small gilt frame mirror *36cm x 26cm* (2)
711. **Adrian Hill** Trees - watercolour over pencil, gallery label verso *Chas. H West 34cm x 51cm*; also two books by Adrian Hill "Further Steps in Oil Painting", "Faces & Figures"
712. **Adrian Hill** "South Boundary Bath(?) Midhurst" - watercolour over pencil, signed and titled lower left *Chas H West* Gallery label verso *33cm x 50cm*
713. **Adrian Hill** "Madams(?) Farm, Midhurst" A pencil and watercolour drawing titled and signed *Chas H West* gallery label verso *31cm x 49cm*
714. **Adrian Hill** A pencil and multi colour drawing with exhibition label verso R.B.A. Adrian Hill, Old Laundry Cottage, Midhurst, Sussex "design No. 1"; signed lower left *61cm x 74cm*
715. **Adrian Hill** A pencil and multi colour drawing with exhibition label verso R.B.A. Adrian Hill, Old Laundry Cottage, Midhurst, Sussex "design No. 2"; signed lower left *61cm x 74cm*

716. **An XVIII century Aubusson tapestry** "Jeu de Cheval" 2.41m x 2.62m purchased *S Franses Carpets Ltd., London 1980* £2000-4000



717. **A XIX century ebonised and plaster gilt cushion frame wall mirror** 80cm x 69cm £150-250



718. **A pair of XIX century portraits**, the lady wearing a blue dress, seated in a red upholstered chair, and the gentleman in black with a white stock Oils on canvas, unsigned 75cm x 62cm £75-150



719. **XIX century Continental School** A stone viaduct crossing a gorge with shepherd, child and flock on a lane in the foreground Oil on canvas 45cm x 55cm £200-400



720. **G. Gianni 1882** Valetto Harbour, Malta - with many figures and ships on the water Oil on canvas signed lower left 30cm x 62cm £2000-4000



721. **Walter Heath Williams** An English country landscape with shepherd boy and flock on a lane and two children fishing in a brook Oil on canvas - cleaned, relined and framed (purchased *James Best Antiques, Woodhall Spa 1980*) 44cm x 64cm £1500-2500



722. **Walter Heath Williams** An English country landscape with two figures on a lane and boy fishing in a brook Oil on canvas - relined and reframed (purchased *James Best Antiques, Woodhall Spa 1980*) 39cm x 59cm £1500-2500



723. **J(?) Westall** English country landscape with figures and cottages signed lower left, oil on canvas 19cm x 39cm £150-250



724. **School of Paul Sanby.** A pair of well painted watercolour drawings each titled on the mount Ashside Borrowdale and Rosthwaite Bridge approx. 18cm x 24.5cm £150-300



725. **J M Barralet** A watercolour drawing figures in a farmyard - signed approx. 22cm x 29.5cm and an XVIII century school pen and ink drawing of a country house with two figures fishing - unsigned, approx. 20cm x 28cm (2)

726. **An XVIII century watercolour drawing** - figures before a fallen tree monogrammed E E 1780 approx. 20.5cm x 27cm £150-250



727. **S Bollock** A watercolour drawing - Lincoln, signed lower right 19cm x 24cm



728. **An embroidered oriental silk panel** with a blue floral double border, the centre of floral design worked with gold thread

729. **T Wilson R. B. A.** A pair of watercolour drawings 'Ben Balk & Loch Lomond' signed lower right, titled on the mount in contemporary plaster gilt frames approx. 24.5cm x 34.5cm £400-600



730. **Roxin, Herm** A pair of horse portraits Oil on canvas 20cm x 14cm

731. **XIX century Continental School** A pair of oils on panel - male and female figures riding donkeys with panniers to each side 21cm x 17cm
732. **William Breanski** Cattle drinking at a loch Oil on canvas, signed lower right 49cm x 75cm £200-400
733. **XIX century Continental School** A watercolour drawing - lake scene; and after Toeneully - a black and white engraving, a street scene with Hansom cab; also after Knox - a coloured print "Glorious Venice" (3)
734. **XIX century Dutch School** Two portraits of young boys, one carrying turnips, the other wearing a white shirt with farmyard in the background 19cm x 15.5cm £150-250

735. **English School XIX century** A watercolour drawing of "Mr Simpson, the famous M.C. at the Royal Pavilion Brighton" according to a hand written label verso, in oval gilt engraved mount image approx. 7cm



736. **Early XIX century Continental School** An oil on canvas - portrait of a monk 28cm x 23cm

737. **Two silk and gold trim scalloped pelmets** each approx 137cms x 24cms, framed and glazed



738. **A pair of Lille porcelain and ormolu double wall sconces**, the shaped panels painted with pastoral scenes of figures beside a pump with horse and rider, sheep in the foreground 45cm x 30cm overall £300-500



739. **An elaborate late XVIII/early XIX century Continental glass and wooden frame mirror** richly decorated with coloured glass spirals, flowers, scrolls and leafage, probably Venetian - much damage and loss 105cm x 85cm £400-800



740. **XIX century Continental School** Oil on panel - an Italianate landscape with river flowing through a gorge 21cm x 28.5cm

741. **David Bates 1908 signed, one dated** "A Boggy Reach - Dolwydalen" and "By the School House, Breadons Norton" watercolour drawings, a pair, contemporary moulded plaster gilt frames 26cm x 36cm £1000-2000



742. **W Stone** "A scene on the Ledr Moel-Siabod in the background" written verso oil on canvas, contemporary plaster gilt frame 44cm x 59cm £300-500



743. **M Gear** A watercolour drawing of a Cairn Terrier pup 37cm x 25.5cm £100-200



FURNITURE

760. **A Georgian mahogany tripod table** - reduced in height to provide a coffee table 90cm diameter £75-150
761. **A Georgian mahogany corner cupboard**, the moulded cornice above an astragal glazed door, the lower section enclosed by a panel door 90cm wide, 194cm high £400-600
762. **A set of four XVIII century elm rush seated dining chairs** on square taper supports with "H" stretchers and another almost matching chair (5) £100-150
763. **An XVIII century oak four panel back open arm settle** raised on turned supports 196cm wide £200-400



764. A Georgian oak chest of two short and three long graduated drawers, raised on shaped bracket feet 95cm x 50cm, 82cm high £300-500



771. An Edwardian satinwood demi-lune commode, cross banded and ebony strung, raised on square taper supports terminating in spade feet 103cm wide, 119cm high, 50cm deep £400-800



765. An XVIII century oak bible box enclosed by a sloping top above a gouge carved frieze and fitted with a long drawer beneath, the interior with four small drawers 69cm wide £100-200



772. A Regency rosewood chiffonier, the upper section with a gilt brass gallery on turned column supports, fitted with a long drawer to the frieze, the base enclosed by a pair of fielded panel doors flanked by fluted Corinthian style columns, on a plain plinth 96cm wide, 39cm deep, 120cm high £700-1200



766. An early XVIII century oak coffer with plain planked top, two panel front, each panel centred with a diamond relief carving beneath a carved frieze, raised on high stiles 111cm wide £200-350



773. A rectangular mahogany cheval mirror 159cm high



767. A small Georgian mahogany dressing chest fitted with a brushing slide above three long drawers, raised on bracket feet 74cm wide, 50cm deep, 87.5cm high £400-650



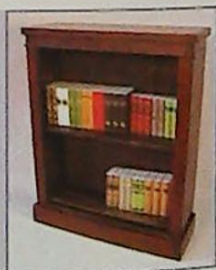
774. A XIX century mahogany marquetry inlaid pier table, fitted with a long drawer to the frieze, raised on turned columns with ormolu capitals, inset mirror to the back 85cm wide, 41cm deep £400-650



768. A Georgian mahogany chest of four long graduated drawers on shaped bracket feet 91cm x 46.5cm, 93cm high £300-600



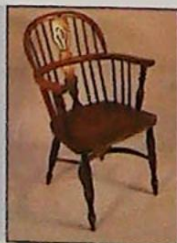
775. A Victorian walnut open bookcase with two adjustable shelves 86cm wide, 102cm high, 27cm deep £150-250



769. An Edwardian marquetry inlaid open armchair, the seat upholstered in maroon dralon, raised on cabriole front supports and another side chair similarly upholstered (2)

776. A Victorian burr walnut marquetry inlaid floor standing bow fronted cupboard

770. A XIX century yew wood Windsor armchair with pierced vase splat, ring turned front supports joined by a crinoline stretcher £250-350



777. A small XIX century mahogany pembroke table fitted with a concealed frieze drawer and raised on ring turned supports 82cm square extended £120-180



778. **A Victorian rosewood conical workbox** with a fitted interior, raised on carved cabriole supports with scroll feet £150-250



779. **A pair of Victorian ebonised walnut inlaid salon chairs** with ormolu mounts and with a pair of matching foot stools £150-250

780. **A XIX century Empire Biedermeier mahogany secretaire a abattant** fitted with four long drawers, the secretaire enclosed by a fall front and flanked by turned columns with ormolu capitals, grey marble top 86cm wide, 41cm deep, 144cm high £300-600



781. **A Victorian carved walnut frame spoon back lady's chair** upholstered in buttoned gold dralon and raised on cabriole legs £100-200



782. **Two from a set of Regency rosewood quartetto tables**, the largest 41cm x 31.5cm £70-120

783. **An elaborate Victorian pedestal sideboard** constructed in mixed wood with pollard oak veneers to the drawers and cupboards, the raised back of architectural design 212cm wide, 68cm deep £100-200



784. **The base of a Georgian mahogany wash stand - as a side table**

785. **A lacquered and chinoiserie decorated tripod wine table**

786. **Three matching Regency rosewood brass inlaid dining chairs** (1 carver and 2 singles) with cane panel seats on sabre front supports £150-250



787. **A mahogany and boxwood strung dressing table stool**

788. **A George III mahogany fold over tea table** fitted with a long drawer to the frieze and raised on fluted and chamfered supports 84cm wide, 45cm deep £200-300

789. **A George III mahogany bureau bookcase**, the upper section enclosed by a pair of fielded panel doors beneath a dentil cornice, the fall front enclosing a fitted interior above two short and three long drawers, raised on ogee bracket feet 96cm wide, 219cm high £1500-2500



790. **A French Hepplewhite design carved mahogany frame window stool** £150-250



791. **A small Georgian mahogany tallboy**, the dentil cornice above a blind frieze, the upper section with four graduated drawers and the lower section with two, raised on shaped bracket feet 100cm wide, 164cm high £300-600



792. **A French XIX century gilt frame open armchair**



793. **A XIX century beech frame duet stool** with overstuffed top, raised on shaped supports £100-200

794. **A Victorian lady's chair** on turned mahogany front supports, fully upholstered in buttoned green dralon £80-150

795. **An early XIX century oak drop leaf gate leg dining table** 149cm x 116cm £80-150

796. A circular Victorian mahogany pot cupboard with a white marble top (*distressed*)
76cm high, 38.5cm diameter
£100-200



797. An XVIII century oak and mahogany banded hanging corner cupboard enclosed by a pair of two panel doors with three internal shaped shelves *approx.*
102cm high x 76cm wide
£150-250



798. Gillows. A XIX century library table fitted with three drawers to the frieze, the centre drawer stamped "Gillows Lancaster", raised on fluted tapering supports and with a crimson and gilt tooled leather writing surface 76cm x 120cm £3500-5500



799. A set of four gilt frame boudoir chairs, the overstuffed seats upholstered in regency floral stripe, raised on turned taper supports joined by matching stretchers £300-600



800. A pair of bergere armchairs with cane panel sides, shaped frames and elaborate stretchers, upholstered in tangerine fabric

801. An early XIX century mahogany carver chair on ring turned supports with an overstuffed seat

802. An XVIII century oak plate rack 139cm x 116cm
£100-200



803. An early XIX century mahogany six leg sideboard with a shaped raised back, concave central drawer above a cupboard and flanked by two drawers to each side, ebony strung and raised on ring turned supports
146cm wide, 47cm deep £200-400



804. A XIX century French Empire armchair with an ebonised and gilt decorated frame upholstered in gold pattern material £200-400



805. A pair of XIX century rosewood pole screens, the framed woolwork panels of vases of flowers, on baluster columns with a tricorn base and turned feet £250-350



806. A Victorian mahogany frame gentleman's armchair, the scroll arms above cabriole front supports joined by a serpentine stretcher, upholstered in buttoned gold dralon £200-400



807. A Victorian mahogany framed spoon back lady's chair upholstered in gold dralon raised on turned supports

808. A Victorian carved walnut frame chaise longue, raised on cabriole front supports, upholstered in button gold dralon £300-600



809. An XVIII century oval oak drop leaf table, raised on tapering supports with pad feet 124cm x 108cm £80-150



810. An early XIX century mahogany bow front hanging corner cupboard enclosed by double cross banded doors beneath a moulded cornice and fitted with three internal shelves
97cm high £100-200

811. A French XIX century oak wall mounted plate rack 83cm high, 54cm wide

812. A XIX century mahogany Canterbury with rounded lyre design ends the serpentine divisions on barley twist supports the base fitted with a drawer and raised on turned fluted legs
£170-280



813. An unusual Victorian mahogany frame reclining open armchair, raised on shaped supports with original brass castors £150-250



814. An XVIII century French relief carved armoire, the moulded cornice above a pair of panel doors, topped with floral bouquets and with relief panels of a vase of flowers and musical instruments, raised on short shaped legs (now internally fitted with shelves) 152cm wide, 230cm high £700-1100



815. A XIX century pedestal tilt top wine table, the column carved with upturned acanthus on a stepped circular base with circular feet the rectangular top 40cm x 31cm £120-180



816. A XIX century mahogany pedestal sideboard fitted with a central long drawer and two short drawers, raised on turned feet

817. An Edwardian mahogany boxwood strung china display cabinet enclosed by a glazed door with diamond pattern astragals, raised on square taper supports terminating in spade feet 69cm wide, 149cm high £120-200



818. A Georgian mahogany wing armchair, raised on square front supports joined by an "H" stretcher £200-400



819. A Georgian mahogany 'D' end dining table, the drop leaf centre section with double gate legs connecting to the two 'D' ends, the frieze boxwood strung, raised on square taper supports terminating in spade feet 281.5cm x 137cm extended £1000-1500



820. A set of seven (6 singles and 1 carver) Hepplewhite design mahogany dining chairs by Wallace King Limited Norwich £200-400

821. A set of five (4 singles and 1 carver) Hepplewhite design mahogany dining chairs £150-250



822. A XIX century mahogany hall chair with an oval patera design back centred with a classical urn, shaped solid seat on fluted tapering front supports £80-150



823. A XIX century North Notts ash and elm child's windsor chair with pierced "christmas tree" splats, raised on ring turned supports joined by an "H" stretcher £200-350



824. A Victorian walnut davenport desk, the upper compartment decorated with a fretted frieze and enclosing a fitted interior, the slope enclosing pigeon holes and a drawer with four further drawers to one side enclosed by a panelled door, bold cabriole bracket supports, relief carved with a flower to the knee 55cm wide, 57cm deep £300-550



825. A set of four Regency mahogany sabre leg dining chairs with moulded rectangular curved splats and drop in seats £250-400



826. A pair of XIX century painted and lacquered sabre leg side chairs, two mahogany chairs of similar style and another regency rosewood sabre leg chair (5)

827. **An early XIX century rosewood library table**, the rectangular top with a green gold tooled leather inset with two concealed frieze drawers beneath the moulded border, raised on turned column supports *121cm x 70cm* £600-900



828. **A Victorian mahogany Sutherland table** on turned supports, the rectangular top *88cm x 88.5cm* £100-200

829. **A Georgian mahogany 'D' end dining table** with one leaf *160cm x 122cm* £300-600



830. **A harlequin set of six Lancashire spindle back rush seated dining chairs**, raised on turned taper supports with pad feet and joined by turned stretchers £200-400



831. **A Victorian mahogany show-wood frame chaise longue**, the serpentine back carved with a pierced foliate scroll, raised on turned supports, upholstered in gold dralon £250-400

832. **A well figured XIX century rosewood serpentine top loo table** raised on a carved column with bold quadruple scroll feet, the top *155cm x 115cm* £300-600



833. **A set of four Georgian mahogany dining chairs** of Hepplewhite design with vertical pierced splats and overstuffed seats, tapering fluted front supports

834. **A XIX century French eight leg open arm settee**, now upholstered in yellow pattern material, the frame painted grey and gilt lined £100-200



835. **A late XVIII century satinwood fold over demi-lune games table**, the top with a broad rosewood band, the frieze and taper legs boxwood and ebony strung *91cm wide, 45cm deep* £500-800



836. **A late Georgian period mahogany two drawer side table** in the style of Gillows *Approx 75.5cms high x 115cms wide x 53cms deep* £200-400



837. **A Victorian walnut serpentine chiffonier**, the shaped mirror boldly carved with foliate and husks above a shaped white veined marble top, the base with three mirror panel doors *118.5cm wide* £180-280



838. **A carved hardwood frame oriental two fold screen** with lacquered panels, applied decoration of birds amid branches, each panel approx. *146cm x 57cm*

839. **A XIX century mahogany chest of two short and three long drawers** with oval thistle design, pressed brass handles, raised on bracket feet *96cm wide, 45.5cm deep* £250-350

840. **An early XIX century mahogany bow front chest of two short and three long drawer**, boxwood strung with diamond ivory escutcheons and with ebonised turned handles, raised on bracket feet *101cm wide, 52cm deep* £300-500



841. **An XVIII century oak three panel coffer** with a plain one piece top, lunette carved top rail, raised on high stiles *110cm wide, 42cm deep, 58.5cm high* £300-400



842. A gothic Victorian oak armchair boldly carved with masks, fruiting vine and foliage, raised on turned and block supports with barley twist stretchers



843. A mahogany and satinwood banded Sheraton revival bow front side table raised on square taper supports 91.5cm wide £120-180



844. A giltwood mirror back corner display shelf 91cm high

845. A magnificent French twelve branch chandelier, the gilt metal boss with foliate scroll arms supporting the 12 candle holders (now converted to electricity) approx. 110cm high, 60cm diameter £800-1500



846. A pair of bronzed metal "winged angel" pendant lights, each holding two bulb holders in their outstretched hands approx. 50cm long £200-400



847. A George II period mahogany dish top wine table with deep moulded edge on turned column with pad feet Approx. 46cms diameter, 69cms high £800-1200

848. A good quality early George II period mahogany writing or corner chair with original finish £450-650



849. A Victorian mahogany wardrobe with central mirror flanked by two panel doors, two drawers to the base 153cm wide



850. An Edwardian mahogany china display cabinet enclosed by astragal glazed doors raised on square legs with an undershelf 105cm wide £100-200



851. A Victorian stripped pine butlers cupboard, the upper section enclosed by glazed sliding doors, the base with two drawers and double cupboard 137.5cm wide, 232cm high £100-200

852. A Victorian gothic revival elaborately carved oak dresser, the back with a leaf carved cornice, open arched shelves above two cupboards, the base with three drawers and three cupboards 182cm wide, 208cm high £400-600



853. A Victorian polished hardwood frame three fold screen centred with oriental silk floral panels beneath a spindle turned gallery

854. A Regency design mahogany twin pillar dining table with two spare leaves 234cm x 110cm

855. A set of six Victorian dining chairs, the walnut frames carved in relief with Prince of Wales plumes and spindle turnings

856. An Edwardian mahogany chippendale design extending dining table raised on bold cabriole carved legs with ball and claw feet, two spare leaves 229cm x 118cm extended £350-600

857. A XIX century oak drop leaf dining table

858. An Edwardian oak gate leg corner table carved in relief

859. An Edwardian oak hall stand and a wall mirror with glove box

860. A George III mahogany pie crust edge wine table on a baluster column with triple cabriole supports 45cm wide £100-200



861. An XVIII century oak lowboy with one long and two deep drawers above a shaped frieze (replacement top) 79cm wide £75-120

862. An XVIII century oak lowboy fitted with one long and two deep mahogany cross banded drawers above a fretted frieze, raised on square chamfered supports 84cm wide, 49cm deep £250-400



863. A XIX century oak fold over tea table fitted with a single frieze drawer raised on square supports 84cm wide
864. A Georgian mahogany fold over tea table, the frieze inlaid with a shell patera raised on square supports 88cm wide

865. An early XIX century figured mahogany fold over tea table raised on a baluster column with quadruple splay legs, terminating in carved paw feet £250-350



866. A Georgian mahogany bureau, the slope front enclosing a fitted interior above four graduated oak lined drawers with original oval pressed brass handles 106cm wide £200-400



867. A XIX century painted pine blanket box, a nest of tables and a miniature oak stool

868. A George III mahogany commode



869. A George II style walnut dressing table stool



870. An XVIII century style oval oak drop leaf wake table with double gate action on baluster and block turned supports approx. 152cm x 228cm £600-1200



871. Eight oak ladder back rush seated dining chairs (2 carvers and 6 singles) £150-300

872. An Edwardian mahogany satinwood banded and boxwood strung Sheraton revival needlework table with a fitted interior (silk bag missing) 43cm diameter £80-150



873. A late Victorian chaise longue

874. An oriental armchair with serpentine solid seat, the back and arms profusely carved with dragons and birds on cabriole front supports £200-300



875. An antique ladderback open armchair with rush seat

876. A XIX century ash and elm high back windsor chair

877. A late Victorian mahogany mirror back sideboard, with projecting canopy on turned columns, the base with two drawers and double cupboard 114cm wide £100-200

878. A Victorian mahogany secretaire bookcase, the upper section enclosed by plain glazed doors beneath a moulded cornice, the secretaire fitted with a series of small drawers, pigeon holes and with a slide out writing slope, the base enclosed by double panel doors 110cm wide, 215cm high

879. A XVII century carved oak court cupboard, the upper section enclosed by two panel doors beneath a projecting canopy with a carved date of 1676, the base enclosed by a panelled cupboard 139cm wide, 161cm high, 63cm deep £700-1100



880. A XVII century relief carved mule chest with plank top and three panel front above two drawers 127cm wide £300-450



881. A gilt and grey painted neo classical design over mantel mirror 160cm x 117cm
882. A Victorian plaster gilt ornately framed over mantel mirror 143cm wide

883. A XIX century wing back armchair on square tapering mahogany supports
884. An Edwardian mahogany boxwood and satinwood inlaid triple wardrobe fitted with two drawers to the base

885. An Edwardian mirror back sideboard cum china display cabinet, the elaborate back with a broken pedimented canopy, the base and bow fronted marquetry inlaid central door flanked by glazed china cupboards 122cm wide, approx. 186cm high £150-250



886. A set of six Victorian rosewood cabriole leg dining chairs £200-400

887. Four various oriental patterned rugs



888. An oriental flat weave multi coloured rug approx. 190cm x 100cm



889. An oriental flat weave runner and three rugs

897. A XIX century French kingwood and parquetry bureau de dame with gilt bronze mounts and undulating top, the bombe fall flap revealing a fitted interior, above a shaped frieze drawer, on slender cabriole legs 70cm wide £500-1000



898. A XIX century satinwood and marquetry inlaid cylinder desk fitted with three drawers above the secretaire, the cylinder enclosing a leather inlaid writing surface beneath a series of pigeon holes and three further drawers, fitted with a long frieze drawer, raised on square taper supports terminating in spade feet 88cm wide, 51cm deep, 104.5cm high £2000-4000



899. An XVIII century marquetry bombe front commode chest of three drawers, profusely inlaid with floral marquetry to the top bombe sides and drawer fronts 97cm wide, 49cm deep, 82cm high £2000-4000



900. A XIX century mahogany drum table fitted with four drawers to the frieze and four dummies, raised on a tapering flat sided column with tricorn platform base on turned supports with original brass castors 120cm diameter £700-1200

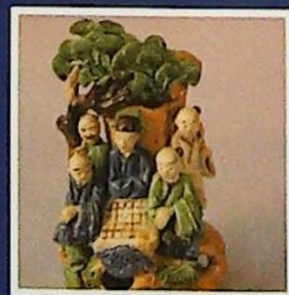
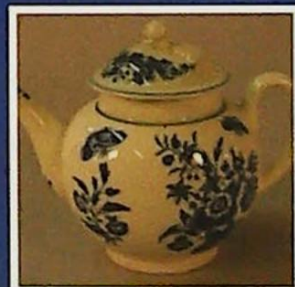
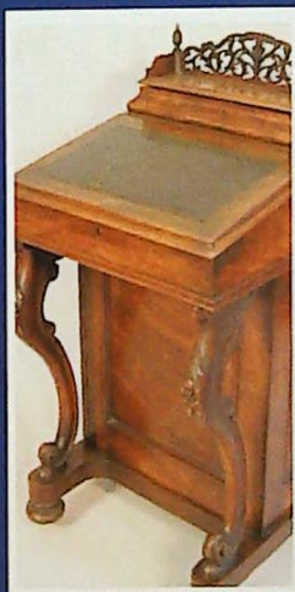


Forthcoming Sales 2008

First Saturday Estate Sales will be held
on the 1st Saturday monthly at 10 am
October 4th - November 1st - December 6th

All sales on view day prior 12 noon-4pm or by appointment.
Catalogues (downloadable) approx 7 days prior.

Free Valuation Clinic every Friday morning 9.30 - 12 noon



DUNSTON HOUSE, PORTLAND STREET, LINCOLN • LN5 7NN

TELEPHONE 01522 524984 FACSIMILE 01522 535600

EMAIL auctions@thosmawer.com WEBSITE www.thosmawer.com





THOS. MAWER & SON LTD.

Auctioneers & Valuers Established in 1864

Lincolnshire's International Auctioneers



Lots were purchased from Hong Kong, Australia, USA, Malta, Ireland, Italy and Korea in our last sale



Camberlains
Worcester
teapot £90
Mr Elliott,
New South
Wales
Australia

XIX
century
bonheur du
jour £5400
Mr Cho
Man,
Korea

Kutani
figure of a
geisha
£250
Mr
Schneider
USA

XIX
century
card table
£580
Mr Howard
Ireland

Italian Map
by
Cornaro
£380
Mr Cotonese
Italy

Doulton
figure of
Henry VIII
£ 180
Mrs E
Perkins
Indiana
USA

Chinese
vase
stands
£470
Ming
Gallery
Hong Kong

We sell antiques and collectables **worldwide**, frequently achieving **record prices**. For the best possible prices contact the specialists for *free* valuation and advice. Entries now accepted for our next global sale.

DUNSTON HOUSE, PORTLAND STREET, LINCOLN LN5 7NN

TEL: +44 (0)1522 524984 E-MAIL: auctions@thosmawer.com

W: www.thosmawer.com



LOCATION



The Thos. Mawer & Sons salerooms at Dunston House are situated in central Lincoln on the east end of Portland Street at the foot of Pelham Bridge (Canwick Road). By car, approaching from the south take the last turning on the left just before the road rises to the bridge.

Approaching from the north (via Broadgate), go over Pelham Bridge and turn left towards Jacksons Building Centre/Tesco on to Kesteven Street. Follow the road around to the left and drive under Pelham Bridge to Portland Street. Turn left and you will see Dunston House on the right. Portland Street is also accessible from Lincoln's High Street, opposite the Ritz public house.

The salerooms are within walking distance of the main railway station and bus depot.

CONDITIONS OF SALE

1. In these conditions Thos. Mawer & Son act only as auctioneers and agents and the representative of Thos. Mawer & Son conducting the auction is called 'The Auctioneer'

2. Whilst Thos. Mawer & Son make every effort to ensure the accuracy of their catalogue and the description of any lot:

(i) Each lot set out in the catalogue or as divided or combined with any other lot or lots is sold by the vendor with all faults and imperfections and errors or descriptions

(ii) Thos. Mawer & Son do not accept responsibility for the authenticity, attribution, genuineness, origin, authorship, date, age, period condition or quality of any lot unless they have been instructed in writing by the buyer to so certify.

(iii) All statements whether printed in the catalogue or made orally as to any of the matters set out in (ii) above are statements or opinion only and are not to be taken as being or implying any warranties or representations of fact by Thos. Mawer & Son unless they have been instructed in writing by the buyers to so certify.

3. The Auctioneer has absolute discretion to divide any lot, to combine any two or more lots or to withdraw any lot or lots from sale, to refuse bids, regulate bidding or cancel the sale without in any case giving any reason or without previous notice. He may bid on behalf of the vendor for all goods which are being offered subject to reserve or at the Auctioneer's discretion.

The highest bidder shall be the buyer. The Auctioneer may at his sole discretion determine the advance of bidding or refuse a bid. If during the auction the Auctioneer considers that a dispute has arisen he has absolute discretion to settle it, or to re-offer the lot.

All conditions, notices, descriptions, statements and other matters in the catalogue and elsewhere concerning any lot are subject to any statements modifying or affecting the same made by the Auctioneer from the rostrum prior to any bid being accepted for the lot.

4. The buyer shall pay the hammer price together with a premium of the hammer price - 17.6% inclusive of VAT

5. Notwithstanding any other terms of these Conditions, if within seven days after the sale Thos. Mawer & Son have received from the buyer of any lot notice in writing that in his view the lot is a deliberate forgery and within twenty-one days after such notification the buyers return the same to Thos. Mawer & Son in the same condition as at the time of the sale and by producing evidence, the burden of proof to be on the buyer, satisfies Thos. Mawer & Son that considered in the light of the entry in the catalogue the lot is a deliberate forgery then the sale of the lot will be rescinded and the purchase price of the same refunded.

The vendor agrees to be bound by Thos. Mawer & Son's decision.

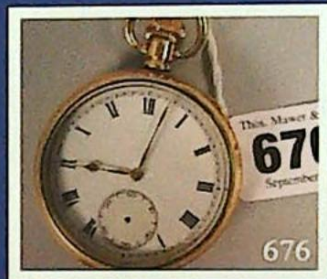
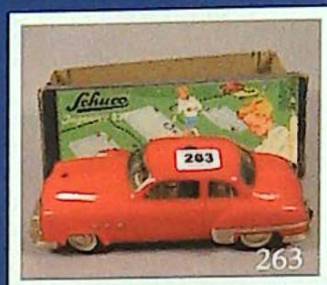
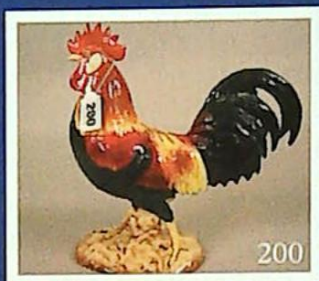
6. Thos. Mawer & Son disclaim any responsibility for default by either the buyer or the vendor because they act as Auctioneers only and therefore do not pay out to the vendor until payment is received from the buyer. Instructions given by telephone are accepted at the sender's risk and must be confirmed in writing forthwith.

7. Every person on Thos. Mawer & Son's premises at any time shall be deemed to be there at his own risk. He shall have no claim against Thos. Mawer & Son in respect of any accident which may occur or injury, damage, loss howsoever caused, save in so far as the injury, damage loss shall be caused by the negligence of Thos. Mawer & Son's employees.

8. Each lot shall be at the purchasers risk from the fall of the hammer and must be paid for in full before the delivery and must be taken away by the purchaser at his own expense within 7 working days following the conclusion of the sale. The Auctioneer shall be entitled to charge storage charges in respect of lots not taken away as aforesaid (minimum charge of £25 plus VAT) and interest on unpaid accounts @ 4% above clearing bank base rate (per calendar month)

9. Cheques which are not honoured by the payee's bank will incur a handling charge of £20 plus VAT for each presentation.

This contract is governed by English Law.



DUNSTON HOUSE . PORTLAND STREET . LINCOLN . LN5 7NN
TELEPHONE 01522 524984 . FACSIMILE 01522 535600
EMAIL auctions@thosmawer.com . WEBSITE www.thosmawer.com