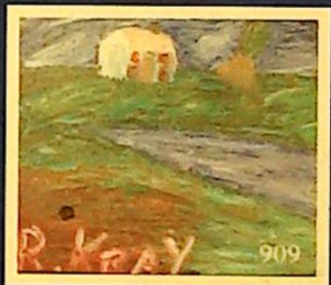


THOS. MAWER & SON LTD



THOS. MAWER & SON LTD.

Auctioneers & Valuers Established in 1864



First Saturday Estate Sale

**ANTIQUES, COLLECTABLES
&
CONTENTS OF LOCAL HOMES**

Saturday 2nd July 2005 commencing at 10.00am

On View

Friday 1st July 10.00am - 4.00pm & morning of sale from 8.30am

Catalogue £5.00

THOS. MAWER & SON LTD

COMMISSIONS

The Auctioneers are pleased to execute commissions for intending buyers in confidence as cheaply as is allowed by any other bids. All telephone bids must be confirmed in writing or by fax by 4pm the day prior to sale, telephone bids will not be accepted for lots on which the top estimate is under £500.00. We cannot guarantee to execute bids received on the morning of sale.

BUYER'S PREMIUM

There is a 15% premium (inclusive of VAT) payable on the final hammer price of each lot.

REGISTRATION

All prospective purchasers are requested to register and obtain a bidding number prior to the start of the sale.

CATALOGUE DESCRIPTIONS

Care is taken to ensure that any statement as to authorship, attribution, origin, date and provenance is reliable and accurate, but all such statements are statements of opinion and are not to be taken as statement or representations of fact. Thos. Mawer & Son Ltd. reserve the right, in forming their opinion, to consult and rely upon any expert or authority reasonably considered by them to be reliable. While an identification of damage is given in some instances, an absence of

such advice does not imply that a lot is free from defect. Prospective purchasers are strongly advised to inspect any lot on which they intend to bid. All measurements and weights are approximate and should be verified by intending purchasers

ESTIMATES

Estimates for lots under £100.00 are not printed in the catalogue. On lots that are reserved, the reserve will not be greater than the published estimate at the time the catalogue goes to press.

PAYMENT OF ACCOUNTS

All Lots should be paid for and collected immediately following the sale. Any lots not collected by 4.00pm on the Wednesday following sale day will incur storage charges (minimum £25.00 plus VAT per lot).

Payment for all lots must be made on the day of sale and methods are:

(1) CASH, (2) CHEQUES supported by either a letter of Reference from your bank or a cheque guarantee card to cover the sum of your purchase, (3) BANKERS DRAFT, (4) DIRECT DEBIT CARDS such as "Switch", "Delta", "Classic", "Connect", (5) CREDIT CARDS subject to a 2% premium charge.

No lots in this sale are the property of Thos. Mawer & Son.

CONTENTS

The complete catalogue for this sale can be downloaded from our website. On the homepage, go to the box headed General or Special Sales then click here for text only printable version.

Please note - Lots 1 -100 and 101 onwards will be sold simultaneously commencing at 10am.

LOT 1 - 100

General Furniture located in the goods in area of the saleroom.

LOT 101 - 649

Ceramics, Glass, General Household Effects, Art Nouveau, Art Deco, Metalware etc.

Lotted catalogue available only on website as above.

LOT 650 - 985

Antiques & Collectables - will be sold in lot order commencing at approximately 1pm.

If you are travelling to the saleroom to bid for a specific lot, please telephone us during the morning to ascertain the sale progress.

CERAMICS, GLASS, GENERAL HOUSEHOLD EFFECTS, ART NOUVEAU, ART DECO

101. A pair of white alabaster baluster vases with oval pink panels
102. A pair of green onyx and gilt metal mounted table lamps
103. A pair of green onyx and gilt metal mounted table lamps
104. A pair of green onyx and gilt metal mounted table lamps
105. A pair of green onyx and gilt metal mounted table lamps
106. A pair of green onyx and gilt metal mounted table lamps
107. Three boxes of polished onyx fruit ornaments
108. Two boxes of onyx bangles
109. A 10" diameter polished stone comport and eleven similar approx. 5"
110. Four blue/white polished stone segmented vases
111. A quantity of polished stone/alabaster ashtrays - one shelf
112. Three American eagle union ornaments
113. Coloured ornaments - children etc. - one shelf
114. Ten x 5 piece polished fossil stone and other cruets
115. Fourteen desk stands (13 with clocks)
116. Polished stone ashtrays - two boxes
117. Twelve bird ornaments
118. Polished fossil stone cylindrical and baluster vases (top of bookcase)
119. Polished stone goblets (24) - one shelf
120. Polished stone baluster vases (11)
121. Polished stone parrots (4)
122. Polished stone parrots (4)
123. Polished stone parrots (4)
124. Polished stone parrots (3)
125. Polished stone doves (6)
126. Polished stone goblets - one shelf
127. Seventeen polished stone ashtrays
128. Six polished stone penguins
129. Four polished stone birds of prey
130. Four doves and two swans
131. Cylindrical and bamboo style pots, large quantity - one shelf
132. 24 painted wooden metal mounted tankards and five large ditto
133. Ten polished fossil stone grey/beige baluster vases
134. Seven alabaster/onyx baluster vases
135. Fifteen smaller alabaster /onyx baluster vases
136. Five green segmented polished stone vases
137. Five baluster alabaster vases
138. Two carved stone birds of prey
139. Seven various vases
140. Four onyx trays and 24 goblets
141. Twelve various onyx and other vases
142. Sixteen onyx animal ornaments
143. Seven various onyx and polished stone vases
144. Two boxes of onyx animal ornaments
145. Two onyx lions, four small ditto and three coloured ditto (9)
146. Eight polished fossil stone baluster vases
147. Seven onyx planters
148. Four baluster onyx vases
149. Two boxes of onyx crocodiles etc.
150. Six pagoda clocks and six vases (top shelf)
151. One shelf of carved hardwood coasters, cigar boxes and tissue boxes
152. One shelf of onyx and gilt metal candelabra
153. Large hand carved and leather animals - camels, rhinoceros, elephants, antelopes etc. - one shelf, large quantity
154. Carved hardwood camels - one shelf leather horses etc. - two boxes
155. One shelf of onyx tortoises
156. Painted and carved wooden baluster vases (19)
157. Religious and child ornaments, De Capoli collection - one shelf
158. Hardwood desk tidies and coasters - one shelf
159. Hardwood ornaments, servers, key racks etc. - one shelf
160. Tissue box holders, circular hardwood lidded containers - one shelf
161. Fossil stone coasters and holders approx. 28 plus others
162. Metal wall plaques - some with coloured enamelling
163. Onyx vases and ashtrays - four various boxes
164. Polished "wood" stone ornaments - parrots, birds, two platters (top shelf)
165. Polished "wood" stone ornaments - dolphins, coasters, tortoise, platters
166. Polished "wood" stone ornaments - dolphins, birds, platters etc.
167. Polished "wood" stone - doves, hors d'oeuvre dish, platters etc.
168. Polished "wood" stone - dolphins, doves, platters (top shelf)
169. Polished "wood" stone - doves, lions, platter and bird
170. Onyx vases - one shelf (21)
171. Onyx animals (15)
172. Onyx vases - simulated bamboo design and cylindrical (12)
173. Coloured children ornaments - large quantity
174. Six onyx swans
175. Simulated ivory casks, hardwood brass inlaid lidded boxes etc. - one shelf
176. Onyx animal ornaments (14)
177. Onyx candle holders - two trays
178. Buddhist ornaments - one shelf
179. Four large onyx ducks
180. Carved hardwood circular lidded containers and one box of wall clocks.

181. Onyx eggs etc. - six boxes (large quantity)
182. Indian copper ornaments - one shelf
183. De Capoli Collection - eagles (5)
184. Sundry onyx ornaments and four chess sets - three shelves
185. Four pagoda design clocks and four baluster vases
186. Green onyx three piece clock set
187. Green onyx three piece clock set
188. Green onyx three piece clock set
189. Green onyx three piece clock set
190. Green onyx three piece clock set
191. Green onyx three piece clock set
192. Green onyx three piece clock set
193. Fossil rock three piece clock set
194. Fossil rock three piece clock set
195. Two black polished stone pagoda cased clocks
196. Two black polished stone pagoda cased clocks
197. Two black polished stone pagoda cased clocks
198. Green onyx three piece clock set
199. Green onyx three piece clock set
200. Green onyx three piece clock set
201. Green onyx ornaments - tortoises, frogs, dolphins etc. - one shelf
202. Onyx goblets - two sizes with two trays - one shelf
203. One shelf of onyx ashtrays etc.
204. Two green onyx swans and a quantity of candle holders
205. Onyx candelabra - one shelf
206. Two onyx chess sets
207. Decorated onyx plates and vases - one shelf
208. Onyx mounted mantel clocks - one shelf
209. Two onyx chess sets
210. Onyx goblets - one shelf
211. Onyx dishes, comports and hors d'oeuvre dishes - one shelf
212. Two onyx chess sets
213. Brass baluster jewelled and engraved vases - one shelf
214. Black enamel and brass coloured engraved vases - one shelf
215. Sundry brass and other metal ornaments, candelabra etc.
216. Embroidered cushion covers
217. Two onyx telephones
218. Two painted and decorated pedestal wine tables
219. Two painted and decorated pedestal wine tables
220. Two painted and decorated pedestal wine tables
221. A box of black leather wallets
222. A gemstone globe in polished brass plated mount
223. Two onyx mounted wall clocks
224. Two onyx mounted wall clocks
225. Two onyx mounted wall clocks
226. Two onyx mounted wall clocks

LOTS 230 - 649 on www.thosmawer.com

COLLECTABLE MALT WHISKYS

650. Talisker. A 20 year old single malt scotch whisky, 62% volume, 70cl, boxed
651. Bowmore. Cask strength Islay single malt, limited edition 2407, 56% volume, 70cl
652. Caol Ila 1990. Gordon & McPhaill scotch whisky, 58.2% volume, 70cl, boxed
653. Aberlour single highland malt, 12 years old, 40% volume, 1 litre, boxed £80 - £120
654. Aberlour. A 1980 single malt, 43%, 70cl, boxed £80 - £120
655. Aberlour. A 30 year old bottle No. 99/1000, 43% volume, 70cl, boxed, £1 - 200
656. Blackadder. A 1991 Row cask, Bowmore distilled, 60% volume, 70cl
657. Glenfarclas. Distilled on the 25th December 1959, one of only 60 bottles, 46% volume, 70cl, boxed £200 - £400
658. Talisker double matured 1989 distillers edition special release, 70cl, 45.8% volume, 70cl, boxed
659. Single Islay malt whisky, vintage 1981, bottle No. 4/243, Caol Ial Distillery, 22 year old cask, 246, 58.3% volume, 70cl, boxed
660. Balmenach - a 28 year old limited edition 46% vol. whisky, 70cl, boxed
661. Royal Lochnagar. A 12 year old 40% volume whisky, 70cl, boxed
662. Islay malt scotch whisky, vintage 1981, bottle No. 64/364, cask 465, 58.2% volume, 70cl, presentation box

CERAMICS & GLASS

663. Royal Crown Derby - XIX century and later table ware comprising an early Imari tea cup and saucer, coffee cans, loving cup, serving plate, shell shaped dish, side plates etc. (24 items) £150-250
664. An early XIX century Derby part tea service in gilt, floral and blue scroll decoration, comprising - teapot, serving plate, five coffee cans and saucers, four tea cups and saucers, each with red crown cross and D mark



665. A XIX century porcelain teapot and stand in gilt, blue and red Imari style pattern, painted number below



666. Copeland & Garratt. A XIX century transfer printed wavy edge shallow dish, the central scene showing ladies at rest amongst trees and fountain with mountain in the background, painted and impressed crown mark to base, 28cm diameter

667. A XIX century French hand painted cabinet plate of Mont St Michel, 24cm diameter



668. A late XIX/early XX century hand painted cabinet plate in the Coalport manner, the blue ground with gilt beadwork to edge, lighthouse with ship in background, impressed diamond date code



669. A set of three XIX century style French coffee cans and saucers decorated in blue and gilt floral pattern, continental porcelain tankard with cherub handle and a German cup and saucer

670. A XIX century pewter jelly mould 14cm high, a pressed glass two handled dish decorated shell motif with studded handle and a pair of Victorian style ceramic shoes, the laces and rim highlighted in gilt

671. A pair of almost matching early XIX century Newhall style tea bowls, two XIX century pink rimmed saucers decorated with flowers and two almost matching XIX century Newhall style cups decorated with pink and green flowers; an early XX century part tea service and a XIX century Gaudy Welsh style ironstone jug with impressed No. 30 to base

672. Wedgwood. Charnwood pattern - six coffee cups and saucers

673. Royal Doulton. H4095 "Tiverley" pattern - six cups, saucers, plates, cream jug and sandwich plate

674. A pair of XIX century Vienna hand painted plates, each with gilt and blue decorated rim, titled "Aimez Leiden", and "Lareley resting against a rock" signed Reimer and with underglazed painted shield to reverse, 24cm diameter £200-400

675. A set of four large and two smaller XVIII century famille rose style octagonal plates, each with gilt red borders and decorated with flowers and insects, 22cm diameter, and 17cm diameter



676. A good XIX century breakfast set comprising nine large plates, one lozenge shaped serving dish, one square dish and two others - each with gilt decorated with rococo style scrolled edge, hand painted floral corners, the centres painted with different flowers - (13) diameter of plates approx. 23cm £400 - £600



677. Wedgwood bone china. A comprehensive part dinner service with gilt rim and green border comprising large meat plate, two smaller, lidded veg dish, gravy boat, soup plates, dinner plates, side plates, bread and butter plates etc. (67)

678. A pair of porcelain spill holders, the first with boy in bonnet, and girl, each beside trees; a pair of semi porcelain crumb coated figures of a lady holding basket and gentleman holding a flagon and a porcelain bocage figure of a lady beside a lamb (5)

679. A XIX century style porcelain candlestick in the form of a girl holding a flower on a rococo "S" scroll base, painted mark RJ, approx. 26cm high

680. Rudolstadt Volkstedt. A figure of a gardener with basket of flowers on gilt scroll four footed base, with painted blue mark below for Rudolph Kammner, 19cm high

681. A interesting whistle in the shaped of a bird, trailed slip decoration of yellows and browns

682. Royal Worcester. A blush ivory pot pourri in the form of a bird with outstretched wings holding an ovoid shape lidded container, printed mark and date code for 1908

683. A Japanese carved bone figure of an old man standing on a rocky plinth with small temple to the fore, he holding cup and apple

684. A XIX century Staffordshire flatback watch holder in the form of a turreted castle, coloured and with applied bocage, 33.5cm high, 24cm wide



685. An oriental gaud shaped vase decorated with flecked blue, grey and purple glaze together with a turned hardwood stand
686. A XIX century Imari charger in usual pallet with floral decoration, 33cm diameter
687. A XIX century Imari narrow necked vase, approx. 33cm high
688. A Japanese hard paste porcelain figure of a lady and another of a geisha and a narrow necked bulbous vase decorated with prunus and birds
689. Sitzendorf. A pair of narrow necked vases with applied rose decoration supported by three cherubs

690. A XIX century transfer printed "God speed the plough" cider mug, the front showing agricultural tools and the words "trust in god the husbandmans diligence provides bread", the reverse "god speed the plough industry produceth wealth", 14cm diameter, 13cm high
£100-200



691. An ale mug (similar to previous lot), 10cm high, 10cm diameter
692. An early XIX century transfer printed creamware jug with black lined rim, pointer inspecting dead game bird, painted sun decoration to spout (a.f) 14cm high
693. Clarice Cliff. A "Latona Bouquet" lotus jug, 30cm high
£600-800

694. A mid XIX century Brampton stoneware toby jug, the seated gentleman with foaming jug of ale and beaker, in tricorne hat and frock coat, breeches and buckled shoes, 26cm high (it is believed this represents George III, a similar example can be seen in Astbury Whieldon Ralph Wood figures & toby jugs)
£300-400



695. An unusual Wemyss toby jug in the form of a pot bellied bearded sailor, torso only, on shell base in blues and yellows, impressed mark Wemyss Ware RHAS
£1000 - 1500



696. Wemyss. A large seated pig with raised ears and black sponged decorated body, the base impressed Wemyss Ware RH & S, 30cm high, 44cm long (some damage) £1500-2200



697. A XIX century cranberry glass jug with plain glass stopper and handle, 21cm high with stopper
698. A silver topped and blue enamelled cut glass scent spray with pump action
699. A Victorian ruby glass claret jug with filigree pierced white metal mount and stopper, with a green celadon vase and hardwood stand
700. A collection of glass:- silver mounted square decanter, pair of similar smaller wheel etched decanters, three green stemmed wine glasses, four claret glasses and ten conical cordial glasses - mainly XIX century

MISCELLANY, COLLECTABLES & METALWARE

705. A pair of facsimile naval percussion muzzle loading pistols with brass butt plates, trigger guard and fittings
706. A naval type XIX century percussion pistol and another similar reproduction pistol
707. Two miniature muff pistols, pin fire; deactivated
708. A small revolver starting pistol with folding trigger
709. A percussion pocket pistol with twist off barrel, another similar with engraved cock and lock, checkered stock and a third with octagonal twist off barrel (3)
710. A Webley Tempest .22 air pistol, boxed, appears unused with leather holster
711. A .177 air rifle (unnamed) - BSA Cadet?
712. An Anschutz .177 air rifle with competition sight
713. A XIX century muzzle loading single barrel fowling gun with engraved lock by Samuel Harper, 31.5" barrel
714. A XIX century muzzle loading percussion musket (unnamed), 31" barrel
715. An English World War I bayonet with scabbard, stamped 1907
716. A Victorian officers' sword with metal scabbard, brass pierced basket hilt with royal cipher, engraved blade (handle defective, blade corroded), approx. 38" overall
719. A XIX century wall mounted holosteric aneroid barometer contained in a mahogany dome top case with bracket, 22.5cm high (excluding bracket)
720. A rare and interesting brass tripod table top microscope by Harry H. St George with multiple attachments and lenses, 27cm high with three various leather cases
£100-200

721. 142 microscope slides to include trumpet shells, other aqua marine life etc., mainly XIX century including slides by W Watson & Sons, W H Clarke, W Joshua, Darlaston, Baker etc. - all labelled in a fitted box £250-350
722. A XIX century day or night brass telescope
723. An Edwardian mahogany oval drinks tray with raised sides and metal handles, the centre with oval inlay
724. A mid XIX century rosewood tea caddy, the interior with two sectional compartments standing on squat bun feet
725. A metal and pottery floral decorated lamp with white glass shade
726. A turned brass XIX century mortar, 10cm high with a tapering metal pestle
727. An Art Nouveau style oval beaten copper tray, tankard, tobacco jar and an oblong narrow cooper tray and rectangular tray with central ceramic cabachon

728. A Liberty style copper and brass coal container, the lid and body decorated with stylised tendril leaves set with ceramic cabachon, pair of brass scrolling side handles and cross shaped handle to lid
£300 - £500



729. Hardy Bros. Alnwick. A three piece steel core salmon fly rod numbered 8125 with spare end section, approx. 18'
730. Taxidermy. A game cock standing on moss in a landscape setting - cased, 68cm x 61cm
731. A white marble bust of a Victorian lady reading from a tablet, 101cm
732. A Japanese white metal miniature sedan chair stamped verso "90" with Japanese script and WH and a Japanese miniature figure of a man seated holding a document flanked by boxes
733. An oval portrait miniature of a young lady with her arms folded, plain brass frame
8cm x 6.5cm overall
734. An oval portrait miniature, probably of Madam Vichy, Le Brun, signed Bonis in decorative oval brass frame surmounted by a ribbon 9cm x 6cm overall
735. A gilded framed oval portrait miniature brooch depicting a young woman
736. A union cased XIX century photograph of a young woman and another of a boy and two miniature prints of XVIII century gentleman (4)

737. Birmingham 1912
A hallmarked silver and tortoise shell backed part dressing table set comprising hand mirror and brush
738. A narrow necked trumpet shaped flower vase and another; two hallmarked silver candle holders with etched decoration

739. A pair of Georgian style old Sheffield plate three branch candelabra, 47cm high
£150-250



740. A Viners of Sheffield alpha plate circular open galleried tray with engraved scrolling flowers, a silver plated mint box holder, half pint tankard, two small dishes and a cased set of six filigree work napkin rings
741. A hallmarked silver hat pin stand, specimen vase, small cup, bowl and three bone handled tools
- 741B. A hallmarked silver engine turned cigarette box, small domed mantel clock, lady's cigarette case with enamelled cover front etc. - one box
- 741 Continental silver bowl, set of plated bean spoons etc. - one tray
742. A silver tea strainer on copper plated coaster with cast fruiting vine decoration, turned wooden base; a Georgian style plated jug with fruitwood handle and Birmingham 1933 a circular silver lid with gadroon decoration and turban style finial
743. Six Indian white metal bowls, the interior with highly decorative etched scroll motifs, the exterior lightly decorated and one small Indian silver circular box, similarly decorated
744. A set of six late XIX century Indian white metal napkin rings, each with pierced floral design, a similar near matching set of five Indian white metal napkin rings and two sugar nips
745. A rectangular silver plated tray with gadrooned edge, strap carrying handles together with miscellaneous plated cutlery - soup spoons, forks, knives, teaspoons etc.
746. EPNS - assorted Kings pattern and other cutlery
747. EPNS - two toast racks, bottle holder, cream and sugar and another cream jug
748. An EPNS teapot, coffee pot, ice bucket, spoons, tongs and assorted cutlery
749. An EPNS Walker & Hall bright cut decorated four piece tea service
750. A Georgian design EPNS teapot
751. An EPNS entree dish and cover
752. A five piece silver plated tea/coffee service and matching oval tray together with a three piece silver plated coffee service

753. Sheffield 1908
A set of six mother of pearl handled dessert knives and forks in velvet and satin lined case maker W&H
754. Sheffield 1934
A set of six hallmarked coffee spoons with ribbed decoration, fitted casemaker C.W.F.
755. Birmingham 1931
A set of six hallmarked silver coffee spoons contained in a fitted case
756. Sheffield 1952
A set of six hallmarked silver handled fruit knives by Vines Ltd, fitted case
757. London 1907
A hallmarked silver pepper mill maker J.G. & S
758. London 1927
A hallmarked silver cigar case, the lid with shield, initialled "IHC" and a silver plated hip flask
759. Sheffield 1894/5
A hallmarked silver repousse and filigree decorated bowl, the centre engraved "HMC 1870/1895"
760. London 1815
A scatter hallmarked cream jug with oval ribbed body, gadrooned lip and scroll feather handle, four ball feet. Maker I.B
761. Sheffield 1939
A hallmarked silver christening mug engraved "Bridgett Battersby 1st August 1941"
762. A Georgian hallmarked silver cream jug with oval ribbed body, reeded lip and handle, engraved with initial "D" (marks rubbed)
763. London 1848
A repousse decorated cream jug with cast scroll handle, stepped base, engraved with coronet and initials AEH. Maker CTF GF, 100g
764. Sheffield 1898/9
A hallmarked bulbous bodied lidded jug with satyr decorated spout. 104g
765. Sheffield 1934
A hallmarked silver presentation tankard engraved "presented to W Emmerson Lee Esq. M.D. by the Postmaster & Staff of the Worksop Post Office 1934"
766. Dublin 1942/3
A stemmed goblet with circular gadroon and ribbed base, gilded interior, engraved with hogs head crest, maker A.B.
767. London 1915/16
A two handled presentation cup engraved "DML Nov. 28 1914" maker B & F Ltd, 150g
768. A Norwegian silver plate with ribbed rim and enamelled badge "Norsk Jockey Klub" marked verso J.Tostrup
769. A glass specimen vase with ribbed wrythen decoration, hallmarked silver rim and a cut glass and silver topped eau de cologne bottle
770. A hallmarked silver cigar case and a pair of sugar nips
771. A pair of Birmingham hallmarked specimen vases
772. A Birmingham hallmarked silver coffee pot
773. A pair of silver on copper candlesticks engraved "P"
774. Nine assorted silver teaspoons, mustard spoon and a pair of sugar nips
775. A Birmingham 1935 jubilee hallmarked silver cigarette case with R.A.O.C. crest, three napkin rings, crested spoon and oval EPNS dish
776. A hallmarked silver evening purse
777. A silver mounted simulated bamboo walking cane
778. A set of six hallmarked silver apostle teaspoons with twist stems; fitted case and a cased set of six EPNS spoons
779. A hallmarked silver Lincoln Imp finial spoon in fitted case
780. Sheffield 1934. A bright cut and monogrammed three piece tea set, ebonised handle with matching milk jug and sugar bowl, 34ozs gross
£150 - £250
781. A Birmingham hallmarked silver and tortoise shell style desk calendar with easel back (marks rubbed)
782. Birmingham 1975
A hallmarked silver coaster with turned wooden base
783. Birmingham 1905/6
A hallmarked silver oblong box with scroll decorated lid inscribed to front 1909-1911 114g
784. London 1910
A silver square cigarette box
785. Birmingham 1971
A scatter hallmarked bon bon dish with gadroon and leaf decorated border and a repousse decorated silver handled page turner
786. Six hallmarked silver table spoons with engraved handles, various makers and dates and a pair of bright cut sugar nips
787. A silver plated soup ladle, maker Mappin & Webb; a silver plated basting spoon and five sugar nips
788. A set of six Sheffield hallmarked silver teaspoons with matching sugar nips, fitted cased, retailer Wheaton & Bennett, Oxford Street, London
789. A set of four grapefruit spoons stamped "patent sterling", four Birmingham hallmarked coffee spoons with reeded decoration and a pair of silver plated XVIII century style sugar tongs
790. Birmingham 1894
A christening fork and spoon engraved "DML" in a fitted red leather gilt decorated satin and velvet lined case, retailer John Perry Ltd, Angel Road, Nottingham (napkin ring missing)
maker TB & S

791. Sheffield 1953
A hallmarked silver cake server in presentation case
792. Sheffield 1909/10
A set of three cast filigree and swag decorated salt cellars with blue glass liners; Sheffield 1907/8 three pepperettes and a lidded mustard pot; Birmingham 1960/61 a hallmarked silver butter knife and six hallmarked silver salt/mustard spoons
793. A Birmingham hallmarked Georgian design sauce boat
794. Chester 1922
A hallmarked silver cigarette case with ribbed decoration and key border, gilded interior and a Birmingham 1906 engraved cigarette case from
795. Birmingham 1908 A hallmarked silver lady's evening purse, import hallmark; and a small white metal purse with decorated clasp; a ribbed plated metal vesta case; silver handled button hook and a small cut glass scent bottle with filigree white metal screw off top
796. Birmingham 1954
A presentation silver cased square cigarette box with engine turned lid engraved "Presented by Central Division & Conservatives 1955"; a Ronson silver plated table lighter and a 1953 chrome plated pocket lighter
797. Three hallmarked silver vesta cases and another in the form of a violin
798. A mahogany and satin lined canteen of twelve fish eaters with engraved blades and bone handles
799. A stained wooden canteen containing community plate cutlery
800. Joseph Rogers & Sons. An oak canteen containing steel bladed ivorine handled dinner knives, six silver handled tea knives and two cases of various plated teaspoons
801. A hallmarked silver trophy and a quantity of other plated trophies - one box
809. A hallmarked 9 carat gold celtic style crucifix and 55cm long chain
810. Assorted chain necklaces and a photo locket on chain
811. An 18 carat gold wedding band and a gold/platinum and diamond eternity ring
- 811A. A pair of earrings, 18ct diamond cluster ring, two pairs of gold cuff links, heart shaped silver locket, dress ring etc. - one bag
812. A hallmarked 9carat gold ring set with single sapphire surrounded by eight small diamonds
813. A hallmarked 9 carat gold solitaire diamond ring
814. A hallmarked gold ring set with three opals separated by two trios of diamonds
815. An unmarked gold ring set with five graduated opals
816. A 9 carat gold single stone blue zircon set ring in a coronet setting
817. An 18 carat bow design ring set with three small sapphires and six diamonds, stamped 750
818. 11 assorted wedding bands including 9carat
819. Eight assorted gold signet rings
820. Ten assorted white metal rings
821. Eleven assorted dress rings including hallmarked 9ct gold
822. A pair of diamond cluster ear studs in yellow gold mount, the central stone surrounded by eight smaller stones £200 - £400

823. A platinum bar brooch, approx. 73mm long, set with a single diamond to each end with 13 small stones to each side of the central disc centred with a cross of five step cut rubies surrounded by 36 small diamonds £800-1200



JEWELLERY

802. A basket set 25 stone diamond cluster ring stamped 750 £900-1400
803. Five rings - 2 x 9carat, 1 eternity ring set with diamonds and alternate sapphires and a 22 carat solitaire diamond
804. An 18ct yellow gold diamond brick faceted link bracelet, 40mm wide, 19.7cm long, import mark 1960, approx. 97grams £400-600
805. An unmarked gold hollow link chain bracelet, 23cm long
806. A white metal chatelaine and yellow metal chain
807. Four assorted 9carat gold chain necklaces and a wedding band
808. A Birmingham hallmarked 9carat gold necklace, 62cm long, 2.75oz £500-700
824. A white metal bracelet in the form of a belt and buckle set with hardstones
825. A XIX century cranberry glass double ended scent bottle with glass stopper and one silver screw top end, the other hinged £1 - £150
826. A hallmarked 9 carat gold horseshoe pendant set with nine opals and an oval pendant set with 12 moonstones
827. An imitation diamond/sapphire necklace and pair of earrings
828. A brilliant set evening bracelet
829. A shaped gilt plated satin lined small jewellery casket containing a cut steel fly brooch, coral necklace etc.
830. An assortment of costume jewellery
831. A silver napkin ring; silver vesta case; 9ct gold enamel fob "Lincoln District Village Football Competition 1928-9"; silver football fob and a 1951 crown coin
832. A quantity of costume jewellery

833. An engraved silver vesta case; pocket watch with chain and 9ct. fob; eternity ring; 9ct signet ring; 9ct bar tie pin; 9ct wishbone brooch and two dress rings
834. A XIX century French sycamore miniature box with transfer decorated lid a semi nude female entitled "Elle Attend" (a/f); a white metal pocket lighter; a bakelite snuff box; a burr wood card box with sliding lid; a Japanese decorated metal case depicting a landscape with Mount Fuji in the background and a search light brass cigarette case
- 834A. A quantity of costume jewellery etc. - one box
835. A fine gold coloured chain, cast foliage pendant with single brilliant, 18ct moonstone set ring, and lady's watch in an ebonised circular beech box with art nouveau white meal decorated lid

WATCHES, CLOCKS & BAROMETERS

848. A XIX century Vienna wall clock in a walnut and ebonised case decorated in relief, the top with a broken arched pediment, eight day striking movement, approx. 75cm overall
849. A small walnut cased Vienna type wall clock with eight day striking movement 75cm high
850. A XIX century Vienna spring driven wall clock with Junghans movement, the architectural case with an elaborate pediment decorated with split turnings and with turned finials, approx. 80cm high
851. An Edwardian oak cased circular steel dial wall clock, the bevel glazed door with brass astragals and revealed pendulum, approx. 85cm high
852. An Edwardian circular steel dial chiming wall clock, the oak case with astragal glazed aperture, approx. 79cm overall
853. A XIX century Vienna wall clock, the elaborate case surmounted by an eagle with outstretched wings on a castellated top with turned finials, the door flanked by split turnings, the white enamel dial marked "GE", eight day striking movement, 104cm overall

854. A XIX century fusee wall clock, the painted dial signed "Thos. Darlington Silverdale", the rosewood case inlaid with mother of pearl birds, deer and foliage, 70cm



855. An American eight day drop dial wall clock in rosewood and inlaid case with roman numeric dial, approx. 60cm £100-200
856. A XIX century Vienna wall clock, the elaborately carved mahogany case decorated with split turnings beneath a broken pediment, flanked by turned finials, the door with key hole glass aperture, showing the circular white dial with pressed brass central spandrel, eight day striking movement, approx. 137cm high overall £100-200
857. A continental wall clock, thermometer and barometer contained in an elaborate carved hardwood case, 85cm overall
858. A XIX century rosewood five dial onion top banjo barometer, 102cm high, the dial 25cm
859. A XIX century rosewood mercury barometer and thermometer contained in a shaped case, 92cm high
860. A carved oak cased two dial banjo barometer with thermometer approx. 84cm high £80-120
861. A XIX century five dial rosewood banjo barometer by Johnson Walton, 95cm overall £75-150
862. A XX century oak cased "grandmother" clock with eight day Westminster and Whittington chiming movement, 145cm high

836. Assorted ladies wrist watches (51)
837. Assorted gent's wrist watches (32)
838. A large quantity of gent's wrist watches and parts
839. Four gent's wrist watches
840. A Waltham gold plated case pocket watch, a Pilot ditto and a 35cm rolled gold chain
841. An XVIII century pair cased London hallmarked pocket watch with white enamel dial, the fusee movement signed Henry Reynolds London and numbered 2412, approx. 4cm diameter
842. An open face silver cased pocket watch by J.N. Masters Ltd, Rye, Sussex, Chester hallmark
843. A Smiths English Clocks Ltd. London brass circular cased ships clock with white roman dial and a Rotax eight day brass cased circular clock (2)

844. A fine XIX century French ormolu mantel clock inset with porcelain Sevres style plaques painted with cherubs at play and surmounted by an ormolu and porcelain stylised urn, eight day striking movement, 36cm high £400-650



845. A carved oak cased black forest style mantel cuckoo clock with roman numeric dial, 39cm high £100-200
846. A 19th century mahogany cased Vienna regulator wall clock, the heavily carved rococo style shell motif above roman numeric dial flanked by turned columns, approx. 90cm
847. A 19th century mahogany Vienna regulator wall clock, the plain flat top above roman numeric dial flanked by turned columns with pendulum, 96cm

863. An early XIX century mahogany longcase clock, the arched dial painted with shipping scenes and signed "Lyon & Co Manchester", with subsidiary seconds and date ring, contained in a pagoda top hood, inlaid with a patera, the base enclosed by a long arched door, boxwood and ebony stringing, 221cm high
£1000-1500



864. An early XIX century longcase clock, the arched dial painted with flowers and centred with an urn in a roundel, signed "Broderick Boston", with subsidiary seconds ring, contained in an oak and mahogany swan neck pedimented hood, the case enclosed by a long shaped cross banded door, 207cm high £1000- 1500



865. An XVIII century oak longcase clock, the flat brass dial engraved in the arch "George Murray Down", with subsidiary calendar ring and seconds hand, contained in a broken swan neck pedimented hood, the trunk with a long shaped door, 213cm high, dial 13" wide 7/1100



866. A XIX century Lincolnshire longcase clock with arched painted dial, eight day movement, contained in an oak and mahogany case with remnants of original paper label "Usher Lincoln" distressed £500-700

868. A XIX century longcase clock "Wilson" movement, square painted dial, Barnstaple maker £100-200

PICTURES

870. Giovannini, Vincenzo
Oil on canvas - woodland landscape, figure and mule on a path
47cm x 71cm £800 - £1200

871. Reeve, Russell s.d.
Watercolour drawing - farmer and cattle
26cm x 35.5cm

872. Lovatt, R.S. Oil on canvas - a late pre raphaelite style painting of a semi clad maiden in garden holding a butterfly, surrounded by flowers, with an ivory plaque "presented to Mr Henry Woodcock as a token of esteem by the members of the Surrey St. Circuit of the United Methodist Church June 23rd 1908" 60cm x 44cm

873. Riley, M L s.d.
Watercolour drawing - a mill pond with central island, Windsor Castle? in distance
27cm x 37cm

874. Morse, R s.
Watercolour drawing - middle eastern street scene
37cm x 27cm

875. Joly, J
Oil on canvas - a winter river landscape flowing through mountainous country
54cm x 88cm £300 - £500



876. Forbes, Leyton
A Victorian country cottage with figure in the doorway amid trees
15cm x 23cm

877. Firth, G.
A finely painted watercolour drawing of a cathedral city with river and figures in the foreground
15cm x 21.5cm

878. A XIX century watercolour drawing - Dutch(?) river scene with windmill and ship in the foreground, indistinctly signed and titled in pencil
12.5cm x 20cm

879. XVIII century English School
Oil on panel - portrait of a gentleman, half length with a white collar and crimson robe
19cm x 30.5cm

880. A coloured print - The Enraged Vicar after Rowlandson 1805, the hunt running through the formal vicarage garden

881. A folio of XIX century shipping prints "published by J P Thompson Great Newport Street, London, print seller and etc...." (6)

882. School of Peter Lely
Oil on canvas - a portrait of the Duchess of Westminster wearing a red lace trimmed dress and holding a basket of fruit 70cm x 60cm
£800-1200



883. Baxter, Geo.
Two prints - the first showing the rare sweep boy beside Baxters house door, the second showing child with hat and broom, each in Hogarth style frames
17cm x 11cm

884. A portrait of Ellen Terry dedicated to her by the artist (signature indecipherable) - shown standing and wearing a red robe, oil on canvas
26cm x 16.5cm

885. XIX century Continental School
Watercolour drawing - river landscape, fisherman in foreground, bridge, castle and mountains
34.5cm x 44.5cm
£100-200

886. Dearman, John RA
Watercolour drawing monogrammed and dated '42 - landscape "Dorset Cove" in the summer time, in inscribed mount
35cm x 55cm
£300-500

887. Frater, F.G
A watercolour drawing - river landscape with village and steeple in the middle distance
24cm x 54cm £80 - £120

888. Norbury, E H
Watercolour drawing - "Washing Day" Conway North Wales, washer woman in foreground in front of market scene, Conway Castle in the distance. 69cm x 50cm
£200-400



889. Gilpin, Rev. William (attributed)
Watercolour - river landscape showing figures in foreground, castle and mountains in background
26cm x 33cm
£200-300

890. Attributed to William Osbourne Hamilton
Watercolour drawing - XVIII century river landscape, herd and cattle in foreground, rowing boat, bridge and mountains in background
21.5cm x 31cm
£200-300

891. XIX century English School
Watercolour drawing - landscape with rowing boat, figures and house in background, signed and dated 1845, written verso, Mary *AFA* BEALEY
17cm x 25.5cm

892. XIX Century English School
Watercolour drawing - river landscape, large tree in foreground, courting couple in background, label verso by Charles Vincent Barber 1784-1854
17.5cm x 27cm

893. XVII century English School oil on panel
Peasants drinking
30cm x 35cm
£150-250



894. Greaves, W
Oil on canvas - a country road lined with autumnal trees, figure with child and vehicle in the distance
37cm x 48cm

895. A pair of watercolour drawings - autumnal landscapes, signed A. Hulk
16cm x 31cm
£75-150

896. XVIII century Continental School. Still life study of summer flowers in a jardiniere
43cm x 56cm
£200 - £400



897. A set of four XIX century aqua tints of champion fighting cocks, each titled, Hogarth frames image size approx. 21cm x 22cm
£120-180



898. McKenzie, Ivor 1880-1962 RI RBA PS GI USA
A Somerset lake, exhibition label verso RI painters in w/c
29cm x 40cm

899. Ayling, Geo.
Watercolour drawing - The Thames with shipping in the foreground and St Pauls beyond
36cm x 52cm
£500-800



900. After Saxton
A hand coloured XVII century map of Lincolnshire "Lincolniae ..."
30cm x 35.5cm

901. Hondius
A XVII century coloured map of Lincolnshire "The Countie & Citie of Lyncolne etc."
38cm x 50cm

902. An XVIII century framed bookplate - The Road from Nottingham to Grimsby in Lincolnshire
18cm x 12cm

903. A coloured aquatint engraved for the complete English traveller - a perspective view of the cathedral and City of Lincoln
18cm x 29cm overall

904. Clarkson Stanfield
A gauche highlighted with white, gallery label verso "The Reynolds Gallery Plymouth view in Germany of a village etc. from an album of a trip up the Rhine 1841"
17cm x 26cm
£150-250



905. Scott, B
Oil on canvas - XIX century mountainous scene, Vale of Avoca, Ireland showing fishermen with boat in the background, gilt frame
30cm x 60cm
£80-120

906. Baron, H
A watercolour drawing - two ladies with a child clutching a broken doll
15cm x 11cm
£200 - £400

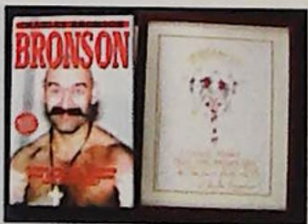


907. Wyllie, W.L
A watercolour drawing - two masted sailing ship at anchor in port, evening sky, annotated verso Bowness.
43.5cm x 16.5cm £700 - £900
908. Four XIX century bookplates - Boston Stump and Sleaford church, map print of Lincolnshire in hogarth frame, XIX century bookplate - ladies reading in decorative giltwood frame etc. (9)

909. Kray, Ronnie 1934-1995
A signed oil on board, impressionist landscape with stream, houses and trees in bright colours, large signature; sold with letter in Kray's hand stamped "Parkhurst Prison" referring to the picture addressed to 'John'
30cm x 38cm
£800-1200



910. Bronson, Charles
(described as Britain's most dangerous convict) A cartoon, the black outline photocopied with added colouring - annotated "Licking Honey from the razors edge, all the best Ricky for '98" signed Charles Bronson, verso "life is a journey my friend so strap in safe! foot on the gas and go for it!" 21cm x 14.7cm; sold with Bronson's signed autobiography, published by Blake Publishing in 2000



FURNITURE

915. A decorative rococo style oval hanging mirror with gilt wood ribbon top and carved leaf design below
£100 - £200

916. A rococo style gilt wood mirror, the upper section with heavily carved Prince of Wales feathers and acanthus motif flanked by griffins, the mirror flanked by a "S" shaped scrolls above heavily carved shell motif and a plaster gilt mirror in the rococo taste with heavily carved shell and scroll motif
917. A small George III caddy top mahogany chest fitted with three long oak lined drawers, with a brushing slide, raised on shaped bracket feet
84cm high, 86cm wide, 46cm deep £300-500

918. An early XIX century rectangular mahogany dressing table mirror, the base with two cushion fronted drawers on reeded shaped legs



LOTS 918 & 975

919. A Georgian mahogany corner cabinet, the moulded dentil cornice above a pair of four panel doors enclosing three internal shaped shelves, 130cm wide, 135cm high £100-200
920. A small XVIII century oak dresser, the upper section with a shaped frieze beneath a moulded cornice with three plate display shelves and two panelled cupboards, the base fitted with two deep drawers raised on shaped legs, 178cm wide
£1400-2200
921. A Georgian mahogany bookcase, the domed cornice with applied moulding above two astragal arched glazed doors with internal shelves
93cm wide
922. Leutke Leipzig. A baby grand piano in a polished hardwood case, approx. 172cm £300-500
923. An XVIII century panelled oak three drawer pedestal food cupboard, the top door with four baluster turned spindles, the central panel door with pierced decoration and the lower door with a fielded panel, with panel sides and wrought metal hinges, 163cm high, 54.5cm wide
924. Eight matched Victorian mahogany bar back dining chairs, four with overstuffed seats, four with drop-in seats on similar turned front supports £150-250
925. A XIX century Continental walnut pedestal filing cabinet fitted with seven blue tooled leather fronted drawers with two lockable hinged side slats below a panelled drawer flanked by turned columns, 72cm wide, 139cm high £100-200
926. A XIX century mahogany bureau, the interior fitted with pigeon holes and drawers, the base with four long graduated cock beaded drawers on bracket feet, 91.5cm wide £100-200

For more photographs visit www.thosmawer.com

927. An XVIII century oak barrel back hanging corner cupboard, the moulded cornice above a pair of panel doors enclosing two shaped internal shelves, 101cm high, 91cm wide £250-350



940. A George III inverted breakfront sideboard fitted with a central napery drawer flanked by two further narrow drawers above a double cupboard and with a cellerette drawer and cupboards to each side, raised on ring turned supports, 170cm wide £300-500



928. A XIX century oak pedestal display cabinet enclosed by a plain glazed door, 70cm wide, 114cm high

929. A late Victorian oak shop cabinet, the upper section enclosed by glazed doors and fitted with pigeon holes, the base enclosed by a pair of panel doors, 125cm wide, 197cm high £100-200

930. A set of four walnut salon chairs, the frames elaborately carved in relief with foliate scrolls, raised on cabriole front supports and with upholstered back panels and overstuffed seats £300-600

931. An early XIX century plain oak fold over tea table, raised on square taper supports, 89.5cm wide

932. A Georgian mahogany gate leg breakfast table with one leaf standing on square legs, 70cm high, 68cm long extended £100-150

933. A principally XIX century double sided mahogany partners desk fitted with five drawers to each side of the two pedestals, the mahogany top 109cm x 168cm £200-300

934. A good quality burr wood serpentine chest of four cock beaded drawers, the top quarter veneered and cross banded 85cm wide, 89cm high £100-150



935. A XIX century ebonised and boule ormolu mounted side cabinet enclosed by a single door centred with a raised oval panel, 81cm wide, 106cm high, 31.5cm deep £200-300

936. A Georgian style small serpentine fronted chest of four drawers beneath a brushing slide, 59.5cm wide

937. A superb pair of Sheraton style satinwood fold over games tables, the cross banded tops inlaid with garlands, repeated on the frieze, standing on square taper supports, 92cm wide £1700-2500

938. A mahogany top clover leaf occasional table on a turned column with triped shaped feet, 46cm high

939. A small XIX century mahogany satinwood banded sutherland style occasional table, raised on quadruple turned supports, 64cm x 54cm extended £80 - £120

941. A Victorian mahogany serpentine fronted dressing table mirror of good proportions with barley twist supports, standing on scroll feet, approx. 68cm high

942. An XVIII century oak bureau, the sloping fall cross banded in mahogany and enclosing an interior of small drawers and pigeon holes, the base with four graduated cross banded long drawers, standing on bracket feet, 102cm wide £150-250

943. A Regency figured mahogany chiffonier with two shelves on "S" scroll and brass supports above a cupboard base enclosed by fielded panel doors and flanked by fluted columns, 136cm wide £800 - £400

944. An XVIII century oak coffer, the top and front each with three panels in geometrical stepped moulds, 125cm wide £350-500



945. A Victorian rosewood marquetry inlaid cabinet, the centre section enclosed by a pair of panelled and mirrored doors flanked by open display shelves, 122cm wide

946. An XVIII century mahogany library cabinet, the upper section enclosed by a pair of arched astragal glazed doors with three internal shelves, the base a chest of four short and three long graduated cock beaded drawers, each with oval pressed brass handles, raised on shaped bracket feet, 109cm wide £200-300

947. A XIX century mahogany pembroke table fitted with a single drawer to the frieze and an opposing dummy, raised on ring turned tapering supports, 106cm x 94cm extended £80-150

948. A mahogany chest of four drawers with brass drop handles, raised on bracket feet, 60cm wide, 72cm high

949. A Georgian style mahogany bow fronted kneehole dressing table, the one long central cock-beaded drawer flanked by two narrow and two deeper drawers, raised on square taper supports, 115cm long, 58cm deep

950. A Victorian mahogany drug cupboard, the moulded cornice above a pair of fielded panel doors, the interior fully fitted with compartments for bottles, a long drawer to the base and a cupboard, 61.5cm wide, 107cm high £100-200

951. A small XIX century mahogany chest of four graduated cock beaded drawers, the top cross banded in satinwood, bowwood and ebony strung with a thumb moulded border, raised on shaped bracket feet 80cm high, 84cm wide, 48cm deep £300-500

952. A Victorian mahogany framed three seater chesterfield settee upholstered in claret material on turned legs with brass castors, approx. 191cm long

953. An XVIII century full height oak double corner cupboard with moulded key pattern cornice above a pair of arched fielded panel doors enclosing the upper section, the base with a pair of short doors and with internal shaped shelves (restored) 219cm high, 105cm wide £2 - 400

954. A Georgian mahogany bird cage tripod table, the 88cm diameter top on a "gun barrel" pedestal with triple cabriole supports terminating in generous pad feet, original brass barrel castors (1 foot broken) £100-200

955. An XVIII century oak chest of four cock beaded drawers, the top with a thumb moulded edge, raised on bracket feet 92cm wide £200-300

956. A good late Victorian single wardrobe, the mirrored door above a long cock-beaded drawer, the interior fitted with pegs and clothes rail, approx. 197cm high, 113cm wide at widest point £100-200

957. A late Victorian walnut dressing table, the central mirror in a carved frame flanked by two cupboards with circular mirror inset above two trinket drawers, the base with two short and two long drawers 106cm wide £100-150

958. A principally George III mahogany double corner display cabinet, the upper section enclosed by an astragal glazed door beneath relief carved cornice, the base enclosed by a similar door standing on bracket feet 207cm high, 48cm deep £200-300

959. An early XIX century double pedestal sideboard, the centre with a bow fronted napery drawer, the pedestal enclosed by arcaded panel doors flanked by spirally fluted columns with fitted interior 204cm wide, 106cm high (approx.) £150-250

960. A small Georgian mahogany bow fronted sideboard, the top with a brass curtain rail on baluster turned supports, the base fitted with three narrow drawers and two deep drawers, raised on reeded turned supports, 126cm wide, 56cm deep £400-700



961. A Victorian mahogany frame double ended settee, the shaped mahogany back, carved scroll arms and serpentine front rail raised on turned supports with pot castors £200-300

962. A Victorian mahogany three part kneehole desk with three drawers to the frieze and three to each pedestal, the mahogany top 120cm x 60cm £200-400

963. A Georgian fruitwood tripod side table, the planked circular top raised on a ring turned column with tripod legs, 67cm diameter, 60cm high £70-140

964. An oval Victorian burr walnut loo table raised on a baluster fluted column with quadruple cabriole supports carved at the knee, the scroll feet on white pottery castors, the quarter veneered top 136cm x 104cm £200-400

965. A Georgian mahogany sofa table, the rectangular top with a reeded edge above two cock beaded drawers with opposing dummies, raised on quadruple turned and carved supports with swept leaf carved feet and lion paw brass castors, 134cm x 74cm extended £400-700

966. A XIX century oval mahogany pembroke table banded with chevron stringing, raised on square taper supports fitted with a single frieze drawer and opposing dummy, 100cm x 81.5cm extended £100-200



967. A magnificent early XIX century rosewood, satinwood and marquetry inlaid centre table, the segmented top with a moulded border on a flat sided column with arcaded moulding, the tricorn base with scroll feet, 124.5cm diameter £2500-3500



968. An oak frame deep button double ended Victorian sofa raised on turned supports with brass castors upholstered in blue polka dot material £150 - £250

969. A Victorian open arm button back upholstered easy chair on ebonised turned under arms and legs with ormolu mounts £100-200

970. An XVIII century Continental carved oak coffer, the frieze dedicated in relief



"Jungfer. Becke von Holten Anno 1778", above four arched fielded panels enclosed by a plain plank top with large wrought iron carrying handles to each side, 182cm wide, 55cm high, 60cm deep £700-1000

971. A Georgian square mahogany wash stand with a double hinged top, the undertier fitted with a drawer raised on square supports joined by an "X" stretcher, 36cm £100-150



LOT 971 & 985

972. A XIX century mahogany kneehole desk with inset red leatherette top fitted with two long and two short drawers to the frieze, raised on baluster turned supports, 119cm x 80cm £100-200
973. A Victorian mahogany framed button back armless chair raised on cabriole front supports, upholstered in petrol blue dralon £100-150
974. A Victorian rosewood bookcase top enclosed by a pair of plain glazed doors, the applied mouldings of flowers and foliage
975. A principally XIX century polished oak chest of three long drawers, raised on bracket feet, 93cm wide
976. An unusual XIX century mahogany boxwood inlaid empire style carver chair with a deep bowed shaped back inlaid with a wreath, the shaped arms with stylised carved lion masks on cabriole front supports with claw feet
977. A set of six (5 singles and 1 carver) Georgian mahogany dining chairs, the reeded frames with horizontal oblong splats, overstuffed seats on tapering fluted front supports joined by "X" stretchers £200-400
978. Three miscellaneous antique chairs - Chippendale style ribbon back carver with drop-in seat, a similar camel back side chair and an Edwardian mahogany boxwood strung salon chair with upholstered seat and splat
979. A set of four Georgian mahogany dining chairs (3 singles and 1 carver) with shaped pierced and carved splats, reeded frames with overstuffed seats raised on square taper front supports terminating in spade feet £150-250
980. A pair of Victorian walnut frame spoonback side chairs carved in relief with ribbons and stylised foliage, raised on cabriole front supports

981. A pair of heavily carved Victorian balloon back chairs with scrolled fern carved backs above overstuffed seats, cabriole front legs
982. A XIX century mahogany dining chair, with broad curved plain back on flat sided tapering turned front supports
983. A XIX century four poster bed with spirally fluted and carved end posts on a stout timber frame £200-400
984. A Georgian mahogany bow front hanging corner cupboard, the moulded cornice above an inlaid frieze centred with a patera, the doors enclosing three shelves, 114cm high £250-350
985. A small George III style bow fronted sideboard fitted with a central cock beaded drawers flanked by two cupboards, each with lion mask ring handles, raised on square taper supports terminating in spade feet, 102cm wide £100-200

Further lots on www.thosmawer.com

LOCATION



The Thos. Mawer & Sons salerooms at Dunston House are situated in central Lincoln on the east end of Portland Street at the foot of Pelham Bridge (Canwick Road). By car, approaching from the south take the last turning on the left just before the road rises to the bridge.

Approaching from the north (via Broadgate), go over Pelham Bridge and turn left towards Jacksons Building Centre/Tesco on to Kesteven Street. Follow the road around to the left and drive under Pelham Bridge to Portland Street. Turn left and you will see Dunston House on the right. Portland Street is also accessible from Lincoln's High Street, opposite the Ritz public house.

The salerooms are within walking distance of the main railway station and bus depot.

CONDITIONS OF SALE

1. In these conditions Thos. Mawer & Son act only as auctioneers and agents and the representative of Thos. Mawer & Son conducting the auction is called 'The Auctioneer'

2. Whilst Thos. Mawer & Son make every effort to ensure the accuracy of their catalogue and the description of any lot:

(i) Each lot set out in the catalogue or as divided or combined with any other lot or lots is sold by the vendor with all faults and imperfections and errors or descriptions

(ii) Thos. Mawer & Son do not accept responsibility for the authenticity, attribution, genuineness, origin, authorship, date, age, period condition or quality of any lot unless they have been instructed in writing by the buyer to so certify.

(iii) All statements whether printed in the catalogue or made orally as to any of the matters set out in (ii) above are statements or opinion only and are not to be taken as being or implying any warranties or representations of fact by Thos. Mawer & Son unless they have been instructed in writing by the buyers to so certify.

3. The Auctioneer has absolute discretion to divide any lot, to combine any two or more lots or to withdraw any lot or lots from sale, to refuse bids, regulate bidding or cancel the sale without in any case giving any reason or without previous notice. He may bid on behalf of the vendor for all goods which are being offered subject to reserve or at the Auctioneer's discretion.

The highest bidder shall be the buyer. The Auctioneer may at his sole discretion determine the advance of bidding or refuse a bid. If during the auction the Auctioneer considers that a dispute has arisen, has absolute discretion to settle it, or to re-offer the lot.

All conditions, notices, descriptions, statements and other matters in the catalogue and elsewhere concerning any lot are subject to any statements modifying or affecting the same made by the Auctioneer from the rostrum prior to any bid being accepted for the lot.

4. The buyer shall pay the hammer price together with a premium of the hammer price - 15% inclusive of VAT

5. Notwithstanding any other terms of these Conditions, if within seven days after the sale Thos. Mawer & Son have received from the buyer of any lot notice in writing that in his view the lot is a deliberate forgery and within twenty-one days after such notification the buyers return the same to Thos. Mawer & Son in the same condition as at the time of the sale and by producing evidence, the burden of proof to be on the buyer, satisfies Thos. Mawer & Son that considered in the light of the entry in the catalogue the lot is a deliberate forgery then the sale of the lot will be rescinded and the purchase price of the same refunded.

The vendor agrees to be bound by Thos. Mawer & Son's decision.

6. Thos. Mawer & Son disclaim any responsibility for default by either the buyer or the vendor because they act as Auctioneers only and therefore do not pay out to the vendor until payment is received from the buyer. Instructions given by telephone are accepted at the sender's risk and must be confirmed in writing forthwith.

7. Every person on Thos. Mawer & Son's premises at any time shall be deemed to be there at his own risk. He shall have no claim against Thos. Mawer & Son in respect of any accident which may occur or injury, damage, loss howsoever caused, save in so far as the injury, damage loss shall be caused by the negligence of Thos. Mawer & Son's employees.

8. Each lot shall be at the purchasers risk from the fall of the hammer and must be paid for in full before the delivery and must be taken away by the purchaser at his own expense within 7 working days following the conclusion of the sale. The Auctioneer shall be entitled to charge storage charges in respect of lots not taken away as aforesaid (minimum charge of £10 plus VAT) and interest on unpaid accounts @ 4% above clearing bank base rate (per day)

9. Cheques which are not honoured by the payee's bank will incur a handling charge of £20 plus VAT for each presentation.

This contract is governed by English Law.



DUNSTON HOUSE · PORTLAND STREET · LINCOLN · LN5 7NN
TELEPHONE 01522 524984 · FACSIMILE 01522 535600
EMAIL auction@thosmawer.com · WEBSITE www.thosmawer.com