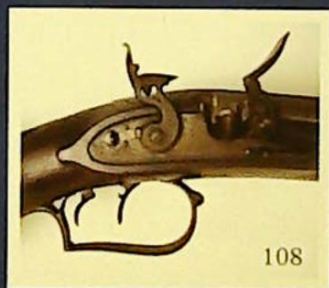


THOS. MAWER & SON LTD



THOS. MAWER & SON LTD.

Auctioneers & Valuers Established in 1864



WINTER ANTIQUE SALE

Saturday 29th January 2005 commencing at 10.30am

On View

Friday 28th 10.00am - 4.00pm & morning of sale from 9.00am

Catalogue £5.00

COMMISSIONS

The Auctioneers are pleased to execute commissions for intending buyers in confidence as cheaply as is allowed by any other bids. All telephone bids must be confirmed in writing or by fax by 4pm the day prior to sale, telephone bids will not be accepted for lots on which the top estimate is under £500.00. We cannot guarantee to execute bids received on the morning of sale.

BUYER'S PREMIUM

There is a 15% premium (inclusive of VAT) payable on the final hammer price of each lot.

REGISTRATION

All prospective purchasers are requested to register and obtain a bidding number prior to the start of the sale.

CATALOGUE DESCRIPTIONS

Care is taken to ensure that any statement as to authorship, attribution, origin, date and provenance is reliable and accurate, but all such statements are statements of opinion and are not to be taken as statement or representations of fact. Thos. Mawer & Son Ltd. reserve the right, in forming their opinion, to consult and rely upon any expert or authority reasonably considered by them to be reliable. While an identification of damage is given in some instances, an absence of such advice does not imply that a lot is free from defect. Prospective purchasers are strongly advised to inspect any lot on which they intend to bid. All measurements and weights are approximate and should be verified by intending purchasers

ESTIMATES

Estimates for lots under £100.00 are not printed in the catalogue. On lots that are reserved, the reserve will not be greater than the published estimate at the time the catalogue goes to press.

PAYMENT OF ACCOUNTS

All Lots should be paid for and collected immediately following the sale. Any lots not collected by 4.00pm on the Wednesday following sale day will incur storage charges (minimum £25.00 plus VAT per lot).

Payment for all lots must be made on the day of sale and methods are (1) CASH, (2) CHEQUES supported by either a letter of Reference from your bank or a cheque guarantee card to cover the sum of your purchase, (3) BANKERS DRAFT, (4) DIRECT DEBIT CARDS such as "Switch", "Delta", "Classic", "Connect", (5) CREDIT CARDS subject to a 2% premium charge.

No lots in this sale are the property of Thos. Mawer & Son.

FIRST SATURDAY ESTATE SALES

5th FEBRUARY 5th MARCH 2nd APRIL
7th MAY 4th JUNE

SPRING ANTIQUE SALE

Furniture, Silver, Pictures, Clocks, Ceramics

23rd APRIL

VIEWING

Victorian & Later Sales - Friday prior 12noon - 4pm & morning of sale from 8.30am

Antique Sales - Day prior to sale 10am - 4pm & morning of sale from 9am

Catalogues posted on the website www.thosmawer.com approx.

5 days prior

N.B. Please telephone prior to travelling as dates may be subject to alteration

FORTHCOMING SALES

CERAMICS

1. Coalport. A XX century bone china dessert service comprising 12 plates x 22cm dia., 3 pairs of dishes - oval, square and round, the royal blue borders with gilt edging and foliate scrolls, the centres with floral sprigs, printed mark, purple paint mark 6698; together with two XIX century plates with similar decoration (20)
£100-150



2. A mid XIX century blue and white transfer printed pearlware jug depicting two boys fishing in a river watched by their mother and a blue and white transfer printed cup - man and dog by a river with castle beyond

3. Leeds pottery. A XIX century pearlware plate with blue and white willow pattern transfer decoration, 27cm diameter, impressed mark Leeds Pottery and "5"

4. A XIX century porcelain teapot painted with flowers and landscape; a XIX century coffee can with Chinese style decoration and three cups with floral decoration

5. Wedgwood. A XIX century plate with Japan style decoration, 20cm diameter; Rockingham Works Brameld - a pair of saucers, number 1451; a Spode cup with French sprig decoration and three XIX century cups, the interiors decorated in sky blue with gilt highlights (6)

6. Wedgwood. A pearlware shell shape sauce tureen and stand decorated with brown, black and orange hexagonal lozenged border, impressed mark with a XIX century china trio of cup and two saucers, gilt rim, blue field with shell designs and floral band to base; two XIX century cups, the interiors decorated in royal blue gilt and flowers and a green, gilt and floral decorated cup and saucer

7. Two XIX century Dresden style chocolate cups and stands (a.f)

8. A collection of XIX century "cabbage leaf" green glazed plates and a comport (11)



9. A Cauldon bone china part tea service, transfer printed in ochre and cobalt with gilt highlights - 39 pieces

10. Sundry XIX century English pottery and china to include a gilded soap dish and cover, copper lustre jug, small Derby style tapering vase marked OB370, Sunderland copper lustre plaque and a large vase (5)

11. Copeland Spode. A Cabaret service comprising 36.5cm diameter circular tray with fluted border, three small cups and saucers, teapot, sugar basin and milk jug, each piece decorated with scattered summer flowers
£80-140

12. A XIX century "Japanese" pattern new stone meat plate by M & H
48cm x 38cm



13. A XIX century Imari charger, decorated in typical pallet and centred with a Chinese vase holding a shrub with many flowers, the border divided into floral decorated panels, 40cm diameter

14. A pair of faience tin glazed blue and white circular shallow dishes, the centres painted with a vase of flowers, surrounded by floral garlands and with fruit and vases to the borders, painted mark beneath MIQ 500
35cm diameter
£150-250



15. A blue and white faience tin glazed shallow dish, 35cm diameter (similar to previous lot)

16. A Nankin blue and white charger, painted with a bird amid blossom and with floral borders, 43cm diameter
£100-150



17. An oriental blue and white charger painted with a stylised floral pattern, 36.5cm diameter

18. Two tin glazed delft style baluster vases, two similar bulb vases and four various covers

19. An early XX century Wedgwood willow pattern toilet bowl, printed and impressed marks 40cm diameter; Losolware "Armado" pattern toilet bowl, 41cm diameter

20. A XIX century blue and white transfer printed meat plate and comport, "Asiatic Pheasant" pattern (unmarked); and a similar pattern small open dish, maker H & K

21. Two XIX century oriental porcelain bowls with willow pattern style decoration

22. An XVIII century English delft tin glazed shallow bowl decorated with stylised building and trees, 19cm diameter

23. A XIX century Chinese famille rose decorated bowl, 17cm diameter

24. A Quimper vase painted in typical style, maker HB, together with a similar two handled cup; a Continental porcelain beaker decorated with figures and flowers and an oval dish with Kauffman style figures (4)

25. A XIX century Prattware jug, the embossed body decorated with figures and foliage, 15cm high



26. A XIX century Staffordshire trio decorated in Japan style comprising cup and saucer and shallow dish, maker H & S; and a XIX century "opaque china" jug, maker M & N and an early XX century Enoch Wedgwood "Windermere" pattern jug

27. Bloor Derby. A XIX century pot pourri in the form of a campana style vase, the body decorated with applied flowers, gilt highlights to handles and base, leaf and floral decorated lid, 12cm high; and a Crown Derby two handled cup and saucer with similar decoration (2)

28. A Staffordshire pottery group of a seated crumb coated white poodle with two pups, oval purple gilt lined bases, 11cm high

29. A XIX century Staffordshire flatback figure of a zebra beside a tree stump with a serpent twining around its body, 20cm high



30. A XIX century porcelain pen holder in the form of a convolvulus flanked by a pair of birds, 8.5cm high; and another ornament modelled as a tree stump with pair of birds nest and eggs, 10cm high

31. A XIX century Staffordshire flatback group of a boy and girl with parrot and begging dog, seated beneath a floral bough, 20cm high

32. A XIX century Staffordshire flatback ornament of a man with blue jacket and orange cape astride a horse wearing a striped blanket, on a naturalistic modelled base, 20cm high

33. A pair of Staffordshire King Charles spaniel ornaments with white bodies, gilt chain and collar, orange and black snout, black eyes, 24cm high

34. A pair of Staffordshire seated King Charles spaniel ornaments with white bodies, gilt collar, black chain, black and grey snout, yellow and black painted eyes, 25cm high

35. Two Staffordshire recumbent greyhound pen holders, on royal blue bases, 16cm long; a similar larger pen holder, 19cm long; a pair of XX century spotted greyhound ditto and a pair of black and white seated dogs (7)

36. A XIX century Staffordshire flatback spillholder figure group titled "Robin Hood", with seated and standing figures and a black and white dog, 38cm high

37. A pair of pottery standing greyhound, each with a hare in its mouth, brown body and blue base, 27cm

38. A late XVIII/early XIX century pearlware cow creamer decorated in orange and black, standing on a rectangular ribbed sided pale green glazed base with black band, 11.5cm high
£75-130

39. An early XIX century cylindrical "frog" mug, decorated in relief with three figures drinking in a tavern, 11cm high
£100-150



40. Doulton Lambeth. A baluster jug decorated in relief with Roman chariots, figures and a palm tree, the neck and foot in green glaze, 24cm high

41. Doulton Lambeth. A pair of vases with cylindrical necks and flared rims, decorated with stylised dark green foliage, applied band of white flowers, the background with white flowers and petals, impressed mark 1884, incised initials of Frank Butler (1872-1911) and three assistants, scratch number 970
£500-800



42. Royal Crown Derby pattern 2712. Teaware comprising a circular plate, 23cm; four 17.5cm diameter tea plates, five saucers and four cups (14)

43. A XIX century English china comport, the moulded border with pierced ribbon handles, banded in apple green, the centre painted with flowers and with gilded highlights 33cm x 22cm diameter; and a wavy edge shallow Swansea dish, oriental style decoration, 23.5cm square

44. Royal Albert crown china. A green and gold design cased coffee service comprising six cups and saucers with six silver spoons, pattern 8471
£200-300



45. A XIX century blue and white Chinese pillow, the decoration with landscape and floral decoration, 32cm x 13.5cm
£80-120

46. A mid XIX century blue and white wild rose meat platter showing Nuneham Park House, rustic bridge and lock keepers thatched cottage, 41cm long; and another XIX century blue and white meat platter decorated with a country house behind lake (Shelton Abbey?), 41cm long
£150-250



47. A pair of XIX century George Jones style shell shaped comports, each on three sea serpent modelled legs, approx. 22cm diameter; also a majolica jug and a pair of candlesticks

48. Royal Worcester. A biscuit barrel with plated mounts and swing handle, the blush ground painted with floral bouquets, painted number W5171, 14cm high
£150-200

49. Royal Worcester pattern 1523, monogrammed B. A blush ground two handled jardiniere painted with summer flowers with blue leafage, elaborate moulded side handles with gilt highlights, 20cm high
£250-400



50. Royal Worcester pattern 1256. A "tusk" vase, the blush ground painted with floral sprays, incised gilded band and elaborate raised handles, the body approx. 14.5cm high
£100-180

51. Lock & Co Worcester. A simulated bamboo triple cluster vase, 18.5cm high
£100-160

52. Royal Worcester (green mark) number 302. A pot pourri moulded with foliage and with a two colour pierced cover, 11cm diameter



53. Royal Worcester pattern 1094. A blush ground jug painted with summer flowers and with a ribbed gold "C" scroll handle, 14cm
£100-150

54. Wedgwood. A XX century naturalistic three piece "cauliflower" tea set with impressed marks



55. A XIX century Continental ornate porcelain vase with gilt, pink and floral painted front, reverse in apple green, 42cm high

GLASS

61. A XIX century white ruby and gilt highlighted overlay glass vase, 28cm high

62. A mallet shaped green blown glass bottle with named seal "I. Connay 1726", 17cm high

63. An etched glass barrel with plated metal spigot, approx. 30cm

64. A pair of cylindrical hob nail cut vases with hallmarked silver rims and star cut bases, 22cm high

65. A late XIX century silver plated epergne stand with four vaseline glass trumpets, 26cm tall

66. A plated decanter stand with two facet cut decanters, bowl and two tumblers

67. A XX century cut glass five branch chandelier hung with facet drops, the "S" scroll arms radiating upon a central baluster glass column, 61cm overall

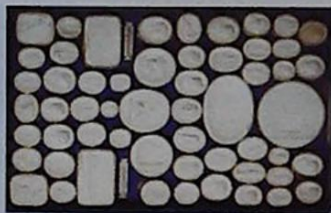
MISCELLANY, COLLECTABLES & METALWARE

71. A William IV painted hardwood truncheon with crown and cipher, ring turned hand grip, 32cm overall

72. A carved ebony Indian elephant with ivory tusks and feet detailed 20cm high

73. A Black Forest carved hardwood tobacco jar modelled as a bearded sailor smoking a cigar, the head hinging at the shoulder concealing the tobacco compartment, 35cm high
£600-700

74. A collection of 172 XIX century Italian paste "cameos" including many familiar classical and mythological characters such as Hercules, Minvera, Medusa etc., also some Medieval - Dante, Cupid and Da Vinci's Last Supper, each cameo in a gilded paper frame, in the style of James Tassie
£1000-1500



75. A fossilized walrus ivory scrimshaw carving of a grizzly bear with salmon in its mouth against a rocky landscape by Robert Monfils 15cm long
£150-250

75A. A walrus ivory scrimshaw of three sailing ships by R Blake?, 13cm long
£200-300

75B. A plain walrus ivory on stand
£80-150

76. A pair of XIX century silhouettes on glass, gentleman with top hat, lady with frilled scarf and hat - circular ebonised frames, 10cm diameter

77. Four small Le Blond prints in two frames; "Osborne House", "Brothers Water", "Venice" and "Her Majesty Leaving Portsmouth Harbour", the mounts embossed "Baxter"
5cm x 4.5cm, ebonised frames

78. A miniature oval portrait on ivory of a young girl wearing a lace bonnet with a lace trimmed dress, indistinct name or signature Ada Pearson?
approx. 7cm x 5.5cm



79. An oval portrait miniature on ivory of a young girl wearing an elaborate lace bonnet and white dress with large bow at her neck, inscribed Ada Muir
7cm x 6cm, cast metal oval frame

80. A circular miniature of a Continental port with figures, buildings and ships, appears to be painted on ribbed paper in watercolours, indistinct monogram JC?, circular gilt embossed inner frame, the outer ebonised frame with tortoise-shell style back
8.4cm diameter

81. Two XIX century silhouettes of Victorian gentleman - one oval mounted, the other gilt framed

82. After J W Best A XIX century bookplate "Academy Priory Louth", contemporary Victorian mahogany frame
18cm x 21cm overall

83. A pair of framed book plates - John Russell and Cardinal Beaton, Hogarth frames

84. Asprey London. A black grained leather lady's vanity case with fawn leather interior and mirror, fitted compartments containing assorted brushes, scissors etc.
£200-300

85. Oak and cast iron foot bellows, by Fletcher, Russell & Co Ltd, Warrington, Manchester & London, 29cm high

86. A XIX century copper warming pan, the lid engraved with a butterfly and bird

87. A XIX century circular copper warming pan, the lid engraved with a bird amid foliage and berries

88. A copper coaching horn, 137cm overall

89. A copper coaching horn, 125cm overall

90. A pair of brass carriage lamp style wall lights, the glass panels with harebell swags, urn finials, 48cm long

91. A brass framed mesh fire guard, 115cm wide

92. A XIX century pierced brass fire kerb on three circular feet, 83cm wide

93. A pair of XVIII century chamber candlesticks, dish with rectangular drip trays, sliding candle ejectors and one snuffer

94. A brass XIX century imperial gill measure engraved "Burrough of Huntingdon 1st Day of January 1826 David Veasey the younger Esq. Mayor" 7.5cm high

95. A pair of XIX century brass fire dogs, 45cm high
£150-250



Also featured in photograph-
LOTS 324 & 342

96. A heavy cast metal cauldron, 28cm high

97. A XIX century brass and iron trivet with a turned wooden handle

98. Two XIX century cast iron door stops - a woodman with his dog smoking a pipe (1 a/f) and another brass ditto Punch and Judy (3)

99. Two XIX century cast iron door stops of Napoleon

100. A set of four XIX century conical copper measures, each engraved WPH - one gallon, half gallon, quart and half pint

101. Three copper and brass measures, each with an applied brass plaque "Borough of Bedford" - 5 litre, 10 litre and 20 litre
£150-250

102. A XIX century circular copper kettle, the lid with an acorn finial and another similar (2)

103. A Victorian display of 18 colourful birds of paradise, perched on a tree bough with naturalistic base under a glass dome, the dome approx. 75cm high
£350-550



104. A XIX century bronze statuette "Clodia", standing by a tree stump on a square base, 40cm high
£250-350



105. A fine bronze group - a male figure releasing two hunting dogs on leashes, signed R. De Wandeleir on a grey veined marble plinth, the bronze 78cm long and 46cm high
£1500-2500



106. A white marble bust of a Victorian lady reading from a tablet, 101cm wide
£1000-1400

107. A XIX century percussion muzzle loading single barrel sporting gun by Godson, the lock plate engraved with pointers, walnut stock with checkered grip, 31.5" barrel, with a shell embossed copper powder flask
£100-150



108. A rare flintlock big game rifle by Samuel Nock with set trigger, walnut stock and double hinged leaf sight, London proof mark, 31" barrel, number 397 - approx. 10 bore
£600-900



109. A mid XIX century percussion double barrel sporting gun by Thos. Greatrex with engraved back action locks, checkered walnut stock, cross bolt fore end, Birmingham proof marks mid XIX century, 29" barrels, approx. 10 bore
£200-400

110. Holy Bible. "Breeches Bible" imprinted at London by the Deputies of Christopher Barker 1594, 4to, bound in contemporary calf, brass corner pieces and brass lozenges in centre, wants clasps, binding very worn, seems to lack most of the prelims and map (only one page between title and Genesis) - some stained and signs of use throughout, some pages missing, others damaged
£400-500



111. A XIX century elliptical enamel and gilt metal mounted trinket box with three painted landscape panels in rococo scroll frames on a turquoise ground, 19cm long, 4cm high
£300-400

112. A rare Hall typewriter, patent March 1st 1881, number 6993, Salem, Mass, contained in a fitted mahogany box
£400-600



113. A brass pocket sextant by Stanley London, the case dated 1911, 7.8cm diameter
£150-250

114. The Franklin terrestrial globe, 12" diameter, containing all the geographical divisions and political boundaries to the present date by H.B. Nimms & Co, Troy, N.Y., on a cast metal stand, approx. 50cm high overall
£800-1200



115. A pocket barometer and thermometer in a gilt metal case with circular steel dial, 4.6cm diameter
£100-200

CADDIES & BOXES

121. An oak cigarette box, 9cm wide, 18.5cm long; a dome top mahogany tea caddy inner compartment with hinged lid, 13cm high, 14cm long and an oblong XIX century mahogany box, 13.5cm high, 28cm wide (3)

122. A XIX century mahogany tea caddy, the exterior with shell and floral inlay, the interior in two sections (a/f); a XIX century burr walnut two compartment tea caddy, the lid inlaid with flowers (2)

123. A late XVIII/early XIX century mahogany tantalus (possibly apothecary's cabinet) with compartments for six bottles (two remaining), the exterior chevron banded and inlaid with oval shell pateras, swan neck brass carrying handles to each side, 28cm wide, 20.5cm high

124. A XIX century penwork tea caddy, profusely decorated both internally and externally with a floral design, the interior fitted with two tea compartments and central mixing bowl, raised on brass claw and ball feet with brass looped carrying handles, 32cm wide, 18cm high, 16.5cm deep
£150-250



125. A XIX century coromandel domed writing box with key, the interior fitted with ink and pen holders and leatherette slope, the exterior with circular plaque dedicated 1889, 35cm long, 15.5cm high
£300-400

126. A XIX century oblong box inlaid and crossbanded with exotic veneers, 34.5cm wide

127. A XIX century serpentine shape tortoise-shell tea caddy with two internal tea compartments, standing on turned feet, 15cm long, 9.5cm high
£600-700



128. A mid XIX century rosewood tea caddy with floral mother of pearl inlay and escutcheon standing on bun feet (a/f), 19cm long, 16cm high

129. A Victorian papier mache tea caddy elaborately decorated with mother of pearl inlay and painted gilt border, with two compartment interior, standing on shaped feet, 15.5cm high, 22cm long
£300-400



SILVER & PLATE

140. A pair of rococo design silver on copper three branch candelabra and matching pair of table candlesticks

141. A pair of plated wine coasters with gadrooned borders on turned hardwood bases, 16cm diameter

142. A Romney plate lozenge shaped entree dish and cover with ribbed decoration, 26cm x 18.5cm

143. A XIX century silver on copper snuffers tray with ribbed border, 23cm long; and a pair of snuffers

144. A silver plated oval entree dish and cover with inner pierced strainer, the base lined with stove enamel beaded decoration to lid and base, 30cm x 23cm

145. A XIX century silver plate entree dish and cover, the inner liner with gadrooned border, lid with floral decoration, raised on four cast feet, 36cm x 23cm

146. A XIX century silver plate cheese dish and cover, the base with repousse decorated border, the lid with bright cut foliate decoration, scroll handle, maker W Briggs & Co Sheffield; together with a butter knife with silver covered handle

147. O'Neida. A large plated serving tray with cast fruit and floral border, scroll handles, foliate engraved centre, 50cm x 38cm

148. A "Cavalier" silver plated serving tray with cast foliate border and handles, 59cm x 44cm

149. An Elkington Plate large galleried two handled tea tray with canted corners, foliate and scroll border and engraved centre, 68cm x 43.5cm
£130-180

150. Silver plate: a lobed cream jug with beaded border on four hoof feet; a Walker & Hall syphon holder with reeded rim; an ice bucket with swing handle and a pair of "claw" ice nips

151. Sundry plated ware - crumb scoop, oval dish, two toast racks, nutcrackers, pair of salt coasters, pair of ladles, fish eaters, napkin ring, pair of salts etc.

152. Silver plate: six various salvers, some engraved and dedicated and a fruit comport (7)

153. A heavy silver plate campana shape wine cooler with embossed borders and loop handles, 24.5cm high
£350-450

154. A silver plated turkey dish with hot water reservoir, bright cut harebell and foliate



border, gadrooned edge, raised on four ornate scroll feet, pair of ribbed carrying handles, 57cm x 46cm

155. Georg Jensen. A set of twelve XX century gold plated sterling silver dessert spoons, the pear formed bowl rising to a terminal, each spoon showing a differing flower head, each marked in sequence on reverse 1971-1982, stems marked RA AB, sterling Denmark, hallmark of three crowns, letter S
£180-250

156. A pair of particularly fine Art Nouveau Grecian style WMF silver plate two handled vases with blue glass liners, the main decoration of maidens in flowing dresses beneath a fruiting vine frieze, the foot marked B WMF I/O OX and numbered beneath 130, 39.5cm high
£1700-2200



160. A hallmarked silver spirit kettle and stand, the lobed body part fluted with swing handle, the hinge to the stand on four reeded cabriole legs (spirit burner missing), marks rubbed, London, maker TB, approx. 30ozs gross
£100-200

161. London 1939. A coffee pot or hot water jug with plain body, scroll shaped composition handle and finial, maker WS Limited, 24ozs gross
£75-150

162. London 1784/5. A fluted oval bodied teapot with bright cut decoration, scroll handle, lid with cast urn finial, maker Samuel Wood 16+ ozs
£100-200



163. James Dixon & Son. A spherical breakfast teapot designed by Christopher Dresser No. 2273 and with Victorian registration mark, 10.5cm high
£3-500



164. A hallmarked three piece breakfast tea service, the oval body part fluted, comprising teapot with ebonised handle, sugar basin and milk jug (London mark rubbed)
£100-200

165. London 1843. A Victorian three piece tea service of cylindrical tapering form with scroll handles, engraved foliate decoration with central crest; the teapot with a floral finial, makers EB JB & WB, 41ozs gross
£300-600

166. A pair of hallmarked silver posy holders with spirally fluted lobed bodies, everted rim, supported on three rams head capital and hoof feet (marks rubbed), 14cm high

167. Birmingham 1912. Two similar Georgian style sauce boats with hoof feet, maker WA £70-£120

168. Sheffield 1899. A pair of silver asparagus tongs, maker GH

169. A pair of ornate pierced pressed silver bon bon dishes with floral and trellis body (hallmarks obliterated), 11cm diameter
£40-80

170. A set of four circular silver salt cellars, each with three loop handles and spoons, S & Co Birmingham; cased
£130-180



171. An early XVIII century two handled loving cup engraved "John Wells 1748 to I Horner - 91", London 1738, maker RB, monogrammed on the body and to each handle, 13.5cm high, 12cm diameter, approx. 13ozs,
£500-700

172. A hallmarked silver and pale blue/green enamelled five piece dressing table set with engine turned decoration, London 1909

173. Birmingham 1929 hallmarked silver desk inkwell with oval reservoir and stand

174. Chester 1940. A hallmarked silver salver with scalloped edge, maker SG & S Limited, 25cm diameter, 13.5ozs approx.
£80-120



175. A hallmarked silver oval photograph frame with oak easel back, 17cm x 13cm

176. A hallmarked silver rectangular photograph frame with cast scrolling borders, easel back, 23cm x 16.5cm

177. A pair of Birmingham hallmarked "claw" sugar bows, another small pair and a letter opener modelled on a meat skewer, Sheffield 1912, maker M H & Co Ltd

178. Chester 1903. A bright cut decorated vesta case with monogram

179. London 1844. A set of four silver gilt circular salt cellars with cast rims and bracket feet, maker JE
£200-300



180. Sheffield 1947. A circular scale patterned bon bon dish with pierced border, raised on a turned circular foot, maker Mappin & Webb, 12cm diameter
£30-60

181. A Birmingham hallmarked silver rectangular engine turned decorated and monogrammed cigarette box with wooden liner and a miniature Armada dish with scatter hallmark, maker RC, London 1973

182. London 1874. A set of three Victorian three footed salt cellars with beaded borders and engraved bodies, maker RH
£100-200

183. A circular hand mirror with embossed cherubic design silver back and handle

184. A Georgian silver toddy ladle, the bowl inset with a George II shilling, with a spirally fluted whale bone handle, 39cm long

185. London 1856. A fiddle pattern soup ladle, engraved monogrammed "JEC", 10ozs, 34cm long

186. London 1835. A fiddle pattern basting spoon monogrammed "M", maker I.L. H.L. V.L., 30cm long



Lots 185, 186, 187

187. London 1855. A fiddle thread and shell pattern cheese spade, maker GA

188. Sheffield 1959. A silver pistol grip handled three piece carving set, maker EV (Viners Limited) in a fitted velvet and satin lined retailers box "Harrison Bros. & Houson Sheffield"
£100-200



189. A Victorian silver handled cheese spade

190. A London hallmarked Victoria (young head) mustard pot with blue glass liner (marks obliterated) with a small pepperette and small pressed silver salt cellar

191. A pair of Birmingham hallmark silver embossed pepperettes, approx. 7cm high

JEWELLERY & POCKET WATCHES

192. A set of four Gorham sterling silver oval bon bon dishes with pierced decoration and scroll and shell pattern borders

193. A set of four Victorian silver salts with square hob nail cut containers on decorative bases with two shell shaped spoons, Sheffield 1895
£80-130

194. Two bright cut decorated pocket silver cigarette cases, Birmingham hallmarked, and a triangular ashtray

195. Birmingham 1816. A rectangular engine turned silver vinaigrette with silver gilt interior, pierced foliate grill, maker IS
£100-200



196. Birmingham 1833. An engine turned silver rectangular snuff box with gilded interior, maker JW, 7.5cm x 5cm
£100-200



197. A London hallmark silver model of a stallion, 1955, approx. 6 ozs, 9cm high
£120-180

198. A XIX century mahogany canteen of twelve fruit knives and forks with carved bone handles, maker W H & S



199. Birmingham 1915. A three footed salver with pie crust border, the centre engraved with a foliate cartouche and crest, motto "Deum Cole Regm Serva", maker Elkington & Co., 31.5cm diameter, 26ozs
£130-180

200. A large early XIX century style silver spirit kettle and stand, the oval half fluted body with decorative cast scroll borders, shaped silver and reeded ebonite handle, the four footed stand with a plated burner, monogrammed WHS & S Ltd, London 1904 approx. 50ozs gross (exc. burner) 34cm high



210. A Victorian facet cut ruby glass double ended scent bottle, unmarked silver coloured mounts, engraved "C"

211. A Victorian scent bottle in clear glass flashed with red, silver top (damaged) and a double ended facet cut ruby glass Victorian scent bottle

212. A gold plate bridge pencil, the top inset with a bloodstone and the body with engraved decoration, a similar silver coloured pen with retractable nib and four other bridge pencils (6)



213. A XIX century snuff box, the gold coloured metal frame with an agate inset top and bottom, a small white metal engraved pill box and a tortoise-shell faced purse (3)

214. A 9 carat gold chain bracelet with padlock hasp

215. An oval cameo of a young girl with an applied top gold diamond pendant in an oval 9 carat mount for use as a brooch or pendant



216. A 9 carat gold Birmingham hallmarked bar brooch centred with a wish bone, flanked by leaves, all set with seed pearls and a central garnet coloured stone

217. An oval gold coloured locket on a fine gilt neck chain, an oval cameo ring in 9 carat gold setting, a 9 carat bar brooch set with five facet cut garnet coloured stones, the centre stone surrounded by filigree and seed pearl, closed back (3)

218. A heraldic 9 carat gold bar brooch depicting St George slaying the dragon with the motto "Quo Fatuu Vocant"

219. A mementomori brooch centred with a lock of hair and surrounded by facet cut black stones, engraved on the reverse "Edw. Beauchamp Esq. 9th Feb. 1813-62"

220. A mementomori brooch centred with a lock of hair, surrounded by small pearls and ruby coloured stones

221. An XVIII century seal of three ponies either side of a chevron, in scroll decorated gold plated mount
£100-150

222. A yellow gold gent's ring set with three diamonds

223. An unmarked gold ring set with five seed pearls surrounded by eighteen small diamonds
£200-400

224. A pair of diamond cluster ear studs in yellow gold mount, the central stone surrounded by eight smaller stones
£500-700

225. An unmarked gold hollow link chain bracelet, 23cm long

226. A 9 carat rose gold double albert watch chain with a 1908 sovereign and a green three sided swivel fob, gross weight approx. 50 grams
£170-220

227. Rolex. An oyster perpetual datejust mid-size bi-metal cased wrist watch on Jubilee bracelet (gent's size) with original certificate, box etc. No. 68273 (purchased 1987 - current equivalent new watch rrp £3210)
£1100-1400

228. A XIX century white enamel dial open face pocket watch by Thos. Hulme London, numbered 17948, the silver pair case hallmarked 1842
£100-150

229. A gent's 18 carat gold full hunting minute repeating chronograph with Swiss lever movement, retailed by J W Benson Ltd, with the original warranty and receipt made to Mr W A Cutler of Brixton, 29th August 1918 (W A Cutler is believed to have been a wealthy boxer who founded a gym in Brixton)
£2500-3500



PICTURES

235. A mid XIX century rosewood framed woolwork panel depicting summer flowers, originally from a pole screen
53cm x 51cm



236. A fabric pictorial panel of a woman with a child in her arms in a landscape setting, elaborate XIX century plaster gilt frame
63cm x 56cm overall

237. An oriental silk and needlework panel centred with a bird on a gold ground, framed and glazed, approx. 30cm square

238. A watercolour sketch of seated and standing scantily clad figures, attributed on the mount to William Etty RA, label verso "This drawing was included in the exhibition of Etty drawings November 1938 at the Brook Street Art Gallery, 14 Brook Street, New Bond Street, London"
12cm x 8cm



239. An early XIX century watercolour - half length portrait of a black lady in a brown dress with white hat
22cm x 17cm, birds eye maple frame

240. Rice, J
A watercolour - horse drawn plough with house and trees in the background
23cm x 32cm



241. Fortescue, W.B.
A watercolour drawing of a harbour scene with quay, lighthouse, fishing smack in sail
16cm x 10cm, mounted and framed
£100-150

242. Norden s.
A pen and ink drawing of a mother seated in the garden, saucepan on her lap with young child facing her
7cm x 12cm, mounted and framed



243. Goff, Fred E.J.
Two watercolour drawings - Ann Hathaway's Cottage and The Fairy Glen Betts-y-Coed
12cm x 15cm, contemporary gilt mount and frame
£200-300

244. XIX century English School Watercolour drawing - fisherman hauling ships ashore before the storm (believed) at Ramsgate
42cm x 62cm
£1000-1500



245. XIX century English School
Oil on canvas - shepherd driving a flock of sheep along a country lane, gilt frame
27cm x 40cm



246. A XIX century portrait sketch of a gentleman, head and shoulders, pencil and chalk on brown paper
44cm x 33cm, mounted and framed

247. Arnfield, E. signed
Oil on canvas - portrait of a rough coated terrier, gilt frame
30cm x 36.5cm



248. Moulton, AA watercolour drawing of a country lane, thatched cottage in the middle ground, figure leaning against the fence
12cm x 27cm, gilt mount and frame

249. Griffith, Kate s.
A watercolour drawing study of a green woodpecker and two kingfishers in the snow, written verso "To Miss H Barlow with my love and much gratitude from the artist", fragments of the original label verso dedicated from the artist
25cm x 35cm
£80-140



250. Rosser, Albert
A watercolour drawing titled on the mount "Bassenthwaite Lake & Skiddaw"
17cm x 25cm, mounted and framed

251. Garcia, Ezequiel
An oil on canvas signed and titled "Buenos Aires La Boca" - a shipping scene with tugs around and ocean going vessel
69cm x 49cm
£300-500

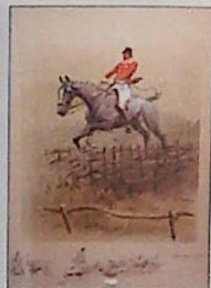
252. A XIX century oil on artists board - cattle grazing by stream with trees, mountains and buildings behind, in a fine moulded stepped gilt contemporary frame
22cm x 29cm

253. Stannard, Sylvester
A XIX century watercolour drawing of a thatched cottage, the garden with summer flowers in bloom, labelled verso "Anocahome in Devon", signed
24.5cm x 34cm
£450-650

254. Edwards, Lionel
"Alexander" - Drum Horse of the Lifeguards
Oil on canvas painted on panel with original receipt sold by the Tryon Gallery 1964, also gallery label verso
34cm x 49.5cm
£1000-1500



255. Payne, Charles, J.
Snaffles - a print heightened with colour titled "Swagger, But a Workman", signed Snaffles,
46cm x 39cm
£800-1200



256. Collingwood Smith, Wm. (attributed)
A watercolour - lakeland landscape written "Sketched Under Difficulties"
23cm x 31.5cm

MIRRORS

261. A mahogany dressing table mirror, the box base inlaid with a star and fitted with a single drawer standing on ogee bracket feet, 31cm wide

262. A gilt wall mirror of neo classical design, the moulded cornice above a panel centred with a shell cartouche, flanked by cluster columns with foliage capitals, 96cm x 54cm overall

263. A XIX century gilded over mantel mirror of neo classical design with applied rope twist turnings beneath a moulded breakfront cornice, the mirror divided into three panels,
146cm wide, 76.5cm high
£200-400



264. A large mahogany frame Victorian dome top overmantel mirror, 182cm high, 130cm wide

265. A XIX century rectangular neo classical design gilt frame overmantel mirror, the moulded cornice above a split turned moulding flanked by fluted columns,
87cm x 70cm overall
£80-130

266. A large bevel edge mirror in a swept gilded XIX century style frame, overall size 246cm x 184cm approx.

CLOCKS & BAROMETERS

271. A XIX century mercury column barometer, the rosewood case with carved scroll decoration, the engraved steel dial signed Fisher & Co, Ely, 91cm high
£80-120

272. A XIX century mercury column barometer, the boxwood strung and mahogany case with broken pediment, the engraved steel dial signed J Lenoni, Edinburgh, 96cm high
£200-300

275. An elaborate gilt metal cased and white alabaster French empire mantel clock, surmounted by an eagle with outstretched wings killing a snake, the circular dial with recessed centre and individual gilt roman numerals, eight day striking movement by Rollin a Paris, 45cm high
£150-250



276. A fine quality gilt metal and bronze cased mantel clock surmounted by an eagle with outstretched wings, the circular English movement with white dial, Roman and Arabic numerals, flanked by maidens reading from books, applied trailing bocage standing on bracket feet, 31cm high
£1200-1800



277. A XIX century mahogany cased Scottish bracket clock, the circular painted dial signed William McEwan, Auchterarder with double fusee repeating movement, overhauled by Timepiece Repairs, Lincoln 2004 and sold in going order, 40cm high
£600-900

278. A XIX century onyx and brass cased mantel clock enclosed by four bevel glass panels, the circular gilt dial with a recessed revealed escapement, striking movement and compensating mercury pendulum, 37cm high
£600-800

279. A small carriage clock, the circular porcelain dial signed "Elliott & Son London", contained in an oval engraved case with bevel glass panel and swing carrying handle, 8cm high
£100-150

280. A XIX century mahogany cased drop dial wall clock with double fusee movement, with iron false plate stamped "Walker & Hughes", white painted dial signed H Cliff Ipswich, the case inlaid with brass stringing, approx. 59cm overall
£400-600

281. A XIX century oak longcase clock, the painted square dial with date aperture and subsidiary seconds ring signed Alexander, Chippenham, eight day movement, contained in a square hood with brass capped columns, the base enclosed by a long door, 198cm high, dial 30.5cm diameter
£1000-1500

282. A XIX century oak and mahogany longcase clock, the dial painted with buildings and signed Gadsby Lincoln, subsidiary seconds ring and date aperture, eight day striking movement, contained in a broken swan neck pediments hood, the base enclosed by a short door, 214cm high, dial 30.5cm x 40cm

283. A XIX century oak and mahogany longcase clock, the arched dial painted with allegorical figures, the eight day movement in a broken swan neck pedimented hood, the base enclosed by a long arched cross-banded door, 219cm high
£700-1100

284. An early XIX century oak longcase clock, the painted arched dial signed Simpson, Lincoln, with subsidiary seconds ring and date aperture, the spandrels of female sculptures, artists, writers and explorers, enclosed by a broken swan neck pedimented hood flanked with fluted columns, the hinged door with shell inlay, flanked by reeded columns, 210cm high, dial 43cm x 30.5cm
£1000-1500

285. A XIX century oak longcase close with square painted dial and 30 hour movement, the base enclosed by a long door, 191cm high, dial 30.5cm square
£400-600

286. A rare XVIII century longcase clock, the square brass dial with silvered chapter ring, subsidiary seconds and date ring, signed "William Barnard Newark", numbered 835, with eight day striking movement, contained in a cushion shaped hood, flanked by half columns, the base enclosed by a long arched door, 203cm high, dial 30cm square
£1000-2000



RUGS

291. An antique Shirvan style hall runner, the deep indigo field with an overall design of palmettes between multiple borders, 530cm x 132cm approx.
£400-600



292. A good quality Bokhara style rug, the deep crimson ground decorated with a series of medallions between multiple borders, purchased by the vendor in Persia 1950s, 140cm x 92cm
£150-250

293. An oriental rug centred with a geometrical panel of "X" in multiple colours between a wide border, 180cm x 113cm

294. An oriental rug, the geometrical design between multiple borders, predominately in shades of brown/orange, 134cm x 82cm

295. A Bokhara style rug centred with a triple row of medallions between multiple borders - purchased by the vendor in Persia in the 1950s 188cm x 118cm
£200-300



296. A good quality Persian rug, the deep blue ground with a series of medallions between multiple borders, purchased in Persia in the 1950s, 170cm x 107cm
£200-300

FURNITURE

300. A Victorian mahogany pedestal dressing table, fitted with two small drawers and four larger drawers to each pedestal, supporting an oblong mirror in a shaped mahogany frame
£200-300

301. A principally XVIII century carved oak frame day bed, the back with a coronet held by two figures above a cane panel with barley twist block stretchers and turned and block supports
£350-500



302. A Georgian mahogany 'D' end dining table, raised on plain square taper legs with a spare leaf (distressed), 124cm x 127cm plus the leaf 65cm wide
£300-400

303. An early XIX century mahogany chest of two short and four long drawers, the top and drawer fronts boxwood strung, the oval pressed brass handles depicting a recumbent maiden, 106cm wide, 47cm deep
£150-250

304. A magnificent, probably Scottish figured mahogany pedestal sideboard, the serpentine shaped back carved with fruit and thistles above the breakfront base with three cushion fronted drawers, one pedestal with slides, the other fitted with a cellerette, 114cm wide
£500-700



305. A Victorian mahogany bookcase, the three door bookcase upper section with a moulded cornice, the doors with crimson fabric pleated panels, the base with three fielded panel doors on a plain plinth, 213.5cm high, 197cm wide
£800-1200



306. A Victorian overstuffed upholstered armless sofa on turned carved mahogany front supports

307. A Victorian carved walnut frame button back armchair, the serpentine front rail centred with relief carved flowerheads, raised on short cabriole legs with original brass and pot castors (upholstered to match previous lot)
£200-300

308. A Victorian two seater chesterfield upholstered in cream deep buttoned floral fabric, standing on bun feet, approx. 190cm long

309. A Victorian oak fire surround, the mantel shelf supported on stepped mouldings with leaf carved capitals to each column, 220cm wide, 145cm high, the opening 160cm x 113cm
£150-250

310. A magnificent XIX century Continental walnut breakfront wardrobe of architectural design, the moulded and stepped cornice above three drawers, two with painted panels of wading birds among rushes, the central mirror door enclosing linen slides and four drawers, the wardrobe compartments fitted with a drawer and hat box, the base with three further drawers, 240cm wide, 241cm high
£700-1200



311. A XVII century oak chest on open (later) stand, two short drawers above three long drawers with geometrical moulded panel fronts, the stand carved in relief on block and turned supports joined by plain stretchers, 92cm wide, 122cm high, 55.5cm deep
£800-1200



312. A small George III figured mahogany chest of two short and three long cockbeaded drawers, the top boxwood strung and satinwood banded, the drawer fronts with boxwood inlay between canted corners, standing on ogee bracket feet, 95cm x 52cm
£600-900



313. A Georgian mahogany snap top tripod table on a baluster turned column, the top 83cm diameter
£100-150

314. A XIX century mahogany, possibly Scottish, chest of four short, one deep and three long drawers, raised on turned feet, each drawer cock-beaded with pressed turned brass knobs, 24.5cm wide
£400-600

315. A Regency figured mahogany chiffonier with two shelves on "S" scroll and brass supports above a cupboard base enclosed by fielded panel doors and flanked by fluted columns, 136cm wide
£1600-2200



316. A XIX century rosewood canterbury with spindle turned frame, the base fitted with a single drawer, raised on turned supports with brass and pot castors, 49.5cm wide
£150-250

317. A Victorian mahogany serpentine side table with inlaid chess board top, raised on quadruple baluster turned columns, 79cm x 38.5cm overall

318. A XVII century three panel oak relief carved coffer enclosed by a plain plank hinge lid and standing on square stiles, 122cm wide
£400-600



319. A Georgian mahogany night table, the upper section a cupboard enclosed by a pair of doors above two (converted) drawers with shaped brass escutcheons, raised on bracket feet. 63cm wide
£150-250



320. A George III mahogany night table with a plain gallery, the cupboard enclosed by a plain door raised on square taper supports, 35.5cm wide
£250-350

321. A principally XVIII century walnut bureau, the fall front with a wide crossband and herringbone inlaid, the interior forward fitted with a series of pigeon holes and small drawers, the base with two short and three long cockbeaded drawers, raised on bracket feet, 87.5cm wide
£300-450

322. An early XVIII century oak chest on stand, the moulded cornice above four long graduated drawers, the stand on shaped legs joined by an arched apron, 93cm wide, 133cm high
£700-1200



323. A high quality Victorian burr walnut canterbury, the upper shelf with a shaped pierced intricately carved gallery, the base with compartments above a single concave drawer, 62.5cm wide
£1250-1600



330. An Edwardian mahogany serpentine fronted china display cabinet in the Sheraton style with boxwood and ebony stringing, enclosed by a single door and raised on square taper supports with spade feet, 94cm wide



324. A XIX century mahogany fold over top games table, raised on a turned column with platform base, 90cm wide
£250-400



331. A Louis XVI style gilt wood salon suite comprising settee, two open armchairs and two side chairs with a similarly upholstered foot stool
£250-400



325. An XVIII century oak welsh dresser, the moulded cornice above three plate display shelves, the base fitted with three drawers above an open pot board, raised on bracket feet, 170cm wide, 42cm deep, 209cm high
£3500-4500



332. A Victorian ebonised burr walnut and ormolu mounted pedestal china display cabinet enclosed by a plain glazed door with plush lined interior with two internal shelves, 79cm wide
£200-350

333. A Georgian mahogany tripod table with 92cm diameter one piece top, raised on a baluster column with triple cabriole supports
£450-580

334. An early XIX century mahogany bow front chest of two short and three long drawers, 110cm wide
£300-400



326. An XVIII century oak open armchair with a solid shaped splat, drop-in rush upholstered seat raised on cabriole front supports terminating in pad feet
£200-300

327. A Regency mahogany fold over tea table, raised on a ring turned column with quadruple splay feet, carved with styled foliage at the knee and terminating in square brass castors, 96cm wide
£350-450



335. A Victorian mahogany chest of two short and three long cock-beaded drawers, 105.5cm wide
£100-200

328. A small XVII century boarded oak coffer with stylised relief carving to the front, iron lock plate and hasp, plain plank top, 98.5cm wide, 45cm high
£600-800



336. A Georgian style mahogany breakfront sideboard with central drawer above a deep napery drawer flanked by bow fronted cupboards, raised on six taper legs with spade feet, outlined with ebony stringing throughout and with brass lion mask ring handles, 150cm wide
£300-500



329. An XVIII century oak bureau bookcase, the upper section enclosed by a pair of panelled doors beneath a moulded and carved cornice set with flower heads, the fall front enclosing a fitted interior with pigeon holes and drawers including four secret drawers, the base with four long graduated drawers on bracket feet, 102cm wide, 213cm high
£650-950



337. A large XVIII century oak hanging corner cupboard, the moulded cornice above a fielded panel door banded in crossgrain mahogany, the interior fitted with drawers and three shelves, 123.5cm high
£100-200

338. A Victorian mahogany circular breakfast table, the top with a broad rosewood crossband raised on a baluster flat sided column with four carved scroll feet, 131cm diameter
£150-250

339. A Georgian oak bow front hanging corner cupboard enclosed by a pair of panelled doors, 95.5cm high

340. A XIX century carved mahogany plant stand, the spirally fluted column on a square base supporting a turned circular top, 115cm high

341. A XIX century plant stand, the turned tapering pedestal supporting a square top, 112cm high

342. A XIX century mahogany pole screen, the mahogany framed needlework panel on a turned support with tricorn base

343. A Chinese chippendale design bijouterie table, the hinged lid in a blind fret carved frame, raised on turned cluster columns, the undertier supported on scroll carved brackets, 76cm wide, 77cm high, 51cm deep
£600-800



344. A Georgian mahogany wash stand, the double hinged lid enclosing a fitted interior above a dummy drawer, cupboard and single drawer, raised on square taper supports, 49cm wide
£80-140

345. A Carolean style walnut frame open armchair, the back arms and seat upholstered in tapestry type material on scrolling supports joined by an elaborately carved front stretcher with a block and turned stretcher beneath
£200-300

346. An XVIII century plain oak open hanging corner cupboard, the three internal shelves enclosed by a pair of doors with "H" hinges, 101cm high
£150-250

347. An XVIII century hanging oak corner cupboard, the moulded cornice above a pair of fielded panel doors enclosing three internal shelves, 109cm high
£300-500



348. A XIX century circular two tier etagere with gilt brass gallery, floral marquetry to each tier on plain turned supports with bold cast gilt metal leaf moulded feet, 28cm diameter, 56cm high
£330-430

349. A principally XVIII century plain oak side table with a three plank top, raised on turned supports joined by plain stretchers, 145cm x 50.5cm
£200-300

350. A Victorian conversation settee or lovers seat upholstered in buttoned pink dralon on a rosewood frame with carved cabriole supports and original brass and pot castors
£350-500



351. A gilt wood Louis XVI style salon suite comprising settee and four matching open armchairs, upholstered in crimson cut floral pattern material, the elaborate gilt frames carved in relief
£500-1000

352. A George III mahogany writing table fitted with a narrow centre drawer, two short drawers and one deep simulated as two either side, raised on square taper supports, 91.5cm wide, 55.5cm high
£400-600

353. An early XIX century mahogany fold over tea table, the frieze boxwood strung and raised on ring turned tapering supports, 91cm wide
£100-150

354. A XIX century circular mahogany boxwood strung and marquetry banded display table, the upper tier on four out-turned supports, the circular display cabinet enclosed by three bow fronted glass panels, raised on square taper shaped legs, 55.5cm diameter, 111cm high
£700-1200

355. A small Regency period mahogany work table, the cross banded top with two drop flaps and fitted with two drawers above a silk bag, on lyre supports, the out curved legs terminating in scroll feet, joined by turned stretchers, 75cm x 39cm extended
£600-750



356. An unusual XIX century carved oak gothic design side table fitted with two drawers to the frieze, each with recessed panel fronts, raised on turned legs with corinthian capitals, joined by wavy "X" stretchers, the top with a thumb mould, 105cm x 69cm
£500-800

357. A wing armchair upholstered in pink velor on turned front supports with pot castors

358. A particularly good mahogany frame Victorian gentleman's armchair upholstered in floral brocade type material, raised on cabriole front supports with original brass and pot castors, joined by a serpentine front rail
£250-350



359. A XIX century mahogany extending dining table with four spare leaves, raised on turned tapering flat sided legs with original brass castors, 297cm x 134cm extended
£3000-5000



360. A Victorian oak extending dining table with three spare leaves, raised on turned fluted supports, 236cm x 128cm extended
£150-250

361. A magnificent XIX century walnut extending dining table, closing to form a 142cm diameter breakfast table extending with four leaves to a total of 340cm x 144cm on foliate carved scroll supports, remains of old label beneath "Thomas Colquhoun St James London"
£3000-5000

362. A good set of six mid Victorian rosewood dining chairs, the balloon shape backs with horizontal curved and pierced carved stretchers, overstuffed seats raised on cabriole front supports joined by a serpentine rail
£600-900

363. A set of eight Lancashire ash ladderback dining chairs comprising six singles and two almost matching carvers, attributed to the Billinge/Pemberton/Wigan area (see Cotton, The English Regional Chair)
£900-1300



364. An Edwardian mahogany and satinwood inlaid carver chair, the intricate splat centred with an oval and inlaid with wreaths and ribbons

365. A set of four XIX century Thames Valley elm and fruit wood kitchen chairs with horizontal shaped splats, centred by ringed roundels, shaped seats, the turned front supports joined by "H" stretchers
£180-280

366. A XIX century yew wood stickback windsor chair with swept underarms and shaped ash saddle seat, raised on ring turned front supports
£150-220

367. A principally XVIII century oak open armchair, the panelled back carved with a diamond motif, the scroll arms on turned tapering supports repeated on the legs which are joined by plain stretchers, the drop in seat now upholstered in woolwork
£350-600



368. A set of six XIX century rosewood dining chairs with shaped relief carved top rails, horizontal carved splats and drop in seats upholstered in pink velor on turned fluted front supports
£450-650

369. A pair of Georgian mahogany ladderback Hepplewhite design carver chairs, the carved serpentine cresting rails above three shaped and pierced horizontal splats, drop-in seats on square chamfered supports joined by "H" stretchers
£150-250

370. A XIX century mahogany carver chair with reeded frame and dished solid seat on square legs

371. A set of six XIX century Chippendale design dining chairs with pierced carved ribbon splats above overstuffed leather upholstered seats, raised on shaped front supports, carved at the knee and terminating in ball and claw feet
£500-700



372. An Edwardian mahogany corner chair, the bow shaped back with a carved cresting and three vertical pierced splats, raised on style cabriole legs joined by an "X" stretcher

373. A XIX century continental six leg open arm settee, the painted carved frame with floral garland and stylised acanthus raised on fluted tapering turned legs
£200-400



374. A principally XVIII century oval oak gate leg dining table, raised on baluster turned and block supports with plain stretchers and fitted with two drawers to the frieze,
160cm x 153cm extended
£700-1200



375. A Georgian oval mahogany pembroke occasional table, the top boxwood strung, fitted with a single frieze drawer and raised on square supports, 110cm x 96cm extended
£100-150

376. An early XIX century Regency mahogany side table, the panelled frieze with two drawers on scroll front supports carved in relief with acanthus and on paw feet,
214cm wide, 73cm deep
£1500-2500



377. A pair of square Victorian mahogany foot stools with overstuffed woolwork seats, raised on turned legs, approx. 33cm
£130-180

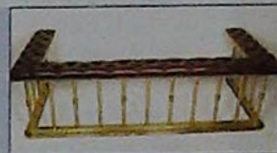
378. A XIX century ebonised and ormolu mounted display cabinet and shelf with two shaped shelves lined with plush against a mirror back, the base a display cupboard enclosed by a pair of plain glazed doors,
63.5cm wide, 76cm high
£250-350

379. A XIX century burr walnut lady's escritoire with a gilded pierced decorative gallery, the serpentine fall enclosing an interior with two concave drawers, one fitted with pen tray etc., raised on pierced carved ends, joined by a spirally fluted stretcher, 58.5cm wide
£1000-1500

380. A square Georgian mahogany wash stand, fitted for a wash bowl with drawer to the undertier, (top loose) 33cm high, 33cm wide



381. A Victorian style brass club fender with a buttoned tan leather upholstered top,
182cm wide, 89cm deep
£700-1200



382. An XVIII century mahogany lowboy fitted with three drawers to the frieze, each with original swan neck brass handles and butterfly escutcheons, raised on cabriole legs terminating in shaped pad feet,
83cm x 50cm
£700-1200

383. An early XIX century mahogany extending dining table with three leaves raised on eight tapering flat sided legs with original brass castors,
270cm x 122cm extended
£1000-1500



LOCATION



The Thos. Mawer & Sons salerooms at Dunston House are situated in central Lincoln on the east end of Portland Street at the foot of Pelham Bridge (Canwick Road). By car, approaching from the south take the last turning on the left just before the road rises to the bridge.

Approaching from the north (via Broadgate), go over Pelham Bridge and turn left towards Jacksons Building Centre/Tesco on to Kesteven Street. Follow the road around to the left and drive under Pelham Bridge to Portland Street. Turn left and you will see Dunston House on the right. Portland Street is also accessible from Lincoln's High Street, opposite the Ritz public house.

The salerooms are within walking distance of the main railway station and bus depot.

CONDITIONS OF SALE

1. In these conditions Thos. Mawer & Son act only as auctioneers and agents and the representative of Thos. Mawer & Son conducting the auction is called 'The Auctioneer'

2. Whilst Thos. Mawer & Son make every effort to ensure the accuracy of their catalogue and the description of any lot:

(i) Each lot set out in the catalogue or as divided or combined with any other lot or lots is sold by the vendor with all faults and imperfections and errors or descriptions

(ii) Thos. Mawer & Son do not accept responsibility for the authenticity, attribution, genuineness, origin, authorship, date, age, period condition or quality of any lot unless they have been instructed in writing by the buyer to so certify.

(iii) All statements whether printed in the catalogue or made orally as to any of the matters set out in (ii) above are statements or opinion only and are not to be taken as being or implying any warranties or representations of fact by Thos. Mawer & Son unless they have been instructed in writing by the buyers to so certify.

3. The Auctioneer has absolute discretion to divide any lot, to combine any two or more lots or to withdraw any lot or lots from sale, to refuse bids, regulate bidding or cancel the sale without in any case giving any reason or without previous notice. He may bid on behalf of the vendor for all goods which are being offered subject to reserve or at the Auctioneer's discretion.

The highest bidder shall be the buyer. The Auctioneer may at his sole discretion determine the advance of bidding or refuse a bid. If during the auction the Auctioneer considers that a dispute has arisen, has absolute discretion to settle it, or to re-offer the lot.

All conditions, notices, descriptions, statements and other matters in the catalogue and elsewhere concerning any lot are subject to any statements modifying or affecting the same made by the Auctioneer from the rostrum prior to any bid being accepted for the lot.

4. The buyer shall pay the hammer price together with a premium of the hammer price - 15% inclusive of VAT

5. Notwithstanding any other terms of these Conditions, if within seven days after the sale Thos. Mawer & Son have received from the buyer of any lot notice in writing that in his view the lot is a deliberate forgery and within twenty-one days after such notification the buyers return the same to Thos. Mawer & Son in the same condition as at the time of the sale and by producing evidence, the burden of proof to be on the buyer, satisfies Thos. Mawer & Son that considered in the light of the entry in the catalogue the lot is a deliberate forgery then the sale of the lot will be rescinded and the purchase price of the same refunded.

The vendor agrees to be bound by Thos. Mawer & Son's decision.

6. Thos. Mawer & Son disclaim any responsibility for default by either the buyer or the vendor because they act as Auctioneers only and therefore do not pay out to the vendor until payment is received from the buyer. Instructions given by telephone are accepted at the sender's risk and must be confirmed in writing forthwith.

7. Every person on Thos. Mawer & Son's premises at any time shall be deemed to be there at his own risk. He shall have no claim against Thos. Mawer & Son in respect of any accident which may occur or injury, damage, loss howsoever caused, save in so far as the injury, damage loss shall be caused by the negligence of Thos. Mawer & Son's employees.

8. Each lot shall be at the purchasers risk from the fall of the hammer and must be paid for in full before the delivery and must be taken away by the purchaser at his own expense within 7 working days following the conclusion of the sale. The Auctioneer shall be entitled to charge storage charges in respect of lots not taken away as aforesaid (minimum charge of £10 plus VAT) and interest on unpaid accounts @ 4% above clearing bank base rate (per day)

9. Cheques which are not honoured by the payee's bank will incur a handling charge of £20 plus VAT for each presentation.

This contract is governed by English Law.

