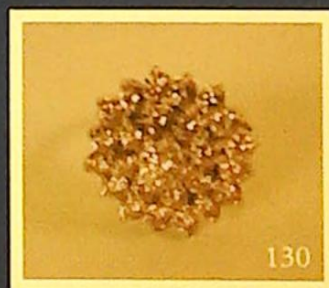




THOS. MAWER & SON LTD.

Auctioneers & Valuers Established in 1864



Autumn Antique Sale

**ANTIQUES, COLLECTABLES
&
CONTENTS OF LOCAL HOMES**

Saturday 29th October 2005 commencing at 10.00am

On View

Friday 28th October 9.30am - 3.30pm & morning of sale from 9.00am

Catalogue £5.00

THOS. MAWER & SON LTD

COMMISSIONS

The Auctioneers are pleased to execute commissions for intending buyers in confidence as cheaply as is allowed by any other bids. All telephone bids must be confirmed in writing or by fax by 4pm the day prior to sale, telephone bids will not be accepted for lots on which the top estimate is under £500.00. We cannot guarantee to execute bids received on the morning of sale.

BUYER'S PREMIUM

There is a 15% premium (inclusive of VAT) payable on the final hammer price of each lot.

REGISTRATION

All prospective purchasers are requested to register and obtain a bidding number prior to the start of the sale.

CATALOGUE DESCRIPTIONS

Care is taken to ensure that any statement as to authorship, attribution, origin, date and provenance is reliable and accurate, but all such statements are statements of opinion and are not to be taken as statement or representations of fact. Thos. Mawer & Son Ltd. reserve the right, in forming their opinion, to consult and rely upon any expert or authority reasonably considered by them to be reliable. While an identification of damage is given in some instances, an absence of

such advice does not imply that a lot is free from defect. Prospective purchasers are strongly advised to inspect any lot on which they intend to bid. All measurements and weights are approximate and should be verified by intending purchasers

ESTIMATES

Estimates for lots under £100.00 are not printed in the catalogue. On lots that are reserved, the reserve will not be greater than the published estimate at the time the catalogue goes to press.

PAYMENT OF ACCOUNTS

All Lots should be paid for and collected immediately following the sale. Any lots not collected by 4.00pm on the Wednesday following sale day will incur storage charges (minimum £25.00 plus VAT per lot).

Payment for all lots must be made on the day of sale and methods are:

(1) CASH, (2) CHEQUES supported by either a letter of Reference from your bank or a cheque guarantee card to cover the sum of your purchase, (3) BANKERS DRAFT, (4) DIRECT DEBIT CARDS such as "Switch", "Delta", "Classic", "Connect", (5) CREDIT CARDS subject to a 2% premium charge.

No lots in this sale are the property of Thos. Mawer & Son.

CONTENTS

The complete catalogue for this sale can be downloaded from our website. On the homepage, go to the box headed "General or Special Sales" then "click here for text only printable version."

CERAMICS

Lot 1 – 29

CLARICE CLIFF

Lot 30 – 39

MOORCROFT

Lot 40 – 45

GLASS

Lot 48 – 53

MISCELLANY, COLLECTABLES & METALWARE

Lot 55 – 80

SILVER & PLATE

Lot 90 – 127

JEWELLERY

Lot 130 – 135

CLOCKS & BAROMETERS

Lot 139 – 162

PICTURES

Lot 164 – 187

FURNITURE

Lot 200 - 277

If you are travelling to the saleroom to bid for a specific lot, please telephone us during the morning to ascertain the sale progress.

CERAMICS

1. A Staffordshire flatback castle with applied boge, centred with a clock, the gilt handles reading 3pm on an oval gilt lined base 27cm high
2. Two Staffordshire cottages with applied coloured boge on gilt lined bases and a pair of violet coloured castles (4)
3. An early XIX century model of a standing ram by a tree stump coloured in brown and green, in the style of Ralph Salt 12cm high
4. A pair of Staffordshire King Charles spaniels, the moulded bodies with black decoration and a King Charles spaniel with puppy on an oval blue base (3) 25cm and 21cm
5. A XIX century glazed stoneware Brampton model of a seated King Charles spaniel on a lozenge shaped base approx. 6.5cm high
6. An early XIX century pearlware figure of "Diana the Huntress", holding bow in right hand, drawing arrow with left, painted in colours approx. 31cm high £100-150
7. A XIX century "frog" tankard, the exterior with coloured raised decoration of figures in a tavern 12cm high 11.5cm diameter
8. A rare XIX century Sunderland lustre tavern mug decorated with an oval vignette of a three masted sailing ship and legend "landlords caution" 12cm high, 12.2cm diameter £100-150
9. An early XIX century lustre decorated bowl with an oval vignette "East view of the cast iron bridge river Weir & etc." posing a legend "the loss of gold is much" 18cm diameter
10. An XVIII century Dr Wall period baluster jug with a mask spout, underglaze blue crescent mark beneath (body cracked) 14cm high £80-120
11. Chamberlains Worcester. A well coloured figure of a milk maid, yoke on her shoulder with two pails, carrying a pail in her other hand 18cm high £100-200
12. Royal Worcester shape 2491. A miniature vase painted with ripening fruit by H Ayrton 12cm
13. A late XIX century vase in the manner of Coalport having two "S" scroll handles, the front beneath hand painted scene of a bridge, mountains and castle, the reverse a basket of flowers, painted No. 8282 approx. 25cm high £80-120

14. Royal Crown Derby pattern 2451. A set of six coffee cans and saucers with two porcelain handle spoons £100-200



15. Doulton stoneware. A pair of jardinieres decorated with tube lined green garlands on a blue ground, impressed marks DG and mark for 1922-1956, 20cm diameter, 20cm high £80-120
16. A pink lustre decorated XIX century part tea service:- teapot, sugar basin, slop basin and milk jug, nine cups, twelve saucers, two bread & butter plates
17. A late XIX century dessert service comprising large comport raised on trumpet shaped base, five others and six plates, each decorated with blue and gilt highlights on a yellow ground with four panels of flowers
18. Doulton. A large Gloire-De Dijon blue and white transfer printed vase (stapled repair) 59cm high
19. A XIX century blue and white meat plate with gravy well, the transfer printed decoration dominated by large flowers and butterflies, surrounded by a gadrooned moulded edge, printed mark verso "oriental opaque china" amongst cartouche of scrolls and flowers
20. Blue and white transfer print:- A "Syria" pattern plate, 26.5cm and two oval "Italian lakes" meat plates 38.5cm x 33cm (3)
21. A XIX century Staffordshire blue and white transfer print Surseya Ghaut pattern dish by Thomas & Benjamin Godwin 25cm diameter
22. A Maiolica style squat vase decorated with flowers in blues, oranges and yellow 13cm high
23. Crown Ducal shape 4088. A circular vase in shades of brown with tube line stitching, 17cm high

24. Martin ware. A small circular baluster vase painted with exotic sea creatures, incised beneath "Martin Bros London" 5cm high £280-380



26. XIX century blue and white plate by Rowley, Wilson Street Glasgow decorated with acorn leaf border with shepherd and flock in foreground, house in middle ground and priory in background, 25cm diameter; and two other XIX century blue and white plates, the first showing a farmer with cattle, the second a river, houses and bridge £80-120

27. A Staffordshire pottery Vicar & Moses group depicting model of a sleeping parson above sermon reader below, the pulpit decorated with black splash on brown ground 24cm high £250-350



28. Adams. A blue jasperware Falmouth sugar sifter with pierced hallmarked Birmingham silver top, the main body decorated with swags, impressed marks Adams, established 1657 Tunstall England 16cm high

29. Minton. An unusual XIX century charger with blue tit, bee and flowers by C.H. Spiers decorated in colours, paper label verso Howell & James Art Pottery Exhibition 1877, impressed marks Minton and N 34cm diameter £200-400



CLARICE CLIFF

30. Clarice Cliff. "Liberty" - a stepped 'Bizarre' planter decorated in black, green, yellow, orange and brown stripes, painted mark beneath, impressed No. 416 9cm high £100-200
31. Clarice Cliff. "Pansies", a 'Bizarre' stepped planter decorated in greens, pinks, blues etc. on cream ground, painted marks beneath 9cm high £100-200
32. Clarice Cliff. "My Garden" - a 'Bizarre' pattern vase No. 666, printed factory mark beneath 10cm high

33. Clarice Cliff. A Bizarre "Biarritz" plate painted in colours, printed factory mark BO and a Clarice Cliff milk jug decorated with red and gilt circular design on double pillar base, printed marks beneath Clarice Cliff Newport Pottery England, 19cm high

34. Clarice Cliff. A cylindrical "Broth" pattern vase (body crack) 20cm £400-600



35. Clarice Cliff. A Bizarre "Crocus" pattern posy holder, printed marks underneath Clarice Cliff Newport Pottery England, impressed number 225 8.5cm high £70-130

36. Clarice Cliff. A 'Bizarre' "Crocus" pattern side plate, printed marks verso 19cm diameter

37. Clarice Cliff. A 'Bizarre' "Crocus" pattern sandwich plate with yellow rim, printed marks verso, 20cm diameter

38. Clarice Cliff. A 'Bizarre' "Crocus" pattern trio comprising cup, saucer and side plate, printed marks verso, plate 18cm diameter £80-130



39. Clarice Cliff. An unusual 'Bizarre' "Crocus" pattern springtime oval meat plate 37cm diameter £80-130



MOORCROFT

40. Moorcroft. "Pomegranate" pattern - an ovoid vase with a vertical rim, painted in shades of pink, purple, ochre and green on a blue ground, painted blue signature, impressed marks 'Moorcroft made in England' 14cm high
41. Moorcroft. "Hibiscus" ginger jar and cover in shades of yellow, purple, green on blue ground, green WM mark below 16cm wide lid; "Hibiscus" pattern small kidney shaped ashtray in pink and green on blue ground together with Guide to Moorcroft Pottery 1897-1990 by Paul Atterbury
42. Moorcroft. "Hibiscus" pattern shallow dish in shades of pink, green, blue and brown on blue ground with impressed green mark Moorcroft made in England, WM mark 4 1986 onwards 23cm diameter
43. Moorcroft. "Anemone" new design lamp base, ovoid with squat neck, painted in shades of pink, purple and green on a blue ground and wooden base 22cm high

44. Moorcroft. A leaf and berry pattern bowl in shades of purple, green and pink on a green ground, painted blue signature, impressed marks made in England, W Moorcroft, scrolled signature above potter to HM the Queen 23cm diameter £100-150



45. Moorcroft. A frilled and slipper orchids pattern bowl on green ground, impressed marks Moorcroft and made in England, signature 1949-1986 28cm diameter £250-350



GLASS

48. A XIX century cushion shaped glass decanter with etched leaf decoration to the main body 31cm high; and a Victorian blue glass vase, 10cm high
50. Three XIX century Prussian graduated shaped decanters, each with mushroom stoppers, the largest 27cm high
51. A XIX century cranberry glass ovoid shaped jug with silver plated hinged lid, collar and scroll handle, 26cm high
52. A XIX century two handled sugar bowl, the pewter outer framed decorated with satyr masks with cranberry glass liner, 12cm diameter
53. A magnificent display of dried flowers and grasses arranged in a milk glass vase and contained under a large glass dome approx. 82cm high £200-400



MISCELLANY, COLLECTABLES & METALWARE

55. A pair of XIX century brass candlesticks, the triple baluster column raised on graduated circular foot each 55cm high £70-130
56. An early XX century circular ivory box decorated with raised tiger to the lid 7cm diameter
57. A Victorian ebonised pole screen, the egg and cup finial above embroidered floral circular panel, raised on turned baluster column on tricorn base with scroll feet 149cm high £70-130
58. An Art Deco half length bust of a naked girl wearing a jeweled crown with flowing locks, on a matching circular plinth, 75cm high (cataloguer's estimate 34D!) £200-300

59. A pair of green onyx gilt brass mounted pedestal table lamps and reservoirs of Corinthian column form, (bases only) 61cm high
£100-200
60. A large circular oriental bronze jardiniere decorated in relief with blossom and bamboo standing on four feet, circular seal mark beneath
35cm diameter, 25cm high

61. A life size cast metal (brass?) model of a wild boar, 106cm approx. overall
£700-1000



62. A bronze figure of a naked girl seated on a boulder, marble plinth approx. 18cm high
63. An oriental bronze figure seated on a bough holding a box 9cm high

64. A well modelled Japanese bronze Indian elephant with ivory tusks, seal mark beneath, on a hardwood stand 28cm high, approx. 38cm long
£300-500



65. A relief cast metal plaque of the Duke of Wellington, 42cm high, 32cm diameter
66. An elaborate cast brass and mesh fire screen decorated with flowers, fruit and ribbons
76cm wide
67. An alligator skin suitcase by S Goff & Co, Covent Garden, brass locks
54cm x 35cm x 19cm
68. A circular Victorian walnut beadwork upholstered foot stool
69. A Georgian mahogany sarcophagus shaped tea caddy, the interior fitted with two removable foil lined tea compartments and a central mixing bowl compartment with mother of pearl shield shaped escutcheon, carrying knobs, squat bun feet 24cm high, 33cm wide
£100-200

- 69A. A XIX century rosewood tea caddy, the interior divided into three compartments and standing on turned feet 36.5cm wide, approx. 18cm high
£80-120
- 69B. A XIX century mahogany tea caddy, the interior fitted with two tea compartments with hinged lids 37cm wide, approx. 20cm high
£80-120
- 69C. A fine Regency mahogany brass inlaid tea caddy, the stepped top enclosing a fitted interior with two tea compartments and a central aperture for a mixing bowl, raised on turned feet 19cm high, 31.5cm wide
£150-250
70. A good quality Victorian rosewood tea caddy of cushion form with extensive foliate mother of pearl inlay, repeated on the interior of the lid and the lids of the two tea compartments, standing on turned feet
37cm wide, approx. 23cm high
£180-280
71. A XIX century stationery box, the domed lid with central gilt metal lozenge motif and ivorine panels with similar escutcheons, the interior with two horizontal compartments, 14cm high, 12cm wide
72. A burr walnut sewing box, the domed lid applied with metal cruciform motif and ivorine panels, with similar escutcheon, velvet upholstered interior (a/f), 10cm high, 14cm wide
73. A XIX century book slide, each end applied with gilt metal cruciform motif flanked by ivorine panels and a similarly decorated book cover, the slide 35cm long when closed
- 73A. An unusual perfume casket in the form of a cabin trunk with metal mounts, the interior fitted with two coloured glass perfume bottles with gilt tops
8.5cm
£80-120
74. A cast brass oval dressing table mirror of neo-classical design
75. An oval XVIII century style gilt frame wall mirror surmounted by a ribbon bouquet
84cm overall
£80-130
76. A large Victorian peer glass in a trellis and flower head decorated plaster gilt frame
250cm high, 151cm wide
£300-550
- 76A. A Georgian carved and gilded wall mirror of Chippendale design, the rectangular bevelled plate surmounted by scrolled carved pedimented top and opposing "C" scroll to the base 103cm high, 53cm wide
£350-550

77. A pair of circular relief plaques in painted plaster, children with birds nest and children with dog and puppy
74cm diameter
£100-200
78. A pair of brightly coloured ceramic masked harlequins on plinths, male and female, she with a cockeral at her feet, the figures 110cm and 103cm, the plinths 39cm
£1400-1800
79. An oval portrait miniature on porcelain of a lady in black Victorian mourning dress with white lace collar
80. A gilded framed portrait of a shepherdess with her sheep, cottage in the background titled "Amanda"
25cm x 16cm

SILVER & PLATE

90. WMF (Wurttembergische Metallwaren-Fabrik). XIX century crumb tray with wavy edge and double whiplash handle decorated with applied stylised lotus flowers and standing on four ball feet 24cm long, 7cm high
£80-120

91. WMF. An early XX century highly decorative pierced trumpet shaped flower basket with repousse decorated handle, beadwork rim and the main body decorated in garlands, rosettes and urns
approx. 36cm high



92. WMF. A two handled hammered fruit bowl with liner raised on three ball feet and beaded circular base
26cm diameter, 17cm high
93. A late XIX century tapered claret jug, the lid with lion finial above satyr style lip and dutch scroll handle, the main body with etched floral decoration 30cm high
100. James Dixon & Sons. A two handled rowing trophy entitled "Christ College Trial Eights dated 1897"
approx. 18cm high
101. London 1875
Hallmarked silver presentation chalice decorated with repousse floral swags and given to "Henry Bower from his Aunt E Dow August 14th 1874" 23cm high, approx. 9 troy ozs

102. Birmingham. A large hallmarked silver presentation inkwell with inner glass liner, dedicated to "The Rev. N W Bower MA by the members of the Heversham Social Club Easter 1910" approx. 10cm high, 22cm wide, approx. 41 troy ozs

103. Sheffield 1953
A hallmarked silver tea service by Walker & Hall comprising teapot, hot water jug, cream jug and two handled sugar bowl, each sparsely decorated with gadrooned upper rim and foot, water jug approx. 24cm high
approx. 59 troy ozs total

104. London 1826. A hallmarked silver squat teapot by William Sutton having applied rose and leaf knop, embossed lid and spout and scroll handle with applied leaf decoration
approx. 21cm diameter, 15cm high,
approx. 21 troy ozs £150-250

105. Birmingham 1929
A hallmarked silver three footed sauce boat
7cm high, 11cm wide, approx. 6 troy ozs

106. Sheffield 1915 - A hallmarked silver cream jug by Walker & Hall and Birmingham 1908 - a hallmarked silver cream jug with gadrooned decoration (2)

107. Chester hallmarked three footed sauce boat
10cm high and another Birmingham 1929
approx. 7cm high, approx. 8 troy ozs total

108. Birmingham 1927
A hallmarked silver photograph frame plainly decorated 34cm high, 26cm wide,
approx. 31 troy ozs

109. Birmingham 1912. A hallmarked silver photograph frame, 17cm high, 13cm wide;
Chester hallmarked ditto 14cm high, 9cm wide

110. London 1950
A pair of hallmarked silver concave back engine turned clothes brushes
approx. 8 troy ozs

111. Birmingham 1925
Hallmarked silver presentation cigarette box presented to "The Rev. N D Bower MA, the Colonial Chaplin of Malacca 1921-1927" 7cm high, 22cm long,
approx. 25 troy ozs



112. Birmingham hallmarked silver handled cup inscribed "Nicholas John 1939 from Uncle Eric"; a small Birmingham hallmarked tennis trophy; a hallmarked silver cigarette box; Sheffield hallmarked cased coffee bean spoons; five Birmingham hallmarked teaspoons (cased) and a cased set of six spoons
113. Walker & Hall Sheffield. A boxed hallmarked silver mustard pot and spoon in gadroon decoration with turned finial; boxed presentation egg cup and two spoons and a boxed christening set comprising egg cup, napkin ring and spoon
114. Hallmarked silver flatware comprising a Georgian dessert spoon and another, London hallmarked Georgian fork etc. (12 items)
115. Birmingham 1935. An engine turned cigarette box; Birmingham hallmarked card case; Chester hallmarked ditto with engine turned design approx. 7 troy ozs total
116. Sheffield hallmarked three footed sauce boat approx. 9.5cm high and another, two hallmarked silver napkin rings decorated with beaded banding
117. Birmingham hallmarked silver cigarette box and three hallmarked silver toast racks
118. Chester 1898
A hallmarked silver ink stand, the tray with pierced rim and original glass bottle with hallmarked silver top
119. Birmingham 1830
A hallmarked silver engine turned snuff box by Edward Smith
£80-120
120. Birmingham hallmarked silver. A cased set of eleven Kings pattern coffee spoons and a pair of non matching sugar tongs
121. A quantity of hallmarked silver table ware comprising mustard pot with spoon, pepper pot, two salts, napkin ring, liners etc.
122. A collection of hallmarked silver comprising dressing table bottle, pierced bon bon basket, two Georgian silver salt spoons, two commemorative spoons, Edwardian green glass scent bottle, Victorian cut glass globular scent bottle with hallmarked silver top, cased flat ware etc.
123. A pair of Victorian cast silver table candlesticks on spirally fluted column with weighted stepped base and detachable nozzles (1 damaged), 15cm; also a part fluted small Sheffield cream jug, Birmingham baluster pepperette and lidded mustard (4)
124. Sheffield 1973
A hallmarked silver meat skewer style letter opener 21cm long

125. Georgian hallmarked sugar nips; Victorian hallmarked silver ditto and another (3)
126. Aberdeen silver. A rare set of six mid XVIII century table spoons by James Wildgoose, 1763-1770

127. A cased eleven piece silver backed dressing table set
£200-400



JEWELLERY

130. A basket set 25 stone diamond cluster ring stamped .750
£400-600



131. A Victorian pendant in the form of a cross set with fourteen amber and amethyst coloured stones with closed gold metal back
55cm x 45cm
£100-150
132. A tier drop shape dress ring set centred with a facet cut emerald coloured stone surmounted by five small diamonds and close set with five further stones to the point, yellow metal mount
£500-600

133. An oval open pendant hung with a green stone and mounted with chip diamonds and 21 graduated green stones to the perimeter
approx. 40mm
£500-600



134. A seal fob "Mary" in decorative yellow metal setting

135. A small brass and copper cask elaborately decorated with hunting scenes in relief, village dance, figures on horseback etc.; a carved hardwood watch case and two Continental silver fob watches



CLOCKS & BAROMETERS

139. A XIX century rosewood banjo barometer and thermometer in a shaped rosewood case 92cm overall
140. An unusual Dutch mercury column walnut cased barometer and thermometer, surmounted by a shell and nautilus design with fretted and engraved steel dial and back plate to the thermometer 120cm high £400-600
141. A XIX century mahogany stick barometer and thermometer with ivorine dial 91cm £150-250
142. A XIX century rosewood and penwork five dial onion top banjo barometer 95cm high £150-250
143. A gilt metal mantel clock with roman numeric enamelled dial, surmounted by bocage beside a boy astride barrel, raised on rococo style shell and scroll base 30cm high £80-150
144. A XIX century gilt metal mantel clock of neo-classical design, the circular pierced engraved dial contained in a stepped case surmounted by a seated maiden and her dog, raised on bold lion paw feet 54cm high £400-650



- 144A. A magnificent XIX century bouille bracket clock, the striking movement stamped "CHles MT(?) No. 8452, the engraved gilt dial with individual enamel roman numerals, the case surmounted by a winged cherub with a bearded angel to the base, raised on bold mask and paw feet 93cm high £3000-5000
145. An Edwardian mahogany cased mantel clock inlaid with marquetry ribbon bouquets and checker strung, with brass handles, finial and feet, the circular white dial signed "Mappin & Webb" (recently overhauled, see label in case) 21cm high £200-300
146. An Edwardian mahogany cased mantel clock with white enamel dial and striking movement 35cm high
147. A XIX century oak cased bracket clock with a circular steel dial, the domed top relief carved and inlaid with brass, trellis brass sound panels to each side, the movement striking on two gongs 43cm high, 31cm wide £200-300
148. A Continental bronzed metal and green alabaster clock garniture, the clock with eight day striking movement, the stepped case surmounted by a maiden against a tree bough, titled "L'Accident Par Francois Moreau" flanked by matching figures 46cm high £300-500
149. A XIX century walnut cased double weight Vienna wall clock with circular brass and enamel decorated dial, the case surmounted by an elaborate stepped top with turned finials and with split turnings approx. 130cm overall £350-550
150. A XIX century drop dial wall clock, the rosewood case profusely inlaid with flowers, birds and animals in mother of pearl, the white painted dial signed "Thos. Darlington Silverdale" 70cm high £250-350
151. A XIX century drop dial wall clock contained in a walnut inlaid case with revealed pendulum £70-130
152. A XIX century drop dial wall clock contained in a rosewood and mother of pearl inlaid case with applied carved wings, the white dial signed "Bellatti Lincoln", revealed pendulum 86cm £180-280
153. A XIX century wall clock with 13" diameter white painted dial, contained in a moulded mahogany case with fusee movement, overall diameter approx. 50cm £200-300
154. A XIX century wall clock, the circular 12" white dial in a mahogany case enclosed by a brass bezel with domed glass, fusee movement £250-350
155. A XIX century Vienna wall clock, the spring driven movement with painted Roman numerals and inner Arabic numerals to the white dial, the case decorated with split turnings approx. 80cm
156. A XIX century Vienna wall clock, the spring driven movement with white enamel dial, painted with Arabic and Roman numerals, the case decorated with ebonised split turnings, surmounted by a scroll carved pediment approx. 75cm
157. A XIX century mahogany longcase clock, the painted 14" dial signed "J Broadhead Sowerby Bridge", the eight day movement in a broken swan neck pedimented case, the wide trunk with a shaped short figured mahogany door height overall approx. 240cm £1000-1500

158. A XIX century Lincolnshire oak and mahogany longcase clock, the arched dial painted with rural scenes and signed "Robert Horncastle", contained in a broken swan neck pedimented hood, the case enclosed by a short cross-banded door centred with a diamond inlay; eight day striking movement
210cm high £800-1200

159. An early XIX century mahogany longcase clock, the arched painted dial with floral spandrels, an oval vignette of a female gathering flowers and signed Gibson Berwick, subsidiary date and seconds rings, contained in a broken swan neck pedimented hood, the case enclosed by a long figured mahogany door; eight day striking movement 210cm high £900-1350

160. An important mahogany longcase clock, the painted moon roller movement with sweep date hand (missing) and subsidiary seconds ring, contained in a mahogany neo-classical case with broken architectural pediment to the hood, flanked by fluted columns, the base enclosed by a long door with blind fret canted corner 260cm high £2000-3000



161. An XVIII century walnut longcase clock, the arched brass dial with a circular silvered disc to the arch signed "Robert Potts Patrington", eight day striking movement with date aperture and subsidiary seconds ring, contained in a pagoda type hood, ebony and boxwood strung, the base enclosed by a long arched door 229cm high £1500-2500

162. A superb XIX century north country longcase clock, the painted dial with moon roller movement, subsidiary seconds and date rings, signed "H Stuart Liverpool", contained in an elaborate broken swan neck pedimented hood with painted floral panels beneath the serpentine horns, the broad case in flamed mahogany, the shaped door flanked by fluted columns, raised on turned feet 245cm high £2000-3000



PICTURES

164. XIX century Continental School An oil on panel - river landscape with village, fishing vessel and figures 19cm x 28cm £200-300

165. Oriental school
A pair of watercolour portraits of an oriental man and woman - one smoking an opium pipe, the other holding a tea bowl, one signed Ryuko(?) 49cm x 33cm £80-130

166. Cameron, Angus s.
A large oil on canvas - highland cattle grazing by a loch with mountains in the background, daytime, the frame 84cm x 110cm £300-500

167. Cameron, Angus s.
A large oil on canvas showing highland cattle grazing by a loch with mountains in the background, summers evening, the frame 84cm x 110cm £300-500

168. XIX century English School
Oil on canvas - school playground with many figures, the master chastising a boy 70cm x 90cm £1200-1600



169. Naumann, H 1920 s.
Oil on canvas - pond beside a thatched and timbered cottage with punt and water fowl, magnificent plaster gilt frame 69cm x 98cm £300-500

170. Fraser, F.G
A watercolour drawing - river landscape with village and steeple in the middle distance 24cm x 54cm

171. Clarkson Stanfield
A gauche highlighted with white, gallery label verso "The Reynolds Gallery Plymouth view in Germany of a village etc. from an album of a trip up the Rhine 1841" 17cm x 26cm £150-250

172. Findley, A.H. s.
Watercolour drawing - the south side of Lincoln Cathedral, mounted and framed 30cm x 22cm

173. Findley, A.H.

Two watercolour drawings - The Jews House
The Strait and Lincoln Cathedral (unframed)
33cm x 25cm and 25cm x 33cm
£80-130

174. XIX century English School

Oil on canvas - coastal landscape, believed
Rottingdean(?) with many figures, shepherd,
sheep and buildings, windmill in the
background
45cm x 59cm £100-200

175. McKenzie, D. s.

Pair of oil on canvases - Scottish loch scenes
with fishermen and other figures
29cm x 59.5cm
£75-150

176. Bertoni, L. s.

Oil on canvas -
Venetian scene
with gondoliers
in the
foreground
39cm x 57cm
£400-600



177. XVIII century Continental school

Oil on panel - interior scene, an alchemist (?)
and other figures
42cm x 52cm
£100-250

178. XVIII century Continental School

Oil on panel - interior scene with a robed man
seated and another figure by his side
(distressed)
42cm x 52cm
£150-250

179. Hortori, E. s.

Oil on canvas - country landscape with rider on
a lane beside a stream
29 x 39.5cm
£70-150

180. Denton, Troy

A large oil on canvas North American Indians
with animal skull and wall paintings in the
background in highly decorative gilt wood
frame
100cm x 75cm
£150-300

181. Hewitt, E. 182?

Oil on canvas -
rural landscape
with children
49cm x 60cm
£200-300



182. Ellis, A.B. signed watercolour - Victorian

Lincoln from Brayford East showing tall ships
docking, houses, horse and cart in the middle
ground and the cathedral in the background on
a calm day
35cm x 54cm

183. Paul, A.L. s.

Watercolour drawing - a watermill with figures
and a rider in the foreground
26cm x 37.5cm
£150-250

184. Burning Y Rumps at Temple Bar. A XIX
century lithograph and another Hudibras
encounters the Skimmington - each in
decorative Hogarth style frames
26.5cm x 51cm

185. A good pictorial and motto sampler by Mary
Alcock dated 1817 having a central pagoda
flanked by flowers in wooden frame
35cm square
£100-150

186. A mid XIX century pictorial numeric and
alphabetic sampler by Maria Brewer aged 12
years and dated February 1840 in a
rectangular Hogarth style frame 23cm x 45cm



187. An alphabetic, numeric and pictorial sampler
by Magdalena Bergmaister, dated 1895
78cm x 23cm
£150-250

FURNITURE

200. A fine XVIII century oak barrel back corner cabinet, the upper section enclosed by a pair of arched panel doors with "H" brass hinges, the base with two rectangular doors, the interior having two shaped shelves fitted to the curved back 183cm high, 99cm wide
£1200-1800



201. An early XIX century elm chest of two short and three long drawers, raised on bracket feet 95cm wide

202. An XVIII century oak bureau, the fall front enclosing a fitted interior above three long graduated drawers on bracket feet 99cm wide
£100-200

203. A handsome early XIX century figured mahogany press cupboard, the upper section enclosed by a pair of fielded cross-banded flame mahogany panel doors, standing on a chest of two short and three long cock-beaded drawers on turned feet 137cm wide, 216cm high
£300-600

204. *A XIX century three part mahogany partners desk fitted with three frieze drawer to either side and three drawers to each side of the pedestals, raised on a plain plinth 182cm x 119cm
£1200-1800

205. A late Victorian mahogany frame side chair with turned spindles beneath the arms, raised on turned and fluted front supports, upholstered in green cut pattern velor

206. A late Victorian walnut frame scratch carved button back lady's chair upholstered in petrol dralon
£70-140

207. A Victorian mahogany barley twist pedestal with a circular dish top and octagonal base with four carved feet 115cm high

208. A Victorian ebonised gilt decorated and walnut cross banded lady's desk, the upper section with

a cupboard containing a series of pigeon holes and stationery compartments, the sloping fall concealing two further drawers and fitted with cupboards to each side - distressed
£100-200

209. A substantial XIX century figured mahogany chest of five long drawers with turned wooden handles, standing on splay bracket feet 125cm wide
£100-200

210. A late XVII/early XVIII century panelled oak three drawer chest on stand with geometrically moulded drawer fronts, raised on short legs 98cm wide
£200-300

211. An XVIII century oak bureau, the fall front enclosing a forward fitted interior with a series of pigeon holes and drawers, either side of a central cupboard with two secret drawers, the base with four graduated long drawers raised on bracket feet 91cm wide
£200-400

212. A Victorian walnut ebonised and ormolu mounted bijouterie display cabinet enclosed by a plain glazed door 79cm wide £150-250

213. An Edwardian mahogany fold over games table, raised on square taper boxwood strung supports 69cm wide

214. An XVIII century oak chest resembling a coffer, the front enclosed by a pair of carved and panelled doors, the interior fitted with three long drawers, raised on square stiles 89cm wide, 47cm deep, 62cm high
£400-600



215. An XVIII century oak coffer enclosed by a hinged three panel lid above a relief carved three panel front with iron lock plate, raised on high stiles 110cm wide
£280-400

216. An XVIII century oak coffer with a hinged planked top, three panel front and carved top rail 127cm wide £200-300

217. A XIX century mahogany chest of two short and three long drawers, the top cross banded in rosewood, the drawers ebony and boxwood strung and with diamond shaped ivory escutcheons on bracket feet (distressed) 107cm wide, 53cm deep £80-150
218. A Victorian mahogany serpentine fronted box commode
219. A XIX century broad arm ash and elm Windsor chair with pierced splat, raised on turned front supports joined by an "H" stretcher £120-180
220. A XVII century oak coffer enclosed by a three panelled hinged lid, the panelled front with lunette carved top rail 113cm high £200-300

221. * A XIX century mahogany partners desk fitted each side with three frieze drawers and with three drawers to each pedestal with opposing cupboards, on a plain plinth, the top 149cm x 152cm £500-750



222. A XIX century Nottinghamshire high back yew windsor chair with pierced vase splats, elm saddle seat, raised on turned front supports joined by a crinoline stretcher £300-450
223. A Victorian side cabinet with an associated glazed bookcase top, the base fitted with two drawers and two cupboards and internally with shelves and twelve specimen drawers, 93cm wide
224. A pair of Edwardian Sheraton Revival style shield back side chairs, the vase splats boxwood inlaid, raised on square taper supports
225. A Victorian ebonised and gilded fortune tellers table, raised on spirally fluted triple columns joined by a central orb with swept feet 59cm diameter

226. A XIX century carved and gilded French side chair with an oval back surmounted by a ribbon bouquet, swept arms, turned fluted front supports £200-300



227. A set of six painted carved and plaster gilt frame Continental salon chairs, raised on cabriole front supports £300-500



228. A Victorian oak frame button back lady's chair on turned front supports; an Edwardian high back caned armchair and a Victorian cabriole leg dining chair
229. A set of four Georgian mahogany dining chairs (3 singles and 1 carver) with shaped pierced and carved splats, reeded frames with overstuffed seats raised on square taper front supports terminating in spade feet (a/f) £150-250
230. A XIX century mahogany press cupboard, the moulded cornice above two panelled doors, the interior fitted with four linen slides above two short and two long graduated cock-beaded drawers on bracket feet 220cm high, 56cm deep, 112cm wide £150-250
231. A XIX century rectangular mahogany tripod table raised on a carved turned column with swept tripod legs terminating in scroll feet, the top 73cm x 61cm £100-150
232. A high quality Edwardian figured mahogany triple wardrobe centred with a mirror, flanked by two panel doors and internally fitted 176cm wide £80-130

233. A Georgian mahogany bow front hanging corner cupboard enclosed by a pair of doors with "H" brass hinges, the interior with three shelves and three small drawers 111cm high £300-500



234. An XVIII century plaster gilt table frame, the frieze with pierced scrolls and shells, raised on shaped legs terminating in pad feet (probably originally with a marble top) 71cm wide £150-250

235. A XVII century profusely carved oak coffer enclosed by a plain plank top, the front with arcaded relief carved panels, inlaid with holly, raised on high stiles and with panelled sides 124cm wide
£350-550



236. A XIX century rectangular mahogany spider leg top table on a ring turned column, the top 75cm x 55cm
£80-130

237. A Victorian walnut sewing table with a hinged lid, marquetry inlaid with an alpine scene of a goat herd and buildings, the interior fitted with compartments and cotton bobbins, the frieze with one dummy and one drawer with a side opening bag for silks, raised on cabriole shaped legs, the top 60cm x 40cm
£300-500



238. A Georgian mahogany tray top wine table on a baluster turned column with triple cabriole supports
41cm diameter
£150-220

239. A late Victorian mahogany fold over games table, the interior lined with green baize and with a tool gilded corner, fitted with two panel frieze drawers raised on cabriole supports, joined by an undertier

240. A decorative painted serpentine front three drawer commode with shaped sides and raised on swept feet
90cm wide
£200-300

241. A Georgian circular mahogany tripod table, raised on a vase turned column with triple cabriole supports carved in relief at the knee
£100-200

242. A green painted carved bergere panel 5ft bed
£100-200

243. An attractive Edwardian mahogany and penwork clover leaf shaped bijouterie display table, raised on shaped legs joined by curved stretchers, the top approx. 50cm
£300-500

244. A small Victorian walnut Sutherland type occasional table

245. An antique circular mahogany tripod wine table
49cm diameter

246. An Edwardian mahogany circular "patent" games table, the top revolving to extend the four counter wells, standing on taper supports with pad feet
68cm diameter

247. A late XIX century mahogany envelope games table, the folding top with counter wells and lined in green baize, fitted with a single drawer, raised on cabriole supports joined by an undertier 55cm square

248. A superb quality satinwood serpentine front three part kneehole desk, the top in three panels, each centred with quartered ovals with a cross banded border, drawers cross-banded and standing on splay bracket feet, the carcass constructed of oak
137cm wide, 89cm deep (max.)
£2500-3500



249. A Victorian mahogany oblong side table, the raised back centred with a shield in relief, standing on turned tapering supports
122cm wide
£100-150

250. A Victorian walnut inlaid and crossbanded davenport desk with a fitted stationery compartment and four drawers to the side
£200-400

251. A Georgian mahogany wash stand, the bowl enclosed by two leaves, the undertier fitted with a drawer and the square legs joined by circular stands to take the water jug
38cm square
£150-250

252. A Victorian spoonback carved and gilded ebonised frame side chair with original woolwork and bead upholstery on turned reeded front supports
£80-140

253. A set of five (1 carver and 4 singles) Hepplewhite camel back dining chairs, the shield backs of classical design, the wide saddle seats upholstered with pony hair, raised on square taper supports with spade feet
£400-650



254. A set of five (4 singles and 1 carver) XVIII century mahogany dining chairs with reeded curved top rails, "X" splats, drop-in seats, raised on square taper front supports joined by plain stretchers
£300-500
255. A pair of attractive Edwardian rosewood marquetry inlaid bedroom chairs with vertical shaped central splats, overstuffed seats on square taper front supports
£80-130

256. A particularly good set of four Regency mahogany sabre leg dining chairs with carved shaped top rails, foliate carved scrolling horizontal splats and drop in seats
£400-600



257. A XIX century mahogany carver chair with plain curved top rail and splat, scroll arms, drop in seat and sabre front supports
£70-130
258. A rare XVIII century oak three legged stool with an oval top, the square legs joined by an undertier, the top 40cm x 29cm
£150-250
259. A Victorian satinwood child's chair, the upholstered back panel flanked by plain columns beneath a crested carving, overstuffed seat on turned front supports
260. A Victorian Gothic revival heavily carved oak three part pedestal desk, fitted with three drawers to the frieze and three further drawers to each pedestal, all with stylised lion mask handles 119cm wide, 74cm deep
£200-350

261. *A XIX century mahogany partners desk with three drawers to each side of the frieze, three drawers to each pedestal with opposing cupboards, plain plinth 184cm x 113cm
£400-700



262. A good quality XVIII century figured mahogany side table, the top with a wide crossband before the moulded edge, fitted with two short oak lined cock beaded drawers and one long, raised on plain chamfer supports
77cm wide
£400-600
263. An XVIII century oak cupboard, the upper section enclosed by a pair of arched fielded panel doors and the lower by a pair of rectangular panel doors, fitted internally with shelves
103cm wide
£300-500
264. A Victorian mahogany extending dining table, raised on turned legs with original brass and pot castors
142cm x 127cm
£200-300
265. An oval Georgian mahogany gate leg dining table 158cm x 107cm extended
£150-250
266. An XVIII century oval oak drop leaf gate leg mahogany dining table
156cm x 122cm extended
£300-400

267. A XIX century rectangular mahogany wine cooler enclosed by a quartered slightly domed lid, the front and sides with fielded panels, raised on turned feet
67cm wide £300-500



268. An American bobbin turned stained beech frame rocking chair
£150-250

269. A Victorian oval walnut loo table with quartered veneered top raised on a carved column with quadruple carved cabriole supports
89cm x 120cm £500-700



270. A pair of Edwardian mahogany boxwood strung armchair (frames)
271. A wing armchair, prayer chair, bureau and other parts (distressed)

272. A George III style carved mahogany corner chair with pierced vase splats, raised on cabriole ball and claw front supports
£300-500



273. A Victorian gothic richly carved oak side chair
274. A George III mahogany chest of two short and three long drawers (no feet)
93cm wide £250-350

275. A Regency rosewood canterbury divided into four compartments with serpentine rails, the front and back scroll carved above a single drawer raised on turned supports with original brass castors 55cm wide £300-500



276. A set of nine Georgian design carver chairs with shaped arms, cabriole front supports, scroll carved at the head, terminating in pad feet, overstuffed backs and seats in brown leatherette £400-600



277. A XIX century rosewood centre table, the lozenge shaped top inset with specimen marble and centred with a chess board, raised on a turned inverted trumpet shaped column with shaped platform base, the top 103cm x 90cm
£4000-6000



END OF SALE

LOCATION



The Thos. Mawer & Sons salerooms at Dunston House are situated in central Lincoln on the east end of Portland Street at the foot of Pelham Bridge (Canwick Road). By car, approaching from the south take the last turning on the left just before the road rises to the bridge.

Approaching from the north (via Broadgate), go over Pelham Bridge and turn left towards Jacksons Building Centre/Tesco on to Kesteven Street. Follow the road around to the left and drive under Pelham Bridge to Portland Street. Turn left and you will see Dunston House on the right. Portland Street is also accessible from Lincoln's High Street, opposite the Ritz public house.

The salerooms are within walking distance of the main railway station and bus depot.

CONDITIONS OF SALE

1. In these conditions Thos. Mawer & Son act only as auctioneers and agents and the representative of Thos. Mawer & Son conducting the auction is called 'The Auctioneer'

2. Whilst Thos. Mawer & Son make every effort to ensure the accuracy of their catalogue and the description of any lot:

(i) Each lot set out in the catalogue or as divided or combined with any other lot or lots is sold by the vendor with all faults and imperfections and errors or descriptions

(ii) Thos. Mawer & Son do not accept responsibility for the authenticity, attribution, genuineness, origin, authorship, date, age, period condition or quality of any lot unless they have been instructed in writing by the buyer to so certify.

(iii) All statements whether printed in the catalogue or made orally as to any of the matters set out in (ii) above are statements or opinion only and are not to be taken as being or implying any warranties or representations of fact by Thos. Mawer & Son unless they have been instructed in writing by the buyers to so certify.

3. The Auctioneer has absolute discretion to divide any lot, to combine any two or more lots or to withdraw any lot or lots from sale, to refuse bids, regulate bidding or cancel the sale without in any case giving any reason or without previous notice. He may bid on behalf of the vendor for all goods which are being offered subject to reserve or at the Auctioneer's discretion.

The highest bidder shall be the buyer. The Auctioneer may at his sole discretion determine the advance of bidding or refuse a bid. If during the auction the Auctioneer considers that a dispute has arisen, has absolute discretion to settle it, or to re-offer the lot.

All conditions, notices, descriptions, statements and other matters in the catalogue and elsewhere concerning any lot are subject to any statements modifying or affecting the same made by the Auctioneer from the rostrum prior to any bid being accepted for the lot.

4. The buyer shall pay the hammer price together with a premium of the hammer price - 15% inclusive of VAT

5. Notwithstanding any other terms of these Conditions, if within seven days after the sale Thos. Mawer & Son have received from the buyer of any lot notice in writing that in his view the lot is a deliberate forgery and within twenty-one days after such notification the buyers return the same to Thos. Mawer & Son in the same condition as at the time of the sale and by producing evidence, the burden of proof to be on the buyer, satisfies Thos. Mawer & Son that considered in the light of the entry in the catalogue the lot is a deliberate forgery then the sale of the lot will be rescinded and the purchase price of the same refunded.

The vendor agrees to be bound by Thos. Mawer & Son's decision.

6. Thos. Mawer & Son disclaim any responsibility for default by either the buyer or the vendor because they act as Auctioneers only and therefore do not pay out to the vendor until payment is received from the buyer. Instructions given by telephone are accepted at the sender's risk and must be confirmed in writing forthwith.

7. Every person on Thos. Mawer & Son's premises at any time shall be deemed to be there at his own risk. He shall have no claim against Thos. Mawer & Son in respect of any accident which may occur or injury, damage, loss howsoever caused, save in so far as the injury, damage loss shall be caused by the negligence of Thos. Mawer & Son's employees.

8. Each lot shall be at the purchasers risk from the fall of the hammer and must be paid for in full before the delivery and must be taken away by the purchaser at his own expense within 7 working days following the conclusion of the sale. The Auctioneer shall be entitled to charge storage charges in respect of lots not taken away as aforesaid (minimum charge of £10 plus VAT) and interest on unpaid accounts @ 4% above clearing bank base rate (per day)

9. Cheques which are not honoured by the payee's bank will incur a handling charge of £20 plus VAT for each presentation.

This contract is governed by English Law.



DUNSTON HOUSE · PORTLAND STREET · LINCOLN · LN5 7NN
TELEPHONE 01522 524984 · FACSIMILE 01522 535600
EMAIL auction@thosmawer.com · WEBSITE www.thosmawer.com