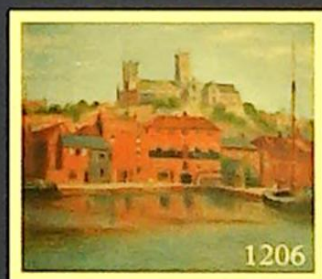
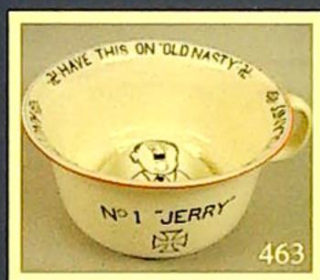




# THOS. MAWER & SON LTD.

*Auctioneers & Valuers Established in 1864*



**Spring Sale of**

**ANTIQUES, INTERESTING COLLECTABLES  
PAINTINGS & FURNITURE**

Saturday 6th May 2006 commencing at 10.00am

**On View**

Friday 5th May 10.00am - 4.00pm & morning of sale from 8.30am

Catalogue £5.00



# THOS. MAWER & SON LTD.

---

## COMMISSIONS

The Auctioneers are pleased to execute commissions for intending buyers in confidence as cheaply as is allowed by any other bids. All telephone bids must be confirmed in writing or by fax by 4pm the day prior to sale. Telephone bids will not be accepted for lots on which the top estimate is under £500.00. We cannot guarantee to execute bids received on the morning of sale.

## BUYER'S PREMIUM

There is a 15% premium (inclusive of VAT) payable on the final hammer price of each lot.

## REGISTRATION

All prospective purchasers are requested to register and obtain a bidding number prior to the start of the sale.

## CATALOGUE DESCRIPTIONS

Care is taken to ensure that any statement as to authorship, attribution, origin, date and provenance is reliable and accurate, but all such statements are statements of opinion and are not to be taken as statement or representations of fact. Thos. Mawer & Son Ltd. reserve the right, in forming their opinion, to consult and rely upon any expert or authority reasonably considered by them to be reliable. While an identification of damage is given in some instances, an absence of such advice does not imply that a lot is free

from defect. Prospective purchasers are strongly advised to inspect any lot on which they intend to bid. All measurements and weights are approximate and should be verified by intending purchasers.

## ESTIMATES

Estimates for lots under £100.00 are not printed in the catalogue. On lots that are reserved, the reserve will not be greater than the published estimate at the time the catalogue goes to press.

## PAYMENT OF ACCOUNTS

All Lots should be paid for and collected immediately following the sale. Any lots not collected by 4.00pm on the Wednesday following sale day will incur storage charges (minimum £25.00 plus VAT per lot).

Payment for all lots must be made on the day of sale and methods are:

(1) CASH, (2) CHEQUES supported by either a letter of Reference from your bank or a cheque guarantee card to cover the sum of your purchase, (3) BANKERS DRAFT, (4) DIRECT DEBIT CARDS such as "Switch", "Delta", "Classic", "Connect", (5) CREDIT CARDS subject to a 2% premium charge.

No lots in this sale are the property of Thos. Mawer & Son.



# CONTENTS

---

The complete catalogue for this sale will be updated approx. 7 days prior to sale and can be downloaded from our website: [www.thosmawer.com](http://www.thosmawer.com)  
Extra lots will be added as they are delivered and will only be described on the website. On the homepage, go to the box headed "General or Special Sales" and click here for text only printable version.

*Please note – Lots 1-100 and 101 onwards will be sold simultaneously commencing at 10am. \* These will be sold simultaneously with the Wedgewood Collection commencing at approximately 11am.*

Lot 1 – 174  
see [www.thosmawer.com](http://www.thosmawer.com)

Lot 175 – 210  
Royal Doulton

Lot 213 – 434  
Beswick and other factories

Lot 436 – 516  
Staffordshire, Sunderland,  
Troika and other makers

Lot 520 – 593  
Instruments, Decorative  
Metalware etc.

\* Lot 600 – 681  
Spectacles, frames and cases

\* Lot 825 – 852  
A collection of Cinema  
advertising posters

\* Lot 855 – 859  
Taxidermy

\* Lot 860 – 924  
Arms, Edged weapons and  
collectables etc.

Lot 930 – 957  
Glassware

Lot 958 – 973  
Bygones, Boxes and Caddies

Lot 980 – 1026  
Silver

Lot 1030 – 1055  
Silver Plate

Lot 1056 – 1132  
Watches and Jewellery,  
Sovereigns etc.

Lot 1140 – 1148  
Eastern Rugs

Lot 1151 – 1224  
Watercolour, Drawing, Paintings  
and Prints

Lot 1230 – 1264  
Clocks and Barometers

Lot 1265 – 1351  
Furniture

*If you are travelling to the saleroom to bid for a specific lot, please telephone us during the morning to ascertain the sale progress.*



## ROYAL DOULTON

175. Royal Doulton plates:- Viking longboat, tavern scene etc. various sizes (3)
176. Royal Doulton - a pair of transfer printed plates Bow Valley and Mount Rundle  
*27. cms diameter*
177. Royal Doulton - character jug 'Pearly Queen', large
178. Royal Doulton - character jug 'Robin Hood', large
179. Royal Doulton - character jug 'Captain Ahab', large
180. Royal Doulton - character jug 'Long John Silver' 1951 mark, large
181. Royal Doulton - character jug 'St George', large
182. Royal Doulton - character jug 'Rip Van Winkle' 1954 mark, large
183. Royal Doulton - character jug 'Robin Hood', large
184. Royal Doulton - Mr Pickwick 'De-luxe Whiskey' decanter (with contents), medium
185. A Royal Doulton decanter 'Falstaff', medium
186. Royal Doulton - character jug, 'The Poacher', medium
187. Royal Doulton character jug - 'John Doulton' collectors club piece, medium
188. Royal Doulton - character jug 'Dick Turpin' (mask raised), small
189. Royal Doulton - character jug 'Rip Van Winkle', small
190. Royal Doulton - character jug 'Sam Weller', tiny
191. Royal Doulton - character jug 'Sarey Gamp', tiny
192. Royal Doulton - Terrier dog collection 'Yorkshire Terrier' on rectangular base';(boxed)
193. Royal Doulton - animals collection 'Beagle' on rectangular base (boxed)
194. Royal Doulton 'Classics' figure Happy Birthday 2003 boxed with certificate
195. Royal Doulton figure - 'Buttercup';  
*17.8 cms high*
196. Royal Doulton figure 'Ninette'; *19.1 cms high*
197. Royal Doulton figure 'Diana' by Peggy Davies
198. Royal Doulton figure Ladies of the British Isles series - 'Ireland'; *19.7 cms high*
199. Royal Doulton figure 'Elyse'
200. Royal Doulton figure - 'The Old Balloon Seller'; *18 cms high*
201. Royal Doulton figure - 'Make Believe';  
*14.6 cms high*
202. Royal Doulton figure - 'Ascot'; *14.6 cms high*

203. Royal Doulton figure - 'The Pied Piper'  
*approx 22 cms high*
204. Royal Doulton figure - 'The Balloon Man' -  
*18 cms high*
205. Royal Doulton figure - 'The Boy Evacuee'  
limited edition no: 331 of 9500 with certificate;  
*21.6 cms high*
206. Royal Doulton figure. 'Girl Evacuee' limited  
edition no: 331 of 9500 with certificate;  
*20.3 cms high £200-400*
207. Royal Doulton - a boxed limited edition figure  
'Florence Nightingale' No: 159 with certificates  
*19.5 cms high*
208. Royal Doulton figure - 'Sweet & Twenty'  
painted marks beneath *approx 16 cms high*
209. Royal Doulton - 'Reflections' series figure  
'A Winters Walk' HN 3052; *32 cms high*
210. Royal Doulton - A rare limited edition 'Guy  
Fawkes' jug; No. 330 of 600 the inside with  
printed motto 'Let it be known to all just  
men...' with certificate *approx 19 cms high*  
*£600-800*

## BESWICK AND OTHER FACTORIES

213. Coalport Shakesperian Classical Heroines  
(limited edition) figure 'Aerial' No:537 of 2000;  
*26 cms high (boxed)*
214. Coalport 'Shakesperian Classical Heroines'  
limited edition figure Ariel no:527 of 2000;  
*26 cms high (boxed)*
215. Nao, a large standing figure of a lady astride  
rockwork and flagon on naturalistic base with  
printed marks below *30 cms high*
216. Lladro and Nao figure group clown with boy  
playing concertina. Printed marks beneath;  
*25 cms high*
217. A mid XX century Capo di Monte style figure  
group by 'Tizian Gazzzi' 'Ammalata Scuatore  
intoxicated lady of the night being attended to  
by a doctor; *27 cms high*
220. Beswick no: 1180 Cockatoo black circle mark  
below; *19.5 cms high*
221. Beswick horse head left, black circle mark  
below, *20 cms high*; and standing shire horse  
unmarked
222. Royal Doulton:- matt finished horse, impressed  
marks below; *19 cms high*
223. Beswick:- standing figure of a Great Dane  
'Ruler of Duborough', black oval mark under  
front foot; *16 cms high*
224. Beswick:- a standing Doberman, black oval  
mark under front foot; *height 13 cms high*



225. Beswick:- an Airedale terrier 'Cast Iron Monarch', black oval mark under front foot; 14 cms high
226. Beswick:- an Airedale terrier 'Tawer Romulus', black oval mark under front foot; 12 cms high
227. Beswick:- miniature standing figure of a Whippet, black oval mark below; 10 cms high
228. Royal Doulton:- standing figure of a Doberman - 'Dobe's Storm', printed mark under back leg; 14 cms high
229. Beswick:- miniature standing figure of a Dalmation, black oval mark below; 8 cms high
230. Beswick:- a figure of a recumbant fox black oval mark beneath; 9.5 cms high
231. Beswick - Horse matt finished Red Rum on wooden plinth; 30 cms high
232. Beswick - Horse matt finished Morgan horse 'Tarryall Maestro' on oval wooden plinth; 26 cms high
233. Beswick - Matt finished horse 'Psalm' standing on oval wooden plinth; 27 cms high
234. Beswick - standing black Puma, left leg raised on naturalistic base
235. Sylvac - A standing Clydesdale horse right foot lifted in leather metal harness printed mark below; 26 cms high
236. Beswick:- No: 868 Rearing Huntsman black mark beneath approx 24 cms high £300-500
250. A bulbous shaped jug 'Maternal Affection' decorated with floral wreaths to the rim and flowers to the handle. Impressed and imprinted mark below "E.R for sale in the United Kingdom only" 12 cms high
251. 'Maternal Affection' A cream jug with classical frieze, vine leaf rim and fluted handle, impressed marks below 12 cms high
252. 'Sacrifice to Cupid' - an Etruscan jug of 'waisted' form with floral border and sparse floral decoration to the plain handle, impressed marks below 13 cms high
253. 250th Anniversary piece - a boxed napkin ring decorated with vine garlands, an octagonal shaped night light decorated with flowers, and a heart shaped box the lid with rose border and the main body decorated with nine single flowers, impressed marks, the box 13 cms diameter (3)
254. An Olympus jar - the lid decorated in tri-colours of blue deep blue and white with deep blue oak leaf border and classical frieze, impressed marks below 12 cms high
255. An Arcadian bud vase of 'waisted' form, the neck with band of flowers the main body decorated with poacher and dog under tree impressed marks 12.5 cms high
256. A boxed sugar bowl decorated with *Aurora Nemesis and Warrior and Cupids* impressed marks 12 cms diameter
257. A miniature vase with oak leaf frieze the main body decorated with *Cupid and the Four Seasons* 8.5 cms high, a miniature urn vase showing scenes of Sacrifice with fluted body raised on circular foot 9cms, and an *Olympus jar* the lid with fern leaf motif the main body decorated with classical scenes impressed marks below (3) 12.5 cms
258. A teapoy, the lid decorated with vine leaf mock border the main body showing Goddesses surrounded by vine garlands, impressed marks below
259. A limited edition Fribourg and Treyer commemorative cylindrical spice jar. The main body decorated with goddesses and stylised flowers, impressed marks below; and a table bell decorated with cupid and the four seasons, impressed marks to the interior (2)
260. A pair of cylindrical candlesticks, the plain sconces raised on tapering columns decorated with the Two Muses and raised on circular stepped base with oak leaf border 16 cms high
261. A pair of candlesticks the sconces decorated with bell flower borders above tapering stems showing goddesses amongst trees, raised on circular foot decorated with ferns and flowers, each impressed marks below 16.5 cms high
262. An Arcadian small vase of 'waisted' form decorated with *Cupid* cameos and goddess with spear, impressed marks below 9 cms high, a bulbous shaped cameo posy vase the main body plainly decorated with *Muses watering Pegasus*, impressed marks below 10 cms high; an Apollo round box similarly decorated to the preceding item with bell flower border 6.5 cms diameter, and a kidney shaped bean box the lid similarly decorated with floral border, the main body with hour glass flowers and cupid cameos, impressed marks 7 cms diameter and another (5)
263. A ring stand decorated with laurel border to the main body and upper band with floral tip the interior section with four cameos, a square ring box the lid decorated with Cupid group; a heart shaped box with laurel frieze; a boxed christmas tree decoration showing teddy bear on rocking horse with raised fruit and leaf border and a thimble, some with impressed marks, varying sizes ( 5)



264. A oblong box, the lid decorated with classical scene and Tudor roses with rose petal border; a round box the lid showing *Aurora* with rose border a bulbous shaped pommander decorated with classical figures; a circular box; a perfume bottle with shaped stopper decorated with *Muses grooming Pegasus*, a cameo pot similarly decorated and a boxed candle holder, various sizes and marks (7)
265. A square box the lid decorated with floral frieze and interior cameo an elderly gentleman seated with another man and woman, the main body decorated with further cameos; a part cruet set decorated with cupid cameos and flowers; and a cream jug with laurel wreath to the handle, various marks and sizes (4)
266. Three Christmas mugs each with holly leaf borders and handles showing *Piccadilly Circus* (1971) *St Paul's Cathedral* (1972) and the *Houses of Parliament* (1974); impressed marks below, each 11 cms high
267. A coffee can decorated with cameo goddesses and matching saucer with bell flower border in presentation box 6 cms high, a tea cup and saucer 'Maternal Affection' pattern, the saucer with six cameo cupids to the border 6 cms. Christmas 1991 cup and saucer decorated with children and snowmen each with impressed mark (3)
268. A cylindrical box and cover decorated with vine and grape pattern to the lid and body 12 cms diameter
269. A circular box the cover decorated with muses grooming Pegasus with oak leaf rim; a covered round jar decorated with the dancing hours; a scalloped box and cover with oak leaf border and cameos to the body; and a bud vase, the bulbous shaped body decorated with cameos; various marks and sizes (4)
270. A fruit bowl with oak leaf border showing 'The sacrifice to Pomona and Flora' impressed marks 20 cms diameter
271. A comport, the shaped upper section with vine leaf border raised on 'waisted' column and circular foot, impressed marks, 9 cms
272. A powder box, the fluted cover decorated with floral cameos above plainly decorated base with bell flower border, impressed marks, 14 cms
273. Two circular boxes and covers each with onion shape florally decorated knobs and vine leaf borders, impressed marks 12 cms diameter
274. Christmas plates:- 1978 *Horseguards*, 1970 *Trafalgar Square*, 1981 *Marble Arch*, 1980 *St James' Palace* each with holly leaf border impressed marks, 21 cms diameter and a '2nd Decade' (1979- 88) Christmas plate, and a collection of London landmarks various monumental cameos impressed marks (5) 20 cms diameter,
275. A 1992 Valentines plate 'Anthony & Cleopatra' with rose heart and cupid border, tricolour 1990 Valentines plate 'My Valentine' each 17 cms diameter, a Cupid plate with 6 cameos to the border 23 cms and an oval tray with vine leaf border showing *Psyche bound and attacked by Cupid* (Flaxman original), 25x19 cms (4)
276. A fluted jardiniere, the scalloped rim decorated with bell flower border with floral cameos to the main body, impressed marks below 11 cms high
277. A pair of 'Grecian' design jardiniere's of good proportion. The plain moulded rims decorated with rose and leaf border, the main body with garlands of fruit and leaves, and further cameos showing *Muses, Aurora* etc. Each with impressed marks 12 cms high (2)
278. A 'Mothering Sunday' plate ( 1973) with floral laurel border, and similar decorated plates for 1974, 1980 and 1994, each with impressed marks, 17 cms diameter (4)
279. A plainly decorated 'Paris' plate with 6 rim cameos; a fluted plate with floral laurel border and central cameo showing *Putti and Coelacanth* with shell cameos to the border, a 1780-1980 commemorative plate with bell flower laurel border; an 'Olympic Games - Montreal' commemorative plate; *Queens 40th Anniversary of succession* commemorative plate; and another plate - various marks and sizes (7)
281. Various *Horoscope* plates each decorated with bell flower laurel border and central cameo, impressed marks 11 cms diameter (11)
282. An 'American Independence' plate (with certificate) decorated with cameo stars to the border; a Thomas Jefferson portrait and signature saucer; *American Independence* plate 1776 -1976; and another commemorating the *Battle of Concord* etc. various marks and sizes (6)
283. A part tea service comprising teapot and matched sugar bowl the teapot with interior glazing decorated with leaf border to the lid and spout with the 'Maternal Affection' to the main body, the sugar bowl decorated with similar design, classical frieze to the main body each with impressed marks, the teapot approx 16 cms diameter (2)



284. An oval bowl with fluted body and decorated with cameo daisies and garlands to the interior with further exterior cameos; and a diamond shaped pin tray with Tudor rose and oak leaf border, each with impressed marks 14.5 cms (2)
285. A fluted ash tray with central cameo, an oblong pin tray with bell flower floral border and central cameo, a flower basket, a heart shape pin dish, other pin dishes etc. various marks and sizes (8)
286. A quantity of pin dishes, a scalloped edged dish, a club shaped dish, round tray with central *Aurora* goddess cameo etc. various marks and sizes (10)
287. A large and impressive urn vase decorated with acorn finial above moulded leaf edge the main body with the scene '*Maternal Affection*' and flanked by shaped handles with bell flower design and raised on circular foot and square plinth with impressed marks below 36 cms high
288. A pair of 'waisted' vases with moulded rims above raised cameo acanthus leaves on circular foot, each with impressed marks, 19 cms high
289. A large tricolour fruit bowl with ribbon leaf patterned rim above unusual yellow blue and white chequer board design to the main body, impressed marks below 20 cms diameter

290. A tricolour cylindrical flower vase with removable stem 'lid' above blue white and yellow chequer board floral pattern to the main body, printed marks below 14 cms high



291. An urn shaped pot pourri vase, the pierced lid with acorn finial and floral cameos above floral rim, the main body having cameos of trees foliage and Goddesses flanked by shaped bell flower handles, and raised on a circular foot 29 cms high

292. A XIX century Jasper ware cheese bell having heart shaped silver plated handle the rim decorated with oak leaf frieze and the main body decorated with goddesses amongst trees on later silver plated circular base with interior marking 17 cms diameter



293. A '*Prince Charles*' saucer, ditto decorated with the three Muses etc (all boxed) (6)
294. A rare 'deeper' blue part tea service, comprising teapot sugar bowl and cream jug, the teapot with interior glazing each decorated with the scene *The Sacrifice to Cupid* (3)
295. An 'Arcadian' vase main body decorated with lions mask head and garlands raised on moulded circular foot 15 cms high
300. A sacrifice plate showing *Ceres and Cupid* with plain centre, impressed marks, 24 cms diameter
301. A circular plaque with vine leaf border and *Ceres* cameo 20 cms diameter
302. A 'waisted' sacrifice vase decorated with raised cameo to the middle section and circular foot the main body with *Ceres, Flora and Cupid* cameos 17 cms high

303. An 'Imperial bowl' decorated with oak leaf design to the rim. The main body showing the sacrifice of *Ceres and Cupid* raised on a circular foot in fern and leaf decoration, impressed marks 20 cms diameter



304. An oak leaf vase, the main body showing *Psyche bound and attacked by Cupid* after the Flaxman original impressed marks below 13 cms high
305. A square box, the lid heavily decorated with flowered border and Jasper cameo, after Hackwood, showing Ulysees on a chariot, the main body having raised cameos with Cupid, 10 cms across
306. A shaped 'Pentefoil' box, the lid sparsely decorated with flowers and central cameo, the main body showing further cameos of Cupid, impressed marks below 8.5 cms across
307. A small circular box heavily decorated with vine leaves to the lid and main body, impressed marks 8.5 cms diameter
308. A coffee can and saucer 'Five dancing hours' pattern with laurel leaves to the rim, impressed marks below 5 cms high
309. An oblong pin tray with central classical cameo and bell flower laurel rim, impressed marks below 14.5 cms
310. A kidney shaped bean box, the lid with single cameo showing '*Cupids Market*' with further cameos to the main body of cupid etc, impressed marks below 8 cms
311. A pair of circular ash trays each decorated with vine leaves, , impressed marks below 8.5 cms diameter (2)



312. A large circular box and cover with onion knob lid and main body decorated with vine leaves, impressed mark 12 cms
313. An unusual cameo brooch in gold coloured setting showing the 'Dancing Hour', impressed marks below
314. A large sacrifice bowl with oak leaf rim, the main body showing *Ceres and Cupid* above leaf and fern base rim 22 cms diameter
315. A scalloped box, the lid decorated with oak leaf border and central cameo showing Ulysees slaying the Chariot of Victory 12 cms
316. A spade shaped tray with oak leaf border and central cameo trim, *Bellerophon watering Pegasus below Parnassus* 11 cms
317. A circular fluted box, the lid with floral border and central cameo showing *The Three Muses watering Pegasus*, printed marks below, 9 cms
318. A moulded cream jug with fluted spout and plain handle showing pair of reversed cameos, impressed marks below 12.5 cms high
319. A moulded cream jug with fluted spout and plain handle showing pair of reversed cameos, impressed marks below 12.5 cms high
320. A coffee can decorated with cameos of maidens. The saucer decorated with sparse leaf design to the rim, impressed marks below
321. A pair of banquet candlesticks decorated with raised swags, impressed marks below, each 4 cms diameter
322. A rare black and cream 'Guinness 225th Anniversary' 1759-1984 commemorative plate with raised wheat sheaf decorated rim and central medallion of *Arthur Guinness* 16.5 cms diameter

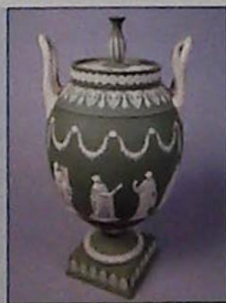
326. A good example of the Portland Vase with impressed marks below 15.5 cms high



327. A boxed miniature vase with cane rim the main body with raised cameos above fluted bowl on circular foot 8 cms, a boxed *Bacchus* vase with laurel wreath rim and base the main body showing *Apollo and Euterpe*, impressed marks, 12 cms, an *Athens* tray with scalloped edge and central cameo showing a 16 petal flower, impressed marks, 12 cms, and a boxed cylindrical flower tub with laurel wreath rim the main body showing the scene 'Maternal Affection', impressed marks below; 8 cms high (4)
328. An extremely rare apprentice piece comprised of six shaped cameos in gilt frame; maker unknown
329. A cake plate decorated with central laurel ring with cameos towards the rim to include *Cupid, The three muses, Aurora etc*; printed marks below, 21 cms diameter (2)
330. A pair of Humidor jars, the lids with plain circular knobs and decorated with fern leaves, the main body illustrating the scene 'Sacrifice' with vine leaf wreaths to the rim each 16 cms high (2)
331. A pair of stem vases, the bulbous shape body decorated with laurel wreath and showing *The Three Graces, Nemesis etc.* printed marks below, each 12 cms high (2)
332. A heart shape box, the cover with laurel edging and central cameo; fluted round tray with central cameo; small scalloped box having laurel ring and central cameo *Muses watering Pegasus* each with impressed marks, various sizes, and a coffee can and saucer (4)
333. An oblong tray the central cameo showing 'Sacrifice to Cupid'; a cylindrical jardiniere with the scene 'Maternal Affection' and laurel wreath to the rim; a small stem vase of trumpet form decorated with two cameos of the 'Two Winged Dancers', a clock and a heart shaped box, each piece with impressed marks to the base, various sizes (5)
334. A boxed cylindrical spill vase with straight sides and laurel topped rim above cameo showing *Terpsichore and Thalia* 8 cms and a round box the lid with laurel wreath to the rim, the central cameo; *Muses grooming Pegasus* each with impressed marks 10 cms diameter (2)
335. A boxed *Bacchus* vase with laurel swags to the rim, the main body decorated with cameo showing *Diana and the Deer, Athena and the Owl* on plain circular foot, impressed marks below 15 cms high
336. An impressive Urn with floral knob above mask head handles and raised floral upper body, the main body showing various goddesses raised on circular and squared foot 24 cms high
340. An Imperial footed bowl with oak leaf border above raised cameos showing the 'Sacrifice to Ceres' raised on circular acanthus leaf base 20 cms across
341. A tall rose vase the upper border decorated with raised roses, grapes and pomegranates, the main body showing 'Maternal Affection', raised on circular foot, decorated with raised fruit height 17 cms



342. A posy vase showing the *Four Seasons and Cupid*, circular box and cover decorated with vine leaves to the main body and lid, an Arcadian flower pot '*Maternal Affection*', an egg box decorated with central cameo to the lid; and a vase on circular foot decorated with goddesses and trees, impressed marks *various heights* (5)
343. A rare colour variation a XIX century round lidded box decorated with roses to the rim, *Muses watering Pegasus* etc. 4.75 cms diameter
346. A large Sacrifice bowl with oak leaf banding to the rim raised on circular foot, impressed marks below, 20 cms diameter
347. A Preserve pot with lid handle and collar, the main body decorated with the '*Sacrifice to Cupid*' series, a coffee can and saucer showing six *cupid* groups, a miniature vase another tall vase with lion mask handles, each with impressed marks below *various heights* (4)
348. A Grecian flower pot with rose border, the main body decorated with lions mask heads and vine garlands and four raised cameos, *impressed marks*
349. A small dish decorated with *The Three Muses watering Pegasus*, A comport with vine leaf border raised on circular foot, a pair of candlesticks decorated with oak leaves and acorns, the main body decorated with *Apollo, Polymnia* etc. impressed marks below, *varying heights* (4)
350. A scalloped box and lid decorated with oak leaf border 13 cms diameter, a diamond pin tray 11 cms diam. a 'reading' candlestick 13 cms high and a club tray 10 cms diameter each with impressed marks below (4)
351. An urn vase with floral decorated knob and *Bacchus* mask handles, the main body showing '*The Dancing Hours*' raised on a circular and squared foot, impressed marks below 28 cms high
352. An urn vase the lid having shaped finial above fluted handles the bulbous middle section showing *Apollo and all Nine Muses*, raised on circular and squared foot, impressed marks below 33 cms high
354. An Etruscan jug with beak spout and moulded flowers to the handle, the bulbous main body '*Sacrifice to Ceres*' and Cupid with interior glazing 19 cms high, and another 13 cms high each with impressed marks below (2)
355. A cylindrical spill pot decorated with stylised circular flowers to the rim, the main body with two cameos '*Thalia and Melpomene*' (Comedy and Tragedy) height 16 cms, impressed marks below
356. A circular *Sacrifice* plate with plain centre decorated with '*Sacrifice to Cupid*' and '*Ceres*' 24 cms diameter
357. An oval wall plaque '*Dancing Hours*' mounted in green velvet and gilt frame, the plaque 10 cms diameter
358. A heart shaped tray with oak leaf frieze the central cameo showing *Nemesis and Warrior* (af) 11 cms diameter, a circular fluted box with lid; 7 cms diameter, and three circular cameos showing *Muses watering Pegasus, The Three Graces* and *Aurora Goddess of the Dawn*, mounted on green velvet in Hogarth style frame, various impressed marks below (3)
359. A vase plainly decorated with cameos showing *Venus and Cupid* etc 9 cms high, a fluted square tray of small proportion 10 cms, oblong ditto 12 cms, milk jug 10 cms high and a 'spade' tray 11 cms diameter various impressed marks (5)
360. An oval tray with oak leaf border and lightly fluted centre with single cameo 23 cms diameter, and a cylindrical jar and cover with plain ball knob, the main body decorated with '*The Dancing Hours*' 10.5 cms high (2)
361. A kidney shaped bean box and cover with tea rose edging, the main body decorated with four sets of plain *Cupids* 8 cms, an edged pin dish, 11 cms and two heart shaped boxes and covers, each 13 cms decorated with rose border and central cameos, each 13 cms, impressed marks below (4)
362. A pair of rectangular wall plaques '*The Dancing Hours*' each in gilt frames the plaques, impressed marks below, 23.5 cms each (2)
363. Teal:- An extremely rare 'club' tray 12cms, an oblong tray with floral bell flower border and central cameo 15 cms, a highly decorative reading candlestick 13 cms, a silver box with scalloped edge the lid with oak leaf border and central cameo *Cupid in chariot drawn by lions*, various marks, 10.5 cms (4)





364. A pair of bud vases of good proportion the slender necks decorated with bell flowers, the onion shaped main bodies with three cameos showing *Pegasus, Angels, Cupid etc*; each 11.5 cms high and a kidney shaped bean box and cover the central cameo of *Pegasus*, the main body decorated with four sets of plain *Cupids* 8 cms, impressed marks below (3)
370. A late XIX century jug with beak spout and moulded handle decorated with garlands, the main body with cameos showing '*Maternal Affection*' impressed marks below 15 cms
371. A XIX century hot water jug the lid with plain spherical knob with moulded handle, the main body decorated with cameos of *Ceres and Diana*, impressed marks below, 20 cms high (af)
372. A XIX century scalloped shaped silver box, the lid with outer leaf border the centre cameo showing *Cupid* with further cameos to the main body, impressed marks below 13 cms diameter
373. A pair of early XX century cylindrical vases with stylised scrolls and flowers to the upper edge, the main body decorated with cameos showing *Erato and Melpomene* by Flaxman, impressed marks below, each 10 cms high
374. A XIX century rose vase of small proportion having moulded top band decorated with rose border above cameo showing '*Sacrifice of Cupid*', impressed marks below, 12 cms high
375. A XIX century *Trojan* jug with silver plated hinged lid and moulded handle, the main body decorated with vine leaf rim above cameos showing '*Sacrifice to Ceres/Cupid*', impressed marks below, 12 cms high
376. A pair of early XIX century bulbous shaped bud vases having white interiors and wide rims, the round neck decorated with drooping leaves and flowers, the main body showing *Calliope* after by Flaxman, each 13 cms high
377. A good early XX century cylindrical biscuit barrel and cover with shaped knob and raised oak leaf/acorn on stalk decoration to the lid, the main body with cameos showing '*Maternal Affection*' and the '*Sacrifice to Cupid*' with interior glazing 20 cms high
378. A XIX century biscuit barrel, the silver plated lid with decorative finial and gadrooned handle, the bulbous shaped main body with cameos showing '*Sacrifice to Ceres*' after the Flaxman original
379. A XIX century oblong box the cover bordered by oak leaves and acorns with central cameo *Priam begging for the body of his son Hector*
380. An early XX century biscuit barrel with electro plated lid and handle and buff coloured finial, the main body with cameos showing *The Four Seasons; Two trees; Spring and Summer/Athene, Autumn and Winter/ Ceres*, impressed marks below, height 13 cms
381. A oblong tray with rose border, the inner section decorated with cameos showing *Ulysees, Cupid etc*. impressed marks 1860, 19 cms
382. An early XX century tea bowl decorated with scenes 8 cms diameter, and a modern *Elizabeth II* commemorative ash tray, 11 cms, each with impressed marks below (2)
383. An early XX century rose vase with pierced interior disc, the rim decorated with rose and leaf border the main body with cameos showing '*Maternal Affection*', impressed marks below, 15 cms high
384. A XIX century biscuit barrel the silver plated lid with elaborate finial and handle the main body decorated with cameos showing '*Sacrifice to Cupid Sacrifice to Ceres*', impressed marks below, 19.5 cms tall
385. A pair of bulbous shaped bud vases with white interiors, the main body decorated with cameos of *The Four Seasons of Cupid* after Hackwood 1877, each with impressed marks below, 13 cms high
386. Two almost matching lidded pots. The upper sections decorated with acorn leaf banding with three cameos to the bodies, each impressed marks below, 6 cms high
387. A good XIX century *Trojan* jug with plated hinged lid (Clarke's patent), the main body with laurel wreath banding to the top and bottom and cameos showing '*Maternal Affection*' height, 15 cms
388. A XIX century heart shaped dish with rose border and central cameo showing *Pegasus and Bellerophon*, impressed marks below, 12 cms diameter
389. A XIX century jar with hammered pewter lid, plainly decorated with cameos showing *Cupid standing, Cupid and harp, Maria and Dog*, impressed marks below, approx 8 cms diameter
390. A pair of early XX century bud vases of bulbous shape, the moulded necks with raised acanthus leaves above cameos showing the *Three Graces dancing, the Muses watering Pegasus etc*. each with impressed marks below, 11 cms high
391. An early XX century cream jug in an unusual dark blue colour moulded handle and beak spout decorated with acanthus swags, the main body decorated with various cameos, *Goddesses, Cupid etc*. impressed marks below, 8 cms high



392. A good early XX century example of the Portland vase with lightly moulded handles, impressed marks below 1929, 12 cms high
393. An early XX century cup and saucer of unusual dark blue colour each piece decorated with floral swags and cameos showing *Bellerophon watering Pegasus* (after Hackwood), impressed marks below the saucer, 12 cms diameter
394. A good early XX century Trojan jug with moulded handle the rim decorated with vine leaves above cameos showing 'Maternal Affection', impressed marks below, 16 cms high
395. A late XIX century Etruscan jug with pewter fitted lid, the neck having floral banding above cameo showing 'Maternal Affection' and further banding, impressed marks below 16 cms high
396. An early XX century round lidded pot and cover with oak leaf banding, the main body decorated with cameos showing *Ulysees stopping the 'Chariot of Victory' etc.* 11 cms high
397. An early XX century hair pot and cover decorated with stylised heart shaped swags and floral bell flower banding, the main body with cameos showing *Aurora in her chariot* and *Cupid trying on a mask*, impressed marks below, 9 cms high
398. An early XX century cream jug with hinged lid and beak spout, the main body with cameos showing gods, goddesses, floral swags etc. 6 cms high
399. A XIX century bulbous shaped posy vase, the neck with floral banding above cameos showing trees, muses and dogs 13 cms high
405. A kidney shaped pin dish with floral banding to the lid and central cameo *Aurora* goddess 6 cms diameter
406. An oval tray with 'Floral Berry' banding, the central cameo showing *Cupid*, impressed marks below, 24 cms
407. A boxed cylindrical pin dish and cover, 4 cms diameter, circular dish and cover with decorative knob and floral banding to the lid and main body, 8 cms diameter, a boxed bulbous shaped cream jug with floral banding raised moulding to the spout and handle, the main body showing cameos of goddesses, foliage etc. 13 cms high each with impressed marks (3)
411. A large torso bust of *Mercury* wearing a winged helmet, on circular footed base, impressed marks below, approx 50 cms high

412. An late XVIII century teapot with moulded handle, and bulbous body and ribbon handle with cylindrical spout, impressed marks below, 25 cms long (lid missing)



413. A XX century globular shaped cream jug with plain handle and beaked spout, 5 cms
414. An unusual XX century beaker with floral banding to the rim and chequer board design to the main body, by visiting Wedgwood potter (George O Smith) dated 27.6.33, height 10.5 cms
415. A XX century two handled sugar box plainly decorated with ball knob, 10 cms
416. A trumpet shaped vase with plain rim the main body decorated with wreath and bullrush pattern, printed marks below 8 cms high
417. A cylindrical cigarette jar and cover with ball knob and decorated with oak leaf banding with raised designs to the main body showing the 'Sacrifice of Cupid', impressed marks below 11 cms high
418. A diamond shape pin dish with floral banding and central Flaxman style cameo, impressed marks below 8.5 cms
- 418A. A slender stem vase decorated with raised flowers leaves and medallions impressed marks below, 14 cms high (af) (it is believed this style of vase is said to be a funeral vase)

419. A late XIX century teapot with moulded floral banding the main body decorated with *The Sacrifice of Ceres*



420. An late XVIII/early XIX century teapot plainly decorated, impressed marks below, 10 cms



421. A cylindrical spill vase decorated with floral garland banding to the rim the main body with raised design showing *Urania* after Flaxman etc. 16 cms high
422. An early XX century cream jug. With moulded handle, and floral wreaths to the beak spout, the main body with raised decoration showing goddesses foliage etc. impressed marks below, 6 cms high



423. An early XX century coffee can and saucer plainly decorated with C shaped handle, the saucer 11 cms diameter



424. An early XX century cylindrical spill pot, of small proportion plainly decorated with border garland of leaves and grapes, impressed marks below, 5 cms high
425. Reilly, Robin & Savage George:- 'Wedgwood' Antique Collectors Club, and a quantity of other books (1 box)
426. Books:- 'Wedgwood' by Rathbone (1)
427. A XIX century black basalt teapot and stand hinged lid, fluted knob, moulded handle and raised floral decoration to the main body, overall height 19.5 cms
430. Wedgwood - A late XIX century majolica mallet shaped decanter on stand with silver plated lid and sphinx finial decorated in green, brown and yellow with plated banding to the neck, main body and base; overall height 31 cms £150-250
431. Wedgwood - A XX century copper lustre jug 'Fallow Deer' pattern printed mark below, approx 8.75 cms high
432. A XIX century salt glazed press moulded jug the main body decorated with child collecting eggs in naturalistic setting, 20 cms high £60-80
433. Wedgwood - A XIX century terracota bowl the lid with raised oak leaf border on stand with liner, approx 12.5 cms high £80-120

434. Wedgwood - A XIX century stoneware game pie dish and liner the lid with hare finial and raised images of game the body decorated with floral garlands and hanging birds, approx 15 cms high £100-150



## STAFFORDSHIRE, SUNDERLAND, TROIKA AND OTHER MAKERS

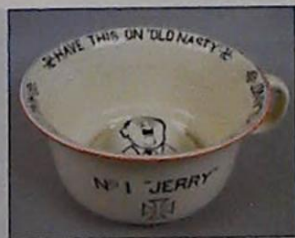
436. A XIX century Staffordshire figure of a standing elephant on moulded base with gilt highlights, 25 cms high £100-150



437. A pair of Staffordshire style figures of seated cats, decorated gilt sponge to the bodies and gilt highlights to the eyes and mouth, moulded padlocked collars, approx 27.5 cms high
438. 'Will Watch' - a Staffordshire style figure. Seated Gentleman holding pistols on naturalistic base, 32 cms high
439. Modern Staffordshire style figure of Marshal Arnaud on horseback blue jacket, 21 cms high
440. A modern Staffordshire style figure - 'The Seated Turk' holding flagon on circular base 13 cms high
441. A pair of XIX century Staffordshire polychrome ink stands formed as recumbant greyhounds on shaped blue bases, each 9.5 cms high
442. A Staffordshire flat back spill holder decorated with figures and lambs amongst bocage on naturalistic base 19 cms high
443. A Staffordshire polychrome flat back figure of a girl and boy he in kilt holding King Charles spaniel, she in feathered hat, on naturalistic base with gilt rim, 22 cms high
444. A Staffordshire style flat back group 'Beaumaris Castle' decorated with gilt highlights and crumb coated bocage, 14.5 cms high
445. A pair of XIX century glazed porcelain figures of Little Red Riding Hood, decorated in colours, approx 14 cm high
446. A quantity of late XIX century pottery and porcelain figures, a glazed porcelain oval thimble box the lid decorated with children, an Allerton's gaudy Welsh decorated tig, and a plain model of a recumbent cow (9)
447. A pair of Chelsea style porcelain candle holders each modelled astride dancing girl with pink on white ground, blue anchor mark below, each 13 cms high
448. A XIX century Sunderland Bacchus tankard, pink lustre banding to the rim and base, polychrome dots to the main body with shaped handle, 14.5 cms high £80-120
449. A pair of XIX century polychrome Staffordshire character jugs modelled as Punch & Judy, Punch 11 cms high
450. A mid XX century Allerton 'squat' toby jug with gilt and blue jacket breeches and another unmarked, each approx 12 cms high
451. Two XIX century Sunderland lustre saucers, a pearlware willow patterned blue and white transfer printed ditto and another (4)
452. A XIX century Rockingham christening mug gilt rim entitled Nathaniel with moulded handle pink dragon mark below, and a souvenir mug 'A present from Louth' the former 8 cms high



453. A XIX century Portobello pottery soup bowl with written script to the inner 'Contented wi' little and cantie wi' mair. 19 cms high £20-40
454. An Edwardian tea pot stand formed as a polychrome tile on shaped copper base 20 cms across
455. A XIX century polychrome fruit bowl on circular foot, a gaudy Welsh style jug, and an ironstone ditto the bowl 22 cms diameter
456. Copeland late Spode - A XIX century Imari pattern foot bath with scalloped edge decorated with flowers on white ground, approx 53 cms £200-300
457. Copeland Spode - A magnificent and comprehensive 52 piece XIX century blue and white part dinner service each piece decorated with birds before stream and bridge with trees in the middle ground and floral borders; comprising large two handled open tureen, gravy boat, shaped serving dishes, diamond shaped sweetmeat dish, dinner plates, soup bowls etc. £400-800
458. 'Imported Canton China' a XIX century blue and white transfer printed drainer and decorated with bird of paradise amongst flowers with thumb moulded rim, 35.5 cms across
459. A XIX century blue and white transfer printed fruit bowl decorated with naive scenes of Chinese figures hunting a single stag with trees, hill and oriental building in the background; bead work border raised on circular foot, 29 cms diameter £60-80
460. A XIX century blue and white transfer printed jug with plain scroll handles and moulded spout decorated with deer amongst trees with house in the middle ground 22 cms high
461. A pair of XIX century blue and white transfer printed meat plates each decorated with river scenes, and a willow pattern meat plate the latter approx 45 cm diameter (3)
462. A large blue and white willow pattern transfer printed plate, and two others, the larger 54 cms across (3)
463. Crown Devon Fieldings; Nazi propoganda musical chamber pot, the raised interior painted with Adolf Hitler's face, the rim reading 'Have this on Old Nasty' and 'Another violation of Poland' the exterior reading 'No: 1 Jerry', playing Rule Britannia when lifted; 26 cms diameter £200-400
464. Wade - Nat West pig 'Cousin Wesley' raised mark Wade England DW with white interior 14.8 cms high £100-150
465. Crown Devon:- an unusual three part cruet set with gnome handle, toadstool pepper, floral salt and toadstool preserve jar and cover
- 466A. A modern set of three graduated Guinness wall toucans printed marks verso - 'Carltonware hand painted, Made in England', the largest 23cm long
467. A pair of Continental porcelain figures of a boy and girl, he in hat she in bonnet, each approx 19.5 cms high
468. A Continental porcelain bulbous flower vase heavily decorated with crumb coated petals on naturalistic feet, approx 10 cms high
469. A quantity of carved jade and other animal figures
470. A 1960's studio pottery bowl decorated with scraffito lines to the interior and exterior on green ground, 19 cms diameter £350-450
471. Shelley - art deco design 'Spatterware' a bulbous shaped vase in fawn green and blue, 17 cms high
472. A XX century earthenware figure of a standing boxer dog on oval base with gilt rim, 21.5 cms high
473. Davenport - A cabinet plate with pierced rim decorated with grapes, printed crown mark verso; 23.5 cms diameter
474. Royal Worcester, A cabinet plate, with wavy edge, decorated with lake tree and mountains signed J Hendry, pink crown and crescent mark verso, 20.5 cms diameter £80-120
475. A late XIX century/early XX century cabinet plate decorated with gilt scrolls on blue ground, and a XIX florally decorated plate on black ground with gilt highlights, the latter 24 cms diameter
476. A XIX century transfer printed jug decorated with flowers; a Burleighware lustre vase with wavy edge rim; and a XIX century Ashworth stoneware plate



477. Troika - A late XX century Newlyn design lamp, maker AW, painted marks beneath 'Troika Cornwall' approx 30 cms high £200-400





478. Troika, An urn vase decorated with triangles circles and black banding to the main body, printed mark beneath 'Troika St Ives England' makers mark, for Sylvia Vallence. (1967-69); 26 cms high £80-120
479. Clarice Cliff - 'Margurite'  
A bizarre ribbed preserve pot with lid,  
approx 7 cms high £130-160
480. Clarice Cliff - *Biarritz*. A part breakfast set comprising large serving dish and six rectangular bowls each decorated with flowers and dots, the dish 21.5 cms long (af) £80-120
481. Clarice Cliff - *Bizarre Crocus* pattern part breakfast set of large octagonal bowl and four circular breakfast bowls, the octagonal bowl 23 cms across £200-400
482. Royal Doulton - A pair of early XX century stoneware vases of waisted form decorated with applied and incised flowers in blue orange and white with gilt highlights, impressed lion rosette mark, makers UBW, approx 25 cms high £60-80
483. A pair of early XX century design Art Nouveau vases sparsely decorated with blue dots on sponged ground, impressed and painted numbers below, each 19.5 cms high
484. A pair of oriental vases decorated with gilt highlighted butterflies and flowers on blue ground, each 24.5 cms high
485. A pair of XIX century Japanese Satsuma vases decorated with wild fowl before flowers and buildings, £200-300
486. A XIX century Imari patterned plate, with wavy edge decorated with rust and blue flowers on white ground, 31 cms diameter
487. A XIX century Imari patterned plate with wavy edge decorated with rust and blue flowers on white ground, 31 cms diameter
488. A XIX century Chinese dish decorated with figures before bridge, 32 cms diameter
489. Two XIX century oriental plates decorated with a famille rose palette on green ground birds butterflies and flowers, each 25 cms diameter
490. A Sevres style plate the centre decorated with *Muses and Cherubs* signed Lasson with gilt rim on green ground pressed number 16 verso, 30 cms diameter
491. Copeland late Spode:- A XIX century dish with scalloped edge decorated with oriental style figures, pressed crown mark beneath, 30 cms diameter
492. A XIX century French charger with gilt floral decoration on yellow ground, painted gold rose mark below the initials LUVG, 38 cms diameter £100-150

496. Moorcroft 'Anemone' pattern.  
A large vase, blue ground blue signature impressed marks;  
approx 26 cms high £280-320



497. Moorcroft 'Finches' pattern. A plate blue and light green ground, green monogram mark,  
25.75 cms diameter £150-250

498. Moorcroft 'Finches' pattern. A pair of vases with green impressed monogram mark, each 19 cms high £600-800



499. Moorcroft 'Anemone' pattern.  
A waisted vase, green impressed marks hand painted 2002,  
22 cms high



500. Moorcroft - *Magnolia and Hibiscus* pattern vase unmarked; 8 cms high £40-60
501. Moorcroft - *Magnolia and Hibiscus* pattern vase pink on cream ground; impressed marks below, 9 cms high £60-80
502. A Chelsea works small vase with sloop decorated flowers by Lise Moorcroft; 8 cms high
503. Moorcroft - trial piece purple and orange flowers written signature mark beneath Kerri; 16 cms diameter
504. Moorcroft - *Hibiscus* pattern small lidded ginger jar, original sticker beneath; 12 cms high £80-120
505. Moorcroft - modern waisted vase *Fruit and Berry* pattern, brown signature mark dated 2000; 17 cms high
506. Moorcroft - small bulbous ginger jar and cover A rare trial piece decorated with child and teddy bear with printed mark beneath - trial 14.01.02; 11 cms high £100-150
509. A pair of XIX century three branch candle sconces decorated with applied and encrusted flowers in purple and green terminating in light blue foliate stems, each 20 cms high

510. A continental porcelain clock, the numeric dial flanked by crumbed flowers and cherubs raised on scroll feet with gilt highlights, double blue cross mark below, 30 cms high (af)





511. Potschappel:- A pair of highly decorative florally encrusted vases and covers in three sections each with elaborate rococo scroll moulded bodies edged in pink and lilac with gilt highlights and floral sprays encrusted with coloured fruits and flowers painted scenes of *Cupid and the Three Graces*, the covers with applied semi clad maidens holding garlands raised on rococo scroll bases with applied floral sprigs. Marked below, *each approx 58 cms high* £1500-2000

512. Potschappel:- An urn shaped vase in three sections the main body with applied encrusted coloured flowers in purples blues and orange with painted floral bouquets and gilt scrolled highlights, the handles decorated with relief moulded winged cherubs, the pierced lid with further cherubs and painted coat of arms raised on encrusted floral scroll base with gilt highlights, painted marks below, *approx 84 cms high (a.f)* £400-700



513. Potschappel:- A magnificent pair of urn shaped vases and covers in three sections, the elaborate moulded bodies with gilt highlights decorated with religious scenes, applied encrusted coloured flowers and moulded handles formed as semi clad maidens holding posies, the gadrooned covers with gilt highlights and central cartouche, painted shield motif flanked by applied winged cherubs on florally patterned scroll bases, painted marks beneath; *approx 86 cms high* £1500-2000



514. A XIX century Vienna circular porcelain plaque titled verso 'Othello' richly enamelled and gilded frame to the finely painted scene signed lower right. A? Frause Leinge 49.5 cms diameter £800-1200



515. A plaster style torso bust of a naked female impressed marks 1762; 30.5 cms high

516. A resin torso bust of a girl on circular base approx 30 cm high

## INSTRUMENTS, DECORATIVE METALWARE ETC.

520. A Culpeper type English microscope with accessories in a mahogany pillar case fitted with a small drawer to the base, the microscope 26 cms high, the case 32 cms



521. A XIX century three draw brass and leather mounted telescope with stand, fitted oak case and spare eye piece 76 cm open 27 cm closed



522. A set of portable folding beam scales on stained base, with weights and accessories 4 cms high

523. Good Brand & Co, Victoria Buildings, Manchester, a set of early XX century folding beam scales on mahogany base with central drawer; 34 cm high

524. A XX century geometry set in fitted rosewood case and another

525. A XX century geometry set in fitted rosewood case

526. Late XIX century brass table top adjustable magnifier on cylindrical support and circular base

527. A XIX century brass microscope, by Baker, London. No: 242 coarse rack and pinion focusing control fine focus and single adjustable eye piece with a qty of lenses by Powell & Lealand, Zeiss, Broadhurst, Clarkson & Co, Reichert and others unmarked etc, in fitted lens box and mahogany carrying case the microscope, *approx 40cm high* £200-400

528. Bell & Howell a XX century double run 8 model 134G American Cine Camera with lenses in a Wallace Heaton Ltd leather case, 13 cms long

531. The "New Cecil Zonophone", a clockwork gramophone with original painted tin horn in oak case, approx 64cm across





532. Two XIX century cast metal carriage lamps  
*each 48cm high*
533. Two XIX century bronzed figures, the first of Bacchus the second a semi naked maiden both holding urns raised on circular stepped bases  
*approx 24 cms high*
534. A XIX century brass lamp with milk glass shade raised on baluster column and circular foot  
*approx 61 cms high*
535. A brass oil lamp the clear glass funnel and frosted shade with circular reservoir and bell shaped foot on ebonised circular plinth  
*approx 58cm high*
536. A brass oil lamp with clear chimney and glass reservoir raised on fluted column 56cm high
537. A brass oil lamp raised on circular foot,  
*46cm high*
538. A shaped cast metal fire fender
539. A XX century walking stick the knop modelled as dogs head with silver plated collar, barley twist ditto and two others
540. An early XX century walking stick with silver collar and end and two others
541. A XX century walking cane with silver knop and another walking stick
542. Three walking sticks
543. Three Bosson style plaques Newport Arch, Lincoln Cathedral, and the Jewes House each mounted and framed (3)
544. A XIX century copper kettle with brass handle and a copper measuring jug, the kettle  
*approx 23 cm high*
545. A XIX century copper kettle  
*approx 27 cm high*
546. A near matching set of XIX century copper and brass graduated kettles each with acorn finials
547. A late XIX century gallon copper kettle
548. A XIX century copper jug with shaped spout and hammered body 32cm high, a circular hammered copper plant stand on triple brass hairy paw feet, a miniature chamber pot with brass handle and a table with hammered copper top
549. A hammered copper coal helmet with brass handles and a copper kettle with acorn finial and brass mounts
550. A copper warming pan with turned handle
551. A copper warming pan with turned ebonised handle
552. A copper warming pan with turned handle
553. A brass warming pan with shaped handle
554. A copper urn with pierced lid and turned ebonised handles raised on square base and ball feet  
*approx 31cm high*
555. Gaskell & Chambers Greenways Works, Birmingham. An Arts & Crafts pub table with hammered circular copper top and square tapering legs terminating on pad feet  
*70cm high*
556. A late XIX / early XX century copper and brass samavar with turned carrying handles the main body decorated with gadrooned highlights raised on circular foot and quadruple supports  
*47.5 cms high £100-150*
557. A XIX century copper kettle with brass acorn finial 30 cms high
558. A brass fire fender *36 cms long*
559. An oval Victorian brass fire screen the glass interior decorated with stork in naturalistic setting raised on pad feet *75 cms high*  
*£100-150*
560. An early XX century oak stool the oval top with pierced centre *46 cms high*
561. Early XX century oak and metal bound jardiniere on stand *77 cms high*
562. A matched five piece brass fireside companion set
563. A XIX century cone shaped copper spirit warmer and copper pan with brass handle the pan *26 cms diameter* £60-80
564. A XIX century oak and brass bound stick barrel and a qty of walking sticks - one with a screw top and glass liqueur tube
565. A XIX century cast iron figural stick stand 'The Reaper' raised on kidney shaped base  
*79 cms high £60-100*
566. Two copper and one brass saucepans (3)
567. A copper warming pan with ebonised handle
568. A XIX century copper warming pan
569. A late XIX century copper and brass lamp  
*£80-120*
570. A XIX century brass door knocker, later letter box and bell pull (3)
571. A modern smokers stand the octagonal top raised on support formed as standing native African *80 cms tall*
572. A XIX century ash and elm Boston bar stool with circular seat raised on turned legs and cross stretcher *57 cms high*
573. A XX century copper coaching horn with brass mouth piece *119 cms high*
574. Copper warming pan with turned ebonised handle
575. A XIX century two handled copper preserve pan *60cm diameter*
576. A brass jam pan with iron carrying handle  
*approx 14cm high*
577. A brass jam pan *approx 16cm high*



578. A XIX century brass clockwork roasting jack with support hook and key approx 41cm high

579. A set of nine Victorian Lignum Vitae carpet bowls

580. After Herbert Godd (drawing from life) Art Deco hammered pewter plaque advertising the City of Lincoln Arts & Crafts Exhibition on oak mount 28 cms high



581. Two leather gun cases one with brass corners

582. A hardwood model of a Lancaster bomber carved on the cockpit 'City of Lincoln' approx 86cm and a print £50-80

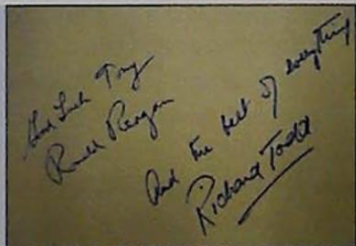
583. A XIX century French leather and Nickel beaded dog collar £100-150



584. Tunbridge ware. A late XIX century ink stand with turned pen holders and moulded glass bottle 14.25 cms £40-60

587. HRH Princess Margaret B/W photograph signed "Margaret" 10" x 8" with 3 others and visitors book signed twice by Princess Margaret also Joyce Grenfell & Angus Ogilvy 1962 - 1978 £100-200

588. Autographs. Two Autograph albums containing the signatures of many film stars including Gregory Peck, Errol Flynn, Ronald Reagan, Anthony Quail, Richard Todd etc. collected by the present owners grandfather whilst working at the Elstree Studios between approx 1940 and 1970 £400-600



589. A booklet containing late XIX /early XX century black and white photographs of Lincoln to include the Castle, Roman Arch from the South West from Canwick Hill, Horsefair etc.

590. Photography. The Photographic Convention Plymouth 3rd - 9th July 1893 a collection of landscapes by Richard Keene Ltd., of Derby comprising approx 58 photographs named views in Devon and Cornwall each approx 15 x 20 cms

591. Photographic Convention 1893 ( as above) approx 25 photographs taken by Richard Keene including Salisbury Cathedral, views in Wales and Chester each approx 15 x 20 cms

592. Photographic Convention approx 20 photographs taken by Richard Keene of Derby Bath and district, including Glastonbury Abbey etc. approx 15 x 20 cms

593. Photographic Convention - approx 37 photographs taken by Richard Keene of Derby Isle of Wight, Yorkshire, York Minster, Stokesay etc. approx 15 x 20 cms and two water colour drawings by one of his sons

On instructions from Mr John Neild

- retired Optician

A collection of 18<sup>th</sup>, 19<sup>th</sup> & 20<sup>th</sup> Century spectacles frames and cases



600. A rare XIX century Loupe with 4 x printed magnification and shaped tortoise shell handle

601. A pair of Georgian hall marked silver spectacles Birmingham makers mark IP with plain frames and adjustable side bars

602. XIX century Lorgnette with tortoise shell frame and shaped barley twist handle

603. A pair of early XIX century tortoise shell spectacles with shaped double side bars

604. A mid XIX century Pince-nez with tortoise shell frames and shaped handle

605. A pair of Georgian hallmarked silver plated spectacles with adjustable side bars

606. A pair of late XIX century spectacles with tortoise shell frames and single side bars

607. A XIX century unhall-marked gold coloured Pince-nez with adjustable spring bridge and shaped nose guards

608. A pair of XIX century spectacles with curved ear pieces

609. A XIX century Lorgnette with tortoise shell frame and shaped handle (no lenses)

610. An unhallmarked XIX gold coloured Pince-nez with spiral sprung bridge and linked chain



611. An unhallmarked gold coloured Pince-nez with spiral sprung bridge and padded nose guards

612. A pair of XIX century silver plated spectacles marks rubbed, with slender single pierced side bars

613. A pair of XIX century hm silver plated spectacles marks rubbed, with adjustable side bars



614. A pair of XIX century spectacles with tinted lenses and curved ear pieces
615. A XIX century unhallmarked Pince-nez with shaped support to the frame
616. A pair of XIX century hallmarked silver spectacles Birmingham makers mark I no P with pierced double side bars
617. A XIX gold plated monocle with engine turned handle
618. An unhallmarked gold coloured Pince-nez with clear oval lenses
619. A mid XIX century spring Lorgnette with unhall-marked gold frame and shaped tortoise shell handle with central oval cartouche
620. A late XIX century Lorgnette with shaped pierced tortoise shell handle and frame

621. A pair of Georgian hm silver? spectacles Birmingham maker IT, marks rubbed with double side bars



622. A pair of XIX century spectacles with adjustable side bars
623. A pair of XIX century spectacles with single adjustable side bar (af)

624. A XIX century silver plated Lorgnette with elaborate pierced handle



625. A pair of XIX century spectacles with hall marked silver frames and slender double side bars (marks rubbed)
626. A XIX century spring Lorgnette with metal frame

627. A mid XIX century Lorgnette with shaped tortoise shell and gilded handle and un hall marked silver plated frame



628. A pair of Georgian hm silver spectacles maker JW with adjustable side bars
629. A pair of XVIII century spectacles with engraved brass frames and adjustable side bars
630. A pair of XIX century spectacles with metal frames and plain side bars
631. A pair of hm silver spectacles with adjustable side bars
632. A pair of Georgian hm silver spectacles marks rubbed with adjustable side bars

633. A pair of Georgian London hm silver spectacles with double hinged side bars marks rubbed

634. A pair of Georgian hm silver spectacles marks worn with adjustable double side bars
635. A pair of late XVIII century spectacles with iron double side bar and pierced ends
636. A pair of early XIX century spectacles with metal single side bars and pierced ends
637. A pair of XIX century silver plated spectacles Birmingham makers mark J K, having double side bars with pierced ends (cased)
638. A pair of XVIII century hall marked silver spectacles the frames with fixed double side bars
639. An unhallmarked gold coloured Pince-nez with plain pierced frame
640. A pair of Victorian hm silver spectacles date mark rubbe with slender double side bars
641. A pair of XIX century spectacles with slender double side bars
642. A XIX century Lorgnette with pewter coloured frame and handle
643. A pair of XIX century scissor spectacles with tortoise shell frame
644. A pair of early XIX century eye preservers with lateral tinted visors and plated double side bars
645. A pair of early XIX century silver plated spectacles with double pierced side bars
646. A pair of Georgian hallmarked silver spectacles Birmingham. Makers mark J H
647. A pair of XIX century silver plated spectacles with pierced single adjustable side bar (af)
648. A pair of XIX century etched brass spectacles with adjustable side bars (cased)
649. A pair of XIX century steel spectacles with pierced single side bars
650. A pair of XIX century spectacles with tortoise shell frames and tapering single side bars
651. A pair of XIX century steel spectacles with pierced single side bars (cased) (af)
652. A pair of XIX century spectacles with tinted lenses and slender tortoise shell frames with side bars
653. A pair of XIX century metal framed spectacles with shaped bridge, the double side bars terminating in circular ends
654. A XIX century reading glass with tortoise shell frame and another (af)(cased)
655. A XIX century silver plated spring Lorgnette with engine turned frame and handle and later carrying cord
656. A XIX century folding reading glass the mother of pearl outer case with un hall marked silver mounts fitted in velvet lined box



657. A pair of unusual XIX century spectacles with large tortoise shell pierced frames and double side bars
658. A pair of XIX century spectacles with pierced adjustable side bars in fitted case
659. A pair of unhallmarked gold coloured spectacles the bridge reading 'Stocoto' with curved ear pieces
660. A pair of unhallmarked gold coloured spectacles with curved and turned ear pieces and tortoise shell nose guards and tortoise shell case
661. A pair of XIX century steel spectacles and a Victorian case with mother of pearl inlay
662. A pair of unhallmarked gold coloured spectacles with plain rims and curved pierced side bars in pressed cardboard case
663. A XIX century gold coloured Pince-nez with spring loaded bridge
664. A XIX century Pince nez with unhallmarked gold coloured pierced bridge and nose guards
665. An unhallmarked gold coloured lorgenette
666. A Victorian ebonised spectacles case the hinged lid with mother of pearl inlay and two others similar (3)
667. A pair of XIX century spectacles with tortoise shell frames and curved tapering side bars
668. A XIX century un hall marked gold coloured Pince -nez with spring loaded bridge and padded nose guards fitted in velvet lined case
669. A XIX century Pince-nez with tortoise shell frame and (later) cord
670. A late XIX century Mauchlinware spectacles case with printed image of Bridlington Harbour
671. A Victorian ebonised spectacles case with inlaid hinged lid and another ( 2)
672. An XVIII century leather spectacles case and three later pressed card cases (4)
673. Four pressed card spectacles cases and another knitted (5)
674. A XIX century tortoise shell spectacles case the hinged lid with unhall-marked silver mounts
675. A XIX century tortoise shell spectacles case with hinged lid
676. A XIX century ebonised spectacles case decorated with oriental scenes and another (2)
677. A XIX century Shagreen spectacles case and a Victorian pressed leather case
678. Two XIX century Shagreen spectacles cases each with unhall-marked silver mounts to the hinged lids (2)
679. A XIX century Shagreen monocle case with unhall-marked silver mounts to the hinged lid, and another case (2)
680. A XIX century Shagreen scientific instruments case having silver mounts to the hinged lid the fitted interior lacking contents

681. A pair of hallmarked gold coloured spectacles with curved side bars, and another pair a.f. the leather case with hall marked silver mounts

## A COLLECTION OF CINEMA ADVERTISING POSTERS

825. *The moving Target*  
ABC Cleethorpes, Stafford & Co Ltd.,  
Nottingham & London in association with  
Warner Bros. 75cms x 101 cms Some folding, 1  
tear to edge £40-60
826. *West Side Story* Lonsdale & Bartholemew in  
association with United Artists England 75.5  
cms x 99 cms Some folding £30-50
827. *Carry on up the Jungle* Published by A E Berry  
Ltd., England 76 cms x 96.5 cms Some folding  
£30-50

828. *James Bond On Her  
Majesty's Secret Service*  
2 identical posters by  
Lonsdale &  
Bartholemew in  
association with United  
Artists - England 25.5 cms x 99cms Some  
folding £100-150



829. *The Magic Christian* and *Tiger by the Tail* For  
Grimsby ABC cinema 76 cms x 99 cms Some  
folding £20-40
830. *The ballad of Josie* and *Rosie* A double film  
poster English 76 cms x 99 cms Some edge  
tears, folding etc. £20-40
831. *In the Heat of the Night* Lonsdale &  
Bartholemew in association with United Artists  
England 76 cms 102 cms Some folding £50-80
832. *Babylove* Lonsdale & Bartholemew in  
association with Embassy Films 76 cms x 96  
cms Large tear and  
*Bandolero!* Lonsdale & Bartholemew in  
association with 20th Century Fox 76.5 cms x  
101 cms Large tear to bottom corner, and  
folding £20-30
833. *Alfred the Great* Lonsdale & Bartholemew in  
association with MGM, the ABC at Grimsby  
76 cms x 101 cms £20-40
834. *The Battle for Anzio* and *Don't Raise the Bridge  
Lower the River* Double poster W E Berry Ltd.,  
in association with National Screens Service  
76 cms x 101 cms Some staining and creases  
£15-20

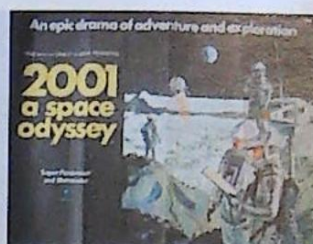


835. *The Good The Bad and the Ugly* Lonsdale & Bartholomew in association with United Artists England 76.5 cms x 101 cms Some folding £200-400



836. *This property is Condemned* and *The Psycho Pass* Leonard Ripley and Co. Ltd., in association with Technicolour England 76 cms x 102 cms Some folding and staining, double poster torn and taped £20-40
837. *Three in the Attic* and *The Devils* 8 Double poster Anglo Amalgamated in association with Warner - Pathe 76 cms x 99 cms A Cleethorpes advertising poster for *Ring of Bright Water* and *The Early Bird*, another for the *Grimsby September Fair*, the cast list for *Crooks and Coronets* starring Telly Savalas, an Odeon Dover advertising poster for *The Most Dangerous Man in the World* Part torn poster for *Jason & the Argonauts* and two others, various folding tears damage and losses (8 in total) £30-50
838. *Walt Disney's Alice in Wonderland* and *Rascal* Double poster S & DS Ltd., England 75 cms x 101 cms and *Cinderella* and *The Horse in the Grey Flannel Suit* S & DS Ltd., in association with Walt Disney Productions 75 cms x 98 cms Large tear to the corner and folding to both £40-60
839. *The Longest Day* Lonsdale and Bartholomew in association with 20th Century Fox England 75.5 cms x 99 cms Folding tearing and added attachments verso £30-50
840. *Twinky* and *Diamond Rush* 76 cms x 97 cms Cleethorpes advertising poster for *Fanny Hill* and *Curse of the Dead*, another for *A Promise of Bed* and *Erotique* a Drinking and Driving advertising poster, 1984 Ipswich Raceway advertising poster, various tearing and creasing etc. (5 in total) £20-40
841. *The Guns of the Magnificent Seven* Lonsdale & Bartholomew in association with United Artists England 76 cms x 99 cms Folding £30-50
842. *Three into Two won't Go* and *Eye of the Cat* Double advertising poster Universal Pictures English 76 cms x 100 cms Some folding £10-20

843. *2001 A Space Odyssey* W E Berry in association with MGM England 76 cms x 100 cms Some folding £100-200



844. *John and Mary* and *The Last Shot you Hear* Double advertising poster Lonsdale and Bartholomew in association with 76 cms x 100 cms Folding and creasing £20-40
845. *Walt Disney's Alice in Wonderland* and *Rascal* S & DS Ltd., in association with Walt Disney productions England 75.5 cms x 105 cms £30-50
846. *West Side Story* Lonsdale & Bartholomew in association with United Artists 75.5 cms x 101 cms Tears and folding £30-50
847. *A Promise of Bed* and *Erotique* A Cleethorpes double advertising poster, also *Stiletto* and *A Time for Giving* and another *The Wonder of Love* Broomhead England 76 cms x 101 cms Each with some tearing and folds etc. (3) £30-50
848. *Some May Live* Half wall poster Lonsdale & Bartholomew in association with Rank England 25.5 cms x 99 cms and another half poster *The Pink Jungle* W E Berry Ltd., in association with Universal Pictures each separated from complete posters (2)
849. *Belle de Jour* Eastman colour 76 cms x 50.5 cms and another advertising poster for *Goodbye Columbus* and *Target*, another part poster *The Incredible Mr Limpet* (part). *Chuka*, *Laurel & Hardy's Laughing Twenties*, Stafford & Co. Ltd., all each some folding (5)
850. *The Spy who came in from the Cold* Two left part posters, ex publicity and another part poster of *Camelot* etc. (4) various sizes, tears creases etc.
851. *The Man from Uncle* Left side only, Hawaiian style, right side only, *Chuka*, left side only, Made in Paris. Right side, *Run wild Run Free* right side only, *Carry on again* left side only and an anti Drink-Driving Poster various sizes, tears and folds etc. (7)
852. 'Dont bother to knock' - a modern cardboard advertising poster in association with Twentieth Century Fox approx 150 cms high



## TAXIDERMY

855. Taxidermy:-  
Victorian/early  
Edwardian leopard skin  
with head on green felt  
backing approx 125cm  
long



856. Taxidermy:- A long horned grey faced rams  
head mounted on shield plinth; 53cm  
857. Taxidermy: A fox's mask on shield shape  
plaque approx 29 cms high  
858. Taxidermy: A Monkjack head mounted on  
shield stamped B.E.A. 1907  
approx 41 cms high  
859. Taxidermy - five point stags head (skeleton)

## ARMS, EDGED WEAPONS AND COLLECTABLES ETC.

860. A Mauser bayonet stamped 'Mundlos 2426'  
with metal scabbard and leather frog; 15 inches  
861. A Hitler Youth dagger engraved 'E.V.S Solingen'  
the chequered grip with inset diamond and  
coloured enamels centred with a Swastika,  
metal scabbard with leather belt suspender;  
9.5 inches  
862. A German AS Police bayonet and sheath with  
engraved blade stamped 'Solingen' chequered  
grip; 14.5 inches  
863. An Italian bayonet and metal scabbard;  
16 inches  
864. A Canadian Ross Rifle Co. 1907 patent  
bayonet and scabbard; 14.5 inches  
865. A Swedish bayonet and scabbard the blade  
stamped 'EJ E AB' with anchor mark and the  
scabbard with various index numbers,  
chequered all metal grip; 13 inches  
866. A copy of a German Naval dagger with etched  
steel blade ornate cast brass hilt and engraved  
brass scabbard; 15 inches  
867. A copy of a German Luftwaffe dagger with  
plated mounts and scabbard; 15 inches  
868. An S.A. dagger the blade engraved 'Albert  
Mebus Solingen' stamped number to the hilt and  
corresponding number to the scabbard;  
13.75 inches  
869. A copy of WWII SS dagger with painted  
scabbard and plated mount; 14 inches  
870. An Italian bayonet with wooden grip stamped  
'BF7720'; 16 inches  
871. A Mauser bayonet the steel blade stamped  
'FHerdera. SN'; 1455d; 15 inches  
872. Wilkinson Sword Co Ltd., the 'FS fighting  
knife', a one piece metal dagger; 11.5 inches and  
another similar with leather scabbard  
873. An American bayonet with chequered grip  
stamped 'US M7 Mil Par'; 11.5 inches  
874. An American bayonet with chequered grip  
stamped 'US M5 A1 M11 Par Co1'; 11.5 inches  
875. A British bayonet and metal scabbard stamped  
'Mk.2N67'; 10.5 inches overall  
876. A small Indian dagger the handle formed from  
polished coloured stones and inlaid with  
coloured round balls and another brass  
mounted Indian dagger with engraved  
scabbard; 5.75 inches and 8.25 inches  
877. A Swedish knife with engraved silver plate  
handle and engraved scabbard, the steel blade  
stamped 'Mora'; 8.5 inches  
878. A Spanish horn handled Lock knife, the blade  
stamped 'Jeminel au Havre'; 9.5 inches  
879. A European stag horn handled hunting knife  
with leather scabbard; 16 inches  
880. An Afghan Pesh Kabz with bone mounted hilt;  
16 inches  
881. Two Russian Kindjal one hilt inlaid with  
coloured dots and the other with two domed  
brass rosettes; 14 inches and 14.5 inches  
882. Antique weighted leather covered cosh; approx  
14 inches and another leather and metal cosh;  
12 inches  
883. A Kukri, brass mounted with hardwood handle  
black leather scabbard and brass tip; 15 inches  
884. A Kukri and scabbard white metal mounts;  
12 inches  
885. A Kukri the hardwood handle with white metal  
mount and lion mask butt, leather scabbard;  
9 inches  
886. A Kukri, the hardwood handle with white metal  
mounts and lion mask butt, black scabbard with  
two small knives; 15 inches  
887. An African Nubian dagger with bound leather  
handle and decorative leather sheath; 15 inches  
888. An African camel skin dagger with decorative  
leather scabbard; 13 inches overall  
889. An oriental Kris with wooden scabbard and  
handle; 17 inches  
890. Two German carving knives with broad steel  
blades brass mounted hilt; 18 inches  
891. A Kris with shaped hardwood handle,  
Malayan?; 17 inches  
892. A Kukri, brass mounted with hardwood handle  
and black leather scabbard; 14 inches  
893. A Zulu elephant spear; 69 inches  
894. An African lion spear decorated with animal  
hair; 61 inches



895. A South Sea Island fishing spear; 70 inches  
 896. An African Zulu hunting spear; 52 inches  
 897. An African hide covered lion spear with engraved mane; 60 inches  
 898. A rare Nepalese Temple Kora the blade etched with a flower head approx; 23 inches overall  
 899. A XIX century Turkish side arm with a part serrated blade, hardwood facings to the handle and brass mounted hilt; 25 inches overall  
 900. A XIX century hunting sword, the plain steel blade with a horn handle, brass mounted hilt of acorn and shell pattern possibly German; 25 inches overall  
 901. A XIX century French sidearm with cast brass hilt and brass mounted leather scabbard; 25 inches overall  
 902. A Nepalese Kora with engraved blade and ornate handle; approx 23 inches overall  
 903. A Brown Bess type socket bayonet numbered '5'; 21 inches  
 904. Two Spanish bayonets one stamped 'Artilleria Nacional', both numbered; approx 20 inches  
 905. A French Chasseporte bayonet engraved 'St. Etienne 1872'; P49588 approx 27.5 inches  
 906. A British Enfield 1856 bayonet with chequered grip; 28 inches  
 907. A Cavalry sword with chequered grip and cast basket hilt Indian type 1853?; 35 inches  
 908. A continental Court sword with relief cast ornate gilt brass hilt and etched blade; 37 inches  
 909. An African steel sword with leather bound handle and stitched leather scabbard; 37 inches  
 910. A Sudanese Kaskara the flat blade engraved with a crescent, silver mounted hilt part missing; 42 inches overall

911. An African Swazi axe with metal bound hardwood handle; approx 26 inches overall



912. An all metal Indian decorative war axe; 21 inches  
 913. A carved wooden South Seas fishing spear; 23 inches  
 914. An African hardwood Knob Kerry; 26 inches  
 915. A straight South Sea Island war club; 42 inches overall  
 916. An antique wooden tapering sword stick with brass mount and turned hardwood handle, the steel blade with a small brass inlay; 35.5 inches overall  
 917. An antique brass mounted steel sword stick in ebonised cane; 35 inches

918. An antique leather bound Eastern sword stick; 26.5 inches  
 919. Three antique Aboriginal hunting boomerangs; from 22 inches to 35 inches  
 920. A 1912 Cavalry officers sword the blade stamped 'London made' shagreen handle with engraved guard, leather scabbard; 43 inches



921. An ornamental carved African wooden spear; 60 inches  
 922. A South Sea Kite war club; 48 inches  
 923. A South Sea Island Adzed war club; 37.5 inches

924. A South Sea pineapple war club; 40 inches



## GLASSWARE

930. A pair of Victorian frosted glass lustres of 'dumb bell' form with gilt highlights and plain glass droppers each approx 21 cms high, and a qty of spare droppers £50-80  
 931. A pair of Victorian green glass lustres of 'Dumb bell' form each with castellated tops raised on baluster columns and circular feet, with gilt highlights and plain glass droppers, each 25 cms high  
 932. An Edwardian oil lamp with moulded milk glass shade raised on cylindrically tapering glass body and elaborate cast metal base; approx 78 cms  
 933. A XIX century oil lamp having fluted cranberry glass shade and clear reservoir raised on ceramic ovoid body and pierced metal foot; 55.5 cms high £100-200  
 934. A pair of XIX century bottle vases of bulbous form decorated with flowers on white ground, each 19.5 cms high  
 935. A pair of Victorian glass lustres the castellated gilt highlighted tops in the form of flowers each raised on moulded glass stems and circular feet with droppers, each 33 cm high £150-200  
 936. A XIX century single cranberry glass epergne trumpet



937. A XIX century cranberry glass jug of waisted form with wavy edged rim and plain glass handle raised on stylised floral foot, and a similar glass bowl with wavy edge the jug, *11 cms high*
938. A Victorian cranberry glass epergne, the fluted trumpet raised on shaped glass base and pierced metal stand, *30 cms high*
939. A XIX century Bristol blue glass rolling pin with printed maritime scenes and the motto 'When this you see remember me' with knob handles, *38 cms long*
940. An early XX century glass drinks set of bulbous shape jug and two glasses each raised on triple blue glass cabriole feet and etched with Gregory style children amongst bocage the jug *13 cms high*, a plain moulded jar and stopper and three other etched glasses
941. A Victorian blue glass vase the body etched with gilt flowers, castellated top raised on trumpet shape stem and shaped scalloped foot, *22.5 cms high*
942. A magnificent Victorian cranberry glass ornamental pipe of large proportion with curved and turned tapering stem, *approx. 75cm long*
943. A XIX century amethyst glass cornucopia with clear 'printies' the gilt mount in the form of a hand raised on rectangular base, *20 cms high £80-120*
944. An early XIX century cordial glass, ale glass with trumpet shaped bowl and two others similar (4)
945. A XIX century 'Master of Ceremonies' ale glass, blue glass goblet with cup shaped bowl, dram glass and another (4)
946. A XIX century dwarf ale glass raised on conical foot, two rummers on square bases with etched bowls and a cordial glass on squared foot
947. A XIX century dram glass on domed foot, wine glass with hob nail cut bowl, XIX century ale glass with etched bowl and modern ditto (5)
948. Two Champagne flutes single series twist to the stem and three rummers (5)
949. Two Romers
950. Two plain glass roamers with unground pontils and another wheel etched with fruiting vine
951. A XX century press moulded 'Master of Ceremonies' dram glass (7 cm high)
952. A late XIX/early XX century blue glass ink well, with ribbed body (5cm high)
953. A pair of Victorian blue glass bulbous shaped vases each with covers on circular feet with gilt decoration to the rims, the bodies decorated with birds flowers and insects, *each 40 cms high £80-120*

954. A XIX century Stourbridge green glass dump, *approx 12 cms high*
955. A XIX century Stourbridge dump, *approx 10 cms high*
956. A XIX century green glass basket raised on moulded base and five frosted glass shades (6)
957. Two XIX century decanters with bulbous shaped glass stoppers, a rummer of unusually small form, a cylindrical ice cream lick, five later glasses, two stoppers etc.

## BYGONES, BOXES AND CADDIES

958. A XIX century brass oil lamp with plain cylindrical chimney, glass shade and coloured glass reservoir painted with flowers and raised on an ionic fluted column with stepped squared base decorated with garlands, *approx 83 cms high £100-200*
959. Five modern paperweights and a glass vase (6)

962. A XIX century parquetry and bone serpentine fronted box standing on turned brass feet, *10 high x 28 cms wide £100-200*



963. An early XIX century marquetry box the lid front and sides inlaid with sailing ships in full sail and landscape scene, *12 high x 31 cms wide £150-180*
964. A XIX century poker work card case in two sections with fitted interior *12 cms high*
965. An Edwardian mahogany oblong tea tray galleried edge and shaped metal carrying handles the centre inlaid with boxwood shell, *approx 56 cms long £40-60*
966. An XVIII century mahogany slope desk, *50 cms wide*
967. A late XIX / early XX century walnut and parquetry jewellery box with fitted interior, *13 cms high*
968. A Victorian rosewood mother of pearl inlaid box with concealed side drawer
969. A XIX century rose wood sarcophagus shaped tea caddy with circular lock escutcheon and fitted interior, *11 cms high*
970. A XIX century mahogany apothecary cabinet the lockable hinged lid above one long drawer with flushed handle (now converted to a sewing box) *19 cm high £80-120*



971. A XIX century mahogany sarcophagus shaped tea caddy with metal cartouche and lock escutcheon and two sectional interior, 15 cm high
972. A late XIX / early XX century Victorian writing box with brass bandings to the outer case, the interior fitted with velvet topped writing slope, ink and pen holders (closed) 16 cm high
973. A rare late XIX / early XX century mahogany and parquetry spittoon the hinged embroidered lid revealing glazed inner liner raised on pot castors, approx 16 cms high £80-120

## SILVER

980. A pair of Edwardian candlesticks Birmingham 1905 of plain form with fluted stems raised on squared bases decorated with mask heads and garlands, 13 cms high
981. An Edwardian hot water jug London 1906 - 07 of baluster form, shaped hinged lid and acorn finial, ebonised handle raised on plain square foot, weight 12.5 troy ozs, approx 20 cms high £30-50
982. A castor London 1972 - 73 circular bellied form, the removable domed cover with knob finial the whole on circular foot, height 17.5 cms
983. A circular snuff box Birmingham 1911 makers mark for Deakin & Francis Ltd., with flush hinged lid and interior gilding 8 cms diameter and A lidded box Birmingham 1922 - 23 of circular form with hinged lid raised on triple scroll feet, 7 cms diameter
984. A XX century salver Sheffield 1933 - 34 With moulded scalloped border raised on quadruple hoof supports, approx 20 troy ozs, 25.5 cms diameter, £100-150
985. A Georgian style sauce boat Birmingham 1937 - 1938 by SB & S Ltd., having scalloped edge and scroll handle raised on triple hoof supports with shell pattern to the knee, and three hm silver trophies
986. A George III toddy ladle London 1766-67 with later foral repousse decorated bowl, and fruit wood handle, 31 cms long
987. A three piece tea service Birmingham 1931 comprising tea pot of squat circular form with ebonised knob and moulded handle, two handled sugar bowl and cream jug each with Greek key design decoration to the rim £80-120
988. A near matching set of four Georgian salt cellars London 1774 - 75 of circular form with plain decoration each raised on triple hoofed feet (one with liner) marks, rubbed £100-200
989. A pair of Victorian hall marked silver shell shaped butter dishes Sheffield 1895 makers mark for James Dixon & Sons each on triple ball supports; 10 cms
990. A hall marked silver pin cushion London 1921 of circular form with removable hinged embroidered centre section, approx 6 cms diameter £20-30
991. Hand mirror Birmingham 1899 Makers mark L&S rococo scroll decoration with pierced handle, 20 cms £20-30
992. A pair of salts Birmingham 1929 - 30 with liners raised on quadruple pad feet, a later Birmingham hm mustard pot with liner, with matching salt and two others (6)
993. An Edwardian teapot Birmingham 1904 - 05 of cape form with ebonised knob, moulded handle, gadrooning to the hinged lid and body 11.5 cms high, and a Birmingham hm hand mirror in heavy relief decorated with scroll work
994. A pair of candlesticks Birmingham 1977 scatter hallmarked with makers mark PHVee & Co baluster shaped columns raised circular base with beaded border, 15.5 cms high, a Birmingham hm circular bowl raised on triple hoof support, a Birmingham hm pepper pot and three Chester hm napkin rings with bright cut decoration to the bodies
995. A George III cream jug and two handled sugar bowl London 1807, makers mark for Abraham Portal ? (rubbed) cape form with Greek key design scroll handles and interior gilding raised on ball feet and a matched silver plated tea pot of oblong bellied form £100-150
996. Hall marked silver hot water jug Birmingham 1909 bulbous form with beak spout and wicker handle; 13.5 cms high
997. A pair of Edwardian hall marked silver dishes Sheffield 1910-11 makers mark Walker & Hall each with beaded edge and pierced bodies approx 3 ozs
998. A hallmarked silver sweetmeat dish with handle London 1813 makers mark Peter & Anne Bateman half moon shape with handle and interior gilding raised on stepped oval foot with bright cut decoration to the main body, 8 cms high £100-150





999. **Hall marked silver sauce boat** *Birmingham 1910-11* shaped handle with gadrooned rim raised on triple hoof supports, 6 1/4 ozs, 16.5 cms long



1000. **Hall marked silver sugar box** *London 1924* gadrooned decoration to the rim, hinged lid and finial lightly engraved, 6 ozs, 10 cms high

1001. **A Georgian Goblet** *London 1812* maker mark *Eames and Barnard* Embossed decoration to the main body with traces of original gilding on circular foot 6.5 ozs, 19 cms high



1002. **A pair of late XIX century bon bon dishes** *Sheffield 1895* with pierced rococo scroll design to the edge, approx 15.5 cms long

1003. **Hall marked silver cream jug** *Chester 1921-22* with moulded spout and handle raised on triple hoof supports; approx 5 cms high

1004. **Mid XX century tea strainer on stand** *Birmingham 1936-7* with pierced handle, and an early XX century hall marked silver dish with ribbon edge, makers mark H Matthews

1005. **Hall marked silver butter dish and liner** *Chester 1925* shaped handles raised on ball feet; 11 cms diameter

1006. **A Victorian Christening cup** *London 1854 - 55* makers mark rubbed of inverted bell form with scroll and lattice work to the main body raised on circular foot, 10.5 cms high, and a Victorian needle jar with silver top, 12.5 cms (2)

1007. **An early XX century circular inkstand** *Birmingham 1916 - 17* Birmingham hall marked cigarette case and another with scroll design, Sterling silver stamp holder in the form of an envelope and a burr wood snuff box (5)

1008. **Hall marked silver Part dressing table set** *Birmingham 1929* hand mirror and brush each with engine turned decoration, hm silver glove stretchers, pepper pot, glass hat pin jar with hall mark silver lid and another jar (5 items)

1009. **A Victorian bon bon basket** *London 1895-6* Shaped pierced edge raised on shell scroll supports, approx 10 oz, 19 cms long £80-120

1010. **An Edwardian cigarette box** bright cut decoration to the main body, 10 cms long

1011. **Set of 6 Napkin rings** *Birmingham 1938* bright cut decoration in fitted case £40-60

1012. **A hallmarked silver fish server**

*Dublin 1832-3* makers mark for *West & Sons* bright cut and pierced blade Queens pattern handle; approx 5 ozs, 30 cms long £60-80



1013. **Six Victorian tea spoons** *London 1842* fiddle pattern design and six Georgian hm silver teaspoons (12)

1014. **A set of six Georgian teaspoons** *London 1791- 92* fiddle back pattern initialed S R & M £20-40

1015. **A Georgian preserve spoon** *London 1806 - 7* makers mark T.F. (*Thomas Folkingham ?*) with fiddle pattern handle and gilded bucket scoop, 11 cms

1016. **A cork stopper** *Birmingham* marks rubbed knop modelled as a hound's head

1017. **Edwardian cream jug** *Birmingham 1901* embossed shell motif to the body with moulded handle, two handled sugar bowl *London 1894*, scrap bon bon dish, pair of hall marked sugar bows, tweezers, nail file with silver handle etc. (8)

1018. **Glove stretchers** *Birmingham 1909* shaped ends with steel tongues, file with hall marked silver handle, pierced bon bon dish pair of grape scissors with elaborate embossed handle (4)

1019. **Hall marked silver caddy spoon** *London 1920* shell shaped scoop, hall marked circular pill box, and a silver? link chain with pendant (3)

1020. **A Victorian cased christening spoon** *Birmingham 1856* with (replacement)? shaped handle in fitted velvet case and a cased hall marked silver medicine spoon and tongue scraper (2)

1021. **Silver flat ware** a quantity of hall marked silver flat ware comprising two ladles (*London 1834*) another (*London 1835*) cake slice (*Exeter 1835*) and a silver plated fish knife and fork

1022. **A set of six Victorian hall marked silver teaspoons** 1867 makers mark C B fiddle pattern lightly monogrammed, a Georgian hm silver teaspoon and a vesta case

1023. **Hall mark silver flat ware** *Sheffield 1901* comprising cased set of six spoons, another *Sheffield 1938*, another *Birmingham 1910* hallmarked silver spoon and fork, *Sheffield 1912* £30-50



1024. **An Art Nouveau design preserve spoon** *Sheffield 1902 - 03* with inverted bowl and crook handle, a set of *Sheffield* hm sugar bows and another, three preserve spoons and six bread knives with hall marked silver handles and plated blades (12)
1025. **An early XX century candlestick** *Chester 1910* on circular foot, hm silver hairbrush. modern pewter tankard and a small pewter bulbous shaped jug (4)
1026. **A hallmarked silver sauce boat** *London marks* rubbed with wavy edge raised on triple hoof supports

## SILVER PLATE

1030. **Silver plate** a pair of early XX century wine coasters, circular form with pierced decoration highlighted with garlands on wooden baize lined bases each 14 cms diameter and two silver plated four sectional toast racks each with quadruple ball feet (4)
1031. **Silver plate** *Two shaped entree dishes* with gadrooned border trumpet shaped flower vase, napkin rings, quantity of flat ware, cream jug, toast rack etc.
1032. **Silver plate various:-** egg cup set and spoons on stand, sugar bowl liner and bows, vase, flat ware etc. 1 tray
1033. **Silver Plate** Saucers, goblet, cream jug, teapot, sugar bows, mustard pot and spoon, cup holders, shallow dish, glass lined dish etc.
1034. **J S S - silver plated part service** Comprising water jug, coffee pot, sugar bowl and scoop, cream jug, sugar bowl, ash tray and galleried tray
1035. **Silver plate** two large circular condiment mats with bright cut decoration and six others smaller, small salver etc.(11)
1036. **Hall marked silver and plated ware** comprising Georgian preserve spoon, flat ware, collectors spoon, sugar bows, sherry label, gin label, costume brooch etc.
1037. **Silver plate** napkin rings, cutlery, cased teaspoons, sweet forks, case with beaded edge etc.
1038. **Silver plate** comprising bullet shape coffee pot, goblet tankard, flat ware, teapot, scuttle shaped sugar box, flower vases, pepper pot etc.
1039. **An electro plated kettle on stand** with bright cut floral decoration to the main body and (liner missing), a hot water jug with scroll decoration to the body, a teapot of bellied form with bright cut decoration

1040. **Silver plate** three goblets, tankard, part cruet, vase etc.
1041. **Silver plate part tea service** Comprising bullet shaped coffee pot, matched cream jug, sugar bowl, castors, preserve pot, tray
1043. **Silver plate** Three branch candlestick and another, plated horse figure, cigarette box, brass horse and cart
1044. **Viners silver plate cutlery** Queens pattern setting for six fitted in canteen
1045. **Silver plate** A three branch candelabra raised on baluster turned column and circular foot, 21 cms high
1046. **Silver plate** cutlery decorated with bead work edge fitted in oak canteen 48 pieces
1047. **Silver plate** a set of early XX century sweet knives and forks each with bright cut decoration to the blades and mother of pearl handles fitted in oak canteen stamped Elkington & Co Regents Street London
1055. **Silver plate** An early XX century 'chain link' evening purse

## WATCHES AND JEWELLERY, SOVEREIGNS ETC.

1056. A Gentleman's open face pocket watch the engine turned case stamped 14k the white enamelled dial with Arabic and Roman numerals and subsidiary second hand £50-80
1057. Ladies hall marked 9 ct 'Regency' cocktail watch £60-80
1058. Rolex - A Lady's watch - with silvered circular dial, baton markers, gilt hands and 9 ct gold integral bracelet, *approx 15 cms*
1059. A 9ct gold unhallmarked buckle set with two pearls, 3.1 cms long, a 9 ct gold brooch set with amethyst coloured stone, a double link hollow gold coloured bracelet with heart shaped padlock clasp, and a hm 9 ct gold watch chain with circular medallion fob, maker J.M
1060. A pair of hallmarked 9 ct gold cuff links and another pair unhallmarked
1061. A silver plated model of a miniature windmill, a qty of costume and other jewellery, lozenge shaped locket with engine turned back, a celtic brooch set with central amethyst coloured stone another stamped Mizpah, a similar Maltese shaped cross necklace set with polished central stone, a bridge pencil, etc.
1062. A pair of gold coloured drop earrings with green lozenge shaped stones set with pearls



1063. A white metal roll link rope work chain, white metal link chain brooch and a pendant
1064. A 'Rolex' 9ct gold cased Gent's wrist watch No: 39654 (case only)
1065. A Lady's bar brooch set with blue stones and sea pearls; and a reticulated brilliant set floral pendant
1066. Costume jewellery - brooches etc.
1067. A 2 colour fine Dubai gold and white metal spiral rope twist necklace, 17 inches
1068. An oval plain gold locket 4 cms on a 9 carat gold double spiral, 16 inches
1069. A fine and rare antique French gold rococo style thimble case with a jewelled catch to the hinged lid on a gilded double spiral neck chain, 26 inches
1070. An 18k Swiss Ladies fob watch with bright cut foliate and floral engraving to the dial centre and case
1071. A finely painted oval portrait miniature of a young Victorian boy wearing a white ruff in a brown buttoned tunic type jacket; oval mounted in a gold metal frame as a brooch
1072. A circular and 9 ct gold and mother of pearl powder compact with a loop to hang as a pendant 5 cms diameter
1073. Lady's fob watch with engine turned case three cocktail watches, open face pocket watch etc. 1 bag
1074. A qty of beads, necklaces etc.
1075. A qty of costume and other jewellery etc.
1076. Costume and other jewellery - necklaces, Gents quartz watch, Bullards advertising pencil, powder compact hall marked silver butter dish etc.
1077. A qty of costume and other jewellery, Gents necklaces etc.
1080. A Gentleman's monogrammed 18 carat gold ring, and Ladies un-hallmarked ring set with five stones
1081. A Victorian 22 carat gold circular wedding band
1082. An Edward VII 1903 sovereign ring £50-80
1083. A white metal brooch in the form of a turtle with coloured stones to the shell and red stones to the eyes
1084. Lady's hm 9 ct gold ring central rectangular amethyst with brillants to the shoulder
1085. Lady's hm gold ring with single brilliant in white metal setting
1086. Lady's hm 9 ct gold ring set with garnets and pearls
1087. A diamond and sapphire ring - the oval cut sapphire in gilt mount surmounted by 10 circular cut diamonds £300-400

1088. An oval half set sapphire and diamond ring with matching earrings in yellow gold
1089. A George V 1911 sovereign ring
1090. A three stone sapphire and diamond basket set dress ring
1091. A platinum set three stone diamond ring
1092. A yellow gold diamond dress ring, the central stone flanked by two turquoise
1093. A white gold set solitaire diamond ring
1094. A 9ct gold solitaire diamond signet ring

1095. A diamond solitaire ring set with an oval European cut diamond (approx 2.9 carat) set on yellow plain shoulder and shank stamped 18 ct. £5000-8000



1096. An eternity ring set with fourteen brilliant cut diamonds (total approx 3.5 carat) on platinum setting £2000-3000
1098. An 18ct chunky signet ring set with three diamonds £600-700
1105. A Victoria gold sovereign 1898
1106. A Victorian gold sovereign 1884
1107. An Elizabeth II gold sovereign 1974
1108. A Victoria gold sovereign 1891
1109. A Victoria gold sovereign 1899
1110. An Edward VII gold sovereign 1908
1111. A Victoria gold sovereign 1892
1112. An Edward VII gold sovereign 1910
1113. An Elizabeth II gold sovereign 1974
1114. A Victoria gold sovereign 1899
1115. A George V gold sovereign 1912
1116. An Edward VII gold sovereign 1906
1117. An Edward VII gold sovereign 1905
1118. A Victoria gold sovereign 1894
1119. A George V gold sovereign 1912
1120. A George V half sovereign 1911, and an Edward VII half sovereign 1908
1121. A Victorian gold £2 piece 1887 in a pendant frame
1122. An 1879 sovereign pendant in an open mount on 22ct gold neck chain
1123. A collection of Victorian and later Crowns (7) a collection of 16 half Crowns from Edward VII to Elizabeth II and three Florins all George V with sundry other silver coinage, shillings, sixpence etc.
1126. 19 Sommerset uncirculated one pound notes serial numbers BR44552977 - 997 some missing
1127. 22 used ten shilling notes, 4 x J G Hollom and 18 J.S.Fforde, and 2 pound notes J B Page



- 1128.15 uncirculated 10 shilling notes, J S Fforde  
 1129.30 uncirculated pound notes J B Page numbers  
 HX 16547001 - 30  
 1130.30 uncirculated pound notes J B Page  
 1131.38 uncirculated pound notes D H F  
 Sommerset  
 1132. Jersey 10 shilling note and a Confederate 2  
 dollar note

## EASTERN RUGS

1140. Perisan Hamadan rug large geometric  
 terracotta medallion on indigo field, light blue  
 border; 1.90 x 1.04 m  
 1141. Persian Saraband rug fine all over paisley  
 design on soft terracotta field with white  
 border; 1.45 x 1.06 m

1142. Persian Heriz  
 carpet large blue  
 geometric  
 medallion on red  
 field with ivory  
 corners, blue  
 border; 2.37 x 2.02 m



1143. Persian Lori carpet three terracotta geometric  
 medallions on indigo field, 2.73 x 1.65 m  
 1144. Kurdish rug small all over geometric design on  
 chocolate ground with blue border;  
 2.34 x 1.20 m  
 1145. Perisan Mahal rug all over dense floral design  
 on blue ground; 2.08 x 1.32 m

1146. Persian Bakhtiar  
 rug bold  
 geometric  
 medallion  
 on rust field;  
 1.90 x 1.30 m



1147. Kurdish rug small all over rose geometric  
 design on blue ground with white border;  
 1.95 x 1.06 m  
 1148. Perisan Mahal rug all over floral design on blue  
 ground with terracotta border,  
 1.45 x 1.07 m

## WATERCOLOUR DRAWINGS PAINTINGS AND PRINTS

1151. Fred Heinz, 1875 - 1897- a pair of water  
 colours titled *The Forest Pool* and *Through the  
 Wood*, contemporary swept gilt frames and gold  
 mounts - signed, 27 cms x 37 cms £350-500  
 1152. A XIX century water colour drawing '*Cattle on  
 a Rocky Outcrop*' unsigned, 18.5 x 27.5 cms  
 £150-250  
 1153. J G, 1878 monogrammed water colour '*On the  
 Stow*' bridge and trees mounted in gilt frame;  
 11.5 x 17 cms £80-120  
 1154. J N Bolston signed water colour '*The Thames  
 Henley*' people before tree modern mount in  
 oak frame; 27.5 x 41 cms

1155. W H Pigott  
 (18)'89, water  
 colour drawing  
 '*Newark Market*'  
 with cattle sheep  
 and many figures  
 beneath the Castle  
 35.5 cms x 51 cms  
 £800-1200



1156. XIX century  
 English school -  
 '*Whitby Harbour*'  
 with many figures  
 on the quay boats  
 on the water and  
 the Abbey in the  
 distance - water  
 colour drawing (unsigned) 25 cms x 35 cms  
 £600-900



1157. Attributed to M L Fox Path leading to chapel  
 with tree in foreground in modern mount and  
 frame water colour 19 cms x 25 cms  
 1158. G F Prosser (1800-1880) signed and titled  
 '*Harrow on the Hill from Uxbridge Common*'  
 with figures and a dog by a five bar gate in the  
 foreground, a pencil and water colour  
 heightened with body colour; from Spinks 1983  
 - with receipt verso £500-800  
 1159. A XIX century English school, stream leading  
 to bridge and town in modern mount and  
 frame, 20 x 30 cms  
 1160. McEwan, D.H. Signed water colour stream  
 and mountains, figure in middle ground,  
 21 x 29 cms



1161. XIX century English school 'The Snake Dancer' water colour drawing unsigned, 22.5 x 17 cms £150-250
1162. A water colour drawing signed J M W Turner and also attributed on the mount, continental cliff top village above a lake with figures and horses in the foreground, 13 x 18.5 cms £500-1000
1163. XIX century continental school water colour figures before a spire, 23 x 17 cms, in modern mount and frame
1164. J.P. Sandown signed and dated water colour-moored boats before windmill; 11 x 19 cms
1165. RAL, initialed a pair of water colour drawings lakeland landscapes with buildings and boats, 25 x 36 cms
1166. C. J. Kelsey Chalk on paper; flowers and trees 29 x 34 cms
1167. A Guist signed and titled water colour French town scape river and trees in the foreground before bridge and bell tower
1168. Continental school water colour Town scene with figures houses and trees, 17.5 x 24 cms
1169. An early XX century school water colour 'Crofters Cottage' figure in foreground mountains in the distance, 14 x 23 cms
1170. T.Mortimer Signed XIX century water colour - boat on calm waters, 17.5 x 24 cms
1171. A XIX century continental school water colour figures on country lane before windmill and town in the middle ground, 21 x 17.5 cms
1172. XIX century continental school water colour twilight river landscape with figures in the foreground, 18 x 25 cms
1173. Samuel Thomas A set of three kitten pictures, pencil and hand coloured (3, 1 signed), 28 x 30 cms
1174. XIX century continental school water colour Stream and mountains with seated figure in the foreground 17.5 x 25 cms
1175. XIX century continental school water colour Pond and trees with figures in the middle ground (illegible signature bottom left) 42 x 34 cms
1176. XX century English school Water colour, trees with town in the middle ground, 23 x 30 cms
1177. Follower of Peter De Wint signed water colour calm sea scape town in the middle ground, 17 x 27.5 cms

1178. Leslie Worth signed and dated pencil and water colour, with swans before trees and settlement in modern mount and frame dated



1953, Agnews retailers label verso; 22 x 51.5 cms £700-1000

1179. An interesting group of four water colours, three written verso 'The Daub Club 1890', Toilers - potato pickers with critical comments and signatures, Pandora Club October 96, 'By the Sea' criticisms and comments the Daub Club undated 'Homeward' pair of grey work horses one being ridden home, all unframed approx 17.5 cms x 25 cms £300-400



1180. Peter De Wint - Cattle watering in a stream beneath trees, open landscape with church tower in the distance - water colour 18 cms x 26 cms £900-1300



1181. Kate Hayllar 1884 s.d. still life study of green and black grapes in a trug on a table with apples champagne sauce etc. in a Victorian room setting, water colour drawing 12 cms x 17.3 cms £4500-6500



1182. Yamada Baske (?-1934)- signed water colour drawing on paper impressionist landscape mounted and framed, 32 x 48 cms



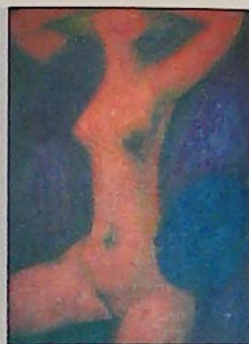
1183. Me De Soiza, 1940 a signed and dated watercolour seascape, boat drying sails, 29 x 14 cms
1185. A XIX century English school oil on artists board. stream before summer house and trees; 49 x 63 cms £80-120
1186. A XIX century English school oil on canvas, a country landscape with cows and pond before a cottage with figure looking on; 45 x 34.5 cms £100-200
1187. Tom Seymour - signed a pair of oils on canvas moorland landscape with figures and ducks by a brook, cottages in the distance and a river landscape with cattle and sheep, 39 x 60 cms £1000-1600
1188. A XIX century continental school oil on canvas - a pastoral scene with ruined tower figures in rowing boat on a lake and figure on a path, 61 x 87 cms £200-300
1189. A continental village scene indistinctly signed - oil on canvas Italian (?) figures with chickens feeding at their feet, 56 x 37 cms £200-300
1190. E J Lance, a pair of still life studies - black grapes in a bowl with flowers, strawberries and other fruit on a ledge, oils on card signed, 23 cms x 33 cms
1191. Angus Cameron - oil on canvas highland cattle standing in a Loch, 60 x 90 cms
1192. Spooner - two XIX century oils on canvas; fishermen pulling ashore their boat beneath a rocky headland and the companion picture fishermen rowing ashore
1193. Early XIX century English school oil on canvas farmer before gatepost and tree; 30.5 x 25.5 cms
1194. Mace signed oil on canvas 'Beaters Day Norton Disney Lincolnshire', 48 x 59 cm £50-80
1195. After George Moorland - XIX century oil on canvas 'Foresters', 36 x 44 cms
1196. W H Jones 1882 signed and dated verso and titled 'approaching autumn' oil on canvas, 39 x 20 cms

1197. H Moore (RA RWS 1831-1895) signed, oil on canvas. A pair of seascapes; Two first rate ships of the line in rough waters with the wind on their starboard quarters, a plunging wreck buoy in the foreground. The second; In the peace of an anchorage drying sails after a storm, a ships cutter heads for the shore, a mooring buoy in the foreground. 49 x 75 cms contemporary stepped gilt frames



1198. A XIX century English school oil on canvas grazing sheep before mountains, 54 x 81 cm £200-300
1199. Willhelm Schulz o/c. A still life study vase of summer flowers on a ledge, 52 x 77 cms £300-600
1200. George Turner, oil on artists board written verso 'Resting by the Brook' near Kirk Ireton painted by George Turner, 30 x 45 cms contemporary swept gilt frame £1500-2000

1201. Tony Bartl signed oil on canvas 'The Red Lady' nude - 74.5 x 54.5 cms



1202. Tony Bartl signed oil on canvas 'Lincoln by night' a landscape 90 x 69 cms
1203. A E White (18)'97 s.d., 'Pottergate Lincoln' - oil on canvas, 35.5 cms x 30.5 cms unframed
1204. A E White (18)'99 s.d. 'The Arboretum Lincoln' with figures promenading - oil on canvas, 42 cms x 32 cms unframed £75-140
1205. A E White (18)'98 s.d. 'Steep Hill', with mother child and figures in the distance painted from Michaelgate - the Cathedral towers in the distance - oil on canvas contemporary plain oak frame, 61 cms x 46 cms £150-200

1206. A E White (18)'98 s.d. 'Brayford North Lincoln', with moored sailing barge and Cathedral above - oil on canvas modern moulded frame, 29 cms x 34 cms £100-150



1207. A. Sunt \*\* or, 1929 a large oil on canvas portrait of a youth full length holding rifle astride spaniel, pond and country house in the distance in swept ropework gilt frame, 123 x 99 cms £100-200
1208. Barling? XIX century oil on canvas milkmaid and child in a landscape setting, 44 x 34 cms £80-150
1209. Conway? a large XIX century landscape flowing stream with bridge in the middle ground before trees and mountains in flowing gilt frame, 76 x 125 cm £300-500
1210. After Titian - 'Sleeping Putto' oil on canvas, 77 x 97 cms £100-300



1216. After Sisley, colour print figures in woodland, 6 cms x 62 cms
1217. Nimo Smith A signed acrylic on paper titled XI. dated 1968 in painted contemporary frame, 74 cms x 54 cms £200-400
1221. A needlework sampler by Jane Corke 1850 worked with flowers trees and animals, framed and glazed, 33 x 32 cms
1222. A needlework sampler by Eleanor Benington, 1797 worked as a map of the British Isles in Hogarth style frame, 47 x 42 cms £150-250
1223. An early XX century oriental silkwork figures before pagoda in circular mount, 23 cm diameter
1224. A needlework - 'John the Baptist beheaded' contemporary Victorian maple frame, 23 x 19 cms

## CLOCKS & BAROMETERS

1230. A XIX century continental spelter mantel clock the circular white painted dial surmounted by a harp and with the figure of a young girl playing a lute to one side rouge vein marbled base, 32 cms high £250-350
1231. An early XX century mantel alarm clock the painted walnut case with broken pedimented and turned finial with (later) Roman numeric dial, 47 cms high

1232. An early XIX century mahogany cased bracket clock the circular white dial with black Roman numerals fusee movement; on a scroll support with rectangular plinth, 31 cms x 26.5 cms wide the dial 20 cms £250-350



1233. A French brass carriage clock the corniche case with roman numeric dial and metal hands written to the face *JW Benson London* a single barrel movement with cylinder escapement, approx 17.5 cms high £150-200

1234. A late XIX century continental bronzed mantel clock the circular dial with Roman numerals surmounted by garlands and flanked by a cherub raised on stepped break front alubaster base, 28 cm high



1235. A mid XX century oak cased mantel clock with silvered dial and Arabic numerals and pierced pointers, 33 cms across
1236. A mid XX century oak mantel clock with arabic dial
1237. A mid XX century mantel clock with oak case and arabic numerals
1238. A XIX century style gilt metal mantel clock the circular dial with Roman numerals surmounted by pagoda astride ? holding wheat the whole on ebonised base with dome the clock, 27 cm high £80-120
1239. A handsome Victorian slate marble mantel clock with eight day movement on circular Roman numeric dial the whole raised on shaped base with bracket feet, 36 cms high
1240. An early XX century travelling clock London 1911 - 12 of rectangular form with shaped hinged handle and inlaid tortoise shell panels engraved with garlands raised on four ball feet; Roman numeric dial, stamped *Graves Birmingham*, 7.5 cms high £300-500
1243. An early XX century wall clock with (later) paper face in carved oak case; eight day movement, approx 70 cms high
1244. A modern walnut cased wall clock the circular roman numeric dial with elaborate cast metal handles flanked by columns with weights and pendulum
1245. A late XIX century Vienna type wall clock with spring driven striking movement contained in an elaborate polished hardwood case decorated with split turnings castellated top with a prancing horse, 78 cms overall £50-100
1246. A XIX century Vienna double weight driven wall clock the case elaborately decorated with ebonised fluted split turned columns the plain moulded top, 102 cm high
1247. A XIX century Vienna walnut cased driven wall clock the circular roman numeric dial flanked by fluted columns surmounted by broken pedimented top with lions mask head the movement is reputed to be by Gustav Becker Vienna, 113 cms high
1249. A XIX century Vienna cased triple weight driven wall clock the circular roman numeric dial flanked by ionic fluted columns the whole surmounted by a gadrooned moulded frieze and a broken swan neck pediment with castellated finial approx, 131 cm £400-600
1250. A XIX century Vienna spring driven wall clock the dial centre embossed with a bird in branches the elaborate case decorated with split turnings finials and surmounted by an eagle with outstretched wings, 96 cms



1254. A Victorian marquetry case wall clock with circular white dial striking movement the pendulum revealed in a glass aperture, approx 70 cms
1255. A circular brass and painted metal cased aneroid barometer on an oak back board, 17.5 cms diameter
1256. An XVIII century stick barometer the (previously) silver dial signed Joss Scula & Co. Boston Lincoln the mahogany case with the broken architectural pediment - distressed, 98 cms overall
1257. An Edwardian oak case two dial banjo style barometer/ thermometer, 79 cms high £50-80

1260. A XIX century Lincolnshire oak and mahogany long case clock the arched painted dial signed *Richd. Francis Navenby* and painted with shells to the spandrels and a sportsman with his spaniel flushing a pheasant in the arch, the eight day movement enclosed by a broken swan neck pedimented hood the case with original paper label 'George Usher cabinet and clock maker Lincoln' and numbered 15; 216 cms high



1264. An attractive XVIII century hanging mirror, the break fronted top above patera mouldings and barley twist columns; 80 cms high £100-150

## FURNITURE

1265. A Georgian mahogany chest of two short and three long graduated oak lined cock beaded drawers each with polished brass butterfly escutcheons standing on bracket feet, 112 cms wide 57 cms deep £400-650
1266. A XVII century three panel coffer with a carved top rail on high styles, 114 cms wide £200-300

1267. A fine Sheraton style satinwood sofa table by *Waring & Gilloz*, a satinwood cross banded top, ebony stringing, display legs with brass castors; 152 x 53.5 cms extended



1268. An Edwardian mahogany chest of small proportion with three long drawers and chequered stringing raised on square legs; 91 cms wide

1269. A Victorian figured mahogany bow front chest of two short and three long drawers with spirally fluted chamfered corners; 117 cms wide £250-350

1270. A Georgian mahogany console table the shaped marble top above moulded apron with carved shell motif raised on fluted sabre legs terminating in scroll and orb feet; 180 cms across x 90 cms high £600-900



1271. A tall XIX century oak chest of two short and four long drawers with canted corners standing on bracket feet; 116 cms wide £400-550

1272. An XVIII century oak coffer with a three panel lid and front lunette carved top rail with original black iron lock plate raised on high stiles; 127 cms wide £200-300

1274. A Victorian figured mahogany bow front chest of two short and three long drawers with original turned knobs centred with mother of pearl discs, spirally fluted canted corners; 105 cms wide

1275. An XVIII century circular red walnut drop leaf gate leg breakfast table raised on tapered supports terminating in pad feet; 123 cms diameter £200-300

1276. A handsome Regency bow fronted mahogany chest of two short and three long cock beaded and oak lined drawers flanked by fluted columns the string inlaid with a wide cross band raised on turned feet with pot castors; 99.5 cms wide x 57 cms deep £350-550



1277. An attractive Bullock style early XIX century rectangular mahogany toilet mirror on scrolling brackets, the base on turned supports; 62 cms wide £150-250



1278. A Lady's dressing table the quarter veneered cross banded top with moulded edge above three drawers to the frieze, and two further drawers, raised on reeded cylindrical supports; 155 cms wide

1279. A XIX century Lincolnshire painted pine chest of two short and two long drawers with a shaped raised back; 85 cms wide



1280. A good XVIII century handing oak corner cupboard enclosed by a pair of two panelled doors with H brass hinges, and three internal shaped shelves;  
*100 cms high 82 cms wide*  
 £300-500



1281. An XVIII century oak chest of two short and three long graduated cock beaded drawers raised on shaped bracket feet; *86 cms 50 cms deep* £300-400

1282. An Edwardian walnut Sutherland table of small proportion the shaped top with moulded edge, raised on barley twist support and straight stretcher; *when open 62 cms*

1283. A Victorian painted pine double dresser with a shaped back and shelf central cupboard to the base, flanked by three drawers to each side; *137 cms wide*

1284. A small XIX century stained chiffonier with an arch raised back, two fitted drawers above a double cupboard flanked by reeded columns; *84 cms wide*

1285. A Georgian mahogany commode, the hinged lid revealing fitted interior raised on splayed supports; *73 cm high*

1286. A XIX century mahogany work table the moulded top with Rosewood cross banding above one long draw with knob handles raised on baluster shaped fluted support quadruple splayed legs with brass caps and castors; *76 cms high* £80-120

1287. A Victorian mahogany frame chaise longue

1288. A Victorian stained pine graduated hanging wall shelf with shaped ends; *83 cms high*

1289. A mahogany hanging wall shelf with pierced arcaded sides, double cupboard enclosed by panelled doors; *70 cms high*

1290. A XIX century Continental elaborately carved settee the hardwood frame carved with masks, opposing griffins and arcaded pierced scrolls, overstuffed seat £100-200

1291. A Victorian mahogany hall table of architectural design fitted with two drawers to the frieze and raised on turned tapering supports; *106 cms wide* £150-250

1292. A child's Edwardian green plush upholstered arm chair £80-150

1293. An attractive Victorian over stuffed fan back Lady's chair raised on carved cabriole front supports upholstered in yellow dralon type material £100-200

1294. An early XIX century figured Mahogany Linen Press. The upper section enclosed by a pair of panelled doors beneath a moulded cornice with a scrolling crest, the base fitted with two short and two long cock beaded drawers;  
*123 cms wide* £1000-1500



1295. A Victorian demi lune mahogany console table raised on a single relief carved cabriole support on a shaped base; *91 cms wide* £80-150

1296. A Victorian mahogany three part knee hole desk the top with a hinged writing surface concealing a fitted interior, beneath a spindle turned gallery and flanked by two small drawers, the base fitted with three frieze drawers and three drawers to each side; *137 cms wide* £250-400

1297. A Victorian burr walnut conical work box the octagonal hinged lid enclosing a fitted interior, the base on triple cabriole carved supports £350-550



1298. A Victorian mahogany 20 drawer specimen cabinet by J T Crockett & Son London, containing a collection of Lincolnshire moths and butterflies; *52 cms wide 126 cms high* £800-1200



1299. A mahogany 18 drawer pedestal specimen cabinet containing Lincolnshire moths and butterflies the drawers enclosed by a panelled front; *68 cms wide 129 cms high* £400-600



1300. A Victorian three tier buffet, the shelves separated by baluster turned columns, shaped back centred with a shield the base fitted with a long drawer on original pot castors; *101 cms wide 65 cms high* £400-600



1301. A white marble bust of a Victorian industrialist inscribed verso *R. Omerod Smith, Fecit Roma 1855* the bust approx 74 cms on a black circular marble plinth £300-600



1302. A Victorian fortune tellers table, with a circular upholstered top raised on triple ebonised and gilt decorated spirally fluted supports, with out turned feet joined by a globe stretcher; 58 cms diameter
1303. A circular Victorian mahogany breakfast table on a tapering plain column the platform base with carved paw feet; 119 cms diameter £80-150
1304. An oval Victorian mahogany loo table raised on a baluster turned column with triple cabriole supports; 137 x 104 cms £100-150
1305. An XVIII century oval oak drop leaf gate leg mahogany dining table 156cm x 122cm extended
1306. A Victorian chaise longue raised on turned tapering hardwood supports with pot castors, upholstered in cut floral pattern moquette type material
1307. A Victorian burr walnut serpentine worktable fitted with a single drawer to the frieze raised on pierced lyre ends joined by a turned stretcher (distressed) £200-300
1309. An Edwardian mahogany boxwood strung three tier folding cake stand
1310. A XIX century mahogany Pembroke style drop leaf occasional table fitted with a single drawer and raised on turned taper supports; 97 cms x 101 cms £80-150
1311. An XVIII 'D' end gate leg table raised on pad feet; 110 x 114 cms £80-120
1312. A small Georgian mahogany Pembroke style side table fitted with a single drawer to the frieze and raised on square taper supports; 82 cms x 71 cms
1313. A XIX century mahogany Pembroke style table a rectangular top with plain edge above single drawer with knob handle, raised on square tapering legs, approx 99 cms wide (when opened)
1314. A XIX century mahogany drop leaf table raised on club feet; 123 x 97 cms
1315. An Edwardian fold over top mahogany games table by *T Simpson & Sons Cabinet Makers Halifax*, raised on carved cabriole supports joined by a shaped 'H' stretcher; 59 cms wide
1316. A XIX century open book case fitted with adjustable shelves on an open base; 120 cms wide £100-150
1317. An early XIX century mahogany leaf stand (from a dining table)

1318. A XIX century walnut and inlaid loo table with ebonised moulded edge raised on fluted pilliared support and tricorn base; 127 x 94 cms £100-150

1319. A Victorian figured walnut oval drop leaf Sutherland table raised on barley twist supports; 104 cms x 84 cms £150-250



1323. A set of four Victorian ash and elm kitchen chairs with turned spindle backs and ring turned front supports, joined by an H stretcher
1324. Three Victorian kitchen chairs
1325. Four various Georgian mahogany dining chairs, a William IV ditto and a Victorian cabriole leg chair (6)
1326. A set of four mahogany Victorian balloon back dining chairs on turned tapering front supports with drop in seats £150-200
1327. A pair of Victorian balloon back dining chairs with carved horizontal splats upholstered to match the previous lot
1328. A set of six late Victorian heavy oak dining chairs with carved horizontal splats separated by spindle turnings overstuffed seats and turned front supports £80-140
1329. A XIX century ash and elm child's rocking chair
1330. Three Victorian mahogany dining chairs with pierced vase shaped splats, and drop in seats on turned front supports
1331. A Victorian Lady's chair with scratch carved walnut frame raised on turned and fluted front supports the back and seat upholstered in claret coloured dralon
1332. A XIX century child's ash Windsor chair
1333. A Victorian Gentleman's arm chair with moulded mahogany frame scroll arms and cabriole front supports joined by a serpentine rail upholstered in pink button dralon £250-350
1334. A Victorian mahogany rocking chair with carved splat raised on cabriole front supports overstuffed upholstered seat

1335. A pair of Victorian style Lady's and Gentleman's button back chairs each with relief carved frame with fruit and foliage raised on cabriole supports beneath scroll arms upholstered in mink and green coloured dralon type material £100-200





1336. A late Victorian Lady's chair - the fluted polished hardwood frame with a serpentine pierced scroll design crest, on baluster turned front supports upholstered in floral patterned material
1337. An Edwardian stained hardwood high back side chair with pierced splat and square tapered front supports
1338. A Victorian Gentleman's arm chair the moulded and carved mahogany frame with scroll arms and foliate carved cabriole front supports upholstered in blue dralon £250-350
1339. A Victorian button back arm chair, the overstuffed frame upholstered in sage dralon standing on carved cabriole front supports joined by a serpentine front stretcher £100-200
1340. A Victorian occasional chair the moulded mahogany frame enclosing the shaped upholstered back, overstuffed seat raised on baluster front supports £100-200
1341. A XIX century ash and elm child's Windsor chair, Nottinghamshire style pierced back splat raised on X stretcher

1342. A Georgian wing arm chair with serpentine arm rests raised on squared front supports with H stretcher; 117 cms high £200-400



1343. Principally Victorian double bed with upholstered canopy and figured mahogany ends



1344. A magnificent Victorian mahogany half tester double bed with panel ends and turned tapering columns carved with stylised acanthus £800-1200



1345. A late Victorian mahogany frame tub chair, the button back and arms raised on baluster turnings with over stuffed seat and turned front support

1346. A XIX century rosewood and marquetry inlaid Bureau de Dame the serpentine top with a raised gilt brass pierced gallery, the full front enclosing drawers above a well raised on cabriole front supports with gilt mounts to the knee; 74 cms wide £400-650



1347. An XVIII century Bombe Dutch walnut and marquetry cylinder bureau, the secretaire fitted with six bow fronted drawers either side of a tambour enclosing a further drawer, the sliding writing surface operating the cylinder, three long drawers to the base above a shaped apron on bracket feet, gilt metal handles and gallery; 114 cms wide £5000-6000



1348. A set of XIX century sabre leg marquetry inlaid dining chairs £2000-3000

1349. A XIX century mahogany break front bookcase the upper section enclosed by plain glazed doors, the centre flanked by turned columns with four panel doors on a plain plinth; 240 cms wide £4000-5000



1350. XX A Victorian mahogany Lady's side chair the moulded frame with carved cabriole front support £150-250

1351. A Georgian elm carver chair

1352

Late entries details on:

[www.thosmawer.com](http://www.thosmawer.com)

Select printable version of catalogue



***f*irst Saturday Estate Sales**

*comprising of approx. 1000 lots of Victorian to modern furniture,  
ceramics, glass, pictures, bygones, collectables etc.*

*will take place at 10am on*

**3<sup>rd</sup> JUNE 1<sup>st</sup> JULY 5<sup>th</sup> AUGUST**

**2<sup>nd</sup> SEPTEMBER 7<sup>th</sup> OCTOBER**

**4<sup>th</sup> NOVEMBER 2<sup>nd</sup> DECEMBER**

\*\*\*\*\*

**A free valuation clinic is held each Friday morning  
at Dunston House 9.30 - 12 noon.**

**You are invited to bring your antiques/collectables for  
identification and valuation, with no obligation to sell.**

\*\*\*\*\*

**Formal valuation prepared for insurance,  
inheritance tax, family division etc.**

**For further details or a quotation contact J.C. Slingsby**



# NOTES



## LOCATION



The Thos. Mawer & Sons salerooms at Dunston House are situated in central Lincoln on the east end of Portland Street at the foot of Pelham Bridge (Canwick Road). By car, approaching from the south take the last turning on the left just before the road rises to the bridge.

Approaching from the north (via Broadgate), go over Pelham Bridge and turn left towards Jacksons Building Centre/Tesco on to Kesteven Street. Follow the road around to the left and drive under Pelham Bridge to Portland Street. Turn left and you will see Dunston House on the right. Portland Street is also accessible from Lincoln's High Street, opposite the Ritz public house.

The salerooms are within walking distance of the main railway station and bus depot.



## CONDITIONS OF SALE

1. In these conditions Thos. Mawer & Son act only as auctioneers and agents and the representative of Thos. Mawer & Son conducting the auction is called 'The Auctioneer'

2. Whilst Thos. Mawer & Son make every effort to ensure the accuracy of their catalogue and the description of any lot:

(i) Each lot set out in the catalogue or as divided or combined with any other lot or lots is sold by the vendor with all faults and imperfections and errors or descriptions

(ii) Thos. Mawer & Son do not accept responsibility for the authenticity, attribution, genuineness, origin, authorship, date, age, period condition or quality of any lot unless they have been instructed in writing by the buyer to so certify.

(iii) All statements whether printed in the catalogue or made orally as to any of the matters set out in (ii) above are statements or opinion only and are not to be taken as being or implying any warranties or representations of fact by Thos. Mawer & Son unless they have been instructed in writing by the buyers to so certify.

3. The Auctioneer has absolute discretion to divide any lot, to combine any two or more lots or to withdraw any lot or lots from sale, to refuse bids, regulate bidding or cancel the sale without in any case giving any reason or without previous notice. He may bid on behalf of the vendor for all goods which are being offered subject to reserve or at the Auctioneer's discretion.

The highest bidder shall be the buyer. The Auctioneer may at his sole discretion determine the advance of bidding or refuse a bid. If during the auction the Auctioneer considers that a dispute has arisen he has absolute discretion to settle it, or to re-offer the lot.

All conditions, notices, descriptions, statements and other matters in the catalogue and elsewhere concerning any lot are subject to any statements modifying or affecting the same made by the Auctioneer from the rostrum prior to any bid being accepted for the lot.

4. The buyer shall pay the hammer price together with a premium of the hammer price - 15% inclusive of VAT

5. Notwithstanding any other terms of these Conditions, if within seven days after the sale Thos. Mawer & Son have received from the buyer of any lot notice in writing that in his view the lot is a deliberate forgery and within twenty-one days after such notification the buyers return the same to Thos. Mawer & Son in the same condition as at the time of the sale and by producing evidence, the burden of proof to be on the buyer, satisfies Thos. Mawer & Son that considered in the light of the entry in the catalogue the lot is a deliberate forgery then the sale of the lot will be rescinded and the purchase price of the same refunded.

The vendor agrees to be bound by Thos. Mawer & Son's decision.

6. Thos. Mawer & Son disclaim any responsibility for default by either the buyer or the vendor because they act as Auctioneers only and therefore do not pay out to the vendor until payment is received from the buyer. Instructions given by telephone are accepted at the sender's risk and must be confirmed in writing forthwith.

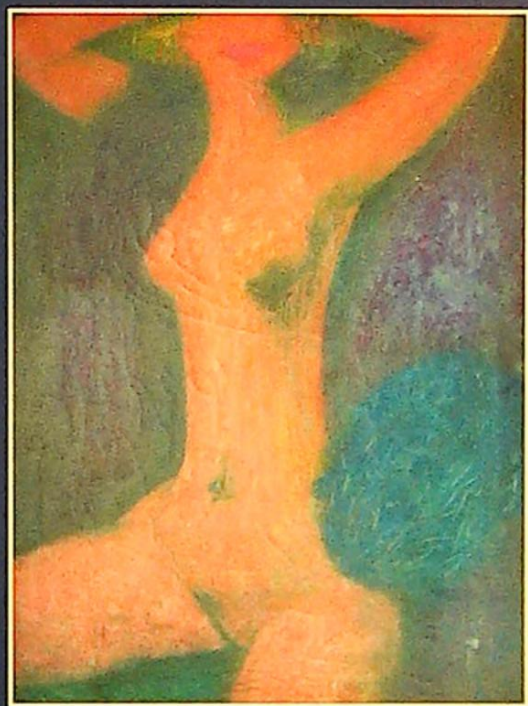
7. Every person on Thos. Mawer & Son's premises at any time shall be deemed to be there at his own risk. He shall have no claim against Thos. Mawer & Son in respect of any accident which may occur or injury, damage, loss howsoever caused, save in so far as the injury, damage loss shall be caused by the negligence of Thos. Mawer & Son's employees.

8. Each lot shall be at the purchasers risk from the fall of the hammer and must be paid for in full before the delivery and must be taken away by the purchaser at his own expense within 7 working days following the conclusion of the sale. The Auctioneer shall be entitled to charge storage charges in respect of lots not taken away as aforesaid (minimum charge of £25 plus VAT) and interest on unpaid accounts @ 4% above clearing bank base rate (per calendar month)

9. Cheques which are not honoured by the payee's bank will incur a handling charge of £20 plus VAT for each presentation.

This contract is governed by English Law.





Lot 1201 Tony Bartl signed oil on canvas  
*'The Red Lady'* surrealist nude - 74.5 x 54.5 cms



DUNSTON HOUSE . PORTLAND STREET . LINCOLN . LN5 7NN  
TELEPHONE 01522 524984 . FACSIMILE 01522 535600  
EMAIL [auction@thosmawer.com](mailto:auction@thosmawer.com) . WEBSITE [www.thosmawer.com](http://www.thosmawer.com)