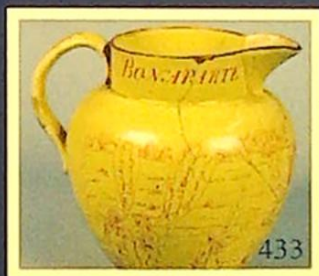




THOS. MAWER & SON LTD.

Auctioneers & Valuers Established in 1864



Spring Sale of

**ANTIQUES, SILVER, COLLECTABLES
PAINTINGS & FURNITURE**

Saturday 3rd March 2007 commencing at 10.00am

On View

Friday 2nd March 10.00am - 4.00pm & morning of sale from 8.30am

Catalogue £5.00

THOS. MAWER & SON LTD.

COMMISSIONS

The Auctioneers are pleased to execute commissions for intending buyers in confidence as cheaply as is allowed by any other bids. All telephone bids must be confirmed in writing or by fax by 4pm the day prior to sale. **Telephone bids will not be accepted for lots on which the top estimate is under £500.00.** We cannot guarantee to execute bids received on the morning of sale.

BUYER'S PREMIUM

There is a 17.6% premium (inclusive of VAT) payable on the final hammer price of each lot.

REGISTRATION

All prospective purchasers are requested to register and obtain a bidding number prior to the start of the sale.

CATALOGUE DESCRIPTIONS

Care is taken to ensure that any statement as to authorship, attribution, origin, date and provenance is reliable and accurate, but all such statements are statements of opinion and are not to be taken as statement or representations of fact. Thos. Mawer & Son Ltd. reserve the right, in forming their opinion, to consult and rely upon any expert or authority reasonably considered by them to be reliable. While an identification of damage is given in some instances, an absence of such advice does not imply that a lot is free

from defect. Prospective purchasers are strongly advised to inspect any lot on which they intend to bid. All measurements and weights are approximate and should be verified by intending purchasers.

ESTIMATES

Estimates for lots under £100.00 are not printed in the catalogue. On lots that are reserved, the reserve will not be greater than the published estimate at the time the catalogue goes to press.

PAYMENT OF ACCOUNTS

All Lots should be paid for and collected immediately following the sale. Any lots not collected by 4.00pm on the Wednesday following sale day will incur storage charges (minimum £25.00 plus VAT per lot).

Payment for all lots must be made on the day of sale and methods are:

(1) CASH, (2) CHEQUES supported by either a letter of Reference from your bank or a cheque guarantee card to cover the sum of your purchase, (3) BANKERS DRAFT, (4) DIRECT DEBIT CARDS such as "Switch", "Delta", "Classic", "Connect", (5) CREDIT CARDS subject to a 2% premium charge.

No lots in this sale are the property of Thos. Mawer & Son.

ORDER OF SALE COMMENCING AT 10am

Italics denotes catalogue on internet only - www.thosmawer.com

1-200

*General Furniture, China,
Glass, Bric-a-Brac etc.*

201-250

*Collection of Lilliput Lane
cottages*

N.B. Lots 1-100 and 101-250 will
be sold simultaneously

251-354

**Collection of Royal Doulton
Character Jugs**

355-391

Oriental Ceramics

401-420

Royal Dux & Royal Worcester

426-490

English & Continental China

527-535

Lalique & other glassware

560-575

Bygones, Treen & Weapons

576-875

*Miscellaneous Bygones,
Stamps, Postcards & General
Household Effects etc*

876-979

Silver, Plate & Jewellery

997-1025

Pictures & Prints

1026-1044

Clocks & Barometers

1045 onwards

Furniture, Rugs, Mirrors

The complete catalogue for this sale will be updated approx. 7 days prior to sale and can be downloaded from our website: www.thosmawer.com
Extra lots will be added as they are delivered and will only be described on the website. On the homepage, go to the box headed "General or Special Sales" and click here for text only printable version.

If you are travelling to the saleroom to bid for a specific lot, please telephone us during the morning to ascertain the sale progress.

ROYAL DOULTON CHARACTER JUGS

251. **Royal Doulton Character Jug** - Long John Silver (large) £20-30
252. **Royal Doulton Character Jug** - Monty (large, Second) £10-20
253. **Royal Doulton Character Jug** - John Peel (large) A23 mark beneath £20-30
254. **Royal Doulton Character Jug** - Cardinal (large) £20-30
255. **Royal Doulton Character Jug** - Falstaff (large) £20-30
256. **Royal Doulton Character Jug** - Beefeater (large) - 'Beefeaters' printed mark beneath £20-30
257. **Royal Doulton Character Jug** - Tony Weller (large) £20-30
258. **Royal Doulton Character Jug** - Pied Piper (large) £20-30
259. **Royal Doulton Character Jug Of The Year 1993** - Vice Admiral Lord Nelson (large) - with certificate £50-80
260. **Royal Doulton "The Collecting World" Character Jug** - The Collector (large) with certificate £50-80
261. **Royal Doulton "The Collecting World" Character Jug** - The Auctioneer (large) with certificate £50-80
262. **Royal Doulton "The Collecting World" Character Jug** - The Antique Dealer (large) with certificate £50-80
263. **Royal Doulton "The Star-Crossed Lovers Collection" Character Jug** - Anthony and Cleopatra (large) £40-80
264. **Royal Doulton "The Star-Crossed Lovers Collection" Character Jug** - Samson & Delilah (large) £40-80
265. **Royal Doulton "The Star-Crossed Lovers Collection" Character Jug** Napoleon and Josephine (large) £40-80
266. **Royal Doulton "Special edition" Character Jug** - Scaramouche (large) Guild mark beneath £40-60
267. **Royal Doulton "The Antagonist's Collection" Limited Edition Character Jug** - The Battle of Little Big Horn No 8491 of 9500 (large) £40-80
268. **Royal Doulton "The Antagonist's Collection" Limited Edition Character Jug** - The Civil War No 8619 of 9500 (large) £50-80
269. **Royal Doulton "The Antagonist's Collection" Limited Edition Character Jug** - the Battle of the Alamo 1836. No 5964 of 9500 (large) £40-60
270. **Royal Doulton "The Antagonist's Collection" Limited Edition Character Jug** - The Seige of Yorktown 1781. No 5652 of 9500 (large) £40-60
271. **Royal Doulton/Kevin Francis Ceramics. A "Special Edition" Character Jug** - The Pendle Witch (large) £30-50
272. **Royal Doulton "Special Edition" Character Jug** - Sir Francis Drake (large) Guild mark beneath £30-50
273. **Royal Doulton "Special Edition" Character Jug** - Queen Victoria (large) guild mark beneath £80-120
274. **Royal Doulton Limited Edition Character Jug** - Charlie Chaplin No 588 of 5000 (large) with certificate £40-60
275. **Royal Doulton Toby Jug** "Jolly Toby" £30-50
276. **Royal Doulton in Association with William Grant.** A rare unopened whisky character jug/decanter celebrating "100 years since William Grant laid the foundation stone of his Highland Distillery", in velvet lined box with certificate *The chance to buy the decanter was awarded to winners of a prize draw in a limited UK number* £150-250
277. **Royal Doulton "The Wild West Collection" Character Jug** - Buffalo Bill (small, second) £10-20
278. **Royal Doulton "The Wild West Collection" Character Jug** - Doc Holliday (small, second) £10-20
279. **Royal Doulton "The Wild West Collection" Character Jug** - Geronimo (small) £20-30
290. **Royal Doulton Character Jugs** - Catherine Howard, Ann of Cleves, Ann Boleyn, Catherine of Aragon, Jane Semour, Catherine Parr and Henry VIII (small, various marks) £80-120
291. **Royal Doulton Character Jug** - Pearly King (small) £25-35
292. **Royal Doulton Character Jug** - Pearly Queen (small) £25-35
293. **Royal Doulton, two Limited Edition Character Jugs** - Napoleon & Wellington. No 322 of 2500 (small) with certificate £50-80
294. **Royal Doulton two Limited Edition, "Armada", Character Jugs** - Queen Elizabeth I & King Phillip II. No 281 of 9500 (small) with certificate £40-80
295. **Royal Doulton Character Jug** - The Lobster Man (small) £15-25
296. **Royal Doulton Character Jug** - Neptune (small) £15-25

297. **Royal Doulton Character Jug** - The Poacher (small) £15-25
298. **Royal Doulton Character Jug** - The Falconer (small) £15-25
299. **Royal Doulton Character Jug** - Merlin (small) £15-25
300. **Royal Doulton "Journey Through Britain" Limited Edition Character Jug** - The Postman No 667 of 5000 (small) with certificate £25-35
301. **Royal Doulton "Journey Through Britain" Limited Edition Character Jug** - The Policeman, No 303 of 5000 (small) with certificate £25-35
302. **Royal Doulton "Journey Through Britain" Limited Edition Character Jug** - The Engine Driver, No 225 of 5000 (small) with certificate £25-35
303. **Royal Doulton Character Jug** - The Guardsman (small) £15-25
304. **Royal Doulton. Two Limited Edition Character Jugs** - Stan Laurel & Oliver Hardy No 480 of 3500 (small) £70-100
305. **Royal Doulton Character Jug** - The London Bobby (small) £15-25
306. **Royal Dolton Character Jugs** - Porthos, Athos, Aramis, D'Artagnan (small, various marks) £70-90
307. **Royal Doulton Character Jug** - Robin Hood (small) £15-25
308. **Royal Doulton Character Jug** - Dick Turpin - mask raised (small) £20-25
309. **Royal Doulton Character Jug** - Granny (small) £15-25
310. **Royal Doulton Character Jug** - John Doulton (small) £15-25
311. **Royal Doulton Character Jug** - Don Quixote (small) £15-25
312. **Royal Doulton Character Jug** - Rip van Winkle (small) £15-25
313. **Royal Doulton Character Jug** - Michael Doulton (small) £10-20
314. **Royal Doulton Character Jug** - Sairy Gamp (small) £10-20
315. **Royal Doulton Character Jug** - 'Arriet (small) £60-80
316. **Royal Doulton Character Jug** - North American Indian (small) £15-25
317. **Royal Doulton Character Jug** - Captain Henry Morgan (small) £15-25
318. **Royal Doulton Character Jug** - Auld Mac (small) £15-25
319. **Royal Doulton Character Jug** - Mr Pickwick (small) £15-25
320. **Royal Doulton Character Jug** - Old Salt, modelled by Gary Sharpe (small) £10-20
321. **Royal Doulton Character Jug** - Capt Ahab (small) £15-25
335. **Royal Doulton Character Jug** - Dick Turpin mask lowered (mini) £15-25
336. **Royal Doulton Character Jug** - Old Charley (mini) £15-25
337. **Royal Doulton Character Jug** - Sancho Panca (mini) £10-20
338. **Royal Doulton Character Jug** - The Gardener (mini) £15-25
339. **Royal Doulton Character Jug** - Mine Host (mini) £15-25
340. **Royal Doulton Character Jug** - Bacchus (mini, second) £10-20
341. **Royal Doulton Character Jug** - Paddy (mini) £15-20
342. **Royal Doulton Character Jug** - Sam Weller (mini) £15-20
343. **Royal Doulton Character Jug** - Mr Micawber (mini) £15-20
344. **Royal Doulton Character Jug** - The Sleuth (mini) £15-20
345. **Royal Doulton Character Jug** - Capt Henry Morgan (mini) £15-20
346. **Royal Doulton Character Jug** - Beefeater (mini, second) £10-20
347. **Royal Doulton Character Jug** - Mad Hatter (mini) £15-25
348. **Royal Doulton Character Jug** - Gone Away (mini) £10-20
349. **Royal Doulton Character Jug** - Beefeater - exclusively for International Collectors Club (tiny) £30-50
350. **Royal Doulton Character Jug** - Mr Micawber (tiny) £30-50
351. **Royal Doulton Character Jug** - 'Arry (mini) £100-150
352. **Royal Doulton Toby Jug** - Winston Churchill (mini) £20-30
353. **Royal Doulton Toby Jug** - Albert Sagger The Potter - exclusively for Collectors Club £25-35
354. **Royal Doulton Figure** - Pride & Joy - Exclusively for Collectors Club £50-80

ORIENTAL CERAMICS

355. **An oriental terracotta figure** of a standing horse possibly *Tang dynasty* approx 14cms high



356. **Four polychrome "Foods of the Afterlife" figures**, Ming style formed as fish each approx 10cms long



357. **Four polychrome "Foods of the Afterlife" figures**, Ming style two formed as fish, duck etc, the duck approx 8cms long



358. **Four polychrome "Foods of the Afterlife" figures**, Ming style formed as fish each approx 10cms long



359. **Five polychrome and undecorated "Foods of the Afterlife" figures** Ming style formed as boars heads each approx 5.5cms high



360. **Five oriental terracotta ornaments** possibly *Han dynasty* comprising bird, stylized bird and 3 miniature vases, green glazes etc, the largest vase approx 6cms high



361. **Four glazed "Foods of the Afterlife" figures**, possibly *Ming* £80-120

362. **Five various "Foods of the Afterlife" figures** possibly *Ming* comprising fish, boar's head etc, the fish approx 11cms long

363. **Four oriental terracotta ornaments** possibly *Han dynasty* comprising nesting bird, two handled vase, shaped dish and ditto on circular foot, the bird approx 8cms long

364. **Three oriental miniature terracotta vases**, possibly *Han dynasty* each coloured in shades of green, the tallest approx 10.5cms high

365. **Five various "Foods of the Afterlife" figures** possibly *Han dynasty*

366. **A Neolithic incense burner** of circular form, loop handles, raised on triple supports; an antique figure of a sheep and two glazed candlesticks (4)

367. **Six oriental terracotta figures** possibly *Han dynasty*, comprising:- vase, stylized bird etc and a later oriental glazed tea cup

368. **A pair of Qianlong style dogs of fo**

typically decorated in blues and purples, one with a paw resting on bowl, the other resting on puppy, each raised on rectangular floral bases each approx. 29cm high



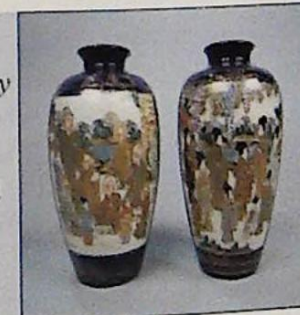
369. **A pair of blue and white Kangxi style dishes** decorated with birds and trees on white ground, painted marks beneath each approx. 26cm diameter £350-450



370. **A pair of Kangxi style polychrome plates** decorated with figures in an oriental garden, predominately in brown, green and yellow approx. 23.5cm diameter £250-300



371. **A pair of Satsuma vases** early XX century of bulbous form, decorated with many figures in garden, gold rectangular marks beneath each approx. 13cm high



372. **An oriental famille vert bowl** *XX century* heavily decorated with flowers on white ground, circular foot and a XIX century famille rose incense bottle, decorated with figures, flowers and birds on white ground *the bowl approx. 22cm diameter*

373. **An oriental polished soapstone figure group** *XX century* birds amongst flowers (a/f) *approx. 11cm high*



374. **An octagonal Imari plate** *late XIX century* typically decorated with central vase of flowers, painted flowers verso *approx. 23cm diameter*

375. **An octagonal Imari plate** *late XIX century* predominately in gilt, blue and orange with painted flowers verso *approx. 29cm diameter*

376. **An hexagonal Imari plate** typically decorated with central flowers, surrounded by birds and further foliage in blue, orange and white, painted flowers verso *approx. 28cm diameter*

377. **An oriental sake bottle** *XIX century style* of barrel form with slender tapering neck, heavily decorated with flowers, predominately in green, blue and yellow, painted mark beneath *approx. 14cm high*

378. **An oriental blue and white plate** *XIX century* decorated with buildings before bridge and farmer leading cow. *21.5cms diameter*

379. **An unusual hand painted oriental dish** *XIX century* polychrome decoration, house amongst trees and foliage with mountains in the distance *approx 26.5cm long £150-250*



380. **An Imari dish** *probably XIX century* ribbed oval form "wavy" rim decorated with flowers, decoration verso *approx 22cm long*

381. **An oriental ginger jar and cover** *XX century* bulbous form, polychrome decoration birds and flowers *approx 16.5cm high*

382. **A pair of Japanese bronzed vases in the Kangxi manner** each of shaped bulbous form, the bodies decorated with raised birds of paradise on squared bases *each approx. 36.5cm high*

383. **A Kangxi style lacquered sectional box** gilt floral decoration *approx. 25cm high*

384. **A large Chinese Qianlong famille rose bowl** decorated both on interior and exterior flowers in green and pink banding *approx. 28.5cm diameter*



385. **A pair of Imari vases** *late XIX century* tapering baluster form, bulbous bodies decorated with flowers on white ground, interior floral rims *each approx. 36cm high £100-150*



386. **An Imari vase and cover** *probably late XIX century* hexagonal form, the cover with Dog of Fo knob, the vase decorated with flowers, predominately in blues and reds *approx. 38cm high £80-120*



387. **An Imari vase and cover** *late XIX century* of cylindrical form, domed cover with gilt highlighted knob, the whole decorated with flowers *approx. 34cm high £80-120*



388. **An antique polished marble figure head of a sphinx** plainly modelled on circular baize lined foot *approx 12cm high £100-150*



389. **An Isnic water bottle** *XIX century style* of bulbous form decorated with flowers in green and blue on white ground *33cm high*



390. **An oriental famille rose bowl** late XIX/early XX century typically decorated with gilt highlights and flowers on a white banded ground with coat of arms, unmarked circular foot approx. 19.5cm diameter



391. **A famille rose bowl** late XIX/early XX century of circular form, the main body decorated in typical pallet with raised scrolls, flowers and central coat of arms; the whole on gilt highlighted triple scroll supports, printed mark beneath approx. 25cm diameter



ROYAL DUX, ROYAL WORCESTER

401. **A Royal Dux Art Nouveau design centrepiece** early XX century, pink triangular raised mark beneath formed as a seated scantily clad girl on rock overlooking stylised shell shape pond floral base decorated in green/cream colours approx 28cm high £200-400



402. **A Royal Dux figure group of a child riding Shire Horse** early XX century, raised pink triangular mark beneath decorated in colours of predominately green and cream on oblong shaped naturalistic base approx 38cm across £100-200



403. **A Royal Dux figure of a goat pulling cart** early XX century, raised pink triangular mark beneath typically modelled in harness on shaped oblong naturalistic base approx 34cm across £80-120



404. **Royal Dux, a pair of figures - Shepherd and Shepherdess** early XX century raised pink triangular marks beneath he lent on Crook wearing a cape and satchel aside dog on naturalistic setting, she holding a flagon, lamb at her side each approx 26cm high £100-200



405. **Royal Dux. A figure of a scantily clad maiden in naturalistic setting** circa 1920, raised pink triangle beneath No. 467 seated aside rocks dipping her toe into a shell shaped cavern painted in colours approx 43cm high £100-200



409. **Royal Worcester. A pair of female Grecian water carriers** circa 1907 No. 2-125 each standing in gilt highlighted costume holding flagons and urns to the head, raised on circular naturalistic bases 49cm high £500-800



410. **Royal Worcester. A pair of vases** circa 1903 each of cylindrical form painted with flowers on cream ground, pierced handles, each raised on circular feet, printed marks beneath each 21.5cm high £100-150



411. **Royal Worcester. A cream jug** circa 1914 No. 1094 shaped spout, ribbed gilt handle, main body painted with flowers on peach ground raised on circular foot, printed mark beneath approx 15cm high £50-80



412. **Royal Worcester. A cream jug** circa 1902 No. 1094 of bulbous form with shaped spout and gilt handle, the main body painted with flowers on peach ground. printed marks beneath approx 13cm high (all) £50-80



413. **Royal Worcester.** A circular bowl of small proportion *circa* 1903 No. 991 of squat bulbous form, four loop handles, the main body painted with flowers on peach ground, printed marks beneath *approx 10cm diam.*



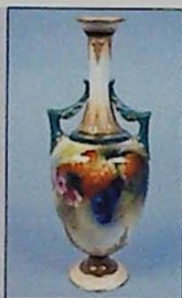
414. **Royal Worcester.** A stem vase *circa* 1899 of squat bulbous form with gilt highlighted shaped rim, the main body painted with flowers on peach ground raised on circular foot. printed marks beneath and another Royal Worcester saucer of shaped circular form *the vase 7.5cm high £80-120*



415. **Royal Worcester.** A stem vase *circa* 1900 No. 1716 of baluster form, squat trumpet stem, mask handles, the main body painted with anemones on peach ground, the whole raised on circular foot and square base, printed marks beneath *20.5cm high £50-80*



416. **Royal Worcester Hadley.** A stem vase *circa* 1907 No. 211-11.10 of urn form, trumpet stem, shaped handles, the gilt highlighted body painted with blackberries and flowers on blue and ivory ground raised on circular foot *19cm high £80-120*



417. **Royal China Works Worcester.** A stem vase *early XX century* No. 789 the main body gilt highlighted and painted with birds, and fruit on cream ground, the whole raised on inverted circular foot. printed marks beneath *20.5cm high £80-120*



418. **Royal Worcester.** A magnificent pair of stem vases *circa* 1892 No. 552 each of ovular form with gilt highlighted trumpet stems and mask handles, painted with dragonflies and flowers on peach ground raised on circular feet. printed marks beneath *each 22.5cm high £200-300*



419. **Royal Worcester.** A Hadleyware pot pourri bowl and cover *circa* 1903 No. F120-10 of circular form with domed cover, the main body painted with yellow roses on blush ground with pierced rim, the whole raised on circular foot, printed marks beneath *25.5cm high £150-250*



420. **Royal Worcester.** A jug *circa* 1903 of bulbous form, decorated with flowers, shaped spout and ribbed gilt handle, *approx 14.5cms high £50-80*



ENGLISH AND CONTINENTAL CHINA

426. **Doulton & Slater.** A vase *early XX century* of footed form with ovoid body, tapering cylindrical neck, green and blue glazes with wide "Slaters Patent" banding *impressed marks approx 24.5cm high*



427. **Doulton Lambeth.** A pair of vases *XIX century* Makers mark for Edward Dunn each decorated in relief and incised with stylised flowers in blue and sage *impressed marks beneath each approx 22.5cm high £100-150*



428. **Doulton Lambeth.** A rare stoneware advertising whisky barrel *late XIX early XX century* the upper and lower banding reading "Ross & Cameron's Highland Whisky" decorated with raised oak leaves and acorns on blue ground with acorn stopper; *impressed rosette mark beneath approx 32cm high £200-400*



429. **A Royal Doulton stoneware water filter** late XIX /early XX century cylindrical form, domed removable lid, lion mask handles, raised scroll decoration to the blue and brown body, central shield, the whole raised on circular foot; impressed lion and rosette mark beneath approx 53cms high £100-150



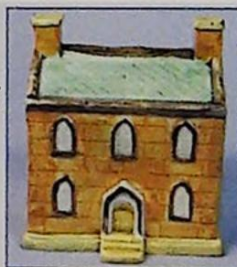
430. **A Staffordshire flatback spill vase** probably late XIX century modelled as the Prince & Princess of Wales - he standing in blue jacket, she with hand on hip, crumb coated naturalistic setting 21cm high



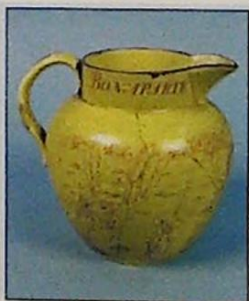
431. **A pair of Staffordshire recumbent lions** mid XIX century with gilt highlighted manes on rockwork, raised on inverted oval bases each approx. 28cm across



432. **A Yorkshire pearlware cottage** circa 1810 typically decorated in Pratt colours of yellow and green on moulded rectangular base approx. 15cm high £100-150



433. **A rare Swansea Napoleon Bonaparte dated propaganda jug** April 1st 1814 of bulbous form with beak spout decorated with various figures and speech bubbles approx 14cm high £250-350



434. **A Staffordshire lustre jug** XIX century of bulbous form, beak spout, shaped scroll handle; the main body reading "LIFE IS AN INN... and verso TWELVE GOOD RULES FOUND IN THE STUDY OF KING CHARLES I OF BLESSED MEMORY..." on moulded circular foot approx 15.5cm high £50-80



435. **An English copper and pink lustre jug** XIX century possibly Staffordshire of shaped bulbous form, beak spout, moulded scroll handle, the main body decorated with houses on yellow ground raised on circular foot approx 14.5cm high £50-80



436. **A Gaudy Welsh style jug** Late XIX /early XX century painted in colours, moulded handle, shaped base approx 19.5cm high

437. **A copper lustre jug** probably XX century of shaped form moulded spout and handle, gilt highlights 16cm tall

438. **A Derby posset bottle and lid** XVIII century style of bulbous form painted with flowers on red and blue ground painted crown beneath 23cm high

439. **A good Derby oval dessert dish** A copy of the Duesbury Derby pattern 1790 Lozenge form, hand painted with fruits and flowers, gilt rim, pink crown mark beneath 32cm long

440. **A pair of Bow tea bowls** XIX century each of ribbed gilt circular form, interior gilt banding on blue ground, sparse floral pattern on circular feet, blue crescent marks beneath each approx 8.5cms

441. **Masons Mandarin pattern; An Ironstone bowl** XX century of shaped circular form decorated with flowers on white ground, the whole raised on circular foot printed marks beneath approx 26cm diameter

442. **A novelty pottery teapot** circa 1930's in the form of a motor car with driver knob predominantly green glazes impressed marks beneath approx 24cm long

443. **"Sun Dial" a Queen Mary cheese dish and cover** No. 537 mid XX century, 20cm across

444. **Aynsley China. A limited edition model Bald Eagle** 1776-1976

to commemorate the bi-centenary of the United States of America on hexagonal shaped wooden base (limited edition of 750) £80-120



445. **Two Chelsea tea bowls and one saucer** circa 1780 gold D anchor mark beneath of ribbed form each painted with scattered flowers on white ground, gilt rims the saucer approx 14.5cm diameter £50-80



446. A George Jones Majolica strawberry

server XIX century, unmarked mottled base, diamond registration stamp of oval form decorated with raised strawberries and flowers on predominantly blue ground with shaped sugar bowl and cream jug the whole on oval foot approx 37cm (believed to be from the Lady Isabel Barnet collection) £500-700



447. A Minton chestnut dish and stand XX century in green and white glazes approx. 22.5cm diameter



448. Moorcroft vase of shouldered form circa 2001 decorated with flowers approx 22.5cm high. Impressed and painted marks beneath



449. A blue and white tin glazed earthenware plate XVIII century decorated with houses amongst trees with white border approx. 30cm diameter £100-150



450. A Swansea cabinet cup and saucer decorated with polychrome birds and flowers on white ground with gilt highlights the saucer approx. 14cm diameter

451. A serving dish and two dinner plates XIX century The dish of lozenge form with pierced ends and poly chrome decoration and two shaped circular dinner plates the dish 28.5cms long

452. H.B & Co. A pair of oriental design jugs XX century each of squared form with moulded handles raised on squared feet, impressed marks beneath 16cm high

453. A pair of Davenport cabinet plates late XIX century each with scalloped edges decorated with flowers and a pair of Derby style dinner plates with gilt edges, the centres decorated with flowers



454. XIX/XX century china comprising:- cup and saucer, miniature Coalport stem vase, chinoiserie match holder, French tea cup and saucer, Crown Staffordshire pin dish, famille vert tea bowl and a Derby slop bowl the slop bowl approx 16cm diameter

455. A Majolica jardiniere on stand probably XIX century the bowl and baluster stem painted with raised leaves and flowers on dark green ground, the whole on circular foot approx 114cm high £100-150



456. A transfer printed jardiniere on stand early XX century decorated with deer before trees and mountains approx 86cm high



457. A massive Victorian majolica jardiniere on stand XIX century the bowl of inverted circular form with shaped rim on bulbous cylindrical stand terminating in circular foot the whole tube lined with lotus flowers on blue ground 132cm high £150-250



458. Clarice Cliff Bizarre A pair of "Gayday" pattern cylindrical vases with flared rims, printed mark beneath and impressed 195, 22cm high £200-300



465. A large blue and white tin glazed charger XVIII century possibly Frankfurt decorated with seated figures amongst trees and buildings, shaped rim approx. 39cm diameter £200-300



466. A Sevres St. Domingue cabinet plate XIX century hand coloured and decorated with soldiers taking order with garland rim on green ground, painted marks beneath approx. 23cm diameter £80-120



467. **Two Continental shaped dishes in the Meissen style** XIX century of shaped circular form, gilt decorated stems on white ground, blue cross sword marks beneath each approx 28.5cm diameter

468. **Dresden. A two handled basket** early XX century the gilt highlighted pierced bowl with scroll handles, hand painted interior raised floral decoration on baluster column and circular foot. printed mark beneath approx 18cm diameter

469. **A Continental vase** (now converted to a table lamp) late XIX/early XX century of urn form with circular gilt highlighted top, cylindrical stem and bulbous body decorated with flowers on a white ground, the whole raised on circular foot, with lid the whole approx. 32cm high



470. **A Dresden cabinet plate** early XIX century hand painted flowers, blue cross sword mark beneath approx. 21 diameter

471. **An attractive Vienna cabinet plate** XIX century gilt on white ground, painted shield mark beneath approx. 24.5cm diameter

472. **Meissen. Two vases** XX century each of cylindrical form decorated with flowers on white ground, raised on circular feet, impressed cross sword marks beneath each approx 9.5cm high

473. **Sarreguemines:- a pair of vases** XX century each of baluster form decorated with etched flowers on brown ground with floral banding raised on circular feet, impressed marks beneath each approx 18cm high

474. **A large pair of Continental vases** early XX century each of shaped cylindrical form with gilt handles and floral highlights to the main body, raised on circular feet each approx. 31cm high

475. **A pair of glazed porcelain candlesticks** XX century formed as cherubs holding sconces amongst fruits, gilt coloured circular bases each approx 20.5cm high

476. **A Chantilly milk jug and similar sugar bowl** sparsely decorated with green and blue flowers on a white ground, printed marks beneath sugar bowl approx. 16.5cm diameter

477. **A Continental porcelain centre piece of small proportion** XX century modelled as pierced basket with gilt lined rim, raised by semi clad putti on circular naturalistic base, printed blue line mark beneath approx. 23cm high



478. **A Continental porcelain ink stand** possibly XIX century the circular top with gilt highlights, above an inverted body decorated with figures amongst flowers on a circular base 10cm diameter

479. **A Dresden style porcelain two handled inkstand** late XIX/early XX century of circular form with gilt highlighted knob and scroll handles, the main body decorated with painted figures surmounted by gilt highlighted shields on a circular base, printed blue line mark beneath the base approx. 22cm diameter



480. **A Continental porcelain basket** possibly XIX century inverted oblong form, strap handle, crumb coated flowers to the body, painted number 55 beneath approx 11.5cm high

481. **The Staatliche Porcelain Works:- A Meissen pin dish and cover** shaped triangular form, hand painted with flowers, printed mark beneath approx 8cm long, a shaped Old English dish and a saucer (3)

482. **An Austrian porcelain saucer by Josef Vater** second half XIX century gilt rim on blue ground, centre showing courting couple, blue shield mark verso 13cm diameter



483. **A lidded jewellery box** late XIX century, possibly Sampson of shaped oblong form metal hinges and mounts, hand painted flowers on white and blue ground approx 17cm long

484. **A XIX century blue and white Dutch tin glazed plate** XIX century river before houses, floral banding, printed initial verso 26cms diameter



485. **A rare set of four Sevres named view fishing plates** XIX century each showing French coastal scenes entitled: "Peche du Anatifes", "Peche au Fasquier", "Peche des Sucets" and "Peche du Maigre" the first plate showing the removal of shells from rocks with a strong blade, the second showing fish attracted by the flare of the burning wood, which is a furnace placed at the foot of the boat, the third: Negros removing fish from a boat to which they are clinging and the fourth plate: fishermen attracting fish to be caught or speared with a high pitched whistle; each with rich gilt highlighted rims on cobalt blue ground, in Rococo design gilt wood frames, painted marks beneath *each approx 33cm diameter £1000-1500*



486. **A Continental porcelain clock** the circular arabic dial fitted in dome topped case with gilt highlights, centred by a raised figure of a girl reading the whole on an inverted rectangular base *approx 31.5cm high*



487. **A Continental porcelain figure of a girl** early XX century standing holding basket, on circular foot *approx 24.5cm high*

488. **A Wedgwood green & brown flo glazed flask** with plated mounts, the lid with a sphinx finial on a circular stand impressed beneath "Wedgwood" and with registration mark to the mounts *27.5cms high*

489. **A Wedgwood "fallow deer" pattern** blue and white octagonal fruit bowl *21cms diameter*

490. **Beswick Connoisseur model Red Rum** on oval wooden base *33cms high £200-300*



LALIQUE & OTHER GLASSWARE

527. **Lalique. A clear and frosted glass bowl** XX century shaped flowers with etched veins and petals. impressed script marks beneath *30cm diameter £100-150*



528. **Lalique. A circular ash tray** XX century the central tablet bearing frosted and clear glass Man O' War *approx 6.5cm*



529. **Lalique. A circular ashtray** XX century the central shaped tablet showing clear and frosted glass maiden, impressed script mark beneath *10cm high*



530. **Lalique. A pair of clear and frosted bulbous glass "thistle vases"** XX century each of shaped circular form on circular feet, impressed script mark beneath *each approx 11.5cm high £100-150*



531. **A frosted glass and metal table lamp** early part of the XX century formed as a naked maiden holding torch with frosted shade and metal support on naturalistic squared foot *approx 41cm high*



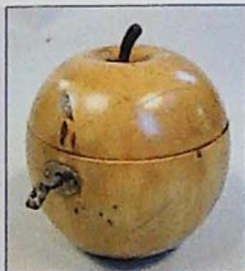
532. **A set of six cocktail glasses** early-mid XX century indented wide rimmed bowls, raised on cut stems and circular feet (6) *each approx. 14cm high*

533. **A Victorian frosted glass lustre** of dumbbell form, gilt highlights, green and clear glass droppers *approx 33cm high*

534. **A coloured glass paperweight** dated 1856 approx 9.5cm diam. and another smaller (2)
535. **Cut glass metal framed basket chandelier** XX century hand with glass prisms

BYGONES, TREEN, WEAPONS ETC

560. **An apple wood tea caddy** XIX century of typical form oval metal lock escutcheon with key, foil lined interior approx 15cms high £800-1200



561. **A Victorian tortoise shell tea caddy** XIX century of rectangular domed form, silvered mount and lock escutcheon, ivory finished sectional interior encased by tortoise shell lids with turned ivory knobs approx 19cm across £200-400



562. **A Boule work jewellery box of small proportion** XIX century of shaped rectangular form inlaid with central cartouche inscribed "Marie" plain interior approx 13.5cm long



563. **A rosewood jewellery box** XIX century the exterior with lion mask loop handles, the shaped inlaid hinged lid revealing removable sectional interior, the whole raised on brass hairy paw feet approx 25.5cm across £150-250



564. **A good XIX century rosewood sewing box** the exterior with shell inlay to the central oval cartouche and lock escutcheon, the interior with later document pouch and sectional compartments 30cm across, 14.5cm high, 22.5cm deep £100-150



565. **A XIX century rosewood writing box** with brass corners, fitted interior and a secret drawer 50cm x 26cm £80-130



566. **A good papier mache wall plate** late XIX century decorated with Eastern style buildings, Mother of Pearl highlights, gilt scroll handles and floral border approx 29.5cm across



567. **A brass and copper samovar** early XX century of circular form with brass handles, the whole raised on circular foot approx. 58cm high £40-80



568. **A large pair of cast bronzed camels** carrying large campana vases on their backs 67cm high £150-250



569. **A fine pair of XIX century cast brass fire dogs** with applied winged lions beneath a pineapple finial 76cm high £700-1000



570. **A brass club fender** the corner seats upholstered in red button hide raised on tubular supports 140cm wide with a set of three long handle fire irons £150-250

572. **An XVIII century stonebow** with full walnut stock, slender steel bow, with (probably) original gut string, folding back sight 83cm overall £350-600



573. **A North African curved sword** plain blade, leather handle and scabbard approx 78.5cm long

574. **A plaster studio art head of a man** approx. 24cm high



575. **A Hardy Perfect 4.25 inch salmon reel early XX century** stamped "HARDY'S PAT. PERFECT REEL" and on the line guide "HARDY'S PAT", also with the "rod in hand" trademark, pierced brass face, ivorine handle, alloy body, the back plate with four cusps and double row of perforations, brass foot £300-400



SILVER, PLATE & JEWELLERY

876. **An XVIII century scatter hallmarked hot water jug**

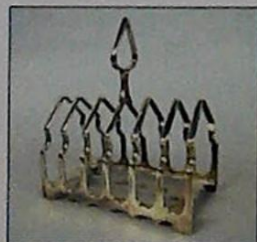
London 1769, makers mark John Parker and Edward Wakelin (rubbed) of lobed baluster form (later) embossed with foliate scrolls acorn mounted domed lid, plain handle, the whole on circular foot Approx 23.5cms high, approx 14.5 troy ozs



877. **A George II salver** London 1743 (?) makers mark John Lesagie of shaped circular form with foliate capped shell border and (later) central floral etching on triple scroll feet approx 29 troy oz 31.5cm diameter (marks rubbed) £500-800

878. **A XX century sectional toast rack**

Sheffield, rubbed date mark, makers mark James Dixon & Son with shaped borders, triangular arched bars, the central bar surmounted by shaped handle approx 14cm long, 6 troy oz



879. **A pair of mid-XX century candle sticks**

London 1958 makers mark R.C (?rubbed) each on circular bases, plain ribbed bodies, tapering cylindrical stems, and sconces each approx 15.5cm, approx 14 troy oz £80-120



880. **A hallmarked silver tankard** Sheffield markers mark I.H of campana form, embossed scroll body and scroll handle the whole on circular foot, vacant cartouche approx 13cm high, 5 troy oz



881. **A Victorian mustard pot and later spoon**

London 1838 maker Charles Reilly & George Storer Shaped circular form, scroll handle, pierced body, engraved lid and blue glass liner approx 3.5 troy oz, 6cm high £100-150



882. **An Edwardian sugar sifter**

Chester 1908 makers mark ATBSEV typical cylindrical form, urn finial, pierced lid and body raised on circular foot with blue glass liner and a clover leaf dish (2) the sifter approx 14.5cm high



883. **An Edwardian teapot**

Chester 1906 makers mark Asprey & Co Of squat circular form ebonised oval knob and scroll handle on circular foot approx 7oz troy, 22cm long £100-150



884. **A gentleman's ebonised walking cane** with hammered silver coloured crook handle and brass bound tip approx 88cm long



885. An attractive three piece cruet set

London 1937 and 38 makers mark rubbed, retailer: W. Mansell, Lincoln comprising:- pepper pot of bulbous form with pierced lid and lions mask paw feet, similar salt with blue glass liner, mustard pot and a quantity of silver and other spoons the pepper pot approx 9.5cm high approx 12 troy oz £100-150



886. Hallmarked silver comprising:

a miniature pepper pot with gadrooned central body on circular foot, salt, napkin ring with embossed leaf and berry decoration and two blue glass liners the pepper pot approx 6.5cm high



887. A set of six XX century teaspoons

Sheffield 1921 plain bowls, twist stems headed by various animals etc in fitted velvet lined case



888. A pair of XIX century sauce ladles London 1842 makers mark WE of embossed scroll form, plain bowls and a quantity of other silver flatware approx 8 troy oz

889. A quantity of hallmarked silver table spoons Various shapes, makers and dates approx 25 troy ozs

890. A quantity of hallmarked silver flatware Various dates, makers and forms Comprising part sets, sugar bows etc approx 14 troy ozs

891. A pair of George III table spoons London 1812 makers mark Sarah & John Blake Of Old English form with (later) etched bowls and handles approx 1.5 troy oz

892. A quantity of Irish teaspoons various dates, makers and forms approx 7 troy oz

893. A set of bone handled bread knives and sweet forks Sheffield 1920? etc

894. Six teaspoons Sheffield 1937 & Birmingham 1965 maker JBC & S etc Of pierced Art Nouveau design approx 3 troy ozs

895. A quantity of hallmarked silver flatware Various dates and makers Comprising dinner and sweet forks, ladles etc approx 14.5 troy ozs

896. A pair of George III table spoons London 1777 makers mark rubbed Old English pattern and a pair of cased plated fruit spoons approx 2 troy ozs

897. The Wells-Cole & Wilson Cup 1949; A magnificent Lincoln and District cricket trophy

Birmingham 1905 makers mark Elkington & Co of compressed urn form, scroll side handles, plain banded body and circular lid, the whole raised on circular foot Weight:-approx 160 troy ozs (4950 grams) Approx 51.5cm high £1200-1600



898. A cigarette paper box Birmingham 1910 Curved form, hinged lid another similar (no lid) and an oblong clothes brush the box approx 8 1/4cms long

899. An unusual Parisien exhibition white metal medallion

Late XIX century Circular form reading verso "Exposition Universelle International De 1878" the inner cartouche reading Penney & Co



900. A cigarette box Birmingham 1958 Maker WNS Ltd domed engine turned lid, fitted wooden interior and an engine turned silver cigar box the cigarette box 11.5cm long

901. Flatware comprising a plated bread fork with HM silver collar and bone handle, another similar, four HM silver teaspoons, and a white metal two prong fork

902. A hallmarked silver "chain mail" evening bag Birmingham 1916 Makers mark rubbed with plated chain link handle approx 11cm long



930. A silver plated biscuit box oval form, hinged lid with pineapple finial, the main body etched with scrolls on oval base terminating in ball feet 18.5cm high

931. **Silver plate** comprising a pair of coasters, toast rack, lidded jug, open ditto, milk jug, two handled sugar bowl
932. **Silver plate:- a two handled cup** of inverted bell form, leaf capped scroll handles, main body decorated with scrolls the whole raised on circular foot and a jug each with engraved bodies *the cup approx 16.5cm high*
933. **Silver plate** A five piece service comprising two coffee pots, teapot, cream jug and two handled sugar bowl *the coffee pot approx. 28cm high*
934. **Silver plate** toast rack, miniature jardiniere, crumb scoop and brush, cased horn handled carving set, three piece tea set and cased bread knives

935. **An Edwardian spirit kettle** the teapot with fixed scroll handle, chased scroll body on pierced rococo scroll stand with burner *approx 30.5cm*



936. **An early XX century spirit kettle on stand** fixed scroll handle, plain spout, gadrooned lower body on stand with burner *approx 29cm high*
937. **An early XX century silver plated spirit kettle on stand** chased and embossed decoration on "S" scroll supports, with burner. *42cms high*

938. **A XIX century silver plated tea tray** embossed scroll and floral border, engraved leaf and acorn centre, pierced handles on scroll feet *approx 69cms long*



939. **A silver plated tea tray of oval form** with leaf scroll border, pierced handles and engraved centre, the whole raised on quadruple supports *approx 74cms long*



940. **Silver plate:- a pair of candlesticks** with plain capitals each raised on tapering columns, stepped oval bases *each approx 29.5cm high*
941. **An early XX century centre piece** formed as three graduated, pierced baskets joined by a baluster stem *approx 55cm high* and a comport

942. **A pair of blue glass and silver plated urns** each decorated with flowers, scrolls and foliage on circular bases *each approx 35cm high* £100-200

943. **A Victorian Samovar of urn form** with removable lid, scroll handles, bright cut body decorated with ferns, central tap, raised on square support terminating in claw feet *approx 61cm high*



944. **An early XX century centre piece** the pierced central basket raised on tapering column holding three further hanging baskets on shaped triangular base terminating in ball feet *approx 33cm high*

945. **An Edwardian centre piece** the central cut glass trumpet raised on tapering stem above a cut glass bowl and three (vacant) sconces joined by a shaped base *approx 39cm high*



946. **An early XX century Art Nouveau epergne** the central trumpet joined to three others by entwined branches *approx 25cm high*



947. **A Victorian five branch epergne** the glass trumpets joined by entwined branches on ball feet *41cm high*



948. **A Victorian cast metal epergne** the central green glass trumpet raised on a stem formed as a resting peasant on a rococo design scroll base supporting two green glass baskets *approx 71cm high* £100-150



949. **A XX century metal five branch candelabra** decorated with ceramic petals on shaped floral base *approx 25cm high (minus candles)*
950. **A Victorian centre piece** the shaped painted glass bowl with moulded handles and applied blown fruits raised on a silver plated base *approx 27cm high*

951. **Thomas Turner, Suffolk Works**

A good oak cased canteen of cutlery comprising:- 12 large knives, two carving knives and sharpeners, 12 dinner knives and forks, 12 dessert spoons, six tablespoons, 12 further forks etc some knives with H/S collars £150-250



952. **A half fluted three piece tea service**

another oval teapot, sugar bows and napkin rings

953. **A pair of entree dishes** each of shaped oval outline, scroll and floral decoration, foliate scroll handles *each approx 38cms long*

954. **A pair of entree dishes** each of oval form, beaded borders and scroll handles *each 30cms across*

955. **Silver plate comprising:** Lidded muffin dish, two handled pierced ditto, cylindrical biscuit box on ball feet, tongs, hip flask, coffee pot and quantity of flatware Walker & Hall etc

956. **Silver plate comprising:** Three branch candelabra on circular foot, lidded preserve pot, cigar holder, armada dish, a quantity of part entree dishes, flatware, pickle forks, serving spoon etc

957. **An early XX century two handled samovar**

Of urn form, removable domed cover, turned handles raised on stylized paw feet *approx 40cms high*

965. **A pair of early XX century enamel jewellery boxes of small proportion** each with gilt highlighted hinged lids decorated with flowers on purple ground, written beneath "MADE IN FRANCE" *each 6.5cm high*

966. **A gentleman's 18 carat gold open faced pocket watch by Thomas Edwards, Liverpool.**

Chester 1842 with English lever movement, roman numeric dial, subsidiary second hand and baton pointers with gold plated Albert chain and key (recently overhauled) £500-800



967. **Omega "Seamaster" 30 gents wrist watch** *mid XX century* wind up mechanism fitted with leather strap

968. **A lady's Bulova diamond set**

cocktail watch the circular case surmounted by 8 cut stones with diamond set shoulders, silver coloured dial, baton numerals at the quarters and bullet points to the remainder with silver coloured hands, the white metal case stamped 14K £400-600



969. **A lady's Bulova cocktail watch** the oval dial with numeric and baton numerals with mechanical movement, the integral bracelet set with 32 diamonds, the white metal bracelet stamped 14K £400-600

970. **A Victorian sovereign** 1888

971. **Two Victorian sovereigns** 1889

972. **A Victorian sovereign** 1891

973. **A Victorian sovereign** 1892

974. **An Edwardian sovereign** 1913

975. **Two half sovereigns** 1907 & 1910 £50-80

975a. **A Victorian sovereign** 1890 £60-80

976. **Three half sovereigns** - 1912, 1913 & 1914

977. **A 9 carat gold necklace** of oval vertical graduated bars £80-130

978. **An oval cameo brooch**

of a young lady with flowing hair and a hair band in a 9 carat gold decorative mount



979. **A quantity of costume jewellery** including a Jubilee crown, a 9 carat watch fob, bar brooch, pendant etc.

PICTURES & PRINTS

997. **A Russian Icon**
Possibly XIX century
Depicting Madonna and Child
30.5cms x 27cms
£100-200



998. **In the Manner of Jean Baptiste Huet 1745-1811**
Pencil with highlights
barnyard scene child and animals
23.5cm x 37.5cm £250-350



999. **In the manner of Jean Baptiste Huet 1745-1811**
pencil with highlights
Diana the Huntress, nude beside animals
36cm x 22.5cm £250-350



1000. **J Machperson**
XIX century English
School watercolour
drawing cattle drinking before trees and cottage
18.5cm x 27.5cm £150-250



1001. **After David Shepherd (b. 1931)** Limited edition print "Burning Bright". Signed in pencil to the mount
No. 1012/2000 50cms x 78cms £300-600



1002. **Randolf Wehn** Oil on canvas Stream, buildings and trees before mountains signed lower right
47cms x 98.5cms

1003. **A XX century etching** "Magdalen Tower"; another "Christchurch Oxford"; John Hall watercolour - town scape and a print after J Clark (4)

Lot 1011 William Logsdail (1859 – 1944)

He lived at 19 Minster Yard, his father was head verger at the cathedral for 53 years.

When he left Lincoln Grammar School he went to the Lincoln School of Art where he excelled and won many National prizes including when he was 15 the Gold Medal from the Dept of Science and Art for the best work in all the Schools of Art in England.

After leaving Lincoln he went to study in London for a year and then onto Antwerp where he studied under Professor Verlat at the Ecole des Beaux Arts. He became the first foreign student to win the Concours Internationale (Gold Medal). There was a Flemish feel for his pictures and Queen Victoria purchased 'The Fish Market' for Osborne House.

In 1902 he returned to live and work in London. A period of change in his life and he began to feel despondent possibly unfulfilled. At this time he went back to his roots. He embarked on his Cathedral project. The idea was to paint all the important cathedrals in the country. However Lincoln was the first and only one of this intended series. It was painted and exhibited at the RA in 1905. It came into the possession of Alderman C T Parker, who presented it to the Usher Gallery in 1929.

In autumn 1880 Logsdail went to Venice to study colour and extend his experience. On arrival he took his first of five studios in Venice the Colle Capizzi at San Via. Apart from London 1887 – 1891 he rarely left Venice until 1900 except to visit London and exhibit at the RA or on excursions. His small scale views of Venice predate large-scale complex Venetian genre that he painted in mid 1880's.

1004. **After Joseph Mallord William Turner**
(1775-1851)

two framed bookplates
- "The Grand Canal
Venice" and "Ancient
Rome"
each 18cm x 27cm
and 19.5cm x 27cm



1005. **XX Italian School watercolour** River before
bridge and buildings *indistinctly signed lower
right* 37cms x 26.5cms

1006. **Kenneth Jack**

Pencil, pastel and
watercolour (1975)
"Fish Bar & Church,
Stamford Lincs"
signed lower right (1975)
24cms x 30.5cms



1007. **Continental school**

oil on board
"A Game Larder"
34cms x 44.5cms



1008. **Alfred H Vickers**
(1849-1907)

oil on board
settlement on the
Rhine with boats
before windmill
signed lower right A H Vickers 1894
43cm x 79cm £300-500



1009. **English School** oil on canvas Anchored boat
before calm stream; watercolour - calm
seascape; engraving; modern print and
watercolour - gulls (5)

1010. **Pawson?** Engraving - watercolour Lincoln
Cathedral; the cathedral from the castle
bookplate and a print - Pinner Middlesex (4)

1011. **William Logsdail 1859-1944**

*The Courtyard on San Gregorio St Della Salute
Vènice* Figures gathered round a well one
kneeling feeding pigeons *canvas laid on board
signed LR '82 contemporary plaster gilt frame*
69cm x 58cm (A smaller study for this picture is
at the Usher Gallery Lincoln, this picture was
probably exhibited there in 1944)
£6500-8500

- see back cover for illustration

1012. **Le Beuze, G** Oil on canvas Bearded gentleman
in prayer amongst snow, signed and dated
(Paris 1964) bottom right 33cm x 25cm

1013. **Leuaguay?** Signed continental school etching low
flying birds before town 13cm x 18.5cm

1014. **Kazarian**

A pair of oils on
board Lane with
chickens before
figure and cart and
lane before figure
and thatched
cottages each signed and dated ('65) bottom
left each 16cm x 23cm



1015. **After Blome**

Map of Lincolnshire
dedicated to Robert Earl of
Lindsey in Hogarth style
frame approx. 37cm x 31cm



1016. **After Lawrence
Stephen Lowry**
(1887-1976)

"A Street Scene" A
limited edition black and
white print signed and
watermarked to the mount number 599 of 850
approx 26cm x 36.5cm £150-300



1017. **David Muirhead Bone (1876-1953)** pencil on
paper Coastal scene monogrammed bottom left
7.5cm x 14cm

1018. **XIX century North European School**

oil on board Seated sailor, half
length, smoking clay pipe in blue
jacket before masted sailing boats
approx 48cm x 28.5 cm
£80-140



1019. **XIX century English School** oil on canvas
Lady seated by a table dressed in white and
pink gown interior setting (A later copy of
"The Love Letter") 44.5cm x 37cm

1020. **William Greaves (1852-1938)**

oil on canvas River landscape with rock pool
and figure fishing (believed
to be The Ribble) signed
and dated (1878) lower left
29.5cm x 45cm
£200-300



1021. **Arthur William Redgate (1860-1906)**
oil on canvas Horse driven cart before figure,
 house and many
 trees on country
 lane signed and
 dated (1876)
 bottom right
 29.5x44.5cm
 £100-150



1022. **Follower of Samuel Palmer (1805 - 1881)**
oil on loose panel board
 River landscape, sailing
 boat before mountains
 49x75cm



1023. **Sir Peter Markham Scott (1909-1989)**
Oil on board
**"Teal coming into
 the decoy"**
 signed lower right,
 18.5cm x 25cm
 £800-1200



1024. **Sir Peter Markham Scott (1909-1989)** *Oil on canvas*
**"Pintail rising from
 water"** signed and dated 1948
 lower right
 44cm x 37cm
 £1400-1800



1025. **James Stinton 1870-1961**
A pair of watercolour drawings
 cock and hen pheasant amid
 bracken and pheasants by a
 woodland 12.5cm x 18cm,
 each signed lower right
 £600-800



CLOCKS & BAROMETERS

1026. **A late XIX/early XX century
 brass striking carriage clock**
 the white enamel dial with Arabic
 numerals, strike on gong action
 (with key) 18cm high



1027. **A good marble, onyx and gilt highlighted
 clock garniture**
early XX century
 comprising an
 elaborately designed
 clock with eight day
 movement, quarter
 striking action, the face
 signed Beau Cousin, Cambrai, the Arabic dial
 surmounted by nesting bird raised on
 cylindrical gilt ended pillars on D-end base
 terminating in gilt covered feet with onyx vase
 garniture *the clock 38cm high* £250-350



1028. **A George II ebony cased
 striking bracket clock by
 Thos. Page Norwich**
 with brass handle to the
 inverted bell top glazed side
 panels and brass quarter grills
 to the front door, the brass
 dial with foliate spandrels
 silvered chapter ring, engraved with Arab and
 Roman numerals, the matted centre with mock
 pendulum and date aperture, the circular disc
 to the arch signed *Thos. Page Norwich* fussee
 movement with five ringed pillars, hour strike
 on bell with pull repeat 48cm high, 26.5cm wide,
 19.5cm deep £1500-2000



1029. **A marbled clock
 garniture of
 classical form**
 the circular enamelled
 Roman numeric dial
 flanked by urns on
 rectangular foot and ebonised base with two
 garniture formed as guards
the clock approx 32cm high



1030. **A French gilt and marbled clock garniture**

XX century of classical form, the white enamel dial stamped "23 Rue de Russi Pari" with Arabic numerals surmounted by urns and flanked by cylindrical tapering columns, joined by gilt coloured garland, the whole raised on stepped rectangular base, terminating in circular metal feet with a pair of two branch candelabra garniture, the clock approx 42cms high £500-700



1031. **A XX century Boulle style bracket clock on a matching pedestal** the Roman numeric dial fitted in an elaborately decorated case with metal mounts, urn finial and scroll supports the whole raised on tapering stand the clock approx 67cm high £100-150

1032. **An XVIII century style Dutch school clock** the brass movement surmounted by a cast heraldic plaque, with contemporary oak wall bracket the clock 30cm high 16cm wide £400-600



1033. **A late XIX century Vienna wall clock** the Roman numeric dial stamped "H. Samuel" driven by two weights in walnut case approx 108cm high

1034. **A XIX century French brass carriage clock** The movement enclosed by bevel glass panels and with a rectangular white enamel dial contained in a leather travelling case

1035. **An Edwardian oak chiming mantle clock** with circular steel dial, German movement

1036. **A late Victorian mantle clock** with steel dial and applied decorative brass spandrels and brass centre contained in an architectural neo-classical oak case with striking movement 38cms high



1038. **An XVIII century mercury column stick barometer** the mahogany case boxwood and ebony strung and feather banded each side of the column, the silvered dial signed "B Brown Fecit" and with a thermometer, the rectangular base enclosing the reservoir boxwood strung, cross banded and centred with a large oval 102cm high £1500-2200



1039. **A XIX century rosewood and mother of pearl inlaid banjo barometer** by Simpson, London with 10" steel dial 122cm overall £300-400



1040. **A XIX century oak and mahogany banded longcase clock** with circular painted dial signed Holliwell & Son Derby contained in a swan neck pedimented hood; 30 hour striking movement 211cm high £200-300



1041. **A XIX century Yorkshire mahogany longcase clock** with three train movement the painted dial signed W Cordingley, Leeds and showing light houses and shipping 264cm high £1000-1500



1042. **A XIX century longcase clock** the arched painted dial signed "Hen.y Loat Nantwich", contained in a relief carved oak case 235cm high £500-700



1043. **A XIX century oak and mahogany cased Grandfather clock** the painted arched dial with Roman numerals and subsidiary second hand signed James Barnes, Gainsborough eight day movement, fitted in a swan neck pedimented hood and inlaid case approx 212cms high £800-1200



1044. **An Edwardian stained beech wall clock** The squared steel dial with arabic numerals plain case Approx 74cms high

FURNITURE, RUGS, MIRRORS

1045. An Arts and Crafts style oak three door sideboard

each door divided into four fielded panels standing on square chamfered legs joined by a plain stretcher 200cm x 60cm £100-200



1046. A mid XX century "Cotswold School Arts & Crafts" pedestal sideboard

in the manner of Romney Green, the centre frieze drawer with carved octagonal handles flanked by carved single panel cupboards on inverted scroll supports. 178cms x 50cms x 79.5cms £300-400



1047. A mid XX century "Cotswold School Arts & Crafts" drawleaf table

in the manner of Romney Green, raised on squared tapering supports. 121.5cms x 90.5cms when closed £100-200



1048. A mid XX century Cotswold School Arts & Crafts oval tea tray

in the manner of Romney Green, with pierced handles and galleried edge 64.5cms £30-50



1049. A mid XX century Cotswold School Arts & Crafts coffee table

in the manner of Romney Green the plain rectangular top raised on four carved, indented pillars terminating in scroll feet, joined by plain stretchers 68cms x 44cms £80-120



1050. An XVIII century and later waisted mahogany bureau bookcase the upper section enclosed by a pair of glazed astragal doors beneath a broken architectural pediment, the fall front bureau enclosing a forward fitted interior with central well above two short and two long drawers on bracket feet 91cm wide, 245cm high £400-700



1051. A Sheraton Revival mahogany bow front china corner display cabinet

summounted by a broken swan neck pediment enclosed by glazed doors on square taper legs with an under tier, satinwood banded overall 191cm high £300-500



1052. A XIX century yew wood Nottinghamshire Windsor armchair

with "curly" splat turned legs joined by a crinoline stretcher £250-400



1053. A small XVII century two panel oak coffer

with lunette carved top rail the panels with floral roundels raised on high stiles 86cm wide 46.5cm deep £250-350



1054. A XIX century ash and elm stick back Windsor chair

on ring turned supports joined by an "H" stretcher £100-200



1055. A Victorian mahogany chiffonier with shaped panelled back and serpentine display shelf the base with two concave drawers above a pair of fielded panel doors 122cm wide £200-300

1056. **A magnificent satinwood gentleman's compactum and secretaire**

by Bebarfalds Ltd Sidney Australia with extensively fitted interior with writing slide, drawers, hanging cupboard with clips for walking sticks and two rising compartments to the top each with dressing mirrors
132cm wide 63cm deep 144cm high £500-1000



1060. **A George III mahogany chest of two short and three long drawers** with crossbanded and boxwood strung top original swan neck handles raised on bracket feet
distressed 87cm x 48cm £200-400



1061. **A XIX century carved gilt wood wall mirror**
69cm x 60cm



1057. **A Victorian oak three part kneehole desk** the top with a slope enclosing a well with fitted pigeon holes and drawers and flanked by two pedestals each fitted with four drawers, the desk carved overall in deep relief with acorns and oak leaves
130cm wide, 75 deep £500-900



1062. **An oval gilt frame Edwardian mirror** divided into segments 88cm x 60cm

1063. **A fine pair of gilded metal quiver design three branch girandoles** surmounted by a ribbon and hung with floral garlands 76cm high £200-300



1058. **A late XIX century carved wood exhibition mirror** the frame of fruiting vine approx 94cm x 70cm overall (possibly completed for the 1891 Boston Mass. exhibition) £200-500



1064. **An XVIII century and later Continental walnut cabinet** carved in deep relief with putti and masks, supported by two oriental style winged lions, the base on carved claw feet 136cm wide, 123cm high £700-1200



1059. **A George III mahogany library cabinet** the upper sectioned by astragal glazed doors with a fitted interior of pigeon holes and small drawers the centre with three secret drawers, the based with brushing slide and three long drawers raised on bracket feet
110cm wide 203cm high £400-700



1065. **An XVIII century walnut chest** of two short and three long graduated drawers the quartered top with a wide cross band and double herringbone banding raised on bracket feet
97cm wide 57cm deep £300-600



1066. **A Georgian bow front mahogany hanging corner cabinet** enclosed by double doors with "H" brass hinged
102cm high
£200-300



1067. **Victorian mahogany chest** of two short and three long graduated drawers each with original turned rosewood knobs 95cm wide
£150-250



1068. **A Louise XVI style corner vitrine** with gilt brass mounts, enclosed by a bow front glazed door with painted panel 150cm high £100-200

1069. **An Edwardian figured mahogany three section wardrobe** the centre with three drawers and a cupboard flanked by two hanging wardrobes enclosed by mirror doors 196cm wide

1070. **A Georgian mahogany "D" shape fold over tea table** 92cm wide

1071. **A XIX century mahogany pembroke table** with single drawer to the frieze and an opposing dummy, raised on flat sided taper supports 91cm x 97cm extended

1072. **A set of seven (five singles and two carvers) Georgian style mahogany dining chairs**

with horizontal shaped and pierced splats on reeded front supports
£400-600



1073. **A Georgian mahogany "D" shape fold over card table** the top with a double crossband raised on square taper supports 87cm wide £100-200



1074. **A Sheraton mahogany bow front six leg sideboard**

with crossbanded and boxwood strung top central frieze drawer flanked by two deep drawers one fitted with a cellarete 159cm wide 72cm deep £300-500



1075. **A very fine XIX century rosewood cylinder desk** labelled

"manufactured by F J Mercer cabinet maker & upholsterer, 24 & 26 Fargate Sheffield" the top with a fretted gallery, the interior veneered in maple and fitted with a writing slope, pigeon holes and drawers, one pedestal with four drawers, the other with four dummy drawers enclosing a cupboard 122cm wide, 80cm deep £1200-1800



1076. **A Georgian mahogany sewing table**

with lozenge shape hinge lid raised on taper supports 47cm wide
£80-150



1077. **A XIX century mahogany dropleaf dining table**

on taper supports with pad feet 150cm x 110cm £150-250



1078. **A Victorian mahogany side table** with a shaped top, single drawer to the frieze, raised on turned fluted supports, joined by a platform base 122cm wide £100-200

1079. **A Louis XVI style bureau de plat** with gilt brass mounts the quartered walnut top crossbanded in kingwood and centered with floral marquetry, one long shaped drawer to the frieze on cabriole supports 77cm x 51cm £700-900



1080. **A Victorian rosewood frame lady's chair** with a shaped back raised on cabriole front supports



1081. **A Victorian carved frame open armchair** upholstered in buttoned mink dralon £150-250



1082. **A XIX century figured mahogany centre table** the frieze with dummy drawers to either side, raised on a square pedestal with platform base 130cm wide, 65cm deep £300-500



1083. **A Victorian mahogany extending dining table** with spare leaf, on turned legs 154cm x 102cm extended £600-800



1084. **A walnut veneer three part pedestal desk** with inset leather top 124cm x 61cm £100-200

1085. **A XIX century circular rosewood centre table** raised on a turned column with tricorn beaded platform base on fluted feet 131cm dia £400-600

1086. **A George III oval mahogany pembroke table** the top with a wide cross band ebony and boxwood strung fitted with two frieze drawers raised on square taper supports 112cm x 89cm extended £150-250

1087. **A set of six (2 carvers and 4 single) XVIII century Hepplewhite design dining chairs** with triple vertical splats, wide shaped seats on taper front supports with "H" stretchers £600-900



1088. **A magnificent walnut German cabinet** of neo-classical design carved in deep relief the upper enclosed by two walnut veneer doors centred by roundels either side of a central glazed display cabinet the base with three bow fronted drawers standing on bold paw feet; early/mid XX century 252cm wide 190cm high £800-1200



1089. **A German pedestal knee hole desk**

(matching the previous lot) fitted with a central frieze drawer flanked by panelled cupboards with interior slides etc 174cm wide 85cm deep £400-600



1090. **A German circular centre table**

(matching the previous two lots) raised on carved "S" scroll supports on an "X" stretcher with carved paw feet 100cm dia £300-400



1091. **A set of four XX century cane back dining chairs** and a pair of beech frame open arm carver chairs

1092. **A pair of Victorian walnut balloon back dining chairs** with overstuffed seats upholstered in blue

1093. **An Edwardian mahogany and boxwood strung tub chair** with elaborate pierced splats on square taper supports

1094. **Three Georgian mahogany dining chairs** with "X" splats on plain legs with "H" stretchers and two similar ditto (5)



1095. **A set of four George III mahogany dining chairs** (three singles and a carver) with horizontal reeded and shaped splats raised on ring turn supports £150-250



1096. A Chippendale style elm side chair and a Georgian mahogany carver chair

1097. A pair of Edwardian fully upholstered armchairs on square mahogany tapering supports

1098. A circular mahogany wine table on spider legs

1099. Victorian rocking chair with oval back raised on turned supports



1100. A well figured Victorian mahogany tallboy the upper section with a protruding cornice, the two short and three long drawers flanked by turned columns, the base with three further drawers
130cm wide, 207cm high
£100-200



1101. A rectangular rug and another smaller

1102. Three rectangular rugs

1103. A hall runner and two rectangular rugs

1104. A Georgian wing armchair raised on square mahogany legs joined by an "H" stretcher, now upholstered in green dralon
£400-600



1105. A pair of Georgian style wing armchairs upholstered in burgundy dralon on mahogany legs with plain stretchers £300-500

1106. A French Vernis Martin style bow vitrine with gilt metal mounts standing on shaped legs,
100cm wide, 162cm high
£200-300



1107. A stained hardwood fluted standard lamp

1108. A XIX century mahogany child's chair with cane back and seat, serpentine front rail on turned and fluted front supports with a shaped foot rest



1109. A pair of XIX century ash and elm wheel back side chairs with shaped saddle seats raised on ring turn front supports joined by an "H" stretcher
£100-150



1110. An XVIII century oval drop leaf gate legged pad foot dining table
160cms x 105.5cms
extended £150-250



1111. A George III rectangular mahogany fold over top tea table raised on fluted square supports
81cms wide x 42cms deep
£100-200



1112. A XIX century mahogany frame armchair upholstered in pink dralon and raised on turned fluted supports

1113. A Victorian mahogany breakfront wardrobe the centre section with slides and drawers enclosed by a mirrored door and flanked by clothing rails the whole raised on moulded base
208cm x 130cm x 58cm
£800-1200



1117. A Matched Set of ten (eight + two) XIX century Lancashire rush seated spindle back chairs. Each with upper and lower galleries of five spindles above quarter round front supports joined by turned front stretchers. £3500-£4500.



1119. An eighteenth century oak plank top fold over 'Cumberland' table with three drawers to the freize on squared tapering supports. When open 260 cm x 174 cm. £2000-£3000



1118. An XVIII century oak Welsh dresser. The upper section with an open plate rack, the base with three drawers above three cupboards with original swan neck handles approx 210 cm x 181 cm x 48 cm £1400-£1800.



1120. A late 1940s or early 1950's three piece suite.

Art Deco design, upholstered in green and cream vinyl with floral moquette cushions.



FORTHCOMING SALES

*f*irst Saturday Estate Sales
will take place on

31st March, 5th May, 2nd June, 7th July

**NB: Due to Easter weekend the April Sale
will take place on the 31st March**

*Comprising of approx 1000 lots of Victorian to modern furniture,
ceramics, glass, pictures, bygones, collectables etc*

31st March

*Antiquarian & Modern Books (approx. 400 lots)
including approx. 200 lots of Lincolnshire books*

VIEWING

Friday prior 12noon-4pm & morning of sale from 8.30am
Antique Sales may be viewed by appointment during the week prior



Lot 383



Lot 382



Lot 1068



Lot 967



Lot 487



Lot 937



Lot 1019



Lot 1031



Lot 969



Lot 936



Lot 533



Lot 942



Lot 1084



Lot 1086



Lot 1098



Lot 483



Lot 573

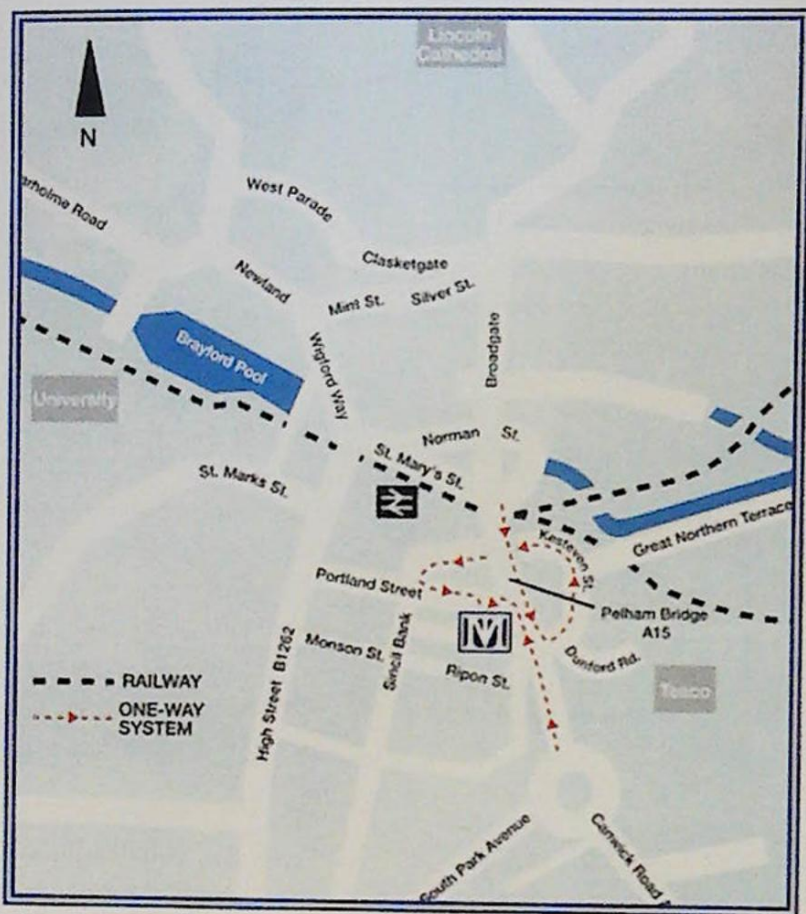


Lot 380



Lot 1062

LOCATION



The Thos. Mawer & Sons salerooms at Dunston House are situated in central Lincoln on the east end of Portland Street at the foot of Pelham Bridge (Canwick Road). By car, approaching from the south take the last turning on the left just before the road rises to the bridge.

Approaching from the north (via Broadgate), go over Pelham Bridge and turn left towards Jacksons Building Centre/Tesco on to Kesteven Street. Follow the road around to the left and drive under Pelham Bridge to Portland Street. Turn left and you will see Dunston House on the right. Portland Street is also accessible from Lincoln's High Street, opposite the Ritz public house.

The salerooms are within walking distance of the main railway station and bus depot.

CONDITIONS OF SALE

1. In these conditions Thos. Mawer & Son act only as auctioneers and agents and the representative of Thos. Mawer & Son conducting the auction is called 'The Auctioneer'

2. Whilst Thos. Mawer & Son make every effort to ensure the accuracy of their catalogue and the description of any lot:

(i) Each lot set out in the catalogue or as divided or combined with any other lot or lots is sold by the vendor with all faults and imperfections and errors or descriptions

(ii) Thos. Mawer & Son do not accept responsibility for the authenticity, attribution, genuineness, origin, authorship, date, age, period condition or quality of any lot unless they have been instructed in writing by the buyer to so certify.

(iii) All statements whether printed in the catalogue or made orally as to any of the matters set out in (ii) above are statements or opinion only and are not to be taken as being or implying any warranties or representations of fact by Thos. Mawer & Son unless they have been instructed in writing by the buyers to so certify.

3. The Auctioneer has absolute discretion to divide any lot, to combine any two or more lots or to withdraw any lot or lots from sale, to refuse bids, regulate bidding or cancel the sale without in any case giving any reason or without previous notice. He may bid on behalf of the vendor for all goods which are being offered subject to reserve or at the Auctioneer's discretion.

The highest bidder shall be the buyer. The Auctioneer may at his sole discretion determine the advance of bidding or refuse a bid. If during the auction the Auctioneer considers that a dispute has arisen he has absolute discretion to settle it, or to re-offer the lot.

All conditions, notices, descriptions, statements and other matters in the catalogue and elsewhere concerning any lot are subject to any statements modifying or affecting the same made by the Auctioneer from the rostrum prior to any bid being accepted for the lot.

4. The buyer shall pay the hammer price together with a premium of the hammer price - 17.6% inclusive of VAT

5. Notwithstanding any other terms of these Conditions, if within seven days after the sale Thos. Mawer & Son have received from the buyer of any lot notice in writing that in his view the lot is a deliberate forgery and within twenty-one days after such notification the buyers return the same to Thos. Mawer & Son in the same condition as at the time of the sale and by producing evidence, the burden of proof to be on the buyer, satisfies Thos. Mawer & Son that considered in the light of the entry in the catalogue the lot is a deliberate forgery then the sale of the lot will be rescinded and the purchase price of the same refunded.

The vendor agrees to be bound by Thos. Mawer & Son's decision.

6. Thos. Mawer & Son disclaim any responsibility for default by either the buyer or the vendor because they act as Auctioneers only and therefore do not pay out to the vendor until payment is received from the buyer. Instructions given by telephone are accepted at the sender's risk and must be confirmed in writing forthwith.

7. Every person on Thos. Mawer & Son's premises at any time shall be deemed to be there at his own risk. He shall have no claim against Thos. Mawer & Son in respect of any accident which may occur or injury, damage, loss howsoever caused, save in so far as the injury, damage loss shall be caused by the negligence of Thos. Mawer & Son's employees.

8. Each lot shall be at the purchasers risk from the fall of the hammer and must be paid for in full before the delivery and must be taken away by the purchaser at his own expense within 7 working days following the conclusion of the sale. The Auctioneer shall be entitled to charge storage charges in respect of lots not taken away as aforesaid (minimum charge of £25 plus VAT) and interest on unpaid accounts @ 4% above clearing bank base rate (per calendar month)

9. Cheques which are not honoured by the payee's bank will incur a handling charge of £20 plus VAT for each presentation.

This contract is governed by English Law.



DUNSTON HOUSE . PORTLAND STREET . LINCOLN . LN5 7NN
TELEPHONE 01522 524984 . FACSIMILE 01522 535600
EMAIL auctions@thosmawer.com . WEBSITE www.thosmawer.com