



Collective Sale Review

May 2024

**GOLDING YOUNG** EST  
1864

# Probate – Inheritance Tax Assessment

For many Executors and Trustees the responsibility of dealing with a deceased's Estate is a once-in-a-lifetime experience. You have to make a number of important decisions in a very short space of time and all when the loss is most difficult to come to terms with.

The position of Executor is an important one in law and has defined personal liability and responsibility. To exhibit due diligence to beneficiaries and more importantly HM Revenue & Customs, an Executor or advisor will instruct a firm Regulated by RICS.

Even if the estate will be taxed at 0%, a valuation remains an essential tool for an Executor. The inventory will still be used for identification of bequests, trust items, family division and proof of value.

Our valuations are prepared to the International Valuation Standards requirement of the 'Red Book'.

The report will cover sections of:

- Jewellery
- Vehicles
- Antiques, Fine Art & Collections
- General Furniture & Effects



## Removals – Household & Commercial

- Free Quotations
- Full Packing Service
- Suppliers of Packing Materials
- Shipping & Storage Arranged
- Antiques & Fine Art Specialists
- Specialist Piano Movers
- Office Movers

Contact Andrew Lowes on 07970 742577 for a quote  
or email [lowes@goldingyoung.com](mailto:lowes@goldingyoung.com)

[goldingyoung.com](http://goldingyoung.com)

# Grantham Collective Review - 1st May 2024



**A Royal Albert porcelain Old Country Roses pattern part dinner, tea and coffee service, including a vegetable tureen and cover, large and small fruit bowls, three tier cake stand, sandwich plates, dinner, dessert and side plates, cereal bowls, tea pots, cream jugs, sauce boat, tea and coffee cups and saucers. (qty) SOLD for £400**



**A George II gold guinea 1781, the obverse with laureate head, reversed with crowned shield of arms, approximately 8.2g. SOLD for £420**



**An Edwardian diamond set brooch, in a lozenge openwork design, with a central wreath flanked by two flowers, in white metal, with safety chain as fitted, 6.0g, in a fitted box for J W Benson Ltd, 25 Old Bond Street London. SOLD for £460**



**A pair of reconstituted stone two handled garden urns, one with plinth, each urn 36cm high, 63cm wide, plinth 27cm high. SOLD for £320**



**A Victorian Masonic jewel, for Skelmersdale number 1599 lodge, with motto and coat of arms, and 18ct gold set square suspension, engraved "Presented by the members of the Clapton lodge 1365 to BRO. R.E. Fairclough M.M. as a token of esteem and fraternal regards 1894-1895, suspension 14.2g. SOLD for £500**



**A Moorcroft pottery Woodside Farm pattern vase, of twin handled waisted form, circa 1999, painted and impressed marks, boxed, 26cm high. SOLD for £340**



**Philately. GB mint commemoratives and definitives, pre and post decimalisation, including sheets and blocks, high face value. SOLD for £360**



**A George V silver twin handled trophy, with angular handles, Barker Brothers Silver Ltd, Birmingham 1927, 27.19oz. SOLD for £320**



**A large cast and wrought iron garden gate, 277cm wide, 130cm high. SOLD for £480**



**A set of ten early Victorian mahogany dining chairs, each with a plain bar back, a drop in seat, on turned tapering legs. SOLD for £400**

# Grantham Collective Review - 1st May 2024



**Philately. QV-EII definitives and commemoratives**, including Victorian penny reds, pre and post decimalisation commemoratives, many high face value, in three albums.  
**SOLD for £340**



**An early 20thC oval diamond and platinum solitaire ring**, high claw set, approximately 0.9ct, size N, 2.7g.  
**SOLD for £750**



**A late 18thC oak dresser**, the rectangular top with a raised recess for plates, above three drawers, each with brass drop handles and pierced escutcheons, on square tapering legs, 86cm high, 180cm wide.  
**SOLD for £600**



**A group of late 20thC studio pottery**, including a water jug, bowls, jar and cover, and a vase. (qty)  
**SOLD for £360**



**A 9ct gold bangle**, with engraved repeating acanthus leaf decoration, on a snap clasp, 24.5g.  
**SOLD for £400**



**A reconstituted stone garden urn**, of part fluted form, on a rectangular plinth with panellied sides, 115cm high.  
**SOLD for £320**



**A William IV figured mahogany and burr yew breakfast table**, the circular top with radiating veneers, on a leaf carved turned column and triform base, with bun feet, 137cm diameter.  
**SOLD for £300**



**A 9ct gold graduated double curb link Albert chain**, with two lobster claw clasps and T bar as fitted, together with a 9ct gold bicolour shielded medallion, 44.5g.  
**SOLD for £800**



**A large deep seated sofa**, upholstered in gold, red and silvered pattern fabric, on turned and reeded legs with brass castors, 201cm wide, and a matching smaller sofa, 176cm wide. (2)  
**SOLD for £950**



**A pair of reconstituted stone two handled garden urns**, of amphora style, on a circular plinth, 52cm high, 51cm wide. (AF)  
**SOLD for £380**

# Bourne Collective Review - 8th May 2024



A Vauxhall Astra SRI Estate car, Registration EO14 ERK, automatic, petrol, 1600cc, five door, green, V5 present, two keys and booklets, one previous owner.  
**SOLD for £3,000**



An early 20thC anniversary clock, the square pink guilloché enamel dial with silvered chapter ring bearing Arabic numerals, the clock surmounted by cast metal floral and leaf decoration, raised on two brass and purple enamel columns, key wind, drum barrel movement, stepped base with glass domed case, 32cm high.  
**SOLD for £240**



An Ercol elm chest, of three drawers, on castors, model number 412, bearing label, 66cm high, 92cm wide, 43cm deep.  
**SOLD for £300**



A Royal Mint Scout gold proof fifty pence coin, with certificate of authenticity marked as 22ct gold alloy, boxed and small group of additional coins to include a Queen Mother crown, threepence pieces, two shillings, modern ten pence piece, etc. (a quantity)  
**SOLD for £650**



A 19thC portrait brooch, of oval design, the miniature painted oval panel depicting blonde haired gentleman in evening dress, in a yellow metal frame, unmarked, the back set with blue enamel and a woven crossover memorial central panel, on steel pin back, 8cm x 6cm. (AF)  
**SOLD for £220**



An Epiphone Riviera P93 MG electric guitar, serial number 11021502198, the body in gold coloured casing, 105cm long, in hard case.  
**SOLD for £360**



A WWI Canadian army peak cap, dated 1916, with leather adjusting belt and Canada cap badge, 22cm diameter.  
**SOLD for £200**



A longuard neck chain, with two row hammered link design, with arched clip and central bolt clasp, yellow metal unmarked, 46cm long, 38.2g all in.  
**SOLD for £600**



A mid century St Michael case, containing an artist's portfolio, of charcoal and pencil still life sketches, portrait studies, pen and ink sketches, interior and architectural studies, various prints, etc. (1 case)  
**SOLD for £260**



An early 20thC brown painted metal framed double sided swing sign, for Gentlemen's Toilet, on a later cast iron L shaped support, the sign 32cm wide.  
**SOLD for £320**

# Bourne Collective Review - 8th May 2024



A Metrax Belgian machine woven tapestry wall hanging, of The Touch, with rail, 130cm x 140cm.  
**SOLD for £200**



A pair of Victorian cast urns, each with a shell moulded border, on square foot, 50cm high, 76cm diameter.  
**SOLD for £480**



A Steiff mohair Paddington Bear, with suitcase, plush marmalade sandwich and glass jar of orange marmalade, limited edition of 500, 60cm high, with certificate, boxed with outer packaging.  
**SOLD for £400**



A Stressless style armchair, upholstered in brown leather, on a beech base, with matching footstool.  
**SOLD for £280**



A Wedgwood porcelain dinner service decorated in the Amherst pattern, comprising 8" covered vegetable tureen, 8" soup bowls, gravy boats and saucers, 6.25" cereal bowls, 7" plates, 10.75" dinner plates, tureens and covers, fruit bowl, etc., mainly boxed.  
**SOLD for £220**



A Steiff Aunt Lucy mohair bear, limited edition number 950/1500, with certificate, boxed with outer packaging.  
**SOLD for £220**



A Drive Auto Fold Elite scooter, in red, S3026-2.  
**SOLD for £400**



A set of six oak dining chairs, each with a leather seat and back with stud work, on turned legs united by stretchers (4+2).  
**SOLD for £440**



A Hornby R3379 class 43 HST Harry Patch train set, comprising Great Western Region Harry Patch power car 43172, and Great Western Region unpowered power car 43154, boxed.  
**SOLD for £240**



An oak refectory table in 17thC style, the planked top, on leaf carved cup and cover supports and splayed feet with flat stretcher, 76cm high, 192cm wide, 85cm deep.  
**SOLD for £220**

# Lincoln Collective Review - 15th May 2024



Collection of over 60 Sovereigns.  
SOLD for £17,400



Eight Lilliput Lane items,  
to include The Taj Mahal, Lead  
Kindly Light in Winter, Full Steam  
Ahead, etc. (AF)  
SOLD for £240



A Longuard neck chain, with  
single clip, stamped 9ct, 132cm long,  
28.1g all in.  
SOLD for £460



A Villeroy & Boch Gallo design  
Cordoba pattern dinner and tea  
service, each piece decorated with  
blue leaves and geometric borders  
predominantly in blue and green.  
SOLD for £200



A 9ct gold gate bracelet, of six bar  
design, with safety chain and  
padlock, 16cm long, 19.1g.  
SOLD for £320



A Victorian ebonised oak dinner  
gong, the frame with a central lion  
mask, carved overall with leaves,  
flutes, flowers and scrolls, with a  
bronze gong, 76cm wide.  
SOLD for £220



A quantity of LP records, to include  
Pink Floyd, compilations, ABBA,  
Van Halen, ACDC, etc. (2 boxes)  
SOLD for £340



The Luttrell Psalter, published by  
The Folio Society, bound in goat  
skin with gilt and coloured tooling,  
together with a Luttrell Psalter  
Commentary, in presentation case.  
SOLD for £440



A collection of seven pieces of  
Lilliput Lane, to include St Patrick's  
Church, High Ghyll Farm, Armada  
House, and The George Inn. (AF)  
SOLD for £240



A late 19th/early 20thC ebonised  
oak sofa, in Carolean style, the high  
back decorated with scrolls, leaves  
and spirally turned supports, with  
a padded back, seat, on part turned  
legs, with stretcher, 180cm wide.  
SOLD for £220

# Lincoln Collective Review - 15th May 2024



A Royal Mint George VI 1937 gold specimen coin set, comprising five pound, two pound, full and half sovereign, in fitted case.  
**SOLD for £10,000**



An unusual 17thC dug out oak cupboard, the back formed from one piece of timber, the front with a long fall front door with support and a small cupboard door, each with tapering iron hinges, on stiles, 180cm high, 55cm wide.  
**SOLD for £300**



Stamps.- GB.- QV-QEII.- 1 album, reasonably strong in QV, including 1d black and reds and some good QV and KGVI examples, including some mint, mainly postally-used, hinge-mounted, c.300+  
**SOLD for £900**



A 9ct gold bangle, of twist design set with grey cultured pearl, Sheffield 1996, 7cm diameter, 22.8g all in.  
**SOLD for £380**



A group of WWI related items relating to Mr Charles Duke, comprising military black and white print in oak frame, 50cm x 39cm, certificates for post war credits, death plaque, medals awarded to private Duke 15178 of the West Riding regiment, letters and other correspondence, etc.  
**SOLD for £260**



A set of three large gilt metal waterfall shaped chandeliers, each with cut glass drops and beads, 104cm wide.  
**SOLD for £200**



A late 19th/early 20thC rose gold gate bracelet, each of arched form with mottled and brushed links, with safety chain and heart shaped padlock stamped 9ct, 16cm long, 14.6g all in. (AF)  
**SOLD for £240**



An Eastern inspired tricolour bracelet, set with yellow, rose and white coloured gold, with some plated fitments, the clasp stamped 9kt Italy, 18cm long, 21.5g all in.  
**SOLD for £360**



A set of eight Victorian carved oak dining chairs, each back carved with a mask, leaves, spirally turned supports, with a brown leather padded seat, on spirally turned legs with H stretcher, two with arms, the armchairs 64cm wide.  
**SOLD for £700**



A Crown Ducal Florentine pattern part dinner service, and a similar Solianware dinner service.  
**SOLD for £400**



# PRIVATE CLIENT & PROFESSIONAL SERVICE DEPARTMENT

We value personal property for private and corporate clients. Our team have valued family heirlooms, art collections and museum holdings for a variety of purposes.

We are the only auction house in the region to have a bespoke Private Client Department with:

- Three Chartered Arts & Antiques Surveyors
- Four RICS / Antiques Trade Gazette professional assessment award-winning valuers
- Two In-house qualified jewellery valuers
- Experience in abundance and diversity since 1864
- Ten professional staff with RICS, NAVA or SoFAA qualifications.



**For initial advice contact the following Chartered Auctioneers & Valuers:**

Bourne, Stamford & South Colin Young MRICS 01778 422686	Grantham, Lincoln & North William Gregory MRICS 01522 524984
---	--

# Grantham Collective Review - 29th May 2024



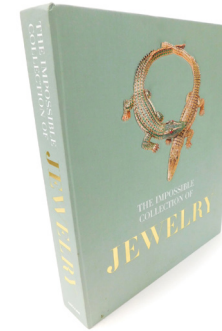
A Rolex 18ct gold cased Oyster Perpetual date gentleman's wristwatch, circular dial with gold batons, centre seconds, marked superlative chronometer, officially certified, on a leather non Rolex strap.  
**SOLD for £2,200**



A Victorian half hunter pocket watch, keyless wind, circular enamel dial bearing Roman numerals, movement by John Ashworth and Company, Manchester and Geneva, number 10053, the case monogram engraved, with outer chapter ring in pink guilloche and blue enamel, bearing Roman numerals, stamped 18c and 0.755, 60.9g, together with a 9ct gold lobster claw clasp, 2.5g.  
**SOLD for £1,200**



A Victorian silver tea and coffee set, of baluster form, with reeded and embossed decoration of trailing fruit and leaves, comprising tea pot, coffee pot, cream jug and sugar bowl, William & Henry Stratford, Sheffield 1863, 68.33oz.  
**SOLD for £1,200**



Becker (Vivienne). The Impossible Collection of Jewellery, The Hundred Most Important Jewels of the 20th century, folio, with one hundred plates, gilt tooled orange binding, limited edition 100, in a pale green linen clamshell case, published by Assouline Publishing, New York 2012, RRP £1050, 40cm x 47cm x 8cm.  
**SOLD for £200**



A part suite of Victorian Fiddle and Thread pattern silver flatware, initial engraved, comprising basting spoon, six tablespoons and forks, dessert spoons, dessert forks and five teaspoons, Charles Boyton II, London 1875, 66.77oz.  
**SOLD for £1,100**



A Royal Worcester figure modelled as Grandmother's Dress, 3081, another modelled as Joan, 2915, and a Royal Doulton figure modelled as Pinkie, HN1559. (3)(AF)  
**SOLD for £220**



A pair of 18ct gold knot cufflinks, 10.9g.  
**SOLD for £380**



A ruby five stone ring, possibly Burmese, of graduated size, set in unmarked yellow metal, size P, 2.9g.  
**SOLD for £300**



A 9ct gold curb link bracelet, without clasp and with partial safety chain, 24.6g.  
**SOLD for £400**



Sue McCartney Snape (b.1957). Glyndebourne, limited edition print 628/750, signed, 52cm x 62cm.  
**SOLD for £380**

# Grantham Collective Review - 29th May 2024



A Baume & Mercier gentlemen Tronosonic wristwatch, circular gold dial with batons, centre seconds, date aperture, in a textured yellow metal casing, serial number 49005/31003, on a later leather strap, boxed.  
**SOLD for £750**



Greenwood (C & J). Map of the county of Lincoln(shire) from an actual survey made in the years 1827 and 1828, comprising East Lincolnshire, and West Lincolnshire, in a calf slipcase, published by Greenwood & Company, London 1830.  
**SOLD for £420**



A pair of early 20thC Moorcroft Florian ware pottery vases, of slender baluster form, decorated in the Dianthus pattern, printed and painted marks, 30cm high.  
**SOLD for £700**



A gentleman's 18ct gold signet ring, monogram engraved, size N, 12.4g.  
**SOLD for £400**



An ebonised carpenter's tool chest, with a hinged lid opening to reveal assorted carpenter's tools, etc, 89cm wide.  
**SOLD for £650**



An Edward VII silver cake stand, the bowl with pierced Acanthus leaf and foliate scroll decoration, with a pie crust rim, raised on a foliate scroll base, with four scroll feet, Walker and Hall, Sheffield 1910, 37.06oz, 31cm wide.  
**SOLD for £610**



An 18ct gold diamond and emerald ring, in a flower head setting, diamonds approximately 1ct, size N, 5.5g.  
**SOLD for £360**



A pair of late 19thC Bohemian cranberry and milk glass lustres, decorated with floral sprays, with prismatic cut drops, 32cm high.  
**SOLD for £600**



A late 19thC parure of amethyst set jewellery, in yellow metal, each with a faux pearl surround, comprising a necklace with detachable clip pendant, bracelet and pair of earrings. (AF)  
**SOLD for £360**



By Tender. A Howa Model 1500 .223 sporting rifle, serial number B388239, with silencer, Yukon gun scope, and instructions/safety manual, barrel 61.5cm long, cased.  
**SOLD for £460**

**GOLDING YOUNG** EST  
1864

## Thinking of selling?

Executors, solicitors, accountants, insurers, corporations and government departments, have to exhibit due diligence when instructing. Use this checklist to do the same, with a few reasons why you may wish to choose us.

### We are regulated by RICS

Better Regulation for Us. Better Protection for You.  
Accept Nothing Less.

### Our online catalogues

For over 20 years our catalogues have been online and our experience ensures they are placed in front of the right buyers in the global market.

### Our sales results

July 2020 saw our 141st consecutive month with a sale at either Bourne, Grantham or Lincoln producing a sold rate of over 90%. Good advice, great results for hundreds of vendors every month.

**Join their success with an entry in our next sale!**

# A firm of the highest standing

Being a firm of Chartered Auctioneers & Valuers means that we have not only qualified to the highest standard in the profession, but have to maintain those standards. The first due diligence check any professional makes when needing a formal valuation, or simply selling at auction is for The Hallmark of a Chartered Auctioneer & Valuer - Regulated by RICS.

## RICS

The Royal Institution of Chartered Surveyors is the professional body that has been responsible for The Auctioneers Charter since 1970. All members have to complete at least 20 hours CPD or Continued Professional Development every year. All valuation work is prepared to the RICS Red Book requirements incorporating the International Valuation Standards (IVSC) Client Accounting. All client money has to be held in dedicated, ring-fenced accounts with a full audit trail.

## NAVA Propertymark

The National Association of Valuers and Auctioneers are an important body within the auctioneering and valuation profession, specifically in our case relating to the sale of chattels or personal property. All members have to complete at least 12 hours CPD or Continued Professional Development every year. They work with auctioneers and consumers alike, to offer regulation and guidance. Membership also provides for Primary Authority with Trading Standards to ensure clarity and understanding.

## SoFAA

The Society of Fine Art Auctioneers, formed in 1973, as the name suggests, is a society that exclusively represents the interests of the leading fine art auctioneers in the UK helping them provide the best service to clients. With this level of qualification and accreditation within the firm we pride ourselves on providing a reliable and professional service to get it right.



#### The Bourne Auction Rooms

Spalding Road, Bourne,

Lincolnshire PE10 9LE

E: [bourne@goldingyoung.com](mailto:bourne@goldingyoung.com)

T: +44 (0) 1778 422686

F: +44 (0) 1778 425726

#### The Grantham Auction Rooms

Old Wharf Road, Grantham,

Lincolnshire NG31 7AA

E: [grantham@goldingyoung.com](mailto:grantham@goldingyoung.com)

T: +44 (0) 1476 565118

F: +44 (0) 1476 561475

#### The Lincoln Auction Rooms

Thos Mawer House, Station Road

North Hykeham, Lincoln LN6 3QY

E: [lincoln@goldingyoung.com](mailto:lincoln@goldingyoung.com)

T: +44 (0) 1522 524984

F: +44 (0) 1522 681804

#### The Leicester & Midlands Office

E: [leicester@goldingyoung.com](mailto:leicester@goldingyoung.com)

T: +44 (0) 116 473 5735

#### London & South Valuations

E: [london@goldingyoung.com](mailto:london@goldingyoung.com)

T: +44 (0) 203 301 1007

#### The Louth & Wolds Office

E: [louth@goldingyoung.com](mailto:louth@goldingyoung.com)

T: +44 (0) 1507 661864

#### The Stamford & Rutland Office

E: [stamford@goldingyoung.com](mailto:stamford@goldingyoung.com)

T: +44 (0) 1780 7516