

Autumn Catalogue 1998

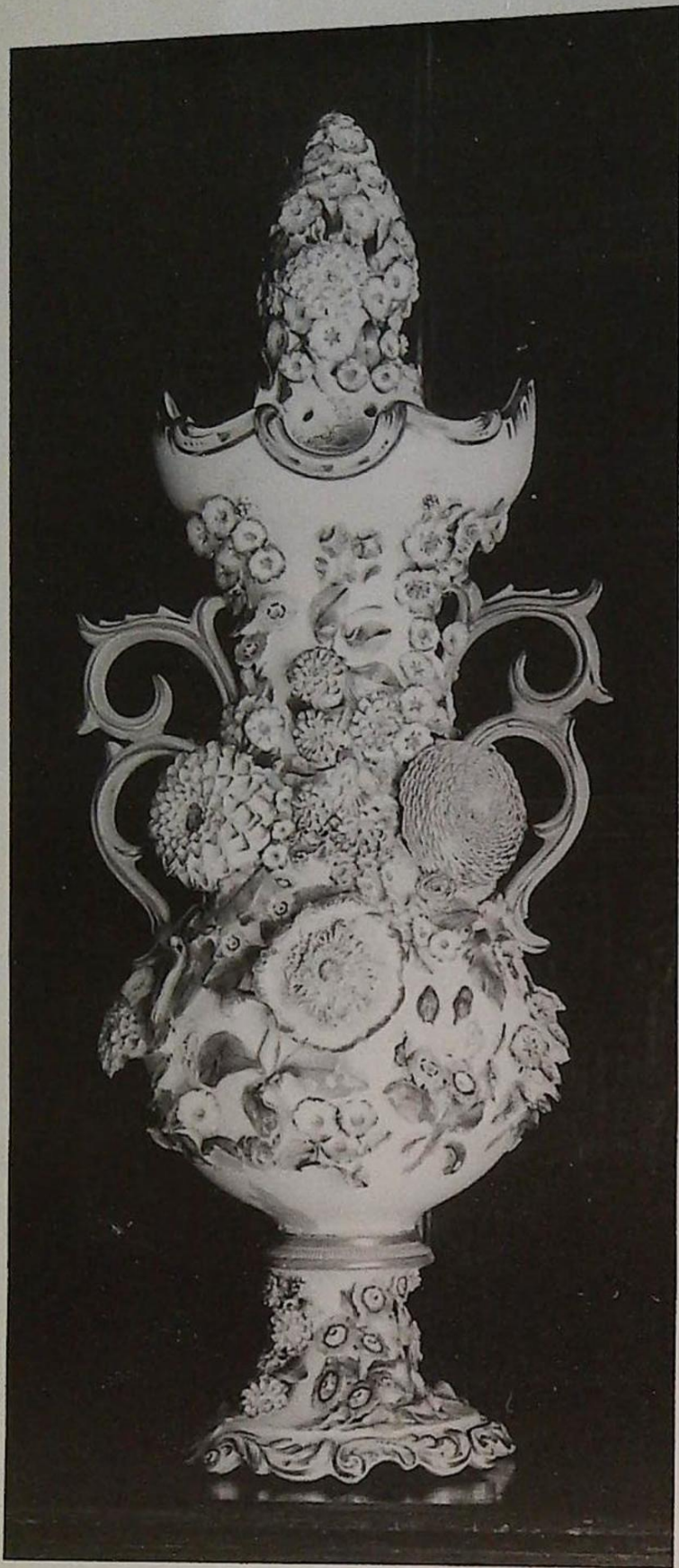
*Antiques & Fine Art
Auction*

Established 1900

-GOLDINGS-

— AUCTIONEERS & VALUERS —





AUTUMN FINE ART SALE 1998

Upon instructions from Executors, Private Collectors & Individuals
and other residual contents of Property Clearances

GOLDING YOUNG & CO. will sell by AUCTION

STAFFORDSHIRE POTTERY — Lots 1 to 51

CLOCKS & BAROMETER — Lots 52 to 60

ROYAL DOULTON CHARACTER JUGS — Lot 61 to 158

GLASSWARE— Lot 159 to 200

COLLECTORS ITEMS, BYGONES & MISCELLANEA — Lots 210 to 310

EUROPEAN CERAMIC— Lots 311 to 390

BOOKS & PRINTED ITEMS— Lot 391 to 402

JEWELLERY & WATCHES— Lot 403 to 437

SILVER & PLATEDWARES— Lots 438 to 490

ARMS & MILITARIA— Lots 491 to 500

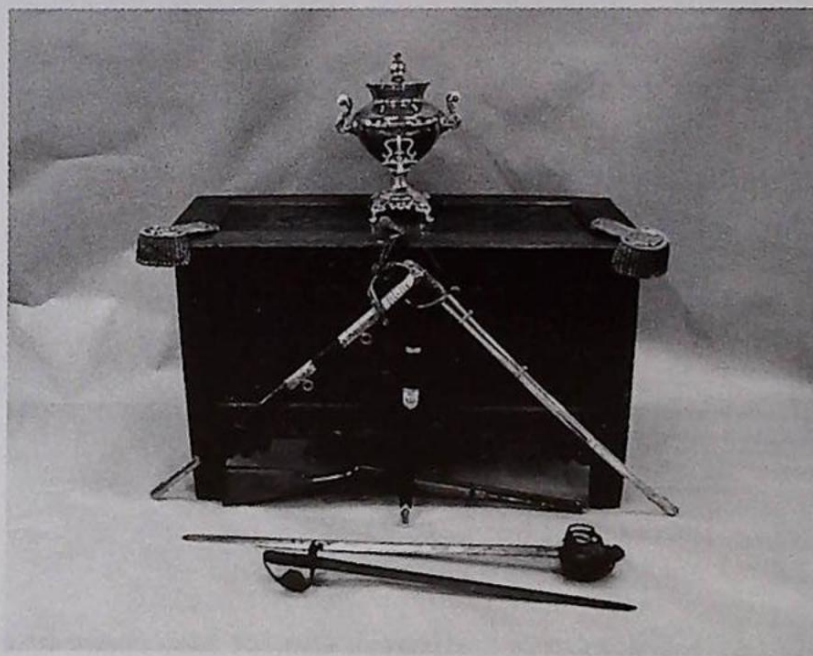
TOYS — Lots 501 to 517

ORIENTAL CERAMICS & WORKS OF ART— Lots 518 to 579

OIL PAINTINGS, WATERCOLOURS & PRINTS — Lots 701 to 760

ANTIQUE & LATER FURNITURE — Lots 771 to 903

(Commencing 10 a.m. and sold concurrently with Lots 1 to 200)



On Wednesday, 21st October, 1998

commencing at 10 a.m.

Guide to Cover Illustrations

Front cover: Lot 710 and clockwise from top left:

Front inside cover: 360, 358 & 359, 159, 388

Rear inside cover: 713, part 1 to 51, 873, 711,
part 61 to 158, 55

Viewing:

Sunday 18th 2 p.m. - 4 p.m.

Tuesday 20th 2 p.m. - 7 p.m.

& Saleday 9 a.m. - 10 a.m.

All enquiries 01476 565118

Fax 01476 561475

Golding Young & Co., Old Wharf Road, Grantham, Lincolnshire, NG31 7AA

IMPORTANT NOTES FOR PURCHASERS

1. **PAYMENT:** Must be made in full immediately after the Auction. The following methods of payment are acceptable.
a) Cash b) Bankers Draft c) Building Society Cheque
d) Cheques, accompanied by a valid card. For accounts above the stated card limit, we reserve the right to retain the goods until clearance is established.

2. **BUYERS PREMIUM:** of 10% + VAT is payable on all lots.

3. **REMOVAL OF PURCHASES:** Goods must be collected as soon as they are paid for, and in the Two Working Days following the sale. If goods are not collected on these days we reserve the right to charge £1 per lot per day thereafter.

4. **COMMISSION BIDS:** If you are unable to attend this or any of our future sales we will be pleased to bid on your behalf. We always purchase at the lowest possible price, subject to other bids and reserves.

All bids must be handed to the office on an official form. It remains the responsibility of prospective purchasers to contact GOLDINGS to confirm whether their bids have been successful.

5. **TELEPHONE BIDS:** There are inherent dangers with this practice, therefore all such arrangements are made entirely at the bidder's risk. Telephone bids will only be accepted if the lower estimate is £500 or above. For lots with a lower estimate below this figure Commission Bids Only will be accepted.

5. **SMOKING:** is not permitted in any part of the Saleroom.

6. **REFRESHMENTS:** will be available Saleday.

7. **ACCOUNT TRANSFERS:** will not be recognised after the sale. If any lots are purchased for another person, this must be declared at the fall of the hammer.

8. **ESTIMATES:** Our Auctioneers will be available during viewing to give guidance on your prospective purchases

GLOSSARY

a) Generally: 'As Found.' (AF). This term indicates the lot has some damage. Its absence does not indicate that the lot is free of defect. All lots are **SOLD AS SEEN**.

b) Paintings: 'Signed, initialled, monogrammed' This refers to the present state of the work and is not an attribution.

c) Books and printed matter: These items are not sold subject to collation and are not returnable once removed from the premises.

d) Silver & Jewellery: Weights given are approximations given by basic instruments.

A Local Private Collection of STAFFORDSHIRE POTTERY

1. Prince of Wales on Horse 9¹/₂".
2. Albert Standing 7".
3. Victoria on horse 6¹/₂".
4. Victoria & Prince of Wales (pair) 18".
5. Princess Royal and Fredrick of Prussia 16".
6. Prince of Wales on Goat 6
7. Unicorn and Lion 9".
8. Prince Alfred as a Cadet (Rare) 12".
9. Victoria and King of Sardinia 13".
10. Burnby and Stewart (Pair) 14".
11. Death of Nelson 8".
12. Napoleon 16".
13. Queen of Prussia 16".
14. King of Prussia 16".
15. Louis Napoleon on Horse 12".
16. Soldiers Dream 10".
17. Napoleon 8".
18. Faith, Hope & Charity 9".
19. Vicar and Moses 8".
20. Androcles and Lion 10".
21. Esmeralda and Gringiore 6".
22. Esmeralda and Gringiore 7".
23. Tom King 10".
24. Dick Turpin 11".
25. Burns and Mary 12".
26. Burns & Mary in Bough Arch 10".
27. Wallace 16".
28. Bruce 15".
29. Androcles and Lion 8".
30. 30 Miles to London 10".
31. Babes in Wood 8".
32. Poodles in Group 5".
33. Men with barrel 8".
34. Boy and Sheep 9".

35. Scottish Boy and Girl (pair) 8".
36. House Moneybox.
37. House Moneybox.
38. Castle.
39. Deer Hunt 9".
40. Boy, Girl and Dog 7".
41. Sheep 5".
42. Sheep (pair) 5".
43. Neptune 9".
44. Ceres 10".
45. Spare Lot.
46. Albert 11", c.1845.
47. Young mother and 3 children in eveningware, square based. 7".
48. A Toby Jug with cover.
49. A flatback castle with clock (AF).
50. A Staffordshire style clock group.
51. A pair of Spaniels with gilt decoration.

CLOCKS & BAROMETER

52. An aneroid Banjo BAROMETER
53. A 19thC walnut Vienna WALL CLOCK.
54. A 19thC walnut Black Forest WALL CLOCK.
55. An Art Deco chromium plated MANTEL CLOCK. 4".
Illustrated inside rear cover.
56. A 19thC French gilt metal MANTEL CLOCK with porcelain mounts, 17".
57. A mahogany Napoleon's hat MANTEL CLOCK.
- 58-60. Spare lots.

A Local Private Collection of ROYAL DOULTON CHARACTER JUGS

61. Old Charley D5946, 1939-1982, C.Noke

62. Guardsman (AF) D6582, 1986-1992, M.Henk
63. Long John Silver D6512, 1960-1992, M.Henk
64. Mr Micawber A-D6138, 1940-1960, LH & HF
65. Neptune D6555, 1961-1991, M Henk
66. Paddy A, 1939-1960, H.Fenton
67. Dick Turpin A, 1940-1960, CN & AF
68. Mark Twain D6758, 1987-1990, E.Griffiths
69. Falstaff D6519, 1960-1992, HF
70. The Lobster Man D6652, 1980-1991, D.Biggs
71. Merlin D6543, 1960-1992, G.Sharpe
72. North American Indian D6665, 1967-1992, M.Henk
73. Tam O'Shanter D6640, 1973-1980, M.Henk
74. Tony Wetter D6044, 1939-1960, LH & HF
75. Mr. Pickwick D6245, 1947-1960, V & V
76. Mr. Toby Philpots D6043, 1939-1969, C.Noke
77. Robin Hood D6541, 1960-1991, M.Henk
78. The Cardinal D6129, 1940-1960, C.Noke
79. Paddy D5768, 1937-1960, HF
80. The Falconer D6540, 1960-, M.Henk
81. Captain Henry Morgan D6469, 1958-1982, G.Sharpe
82. Farmer John D5789, 1938-1960, C. Noke
83. Rip Van Winkle D6463, 1957-, G.Blower
84. Sam Johnson D6296, 1950-1960, HF
85. John Peel D5731, 1937-1960, HF
86. Sancho Panca D6461, 1957-1983, G.Blower
87. Parson Brown D5529, 1935-1960, C.Noke
88. Jarge D6295, 1950-1960, HF

89. Gladiator D6553, 1961-1967, M.Henk
90. Guardsman D6575, 1963-1983, M.Henk
91. The Cavalier A-D6173, 1941-1960, HF
92. The Angler D6866, 1990, S.Taylor
93. The Snooker Player D6879, 1991, S.Taylor
94. Falstaff D6385, 1950-, HI
95. Ugly Duchess D6603, 1965-1973, M.Henk
96. Scaramouche D6561, 1962-1967, M.Henk
97. Auld Mac D5824, 1937-1985, HF
98. The Town Cryer D6537, 1960-1973, D.Biggs
99. Granny A-(D6384), 1953-1983, HF & MM
100. Tony Weller D5530, 1936-1960, LH & HF
101. The Lawyer D6504, 1959-, M.Henk
102. John Barleycorn D5735, 1937-1960, C.Noke
103. Anne Boleyn D6650, 1980-1990, D.Tootle
104. Cardinal D6033, 1939-1960, C.Noke
105. Cardinal A(D6033), 1939-1960, C.Noke
106. John Doulton Collectors Club D6656, 1980, E.Griffiths
107. The Poacher D6464, 1957-, M.Henk
108. The Poacher. (bisque) D6464, 1957-, M.Henk
109. The Sailor D6875, 1991, W.K.Harpers
110. Santa Claus D6705, 1984, M.Abberley
111. Blacksmith D6578, 1963-1983, D.Biggs
112. Merlin D6536, 1960, G.Sharpe
113. The Poacher D6464, 1957, M.Henk
114. Pick Kwik, Derby Whisky
115. Beefeater D6206, 1947-1953,
116. Bacchus D6499, 1959-1991, M.Henk
117. Athos D6439, 1956-1991, M.Henk
118. Porthos D6440, 1956-1991, M.Henk
119. The Lobster Man D6617, 1968-1991, D.Biggs
120. Gaoler D6570, 1963-1983, D.Biggs
121. Annie Oakley D6732, 1985-1988, S.Taylor
122. North American Indian D6611, 1967-1991, M.Henk
123. Captain Ahab D6500, 1959-1985, G.Sharpe
124. The Sleuth D6631, 1973, A.Moore
125. Izzac Walton D6404, 1953-1982, G.Blower
126. Auld Mac D5823, 1937-1985, HF
127. The Poacher D6781, 1987-1989, M.Henk
128. Falstaff D6287, 1950-, H Fenton
129. Drake A-(D6115), 1940-1960
130. The Mikado D6501, 1959-1969, M.Henk
131. Guy Fawkes D6861, Ltd Ed for Canada
132. Captain Henry Morgan D6467, 1958-1982, G.Sharpe
133. Smuggler D6616, 1968-1981, D.Biggs
134. The Trapper D6609, 1967-1983, M.Henk & D.Biggs
135. Sancho Panza D6456, 1957-1983, G. Blowers
136. The Guardsman D6755, 1986, S.Taylor
137. The Lumberjack D6610, 1967-1983, M.Henk
138. The Collector D6796, S.Taylor
139. The Lawyer D6498, 1959-, M Henk
140. Dick Turpin
141. Sairey Gamp D5528, 1935-1986, LH & HF
142. John Barleycorn Old Lad
143. Long John Silver D6335, 1960, M.Henk
144. Old Charlie D5420, 1934-1983, C.Noke
145. Robin Hood D6527, 1960-1992, M. Henk.
146. The Poacher D6429, 1955, M.Henk
147. Cardinal D5614, 1936-1960, C. Noke.
148. Santa Claus D6675, 1982, M.Abberley
149. Santa Claus D6668, 1981, M.Abberley
150. Old Charley D6144, 1940-1960, C.Noke
151. The Cardinal D6258, 1947-1960, C.Noke
152. The Cardinal D6258, 1947-1960, C.Noke
153. Mr. Pickwick D6260, 1947-1960, LH & HF
154. John Peel D6259, 1940-1960, HF.
155. Sam Weller D6147, 1940-1960, LH & HF
156. Fat Boy D6142, 1940-1960, LH & HF
157. Arriet D6256, 1947-1960, HF
158. Spare lot.

GLASSWARE

159. A graduated set of 4 Coty Complice SCENT BOTTLES all with Lalique stoppers (smallest not glass). *Illustrated inside front cover.*

160. A small 19thC French glass DISH with gilt opaque twists.

161. A cranberry BOWL and COVER (AF).

162. A pair of frilled cranberry BOWLS (AF).

163. Three cranberry SALTS (AF).

164. Two frilled cranberry BOWLS (AF).

165. A cranberry CREAM JUG (AF).

166. A cranberry SPILL VASE with electroplate stand.

167. A cranberry POSY VASE with 2 baskets.

168. A cranberry WAVY VASE.
169. A cranberry TAPER VASE.
170. Three painted cranberry VASES.
171. Cranberry Pieces (AF).
172. A ruby LUSTRE VASE.
173. An OIL LAMP with cranberry reservoir and shade.
174. A cranberry JAR and COVER on mirror base.
175. A vaseline TRUMPET VASE on a brass stand.
176. A pink twist glass LAMP BASE.
177. A pair of crystal SPILL VASES.
178. An orange and white oil glass VASE.
179. A pair of Edwardian marble glass LAMP SHADES.
180. An enamelled FLAT VASE with castleated rim.
181. An overlay DECANTER and a bowl (2).
182. A cranberry SPILL VASE (AF).
183. A crystal SPILL VASE with silver rim and an OIL BOTTLE (2).
184. Three WALL LIGHTS with shades including vaseline example.
185. An amber overlay VASE with plated neck.
186. A cranberry BOWL.
187. A set of 3 Art Deco WALL LIGHTS with frost glass shell shades.
188. A Victorian 19thC Bohemian white and ruby overlay VASE.
189. A white slag glass BOWL and CREAMER.
190. A George II glass TAZZA with silesian stem and folded foot, 12" dia.
191. Coloured leaded LIGHTS.
192. An Edwardian oak 3 bottle TANTALUS.
- 193-200. Spare lots.

CADDIES & BOXES

201. A Chippendale period TEA CADDY

202. A George III string inlaid CADDY BOX.
203. A Victorian mother of pearl inlaid rosewood WRITING BOX.
204. A George III mahogany BOX with lift top over 2 drawers with knob handles.
205. A 19thC mahogany WRITING BOX with specimen parquetry top.
206. A walnut veneer rectangular BOX.
207. A Georgian mahogany BIBLE BOX.
208. A Victorian brassbound walnut WRITING BOX.
209. A 19thC brassbound mahogany CAMPAIGN WRITING BOX with Bramah lock.
210. A Victorian mahogany WORK-BOX.
211. A Victorian walnut WRITING BOX.

COLLECTORS' ITEMS, BYGONES & MISCELLANEA

212. Assorted Brassware.
213. A 3-brass MARTINGALE.
214. A 5-brass MARTINGALE.
215. A set of Victorian cast iron PAN SCALES and some brass weights.
216. An unlabeled VIOLIN.
217. An unlabeled VIOLIN, cased with bow.
218. A Victorian mahogany MIRROR BASE.
219. A Victorian OIL LAMP with blue glass reservoir.
220. A set of 4 brass HAND LANTERNS.
221. A brass WARMING PAN engraved with Castle Ruins.
222. A Victorian copper COAL HELMET.
223. A Victorian copper SKILLET.
224. A pair of Victorian brass CANDLESTICKS.
225. A Victorian brass PRESERVE PAN, Pestle & Mortar.
- 226-230. Spare lots.

231. A 19thC stained and leaded GLASS PANEL.
232. A 19thC stained and leaded GLASS PANEL.
233. A Victorian mahogany CURTAIN POLE. 4'6".
234. A pair of Victorian cast iron 'Punch and Judy' DOOR PORTERS.
235. Ebony Tray and Hand Mirror, papier mache Plate and Vase. (4)
236. Linen
237. An ornate Victorian copper SAMOVAR. *Illustrated on frontispiece.*
238. A heavy brass LADLE.
239. A cast brass circular PLAQUE depicting The Adoration of Magi.
240. A Victorian brass LADLE and CHESTNUT ROASTER (2).
241. 3 brass Candlesticks.
242. Brassware, etc.
243. Two Crumb Scoops and Brush.
244. A Victorian brass PRESERVE PAN.
245. A brass COMPANION SET.
246. A 19thC brass Armorial LOG BUCKET with lobed body.
247. A similar JARDINIERE on 3 feet.
248. Linen
249. Linen
250. A small oak WALL CUPBOARD.
251. A pewter PLATE and TYG.
252. An Asian brass EWER and copper Tray.
253. An old leather TRAVEL CASE.
254. A Snakeskin Handbag.
255. A fishing SPEAR and horn handled knife.
256. Spare lot.
258. An Indian brass JAR with red cabachon stones.
259. A brass OIL LAMP.
260. A brass and onyx OIL LAMP.
261. A brass reeded column OIL LAMP.

262. A pair of oval reconstituted marble Art Nouveau PLAQUES of ladies.
263. A Woolland Bros TRUNK (AF).
264. A pair of Victorian brass pricket ALTER STICKS.
265. An oval Armorial cast-iron PLAQUE of Christ's Hospital, London.
266. A pair of Art Deco chromium plated FIGURES of nude females holding garlands overhead, modelled after LIMOUSIN, on onyx bases, 18" high.
267. Two Picture Frames.
268. An old cast COFFEE MILL.
269. Two Art Nouveau leaded LIGHTS.
270. A 1930's leaded LIGHT.
271. A pair of gilt acanthus carved BRACKETS.
272. An Edwardian carved oak aneroid BAROMETER.
273. A Salter Class II brass faced BALANCE.
274. A pair of carved TABLE LEGS.
275. A carved NUT CRACKER, Crumb Scoop and pair of Binoculars. (3)
276. Two cast Figures of Highland Terriers.
277. A carved giltwood TABLELAMP
278. The Rhythm No 375U enamel Radiation IRON and stand.
279. A pair of 2 light brass SCONCES.
280. A cast STAND, 2 brass Chambersticks and door ironmongery.
281. A pair of floral SCONCES and another.
282. An oak and plated BISCUIT JAR.
283. A plated SCONCE.
284. An Edwardian riveted brass BLOW TORCH and Lamberts brass STIRRUP PUMP.
285. A plaster angel mask BRACKET.
286. A leather COLLAR BOX and contents.
287. A circular Chinoiserie TABLE MIRROR.
288. A gold painted terracotta URN.
289. A brass 'Viking' fireside FIGURE.
290. A small 19thC mahogany WALL CUPBOARD with 2 fielded door and 2 drawers.
291. A Victorian brass OIL LAMP with engraved shade.
292. Two wooden FISHING REELS and Table Winder.
293. An unusual steel Woodworking PLANE with bull nosed rectangular base.
294. A Victorian cast iron Lion DOOR PORTER.
295. Three Bonnets and a leather Glove Box.
296. A modern VIOLIN.
297. A pair of turned brass CANDLE-STICKS.
298. A Prisoner of War straw-work CASE.
299. An Art Deco chromium plated DESK STAND.
300. Three Victorian LITHOPHANES.
301. A cased set of mother of pearl and gilt OPERA GLASSES by Le Mair Paris.
302. A Victorian oak cased BALANCE.
303. A small Victorian cast iron shell STAND.
304. A small bronze seated Bear with bowl.
305. A Guernsey 1986 Coin PROOF SET.
306. A Postal Rule and Treen Wool Holder.
- 307-310. Spare lots.
- EUROPEAN CERAMICS**
311. A small Wedgwood lustre BOWL.
312. A set of 5 Edwardian Royal Worcester silver framed COFFEE CANS and Saucers, cased.
313. A 19thC. Berlin CREAMER.
314. An English Willow pattern PICKLE DISH.
315. A New Hall TEABOWL.
316. A Salopian TEABOWL (AF).
317. A Sooty Cricketing EGGCUP.
318. A terracotta COCKERELL decorated in slip and having a whistle base (AF).
319. A small Fielding's lustrine octagonal BOWL.
320. An early 19thC DESSERT SERVICE with gilt grey borders enclosing floral painted centres, comprising shallow dish and 6 plates.
321. A Victorian moustache CUP and SAUCER.
322. Two Indian Tree MEAT DISHES.
323. A Harlequin set of Aynsley TEAWARE.
324. A Foley part TEASET.
325. Colclough and Grafton TEASETS.
326. Six Soho Pottery COFFEE CANS and SAUCERS.
327. Maw's double valved Earthenware INHALER.
328. A Wiltonware landscape lustre 2 handled pedestal BOWL.
329. A green Clarice Cliff moulded Water Jug, Bowl and Plate.
330. A set of 6 Brussels Cups and Saucers.
331. A Shorter Character JUG of Long John Silver (AF).
332. A Wood's 'Delph' pattern blue and white DINNER SERVICE including 5 graduated meatplates, 4 tureens and 3 x 12 plates.
333. A Rockingham style TEA and COFFEE SERVICE with peach panels within gilt scrolling foliage.
334. Two New Chelsea VASES.
335. A pair of floral 2 handled VASES.
336. A Japan design part DINNER SERVICE.
337. A Poole red, yellow and turquoise glazed SAUCER DISH.
338. An Elkesley studio pottery VASE (AF).
339. An 18thC Dutch Delft VASE (AF).

340. A Rialtware JUG and Wemyss style Preserve Jar.
341. A Victorian floral JARDINIÈRE.
342. A Victorian CHAMBER POT and JUG.
343. A Victorian cream floral DISH.
344. A Victorian blue and green bordered part DINNER SERVICE.
345. A Minton Majolica Jug (AF)
346. Susie Cooper 'Glen Mist' DINNERWARE.
347. A Wedgwood Jasperware CAMEO.
348. A Poole pottery banana shape BOWL.
349. A German FIGURE of boy and cart (AF).
350. A Clarice Cliff Wheatsheaf JUG.
351. A flow-blue WATER JUG (AF)
352. A Foley Jubilee CREAMER.
353. A Shelley Cup and Saucer and 4 Limoges Dishes.
354. A Victorian brown printed JUG, BOWL and DISH.
355. A Porter's Guinness Bull Dog JUG.
356. A Doulton oval flow-blue WASH-BOWL.
357. Nymphenberg TEAWARE (5).
358. A fine 19thC Meissen quatrefoil STAND. 10" square.
359. A fine 19thC Meissen CENTRE-PIECE. 17" high. *Illustrated inside front cover seated on previous lot.*
360. A 19thC Coalport floral encrusted VASE and COVER. 2'6" high (AF). *Illustrated inside front cover.*
361. A Doulton VASE and an unusual JUG (both AF).
362. A Prattware TRINKET BOX.
363. Part Tea Service, etc.
364. A Mintons breakfast CUP and SAUCER.
365. Three similar Soup BOWLS and Tureen (AF).
366. A Royal Worcester cream ground 2249 VASE, 6".
367. A Royal Worcester cream ground model 1326 POT with cover, 1907.
368. A Royal Worcester shallow square DISH painted with flora, 1904.
369. A Royal Worcester cream ground model 1094 EWER painted with a floral spray, 1908.
370. An Arthur Wood HUNTING EWER with hound handle.
371. A pair of Art Deco JUGS.
372. A Grimwades square TEAPOT and a German Jasperware JAR and Cover. (2)
373. Three Doulton JUGS (AF) and blue Planter. (4)
374. A pair of Fieldings pink lustrine TAPER VASES.
375. A flambe glazed gourd VASE and a Taper Jug.
376. Blue and white Pottery Pieces.
377. An Edwardian 2 handled floral Baluster VASE.
378. A Myott floral JUG.
379. A Wedgwood blue glazed shallow BOWL.
380. A pair of cream pottery CHERUB BRACKETS incised F.V. B/stone POOLE England.
381. An Arthur Wood octagonal VASE.
382. A Victorian transfer printed JUG with hound handle.
383. A George Jones pale green glazed part DESSERT SERVICE.
384. A Beswick leaf BOWL.
385. A Collard Art Deco BOWL.
386. An early 19thC Derby PLATE.
387. Willow pattern Tureens, etc.
388. A Clarice Cliff oval SUGAR SIFTER. 5". *Illustrated inside front cover.*
- 389-390. Spare lots
393. Mountbattan Books, 2 pictures and Earl of Beaconsfield, (4 vols).
394. Royal Doulton Figurines Book.
395. Children's Books.
396. Postcards.
397. A Dickens Folio.
398. Lewis Carroll. Alice's Adventures in Wonderland, illustrated by Arthur Rackham.
399. Josiah Burchett. Complete History of the Transactions at Sea, 1720, leatherbound.
400. Victorian Bible, Cookery Books and folio. (5)
401. Sydney. History of England with many photos.
402. Loose Postcards.

JEWELLERY & WATCHES

403. A 3 colour gold SNAKE BRACELET.
404. A similar CHOKER.
405. A Duport engine turned LIGHTER.
406. An 1893 Sovereign.
407. A 1895 Sovereign.
408. A 1912 Sovereign.
409. A 1914 Half Sovereign.
410. Two coin PENDANTS.
411. A 3-strand PEARL NECKLACE.
412. Crowns and Cigarette Case.
413. Two pairs 9ct gold CUFFLINKS.
414. A platinum flowerhead RING set with old cut diamonds, boxed
415. A 9ct gold Fox Mask STOCK PIN and another.
416. An 18ct gold diamond and ruby 3-stone RING.
417. An 18ct gold flowerhead BROOCH set with 7 rubies and diamonds.
418. An Edwardian gold SOVEREIGN CASE. Birmingham assay.

PRINTED ITEMS

391. Twelve Childrens Treasure Books.
392. A Victorian tooled leather MUSICAL PICTURE ALBUM.



Lots 419 & 420

419. An 18ct gold Half Hunter cased keyless lever WATCH by Patek Philippe, cased marked M W Galt & Bro Washington No 36819 Peak Philippe & Co Geneva. *Illustrated.*

420. Patek Philippe. Gentleman's 18ct mechanical WRISTWATCH, c.1950, Ref No 1450, the tank style case No 653165 holding an 18 jewel movement with micrometer regulator and heat adjusted to 5 positions, movement no 970500, watch made for French market with rectangular case and hooded lugs, strap is by Patek Philippe with 18ct buckle to match. Case, dial and movement signed. *Illustrated.*

421. A 9ct gold Sigma WATCH RING.

422. A 9ct gold CHARM BRACELET.

423. An 18ct gold RING set with 5 large pearls and diamonds.

424. A heavy gold CHARM BRACELET

425. A gold lady's WRISTWATCH.

426. A chased silver CRUCIFORM WATCH.

427. A 9ct gold knotted BAR BROOCH, boxed.

428. A German WWI Bangle.

429. A 9ct gold and silver Dress RING, boxed.

430. Sundry Jet Jewellery.

431. A Victorian silver POCKET-WATCH.

432. A 9ct gold Gent's onyx Signet RING.

433. A 9ct gold Cameo BROOCH.

434. An 18ct gold RING set with 5 old cut diamonds.

435. A silver flat-curb BRACELET.

436. A ladies 9ct gold Rotary Wristwatch on a gate bracelet.

437. A 1907 Half Sovereign.

SILVER & PLATEDWARE

438. A plated oval TRAY.

439. Plated Flatware and Cutlery.

440. A Walker & Hall plated 5-piece TEASET.

441. A pair of Old Sheffield plate neo-classical WARMING TUREENS.

442. An oval plated ENTREE DISH and pair of SAUCEBOATS.

443. Plated Goblets, Tankards, etc.

444. An electroplate 2-jar PICKLE STAND with fork.

445. An electroplate Nautilus shell SPOON WARMER.

446. A plated 3 light CANDELABRUM

447. An electroplate 2 handled TROPHY CUP.

448. Electroplate: Teapot, Coffee Pot, Creamer and Sauceboat.

449. A pair of pierced silver circular PIN DISHES. Birmingham assay.

450. An engine turned silver CIGARETTE BOX.

451. A small silver LOVING CUP. London assay.

452. A pair of circular silver DWARF CANDLESTICKS. Birmingham 1913.

453. A George III silver CREAMER. London 1773.

454. A Victorian silver rococo design CHATELAINE.

455. A pair of George III silver SUGAR SCISSORS, rubbed marks.

456. An Edwardian silver SUGAR CASTER with a pierced frame around a green glass sleeve. Chester 1910.

457. Plated Spoon and forks, 3 cases

458. A cased 3-piece silver CRUET. Birmingham assay.

459. A cased set of 6 silver beaded TEASPOONS, Sheffield assay.

460. A cased set of 6 silver handled BUTTER KNIVES. Sheffield assay.

461. A cased set of 6 pairs of Dessert KNIVES AND FORKS.

462. A cased set of 6 pairs of fish KNIVES AND FORKS.

463. A pair of Edwardian pierced silver SALTS with blue glass liners.

464. A pair of silver PEPPERETTES.

465. An oval silver MUSTARD and SALT.

466. A Georgian silver Old English pattern BASTING SPOON. London assay.

467. An Art Nouveau silver backed HAND BRUSH.

468. A pair of silver banded and horn handled FISH SERVERS.

469. An Edwardian chased silver twin SOVEREIGN CASE. Birmingham assay.

470. An Edwardian chased silver VESTA and SOVEREIGN CASE. Birmingham assay.

471. A Walker & Hall engine turned silver CIGARETTE BOX.

472. A silver and horn mounted CARVERY SET.

473. A pair of small rococo silver BOWLS.

474. A Victorian silver London shape SPIRIT KETTLE on stand by James Dixon & Sons. Sheffield 1898.

475. A silver 3 footed Bachelor's TEAPOT. Birmingham assay.

476. A Georgian silver FISH SERVER. Edinburgh assay.

477. A silver Jewish 9-light CANDELABRUM. London assay.

478. A cased set of 6 French silver rococo SPOONS.

479. A pair of George Jensen silver SALTS.
480. Two Indian silver BOXES.
481. A William Comyns silver 3-piece Dressing TABLE SET (AF).
482. A silver MANICURE SET, cased.
483. A Victorian silver TROPHY CUP.
484. A silver CANDLESTICK.
485. A Victorian mahogany cased part set of Dessert KNIVES and FORKS.
486. An Edwardian silver MANICURE SET, cased.
- 487-490. Spare lots.

ARMS & MILITARIA

491. A Scottish Piper's DIRK.
492. A Victorian Officer's SWORD by Buckmaster with brass scabbard.
493. A pair of Victorian EPAULETTES with rosettes.
494. A pair of Officers Spurs, Chinese Hat and Pill Box.
495. A mid 19thC Carbine RIFLE, deactivated.
496. An early 19thC First Pattern Naval CUTLASS with figure of eight handguard.
497. A 19thC Scottish BROADSWORD with beak nose handguard.
498. A fine Edwardian Naval Officer's SWORD.
499. A WWII German Officer's brown SHIRT.
500. A Victorian horn handled SWORDSTICK with silver mounts.

TOYS

501. Two wooden JIGSAWS including White Star 534 Queen Mary.
502. Two Robots, track and transformers.
503. A late set of Thunderbird Models.
504. An Elastolin Shepherd and 3 animals.
505. A solitaire Board and Marbles.



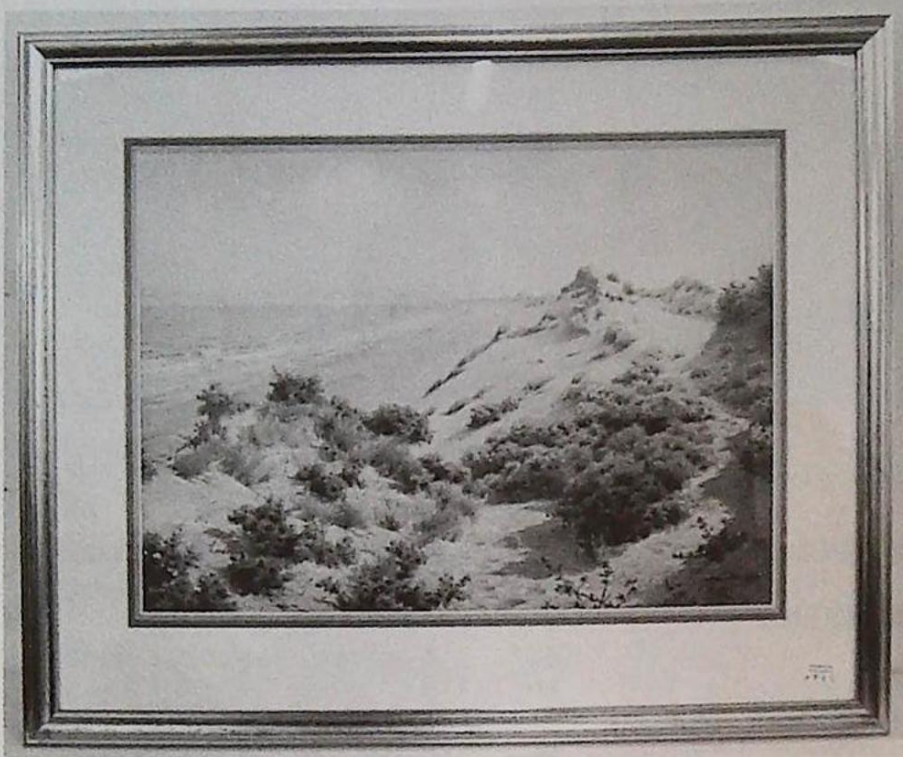
Lot 527

506. Five Dinky CARS.
507. 2 small bisque DOLLS.
508. An Armand Marseille 10/0 bisque headed DOLL with jointed wooden body, 10".
509. A Dressel bisque headed DOLL with linen body, kid and bisque arms, 19", c.1885.
510. A Doll's PRAM, roddy and other Dolls.
511. A bisque DOLL'S HEAD.
512. A jointed straw filled TEDDY BEAR.
513. A Rupert Bendy TOY and cellulose fan. (2)
514. Dominoes, Draughts and Cribbage Board.
515. Escalado Race Game.
- 516-517. Spare lots.
521. A signed Japanese fruitwood NETSUKE study of a Daimo sleeping.
522. A signed Japanese fruitwood NETSUKE study of Mu Jima the Mermaid of mythology coiled around a water stump.
523. A signed Japanese ivory NETSUKE study of an almost naked man chasing a spider from a huge marrow.
524. A signed Japanese ivory NETSUKE study of a large turtle climbing upon a folded lotus leaf.
525. A signed Japanese ivory NETSUKE study of a naked Geisha sleeping in an upright sitting position.
526. A signed Japanese ivory NETSUKE study of father and son playing with a large dragon-head mask.
527. A 19thC turquoise ground Cantonese BOWL. *Illustrated.*
528. A pair of Japanese cloissone baluster VASES.
529. A 19thC Japanese bronze FIGURE 8", and Chinese Bell. (4)
530. A Meiji period Imari CHARGER.
531. An 18thC Chinese famille rose lozenge shape pedestal BOWL.
532. A Cantonese BOWL, 10" dia.
533. A Chinese blue and white circular BOWL.
534. A Chinese blue and white fence pattern PLATE.

ORIENTAL CERAMICS & WORKS OF ART

518. A Chinese TEABOWL and SAUCER.
519. A small Imari Basket Pattern BOWL.
520. A Chinese blue and white RICE BOWL.

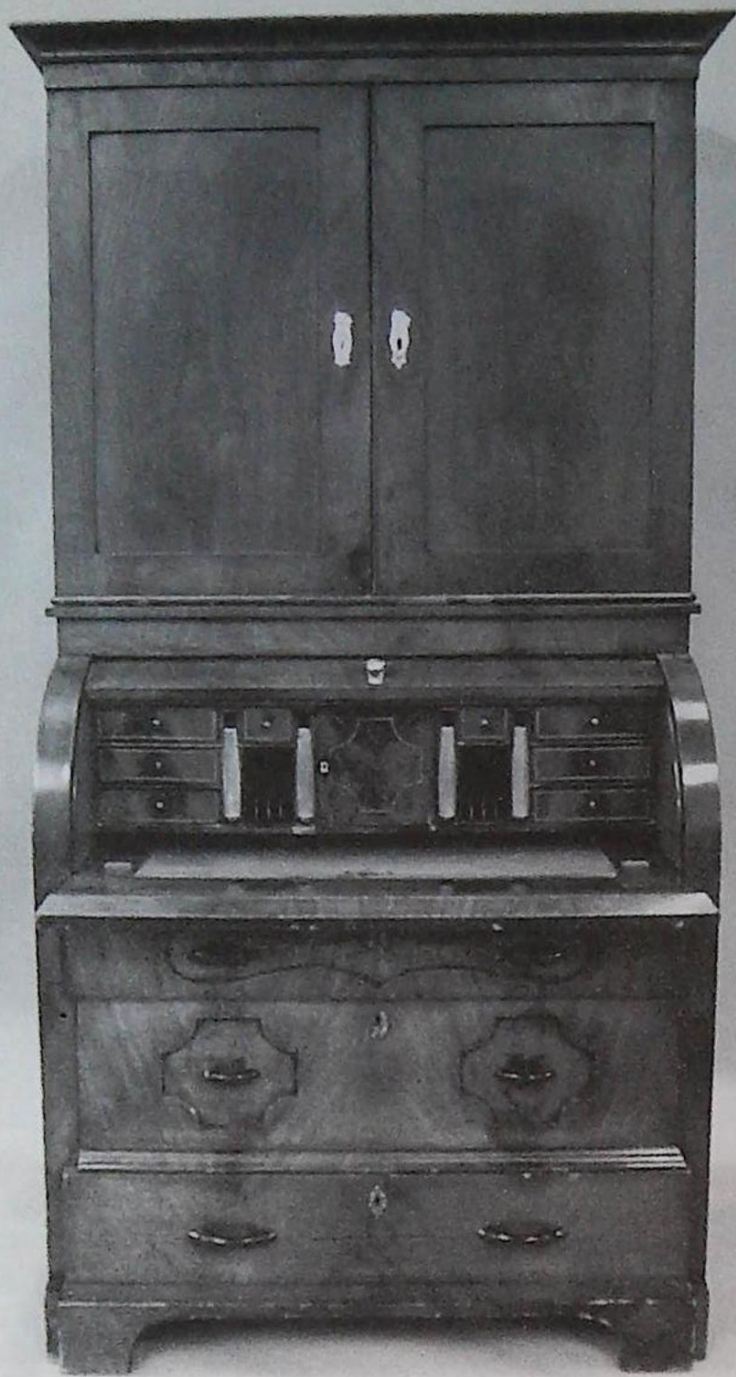
Lot 709



Lots 849 and 806

Lot 712





Lot 903



Lots 842 and 854 - Each a set of six



Lot 707

535. A Chinese Willow pattern LEAF DISH.

536. A Chinese carved boxwood CARD CASE.

537. 5 + 1 Chinese PLATES.

538. A pair of Chinese carved hardwood SCREENS with ivory and mother of pearl eagles in relief.

539. A Chinese rosewood TABLE SCREEN inset with an Imari plate.

540. A Chinese rosewood TABLE CABINET.

541. A Chinese bronze FIGURE of a Warrior on a mound.

542. A Japanese carved hardwood FIGURE of Daruma.

543. A Chinese green and white cloisonne BOTTLE VASE.

544. Two Chinese bronze shallow PLANTERS.

545. A Chinese bronze BOWL on stand.

546. A Japanese Kyoto JUG signed Tan Zan.

547. A bronze Tang style Horse TABLE LAMP.

548. A pair of Arita SAUCER DISHES.

549. A pair of Satsuma PLATES, gilt over royal blue.

550. A Chinese FIGURE of seated man with pot.

551. A Chinese FIGURE of seated man with pot on stand.

552. A Chinese blue and white octagonal baluster VASE.

553. Two Chinese FIGURES.

554. A turquoise ground Chinese design INKPOT by Theodore Deck.

555. A Chinese cylindrical TEA CADDY (no cover).

556. A Japanese SAUCER DISH.

557. A Chinese ormolu mounted VASE.

558. A pair of Japanese FIGURES of Geishas.

559. A Persian octagonal MOON FLASK.

560. A Chinese FIGURE of a man sitting on a toad.



Lot 701

561. A Chinese figural LAMP BASE.

562. A Chinese turquoise ground BOWL.

563. An Arita TEAPOT.

564. A Cantonese SUGAR BOX with cover.

565. A Chinese blue and white BOWL with 4 character marks.

566. A FIGURE of a Kutani Dancer.

567. A Chinese blue and white SAUCER DISH.

568. An unusual Japanese black lacquer JEWELLERY CABINET with frosted glass panels.

569. A 17thC 'Nanking Cargo' blue and white 6" BOWL. Ex lot 3032 Christie's April 1986 Sale.

570-3. A 17thC 'Nanking Cargo' blue and white 6" BOWL. Ex part Lot 3142 Christie's April 1986 Sale.

574-8 A 17thC 'Nanking Cargo' blue and white 6" BOWL. Ex part Lot 3184 Christie's April 1986 Sale.

579. A Japanese iron VASE cast in relief with gilt foliage.

GOLDINGS EXPRESS SALES SERVICE

Lots 580 to 700 have been reserved for uncatalogued late entries. If you have something suitable for this sale please contact Colin Young. A fee of £2 per lot of small collectables will be levied for this service.

OIL PAINTINGS, WATERCOLOURS & PRINTS

701. George Wright (1880-1942). A Roundhead on horseback in a winter landscape, oil on canvas, signed G Wright, verso label of çW H Patterson, 19 Ablemarle, London. 10" x 7". *Illustrated.*

702. 18thC German School. A fiddle player with children in the street and another watching through a cottage window, oil on oak panel. 16" x 14".

703. W Willoughby. Children playing with a wheelbarrow in front of a cottage in landscape, oil on canvas, signed and titled verso. 11" x 14".

704. Vincent Clare (1855-1925). Still life of plums and pears, oil on canvas, signed. 12" x 10".



Lot 705

705. Vincent Clare (1855-1925). Still life of floral sprays, pair of watercolours, signed. $9\frac{1}{2}'' \times 7''$ oval, gilt framed. *Illustrated.*

706. A 19thc naive Interior Scene with family around a crib, oil on panel, dated 1852 co-joined VR monogram (AF).

707. Style of John Crome (1769-1821). Norfolk landscape with figures by the stream in the foreground, oil on canvas. $21'' \times 24''$. *Illustrated on centre pages.*

708. 19thC English School. Landscape with figures and stag, oil on panel, indistinctly signed, gilt framed.

709. William Bartol Thomas (1877-1947). Lincolnshire coastal scene, watercolour, signed W B Thomas and dated 1902. $13'' \times 18''$. *Illustrated on centre pages.*

710. Jan van Huchtenberg (1647-1733). Skirmish of Cavalry, oil on panel, $25\frac{1}{2}'' \times 29\frac{1}{2}''$. *Illustrated around cover.*

711. After John Crome (1768-1821). Figures around a boatyard fire, oil on panel. $9'' \times 13''$, gilt framed. *Illustrated inside rear cover.*

712. H S Tozer. A pair of interior scenes, one of an old lady making a patchwork quilt, one of an old man mending a wall clock, oil on canvas, signed, $11'' \times 15''$, gilt framed. *Illustrated on centre pages.*

713. F Watkins. Sailing boats in harbour, OIL ON CANVAS, signed and dated 82. *Illustrated inside rear cover.*

714-20. Spare lots.

721. 20thC English School. River landscape with thatched cottage, oil on card. $18'' \times 27''$, gilt oak frame.

722. S Wilson. Two watercolours of Taunton; a landscape watercolour and print. (4)

723. A pair of lithographs depicting Sebastopol and Caverns.

724. A Victorian oil on canvas of a King Charles Spaniel, titled Tiny, dated 1896, oak framed.

725. A pair of Watercolours depicting a farmyard and sheep on a village street.

726. After Reynolds. Simplicity colour engraving by Bartolozzi, rosewood framed

727. After Reynolds. Countess Spencer and Reverie, colour engravings by Cheeseman, gilt framed. (2)

728. Gilt frames and portraits. (4)

729. 19thC German School. Green gowned boy combing his red hair in a piece of broken mirror, oil on canvas. $9'' \times 7''$.

730. A 19thC Greek glass ICON.

731. 19thC portrait of Frances Tarrant, oil on canvas. $2'6'' \times 2'$.

732. T Greenhalgh. Cathedral interior, watercolour, signed. $17'' \times 11''$.

733. A similar lot with SM initials, dated 1879.

734. A 19thC oil of The Gate at Capesthorpe.

735. A View of Glossop, oil on canvas, $24'' \times 30''$, first quarter 20thC.

736. Wm. Hy. Vernon. Punt on a river, watercolour, signed W H Vernon.

737. Cecil Hodgkinson. Pinkfeet over the Fens, watercolour, signed. $13'' \times 19''$.

738. C H Peet. Rocky coastal scene with gulls, watercolour, signed. $13'' \times 20''$.

739. C Taylor. Stream and landscape with girl, sheep and dogs on the tow path, oil on paper, signed and dated 1896. $7'' \times 14''$.

740. John Pettit. Death of a Dinosaur, 451/500 Limited Edition Print with signatures including Willia Tait.

741. Robert Taylor. Last Flight Home, 364/850 Limited Edition Print with signatures including Bill Reid and Leonard Cheshire.

742. A gilt framed Watercolour entitled Nile Boat March 1853, gilt framed.

743. E J Lowther. The King Edward Schools, pen and wash, signed. $11'' \times 16''$.

744. W Herbert. British Warships at Sea, oil on card, signed and dated 1915. $12'' \times 24''$, gilt framed.

745. Son and Heir Canal Print.

746. M Cumming. Silver birch on a river bank, watercolour, signed. $18\frac{1}{2}'' \times 9\frac{1}{2}''$, gilt framed.

747. T Preston. Shepherd leading his flock down a country path, oil on canvas, signed. $12'' \times 24''$, gilt framed.

748. 2 Hunting Prints.

749. 2 Watercolour Landscapes.

750. Mountainous landscape with river, watercolour, gilt framed.

751. A gilt framed Landscape Print.

752. Cecil Aldin (1870-1935). Small sketch of a cocker spaniel (AF).

753. A pair of colour landscape Prints after Elwin Edwards.

754. A Pears Print - Summer Glory.

755. E Williams. Sunrise landscape, Watercolour, signed.

756. Pair of oak framed PRINTS - Labour of Love and Wounded Dove.

757. A gilt framed Picture of girl on a Donkey.

758. Still Life of fruit and flowers, oil on board.

759. A Chester. Two ladies carrying baskets, OIL ON CANVAS, signed.

760-70. Spare lots.

FURNITURE

(Commencing 10am and sold concurrently with lots 1 to 200)

771. A large Afghan red ground CARPET.

772. A large Afghan red ground CARPET.

773. A hand cut Chinese RUG.

774. A Sheraton string inlaid mahogany CARD TABLE with D-shape folding top and square taper legs.

775. A Victorian style mahogany TRIPOD TABLE, with circular gallery and claw supports.

776. A Victorian walnut tripod GAMES TABLE with shaped circular top with tonbridge inlaid chequerboard.

777. An Edwardian crossbanded mahogany WALL CABINET with 2 glazed doors.

778. An Edwardian cross banded mahogany DRESSING TABLE with oval mirror and square taper legs.

779. A Chinese Chippendale style mahogany 3 tier OPEN BOOKCASE.

780. A 4 panel Dressing SCREEN with coloured Chinoiserie figures and pagodas in relief on a black lacquer ground.

781. A pair of Victorian mahogany balloonback DINING CHAIRS.

782. Two William IV barback KITCHEN CHAIRS (one painted).

783. A Victorian mahogany bowfront split CHEST of 2 short and 3 long drawers, knob handles and turned feet.

784. An oak TRIPOD TABLE with canted oblong top.

785. A Georgian style mahogany 3 tier DUMB WAITER.

786. A Victorian satinwood CHEST of 2 short and 3 long drawers with knob handles.

787. A set of 7 (inc. carver) Edwardian mahogany shieldback DINING CHAIRS.

788. An elm SIDEBOARD with shaped back and 2 drawers over 2 doors.

789. An old Child's SCHOOL DESK

790. A Victorian flamed mahogany D-Front CHEST of 2 short and 3 long drawers with pierced backplate handles.

791. A Victorian carved walnut upholstered ARMCHAIR with serpentine seat.

792. A Victorian triple barback GRANDFATHER CHAIR.



Lot 796

793. A George III mahogany TEA TABLE with folding moulded rectangular top, 2 frieze drawers and square taper legs.

794. A Victorian pollard oak TRIPOD TABLE.

795. A mahogany ball and claw CORNER CHAIR.

796. An Edwardian walnut ladies KNEEHOLE DESK. *Illustrated.*

797. A 17thC and later carved oak 2 panel COFFER. *Illustrated on frontispiece.*

798. A pair of Edwardian mahogany JARDINIÈRE STANDS.

799. A 1920's mahogany GRAMOPHONE CABINET.

800. A 1920's mahogany BUREAU with ball and claw feet.

801. A Victorian carved walnut ARMCHAIR with scroll arms and legs.

802. A mahogany fretwork 4 tier OPEN BOOKCASE.

803. A Victorian mahogany X-frame STOOL.

804. A Victorian brass and steel FIRESCREEN with chain mail curtains.

805. An Edwardian oak revolving BOOKCASE with reading flap.

806. A Victorian walnut Prie-Dieu CHAIR. *Illustrated on centre pages.*

807. A Victorian mahogany DRESSER BASE with 7 drawers and mirror base.

808. A pair of tapestry upholstered Victorian mahogany L-shape SOFAS.

809. A Mahogany REFECTORY TABLE on square taper legs.

810. A Victorian marble top POT CUPBOARD.

811. A Victorian style mahogany Wellington CHEST with mother of pearl inlay.

812. A Victorian mahogany CHEST of 2 short and 3 long drawers with knob handles and bun feet 46" wide.

813. A Victorian plum pudding mahogany CHEST of 2 short and 3 long drawers with knob handles and bun feet 48" wide.

814. A 17thC. oak 3 panel COFFER with demi-lune frieze and lozenge panels 4'1" wide, 2'4" high, 22" deep.

815. A Georgian mahogany SILVER TABLE (AF).

816. An Art Nouveau brass and copper oil LAMP STANDARD converted for electricity.

817. A carved mahogany 3 drawer HALL TABLE.



Lot 821

843. An Edwardian mahogany twin pedestal KNEEHOLE DESK with 1901 presentation plaque.

844. A 1920's mahogany bowfront CHINA CABINET with shaped astragals, gadrooned top, ball and claw feet.

845. A Victorian lathback KITCHEN CHAIR.

846. A 1920's oak SIDEBOARD with bulbous legs and supports.

847. A Victorian grain painted pine CHEST of 2 short and 3 long drawers with Art Nouveau handles and turned feet, together with similar DRESSING TABLE, and WASHSTAND.

848. A Queen Anne style burr walnut 3 drawer SIDE TABLE.

849. A George II hanging CORNER CUPBOARD with floral painted bowfront. *Illustrated on centre pages.*

850. A Georgian oak BUREAU (AF).

851. A 19thC mahogany SQUARE PIANO by John Broadwood & Sons.

852. An Edwardian string inlaid mahogany QUARTETTO of TABLES.

853. A Victorian mahogany Duchess DRESSING TABLE.

854. A set of 6 Victorian mahogany balloonback DINING CHAIRS with shaped backs and drop-in seats. *Illustrated on centre pages.*

855. A Georgian mahogany CHEST of 3 drawers with later knob handles and top.

856. A Victorian mahogany traytop WASHSTAND with 2 drawers, knob handles, platform stretchers and scroll feet.

857. A Victorian mahogany pull-out DINING TABLE with turned legs (no leaves).

858. A pair of rectangular WALL MIRRORS.

859. A black painted pine BOX.

860. An Edwardian leaded glazed WALL CABINET.

861. A gilt metal STANDARD LAMP with shelf.

862. An Edwardian brass and mahogany HAT and COAT RACK.

863. A Victorian rosewood POLE-SCREEN with trefoil base.

818. A Victorian elm STOOL.

819. A George III string inlaid mahogany CARD TABLE with demilune folding top, square taper legs and spade feet.

820. A Victorian rosewood BREAKFAST TABLE with circular tilt top, octagonal baluster pillar, trefoil base with claw feet.

821. A Victorian mahogany DAVENPORT. *Illustrated.*

822. A barleytwist oak gateleg DINING TABLE.

823. A Victorian style 3 tier WHATNOT with fretwork gallery.

824. A Victorian grain painted pine CHEST of 2 short and 3 long drawers, pressed handles and turned feet.

825. A Victorian 3 gold SCRAP SCREEN.

826. A Victorian Chesterfield SOFA in green dralon.

827. An Edwardian mahogany OFFICE TABLE on moulded square taper legs. 5'8" x 3'.

828. A Victorian oak PEMBROKE TABLE.

829. A CENTRE TABLE with circular marquetry tilt top and carved 4 pillar pedestal 3' dia.

830. A George III Mahogany bowfront Commode CHEST (AF).

831. An Edwardian light ash POT CUPBOARD.

832. An Edwardian mahogany stained MUSIC CABINET.

833. A Victorian satinwood CHEST of 2 short and 3 long drawers with knob handles.

834. A late Victorian satinwood DRESSING CHEST.

835. A walnut Shelf, oak Tabletop, and Mirror.

836. A 17thC plain oak 3 panel COFFER.

837. A William IV mahogany OPEN ARMCHAIR upholstered with red button dralon.

838. A Victorian carved oak PURDONIUM.

839. An early 19thC mahogany 2 door and 2 drawer Cabinet.

840. A 19thC French oval OCCASIONAL TABLE.

841. A 19thC French elm and pine STOOL.

842. A set of 6 - 19thC mahogany DINING CHAIRS with wheatsheaf pierced splats and serpentine seating. *Illustrated on centre pages*

864. An Edwardian roll-top DESK (AF).

865. A 17thC oak GATELEG TABLE with oval top.

866. A Victorian oak Gothic HALL CHAIR.

867. A Victorian mahogany CHEST of 2 short and 3 long drawers with knob handles.

868. A Victorian painted pine BED TABLE.

869. A Victorian walnut NURSING CHAIR with gold button dralon upholstery and matching side chair.

870. An Edwardian walnut windout DINING TABLE.

871. A late Victorian astragal glazed WALL CABINET.

872. A quarter veneered walnut SERVING TABLE on turned legs.



Lot 874



Lot 883

873. An early 19thC. Mahogany Breakfront LIBRARY BOOKCASE with dentil cornice, 4 astragal glazed door top and 4 panel doors to base, 6'9 wide, 21" deep, 7'9" high, together with steps. *Illustrated inside rear cover.*

874. A fine Edwardian mahogany CORNER CABINET with swan neck pediment, astragal glazed door with shelves and mirrors, bowfront base. *Illustrated.*

875. An Edwardian oak WARDROBE and 2 drawer CHEST.

876. An Edwardian satinwood WARDROBE

877. An Edwardian mahogany marquetry Double WARDROBE.

878. An Aeolian Mahogany cased overstrung PIANO with pianola works and rolls.

879. An Edwardian PIANO STOOL with cabriole legs.

880. An Edwardian mahogany veneered triple wardrobe COMPACTUM.

881. A heavy panelled oak 2 door CUPBOARD with light carving and raised on stiles.

882. A Victorian serpentine breakfront SIDEBBOARD with shaped and carved back, 3 frieze drawers and 4 door cupboard base. 6' wide.

883. An early 19thC mahogany SECRETAIRE BOOKCASE. *Illustrated.*

884. A George III satinwood cross banded mahogany bowfront CHEST of 2 short and 3 long drawers, oval handles and splay feet.

885. A pair of Light Ash Mid-European wardrobes and a pair of single beds in the Arts and Crafts Style.

886. A Victorian mahogany TABLE MIRROR with scroll supports and bun feet.

887. A Victorian mahogany DISPLAY CABINET with 2 glazed doors over a buffet base.

888. An Edwardian string inlaid mahogany DISPLAY CABINET with 2 leaded glazed doors, square taper legs and spade feet. 3' wide, 4'9" high.

889. A late Victorian walnut HALLSTAND with topographical tiles and mirror back.

890. An Edwardian carved walnut MUSIC STOOL.

891. An Edwardian style mahogany marquetry BUREAU BOOKCASE.

892. A Victorian mahogany DOUBLE WARDROBE.

893. A late Victorian carved satinwood BEDROOM SUITE comprising wardrobe, washstand, dressing chest and bed.

894. An oak WALL MIRROR.

895. An oak octagonal WALL MIRROR.

896. A similar lot.

897. A Victorian rise and fall PIANO STOOL.

898. A neo-classical style oval WALL MIRROR.

899. A Victorian satin walnut TABLE MIRROR with shaped drawer base.

900. A late Victorian oak DRESSER with platerack top and cabriole legs.

901. A Victorian satin walnut Duchess DRESSING TABLE.

902. A Victorian mahogany HALLSTAND with baluster stickstand.

903. An early 19thC. flamed mahogany cylinder BUREAU CABINET, with 2 panel door top, fitted interior, writing slide and 3 graduated drawers. *Illustrated on centre pages.*

GOLDINGS EXPRESS SALES SERVICE

Lots 904 onward are available for uncatalogued late entries. If you have something suitable for this sale please contact Colin Young. A fee of £5 per lot of furniture will be levied for this service.

END of SALE

CONDITIONS OF SALE

1. These Conditions together with any Notices to Purchasers are the only terms and conditions subject to which Golding Young & Co. ("the Auctioneers") as agents for the Vendor will sell goods to a purchaser ("the Bidder") and all other conditions, whether express, or implied at common law or by statute as are capable of lawful exclusion are hereby excluded.
2. The highest bidder shall be the buyer. The Auctioneers reserve the right of regulating the biddings; of rejecting any bid; and of bidding for, withdrawing, consolidating, dividing or altering the order of lots.
3. The purchase money for each lot with the usual commission of 10% plus VAT at the current rate shall be paid at the fall of the hammer (if required). Each lot at the fall of the hammer shall be at the sole risk and expense of the buyer, and shall be paid for and removed immediately after the conclusion of the sale, but no lot shall become the property of the buyer, or be removable until paid for, and if taken away in contravention of these conditions without an order for removal signed by the Auctioneers, they shall have power to seize the same by their servants or agents, or otherwise, or the Auctioneers may recover either the lot sold or the price thereof (at their option) by action at law.
4. No contra account of any description whatever will be allowed to the buyer as a set off, and payment for each Lot shall be made to the Auctioneers or their clerk only, and a buyer paying by cheque must give satisfactory references.
5. For all purposes of this sale the Clerk of the Auctioneers shall be deemed to be the agent of both seller and buyer.
6. A bidder shall not be allowed to retract his bidding after the fall of the hammer, and he shall give up his full name and address if required. The Auctioneers will not recognise the transfer of any lot from one buyer to another, nor make any alteration in the sale book in respect thereof.
7. The Auctioneers are acting only as agents, and give no personal warranty as to the condition, quality or authenticity of any chattels offered for Auction. Any catalogue description is given merely as guide to purchasers, any description can be changed from the rostrum before the lot is sold. If a purchaser buys without previous inspection he will do so at his own risk.
8. Notwithstanding any other terms in these Conditions, if within 7 days of the Sale a purchaser gives notice in writing that a lot is a deliberate forgery, with supporting factual evidence, the Auctioneers may rescind the transaction. The burden of factual proof lies with purchaser, mere opinions will not satisfy. This benefit is not assignable.
9. If any buyer neglect or refuse to comply with the above conditions or any of them, his deposit money (if any) shall be forfeited, and the lot uncleared may, at the option of the Auctioneers, be resold without notice by public auction or private treaty, and any loss occasioned by such re-sale together with all expenses attendant thereon, or arising under these conditions shall be paid for by the defaulter and be recoverable as and for liquidated damages. This condition is however without prejudice to the right of the Auctioneers to enforce the contract made at this sale if they think fit.
10. Any Notes for Purchasers and Catalogue Glossaries will be construed as Conditions of Sale.
11. The Auctioneers shall be the sole Arbitrators in all matters of dispute relating to those conditions both as between the seller and the buyer and between the several bidders and buyers and their determination on all matters shall be final and binding on all parties concerned.

Auctioneers: C. Robin Hall FRICS FAAV & Colin R. Young FNAVA

NOTES

FREE AUCTION VALUATIONS - YOUR REGIONAL ANTIQUES ROADSHOW

HOURS OF BUSINESS

Monday to Friday 9 a.m. to 1 p.m. & 2 p.m. to 5 p.m.
Entries welcome at all times except Wednesday mornings

PROPERTIES CLEARED - VALUATIONS FOR ALL PURPOSES

Offices at
GRANTHAM + BOSTON + STAMFORD + RUTLAND

COMMISSION BID FORM

LOT NO	BRIEF DESCRIPTION	PRICE

Bids are left at the senders risk and are accepted subject to our Conditions of Sale.

NAME:

ADDRESS:

.....

.....

.....

TEL:

SIGNATURE:

SALE DATE:

Lots will be purchased at the lowest price as permitted by other bids or reserves.

Prospective purchasers should contact the Auction Rooms after the sale and if successful, the item(s) purchased must be collected and paid for within two days of the sale.

A Buyers Premium of 10% + VAT will be levied on the hammer price, to all purchasers.

Established 1900

— GOLDINGS —

Chartered Surveyors, Auctioneers, Valuers & Estate Agents
Residential, Commercial, Agricultural, Property Management, Financial Services

45 High Street, Grantham, NG31 6NE

Telephone: 01476 · 590211

PROFESSIONAL SERVICES FOR



RESIDENTIAL

Our established Residential department headed by Chartered Surveyors undertakes sale and valuation of all types of property from Castles to Town Houses; Surveys, Homebuyers Reports, Mortgage, Probate and Insurance Valuations carried out with care attending to individual requirements.



COMMERCIAL

Dealing with the sale and survey of Shops, Offices and Factories. Valuation for Rent Reviews, Lease renewals and negotiations. Rent Arbitration, on behalf of landlord and tenant.

Plant, Machinery & Assets; Sales for Receivers, Liquidators, High Court & County Court. Auction Sales on Site or at The Grantham Auction Rooms for private and public clients alike.



AGRICULTURAL

Our Senior Partner has wide experience in the sale and valuation of Agricultural Properties, conducting Farm Sales and Valuation of Live and Dead Farming Stock for dissolution, Probate and other matters. Together with Rent Reviews, Development Land reports and Annual Stocktaking Valuations.



FINANCIAL SERVICES

Our Experienced Consultant is available to advise on all matters concerning Finance, Mortgages, Insurance, Investment, Planning and Pensions.



PROPERTY MANAGEMENT

Personal service and attention to detail ensures that our management team exploits your investment portfolio whether an Individual Family Home let for a small fee or Office, Factory, Shop or Farm with rent collected and regular inspections made.

Chattels Auctioneer

Colin R. Young FNAVA

Property Management

Mrs. Margaret Pashley

Partners

C. Robin Hall FRICS FAAV

Ian J. Shaw FRICS FNAEA

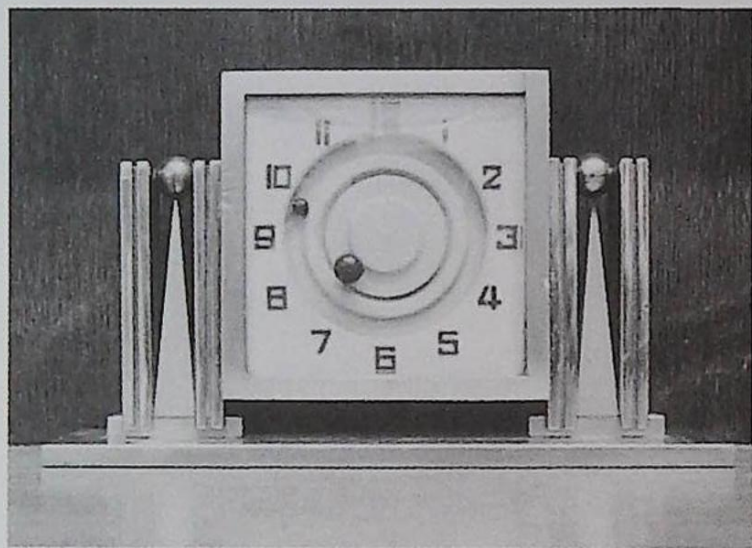
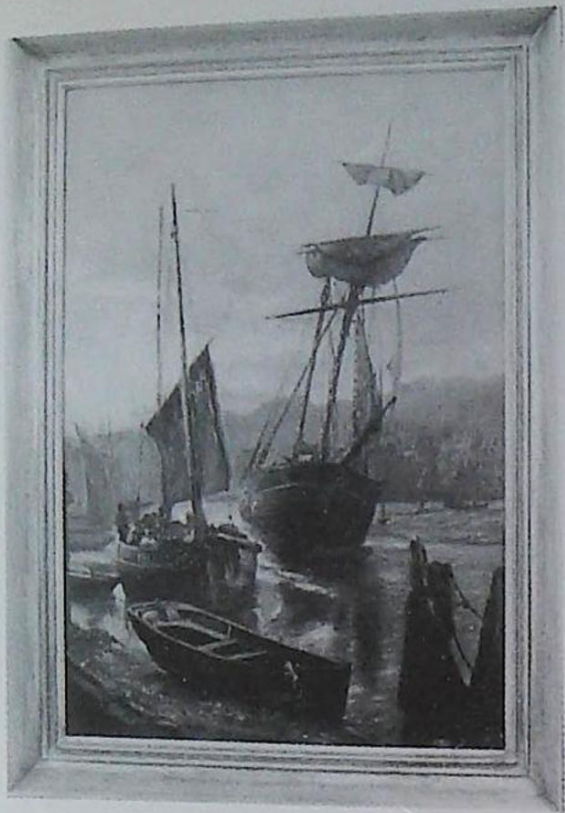
Financial Service Consultant

John G. Stukins

Residential Sales Manager

Mrs. Jenny Diment FNAEA CPEA

Associated Office: Golding Young & Co. The Grantham Auction Rooms, Old Wharf Road, Grantham, Lincolnshire, NG31 7AA
Telephone: (01476) 565118 Fax: (01476) 561475



Golding Young & Co.

Old Wharf Road, Grantham
Lincolnshire, NG31 7AA

01476 - 565118

