

Established 1900

-GOLDINGS-

— AUCTIONEERS & VALUERS —

0 1 4 7 6 — 5 6 5 1 1 8



Spring Catalogue 1998

Antiques
& Fine Art

Auction

S

1998 ANTIQUES & FINE ART AUCTION SALES CALENDAR

Sales commence 10 a.m. on the following Wednesdays

JUNE 3RD

Closing date for entries 22nd May

AUGUST 12TH

Closing date for entries 3rd August

OCTOBER 21ST

Catalogue closing date 2nd October

DECEMBER 9TH

Closing date for entries 30th November

Viewing Times

Tuesday prior to the sale 2 p.m. to 7 p.m.

Saleday 9 a.m. to 10 a.m.

* Denotes viewing Sunday prior 2 p.m. to 4 p.m. *



19thC - French School. Sold in our last sale for £1,250

Catalogues

All of the above sales will have catalogues available
individually or by Annual subscription of £12

GENERAL SALES

Every Wednesday at 10.30 a.m.

(excepting Antique Sales and Bank Holiday Weeks)

Viewing Tuesdays 4 p.m. to 6 p.m. and Saleday from 9 a.m.

SALEDAY CASH PAYOUT AVAILABLE FOR VENDORS

Upon instructions from the Executors, Private Collectors and House Clearances
from throughout the Region,
Golding Young & Co. will SELL by AUCTION

ANTIQUES & FINE ART

On
Wednesday, 8th April, 1998
at 10 a.m.



Lot 673

- | | |
|-------------------|------------|
| *Furniture | *Paintings |
| *Silver & Plate | *Ceramics |
| *Clocks | *Glass |
| *Arms & Militaria | *Toys |
| *Metalware | |

Viewing: Sunday 5th 2 p.m. - 4 p.m.
Tuesday 7th 2 p.m. - 7 p.m.
& Saleday 9 a.m. - 10 a.m.

FREE AUCTION VALUATIONS - YOUR REGIONAL ANTIQUES ROADSHOW

HOURS OF BUSINESS

Monday to Friday 9 a.m. to 1 p.m. & 2 p.m. to 5 p.m.
Entries welcome at all times except Wednesday mornings

PROPERTIES CLEARED - VALUATIONS FOR ALL PURPOSES

Offices at
GRANTHAM + BOSTON + STAMFORD + RUTLAND

IMPORTANT NOTES FOR PURCHASERS

1. PAYMENT: Must be made in full immediately after the Auction. The following methods of payment are acceptable.
a) Cash b) Bankers Draft c) Building Society Cheque
d) Cheques, accompanied by a valid card. For accounts above the stated card limit, we reserve the right to retain the goods until clearance is established.

2. BUYERS PREMIUM: of 10% + VAT is payable on all lots.

3. REMOVAL OF PURCHASES: Goods must be collected as soon as they are paid for, and in the Two Working Days following the sale. If goods are not collected on these days we reserve the right to charge £1 per lot per day thereafter.

4. COMMISSION BIDS: If you are unable to attend this or any of our future sales we will be pleased to bid on your behalf. We always purchase at the lowest possible price, subject to other bids and reserves.

All bids must be handed to the office on an official form. It remains the responsibility of prospective purchasers to contact GOLDINGS to confirm whether their bids have been successful.

5. TELEPHONE BIDS: There are inherent dangers with this practice, therefore all such arrangements are made entirely at the bidder's risk. Telephone bids will only be accepted if the lower catalogue estimate is £500 or above. For lots with a lower estimate below this figure Commission Bids Only will be accepted.

5. SMOKING: is not permitted in any part of the Saleroom.

6. REFRESHMENTS: will be available Saleday.

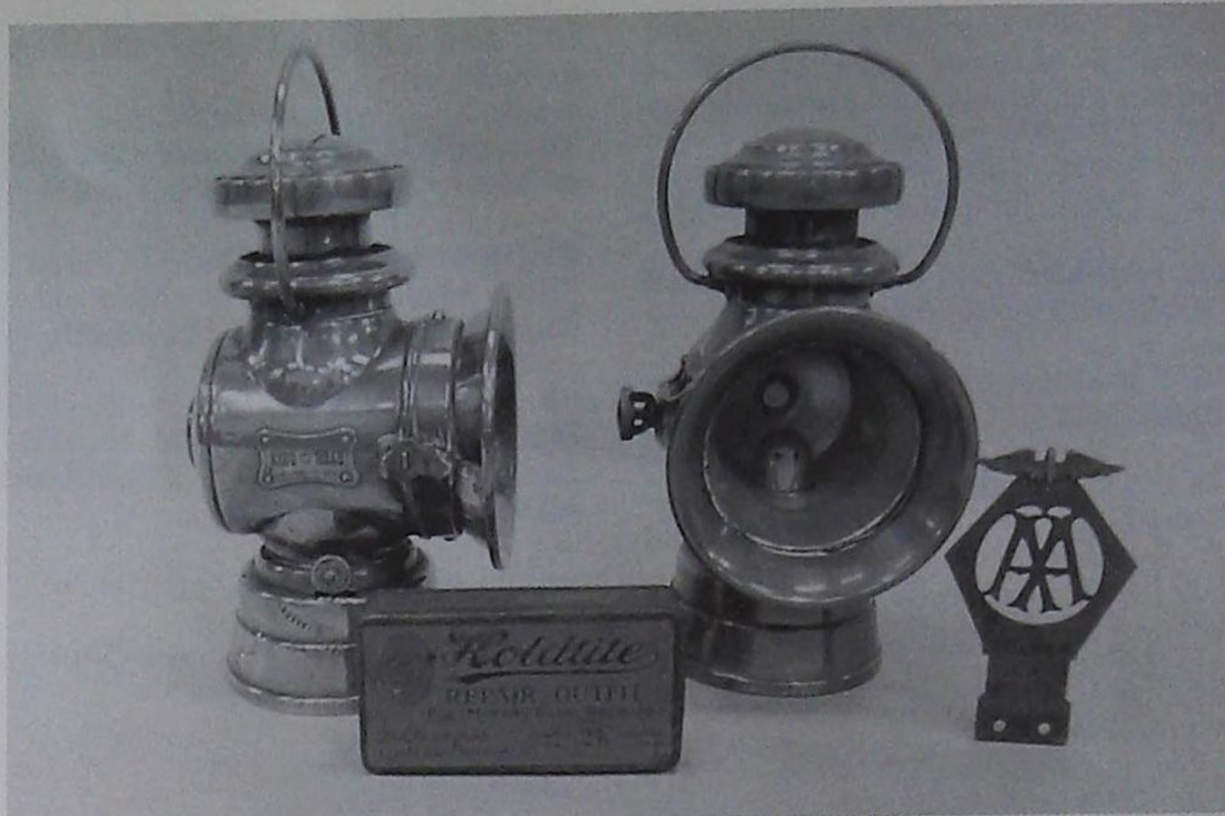
7. ACCOUNT TRANSFERS: will not be recognised after the sale. If any lots are purchased for another person, this must be declared at the fall of the hammer.

GLOSSARY

- a) Generally: 'As Found.' (AF). This term indicates the lot has some damage. Its absence does not indicate that the lot is free of defect. All lots are SOLD AS SEEN.
- b) Paintings: 'Signed, initialled, monogrammed' This refers to the present state of the work and is not an attribution.
- c) Books and printed matter: These items are not sold subject to collation and are no returnable once removed from the premises.
- d) Silver & Jewellery: Weights given are approximations given by basic instruments.

BOOKS & PRINTED ITEMS

1. Goldsmiths Marks.
2. Assorted Antique Reference Books.
3. Accidents and Ailments, First Aid for Horses, Dogs, Birds and Cattle. Publisher Elliman, in slip case.
4. Armitage. Cattle Doctor, illustrated, publisher, Warne.
5. W J Miles. Modern Practical Farriery, publisher Gresham.
6. Savage. English Pottery and Porcelain.
7. A Collection of Grantham Area Postcards (3 albums).
8. Fridtjof Nansen. Life and Exploration and First Crossing of Greenland. (2)
9. John Leech. Romford Hounds, Mr Sponges Hunting Tour.
10. Childrens' Books. (7)
11. Punch, Thackery's 'Book of Snobs'. (4)
12. Ingoldsby Legends with illustrations, 1885.
13. G D Armour. Humour in the Hunting Field, folio of 20 colour prints and text by Crascredo. Other modern unframed Hunting Prints.
14. Assorted POSTCARDS, 2 albums and loose.
15. Mrs. Beeton, Childs Companion and Home Wards.
16. Photographic Panorama of the World, 1895, portfolio.
17. A Postcard ALBUM.
18. Commemorative PAPERS.
19. Whitbread's Inn Sign Cards.
20. Hogarth's Works, a folio of Engravings and a 17thC New Testament.
21. Graves. Dictionary of Artists.
22. Colour Engravings of Castles.
23. A Postcard ALBUM.
24. 1993 Burke's Peerage, etc.
25. Pytchley Cookery Book, etc. (4)



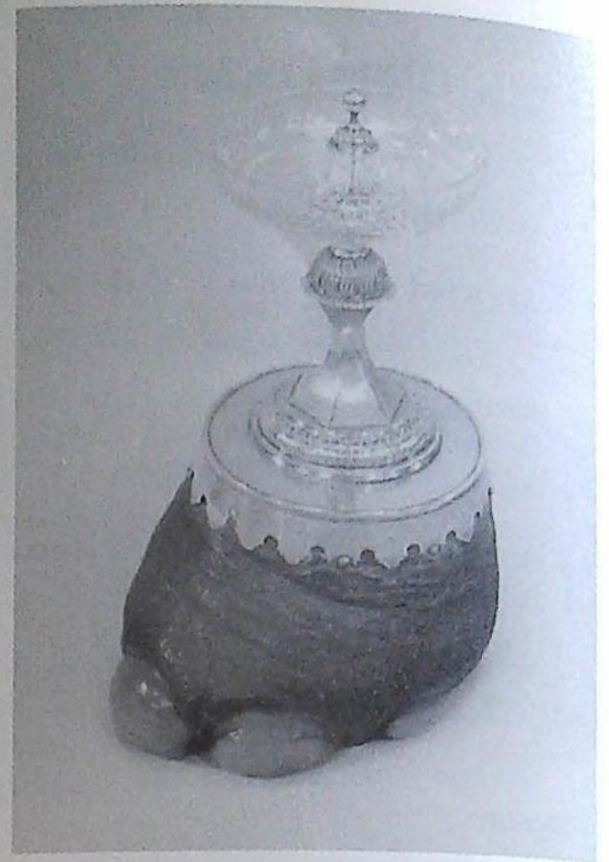
Lots 51, 52 and 53

26. Culpepper. British Herbal; Flowers of the Field. (2)
27. Dickens. 6 vols, red leather spined.
28. 19thC Art Books.
29. Bell's British Theatre Tragedies. 1776/7. 3 vols.
30. Hobson. The Story of the XII Royal Lancers.
31. West. Diseases of Infancy and Childhood; Bingley's Animal Biography, 3 vols; Woods Natural History vol III. (5)
32. Bewicks History of British Birds 1832.
33. 19thC Spectator Books.
34. Tennyson. Morte D'Arthur with illuminated drawings by Alberto Sangorski and 2 others.
35. Full and part set CIGARETTE CARDS.
36. Josiah Burchall. A Complete History of the most remarkable Tansactions at Sea
37. Hurlbutt. Bristol Porcelain and Illustrations for the catalogue of The Trapnell Collection.
38. DIBDIN T. F. A Bibliographical Antiquarian and Picturesque Tour in the Northern Counties of England and Scotland 1838. 2 vols. Large 8vo, plates, half calf, rubbed.
39. The Merry-go Round.
40. Harpers Young People, 1885 with colour plates.
41. Kelly's Post Office London Directory, 1926 with map.
42. A E Bonser. Kings of the Forest, ill. S Berkeley, gilt cloth.
43. Bold Turpin, colour portfolio.
44. Childrens Books.
45. Modern Boot & Shoemaker, 4 vols, etc.
46. Humboldt. Travels, 3 vols and other leatherbounds.
47. Norweigan photographic portfolio, etc.
- 49-50. Spare Lots.

COLLECTORS' ITEMS & MISCELLANEA

51. A pair of Lucas King of the Road brass LAMPS No 726, c.1910/12. *Illustrated.* £150-250
52. A brass AA Light Car BADGE No 205954. *Illustrated.* £40-60
53. A Holdtite REPAIR OUTFIT for Motor Tube repair. *Illustrated.*
54. An Edwardian oak SMOKER'S CABINET with bevel glass door. £80-120

55. A red squirrel, preserved and mounted with a hazelnut amidst grasses and mosses in a glazed display case. £35-45
56. Linen, Tablecovers, etc. £45-60
57. A Victorian brass DINNER GONG with rustic stand. £20-30
58. Brass Inkwell, Jewel Box, Teapot, etc.
59. A green onyx 6 piece DESK SET. £30-50
60. A Victorian mahogany ENLARGER and a balance stand.
61. A Victorian tongridgeware WORKBOX. £40-60
62. Two tinsplate INKSTANDS. £20-40
63. A Victorian copper SPIRIT KETTLE on stand.
64. A Victorian brass WATER CAN.
65. A Victorian copper WARMING PAN. £30-50
66. A Copper SHIP'S LANTERN. £20-40
67. A Chesterman's Patent brass ROASTING JACK. £20-40
68. Brass kettle, oil lamp and horn.
69. A pair of 19thC Chinese hardwood FIGURES of a street seller 14" high (AF) and another. £50-80
70. An early Victorian chased copper WARMING PAN with an ebonised handle. £40-60
71. A 19thC brass cylindrical WATER JUG. £30-50
72. A lignum vitae cylindrical MUG with metal bands. 7 1/2". £60-80
73. A Victorian cast iron galleried FENDER. £20-40
74. A Victorian vased VIOLIN. £20-40
75. A Victorian embossed brass COAL BUCKET. £20-40
76. An early Ormond ivory bakelite HAIR DRYER. £20-30
77. A Victorian tin JELLY MOULD
78. Five antique cast iron SAUCEPANS.
79. A Victorian mahogany COAL SCUTTLE with Art Nouveau metal mounts. £40-60
80. An Oak Artist's paint and pallet BOX. £30-40
81. An oval Victorian beadwork and mahogany STAND. £40-60
82. Seven 2 minute CYLINDERS.
83. Two Victorian iron FENDERS.
84. A Curative Magneto-Electric SHOCK MACHINE by E Howett, Launder Terrace, Grantham, mahogany cased. £40-60
85. A silk Picture of a young lady.
86. An Arts & Crafts brass WARMING STAND.
87. A Victorian brass tile top TEAPOT STAND.
88. An unusual Japanese black lacquer JEWELLERY CABINET with frosted glass panels. £60-90
89. An oak cased Resselbell tabletop GRAMOPHONE and records. £50-80
90. A cased CHEMICAL BALANCE. £20-30
91. A pair of Regency HAND SCREENS, the card panels with applied and hand-painted floral decoration. £80-120
92. A Victorian tortoiseshell and gold handled UMBRELLA. £100-150
93. A Victorian copper circular BOILER with cover.
94. A cast iron St Bernard DOORSTOP. £20-30
95. A pair of figural metal CANDLESTICKS on rococo bases with twin branch glass holders and a similar single example. £80-120
96. A Victorian copper COAL SCUTTLE (AF). £20-30
97. A Victorian treen tabletop WOOLWINDER and thread BOBBIN. £30-50
98. Pair of Butter Pats, Beer Tap and 2 bowls. £20-30
99. A small Model of SS Delilian, cased.
100. A faded Victorian needlework SAMPLER. £30-50
101. A mahogany cased CHEMICAL BALANCE. £20-30
102. A Wade & Son oak BUTTER CHURN on stand. £40-60
103. A Victorian walnut WRITING BOX and another (AF).
104. Two pairs Victorian brass CANDLESTICKS.
105. An old wooden BIRD SCARER, door knocker, etc.
106. A 19thC table CENTREPIECE with a cut crystal bowl and electroplate column mounted to an elephant's foot. 19" long. *Illustrated.* £100-150
107. A 19thC tin SPICE BOX, pair of brass Candlesticks and a Footman.
108. A Special Swilcan Mashie GOLF CLUB by D Anderson & Sons, St Andrews.
109. A Victorian OIL LAMP with floral blue glass reservoir and cast base. £40-60
110. An Art Deco brass OIL WALL LIGHT. £35-50
111. A Turner & Wainwright TOFFEE TIN in the form of a snakeskin attache case.
112. A 19thC mahogany duet WRITING BOX. £80-120
113. A natural and red stained ivory CHESS SET, Kings 8cm high, Pawns 3.5cm high. Contained in a mahogany box with sliding cover, together with an inlaid wooden chequerboard with box base. £250-350
114. Three pairs of modern Britains LEAD SOLDIERS and others. £20-30
115. A set of brass and mahogany POSTAL SCALES and weights. £30-50



Lot 106

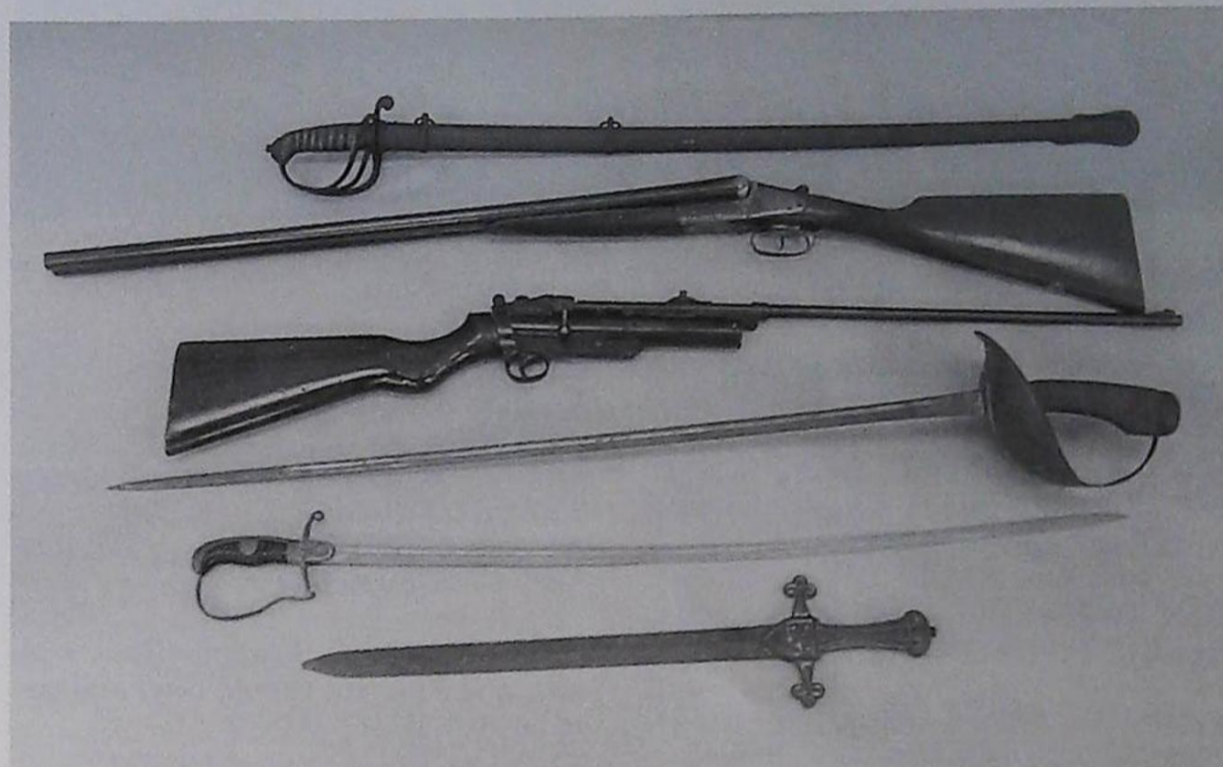
116. A Prisoner of War straw work elliptical CASE. £40-60
117. Drawing Instruments, cased
118. Crescent and other HORSE BRASSES. £30-50
119. A Victorian Yew Playing CARD BOX. £25-40
120. A Sporrán and Boot.
121. A leather and plated BEAKER with faceted toddy bottle. £30-50
122. A Sike's Hydrometer Set in a mahogany case. £20-40
123. Mahogany cased WEIGHTS.
124. Oak and brass POSTAL SCALES and weights. £20-40
125. Qty of old TINS.
- 126-30. Spare Lots.

TOYS

131. A Meccano STEAM ENGINE, boxed.
132. A Hornby R.320 LMS Class 5 Locomotive in black livery, boxed.
133. A Hornby 0-6-2 Locomotive, Hornby Dublo track, accessories, etc.
134. A 1950's Japanese battery operated BEAR pourint a drink of Coke. £50-70
135. A small golden plush CAT. £40-60
136. An Italian Pinocchio BENDY TOY.
137. A Marklin cast and tinplate MODEL of a Field Gun. £100-150
138. A Hornby tinplate Railway Crossing and Bridge.
139. A Bing tinplate Engine Shed.
140. Britains lead FIGURES (c.15), railway related.
141. A collection of BENDY TOYS being Rupert, Noddy, Disney and other characters. £40-60
142. A Hornby RS606 Express Goods TRAIN SET, boxed
143. A Collection of Teddy Bears. £90-120
144. Austin Somerset Ride-On Car. £100-150
- 145-50. Spare Lots.

ARMS & MILITARIA

151. A 19thC leatherbound brass TELESCOPE by E. & E. Emanuel, Portsea. £25-50
152. A Georgian Officer's SWORD with curved plated blade, 33", engraved 'A Troop Farrier Major Smith', with steel scabbard. £60-90
153. *An Argyle 12 bore single barrel SHOTGUN.



Lots 152, 168, 161, 166, 164 and 165

154. *A BSA 12 bore single barrel SHOTGUN.
155. *A Manuarm .410 single barrel bolt action SHOTGUN.
156. *A BSA 12 bore single barrel vent rib SHOTGUN.
157. *A AYA COSMOS 16 bore single barrel SHOTGUN.
158. *A .410 single barrel SHOTGUN.
159. A 19thC. Persian electroplated 'Boteh' buckle with embossed foliate decoration. £50-70
160. Military Badges.
161. A Webley .22 Service AIR RIFLE, Mk.II.
162. An antique AIR RIFLE.
163. A Tomahawk.
164. A Nazi Officer's SWORD with curved plated blade. 32", gilt alloy with stirrup knuckle bow, eagle and swastika lanyet. £80-120

165. A Medieval style SHORT SWORD of Celtic design, 25". £50-70

166. A Continental SWORD with moulded grip and solid handguard. £40-70

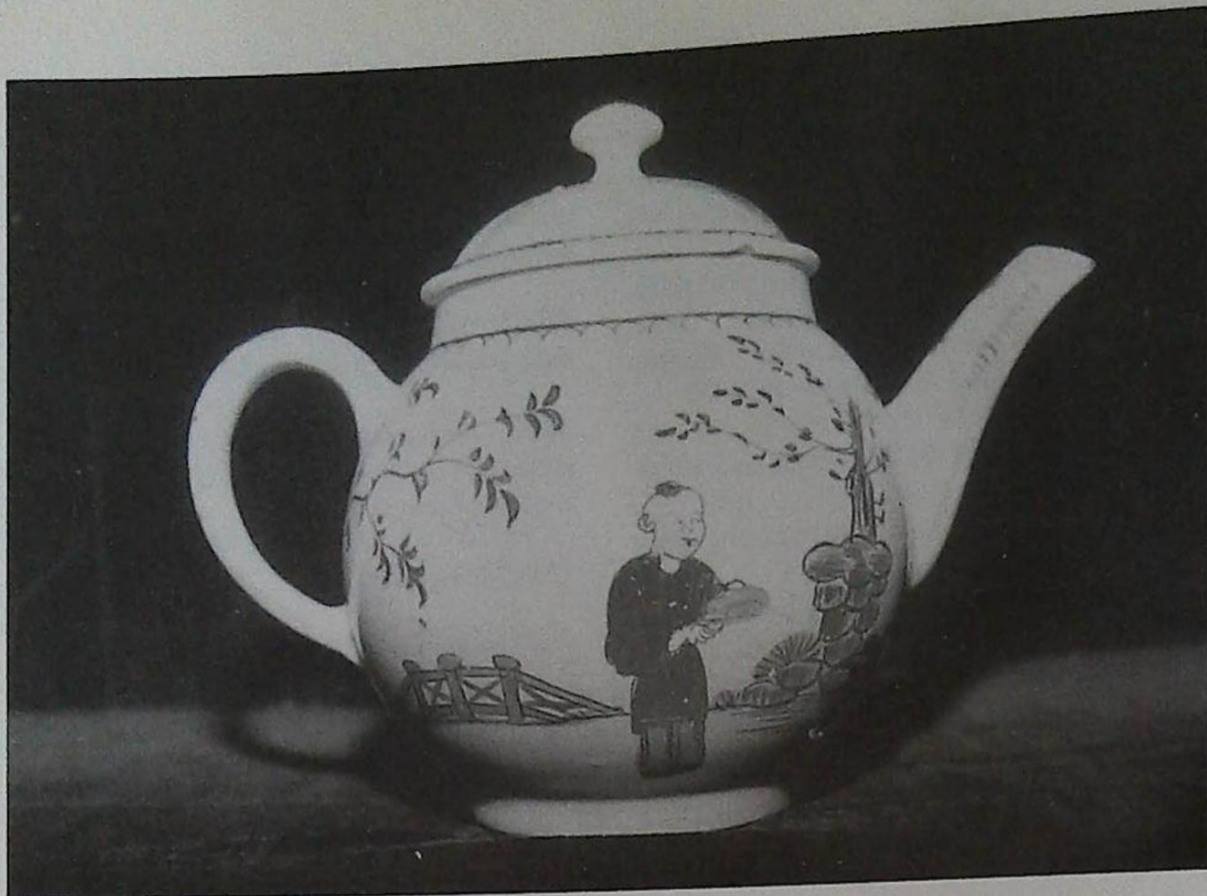
167. A Zabala 12 bore double barrel side by side SHOTGUN.

168. A Cogswell & Harrison 12 bore side by side SPORTING GUN with leather case. £100-150

169-70. Spare Lots.

GLASS & CERAMICS

171. A George Jones majolica STRAWBERRY DISH the base impressed with the GJ monogramme over A2 and date lozenge for 9th February 1875, parcel number 2. 15" wide, 8" deep, 8 1/2" high. Illustrated on front cover. £1200-1500
172. A Bow bullet shape bachelor's TEAPOT of Oriental design, c.1760. 4 1/2" high. Illustrated. £400-600
173. A Dresden 5-piece MONKEY BAND, marked N under crown in underglaze blue, c.6". Illustrated. £300-400
174. A first period Worcester TEA-BOWL and SAUCER. £30-40
175. Two Dresden CUPS and SAUCERS.
176. A German porcelain Doll's TEA SERVICE (No Teapot lid). £20-30
177. A Foley 'Intarsio' CHARACTER TEAPOT, c.1898. 4 1/2". £120-180



Lot 172

178. A Victorian Majolica BOWL with cover 6" dia. £80-100

179. An early 19thC. Derby SCENT BOTTLE, gilt green ground painted with floral sprays. £60-80

180. An early 19thC Staffordshire ROUGE POT. £20-30

181. An Allcock topographical PIN TRAY c.1840. £35-50

182. A Worcester TEABOWL c.1800. £20-30

183. A Derby campana shape VASE with rococo handles, gilt blue ground and cartouche painted with a fisherman, masked 'View in Italy' to base. c.1830 *Illustrated*. 9 1/2" high. £300-400

184. A blue and white Tureen LADLE.

185. A 19thC. Berlin hand painted JUG 4 1/2". £50-80



Lot 173

186. A pair of signed Kutani BOTTLE VASES. 8". £40-60

187. A signed Kutani 3 piece TEASET. £40-60

188. An Ointment Pot.

189. An 18thC. Cordial Glass with star and flute cut funnel bowl and circular foot. 4 3/4". £50-70

190. An 18thC Ale Glass with a circular conical bowl, knob stem and circular folded foot 5". £50-70

191. A 19thC Naples figure of a 'Little Lieutenant'. 4 1/2". £40-60

192. A Worcester Mandarin pattern CUP, c.1770. £40-60

193. A similar lot. £40-60

194. A Royal Doulton WATER JUG depicting The Pickwick Papers at The White Hart Inn at Southwark. 5 1/2". £40-60

195. A Royal Doulton Grand National TANKARD, First of a series of Sporting Designs by Teofani, 1937 'Royal Mail'. 6". £40-60

196. A Royal Doulton LOVING CUP depicting The Three Musketeers. A 1936 Limited Edition designed by C J Noke and H Fenton No 284 of 600. 10" high. *Illustrated*. £200-300

197. A Royal Doulton FIGURE, Patricia HN1414, 1930-49. 8 1/2". *Illustrated* £100-150

198. A Royal Doulton FIGURE, Butterfly HN719, 1925-38. 6 1/2". *Illustrated* £300-400

199. A Royal Doulton stoneware Art Pottery JARDINIÈRE with a wavy rim and moulded white roses and leafage on a mottled blue ground. Impressed mark of Eliza Stock. 13" dia, 11" high. *Illustrated*. £150-250

200. A Royal Doulton Character JUG - Lord Nelson D6336 (AF). £85-100

201. Three Royal Doulton Dickensware BOWLS and a matching example with a coaching scene. £20-40

202. A Burleighware COMMEMORATIVE JUG depicting the 1953 Coronation, E T Bailey. 8 1/2". £80-120

203. An Adams silver banded jasperware 3 piece Bachelor's TEASET, Birmingham assay. £40-60

204. A Wedgwood jasperware Bachelor's TEAPOT and JUG. £30-50

205. A Belleek JAR and 4 pieces of Victorian glassware. £25-40

206. A pair of Langley stoneware BOTTLE VASES 8". £40-60



Lot 183

207. A pair of Langley Stoneware waisted cylindrical VASES 8". £20-40

208. Langley stoneware Teapot, Water Jug, Creamer and Hunting Scene Vase (4). £20-40

209. An Ambassador 'English Hunting Scenes' COFFEE SERVICE. £20-40

210. A pair of Langley stoneware TOBACCO JARS. £20-40

211. A Copeland Spode 'Royal Jasmine' MEATPLATE and another.

212. A 'Pointons' Creamware floral decorated bowl of ribbed design with pierced cover 4¹/₂". £20-30
213. Eight pieces coloured Glass.
214. A Paragon 'Summer Rose' pattern part TEA SERVICE. £30-50
215. A Victorian Ironstone TUREEN (AF). £20-40
216. A Vuillamy 'HM OOM PAUL IDV' CHARACTER JUG and another. £30-40
217. A Willow Pattern MEATPLATE with transfer decoration.
218. A Naples FIGURE GROUP (AF). £80-100
219. A Mason's ironstone mandarin pater JUG. 7". £80-120
220. A similar JUG. (AF) £25-40
221. An 1882 Preston Guild MUG. £20-30
222. A pair of Victorian sky blue JUGS with pate-sur-pate floral motifs. 7". £40-60
223. A pair of late 19thC German FIGURES of blanc-de-chine neo-classical maidens holding urns, on circular bases. 10". £90-120
224. A printed and painted black ground COMMEMORATIVE JUG depicting Victoria's 60th Anniversary. 6". £30-40
225. A seated pig WATER JUG. 10¹/₂". £40-60
226. A crackle glazed polychrome SAUCER DISH with a cannon to the centre field and inscribed 'a ca ira 1793'. 9" dia.
227. A New Hall CREAMER. £30-40
228. A New Hall CREAMER. £20-30
229. A Grainger's Worcester MUG. £30-40
230. A Worcester Lozenge DISH c.1780 (AF). £20-30
231. A Miles Mason Willow pattern TRIO. £20-30
232. A Miles Mason Willow pattern TRIO. £20-30
233. A Caughley CUP, Worcester Teabowl and saucer (3). £20-30
234. Worcester and other Cups and Bowls. £20-30
235. A Victorian floral painted cream glass GARNITURE of 3 vases. £30-50
236. A Soho pottery 3 piece TOILET SET.
237. An Aynsley rose pattern TEA SERVICE. £60-80
238. Two Victorian London shape TEAPOTS, 2 Jugs, etc. £20-30
239. Assorted Kutani pieces. £20-30
240. A Chinese Plate, Bowl and Japan Bowl. (3)
241. A 19thC Staffordshire FIGURE of Queen Victoria, 11". £30-40
242. A 19thC Staffordshire FIGURE of Queen Victoria, 11". £30-40
243. An Asiatic pheasant MEAT-PLATE and another. £30-40
244. A pair of Victorian mallet shaped DECANTERS. £40-60
245. A Copeland Spode Italian BOWL. 9¹/₂" dia. £30-40
246. A pink ground 4 piece TOILET SET. £30-50
247. A silvered and pierced glass DISH.
248. A Royal Worcester FRUIT BOWL hand painted and enamelled with birds and flora. 12" dia. Year cypher 1922. £50-80
249. A pair of Chinese Baluster TEMPLE VASES. 4'2" high.
250. An Imari Punch Bowl, 10" dia. £70-90
251. A Capo di Monte FIGURE of girl on bench. £20-30
252. A pair of Continental FIGURAL TABLELAMPS. £80-120
253. A Meiji period Imari lobed circular CHARGER, enamelled and gilt in the Basket Pattern. 15" dia. Illustrated on front cover. £200-300
254. An extensive Tuscan 'Rondeley' pattern Tea, Coffee and Dinner Service. £100-150
255. A Foley purple floral painted TEA SERVICE, 10 plates. £80-120
256. Victorian Teaware.
257. Rinser Bowl, Vase and Glasses.
258. Miles Mason Teabowl, Saucer and 2 similar Wedgwood Plates. (4) £20-30
259. Two 19thC copper lustre JUGS and GOBLET.
260. Three Villeroy & Boch blue and white Hors deuvre FAN DISHES. £20-30
261. Spode Bowl, Moustache Cup and Saucer, etc.
262. A Victorian Staffordshire purple lustre TEA SERVICE. £30-50
263. Three Victorian JUGS.
264. A Victorian floral WASHBOWL and 2 soap dishes.
265. A Wedgwood butterfly lustre BOWL. (AF)
266. Spode Meatplate, moulded Jug and pair of figures. (All AF)
267. A Mintons turquoise and gilt bodied part TEA SERVICE. £80-120
268. A pair of Mason's ironstone mandarin design BOWLS. £50-80
269. A 1920's gilt pink WALL PLAQUE, 17" dia. £30-40
270. A pair of 19thC Meissen floral CUPS and SAUCERS. £40-60
271. Victorian purple lustreware, cups and saucers. £20-40
272. Blue and white Plates, etc.
273. A copper lustre helmet shaped JUG with central panel of flowers, 6". £20-30
274. A similar lot decorated polychrome flowers in relief, 4³/₄". £20-40
275. A tapering copper lustre JUG with mask spout decorated flowers in relief, 7¹/₄". £30-50
276. A 19thC copper lustre JUG with central waisted panel of polychrome figures, 6¹/₂". £30-50
277. A copper lustre JUG decorated central panel of flowers in relief, 6¹/₂". £20-40
278. A 19thC helmet shaped copper lustre JUG with scroll handle, 6¹/₂". £20-40
279. A similar lot with central panel of green, 6¹/₄". £20-30
280. A similar lot with panel of blue, 5³/₄". £20-30
281. A baluster copper lustre JUG decorated with flowers in relief, 7". £20-30

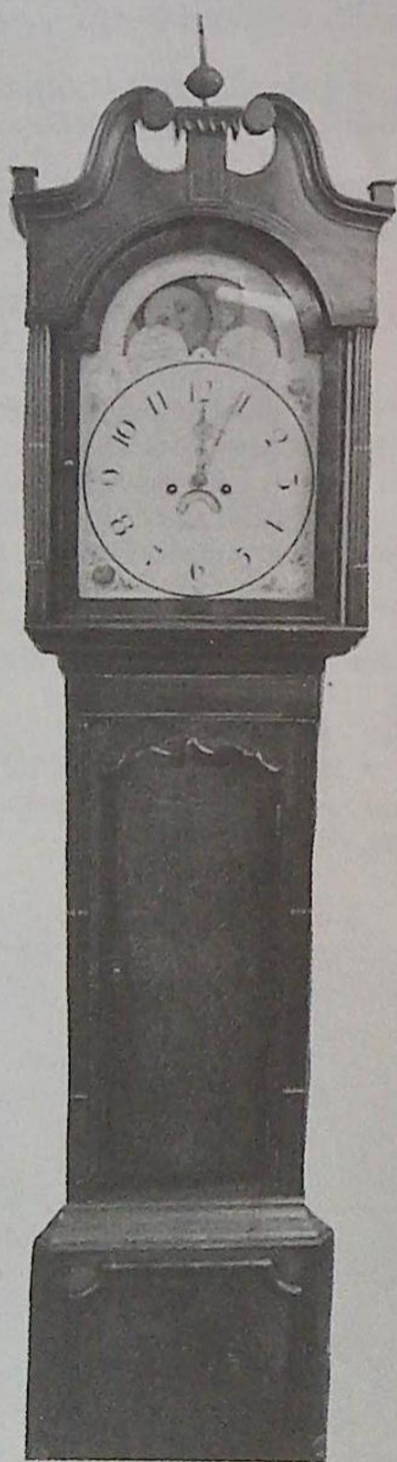
282. A Victorian moulded stoneware INKWELL. £20-30

283. A Prattware transfer printed PLATE.

284. A Victorian lilac ground floral JUG and BOWL and TRINKET SET. £40-60

285. An early Victorian Staffordshire TOBY JUG depicting a seated John Bull. 10" high. £60-90

286-300. Spare Lots.



Lot 304

CLOCKS

301. A George III mahogany cross-banded oak LONGCASE CLOCK, the swan neck hood having cluster column pillars, the design continuing through the trunk with full length shaped top door, fielded panel base, 8-day movement striking on a bell, landscaped moon roller to arch, red and white rose painted spandrels, seconds ring and date crescent. Maker Walker. 7' high. *Illustrated.* £1800-2500

302. An oak Model of a Longcase Clock.

303. An Edwardian string inlaid mahogany LANCET CLOCK with gilt brass handles and feet, silvered silent/strike and chapter rings, 8 day 1/4 striking movement. 13" high. £150-250

304. A George III mahogany LONG-CASE CLOCK with swan-neck pillared hood, candytwist inset trunk with moulded door, panelled base with shaped apron and splay feet, the brass dial having Tempus Fugit rondel to arch, Roman numerals to chapter ring, seconds and date rings, applied cast spandrels, and inscription 'BUTTON, WAKEFIELD', 8-day movement striking on a bell. 7'6" high. *Illustrated.* £2000-3000

305. A Victorian polished slate 8-day MANTEL CLOCK. £50-80

306. A 1930's mahogany WALL CLOCK. £50-80

307-9. Spare Lots.

SILVER & PLATEDWARE

310. An electroplate 4 bottle CRUET. £30-40

311. An electroplate 3 bottle DECANTER STAND.

312. An electroplate MUFFIN DISH with beaded rim. £35-50

313. An electroplate KEDGEREE SERVER with ivory handle. £80-120

314. An electroplate FISH PLATTER with sauceboat. £60-80

315. An electroplate 3 piece TEASET. £80-120

316. A cut crystal BISCUIT BARREL with an electroplate cover and handle. £30-50

317. A Victorian cutlery BASKET and quantity of bone handled knives. £30-40

318. An electroplate oval BOWL on a collet foot. 10". £20-30

319. A Victorian silver baluster TANKARD embossed floral trophies in C scroll cartouches, double scroll acanthus handle. Maker HL. London 1857. 5". 10 1/2 oz. *Illustrated.* £180-250

320. A George VI silver SALVER with gadrooned piecrust rim, on 4 ball and claw feet, presentation inscription. Birmingham 1947. 8" dia. 13 1/2 oz. £120-180

321. A Victorian silver curved rectangular HIP FLASK inscribed motto 'Aye Ready'. Maker CC. Birmingham 1897. 7 1/2 oz. £70-100



Lots 319, 322 and 341

322. A Victorian melon shaped chased silver TEAPOT with scroll handle and 4 scroll feet. Maker WH. London 1850. 7" high. 22oz. *Illustrated*. £220-280

323. A set of 6 Edwardian beaded old English COFFEE SPOONS and TONGS. Maker JR. Sheffield 1910. £20-30

324. A set of 6 George V rat tail COFFEE SPOONS. Birmingham 1919. £20-30

325. A set of 6 Tiffany's sterling silver shell pattern TEASPOONS. £40-60

326. A pair of Victorian silver SALT SPOONS with twisted stems. London 1898. £15-25

327. Assorted silver FLATWARE (7). £15-25

328. A Victorian silver fiddle pattern SIFTER SPOON with bright cut stem and floral embossed bowl. Maker Edward Edwards, London 1851. £25-35

329. A cased Victorian silver 3 piece CHRISTENING SET with tulip knopped mother of pearl handles. Maker George Unite. Birmingham 1853. £80-120

330. A pair of Dutch silver APOSTLE SPOONS, cased. £80-120

331. Two George V silver circular POWDER BOXES, one raised on 3 cabriole legs, having tortoiseshell covers, inset with piquet bows and flora. London 1919. £180-250

332. A small silver TODDY FLASK. Chester assay. £15-25

333. A Victorian silver TROWEL with acanthus carved ivory handle and Wesleyan inscription. Maker RH Sheffield 1873. £80-120

334. A cased pair of electroplate bone handled FISH SERVERS.

335. A Victorian silver MOAT SPOON and 2 pairs Georgian silver SUGAR TONGS.

336. Two sets of 6 BUTTER KNIVES and a CHRISTENING SET, all cased. (3) £30-50

337. A set of 6 silver TEASPOONS, other silver and plated flatware, sucrere and jug. £30-50

338. A 1953 British Hallmarks set of 6 rat-tail COFFEE SPOONS.

339. A Continental silver-gilt PIPE INHALER. £20-30

340. A Vietnamese serpent embossed silver SNUFF BOAT. £30-40

341. A pair of George V silver CANDELTICKS, Sheffield 1911. 12" high. *Illustrated*. £300-400

342. A Maples Oak CANTEEN of Old English plated cutlery, 6 plate setting. £120-180

343. Modern silver Whisky and Brandy Decanter LABELS.

344. A cut crystal OIL BOTTLE with silver neck. Birmingham assay. £25-40

345. A pair of plated SALTS, cased. £20-30

346. A pair of bright-cut SUGAR TONGS. Maker Peter, Anne & Wm Bateman. London 1801.

347. A bakelite INKSTAND with a silver top glass well. Birmingham assay. £50-80

348. An Edwardian silver 7 bar TOASTRACK. Maker James Dixon & Sons. Sheffield 1902. 5³/₄ oz. £60-90

349. A Victorian silver circular Bachelor's TEAPOT with ebonised double scroll handle, on 3 feet. Maker George Unite. London 1899. 8 oz all in. £70-100

350. An Edwardian silver CREAM JUG with double scroll handle. London 1902. 2³/₄ oz. (AF) £25-45

351. A Victorian 2 piece CARVERY SET with silver mounted twist ivory handles. £30-40

352. A George IV silver old English BASTING SPOON. Maker HH. London 1817. £35-50

353. A George III silver LADLE with Onslow knop and shell bowl. Maker R*. London 1768. 4 oz. £120-180

354. A pair of Victorian silver KNIFE RESTS. Maker O&B. Birmingham 1855. £30-50

355. A set of 6 Victorian silver Old English DESSERT FORKS. Maker CS. London 1844. 8 oz. £60-90

356. A set of 6 George III silver Old English TABLE FORKS. Makers Wm Eley and Wm Fearn. London 1802. 13¹/₂ oz. £120-150

357. A harlequin set of 6 Georgian Old English thread DESSERT FORKS. 8 oz. £40-60

358. Three George IV silver Kings pattern DESSERT FORKS. London 1825. 5¹/₂ oz. £25-35

359-70. Spare Lots.

NETSUKE

371. A signed Japanese ivory NETSUKE portrayal of a court treasurer standing in fine decorated hooded kimono holding some gold and a gourd. £50-80

372. A signed Japanese ivory NETSUKE portrayal of a short section of bamboo and a snail feeding. £50-80



Selection of Lots from 395 – 403



Lot 67



Sample of Lots 194 – 199



Lot 542



675



Lot 550

373. A signed Japanese ivory NET-SUKE a portrayal of an infant guarding his rice bowl from his pet rat. £60-90

374. A signed Japanese ivory NET-SUKE portrayal of an immortal, hunch-backed resting upon a staff with full flowing kimono. £60-90

375. A signed Japanese three case fruitwood INRO, each side bearing a dragonfly in high relief carving and corded in blue silk with a small ivory ojime bead and mounted with a fruitwood netsuke of a naked geisha in provocative pose. £100-150

376. A signed Japanese fruitwood NETSUKE portrayal of a mythological Baku, the 'eater of bad dreams', inlaid eyes. £30-50

377. A signed Japanese blackwood NETSUKE portrayal of a mythological Kappa, climbing over rocks. £40-60

378. A signed Japanese ivory NET-SUKE portrayal of a Geisha. £60-80

379. A signed Japanese ivory NET-SUKE portrayal of a youth in fine kimono seated holding his rice bowl upon his shoulder. £70-90

380. A Japanese ivory NETSUKE portrayal of a farm labourer holding a large bamboo pole. £70-90

381. A signed Japanese ivory TONKOTSU, (a smoking pipe case), its main body decorated in heavy raised carving to depict a dragon hiding within its own smoke clouds, its hardwood ferrule corded and terminated with ivory beads. £80-100

382-90. Spare Lots.

JEWELLERY, WATCHES & BIJOUTERIE

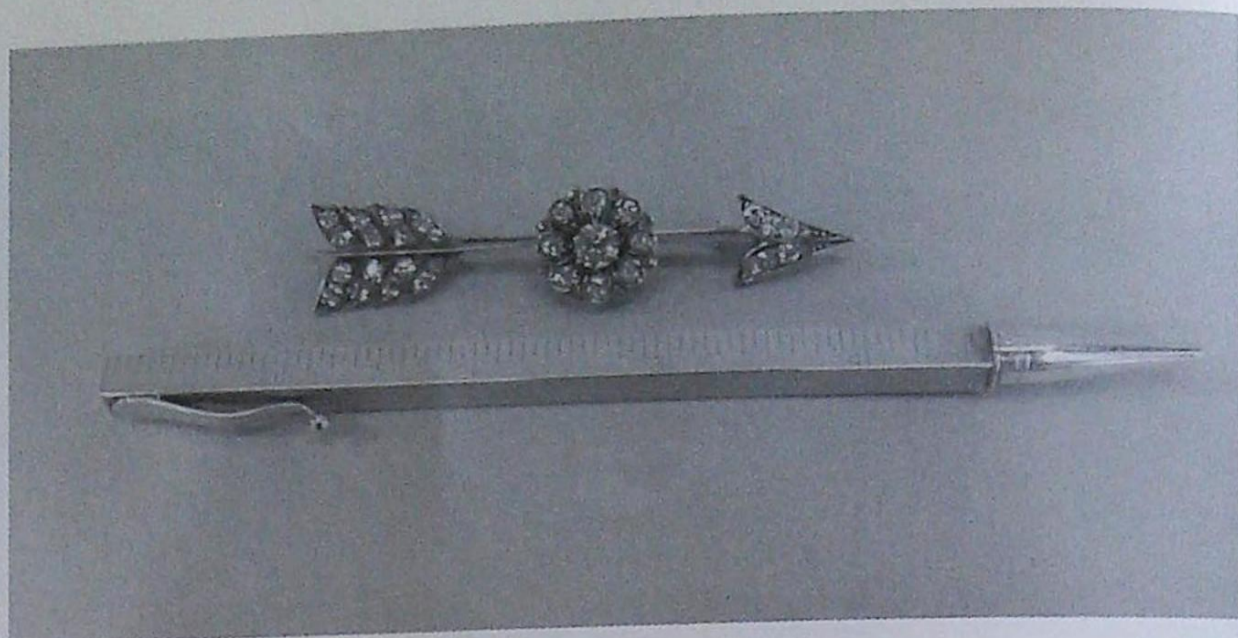
391. An early 19thC gold 'REGARD' RING. £180-250

392. An 18ct gold MARQUISE RING set with ruby and diamonds. £600-800

393. A Tiffany & Co engine turned 14k gold PROPELLING PENCIL extending in 3 square sections to form a 12" rule. Initialled AW. 44g. *Illustrated.* £150-250

394. An antique diamond set Cupid's ARROW BROOCH. *Illustrated.* £900-1200

395. A Victorian 18ct gold 3 stone RING set diamond and 2 rubies. Birmingham 1886. £120-180



Lots 393 and 394

396. A 9ct gold 5 stone RING set with 4 diamonds and ruby. £300-400

397. An Art Nouveau design PENDANT set with amethysts and seed pearls. £125-175

398. An 18ct white gold RING set with a large oval andalusite and c.75pts diamonds. £450-575

399. An 18ct gold RING set with 3 rubies and 2 brilliant cut diamonds. £425-550

400. A diamond CROSSOVER RING with 2 stones of c.2.8cts total and diamond shoulders. £5200-5800

401. A platinum RING set with single opal. £220-350

402. An Art Deco platinum and diamond COCKTAIL RING of c.1.25cts. £800-1100

403. An 18ct and platinum 3 stone RING set with an oblong emerald and 60pts diamonds. £900-1200

404. A Victorian gold oval DRESS RING set with an enamel panel of a portrait of a lady. £150-200

405. A Victorian 15ct gold MARQUISE BROOCH set with 4 oblong emeralds and 4 old cut diamonds. £500-700

406. An 18ct and platinum RING set with 5 graduated diamonds. £800-1200

407. Costume Jewellery (2 bags)

408. Costume Jewellery (2 bags).

409. Gold and other RINGS (2 bags)

410. Dupont Lighter and Earrings.

411. A 9ct rose gold RING set with single pearl. £25-35

412. A 9ct rose gold GYPSY RING. £25-35

413. A 9ct rose gold 3 stone marquise RING. £40-60

414. A 9ct gold RING set with large blue topaz. £25-35

415. A DRESS RING set with pearls and large cabachon amethyst. £150-200

416. A Victorian gold mounted portrait CAMEO BROOCH. £75-100

417. Two 9ct gold Child's HAIR GRIPS. £25-35

418. A Venetian glass BEAD NECKLACE.

419. 2 gold STOCK PINS.

420. Costume Jewellery.

421. Costume Jewellery.

422. An ivory Rose PENDANT and 3 jet BROOCHES. £15-25

423. A 9ct gold STOCK PIN depicting a fox's head with ruby eyes. £25-40

424. An Asprey silver FOB with fox's head medallion, flat curb chain and horseshoe. £20-30

425. A 9ct rose gold BAR BROOCH with an elephant pendant carved in coral. £25-40

426. A 9ct gold PENDANT medallion, 1889 Crown and 3 pieces costume jewellery. £15-25

427. An Edwardian 15ct gold BROOCH set with pearls and turquoise. £150-200

428. A gold and platinum 3 stone RING set with 2 diamonds and ruby. £100-150

429. Two gold Locketts. £15-25
430. Four gold signet rings.
431. 9ct. gold St Christopher and octagonal locket.
432. Two ladies 9ct. gold bracelet watches.
433. Ladies 14ct gold Eterna WATCH on 14ct snake link bracelet.
434. A 9ct gold diamond SOLITAIRE RING. £20-40
435. A 14ct gold Gent's WRISTWATCH and a gold plated Gent's FOB WATCH. £20-40
436. A 9ct gold CRUCIFIX set with coral and rose cut diamonds. £85-100
437. A 9ct gold BAR BROOCH set with garnet and seed pearls. £15-25
438. A Victorian 15ct gold RING set with 8 seed pearls. £55-75
439. A knot BAR BROOCH set with turquoise and 2 seed pearls. £20-40
440. A 9ct gold BAR BROOCH set with an oval sapphire. £25-45
441. A 9ct gold BAR BROOCH set with a small diamond. £35-45
442. A 9ct gold CAMEO RING. £35-50
443. A 9ct rose gold hollow curb BRACELET, 14.5g. £50-75
444. A gold round link BRACELET, 18g. £75-100
445. A 9ct gold ruby and diamond CLUSTER RING. £65-85
446. A 9ct gold Spider's Web PENDANT and chain. £15-25
447. An 18ct gold CRUCIFIX. £20-30
448. A 9ct gold Star PENDANT set with seed pearls on chain. £35-45
449. A 9ct gold emerald and diamond CLUSTER RING. £60-85
450. A gold LEAF BROOCH set with emeralds. Stamped 750. £75-100
451. A 9ct gold graduated COLLANET and matching earrings. 34.5g £80-130
452. A 15ct fancy rope GUARD CHAIN, 28g. £140-170
453. An 18ct gold marquise RING set with 5 Victorian cut diamonds. £80-120
454. A Victorian 15ct gold MEMORIAL BROOCH with single pearl. £30-40

455. A Victorian gold RING set with 5 rose cut diamonds. £50-80
456. A Victorian 15ct gold MEMORIAL STOCK PIN. £18-25
457. C.13 gold, silver and other RINGS.
458. A Vidor marcasite lady's WRISTWATCH.
459. A Victorian silver FOB WATCH. £20-30
460. A gold BULLET PENCIL on chain and hoop. £120-150
461. A Waltham Art Deco lady's WRISTWATCH. £140-180
462. A 9ct gold curb and padlock charm BRACELET. £60-80
463. A 9ct gold tie CLIP. £15-25
464. A Figaro BRACELET with T Bar. £20-30
465. A 9ct gold garnet set BROOCH. £35-45
466. A 9ct gold engraved BANGLE. £80-100
467. A 24" 9ct gold chain and St Christopher. £30-40
468. A pair 9ct. gold EARRINGS. £28-35
469. A 9ct gold fancy NECKLACE. £120-150
470. A 9ct gold flat curb NECKLACE. £110-140
471. A 9ct gold DRESS RING set with an oval portrait CAMEO. £40-60
472. An early Victorian circular gold HAIR LOCKET with engine turned decoration and cast border. £30-40
473. A ladies antique gold belcher CHAIN, 16". £35-40
474. A Victorian silver POCKET WATCH. £30-40
475. A Victorian silver verge POCKET WATCH by L Abraham, Wellington No 119. £80-120
476. An Elgin POCKET WATCH. £40-60
477. Three Victorian POCKETWATCHES included plated Chronograph. £25-40
478. A Victorian silver HUNTER POCKET WATCH with fusee movement. London 1871. £60-80

479. A Victorian silver HALF-HUNTER POCKET WATCH. £30-50
480. Old gold RINGS including a 5-stone opal example. £40-60
481. A multi-gem set 9 stone LINEAR BROOCH. £50-70
- 482-90. Spare Lots.

COINS & BANKNOTES

491. An 1888 1/-
492. An 1899 1/-
493. A 15thC French coin, 1901 Austrian Corona and a 1stC Roman coin.
494. Florins, Half Crowns and other denominations.
495. A 1907 gold SOVEREIGN.
496. A 1912 gold SOVEREIGN.
497. A 1915 gold SOVEREIGN.
498. 4 x Page £20 Notes.
499. A 1909 gold SOVEREIGN.
500. Peppiatt 1944 White 5 Note.
501. Lessal 1945 Scottish 5 Note.
502. Peppiatt 10/- Note.
- 503-40. Spare Lots.

GOLDINGS EXPRESS SALE SERVICE

Late entry lots will still be accepted for this sale, a £2 lotting fee and £5 minimum commission per lot will be applied.

PICTURES

541. 19thC. Canadian School. Covered and open wagons being driven through a village within a wooded landscape, OIL ON CANVAS, unsigned. 17¹/₂" x 20³/₄". Gilt framed. £100-200
542. John R Mather (1848-1916). A 2 mast sailing ship at sea, WATER-COLOUR, signed J R Mather. 12¹/₂" x 24", gilt framed. Illustrated. £200-300



Lot 546

546. Victoriano Codina y Langlin (1844-1911). Full length portrait of a Spanish guitarist in traditional costume, WATERCOLOUR, signed V: Codina-Langlin 1882, 14" x 8 1/2", gilt mount and frame. *Illustrated.* £400-600

547. G Hepper. A seated terrier with a flagon and bowl, signed, OIL ON CANVAS. 21" x 17". *Illustrated.* £500-700

548. A 19thC CLOCK PICTURE with movement by Dupont, Paris, Village scene with horse and trap, oil on canvas. 18" x 22". *Illustrated.* £400-600

549. Sarah Wilhelmina Wenzler (fl.1859-1870) American. Still Life of pears and peaches in a shallow dish, OIL ON CANVAS. 9" x 13 1/2", signed S W Wenzler, dated 1862, moulded gilt plaster frame. Painted on the reverse of the canvas 'Given by Miss Peabody to Mrs Carr having belonged to Nathaniel Hawthorne. *Illustrated on rear cover.* £1200-1800

553-5. Similar lots.

556. Wellingtons First Encounter with the French. £25-40

557. A copper ENGRAVING by Bordell of a view near Sudbury in Suffolk. £35-45

558. Coloured Prints of Old Masters.

559. Colour Engravings of Stamford and Kirby Hall. (3)

560. A 19thC Portrait of a male Cellist, OIL ON CANVAS, inscribed HLB to VHB 1894. 14" x 10". £100/150

561. A 19thC Portrait of a Physician in a laboratory, OIL ON CANVAS. 16" x 12". £100-150

562. After Orme. Fox Hunting 1808, plates 2 and 3 framed. £60-90

543. John R Mather (1848-1916). A 3 mast sailing ship at sea, unsigned. 9 1/2" x 2", gilt framed. £150-200

545. Fred R Fitzgerald. Mountainous landscape with lake in the foreground, WATERCOLOUR, signed. 15" x 22". £300-400



Lot 547



Lot 548

550. F. W. Scarborough (FL.1896-1939) Fishing Boats in the harbour, watercolour, signed. 13" x 20". £1200-1500

551. A similar lot

552. F. W. Scarborough (FL.1896-1939) Fishing Boats at the shore, watercolour, signed. 6 1/2" x 9 1/2". £300-500

563. 19th/20thC English School. Gathering the hay, watercolour, initialled C.A., 8" x 12", gilt mount and frame. £90-120

564. A Tynwell Church Engraving. £40-50

565. Gilt framed Print of a lady.

566. A 19thC gilt framed needlework PICTURE of a Court Scene. £180-250

567. 2 Gilt framed Engravings of young girls. £20-40

568. Elizabeth Sharp. 'The Belvoir' out in the Vale, limited edition print No 285/850.

569. Victorian watercolour of a standing infant girl in a blue velvet dress, indistinct monogram, 14" x 9". £350-450

570. A pair of framed engravings of Mrs Cosway and Mrs Damer. £15-25

571. Douglas Hooper. A cottage in a cove with sailing dinghies, WATERCOLOUR, signed. 9 1/2" x 15 1/2". £100-150

572. Richard Wane (1852-1904). Wooded landscape with ducks in the foreground, WATERCOLOUR, signed R Wane 18*2. 9 1/2" x 13 1/2" (foxed). £80-120

573. Michael N Oxerham. Birds of Prey, pair of Watercolours, signed. 6 1/2" x 4 1/2". £120-150

574. James C Middleton. Rocky Cove, Watercolour, signed in pencil. 14" x 19". £80-120

575. E Gantry. Landscape, Watercolour, signed. 7" x 10". £45-60

576. Ralstan Gudgeon RWS. Birds, pair of Watercolours and gouache, signed. 9 1/2" x 6". £80-120

577. L K Welch (Attrib). Farmyard Scene, watercolour. 10" x 14". £180-250

578. Cottage oil painting and similar landscape.

579. A pair of Victorian velvet PICTURES of young boys and girls in landscape, oak framed. £40-60

580. After Alken. The First Steeplechase on record, coloured engravings by J. Harris. Plates I, III & IV. £80-120

581. A 19thC OIL ON COPPER portrait of a lady. £80-120

582. A pair of 19thC Continental Landscape Oils in oval frames. 5" x 6" £80-120

583. A pair of circular mahogany FRAMES, needlework picture and lithograph of Cromer. £20-40

584. 19thC. English School. Head and shoulders PORTRAIT of a gentleman. £40-60

585. James Ward RA (1769-1809). A Pair of CARICATURE SKETCHES. Pencil on card. 6" x 4" Framed and mounted. £80-120

586. A pair of religious Oil Paintings on metal and wood panels.

587-600. Spare lots.

FURNITURE

601. A Persian red ground RUG with floral central medallion and border. *Illustrated.* 7' x 4'6". £200-300



Lot 601

602. A small Persian PRAYER RUG.

603. A George III Mahogany TEA TABLE with rectangular folding top and moulded square legs. 3' wide. £300-500

604. A 1920's ball turned CORNER CHAIR with rush seat. £40-60

605. A Victorian mahogany TEA TABLE with rectangular folding top, carved frieze and baluster legs. 37 1/2" wide. £300-400

606. A brown rexine drop arm SOFA.

607. A 19thC. mahogany SIDE TABLE with drawer, pressed and brass handles and square legs. 36" x 20" £150-250

608. An Edwardian walnut SUTHERLAND TABLE with canted rectangular crossbanded top. 28" x 24". £150-250

609. A Victorian bobbin turned drop arm SOFA. £80-120

610. A late Victorian flamed mahogany CHEST of 2 short and 2 long drawers, brass loop handles and skirted base. 42" wide. £150-250

611. A George II oak CHEST of 2 short and 3 long graduated drawers, with moulded top, brass swan-neck handles and bracket feet. 40" wide, 40" high. £400-600

612. An Edwardian beech ROCKING CHAIR. £80-100

613. An Edwardian mahogany Kneehole DESK with gallery and 4 surface drawers. 3 part leather top. 4' x 22". £400-600

614. An Edwardian beech oval DESK CHAIR. £40-60

615. A Victorian walnut CANTERBURY. *Illustrated.* £800-1000



Lot 615

616. A pair of Victorian ARMCHAIRS with turned front legs, upholstered in green sculptured dralon together with a stool. £200-300

617. A Sheraton period mahogany PEMBROKE TABLE with flamed and satinwood crossbanded top, frieze drawer. £700-900

618. A George III flamed mahogany TRIPOD TABLE with rectangular tilt top, turned pillar, cabriole legs and spade feet. 24" x 19". £300-400

619. A set of 4 Victorian mahogany balloonback DINING CHAIRS with serpentine drop-in seats and turned legs. £300-400

620. A Victorian walnut SUTHERLAND TABLE with quarter veneered burr top and turned and carved base on ceramic castors. 2' x 2'6". *Illustrated.* £500-700



Lot 620

621. An Edwardian mahogany and marquetry low SALON CHAIR with gallery back and open arms. £150-250

622. A wavy lathback CHILD'S CHAIR and a Victorian 'bamboo' carved gateback CHAIR. (2) £50-70

623. An Edwardian mahogany CARD TABLE with carved and moulded D-shape folding top, on 4 cabriole legs terminating in ball and claw feet. 32" wide. £250-400

624. A Regency painted oak folding LIBRARY CHAIR/STEPS. £100-150

625. A Victorian Tonbridgeware and parquetry CABINET in the Oriental taste. 27" wide, 31" high, 11" deep. (AF) £150-250

626. A William IV mahogany OPEN ARMCHAIR with turned arm supports and legs, brass cup castors and gold button dralon upholstery. £150-250

627. A Victorian updated ARMCHAIR with turned front legs. £80-120

628. An 18thC Oak dome top SEA CHEST with wrought iron bracing and handles. £150-250

629. A 19thC Danish walnut CHEST of 5 graduated drawers. 39" wide, 39" high. (AF) £150-250

630. A Georgian oak TRIPOD TABLE with circular top. 35" dia. £80-120

631. A 16thC oak SWORD CHEST with 2 plank top and floral carved front. 40" wide, 23" high. *Illustrated.* £400-600

632. An early 18thC oak SIDE TABLE with moulded top, frieze drawer, turned legs and pad feet. 32" x 21". £400-600

633. A Victorian upholstered CHAISE LONGUE with loose green covers and turned walnut legs. £120-180

634. A Sheraton style mahogany bowfront DRESSING or WRITING TABLE with 5 drawers, square taper legs and spade feet. 39" wide. £150-250

635. A rectangular mahogany TABLE MIRROR. £40-60

636. An Edwardian mahogany TUB CHAIR with carved splat open arms. £50-80



Lot 645

637. An Arts & Crafts floral painted 3 fold SCREEN. £50-70

638. A Victorian pitch pine SERVING TABLE with a 2" butchers block top, 2 drawers and taper turned legs. 7' wide, 2'8" deep. £300-500

639. A set of 3 - 1930's wrought iron framed wicker PATIO CHAIRS with rolled arms. £180-250

640. A 1920's oak Student's BUREAU BOOKCASE. £120-150

641. A walnut and mahogany REVOLVING BOOKCASE. 3'8" high, 2' square. £600-800

642. An Edwardian mahogany TOWEL RAIL with splay legs. £50-80

643. A 1920's oak OCCASIONAL TABLE with folding top, undershelf and ball turned legs and stretchers. £80-120

644. A William IV mahogany CARVER CHAIR with barback and scroll arms. £250-350

645. An elegant pair of Victorian mahogany OPEN ARMCHAIRS with button leather spoonbacks, serpentine seats and cabriole legs. *Illustrated.* £1500-2000

646. A Victorian string inlaid mahogany SIDE CABINET with 2 drawers over single drawer, on bracket feet. 16" wide, 40" high, 20" deep. £250-350



Lot 631

647. A Victorian walnut SUTHERLAND TABLE with moulded oval top, 2 drawers, 6 turned legs and low level stretcher. 2'7" x 2'5". £350-450

648. A set of 3 (including carver) early 19thC mahogany DINING CHAIRS in the Hepplewhite manner with pierced vase splats. £150-250

649. A Victorian Pollard Oak SIDE TABLE with 2 drawers with carved handles, part reeded and tapered turned legs. 39" x 24". £250-350

650. A Victorian oak TABLE MIRROR with rectangular canted glass, fluted columns, turned stretcher and scroll feet. 2'6" high. £150-200

651. A Victorian mahogany DINING TABLE on turned legs. 4'10" x 3'3". £300-400

652. A 19thC Japanese black lacquer CABINET with chinoiserie panels to the 2 doors and drawer frontage. 22" high. £50-80

653. An Edwardian mahogany MUSIC CHEST with 4 drawers, brass handles and shaped legs. £50-80

654. A Victorian stained pine traytop WASHSTAND. £50-70

655. A Victorian stained pine traytop WASHSTAND with undershelf. £60-80

656. An Edwardian mahogany OCCASIONAL TABLE with shaped top revealing a fitted interior converting to a lady's WRITING TABLE with cabriole legs and undershelf. £250-400

657. A George III mahogany BACHELOR'S CHEST with moulded caddy top, brushing slide over 3 doors, oval pressed brass handles and bracket feet. 33" wide. £600-800

658. A Victorian flamed mahogany BUREAU with fall flap, lopers, 3 graduated drawers, knob handles and turned feet 36" wide. £200-400

659. A Victorian flamed mahogany CHEST of 3 drawers, moulded top, knob handles and turned feet. 41" wide. £150-250

660. A Victorian grain painted pine WALL CUPBOARD with single door. £50-80

661. A brassbound mahogany CHEST of 8 drawers with campaign handles, 20" wide, 3'6" high. £150-250

662. A Georgian oak CHEST of 2 short and 3 long graduated drawers, knob handles and bracket feet. 39" wide. £300-400



Lot 668

663. A period oak REFECTORY TABLE on 2 bulbous legs. £1800-2500

664. A Victorian mahogany TABLE MIRROR with rectangular glass, scroll supports, shaped base and bun feet. 28" high. £80-120

665. A 19thC walnut overstrung UPRIGHT PIANO, retailer Henry Rogers, Sunderland.

666. A 19thC. Beidermier bleached walnut WRITING DESK with secretaire drawer over a cylinder top, drawer and cupboard base. 43" wide. £400-600

667. An Art Nouveau brass and iron BEDSTEAD.

668. A Victorian flamed mahogany OFFICE CABINET with moulded cornice, the upper part having 2 panel doors revealing press drawers, the similar doors to base revealing 2 fitted drawers, on turned legs. 4' wide, 22" deep, 6'6" high. *Illustrated.* £400-600

669. A Victorian flamed mahogany bowfront CHEST of 2 short and 3 long graduated drawers with knob handles and inset candytwist pillars. 42" wide. £180-250

670. Two Victorian iron SINGLE BEDS.

671. A Victorian brass and white painted iron SINGLE BED. £25-50

672. An Art Nouveau walnut SIDEBOARD with arched and carved mirrorback, 2 drawers overs, 2 doors and square tapered legs. 4'4" wide. £400-600

673. A George III mahogany CABINET, the upper part having 2 glazed doors, centre part of 2 drawers, on a skirted base having 2 doors over 4 deep drawers, 25" wide, 15" deep, 7'8" high. Formerly of Polebrook Manor. *Illustrated.* £1000-1500

674. A period oak CUPBOARD with 2 full length panelled doors. 4' wide, 22" deep, 5'7" high. £400-600

675. A William & Mary oak BUREAU the fall flap concealing pigeon holes, doors and well recess, lopers, 2 short and 2 long graduated drawers with later knob handles and turned feet. 36" wide. *Illustrated* £1000-1500

676. A Maples oak CHEST of 8 drawers with drop handles and skirted base. 42" wide. £150-250

677. A Victorian mahogany DISPLAY CABINET with moulded cornice, 2 astragal glazed doors with glass shelves and bevel mirrored back, over a 3 door base. 8'2" high, 5' wide. £900-1200

678. A 19thC Flemish carved oak SIDEBOARD with split level mirror-back, 2 drawers and 2 door base. 4'6" wide. £300-400

679. An overstrung UPRIGHT PIANO by Leonhardt, Berlin. £60-80

680. A 1920's barleytwist oak SIDEBOARD with mirror back. 4' wide. £150-250

681. An Edwardian mahogany china DISPLAY CABINET with 2 astragal glazed doors, on splay legs. 3' wide, 5'8" high. £400-600

682. A Victorian mahogany break-front SIDEBOARD with 4 door cupboard base. 5'6" wide. £400-600

683. A Geo. mahogany crossbanded oak CHEST of 2 short and 3 long graduated drawers, brass loop handles and bracket feet. 48" wide. £200-400

684. A Victorian flamed mahogany TABLE MIRROR with rectangular glass, 5 scroll supports and moulded base. 2' high. £80-120

685. A Victorian mahogany TABLE MIRROR with oval glass, carved supports and shaped base with lift flap. 31" high. £80-120

686. A Georgian Oak BUREAU with fall flap, concealing pigeon holes and drawers, lopers, 2 short and 2 long drawers and bracket feet 42" wide.

687. An Edwardian string inlaid mahogany TABLE MIRROR with oval bevel glass, shaped supports, stretcher and legs. 28" high 34" wide. £100-150

END of SALE

CONDITIONS OF SALE

1. These Conditions together with any Notices to Purchasers are the only terms and conditions subject to which Golding Young & Co. ("the Auctioneers") as agents for the Vendor will sell goods to a purchaser ("the Bidder") and all other conditions, whether express, or implied at common law or by statute as are capable of lawful exclusion are hereby excluded.
2. The highest bidder shall be the buyer. The Auctioneers reserve the right of regulating the biddings; of rejecting any bid; and of bidding for, withdrawing, consolidating, dividing or altering the order of lots.
3. The purchase money for each lot with the usual commission of 10% plus VAT at the current rate shall be paid at the fall of the hammer (if required). Each lot at the fall of the hammer shall be at the sole risk and expense of the buyer, and shall be paid for and removed immediately after the conclusion of the sale, but no lot shall become the property of the buyer, or be removable until paid for, and if taken away in contravention of these conditions without an order for removal signed by the Auctioneers, they shall have power to seize the same by their servants or agents, or otherwise, or the Auctioneers may recover either the lot sold or the price thereof (at their option) by action at law.
4. No contra account of any description whatever will be allowed to the buyer as a set off, and payment for each Lot shall be made to the Auctioneers or their clerk only, and a buyer paying by cheque must give satisfactory references.
5. For all purposes of this sale the Clerk of the Auctioneers shall be deemed to be the agent of both seller and buyer.
6. A bidder shall not be allowed to retract his bidding after the fall of the hammer, and he shall give up his full name and address if required. The Auctioneers will not recognise the transfer of any lot from one buyer to another, nor make any alteration in the sale book in respect thereof.
7. The Auctioneers are acting only as agents, and give no personal warranty as to the condition, quality or authenticity of any chattels offered for Auction. Any catalogue description is given merely as guide to purchasers, any description can be changed from the rostrum before the lot is sold. If a purchaser buys without previous inspection he will do so at his own risk.
8. Notwithstanding any other terms in these Conditions, if within 7 days of the Sale a purchaser gives notice in writing that a lot is a deliberate forgery, with supporting factual evidence, the Auctioneers may rescind the transaction. The burden of factual proof lies with purchaser, mere opinions will not satisfy. This benefit is not assignable.
9. If any buyer neglect or refuse to comply with the above conditions or any of them, his deposit money (if any) shall be forfeited, and the lot uncleared may, at the option of the Auctioneers, be resold without notice by public auction or private treaty, and any loss occasioned by such re-sale together with all expenses attendant thereon, or arising under these conditions shall be paid for by the defaulter and be recoverable as and for liquidated damages. This condition is however without prejudice to the right of the Auctioneers to enforce the contract made at this sale if they think fit.
10. Any Notes for Purchasers and Catalogue Glossaries will be construed as Conditions of Sale.
11. The Auctioneers shall be the sole Arbitrators in all matters of dispute relating to those conditions both as between the seller and the buyer and between the several bidders and buyers and their determination on all matters shall be final and binding on all parties concerned.

Auctioneers: C. Robin Hall FRICS FAAV & Colin R. Young FNAVA

MAILING REGISTER SUBSCRIPTION FORM

If you wish to receive our Auction catalogues and detail sheets for one year, please complete and return this form.

1. Antiques & Fine Art Auctions

There are currently planned 5 Sales per annum to include:-

Furniture, Paintings, Prints, Glass, Ceramics, Toys, Silver, Clocks, Watches, Jewellery, Metalware, Stamps, Coins, Books, Arms & Militaria, Bygones, Barometers, Collectors Items, etc.

2. Commercial Auctions

Frequency of Sales determined by instructions from The High and County Courts, Liquidators and Receivers.

Office Equipment, Catering Equipment, Engineering Equipment, Industrial Plant & Machinery, Retail/Wholesale Shop Stock and Fittings, Vehicles; – Assets of a variety of Businesses.

3. Specific Requirements

If you specialise in one area of the above categories (eg. *Books*) please state this to avoid receiving unwanted catalogues.

.....

| | | |
|-------------------------------|---------------------|-------|
| 1. Antiques & Fine Art. (£10) | £..... | |
| 2. Commercial Auctions. (£5) | £..... | |
| | Fee enclosed £..... | Total |

Name: Mr/Mrs/Miss/Title

Address:

.....

.....

.....

Tel: (.....) Date: Our Ref: *ML

Established 1900

— GOLDINGS —

Chartered Surveyors, Auctioneers, Valuers & Estate Agents
Residential, Commercial, Agricultural, Property Management, Financial Services

45 High Street, Grantham, NG31 6NE

Telephone: 01476 · 590211

PROFESSIONAL SERVICES FOR



RESIDENTIAL

Our established Residential department headed by Chartered Surveyors undertakes sale and valuation of all types of property from Castles to Town Houses; Surveys, Homebuyers Reports, Mortgage, Probate and Insurance Valuations carried out with care attending to individual requirements.



COMMERCIAL

Dealing with the sale and survey of Shops, Offices and Factories. Valuation for Rent Reviews, Lease renewals and negotiations. Rent Arbitration, on behalf of landlord and tenant.

Plant, Machinery & Assets; Sales for Receivers, Liquidators, High Court & County Court. Auction Sales on Site or at The Grantham Auction Rooms for private and public clients alike.



AGRICULTURAL

Our Senior Partner has wide experience in the sale and valuation of Agricultural Properties, conducting Farm Sales and Valuation of Live and Dead Farming Stock for dissolution, Probate and other matters. Together with Rent Reviews, Development Land reports and Annual Stocktaking Valuations.



FINANCIAL SERVICES

Our Experienced Consultant is available to advise on all matters concerning Finance, Mortgages, Insurance, Investment, Planning and Pensions.



PROPERTY MANAGEMENT

Personal service and attention to detail ensures that our management team exploits your investment portfolio whether an Individual Family Home let for a small fee or Office, Factory, Shop or Farm with rent collected and regular inspections made.

Chattels Auctioneer

Colin R. Young FNAVA

Property Management

Mrs. Margaret Pashley

Partners

C. Robin Hall FRICS FAAV

Ian J. Shaw FRICS FNAEA

Financial Service Consultant

John G. Stukins

Residential Sales Manager

Mrs. Jenny Diment FNAEA CPEA

Associated Office: Golding Young & Co. The Grantham Auction Rooms, Old Wharf Road, Grantham, Lincolnshire, NG31 7AA
Telephone: (01476) 565118 Fax: (01476) 561475



Golding Young & Co.
Old Wharf Road, Grantham
Lincolnshire, NG31 7AA
01476 – 565118