

Established 1900
-GOLDINGS-
AUCTIONEERS & VALUERS



Summer 1999
Antiques & Fine Art Auction Catalogue
incorporating the contents of
The Old Hall, Sudbrook, Near Grantham

Established 1900
-GOLDINGS-
AUCTIONEERS & VALUERS

Antiques Valuation Services



Two George Jones Majolica Centers - Sold for £17,000

FREE AUCTION VALUATIONS

Entries now invited for our forthcoming Fine Art and Specialist Sales of

Antique and later Furniture
European and Oriental Pottery, Porcelain and Glass
Oil paintings, Watercolours and Prints
Books and Printed Items
Dolls, Teddy Bears, Die-cast, Tinsplate and other Toys
Silver, Sheffield and Electro Platedwares
Clocks, Watches & Jewellery
Modern Sporting Guns, Antique Arms & Militaria
Collectors' Items

Our valuer Colin Young FNAVA is available for consultation
Every Tuesday 2pm to 6pm in the Saleroom

For appointments at other times contact Marie Scofield on 01476 565118

*For less portable items or large collections we would be pleased to visit your home
without charge or obligation*

Specialists in the preparation of Insurance and Probate Valuations

SUMMER FINE ART SALE 1999

Upon kind instructions from the Toulson Family we are pleased to offer the entire contents of
The Old Hall, Sudbrook, Near Grantham

removed to the saleroom for convenience of sale

Also by order of the Executors of Mrs. E. J. Ghosh (Dec'd), Mr. A. Ridlington (Dec'd), other Estates,
Private Collectors & Individuals and residual contents of several Property Clearances

GOLDING YOUNG & CO. will sell by AUCTION, a catalogued 2 day sale of

Antiques & Fine Art Furniture & Effects

On Wednesday, 9th and Thursday 10th June 1999 at 10 a.m.



Lots 582, 717, 718, 719

Day One:

Lots 1 to 800

Books, Silver, Metalware,
Glass, Ceramics,
Clocks, Jewellery, etc.

Day Two:

Lots 801 to 1350

Pictures, Furniture,
Rugs & Garden Statuary



Lot 814

Viewing:

Monday 7th and Tuesday 2 p.m. - 7 p.m.

Wednesday 9th 9 am - 5 pm (day one lots to 10 am) & Thursday 10th from 9 am

All enquiries 01476 565118 Fax 01476 561475

Golding Young & Co., Old Wharf Road, Grantham, Lincolnshire, NG31 7AA

IMPORTANT NOTES FOR PURCHASERS

1. **PAYMENT:** Must be made in full immediately after the Auction. The following methods of payment are acceptable.
- a) Cash b) Bankers Draft c) Building Society Cheque
 - d) Cheques, accompanied by a valid card.

PAYING BY CHEQUE?

If you are not known to the Auctioneers and wish to pay by cheque above your guarantee card limit **WE WILL RETAIN THE GOODS** until it has been cleared (7 days). There will be **NO EXCEPTIONS** to our policy. To avoid **UNDUE EMBARRASSMENT** for yourself or to our staff please do not ask for preferential treatment. If you wish to clear goods immediately bring a letter from your Bank or a suitable guarantor reference.

2. **BUYERS PREMIUM:** of 12½% + VAT is payable on all lots.
3. **REMOVAL OF PURCHASES:** Goods must be collected as soon as they are paid for, and in the Two Working Days following the sale. If goods are not collected on these days we reserve the right to charge £1 per lot per day thereafter.
4. **COMMISSION BIDS:** If you are unable to attend this or any of our future sales we will be pleased to bid on your behalf. We always purchase at the lowest possible price, subject to other bids and reserves.
- All bids must be handed to the office on an official form. It remains the responsibility of prospective purchasers to contact **GOLDINGS** to confirm whether their bids have been successful.
5. **TELEPHONE BIDS:** There are inherent dangers with this practice, therefore all such arrangements are made entirely at the bidder's risk. Telephone bids will only be accepted if the lower estimate is £500 or above. For lots with a lower estimate below this figure Commission Bids Only will be accepted.
5. **SMOKING:** is not permitted in any part of the Saleroom.
6. **REFRESHMENTS:** will be available Saleday.
7. **ACCOUNT TRANSFERS:** will not be recognised after the sale. If any lots are purchased for another person, this must be declared at the fall of the hammer.
8. **ESTIMATES:** Our Auctioneers will be available during viewing to give guidance on your prospective purchases

GLOSSARY

- a) Generally: 'As Found.' (AF). This term indicates the lot has some damage. Its absence does not indicate that the lot is free of defect. All lots are **SOLD AS SEEN**.
- b) Paintings: 'Signed, initialled, monogrammed' This refers to the present state of the work and is not an attribution.
- c) Books and printed matter: These items are not sold subject to collation and are not returnable once removed from the premises.
- d) Silver & Jewellery: Weights given are approximations given by basic instruments.

DAY ONE

- 1-6. An antique opaque twist WINE GLASS.
7. A Georgian LIQUER GLASS with faceted stem.
8. A Georgian drawn trumpet WINE GLASS.
9. A Georgian RUMMER.
10. A Georgian WINE GLASS.
11. Six Stuart Crystal thistle LIQUER GLASSES.
12. A pair of Victorian Staffordshire miniature poodles with circular gilt bases.
13. Three Victorian Staffordshire miniature standing poodles.
14. A pair of star-cut glass RUMMERS.
15. Four antique conical bowl GLASSES.
16. A Nailsea opaque patterned glass FLASK.
17. A Staffordshire COW CREAMER.
18. A Victorian faceted ALE GLASS
19. A Georgian ALE GLASS with wheel-cut drawn trumpet bowl, air twist stem and dome foot.
20. A treacleware hound mask STIRRUP CUP.
21. A fine Victorian hound mask STIRRUP CUP with yellow bell base and liver sponged decoration.
22. A Weymss ware black and white seated pig, impressed mark. 3³/₄" high.
23. A salt glazed stoneware POT with cover moulded with horse and hounds.
24. A salt glazed stoneware EWER with hound handle and body moulded with game. 6" high.
25. A Victorian Imari pattern JUG with unusual serpent handle, impressed 'ironstone china'. 7".
26. A Delft polychrome INKSTAND.
27. A pair of Victorian Staffordshire miniature sheep.
28. A pair of Victorian Staffordshire FIGURES of recumbent goat and lamb with blue gilt bases.
29. A pair of Staffordshire style recumbent animals.
30. Three Victorian Staffordshire recumbent sheep.
31. Two large 19thC Meissen FIGURES of magpies on naturalistic bases.
32. An early Staffordshire FIGURE GROUP 'The Tithe Pig'.
33. A Staffordshire polychrome TOBY JUG.
34. A Victorian purple moulded EWER decorated with strawberries and purple lustre leaves.
- 35-6. A 19thC Chinese bronze CENSER.
37. A bronze FIGURE of a heavy horse, signed P Gechter 1842. 5" high.
38. A Naples figural LAMP in the form of an owl. 9¹/₂".
39. A cased set of Royal Crown Derby pistol handled PASTRY KNIVES and FORKS.
40. St Ives Pottery COFFEE SET, 3 Poole CUPS and SAUCERS, Masons BREAKFAST CUP AND SAUCER.
41. Pewter. (5)
- 42-3. A set of 3 Victorian pewter TANKARD MEASURES, graduating from quart - pint - half.
44. Bonn trefoil HORS D'OEUVRE DISH and EGG CUP STAND (2).
45. A plated neo-classical CANDLESTICK/TABLE LAMP.
46. Glass RUMMERS, BEAKERS, etc.
47. Quantity of glass ICE BREAKERS
48. Pair brass CANDLESTICKS, FIRE TONGS, SHAKER AND PAN COVER.
49. A 19thC patinated spelter HANGING LIGHT in the form of an Art Nouveau stylised angel.
50. Lacquer GLOVE BOX, TRINKET BOX, NIGHT LIGHT, etc.
51. A Victorian pierced brass MILK SKIMMER.
52. An early hand painted treen MORTAR.
53. A Georgian embossed brass armorial CANDLE BOX.
54. A Tudor period panel with polychrome heraldic shield. 18" x 9".
55. A period oak carving of a sea horse.
56. A Continental fruitwood BOARD with carved and pin struck decoration and inscription C B * 1845.
57. A painted Irish PEAT BUCKET with steel bands.
58. A Victorian elm MILKING STOOL.
59. A 19thC rosewood marquetry Swiss MUSIC BOX with drum and bells in sight, 10 tunes.
60. SPIRIT BARREL, JARDINIERE and CHEESE STAND.
61. A Sycamore BUTTER BOWL.
62. A rosewood swept frame and milk glass picture of flowers.
63. A PATCHWORK QUILT.
64. A pewter mounted COCONUT CUP and COVER.
65. A Georgian gallon MEASURE, 2 HOBBS and PIE RAISER.
66. A Victorian cast iron DOOR STOP in the form of a highlander.
67. A Victorian cast iron DOOR STOP in the form of Wellington.
68. Two basalt TEAPOTS, CREAMER and redware TEAPOT (4).
69. A pair of Tang style seated horses.
70. The Beatles BOWL, POT LID, Shakespeare's house model, etc.
71. A Victorian CRYSTOLEUM of a cherub and cupid after Munier.
72. Daguerrotypes.
73. A set of Regency FURNITURE HANDLES and 2 Victorian pressed metal TIE BACKS.
74. Six Derby COFFEE CANS.
75. Two Wedgwood LEAF PLATES and a Paris TUREEN STAND.
76. A Victorian Staffordshire FIGURE GROUP of Albert and Victoria.
77. A Victorian Staffordshire FIGURE GROUP of boy, girl and goat on a scrolling base.
78. Millefiore ASHTRAY and 3 glass SHADES.
79. A cased taxidermy SQUIRREL.

80. Blue and white PLATES, TUREENS, etc.
81. A 19thC walnut and metal mounted rococo MANTEL CLOCK with enamel dial, 8 day.
83. 1920's hanging CENTRE LIGHT.
84. A marble PEDESTAL engraved with a bird.
85. WOODWORKING TOOLS
86. Denby DINNERWARE.
87. Oriental design DISH.
88. Reproduction brass PAN SCALES.
89. Perfume Bottles.
90. A pair Victorian EWERS with painted bulbous glass bodies.
91. A Victorian copper SAMOVAR.
92. A 19thC rosewood marquetry Swiss MUSICAL BOX, 8 airs.
93. An Art Deco chromium figural 3-branch CANDELABRUM.
94. A Victorian cast iron OIL LAMP with pink glass reservoir.
95. A pair of hunting scene pictures on linen.
96. An Indian brass JAR and COVER.
97. A Chinese pedestal BOWL with pierced rim.
98. A 19thC electroplate NEWSPAPER STAND.
99. A Chinese bronze IRONING PAN.
100. A pair of cast iron Punch and Judy DOOR STOPS.
101. A black basalt oval TEAPOT of neo-classical design impressed E Mayer to base.
102. A Chinese carved tortoiseshell SNUFF BOX.
103. A tartanware circular PATCH BOX, the cover having a penny red stamp and gilt initials M. Duff.
104. A green egg carved from a nut.
105. A Scottish silver mounted cornucopia horn FLASK.
106. A 1905 HALF-SOVEREIGN.
107. A Victorian silver Child's RATTLE with whistle and coral teeth.
108. A pair of Georgian silver CAULDRON SALTS and a plated spoon.
109. Feeder Spoon, Cigar Cutter, Elkington silver Bowl, etc.
110. Trinket pieces
111. An Armand Marseille baby DOLL marked A.M. Germany 341/2K.
112. A well detailed bronze FIGURE of a cat impressed **SCHUTZT to the tail. 4" long.
113. A Victorian vaseline glass BOWL.
114. Four 2-branch WALL SCONCES.
115. A brass OIL LAMP with cranberry shade.
116. Cast iron CANDLESTICK and spelter Art Nouveau EPERGNE STAND (2).
117. Three plated CANDELABRA.
118. A collection of HORSE BRASSES including martingales, terret and swinger.
119. A Victorian brass embossed COAL SCUTTLE with porcelain handle shovel.
120. Two Victorian copper MEASURE JUGS.
121. A Victorian copper WATERING CAN.
122. Three graduated Victorian copper CIDER MEASURES.
123. Four Victorian copper KETTLES.
124. Three brass LETTER RACKS.
125. A copper 2-handled PAN and contents.
126. A Japanese hand painted and lacquered TRAY painted with cranes and lily pads. 21" square.
127. A 19thC Chinese bronze shallow BOWL with reversible liner/stand. 12" dia.
128. An oak Westminster chime MANTEL CLOCK.
129. Two short handled Victorian WARMING PANS.
130. Glassware (5).
131. Ornaments.
- 132-5. FIRE IRONS.
- 136-8. ANDIRONS.
139. A Victorian brass Bedroom FIRE FRONT.
- 140-2. A Victorian pierced brass FENDER.
143. A Victorian rolled brass FENDER.
144. An ornate Victorian cast iron FENDER.
145. A fine Victorian galleried brass FENDER.
146. A fine Victorian reeded brass FENDER with acanthus and urn finials.
147. A Victorian brass framed FIRE-GUARD with rose painted mirror panel.
148. A brass Adam Revival FIREGUARD.
149. A Victorian rise and fall OIL LAMP with lyre and mask cast metal supports.
150. A fine pair of Victorian green and milk glass CHANDELIERS.
151. Hanging CENTRE LIGHT.
152. A brass hanging OIL LAMP with milk glass shade (converted to electric).
153. An Art Nouveau and copper HANGING LANTERN.
154. An Edwardian oak SMOKER'S CABINET.
155. An Edwardian brass BALANCE.
156. A black lacquer GLOVE BOX.
157. A mother of pearl inlaid rosewood WORKBOX.
158. A mother of pearl inlaid dome top GLOVE BOX.
159. A Victorian mahogany WORK BOX
160. A Georgian herringbone strung mahogany TEA CADDY.
161. A Victorian flamed mahogany WORK BOX.
162. A Victorian tonbridge inlaid walnut dome top TEA CADDY.
163. A Regency mahogany TEA CADDY on brass ball feet.
164. A mahogany 2 section CUTLERY TRAY.
165. A Victorian mahogany sarcophagus TEA CADDY.
166. A Victorian flamed mahogany flamed mahogany WORK BOX.

167. An electroplate on copper CENTREPIECE with flared trumpet and wavy bowl and cast rococo borders. 14" dia, 12" high.
168. An electroplate circular BISCUIT BARREL.
169. A Scandinavian Art Glass VASE, signed.
170. An album of French Romantisist POSTCARDS.
171. A 19thC brass bound walnut campaign duet WRITING BOX.
172. Cranberry Pieces.
173. A pair of Japanese blue and white TEMPLE JARS with covers, the bodies moulded with serpents. 16" high.
174. A Victorian crimped clear and blue glass EPERGNE.
175. Two lustre VASES.
176. A blue and green Art Glass VASE.
- 177-8. A pair of moulded glass VASES.
- 179-82. Two DECANTERS.
183. Two slice-cut DECANTERS.
- 183A. Two DECANTERS.
184. A pair of faceted DECANTERS.
185. Three claret JUGS.
186. A pair of slice cut DECANTERS with spire stoppers and a matching smaller example.
187. Blue glass liquor DECANTER and 3 CUPS.
188. A Victorian Meashamware TEAPOT.
189. A tin glazed blue and white JUG, German stoneware TANKARD and JUG (3).
190. A fine Royal Dux CENTREPIECE with shell bowl supported by boy and girl on a naturalistic base. 15½" high.
191. Twelve thistle cut crystal SHERRY GLASSES.
192. A vaseline and cranberry glass BOWL.
193. A cranberry glass JUG.
194. A pair of wavy rim cranberry glass VASES. 9".
195. A pair of cranberry glass wavy rim JUGS. 10".
196. Four cranberry WINE GLASSES.
- 197-8. Six cranberry glass BEAKERS.
199. A cranberry glass DECANTER with blown stopper.
200. A cranberry glass WATER JUG.
201. A cranberry glass WATER BOTTLE with blown stopper.
202. A cranberry glass wavy rim WATER JUG.
203. A moulded glass JUG with plated cover.
204. A pair of heavy cut crystal mallet DECANTERS with prismatic stoppers.
205. A Loetz style lobed iridescent glass BOWL in a gilt metal Arts and Crafts stand. 15½" high, 9" dia.
206. A silver mounted ebony DRESSING TABLE SET, 3 Books and Teapot.
207. Cut and moulded glass VASES (2)
208. A Victorian ironstone pedestal BOWL. 8" dia.
209. A famille rose GINGER JAR and COVER.
210. A silver CANDLESTICK and silver rimmed VASE.
211. Two Burleigh flow blue SAUCE TUREENS.
212. An electroplate and cut crystal 4-trumpet EPERGNE.
213. Two Crown Ducal CANDLESTICKS.
- 214-5. Two glass LAMPSHADES.
216. Four glass LAMPSHADES.
217. Two glass GLOBES.
218. Two green glass LAMP-SHADES.
219. An Art Deco green glass DRESSING TABLE SET.
220. An Imari WALL PLATE.
221. Three Victorian MEAT DISHES.
222. Two Victorian pink glass VASES.
223. Crestedware, etc. (6).
224. Cut crystal FRUIT BOWL.
225. Two moulded glass FRUIT BOWLS.
226. Dutch polychrome FIGURE of a parrot.
227. A pair of German bisque FIGURES of a young dandy and girl. 12".
228. A Victorian 'Oriental ivory' polychrome WATER JUG and WASHBOWL.
229. Pressed glassware.
230. Crown Devon Stockholm pattern TUREEN, COVER, BOWL and PLATE.
231. A Victorian enamelled and gilt glass CANDY JAR, COVER and PLATE.
232. Four cranberry glass BOWLS.
233. Champagne and other Glasses.
234. Three pieces cranberry GLASSWARE.
235. Sylvac BOWL.
236. Two moulded glass BOWLS.
237. Two Victorian green glass EWERS. 6".
238. Three cranberry glass BOWLS.
239. A Susie Cooper part TEASET of concentric black line design.
240. A Susie Cooper ASHTRAY, Langley TEAPOT and JUG (3).
241. A pair of Victorian gilt frosted glass lustre VASES, 12".
242. A pair of Victorian gilt and enamelled glass VASES. 11".
243. A red bubble glass LEMONADE JUG and 4 CUPS.
244. Three cranberry glass JUGS.
245. Six ruby GLASSES.
246. Blue glass EWER, 2 GOBLETS and other glasses (9).
247. A hob-nail cut crystal DECANTER
248. A cut crystal DECANTER.
249. A Mason's BOWL and Minton ribbon PLATE.
250. Pressed glass BOWL and DISH.
251. Two cranberry SALTS, MUSTARD and PEPPER POT (4).

252. Three Italian neo-classical design CABINET PLATES.
253. Pressed glass BOWL and DISH.
254. Three cranberry WINE GLASSES
255. A Rockingham style TEA SERVICE with flowing gilt decoration to a lilac border comprising 16 cups, 11 saucers, plate and slop bowl.
256. A Copeland Spode DINNER SERVICE with polychrome decorations of exotic birds comprising 3 graduated meatplates, 2 tureens, sauceboat and stand, 10 x 8" + 10 x 9" + 10 x 10" plates.
257. An INK STAND with 2 cut crystal wells.
258. Two Ashworth polychrome PLATES.
259. Two SHAVING MUGS.
260. Decorative Glassware.
261. A slice and hob-nail cut malt DECANTER.
262. A Cumbria crystal Ship's DECANTER.
263. A Minton Princess Pattern part TEA SERVICE.
264. A Butler EPNS CUTLERY SET in a Harrods canteen.
265. An electroplate SOUP LADLE
266. A Booth & Brookes FERROGRAPH of Edward Carson inscribed for God and Ulster dated 1914. 9" x 7".
267. A seated gilt FIGURE.
268. A floral CHAMBER POT and TEAPOT.
269. A Carltonware conch pattern CRUET.
270. A Gouda VASE.
271. A cut crystal thistle VASE.
272. A Beetle carved in soapstone.
273. A Prattware POT LID Horse Racing Scene.
274. A Polychrome POT LID entitled The Master of the Hounds.
275. An Edwardian 'Orient' design TEA SERVICE comprising 12 cups, saucers and plates, 2 sandwich plates, teapot, stand, creamer and slop bowl.
276. An electroplate 3-piece Batchelor TEASET.
277. An electroplate octagonal CAKE BASKET with swing handle.
278. An electroplate trefoil HORS D'OEUVRE DISH, 2 BEAKERS, etc (6).
279. A French gilt and enamelled FISH PLATTER and 11 PLATES, marked L R Mallet, Haviland, France.
280. An extensive Russian DINNER SERVICE with royal blue borders decorated with burnished and embossed gilt decoration.
281. A Japanese eggshell china TEA SERVICE.
282. A Poole JUG, BOWL and a PLATE.
283. Two conical WALL POCKETS.
284. A pair of painted taper glass VASES. 13".
285. A Burleighware 2-handled DISH.
286. Pressed and cut glass TRINKET PIECES.
287. Pressed glass TRINKET PIECES.
288. Glass SALTS, CRUETS, etc.
289. Pressed Glassware (8).
290. Pink pressed Glassware.
291. Pressed Glassware.
292. Coloured Glassware.
293. Pressed Glassware.
294. Green pressed Glassware.
- 295-6. Pressed Glassware.
297. Royal Winton Jug, Figures, etc.
298. Jasperware JUG, 2 others and 2 TEAPOTS (5).
299. A plush puppy NIGHTDRESS CASE.
300. A plated revolving 7-bottle CRUET STAND.
301. Pressed Glassware.
- 301A. Oriental and other Pottery.
302. Pressed glass CENTREPIECE.
303. Riding Tack.
304. Glassware (2).
305. Pottery (2)
306. Pottery (2)
307. Pottery and glassware (2)
- 308-11. A plated MEAT COVER.
312. Assorted Metalware.
313. An Indian brass JARDINIERE and 2 handled pedestal JARDINIERE. (2)
314. A pair of Victorian gilt brass HAND SCREENS.
315. Giltwood WALL SCONCES.
316. A large lobed glass BOWL.
317. Fox's Mask and Brush, mounted.
318. Clark's 'Anchor' cantilever COTTON DISPLAY CASE.
319. A tinsmith's ANVIL.
320. A copper POST HORN and another.
321. A Victorian OIL LAMP with green glass reservoir.
322. OIL LAMPS and parts.
323. A Cries of London SANDWICH SET.
324. A Victorian 8-day slate MANTEL CLOCK.
325. A Victorian slate 8-day MANTEL CLOCK with brass columns.
326. A pair of classical campana clock garniture URNS.
327. A Myott part DINNER SERVICE
328. Pickwick PLATES (5).
329. Victorian Pottery.
330. A Victorian slate and marble 8-day MANTEL CLOCK.
- 331-4. A Victorian TRINKET SET.
335. A 19thC French ormolu and onyx MANTEL CLOCK.
336. A Victorian floral pottery STAND and COVER.
337. A Victorian floral CHEESE DISH and COVER.
338. Ornaments.
339. Glassware (7).



Lot 1173



Lot 818



Lot 689

Lot 822



Lot 476

340. Royal Doulton, Canton and other Pottery (7).
341. 1920's cloud glass BOWLS.
342. A Crown Devon Wye pattern DISH.
343. Glass Bell Cover, Base and Trophy Plinth.
344. A glass lustre VASE.
345. Ribbon Plate, Aynsley gilt plate and another (3).
346. A Carltonware Poppy pattern BISCUIT BARREL with plated cover.
347. A pair of Victorian green painted glass VASES.
348. A Worcester style MOON FLASK.
349. Crystal TUMBLERS.
350. A glass FRUITBOWL and TABLE LAMP.
351. Two wheel-cut glass WATER JUGS.
352. Two ruby glass VASES and BONBON BASKET.
353. A Victorian cranberry EPERGNE with 3 trumpets.
354. An amber glass DECANTER.
355. Two BOWLS.
356. An antique 4 brass MARTINGALE.
357. An antique 8 brass MARTINGALE.
358. An antique 4 brass MARTINGALE.
359. An antique 3 brass MARTINGALE.
360. An antique 2 brass FACE PIECE.
361. An antique 2 brass FACE PIECE.
362. 3 loose HORSE BRASSES.
363. A Victorian copper SAUCEPAN.
364. Three Victorian brass CANDLESTICKS.
365. Two Victorian painted glass VASES.
366. TEA CARDS.
367. A pair of Imari WALL PLATES.
368. A red bubbled Art Glass flared VASE.
369. A floral moulded circular TABLE MIRROR.
370. A Victorian cast iron OIL LAMP with painted milk glass shade.
371. A pair of cut crystal VASES.
372. A cast iron 3 branch CANDELABRUM and 2 CANDLESTICKS.
373. A pair of gilt metal CANDELABRA with cranes forming the pedestal.
374. A Pair of 19thC French spelter FIGURES of boy and girl.
375. A pair of brass CANDELABRA.
376. A pair of 19thC French spelter FIGURES of industry.
377. Pewterware (7).
378. A pair of 19thC spelter figural TABLE LAMPS.
379. Four pewter TEAPOTS.
380. Assorted metalware.
381. A pair of 19thC French spelter figural TABLE LAMPS depicting night and day.
382. A pair of 2-branch piano SCONCES.
383. A pair of cast brass WHEATSHEAFS.
384. A plated 4-trumpet EPERGNE.
385. Two copper TABLE LAMPS.
386. Graduated pewter TANKARDS.
387. Assorted metalware.
388. Candlesticks, Chambersticks and a pair of stag Epergne bases.
389. A 19thC spelter figural TABLE LAMP after Moreau.
- 389A. Wooden CANDLESTICKS.
390. Bellows, small Cabinet and other wooden items.
391. Hand painted blue Pottery.
- 391A. Five LANTERNS.
392. Waterford crystal pedestal BOWL.
- 392A. Fluted glass VASE.
393. Pressed Glassware.
394. A Victorian flamed mahogany WORKBOX.
395. A Victorian mahogany BOX.
396. An ironstone TUREEN with cover, ladle and stand.
397. A Victorian Majolica CHEESE DISH with bell cover.
398. Three spelter FIGURES.
399. A Royal Grafton TEA SERVICE.
400. Antique HORSE BRASSES.
- 400A. A Victorian part TEASET.
401. Assorted Pottery.
402. A Newhall scene painted DESSERT DISH.
403. Wild Turkey Platter, Plates and another.
404. Hartley pearlware CUP, c.1800.
405. Assorted Plates, Teapot and Coffee Cans.
406. A fine Victorian brass inlaid rosewood duet WRITING BOX.
407. A copper pedestal BOWL.
408. A marbled glass LIGHT SHADE.
409. A Rockingham style TEA and COFFEE SERVICE with peach panels within gilt scrolling foliage.
410. Metalware, etc.
411. Pottery including Candlesticks and Dogs.
412. A Satsuma Vase and pair of glass Candlesticks.
- 412A. Assorted Pottery.
413. Painted Jewellery Box and plated Brushes, Mirrors, etc.
414. A mother of pearl inlaid walnut WORKBOX.
415. A 3-piece plated TEASET.
416. A 19thC American beehive MANTEL CLOCK.
417. Platedware (3)
418. Silver backed Dressing Table pieces (6).
419. A Victorian MANTEL CLOCK.

420. A Victorian brass OIL LAMP with clear glass reservoir.
421. A Victorian papier mâché LETTER RACK.
422. A flow blue JARDINIÈRE on stand.
- 423-4. Assorted Pottery.
425. A small domed top leather and studded TRUNK.
426. Metalware, Cutlery, etc. (3).
427. A large electroplate oval SERVING TRAY with gadrooned rim and handles.
- 428-9. A Benares brass circular TRAY.
430. Pottery, etc.
431. Assorted Pictures.
432. Assorted Pictures and Frames.
433. Hanging CENTRE LIGHT, SHADES and SCONCES.

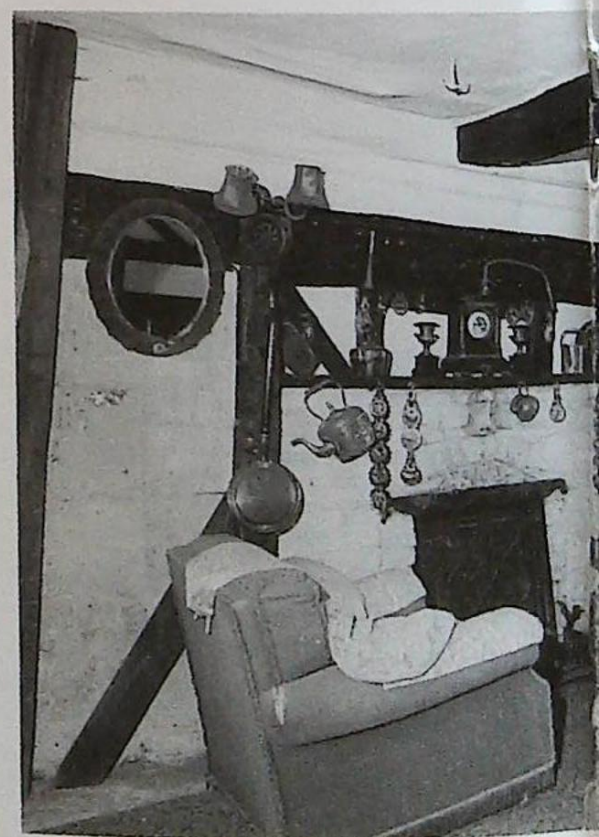
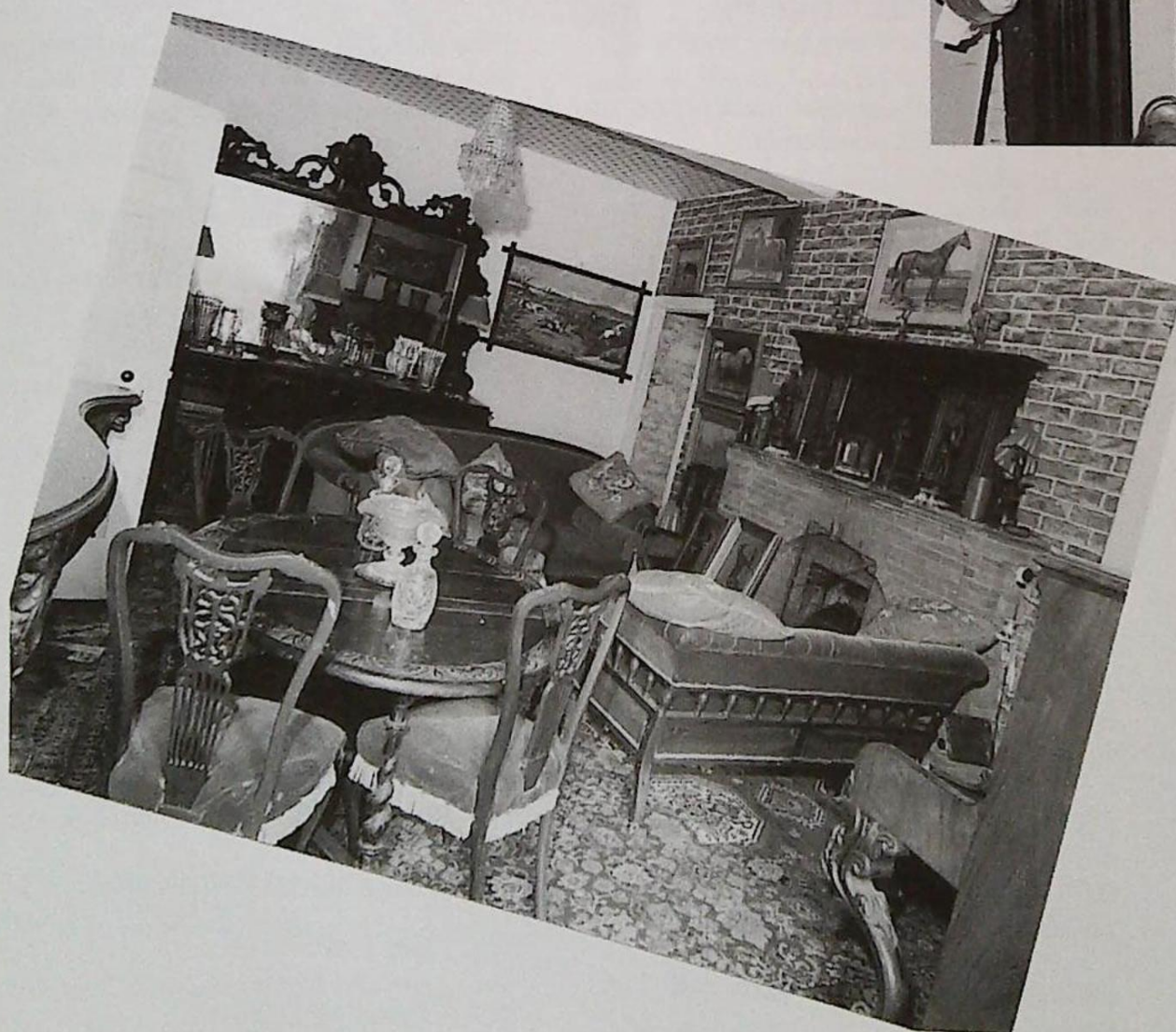
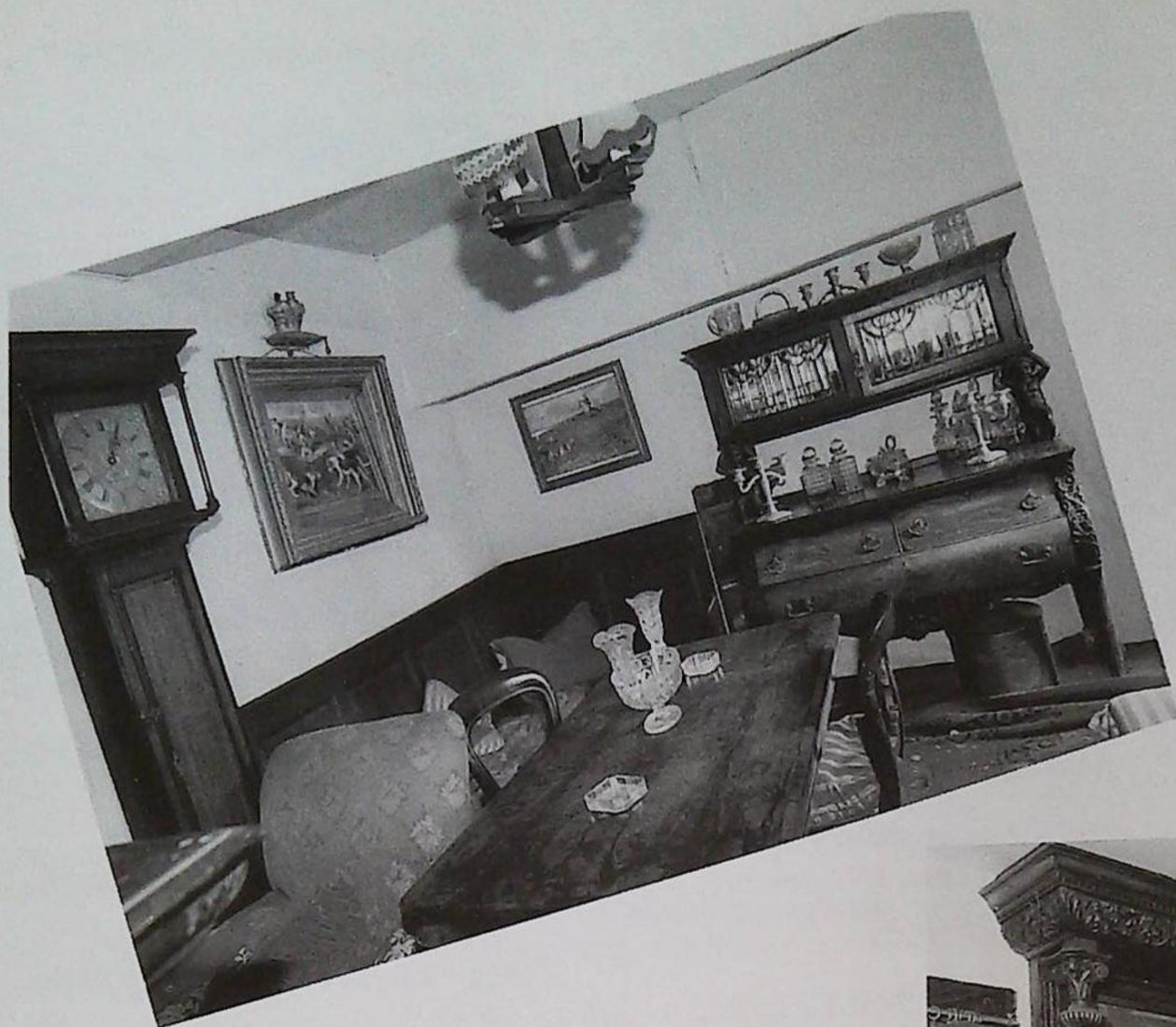
Royal Doulton Character Jugs

434. The Snooker Player D6879, 1991, S Taylor.
435. Blacksmith D6578, 1963-1983, D Biggs.
436. The Sailor D6875, 1991, W K Harpers.
437. Merlin D6536, 1960, G Sharpe.
438. Falstaff D6385, 1950-, HI
439. Paddy D5768, 1937-1960, HF.
440. The Angler D6866, 1990, S Taylor.
441. Santa Claus D6705, 1984, M Abberley.
442. The Poacher D6464, 1957, M Henk.
443. John Doulton Collectors Club D6656, 1980, E Griffiths.
444. North American Indian D6665, 1967-1992, M Henk.
445. Tony Welter D6044, 1939-1960, LH & HF
446. The Cardinal D6129, 1940-1960, C Noke.
447. Dick Turpin A, 1940-1960, CN & AF.
448. Falstaff D6519, 1960-1992, HF.
449. Fat Boy D6142, 1940-1960, LH & HF
450. Sam Weller D6147, 1940-1960, LH 7 HF
451. John Barleycorn Old Lad.
- 451A. Sairey Gamp D5528, 1935-1986, LH & HF.
452. A pair of cranberry glass JUGS.
453. A pair of cranberry glass JUGS.
454. A gilt cranberry 2-handle VASE.
455. A George Jones majolica PEDESTAL BASE moulded with deer and rabbit (tree pedestal cut to height of deers).
456. A Victorian floral CHRISTENING MUG.
457. A Dresden oval porcelain MIRROR with cherubs.
458. A William Adams cameo Jasperware SPILL VASE.
459. Hummell FIGURE.
460. Britains LEAD FIGURES of show jumpers.
461. An extensive 19thC Ridgeways DOLLS' TEA AND DINNER SERVICE.
462. A Staunton pattern CHESS SET.
463. A small German glazed pottery BUST of a lady.
464. A plated hockey stick ASHTRAY
465. Coins and Oriental Vase.
466. A fine quality Japanese lacquer TEA TRAY with relief decorations of foliate scrolling peonies in gold and silver. 3.1/2" deep, 11" x 13" with original box.
467. A Wedgwood dragon lustre BOWL 11" dia.
468. A Victorian part DESSERT SET comprising 2 comports and 2 handled dish with gilt turquoise and peach borders.
469. A Meissen Marcolini period blanc de chine CANDELABRUM with girl seated on 2 baskets to base. 9" high.
470. Three 19thC marble cameo plaques of the Willoughby family. 19" high, 15" wide.
471. A fine quality electroplated rectangular SERVING TRAY with rococo engraved cartouche centre, the raised border embossed with C scrolls and flora and gadrooned handles. 17" x 24". Maker Benetfink of London, together with a light oak case.
472. A pair of leather RIDING BOOTS and trees.
473. A 19thC oak and mahogany LONGCASE CLOCK with swan-neck pillared hood, painted dial and 8-day movement.
474. A Georgian oak LONGCASE CLOCK with pillared hood, shell inlaid trunk door, 12" square brass face with applied spandrels, Roman numerals and maker Mafsey, Newcastle to the chapter ring, matted centre field with date crescent, 30 hour movement. 73" high.
475. A Georgian oak and mahogany LONGCASE CLOCK with swan-neck dentil moulded and pillared hood, full length door, 12" square arch painted dial with portrait to arch, Arabic numerals, seconds ring and date crescent, 8 day movement striking on a bell.
476. An early 19thC shell and ton-bridge inlaid flamed mahogany LONGCASE CLOCK with swan-neck pillared hood, reeded column enclosed shape door, canted base and ogee feet. The 14" square arch dial having moon roller to arch, Roman numerals, seconds ring, date crescent, maker Jonah Rangely of **field, 8 day movement striking on a bell. 92" high.
477. A George III green lacquer and chinoiserie LONGCASE CLOCK by William Hayter of Chatham. 7'9" high. *Illustrated.*
478. An early 19thC string inlaid mahogany BANJO BAROMETER by Adler of Louth.
479. A 19thC American walnut ogee SHELF CLOCK by Jerome & Co, Conneticut, 30 hour.
480. A Barometer Case.
481. 19thC walnut Vienna Regulator WALL CLOCK with enamel dial.
482. 19thC walnut Vienna Regulator WALL CLOCK with enamel dial.
483. A 19thC French Cartel CLOCK with a pressed gilt metal surround embossed with wheatsheafs and cherubs, the convex enamel dial painted with Roman numerals, floral spray and Reder a Mangiennes; 8 day movement striking on a bell.

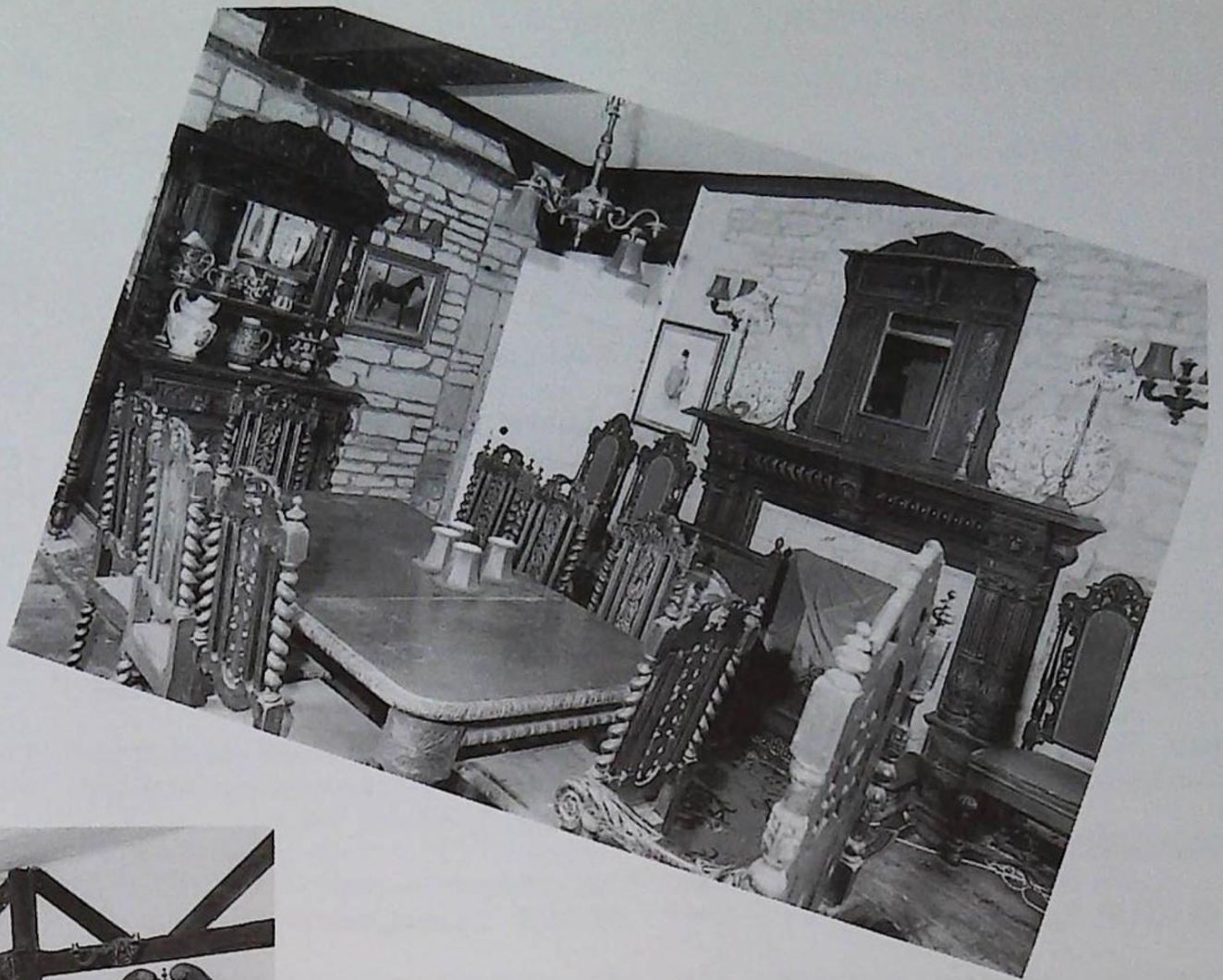
484. Two Satsuma VASES.
485. An Arts and Crafts decorated 2-handled Portland VASE inscribed C H Bramnam BA** 1892 WC. 16" high.
486. A gilt decorated 2-handled VASE and another.
487. Three Oriental design moulded VASES.
488. An interesting pair of 19thC VASES and COVERS, hand painted giving a papier mâché effect finish. 22" high.
489. A Royal Doulton octagonal JARDINIÈRE with polychrome panels of exotic birds. 10" high.
490. A Victorian copper WARMING PAN
491. A mirror fronted WALL CABINET with barometer.
492. A Meiji period Imari CHARGER. 18" dia.
493. A pair of gilt gesso WALL SCONCES with shell and satyr backs.
494. A Victorian CRYSTOLEUM of nuns.
495. A Wedgwood willow pattern PLATE in a gilt and ebonised circular frame.
496. A plaster BUST of a young girl.
497. A mounted STAG'S HEAD.
498. A mounted Indian Spotted Deer.
499. An Iznik design pottery PLAQUE. 22" dia.
500. A green bubble Art Glass flared VASE. 16" high.
501. A 19thC Cantonese baluster VASE, decorated with famille rose enamels. 25" high.
502. A taxidermy case containing a FOX, RABBIT and 3 CUBS.
503. Three hunting pink TUNICS.
504. Green pressed GLASSWARE.
505. Two pairs of cranberry glass SALTS.
506. A parquetry JEWEL BOX and carved WALL BRACKET.
507. A Beswick JUG and similar CANDLESTICK.
- 508-10. A Nanking Cargo BOWL.
511. A pair of electroplate and crystal PRESERVE POTS in the form of curling stones.
512. A pair of oval plated ENTREE DISHES.
513. Filigree work CASE and other platedware.
514. An ivory and tortoiseshell JEWELLERY BOX.
515. An electroplate rectangular CAKE BASKET with swing handle.
516. Mustard Spoons, Sugar Tongs, etc.
517. An octagonal baluster JUG and 2-handled TROPHY.
518. A pair of hob-nail cut DECANTERS.
519. A cased set of 12 pairs mother of pearl handled PASTRY KNIVES and FORKS.
520. CUTLERY
521. A small brass framed MIRROR.
522. An electroplate circular Art Deco HORS D'OEUVRE DISH with glass inserts.
523. A fleur de lys wheel-cut engraved FINGER BOWL.
524. An Art Deco glass DESSERT SET.
525. A cut crystal VASE.
526. A Royal Albert 12-place TEA SERVICE.
527. A Crown Staffordshire floral part TEA SERVICE.
528. A Rockingham style 9-place TEA SERVICE.
529. A pottery FISH BOWL.
530. A Noritake black ground VASE.
531. A Royal Winton CREAMER, BOWL and TRAY.
532. A Victorian pottery EGG STAND
533. Minton CUP, SANDWICH PLATE and floral PLATES.
534. POSY RING, PATCH BOX, ROSE BOWL, etc. (5)
536. A green and brown treacle glazed CUSPER.
537. A similar portrait moulded JUG, G.O.M.
538. FRUIT SET, FIGURE, VASE, etc.
539. Willow Pattern POTTERY.
540. Victorian and later TILES.
541. An electroplate circular BISCUIT BARREL.
542. A Victorian brass TRIVET.
543. A cranberry glass BONBON DISH.
544. Two glass HANDKERCHIEF BOWLS.
545. A pressed glass BISCUIT BARREL and plated HORS D'OEUVRE DISH.
546. A plated oak BISCUIT BARREL
547. Plated NUTCRACKERS and GRAPE SCISSORS.
548. Two reproduction SILHOUETTES
549. Five NAPKIN RINGS.
550. Plated CUTLERY.
551. Coral pieces, etc.
552. Postcard ALBUM and CARDS.
553. A folding leather PHOTOGRAPH CASE.
554. An Indian ebony INKSTAND.
555. A Japanese lacquer BOX.
556. Three mottled glass POSY BASKETS.
557. A pair of barleytwist dwarf CANDLESTICKS.
558. Two marbled glass LAMPSHADES.
559. Four modern pottery VASES.
560. A Royal Crown Derby blue and white Oriental design 6 setting TEA SERVICE.
561. A 19thC Coalport part TEA SERVICE.
562. Railway Collectors items.
563. Coal buckets, Trays, etc.
- 564-5. Brass FIRE IRONS.
- 566-73 Spare Lots
574. A gilt framed CRYSTOLEUM of children
575. An electroplate 4-piece TEASET.

576. A Victorian polished slate MANTEL CLOCK.
577. A pair of open twist brass CANDLESTICKS.
578. A carved ivory PAGODA.
579. A large white pottery TABLE LAMP.
580. A pair of turned brass TABLE LAMPS.
581. A celadon glazed floral JARDINIERE
582. A Dresser style electroplate TEAPOT.
583. A pair of French VASES with painted panels of young boy and girl, pink ground with gilt decoration.
584. A pair of 19thC French spelter FIGURES of cavaliers. 30".
585. A pair of 19thC French spelter FIGURES of Indian Squaws. 24".
586. Four milk glass SHADES.
587. A 19thC electroplate globular TEA KETTLE on a gated rustic warming stand.
588. An electroplate SPIRIT KETTLE on warming circular stand.
589. A Loysel's patent electroplate Hydrostatic Percolator 4 pint URN, by Shaw & Fisher of Sheffield No 5225 (damaged handles).
590. A Satsuma brown ground baluster VASE with floral enamel 12" high.
591. A French gilt metal MANTEL CLOCK, rococo design with enamel dial, 8-day movement.
592. A brass anniversary dome CLOCK
593. A crystal VASE.
594. A GARNITURE of 3 Spode 2-handled urnular VASES with gilt and green vine and berry decoration.
595. A pair of neo-classical design electroplate CANDLESTICKS. 9".
596. A porcelain SOAP DISH.
597. A large pewter JUG.
598. A bargeware URN.
599. A Victorian brass OIL LAMP.
600. A Victorian mahogany sarcophagus TEA CADDY.
601. A large Beswick HORSE.
602. A small Worcester blue and white BOWL.
603. A Carltonware fairyland lustre baluster VASE. 11".
604. A Victorian transfer printed boat shape TUREEN and STAND.
605. A blanc de chine FIGURE of a Chinese girl and horse.
606. A blanc de chine FIGURE of Guan Yin.
607. A pair of crystal DECANTERS with blown stoppers and wheel-cut fern decoration.
608. A Victorian copper KETTLE with acorn finial.
609. A green floral TOILET SET.
610. A brown transfer printed JUG and WASHBOWL.
611. A floral TOILET SET.
612. A Crown Devon TOILET SET.
613. A rose pattern WATER JUG and 2 BOWLS.
614. A black ground TOILET SET.
615. Gilt decorated WATER JUG and CHAMBER POT.
616. A Portmeirion part COFFEE SET
617. A Victorian DESSERT SERVICE with a sky blue border.
618. A pair of German stoneware JARDINIERES on stands.
619. Three coloured glass JUGS and 2 taper VASES.
620. WATER JUG and quantity of GLASSES.
621. Three dolls, Escallado Game, etc.
622. A Foot Measuring Gauge.
623. Wooden Sundries.
624. Brass and Iron Fan, Mirror, Coal Bucket and pair shoes.
625. Platedware including toast racks, cigarette box, etc.
626. Green and gilt part TEASERVICE
627. A Royal Doulton Harlow pattern part TEA SERVICE.
628. Mounted Foxes Mask and Brush.
629. An ironstone part DINNER SERVICE.
630. A Staffordshire part TEA SERVICE.
631. Clocks, Beakers, etc.
632. An Edwardian tin COAL SKUTTLE.
633. Quantity of Meccano.
656. Assorted Books.
657. London Books and Maps.
658. Old & New London, 6 vols.
659. A Victorian family BIBLE.
660. Thomas Allen. History of the County of Lincoln, 1830.
661. Dr Buchanan's Book of Medicine, Niles Register and Sabu the Elephant Boy (3).
662. Lloyds Butterflies and Moths, 5 vols.
663. Lloyds Game Birds, 2 vols.
664. 18thC Compleat Housewife.
665. Albert F Calvert. The Spanish Royal Wedding, illus.
666. Graham Hill. Leaves from the Calvert Papers. 1894.
667. Memoir of Edward Calvert 1799-1883, Illus No 130 of 350. 1893.
668. A A Milne. Winnie The Pooh, decorated by E H Shepherd 1st Ed, Methuen, d/w and a later House at Pooh Corner.
669. Spare Lot.
670. Mickey Mouse au Far-West and Tour de France Book.
671. Table top DISPLAY CASE.
672. A Railway Signalling Lamp.
673. An old mahogany CASH REGISTER.
674. Needlework DRAWERS and Asimith mirror.
675. Cast iron KITCHEN SCALES and a WASH BOWL.
676. A corner DISPLAY SHELF.
677. Old Auction Catalogues.
678. Old Doll.
679. Hanging Light.

*Views
The Old
Sudbr*



us of
ld Hall,
brook



680. A copper COAL BUCKET.
681. Pottery JUG and VASE.
682. An Edwardian coloured glass HANGING LANTERN.
683. Carved Eagle Pediment.
684. A 1950's chrome CAR RADIO.
685. A pair of mounted ANTLERS.
686. A taxidermy FOX.
687. A brass and boxwood ROPE GAUGE
688. A Wedgwood creamware cylinder TEAPOT and cover with purple lustre decoration and a Jug (2).
689. A Moorcroft 'Claremont Toadstool' BOWL, signed, 10" dia.
690. A Susie Cooper TEA for TWO Set
- 691-710. Spare Lots
711. A pierced silver BASKET on a 4-footed base. Maker James Dixon & Sons, Sheffield assay.
712. Cased FISH CUTLERY, etc.
713. An electroplate oval 2-handled TRAY with Celtic design raised border.
714. A dresser style cut crystal and electroplate CLARET JUG.
715. A mahogany CANTEEN containing a part set of cutlery.
716. A mahogany CANTEEN of 12 pairs of bone handled CUTLERY.
717. A Victorian and later silver 4-piece harlequin TEASET with floret on matted lozenge decoration and oval cartouche. Mixed makers and dates. 78oz all in.
718. A George V silver 2-handled TRAY with gadrooned raised edge, maker James Dixon & Sons, Sheffield 1918. 24" x 18". 135oz.
719. A silver 3-piece TEASET of rectangular form with scrolling strap-work and ivory handles, maker FC, Sheffield 1939. 34oz all in.
720. An Edwardian silver PEPPER POT in the form of a chauffeur, Maker CS & SS, Chester 1908.
721. An Edwardian silver repousse rococo oval BONBON DISH, Chester 1901.
722. A Georgian silver 2-section WINE FUNNEL.
723. A circular silver CREAMER and SUCRERE, Sheffield assay. 13oz.
724. A pair of silver QUAICH, Edinburgh assay.
725. A George III silver pot bellied CREAMER with beaded rim, maker Walter Brind, London 1784.
726. A modern silver EWER commemorating the 350th Anniversary of the Sailing of the Mayflower.
727. An engine turned silver SNUFF BOX, Birmingham assay.
728. A silver 3-foot CARD TRAY with raised piecrust edge, London assay. 10oz.
729. A George III silver 2-handled SUCRERE with cover, maker GA & Co, Sheffield 1809. 14oz.
730. An Art Nouveau silver EASEL FRAME, Birmingham 1903. 11½".
731. A circular silver TEAPOT, Sheffield assay. 15oz. all in.
732. A late 19thC German CORKSCREW in the form of 2 ladies legs with calf-length boots and green and white striped stockings.
733. A cased pair of Edwardian silver oval SALTS, Birmingham 1904.
734. A cased set of 6 electroplate NAPKIN RINGS.
735. A Victorian silver 3-piece TEASET with part fluted body, London 1898. 35oz all in.
736. A silver 2-handled TROPHY CUP on plinth, 1929. 13oz.
737. The St Maun silver 2-handled BOWL on plinth, London 1902. 34oz.
738. A silver CIGARETTE BOX, Birmingham assay.
739. A pair of silver 5-bar TOASTRACKS, Birmingham assay.
740. A pair of pierced silver BONBON DISHES.
741. A pair of 9ct gold Propelling Pencils and refills.
742. Watches, Necklace and Brooches
743. A Benson lady's gold WRISTWATCH.
744. A 22ct gold WEDDING BAND.
- 745-8. Costume and Trinket Pieces.
749. A gold BAR BROOCH set with pearls and diamond.
750. A gold and sapphire RING.
751. Brooches and costume jewellery.
752. A silver 2-handled pedestal FRUITBOWL, Sheffield 1933.
753. A pair of Japanese lacquer PIPE HOLDERS with silver mounts.
754. A pair of silver taper CANDLESTICKS, Birmingham 1922.
755. A silver mounted Deer Foot, Edinburgh 1880.
756. A silver SPECIMEN VASE, Birmingham 1906.
757. A silver taper CANDLESTICK, Birmingham 1935.
758. A cased silver MARROW SCOOP.
759. A cased set of silver COFFEE BEAN SPOONS, Birmingham 1930.
760. An engine turned silver VESTA CASE.
761. An Edwardian silver topped TRINKET JAR.
762. A pair of George III silver SUGAR BOWS by Peter and William Bateman.
763. A silver and ivory LETTER KNIFE, Birmingham assay.
764. A cut crystal SUGAR SIFTER with silver top, Birmingham 1934.
765. A James Usher Lincoln Imp knopped silver SPOON.
766. A silver CIGARETTE CASE, Birmingham 1916.
767. A silver 3 trumpet EPERGNE, Birmingham 1945.
768. A silver lobed FRUITBOWL, Sheffield 1946.
769. A silver engine turned CIGARETTE CASE, Birmingham 1926
770. A silver 3-piece circular CRUET, Birmingham 1944.
771. An engine turned silver CIGARETTE CASE.
772. A circular silver MUSTARD POT.
773. A circular silver TRINKET BOX on 3 legs.

774. Plated Tray, silver dwarf Candlesticks, etc.

775. Eight pieces of Eastern silverwares

776. An engine turned silver COMPACT.

777. A silver octagonal 5-piece CRUET, Birmingham assay.

778. Two silver PEPPER POTS and cased set.

779. A pair of silver PEPPER POTS.

780. A pair of silver PEPPER POTS.

781. A signed Japanese fruitwood NETSUKE study of two small boys riding upon a large carp fish to which they have attached a dragon's head.

782. A signed Japanese ivory NETSUKE study of a village elder bending to lift a decorated takaramono sack.

783. A signed Japanese ivory NETSUKE study of a portly Samurai dressed in loose fitting open fronted kimono, his katana sword resting in his obi.

784. A signed Japanese ivory NETSUKE study of a human ghost, with aogai inset eyes.

785. A signed Japanese ivory NETSUKE study of a Geisha walking in fine full flowing kimono carrying a small parcel and a furled parasol.

786. A signed Japanese ivory NETSUKE study of Okame knelt with wide open front kimono.

787. A Victorian 18ct gold POCKET WATCH by Sir John Bennett, No 12208. Chester 1882.

788. A pair of silver miniature TROPHIES.

789. A pair of Scandinavian design hammered silver SALTS with gilt bowls

790. A 5 stone diamond RING set in white gold.

791. Gold and silver BAR BROOCHES (2)

792. Two BAR BROOCHES.

793. A cameo BAR BROOCH.

794. A silver ALBERT.

795. A 14k gold gent's POCKET WATCH.

796. A Victorian silver VESTA CASE and box link ALBERT.

797. A silver key-wind gent's POCKET WATCH by Shearer of Glasgow.

798. A 9ct gold REGARD RING.

799. A Cyma ladies WRISTWATCH.

800. An Art Deco 18ct gold and platinum diamond set RING.

DAY TWO

801. After Lomax. Colour print of the Reconciliation.

802. After Sanderson Wills. Pair of colour hunting prints.

803. A pair of gilt framed OILS ON BOARD of West Willoughby Hall, East and South Sides, 1926.

804. Assorted Hunting Prints.

805. Assorted Prints and Frames.

806. Assorted Prints and Frames.

807. A pair of Hogarth framed colour ENGRAVINGS of Genre scenes by Orme.

808. A gilt and mahogany framed portrait of a lady.

809. An Edwardian landscape painted WALL MIRROR.

810. Colour print of Cotswold Cottages, Dorsington. After Brooks.

811. A pair of oak framed colour coaching prints after Ludovici.

812. A gilt framed forest scene OIL ON CANVAS, bears signature H Hadfield Cubley. 30" x 26".

813. A V Spencer. Boston Market and Stump, 1788, OIL ON CANVAS. 14" X 17", gilt framed.

814. W Hardy. 3 Spaniels with Game in woodland, OIL ON CANVAS. 20" x 30", gilt framed.

815. W H Doust. Stormy Seascape of Dutch Coast, OIL ON BOARD, gilt frame.

816. Merrymaking Monks in Tavern, pair of Bavarian OILS ON CANVAS. 12" x 15", gilt frames.

817. Highland Scene Print, gilt frame.

818. E H Shepherd. Portrait of his Wife Florence in a Summer Garden, OIL ON CANVAS. 20" x 16"

819. Walter Stuart Lloyd (fl.1875-1929). Lincoln Cathedral from Brayford Pool, WATERCOLOUR. 28 1/2" x 14 1/2".

820. L S Lowry. Three Figures Walking, pencil. 9 3/4" x 6 1/2".

821. Dame Laura Knight (1877-1970). View of the Malvern Hills, WATERCOLOUR. 22" x 14 1/4".

822. George Goodwin Kilburne. A Game of Cards, WATERCOLOUR. 10 1/2" x 8".

823. Andy Warhol. Portrait of Elizabeth Taylor and Coffee Can, SILK SCREEN PRINT. 35 1/2" x 23 1/2".

824. Noel Harry Leaver (1889-1951). York Minster, WATERCOLOUR. 6 3/4" x 4 3/4".

825. Victoriano Cordina-y-Langlin (1844-1911). Portrait of a Spanish Girl, WATERCOLOUR. 14 1/4" x 9 3/4".

826. Antonio Domba. Study of Middle Eastern Gentlemen, WATERCOLOUR. 10" x 8".

827. Antonio Domba. A Group of Middle Eastern Gentlemen, WATERCOLOUR. 11" x 7".

828. Wilfred R Wood. High Street, St Martins, Stamford, WATERCOLOUR, signed and dated '55. 9" x 12 1/4".

829. A pencil drawing of 2 gundogs.

830. Kate B Griffith. Autumn Landscape with trees, bridge and stream, OIL ON CANVAS, signed. 14" x 16 1/2".

831. A Clarkeson. Stabled horse, OIL ON CANVAS, signed. 12" x 16".

832. A similar lot, initialled SSH.

833. David Bates (c.1841-1921). Landscape with figure carrying sticks and dog, WATERCOLOUR, signed. 14 1/4" x 21".

834. R Rogers. Children playing in a wooded landscape, WATERCOLOUR, signed and dated 1904. 10 3/4" x 14 1/2".

835. After Thomas Heaphy. Print of Rangitolo No 2.

836. A gilt framed OIL ON CANVAS of a mare and foal.

837. Unframed OIL ON CANVAS of a lady in full-length gown (holed).
838. A WATERCOLOUR view of Sudbrooke Hall West Side.
839. A landscape WATERCOLOUR with stone bridge over river, initialled T C. 11½" x 15".
840. A pair of Highland Landscape Prints with cattle and sheep.
841. Five pastoral colour prints.
842. P Humphrey. Autumn leaves, OIL ON BOARD, signed. 21½" x 28".
843. Vernon Hardy. Misty Dawn and Sunset, pair of boat scenes, signed. 13" x 7½".
844. A Victorian cushion moulded case of dried flora.
845. Colour print of sunrise on Loch Katrine.
846. Large gilt framed colour hunting print.
847. A pair of Victorian colour prints of a young lady in full length dress.
848. Three primitive equestrian OIL PAINTINGS.
849. Three OILS ON CANVAS of horses (2 unfinished).
850. A small OIL ON CANVAS of Highland Cattle.
851. A pair of Victorian gilt framed Oleographs of young girls.
852. A late 19thC painting of 4 kittens with roses and a basket, OIL ON CANVAS. 20" x 24".
853. A gilt framed scene from Faust, Oleograph after Burmeister.
854. A pair of gilt framed colour prints of horses.
855. A pair of rural gilt framed oleographs.
856. An oak framed artist's first proof of The Earl of March, Master of Goodwood Foxhounds.
857. A similar lot of Stephen Dickins Huntsman to the North Staffordshire.
858. A similar lot.
859. A gilt framed colour hunting print.
860. A colour tavern scene print after Bennett.
861. A modern framed hand coloured ENGRAVING of 3 species of iris.
862. A Victorian milk glass panel painted with birds and flora.
863. Gilt framed colour print of a horse.
864. A gilt framed colour print of Bubbles, After Millais.
865. A modern gilt framed WATERCOLOUR of Longleat and its grounds, signed J Wood Smith '50. 10½" x 14".
866. An ink and wash Sketch of Mr Micawber, signed and dated 1960.
867. A colour cock fighting print.
868. A pair of Victorian gilt framed OILS ON CANVAS landscape with river and church in the foreground.
869. Four portraits of ladies and a maple framed Millais print.
870. Two gilt framed milk glass pictures of flowers.
871. A Victorian gilt framed landscape of a Highland Loch.
872. Two quarter length portraits of young ladies.
873. Four gilt framed Hunting Prints.
874. A small Victorian gilt framed winter landscape with 2 figures and church initialled ER.
875. Two sepia landscape ENGRAVINGS after Claude by Earlom, No's 36 and 42.
876. A set of 4 colour hunting ENGRAVINGS after Alken.
877. E Bennett. Pair of Landscapes OILS ON CANVAS, signed E Bennett. 12½" x 16" (AF).
878. A pair of gilt framed panoramic shore scenes signed G Hare. 10" x 24".
879. Oak framed portrait of 2 young children and 2 colour prints.
880. Portrait of a young lady in a gilt, ebonised and velvet frame.
881. Portrait of a young girl in an ebonised frame.
882. A mahogany, velvet and gilt rectangular frame.
883. Two Oriental WATERCOLOURS of birds.
884. Three Oriental WATERCOLOURS
885. Four Chinese WATERCOLOURS of fruit on rice paper.
886. Three Arthur Spencer ETCHINGS
887. A pair of PORTRAIT MINIATURES in ivory inset frames.
888. A pair of PORTRAIT MINIATURES in ivory inset frames.
889. Assorted Pictures.
890. An oak framed landscape print with stag entitled 'Startled'.
891. A pair of colour Coaching Prints entitled 'The Drag' and 'The Tandem'.
892. A pair of Hogarth framed River Avon Prints.
893. Landscape Print and Watercolour of an Owl.
894. Set 4 oak framed dried flowers.
- 895-20. Spare Lots.
921. A painted giltwood 5-branch CENTRE LIGHT.
922. A late Victorian walnut POT CUPBOARD.
923. A Regency mahogany COMMODE CHEST with ebony stringing and knob handles.
924. A Victorian mahogany scroll back NURSING CHAIR with pink buttoned upholstery.
925. A Regency mahogany bow front CHEST of 3 drawers with ebony and boxwood stringing, brass swan-neck handles and splay feet.
926. A tapestry upholstered Georgian style wingback 3-piece SUITE.
927. A Georgian mahogany CHEST of 2 short and 3 long graduated drawers with brass handles and bracket feet.
928. A Victorian flamed mahogany bowfront CHEST of 2 short and 3 long graduated drawers with knob handles.
929. An Edwardian mahogany CHEST of 5 fall front drawers with drop handles, raised on square taper legs.
930. An Edwardian shell inlaid mahogany ladies WRITING TABLE with 2 drawers and square taper legs.

931. A Victorian ash POT CUPBOARD.
932. A Victorian ash POT CUPBOARD.
933. An Edwardian KNEEHOLE DESK with leatherette top.
934. A George III mahogany TABLE MIRROR with bevelled glass and concave drawer.
935. A Victorian upholstered TUB CHAIR.
936. A Victorian TUB CHAIR with green button dralon upholstery.
937. A Victorian TUB CHAIR with green button dralon upholstery.
938. A Victorian mahogany spoonback NURSING CHAIR with pink button dralon upholstery.
939. A yew veneered LOW BOY with ebony stringing and single frieze drawer.
940. A Chippendale style mahogany CARVER CHAIR.
941. A Victorian burr walnut and satinwood inlaid CENTRE TABLE.
943. A Victorian papier mache PEDESTAL TABLE, the top inlaid with mother of pearl and painted with flowers and gilt scrollwork.
944. A Georgian oak TRIPOD TABLE with circular dish top.
945. A late Victorian mahogany candytwist TORCHERE.
946. A Victorian mahogany TOWEL RAIL.
947. A Victorian marquetry inlaid walnut corner WHATNOT.
948. A Victorian walnut corner WHATNOT.
949. A fine Victorian walnut Sutherland TABLE with onion turned legs, the butterfly top having quarter veneered burr walnut.
950. A reproduction oak PLATERACK.
951. An Edwardian walnut 3 drawer DRESSING CHEST.
952. A 1920's burr walnut and crossbanded bowfront SIDE TABLE raised on shell carved cabriole legs.
953. An Edwardian circular mahogany OCCASIONAL TABLE.
954. A pair of Edwardian splatback BEDROOM CHAIRS.
955. A pair of Victorian mahogany splatback DINING CHAIRS.
956. A Carolean style carved oak HALL CHAIR.
957. A Victorian oak HALL CHAIR.
958. A pair of ebonised CARVER CHAIRS and 2 similar SIDE CHAIRS.
959. A William IV mahogany CARD TABLE with moulded rectangular top, octagonal taper pillar, quatrefoil base, scroll feet and castors.
960. A Victorian mahogany POT CUPBOARD with marble top.
961. An Edwardian carved oak PURDONIUM.
962. An Edwardian carved oak POT CUPBOARD.
963. A Regency mahogany Table D-end.
964. A 19thC mahogany CHAIR with carved cresting rail, bergere back and overstuffed seat.
965. A William IV mahogany CARVER CHAIR with scroll arms.
966. A Victorian mahogany PIANO STOOL.
967. An Edwardian oak windout DINING TABLE with fluted legs, no leaves. 41" x 48" min.
968. A set of 6 Edwardian oak DINING CHAIRS with scoop carved cresting rail, floral damask upholstered panel backs and overstuffed seats.
969. A set of 4 Victorian mahogany balloon back DINING CHAIRS with turned legs and damask upholstered drop in seats.
970. A compact Victorian mahogany windout DINING TABLE, the moulded top having single leaf, on reeded legs with brass cup ceramic castors. Provenance: The table was originally in the childhood home of Margaret Thatcher.
971. A late Victorian mahogany windout DINING TABLE, the moulded top having 2 extension leaves, raised on shell carved cabriole legs. 48" wide, 60-90" long.
972. A Victorian gilt and ebonised NURSING CHAIR with green dralon upholstery.
973. A Victorian mahogany TEA TABLE with folding rectangular top, scroll frieze, octagonal taper pedestal, quatrefoil base and turned feet.
974. A Jacobean style carved oak HALL CHAIR with scrolling cresting rail, turned uprights, plain arms and stretchers.
975. Heavily carved Oriental TABLE.
976. An Edwardian string inlaid mahogany OCCASIONAL TABLE with 4-leaf clover top and undershelf.
977. A Victorian rosewood rise and fall PIANO STOOL with scroll legs.
978. A Victorian mahogany SCOTCH CHEST of 2 short and 3 long graduated drawers with knob handles and turned feet.
979. A reproduction carved oak COFFER.
980. A Victorian light oak NURSING CHAIR with floral damask buttoned upholstery.
981. A 1920's walnut quarter veneered POT CUPBOARD.
982. A Victorian mahogany shield back HALL CHAIR.
983. A Louis XV style FAUTEUIL.
984. A pair of Queen Anne style walnut CARVER CHAIRS with drop-in seats.
985. A 1920's walnut bowfront CHINA CABINET with 2 astragal glazed doors enclosing 2 beaded panel doors, raised on ball and claw feet.
986. A heavy Victorian mahogany TORCHERE with reeded column and tripod base.
987. A Queen Anne style walnut CARVER CHAIR.
988. A panelled oak MULE CHEST.
989. A 1920's carved oak BUREAU.
990. A Georgian style deep upholstered ARMCHAIR with shell carved cabriole legs.
991. An Edwardian mahogany SILVER TABLE with turned legs and club feet.
992. A Victorian pine BLANKET BOX.
993. A Victorian upholstered BLANKET BOX.
994. A Victorian carved oak CHAIR with carved mask splat.
995. A late Victorian mahogany KNEEHOLE DESK with leather inset top, swan-neck handles and ball and claw feet. 36" x 60".



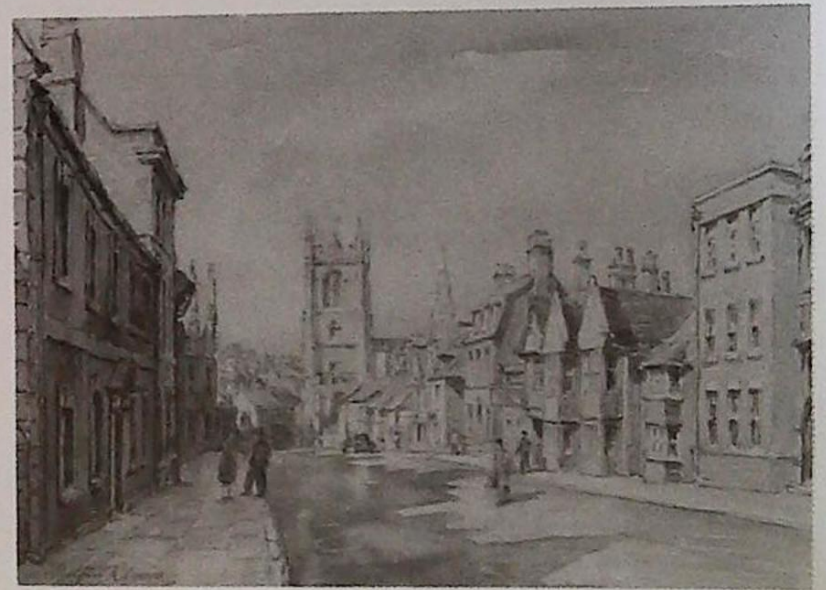
Lot 831



Lot 720

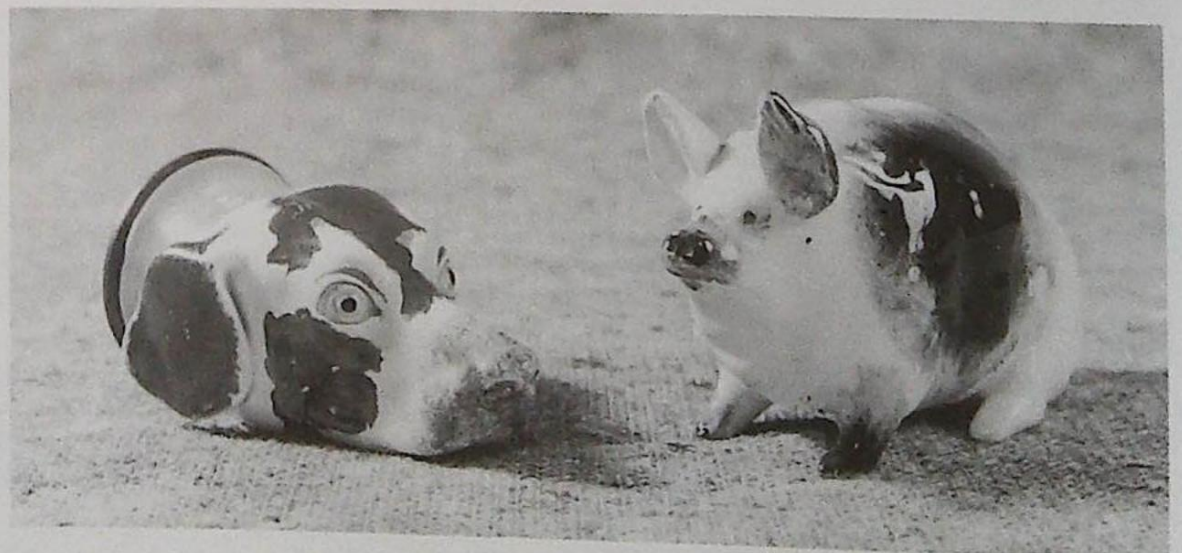


Lot 477



Lot 828

Lots 21 and 22



996. An Edwardian carved walnut FIREScreen with circular print of a young lady picking flowers.
997. A Victorian flamed mahogany TABLE MIRROR with lift flap and bun feet.
998. A Victorian oak HALL STAND.
999. A George III flamed mahogany TRIPOD TABLE with rectangular top.
1000. A 19thC mahogany CHAIR with carved cresting rail and cabriole legs.
1001. An early Georgian carved oak hanging CORNER CUPBOARD.
1002. An Edwardian string inlaid CORNER CHAIR.
1003. A Regency mahogany rise and fall MUSIC SEAT with gadrooned cresting rail, lyre splat back and reeded legs.
1004. A Victorian gold painted FIRE SCREEN with beadwork panel.
1005. A 19thC carved oak WRITING TABLE with mask handles.
1006. A 3-fold SCREEN.
1009. A Jacobean style carved oak SIDEBOARD with baluster supports, 2 drawers over 2 doors.
1010. A Victorian mahogany HALF TESTER BED.
1011. A Victorian ebonised SIDE CABINET with glazed doors enclosing a gilt and scratch carved centre panel.
1012. A Victorian mahogany TOWEL RAIL.
1013. A white painted 4 drawer CHEST.
1014. An EASEL.
1015. An Art Deco walnut veneered twin pedestal DINING TABLE with cushioned frieze and 6 barrel back DINING CHAIRS.
1016. A Georgian mahogany WIG STAND.
1017. A reproduction burr elm PARTNER'S DESK.
1018. An Edwardian mahogany bowfront CHINA CABINET.
1019. A reproduction Maples DINING SUITE comprising extending dining table, 8 chairs (no seats), sideboard and cocktail cabinet.
1020. A rococo style WALL MIRROR
1021. A rococo style WALL MIRROR
1022. A Victorian oak PEW.
1023. A set 4 Carolean style oak DINING CHAIRS with bergere backs.
1024. A 19thC 3 tier OCCASIONAL TABLE.
1025. A Victorian mahogany balloonback DINING CHAIR.
1026. An oak gateleg TABLE.
1027. An oak gateleg TABLE.
1028. An Art Nouveau brass STANDARD LAMP.
1029. A Victorian smoker's BOW CHAIR.
1030. A Victorian mahogany HALL CHAIR.
1031. A Victorian CRICKET TABLE.
1032. Furniture Parts including Tripod Table.
1033. A Georgian oak TRIPOD TABLE with circular top.
1034. A Georgian oak TRIPOD TABLE with circular top.
1035. A profusely carved 19thC mahogany SERVING TABLE. 60" wide
1036. A late Victorian walnut mirrorback SIDEBOARD with turned and reeded uprights, the base having Art Nouveau handles to the 2 drawers over 2 carved panel doors.
1037. A Victorian flamed mahogany Duchess DRESSING TABLE.
1038. A Singer treadle SEWING MACHINE.
1039. An Edwardian PIANO STOOL.
1040. An Edwardian mahogany CHIFFONIER BASE.
1041. A walnut veneered SIDEBOARD.
1042. A Victorian mahogany TABLE MIRROR with 2 drawer base.
1043. A Victorian mahogany Duchess DRESSING TABLE.
1044. A 1930's oak BUREAU with barleytwist legs.
1045. A Victorian papier mache TRIPOD TABLE.
1046. A set of 4 Victorian DINING CHAIRS with wash blue paintwork.
1047. A barleytwist oak FIREScreen
1048. A Victorian oak 3-tier DUMB WAITER.
1049. A pair of Victorian circular FOOTSTOOLS.
1050. A 19thC oak Pembroke TABLE.
1051. A Victorian pine Pembroke TABLE.
1052. A 1920's mahogany CHINA CABINET with gadrooned top, astragal glazed doors, raised on shell cabriole legs with ball and claw feet.
1053. A reproduction burr elm Georgian style BOOKCASE.
1054. A Victorian mahogany marbletop WASHSTAND.
1055. A Hepplewhite style DINING CHAIR.
1056. A Regency and later mahogany CARVER CHAIR.
1057. A set of 4 Edwardian oak DINING CHAIRS with button dralon panel backs and seats.
1058. A period oak CARVER CHAIR with upholstered panel back, seat and arms.
1059. An Edwardian inlaid mahogany OCCASIONAL TABLE.
1060. A Victorian mahogany compact Irish SOFA.
1061. An oak 3 drawer CHEST on stand.
1062. A wrought iron STANDARD LAMP.
1063. A wrought iron STANDARD LAMP.
1064. A George III mahogany TRIPOD TABLE with rectangular top.
1065. A bergere oak 2 seater SOFA.
1066. A set of 4 17thC style oak highback DINING CHAIRS.
1067. A similar pair of CARVER CHAIRS.
1068. A similar CARVER CHAIR.
1069. An intricately carved 19thC Chinese hardwood mirrorback DRESSER.

1070. An Edwardian oak SIDE-BOARD with galleried mirror back, 2 drawer and 2 door cupboard base with lightly carved urn motifs.
1071. A pair of Georgian oak ballback KITCHEN CHAIRS.
1072. A Victorian carved oak CENTRE TABLE with dolphin feet.
1073. A Victorian barleytwist oak DINNER GONG.
1074. A profusely carved 19thC mahogany serpentine SERVING TABLE.
1075. An oak FENDER.
1076. A pair of Victorian mahogany DINING CHAIRS.
1077. An Edwardian mahogany TUB CHAIR.
1078. An Edwardian string inlaid mahogany OVERMANTEL MIRROR.
1079. An Edwardian oval WALL MIRROR.
1080. A Chinese hardwood 4-fold SCREEN.
1081. An Edwardian walnut CHEST of 2 short and 3 long graduated drawers with knob handles and shaped apron.
1082. A demi-lune carved oak barleytwist gateleg TABLE.
1083. A Victorian oak HALL CHAIR.
1084. A Victorian mahogany DISPLAY CABINET.
1085. An Edwardian mahogany CHINA CABINET with Greek key cornice over 2 astragal glazed doors, gadrooned apron with ball and claw feet.
1086. An Edwardian marquetry inlaid mahogany 2-door CHINA CABINET with astragal glazed doors and undershelf.
1087. A Victorian Irish OVERMANTEL MIRROR with gilt ebonised and jewelled frame.
1088. A 1920's walnut BOOKCASE with 2 astragal glazed doors over 2 panelled doors and bracket feet.
1089. A burr walnut and floral marquetry REVOLVING BOOKCASE.
1090. A Victorian gilt PIER GLASS.
1091. An oval Chinoiserie decorated WALL MIRROR.
1092. A Victorian mahogany WALL MIRROR with lift top compartment.
1093. A Jacobean style carved oak HALLSTAND.
1094. A Regency flamed mahogany PRESS CUPBOARD with 2 doors enclosing drawers over 2 short and 2 long drawers.
1095. A late Victorian mahogany breakfront WARDROBE COMPACTUM.
1096. A set of 4 Edwardian DINING CHAIRS with ribbon carved splats and cabriole legs.
1097. A reproduction linenfold oak 4-piece BEDROOM SUITE.
1098. A set of 4 Victorian elm seated lathback KITCHEN CHAIRS.
1099. An Edwardian mahogany CHAIR with pierced vase splat.
1100. A large Victorian gilt framed WALL MIRROR.
1101. A large Victorian gilt framed WALL MIRROR.
1102. A 19thC PIER TABLE with gold and green decoration and marble inset top.
1103. A 17thC oak corner SETTLE.
1104. An early 19thC gilt OVERMANTEL MIRROR.
1105. A Victorian ebonised OVERMANTEL MIRROR.
1106. An Edwardian walnut OVERMANTEL MIRROR.
1107. An oak HALL STAND.
1108. A 1930's oak HALL STAND.
1109. A Georgian oak CORNER CUPBOARD with dentil cornice, open shaped shelves and 2 door base.
1110. A Victorian carved oak mirrorback SIDEBOARD.
1111. A large 19thC carved oak mirrorback SIDEBOARD.
1112. A large 19thC carved oak mirrorback SIDEBOARD.
1113. An impressive 19thC oak SERVING TABLE with heavily carved rococo splashback and frieze.
1114. A cast iron FIREBACK.
1115. A wrought iron DOG GRATE.
1116. A Regentone RADIOGRAMME.
1117. A Victorian scrub top KITCHEN TABLE.
1118. A mahogany tilt-top TABLE with sabre legs.
- 1118A. A Victorian mahogany DRESSING TABLE.
1119. A walnut serpentine DRESSING TABLE.
1120. A Victorian burr walnut Duchess DRESSING TABLE.
1121. A Victorian burr walnut upright PIANO by Burling & Burling.
1122. An ebonised upright overstrung PIANO by H Lange & Co Berlin.
1123. An Edwardian MUSIC STOOL with lyre carved box seat.
1124. A quarter veneered walnut CUTLERY CANTEEN on cabriole legs.
1125. A Victorian painted 4-drawer CHEST.
1126. A Victorian spindleback GRANDMOTHER CHAIR.
1127. A Victorian carved oak extending DINING TABLE.
1128. A harlequin set of 11 carved barleytwist oak highback DINING CHAIRS.
- Victorian white painted Furniture**
1129. DRESSING TABLE.
1130. OCCASIONAL TABLE.
1131. BEDSTEAD.
1132. WARDROBE.
1133. WARDROBE.
1134. DRESSING CHEST and STOOL
1135. DRESSING CHEST.
1136. OCCASIONAL TABLE.
1137. TABLE MIRROR.
1138. OAK CUPBOARD with single glazed door.
1139. Oak linenfold HALL ROBE.
1140. A 19thC oak CABINET, the upper section having 2 bevelled glass doors supported by cherubs over a bombe 2 short and 1 long drawer base, raised on legs.

1141. A panelled oak 4-door CUPBOARD.
1142. A Victorian cast iron and tiled FIREBACK.
1143. Two grate fronts.
1144. A late Victorian WARDROBE, WASHSTAND AND BEDHEAD.
1145. A late Victorian WARDROBE and 4-drawer CHEST.
1146. A Victorian mahogany TOWEL RAIL.
1147. A late Victorian mahogany DRESSING TABLE.
1148. A Victorian painted octagonal CENTRE TABLE.
1149. A mahogany CORNER CUPBOARD with dentil moulded cornice, open shelves over 2 drawers and 2 door base.
1150. An American ROCKING CHAIR with button leather upholstery.
1151. A late Victorian mahogany PURDONIUM.
1152. A Victorian flamed mahogany TABLE MIRROR with 2 drawer base.
1153. An oak OVERMANTEL.
1154. A Georgian oak hanging CORNER CUPBOARD with 2 panelled doors.
1155. A fine Edwardian rosewood marquetry OVERMANTEL MIRROR.
1156. A Victorian mahogany TABLE MIRROR.
1157. A Victorian walnut X-frame STOOL with turned stretcher.
1158. An Edwardian oak hanging SMOKER'S CABINET with dentil moulding over single door and pipe rack.
1159. A 19thC carved oak WALL CABINET with 3 shelves, single drawer and oval carved panel of cherubs.
1160. An early Murphy Television.
1161. A 19thC gilt 3-tier CORNER SHELF.
1162. A Victorian OVERMANTEL MIRROR.
1163. A Victorian crossbanded walnut OVERMANTEL MIRROR.
1164. A Victorian COATRACK in the form of a horseshoe.
1165. An Edwardian oak oval WALL MIRROR.
1166. An oak framed rectangular WALL MIRROR.
1167. A fine Edwardian floral painted satinwood oval WALL MIRROR with carved ribbon pediment.
1168. A set of 4 19thC bamboo carved KITCHEN CHAIRS with painted decoration.
1169. An Edwardian satinwood crossbanded flamed mahogany BEDROOM SUITE comprising wardrobe compactum, tile back washstand and dressing chest.
1170. An Edwardian mahogany WARDROBE COMPACTUM.
1171. An Edwardian oak double WARDROBE with Art Nouveau hammered copper panels.
1172. An Edwardian string inlaid mahogany CHINA DISPLAY CABINET with bow front glass.
1173. A Victorian mahogany SECRETAIRE BOOKCASE with glazed 2 door top and secretaire draw over 2 doors.
1174. A Victorian mahogany 4 glazed door BOOKCASE.
1175. A late Victorian ebonised CHIFFONIER.
1176. An Edwardian marquetry inlaid rosewood CHIFFONIER with bevelled glass.
1177. Period oak Bed Parts.
1178. An Edwardian oak FIRE SURROUND with mirror back, carved with dentil moulding and foliate scroll work, dated 1912.
1179. A period oak FIRE SURROUND with 2 Ionic columns to each side.
1180. A Victorian mahogany SOFA with scroll legs and serpentine feet, upholstered in maroon dralon.
1181. A Victorian mahogany SOFA with scroll arms and turned legs, upholstered in pink dralon.
1182. A pair of late Victorian ladies and gents OPEN ARMCHAIRS with pink dralon upholstery.
1183. A Victorian mahogany CHAISE LONGUE in a white and gold upholstery.
1184. An Empire style gilt OVERMANTEL MIRROR.
1185. A Victorian gilt OVERMANTEL MIRROR with ropetwist frame.
1186. A Victorian walnut CREDENZA with marble top and mirrorback.
1187. A William IV rosewood CENTRE TABLE raised on reeded baluster pedestals and turned stretcher.
1188. A 19thC French giltwood CONSOLE TABLE with marble top.
1189. A 19thC French gilt GIRANDOLE with oval glass and 3-branch sconce.
1190. A Queen Anne style walnut fall front BUREAU on carved cabriole supports.
1191. A Georgian double door bow fronted mahogany CUPBOARD with interior drawers and brass H hinges.
1192. A small Georgian style mahogany serpentine CHEST of 3 drawers.
1195. A 19thC Oriental 4-fold SCREEN painted with figures to one side, the other having birds and flora in high relief inset with ivory and mother of pearl.
1196. A gilt framed WALL MIRROR.
1197. A 17thC 3 panel carved oak COFFER.
1198. A Victorian mahogany WRITING TABLE with leather top and pen drawer.
1199. An Edwardian gold painted china DISPLAY CABINET.
1200. A set of 3 Victorian mahogany DINING CHAIRS.
- Followed by a selection of Oriental Rugs, Pine and shipping Furniture, heavy upholstery, garden statues, etc.....

Established 1900
-GOLDINGS-
AUCTIONEERS & VALUERS

Upon instructions from various individuals including the collection of the late Eric Lane of Boston
Golding Young & Co will sell by Auction a catalogued sale of

**MODERN SPORTING GUNS
ANTIQUE ARMS & MILITARIA
& ASSOCIATED ITEMS**

On Saturday 19th June 1999 at 11 am

Including 2 Holland & Holland Royal sidelock ejectors, 12 bores by Jeffrey, Midland, etc.,
4 bores by Towl and Tolley, hammer guns by Collings and Wallis, etc.

We are now accepting further entries of antique and modern guns, edged weapons,
militaria, fishing tackle, hunting & riding tack and other associated country pursuit items.

On the sale theme we also invite collectables, ephemera, paintings, prints, silver, etc.



Followed at 1 pm by a sale of modern

COLLECTORS ITEMS

Including Die-cast model cars, Bells whisky commemorative bottles, Franklin Mint items,
300 lots of Cigarette and Tea Cards, 20thC pottery, etc.

Viewing: Friday, 18th 2 pm - 7 pm & Saleday from 9 am

Golding Young & Co., Old Wharf Road, Grantham, Lincolnshire, NG31 7AA
Tel 01476 565118 Fax 01476 561475

NOTES

CONDITIONS OF SALE

1. These Conditions together with any Notices to Purchasers are the only terms and conditions subject to which Golding Young & Co. ("the Auctioneers") as agents for the Vendor will sell goods to a purchaser ("the Bidder") and all other conditions, whether express, or implied at common law or by statute as are capable of lawful exclusion are hereby excluded.
2. The highest bidder shall be the buyer. The Auctioneers reserve the right of regulating the biddings; of rejecting any bid; and of bidding for, withdrawing, consolidating, dividing or altering the order of lots.
3. The purchase money for each lot with the usual commission of 12½% plus VAT at the current rate shall be paid at the fall of the hammer (if required). Each lot at the fall of the hammer shall be at the sole risk and expense of the buyer, and shall be paid for and removed immediately after the conclusion of the sale, but no lot shall become the property of the buyer, or be removable until paid for, and if taken away in contravention of these conditions without an order for removal signed by the Auctioneers, they shall have power to seize the same by their servants or agents, or otherwise, or the Auctioneers may recover either the lot sold or the price thereof (at their option) by action at law.
4. No contra account of any description whatever will be allowed to the buyer as a set off, and payment for each Lot shall be made to the Auctioneers or their clerk only, and a buyer paying by cheque must give satisfactory references.
5. For all purposes of this sale the Clerk of the Auctioneers shall be deemed to be the agent of both seller and buyer.
6. A bidder shall not be allowed to retract his bidding after the fall of the hammer, and he shall give up his full name and address if required. The Auctioneers will not recognise the transfer of any lot from one buyer to another, nor make any alteration in the sale book in respect thereof.
7. The Auctioneers are acting only as agents, and give no personal warranty as to the condition, quality or authenticity of any chattels offered for Auction. Any catalogue description is given merely as guide to purchasers, any description can be changed from the rostrum before the lot is sold. If a purchaser buys without previous inspection he will do so at his own risk.
8. Notwithstanding any other terms in these Conditions, if within 7 days of the Sale a purchaser gives notice in writing that a lot is a deliberate forgery, with supporting factual evidence, the Auctioneers may rescind the transaction. The burden of factual proof lies with purchaser, mere opinions will not satisfy. This benefit is not assignable.
9. If any buyer neglect or refuse to comply with the above conditions or any of them, his deposit money (if any) shall be forfeited, and the lot uncleared may, at the option of the Auctioneers, be resold without notice by public auction or private treaty, and any loss occasioned by such re-sale together with all expenses attendant thereon, or arising under these conditions shall be paid for by the defaulter and be recoverable as and for liquidated damages. This condition is however without prejudice to the right of the Auctioneers to enforce the contract made at this sale if they think fit.
10. Any Notes for Purchasers and Catalogue Glossaries will be construed as Conditions of Sale.
11. The Auctioneers shall be the sole Arbitrators in all matters of dispute relating to those conditions both as between the seller and the buyer and between the several bidders and buyers and their determination on all matters shall be final and binding on all parties concerned.

Auctioneers: C. Robin Hall FRICS FAAV & Colin R. Young FNAVA

NOTES

FREE AUCTION VALUATIONS - YOUR REGIONAL ANTIQUES ROADSHOW

HOURS OF BUSINESS

Monday to Friday 9 a.m. to 1 p.m. & 2 p.m. to 5 p.m.
Entries welcome at all times except Wednesday mornings

PROPERTIES CLEARED - VALUATIONS FOR ALL PURPOSES

Offices at
GRANTHAM + BOSTON + STAMFORD + RUTLAND

Established 1900

— GOLDINGS —

Chartered Surveyors, Auctioneers, Valuers & Estate Agents
Residential, Commercial, Agricultural, Property Management, Financial Services

45 High Street, Grantham, NG31 6NE

Telephone: 01476 · 590211

PROFESSIONAL SERVICES FOR



RESIDENTIAL

Our established Residential department headed by Chartered Surveyors undertakes sale and valuation of all types of property from Castles to Town Houses; Surveys, Homebuyers Reports, Mortgage, Probate and Insurance Valuations carried out with care attending to individual requirements.



COMMERCIAL

Dealing with the sale and survey of Shops, Offices and Factories. Valuation for Rent Reviews, Lease renewals and negotiations. Rent Arbitration, on behalf of landlord and tenant.

Plant, Machinery & Assets; Sales for Receivers, Liquidators, High Court & County Court. Auction Sales on Site or at The Grantham Auction Rooms for private and public clients alike.



AGRICULTURAL

Our Senior Partner has wide experience in the sale and valuation of Agricultural Properties, conducting Farm Sales and Valuation of Live and Dead Farming Stock for dissolution, Probate and other matters. Together with Rent Reviews, Development Land reports and Annual Stocktaking Valuations.



FINANCIAL SERVICES

Our Experienced Consultant is available to advise on all matters concerning Finance, Mortgages, Insurance, Investment, Planning and Pensions.



PROPERTY MANAGEMENT

Personal service and attention to detail ensures that our management team exploits your investment portfolio whether an Individual Family Home let for a small fee or Office, Factory, Shop or Farm with rent collected and regular inspections made.

Chattels Auctioneer

Colin R. Young FNAVA

Property Management

Mrs. Margaret Pashley

Partners

C. Robin Hall FRICS FAAV

Ian J. Shaw FRICS FNAEA

Financial Service Consultant

John G. Stukins

Residential Sales Manager

Mrs. Jenny Diment FNAEA CPEA

Associated Office: Golding Young & Co. The Grantham Auction Rooms, Old Wharf Road, Grantham, Lincolnshire, NG31 7AA
Telephone: (01476) 565118 Fax: (01476) 561475

Established 1900

-GOLDINGS-

— AUCTIONEERS & VALUERS —



Sold for £4,000 in the Spring Fine Art Sale

Golding Young & Co.
Old Wharf Road, Grantham
Lincolnshire, NG31 7AA
01476 - 565118