

Established 1900
-GOLDINGS-
AUCTIONEERS & VALUERS

Upon instructions from the Executors of Mrs. A. E. Smith
and various other local Estates, House Clearances and other sources

GOLDING YOUNG & CO

will sell by Auction

**ANTIQUUE FURNITURE, WORKS OF ART
& COLLECTABLES**

On Wednesday, 5th April, 2000 at 10 am



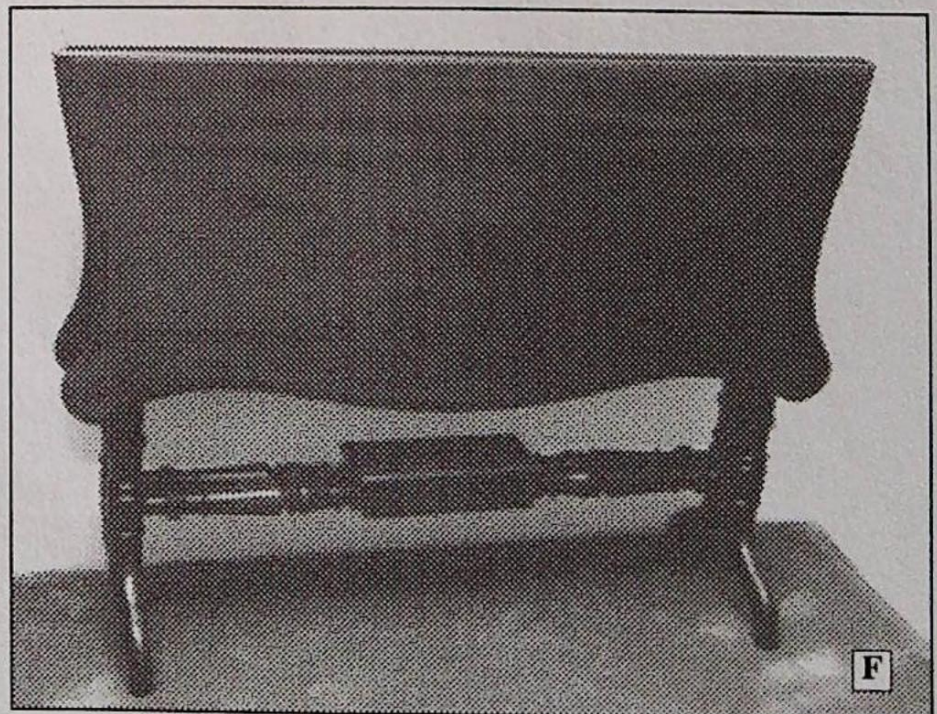
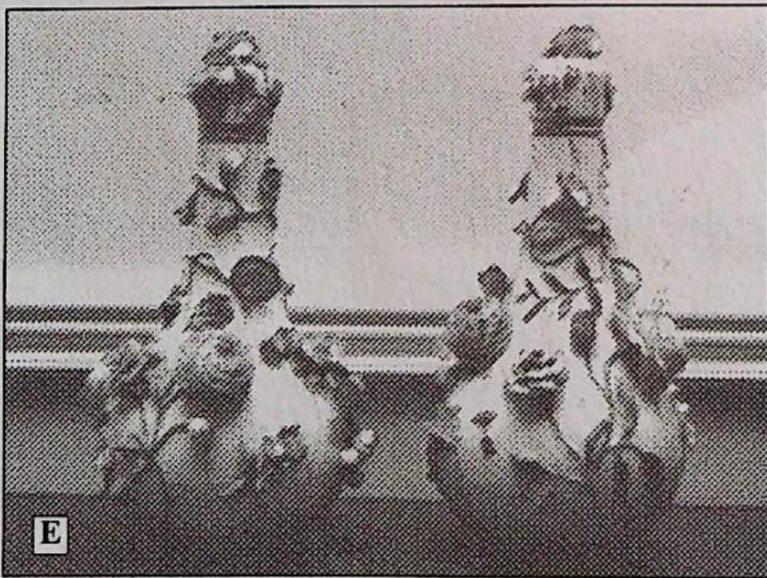
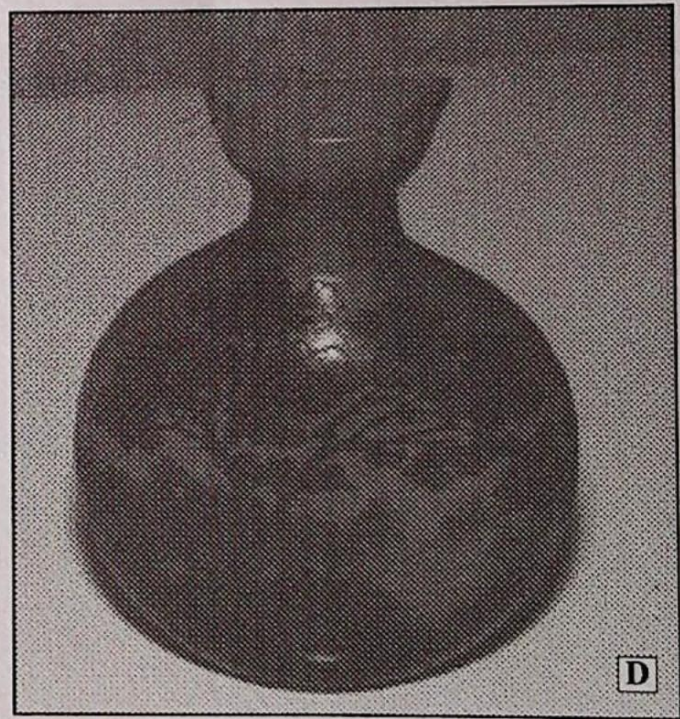
Viewing: Tuesday 4th April 2 pm to 7 pm & Saleday from 9 am

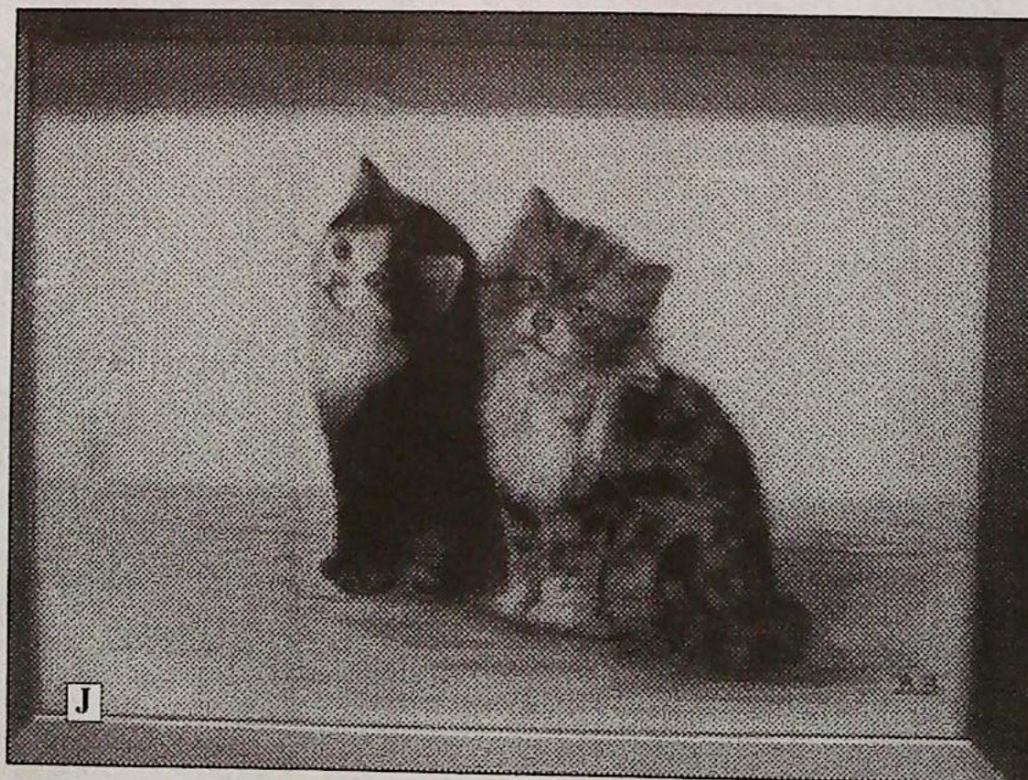
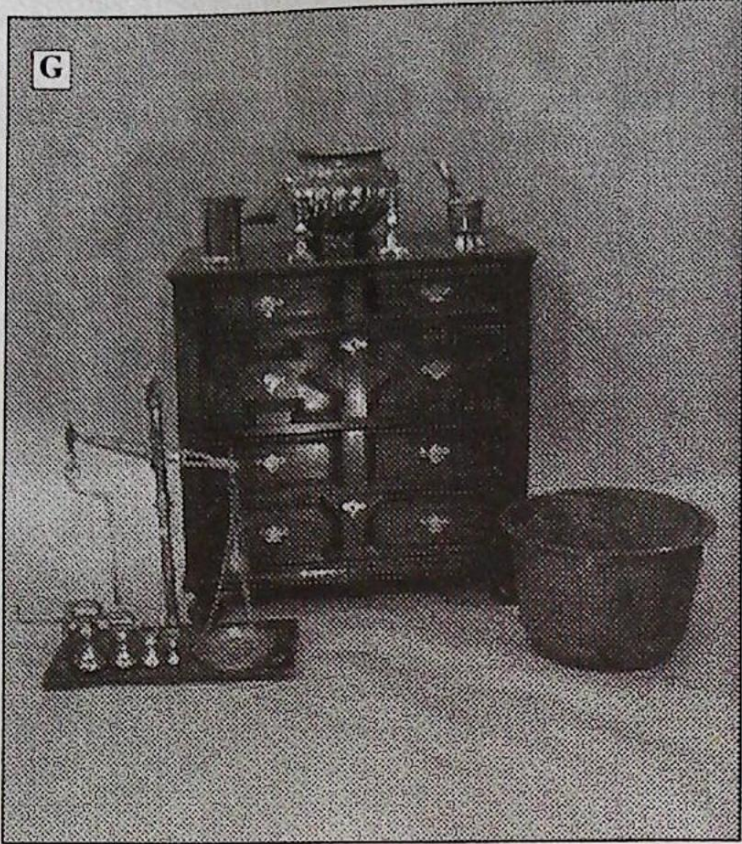
Golding Young & Co.

Old Wharf Road, Grantham
Lincolnshire, NG31 7AA

01476 - 565118

Fax: 01476 561475 E-Mail: goldingyoung@compuserve.com





1. The oak panelled and lead glazed Entrance Vestibule of St Wulfram's Church, Grantham. (Cover illustration). VIEWING for this lot is at the Church in Swinegate. The lot will be sold from the rostrum at the Auction Rooms while the structure remains in-situ.

SPECIFIC CONDITIONS OF SALE relating to the Vestibule.

- a) The lot is to be paid for in full within 3 days of the sale.
- b) The purchaser is responsible for the removal of the lot. This must commence on the 25th April and be completed no later than the 27th April.

Should this be an obstacle to bidding please speak to Mr Young prior to the sale. If the structure is not removed by the specified date the purchaser will be held responsible for all removal and storage costs incurred.

PICTURES

- | | |
|---|--|
| 1A. Tamboto. Connect 30, Limited Edition Print. | 23. An Alpine Landscape, oil on canvas. |
| 2. Katemoto. Angle 1, Limited Edition Print. | 24. Three Japanese Prints. |
| 3. Maki Haku. Snow and Flower, pair of embossed Prints. | 25. Four Victorian London Scene paintings over prints. |
| 4. A pair of Japanese Limited Edition Prints. | 26. A 19thC woolwork PICTURE of a family group. 32" x 39". |
| 5. Taguchi. Limited Edition Print. | 27. A 19thC SAMPLER (AF) |
| 6. Konobori. Limited Edition Print. | 28. Herbert Dicksee. Signed print of lions. |
| 7. Rei Yuki. Blue Cat Avenue, Limited Edition Print. | 29. Herbert Dicksee. Signed print of tiger. (AF) |
| 8. City of London Feast and 4 modern oil paintings. | 30. A pair of Redoute floral Prints. |
| 9. A pair of Redoute colour floral Prints. | 31. A silk screen Print of a Tiger. |
| 10. Print. The Boyhood of Raleigh by Millais. | 32. A pen sketch of a bullfight inscribed Sevilla 9.4.50. 6 1/2" x 9 1/4". |
| 11. A Victorian colour Print entitled 'No Thank You', maple framed. | 33. Isabel Harmer. Silk screen Print of a seagull. 30" x 30". |
| 12. Lesley Hammett. Rural Scene, oil on canvas, signed. 16" x 20". | 34. After Munnings. Major Bouch with the Belvoir Hounds, colour print, signed in pencil. |
| 13. Lesley Hammett. Rural Scene, oil on canvas, signed. 16" x 20". | 35. Neil Cawthorne. Limited Edition Hunting Print, signed. |
| 14. Lesley Hammett. Rural Scene with ducks, oil on canvas, signed. 16" x 20". | 36. Colour Print entitled Sunrise on Loch Katrine. |
| 15. Neil Cawthorne. HRH The Prince of Wales, Limited Edition Print. | 37. Colour Print entitled George and the Bairn. |
| 16. Four England's Hunting Country colour Maps. | 38. I A Gillibrand. Landscape watercolour with cottage. 10" x 14". |
| 17. Set of 4 19thC Fishing Engravings after Howitt. | 39. Henry Vizetelly. Colour Engraving of The Crystal Palace and Exhibition 1851. (AF) |
| 18. Four framed 19thC Coaching Series colour prints after Geeson. | 40. A late 19thC copy of the West Prospect of King's Lynn 1731. |
| 19. WWII Naval Battle Scene signed Groez. | 41. Ema Griffith. Watercolour of a Fuschia, c.1838. |
| 20. 19thC English School. Aylesford, Kent, Watercolour, indistinctly signed. | 42. 'Jailhouse Rock' FILM POSTER. |
| 21. 19th/20thC English School. River at Sunset, watercolour. 8 1/2" x 18". | 43. Print of the GNR Bridge, Boston. |
| 22. C M H Osborne. Alpine landscape, watercolour, signed. | 44. A Victorian colour Print of Little Bo Peep. |
| | 45. A small 19thC oil on panel of apples, pears and a beetle. |

46. A 19thC Naval 3/4 length PORTRAIT believed to be T Hutley, in the style of Francis Grant.
47. Bessie Bamber. 2 Kittens playing, oil on milk glass, initials BB. (Illustration J).
48. Bryan M Conway. Hunting Scene, OIL ON CANVAS.
49. Colour Engraving, Dover, The Landing of Prince Albert.
50. Three signed engravings of Cambridge Colleges and Waterloo Print (4).
51. A watercolour of a Turkish gentleman and pipe.
52. A pair of Japanese watercolours of Geishas.
53. David Bates rural scene Print.
54. A pair of oil on card Rural Landscapes.
55. St Michael's Mount Engraving and 4 others.
56. A pair of small oval Indian Watercolours on ivory, in carved frames.
- 57-58 Spare lots.

COLLECTORS ITEMS AND MISCELLANEA

59. A Victorian copper TEA KETTLE.
60. A 19thC cast-iron FIRE BASKET.
61. A pair of 19thC garden URNS (AF)
62. A horse-drawn PLOUGH.
63. A lead WELL PUMP.
64. Lamb's Rum Mirror and Michelin enamel Map.
65. A wrought iron SPARKGUARD.
66. A wrought-iron GRATE FRONT.
67. A pair of wrought ANDIRONS.
68. Two small FENDERS and cornice.
69. A Georgian wirework and brass FENDER.
70. Quantity of Victorian TILES.
71. Three large Victorian terracotta TILES.
72. A Victorian style SPINNING WHEEL.
73. 78rpm Records.
74. A cased model FISH.
75. A pair of RIDING BOOTS WITH trees.
76. A pair of RIDING BOOTS with trees.
77. A large iron CLEAVER.
78. A cast-iron WELL PUMP.
79. A Victorian hammered copper LOG BUCKET.
80. A reproduction figure of Charlie Chaplin.
81. Cast-iron FIRE INSERTS.
82. Cast-iron FIRE INSERTS.
83. A Victorian cast-iron FIREPLACE.
84. A Victorian mahogany circular FOOTSTOOL with beadwork.
85. An Officer's Tunic.
86. A Victorian painted tin and brass COAL SCUTTLE.
87. A Victorian brass FENDER.
88. An early Victorian copper WARMING PAN with pin-struck cover.
89. Three oak TRAYS.
90. 'The Cottage Jack', a 19thC clockwork ROASTING JACK with spit.
91. A leather Gladstone Bag.
92. An early Victorian copper COAL HELMET.
93. Two bowler HATS, boxed.
94. A boxed TOP HAT.
95. A Victorian oak handled brass GRAIN SCOOP.
96. Hanging Centre Light.
97. Hanging Centre Light.
98. Hanging Centre Light.
99. Old Uniforms.
100. A large Victorian copper KETTLE with acorn finial.
101. An Italian LUTE, cased.
102. A 19thC brass beam BALANCE and 4 graduated bell weights.
103. A Paolo Noprani Art Deco ACCORDIAN.
104. A Negretti & Zambra circular BARO-THERMOMETER on mahogany desk mount.
105. Brass Servant's BELL, balance and hooks.
106. A Victorian flamed mahogany sarcophagus TEA CADDY.
107. A pair of glass double gourd SODA SYPHONS.
108. A painted salt-glazed stoneware BARREL.
109. A 'Candlestick' TELEPHONE and Bell Box.
110. Quantity of old BOWLS.
111. A mother Victorian ebonised walnut oval INKSTAND with mother of pearl.

112. A Victorian rosewood PEN BOX.
113. A 'bayonet' LANTERN.
114. An oak EASEL.
115. 'Tommy' HELMETS.
116. A Victorian BM COFFEE POT (AF)
117. Two inlaid mahogany TRAYS (AF).
118. An enamel BREAD BIN.
119. A walnut cased SEWING MACHINE.
120. A 1970's plastic ROBOT.
121. An Oriental bronze FIGURE.
122. An Indian tinplate CAR.
123. A Victorian brass 3-foot JARDINIERE.
124. A pair of ivory TUSKS carved with negro faces.
125. 'The Wolf' Miner's LAMP.
126. A Victorian brass and mahogany TELESCOPE.
127. A Bing 'Pigmyphone' and Records.
128. A Singer Sewing Machine.
129. Old motorcycle Gloves, RAC Maps, etc.
130. Steel FIRE IRONS.
131. A set of 3 reeded brass FIRE IRONS.
132. A small pair of champleve baluster VASES.
133. A small pair of cloissone baluster VASES.
134. A ribbonwork Polescreen PANEL.
135. Old Bottles.
136. Carvery Cutlery and whisk.
137. A pair of bird DESK STANDS.
138. A German TRUMPET, cased.
139. A pair of ebony Candlesticks, tray and elephants.
140. Two Christian Dior foamex advertising BUSTS.
141. Two Tribal MASKS.
142. A VIOLIN by R W Berry 19/4, maker Thornlea, Hephthorn Lane No 8 Chesterfield. 15", overall length 24".
143. A small oak CASK.
144. An oak BUCKET.
145. An oak LETTER RACK.
146. A pair of BELLOWS.
147. An oak BOOK RACK.
148. A brass MARTINGALE.
149. Three HORSEBRASSES.
150. Three HORSEBRASSES.
151. Four Victorian copper PANS.
152. A Victorian brass MILKPAN.
153. A bronze MORTAR and BELL.
154. Two small Victorian brass PRESERVE PANS.
155. A Victorian brass LADLE.
156. A copper POST HORN.
157. An early 19thC mahogany TABLE MIRROR with turned uprights.
158. A small needlework Picture of a setter.
159. Old keys, sieve, etc.
160. A Victorian oval copper KETTLE.
161. A Victorian brass WATER CAN.
162. A miniature brass and copper 'Masthead' SHIP'S LANTERN.
163. A finely figured Victorian yew STOOL.
164. A small salt-glazed stoneware POT, No 7 flat iron and a mahogany collection cup.
165. A Victorian pierced copper WARMING PAN.
166. A Victorian brass and burr walnut dome top JEWEL CASKET.
167. A Victorian burr walnut WORKBOX.
168. A Victorian rosewood WORKBOX.
169. A satin lined Model of a Sedan Chair, forming a display case. 22" high.
170. A Doulton salt-glazed stoneware BARREL.
171. A Fallowfield photographic Enlarger.
172. A Rifle Club SHIELD.
173. A Victorian OIL LAMP.
174. A Victorian walnut WRITING BOX.
175. A pair of Victorian brass CANDLESTICKS.
176. A Victorian walnut brassbound WRITING BOX.
177. Two plated TAZZAE and a Cakestand.
178. A Victorian oval copper KETTLE with milk glass handle.
179. A Victorian brass WARMING PAN engraved with a peacock.
180. An oak TRAY.

181. A 19thC brass CAFEOLETTE.
182. A 19thC bronze PESTLE and MORTAR.
183. A brass Ladle and Milk Skimmer.
184. Three Victorian brass CANDLESTICKS.
185. Three Victorian brass CANDLESTICKS.
186. Two Victorian brass CANDLESTICKS.
187. A Victorian mahogany WRITING BOX.
188. A Georgian mahogany CADDY BOX.
189. A carved oak STOOL.
190. An oak Bookrack and Picture Frame.
191. A Chinese silk JACKET.
192. Rummors and glasses (4)
193. A 19thC Belgian brass CHAMBERSTICK.
194. A brass Inkpot and Boot.
195. A brass Saucepan and Handbell.
196. An Adam style FIRE FRONT, etc.
197. Mahogany Curtain Pole Rings, etc.
198. A Victorian brass SAUCEPAN.
199. Two stoneware FOOT WARMERS.
200. Pie Raisers and Jelly Moulds.
201. Riding Boot and trees.
202. Plated Cake Basket, brass Jardiniere and brushes.
203. A small taxidermy OWL.
204. Marquetry BOX and 2 glove stretchers.
205. A Victorian brass and copper WARMING PAN.
206. Old Cameras and Binoculars.
207. A Georgian embossed brass JARDINIERE.
208. Five brass Bell WEIGHTS.
209. Four brass cylindrical WEIGHTS.
210. A Victorian copper rectangular PLANTER.
211. A Victorian copper rectangular TRAY with well.
212. A coal Helmet.
213. A Chinese WATER BUCKET.
214. An 18thC Cavalry SABRE.
215. An Art Nouveau metal and leather PANEL.
216. Three carbide LAMPS.
217. A Vidor Attached Cased RADIO.
218. A small 8-drawer Office File.
219. A Ruggeri copy VIOLIN, cased.
220. A mahogany rosewood and mother of pearl BOW.
221. A steel Rocking Horse.
222. A Victorian leather CIGAR BOX with Bramah lock.
223. A Victorian Tonbridge inlaid walnut WORKBOX.
224. A 19thC French brass inlaid rosewood serpentine WORKBOX (AF).
225. A lady's MOURNING SHAWL.
226. A golden plush jointed TEDDY BEAR (AF).
227. A pair of oak and chrome CANDLESTICKS.
228. An Art Deco plaster FIGURE of a young lady in a bonnet.
229. A Victorian cast-iron COFFEE MILL.
230. Door Knocker, letterbox and spirit kettle.
231. A Meiji period Japanese lacquer and chinoiserie TABLE CABINET.
232. A pair of signed Japanese hardwood NETSUKE of dragons.
233. A pair of signed hardwood NETSUKE of dragons.
234. A signed Japanese fruitwood NETSUKE, study of a dragon toad crouched with strings of coins on silken tassels.
235. A signed Japanese ivory NETSUKE, study of a naked Geisha sleeping in an upright sitting position.
236. A signed Japanese ivory NETSUKE, study of a small boy seated in fine kimono and playing with a large upturned mushroom.
237. A signed Japanese ivory NETSUKE, study of a crayfish with umimatsu inlaid eyes.
238. A signed Japanese ivory NETSUKE, study of a bewildered village elder.
239. A Japanese ivory NETSUKE, study of a large cockerel.
240. Five horn BEAKERS including 2 silver mounted.
241. A Razor Box.
242. SS Hat.
243. Two cloth Nazi Badges.
244. 2 SS Skull Badges.
245. 1965 Battle of Britain First Day Cover with the autographs of the Beatles.

246. Autographs of the England World Cup winning team.
247. A carved ivory FIGURE of a Nun.
248. Blood letting knife, marrow scoop, etc.
249. A Meiji period Japanese carved ivory PARASOL HANDLE in the form of a lion: a carved ivory Spill Vase and ivory Chess pieces (9)
250. A Mauchlinware string dispensing BALL 'Laxey Wheel, Isle of Man'.
251. A similar lot - 'Auld Brig 'O' Doon'.
252. A blond tortoiseshell CARD CASE.
253. Four fountain PENS and Pencil.
254. A pair of unframed STEVENGRAPHS, 'The Good Old Days' and 'The Present Time'.
255. Treen Inkpot.
256. Treen Boot.
257. A carved limewood CUP and COVER.
258. Small silver items, napkin rings, etc.
259. Photograph, treen boxes, etc.
260. An early 18thC French gilt bronze scrolling female FIGURE. 5 1/2".
261. A telescopic brass TOASTING FORK.
262. Two WWI Service Medals and Coins.
263. An Armand Marseille DOLL. 9" high.
264. A small pair of kid Ballet SHOES.
265. A cased Ronson Varaflame LIGHTER and CASE with mother of pearl decoration.
266. An optical inspection CASE.
267. A plated Mascot of a horse.
268. A Car Mascot of an Indian head.
269. A fine nickel-plated CAR MASCOT depicting Mercury.
270. Cigarette Card Silks.
271. A quantity of miscellaneous lead animals and figures.
272. A Picollo FLUTE.
273. A fine Meerschaum PIPE carved in the form of a Negro Mask, cased.
274. A fine Meerschaum PIPE carved in the form of a lady with parasol and dog with inlaid eyes.
275. Two Pipes.
- 276.-280 Spare Lots.

GLASS AND CERAMICS

281. A 19thC Meissen FIGURE of a chaffinch. 5 1/2" high.
282. A Royal Doulton 'Battle of Hastings' cylindrical JUG.
283. A Coalport Limited Edition BUST of Charles and Diana No 116/250.
284. A Meissen blue and white shell SALT on scroll feet.
285. Trinket China and Enamelwares.
286. A Sylvac Pony.
287. A Victorian green glass DUMP.
288. An early 19thC Coalport ROUGE POT with gilt floral decoration.
289. A similar MUG.
290. A Hummell FIGURE - Little Shopper.
291. A Hummell FIGURE - Boy with pig in basket.
292. A Hummell FIGURE - Girl with schoolbag.
293. A Hummell FIGURE - Girl with basket.
294. A Hummell FIGURE - Boy with basket.
295. A Hummell FIGURE - Bee.
296. A Collection of over 100 pieces of Goss, Carlton and other CRESTED CHINA.
297. A Willow pattern DOLL'S TEA FOR TWO SET.
298. A large collection of Goss and other CRESTED CHINA.
299. A small early 18thC Arita onion VASE (AF).
300. A Derby scene painted baluster VASE, c. 1830.
301. A Royal Worcester PIN TRAY with scene painted view of WORCESTER.
302. An early 20thC Galle cameo glass VASE, acid etched landscape in shades of brown, signed. 6" high. (Illustration D).
303. A Meiji period Japanese Satsuma CHARGER.
304. A 19thC Spode style blue and white transfer printed MEATPLATE
305. Three pieces Poole Pottery.
306. A Moorcroft Dish and Bowl.
307. A Losolware Sucrere, Plate and portrait plate (3).
308. Three Royal Doulton Plates.
309. An ironstone Plate and 2 silver lustre Plates (3).

310. A fine pair of 19thC Sitzendorf COMPORTS with pierced and moulded bowls and figural columns, 12" high. (Illustration B).
311. Eight cut glass Beakers and 2 Jugs.
312. A crystal Celery VASE and Pickle JAR.
313. Two Willow pattern BOWLS and another.
314. A Staffordshire CHEESE DISH and cover.
315. A Royal Doulton CHARACTER JUG, Othello D667*.
316. A Royal Doulton CHARACTER JUG, The Guardsman D6755.
317. An Adams Dickensware LOVING CUP.
318. A Victorian Staffordshire FIGURE depicting Romeo & Juliet under a bow. 8".
319. A Noritake landscape VASE and cover.
320. A Meiji period Japanese BOTTLE VASE, yellow ground in the Chinese taste with lappet neck and turquoise banding. 16" high.
321. A Belleek cloverleaf moulded TEA FOR TWO.
322. Four Shelley Cups and Saucers, etc.
323. A Capodimonte shell CENTREPIECE with cherub.
324. A George Jones basket and leaf moulded NUT DISH.
325. A George Jones majolica oval STRAWBERRY DISH (restored and no pots).
326. Feeders and Sauce Boats.
327. A Wade TABLELAMP.
328. An early 19thC stoneware JUG moulded with figures and painted with birds and butterflies.
329. A Chamberlain's Worcester PLATE, moulded orange border, central hand painted yellow rose.
330. A pair of mid-19thC Derby BOTTLE VASES with covers encrusted with flowers and gilt decoration. 10" high. (Illustration E).
331. A pair of Chamberlain's Worcester kidney shaped DISHES with broad orange borders and gilt stylised floral decoration.
332. A Coalport PLATE, fawn/mustard-coloured border, shaped rim, and central bouquet of flowers. Pattern 4/257 attributed to Stephen Lawrence in Coalport Book (Goddens).
333. A Swansea PLATE with 3 floral sprays.
334. A pair of floral enamel frosted glass VASES, 13".
335. A 'Schweppes' Match Striker.
336. Royal Commemorative China.
337. A Davenport ivy pattern PLATE and 2 further JUGS.
338. Victorian and other PLATES.
339. A Carltonware LEAF DISH and 3 others.
340. A 19thC Meissen FIGURE GROUP depicting a young family with doves and garlands around a central column and urn. 8" high. (Illustration C).
341. A Webb crystal BOWL, 8" dia.
342. A Webb crystal BOWL, 8" dia.
343. A Victorian cut crystal mallet DECANTER.
344. A German porcelain TAZZA with pierced and floral painted bowl, on a wrythen pedestal. 10" dia, 9" high.
345. A Dresden pierced lozenge DISH painted with pansies.
346. A New Hall SAUCER and Copeland stoneware JUG.
347. A Victorian blue and white Sauce Tureen and 2 low Comports.
348. A Victorian clover pattern WATER JUG.
349. Four Victorian Prattware Staffordshire POT LIDS in ebonised frame.
350. A Meiji period Japanese Satsuma baluster JAR with lining lid and cover, decorated in traditional enamels depicting birds and flora, signed to base. 10 1/2" high.
351. A Copenhagen DISH and Staffordshire BOWL.
352. An opal, clear and brown GLASS VASE.
353. A 19thC Cantonese cylindrical TEAPOT. 6 1/2" high.
354. A Celadon JARDINIÈRE moulded with leaf decoration. 6" high.
355. A Meiji period Japanese Imari double gourd VASE. 7" high.
356. A Copeland & Garrett PLATE transfer printed with the Spode 'Net' pattern in the Chinese taste, printed and impressed mark. 10" dia.
357. Two 19thC Bavarian PLATES and SUCRÈRE.
358. A Dr Wall period Worcester SAUCER; cup, saucer, Satsuma pot and green glass vase. (5)
359. A Ridgway Imari pattern EGG CRUET (AF)
360. A 19thC Italian terracotta FIGURE GROUP of 3 putti trying to motivate a seated goat. 21" x 5" and 12" high. (Illustration A).

361. An early 20thC Italian Art Deco terracotta FIGURE GROUP of a naked young girl and a turtle, signed GUERO. 15 1/2" x 3 1/2" and 9" high.
362. An 18thC Chinese mandarin pattern PALETTE MUG (restored).
363. A 19thC Spode style BOWL (AF).
364. A large 19thC Mason's ironstone TANKARD.
365. A 19thC Staffordshire transfer printed and overpainted MUG with moulded frog to interior.
366. A 19thC Doulton salt-glazed stoneware HARVEST JUG. 6 1/2".
367. A breakfast CUP and SAUCER.
368. Four porcelain Plates.
369. Two Queen Victoria pressed Plates.
370. A 19thC Minton TAZZA with moulded gilt and rose painted dish supported by 3 stylised dolphins. 8" high.
371. Four green stem Glasses.
372. A 19thC transfer printed COFFEE POT.
373. A Losolware salad Plate and Drainer.
374. A preserve pot.
375. A Radford salad plate and sauce boat.
376. Two German FAIRINGS (AF).
377. A Victorian willow pattern MEATPLATE.
378. A Georgian glass TAZZA with Silesian stem and folded foot.
379. A Victorian floral CHEESE DISH.
380. A 19thC Chinese flared BOWL with figures in landscape to the exterior, turquoise interior and base, on a hardwood stand. 7 1/2" dia.
381. Pressed Glassware.
382. A cut crystal mallet DECANTER.
383. A cut crystal PICKLE JAR.
384. Two decoupage BOXES.
385. Miniature Teapots and Creamers.
386. A pair of bisque reclining FIGURES.
387. Two modern Decanters, jugs and vases.
388. Three Prattware POT LIDS.
389. Victorian lustre pottery.
390. A Meiji period Japanese Imari lobed SAUCER DISH. 12" dia.
391. Glass bonbon Dish, Knife Rests, etc.
392. Six CUSTARD GLASSES.
393. Beswick leaf dish, plates, etc.
394. Four etched glass Dishes.
395. Three Shelley Pickle Dishes.
396. Victorian leaf Plates and a bowl.
397. Blue and white Pottery.
398. Willow pattern Plates and Bowls.
399. Ashworth Plates and Bowls.
400. Plates; Green's Morning Glory and others.
401. Four Green's STORAGE JARS.
402. A Booth's Ribstone part DINNER SERVICE.
403. A Royal Doulton Dickens Seriesware moulded JUG with silver rim. 7" high.
404. Two Japanese Plates and stands.
405. A Meiji period Japanese blue and white CHARGER.
406. Three Booths 'Pompadour' PLATES and a Meatplate.
407. A Peking green glass FIGURE of Guan Yin (AF).
408. A pair of 19thC German bisque FIGURES of a boy and girl.
409. A Victorian Staffordshire PEN HOLDER (AF), plate and mug.
410. A Victorian green JARDINIERE and STAND. (AF)
411. A pair of oak framed Victorian treacle glazed TILES moulded with Pre-Raphaelite scenes.
412. A 19thC Chinese polychrome GINGER JAR with cover (AF), decorated with birds and foliage. 13" high.
413. A fine pair of 19thC wheel-cut crystal DECANTERS with prismatic stoppers.
414. A Minton blanc-de-chine CANDELABRUM in the form of a putti holding 2 cornucopia. 11".
415. Three Chamberlain Worcester green ground floral COMFORTS (AF).
416. A pair of Royal Doulton VASES.
417. A Staffordshire FIGURE of a highland soldier, c.1850 (A Soldier's Dream).
418. A French faience PLAQUE of a nobleman, c.1840.
419. Three Derby Vases, c.1760.

420. A large Victorian ironstone TUREEN STAND (AF)

421-430. Spare lots.

BOOKS AND PRINTED ITEMS

431. Four engravings depicting Cruelty.
432. A 19thC Blacksmith's ACCOUNT BOOK.
433. Struwelpeter Child's Book and Matches.
434. Old Calendars.
435. Lloyds Monkey's. 2 vols.
436. Russo-Turkish War. 2 vols.
437. Modern copies of Saxton's Maps of Lincolnshire and Gloucestershire.
438. John Ogilby. A hand coloured Linear MAP of the road from Buckingham to Bridgnorth.
439. Old O.S. Maps, etc.
440. A Victorian Scrap Album of natural life engravings and sketches.
441. Mrs Beeton's and the life of Dickens. (2)
442. Folder of Prints and Cuttings.
443. Horses Hunting and Racing Cuttings and Prints.
444-451. Folder of prints and cuttings
452. Two music books, paradise and the Peri.

SILVER AND PLATED WARES

461. An electroplate rococo CAKE BASKET.
462. A cased 6-place CUTLERY SET.
463. An electroplate 4-piece TEASET with scroll handles.
464. An electroplate oblong TRAY with paw feet.
465. A plated 3-piece CRUET and COASTER.
466. A plated pedestal Bowl.
467. A Victorian plated Teapot and a Coffee Pot.
468. A pair of electroplate oval CAKE TRAYS.
469. Platedware : Sauceboat, Salts, Tray, etc.
470. Three electroplate MEAT COVERS.
471. An electroplate Teapot, Sauceboat and Toastrack.
472. An electroplate on copper 4-piece TEASET.
473. A dressing table Brush. Chester assay.
474. A Victorian chased silver VESTA CASE. Birmingham assay.

475. A crystal PRESERVE JAR with silver cover and plated base.

476. A rococo VESTA CASE marked Sterling.

477. An oval embossed silver JEWEL BOX. Maker Wm Comyns. London assay.

478. An embossed silver CREAMER. Maker WH. Birmingham assay.

479. A miniature silver CIGARETTE BOX. Birmingham assay.

480. A set of 6 silver COFFEE SPOONS, cased. Birmingham assay.

481. An Edwardian silver top EAU-DE-TOILETTE BOTTLE. 7" high. Birmingham 1907.

482. White metal Pastry Forks and Server.

483. A pair of silver back HAIR BRUSHES. Birmingham assay.

484. Cased bone handled FISH SERVERS.

485. Snuffer and Sugar SCISSORS (2).

486. A jade handled heart bowled PRESERVE SPOON marked sterling.

487. A silver mounted SPIRIT FLASK. Maker James Dixon & Sons, Sheffield assay.

488. Two Georgian silver COFFEE SPOONS and another.

489. A pair of silver SERVING SPOONS, cased. Sheffield assay.

JEWELLERY AND WATCHES

490. A Wyler Vetta Incaflex Dynawind 18ct gold ladies bracelet WATCH.
491. Two gold Chains.
492. A ladies 9ct gold Geneve bracelet Watch.
493. A 9ct gold Collar.
494. A lady's 9ct gold Accurist bracelet Watch.
495. A silver Locket on heavy chain and silver fob locket.
496. Assorted stone Earrings.
497. Two 9ct gold Chains.
498. A Venetian glass bead Necklace.
499. An H Samuel silver cased key-wind Gent's POCKETWATCH.
500. A French silver cased key-wind lady's FOBWATCH with gold applique dial, cased.
501. A costume 4-strand pearl Choker.
502. A Celtic sword brooch and 3 other silver brooches.

- 503. A gent's Tissot watch.
- 504. A coral necklace.
- 505. A ladies wristwatch on black leather strap.
- 506. Two silver thimbles.
- 507. A 9ct gold and opal BAR BROOCH.
- 508. An Art Nouveau opal and gold PENDANT.
- 509. A yellow metal and seed pearl BAR BROOCH.
- 510. Three 9ct gold stickpins, one set with a peridot.
- 511. A ladies 18ct gold FOB WATCH in a travel case.
- 512. A double strand graduated pearl NECKLACE with diamante clasp.
- 513. A silver handled button hook, mother of pearl handled silver pen knife and miniature pepper pot.
- 514. An Edwardian silver serving SPOON, London 1904.
- 515. A silver power COMPACT.
- 516. A hammered silver CIGARETTE BOX.
- 517. A large jewel box containing costume jewellery, lenses and Eurostar travel clock.
- 518. Foreign notes and 2 silver jubilee crowns.
- 519. A Jet bead NECKLACE.
- 520. A Georgian paste BUCKLE.
- 521. A pair of Art Deco CLIPS.
- 522. Jewellery Boxes, coin and clips.
- 523. A Scottish design BROOCH.
- 524. An RAF enamel silver WING BROOCH.

CLOCKS

- 525. A 19thC French brass CARRIAGE TIMEPIECE. 4 1/2" high.
- 526. An early 19thC French ormolu MANTEL TIMEPIECE with enamel dial and 8-day movement. 10".
- 527. A 19thC American mahogany SHELF CLOCK.
- 528. A Victorian mahogany cased WALL CLOCK.
- 529. A Victorian mahogany bezel WALL CLOCK by A Satelle, Lincoln with an earlier movement.
- 530. A Victorian ebonised and burr-walnut balloon MANTEL CLOCK with French 8-day movement.
- 531. An Edwardian mahogany MANTEL TIMEPIECE of heart form with marquetry inlaid patera and pendant husks, French 8-day movement. 9 1/2".

- 532. A Victorian black marble columnar MANTEL CLOCK.
- 533. A brass and mahogany SHIP'S PAIR of clock and barometer.
- 534. A Victorian mahogany clock BRACKET.
- 535-549. Spare lots for late entries.

FURNITURE

- 550. A Victorian mahogany FIRE SCREEN.
- 551. A Persian RUG.
- 552. A fine Victorian cast iron GARDEN BENCH with an elaborate scroll back decorated with nasturtiums, model no ?9562?. 6' wide. (AF)
- 553. An oak cased UPRIGHT PIANO, overstrung. Hilton & Hilton.
- 554. A Victorian walnut marquetry UPRIGHT PIANO by Ramsden.
- 555. Two Banks of c.80 pine SHOP DRAWERS.
- 556. An oak DESK with 11 drawers.
- 557. An oak DESK with 6 drawers.
- 558. A pair of Victorian SMOKER'S BOW CHAIRS.
- 559. A French style gilt and cream painted STANDARD LAMP.
- 560. An Edwardian mahogany marbletop WASHSTAND.
- 561. A Persian RUG.
- 562. A Victorian burr-walnut 'COFFEE' TABLE.
- 563. An oak roll-top DESK with S-shape tambour.
- 564. A Georgian mahogany Tripod TABLE.
- 565. A late Victorian galleried BOUDOIR SOFA.
- 566. A period oak HALL CHAIR.
- 567. A 19thC barleytwist oak HALL CHAIR.
- 568. An Edwardian Child's PUSH CHAIR.
- 569. A 1920's mahogany and bevel glass CHEVAL MIRROR.
- 570. A Victorian walnut bowfront CHEST of 2 short and 3 long drawers with glass handles.
- 571. A George III oak BUREAU on bracket feet.
- 572. A Victorian TABLE with circular mahogany top, wrythen brass pedestal and cast base.
- 573. A Victorian mahogany traytop CHEST with knob handles.
- 574. A Victorian lathback ROCKING CHAIR.
- 575. A fine 19thC yew low-back WINDSOR CHAIR with crinoline stretcher.

576. A fine 19thC yew low-back WINDSOR CHAIR with crinoline stretcher.
577. An Edwardian bergere CARVER CHAIR.
578. A William & Mary panelled oak CHEST of 4 drawers with swan-neck handles and ball feet. 37" wide. (Illustration G).
579. A Victorian rosewood veneered CARD TABLE with moulded folding rectangular top, shaped and moulded frieze, carved pillar and shaped cabriole legs.
580. A reproduction mahogany bowfront WRITING TABLE and carver Chair.
581. A Persian RUG.
582. A 1920's black lacquered and chinoiserie STANDARD LAMP.
583. An Edwardian oak OCCASIONAL TABLE with turned legs, glass ball and cast claw feet.
584. A Victorian upholstered ARMCHAIR with turned mahogany feet and loose covers.
585. A Victorian tapestry upholstered Chesterfield SOFA.
586. Spare lot.
587. A French style cream painted BOUDOIR SOFA.
588. A 17thC oak JOINT TABLE.
589. A Georgian mahogany TRAY on STAND.
590. A Victorian mahogany bowfront MIRROR BASE.
591. A Victorian carved oak MONK'S BENCH (AF).
592. A Victorian pine DRESSER BASE.
593. Edwardian pitch pine RAILINGS.
594. An open BOOKCASE.
595. A 19thC painted pine Clerk's DESK.
597. A 17thC oak 3-panel COFFER.
598. A period and later oak GATELEG TABLE.
599. A George III mahogany CHEST of 4 graduated drawers with swan-neck handles, bracket feet. 30" wide, 31" high.
600. A George III flamed mahogany TABLE with rectangular moulded top, turned pillar and 4 splay legs.
601. An oak REFECTORY TABLE. 64" x 33".
602. A set of 4 oak DINING CHAIRS with studded leather seats and panel backs.
603. A pair of 19thC fruitwood CARVER CHAIRS with rush seats.
604. A George III mahogany TEA TABLE with circular tilt-top, turned pillar and tripod base. 25" dia.
605. A Georgian mahogany SIDE TABLE with drawer and later top.
606. A George III oak LOWBOY with 3 drawers, swan-neck handles and shaped frieze. 32" wide.
607. An oak 2-door CORNER CUPBOARD. 31" high.
608. An oak linenfold 2-door hanging CORNER CUPBOARD. 35" high.
609. A Victorian rosewood CANTERBURY. (Illustration I).
610. A 19thC mahogany TOWEL RAIL.
611. A pair of Edwardian marbletop POT CUPBOARDS.
612. A 19thC French cream and gilt painted TORCHERE, 32" high.
613. A 19thC Continental walnut veneered POT CUPBOARD with marble top 1/4 inset barleytwist uprights.
614. A Victorian mother of pearl inlaid OCCASIONAL TABLE.
615. A Victorian stripped pine 3 drawer traytop CHEST.
616. An Edwardian ebonised CARVER CHAIR with bentwood twist uprights.
617. A 19thC Italian gilt HEADBOARD with Chinese silk padding.
618. A Victorian walnut marbletop PLANTSTAND.
619. An Edwardian walnut OCCASIONAL TABLE.
620. A Victorian mahogany LOO TABLE on 4 scroll legs.
621. A Victorian mahogany SUTHERLAND TABLE with butterfly moulded top and turned base. 3' square. (Illustration F).
622. A set of 4 19thC country KITCHEN CHAIRS with rush seats.
623. A 19thC French kingwood and marquetry BUREAU de DAME. (Illustration I)
624. A Regency mahogany oval BREAKFAST TABLE with 3 sabre legs.
625. A Victorian oak PARTNER'S DESK with 3 drawers to each frieze and each pedestal. 4'6" x 3'6".
626. An Edwardian panelled mahogany KNEEHOLE DESK with reeded columns and swan-neck handles. 5'6" x 3'4".
627. A 19thC rosewood BUREAU with knob handles.

628. A pair of marble topped and ormolu mounted bombe TORCHERES.
629. A Chippendale design mahogany SILVER TABLE.
630. A pair of Victorian ash and elm SMOKER'S BOW CHAIRS.
631. A rocking Chair.
632. A Victorian pine DRESSER BASE.
633. A Victorian beech CHEST of drawers.
634. A walnut circular COFFEE TABLE with cabriole legs.
635. An Edwardian mahogany SUTHERLAND TABLE.
636. A Georgian flamed mahogany BUREAU.
637. An elm BLANKET BOX.
638. A Victorian deep buttoned velvet SOFA with ebonised legs.
639. A white painted 19thC overmantel MIRROR.
640. A Victorian bamboo octagonal OCCASIONAL TABLE with lacquered top.
641. A Victorian walnut Credenza cabinet corner base.
642. A Regency mahogany breakfast TABLE with square top.
643. A brass inlaid rosewood 4-fold SCREEN.
644. A brass-inlaid rosewood dome-top CHEST.
645. A Victorian ebonised CREDENZA with boxwood and ormolu decoration and central oval jasperware cameo. (Illustration H).
646. A George III oak BUREAU crossbanded in mahogany with fitted interior and bracket feet.
647. A Victorian oak and mahogany 2-drawer WRITING TABLE.
648. An Edwardian studded leather OFFICE CHAIR.
649. An Edwardian mahogany DISPLAY CABINET with single drawer over bowfront cupboard, on taper legs.
650. An Edwardian mahogany 2-door CHINA CABINET on cabriole legs.
651. An oval bevel WALL MIRROR.
652. A Victorian pine LARDER CUPBOARD.
653. A Victorian pine WELSH DRESSER.
654. A Chippendale style mahogany DISPLAY CABINET on stand.
655. A Victorian pine scrubtop KITCHEN TABLE.

End of Sale