

Established 1900

1900

-GOLDINGS-

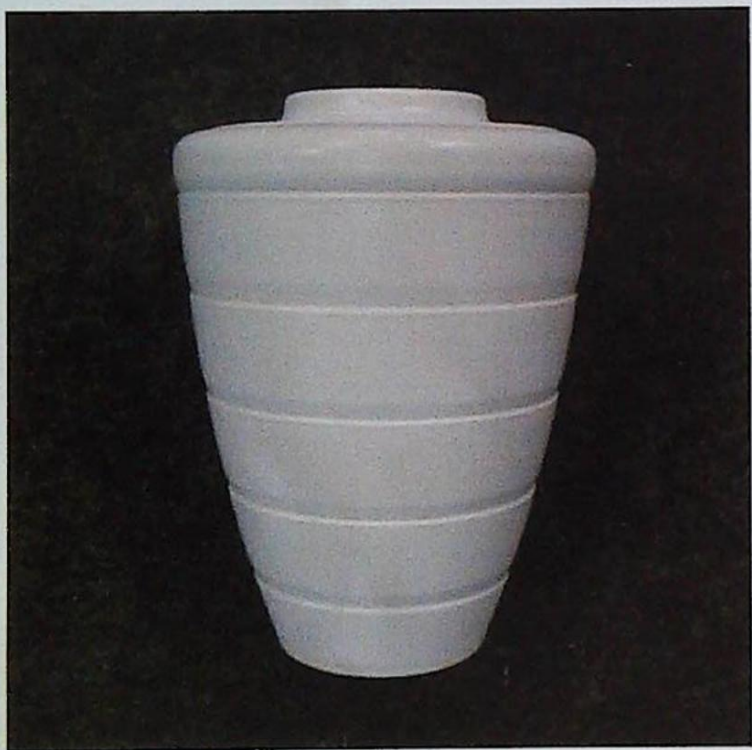
2000

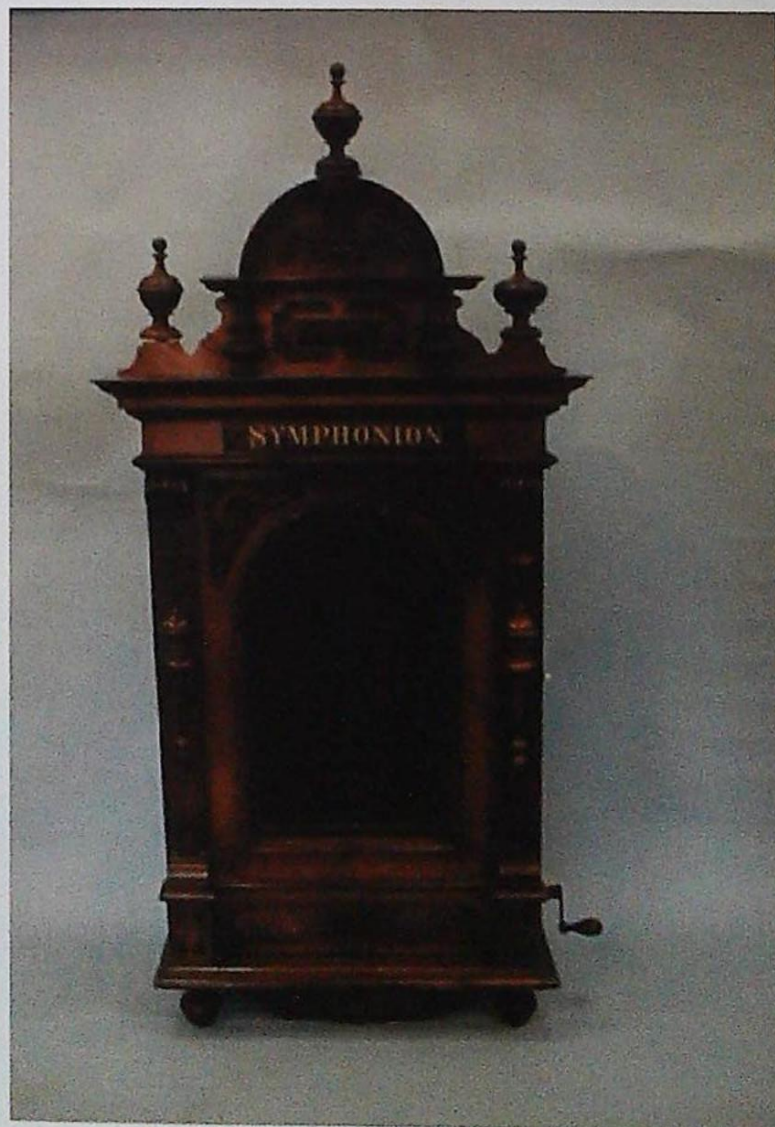
— AUCTIONEERS & VALUERS —

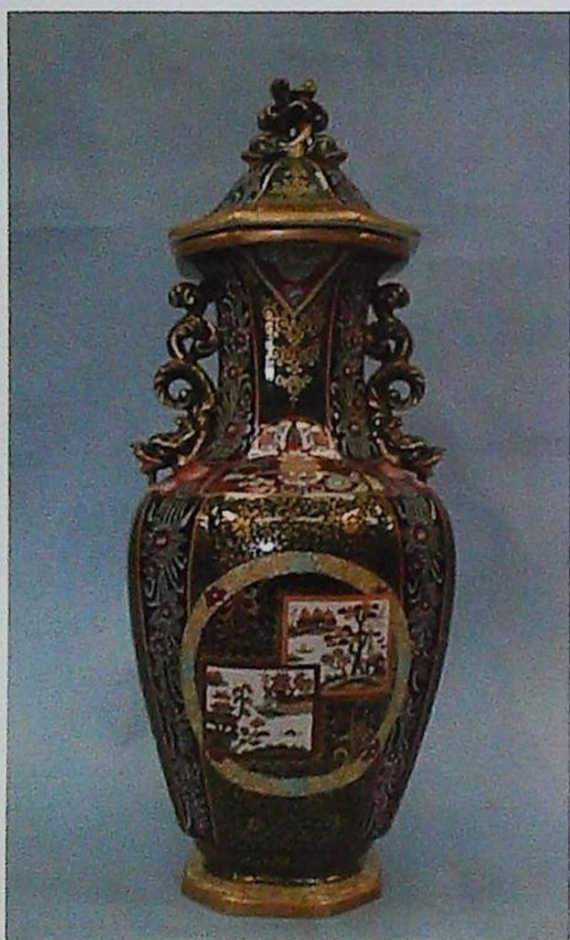
*The Millennium
Autumn Fine Art Sale*



100 Years of Professional Service







Established 1900
-GOLDINGS-
AUCTIONEERS & VALUERS

Upon Instructions from Executors, Solicitors, Private Individuals and the residual contents of House Clearances.

Golding Young & Co will sell by Auction

WORKS OF ART
ANTIQUE AND QUALITY LATER
FURNITURE AND EFFECTS
AND
COLLECTORS ITEMS

on
Wednesday 18th October 2000
at 10 am

Viewing
Tuesday 17th October 2pm to 7pm
And Saleday 9am to 10am

All enquiries
Telephone 01476 565118
Fax 01476 561475
Email: goldingyoung@compuserve.com

Golding Young & Co, Old Wharf Road, Grantham, Lincolnshire, NG31 7AA

IMPORTANT NOTES FOR PURCHASERS

1. PAYMENT: Must be made in full immediately after the Auction. The following methods of payment are acceptable.

a) Cash b) Bankers Draft c) Building Society Cheque
d) Cheques, accompanied by a valid card.

PAYING BY CHEQUE?

If you are not known to the Auctioneers and wish to pay by cheque above your guarantee card limit WE WILL RETAIN THE GOODS until it has been cleared (7 days). There will be **NO EXCEPTIONS** to our policy. To avoid **UNDUE EMBARRASSMENT** for yourself or to our staff please do not ask for preferential treatment. If you wish to clear goods immediately bring a letter from your Bank or a suitable guarantor reference.

2. BUYERS PREMIUM: of 12½% + VAT is payable on all lots.
3. REMOVAL OF PURCHASES: Goods must be collected as soon as they are paid for, and in the Two Working Days following the sale. If goods are not collected on these days we reserve the right to charge £1 per lot per day thereafter.
4. COMMISSION BIDS: If you are unable to attend this or any of our future sales we will be pleased to bid on your behalf. We always purchase at the lowest possible price, subject to other bids and reserves.
- All bids must be handed to the office on an official form. It remains the responsibility of prospective purchasers to contact GOLDINGS to confirm whether their bids have been successful.
5. TELEPHONE BIDS: There are inherent dangers with this practice, therefore all such arrangements are made entirely at the bidder's risk. Telephone bids will only be accepted if the lower estimate is £500 or above. For lots with a lower estimate below this figure Commission Bids Only will be accepted.
5. SMOKING: is not permitted in any part of the Saleroom.
6. REFRESHMENTS: will be available Saleday.
7. ACCOUNT TRANSFERS: will not be recognised after the sale. If any lots are purchased for another person, this must be declared at the fall of the hammer.
8. ESTIMATES: Our Auctioneers will be available during viewing to give guidance on your prospective purchases

GLOSSARY

- a) Generally: 'As Found.' (AF). This term indicates the lot has some damage. Its absence does not indicate that the lot is free of defect. All lots are **SOLD AS SEEN**.
- b) Paintings: 'Signed, initialled, monogrammed' This refers to the present state of the work and is not an attribution.
- c) Books and printed matter: These items are not sold subject to collation and are not returnable once removed from the premises.
- d) Silver & Jewellery: Weights given are approximations given by basic instruments.

1. A Victorian Tonbridge inlaid walnut writing box.
2. A Victorian walnut dome top workbox.
3. Architectural Victorian Mantel Clock.
4. A pair of 'Simplex' Fire Extinguishers.
5. A circular 'blow' Ball Board Game.
6. A tin Waste Paper Bin and a brass globular Vase with turn-over rim.
7. A cased Violin.
8. A cased Violin.
9. A Singer Sewing Machine.
10. A green painted Milk Churn - North Road Dairy, Whitby.
11. A Victorian brass bound rosewood Writing Box.
12. A transfer printed Box.
13. A Regency rosewood 2 section tea caddy with recess for mixing jar.
14. An Edwardian inlaid mahogany Mantel Clock.
15. A pair of open twist oak Candlesticks.
16. 'Universal History of the World' 8 vols and 'The Story of Exploration and Adventure' 3 vols.
17. A 19th C French onyx gilt metal Mantel Clock base.
18. A wrought iron grate front and pair of andirons.
19. A Victorian copper Kettle with acorn finial.
20. A set of wooden block picture puzzles.
21. A Georgian brass and iron pierced Fender.
22. An EPBM matching 3-piece Coffee Set, plated dish and egg cup stand.
23. A regulating Spong Patent Knife Sharpener.
24. A 19thC brass and copper Warming Pan with turned fruitwood handle. 44" high.
25. A silver plated Vase, with a pierced raised octagonal collar over a circular tapering column, on flared octagonal base. 10.1/4" high.
26. A pair of EPNS Georgian style Coffee Pots with engraved decoration.
27. A cased pair of bowling Woods and Jack.
28. A pair of cast brass faux heraldic Shields with scroll surround and helmet cresting. 5 1/2" wide.
29. An early Salignar Cognac Bottle with green wax seal.
30. Three stoneware Spirit Bottles.
31. A Georgian mahogany Tea Caddy and early carved oak panel (AF).
32. Lydekker (Richard). Lloyd's Natural History, 3 vols. 1) Marsupialia and Monotremata, ii) British Mammalia, iii) Carnivora. Colour plates, 1896, half calf. (AF)
33. Cescinsky (Herbert) & Gribble (Ernest R). Early English Furniture and Woodwork 2 vols. 1922, cloth boards qto.
34. A case of Nautical and other books.
35. An extensive collection of Dennis Wheatley books principally 1st Editions with dust jackets.
36. A 19th C pewter revolving Cruet with 5 cut crystal bottles and a cash box.
37. A Victorian rosewood Box.
38. A Victorian rosewood Glove Box.
39. A small mahogany Box.
40. A small Victorian oak Box.
41. A Victorian rosewood and mahogany Box.
42. A 19th C mahogany Box with drawer.
43. A 19th C mahogany and rosewood Writing Box.
44. A 19th C mahogany Box on turned feet.
45. A 19th C mahogany sarcophagus Tea Caddy on brass feet and brass handles.
46. A Victorian mahogany medicine Chest with various bottles.
47. A case of Meccano parts and 78 rpm records.
48. A Georgian style pierced steel Fender.
49. A 'Madame Pompadour' composition doll, with mohair wig, open/close blue eyes, open mouth, articulated limbs, in original costume. 34" high, stamped 'FRIA'
50. A Koppelsdorf bisque head Doll with jointed composition limbs, mohair wig, open/close blue eyes, pierced nostrils and tremble tongue. 21" high, marked on head "AM Koppelsdorf, Germany, 996, A.9.M."
51. 3 Lillywhite Cricket Bats.
52. A Gladstone Bag.
53. A pair of oak and steel Hames.
54. A Victorian brass Stirrup Pump and Spirit Level.
55. A rococo brass Easel Frame.
56. A pair of fretwork Wall Brackets.
57. A small hanging Lantern and armorial brass Wall Sconce.
58. A set of Victorian Tiles.
59. A Crown Ducal 'orange tree' pattern Sandwich Set.
60. An Edwardian carved oak aneroid Barometer.
61. A Swanee ukelele Banjo, cased.
62. A 19th C American drop dial Wall Clock with satinwood marquetry borders.
63. A 19th C Vienna style Wall Clock with simulated marquetry panels.
64. The Chromatic Ludwig Accordeon.
65. A Poole Pottery egg cruet for four.
66. A Lambeth stoneware Jug. 8 1/4".
67. A small Lambeth stoneware Jug. 4". (AF)
68. A lacquer crumb tray, etc.
69. A pair of crystal Inkwells. (AF)
70. Two Carltonware 5" Dishes in deep red and gilt with oriental decoration and double handles.

71. A Crown Devon Jug in deep red with dragon decoration.
72. A pair of Carltonware Temple Jars, 9" tall deep blue and gilt.
73. A Crown Devon oval Flower Bowl, double handled in deep red and gilt with willow tree decoration.
74. A Carltonware 'Rouge Royale' Bowl, 11" dia standing on 3 gilt feet with spiders web and dragonfly decoration.
75. A pair of Carltonware Temple Jars, 12" tall, deep red and gilt.
76. A Carltonware 'Vert Royale' dish with heron and willowtree decoration.
77. Four pieces silver lustre.
78. A small Solitaire game.
79. A turned wood Fruit Stand.
80. A Chinese blue and white square dish. 9".
81. An oblong burr walnut Box.
82. A Poole Pottery Saucer Dish decorated with a faun and marked S.K.#.
83. An oblong burr wood Box.
84. A treen Pen Pot.
85. Three Newhall Tea Bowls and 2 saucers. (AF)
86. A pair of 19th C floral painted Dessert Plates with cornflower blue border.
87. Ten Spode floral Plates reetailed by Waring & Gillows Ltd.
88. A majolica Cusper.
89. Playing Card Box.
90. An antique copper Grain Scoop.
91. A large dome burr wood Box with lock.
92. An Atlas china green floral bordered Tea Service.
93. A Chinese blue and white plate, painted with birds and insects on flowering prunus, 19thC. 11" dia.
94. A terracotta bottle Flask with mushroom stopper and stand decorated with a turquoise scale band, superimposed with winged dragons and medallions. 10" high.
95. A Moorcroft Charger moulded with 3 sunflowers. 14".
96. A silver plated Basting Spoon and Sugar and Cream Stand.
97. An EPNS Teapot and Sucre.
98. An engine turned silver plated Tray.
99. An electroplate Spirit Kettle on stand with chased decoration.
100. An Ewenny Pottery taper Jug.
101. A Fishley Holland stoneware Jug.
102. A similar lot.
103. A similar lot.
104. A similar lot.
105. A Torquayware Batchelor Teaset and other pieces.
106. Two silver lustre Jugs.
107. A Barometer, Picture and pair of brass Candlesticks.
108. Four pieces of Torquayware
109. Five German porcelain Spill Vases.
110. Four pieces of torquayware.
111. Five German porcelain figures of seated cows.
112. Five German porcelain figures of seated cows.
113. Four German porcelain Figures of seated calves.
114. Four German porcelain Figures of seated calves.
115. A Torquayware Taper Vase with folded rim.
116. An Aller-Vale Hair Tidy and Chamber Stick. (2)
- 117.-123. A Fishley Holland stoneware Jug.
124. Four German pottery Character Jugs.
125. Four German pottery Character Jugs.
126. Three German pottery Character Jugs, slightly larger.
127. Trivet, Can Opener, Toffee Hammer, etc.
128. Three Ewenny Jugs.
129. Three pieces of souvenir Pottery and one other.
130. A Fishley Holland Vase.
131. A Fishley Holland Wall Pocket.
132. Three modern Chinese Figures.
133. Plate, copper and other metalware.
134. A small gilt floral moulded Table Mirror.
135. Sylvac Creamer and small Planter.
136. An olivewood and marquetry prick Box in the form of a small rack of books.
137. A Burleighware Art Deco Jug.
138. A small Shelley Pin Dish.
139. Playing Cards, Smelling Salts, etc.
140. Two Character Jugs of John Bull
141. A small circular Table Mirror with floral moulding.
142. A Victorian rosewood Writing Box. (AF)
143. A small inlaid rosewood Box.
144. A Victorian mahogany Workbox.
145. A Victorian rosewood Tea Caddy with twin wooden tea boxes.
146. A brass Companion Set and a small copper Posher.
147. A Victorian copper Kettle with acorn finial.
148. A Victorian copper Kettle.
149. A 19th C French gilt metal Mantel Clock with figure of a young man and horse.
150. A pair of 19thC spelter Figures of Byzantine warriors, on circular bases with lappet borders, turned wooden plinths. 15" high.
151. A graduated set of copper and brass Saucepans.
152. A Wedgwood Raphael pattern Tureen and 3 Plates.
153. A Victorian copper Watering Can.

154. A Victorian Staffordshire Figure of a Scottish lad with a basket of fruit on a goat and another Staffordshire style figure.
155. A model of a bulldog entitled 'Hitler's Terror'.
156. A modern art glass Vase.
157. A pair of Staffordshire style spaniels by Royal Doulton.
158. A cut crystal Decanter with silver plated collar by WMF.
159. A small brass WW1 Shell.
160. A Staffordshire Garniture of 3 vases and covers with hunting scenes on a green ground with gilt decoration.
161. A pair of WMF brass baluster Vases. 7".
162. A large Mortar with two Pestles.
163. A Doulton Lambeth saltglazed harvest Teapot. 7". (AF)
164. A Royal Doulton Character Jug - 'Old Charlie' D5420.
165. A Cottageware Teapot.
166. A green Sphere with stand.
167. A large dome top Tea Caddy with lock.
168. A pair of modern Oriental Temple Vases with bird and flower decoration. Height approx 24".
169. A green Pen Pot.
170. A modern famille rose decorated oriental Fishbowl.
171. A set of green Coasters
172. A bow topped green Letter Rack.
173. A circular green Box.
174. A Shaped green Letter Rack.
175. A pair of barleytwist Candlesticks.
176. A large blue and white china Tea Kettle.
177. A pair of 19th C French 3-branch Candelabra with marble columns and bases.
178. A brass columnar Oil Lamp with milk glass reservoir transfer printed with a stag.
179. A glass mallet shaped Decanter with silver collar.
180. A glass mallet shaped Decanter with silver collar.
181. A Copeland bone china breakfast and tea service, the white ground painted in underglaze blue and gilt with Greek Key frieze, stylised ferns pendant from gilt bands, 58 pieces, early 20thC.
182. An extensive Copeland green floral transfer printed tea service.
183. A Graingers Worcester part tea service, printed in blue with Chinese dragons and diaper panels, comprising 4 cups, saucers and plates cream jug, covered dish, large plate, oval plate and cover, c.1850 (some damage).
184. A Noritake string of pearls pattern modern Tea and Dinner Service
185. A gilt decorated blue and white willow pattern Tea Service.
186. A set of six floral Cups and Saucers.
187. A Grindley transfer printed part teaset.
188. A Victorian willow pattern Meaddish.
189. A Victorian willow pattern Meaddish.
190. A Japanese eggshell porcelain miniature Teaset, decorated with flowers and birds within blue lustre borders, comprising teapot, milk jug, sugar bowl, 6 cups, saucers and plates, in original box.
191. A Victorian footbath of traditional form with red and orange stripes, c.1860.
192. A 40 piece early 20th C Tea Set decorated with yellow flower sprays with blue banding and gold rims comprising 12 cups and saucers, 12 side plates, 2 bread/cake plates, cream jug and slop bowl.
193. A 40 piece late 19th/early 20th C Tea Service decorated with rose, pansy and forget-me-not motifs comprising 12 cups and saucers, 12 side plates, 2 bread/cake plates, cream jug and slop bowl.
194. A 56 piece 12 place setting 'Rajah' pattern Dinner Service by Thos Till & Sons comprising 6 oval serving dishes (18", 16", 14", 12 1/2", 2 x 11 1/2"), 12 x 10" dinner plates, 12 x 9 1/2" plates, 12 7 1/2" plates, 2 x 8 1/2" tureens with lids, 2 x 5 1/2" tureens with lids, ladles and drip plates. 18" serving dish and ladle (AF)
195. Two Asian white metal Trays, 4 Bowls and an Inkwell.
196. A pair of Asian bronze Figures of ladies.
197. 1973 and 1974 Rupert Annuals.
198. A Graingers Worcester Dessert Service of green and gilt decoration comprising 3 compots and 6 plates.
199. A Victorian floral striped Water Jug.
200. A Japanese black lacquer Photograph Album with photographs of Mount Fuji, the front boards inlaid with mother of pearl.
201. A heavy silver 2-handled Rosebowl with pierced border and scroll handles. London 1910. Approx 36 ozs.
202. An Art Deco silver Cocktail Shaker, Maker Mappin & Webb. Birmingham 1929. 14oz all in.
203. A Walker & Hall plated Cake Basket.
204. A Victorian silver repousse Goblet of rococo design. London 1856.
205. A cased pair of silver Serviette Rings of modern design marked Birmingham 1976.
206. A silver Cigarette Box. Birmingham assay.
207. A Set of 6 silver plated coffee spoons commemorating Girls Adventure Society Clubs.
208. An Edwardian silver Bowl with flying scroll handles made by W H S Birmingham 1910. Weight 50 ozs.
209. An extensive set of ladies dressing table items with white metal lids and backs decorated in the Art Nouveau style.
210. A Georgian style silver baluster Jug. Chester Assay.
211. A cranberry glass Sugar Bowl in a fern decorated white metal cageware holder.
212. A pair of flared silver trumpet Vases with loaded bases. Chester assay.
213. A white metal backed hair brush and mirror.

214. A pair of white metal GRAPE SCISSORS, cased, having heavy ornate handles decorated with vine leaves and grapes.
215. A bag containing brass crested buttons marked Firmin & Sons Ltd, London on the reverse.
216. A pack of hand painted playing cards on animal skin, in a skin case.
217. A Necklace of various coloured agate beads.
218. A green glass Perfume Bottle with a silver top, rubbed marks, maker W & Co.
219. A silver card case and pencil, engine turned and engraved decoration. Birmingham 1871.
220. A silver Ashtray. Sheffield 1935.
221. A cut glass Powder Jar with silver collar, rubbed marks.
222. Two Irish silver Tablespoons, fiddle and rat-tail pattern with a bulls head crest engraved, Dublin 1831.
223. Two silver Tablespoons with an embossed bulldog head decoration. Sheffield 1908 and 1912.
224. A silver Candlestick of rococo design with a loaded base (some damage). Birmingham 1905.
225. A cased set of silver Dessert Cutlery, maker A & D. Sheffield 1904.
226. Assorted stone earrings.
227. A Chinese jade Pendant on a 9ct gold belcher chain.
228. A 15ct gold ropetwist Guard Chain.
229. A lady's bezel wind Fob Watch.
230. Two 9ct gold Tie Pins.
231. A Victorian silver chased oval Locket.
232. A silver mounted banded agate Brooch/Pendant.
233. A platinum and gold Solitaire Bar Brooch set with a diamond.
234. A small engraved bar BROOCH 'Betty', marked 15ct.
235. Four various Chains including fancy link.
236. A small diecast Sign.
237. A silver Pencil.
238. 2 chains.
239. Two Edwardian costume Bracelets.
240. An engraved silver Vesta Case and Albert, T-bar and swivel.
241. A round diamond cluster ring, the shank marked 18ct. plat., having a central diamond of approx 0.42 ct surrounded by 10 small diamonds.
242. A marquise cut diamond Solitaire Ring.
243. A Victorian 18ct gold Marquise Ring set with 14 diamonds enclosing 3 sapphires. Birmingham 1897.
244. An antique French paste full Eternity Ring.
245. A 9ct gold cubic zirconium and amethyst cluster Ring.
246. A 9ct gold keeper Ring and one other.
247. A cameo Brooch.
248. A Lady's 9ct gold Vertex Watch on bracelet.
249. A silver Vesta Case, Horseshoe and a Cross.
250. Two white metal filigree Brooches.
251. Assorted ear-rings.
252. Two lady's Watches.
253. Three gent's Watches on leather straps.
254. A signed Japanese blackwood Netsuke, study of Toenko the recluse of mythology riding upon his pet oxen.
255. A signed Japanese ivory Netsuke study of a house-master returning from shopping carrying his basket and a fish.
256. A signed Japanese ivory Netsuke study of a naked Geisha sleeping seated upright with her knees drawn tight to her chest.
257. A signed Japanese ivory Netsuke study of a fruit picker on his knees with a basket gathering windfalls.
258. A signed Japanese ivory Netsuke study of the immortals Daikoku and Ebisu depicted traditionally each knelt on one knee, one holding a fish, the other a decorated takaramono sack.
259. A signed Japanese ivory Netsuke study of a pair of village elders, a Samurai and his lady seated one behind the other and holding hands.
260. A suite of opal doublet Jewellery comprising of an opal doublet surrounded by white stones as a brooch, a ring and a pair of earrings in the same style all being set in yellow metal, testing as 14ct gold.
261. A pair of diamond stud Earrings set in white metal basket style settings, total carat weight 1.20cts. approx.
262. A small Sowerby glass Salt.
263. A Hummel Match Striker and a small blue and white Jug.
264. A silver Crumb Scoop. Sheffield 1896.
265. An early Dutch silver Spoon.
266. An early rat-tail Spoon.
267. An early rat-tail Spoon.
268. An early scroll bowl Spoon. London 1763.
269. An early shell bowl Spoon. London 1771.
270. An early rat-tail Spoon.
271. An early seal top Spoon.
272. An early apostle Spoon.
273. An Irish silver Fish Slice with pierced decoration. Maker GS.
274. A pair of Georgian silver Sugar Scissors, marked W.C.
275. Three porcelain Dolls Heads, 2 larger marked 9, the smaller marked 21.
276. A selection of old coins.
277. A small leather Attaché Case and contents, being a large selection of early 20th C costume jewellery.
278. Two plain plated Napkin Rings and 4 with pierced decoration.
279. A silver plated Teapot with bright cut decoration.
280. A diamond Ring having a central stone of .30pts with stepped shoulders, set with 8 small diamonds, all set in platinum on a yellow metal shank marked 9ct.

281. A yellow metal square fox Chain maked 750. 18".
282. A Cameo Brooch set in yellow metal, marked 9ct.
283. A 3 stone twist Ring, being a central pale blue stone of approx .75 pts, possibly aquamarine, with a small diamond either side, in a white metal setting on a yellow metal shank marked 18ct.
284. A selection of diamanté Costume Jewellery.
285. A quantity of cased Cutlery. (5)
286. A quantity of Costume Jewellery.
287. Two yellow metal stone set Rings.
288. Small plated Cutlery items including sardine servers.
289. Two silver Pocket Watches.
290. A mounted rabbits foot Brooch, with a silver cap mount set with a cut Cairngorm quartz stone, marked Edinburgh, and a rose gold coloured memorial brooch.
291. A selection of Watch Keys.
292. Two Chains (base metal).
293. White metal backed hairbrush.
294. A French silver cased lady's keywind Fob Watch.
295. A silver oval link Albert.
296. Amber Beads.
297. A 15ct gold arrow and horseshoe Bar Brooch.
298. A Victorian silver box link Albert. Birmingham 1900.
299. A 9ct rose gold red stone Ring.
300. A 9ct gold Bar Brooch set with sapphire and seed pearls.
301. A stoneware Water Filter.
302. A Doulton stoneware improved Bread Pan.
303. A tapering stoneware Water Filter and Flagon.
304. Two Pancheons.
305. A wrought iron Dog Grate.
306. Two cast and wrought iron Ladles.
307. Two Flat Irons, Fire Irons, Carpet Beater, etc.
308. An Art Nouveau brass Fender.
309. An early 20thC leather Travelling Case, the interior fitted with toilet accessories. 17 3/4" wide.
310. A curved pitch pine Panel.
311. Three Malt Shovels and Forks.
312. Table top Gramophone with tin-plate horn together with records.
313. A cast and pierced brass Inkwell with large crystal well surmounted by eagle lid.
314. A Victorian cream and gilt decorated 6-piece Toilet Set.
315. A crystal hanging Centre Light (AF).
316. An Edwardian floral transfer printed 6-piece Toilet Set.
317. A cast iron Disney Trivet pierced with a figure of Mickey Mouse.
318. Two brass Inkwells and a pair of dwarf Candlesticks.
319. Various Bread Knives, Tin Openers, etc.
320. A graduated set of teak and brass Boxes.
321. A pair of barleytwist Candlesticks and oak Goblet. (AF)
322. A small brass Fly Fishing Reel.
323. A Victorian mahogany Fishing Reel.
324. A Victorian style mahogany sarcophagus Tea Caddy.
325. A Victorian enamelled glass Spill Vase and pair of porcelain examples.
326. A small pair of Parian Figures of boys.
327. A Sandwich Set and Royal Winton Dish.
328. A Crown Devon Wall Pocket and a green moulded Jug.
329. An African tribal Mask mounted with shells.
330. A pink and white late Victorian Trinket Set.
331. Sundry platedware.
332. A Victorian cased Violin (AF) (no labels).
333. Two Victorian blue and white Meatplates.
334. An 18th C Chinese octagonal Saucer Dish.
335. A pair of majolica Saucer Dishes, probably Wedgwood.
336. Two graduated majolica oval Jugs embossed with sunflowers.
337. A Steiff golden plush Teddy Bear (AF).
338. A large quantity of Folio Society Books in slip cases.
339. A similar lot.
340. The Cambridge Bibliography of English Literature. (6)
341. A small Victorian oak Stool.
342. A set of Victorian brass Fire Irons.
343. A rococo gilt frame containing a print after Rembrandt.
344. A Sylvac Centre Piece of a cherub supporting a Bacchanalian bowl (AF) and a Shelley oval Teapot Stand.
345. A reproduction majolica beehive Cheese Dish and Cover.
346. A 19th C Chinese Fishbowl (AF).
347. An American patchwork Quilt.
348. An Art Deco glass and brass Inkstand.
349. Various items including Platedware, Vase, lacquer Box, Soda Syphon, etc.
350. Four glass Decanters.
351. A pair of crystal Vases, another and a Carafe.
352. Assorted Glassware.
353. A Mary Gregory Vase, and a jug, etc. (5)
354. A pair of electroplate on copper Candlesticks.
355. Sotherby's and Christies Catalogues, etc.
356. A Victorian vaseline and lemon glass Bowl, another and vase.
357. A Victorian cranberry and vaseline glass trumpet Wall Sconce.

358. A pair of Candelabra and plated model of an Alsatian.
359. A carbide Lamp.
360. A copper embossed Bowl and brass Vase.
361. Two stoneware Spirit Barrels - gin and sherry.
362. A Clarke's patent Match Striker.
363. A Carnival glass Bowl.
364. Various glass and Pottery and a Biscuit Barrel.
365. Mortice and Marking Gauges. (3)
366. A burr walnut Box and rosewood Cigarette Box.
367. A Crown Devon campana Vase. Height 9 1/2".
368. A Japanese lacquer Fruit Bowl.
369. Three biscuit Barrels.
370. A plough Plane.
371. A plough Plane.
372. Moulding Planes, etc.
373. Two carved hardwood tribal Figures and a crocodile.
374. A pair of Gibson rose pattern bottle Vases.
375. A Staffordshire pottery Mantel Clock.
376. Two Chamber Pots.
377. Two Chamber Pots.
378. A Parian Bust of Queen Victoria. Height 7 1/2".
379. Two graduated Markin, Shaw and Cope ironstone Jugs. (AF)
380. A handmade wooden model Fishing Smack.
381. An Art Pottery elliptical Planter and Jasperware Bowl.
382. A Regalware part Dinner Service.
383. Four blue and white Meatplates.
384. Two green leaf Plates and other pottery.
385. Three Chamber Pots.
386. Various lemonade & ginger beer Bottles and 2 Fans.
387. Susie Cooper Trio and other pieces.
388. Two Comports and Fenton Sucrier.
389. An Izmik style blue glazed Vase decorated animals in relief.
390. A Victorian Staffordshire Jug moulded with scantily clad figures and a vase.
391. Seven various Jugs.
392. Two Edwardian Bowls.
393. A chamber Pot, Ducal Vase, etc.
394. A Victorian Parian Figure of a Cucassian slave.
395. A German porcelain figural Candelabrum.
396. Two German porcelain Figures and Swan Spill Vase.
397. *GAB Dewar. The Book of The Dry Fly and the Story of Plants.
398. F G Shaw. The Science of Dry Fly Fishing and Salmon Fly Casting, 1907.
399. A heavy pierced brass Table Lamp.
400. A cast brass Tablelamp with 2 arms, on an adjustable tapering and baluster stem and on a circular foot, moulded with Chinese ho-ho birds and characters. 26" high.
401. A brass bound oak Bucket.
402. A bronze Bell on wrought iron bracket.
403. Cundo world Time Clock.
404. A Victorian copper Coal Helmet.
405. A Victorian brass Preserve Pan.
406. A Cigarette Lighter in the form of a knight.
407. A Continental fruitwood Board with carved and pin struck decoration and inscription C B * 1845
408. A Treen Canister and Cover.
409. A Chinese inset bronze 2 handled Vase.
410. A Chinese bronze 2 handled Bowl on Stand. (AF)
411. A Victorian brass Milk Pan.
412. A brass bound oak Bucket.
413. A Victorian polished slate Mantel Clock of architectural form.
414. A set of 19th C oak and copper Irish mechanical Peat Bellows.
415. A Victorian Moon Flask with majolica glazed flowers and foliage in relief enclosed by ribbon and bamboo borders, with hand-painted landscape below. 8". (Restored neck).
416. A late Victorian carved oak model of a longcase clock.
417. A 4 bottle Cruet on plated stand.
418. A Chinese Han Dynasty tomb granary Jar raised on bare paw feet.
419. A pair of 19th C Fontenbleau figural Candlesticks with circular moulded scroll bases depicting boy and girl leaning against trees. 11".
420. A pair of Victorian milk glass Vases, with hand painted gilt decoration around a central cartouche with transfer printed neo-classical scenes.
421. A Charles Barlow green ground and gilt 2-handled Vase on plinth with hand-painted panels of a mill house and a mountainous landscape. 17".
422. An 'Alhambrian' late 19th C Continental moulded Ewer. 18" high.
423. A pair of early 20th C Continental bisque Figures of a young man and woman in 18th C dress. 16".
424. 5 silver teaspoons London ? 1802.
425. 4 silver teaspoons London ? 1817.
426. 5 small white metal spoons.
427. 2 silver teaspoons London 1805.
428. Three silver tablespoons. London 1804, 1833, 1796.
429. 6 silver teaspoons.
430. 6 silver teaspoons London 1838.

451. A pair of Victorian Staffordshire Figures of a boy and girl. 4 1/2".
452. A Victorian Staffordshire Cottage and Spill Vase. (AF)
453. A 19th C Continental Figure of a small bird.
454. A Paris porcelain cylindrical Teapot, Coffee Can and Tea Cup.
455. Two Coffee Cans and a monogrammed Tea Cup and Saucer.
456. A Stoneware Bread Bin and a Vinegar Barrel and tap.
457. A Victorian Staffordshire Figure of boy and girl standing beside a wheatsheaf. (AF)
458. A Victorian Staffordshire Figure of the Prince of Wales kneeling on a stag with a spaniel. 14". (AF)
459. A pair of Victorian Staffordshire spaniels with green and purple lustre decoration, 10". (AF)
460. A Victorian Staffordshire Figure of the lion slayer. (AF)
461. A Victorian Staffordshire Figure of mounted horseman. (AF)
462. A Victorian Staffordshire Figure of mounted horseman. (AF)
463. A pair of Staffordshire transfer printed and overpainted Vases with scenes of shire horses.
464. A pair of Staffordshire floral Vases.
465. A pair of Staffordshire red ground Vases with neo classical transfer printed scenes.
466. A Staffordshire 2-handled Vase transfer printed with a neo-classical scene of seated female figures.
467. A pair of Victorian Staffordshire spaniels. 12". (AF)
468. A pair of Staffordshire recumbent lions. 9". (AF)
469. A pair of Staffordshire standing lions. 10". (AF)
470. A Victorian rosewood domed Glove Box and Travel Set.
471. A Spoon rack, a Darning Mushroom, plaster Figure and a Cottons Box.
472. A 19th C peck and gallon Measures.
473. A black Bakelite Telephone.
474. Four Chinese specimen Vases, Teabowl and Saucer.
475. A set of 6 tea knives, 3 Duncan prints and a manuscript fragment.
476. An Indian silver Bowl and Pipe.
477. Two Printing Blocks.
478. An eastern silver mounted Dagger.
479. A bronze Oil Lamp and a Bowl and Tray.
480. Six pieces of Treen.
481. A brass columnar Table Lamp.
482. A brass Table Lamp in the form of a sword hilt.
483. A 19th C treen Tea Caddy in the form of a pear.
484. A 18th C wrought iron rush light holder on an elm base.
485. An oval brass Bowl.
486. A brass Table Lamp.
487. A Victorian glass Dump.
488. A Staffordshire polychrome Figure of a game bird.
489. An alabaster and bleached walnut Table Mirror.
490. A set of 10 Stuart Crystal Liqueur Glasses.
491. Four glass Perfume Bottles.
492. Four Victorian Jelly Moulds (d486)
493. Three Carriage Lamps (d486)
494. Various picture Frames.
495. A Briefcase, Bakelite tray, smoothing iron, etc.
496. A Victorian moulded blue Jug, 1828 stoneware Jar, Bowl and Plate.
497. A Victorian Coffee Mill
498. Two willow pattern Meatplates.
499. An 18th C sheep's head Wall Clock with painted wooden dial.
500. A 19th C Wall Clock with pink and white enamel dial, moulded beech bezel.
501. Pottery pieces, glass plate, etc.
502. Wooden Bowl, 2 Shields and small bottle of Moët & Chandon.
503. A Salting Pot, a salt glazed stoneware Water Bowl impressed Hamworthy Junction and other pieces.
504. Two boxed stencil plate kits and an RAC badge.
505. An Album of topographical postcards.
506. A Georgian oak Candlebox.
507. A small mahogany brass handled Serving Tray.
508. A wicker travelling Drinks Basket.
509. 'Beware' a cast-iron Railway Sign. (AF)
510. A bold socket set, tap and die sets, building and joinery tools.
511. A Blossom Toys 1950's musical Teddy Bear.
512. Royal Doulton Nisbet porcelain Doll entitled 'The Muff', boxed.
513. A 19th C red flashed glass mallet Decanter and Bowl with engraved decoration.
514. A Royal Doulton Minton pattern Toast Rack and a 1930's floral example.
515. A Royal Doulton Figure from The Snowman collection DS3 'Stylish Snowman'.
516. A Guerin & Co floral Tureen and cover with Manchester retailer's mark.
517. A pot bellied pewter Measure and Mustard Pot.
518. A late 19th C stoneware Ewer with moulded rose and foliage decoration, Incised mark Lear. 10".
519. A Bohemian green glass white overlay Oil Lamp hand painted with flowers and on a brass base.
520. An 18th C steel Wool Weight marked WORKSBY.
521. A Capodimonte porcelain mounted brass Centre Light.
522. An oval lead Tobacco Jar and a White Cherry Toothpaste Pot.
523. A pair of plated Candelabra.
524. A plated Chamberstick and pair of Ashtrays.

525. A 'crocodile skin' copper Jug.
526. A pair of 19th C porcelain Figures of young girl with fan and boy with tricorn. 9".
527. A Sylvac twin cornucopia Vase.
528. A crystal claret Jug with wrythen body.
529. A carved Stand, stoneware Footwarmer and 2 Horse Brasses.
530. A Campana shaped Jayfarm Vase.
531. A Royal Winton floral decorated Preserve Jar and cover.
532. A set of 3 Hunting Jugs and Russian Figure of a fox.
533. A pair of late 19th C bronze bottle Vases embellished with Eastern openwork and arabesque moulding. 16".
534. A pair of late 19th C Continental moulded Vases. 13".
535. Staffordshire Figure of a Boy.
536. A Staffordshire Figure of a Girl.
537. A Clarice Cliffe 'Bizarre Pattern' cream ground circular tapering Jug and Plate, painted in yellow, orange, green and brown with flowering branch, the jug with angled loop handles. 6 3/4" high and 9" dia. (Chip to plate).
538. A Myott Jug and a set of 3 Poole Plates.
539. A set of 6 mother of pearl handle Butter Knives, and various plated Spoons and Sugar Tongs.
540. A Beswick Hors d'oeuvres Tray and a Greens chicken jelly Mould.
541. A Stylecraft Midwinter three-tier Cake Stand and glass ribbon plate.
542. A brass inset mahogany Geometry Case with some instruments.
543. A rotary Stamp Cancellor in hardwood case.
544. A walking Cane with white metal mount.
545. A 'Clover' Toilet Dish with liner and floral Comport.
546. Two Wade Water Jugs.
547. Carlton leaf dish, another, Adams Titon Sauceboat and 2 Dishes.
548. Five Staffordshire Soup Bowls and Wade Tureen.
549. A Royal Worcester Cabinet Plate with gilt cartouche borders having opposing scenes of fish and fishing accessories, the centre field painted with a bridge over a river in landscape, signed verso E. Salter (restored). 10" dia.
550. A late Victorian painting on glass with 2 ladies in architectural gardens. 10" x 7".
551. A pair of Doulton salt-glazed stoneware Whisky Flasks having raised decoration of a galleon and marked 'Special Ireland Whisky'. 7".
552. A 19th C Japanese Imari pattern 2-handled circular Tureen with domed cover, 6 character mark to base. (Some restoration).
553. A pair of Chinese Song Dynasty celadon glazed Rice Bowls.
554. Four old Russian glass Perfume Bottles with silver plated filigree cagework decoration.
555. An 18th C Leeds creamware Coffee Pot with loop handle. (Spout and cover missing).
556. A Chinese cloisonne shallow Bowl highly decorated in polychrome enamels depicting a sea serpent to the interior. 12" dia. Illustrated.
557. A 19th C treen pedestal Bowl. 9" dia.
558. A Wedgwood & Co chrysanthemum pattern gilt floral Teapot.
559. A Berlin gilt cup and another.
560. A 19th C American architectural Mantel Clock with a marbled wooden case and lion figure.
561. A Suitcase and Cashbox.
562. A painted ceremonial carved wooden Face Mask, probably Siamese, c. 1900.
563. A Chinese Han Dynasty tombstone Shield formed with raised decoration, green glazed.
564. A Victorian copper Coal Scuttle.
565. Imperial Gazetteer of England and Wales, 2 vols, leather spine and another.
566. Grant R Francis. 'Old English Drinking Glasses' and another.
567. Joseph Bles. 'Rare English Glasses of the 17th and 18th Centuries'.
568. Marbled leather bound Ledgers. (5)
569. A metal hanging Lantern.
570. Antique related Books.
571. A Victorian decorated Police Truncheon and another.
572. A Bowler Hat.
573. A Fez and Bellboy Hat.
574. A German Navy Cap and another.
575. Richard Doyle. 'The Foreign Tour of Brown, Jones and Robinson'.
576. J M Barrie. 'Peter Pan and Wendy' decorated by Gwynedd M Hudson, cloth.
577. A 19th C Cantonese enamel Bowl decorated with flowers on a bleu-de-mazarin and turquoise ground. (AF)
578. A large Chinese blue and white Ginger Jar with Kangxi marks.
579. An 18th C Chinese sang de beouf Bottle Vase. 14".
580. A small Watercolour of a cove signed T Dyke Hart and a photograph album.
581. Frank Paton. 'The Compliments of the Season', An engraving signed in pencil. (AF)
582. A pair of Sugar Bows, London 1822.
583. Two silver mustard Spoons. London 1830.
584. A silver Tablespoon. London 1802.
585. A silver Caddy Spoon. London 1837.
586. A silver pencil holder Birmingham 1894, 3 white metal seafood picks and 1 spoon.
587. 6 silver teaspoons London 1826.
588. 2 silver tablespoons. London 1800 and 1823.

589. 6 white metal teaspoons some marked for silver.
590. Four silver teaspoons.
591. 2 silver coffee spoons.
592. A silver flat curb albert and Fob.
593. Two Victorian Brooches, silver and jet.
594. A Victorian silver Brooch and a Vesta Case.
595. A Victorian gold mounted agate and carnelian Swivel Fob.
596. A silver medal and Brooch.
597. A 9ct gold 3-Bar Brooch set with seed pearls to an anchor.
598. An Art Nouveau brass hanging Oil Lamp. (AF)
599. A Victorian brass hanging Oil Lamp with milk glass shade.
600. A late 19th C oak and walnut veneered Symphonium with 19" discs playing on 2 combs (1 tooth missing) and having penny in the slot mechanism and a further 10 discs.
601. Copper Tray, oriental Drawing Books, Frames, etc.
602. A leather Suitcase.
603. A Union Flag.
604. Police Helmets, Military Caps, etc.
605. Cushions, needlework, etc
606. Military and Civilian Peak Caps.
607. Three Pith Helmets including German example.
608. A cased Sewing Machine by William Sellers & Co, having shaped case base and oval painted landscape.
609. A brass Absol syringe No 4 for insecticides and auto-greasegun.
610. Kitchenalia.
611. 11' built cane F W Wallis Rod by Hardy Bros, reg no 8880 and 12' cane course rod by Alcock's 'The Pierless'.
612. A 10' spinning rod by Alex Martin and a built cane trout rod, 11' by the same maker.
613. An 11'6 cane trout rod and 12'6 cane grilse rod.
614. Two old trout rods and early pike/salmon rod.
615. A Clayton of Boston 'Fenland' 3 section rod.
616. A Victorian brass Oil Lamp with moulded milk glass reservoir and shade.
617. A gilt brass framed 4-glass Mantel Clock with circular enamelled dial, 8-day movement striking a gong and having twin glass mercurial pendulum.
618. An African Dogon Tribal Figure on plinth. 24" high.
619. 'The Early History of Charles Fox', Practical Knowledge, 6 vols; and 'Scripture Engravings' in 2 leather spined volumes with marble boards by William and Ann Wade.
620. A case of Masonic Regalia.
621. A Victorian brass and walnut Coal Scuttle.
622. A Chinese bronze Chariot Ring.
623. A Manual for a Bristol Fighter, motor cycling manual and others.
624. Buttons, etc
625. A Victorian blue and white part Dinner Service.
626. A French ormolu table Centrepiece in the form of neo-classical male and female figures seated on rocks, each supporting a 3 light leafy scrolling stem. Stamped MGA to base 27" high. Illustrated to front cover.
- 627-700. Spare lots for late entries.
701. An early 19thC Cantonese baluster vase, the body moulded with sea serpents and having shi shi handles. 24". Illustrated.
702. A fine 19th C ironstone Vase and Cover in the Chinese taste having a gilt green ground, decorated with panels of flora and landscape, having serpent scrolling finial and handles, bearing a transfer printed maker's mark to base of G L Ashworth & Bros, Hanley. 26". Illustrated.
703. A large Victorian majolica glazed Jardiniere moulded with neo-classical trailing anthemions, ribbons and pendant husks around blue oval paterae and on a green ground. Similar pedestal. Height 42" overall. (AF)
704. A green treacle glazed Jardiniere on stand overpainted in white with storks. Height 35" overall.
705. A 1930's MODEL of the Golden Hind 27 1/2".
706. A Victorian glass domed Display of 8 taxidermy exotic birds.
707. A glazed case of two taxidermy pheasants.
708. Two cases taxidermy birds.
709. A cast figure of a boy wrestling with a duck. 32" high.
710. A late 19th C Plaque Figure Group of a boy and a girl with a sledge.
711. A mid-Victorian Staffordshire pottery Incrrier depicting a snake stealthing a nest of bird's eggs.
712. 4 Chinese Song Dynasty chocolate part glazed Tea Bowls.
713. A 19th C Dresden Jar with cover decorated with opposing panels of flowers and garden scenes on a powder blue ground. 6". (AF)
714. A pair of Victorian dimpled vaseline glass Nightlight Holders.
715. A Victorian moulded Jug depicting a woodland camp. Moulded mark of Samuel Alcock. (AF)
716. A Metlach Stein with pewter lid and moulded with a scene of a bishop forming silver secularware.
717. A late 18th C Meissen polychrome boat shaped Teacup.
718. An Adams & Bromley majolica fish eating fish Teapot. (AF)
719. 3 Royal Doulton Models of dogs.
720. A porcelain half-doll depicting a young girl in traditional Dutch dress.
721. A Keith Murray for Wedgwood tapering cylindrical Vase with ring decoration. 8". (Slight chip to base). Illustrated.
722. A Chinese Kangxi mallet shaped Vase with applied handles and blue and white decoration, depicting a young family riding an ox. 5 1/2". Four character mark to base.

723. A French pink and mauve cameo glass Vase acid etched and carved with trailing flora, signed Arsal, with an etched number to base 8483. 8".
724. A 19thC Strawberry Hill brass Fan Case decorated in the Gothic taste.
725. A small 17th C crested bronze Mortar.
726. An 18th C Wedgwood moulded creamware Teapot (no lid).
727. A 19th C French bronze Figure of a monkey in Napoleonic dress mounted on a poodle, (after the engraving by Rowlandson depicting the Anglo-French relationship), signed A Baron and bearing foundry mark. 8" wide, 4" deep, 8" high.
728. A Doulton Lambeth stoneware Tyg, the cylindrical body sgraffito decorated with a scene of goats and kids by Hannah Barlow, the electrplate frame formed by Elkington & Co. 8 1/2" high. Illustrated.
729. A Georgian tortoiseshell pagoda top Tea Caddy inlaid with pewter lines and mother of pearl floral motifs.
730. A Doulton Lambeth saltglazed stoneware harvest Tyg. 6" high.
731. A Victorian ivory telescopic Monocular, cased.
732. A Royal Dux Figure of a maiden leaning over a shell. 7". (Firing crack).
733. A small Victorian Staffordshire octagonal cottage Pastille Burner. (AF)
734. A Carlton china crested Cooking Range.
735. A 19th C Doccia blue and gilt Teapot.
736. A pair of flintlock muff Pistols by Barber of Newark.
737. A large oval millefiore Paperweight, probably French 19thC.
738. A pair of Royal Worcester Cabinet Plates painted by W Powell depicting a robin and a green woodpecker, cypher marks for 1915.
739. 19thC English School. Portrait Miniature of Edward Davies, half-length facing right, in dark blue coat and white cravat, watercolour on ivory, oval. 3 1/4" x 2 1/2". Bears text verso and dated 1843.
740. Portrait miniature of an 18thC French mademoiselle, on ivory, signed M Callet.
741. Portrait of a lady - 20thC colour print, oval. 3 1/2" x 2 1/2", in ornate gilt metal frame; another of a huntsman.
742. Two WWI Service Medals of Private S Reddish of The Lincolnshire Regiment, QE2 Faithful Service Medal, boxed, and various coins.
743. A silver mounted ebonised Jewel Box.
744. A set of 6 18th C Dutch Delft underglaze blue decorated Wall tiles. 5".
745. An early Figure of Mickey Mouse marked registration no 750611. 12". (Some damage to right hand).
746. Old Bottle Openers, Keys, small metal items, etc.
747. An organic material Snuff Box and one other.
748. A carved Coquila Nut.
749. Assorted WWII cloth badges.
750. A pair of 19th C Japanese landscape paintings in relief. (AF).
751. A pair of oak framed coloured Prints of 18th C interiors by M Doraston.
752. A 19th C American shelf Clock with flamed mahogany and simulated marble painted case.
753. Engraving of Anne Hathaway's Cottage and The Monument. (2)
754. Two oak framed portrait Photographs.
755. Rusoff "The Glade" oil on canvas.
756. 20thC Continental School. Landscape - chalet nestling amongst pine trees, snow covered mountains beyond, oil on canvas, indistinctly signed. 20" x 24".
757. A pair of coloured fashion drawings of young ladies with dogs, signed Clarence F Underwood.
758. A humorous colour engraving.
759. Hogan. Still Life oil on canvas.
760. A 19th C woolwork Picture depicting Isaac and Abraham.
761. Modern oil painting, Lakeside scene.
762. A Victorian gilt framed woolwork picture entitled 'Hagars Flight', on a verre eglomise mount.
763. Doherty. Highland landscape oil on canvas.
764. 3 hunting Prints and another.
765. A pair of colour Engravings after Hogarth - 'Night' and 'Day'. (AF)
766. Joly. Still life after Cezanne oil on canvas.
767. A Bartolozzi Engraving of a sleeping child.
768. A Victorian mahogany framed woolwork picture. (AF)
769. A Victorian colour Print entitled 'Young Lochinvar'.
770. Two Laurie and Whittle beauty Engravings.
771. Welsh. Still life oil on canvas.
772. A drop dial Wall Clock with single fusee 8-day movement, 9" brass bezel. Rosewood case with octagonal beaded surround with floral brass inlay, c.1850.
773. W H Earp. Shoreline with sailing boats, Watercolour, signed. 10" x 21".
774. Alfred H Vickers. River landscape - fisherman by the water's edge, cottages and hills beyond, oil on canvas, signed. 11 1/2" x 9 1/2".
775. A pastel drawing of Barnwell Castle.
776. An Edwardian Wall Mirror with cattle scene prints to frame.
777. Rose. Study of a cow oil on canvas.
778. A late Victorian landscape Oil Painting and a colour print 'The Gardener's Wife'.
779. A Chinese lacquer Panel with raised mother of pearl decoration.
780. A modern Engraving.
781. A Japanese print and Vernon Ward print and a framed photograph.

782. A 19th C Continental woolwork Picture of a young man with a pipe.
783. A drop dial Wall Clock with single fusee 8-day movement. 12" brass bezel, coromandel case with mother of pearl inlay, c.1820.
784. 19th C colour Print after Moorland. 'Evening or the Post Boy's Return'.
785. A Victorian mahogany cased wall clock.
786. Sowerby Lodge. A 1930's Doll's House with furnishing.
787. Valentine My Living Shelf. Still life oil on canvas.
788. Gilt framed colour Print after Femeley.
789. Woolwork picture of a seascape, oak framed.
790. John Holland (19thC). Peel harbour, Isle of Man, oil on board, 10" x 16", heavy gilt frame.
791. John Sell Cotman (1782-1842). Mill house and stream, watercolour drawing, label verso. 6 3/4" x 10".
792. Thomas Pyne (1843-1935). Extensive river landscape with grazing cattle, wooded slopes, hills beyond, watercolour, bears label verso. 9" x 13".
793. After The Race, A Limited Edition Print.
794. E M B (20th C English). Windsor Castle from the Thames, pencil heightened body colour, signed with initials and dated 25.7.01.
795. Ada Watson Raab. Street scene with figures by a church arch and medieval timbered buildings, signed and dated '25, watercolour. 7 1/4" x 10".
796. A Victorian colour Print entitled 'Every Inch a Sailor'.
797. Three 19th C coaching Prints.
798. Jackson. Equine portrait Oil on canvas.
799. Paul Sandby Munn (19thC British). 'View of Llanthony Abbey, Monmouthshire', watercolour and pencil, title verso. 11 1/4" x 18".
800. William Bartol Thomas (1887-1947). 'Welsh Sands' - landscape with grassy sand dunes, sea and hills in the distance, watercolour, signed. 9 3/4" x 13 3/4".
801. Modern oil on canvas of a Chinese farm worker with oxen.
802. J H Seth (19thc). Landscapes - figures on a country path by a loch and figures fishing by a waterfall, watercolours, a pair, signed and dated indistinctly. 7" x 10".
803. After Dendy Sadler. A Victorian couple in a garden, signed in pencil by the artist and the etcher James Dobie.
804. H Tyers. Watercolour of the Royal Yacht Britannia painted from Tower Pier.
805. After George Downing. Colour Print of Old Tyme London.
806. A 19thC Tavern Clock in a figured mahogany case. The 18" enamelled dial signed Geo Bradshaw, Whitchurch, striking movement. 50" high.
807. L Mountain. Fisherman on a river bank, oil on canvas, signed and dated 1903. 20" x 14".
808. E Mountain. Cows on a cliff top path, oil on canvas. 10" x 22".
809. Emmet. Still life oil on canvas.
810. Lesley Herriett (20thC). River landscape with a sailing boat moored by a thatched cottage, with mainly wooded banks, oil on canvas, signed. 15" x 19".
811. H M Raine. River landscape, a pair, ovals, watercolour, signed and dated 1923. 13 3/4" x 17 3/4".
812. 19th C oil on oak panel. Landscape 10 1/2" x 13".
813. Blaeu. A double sided coloured map of Denbighshire and Flintshire c.1645. Framed.
814. Donald Shearer (20thC School). 'Evening on Loch Ness', scene with shoreline to the fore and mountains beyond, oil on canvas, signed. 23" x 35".
815. F Nicholson. Landscape, highland loch in a mountain valley, watercolour, signed. 6 1/4" x 9 1/2".
816. 19thC English School. Landscape with a saddled donkey grazing beside a wattle fence, cottage and sheep beyond, oil on canvas. 11 1/4" x 15 1/4".
817. Chandos. 'Riviera Scene' - figures by the water's edge, before a building with flower laden balcony, a sailing boat nearby, oil on board. 11 1/2" x 15 1/2", signed, label verso.
818. G Stainton (fl.1860-1890). Fishing boats off the coast, with sailors in rowing boats in the foreground, oil on canvas, inscribed and dated verso, 1884. 19 1/4" x 23 1/4".
819. J E Peach. An Edwardian lady with bonnet and full-length dress, watercolour, signed and dated 1901. 9 1/2" x 6 1/2".
820. Barbara Corley, 1961. Head and shoulders portrait of a young girl, charcoal drawing, signed and dated. 24" x 18".
821. A pen sketch of a bullfight inscribed Sevilla 9.4.50. 6 1/2" x 9 1/4".
822. A pair of colour Engravings, proofs, signed in pencil, Edward King.
823. A floral gilt framed Wall Mirror.
824. A Victorian Tonbridge inlaid Overmantel Mirror.
825. John Lees (19thC British). 'The Kittock Burn near Busby' - fisherman by a stream, with stone bridge beyond, watercolour, signed and dated 1885. 7 1/2" x 11 1/2".
826. A gilt framed needlework picture of flowers in a vase.
827. A silhouette picture of cranes.
828. Two modern framed Prints of horses and a train at a crossing.
829. Colour Print after Herring of The racehorse Charles XII.
830. A Georgian needlework Picture of a seated woman.
831. A 19th C oil on oak Panel depicting the birth of Christ.
832. Bryan M Conway. Hunting Scene, oil on canvas.
833. An oval bevel Wall Mirror with reeded gilt frame.
834. An Autumnal view of a loch and mountains with figures and boats. Watercolour. 20" x 16 1/2".
835. Pair of silhouette portraits.
836. A triptych of Japanese Watercolours on silk depicting cranes, blossom, birds and flora.

837. An unusual pair of Scandinavian winter landscapes painted on kid. 9 1/2" x 13 1/2", oak framed.
838. W Richards. Pair of coastal scenes with sailing boats and figures on the shore, oil on canvas, signed. 8" x 12 1/2".
839. Panoramic print of London.
840. A gilt framed oil on panel depicting a cat feeding on a bird. 20" x 24".
841. Mary E Oddie (20thC). Still life - Anemones in a cream glazed baluster jug, oil on board, signed. 18 1/4" x 14".
842. Watercolour of an early stone house.
843. D Pocklington. A pair of Arabian scene oils on canvas.
844. Fine Art Trade Guild Print of a Lancaster Bomber by K B Hancock.
845. Modern watercolour of 2 stags.
846. Early 20thC School. Cattle in a farmyard, oil on board. 14 1/4" x 19 1/2". (Frame inscribed 'Presented to R T V C by Charles Hammond Esq').
847. A framed oil on canvas of horses.
848. A Victorian needlework Sampler by Isabella Catchpole, 1817. (AF)
849. A 19th C Chinese needlework panel in 4 scenes with gilt mount and ebonised frame.
850. F Robertson (19thC). Highland landscape - cattle watering and grazing by the loch side, mist covered mountain in the distance, oil on canvas, signed. 19 1/2" x 29 1/2". Illustrated on centrefold.
851. John Cothen Webb. A proof copy colour print of Venice, signed in pencil.
- 852-900. Spare lots for late entries.

FURNITURE STARTS @ 10am

PLEASE NOTE THAT THE FURNITURE SECTION

901 ONWARDS

WILL BE SOLD CONCURRENTLY WITH LOT 1 AT 10am.

901. An Edwardian walnut mirrorback Dresser.
902. An Art Deco mahogany and ebonised Grandmother Clock.
903. A 19th C oak Coaching Table with circular dished top and turned base.
904. A Victorian pine Dough Trough on castors.
905. An Edwardian walnut overmantel Mirror.
906. A George III mahogany cross banded oak hanging Corner Cupboard with 2 doors.
907. A late Victorian 7pce walnut Salon Suite with carved fretwork splats, comprising sofa, armchair and 5 side chairs.
908. A Victorian mahogany two tier Buffet with moulded top and baluster turned legs.
909. An Edwardian mahogany Centre Table with leather inset top, on square taper legs.
910. A pair of bobbin turned oak Dining Chairs.
911. A Bagatelle Board.
912. A George III mahogany barback Dining Chair.
913. A period oak Hall Chair.
914. A finely carved and pierced Victorian walnut spoonback Nursing Chair with serpentine seat and cabriole legs.
915. A 17th C oak Coffin with 3 plain panels to the lid and 2 tulip carved panels to the front, raised on stiles.
916. A late Victorian carved Dresser Base with secretaire drawer.
917. A Victorian walnut marquetry oval Loo Table with tilt top, raised on 4 pillars with carved cabriole legs.
918. Norwegian Coffee Table
919. A Victorian walnut bobbin turned 2-tier Whatnot.
920. A 19th C French giltwood Stool with raised arms.
921. A mahogany Gypsy Table on bobbin turned stand.
922. An Edwardian marquetry Bedroom Chair.
923. A late 19th C pollard oak Sideboard of architectural form with fielded and carved bachanallian panels in the Arts and Crafts manner.
924. A pair of late Victorian mahogany stained pine traytop Washstands.
925. A Victorian mahogany double door glazed Bookcase Top.
926. A George III red walnut dropleaf Table with oval top, cabriole legs with ball and claw feet.
927. An unusual 6 leg oak dropleaf Dining Table.
928. A Victorian walnut Table Mirror with barleytwist supports.
929. An Adam style mahogany serpentine Dressing Table with mirror and a matching marble topped Washstand.
930. A late 19th C ash and elm rush seated Chair.
931. A Victorian elm smoker's Bow Chair.
932. A 19thC elm spindleback Carver Chair.
933. A child's roll top Desk and Chair.
934. A Victorian carved walnut serpentine Stool with cabriole legs.
935. A pair of Georgian mahogany pierced ladderback Chairs with concave seats.
936. A set of 6 (including 2 carvers) continental cane seated Dining Chairs with fruitwood reeded legs.
937. A Victorian satin birch Bureau with fall flap over 4 graduated drawers and turned feet.
938. A Victorian grain painted bowfront Chest of 2 short and 3 long graduated drawers with turned handles and feet.
939. Two Victorian mahogany Bedposts.
940. An Edwardian ebonised Nursing Chair.
941. A yellow painted Chair.
942. Two pairs of Victorian balloon back Dining Chairs with cabriole legs. (AF)

943. An early 18th C oak gateleg Table. (AF)
944. A Victorian oak Partner's Desk with 3 drawers to each frieze and each pedestal. 4'6" x 3'6".
945. An early 20thC mahogany extending Dining Table in the Chippendale manner with moulded top having fold-over leaf, gadrooned frieze, carved acanthus cabriole legs with ball and claw feet. 4' wide x 6' min/8'6" max.
946. A set of 3 Victorian rosewood balloonback Dining Chairs with cabriole legs.
947. A large oak plank top Dining Table with small drop leaves.
948. A set of 4 Victorian and later mahogany balloonback Dining Chairs with cabriole legs.
949. A George III mahogany Sectaire Bookcase with astragal glazed 2 door upper section, the lower having fitted drawer over 2 door base, on splay feet. 44" wide, 95" high. Illustrated.
950. A pair of Victorian mahogany balloonback Dining Chairs with turned legs.
951. A 19thC oak rise and fall Bible Stand.
952. An oak Hall Chair.
953. An 18th century oak Hall Chair with fielded panel back.
954. A 19thC mahogany 2 drawer Side Table on square legs.
955. A small glazed table top Display Cabinet.
956. An early 19thC flamed mahogany demi-lune Side Table.
957. A Victorian mahogany kneehole Desk with 2 Gothic arch doors enclosing fitted drawers and lift flap.
958. A Georgian style mahogany 3 door astragal glazed Bookcase.
959. A 19thC mahogany Tea Table with rectangular folding top and square legs.
960. A mahogany Blanket Box.
961. A Victorian pine Blanket Box.
962. An octagonal bevelled Wall Mirror.
963. A small onyx Table.
964. Seven Victorian elm Bar Stools with dish tops, turned legs and iron stretchers.
965. A Victorian oak Side Table.
966. Two Victorian gilt Bedroom Chairs.
967. An Edwardian mahogany oval Centre Table with undershelf.
968. An antique style oak gateleg Dining Table.
969. A set of 4 20th century mahogany Dining Chairs.
970. A Lloyd loom Chair and box stool.
971. A Victorian candytwist mahogany Torchere.
972. A Victorian brass Firescreen Frame.
973. A Victorian light ash box Commode.
974. A George III mahogany gentleman's Dressing Chest converted to a drinks cabinet. 38" wide, 36" high.
975. A late Victorian carved walnut Sideboard with low mirrorback and shelf, and 2 drawers over the glazed cupboard base.
976. A Victorian carved oak Corner Cupboard raised on legs.
977. A William IV mahogany Tea Table with folding D-shape top and turned legs.
978. A late Victorian triple Wardrobe.
979. An Edwardian 3 wheel Invalid Chair.
980. A set of 4 Queen Anne style oak Dining Chairs with cabriole legs.
981. A 19th C Italian walnut open Armchair with sculptured velvet panel back and seat, scrolling arms, legs and foliate stretcher.
982. A Victorian mahogany spoonback Armchair upholstered in burgundy sculptured dralon.
983. A bobbin turned oak Joint Stool.
984. A Victorian mahogany Worktable with a rectangular top, single drawer over basket, tulip carved pillar, quatrefoil base with bun feet.
985. A fine inlaid satinwood Bonheur de Jour with rosewood crossbanding, box and ebony stringing and gilt metal mounts, 20thC.
986. An antique oak Gateleg Table with 40" oval top.
987. A period oak Hall Chair. (AF)
988. A Georgian oak Pembroke Table.
989. A Queen Anne style walnut Bureau/Bookcase on cabriole legs, 1920's.
990. An Art Deco walnut veneered longcase Clock with 3 train movement by Enfield, 1930's.
991. A Victorian rosewood Ottoman of bombe form with modern upholstery.
992. A 19th C rectangular carved Side Table with single drawer.
993. A Victorian wicker Pushchair.
994. A wicker Pram.
995. A carved teak occasional Table.
996. A carved oak Sewing Box on stand.
997. A pair of late Victorian walnut ladies and gentlemen's Salon Chairs with dralon upholstery.
998. A Hepplewhite design 19thC Carver Chair.
999. A Victorian mahogany cylindrical Pot Cupboard with reeded pedestal.
1000. A Victorian lath back Grandfather Chair.
1001. An Edwardian oak lath back office Swivel Chair.
1002. An Edwardian Pub Bench with dralon upholstery and turned legs.
1003. A Sheraton revival rosewood Display Cabinet with scrolled broken pediment, mirror back, panel doors with glazed side panels, inlaid satinwood, boxwood and ebony stringing and on 4 square tapering reeded supports. 93" high x 41" wide. Illustrated.
1004. A Victorian Dining Table with turned oak legs.

1005. A large barleytwist mahogany drawleaf Dining Table with moulded stretchers.
1006. A reproduction rectangular Centre Table on square taper legs.
1007. A set of 6 antique ash and elm Country Dining Chairs with turned backs, legs and stretchers and on pad feet.
1008. A red painted model Welsh Dresser.
1009. A reproduction oak open linenfold Bookcase.
1010. A mahogany Tripod Table.
1011. A 19thC mahogany topped Tripod Table.
1012. A Victorian Work Table with painted musical trophies.
1013. An Oriental panelled 2-door Cupboard.
1014. A Victorian box Stool with sculptured dralon upholstery.
1015. An oak Hall Table with drawer.
1016. A Rectangular mahogany Piano Stool with drop-in seat.
1017. A circular table inlaid with mother of pearl counters.
1018. A Victorian satinwood Wine Box.
1019. A 19th C marble ornamental Garden Vase. 25" high.
1020. A Edwardian Double Bedstead.
1021. A two seater drop-arm Sofa.
1022. A Victorian mahogany Writing Table with slender turned legs and stretchers and single drawer.
1023. A flamed mahogany Cabinet (converted from a piano).
1024. A large and imposing Victorian oak and mahogany Cabinet with 2 doors having moulded wire and cloth panels over 2 drawers. 5'8" wide, 8'3" high, 15" deep. Provenance: St Wulfram's Church, Grantham.
1025. A Chippendale mahogany fretwork Pier Glass with inset gilt ho-ho bird.
1026. A pair of marble top ormolu mounted bombe Torchères.
1027. A George III oak Dresser Base with 3 mahogany crossbanded drawers over 2 central drawers enclosed by cupboards and reeded panel, pierced brass swan-neck handles. 5'9" wide, 2'8" high, 18" deep.
1028. A 19th C mahogany Chest of 2 short and 2 long graduated drawers with pierced backplate handles and bracket feet. 3' wide.
1029. A reproduction mahogany bowfront 3 drawer Chest.
1030. An early 19th C mahogany Pembroke Table with oval drop leaves, square taper legs, brass cup castors.
1031. An Edwardian oak combination Dressing Chest with marble top.
1032. A tall oak Joint Stool.
1033. An early 19th C oak Chest of 2 short and 3 long graduated drawers with ebonised knob handles and bracket feet.
1034. A Victorian painted pine Chest of 2 short and 3 long graduated drawers with ebonised knob handles and turned feet.
1035. An oak 2 door Cabinet on 2 drawer stand, 1930's.
1036. A Sheraton style mahogany serpentine Sideboard on square taper legs, late 19thC.
1037. A Georgian oak Bureau with short fall-flap over 4 long graduated drawers with lion mask ring handles and bracket feet. 3'9" wide.
1038. A carved oak 3 panel Coffin raised on stiles.
1039. An early 19th C continental flamed mahogany Secrétaire à Abattant with fall front resting over three stepped drawers.
1040. A Georgian mahogany Secrétaire with fitted drawer over 2 panel doors with oval flamed veneers, on bracket feet.
1041. A 'Chinese Chippendale' open mahogany framed Armchair with floral tapestry upholstery and blind fret carving.
1042. A Victorian rosewood mirror backed Sideboard with floral inlay, galleried cupboards and panelled doors, c.1890.
1043. A Victorian flamed mahogany bowfront Chest of a single cushion drawer over 4 drawers with glass knob handles.
1044. Victorian Tub Chair (AF)
1045. Four reeded Victorian Table Legs.
1046. Drop Leaf Table with later formica top.
1047. An oak Standard Lamp.
1048. A fall flap Cabinet.
1049. A 19th C stone bacchanalian decorated campana shaped urn.
1050. An Edwardian Pushchair.
1051. A late Victorian carved walnut Bedstead.
1052. A Victorian stripped pine Corner Cupboard with shaped shelves and panelled door.
1053. An Edwardian Picture Easel.
1054. A Victorian iron Bedstead.
1055. A late Victorian walnut Hall Stand with fret and galleried back and turned legs.
1056. A walnut Bedroom Suite with carved decoration comprising double bedstead with modern divan mattress, double wardrobe, triple mirror dressing table and marble topped washstand, c.1900.
1057. A 19th C tripod Table with marble chequerboard top, turned pillar and trefoil base.
1058. A small oak bobbin turned Footstool.
1059. A Victorian mahogany Stool with reeded legs.
1060. A Victorian pine 4 door Office Cabinet.
1061. A 17thC oak 3 panel Coffin.
1062. An Edwardian mahogany Bureau with fall flap over 3 graduated drawers and cabriole legs.
1063. A Victorian rosewood and mahogany Pier Cabinet.
1064. A period carved oak Court Cupboard.
1065. A 19th C mahogany duchess dressing table Base, stamped STRAHAN 20602.

1066. An Edwardian oak mirrorbaack Hallstand with turned uprights.
1067. A barleytwist oak Sideboard with carved back, 2 drawers enclosed by 2 doors, raised on barleytwist legs with plain stretchers.
1068. A Georgian oak and pine Chest of 4 drawers with drop handles and bracket feet.
1069. A Victorian mahogany Pot Cupboard.
1070. A small Turkish Rug.
1071. A small Turkish Rug.
1072. A small Turkish Rug.
1073. A Persian Rug.
1074. A Shirazi Rug.
1075. An Afshari Rug.
1076. A Persian Rug.
1077. A Turkish Rug.
1078. A red ground Indian Rug.
1079. A Zekhani Rug.
1080. A Regency mahogany ropetwist Pier Glass. 42" high.
1081. A 19th C oak and mahogany longcase Clock with painted arch dial with fishing scene to arch, conch shells to the spandrels and marked R Hardy, Newark. 6'8" high.
1082. A Victorian mahogany Games Table with rectangular moulded top inset with circular marble chequerboard and inscribed 'Derby Farm 1898', raised on turned legs.

Established 1900
- GOLDINGS -
AUCTIONEERS & VALUERS
www.goldingyoung.com

Forthcoming Auction Sales

*At The Grantham Auction Rooms,
Old Wharf Road, Grantham, Lincs NG31 7AA
Tel: 01476 565118*

Fax: 01476 561475 E-mail: goldingyoung@compuserve.com

Upon instructions from Executors, Private individuals, House Clearances, etc.

GENERAL FURNITURE & EFFECTS

Also COMMERCIAL GOODS

viz. A large amount of OFFICE EQUIPMENT, desks, cabinets, chairs, photocopier, etc. HAND TOOLS including trolley jacks, angle grinders, bandsaw, shotblast cabinet, hedge cutter, wood lathe, rivet guns, woodworking sander, electric pumps, Bosch cordless drill, Makita electric drill, screwdriver sets, socket sets, heavy duty workbench, various sack wheels, cabinets, storage units, etc
Upon instructions from the Office of the Sheriff of Lincolnshire, Machine Mart Ltd., and others.

On Wednesday 25th October 2000 at 10 am

These sales attract buyers looking for furniture, pictures, silver & plate, ceramics, carpets, books, domestic appliances, tools, outdoor and garden items, bric-a-brac, etc

HOUSE CLEARANCES and SINGLE ITEMS always INVITED
ENTRIES CLOSE 5pm the preceding FRIDAY

Viewing: Tuesday prior 2pm to 6pm and Saleday from 9am

Our next catalogued sale of

**BYGONES &
20th C. COLLECTABLES**

Is on Wednesday 8th November at 10am

Including an important collection of bygone shop stock, early packaging, etc. and a collection of A.R.P. memorabilia, 120 music boxes, Also invited are lots of Beswick, Sylvac, Carltonware, Royal Doulton figures, Wade, Wedgwood, Hornsea, Burleigh, Aynsley, Shelley and any good 20th C. ceramics, lots of Corgi, Matchbox, and tin plate cars and toys, early soft toys and boxed toys and games, postcards, cigarette cards, stamps in albums, advertising memorabilia, stringed puppets, dolls, railway items, books, etc. and early 20th C. glass and jewellery.

CLOSING DATE FOR CATALOGUE ENTRIES – FRIDAY 20th October

Viewing: Tuesday prior 2pm to 7pm and Saleday from 9am

Catalogues: FREE when collected from our offices and websites
www.invaluable.co.uk/gv&c AND www.icollector.com
from Friday 3rd or £4 (pre-paid) by post.